



Agricultural Prices

ISSN: 1937-4216

Released May 31, 2011, by the National Agricultural Statistics Service (NASS), Agricultural Statistics Board, United States Department of Agriculture (USDA).

May Farm Prices Received Index Decreased 1 Point

The preliminary All Farm Products Index of Prices Received by Farmers in May, at 174 percent, based on 1990-1992=100, decreased 1 point (0.6 percent) from April. The Crop Index is unchanged but the Livestock Index decreased 3 points (1.9 percent). Producers received lower prices for cattle, corn, eggs, and strawberries and higher prices for hay, broilers, celery, and lettuce. In addition to prices, the overall index is also affected by the seasonal change based on a 3-year average mix of commodities producers sell. Increased monthly marketings of wheat, cantaloupes, broilers, and sweet corn offset decreased marketings of cattle, corn, milk, and soybeans.

The preliminary All Farm Products Index is up 36 points (26 percent) from May 2010. The Food Commodities Index, at 165, decreased 2 points (1.2 percent) from last month but increased 27 points (20 percent) from May 2010.

Prices Paid Index Up 1 Point

The May Index of Prices Paid for Commodities and Services, Interest, Taxes, and Farm Wage Rates (PPITW) is 204 percent of the 1990-1992 average. The index is up 1 point (0.5 percent) from April and 23 points (13 percent) above May 2010. Higher prices in May for hay & forages, complete feeds, nitrogen, and gasoline more than offset lower prices for feeder cattle, feeder pigs, feed grains, and concentrates.

Prices Received, Prices Paid, and Ratio of Prices Received to Prices Paid Indexes 1990-1992 Base – United States: May 2011 with Comparisons

Index	May 2010	April 2011	May 2011
Prices received by farmers	138	175	174
Prices paid by farmers	181	203	204
Ratio of prices received to prices paid	76	86	85

Contents

Prices Received by Farmers	4
Prices Received Indexes – United States: May 2011 with Comparisons	5
Prices Received and Prices Paid Indexes by Month for Selected Groups – United States: 2010 and 2011, 1990-1992 Base	5
Received Indexes by Month, Livestock Products, All Products, and All Crops – United States: 1990-1992=100 Chart.....	6
Received Indexes by Month, Food Grains, Feed Grains & Hay, and Oilseeds – United States: 1990-1992=100 Chart.....	6
Received Indexes by Month, Fruit & Nut and Commercial Vegetables – United States: 1990-1992=100 Chart.....	7
Received Indexes by Month, Meat Animal, Dairy Products, and Poultry & Eggs – United States: 1990-1992=100 Chart.....	7
Prices Received for Field Crops and Fruits – United States: May 2011 with Comparisons	8
Prices Received for Vegetables and Livestock – United States: May 2011 with Comparisons.....	9
Prices Received for Corn by Month – United States Chart.....	10
Prices Received for Wheat by Month – United States Chart	10
Prices Received for Cotton by Month – United States Chart.....	11
Prices Received for Soybeans by Month – United States Chart	11
Prices Received for Cattle by Month – United States Chart	12
Prices Received for Milk by Month – United States Chart	12
Prices Received for Hogs by Month – United States Chart	13
Prices Received for Poultry by Month – United States Chart	13
Prices Received for All Wheat, Corn, and Soybeans by Month – United States: 2011 with Comparisons	14
Prices Received for Beef Cattle and All Hogs by Month – United States: 2011 with Comparisons	14
Prices Received for All Wheat – States and United States: May 2011 with Comparisons	15
Prices Received for Winter Wheat – States and United States: May 2011 with Comparisons	15
Prices Received for Durum Wheat – States and United States: May 2011 with Comparisons.....	16
Prices Received for Spring Wheat – States and United States: May 2011 with Comparisons	16
Prices Received for All Barley – States and United States: May 2011 with Comparisons.....	17
Prices Received for Malting Barley – States: May 2011 with Comparisons	17
Prices Received for Feed Barley – States: May 2011 with Comparisons	17
Prices Received for Corn – States and United States: May 2011 with Comparisons	18
Prices Received for Soybeans – States and United States: May 2011 with Comparisons	18
Prices Received for Oats – States and United States: May 2011 with Comparisons	19
Prices Received for Sorghum Grain – States and United States: May 2011 with Comparisons.....	19
Prices Received for Dry Beans – States and United States: May 2011 with Comparisons	20
Prices Received for Peanuts (In-Shell) – States and United States: May 2011 with Comparisons.....	20
Prices Received for Sunflowers – States and United States: May 2011 with Comparisons	21
Prices Received for Canola – States and United States: May 2011 with Comparisons	21
Prices Received for Flaxseed – States and United States: May 2011 with Comparisons	21
Prices Received for Upland Cotton and Cottonseed – States and United States: May 2011 with Comparisons	22
Prices Received and Farm Marketings for Upland Cotton and Rice – United States: May 2011 with Comparisons	22
Prices Received for Hay by Type – States and United States: May 2011 with Comparisons.....	23
Prices Received for Apples – States and United States: May 2011 with Comparisons	23
Prices Received for Citrus Fruits by Utilization – States and United States: May 2010	24
Prices Received for Citrus Fruits by Utilization – States and United States: April 2011	25
Prices Received for Citrus Fruits by Utilization – States and United States: May 2011	26
Prices Received for Potatoes – States and United States: May 2011 with Comparisons.....	27
Prices Received for All Milk – States and United States: May 2011 with Comparisons.....	28
Prices Received for Milk Cows – States and United States: April 2011 with Comparisons	29
Commodity Parity Prices and Price as Percent of Parity Price – United States: May 2011 with Comparisons	30

Commodity Parity Prices – United States: May 2011 with Comparisons	31
Reliability of Prices Received Estimates	33
Prices Paid by Farmers.....	34
Prices Paid Indexes and Related Parity Ratios – United States: May 2011 with Comparisons.....	35
Prices Paid Indexes and Annual Weights for Input Components and Sub-Components – United States: May 2011 with Comparisons.....	36
Paid Indexes by Month, All Items and Production Items – United States: 1990-1992=100 Chart	37
Paid Indexes, Annual Averages, Production Items, Interest, Taxes, and Wages – United States: 1990-1992=100 Chart	37
Paid Indexes by Farm Type, All Items – United States: 1990-1991=100 Chart.....	38
Paid Indexes by Origin, All Production Items – United States: 1990-1992=100 Chart	38
Paid Indexes by Non-Farm Sector, Supplies & Repairs, Fertilizer, Machinery, and Fuel – United States: 1990-1992=100 Chart	39
Paid Indexes by Month, Feed and Replacement Livestock – United States: 1990-1992=100 Chart.....	39
Feed Price Ratios – United States: May 2011 with Comparisons.....	40
Prices Received Used to Calculate Feed Price Ratios – United States: May 2011 with Comparisons.....	40
Prices Paid for Feeder Livestock – United States: May 2011 with Comparisons.....	40
Prices Paid Broiler-Feed Ratio Monthly and Annual Average – United States: January 2007 - May 2011.....	41
Prices Paid Market Egg-Feed Ratio Monthly and Annual Average – United States: January 2007 - May 2011	41
Prices Paid Turkey-Feed Ratio Monthly and Annual Average – United States: January 2007 - May 2011	41
Prices Paid Milk-Feed Ratio Monthly and Annual Average – United States: January 2007 - May 2011	42
Prices Paid Hog-Corn Ratio Monthly and Annual Average – United States: January 2007 - May 2011.....	42
Prices Paid Steer & Heifer-Corn Feed Ratio Monthly and Annual Average – United States: January 2007 - May 2011	42
Reliability of Prices Paid Estimates	43
Information Contacts	44

Prices Received by Farmers

The May All Farm Products Index is 174 percent of its 1990-1992 base, down 0.6 percent from the April index but 26 percent above the May 2010 index.

All crops: The May index, at 199, was unchanged from April but 34 percent above May 2010. Index increases for food grains, commercial vegetables, and potatoes & dry beans offset index decreases for feed grains & hay, oilseeds, and cotton.

Food grains: The May index, at 256, is up 4.5 percent from the previous month and 62 percent above a year ago. The May all wheat price, at \$8.19 per bushel, is up 15 cents from April and \$3.86 above May 2010.

Feed grains & hay: The May index, at 259, is down 1.1 percent from last month but 70 percent above a year ago. The corn price, at \$6.15 per bushel, is down 20 cents from last month but \$2.67 above May 2010. The all hay price, at \$169 per ton, is up \$28.00 from April and up \$53.00 from last May. Sorghum grain, at \$10.80 per cwt, is 90 cents below April but \$5.11 above May last year.

Cotton, Upland: The May index, at 133, is down 7.6 percent from April but 21 percent above last year. The May price, at 80.3 cents per pound, is down 7.0 cents from the previous month but 13.7 cents above last May.

Oilseeds: The May index, at 233, is down 0.9 percent from April but 39 percent higher than May 2010. The soybean price, at \$13.00 per bushel, decreased 10 cents from April but is \$3.59 above May 2010.

Fruits & nuts: The May index, at 144, is unchanged from April but 2.1 percent higher than a year ago. Price increases for oranges, lemons, and grapefruit offset price decreases for strawberries, apples, and pears.

Commercial vegetables: The May index, at 170, is up 3.7 percent from last month but 1.2 percent below May 2010. Price increases during May for celery, lettuce, cauliflower, and onions more than offset price declines for tomatoes, asparagus, sweet corn, and cucumbers.

Potatoes & dry beans: The May index, at 190, is up 1.1 percent from last month and 29 percent above May 2010. The all potato price, at \$11.26 per cwt, is up 9 cents from April and up \$2.69 from last May. The all dry bean price, at \$31.70 per cwt, is unchanged from the previous month but \$3.90 above May 2010.

Livestock and products: The May index, at 153, is 1.9 percent below last month but up 17 percent from May 2010. Compared with a year ago, prices are higher for cattle, milk, hogs, eggs, turkeys, and calves. Prices for broilers are down from last year.

Meat animals: The May index, at 154, is down 2.5 percent from last month but 18 percent higher than last year. The May hog price, at \$67.80 per cwt, is up 10 cents from April and \$5.60 higher than a year ago. The May beef cattle price of \$115 per cwt is down \$4.00 from last month but \$20.30 higher than May 2010.

Dairy products: The May index, at 149, is down 0.7 percent from a month ago but 30 percent higher than May last year. The May all milk price of \$19.40 per cwt is down 20 cents from last month but \$4.40 high than May 2010.

Poultry & eggs: The May index, at 155, is down 1.9 percent from April but 3.3 percent above a year ago. The May market egg price, at 62.2 cents per dozen, decreased 26.5 cents from April but is 18.1 cents above May 2010. The May broiler price, at 50.0 cents per pound, is up 1.0 cent from April but 2.0 cents below a year ago. The May turkey price, at 68.2 cents per pound, increased 2.8 cents from the previous month and 12.1 cents from a year earlier.

Prices Received Indexes – United States: May 2011 with Comparisons

[Revised historical price indexes for months not shown are available at www.nass.usda.gov]

Index	1910-1914 Base				1990-1992 Base		
	1990-1992 Average	May 2010	April 2011	May 2011	May 2010	April 2011	May 2011
	(percent)	(percent)	(percent)	(percent)	(percent)	(percent)	(percent)
All products	639	875	1113	1104	138	175	174
All crops	500	731	988	987	148	199	199
Food grains	325	501	775	811	158	245	256
Feed grains & hay	363	542	935	925	152	262	259
Cotton, Upland	517	564	739	680	110	144	133
Tobacco	1263	1563	1491	1491	103	99	99
Oilseeds	554	919	1288	1277	168	235	233
Fruits & nuts	716	987	1009	1009	141	144	144
Commercial vegetables	698	1226	1172	1214	172	164	170
Potatoes & dry beans	540	745	954	961	147	188	190
Other crops	493	613	621	621	124	126	126
Livestock and products	768	1004	1195	1170	131	156	153
Meat animals	1021	1325	1607	1565	130	158	154
Dairy products	799	923	1206	1194	115	150	149
Poultry & eggs	282	420	444	435	150	158	155
Food commodities	(NA)	(NA)	(NA)	(NA)	138	167	165

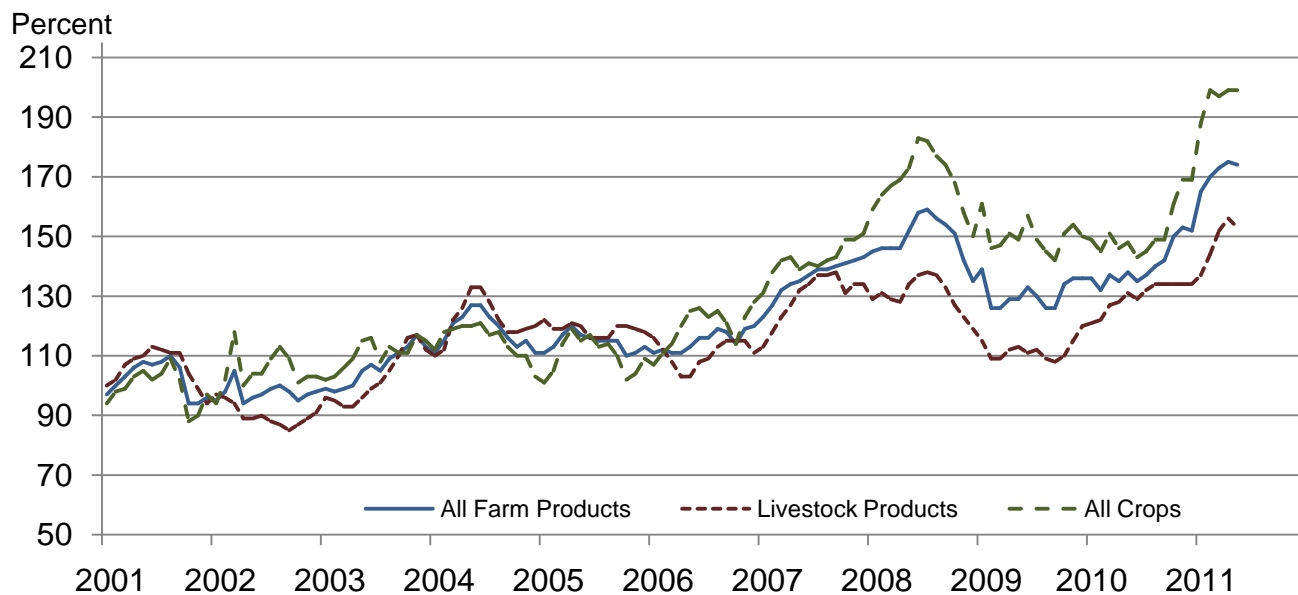
(NA) Not available.

Prices Received and Prices Paid Indexes by Month for Selected Groups – United States: 2010 and 2011, 1990-1992 Base

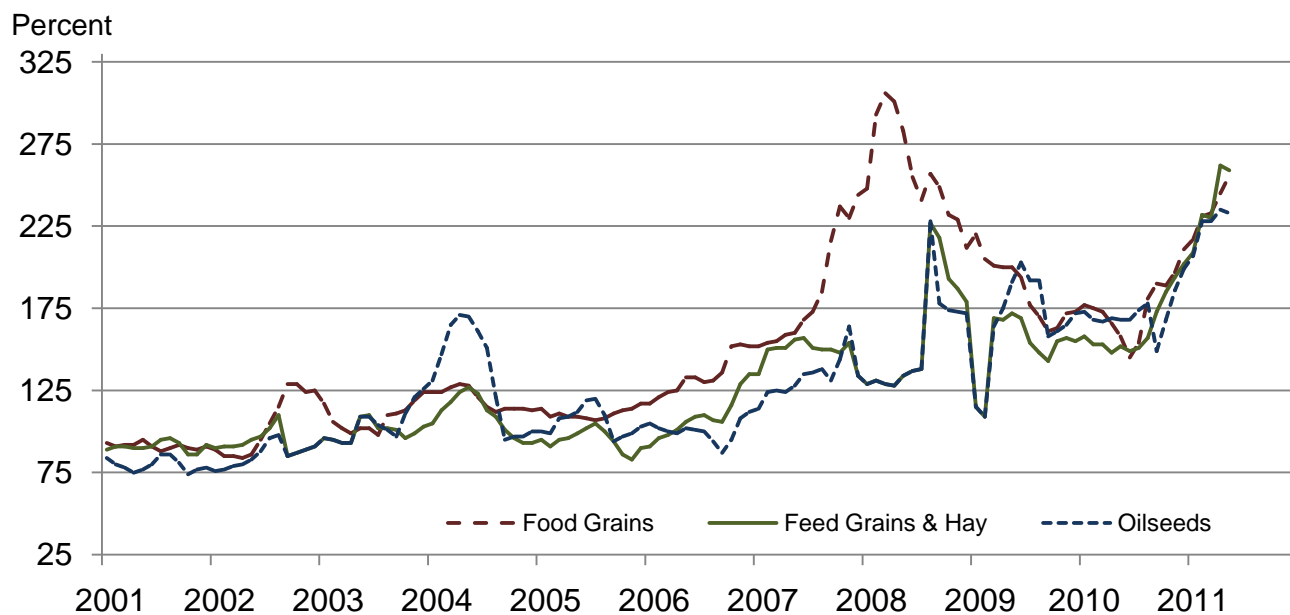
[Revised historical price indexes for months not shown are available at www.nass.usda.gov. Blank data cells indicate estimation period has not yet begun]

Month	Index of prices received						Index of prices paid			
	All farm products		All crops		Livestock and products		All items		Production items	
	2010	2011	2010	2011	2010	2011	2010	2011	2010	2011
	(percent)	(percent)	(percent)	(percent)	(percent)	(percent)	(percent)	(percent)	(percent)	(percent)
January	136	165	149	188	121	137	181	194	185	202
February	132	170	145	199	122	144	180	197	184	205
March	137	173	151	197	127	152	180	201	184	211
April	135	175	146	199	128	156	181	203	185	215
May	138	174	148	199	131	153	181	204	186	216
June	135		143		129		180		185	
July	137		145		132		180		185	
August	140		149		134		181		185	
September	142		149		134		182		187	
October	150		161		134		184		190	
November	153		169		134		186		192	
December	152		169		134		188		196	

Received Indexes by Month, Livestock Products, All Products, and All Crops – United States: 1990-1992=100

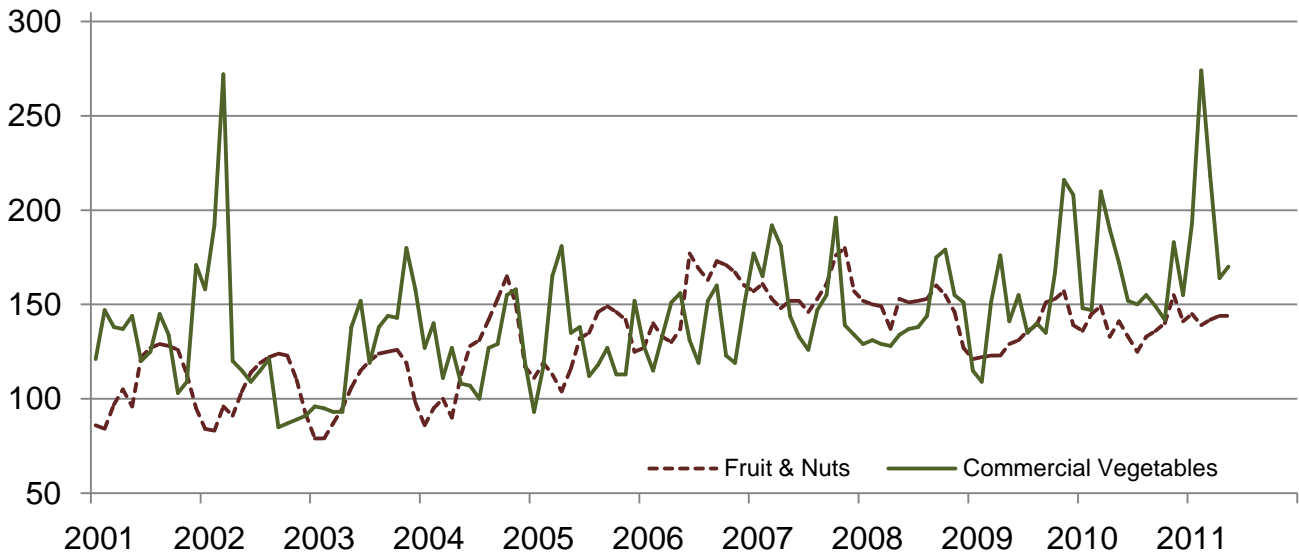


Received Indexes by Month, Food Grains, Feed Grains & Hay, and Oilseeds – United States: 1990-1992=100



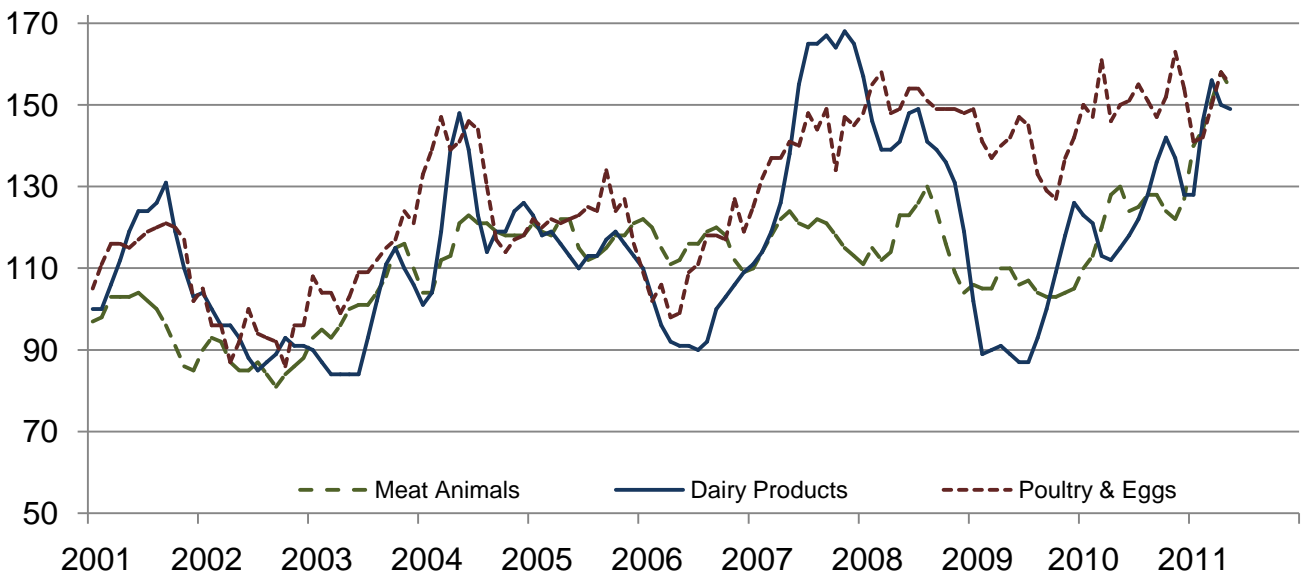
Received Indexes by Month, Fruit & Nut and Commercial Vegetables – United States: 1990-1992=100

Percent



Received Indexes by Month, Meat Animal, Dairy Product, and Poultry & Egg – United States: 1990-1992=100

Percent



Prices Received for Field Crops and Fruits – United States: May 2011 with Comparisons

Commodity	Average 1990-1992=100	May 2010	April 2011	Preliminary May 2011
Field crops				
Austrian winter peas	dollars/cwt (NA)	(S)	(D)	(S)
Barley, all	dollars/bushel 2.12	4.25	4.27	4.57
Feed	dollars/bushel 1.90	2.49	4.32	4.87
Malting	dollars/bushel 2.43	4.51	4.25	4.49
Beans, dry edible	dollars/cwt 19.10	27.80	31.70	31.70
Canola	dollars/cwt (NA)	16.70	24.80	25.80
Chickpeas, all	dollars/cwt (NA)	27.50	36.90	44.00
Large	dollars/cwt (NA)	28.10	40.10	44.00
Small	dollars/cwt (NA)	26.10	(D)	(D)
Corn	dollars/bushel 2.30	3.48	6.35	6.15
Cotton, Upland	dollars/pound 0.606	0.666	0.873	0.803
Cottonseed ¹	dollars/ton 96.00	(NA)	(NA)	(NA)
Flaxseed	dollars/bushel 4.27	8.34	13.50	13.30
Hay, all, baled	dollars/ton 76.30	116.00	141.00	169.00
Alfalfa	dollars/ton 77.20	121.00	155.00	186.00
Other	dollars/ton 60.00	100.00	103.00	112.00
Lentils	dollars/cwt (NA)	29.40	28.80	27.10
Oats	dollars/bushel 1.22	2.19	3.53	3.49
Peanuts, in-shell	dollars/pound 0.304	0.205	0.232	0.227
Peas, dry edible	dollars/cwt (NA)	9.35	11.90	12.50
Potatoes	dollars/cwt 5.82	8.57	11.17	11.26
Rice, all	dollars/cwt 7.07	13.80	13.00	13.40
Long	dollars/cwt (NA)	12.60	11.40	11.50
Medium and short	dollars/cwt (NA)	17.90	18.30	19.70
Sorghum grain	dollars/cwt 3.75	5.69	11.70	10.80
Soybeans	dollars/bushel 5.61	9.41	13.10	13.00
Sunflowers, all	dollars/cwt 9.50	14.90	28.90	30.30
Wheat, all	dollars/bushel 2.96	4.33	8.04	8.19
Winter	dollars/bushel 2.93	4.21	7.39	7.70
Durum	dollars/bushel 2.86	4.28	8.60	8.44
Other spring	dollars/bushel 3.11	4.61	8.67	9.20
Hard red winter ²	dollars/bushel (NA)	4.16	7.50	(NA)
Soft red winter ²	dollars/bushel (NA)	4.38	7.27	(NA)
Hard red spring ²	dollars/bushel (NA)	4.62	8.74	(NA)
White ²	dollars/bushel 3.24	4.35	7.06	(NA)
Fruits				
Citrus, equivalent on-tree				
Grapefruit	dollars/box 5.77	4.05	6.26	6.77
Lemons	dollars/box 10.10	9.13	8.36	10.41
Oranges	dollars/box 5.79	8.00	7.01	7.45
Tangelos	dollars/box 5.82	(NA)	(NA)	(NA)
Tangerines and mandarins	dollars/box 15.11	(S)	13.25	(S)
Noncitrus, fresh				
Apples ³	dollars/pound 0.212	0.309	0.266	0.259
Grapes ³	dollars/ton 506.00	(S)	(S)	(S)
Peaches ³	dollars/ton 432.00	1,080.00	(S)	1,290.00
Pears ³	dollars/ton 370.00	533.00	618.00	588.00
Strawberries	dollars/cwt 56.00	78.90	96.20	83.20

(D) Withheld to avoid disclosing data for individual operations.

(NA) Not available.

(S) Insufficient number of reports to establish an estimate.

¹ Marketing year August - February.

² Preliminary estimates not set for this item.

³ Equivalent packinghouse-door returns for California, Michigan, New York (apples only), and Washington (apples, peaches, and pears). Prices as sold for other states.

Prices Received for Vegetables and Livestock – United States: May 2011 with Comparisons

[Price data source for livestock and poultry commodities is United States Department of Agriculture's Agricultural Marketing Service]

Commodity	Average 1990-1992=100	May 2010	April 2011	Preliminary May 2011
Vegetables, fresh ¹				
Asparagusdollars/cwt	79.80	137.00	160.00	101.00
Beans, snap ²dollars/cwt	(NA)	43.00	57.20	55.60
Broccolidollars/cwt	22.50	43.50	33.90	34.90
Cantaloupes ²dollars/cwt	(NA)	19.60	(S)	(S)
Carrotsdollars/cwt	13.20	27.40	46.20	46.30
Cauliflowerdollars/cwt	26.80	68.60	42.90	65.90
Celerydollars/cwt	11.60	20.00	19.30	38.20
Corn, sweetdollars/cwt	15.70	25.10	23.80	22.30
Cucumbers ²dollars/cwt	(NA)	17.70	26.40	23.80
Lettucedollars/cwt	11.90	24.30	17.80	20.20
Onions ³dollars/cwt	12.80	19.30	8.43	10.60
Tomatoesdollars/cwt	32.30	65.20	67.60	41.30
Livestock				
Calvesdollars/cwt	94.30	124.00	147.00	141.00
Cattle, all beefdollars/cwt	72.90	94.70	119.00	115.00
Cows ⁴dollars/cwt	49.60	59.00	78.90	79.10
Steers & heifersdollars/cwt	77.10	99.70	122.00	118.00
Milk cows ⁵dollars/head	1130.00	(NA)	1420.00	(NA)
Hogs, alldollars/cwt	47.70	62.20	67.70	67.80
Barrows & giltsdollars/cwt	48.40	62.40	68.30	68.50
Sowsdollars/cwt	39.50	56.70	57.90	56.10
Lambsdollars/cwt	56.20	122.00	181.00	(NA)
Sheepdollars/cwt	23.40	46.20	68.80	(NA)
Dairy and poultry				
Milk, all ⁶dollars/cwt	13.06	15.00	19.60	19.40
Fat test percent	3.66	3.58	3.70	3.64
Broilers, live ⁷dollars/pound	0.317	0.520	0.490	0.500
Eggs, all ⁸dollars/dozen	0.643	0.633	1.050	0.822
Market ^{8 9}dollars/dozen	0.546	0.441	0.887	0.622
Turkeys, live ^{8 10 11}dollars/pound	0.380	0.561	0.654	0.682
Adjusted for seasonal variation				
Eggs, alldollars/dozen	0.545	0.804	1.090	1.050
Seasonal factor percent	100	79	96	78
Milk, all ⁶dollars/cwt	9.71	15.80	21.20	20.50
Seasonal factor percent	100	95	92	95

(NA) Not available.

(S) Insufficient number of reports to establish an estimate.

¹ Beginning January 2006, point of first sale. FOB shipping point for prior years.

² Monthly estimates began January 1995.

³ Includes some processing.

⁴ Beef cows and cull dairy cows sold for slaughter.

⁵ Animals sold for dairy herd replacement only. Prices available for January, April, July, and October.

⁶ Before deductions for hauling. Includes quality, quantity, and other premiums. Excludes hauling subsidies.

⁷ Live weight equivalent price.

⁸ Mid-month price.

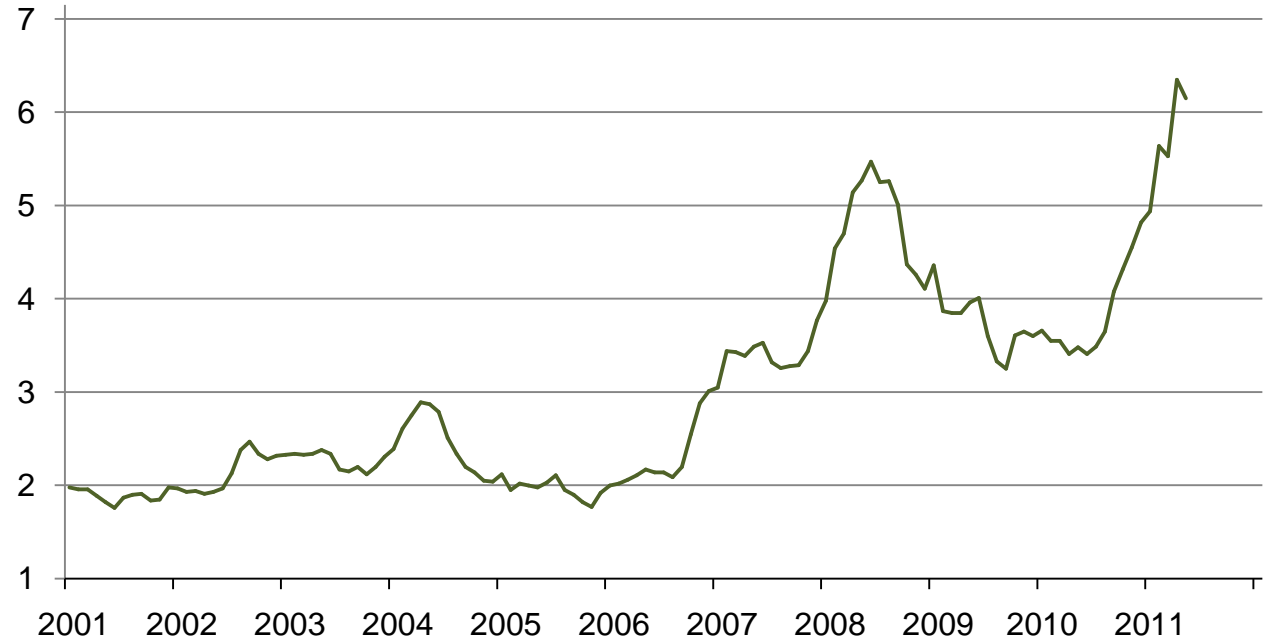
⁹ Also referred to as table eggs.

¹⁰ Live weight equivalent price is used when actual live weight price is not available.

¹¹ Beginning January 2011, price reflects FOB shipping point basis. Prior year price reflects delivered basis.

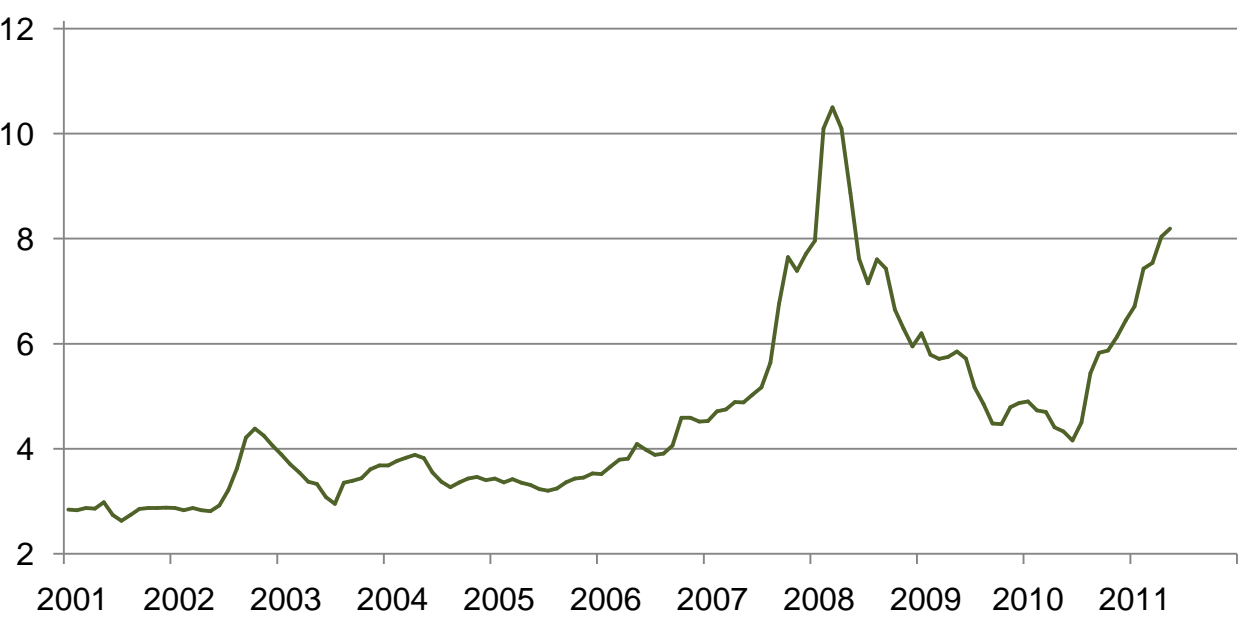
Prices Received for Corn by Month – United States

Dollars per bushel



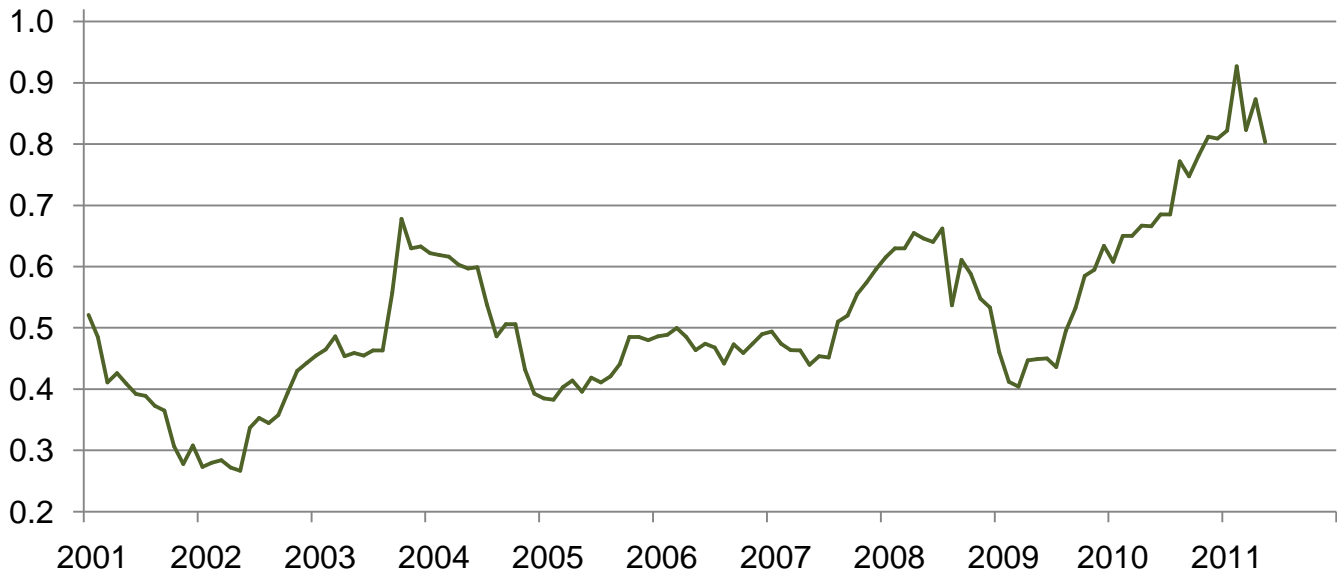
Prices Received for Wheat by Month – United States

Dollars per bushel



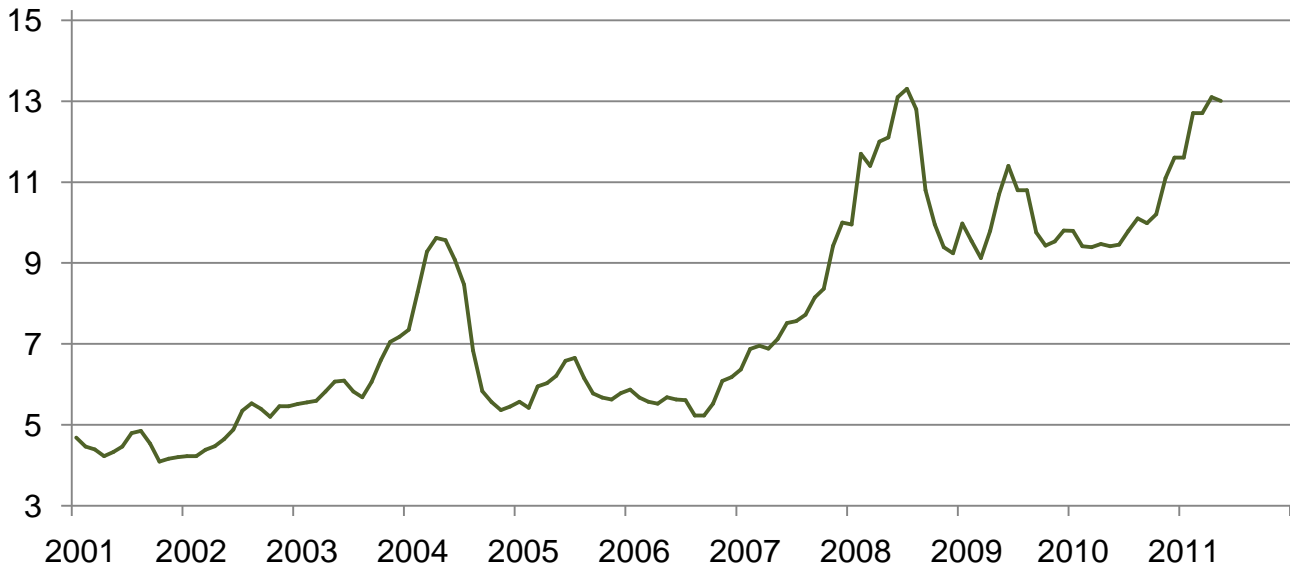
Prices Received for Upland Cotton by Month – United States

Dollars per pound



Prices Received for Soybeans by Month – United States

Dollars per bushel



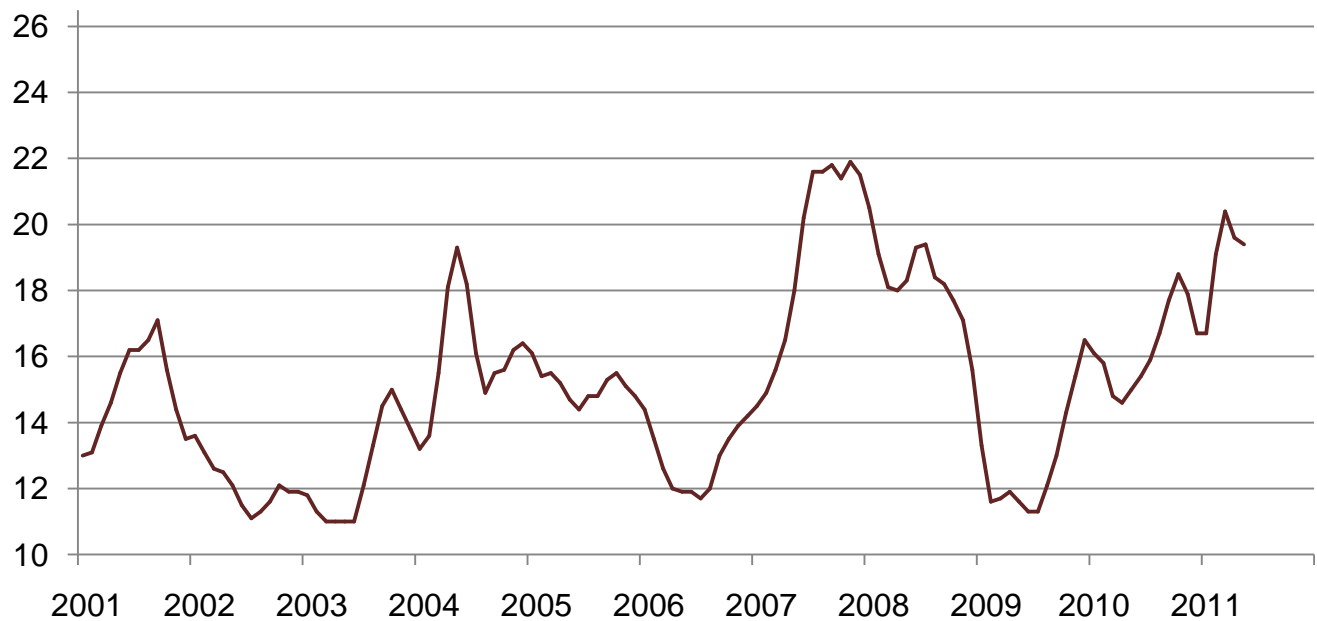
Prices Received for Cattle by Month – United States

Dollars per cwt



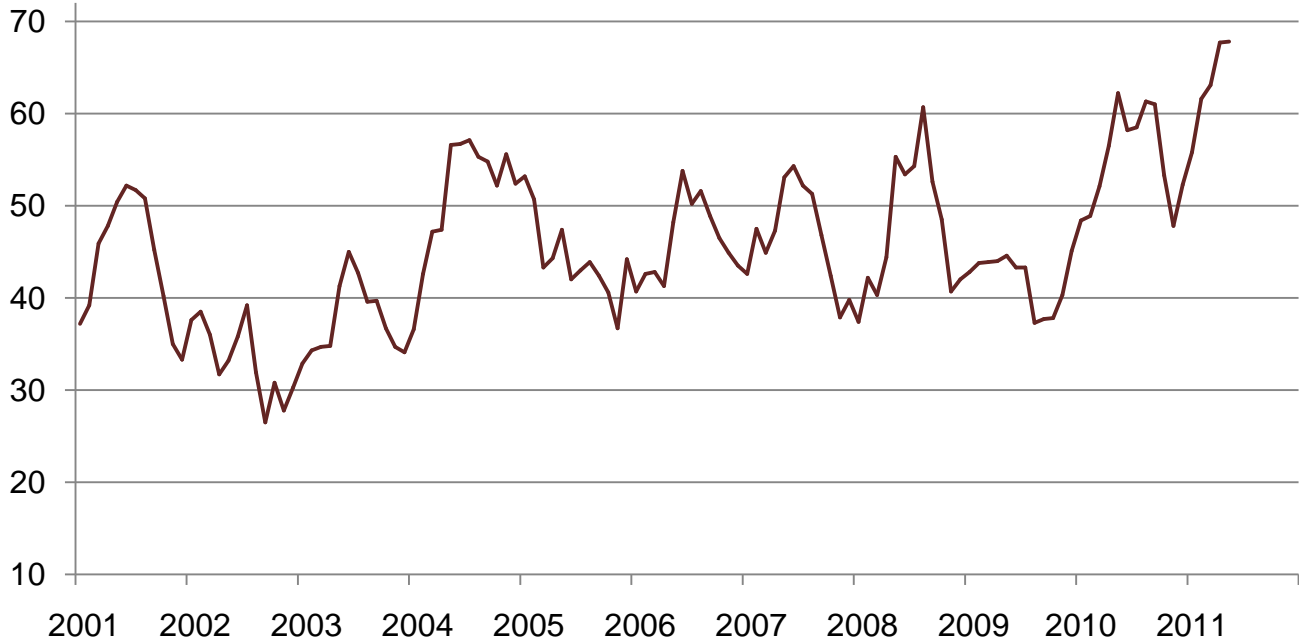
Prices Received for Milk by Month – United States

Dollars per cwt



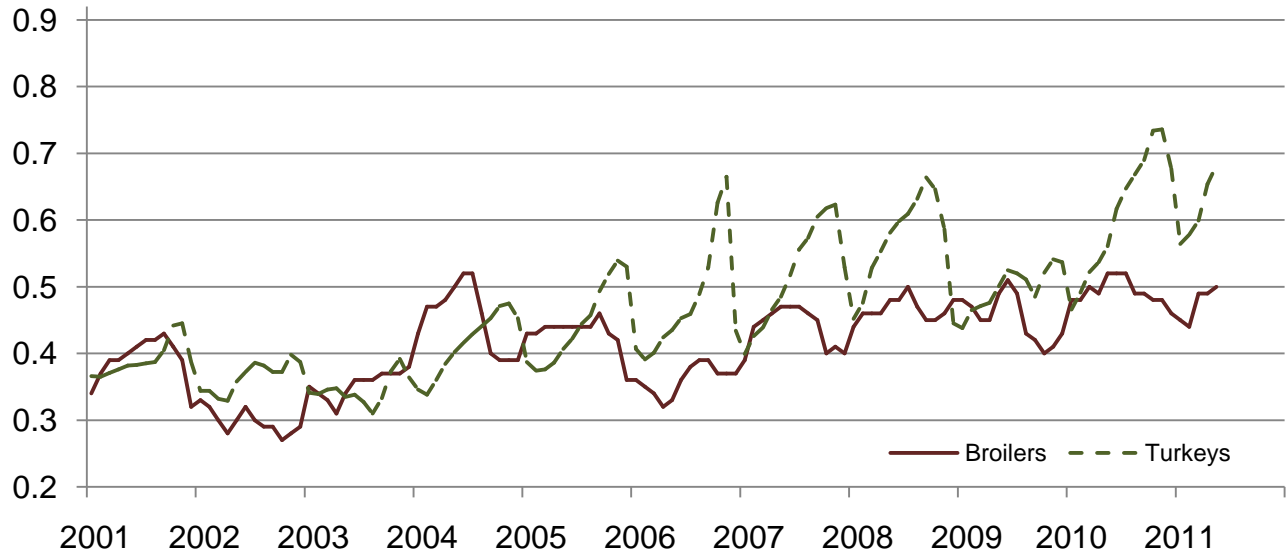
Prices Received for Hogs by Month – United States

Dollars per cwt



Prices Received for Poultry by Month – United States

Dollars per pound



Prices Received for All Wheat, Corn, and Soybeans by Month – United States: 2011 with Comparisons

[Current month prices are mid-month; prices for previous months and years are for the entire month. Blank data cells indicate estimation period has not yet begun]

Month	All wheat			Corn			Soybeans		
	2009	2010	Preliminary 2011	2009	2010	Preliminary 2011	2009	2010	Preliminary 2011
	(dollars per bushel)	(dollars per bushel)	(dollars per bushel)	(dollars per bushel)	(dollars per bushel)	(dollars per bushel)	(dollars per bushel)	(dollars per bushel)	(dollars per bushel)
January	6.20	4.90	6.71	4.36	3.66	4.94	9.97	9.79	11.60
February ..	5.79	4.73	7.43	3.87	3.55	5.64	9.54	9.41	12.70
March	5.71	4.70	7.54	3.85	3.55	5.53	9.12	9.39	12.70
April	5.75	4.41	8.04	3.85	3.41	6.35	9.79	9.47	13.10
May	5.85	4.33	8.19	3.96	3.48	6.15	10.70	9.41	13.00
June	5.72	4.16		4.01	3.41		11.40	9.45	
July	5.17	4.50		3.60	3.49		10.80	9.79	
August	4.85	5.44		3.33	3.65		10.80	10.10	
September ..	4.48	5.83		3.25	4.08		9.75	9.98	
October	4.47	5.87		3.61	4.32		9.43	10.20	
November	4.79	6.13		3.65	4.55		9.53	11.10	
December	4.87	6.45		3.60	4.82		9.80	11.60	

Prices Received for Beef Cattle and All Hogs by Month – United States: 2011 with Comparisons

[Current month prices are mid-month; prices for previous months and years are for the entire month. Blank data cells indicate estimation period has not yet begun. Price data source is United States Department of Agriculture's Agricultural Marketing Service]

Month	Beef cattle ¹			All hogs ²		
	2009	2010	Preliminary 2011	2009	2010	Preliminary 2011
	(dollars per cwt)	(dollars per cwt)	(dollars per cwt)	(dollars per cwt)	(dollars per cwt)	(dollars per cwt)
January	80.10	82.30	107.00	42.80	48.40	55.80
February	78.90	85.70	108.00	43.80	48.90	61.60
March	79.10	90.40	115.00	43.90	52.10	63.10
April	83.80	95.60	119.00	44.00	56.50	67.70
May	83.20	94.70	115.00	44.60	62.20	67.80
June	80.10	90.40		43.30	58.20	
July	80.90	91.70		43.30	58.50	
August	80.40	93.50		37.30	61.30	
September	80.50	94.10		37.70	61.00	
October	79.20	93.10		37.80	53.30	
November	79.60	94.00		40.30	47.80	
December	78.50	98.10		45.10	52.30	

¹ Cows and steers & heifers.

² Barrows & gilts and sows.

Prices Received for All Wheat – States and United States: May 2011 with Comparisons

State	May 2010	April 2011	Preliminary May 2011
	(dollars per bushel)	(dollars per bushel)	(dollars per bushel)
Arizona	(D)	(D)	(D)
Arkansas	4.42	(D)	(D)
California	4.37	(D)	(D)
Colorado	3.98	7.71	7.86
Idaho	4.44	7.56	7.30
Illinois	4.09	7.64	7.30
Indiana	5.03	7.71	6.86
Kansas	4.24	8.09	8.00
Michigan	4.39	7.04	6.70
Minnesota	4.27	7.74	7.94
Missouri	4.21	5.78	6.90
Montana	4.71	7.48	8.68
Nebraska	3.97	7.56	7.75
North Carolina	(D)	7.79	7.75
North Dakota	4.34	9.10	9.36
Ohio	4.36	7.24	6.63
Oklahoma	4.21	7.97	8.11
Oregon	4.68	7.73	7.57
South Dakota	4.54	8.79	8.72
Texas	3.93	7.68	8.00
Washington	4.49	7.50	7.99
United States	4.33	8.04	8.19

(D) Withheld to avoid disclosing data for individual operations.

Prices Received for Winter Wheat – States and United States: May 2011 with Comparisons

State	May 2010	April 2011	Preliminary May 2011
	(dollars per bushel)	(dollars per bushel)	(dollars per bushel)
Arkansas	4.42	(D)	(D)
California	4.37	(D)	(D)
Colorado	3.98	7.71	7.86
Idaho	4.29	7.05	7.25
Illinois	4.09	7.64	7.30
Indiana	5.03	7.71	6.86
Kansas	4.24	8.09	8.00
Michigan	4.39	7.04	6.70
Minnesota	(D)	7.46	7.00
Missouri	4.21	5.78	6.90
Montana	4.37	6.88	7.45
Nebraska	3.97	7.56	7.75
North Carolina	(D)	7.79	7.75
North Dakota	3.93	7.28	7.25
Ohio	4.36	7.24	6.63
Oklahoma	4.21	7.97	8.11
Oregon	4.62	7.38	7.30
South Dakota	4.15	7.03	7.30
Texas	3.93	7.68	8.00
Washington	4.27	7.11	7.46
United States	4.21	7.39	7.70

(D) Withheld to avoid disclosing data for individual operations.

Prices Received for Durum Wheat – States and United States: May 2011 with Comparisons

State	May 2010	April 2011	Preliminary May 2011
	(dollars per bushel)	(dollars per bushel)	(dollars per bushel)
Arizona	(D)	(D)	(D)
California	(S)	(S)	(S)
Idaho	(D)	(D)	(D)
Montana	4.46	8.59	(D)
North Dakota	4.00	8.63	8.50
United States	4.28	8.60	8.44

(D) Withheld to avoid disclosing data for individual operations.

(S) Insufficient number of reports to establish an estimate.

Prices Received for Spring Wheat – States and United States: May 2011 with Comparisons

State	May 2010	April 2011	Preliminary May 2011
	(dollars per bushel)	(dollars per bushel)	(dollars per bushel)
Colorado	(S)	(D)	(S)
Idaho	4.60	8.39	7.30
Minnesota	4.27	7.74	8.00
Montana	5.47	8.02	10.00
North Dakota	4.43	9.31	9.55
Oregon	5.08	9.33	9.20
South Dakota	5.27	10.00	9.70
Washington	5.26	8.87	9.78
United States	4.61	8.67	9.20

(D) Withheld to avoid disclosing data for individual operations.

(S) Insufficient number of reports to establish an estimate.

Prices Received for All Barley – States and United States: May 2011 with Comparisons

State	May 2010	April 2011	Preliminary May 2011
	(dollars per bushel)	(dollars per bushel)	(dollars per bushel)
California	(D)	(S)	(S)
Colorado	(D)	(D)	(S)
Idaho	4.59	4.08	4.02
Minnesota	(D)	4.07	(D)
Montana	4.86	4.42	4.99
North Dakota	3.21	4.19	4.93
Oregon	3.12	4.80	5.00
Utah	2.97	5.61	5.04
Washington	2.75	5.17	(D)
Wyoming	(S)	(D)	(S)
United States	4.25	4.27	4.57

(D) Withheld to avoid disclosing data for individual operations.

(S) Insufficient number of reports to establish an estimate.

Prices Received for Malting Barley – States: May 2011 with Comparisons

State	May 2010	April 2011	Preliminary May 2011
	(dollars per bushel)	(dollars per bushel)	(dollars per bushel)
Idaho	4.94	3.85	3.90
Minnesota	(S)	(D)	(D)
Montana	4.95	4.41	5.03
North Dakota	3.38	4.23	5.10
Wyoming	(S)	(D)	(S)

(D) Withheld to avoid disclosing data for individual operations.

(S) Insufficient number of reports to establish an estimate.

Prices Received for Feed Barley – States: May 2011 with Comparisons

State	May 2010	April 2011	Preliminary May 2011
	(dollars per bushel)	(dollars per bushel)	(dollars per bushel)
Idaho	2.58	5.11	4.95
Minnesota	(D)	4.16	(D)
Montana	2.52	4.51	4.77
North Dakota	2.01	4.09	4.25
Wyoming	(S)	(S)	(S)

(D) Withheld to avoid disclosing data for individual operations.

(S) Insufficient number of reports to establish an estimate.

Prices Received for Corn – States and United States: May 2011 with Comparisons

State	May 2010	April 2011	Preliminary May 2011
	(dollars per bushel)	(dollars per bushel)	(dollars per bushel)
Colorado	3.45	6.05	6.04
Illinois	3.49	6.68	6.40
Indiana	3.65	6.73	6.54
Iowa	3.52	6.18	6.00
Kansas	3.40	6.82	6.35
Kentucky	3.77	6.61	6.70
Michigan	3.44	6.60	6.20
Minnesota	3.33	5.79	5.60
Missouri	3.57	6.25	6.00
Nebraska	3.51	6.18	6.10
North Carolina	4.04	7.52	6.85
North Dakota	2.98	5.83	5.90
Ohio	3.52	6.80	6.28
Pennsylvania	3.79	7.23	7.18
South Dakota	3.21	6.09	6.00
Tennessee	3.87	7.04	6.90
Texas	4.04	7.09	6.38
Wisconsin	3.38	6.26	6.10
United States	3.48	6.35	6.15

Prices Received for Soybeans – States and United States: May 2011 with Comparisons

State	May 2010	April 2011	Preliminary May 2011
	(dollars per bushel)	(dollars per bushel)	(dollars per bushel)
Arkansas	9.25	13.10	13.20
Illinois	9.43	13.40	13.40
Indiana	9.77	13.30	13.40
Iowa	9.35	12.90	13.00
Kansas	9.35	13.20	13.00
Kentucky	9.61	13.60	13.50
Louisiana	9.06	12.00	(S)
Michigan	9.54	12.70	12.70
Minnesota	9.15	12.50	12.50
Mississippi	8.75	13.10	13.30
Missouri	9.48	13.50	13.60
Nebraska	9.27	12.90	13.00
North Carolina	9.66	13.50	13.50
North Dakota	9.06	12.40	12.30
Ohio	9.50	12.90	12.90
South Dakota	9.19	12.70	12.90
Tennessee	9.55	13.50	13.50
Wisconsin	9.85	12.40	12.50
United States	9.41	13.10	13.00

(S) Insufficient number of reports to establish an estimate.

Prices Received for Oats – States and United States: May 2011 with Comparisons

State	May 2010	April 2011	Preliminary May 2011
	(dollars per bushel)	(dollars per bushel)	(dollars per bushel)
Illinois	2.96	4.36	4.30
Iowa	2.24	3.78	3.50
Michigan	2.84	3.80	3.70
Minnesota	1.70	3.17	3.10
Montana	2.39	(D)	(S)
Nebraska	2.34	3.91	3.90
New York	(D)	3.34	3.53
North Dakota	1.82	3.07	(D)
Oregon	(D)	(S)	(S)
Pennsylvania	2.60	4.60	4.52
South Dakota	2.03	3.68	3.39
Texas	(S)	(S)	(S)
Wisconsin	2.13	3.59	3.45
United States	2.19	3.53	3.49

(D) Withheld to avoid disclosing data for individual operations.

(S) Insufficient number of reports to establish an estimate.

Prices Received for Sorghum Grain – States and United States: May 2011 with Comparisons

State	May 2010	April 2011	Preliminary May 2011
	(dollars per cwt)	(dollars per cwt)	(dollars per cwt)
Illinois	(D)	(D)	11.90
Kansas	5.55	11.60	10.60
Louisiana	(D)	(S)	(S)
Missouri	5.40	(D)	11.10
Nebraska	5.38	11.60	11.00
Oklahoma	5.26	11.80	10.70
Texas	6.91	12.20	11.50
United States	5.69	11.70	10.80

(D) Withheld to avoid disclosing data for individual operations.

(S) Insufficient number of reports to establish an estimate.

Prices Received for Dry Beans – States and United States: May 2011 with Comparisons

State	May 2010	April 2011	Preliminary May 2011
	(dollars per cwt)	(dollars per cwt)	(dollars per cwt)
California	49.30	45.70	(D)
Colorado	31.60	29.90	30.30
Idaho	29.80	29.30	30.80
Michigan	33.80	39.50	40.00
Minnesota	32.10	(D)	(D)
Nebraska	28.70	32.70	32.40
North Dakota	23.80	26.80	27.90
United States	27.80	31.70	31.70

(D) Withheld to avoid disclosing data for individual operations.

Prices Received for Peanuts (In-Shell) – States and United States: May 2011 with Comparisons

State	May 2010	April 2011	Preliminary May 2011
	(dollars per pound)	(dollars per pound)	(dollars per pound)
Alabama	0.202	0.219	0.221
Florida	0.201	0.225	0.231
Georgia	0.200	0.222	0.222
Mississippi	(S)	0.216	0.220
New Mexico	0.206	(D)	(S)
North Carolina	0.210	0.256	0.229
Oklahoma	(D)	0.245	(S)
South Carolina	0.217	0.240	0.237
Texas	0.221	0.265	(D)
Virginia	0.220	(D)	0.219
United States	0.205	0.232	0.227

(D) Withheld to avoid disclosing data for individual operations.

(S) Insufficient number of reports to establish an estimate.

Prices Received for Sunflowers – States and United States: May 2011 with Comparisons

State	May 2010	April 2011	Preliminary May 2011
	(dollars per cwt)	(dollars per cwt)	(dollars per cwt)
Colorado	(D)	(S)	(S)
Kansas	(D)	29.50	(D)
Minnesota	19.30	27.20	(D)
North Dakota	16.40	28.40	29.70
South Dakota	13.10	30.60	32.50
United States	14.90	28.90	30.30

(D) Withheld to avoid disclosing data for individual operations.

(S) Insufficient number of reports to establish an estimate.

Prices Received for Canola – States and United States: May 2011 with Comparisons

State	May 2010	April 2011	Preliminary May 2011
	(dollars per cwt)	(dollars per cwt)	(dollars per cwt)
Minnesota	(D)	(D)	(S)
North Dakota	16.60	24.80	25.80
United States	16.70	24.80	25.80

(D) Withheld to avoid disclosing data for individual operations.

(S) Insufficient number of reports to establish an estimate.

Prices Received for Flaxseed – States and United States: May 2011 with Comparisons

State	May 2010	April 2011	Preliminary May 2011
	(dollars per bushel)	(dollars per bushel)	(dollars per bushel)
North Dakota	8.34	13.50	13.30
United States	8.34	13.50	13.30

Prices Received for Upland Cotton and Cottonseed – States and United States: May 2011 with Comparisons

[Cottonseed marketing year August - February]

State	Cotton, Upland			Cottonseed		
	May 2010	April 2011	Preliminary May 2011	May 2010	April 2011	Preliminary May 2011
	(dollars per pound)	(dollars per pound)	(dollars per pound)	(dollars per ton)	(dollars per ton)	(dollars per ton)
Alabama	0.675	0.790	0.790	(NA)	(NA)	(NA)
Arizona	(D)	(D)	(S)	(NA)	(NA)	(NA)
Arkansas	0.669	0.790	0.790	(NA)	(NA)	(NA)
California	0.708	(S)	(S)	(NA)	(NA)	(NA)
Georgia	0.677	0.790	0.790	(NA)	(NA)	(NA)
Louisiana	0.673	0.790	0.790	(NA)	(NA)	(NA)
Mississippi	0.672	0.790	0.790	(NA)	(NA)	(NA)
North Carolina	0.677	0.790	0.790	(NA)	(NA)	(NA)
Tennessee	0.661	(D)	0.790	(NA)	(NA)	(NA)
Texas	0.641	0.856	0.840	(NA)	(NA)	(NA)
United States	0.666	0.873	0.803	(NA)	(NA)	(NA)

(D) Withheld to avoid disclosing data for individual operations.

(NA) Not available.

(S) Insufficient number of reports to establish an estimate.

Prices Received and Farm Marketings for Upland Cotton and Rice – United States: May 2011 with Comparisons

Item	May 2010	April 2011	Preliminary May 2011
Cotton, Upland			
Average price dollars/pound	0.666	0.873	0.803
Marketings ¹ 1,000 bales	356	205	(NA)
Rice, all			
Average price dollars/cwt	13.80	13.00	13.40
Marketings ² 1,000 cwt	13,145	12,508	(NA)
Rice, long			
Average price dollars/cwt	12.60	11.40	11.50
Marketings ² 1,000 cwt	10,055	9,557	(NA)
Rice, medium and short			
Average price dollars/cwt	17.90	18.30	19.70
Marketings ² 1,000 cwt	3,090	2,951	(NA)

(NA) Not available.

¹ Marketings based on a survey of cotton buyers in the major producing States - Alabama, Arizona, Arkansas, California, Georgia, Louisiana, Mississippi, North Carolina, Tennessee, and Texas.

² Purchases by private firms and rice (rough equivalent) shipped by cooperatives.

Prices Received for Hay by Type – States and United States: May 2011 with Comparisons

State	All hay			Alfalfa hay			Other hay		
	May 2010	April 2011	Preliminary May 2011	May 2010	April 2011	Preliminary May 2011	May 2010	April 2011	Preliminary May 2011
	(dollars per ton)	(dollars per ton)	(dollars per ton)	(dollars per ton)	(dollars per ton)	(dollars per ton)	(dollars per ton)	(dollars per ton)	(dollars per ton)
Arizona	125.00	179.00	213.00	125.00	180.00	215.00	125.00	140.00	155.00
California	118.00	212.00	224.00	123.00	226.00	239.00	101.00	116.00	141.00
Colorado	124.00	136.00	148.00	125.00	140.00	150.00	115.00	115.00	125.00
Idaho	95.00	174.00	190.00	97.00	175.00	192.00	65.00	135.00	125.00
Illinois	127.00	135.00	141.00	131.00	145.00	150.00	88.00	90.00	95.00
Iowa	118.00	113.00	112.00	123.00	118.00	118.00	85.00	80.00	81.00
Kansas	112.00	105.00	125.00	115.00	115.00	130.00	70.00	70.00	75.00
Kentucky	111.00	102.00	113.00	145.00	150.00	155.00	80.00	75.00	75.00
Michigan	130.00	99.00	104.00	135.00	105.00	110.00	110.00	80.00	80.00
Minnesota	108.00	105.00	105.00	115.00	115.00	115.00	75.00	80.00	80.00
Missouri	72.00	75.00	88.00	125.00	140.00	140.00	60.00	65.00	65.00
Montana	87.00	79.00	84.00	93.00	80.00	85.00	74.00	75.00	80.00
Nebraska	74.00	76.00	89.00	78.00	80.00	95.00	62.00	66.00	68.00
Nevada	93.00	160.00	164.00	93.00	160.00	165.00	92.00	135.00	135.00
New Mexico	151.00	172.00	216.00	153.00	175.00	220.00	126.00	143.00	180.00
New York	94.00	122.00	116.00	120.00	149.00	150.00	90.00	116.00	111.00
North Dakota	64.00	60.00	60.00	66.00	64.00	62.00	46.00	44.00	44.00
Ohio	121.00	117.00	131.00	152.00	160.00	162.00	85.00	94.00	90.00
Oklahoma	113.00	112.00	119.00	135.00	143.00	147.00	76.00	72.00	76.00
Oregon	143.00	181.00	187.00	131.00	184.00	190.00	162.00	168.00	175.00
Pennsylvania	117.00	134.00	134.00	130.00	165.00	155.00	115.00	127.00	124.00
South Dakota	88.00	80.00	95.00	90.00	83.00	99.00	72.00	70.00	81.00
Texas	138.00	126.00	144.00	183.00	195.00	200.00	115.00	115.00	115.00
Utah	95.00	131.00	166.00	95.00	134.00	167.00	85.00	113.00	137.00
Washington	133.00	154.00	160.00	125.00	150.00	155.00	170.00	165.00	175.00
Wisconsin	115.00	97.00	97.00	120.00	100.00	100.00	90.00	75.00	75.00
Wyoming	89.00	94.00	104.00	90.00	95.00	107.00	85.00	91.00	97.00
United States	116.00	141.00	169.00	121.00	155.00	186.00	100.00	103.00	112.00

Prices Received for Apples – States and United States: May 2011 with Comparisons

[Equivalent packinghouse-door returns for California, Michigan, New York, and Washington. Prices at point of first sale for other States]

State	Apples, fresh use		
	May 2010	April 2011	Preliminary May 2011
	(dollars per pound)	(dollars per pound)	(dollars per pound)
California	(NA)	(NA)	(NA)
Michigan	0.240	0.305	(NA)
New York	0.207	0.254	0.270
Ohio	0.402	0.430	0.580
Pennsylvania	0.346	(S)	(S)
Virginia	(NA)	0.370	(NA)
Washington	0.331	0.265	0.256
United States	0.309	0.266	0.259

(NA) Not available.

(S) Insufficient number of reports to establish an estimate.

Prices Received for Citrus Fruits by Utilization – States and United States: May 2010

[Net pounds per box: grapefruit in California-67, Florida-85, Texas-80; lemons-76; oranges in California-75, Florida-90, Texas-85; tangelos in Florida-90; tangerines and mandarins in Arizona and California-75, Florida-95]

Commodity, State, and type	FOB packed fresh	Equivalent returns					
		Packinghouse-door			On-tree		
		All	Fresh	Process	All	Fresh	Process
	(dollars per box)	(dollars per box)	(dollars per box)	(dollars per box)	(dollars per box)	(dollars per box)	(dollars per box)
Grapefruit							
California	16.20	6.40	6.40	(S)	3.30	3.30	(S)
Florida	23.50	7.61	14.14	4.31	4.80	11.79	1.27
White	22.50	4.49	13.15	4.40	1.75	10.50	1.65
Colored	23.50	8.79	14.15	4.25	5.96	11.80	1.00
Texas	18.90	5.35	8.65	1.60	3.89	7.15	0.20
United States	18.40	6.58	8.62	3.40	4.05	6.07	0.91
Lemons							
California	39.80	14.88	29.11	(D)	9.13	23.36	(D)
Oranges							
California							
Navel and miscellaneous	25.70	13.85	17.31	(D)	11.20	14.66	(D)
Valencia	(D)	(D)	(D)	(D)	(D)	(D)	(D)
Florida							
Valencia	22.50	10.05	12.60	10.00	7.45	9.80	7.40
United States	23.90	10.62	15.35	9.59	8.00	12.67	6.99

(D) Withheld to avoid disclosing data for individual operations.

(S) Insufficient number of reports to establish an estimate.

Prices Received for Citrus Fruits by Utilization – States and United States: April 2011

[Net pounds per box: grapefruit in California-80, Florida-85, Texas-80; lemons-80; oranges in California-80, Florida-90, Texas-85; tangelos in Florida-90; tangerines and mandarins in Arizona and California-80, Florida-95]

Commodity, State, and type	FOB packed fresh	Equivalent returns					
		Packinghouse-door			On-tree		
		All	Fresh	Process	All	Fresh	Process
	(dollars per box)	(dollars per box)	(dollars per box)	(dollars per box)	(dollars per box)	(dollars per box)	(dollars per box)
Grapefruit							
California	21.00	14.60	14.60	(D)	12.50	12.50	(D)
Florida	21.70	7.53	11.83	6.43	4.95	9.64	3.75
White	22.30	6.38	12.40	5.90	3.86	10.25	3.35
Colored	21.50	8.73	11.70	7.20	6.10	9.50	4.35
Texas	24.00	8.18	13.70	1.60	6.69	12.15	0.20
United States	23.40	8.15	13.45	4.04	6.26	11.76	1.99
Lemons							
California	31.60	14.23	20.70	(D)	8.36	14.83	(D)
United States	31.60	14.23	20.70	(D)	8.36	14.83	(D)
Oranges							
California							
Navel and miscellaneous	21.10	8.92	12.46	(D)	6.46	10.05	(D)
Valencia	(D)	(D)	(D)	(D)	(D)	(D)	(D)
Florida							
Valencia	21.90	9.66	11.90	9.60	7.05	9.20	7.00
United States	21.40	9.58	12.67	8.79	7.01	10.23	6.19
Tangerines and mandarins							
California	(D)	(D)	(D)	(D)	(D)	(D)	(D)
Florida	33.20	15.76	20.95	8.90	12.26	17.45	5.40
United States	30.50	16.34	21.46	3.18	13.25	18.66	-0.66

(D) Withheld to avoid disclosing data for individual operations.

Prices Received for Citrus Fruits by Utilization – States and United States: May 2011

[Net pounds per box: grapefruit in California-80, Florida-85, Texas-80; lemons-80; oranges in California-80, Florida-90, Texas-85; tangelos in Florida-90; tangerines and mandarins in Arizona and California-80, Florida-95]

Commodity, State, and type	FOB packed fresh	Equivalent returns					
		Packinghouse-door			On-tree		
		All	Fresh	Process	All	Fresh	Process
	(dollars per box)	(dollars per box)	(dollars per box)	(dollars per box)	(dollars per box)	(dollars per box)	(dollars per box)
Grapefruit							
California	18.90	12.50	12.50	(D)	10.40	10.40	(D)
Florida	22.70	8.61	12.86	6.14	6.13	10.67	3.51
White	23.40	6.62	13.50	6.10	4.09	11.35	3.55
Colored	22.60	10.43	12.80	6.25	8.00	10.60	3.40
Texas	24.00	8.00	13.70	1.60	6.52	12.15	0.20
United States	23.30	8.37	13.51	2.04	6.77	11.85	0.52
Lemons							
California	32.90	16.28	22.00	(D)	10.41	16.13	(D)
Oranges							
California							
Navel and miscellaneous	22.00	8.60	13.36	(D)	6.13	10.95	(D)
Valencia	20.60	9.81	11.96	(D)	7.36	9.55	(D)
Florida							
Valencia	22.90	10.25	12.90	10.20	7.65	10.20	7.60
United States	21.60	10.03	12.81	9.57	7.45	10.37	6.97
Tangerines and mandarins							
California	(S)	(S)	(S)	(S)	(S)	(S)	(S)
Florida	(S)	(S)	(S)	(S)	(S)	(S)	(S)
United States	(S)	(S)	(S)	(S)	(S)	(S)	(S)

(D) Withheld to avoid disclosing data for individual operations.

(S) Insufficient number of reports to establish an estimate.

Prices Received for Potatoes – States and United States: May 2011 with Comparisons

State	May 2010	April 2011	Preliminary May 2011
	(dollars per cwt)	(dollars per cwt)	(dollars per cwt)
California			
Spring ¹	16.50	20.20	26.40
Fall	9.80	10.70	10.80
All ²	15.60	19.30	24.80
Colorado			
Fresh ³	5.45	15.40	(D)
All ²	5.25	13.50	11.30
Florida	14.50	16.00	14.60
Idaho			
Fresh ³	3.80	10.70	(D)
Processing	8.20	7.80	(D)
All ²	5.95	9.85	9.35
Maine	10.70	11.00	10.30
Michigan	12.10	13.10	13.70
Minnesota	6.95	8.00	(D)
New York	13.70	15.90	14.60
North Carolina	(S)	(S)	(S)
North Dakota			
Fresh ³	10.60	13.40	(D)
Processing	10.70	7.90	(D)
All ²	9.85	9.25	9.90
Oregon	8.70	9.85	9.85
Texas	(S)	(S)	(S)
Virginia	(S)	(S)	(S)
Washington			
Processing	8.45	7.55	(D)
All ²	8.45	9.05	8.45
Wisconsin			
Fresh ³	5.95	14.70	(D)
Processing	12.00	9.75	(D)
All ²	10.30	12.00	11.30
United States			
Fresh ³	8.36	15.61	(D)
Processing	8.91	8.38	(D)
All ²	8.57	11.17	11.26

(D) Withheld to avoid disclosing data for individual operations.

(S) Insufficient number of reports to establish an estimate.

¹ Beginning in 2010, winter and summer potatoes included in spring potatoes.

² Average price of potatoes sold for all uses, including table stock, processing, seed, and livestock feed.

³ Fresh market prices only. Includes table stock prices.

Prices Received for All Milk – States and United States: May 2011 with Comparisons

[Before deduction for hauling. Includes quality, quantity, and other premiums. Excludes hauling subsidies]

State	May 2010		April 2011		Preliminary May 2011	
	Price (dollars per cwt)	Fat test (percent)	Price (dollars per cwt)	Fat test (percent)	Price (dollars per cwt)	Fat test (percent)
Arizona	14.90	3.40	19.60	3.50	19.80	3.48
California	13.60	3.59	18.19	3.68	17.40	3.60
Colorado	15.20	3.43	19.70	3.57	19.50	3.47
Florida	19.00	3.48	24.30	3.63	24.70	3.62
Idaho	14.30	3.57	17.70	3.70	17.50	3.63
Illinois	15.60	3.68	19.70	3.71	19.80	3.68
Indiana	15.80	3.57	20.80	3.65	20.90	3.59
Iowa	15.30	3.56	19.90	3.71	19.80	3.65
Kansas	15.90	3.55	20.90	3.74	21.00	3.66
Michigan	15.60	3.51	20.60	3.67	20.80	3.61
Minnesota	14.90	3.63	19.10	3.73	19.20	3.68
Missouri	15.20	3.55	20.00	3.67	19.90	3.59
New Mexico	14.50	3.42	19.20	3.56	19.30	3.50
New York	16.00	3.62	21.20	3.75	21.10	3.70
Ohio	16.40	3.63	21.60	3.79	21.80	3.72
Oregon	16.10	3.68	20.40	3.79	20.50	3.74
Pennsylvania	16.90	3.60	21.50	3.75	21.40	3.70
Texas	15.70	3.61	20.40	3.77	20.60	3.73
Utah	15.10	3.59	19.60	3.70	19.40	3.65
Vermont	16.50	3.73	21.40	3.80	21.10	3.76
Virginia	17.60	3.52	22.90	3.69	23.10	3.64
Washington	15.00	3.68	20.30	3.79	20.40	3.74
Wisconsin	14.90	3.59	19.20	3.72	19.10	3.67
United States	15.00	3.58	19.60	3.70	19.40	3.64

Prices Received for Milk Cows – States and United States: April 2011 with Comparisons

[Animals sold for dairy herd replacement only. Prices estimated in January, April, July, and October]

State	April 2010 (dollars per head)	January 2011 (dollars per head)	April 2011 (dollars per head)
Arizona	1,350	1,380	1,450
California	1,300	1,200	1,300
Colorado	1,300	1,330	1,450
Florida	1,450	1,360	1,480
Idaho	1,300	1,200	1,450
Illinois	1,400	1,330	1,430
Indiana	1,270	1,350	1,450
Iowa	1,250	1,250	1,430
Kansas	1,250	1,200	1,400
Michigan	1,400	1,450	1,550
Minnesota	1,250	1,310	1,410
Missouri	1,160	1,130	1,280
New Mexico	1,320	1,320	1,380
New York	1,300	1,300	1,400
Ohio	1,310	1,360	1,470
Oregon	1,320	1,290	1,390
Pennsylvania	1,400	1,400	1,450
Texas	1,270	1,200	1,400
Utah	1,150	1,140	1,300
Vermont	1,350	1,400	1,500
Virginia	1,300	1,360	1,410
Washington	1,300	1,300	1,400
Wisconsin	1,450	1,430	1,560
United States	1,330	1,300	1,420

Commodity Parity Prices and Price as Percent of Parity Price – United States: May 2011 with Comparisons

[Parity prices are computed under the provisions of Title III, Subtitle a, Section 301 (a) of the Agricultural Adjustment Act of 1938 as amended by the Agricultural Acts of 1948, 1949, and 1956. See January *Agricultural Prices* for details on adjusted base price and parity price computations. Parity data not available for blank cells. Primary source of data for livestock and milk prices is United States Department of Agriculture's Agricultural Marketing Service]

Commodity and unit	Adjusted base price	Parity price			Price as percent of parity		
		May 2010	April 2011	May 2011	May 2010	April 2011	May 2011
	(dollars)	(dollars)	(dollars)	(dollars)	(percent)	(percent)	(percent)
Basic commodities							
All wheatbushel	0.608	14.60	16.50	16.50	30	49	50
Ricecwt	1.63	33.70	44.30	44.30	41	29	30
Cornbushel	0.384	9.08	10.40	10.40	38	61	59
Cotton							
Upland pound	0.071	2.05	1.93	1.93	32	45	42
American Pima pound	0.129	3.22	3.51	3.51	36	33	33
Peanuts pound	0.027	0.708	0.734	0.734	29	32	31
Designated nonbasic							
All milk, to plants ¹cwt	1.82	44.70	49.50	49.50	35	43	41
Honey, extracted ² pound	0.134	3.10	3.64	3.64	47	40	40
Wool and mohair							
Wool pound	0.092	2.07	2.50	2.50	38	46	46
Mohair pound	0.324	8.37	8.81	8.81	32	40	40
Other nonbasic							
Apples, fresh ³ pound	0.033	0.805	0.897	0.897	38	30	29
Barleybushel	0.425	10.20	11.60	11.60	42	37	39
Canolacwt	1.740	39.80	47.30	47.30	42	52	55
Cottonseed ton	15.40	368.00	419.00	419.00	42	41	41
Dry edible beanscwt	2.92	70.30	79.40	79.40	40	40	40
Flaxseedbushel	1.020	23.70	27.70	27.70	35	49	48
Oatsbushel	0.250	5.95	6.80	6.80	37	52	51
Potatoescwt	0.834	20.30	22.70	22.70	42	49	50
Sorghum graincwt	0.675	16.00	18.30	18.40	36	64	59
Soybeansbushel	0.948	22.40	25.80	25.80	42	51	50
Sunflower, allcwt	1.91	45.10	51.90	51.90	33	56	58
Citrus (equivalent on-tree)							
Grapefruitbox	0.663	15.80	18.00	18.00	26	35	38
Lemonsbox	1.36	33.70	37.00	37.00	27	23	28
Orangesbox	0.686	16.10	18.60	18.70	50	38	40
Tangerinesbox	1.43	33.90	38.90	38.90	47	34	34
Livestock and poultry							
Beef cattlecwt	10.10	249.00	275.00	275.00	38	43	42
Calvescwt	14.10	351.00	383.00	383.00	35	38	37
Hogscwt	5.51	135.00	150.00	150.00	46	45	45
Lambscwt	11.70	281.00	318.00	318.00	43	57	(NA)
Sheepcwt	4.38	106.00	119.00	119.00	44	58	(NA)
Eggs ¹dozen	0.091	2.22	2.47	2.47	36	44	43
Turkeys, live pound	0.056	1.370	1.520	1.520	41	43	45

(NA) Not available.

¹ Seasonally adjusted price as percentage of parity price.

² Wholesale extracted. Adjusted base price derived from state annual averages prices weighted by production. For 1982 through 1985 the national averages are the support prices.

³ Equivalent packinghouse-door returns for California, New York (apples only), Oregon (except peaches), and Washington. Price at point of first sale for other states.

Commodity Parity Prices – United States: May 2011 with Comparisons

[Parity prices are computed under the provisions of Title III, Subtitle a, Section 301 (a) of the Agricultural Adjustment Act of 1938 as amended by the Agricultural Acts of 1948, 1949, and 1956. See January *Agricultural Prices* for details on adjusted base price and parity price computations]

Commodity and unit	Adjusted base price	Parity price		
		May 2010	April 2011	May 2011
	(dollars)	(dollars)	(dollars)	(dollars)
Field crops and miscellaneous				
Hops	0.307	7.32	8.34	8.35
Mustard seed	2.66	63.20	72.30	72.30
Rapeseed	2.14	49.80	58.20	58.20
Rye	0.492	11.60	13.40	13.40
Safflower	1.94	47.60	52.70	52.70
Spearmint oil	1.44	34.60	39.10	39.20
Sweetpotatoes	2.27	55.40	61.70	61.70
Tobacco				
Flue-cured, 11-14	0.208	5.27	5.65	5.66
Fire-cured, 21-23	0.293	7.27	7.96	7.97
Burley, 31	0.214	5.54	5.82	5.82
Maryland, 32	0.183	4.54	4.97	4.98
Dark air-cured, 35-37	0.261	6.54	7.09	7.10
Pennsylvania seedleaf, 41	0.191	4.73	5.19	5.19
Cigar binder, 51	0.675	15.90	18.30	18.40
Noncitrus fruit				
Apples, processing ¹	16.10	407.00	438.00	438.00
Apricots				
Fresh ²	114.00	2,640.00	3,100.00	3,100.00
Dried (California)	262.00	6,170.00	7,120.00	7,120.00
Avocados ²	198.00	5,150.00	5,380.00	5,380.00
Cherries				
Sweet	210.00	5,000.00	5,710.00	5,710.00
Tart	0.034	0.854	0.924	0.924
Cranberry ³	4.89	116.00	133.00	133.00
Dates ² (California)	183.00	4,810.00	4,970.00	4,980.00
Grapes				
Raisin variety	117.00	2,680.00	3,180.00	3,180.00
Other dried	65.40	1,630.00	1,780.00	1,780.00
Kiwifruit	94.40	2,320.00	2,570.00	2,570.00
Nectarines, fresh ² (California)	55.30	1,350.00	1,500.00	1,500.00
Olives, canning ³ (California)	87.40	2,310.00	2,380.00	2,380.00

See footnote(s) at end of table.

--continued

Commodity Parity Prices – United States: May 2011 with Comparisons (continued)

[Parity prices are computed under the provisions of Title III, Subtitle a, Section 301 (a) of the Agricultural Adjustment Act of 1938 as amended by the Agricultural Acts of 1948, 1949, and 1956. See January *Agricultural Prices* for details on adjusted base price and parity price computations]

Commodity and unit	Adjusted base price	Parity price		
		May 2010	April 2011	May 2011
	(dollars)	(dollars)	(dollars)	(dollars)
Noncitrus fruit - continued				
Papayas (Hawaii) pound	0.046	1.12	1.12	1.25
Peaches				
Fresh ⁴ ton	83.00	2,030.00	2,020.00	2,260.00
Dried (California) ton	57.30	1,580.00	1,580.00	1,560.00
Processing, excludes dried				
Clingstone ³ (California) ton	33.70	822.00	819.00	916.00
Pears				
Fresh ⁴ ton	55.60	1,340.00	1,330.00	1,510.00
Dried ¹ (California) ton	178.00	4,220.00	4,210.00	4,840.00
Plums (California)				
Fresh, equivalent on-tree ton	60.20	1,490.00	1,480.00	1,640.00
Prunes, dried ¹ (California) ton	147.00	3,560.00	3,550.00	4,000.00
Prunes and plums				
Fresh, excludes California ⁵ ton	63.80	1,540.00	1,540.00	1,730.00
Processing, excludes dried ¹ ton	25.70	647.00	644.00	699.00
Tree nuts ⁶				
Almonds pound	0.209	4.93	4.91	5.68
Hazelnuts ton	183.00	4,170.00	4,160.00	4,980.00
Pistachios pound	0.194	4.64	4.62	5.27
Walnuts ton	177.00	4,200.00	4,180.00	4,810.00
Vegetables, fresh ⁷				
Carrots ⁸ cwt	2.61	62.00	61.70	71.00
Cauliflower ⁸ cwt	4.26	105.00	105.00	116.00
Celery ⁸ cwt	2.05	51.00	50.80	55.70
Honeydew melons cwt	2.17	56.40	56.20	59.00
Lettuce cwt	2.35	57.30	57.10	63.90
Onions ⁸ cwt	1.57	37.10	37.00	42.70
Tomatoes cwt	4.75	114.00	114.00	129.00

¹ Equivalent returns at processing plant door.

² Equivalent returns at packinghouse door.

³ Equivalent returns for bulk fruit at first delivery point.

⁴ Equivalent packinghouse-door returns for California, New York (apples only), Oregon (except peaches), and Washington. Price at point of first sale for other states.

⁵ Based on "as sold" prices for fresh fruit in all states.

⁶ Prices In-Shell basis except almonds which are shelled basis.

⁷ FOB shipping point prices.

⁸ Includes some processing.

Reliability of Prices Received Estimates

Definition: Prices received represent sales from producers to first buyers. They include all grades and qualities. The average commodity price from the survey multiplied by the total quantity marketed theoretically should give the total cash receipts for the commodity.

Survey procedures: Primary sales data used to determine grain prices were obtained from probability samples of about 1900 mills and elevators. These procedures ensure that virtually all grain moving into commercial channels has a chance of being included in the survey. Generally, States surveyed account for 90 percent or more of total United States production. Livestock prices are obtained from packers, stockyards, auctions, dealers, and market check data from AMS-USDA, private marketing organizations, and state commodity groups and agencies. Inter-farm sales of grain and livestock are not included since they represent very small percentages of the total marketings. Grain marketed for seed is also excluded. Fruit and vegetable prices are obtained from sample surveys and market check data from AMS-USDA, private marketing organizations, state agencies, and universities.

Summary and estimation procedures: Survey quantities sold are expanded by strata to state levels and used to weight average strata prices to a state average. State prices are then weighted to a United States price based on expanded marketings. Recommendations are prepared by the State Field Offices and reviewed by the Agricultural Statistics Board in Washington, D.C. State recommendations are reviewed for reasonableness with survey data, other States, and recent historic estimates.

Revisions: For most items, the current month's preliminary price represents a 3-5 day period around the 15th of the month. Previous month's prices represent actual dollars received for quantities sold during the entire month. Revisions are published in monthly issues of Agricultural Prices.

Reliability: United States price estimates based on probability surveys generally have a sampling error of less than one percent for the major commodities such as corn, wheat, soybeans, cotton, and rice. Current methods of summarization for non-probability commodities are not designed directly to calculate sampling errors. However, analytical measures approximate the United States relative sampling errors at around five percent. Any nonsampling errors are attributed to such things as the inability to obtain correct information, differences in interpreting questions or definitions, mistakes in coding or processing the data, etc. Efforts are made at each step in the survey process to minimize these nonsampling errors.

Prices Paid by Farmers

The May Index of Prices Paid for Commodities and Services, Interest, Taxes, and Farm Wage Rates (PPITW) at 204 (1990-1992=100), is up 0.5 percent from April 2011 and 13 percent from May 2010.

Production index: The May index, at 216, increased 0.5 percent from last month and 16 percent from last year. Higher prices in May for hay & forages, complete feeds, nitrogen, and gasoline more than offset lower prices for feeder cattle, feeder pigs, feed grains, and concentrates.

Feed: The May index, at 228, increased 2.7 percent from April and 33 percent from last May. Since April, higher prices for hay & forages, complete feeds, and supplements more than offset lower prices for feed grains and concentrates.

Livestock and poultry: The May index, at 151, decreased 5.0 percent from last month but increased 10 percent from last year. Since April, prices are lower for feeder cattle and feeder pigs. The May feeder cattle price, at \$130.20 per cwt, is down \$4.50 from the April price. May feeder pigs averaged \$142.00 per cwt, down \$42.00 from April.

Fertilizer: The May index, at 328, is up 1.5 percent from April and 31 percent above May a year ago. Since April, prices are higher for nitrogen, potash & phosphate, and mixed fertilizer.

Chemicals: The May index, at 144, is unchanged from April and last May. Compared with last month, prices are slightly lower for herbicides and insecticides.

Fuels: The May index, at 387, is up 2.1 percent from a month earlier and 35 percent above May 2010. Compared with last month, prices are higher for gasoline, LP gas, and diesel.

Machinery: The May index, at 239, is unchanged from April but 4.8 percent above last May. Compared with last month, prices are slightly lower for other machinery and self-propelled machinery.

Consumer price index: The April 2011 Consumer Price Index, as issued by the Bureau of Labor Statistics, for all urban consumers (CPIU) increased 0.6 percent before seasonal adjustment to a level of 224.906 (1982-1984=100). The March index is 223.467. For the 12-month period ending in April, the overall index increased 3.2 percent.

Prices Paid Indexes and Related Parity Ratios – United States: May 2011 with Comparisons

[Revised historical price indexes for months not shown are available at www.nass.usda.gov]

Indexes and ratios	1910-1914 Base			1990-1992 Base		
	May 2010	April 2011	May 2011	May 2010	April 2011	May 2011
	(percent)	(percent)	(percent)	(percent)	(percent)	(percent)
Prices paid by farmers for commodities, services, interest, taxes, and wage rates (PPITW)	2409	2707	2719	181	203	204
Production	1802	2083	2092	186	215	216
Feed	838	1083	1111	172	222	228
Livestock & poultry	1750	2035	1935	137	159	151
Seeds	2815	3327	3327	284	336	336
Fertilizer	918	1184	1203	250	323	328
Chemicals	893	893	892	144	144	144
Fuels	2214	2928	2986	287	379	387
Supplies & repairs	1131	1158	1163	159	163	164
Autos & trucks	2985	3076	3085	112	116	116
Machinery	5717	5996	5990	228	239	239
Building materials	2267	2316	2328	167	170	171
Services & rent	2036	2123	2124	(NA)	(NA)	(NA)
Services	(NA)	(NA)	(NA)	160	165	166
Rent	(NA)	(NA)	(NA)	191	203	203
Interest ¹	3389	3646	3646	135	145	145
Taxes ²	5549	6032	6032	207	225	225
Wage rates	6991	7101	7101	187	190	190
Production, interest, taxes, and wage rates (PITW)	2478	2821	2832	184	210	211
Family living-CPI ³	2072	2136	2150	162	167	168
Ratio (received/paid)	(NA)	(NA)	(NA)	76	86	85
Parity ratio ⁴	36	41	41	(NA)	(NA)	(NA)
Parity ratio adjusted ⁵	38	42	42	(NA)	(NA)	(NA)
PPITW adjusted for productivity ⁶	1396	1463	1466	(NA)	(NA)	(NA)
Crop sector (PPITW)	(NA)	(NA)	(NA)	191	213	214
Livestock sector (PPITW)	(NA)	(NA)	(NA)	170	193	194
Farm sector (production)	(NA)	(NA)	(NA)	178	219	219
Non-farm sector (production)	(NA)	(NA)	(NA)	190	212	214

(NA) Not available.

¹ Interest per acre on farm real estate debt and interest rate on farm non-real estate debt.

² Farm real estate taxes payable per acre.

³ Bureau of Labor Statistics, Consumer Price Index for all urban consumers (CPI-U), for the previous month converted by the USDA.

⁴ Ratio of index of prices received to PPITW (1910-1914=100).

⁵ Based on estimated cash receipts, from marketings and government payments, the preliminary adjustment factor is 1.044 for 2011 and the revised factor is 1.041 for 2010.

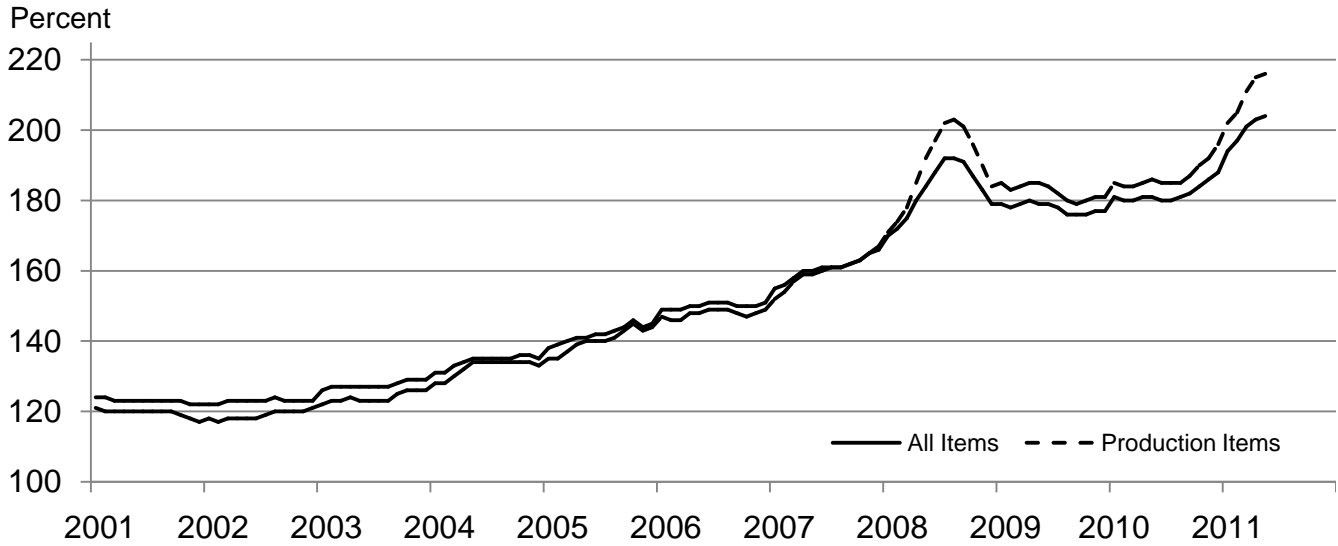
⁶ PPITW is adjusted based on productivity trend for the prior 15 years.

Prices Paid Indexes and Annual Weights for Input Components and Sub-Components – United States: May 2011 with Comparisons

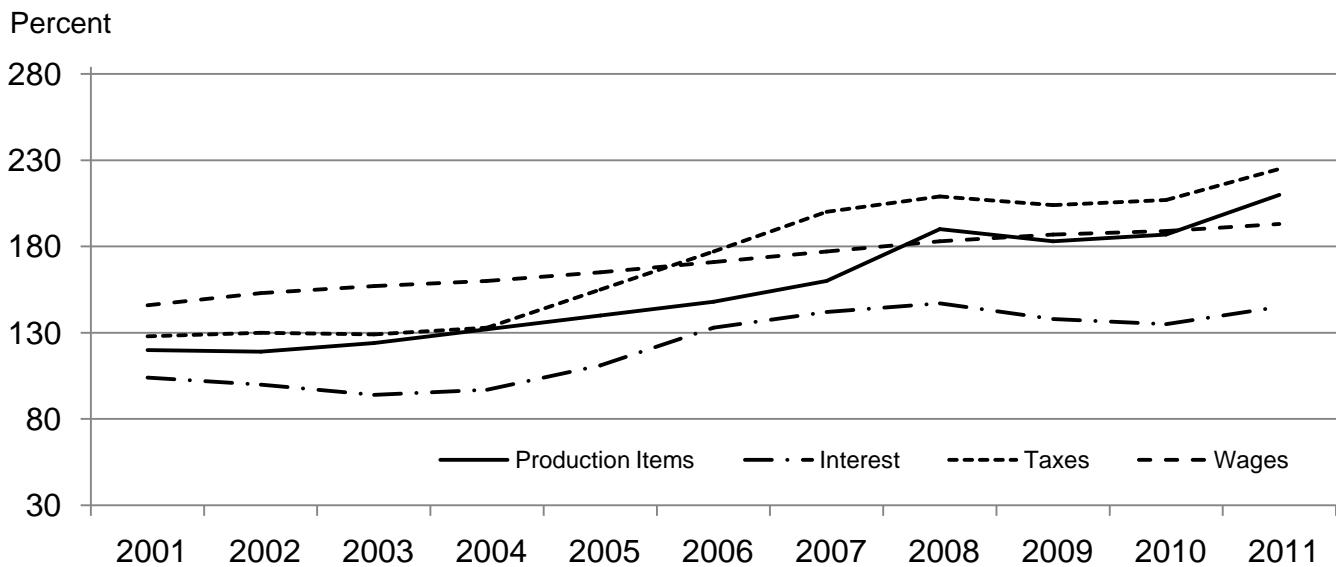
[Revised historical price indexes for months not shown are available at www.nass.usda.gov. Relative weights are a five year moving average]

	Relative weights		Indexes (1990-1992=100)		
	2010	2011	May 2010	April 2011	May 2011
	(percent)	(percent)	(percent)	(percent)	(percent)
Production items	70.2	70.6	186	215	216
Feed	11.9	12.2	172	222	228
Feed grains	1.7	1.7	150	273	263
Complete feeds	5.8	6.0	178	223	229
Hay & forages	1.5	1.5	151	178	207
Concentrates	1.9	1.9	182	203	201
Supplements	1.0	1.0	182	232	240
Livestock & poultry	8.6	8.5	137	159	151
Feeder cattle	6.7	6.6	131	159	154
Feeder pigs	0.7	0.7	201	200	155
Milk cow replacements	0.7	0.7	118	126	126
Poultry	0.5	0.5	151	151	151
Seeds	3.9	4.1	284	336	336
Field crops	3.6	3.7	299	356	356
Grasses & legumes	0.4	0.4	139	145	145
Fertilizer	5.2	5.5	250	323	328
Mixed fertilizer	2.3	2.4	238	313	315
Nitrogen	2.2	2.3	244	319	327
Potash & phosphate	0.7	0.8	310	368	376
Chemicals	3.2	3.3	144	144	144
Herbicides	2.0	2.1	133	130	130
Insecticides	0.7	0.7	163	167	167
Fungicides & other	0.5	0.5	167	174	174
Fuels	3.9	4.0	287	379	387
Diesel	2.5	2.5	307	419	423
Gasoline	0.9	0.8	248	328	342
LP gas	0.5	0.7	248	295	311
Supplies & repairs	4.6	4.6	159	163	164
Supplies	1.5	1.5	154	159	160
Repairs	3.0	3.0	162	166	166
Autos & trucks	1.5	1.4	112	116	116
Autos	0.2	0.2	110	113	114
Trucks	1.3	1.2	113	116	116
Machinery	4.5	4.3	228	239	239
Tractors	1.0	0.9	191	203	203
Self-propelled	1.8	1.7	236	250	250
Other machinery	1.7	1.6	241	248	248
Building materials	4.5	4.4	167	170	171
Services	12.1	12.1	160	165	166
Custom rates	1.2	1.2	145	145	145
Other services	10.8	10.9	162	168	168
Rent	6.3	6.3	191	203	203
Cash	3.4	3.4	243	258	258
Share	2.9	2.9	130	138	138
Interest	3.6	3.5	135	145	145
Taxes	3.0	3.1	207	225	225
Wage rates	7.5	7.4	187	190	190
Family living-CPI	15.7	15.4	162	167	168

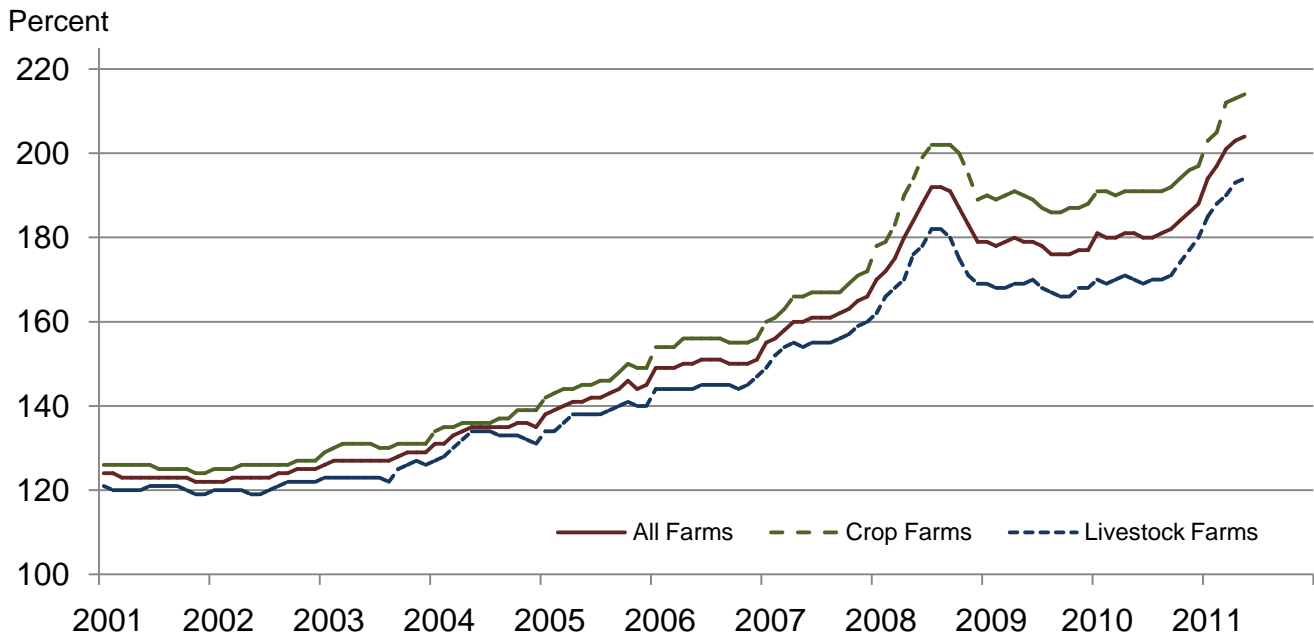
Paid Indexes by Month, All Items and Production Items – United States: 1990-1992=100



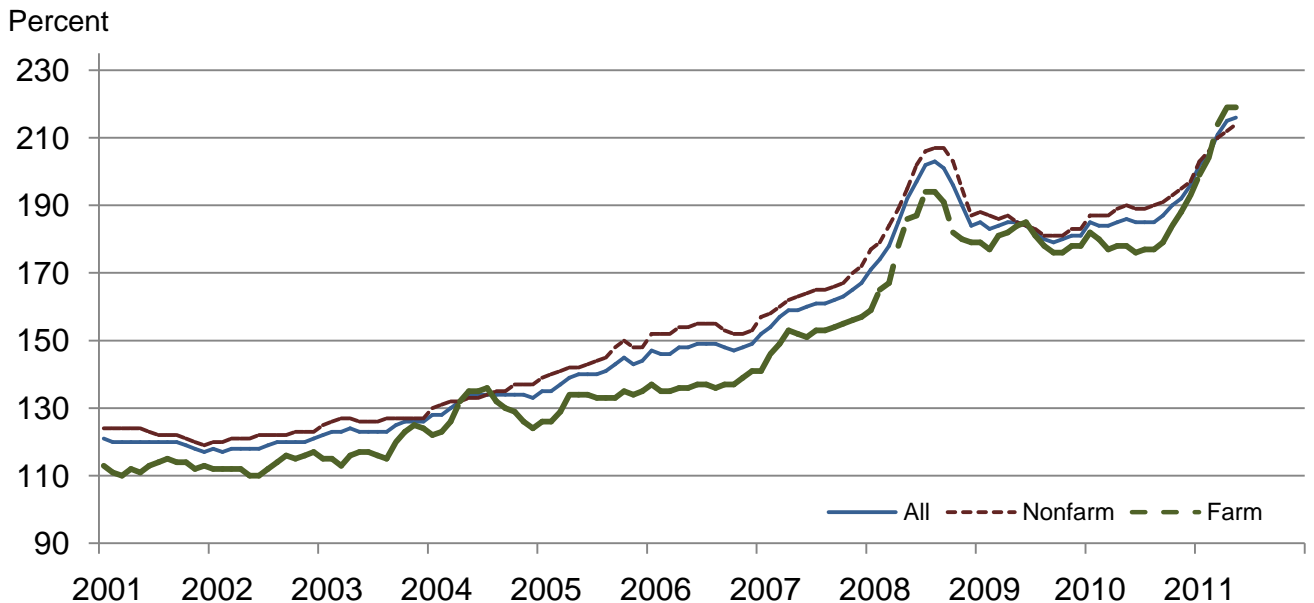
Paid Indexes, Annual Averages, Production Items, Interest, Taxes, and Wages – United States: 1990-1992=100



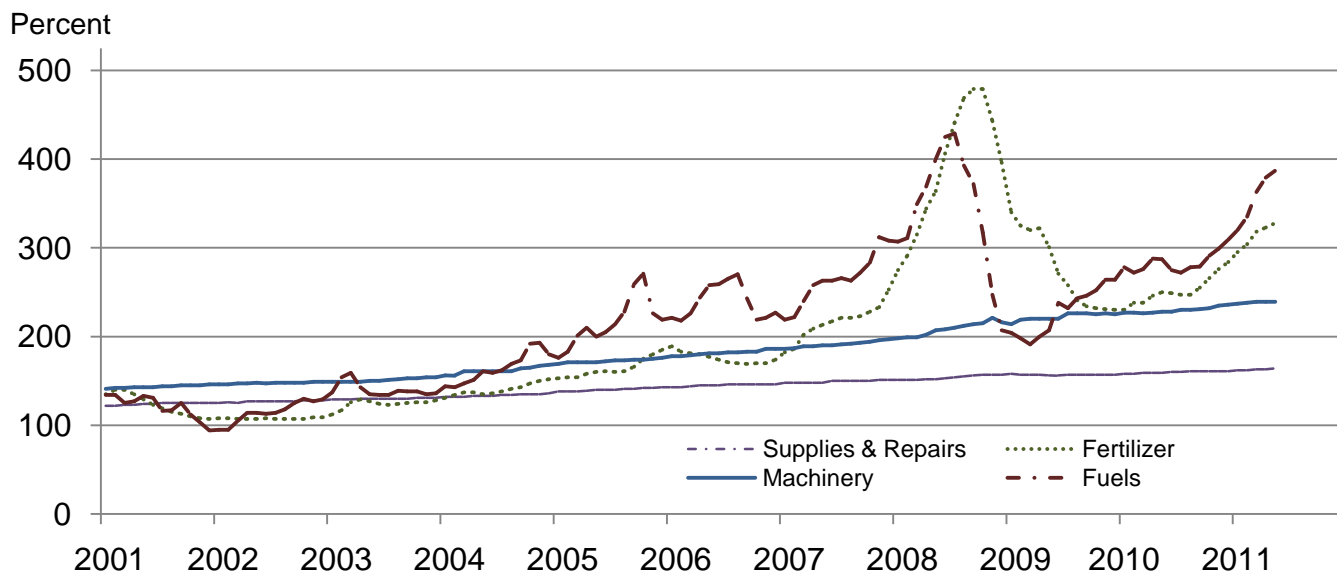
Paid Indexes by Farm Type and Month, All Items – United States: 1990-1992=100



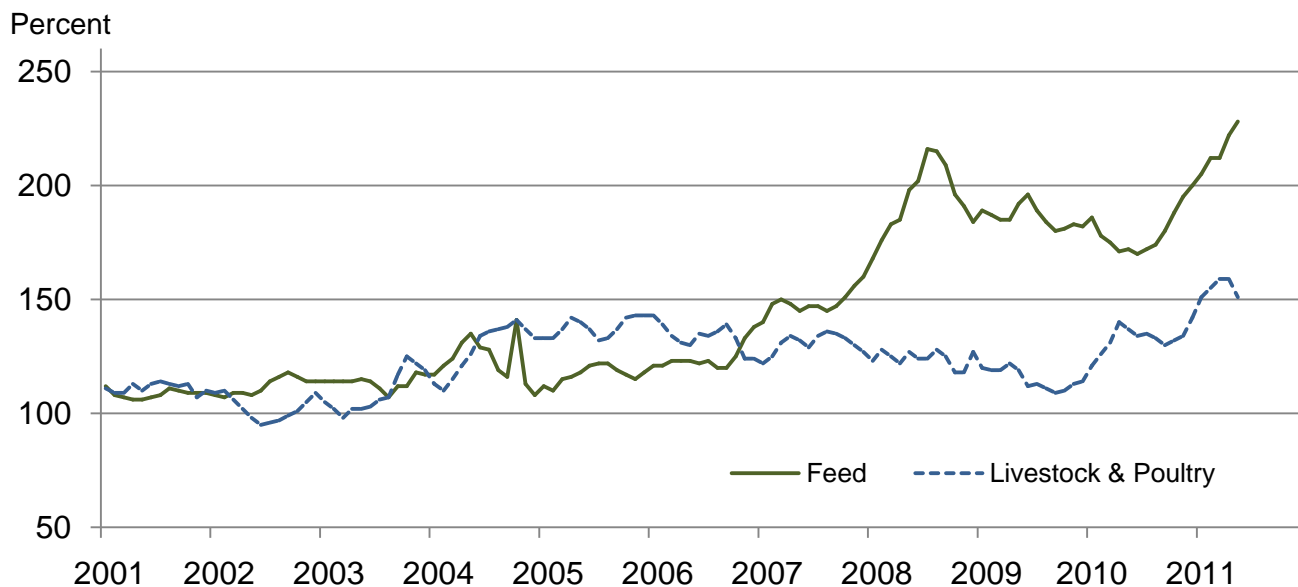
Paid Indexes by Origin and Month, All Production Items – United States: 1990-1992=100



Paid Indexes by Non-Farm Sector and Month, Supplies & Repairs, Fertilizer, Machinery, and Fuel – United States: 1990-1992=100



Paid Indexes by Month, Feed and Livestock & Poultry – United States: 1990-1992=100



Feed Price Ratios – United States: May 2011 with Comparisons

Feed price ratio ¹	May 2010	April 2011	Preliminary May 2011
Broiler-feed: pounds of broiler grower feed equal in value to 1 pound of broiler, live weight ²	5.1	3.1	3.2
Market egg feed: pounds of laying feed equal in value to 1 dozen eggs ³	5.1	6.4	4.6
Hog-corn: bushels of corn equal in value to 100 pounds of hog, live weight	17.9	10.7	11.0
Milk-feed: pounds of 16% mixed dairy feed equal in value to 1 pound of whole milk ⁴	2.17	1.83	1.74
Steer & heifer-corn: bushels of corn equal in value to 100 pounds of steer & heifers, live weight	28.6	19.2	19.2
Turkey-feed: pounds of turkey grower equal in value to 1 pound of turkey, live weight ⁵	6.2	4.4	4.7

¹ Effective January 1995, prices of commercial prepared feeds are based on current United States prices received for corn, soybeans, alfalfa hay, and all wheat.

² The price of commercial prepared broiler feed is based on current United States prices received for corn and soybeans. The modeled feed uses 58 percent corn and 42 percent soybeans.

³ The price of commercial prepared layer feed is based on current United States prices received for corn and soybeans. The modeled feed uses 75 percent corn and 25 percent soybeans.

⁴ The price of commercial prepared dairy feed is based on current United States prices received for corn, soybeans, and alfalfa hay. The modeled feed uses 51 percent corn, 41 percent alfalfa hay, and 8 percent soybeans.

⁵ The price of commercial prepared turkey feed is based on current United States prices received for corn, soybeans, and wheat. The modeled feed uses 51 percent corn, 28 percent soybeans, and 21 percent wheat.

Prices Received Used to Calculate Feed Price Ratios – United States: May 2011 with Comparisons

[Price data source for livestock and poultry commodities is United States Department of Agriculture's Agricultural Marketing Service]

Item	May 2010	April 2011	Preliminary May 2011
	(dollars)	(dollars)	(dollars)
Broilers, live pound	0.520	0.490	0.500
Eggs, market dozen	0.441	0.887	0.622
Hogs, allcwt	62.20	67.70	67.80
Milk, allcwt	15.00	19.60	19.40
Steers and heiferscwt	99.70	122.00	118.00
Turkeys, live pound	0.561	0.654	0.682
Corn bushel	3.48	6.35	6.15
Hay, alfalfa ton	121.00	155.00	186.00
Soybeans bushel	9.41	13.10	13.00
Wheat, all bushel	4.33	8.04	8.19

Prices Paid for Feeder Livestock – United States: May 2011 with Comparisons

[Price data source is United States Department of Agriculture's Agricultural Marketing Service]

Item	May 2010	April 2011	Preliminary May 2011
	(dollars)	(dollars)	(dollars)
Feeder cattle & calvescwt	111.10	134.70	130.20
Feeder pigscwt	185.00	184.00	142.00

Prices Paid Broiler-Feed Ratio Monthly and Annual Average – United States: January 2007 - May 2011

[The price of commercial prepared broiler feed is based on current United States prices received for corn and soybeans. The modeled feed uses 58 percent corn and 42 percent soybeans]

Year	January	February	March	April	May	June	July	August	September	October	November	December	Average
2007	5.1	5.3	5.3	5.5	5.5	5.3	5.4	5.2	4.9	4.3	4.0	3.7	5.0
2008	4.0	3.6	3.6	3.4	3.4	3.2	3.4	3.3	3.5	3.9	4.2	4.5	3.7
2009	4.2	4.4	4.3	4.2	4.2	4.2	4.3	3.9	4.1	3.9	3.9	4.1	4.1
2010	4.5	4.7	4.9	4.8	5.1	5.1	5.0	4.5	4.4	4.1	3.8	3.5	4.5
2011	3.4	3.0	3.4	3.1	3.2								3.2

Prices Paid Market Egg-Feed Ratio Monthly and Annual Average – United States: January 2007 - May 2011

[The price of commercial prepared layer feed is based on current United States prices received for corn and soybeans. The modeled feed uses 75 percent corn and 25 percent soybeans]

Year	January	February	March	April	May	June	July	August	September	October	November	December	Average
2007	11.7	8.4	9.1	7.6	8.1	6.4	10.7	9.5	12.3	10.2	13.9	13.9	10.2
2008	12.8	11.2	11.8	7.5	5.8	7.3	5.4	6.6	7.7	8.9	9.4	9.2	8.6
2009	9.0	7.0	7.2	8.4	4.3	3.8	5.6	6.5	6.8	7.3	10.0	10.6	7.2
2010	10.1	8.9	12.2	7.0	5.1	5.0	6.0	6.9	4.6	6.5	9.5	8.1	7.5
2011	5.8	6.0	5.1	6.4	4.6								5.6

Prices Paid Turkey-Feed Ratio Monthly and Annual Average – United States: January 2007 - May 2011

[The price of commercial prepared turkey feed is based on current United States prices received for corn, soybeans, and wheat. The modeled feed used 51 percent corn, 28 percent soybeans, and 21 percent wheat]

Year	January	February	March	April	May	June	July	August	September	October	November	December	Average
2007	5.4	5.3	5.5	5.8	5.9	6.1	6.6	6.7	6.6	6.5	6.2	4.9	6.0
2008	4.1	3.6	4.0	4.0	4.3	4.3	4.5	4.7	5.4	5.9	5.6	4.4	4.6
2009	4.1	4.6	4.8	4.7	4.7	4.8	5.1	5.2	5.3	5.6	5.7	5.6	5.0
2010	4.8	5.3	5.6	5.9	6.2	6.9	6.9	6.7	6.6	6.8	6.4	5.6	6.2
2011	4.6	4.2	4.4	4.4	4.7								4.5

Prices Paid Milk-Feed Ratio Monthly and Annual Average – United States: January 2007 - May 2011

[The price of commercial prepared dairy feed is based on current United States prices received for corn, soybeans, and alfalfa. The modeled feed uses 51 percent corn, 8 percent soybeans, and 41 percent alfalfa]

Year	January	February	March	April	May	June	July	August	September	October	November	December	Average
2007	2.45	2.33	2.39	2.50	2.56	2.88	3.17	3.19	3.19	3.10	3.05	2.85	2.80
2008	2.65	2.24	2.07	1.95	1.83	1.87	1.90	1.81	1.90	2.02	2.01	1.92	2.01
2009	1.60	1.51	1.55	1.58	1.48	1.47	1.59	1.80	2.00	2.11	2.26	2.42	1.78
2010	2.33	2.34	2.18	2.19	2.17	2.26	2.31	2.37	2.38	2.40	2.23	1.98	2.26
2011	1.96	2.02	2.14	1.83	1.74								1.94

Prices Paid Hog-Corn Ratio Monthly and Annual Average – United States: January 2007 - May 2011

[Number of bushels of corn equal in value to 100 pounds of all hogs, live weight]

Year	January	February	March	April	May	June	July	August	September	October	November	December	Average
2007	14.0	13.8	13.1	14.0	15.2	15.4	15.7	15.7	14.3	12.9	11.0	10.6	13.8
2008	9.4	9.3	8.6	8.6	10.5	9.8	10.3	11.5	10.5	11.1	9.6	10.2	10.0
2009	9.8	11.3	11.4	11.4	11.3	10.8	12.0	11.2	11.6	10.5	11.0	12.5	11.2
2010	13.2	13.8	14.7	16.6	17.9	17.1	16.8	16.8	15.0	12.3	10.5	10.9	14.6
2011	11.3	10.9	11.4	10.7	11.0								11.1

Prices Paid Steer & Heifer-Corn Feed Ratio Monthly and Annual Average – United States: January 2007 - May 2011

[Number of bushels of corn equal in value to 100 pounds of steers & heifers, live weight]

Year	January	February	March	April	May	June	July	August	September	October	November	December	Average
2007	29.3	26.6	28.5	29.4	28.1	26.4	28.0	29.4	30.0	29.4	27.9	25.3	28.2
2008	23.5	20.8	19.8	17.9	18.2	17.6	19.0	19.0	19.8	21.3	21.3	20.9	19.9
2009	19.7	21.7	21.8	22.9	22.1	21.2	23.7	25.6	26.3	23.4	23.4	23.3	22.9
2010	23.9	25.5	27.0	29.6	28.6	27.8	27.5	26.9	24.4	22.9	22.2	21.6	25.7
2011	22.3	19.7	21.3	19.2	19.2								20.3

Reliability of Prices Paid Estimates

Definition: Prices paid by farmers represent the average costs of inputs purchased by farmers and ranchers to produce agricultural commodities. Conceptually, the average price when multiplied by quantity purchased should equal total producer expenditures for the item.

Survey procedures: The prices paid data are obtained from establishments that sell goods and services to farmers and ranchers. Annually, about 8,500 firms are randomly selected from lists by type of item sold with an average response rate in the range of 75-80 percent. Firms are asked to report the price for the specified item "most commonly bought by farmers" or that was the "volume seller". Approximately 135 items are surveyed each March to represent all production input items purchased. The survey reference period for most items is the five business days centered around the 15th of the month. Separate prices paid surveys are conducted for agricultural chemicals, fuels, feed, fertilizer, machinery, and seed.

Summary and estimation procedures: The annual March Prices Paid Survey is summarized as a nonprobability survey. Average prices reported are aggregated to the region and United States level using weights available from expenditure data and other administrative sources. Price recommendations are prepared by the State Field Offices and Headquarters for review by the Agricultural Statistics Board in Washington, D.C. Also, the change in price level for individual items surveyed are combined to the regional and United States levels, and are published as prices paid indexes referenced to a specific base period. Prices paid indexes for new autos and trucks, building materials, farm supplies, motor supplies, and marketing containers are updated based on price changes measured in selected Bureau of Labor Statistics (BLS) indexes.

Revisions: Any revisions are published in the monthly and in annual issues of Agricultural Prices. The basis for revision must be supported by additional data that directly affect the level of the estimate. More revisions are likely for March when separate prices paid surveys are conducted, in lieu of BLS indexes, by the USDA to measure price change.

Reliability: Current methods of summarization for the March data are not designed directly to calculate sampling errors. However, analytical measures approximate the United States relative sampling errors for major items around 10 percent. Any nonsampling errors are attributed to such things as the inability to obtain correct information, differences in interpreting questions or definitions, mistakes in coding or processing the data, etc. Efforts are made at each step in the survey process to minimize these nonsampling errors.

Program change: Effective January 1, 1995, the National Agricultural Statistics Service updated the weights and changed the construction of its prices paid and received by farmers indexes. A Federal Register Notice dated October 28, 1994 discussed these program modifications.

A 1990-1992 reference and base period replaced the 1977 reference and 1971-1973 base weight period. Five-year moving average weights replaced the current fixed 1971-1973 base period weights. The 1910-1914=100 price indexes, required by statute for computing parity prices, were linked forward based on the changes in the new 1990-1992=100 indexes. The new indexes were constructed by multiplying the ratios of the current prices to the base period prices by the moving average weights (adjusted for seasonal marketing patterns for the prices received indexes).

Information Contacts

Direct general questions to Kevin Barnes, Chief, Environmental, Economics and Demographics Branch at (202) 720-6146. Below are the commodity specialists to contact for additional information.

Crop Prices Received

Lance Honig, Chief, Crops Branch	(202) 720-2127
Jacqueline Moore, Head, Field Crops Section	(202) 720-2127
Suzanne Avilla – Peanuts, Rice.....	(202) 720-7688
Bryan Durham – Hay, Oats	(202) 690-3234
Steve Maliszewski – Cotton, Cotton Ginnings, Sorghum.....	(202) 720-5944
Anthony Prillaman – Corn, Proso Millet, Flaxseed	(202) 720-9526
Nick Schauer – Wheat, Rye	(202) 720-8068
Julie Schmidt – Crop Weather, Barley, Sugar Crops	(202) 720-7621
Travis Thorson – Soybeans, Sunflower, Other Oilseeds.....	(202) 720-7369
Jorge Garcia-Pratts, Head, Fruits, Vegetables and Special Crops Section.....	(202) 720-2127
Debbie Flippin – Fresh and Processing Vegetables, Onions, Strawberries.....	(202) 720-2157
Fred Granja – Apples, Apricots, Cherries, Plums, Prunes, Tobacco	(202) 720-4288
Erika White – Floriculture, Maple Syrup, Nursery, Tree Nuts	(202) 720-4215
Chris Hawthorn – Citrus, Coffee, Grapes, Tropical Fruits.....	(202) 720-5412
Daphne Schauber – Berries, Cranberries, Potatoes, Sweet Potatoes	(202) 720-4285
Dan Norris – Austrian Winter Peas, Dry Edible Peas, Lentils, Mints, Mushrooms, Peaches, Pears, Wrinkled Seed Peas, Dry Beans	(202) 720-3250
Kim Ritchie – Hops.....	(360) 709-2400

Livestock Prices Received

Dan Kerestes, Chief, Livestock Branch	(202) 720-3570
Scott Hollis, Head, Livestock Section.....	(202) 720-3570
Jason Hardegree - Cattle	(202) 720-3040
Mike Miller - Milk, Milk Cows	(202) 720-3278
Everett Olbert - Sheep, Lambs, Goats, Wool, Mohair.....	(202) 720-4751
Doug Bounds - Hogs.....	(202) 720-3106
Bruce Boess, Head, Poultry and Specialty Commodities Section.....	(202) 720-3570
Doug Bounds - Turkeys	(202) 720-3106
Kim Linonis - Eggs.....	(202) 690-8632
Troy Marshall - Broilers, Honey	(202) 720-3244

Indexes, Prices Paid, and Parity Prices

Kevin Barnes, Chief, Environmental, Economics and Demographics Branch.....	(202) 720-6146
Kevin Hintzman, Head, Economics Section	(202) 720-6146
Daryl Brinkman - Prices Received Indexes, Parity Prices	(202) 720-8844
Joe Samson - Grazing Fees	(202) 720-5446
Jennifer Sissom - Prices Paid Indexes, Prices Paid for Feed, Fertilizer, Agricultural Chemicals, Seeds, Farm Supplies and Repairs, Farm Machinery, Fuels, Feeder Livestock, Poultry Chicks, Feed Price Ratios, Autos & Trucks.....	(202) 690-3229

Access to NASS Reports

For your convenience, you may access NASS reports and products the following ways:

- All reports are available electronically, at no cost, on the NASS web site: <http://www.nass.usda.gov>
- Both national and state specific reports are available via a free e-mail subscription. To set-up this free subscription, visit <http://www.nass.usda.gov> and in the “Receive NASS Updates” box under “Receive reports by Email,” click on “National” or “State” to select the reports you would like to receive.
- Printed reports may be purchased from the National Technical Information Service (NTIS) by calling toll-free (800) 999-6779, or (703) 605-6220 if calling from outside the United States or Canada. Accepted methods of payment are Visa, MasterCard, check, or money order.

For more information on NASS surveys and reports, call the NASS Agricultural Statistics Hotline at (800) 727-9540, 7:30 a.m. to 4:00 p.m. ET, or e-mail: nass@nass.usda.gov.

The United States Department of Agriculture (USDA) prohibits discrimination in all its programs and activities on the basis of race, color, national origin, age, disability, and where applicable, sex, marital status, familial status, parental status, religion, sexual orientation, political beliefs, genetic information, reprisal, or because all or a part of an individual's income is derived from any public assistance program. (Not all prohibited bases apply to all programs.) Persons with disabilities who require alternative means for communication of program information (Braille, large print, audiotape, etc.) should contact USDA's TARGET Center at (202) 720-2600 (voice and TDD).

To file a complaint of discrimination, write to USDA, Assistant Secretary for Civil Rights, Office of the Assistant Secretary for Civil Rights, 1400 Independence Avenue, S.W., Stop 9410, Washington, DC 20250-9410, or call toll-free at (866) 632-9992 (English) or (800) 877-8339 (TDD) or (866) 377-8642 (English Federal-relay) or (800) 845-6136 (Spanish Federal-relay). USDA is an equal opportunity provider and employer.