



Agricultural Prices

ISSN: 1937-4216

Released June 29, 2011, by the National Agricultural Statistics Service (NASS), Agricultural Statistics Board, United States Department of Agriculture (USDA).

Seed Corn Alert

Prices Paid for All Seed Corn and Non-biotech Seed Corn for March 2010 on page 48 were revised.

June Farm Prices Received Index Up 7 Points

The preliminary All Farm Products Index of Prices Received by Farmers in June, at 181 percent, based on 1990-1992=100, increased 7 points (4.0 percent) from May. The Crop Index is up 12 points (6.0 percent) but the Livestock Index was unchanged. Producers received higher prices for milk, corn, and broccoli, and lower prices for cattle, lettuce, wheat, and strawberries. In addition to prices, the overall index is also affected by the seasonal change based on a 3-year average mix of commodities producers sell. Increased monthly marketings of wheat, hay, grapes, and peaches offset decreased marketings of corn, cattle, oranges, and milk.

The preliminary All Farm Products Index is up 46 points (34 percent) from June 2010. The Food Commodities Index, at 172, increased 7 points (4.2 percent) from last month and 38 points (28 percent) from June 2010.

Prices Paid Index Unchanged

The June Index of Prices Paid for Commodities and Services, Interest, Taxes, and Farm Wage Rates (PPITW) is 204 percent of the 1990-1992 average. The index is unchanged from May but is 23 points (13 percent) above June 2010. Higher prices in June for complete feeds, feed grains, nitrogen, and other services offset lower prices for feeder cattle, diesel, feeder pigs, and gasoline.

Prices Received, Prices Paid, and Ratio of Prices Received to Prices Paid Indexes 1990-1992 Base – United States: June 2011 with Comparisons

Index	June 2010	May 2011	June 2011
Prices received by farmers	135	174	181
Prices paid by farmers	181	204	204
Ratio of prices received to prices paid	75	85	89

Contents

Prices Received by Farmers	4
Prices Received Indexes – United States: June 2011 with Comparisons	5
Prices Received and Prices Paid Indexes by Month for Selected Groups – United States: 2010 and 2011, 1990-1992 Base	5
Received Indexes by Month, Livestock Products, All Products, and All Crops – United States: 1990-1992=100 Chart.....	6
Received Indexes by Month, Food Grains, Feed Grains & Hay, and Oilseeds – United States: 1990-1992=100 Chart.....	6
Received Indexes by Month, Fruit & Nut and Commercial Vegetables – United States: 1990-1992=100 Chart.....	7
Received Indexes by Month, Meat Animal, Dairy Products, and Poultry & Eggs – United States: 1990-1992=100 Chart.....	7
Prices Received for Field Crops and Fruits – United States: June 2011 with Comparisons	8
Prices Received for Vegetables and Livestock – United States: June 2011 with Comparisons.....	9
Prices Received for Corn by Month – United States Chart.....	10
Prices Received for Wheat by Month – United States Chart	10
Prices Received for Cotton by Month – United States Chart.....	11
Prices Received for Soybeans by Month – United States Chart	11
Prices Received for Cattle by Month – United States Chart	12
Prices Received for Milk by Month – United States Chart.....	12
Prices Received for Hogs by Month – United States Chart	13
Prices Received for Poultry by Month – United States Chart.....	13
Prices Received for All Wheat, Corn, and Soybeans by Month – United States: 2011 with Comparisons	14
Prices Received for Beef Cattle and All Hogs by Month – United States: 2011 with Comparisons	14
Prices Received for All Wheat – States and United States: June 2011 with Comparisons	15
Prices Received for Winter Wheat – States and United States: June 2011 with Comparisons	15
Prices Received for Durum Wheat – States and United States: June 2011 with Comparisons.....	16
Prices Received for Spring Wheat – States and United States: June 2011 with Comparisons	16
Prices Received for All Barley – States and United States: June 2011 with Comparisons.....	17
Prices Received for Malting Barley – States: June 2011 with Comparisons	17
Prices Received for Feed Barley – States: June 2011 with Comparisons	17
Prices Received for Corn – States and United States: June 2011 with Comparisons	18
Prices Received for Soybeans – States and United States: June 2011 with Comparisons	18
Prices Received for Oats – States and United States: June 2011 with Comparisons	19
Prices Received for Sorghum Grain – States and United States: June 2011 with Comparisons.....	19
Prices Received for Dry Beans – States and United States: June 2011 with Comparisons	20
Prices Received for Peanuts (In-Shell) – States and United States: June 2011 with Comparisons.....	20
Prices Received for Sunflower – States and United States: June 2011 with Comparisons.....	21
Prices Received for Canola – States and United States: June 2011 with Comparisons	21
Prices Received for Flaxseed – States and United States: June 2011 with Comparisons	21
Prices Received for Upland Cotton and Cottonseed – States and United States: June 2011 with Comparisons	22
Prices Received and Farm Marketings for Upland Cotton and Rice – United States: June 2011 with Comparisons.....	22
Prices Received for Hay by Type – States and United States: June 2011 with Comparisons.....	23
Prices Received for Apples – States and United States: June 2011 with Comparisons	23
Prices Received for Citrus Fruits by Utilization – States and United States: June 2010	24
Prices Received for Citrus Fruits by Utilization – States and United States: May 2011	25
Prices Received for Citrus Fruits by Utilization – States and United States: June 2011	26
Prices Received for Potatoes – States and United States: June 2011 with Comparisons.....	27
Prices Received for All Milk – States and United States: June 2011 with Comparisons.....	28
Prices Received for Milk Cows – States and United States: April 2011 with Comparisons	29
Commodity Parity Prices and Price as Percent of Parity Price – United States: June 2011 with Comparisons	30
Commodity Parity Prices – United States: June 2011 with Comparisons.....	31

Marketing Year for Specified Commodities	33
Prices Received for Sweet Potatoes, Market Year Average - States and United States: 2008-2010	33
Prices Received and Farm Marketings for Oats by Month – United States: Marketing Years 2008-2009 through 2010-2011	34
Prices Received and Farm Marketings for All Barley by Month – United States: Marketing Years 2008-2009 through 2010-2011	34
Prices Received and Farm Marketings for Malting Barley by Month – United States: Marketing Years 2008-2009 through 2010-2011	35
Prices Received and Farm Marketings for Feed Barley by Month – United States: Marketing Years 2008-2009 through 2010-2011	35
Prices Received and Farm Marketings for All Wheat by Month – United States: Marketing Years 2008-2009 through 2010-2011	36
Prices Received for Winter Wheat by Month, Marketing Year Average – United States: 2008-2009 through 2010-2011	36
Prices Received for Durum Wheat by Month, Marketing Year Average – United States: 2008-2009 through 2010-2011	37
Prices Received for Other Spring Wheat by Month, Marketing Year Average – United States: 2008-2009 through 2010-2011	37
Prices Received for Hard Red Spring Wheat by Month, Marketing Year Average – United States: 2008-2009 through 2010-2011	38
Prices Received for Hard Red Winter Wheat by Month, Marketing Year Average – United States: 2008-2009 through 2010-2011	38
Prices Received for Soft Red Winter Wheat by Month, Marketing Year Average – United States: 2008-2009 through 2010-2011	39
Prices Received for White Wheat by Month, Marketing Year Average – United States: 2008-2009 through 2010-2011	39
Reliability of Prices Received Estimates	40
Prices Paid by Farmers.....	41
Prices Paid Indexes and Related Parity Ratios – United States: June 2011 with Comparisons.....	42
Prices Paid Indexes and Annual Weights for Input Components and Sub-Components – United States: June 2011 with Comparisons.....	43
Paid Indexes by Month, All Items and Production Items – United States: 1990-1992=100 Chart	44
Paid Indexes, Annual Averages, Production Items, Interest, Taxes, and Wages – United States: 1990-1992=100 Chart	44
Paid Indexes by Farm Type, All Items – United States: 1990-1991=100 Chart.....	45
Paid Indexes by Origin, All Production Items – United States: 1990-1992=100 Chart	45
Paid Indexes by Non-Farm Sector, Supplies & Repairs, Fertilizer, Machinery, and Fuel – United States: 1990-1992=100 Chart	46
Paid Indexes by Month, Feed and Replacement Livestock – United States: 1990-1992=100 Chart.....	46
Feed Price Ratios – United States: June 2011 with Comparisons.....	47
Prices Received Used to Calculate Feed Price Ratios – United States: June 2011 with Comparisons.....	47
Prices Paid for Feeder Livestock – United States: June 2011 with Comparisons.....	48
Prices Paid for Seeds – United States: 2009-2011	48
Reliability of Prices Paid Estimates	49
Information Contacts	50

Prices Received by Farmers

The June All Farm Products Index is 181 percent of its 1990-1992 base, up 4.0 percent from the May index and 34 percent above the June 2010 index.

All crops: The June index, at 213, increased 6.0 percent from May and is 49 percent above June 2010. Index increases for fruits & nuts, feed grains & hay, oilseeds, and food grains more than offset the index decreases for commercial vegetables, potatoes & dry beans, and cotton.

Food grains: The June index, at 257, is 2.0 percent above the previous month and 77 percent above a year ago. The June all wheat price, at \$7.85 per bushel, is down 31 cents from May but \$3.69 above June 2010.

Feed grains & hay: The June index, at 269, is up 1.5 percent from last month and 81 percent above a year ago. The corn price, at \$6.58 per bushel, is up 28 cents from last month and \$3.17 above June 2010. The all hay price, at \$163 per ton, is down \$6.00 from May but up \$49.00 from last June. Sorghum grain, at \$11.80 per cwt, is 20 cents above May and \$6.42 above June last year.

Cotton, Upland: The June index, at 131, is down 2.2 percent from May but 16 percent above last year. The June price, at 79.6 cents per pound, is down 1.7 cents from the previous month but 11.1 cents above last June.

Oilseeds: The June index, at 240, is up 1.7 percent from May and 43 percent higher than June 2010. The soybean price, at \$13.30 per bushel, increased 10 cents from May and is \$3.85 above June 2010.

Fruits & nuts: The June index, at 157, is up 9.8 percent from May and 18 percent higher than a year ago. Price increases for oranges, lemons, and apples more than offset decreases for peaches, strawberries, and pears.

Commercial vegetables: The June index, at 168, is down 2.9 percent from last month but 11 percent above June 2010. Price declines during June for lettuce, celery, carrots, and cantaloupes more than offset price increases for broccoli, cucumbers, onions, and sweet corn.

Potatoes & dry beans: The June index, at 188, is down 0.5 percent from last month but 33 percent above June 2010. The all potato price, at \$11.08 per cwt, is down 9 cents from May but up \$2.83 from last June. The all dry bean price, at \$33.20 per cwt, is up 30 cents from the previous month and \$7.20 above June 2010.

Livestock and products: The June index, at 152, is unchanged from last month but up 18 percent from June 2010. Compared with a year ago, prices are higher for milk, cattle, hogs, eggs, turkeys, and calves. Broiler prices are down from last year.

Meat animals: The June index, at 144, is down 4.6 percent from last month but 16 percent higher than last year. The June hog price, at \$67.70 per cwt, is down 90 cents from May but \$9.50 higher than a year ago. The June beef cattle price of \$106 per cwt is down \$6.00 from last month but \$15.60 higher than June 2010.

Dairy products: The June index, at 161, is up 7.3 percent from a month ago and 36 percent higher than June last year. The June all milk price of \$21.00 per cwt is up \$1.40 from last month and \$5.60 higher than June 2010.

Poultry & eggs: The June index, at 157, is up 1.3 percent from May and 4.0 percent above a year ago. The June market egg price, at 68.7 cents per dozen, increased 6.5 cents from May and is 26.5 cents above June 2010. The June broiler price, at 50.0 cents per pound, is unchanged from May but 2.0 cents below a year ago. The June turkey price, at 69.0 cents per pound, is up 1.1 cents from the previous month and 7.3 cents from a year earlier.

Prices Received Indexes – United States: June 2011 with Comparisons

[Revised historical price indexes for months not shown are available at www.nass.usda.gov]

Index	1910-1914 Base				1990-1992 Base		
	1990-1992 Average	June 2010	May 2011	June 2011	June 2010	May 2011	June 2011
	(percent)	(percent)	(percent)	(percent)	(percent)	(percent)	(percent)
All products	639	856	1106	1148	135	174	181
All crops	500	709	996	1054	143	201	213
Food grains	325	459	798	814	145	252	257
Feed grains & hay	363	531	944	959	149	265	269
Cotton, Upland	517	580	688	674	113	134	131
Tobacco	1263	1563	1491	1491	103	99	99
Oilseeds	554	923	1296	1316	168	236	240
Fruits & nuts	716	931	1000	1094	133	143	157
Commercial vegetables	698	1087	1233	1203	152	173	168
Potatoes & dry beans	540	714	959	952	141	189	188
Other crops	493	613	621	621	124	126	126
Livestock and products	768	987	1163	1164	129	152	152
Meat animals	1021	1260	1537	1468	124	151	144
Dairy products	799	948	1206	1292	118	150	161
Poultry & eggs	282	424	435	441	151	155	157
Food commodities	(NA)	(NA)	(NA)	(NA)	134	165	172

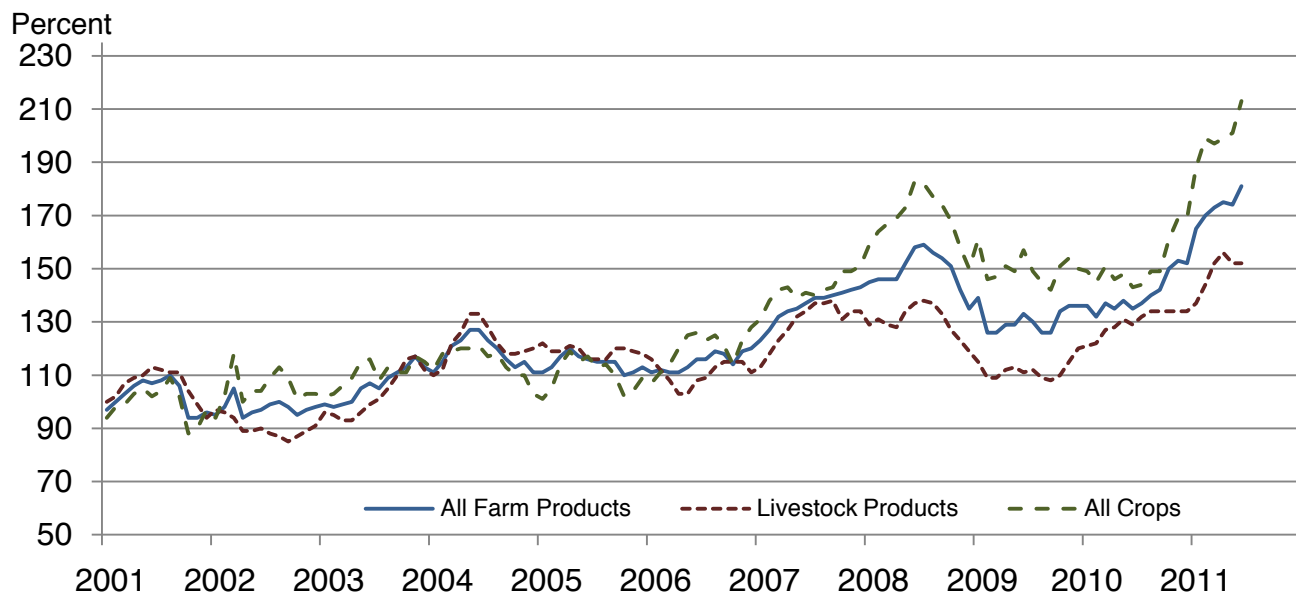
(NA) Not available.

Prices Received and Prices Paid Indexes by Month for Selected Groups – United States: 2010 and 2011, 1990-1992 Base

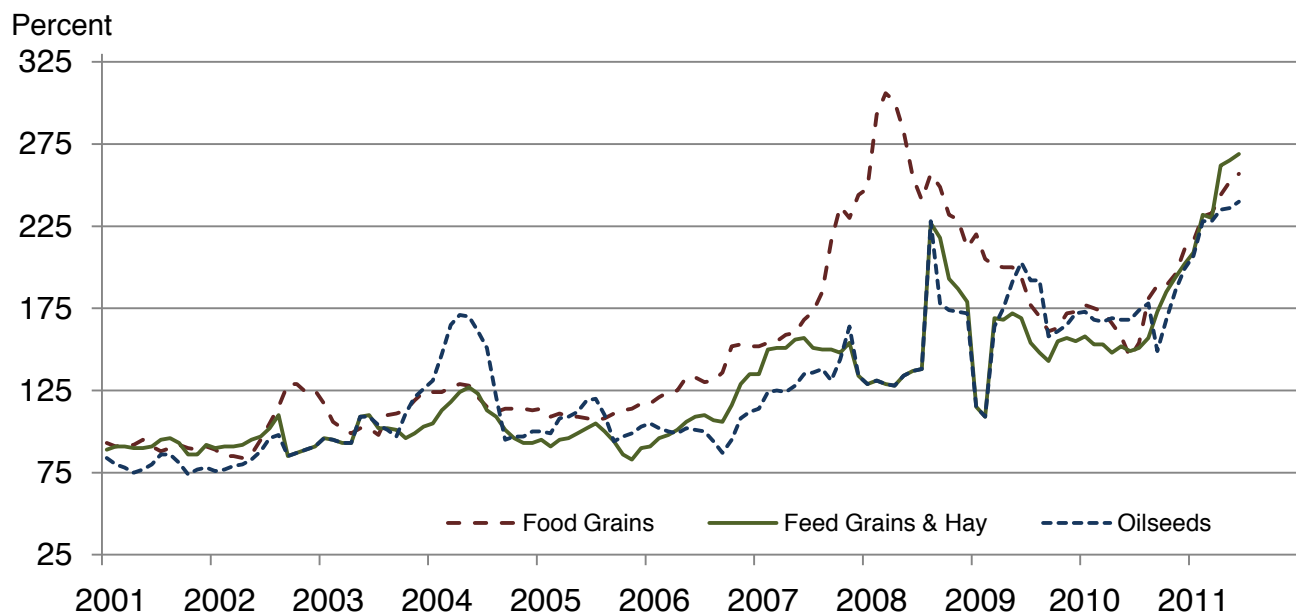
[Revised historical price indexes for months not shown are available at www.nass.usda.gov. Blank data cells indicate estimation period has not yet begun]

Month	Index of prices received						Index of prices paid			
	All farm products		All crops		Livestock and products		All items		Production items	
	2010	2011	2010	2011	2010	2011	2010	2011	2010	2011
	(percent)	(percent)	(percent)	(percent)	(percent)	(percent)	(percent)	(percent)	(percent)	(percent)
January	136	165	149	188	121	137	180	195	185	204
February	132	170	145	199	122	144	180	198	184	207
March	137	173	151	197	127	152	181	201	185	211
April	135	175	146	199	128	156	182	203	187	215
May	138	174	148	201	131	152	182	204	187	215
June	135	181	143	213	129	152	181	204	186	215
July	137		144		132		181		186	
August	140		149		134		182		187	
September	142		149		134		183		188	
October	150		161		134		185		191	
November	153		169		134		187		194	
December	152		169		134		189		197	

Received Indexes by Month, Livestock Products, All Products, and All Crops – United States: 1990-1992=100

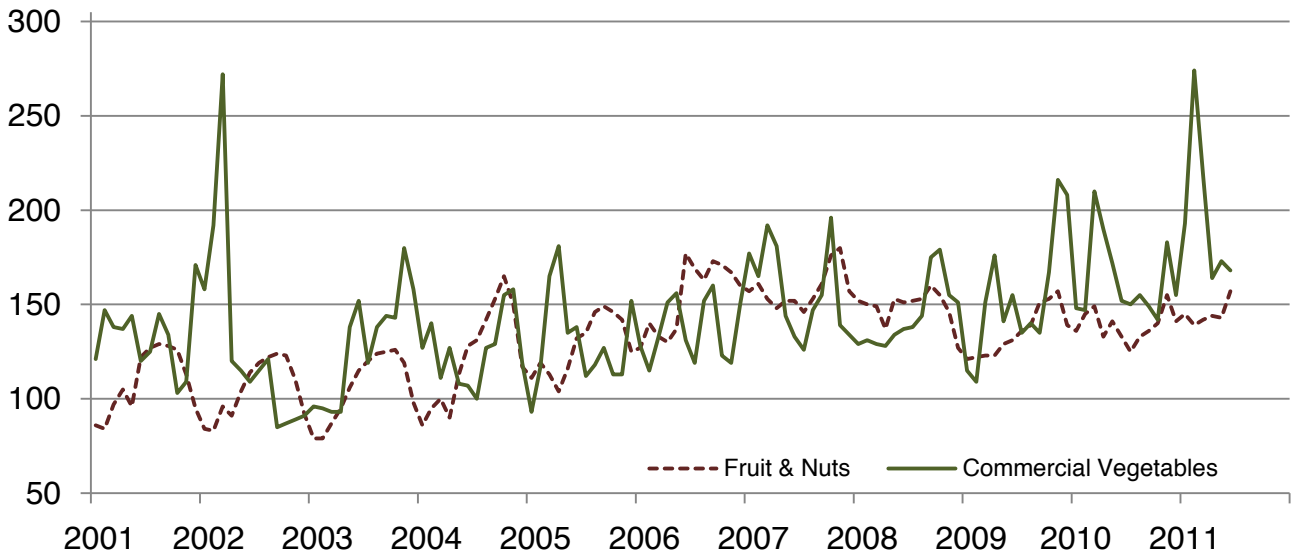


Received Indexes by Month, Food Grains, Feed Grains & Hay, and Oilseeds – United States: 1990-1992=100



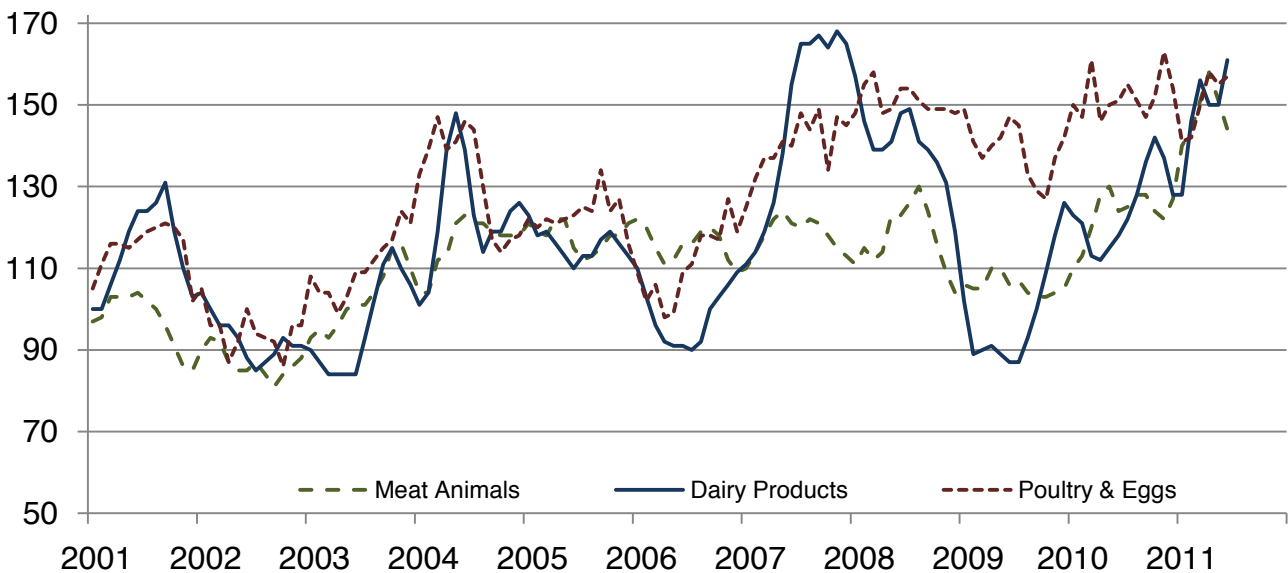
Received Indexes by Month, Fruit & Nut and Commercial Vegetables – United States: 1990-1992=100

Percent



Received Indexes by Month, Meat Animal, Dairy Product, and Poultry & Egg – United States: 1990-1992=100

Percent



Prices Received for Field Crops and Fruits – United States: June 2011 with Comparisons

Commodity	Average 1990-1992=100	June 2010	May 2011	Preliminary June 2011
Field crops				
Austrian winter peas dollars/cwt	(NA)	(S)	(D)	(S)
Barley, all dollars/bushel	2.12	3.64	4.15	5.11
Feed dollars/bushel	1.90	2.24	4.61	5.01
Malting dollars/bushel	2.43	4.24	4.04	5.15
Beans, dry edible dollars/cwt	19.10	26.00	32.90	33.20
Canola dollars/cwt	(NA)	17.00	23.50	25.00
Chickpeas, all dollars/cwt	(NA)	25.60	36.00	(D)
Large dollars/cwt	(NA)	27.60	39.00	(D)
Small dollars/cwt	(NA)	19.10	29.30	(D)
Corn dollars/bushel	2.30	3.41	6.30	6.58
Cotton, Upland dollars/pound	0.606	0.685	0.813	0.796
Cottonseed ¹ dollars/ton	96.00	(NA)	(NA)	(NA)
Flaxseed dollars/bushel	4.27	9.26	14.20	14.10
Hay, all, baled dollars/ton	76.30	114.00	169.00	163.00
Alfalfa dollars/ton	77.20	119.00	186.00	180.00
Other dollars/ton	60.00	99.10	112.00	113.00
Lentils dollars/cwt	(NA)	26.30	29.40	32.10
Oats dollars/bushel	1.22	2.11	3.55	3.51
Peanuts, in-shell dollars/pound	0.304	0.216	0.229	0.232
Peas, dry edible dollars/cwt	(NA)	7.48	12.40	13.90
Potatoes dollars/cwt	5.82	8.25	11.17	11.08
Rice, all dollars/cwt	7.07	13.20	12.40	12.00
Long dollars/cwt	(NA)	11.90	11.00	11.20
Medium and short dollars/cwt	(NA)	17.50	17.80	19.60
Sorghum grain dollars/cwt	3.75	5.38	11.60	11.80
Soybeans dollars/bushel	5.61	9.45	13.20	13.30
Sunflowers, all dollars/cwt	9.50	15.10	29.70	33.10
Wheat, all dollars/bushel	2.96	4.16	8.16	7.85
Winter dollars/bushel	2.93	4.05	7.80	7.35
Durum dollars/bushel	2.86	4.58	7.86	9.96
Other spring dollars/bushel	3.11	4.58	8.85	9.84
Hard red winter ² dollars/bushel	(NA)	3.94	8.00	(NA)
Soft red winter ² dollars/bushel	(NA)	4.50	7.09	(NA)
Hard red spring ² dollars/bushel	(NA)	4.59	8.95	(NA)
White ² dollars/bushel	3.24	4.28	7.22	(NA)
Fruits				
Citrus, equivalent on-tree				
Grapefruit dollars/box	5.77	5.40	6.77	9.50
Lemons dollars/box	10.10	11.24	10.41	12.79
Oranges dollars/box	5.79	8.85	7.45	8.12
Tangelos dollars/box	5.82	(NA)	(NA)	(NA)
Tangerines and mandarins dollars/box	15.11	(D)	(S)	(S)
Noncitrus, fresh				
Apples ³ dollars/pound	0.212	0.308	0.259	0.263
Grapes ³ dollars/ton	506.00	630.00	(S)	1,270.00
Peaches ³ dollars/ton	432.00	604.00	1,290.00	646.00
Pears ³ dollars/ton	370.00	640.00	588.00	558.00
Strawberries dollars/cwt	56.00	67.70	80.80	72.00

(D) Withheld to avoid disclosing data for individual operations.

(NA) Not available.

(S) Insufficient number of reports to establish an estimate.

¹ Marketing year August - February.

² Preliminary estimates not set for this item.

³ Equivalent packinghouse-door returns for California, Michigan, New York (apples only), and Washington (apples, peaches, and pears). Prices as sold for other states.

Prices Received for Vegetables and Livestock – United States: June 2011 with Comparisons

[Price data source for livestock and poultry commodities is United States Department of Agriculture's Agricultural Marketing Service]

Commodity	Average 1990-1992=100	June 2010	May 2011	Preliminary June 2011
Vegetables, fresh ¹				
Asparagusdollars/cwt	79.80	86.30	103.00	93.00
Beans, snap ²dollars/cwt	(NA)	53.00	56.90	51.60
Broccolidollars/cwt	22.50	34.50	40.20	69.80
Cantaloupes ²dollars/cwt	(NA)	17.50	18.00	15.80
Carrotsdollars/cwt	13.20	26.20	44.80	36.20
Cauliflowerdollars/cwt	26.80	32.90	56.80	62.90
Celerydollars/cwt	11.60	15.80	33.10	17.90
Corn, sweetdollars/cwt	15.70	16.00	22.20	24.20
Cucumbers ²dollars/cwt	(NA)	26.70	19.20	28.50
Lettucedollars/cwt	11.90	25.70	26.40	18.20
Onions ³dollars/cwt	12.80	16.10	17.90	19.50
Tomatoesdollars/cwt	32.30	37.30	49.10	53.90
Livestock				
Calvesdollars/cwt	94.30	122.00	137.00	129.00
Cattle, all beefdollars/cwt	72.90	90.40	112.00	106.00
Cows ⁴dollars/cwt	49.60	57.90	78.20	77.20
Steers & heifersdollars/cwt	77.10	94.80	115.00	108.00
Milk cows ⁵dollars/head	1130.00	(NA)	(NA)	(NA)
Hogs, alldollars/cwt	47.70	58.20	68.60	67.70
Barrows & giltsdollars/cwt	48.40	58.50	69.20	68.30
Sowsdollars/cwt	39.50	53.20	56.00	54.50
Lambsdollars/cwt	56.20	119.00	181.00	(NA)
Sheepdollars/cwt	23.40	42.10	55.40	(NA)
Dairy and poultry				
Milk, all ⁶dollars/cwt	13.06	15.40	19.60	21.00
Fat test percent	3.66	3.53	3.64	3.59
Broilers, live ⁷dollars/pound	0.317	0.520	0.500	0.500
Eggs, all ⁸dollars/dozen	0.643	0.619	0.823	0.883
Market ^{8 9}dollars/dozen	0.546	0.422	0.622	0.687
Turkeys, live ^{8 10 11}dollars/pound	0.380	0.617	0.679	0.690
Adjusted for seasonal variation				
Eggs, alldollars/dozen	0.545	0.804	1.060	1.150
Seasonal factor percent	100	77	77	77
Milk, all ⁶dollars/cwt	9.71	15.90	20.60	21.90
Seasonal factor percent	100	97	95	96

(NA) Not available.

¹ Beginning January 2006, point of first sale. FOB shipping point for prior years.

² Monthly estimates began January 1995.

³ Includes some processing.

⁴ Beef cows and cull dairy cows sold for slaughter.

⁵ Animals sold for dairy herd replacement only. Prices available for January, April, July, and October.

⁶ Before deductions for hauling. Includes quality, quantity, and other premiums. Excludes hauling subsidies.

⁷ Live weight equivalent price.

⁸ Mid-month price.

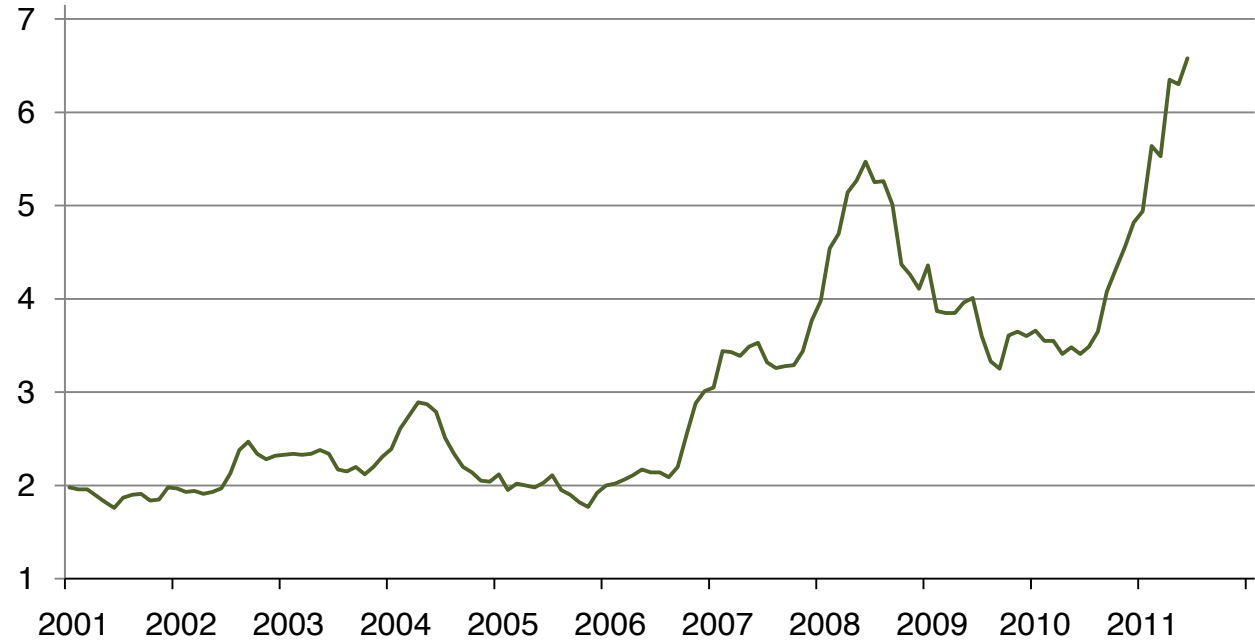
⁹ Also referred to as table eggs.

¹⁰ Live weight equivalent price is used when actual live weight price is not available.

¹¹ Beginning January 2011, price reflects FOB shipping point basis. Prior year price reflects delivered basis.

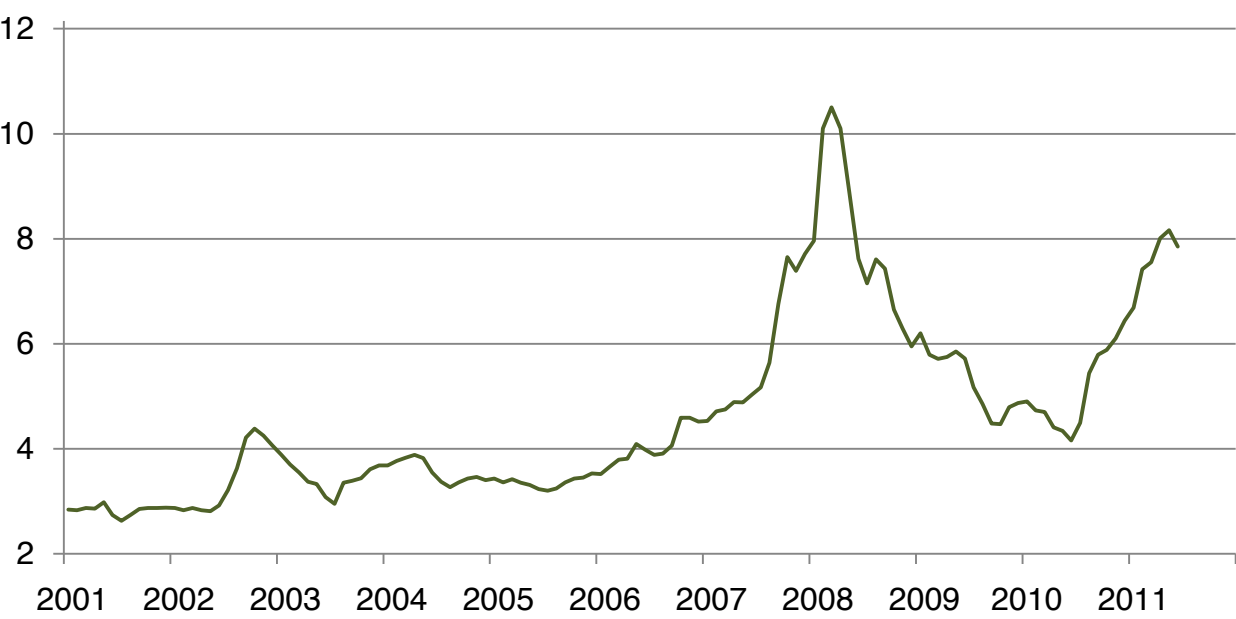
Prices Received for Corn by Month – United States

Dollars per bushel



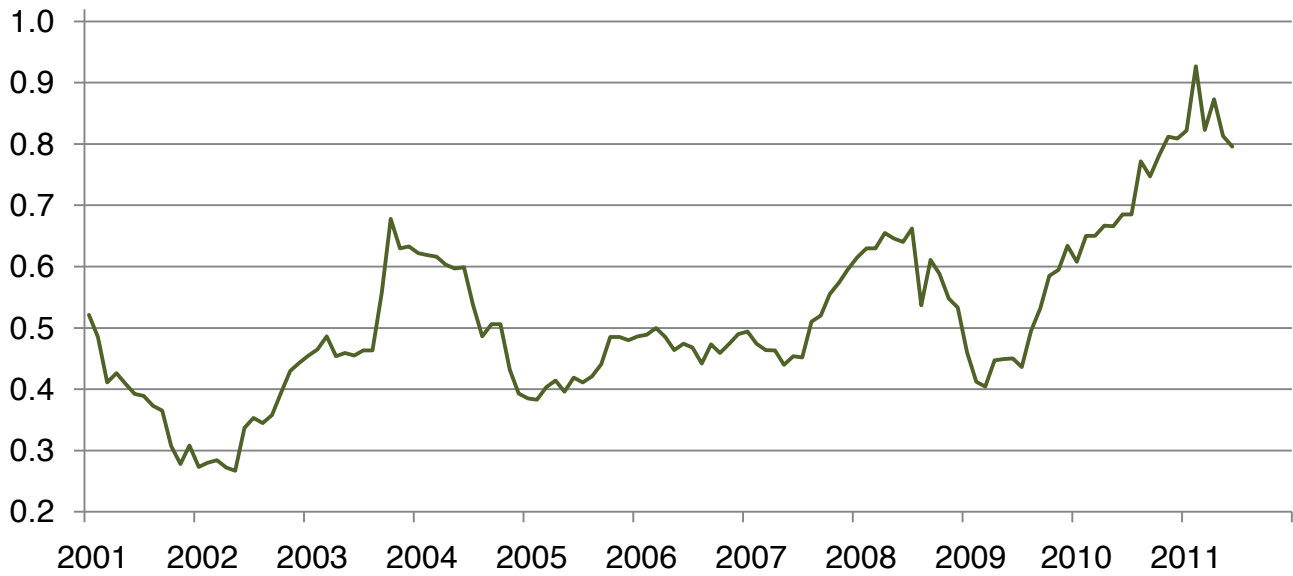
Prices Received for Wheat by Month – United States

Dollars per bushel



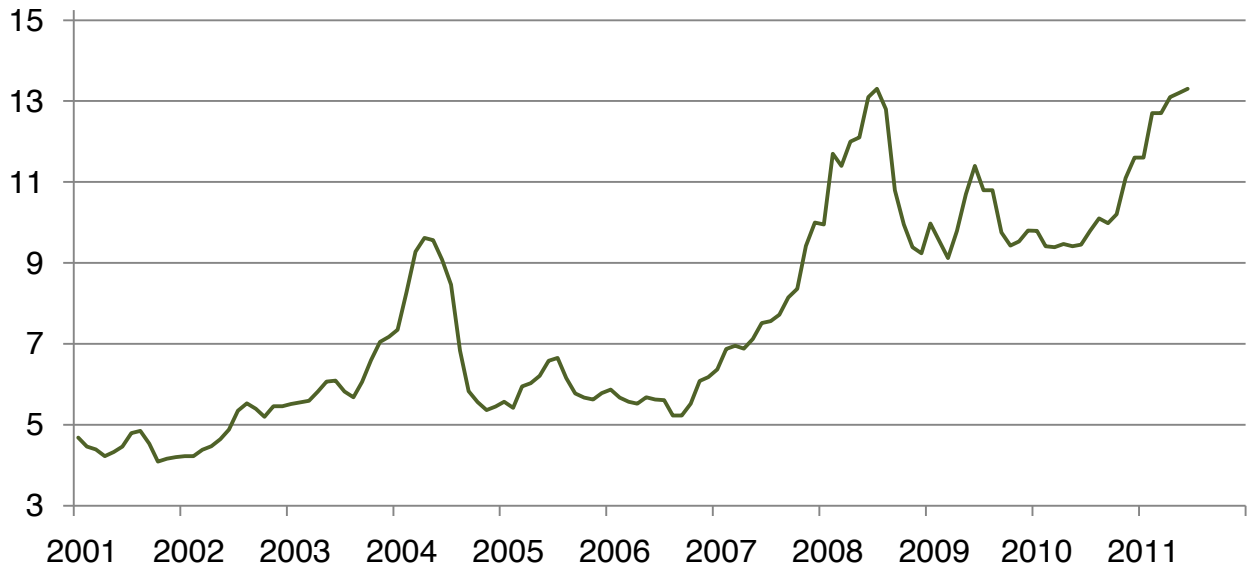
Prices Received for Upland Cotton by Month – United States

Dollars per pound



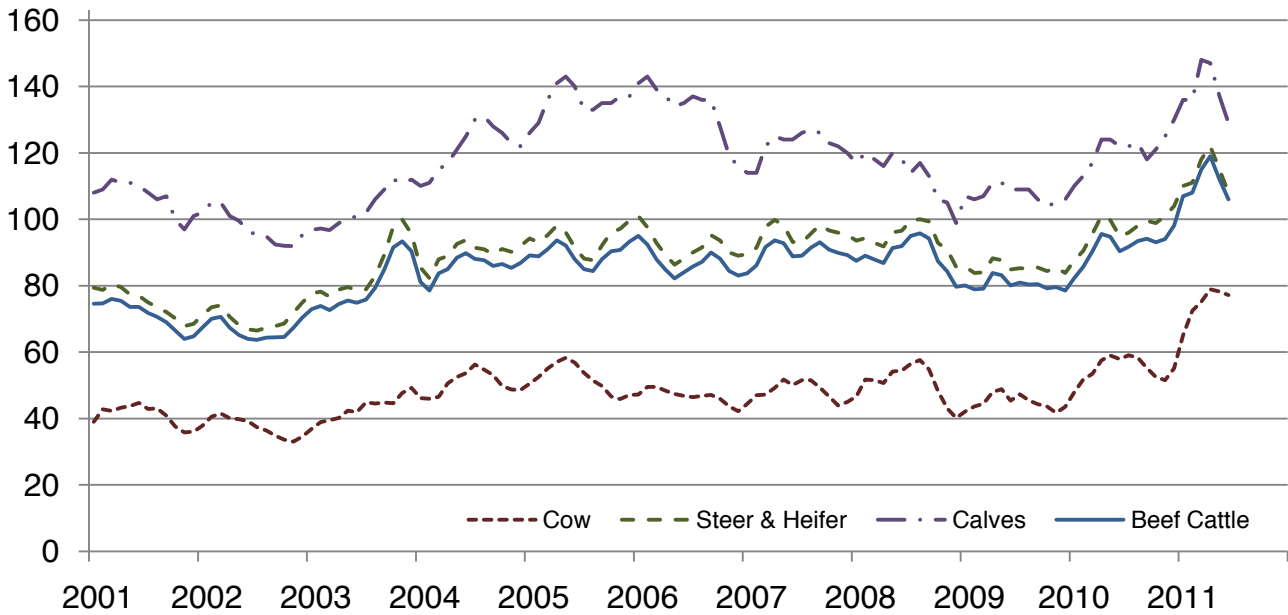
Prices Received for Soybeans by Month – United States

Dollars per bushel



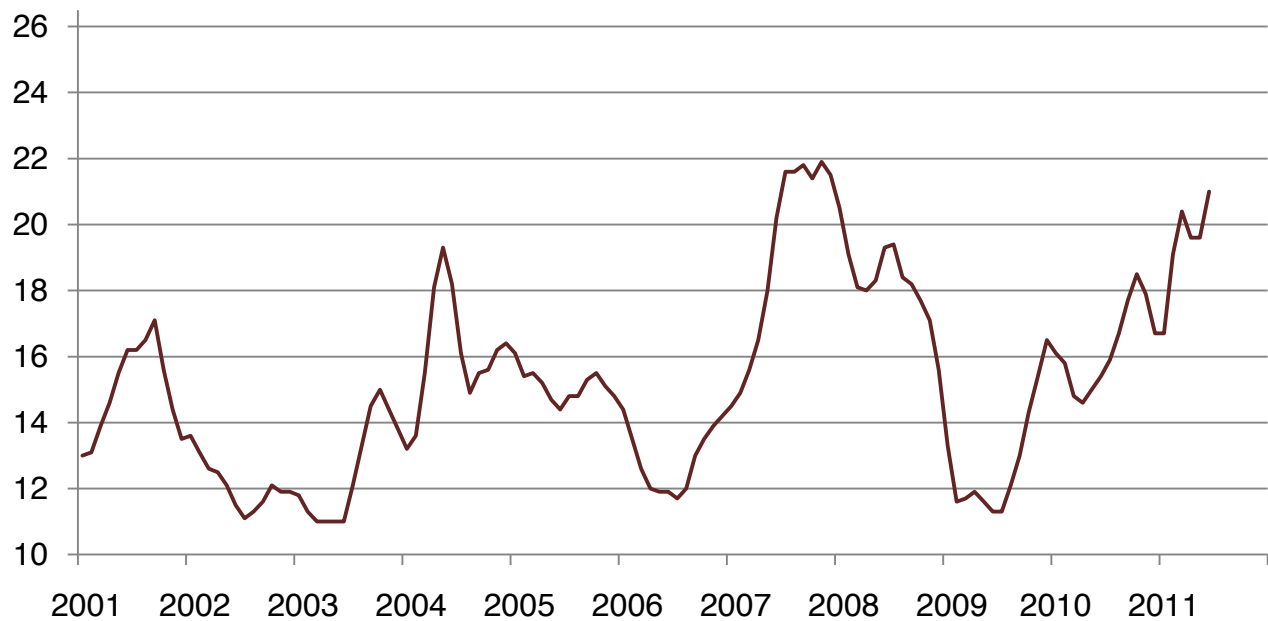
Prices Received for Cattle by Month – United States

Dollars per cwt



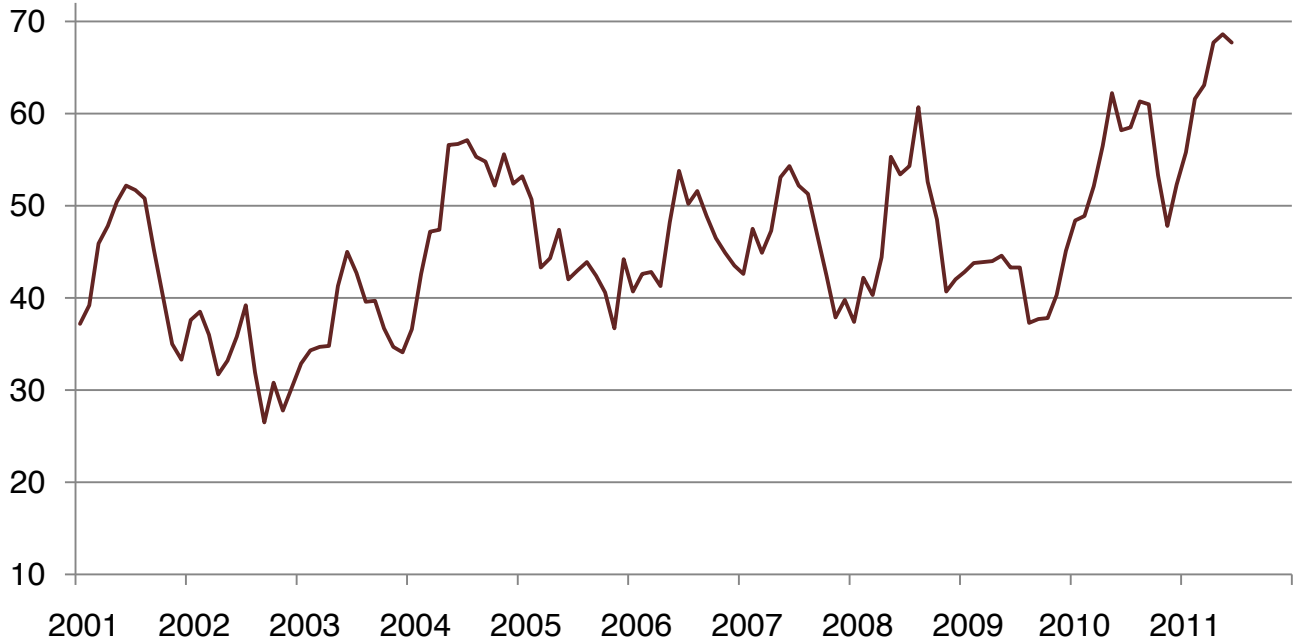
Prices Received for Milk by Month – United States

Dollars per cwt



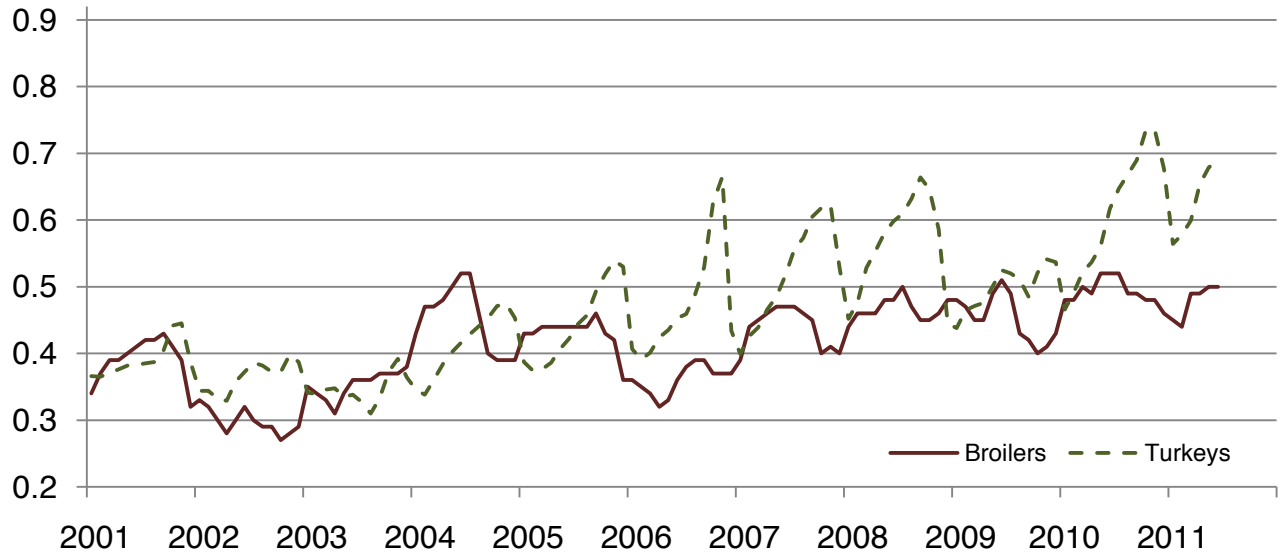
Prices Received for Hogs by Month – United States

Dollars per cwt



Prices Received for Poultry by Month – United States

Dollars per pound



Prices Received for All Wheat, Corn, and Soybeans by Month – United States: 2011 with Comparisons

[Current month prices are mid-month; prices for previous months and years are for the entire month. Blank data cells indicate estimation period has not yet begun]

Month	All wheat			Corn			Soybeans		
	2009	2010	Preliminary 2011	2009	2010	Preliminary 2011	2009	2010	Preliminary 2011
	(dollars per bushel)	(dollars per bushel)	(dollars per bushel)	(dollars per bushel)	(dollars per bushel)	(dollars per bushel)	(dollars per bushel)	(dollars per bushel)	(dollars per bushel)
January	6.20	4.90	6.69	4.36	3.66	4.94	9.97	9.79	11.60
February ..	5.79	4.73	7.42	3.87	3.55	5.64	9.54	9.41	12.70
March	5.71	4.70	7.55	3.85	3.55	5.53	9.12	9.39	12.70
April	5.75	4.41	8.01	3.85	3.41	6.35	9.79	9.47	13.10
May	5.85	4.34	8.16	3.96	3.48	6.30	10.70	9.41	13.20
June	5.72	4.16	7.85	4.01	3.41	6.58	11.40	9.45	13.30
July	5.17	4.49		3.60	3.49		10.80	9.79	
August	4.85	5.44		3.33	3.65		10.80	10.10	
September ..	4.48	5.79		3.25	4.08		9.75	9.98	
October	4.47	5.88		3.61	4.32		9.43	10.20	
November	4.79	6.10		3.65	4.55		9.53	11.10	
December	4.87	6.44		3.60	4.82		9.80	11.60	

Prices Received for Beef Cattle and All Hogs by Month – United States: 2011 with Comparisons

[Current month prices are mid-month; prices for previous months and years are for the entire month. Blank data cells indicate estimation period has not yet begun. Price data source is United States Department of Agriculture's Agricultural Marketing Service]

Month	Beef cattle ¹			All hogs ²		
	2009	2010	Preliminary 2011	2009	2010	Preliminary 2011
	(dollars per cwt)	(dollars per cwt)	(dollars per cwt)	(dollars per cwt)	(dollars per cwt)	(dollars per cwt)
January	80.10	82.30	107.00	42.80	48.40	55.80
February	78.90	85.70	108.00	43.80	48.90	61.60
March	79.10	90.40	115.00	43.90	52.10	63.10
April	83.80	95.60	119.00	44.00	56.50	67.70
May	83.20	94.70	112.00	44.60	62.20	68.60
June	80.10	90.40	106.00	43.30	58.20	67.70
July	80.90	91.70		43.30	58.50	
August	80.40	93.50		37.30	61.30	
September	80.50	94.10		37.70	61.00	
October	79.20	93.10		37.80	53.30	
November	79.60	94.00		40.30	47.80	
December	78.50	98.10		45.10	52.30	

¹ Cows and steers & heifers.

² Barrows & gilts and sows.

Prices Received for All Wheat – States and United States: June 2011 with Comparisons

State	June 2010	May 2011	Preliminary June 2011
	(dollars per bushel)	(dollars per bushel)	(dollars per bushel)
Arizona	5.17	6.80	9.30
Arkansas	4.92	(D)	(D)
California	(D)	7.62	5.88
Colorado	3.77	7.96	7.63
Idaho	4.45	7.48	7.74
Illinois	4.26	7.63	7.50
Indiana	4.49	7.55	6.96
Kansas	3.98	8.41	7.65
Michigan	4.20	7.01	7.00
Minnesota	4.08	8.10	8.68
Missouri	4.93	6.73	6.60
Montana	4.73	7.86	8.96
Nebraska	3.83	7.16	7.10
North Carolina	4.31	6.99	7.38
North Dakota	4.42	9.29	10.20
Ohio	4.27	7.12	6.44
Oklahoma	3.75	8.08	7.84
Oregon	4.57	7.77	7.59
South Dakota	4.81	9.73	10.10
Texas	3.89	8.43	7.68
Washington	4.35	7.97	7.88
United States	4.16	8.16	7.85

(D) Withheld to avoid disclosing data for individual operations.

Prices Received for Winter Wheat – States and United States: June 2011 with Comparisons

State	June 2010	May 2011	Preliminary June 2011
	(dollars per bushel)	(dollars per bushel)	(dollars per bushel)
Arkansas	4.92	(D)	(D)
California	(D)	7.62	(D)
Colorado	3.76	7.96	7.63
Idaho	4.37	7.07	7.55
Illinois	4.26	7.63	7.50
Indiana	4.49	7.55	6.96
Kansas	3.98	8.41	7.65
Michigan	4.20	7.01	7.00
Minnesota	3.35	7.56	7.90
Missouri	4.93	6.73	6.60
Montana	4.29	7.32	7.50
Nebraska	3.83	7.16	7.10
North Carolina	4.31	6.99	7.38
North Dakota	3.48	6.87	7.10
Ohio	4.27	7.12	6.44
Oklahoma	3.75	8.08	7.84
Oregon	4.47	7.53	7.40
South Dakota	3.97	8.06	7.55
Texas	3.89	8.43	7.68
Washington	4.21	7.45	7.38
United States	4.05	7.80	7.35

(D) Withheld to avoid disclosing data for individual operations.

Prices Received for Durum Wheat – States and United States: June 2011 with Comparisons

State	June 2010	May 2011	Preliminary June 2011
	(dollars per bushel)	(dollars per bushel)	(dollars per bushel)
Arizona	5.17	(D)	(D)
California	(D)	(S)	(S)
Idaho	(D)	(D)	(S)
Montana	4.29	8.56	10.20
North Dakota	3.89	8.53	10.30
United States	4.58	7.86	9.96

(D) Withheld to avoid disclosing data for individual operations.

(S) Insufficient number of reports to establish an estimate.

Prices Received for Spring Wheat – States and United States: June 2011 with Comparisons

State	June 2010	May 2011	Preliminary June 2011
	(dollars per bushel)	(dollars per bushel)	(dollars per bushel)
Colorado	(D)	(S)	(S)
Idaho	4.61	8.40	8.00
Minnesota	4.08	8.12	8.70
Montana	5.40	8.23	10.00
North Dakota	4.55	9.47	10.30
Oregon	5.14	9.17	8.75
South Dakota	5.26	10.30	10.90
Washington	5.04	9.38	9.75
United States	4.58	8.85	9.84

(D) Withheld to avoid disclosing data for individual operations.

(S) Insufficient number of reports to establish an estimate.

Prices Received for All Barley – States and United States: June 2011 with Comparisons

State	June 2010	May 2011	Preliminary June 2011
	(dollars per bushel)	(dollars per bushel)	(dollars per bushel)
California	(D) 5.98	5.98	5.13
Colorado	(D)	(D)	(S)
Idaho	5.09	3.85	5.66
Minnesota	(D)	(D)	(D)
Montana	4.28	4.17	4.21
North Dakota	3.05	4.24	5.10
Oregon	2.75	4.93	5.10
Utah	3.21	(D)	(D)
Washington	3.30	4.75	5.04
Wyoming	(D)	(D)	(S)
United States	3.64	4.15	5.11

(D) Withheld to avoid disclosing data for individual operations.

(S) Insufficient number of reports to establish an estimate.

Prices Received for Malting Barley – States: June 2011 with Comparisons

State	June 2010	May 2011	Preliminary June 2011
	(dollars per bushel)	(dollars per bushel)	(dollars per bushel)
Idaho	5.49	3.76	5.70
Minnesota	(D)	(D)	(D)
Montana	4.50	4.12	4.05
North Dakota	3.69	4.18	5.20
Wyoming	(S)	(D)	(S)

(D) Withheld to avoid disclosing data for individual operations.

(S) Insufficient number of reports to establish an estimate.

Prices Received for Feed Barley – States: June 2011 with Comparisons

State	June 2010	May 2011	Preliminary June 2011
	(dollars per bushel)	(dollars per bushel)	(dollars per bushel)
Idaho	2.87	5.12	5.20
Minnesota	2.35	4.54	(D)
Montana	2.37	4.47	5.09
North Dakota	1.91	4.37	4.55
Wyoming	(D)	(S)	(S)

(D) Withheld to avoid disclosing data for individual operations.

(S) Insufficient number of reports to establish an estimate.

Prices Received for Corn – States and United States: June 2011 with Comparisons

State	June 2010	May 2011	Preliminary June 2011
	(dollars per bushel)	(dollars per bushel)	(dollars per bushel)
Colorado	3.50	6.55	6.74
Illinois	3.41	6.65	6.80
Indiana	3.55	6.60	7.20
Iowa	3.42	6.24	6.60
Kansas	3.24	6.56	6.90
Kentucky	3.75	6.90	7.20
Michigan	3.45	6.15	6.80
Minnesota	3.39	5.40	6.00
Missouri	3.54	6.74	7.00
Nebraska	3.44	5.97	6.30
North Carolina	4.06	7.76	7.92
North Dakota	3.26	5.80	6.35
Ohio	3.39	6.93	7.25
Pennsylvania	3.84	7.08	7.90
South Dakota	3.14	6.03	6.30
Tennessee	3.41	5.71	6.90
Texas	3.62	6.57	7.29
Wisconsin	3.38	6.46	6.60
United States	3.41	6.30	6.58

Prices Received for Soybeans – States and United States: June 2011 with Comparisons

State	June 2010	May 2011	Preliminary June 2011
	(dollars per bushel)	(dollars per bushel)	(dollars per bushel)
Arkansas	8.98	12.00	13.40
Illinois	9.60	13.40	13.50
Indiana	9.79	13.70	13.90
Iowa	9.39	13.20	13.30
Kansas	9.28	13.50	13.50
Kentucky	9.62	13.60	13.60
Louisiana	7.68	12.80	(S)
Michigan	9.49	12.60	13.20
Minnesota	9.10	12.70	12.90
Mississippi	8.56	12.90	13.40
Missouri	9.56	13.60	13.70
Nebraska	9.31	13.10	13.30
North Carolina	9.59	13.80	13.90
North Dakota	9.17	12.50	12.60
Ohio	9.82	13.50	13.80
South Dakota	9.03	12.90	13.10
Tennessee	9.63	13.60	13.60
Wisconsin	9.42	12.60	12.80
United States	9.45	13.20	13.30

(S) Insufficient number of reports to establish an estimate.

Prices Received for Oats – States and United States: June 2011 with Comparisons

State	June 2010	May 2011	Preliminary June 2011
	(dollars per bushel)	(dollars per bushel)	(dollars per bushel)
Illinois	(D)	(D)	(D)
Iowa	2.30	3.56	3.60
Michigan	2.67	4.31	3.50
Minnesota	1.98	3.18	3.30
Montana	(D)	(D)	(S)
Nebraska	2.69	4.00	4.00
New York	(D)	3.58	(D)
North Dakota	1.89	3.29	(S)
Oregon	(S)	(S)	(S)
Pennsylvania	3.03	4.72	3.88
South Dakota	2.20	3.64	3.75
Texas	(D)	(S)	(D)
Wisconsin	2.06	3.35	3.25
United States	2.11	3.55	3.51

(D) Withheld to avoid disclosing data for individual operations.

(S) Insufficient number of reports to establish an estimate.

Prices Received for Sorghum Grain – States and United States: June 2011 with Comparisons

State	June 2010	May 2011	Preliminary June 2011
	(dollars per cwt)	(dollars per cwt)	(dollars per cwt)
Arkansas	(S)	(S)	(S)
Illinois	(D)	12.40	12.50
Kansas	5.02	11.50	11.70
Louisiana	(D)	(D)	(S)
Missouri	(S)	(D)	11.90
Nebraska	5.38	11.10	11.50
Oklahoma	5.03	11.60	11.80
Texas	5.85	11.60	12.00
United States	5.38	11.60	11.80

(D) Withheld to avoid disclosing data for individual operations.

(S) Insufficient number of reports to establish an estimate.

Prices Received for Dry Beans – States and United States: June 2011 with Comparisons

State	June 2010	May 2011	Preliminary June 2011
	(dollars per cwt)	(dollars per cwt)	(dollars per cwt)
California	43.00	51.10	(D)
Colorado	29.90	29.70	30.80
Idaho	30.70	33.90	35.70
Michigan	28.50	40.10	40.00
Minnesota	29.60	(D)	(D)
Nebraska	31.20	32.10	32.60
North Dakota	22.00	28.10	29.80
United States	26.00	32.90	33.20

(D) Withheld to avoid disclosing data for individual operations.

Prices Received for Peanuts (In-Shell) – States and United States: June 2011 with Comparisons

State	June 2010	May 2011	Preliminary June 2011
	(dollars per pound)	(dollars per pound)	(dollars per pound)
Alabama	0.201	0.221	0.216
Florida	0.204	0.229	0.226
Georgia	0.202	0.222	0.226
Mississippi	(S)	0.220	0.213
New Mexico	(D)	0.249	0.255
North Carolina	0.236	0.234	0.257
Oklahoma	0.207	0.262	0.247
South Carolina	0.225	0.239	0.252
Texas	0.241	0.259	0.258
Virginia	0.222	0.220	(S)
United States	0.216	0.229	0.232

(D) Withheld to avoid disclosing data for individual operations.

(S) Insufficient number of reports to establish an estimate.

Prices Received for Sunflower – States and United States: June 2011 with Comparisons

State	June 2010	May 2011	Preliminary June 2011
	(dollars per cwt)	(dollars per cwt)	(dollars per cwt)
Colorado	(D)	(S)	(S)
Kansas	13.90	(D)	(D)
Minnesota	17.40	23.00	(D)
North Dakota	15.30	30.60	34.00
South Dakota	13.70	26.40	32.50
United States	15.10	29.70	33.10

(D) Withheld to avoid disclosing data for individual operations.

(S) Insufficient number of reports to establish an estimate.

Prices Received for Canola – States and United States: June 2011 with Comparisons

State	June 2010	May 2011	Preliminary June 2011
	(dollars per cwt)	(dollars per cwt)	(dollars per cwt)
Minnesota	(D)	(D)	(S)
North Dakota	17.00	23.50	25.00
United States	17.00	23.50	25.00

(D) Withheld to avoid disclosing data for individual operations.

(S) Insufficient number of reports to establish an estimate.

Prices Received for Flaxseed – States and United States: June 2011 with Comparisons

State	June 2010	May 2011	Preliminary June 2011
	(dollars per bushel)	(dollars per bushel)	(dollars per bushel)
North Dakota	9.26	14.20	14.10
United States	9.26	14.20	14.10

Prices Received for Upland Cotton and Cottonseed – States and United States: June 2011 with Comparisons

[Cottonseed marketing year August - February]

State	Cotton, Upland			Cottonseed		
	June 2010	May 2011	Preliminary June 2011	June 2010	May 2011	Preliminary June 2011
	(dollars per pound)	(dollars per pound)	(dollars per pound)	(dollars per ton)	(dollars per ton)	(dollars per ton)
Alabama	0.679	0.793	0.793	(NA)	(NA)	(NA)
Arizona	(D)	(D)	(S)	(NA)	(NA)	(NA)
Arkansas	0.671	0.793	0.793	(NA)	(NA)	(NA)
California	(D)	(D)	(S)	(NA)	(NA)	(NA)
Georgia	0.679	0.793	0.793	(NA)	(NA)	(NA)
Louisiana	0.675	0.793	0.793	(NA)	(NA)	(NA)
Mississippi	0.678	0.793	0.793	(NA)	(NA)	(NA)
North Carolina	0.679	0.793	0.793	(NA)	(NA)	(NA)
Tennessee	0.680	0.793	0.793	(NA)	(NA)	(NA)
Texas	0.718	0.829	(D)	(NA)	(NA)	(NA)
United States	0.685	0.813	0.796	(NA)	(NA)	(NA)

(D) Withheld to avoid disclosing data for individual operations.

(NA) Not available.

(S) Insufficient number of reports to establish an estimate.

Prices Received and Farm Marketings for Upland Cotton and Rice – United States: June 2011 with Comparisons

Item	June 2010	May 2011	Preliminary June 2011
Cotton, Upland			
Average price dollars/pound	0.685	0.813	0.796
Marketings ¹ 1,000 bales	299	180	(NA)
Rice, all			
Average price dollars/cwt	13.20	12.40	12.00
Marketings ² 1,000 cwt	11,019	14,006	(NA)
Rice, long			
Average price dollars/cwt	11.90	11.00	11.20
Marketings ² 1,000 cwt	8,373	11,206	(NA)
Rice, medium and short			
Average price dollars/cwt	17.50	17.80	19.60
Marketings ² 1,000 cwt	2,646	2,800	(NA)

(NA) Not available.

¹ Marketings based on a survey of cotton buyers in the major producing States - Alabama, Arizona, Arkansas, California, Georgia, Louisiana, Mississippi, North Carolina, Tennessee, and Texas.

² Purchases by private firms and rice (rough equivalent) shipped by cooperatives.

Prices Received for Hay by Type – States and United States: June 2011 with Comparisons

State	All hay			Alfalfa hay			Other hay		
	June 2010	May 2011	Preliminary June 2011	June 2010	May 2011	Preliminary June 2011	June 2010	May 2011	Preliminary June 2011
	(dollars per ton)	(dollars per ton)	(dollars per ton)	(dollars per ton)	(dollars per ton)	(dollars per ton)	(dollars per ton)	(dollars per ton)	(dollars per ton)
Arizona	130.00	213.00	226.00	130.00	215.00	230.00	125.00	155.00	170.00
California	114.00	224.00	218.00	121.00	239.00	238.00	95.00	141.00	137.00
Colorado	125.00	148.00	169.00	125.00	150.00	170.00	120.00	125.00	145.00
Idaho	107.00	190.00	189.00	107.00	192.00	191.00	80.00	125.00	145.00
Illinois	116.00	141.00	134.00	125.00	150.00	150.00	88.00	95.00	90.00
Iowa	116.00	112.00	122.00	119.00	118.00	125.00	83.00	81.00	86.00
Kansas	106.00	125.00	141.00	110.00	130.00	150.00	70.00	75.00	90.00
Kentucky	93.00	113.00	94.00	140.00	155.00	160.00	80.00	75.00	75.00
Michigan	110.00	104.00	97.00	115.00	110.00	100.00	90.00	80.00	80.00
Minnesota	111.00	105.00	105.00	120.00	115.00	115.00	75.00	80.00	80.00
Missouri	75.00	88.00	71.00	125.00	140.00	140.00	60.00	65.00	60.00
Montana	90.00	84.00	93.00	89.00	85.00	94.00	100.00	80.00	85.00
Nebraska	76.00	89.00	86.00	77.00	95.00	89.00	62.00	68.00	65.00
Nevada	91.00	164.00	173.00	91.00	165.00	175.00	96.00	135.00	135.00
New Mexico	152.00	216.00	230.00	155.00	220.00	235.00	127.00	180.00	175.00
New York	99.00	116.00	146.00	120.00	150.00	155.00	85.00	111.00	124.00
North Dakota	59.00	60.00	56.00	63.00	62.00	61.00	45.00	44.00	44.00
Ohio	105.00	131.00	125.00	144.00	162.00	167.00	80.00	90.00	98.00
Oklahoma	105.00	119.00	111.00	135.00	147.00	155.00	73.00	76.00	76.00
Oregon	146.00	187.00	207.00	134.00	190.00	213.00	174.00	175.00	187.00
Pennsylvania	125.00	134.00	156.00	145.00	155.00	175.00	120.00	124.00	147.00
South Dakota	81.00	95.00	95.00	83.00	99.00	99.00	72.00	81.00	81.00
Texas	130.00	144.00	139.00	183.00	200.00	204.00	110.00	115.00	115.00
Utah	105.00	166.00	172.00	105.00	167.00	173.00	95.00	137.00	141.00
Washington	137.00	160.00	170.00	125.00	155.00	165.00	170.00	175.00	185.00
Wisconsin	116.00	97.00	97.00	120.00	100.00	100.00	85.00	75.00	75.00
Wyoming	88.00	104.00	105.00	89.00	107.00	106.00	80.00	97.00	97.00
United States	114.00	169.00	163.00	119.00	186.00	180.00	99.10	112.00	113.00

Prices Received for Apples – States and United States: June 2011 with Comparisons

[Equivalent packinghouse-door returns for California, Michigan, New York, and Washington. Prices at point of first sale for other States]

State	Apples, fresh use		
	June 2010	May 2011	Preliminary June 2011
	(dollars per pound)	(dollars per pound)	(dollars per pound)
California	(NA)	(NA)	(NA)
Michigan	(NA)	(NA)	(NA)
New York	0.208	0.270	0.278
Ohio	0.460	0.580	0.520
Pennsylvania	0.393	(S)	(S)
Virginia	(NA)	(NA)	(NA)
Washington	0.319	0.256	0.261
United States	0.308	0.259	0.263

(NA) Not available.

(S) Insufficient number of reports to establish an estimate.

Prices Received for Citrus Fruits by Utilization – States and United States: June 2010

[Net pounds per box: grapefruit in California-67, Florida-85, Texas-80; lemons-76; oranges in California-75, Florida-90, Texas-85; tangelos in Florida-90; tangerines and mandarins in Arizona and California-75, Florida-95]

Commodity, State, and type	FOB packed fresh	Equivalent returns					
		Packinghouse-door			On-tree		
		All	Fresh	Process	All	Fresh	Process
	(dollars per box)	(dollars per box)	(dollars per box)	(dollars per box)	(dollars per box)	(dollars per box)	(dollars per box)
Grapefruit California	18.30	8.50	8.50	(S)	5.40	5.40	(S)
Lemons California	40.30	16.99	29.61	(D)	11.24	23.86	(D)
Oranges California							
Navel and miscellaneous	29.00	16.49	20.61	(D)	13.84	17.96	(D)
Valencia	20.80	10.45	12.28	(D)	7.76	9.59	(D)
Florida Valencia	24.30	10.26	14.40	10.00	7.65	11.60	7.40
United States	25.20	11.48	16.56	9.22	8.85	13.89	6.61
Tangerines and mandarins California	(D)	(D)	(D)	(D)	(D)	(D)	(D)

(D) Withheld to avoid disclosing data for individual operations.

(S) Insufficient number of reports to establish an estimate.

Prices Received for Citrus Fruits by Utilization – States and United States: May 2011

[Net pounds per box: grapefruit in California-80, Florida-85, Texas-80; lemons-80; oranges in California-80, Florida-90, Texas-85; tangelos in Florida-90; tangerines and mandarins in Arizona and California-80, Florida-95]

Commodity, State, and type	FOB packed fresh	Equivalent returns					
		Packinghouse-door			On-tree		
		All	Fresh	Process	All	Fresh	Process
	(dollars per box)	(dollars per box)	(dollars per box)	(dollars per box)	(dollars per box)	(dollars per box)	(dollars per box)
Grapefruit							
California	18.90	12.50	12.50	(D)	10.40	10.40	(D)
Florida	22.70	8.61	12.86	6.14	6.13	10.67	3.51
White	23.40	6.62	13.50	6.10	4.09	11.35	3.55
Colored	22.60	10.43	12.80	6.25	8.00	10.60	3.40
Texas	24.00	8.00	13.70	1.60	6.52	12.15	0.20
United States	23.30	8.37	13.51	2.04	6.77	11.85	0.52
Lemons							
California	32.90	16.28	22.00	(D)	10.41	16.13	(D)
Oranges							
California							
Navel and miscellaneous	22.00	8.60	13.36	(D)	6.13	10.95	(D)
Valencia	20.60	9.81	11.96	(D)	7.36	9.55	(D)
Florida							
Valencia	22.90	10.25	12.90	10.20	7.65	10.20	7.60
United States	21.60	10.03	12.81	9.57	7.45	10.37	6.97
Tangerines and mandarins							
California	(S)	(S)	(S)	(S)	(S)	(S)	(S)
Florida	(S)	(S)	(S)	(S)	(S)	(S)	(S)
United States	(S)	(S)	(S)	(S)	(S)	(S)	(S)

(D) Withheld to avoid disclosing data for individual operations.

(S) Insufficient number of reports to establish an estimate.

Prices Received for Citrus Fruits by Utilization – States and United States: June 2011

[Net pounds per box: grapefruit in California-80, Florida-85, Texas-80; lemons-80; oranges in California-80, Florida-90, Texas-85; tangelos in Florida-90; tangerines and mandarins in Arizona and California-80, Florida-95]

Commodity, State, and type	FOB packed fresh	Equivalent returns					
		Packinghouse-door			On-tree		
		All	Fresh	Process	All	Fresh	Process
	(dollars per box)	(dollars per box)	(dollars per box)	(dollars per box)	(dollars per box)	(dollars per box)	(dollars per box)
Grapefruit California	18.00	11.60	11.60	(D)	9.50	9.50	(D)
Lemons California	34.70	18.66	23.80	(D)	12.79	17.93	(D)
Oranges California							
Navel and miscellaneous	24.10	10.76	15.46	(D)	8.30	13.05	(D)
Valencia	21.00	9.82	12.36	(D)	7.38	9.95	(D)
Florida Valencia	26.40	10.83	16.40	10.70	8.22	13.70	8.10
United States	22.40	10.69	13.62	10.15	8.12	11.18	7.55

(D) Withheld to avoid disclosing data for individual operations.

Prices Received for Potatoes – States and United States: June 2011 with Comparisons

State	June 2010	May 2011	Preliminary June 2011
	(dollars per cwt)	(dollars per cwt)	(dollars per cwt)
California			
Spring ¹	14.00	25.70	19.70
Fall	10.90	10.80	10.50
All ²	13.70	24.10	19.20
Colorado			
Fresh ³	5.95	15.30	(D)
All ²	5.40	13.00	13.40
Florida	13.30	(D)	(D)
Idaho			
Fresh ³	3.80	10.30	(D)
Processing	8.30	7.60	(D)
All ²	5.80	9.20	9.05
Maine	10.20	10.70	9.70
Michigan	(D)	13.70	(D)
Minnesota	5.75	6.90	(D)
New York	15.80	15.50	11.70
North Carolina	11.80	(S)	(S)
North Dakota			
Fresh ³	(D)	9.90	(D)
Processing	(D)	7.30	(D)
All ²	(D)	8.65	7.65
Oregon	8.70	9.70	11.40
Texas	(S)	(S)	(S)
Virginia	(S)	(S)	(S)
Washington			
Processing	8.40	7.50	(D)
All ²	8.55	8.60	8.65
Wisconsin			
Fresh ³	(D)	14.40	(D)
Processing	(D)	7.45	(D)
All ²	(D)	11.80	10.10
United States			
Fresh ³	8.08	16.59	(D)
Processing	8.64	8.41	(D)
All ²	8.25	11.17	11.08

(D) Withheld to avoid disclosing data for individual operations.

(S) Insufficient number of reports to establish an estimate.

¹ Beginning in 2010, winter and summer potatoes included in spring potatoes.

² Average price of potatoes sold for all uses, including table stock, processing, seed, and livestock feed.

³ Fresh market prices only. Includes table stock prices.

Prices Received for All Milk – States and United States: June 2011 with Comparisons

[Before deduction for hauling. Includes quality, quantity, and other premiums. Excludes hauling subsidies]

State	June 2010		May 2011		Preliminary June 2011	
	Price	Fat test	Price	Fat test	Price	Fat test
	(dollars per cwt)	(percent)	(dollars per cwt)	(percent)	(dollars per cwt)	(percent)
Arizona	15.60	3.41	19.80	3.47	20.70	3.48
California	13.97	3.55	17.98	3.61	20.40	3.58
Colorado	15.60	3.33	19.60	3.56	20.50	3.50
Florida	20.50	3.50	24.40	3.59	25.00	3.60
Idaho	14.10	3.50	17.80	3.63	19.00	3.55
Illinois	16.10	3.61	19.60	3.66	20.50	3.63
Indiana	16.60	3.52	20.60	3.58	21.50	3.53
Iowa	15.60	3.50	19.70	3.64	20.70	3.58
Kansas	16.10	3.46	20.70	3.67	21.60	3.56
Michigan	16.30	3.45	20.60	3.61	21.50	3.55
Minnesota	14.90	3.57	19.40	3.69	21.60	3.63
Missouri	16.10	3.48	20.20	3.63	20.90	3.59
New Mexico	14.90	3.37	19.20	3.54	20.30	3.50
New York	16.80	3.56	21.30	3.67	22.00	3.63
Ohio	16.80	3.56	21.50	3.70	22.20	3.63
Oregon	16.40	3.63	20.00	3.71	21.00	3.66
Pennsylvania	17.50	3.50	22.10	3.65	22.80	3.60
Texas	16.10	3.56	20.60	3.75	20.90	3.71
Utah	15.60	3.52	19.50	3.67	20.30	3.64
Vermont	17.10	3.67	21.60	3.72	22.50	3.68
Virginia	18.90	3.49	22.80	3.61	23.50	3.57
Washington	15.60	3.63	20.10	3.71	21.70	3.66
Wisconsin	15.00	3.54	18.90	3.67	21.00	3.61
United States	15.40	3.53	19.60	3.64	21.00	3.59

Prices Received for Milk Cows – States and United States: April 2011 with Comparisons

[Animals sold for dairy herd replacement only. Prices estimated in January, April, July, and October]

State	April 2010 (dollars per head)	January 2011 (dollars per head)	April 2011 (dollars per head)
Arizona	1,350	1,380	1,450
California	1,300	1,200	1,300
Colorado	1,300	1,330	1,450
Florida	1,450	1,360	1,480
Idaho	1,300	1,200	1,450
Illinois	1,400	1,330	1,430
Indiana	1,270	1,350	1,450
Iowa	1,250	1,250	1,430
Kansas	1,250	1,200	1,400
Michigan	1,400	1,450	1,550
Minnesota	1,250	1,310	1,410
Missouri	1,160	1,130	1,280
New Mexico	1,320	1,320	1,380
New York	1,300	1,300	1,400
Ohio	1,310	1,360	1,470
Oregon	1,320	1,290	1,390
Pennsylvania	1,400	1,400	1,450
Texas	1,270	1,200	1,400
Utah	1,150	1,140	1,300
Vermont	1,350	1,400	1,500
Virginia	1,300	1,360	1,410
Washington	1,300	1,300	1,400
Wisconsin	1,450	1,430	1,560
United States	1,330	1,300	1,420

Commodity Parity Prices and Price as Percent of Parity Price – United States: June 2011 with Comparisons

[Parity prices are computed under the provisions of Title III, Subtitle a, Section 301 (a) of the Agricultural Adjustment Act of 1938 as amended by the Agricultural Acts of 1948, 1949, and 1956. See January *Agricultural Prices* for details on adjusted base price and parity price computations. Parity data not available for blank cells. Primary source of data for livestock and milk prices is United States Department of Agriculture's Agricultural Marketing Service]

Commodity and unit	Adjusted base price	Parity price			Price as percent of parity		
		June 2010	May 2011	June 2011	June 2010	May 2011	June 2011
	(dollars)	(dollars)	(dollars)	(dollars)	(percent)	(percent)	(percent)
Basic commodities							
All wheatbushel	0.608	14.40	16.50	16.50	29	49	48
Ricecwt	1.63	33.40	44.30	44.20	40	28	27
Cornbushel	0.384	9.00	10.40	10.40	38	61	63
Cotton							
Upland pound	0.071	2.03	1.93	1.93	34	42	41
American Pima pound	0.129	3.19	3.51	3.50	37	33	33
Peanuts pound	0.027	0.702	0.734	0.733	31	31	32
Designated nonbasic							
All milk, to plants ¹cwt	1.82	44.30	49.50	49.40	36	42	44
Honey, extracted ² pound	0.134	3.07	3.64	3.64	47	40	40
Wool and mohair							
Wool pound	0.092	2.06	2.50	2.50	38	46	46
Mohair pound	0.324	8.30	8.81	8.79	32	40	40
Other nonbasic							
Apples, fresh ³ pound	0.033	0.799	0.897	0.895	39	29	29
Barleybushel	0.425	10.10	11.60	11.50	36	36	44
Canolacwt	1.740	39.40	47.30	47.20	43	50	53
Cottonseed ton	15.40	365.00	419.00	418.00	42	41	41
Dry edible beanscwt	2.92	69.70	79.40	79.20	37	41	42
Flaxseedbushel	1.020	23.50	27.70	27.70	39	51	51
Oatsbushel	0.250	5.90	6.80	6.78	36	52	52
Potatoescwt	0.834	20.20	22.70	22.60	41	49	49
Sorghum graincwt	0.675	15.90	18.40	18.30	34	63	64
Soybeansbushel	0.948	22.20	25.80	25.70	43	51	52
Sunflower, allcwt	1.91	44.80	51.90	51.80	34	57	64
Citrus (equivalent on-tree)							
Grapefruitbox	0.663	15.70	18.00	18.00	34	38	53
Lemonsbox	1.36	33.40	37.00	36.90	34	28	35
Orangesbox	0.686	16.00	18.70	18.60	55	40	44
Tangerinesbox	1.43	33.60	38.90	38.80	47	34	92
Livestock and poultry							
Beef cattlecwt	10.10	247.00	275.00	274.00	37	41	39
Calvescwt	14.10	348.00	383.00	383.00	35	36	34
Hogscwt	5.51	134.00	150.00	149.00	43	46	45
Lambscwt	11.70	278.00	318.00	317.00	43	57	(NA)
Sheepcwt	4.38	105.00	119.00	119.00	40	47	(NA)
Eggs ¹dozen	0.091	2.20	2.47	2.47	37	43	47
Turkeys, live pound	0.056	1.360	1.520	1.520	45	45	45

(NA) Not available.

¹ Seasonally adjusted price as percentage of parity price.

² Wholesale extracted. Adjusted base price derived from state annual averages prices weighted by production. For 1982 through 1985 the national averages are the support prices.

³ Equivalent packinghouse-door returns for California, New York (apples only), Oregon (except peaches), and Washington. Price at point of first sale for other states.

Commodity Parity Prices – United States: June 2011 with Comparisons

[Parity prices are computed under the provisions of Title III, Subtitle a, Section 301 (a) of the Agricultural Adjustment Act of 1938 as amended by the Agricultural Acts of 1948, 1949, and 1956. See January *Agricultural Prices* for details on adjusted base price and parity price computations]

Commodity and unit	Adjusted base price	Parity price		
		June 2010	May 2011	June 2011
	(dollars)	(dollars)	(dollars)	(dollars)
Field crops and miscellaneous				
Hops pound	0.307	7.26	8.35	8.33
Mustard seed cwt	2.66	62.70	72.30	72.20
Rapeseed cwt	2.14	49.40	58.20	58.10
Rye bushel	0.492	11.50	13.40	13.30
Safflower cwt	1.94	47.20	52.70	52.60
Spearmint oil pound	1.44	34.40	39.20	39.10
Sweetpotatoes cwt	2.27	54.90	61.70	61.60
Tobacco				
Flue-cured, 11-14 pound	0.208	5.23	5.66	5.64
Fire-cured, 21-23 pound	0.293	7.21	7.97	7.95
Burley, 31 pound	0.214	5.49	5.82	5.81
Maryland, 32 pound	0.183	4.50	4.98	4.96
Dark air-cured, 35-37 pound	0.261	6.49	7.10	7.08
Pennsylvania seedleaf, 41 pound	0.191	4.69	5.19	5.18
Cigar binder, 51 pound	0.675	15.80	18.40	18.30
Noncitrus fruit				
Apples, processing ¹ ton	16.10	404.00	438.00	437.00
Apricots				
Fresh ² ton	114.00	2,610.00	3,100.00	3,090.00
Dried (California) ton	262.00	6,120.00	7,120.00	7,110.00
Avocados ² ton	198.00	5,110.00	5,380.00	5,370.00
Cherries				
Sweet ton	210.00	4,960.00	5,710.00	5,700.00
Tart pound	0.034	0.847	0.924	0.922
Cranberry ³ barrel	4.89	115.00	133.00	133.00
Dates ² (California) ton	183.00	4,770.00	4,980.00	4,960.00
Grapes				
Raisin variety ton	117.00	2,660.00	3,180.00	3,170.00
Other dried ton	65.40	1,610.00	1,780.00	1,770.00
Kiwifruit ton	94.40	2,300.00	2,570.00	2,560.00
Nectarines, fresh ² (California) ton	55.30	1,340.00	1,500.00	1,500.00
Olives, canning ³ (California) ton	87.40	2,290.00	2,380.00	2,370.00

See footnote(s) at end of table.

--continued

Commodity Parity Prices – United States: June 2011 with Comparisons (continued)

[Parity prices are computed under the provisions of Title III, Subtitle a, Section 301 (a) of the Agricultural Adjustment Act of 1938 as amended by the Agricultural Acts of 1948, 1949, and 1956. See January *Agricultural Prices* for details on adjusted base price and parity price computations]

Commodity and unit	Adjusted base price	Parity price		
		June 2010	May 2011	June 2011
	(dollars)	(dollars)	(dollars)	(dollars)
Noncitrus fruit - continued				
Papayas (Hawaii) pound	0.046	1.11	1.12	1.25
Peaches				
Fresh ⁴ ton	83.00	2,010.00	2,030.00	2,250.00
Dried (California) ton	57.30	1,570.00	1,580.00	1,550.00
Processing, excludes dried				
Clingstone ³ (California) ton	33.70	816.00	822.00	914.00
Pears				
Fresh ⁴ ton	55.60	1,330.00	1,340.00	1,510.00
Dried ¹ (California) ton	178.00	4,190.00	4,220.00	4,830.00
Plums (California)				
Fresh, equivalent on-tree ton	60.20	1,470.00	1,490.00	1,630.00
Prunes, dried ¹ (California) ton	147.00	3,530.00	3,560.00	3,990.00
Prunes and plums				
Fresh, excludes California ⁵ ton	63.80	1,530.00	1,540.00	1,730.00
Processing, excludes dried ¹ ton	25.70	641.00	647.00	697.00
Tree nuts ⁶				
Almonds pound	0.209	4.89	4.93	5.67
Hazelnuts ton	183.00	4,140.00	4,170.00	4,960.00
Pistachios pound	0.194	4.60	4.64	5.26
Walnuts ton	177.00	4,160.00	4,200.00	4,800.00
Vegetables, fresh ⁷				
Carrots ⁸ cwt	2.61	61.50	62.00	70.80
Cauliflower ⁸ cwt	4.26	104.00	105.00	116.00
Celery ⁸ cwt	2.05	50.60	51.00	55.60
Honeydew melons cwt	2.17	55.90	56.40	58.90
Lettuce cwt	2.35	56.90	57.30	63.80
Onions ⁸ cwt	1.57	36.80	37.10	42.60
Tomatoes cwt	4.75	113.00	114.00	129.00

¹ Equivalent returns at processing plant door.

² Equivalent returns at packinghouse door.

³ Equivalent returns for bulk fruit at first delivery point.

⁴ Equivalent packinghouse-door returns for California, New York (apples only), Oregon (except peaches), and Washington. Price at point of first sale for other states.

⁵ Based on "as sold" prices for fresh fruit in all states.

⁶ Prices In-Shell basis except almonds which are shelled basis.

⁷ FOB shipping point prices.

⁸ Includes some processing.

Marketing Year for Specified Commodities

Barley: June 1 to May 31 for U.S.; June 1 to May 31 for Arizona, California, Delaware, Kentucky, Maryland, New Jersey, North Carolina, Pennsylvania, Virginia; August 1 to July 31 for Alaska, Maine; July 1 to June 30 for all other states.

Oats: June 1 to May 31 for U.S.; May 1 to April 30 for Alabama, Georgia and Texas; June 1 to May 31 for North Carolina, Oklahoma, South Carolina, and Virginia; August 1 to July 31 for Maine and New York; September 1 to August 31 for Alaska; July 1 to June 30 for all other States.

Sweet Potatoes: July - June for United States; July 1 to June 30 for Alabama and California; July 1 to May 31 for Georgia, Louisiana, North Carolina and Texas; August 1 to May 31 for South Carolina, and Virginia; and August 1 to July 31 for New Jersey.

Wheat: June 1 to May 31 for U.S.; May 1 to April 30 for Alabama, Florida, Georgia, Louisiana, Mississippi, and Texas; June 1 to May 31 for Arizona, Arkansas, California, Delaware, Illinois, Indiana, Kansas, Kentucky, Maryland, Missouri, New Mexico, North Carolina, Oklahoma, South Carolina, Tennessee, and Virginia; July 1 to June 30 for all other States.

Prices Received for Sweet Potatoes, Market Year Average - States and United States: 2008-2010

State	2008	2009	2010
	(dollars per cwt)	(dollars per cwt)	(dollars per cwt)
Alabama	12.10	20.50	6.56
Arkansas ¹	(NA)	13.20	13.80
California	30.40	26.80	24.30
Florida ¹	(NA)	30.00	(D)
Louisiana	18.30	18.10	19.20
Mississippi	18.60	20.30	20.40
New Jersey	26.90	29.00	32.60
North Carolina	18.50	19.50	18.00
South Carolina ²	18.00	(NA)	(NA)
Texas	14.40	17.00	21.80
Virginia ²	9.75	(NA)	(NA)
United States	21.20	21.80	20.10

(D) Withheld to avoid disclosing data for individual operations.

(NA) Not available.

¹ Estimates began in 2009.

² Estimates discontinued in 2009.

Prices Received and Farm Marketings for Oats by Month – United States: Marketing Years 2008-2009 through 2010-2011

[Marketing year average (MYA) prices are weighted average prices for the U.S. marketing year of June through May. Monthly farm marketings, based on a sample survey, as percent of total used for calculating MYA prices]

Month	Prices received			Farm marketing percentages		
	2008-2009	2009-2010	2010-2011	2008-2009	2009-2010	2010-2011
	(dollars per bushel)	(dollars per bushel)	(dollars per bushel)	(percent)	(percent)	(percent)
June	3.56	2.37	2.11	5.1	8.2	6.9
July	3.44	2.03	2.11	22.0	10.5	19.7
August	3.16	1.86	2.09	30.9	37.4	27.1
September	3.29	1.82	2.30	10.4	11.6	7.2
October	3.26	2.03	2.55	4.4	5.6	6.2
November	3.00	2.02	3.07	3.0	3.2	4.7
December	3.12	2.22	2.94	3.3	2.3	3.9
January ¹	2.77	2.19	3.13	6.1	3.2	6.7
February	2.69	2.30	3.27	4.4	4.2	5.0
March	2.77	2.29	3.28	3.5	6.5	5.1
April	2.37	2.25	3.54	3.3	4.5	5.0
May	2.64	2.19	3.55	3.6	2.8	2.5
MYA	3.15	2.02	2.52	100.0	100.0	100.0

¹ Second year.

Prices Received and Farm Marketings for All Barley by Month – United States: Marketing Years 2008-2009 through 2010-2011

[Marketing year average (MYA) prices are weighted average prices for the U.S. marketing year of June through May. Monthly farm marketings, based on a sample survey, as percent of total used for calculating MYA prices]

Month	Prices received			Farm marketing percentages		
	2008-2009	2009-2010	2010-2011	2008-2009	2009-2010	2010-2011
	(dollars per bushel)	(dollars per bushel)	(dollars per bushel)	(percent)	(percent)	(percent)
June	4.78	4.70	3.64	3.0	6.1	8.0
July	5.12	5.09	3.79	5.8	9.5	9.2
August	5.46	5.17	3.69	20.2	14.8	17.2
September	5.97	4.78	3.61	12.0	11.0	9.5
October	5.73	4.41	3.73	10.9	8.6	6.4
November	5.44	4.46	3.86	7.5	6.2	7.0
December	5.49	4.54	3.86	6.3	8.6	7.2
January ¹	5.34	4.68	3.86	12.0	10.5	9.3
February	4.99	4.53	3.95	6.7	8.3	8.0
March	5.03	4.22	4.29	7.1	7.7	8.2
April	4.84	4.08	4.41	5.4	4.7	6.4
May	4.59	4.25	4.15	3.1	4.0	3.6
MYA	5.37	4.66	3.86	100.0	100.0	100.0

¹ Second year.

Prices Received and Farm Marketings for Malting Barley by Month – United States: Marketing Years 2008-2009 through 2010-2011

[Marketing year average (MYA) prices are weighted average prices for the U.S. marketing year of June through May. Monthly farm marketings, based on a sample survey, as percent of total used for calculating MYA prices]

Month	Prices received			Farm marketing percentages		
	2008-2009	2009-2010	2010-2011	2008-2009	2009-2010	2010-2011
	(dollars per bushel)	(dollars per bushel)	(dollars per bushel)	(percent)	(percent)	(percent)
June	4.51	5.38	4.24	2.6	4.9	7.2
July	5.23	5.48	4.14	5.6	9.4	9.5
August	5.67	5.47	3.94	20.1	15.9	18.7
September	6.40	5.32	3.96	11.4	10.7	8.3
October	6.20	4.94	3.88	10.6	8.0	5.8
November	5.63	4.88	3.98	8.3	5.9	7.3
December	5.91	4.84	3.97	6.5	8.8	7.4
January ¹	5.62	4.87	3.97	13.0	11.3	9.3
February	5.54	4.70	4.06	6.6	8.7	8.0
March	5.50	4.43	4.29	7.2	8.0	8.9
April	5.33	4.55	4.22	5.3	4.3	6.0
May	5.17	4.51	4.04	2.8	4.1	3.6
MYA	5.71	5.02	4.05	100.0	100.0	100.0

¹ Second year.

Prices Received and Farm Marketings for Feed Barley by Month – United States: Marketing Years 2008-2009 through 2010-2011

[Marketing year average (MYA) prices are weighted average prices for the U.S. marketing year of June through May. Monthly farm marketings, based on a sample survey, as percent of total used for calculating MYA prices]

Month	Prices received			Farm marketing percentages		
	2008-2009	2009-2010	2010-2011	2008-2009	2009-2010	2010-2011
	(dollars per bushel)	(dollars per bushel)	(dollars per bushel)	(percent)	(percent)	(percent)
June	5.49	3.16	2.24	4.7	12.7	10.8
July	4.72	2.94	2.40	6.8	9.9	8.2
August	4.54	2.49	2.39	21.0	9.8	12.1
September	4.46	2.14	2.89	15.1	12.5	14.1
October	3.82	2.29	3.38	12.1	11.5	8.3
November	3.43	2.50	3.34	3.7	7.3	5.9
December	3.00	2.63	3.40	5.2	7.9	6.6
January ¹	2.90	2.63	3.46	7.2	5.9	9.4
February	2.63	3.11	3.56	7.2	5.9	7.9
March	2.73	2.66	4.26	6.8	6.2	5.5
April	2.65	2.40	4.89	5.5	6.9	8.0
May	2.99	2.49	4.61	4.7	3.5	3.2
MYA	3.82	2.61	3.22	100.0	100.0	100.0

¹ Second year.

Prices Received and Farm Marketings for All Wheat by Month – United States: Marketing Years 2008-2009 through 2010-2011

[Marketing year average (MYA) prices are weighted average prices for the U.S. marketing year of June through May. Monthly farm marketings, based on a sample survey, as percent of total used for calculating MYA prices]

Month	Prices received			Farm marketing percentages		
	2008-2009	2009-2010	2010-2011	2008-2009	2009-2010	2010-2011
	(dollars per bushel)	(dollars per bushel)	(dollars per bushel)	(percent)	(percent)	(percent)
June	7.62	5.72	4.16	11.4	10.8	10.4
July	7.15	5.17	4.49	21.8	18.3	25.6
August	7.61	4.85	5.44	14.9	10.8	13.5
September	7.43	4.48	5.79	7.8	9.5	9.3
October	6.65	4.47	5.88	3.8	9.7	5.4
November	6.29	4.79	6.10	3.2	6.8	4.2
December	5.95	4.87	6.44	6.9	6.3	6.6
January ¹	6.20	4.90	6.69	7.4	7.7	7.8
February	5.79	4.73	7.42	4.3	5.1	4.7
March	5.71	4.70	7.55	6.6	5.2	5.4
April	5.75	4.41	8.01	5.3	6.1	3.9
May	5.85	4.34	8.16	6.6	3.7	3.2
MYA	6.78	4.87	5.70	100.0	100.0	100.0

¹ Second year.

Prices Received for Winter Wheat by Month, Marketing Year Average – United States: 2008-2009 through 2010-2011

[Marketing year average (MYA) prices are weighted average prices for the U.S. marketing year of June through May]

Month	2008-2009	2009-2010	2010-2011
	(dollars per bushel)	(dollars per bushel)	(dollars per bushel)
June	7.51	5.47	4.05
July	7.10	5.02	4.47
August	7.30	4.67	5.47
September	6.99	4.20	5.76
October	6.03	4.27	5.83
November	5.65	4.60	6.02
December	5.40	4.68	6.40
January ¹	5.70	4.67	6.35
February	5.26	4.53	7.03
March	5.27	4.45	7.02
April	5.26	4.19	7.37
May	5.52	4.21	7.80
MYA	6.57	4.71	5.37

¹ Second year.

Prices Received for Durum Wheat by Month, Marketing Year Average – United States: 2008-2009 through 2010-2011

[Marketing year average (MYA) prices are weighted average prices for the U.S. marketing year of June through May]

Month	2008-2009	2009-2010	2010-2011
	(dollars per bushel)	(dollars per bushel)	(dollars per bushel)
June	8.48	7.26	4.58
July	11.70	7.57	4.44
August	12.60	5.83	4.45
September	11.90	4.95	4.89
October	11.50	4.86	5.07
November	8.93	4.59	5.55
December	8.40	4.91	5.71
January ¹	8.26	4.94	7.09
February	7.53	4.61	8.45
March	7.40	4.57	8.09
April	7.18	4.17	8.60
May	7.84	4.34	7.86
MYA	9.26	5.47	5.98

¹ Second year.

Prices Received for Other Spring Wheat by Month, Marketing Year Average – United States: 2008-2009 through 2010-2011

[Marketing year average (MYA) prices are weighted average prices for the U.S. marketing year of June through May]

Month	2008-2009	2009-2010	2010-2011
	(dollars per bushel)	(dollars per bushel)	(dollars per bushel)
June	10.10	6.66	4.58
July	9.52	5.96	4.71
August	8.18	5.54	5.47
September	7.76	4.85	5.97
October	7.20	5.00	6.14
November	7.10	5.19	6.35
December	6.89	5.18	6.60
January ¹	7.02	5.30	7.14
February	6.61	5.04	7.68
March	6.50	5.04	8.07
April	6.49	4.89	8.67
May	6.76	4.61	8.85
MYA	7.31	5.23	6.49

¹ Second year.

Prices Received for Hard Red Spring Wheat by Month, Marketing Year Average – United States: 2008-2009 through 2010-2011

[Marketing year average (MYA) prices are weighted average prices for the U.S. marketing year of June through May]

Month	2008-2009	2009-2010	2010-2011
	(dollars per bushel)	(dollars per bushel)	(dollars per bushel)
June	10.10	6.72	4.59
July	9.68	6.00	4.72
August	8.20	5.59	5.49
September	7.80	4.87	6.03
October	7.27	5.04	6.19
November	7.17	5.24	6.41
December	6.97	5.21	6.64
January ¹	7.10	5.33	7.22
February	6.73	5.06	7.70
March	6.57	5.06	8.12
April	6.57	4.92	8.75
May	6.90	4.63	8.95
MYA	7.39	5.26	6.54

¹ Second year.

Prices Received for Hard Red Winter Wheat by Month, Marketing Year Average – United States: 2008-2009 through 2010-2011

[Marketing year average (MYA) prices are weighted average prices for the U.S. marketing year of June through May]

Month	2008-2009	2009-2010	2010-2011
	(dollars per bushel)	(dollars per bushel)	(dollars per bushel)
June	7.91	5.96	3.94
July	7.59	5.36	4.38
August	7.61	4.84	5.42
September	7.31	4.32	5.82
October	6.20	4.28	5.88
November	5.72	4.68	6.15
December	5.48	4.68	6.51
January ¹	5.86	4.73	6.50
February	5.39	4.54	7.07
March	5.37	4.48	7.10
April	5.47	4.16	7.50
May	5.76	4.16	8.00
MYA	6.90	4.84	6.49

¹ Second year.

Prices Received for Soft Red Winter Wheat by Month, Marketing Year Average – United States: 2008-2009 through 2010-2011

[Marketing year average (MYA) prices are weighted average prices for the U.S. marketing year of June through May]

Month	2008-2009	2009-2010	2010-2011
	(dollars per bushel)	(dollars per bushel)	(dollars per bushel)
June	6.07	4.69	4.50
July	6.15	4.37	4.77
August	6.19	4.04	5.75
September	5.27	3.63	5.89
October	4.60	3.86	5.94
November	4.17	4.21	5.46
December	4.63	4.52	6.73
January ¹	4.92	4.49	6.31
February	4.61	4.37	7.11
March	4.97	4.14	6.70
April	4.32	4.26	7.27
May	4.75	4.37	7.09
MYA	5.78	4.35	5.16

¹ Second year.

Prices Received for White Wheat by Month, Marketing Year Average – United States: 2008-2009 through 2010-2011

[Marketing year average (MYA) prices are weighted average prices for the U.S. marketing year of June through May]

Month	2008-2009	2009-2010	2010-2011
	(dollars per bushel)	(dollars per bushel)	(dollars per bushel)
June	7.88	5.21	4.28
July	6.89	4.99	5.26
August	7.31	4.68	5.52
September	6.96	4.14	5.54
October	6.10	4.30	5.72
November	5.97	4.39	5.88
December	5.39	4.74	6.07
January ¹	5.83	4.59	6.05
February	5.26	4.56	6.78
March	5.12	4.52	6.65
April	5.10	4.34	7.06
May	5.13	4.34	7.22
MYA	6.01	4.52	5.88

¹ Second year.

Reliability of Prices Received Estimates

Definition: Prices received represent sales from producers to first buyers. They include all grades and qualities. The average commodity price from the survey multiplied by the total quantity marketed theoretically should give the total cash receipts for the commodity.

Survey procedures: Primary sales data used to determine grain prices were obtained from probability samples of about 1900 mills and elevators. These procedures ensure that virtually all grain moving into commercial channels has a chance of being included in the survey. Generally, States surveyed account for 90 percent or more of total United States production. Livestock prices are obtained from packers, stockyards, auctions, dealers, and market check data from AMS-USDA, private marketing organizations, and state commodity groups and agencies. Inter-farm sales of grain and livestock are not included since they represent very small percentages of the total marketings. Grain marketed for seed is also excluded. Fruit and vegetable prices are obtained from sample surveys and market check data from AMS-USDA, private marketing organizations, state agencies, and universities.

Summary and estimation procedures: Survey quantities sold are expanded by strata to state levels and used to weight average strata prices to a state average. State prices are then weighted to a United States price based on expanded marketings. Recommendations are prepared by the State Field Offices and reviewed by the Agricultural Statistics Board in Washington, D.C. State recommendations are reviewed for reasonableness with survey data, other States, and recent historic estimates.

Revisions: For most items, the current month's preliminary price represents a 3-5 day period around the 15th of the month. Previous month's prices represent actual dollars received for quantities sold during the entire month. Revisions are published in monthly issues of Agricultural Prices.

Reliability: United States price estimates based on probability surveys generally have a sampling error of less than one percent for the major commodities such as corn, wheat, soybeans, cotton, and rice. Current methods of summarization for non-probability commodities are not designed directly to calculate sampling errors. However, analytical measures approximate the United States relative sampling errors at around five percent. Any nonsampling errors are attributed to such things as the inability to obtain correct information, differences in interpreting questions or definitions, mistakes in coding or processing the data, etc. Efforts are made at each step in the survey process to minimize these nonsampling errors.

Prices Paid by Farmers

The June Index of Prices Paid for Commodities and Services, Interest, Taxes, and Farm Wage Rates (PPITW) at 204 (1990-1992=100), is unchanged from May 2011 but is up 13 percent from June 2010.

Production index: The June index, at 215, is unchanged from last month but increased 16 percent from last year. Higher prices in June for complete feeds, feed grains, nitrogen, and other services offset lower prices for feeder cattle, diesel, feeder pigs, and gasoline.

Feed: The June index, at 232, increased 1.8 percent from May and 36 percent from last June. Since May, higher prices for complete feeds, feed grains, supplements, and concentrates more than offset lower prices for hay & forages.

Livestock and poultry: The June index, at 142, decreased 4.7 percent from last month but increased 6.0 percent from last year. Since May, prices are lower for feeder cattle and feeder pigs. The June feeder cattle price, at \$123.20 per cwt, is down \$4.50 from the May price. June feeder pigs averaged \$113.00 per cwt, down \$27.00 from May.

Fertilizer: The June index, at 325, is up 0.3 percent from May and is 31 percent above June a year ago. Since May, higher prices for nitrogen more than offset lower prices for mixed fertilizer and potash & phosphate.

Chemicals: The June index, at 144, is unchanged from May but decreased 0.7 percent from last June. Compared with last month, prices are lower for herbicides, insecticides, and fungicides/other.

Fuels: The June index, at 373, is down 2.6 percent from a month earlier but is 36 percent above June 2010. Compared with last month, prices are lower for diesel and gasoline but higher for LP gas.

Machinery: The June index, at 242, increased 0.8 percent from May and is 6.1 percent above last June. Compared with last month, prices are higher for other machinery but lower for self-propelled machinery.

Consumer price index: The May 2011 Consumer Price Index, as issued by the Bureau of Labor Statistics, for all urban consumers (CPI-U) increased 0.5 percent before seasonal adjustment to a level of 225.964 (1982-1984=100). The April index is 224.906. For the 12-month period ending in May, the overall index increased 3.6 percent.

Prices Paid Indexes and Related Parity Ratios – United States: June 2011 with Comparisons

[Revised historical price indexes for months not shown are available at www.nass.usda.gov]

Indexes and ratios	1910-1914 Base			1990-1992 Base		
	June 2010	May 2011	June 2011	June 2010	May 2011	June 2011
	(percent)	(percent)	(percent)	(percent)	(percent)	(percent)
Prices paid by farmers for commodities, services, interest, taxes, and wage rates (PPITW)	2412	2713	2713	181	204	204
Production	1806	2087	2086	186	215	215
Feed	832	1114	1135	170	228	232
Livestock & poultry	1709	1903	1821	134	149	142
Seeds	3082	3327	3327	311	336	336
Fertilizer	914	1188	1192	249	324	325
Chemicals	895	891	888	145	144	144
Fuels	2125	2953	2880	275	383	373
Supplies & repairs	1133	1171	1183	160	165	167
Autos & trucks	2979	3089	3101	112	116	117
Machinery	5726	6031	6067	228	240	242
Building materials	2258	2328	2340	166	171	172
Services & rent	2046	2127	2132	(NA)	(NA)	(NA)
Services	(NA)	(NA)	(NA)	162	166	167
Rent	(NA)	(NA)	(NA)	191	203	203
Interest ¹	3389	3646	3646	135	145	145
Taxes ²	5549	6032	6032	207	225	225
Wage rates	6991	7101	7101	187	190	190
Production, interest, taxes, and wage rates (PITW)	2483	2826	2825	185	210	210
Family living-CPI ³	2070	2146	2156	162	168	168
Ratio (received/paid)	(NA)	(NA)	(NA)	75	85	89
Parity ratio ⁴	35	41	42	(NA)	(NA)	(NA)
Parity ratio adjusted ⁵	37	42	44	(NA)	(NA)	(NA)
PPITW adjusted for productivity ⁶	1397	1465	1466	(NA)	(NA)	(NA)
Crop sector (PPITW)	(NA)	(NA)	(NA)	193	213	213
Livestock sector (PPITW)	(NA)	(NA)	(NA)	170	194	194
Farm sector (production)	(NA)	(NA)	(NA)	180	219	219
Non-farm sector (production)	(NA)	(NA)	(NA)	189	213	213

(NA) Not available.

¹ Interest per acre on farm real estate debt and interest rate on farm non-real estate debt.

² Farm real estate taxes payable per acre.

³ Bureau of Labor Statistics, Consumer Price Index for all urban consumers (CPI-U), for the previous month converted by the USDA.

⁴ Ratio of index of prices received to PPITW (1910-1914=100).

⁵ Based on estimated cash receipts, from marketings and government payments, the preliminary adjustment factor is 1.044 for 2011 and the revised factor is 1.041 for 2010.

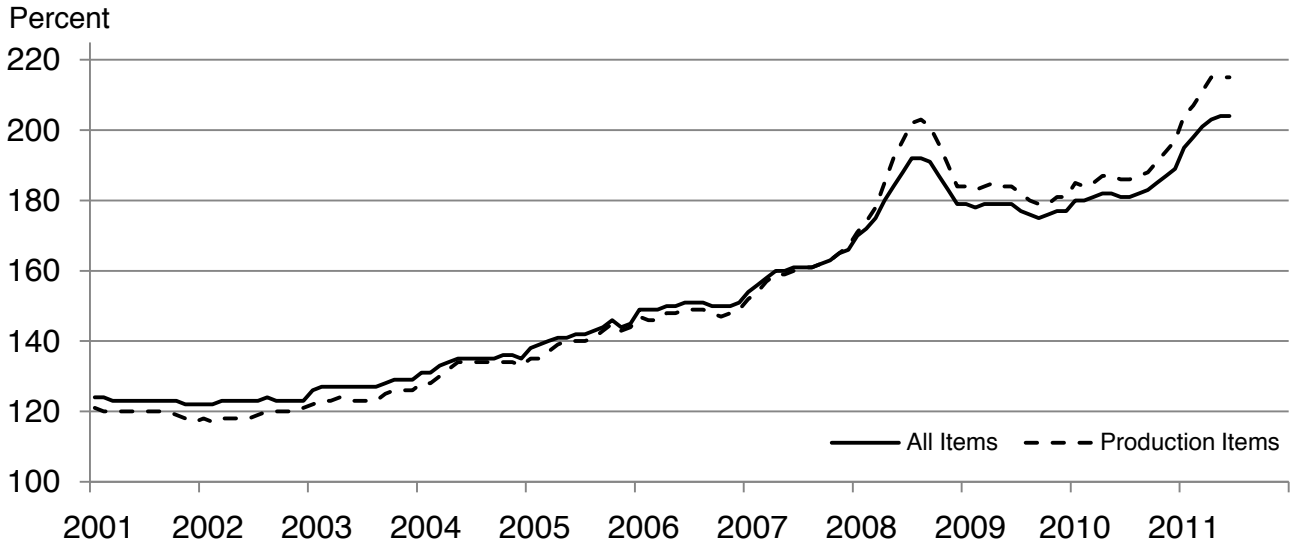
⁶ PPITW is adjusted based on productivity trend for the prior 15 years.

Prices Paid Indexes and Annual Weights for Input Components and Sub-Components – United States: June 2011 with Comparisons

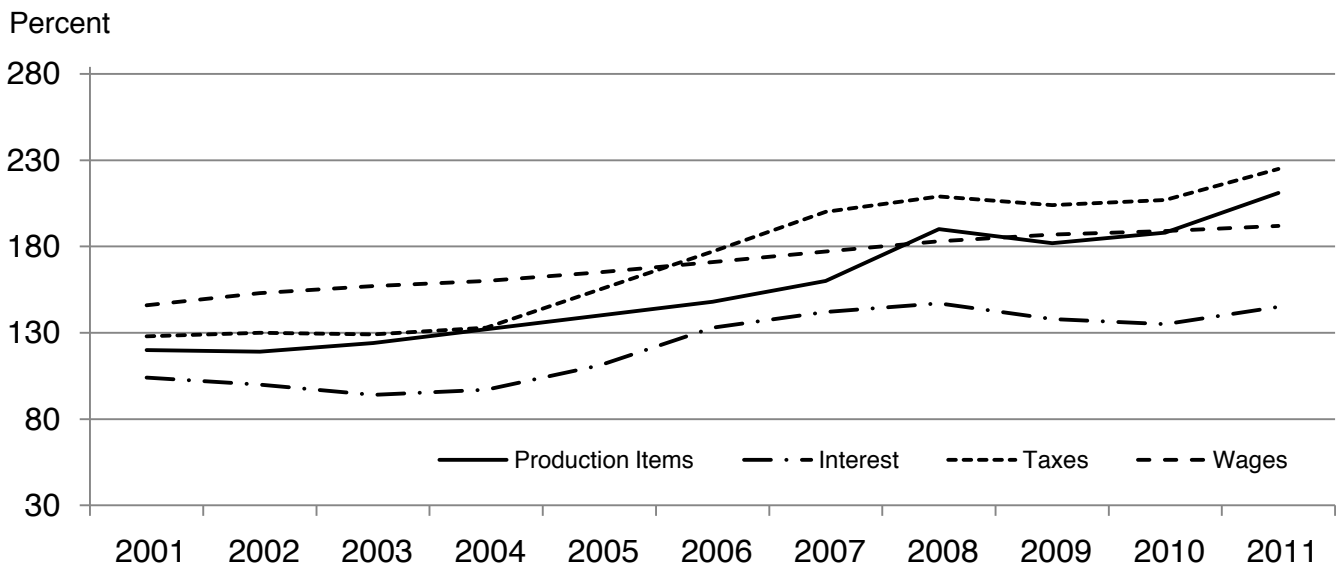
[Revised historical price indexes for months not shown are available at www.nass.usda.gov. Relative weights are a five year moving average]

	Relative weights		Indexes (1990-1992=100)		
	2010	2011	June 2010	May 2011	June 2011
	(percent)	(percent)	(percent)	(percent)	(percent)
Production items	70.2	70.6	186	215	215
Feed	11.9	12.2	170	228	232
Feed grains	1.7	1.7	146	270	282
Complete feeds	5.8	6.0	177	227	231
Hay & forages	1.5	1.5	149	207	203
Concentrates	1.9	1.9	184	206	209
Supplements	1.0	1.0	182	239	245
Livestock & poultry	8.6	8.5	134	149	142
Feeder cattle	6.7	6.6	129	151	146
Feeder pigs	0.7	0.7	181	152	123
Milk cow replacements	0.7	0.7	118	126	126
Poultry	0.5	0.5	151	151	151
Seeds	3.9	4.1	311	336	336
Field crops	3.6	3.7	329	356	356
Grasses & legumes	0.4	0.4	139	145	145
Fertilizer	5.2	5.5	249	324	325
Mixed fertilizer	2.3	2.4	241	310	308
Nitrogen	2.2	2.3	241	325	332
Potash & phosphate	0.7	0.8	301	363	359
Chemicals	3.2	3.3	145	144	144
Herbicides	2.0	2.1	132	129	129
Insecticides	0.7	0.7	164	166	166
Fungicides & other	0.5	0.5	168	173	173
Fuels	3.9	4.0	275	383	373
Diesel	2.5	2.5	296	418	407
Gasoline	0.9	0.8	239	337	321
LP gas	0.5	0.7	231	310	312
Supplies & repairs	4.6	4.6	160	165	167
Supplies	1.5	1.5	154	162	165
Repairs	3.0	3.0	162	166	167
Autos & trucks	1.5	1.4	112	116	117
Autos	0.2	0.2	110	114	116
Trucks	1.3	1.2	112	116	117
Machinery	4.5	4.3	228	240	242
Tractors	1.0	0.9	191	203	203
Self-propelled	1.8	1.7	236	250	250
Other machinery	1.7	1.6	241	252	256
Building materials	4.5	4.4	166	171	172
Services	12.1	12.1	162	166	167
Custom rates	1.2	1.2	145	145	145
Other services	10.8	10.9	164	168	169
Rent	6.3	6.3	191	203	203
Cash	3.4	3.4	243	258	258
Share	2.9	2.9	130	138	138
Interest	3.6	3.5	135	145	145
Taxes	3.0	3.1	207	225	225
Wage rates	7.5	7.4	187	190	190
Family living-CPI	15.7	15.4	162	168	168

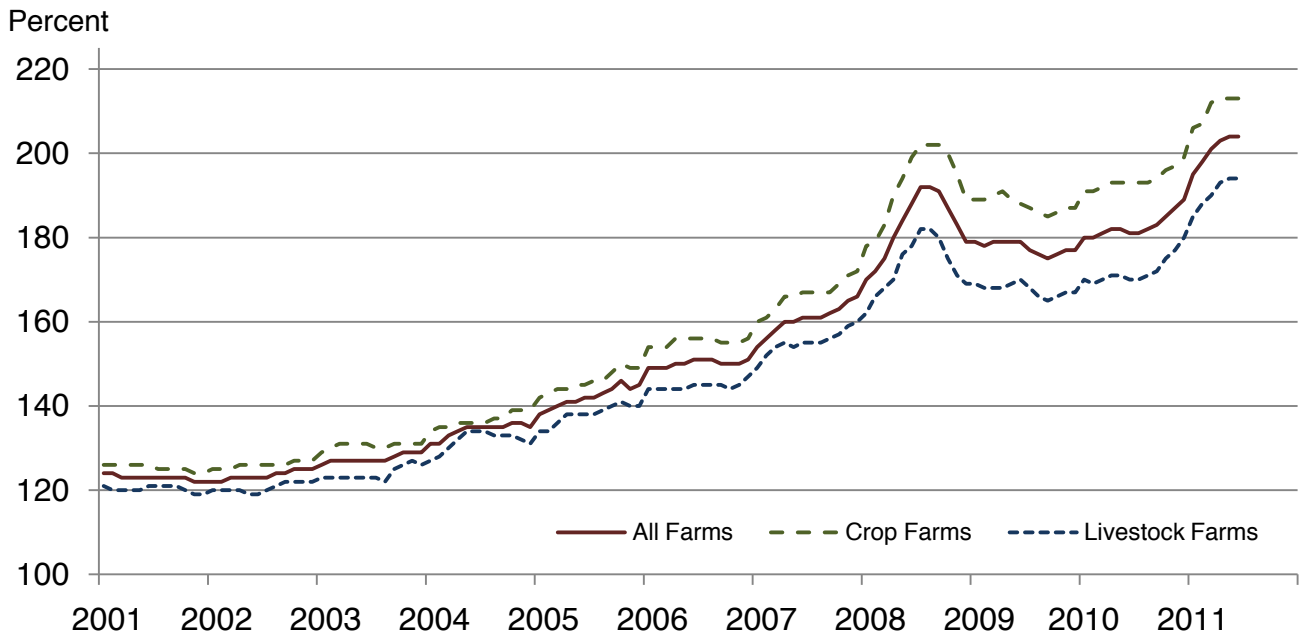
**Paid Indexes by Month,
All Items and Production Items –
United States: 1990-1992=100**



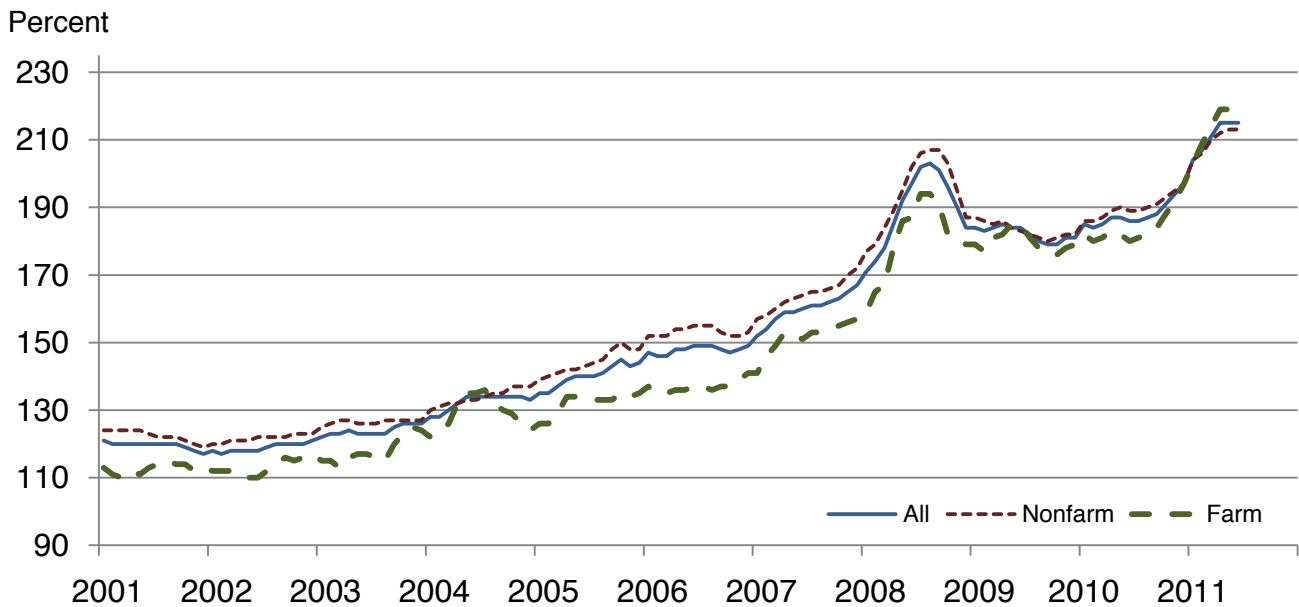
**Paid Indexes, Annual Averages,
Production Items, Interest, Taxes, and Wages –
United States: 1990-1992=100**



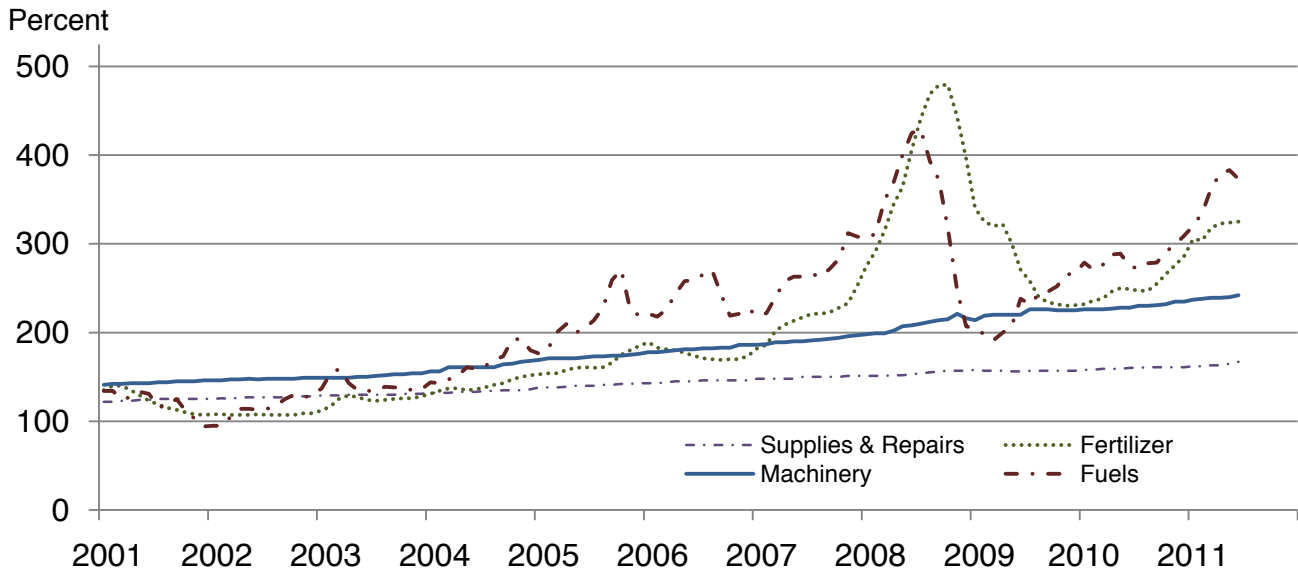
Paid Indexes by Farm Type and Month, All Items – United States: 1990-1992=100



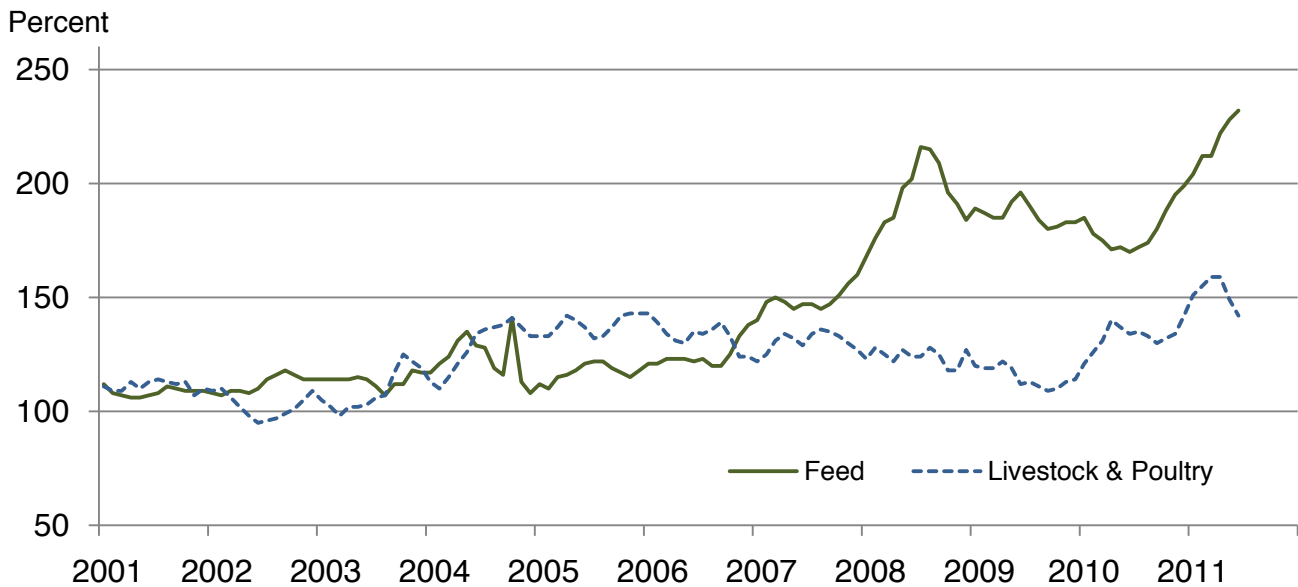
Paid Indexes by Origin and Month, All Production Items – United States: 1990-1992=100



Paid Indexes by Non-Farm Sector and Month, Supplies & Repairs, Fertilizer, Machinery, and Fuel – United States: 1990-1992=100



Paid Indexes by Month, Feed and Livestock & Poultry – United States: 1990-1992=100



Feed Price Ratios – United States: June 2011 with Comparisons

Feed price ratio ¹	June 2010	May 2011	Preliminary June 2011
Broiler-feed: pounds of broiler grower feed equal in value to 1 pound of broiler, live weight ²	5.1	3.2	3.1
Market egg feed: pounds of laying feed equal in value to 1 dozen eggs ³	5.0	4.5	4.8
Hog-corn: bushels of corn equal in value to 100 pounds of hog, live weight	17.1	10.9	10.3
Milk-feed: pounds of 16% mixed dairy feed equal in value to 1 pound of whole milk ⁴	2.26	1.73	1.83
Steer & heifer-corn: bushels of corn equal in value to 100 pounds of steer & heifers, live weight	27.8	18.3	16.4
Turkey-feed: pounds of turkey grower equal in value to 1 pound of turkey, live weight ⁵	6.9	4.6	4.6

¹ Effective January 1995, prices of commercial prepared feeds are based on current United States prices received for corn, soybeans, alfalfa hay, and all wheat.

² The price of commercial prepared broiler feed is based on current United States prices received for corn and soybeans. The modeled feed uses 58 percent corn and 42 percent soybeans.

³ The price of commercial prepared layer feed is based on current United States prices received for corn and soybeans. The modeled feed uses 75 percent corn and 25 percent soybeans.

⁴ The price of commercial prepared dairy feed is based on current United States prices received for corn, soybeans, and alfalfa hay. The modeled feed uses 51 percent corn, 41 percent alfalfa hay, and 8 percent soybeans.

⁵ The price of commercial prepared turkey feed is based on current United States prices received for corn, soybeans, and wheat. The modeled feed uses 51 percent corn, 28 percent soybeans, and 21 percent wheat.

Prices Received Used to Calculate Feed Price Ratios – United States: June 2011 with Comparisons

[Price data source for livestock and poultry commodities is United States Department of Agriculture's Agricultural Marketing Service]

Item	June 2010	May 2011	Preliminary June 2011
	(dollars)	(dollars)	(dollars)
Broilers, live pound	0.520	0.500	0.500
Eggs, marketdozen	0.422	0.622	0.687
Hogs, allcwt	58.20	68.60	67.70
Milk, allcwt	15.40	19.60	21.00
Steers and heiferscwt	94.80	115.00	108.00
Turkeys, live pound	0.617	0.679	0.690
Cornbushel	3.41	6.30	6.58
Hay, alfalfa ton	119.00	186.00	180.00
Soybeansbushel	9.45	13.20	13.30
Wheat, allbushel	4.16	8.16	7.85

Prices Paid for Feeder Livestock – United States: June 2011 with Comparisons

[Price data source is United States Department of Agriculture's Agricultural Marketing Service]

Item	June 2010	May 2011	Preliminary June 2011
	(dollars)	(dollars)	(dollars)
Feeder cattle & calvescwt	109.40	127.70	123.20
Feeder pigscwt	166.00	140.00	113.00

Prices Paid for Seeds – United States: 2009-2011

[Biotech varieties are made to be resistant to herbicides, insects, or both. A technology fee is included within the price]

Item	March 2009	March 2010	March 2011
	(dollars)	(dollars)	(dollars)
Corn, hybrid, all80,000 kernels	217	229	237
Biotech80,000 kernels	235	247	249
Non-biotech80,000 kernels	139	152	163

Reliability of Prices Paid Estimates

Definition: Prices paid by farmers represent the average costs of inputs purchased by farmers and ranchers to produce agricultural commodities. Conceptually, the average price when multiplied by quantity purchased should equal total producer expenditures for the item.

Survey procedures: The prices paid data are obtained from establishments that sell goods and services to farmers and ranchers. Annually, about 8,500 firms are randomly selected from lists by type of item sold with an average response rate in the range of 75-80 percent. Firms are asked to report the price for the specified item "most commonly bought by farmers" or that was the "volume seller". Approximately 135 items are surveyed each March to represent all production input items purchased. The survey reference period for most items is the five business days centered around the 15th of the month. Separate prices paid surveys are conducted for agricultural chemicals, fuels, feed, fertilizer, machinery, and seed.

Summary and estimation procedures: The annual March Prices Paid Survey is summarized as a nonprobability survey. Average prices reported are aggregated to the region and United States level using weights available from expenditure data and other administrative sources. Price recommendations are prepared by the State Field Offices and Headquarters for review by the Agricultural Statistics Board in Washington, D.C. Also, the change in price level for individual items surveyed are combined to the regional and United States levels, and are published as prices paid indexes referenced to a specific base period. Prices paid indexes for new autos and trucks, building materials, farm supplies, motor supplies, and marketing containers are updated based on price changes measured in selected Bureau of Labor Statistics (BLS) indexes.

Revisions: Any revisions are published in the monthly and in annual issues of Agricultural Prices. The basis for revision must be supported by additional data that directly affect the level of the estimate. More revisions are likely for March when separate prices paid surveys are conducted, in lieu of BLS indexes, by the USDA to measure price change.

Reliability: Current methods of summarization for the March data are not designed directly to calculate sampling errors. However, analytical measures approximate the United States relative sampling errors for major items around 10 percent. Any nonsampling errors are attributed to such things as the inability to obtain correct information, differences in interpreting questions or definitions, mistakes in coding or processing the data, etc. Efforts are made at each step in the survey process to minimize these nonsampling errors.

Program change: Effective January 1, 1995, the National Agricultural Statistics Service updated the weights and changed the construction of its prices paid and received by farmers indexes. A Federal Register Notice dated October 28, 1994 discussed these program modifications.

A 1990-1992 reference and base period replaced the 1977 reference and 1971-1973 base weight period. Five-year moving average weights replaced the current fixed 1971-1973 base period weights. The 1910-1914=100 price indexes, required by statute for computing parity prices, were linked forward based on the changes in the new 1990-1992=100 indexes. The new indexes were constructed by multiplying the ratios of the current prices to the base period prices by the moving average weights (adjusted for seasonal marketing patterns for the prices received indexes).

Information Contacts

Direct general questions to Kevin Barnes, Chief, Environmental, Economics and Demographics Branch at (202) 720-6146. Below are the commodity specialists to contact for additional information.

Crop Prices Received

Lance Honig, Chief, Crops Branch	(202) 720-2127
Jacqueline Moore, Head, Field Crops Section	(202) 720-2127
Suzanne Avilla – Peanuts, Rice.....	(202) 720-7688
Bryan Durham – Oats, Rye, Wheat.....	(202) 720-8068
Steve Maliszewski – Cotton, Cotton Ginnings, Sorghum.....	(202) 720-5944
Anthony Prillaman – Corn, Proso Millet, Flaxseed	(202) 720-9526
Julie Schmidt – Crop Weather, Barley, Hay	(202) 720-7621
Travis Thorson – Soybeans, Sunflower, Other Oilseeds.....	(202) 720-7369
Jorge Garcia-Pratts, Head, Fruits, Vegetables and Special Crops Section.....	(202) 720-2127
Debbie Flippin – Fresh and Processing Vegetables, Onions, Strawberries.....	(202) 720-2157
Fred Granja – Apples, Apricots, Cherries, Plums, Prunes, Tobacco	(202) 720-4288
Erika White – Floriculture, Maple Syrup, Nursery, Tree Nuts	(202) 720-4215
Chris Hawthorn – Citrus, Coffee, Sugar Crops, Grapes, Tropical Fruits.....	(202) 720-5412
Daphne Schauber – Berries, Cranberries, Potatoes, Sweet Potatoes	(202) 720-4285
Dan Norris – Austrian Winter Peas, Dry Edible Peas, Lentils, Mints, Mushrooms, Peaches, Pears, Wrinkled Seed Peas, Dry Beans	(202) 720-3250
Kim Ritchie – Hops.....	(360) 709-2400

Livestock Prices Received

Dan Kerestes, Chief, Livestock Branch	(202) 720-3570
Scott Hollis, Head, Livestock Section.....	(202) 720-3570
Jason Hardegree - Cattle	(202) 720-3040
Mike Miller - Milk, Milk Cows	(202) 720-3278
Everett Olbert - Sheep, Lambs, Goats, Wool, Mohair.....	(202) 720-4751
Doug Bounds - Hogs.....	(202) 720-3106
Bruce Boess, Head, Poultry and Specialty Commodities Section.....	(202) 720-3570
Cody Brokmeyer - Turkeys	(202) 690-3237
Kim Linonis - Eggs.....	(202) 690-8632
Troy Marshall - Broilers, Honey	(202) 720-3244

Indexes, Prices Paid, and Parity Prices

Kevin Barnes, Chief, Environmental, Economics and Demographics Branch.....	(202) 720-6146
Kevin Hintzman, Head, Economics Section	(202) 720-6146
Daryl Brinkman - Prices Received Indexes, Parity Prices.....	(202) 720-8844
Joe Samson - Grazing Fees	(202) 720-5446
Jennifer Sissom - Prices Paid Indexes, Prices Paid for Feed, Fertilizer, Agricultural Chemicals, Seeds, Farm Supplies and Repairs, Farm Machinery, Fuels, Feeder Livestock, Poultry Chicks, Feed Price Ratios, Autos & Trucks.....	(202) 690-3229

Access to NASS Reports

For your convenience, you may access NASS reports and products the following ways:

- All reports are available electronically, at no cost, on the NASS web site: <http://www.nass.usda.gov>
- Both national and state specific reports are available via a free e-mail subscription. To set-up this free subscription, visit <http://www.nass.usda.gov> and in the “Receive NASS Updates” box under “Receive reports by Email,” click on “National” or “State” to select the reports you would like to receive.
- Printed reports may be purchased from the National Technical Information Service (NTIS) by calling toll-free (800) 999-6779, or (703) 605-6220 if calling from outside the United States or Canada. Accepted methods of payment are Visa, MasterCard, check, or money order.

For more information on NASS surveys and reports, call the NASS Agricultural Statistics Hotline at (800) 727-9540, 7:30 a.m. to 4:00 p.m. ET, or e-mail: nass@nass.usda.gov.

The United States Department of Agriculture (USDA) prohibits discrimination in all its programs and activities on the basis of race, color, national origin, age, disability, and where applicable, sex, marital status, familial status, parental status, religion, sexual orientation, political beliefs, genetic information, reprisal, or because all or a part of an individual's income is derived from any public assistance program. (Not all prohibited bases apply to all programs.) Persons with disabilities who require alternative means for communication of program information (Braille, large print, audiotape, etc.) should contact USDA's TARGET Center at (202) 720-2600 (voice and TDD).

To file a complaint of discrimination, write to USDA, Assistant Secretary for Civil Rights, Office of the Assistant Secretary for Civil Rights, 1400 Independence Avenue, S.W., Stop 9410, Washington, DC 20250-9410, or call toll-free at (866) 632-9992 (English) or (800) 877-8339 (TDD) or (866) 377-8642 (English Federal-relay) or (800) 845-6136 (Spanish Federal-relay). USDA is an equal opportunity provider and employer.