



# Agricultural Prices

ISSN: 1937-4216

Released July 29, 2011, by the National Agricultural Statistics Service (NASS), Agricultural Statistics Board, United States Department of Agriculture (USDA).

## July Farm Prices Received Index Increased 2 Points

The preliminary All Farm Products Index of Prices Received by Farmers in July, at 181 percent, based on 1990-1992=100, increased 2 points (1.1 percent) from June. The Crop Index is down 1 point (0.5 percent) but the Livestock Index increased 3 points (2.0 percent). Producers received higher prices for cattle, milk, cantaloupes, and corn and lower prices for broilers, wheat, broccoli, and carrots. In addition to prices, the overall index is also affected by the seasonal change based on a 3-year average mix of commodities producers sell. Increased monthly marketings of wheat, grain sorghum, hay, and tomatoes offset decreased marketings of milk, potatoes, cantaloupes, and strawberries.

The preliminary All Farm Products Index is up 43 points (31 percent) from July 2010. The Food Commodities Index, at 172, increased 2 points (1.2 percent) from last month and 34 points (25 percent) from July 2010.

## Prices Paid Index Up 2 Points

The July Index of Prices Paid for Commodities and Services, Interest, Taxes, and Farm Wage Rates (PPITW) is 206 percent of the 1990-1992 average. The index is up 2 points (1.0 percent) from June and 25 points (14 percent) above July 2010. Higher prices in July for feeder cattle, nitrogen, complete feeds, and hay & forages more than offset lower prices for diesel, supplements, and gasoline.

## Prices Received, Prices Paid, and Ratio of Prices Received to Prices Paid Indexes 1990-1992 Base – United States: July 2011 with Comparisons

Index	July 2010	June 2011	July 2011
Prices received by farmers .....	138	179	181
Prices paid by farmers .....	181	204	206
Ratio of prices received to prices paid .....	76	88	88

## +Contents

Prices Received by Farmers .....	4
Prices Received Indexes – United States: July 2011 with Comparisons.....	5
Prices Received and Prices Paid Indexes by Month for Selected Groups – United States: 2010 and 2011, 1990-1992 Base .....	5
Received and Paid Indexes, Annual Average – United States: 1990-1992=100 Chart.....	6
Crop Farm Received and Paid Indexes, All Items by Quarter – United States: 1990-1992=100 Chart.....	7
Livestock Farm Received and Paid Indexes All Items by Quarter – United States: 1990-1992=100 Chart.....	7
Received Indexes by Month, Livestock Products, All Products, and All Crops – United States: 1990-1992=100 Chart.....	8
Received Indexes by Month, Food Grains, Feed Grains & Hay, and Oilseeds – United States: 1990-1992=100 Chart.....	8
Received Indexes by Month, Fruit & Nut and Commercial Vegetables – United States: 1990-1992=100 Chart.....	9
Received Indexes by Month, Meat Animal, Dairy Product, and Poultry & Egg – United States: 1990-1992=100 Chart.....	9
Prices Received for Field Crops and Fruits – United States: July 2011 with Comparisons.....	10
Prices Received for Vegetables and Livestock – United States: July 2011 with Comparisons .....	11
Prices Received for Corn by Month – United States Chart.....	12
Prices Received for Wheat by Month – United States Chart .....	12
Prices Received for Upland Cotton by Month – United States Chart .....	13
Prices Received for Soybeans by Month – United States Chart .....	13
Prices Received for Cattle by Month – United States Chart .....	14
Prices Received for Milk by Month – United States Chart .....	14
Prices Received for Hogs by Month – United States Chart .....	15
Prices Received for Poultry by Month – United States Chart.....	15
Prices Received for All Wheat, Corn, and Soybeans by Month – United States: 2011 with Comparisons .....	16
Prices Received for Beef Cattle and All Hogs by Month – United States: 2011 with Comparisons .....	16
Prices Received for All Wheat – States and United States: July 2011 with Comparisons.....	17
Prices Received for Winter Wheat – States and United States: July 2011 with Comparisons.....	17
Prices Received for Durum Wheat – States and United States: July 2011 with Comparisons .....	18
Prices Received for Spring Wheat – States and United States: July 2011 with Comparisons .....	18
Prices Received for All Barley – States and United States: July 2011 with Comparisons .....	19
Prices Received for Malting Barley – States: July 2011 with Comparisons .....	19
Prices Received for Feed Barley – States: July 2011 with Comparisons.....	19
Prices Received for Corn – States and United States: July 2011 with Comparisons .....	20
Prices Received for Soybeans – States and United States: July 2011 with Comparisons.....	20
Prices Received for Oats – States and United States: July 2011 with Comparisons.....	21
Prices Received for Sorghum Grain – States and United States: July 2011 with Comparisons .....	21
Prices Received for Dry Beans – States and United States: July 2011 with Comparisons .....	22
Prices Received for Peanuts (In-Shell) – States and United States: July 2011 with Comparisons .....	22
Prices Received for Sunflower – States and United States: July 2011 with Comparisons.....	23
Prices Received for Canola – States and United States: July 2011 with Comparisons.....	23
Prices Received for Flaxseed – States and United States: July 2011 with Comparisons.....	23
Prices Received for Upland Cotton and Cottonseed – States and United States: July 2011 with Comparisons.....	24
Prices Received and Farm Marketings for Upland Cotton and Rice – United States: July 2011 with Comparisons .....	24
Prices Received for Hay by Type – States and United States: July 2011 with Comparisons .....	25
Prices Received for Apples – States and United States: July 2011 with Comparisons.....	25
Prices Received for Citrus Fruits by Utilization – States and United States: July 2010 .....	26
Prices Received for Citrus Fruits by Utilization – States and United States: June 2011 .....	27
Prices Received for Citrus Fruits by Utilization – States and United States: July 2011 .....	28

Prices Received for Potatoes – States and United States: July 2011 with Comparisons .....	29
Prices Received for All Milk – States and United States: July 2011 with Comparisons .....	30
Prices Received for Milk Cows – States and United States: July 2011 with Comparisons .....	31
Commodity Parity Prices and Price as Percent of Parity Price – United States: July 2011 with Comparisons.....	32
Commodity Parity Prices – United States: July 2011 with Comparisons .....	33
Marketing Year for Specified Commodities .....	35
Prices Received for Sugar Crops, Market Year Average and Value of Production – United States: 2010 .....	35
Seasonal Adjustment Factors for All Eggs and All Milk.....	36
Prices Received Indexes Monthly and Annual Average – United States: 2007-2011 .....	37
Reliability of Prices Received Estimates .....	45
Prices Paid by Farmers.....	46
Prices Paid Indexes and Related Parity Ratios – United States: July 2011 with Comparisons .....	47
Prices Paid Indexes and Annual Weights for Input Components and Sub-Components – United States: July 2011 with Comparisons .....	48
Paid Indexes by Month, All Items and Production Items – United States: 1990-1992=100 Chart .....	49
Paid Indexes, Annual Averages, Production Items, Interest, Taxes, and Wages – United States: 1990-1992=100 Chart .....	49
Paid Indexes by Farm Type and Month, All Items – United States: 1990-1991=100 Chart .....	50
Paid Indexes by Origin and Month, All Production Items – United States: 1990-1992=100 Chart .....	50
Paid Indexes by Non-Farm Sector and Month, Supplies & Repairs, Fertilizer, Machinery, and Fuel – United States: 1990-1992=100 Chart .....	51
Paid Indexes by Month, Feed and Replacement Livestock – United States: 1990-1992=100 Chart.....	51
Feed Price Ratios – United States: July 2011 with Comparisons .....	52
Prices Received Used to Calculate Feed Price Ratios – United States: July 2011 with Comparisons .....	52
Prices Paid for Feeder Livestock – United States: July 2011 with Comparisons .....	52
Prices Paid Indexes Monthly and Annual Average – United States: 2007-2011 .....	53
Prices Paid Index Sub-Components Monthly and Annual Average – United States: 2007-2011 .....	64
Reliability of Prices Paid Estimates .....	72
Information Contacts .....	73

## Prices Received by Farmers

The July All Farm Products Index is 181 percent of its 1990-1992 base, up 1.1 percent from the June index and 31 percent above the July 2010 index.

**All crops:** The July index, at 207, decreased 0.5 percent from June but is 41 percent above July 2010. Index increases for feed grains & hay, potatoes & dry beans, and oilseeds more than offset the index decreases for fruits & nuts, commercial vegetables, and food grains.

**Food grains:** The July index, at 238, is 2.1 percent below the previous month but 55 percent above a year ago. The July all wheat price, at \$7.18 per bushel, is down 22 cents from June but \$2.69 above July 2010.

**Feed grains & hay:** The July index, at 267, is up 1.9 percent from last month and 77 percent above a year ago. The corn price, at \$6.46 per bushel, is up 8 cents from last month and \$2.97 above July 2010. The all hay price, at \$170 per ton, is up \$7.00 from June and up \$58.00 from last July. Sorghum grain, at \$11.40 per cwt, is 90 cents above June and \$5.43 above July last year.

**Cotton, Upland:** The July index, at 132, is down 1.5 percent from June but 17 percent above last year. The July price, at 79.7 cents per pound, is down 1.7 cents from the previous month but 11.2 cents above last July.

**Oilseeds:** The July index, at 241, is up 1.7 percent from June and 39 percent higher than July 2010. The soybean price, at \$13.40 per bushel, increased 20 cents from June and is \$3.61 above July 2010.

**Fruits & nuts:** The July index, at 142, is down 11 percent from June and 1.4 percent lower than a year ago. Price decreases for pears, oranges, and grapefruit more than offset price increases for lemons, apples, and strawberries.

**Commercial vegetables:** The July index, at 149, is down 6.3 percent from last month and 0.7 percent below July 2010. Price declines for broccoli, tomatoes, carrots, and cauliflower more than offset price increases during July for cantaloupes, sweet corn, lettuce, and asparagus.

**Potatoes & dry beans:** The July index, at 223, is up 13 percent from last month and 50 percent above July 2010. The all potato price, at \$13.46 per cwt, is up \$1.87 from June and up \$4.63 from last July. The all dry bean price, at \$35.10 per cwt, is up \$1.10 from the previous month and \$9.30 above July 2010.

**Livestock and products:** The July index, at 156, is 2.0 percent above last month and up 18 percent from July 2010. Compared with a year ago, prices are higher for milk, cattle, hogs, eggs, calves, and turkeys. Broiler prices are down from last year.

**Meat animals:** The July index, at 153, is up 4.8 percent from last month and 22 percent higher than last year. The July hog price, at \$71.60 per cwt, is up \$1.90 from June and \$13.10 higher than a year ago. The July beef cattle price of \$112 per cwt is up \$5.00 from last month and \$20.30 higher than July 2010.

**Dairy products:** The July index, at 169, is up 4.3 percent from a month ago and 39 percent higher than July last year. The July all milk price of \$22.10 per cwt is up 90 cents from last month and \$6.20 from July 2010.

**Poultry & eggs:** The July index, at 150, is down 3.2 percent from June and a year ago. The July market egg price, at 68.4 cents per dozen, decreased 0.3 cent from June but is 15.6 cents above July 2010. The July broiler price, at 47.0 cents per pound, is down 2.0 cents from June and 5.0 cents below a year ago. The July turkey price, at 69.1 cents per pound, is down 0.4 cent from the previous month but up 4.4 cents from a year earlier.

## Prices Received Indexes – United States: July 2011 with Comparisons

[Revised historical price indexes for months not shown are available at [www.nass.usda.gov](http://www.nass.usda.gov)]

Index	1910-1914 Base				1990-1992 Base		
	1990-1992 Average	July 2010	June 2011	July 2011	July 2010	June 2011	July 2011
	(percent)	(percent)	(percent)	(percent)	(percent)	(percent)	(percent)
All products .....	639	878	1137	1151	138	179	181
All crops .....	500	727	1030	1025	147	208	207
Food grains .....	325	487	769	753	154	243	238
Feed grains & hay .....	363	540	933	952	151	262	267
Cotton, Upland .....	517	580	689	675	113	134	132
Tobacco .....	1263	1563	1491	1491	103	99	99
Oilseeds .....	554	956	1301	1319	174	237	241
Fruits & nuts .....	716	1008	1108	990	144	159	142
Commercial vegetables .....	698	1069	1138	1066	150	159	149
Potatoes & dry beans .....	540	756	993	1129	149	196	223
Other crops .....	493	613	635	635	124	129	129
Livestock and products .....	768	1008	1171	1195	132	153	156
Meat animals .....	1021	1274	1490	1555	125	146	153
Dairy products .....	799	978	1304	1360	122	162	169
Poultry & eggs .....	282	434	435	422	155	155	150
Food commodities .....	(NA)	(NA)	(NA)	(NA)	138	170	172

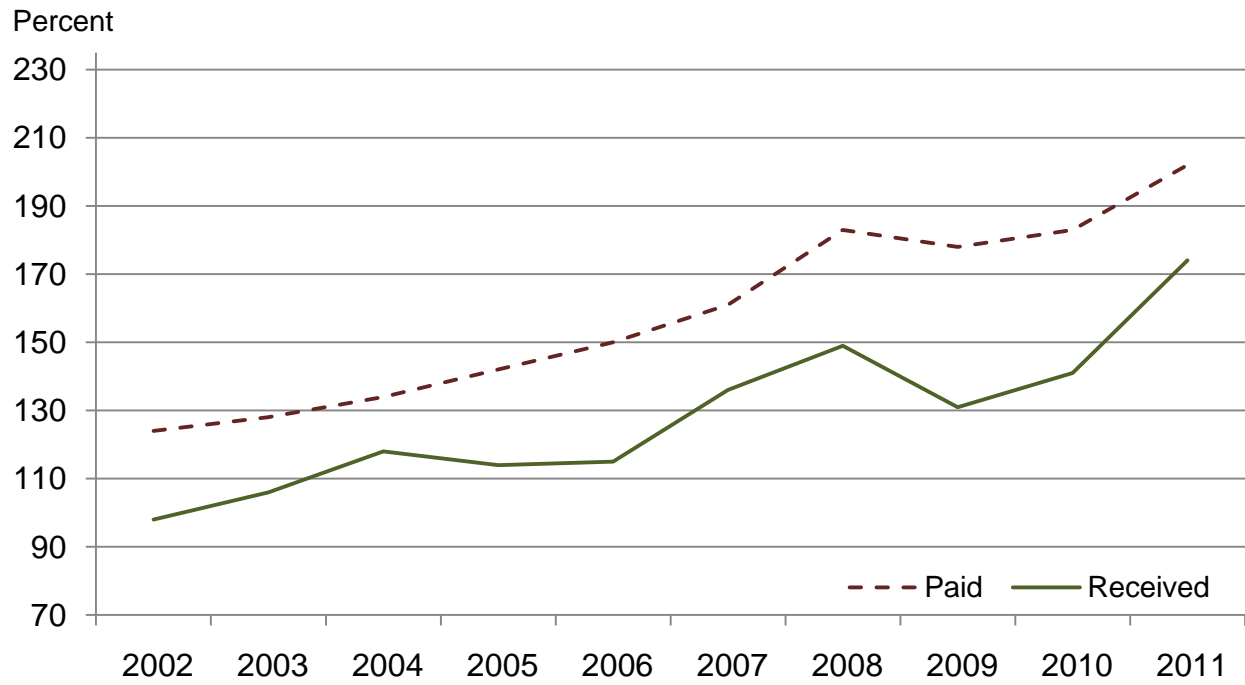
(NA) Not available.

## Prices Received and Prices Paid Indexes by Month for Selected Groups – United States: 2010 and 2011, 1990-1992 Base

[Revised historical price indexes for months not shown are available at [www.nass.usda.gov](http://www.nass.usda.gov). Blank data cells indicate estimation period has not yet begun]

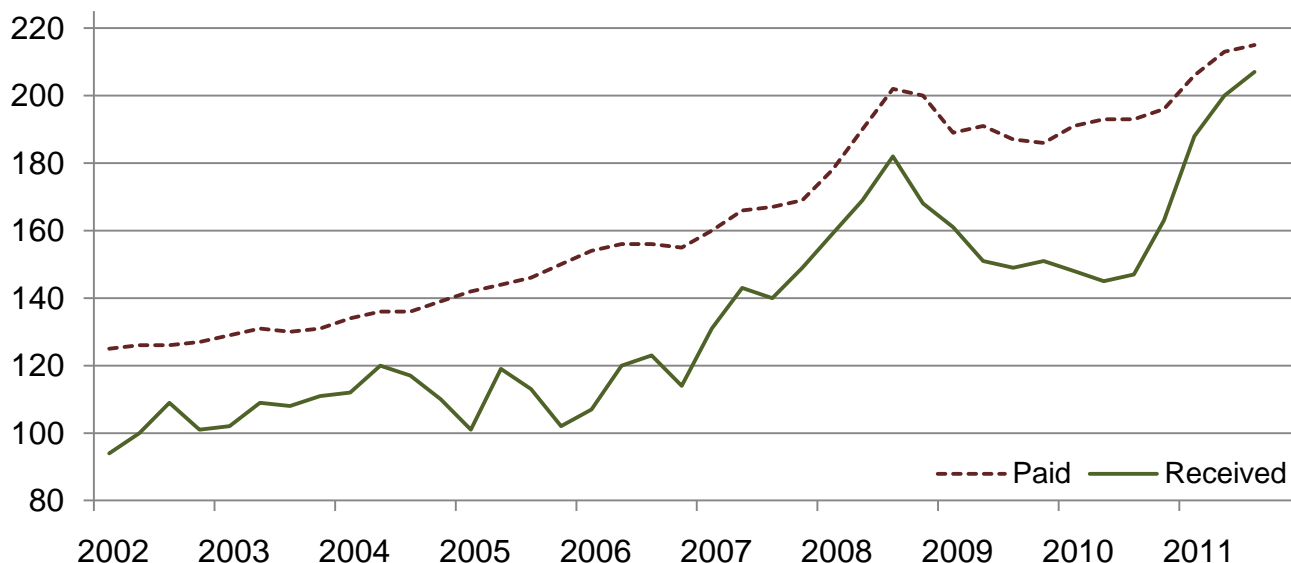
Month	Index of prices received						Index of prices paid			
	All farm products		All crops		Livestock and products		All items		Production items	
	2010	2011	2010	2011	2010	2011	2010	2011	2010	2011
	(percent)	(percent)	(percent)	(percent)	(percent)	(percent)	(percent)	(percent)	(percent)	(percent)
January .....	136	166	148	188	121	137	180	196	185	204
February .....	132	170	145	200	122	144	180	198	184	207
March .....	137	173	150	197	127	152	181	201	185	211
April .....	135	176	145	200	128	156	182	203	187	215
May .....	138	175	147	202	131	152	182	204	187	215
June .....	135	179	144	208	129	153	181	204	186	215
July .....	138	181	147	207	132	156	181	206	186	218
August .....	141		151		134		182		187	
September .....	143		152		134		183		188	
October .....	151		163		134		185		191	
November .....	154		172		134		187		194	
December .....	152		169		134		189		197	

## Received and Paid Indexes, Annual Average – United States: 1990-1992=100



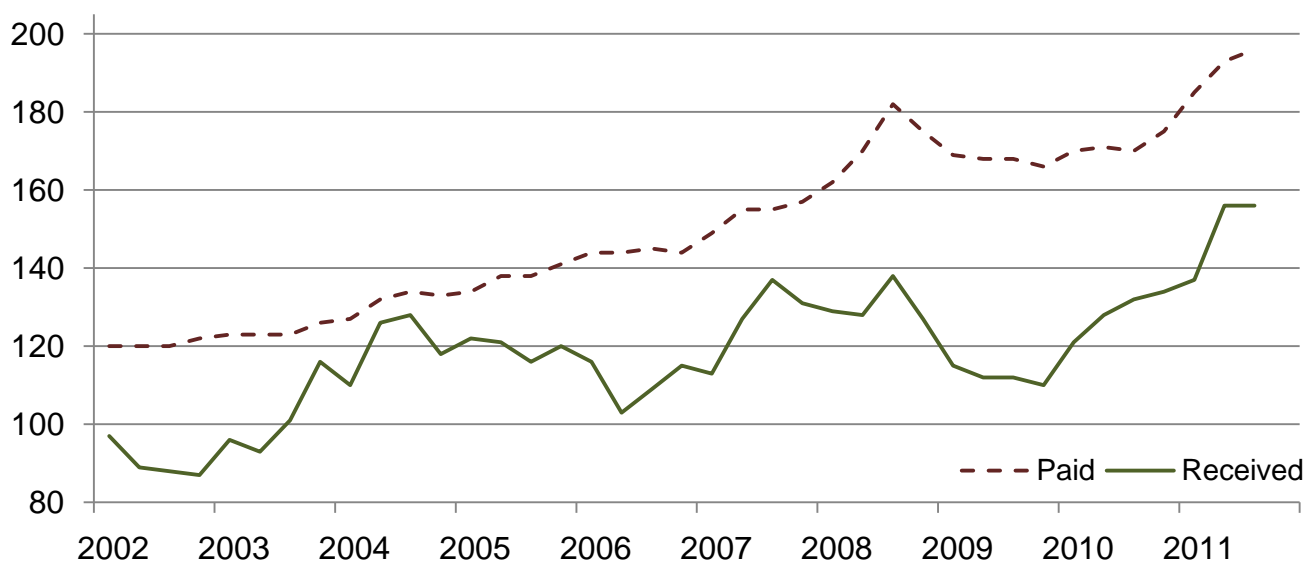
## Crop Farm Received and Paid Indexes, All Items by Quarter – United States: 1990-1992=100

Percent

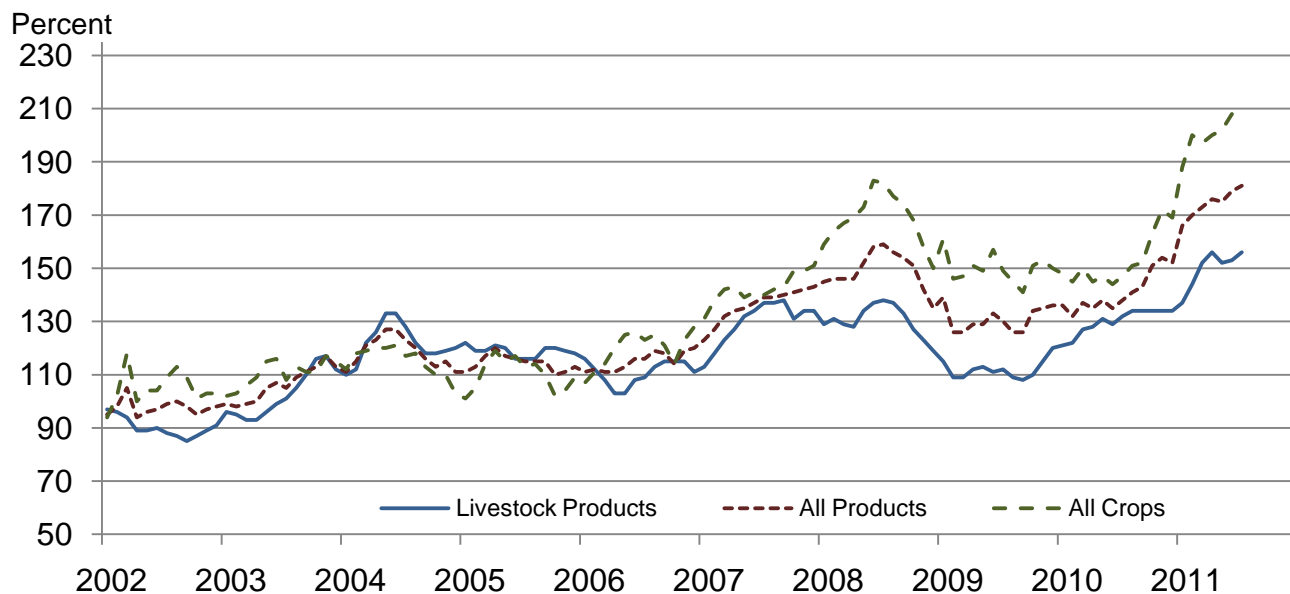


## Livestock Farm Received and Paid Indexes, All Items by Quarter – United States: 1990-1992=100

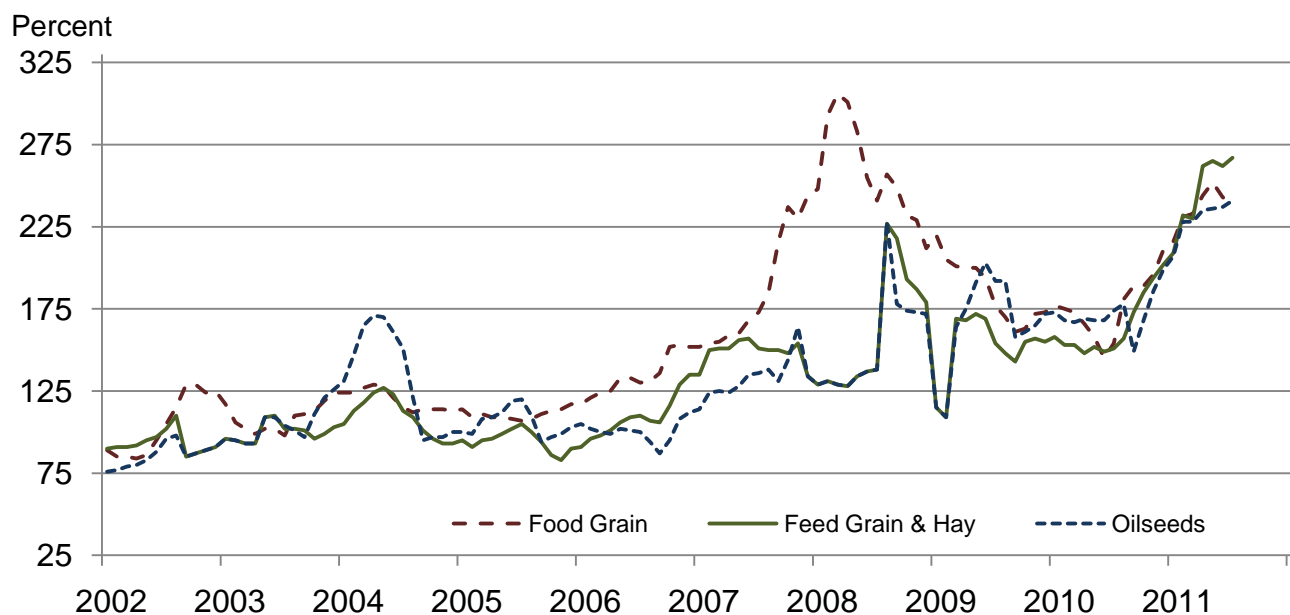
Percent



## Received Indexes by Month, Livestock Products, All Products, and All Crops – United States: 1990-1992=100



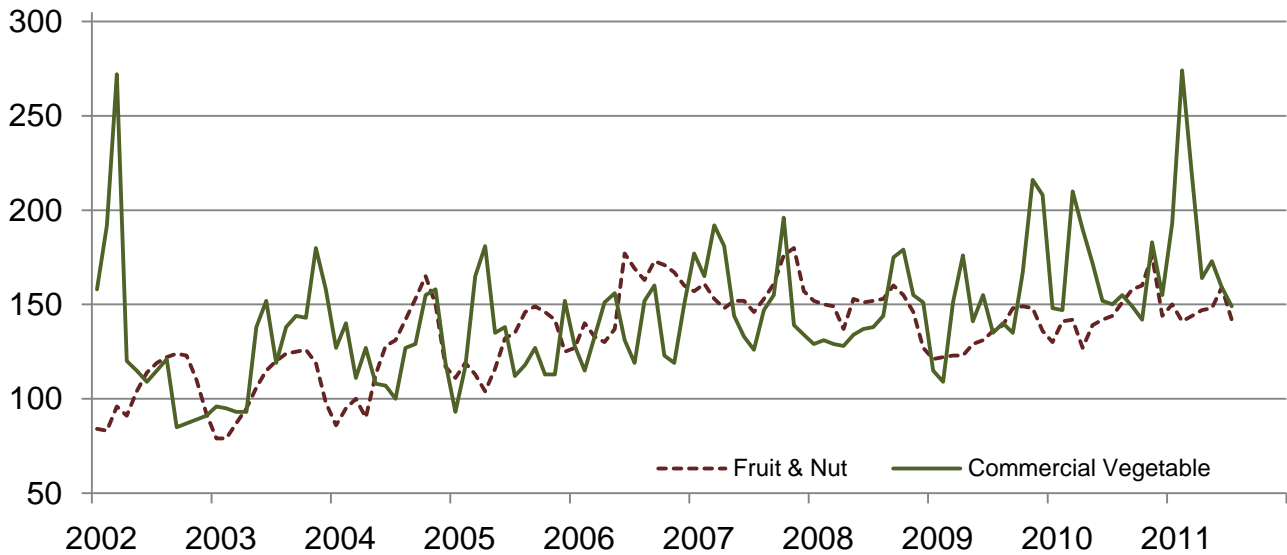
## Received Indexes by Month, Food Grains, Feed Grains & Hay, and Oilseeds – United States: 1990-1992=100





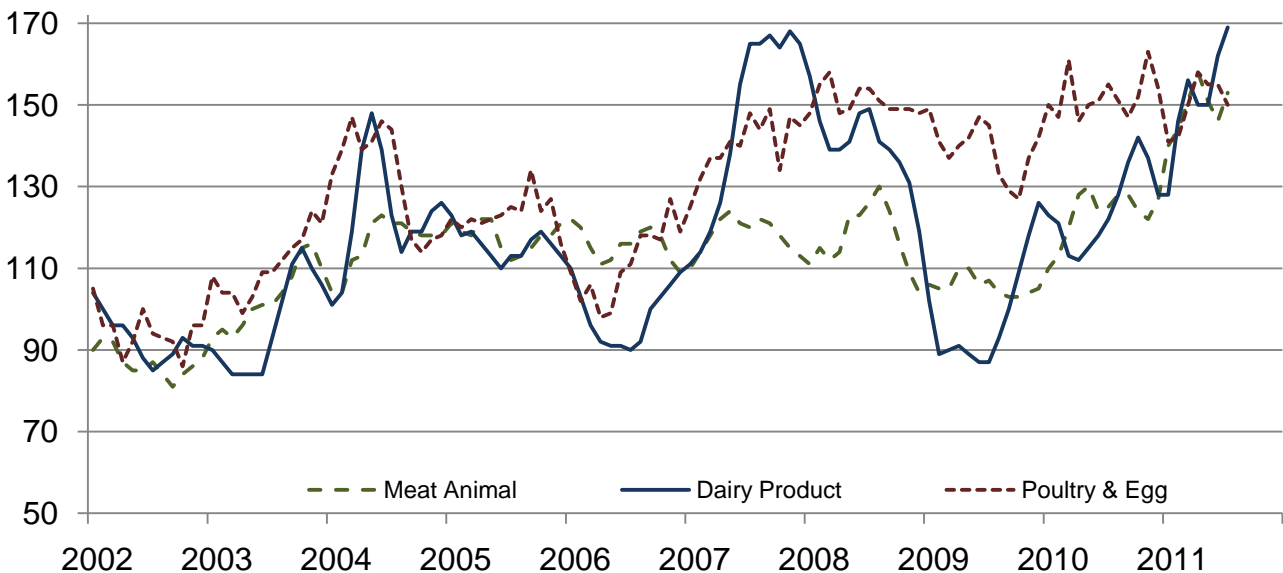
## Received Indexes by Month, Fruit & Nut and Commercial Vegetables – United States: 1990-1992=100

Percent



## Received Indexes by Month, Meat Animal, Dairy Product, and Poultry & Egg – United States: 1990-1992=100

Percent



**Prices Received for Field Crops and Fruits – United States: July 2011 with Comparisons**

Commodity	Average 1990-1992=100	July 2010	June 2011	Preliminary July 2011
<b>Field crops</b>				
Austrian winter peas .....	dollars/cwt (NA)	(S)	(D)	(S)
Barley, all .....	dollars/bushel 2.12	3.79	4.66	5.04
Feed .....	dollars/bushel 1.90	2.40	4.75	5.11
Malting .....	dollars/bushel 2.43	4.14	4.61	5.01
Beans, dry edible .....	dollars/cwt 19.10	25.80	34.00	35.10
Canola .....	dollars/cwt (NA)	17.50	24.80	25.50
Chickpeas, all .....	dollars/cwt (NA)	25.90	36.40	40.00
Large .....	dollars/cwt (NA)	37.00	39.80	(D)
Small .....	dollars/cwt (NA)	22.80	27.10	(D)
Corn .....	dollars/bushel 2.30	3.49	6.38	6.46
Cotton, Upland .....	dollars/pound 0.606	0.685	0.814	0.797
Cottonseed <sup>1</sup> .....	dollars/ton 96.00	(NA)	(NA)	(NA)
Flaxseed .....	dollars/bushel 4.27	10.70	15.40	15.50
Hay, all, baled .....	dollars/ton 76.30	112.00	163.00	170.00
Alfalfa .....	dollars/ton 77.20	117.00	180.00	189.00
Other .....	dollars/ton 60.00	97.30	113.00	119.00
Lentils .....	dollars/cwt (NA)	26.00	26.70	29.00
Oats .....	dollars/bushel 1.22	2.11	3.41	3.60
Peanuts, in-shell .....	dollars/pound 0.304	0.215	0.232	0.236
Peas, dry edible .....	dollars/cwt (NA)	7.50	12.90	16.00
Potatoes .....	dollars/cwt 5.82	8.83	11.59	13.46
Rice, all .....	dollars/cwt 7.07	12.60	11.80	12.50
Long .....	dollars/cwt (NA)	11.30	11.00	11.20
Medium and short .....	dollars/cwt (NA)	16.90	17.10	17.90
Sorghum grain .....	dollars/cwt 3.75	5.97	10.50	11.40
Soybeans .....	dollars/bushel 5.61	9.79	13.20	13.40
Sunflowers, all .....	dollars/cwt 9.50	15.40	29.10	31.10
Wheat, all .....	dollars/bushel 2.96	4.49	7.40	7.18
Winter .....	dollars/bushel 2.93	4.47	7.13	6.98
Durum .....	dollars/bushel 2.86	4.44	8.97	12.70
Other spring .....	dollars/bushel 3.11	4.71	9.26	8.46
Hard red winter <sup>2</sup> .....	dollars/bushel (NA)	4.38	7.20	(NA)
Soft red winter <sup>2</sup> .....	dollars/bushel (NA)	4.77	7.00	(NA)
Hard red spring <sup>2</sup> .....	dollars/bushel (NA)	4.72	9.34	(NA)
White <sup>2</sup> .....	dollars/bushel 3.24	5.26	6.94	(NA)
<b>Fruits</b>				
Citrus, equivalent on-tree				
Grapefruit .....	dollars/box 5.77	1.30	9.50	8.20
Lemons .....	dollars/box 10.10	12.59	12.79	15.26
Oranges .....	dollars/box 5.79	7.10	8.12	7.74
Tangelos .....	dollars/box 5.82	(NA)	(NA)	(NA)
Tangerines and mandarins .....	dollars/box 15.11	(S)	(S)	(NA)
Noncitrus, fresh				
Apples <sup>3</sup> .....	dollars/pound 0.212	0.299	0.263	0.289
Grapes <sup>3</sup> .....	dollars/ton 506.00	460.00	1,270.00	(S)
Peaches <sup>3</sup> .....	dollars/ton 432.00	573.00	646.00	632.00
Pears <sup>3</sup> .....	dollars/ton 370.00	598.00	675.00	521.00
Strawberries .....	dollars/cwt 56.00	62.00	72.70	74.10

(D) Withheld to avoid disclosing data for individual operations.

(NA) Not available.

(S) Insufficient number of reports to establish an estimate.

<sup>1</sup> Marketing year August - February.

<sup>2</sup> Preliminary estimates not set for this item.

<sup>3</sup> Equivalent packinghouse-door returns for California, Michigan, New York (apples only), and Washington (apples, peaches, and pears). Prices as sold for other states.

# Prices Received for Vegetables and Livestock – United States: July 2011 with Comparisons

[Price data source for livestock and poultry commodities is United States Department of Agriculture's Agricultural Marketing Service]

Commodity	Average 1990-1992=100	July 2010	June 2011	Preliminary July 2011
<b>Vegetables, fresh <sup>1</sup></b>				
Asparagus .....dollars/cwt	79.80	(S)	94.10	136.00
Beans, snap <sup>2</sup> .....dollars/cwt	(NA)	68.80	52.00	(S)
Broccoli .....dollars/cwt	22.50	29.30	55.70	28.00
Cantaloupes <sup>2</sup> .....dollars/cwt	(NA)	15.70	16.30	25.30
Carrots .....dollars/cwt	13.20	27.10	35.10	29.50
Cauliflower .....dollars/cwt	26.80	31.20	52.80	34.80
Celery .....dollars/cwt	11.60	16.00	17.10	16.60
Corn, sweet .....dollars/cwt	15.70	20.20	24.00	28.00
Cucumbers <sup>2</sup> .....dollars/cwt	(NA)	26.10	32.00	30.90
Lettuce .....dollars/cwt	11.90	26.00	17.10	17.60
Onions <sup>3</sup> .....dollars/cwt	12.80	16.30	20.00	18.80
Tomatoes .....dollars/cwt	32.30	33.60	43.50	35.20
<b>Livestock</b>				
Calves .....dollars/cwt	94.30	122.00	133.00	142.00
Cattle, all beef .....dollars/cwt	72.90	91.70	107.00	112.00
Cows <sup>4</sup> .....dollars/cwt	49.60	59.10	75.90	74.40
Steers & heifers .....dollars/cwt	77.10	96.00	110.00	115.00
Milk cows <sup>5</sup> .....dollars/head	1130.00	1320.00	(NA)	1480.00
Hogs, all .....dollars/cwt	47.70	58.50	69.70	71.60
Barrows & gilts .....dollars/cwt	48.40	58.70	70.40	72.40
Sows .....dollars/cwt	39.50	54.20	53.70	54.50
Lambs .....dollars/cwt	56.20	122.00	189.00	(NA)
Sheep .....dollars/cwt	23.40	43.80	50.80	(NA)
<b>Dairy and poultry</b>				
Milk, all <sup>6</sup> .....dollars/cwt	13.06	15.90	21.20	22.10
Fat test ..... percent	3.66	3.49	3.59	3.56
Broilers, live <sup>7</sup> .....dollars/pound	0.317	0.520	0.490	0.470
Eggs, all <sup>8</sup> .....dollars/dozen	0.643	0.709	0.883	0.880
Market <sup>8 9</sup> .....dollars/dozen	0.546	0.528	0.687	0.684
Turkeys, live <sup>8 10 11</sup> .....dollars/pound	0.380	0.647	0.695	0.691
<b>Adjusted for seasonal variation</b>				
Eggs, all .....dollars/dozen	0.545	0.837	1.130	1.040
Seasonal factor ..... percent	100	85	78	84
Milk, all <sup>6</sup> .....dollars/cwt	9.71	16.40	22.00	22.90
Seasonal factor ..... percent	100	97	96	97

(NA) Not available.

(S) Insufficient number of reports to establish an estimate.

<sup>1</sup> Beginning January 2006, point of first sale. FOB shipping point for prior years.

<sup>2</sup> Monthly estimates began January 1995.

<sup>3</sup> Includes some processing.

<sup>4</sup> Beef cows and cull dairy cows sold for slaughter.

<sup>5</sup> Animals sold for dairy herd replacement only. Prices available for January, April, July, and October.

<sup>6</sup> Before deductions for hauling. Includes quality, quantity, and other premiums. Excludes hauling subsidies.

<sup>7</sup> Live weight equivalent price.

<sup>8</sup> Mid-month price.

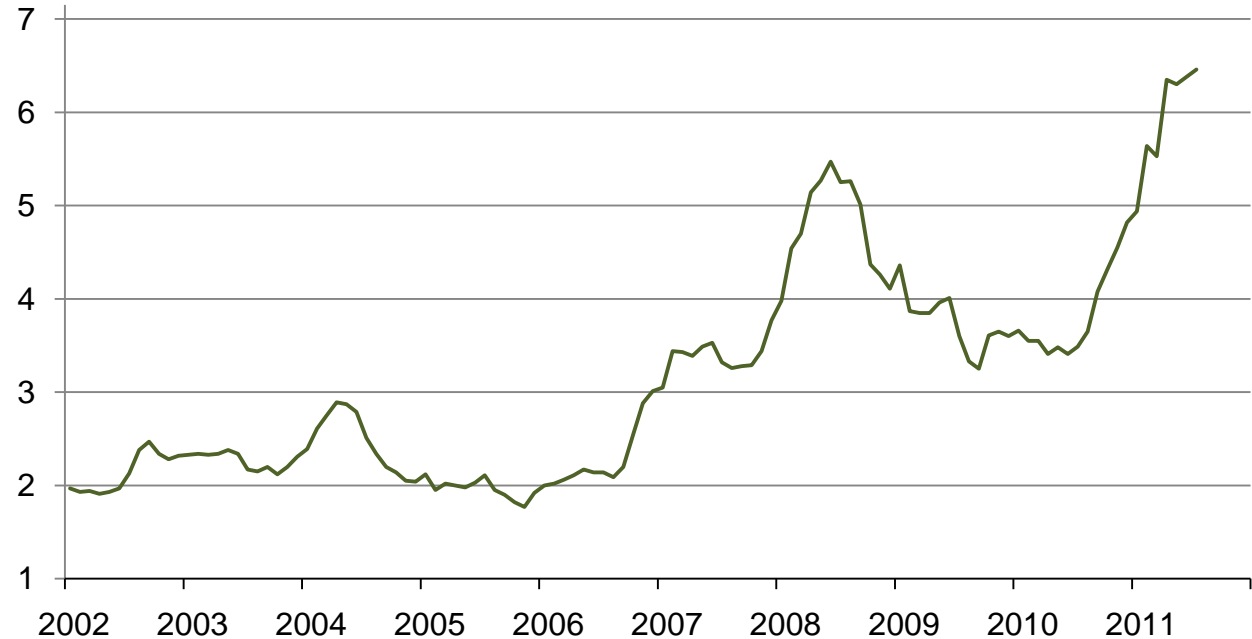
<sup>9</sup> Also referred to as table eggs.

<sup>10</sup> Live weight equivalent price is used when actual live weight price is not available.

<sup>11</sup> Beginning January 2011, price reflects FOB shipping point basis. Prior year price reflects delivered basis.

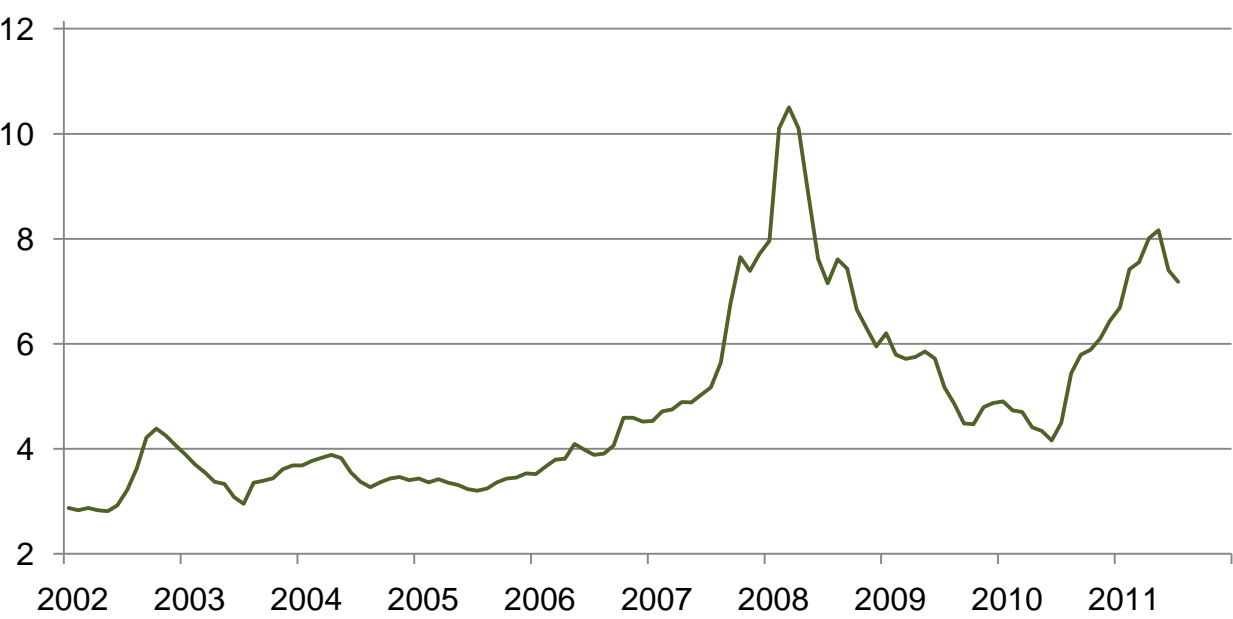
# Prices Received for Corn by Month – United States

Dollars per bushel



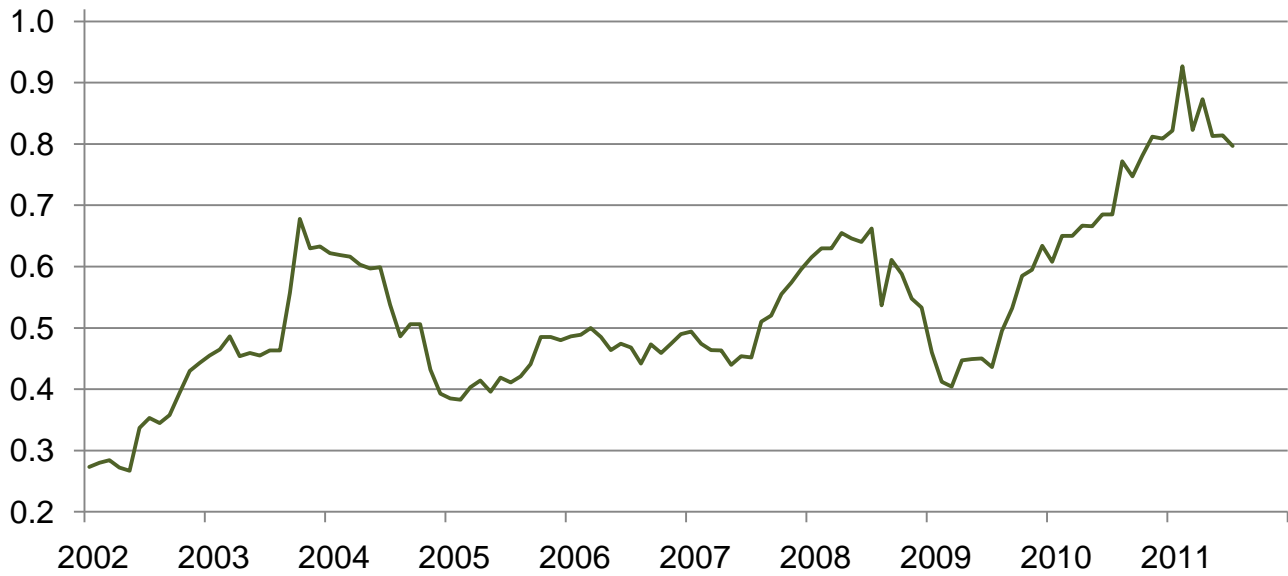
# Prices Received for Wheat by Month – United States

Dollars per bushel



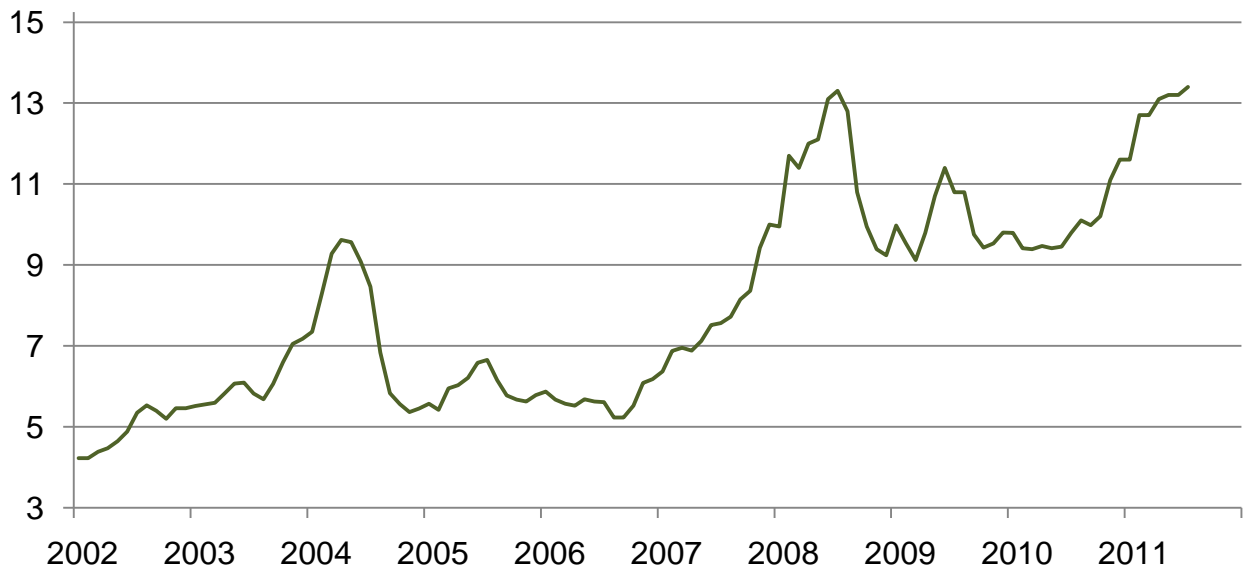
## Prices Received for Upland Cotton by Month – United States

Dollars per pound



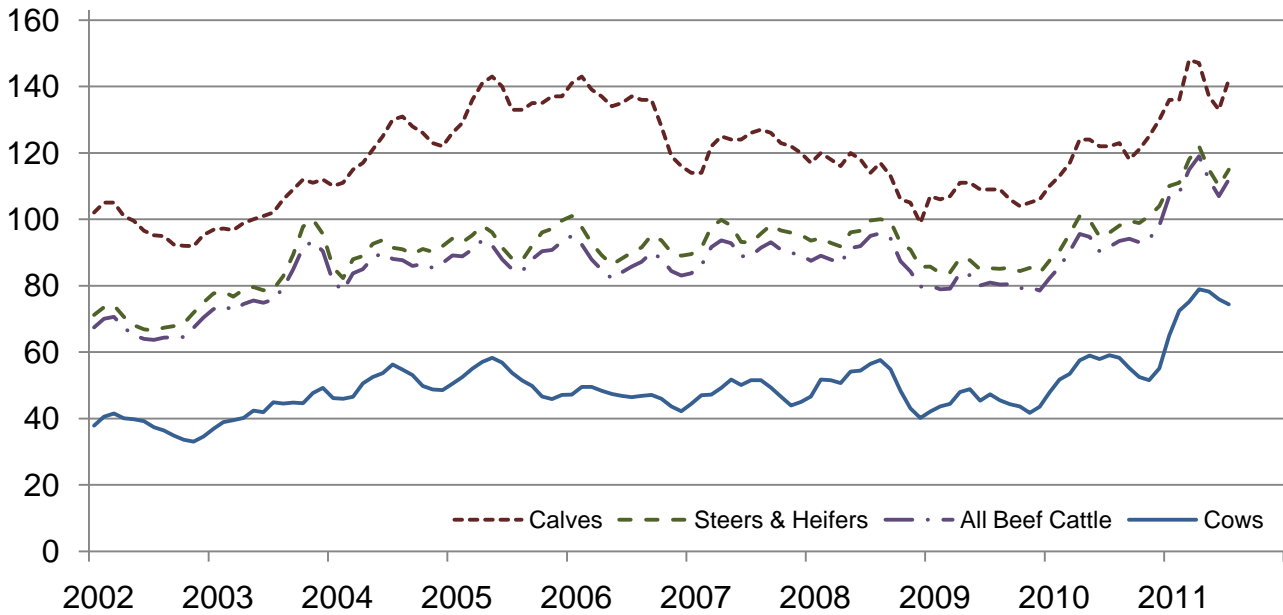
## Prices Received for Soybeans by Month – United States

Dollars per bushel



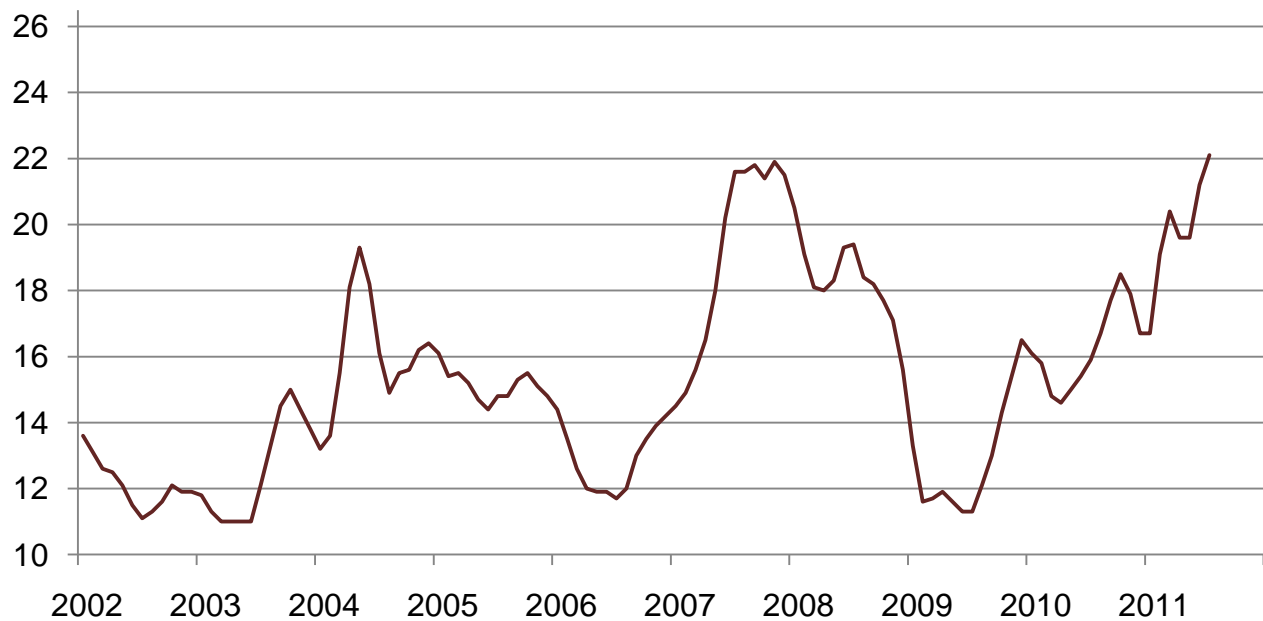
## Prices Received for Cattle by Month – United States

Dollars per cwt



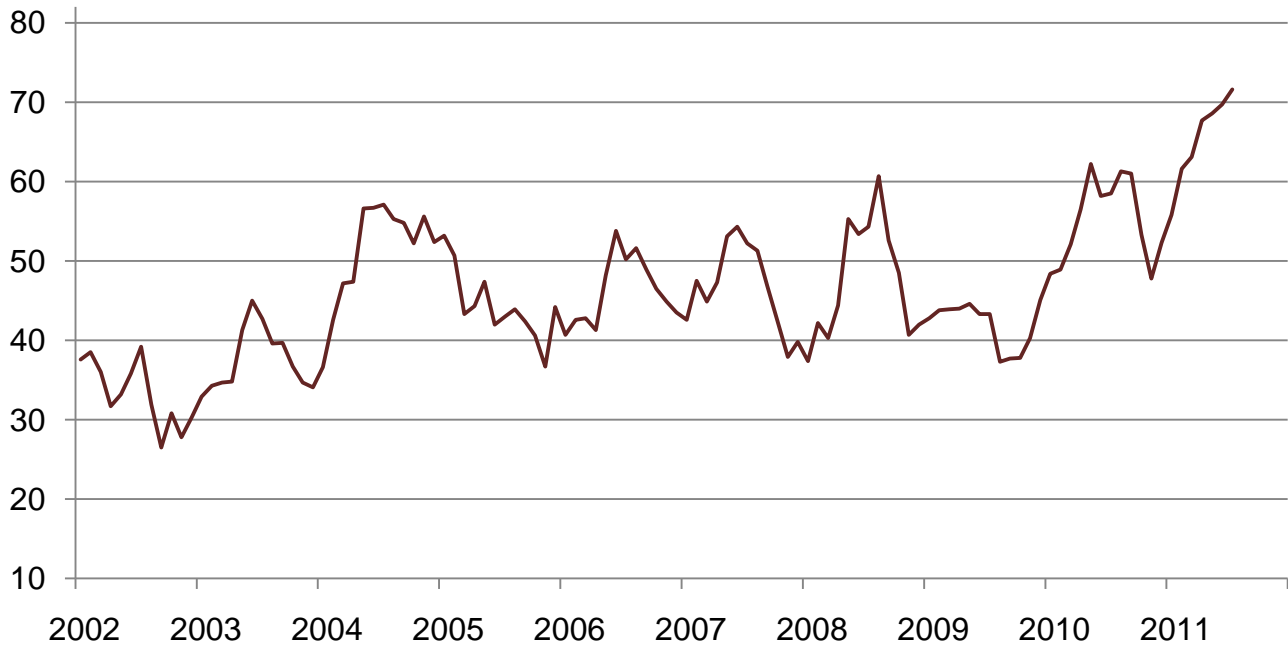
## Prices Received for Milk by Month – United States

Dollars per cwt



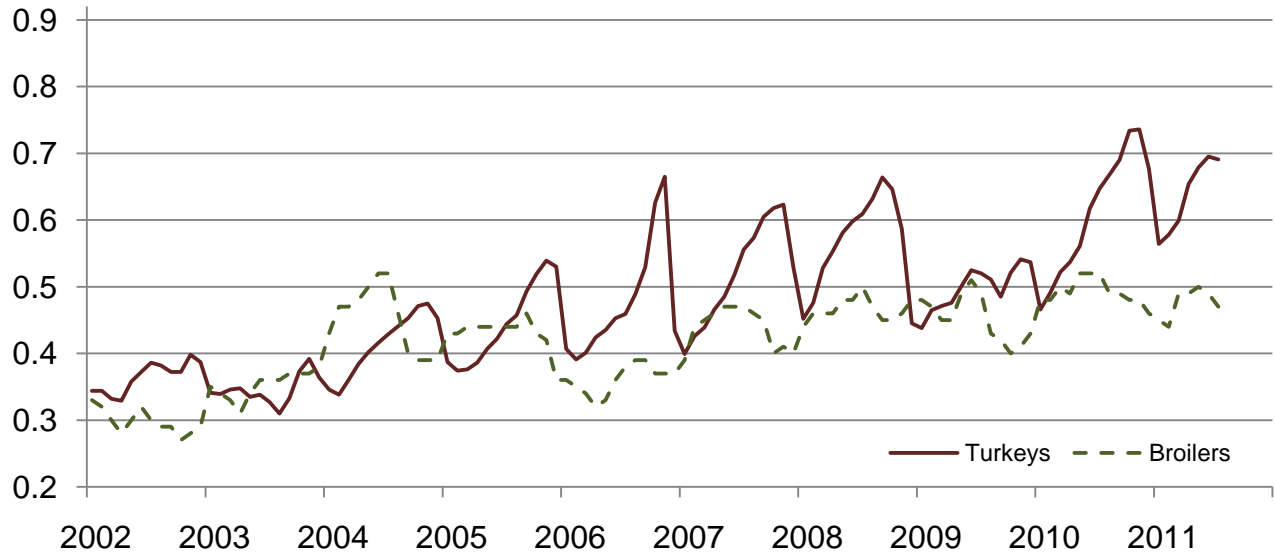
## Prices Received for Hogs by Month – United States

Dollars per cwt



## Prices Received for Poultry by Month – United States

Dollars per pound



## Prices Received for All Wheat, Corn, and Soybeans by Month – United States: 2011 with Comparisons

[Current month prices are mid-month; prices for previous months and years are for the entire month. Blank data cells indicate estimation period has not yet begun]

Month	All wheat			Corn			Soybeans		
	2009	2010	Preliminary 2011	2009	2010	Preliminary 2011	2009	2010	Preliminary 2011
	(dollars per bushel)	(dollars per bushel)	(dollars per bushel)	(dollars per bushel)	(dollars per bushel)	(dollars per bushel)	(dollars per bushel)	(dollars per bushel)	(dollars per bushel)
January ....	6.20	4.90	6.69	4.36	3.66	4.94	9.97	9.79	11.60
February ..	5.79	4.73	7.42	3.87	3.55	5.64	9.54	9.41	12.70
March .....	5.71	4.70	7.55	3.85	3.55	5.53	9.12	9.39	12.70
April .....	5.75	4.41	8.01	3.85	3.41	6.35	9.79	9.47	13.10
May .....	5.85	4.34	8.16	3.96	3.48	6.30	10.70	9.41	13.20
June .....	5.72	4.16	7.40	4.01	3.41	6.38	11.40	9.45	13.20
July .....	5.17	4.49	7.18	3.60	3.49	6.46	10.80	9.79	13.40
August .....	4.85	5.44		3.33	3.65		10.80	10.10	
September	4.48	5.79		3.25	4.08		9.75	9.98	
October ....	4.47	5.88		3.61	4.32		9.43	10.20	
November	4.79	6.10		3.65	4.55		9.53	11.10	
December	4.87	6.44		3.60	4.82		9.80	11.60	

## Prices Received for Beef Cattle and All Hogs by Month – United States: 2011 with Comparisons

[Current month prices are mid-month; prices for previous months and years are for the entire month. Blank data cells indicate estimation period has not yet begun. Price data source is United States Department of Agriculture's Agricultural Marketing Service]

Month	Beef cattle <sup>1</sup>			All hogs <sup>2</sup>		
	2009	2010	Preliminary 2011	2009	2010	Preliminary 2011
	(dollars per cwt)	(dollars per cwt)	(dollars per cwt)	(dollars per cwt)	(dollars per cwt)	(dollars per cwt)
January .....	80.10	82.30	107.00	42.80	48.40	55.80
February .....	78.90	85.70	108.00	43.80	48.90	61.60
March .....	79.10	90.40	115.00	43.90	52.10	63.10
April .....	83.80	95.60	119.00	44.00	56.50	67.70
May .....	83.20	94.70	112.00	44.60	62.20	68.60
June .....	80.10	90.40	107.00	43.30	58.20	69.70
July .....	80.90	91.70	112.00	43.30	58.50	71.60
August .....	80.40	93.50		37.30	61.30	
September .....	80.50	94.10		37.70	61.00	
October .....	79.20	93.10		37.80	53.30	
November .....	79.60	94.00		40.30	47.80	
December .....	78.50	98.10		45.10	52.30	

<sup>1</sup> Cows and steers & heifers.

<sup>2</sup> Barrows & gilts and sows.



## Prices Received for All Wheat – States and United States: July 2011 with Comparisons

State	July 2010	June 2011	Preliminary July 2011
	(dollars per bushel)	(dollars per bushel)	(dollars per bushel)
Arizona .....	5.40	8.13	(D)
Arkansas .....	5.10	7.42	6.90
California .....	(D)	(D)	(D)
Colorado .....	4.34	7.80	6.79
Idaho .....	4.38	7.63	6.90
Illinois .....	4.75	6.42	6.40
Indiana .....	5.06	6.03	6.75
Kansas .....	4.38	7.07	7.15
Michigan .....	5.48	6.27	6.75
Minnesota .....	4.24	8.58	7.29
Missouri .....	4.30	6.83	6.80
Montana .....	4.71	8.20	7.74
Nebraska .....	4.41	7.69	6.70
North Carolina .....	4.80	7.28	7.01
North Dakota .....	4.52	9.85	9.46
Ohio .....	4.52	6.90	7.23
Oklahoma .....	4.43	7.61	7.28
Oregon .....	5.01	7.44	6.95
South Dakota .....	4.37	9.27	8.35
Texas .....	4.26	7.03	7.22
Washington .....	4.91	7.67	6.76
United States .....	4.49	7.40	7.18

(D) Withheld to avoid disclosing data for individual operations.

## Prices Received for Winter Wheat – States and United States: July 2011 with Comparisons

State	July 2010	June 2011	Preliminary July 2011
	(dollars per bushel)	(dollars per bushel)	(dollars per bushel)
Arkansas .....	5.10	7.42	6.90
California .....	(D)	(D)	(D)
Colorado .....	4.34	7.80	6.79
Idaho .....	4.23	6.99	6.35
Illinois .....	4.75	6.42	6.40
Indiana .....	5.06	6.03	6.75
Kansas .....	4.38	7.07	7.15
Michigan .....	5.48	6.27	6.75
Minnesota .....	4.39	(D)	(S)
Missouri .....	4.30	6.83	6.80
Montana .....	4.39	7.16	6.78
Nebraska .....	4.41	7.69	6.70
North Carolina .....	4.80	7.28	7.01
North Dakota .....	3.90	6.71	6.70
Ohio .....	4.52	6.90	7.23
Oklahoma .....	4.43	7.61	7.28
Oregon .....	4.87	7.13	6.70
South Dakota .....	4.17	7.38	6.85
Texas .....	4.26	7.03	7.22
Washington .....	4.83	7.08	6.38
United States .....	4.47	7.13	6.98

(D) Withheld to avoid disclosing data for individual operations.

(S) Insufficient number of reports to establish an estimate.

**Prices Received for Durum Wheat – States and United States: July 2011 with Comparisons**

State	July 2010	June 2011	Preliminary July 2011
	(dollars per bushel)	(dollars per bushel)	(dollars per bushel)
Arizona .....	5.40	8.13	(D)
California .....	(D)	(S)	(S)
Idaho .....	(D)	(D)	(S)
Montana .....	4.20	9.06	12.20
North Dakota .....	3.84	11.60	12.80
United States .....	4.44	8.97	12.70

(D) Withheld to avoid disclosing data for individual operations.

(S) Insufficient number of reports to establish an estimate.

**Prices Received for Spring Wheat – States and United States: July 2011 with Comparisons**

State	July 2010	June 2011	Preliminary July 2011
	(dollars per bushel)	(dollars per bushel)	(dollars per bushel)
Colorado .....	3.82	(S)	(S)
Idaho .....	4.60	8.73	7.40
Minnesota .....	4.23	8.59	7.30
Montana .....	5.42	8.76	7.87
North Dakota .....	4.71	9.53	9.00
Oregon .....	5.61	8.94	8.25
South Dakota .....	5.26	10.10	8.99
Washington .....	5.33	9.38	7.90
United States .....	4.71	9.26	8.46

(S) Insufficient number of reports to establish an estimate.

### Prices Received for All Barley – States and United States: July 2011 with Comparisons

State	July 2010	June 2011	Preliminary July 2011
	(dollars per bushel)	(dollars per bushel)	(dollars per bushel)
California .....	3.32	5.56	(D)
Colorado .....	4.22	(D)	(S)
Idaho .....	5.01	4.31	4.75
Minnesota .....	3.86	5.69	(D)
Montana .....	3.87	4.58	5.46
North Dakota .....	3.41	4.66	4.89
Oregon .....	2.88	4.78	5.20
Utah .....	2.66	5.38	5.53
Washington .....	3.46	4.81	4.98
Wyoming .....	(D)	(D)	(S)
United States .....	3.79	4.66	5.04

(D) Withheld to avoid disclosing data for individual operations.

(S) Insufficient number of reports to establish an estimate.

### Prices Received for Malting Barley – States: July 2011 with Comparisons

State	July 2010	June 2011	Preliminary July 2011
	(dollars per bushel)	(dollars per bushel)	(dollars per bushel)
Idaho .....	5.16	3.83	4.45
Minnesota .....	(D)	5.75	(D)
Montana .....	4.05	4.57	5.64
North Dakota .....	3.85	4.68	4.95
Wyoming .....	(D)	(S)	(S)

(D) Withheld to avoid disclosing data for individual operations.

(S) Insufficient number of reports to establish an estimate.

### Prices Received for Feed Barley – States: July 2011 with Comparisons

State	July 2010	June 2011	Preliminary July 2011
	(dollars per bushel)	(dollars per bushel)	(dollars per bushel)
Idaho .....	2.86	5.69	5.75
Minnesota .....	1.93	4.69	(D)
Montana .....	2.28	4.62	4.61
North Dakota .....	2.02	4.63	4.70
Wyoming .....	(S)	(D)	(S)

(D) Withheld to avoid disclosing data for individual operations.

(S) Insufficient number of reports to establish an estimate.

## Prices Received for Corn – States and United States: July 2011 with Comparisons

State	July 2010	June 2011	Preliminary July 2011
	(dollars per bushel)	(dollars per bushel)	(dollars per bushel)
Colorado .....	3.48	6.57	7.01
Illinois .....	3.51	6.56	6.60
Indiana .....	3.69	6.82	6.90
Iowa .....	3.50	6.30	6.50
Kansas .....	3.41	7.04	7.10
Kentucky .....	3.75	7.28	7.10
Michigan .....	3.55	6.77	6.90
Minnesota .....	3.37	5.79	6.00
Missouri .....	3.56	6.87	6.80
Nebraska .....	3.54	6.32	6.15
North Carolina .....	4.06	8.01	7.07
North Dakota .....	3.12	6.23	6.35
Ohio .....	3.57	6.89	6.98
Pennsylvania .....	4.03	7.73	7.42
South Dakota .....	3.19	6.17	6.30
Tennessee .....	3.86	6.66	6.50
Texas .....	3.72	7.74	6.57
Wisconsin .....	3.41	6.40	6.47
United States .....	3.49	6.38	6.46

## Prices Received for Soybeans – States and United States: July 2011 with Comparisons

State	July 2010	June 2011	Preliminary July 2011
	(dollars per bushel)	(dollars per bushel)	(dollars per bushel)
Arkansas .....	9.71	12.80	13.60
Illinois .....	10.00	13.50	13.80
Indiana .....	10.10	13.40	13.80
Iowa .....	9.69	13.20	13.50
Kansas .....	9.83	13.70	13.70
Kentucky .....	10.00	13.80	13.90
Louisiana .....	9.90	12.50	(D)
Michigan .....	9.80	13.10	13.20
Minnesota .....	9.41	12.80	13.00
Mississippi .....	(D)	13.30	13.60
Missouri .....	9.87	13.60	13.80
Nebraska .....	9.46	13.00	13.10
North Carolina .....	10.40	14.00	14.00
North Dakota .....	9.25	12.70	12.90
Ohio .....	10.20	13.40	13.60
South Dakota .....	9.25	12.90	13.20
Tennessee .....	9.96	13.30	13.60
Wisconsin .....	9.98	12.40	12.80
United States .....	9.79	13.20	13.40

(D) Withheld to avoid disclosing data for individual operations.

### Prices Received for Oats – States and United States: July 2011 with Comparisons

State	July 2010	June 2011	Preliminary July 2011
	(dollars per bushel)	(dollars per bushel)	(dollars per bushel)
Illinois .....	(D)	(S)	(S)
Iowa .....	2.27	3.63	3.40
Michigan .....	2.29	4.06	4.00
Minnesota .....	2.05	3.22	3.30
Montana .....	(S)	3.04	(S)
Nebraska .....	2.58	4.41	4.25
New York .....	1.92	(D)	(D)
North Dakota .....	1.84	3.02	(D)
Oregon .....	(S)	(D)	(S)
Pennsylvania .....	2.19	3.76	3.80
South Dakota .....	2.22	3.68	3.70
Texas .....	(S)	(S)	(S)
Wisconsin .....	1.84	3.32	3.32
United States .....	2.11	3.41	3.60

(D) Withheld to avoid disclosing data for individual operations.

(S) Insufficient number of reports to establish an estimate.

### Prices Received for Sorghum Grain – States and United States: July 2011 with Comparisons

State	July 2010	June 2011	Preliminary July 2011
	(dollars per cwt)	(dollars per cwt)	(dollars per cwt)
Arkansas .....	(S)	(S)	(S)
Illinois .....	(D)	11.60	11.50
Kansas .....	5.42	12.00	11.90
Louisiana .....	(D)	(S)	(S)
Missouri .....	5.45	(D)	11.70
Nebraska .....	5.35	12.30	11.30
Oklahoma .....	5.39	12.30	12.20
Texas .....	6.14	10.00	11.30
United States .....	5.97	10.50	11.40

(D) Withheld to avoid disclosing data for individual operations.

(S) Insufficient number of reports to establish an estimate.

**Prices Received for Dry Beans – States and United States: July 2011 with Comparisons**

State	July 2010	June 2011	Preliminary July 2011
	(dollars per cwt)	(dollars per cwt)	(dollars per cwt)
California .....	40.60	49.60	(D)
Colorado .....	30.30	35.10	32.20
Idaho .....	30.00	30.60	31.70
Michigan .....	32.90	40.60	40.00
Minnesota .....	25.50	34.70	(D)
Nebraska .....	28.40	32.90	34.50
North Dakota .....	22.40	30.50	33.20
United States .....	25.80	34.00	35.10

(D) Withheld to avoid disclosing data for individual operations.

**Prices Received for Peanuts (In-Shell) – States and United States: July 2011 with Comparisons**

State	July 2010	June 2011	Preliminary July 2011
	(dollars per pound)	(dollars per pound)	(dollars per pound)
Alabama .....	0.199	0.220	0.224
Florida .....	0.205	0.225	0.229
Georgia .....	0.202	0.223	0.223
Mississippi .....	0.193	0.216	0.224
New Mexico .....	(D)	0.249	0.248
North Carolina .....	0.254	0.254	0.255
Oklahoma .....	0.236	(D)	0.267
South Carolina .....	0.230	0.254	0.238
Texas .....	0.240	0.265	0.272
Virginia .....	0.214	0.254	0.254
United States .....	0.215	0.232	0.236

(D) Withheld to avoid disclosing data for individual operations.

### Prices Received for Sunflower – States and United States: July 2011 with Comparisons

State	July 2010	June 2011	Preliminary July 2011
	(dollars per cwt)	(dollars per cwt)	(dollars per cwt)
Colorado .....	(D)	(S)	(S)
Kansas .....	17.20	(D)	(D)
Minnesota .....	15.60	23.90	23.60
North Dakota .....	15.60	28.30	31.90
South Dakota .....	14.20	30.20	31.30
United States .....	15.40	29.10	31.10

(D) Withheld to avoid disclosing data for individual operations.

(S) Insufficient number of reports to establish an estimate.

### Prices Received for Canola – States and United States: July 2011 with Comparisons

State	July 2010	June 2011	Preliminary July 2011
	(dollars per cwt)	(dollars per cwt)	(dollars per cwt)
Minnesota .....	(D)	(D)	(S)
North Dakota .....	17.50	24.90	25.50
United States .....	17.50	24.80	25.50

(D) Withheld to avoid disclosing data for individual operations.

(S) Insufficient number of reports to establish an estimate.

### Prices Received for Flaxseed – States and United States: July 2011 with Comparisons

State	July 2010	June 2011	Preliminary July 2011
	(dollars per bushel)	(dollars per bushel)	(dollars per bushel)
North Dakota .....	10.70	15.40	15.50
United States .....	10.70	15.40	15.50

## Prices Received for Upland Cotton and Cottonseed – States and United States: July 2011 with Comparisons

[Cottonseed marketing year August - February]

State	Cotton, Upland			Cottonseed		
	July 2010	June 2011	Preliminary July 2011	July 2010	June 2011	Preliminary July 2011
	(dollars per pound)	(dollars per pound)	(dollars per pound)	(dollars per ton)	(dollars per ton)	(dollars per ton)
Alabama .....	0.686	0.797	0.797	(NA)	(NA)	(NA)
Arizona .....	(D)	(D)	(S)	(NA)	(NA)	(NA)
Arkansas .....	0.686	0.797	0.797	(NA)	(NA)	(NA)
California .....	(D)	(D)	(S)	(NA)	(NA)	(NA)
Georgia .....	0.686	0.797	0.797	(NA)	(NA)	(NA)
Louisiana .....	(D)	0.797	0.797	(NA)	(NA)	(NA)
Mississippi .....	0.686	0.797	0.797	(NA)	(NA)	(NA)
North Carolina .....	0.686	0.797	0.797	(NA)	(NA)	(NA)
Tennessee .....	0.686	0.797	0.797	(NA)	(NA)	(NA)
Texas .....	0.628	0.827	(S)	(NA)	(NA)	(NA)
United States .....	0.685	0.814	0.797	(NA)	(NA)	(NA)

(D) Withheld to avoid disclosing data for individual operations.

(NA) Not available.

(S) Insufficient number of reports to establish an estimate.

## Prices Received and Farm Marketings for Upland Cotton and Rice – United States: July 2011 with Comparisons

Item	July 2010	June 2011	Preliminary July 2011
Cotton, Upland			
Average price ..... dollars/pound	0.685	0.814	0.797
Marketings <sup>1</sup> ..... 1,000 bales	667	137	(NA)
Rice, all			
Average price ..... dollars/cwt	12.60	11.80	12.50
Marketings <sup>2</sup> ..... 1,000 cwt	11,952	11,058	(NA)
Rice, long			
Average price ..... dollars/cwt	11.30	11.00	11.20
Marketings <sup>2</sup> ..... 1,000 cwt	9,089	9,568	(NA)
Rice, medium and short			
Average price ..... dollars/cwt	16.90	17.10	17.90
Marketings <sup>2</sup> ..... 1,000 cwt	2,863	1,490	(NA)

(NA) Not available.

<sup>1</sup> Marketings based on a survey of cotton buyers in the major producing States - Alabama, Arizona, Arkansas, California, Georgia, Louisiana, Mississippi, North Carolina, Tennessee, and Texas.

<sup>2</sup> Purchases by private firms and rice (rough equivalent) shipped by cooperatives.



## Prices Received for Hay by Type – States and United States: July 2011 with Comparisons

State	All hay			Alfalfa hay			Other hay		
	July 2010	June 2011	Preliminary July 2011	July 2010	June 2011	Preliminary July 2011	July 2010	June 2011	Preliminary July 2011
	(dollars per ton)	(dollars per ton)	(dollars per ton)	(dollars per ton)	(dollars per ton)	(dollars per ton)	(dollars per ton)	(dollars per ton)	(dollars per ton)
Arizona .....	130.00	226.00	226.00	130.00	230.00	230.00	125.00	170.00	170.00
California .....	113.00	218.00	223.00	121.00	238.00	237.00	90.00	137.00	164.00
Colorado .....	125.00	169.00	178.00	125.00	170.00	180.00	120.00	145.00	155.00
Idaho .....	101.00	189.00	220.00	102.00	191.00	223.00	76.00	145.00	162.00
Illinois .....	122.00	134.00	127.00	128.00	150.00	150.00	85.00	90.00	92.00
Iowa .....	110.00	122.00	117.00	114.00	125.00	121.00	81.00	86.00	83.00
Kansas .....	107.00	141.00	151.00	115.00	150.00	170.00	75.00	90.00	95.00
Kentucky .....	89.00	94.00	108.00	135.00	160.00	175.00	70.00	75.00	80.00
Michigan .....	102.00	97.00	103.00	105.00	100.00	110.00	85.00	80.00	85.00
Minnesota .....	111.00	105.00	113.00	115.00	115.00	120.00	80.00	80.00	90.00
Missouri .....	74.00	71.00	74.00	130.00	140.00	165.00	60.00	60.00	60.00
Montana .....	85.00	93.00	97.00	83.00	94.00	97.00	100.00	85.00	94.00
Nebraska .....	76.00	86.00	93.00	78.00	89.00	99.00	65.00	65.00	76.00
Nevada .....	110.00	173.00	195.00	110.00	175.00	198.00	105.00	135.00	156.00
New Mexico .....	154.00	230.00	235.00	157.00	235.00	240.00	128.00	175.00	179.00
New York .....	112.00	146.00	121.00	130.00	155.00	121.00	100.00	124.00	120.00
North Dakota .....	56.00	56.00	64.00	59.00	61.00	68.00	44.00	44.00	49.00
Ohio .....	122.00	125.00	130.00	145.00	167.00	169.00	90.00	98.00	77.00
Oklahoma .....	101.00	111.00	127.00	135.00	155.00	184.00	77.00	76.00	87.00
Oregon .....	154.00	207.00	236.00	150.00	213.00	226.00	171.00	187.00	258.00
Pennsylvania .....	127.00	156.00	160.00	149.00	175.00	217.00	120.00	147.00	133.00
South Dakota .....	74.00	95.00	102.00	75.00	99.00	106.00	65.00	81.00	81.00
Texas .....	132.00	139.00	150.00	183.00	204.00	220.00	110.00	115.00	120.00
Utah .....	109.00	172.00	196.00	110.00	173.00	200.00	100.00	141.00	155.00
Washington .....	146.00	170.00	185.00	130.00	165.00	180.00	195.00	185.00	200.00
Wisconsin .....	102.00	97.00	104.00	110.00	100.00	110.00	80.00	75.00	75.00
Wyoming .....	87.00	105.00	121.00	89.00	106.00	123.00	80.00	97.00	115.00
United States .....	112.00	163.00	170.00	117.00	180.00	189.00	97.30	113.00	119.00

## Prices Received for Apples – States and United States: July 2011 with Comparisons

[Equivalent packinghouse-door returns for California, Michigan, New York, and Washington. Prices at point of first sale for other States]

State	Apples, fresh use		
	July 2010	June 2011	Preliminary July 2011
	(dollars per pound)	(dollars per pound)	(dollars per pound)
California .....	(NA)	(NA)	(NA)
New York .....	(NA)	0.278	(NA)
Ohio .....	0.470	0.520	0.580
Pennsylvania .....	(NA)	(S)	(S)
Virginia .....	(NA)	(NA)	(NA)
Washington .....	0.299	0.261	0.287
United States .....	0.299	0.263	0.289

(NA) Not available.

(S) Insufficient number of reports to establish an estimate.

## Prices Received for Citrus Fruits by Utilization – States and United States: July 2010

[Net pounds per box: grapefruit in California-67, Florida-85, Texas-80; lemons-76; oranges in California-75, Florida-90, Texas-85; tangelos in Florida-90; tangerines and mandarins in Arizona and California-75, Florida-95]

Commodity, State, and type	FOB packed fresh	Equivalent returns					
		Packinghouse-door			On-tree		
		All	Fresh	Process	All	Fresh	Process
	(dollars per box)	(dollars per box)	(dollars per box)	(dollars per box)	(dollars per box)	(dollars per box)	(dollars per box)
Grapefruit California .....	14.20	4.40	4.40	(S)	1.30	1.30	(S)
Lemons California .....	41.40	18.34	30.71	(D)	12.59	24.96	(D)
Oranges California .....	20.50	9.79	11.98	(D)	7.10	9.29	(D)
Navel and miscellaneous .....	(D)	(D)	(D)	(D)	(D)	(D)	(D)
Valencia .....	20.50	9.79	11.98	(D)	7.10	9.29	(D)
United States .....	20.50	9.79	11.98	(D)	7.10	9.29	(D)

(D) Withheld to avoid disclosing data for individual operations.

(S) Insufficient number of reports to establish an estimate.

## Prices Received for Citrus Fruits by Utilization – States and United States: June 2011

[Net pounds per box: grapefruit in California-80, Florida-85, Texas-80; lemons-80; oranges in California-80, Florida-90, Texas-85; tangelos in Florida-90; tangerines and mandarins in Arizona and California-80, Florida-95]

Commodity, State, and type	FOB packed fresh	Equivalent returns					
		Packinghouse-door			On-tree		
		All	Fresh	Process	All	Fresh	Process
	(dollars per box)	(dollars per box)	(dollars per box)	(dollars per box)	(dollars per box)	(dollars per box)	(dollars per box)
Grapefruit California .....	18.00	11.60	11.60	(D)	9.50	9.50	(D)
Lemons California .....	34.70	18.66	23.80	(D)	12.79	17.93	(D)
Oranges California .....	21.90	10.12	13.26	(D)	7.66	10.85	(D)
Navel and miscellaneous .....	24.10	10.76	15.46	(D)	8.30	13.05	(D)
Valencia .....	21.00	9.82	12.36	(D)	7.38	9.95	(D)
Florida Valencia .....	26.40	10.83	16.40	10.70	8.22	13.70	8.10
United States .....	22.40	10.69	13.62	10.15	8.12	11.18	7.55

(D) Withheld to avoid disclosing data for individual operations.

## Prices Received for Citrus Fruits by Utilization – States and United States: July 2011

[Net pounds per box: grapefruit in California-80, Florida-85, Texas-80; lemons-80; oranges in California-80, Florida-90, Texas-85; tangelos in Florida-90; tangerines and mandarins in Arizona and California-80, Florida-95]

Commodity, State, and type	FOB packed fresh	Equivalent returns					
		Packinghouse-door			On-tree		
		All	Fresh	Process	All	Fresh	Process
	(dollars per box)	(dollars per box)	(dollars per box)	(dollars per box)	(dollars per box)	(dollars per box)	(dollars per box)
Grapefruit California .....	16.70	10.30	10.30	(D)	8.20	8.20	(D)
Lemons California .....	39.20	21.13	28.30	(D)	15.26	22.43	(D)
Oranges California							
Valencia .....	20.90	10.19	12.26	(D)	7.74	9.85	(D)
United States .....	20.90	10.19	12.26	(D)	7.74	9.85	(D)

(D) Withheld to avoid disclosing data for individual operations.

## Prices Received for Potatoes – States and United States: July 2011 with Comparisons

State	July 2010	June 2011	Preliminary July 2011
	(dollars per cwt)	(dollars per cwt)	(dollars per cwt)
California			
Spring <sup>1</sup> .....	14.40	19.60	21.60
Fall .....	11.90	10.60	11.90
All <sup>2</sup> .....	14.30	19.20	21.30
Colorado			
Fresh <sup>3</sup> .....	8.80	16.80	(D)
All <sup>2</sup> .....	7.90	14.10	17.40
Florida .....	(S)	13.10	(S)
Idaho			
Fresh <sup>3</sup> .....	5.30	12.00	(D)
Processing .....	7.60	7.90	(D)
All <sup>2</sup> .....	6.20	9.55	10.40
Maine .....	(D)	10.30	(D)
Michigan .....	10.70	(S)	(S)
Minnesota .....	6.95	5.95	(D)
New York .....	(S)	(D)	(S)
North Carolina .....	11.10	11.80	11.50
North Dakota			
Fresh <sup>3</sup> .....	(S)	(D)	(D)
Processing .....	(D)	7.80	(D)
All <sup>2</sup> .....	(D)	8.00	7.10
Oregon .....	7.45	10.50	10.70
Texas .....	(S)	(S)	(S)
Virginia .....	12.10	16.30	16.30
Washington			
Processing .....	8.70	7.60	(D)
All <sup>2</sup> .....	9.20	9.15	10.00
Wisconsin			
Fresh <sup>3</sup> .....	(D)	(D)	(S)
Processing .....	(D)	(D)	(S)
All <sup>2</sup> .....	(D)	(D)	(S)
United States			
Fresh <sup>3</sup> .....	9.60	17.49	(D)
Processing .....	8.01	8.21	(D)
All <sup>2</sup> .....	8.83	11.59	13.46

(D) Withheld to avoid disclosing data for individual operations.

(S) Insufficient number of reports to establish an estimate.

<sup>1</sup> Beginning in 2010, winter and summer potatoes included in spring potatoes.

<sup>2</sup> Average price of potatoes sold for all uses, including table stock, processing, seed, and livestock feed.

<sup>3</sup> Fresh market prices only. Includes table stock prices.

## Prices Received for All Milk – States and United States: July 2011 with Comparisons

[Before deduction for hauling. Includes quality, quantity, and other premiums. Excludes hauling subsidies]

State	July 2010		June 2011		Preliminary July 2011	
	Price (dollars per cwt)	Fat test (percent)	Price (dollars per cwt)	Fat test (percent)	Price (dollars per cwt)	Fat test (percent)
Arizona .....	15.90	3.41	21.00	3.49	21.70	3.48
California .....	14.69	3.51	20.42	3.62	20.70	3.59
Colorado .....	15.90	3.31	20.80	3.47	21.90	3.43
Florida .....	21.00	3.51	25.30	3.60	26.00	3.61
Idaho .....	14.60	3.42	19.30	3.54	21.00	3.47
Illinois .....	16.40	3.55	21.30	3.58	22.60	3.55
Indiana .....	17.20	3.50	21.50	3.50	22.60	3.48
Iowa .....	16.00	3.47	21.20	3.57	22.50	3.54
Kansas .....	16.60	3.45	21.80	3.60	23.00	3.57
Michigan .....	16.70	3.44	21.60	3.54	22.80	3.52
Minnesota .....	15.30	3.54	21.20	3.63	22.70	3.59
Missouri .....	16.50	3.48	21.90	3.55	22.90	3.55
New Mexico .....	15.40	3.37	20.80	3.45	21.80	3.45
New York .....	17.40	3.54	22.40	3.60	23.10	3.58
Ohio .....	17.20	3.54	22.40	3.62	23.40	3.60
Oregon .....	16.60	3.60	22.10	3.67	22.80	3.64
Pennsylvania .....	18.10	3.50	22.90	3.60	23.80	3.60
Texas .....	16.70	3.56	21.60	3.68	22.50	3.68
Utah .....	15.80	3.46	20.50	3.58	21.30	3.55
Vermont .....	17.60	3.63	22.70	3.68	23.20	3.65
Virginia .....	19.60	3.42	24.00	3.56	24.80	3.54
Washington .....	15.80	3.60	21.70	3.67	22.40	3.64
Wisconsin .....	15.20	3.47	20.70	3.60	22.10	3.55
United States .....	15.90	3.49	21.20	3.59	22.10	3.56

## Prices Received for Milk Cows – States and United States: July 2011 with Comparisons

[Animals sold for dairy herd replacement only. Prices estimated in January, April, July, and October]

State	July 2010 (dollars per head)	April 2011 (dollars per head)	July 2011 (dollars per head)
Arizona .....	1,300	1,450	1,500
California .....	1,300	1,300	1,400
Colorado .....	1,350	1,450	1,550
Florida .....	1,360	1,480	1,540
Idaho .....	1,350	1,450	1,500
Illinois .....	1,350	1,430	1,440
Indiana .....	1,260	1,450	1,500
Iowa .....	1,250	1,430	1,470
Kansas .....	1,250	1,400	1,400
Michigan .....	1,400	1,550	1,550
Minnesota .....	1,270	1,410	1,480
Missouri .....	1,150	1,280	1,290
New Mexico .....	1,320	1,380	1,460
New York .....	1,300	1,400	1,450
Ohio .....	1,300	1,470	1,520
Oregon .....	1,320	1,390	1,450
Pennsylvania .....	1,400	1,450	1,550
Texas .....	1,230	1,400	1,450
Utah .....	1,250	1,300	1,340
Vermont .....	1,400	1,500	1,600
Virginia .....	1,320	1,410	1,460
Washington .....	1,300	1,400	1,450
Wisconsin .....	1,400	1,560	1,570
United States .....	1,320	1,420	1,480

## Commodity Parity Prices and Price as Percent of Parity Price – United States: July 2011 with Comparisons

[Parity prices are computed under the provisions of Title III, Subtitle a, Section 301 (a) of the Agricultural Adjustment Act of 1938 as amended by the Agricultural Acts of 1948, 1949, and 1956. See January *Agricultural Prices* for details on adjusted base price and parity price computations. Parity data not available for blank cells. Primary source of data for livestock and milk prices is United States Department of Agriculture's Agricultural Marketing Service]

Commodity and unit	Adjusted base price	Parity price			Price as percent of parity		
		July 2010	June 2011	July 2011	July 2010	June 2011	July 2011
	(dollars)	(dollars)	(dollars)	(dollars)	(percent)	(percent)	(percent)
<b>Basic commodities</b>							
All wheat .....bushel	0.608	14.50	16.50	16.60	31	45	43
Rice .....cwt	1.63	33.50	44.20	44.60	38	27	28
Corn .....bushel	0.384	9.02	10.40	10.50	39	61	62
<b>Cotton</b>							
Upland ..... pound	0.071	2.04	1.93	1.94	34	42	41
American Pima ..... pound	0.129	3.20	3.50	3.53	37	33	33
Peanuts ..... pound	0.027	0.703	0.733	0.739	31	32	32
<b>Designated nonbasic</b>							
All milk, to plants <sup>1</sup> .....cwt	1.82	44.40	49.40	49.80	37	45	46
Honey, extracted <sup>2</sup> ..... pound	0.134	3.08	3.64	3.67	47	40	39
<b>Wool and mohair</b>							
Wool ..... pound	0.092	2.06	2.50	2.52	38	46	46
Mohair ..... pound	0.324	8.32	8.79	8.87	32	40	39
<b>Other nonbasic</b>							
Apples, fresh <sup>3</sup> ..... pound	0.033	0.800	0.895	0.904	37	29	32
Barley .....bushel	0.425	10.10	11.50	11.60	38	41	43
Canola .....cwt	1.740	39.50	47.20	47.60	44	53	54
Cottonseed ..... ton	15.40	366.00	418.00	422.00	42	41	41
Dry edible beans .....cwt	2.92	69.80	79.20	79.90	37	43	44
Flaxseed .....bushel	1.020	23.60	27.70	27.90	45	56	56
Oats .....bushel	0.250	5.92	6.78	6.85	36	50	53
Potatoes .....cwt	0.834	20.20	22.60	22.80	44	51	59
Sorghum grain .....cwt	0.675	15.90	18.30	18.50	38	57	62
Soybeans .....bushel	0.948	22.20	25.70	26.00	44	51	52
Sunflower, all .....cwt	1.91	44.90	51.80	52.30	34	56	59
<b>Citrus (equivalent on-tree)</b>							
Grapefruit .....box	0.663	15.70	18.00	18.20	8	53	45
Lemons .....box	1.36	33.50	36.90	37.20	38	35	41
Oranges .....box	0.686	16.00	18.60	18.80	44	44	41
Tangerines .....box	1.43	33.70	38.80	39.20	139	92	91
<b>Livestock and poultry</b>							
Beef cattle .....cwt	10.10	247.00	274.00	277.00	37	39	40
Calves .....cwt	14.10	349.00	383.00	386.00	35	35	37
Hogs .....cwt	5.51	134.00	149.00	151.00	44	47	47
Lambs .....cwt	11.70	279.00	317.00	320.00	44	60	(NA)
Sheep .....cwt	4.38	105.00	119.00	120.00	42	43	(NA)
Eggs <sup>1</sup> .....dozen	0.091	2.21	2.47	2.49	38	46	42
Turkeys, live ..... pound	0.056	1.360	1.520	1.530	48	46	45

(NA) Not available.

<sup>1</sup> Seasonally adjusted price as percentage of parity price.

<sup>2</sup> Wholesale extracted. Adjusted base price derived from state annual averages prices weighted by production. For 1982 through 1985 the national averages are the support prices.

<sup>3</sup> Equivalent packinghouse-door returns for California, New York (apples only), Oregon (except peaches), and Washington. Price at point of first sale for other states.



## Commodity Parity Prices – United States: July 2011 with Comparisons

[Parity prices are computed under the provisions of Title III, Subtitle a, Section 301 (a) of the Agricultural Adjustment Act of 1938 as amended by the Agricultural Acts of 1948, 1949, and 1956. See January *Agricultural Prices* for details on adjusted base price and parity price computations]

Commodity and unit	Adjusted base price	Parity price		
		July 2010	June 2011	July 2011
	(dollars)	(dollars)	(dollars)	(dollars)
<b>Field crops and miscellaneous</b>				
Hops .....	0.307	7.28	8.33	8.41
Mustard seed .....	2.66	62.80	72.20	72.80
Rapeseed .....	2.14	49.50	58.10	58.60
Rye .....	0.492	11.50	13.30	13.50
Safflower .....	1.94	47.30	52.60	53.10
Spearmint oil .....	1.44	34.40	39.10	39.40
Sweetpotatoes .....	2.27	55.00	61.60	62.20
<b>Tobacco</b>				
Flue-cured, 11-14 .....	0.208	5.24	5.64	5.70
Fire-cured, 21-23 .....	0.293	7.23	7.95	8.02
Burley, 31 .....	0.214	5.50	5.81	5.86
Maryland, 32 .....	0.183	4.51	4.96	5.01
Dark air-cured, 35-37 .....	0.261	6.50	7.08	7.15
Pennsylvania seedleaf, 41 .....	0.191	4.70	5.18	5.23
Cigar binder, 51 .....	0.675	15.80	18.30	18.50
<b>Noncitrus fruit</b>				
Apples, processing <sup>1</sup> .....	16.10	405.00	437.00	441.00
Apricots				
Fresh <sup>2</sup> .....	114.00	2,620.00	3,090.00	3,120.00
Dried (California) .....	262.00	6,140.00	7,110.00	7,170.00
Avocados <sup>2</sup> .....	198.00	5,120.00	5,370.00	5,420.00
Cherries				
Sweet .....	210.00	4,970.00	5,700.00	5,750.00
Tart .....	0.034	0.849	0.922	0.931
Cranberry <sup>3</sup> .....	4.89	115.00	133.00	134.00
Dates <sup>2</sup> (California) .....	183.00	4,780.00	4,960.00	5,010.00
<b>Grapes</b>				
Raisin variety .....	117.00	2,670.00	3,170.00	3,200.00
Other dried .....	65.40	1,620.00	1,770.00	1,790.00
Kiwifruit .....	94.40	2,310.00	2,560.00	2,580.00
Nectarines, fresh <sup>2</sup> (California) .....	55.30	1,340.00	1,500.00	1,510.00
Olives, canning <sup>3</sup> (California) .....	87.40	2,300.00	2,370.00	2,390.00

See footnote(s) at end of table.

--continued

## Commodity Parity Prices – United States: July 2011 with Comparisons (continued)

[Parity prices are computed under the provisions of Title III, Subtitle a, Section 301 (a) of the Agricultural Adjustment Act of 1938 as amended by the Agricultural Acts of 1948, 1949, and 1956. See January *Agricultural Prices* for details on adjusted base price and parity price computations]

Commodity and unit	Adjusted base price	Parity price			
		July 2010	June 2011	July 2011	
	(dollars)	(dollars)	(dollars)	(dollars)	
Noncitrus fruit - continued					
Papayas (Hawaii) .....	pound	0.046	1.12	1.11	1.26
Peaches					
Fresh <sup>4</sup> .....	ton	83.00	2,010.00	2,010.00	2,270.00
Dried (California) .....	ton	57.30	1,570.00	1,570.00	1,570.00
Processing, excludes dried					
Clingstone <sup>3</sup> (California) .....	ton	33.70	817.00	816.00	923.00
Pears					
Fresh <sup>4</sup> .....	ton	55.60	1,330.00	1,330.00	1,520.00
Dried <sup>1</sup> (California) .....	ton	178.00	4,200.00	4,190.00	4,870.00
Plums (California)					
Fresh, equivalent on-tree .....	ton	60.20	1,480.00	1,470.00	1,650.00
Prunes, dried <sup>1</sup> (California) .....	ton	147.00	3,540.00	3,530.00	4,020.00
Prunes and plums					
Fresh, excludes California <sup>5</sup> .....	ton	63.80	1,530.00	1,530.00	1,750.00
Processing, excludes dried <sup>1</sup> .....	ton	25.70	643.00	641.00	704.00
Tree nuts <sup>6</sup>					
Almonds .....	pound	0.209	4.90	4.89	5.72
Hazelnuts .....	ton	183.00	4,150.00	4,140.00	5,010.00
Pistachios .....	pound	0.194	4.61	4.60	5.31
Walnuts .....	ton	177.00	4,170.00	4,160.00	4,850.00
Vegetables, fresh <sup>7</sup>					
Carrots <sup>8</sup> .....	cwt	2.61	61.60	61.50	71.50
Cauliflower <sup>8</sup> .....	cwt	4.26	105.00	104.00	117.00
Celery <sup>8</sup> .....	cwt	2.05	50.70	50.60	56.10
Honeydew melons .....	cwt	2.17	56.00	55.90	59.40
Lettuce .....	cwt	2.35	57.00	56.90	64.30
Onions <sup>8</sup> .....	cwt	1.57	36.90	36.80	43.00
Tomatoes .....	cwt	4.75	114.00	113.00	130.00

<sup>1</sup> Equivalent returns at processing plant door.

<sup>2</sup> Equivalent returns at packinghouse door.

<sup>3</sup> Equivalent returns for bulk fruit at first delivery point.

<sup>4</sup> Equivalent packinghouse-door returns for California, New York (apples only), Oregon (except peaches), and Washington. Price at point of first sale for other states.

<sup>5</sup> Based on "as sold" prices for fresh fruit in all states.

<sup>6</sup> Prices In-Shell basis except almonds which are shelled basis.

<sup>7</sup> FOB shipping point prices.

<sup>8</sup> Includes some processing.

## Marketing Year for Specified Commodities

**Sugarbeets:** September 1 to August 31 for United States and all estimating States. Estimating States are California, Colorado, Idaho, Michigan, Minnesota, Montana, Nebraska, North Dakota, Oregon, and Wyoming.

**Sugarcane:** October 1 to September 30 for United States and all estimating States. Estimating States are Florida, Hawaii, Louisiana, and Texas.

## Prices Received for Sugar Crops, Market Year Average and Value of Production – United States: 2010

[Final prices and value of production by States will be published in "Crop Values" February 2012]

	Sugarbeets <sup>1</sup>		Sugarcane <sup>2</sup>		
	Price	Value of production	For sugar		Sugar and seed
			Price	Value of production	Value of production
	(dollars) (per ton)	(1,000 dollars)	(dollars) (per ton)	(1,000 dollars)	(1,000 dollars)
United States .....	61.70	1,968,389	41.70	1,069,956	1,141,077

<sup>1</sup> Includes California, Colorado, Idaho, Michigan, Minnesota, Montana, Nebraska, North Dakota, Oregon, and Wyoming.

<sup>2</sup> Includes Florida, Hawaii, Louisiana, and Texas.

## **Seasonal Adjustment Factors for All Eggs and All Milk**

Base prices used in calculating parity prices are averages of prices received by farmers for several years; therefore, any seasonal variation is largely averaged out. To facilitate comparisons with parity prices, monthly prices for all eggs and all milk are adjusted for seasonal variation.

The seasonally adjusted price is calculated by dividing the monthly price by the adjustment factor. The factors are based on prices for the years 1999-2010. Seasonal adjustment factors are published monthly in the United States table with the seasonal adjusted prices on page 11 of this publication.

## Prices Received Indexes Monthly and Annual Average – United States: 2007-2011

[Revised historical price indexes for months not shown are available at [www.nass.usda.gov](http://www.nass.usda.gov). Blank cells indicate estimation period has not begun]

Year	January	February	March	April	May	June	July	August	September	October	November	December	Average <sup>1</sup>
All products 1910-1914 = 100													
2007 ...	778	806	835	847	857	870	880	884	890	896	900	906	862
2008 ...	917	926	929	926	962	1005	1011	990	980	955	899	858	947
2009 ...	882	799	800	820	820	842	823	798	797	848	859	860	829
2010 ...	860	838	868	856	874	859	878	897	907	955	976	966	895
2011 ...	1052	1082	1099	1115	1109	1137	1151						1106
All products 1990-1992 = 100													
2007 ...	123	127	132	134	135	137	139	139	140	141	142	143	136
2008 ...	145	146	146	146	152	158	159	156	154	151	142	135	149
2009 ...	139	126	126	129	129	133	130	126	126	134	135	136	131
2010 ...	136	132	137	135	138	135	138	141	143	151	154	152	141
2011 ...	166	170	173	176	175	179	181						174
All crops 1910-1914 = 100													
2007 ...	651	684	706	707	690	700	696	705	707	739	740	749	706
2008 ...	787	814	829	839	857	909	903	878	862	831	784	742	836
2009 ...	797	725	730	747	739	779	737	718	700	747	759	741	743
2010 ...	735	717	743	721	730	714	727	750	753	808	850	839	757
2011 ...	933	990	978	993	1002	1030	1025						993
All crops 1990-1992 = 100													
2007 ...	131	138	142	143	139	141	140	142	143	149	149	151	142
2008 ...	159	164	167	169	173	183	182	177	174	168	158	150	169
2009 ...	161	146	147	151	149	157	149	145	141	151	153	150	150
2010 ...	148	145	150	145	147	144	147	151	152	163	172	169	153
2011 ...	188	200	197	200	202	208	207						200

See footnote(s) at end of table.

--continued

**Prices Received Indexes Monthly and Annual Average – United States: 2007-2011 (continued)**

[Revised historical price indexes for months not shown are available at [www.nass.usda.gov](http://www.nass.usda.gov). Blank cells indicate estimation period has not begun]

Year	January	February	March	April	May	June	July	August	September	October	November	December	Average <sup>1</sup>
Food grains 1910-1914 = 100													
2007 ...	481	489	491	504	506	531	547	587	683	752	730	775	590
2008 ...	787	927	971	954	895	809	765	813	789	736	725	672	820
2009 ...	698	649	638	633	633	616	559	537	509	516	547	548	590
2010 ...	559	556	547	525	502	459	487	574	599	600	622	668	558
2011 ...	685	732	739	773	798	769	753						750
Food grains 1990-1992 = 100													
2007 ...	152	154	155	159	160	168	173	185	216	237	230	244	186
2008 ...	248	293	306	301	283	255	241	257	249	232	229	212	259
2009 ...	220	205	201	200	200	194	177	170	161	163	172	173	186
2010 ...	177	175	173	166	158	145	154	181	189	189	196	211	176
2011 ...	216	231	233	244	252	243	238						237
Feed grains & hay 1910-1914 = 100													
2007 ...	482	536	539	537	558	561	540	534	534	528	548	593	541
2008 ...	619	689	713	768	809	824	803	808	779	686	668	640	734
2009 ...	671	604	602	599	612	604	551	527	511	553	560	552	579
2010 ...	564	544	546	527	542	531	540	560	617	661	693	722	587
2011 ...	745	827	818	936	944	933	952						879
Feed grains & hay 1990-1992 = 100													
2007 ...	135	150	151	151	156	157	151	150	150	148	154	166	152
2008 ...	173	193	200	215	227	231	225	227	218	193	187	179	206
2009 ...	188	169	169	168	172	169	154	148	143	155	157	155	162
2010 ...	158	153	153	148	152	149	151	157	173	185	194	202	165
2011 ...	209	232	230	262	265	262	267						247

See footnote(s) at end of table.

--continued

## Prices Received Indexes Monthly and Annual Average – United States: 2007-2011 (continued)

[Revised historical price indexes for months not shown are available at [www.nass.usda.gov](http://www.nass.usda.gov). Blank cells indicate estimation period has not begun]

Year	January	February	March	April	May	June	July	August	September	October	November	December	Average <sup>1</sup>
Cotton 1910-1914 = 100													
2007 ...	418	401	393	392	372	384	383	432	440	470	486	504	423
2008 ...	521	533	533	554	547	542	560	455	517	498	464	451	515
2009 ...	389	349	342	378	380	381	369	419	450	495	504	537	416
2010 ...	515	550	550	565	564	580	580	653	632	661	687	685	602
2011 ...	696	785	697	739	688	689	675						710
Cotton 1990-1992 = 100													
2007 ...	82	78	77	76	73	75	75	84	86	92	95	98	82
2008 ...	101	104	104	108	107	106	109	89	101	97	90	88	100
2009 ...	76	68	67	74	74	74	72	82	88	97	98	105	81
2010 ...	100	107	107	110	110	113	113	127	123	129	134	133	117
2011 ...	136	153	136	144	134	134	132						138
Tobacco 1910-1914 = 100													
2007 ...	1391	1391	1391	1391	1391	1391	1391	1391	1391	1391	1391	1395	1392
2008 ...	1395	1395	1395	1395	1395	1395	1395	1395	1395	1395	1395	1569	1409
2009 ...	1569	1569	1569	1569	1569	1569	1569	1569	1569	1569	1569	1563	1568
2010 ...	1563	1563	1563	1563	1563	1563	1563	1563	1563	1563	1563	1491	1557
2011 ...	1491	1491	1491	1491	1491	1491	1491						1491
Tobacco 1990-1992 = 100													
2007 ...	92	92	92	92	92	92	92	92	92	92	92	92	92
2008 ...	92	92	92	92	92	92	92	92	92	92	92	104	93
2009 ...	104	104	104	104	104	104	104	104	104	104	104	103	104
2010 ...	103	103	103	103	103	103	103	103	103	103	103	99	103
2011 ...	99	99	99	99	99	99	99						70

See footnote(s) at end of table.

--continued

**Prices Received Indexes Monthly and Annual Average – United States: 2007-2011 (continued)**

[Revised historical price indexes for months not shown are available at [www.nass.usda.gov](http://www.nass.usda.gov). Blank cells indicate estimation period has not begun]

Year	January	February	March	April	May	June	July	August	September	October	November	December	Average <sup>1</sup>
Oilseeds 1910-1914 = 100													
2007 ...	625	677	684	677	700	741	745	757	719	788	898	969	748
2008 ...	974	1150	1125	1180	1190	1292	1308	1248	975	951	949	943	1107
2009 ...	981	945	899	960	1048	1113	1055	1055	867	884	905	942	971
2010 ...	951	920	918	925	919	923	956	976	816	918	1018	1092	944
2011 ...	1132	1248	1251	1288	1296	1301	1319						1262
Oilseeds 1990-1992 = 100													
2007 ...	114	124	125	124	128	135	136	138	131	144	164	177	137
2008 ...	178	210	205	215	217	236	239	228	178	174	173	172	202
2009 ...	179	172	164	175	191	203	192	192	158	161	165	172	177
2010 ...	173	168	167	169	168	168	174	178	149	168	186	199	172
2011 ...	207	228	228	235	236	237	241						230
Fruits & nuts 1910-1914 = 100													
2007 ...	1097	1125	1066	1036	1061	1058	1021	1068	1127	1226	1255	1093	1103
2008 ...	1062	1047	1040	957	1067	1054	1063	1067	1114	1079	1022	883	1038
2009 ...	846	851	859	856	898	912	950	974	1036	1039	1034	946	933
2010 ...	906	987	991	890	971	990	1008	1055	1102	1117	1226	1008	1021
2011 ...	1046	988	1008	1027	1035	1108	990						1029
Fruits & nuts 1990-1992 = 100													
2007 ...	157	161	153	148	152	152	146	153	161	176	180	157	158
2008 ...	152	150	149	137	153	151	152	153	160	155	146	127	149
2009 ...	121	122	123	123	129	131	136	139	148	149	148	136	134
2010 ...	130	141	142	127	139	142	144	151	158	160	176	144	146
2011 ...	150	141	144	147	148	159	142						147

See footnote(s) at end of table.

--continued



## Prices Received Indexes Monthly and Annual Average – United States: 2007-2011 (continued)

[Revised historical price indexes for months not shown are available at [www.nass.usda.gov](http://www.nass.usda.gov). Blank cells indicate estimation period has not begun]

Year	January	February	March	April	May	June	July	August	September	October	November	December	Average <sup>1</sup>
Commercial vegetables 1910-1914 = 100													
2007 ...	1268	1179	1375	1294	1030	948	897	1047	1111	1403	994	988	1128
2008 ...	985	846	962	1157	1100	1091	1022	1030	1248	1278	1109	1078	1076
2009 ...	1239	992	1077	1256	1010	1106	967	1001	963	1196	1544	1489	1153
2010 ...	1060	1054	1501	1357	1226	1087	1069	1107	1061	1018	1311	1106	1163
2011 ...	1380	1958	1557	1172	1233	1138	1066						1358
Commercial vegetables 1990-1992 = 100													
2007 ...	177	165	192	181	144	133	126	147	155	196	139	138	158
2008 ...	138	118	135	162	154	153	143	144	175	179	155	151	151
2009 ...	173	139	151	176	141	155	135	140	135	167	216	208	161
2010 ...	148	147	210	190	172	152	150	155	149	142	183	155	163
2011 ...	193	274	218	164	173	159	149						190
Potatoes & dry beans 1910-1914 = 100													
2007 ...	619	647	689	744	686	671	702	594	531	525	596	644	637
2008 ...	667	699	705	756	820	901	957	941	795	710	792	826	797
2009 ...	831	791	819	824	812	821	769	756	718	647	661	682	761
2010 ...	663	662	663	743	745	714	756	689	652	605	704	737	694
2011 ...	767	799	916	954	959	993	1129						931
Potatoes & dry beans 1990-1992 = 100													
2007 ...	122	128	136	147	135	132	139	117	105	104	118	127	126
2008 ...	132	138	139	149	162	178	189	186	157	140	156	163	157
2009 ...	164	156	162	163	160	162	152	149	142	128	130	135	150
2010 ...	131	131	131	147	147	141	149	136	129	119	139	145	137
2011 ...	151	158	181	188	189	196	223						184

See footnote(s) at end of table.

--continued

## Prices Received Indexes Monthly and Annual Average – United States: 2007-2011 (continued)

[Revised historical price indexes for months not shown are available at [www.nass.usda.gov](http://www.nass.usda.gov). Blank cells indicate estimation period has not begun]

Year	January	February	March	April	May	June	July	August	September	October	November	December	Average <sup>1</sup>
	Other crops 1910-1914 = 100												
2007 ...	582	582	582	582	582	582	585	585	583	582	582	582	582
2008 ...	602	602	602	602	602	602	603	603	607	607	607	607	604
2009 ...	607	607	607	607	607	607	607	607	609	613	613	613	609
2010 ...	613	613	613	613	613	613	613	613	622	636	636	636	619
2011 ...	635	635	635	635	635	635	635	635					635
	Other crops 1990-1992 = 100												
2007 ...	118	118	118	118	118	118	119	119	118	118	118	118	118
2008 ...	122	122	122	122	122	122	123	123	123	123	123	123	123
2009 ...	123	123	123	123	123	123	123	123	124	125	125	125	124
2010 ...	124	124	124	124	124	124	124	124	126	129	129	129	126
2011 ...	129	129	129	129	129	129	129	129					129
	Food commodities 1990-1992 = 100												
2007 ...	123	127	132	135	136	138	140	142	143	144	146	146	138
2008 ...	145	144	144	143	148	155	156	153	152	149	139	133	147
2009 ...	134	122	122	127	126	130	128	124	125	132	135	137	128
2010 ...	134	131	137	135	138	135	138	142	141	146	149	147	139
2011 ...	158	163	168	167	165	170	172						166

See footnote(s) at end of table.

--continued

**Prices Received Indexes Monthly and Annual Average – United States: 2007-2011 (continued)**

[Revised historical price indexes for months not shown are available at [www.nass.usda.gov](http://www.nass.usda.gov). Blank cells indicate estimation period has not begun]

Year	January	February	March	April	May	June	July	August	September	October	November	December	Average <sup>1</sup>
Livestock and products 1910-1914 = 100													
2007 ...	868	906	942	971	1010	1025	1052	1048	1056	1003	1026	1024	994
2008 ...	988	1004	990	978	1026	1048	1059	1053	1021	975	944	911	1000
2009 ...	878	836	832	861	863	854	859	833	831	843	882	917	857
2010 ...	930	937	974	978	1004	987	1008	1024	1028	1024	1030	1026	996
2011 ...	1052	1104	1167	1195	1163	1171	1195						1149
Livestock and products 1990-1992 = 100													
2007 ...	113	118	123	127	132	134	137	137	138	131	134	134	130
2008 ...	129	131	129	128	134	137	138	137	133	127	123	119	130
2009 ...	115	109	109	112	113	111	112	109	108	110	115	120	112
2010 ...	121	122	127	128	131	129	132	134	134	134	134	134	130
2011 ...	137	144	152	156	152	153	156						150
Meat animals 1910-1914 = 100													
2007 ...	1116	1163	1205	1245	1262	1227	1220	1247	1234	1204	1174	1153	1204
2008 ...	1132	1171	1144	1157	1256	1252	1285	1325	1263	1178	1114	1058	1195
2009 ...	1075	1067	1067	1120	1117	1078	1086	1060	1050	1048	1064	1067	1075
2010 ...	1119	1156	1218	1300	1325	1260	1274	1308	1308	1261	1243	1295	1256
2011 ...	1421	1462	1539	1607	1537	1490	1555						1516
Meat animals 1990-1992 = 100													
2007 ...	110	114	118	122	124	121	120	122	121	118	115	113	118
2008 ...	111	115	112	114	123	123	126	130	124	116	109	104	117
2009 ...	106	105	105	110	110	106	107	104	103	103	104	105	106
2010 ...	110	113	120	128	130	124	125	128	128	124	122	127	123
2011 ...	140	144	151	158	151	146	153						149

See footnote(s) at end of table.

--continued

## Prices Received Indexes Monthly and Annual Average – United States: 2007-2011 (continued)

[Revised historical price indexes for months not shown are available at [www.nass.usda.gov](http://www.nass.usda.gov). Blank cells indicate estimation period has not begun]

Year	January	February	March	April	May	June	July	August	September	October	November	December	Average <sup>1</sup>
	Dairy products 1910-1914 = 100												
2007 ...	892	917	960	1015	1108	1243	1329	1329	1341	1317	1348	1323	1177
2008 ...	1261	1175	1114	1114	1132	1188	1194	1132	1120	1095	1052	954	1128
2009 ...	818	714	720	732	714	695	695	745	800	880	948	1015	790
2010 ...	991	972	911	898	923	948	978	1028	1089	1138	1101	1028	1000
2011 ...	1028	1175	1255	1206	1206	1304	1360						1219
	Dairy products 1990-1992 = 100												
2007 ...	111	114	119	126	138	155	165	165	167	164	168	165	146
2008 ...	157	146	139	139	141	148	149	141	139	136	131	119	140
2009 ...	102	89	90	91	89	87	87	93	100	109	118	126	98
2010 ...	123	121	113	112	115	118	122	128	136	142	137	128	124
2011 ...	128	146	156	150	150	162	169						152
	Poultry & eggs 1910-1914 = 100												
2007 ...	351	372	384	384	397	392	415	404	417	377	414	407	393
2008 ...	417	435	445	415	418	433	431	423	417	417	418	416	424
2009 ...	419	395	384	394	399	412	407	372	362	357	384	400	390
2010 ...	422	412	452	409	420	424	434	424	412	426	457	433	427
2011 ...	395	400	421	444	435	435	422						422
	Poultry & eggs 1990-1992 = 100												
2007 ...	125	132	137	137	141	140	148	144	149	134	147	145	140
2008 ...	148	155	158	148	149	154	154	151	149	149	149	148	151
2009 ...	149	141	137	140	142	147	145	133	129	127	137	142	139
2010 ...	150	147	161	146	150	151	155	151	147	152	163	154	152
2011 ...	141	142	150	158	155	155	150						150

<sup>1</sup> Simple average required for parity regulations. Weighted 1990-1992 average equals 100. Average is year-to-date for current year.

## Reliability of Prices Received Estimates

**Definition:** Prices received represent sales from producers to first buyers. They include all grades and qualities. The average commodity price from the survey multiplied by the total quantity marketed theoretically should give the total cash receipts for the commodity.

**Survey procedures:** Primary sales data used to determine grain prices were obtained from probability samples of about 1900 mills and elevators. These procedures ensure that virtually all grain moving into commercial channels has a chance of being included in the survey. Generally, States surveyed account for 90 percent or more of total United States production. Livestock prices are obtained from packers, stockyards, auctions, dealers, and market check data from AMS-USDA, private marketing organizations, and state commodity groups and agencies. Inter-farm sales of grain and livestock are not included since they represent very small percentages of the total marketings. Grain marketed for seed is also excluded. Fruit and vegetable prices are obtained from sample surveys and market check data from AMS-USDA, private marketing organizations, state agencies, and universities.

**Summary and estimation procedures:** Survey quantities sold are expanded by strata to state levels and used to weight average strata prices to a state average. State prices are then weighted to a United States price based on expanded marketings. Recommendations are prepared by the State Field Offices and reviewed by the Agricultural Statistics Board in Washington, D.C. State recommendations are reviewed for reasonableness with survey data, other States, and recent historic estimates.

**Revisions:** For most items, the current month's preliminary price represents a 3-5 day period around the 15th of the month. Previous month's prices represent actual dollars received for quantities sold during the entire month. Revisions are published in monthly issues of Agricultural Prices.

**Reliability:** United States price estimates based on probability surveys generally have a sampling error of less than one percent for the major commodities such as corn, wheat, soybeans, cotton, and rice. Current methods of summarization for non-probability commodities are not designed directly to calculate sampling errors. However, analytical measures approximate the United States relative sampling errors at around five percent. Any nonsampling errors are attributed to such things as the inability to obtain correct information, differences in interpreting questions or definitions, mistakes in coding or processing the data, etc. Efforts are made at each step in the survey process to minimize these nonsampling errors.

## Prices Paid by Farmers

The July Index of Prices Paid for Commodities and Services, Interest, Taxes, and Farm Wage Rates (PPITW) at 206 (1990-1992=100), is up 1.0 percent from June 2011 and 14 percent from July 2010.

**Production index:** The July index, at 218, increased 1.4 percent from last month and 17 percent from last year. Higher prices in July for feeder cattle, nitrogen, and complete feeds more than offset lower prices for diesel, supplements, and gasoline.

**Feed:** The July index, at 235, increased 2.2 percent from June and 37 percent from last July. Since June, higher prices for complete feeds, hay & forages, concentrates, and feed grains more than offset lower supplement prices.

**Livestock and poultry:** The July index, at 155, increased 6.2 percent from last month and 15 percent from last year. Since June, prices are higher for feeder cattle, feeder pigs, and milk cows. The July feeder cattle price, at \$135.50 per cwt, is up \$8.70 from the June price. July feeder pigs averaged \$119.00 per cwt, up \$8.00 from June.

**Fertilizer:** The July index, at 337, is up 1.8 percent from June and is 36 percent above July a year ago. Since June, prices are higher for nitrogen, potash & phosphate, and mixed fertilizer.

**Chemicals:** The July index, at 144, is unchanged from June but decreased 0.7 percent from last July. Compared with last month, prices are slightly higher for herbicides and insecticides.

**Fuels:** The July index, at 368, is down 0.8 percent from a month earlier but is 35 percent above July 2010. Compared with last month, prices are lower for diesel and gasoline but higher for LP gas.

**Machinery:** The July index, at 240, is unchanged from June but is 4.3 percent above last July.

**Consumer price index:** The June 2011 Consumer Price Index, as issued by the Bureau of Labor Statistics, for all urban consumers (CPI-U) decreased 0.1 percent before seasonal adjustment to a level of 225.722 (1982-1984=100). The May index is 225.964. For the 12-month period ending in June, the overall index increased 3.6 percent.

## Prices Paid Indexes and Related Parity Ratios – United States: July 2011 with Comparisons

[Revised historical price indexes for months not shown are available at [www.nass.usda.gov](http://www.nass.usda.gov)]

Indexes and ratios	1910-1914 Base			1990-1992 Base		
	July 2010	June 2011	July 2011	July 2010	June 2011	July 2011
	(percent)	(percent)	(percent)	(percent)	(percent)	(percent)
Prices paid by farmers for commodities, services, interest, taxes, and wage rates (PPITW) .....	2414	2714	2738	181	204	206
Production .....	1808	2088	2113	186	215	218
Feed .....	840	1123	1146	172	230	235
Livestock & poultry .....	1724	1861	1978	135	146	155
Seeds .....	3082	3327	3327	311	336	336
Fertilizer .....	904	1212	1236	247	331	337
Chemicals .....	899	891	892	145	144	144
Fuels .....	2100	2866	2839	272	371	368
Supplies & repairs .....	1138	1174	1178	160	165	166
Autos & trucks .....	2976	3091	3094	112	116	116
Machinery .....	5769	6031	6031	230	240	240
Building materials .....	2255	2338	2348	166	172	173
Services & rent .....	2046	2140	2150	(NA)	(NA)	(NA)
Services .....	(NA)	(NA)	(NA)	162	168	169
Rent .....	(NA)	(NA)	(NA)	191	203	203
Interest <sup>1</sup> .....	3389	3646	3646	135	145	145
Taxes <sup>2</sup> .....	5549	6032	6032	207	225	225
Wage rates .....	6972	7101	7101	186	190	190
Production, interest, taxes, and wage rates (PITW) .....	2484	2828	2856	185	210	213
Family living-CPI <sup>3</sup> .....	2071	2144	2142	162	167	167
Ratio (received/paid) .....	(NA)	(NA)	(NA)	76	88	88
Parity ratio <sup>4</sup> .....	36	42	42	(NA)	(NA)	(NA)
Parity ratio adjusted <sup>5</sup> .....	38	43	43	(NA)	(NA)	(NA)
PPITW adjusted for productivity <sup>6</sup> .....	1395	1465	1468	(NA)	(NA)	(NA)
Crop sector (PPITW) .....	(NA)	(NA)	(NA)	193	214	215
Livestock sector (PPITW) .....	(NA)	(NA)	(NA)	170	194	196
Farm sector (production) .....	(NA)	(NA)	(NA)	181	218	224
Non-farm sector (production) .....	(NA)	(NA)	(NA)	189	214	214

(NA) Not available.

<sup>1</sup> Interest per acre on farm real estate debt and interest rate on farm non-real estate debt.

<sup>2</sup> Farm real estate taxes payable per acre.

<sup>3</sup> Bureau of Labor Statistics, Consumer Price Index for all urban consumers (CPI-U), for the previous month converted by the USDA.

<sup>4</sup> Ratio of index of prices received to PPITW (1910-1914=100).

<sup>5</sup> Based on estimated cash receipts, from marketings and government payments, the preliminary adjustment factor is 1.044 for 2011 and the revised factor is 1.041 for 2010.

<sup>6</sup> PPITW is adjusted based on productivity trend for the prior 15 years.

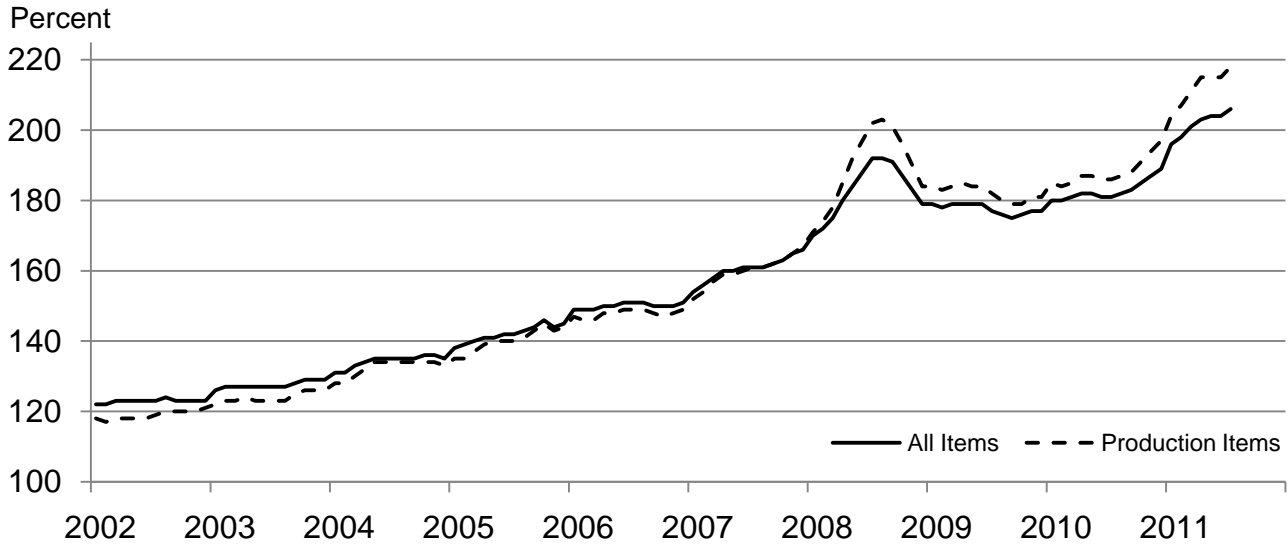
## Prices Paid Indexes and Annual Weights for Input Components and Sub-Components – United States: July 2011 with Comparisons

[Revised historical price indexes for months not shown are available at [www.nass.usda.gov](http://www.nass.usda.gov). Relative weights are a five year moving average]

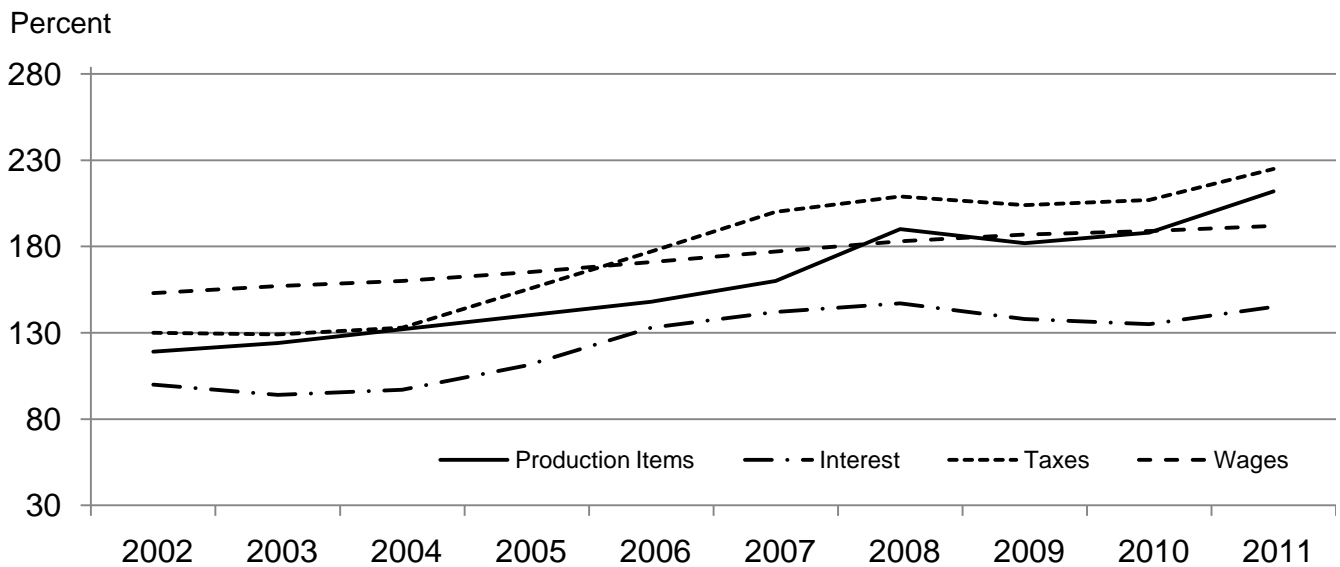
	Relative weights		Indexes (1990-1992=100)		
	2010	2011	July 2010	June 2011	July 2011
	(percent)	(percent)	(percent)	(percent)	(percent)
Production items .....	70.2	70.6	186	215	218
Feed .....	11.9	12.2	172	230	235
Feed grains .....	1.7	1.7	151	270	277
Complete feeds .....	5.8	6.0	178	230	234
Hay & forages .....	1.5	1.5	147	203	213
Concentrates .....	1.9	1.9	190	213	221
Supplements .....	1.0	1.0	180	234	229
Livestock & poultry .....	8.6	8.5	135	146	155
Feeder cattle .....	6.7	6.6	132	150	160
Feeder pigs .....	0.7	0.7	169	121	129
Milk cow replacements .....	0.7	0.7	117	126	131
Poultry .....	0.5	0.5	151	151	151
Seeds .....	3.9	4.1	311	336	336
Field crops .....	3.6	3.7	329	356	356
Grasses & legumes .....	0.4	0.4	139	145	145
Fertilizer .....	5.2	5.5	247	331	337
Mixed fertilizer .....	2.3	2.4	245	311	311
Nitrogen .....	2.2	2.3	231	334	343
Potash & phosphate .....	0.7	0.8	298	383	404
Chemicals .....	3.2	3.3	145	144	144
Herbicides .....	2.0	2.1	133	129	130
Insecticides .....	0.7	0.7	165	167	167
Fungicides & other .....	0.5	0.5	170	174	174
Fuels .....	3.9	4.0	272	371	368
Diesel .....	2.5	2.5	293	406	401
Gasoline .....	0.9	0.8	238	318	314
LP gas .....	0.5	0.7	221	310	310
Supplies & repairs .....	4.6	4.6	160	165	166
Supplies .....	1.5	1.5	155	162	163
Repairs .....	3.0	3.0	163	167	168
Autos & trucks .....	1.5	1.4	112	116	116
Autos .....	0.2	0.2	110	115	116
Trucks .....	1.3	1.2	112	116	116
Machinery .....	4.5	4.3	230	240	240
Tractors .....	1.0	0.9	194	203	203
Self-propelled .....	1.8	1.7	237	250	250
Other machinery .....	1.7	1.6	243	252	252
Building materials .....	4.5	4.4	166	172	173
Services .....	12.1	12.1	162	168	169
Custom rates .....	1.2	1.2	145	148	148
Other services .....	10.8	10.9	164	170	171
Rent .....	6.3	6.3	191	203	203
Cash .....	3.4	3.4	243	258	258
Share .....	2.9	2.9	130	138	138
Interest .....	3.6	3.5	135	145	145
Taxes .....	3.0	3.1	207	225	225
Wage rates .....	7.5	7.4	186	190	190
Family living-CPI .....	15.7	15.4	162	167	167



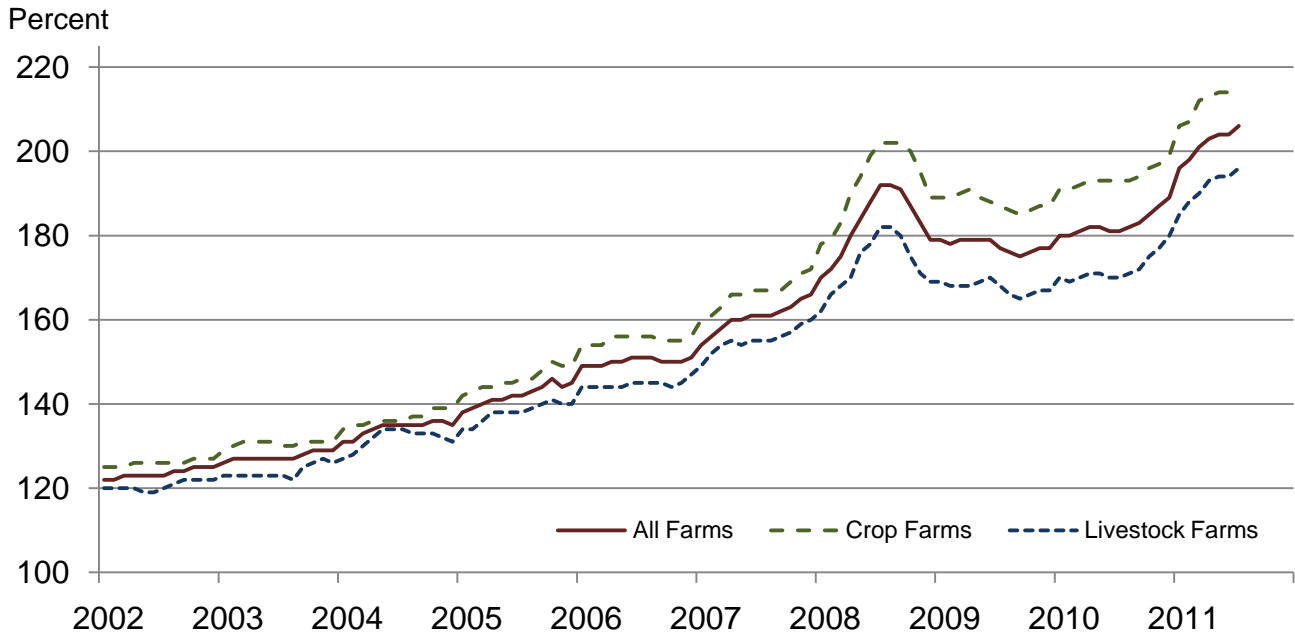
## Paid Indexes by Month, All Items and Production Items – United States: 1990-1992=100



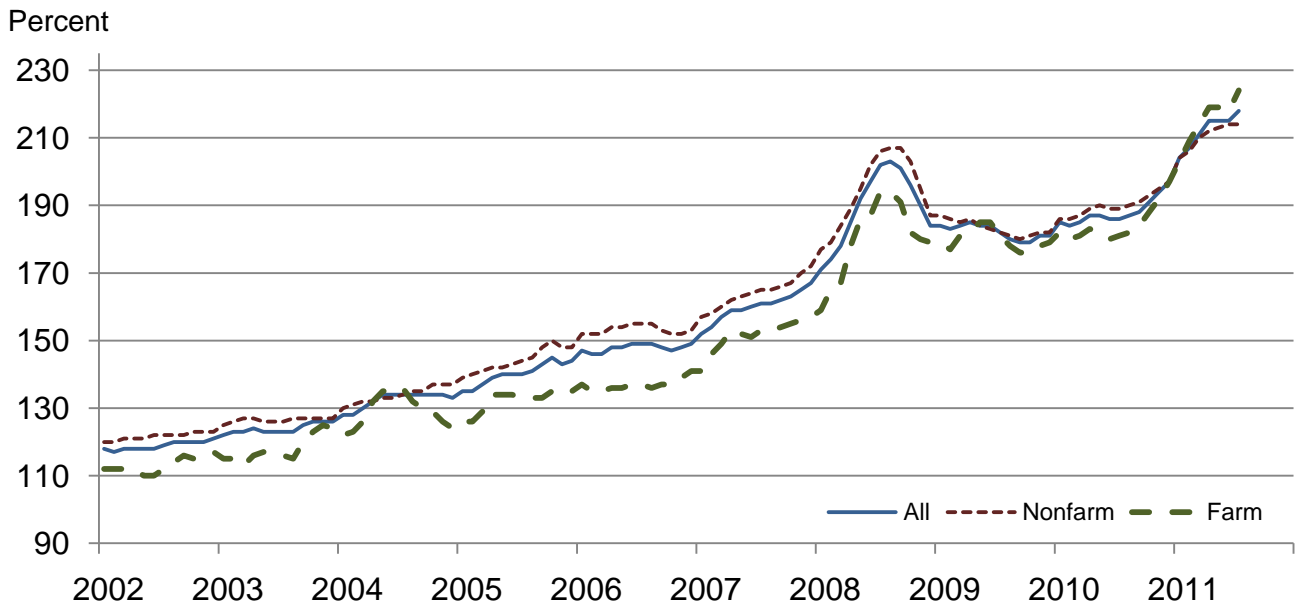
## Paid Indexes, Annual Averages, Production Items, Interest, Taxes, and Wages – United States: 1990-1992=100



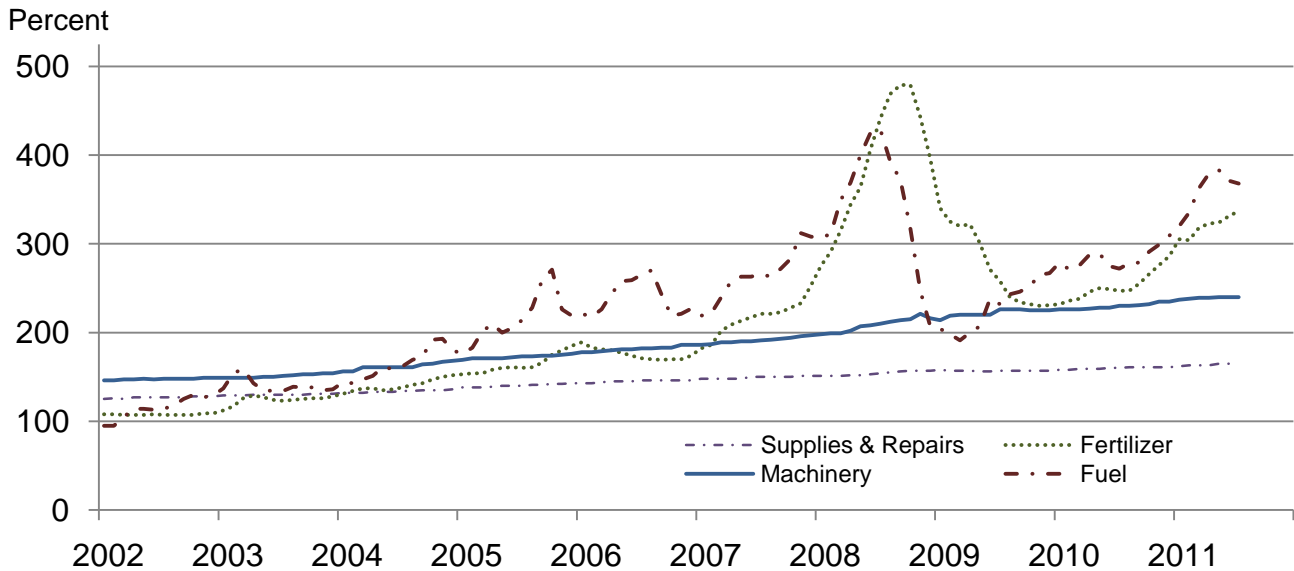
## Paid Indexes by Farm Type and Month, All Items – United States: 1990-1992=100



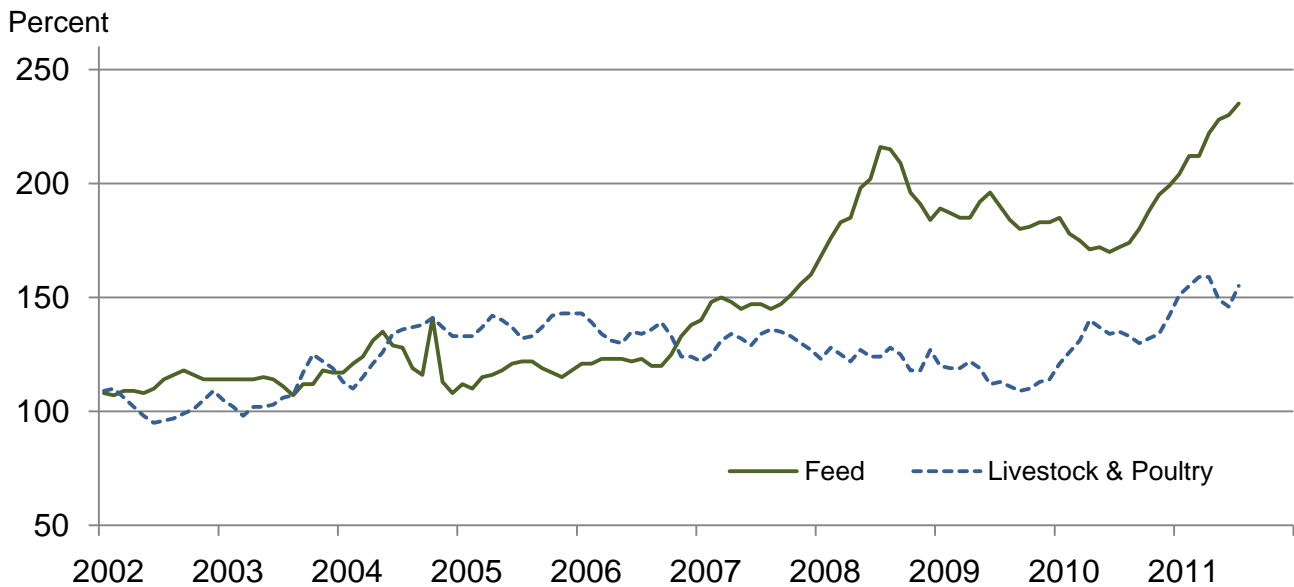
## Paid Indexes by Origin and Month, All Production Items – United States: 1990-1992=100



## Paid Indexes by Non-Farm Sector and Month, Supplies & Repairs, Fertilizer, Machinery, and Fuel – United States: 1990-1992=100



## Paid Indexes by Month, Feed and Livestock & Poultry – United States: 1990-1992=100



## Feed Price Ratios – United States: July 2011 with Comparisons

Feed price ratio <sup>1</sup>	July 2010	June 2011	Preliminary July 2011
Broiler-feed: pounds of broiler grower feed equal in value to 1 pound of broiler, live weight <sup>2</sup> .....	5.0	3.1	2.9
Market egg feed: pounds of laying feed equal in value to 1 dozen eggs <sup>3</sup> .....	6.0	4.9	4.8
Hog-corn: bushels of corn equal in value to 100 pounds of hog, live weight .....	16.8	10.9	11.1
Milk-feed: pounds of 16% mixed dairy feed equal in value to 1 pound of whole milk <sup>4</sup> .....	2.31	1.88	1.91
Steer & heifer-corn: bushels of corn equal in value to 100 pounds of steer & heifers, live weight .....	27.5	17.2	17.8
Turkey-feed: pounds of turkey grower equal in value to 1 pound of turkey, live weight <sup>5</sup> .....	6.9	4.8	4.7

<sup>1</sup> Effective January 1995, prices of commercial prepared feeds are based on current United States prices received for corn, soybeans, alfalfa hay, and all wheat.

<sup>2</sup> The price of commercial prepared broiler feed is based on current United States prices received for corn and soybeans. The modeled feed uses 58 percent corn and 42 percent soybeans.

<sup>3</sup> The price of commercial prepared layer feed is based on current United States prices received for corn and soybeans. The modeled feed uses 75 percent corn and 25 percent soybeans.

<sup>4</sup> The price of commercial prepared dairy feed is based on current United States prices received for corn, soybeans, and alfalfa hay. The modeled feed uses 51 percent corn, 41 percent alfalfa hay, and 8 percent soybeans.

<sup>5</sup> The price of commercial prepared turkey feed is based on current United States prices received for corn, soybeans, and wheat. The modeled feed uses 51 percent corn, 28 percent soybeans, and 21 percent wheat.

## Prices Received Used to Calculate Feed Price Ratios – United States: July 2011 with Comparisons

[Price data source for livestock and poultry commodities is United States Department of Agriculture's Agricultural Marketing Service]

Item	July 2010	June 2011	Preliminary July 2011
	(dollars)	(dollars)	(dollars)
Broilers, live ..... pound	0.520	0.490	0.470
Eggs, market ..... dozen	0.528	0.687	0.684
Hogs, all .....cwt	58.50	69.70	71.60
Milk, all .....cwt	15.90	21.20	22.10
Steers and heifers .....cwt	96.00	110.00	115.00
Turkeys, live ..... pound	0.647	0.695	0.691
Corn ..... bushel	3.49	6.38	6.46
Hay, alfalfa ..... ton	117.00	180.00	189.00
Soybeans ..... bushel	9.79	13.20	13.40
Wheat, all ..... bushel	4.49	7.40	7.18

## Prices Paid for Feeder Livestock – United States: July 2011 with Comparisons

[Price data source is United States Department of Agriculture's Agricultural Marketing Service]

Item	July 2010	June 2011	Preliminary July 2011
	(dollars)	(dollars)	(dollars)
Feeder cattle & calves .....cwt	111.80	126.80	135.50
Feeder pigs .....cwt	155.00	111.00	119.00

## Prices Paid Indexes Monthly and Annual Average – United States: 2007-2011

[Revised historical price indexes for months not shown are available at [www.nass.usda.gov](http://www.nass.usda.gov). Blank cells indicate estimation period has not begun]

Year	January	February	March	April	May	June	July	August	September	October	November	December	Average <sup>1</sup>
	Commodities, services, interest, taxes, and wage rates (PPITW) 1910-1914 = 100												
2007 ...	2057	2080	2108	2130	2133	2139	2146	2144	2151	2171	2194	2208	2138
2008 ...	2261	2292	2334	2395	2455	2505	2551	2556	2542	2496	2432	2378	2433
2009 ...	2381	2370	2378	2386	2383	2382	2359	2342	2333	2342	2356	2358	2364
2010 ...	2402	2395	2407	2420	2424	2412	2414	2420	2432	2466	2492	2522	2434
2011 ...	2603	2633	2680	2708	2714	2714	2738						2684
	Commodities, services, interest, taxes, and wage rates (PPITW) 1990-1992 = 100												
2007 ...	154	156	158	160	160	161	161	161	162	163	165	166	161
2008 ...	170	172	175	180	184	188	192	192	191	187	183	179	183
2009 ...	179	178	179	179	179	179	177	176	175	176	177	177	178
2010 ...	180	180	181	182	182	181	181	182	183	185	187	189	183
2011 ...	196	198	201	203	204	204	206						202
	Items used for production, interest, taxes, and wage rates (PITW) 1910-1914 = 100												
2007 ...	2088	2115	2144	2169	2170	2176	2184	2183	2191	2214	2240	2257	2178
2008 ...	2319	2356	2403	2476	2545	2601	2656	2664	2647	2596	2526	2465	2521
2009 ...	2463	2447	2456	2465	2460	2455	2428	2406	2395	2406	2422	2425	2436
2010 ...	2472	2464	2477	2492	2496	2483	2484	2491	2505	2546	2577	2611	2508
2011 ...	2705	2739	2792	2822	2827	2828	2856						2796
	Items used for production, interest, taxes, and wage rates (PITW) 1990-1992 = 100												
2007 ...	155	157	160	161	162	162	163	162	163	165	167	168	162
2008 ...	173	175	179	184	189	194	198	198	197	193	188	183	188
2009 ...	183	182	183	183	183	183	181	179	178	179	180	181	181
2010 ...	184	183	184	186	186	185	185	185	186	189	192	194	187
2011 ...	201	204	208	210	210	210	213						208

See footnote(s) at end of table.

--continued

## Prices Paid Indexes Monthly and Annual Average – United States: 2007-2011 (continued)

[Revised historical price indexes for months not shown are available at [www.nass.usda.gov](http://www.nass.usda.gov). Blank cells indicate estimation period has not begun]

Year	January	February	March	April	May	June	July	August	September	October	November	December	Average <sup>1</sup>
Items for production 1910-1914 = 100													
2007 ...	1471	1494	1520	1545	1546	1551	1563	1561	1568	1581	1604	1619	1552
2008 ...	1658	1690	1732	1800	1860	1910	1961	1969	1954	1902	1841	1787	1839
2009 ...	1788	1774	1782	1791	1787	1782	1763	1744	1734	1738	1752	1755	1766
2010 ...	1793	1785	1796	1814	1818	1806	1808	1814	1826	1855	1882	1912	1826
2011 ...	1977	2006	2052	2083	2088	2088	2113						2058
Items used for production 1990-1992 = 100													
2007 ...	152	154	157	159	159	160	161	161	162	163	165	167	160
2008 ...	171	174	178	185	192	197	202	203	201	196	190	184	190
2009 ...	184	183	184	185	184	184	182	180	179	179	181	181	182
2010 ...	185	184	185	187	187	186	186	187	188	191	194	197	188
2011 ...	204	207	211	215	215	215	218						212
Feed 1910-1914 = 100													
2007 ...	681	722	731	720	709	717	717	710	716	736	763	780	725
2008 ...	820	860	891	902	968	988	1057	1048	1021	956	934	901	945
2009 ...	921	911	903	901	937	959	925	900	881	883	894	891	909
2010 ...	905	868	854	835	838	832	840	849	879	917	951	974	878
2011 ...	995	1034	1033	1083	1114	1123	1146						1076
Feed 1990-1992 = 100													
2007 ...	140	148	150	148	145	147	147	145	147	151	156	160	149
2008 ...	168	176	183	185	198	202	216	215	209	196	191	184	194
2009 ...	189	187	185	185	192	196	190	184	180	181	183	183	186
2010 ...	185	178	175	171	172	170	172	174	180	188	195	199	180
2011 ...	204	212	212	222	228	230	235						220

See footnote(s) at end of table.

--continued

## Prices Paid Indexes Monthly and Annual Average – United States: 2007-2011 (continued)

[Revised historical price indexes for months not shown are available at [www.nass.usda.gov](http://www.nass.usda.gov). Blank cells indicate estimation period has not begun]

Year	January	February	March	April	May	June	July	August	September	October	November	December	Average <sup>1</sup>
Livestock & poultry 1910-1914 = 100													
2007 ...	1565	1598	1672	1712	1691	1647	1716	1739	1731	1697	1661	1626	1671
2008 ...	1572	1638	1599	1562	1626	1588	1580	1639	1596	1514	1511	1617	1587
2009 ...	1539	1517	1518	1565	1516	1436	1445	1418	1399	1409	1444	1463	1472
2010 ...	1547	1611	1674	1786	1750	1709	1724	1704	1662	1684	1717	1811	1698
2011 ...	1924	1979	2027	2035	1903	1861	1978						1958
Livestock & poultry 1990-1992 = 100													
2007 ...	122	125	131	134	132	129	134	136	135	133	130	127	131
2008 ...	123	128	125	122	127	124	124	128	125	118	118	127	124
2009 ...	120	119	119	122	119	112	113	111	109	110	113	114	115
2010 ...	121	126	131	140	137	134	135	133	130	132	134	142	133
2011 ...	151	155	159	159	149	146	155						153
Seeds 1910-1914 = 100													
2007 ...	1838	1838	1838	2086	2086	2086	2086	2086	2086	2086	2086	2086	2024
2008 ...	2086	2086	2086	2722	2722	2722	2722	2722	2722	2722	2722	2722	2563
2009 ...	2722	2722	3008	3008	3008	3008	3008	3008	3008	3008	3008	3008	2960
2010 ...	3008	3008	3082	3082	3082	3082	3082	3082	3082	3082	3082	3082	3070
2011 ...	3082	3082	3327	3327	3327	3327	3327						3257
Seeds 1990-1992 = 100													
2007 ...	186	186	186	211	211	211	211	211	211	211	211	211	204
2008 ...	211	211	211	275	275	275	275	275	275	275	275	275	259
2009 ...	275	275	304	304	304	304	304	304	304	304	304	304	299
2010 ...	304	304	311	311	311	311	311	311	311	311	311	311	310
2011 ...	311	311	336	336	336	336	336						329

See footnote(s) at end of table.

--continued

## Prices Paid Indexes Monthly and Annual Average – United States: 2007-2011 (continued)

[Revised historical price indexes for months not shown are available at [www.nass.usda.gov](http://www.nass.usda.gov). Blank cells indicate estimation period has not begun]

Year	January	February	March	April	May	June	July	August	September	October	November	December	Average <sup>1</sup>
Fertilizer 1910-1914 = 100													
2007 ...	666	683	740	766	780	794	809	808	816	837	854	928	790
2008 ...	1007	1065	1155	1260	1333	1489	1616	1718	1755	1757	1622	1452	1436
2009 ...	1246	1191	1173	1181	1102	992	944	881	856	849	845	848	1009
2010 ...	851	866	871	903	918	914	904	907	935	975	1010	1049	925
2011 ...	1119	1116	1165	1184	1188	1212	1236						1174
Fertilizer 1990-1992 = 100													
2007 ...	182	186	202	209	213	217	221	221	223	228	233	253	216
2008 ...	275	291	315	344	364	406	441	469	479	479	443	396	392
2009 ...	340	325	320	322	301	271	258	240	234	232	230	231	275
2010 ...	232	236	238	246	250	249	247	247	255	266	276	286	252
2011 ...	305	304	318	323	324	331	337						320
Chemicals 1910-1914 = 100													
2007 ...	797	797	803	805	800	798	796	798	795	803	808	810	801
2008 ...	820	822	827	833	840	854	868	871	883	889	903	899	859
2009 ...	877	915	930	941	944	913	919	895	906	914	943	954	921
2010 ...	885	885	887	892	893	895	899	900	903	900	893	887	893
2011 ...	891	895	894	893	891	891	892						892
Chemicals 1990-1992 = 100													
2007 ...	129	129	130	130	129	129	129	129	128	130	131	131	129
2008 ...	133	133	134	135	136	138	140	141	143	144	146	145	139
2009 ...	142	148	150	152	153	148	149	145	146	148	153	154	149
2010 ...	143	143	143	144	144	145	145	146	146	146	144	144	144
2011 ...	144	145	145	144	144	144	144						144

See footnote(s) at end of table.

--continued



## Prices Paid Indexes Monthly and Annual Average – United States: 2007-2011 (continued)

[Revised historical price indexes for months not shown are available at [www.nass.usda.gov](http://www.nass.usda.gov). Blank cells indicate estimation period has not begun]

Year	January	February	March	April	May	June	July	August	September	October	November	December	Average <sup>1</sup>
Fuels 1910-1914 = 100													
2007 ...	1690	1717	1855	1992	2031	2026	2055	2032	2098	2186	2405	2373	2038
2008 ...	2369	2400	2690	2847	3091	3282	3310	3036	2870	2443	1903	1601	2653
2009 ...	1575	1526	1476	1546	1600	1835	1788	1874	1897	1948	2048	2061	1765
2010 ...	2151	2093	2133	2224	2229	2125	2100	2147	2152	2245	2305	2387	2191
2011 ...	2468	2589	2801	2928	2953	2866	2839						2778
Fuels 1990-1992 = 100													
2007 ...	219	222	240	258	263	263	266	263	272	283	312	308	264
2008 ...	307	311	349	369	400	425	429	393	372	317	247	207	344
2009 ...	204	198	191	200	207	238	232	243	246	252	265	267	229
2010 ...	279	271	276	288	289	275	272	278	279	291	299	309	284
2011 ...	320	335	363	379	383	371	368						360
Supplies & repairs 1910-1914 = 100													
2007 ...	1051	1053	1052	1053	1054	1066	1061	1063	1067	1067	1068	1071	1060
2008 ...	1072	1074	1069	1076	1081	1084	1094	1100	1104	1114	1115	1115	1091
2009 ...	1119	1116	1114	1114	1109	1106	1111	1111	1111	1114	1114	1114	1113
2010 ...	1120	1124	1125	1127	1131	1133	1138	1139	1140	1141	1142	1143	1134
2011 ...	1151	1154	1154	1158	1171	1174	1178						1163
Supplies & repairs 1990-1992 = 100													
2007 ...	148	148	148	148	148	150	150	150	150	150	151	151	149
2008 ...	151	151	151	152	152	153	154	155	156	157	157	157	154
2009 ...	158	157	157	157	156	156	157	157	157	157	157	157	157
2010 ...	158	158	159	159	159	160	160	161	161	161	161	161	160
2011 ...	162	163	163	163	165	165	166						164

See footnote(s) at end of table.

--continued

## Prices Paid Indexes Monthly and Annual Average – United States: 2007-2011 (continued)

[Revised historical price indexes for months not shown are available at [www.nass.usda.gov](http://www.nass.usda.gov). Blank cells indicate estimation period has not begun]

Year	January	February	March	April	May	June	July	August	September	October	November	December	Average <sup>1</sup>
Autos & trucks 1910-1914 = 100													
2007 ...	2980	2976	2975	2967	2954	2938	2928	2924	2918	2925	2948	2959	2949
2008 ...	2965	2956	2940	2922	2907	2896	2883	2847	2818	2817	2819	2818	2882
2009 ...	2841	2874	2892	2901	2909	2924	2932	2895	2903	2958	2987	2993	2917
2010 ...	2996	3004	3003	2996	2985	2979	2976	2975	2980	2989	3003	3014	2992
2011 ...	3026	3053	3067	3076	3089	3091	3094						3071
Autos & trucks 1990-1992 = 100													
2007 ...	112	112	112	112	111	110	110	110	110	110	111	111	111
2008 ...	111	111	111	110	109	109	108	107	106	106	106	106	108
2009 ...	107	108	109	109	109	110	110	109	109	111	112	113	110
2010 ...	113	113	113	113	112	112	112	112	112	112	113	113	113
2011 ...	114	115	115	116	116	116	116						115
Machinery 1910-1914 = 100													
2007 ...	4670	4681	4732	4740	4756	4779	4800	4815	4831	4859	4928	4942	4794
2008 ...	4968	4986	5005	5063	5204	5220	5277	5319	5358	5393	5543	5431	5231
2009 ...	5380	5501	5527	5523	5517	5508	5660	5662	5658	5655	5655	5652	5575
2010 ...	5677	5678	5674	5694	5717	5726	5769	5782	5802	5825	5894	5907	5762
2011 ...	5937	5982	6002	5996	6031	6031	6031						6002
Machinery 1990-1992 = 100													
2007 ...	186	187	189	189	190	190	191	192	193	194	196	197	191
2008 ...	198	199	199	202	207	208	210	212	214	215	221	216	209
2009 ...	214	219	220	220	220	220	226	226	226	225	225	225	222
2010 ...	226	226	226	227	228	228	230	230	231	232	235	235	230
2011 ...	237	238	239	239	240	240	240						239

See footnote(s) at end of table.

--continued

**Prices Paid Indexes Monthly and Annual Average – United States: 2007-2011 (continued)**

[Revised historical price indexes for months not shown are available at [www.nass.usda.gov](http://www.nass.usda.gov). Blank cells indicate estimation period has not begun]

Year	January	February	March	April	May	June	July	August	September	October	November	December	Average <sup>1</sup>
Building materials 1910-1914 = 100													
2007 ...	2080	2083	2090	2100	2107	2111	2115	2115	2112	2112	2112	2114	2104
2008 ...	2125	2139	2157	2188	2222	2257	2293	2327	2339	2319	2298	2272	2245
2009 ...	2263	2239	2232	2221	2217	2208	2207	2203	2208	2207	2205	2208	2218
2010 ...	2211	2224	2236	2253	2267	2258	2255	2254	2251	2251	2255	2263	2248
2011 ...	2277	2290	2304	2316	2328	2338	2348						2315
Building materials 1990-1992 = 100													
2007 ...	153	153	154	155	155	155	156	156	155	155	155	156	155
2008 ...	156	157	159	161	164	166	169	171	172	171	169	167	165
2009 ...	167	165	164	163	163	163	162	162	163	162	162	163	163
2010 ...	163	164	165	166	167	166	166	166	166	166	166	167	165
2011 ...	168	169	170	170	171	172	173						170
Services & rent <sup>2</sup> 1910-1914 = 100													
2007 ...	1739	1751	1738	1731	1736	1749	1754	1753	1753	1752	1750	1751	1746
2008 ...	1796	1797	1799	1805	1808	1826	1833	1836	1832	1833	1825	1825	1818
2009 ...	1980	1978	1977	1974	1974	1985	1976	1975	1975	1974	1970	1970	1976
2010 ...	2030	2028	2033	2032	2036	2046	2046	2047	2046	2042	2040	2041	2039
2011 ...	2120	2121	2126	2125	2130	2140	2150						2130
Services 1990-1992 = 100													
2007 ...	145	147	145	144	145	146	147	147	147	147	147	147	146
2008 ...	143	143	144	144	145	147	148	148	148	148	147	147	146
2009 ...	157	157	156	156	156	158	156	156	156	156	156	156	156
2010 ...	160	159	160	160	160	162	162	162	162	161	161	161	161
2011 ...	165	165	166	166	166	168	169						166
Rent 1990-1992 = 100													
2007 ...	147	147	147	147	147	147	147	147	147	147	147	147	147
2008 ...	165	165	165	165	165	165	165	165	165	165	165	165	165
2009 ...	184	184	184	184	184	184	184	184	184	184	184	184	184
2010 ...	191	191	191	191	191	191	191	191	191	191	191	191	191
2011 ...	203	203	203	203	203	203	203						203

See footnote(s) at end of table.

--continued

**Prices Paid Indexes Monthly and Annual Average – United States: 2007-2011 (continued)**

[Revised historical price indexes for months not shown are available at [www.nass.usda.gov](http://www.nass.usda.gov). Blank cells indicate estimation period has not begun]

Year	January	February	March	April	May	June	July	August	September	October	November	December	Average <sup>1</sup>
Interest 1910-1914 = 100													
2007 ...	3569	3569	3569	3569	3569	3569	3569	3569	3569	3569	3569	3569	3569
2008 ...	3693	3693	3693	3693	3693	3693	3693	3693	3693	3693	3693	3693	3693
2009 ...	3454	3454	3454	3454	3454	3454	3454	3454	3454	3454	3454	3454	3454
2010 ...	3389	3389	3389	3389	3389	3389	3389	3389	3389	3389	3389	3389	3389
2011 ...	3646	3646	3646	3646	3646	3646	3646	3646	3389	3389	3389	3389	3646
Interest 1990-1992 = 100													
2007 ...	142	142	142	142	142	142	142	142	142	142	142	142	142
2008 ...	147	147	147	147	147	147	147	147	147	147	147	147	147
2009 ...	138	138	138	138	138	138	138	138	138	138	138	138	138
2010 ...	135	135	135	135	135	135	135	135	135	135	135	135	135
2011 ...	145	145	145	145	145	145	145	145	135	135	135	135	145
Taxes 1910-1914 = 100													
2007 ...	5356	5356	5356	5356	5356	5356	5356	5356	5356	5356	5356	5356	5356
2008 ...	5598	5598	5598	5598	5598	5598	5598	5598	5598	5598	5598	5598	5598
2009 ...	5453	5453	5453	5453	5453	5453	5453	5453	5453	5453	5453	5453	5453
2010 ...	5549	5549	5549	5549	5549	5549	5549	5549	5549	5549	5549	5549	5549
2011 ...	6032	6032	6032	6032	6032	6032	6032	6032	5549	5549	5549	5549	6032
Taxes 1990-1992 = 100													
2007 ...	200	200	200	200	200	200	200	200	200	200	200	200	200
2008 ...	209	209	209	209	209	209	209	209	209	209	209	209	209
2009 ...	204	204	204	204	204	204	204	204	204	204	204	204	204
2010 ...	207	207	207	207	207	207	207	207	207	207	207	207	207
2011 ...	225	225	225	225	225	225	225	225	207	207	207	207	225
Wage rates 1910-1914 = 100													
2007 ...	6688	6688	6688	6591	6591	6591	6455	6455	6455	6707	6707	6707	6610
2008 ...	6985	6985	6985	6830	6830	6830	6701	6701	6701	6927	6927	6927	6860
2009 ...	7062	7062	7062	7017	7017	7017	6888	6888	6888	7062	7062	7062	7007
2010 ...	7159	7159	7159	6991	6991	6991	6972	6972	6972	7192	7192	7192	7079
2011 ...	7295	7295	7295	7101	7101	7101	7101	7101	6972	7192	7192	7192	7184
Wage rates 1990-1992 = 100													
2007 ...	179	179	179	176	176	176	173	173	173	179	179	179	177
2008 ...	187	187	187	183	183	183	179	179	179	185	185	185	183
2009 ...	189	189	189	188	188	188	184	184	184	189	189	189	187
2010 ...	191	191	191	187	187	187	186	186	186	192	192	192	189
2011 ...	195	195	195	190	190	190	190	190	186	192	192	192	192

See footnote(s) at end of table.

--continued

## Prices Paid Indexes Monthly and Annual Average – United States: 2007-2011 (continued)

[Revised historical price indexes for months not shown are available at [www.nass.usda.gov](http://www.nass.usda.gov). Blank cells indicate estimation period has not begun]

Year	January	February	March	April	May	June	July	August	September	October	November	December	Average <sup>1</sup>
Family living 1910-1914 = 100													
2007 ...	1922	1933	1950	1963	1975	1979	1978	1975	1980	1984	1996	1995	1969
2008 ...	2005	2011	2028	2040	2057	2078	2089	2081	2078	2057	2018	1997	2045
2009 ...	2005	2015	2020	2025	2031	2049	2045	2050	2051	2053	2055	2051	2038
2010 ...	2058	2059	2067	2071	2072	2070	2071	2073	2075	2077	2078	2082	2071
2011 ...	2092	2102	2122	2136	2146	2144	2142						2126
Family living 1990-1992 = 100													
2007 ...	150	151	152	153	154	155	155	154	155	155	156	156	154
2008 ...	157	157	158	159	161	162	163	163	162	161	158	156	160
2009 ...	157	157	158	158	159	160	160	160	160	160	160	160	159
2010 ...	161	161	161	162	162	162	162	162	162	162	162	163	162
2011 ...	163	164	166	167	168	167	167						166
Production items with farm origin <sup>3</sup> 1990-1992 = 100													
2007 ...	141	146	149	153	152	151	153	153	154	155	156	157	152
2008 ...	159	165	167	178	186	187	194	194	191	182	180	179	180
2009 ...	179	177	181	182	185	185	181	178	176	176	178	179	180
2010 ...	182	180	181	183	182	180	181	182	184	188	192	197	184
2011 ...	203	209	214	219	219	218	224						215
Production items with non-farm origin <sup>4</sup> 1990-1992 = 100													
2007 ...	157	158	160	162	163	164	165	165	166	167	170	172	164
2008 ...	177	179	184	189	195	202	206	207	207	203	195	187	194
2009 ...	187	186	185	186	184	183	182	181	180	181	182	182	183
2010 ...	186	186	187	189	190	189	189	190	191	193	195	197	190
2011 ...	204	206	210	212	213	214	214						211

See footnote(s) at end of table.

--continued

**Prices Paid Indexes Monthly and Annual Average – United States: 2007-2011 (continued)**

[Revised historical price indexes for months not shown are available at [www.nass.usda.gov](http://www.nass.usda.gov). Blank cells indicate estimation period has not begun]

Year	January	February	March	April	May	June	July	August	September	October	November	December	Average <sup>1</sup>
Parity ratio <sup>5</sup> 1910-1914 = 100													
2007 ...	38	39	40	40	40	41	41	41	41	41	41	41	40
2008 ...	41	40	40	39	39	40	40	39	39	38	37	36	39
2009 ...	37	34	34	34	34	35	35	34	34	36	36	36	35
2010 ...	36	35	36	35	36	36	36	37	37	39	39	38	37
2011 ...	40	41	41	41	41	42	42						41
Adjusted parity ratio <sup>6</sup> 1910-1914 = 100													
2007 ...	39	40	41	41	42	42	43	43	43	43	43	43	42
2008 ...	42	42	41	40	41	42	41	40	40	40	38	37	40
2009 ...	38	35	35	36	36	37	36	35	35	38	38	38	36
2010 ...	37	36	38	37	37	37	38	39	39	40	41	40	38
2011 ...	42	42	42	42	42	43	43						43
Ratio 1990-1992 = 100													
2007 ...	80	81	84	84	84	85	86	86	86	87	86	86	85
2008 ...	85	85	83	81	83	84	83	81	81	81	78	75	82
2009 ...	78	71	70	72	72	74	73	72	72	76	76	77	74
2010 ...	76	73	76	74	76	75	76	77	78	82	82	80	77
2011 ...	85	86	86	87	86	88	88						86

See footnote(s) at end of table.

--continued

## Prices Paid Indexes Monthly and Annual Average – United States: 2007-2011 (continued)

[Revised historical price indexes for months not shown are available at [www.nass.usda.gov](http://www.nass.usda.gov). Blank cells indicate estimation period has not begun]

Year	January	February	March	April	May	June	July	August	September	October	November	December	Average <sup>1</sup>
Crop sector (PPITW) 1990-1992 = 100													
2007 ...	160	161	163	166	166	167	167	167	167	169	171	172	166
2008 ...	178	179	183	190	194	199	202	202	202	200	195	189	193
2009 ...	189	189	190	191	189	188	187	186	185	186	187	187	188
2010 ...	191	191	192	193	193	193	193	193	194	196	197	199	194
2011 ...	206	207	212	213	214	214	215						211
Livestock sector (PPITW) 1990-1992 = 100													
2007 ...	149	152	154	155	154	155	155	155	156	157	159	160	155
2008 ...	162	166	168	170	176	178	182	182	180	175	171	169	173
2009 ...	169	168	168	168	169	170	168	166	165	166	167	167	168
2010 ...	170	169	170	171	171	170	170	171	172	175	177	180	172
2011 ...	185	188	190	193	194	194	196						192
Commodities, services, interest, taxes, and wage rates Adjusted for productivity 1910-1914 = 100													
2007 ...	1374	1379	1386	1384	1387	1388	1379	1378	1380	1403	1408	1410	1388
2008 ...	1437	1443	1452	1452	1463	1474	1473	1473	1470	1477	1461	1450	1460
2009 ...	1418	1418	1420	1418	1419	1421	1408	1406	1405	1419	1421	1421	1416
2010 ...	1405	1404	1407	1398	1399	1397	1395	1397	1399	1420	1424	1429	1406
2011 ...	1455	1461	1471	1463	1465	1465	1468						1464

<sup>1</sup> Simple average and is year-to-date for current year.

<sup>2</sup> For the 1990-92=100 base period, the Services & Rent Index is separated.

<sup>3</sup> Feed, livestock & poultry purchases, and seed.

<sup>4</sup> Fertilizer, agricultural chemicals, fuels, supplies & repairs, autos & trucks, machinery, building materials, and services & rent.

<sup>5</sup> Ratio of index of prices received to index of prices paid for commodities, services, interest, taxes, and wage rates.

<sup>6</sup> Ratio of the index of prices received after adjustment for government payments to the index of prices paid for commodities, services, interest, taxes, and wage rates.

**Prices Paid Index Sub-Components Monthly and Annual Average –  
United States: 2007-2011**

[Revised historical price indexes for months not shown are available at [www.nass.usda.gov](http://www.nass.usda.gov). Blank cells indicate estimation period has not begun]

Year	January	February	March	April	May	June	July	August	September	October	November	December	Average <sup>1</sup>
Feed grains 1990-1992 = 100													
2007 ...	135	151	150	147	152	152	143	142	145	146	151	165	148
2008 ...	174	198	206	223	227	237	226	225	215	189	183	173	206
2009 ...	183	163	164	164	169	171	154	145	142	154	156	155	160
2010 ...	157	152	153	146	150	146	151	157	176	186	197	208	165
2011 ...	215	244	240	273	270	270	277						255
Complete feeds 1990-1992 = 100													
2007 ...	138	141	145	142	136	139	141	138	139	144	149	152	142
2008 ...	161	168	177	178	188	195	215	215	213	204	196	184	191
2009 ...	188	193	193	191	200	206	206	199	196	191	191	191	195
2010 ...	195	187	183	178	178	177	178	179	182	189	198	202	186
2011 ...	208	212	217	223	227	230	234						221
Hay & forages 1990-1992 = 100													
2007 ...	147	152	161	165	171	164	165	165	168	170	173	171	164
2008 ...	169	172	178	180	212	206	209	207	204	199	192	180	192
2009 ...	177	171	170	166	164	153	146	139	141	141	141	140	154
2010 ...	142	139	142	143	151	149	147	145	145	147	145	148	145
2011 ...	148	152	161	178	207	203	213						180
Concentrates 1990-1992 = 100													
2007 ...	124	145	142	140	137	144	149	150	150	154	162	161	146
2008 ...	174	175	180	178	199	196	221	216	197	164	178	192	189
2009 ...	190	183	179	186	197	215	199	198	188	190	193	194	193
2010 ...	190	187	183	176	182	184	190	193	187	197	209	208	190
2011 ...	213	214	204	203	206	213	221						210

See footnote(s) at end of table.

--continued



**Prices Paid Index Sub-Components Monthly and Annual Average –  
United States: 2007-2011 (continued)**

[Revised historical price indexes for months not shown are available at [www.nass.usda.gov](http://www.nass.usda.gov). Blank cells indicate estimation period has not begun]

Year	January	February	March	April	May	June	July	August	September	October	November	December	Average <sup>1</sup>
Supplements 1990-1992 = 100													
2007 ...	176	182	177	170	165	164	155	154	156	163	171	176	167
2008 ...	182	192	188	178	185	193	212	202	205	212	205	202	196
2009 ...	215	222	206	210	219	214	204	208	200	210	225	223	213
2010 ...	230	206	200	204	182	182	180	181	215	225	220	229	204
2011 ...	230	238	225	232	239	234	229						232
Feeder cattle 1990-1992 = 100													
2007 ...	115	117	124	129	128	126	132	134	134	131	128	123	127
2008 ...	117	123	119	118	124	123	123	126	122	114	110	119	120
2009 ...	112	110	109	116	117	113	116	114	111	109	111	111	112
2010 ...	115	120	125	134	131	129	132	132	127	130	134	141	129
2011 ...	149	153	157	159	151	150	160						154
Feeder pigs 1990-1992 = 100													
2007 ...	158	169	171	160	152	127	111	120	109	99	96	104	131
2008 ...	114	123	122	95	99	73	57	88	90	90	123	145	102
2009 ...	159	156	162	160	109	66	62	49	65	89	107	127	109
2010 ...	160	174	189	209	201	181	169	150	152	148	140	162	170
2011 ...	199	220	221	200	152	121	129						178
Milk cow replacements 1990-1992 = 100													
2007 ...	147	147	147	153	153	153	173	173	173	179	179	179	163
2008 ...	174	174	174	172	172	172	176	176	176	170	170	170	173
2009 ...	145	145	145	123	123	123	113	113	113	110	110	110	123
2010 ...	119	119	119	118	118	118	117	117	117	118	118	118	118
2011 ...	115	115	115	126	126	126	131						122

See footnote(s) at end of table.

--continued

**Prices Paid Index Sub-Components Monthly and Annual Average –  
United States: 2007-2011 (continued)**

[Revised historical price indexes for months not shown are available at [www.nass.usda.gov](http://www.nass.usda.gov). Blank cells indicate estimation period has not begun]

Year	January	February	March	April	May	June	July	August	September	October	November	December	Average <sup>1</sup>
Poultry 1990-1992 = 100													
2007 ...	138	138	138	138	138	138	138	138	138	138	138	138	138
2008 ...	145	145	145	145	145	145	145	145	145	145	145	145	145
2009 ...	149	149	149	149	149	149	149	149	149	149	149	149	149
2010 ...	151	151	151	151	151	151	151	151	151	151	151	151	151
2011 ...	151	151	151	151	151	151	151	151	151	151	151	151	151
Field crop seeds 1990-1992 = 100													
2007 ...	191	191	191	218	218	218	218	218	218	218	218	218	211
2008 ...	218	218	218	287	287	287	287	287	287	287	287	287	270
2009 ...	287	287	319	319	319	319	319	319	319	319	319	319	313
2010 ...	319	319	329	329	329	329	329	329	329	329	329	329	328
2011 ...	329	329	356	356	356	356	356	356	329	329	329	329	348
Grass & legume seeds 1990-1992 = 100													
2007 ...	133	133	133	142	142	142	142	142	142	142	142	142	140
2008 ...	142	142	142	157	157	157	157	157	157	157	157	157	154
2009 ...	157	157	161	161	161	161	161	161	161	161	161	161	160
2010 ...	161	161	139	139	139	139	139	139	139	139	139	139	143
2011 ...	139	139	145	145	145	145	145	145	139	139	139	139	143
Mixed fertilizer 1990-1992 = 100													
2007 ...	173	177	183	189	198	205	210	216	221	226	229	249	206
2008 ...	272	288	322	354	362	403	430	440	441	441	416	364	378
2009 ...	337	331	298	293	281	272	260	251	247	241	240	237	274
2010 ...	230	229	225	233	238	241	245	250	256	263	275	284	247
2011 ...	292	305	310	313	310	311	311	311	311	311	311	311	307

See footnote(s) at end of table.

--continued

**Prices Paid Index Sub-Components Monthly and Annual Average –  
United States: 2007-2011 (continued)**

[Revised historical price indexes for months not shown are available at [www.nass.usda.gov](http://www.nass.usda.gov). Blank cells indicate estimation period has not begun]

Year	January	February	March	April	May	June	July	August	September	October	November	December	Average <sup>1</sup>
Nitrogen 1990-1992 = 100													
2007 ...	202	204	226	236	235	236	235	228	228	238	243	264	231
2008 ...	283	294	310	322	349	375	411	434	447	443	411	396	373
2009 ...	333	276	295	308	291	263	250	219	211	215	215	212	257
2010 ...	220	227	229	242	244	241	231	229	237	255	260	273	241
2011 ...	284	286	311	319	325	334	343						315
Potash & phosphate 1990-1992 = 100													
2007 ...	149	164	186	192	193	197	212	211	214	207	214	233	198
2008 ...	257	287	311	377	410	511	566	662	693	710	622	497	492
2009 ...	369	453	463	456	394	289	274	271	261	251	247	272	333
2010 ...	275	287	301	304	310	301	298	295	306	308	326	332	304
2011 ...	410	357	361	368	363	383	404						378
Herbicides 1990-1992 = 100													
2007 ...	122	122	123	123	122	121	121	121	120	122	122	122	122
2008 ...	123	123	124	125	126	129	131	132	134	136	138	138	130
2009 ...	135	141	144	145	145	140	141	137	138	138	142	144	141
2010 ...	133	132	132	133	133	132	133	133	133	132	131	130	132
2011 ...	130	130	130	130	129	129	130						130
Insecticides 1990-1992 = 100													
2007 ...	146	146	148	148	148	147	147	148	147	149	150	151	148
2008 ...	153	153	154	156	156	157	158	158	158	158	159	157	156
2009 ...	152	157	158	161	163	158	160	157	160	162	168	171	161
2010 ...	159	160	161	163	163	164	165	166	167	166	165	165	164
2011 ...	166	167	167	167	166	167	167						167

See footnote(s) at end of table.

--continued

**Prices Paid Index Sub-Components Monthly and Annual Average –  
United States: 2007-2011 (continued)**

[Revised historical price indexes for months not shown are available at [www.nass.usda.gov](http://www.nass.usda.gov). Blank cells indicate estimation period has not begun]

Year	January	February	March	April	May	June	July	August	September	October	November	December	Average <sup>1</sup>
Fungicides & other 1990-1992 = 100													
2007 ...	130	131	132	133	133	133	133	134	134	136	137	139	134
2008 ...	141	142	143	145	146	149	152	153	155	157	160	159	150
2009 ...	156	163	165	167	169	164	166	162	164	166	173	175	166
2010 ...	163	164	165	166	167	168	170	170	172	172	171	171	168
2011 ...	172	174	174	174	173	174	174						173
Diesel 1990-1992 = 100													
2007 ...	241	242	260	277	274	276	283	284	293	306	338	334	284
2008 ...	332	339	391	413	443	465	464	421	390	344	274	231	376
2009 ...	215	204	192	206	208	237	240	250	251	257	271	268	233
2010 ...	279	275	290	305	307	296	293	299	298	310	320	331	300
2011 ...	347	369	403	419	418	406	401						395
Gasoline 1990-1992 = 100													
2007 ...	182	184	206	228	252	246	239	226	228	229	251	247	226
2008 ...	250	249	267	285	311	336	337	315	310	257	183	145	270
2009 ...	154	165	169	177	195	226	218	226	221	222	231	227	203
2010 ...	237	231	242	249	248	239	238	238	236	244	249	260	243
2011 ...	269	278	308	328	337	318	314						308
LP Gas 1990-1992 = 100													
2007 ...	184	202	211	225	232	230	239	237	256	279	303	295	241
2008 ...	286	278	279	297	343	386	419	397	393	286	222	199	315
2009 ...	242	226	226	216	228	261	214	234	262	284	302	337	253
2010 ...	339	312	263	265	262	231	221	238	248	268	269	275	266
2011 ...	282	284	284	295	310	310	310						296

See footnote(s) at end of table.

--continued

**Prices Paid Index Sub-Components Monthly and Annual Average –  
United States: 2007-2011 (continued)**

[Revised historical price indexes for months not shown are available at [www.nass.usda.gov](http://www.nass.usda.gov). Blank cells indicate estimation period has not begun]

Year	January	February	March	April	May	June	July	August	September	October	November	December	Average <sup>1</sup>
Supplies 1990-1992 = 100													
2007 ...	140	140	140	140	140	140	140	141	140	141	141	141	140
2008 ...	143	144	144	145	145	146	149	152	154	156	156	156	149
2009 ...	156	155	154	154	153	152	152	152	152	152	153	153	153
2010 ...	153	153	153	154	154	154	155	155	156	156	156	156	155
2011 ...	158	158	157	159	162	162	163						160
Repairs 1990-1992 = 100													
2007 ...	152	153	153	153	153	155	154	154	155	155	155	156	154
2008 ...	155	155	154	155	156	156	156	156	156	158	158	158	156
2009 ...	158	158	158	159	158	158	159	159	159	159	159	159	159
2010 ...	160	161	161	161	162	162	163	163	163	163	163	163	162
2011 ...	164	165	165	166	166	167	168						166
Autos 1990-1992 = 100													
2007 ...	110	110	109	109	109	108	108	108	108	108	109	109	109
2008 ...	109	109	109	108	108	108	109	108	108	108	108	108	108
2009 ...	109	109	109	109	109	109	110	108	108	110	112	112	109
2010 ...	112	111	111	111	110	110	110	110	110	110	111	111	111
2011 ...	111	112	112	113	114	115	116						113
Trucks 1990-1992 = 100													
2007 ...	112	112	112	112	111	111	110	110	110	110	111	112	111
2008 ...	112	112	111	110	109	109	108	107	106	106	106	106	108
2009 ...	107	108	109	109	109	110	110	109	109	111	112	113	110
2010 ...	113	113	113	113	113	112	112	112	112	113	113	114	113
2011 ...	114	115	116	116	116	116	116						116

See footnote(s) at end of table.

--continued

**Prices Paid Index Sub-Components Monthly and Annual Average –  
United States: 2007-2011 (continued)**

[Revised historical price indexes for months not shown are available at [www.nass.usda.gov](http://www.nass.usda.gov). Blank cells indicate estimation period has not begun]

Year	January	February	March	April	May	June	July	August	September	October	November	December	Average <sup>1</sup>
Tractors 1990-1992 = 100													
2007 ...	165	165	166	166	166	166	166	165	165	166	178	174	167
2008 ...	175	175	174	175	175	175	178	178	180	181	181	182	177
2009 ...	184	183	185	186	186	186	186	187	188	188	189	189	186
2010 ...	188	189	189	190	191	191	194	195	197	198	199	200	193
2011 ...	201	202	203	203	203	203	203						202
Self-propelled 1990-1992 = 100													
2007 ...	195	195	196	196	197	198	199	200	202	203	204	206	199
2008 ...	207	208	209	210	212	213	213	214	214	216	230	217	214
2009 ...	218	229	229	229	229	229	230	230	230	230	231	231	229
2010 ...	234	234	234	235	236	236	237	238	239	240	247	247	238
2011 ...	248	249	250	250	250	250	250						250
Other machinery 1990-1992 = 100													
2007 ...	189	190	194	195	195	197	198	198	199	200	200	201	196
2008 ...	202	203	204	209	221	222	226	230	232	234	235	236	221
2009 ...	228	230	231	230	230	229	244	243	242	242	241	241	236
2010 ...	240	240	240	240	241	241	243	243	243	243	244	244	242
2011 ...	245	248	249	248	252	252	252						250
Custom rates 1990-1992 = 100													
2007 ...	125	125	125	125	125	125	125	125	125	125	125	125	125
2008 ...	144	144	144	144	144	144	144	144	144	144	144	144	144
2009 ...	145	145	145	145	145	145	145	145	145	145	145	145	145
2010 ...	145	145	145	145	145	145	145	145	145	145	145	145	145
2011 ...	148	148	148	148	148	148	148						148

See footnote(s) at end of table.

--continued

**Prices Paid Index Sub-Components Monthly and Annual Average –  
United States: 2007-2011 (continued)**

[Revised historical price indexes for months not shown are available at [www.nass.usda.gov](http://www.nass.usda.gov). Blank cells indicate estimation period has not begun]

Year	January	February	March	April	May	June	July	August	September	October	November	December	Average <sup>1</sup>
Other services 1990-1992 = 100													
2007 ...	147	149	147	146	147	149	150	149	149	149	149	149	149
2008 ...	143	143	144	144	145	147	148	149	148	148	147	147	146
2009 ...	158	158	158	157	157	159	158	157	158	157	157	157	158
2010 ...	161	161	162	162	162	164	164	164	164	163	163	163	163
2011 ...	167	167	168	168	168	170	171						168
Cash Rent 1990-1992 = 100													
2007 ...	178	178	178	178	178	178	178	178	178	178	178	178	178
2008 ...	205	205	205	205	205	205	205	205	205	205	205	205	205
2009 ...	236	236	236	236	236	236	236	236	236	236	236	236	236
2010 ...	243	243	243	243	243	243	243	243	243	243	243	243	243
2011 ...	258	258	258	258	258	258	258						258
Share Rent 1990-1992 = 100													
2007 ...	112	112	112	112	112	112	112	112	112	112	112	112	112
2008 ...	118	118	118	118	118	118	118	118	118	118	118	118	118
2009 ...	124	124	124	124	124	124	124	124	124	124	124	124	124
2010 ...	130	130	130	130	130	130	130	130	130	130	130	130	130
2011 ...	138	138	138	138	138	138	138						138

<sup>1</sup> Simple average and is year-to-date for current year.

## Reliability of Prices Paid Estimates

**Definition:** Prices paid by farmers represent the average costs of inputs purchased by farmers and ranchers to produce agricultural commodities. Conceptually, the average price when multiplied by quantity purchased should equal total producer expenditures for the item.

**Survey procedures:** The prices paid data are obtained from establishments that sell goods and services to farmers and ranchers. Annually, about 8,500 firms are randomly selected from lists by type of item sold with an average response rate in the range of 75-80 percent. Firms are asked to report the price for the specified item "most commonly bought by farmers" or that was the "volume seller". Approximately 135 items are surveyed each March to represent all production input items purchased. The survey reference period for most items is the five business days centered around the 15th of the month. Separate prices paid surveys are conducted for agricultural chemicals, fuels, feed, fertilizer, machinery, and seed.

**Summary and estimation procedures:** The annual March Prices Paid Survey is summarized as a nonprobability survey. Average prices reported are aggregated to the region and United States level using weights available from expenditure data and other administrative sources. Price recommendations are prepared by the State Field Offices and Headquarters for review by the Agricultural Statistics Board in Washington, D.C. Also, the change in price level for individual items surveyed are combined to the regional and United States levels, and are published as prices paid indexes referenced to a specific base period. Prices paid indexes for new autos and trucks, building materials, farm supplies, motor supplies, and marketing containers are updated based on price changes measured in selected Bureau of Labor Statistics (BLS) indexes.

**Revisions:** Any revisions are published in the monthly and in annual issues of Agricultural Prices. The basis for revision must be supported by additional data that directly affect the level of the estimate. More revisions are likely for March when separate prices paid surveys are conducted, in lieu of BLS indexes, by the USDA to measure price change.

**Reliability:** Current methods of summarization for the March data are not designed directly to calculate sampling errors. However, analytical measures approximate the United States relative sampling errors for major items around 10 percent. Any nonsampling errors are attributed to such things as the inability to obtain correct information, differences in interpreting questions or definitions, mistakes in coding or processing the data, etc. Efforts are made at each step in the survey process to minimize these nonsampling errors.

**Program change:** Effective January 1, 1995, the National Agricultural Statistics Service updated the weights and changed the construction of its prices paid and received by farmers indexes. A Federal Register Notice dated October 28, 1994 discussed these program modifications.

A 1990-1992 reference and base period replaced the 1977 reference and 1971-1973 base weight period. Five-year moving average weights replaced the current fixed 1971-1973 base period weights. The 1910-1914=100 price indexes, required by statute for computing parity prices, were linked forward based on the changes in the new 1990-1992=100 indexes. The new indexes were constructed by multiplying the ratios of the current prices to the base period prices by the moving average weights (adjusted for seasonal marketing patterns for the prices received indexes).



## Information Contacts

Direct general questions to Kevin Barnes, Chief, Environmental, Economics and Demographics Branch at (202) 720-6146. Below are the commodity specialists to contact for additional information.

### Crop Prices Received

Lance Honig, Chief, Crops Branch .....	(202) 720-2127
Jacqueline Moore, Head, Field Crops Section .....	(202) 720-2127
Suzanne Avilla – Peanuts, Rice .....	(202) 720-7688
Bryan Durham – Oats, Rye, Wheat.....	(202) 720-8068
Steve Maliszewski – Cotton, Cotton Ginnings, Sorghum.....	(202) 720-5944
Anthony Prillaman – Corn, Proso Millet, Flaxseed .....	(202) 720-9526
Julie Schmidt – Crop Weather, Barley, Hay .....	(202) 720-7621
Travis Thorson – Soybeans, Sunflower, Other Oilseeds .....	(202) 720-7369
Jorge Garcia-Pratts, Head, Fruits, Vegetables and Special Crops Section.....	(202) 720-2127
Debbie Flippin – Fresh and Processing Vegetables, Onions, Strawberries .....	(202) 720-2157
Fred Granja – Apples, Apricots, Cherries, Plums, Prunes, Tobacco .....	(202) 720-4288
Erika White – Floriculture, Maple Syrup, Nursery, Tree Nuts .....	(202) 720-4215
Chris Hawthorn – Citrus, Coffee, Sugar Crops, Grapes, Tropical Fruits .....	(202) 720-5412
Daphne Schauber – Berries, Cranberries, Potatoes, Sweet Potatoes .....	(202) 720-4285
Dan Norris – Austrian Winter Peas, Dry Edible Peas, Lentils, Mints, Mushrooms, Peaches, Pears, Wrinkled Seed Peas, Dry Beans .....	(202) 720-3250
Kim Ritchie – Hops .....	(360) 709-2400

### Livestock Prices Received

Dan Kerestes, Chief, Livestock Branch .....	(202) 720-3570
Scott Hollis, Head, Livestock Section .....	(202) 720-3570
Jason Hardegree - Cattle .....	(202) 720-3040
Mike Miller - Milk, Milk Cows .....	(202) 720-3278
Everett Olbert - Sheep, Lambs, Goats, Wool, Mohair.....	(202) 720-4751
Doug Bounds - Hogs .....	(202) 720-3106
Bruce Boess, Head, Poultry and Specialty Commodities Section .....	(202) 720-3570
Cody Brokmeyer - Turkeys .....	(202) 690-3237
Kim Linonis - Eggs.....	(202) 690-8632
Troy Marshall - Broilers, Honey .....	(202) 720-3244

### Indexes, Prices Paid, and Parity Prices

Kevin Barnes, Chief, Environmental, Economics and Demographics Branch .....	(202) 720-6146
Kevin Hintzman, Head, Economics Section.....	(202) 720-6146
Daryl Brinkman - Prices Received Indexes, Parity Prices.....	(202) 720-8844
Joe Samson - Grazing Fees.....	(202) 720-5446
Jennifer Sissom - Prices Paid Indexes, Prices Paid for Feed, Fertilizer, Agricultural Chemicals, Seeds, Farm Supplies and Repairs, Farm Machinery, Fuels, Feeder Livestock, Poultry Chicks, Feed Price Ratios, Autos & Trucks .....	(202) 690-3229

## Access to NASS Reports

For your convenience, you may access NASS reports and products the following ways:

- All reports are available electronically, at no cost, on the NASS web site: <http://www.nass.usda.gov>
- Both national and state specific reports are available via a free e-mail subscription. To set-up this free subscription, visit <http://www.nass.usda.gov> and in the “Receive NASS Updates” box under “Receive reports by Email,” click on “National” or “State” to select the reports you would like to receive.
- Printed reports may be purchased from the National Technical Information Service (NTIS) by calling toll-free (800) 999-6779, or (703) 605-6220 if calling from outside the United States or Canada. Accepted methods of payment are Visa, MasterCard, check, or money order.

For more information on NASS surveys and reports, call the NASS Agricultural Statistics Hotline at (800) 727-9540, 7:30 a.m. to 4:00 p.m. ET, or e-mail: [nass@nass.usda.gov](mailto:nass@nass.usda.gov).

The United States Department of Agriculture (USDA) prohibits discrimination in all its programs and activities on the basis of race, color, national origin, age, disability, and where applicable, sex, marital status, familial status, parental status, religion, sexual orientation, political beliefs, genetic information, reprisal, or because all or a part of an individual's income is derived from any public assistance program. (Not all prohibited bases apply to all programs.) Persons with disabilities who require alternative means for communication of program information (Braille, large print, audiotape, etc.) should contact USDA's TARGET Center at (202) 720-2600 (voice and TDD).

To file a complaint of discrimination, write to USDA, Assistant Secretary for Civil Rights, Office of the Assistant Secretary for Civil Rights, 1400 Independence Avenue, S.W., Stop 9410, Washington, DC 20250-9410, or call toll-free at (866) 632-9992 (English) or (800) 877-8339 (TDD) or (866) 377-8642 (English Federal-relay) or (800) 845-6136 (Spanish Federal-relay). USDA is an equal opportunity provider and employer.