



Agricultural Prices

ISSN: 1937-4216

Released September 29, 2011, by the National Agricultural Statistics Service (NASS), Agricultural Statistics Board, United States Department of Agriculture (USDA).

September Farm Prices Received Index Declines 1 Point

The preliminary All Farm Products Index of Prices Received by Farmers in September, at 183 percent, based on 1990-1992=100, decreased 1 point (0.5 percent) from August. The Crop Index is unchanged but the Livestock Index decreased 7 points (4.4 percent). Producers received higher prices for cattle, strawberries, hay, and grain sorghum and lower prices for broilers, hogs, milk, and corn. In addition to prices, the overall index is also affected by the seasonal change based on a 3-year average mix of commodities producers sell. Increased monthly marketings of corn, soybeans, apples, and potatoes offset decreased marketings of cattle, wheat, broilers, and grapes.

The preliminary All Farm Products Index is up 40 points (28 percent) from September 2010. The Food Commodities Index, at 169, decreased 4 points (2.3 percent) from last month but increased 28 points (20 percent) from September 2010.

Prices Paid Index Unchanged

The September Index of Prices Paid for Commodities and Services, Interest, Taxes, and Farm Wage Rates (PPITW) is 205 percent of the 1990-1992 average. The index is unchanged from August but 22 points above (12 percent) September 2010. Higher prices in September for complete feeds, supplements, LP gas, and potash & phosphate offset lower prices for concentrates, feeder cattle, feed grains, and feeder pigs.

Prices Received, Prices Paid, and Ratio of Prices Received to Prices Paid Indexes 1990-1992 Base – United States: September 2011 with Comparisons

Index	September 2010	August 2011	September 2011
Prices received by farmers	143	184	183
Prices paid by farmers	183	205	205
Ratio of prices received to prices paid	78	90	89

Contents

Prices Received by Farmers	4
Prices Received Indexes – United States: September 2011 with Comparisons	5
Prices Received and Prices Paid Indexes by Month for Selected Groups – United States: 2010 and 2011, 1990-1992 Base	5
Received Indexes by Month, Livestock Products, All Products, and All Crops – United States: 1990-1992=100 Chart.....	6
Received Indexes by Month, Food Grains, Feed Grains & Hay, and Oilseeds – United States: 1990-1992=100 Chart.....	6
Received Indexes by Month, Fruit & Nut and Commercial Vegetables – United States: 1990-1992=100 Chart.....	7
Received Indexes by Month, Meat Animal, Dairy Products, and Poultry & Eggs – United States: 1990-1992=100 Chart.....	7
Prices Received for Field Crops and Fruits – United States: September 2011 with Comparisons	8
Prices Received for Vegetables and Livestock – United States: September 2011 with Comparisons	9
Prices Received for Corn by Month – United States Chart.....	10
Prices Received for Wheat by Month – United States Chart	10
Prices Received for Cotton by Month – United States Chart.....	11
Prices Received for Soybeans by Month – United States Chart	11
Prices Received for Cattle by Month – United States Chart	12
Prices Received for Milk by Month – United States Chart.....	12
Prices Received for Hogs by Month – United States Chart	13
Prices Received for Poultry by Month – United States Chart.....	13
Prices Received for All Wheat, Corn, and Soybeans by Month – United States: 2011 with Comparisons	14
Prices Received for Beef Cattle and All Hogs by Month – United States: 2011 with Comparisons	14
Prices Received for All Wheat – States and United States: September 2011 with Comparisons	15
Prices Received for Winter Wheat – States and United States: September 2011 with Comparisons	15
Prices Received for Durum Wheat – States and United States: September 2011 with Comparisons	16
Prices Received for Spring Wheat – States and United States: September 2011 with Comparisons.....	16
Prices Received for All Barley – States and United States: September 2011 with Comparisons	17
Prices Received for Malting Barley – States: September 2011 with Comparisons.....	17
Prices Received for Feed Barley – States: September 2011 with Comparisons	17
Prices Received for Corn – States and United States: September 2011 with Comparisons.....	18
Prices Received for Soybeans – States and United States: September 2011 with Comparisons	18
Prices Received for Oats – States and United States: September 2011 with Comparisons	19
Prices Received for Sorghum Grain – States and United States: September 2011 with Comparisons	19
Prices Received for Dry Beans – States and United States: September 2011 with Comparisons.....	20
Prices Received for Peanuts (In-Shell) – States and United States: September 2011 with Comparisons.....	20
Prices Received for Sunflower – States and United States: September 2011 with Comparisons	21
Prices Received for Canola – States and United States: September 2011 with Comparisons	21
Prices Received for Flaxseed – States and United States: September 2011 with Comparisons.....	21
Prices Received for Upland Cotton and Cottonseed – States and United States: September 2011 with Comparisons	22
Prices Received and Farm Marketings for Upland Cotton and Rice – United States: September 2011 with Comparisons	22
Prices Received for Hay by Type – States and United States: September 2011 with Comparisons.....	23
Prices Received for Apples – States and United States: September 2011 with Comparisons	23
Prices Received for Citrus Fruits by Utilization – States and United States: September 2010.....	24
Prices Received for Citrus Fruits by Utilization – States and United States: August 2011	25
Prices Received for Citrus Fruits by Utilization – States and United States: September 2011.....	26
Prices Received for Potatoes – States and United States: September 2011 with Comparisons	27
Prices Received for All Milk – States and United States: September 2011 with Comparisons.....	28
Prices Received for Milk Cows – States and United States: July 2011 with Comparisons	29

Commodity Parity Prices and Price as Percent of Parity Price – United States: September 2011 with Comparisons	30
Commodity Parity Prices – United States: September 2011 with Comparisons.....	31
Marketing Year for Specified Commodities	33
Dry Edible Peas Market Year Average Prices Received – States and United States: Marketing Years 2008 through 2010.....	34
Austrian Winter Peas Market Year Average Prices Received – States and United States: Marketing Years 2008 through 2010.....	34
Lentils Market Year Average Prices Received – States and United States: Marketing Years 2008 through 2010	34
Prices Received and Farm Marketings for Lentils by Month – United States: Marketing Years 2008-2009 through 2010-2011	35
Prices Received and Farm Marketings for Dry Edible Peas by Month – United States: Marketing Years 2008-2009 through 2010-2011	35
Prices Received and Farm Marketings for Austrian Winter Peas by Month – United States: Marketing Years 2008-2009 through 2010-2011	36
Prices Received and Farm Marketings for Corn by Month – United States: Marketing Years 2008-2009 through 2010-2011	36
Market Year Average Prices Received for Sorghum Grain – States and United States: Marketing Years 2008 through 2010.....	37
Percent of Sorghum Grain Farm Marketings by Month – States and United States: Marketing Years 2009-2010 and 2010-2011	37
Prices Received for Sorghum Grain by Month – States and United States: Marketing Years 2009-2010 and 2010-2011	38
Soybean Market Year Average Prices Received – States and United States: Marketing Years 2008 through 2010	40
Prices Received for Soybeans by Month – States and United States: Marketing Years 2009-2010 and 2010-2011	41
Percent of Soybean Farm Marketings by Month – States and United States: Marketing Years 2009-2010 and 2010-2011	43
Reliability of Prices Received Estimates	44
Prices Paid by Farmers.....	45
Prices Paid Indexes and Related Parity Ratios – United States: September 2011 with Comparisons	46
Prices Paid Indexes and Annual Weights for Input Components and Sub-Components – United States: September 2011 with Comparisons.....	47
Paid Indexes by Month, All Items and Production Items – United States: 1990-1992=100 Chart	48
Paid Indexes, Annual Averages, Production Items, Interest, Taxes, and Wages – United States: 1990-1992=100 Chart	48
Paid Indexes by Farm Type, All Items – United States: 1990-1992=100 Chart.....	49
Paid Indexes by Origin, All Production Items – United States: 1990-1992=100 Chart	49
Paid Indexes by Non-Farm Sector, Supplies & Repairs, Fertilizer, Machinery, and Fuel – United States: 1990-1992=100 Chart	50
Paid Indexes by Month, Feed and Replacement Livestock – United States: 1990-1992=100 Chart.....	50
Feed Price Ratios – United States: September 2011 with Comparisons.....	51
Prices Received Used to Calculate Feed Price Ratios – United States: September 2011 with Comparisons.....	51
Prices Paid for Feeder Livestock – United States: September 2011 with Comparisons.....	51
Reliability of Prices Paid Estimates	52
Information Contacts	53

Prices Received by Farmers

The September All Farm Products Index is 183 percent of its 1990-1992 base, down 0.5 percent from the August index but 28 percent above the September 2010 index.

All crops: The September index, at 210, is unchanged from August but 38 percent above September 2010. Index increases for fruits & nuts, feed grains & hay, and upland cotton offset index decreases for oilseeds, food grains, commercial vegetables, and potatoes & dry beans.

Food grains: The September index, at 245, is 1.6 percent below the previous month but 30 percent above a year ago. The September all wheat price, at \$7.53 per bushel, is down 8 cents from August but \$1.74 above September 2010.

Feed grains & hay: The September index, at 281, is unchanged from last month but 62 percent above a year ago. The corn price, at \$6.69 per bushel, is down 19 cents from last month but \$2.61 above September 2010. The all hay price, at \$176 per ton, is up \$4.00 from August and \$64.00 higher than last September. Sorghum grain, at \$11.70 per cwt, is \$1.00 above August and \$4.44 above September last year.

Cotton, Upland: The September index, at 157, is up 1.3 percent from August and 28 percent above last year. The September price, at 95.4 cents per pound, is up 1.4 cents from the previous month and 20.7 cents above last September.

Oilseeds: The September index, at 215, is down 10 percent from August but 44 percent higher than September 2010. The soybean price, at \$13.10 per bushel, decreased 30 cents from August but is \$3.12 above September 2010.

Fruits & nuts: The September index, at 182, is up 4.0 percent from August and 15 percent higher than a year ago. Price increases for apples, strawberries, and grapefruit more than offset price decreases for grapes, lemons, and oranges.

Commercial vegetables: The September index, at 144, is down 2.7 percent from last month and 3.4 percent below September 2010. Price decreases for onions, sweet corn, and broccoli more than offset price increases during September for cucumbers, tomatoes, and lettuce.

Potatoes & dry beans: The September index, at 172, is down 4.4 percent from last month but 35 percent above September 2010. The all potato price, at \$9.32 per cwt, is down \$1.15 from August but up \$2.10 from last September. The all dry bean price, at \$40.90 per cwt, is up \$6.90 from the previous month and \$14.40 above September 2010.

Livestock and products: The September index, at 151, is 4.4 percent below last month but up 13 percent from September 2010. Compared with a year ago, prices are higher for cattle, milk, eggs, hogs, calves, and turkeys. Prices for broilers are lower than last year.

Meat animals: The September index, at 149, is down 2.6 percent from last month but 16 percent higher than last year. The September hog price, at \$66.70 per cwt, is down \$9.10 from August but \$5.70 higher than a year ago. The September beef cattle price of \$112 per cwt is up \$1.00 from last month and \$17.90 higher than September 2010.

Dairy products: The September index, at 160, is down 4.8 percent from a month ago but 18 percent higher than September last year. The September all milk price of \$20.90 per cwt is down \$1.10 from last month but \$3.20 higher than September 2010.

Poultry & eggs: The September index, at 147, is down 8.1 percent from August but unchanged from a year ago. The September market egg price, at 76.9 cents per dozen, decreased 22.2 cents from August but is 32.3 cents above September 2010. The September broiler price, at 44.0 cents per pound, is down 4.0 cents from August and 5.0 cents below a year ago. The September turkey price, at 72.1 cents per pound, is up 1.4 cents from the previous month and 3.1 cents higher than a year earlier.

Prices Received Indexes – United States: September 2011 with Comparisons

[Revised historical price indexes for months not shown are available at www.nass.usda.gov]

Index	1910-1914 Base				1990-1992 Base		
	1990-1992 Average	September 2010	August 2011	September 2011	September 2010	August 2011	September 2011
	(percent)	(percent)	(percent)	(percent)	(percent)	(percent)	(percent)
All products	639	907	1165	1159	143	184	183
All crops	500	753	1043	1041	152	210	210
Food grains	325	599	789	775	189	249	245
Feed grains & hay	363	617	1001	1003	173	281	281
Cotton, Upland	517	632	796	807	123	155	157
Tobacco	1263	1563	1491	1491	103	99	99
Oilseeds	554	816	1311	1178	149	239	215
Fruits & nuts	716	1101	1221	1267	158	175	182
Commercial vegetables	698	1061	1060	1031	149	148	144
Potatoes & dry beans	540	643	910	871	127	180	172
Other crops	493	622	635	635	126	129	129
Livestock and products	768	1028	1214	1159	134	158	151
Meat animals	1021	1308	1559	1520	128	153	149
Dairy products	799	1089	1354	1286	136	168	160
Poultry & eggs	282	412	450	413	147	160	147
Food commodities	(NA)	(NA)	(NA)	(NA)	141	173	169

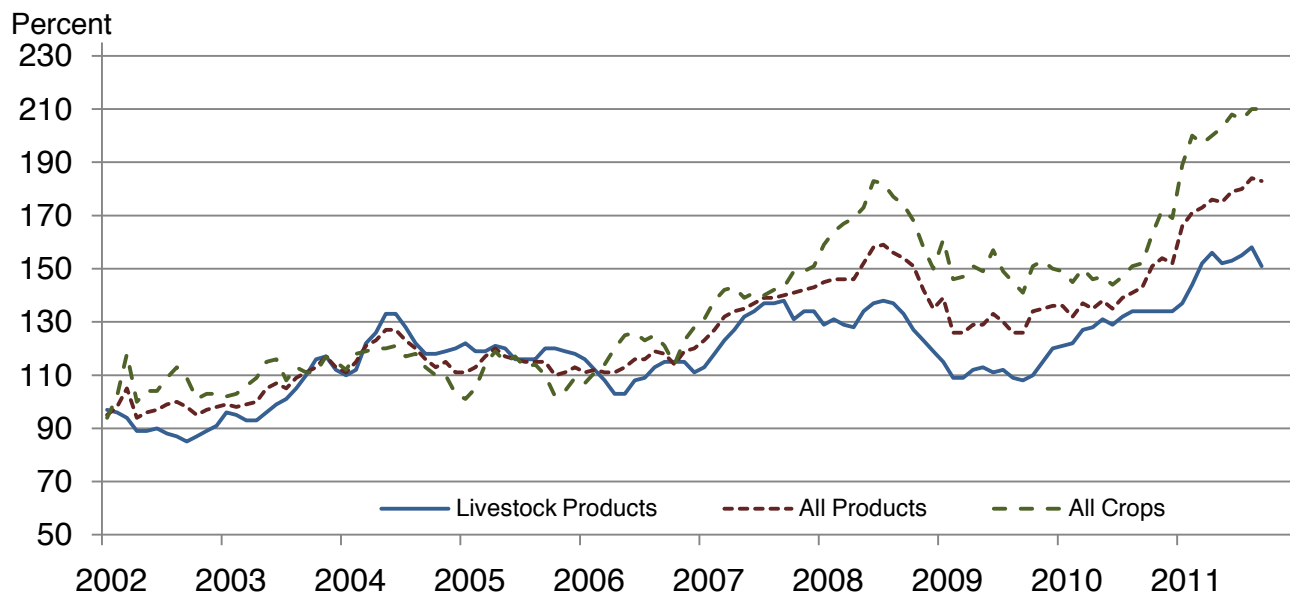
(NA) Not available.

Prices Received and Prices Paid Indexes by Month for Selected Groups – United States: 2010 and 2011, 1990-1992 Base

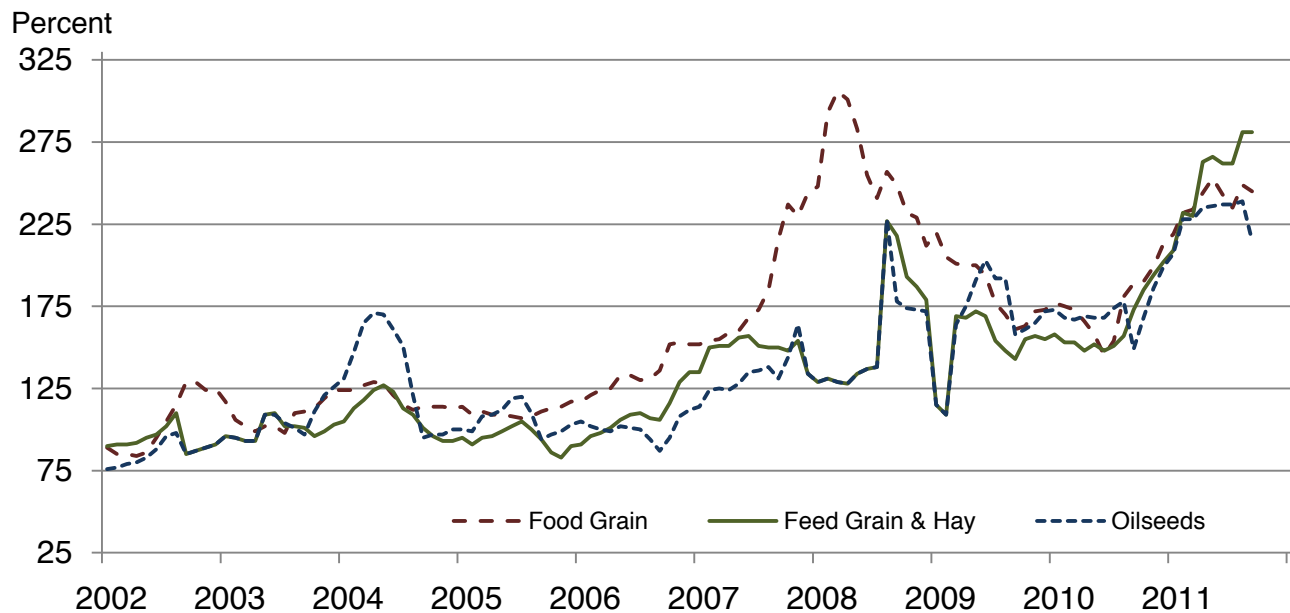
[Revised historical price indexes for months not shown are available at www.nass.usda.gov. Blank data cells indicate estimation period has not yet begun]

Month	Index of prices received						Index of prices paid			
	All farm products		All crops		Livestock and products		All items		Production items	
	2010	2011	2010	2011	2010	2011	2010	2011	2010	2011
	(percent)	(percent)	(percent)	(percent)	(percent)	(percent)	(percent)	(percent)	(percent)	(percent)
January	136	166	149	189	121	137	180	196	185	204
February	132	171	145	200	122	144	180	198	184	207
March	137	173	150	197	127	152	181	201	185	212
April	135	176	146	200	128	156	182	204	187	215
May	138	175	147	203	131	152	182	204	187	215
June	135	179	144	208	129	153	181	204	186	215
July	139	180	147	206	132	155	181	204	186	216
August	141	184	151	210	134	158	182	205	187	216
September	143	183	152	210	134	151	183	205	188	217
October	151		163		134		185		191	
November	154		172		134		187		194	
December	152		169		134		189		197	

Received Indexes by Month, Livestock Products, All Products, and All Crops – United States: 1990-1992=100

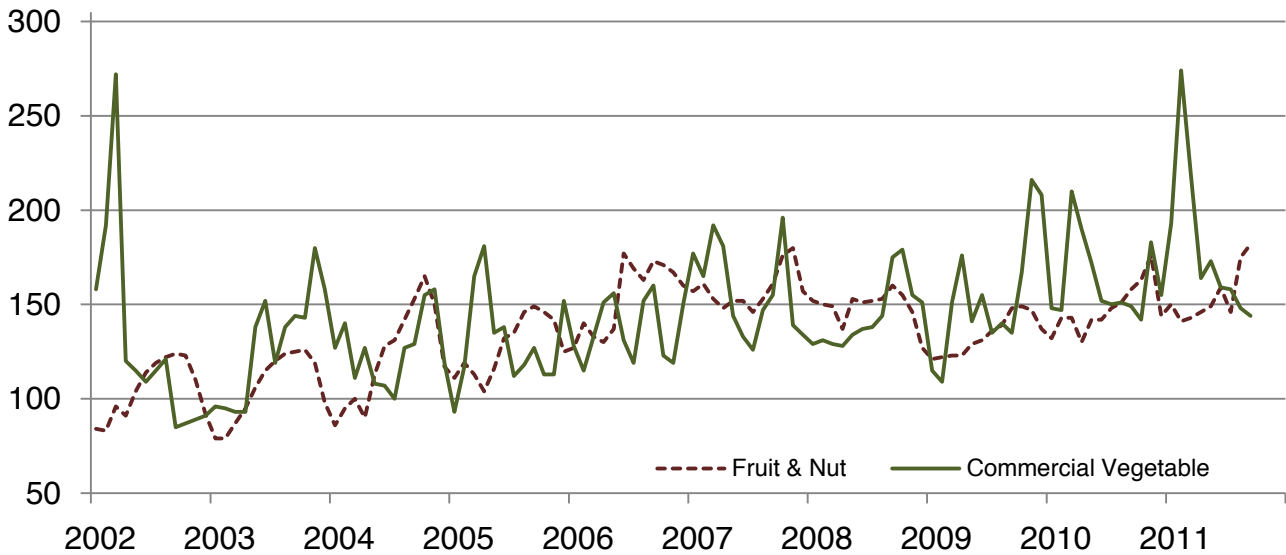


Received Indexes by Month, Food Grains, Feed Grains & Hay, and Oilseeds – United States: 1990-1992=100



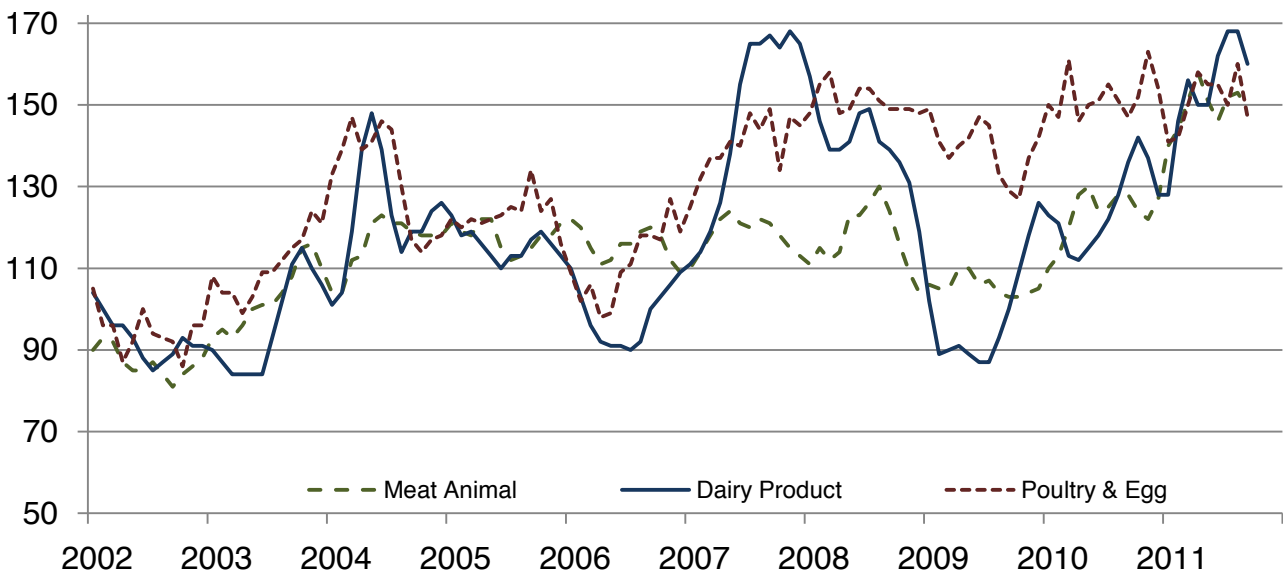
Received Indexes by Month, Fruit & Nut and Commercial Vegetables – United States: 1990-1992=100

Percent



Received Indexes by Month, Meat Animal, Dairy Product, and Poultry & Egg – United States: 1990-1992=100

Percent



Prices Received for Field Crops and Fruits – United States: September 2011 with Comparisons

Commodity	Average 1990-1992=100	September 2010	August 2011	Preliminary September 2011
Field crops				
Austrian winter peas	dollars/cwt (NA)	16.60	(S)	(S)
Barley, all	dollars/bushel 2.12	3.61	5.20	5.52
Feed	dollars/bushel 1.90	2.89	4.85	5.05
Malting	dollars/bushel 2.43	3.96	5.24	5.70
Beans, dry edible	dollars/cwt 19.10	26.50	34.00	40.90
Canola	dollars/cwt (NA)	17.40	23.10	24.00
Chickpeas, all	dollars/cwt (NA)	25.00	35.10	(D)
Large	dollars/cwt (NA)	25.30	42.80	(D)
Small	dollars/cwt (NA)	21.20	18.80	(D)
Corn	dollars/bushel 2.30	4.08	6.88	6.69
Cotton, Upland	dollars/pound 0.606	0.747	0.940	0.954
Cottonseed ¹	dollars/ton 96.00	154.00	213.00	245.00
Flaxseed	dollars/bushel 4.27	10.80	14.30	14.40
Hay, all, baled	dollars/ton 76.30	112.00	172.00	176.00
Alfalfa	dollars/ton 77.20	119.00	191.00	196.00
Other	dollars/ton 60.00	96.80	127.00	128.00
Lentils	dollars/cwt (NA)	23.30	24.30	28.50
Oats	dollars/bushel 1.22	2.30	3.19	3.32
Peanuts, in-shell	dollars/pound 0.304	0.199	0.232	0.232
Peas, dry edible	dollars/cwt (NA)	8.69	14.30	15.40
Potatoes	dollars/cwt 5.82	7.22	10.47	9.32
Rice, all	dollars/cwt 7.07	11.10	13.60	13.80
Long	dollars/cwt (NA)	10.10	12.40	12.70
Medium and short	dollars/cwt (NA)	17.00	18.60	18.80
Sorghum grain	dollars/cwt 3.75	7.26	10.70	11.70
Soybeans	dollars/bushel 5.61	9.98	13.40	13.10
Sunflowers, all	dollars/cwt 9.50	17.30	32.20	33.50
Wheat, all	dollars/bushel 2.96	5.79	7.61	7.53
Winter	dollars/bushel 2.93	5.76	7.26	6.99
Durum	dollars/bushel 2.86	4.89	10.20	10.60
Other spring	dollars/bushel 3.11	5.97	8.30	8.13
Hard red winter ²	dollars/bushel (NA)	5.82	7.40	(NA)
Soft red winter ²	dollars/bushel (NA)	5.89	7.08	(NA)
Hard red spring ²	dollars/bushel (NA)	6.03	8.39	(NA)
White ²	dollars/bushel 3.24	5.54	6.79	(NA)
Fruits				
Citrus, equivalent on-tree				
Grapefruit	dollars/box 5.77	4.70	7.10	9.50
Lemons	dollars/box 10.10	19.72	21.99	15.34
Oranges	dollars/box 5.79	6.88	9.58	8.44
Tangelos	dollars/box 5.82	(NA)	(NA)	(NA)
Tangerines and mandarins	dollars/box 15.11	(S)	(NA)	(NA)
Noncitrus, fresh				
Apples ³	dollars/pound 0.212	0.365	0.434	0.480
Grapes ³	dollars/ton 506.00	420.00	960.00	810.00
Peaches ³	dollars/ton 432.00	497.00	622.00	606.00
Pears ³	dollars/ton 370.00	486.00	620.00	585.00
Strawberries	dollars/cwt 56.00	73.30	92.80	111.00

(D) Withheld to avoid disclosing data for individual operations.

(NA) Not available.

(S) Insufficient number of reports to establish an estimate.

¹ Marketing year August - February.

² Preliminary estimates not set for this item.

³ Equivalent packinghouse-door returns for California, Michigan, New York (apples only), and Washington (apples, peaches, and pears). Prices as sold for other states.

Prices Received for Vegetables and Livestock – United States: September 2011 with Comparisons

[Price data source for livestock and poultry commodities is United States Department of Agriculture's Agricultural Marketing Service]

Commodity	Average 1990-1992=100	September 2010	August 2011	Preliminary September 2011
Vegetables, fresh ¹				
Asparagusdollars/cwt	79.80	(S)	(S)	(S)
Beans, snap ²dollars/cwt	(NA)	69.40	95.30	95.30
Broccolidollars/cwt	22.50	33.30	35.60	32.20
Cantaloupes ²dollars/cwt	(NA)	11.50	11.90	16.00
Carrotsdollars/cwt	13.20	26.80	28.00	27.60
Cauliflowerdollars/cwt	26.80	27.70	30.90	29.00
Celerydollars/cwt	11.60	15.10	14.30	12.70
Corn, sweetdollars/cwt	15.70	24.00	28.30	26.40
Cucumbers ²dollars/cwt	(NA)	28.50	30.00	41.40
Lettucedollars/cwt	11.90	17.20	14.70	15.20
Onions ³dollars/cwt	12.80	11.70	13.20	10.60
Tomatoesdollars/cwt	32.30	38.40	30.40	37.80
Livestock				
Calvesdollars/cwt	94.30	118.00	134.00	133.00
Cattle, all beefdollars/cwt	72.90	94.10	111.00	112.00
Cows ⁴dollars/cwt	49.60	55.20	70.80	69.70
Steers & heifersdollars/cwt	77.10	99.50	114.00	116.00
Milk cows ⁵dollars/head	1130.00	(NA)	(NA)	(NA)
Hogs, alldollars/cwt	47.70	61.00	75.80	66.70
Barrows & giltsdollars/cwt	48.40	61.20	76.10	66.70
Sowsdollars/cwt	39.50	57.80	68.90	66.50
Lambsdollars/cwt	56.20	135.00	189.00	(NA)
Sheepdollars/cwt	23.40	48.70	66.80	(NA)
Dairy and poultry				
Milk, all ⁶dollars/cwt	13.06	17.70	22.00	20.90
Fat test percent	3.66	3.62	3.56	3.63
Broilers, live ⁷dollars/pound	0.317	0.490	0.480	0.440
Eggs, all ⁸dollars/dozen	0.643	0.634	1.140	0.948
Market ^{8 9}dollars/dozen	0.546	0.446	0.991	0.769
Turkeys, live ^{8 10 11}dollars/pound	0.380	0.690	0.707	0.721
Adjusted for seasonal variation				
Eggs, alldollars/dozen	0.545	0.684	1.170	1.030
Seasonal factor percent	100	93	97	92
Milk, all ⁶dollars/cwt	9.71	17.00	22.00	20.10
Seasonal factor percent	100	104	100	104

(NA) Not available.

(S) Insufficient number of reports to establish an estimate.

¹ Beginning January 2006, point of first sale. FOB shipping point for prior years.

² Monthly estimates began January 1995.

³ Includes some processing.

⁴ Beef cows and cull dairy cows sold for slaughter.

⁵ Animals sold for dairy herd replacement only. Prices available for January, April, July, and October.

⁶ Before deductions for hauling. Includes quality, quantity, and other premiums. Excludes hauling subsidies.

⁷ Live weight equivalent price.

⁸ Mid-month price.

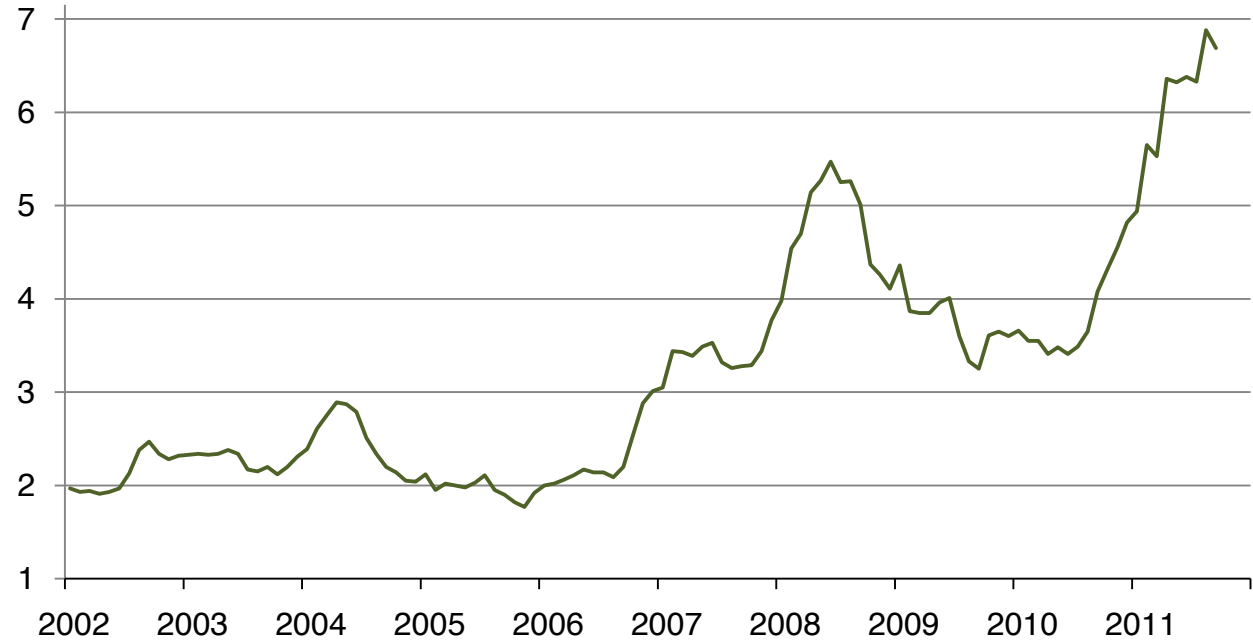
⁹ Also referred to as table eggs.

¹⁰ Live weight equivalent price is used when actual live weight price is not available.

¹¹ Beginning January 2011, price reflects FOB shipping point basis. Prior year price reflects delivered basis.

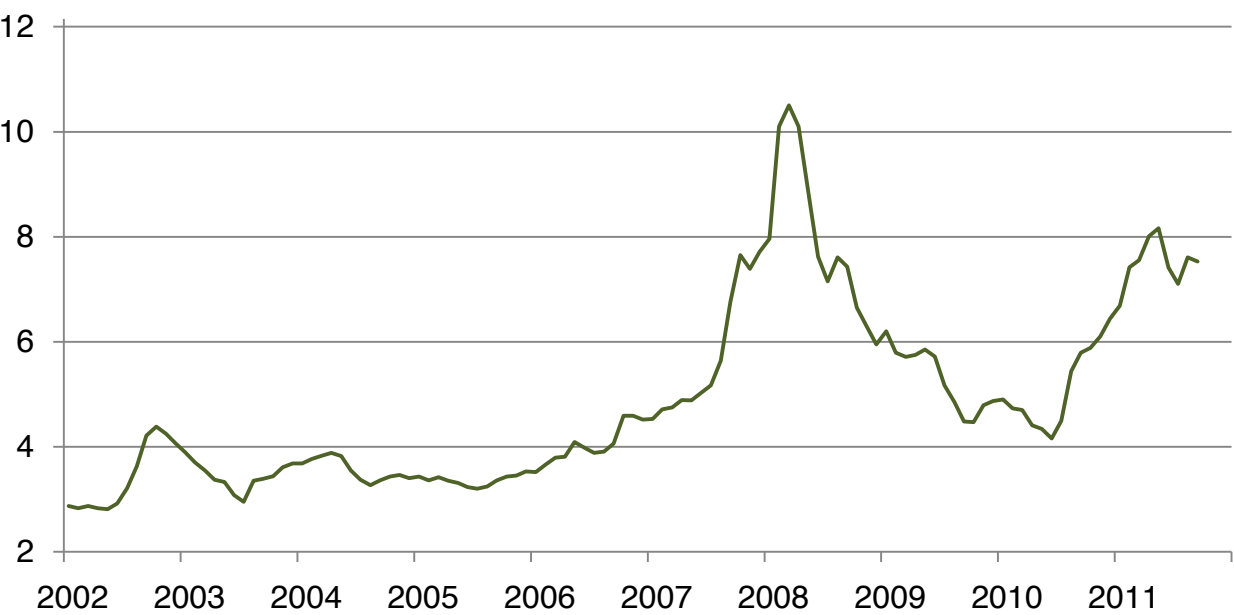
Prices Received for Corn by Month – United States

Dollars per bushel



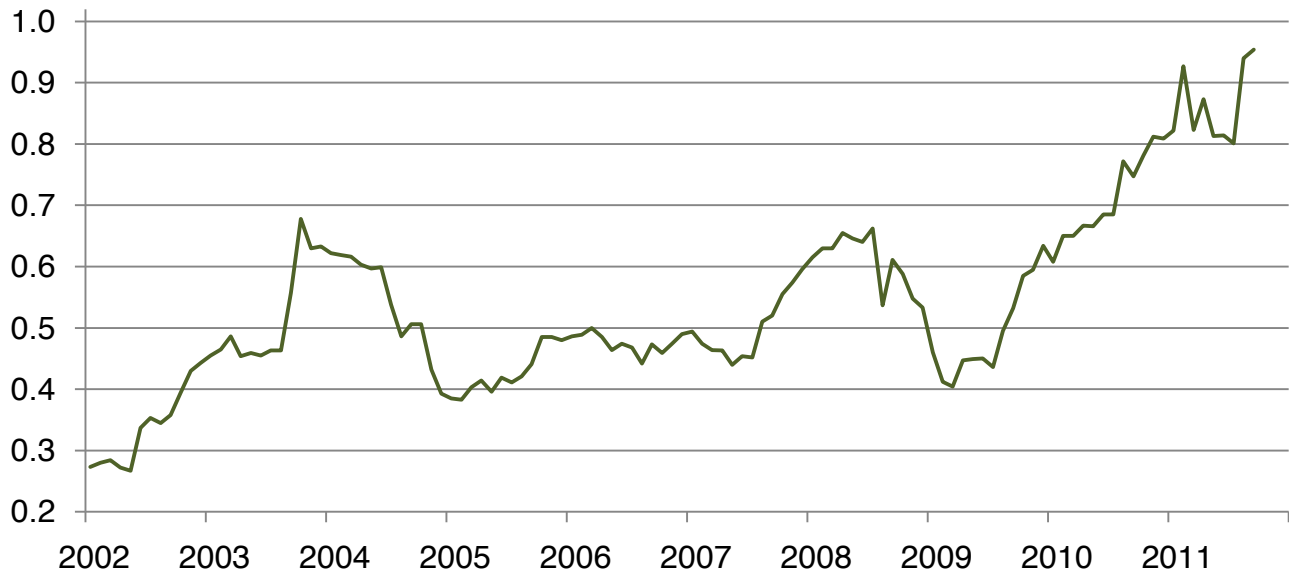
Prices Received for Wheat by Month – United States

Dollars per bushel



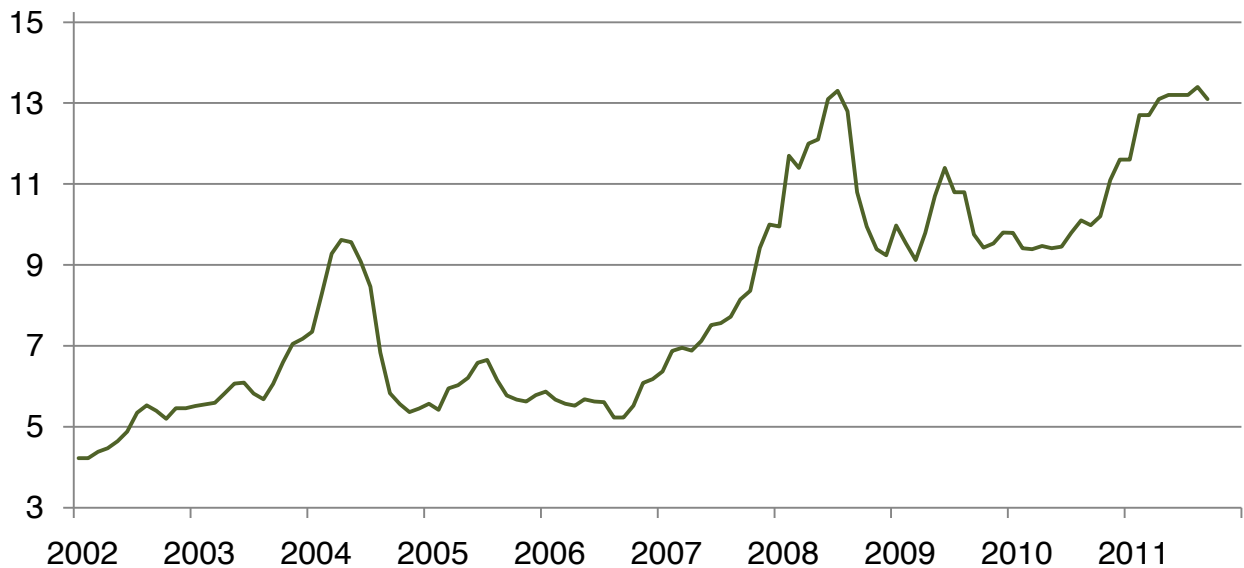
Prices Received for Upland Cotton by Month – United States

Dollars per pound



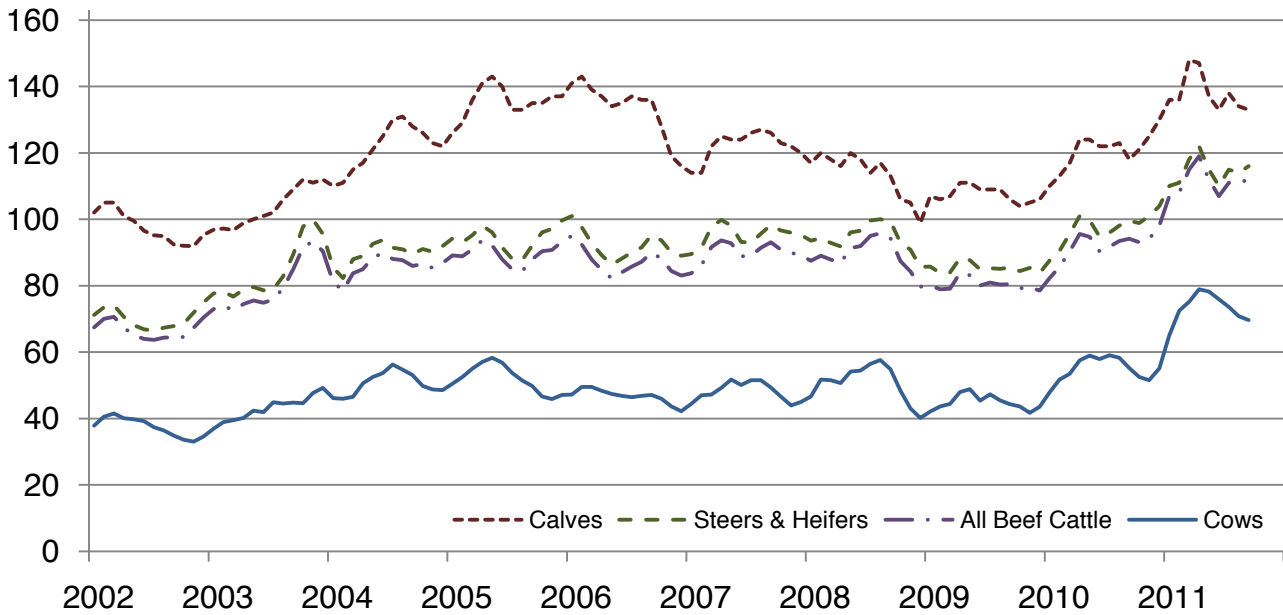
Prices Received for Soybeans by Month – United States

Dollars per bushel



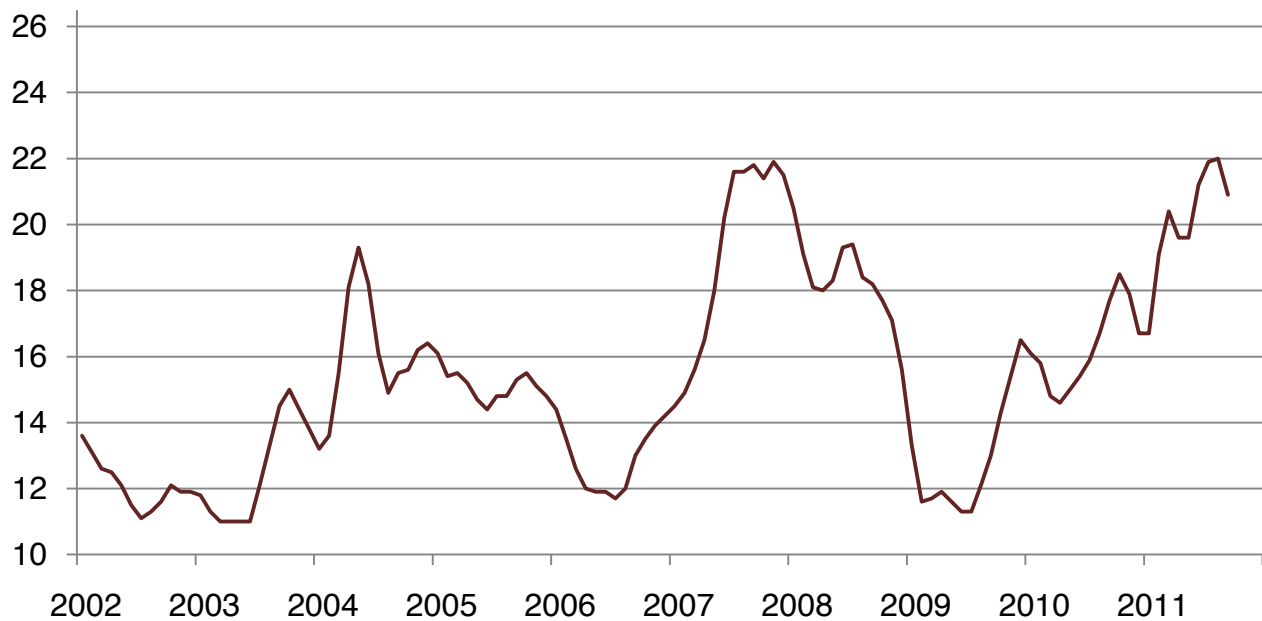
Prices Received for Cattle by Month – United States

Dollars per cwt



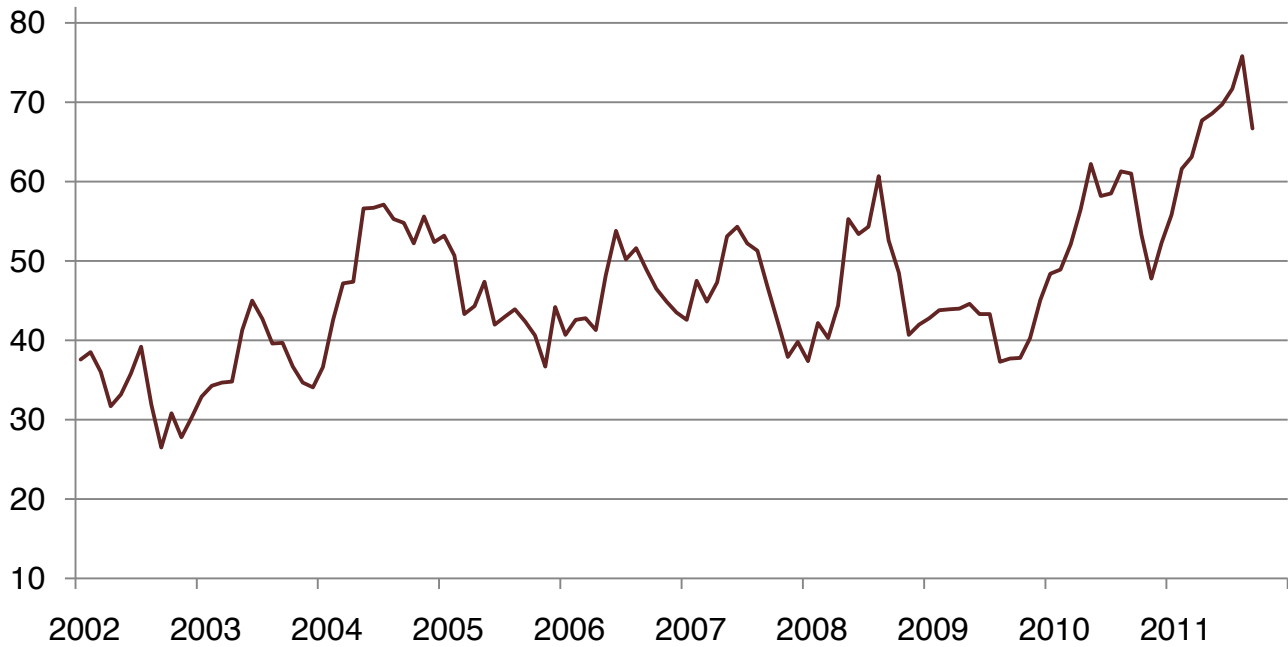
Prices Received for Milk by Month – United States

Dollars per cwt



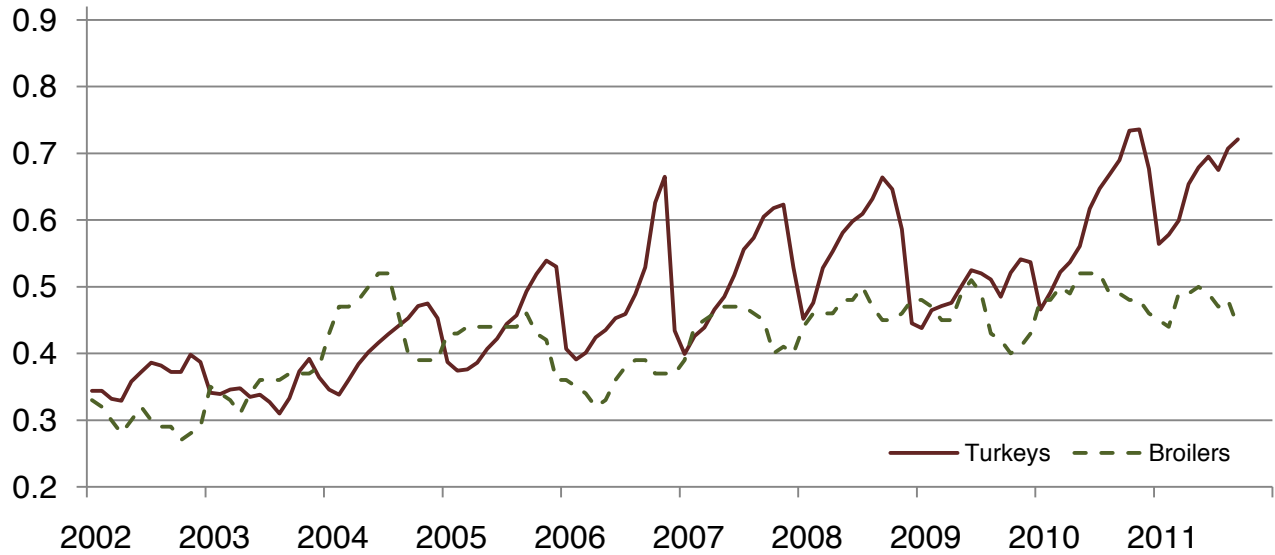
Prices Received for Hogs by Month – United States

Dollars per cwt



Prices Received for Poultry by Month – United States

Dollars per pound



Prices Received for All Wheat, Corn, and Soybeans by Month – United States: 2011 with Comparisons

[Current month prices are mid-month; prices for previous months and years are for the entire month. Blank data cells indicate estimation period has not yet begun]

Month	All wheat			Corn			Soybeans		
	2009	2010	Preliminary 2011	2009	2010	Preliminary 2011	2009	2010	Preliminary 2011
	(dollars per bushel)	(dollars per bushel)	(dollars per bushel)	(dollars per bushel)	(dollars per bushel)	(dollars per bushel)	(dollars per bushel)	(dollars per bushel)	(dollars per bushel)
January	6.20	4.90	6.69	4.36	3.66	4.94	9.97	9.79	11.60
February	5.79	4.73	7.42	3.87	3.55	5.65	9.54	9.41	12.70
March	5.71	4.70	7.55	3.85	3.55	5.53	9.12	9.39	12.70
April	5.75	4.41	8.01	3.85	3.41	6.36	9.79	9.47	13.10
May	5.85	4.34	8.16	3.96	3.48	6.32	10.70	9.41	13.20
June	5.72	4.16	7.41	4.01	3.41	6.38	11.40	9.45	13.20
July	5.17	4.49	7.10	3.60	3.49	6.33	10.80	9.79	13.20
August	4.85	5.44	7.61	3.33	3.65	6.88	10.80	10.10	13.40
September	4.48	5.79	7.53	3.25	4.08	6.69	9.75	9.98	13.10
October	4.47	5.88		3.61	4.32		9.43	10.20	
November	4.79	6.10		3.65	4.55		9.53	11.10	
December	4.87	6.44		3.60	4.82		9.80	11.60	

Prices Received for Beef Cattle and All Hogs by Month – United States: 2011 with Comparisons

[Current month prices are mid-month; prices for previous months and years are for the entire month. Blank data cells indicate estimation period has not yet begun. Price data source is United States Department of Agriculture's Agricultural Marketing Service]

Month	Beef cattle ¹			All hogs ²		
	2009	2010	Preliminary 2011	2009	2010	Preliminary 2011
	(dollars per cwt)	(dollars per cwt)	(dollars per cwt)	(dollars per cwt)	(dollars per cwt)	(dollars per cwt)
January	80.10	82.30	107.00	42.80	48.40	55.80
February	78.90	85.70	108.00	43.80	48.90	61.60
March	79.10	90.40	115.00	43.90	52.10	63.10
April	83.80	95.60	119.00	44.00	56.50	67.70
May	83.20	94.70	112.00	44.60	62.20	68.60
June	80.10	90.40	107.00	43.30	58.20	69.70
July	80.90	91.70	111.00	43.30	58.50	71.70
August	80.40	93.50	111.00	37.30	61.30	75.80
September	80.50	94.10	112.00	37.70	61.00	66.70
October	79.20	93.10		37.80	53.30	
November	79.60	94.00		40.30	47.80	
December	78.50	98.10		45.10	52.30	

¹ Cows and steers & heifers.

² Barrows & gilts and sows.

Prices Received for All Wheat – States and United States: September 2011 with Comparisons

State	September 2010	August 2011	Preliminary September 2011
	(dollars per bushel)	(dollars per bushel)	(dollars per bushel)
Arizona	(D)	(D)	(S)
Arkansas	(D)	6.90	6.80
California	5.59	(D)	(D)
Colorado	5.67	7.17	7.07
Idaho	5.25	6.88	6.90
Illinois	5.96	6.99	6.50
Indiana	6.31	7.05	6.51
Kansas	6.17	7.76	7.35
Michigan	6.07	6.96	6.75
Minnesota	5.56	8.10	8.09
Missouri	5.56	6.93	6.40
Montana	5.40	7.79	7.95
Nebraska	5.62	7.12	7.05
North Carolina	6.23	7.54	7.47
North Dakota	5.76	8.26	8.48
Ohio	5.68	7.16	6.51
Oklahoma	6.27	7.78	7.43
Oregon	6.02	7.04	6.86
South Dakota	5.98	7.76	7.61
Texas	6.36	7.42	7.24
Washington	5.92	7.49	7.44
United States	5.79	7.61	7.53

(D) Withheld to avoid disclosing data for individual operations.
(S) Insufficient number of reports to establish an estimate.

Prices Received for Winter Wheat – States and United States: September 2011 with Comparisons

State	September 2010	August 2011	Preliminary September 2011
	(dollars per bushel)	(dollars per bushel)	(dollars per bushel)
Arkansas	(D)	6.90	6.80
California	(D)	(D)	(D)
Colorado	5.69	7.16	7.06
Idaho	5.16	6.72	6.70
Illinois	5.96	6.99	6.50
Indiana	6.31	7.05	6.51
Kansas	6.17	7.76	7.35
Michigan	6.07	6.96	6.75
Minnesota	5.29	7.30	7.40
Missouri	5.56	6.93	6.40
Montana	5.11	7.02	7.20
Nebraska	5.62	7.12	7.05
North Carolina	6.23	7.54	7.47
North Dakota	5.06	6.75	7.00
Ohio	5.68	7.16	6.51
Oklahoma	6.27	7.78	7.43
Oregon	5.94	6.76	6.60
South Dakota	5.22	7.26	7.15
Texas	6.36	7.42	7.24
Washington	5.80	6.97	6.70
United States	5.76	7.26	6.99

(D) Withheld to avoid disclosing data for individual operations.

Prices Received for Durum Wheat – States and United States: September 2011 with Comparisons

State	September 2010	August 2011	Preliminary September 2011
	(dollars per bushel)	(dollars per bushel)	(dollars per bushel)
Arizona	(D)	(D)	(S)
California	(S)	(S)	(S)
Idaho	(D)	8.86	9.10
Montana	4.44	9.42	10.00
North Dakota	4.93	11.00	11.00
United States	4.89	10.20	10.60

(D) Withheld to avoid disclosing data for individual operations.

(S) Insufficient number of reports to establish an estimate.

Prices Received for Spring Wheat – States and United States: September 2011 with Comparisons

State	September 2010	August 2011	Preliminary September 2011
	(dollars per bushel)	(dollars per bushel)	(dollars per bushel)
Colorado	(D)	(D)	(D)
Idaho	5.47	7.24	7.15
Minnesota	5.57	8.12	8.10
Montana	6.07	8.47	8.50
North Dakota	5.96	8.16	8.10
Oregon	6.50	8.29	8.20
South Dakota	6.44	8.49	8.31
Washington	6.50	8.59	8.41
United States	5.97	8.30	8.13

(D) Withheld to avoid disclosing data for individual operations.

Prices Received for All Barley – States and United States: September 2011 with Comparisons

State	September 2010	August 2011	Preliminary September 2011
	(dollars per bushel)	(dollars per bushel)	(dollars per bushel)
California	(D)	(D)	(S)
Colorado	3.86	5.25	(D)
Idaho	3.99	5.46	5.75
Minnesota	(D)	(D)	(D)
Montana	3.83	4.89	(D)
North Dakota	3.11	5.28	5.43
Oregon	3.20	5.59	4.80
Utah	3.05	5.55	5.72
Washington	3.26	5.05	4.99
Wyoming	(D)	(D)	(D)
United States	3.61	5.20	5.52

(D) Withheld to avoid disclosing data for individual operations.

(S) Insufficient number of reports to establish an estimate.

Prices Received for Malting Barley – States: September 2011 with Comparisons

State	September 2010	August 2011	Preliminary September 2011
	(dollars per bushel)	(dollars per bushel)	(dollars per bushel)
Idaho	4.13	5.46	5.75
Minnesota	(D)	(D)	(D)
Montana	4.09	4.95	(D)
North Dakota	3.67	5.35	5.70
Wyoming	(D)	(D)	(D)

(D) Withheld to avoid disclosing data for individual operations.

Prices Received for Feed Barley – States: September 2011 with Comparisons

State	September 2010	August 2011	Preliminary September 2011
	(dollars per bushel)	(dollars per bushel)	(dollars per bushel)
Idaho	3.27	5.62	5.90
Minnesota	2.33	4.29	(D)
Montana	2.60	4.56	(D)
North Dakota	2.31	4.75	4.80
Wyoming	(S)	(D)	(D)

(D) Withheld to avoid disclosing data for individual operations.

(S) Insufficient number of reports to establish an estimate.

Prices Received for Corn – States and United States: September 2011 with Comparisons

State	September 2010	August 2011	Preliminary September 2011
	(dollars per bushel)	(dollars per bushel)	(dollars per bushel)
Colorado	3.97	7.06	6.77
Illinois	4.05	6.96	6.80
Indiana	4.24	7.18	7.00
Iowa	4.01	6.84	6.55
Kansas	4.09	6.89	6.65
Kentucky	4.11	6.38	6.80
Michigan	4.03	7.22	6.90
Minnesota	3.79	6.49	6.00
Missouri	4.13	7.15	6.70
Nebraska	3.99	6.93	6.60
North Carolina	4.61	6.99	7.26
North Dakota	3.67	6.36	6.30
Ohio	4.21	7.40	7.03
Pennsylvania	4.90	8.52	7.78
South Dakota	3.62	6.75	6.50
Tennessee	4.34	6.32	6.40
Texas	4.18	7.00	7.20
Wisconsin	3.98	7.09	6.60
United States	4.08	6.88	6.69

Prices Received for Soybeans – States and United States: September 2011 with Comparisons

State	September 2010	August 2011	Preliminary September 2011
	(dollars per bushel)	(dollars per bushel)	(dollars per bushel)
Arkansas	10.10	13.20	13.20
Illinois	10.00	13.70	13.60
Indiana	10.10	13.70	13.40
Iowa	9.87	13.50	13.00
Kansas	9.82	13.50	13.00
Kentucky	9.79	13.50	13.20
Louisiana	10.10	11.80	12.10
Michigan	9.71	13.30	12.90
Minnesota	9.48	13.00	12.90
Mississippi	10.10	13.60	13.00
Missouri	10.10	13.70	13.50
Nebraska	9.71	13.30	13.00
North Carolina	11.00	14.00	13.40
North Dakota	9.50	12.80	12.50
Ohio	10.20	13.60	13.20
South Dakota	9.64	13.00	12.70
Tennessee	10.30	13.00	12.90
Wisconsin	9.80	13.40	12.90
United States	9.98	13.40	13.10

Prices Received for Oats – States and United States: September 2011 with Comparisons

State	September 2010	August 2011	Preliminary September 2011
	(dollars per bushel)	(dollars per bushel)	(dollars per bushel)
Illinois	(D)	(D)	(S)
Iowa	2.18	3.20	3.40
Michigan	2.37	3.24	3.50
Minnesota	2.15	2.94	3.10
Montana	(D)	(S)	(S)
Nebraska	2.93	3.53	3.50
New York	1.72	4.10	(D)
North Dakota	2.11	3.01	(D)
Oregon	(D)	(S)	(S)
Pennsylvania	3.10	3.98	4.03
South Dakota	2.42	3.39	3.40
Texas	(S)	(S)	(S)
Wisconsin	1.96	3.12	3.25
United States	2.30	3.19	3.32

(D) Withheld to avoid disclosing data for individual operations.

(S) Insufficient number of reports to establish an estimate.

Prices Received for Sorghum Grain – States and United States: September 2011 with Comparisons

State	September 2010	August 2011	Preliminary September 2011
	(dollars per cwt)	(dollars per cwt)	(dollars per cwt)
Arkansas	7.61	10.90	10.90
Illinois	7.35	(D)	(S)
Kansas	7.16	12.20	11.60
Louisiana	7.76	10.10	(D)
Missouri	7.10	(D)	11.00
Nebraska	6.59	11.70	11.60
Oklahoma	7.43	11.80	11.60
Texas	7.33	10.60	(D)
United States	7.26	10.70	11.70

(D) Withheld to avoid disclosing data for individual operations.

(S) Insufficient number of reports to establish an estimate.

Prices Received for Dry Beans – States and United States: September 2011 with Comparisons

State	September 2010	August 2011	Preliminary September 2011
	(dollars per cwt)	(dollars per cwt)	(dollars per cwt)
California	44.60	(D)	(D)
Colorado	24.00	41.10	40.80
Idaho	27.60	35.70	34.30
Michigan	29.00	(D)	45.00
Minnesota	27.40	35.20	(D)
Nebraska	24.90	39.50	42.70
North Dakota	24.40	35.40	40.00
United States	26.50	34.00	40.90

(D) Withheld to avoid disclosing data for individual operations.

Prices Received for Peanuts (In-Shell) – States and United States: September 2011 with Comparisons

State	September 2010	August 2011	Preliminary September 2011
	(dollars per pound)	(dollars per pound)	(dollars per pound)
Alabama	0.192	0.233	0.227
Florida	0.188	0.230	0.202
Georgia	0.197	0.226	0.239
Mississippi	0.197	0.245	0.222
New Mexico	0.214	(S)	(S)
North Carolina	0.236	0.268	0.255
Oklahoma	(D)	(S)	(S)
South Carolina	0.226	0.253	0.248
Texas	0.253	0.262	(S)
Virginia	0.214	0.234	(S)
United States	0.199	0.232	0.232

(D) Withheld to avoid disclosing data for individual operations.

(S) Insufficient number of reports to establish an estimate.

Prices Received for Sunflower – States and United States: September 2011 with Comparisons

State	September 2010	August 2011	Preliminary September 2011
	(dollars per cwt)	(dollars per cwt)	(dollars per cwt)
Colorado	(D)	(S)	(S)
Kansas	23.90	(D)	28.00
Minnesota	(D)	38.70	36.80
North Dakota	16.70	32.10	35.20
South Dakota	15.70	31.70	31.70
United States	17.30	32.20	33.50

(D) Withheld to avoid disclosing data for individual operations.

(S) Insufficient number of reports to establish an estimate.

Prices Received for Canola – States and United States: September 2011 with Comparisons

State	September 2010	August 2011	Preliminary September 2011
	(dollars per cwt)	(dollars per cwt)	(dollars per cwt)
Minnesota	19.30	24.10	(S)
North Dakota	17.40	23.10	24.00
United States	17.40	23.10	24.00

(S) Insufficient number of reports to establish an estimate.

Prices Received for Flaxseed – States and United States: September 2011 with Comparisons

State	September 2010	August 2011	Preliminary September 2011
	(dollars per bushel)	(dollars per bushel)	(dollars per bushel)
North Dakota	10.80	14.30	14.40
United States	10.80	14.30	14.40

Prices Received for Upland Cotton and Cottonseed – States and United States: September 2011 with Comparisons

[Cottonseed marketing year August - February]

State	Cotton, Upland			Cottonseed		
	September 2010	August 2011	Preliminary September 2011	September 2010	August 2011	Preliminary September 2011
	(dollars per pound)	(dollars per pound)	(dollars per pound)	(dollars per ton)	(dollars per ton)	(dollars per ton)
Alabama	0.741	(S)	(S)	(S)	(NA)	(S)
Arizona	(D)	(S)	(S)	(S)	(NA)	(D)
Arkansas	0.793	(S)	(S)	(S)	(NA)	314.00
California	(S)	(S)	(S)	(S)	(NA)	(S)
Georgia	0.773	(S)	(S)	(S)	(NA)	(S)
Louisiana	0.740	(D)	(D)	165.00	(NA)	257.00
Mississippi	0.766	(S)	(S)	159.00	(NA)	(S)
North Carolina	0.689	(S)	(S)	139.00	(NA)	(S)
Tennessee	0.893	(S)	(S)	(S)	(NA)	(S)
Texas	0.749	0.940	0.954	150.00	213.00	236.00
United States	0.747	0.940	0.954	154.00	213.00	245.00

(D) Withheld to avoid disclosing data for individual operations.

(NA) Not available.

(S) Insufficient number of reports to establish an estimate.

Prices Received and Farm Marketings for Upland Cotton and Rice – United States: September 2011 with Comparisons

Item	September 2010	August 2011	Preliminary September 2011
Cotton, Upland			
Average price dollars/pound	0.747	0.940	0.954
Marketings ¹ 1,000 bales	476	506	(NA)
Rice, all			
Average price dollars/cwt	11.10	13.60	13.80
Marketings ² 1,000 cwt	15,095	11,056	(NA)
Rice, long			
Average price dollars/cwt	10.10	12.40	12.70
Marketings ² 1,000 cwt	12,764	8,925	(NA)
Rice, medium and short			
Average price dollars/cwt	17.00	18.60	18.80
Marketings ² 1,000 cwt	2,331	2,131	(NA)

(NA) Not available.

¹ Marketings based on a survey of cotton buyers in the major producing States - Alabama, Arizona, Arkansas, California, Georgia, Louisiana, Mississippi, North Carolina, Tennessee, and Texas.

² Purchases by private firms and rice (rough equivalent) shipped by cooperatives.

Prices Received for Hay by Type – States and United States: September 2011 with Comparisons

State	All hay			Alfalfa hay			Other hay		
	September 2010	August 2011	Preliminary September 2011	September 2010	August 2011	Preliminary September 2011	September 2010	August 2011	Preliminary September 2011
	(dollars per ton)	(dollars per ton)	(dollars per ton)	(dollars per ton)	(dollars per ton)	(dollars per ton)	(dollars per ton)	(dollars per ton)	(dollars per ton)
Arizona	120.00	216.00	216.00	120.00	220.00	220.00	125.00	180.00	170.00
California	121.00	220.00	225.00	128.00	232.00	236.00	97.00	170.00	174.00
Colorado	124.00	187.00	195.00	125.00	190.00	200.00	110.00	170.00	160.00
Idaho	116.00	227.00	220.00	120.00	230.00	228.00	90.00	150.00	139.00
Illinois	122.00	134.00	141.00	133.00	150.00	155.00	84.00	92.00	100.00
Iowa	107.00	126.00	123.00	112.00	128.00	132.00	79.00	83.00	90.00
Kansas	97.00	156.00	158.00	110.00	180.00	185.00	70.00	100.00	95.00
Kentucky	85.00	117.00	108.00	135.00	175.00	175.00	70.00	80.00	80.00
Michigan	92.00	96.00	102.00	105.00	105.00	110.00	75.00	80.00	85.00
Minnesota	95.00	108.00	115.00	110.00	115.00	125.00	60.00	85.00	85.00
Missouri	70.00	81.00	87.00	135.00	200.00	220.00	60.00	65.00	65.00
Montana	79.00	94.00	91.00	78.00	94.00	91.00	88.00	92.00	91.00
Nebraska	74.00	107.00	114.00	77.00	112.00	122.00	66.00	87.00	90.00
Nevada	120.00	216.00	215.00	120.00	219.00	220.00	125.00	180.00	170.00
New Mexico	164.00	253.00	264.00	167.00	259.00	269.00	136.00	193.00	209.00
New York	97.00	124.00	100.00	120.00	135.00	115.00	90.00	121.00	95.00
North Dakota	56.00	61.00	65.00	59.00	65.00	71.00	42.00	49.00	53.00
Ohio	106.00	149.00	141.00	151.00	188.00	177.00	76.00	89.00	98.00
Oklahoma	84.00	142.00	156.00	138.00	204.00	218.00	76.00	102.00	120.00
Oregon	147.00	225.00	216.00	135.00	226.00	235.00	164.00	224.00	190.00
Pennsylvania	118.00	136.00	105.00	150.00	177.00	161.00	108.00	125.00	89.00
South Dakota	74.00	102.00	123.00	75.00	105.00	130.00	68.00	82.00	97.00
Texas	123.00	165.00	176.00	180.00	246.00	249.00	110.00	135.00	155.00
Utah	108.00	184.00	184.00	108.00	188.00	187.00	99.00	151.00	151.00
Washington	148.00	200.00	207.00	135.00	195.00	210.00	180.00	210.00	200.00
Wisconsin	99.00	100.00	101.00	105.00	105.00	115.00	75.00	75.00	75.00
Wyoming	88.00	121.00	135.00	90.00	123.00	140.00	82.00	115.00	120.00
United States	112.00	172.00	176.00	119.00	191.00	196.00	96.80	127.00	128.00

Prices Received for Apples – States and United States: September 2011 with Comparisons

[Equivalent packinghouse-door returns for California, Michigan, New York, and Washington. Prices at point of first sale for other States]

State	Apples, fresh use		
	September 2010	August 2011	Preliminary September 2011
	(dollars per pound)	(dollars per pound)	(dollars per pound)
California	0.349	0.634	(S)
Michigan	0.320	(NA)	0.435
New York	0.285	(NA)	0.396
Ohio	0.460	0.430	0.460
Pennsylvania	0.416	(S)	(S)
Virginia	0.280	(NA)	0.470
Washington	0.392	0.405	0.504
United States	0.365	0.434	0.480

(NA) Not available.

(S) Insufficient number of reports to establish an estimate.

Prices Received for Citrus Fruits by Utilization – States and United States: September 2010

[Net pounds per box: grapefruit in California-67, Florida-85, Texas-80; lemons-76; oranges in California-75, Florida-90, Texas-85; tangelos in Florida-90; tangerines and mandarins in Arizona and California-75, Florida-95]

Commodity, State, and type	FOB packed fresh	Equivalent returns					
		Packinghouse-door			On-tree		
		All	Fresh	Process	All	Fresh	Process
	(dollars per box)	(dollars per box)	(dollars per box)	(dollars per box)	(dollars per box)	(dollars per box)	(dollars per box)
Grapefruit California ¹	17.60	7.80	7.80	(S)	4.70	4.70	(S)
Lemons California	43.00	25.59	32.10	(D)	19.72	26.23	(D)
Oranges California Valencia	20.50	9.57	11.98	(D)	6.88	9.29	(D)

(D) Withheld to avoid disclosing data for individual operations.

(S) Insufficient number of reports to establish an estimate.

¹ Some processed sales included in fresh sales.

Prices Received for Citrus Fruits by Utilization – States and United States: August 2011

[Net pounds per box: grapefruit in California-80, Florida-85, Texas-80; lemons-80; oranges in California-80, Florida-90, Texas-85; tangelos in Florida-90; tangerines and mandarins in Arizona and California-80, Florida-95]

Commodity, State, and type	FOB packed fresh	Equivalent returns					
		Packinghouse-door			On-tree		
		All	Fresh	Process	All	Fresh	Process
	(dollars per box)	(dollars per box)	(dollars per box)	(dollars per box)	(dollars per box)	(dollars per box)	(dollars per box)
Grapefruit California ¹	15.60	9.20	9.20	(D)	7.10	7.10	(D)
Lemons California	42.20	27.98	31.08	(D)	21.99	25.09	(D)
Oranges California Valencia	22.00	12.01	13.36	(D)	9.58	10.95	(D)

(D) Withheld to avoid disclosing data for individual operations.

¹ Some processed sales included in fresh sales.

Prices Received for Citrus Fruits by Utilization – States and United States: September 2011

[Net pounds per box: grapefruit in California-80, Florida-85, Texas-80; lemons-80; oranges in California-80, Florida-90, Texas-85; tangelos in Florida-90; tangerines and mandarins in Arizona and California-80, Florida-95]

Commodity, State, and type	FOB packed fresh	Equivalent returns					
		Packinghouse-door			On-tree		
		All	Fresh	Process	All	Fresh	Process
	(dollars per box)	(dollars per box)	(dollars per box)	(dollars per box)	(dollars per box)	(dollars per box)	(dollars per box)
Grapefruit California ¹	18.00	11.60	11.60	(D)	9.50	9.50	(D)
Lemons California	39.70	21.33	28.58	(D)	15.34	22.59	(D)
Oranges California Valencia	22.30	10.89	13.66	(D)	8.44	11.25	(D)

(D) Withheld to avoid disclosing data for individual operations.

¹ Some processed sales included in fresh sales.

Prices Received for Potatoes – States and United States: September 2011 with Comparisons

State	September 2010	August 2011	Preliminary September 2011
	(dollars per cwt)	(dollars per cwt)	(dollars per cwt)
California			
Spring	(S)	(S)	(S)
Fall	(S)	(S)	(S)
All ¹	(S)	(S)	(S)
Colorado			
Fresh ¹	12.30	19.90	(D)
All ¹	11.00	19.10	14.20
Florida	(S)	(S)	(S)
Idaho			
Fresh ²	8.20	13.80	(D)
Processing	6.10	7.10	(D)
All ¹	6.50	8.30	7.60
Maine	8.35	(D)	(D)
Michigan	8.70	9.65	9.45
Minnesota	7.30	18.20	(D)
New York	13.80	21.70	16.30
North Carolina	(S)	(S)	(S)
North Dakota			
Fresh ²	14.00	(S)	(D)
Processing	6.90	(S)	(D)
All ¹	8.20	(S)	(D)
Oregon	6.90	7.30	7.45
Texas	18.40	(S)	(S)
Virginia	(S)	(S)	(S)
Washington			
Processing	5.60	7.30	(D)
All ¹	6.35	9.90	8.65
Wisconsin			
Fresh ²	10.20	21.00	(D)
Processing	7.30	9.00	(D)
All ¹	8.70	13.80	(D)
United States			
Fresh ²	11.14	23.05	(D)
Processing	6.16	7.24	(D)
All ¹	7.22	10.47	9.32

(D) Withheld to avoid disclosing data for individual operations.

(S) Insufficient number of reports to establish an estimate.

¹ Average price of potatoes sold for all uses, including table stock, processing, seed, and livestock feed.

² Fresh market prices only. Includes table stock prices.

Prices Received for All Milk – States and United States: September 2011 with Comparisons

[Before deduction for hauling. Includes quality, quantity, and other premiums. Excludes hauling subsidies]

State	September 2010		August 2011		Preliminary September 2011	
	Price	Fat test	Price	Fat test	Price	Fat test
	(dollars per cwt)	(percent)	(dollars per cwt)	(percent)	(dollars per cwt)	(percent)
Arizona	17.00	3.44	22.00	3.48	21.40	3.50
California	16.35	3.63	19.91	3.58	18.50	3.63
Colorado	17.70	3.43	22.00	3.39	21.50	3.45
Florida	21.40	3.60	26.60	3.65	26.90	3.68
Idaho	16.50	3.59	19.50	3.49	17.50	3.56
Illinois	18.70	3.67	22.80	3.55	21.80	3.60
Indiana	18.50	3.62	22.50	3.50	22.00	3.57
Iowa	18.10	3.60	22.60	3.54	21.80	3.62
Kansas	18.60	3.59	22.60	3.55	21.80	3.63
Michigan	18.10	3.55	23.20	3.50	22.60	3.57
Minnesota	18.20	3.67	22.80	3.63	21.00	3.71
Missouri	17.90	3.59	23.60	3.52	23.00	3.58
New Mexico	17.00	3.48	21.50	3.42	21.00	3.50
New York	18.60	3.65	23.50	3.59	23.10	3.67
Ohio	19.20	3.65	23.40	3.56	22.90	3.65
Oregon	19.10	3.71	24.00	3.63	23.30	3.69
Pennsylvania	19.60	3.65	24.20	3.55	23.60	3.70
Texas	18.40	3.67	23.00	3.67	22.50	3.73
Utah	17.40	3.64	21.30	3.54	21.00	3.58
Vermont	19.20	3.75	23.70	3.65	23.10	3.75
Virginia	20.50	3.59	25.20	3.55	25.10	3.63
Washington	17.40	3.71	22.60	3.63	21.20	3.69
Wisconsin	17.80	3.61	22.60	3.56	20.90	3.64
United States	17.70	3.62	22.00	3.56	20.90	3.63

Prices Received for Milk Cows – States and United States: July 2011 with Comparisons

[Animals sold for dairy herd replacement only. Prices estimated in January, April, July, and October]

State	July 2010 (dollars per head)	April 2011 (dollars per head)	July 2011 (dollars per head)
Arizona	1,300	1,450	1,500
California	1,300	1,300	1,400
Colorado	1,350	1,450	1,550
Florida	1,360	1,480	1,540
Idaho	1,350	1,450	1,500
Illinois	1,350	1,430	1,440
Indiana	1,260	1,450	1,500
Iowa	1,250	1,430	1,470
Kansas	1,250	1,400	1,400
Michigan	1,400	1,550	1,550
Minnesota	1,270	1,410	1,480
Missouri	1,150	1,280	1,290
New Mexico	1,320	1,380	1,460
New York	1,300	1,400	1,450
Ohio	1,300	1,470	1,520
Oregon	1,320	1,390	1,450
Pennsylvania	1,400	1,450	1,550
Texas	1,230	1,400	1,450
Utah	1,250	1,300	1,340
Vermont	1,400	1,500	1,600
Virginia	1,320	1,410	1,460
Washington	1,300	1,400	1,450
Wisconsin	1,400	1,560	1,570
United States	1,320	1,420	1,480

Commodity Parity Prices and Price as Percent of Parity Price – United States: September 2011 with Comparisons

[Parity prices are computed under the provisions of Title III, Subtitle a, Section 301 (a) of the Agricultural Adjustment Act of 1938 as amended by the Agricultural Acts of 1948, 1949, and 1956. See January *Agricultural Prices* for details on adjusted base price and parity price computations. Parity data not available for blank cells. Primary source of data for livestock and milk prices is United States Department of Agriculture's Agricultural Marketing Service]

Commodity and unit	Adjusted base price	Parity price			Price as percent of parity		
		September 2010	August 2011	September 2011	September 2010	August 2011	September 2011
	(dollars)	(dollars)	(dollars)	(dollars)	(percent)	(percent)	(percent)
Basic commodities							
All wheatbushel	0.608	14.60	16.50	16.60	40	46	45
Ricecwt	1.63	33.60	44.30	44.50	33	31	31
Cornbushel	0.384	9.07	10.40	10.50	45	66	64
Cotton							
Upland pound	0.071	2.05	1.93	1.94	36	49	49
American Pima pound	0.129	3.22	3.50	3.52	36	33	33
Peanuts pound	0.027	0.707	0.733	0.737	28	32	31
Designated nonbasic							
All milk, to plants ¹cwt	1.82	44.60	49.40	49.70	38	45	40
Honey, extracted ² pound	0.134	3.10	3.64	3.66	47	40	39
Wool and mohair							
Wool pound	0.092	2.07	2.50	2.51	38	46	46
Mohair pound	0.324	8.36	8.80	8.85	32	40	39
Other nonbasic							
Apples, fresh ³ pound	0.033	0.805	0.896	0.901	45	48	53
Barleybushel	0.425	10.10	11.50	11.60	36	45	48
Canolacwt	1.740	39.70	47.30	47.50	44	49	51
Cottonseed ton	15.40	368.00	418.00	420.00	42	51	58
Dry edible beanscwt	2.92	70.20	79.30	79.70	38	43	51
Flaxseedbushel	1.020	23.70	27.70	27.80	46	52	52
Oatsbushel	0.250	5.95	6.79	6.83	39	47	49
Potatoescwt	0.834	20.30	22.70	22.80	36	46	41
Sorghum graincwt	0.675	16.00	18.30	18.40	45	58	64
Soybeansbushel	0.948	22.30	25.70	25.90	45	52	51
Sunflower, allcwt	1.91	45.10	51.90	52.10	38	62	64
Citrus (equivalent on-tree)							
Grapefruitbox	0.663	15.80	18.00	18.10	30	39	52
Lemonsbox	1.36	33.60	36.90	37.10	59	60	41
Orangesbox	0.686	16.10	18.60	18.70	43	52	45
Tangerinesbox	1.43	33.90	38.80	39.00	138	53	53
Livestock and poultry							
Beef cattlecwt	10.10	249.00	274.00	276.00	38	41	41
Calvescwt	14.10	351.00	383.00	385.00	34	35	35
Hogscwt	5.51	135.00	150.00	150.00	45	51	44
Lambscwt	11.70	280.00	318.00	319.00	48	59	(NA)
Sheepcwt	4.38	106.00	119.00	120.00	46	56	(NA)
Eggs ¹dozen	0.091	2.22	2.47	2.48	31	47	42
Turkeys, live pound	0.056	1.370	1.520	1.530	50	47	47

(NA) Not available.

¹ Seasonally adjusted price as percentage of parity price.

² Wholesale extracted. Adjusted base price derived from state annual averages prices weighted by production. For 1982 through 1985 the national averages are the support prices.

³ Equivalent packinghouse-door returns for California, New York (apples only), Oregon (except peaches), and Washington. Price at point of first sale for other states.

Commodity Parity Prices – United States: September 2011 with Comparisons

[Parity prices are computed under the provisions of Title III, Subtitle a, Section 301 (a) of the Agricultural Adjustment Act of 1938 as amended by the Agricultural Acts of 1948, 1949, and 1956. See January *Agricultural Prices* for details on adjusted base price and parity price computations]

Commodity and unit	Adjusted base price	Parity price		
		September 2010	August 2011	September 2011
	(dollars)	(dollars)	(dollars)	(dollars)
Field crops and miscellaneous				
Hops	0.307	7.31	8.34	8.38
Mustard seed	2.66	63.10	72.20	72.60
Rapeseed	2.14	49.70	58.10	58.40
Rye	0.492	11.60	13.40	13.40
Safflower	1.94	47.50	52.70	53.00
Spearmint oil	1.44	34.60	39.10	39.30
Sweetpotatoes	2.27	55.30	61.70	62.00
Tobacco				
Flue-cured, 11-14	0.208	5.27	5.65	5.68
Fire-cured, 21-23	0.293	7.27	7.96	8.00
Burley, 31	0.214	5.53	5.81	5.84
Maryland, 32	0.183	4.53	4.97	5.00
Dark air-cured, 35-37	0.261	6.53	7.09	7.13
Pennsylvania seedleaf, 41	0.191	4.73	5.19	5.21
Cigar binder, 51	0.675	15.90	18.30	18.40
Noncitrus fruit				
Apples, processing ¹	16.10	407.00	437.00	440.00
Apricots				
Fresh ²	114.00	2,630.00	3,100.00	3,110.00
Dried (California)	262.00	6,170.00	7,120.00	7,150.00
Avocados ²	198.00	5,140.00	5,380.00	5,410.00
Cherries				
Sweet	210.00	5,000.00	5,700.00	5,730.00
Tart	0.034	0.853	0.923	0.928
Cranberry ³	4.89	116.00	133.00	133.00
Dates ² (California)	183.00	4,800.00	4,970.00	5,000.00
Grapes				
Raisin variety	117.00	2,680.00	3,180.00	3,190.00
Other dried	65.40	1,620.00	1,780.00	1,790.00
Kiwifruit	94.40	2,320.00	2,560.00	2,580.00
Nectarines, fresh ² (California)	55.30	1,350.00	1,500.00	1,510.00
Olives, canning ³ (California)	87.40	2,310.00	2,370.00	2,390.00

See footnote(s) at end of table.

--continued

Commodity Parity Prices – United States: September 2011 with Comparisons (continued)

[Parity prices are computed under the provisions of Title III, Subtitle a, Section 301 (a) of the Agricultural Adjustment Act of 1938 as amended by the Agricultural Acts of 1948, 1949, and 1956. See January *Agricultural Prices* for details on adjusted base price and parity price computations]

Commodity and unit	Adjusted base price	Parity price		
		September 2010	August 2011	September 2011
	(dollars)	(dollars)	(dollars)	(dollars)
Noncitrus fruit - continued				
Papayas (Hawaii) pound	0.046	1.12	1.12	1.26
Peaches				
Fresh ⁴ ton	83.00	2,020.00	2,020.00	2,270.00
Dried (California) ton	57.30	1,580.00	1,580.00	1,560.00
Processing, excludes dried				
Clingstone ³ (California) ton	33.70	822.00	818.00	920.00
Pears				
Fresh ⁴ ton	55.60	1,340.00	1,330.00	1,520.00
Dried ¹ (California) ton	178.00	4,220.00	4,200.00	4,860.00
Plums (California)				
Fresh, equivalent on-tree ton	60.20	1,480.00	1,480.00	1,640.00
Prunes, dried ¹ (California) ton	147.00	3,560.00	3,540.00	4,010.00
Prunes and plums				
Fresh, excludes California ⁵ ton	63.80	1,540.00	1,530.00	1,740.00
Processing, excludes dried ¹ ton	25.70	646.00	643.00	702.00
Tree nuts ⁶				
Almonds pound	0.209	4.92	4.90	5.71
Hazelnuts ton	183.00	4,170.00	4,150.00	5,000.00
Pistachios pound	0.194	4.63	4.61	5.30
Walnuts ton	177.00	4,190.00	4,180.00	4,830.00
Vegetables, fresh ⁷				
Carrots ⁸ cwt	2.61	61.90	61.70	71.30
Cauliflower ⁸ cwt	4.26	105.00	105.00	116.00
Celery ⁸ cwt	2.05	51.00	50.70	56.00
Honeydew melons cwt	2.17	56.30	56.10	59.20
Lettuce cwt	2.35	57.30	57.10	64.20
Onions ⁸ cwt	1.57	37.10	36.90	42.90
Tomatoes cwt	4.75	114.00	114.00	130.00

¹ Equivalent returns at processing plant door.

² Equivalent returns at packinghouse door.

³ Equivalent returns for bulk fruit at first delivery point.

⁴ Equivalent packinghouse-door returns for California, New York (apples only), Oregon (except peaches), and Washington. Price at point of first sale for other states.

⁵ Based on "as sold" prices for fresh fruit in all states.

⁶ Prices In-Shell basis except almonds which are shelled basis.

⁷ FOB shipping point prices.

⁸ Includes some processing.

Marketing Year for Specified Commodities

Corn for grain: September 1 to August 31 for United States, Arizona, California, Delaware, Illinois, Indiana, Iowa, Kansas, Kentucky, Maryland, Missouri, Nebraska, New Mexico, Ohio, Pennsylvania, South Dakota, Virginia, and West Virginia; July 1 to June 30 for Texas; August 1 to July 31 for Alabama, Arkansas, Florida, Georgia, Louisiana, Mississippi, North Carolina, Oklahoma, South Carolina, and Tennessee; October 1 to September 30 for Colorado, Connecticut, Idaho, Maine, Massachusetts, Michigan, Minnesota, Montana, Nevada, New Hampshire, New Jersey, New York, North Dakota, Oregon, Rhode Island, Utah, Vermont, Washington, Wisconsin, and Wyoming.

Sorghum for grain: September 1 to August 31 for United States, Arizona, California, Colorado, Illinois, Kansas, Kentucky, Missouri, Nebraska, New Mexico, North Carolina, Pennsylvania, and South Dakota; June 1 to May 31 for Texas; August 1 to July 31 for Alabama, Arkansas, Georgia, Louisiana, Mississippi, Oklahoma, South Carolina, and Tennessee.

Soybeans: September 1 to August 31 for United States and all States except Louisiana, Mississippi, and Texas; July 1 to June 30 for Texas; August 1 to July 31 for Louisiana and Mississippi.

Austrian Winter Peas: July 1 to June 30 for United States, Idaho, Montana, and Oregon.

Dry Edible Peas: July 1 to June 30 for United States, Idaho, Montana, North Dakota, Oregon, and Washington.

Lentils: July 1 to June 30 for United States, Idaho, Montana, North Dakota, and Washington.

Dry Edible Peas Market Year Average Prices Received – States and United States: Marketing Years 2008 through 2010

[Excludes both wrinkled seed peas and Austrian winter peas. See "Marketing Year for Specified Commodities" for State and United States marketing year months as defined on page 33 of this report]

State	2008	2009	2010
	(dollars)	(dollars)	(dollars)
Idaho	15.40	10.40	11.10
Montana	14.50	8.46	9.13
North Dakota	13.00	8.44	9.47
Oregon	18.30	17.50	20.70
Washington	14.40	11.30	11.50
United States	13.40	8.98	9.77

Austrian Winter Peas Market Year Average Prices Received – States and United States: Marketing Years 2008 through 2010

[See "Marketing Year for Specified Commodities" for State and United States marketing year months as defined on page 33 of this report]

State	2008	2009	2010
	(dollars)	(dollars)	(dollars)
Idaho	22.40	23.40	17.70
Montana	21.70	21.70	15.50
Oregon	21.80	21.80	20.40
United States	22.40	22.70	17.10

Lentils Market Year Average Prices Received – States and United States: Marketing Years 2008 through 2010

[See "Marketing Year for Specified Commodities" for State and United States marketing year months as defined on page 33 of this report]

State	2008	2009	2010
	(dollars)	(dollars)	(dollars)
Idaho	33.20	26.80	27.90
Montana	34.90	27.20	23.90
North Dakota	33.10	26.60	25.10
Washington	34.10	26.80	30.20
United States	33.80	26.80	25.70

Prices Received and Farm Marketings for Lentils by Month – United States: Marketing Years 2008-2009 through 2010-2011

[Marketing year average (MYA) prices are weighted average prices for the United States marketing year of July - June. Monthly farm marketings, based on a sample survey, as percent of total used for calculating MYA prices. See "Marketing Year for Specified Commodities" for State and United States marketing year months as defined on page 33 of this report]

Month	Prices received			Farm marketing percentages		
	2008-2009	2009-2010	2010-2011	2008-2009	2009-2010	2010-2011
	(dollars per cwt)	(dollars per cwt)	(dollars per cwt)	(percent)	(percent)	(percent)
July	32.70	33.50	27.00	2.3	0.8	1.0
August	31.10	27.00	21.30	11.1	5.5	11.9
September	36.30	25.60	23.30	17.8	14.4	21.6
October	37.40	25.40	25.00	10.5	18.7	11.5
November	38.10	25.90	25.60	10.9	13.4	11.5
December	34.40	27.10	26.80	11.8	16.6	9.4
January ¹	30.50	27.60	28.40	10.0	11.1	7.9
February	30.00	29.60	29.20	4.7	5.9	7.7
March	30.80	28.60	29.70	8.0	6.6	7.1
April	31.30	28.70	28.70	7.4	4.0	5.9
May	30.80	29.40	29.50	1.9	1.4	2.1
June	31.50	26.30	26.00	3.6	1.6	2.4
MYA	33.80	26.80	25.70	100.0	100.0	100.0

¹ Second year.

Prices Received and Farm Marketings for Dry Edible Peas by Month – United States: Marketing Years 2008-2009 through 2010-2011

[Marketing year average (MYA) prices are weighted average prices for the United States marketing year of July - June. Monthly farm marketings, based on a sample survey, as percent of total used for calculating MYA prices. See "Marketing Year for Specified Commodities" for State and United States marketing year months as defined on page 33 of this report]

Month	Prices received			Farm marketing percentages		
	2008-2009	2009-2010	2010-2011	2008-2009	2009-2010	2010-2011
	(dollars per cwt)	(dollars per cwt)	(dollars per cwt)	(percent)	(percent)	(percent)
July	16.10	10.90	7.60	9.8	5.7	14.0
August	15.10	9.02	8.77	11.9	11.1	20.4
September	15.40	8.57	8.69	11.0	11.4	10.5
October	13.80	8.95	8.26	7.8	13.1	5.4
November	13.00	8.78	9.04	7.4	9.8	6.4
December	12.70	8.99	10.20	7.8	10.1	7.2
January ¹	12.70	9.79	10.50	10.4	9.3	7.2
February	12.40	9.14	12.10	6.1	8.5	3.6
March	11.80	8.49	10.90	11.3	5.9	9.1
April	11.40	8.43	12.00	6.4	5.6	6.7
May	12.00	9.35	12.60	4.4	3.7	4.8
June	11.10	7.48	14.00	5.7	5.8	4.7
MYA	13.40	8.98	9.77	100.0	100.0	100.0

¹ Second year.

Prices Received and Farm Marketings for Austrian Winter Peas by Month – United States: Marketing Years 2008-2009 through 2010-2011

[Marketing year average (MYA) prices are weighted average prices for the United States marketing year of July - June. Monthly farm marketings, based on a sample survey, as percent of total used for calculating MYA prices. See "Marketing Year for Specified Commodities" for State and United States marketing year months as defined on page 33 of this report]

Month	Prices received			Farm marketing percentages		
	2008-2009	2009-2010	2010-2011	2008-2009	2009-2010	2010-2011
	(dollars per cwt)	(dollars per cwt)	(dollars per cwt)	(percent)	(percent)	(percent)
July	(S)	24.00	15.80	0.3	5.1	2.2
August	(S)	23.20	16.70	2.7	24.3	19.8
September	20.80	22.30	16.60	50.7	27.1	28.3
October	24.00	23.30	16.80	29.9	30.6	34.1
November	(S)	21.10	17.70	3.4	4.4	4.3
December	(S)	21.70	(S)	5.6	2.0	(S)
January ¹	(S)	23.20	(S)	0.9	2.2	(S)
February	(S)	(S)	20.00	1.8	(S)	6.5
March	(S)	(S)	(S)	4.7	(S)	(S)
April	(S)	19.40	18.50	(S)	1.1	0.4
May	(S)	(S)	19.00	(S)	(S)	1.2
June	(S)	(S)	(S)	(S)	(S)	(S)
MYA	22.40	22.70	17.10	100.0	100.0	100.0

(S) Insufficient number of reports to establish an estimate.

¹ Second year.

Prices Received and Farm Marketings for Corn by Month – United States: Marketing Years 2008-2009 through 2010-2011

[Marketing year average (MYA) prices are weighted average prices for the United States marketing year of September - August. Monthly farm marketings, based on a sample survey, as percent of total used for calculating MYA prices. See "Marketing Year for Specified Commodities" for State and United States marketing year months as defined on page 33 of this report]

Month	Prices received			Farm marketing percentages		
	2008-2009	2009-2010	2010-2011	2008-2009	2009-2010	2010-2011
	(dollars per bushel)	(dollars per bushel)	(dollars per bushel)	(percent)	(percent)	(percent)
September	5.01	3.25	4.08	4.5	5.4	10.7
October	4.37	3.61	4.32	9.4	6.9	16.7
November	4.26	3.65	4.55	11.9	14.3	8.5
December	4.11	3.60	4.82	8.9	11.3	8.2
January ¹	4.36	3.66	4.94	12.8	11.3	15.7
February	3.87	3.55	5.65	6.4	6.7	6.8
March	3.85	3.55	5.53	9.6	7.2	7.4
April	3.85	3.41	6.36	6.7	7.1	5.9
May	3.96	3.48	6.32	9.1	6.4	4.7
June	4.01	3.41	6.38	7.4	6.8	5.3
July	3.60	3.49	6.33	6.9	8.9	5.5
August	3.33	3.65	6.88	6.4	7.7	4.6
MYA	4.06	3.55	5.18	100.0	100.0	100.0

(D) Withheld to avoid disclosing data for individual operations.

(S) Insufficient number of reports to establish an estimate.

¹ Second year.

Market Year Average Prices Received for Sorghum Grain – States and United States: Marketing Years 2008 through 2010

[See "Marketing Year for Specified Commodities" for State and United States marketing year months as defined on page 33 of this report]

State	2008	2009	2010
	(dollars per cwt)	(dollars per cwt)	(dollars per cwt)
Arizona	9.40	6.20	9.10
Arkansas	6.93	5.77	7.14
Colorado	5.90	5.28	9.00
Georgia	6.10	5.70	6.65
Illinois	5.29	6.86	10.40
Kansas	5.61	5.47	9.00
Louisiana	6.90	5.70	6.90
Mississippi	6.00	4.72	7.02
Missouri	6.38	5.86	10.20
Nebraska	5.80	5.62	8.74
New Mexico	6.25	6.12	9.60
Oklahoma	5.89	5.68	9.00
South Dakota	5.62	4.88	8.56
Texas	6.91	6.00	7.26
United States	5.72	5.75	8.96

Percent of Sorghum Grain Farm Marketings by Month – States and United States: Marketing Years 2009-2010 and 2010-2011

[Monthly farm marketings, based on a sample survey, as a percent of total used for calculating marketing year average prices. Blank cells indicate month is outside State's designated marketing year as defined on page 33 of this report]

State and Marketing Year	Jun	Jul	Aug	Sep	Oct	Nov	Dec	Jan	Feb	Mar	Apr	May	Jun	Jul	Aug
	(%)	(%)	(%)	(%)	(%)	(%)	(%)	(%)	(%)	(%)	(%)	(%)	(%)	(%)	(%)
Arkansas															
2009-2010			21	25	37	11	1	1	-	3	1	-	-	-	-
2010-2011			70	26	1	1	1	1	-	-	-	-	-	-	-
Illinois															
2009-2010				3	4	21	7	8	9	23	4	6	4	6	5
2010-2011				15	23	10	4	9	3	6	8	10	3	4	5
Kansas															
2009-2010				3	4	25	20	12	7	5	8	6	3	4	3
2010-2011				5	29	17	19	11	5	3	4	3	2	1	1
Louisiana															
2009-2010			41	21	16	2	2	3	1	-	1	1	-	12	
2010-2011			86	3	1	2	2	3	-	-	-	-	-	3	
Missouri															
2009-2010				2	5	32	11	17	13	-	1	4	-	11	4
2010-2011				11	7	13	7	5	5	5	28	4	10	4	1
Nebraska															
2009-2010				3	3	29	17	10	5	8	5	4	5	6	5
2010-2011				4	31	21	10	16	3	3	4	3	3	1	1
Oklahoma															
2009-2010				1	2	4	23	31	16	8	4	3	4	2	2
2010-2011				6	15	15	11	17	17	5	3	5	3	2	1
Texas															
2009-2010	3	14	12	24	8	14	10	7	2	2	2	2			
2010-2011	3	23	18	6	24	8	10	4	1	1	1	1			
United States															
2009-2010				7.6	5.1	19.7	15.4	9.3	5.0	4.2	5.2	4.1	3.1	11.2	10.1
2010-2011				7.0	28.0	13.8	15.5	8.7	4.0	2.7	2.9	2.2	5.7	4.8	4.7

- Represents zero.

Prices Received for Sorghum Grain by Month – States and United States: Marketing Years 2009-2010 and 2010-2011

[See "Marketing Year for Specified Commodities" for State and United States marketing year months as defined on page 33 of this report]

State	2009-2010							
	June	July	August	September	October	November	December	January ¹
	(dollars per cwt)	(dollars per cwt)	(dollars per cwt)	(dollars per cwt)	(dollars per cwt)	(dollars per cwt)	(dollars per cwt)	(dollars per cwt)
Arkansas	(D)	(S)	5.71	(D)	(D)	6.45	(D)	(D)
Illinois	(D)	(D)	(D)	(D)	(D)	6.36	6.81	6.92
Kansas	6.09	4.65	4.83	4.74	5.29	5.51	5.58	5.67
Louisiana	(D)	(D)	5.48	5.49	5.50	(D)	(D)	5.76
Missouri	6.84	5.74	5.21	4.47	(D)	5.95	5.95	5.84
Nebraska	6.18	4.95	5.04	4.86	5.53	5.72	5.68	5.74
Oklahoma	7.09	4.70	4.47	4.66	5.27	5.74	5.92	5.95
Texas	6.64	5.44	5.64	5.95	5.87	6.30	6.29	6.54
United States	6.29	5.19	5.36	5.63	5.54	5.67	5.71	5.84
State	2010-2011							
	June	July	August	September	October	November	December	January ¹
	(dollars per cwt)	(dollars per cwt)	(dollars per cwt)	(dollars per cwt)	(dollars per cwt)	(dollars per cwt)	(dollars per cwt)	(dollars per cwt)
Arkansas	(S)	(S)	6.94	7.61	(D)	(D)	(D)	(D)
Illinois	(D)	(D)	6.66	7.35	9.55	9.26	10.80	10.70
Kansas	5.02	5.42	5.92	7.16	8.00	8.36	8.98	9.61
Louisiana	(D)	(D)	6.74	7.76	(D)	(D)	(D)	(D)
Missouri	(S)	5.45	5.78	7.10	7.90	8.18	9.02	9.00
Nebraska	5.38	5.35	5.96	6.59	7.77	8.21	8.86	8.99
Oklahoma	5.03	5.39	6.41	7.43	8.34	8.66	8.99	9.52
Texas	5.85	6.14	6.35	7.33	7.41	8.67	8.24	9.16
United States	5.38	5.97	6.36	7.26	7.80	8.44	8.79	9.49

See footnote(s) at end of table.

--continued

Prices Received for Sorghum Grain by Month – States and United States: Marketing Years 2009-2010 and 2010-2011 (continued)

[See "Marketing Year for Specified Commodities" for State and United States marketing year months as defined on page 33 of this report]

State	2009-2010						
	February	March	April	May	June	July	August
	(dollars per cwt)	(dollars per cwt)	(dollars per cwt)	(dollars per cwt)	(dollars per cwt)	(dollars per cwt)	(dollars per cwt)
Arkansas	(S)	4.36	(D)	(S)	(S)	(S)	6.94
Illinois	7.44	(D)	6.94	(D)	(D)	(D)	6.66
Kansas	5.30	5.53	5.28	5.55	5.02	5.42	5.92
Louisiana	(D)	(S)	(D)	(D)	(D)	(D)	6.74
Missouri	6.29	(S)	5.50	5.40	(S)	5.45	5.78
Nebraska	5.55	5.66	5.36	5.38	5.38	5.35	5.96
Oklahoma	5.48	5.40	5.05	5.26	5.03	5.39	6.41
Texas	6.13	5.79	6.39	6.91	5.85	6.14	6.35
United States	5.44	5.68	5.39	5.69	5.38	5.97	6.36
State	2010-2011						
	February	March	April	May	June	July	August
	(dollars per cwt)	(dollars per cwt)	(dollars per cwt)	(dollars per cwt)	(dollars per cwt)	(dollars per cwt)	(dollars per cwt)
Arkansas	(S)	(S)	(S)	(S)	(S)	(S)	10.90
Illinois	12.40	10.50	(D)	12.40	11.60	12.20	(D)
Kansas	10.80	10.80	11.60	11.50	12.00	11.60	12.20
Louisiana	(D)	(S)	(S)	(D)	(S)	(D)	10.10
Missouri	11.40	(D)	(D)	(D)	(D)	12.10	(D)
Nebraska	10.60	10.30	11.60	11.10	12.30	12.40	11.70
Oklahoma	10.80	10.90	11.80	11.70	12.30	11.10	11.80
Texas	11.00	9.75	12.20	11.60	10.00	10.30	10.60
United States	10.90	10.60	11.70	11.60	10.50	10.40	10.70

(D) Withheld to avoid disclosing data for individual operations.

(S) Insufficient number of reports to establish an estimate.

¹ Second year.

Soybean Market Year Average Prices Received – States and United States: Marketing Years 2008 through 2010

[See "Marketing Year for Specified Commodities" for State and United States marketing year months as defined on page 33 of this report]

State	2008 (dollars per bushel)	2009 (dollars per bushel)	2010 (dollars per bushel)
Alabama	10.30	10.00	11.10
Arkansas	9.64	9.66	10.90
Delaware	9.40	9.60	12.20
Florida	8.50	9.50	11.00
Georgia	9.50	9.80	11.70
Illinois	10.20	9.80	11.80
Indiana	10.20	9.80	11.50
Iowa	10.20	9.52	11.20
Kansas	9.39	9.38	11.50
Kentucky	10.00	9.90	11.40
Louisiana	9.52	9.66	10.50
Maryland	9.20	9.50	12.00
Michigan	9.82	9.54	11.10
Minnesota	10.10	9.39	10.90
Mississippi	9.29	9.24	10.40
Missouri	9.74	9.61	11.70
Nebraska	9.79	9.48	11.00
New Jersey	9.75	9.37	11.70
New York	10.30	9.10	11.40
North Carolina	9.33	9.59	12.00
North Dakota	9.71	9.26	10.90
Ohio	10.30	9.78	11.50
Oklahoma	9.10	9.40	11.40
Pennsylvania	10.20	9.40	12.10
South Carolina	9.00	9.50	11.80
South Dakota	9.65	9.18	10.90
Tennessee	9.45	9.74	11.10
Texas	9.25	9.25	10.40
Virginia	9.10	9.40	12.00
West Virginia	9.75	9.60	12.00
Wisconsin	9.80	9.62	10.80
United States	9.97	9.59	11.30

Prices Received for Soybeans by Month – States and United States: Marketing Years 2009-2010 and 2010-2011

[See "Marketing Year for Specified Commodities" for State and United States marketing year months as defined on page 33 of this report]

State	2009-2010						
	August	September	October	November	December	January ¹	February
	(dollars per bushel)	(dollars per bushel)	(dollars per bushel)	(dollars per bushel)	(dollars per bushel)	(dollars per bushel)	(dollars per bushel)
Arkansas	10.70	9.60	9.56	9.69	9.68	9.91	9.00
Illinois	11.10	10.10	9.73	9.79	10.10	9.95	9.44
Indiana	11.00	9.97	9.49	9.63	10.20	10.00	9.82
Iowa	11.00	9.89	9.35	9.53	9.81	9.66	9.30
Kansas	10.70	9.46	9.11	9.37	9.72	9.53	9.17
Kentucky	11.40	9.80	9.51	9.63	10.30	10.10	10.00
Louisiana	10.10	9.72	9.51	9.60	9.41	9.99	9.44
Michigan	11.00	10.10	9.40	9.50	9.91	9.67	9.50
Minnesota	10.50	9.54	9.38	9.32	9.63	9.59	9.16
Mississippi	9.93	9.53	9.20	8.87	9.32	9.52	8.96
Missouri	10.90	10.00	9.33	9.45	9.80	9.81	9.47
Nebraska	10.80	9.47	9.32	9.59	9.82	9.73	9.21
North Carolina	10.90	9.86	9.54	9.69	9.48	9.46	9.49
North Dakota	10.10	9.24	9.30	9.27	9.40	9.28	9.23
Ohio	11.10	9.99	9.63	9.72	9.95	9.93	9.87
South Dakota	10.30	9.16	9.02	9.22	9.46	9.15	9.22
Tennessee	10.60	9.68	9.57	9.71	9.93	9.96	9.47
Wisconsin	11.50	9.88	9.39	9.55	10.00	9.86	9.59
United States	10.80	9.75	9.43	9.53	9.80	9.79	9.41
State	2010-2011						
	August	September	October	November	December	January ¹	February
	(dollars per bushel)	(dollars per bushel)	(dollars per bushel)	(dollars per bushel)	(dollars per bushel)	(dollars per bushel)	(dollars per bushel)
Arkansas	10.10	10.10	10.80	11.40	11.50	11.20	12.80
Illinois	10.30	10.00	10.80	11.10	11.90	11.70	12.90
Indiana	10.50	10.10	10.60	11.50	12.20	11.70	13.00
Iowa	10.00	9.87	9.98	10.90	11.60	11.80	12.60
Kansas	10.20	9.82	10.50	11.50	12.20	12.60	13.20
Kentucky	10.00	9.79	10.70	11.40	11.40	11.50	12.60
Louisiana	9.75	10.10	10.80	12.10	10.30	10.90	12.50
Michigan	10.20	9.71	10.30	11.40	11.90	11.80	12.30
Minnesota	9.87	9.48	9.69	10.50	11.30	11.20	12.10
Mississippi	9.68	10.10	10.30	10.80	10.50	11.70	12.30
Missouri	10.20	10.10	10.50	11.30	11.80	11.60	12.40
Nebraska	9.93	9.71	9.98	10.90	11.80	11.40	12.40
North Carolina	10.80	11.00	10.90	11.20	11.80	12.10	13.30
North Dakota	9.58	9.50	9.83	10.50	10.70	10.90	12.50
Ohio	10.70	10.20	10.60	11.60	12.10	11.90	12.60
South Dakota	9.59	9.64	9.88	10.60	11.10	11.30	12.60
Tennessee	10.20	10.30	10.80	11.60	11.50	11.10	12.80
Wisconsin	10.20	9.80	10.20	10.80	11.60	11.50	12.90
United States	10.10	9.98	10.20	11.10	11.60	11.60	12.70

See footnote(s) at end of table.

--continued

Prices Received for Soybeans by Month – States and United States: Marketing Years 2009-2010 and 2010-2011 (continued)

[See "Marketing Year for Specified Commodities" for State and United States marketing year months as defined on page 33 of this report]

State	2009-2010					
	March	April	May	June	July	August
	(dollars per bushel)	(dollars per bushel)	(dollars per bushel)	(dollars per bushel)	(dollars per bushel)	(dollars per bushel)
Arkansas	9.25	9.18	9.25	8.98	9.71	10.10
Illinois	9.52	9.58	9.43	9.60	10.00	10.30
Indiana	9.70	9.79	9.77	9.79	10.10	10.50
Iowa	9.27	9.33	9.35	9.39	9.69	10.00
Kansas	9.24	9.39	9.35	9.28	9.83	10.20
Kentucky	9.66	9.76	9.61	9.62	10.00	10.00
Louisiana	(D)	9.32	9.06	7.68	9.90	9.75
Michigan	9.40	9.51	9.54	9.49	9.80	10.20
Minnesota	9.08	9.23	9.15	9.10	9.41	9.87
Mississippi	8.88	8.85	8.75	8.56	(D)	9.68
Missouri	9.44	9.59	9.48	9.56	9.87	10.20
Nebraska	9.22	9.33	9.27	9.31	9.46	9.93
North Carolina	9.55	9.64	9.66	9.59	10.40	10.80
North Dakota	9.05	9.04	9.06	9.17	9.25	9.58
Ohio	9.73	9.68	9.50	9.82	10.20	10.70
South Dakota	9.00	9.18	9.19	9.03	9.25	9.59
Tennessee	9.43	9.52	9.55	9.63	9.96	10.20
Wisconsin	9.33	9.55	9.85	9.42	9.98	10.20
United States	9.39	9.47	9.41	9.45	9.79	10.10
State	2010-2011					
	March	April	May	June	July	August
	(dollars per bushel)	(dollars per bushel)	(dollars per bushel)	(dollars per bushel)	(dollars per bushel)	(dollars per bushel)
Arkansas	12.50	13.10	12.00	12.80	13.80	13.20
Illinois	13.10	13.40	13.40	13.50	13.40	13.70
Indiana	12.80	13.30	13.70	13.40	13.70	13.70
Iowa	12.40	12.90	13.20	13.20	13.00	13.50
Kansas	12.90	13.20	13.50	13.70	13.40	13.50
Kentucky	13.00	13.60	13.60	13.80	13.70	13.50
Louisiana	13.30	12.00	12.80	12.50	12.30	11.80
Michigan	12.20	12.70	12.60	13.10	13.20	13.30
Minnesota	12.50	12.50	12.70	12.80	12.80	13.00
Mississippi	13.20	13.10	12.90	13.30	(D)	13.60
Missouri	12.60	13.50	13.60	13.60	13.50	13.70
Nebraska	12.60	12.90	13.10	13.00	13.10	13.30
North Carolina	13.20	13.50	13.80	14.00	14.00	14.00
North Dakota	12.50	12.40	12.50	12.70	12.80	12.80
Ohio	12.90	12.90	13.50	13.40	13.50	13.60
South Dakota	12.50	12.70	12.90	12.90	12.80	13.00
Tennessee	12.80	13.50	13.60	13.30	13.40	13.00
Wisconsin	12.00	12.40	12.60	12.40	12.90	13.40
United States	12.70	13.10	13.20	13.20	13.20	13.40

(D) Withheld to avoid disclosing data for individual operations.
¹ Second year.

Percent of Soybean Farm Marketings by Month – States and United States: Marketing Years 2009-2010 and 2010-2011

[Monthly farm marketings, based on a sample survey, as a percent of total used for calculating marketing year average prices. Blank cells indicate month is outside State's designated marketing year as defined on page 33 of this report]

State and Marketing Year	Aug	Sep	Oct	Nov	Dec	Jan	Feb	Mar	Apr	May	Jun	Jul	Aug
	(%)	(%)	(%)	(%)	(%)	(%)	(%)	(%)	(%)	(%)	(%)	(%)	(%)
Arkansas													
2009-2010		8	19	35	18	9	1	2	1	1	1	1	4
2010-2011		38	21	14	12	9	1	1	1	1	-	1	1
Illinois													
2009-2010		3	14	15	7	19	8	7	5	4	7	7	4
2010-2011		8	20	5	12	26	8	5	3	3	4	3	3
Indiana													
2009-2010		6	23	14	6	18	6	8	5	3	4	4	3
2010-2011		28	18	3	6	18	7	5	3	3	3	3	3
Iowa													
2009-2010		5	17	19	7	12	7	8	6	3	5	7	4
2010-2011		7	39	6	6	14	5	6	3	3	4	4	3
Kansas													
2009-2010		3	23	23	13	13	7	6	4	2	2	3	1
2010-2011		5	36	21	13	8	4	3	2	3	2	1	2
Kentucky													
2009-2010		1	15	18	12	35	7	4	3	1	1	2	1
2010-2011		5	32	6	9	28	9	4	2	2	1	1	1
Louisiana													
2009-2010	5	33	23	10	13	11	2	1	-	-	1	1	
2010-2011	13	30	31	5	13	7	1	-	-	-	-	-	
Michigan													
2009-2010		1	33	24	7	11	5	4	4	2	4	3	2
2010-2011		13	41	8	6	11	5	4	3	2	3	2	2
Minnesota													
2009-2010		5	17	18	12	12	5	6	4	3	7	7	4
2010-2011		7	35	8	9	14	5	4	3	4	4	4	3
Mississippi													
2009-2010	3	13	17	21	23	13	3	2	2	1	1	1	
2010-2011	10	32	18	5	24	6	2	1	-	1	-	1	
Missouri													
2009-2010		2	13	24	8	21	6	7	6	2	3	5	3
2010-2011		3	28	11	10	17	5	5	6	3	4	3	5
Nebraska													
2009-2010		5	33	18	12	10	5	5	3	1	3	3	2
2010-2011		9	33	8	7	24	5	3	2	2	2	2	3
North Carolina													
2009-2010		2	5	15	23	25	9	6	4	3	3	3	2
2010-2011		3	11	27	20	17	7	5	3	2	2	2	1
North Dakota													
2009-2010		1	11	27	15	17	8	9	3	2	3	3	1
2010-2011		4	34	9	9	17	5	4	2	1	5	7	3
Ohio													
2009-2010		2	36	14	7	13	5	7	4	2	4	4	2
2010-2011		20	29	6	7	13	5	6	3	2	3	3	3
South Dakota													
2009-2010		3	21	33	8	8	5	5	4	2	3	5	3
2010-2011		4	46	6	8	12	5	3	2	2	4	5	3
Tennessee													
2009-2010		3	18	38	15	14	3	2	1	1	1	2	2
2010-2011		21	39	8	6	16	3	1	1	1	1	2	1
Wisconsin													
2009-2010		1	18	35	5	16	3	5	5	2	4	4	2
2010-2011		9	53	6	4	11	2	3	3	3	2	2	2
United States													
2009-2010		4.1	20.3	19.6	9.7	14.8	6.0	6.2	4.4	2.6	4.2	4.7	3.4
2010-2011		11.0	30.6	7.4	9.2	17.2	5.5	4.4	2.9	2.8	3.1	3.0	2.9

- Represents zero.

Reliability of Prices Received Estimates

Definition: Prices received represent sales from producers to first buyers. They include all grades and qualities. The average commodity price from the survey multiplied by the total quantity marketed theoretically should give the total cash receipts for the commodity.

Survey procedures: Primary sales data used to determine grain prices were obtained from probability samples of about 1900 mills and elevators. These procedures ensure that virtually all grain moving into commercial channels has a chance of being included in the survey. Generally, States surveyed account for 90 percent or more of total United States production. Livestock prices are obtained from packers, stockyards, auctions, dealers, and market check data from AMS-USDA, private marketing organizations, and state commodity groups and agencies. Inter-farm sales of grain and livestock are not included since they represent very small percentages of the total marketings. Grain marketed for seed is also excluded. Fruit and vegetable prices are obtained from sample surveys and market check data from AMS-USDA, private marketing organizations, state agencies, and universities.

Summary and estimation procedures: Survey quantities sold are expanded by strata to state levels and used to weight average strata prices to a state average. State prices are then weighted to a United States price based on expanded marketings. Recommendations are prepared by the State Field Offices and reviewed by the Agricultural Statistics Board in Washington, D.C. State recommendations are reviewed for reasonableness with survey data, other States, and recent historic estimates.

Revisions: For most items, the current month's preliminary price represents a 3-5 day period around the 15th of the month. Previous month's prices represent actual dollars received for quantities sold during the entire month. Revisions are published in monthly issues of Agricultural Prices.

Reliability: United States price estimates based on probability surveys generally have a sampling error of less than one percent for the major commodities such as corn, wheat, soybeans, cotton, and rice. Current methods of summarization for non-probability commodities are not designed directly to calculate sampling errors. However, analytical measures approximate the United States relative sampling errors at around five percent. Any nonsampling errors are attributed to such things as the inability to obtain correct information, differences in interpreting questions or definitions, mistakes in coding or processing the data, etc. Efforts are made at each step in the survey process to minimize these nonsampling errors.

Prices Paid by Farmers

The September Index of Prices Paid for Commodities and Services, Interest, Taxes, and Farm Wage Rates (PPITW) at 205 (1990-1992=100), unchanged from August 2011 but up 12 percent from September 2010.

Production index: The September index, at 217, increased 0.5 percent from last month and 15 percent from last year. Higher prices in September for complete feeds, supplements, LP gas, and potash & phosphate more than offset lower prices for concentrates, feeder cattle, feed grains, and feeder pigs.

Feed: The September index, at 238, increased 1.3 percent from August and 32 percent from last September. Since August, higher prices for complete feeds, supplements, and hay & forages more than offset lower prices for concentrates and feed grains.

Livestock and poultry: The September index, at 146, decreased 0.7 percent from last month but increased 12 percent from last year. Since August, prices for feeder cattle and feeder pigs are lower. The September feeder cattle price, at \$127.60 per cwt, is down 70 cents per cwt from the August price. September feeder pigs averaged \$99.00 per cwt, down \$4.00 per cwt from August.

Fertilizer: The September index, at 331, is unchanged from August but 30 percent above September a year ago. Since August, higher prices for potash & phosphate offset lower prices for mixed fertilizer and nitrogen.

Chemicals: The September index, at 145, is unchanged from August but 0.7 percent below last September. Compared with last month, prices are slightly higher for herbicides, insecticides, and fungicides/other.

Fuels: The September index, at 368, is up 0.5 percent from a month earlier and 32 percent above September 2010. Compared with last month, prices are higher for LP gas and gasoline but lower for diesel.

Machinery: The September index, at 241, is unchanged from August but 4.3 percent above last September. Compared with last month, prices are higher for self-propelled machinery and other machinery but unchanged for tractors.

Consumer price index: The August 2011 Consumer Price Index, as issued by the Bureau of Labor Statistics, for all urban consumers (CPI-U) increased 0.3 percent before seasonal adjustment to a level of 226.545 (1982-1984=100). The July index is 225.922. For the 12 month period ending in August, the overall index increased 3.8 percent.

Prices Paid Indexes and Related Parity Ratios – United States: September 2011 with Comparisons

[Revised historical price indexes for months not shown are available at www.nass.usda.gov]

Indexes and ratios	1910-1914 Base			1990-1992 Base		
	September 2010	August 2011	September 2011	September 2010	August 2011	September 2011
	(percent)	(percent)	(percent)	(percent)	(percent)	(percent)
Prices paid by farmers for commodities, services, interest, taxes, and wage rates (PPITW)	2432	2723	2730	183	205	205
Production	1827	2098	2104	188	216	217
Feed	881	1147	1164	180	235	238
Livestock & poultry	1662	1875	1863	130	147	146
Seeds	3082	3327	3327	311	336	336
Fertilizer	935	1212	1214	255	331	331
Chemicals	903	898	898	146	145	145
Fuels	2152	2827	2839	279	366	368
Supplies & repairs	1140	1187	1191	161	167	168
Autos & trucks	2980	3074	3064	112	116	115
Machinery	5802	6050	6052	231	241	241
Building materials	2251	2348	2349	166	173	173
Services & rent	2046	2140	2141	(NA)	(NA)	(NA)
Services	(NA)	(NA)	(NA)	162	168	168
Rent	(NA)	(NA)	(NA)	191	203	203
Interest ¹	3389	3646	3646	135	145	145
Taxes ²	5549	6032	6032	207	225	225
Wage rates	6972	7043	7043	186	188	188
Production, interest, taxes, and wage rates (PITW)	2506	2837	2845	187	211	212
Family living-CPI ³	2075	2152	2158	162	168	169
Ratio (received/paid)	(NA)	(NA)	(NA)	78	90	89
Parity ratio ⁴	37	43	42	(NA)	(NA)	(NA)
Parity ratio adjusted ⁵	39	44	44	(NA)	(NA)	(NA)
PPITW adjusted for productivity ⁶	1399	1463	1465	(NA)	(NA)	(NA)
Crop sector (PPITW)	(NA)	(NA)	(NA)	194	214	214
Livestock sector (PPITW)	(NA)	(NA)	(NA)	172	195	196
Farm sector (production)	(NA)	(NA)	(NA)	184	221	223
Non-farm sector (production)	(NA)	(NA)	(NA)	191	213	214

(NA) Not available.

¹ Interest per acre on farm real estate debt and interest rate on farm non-real estate debt.

² Farm real estate taxes payable per acre.

³ Bureau of Labor Statistics, Consumer Price Index for all urban consumers (CPI-U), for the previous month converted by the USDA.

⁴ Ratio of index of prices received to PPITW (1910-1914=100).

⁵ Based on estimated cash receipts, from marketings and government payments, the preliminary adjustment factor is 1.044 for 2011 and the revised factor is 1.041 for 2010.

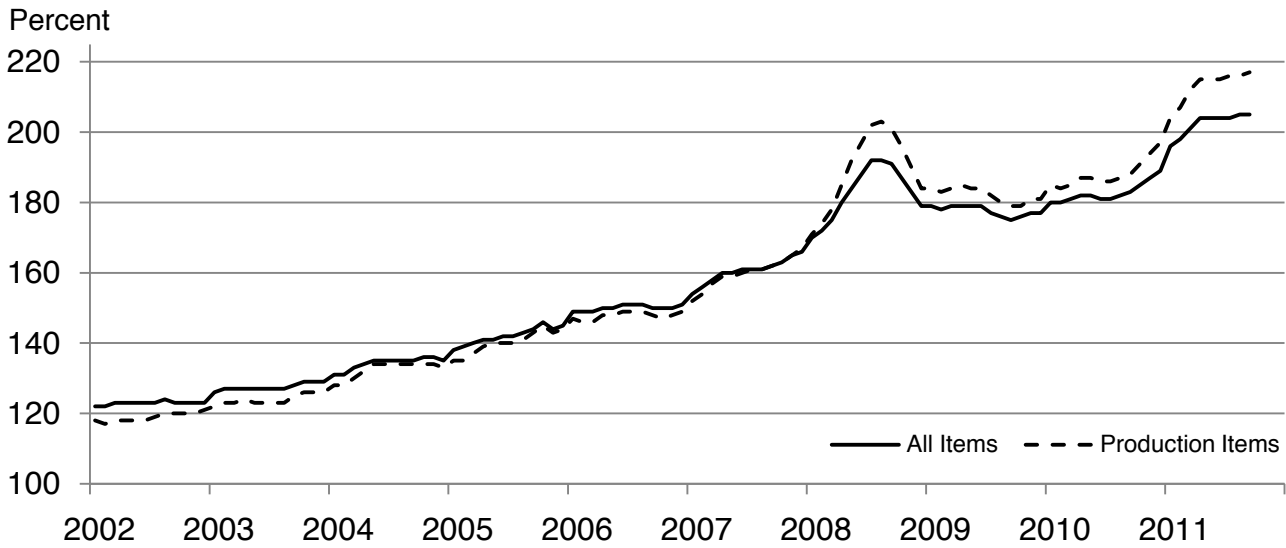
⁶ PPITW is adjusted based on productivity trend for the prior 15 years.

Prices Paid Indexes and Annual Weights for Input Components and Sub-Components – United States: September 2011 with Comparisons

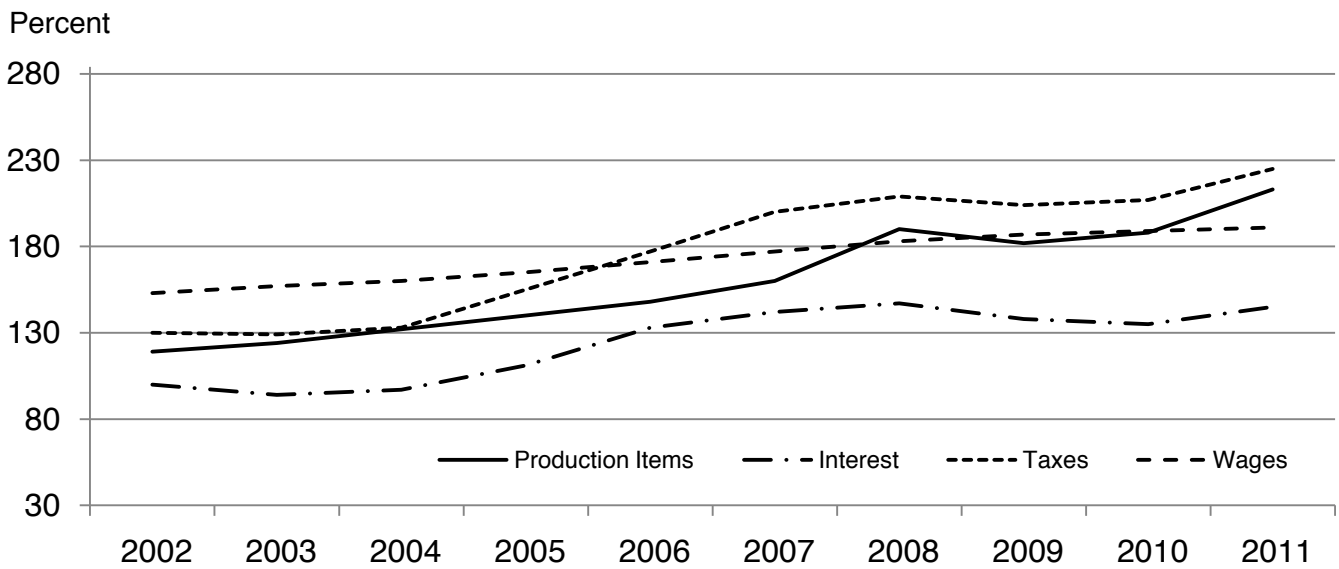
[Revised historical price indexes for months not shown are available at www.nass.usda.gov. Relative weights are a five year moving average]

	Relative weights		Indexes (1990-1992=100)		
	2010	2011	September 2010	August 2011	September 2011
	(percent)	(percent)	(percent)	(percent)	(percent)
Production items	70.2	70.6	188	216	217
Feed	11.9	12.2	180	235	238
Feed grains	1.7	1.7	176	288	286
Complete feeds	5.8	6.0	182	231	236
Hay & forages	1.5	1.5	148	220	224
Concentrates	1.9	1.9	187	204	201
Supplements	1.0	1.0	215	248	265
Livestock & poultry	8.6	8.5	130	147	146
Feeder cattle	6.7	6.6	127	151	151
Feeder pigs	0.7	0.7	152	112	108
Milk cow replacements	0.7	0.7	117	131	131
Poultry	0.5	0.5	151	151	151
Seeds	3.9	4.1	311	336	336
Field crops	3.6	3.7	329	356	356
Grasses & legumes	0.4	0.4	139	145	145
Fertilizer	5.2	5.5	255	331	331
Mixed fertilizer	2.3	2.4	256	312	311
Nitrogen	2.2	2.3	237	339	339
Potash & phosphate	0.7	0.8	306	364	372
Chemicals	3.2	3.3	146	145	145
Herbicides	2.0	2.1	133	130	130
Insecticides	0.7	0.7	167	168	168
Fungicides & other	0.5	0.5	172	175	175
Fuels	3.9	4.0	279	366	368
Diesel	2.5	2.5	298	398	398
Gasoline	0.9	0.8	236	315	315
LP gas	0.5	0.7	248	312	324
Supplies & repairs	4.6	4.6	161	167	168
Supplies	1.5	1.5	156	164	164
Repairs	3.0	3.0	163	169	170
Autos & trucks	1.5	1.4	112	116	115
Autos	0.2	0.2	110	115	114
Trucks	1.3	1.2	112	116	115
Machinery	4.5	4.3	231	241	241
Tractors	1.0	0.9	197	203	203
Self-propelled	1.8	1.7	239	250	250
Other machinery	1.7	1.6	243	254	254
Building materials	4.5	4.4	166	173	173
Services	12.1	12.1	162	168	168
Custom rates	1.2	1.2	145	148	148
Other services	10.8	10.9	164	170	170
Rent	6.3	6.3	191	203	203
Cash	3.4	3.4	243	258	258
Share	2.9	2.9	130	138	138
Interest	3.6	3.5	135	145	145
Taxes	3.0	3.1	207	225	225
Wage rates	7.5	7.4	186	188	188
Family living-CPI	15.7	15.4	162	168	169

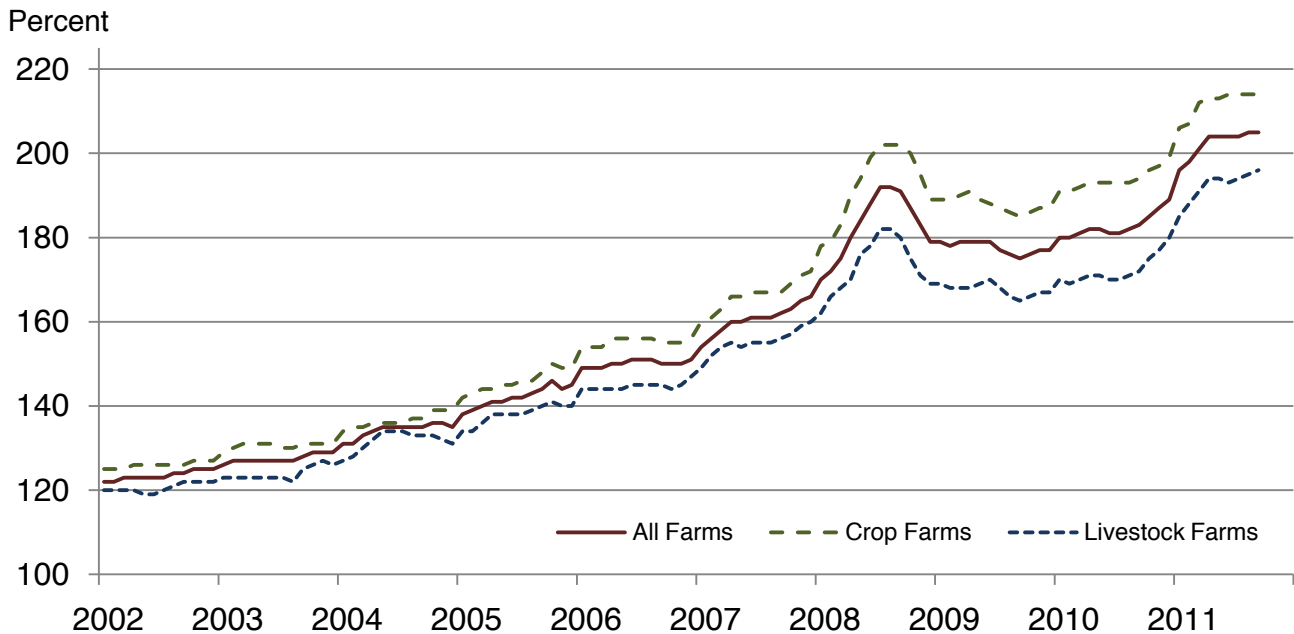
**Paid Indexes by Month,
All Items and Production Items –
United States: 1990-1992=100**



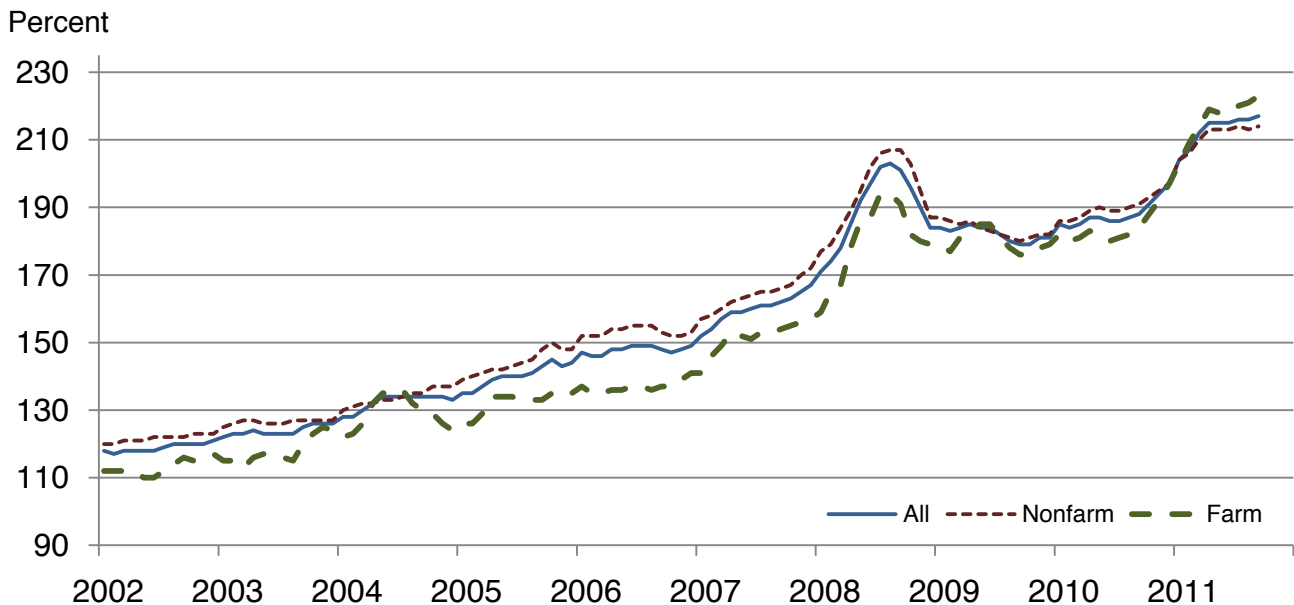
**Paid Indexes, Annual Averages,
Production Items, Interest, Taxes, and Wages –
United States: 1990-1992=100**



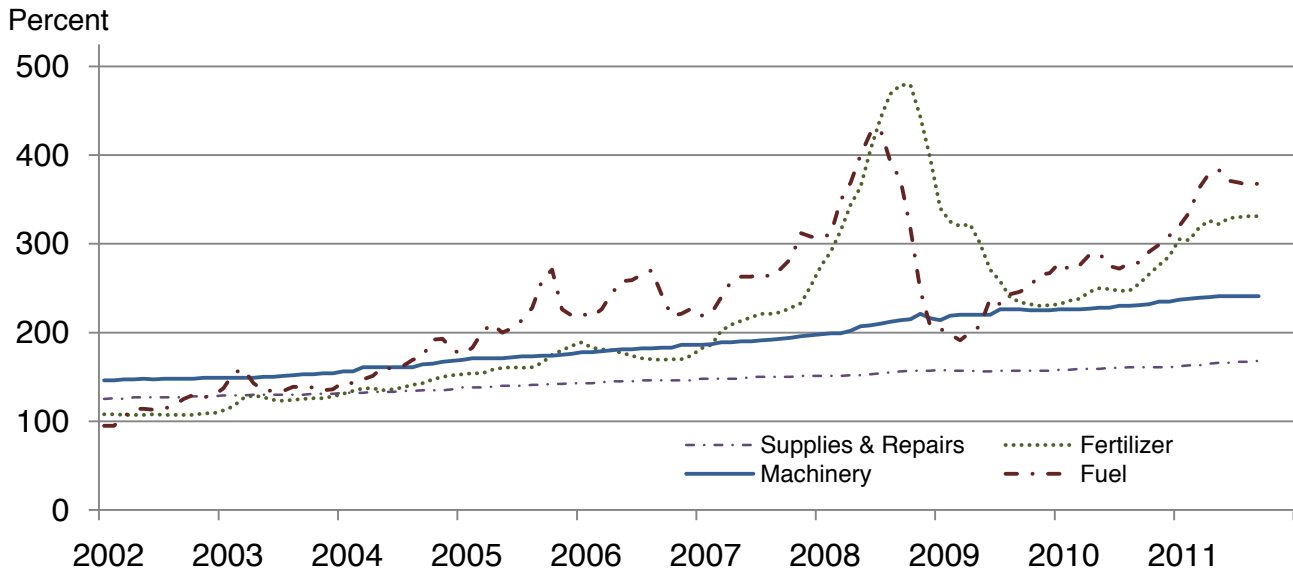
Paid Indexes by Farm Type and Month, All Items – United States: 1990-1992=100



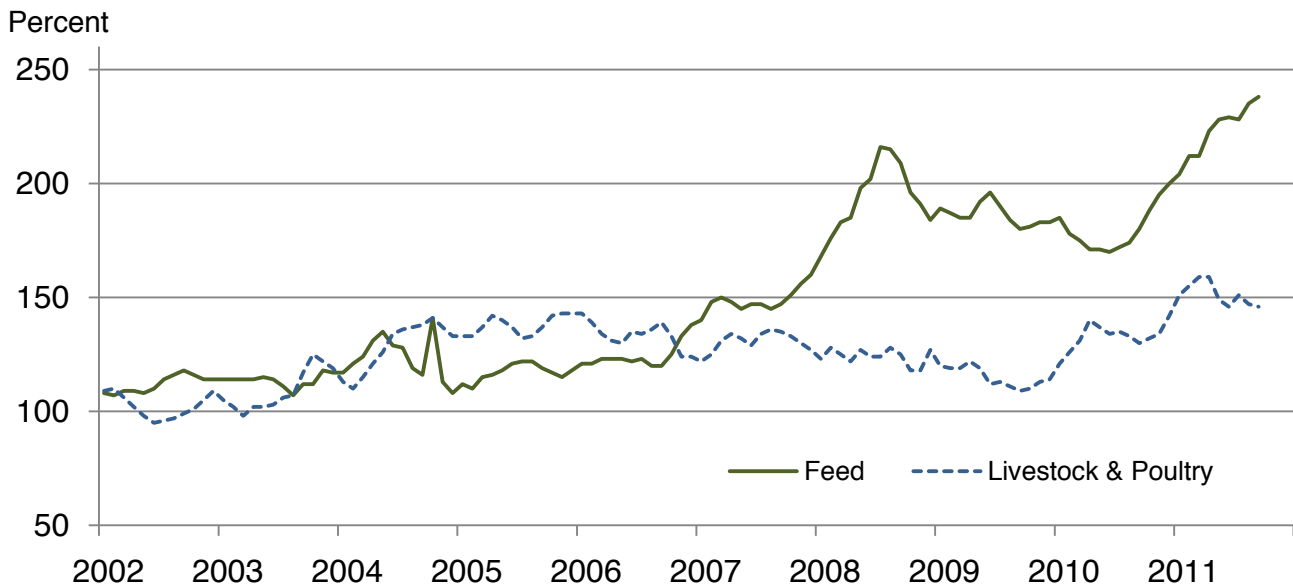
Paid Indexes by Origin and Month, All Production Items – United States: 1990-1992=100



Paid Indexes by Non-Farm Sector and Month, Supplies & Repairs, Fertilizer, Machinery, and Fuel – United States: 1990-1992=100



Paid Indexes by Month, Feed and Livestock & Poultry – United States: 1990-1992=100



Feed Price Ratios – United States: September 2011 with Comparisons

Feed price ratio ¹	September 2010	August 2011	Preliminary September 2011
Broiler-feed: pounds of broiler grower feed equal in value to 1 pound of broiler, live weight ²	4.4	2.9	2.7
Market egg feed: pounds of laying feed equal in value to 1 dozen eggs ³	4.6	6.7	5.3
Hog-corn: bushels of corn equal in value to 100 pounds of hog, live weight	15.0	11.0	10.0
Milk-feed: pounds of 16% mixed dairy feed equal in value to 1 pound of whole milk ⁴	2.36	1.84	1.76
Steer & heifer-corn: bushels of corn equal in value to 100 pounds of steer & heifers, live weight	24.4	16.6	17.3
Turkey-feed: pounds of turkey grower equal in value to 1 pound of turkey, live weight ⁵	6.6	4.7	4.9

¹ Effective January 1995, prices of commercial prepared feeds are based on current United States prices received for corn, soybeans, alfalfa hay, and all wheat.

² The price of commercial prepared broiler feed is based on current United States prices received for corn and soybeans. The modeled feed uses 58 percent corn and 42 percent soybeans.

³ The price of commercial prepared layer feed is based on current United States prices received for corn and soybeans. The modeled feed uses 75 percent corn and 25 percent soybeans.

⁴ The price of commercial prepared dairy feed is based on current United States prices received for corn, soybeans, and alfalfa hay. The modeled feed uses 51 percent corn, 41 percent alfalfa hay, and 8 percent soybeans.

⁵ The price of commercial prepared turkey feed is based on current United States prices received for corn, soybeans, and wheat. The modeled feed uses 51 percent corn, 28 percent soybeans, and 21 percent wheat.

Prices Received Used to Calculate Feed Price Ratios – United States: September 2011 with Comparisons

[Price data source for livestock and poultry commodities is United States Department of Agriculture's Agricultural Marketing Service]

Item	September 2010	August 2011	Preliminary September 2011
	(dollars)	(dollars)	(dollars)
Broilers, live pound	0.490	0.480	0.440
Eggs, market dozen	0.446	0.991	0.769
Hogs, all cwt	61.00	75.80	66.70
Milk, all cwt	17.70	22.00	20.90
Steers and heifers cwt	99.50	114.00	116.00
Turkeys, live pound	0.690	0.707	0.721
Corn bushel	4.08	6.88	6.69
Hay, alfalfa ton	119.00	191.00	196.00
Soybeans bushel	9.98	13.40	13.10
Wheat, all bushel	5.79	7.61	7.53

Prices Paid for Feeder Livestock – United States: September 2011 with Comparisons

[Price data source is United States Department of Agriculture's Agricultural Marketing Service]

Item	September 2010	August 2011	Preliminary September 2011
	(dollars)	(dollars)	(dollars)
Feeder cattle & calves cwt	107.90	128.30	127.60
Feeder pigs cwt	140.00	103.00	99.00

Reliability of Prices Paid Estimates

Definition: Prices paid by farmers represent the average costs of inputs purchased by farmers and ranchers to produce agricultural commodities. Conceptually, the average price when multiplied by quantity purchased should equal total producer expenditures for the item.

Survey procedures: The prices paid data are obtained from establishments that sell goods and services to farmers and ranchers. Annually, about 8,500 firms are randomly selected from lists by type of item sold with an average response rate in the range of 75-80 percent. Firms are asked to report the price for the specified item "most commonly bought by farmers" or that was the "volume seller". Approximately 135 items are surveyed each March to represent all production input items purchased. The survey reference period for most items is the five business days centered around the 15th of the month. Separate prices paid surveys are conducted for agricultural chemicals, fuels, feed, fertilizer, machinery, and seed.

Summary and estimation procedures: The annual March Prices Paid Survey is summarized as a nonprobability survey. Average prices reported are aggregated to the region and United States level using weights available from expenditure data and other administrative sources. Price recommendations are prepared by the State Field Offices and Headquarters for review by the Agricultural Statistics Board in Washington, D.C. Also, the change in price level for individual items surveyed are combined to the regional and United States levels, and are published as prices paid indexes referenced to a specific base period. Prices paid indexes for new autos and trucks, building materials, farm supplies, motor supplies, and marketing containers are updated based on price changes measured in selected Bureau of Labor Statistics (BLS) indexes.

Revisions: Any revisions are published in the monthly and in annual issues of Agricultural Prices. The basis for revision must be supported by additional data that directly affect the level of the estimate. More revisions are likely for March when separate prices paid surveys are conducted, in lieu of BLS indexes, by the USDA to measure price change.

Reliability: Current methods of summarization for the March data are not designed directly to calculate sampling errors. However, analytical measures approximate the United States relative sampling errors for major items around 10 percent. Any nonsampling errors are attributed to such things as the inability to obtain correct information, differences in interpreting questions or definitions, mistakes in coding or processing the data, etc. Efforts are made at each step in the survey process to minimize these nonsampling errors.

Program change: Effective January 1, 1995, the National Agricultural Statistics Service updated the weights and changed the construction of its prices paid and received by farmers indexes. A Federal Register Notice dated October 28, 1994 discussed these program modifications.

A 1990-1992 reference and base period replaced the 1977 reference and 1971-1973 base weight period. Five-year moving average weights replaced the current fixed 1971-1973 base period weights. The 1910-1914=100 price indexes, required by statute for computing parity prices, were linked forward based on the changes in the new 1990-1992=100 indexes. The new indexes were constructed by multiplying the ratios of the current prices to the base period prices by the moving average weights (adjusted for seasonal marketing patterns for the prices received indexes).

Information Contacts

Direct general questions to Kevin Barnes, Chief, Environmental, Economics and Demographics Branch at (202) 720-6146. Below are the commodity specialists to contact for additional information.

Crop Prices Received

Lance Honig, Chief, Crops Branch	(202) 720-2127
Jacqueline Moore, Head, Field Crops Section.....	(202) 720-2127
Suzanne Avilla – Peanuts, Rice	(202) 720-7688
Bryan Durham – Oats, Rye, Wheat.....	(202) 720-8068
Steve Maliszewski – Cotton, Cotton Ginnings, Sorghum.....	(202) 720-5944
Anthony Prillaman – Corn, Proso Millet, Flaxseed	(202) 720-9526
Julie Schmidt – Crop Weather, Barley, Hay	(202) 720-7621
Travis Thorson – Soybeans, Sunflower, Other Oilseeds	(202) 720-7369
Jorge Garcia-Pratts, Head, Fruits, Vegetables and Special Crops Section.....	(202) 720-2127
Debbie Flippin – Fresh and Processing Vegetables, Onions, Strawberries	(202) 720-2157
Fred Granja – Apples, Apricots, Cherries, Plums, Prunes, Tobacco	(202) 720-4288
Erika White – Floriculture, Maple Syrup, Nursery, Tree Nuts	(202) 720-4215
Chris Hawthorn – Citrus, Coffee, Sugar Crops, Grapes, Tropical Fruits	(202) 720-5412
Daphne Schauber – Berries, Cranberries, Potatoes, Sweet Potatoes	(202) 720-4285
Dan Norris – Austrian Winter Peas, Dry Edible Peas, Lentils, Mints, Mushrooms, Peaches, Pears, Wrinkled Seed Peas, Dry Beans	(202) 720-3250
Kim Ritchie – Hops	(360) 709-2400

Livestock Prices Received

Dan Kerestes, Chief, Livestock Branch.....	(202) 720-3570
Scott Hollis, Head, Livestock Section	(202) 720-3570
Jason Hardegree - Cattle	(202) 720-3040
Mike Miller - Milk, Milk Cows	(202) 720-3278
Everett Olbert - Sheep, Lambs, Goats, Wool, Mohair.....	(202) 720-4751
Doug Bounds - Hogs	(202) 720-3106
Bruce Boess, Head, Poultry and Specialty Commodities Section	(202) 720-3570
Cody Brokmeyer - Turkeys	(202) 690-3237
Kim Linonis - Eggs.....	(202) 690-8632
Troy Marshall - Broilers, Honey	(202) 720-3244

Indexes, Prices Paid, and Parity Prices

Kevin Barnes, Chief, Environmental, Economics and Demographics Branch	(202) 720-6146
Kevin Hintzman, Head, Economics Section.....	(202) 720-6146
Daryl Brinkman - Prices Received Indexes, Parity Prices.....	(202) 720-8844
Kevin Hintzman - Grazing Fees	(202) 720-6146
Vincent Davis - Prices Paid Indexes, Prices Paid for Feed, Fertilizer, Agricultural Chemicals, Seeds, Farm Supplies and Repairs, Farm Machinery, Fuels, Feeder Livestock, Poultry Chicks, Feed Price Ratios, Autos & Trucks	(202) 690-3229

Access to NASS Reports

For your convenience, you may access NASS reports and products the following ways:

- All reports are available electronically, at no cost, on the NASS web site: <http://www.nass.usda.gov>
- Both national and state specific reports are available via a free e-mail subscription. To set-up this free subscription, visit <http://www.nass.usda.gov> and in the “Receive NASS Updates” box under “Receive reports by Email,” click on “National” or “State” to select the reports you would like to receive.
- Printed reports may be purchased from the National Technical Information Service (NTIS) by calling toll-free (800) 999-6779, or (703) 605-6220 if calling from outside the United States or Canada. Accepted methods of payment are Visa, MasterCard, check, or money order.

For more information on NASS surveys and reports, call the NASS Agricultural Statistics Hotline at (800) 727-9540, 7:30 a.m. to 4:00 p.m. ET, or e-mail: nass@nass.usda.gov.

The United States Department of Agriculture (USDA) prohibits discrimination in all its programs and activities on the basis of race, color, national origin, age, disability, and where applicable, sex, marital status, familial status, parental status, religion, sexual orientation, political beliefs, genetic information, reprisal, or because all or a part of an individual's income is derived from any public assistance program. (Not all prohibited bases apply to all programs.) Persons with disabilities who require alternative means for communication of program information (Braille, large print, audiotape, etc.) should contact USDA's TARGET Center at (202) 720-2600 (voice and TDD).

To file a complaint of discrimination, write to USDA, Assistant Secretary for Civil Rights, Office of the Assistant Secretary for Civil Rights, 1400 Independence Avenue, S.W., Stop 9410, Washington, DC 20250-9410, or call toll-free at (866) 632-9992 (English) or (800) 877-8339 (TDD) or (866) 377-8642 (English Federal-relay) or (800) 845-6136 (Spanish Federal-relay). USDA is an equal opportunity provider and employer.