



# Agricultural Prices

ISSN: 1937-4216

Released November 30, 2011, by the National Agricultural Statistics Service (NASS), Agricultural Statistics Board, United States Department of Agriculture (USDA).

## November Farm Prices Received Index Up 1 Point

The preliminary All Farm Products Index of Prices Received by Farmers in November, at 185 percent, based on 1990-1992=100, is up 1 point (0.5 percent) from October. The Crop Index is up 5 points (2.5 percent) and the Livestock Index increased 2 points (1.3 percent). Producers received higher prices for corn, lettuce, cattle, and broilers and lower prices for soybeans, hogs, apples, and hay. In addition to prices, the overall index is also affected by the seasonal change based on a 3-year average mix of commodities producers sell. Increased monthly movement of milk, cattle, corn, and cotton offset the decreased marketing of soybeans, peanuts, potatoes, and sunflowers.

The preliminary All Farm Products Index is up 31 points (20 percent) from November 2010. The Food Commodities Index, at 171, decreased 2 points (1.2 percent) from last month but increased 22 points (15 percent) from November 2010.

## Prices Paid Index Unchanged

The November Index of Prices Paid for Commodities and Services, Interest, Taxes, and Farm Wage Rates (PPITW) is 205 percent of the 1990-1992 average. The index is unchanged from October but 18 points above (9.6 percent) November 2010. Higher prices in November for feeder cattle, nitrogen, diesel, and mixed fertilizer offset lower prices for complete feeds, concentrates, supplements, and other services.

## Prices Received, Prices Paid, and Ratio of Prices Received to Prices Paid Indexes 1990-1992 Base – United States: November 2011 with Comparisons

Index	November 2010	October 2011	November 2011
Prices received by farmers .....	154	184	185
Prices paid by farmers .....	187	205	205
Ratio of prices received to prices paid .....	82	90	90

## Contents

Prices Received by Farmers .....	5
Prices Received Indexes – United States: November 2011 with Comparisons .....	6
Prices Received and Prices Paid Indexes by Month for Selected Groups – United States: 2010 and 2011, 1990-1992 Base .....	6
Received Indexes by Month, Livestock Products, All Products, and All Crops – United States: 1990-1992=100 Chart.....	7
Received Indexes by Month, Food Grains, Feed Grains & Hay, and Oilseeds – United States: 1990-1992=100 Chart.....	7
Received Indexes by Month, Fruit & Nut and Commercial Vegetables – United States: 1990-1992=100 Chart.....	8
Received Indexes by Month, Meat Animal, Dairy Products, and Poultry & Eggs – United States: 1990-1992=100 Chart.....	8
Prices Received for Field Crops and Fruits – United States: November 2011 with Comparisons .....	9
Prices Received for Vegetables and Livestock – United States: November 2011 with Comparisons .....	10
Prices Received for Corn by Month – United States Chart.....	11
Prices Received for Wheat by Month – United States Chart .....	11
Prices Received for Upland Cotton by Month – United States Chart .....	12
Prices Received for Soybeans by Month – United States Chart .....	12
Prices Received for Cattle by Month – United States Chart .....	13
Prices Received for Milk by Month – United States Chart .....	13
Prices Received for Hogs by Month – United States Chart .....	14
Prices Received for Poultry by Month – United States Chart .....	14
Prices Received for All Wheat, Corn, and Soybeans by Month – United States: 2011 with Comparisons .....	15
Prices Received for Beef Cattle and All Hogs by Month – United States: 2011 with Comparisons .....	15
Prices Received for All Wheat – States and United States: November 2011 with Comparisons .....	16
Prices Received for Winter Wheat – States and United States: November 2011 with Comparisons .....	16
Prices Received for Durum Wheat – States and United States: November 2011 with Comparisons .....	17
Prices Received for Spring Wheat – States and United States: November 2011 with Comparisons .....	17
Prices Received for All Barley – States and United States: November 2011 with Comparisons .....	18
Prices Received for Malting Barley – States: November 2011 with Comparisons.....	18
Prices Received for Feed Barley – States: November 2011 with Comparisons.....	18
Prices Received for Corn – States and United States: November 2011 with Comparisons.....	19
Prices Received for Soybeans – States and United States: November 2011 with Comparisons.....	19
Prices Received for Oats – States and United States: November 2011 with Comparisons.....	20
Prices Received for Sorghum Grain – States and United States: November 2011 with Comparisons .....	20
Prices Received for Dry Beans – States and United States: November 2011 with Comparisons .....	21
Prices Received for Peanuts (In-Shell) – States and United States: November 2011 with Comparisons .....	21
Prices Received for Sunflower – States and United States: November 2011 with Comparisons .....	22
Prices Received for Canola – States and United States: November 2011 with Comparisons.....	22
Prices Received for Flaxseed – States and United States: November 2011 with Comparisons.....	22
Prices Received for Upland Cotton and Cottonseed – States and United States: November 2011 with Comparisons .....	23
Prices Received and Farm Marketings for Upland Cotton and Rice – United States: November 2011 with Comparisons .....	23
Prices Received for Hay by Type – States and United States: November 2011 with Comparisons .....	24
Prices Received for Apples – States and United States: November 2011 with Comparisons.....	24
Prices Received for Citrus Fruits by Utilization – States and United States: November 2010.....	25
Prices Received for Citrus Fruits by Utilization – States and United States: October 2011 .....	26
Prices Received for Citrus Fruits by Utilization – States and United States: November 2011 .....	27
Prices Received for Potatoes – States and United States: November 2011 with Comparisons .....	28
Prices Received for All Milk – States and United States: November 2011 with Comparisons .....	29
Prices Received for Milk Cows – States and United States: October 2011 with Comparisons .....	30

Commodity Parity Prices and Price as Percent of Parity Price – United States: November 2011 with Comparisons .....	31
Commodity Parity Prices – United States: November 2011 with Comparisons .....	32
Marketing Year for Specified Commodities .....	34
Flaxseed Market Year Average Prices Received – States and United States: Marketing Years 2009 and 2010.....	34
Sunflowers Market Year Average Prices Received – States and United States: Marketing Years 2009 and 2010.....	34
Canola Market Year Average Prices Received – States and United States: Marketing Years 2009 and 2010.....	35
Proso Millet Market Year Average Prices Received – States and United States: Marketing Years 2009 and 2010 .....	35
Other Oilseeds Market Year Average Prices Received – United States: Marketing Years 2009 and 2010 .....	35
Safflower Market Year Average Prices Received – States and United States: Marketing Years 2009 and 2010 .....	35
Corn Market Year Average Prices Received – States and United States: Marketing Years 2009 and 2010.....	36
All Dry Beans Market Year Average Prices Received – States and United States: Marketing Years 2009 and 2010 .....	37
Prices Received for Corn by Month – States and United States: Marketing Years 2009-2010 and 2010-2011.....	38
Prices Received for Flaxseed by Month – States and United States: Marketing Years 2009-2010.....	40
Prices Received for Flaxseed by Month – States and United States: Marketing Years 2010-2011.....	40
Prices Received for Canola by Month – States and United States: Marketing Years 2009-2010.....	41
Prices Received for Canola by Month – States and United States: Marketing Years 2010-2011.....	41
Prices Received for All Sunflowers by Month – States and United States: Marketing Years 2009-2010.....	42
Prices Received for All Sunflowers by Month – States and United States: Marketing Years 2010-2011.....	42
Prices Received for Oil Sunflowers by Month – States and United States: Marketing Years 2009-2010.....	43
Prices Received for Oil Sunflowers by Month – States and United States: Marketing Years 2010-2011.....	43
Prices Received for Non-Oil Sunflowers by Month – States and United States: Marketing Years 2009-2010 .....	44
Prices Received for Non-Oil Sunflowers by Month – States and United States: Marketing Years 2010-2011 .....	44
Prices Received for Dry Edible Beans by Month – States and United States: Marketing Years 2009-2010 .....	45
Prices Received for Dry Edible Beans by Month – States and United States: Marketing Years 2010-2011 .....	45
Percent of Corn Farm Marketings by Month – States and United States: Marketing Years 2009-2010 and 2010-2011 .....	46
Percent of All Sunflower Farm Marketings by Month – States and United States: Marketing Years 2009-2010 and 2010-2011 .....	47
Percent of Flaxseed Farm Marketings by Month – States and United States: Marketing Years 2009-2010 and 2010-2011 .....	47
Percent of Canola Farm Marketings by Month – States and United States: Marketing Years 2009-2010 and 2010-2011 .....	48
Percent of Dry Edible Bean Farm Marketings by Month – States and United States: Marketing Years 2009-2010 and 2010-2011 .....	48
Prices Received and Farm Marketings for All Chickpeas (Garbanzo) – United States: Marketing Years 2009-2010 and 2010-2011 .....	49
Prices Received and Farm Marketings for Large Chickpeas – United States: Marketing Years 2010-2010 and 2010-2011 .....	49
Prices Received and Farm Marketings for Small Chickpeas (Garbanzo) – United States: Marketing Years 2010-2010 and 2010-2011 .....	50
Reliability of Prices Received Estimates .....	51
Prices Paid by Farmers.....	52
Prices Paid Indexes and Related Parity Ratios – United States: November 2011 with Comparisons .....	53
Prices Paid Indexes and Annual Weights for Input Components and Sub-Components – United States: November 2011 with Comparisons .....	54
Paid Indexes by Month, All Items and Production Items – United States: 1990-1992=100 Chart .....	55
Paid Indexes, Annual Averages, Production Items, Interest, Taxes, and Wages – United States: 1990-1992=100 Chart .....	55
Paid Indexes by Farm Type, All Items – United States: 1990-1991=100 Chart.....	56
Paid Indexes by Origin, All Production Items – United States: 1990-1992=100 Chart .....	56

Paid Indexes by Non-Farm Sector, Supplies & Repairs, Fertilizer, Machinery, and Fuel – United States: 1990-1992=100 Chart.....	57
Paid Indexes by Month, Feed and Replacement Livestock – United States: 1990-1992=100 Chart.....	57
Feed Price Ratios – United States: November 2011 with Comparisons .....	58
Prices Received Used to Calculate Feed Price Ratios – United States: November 2011 with Comparisons .....	58
Prices Paid for Feeder Livestock – United States: November 2011 with Comparisons .....	58
Reliability of Prices Paid Estimates .....	59
Information Contacts.....	60

## Prices Received by Farmers

The November All Farm Products Index is 185 percent of its 1990-1992 base, is up 0.5 percent from the October index and 19 percent from the November 2010 index.

**All crops:** The November index, at 208, increased 2.5 percent from October and is 21 percent above November 2010. Index increases for feed grains & hay, oilseeds, commercial vegetables, and potatoes & dry beans more than offset the index decrease for fruits & nuts.

**Food grains:** The November index, at 237, is unchanged from the previous month but 19 percent above a year ago. The November price for all wheat, at \$7.33 per bushel, is up 4 cents from October and \$1.23 above November 2010.

**Feed grains & hay:** The November index, at 259, is up 4.0 percent from last month and 34 percent above a year ago. The corn price, at \$6.00 per bushel, is up 29 cents from last month and \$1.45 above November 2010. The all hay price, at \$176.00 per ton, is down \$5.00 from October but \$66.00 higher than last November. Sorghum grain, at \$11.00 per cwt, is 30 cents above October and up \$2.56 from November last year.

**Cotton, Upland:** The November index, at 155, is up 2.0 percent from October and 16 percent above last year. The November price, at 94.1 cents per pound, is up 1.8 cents from the previous month and 12.6 cents above last November.

**Oilseeds:** The November index, at 213, is up 3.9 percent from October and 15 percent higher than November 2010. The soybean price, at \$11.50 per bushel, decreased 20 cents from October but is 40 cents above November 2010.

**Fruits & nuts:** The November index, at 174, is down 1.1 percent from October and a year ago. Price decreases for apples and grapefruit more than offset price increases for oranges and grapes.

**Commercial vegetables:** The November index, at 165, is up 28 percent from last month but down 9.8 percent from November 2010. Price increases during November for lettuce and tomatoes more than offset price declines for snap beans and sweet corn.

**Potatoes & dry beans:** The November index, at 161, increased 13 percent from last month and is 17 percent above November 2010. The all potato price, at \$8.26 per cwt, is up 93 cents from October and 25 cents from a year ago. The all dry bean price, at \$44.40 per cwt, increased \$2.80 from the previous month and \$17.70 from November 2010.

**Livestock and products:** The November index, at 156, is 1.3 percent above last month and up 16 percent from November 2010. Compared with a year ago, prices are higher for cattle, hogs, milk, calves, and turkeys. Prices for broilers and eggs are lower than last year.

**Meat animals:** The November index, at 157, is up 0.6 percent from last month and 29 percent higher than last year. The November hog price, at \$65.70 per cwt, is down \$3.00 from October but \$14.20 higher than a year ago. The November beef cattle price of \$119.00 per cwt is up \$2.00 from last month and \$25.00 higher than November 2010.

**Dairy products:** The November index, at 152, is unchanged from a month ago but 11 percent higher than November last year. The November all milk price of \$19.90 per cwt is unchanged from last month but \$2.00 higher than November 2010.

**Poultry & eggs:** The November index, at 155, is up 4.0 percent from October but 4.9 percent below a year ago. The November market egg price, at 86.2 cents per dozen, increased 0.5 cent from October but is 15.8 cents below November 2010. The November broiler price, at 45.0 cents per pound, is up 2.0 cents from October but 3.0 cents below a year ago. The November turkey price, at 78.4 cents per pound, is up 1.1 cents from the previous month and 4.8 cents from a year earlier.

## Prices Received Indexes – United States: November 2011 with Comparisons

[Revised historical price indexes for months not shown are available at [www.nass.usda.gov](http://www.nass.usda.gov)]

Index	1910-1914 Base				1990-1992 Base		
	1990-1992 Average	November 2010	October 2011	November 2011	November 2010	October 2011	November 2011
	(percent)	(percent)	(percent)	(percent)	(percent)	(percent)	(percent)
All products .....	639	977	1165	1171	154	184	185
All crops .....	500	850	1005	1030	172	203	208
Food grains .....	325	629	752	750	199	237	237
Feed grains & hay .....	363	692	888	925	194	249	259
Cotton, Upland .....	517	690	781	796	134	152	155
Tobacco .....	1263	1563	1491	1491	103	99	99
Oilseeds .....	554	1017	1124	1166	186	205	213
Fruits & nuts .....	716	1228	1229	1213	176	176	174
Commercial vegetables .....	698	1311	919	1181	183	129	165
Potatoes & dry beans .....	540	699	725	816	138	143	161
Other crops .....	493	636	635	635	129	129	129
Livestock and products .....	768	1030	1179	1194	134	154	156
Meat animals .....	1021	1243	1593	1606	122	156	158
Dairy products .....	799	1101	1224	1224	137	152	152
Poultry & eggs .....	282	457	418	434	163	149	155
Food commodities .....	(NA)	(NA)	(NA)	(NA)	149	173	171

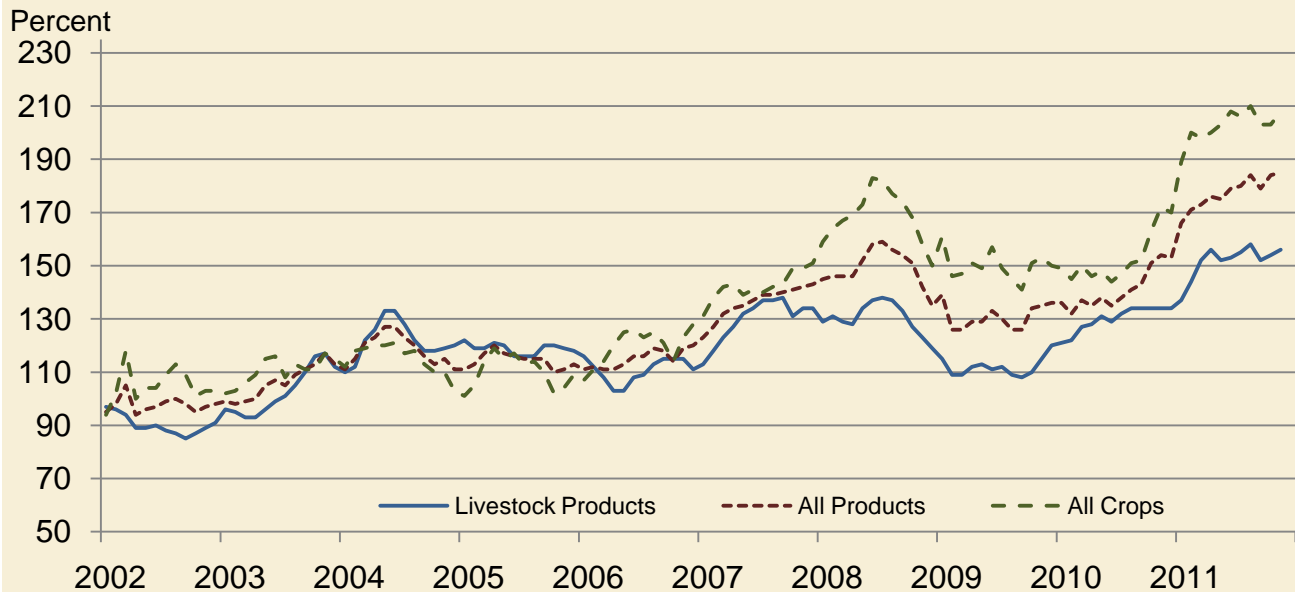
(NA) Not available.

## Prices Received and Prices Paid Indexes by Month for Selected Groups – United States: 2010 and 2011, 1990-1992 Base

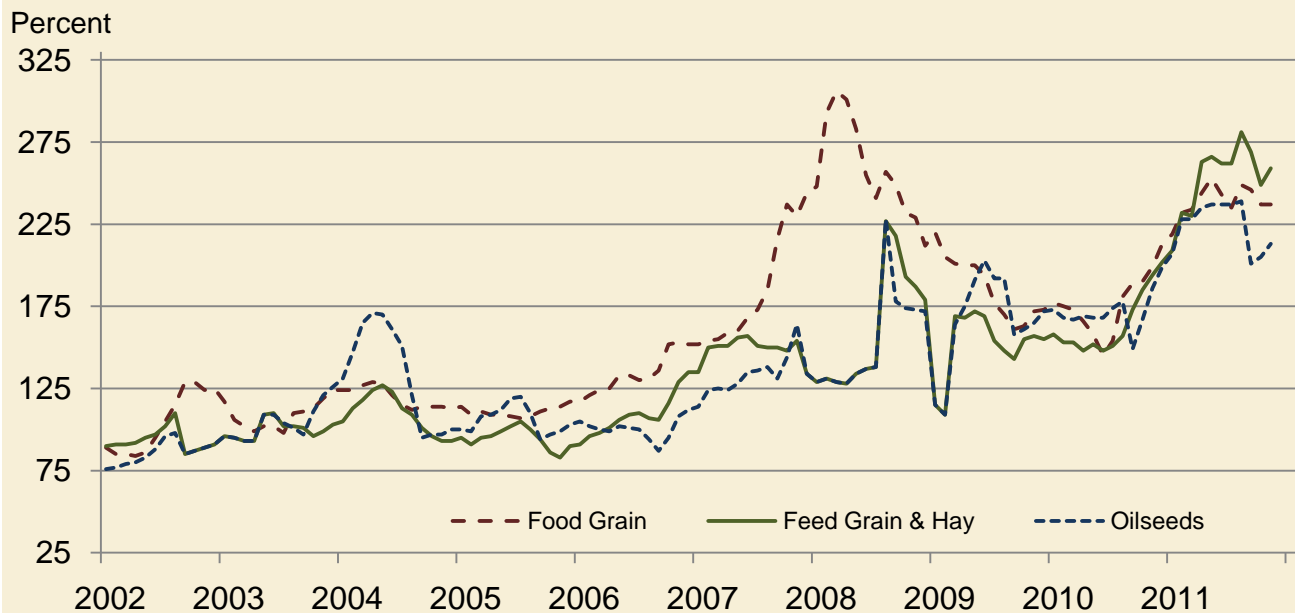
[Revised historical price indexes for months not shown are available at [www.nass.usda.gov](http://www.nass.usda.gov). Blank data cells indicate estimation period has not yet begun]

Month	Index of prices received						Index of prices paid			
	All farm products		All crops		Livestock and products		All items		Production items	
	2010	2011	2010	2011	2010	2011	2010	2011	2010	2011
	(percent)	(percent)	(percent)	(percent)	(percent)	(percent)	(percent)	(percent)	(percent)	(percent)
January .....	136	166	149	189	121	137	180	196	185	204
February .....	132	171	145	200	122	144	180	198	184	207
March .....	137	173	150	198	127	152	181	201	185	212
April .....	135	176	146	200	128	156	182	204	187	215
May .....	138	175	148	203	131	152	182	204	187	215
June .....	135	179	144	208	129	153	181	204	186	215
July .....	138	180	147	206	132	155	181	204	186	216
August .....	141	184	151	210	134	158	182	205	187	216
September .....	143	179	152	203	134	152	183	205	188	217
October .....	151	184	163	203	134	154	185	205	191	216
November .....	154	185	172	208	134	156	187	205	194	217
December .....	153		170		134		189		197	

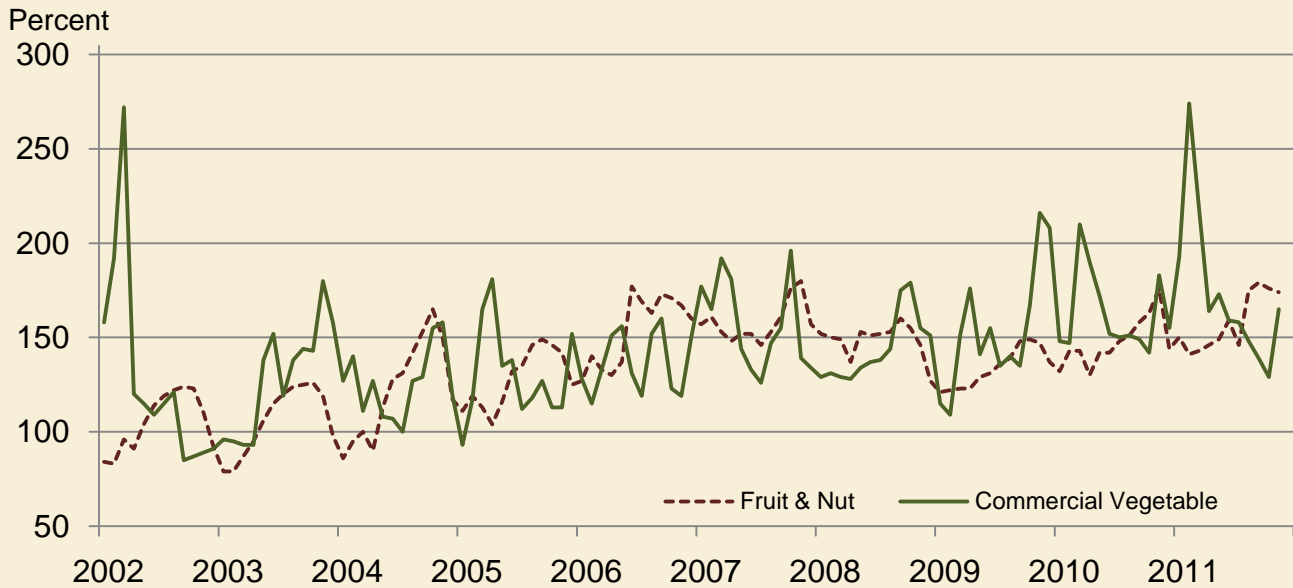
### Received Indexes by Month, Livestock Products, All Products, and All Crops – United States: 1990-1992=100



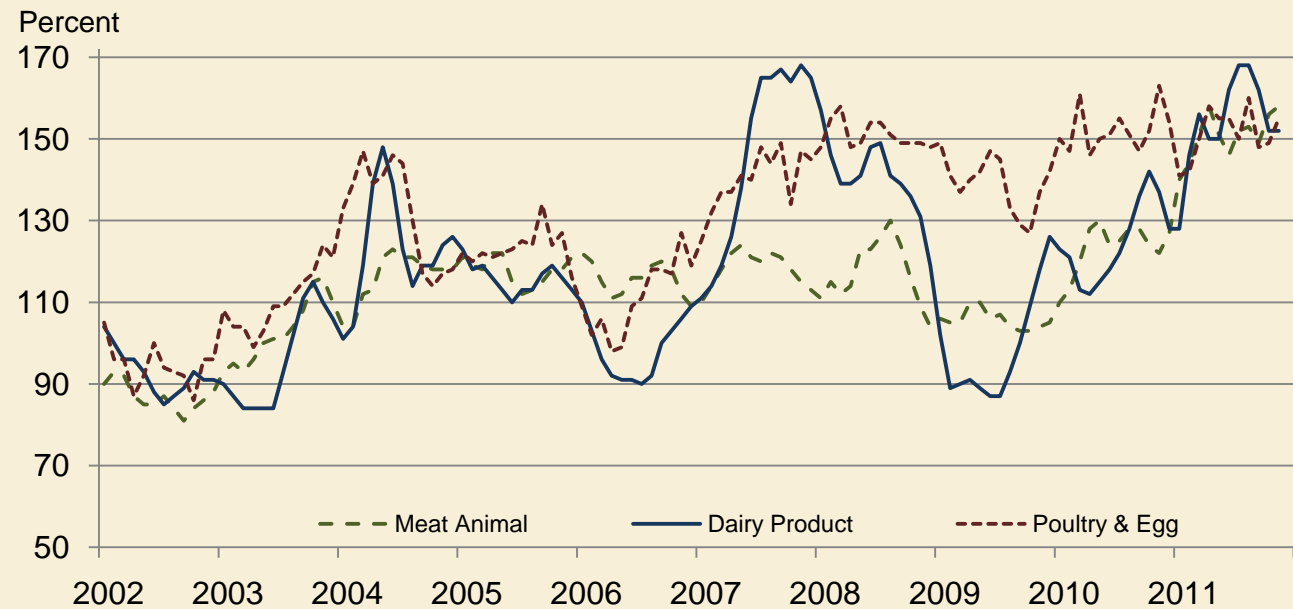
### Received Indexes by Month, Food Grains, Feed Grains & Hay, and Oilseeds – United States: 1990-1992=100



**Received Indexes by Month,  
Fruit & Nut and Commercial Vegetables –  
United States: 1990-1992=100**



**Received Indexes by Month,  
Meat Animal, Dairy Product, and Poultry & Egg –  
United States: 1990-1992=100**





**Prices Received for Field Crops and Fruits – United States: November 2011 with Comparisons**

Commodity	Average 1990-1992=100	November 2010	October 2011	Preliminary November 2011
<b>Field crops</b>				
Austrian winter peas .....dollars/cwt	(NA)	17.70	(S)	(S)
Barley, all .....dollars/bushel	2.12	3.86	5.52	5.59
Feed .....dollars/bushel	1.90	3.34	4.76	4.74
Malting .....dollars/bushel	2.43	3.98	5.68	5.81
Beans, dry edible .....dollars/cwt	19.10	26.70	41.60	44.40
Canola .....dollars/cwt	(NA)	19.10	22.70	23.00
Chickpeas, all .....dollars/cwt	(NA)	28.20	33.50	(D)
Large .....dollars/cwt	(NA)	28.20	42.40	(D)
Small .....dollars/cwt	(NA)	(D)	17.90	(D)
Corn .....dollars/bushel	2.30	4.55	5.71	6.00
Cotton, Upland ..... dollars/pound	0.606	0.815	0.923	0.941
Cottonseed <sup>1</sup> ..... dollars/ton	96.00	162.00	245.00	269.00
Flaxseed .....dollars/bushel	4.27	12.60	13.90	14.70
Hay, all, baled ..... dollars/ton	76.30	110.00	181.00	176.00
Alfalfa ..... dollars/ton	77.20	117.00	203.00	198.00
Other ..... dollars/ton	60.00	97.80	129.00	122.00
Lentils .....dollars/cwt	(NA)	25.60	28.60	28.20
Oats .....dollars/bushel	1.22	3.07	3.70	3.40
Peanuts, in-shell ..... dollars/pound	0.304	0.223	0.283	0.330
Peas, dry edible .....dollars/cwt	(NA)	9.04	16.20	15.40
Potatoes .....dollars/cwt	5.82	8.01	7.33	8.26
Rice, all .....dollars/cwt	7.07	12.50	14.60	14.40
Long .....dollars/cwt	(NA)	10.70	14.00	13.80
Medium and short .....dollars/cwt	(NA)	18.20	16.20	16.90
Sorghum grain .....dollars/cwt	3.75	8.44	10.70	11.00
Soybeans .....dollars/bushel	5.61	11.10	11.70	11.50
Sunflowers, all .....dollars/cwt	9.50	18.70	29.60	31.30
Wheat, all .....dollars/bushel	2.96	6.10	7.29	7.33
Winter .....dollars/bushel	2.93	6.02	6.54	6.41
Durum .....dollars/bushel	2.86	5.55	9.58	10.30
Other spring .....dollars/bushel	3.11	6.35	8.20	8.72
Hard red winter <sup>2</sup> .....dollars/bushel	(NA)	6.15	6.83	(NA)
Soft red winter <sup>2</sup> .....dollars/bushel	(NA)	5.46	6.63	(NA)
Hard red spring <sup>2</sup> .....dollars/bushel	(NA)	6.41	8.39	(NA)
White <sup>2</sup> .....dollars/bushel	3.24	5.88	6.06	(NA)
<b>Fruits</b>				
<b>Citrus, equivalent on-tree</b>				
Grapefruit ..... dollars/box	5.77	12.06	9.62	6.29
Lemons ..... dollars/box	10.10	18.51	12.93	14.40
Oranges ..... dollars/box	5.79	11.47	8.26	9.95
Tangelos ..... dollars/box	5.82	(NA)	(NA)	6.82
Tangerines and mandarins ..... dollars/box	15.11	27.06	10.81	16.29
<b>Noncitrus, fresh</b>				
Apples <sup>3</sup> ..... dollars/pound	0.212	0.353	0.434	0.383
Grapes <sup>3</sup> ..... dollars/ton	506.00	500.00	790.00	980.00
Peaches <sup>3</sup> ..... dollars/ton	432.00	(S)	(S)	(S)
Pears <sup>3</sup> ..... dollars/ton	370.00	549.00	562.00	542.00
Strawberries .....dollars/cwt	56.00	139.00	66.90	66.70

(D) Withheld to avoid disclosing data for individual operations.

(NA) Not available.

(S) Insufficient number of reports to establish an estimate.

<sup>1</sup> Marketing year August - February.

<sup>2</sup> Preliminary estimates not set for this item.

<sup>3</sup> Equivalent packinghouse-door returns for California, Michigan, New York (apples only), and Washington (apples, peaches, and pears). Prices as sold for other states.

# Prices Received for Vegetables and Livestock – United States: November 2011 with Comparisons

[Price data source for livestock and poultry commodities is United States Department of Agriculture's Agricultural Marketing Service]

Commodity	Average 1990-1992=100	November 2010	October 2011	Preliminary November 2011
<b>Vegetables, fresh <sup>1</sup></b>				
Asparagus ..... dollars/cwt	79.80	(S)	(S)	(S)
Beans, snap <sup>2</sup> ..... dollars/cwt	(NA)	44.90	61.60	53.30
Broccoli ..... dollars/cwt	22.50	55.30	33.10	43.10
Cantaloupes <sup>2</sup> ..... dollars/cwt	(NA)	37.10	17.60	15.80
Carrots ..... dollars/cwt	13.20	27.60	27.50	27.20
Cauliflower ..... dollars/cwt	26.80	52.60	30.30	59.60
Celery ..... dollars/cwt	11.60	14.30	12.00	13.70
Corn, sweet ..... dollars/cwt	15.70	20.60	28.40	22.90
Cucumbers <sup>2</sup> ..... dollars/cwt	(NA)	14.30	30.80	35.70
Lettuce ..... dollars/cwt	11.90	35.40	17.00	32.60
Onions <sup>3</sup> ..... dollars/cwt	12.80	12.10	9.50	9.81
Tomatoes ..... dollars/cwt	32.30	38.10	26.60	43.80
<b>Livestock</b>				
Calves ..... dollars/cwt	94.30	125.00	145.00	152.00
Cattle, all beef ..... dollars/cwt	72.90	94.00	117.00	119.00
Cows <sup>4</sup> ..... dollars/cwt	49.60	51.50	65.00	65.70
Steers & heifers ..... dollars/cwt	77.10	101.00	122.00	125.00
Milk cows <sup>5</sup> ..... dollars/head	1130.00	(NA)	1480.00	(NA)
Hogs, all ..... dollars/cwt	47.70	47.80	68.70	65.70
Barrows & gilts ..... dollars/cwt	48.40	48.00	69.00	65.90
Sows ..... dollars/cwt	39.50	43.30	61.80	61.50
<b>Dairy and poultry</b>				
Milk, all <sup>6</sup> ..... dollars/cwt	13.06	17.90	19.90	19.90
Fat test ..... percent	3.66	3.81	3.73	3.79
Broilers, live <sup>7</sup> ..... dollars/pound	0.317	0.480	0.430	0.450
Eggs, all <sup>8</sup> ..... dollars/dozen	0.643	1.130	1.020	1.020
Market <sup>8 9</sup> ..... dollars/dozen	0.546	1.020	0.857	0.862
Turkeys, live <sup>8 10 11</sup> ..... dollars/pound	0.380	0.736	0.773	0.784
<b>Adjusted for seasonal variation</b>				
Eggs, all ..... dollars/dozen	0.545	0.999	1.009	0.903
Seasonal factor ..... percent	100	113	101	113
Milk, all <sup>6</sup> ..... dollars/cwt	9.71	16.60	18.80	18.40
Seasonal factor ..... percent	100	108	106	108

(NA) Not available.

(S) Insufficient number of reports to establish an estimate.

<sup>1</sup> Beginning January 2006, point of first sale. FOB shipping point for prior years.

<sup>2</sup> Monthly estimates began January 1995.

<sup>3</sup> Includes some processing.

<sup>4</sup> Beef cows and cull dairy cows sold for slaughter.

<sup>5</sup> Animals sold for dairy herd replacement only. Prices available for January, April, July, and October.

<sup>6</sup> Before deductions for hauling. Includes quality, quantity, and other premiums. Excludes hauling subsidies.

<sup>7</sup> Live weight equivalent price.

<sup>8</sup> Mid-month price.

<sup>9</sup> Also referred to as table eggs.

<sup>10</sup> Live weight equivalent price is used when actual live weight price is not available.

<sup>11</sup> Beginning January 2011, price reflects FOB shipping point basis. Prior year price reflects delivered basis.

## Prices Received for Corn by Month – United States

Dollars per bushel



## Prices Received for Wheat by Month – United States

Dollars per bushel



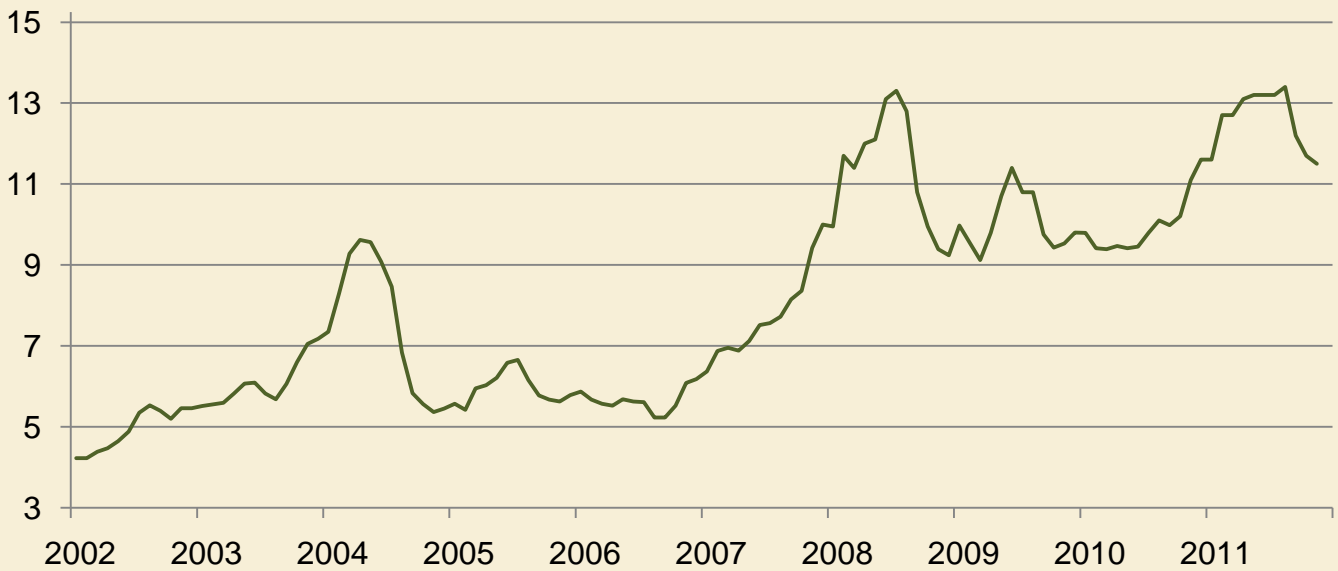
## Prices Received for Upland Cotton by Month – United States

Dollars per pound



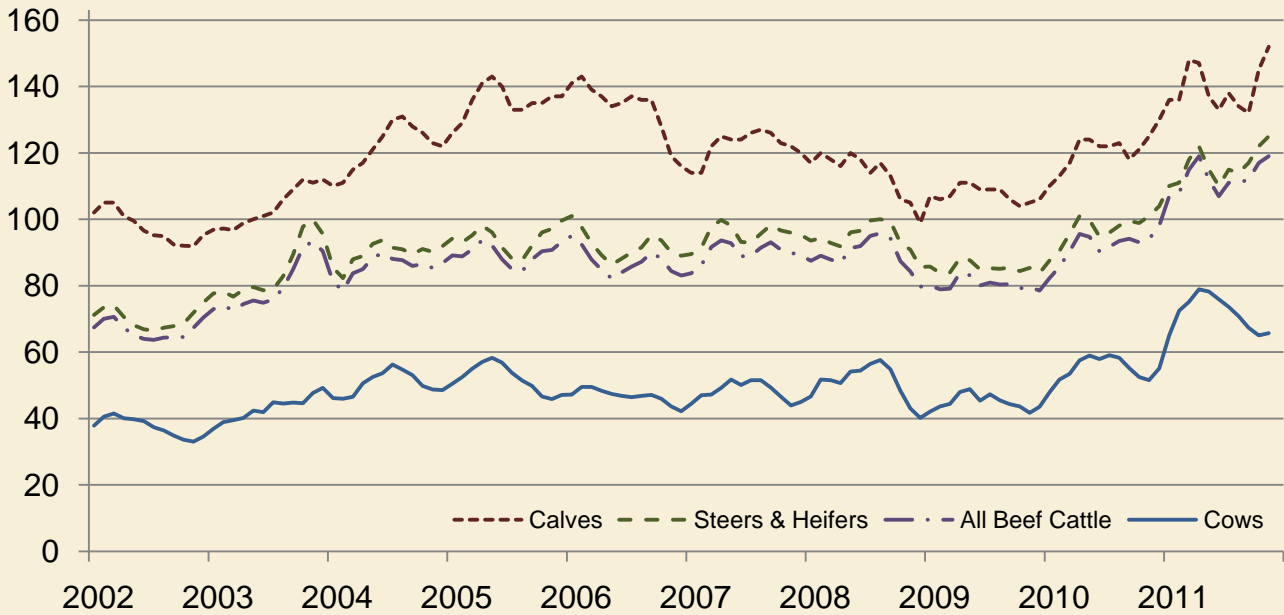
## Prices Received for Soybeans by Month – United States

Dollars per bushel



## Prices Received for Cattle by Month – United States

Dollars per cwt



## Prices Received for Milk by Month – United States

Dollars per cwt



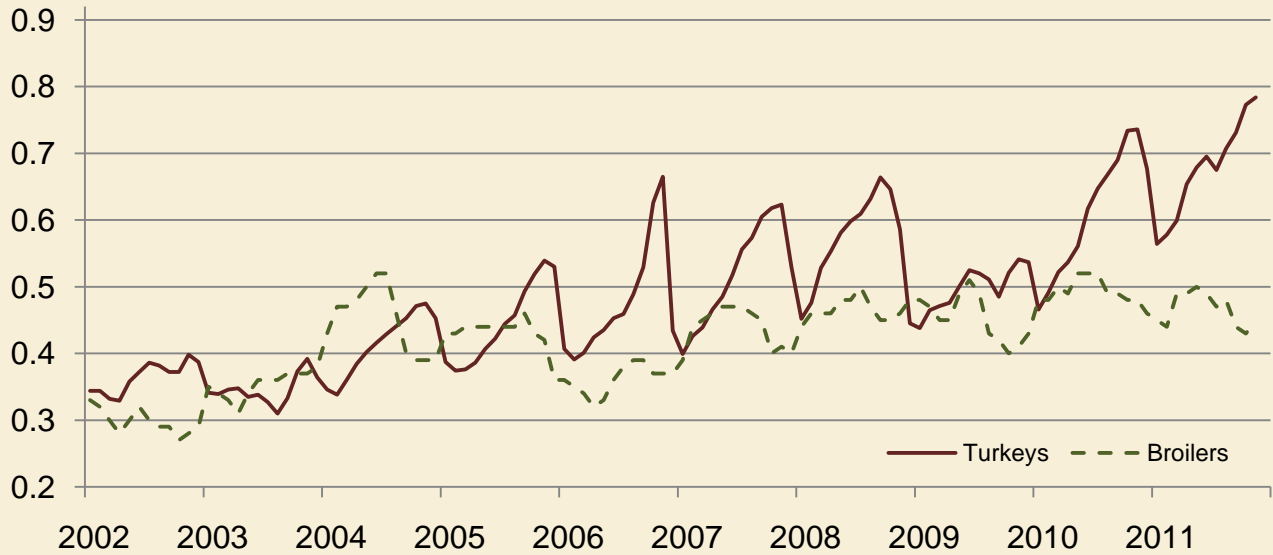
## Prices Received for Hogs by Month – United States

Dollars per cwt



## Prices Received for Poultry by Month – United States

Dollars per pound



## Prices Received for All Wheat, Corn, and Soybeans by Month – United States: 2011 with Comparisons

[Current month prices are mid-month; prices for previous months and years are for the entire month. Blank data cells indicate estimation period has not yet begun]

Month	All wheat			Corn			Soybeans		
	2009	2010	Preliminary 2011	2009	2010	Preliminary 2011	2009	2010	Preliminary 2011
	(dollars per bushel)	(dollars per bushel)	(dollars per bushel)	(dollars per bushel)	(dollars per bushel)	(dollars per bushel)	(dollars per bushel)	(dollars per bushel)	(dollars per bushel)
January .....	6.20	4.90	6.69	4.36	3.66	4.94	9.97	9.79	11.60
February .....	5.79	4.73	7.42	3.87	3.55	5.65	9.54	9.41	12.70
March .....	5.71	4.70	7.55	3.85	3.55	5.53	9.12	9.39	12.70
April .....	5.75	4.41	8.01	3.85	3.41	6.36	9.79	9.47	13.10
May .....	5.85	4.34	8.16	3.96	3.48	6.32	10.70	9.41	13.20
June .....	5.72	4.16	7.41	4.01	3.41	6.38	11.40	9.45	13.20
July .....	5.17	4.49	7.10	3.60	3.49	6.33	10.80	9.79	13.20
August .....	4.85	5.44	7.61	3.33	3.65	6.88	10.80	10.10	13.40
September ...	4.48	5.79	7.55	3.25	4.08	6.37	9.75	9.98	12.20
October .....	4.47	5.88	7.29	3.61	4.32	5.71	9.43	10.20	11.70
November ....	4.79	6.10	7.33	3.65	4.55	6.00	9.53	11.10	11.50
December ....	4.87	6.44		3.60	4.82		9.80	11.60	

## Prices Received for Beef Cattle and All Hogs by Month – United States: 2011 with Comparisons

[Current month prices are mid-month; prices for previous months and years are for the entire month. Blank data cells indicate estimation period has not yet begun. Price data source is United States Department of Agriculture's Agricultural Marketing Service]

Month	Beef cattle <sup>1</sup>			All hogs <sup>2</sup>		
	2009	2010	Preliminary 2011	2009	2010	Preliminary 2011
	(dollars per cwt)	(dollars per cwt)	(dollars per cwt)	(dollars per cwt)	(dollars per cwt)	(dollars per cwt)
January .....	80.10	82.30	107.00	42.80	48.40	55.80
February .....	78.90	85.70	108.00	43.80	48.90	61.60
March .....	79.10	90.40	115.00	43.90	52.10	63.10
April .....	83.80	95.60	119.00	44.00	56.50	67.70
May .....	83.20	94.70	112.00	44.60	62.20	68.60
June .....	80.10	90.40	107.00	43.30	58.20	69.70
July .....	80.90	91.70	111.00	43.30	58.50	71.70
August .....	80.40	93.50	111.00	37.30	61.30	75.80
September .....	80.50	94.10	112.00	37.70	61.00	67.10
October .....	79.20	93.10	117.00	37.80	53.30	68.70
November .....	79.60	94.00	119.00	40.30	47.80	65.70
December .....	78.50	98.10		45.10	52.30	

<sup>1</sup> Cows and steers & heifers.

<sup>2</sup> Barrows & gilts and sows.

**Prices Received for All Wheat – States and United States: November 2011 with Comparisons**

State	November 2010	October 2011	Preliminary November 2011
	(dollars per bushel)	(dollars per bushel)	(dollars per bushel)
Arizona .....	6.24	(D)	(D)
Arkansas .....	(D)	(D)	6.30
California .....	6.30	(D)	(D)
Colorado .....	5.83	5.83	5.89
Idaho .....	5.88	6.40	6.65
Illinois .....	6.08	6.40	6.30
Indiana .....	5.81	6.08	5.99
Kansas .....	6.40	6.86	6.65
Michigan .....	5.93	6.27	6.00
Minnesota .....	5.37	8.27	9.00
Missouri .....	4.59	6.43	6.30
Montana .....	6.09	7.95	8.44
Nebraska .....	5.80	6.67	6.70
North Carolina .....	6.27	7.32	7.00
North Dakota .....	6.10	8.24	9.04
Ohio .....	5.43	6.68	6.60
Oklahoma .....	6.45	7.22	6.72
Oregon .....	6.63	7.09	6.30
South Dakota .....	6.47	7.83	8.22
Texas .....	6.65	7.15	6.68
Washington .....	5.99	6.76	6.60
United States .....	6.10	7.29	7.33

(D) Withheld to avoid disclosing data for individual operations.

**Prices Received for Winter Wheat – States and United States: November 2011 with Comparisons**

State	November 2010	October 2011	Preliminary November 2011
	(dollars per bushel)	(dollars per bushel)	(dollars per bushel)
Arkansas .....	(D)	(D)	6.30
California .....	6.30	(D)	(D)
Colorado .....	5.83	5.84	5.90
Idaho .....	5.71	6.13	6.30
Illinois .....	6.08	6.40	6.30
Indiana .....	5.81	6.08	5.99
Kansas .....	6.40	6.86	6.65
Michigan .....	5.93	6.27	6.00
Minnesota .....	5.06	(D)	(S)
Missouri .....	4.59	6.43	6.30
Montana .....	5.86	6.77	7.01
Nebraska .....	5.80	6.67	6.70
North Carolina .....	6.27	7.32	7.00
North Dakota .....	5.08	6.69	6.60
Ohio .....	5.43	6.68	6.60
Oklahoma .....	6.45	7.22	6.72
Oregon .....	6.49	6.46	5.90
South Dakota .....	5.80	6.98	6.79
Texas .....	6.65	7.15	6.68
Washington .....	5.85	6.32	6.16
United States .....	6.02	6.54	6.41

(D) Withheld to avoid disclosing data for individual operations.

(S) Insufficient number of reports to establish an estimate.



### Prices Received for Durum Wheat – States and United States: November 2011 with Comparisons

State	November 2010	October 2011	Preliminary November 2011
	(dollars per bushel)	(dollars per bushel)	(dollars per bushel)
Arizona .....	6.24	(D)	(D)
California .....	(D)	(S)	(S)
Idaho .....	(D)	(D)	(S)
Montana .....	5.97	10.00	11.00
North Dakota .....	5.45	9.44	10.30
United States .....	5.55	9.58	10.30

(D) Withheld to avoid disclosing data for individual operations.

(S) Insufficient number of reports to establish an estimate.

### Prices Received for Spring Wheat – States and United States: November 2011 with Comparisons

State	November 2010	October 2011	Preliminary November 2011
	(dollars per bushel)	(dollars per bushel)	(dollars per bushel)
Colorado .....	(D)	5.67	5.76
Idaho .....	6.31	7.08	7.10
Minnesota .....	5.38	8.27	9.00
Montana .....	6.35	8.47	9.06
North Dakota .....	6.45	8.09	8.95
Oregon .....	7.39	8.82	8.40
South Dakota .....	6.62	8.40	9.18
Washington .....	6.69	8.20	8.24
United States .....	6.35	8.20	8.72

(D) Withheld to avoid disclosing data for individual operations.

**Prices Received for All Barley – States and United States: November 2011 with Comparisons**

State	November 2010	October 2011	Preliminary November 2011
	(dollars per bushel)	(dollars per bushel)	(dollars per bushel)
California .....	(S)	(S)	(S)
Colorado .....	4.13	(D)	(D)
Idaho .....	4.04	5.62	5.89
Minnesota .....	(D)	5.50	(D)
Montana .....	3.83	5.54	5.40
North Dakota .....	3.70	5.78	5.53
Oregon .....	3.89	4.61	4.60
Utah .....	3.73	5.01	(D)
Washington .....	3.78	4.44	4.35
Wyoming .....	(D)	(D)	(S)
United States .....	3.86	5.52	5.59

(D) Withheld to avoid disclosing data for individual operations.

(S) Insufficient number of reports to establish an estimate.

**Prices Received for Malting Barley – States: November 2011 with Comparisons**

State	November 2010	October 2011	Preliminary November 2011
	(dollars per bushel)	(dollars per bushel)	(dollars per bushel)
Idaho .....	4.05	5.72	6.10
Minnesota .....	(D)	(D)	(D)
Montana .....	3.97	5.59	5.48
North Dakota .....	3.86	5.84	5.60
Wyoming .....	(D)	(D)	(S)

(D) Withheld to avoid disclosing data for individual operations.

(S) Insufficient number of reports to establish an estimate.

**Prices Received for Feed Barley – States: November 2011 with Comparisons**

State	November 2010	October 2011	Preliminary November 2011
	(dollars per bushel)	(dollars per bushel)	(dollars per bushel)
Idaho .....	3.88	5.19	5.00
Minnesota .....	3.29	(D)	(D)
Montana .....	3.22	5.00	4.57
North Dakota .....	3.15	4.98	(D)
Wyoming .....	(D)	(D)	(S)

(D) Withheld to avoid disclosing data for individual operations.

(S) Insufficient number of reports to establish an estimate.

## Prices Received for Corn – States and United States: November 2011 with Comparisons

State	November 2010	October 2011	Preliminary November 2011
	(dollars per bushel)	(dollars per bushel)	(dollars per bushel)
Colorado .....	4.33	5.78	5.99
Illinois .....	4.62	5.87	6.10
Indiana .....	4.82	5.66	6.15
Iowa .....	4.61	5.65	6.05
Kansas .....	4.72	5.98	6.25
Kentucky .....	5.00	5.96	6.30
Michigan .....	4.85	5.69	5.75
Minnesota .....	4.18	5.39	5.60
Missouri .....	4.81	5.90	6.00
Nebraska .....	4.46	5.61	5.90
North Carolina .....	5.47	6.83	6.82
North Dakota .....	4.17	5.25	5.75
Ohio .....	4.96	6.03	6.15
Pennsylvania .....	5.59	6.91	7.07
South Dakota .....	4.25	5.67	6.01
Tennessee .....	4.95	6.32	6.35
Texas .....	4.66	6.39	6.66
Wisconsin .....	4.37	5.56	5.76
United States .....	4.55	5.71	6.00

## Prices Received for Soybeans – States and United States: November 2011 with Comparisons

State	November 2010	October 2011	Preliminary November 2011
	(dollars per bushel)	(dollars per bushel)	(dollars per bushel)
Arkansas .....	11.40	12.00	11.90
Illinois .....	11.10	11.90	11.70
Indiana .....	11.50	11.40	11.60
Iowa .....	10.90	11.80	11.40
Kansas .....	11.50	11.60	11.30
Kentucky .....	11.40	12.00	11.70
Louisiana .....	12.10	12.00	12.00
Michigan .....	11.40	11.60	11.40
Minnesota .....	10.50	11.50	11.00
Mississippi .....	10.80	11.80	11.70
Missouri .....	11.30	11.90	11.60
Nebraska .....	10.90	11.70	11.30
North Carolina .....	11.20	11.90	11.70
North Dakota .....	10.50	11.40	11.10
Ohio .....	11.60	11.90	11.70
South Dakota .....	10.60	11.50	11.20
Tennessee .....	11.60	11.90	11.80
Wisconsin .....	10.80	11.70	11.20
United States .....	11.10	11.70	11.50

**Prices Received for Oats – States and United States: November 2011 with Comparisons**

State	November 2010	October 2011	Preliminary November 2011
	(dollars per bushel)	(dollars per bushel)	(dollars per bushel)
Illinois .....	(S)	(S)	(S)
Iowa .....	2.97	3.58	3.40
Michigan .....	2.99	4.19	3.60
Minnesota .....	2.57	3.12	3.50
Montana .....	(D)	(D)	(S)
Nebraska .....	3.30	(D)	3.50
New York .....	(D)	(D)	(D)
North Dakota .....	2.69	2.78	(D)
Oregon .....	(D)	(S)	(S)
Pennsylvania .....	3.34	4.39	4.23
South Dakota .....	2.93	3.49	3.63
Texas .....	(D)	(S)	(S)
Wisconsin .....	2.73	3.55	3.40
United States .....	3.07	3.70	3.40

(D) Withheld to avoid disclosing data for individual operations.

(S) Insufficient number of reports to establish an estimate.

**Prices Received for Sorghum Grain – States and United States: November 2011 with Comparisons**

State	November 2010	October 2011	Preliminary November 2011
	(dollars per cwt)	(dollars per cwt)	(dollars per cwt)
Arkansas .....	(D)	9.71	10.20
Illinois .....	9.26	10.30	(S)
Kansas .....	8.36	10.70	10.80
Louisiana .....	(D)	(D)	(D)
Missouri .....	8.18	11.30	11.20
Nebraska .....	8.21	10.70	11.20
Oklahoma .....	8.66	10.40	11.20
Texas .....	8.67	10.90	11.60
United States .....	8.44	10.70	11.00

(D) Withheld to avoid disclosing data for individual operations.

(S) Insufficient number of reports to establish an estimate.

**Prices Received for Dry Beans – States and United States: November 2011 with Comparisons**

State	November 2010	October 2011	Preliminary November 2011
	(dollars per cwt)	(dollars per cwt)	(dollars per cwt)
California .....	53.50	57.90	58.40
Colorado .....	24.50	44.40	43.30
Idaho .....	28.10	30.20	45.00
Michigan .....	29.20	45.80	45.80
Minnesota .....	28.40	43.70	46.00
Nebraska .....	23.80	43.00	43.90
North Dakota .....	21.50	36.30	42.00
United States .....	26.70	41.60	44.40

**Prices Received for Peanuts (In-Shell) – States and United States: November 2011 with Comparisons**

State	November 2010	October 2011	Preliminary November 2011
	(dollars per pound)	(dollars per pound)	(dollars per pound)
Alabama .....	0.189	0.263	0.276
Florida .....	0.214	0.235	0.269
Georgia .....	0.207	0.281	0.311
Mississippi .....	0.172	0.300	0.450
New Mexico .....	0.468	(D)	(D)
North Carolina .....	0.242	0.329	0.397
Oklahoma .....	(D)	(D)	(D)
South Carolina .....	0.246	0.304	0.384
Texas .....	0.264	0.372	0.420
Virginia .....	0.242	0.303	0.406
United States .....	0.223	0.283	0.330

(D) Withheld to avoid disclosing data for individual operations.

**Prices Received for Sunflower – States and United States: November 2011 with Comparisons**

State	November 2010	October 2011	Preliminary November 2011
	(dollars per cwt)	(dollars per cwt)	(dollars per cwt)
Colorado .....	20.20	(D)	(S)
Kansas .....	(D)	32.80	31.30
Minnesota .....	20.60	31.00	33.30
North Dakota .....	19.30	30.80	32.20
South Dakota .....	17.50	27.80	30.30
United States .....	18.70	29.60	31.30

(D) Withheld to avoid disclosing data for individual operations.

(S) Insufficient number of reports to establish an estimate.

**Prices Received for Canola – States and United States: November 2011 with Comparisons**

State	November 2010	October 2011	Preliminary November 2011
	(dollars per cwt)	(dollars per cwt)	(dollars per cwt)
Minnesota .....	20.60	(D)	(S)
North Dakota .....	19.10	22.50	23.00
United States .....	19.10	22.70	23.00

(D) Withheld to avoid disclosing data for individual operations.

(S) Insufficient number of reports to establish an estimate.

**Prices Received for Flaxseed – States and United States: November 2011 with Comparisons**

State	November 2010	October 2011	Preliminary November 2011
	(dollars per bushel)	(dollars per bushel)	(dollars per bushel)
North Dakota .....	12.60	13.90	14.70
United States .....	12.60	13.90	14.70

## Prices Received for Upland Cotton and Cottonseed – States and United States: November 2011 with Comparisons

[Cottonseed marketing year August - February]

State	Cotton, Upland			Cottonseed		
	November 2010	October 2011	Preliminary November 2011	November 2010	October 2011	Preliminary November 2011
	(dollars per pound)	(dollars per pound)	(dollars per pound)	(dollars per ton)	(dollars per ton)	(dollars per ton)
Alabama .....	0.872	0.953	0.948	136.00	200.00	204.00
Arizona .....	(D)	0.908	(D)	212.00	(D)	302.00
Arkansas .....	(D)	0.940	0.921	177.00	271.00	268.00
California .....	1.080	(D)	(D)	274.00	299.00	360.00
Georgia .....	0.862	0.943	0.981	136.00	210.00	208.00
Louisiana .....	0.914	0.924	0.965	185.00	248.00	288.00
Mississippi .....	0.790	0.901	(D)	164.00	247.00	248.00
North Carolina .....	0.711	0.893	0.926	151.00	213.00	203.00
Tennessee .....	0.831	0.924	(D)	190.00	250.00	270.00
Texas .....	0.821	0.926	0.908	153.00	270.00	322.00
United States .....	0.815	0.923	0.941	162.00	245.00	269.00

(D) Withheld to avoid disclosing data for individual operations.

## Prices Received and Farm Marketings for Upland Cotton and Rice – United States: November 2011 with Comparisons

Item	November 2010	October 2011	Preliminary November 2011
Cotton, Upland			
Average price .....dollars/pound	0.815	0.923	0.941
Marketings <sup>1</sup> .....1,000 bales	3,651	1,152	(NA)
Rice, all			
Average price .....dollars/cwt	12.50	14.60	14.40
Marketings <sup>2</sup> .....1,000 cwt	16,993	10,435	(NA)
Rice, long			
Average price .....dollars/cwt	10.70	14.00	13.80
Marketings <sup>2</sup> .....1,000 cwt	12,780	7,861	(NA)
Rice, medium and short			
Average price .....dollars/cwt	18.20	16.20	16.90
Marketings <sup>2</sup> .....1,000 cwt	4,213	2,574	(NA)

(NA) Not available.

<sup>1</sup> Marketings based on a survey of cotton buyers in the major producing States - Alabama, Arizona, Arkansas, California, Georgia, Louisiana, Mississippi, North Carolina, Tennessee, and Texas.

<sup>2</sup> Purchases by private firms and rice (rough equivalent) shipped by cooperatives.

## Prices Received for Hay by Type – States and United States: November 2011 with Comparisons

State	All hay			Alfalfa hay			Other hay		
	November 2010	October 2011	Preliminary November 2011	November 2010	October 2011	Preliminary November 2011	November 2010	October 2011	Preliminary November 2011
	(dollars per ton)	(dollars per ton)	(dollars per ton)	(dollars per ton)	(dollars per ton)	(dollars per ton)	(dollars per ton)	(dollars per ton)	(dollars per ton)
Arizona .....	125.00	223.00	233.00	125.00	225.00	235.00	120.00	165.00	185.00
California .....	127.00	226.00	231.00	135.00	239.00	241.00	104.00	159.00	189.00
Colorado .....	123.00	213.00	228.00	125.00	220.00	235.00	105.00	160.00	160.00
Idaho .....	125.00	227.00	232.00	127.00	233.00	236.00	95.00	150.00	150.00
Illinois .....	118.00	144.00	163.00	130.00	160.00	180.00	88.00	110.00	140.00
Iowa .....	114.00	127.00	132.00	120.00	140.00	143.00	77.00	89.00	89.00
Kansas .....	107.00	174.00	186.00	115.00	205.00	215.00	75.00	100.00	100.00
Kentucky .....	87.00	100.00	100.00	130.00	180.00	180.00	75.00	80.00	80.00
Michigan .....	98.00	99.00	102.00	110.00	110.00	115.00	80.00	85.00	85.00
Minnesota .....	92.00	114.00	122.00	110.00	130.00	140.00	70.00	78.00	80.00
Missouri .....	81.00	112.00	115.00	135.00	230.00	235.00	65.00	70.00	90.00
Montana .....	84.00	104.00	96.00	85.00	104.00	96.00	77.00	103.00	92.00
Nebraska .....	74.00	118.00	125.00	78.00	126.00	135.00	64.00	93.00	94.00
Nevada .....	131.00	213.00	222.00	132.00	216.00	225.00	120.00	161.00	175.00
New Mexico .....	160.00	288.00	302.00	165.00	295.00	309.00	135.00	220.00	230.00
New York .....	102.00	118.00	98.00	120.00	127.00	120.00	100.00	115.00	95.00
North Dakota .....	56.00	62.00	69.00	58.00	68.00	73.00	42.00	49.00	52.00
Ohio .....	102.00	134.00	117.00	157.00	181.00	186.00	70.00	85.00	82.00
Oklahoma .....	87.00	168.00	183.00	138.00	223.00	229.00	75.00	123.00	126.00
Oregon .....	150.00	230.00	219.00	143.00	245.00	240.00	160.00	210.00	190.00
Pennsylvania .....	111.00	141.00	127.00	135.00	187.00	180.00	105.00	119.00	100.00
South Dakota .....	78.00	127.00	125.00	80.00	133.00	132.00	69.00	96.00	97.00
Texas .....	120.00	170.00	163.00	180.00	260.00	271.00	112.00	149.00	145.00
Utah .....	108.00	196.00	192.00	108.00	200.00	195.00	99.00	160.00	156.00
Washington .....	143.00	230.00	226.00	130.00	240.00	240.00	175.00	205.00	190.00
Wisconsin .....	98.00	106.00	117.00	105.00	120.00	130.00	70.00	80.00	90.00
Wyoming .....	91.00	139.00	142.00	93.00	145.00	145.00	85.00	120.00	125.00
United States ..	110.00	181.00	176.00	117.00	203.00	198.00	97.80	129.00	122.00

## Prices Received for Apples – States and United States: November 2011 with Comparisons

[Equivalent packinghouse-door returns for California, Michigan, New York, and Washington. Prices at point of first sale for other States]

State	Apples, fresh use		
	November 2010	October 2011	Preliminary November 2011
	(dollars per pound)	(dollars per pound)	(dollars per pound)
California .....	0.370	0.481	(NA)
Michigan .....	0.295	0.380	0.345
New York .....	0.268	0.384	0.366
Ohio .....	0.410	0.500	0.480
Pennsylvania .....	0.388	(S)	0.325
Virginia .....	0.280	0.440	0.440
Washington .....	0.364	0.440	0.384
United States .....	0.353	0.434	0.383

(NA) Not available.

(S) Insufficient number of reports to establish an estimate.



## Prices Received for Citrus Fruits by Utilization – States and United States: November 2010

[Net pounds per box: grapefruit in California-80, Florida-85, Texas-80; lemons-80; oranges in California-75, Florida-90, Texas-85; tangelos in Florida-90; tangerines and mandarins in Arizona and California-80, Florida-95]

Commodity, State, and type	FOB packed fresh	Equivalent returns					
		Packinghouse-door			On-tree		
		All	Fresh	Process	All	Fresh	Process
	(dollars per box)	(dollars per box)	(dollars per box)	(dollars per box)	(dollars per box)	(dollars per box)	(dollars per box)
Grapefruit							
California <sup>1</sup> .....	16.10	9.70	9.70	(S)	7.60	7.60	(S)
Florida .....	27.70	14.79	17.85	5.30	12.46	15.66	2.53
White .....	29.00	14.92	19.10	4.00	12.66	16.95	1.45
Colored .....	27.30	14.75	17.50	5.75	12.39	15.30	2.90
Texas .....	28.20	14.14	17.90	1.60	12.63	16.35	0.20
United States .....	26.50	14.37	16.98	5.30	12.06	14.80	2.53
Lemons							
Arizona .....	(D)	(D)	(D)	(D)	(D)	(D)	(D)
California .....	43.50	25.73	32.60	(D)	19.86	26.73	(D)
United States .....	42.80	24.38	31.88	(D)	18.51	26.01	(D)
Oranges							
California .....	26.40	16.48	17.75	(D)	14.04	15.32	(D)
Navel and miscellaneous ..	26.70	17.10	18.06	(D)	14.68	15.65	(D)
Valencia .....	20.50	8.35	11.98	(D)	5.66	9.29	(D)
Florida							
Early and mids .....	24.50	10.90	14.50	7.24	8.28	11.75	4.74
United States .....	25.80	13.99	16.76	6.14	11.47	14.23	3.62
Tangerines and mandarins							
California .....	(D)	(D)	(D)	(D)	(D)	(D)	(D)
Florida .....	31.60	15.50	19.35	5.68	12.00	15.85	2.18
United States .....	46.90	30.14	37.42	2.31	27.06	34.53	-1.50

(D) Withheld to avoid disclosing data for individual operations.

(S) Insufficient number of reports to establish an estimate.

<sup>1</sup> Some processed sales included in fresh sales.

## Prices Received for Citrus Fruits by Utilization – States and United States: October 2011

[Net pounds per box: grapefruit in California-80, Florida-85, Texas-80; lemons-80; oranges in California-80, Florida-90, Texas-85; tangelos in Florida-90; tangerines and mandarins in Arizona and California-80, Florida-95]

Commodity, State, and type	FOB packed fresh	Equivalent returns					
		Packinghouse-door			On-tree		
		All	Fresh	Process	All	Fresh	Process
	(dollars per box)	(dollars per box)	(dollars per box)	(dollars per box)	(dollars per box)	(dollars per box)	(dollars per box)
Grapefruit							
California <sup>1</sup> .....	15.50	9.10	9.10	(D)	7.00	7.00	(D)
Florida .....	25.10	12.45	15.53	4.86	10.07	13.29	2.14
White .....	29.50	13.59	19.80	4.80	11.23	17.60	2.20
Colored .....	24.00	12.07	14.40	4.90	9.68	12.15	2.10
United States .....	23.30	11.96	14.27	4.86	9.62	12.06	2.14
Lemons							
Arizona .....	(S)	(S)	(S)	(S)	(S)	(S)	(S)
California .....	36.70	18.87	25.58	(D)	12.88	19.59	(D)
United States .....	36.70	18.92	25.56	(D)	12.93	19.57	(D)
Oranges							
California							
Valencia .....	22.20	10.71	13.56	(D)	8.26	11.15	(D)
Tangerines and mandarins							
Florida .....	28.50	14.59	16.20	7.75	10.81	12.50	3.65

(D) Withheld to avoid disclosing data for individual operations.

(S) Insufficient number of reports to establish an estimate.

<sup>1</sup> Some processed sales included in fresh sales.

## Prices Received for Citrus Fruits by Utilization – States and United States: November 2011

[Net pounds per box: grapefruit in California-80, Florida-85, Texas-80; lemons-80; oranges in California-80, Florida-90, Texas-85; tangelos in Florida-90; tangerines and mandarins in Arizona and California-80, Florida-95]

Commodity, State, and type	FOB packed fresh	Equivalent returns					
		Packinghouse-door			On-tree		
		All	Fresh	Process	All	Fresh	Process
	(dollars per box)	(dollars per box)	(dollars per box)	(dollars per box)	(dollars per box)	(dollars per box)	(dollars per box)
Grapefruit							
California <sup>1</sup> .....	12.10	5.57	5.57	(D)	3.43	3.43	(D)
Florida .....	19.40	8.42	9.75	6.17	5.99	7.51	3.42
White .....	22.50	8.97	12.80	5.90	6.54	10.60	3.30
Colored .....	19.00	8.33	9.40	6.25	5.89	7.15	3.45
Texas .....	28.20	17.20	17.90	1.60	15.66	16.35	0.20
United States .....	19.40	8.67	9.97	6.15	6.29	7.78	3.40
Lemons							
Arizona .....	(D)	(D)	(D)	(S)	(D)	(D)	(S)
California .....	36.20	20.03	25.08	(D)	14.04	19.09	(D)
United States .....	36.10	20.37	25.02	(D)	14.40	19.03	(D)
Oranges							
California							
Navel and miscellaneous ..	27.10	15.18	18.29	(S)	13.14	15.83	(S)
Valencia .....	(S)	(S)	(S)	(S)	(S)	(S)	(S)
Florida							
Early and mids .....	26.90	10.87	16.65	9.40	8.23	13.85	6.80
United States .....	27.00	12.38	17.78	8.43	9.95	15.21	6.10
Tangelos							
Florida .....	24.20	9.94	13.10	6.00	6.82	9.95	2.90
Tangerines and mandarins							
Arizona .....	(D)	(D)	(D)	(NA)	(D)	(D)	(NA)
California .....	(D)	(D)	(D)	(D)	(D)	(D)	(D)
Florida .....	28.30	13.20	16.00	7.40	9.37	12.30	3.30
United States .....	35.70	19.01	25.77	3.36	16.29	22.69	1.50

(D) Withheld to avoid disclosing data for individual operations.

(NA) Not available.

(S) Insufficient number of reports to establish an estimate.

<sup>1</sup> Some processed sales included in fresh sales.

**Prices Received for Potatoes – States and United States: November 2011 with Comparisons**

State	November 2010	October 2011	Preliminary November 2011
	(dollars per cwt)	(dollars per cwt)	(dollars per cwt)
California			
Spring .....	(S)	(S)	(S)
Fall .....	9.45	8.30	8.35
All <sup>1</sup> .....	9.45	8.30	8.35
Colorado			
Fresh <sup>1</sup> .....	12.00	11.60	(D)
All <sup>1</sup> .....	10.70	10.20	11.00
Florida .....	(S)	(S)	(S)
Idaho			
Fresh <sup>2</sup> .....	7.50	7.30	(D)
Processing .....	6.50	6.80	(D)
All <sup>1</sup> .....	6.90	6.95	7.00
Maine .....	9.40	(D)	9.70
Michigan .....	10.40	10.20	11.30
Minnesota .....	6.60	8.45	(D)
New York .....	12.20	15.20	14.20
North Carolina .....	(S)	(S)	(S)
North Dakota			
Fresh <sup>2</sup> .....	13.20	17.30	(D)
Processing .....	7.25	(D)	(D)
All <sup>1</sup> .....	8.75	9.25	(D)
Oregon .....	9.10	7.15	8.70
Texas .....	(S)	(S)	(S)
Virginia .....	(S)	(S)	(S)
Washington			
Processing .....	6.30	6.05	(D)
All <sup>1</sup> .....	7.10	6.25	6.75
Wisconsin			
Fresh <sup>2</sup> .....	10.60	10.60	(D)
Processing .....	7.45	7.45	(D)
All <sup>1</sup> .....	9.15	10.20	9.25
United States			
Fresh <sup>2</sup> .....	10.23	10.83	(D)
Processing .....	6.89	6.56	(D)
All <sup>1</sup> .....	8.01	7.33	8.26

(D) Withheld to avoid disclosing data for individual operations.

(S) Insufficient number of reports to establish an estimate.

<sup>1</sup> Average price of potatoes sold for all uses, including table stock, processing, seed, and livestock feed.

<sup>2</sup> Fresh market prices only. Includes table stock prices.

## Prices Received for All Milk – States and United States: November 2011 with Comparisons

[Before deduction for hauling. Includes quality, quantity, and other premiums. Excludes hauling subsidies]

State	November 2010		October 2011		Preliminary November 2011	
	Price (dollars per cwt)	Fat test (percent)	Price (dollars per cwt)	Fat test (percent)	Price (dollars per cwt)	Fat test (percent)
Arizona .....	17.80	3.65	19.70	3.55	19.50	3.60
California .....	15.86	3.79	18.09	3.70	18.40	3.74
Colorado .....	18.20	3.67	19.70	3.57	19.50	3.63
Florida .....	22.80	3.73	24.40	3.73	23.50	3.75
Idaho .....	16.20	3.77	18.30	3.65	18.60	3.74
Illinois .....	19.00	3.86	20.60	3.78	20.00	3.88
Indiana .....	19.10	3.87	20.80	3.71	20.40	3.85
Iowa .....	18.30	3.79	20.60	3.77	20.00	3.82
Kansas .....	19.50	3.85	20.30	3.84	20.10	3.89
Michigan .....	18.90	3.76	21.00	3.68	20.80	3.75
Minnesota .....	17.70	3.84	20.50	3.81	21.30	3.85
Missouri .....	18.40	3.79	20.90	3.74	20.50	3.83
New Mexico .....	17.90	3.74	18.10	3.58	17.90	3.65
New York .....	19.40	3.84	21.70	3.76	21.00	3.83
Ohio .....	19.80	3.90	21.50	3.77	21.00	3.81
Oregon .....	19.00	3.91	21.20	3.81	21.00	3.87
Pennsylvania .....	20.20	3.85	22.20	3.75	21.70	3.85
Texas .....	19.20	3.92	19.90	3.82	19.60	3.89
Utah .....	18.10	3.85	19.10	3.74	18.90	3.85
Vermont .....	19.60	3.90	21.50	3.80	21.00	3.85
Virginia .....	21.60	3.82	23.40	3.81	22.70	3.88
Washington .....	18.10	3.91	20.40	3.81	20.50	3.87
Wisconsin .....	18.00	3.79	20.40	3.76	20.80	3.80
United States .....	17.90	3.81	19.90	3.73	19.90	3.79

## Prices Received for Milk Cows – States and United States: October 2011 with Comparisons

[Animals sold for dairy herd replacement only. Prices estimated in January, April, July, and October]

State	October 2010 (dollars per head)	July 2011 (dollars per head)	October 2011 (dollars per head)
Arizona .....	1,400	1,500	1,550
California .....	1,300	1,400	1,400
Colorado .....	1,350	1,550	1,550
Florida .....	1,400	1,540	1,600
Idaho .....	1,350	1,500	1,450
Illinois .....	1,320	1,440	1,460
Indiana .....	1,340	1,500	1,550
Iowa .....	1,250	1,470	1,450
Kansas .....	1,250	1,400	1,400
Michigan .....	1,400	1,550	1,600
Minnesota .....	1,280	1,480	1,440
Missouri .....	1,190	1,290	1,270
New Mexico .....	1,370	1,460	1,480
New York .....	1,300	1,450	1,450
Ohio .....	1,360	1,520	1,510
Oregon .....	1,300	1,450	1,430
Pennsylvania .....	1,400	1,550	1,550
Texas .....	1,260	1,450	1,400
Utah .....	1,150	1,340	1,380
Vermont .....	1,350	1,600	1,600
Virginia .....	1,340	1,460	1,490
Washington .....	1,300	1,450	1,450
Wisconsin .....	1,410	1,570	1,560
United States .....	1,330	1,480	1,480

## Commodity Parity Prices and Price as Percent of Parity Price – United States: November 2011 with Comparisons

[Parity prices are computed under the provisions of Title III, Subtitle a, Section 301 (a) of the Agricultural Adjustment Act of 1938 as amended by the Agricultural Acts of 1948, 1949, and 1956. See January *Agricultural Prices* for details on adjusted base price and parity price computations. Parity data not available for blank cells. Primary source of data for livestock and milk prices is United States Department of Agriculture's Agricultural Marketing Service]

Commodity and unit	Adjusted base price	Parity price			Price as percent of parity		
		November 2010	October 2011	November 2011	November 2010	October 2011	November 2011
	(dollars)	(dollars)	(dollars)	(dollars)	(percent)	(percent)	(percent)
<b>Basic commodities</b>							
All wheat ..... bushel	0.608	14.90	16.60	16.60	41	44	44
Rice ..... cwt	1.63	34.50	44.60	44.50	36	33	32
Corn ..... bushel	0.384	9.30	10.50	10.50	49	54	57
<b>Cotton</b>							
Upland ..... pound	0.071	2.10	1.94	1.94	39	48	49
American Pima ..... pound	0.129	3.30	3.53	3.52	35	51	51
Peanuts ..... pound	0.027	0.725	0.738	0.738	31	38	45
<b>Designated nonbasic</b>							
All milk, to plants <sup>1</sup> ..... cwt	1.82	45.80	49.80	49.70	36	38	37
Honey, extracted <sup>2</sup> ..... pound	0.134	3.18	3.66	3.66	45	39	39
<b>Wool and mohair</b>							
Wool ..... pound	0.092	2.13	2.52	2.51	37	46	46
Mohair ..... pound	0.324	8.58	8.86	8.85	31	39	39
<b>Other nonbasic</b>							
Apples, fresh <sup>3</sup> ..... pound	0.033	0.825	0.902	0.902	43	48	42
Barley ..... bushel	0.425	10.40	11.60	11.60	37	48	48
Canola ..... cwt	1.740	40.80	47.60	47.50	47	48	48
Cottonseed ..... ton	15.40	378.00	421.00	421.00	43	58	64
Dry edible beans ..... cwt	2.92	72.00	79.80	79.80	37	52	56
Flaxseed ..... bushel	1.020	24.30	27.90	27.90	52	50	53
Oats ..... bushel	0.250	6.10	6.84	6.83	50	54	50
Potatoes ..... cwt	0.834	20.80	22.80	22.80	38	32	36
Sorghum grain ..... cwt	0.675	16.40	18.50	18.40	51	58	60
Soybeans ..... bushel	0.948	22.90	25.90	25.90	48	45	44
Sunflower, all ..... cwt	1.91	46.30	52.20	52.20	40	57	60
<b>Citrus (equivalent on-tree)</b>							
Grapefruit ..... box	0.663	16.20	18.10	18.10	74	53	35
Lemons ..... box	1.36	34.50	37.20	37.20	54	35	39
Oranges ..... box	0.686	16.50	18.80	18.70	70	44	53
Tangerines ..... box	1.43	34.80	39.10	39.10	78	28	42
<b>Livestock and poultry</b>							
Beef cattle ..... cwt	10.10	255.00	276.00	276.00	37	42	43
Calves ..... cwt	14.10	360.00	385.00	385.00	35	38	39
Hogs ..... cwt	5.51	139.00	151.00	151.00	34	45	43
Lambs ..... cwt	11.70	288.00	320.00	320.00	50	59	(NA)
Sheep ..... cwt	4.38	109.00	120.00	120.00	50	49	(NA)
Eggs <sup>1</sup> ..... dozen	0.091	2.28	2.49	2.49	44	41	36
Turkeys, live ..... pound	0.056	1.400	1.530	1.530	53	51	51

(NA) Not available.

<sup>1</sup> Seasonally adjusted price as percentage of parity price.

<sup>2</sup> Wholesale extracted. Adjusted base price derived from state annual averages prices weighted by production. For 1982 through 1985 the national averages are the support prices.

<sup>3</sup> Equivalent packinghouse-door returns for California, New York (apples only), Oregon (except peaches), and Washington. Price at point of first sale for other states.

## Commodity Parity Prices – United States: November 2011 with Comparisons

[Parity prices are computed under the provisions of Title III, Subtitle a, Section 301 (a) of the Agricultural Adjustment Act of 1938 as amended by the Agricultural Acts of 1948, 1949, and 1956. See January *Agricultural Prices* for details on adjusted base price and parity price computations]

Commodity and unit	Adjusted base price	Parity price		
		November 2010	October 2011	November 2011
	(dollars)	(dollars)	(dollars)	(dollars)
<b>Field crops and miscellaneous</b>				
Hops .....pound	0.307	7.50	8.39	8.39
Mustard seed ..... cwt	2.66	64.80	72.70	72.70
Rapeseed ..... cwt	2.14	51.00	58.50	58.50
Rye ..... bushel	0.492	11.90	13.50	13.40
Safflower ..... cwt	1.94	48.80	53.00	53.00
Spearmint oil .....pound	1.44	35.50	39.40	39.30
Sweetpotatoes ..... cwt	2.27	56.80	62.10	62.00
<b>Tobacco</b>				
Flue-cured, 11-14 .....pound	0.208	5.40	5.69	5.68
Fire-cured, 21-23 .....pound	0.293	7.45	8.01	8.00
Burley, 31 .....pound	0.214	5.68	5.85	5.85
Maryland, 32 .....pound	0.183	4.65	5.00	5.00
Dark air-cured, 35-37 .....pound	0.261	6.70	7.14	7.13
Pennsylvania seedleaf, 41 .....pound	0.191	4.85	5.22	5.22
Cigar binder, 51 .....pound	0.675	16.30	18.50	18.40
<b>Noncitrus fruit</b>				
Apples, processing <sup>1</sup> .....ton	16.10	418.00	440.00	440.00
Apricots				
Fresh <sup>2</sup> .....ton	114.00	2,700.00	3,120.00	3,110.00
Dried (California) .....ton	262.00	6,330.00	7,160.00	7,160.00
Avocados <sup>2</sup> .....ton	198.00	5,280.00	5,410.00	5,410.00
Cherries				
Sweet .....ton	210.00	5,130.00	5,740.00	5,740.00
Tart .....pound	0.034	0.875	0.930	0.929
Cranberry <sup>3</sup> ..... barrel	4.89	119.00	134.00	134.00
Dates <sup>2</sup> (California) .....ton	183.00	4,930.00	5,000.00	5,000.00
<b>Grapes</b>				
Raisin variety .....ton	117.00	2,750.00	3,200.00	3,200.00
Other dried .....ton	65.40	1,670.00	1,790.00	1,790.00
Kiwifruit .....ton	94.40	2,380.00	2,580.00	2,580.00
Nectarines, fresh <sup>2</sup> (California) .....ton	55.30	1,390.00	1,510.00	1,510.00
Olives, canning <sup>3</sup> (California) .....ton	87.40	2,370.00	2,390.00	2,390.00

See footnote(s) at end of table.

--continued



## Commodity Parity Prices – United States: November 2011 with Comparisons (continued)

[Parity prices are computed under the provisions of Title III, Subtitle a, Section 301 (a) of the Agricultural Adjustment Act of 1938 as amended by the Agricultural Acts of 1948, 1949, and 1956. See January *Agricultural Prices* for details on adjusted base price and parity price computations]

Commodity and unit	Adjusted base price	Parity price		
		November 2010	October 2011	November 2011
	(dollars)	(dollars)	(dollars)	(dollars)
Noncitrus fruit - continued				
Papayas (Hawaii) .....pound	0.046	1.15	1.13	1.26
Peaches				
Fresh <sup>4</sup> ..... ton	83.00	2,080.00	2,040.00	2,270.00
Dried (California) ..... ton	57.30	1,620.00	1,600.00	1,570.00
Processing, excludes dried				
Clingstone <sup>3</sup> (California) ..... ton	33.70	843.00	830.00	921.00
Pears				
Fresh <sup>4</sup> ..... ton	55.60	1,370.00	1,350.00	1,520.00
Dried <sup>1</sup> (California) ..... ton	178.00	4,330.00	4,260.00	4,860.00
Plums (California)				
Fresh, equivalent on-tree ..... ton	60.20	1,520.00	1,500.00	1,640.00
Prunes, dried <sup>1</sup> (California) ..... ton	147.00	3,650.00	3,590.00	4,020.00
Prunes and plums				
Fresh, excludes California <sup>5</sup> ..... ton	63.80	1,580.00	1,560.00	1,740.00
Processing, excludes dried <sup>1</sup> ..... ton	25.70	663.00	652.00	702.00
Tree nuts <sup>6</sup>				
Almonds .....pound	0.209	5.05	4.97	5.71
Hazelnuts ..... ton	183.00	4,280.00	4,210.00	5,000.00
Pistachios .....pound	0.194	4.75	4.68	5.30
Walnuts ..... ton	177.00	4,300.00	4,230.00	4,840.00
Vegetables, fresh <sup>7</sup>				
Carrots <sup>8</sup> ..... cwt	2.61	63.50	62.50	71.30
Cauliflower <sup>8</sup> ..... cwt	4.26	108.00	106.00	116.00
Celery <sup>8</sup> ..... cwt	2.05	52.30	51.50	56.00
Honeydew melons ..... cwt	2.17	57.80	56.90	59.30
Lettuce ..... cwt	2.35	58.80	57.90	64.20
Onions <sup>8</sup> ..... cwt	1.57	38.00	37.40	42.90
Tomatoes ..... cwt	4.75	117.00	115.00	130.00

<sup>1</sup> Equivalent returns at processing plant door.

<sup>2</sup> Equivalent returns at packinghouse door.

<sup>3</sup> Equivalent returns for bulk fruit at first delivery point.

<sup>4</sup> Equivalent packinghouse-door returns for California, New York (apples only), Oregon (except peaches), and Washington. Price at point of first sale for other states.

<sup>5</sup> Based on "as sold" prices for fresh fruit in all states.

<sup>6</sup> Prices In-Shell basis except almonds which are shelled basis.

<sup>7</sup> FOB shipping point prices.

<sup>8</sup> Includes some processing.

## Marketing Year for Specified Commodities

**Corn for Grain:** September 1 to August 31 for United States; July 1 to June 30 for Texas; August 1 to July 31 for Alabama, Arkansas, Florida, Georgia, Louisiana, Mississippi, North Carolina, Oklahoma, South Carolina, and Tennessee; September 1 to August 31 for Arizona, California, Delaware, Illinois, Indiana, Iowa, Kansas, Kentucky, Maryland, Missouri, Nebraska, New Mexico, Ohio, Pennsylvania, South Dakota, Virginia, and West Virginia; October 1 to September 30 for all other States.

**Dry Edible Beans:** September 1 to August 31 for United States and all States.

**Canola:** July 1 to June 30 for United States and all States.

**Chickpeas (Garbanzo):** September 1 to August 31 for United States.

**Flaxseed:** July 1 to June 30 for United States and all States.

**Sunflower:** September 1 to August 31 for United States; July 1 to June 30 for Texas; September 1 to August 31 for all other States.

### Flaxseed Market Year Average Prices Received – States and United States: Marketing Years 2009 and 2010

States	2009	2010
	(dollars per bushel)	(dollars per bushel)
Minnesota .....	8.80	12.60
Montana .....	7.80	11.20
North Dakota .....	8.15	12.20
South Dakota .....	7.50	12.20
United States .....	8.15	12.20

### Sunflowers Market Year Average Prices Received – States and United States: Marketing Years 2009 and 2010

States	All		Oil		Non-oil	
	2009	2010	2009	2010	2009	2010
	(dollars per cwt)	(dollars per cwt)	(dollars per cwt)	(dollars per cwt)	(dollars per cwt)	(dollars per cwt)
California .....	18.60	20.90	17.80	19.90	21.80	24.00
Colorado .....	18.70	23.90	(D)	(D)	(D)	(D)
Kansas .....	16.10	22.20	14.80	19.60	24.70	28.60
Minnesota .....	18.10	23.50	16.40	21.70	21.70	26.70
Nebraska .....	19.90	26.40	15.40	20.70	24.30	30.00
North Dakota .....	15.70	24.20	14.10	23.70	21.60	25.90
Oklahoma .....	17.50	18.60	16.70	18.00	20.50	25.00
South Dakota .....	13.10	21.50	12.70	20.80	21.10	26.70
Texas .....	19.50	22.50	(D)	(D)	(D)	(D)
United States .....	15.10	23.30	13.80	22.60	22.10	26.60

(D) Withheld to avoid disclosing data for individual operations.

**Canola Market Year Average Prices Received – States and United States: Marketing Years 2009 and 2010**

States	2009	2010
	(dollars per cwt)	(dollars per cwt)
Idaho .....	14.00	18.70
Minnesota .....	(D)	20.90
Montana .....	13.50	20.00
North Dakota .....	16.10	19.30
Oklahoma .....	19.00	17.30
Oregon .....	17.00	17.60
Washington <sup>1</sup> .....	(D)	18.10
Other States <sup>2</sup> .....	18.10	17.60
United States .....	16.20	19.30

(D) Withheld to avoid disclosing data for individual operations.

<sup>1</sup> Beginning in 2010, Washington is published individually.

<sup>2</sup> For 2009, Other States include Colorado, Kansas, Minnesota, and Washington. For 2010, Other States include Colorado and Kansas.

**Proso Millet Market Year Average Prices Received – States and United States: Marketing Years 2009 and 2010**

States	2009	2010
	(dollars per bushel)	(dollars per bushel)
Colorado .....	2.90	4.60
Nebraska .....	3.20	4.50
South Dakota .....	2.60	4.39
United States .....	2.87	4.54

**Other Oilseeds Market Year Average Prices Received – United States: Marketing Years 2009 and 2010**

Year	Rapeseed <sup>1</sup>	Mustard Seed <sup>2</sup>
	(dollars per cwt)	(dollars per cwt)
2009 .....	26.30	30.40
2010 .....	23.40	25.90

<sup>1</sup> Includes Idaho, Minnesota, Oregon, and Washington.

<sup>2</sup> Includes Idaho, Montana, North Dakota, Oregon, and Washington.

**Safflower Market Year Average Prices Received – States and United States: Marketing Years 2009 and 2010**

States	2009	2010
	(dollars per cwt)	(dollars per cwt)
California .....	16.40	17.00
Montana .....	19.00	19.00
North Dakota <sup>1</sup> .....	(D)	18.50
Utah <sup>1</sup> .....	(D)	16.00
Other States <sup>2</sup> .....	17.80	17.30
United States .....	17.10	17.20

(D) Withheld to avoid disclosing data for individual operations.

<sup>1</sup> Beginning in 2010, North Dakota and Utah are published individually.

<sup>2</sup> For 2009, Other States include Colorado, Idaho, North Dakota, South Dakota, and Utah. Beginning in 2010, Other States include Colorado, Idaho, and South Dakota.

**Corn Market Year Average Prices Received – States and United States: Marketing Years 2009 and 2010**

States	2009 (dollars per bushel)	2010 (dollars per bushel)
Alabama .....	3.89	5.07
Arizona .....	4.14	5.80
Arkansas .....	3.79	4.55
California .....	4.28	5.08
Colorado .....	3.68	4.98
Delaware .....	3.80	6.21
Florida .....	4.00	4.70
Georgia .....	4.10	5.95
Idaho .....	4.23	5.27
Illinois .....	3.53	5.24
Indiana .....	3.66	5.38
Iowa .....	3.59	5.23
Kansas .....	3.49	4.95
Kentucky .....	3.74	5.15
Louisiana .....	3.55	4.90
Maryland .....	3.71	6.05
Michigan .....	3.53	5.56
Minnesota .....	3.47	5.01
Mississippi .....	3.72	4.37
Missouri .....	3.58	5.35
Montana .....	4.23	6.00
Nebraska .....	3.58	5.09
New Jersey .....	3.73	6.05
New Mexico .....	4.12	5.03
New York .....	4.02	6.30
North Carolina .....	3.90	5.18
North Dakota .....	3.18	5.01
Ohio .....	3.55	5.45
Oklahoma .....	3.71	4.66
Oregon .....	4.12	5.94
Pennsylvania .....	3.84	6.12
South Carolina .....	3.86	5.49
South Dakota .....	3.23	5.09
Tennessee .....	3.65	4.74
Texas .....	4.01	4.67
Utah .....	4.52	5.75
Virginia .....	3.66	5.54
Washington .....	4.59	6.08
West Virginia .....	3.57	5.75
Wisconsin .....	3.57	5.27
Wyoming .....	4.06	5.31
United States .....	3.55	5.18

**All Dry Beans Market Year Average Prices Received – States and United States: Marketing Years 2009 and 2010**

States	2009	2010
	(dollars per cwt)	(dollars per cwt)
Arizona .....	42.00	36.20
California .....	50.80	47.00
Colorado .....	30.40	26.60
Idaho .....	29.20	27.20
Kansas .....	28.00	23.00
Michigan .....	33.50	31.60
Minnesota .....	31.00	28.70
Montana .....	28.60	27.00
Nebraska .....	30.10	27.00
New Mexico .....	45.00	31.00
New York .....	35.00	30.70
North Dakota .....	26.70	24.70
Oregon .....	31.50	27.90
South Dakota .....	26.50	31.20
Texas .....	34.00	30.40
Washington .....	28.60	29.10
Wisconsin .....	39.40	37.00
Wyoming .....	30.20	30.30
United States .....	30.00	28.00

**Prices Received for Corn by Month – States and United States: Marketing Years 2009-2010 and 2010-2011**

States	2009-2010							
	Jul	Aug	Sep	Oct	Nov	Dec	Jan <sup>1</sup>	Feb
	(dollars per bushel)	(dollars per bushel)	(dollars per bushel)	(dollars per bushel)	(dollars per bushel)	(dollars per bushel)	(dollars per bushel)	(dollars per bushel)
Colorado .....	3.74	3.62	3.51	3.82	3.79	3.69	3.73	3.56
Illinois .....	3.56	3.32	3.27	3.59	3.55	3.57	3.63	3.48
Indiana .....	3.64	3.45	3.31	3.70	3.66	3.62	3.79	3.69
Iowa .....	3.65	3.30	3.23	3.67	3.72	3.68	3.76	3.66
Kansas .....	3.30	3.13	3.18	3.51	3.61	3.53	3.59	3.39
Kentucky .....	3.79	3.46	3.42	3.58	3.62	3.81	3.86	3.88
Michigan .....	3.41	3.35	3.33	3.45	3.52	3.48	3.56	3.32
Minnesota .....	3.61	3.24	3.17	3.60	3.57	3.51	3.55	3.57
Missouri .....	3.61	3.39	3.28	3.49	3.59	3.64	3.66	3.68
Nebraska .....	3.60	3.29	3.18	3.55	3.71	3.64	3.71	3.57
North Carolina .....	4.26	3.99	3.51	3.80	4.18	4.35	4.24	4.26
North Dakota .....	3.18	2.96	2.94	3.06	3.46	3.25	2.98	3.14
Ohio .....	3.61	3.43	3.34	3.66	3.59	3.56	3.57	3.50
Pennsylvania .....	3.88	3.94	3.90	3.75	3.69	3.77	3.89	3.89
South Dakota .....	3.53	3.14	2.98	3.31	3.38	3.33	3.25	3.12
Tennessee .....	4.20	3.58	3.43	3.59	3.71	3.75	3.85	3.97
Texas .....	3.72	3.68	3.47	4.04	4.18	4.12	4.19	3.82
Wisconsin .....	3.75	3.48	3.53	3.73	3.63	3.46	3.57	3.48
United States .....	3.60	3.33	3.25	3.61	3.65	3.60	3.66	3.55
States	2010-2011							
	Jul	Aug	Sep	Oct	Nov	Dec	Jan <sup>1</sup>	Feb
	(dollars per bushel)	(dollars per bushel)	(dollars per bushel)	(dollars per bushel)	(dollars per bushel)	(dollars per bushel)	(dollars per bushel)	(dollars per bushel)
Colorado .....	3.48	3.68	3.97	4.23	4.33	4.66	4.77	5.36
Illinois .....	3.51	3.73	4.05	4.51	4.62	4.84	4.94	5.86
Indiana .....	3.69	3.80	4.24	4.50	4.82	4.94	4.95	5.78
Iowa .....	3.50	3.61	4.01	4.28	4.61	4.86	5.07	5.59
Kansas .....	3.41	3.67	4.09	4.47	4.72	5.18	5.34	6.11
Kentucky .....	3.75	3.84	4.11	4.62	5.00	4.76	4.81	5.60
Michigan .....	3.55	3.78	4.03	4.49	4.85	5.15	5.25	5.85
Minnesota .....	3.37	3.42	3.79	3.96	4.18	4.42	4.76	5.36
Missouri .....	3.56	3.69	4.13	4.38	4.81	5.06	4.99	5.63
Nebraska .....	3.54	3.68	3.99	4.22	4.46	4.83	4.81	5.49
North Carolina .....	4.06	4.20	4.61	5.28	5.47	5.60	6.10	6.44
North Dakota .....	3.12	3.25	3.67	3.92	4.17	4.60	4.35	5.35
Ohio .....	3.57	3.83	4.21	4.56	4.96	5.04	5.23	5.90
Pennsylvania .....	4.03	4.15	4.90	5.44	5.59	5.86	6.34	6.82
South Dakota .....	3.19	3.28	3.62	3.97	4.25	4.55	4.49	5.32
Tennessee .....	3.86	3.99	4.34	4.66	4.95	4.80	5.09	5.74
Texas .....	3.72	3.80	4.18	4.48	4.66	4.59	4.91	5.82
Wisconsin .....	3.41	3.49	3.98	4.31	4.37	4.56	4.90	5.59
United States .....	3.49	3.65	4.08	4.32	4.55	4.82	4.94	5.65

See footnote(s) at end of table.

--continued

**Prices Received for Corn by Month – States and United States: Marketing Years 2009-2010 and 2010-2011 (continued)**

States	2009-2010						
	Mar	Apr	May	Jun	Jul	Aug	Sep
	(dollars per bushel)	(dollars per bushel)	(dollars per bushel)	(dollars per bushel)	(dollars per bushel)	(dollars per bushel)	(dollars per bushel)
Colorado .....	3.62	3.31	3.45	3.50	3.48	3.68	3.97
Illinois .....	3.53	3.42	3.49	3.41	3.51	3.73	4.05
Indiana .....	3.62	3.51	3.65	3.55	3.69	3.80	4.24
Iowa .....	3.61	3.46	3.52	3.42	3.50	3.61	4.01
Kansas .....	3.52	3.26	3.40	3.24	3.41	3.67	4.09
Kentucky .....	3.87	3.67	3.77	3.75	3.75	3.84	4.11
Michigan .....	3.35	3.32	3.44	3.45	3.55	3.78	4.03
Minnesota .....	3.41	3.23	3.33	3.39	3.37	3.42	3.79
Missouri .....	3.64	3.55	3.57	3.54	3.56	3.69	4.13
Nebraska .....	3.60	3.44	3.51	3.44	3.54	3.68	3.99
North Carolina .....	4.19	4.16	4.04	4.06	4.06	4.20	4.61
North Dakota .....	3.15	3.12	2.98	3.26	3.12	3.25	3.67
Ohio .....	3.50	3.38	3.52	3.39	3.57	3.83	4.21
Pennsylvania .....	3.92	3.74	3.79	3.84	4.03	4.15	4.90
South Dakota .....	3.13	3.11	3.21	3.14	3.19	3.28	3.62
Tennessee .....	3.88	3.87	3.87	3.41	3.86	3.99	4.34
Texas .....	4.13	3.93	4.04	3.62	3.72	3.80	4.18
Wisconsin .....	3.56	3.37	3.38	3.38	3.41	3.49	3.98
United States .....	3.55	3.41	3.48	3.41	3.49	3.65	4.08
States	2010-2011						
	Mar	Apr	May	Jun	Jul	Aug	Sep
	(dollars per bushel)	(dollars per bushel)	(dollars per bushel)	(dollars per bushel)	(dollars per bushel)	(dollars per bushel)	(dollars per bushel)
Colorado .....	5.21	6.05	6.55	6.57	6.60	7.06	6.61
Illinois .....	5.73	6.68	6.65	6.56	6.56	6.96	6.09
Indiana .....	5.80	6.71	6.62	6.82	7.04	7.18	6.14
Iowa .....	5.32	6.20	6.25	6.30	6.19	6.84	6.62
Kansas .....	6.08	6.82	6.56	7.04	6.93	6.89	6.08
Kentucky .....	5.76	6.61	6.90	7.28	7.19	6.38	6.01
Michigan .....	5.84	6.60	6.44	6.77	6.82	7.22	6.71
Minnesota .....	5.25	5.79	5.41	5.79	5.83	6.49	6.43
Missouri .....	5.60	6.25	6.74	6.87	6.88	7.15	6.17
Nebraska .....	5.30	6.18	5.97	6.32	6.26	6.93	6.51
North Carolina .....	6.65	7.52	7.76	8.01	7.56	6.99	7.17
North Dakota .....	5.51	5.83	5.81	6.15	5.88	6.36	6.46
Ohio .....	5.95	6.80	6.93	6.89	7.06	7.40	6.95
Pennsylvania .....	6.88	7.23	7.08	7.73	7.54	8.52	7.02
South Dakota .....	5.44	6.08	6.02	6.15	6.10	6.75	6.62
Tennessee .....	6.08	7.04	5.71	6.66	7.05	6.32	6.32
Texas .....	5.45	7.09	6.57	7.74	6.47	7.00	6.34
Wisconsin .....	5.60	6.27	6.47	6.40	6.27	7.09	6.95
United States .....	5.53	6.36	6.32	6.38	6.33	6.88	6.37

<sup>1</sup> Second year.

**Prices Received for Flaxseed by Month – States and United States: Marketing Years 2009-2010**

States	2009-2010					
	July	August	September	October	November	December
	(dollars per bushel)	(dollars per bushel)	(dollars per bushel)	(dollars per bushel)	(dollars per bushel)	(dollars per bushel)
North Dakota .....	8.33	8.19	6.90	6.81	8.12	8.40
United States .....	8.33	8.19	6.90	6.81	8.12	8.40
States	2009-2010					
	January <sup>1</sup>	February	March	April	May	June
	(dollars per bushel)	(dollars per bushel)	(dollars per bushel)	(dollars per bushel)	(dollars per bushel)	(dollars per bushel)
North Dakota .....	8.53	8.57	8.82	8.53	8.34	9.26
United States .....	8.53	8.57	8.82	8.53	8.34	9.26

<sup>1</sup> Second year.

**Prices Received for Flaxseed by Month – States and United States: Marketing Years 2010-2011**

States	2010-2011					
	July	August	September	October	November	December
	(dollars per bushel)	(dollars per bushel)	(dollars per bushel)	(dollars per bushel)	(dollars per bushel)	(dollars per bushel)
North Dakota .....	10.70	11.10	10.80	11.80	12.60	13.10
United States .....	10.70	11.10	10.80	11.80	12.60	13.10
States	2010-2011					
	January <sup>1</sup>	February	March	April	May	June
	(dollars per bushel)	(dollars per bushel)	(dollars per bushel)	(dollars per bushel)	(dollars per bushel)	(dollars per bushel)
North Dakota .....	13.80	15.30	13.70	13.50	14.20	15.40
United States .....	13.80	15.30	13.70	13.50	14.20	15.40

<sup>1</sup> Second year.



### Prices Received for Canola by Month – States and United States: Marketing Years 2009-2010

States	2009-2010					
	July	August	September	October	November	December
	(dollars per cwt)	(dollars per cwt)	(dollars per cwt)	(dollars per cwt)	(dollars per cwt)	(dollars per cwt)
Minnesota .....	(D)	(D)	(D)	(D)	(D)	(D)
North Dakota .....	17.00	16.60	15.50	15.30	16.00	15.80
United States .....	17.10	16.70	15.60	15.30	16.00	15.80

States	2009-2010					
	January <sup>1</sup>	February	March	April	May	June
	(dollars per cwt)	(dollars per cwt)	(dollars per cwt)	(dollars per cwt)	(dollars per cwt)	(dollars per cwt)
Minnesota .....	(D)	(D)	(D)	(D)	(D)	(D)
North Dakota .....	16.30	(D)	16.50	16.80	16.60	17.00
United States .....	16.30	(D)	16.50	16.80	16.70	17.00

(D) Withheld to avoid disclosing data for individual operations.  
<sup>1</sup> Second year.

### Prices Received for Canola by Month – States and United States: Marketing Years 2010-2011

States	2010-2011					
	July	August	September	October	November	December
	(dollars per cwt)	(dollars per cwt)	(dollars per cwt)	(dollars per cwt)	(dollars per cwt)	(dollars per cwt)
Minnesota .....	(D)	(D)	19.30	(D)	20.60	22.30
North Dakota .....	17.90	17.20	17.40	18.20	19.10	19.50
United States .....	17.90	17.20	17.40	18.20	19.10	19.50

States	2010-2011					
	January <sup>1</sup>	February	March	April	May	June
	(dollars per cwt)	(dollars per cwt)	(dollars per cwt)	(dollars per cwt)	(dollars per cwt)	(dollars per cwt)
Minnesota .....	20.20	(D)	25.20	(D)	(D)	(D)
North Dakota .....	20.30	20.40	23.30	24.80	23.50	25.20
United States .....	20.30	20.40	23.40	24.80	23.50	25.10

(D) Withheld to avoid disclosing data for individual operations.  
<sup>1</sup> Second year.

**Prices Received for All Sunflowers by Month – States and United States: Marketing Years 2009-2010**

States	2009-2010					
	September	October	November	December	January <sup>1</sup>	February
	(dollars per cwt)	(dollars per cwt)	(dollars per cwt)	(dollars per cwt)	(dollars per cwt)	(dollars per cwt)
Colorado .....	(D)	(D)	21.50	(D)	(D)	(D)
Kansas .....	16.10	16.30	17.80	15.00	15.00	15.80
Minnesota .....	(D)	17.90	19.10	21.20	17.90	19.30
North Dakota .....	14.20	15.20	14.00	16.00	17.30	17.30
South Dakota .....	12.60	14.00	12.50	12.90	13.30	14.60
United States .....	13.90	15.90	14.20	14.80	15.50	16.70

States	2009-2010					
	March	April	May	June	July	August
	(dollars per cwt)	(dollars per cwt)	(dollars per cwt)	(dollars per cwt)	(dollars per cwt)	(dollars per cwt)
Colorado .....	(D)	(D)	(D)	(D)	(D)	(S)
Kansas .....	15.90	16.20	(D)	13.90	17.20	13.40
Minnesota .....	16.40	16.40	19.30	17.40	15.60	16.60
North Dakota .....	16.50	17.00	16.40	15.30	15.60	14.40
South Dakota .....	13.90	13.90	13.10	13.70	14.20	14.70
United States .....	15.80	15.80	14.90	15.10	15.40	14.50

(D) Withheld to avoid disclosing data for individual operations.

(S) Insufficient number of reports to establish an estimate.

<sup>1</sup> Second year.

**Prices Received for All Sunflowers by Month – States and United States: Marketing Years 2010-2011**

States	2010-2011					
	September	October	November	December	January <sup>1</sup>	February
	(dollars per cwt)	(dollars per cwt)	(dollars per cwt)	(dollars per cwt)	(dollars per cwt)	(dollars per cwt)
Colorado .....	(D)	24.40	20.20	22.30	(D)	(D)
Kansas .....	(D)	21.60	(D)	(D)	21.40	(D)
Minnesota .....	(D)	21.90	20.60	19.00	20.90	27.30
North Dakota .....	16.60	19.50	19.30	21.20	22.80	27.30
South Dakota .....	15.70	17.00	17.50	19.10	19.20	28.30
United States .....	18.10	19.90	18.70	20.60	21.90	27.40

States	2010-2011					
	March	April	May	June	July	August
	(dollars per cwt)	(dollars per cwt)	(dollars per cwt)	(dollars per cwt)	(dollars per cwt)	(dollars per cwt)
Colorado .....	(D)	29.70	(D)	(D)	(D)	(D)
Kansas .....	(D)	29.40	(D)	(D)	(D)	(D)
Minnesota .....	28.20	26.20	23.00	23.90	30.60	38.70
North Dakota .....	28.60	28.40	30.80	28.10	30.50	32.00
South Dakota .....	26.90	30.60	27.60	30.20	30.20	31.70
United States .....	28.30	28.80	30.00	29.00	30.40	32.20

(D) Withheld to avoid disclosing data for individual operations.

<sup>1</sup> Second year.

**Prices Received for Oil Sunflowers by Month – States and United States: Marketing Years 2009-2010**

States	2009-2010					
	September	October	November	December	January <sup>1</sup>	February
	(dollars per cwt)	(dollars per cwt)	(dollars per cwt)	(dollars per cwt)	(dollars per cwt)	(dollars per cwt)
Colorado .....	(D)	(D)	(D)	(D)	(D)	(D)
Kansas .....	15.00	14.70	16.00	14.40	14.30	(D)
Minnesota .....	(D)	(D)	(D)	20.10	(D)	17.20
North Dakota .....	13.00	13.40	13.00	13.40	15.50	16.00
South Dakota .....	12.40	13.30	12.20	12.50	13.00	13.40
United States .....	13.10	14.20	13.10	13.30	14.20	15.30

States	2009-2010					
	March	April	May	June	July	August
	(dollars per cwt)	(dollars per cwt)	(dollars per cwt)	(dollars per cwt)	(dollars per cwt)	(dollars per cwt)
Colorado .....	(D)	(D)	(D)	(D)	(S)	(S)
Kansas .....	14.30	14.70	(D)	13.90	13.30	13.40
Minnesota .....	14.30	15.20	14.70	16.50	14.70	15.90
North Dakota .....	14.80	14.30	14.50	14.60	14.50	13.90
South Dakota .....	13.20	13.30	12.90	13.50	13.30	14.00
United States .....	14.30	14.00	13.60	14.50	14.30	14.00

(D) Withheld to avoid disclosing data for individual operations.

(S) Insufficient number of reports to establish an estimate.

<sup>1</sup> Second year.

**Prices Received for Oil Sunflowers by Month – States and United States: Marketing Years 2010-2011**

States	2010-2011					
	September	October	November	December	January <sup>1</sup>	February
	(dollars per cwt)	(dollars per cwt)	(dollars per cwt)	(dollars per cwt)	(dollars per cwt)	(dollars per cwt)
Colorado .....	(D)	(D)	(D)	(D)	(D)	(D)
Kansas .....	16.30	(D)	(D)	(D)	19.30	(D)
Minnesota .....	(D)	18.80	18.90	17.80	19.30	28.20
North Dakota .....	15.70	18.10	18.50	19.50	22.60	27.50
South Dakota .....	15.70	16.60	17.30	18.60	18.90	28.60
United States .....	15.80	17.70	18.00	19.20	21.60	27.60

States	2010-2011					
	March	April	May	June	July	August
	(dollars per cwt)	(dollars per cwt)	(dollars per cwt)	(dollars per cwt)	(dollars per cwt)	(dollars per cwt)
Colorado .....	(D)	(D)	(S)	(D)	(S)	(S)
Kansas .....	27.60	(D)	(D)	(D)	(D)	(D)
Minnesota .....	28.70	24.80	(D)	21.80	(D)	(D)
North Dakota .....	29.50	29.40	31.20	28.90	31.50	35.40
South Dakota .....	26.90	31.10	26.90	31.20	36.40	33.20
United States .....	28.90	29.70	30.40	29.90	32.40	34.70

(D) Withheld to avoid disclosing data for individual operations.

(S) Insufficient number of reports to establish an estimate.

<sup>1</sup> Second year.

**Prices Received for Non-Oil Sunflowers by Month – States and United States: Marketing Years 2009-2010**

States	2009-2010					
	September	October	November	December	January <sup>1</sup>	February
	(dollars per cwt)	(dollars per cwt)	(dollars per cwt)	(dollars per cwt)	(dollars per cwt)	(dollars per cwt)
Colorado .....	(D)	(D)	(D)	(D)	(D)	(D)
Kansas .....	(D)	(D)	(D)	25.30	(D)	(D)
Minnesota .....	(D)	(D)	22.20	22.40	(D)	22.60
North Dakota .....	29.50	22.60	19.80	21.70	21.90	21.40
South Dakota .....	(D)	(D)	(D)	19.10	(D)	(D)
United States .....	27.20	23.50	21.50	21.70	21.90	22.10

States	2009-2010					
	March	April	May	June	July	August
	(dollars per cwt)	(dollars per cwt)	(dollars per cwt)	(dollars per cwt)	(dollars per cwt)	(dollars per cwt)
Colorado .....	(D)	(D)	(D)	(S)	(D)	(S)
Kansas .....	(D)	(D)	(D)	(S)	(D)	(S)
Minnesota .....	22.40	(D)	(D)	(D)	(D)	(D)
North Dakota .....	21.90	22.30	22.00	23.30	23.40	21.60
South Dakota .....	(D)	(D)	(D)	(D)	(D)	(D)
United States .....	22.40	22.60	22.40	22.70	22.70	20.90

(D) Withheld to avoid disclosing data for individual operations.

(S) Insufficient number of reports to establish an estimate.

<sup>1</sup> Second year.

**Prices Received for Non-Oil Sunflowers by Month – States and United States: Marketing Years 2010-2011**

States	2010-2011					
	September	October	November	December	January <sup>1</sup>	February
	(dollars per cwt)	(dollars per cwt)	(dollars per cwt)	(dollars per cwt)	(dollars per cwt)	(dollars per cwt)
Colorado .....	(D)	(D)	(D)	(D)	(D)	(D)
Kansas .....	(D)	(D)	(D)	(D)	(D)	(D)
Minnesota .....	(D)	25.50	25.70	24.90	25.50	(D)
North Dakota .....	22.40	24.10	24.50	25.00	25.30	25.80
South Dakota .....	(D)	22.70	23.40	(D)	(D)	(D)
United States .....	26.70	26.70	24.60	25.30	25.60	26.00

States	2010-2011					
	March	April	May	June	July	August
	(dollars per cwt)	(dollars per cwt)	(dollars per cwt)	(dollars per cwt)	(dollars per cwt)	(dollars per cwt)
Colorado .....	(D)	(D)	(D)	(D)	(D)	(D)
Kansas .....	(D)	(D)	(D)	(D)	(D)	(D)
Minnesota .....	27.50	(D)	(D)	(D)	(D)	34.00
North Dakota .....	25.40	26.50	27.40	27.20	29.00	30.10
South Dakota .....	(D)	(D)	(D)	(D)	27.90	29.70
United States .....	26.00	26.70	27.90	27.00	28.60	30.10

(D) Withheld to avoid disclosing data for individual operations.

<sup>1</sup> Second year.

**Prices Received for Dry Edible Beans by Month – States and United States: Marketing Years 2009-2010**

States	2009-2010					
	September	October	November	December	January <sup>1</sup>	February
	(dollars per cwt)	(dollars per cwt)	(dollars per cwt)	(dollars per cwt)	(dollars per cwt)	(dollars per cwt)
California .....	46.30	44.40	54.70	56.80	58.50	60.00
Colorado .....	30.20	37.50	30.40	32.40	31.30	33.00
Idaho .....	29.90	25.60	32.40	28.30	32.20	29.60
Michigan .....	33.20	32.40	33.30	35.60	34.90	35.80
Minnesota .....	29.00	31.50	30.50	31.20	35.60	35.90
Nebraska .....	31.00	29.10	30.90	31.30	30.60	30.00
North Dakota .....	26.40	26.40	28.50	27.90	28.30	26.50
United States .....	30.30	29.70	30.10	31.20	31.10	30.40

States	2009-2010					
	March	April	May	June	July	August
	(dollars per cwt)	(dollars per cwt)	(dollars per cwt)	(dollars per cwt)	(dollars per cwt)	(dollars per cwt)
California .....	(D)	(D)	49.30	43.00	40.60	52.00
Colorado .....	31.50	31.30	31.60	29.90	30.30	22.80
Idaho .....	30.80	33.00	29.80	30.70	30.00	28.50
Michigan .....	35.60	36.60	33.80	28.50	32.90	35.10
Minnesota .....	32.10	30.70	32.10	29.60	25.50	31.50
Nebraska .....	30.80	29.80	28.70	31.20	28.40	22.80
North Dakota .....	26.30	26.40	23.80	22.00	22.40	23.20
United States .....	29.70	30.60	27.80	26.00	25.80	29.40

(D) Withheld to avoid disclosing data for individual operations.  
<sup>1</sup> Second year.

**Prices Received for Dry Edible Beans by Month – States and United States: Marketing Years 2010-2011**

States	2010-2011					
	September	October	November	December	January <sup>1</sup>	February
	(dollars per cwt)	(dollars per cwt)	(dollars per cwt)	(dollars per cwt)	(dollars per cwt)	(dollars per cwt)
California .....	44.60	42.70	53.50	43.70	50.60	47.90
Colorado .....	24.00	23.70	24.50	22.50	24.90	27.50
Idaho .....	27.60	22.70	28.10	26.40	29.30	28.80
Michigan .....	29.00	28.60	29.20	30.00	32.00	34.10
Minnesota .....	27.40	28.50	28.40	25.00	28.00	29.10
Nebraska .....	24.90	22.00	23.80	23.50	25.30	29.30
North Dakota .....	24.40	22.70	21.50	21.80	23.10	25.60
United States .....	26.60	25.80	26.70	24.60	26.20	28.60

States	2010-2011					
	March	April	May	June	July	August
	(dollars per cwt)	(dollars per cwt)	(dollars per cwt)	(dollars per cwt)	(dollars per cwt)	(dollars per cwt)
California .....	46.90	45.70	(D)	49.60	48.20	(D)
Colorado .....	29.40	29.90	29.70	35.10	36.70	41.10
Idaho .....	27.50	29.70	33.90	30.40	36.20	34.70
Michigan .....	36.70	39.50	40.10	40.60	42.70	(D)
Minnesota .....	34.70	(D)	(D)	34.70	39.50	35.20
Nebraska .....	31.90	32.70	32.10	32.90	29.40	39.50
North Dakota .....	26.10	26.80	28.20	30.40	32.80	35.50
United States .....	29.90	31.80	32.90	33.80	34.20	34.00

(D) Withheld to avoid disclosing data for individual operations.  
<sup>1</sup> Second year.

## Percent of Corn Farm Marketings by Month – States and United States: Marketing Years 2009-2010 and 2010-2011

[Monthly farm marketings are based on a sample survey and used as a percent of total for calculating MYA prices. Blank cells indicate month is outside State's designated marketing year as defined on page 34]

Year	Jul	Aug	Sep	Oct	Nov	Dec	Jan <sup>1</sup>	Feb	Mar	Apr	May	Jun	Jul	Aug	Sep
	(%)	(%)	(%)	(%)	(%)	(%)	(%)	(%)	(%)	(%)	(%)	(%)	(%)	(%)	(%)
<b>Colorado</b>															
2009-2010 .....				7	15	25	11	6	7	5	4	4	4	4	8
2010-2011 .....				20	16	18	15	5	6	5	4	5	3	1	2
<b>Illinois</b>															
2009-2010 .....			4	5	9	11	14	9	7	8	7	8	10	8	
2010-2011 .....			16	10	6	8	23	6	7	6	5	4	5	4	
<b>Indiana</b>															
2009-2010 .....			4	7	19	8	15	6	9	6	7	5	8	6	
2010-2011 .....			15	13	5	7	18	8	10	6	6	5	4	3	
<b>Iowa</b>															
2009-2010 .....			5	6	15	10	9	7	7	8	7	8	10	8	
2010-2011 .....			6	19	10	6	14	7	8	6	5	6	7	6	
<b>Kansas</b>															
2009-2010 .....			6	15	18	13	11	5	8	6	5	3	5	5	
2010-2011 .....			23	29	9	11	10	5	3	3	2	1	1	3	
<b>Kentucky</b>															
2009-2010 .....			8	15	10	6	20	8	8	6	4	3	4	8	
2010-2011 .....			19	9	5	7	23	12	9	7	3	2	1	3	
<b>Michigan</b>															
2009-2010 .....				5	16	13	11	6	6	6	6	8	9	6	8
2010-2011 .....				21	11	9	14	8	8	8	5	5	4	4	3
<b>Minnesota</b>															
2009-2010 .....				5	13	11	9	5	6	6	7	11	13	10	4
2010-2011 .....				21	8	9	12	7	6	7	6	8	8	5	3
<b>Missouri</b>															
2009-2010 .....			8	12	11	10	12	7	6	6	6	5	7	10	
2010-2011 .....			15	12	6	10	14	7	9	7	5	6	5	4	
<b>Nebraska</b>															
2009-2010 .....			6	6	14	14	10	7	8	7	6	6	9	7	
2010-2011 .....			7	18	9	9	16	8	8	6	4	5	5	5	
<b>North Carolina</b>															
2009-2010 .....		11	29	20	6	5	9	5	4	4	2	2	3		
2010-2011 .....		19	38	7	4	5	11	6	4	3	1	1	1		
<b>North Dakota</b>															
2009-2010 .....				7	8	12	14	7	8	9	6	9	9	7	4
2010-2011 .....				11	13	11	19	10	6	4	3	7	8	6	2
<b>Ohio</b>															
2009-2010 .....			4	6	24	9	11	5	10	6	7	6	7	5	
2010-2011 .....			13	18	7	9	14	7	10	7	5	3	4	3	
<b>Pennsylvania</b>															
2009-2010 .....			6	12	16	11	12	4	6	5	5	7	9	7	
2010-2011 .....			11	23	21	10	5	4	2	1	3	4	11	5	
<b>South Dakota</b>															
2009-2010 .....			7	4	14	17	9	5	6	7	6	8	9	8	
2010-2011 .....			6	13	12	8	13	7	6	5	3	10	10	7	
<b>Tennessee</b>															
2009-2010 .....		3	19	33	9	6	10	3	5	4	3	3	2		
2010-2011 .....		19	34	5	2	8	16	6	4	2	1	1	2		
<b>Texas</b>															
2009-2010 .....	5	4	8	24	24	11	12	3	3	3	2	1			
2010-2011 .....	2	8	15	30	12	16	5	2	2	2	3	3			
<b>Wisconsin</b>															
2009-2010 .....				3	19	10	13	4	8	7	6	6	7	5	12
2010-2011 .....				24	12	7	13	6	7	6	5	7	6	5	2
<b>United States</b>															
2009-2010 .....			5.4	6.9	14.3	11.3	11.3	6.7	7.2	7.1	6.4	6.8	8.9	7.7	
2010-2011 .....			10.7	16.7	8.5	8.2	15.7	6.8	7.4	5.9	4.7	5.3	5.5	4.6	

<sup>1</sup> Second year.

## Percent of All Sunflower Farm Marketings by Month – States and United States: Marketing Years 2009-2010 and 2010-2011

[Monthly farm marketings are based on a sample survey and used as a percent of total for calculating MYA prices]

Year	Sep	Oct	Nov	Dec	Jan <sup>1</sup>	Feb	Mar	Apr	May	Jun	Jul	Aug
	(%)	(%)	(%)	(%)	(%)	(%)	(%)	(%)	(%)	(%)	(%)	(%)
Colorado												
2009-2010 .....	3	15	33	13	13	10	5	3	1	4	-	-
2010-2011 .....	8	44	21	6	4	6	6	3	1	1	-	-
Kansas												
2009-2010 .....	2	14	26	19	16	10	6	4	1	1	1	-
2010-2011 .....	4	40	22	11	6	7	3	3	2	1	-	1
Minnesota												
2009-2010 .....	3	7	13	9	10	12	11	4	4	14	9	4
2010-2011 .....	4	25	11	11	11	9	10	4	3	5	4	3
North Dakota												
2009-2010 .....	3	3	25	13	11	11	9	4	2	6	7	6
2010-2011 .....	2	8	20	9	18	14	11	7	5	1	3	2
South Dakota												
2009-2010 .....	4	4	32	18	15	5	6	5	4	4	2	1
2010-2011 .....	1	15	29	9	14	4	7	4	2	6	5	4
United States												
2009-2010 .....	3.0	4.8	27.2	14.9	13.2	9.2	7.4	4.7	2.5	4.9	4.5	3.7
2010-2011 .....	2.1	13.6	21.9	9.2	15.4	10.5	8.9	5.4	4.1	2.8	3.5	2.6

- Represents zero.

<sup>1</sup> Second year.

## Percent of Flaxseed Farm Marketings by Month – States and United States: Marketing Years 2009-2010 and 2010-2011

[Monthly farm marketings are based on a sample survey and used as a percent of total for calculating MYA prices]

Year	Jul	Aug	Sep	Oct	Nov	Dec	Jan <sup>1</sup>	Feb	Mar	Apr	May	Jun
	(%)	(%)	(%)	(%)	(%)	(%)	(%)	(%)	(%)	(%)	(%)	(%)
North Dakota												
2009-2010 .....	5	4	11	11	10	14	17	10	5	4	2	7
2010-2011 .....	12	7	13	27	10	9	10	5	2	2	2	1
United States												
2009-2010 .....	5.4	4.1	10.9	10.8	10.2	13.6	17.1	9.6	5.5	3.8	2.3	6.7
2010-2011 .....	11.9	7.4	13.1	26.4	10.5	9.1	10.2	4.7	1.7	2.3	1.6	1.1

<sup>1</sup> Second year.

## Percent of Canola Farm Marketings by Month – States and United States: Marketing Years 2009-2010 and 2010-2011

[Monthly farm marketings are based on a sample survey and used as a percent of total for calculating MYA prices]

Year	Jul	Aug	Sep	Oct	Nov	Dec	Jan <sup>1</sup>	Feb	Mar	Apr	May	Jun
	(%)	(%)	(%)	(%)	(%)	(%)	(%)	(%)	(%)	(%)	(%)	(%)
Minnesota												
2009-2010 .....	(D)	(D)	(D)	(D)	(D)	(D)	(D)	(D)	(D)	(D)	(D)	(D)
2010-2011 .....	4	27	8	2	8	6	7	6	17	6	5	4
North Dakota												
2009-2010 .....	7	8	25	6	7	8	12	8	7	4	2	6
2010-2011 .....	4	12	18	13	7	12	14	10	6	2	1	1
United States												
2009-2010 .....	7.1	7.9	25.3	6.4	7.1	7.5	11.8	7.6	7.1	4.4	1.5	6.3
2010-2011 .....	3.6	12.4	17.9	12.4	6.9	12.3	13.8	9.7	6.1	2.4	1.3	1.2

(D) Withheld to avoid disclosing data for individual operations.

<sup>1</sup> Second year.

## Percent of Dry Edible Bean Farm Marketings by Month – States and United States: Marketing Years 2009-2010 and 2010-2011

[Monthly farm marketings are based on a sample survey and used as a percent of total for calculating MYA prices]

Year	Sep	Oct	Nov	Dec	Jan <sup>1</sup>	Feb	Mar	Apr	May	Jun	Jul	Aug
	(%)	(%)	(%)	(%)	(%)	(%)	(%)	(%)	(%)	(%)	(%)	(%)
California												
2009-2010 .....	7	8	7	18	11	6	7	10	6	5	9	6
2010-2011 .....	6	18	9	13	14	11	10	7	4	2	3	3
Colorado												
2009-2010 .....	40	5	5	9	13	5	5	3	2	2	1	10
2010-2011 .....	30	5	6	14	8	8	5	8	4	6	4	2
Idaho												
2009-2010 .....	7	24	5	19	14	3	14	2	1	8	1	2
2010-2011 .....	2	27	8	15	15	5	13	1	3	6	3	2
Michigan												
2009-2010 .....	27	29	10	8	7	3	1	1	1	2	-	11
2010-2011 .....	23	18	12	3	2	6	3	5	3	5	1	19
Minnesota												
2009-2010 .....	31	10	5	2	10	1	7	7	3	1	3	20
2010-2011 .....	24	17	21	5	12	11	4	-	-	1	2	3
Nebraska												
2009-2010 .....	39	9	4	6	14	5	8	1	3	3	2	6
2010-2011 .....	28	11	5	8	11	5	5	3	5	3	11	5
North Dakota												
2009-2010 .....	10	12	18	12	16	6	6	3	4	5	3	5
2010-2011 .....	11	15	9	11	16	12	8	5	3	4	2	4
United States												
2009-2010 .....	19.9	15.6	11.6	10.1	12.9	4.3	5.9	3.0	2.7	3.7	2.3	8.0
2010-2011 .....	16.7	16.2	11.5	8.7	12.0	9.4	6.2	4.2	2.7	3.5	2.7	6.2

- Represents zero.

<sup>1</sup> Second year.



## Prices Received and Farm Marketings for All Chickpeas (Garbanzo) – United States: Marketing Years 2009-2010 and 2010-2011

[Marketing year average (MYA) prices are weighted average prices for the United States marketing year of September - August. Monthly farm marketings are based on a sample survey and used as a percent of total for calculating MYA prices]

Month	Prices received		Farm marketing percentages	
	2009-2010	2010-2011	2009-2010	2010-2011
	(dollars per cwt)	(dollars per cwt)	(percent)	(percent)
September .....	(D)	24.90	(D)	6.7
October .....	25.50	23.80	32.4	35.7
November .....	28.00	28.20	9.2	7.8
December .....	25.90	28.40	13.7	8.9
January <sup>1</sup> .....	29.10	31.00	9.9	12.2
February .....	27.50	30.30	8.0	10.7
March .....	29.70	32.40	6.6	7.0
April .....	33.20	36.90	3.2	1.5
May .....	27.50	36.10	2.7	3.8
June .....	25.60	37.00	3.3	2.3
July .....	25.90	38.80	2.0	2.0
August .....	(D)	33.60	(D)	1.4
MYA .....	27.10	28.20	100.0	100.0

(D) Withheld to avoid disclosing data for individual operations.  
<sup>1</sup> Second year.

## Prices Received and Farm Marketings for Large Chickpeas – United States: Marketing Years 2010-2010 and 2010-2011

[Large chickpeas are larger than 20/64 inch. Marketing year average (MYA) prices are weighted average prices for the United States marketing year of September - August. Monthly farm marketings are based on a sample survey and used as a percent of total for calculating MYA prices]

Month	Prices received		Farm marketing percentages	
	2009-2010	2010-2011	2009-2010	2010-2011
	(dollars per cwt)	(dollars per cwt)	(percent)	(percent)
September .....	(D)	25.20	(D)	8.2
October .....	28.60	26.60	28.8	28.6
November .....	28.40	28.20	11.3	10.2
December .....	28.70	30.70	12.3	8.4
January <sup>1</sup> .....	30.30	32.30	10.5	13.9
February .....	28.70	31.40	9.0	12.7
March .....	30.80	35.40	7.3	7.3
April .....	33.50	39.70	3.9	1.5
May .....	28.10	38.50	2.5	3.6
June .....	27.60	40.10	3.3	2.2
July .....	37.00	44.10	0.6	2.1
August .....	(D)	41.70	(D)	1.3
MYA .....	29.10	30.50	100.0	100.0

(D) Withheld to avoid disclosing data for individual operations.  
<sup>1</sup> Second year.

**Prices Received and Farm Marketings for Small Chickpeas (Garbanzo) – United States: Marketing Years 2010-2010 and 2010-2011**

[Small chickpeas are smaller than 20/64 inch. Marketing year average (MYA) prices are weighted average prices for the United States marketing year of September - August. Monthly farm marketings are based on a sample survey and used as a percent of total for calculating MYA prices]

Month	Prices received		Farm marketing percentages	
	2009-2010	2010-2011	2009-2010	2010-2011
	(Dollars per Cwt)	(Dollars per Cwt)	(Percent)	(Percent)
September .....	(D)	21.30	(D)	1.7
October .....	18.60	19.30	44.4	58.0
November .....	19.70	(D)	2.0	(D)
December .....	19.90	22.40	18.5	10.5
January <sup>1</sup> .....	23.80	22.40	7.9	6.6
February .....	19.30	19.60	4.5	4.4
March .....	23.70	21.60	4.4	6.3
April .....	27.40	(D)	0.8	(D)
May .....	26.10	29.80	3.6	4.5
June .....	19.10	27.50	3.4	2.4
July .....	22.80	20.00	6.6	1.9
August .....	(D)	17.10	(D)	2.0
MYA .....	20.30	20.80	100.0	100.0

(D) Withheld to avoid disclosing data for individual operations.

<sup>1</sup> Second year.

## Reliability of Prices Received Estimates

**Definition:** Prices received represent sales from producers to first buyers. They include all grades and qualities. The average commodity price from the survey multiplied by the total quantity marketed theoretically should give the total cash receipts for the commodity.

**Survey procedures:** Primary sales data used to determine grain prices were obtained from probability samples of about 1900 mills and elevators. These procedures ensure that virtually all grain moving into commercial channels has a chance of being included in the survey. Generally, States surveyed account for 90 percent or more of total United States production. Livestock prices are obtained from packers, stockyards, auctions, dealers, and market check data from AMS-USDA, private marketing organizations, and state commodity groups and agencies. Inter-farm sales of grain and livestock are not included since they represent very small percentages of the total marketings. Grain marketed for seed is also excluded. Fruit and vegetable prices are obtained from sample surveys and market check data from AMS-USDA, private marketing organizations, state agencies, and universities.

**Summary and estimation procedures:** Survey quantities sold are expanded by strata to state levels and used to weight average strata prices to a state average. State prices are then weighted to a United States price based on expanded marketings. Recommendations are prepared by the State Field Offices and reviewed by the Agricultural Statistics Board in Washington, D.C. State recommendations are reviewed for reasonableness with survey data, other States, and recent historic estimates.

**Revisions:** For most items, the current month's preliminary price represents a 3-5 day period around the 15th of the month. Previous month's prices represent actual dollars received for quantities sold during the entire month. Revisions are published in monthly issues of Agricultural Prices.

**Reliability:** United States price estimates based on probability surveys generally have a sampling error of less than one percent for the major commodities such as corn, wheat, soybeans, cotton, and rice. Current methods of summarization for non-probability commodities are not designed directly to calculate sampling errors. However, analytical measures approximate the United States relative sampling errors at around five percent. Any nonsampling errors are attributed to such things as the inability to obtain correct information, differences in interpreting questions or definitions, mistakes in coding or processing the data, etc. Efforts are made at each step in the survey process to minimize these nonsampling errors.

## Prices Paid by Farmers

The November Index of Prices Paid for Commodities and Services, Interest, Taxes, and Farm Wage Rates (PPITW) at 205 (1990-1992=100), unchanged from October 2011 but up 9.6 percent from November 2010.

**Production index:** The November index, at 217, increased 0.5 percent from last month and 12 percent from last year. Higher prices in November for feeder cattle, nitrogen, diesel, and mixed fertilizer offset lower prices for complete feeds, concentrates, supplements, and other services.

**Feed:** The November index, at 216, decreased 4.0 percent from October but increased 11 percent from last November. Since October, prices for complete feeds, concentrates, and supplements are lower.

**Livestock and poultry:** The November index, at 162, increased 4.5 percent from last month and 21 percent from last year. Since October, prices for feeder cattle and feeder pigs are higher. The November feeder cattle price, at \$142.50 per cwt, is up \$5.20 per cwt from the October price. November feeder pigs averaged \$131.00 per cwt, up \$26.00 per cwt from October.

**Fertilizer:** The November index, at 356, is up 3.8 percent from October and 29 percent above November a year ago. Since October, prices for nitrogen and mixed fertilizer are higher.

**Chemicals:** The November index, at 149, is unchanged from October but increased 3.5 percent from last November. Compared with last month, prices for herbicides, insecticides, and fungicides/other remain stable.

**Fuels:** The November index, at 365, is up 2.2 percent from a month earlier and 22 percent above November 2010. Compared with last month, prices for diesel are higher.

**Machinery:** The November index, at 245, increased 0.4 percent from October and is 4.3 percent above last November. Compared with last month, prices for self-propelled machinery increased slightly.

**Consumer price index:** The October 2011 Consumer Price Index, as issued by the Bureau of Labor Statistics, for all urban consumers (CPI-U) decreased 0.2 percent before seasonal adjustment to a level of 226.421 (1982-1984=100). The September index is 226.889. For the 12 month period ending in October, the overall index increased 3.5 percent.

## Prices Paid Indexes and Related Parity Ratios – United States: November 2011 with Comparisons

[Revised historical price indexes for months not shown are available at [www.nass.usda.gov](http://www.nass.usda.gov)]

Indexes and ratios	1910-1914 Base			1990-1992 Base		
	November 2010	October 2011	November 2011	November 2010	October 2011	November 2011
	(percent)	(percent)	(percent)	(percent)	(percent)	(percent)
Prices paid by farmers for commodities, services, interest, taxes, and wage rates (PPITW) .....	2492	2726	2732	187	205	205
Production .....	1882	2097	2104	194	216	217
Feed .....	952	1097	1054	195	225	216
Livestock & poultry .....	1717	1983	2074	134	155	162
Seeds .....	3082	3327	3327	311	336	336
Fertilizer .....	1010	1257	1304	276	343	356
Chemicals .....	893	920	921	144	149	149
Fuels .....	2305	2755	2818	299	357	365
Supplies & repairs .....	1142	1192	1190	161	168	168
Autos & trucks .....	3003	3078	3085	113	116	116
Machinery .....	5894	6110	6157	235	244	245
Building materials .....	2255	2341	2345	166	172	173
Services & rent .....	2040	2136	2126	(NA)	(NA)	(NA)
Services .....	(NA)	(NA)	(NA)	161	167	166
Rent .....	(NA)	(NA)	(NA)	191	203	203
Interest <sup>1</sup> .....	3389	3646	3646	135	145	145
Taxes <sup>2</sup> .....	5549	6032	6032	207	225	225
Wage rates .....	7192	7205	7205	192	193	193
Production, interest, taxes, and wage rates (PITW) .....	2577	2841	2849	192	211	212
Family living-CPI <sup>3</sup> .....	2078	2150	2146	162	168	168
Ratio (received/paid) .....	(NA)	(NA)	(NA)	82	90	90
Parity ratio <sup>4</sup> .....	39	43	43	(NA)	(NA)	(NA)
Parity ratio adjusted <sup>5</sup> .....	41	44	44	(NA)	(NA)	(NA)
PPITW adjusted for productivity <sup>6</sup> .....	1424	1475	1475	(NA)	(NA)	(NA)
Crop sector (PPITW) .....	(NA)	(NA)	(NA)	197	215	216
Livestock sector (PPITW) .....	(NA)	(NA)	(NA)	177	194	194
Farm sector (production) .....	(NA)	(NA)	(NA)	192	219	217
Non-farm sector (production) .....	(NA)	(NA)	(NA)	195	214	217

(NA) Not available.

<sup>1</sup> Interest per acre on farm real estate debt and interest rate on farm non-real estate debt.

<sup>2</sup> Farm real estate taxes payable per acre.

<sup>3</sup> Bureau of Labor Statistics, Consumer Price Index for all urban consumers (CPI-U), for the previous month converted by the USDA.

<sup>4</sup> Ratio of index of prices received to PPITW (1910-1914=100).

<sup>5</sup> Based on estimated cash receipts, from marketings and government payments, the preliminary adjustment factor is 1.044 for 2011 and the revised factor is 1.041 for 2010.

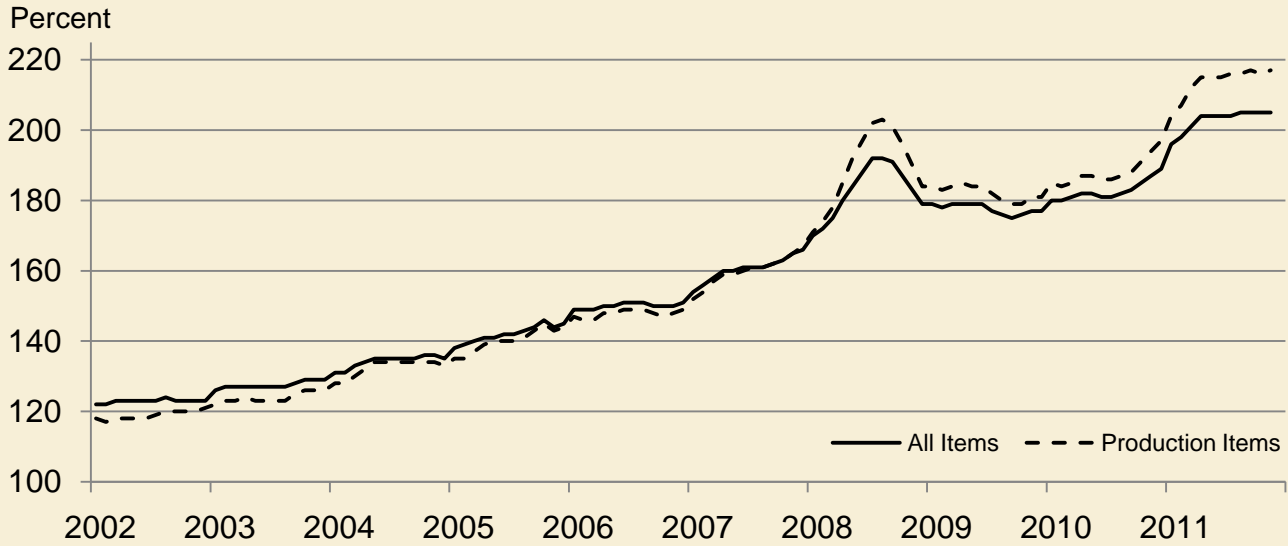
<sup>6</sup> PPITW is adjusted based on productivity trend for the prior 15 years.

## Prices Paid Indexes and Annual Weights for Input Components and Sub-Components – United States: November 2011 with Comparisons

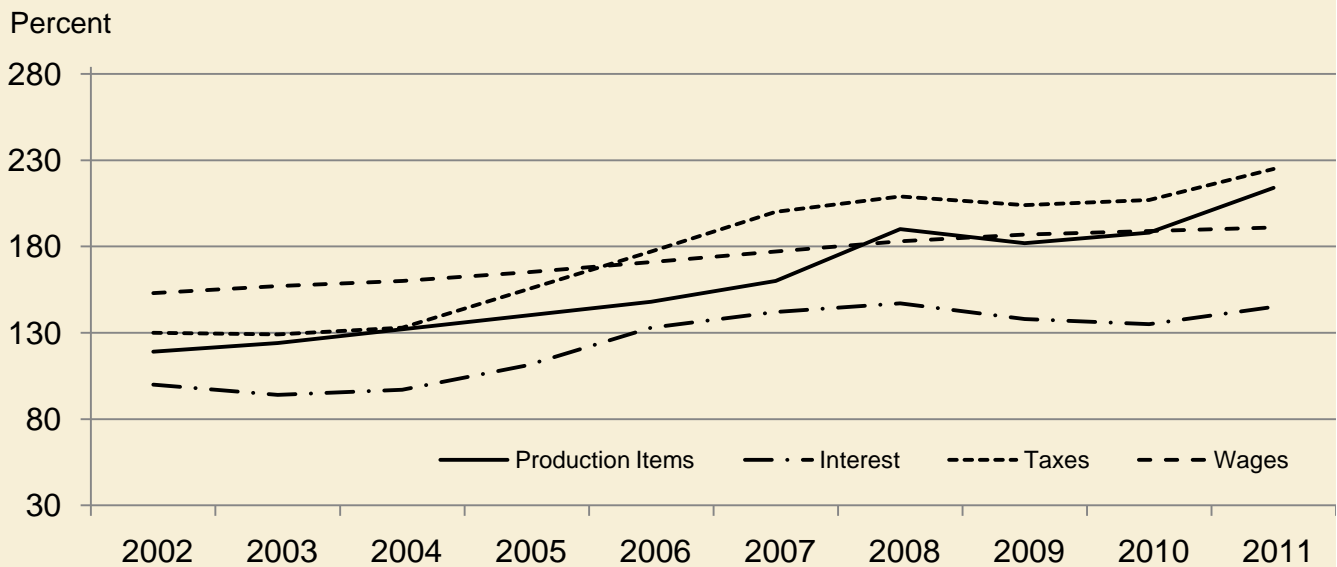
[Revised historical price indexes for months not shown are available at [www.nass.usda.gov](http://www.nass.usda.gov). Relative weights are a five year moving average]

	Relative weights		Indexes (1990-1992=100)		
	2010	2011	November 2010	October 2011	November 2011
	(percent)	(percent)	(percent)	(percent)	(percent)
Production items .....	70.2	70.6	194	216	217
Feed .....	11.9	12.2	195	225	216
Feed grains .....	1.7	1.7	197	249	260
Complete feeds .....	5.8	6.0	198	227	219
Hay & forages .....	1.5	1.5	147	230	222
Concentrates .....	1.9	1.9	209	186	163
Supplements .....	1.0	1.0	220	234	213
Livestock & poultry .....	8.6	8.5	134	155	162
Feeder cattle .....	6.7	6.6	134	162	168
Feeder pigs .....	0.7	0.7	140	114	143
Milk cow replacements .....	0.7	0.7	118	131	131
Poultry .....	0.5	0.5	151	151	151
Seeds .....	3.9	4.1	311	336	336
Field crops .....	3.6	3.7	329	356	356
Grasses & legumes .....	0.4	0.4	139	145	145
Fertilizer .....	5.2	5.5	276	343	356
Mixed fertilizer .....	2.3	2.4	275	323	334
Nitrogen .....	2.2	2.3	260	351	369
Potash & phosphate .....	0.7	0.8	326	379	385
Chemicals .....	3.2	3.3	144	149	149
Herbicides .....	2.0	2.1	131	134	134
Insecticides .....	0.7	0.7	165	172	172
Fungicides & other .....	0.5	0.5	171	179	179
Fuels .....	3.9	4.0	299	357	365
Diesel .....	2.5	2.5	320	392	406
Gasoline .....	0.9	0.8	249	299	297
LP gas .....	0.5	0.7	269	300	298
Supplies & repairs .....	4.6	4.6	161	168	168
Supplies .....	1.5	1.5	156	164	163
Repairs .....	3.0	3.0	163	170	170
Autos & trucks .....	1.5	1.4	113	116	116
Autos .....	0.2	0.2	111	115	115
Trucks .....	1.3	1.2	113	116	116
Machinery .....	4.5	4.3	235	244	245
Tractors .....	1.0	0.9	199	203	203
Self-propelled .....	1.8	1.7	247	256	261
Other machinery .....	1.7	1.6	244	254	254
Building materials .....	4.5	4.4	166	172	173
Services .....	12.1	12.1	161	167	166
Custom rates .....	1.2	1.2	145	148	148
Other services .....	10.8	10.9	163	169	168
Rent .....	6.3	6.3	191	203	203
Cash .....	3.4	3.4	243	258	258
Share .....	2.9	2.9	130	138	138
Interest .....	3.6	3.5	135	145	145
Taxes .....	3.0	3.1	207	225	225
Wage rates .....	7.5	7.4	192	193	193
Family living-CPI .....	15.7	15.4	162	168	168

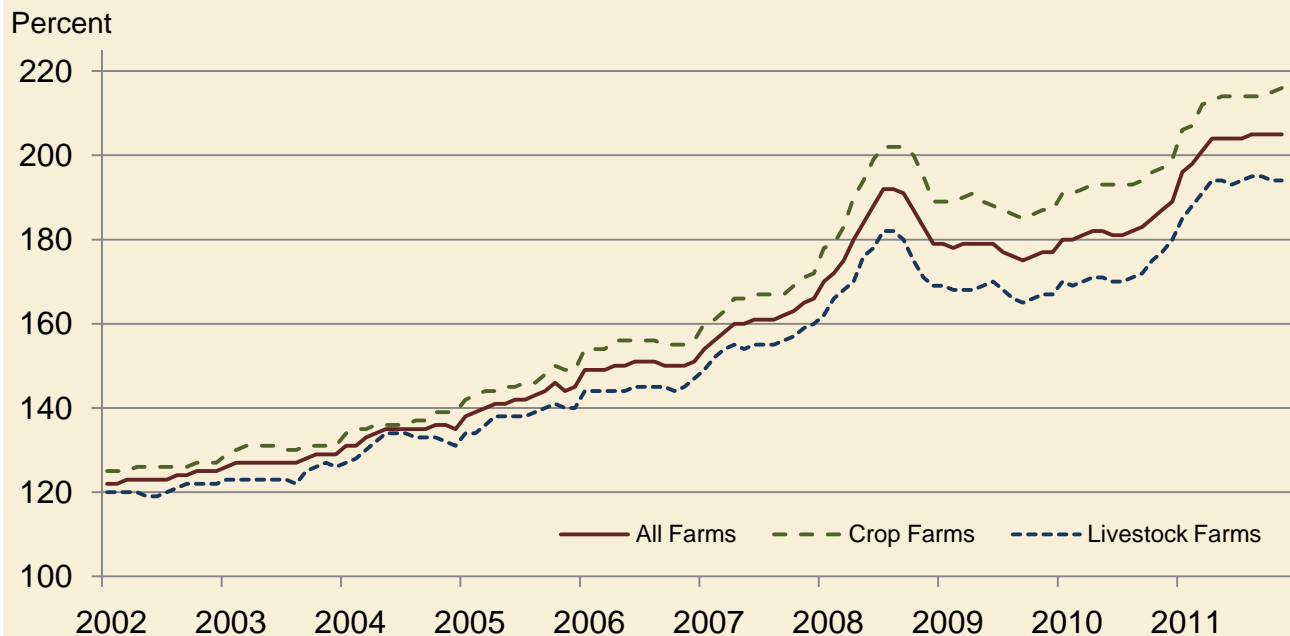
## Paid Indexes by Month, All Items and Production Items – United States: 1990-1992=100



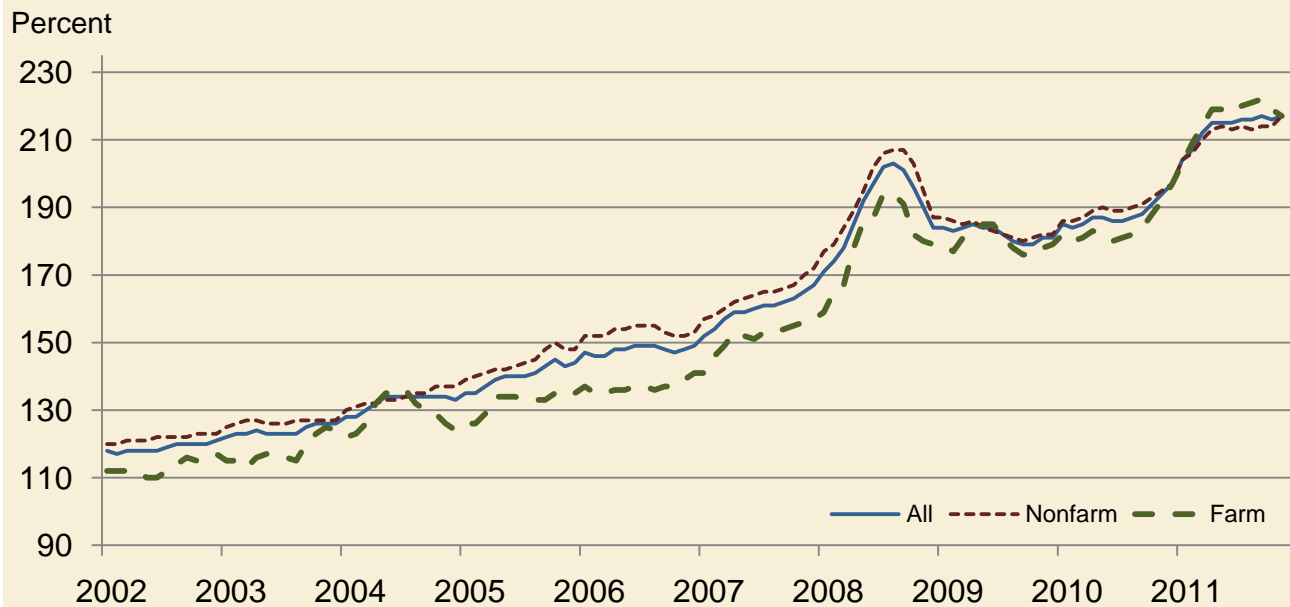
## Paid Indexes, Annual Averages, Production Items, Interest, Taxes, and Wages – United States: 1990-1992=100



### Paid Indexes by Farm Type and Month, All Items – United States: 1990-1992=100

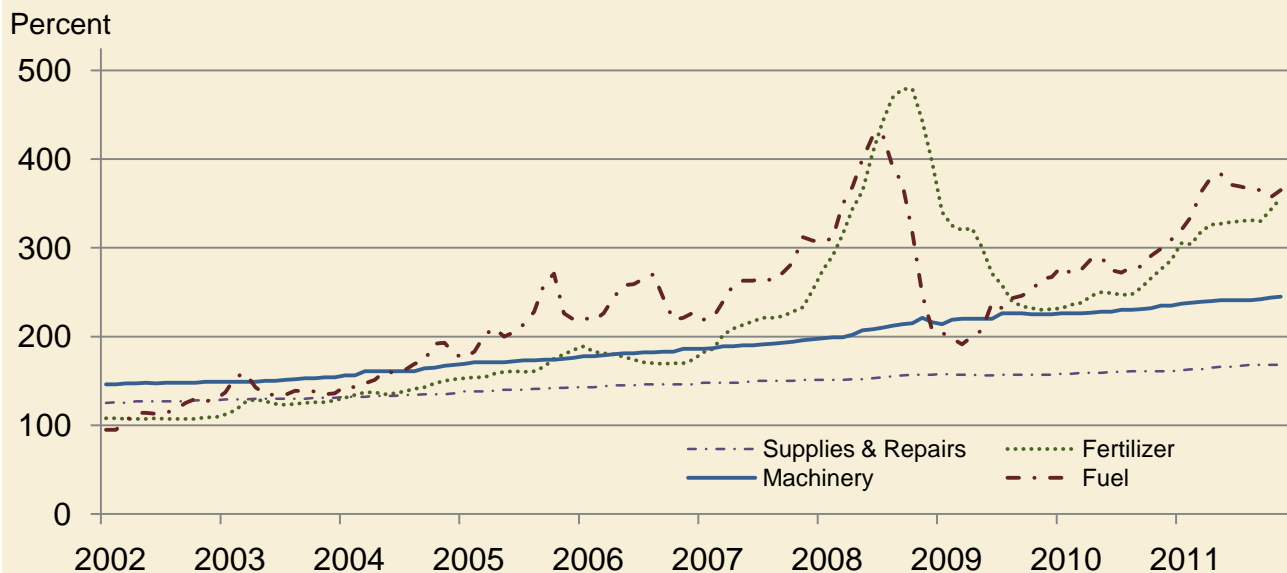


### Paid Indexes by Origin and Month, All Production Items – United States: 1990-1992=100

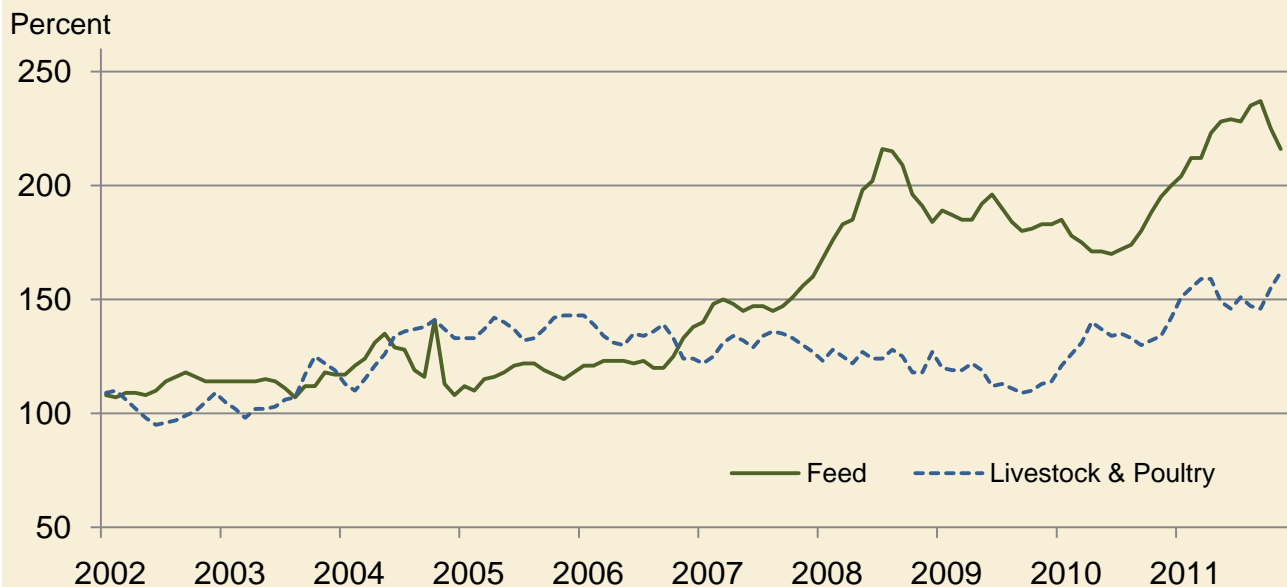




### Paid Indexes by Non-Farm Sector and Month, Supplies & Repairs, Fertilizer, Machinery, and Fuel – United States: 1990-1992=100



### Paid Indexes by Month, Feed and Livestock & Poultry – United States: 1990-1992=100



## Feed Price Ratios – United States: November 2011 with Comparisons

Feed price ratio <sup>1</sup>	November 2010	October 2011	Preliminary November 2011
Broiler-feed: pounds of broiler grower feed equal in value to 1 pound of broiler, live weight <sup>2</sup> .....	3.8	3.0	3.2
Market egg feed: pounds of laying feed equal in value to 1 dozen eggs <sup>3</sup> .....	9.5	6.8	6.7
Hog-corn: bushels of corn equal in value to 100 pounds of hog, live weight .....	10.5	12.0	11.0
Milk-feed: pounds of 16% mixed dairy feed equal in value to 1 pound of whole milk <sup>4</sup> .....	2.23	1.82	1.80
Steer & heifer-corn: bushels of corn equal in value to 100 pounds of steer & heifers, live weight .....	22.2	21.4	20.8
Turkey-feed: pounds of turkey grower equal in value to 1 pound of turkey, live weight <sup>5</sup> .....	6.4	5.9	5.9

<sup>1</sup> Effective January 1995, prices of commercial prepared feeds are based on current United States prices received for corn, soybeans, alfalfa hay, and all wheat.

<sup>2</sup> The price of commercial prepared broiler feed is based on current United States prices received for corn and soybeans. The modeled feed uses 58 percent corn and 42 percent soybeans.

<sup>3</sup> The price of commercial prepared layer feed is based on current United States prices received for corn and soybeans. The modeled feed uses 75 percent corn and 25 percent soybeans.

<sup>4</sup> The price of commercial prepared dairy feed is based on current United States prices received for corn, soybeans, and alfalfa hay. The modeled feed uses 51 percent corn, 41 percent alfalfa hay, and 8 percent soybeans.

<sup>5</sup> The price of commercial prepared turkey feed is based on current United States prices received for corn, soybeans, and wheat. The modeled feed uses 51 percent corn, 28 percent soybeans, and 21 percent wheat.

## Prices Received Used to Calculate Feed Price Ratios – United States: November 2011 with Comparisons

[Price data source for livestock and poultry commodities is United States Department of Agriculture's Agricultural Marketing Service]

Item	November 2010	October 2011	Preliminary November 2011
	(dollars)	(dollars)	(dollars)
Broilers, live .....pound	0.480	0.430	0.450
Eggs, market .....dozen	1.020	0.857	0.862
Hogs, all .....cwt	47.80	68.70	65.70
Milk, all .....cwt	17.90	19.90	19.90
Steers and heifers .....cwt	101.00	122.00	125.00
Turkeys, live .....pound	0.736	0.773	0.784
Corn .....bushel	4.55	5.71	6.00
Hay, alfalfa .....ton	117.00	203.00	198.00
Soybeans .....bushel	11.10	11.70	11.50
Wheat, all .....bushel	6.10	7.29	7.33

## Prices Paid for Feeder Livestock – United States: November 2011 with Comparisons

[Price data source is United States Department of Agriculture's Agricultural Marketing Service]

Item	November 2010	October 2011	Preliminary November 2011
	(dollars)	(dollars)	(dollars)
Feeder cattle & calves .....cwt	113.60	137.30	142.50
Feeder pigs .....cwt	129.00	105.00	131.00

## Reliability of Prices Paid Estimates

**Definition:** Prices paid by farmers represent the average costs of inputs purchased by farmers and ranchers to produce agricultural commodities. Conceptually, the average price when multiplied by quantity purchased should equal total producer expenditures for the item.

**Survey procedures:** The prices paid data are obtained from establishments that sell goods and services to farmers and ranchers. Annually, about 8,500 firms are randomly selected from lists by type of item sold with an average response rate in the range of 75-80 percent. Firms are asked to report the price for the specified item "most commonly bought by farmers" or that was the "volume seller". Approximately 135 items are surveyed each March to represent all production input items purchased. The survey reference period for most items is the five business days centered around the 15th of the month. Separate prices paid surveys are conducted for agricultural chemicals, fuels, feed, fertilizer, machinery, and seed.

**Summary and estimation procedures:** The annual March Prices Paid Survey is summarized as a nonprobability survey. Average prices reported are aggregated to the region and United States level using weights available from expenditure data and other administrative sources. Price recommendations are prepared by the State Field Offices and Headquarters for review by the Agricultural Statistics Board in Washington, D.C. Also, the change in price level for individual items surveyed are combined to the regional and United States levels, and are published as prices paid indexes referenced to a specific base period. Prices paid indexes for new autos and trucks, building materials, farm supplies, motor supplies, and marketing containers are updated based on price changes measured in selected Bureau of Labor Statistics (BLS) indexes.

**Revisions:** Any revisions are published in the monthly and in annual issues of Agricultural Prices. The basis for revision must be supported by additional data that directly affect the level of the estimate. More revisions are likely for March when separate prices paid surveys are conducted, in lieu of BLS indexes, by the USDA to measure price change.

**Reliability:** Current methods of summarization for the March data are not designed directly to calculate sampling errors. However, analytical measures approximate the United States relative sampling errors for major items around 10 percent. Any nonsampling errors are attributed to such things as the inability to obtain correct information, differences in interpreting questions or definitions, mistakes in coding or processing the data, etc. Efforts are made at each step in the survey process to minimize these nonsampling errors.

**Program change:** Effective January 1, 1995, the National Agricultural Statistics Service updated the weights and changed the construction of its prices paid and received by farmers indexes. A Federal Register Notice dated October 28, 1994 discussed these program modifications.

A 1990-1992 reference and base period replaced the 1977 reference and 1971-1973 base weight period. Five-year moving average weights replaced the current fixed 1971-1973 base period weights. The 1910-1914=100 price indexes, required by statute for computing parity prices, were linked forward based on the changes in the new 1990-1992=100 indexes. The new indexes were constructed by multiplying the ratios of the current prices to the base period prices by the moving average weights (adjusted for seasonal marketing patterns for the prices received indexes).

## Information Contacts

Direct general questions to Kevin Barnes, Chief, Environmental, Economics and Demographics Branch at (202) 720-6146. Below are the commodity specialists to contact for additional information.

### Crop Prices Received

Lance Honig, Chief, Crops Branch .....	(202) 720-2127
Jacqueline Moore, Head, Field Crops Section .....	(202) 720-2127
Suzanne Avilla – Peanuts, Rice.....	(202) 720-7688
Bryan Durham – Oats, Rye, Wheat.....	(202) 720-8068
Steve Maliszewski – Cotton, Cotton Ginnings, Sorghum.....	(202) 720-5944
Anthony Prillaman – Corn, Proso Millet, Flaxseed .....	(202) 720-9526
Julie Schmidt – Crop Weather, Barley, Hay .....	(202) 720-7621
Travis Thorson – Soybeans, Sunflower, Other Oilseeds.....	(202) 720-7369
Jorge Garcia-Pratts, Head, Fruits, Vegetables and Special Crops Section.....	(202) 720-2127
Debbie Flippin – Fresh and Processing Vegetables, Onions, Strawberries.....	(202) 720-2157
Fred Granja – Apples, Apricots, Cherries, Plums, Prunes, Tobacco .....	(202) 720-4288
Erika White – Floriculture, Maple Syrup, Nursery, Tree Nuts .....	(202) 720-4215
Chris Hawthorn – Citrus, Coffee, Sugar Crops, Grapes, Tropical Fruits.....	(202) 720-5412
Daphne Schauber – Berries, Cranberries, Potatoes, Sweet Potatoes .....	(202) 720-4285
Dan Norris – Austrian Winter Peas, Dry Edible Peas, Lentils, Mints, Mushrooms, Peaches, Pears, Wrinkled Seed Peas, Dry Beans .....	(202) 720-3250

### Livestock Prices Received

Dan Kerestes, Chief, Livestock Branch .....	(202) 720-3570
Scott Hollis, Head, Livestock Section.....	(202) 720-3570
Jason Hardegree - Cattle .....	(202) 720-3040
Mike Miller - Milk, Milk Cows .....	(202) 720-3278
Doug Bounds - Hogs.....	(202) 720-3106
Bruce Boess, Head, Poultry and Specialty Commodities Section.....	(202) 720-3570
Cody Brokmeyer - Turkeys .....	(202) 690-3237
Kim Linonis - Eggs.....	(202) 690-8632
Miste Salmon - Broilers, Honey.....	(202) 720-3244

### Indexes, Prices Paid, and Parity Prices

Kevin Hintzman, Acting Chief, Environmental, Economics and Demographics Branch.....	(202) 720-6146
Kevin Hintzman, Head, Economics Section .....	(202) 720-6146
Daryl Brinkman - Prices Received Indexes, Parity Prices .....	(202) 720-8844
Scott Shimmin - Grazing Fees .....	(202) 690-3231
Vincent Davis - Prices Paid Indexes, Prices Paid for Feed, Fertilizer, Agricultural Chemicals, Seeds, Farm Supplies and Repairs, Farm Machinery, Fuels, Feeder Livestock, Poultry Chicks, Feed Price Ratios, Autos & Trucks.....	(202) 690-3229

## Access to NASS Reports

For your convenience, you may access NASS reports and products the following ways:

- All reports are available electronically, at no cost, on the NASS web site: <http://www.nass.usda.gov>
- Both national and state specific reports are available via a free e-mail subscription. To set-up this free subscription, visit <http://www.nass.usda.gov> and in the “Receive NASS Updates” box under “Receive reports by Email,” click on “National” or “State” to select the reports you would like to receive.
- Printed reports may be purchased from the National Technical Information Service (NTIS) by calling toll-free (800) 999-6779, or (703) 605-6220 if calling from outside the United States or Canada. Accepted methods of payment are Visa, MasterCard, check, or money order.

For more information on NASS surveys and reports, call the NASS Agricultural Statistics Hotline at (800) 727-9540, 7:30 a.m. to 4:00 p.m. ET, or e-mail: [nass@nass.usda.gov](mailto:nass@nass.usda.gov).

The United States Department of Agriculture (USDA) prohibits discrimination in all its programs and activities on the basis of race, color, national origin, age, disability, and where applicable, sex, marital status, familial status, parental status, religion, sexual orientation, political beliefs, genetic information, reprisal, or because all or a part of an individual's income is derived from any public assistance program. (Not all prohibited bases apply to all programs.) Persons with disabilities who require alternative means for communication of program information (Braille, large print, audiotape, etc.) should contact USDA's TARGET Center at (202) 720-2600 (voice and TDD).

To file a complaint of discrimination, write to USDA, Assistant Secretary for Civil Rights, Office of the Assistant Secretary for Civil Rights, 1400 Independence Avenue, S.W., Stop 9410, Washington, DC 20250-9410, or call toll-free at (866) 632-9992 (English) or (800) 877-8339 (TDD) or (866) 377-8642 (English Federal-relay) or (800) 845-6136 (Spanish Federal-relay). USDA is an equal opportunity provider and employer.



United States Department of Agriculture



# Moving Agriculture Forward

USDA – Growing, Innovating, and Celebrating 150 Years

February 23-24, 2012

Crystal Gateway Marriott Hotel • Arlington, Virginia

Early Registration \$375 until January 23, 2012

\$425 after January 23

To register, go to:

[www.usda.gov/oce/forum](http://www.usda.gov/oce/forum)

— more than 80 speakers —

Program at a Glance is available online