



# Agricultural Prices

ISSN: 1937-4216

Released December 30, 2011, by the National Agricultural Statistics Service (NASS), Agricultural Statistics Board, United States Department of Agriculture (USDA).

## December Farm Prices Received Index Declined 8 Points

The preliminary All Farm Products Index of Prices Received by Farmers in December, at 176 percent, based on 1990-1992=100, decreased 8 points (4.3 percent) from November. The Crop Index is down 15 points (7.3 percent) but the Livestock Index increased 1 point (0.6 percent). Producers received lower prices for corn, soybeans, wheat, and lettuce and higher prices for eggs, broilers, cattle, and broccoli. In addition to prices, the overall index is also affected by the seasonal change based on a 3-year average mix of commodities producers sell. Increased monthly movement of wheat, milk, broilers, and hay offset the decreased marketing of corn, soybeans, cattle, and grapes.

The preliminary All Farm Products Index is up 23 points (15 percent) from December 2010. The Food Commodities Index, at 168, decreased 4 points (2.3 percent) from last month but increased 20 points (14 percent) from December 2010.

## Prices Paid Index Down 1 Point

The December Index of Prices Paid for Commodities and Services, Interest, Taxes, and Farm Wage Rates (PPITW) is 205 percent of the 1990-1992 average. The index is down 1 point (0.5 percent) from November but 16 points above (8.5 percent) December 2010. Lower prices in December for feed grains, complete feeds, diesel, and gasoline more than offset higher prices for feeder pigs, mixed fertilizer, supplements, and feeder cattle.

## Prices Received, Prices Paid, and Ratio of Prices Received to Prices Paid Indexes 1990-1992 Base – United States: December 2011 with Comparisons

Index	December 2010	November 2011	December 2011
Prices received by farmers .....	153	184	176
Prices paid by farmers .....	189	206	205
Ratio of prices received to prices paid .....	81	89	86

## Contents

Prices Received by Farmers .....	2
Prices Received Indexes – United States: December 2011 with Comparisons .....	5
Prices Received and Prices Paid Indexes by Month for Selected Groups – United States: 2010 and 2011, 1990-1992 Base .....	5
Received Indexes by Month, Livestock Products, All Products, and All Crops – United States: 1990-1992=100 Chart.....	6
Received Indexes by Month, Food Grains, Feed Grains & Hay, and Oilseeds – United States: 1990-1992=100 Chart.....	6
Received Indexes by Month, Fruit & Nut and Commercial Vegetables – United States: 1990-1992=100 Chart.....	7
Received Indexes by Month, Meat Animal, Dairy Products, and Poultry & Eggs – United States: 1990-1992=100 Chart.....	7
Prices Received for Field Crops and Fruits – United States: December 2011 with Comparisons .....	8
Prices Received for Vegetables and Livestock – United States: December 2011 with Comparisons .....	9
Prices Received for Corn by Month – United States Chart.....	10
Prices Received for Wheat by Month – United States Chart .....	10
Prices Received for Upland Cotton by Month – United States Chart .....	11
Prices Received for Soybeans by Month – United States Chart .....	11
Prices Received for Cattle by Month – United States Chart .....	12
Prices Received for Milk by Month – United States Chart .....	12
Prices Received for Hogs by Month – United States Chart .....	13
Prices Received for Poultry by Month – United States Chart .....	13
Prices Received for All Wheat, Corn, and Soybeans by Month – United States: 2011 with Comparisons .....	14
Prices Received for Beef Cattle and All Hogs by Month – United States: 2011 with Comparisons .....	14
Prices Received for All Wheat – States and United States: December 2011 with Comparisons .....	15
Prices Received for Winter Wheat – States and United States: December 2011 with Comparisons .....	15
Prices Received for Durum Wheat – States and United States: December 2011 with Comparisons .....	16
Prices Received for Spring Wheat – States and United States: December 2011 with Comparisons .....	16
Prices Received for All Barley – States and United States: December 2011 with Comparisons.....	17
Prices Received for Malting Barley – States: December 2011 with Comparisons .....	17
Prices Received for Feed Barley – States: December 2011 with Comparisons .....	17
Prices Received for Corn – States and United States: December 2011 with Comparisons .....	18
Prices Received for Soybeans – States and United States: December 2011 with Comparisons .....	18
Prices Received for Oats – States and United States: December 2011 with Comparisons .....	19
Prices Received for Sorghum Grain – States and United States: December 2011 with Comparisons.....	19
Prices Received for Dry Beans – States and United States: December 2011 with Comparisons .....	20
Prices Received for Peanuts (In-Shell) – States and United States: December 2011 with Comparisons .....	20
Prices Received for Sunflower – States and United States: December 2011 with Comparisons.....	21
Prices Received for Canola – States and United States: December 2011 with Comparisons .....	21
Prices Received for Flaxseed – States and United States: December 2011 with Comparisons .....	21
Prices Received for Hops – States and United States: 2010 and 2011.....	21
Prices Received for Upland Cotton and Cottonseed – States and United States: December 2011 with Comparisons .....	22
Prices Received and Farm Marketings for Upland Cotton and Rice – United States: December 2011 with Comparisons .....	22
Prices Received for Hay by Type – States and United States: December 2011 with Comparisons.....	23
Prices Received for Apples – States and United States: December 2011 with Comparisons .....	23
Prices Received for Citrus Fruits by Utilization – States and United States: December 2010 .....	24
Prices Received for Citrus Fruits by Utilization – States and United States: November 2011 .....	25
Prices Received for Citrus Fruits by Utilization – States and United States: December 2011 .....	26
Prices Received for Potatoes – States and United States: December 2011 with Comparisons.....	27
Prices Received for All Milk – States and United States: December 2011 with Comparisons.....	28

Prices Received for Milk Cows – States and United States: October 2011 with Comparisons.....	29
Commodity Parity Prices and Price as Percent of Parity Price – United States: December 2011 with Comparisons .....	30
Commodity Parity Prices – United States: December 2011 with Comparisons .....	31
Reliability of Prices Received Estimates .....	33
Prices Paid by Farmers.....	34
Prices Paid Indexes and Related Parity Ratios – United States: December 2011 with Comparisons.....	35
Prices Paid Indexes and Annual Weights for Input Components and Sub-Components – United States: December 2011 with Comparisons.....	36
Paid Indexes by Month, All Items and Production Items – United States: 1990-1992=100 Chart .....	37
Paid Indexes, Annual Averages, Production Items, Interest, Taxes, and Wages – United States: 1990-1992=100 Chart .....	37
Paid Indexes by Farm Type, All Items – United States: 1990-1991=100 Chart.....	38
Paid Indexes by Origin, All Production Items – United States: 1990-1992=100 Chart .....	38
Paid Indexes by Non-Farm Sector, Supplies & Repairs, Fertilizer, Machinery, and Fuel – United States: 1990-1992=100 Chart .....	39
Paid Indexes by Month, Feed and Replacement Livestock – United States: 1990-1992=100 Chart.....	39
Feed Price Ratios – United States: December 2011 with Comparisons .....	40
Prices Received Used to Calculate Feed Price Ratios – United States: December 2011 with Comparisons.....	40
Prices Paid for Feeder Livestock – United States: December 2011 with Comparisons.....	40
Prices Paid for Feed – United States: 2006-2011.....	41
Annual Average Prices Paid for Feeder Livestock – United States: 2006-2011.....	41
Prices Paid by Farmers and Ranchers for Beef Cattle Production.....	42
Prices Received for Beef Cattle – Selected United States Regions: 2011 .....	42
Reliability of Prices Paid Estimates .....	43
Calendar of Prices Received Features in the 2011 Agricultural Price Report .....	44
Calendar of Prices Paid Features in the 2011 Agricultural Price Report .....	47
Information Contacts .....	48

## Prices Received by Farmers

The December All Farm Products Index is 176 percent of its 1990-1992 base, down 4.3 percent from the November index but 15 percent above the December 2010 index.

**All crops:** The December index, at 191, decreased 7.3 percent from November but is 12 percent above December 2010. Index decreases for feed grains & hay, oilseeds, and fruits & nuts more than offset index increases for potatoes & dry beans and upland cotton.

**Food grains:** The December index, at 217, is 7.7 percent below the previous month but 1.9 percent above a year ago. The December all wheat price, at \$6.45 per bushel, is down 81 cents from November but 1 cent above December 2010.

**Feed grains & hay:** The December index, at 238, is down 5.9 percent from last month but 18 percent above a year ago. The corn price, at \$5.44 per bushel, is down 40 cents from last month but 62 cents above December 2010. The all hay price, at \$177 per ton, is up \$1.00 from November and \$66.00 from last December. Sorghum grain, at \$10.10 per cwt, is 60 cents below November but \$1.31 above December last year.

**Cotton, Upland:** The December index, at 155, is up 1.3 percent from November and 16 percent above last year. The December price, at 93.7 cents per pound, is up 1.2 cents from the previous month and 12.5 cents above last December.

**Oilseeds:** The December index, at 206, is down 4.2 percent from November but 3.5 percent higher than December 2010. The soybean price, at \$11.10 per bushel, decreased 60 cents from November and is 50 cents below December 2010.

**Fruits & nuts:** The December index, at 156, is down 11 percent from November but 8.3 percent higher than a year ago. Price decreases for oranges and apples more than offset price increases for strawberries and grapes.

**Commercial vegetables:** The December index, at 146, is down 12 percent from last month and 5.8 percent below December 2010. Price decreases for lettuce and tomatoes more than offset price increases during December for broccoli and snap beans.

**Potatoes & dry beans:** The December index, at 169, is up 5.6 percent from last month and 3.7 percent above December 2010. The all potato price, at \$8.86 per cwt, is up 32 cents from November but down \$1.08 from last December. The all dry bean price, at \$45.30 per cwt, is up \$5.40 from the previous month and \$20.70 above December 2010.

**Livestock and products:** The December index, at 158, is 0.6 percent above last month and 18 percent higher than December 2010. Compared with a year ago, prices are higher for cattle, milk, hogs, eggs, calves, turkeys, and broilers.

**Meat animals:** The December index, at 158, is unchanged from last month but 24 percent higher than last year. The December hog price, at \$64.00 per cwt, is down 40 cents from November but \$11.70 higher than a year ago. The December beef cattle price of \$121 per cwt is up \$1.00 from last month and \$22.90 higher than December 2010.

**Dairy products:** The December index, at 152, is down 2.6 percent from a month ago but 19 percent higher than December last year. The December all milk price of \$19.80 per cwt is 60 cents less than last month but \$3.10 higher than December 2010.

**Poultry & eggs:** The December index, at 163, is up 5.8 percent from November and a year ago. The December market egg price, at \$1.10 per dozen, increased 23.8 cents from November and is 18.1 cents above December 2010. The December broiler price, at 47.0 cents per pound, is up 2.0 cents from November and 1.0 cent above a year ago. The December turkey price, at 75.4 cents per pound, is down 2.6 cents from last month but up 7.7 cents from a year earlier.

## Prices Received Indexes – United States: December 2011 with Comparisons

[Revised historical price indexes for months not shown are available at [www.nass.usda.gov](http://www.nass.usda.gov)]

Index	1910-1914 Base				1990-1992 Base		
	1990-1992 Average	December 2010	November 2011	December 2011	December 2010	November 2011	December 2011
	(percent)	(percent)	(percent)	(percent)	(percent)	(percent)	(percent)
All products .....	639	968	1167	1115	153	184	176
All crops .....	500	842	1020	947	170	206	191
Food grains .....	325	676	745	688	213	235	217
Feed grains & hay .....	363	721	902	847	202	253	238
Cotton, Upland .....	517	687	783	793	134	153	155
Tobacco .....	1263	1491	1491	1491	99	99	99
Oilseeds .....	554	1092	1179	1130	199	215	206
Fruits & nuts .....	716	1004	1219	1088	144	175	156
Commercial vegetables .....	698	1106	1183	1041	155	166	146
Potatoes & dry beans .....	540	828	810	856	163	160	169
Other crops .....	493	636	635	635	129	129	129
Livestock and products .....	768	1026	1202	1209	134	157	158
Meat animals .....	1021	1295	1611	1607	127	158	158
Dairy products .....	799	1028	1255	1218	128	156	152
Poultry & eggs .....	282	433	434	458	154	154	163
Food commodities .....	(NA)	(NA)	(NA)	(NA)	148	172	168

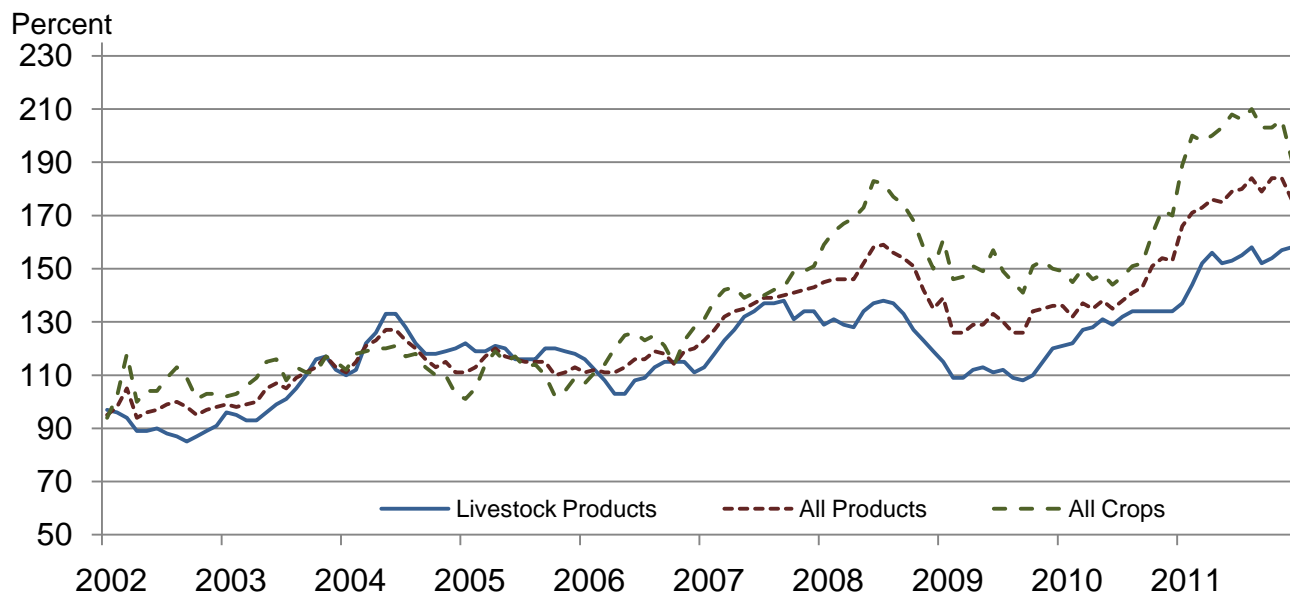
(NA) Not available.

## Prices Received and Prices Paid Indexes by Month for Selected Groups – United States: 2010 and 2011, 1990-1992 Base

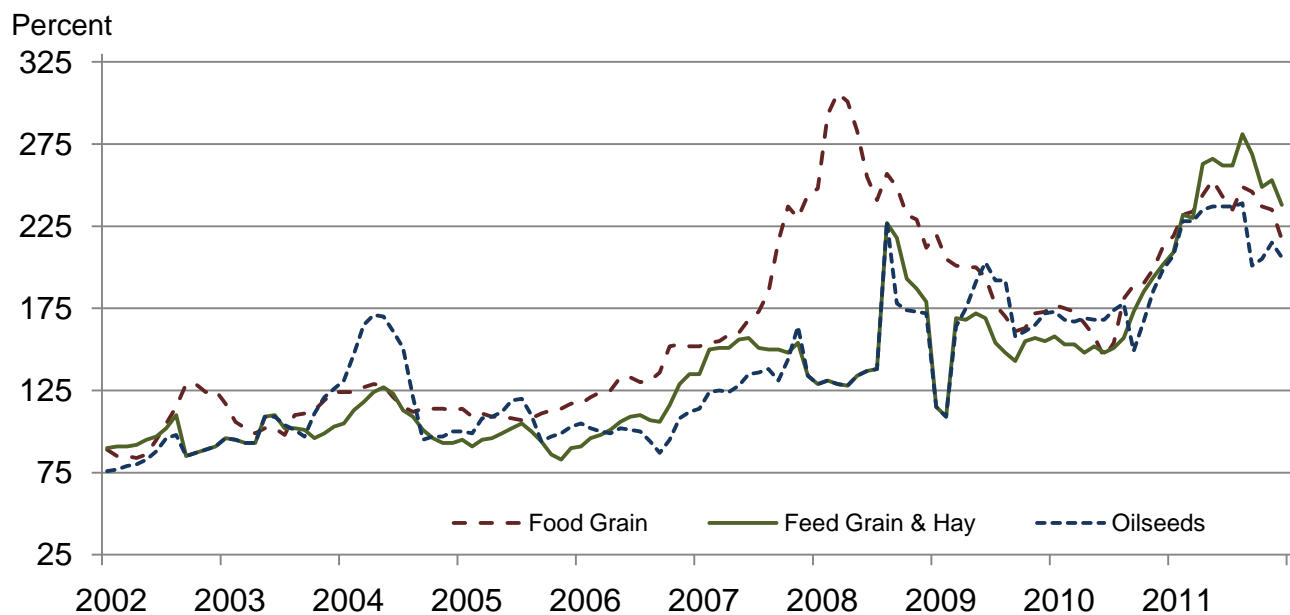
[Revised historical price indexes for months not shown are available at [www.nass.usda.gov](http://www.nass.usda.gov)]

Month	Index of prices received						Index of prices paid			
	All farm products		All crops		Livestock and products		All items		Production items	
	2010	2011	2010	2011	2010	2011	2010	2011	2010	2011
	(percent)	(percent)	(percent)	(percent)	(percent)	(percent)	(percent)	(percent)	(percent)	(percent)
January .....	136	166	149	189	121	137	180	196	185	204
February .....	132	171	145	200	122	144	180	198	184	207
March .....	137	173	150	198	127	152	181	201	185	212
April .....	135	176	146	200	128	156	182	204	187	215
May .....	138	175	148	203	131	152	182	204	187	215
June .....	135	179	144	208	129	153	181	204	186	215
July .....	138	180	147	206	132	155	181	204	186	216
August .....	141	184	151	210	134	158	182	205	187	216
September .....	143	179	152	203	134	152	183	205	188	217
October .....	151	184	163	203	134	154	185	205	191	216
November .....	154	184	172	206	134	157	187	206	194	218
December .....	153	176	170	191	134	158	189	205	197	217

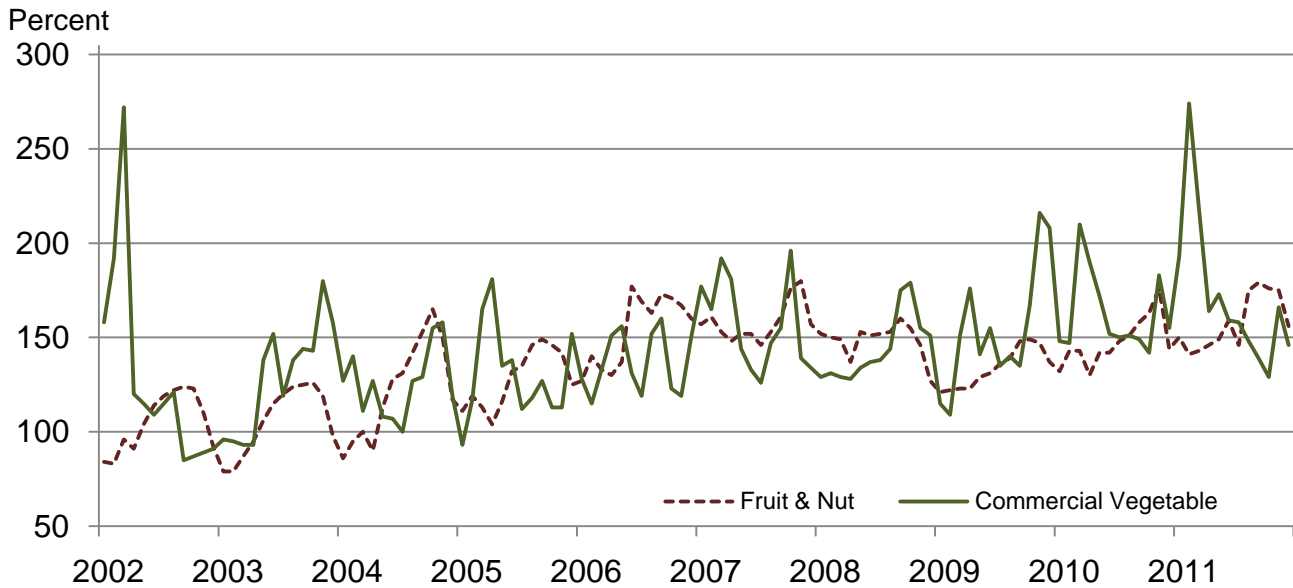
**Received Indexes by Month,  
Livestock Products, All Products, and All Crops –  
United States: 1990-1992=100**



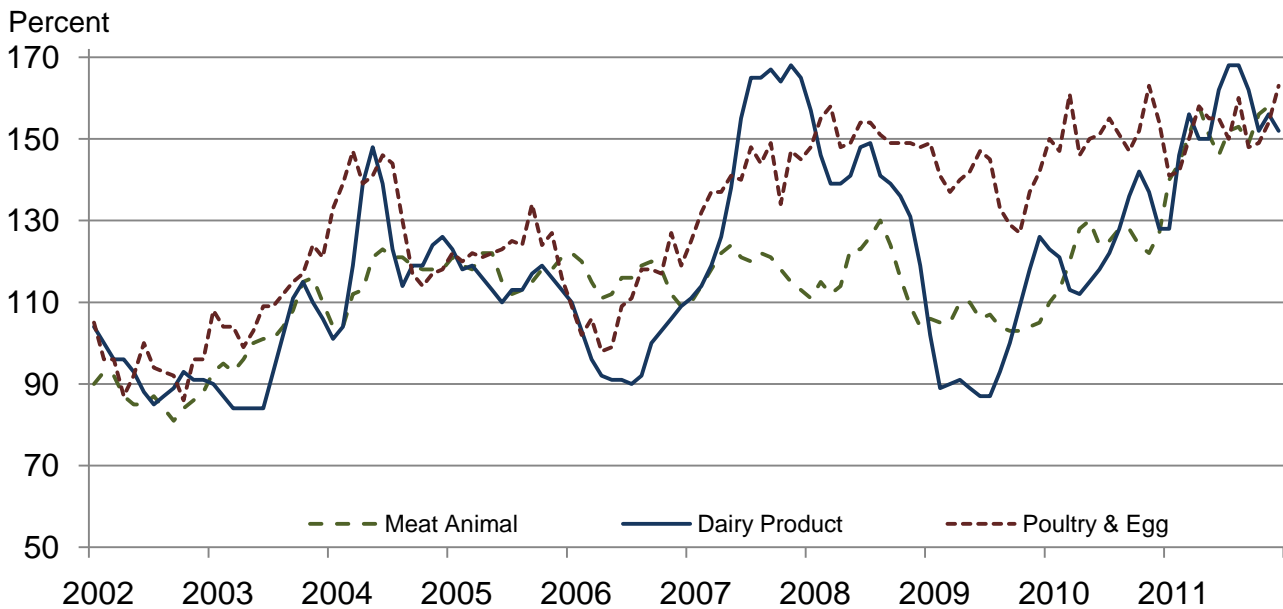
**Received Indexes by Month,  
Food Grains, Feed Grains & Hay, and Oilseeds –  
United States: 1990-1992=100**



**Received Indexes by Month,  
Fruit & Nut and Commercial Vegetables –  
United States: 1990-1992=100**



**Received Indexes by Month,  
Meat Animal, Dairy Product, and Poultry & Egg –  
United States: 1990-1992=100**



**Prices Received for Field Crops and Fruits – United States: December 2011 with Comparisons**

Commodity	Average 1990-1992=100	December 2010	November 2011	Preliminary December 2011
<b>Field crops</b>				
Austrian winter peas .....	dollars/cwt (NA)	(S)	(S)	(S)
Barley, all .....	dollars/bushel 2.12	3.86	5.39	5.50
Feed .....	dollars/bushel 1.90	3.40	4.87	4.48
Malting .....	dollars/bushel 2.43	3.97	5.50	5.72
Beans, dry edible .....	dollars/cwt 19.10	24.60	39.90	45.30
Canola .....	dollars/cwt (NA)	19.50	23.30	22.80
Chickpeas, all .....	dollars/cwt (NA)	28.40	44.40	(D)
Large .....	dollars/cwt (NA)	30.70	45.70	(D)
Small .....	dollars/cwt (NA)	22.40	26.80	(D)
Corn .....	dollars/bushel 2.30	4.82	5.84	5.44
Cotton, Upland .....	dollars/pound 0.606	0.812	0.925	0.937
Cottonseed <sup>1</sup> .....	dollars/ton 96.00	163.00	269.00	264.00
Flaxseed .....	dollars/bushel 4.27	13.10	14.00	(D)
Hay, all, baled .....	dollars/ton 76.30	111.00	176.00	177.00
Alfalfa .....	dollars/ton 77.20	121.00	198.00	199.00
Other .....	dollars/ton 60.00	96.00	122.00	126.00
Lentils .....	dollars/cwt (NA)	26.80	24.70	27.20
Oats .....	dollars/bushel 1.22	2.94	3.36	3.31
Peanuts, in-shell .....	dollars/pound 0.304	0.240	0.331	0.304
Peas, dry edible .....	dollars/cwt (NA)	10.20	15.20	15.90
Potatoes .....	dollars/cwt 5.82	9.94	8.54	8.86
Rice, all .....	dollars/cwt 7.07	13.80	14.50	15.10
Long .....	dollars/cwt (NA)	11.30	14.00	14.40
Medium and short .....	dollars/cwt (NA)	19.00	15.80	16.90
Sorghum grain .....	dollars/cwt 3.75	8.79	10.70	10.10
Soybeans .....	dollars/bushel 5.61	11.60	11.70	11.10
Sunflowers, all .....	dollars/cwt 9.50	20.60	29.00	29.80
Wheat, all .....	dollars/bushel 2.96	6.44	7.26	6.45
Winter .....	dollars/bushel 2.93	6.40	6.42	5.93
Durum .....	dollars/bushel 2.86	5.71	10.40	10.40
Other spring .....	dollars/bushel 3.11	6.60	8.46	7.63
Hard red winter <sup>2</sup> .....	dollars/bushel (NA)	6.51	6.63	(NA)
Soft red winter <sup>2</sup> .....	dollars/bushel (NA)	6.73	6.24	(NA)
Hard red spring <sup>2</sup> .....	dollars/bushel (NA)	6.64	8.69	(NA)
White <sup>2</sup> .....	dollars/bushel 3.24	6.07	6.07	(NA)
<b>Fruits</b>				
Citrus, equivalent on-tree				
Grapefruit .....	dollars/box 5.77	8.06	6.29	6.21
Lemons .....	dollars/box 10.10	9.51	14.40	14.02
Oranges .....	dollars/box 5.79	6.66	9.95	7.02
Tangelos .....	dollars/box 5.82	5.56	6.82	6.56
Tangerines and mandarins .....	dollars/box 15.11	21.53	16.29	21.15
Noncitrus, fresh				
Apples <sup>3</sup> .....	dollars/pound 0.212	0.293	0.383	0.367
Grapes <sup>3</sup> .....	dollars/ton 506.00	750.00	980.00	1,080.00
Peaches <sup>3</sup> .....	dollars/ton 432.00	(S)	(S)	(S)
Pears <sup>3</sup> .....	dollars/ton 370.00	587.00	542.00	521.00
Strawberries .....	dollars/cwt 56.00	285.00	84.40	117.00

(D) Withheld to avoid disclosing data for individual operations.

(NA) Not available.

(S) Insufficient number of reports to establish an estimate.

<sup>1</sup> Marketing year August - February.

<sup>2</sup> Preliminary estimates not set for this item.

<sup>3</sup> Equivalent packinghouse-door returns for California, Michigan, New York (apples only), and Washington (apples, peaches, and pears). Prices as sold for other states.



# Prices Received for Vegetables and Livestock – United States: December 2011 with Comparisons

[Price data source for livestock and poultry commodities is United States Department of Agriculture's Agricultural Marketing Service]

Commodity	Average 1990-1992=100	December 2010	November 2011	Preliminary December 2011
<b>Vegetables, fresh <sup>1</sup></b>				
Asparagus .....dollars/cwt	79.80	(S)	(S)	(S)
Beans, snap <sup>2</sup> .....dollars/cwt	(NA)	85.20	57.50	72.20
Broccoli .....dollars/cwt	22.50	66.60	43.00	59.40
Cantaloupes <sup>2</sup> .....dollars/cwt	(NA)	(S)	15.50	11.90
Carrots .....dollars/cwt	13.20	33.00	26.80	25.60
Cauliflower .....dollars/cwt	26.80	66.40	66.90	72.60
Celery .....dollars/cwt	11.60	20.20	15.00	15.40
Corn, sweet .....dollars/cwt	15.70	31.60	25.00	31.30
Cucumbers <sup>2</sup> .....dollars/cwt	(NA)	19.70	27.70	22.00
Lettuce .....dollars/cwt	11.90	17.50	30.50	20.20
Onions <sup>3</sup> .....dollars/cwt	12.80	11.60	9.47	8.82
Tomatoes .....dollars/cwt	32.30	37.30	44.70	25.40
<b>Livestock</b>				
Calves .....dollars/cwt	94.30	130.00	153.00	158.00
Cattle, all beef .....dollars/cwt	72.90	98.10	120.00	121.00
Cows <sup>4</sup> .....dollars/cwt	49.60	55.10	66.00	69.00
Steers & heifers .....dollars/cwt	77.10	104.00	126.00	128.00
Milk cows <sup>5</sup> .....dollars/head	1130.00	(NA)	(NA)	(NA)
Hogs, all .....dollars/cwt	47.70	52.30	64.40	64.00
Barrows & gilts .....dollars/cwt	48.40	52.70	64.50	64.30
Sows .....dollars/cwt	39.50	48.60	60.80	56.70
<b>Dairy and poultry</b>				
Milk, all <sup>6</sup> .....dollars/cwt	13.06	16.70	20.40	19.80
Fat test ..... percent	3.66	3.85	3.80	3.83
Broilers, live <sup>7</sup> .....dollars/pound	0.317	0.460	0.450	0.470
Eggs, all <sup>8</sup> .....dollars/dozen	0.643	1.080	1.020	1.220
Market <sup>8 9</sup> .....dollars/dozen	0.546	0.919	0.862	1.100
Turkeys, live <sup>8 10 11</sup> .....dollars/pound	0.380	0.677	0.780	0.754
<b>Adjusted for seasonal variation</b>				
Eggs, all .....dollars/dozen	0.545	0.871	0.898	0.981
Seasonal factor ..... percent	100	124	114	124
Milk, all <sup>6</sup> .....dollars/cwt	9.71	15.50	19.00	18.40
Seasonal factor ..... percent	100	108	107	108

(NA) Not available.

(S) Insufficient number of reports to establish an estimate.

<sup>1</sup> Beginning January 2006, point of first sale. FOB shipping point for prior years.

<sup>2</sup> Monthly estimates began January 1995.

<sup>3</sup> Includes some processing.

<sup>4</sup> Beef cows and cull dairy cows sold for slaughter.

<sup>5</sup> Animals sold for dairy herd replacement only. Prices available for January, April, July, and October.

<sup>6</sup> Before deductions for hauling. Includes quality, quantity, and other premiums. Excludes hauling subsidies.

<sup>7</sup> Live weight equivalent price.

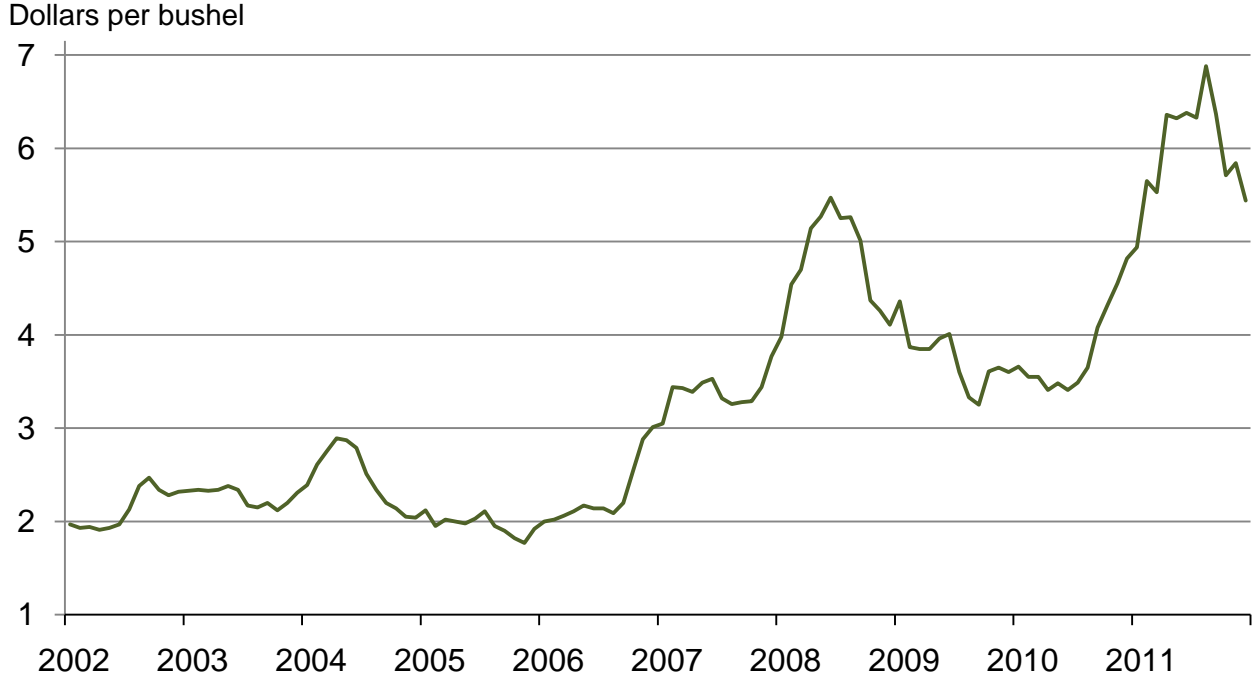
<sup>8</sup> Mid-month price.

<sup>9</sup> Also referred to as table eggs.

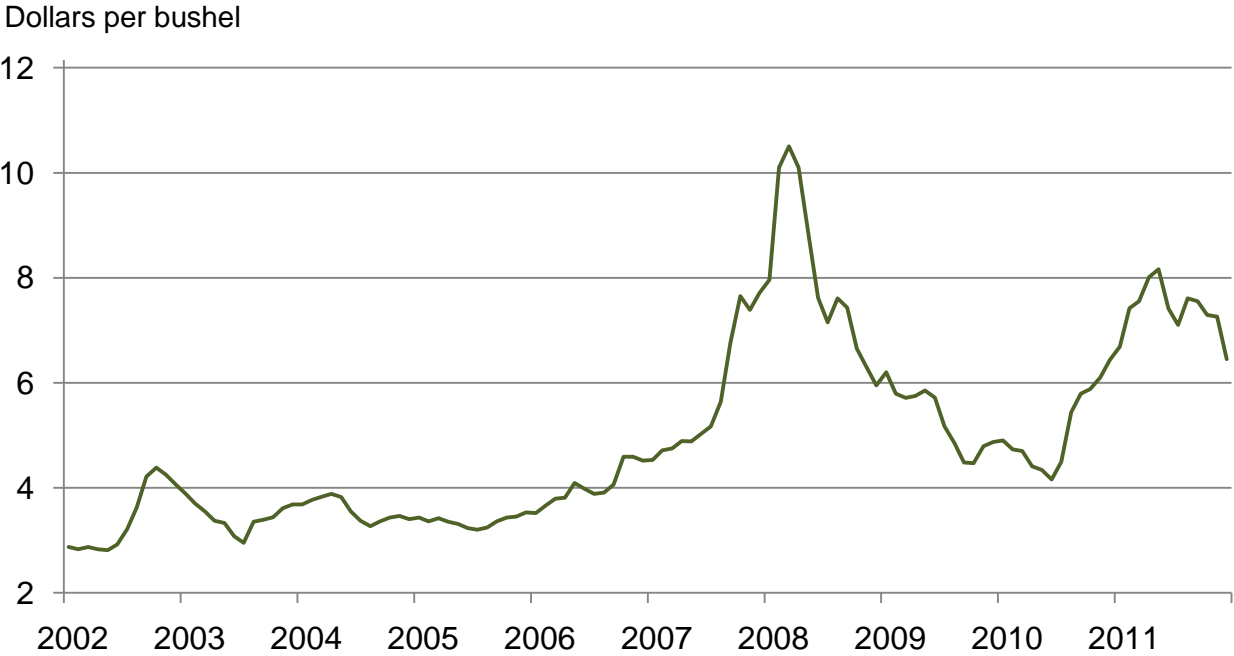
<sup>10</sup> Live weight equivalent price is used when actual live weight price is not available.

<sup>11</sup> Beginning January 2011, price reflects FOB shipping point basis. Prior year price reflects delivered basis.

# Prices Received for Corn by Month – United States



# Prices Received for Wheat by Month – United States



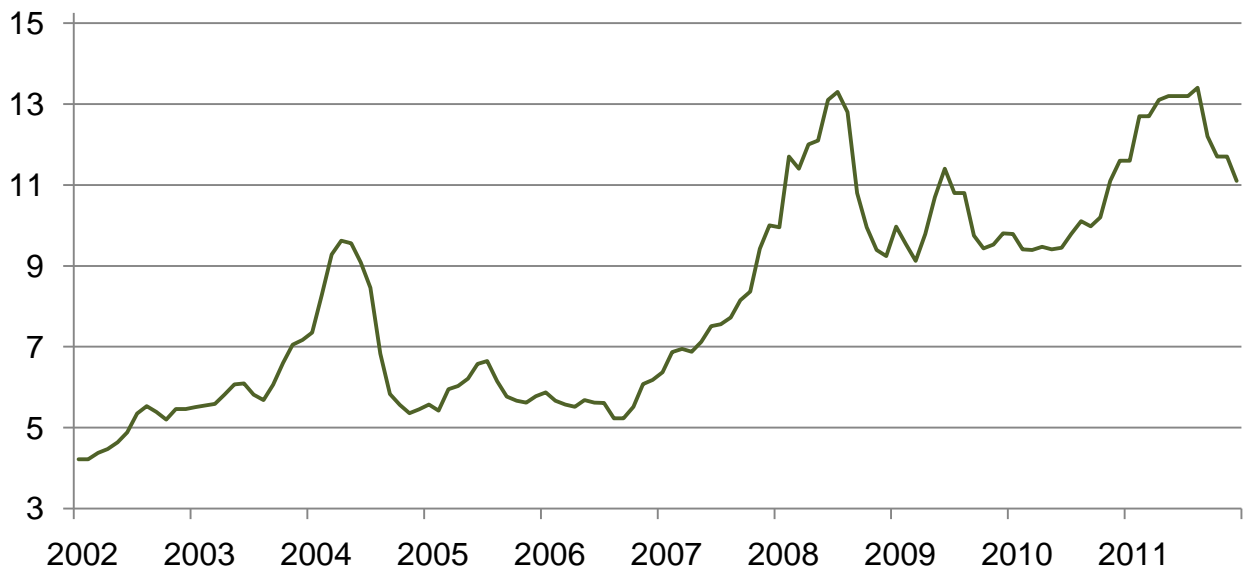
## Prices Received for Upland Cotton by Month – United States

Dollars per pound



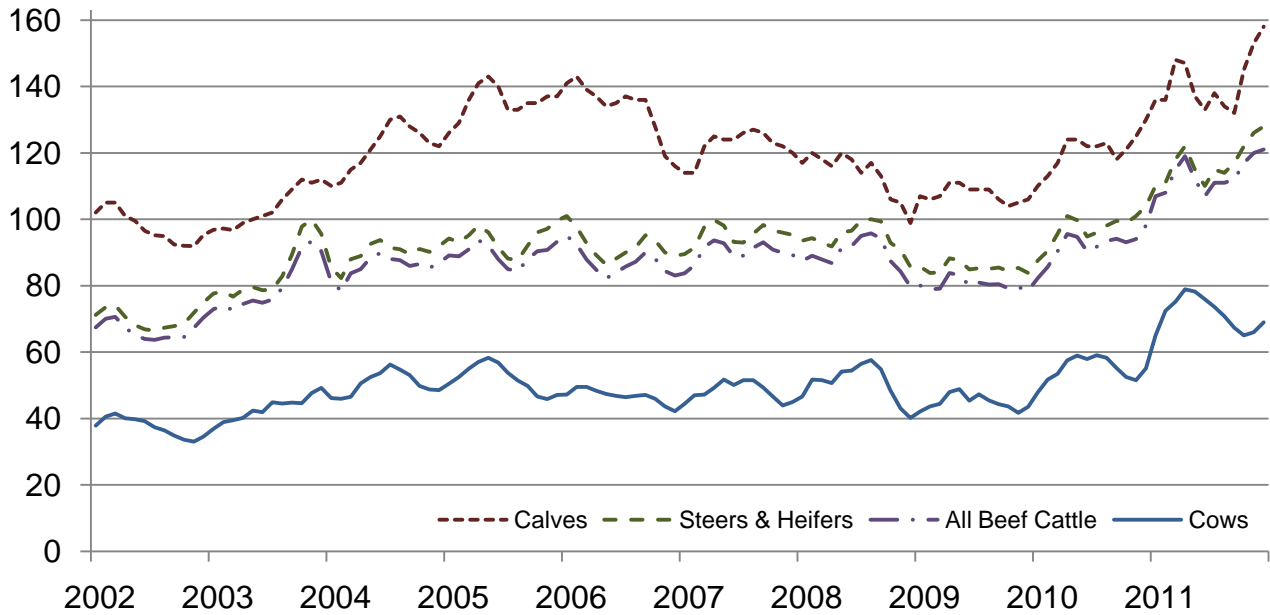
## Prices Received for Soybeans by Month – United States

Dollars per bushel



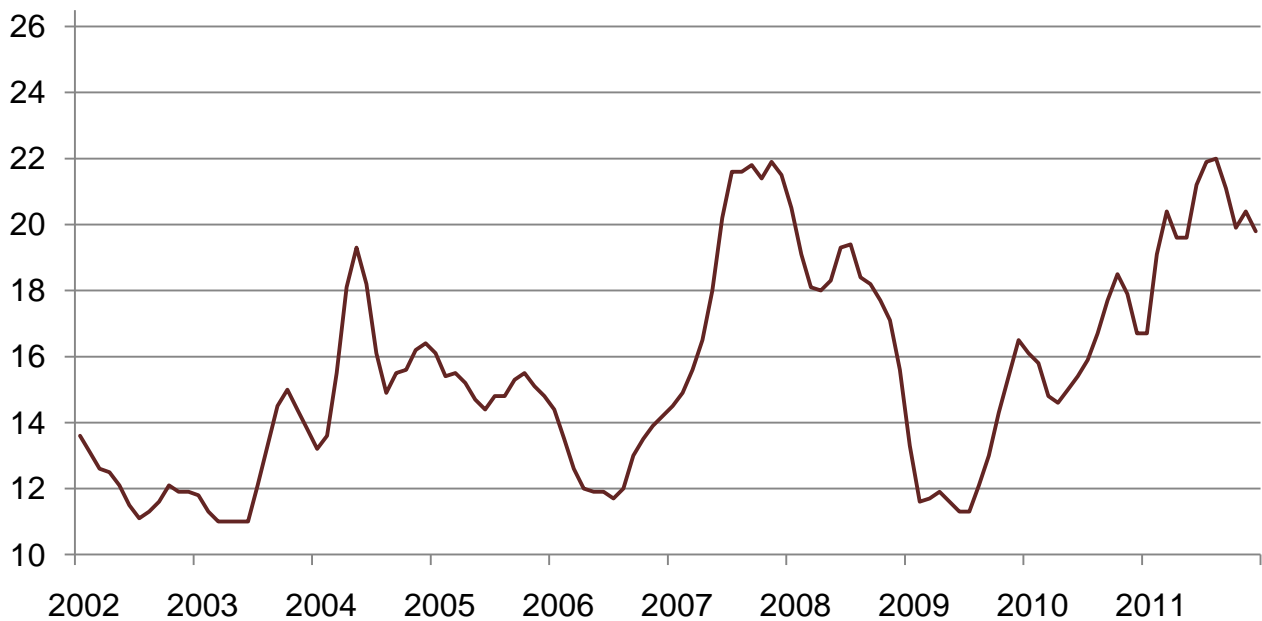
## Prices Received for Cattle by Month – United States

Dollars per cwt



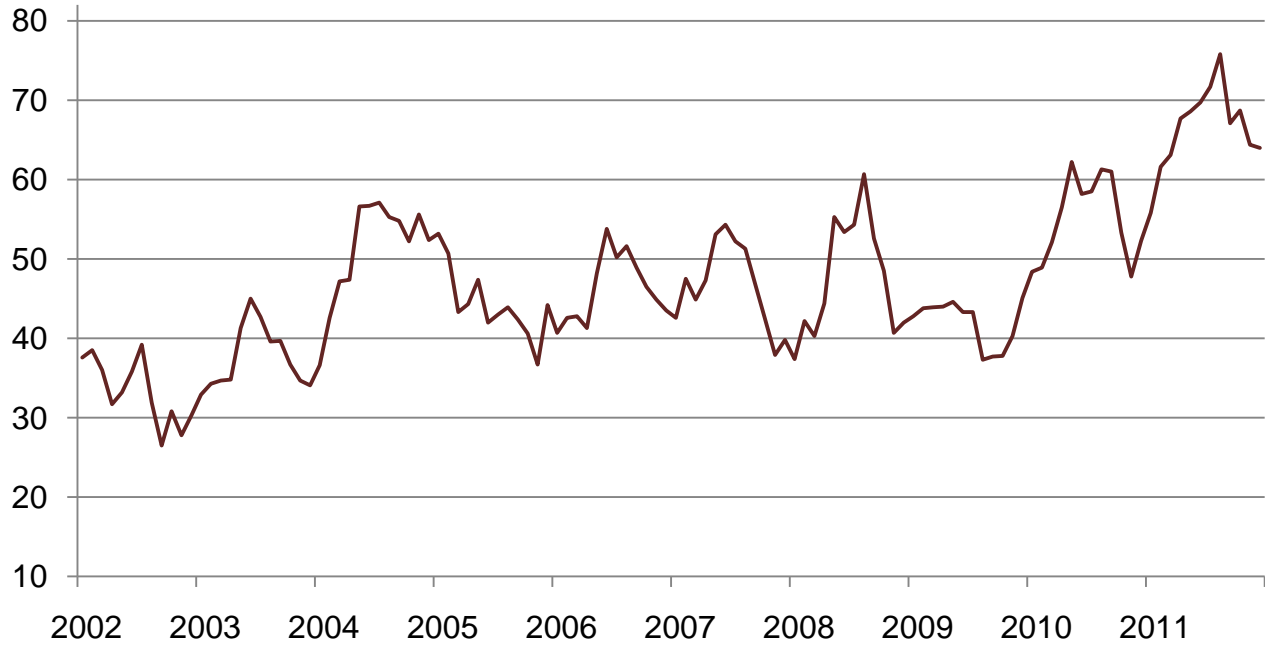
## Prices Received for Milk by Month – United States

Dollars per cwt



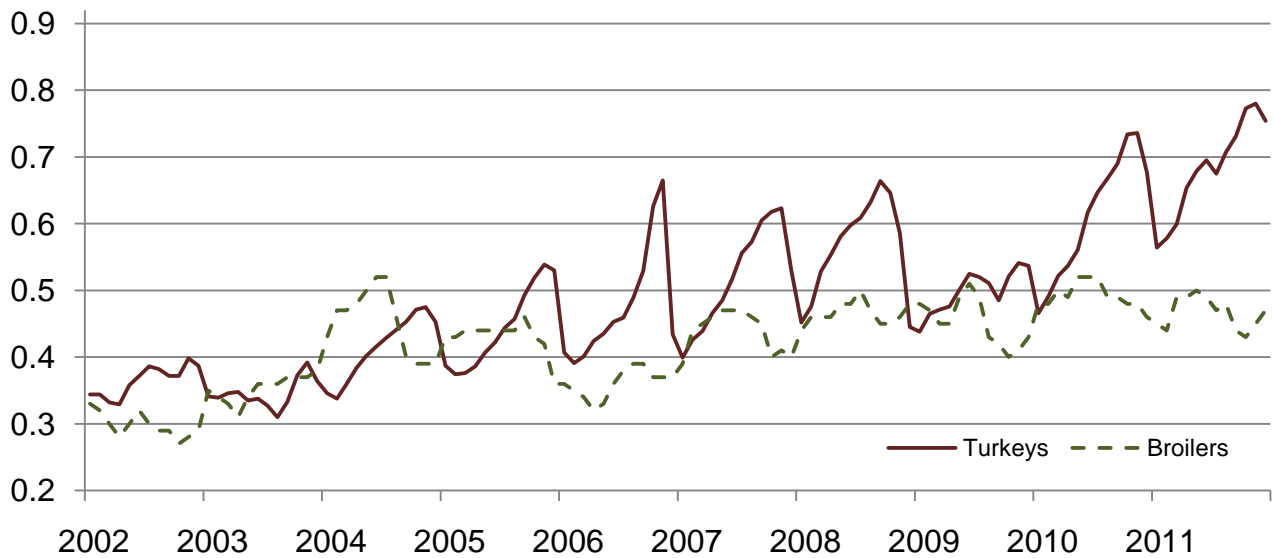
## Prices Received for Hogs by Month – United States

Dollars per cwt



## Prices Received for Poultry by Month – United States

Dollars per pound



## Prices Received for All Wheat, Corn, and Soybeans by Month – United States: 2011 with Comparisons

[Current month prices are mid-month; prices for previous months and years are for the entire month]

Month	All wheat			Corn			Soybeans		
	2009	2010	Preliminary 2011	2009	2010	Preliminary 2011	2009	2010	Preliminary 2011
	(dollars per bushel)	(dollars per bushel)	(dollars per bushel)	(dollars per bushel)	(dollars per bushel)	(dollars per bushel)	(dollars per bushel)	(dollars per bushel)	(dollars per bushel)
January .....	6.20	4.90	6.69	4.36	3.66	4.94	9.97	9.79	11.60
February .....	5.79	4.73	7.42	3.87	3.55	5.65	9.54	9.41	12.70
March .....	5.71	4.70	7.55	3.85	3.55	5.53	9.12	9.39	12.70
April .....	5.75	4.41	8.01	3.85	3.41	6.36	9.79	9.47	13.10
May .....	5.85	4.34	8.16	3.96	3.48	6.32	10.70	9.41	13.20
June .....	5.72	4.16	7.41	4.01	3.41	6.38	11.40	9.45	13.20
July .....	5.17	4.49	7.10	3.60	3.49	6.33	10.80	9.79	13.20
August .....	4.85	5.44	7.61	3.33	3.65	6.88	10.80	10.10	13.40
September ...	4.48	5.79	7.55	3.25	4.08	6.37	9.75	9.98	12.20
October .....	4.47	5.88	7.29	3.61	4.32	5.71	9.43	10.20	11.70
November ....	4.79	6.10	7.26	3.65	4.55	5.84	9.53	11.10	11.70
December ....	4.87	6.44	6.45	3.60	4.82	5.44	9.80	11.60	11.10

## Prices Received for Beef Cattle and All Hogs by Month – United States: 2011 with Comparisons

[Current month prices are mid-month; prices for previous months and years are for the entire month]

Month	Beef cattle <sup>1</sup>			All hogs <sup>2</sup>		
	2009	2010	Preliminary 2011	2009	2010	Preliminary 2011
	(dollars per cwt)	(dollars per cwt)	(dollars per cwt)	(dollars per cwt)	(dollars per cwt)	(dollars per cwt)
January .....	80.10	82.30	107.00	42.80	48.40	55.80
February .....	78.90	85.70	108.00	43.80	48.90	61.60
March .....	79.10	90.40	115.00	43.90	52.10	63.10
April .....	83.80	95.60	119.00	44.00	56.50	67.70
May .....	83.20	94.70	112.00	44.60	62.20	68.60
June .....	80.10	90.40	107.00	43.30	58.20	69.70
July .....	80.90	91.70	111.00	43.30	58.50	71.70
August .....	80.40	93.50	111.00	37.30	61.30	75.80
September .....	80.50	94.10	112.00	37.70	61.00	67.10
October .....	79.20	93.10	117.00	37.80	53.30	68.70
November .....	79.60	94.00	120.00	40.30	47.80	64.40
December .....	78.50	98.10	121.00	45.10	52.30	64.00

<sup>1</sup> Cows and steers & heifers.

<sup>2</sup> Barrows & gilts and sows.

## Prices Received for All Wheat – States and United States: December 2011 with Comparisons

State	December 2010	November 2011	Preliminary December 2011
	(dollars per bushel)	(dollars per bushel)	(dollars per bushel)
Arizona .....	(D)	(S)	(S)
Arkansas .....	(D)	(D)	6.00
California .....	6.40	(D)	(D)
Colorado .....	6.18	6.18	5.68
Idaho .....	6.02	6.82	(D)
Illinois .....	7.28	6.31	5.80
Indiana .....	6.14	5.68	5.59
Kansas .....	6.91	6.75	6.15
Michigan .....	6.83	5.94	5.50
Minnesota .....	6.08	8.65	7.98
Missouri .....	5.46	6.29	6.00
Montana .....	6.18	7.84	7.24
Nebraska .....	6.33	6.18	6.00
North Carolina .....	7.29	7.00	6.65
North Dakota .....	6.49	8.74	8.38
Ohio .....	6.54	6.20	5.83
Oklahoma .....	7.07	7.02	6.17
Oregon .....	6.36	6.47	5.89
South Dakota .....	6.91	7.94	7.14
Texas .....	6.72	7.07	6.00
Washington .....	6.25	6.47	6.12
United States .....	6.44	7.26	6.45

(D) Withheld to avoid disclosing data for individual operations.

(S) Insufficient number of reports to establish an estimate.

## Prices Received for Winter Wheat – States and United States: December 2011 with Comparisons

State	December 2010	November 2011	Preliminary December 2011
	(dollars per bushel)	(dollars per bushel)	(dollars per bushel)
Arkansas .....	(D)	(D)	6.00
California .....	6.21	(D)	(D)
Colorado .....	6.18	6.18	5.70
Idaho .....	5.92	6.56	(D)
Illinois .....	7.28	6.31	5.80
Indiana .....	6.14	5.68	5.59
Kansas .....	6.91	6.75	6.15
Michigan .....	6.83	5.94	5.50
Minnesota .....	6.26	(D)	6.10
Missouri .....	5.46	6.29	6.00
Montana .....	5.99	6.76	6.49
Nebraska .....	6.33	6.18	6.00
North Carolina .....	7.29	7.00	6.65
North Dakota .....	5.73	6.59	5.95
Ohio .....	6.54	6.20	5.83
Oklahoma .....	7.07	7.02	6.17
Oregon .....	6.27	6.27	5.70
South Dakota .....	6.42	6.92	6.11
Texas .....	6.72	7.07	6.00
Washington .....	6.10	6.05	5.83
United States .....	6.40	6.42	5.93

(D) Withheld to avoid disclosing data for individual operations.

**Prices Received for Durum Wheat – States and United States: December 2011 with Comparisons**

State	December 2010	November 2011	Preliminary December 2011
	(dollars per bushel)	(dollars per bushel)	(dollars per bushel)
Arizona .....	(D)	(S)	(S)
California .....	(D)	(S)	(S)
Idaho .....	(D)	(D)	(D)
Montana .....	5.99	12.60	10.80
North Dakota .....	5.62	10.20	10.40
United States .....	5.71	10.40	10.40

(D) Withheld to avoid disclosing data for individual operations.

(S) Insufficient number of reports to establish an estimate.

**Prices Received for Spring Wheat – States and United States: December 2011 with Comparisons**

State	December 2010	November 2011	Preliminary December 2011
	(dollars per bushel)	(dollars per bushel)	(dollars per bushel)
Colorado .....	(D)	6.22	(D)
Idaho .....	6.23	7.32	(D)
Minnesota .....	6.08	8.66	8.00
Montana .....	6.44	8.50	7.69
North Dakota .....	6.72	8.67	8.15
Oregon .....	6.94	7.57	6.90
South Dakota .....	7.27	8.89	8.09
Washington .....	6.97	8.03	7.28
United States .....	6.60	8.46	7.63

(D) Withheld to avoid disclosing data for individual operations.



### Prices Received for All Barley – States and United States: December 2011 with Comparisons

State	December 2010	November 2011	Preliminary December 2011
	(dollars per bushel)	(dollars per bushel)	(dollars per bushel)
California .....	(D)	(S)	(S)
Colorado .....	(D)	5.30	(D)
Idaho .....	3.99	5.56	5.86
Minnesota .....	(D)	(D)	(D)
Montana .....	3.70	5.21	5.18
North Dakota .....	3.73	5.33	5.78
Oregon .....	3.95	4.34	4.50
Utah .....	4.35	5.43	(D)
Washington .....	3.77	4.59	4.03
Wyoming .....	(D)	(D)	(S)
United States .....	3.86	5.39	5.50

(D) Withheld to avoid disclosing data for individual operations.

(S) Insufficient number of reports to establish an estimate.

### Prices Received for Malting Barley – States: December 2011 with Comparisons

State	December 2010	November 2011	Preliminary December 2011
	(dollars per bushel)	(dollars per bushel)	(dollars per bushel)
Idaho .....	3.99	5.62	(D)
Minnesota .....	3.95	(D)	(D)
Montana .....	3.85	5.31	(D)
North Dakota .....	3.93	5.34	5.90
Wyoming .....	(D)	(D)	(S)

(D) Withheld to avoid disclosing data for individual operations.

(S) Insufficient number of reports to establish an estimate.

### Prices Received for Feed Barley – States: December 2011 with Comparisons

State	December 2010	November 2011	Preliminary December 2011
	(dollars per bushel)	(dollars per bushel)	(dollars per bushel)
Idaho .....	3.98	4.67	(D)
Minnesota .....	3.07	(D)	(D)
Montana .....	3.30	4.66	(D)
North Dakota .....	3.02	5.31	(D)
Wyoming .....	(D)	(S)	(S)

(D) Withheld to avoid disclosing data for individual operations.

(S) Insufficient number of reports to establish an estimate.

**Prices Received for Corn – States and United States: December 2011 with Comparisons**

State	December 2010	November 2011	Preliminary December 2011
	(dollars per bushel)	(dollars per bushel)	(dollars per bushel)
Colorado .....	4.66	5.85	5.61
Illinois .....	4.84	5.90	5.40
Indiana .....	4.94	6.11	5.50
Iowa .....	4.86	5.74	5.40
Kansas .....	5.18	6.08	5.85
Kentucky .....	4.76	6.10	5.70
Michigan .....	5.15	5.70	5.20
Minnesota .....	4.42	5.53	5.20
Missouri .....	5.06	6.26	5.65
Nebraska .....	4.83	5.77	5.40
North Carolina .....	5.60	6.89	6.39
North Dakota .....	4.60	5.41	5.30
Ohio .....	5.04	6.03	5.51
Pennsylvania .....	5.86	6.79	6.52
South Dakota .....	4.55	5.68	5.51
Tennessee .....	4.80	6.52	6.00
Texas .....	4.59	6.28	6.23
Wisconsin .....	4.56	5.75	5.40
United States .....	4.82	5.84	5.44

**Prices Received for Soybeans – States and United States: December 2011 with Comparisons**

State	December 2010	November 2011	Preliminary December 2011
	(dollars per bushel)	(dollars per bushel)	(dollars per bushel)
Arkansas .....	11.50	12.10	11.70
Illinois .....	11.90	11.90	11.30
Indiana .....	12.20	11.80	11.10
Iowa .....	11.60	11.60	10.90
Kansas .....	12.20	11.30	10.60
Kentucky .....	11.40	12.10	11.50
Louisiana .....	10.30	11.90	11.00
Michigan .....	11.90	11.50	10.70
Minnesota .....	11.30	11.50	11.10
Mississippi .....	10.50	11.90	11.50
Missouri .....	11.80	11.80	11.40
Nebraska .....	11.80	11.50	11.00
North Carolina .....	11.80	11.40	10.80
North Dakota .....	10.70	11.30	10.50
Ohio .....	12.10	11.80	11.30
South Dakota .....	11.10	11.50	10.70
Tennessee .....	11.50	12.10	11.60
Wisconsin .....	11.60	11.80	11.00
United States .....	11.60	11.70	11.10

### Prices Received for Oats – States and United States: December 2011 with Comparisons

State	December 2010	November 2011	Preliminary December 2011
	(dollars per bushel)	(dollars per bushel)	(dollars per bushel)
Illinois .....	(D)	(D)	(S)
Iowa .....	3.61	3.71	3.45
Michigan .....	3.17	3.78	3.60
Minnesota .....	2.73	3.23	3.20
Montana .....	(D)	(D)	(D)
Nebraska .....	3.40	3.72	3.60
New York .....	2.33	(D)	(D)
North Dakota .....	2.99	2.90	(D)
Oregon .....	(S)	(D)	(S)
Pennsylvania .....	3.98	5.83	(S)
South Dakota .....	2.89	3.63	3.61
Texas .....	(S)	(D)	(D)
Wisconsin .....	3.12	3.91	3.75
United States .....	2.94	3.36	3.31

(D) Withheld to avoid disclosing data for individual operations.

(S) Insufficient number of reports to establish an estimate.

### Prices Received for Sorghum Grain – States and United States: December 2011 with Comparisons

State	December 2010	November 2011	Preliminary December 2011
	(dollars per cwt)	(dollars per cwt)	(dollars per cwt)
Arkansas .....	(D)	9.66	10.00
Illinois .....	10.80	10.20	(S)
Kansas .....	8.98	10.70	10.00
Louisiana .....	(D)	(D)	(S)
Missouri .....	9.02	10.70	10.50
Nebraska .....	8.86	10.40	9.90
Oklahoma .....	8.99	10.20	9.50
Texas .....	8.24	10.70	10.70
United States .....	8.79	10.70	10.10

(D) Withheld to avoid disclosing data for individual operations.

(S) Insufficient number of reports to establish an estimate.

**Prices Received for Dry Beans – States and United States: December 2011 with Comparisons**

State	December 2010	November 2011	Preliminary December 2011
	(dollars per cwt)	(dollars per cwt)	(dollars per cwt)
California .....	43.70	67.40	(D)
Colorado .....	22.50	44.70	44.00
Idaho .....	26.40	37.80	46.20
Michigan .....	30.00	46.80	46.70
Minnesota .....	25.00	34.20	45.00
Nebraska .....	23.50	42.20	43.30
North Dakota .....	21.80	39.40	42.10
United States .....	24.60	39.90	45.30

(D) Withheld to avoid disclosing data for individual operations.

**Prices Received for Peanuts (In-Shell) – States and United States: December 2011 with Comparisons**

State	December 2010	November 2011	Preliminary December 2011
	(dollars per pound)	(dollars per pound)	(dollars per pound)
Alabama .....	0.208	0.269	0.273
Florida .....	0.211	0.276	0.257
Georgia .....	0.220	0.307	0.306
Mississippi .....	0.169	0.394	0.237
New Mexico .....	(D)	(D)	(S)
North Carolina .....	0.234	0.370	0.339
Oklahoma .....	(D)	(D)	0.336
South Carolina .....	0.247	0.357	0.301
Texas .....	0.296	0.459	0.448
Virginia .....	0.246	0.347	0.303
United States .....	0.240	0.331	0.304

(D) Withheld to avoid disclosing data for individual operations.

(S) Insufficient number of reports to establish an estimate.

### Prices Received for Sunflower – States and United States: December 2011 with Comparisons

State	December 2010	November 2011	Preliminary December 2011
	(dollars per cwt)	(dollars per cwt)	(dollars per cwt)
Colorado .....	22.30	29.80	29.40
Kansas .....	(D)	31.30	29.10
Minnesota .....	19.00	35.10	(D)
North Dakota .....	21.20	30.20	31.40
South Dakota .....	19.10	27.40	28.10
United States .....	20.60	29.00	29.80

(D) Withheld to avoid disclosing data for individual operations.

### Prices Received for Canola – States and United States: December 2011 with Comparisons

State	December 2010	November 2011	Preliminary December 2011
	(dollars per cwt)	(dollars per cwt)	(dollars per cwt)
Minnesota .....	22.30	(D)	(S)
North Dakota .....	19.50	23.30	22.80
United States .....	19.50	23.30	22.80

(D) Withheld to avoid disclosing data for individual operations.

(S) Insufficient number of reports to establish an estimate.

### Prices Received for Flaxseed – States and United States: December 2011 with Comparisons

State	December 2010	November 2011	Preliminary December 2011
	(dollars per bushel)	(dollars per bushel)	(dollars per bushel)
North Dakota .....	13.10	14.00	(D)
United States .....	13.10	14.00	(D)

(D) Withheld to avoid disclosing data for individual operations.

### Prices Received for Hops – States and United States: 2010 and 2011

State	2010	2011
	(dollars per pound)	(dollars per pound)
Idaho .....	3.89	2.72
Oregon .....	3.96	2.93
Washington .....	3.11	2.75
United States .....	3.28	2.77

## Prices Received for Upland Cotton and Cottonseed – States and United States: December 2011 with Comparisons

[Cottonseed marketing year August - February]

State	Cotton, Upland			Cottonseed		
	December 2010	November 2011	Preliminary December 2011	December 2010	November 2011	Preliminary December 2011
	(dollars per pound)	(dollars per pound)	(dollars per pound)	(dollars per ton)	(dollars per ton)	(dollars per ton)
Alabama .....	0.974	0.960	(D)	121.00	204.00	208.00
Arizona .....	0.796	0.947	(D)	204.00	302.00	309.00
Arkansas .....	(D)	0.928	1.060	(S)	268.00	239.00
California .....	1.190	1.100	(D)	(D)	360.00	350.00
Georgia .....	0.906	0.955	0.953	137.00	208.00	206.00
Louisiana .....	0.729	0.923	0.927	(S)	288.00	(S)
Mississippi .....	0.757	0.976	0.965	(S)	248.00	263.00
North Carolina .....	0.856	0.902	0.894	143.00	203.00	188.00
Tennessee .....	0.886	0.939	0.947	190.00	270.00	270.00
Texas .....	0.792	0.891	0.857	157.00	322.00	325.00
United States .....	0.812	0.925	0.937	163.00	269.00	264.00

(D) Withheld to avoid disclosing data for individual operations.

(S) Insufficient number of reports to establish an estimate.

## Prices Received and Farm Marketings for Upland Cotton and Rice – United States: December 2011 with Comparisons

Item	December 2010	November 2011	Preliminary December 2011
Cotton, Upland			
Average price ..... dollars/pound	0.812	0.925	0.937
Marketings <sup>1</sup> ..... 1,000 bales	4,253	1,699	(NA)
Rice, all			
Average price ..... dollars/cwt	13.80	14.50	15.10
Marketings <sup>2</sup> ..... 1,000 cwt	19,245	10,544	(NA)
Rice, long			
Average price ..... dollars/cwt	11.30	14.00	14.40
Marketings <sup>2</sup> ..... 1,000 cwt	13,092	7,203	(NA)
Rice, medium and short			
Average price ..... dollars/cwt	19.00	15.80	16.90
Marketings <sup>2</sup> ..... 1,000 cwt	6,153	3,341	(NA)

(NA) Not available.

<sup>1</sup> Marketings based on a survey of cotton buyers in the major producing States - Alabama, Arizona, Arkansas, California, Georgia, Louisiana, Mississippi, North Carolina, Tennessee, and Texas.

<sup>2</sup> Purchases by private firms and rice (rough equivalent) shipped by cooperatives.

## Prices Received for Hay by Type – States and United States: December 2011 with Comparisons

State	All hay			Alfalfa hay			Other hay		
	December 2010	November 2011	Preliminary December 2011	December 2010	November 2011	Preliminary December 2011	December 2010	November 2011	Preliminary December 2011
	(dollars per ton)	(dollars per ton)	(dollars per ton)	(dollars per ton)	(dollars per ton)	(dollars per ton)	(dollars per ton)	(dollars per ton)	(dollars per ton)
Arizona .....	130.00	233.00	248.00	130.00	235.00	250.00	125.00	185.00	200.00
California .....	138.00	231.00	226.00	147.00	241.00	237.00	109.00	189.00	177.00
Colorado .....	128.00	228.00	222.00	130.00	235.00	230.00	105.00	160.00	160.00
Idaho .....	138.00	232.00	226.00	140.00	236.00	228.00	105.00	150.00	150.00
Illinois .....	119.00	163.00	165.00	138.00	180.00	180.00	85.00	140.00	150.00
Iowa .....	102.00	132.00	135.00	115.00	143.00	142.00	78.00	89.00	93.00
Kansas .....	104.00	186.00	188.00	115.00	215.00	215.00	75.00	100.00	105.00
Kentucky .....	91.00	100.00	113.00	130.00	180.00	190.00	80.00	80.00	90.00
Michigan .....	98.00	102.00	103.00	110.00	115.00	110.00	80.00	85.00	90.00
Minnesota .....	93.00	122.00	122.00	100.00	140.00	140.00	75.00	80.00	80.00
Missouri .....	80.00	115.00	103.00	140.00	235.00	250.00	65.00	90.00	75.00
Montana .....	75.00	96.00	98.00	76.00	96.00	98.00	72.00	92.00	96.00
Nebraska .....	74.00	125.00	121.00	77.00	135.00	131.00	64.00	94.00	94.00
Nevada .....	137.00	222.00	227.00	139.00	225.00	230.00	110.00	175.00	160.00
New Mexico .....	160.00	302.00	298.00	165.00	309.00	305.00	135.00	230.00	227.00
New York .....	102.00	98.00	96.00	125.00	120.00	105.00	100.00	95.00	95.00
North Dakota .....	60.00	69.00	74.00	63.00	73.00	80.00	46.00	52.00	54.00
Ohio .....	97.00	117.00	112.00	163.00	186.00	183.00	76.00	82.00	85.00
Oklahoma .....	83.00	183.00	187.00	138.00	229.00	236.00	76.00	126.00	126.00
Oregon .....	153.00	219.00	216.00	148.00	240.00	250.00	160.00	190.00	175.00
Pennsylvania .....	111.00	127.00	156.00	145.00	180.00	194.00	105.00	100.00	130.00
South Dakota .....	80.00	125.00	136.00	83.00	132.00	147.00	69.00	97.00	97.00
Texas .....	119.00	163.00	181.00	180.00	271.00	270.00	112.00	145.00	169.00
Utah .....	109.00	192.00	198.00	109.00	195.00	200.00	99.00	156.00	160.00
Washington .....	144.00	226.00	226.00	130.00	240.00	240.00	170.00	190.00	200.00
Wisconsin .....	96.00	117.00	116.00	100.00	130.00	130.00	70.00	90.00	90.00
Wyoming .....	89.00	142.00	139.00	90.00	145.00	145.00	85.00	125.00	125.00
United States .....	111.00	176.00	177.00	121.00	198.00	199.00	96.00	122.00	126.00

## Prices Received for Apples – States and United States: December 2011 with Comparisons

[Equivalent packinghouse-door returns for California, Michigan, New York, and Washington. Prices at point of first sale for other States]

State	Apples, fresh use		
	December 2010	November 2011	Preliminary December 2011
	(dollars per pound)	(dollars per pound)	(dollars per pound)
California .....	0.304	(NA)	(NA)
Michigan .....	0.290	0.345	0.345
New York .....	0.256	0.366	0.357
Ohio .....	0.390	0.480	0.460
Pennsylvania .....	0.269	0.325	0.318
Virginia .....	0.260	0.440	0.360
Washington .....	0.304	0.384	0.375
United States .....	0.293	0.383	0.367

(NA) Not available.

## Prices Received for Citrus Fruits by Utilization – States and United States: December 2010

[Net pounds per box: grapefruit in California-80, Florida-85, Texas-80; lemons-80; oranges in California-80, Florida-90, Texas-85; tangelos-90; tangerines and mandarins in Arizona and California-80, Florida-95]

Commodity, State, and type	FOB packed fresh	Equivalent returns					
		Packinghouse-door			On-tree		
		All	Fresh	Process	All	Fresh	Process
	(dollars per box)	(dollars per box)	(dollars per box)	(dollars per box)	(dollars per box)	(dollars per box)	(dollars per box)
Grapefruit							
California <sup>1</sup> .....	18.10	11.70	11.70	(S)	9.60	9.60	(S)
Florida .....	23.20	10.33	13.38	5.10	7.92	11.18	2.32
White .....	26.00	10.17	16.10	4.75	7.81	13.95	2.20
Colored .....	22.80	10.36	13.00	5.20	7.94	10.80	2.35
Texas .....	22.40	8.54	12.10	1.60	7.04	10.55	0.20
United States .....	22.50	10.45	13.17	5.10	8.06	10.98	2.32
Lemons							
Arizona .....	(D)	(D)	(D)	(D)	(D)	(D)	(D)
California .....	35.80	16.22	24.90	(D)	10.35	19.03	(D)
United States .....	35.60	15.38	24.65	(D)	9.51	18.78	(D)
Oranges							
California							
Navel and miscellaneous ..	24.80	13.70	16.16	(D)	11.27	13.75	(D)
Florida							
Early and mids .....	23.40	8.23	13.40	7.88	5.71	10.65	5.38
United States .....	24.40	9.17	15.44	7.61	6.66	12.94	5.11
Tangelos							
Florida .....	21.20	8.74	10.80	7.20	5.56	7.65	4.00
Tangerines and mandarins							
Arizona .....	(D)	(D)	(D)	(D)	(D)	(D)	(D)
California .....	(D)	(D)	(D)	(D)	(D)	(D)	(D)
Florida .....	28.00	12.21	15.75	6.40	8.71	12.25	2.90
United States .....	42.90	24.71	33.25	3.26	21.53	30.29	-0.49

(D) Withheld to avoid disclosing data for individual operations.

(S) Insufficient number of reports to establish an estimate.

<sup>1</sup> Some processed sales included in fresh sales.



## Prices Received for Citrus Fruits by Utilization – States and United States: November 2011

[Net pounds per box: grapefruit in California-80, Florida-85, Texas-80; lemons-80; oranges in California-80, Florida-90, Texas-85; tangelos-90; tangerines and mandarins in Arizona and California-80, Florida-95]

Commodity, State, and type	FOB packed fresh	Equivalent returns					
		Packinghouse-door			On-tree		
		All	Fresh	Process	All	Fresh	Process
	(dollars per box)	(dollars per box)	(dollars per box)	(dollars per box)	(dollars per box)	(dollars per box)	(dollars per box)
Grapefruit							
California <sup>1</sup> .....	12.10	5.57	5.57	(D)	3.43	3.43	(D)
Florida .....	19.40	8.42	9.75	6.17	5.99	7.51	3.42
White .....	22.50	8.97	12.80	5.90	6.54	10.60	3.30
Colored .....	19.00	8.33	9.40	6.25	5.89	7.15	3.45
Texas .....	28.20	17.20	17.90	1.60	15.66	16.35	0.20
United States .....	19.40	8.67	9.97	6.15	6.29	7.78	3.40
Lemons							
Arizona .....	(D)	(D)	(D)	(S)	(D)	(D)	(S)
California .....	36.20	20.03	25.08	(D)	14.04	19.09	(D)
United States .....	36.10	20.37	25.02	(D)	14.40	19.03	(D)
Oranges							
California							
Navel and miscellaneous ..	27.10	15.18	18.29	(S)	13.14	15.83	(S)
Valencia .....	(S)	(S)	(S)	(S)	(S)	(S)	(S)
Florida							
Early and mids .....	26.90	10.87	16.65	9.40	8.23	13.85	6.80
United States .....	27.00	12.38	17.78	8.43	9.95	15.21	6.10
Tangelos							
Florida .....	24.20	9.94	13.10	6.00	6.82	9.95	2.90
Tangerines and mandarins							
Arizona .....	(D)	(D)	(D)	(NA)	(D)	(D)	(NA)
California .....	(D)	(D)	(D)	(D)	(D)	(D)	(D)
Florida .....	28.30	13.20	16.00	7.40	9.37	12.30	3.30
United States .....	35.70	19.01	25.77	3.36	16.29	22.69	1.50

(D) Withheld to avoid disclosing data for individual operations.

(NA) Not available.

(S) Insufficient number of reports to establish an estimate.

<sup>1</sup> Some processed sales included in fresh sales.

## Prices Received for Citrus Fruits by Utilization – States and United States: December 2011

[Net pounds per box: grapefruit in California-80, Florida-85, Texas-80; lemons-80; oranges in California-80, Florida-90, Texas-85; tangelos-90; tangerines and mandarins in Arizona and California-80, Florida-95]

Commodity, State, and type	FOB packed fresh	Equivalent returns					
		Packinghouse-door			On-tree		
		All	Fresh	Process	All	Fresh	Process
	(dollars per box)	(dollars per box)	(dollars per box)	(dollars per box)	(dollars per box)	(dollars per box)	(dollars per box)
Grapefruit							
California <sup>1</sup> .....	14.50	7.97	7.97	(D)	5.83	5.83	(D)
Florida .....	18.60	8.11	9.02	7.02	5.63	6.78	4.26
White .....	(D)	(D)	(D)	(D)	(D)	(D)	(D)
Colored .....	18.40	8.10	8.80	7.15	5.61	6.55	4.35
Texas .....	23.70	9.34	13.40	1.60	7.84	11.85	0.20
United States .....	19.70	8.42	10.16	5.82	6.21	8.13	3.37
Lemons							
Arizona .....	(D)	(D)	(D)	(D)	(D)	(D)	(D)
California .....	36.90	20.01	25.78	(D)	14.02	19.79	(D)
United States .....	37.00	20.01	25.84	(D)	14.02	19.85	(D)
Oranges							
California							
Navel and miscellaneous ..	24.20	13.86	15.39	(D)	11.38	12.93	(D)
Florida							
Early and mids .....	23.50	8.84	13.25	8.60	6.23	10.45	6.00
United States .....	24.00	9.61	14.87	8.44	7.02	12.32	5.84
Tangelos							
Florida .....	21.00	9.69	9.90	9.50	6.56	6.75	6.40
Tangerines and mandarins							
Arizona .....	(D)	(D)	(D)	(NA)	(D)	(D)	(NA)
California .....	(D)	(D)	(D)	(D)	(D)	(D)	(D)
Florida .....	25.10	11.68	12.80	9.30	7.85	9.10	5.20
United States .....	40.10	24.37	30.81	4.06	21.15	27.88	-0.09

(D) Withheld to avoid disclosing data for individual operations.

(NA) Not available.

<sup>1</sup> Some processed sales included in fresh sales.

## Prices Received for Potatoes – States and United States: December 2011 with Comparisons

State	December 2010	November 2011	Preliminary December 2011
	(dollars per cwt)	(dollars per cwt)	(dollars per cwt)
California			
Spring .....	(S)	(S)	(S)
Fall .....	9.50	8.35	9.15
All <sup>1</sup> .....	9.50	8.35	9.15
Colorado			
Fresh <sup>1</sup> .....	12.50	11.60	(D)
All <sup>1</sup> .....	11.30	10.30	10.40
Florida .....	(S)	(S)	(S)
Idaho			
Fresh <sup>2</sup> .....	7.50	7.30	(D)
Processing .....	6.70	7.40	(D)
All <sup>1</sup> .....	7.00	7.35	7.55
Maine .....	9.45	9.60	10.00
Michigan .....	10.70	11.50	11.80
Minnesota .....	6.95	7.95	(D)
New York .....	12.20	14.30	14.50
North Carolina .....	(S)	(S)	(S)
North Dakota			
Fresh <sup>2</sup> .....	12.30	17.10	(D)
Processing .....	7.50	7.65	(D)
All <sup>1</sup> .....	9.20	10.50	10.00
Oregon .....	9.35	9.00	9.00
Texas .....	(S)	(S)	(S)
Virginia .....	(S)	(S)	(S)
Washington			
Processing .....	6.45	6.45	(D)
All <sup>1</sup> .....	7.60	7.35	7.40
Wisconsin			
Fresh <sup>2</sup> .....	11.70	11.20	(D)
Processing .....	11.50	7.85	(D)
All <sup>1</sup> .....	11.60	9.85	10.70
United States			
Fresh <sup>2</sup> .....	13.63	10.71	(D)
Processing .....	7.55	7.47	(D)
All <sup>1</sup> .....	9.94	8.54	8.86

(D) Withheld to avoid disclosing data for individual operations.

(S) Insufficient number of reports to establish an estimate.

<sup>1</sup> Average price of potatoes sold for all uses, including table stock, processing, seed, and livestock feed.

<sup>2</sup> Fresh market prices only. Includes table stock prices.

## Prices Received for All Milk – States and United States: December 2011 with Comparisons

[Before deduction for hauling. Includes quality, quantity, and other premiums. Excludes hauling subsidies]

State	December 2010		November 2011		Preliminary December 2011	
	Price	Fat test	Price	Fat test	Price	Fat test
	(dollars per cwt)	(percent)	(dollars per cwt)	(percent)	(dollars per cwt)	(percent)
Arizona .....	16.60	3.69	19.60	3.60	19.40	3.67
California .....	14.86	3.85	18.41	3.75	17.20	3.80
Colorado .....	16.80	3.70	19.90	3.66	19.50	3.68
Florida .....	22.30	3.77	23.70	3.73	23.60	3.73
Idaho .....	15.00	3.82	19.20	3.77	19.00	3.82
Illinois .....	17.80	3.90	21.00	3.87	20.30	3.93
Indiana .....	18.10	3.93	21.00	3.76	20.80	3.80
Iowa .....	16.80	3.83	21.20	3.85	20.50	3.87
Kansas .....	18.10	3.93	20.40	3.91	20.30	3.95
Michigan .....	17.60	3.79	21.00	3.75	20.90	3.76
Minnesota .....	16.30	3.87	21.70	3.90	20.70	3.91
Missouri .....	17.10	3.85	20.90	3.79	20.70	3.81
New Mexico .....	16.60	3.78	18.90	3.63	18.90	3.65
New York .....	18.30	3.86	21.60	3.83	21.00	3.85
Ohio .....	18.60	3.98	21.60	3.82	21.50	3.83
Oregon .....	17.60	3.94	22.20	3.92	21.80	3.93
Pennsylvania .....	18.90	3.85	22.20	3.85	21.80	3.85
Texas .....	17.80	3.96	20.70	3.88	20.40	3.92
Utah .....	17.00	3.87	19.50	3.84	19.40	3.90
Vermont .....	18.20	3.91	21.60	3.86	21.00	3.89
Virginia .....	20.60	3.91	23.20	3.90	22.80	3.96
Washington .....	16.90	3.94	21.00	3.92	20.70	3.93
Wisconsin .....	16.50	3.82	21.30	3.83	20.70	3.83
United States .....	16.70	3.85	20.40	3.80	19.80	3.83

## Prices Received for Milk Cows – States and United States: October 2011 with Comparisons

[Animals sold for dairy herd replacement only. Prices estimated in January, April, July, and October]

State	October 2010 (dollars per head)	July 2011 (dollars per head)	October 2011 (dollars per head)
Arizona .....	1,400	1,500	1,550
California .....	1,300	1,400	1,400
Colorado .....	1,350	1,550	1,550
Florida .....	1,400	1,540	1,600
Idaho .....	1,350	1,500	1,450
Illinois .....	1,320	1,440	1,460
Indiana .....	1,340	1,500	1,550
Iowa .....	1,250	1,470	1,450
Kansas .....	1,250	1,400	1,400
Michigan .....	1,400	1,550	1,600
Minnesota .....	1,280	1,480	1,440
Missouri .....	1,190	1,290	1,270
New Mexico .....	1,370	1,460	1,480
New York .....	1,300	1,450	1,450
Ohio .....	1,360	1,520	1,510
Oregon .....	1,300	1,450	1,430
Pennsylvania .....	1,400	1,550	1,550
Texas .....	1,260	1,450	1,400
Utah .....	1,150	1,340	1,380
Vermont .....	1,350	1,600	1,600
Virginia .....	1,340	1,460	1,490
Washington .....	1,300	1,450	1,450
Wisconsin .....	1,410	1,570	1,560
United States .....	1,330	1,480	1,480

## Commodity Parity Prices and Price as Percent of Parity Price – United States: December 2011 with Comparisons

[Parity prices are computed under the provisions of Title III, Subtitle a, Section 301 (a) of the Agricultural Adjustment Act of 1938 as amended by the Agricultural Acts of 1948, 1949, and 1956. See January *Agricultural Prices* for details on adjusted base price and parity price computations. Parity data not available for blank cells. Primary source of data for livestock and milk prices is United States Department of Agriculture's Agricultural Marketing Service]

Commodity and unit	Adjusted base price	Parity price			Price as percent of parity		
		December 2010	November 2011	December 2011	December 2010	November 2011	December 2011
	(dollars)	(dollars)	(dollars)	(dollars)	(percent)	(percent)	(percent)
<b>Basic commodities</b>							
All wheat .....bushel	0.608	15.20	16.60	16.60	42	44	39
Rice .....cwt	1.63	35.10	44.50	44.60	39	33	34
Corn .....bushel	0.384	9.46	10.50	10.50	51	56	52
<b>Cotton</b>							
Upland ..... pound	0.071	2.14	1.94	1.94	38	48	48
American Pima ..... pound	0.129	3.36	3.52	3.53	35	51	51
Peanuts ..... pound	0.027	0.738	0.738	0.739	33	45	41
<b>Designated nonbasic</b>							
All milk, to plants <sup>1</sup> .....cwt	1.82	46.60	49.70	49.80	33	38	37
Honey, extracted <sup>2</sup> ..... pound	0.134	3.23	3.66	3.67	45	39	39
<b>Wool and mohair</b>							
Wool ..... pound	0.092	2.16	2.51	2.52	37	46	46
Mohair ..... pound	0.324	8.73	8.85	8.86	30	39	39
<b>Other nonbasic</b>							
Apples, fresh <sup>3</sup> ..... pound	0.033	0.840	0.902	0.903	35	42	41
Barley .....bushel	0.425	10.60	11.60	11.60	36	46	47
Canola .....cwt	1.740	41.50	47.50	47.60	47	49	48
Cottonseed ..... ton	15.40	384.00	421.00	421.00	42	64	63
Dry edible beans .....cwt	2.92	73.30	79.80	79.90	34	50	57
Flaxseed .....bushel	1.020	24.70	27.90	27.90	53	50	48
Oats .....bushel	0.250	6.21	6.83	6.84	47	49	48
Potatoes .....cwt	0.834	21.20	22.80	22.80	47	37	39
Sorghum grain .....cwt	0.675	16.70	18.40	18.50	53	58	55
Soybeans .....bushel	0.948	23.30	25.90	25.90	50	45	43
Sunflower, all .....cwt	1.91	47.10	52.20	52.30	44	56	57
<b>Citrus (equivalent on-tree)</b>							
Grapefruit .....box	0.663	16.50	18.10	18.10	49	35	34
Lemons .....box	1.36	35.10	37.20	37.20	27	39	38
Oranges .....box	0.686	16.80	18.70	18.80	40	53	37
Tangerines .....box	1.43	35.40	39.10	39.10	61	42	54
<b>Livestock and poultry</b>							
Beef cattle .....cwt	10.10	259.00	276.00	276.00	38	43	44
Calves .....cwt	14.10	366.00	385.00	386.00	36	40	41
Hogs .....cwt	5.51	141.00	151.00	151.00	37	43	42
Lambs .....cwt	11.70	293.00	320.00	320.00	50	59	(NA)
Sheep .....cwt	4.38	111.00	120.00	120.00	60	49	(NA)
Eggs <sup>1</sup> .....dozen	0.091	2.32	2.49	2.49	38	36	39
Turkeys, live ..... pound	0.056	1.420	1.530	1.530	48	51	49

(NA) Not available.

<sup>1</sup> Seasonally adjusted price as percentage of parity price.

<sup>2</sup> Wholesale extracted. Adjusted base price derived from state annual averages prices weighted by production. For 1982 through 1985 the national averages are the support prices.

<sup>3</sup> Equivalent packinghouse-door returns for California, New York (apples only), Oregon (except peaches), and Washington. Price at point of first sale for other states.

## Commodity Parity Prices – United States: December 2011 with Comparisons

[Parity prices are computed under the provisions of Title III, Subtitle a, Section 301 (a) of the Agricultural Adjustment Act of 1938 as amended by the Agricultural Acts of 1948, 1949, and 1956. See January *Agricultural Prices* for details on adjusted base price and parity price computations]

Commodity and unit	Adjusted base price	Parity price		
		December 2010	November 2011	December 2011
	(dollars)	(dollars)	(dollars)	(dollars)
<b>Field crops and miscellaneous</b>				
Hops .....	0.307	7.63	8.39	8.40
Mustard seed .....	2.66	65.90	72.70	72.80
Rapeseed .....	2.14	51.90	58.50	58.60
Rye .....	0.492	12.10	13.40	13.50
Safflower .....	1.94	49.60	53.00	53.10
Spearmint oil .....	1.44	36.10	39.30	39.40
Sweetpotatoes .....	2.27	57.70	62.00	62.10
<b>Tobacco</b>				
Flue-cured, 11-14 .....	0.208	5.50	5.68	5.69
Fire-cured, 21-23 .....	0.293	7.58	8.00	8.02
Burley, 31 .....	0.214	5.77	5.85	5.86
Maryland, 32 .....	0.183	4.73	5.00	5.01
Dark air-cured, 35-37 .....	0.261	6.82	7.13	7.14
Pennsylvania seedleaf, 41 .....	0.191	4.94	5.22	5.23
Cigar binder, 51 .....	0.675	16.60	18.40	18.50
<b>Noncitrus fruit</b>				
Apples, processing <sup>1</sup> .....	16.10	425.00	440.00	440.00
Apricots				
Fresh <sup>2</sup> .....	114.00	2,750.00	3,110.00	3,120.00
Dried (California) .....	262.00	6,440.00	7,160.00	7,170.00
Avocados <sup>2</sup> .....	198.00	5,370.00	5,410.00	5,420.00
Cherries				
Sweet .....	210.00	5,220.00	5,740.00	5,750.00
Tart .....	0.034	0.890	0.929	0.930
Cranberry <sup>3</sup> .....	4.89	121.00	134.00	134.00
Dates <sup>2</sup> (California) .....	183.00	5,010.00	5,000.00	5,010.00
Grapes				
Raisin variety .....	117.00	2,800.00	3,200.00	3,200.00
Other dried .....	65.40	1,690.00	1,790.00	1,790.00
Kiwifruit .....	94.40	2,420.00	2,580.00	2,580.00
Nectarines, fresh <sup>2</sup> (California) .....	55.30	1,410.00	1,510.00	1,510.00
Olives, canning <sup>3</sup> (California) .....	87.40	2,410.00	2,390.00	2,390.00

See footnote(s) at end of table.

--continued

## Commodity Parity Prices – United States: December 2011 with Comparisons (continued)

[Parity prices are computed under the provisions of Title III, Subtitle a, Section 301 (a) of the Agricultural Adjustment Act of 1938 as amended by the Agricultural Acts of 1948, 1949, and 1956. See January *Agricultural Prices* for details on adjusted base price and parity price computations]

Commodity and unit	Adjusted base price	Parity price			
		December 2010	November 2011	December 2011	
	(dollars)	(dollars)	(dollars)	(dollars)	
Noncitrus fruit - continued					
Papayas (Hawaii) .....	pound	0.046	1.17	1.15	1.26
Peaches					
Fresh <sup>4</sup> .....	ton	83.00	2,110.00	2,080.00	2,270.00
Dried (California) .....	ton	57.30	1,650.00	1,620.00	1,570.00
Processing, excludes dried					
Clingstone <sup>3</sup> (California) .....	ton	33.70	857.00	843.00	922.00
Pears					
Fresh <sup>4</sup> .....	ton	55.60	1,400.00	1,370.00	1,520.00
Dried <sup>1</sup> (California) .....	ton	178.00	4,400.00	4,330.00	4,870.00
Plums (California)					
Fresh, equivalent on-tree .....	ton	60.20	1,550.00	1,520.00	1,650.00
Prunes, dried <sup>1</sup> (California) .....	ton	147.00	3,710.00	3,650.00	4,020.00
Prunes and plums					
Fresh, excludes California <sup>5</sup> .....	ton	63.80	1,610.00	1,580.00	1,750.00
Processing, excludes dried <sup>1</sup> .....	ton	25.70	674.00	663.00	703.00
Tree nuts <sup>6</sup>					
Almonds .....	pound	0.209	5.14	5.05	5.72
Hazelnuts .....	ton	183.00	4,350.00	4,280.00	5,010.00
Pistachios .....	pound	0.194	4.83	4.75	5.31
Walnuts .....	ton	177.00	4,380.00	4,300.00	4,840.00
Vegetables, fresh <sup>7</sup>					
Carrots <sup>8</sup> .....	cwt	2.61	64.60	63.50	71.40
Cauliflower <sup>8</sup> .....	cwt	4.26	110.00	108.00	117.00
Celery <sup>8</sup> .....	cwt	2.05	53.20	52.30	56.10
Honeydew melons .....	cwt	2.17	58.80	57.80	59.40
Lettuce .....	cwt	2.35	59.80	58.80	64.30
Onions <sup>8</sup> .....	cwt	1.57	38.70	38.00	43.00
Tomatoes .....	cwt	4.75	119.00	117.00	130.00

<sup>1</sup> Equivalent returns at processing plant door.

<sup>2</sup> Equivalent returns at packinghouse door.

<sup>3</sup> Equivalent returns for bulk fruit at first delivery point.

<sup>4</sup> Equivalent packinghouse-door returns for California, New York (apples only), Oregon (except peaches), and Washington. Price at point of first sale for other states.

<sup>5</sup> Based on "as sold" prices for fresh fruit in all states.

<sup>6</sup> Prices In-Shell basis except almonds which are shelled basis.

<sup>7</sup> FOB shipping point prices.

<sup>8</sup> Includes some processing.



## Reliability of Prices Received Estimates

**Definition:** Prices received represent sales from producers to first buyers. They include all grades and qualities. The average commodity price from the survey multiplied by the total quantity marketed theoretically should give the total cash receipts for the commodity.

**Survey procedures:** Primary sales data used to determine grain prices were obtained from probability samples of about 1900 mills and elevators. These procedures ensure that virtually all grain moving into commercial channels has a chance of being included in the survey. Generally, States surveyed account for 90 percent or more of total United States production. Livestock prices are obtained from packers, stockyards, auctions, dealers, and market check data from AMS-USDA, private marketing organizations, and state commodity groups and agencies. Inter-farm sales of grain and livestock are not included since they represent very small percentages of the total marketings. Grain marketed for seed is also excluded. Fruit and vegetable prices are obtained from sample surveys and market check data from AMS-USDA, private marketing organizations, state agencies, and universities.

**Summary and estimation procedures:** Survey quantities sold are expanded by strata to state levels and used to weight average strata prices to a state average. State prices are then weighted to a United States price based on expanded marketings. Recommendations are prepared by the State Field Offices and reviewed by the Agricultural Statistics Board in Washington, D.C. State recommendations are reviewed for reasonableness with survey data, other States, and recent historic estimates.

**Revisions:** For most items, the current month's preliminary price represents a 3-5 day period around the 15th of the month. Previous month's prices represent actual dollars received for quantities sold during the entire month. Revisions are published in monthly issues of Agricultural Prices.

**Reliability:** United States price estimates based on probability surveys generally have a sampling error of less than one percent for the major commodities such as corn, wheat, soybeans, cotton, and rice. Current methods of summarization for non-probability commodities are not designed directly to calculate sampling errors. However, analytical measures approximate the United States relative sampling errors at around five percent. Any nonsampling errors are attributed to such things as the inability to obtain correct information, differences in interpreting questions or definitions, mistakes in coding or processing the data, etc. Efforts are made at each step in the survey process to minimize these nonsampling errors.

## Prices Paid by Farmers

The December Index of Prices Paid for Commodities and Services, Interest, Taxes, and Farm Wage Rates (PPITW) at 205 (1990-1992=100), is down 0.5 percent from November 2011 but up 8.5 percent from December 2010.

**Production index:** The December index, at 217, decreased 0.5 percent from last month but increased 10 percent from last year. Lower prices in December for feed grains, complete feeds, diesel, and gasoline more than offset higher prices for feeder pigs, mixed fertilizer, supplements, and feeder cattle.

**Feed:** The December index, at 221, decreased 0.9 percent from November but increased 11 percent from last December. Since November, lower prices for feed grains and complete feeds offset higher prices for supplements.

**Livestock and poultry:** The December index, at 167, increased 1.8 percent from last month and 18 percent from last year. Since November, prices for feeder pigs and feeder cattle are higher. The December feeder cattle price, at \$145.40 per cwt, is up 90 cents per cwt from the November price. December feeder pigs averaged \$153.00 per cwt, up \$20.00 per cwt from November.

**Fertilizer:** The December index, at 350, is up 1.2 percent from November and 22 percent above December a year ago. Since November, prices for mixed fertilizer, nitrogen, and phosphate are higher.

**Chemicals:** The December index, at 145, decreased 1.4 percent from November but increased 0.7 percent from last December. Compared with last month, prices for herbicides, insecticides, and fungicides/other are slightly lower.

**Fuels:** The December index, at 357, is down 2.5 percent from a month earlier but 16 percent above December 2010. Compared with last month, prices for diesel, gasoline, and LP gas are lower.

**Machinery:** The December index, at 246, increased 0.4 percent from November and is 4.7 percent above last December. Compared with last month, prices for tractors and other machinery are slightly higher.

**Consumer price index:** The November 2011 Consumer Price Index, as issued by the Bureau of Labor Statistics, for all urban consumers (CPI-U) decreased 0.1 percent before seasonal adjustment to a level of 226.230 (1982-1984=100). The October index is 226.421. For the 12 month period ending in November, the overall index increased 3.4 percent.

## Prices Paid Indexes and Related Parity Ratios – United States: December 2011 with Comparisons

[Revised historical price indexes for months not shown are available at [www.nass.usda.gov](http://www.nass.usda.gov)]

Indexes and ratios	1910-1914 Base			1990-1992 Base		
	December 2010	November 2011	December 2011	December 2010	November 2011	December 2011
	(percent)	(percent)	(percent)	(percent)	(percent)	(percent)
Prices paid by farmers for commodities, services, interest, taxes, and wage rates (PPITW) .....	2522	2740	2736	189	206	205
Production .....	1912	2112	2108	197	218	217
Feed .....	974	1090	1077	200	223	221
Livestock & poultry .....	1811	2099	2132	142	164	167
Seeds .....	3082	3327	3327	311	336	336
Fertilizer .....	1049	1269	1281	286	346	350
Chemicals .....	887	909	899	144	147	145
Fuels .....	2387	2822	2754	309	366	357
Supplies & repairs .....	1143	1196	1200	161	169	169
Autos & trucks .....	3014	3084	3090	113	116	116
Machinery .....	5907	6142	6174	235	245	246
Building materials .....	2263	2340	2339	167	172	172
Services & rent .....	2041	2133	2130	(NA)	(NA)	(NA)
Services .....	(NA)	(NA)	(NA)	161	167	166
Rent .....	(NA)	(NA)	(NA)	191	203	203
Interest <sup>1</sup> .....	3389	3646	3646	135	145	145
Taxes <sup>2</sup> .....	5549	6032	6032	207	225	225
Wage rates .....	7192	7205	7205	192	193	193
Production, interest, taxes, and wage rates (PITW) .....	2612	2858	2853	194	213	212
Family living-CPI <sup>3</sup> .....	2082	2149	2147	163	168	168
Ratio (received/paid) .....	(NA)	(NA)	(NA)	81	89	86
Parity ratio <sup>4</sup> .....	38	43	41	(NA)	(NA)	(NA)
Parity ratio adjusted <sup>5</sup> .....	40	44	42	(NA)	(NA)	(NA)
PPITW adjusted for productivity <sup>6</sup> .....	1429	1476	1476	(NA)	(NA)	(NA)
Crop sector (PPITW) .....	(NA)	(NA)	(NA)	199	216	216
Livestock sector (PPITW) .....	(NA)	(NA)	(NA)	180	195	195
Farm sector (production) .....	(NA)	(NA)	(NA)	197	222	221
Non-farm sector (production) .....	(NA)	(NA)	(NA)	197	216	215

(NA) Not available.

<sup>1</sup> Interest per acre on farm real estate debt and interest rate on farm non-real estate debt.

<sup>2</sup> Farm real estate taxes payable per acre.

<sup>3</sup> Bureau of Labor Statistics, Consumer Price Index for all urban consumers (CPI-U), for the previous month converted by the USDA.

<sup>4</sup> Ratio of index of prices received to PPITW (1910-1914=100).

<sup>5</sup> Based on estimated cash receipts, from marketings and government payments, the preliminary adjustment factor is 1.044 for 2011 and the revised factor is 1.041 for 2010.

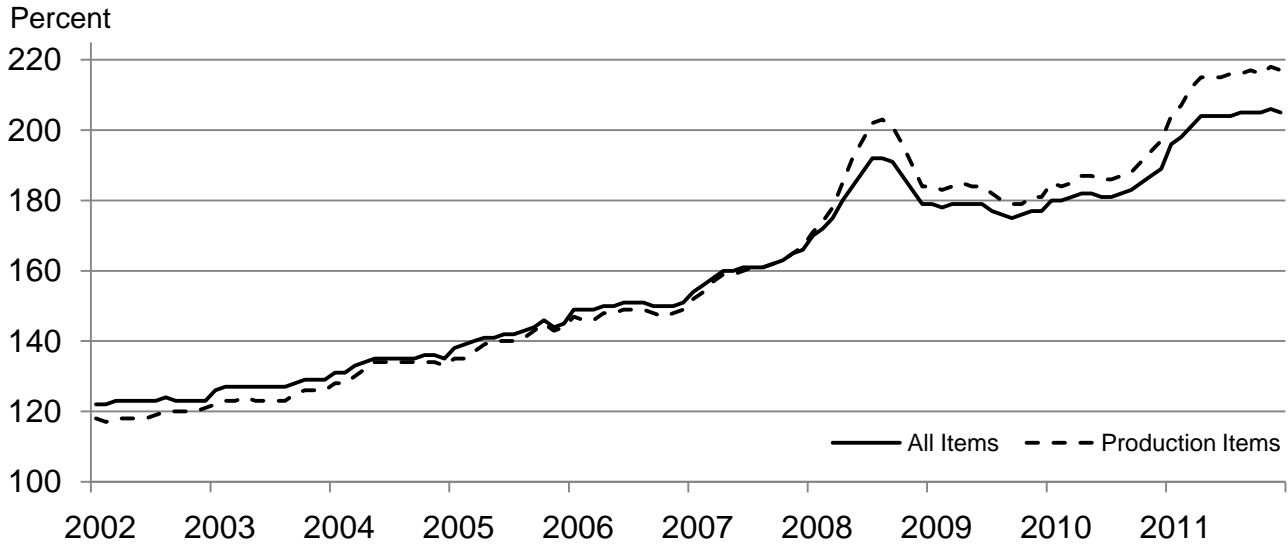
<sup>6</sup> PPITW is adjusted based on productivity trend for the prior 15 years.

## Prices Paid Indexes and Annual Weights for Input Components and Sub-Components – United States: December 2011 with Comparisons

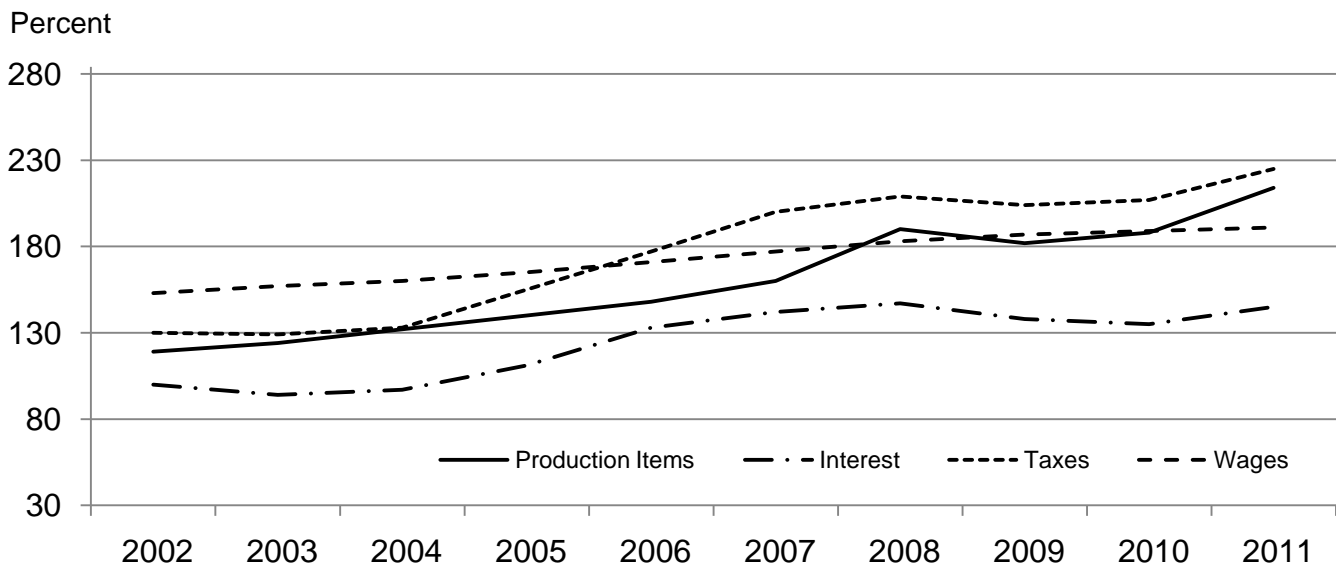
[Revised historical price indexes for months not shown are available at [www.nass.usda.gov](http://www.nass.usda.gov). Relative weights are a five year moving average]

	Relative weights		Indexes (1990-1992=100)		
	2010	2011	December 2010	November 2011	December 2011
	(percent)	(percent)	(percent)	(percent)	(percent)
Production items .....	70.2	70.6	197	218	217
Feed .....	11.9	12.2	200	223	221
Feed grains .....	1.7	1.7	208	253	237
Complete feeds .....	5.8	6.0	202	224	221
Hay & forages .....	1.5	1.5	149	222	225
Concentrates .....	1.9	1.9	208	187	187
Supplements .....	1.0	1.0	229	241	249
Livestock & poultry .....	8.6	8.5	142	164	167
Feeder cattle .....	6.7	6.6	141	171	172
Feeder pigs .....	0.7	0.7	162	145	166
Milk cow replacements .....	0.7	0.7	118	131	131
Poultry .....	0.5	0.5	151	151	151
Seeds .....	3.9	4.1	311	336	336
Field crops .....	3.6	3.7	329	356	356
Grasses & legumes .....	0.4	0.4	139	145	145
Fertilizer .....	5.2	5.5	286	346	350
Mixed fertilizer .....	2.3	2.4	284	327	330
Nitrogen .....	2.2	2.3	273	353	355
Potash & phosphate .....	0.7	0.8	332	387	396
Chemicals .....	3.2	3.3	144	147	145
Herbicides .....	2.0	2.1	130	132	131
Insecticides .....	0.7	0.7	165	170	168
Fungicides & other .....	0.5	0.5	171	177	175
Fuels .....	3.9	4.0	309	366	357
Diesel .....	2.5	2.5	331	409	401
Gasoline .....	0.9	0.8	260	293	284
LP gas .....	0.5	0.7	275	296	286
Supplies & repairs .....	4.6	4.6	161	169	169
Supplies .....	1.5	1.5	156	163	163
Repairs .....	3.0	3.0	163	171	172
Autos & trucks .....	1.5	1.4	113	116	116
Autos .....	0.2	0.2	111	115	115
Trucks .....	1.3	1.2	114	116	116
Machinery .....	4.5	4.3	235	245	246
Tractors .....	1.0	0.9	200	206	210
Self-propelled .....	1.8	1.7	247	256	256
Other machinery .....	1.7	1.6	244	255	256
Building materials .....	4.5	4.4	167	172	172
Services .....	12.1	12.1	161	167	166
Custom rates .....	1.2	1.2	145	148	148
Other services .....	10.8	10.9	163	169	168
Rent .....	6.3	6.3	191	203	203
Cash .....	3.4	3.4	243	258	258
Share .....	2.9	2.9	130	138	138
Interest .....	3.6	3.5	135	145	145
Taxes .....	3.0	3.1	207	225	225
Wage rates .....	7.5	7.4	192	193	193
Family living-CPI .....	15.7	15.4	163	168	168

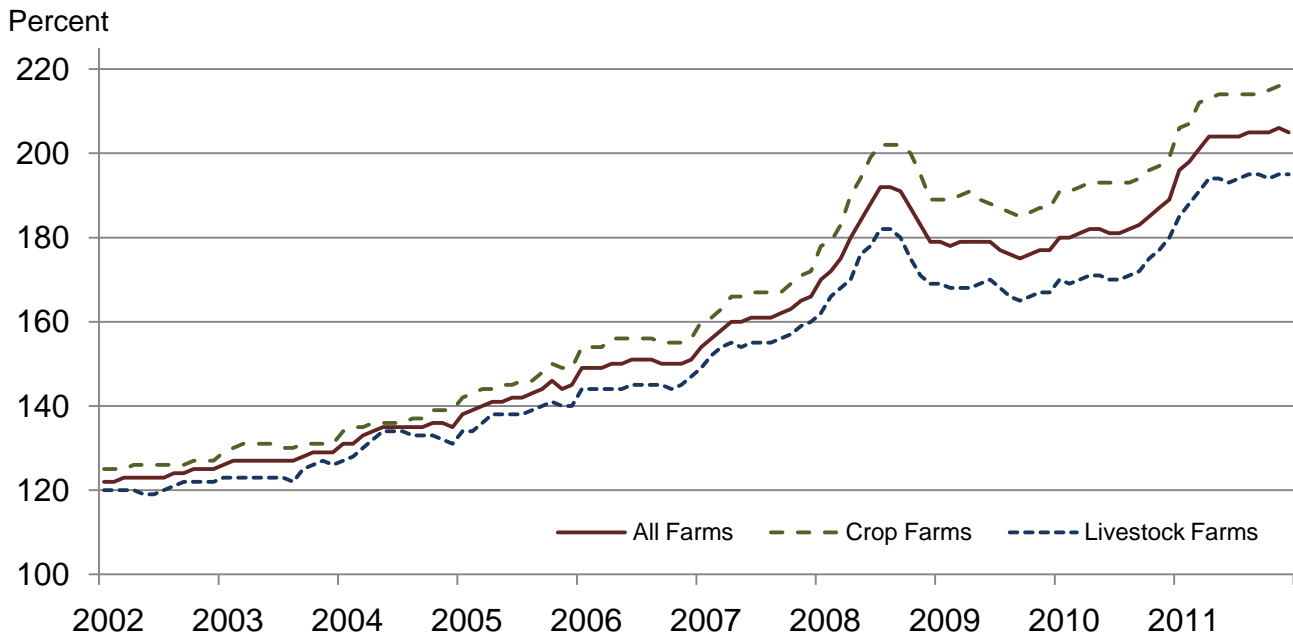
## Paid Indexes by Month, All Items and Production Items – United States: 1990-1992=100



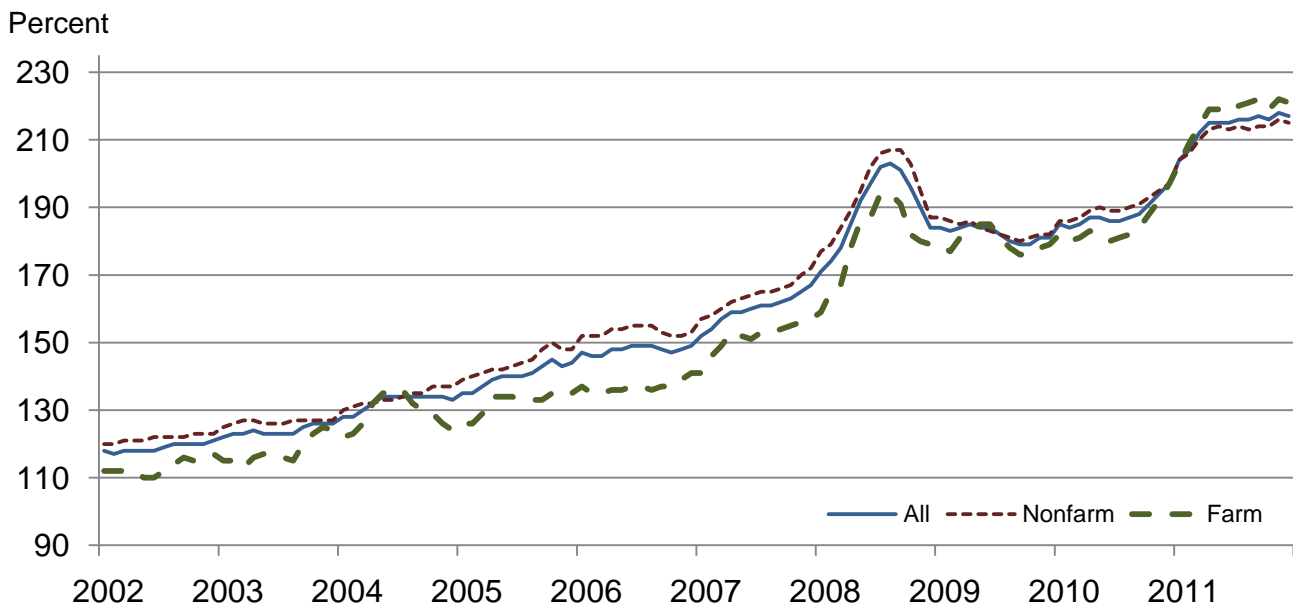
## Paid Indexes, Annual Averages, Production Items, Interest, Taxes, and Wages – United States: 1990-1992=100



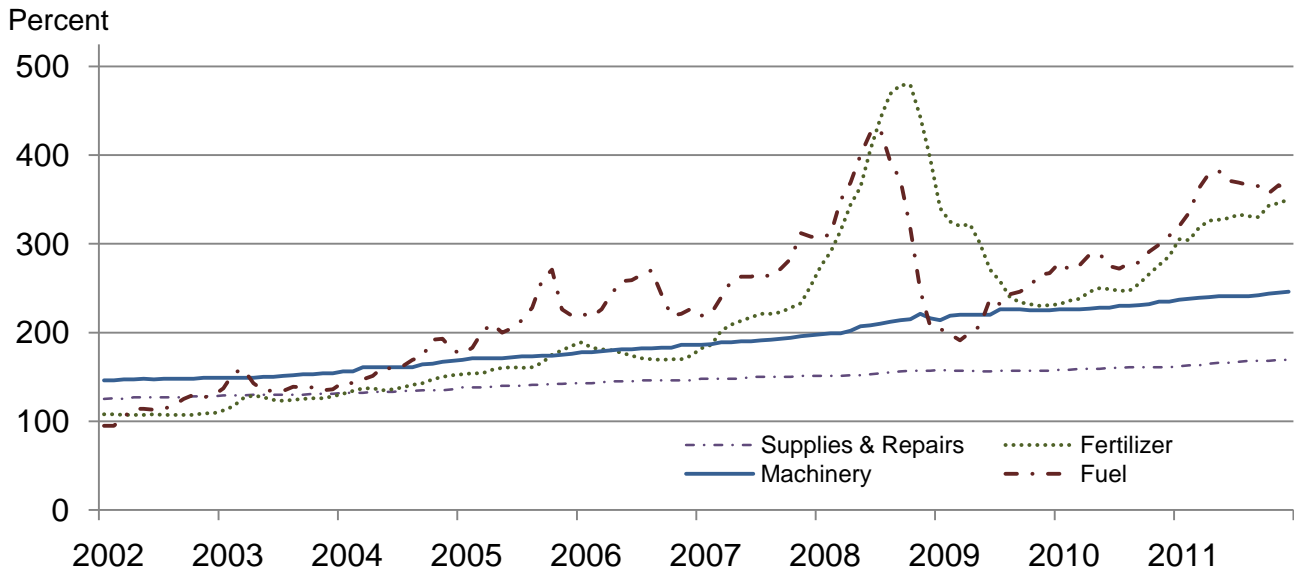
## Paid Indexes by Farm Type and Month, All Items – United States: 1990-1992=100



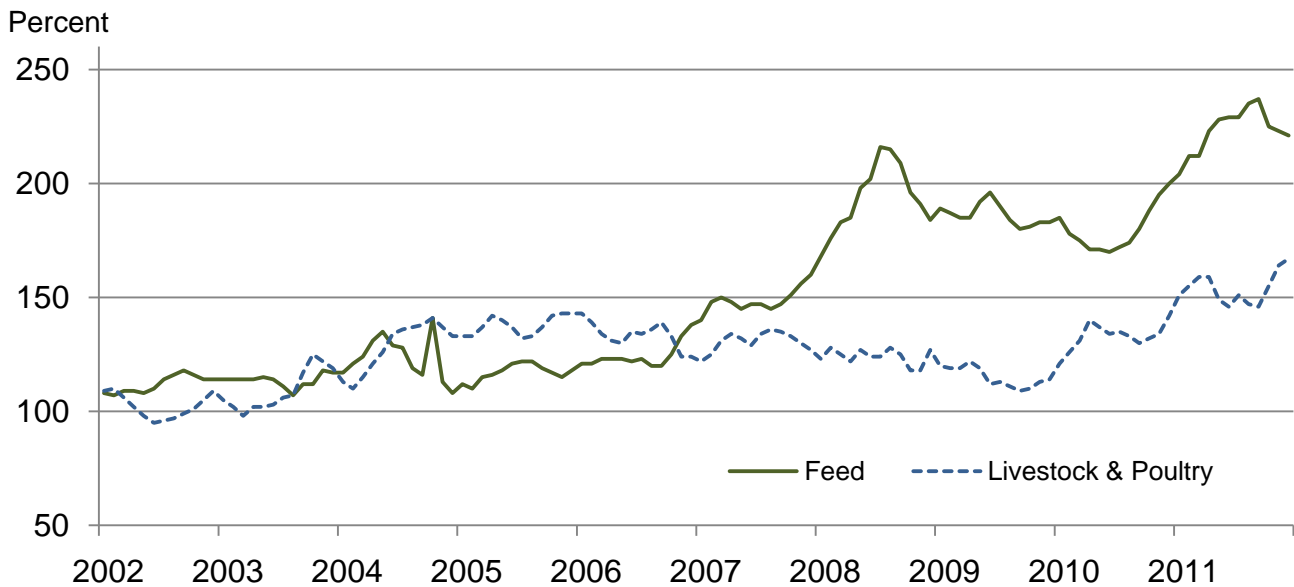
## Paid Indexes by Origin and Month, All Production Items – United States: 1990-1992=100



## Paid Indexes by Non-Farm Sector and Month, Supplies & Repairs, Fertilizer, Machinery, and Fuel – United States: 1990-1992=100



## Paid Indexes by Month, Feed and Livestock & Poultry – United States: 1990-1992=100



## Feed Price Ratios – United States: December 2011 with Comparisons

Feed price ratio <sup>1</sup>	December 2010	November 2011	Preliminary December 2011
Broiler-feed: pounds of broiler grower feed equal in value to 1 pound of broiler, live weight <sup>2</sup> .....	3.5	3.2	3.5
Market egg feed: pounds of laying feed equal in value to 1 dozen eggs <sup>3</sup> .....	8.1	6.8	9.2
Hog-corn: bushels of corn equal in value to 100 pounds of hog, live weight .....	10.9	11.0	11.8
Milk-feed: pounds of 16% mixed dairy feed equal in value to 1 pound of whole milk <sup>4</sup> .....	1.98	1.87	1.88
Steer & heifer-corn: bushels of corn equal in value to 100 pounds of steer & heifers, live weight .....	21.6	21.6	23.5
Turkey-feed: pounds of turkey grower equal in value to 1 pound of turkey, live weight <sup>5</sup> .....	5.6	5.9	6.1

<sup>1</sup> Effective January 1995, prices of commercial prepared feeds are based on current United States prices received for corn, soybeans, alfalfa hay, and all wheat.

<sup>2</sup> The price of commercial prepared broiler feed is based on current United States prices received for corn and soybeans. The modeled feed uses 58 percent corn and 42 percent soybeans.

<sup>3</sup> The price of commercial prepared layer feed is based on current United States prices received for corn and soybeans. The modeled feed uses 75 percent corn and 25 percent soybeans.

<sup>4</sup> The price of commercial prepared dairy feed is based on current United States prices received for corn, soybeans, and alfalfa hay. The modeled feed uses 51 percent corn, 41 percent alfalfa hay, and 8 percent soybeans.

<sup>5</sup> The price of commercial prepared turkey feed is based on current United States prices received for corn, soybeans, and wheat. The modeled feed uses 51 percent corn, 28 percent soybeans, and 21 percent wheat.

## Prices Received Used to Calculate Feed Price Ratios – United States: December 2011 with Comparisons

[Price data source for livestock and poultry commodities is United States Department of Agriculture's Agricultural Marketing Service]

Item	December 2010	November 2011	Preliminary December 2011
	(dollars)	(dollars)	(dollars)
Broilers, live .....pound	0.460	0.450	0.470
Eggs, market .....dozen		0.862	1.100
Hogs, all .....cwt	52.30	64.40	64.00
Milk, all .....cwt	16.70	20.40	19.80
Steers and heifers .....cwt	104.00	126.00	128.00
Turkeys, live .....pound	0.677	0.780	0.754
Corn .....bushel	4.82	5.84	5.44
Hay, alfalfa .....ton	121.00	198.00	199.00
Soybeans .....bushel	11.60	11.70	11.10
Wheat, all .....bushel	6.44	7.26	6.45

## Prices Paid for Feeder Livestock – United States: December 2011 with Comparisons

[Price data source is United States Department of Agriculture's Agricultural Marketing Service]

Item	December 2010	November 2011	Preliminary December 2011
	(dollars)	(dollars)	(dollars)
Feeder cattle & calves .....cwt	119.60	144.50	145.40
Feeder pigs .....cwt	149.00	133.00	153.00



## Prices Paid for Feed – United States: 2006-2011

[April survey for years 2006-2008. March survey began 2009]

Item	2006	2007	2008	2009	2010	2011
	(dollars)	(dollars)	(dollars)	(dollars)	(dollars)	(dollars)
Alfalfa meal .....cwt	16.40	18.20	21.10	23.90	23.80	24.00
Alfalfa pellets .....cwt	16.40	18.70	21.30	24.10	23.20	24.10
Bran .....cwt	16.10	17.40	19.10	23.20	22.70	24.70
Beef cattle concentrate, 32-36% protein ..... ton	336	370	433	488	413	498
Corn meal .....cwt	10.10	12.30	13.70	13.40	12.80	17.10
Cottonseed meal, 41% .....cwt	18.20	20.00	23.00	25.60	25.40	26.60
Dairy feed						
14% protein <sup>1</sup> ..... ton	189	239	301	285	264	333
16% protein <sup>1</sup> ..... ton	210	249	313	293	274	369
18% protein <sup>1</sup> ..... ton	221	267	324	297	284	365
20% protein <sup>1</sup> ..... ton	226	258	320	295	274	356
32-38% protein concentrate ..... ton	341	378	469	458	419	522
Hog feed						
14-18% protein <sup>1 2</sup> ..... ton	228	305	345	328	303	385
38-42% protein concentrate ..... ton	361	398	490	493	446	563
Molasses, liquid .....cwt	17.90	19.20	17.50	22.20	21.30	22.30
Poultry feed						
Broiler grower <sup>1</sup> ..... ton	255	306	387	464	456	502
Chick starter <sup>1</sup> ..... ton	273	327	416	501	485	541
Laying feed <sup>1</sup> ..... ton	240	278	371	391	374	450
Turkey grower <sup>1</sup> ..... ton	302	337	434	466	434	495
Soybean meal, 44% .....cwt	16.90	18.20	23.40	23.20	23.80	26.80
Soybean meal, over 44% .....cwt	15.30	16.90	22.40	22.00	21.20	24.80
Stock salt ..... 50 pound	4.67	5.02	5.45	5.93	5.92	6.18
Trace mineral blocks ..... 50 pound	5.68	6.15	6.60	7.09	8.02	8.16
	Index (1990-92=100)					
Feed Prices paid index <sup>3</sup> ..... percent	124	149	194	186	180	223

<sup>1</sup> Complete ration feed, fed without mixing or supplementation.

<sup>2</sup> Excluding pig starter.

<sup>3</sup> Annual average for all years.

## Annual Average Prices Paid for Feeder Livestock – United States: 2006-2011

Item	2006	2007	2008	2009	2010	2011
	(dollars)	(dollars)	(dollars)	(dollars)	(dollars)	(dollars)
Broiler chicks .....100	22.90	25.60	26.30	26.60	27.00	( <sup>1</sup> )
Egg-type chicks .....100	66.50	69.40	75.60	81.20	82.90	( <sup>1</sup> )
Feeders and stockers						
Cattle and calves ..... cwt	111.10	107.40	101.46	95.20	109.40	132.70
Feeder pigs ..... cwt	129.00	120.00	93.00	100.40	155.90	144.20
Turkey poulters ..... each	1.20	1.32	1.44	1.32	1.43	( <sup>1</sup> )
	Index (1990-92=100)					
Livestock and poultry Prices paid index <sup>2</sup> ..... percent	134	131	124	115	133	154

<sup>1</sup> Annual average data are published in April 2012.

<sup>2</sup> Annual average.

The data presented in the following tables are calculated and published for use by the Forest Service, USDA and the Bureau of Land Management, U.S. Department of the Interior in computing Public Land Grazing Fees.

**2011 Prices Paid Index for Beef Cattle Production (1964-68=100): 946**

The Index of Prices Paid by Farmers and Ranchers for Beef Cattle Production input items is for the period of November 2010 through October 2011. The components of this index include the production indexes of Fuels, Supplies & Repairs, Autos & Trucks, Tractors & Self Propelled Machinery, Other Machinery, Building Materials, Interest, Wage Rates, and Farm Services & Rent. These components are weighted to the overall index value by their importance in the cost of producing beef cattle, the weights are unchanged from a year earlier.

**Prices Received for Beef Cattle – Selected United States Regions: 2011**

[Average for November 2010 through October 2011, except Nevada, Utah, and Washington which are marketing year averages]

State	Beef cattle (dollars per cwt)
17 Western States <sup>1</sup> .....	112.11
16 Western States <sup>2</sup> .....	113.54
11 Western States <sup>3</sup> .....	112.29
9 Great Plains States <sup>4</sup> .....	111.68

<sup>1</sup> 17 Western States: Arizona, California, Colorado, Idaho, Kansas, Montana, Nebraska, Nevada, New Mexico, North Dakota, Oklahoma, Oregon, South Dakota, Texas, Utah, Washington, and Wyoming.

<sup>2</sup> 16 Western States: Arizona, California, Colorado, Idaho, Kansas, Montana, Nebraska, Nevada, New Mexico, North Dakota, Oklahoma, Oregon, South Dakota, Utah, Washington, and Wyoming.

<sup>3</sup> 11 Western States: Arizona, California, Colorado, Idaho, Montana, Nevada, New Mexico, Oregon, Utah, Washington, and Wyoming.

<sup>4</sup> 9 Great Plain States: Colorado, Kansas, Nebraska, New Mexico, North Dakota, Oklahoma, South Dakota, Texas, and Wyoming.

## Reliability of Prices Paid Estimates

**Definition:** Prices paid by farmers represent the average costs of inputs purchased by farmers and ranchers to produce agricultural commodities. Conceptually, the average price when multiplied by quantity purchased should equal total producer expenditures for the item.

**Survey procedures:** The prices paid data are obtained from establishments that sell goods and services to farmers and ranchers. Annually, about 8,500 firms are randomly selected from lists by type of item sold with an average response rate in the range of 75-80 percent. Firms are asked to report the price for the specified item "most commonly bought by farmers" or that was the "volume seller". Approximately 135 items are surveyed each March to represent all production input items purchased. The survey reference period for most items is the five business days centered around the 15th of the month. Separate prices paid surveys are conducted for agricultural chemicals, fuels, feed, fertilizer, machinery, and seed.

**Summary and estimation procedures:** The annual March Prices Paid Survey is summarized as a nonprobability survey. Average prices reported are aggregated to the region and United States level using weights available from expenditure data and other administrative sources. Price recommendations are prepared by the State Field Offices and Headquarters for review by the Agricultural Statistics Board in Washington, D.C. Also, the change in price level for individual items surveyed are combined to the regional and United States levels, and are published as prices paid indexes referenced to a specific base period. Prices paid indexes for new autos and trucks, building materials, farm supplies, motor supplies, and marketing containers are updated based on price changes measured in selected Bureau of Labor Statistics (BLS) indexes.

**Revisions:** Any revisions are published in the monthly and in annual issues of Agricultural Prices. The basis for revision must be supported by additional data that directly affect the level of the estimate. More revisions are likely for March when separate prices paid surveys are conducted, in lieu of BLS indexes, by the USDA to measure price change.

**Reliability:** Current methods of summarization for the March data are not designed directly to calculate sampling errors. However, analytical measures approximate the United States relative sampling errors for major items around 10 percent. Any nonsampling errors are attributed to such things as the inability to obtain correct information, differences in interpreting questions or definitions, mistakes in coding or processing the data, etc. Efforts are made at each step in the survey process to minimize these nonsampling errors.

**Program change:** Effective January 1, 1995, the National Agricultural Statistics Service updated the weights and changed the construction of its prices paid and received by farmers indexes. A Federal Register Notice dated October 28, 1994 discussed these program modifications.

A 1990-1992 reference and base period replaced the 1977 reference and 1971-1973 base weight period. Five-year moving average weights replaced the current fixed 1971-1973 base period weights. The 1910-1914=100 price indexes, required by statute for computing parity prices, were linked forward based on the changes in the new 1990-1992=100 indexes. The new indexes were constructed by multiplying the ratios of the current prices to the base period prices by the moving average weights (adjusted for seasonal marketing patterns for the prices received indexes).

## Calendar of Prices Received Features in the 2011 Agricultural Price Reports

Annual or Marketing Year Average Prices	Month Published
Austrian Winter Peas, United States .....	September
Barley, United States.....	June
by State and United States .....	August
Broilers, by State and United States.....	April
Canola, by State and United States .....	November
Cattle, by State and United States .....	February
Chickens, Other by State and United States.....	April
Chickpeas, by State and United States .....	November
Corn, United States .....	September
by State and United States .....	November
Cotton, by Type, State and United States.....	October
Cottonseed, by State and United States.....	October
Dry Beans, by State and United States.....	November
Dry Edible Peas, United States .....	September
Eggs, by State and United States.....	April
Flaxseed, by State and United States.....	November
Goats, by State and United States .....	February
Hay, by State and United States .....	August
Other Hay, 3-year Average by Region .....	February
Hogs, by State and United States .....	February
Hops, by State and United States .....	December
Lentils, United States .....	September
Milk, Sold to Plants, by Grade, Price and Fat Test, by State and United States .....	April
Mohair, by State and United States .....	February
Mustard Seed, United States .....	November
Oats, United States .....	June
by State and United States .....	August
Peanuts, by State and United States .....	August
Potatoes, by State and United States, Preliminary .....	February
Proso Millet, by State and United States .....	November
Rapeseed, United States .....	November
Rice, United States (year-to-date) .....	August
by State and United States, by Length of Grain .....	January
Safflower, United States .....	November
Sheep and Lambs, by State and United States .....	February
Sorghum, by State and United States .....	September
Soybeans, by State and United States .....	September
Sweetpotatoes, by State and United States, Preliminary .....	January
Final and Revised .....	June
Sugarbeets, United States .....	July
Sugarcane, United States.....	July
Sunflower, by State and United States .....	November
Turkeys, by State and United States.....	April
Wheat, by Class, United States .....	June
by State and United States .....	August
Wool, by State and United States.....	February

**Calendar of Prices Received Features in the 2011 Agricultural Price Reports (continued)**

<b>Monthly Prices Received – Revised</b>	<b>Month Published</b>
Austrian Winter Peas, United States .....	September
Barley, by State and United States .....	August
Broilers, United States .....	April
Cattle, by State and United States .....	February
Chickens, by State and United States .....	April
Chickpeas, by State and United States .....	November
Corn, by State and United States .....	November
Cotton, by Type, State and United States .....	October
Cottonseed, by State and United States .....	October
Dry Beans, by State and United States.....	November
Dry Edible Peas, United States .....	September
Eggs, by State and United States .....	April
Flaxseed, by State and United States .....	November
Hay, by State and United States .....	August
Hogs, by State and United States .....	February
Hops, by State and United States .....	December
Lentils, United States .....	September
Milk, Sold to Plants, by Grade, Price and Fat Test by State and United States .....	April
Milk Cows, by Quarter, by State and United States .....	February
Oats, by State and United States .....	August
Peanuts, by State and United States .....	August
Potatoes, by State and United States, Preliminary .....	February
Rice, United States (year-to-date) .....	August
by State and United States, by Length of Grain .....	January
Sheep and Lambs, by State and United States .....	February
Sorghum, by State and United States .....	September
Soybeans, by State and United States .....	September
Sunflower, by State and United States .....	November
Wheat, by State and United States .....	August

**Calendar of Prices Received Features in the 2011 Agricultural Price Reports (continued)**

<b>Monthly Marketing Percents</b>	<b>Month Published</b>
Austrian Winter Peas, United States .....	September
Barley, United States.....	June
by State and United States .....	August
Chickpeas, by State and United States .....	November
Corn, United States .....	September
by State and United States .....	November
Cotton, Upland, by State and United States .....	October
Dry Beans, by State and United States.....	November
Dry Edible Peas, United States .....	September
Flaxseed, by State and United States.....	November

Hay, by State and United States .....	August
Lentils, United States .....	September
Oats, United States .....	June
by State and United States .....	August
Peanuts, by State and United States .....	August
Rice, United States (year-to-date) .....	August
Final .....	January
Sorghum, by State and United States .....	September
Soybeans, by State and United States .....	September
Sunflower, by State and United States .....	November
Wheat, United States .....	June
by State and United States .....	August

**Prices Received Index Numbers - Revised**

Index of Prices Received by Farmers, United States, by Month and Year .....	January, April, July, October
---	-------------------------------

**Milk and Egg Prices Received, Adjusted for Seasonal Variation**

Seasonally Adjusted Prices, Revised, United States .....	April
Seasonal Adjustment Factors, United States, program change .....	July

**Parity Prices**

Method of Computing .....	January
Average Prices Used for Parity Computations.....	January
Manufacturing Milk: Method of Computing Parity Price Equivalent .....	January
Average Price Received, United States.....	January

## Calendar of Prices Paid Features in the 2011 Agricultural Price Reports

### Indexes (1910-1914=100)

### Month Published

PPITW, PITW, Production Items, Component Items, Interest, Taxes and Wage Rates, Family Living, Farm and Non-Farm Origin, Crop and Livestock Sectors, Adjusted for Productivity, Ratio, Parity Ratio and Adjusted Parity Ratio

Annual Average (2007-2011) ..... January, April, July, October  
 By Month (2007-2011) ..... January, April, July, October  
 United States Current Month, Previous Month, Previous Year ..... Monthly

### Indexes (1990-1992=100)

### Month Published

PPITW, PITW, Production Items, Component and Subcomponent Items, Interest, Taxes and Wage Rates, Family Living Farm and Non-Farm Origin, Crop and Livestock Sectors, Adjusted for Productivity, Ratio, Parity Ratio and Adjusted Parity Ratio

Annual Average (2007-2011) ..... January, April, July, October  
 By Month (2007-2011) ..... January, April, July, October  
 United States Current Month, Previous Month, Previous Year ..... Monthly  
 Feed and Feeder Livestock & Poultry Annual Average, United States (2006-2011) ..... December

### Prices Paid

### Month Published

Farm Machinery, United States ..... April  
 Feed, by Region and United States ..... April  
 Feed, United States (2006-2011) ..... December  
 Feeder Livestock, United States ..... Monthly  
 Poultry, Chicks and Poults, Annual Average ..... April  
 Fertilizer Materials, Mixed Fertilizer and Agricultural Limestone, by Region and United States ..... April  
 Field Seeds, Retail United States ..... April  
 Fuels, by Region and United States ..... April  
 Agricultural Chemicals, United States ..... April

### Feed-Price Ratios

### Month Published

United States by Months and Annual Average, (January 2008- May 2011) ..... May  
 United States Current Month, Previous Month, Previous Year ..... Monthly

### Prices Paid Program Overview

### Month Published

Prices Paid Survey Months, Month Published and Geographic Levels of Estimates ..... January  
 Prices Paid Regions, and States Included ..... April

### Private Grazing Fee Rates and Components of Federal Fees

### Month Published

Private Non-Irrigated Grazing Fee Rates, by State and Region  
 (Data for 2009-2011) ..... January  
 Prices Paid Index for Beef Cattle Production (1964-68=100) ..... December  
 Beef Cattle Prices Received, Selected Regions (November-October) ..... December  
 Other Hay Prices Received, Selected Eastern Regions ..... February

## Information Contacts

Direct general questions to Kevin Hintzman, Acting Chief, Environmental, Economics and Demographics Branch at (202) 720-6146. Below are the commodity specialists to contact for additional information.

### Crop Prices Received

Lance Honig, Chief, Crops Branch .....	(202) 720-2127
Jacqueline Moore, Head, Field Crops Section .....	(202) 720-2127
Suzanne Avilla – Peanuts, Rice.....	(202) 720-7688
Bryan Durham – Oats, Rye, Wheat.....	(202) 720-8068
Steve Maliszewski – Cotton, Cotton Ginnings, Sorghum.....	(202) 720-5944
Anthony Prillaman – Corn, Proso Millet, Flaxseed .....	(202) 720-9526
Julie Schmidt – Crop Weather, Barley, Hay .....	(202) 720-7621
Travis Thorson – Soybeans, Sunflower, Other Oilseeds.....	(202) 720-7369
Jorge Garcia-Pratts, Head, Fruits, Vegetables and Special Crops Section.....	(202) 720-2127
Debbie Flippin – Fresh and Processing Vegetables, Onions, Strawberries.....	(202) 720-2157
Fred Granja – Apples, Apricots, Cherries, Plums, Prunes, Tobacco .....	(202) 720-4288
Erika White – Floriculture, Maple Syrup, Nursery, Tree Nuts .....	(202) 720-4215
Chris Hawthorn – Citrus, Coffee, Sugar Crops, Grapes, Tropical Fruits.....	(202) 720-5412
Daphne Schauber – Berries, Cranberries, Potatoes, Sweet Potatoes .....	(202) 720-4285
Dan Norris – Austrian Winter Peas, Dry Edible Peas, Lentils, Mints, Mushrooms, Peaches, Pears, Wrinkled Seed Peas, Dry Beans .....	(202) 720-3250

### Livestock Prices Received

Dan Kerestes, Chief, Livestock Branch .....	(202) 720-3570
Scott Hollis, Head, Livestock Section.....	(202) 720-3570
Travis Averill - Cattle .....	(202) 720-3040
Mike Miller - Milk, Milk Cows .....	(202) 720-3278
Doug Bounds - Hogs.....	(202) 720-3106
Bruce Boess, Head, Poultry and Specialty Commodities Section.....	(202) 720-3570
Cody Brokmeyer – Honey, Turkeys .....	(202) 690-3237
Kim Linonis - Eggs.....	(202) 690-8632
Miste Salmon - Broilers .....	(202) 720-3244

### Indexes, Prices Paid, and Parity Prices

Kevin Hintzman, Acting Chief, Environmental, Economics and Demographics Branch.....	(202) 720-6146
Kevin Hintzman, Head, Economics Section .....	(202) 720-6146
Daryl Brinkman - Prices Received Indexes, Parity Prices.....	(202) 720-8844
Scott Shimmin - Grazing Fees .....	(202) 690-3231
Vincent Davis - Prices Paid Indexes, Prices Paid for Feed, Fertilizer, Agricultural Chemicals, Seeds, Farm Supplies and Repairs, Farm Machinery, Fuels, Feeder Livestock, Poultry Chicks, Feed Price Ratios, Autos & Trucks.....	(202) 690-3229



## Access to NASS Reports

For your convenience, you may access NASS reports and products the following ways:

- All reports are available electronically, at no cost, on the NASS web site: <http://www.nass.usda.gov>
- Both national and state specific reports are available via a free e-mail subscription. To set-up this free subscription, visit <http://www.nass.usda.gov> and in the “Receive NASS Updates” box under “Receive reports by Email,” click on “National” or “State” to select the reports you would like to receive.
- Printed reports may be purchased from the National Technical Information Service (NTIS) by calling toll-free (800) 999-6779, or (703) 605-6220 if calling from outside the United States or Canada. Accepted methods of payment are Visa, MasterCard, check, or money order.

For more information on NASS surveys and reports, call the NASS Agricultural Statistics Hotline at (800) 727-9540, 7:30 a.m. to 4:00 p.m. ET, or e-mail: [nass@nass.usda.gov](mailto:nass@nass.usda.gov).

The United States Department of Agriculture (USDA) prohibits discrimination in all its programs and activities on the basis of race, color, national origin, age, disability, and where applicable, sex, marital status, familial status, parental status, religion, sexual orientation, political beliefs, genetic information, reprisal, or because all or a part of an individual's income is derived from any public assistance program. (Not all prohibited bases apply to all programs.) Persons with disabilities who require alternative means for communication of program information (Braille, large print, audiotape, etc.) should contact USDA's TARGET Center at (202) 720-2600 (voice and TDD).

To file a complaint of discrimination, write to USDA, Assistant Secretary for Civil Rights, Office of the Assistant Secretary for Civil Rights, 1400 Independence Avenue, S.W., Stop 9410, Washington, DC 20250-9410, or call toll-free at (866) 632-9992 (English) or (800) 877-8339 (TDD) or (866) 377-8642 (English Federal-relay) or (800) 845-6136 (Spanish Federal-relay). USDA is an equal opportunity provider and employer.



United States Department of Agriculture



# Moving Agriculture Forward

USDA – Growing, Innovating, and Celebrating 150 Years

February 23-24, 2012

Crystal Gateway Marriott Hotel • Arlington, Virginia

Early Registration \$375 until January 23, 2012

\$425 after January 23

To register, go to:

[www.usda.gov/oce/forum](http://www.usda.gov/oce/forum)

— more than 80 speakers —

Program at a Glance is available online