



Agricultural Prices

ISSN: 1937-4216

Released May 31, 2012, by the National Agricultural Statistics Service (NASS), Agricultural Statistics Board, United States Department of Agriculture (USDA).

May Farm Prices Received Index Declined 2 Points

The preliminary All Farm Products Index of Prices Received by Farmers in May, at 176 percent, based on 1990-1992=100, decreased 2 points (1.1 percent) from April. The Crop Index is down 3 points (1.4 percent) and the Livestock Index decreased 1 point (0.7 percent). Producers received lower prices for cattle, corn, milk, and wheat. Higher prices were received for broilers, grapefruit, hay, and oranges. In addition to prices, the overall index is also affected by the seasonal change based on a 3-year average mix of commodities producers sell. Increased monthly movement of broilers, sweet corn, wheat, and grapes offset the decreased marketing of corn, cattle, milk, and soybeans.

The preliminary All Farm Products Index is up 1 point (0.6 percent) from May 2011. The Food Commodities Index, at 164, decreased 1 point (0.6 percent) from last month and decreased 1 point (0.6 percent) from May 2011.

Prices Paid Index Down 1 Point

The May Index of Prices Paid for Commodities and Services, Interest, Taxes, and Farm Wage Rates (PPITW) is 212 percent of the 1990-1992 average. The index is down 1 point (-0.5 percent) from April but 8 points (3.9 percent) above May 2011. Lower prices in May for LP gas, diesel, feeder pigs, and feeder cattle offset higher prices for nitrogen, concentrates, complete feeds, and hay & forages.

Prices Received, Prices Paid, and Ratio of Prices Received to Prices Paid Indexes 1990-1992 Base – United States: May 2012 with Comparisons

Index	May	April	May
	2011	2012	2012
Prices received by farmers	175	178	176
Prices paid by farmers	204	213	212
Ratio of prices received to prices paid	86	84	83

Contents

Prices Received by Farmers	4
Prices Received Indexes – United States: May 2012 with Comparisons	5
Prices Received and Prices Paid Indexes by Month for Selected Groups – United States: 2011 and 2012, 1990-1992 Base	5
Received Indexes by Month, Livestock Products, All Products, and All Crops – United States: 1990-1992=100 Chart.....	6
Received Indexes by Month, Food Grains, Feed Grains & Hay, and Oilseeds – United States: 1990-1992=100 Chart.....	6
Received Indexes by Month, Fruit & Nut and Commercial Vegetables – United States: 1990-1992=100 Chart.....	7
Received Indexes by Month, Meat Animal, Dairy Products, and Poultry & Eggs – United States: 1990-1992=100 Chart.....	7
Prices Received for Field Crops and Fruits – United States: May 2012 with Comparisons	8
Prices Received for Vegetables and Livestock – United States: May 2012 with Comparisons.....	9
Prices Received for Corn by Month – United States Chart.....	10
Prices Received for Wheat by Month – United States Chart	10
Prices Received for Upland Cotton by Month – United States Chart	11
Prices Received for Soybeans by Month – United States Chart	11
Prices Received for Cattle by Month – United States Chart	12
Prices Received for Milk by Month – United States Chart	12
Prices Received for Hogs by Month – United States Chart	13
Prices Received for Poultry by Month – United States Chart	13
Prices Received for All Wheat, Corn, and Soybeans by Month – United States: 2012 with Comparisons	14
Prices Received for Beef Cattle and All Hogs by Month – United States: 2012 with Comparisons	14
Prices Received for All Wheat – States and United States: May 2012 with Comparisons	15
Prices Received for Winter Wheat – States and United States: May 2012 with Comparisons	15
Prices Received for Durum Wheat – States and United States: May 2012 with Comparisons	16
Prices Received for Spring Wheat – States and United States: May 2012 with Comparisons	16
Prices Received for All Barley – States and United States: May 2012 with Comparisons.....	17
Prices Received for Malting Barley – States: May 2012 with Comparisons	17
Prices Received for Feed Barley – States: May 2012 with Comparisons	17
Prices Received for Corn – States and United States: May 2012 with Comparisons	18
Prices Received for Soybeans – States and United States: May 2012 with Comparisons	18
Prices Received for Oats – States and United States: May 2012 with Comparisons	19
Prices Received for Sorghum Grain – States and United States: May 2012 with Comparisons.....	19
Prices Received for Dry Beans – States and United States: May 2012 with Comparisons	20
Prices Received for Peanuts (In-Shell) – States and United States: May 2012 with Comparisons.....	20
Prices Received for Sunflower – States and United States: May 2012 with Comparisons.....	21
Prices Received for Canola – States and United States: May 2012 with Comparisons	21
Prices Received for Flaxseed – States and United States: May 2012 with Comparisons	21
Prices Received for Upland Cotton and Cottonseed – States and United States: May 2012 with Comparisons	22
Prices Received and Farm Marketings for Upland Cotton and Rice – United States: May 2012 with Comparisons	22
Prices Received for Hay by Type – States and United States: May 2012 with Comparisons.....	23
Prices Received for Apples – States and United States: May 2012 with Comparisons	23
Prices Received for Citrus Fruits by Utilization – States and United States: May 2011	24
Prices Received for Citrus Fruits by Utilization – States and United States: April 2012	25
Prices Received for Citrus Fruits by Utilization – States and United States: May 2012	26
Prices Received for Potatoes – States and United States: May 2012 with Comparisons.....	27
Prices Received for All Milk – States and United States: May 2012 with Comparisons.....	28
Prices Received for Milk Cows – States and United States: April 2012 with Comparisons	29
Commodity Parity Prices and Price as Percent of Parity Price – United States: May 2012 with Comparisons	30

Commodity Parity Prices – United States: May 2012 with Comparisons	31
Reliability of Prices Received Estimates	33
Prices Paid by Farmers.....	34
Prices Paid Indexes and Related Parity Ratios – United States: May 2012 with Comparisons.....	35
Prices Paid Indexes and Annual Weights for Input Components and Sub-Components – United States: May 2012 with Comparisons.....	36
Paid Indexes by Month, All Items and Production Items – United States: 1990-1992=100 Chart	37
Paid Indexes, Annual Averages, Production Items, Interest, Taxes, and Wages – United States: 1990-1992=100 Chart	37
Paid Indexes by Farm Type, All Items – United States: 1990-1991=100 Chart.....	38
Paid Indexes by Origin, All Production Items – United States: 1990-1992=100 Chart	38
Paid Indexes by Non-Farm Sector, Supplies & Repairs, Fertilizer, Machinery, and Fuel – United States: 1990-1992=100 Chart	39
Paid Indexes by Month, Feed and Replacement Livestock – United States: 1990-1992=100 Chart.....	39
Feed Price Ratios – United States: May 2012 with Comparisons.....	40
Prices Received Used to Calculate Feed Price Ratios – United States: May 2012 with Comparisons.....	40
Prices Paid for Feeder Livestock – United States: May 2012 with Comparisons.....	40
Prices Paid Broiler-Feed Ratio Monthly and Annual Average – United States: 2008-2012	41
Prices Paid Market Egg-Feed Ratio Monthly and Annual Average – United States: 2008-2012.....	41
Prices Paid Turkey-Feed Ratio Monthly and Annual Average – United States: 2008-2012	41
Prices Paid Milk-Feed Ratio Monthly and Annual Average – United States: 2008-2012.....	42
Prices Paid Hog-Corn Ratio Monthly and Annual Average – United States: 2008-2012	42
Prices Paid Steer & Heifer-Corn Feed Ratio Monthly and Annual Average – United States: 2008-2012	42
Reliability of Prices Paid Estimates	43
Information Contacts	44

Prices Received by Farmers

The May All Farm Products Index is 176 percent of its 1990-1992 base, down 1.1 percent from the April index but 0.6 percent above the May 2011 index.

All crops: The May index, at 204, decreased 1.4 percent from April but remained slightly above May 2011. Index decreases for feed grains & hay, food grains, and potatoes & dry beans more than offset the index increases for fruits & nuts, upland cotton, and commercial vegetables.

Food grains: The May index, at 216, is 4.4 percent below the previous month and 15 percent below a year ago. The May all wheat price, at \$6.60 per bushel, is down 51 cents from April and \$1.56 below May 2011.

Feed grains & hay: The May index, at 269, is down 1.1 percent from last month but 1.1 percent above a year ago. The corn price, at \$6.22 per bushel, is down 12 cents from last month and 10 cents below May 2011. The all hay price, at \$199 per ton, is up \$9.00 from April and \$28.00 higher than last May. Sorghum grain, at \$10.10 per cwt, is 50 cents below April and \$1.50 below May last year.

Cotton, Upland: The May index, at 157, is up 4.7 percent from April and 15 percent above last year. The May price, at 95.1 cents per pound, is up 4.2 cents from the previous month and 11.9 cents above last May.

Oilseeds: The May index, at 245, is unchanged from April but 3.4 percent higher than May 2011. The soybean price, at \$13.70 per bushel, is unchanged from April but is 50 cents above May 2011.

Fruits & nuts: The May index, at 173, is up 6.1 percent from April and 16 percent higher than a year ago. Price increases for oranges and grapefruit more than offset the price decrease for strawberries.

Commercial vegetables: The May index, at 138, is unchanged from last month but 19 percent below May 2011. Price increases during May for onions and cucumbers offset the lower price for lettuce.

Potatoes & dry beans: The May index, at 179, is down 7.7 percent from last month and 5.3 percent below May 2011. The all potato price, at \$9.86 per cwt, is down 89 cents from April and \$1.31 from last May. The all dry bean price, at \$44.60 per cwt, is down \$2.40 from the previous month but \$11.70 above May 2011.

Livestock and products: The May index, at 151, is 0.7 percent below last month and May 2011. Compared with a year ago, prices for milk and hogs are down from last year. Prices are higher for cattle, broilers, calves, turkeys, and all eggs.

Meat animals: The May index, at 158, is down 2.5 percent from last month but 4.6 percent higher than last year. The May hog price, at \$61.60 per cwt, is down \$1.20 from April and \$7.00 lower than a year ago. The May beef cattle price of \$121 per cwt is down \$3.00 from last month but \$9.00 higher than May 2011.

Dairy products: The May index, at 126, is down 2.3 percent from a month ago and 16 percent lower than May last year. The May all milk price of \$16.40 per cwt declined 40 cents from last month and is \$3.20 lower than May 2011.

Poultry & eggs: The May index, at 163, is up 2.5 percent from April and 5.2 percent above a year ago. The May market egg price, at 59.4 cents per dozen, decreased 4.8 cents from April and is 2.8 cents below May 2011. The May broiler price, at 53.0 cents per pound, is up 2.0 cents from April and 3.0 cents above a year ago. The May turkey price, at 73.8 cents per pound, is up 0.1 cents from the previous month and up 5.9 cents from a year earlier.

Prices Received Indexes – United States: May 2012 with Comparisons

[Revised historical price indexes for months not shown are available at www.nass.usda.gov]

Index	1910-1914 Base				1990-1992 Base		
	1990-1992 Average	May 2011	April 2012	May 2012	May 2011	April 2012	May 2012
	(percent)	(percent)	(percent)	(percent)	(percent)	(percent)	(percent)
All products	639	1111	1127	1116	175	178	176
All crops	500	1004	1026	1011	203	207	204
Food grains	325	801	717	684	253	226	216
Feed grains & hay	363	948	971	959	266	272	269
Cotton, Upland	517	704	769	805	137	150	157
Tobacco	1263	1491	1559	1559	99	103	103
Oilseeds	554	1296	1344	1342	237	245	245
Fruits & nuts	716	1041	1137	1211	149	163	173
Commercial vegetables	698	1213	982	988	170	138	138
Potatoes & dry beans	540	959	981	906	189	194	179
Other crops	493	643	645	645	131	131	131
Livestock and products	768	1163	1169	1158	152	152	151
Meat animals	1021	1537	1647	1607	151	162	158
Dairy products	799	1206	1034	1009	150	129	126
Poultry & eggs	282	435	447	458	155	159	163
Food commodities	(NA)	(NA)	(NA)	(NA)	165	165	164

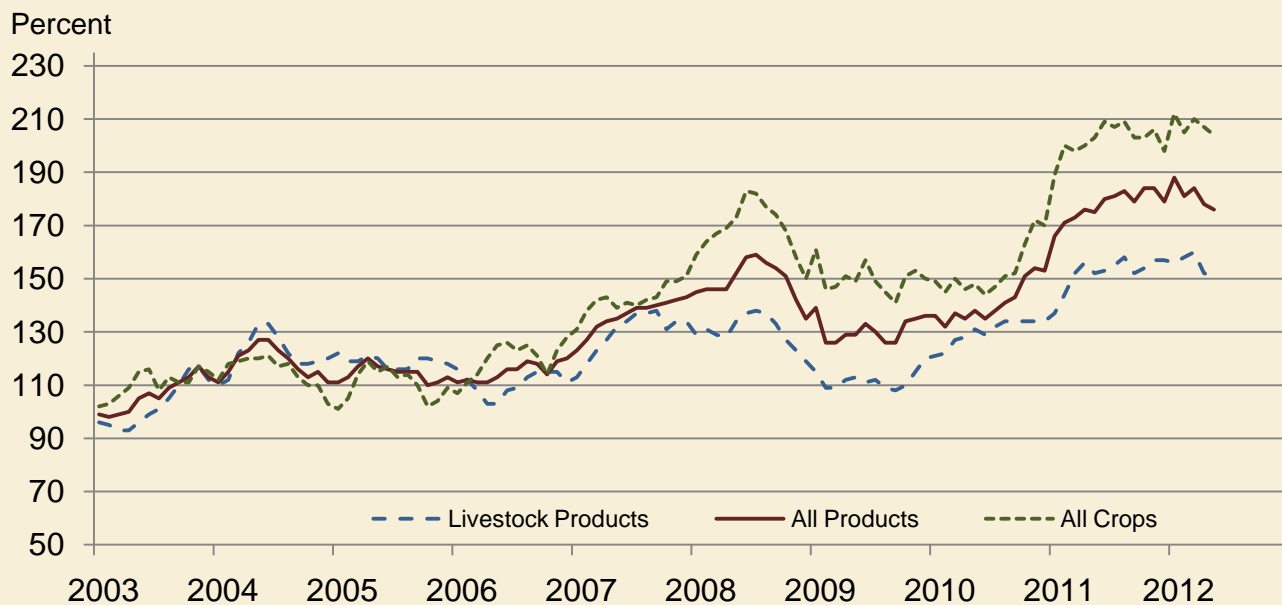
(NA) Not available.

Prices Received and Prices Paid Indexes by Month for Selected Groups – United States: 2011 and 2012, 1990-1992 Base

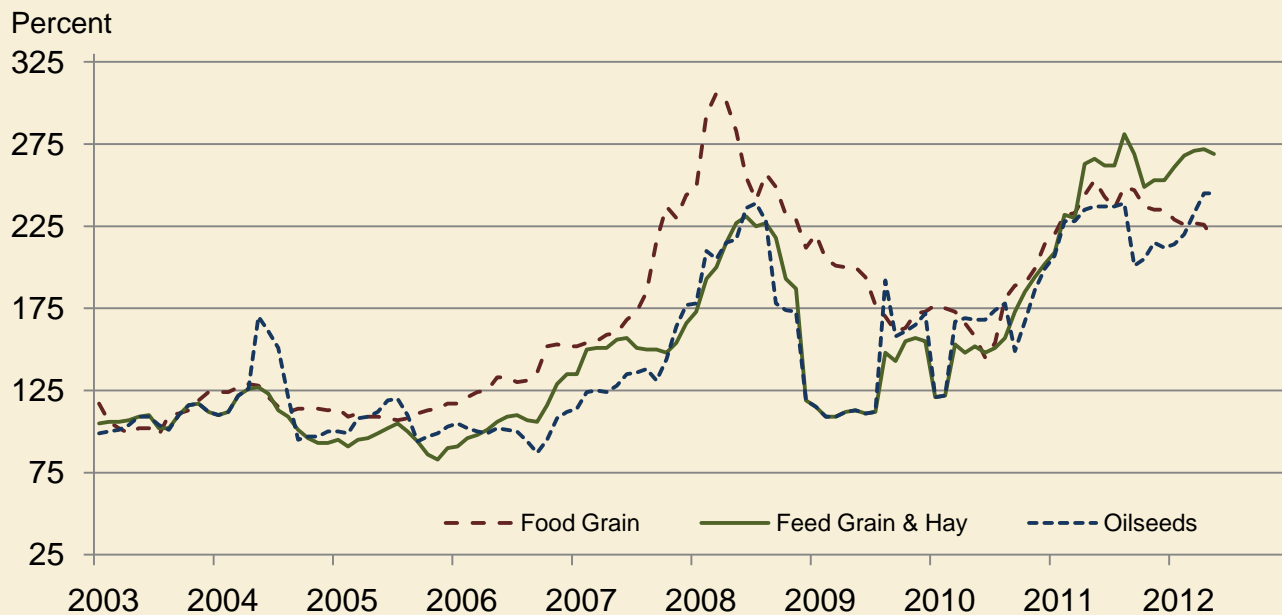
[Revised historical price indexes for months not shown are available at www.nass.usda.gov. Blank data cells indicate estimation period has not yet begun]

Month	Index of prices received						Index of prices paid			
	All farm products		All crops		Livestock and products		All items		Production items	
	2011	2012	2011	2012	2011	2012	2011	2012	2011	2012
	(percent)	(percent)	(percent)	(percent)	(percent)	(percent)	(percent)	(percent)	(percent)	(percent)
January	166	188	189	212	137	156	195	210	204	222
February	171	181	200	205	144	158	197	211	207	223
March	173	184	198	210	152	160	201	213	212	226
April	176	178	200	207	156	152	203	213	215	226
May	175	176	203	204	152	151	204	212	216	225
June	180		209		153		203		215	
July	181		207		155		204		216	
August	183		209		158		205		217	
September	179		203		152		205		218	
October	184		203		154		205		217	
November	184		206		157		206		219	
December	179		198		157		206		218	

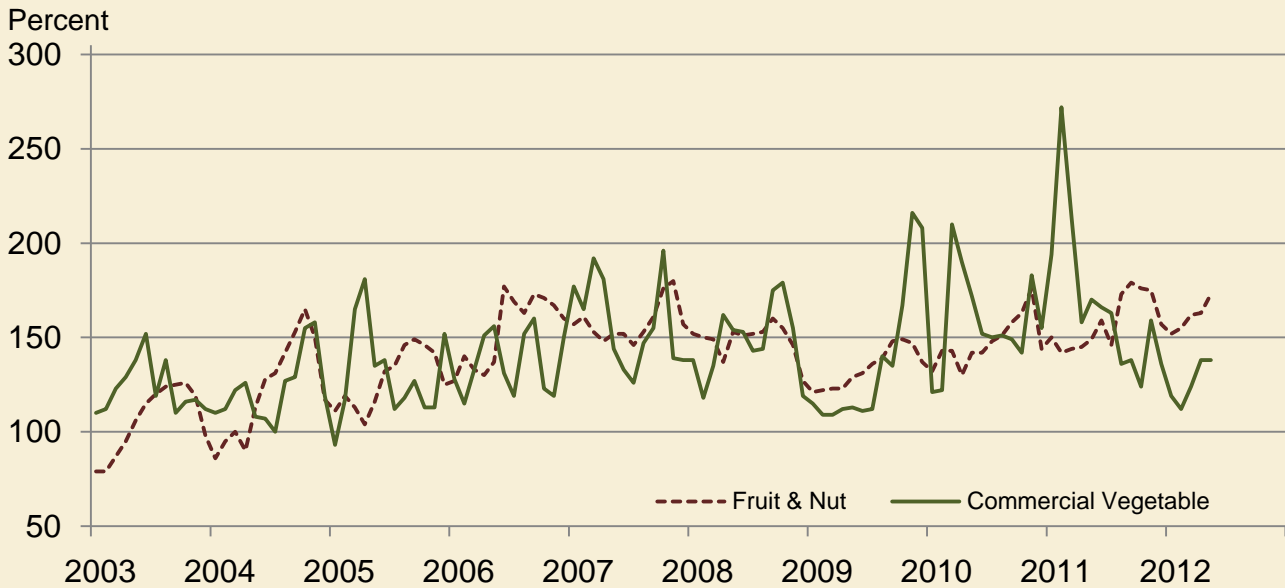
Received Indexes by Month, Livestock Products, All Products, and All Crops – United States: 1990-1992=100



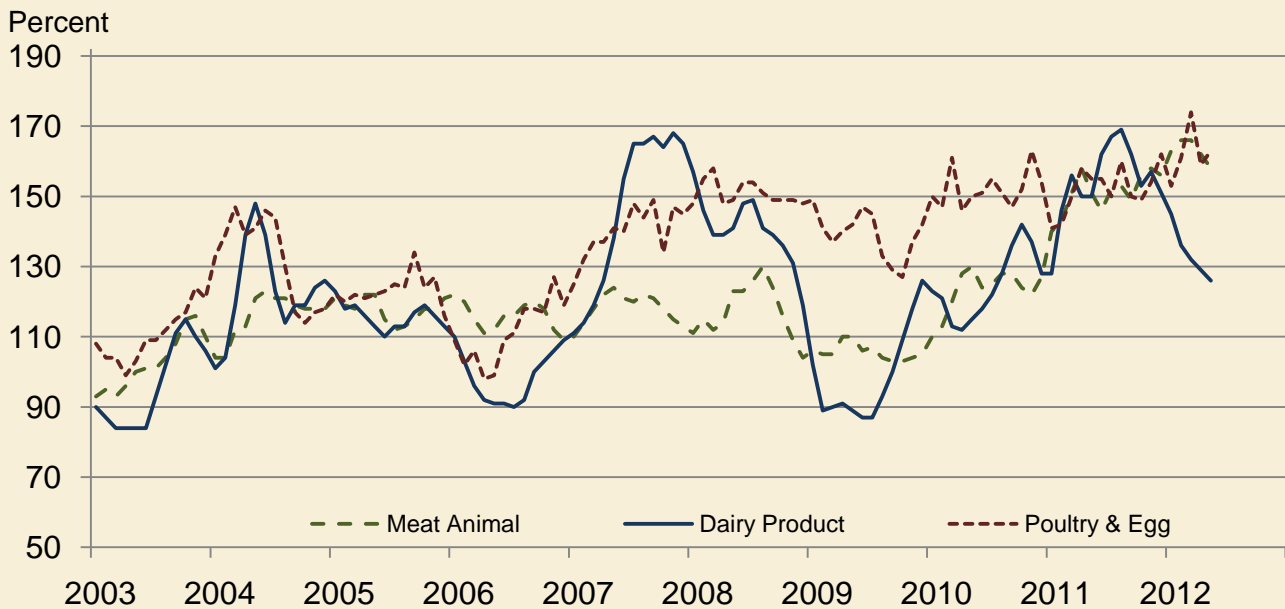
Received Indexes by Month, Food Grains, Feed Grains & Hay, and Oilseeds – United States: 1990-1992=100



Received Indexes by Month, Fruit & Nut and Commercial Vegetables – United States: 1990-1992=100



Received Indexes by Month, Meat Animal, Dairy Product, and Poultry & Egg – United States: 1990-1992=100



Prices Received for Field Crops and Fruits – United States: May 2012 with Comparisons

Commodity	Average 1990-1992	May 2011	April 2012	Preliminary May 2012
Field crops				
Austrian winter peas	dollars/cwt (NA)	19.00	(S)	(S)
Barley, all	dollars/bushel 2.12	4.15	5.72	5.43
Feed	dollars/bushel 1.90	4.61	5.15	4.75
Malting	dollars/bushel 2.43	4.04	5.87	5.64
Beans, dry edible	dollars/cwt 19.10	32.90	47.00	44.60
Canola	dollars/cwt (NA)	23.50	27.80	28.00
Chickpeas, all	dollars/cwt (NA)	36.10	45.80	(S)
Large	dollars/cwt (NA)	38.50	46.10	(S)
Small	dollars/cwt (NA)	29.80	(S)	(S)
Corn	dollars/bushel 2.30	6.32	6.34	6.22
Cotton, Upland	dollars/pound 0.606	0.832	0.909	0.951
Cottonseed ¹	dollars/ton 96.00	(NA)	(NA)	(NA)
Flaxseed	dollars/bushel 4.27	14.20	14.10	14.10
Hay, all, baled	dollars/ton 76.30	171.00	190.00	199.00
Alfalfa	dollars/ton 77.20	187.00	207.00	215.00
Other	dollars/ton 60.00	114.00	140.00	146.00
Lentils	dollars/cwt (NA)	29.50	21.50	21.80
Oats	dollars/bushel 1.22	3.55	3.81	3.76
Peanuts, in-shell	dollars/pound 0.304	0.228	0.351	0.347
Peas, dry edible	dollars/cwt (NA)	12.60	16.40	17.10
Potatoes	dollars/cwt 5.82	11.17	10.75	9.86
Rice, all	dollars/cwt 7.07	12.70	13.90	13.70
Long	dollars/cwt (NA)	10.90	13.20	13.10
Medium and short	dollars/cwt (NA)	19.00	15.30	16.00
Sorghum grain	dollars/cwt 3.75	11.60	10.60	10.10
Soybeans	dollars/bushel 5.61	13.20	13.70	13.70
Sunflowers, all	dollars/cwt 9.50	30.00	28.50	27.00
Wheat, all	dollars/bushel 2.96	8.16	7.11	6.60
Winter	dollars/bushel 2.93	7.80	6.47	6.18
Durum	dollars/bushel 2.86	7.86	9.18	8.75
Other spring	dollars/bushel 3.11	8.85	7.95	7.61
Hard red winter ²	dollars/bushel (NA)	8.00	6.43	(NA)
Soft red winter ²	dollars/bushel (NA)	7.09	6.67	(NA)
Hard red spring ²	dollars/bushel (NA)	8.95	8.05	(NA)
White ²	dollars/bushel 3.24	7.22	6.54	(NA)
Fruits				
Citrus, equivalent on-tree				
Grapefruit	dollars/box 5.77	7.55	6.42	13.83
Lemons	dollars/box 10.10	10.26	15.36	16.80
Oranges	dollars/box 5.79	7.53	9.34	10.20
Tangelos	dollars/box 5.82	(NA)	(NA)	(NA)
Tangerines and mandarins	dollars/box 15.11	(D)	(D)	(D)
Noncitrus, fresh				
Apples ³	dollars/pound 0.212	0.256	0.329	0.333
Grapes ³	dollars/ton 506.00	(S)	(NA)	(NA)
Peaches ³	dollars/ton 432.00	1,290.00	(S)	1,390.00
Pears ³	dollars/ton 370.00	571.00	357.00	409.00
Strawberries	dollars/cwt 56.00	80.80	94.40	88.40

(D) Withheld to avoid disclosing data for individual operations.

(NA) Not available.

(S) Insufficient number of reports to establish an estimate.

¹ Marketing year August - February.

² Preliminary estimates not set for this item.

³ Equivalent packinghouse-door returns for California, Michigan, New York (apples only), and Washington (apples, peaches, and pears). Prices as sold for other states.

Prices Received for Vegetables and Livestock – United States: May 2012 with Comparisons

[Price data source for livestock and poultry commodities is United States Department of Agriculture's Agricultural Marketing Service]

Commodity	Average 1990-1992	May 2011	April 2012	Preliminary May 2012
Vegetables, fresh ¹				
Asparagusdollars/cwt	79.80	77.60	107.00	110.00
Beans, snap ²dollars/cwt	(NA)	58.10	70.70	53.80
Broccolidollars/cwt	22.50	40.20	22.60	27.00
Cantaloupes ²dollars/cwt	(NA)	18.00	(S)	(S)
Carrotsdollars/cwt	13.20	44.80	27.60	27.50
Cauliflowerdollars/cwt	26.80	56.80	28.40	34.70
Celerydollars/cwt	11.60	33.10	12.70	16.00
Corn, sweetdollars/cwt	15.70	19.90	22.40	21.70
Cucumbers ²dollars/cwt	(NA)	19.20	22.30	28.90
Lettucedollars/cwt	11.90	26.40	17.50	14.90
Onions ³dollars/cwt	12.80	15.10	18.00	22.80
Tomatoesdollars/cwt	32.30	49.10	26.70	30.10
Livestock				
Calvesdollars/cwt	94.30	137.00	178.00	176.00
Cattle, all beefdollars/cwt	72.90	112.00	124.00	121.00
Cows ⁴dollars/cwt	49.60	78.20	85.50	87.30
Steers and heifersdollars/cwt	77.10	115.00	128.00	124.00
Milk cows ⁵dollars/head	1130.00	(NA)	1440.00	(NA)
Hogs, alldollars/cwt	47.70	68.60	62.80	61.60
Barrows and giltsdollars/cwt	48.40	69.20	63.10	62.00
Sowsdollars/cwt	39.50	56.00	55.20	52.30
Dairy and poultry				
Milk, all ⁶dollars/cwt	13.06	19.60	16.80	16.40
Fat test percent	3.66	3.66	3.67	3.62
Broilers, live ⁷dollars/pound	0.317	0.500	0.510	0.530
Eggs, all ⁸dollars/dozen	0.643	0.822	0.863	0.826
Market ^{8 9}dollars/dozen	0.546	0.622	0.642	0.594
Turkeys, live ^{8 10 11}dollars/pound	0.380	0.679	0.737	0.738
Adjusted for seasonal variation				
Eggs, alldollars/dozen	0.545	1.010	0.905	1.010
Seasonal factor percent	100	82	95	82
Milk, all ⁶dollars/cwt	9.71	20.80	17.90	17.50
Seasonal factor percent	100	94	94	94

(NA) Not available.

(S) Insufficient number of reports to establish an estimate.

¹ Beginning January 2006, point of first sale. FOB shipping point for prior years.

² Monthly estimates began January 1995.

³ Includes some processing.

⁴ Beef cows and cull dairy cows sold for slaughter.

⁵ Animals sold for dairy herd replacement only. Prices available for January, April, July, and October.

⁶ Before deductions for hauling. Includes quality, quantity, and other premiums. Excludes hauling subsidies.

⁷ Live weight equivalent price.

⁸ Mid-month price.

⁹ Also referred to as table eggs.

¹⁰ Live weight equivalent price is used when actual live weight price is not available.

¹¹ Beginning January 2011, price reflects FOB shipping point basis. Prior year price reflects delivered basis.

Prices Received for Corn by Month – United States

Dollars per bushel



Prices Received for Wheat by Month – United States

Dollars per bushel



Prices Received for Upland Cotton by Month – United States

Dollars per pound



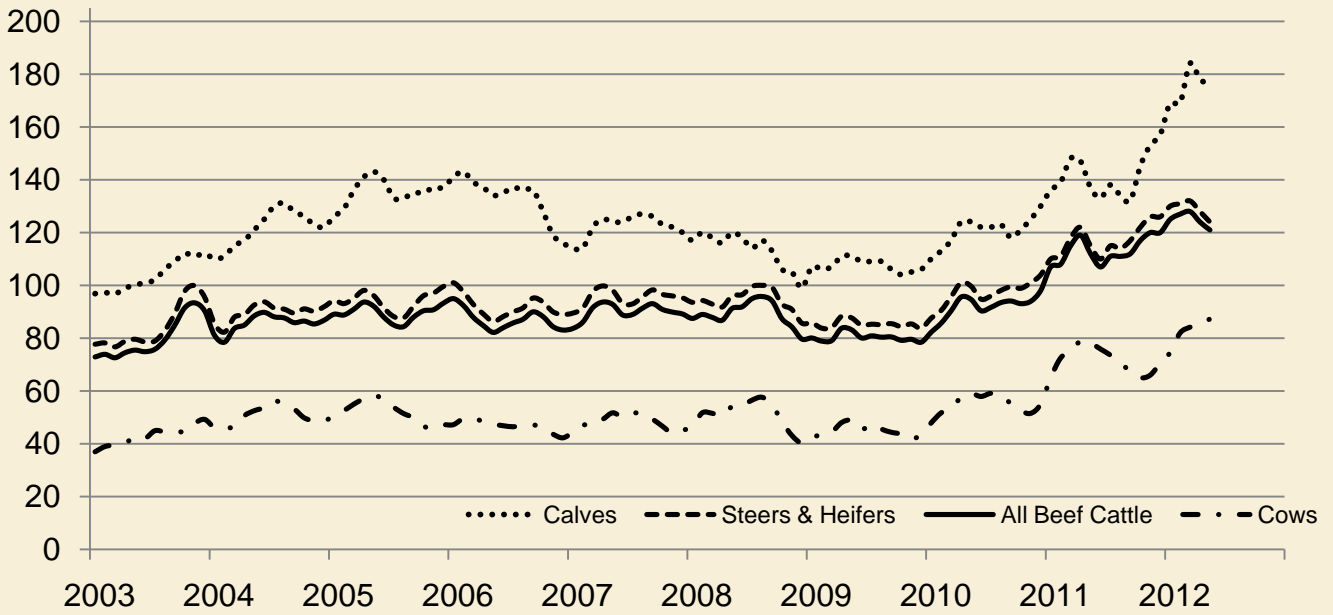
Prices Received for Soybeans by Month – United States

Dollars per bushel



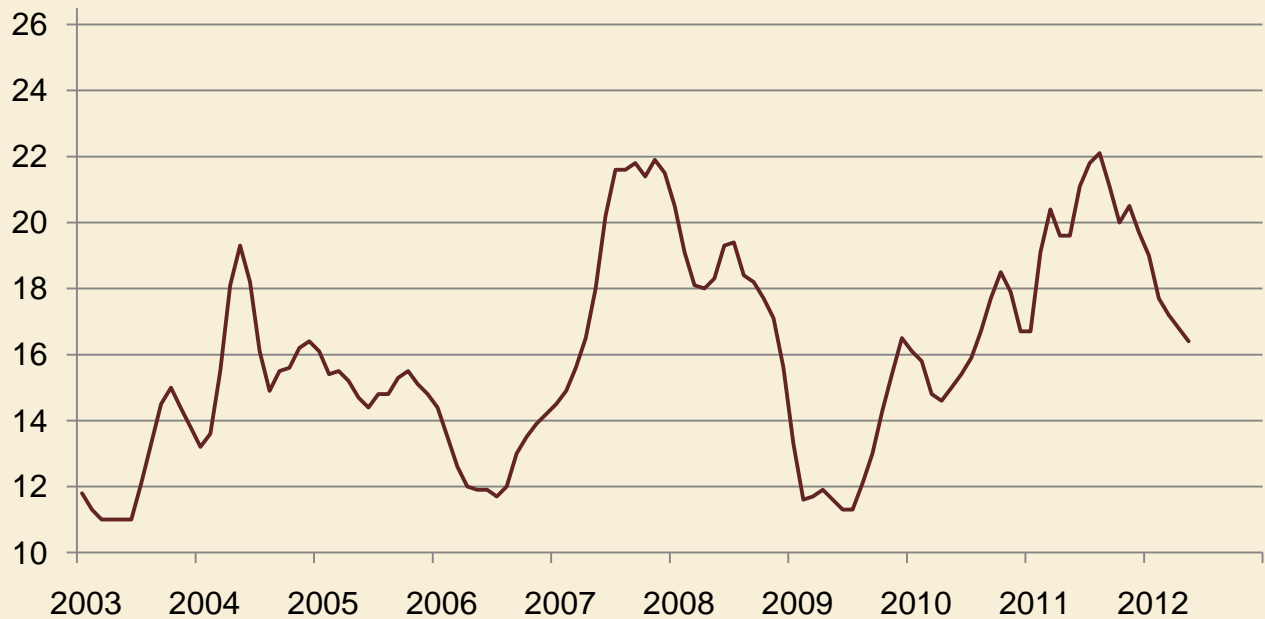
Prices Received for Cattle by Month – United States

Dollars per cwt



Prices Received for Milk by Month – United States

Dollars per cwt



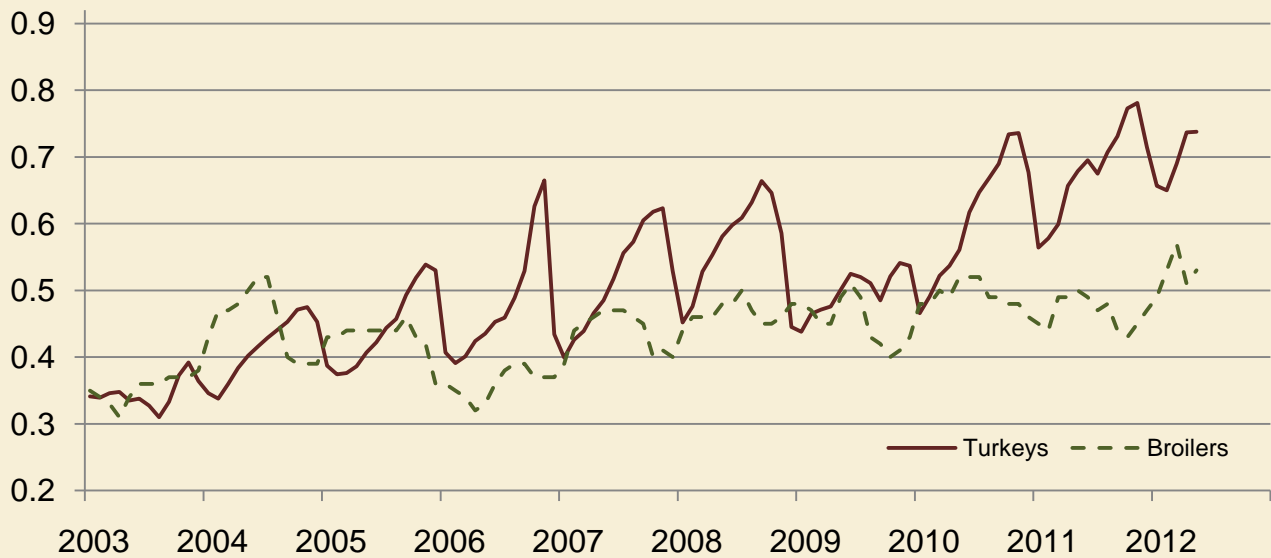
Prices Received for Hogs by Month – United States

Dollars per cwt



Prices Received for Poultry by Month – United States

Dollars per pound



Prices Received for All Wheat, Corn, and Soybeans by Month – United States: 2012 with Comparisons

[Current month prices are mid-month; prices for previous months and years are for the entire month. Blank data cells indicate estimation period has not yet begun]

Month	All wheat			Corn			Soybeans		
	2010	2011	Preliminary 2012	2010	2011	Preliminary 2012	2010	2011	Preliminary 2012
	(dollars per bushel)	(dollars per bushel)	(dollars per bushel)	(dollars per bushel)	(dollars per bushel)	(dollars per bushel)	(dollars per bushel)	(dollars per bushel)	(dollars per bushel)
January	4.90	6.69	7.04	3.66	4.94	6.07	9.79	11.60	11.90
February	4.73	7.42	7.10	3.55	5.65	6.28	9.41	12.70	12.20
March	4.70	7.55	7.19	3.55	5.53	6.35	9.39	12.70	13.00
April	4.41	8.01	7.11	3.41	6.36	6.34	9.47	13.10	13.70
May	4.34	8.16	6.60	3.48	6.32	6.22	9.41	13.20	13.70
June	4.16	7.41		3.41	6.38		9.45	13.20	
July	4.49	7.10		3.49	6.33		9.79	13.20	
August	5.44	7.61		3.65	6.88		10.10	13.40	
September ...	5.79	7.55		4.08	6.37		9.98	12.20	
October	5.88	7.29		4.32	5.71		10.20	11.70	
November	6.10	7.26		4.55	5.84		11.10	11.70	
December	6.44	7.19		4.82	5.86		11.60	11.50	

Prices Received for Beef Cattle and All Hogs by Month – United States: 2012 with Comparisons

[Current month prices are mid-month; prices for previous months and years are for the entire month. Blank data cells indicate estimation period has not yet begun]

Month	Beef cattle ¹			All hogs ²		
	2010	2011	Preliminary 2012	2010	2011	Preliminary 2012
	(dollars per cwt)	(dollars per cwt)	(dollars per cwt)	(dollars per cwt)	(dollars per cwt)	(dollars per cwt)
January	82.30	107.00	125.00	48.40	56.00	63.50
February	85.70	108.00	127.00	48.90	61.40	65.50
March	90.40	115.00	128.00	52.10	62.90	65.20
April	95.60	119.00	124.00	56.50	67.80	62.80
May	94.70	112.00	121.00	62.20	68.60	61.60
June	90.40	107.00		58.20	69.70	
July	91.70	111.00		58.50	71.70	
August	93.50	111.00		61.30	75.80	
September	94.10	112.00		61.00	67.10	
October	93.10	117.00		53.30	68.70	
November	94.00	120.00		47.80	64.40	
December	98.10	120.00		52.40	63.50	

¹ Cows and steers & heifers.

² Barrows & gilts and sows.

Prices Received for All Wheat – States and United States: May 2012 with Comparisons

State	May 2011	April 2012	Preliminary May 2012
	(dollars per bushel)	(dollars per bushel)	(dollars per bushel)
Arizona	(D)	(S)	(S)
Arkansas	(D)	6.39	6.30
California	7.62	(D)	(D)
Colorado	7.96	6.01	5.62
Idaho	7.48	7.08	7.21
Illinois	7.63	6.28	6.10
Indiana	7.55	6.35	6.01
Kansas	8.41	6.36	6.00
Michigan	7.01	6.31	6.20
Minnesota	8.10	7.93	7.38
Missouri	6.73	6.13	5.95
Montana	7.86	7.70	7.19
Nebraska	7.16	6.05	5.95
North Carolina	6.99	7.18	6.61
North Dakota	9.29	7.97	7.36
Ohio	7.12	6.76	6.44
Oklahoma	8.08	6.37	6.10
Oregon	7.77	6.75	6.68
South Dakota	9.73	6.96	6.74
Texas	8.43	6.45	6.04
Washington	7.97	6.93	6.81
United States	8.16	7.11	6.60

(D) Withheld to avoid disclosing data for individual operations.

(S) Insufficient number of reports to establish an estimate.

Prices Received for Winter Wheat – States and United States: May 2012 with Comparisons

State	May 2011	April 2012	Preliminary May 2012
	(dollars per bushel)	(dollars per bushel)	(dollars per bushel)
Arkansas	(D)	6.39	6.30
California	7.62	(D)	(D)
Colorado	7.96	6.00	5.61
Idaho	7.07	6.70	6.70
Illinois	7.63	6.28	6.10
Indiana	7.55	6.35	6.01
Kansas	8.41	6.36	6.00
Michigan	7.01	6.31	6.20
Minnesota	7.56	(D)	5.60
Missouri	6.73	6.13	5.95
Montana	7.32	6.98	(D)
Nebraska	7.16	6.05	5.95
North Carolina	6.99	7.18	6.61
North Dakota	6.87	6.46	5.70
Ohio	7.12	6.76	6.44
Oklahoma	8.08	6.37	6.10
Oregon	7.53	6.57	6.60
South Dakota	8.06	6.17	6.10
Texas	8.43	6.45	6.04
Washington	7.45	6.56	6.49
United States	7.80	6.47	6.18

(D) Withheld to avoid disclosing data for individual operations.

Prices Received for Durum Wheat – States and United States: May 2012 with Comparisons

State	May 2011	April 2012	Preliminary May 2012
	(dollars per bushel)	(dollars per bushel)	(dollars per bushel)
Arizona	(D)	(S)	(S)
California	(S)	(S)	(S)
Idaho	(D)	(D)	(D)
Montana	8.56	12.30	(D)
North Dakota	8.53	8.02	7.40
United States	7.86	9.18	8.75

(D) Withheld to avoid disclosing data for individual operations.

(S) Insufficient number of reports to establish an estimate.

Prices Received for Spring Wheat – States and United States: May 2012 with Comparisons

State	May 2011	April 2012	Preliminary May 2012
	(dollars per bushel)	(dollars per bushel)	(dollars per bushel)
Colorado	(S)	(D)	(D)
Idaho	8.40	7.64	7.75
Minnesota	8.12	7.93	7.40
Montana	8.23	7.80	7.80
North Dakota	9.47	8.00	7.45
Oregon	9.17	7.63	7.10
South Dakota	10.30	8.13	7.70
Washington	9.38	8.23	7.88
United States	8.85	7.95	7.61

(D) Withheld to avoid disclosing data for individual operations.

(S) Insufficient number of reports to establish an estimate.

Prices Received for All Barley – States and United States: May 2012 with Comparisons

State	May 2011	April 2012	Preliminary May 2012
	(dollars per bushel)	(dollars per bushel)	(dollars per bushel)
California	5.98	(S)	(S)
Colorado	(D)	(D)	(S)
Idaho	3.85	5.77	5.86
Minnesota	(D)	5.03	(D)
Montana	4.17	6.03	5.06
North Dakota	4.24	5.44	5.45
Oregon	4.93	4.46	4.70
Utah	(D)	5.22	4.68
Washington	4.75	4.54	4.71
Wyoming	(D)	(D)	(S)
United States	4.15	5.72	5.43

(D) Withheld to avoid disclosing data for individual operations.

(S) Insufficient number of reports to establish an estimate.

Prices Received for Malting Barley – States: May 2012 with Comparisons

State	May 2011	April 2012	Preliminary May 2012
	(dollars per bushel)	(dollars per bushel)	(dollars per bushel)
Idaho	3.76	5.86	(D)
Minnesota	(D)	(D)	(D)
Montana	4.12	6.15	(D)
North Dakota	4.18	5.56	5.60
Wyoming	(D)	(D)	(S)

(D) Withheld to avoid disclosing data for individual operations.

(S) Insufficient number of reports to establish an estimate.

Prices Received for Feed Barley – States: May 2012 with Comparisons

State	May 2011	April 2012	Preliminary May 2012
	(dollars per bushel)	(dollars per bushel)	(dollars per bushel)
Idaho	5.12	5.38	(D)
Minnesota	4.54	5.13	(D)
Montana	4.47	5.37	(D)
North Dakota	4.37	5.02	5.00
Wyoming	(S)	(D)	(S)

(D) Withheld to avoid disclosing data for individual operations.

(S) Insufficient number of reports to establish an estimate.

Prices Received for Corn – States and United States: May 2012 with Comparisons

State	May 2011	April 2012	Preliminary May 2012
	(dollars per bushel)	(dollars per bushel)	(dollars per bushel)
Colorado	6.55	6.35	6.10
Illinois	6.65	6.43	6.40
Indiana	6.62	6.56	6.50
Iowa	6.25	6.22	6.10
Kansas	6.56	6.38	6.10
Kentucky	6.90	6.62	6.60
Michigan	6.44	6.24	6.05
Minnesota	5.41	6.06	6.00
Missouri	6.74	6.46	6.25
Nebraska	5.97	6.39	6.25
North Carolina	7.76	7.07	6.77
North Dakota	5.81	6.05	5.85
Ohio	6.93	6.50	6.40
Pennsylvania	7.08	6.99	6.63
South Dakota	6.02	6.07	5.95
Tennessee	5.71	6.92	6.85
Texas	6.57	7.16	6.89
Wisconsin	6.47	6.15	6.00
United States	6.32	6.34	6.22

Prices Received for Soybeans – States and United States: May 2012 with Comparisons

State	May 2011	April 2012	Preliminary May 2012
	(dollars per bushel)	(dollars per bushel)	(dollars per bushel)
Arkansas	12.00	14.00	(D)
Illinois	13.40	14.00	13.80
Indiana	13.70	13.90	13.90
Iowa	13.20	13.60	13.60
Kansas	13.50	13.60	13.40
Kentucky	13.60	14.20	14.20
Louisiana	12.80	13.90	(S)
Michigan	12.60	13.70	13.50
Minnesota	12.70	13.70	13.70
Mississippi	12.90	14.00	13.70
Missouri	13.60	13.90	13.70
Nebraska	13.10	13.60	13.80
North Carolina	13.80	14.00	13.90
North Dakota	12.50	13.20	13.50
Ohio	13.50	13.70	13.50
South Dakota	12.90	13.70	13.70
Tennessee	13.60	14.10	14.00
Wisconsin	12.60	13.40	13.40
United States	13.20	13.70	13.70

(D) Withheld to avoid disclosing data for individual operations.

(S) Insufficient number of reports to establish an estimate.

Prices Received for Oats – States and United States: May 2012 with Comparisons

State	May 2011	April 2012	Preliminary May 2012
	(dollars per bushel)	(dollars per bushel)	(dollars per bushel)
Illinois	(D)	(S)	(S)
Iowa	3.56	3.69	3.70
Michigan	4.31	4.52	4.50
Minnesota	3.18	3.61	3.60
Montana	(D)	(D)	(D)
Nebraska	4.00	3.67	3.65
New York	3.58	4.44	(D)
North Dakota	3.29	3.44	(D)
Oregon	(S)	(S)	(S)
Pennsylvania	4.72	4.55	4.47
South Dakota	3.64	3.81	3.69
Texas	(S)	(S)	(S)
Wisconsin	3.35	3.76	3.75
United States	3.55	3.81	3.76

(D) Withheld to avoid disclosing data for individual operations.

(S) Insufficient number of reports to establish an estimate.

Prices Received for Sorghum Grain – States and United States: May 2012 with Comparisons

State	May 2011	April 2012	Preliminary May 2012
	(dollars per cwt)	(dollars per cwt)	(dollars per cwt)
Arkansas	(S)	(D)	(D)
Illinois	12.40	(D)	(S)
Kansas	11.50	10.60	9.95
Louisiana	(D)	(D)	(S)
Missouri	(D)	(D)	10.30
Nebraska	11.10	10.90	10.40
Oklahoma	11.70	10.90	10.00
Texas	11.60	11.60	11.10
United States	11.60	10.60	10.10

(D) Withheld to avoid disclosing data for individual operations.

(S) Insufficient number of reports to establish an estimate.

Prices Received for Dry Beans – States and United States: May 2012 with Comparisons

State	May 2011	April 2012	Preliminary May 2012
	(dollars per cwt)	(dollars per cwt)	(dollars per cwt)
California	(D)	49.40	(D)
Colorado	29.70	50.70	51.20
Idaho	33.90	47.80	45.50
Michigan	40.10	43.00	43.40
Minnesota	(D)	47.80	(D)
Nebraska	32.10	46.60	42.50
North Dakota	28.20	47.60	43.30
United States	32.90	47.00	44.60

(D) Withheld to avoid disclosing data for individual operations.

Prices Received for Peanuts (In-Shell) – States and United States: May 2012 with Comparisons

State	May 2011	April 2012	Preliminary May 2012
	(dollars per pound)	(dollars per pound)	(dollars per pound)
Alabama	0.221	0.343	(D)
Florida	0.229	0.353	0.324
Georgia	0.220	0.352	0.337
Mississippi	0.220	0.296	0.277
New Mexico	0.250	(S)	(S)
North Carolina	0.234	0.314	0.382
Oklahoma	0.262	(D)	0.300
South Carolina	0.239	0.333	0.336
Texas	0.259	0.470	0.386
Virginia	0.220	(D)	0.295
United States	0.228	0.351	0.347

(D) Withheld to avoid disclosing data for individual operations.

(S) Insufficient number of reports to establish an estimate.

Prices Received for Sunflower – States and United States: May 2012 with Comparisons

State	May 2011	April 2012	Preliminary May 2012
	(dollars per cwt)	(dollars per cwt)	(dollars per cwt)
Colorado	(D)	(D)	(S)
Kansas	(D)	31.50	29.70
Minnesota	23.00	30.50	(D)
North Dakota	30.80	28.00	27.30
South Dakota	27.60	27.30	25.40
United States	30.00	28.50	27.00

(D) Withheld to avoid disclosing data for individual operations.

(S) Insufficient number of reports to establish an estimate.

Prices Received for Canola – States and United States: May 2012 with Comparisons

State	May 2011	April 2012	Preliminary May 2012
	(dollars per cwt)	(dollars per cwt)	(dollars per cwt)
Minnesota	(D)	27.90	(S)
North Dakota	23.50	27.80	28.00
United States	23.50	27.80	28.00

(D) Withheld to avoid disclosing data for individual operations.

(S) Insufficient number of reports to establish an estimate.

Prices Received for Flaxseed – States and United States: May 2012 with Comparisons

State	May 2011	April 2012	Preliminary May 2012
	(dollars per bushel)	(dollars per bushel)	(dollars per bushel)
North Dakota	14.20	14.10	14.10
United States	14.20	14.10	14.10

Prices Received for Upland Cotton and Cottonseed – States and United States: May 2012 with Comparisons

[Cottonseed marketing year August - February]

State	Cotton, Upland			Cottonseed		
	May 2011	April 2012	Preliminary May 2012	May 2011	April 2012	Preliminary May 2012
	(dollars per pound)	(dollars per pound)	(dollars per pound)	(dollars per ton)	(dollars per ton)	(dollars per ton)
Alabama	0.819	(D)	1.000	(NA)	(NA)	(NA)
Arizona	(D)	(D)	(D)	(NA)	(NA)	(NA)
Arkansas	0.819	(D)	1.000	(NA)	(NA)	(NA)
California	0.944	(D)	(S)	(NA)	(NA)	(NA)
Georgia	0.819	0.962	0.981	(NA)	(NA)	(NA)
Louisiana	0.819	0.919	1.000	(NA)	(NA)	(NA)
Mississippi	0.819	(D)	1.000	(NA)	(NA)	(NA)
North Carolina	0.819	0.975	1.000	(NA)	(NA)	(NA)
Tennessee	0.819	0.905	(D)	(NA)	(NA)	(NA)
Texas	0.829	0.793	0.794	(NA)	(NA)	(NA)
United States	0.832	0.909	0.951	(NA)	(NA)	(NA)

(D) Withheld to avoid disclosing data for individual operations.

(NA) Not available.

(S) Insufficient number of reports to establish an estimate.

Prices Received and Farm Marketings for Upland Cotton and Rice – United States: May 2012 with Comparisons

Item	May 2011	April 2012	Preliminary May 2012
Cotton, Upland			
Average price dollars/pound	0.832	0.909	0.951
Marketings ¹ 1,000 bales	180	297	(NA)
Rice, all			
Average price dollars/cwt	12.70	13.90	13.70
Marketings ² 1,000 cwt	14,227	13,396	(NA)
Rice, long			
Average price dollars/cwt	10.90	13.20	13.10
Marketings ² 1,000 cwt	11,211	9,423	(NA)
Rice, medium and short			
Average price dollars/cwt	19.00	15.30	16.00
Marketings ² 1,000 cwt	3,016	3,973	(NA)

(NA) Not available.

¹ Marketings based on a survey of cotton buyers in the major producing States - Alabama, Arizona, Arkansas, California, Georgia, Louisiana, Mississippi, North Carolina, Tennessee, and Texas.

² Purchases by private firms and rice (rough equivalent) shipped by cooperatives.

Prices Received for Hay by Type – States and United States: May 2012 with Comparisons

State	All hay			Alfalfa hay			Other hay		
	May 2011	April 2012	Preliminary May 2012	May 2011	April 2012	Preliminary May 2012	May 2011	April 2012	Preliminary May 2012
	(dollars per ton)	(dollars per ton)	(dollars per ton)	(dollars per ton)	(dollars per ton)	(dollars per ton)	(dollars per ton)	(dollars per ton)	(dollars per ton)
Arizona	213.00	259.00	250.00	215.00	260.00	255.00	155.00	195.00	195.00
California	224.00	232.00	221.00	239.00	235.00	227.00	141.00	215.00	186.00
Colorado	148.00	243.00	249.00	150.00	255.00	255.00	125.00	170.00	170.00
Idaho	189.00	198.00	178.00	192.00	200.00	180.00	125.00	140.00	120.00
Illinois	144.00	171.00	163.00	150.00	180.00	170.00	95.00	130.00	125.00
Iowa	107.00	137.00	134.00	118.00	143.00	142.00	81.00	90.00	92.00
Kansas	125.00	191.00	190.00	130.00	220.00	205.00	75.00	105.00	105.00
Kentucky	113.00	114.00	120.00	155.00	175.00	180.00	75.00	85.00	80.00
Michigan	102.00	109.00	113.00	110.00	115.00	120.00	80.00	90.00	95.00
Minnesota	111.00	135.00	136.00	115.00	150.00	150.00	80.00	100.00	95.00
Missouri	88.00	91.00	111.00	140.00	200.00	190.00	65.00	75.00	75.00
Montana	79.00	99.00	103.00	79.00	98.00	103.00	80.00	105.00	99.00
Nebraska	81.00	128.00	125.00	85.00	139.00	134.00	68.00	98.00	96.00
Nevada	164.00	214.00	223.00	165.00	215.00	225.00	135.00	175.00	175.00
New Mexico	216.00	293.00	280.00	220.00	300.00	286.00	180.00	220.00	220.00
New York	117.00	107.00	116.00	150.00	171.00	175.00	111.00	101.00	105.00
North Dakota	59.00	71.00	72.00	62.00	75.00	75.00	44.00	53.00	52.00
Ohio	124.00	150.00	170.00	162.00	209.00	209.00	80.00	118.00	118.00
Oklahoma	119.00	197.00	170.00	147.00	249.00	212.00	76.00	140.00	107.00
Oregon	184.00	226.00	228.00	190.00	229.00	230.00	175.00	220.00	226.00
Pennsylvania	134.00	173.00	168.00	155.00	216.00	200.00	124.00	154.00	165.00
South Dakota	97.00	127.00	123.00	99.00	135.00	128.00	81.00	95.00	103.00
Texas	144.00	169.00	144.00	200.00	273.00	220.00	115.00	152.00	105.00
Utah	166.00	171.00	203.00	167.00	175.00	205.00	137.00	142.00	163.00
Washington	161.00	231.00	234.00	155.00	240.00	240.00	175.00	215.00	220.00
Wisconsin	95.00	119.00	119.00	100.00	135.00	135.00	70.00	90.00	90.00
Wyoming	105.00	157.00	157.00	107.00	160.00	165.00	97.00	135.00	135.00
United States	171.00	190.00	199.00	187.00	207.00	215.00	114.00	140.00	146.00

Prices Received for Apples – States and United States: May 2012 with Comparisons

[Equivalent packinghouse-door returns for California, Michigan, New York, and Washington. Prices at point of first sale for other States]

State	Apples, fresh use		
	May 2011	April 2012	Preliminary May 2012
	(dollars per pound)	(dollars per pound)	(dollars per pound)
Michigan	(NA)	0.305	0.305
New York	0.271	0.287	0.281
Ohio	0.580	0.510	0.520
Pennsylvania	(S)	(NA)	(NA)
Virginia	(NA)	(NA)	(NA)
Washington	0.254	0.330	0.335
United States	0.256	0.329	0.333

(NA) Not available.

(S) Insufficient number of reports to establish an estimate.

Prices Received for Citrus Fruits by Utilization – States and United States: May 2011

[Net pounds per box: grapefruit in California-80, Florida-85, Texas-80; lemons-80; oranges in California-80, Florida-90, Texas-85; tangelos-90; tangerines and mandarins in Arizona and California-80, Florida-95]

Commodity, State, and type	FOB packed fresh	Equivalent returns					
		Packinghouse-door			On-tree		
		All	Fresh	Process	All	Fresh	Process
	(dollars per box)	(dollars per box)	(dollars per box)	(dollars per box)	(dollars per box)	(dollars per box)	(dollars per box)
Grapefruit							
California ¹	18.90	12.50	12.50	(D)	10.40	10.40	(D)
Florida	22.70	7.20	12.88	5.96	4.62	10.68	3.30
White	22.00	5.92	12.10	5.85	3.37	9.95	3.30
Colored	22.70	8.59	12.90	6.15	5.97	10.70	3.30
United States	19.50	9.89	12.56	5.96	7.55	10.44	3.30
Lemons							
California	32.90	16.13	22.00	(D)	10.26	16.13	(D)
United States	32.90	16.13	22.00	(D)	10.26	16.13	(D)
Oranges							
California	21.70	9.17	13.04	(D)	6.71	10.63	(D)
Navel and miscellaneous	22.00	8.84	13.36	(D)	6.37	10.95	(D)
Valencia	21.00	10.01	12.36	(D)	7.56	9.95	(D)
Florida							
Valencia	23.20	10.36	13.20	10.30	7.75	10.50	7.70
United States	21.80	10.10	13.05	9.52	7.53	10.62	6.92
Tangerines and mandarins							
California	(D)	(D)	(D)	(D)	(D)	(D)	(D)
United States	(D)	(D)	(D)	(D)	(D)	(D)	(D)

(D) Withheld to avoid disclosing data for individual operations.

¹ Some processed sales included in fresh sales.

Prices Received for Citrus Fruits by Utilization – States and United States: April 2012

[Net pounds per box: grapefruit in California-80, Florida-85, Texas-80; lemons-80; oranges in California-80, Florida-90, Texas-85; tangelos-90; tangerines and mandarins in Arizona and California-80, Florida-95]

Commodity, State, and type	FOB packed fresh	Equivalent returns					
		Packinghouse-door			On-tree		
		All	Fresh	Process	All	Fresh	Process
	(dollars per box)	(dollars per box)	(dollars per box)	(dollars per box)	(dollars per box)	(dollars per box)	(dollars per box)
Grapefruit							
California ¹	21.90	15.37	15.37	(D)	13.23	13.23	(D)
Florida	22.50	8.71	12.90	7.15	6.14	10.66	4.45
White	20.00	7.86	10.30	7.50	5.32	8.10	4.90
Colored	23.20	9.38	13.60	6.75	6.79	11.35	3.95
Texas	(S)	1.60	(S)	1.60	0.20	(S)	0.20
United States	22.20	8.74	14.09	5.82	6.42	11.89	3.44
Lemons							
California	36.00	21.35	24.88	(D)	15.36	18.89	(D)
United States	36.00	21.35	24.88	(D)	15.36	18.89	(D)
Oranges							
California	24.50	13.65	15.72	(D)	11.16	13.26	(D)
Navel and miscellaneous	24.30	13.24	15.49	(D)	10.75	13.03	(D)
Valencia	(D)	(D)	(D)	(D)	(D)	(D)	(D)
Florida							
Valencia	23.70	11.44	13.45	11.40	8.74	10.60	8.70
United States	24.50	11.99	15.56	10.94	9.34	13.08	8.25
Tangerines and mandarins							
California	(D)	(D)	(D)	(D)	(D)	(D)	(D)
United States	(D)	(D)	(D)	(D)	(D)	(D)	(D)

(D) Withheld to avoid disclosing data for individual operations.

(S) Insufficient number of reports to establish an estimate.

¹ Some processed sales included in fresh sales.

Prices Received for Citrus Fruits by Utilization – States and United States: May 2012

[Net pounds per box: grapefruit in California-80, Florida-85, Texas-80; lemons-80; oranges in California-80, Florida-90, Texas-85; tangelos-90; tangerines and mandarins in Arizona and California-80, Florida-95]

Commodity, State, and type	FOB packed fresh	Equivalent returns					
		Packinghouse-door			On-tree		
		All	Fresh	Process	All	Fresh	Process
	(dollars per box)	(dollars per box)	(dollars per box)	(dollars per box)	(dollars per box)	(dollars per box)	(dollars per box)
Grapefruit							
California ¹	22.50	15.97	15.97	(D)	13.83	13.83	(D)
Texas	(S)	(S)	(S)	(S)	(S)	(S)	(S)
United States	22.50	15.97	15.97	(D)	13.83	13.83	(D)
Lemons							
California	38.40	22.79	27.28	(D)	16.80	21.29	(D)
United States	38.40	22.79	27.28	(D)	16.80	21.29	(D)
Oranges							
California	26.30	16.22	17.46	(D)	13.74	15.00	(D)
Navel and miscellaneous	27.10	17.00	18.29	(D)	14.53	15.83	(D)
Valencia	24.70	14.75	15.89	(D)	12.28	13.43	(D)
Florida							
Valencia	25.00	11.95	14.75	11.90	9.25	11.90	9.20
United States	26.20	12.86	17.27	11.69	10.20	14.79	8.99
Tangerines and mandarins							
California	(D)	(D)	(D)	(D)	(D)	(D)	(D)
United States	(D)	(D)	(D)	(D)	(D)	(D)	(D)

(D) Withheld to avoid disclosing data for individual operations.

(S) Insufficient number of reports to establish an estimate.

¹ Some processed sales included in fresh sales.

Prices Received for Potatoes – States and United States: May 2012 with Comparisons

State	May 2011	April 2012	Preliminary May 2012
	(dollars per cwt)	(dollars per cwt)	(dollars per cwt)
California			
Spring	25.70	(D)	15.90
Fall	10.80	(D)	8.65
All ¹	24.10	15.10	14.60
Colorado			
Fresh ²	15.30	12.90	(D)
All ¹	13.00	11.20	10.20
Florida	(D)	(D)	(D)
Idaho			
Fresh ²	10.30	9.30	(D)
Processing	7.60	7.90	(D)
All ¹	9.20	9.85	8.75
Maine	10.70	11.80	10.80
Michigan	13.70	13.80	(S)
Minnesota	6.90	7.00	(D)
New York	15.50	16.30	16.30
North Carolina	(S)	(S)	(S)
North Dakota			
Fresh ²	9.90	9.15	(D)
Processing	7.30	7.75	(D)
All ¹	8.65	9.80	(D)
Oregon	9.70	9.00	8.55
Texas	(S)	(S)	(S)
Virginia	(S)	(S)	(S)
Washington			
Processing	7.50	7.80	(D)
All ¹	8.60	8.90	8.25
Wisconsin			
Fresh ²	14.40	11.00	(D)
Processing	7.45	9.30	(D)
All ¹	11.80	11.50	(D)
United States			
Fresh ²	16.59	13.97	(D)
Processing	8.41	8.14	(D)
All ¹	11.17	10.75	9.86

(D) Withheld to avoid disclosing data for individual operations.

(S) Insufficient number of reports to establish an estimate.

¹ Average price of potatoes sold for all uses, including table stock, processing, seed, and livestock feed.

² Fresh market prices only. Includes table stock prices.

Prices Received for All Milk – States and United States: May 2012 with Comparisons

[Before deduction for hauling. Includes quality, quantity, and other premiums. Excludes hauling subsidies]

State	May 2011		April 2012		Preliminary May 2012	
	Price (dollars per cwt)	Fat test (percent)	Price (dollars per cwt)	Fat test (percent)	Price (dollars per cwt)	Fat test (percent)
Arizona	19.80	3.47	16.00	3.49	15.50	3.48
California	18.08	3.66	15.00	3.67	14.60	3.61
Colorado	19.60	3.56	17.10	3.47	16.70	3.46
Florida	24.40	3.59	20.60	3.58	20.60	3.56
Idaho	17.70	3.63	16.40	3.67	16.30	3.61
Illinois	19.90	3.67	17.10	3.66	16.70	3.63
Indiana	20.50	3.64	16.90	3.61	16.50	3.55
Iowa	19.70	3.64	17.40	3.72	16.90	3.65
Kansas	20.70	3.67	17.20	3.71	16.90	3.62
Michigan	20.60	3.61	17.30	3.61	16.90	3.55
Minnesota	19.40	3.69	17.70	3.78	17.60	3.73
Missouri	20.20	3.65	17.00	3.64	16.70	3.60
New Mexico	19.20	3.54	15.40	3.46	15.20	3.42
New York	21.30	3.67	17.90	3.73	17.30	3.68
Ohio	21.50	3.70	18.00	3.69	17.80	3.66
Oregon	20.00	3.71	18.00	3.78	17.60	3.71
Pennsylvania	22.10	3.65	18.40	3.68	17.80	3.65
Texas	20.60	3.75	16.80	3.69	16.60	3.65
Utah	19.50	3.67	15.70	3.68	15.30	3.64
Vermont	21.40	3.76	18.10	3.78	17.50	3.75
Virginia	22.80	3.61	18.60	3.65	18.20	3.57
Washington	20.10	3.71	17.10	3.78	16.40	3.71
Wisconsin	18.90	3.68	17.60	3.72	17.30	3.67
United States	19.60	3.66	16.80	3.67	16.40	3.62

Prices Received for Milk Cows – States and United States: April 2012 with Comparisons

[Animals sold for dairy herd replacement only. Prices estimated in January, April, July, and October]

State	April 2011 (dollars per head)	January 2012 (dollars per head)	April 2012 (dollars per head)
Arizona	1,450	1,500	1,500
California	1,300	1,400	1,300
Colorado	1,450	1,500	1,520
Florida	1,480	1,490	1,450
Idaho	1,450	1,450	1,450
Illinois	1,430	1,500	1,520
Indiana	1,450	1,450	1,450
Iowa	1,430	1,400	1,450
Kansas	1,400	1,400	1,450
Michigan	1,550	1,600	1,600
Minnesota	1,410	1,430	1,490
Missouri	1,280	1,200	1,300
New Mexico	1,380	1,380	1,350
New York	1,400	1,450	1,460
Ohio	1,470	1,500	1,510
Oregon	1,390	1,440	1,430
Pennsylvania	1,450	1,500	1,500
Texas	1,400	1,400	1,400
Utah	1,300	1,340	1,340
Vermont	1,550	1,550	1,600
Virginia	1,410	1,520	1,540
Washington	1,400	1,400	1,350
Wisconsin	1,560	1,550	1,560
United States	1,420	1,460	1,440

Commodity Parity Prices and Price as Percent of Parity Price – United States: May 2012 with Comparisons

[Parity prices are computed under the provisions of Title III, Subtitle a, Section 301 (a) of the Agricultural Adjustment Act of 1938 as amended by the Agricultural Acts of 1948, 1949, and 1956. See January *Agricultural Prices* for details on adjusted base price and parity price computations. Parity data not available for blank cells. Primary source of data for livestock and milk prices is United States Department of Agriculture's Agricultural Marketing Service]

Commodity and unit	Adjusted base price	Parity price			Price as percent of parity		
		May 2011	April 2012	May 2012	May 2011	April 2012	May 2012
	(dollars)	(dollars)	(dollars)	(dollars)	(percent)	(percent)	(percent)
Basic commodities							
All wheatbushel	0.634	16.50	17.90	17.90	49	40	37
Ricecwt	1.46	44.30	41.30	41.30	29	34	33
Cornbushel	0.414	10.40	11.70	11.70	61	54	53
Cotton							
Upland pound	0.072	1.93	2.04	2.04	43	45	47
American Pima pound	0.141	3.51	3.99	3.99	51	41	41
Peanuts pound	0.026	0.734	0.736	0.735	31	48	47
Designated nonbasic							
All milk, to plants ¹cwt	1.80	49.50	50.90	50.90	42	35	34
Honey, extracted ² pound	0.139	3.64	3.93	3.93	44	41	41
Wool and mohair							
Wool pound	0.104	2.50	2.94	2.94	46	57	57
Mohair pound	0.333	8.81	9.42	9.42	40	44	44
Other nonbasic							
Apples, fresh ³ pound	0.033	0.897	0.934	0.933	29	35	36
Barleybushel	0.436	11.60	12.30	12.30	36	47	44
Canolacwt	1.820	47.30	51.50	51.50	50	54	54
Cottonseed ton	17.40	419.00	492.00	492.00	41	56	56
Dry edible beanscwt	3.01	79.40	85.20	85.10	41	55	52
Flaxseedbushel	1.100	27.70	31.10	31.10	51	45	45
Oatsbushel	0.263	6.80	7.44	7.44	52	51	51
Potatoescwt	0.855	22.70	24.20	24.20	49	44	41
Sorghum graincwt	0.729	18.40	20.60	20.60	63	51	49
Soybeansbushel	1.000	25.80	28.30	28.30	51	48	48
Sunflower, allcwt	2.06	51.90	58.30	58.30	58	49	46
Citrus (equivalent on-tree)							
Grapefruitbox	0.690	18.00	19.50	19.50	42	33	71
Lemonsbox	1.37	37.00	38.80	38.70	28	40	43
Orangesbox	0.698	18.70	19.80	19.70	40	47	52
Tangerinesbox	1.49	38.90	42.20	42.10	53	65	104
Livestock and poultry							
Beef cattlecwt	10.10	275.00	286.00	286.00	41	43	42
Calvescwt	13.90	383.00	393.00	393.00	36	45	45
Hogscwt	5.53	150.00	156.00	156.00	46	40	39
Eggs ¹dozen	0.091	2.47	2.58	2.57	41	35	39
Turkeys, live pound	0.057	1.520	1.610	1.610	45	46	46

¹ Seasonally adjusted price as percentage of parity price.

² Wholesale extracted. Adjusted base price derived from state annual averages prices weighted by production. For 1982 through 1985 the national averages are the support prices.

³ Equivalent packinghouse-door returns for California, New York (apples only), Oregon (except peaches), and Washington. Price at point of first sale for other states.

Commodity Parity Prices – United States: May 2012 with Comparisons

[Parity prices are computed under the provisions of Title III, Subtitle a, Section 301 (a) of the Agricultural Adjustment Act of 1938 as amended by the Agricultural Acts of 1948, 1949, and 1956. See January *Agricultural Prices* for details on adjusted base price and parity price computations]

Commodity and unit	Adjusted base price	Parity price		
		May 2011	April 2012	May 2012
	(dollars)	(dollars)	(dollars)	(dollars)
Field crops and miscellaneous				
Hops pound	0.306	8.35	8.66	8.65
Mustard seed cwt	2.82	72.30	79.80	79.70
Rapeseed cwt	2.23	58.20	63.10	63.10
Rye bushel	0.525	13.40	14.90	14.80
Safflower cwt	2.02	52.70	57.20	57.10
Spearmint oil pound	1.50	39.20	42.50	42.40
Sweet potatoes cwt	2.20	61.70	62.30	62.20
Tobacco				
Flue-cured, 11-14 pound	0.196	5.66	5.55	5.54
Fire-cured, 21-23 pound	0.283	7.97	8.01	8.00
Burley, 31 pound	0.202	5.82	5.72	5.71
Maryland, 32 pound	0.174	4.98	4.92	4.92
Dark air-cured, 35-37 pound	0.256	7.10	7.24	7.24
Pennsylvania seedleaf, 41 pound	0.182	5.19	5.15	5.15
Cigar binder, 51 pound	0.640	18.40	18.10	18.10
Noncitrus fruit				
Apples, processing ^{1 9} ton	16.10	438.00	456.00	455.00
Apricots				
Fresh ^{2 9} ton	114.00	3,100.00	3,230.00	3,220.00
Dried (California) ⁹ ton	262.00	7,120.00	7,410.00	7,410.00
Avocados ^{2 9} ton	198.00	5,380.00	5,600.00	5,600.00
Cherries				
Sweet ⁹ ton	210.00	5,710.00	5,940.00	5,940.00
Tart ⁹ pound	0.034	0.924	0.962	0.962
Cranberry ^{3 9} barrel	4.89	133.00	138.00	138.00
Dates (California) ^{2 9} ton	183.00	4,980.00	5,180.00	5,180.00
Grapes				
Raisin variety ⁹ ton	117.00	3,180.00	3,310.00	3,310.00
Other dried ⁹ ton	65.40	1,780.00	1,850.00	1,850.00
Kiwifruit ⁹ ton	94.40	2,570.00	2,670.00	2,670.00
Nectarines, fresh (California) ^{2 9} ton	55.30	1,500.00	1,560.00	1,560.00
Olives, canning (California) ^{3 9} ton	87.40	2,380.00	2,470.00	2,470.00

See footnote(s) at end of table.

--continued

Commodity Parity Prices – United States: May 2012 with Comparisons (continued)

[Parity prices are computed under the provisions of Title III, Subtitle a, Section 301 (a) of the Agricultural Adjustment Act of 1938 as amended by the Agricultural Acts of 1948, 1949, and 1956. See January *Agricultural Prices* for details on adjusted base price and parity price computations]

Commodity and unit	Adjusted base price	Parity price			
		May 2011	April 2012	May 2012	
	(dollars)	(dollars)	(dollars)	(dollars)	
Noncitrus fruit - continued					
Papayas (Hawaii) ⁹	pound	0.046	1.25	1.30	1.30
Peaches					
Fresh ^{4 9}	ton	83.00	2,260.00	2,350.00	2,350.00
Dried (California) ⁹	ton	57.30	1,560.00	1,620.00	1,620.00
Processing, excludes dried					
Clingstone (California) ^{3 9}	ton	33.70	916.00	954.00	953.00
Pears					
Fresh ^{4 9}	ton	55.60	1,510.00	1,570.00	1,570.00
Dried (California) ^{1 9}	ton	178.00	4,840.00	5,040.00	5,030.00
Plums (California)					
Fresh, equivalent on-tree ⁹	ton	60.20	1,640.00	1,700.00	1,700.00
Prunes, dried (California) ^{1 9}	ton	147.00	4,000.00	4,160.00	4,160.00
Prunes and plums					
Fresh, excludes California ^{5 9}	ton	63.80	1,730.00	1,810.00	1,800.00
Processing, excludes dried ^{1 9}	ton	25.70	699.00	727.00	727.00
Tree nuts^{6 9}					
Almonds	pound	0.209	5.68	5.91	5.91
Hazelnuts	ton	183.00	4,980.00	5,180.00	5,180.00
Pistachios	pound	0.194	5.27	5.49	5.49
Walnuts	ton	177.00	4,810.00	5,010.00	5,010.00
Vegetables, fresh⁷					
Carrots ⁸	cwt	2.69	71.00	76.10	76.10
Cauliflower ⁸	cwt	4.31	116.00	122.00	122.00
Celery ⁸	cwt	2.01	55.70	56.90	56.80
Honeydew melons	cwt	2.09	59.00	59.10	59.10
Lettuce	cwt	2.29	63.90	64.80	64.80
Onions ⁸	cwt	1.49	42.70	42.20	42.10
Tomatoes	cwt	4.68	129.00	132.00	132.00

¹ Equivalent returns at processing plant door.

² Equivalent returns at packinghouse door.

³ Equivalent returns for bulk fruit at first delivery point.

⁴ Equivalent packinghouse-door returns for California, New York (apples only), Oregon (except peaches), and Washington. Price at point of first sale for other states.

⁵ Based on "as sold" prices for fresh fruit in all states.

⁶ Prices In-Shell basis except almonds which are shelled basis.

⁷ FOB shipping point prices.

⁸ Includes some processing.

⁹ Non-citrus fruit and tree nut estimates discontinued October 2011. The program was later reinstated with a publication date of March 15, 2012. Parity prices will be published in the July 2012 *Agricultural Prices* report to include these prices.

Reliability of Prices Received Estimates

Definition: Prices received represent sales from producers to first buyers. They include all grades and qualities. The average commodity price from the survey multiplied by the total quantity marketed theoretically should give the total cash receipts for the commodity.

Survey procedures: Primary sales data used to determine grain prices were obtained from probability samples of about 1900 mills and elevators. These procedures ensure that virtually all grain moving into commercial channels has a chance of being included in the survey. Generally, States surveyed account for 90 percent or more of total United States production. Livestock prices are obtained from packers, stockyards, auctions, dealers, and market check data from AMS-USDA, private marketing organizations, and state commodity groups and agencies. Inter-farm sales of grain and livestock are not included since they represent very small percentages of the total marketings. Grain marketed for seed is also excluded. Fruit and vegetable prices are obtained from sample surveys and market check data from AMS-USDA, private marketing organizations, state agencies, and universities.

Summary and estimation procedures: Survey quantities sold are expanded by strata to state levels and used to weight average strata prices to a state average. State prices are then weighted to a United States price based on expanded marketings. Recommendations are prepared by the State Field Offices and reviewed by the Agricultural Statistics Board in Washington, D.C. State recommendations are reviewed for reasonableness with survey data, other States, and recent historic estimates.

Revisions: For most items, the current month's preliminary price represents a 3-5 day period around the 15th of the month. Previous month's prices represent actual dollars received for quantities sold during the entire month. Revisions are published in monthly issues of Agricultural Prices.

Reliability: United States price estimates based on probability surveys generally have a sampling error of less than one percent for the major commodities such as corn, wheat, soybeans, cotton, and rice. Current methods of summarization for non-probability commodities are not designed directly to calculate sampling errors. However, analytical measures approximate the United States relative sampling errors at around five percent. Any nonsampling errors are attributed to such things as the inability to obtain correct information, differences in interpreting questions or definitions, mistakes in coding or processing the data, etc. Efforts are made at each step in the survey process to minimize these nonsampling errors.

Prices Paid by Farmers

The May Index of Prices Paid for Commodities and Services, Interest, Taxes, and Farm Wage Rates (PPITW) at 212 (1990-1992=100) is down 0.5 percent from April 2012 but up 3.9 percent from May 2011.

Production index: The May index, at 225, decreased 0.4 percent from last month but increased 4.2 percent from last year. Lower prices in May for LP gas, diesel, feeder pigs, and feeder cattle offset higher prices for nitrogen, concentrates, complete feeds, and hay & forages.

Feed: The May index, at 240, increased 1.3 percent from April and 4.8 percent from last May. Since April, higher prices for concentrates, complete feeds, and hay & forages offset lower prices for feed grains and supplements.

Livestock and poultry: The May index, at 171, decreased 2.8 percent from last month but increased 15 percent from last year. Since April, prices for feeder pigs and feeder cattle are lower. The May feeder cattle price, at \$152.40 per cwt, is down \$1.90 per cwt from the April price. May feeder pigs averaged \$129.00 per cwt, down \$31.00 per cwt from April.

Fertilizer: The May index, at 343, is up 1.5 percent from April and 4.9 percent above May a year ago. Since April, higher prices for nitrogen and mixed fertilizer more than offset lower prices for potash & phosphate.

Chemicals: The May index, at 147, decreased 1.3 percent from April but increased 2.1 percent from last May. Compared with last month, prices for herbicides, insecticides, and fungicides/other are lower.

Fuels: The May index, at 362, is down 4.7 percent from a month earlier and 5.5 percent below May 2011. Compared with last month, prices for LP gas, diesel, and gasoline are lower.

Machinery: The May index, at 254, increased 0.4 percent from April and is 5.0 percent above last May. Compared with last month, prices for other machinery are higher.

Consumer price index: The April 2012 Consumer Price Index, as issued by the Bureau of Labor Statistics, for all urban consumers (CPI-U) increased 0.3 percent before seasonal adjustment to a level of 230.085 (1982-1984=100). The March index is 229.392. For the 12 month period ending in April, the overall index increased 2.3 percent.

Prices Paid Indexes and Related Parity Ratios – United States: May 2012 with Comparisons

[Revised historical price indexes for months not shown are available at www.nass.usda.gov]

Indexes and ratios	1910-1914 Base			1990-1992 Base		
	May 2011	April 2012	May 2012	May 2011	April 2012	May 2012
	(percent)	(percent)	(percent)	(percent)	(percent)	(percent)
Prices paid by farmers for commodities, services, interest, taxes, and wage rates (PPITW)	2710	2833	2828	204	213	212
Production	2091	2190	2185	216	226	225
Feed	1117	1159	1173	229	237	240
Livestock and poultry	1908	2245	2189	149	176	171
Seeds	3327	3496	3496	336	353	353
Fertilizer	1197	1238	1257	327	338	343
Chemicals	890	923	907	144	149	147
Fuels	2959	2932	2794	383	380	362
Supplies and repairs	1176	1210	1210	166	170	170
Autos and trucks	3089	3138	3141	116	118	118
Machinery	6067	6351	6372	242	253	254
Building materials	2326	2386	2395	171	176	176
Services and rent	2123	2176	2177	(NA)	(NA)	(NA)
Services	(NA)	(NA)	(NA)	164	166	166
Rent	(NA)	(NA)	(NA)	205	212	212
Interest ¹	3381	3635	3635	135	145	145
Taxes ²	5935	6225	6225	222	232	232
Wage rates	7075	7373	7373	189	197	197
Production, interest, taxes, and wage rates (PITW)	2822	2960	2954	210	220	220
Family living-CPI ³	2146	2185	2192	168	171	171
Ratio (received/paid)	(NA)	(NA)	(NA)	86	84	83
Parity ratio ⁴	41	40	39	(NA)	(NA)	(NA)
Parity ratio adjusted ⁵	42	41	41	(NA)	(NA)	(NA)
PPITW adjusted for productivity ⁶	1456	1494	1494	(NA)	(NA)	(NA)
Crop sector (PPITW)	(NA)	(NA)	(NA)	213	221	221
Livestock sector (PPITW)	(NA)	(NA)	(NA)	193	204	203
Farm sector (production)	(NA)	(NA)	(NA)	219	237	237
Non-farm sector (production)	(NA)	(NA)	(NA)	214	220	219

(NA) Not available.

¹ Interest per acre on farm real estate debt and interest rate on farm non-real estate debt.

² Farm real estate taxes payable per acre.

³ Bureau of Labor Statistics, Consumer Price Index for all urban consumers (CPI-U), for the previous month converted by the USDA.

⁴ Ratio of index of prices received to PPITW (1910-1914=100).

⁵ Based on estimated cash receipts, from marketings and government payments, the preliminary adjustment factor is 1.044 for 2012 and the revised factor is 1.041 for 2011.

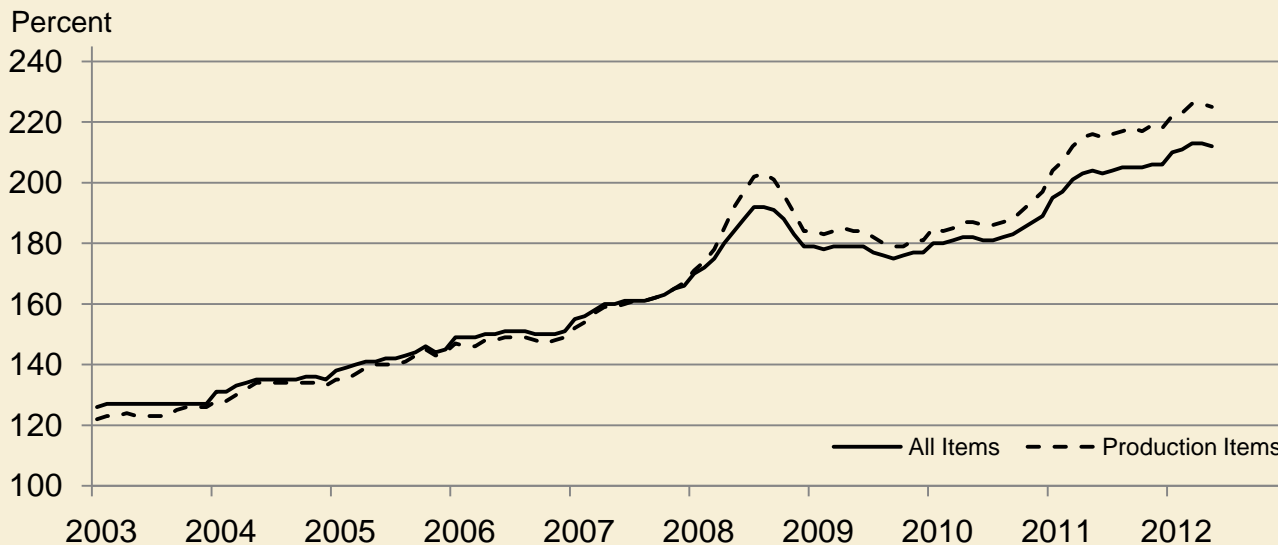
⁶ PPITW is adjusted based on productivity trend for the prior 15 years.

Prices Paid Indexes and Annual Weights for Input Components and Sub-Components – United States: May 2012 with Comparisons

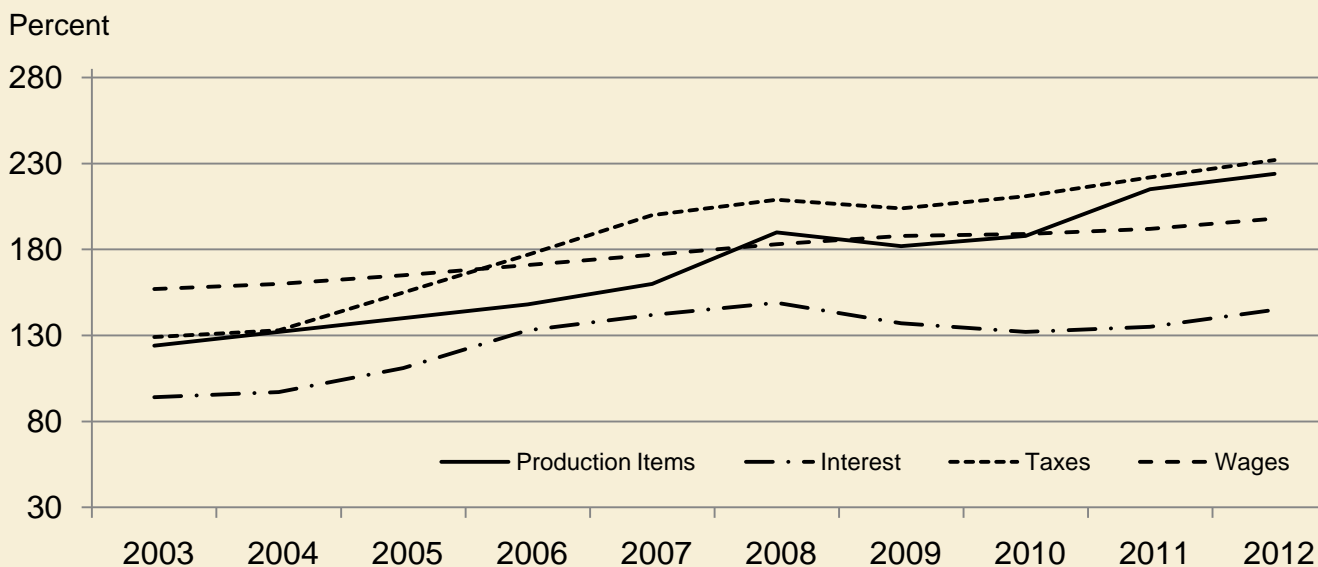
[Revised historical price indexes for months not shown are available at www.nass.usda.gov. Relative weights are a five year moving average]

	Relative weights		Indexes (1990-1992=100)		
	2011	2012	May 2011	April 2012	May 2012
	(percent)	(percent)	(percent)	(percent)	(percent)
Production items	70.6	71.1	216	226	225
Feed	12.2	12.7	229	237	240
Feed grains	1.7	1.8	271	271	265
Complete feeds	6.0	6.2	227	233	236
Hay and forages	1.5	1.6	209	239	249
Concentrates	1.9	2.0	207	224	238
Supplements	1.0	1.1	242	226	215
Livestock and poultry	8.5	8.3	149	176	171
Feeder cattle	6.6	6.5	151	182	180
Feeder pigs	0.7	0.7	152	174	140
Milk cow replacements	0.7	0.7	126	128	128
Poultry	0.5	0.5	157	157	157
Seeds	4.1	4.3	336	353	353
Field crops	3.7	3.9	356	374	374
Grasses and legumes	0.4	0.4	145	151	151
Fertilizer	5.5	5.7	327	338	343
Mixed fertilizer	2.4	2.5	310	322	323
Nitrogen	2.3	2.4	330	342	357
Potash and phosphate	0.8	0.8	368	375	364
Chemicals	3.3	3.2	144	149	147
Herbicides	2.1	2.0	129	134	131
Insecticides	0.7	0.7	166	173	170
Fungicides and other	0.5	0.5	173	179	176
Fuels	4.0	4.0	383	380	362
Diesel	2.5	2.5	417	422	411
Gasoline	0.8	0.8	338	338	325
LP gas	0.7	0.7	316	277	227
Supplies and repairs	4.6	4.6	166	170	170
Supplies	1.5	1.5	162	165	165
Repairs	3.0	3.0	168	173	173
Autos and trucks	1.4	1.2	116	118	118
Autos	0.2	0.2	114	116	116
Trucks	1.2	1.1	116	118	118
Machinery	4.3	4.3	242	253	254
Tractors	0.9	0.9	203	210	210
Self-propelled	1.7	1.7	253	270	270
Other machinery	1.6	1.6	253	261	263
Building materials	4.4	4.2	171	176	176
Services	12.1	12.0	164	166	166
Custom rates	1.2	1.2	148	148	148
Other services	10.9	10.7	166	168	169
Rent	6.3	6.6	205	212	212
Cash	3.4	3.5	262	270	270
Share	2.9	3.0	139	145	145
Interest	3.5	3.4	135	145	145
Taxes	3.1	3.1	222	232	232
Wage rates	7.4	7.2	189	197	197
Family living-CPI	15.4	15.3	168	171	171

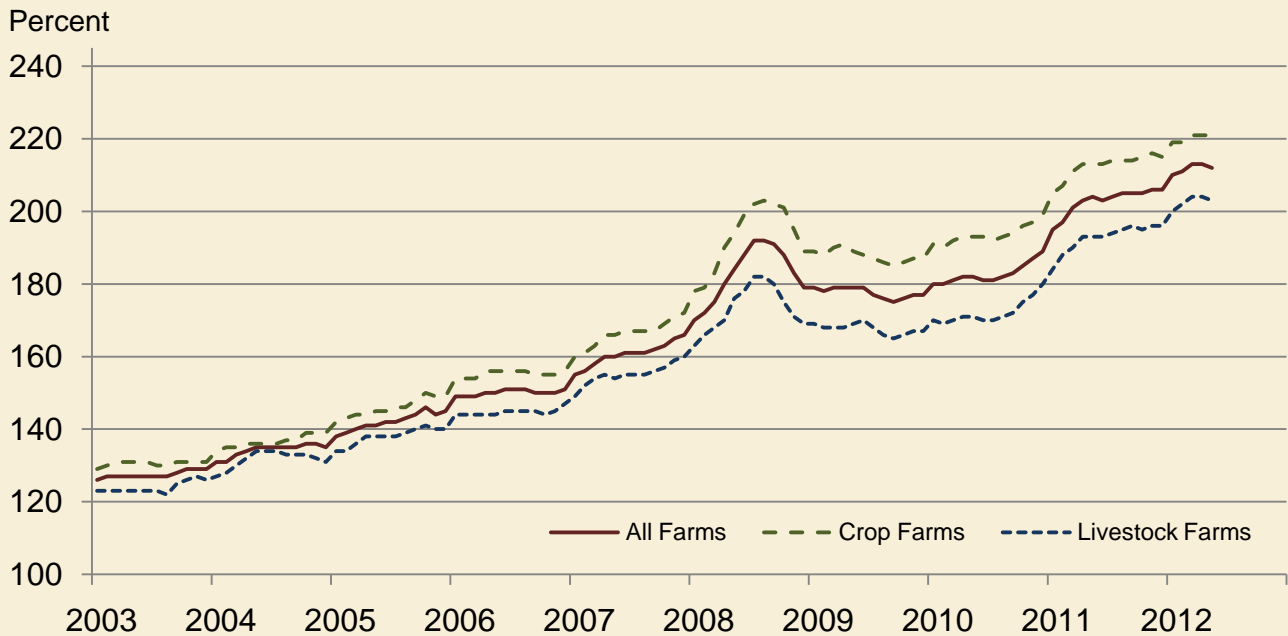
Paid Indexes by Month, All Items and Production Items – United States: 1990-1992=100



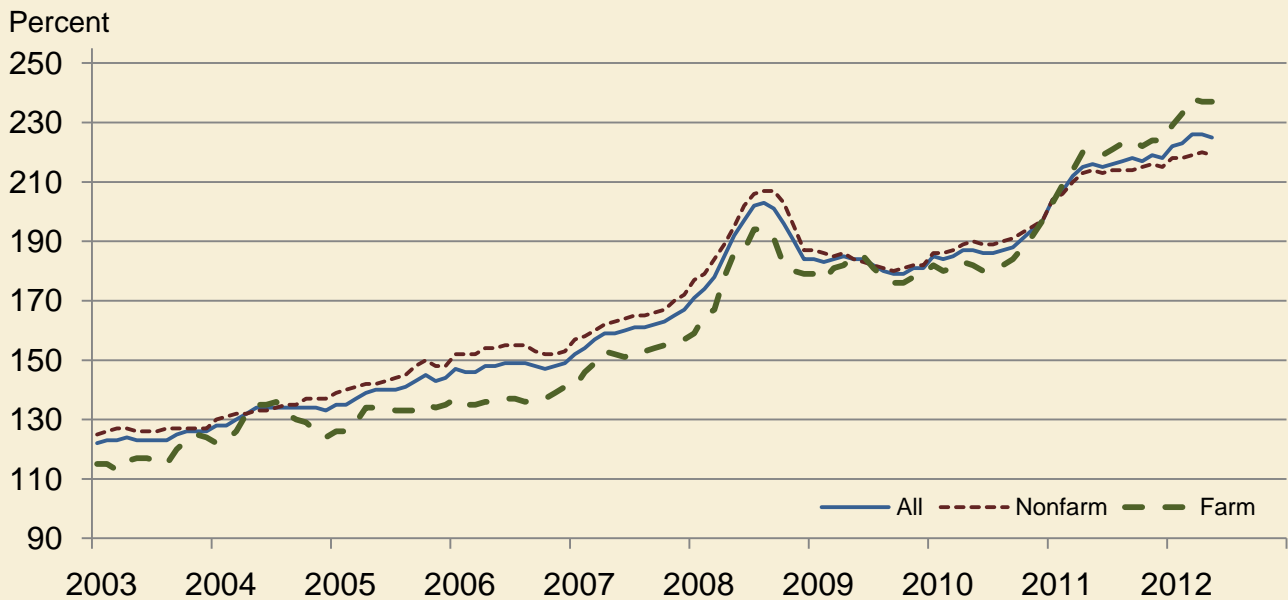
Paid Indexes, Annual Averages, Production Items, Interest, Taxes, and Wages – United States: 1990-1992=100



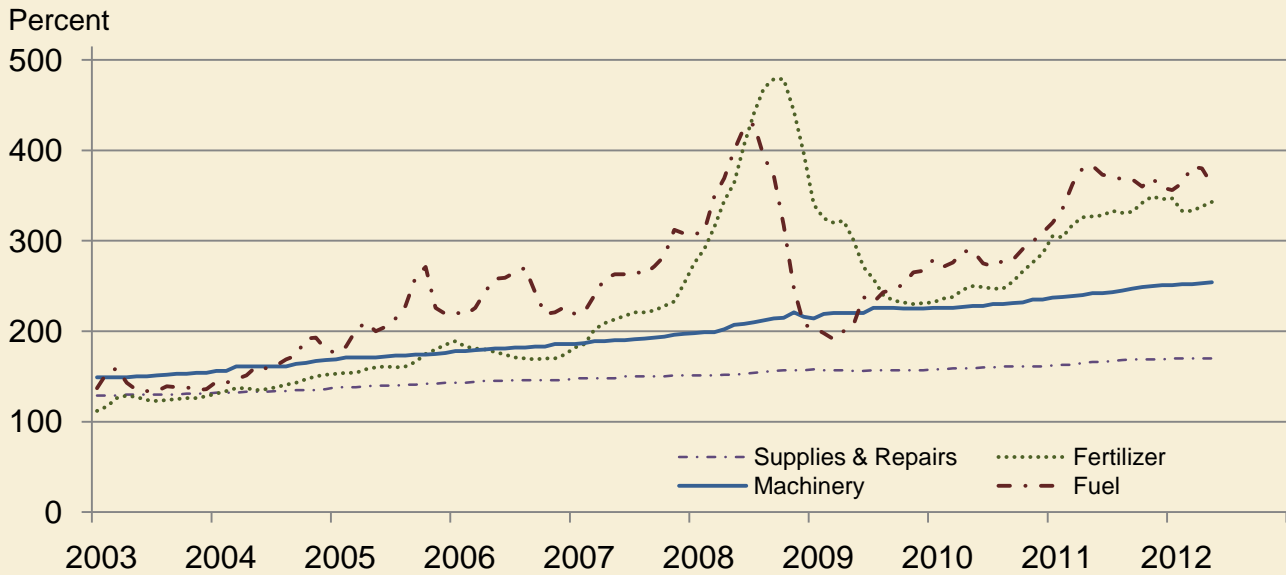
Paid Indexes by Farm Type and Month, All Items – United States: 1990-1992=100



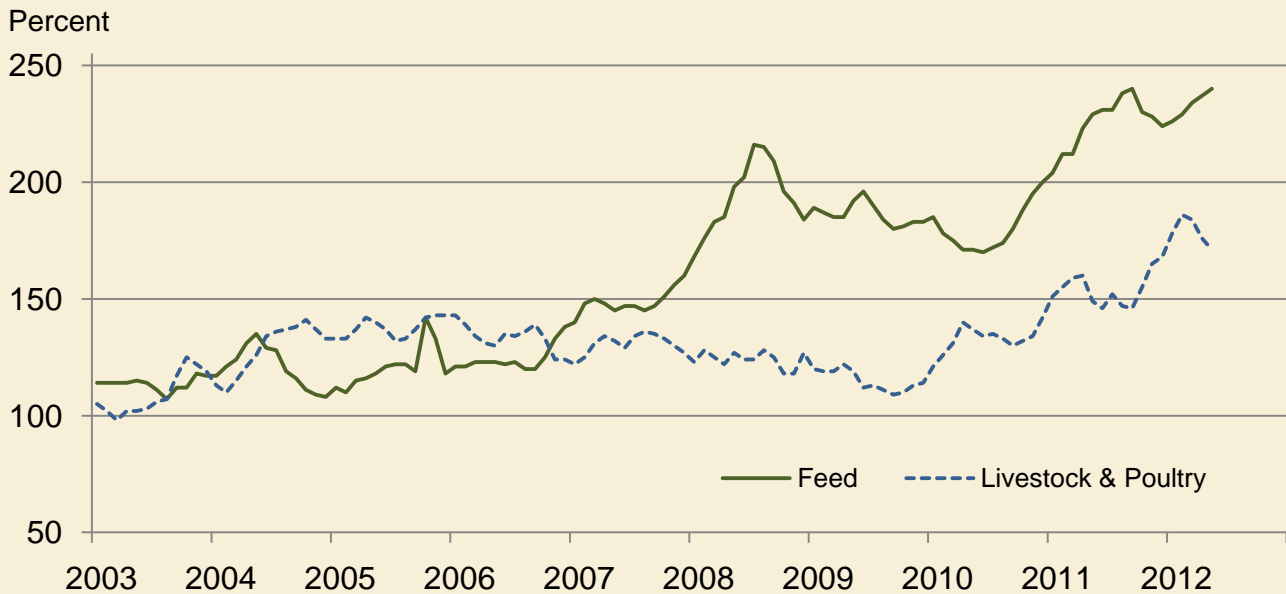
Paid Indexes by Origin and Month, All Production Items – United States: 1990-1992=100



Paid Indexes by Non-Farm Sector and Month, Supplies & Repairs, Fertilizer, Machinery, and Fuel – United States: 1990-1992=100



Paid Indexes by Month, Feed and Livestock & Poultry – United States: 1990-1992=100



Feed Price Ratios – United States: May 2012 with Comparisons

Feed price ratio ¹	May 2011	April 2012	Preliminary May 2012
Broiler-feed: pounds of broiler grower feed equal in value to 1 pound of broiler, live weight ²	3.2	3.2	3.3
Market egg feed: pounds of laying feed equal in value to 1 dozen eggs ³	4.5	4.5	4.2
Hog-corn: bushels of corn equal in value to 100 pounds of hog, live weight	10.9	9.9	9.9
Milk-feed: pounds of 16% mixed dairy feed equal in value to 1 pound of whole milk ⁴	1.73	1.42	1.38
Steer and heifer-corn: bushels of corn equal in value to 100 pounds of steer & heifers, live weight	18.2	20.2	19.9
Turkey-feed: pounds of turkey grower equal in value to 1 pound of turkey, live weight ⁵	4.6	5.0	5.1

¹ Effective January 1995, prices of commercial prepared feeds are based on current United States prices received for corn, soybeans, alfalfa hay, and all wheat.

² The price of commercial prepared broiler feed is based on current United States prices received for corn and soybeans. The modeled feed uses 58 percent corn and 42 percent soybeans.

³ The price of commercial prepared layer feed is based on current United States prices received for corn and soybeans. The modeled feed uses 75 percent corn and 25 percent soybeans.

⁴ The price of commercial prepared dairy feed is based on current United States prices received for corn, soybeans, and alfalfa hay. The modeled feed uses 51 percent corn, 41 percent alfalfa hay, and 8 percent soybeans.

⁵ The price of commercial prepared turkey feed is based on current United States prices received for corn, soybeans, and wheat. The modeled feed uses 51 percent corn, 28 percent soybeans, and 21 percent wheat.

Prices Received Used to Calculate Feed Price Ratios – United States: May 2012 with Comparisons

[Price data source for livestock and poultry commodities is United States Department of Agriculture's Agricultural Marketing Service]

Item	May 2011	April 2012	Preliminary May 2012
	(dollars)	(dollars)	(dollars)
Broilers, livepound	0.500	0.510	0.530
Eggs, marketdozen	0.622	0.642	0.594
Hogs, allcwt	68.60	62.80	61.60
Milk, allcwt	19.60	16.80	16.40
Steers and heiferscwt	115.00	128.00	124.00
Turkeys, livepound	0.679	0.737	0.738
Cornbushel	6.32	6.34	6.22
Hay, alfalfaton	187.00	207.00	215.00
Soybeansbushel	13.20	13.70	13.70
Wheat, allbushel	8.16	7.11	6.60

Prices Paid for Feeder Livestock – United States: May 2012 with Comparisons

[Price data source is United States Department of Agriculture's Agricultural Marketing Service]

Item	May 2011	April 2012	Preliminary May 2012
	(dollars)	(dollars)	(dollars)
Feeder cattle and calvescwt	127.70	154.30	152.40
Feeder pigscwt	140.00	160.00	129.00

Prices Paid Broiler-Feed Ratio Monthly and Annual Average – United States: 2008-2012

[The price of commercial prepared broiler feed is based on current United States prices received for corn and soybeans. The modeled feed uses 58 percent corn and 42 percent soybeans]

Year	January	February	March	April	May	June	July	August	September	October	November	December	Average ¹
2008	4.0	3.6	3.6	3.4	3.4	3.2	3.4	3.3	3.5	3.9	4.2	4.5	3.7
2009	4.2	4.4	4.3	4.2	4.2	4.2	4.3	3.9	4.1	3.9	3.9	4.1	4.1
2010	4.5	4.7	4.9	4.8	5.1	5.1	5.0	4.5	4.4	4.1	3.8	3.5	4.5
2011	3.4	3.0	3.4	3.1	3.2	3.1	3.0	2.9	2.9	3.0	3.2	3.3	3.1
2012	3.4	3.5	3.6	3.2	3.3								3.4

¹ Simple average of monthly ratios, January through December.

Prices Paid Market Egg-Feed Ratio Monthly and Annual Average – United States: 2008-2012

[The price of commercial prepared layer feed is based on current United States prices received for corn and soybeans. The modeled feed uses 75 percent corn and 25 percent soybeans]

Year	January	February	March	April	May	June	July	August	September	October	November	December	Average ¹
2008	12.8	11.2	11.8	7.5	5.8	7.3	5.4	6.6	7.7	8.9	9.4	9.2	8.6
2009	9.0	7.0	7.2	8.4	4.3	3.8	5.6	6.5	6.8	7.3	10.0	10.6	7.2
2010	10.1	8.9	12.2	7.0	5.2	5.0	6.0	6.9	4.6	6.5	9.5	8.1	7.5
2011	5.8	6.0	5.1	6.4	4.5	4.9	4.9	6.7	6.3	6.9	6.8	8.7	6.1
2012	5.1	5.0	5.7	4.5	4.2								4.9

¹ Simple average of monthly ratios, January through December.

Prices Paid Turkey-Feed Ratio Monthly and Annual Average – United States: 2008-2012

[The price of commercial prepared turkey feed is based on current United States prices received for corn, soybeans, and wheat. The modeled feed used 51 percent corn, 28 percent soybeans, and 21 percent wheat]

Year	January	February	March	April	May	June	July	August	September	October	November	December	Average ¹
2008	4.1	3.6	4.0	4.0	4.3	4.3	4.5	4.7	5.4	5.9	5.6	4.4	4.6
2009	4.1	4.6	4.8	4.7	4.7	4.8	5.1	5.2	5.3	5.6	5.7	5.6	5.0
2010	4.8	5.3	5.6	5.9	6.2	6.9	6.9	6.7	6.6	6.8	6.4	5.6	6.2
2011	4.6	4.2	4.4	4.5	4.6	4.8	4.7	4.7	5.2	5.9	5.9	5.4	4.9
2012	4.9	4.7	4.8	5.0	5.1								4.9

¹ Simple average of monthly ratios, January through December.

Prices Paid Milk-Feed Ratio Monthly and Annual Average – United States: 2008-2012

[The price of commercial prepared dairy feed is based on current United States prices received for corn, soybeans, and alfalfa. The modeled feed uses 51 percent corn, 8 percent soybeans, and 41 percent alfalfa]

Year	January	February	March	April	May	June	July	August	September	October	November	December	Average ¹
2008	2.65	2.24	2.07	1.95	1.83	1.87	1.90	1.81	1.90	2.02	2.01	1.92	2.01
2009	1.60	1.51	1.55	1.58	1.49	1.47	1.59	1.80	2.00	2.11	2.26	2.42	1.78
2010	2.33	2.34	2.18	2.19	2.18	2.26	2.30	2.36	2.36	2.40	2.23	1.98	2.26
2011	1.96	2.01	2.12	1.81	1.73	1.87	1.91	1.85	1.84	1.83	1.87	1.80	1.88
2012	1.72	1.55	1.48	1.42	1.38								1.51

¹ Simple average of monthly ratios, January through December.

Prices Paid Hog-Corn Ratio Monthly and Annual Average – United States: 2008-2012

[Number of bushels of corn equal in value to 100 pounds of all hogs, live weight]

Year	January	February	March	April	May	June	July	August	September	October	November	December	Average ¹
2008	9.4	9.3	8.6	8.6	10.5	9.8	10.3	11.5	10.5	11.1	9.6	10.2	10.0
2009	9.8	11.3	11.4	11.4	11.3	10.8	12.0	11.2	11.6	10.5	11.0	12.5	11.2
2010	13.2	13.8	14.7	16.6	17.9	17.1	16.8	16.8	15.0	12.3	10.5	10.9	14.6
2011	11.3	10.9	11.4	10.7	10.9	10.9	11.3	11.0	10.5	12.0	11.0	10.8	11.1
2012	10.5	10.4	10.3	9.9	9.9								10.2

¹ Simple average of monthly ratios, January through December.

Prices Paid Steer & Heifer-Corn Feed Ratio Monthly and Annual Average – United States: 2008-2012

[Number of bushels of corn equal in value to 100 pounds of steers & heifers, live weight]

Year	January	February	March	April	May	June	July	August	September	October	November	December	Average ¹
2008	23.5	20.8	19.8	17.9	18.2	17.6	19.0	19.0	19.8	21.3	21.3	20.9	19.9
2009	19.7	21.7	21.8	22.9	22.1	21.2	23.7	25.6	26.3	23.4	23.4	23.3	22.9
2010	23.9	25.5	27.0	29.6	28.6	27.8	27.5	26.9	24.4	22.9	22.2	21.6	25.7
2011	22.3	19.6	21.3	19.2	18.2	17.2	18.2	16.6	18.4	21.4	21.6	21.5	19.6
2012	21.4	20.9	20.8	20.2	19.9								20.6

¹ Simple average of monthly ratios, January through December.

Reliability of Prices Paid Estimates

Definition: Prices paid by farmers represent the average costs of inputs purchased by farmers and ranchers to produce agricultural commodities. Conceptually, the average price when multiplied by quantity purchased should equal total producer expenditures for the item.

Survey procedures: The prices paid data are obtained from establishments that sell goods and services to farmers and ranchers. Annually, about 8,500 firms are randomly selected from lists by type of item sold with an average response rate in the range of 75-80 percent. Firms are asked to report the price for the specified item "most commonly bought by farmers" or that was the "volume seller". Approximately 135 items are surveyed each March to represent all production input items purchased. The survey reference period for most items is the five business days centered around the 15th of the month. Separate prices paid surveys are conducted for agricultural chemicals, fuels, feed, fertilizer, machinery, and seed.

Summary and estimation procedures: The annual March Prices Paid Survey is summarized as a nonprobability survey. Average prices reported are aggregated to the region and United States level using weights available from expenditure data and other administrative sources. Price recommendations are prepared by the State Field Offices and Headquarters for review by the Agricultural Statistics Board in Washington, D.C. Also, the change in price level for individual items surveyed are combined to the regional and United States levels, and are published as prices paid indexes referenced to a specific base period. Prices paid indexes for new autos and trucks, building materials, farm supplies, motor supplies, and marketing containers are updated based on price changes measured in selected Bureau of Labor Statistics (BLS) indexes.

Revisions: Any revisions are published in the monthly and in annual issues of Agricultural Prices. The basis for revision must be supported by additional data that directly affect the level of the estimate. More revisions are likely for March when separate prices paid surveys are conducted, in lieu of BLS indexes, by the USDA to measure price change.

Reliability: Current methods of summarization for the March data are not designed directly to calculate sampling errors. However, analytical measures approximate the United States relative sampling errors for major items around 10 percent. Any nonsampling errors are attributed to such things as the inability to obtain correct information, differences in interpreting questions or definitions, mistakes in coding or processing the data, etc. Efforts are made at each step in the survey process to minimize these nonsampling errors.

Program change: Effective January 1, 1995, the National Agricultural Statistics Service updated the weights and changed the construction of its prices paid and received by farmers indexes. A Federal Register Notice dated October 28, 1994 discussed these program modifications.

A 1990-1992 reference and base period replaced the 1977 reference and 1971-1973 base weight period. Five-year moving average weights replaced the current fixed 1971-1973 base period weights. The 1910-1914=100 price indexes, required by statute for computing parity prices, were linked forward based on the changes in the new 1990-1992=100 indexes. The new indexes were constructed by multiplying the ratios of the current prices to the base period prices by the moving average weights (adjusted for seasonal marketing patterns for the prices received indexes).

Information Contacts

Direct general questions to Dale Hawks, Acting Chief, Environmental, Economics and Demographics Branch at (202) 720-6146. Below are the commodity specialists to contact for additional information.

Crop Prices Received

Lance Honig, Chief, Crops Branch	(202) 720-2127
Jacqueline Moore, Head, Field Crops Section	(202) 720-2127
Suzanne Avilla – Peanuts, Rice.....	(202) 720-7688
Bryan Durham – Oats, Rye, Wheat.....	(202) 720-8068
Steve Maliszewski – Cotton, Cotton Ginnings, Sorghum.....	(202) 720-5944
Anthony Prillaman – Corn, Proso Millet, Flaxseed	(202) 720-9526
Julie Schmidt – Crop Weather, Barley, Hay	(202) 720-7621
Travis Thorson – Soybeans, Sunflower, Other Oilseeds.....	(202) 720-7369
Jorge Garcia-Pratts, Head, Fruits, Vegetables and Special Crops Section.....	(202) 720-2127
Debbie Flippin – Fresh and Processing Vegetables, Onions, Strawberries.....	(202) 720-2157
Fred Granja – Apples, Apricots, Cherries, Plums, Prunes, Tobacco	(202) 720-4288
Erika White – Floriculture, Maple Syrup, Nursery, Tree Nuts	(202) 720-4215
Chris Hawthorn – Citrus, Coffee, Sugar Crops, Grapes, Tropical Fruits.....	(202) 720-5412
Daphne Schauber – Berries, Cranberries, Potatoes, Sweet Potatoes	(202) 720-4285
Dan Norris – Austrian Winter Peas, Dry Edible Peas, Lentils, Mints, Mushrooms, Peaches, Pears, Wrinkled Seed Peas, Dry Beans	(202) 720-3250

Livestock Prices Received

Dan Kerestes, Chief, Livestock Branch	(202) 720-3570
Scott Hollis, Head, Livestock Section.....	(202) 720-3570
Travis Averill – Cattle.....	(202) 720-3040
Mike Miller – Milk, Milk Cows	(202) 720-3278
Doug Bounds – Hogs	(202) 720-3106
Bruce Boess, Head, Poultry and Specialty Commodities Section.....	(202) 720-3570
Cody Brokmeyer – Turkeys.....	(202) 690-3237
LaKeya Jones – Honey	(202) 720-0585
Kim Linonis – Eggs.....	(202) 690-8632
Miste Salmon – Broilers.....	(202) 720-3244

Indexes, Prices Paid, and Parity Prices

Dale Hawks, Acting Chief, Environmental, Economics and Demographics Branch.....	(202) 720-6146
Tony Dorn, Head, Economics Section	(202) 690-3223
Daryl Brinkman – Prices Received Indexes, Parity Prices	(202) 720-8844
Scott Shimmin – Grazing Fees.....	(202) 690-3231
Vincent Davis – Prices Paid Indexes, Prices Paid for Feed, Fertilizer, Agricultural Chemicals, Seeds, Farm Supplies and Repairs, Farm Machinery, Fuels, Feeder Livestock, Poultry Chicks, Feed Price Ratios, Autos & Trucks.....	(202) 690-3229

Access to NASS Reports

For your convenience, you may access NASS reports and products the following ways:

- All reports are available electronically, at no cost, on the NASS web site: <http://www.nass.usda.gov>
- Both national and state specific reports are available via a free e-mail subscription. To set-up this free subscription, visit <http://www.nass.usda.gov> and in the “Follow NASS” box under “Receive reports by Email,” click on “National” or “State” to select the reports you would like to receive.
- Printed reports may be purchased from the National Technical Information Service (NTIS) by calling toll-free (800) 999-6779, or (703) 605-6220 if calling from outside the United States or Canada. Accepted methods of payment are Visa, MasterCard, check, or money order.

For more information on NASS surveys and reports, call the NASS Agricultural Statistics Hotline at (800) 727-9540, 7:30 a.m. to 4:00 p.m. ET, or e-mail: nass@nass.usda.gov.

The United States Department of Agriculture (USDA) prohibits discrimination in all its programs and activities on the basis of race, color, national origin, age, disability, and where applicable, sex, marital status, familial status, parental status, religion, sexual orientation, political beliefs, genetic information, reprisal, or because all or a part of an individual's income is derived from any public assistance program. (Not all prohibited bases apply to all programs.) Persons with disabilities who require alternative means for communication of program information (Braille, large print, audiotape, etc.) should contact USDA's TARGET Center at (202) 720-2600 (voice and TDD).

To file a complaint of discrimination, write to USDA, Assistant Secretary for Civil Rights, Office of the Assistant Secretary for Civil Rights, 1400 Independence Avenue, S.W., Stop 9410, Washington, DC 20250-9410, or call toll-free at (866) 632-9992 (English) or (800) 877-8339 (TDD) or (866) 377-8642 (English Federal-relay) or (800) 845-6136 (Spanish Federal-relay). USDA is an equal opportunity provider and employer.