



Agricultural Prices

ISSN: 1937-4216

Released June 28, 2012, by the National Agricultural Statistics Service (NASS), Agricultural Statistics Board, United States Department of Agriculture (USDA).

Special Note

Prices paid and value of hatchery production for all chicks for 2009, 2010, and 2011 on page 48 are revised.

June Farm Prices Received Index Increased 3 Points

The preliminary All Farm Products Index of Prices Received by Farmers in June, at 181 percent, based on 1990-1992=100, increased 3 points (1.7 percent) from May. The Crop Index is up 2 points (1.0 percent) and the Livestock Index increased 1 point (0.7 percent). Producers received higher prices for hogs, oranges, eggs, and broccoli and lower prices for hay, corn, soybeans, and broilers. In addition to prices, the overall index is also affected by the seasonal change based on a 3-year average mix of commodities producers sell. Increased monthly movement of wheat and hay offset the decreased marketing of oranges, corn, cattle, and strawberries.

The preliminary All Farm Products Index is up 1 point (0.6 percent) from June 2011. The Food Commodities Index, at 170, increased 4 points (2.4 percent) from last month but decreased 1 point (0.6 percent) from June 2011.

Prices Paid Index Unchanged

The June Index of Prices Paid for Commodities and Services, Interest, Taxes, and Farm Wage Rates (PPITW) is 215 percent of the 1990-1992 average. The index is unchanged from May but 12 points (5.9 percent) above June 2011. Higher prices in June for complete feeds, concentrates, nitrogen, and supplements offset lower prices for diesel, hay & forages, LP gas, and gasoline.

Prices Received, Prices Paid, and Ratio of Prices Received to Prices Paid Indexes 1990-1992 Base – United States: June 2012 with Comparisons

Index	June	May	June
	2011	2012	2012
Prices received by farmers	180	178	181
Prices paid by farmers	203	215	215
Ratio of prices received to prices paid	89	83	84

Contents

Prices Received by Farmers	4
Prices Received Indexes – United States: June 2012 with Comparisons	5
Prices Received and Prices Paid Indexes by Month for Selected Groups – United States: 2011 and 2012, 1990-1992 Base	5
Received Indexes by Month, Livestock Products, All Products, and All Crops – United States: 1990-1992=100 Chart.....	6
Received Indexes by Month, Food Grains, Feed Grains & Hay, and Oilseeds – United States: 1990-1992=100 Chart.....	6
Received Indexes by Month, Fruit & Nut and Commercial Vegetables – United States: 1990-1992=100 Chart.....	7
Received Indexes by Month, Meat Animal, Dairy Products, and Poultry & Eggs – United States: 1990-1992=100 Chart.....	7
Prices Received for Field Crops and Fruits – United States: June 2012 with Comparisons	8
Prices Received for Vegetables and Livestock – United States: June 2012 with Comparisons.....	9
Prices Received for Corn by Month – United States Chart.....	10
Prices Received for Wheat by Month – United States Chart	10
Prices Received for Upland Cotton by Month – United States Chart	11
Prices Received for Soybeans by Month – United States Chart	11
Prices Received for Cattle by Month – United States Chart	12
Prices Received for Milk by Month – United States Chart	12
Prices Received for Hogs by Month – United States Chart	13
Prices Received for Poultry by Month – United States Chart	13
Prices Received for All Wheat, Corn, and Soybeans by Month – United States: 2012 with Comparisons	14
Prices Received for Beef Cattle and All Hogs by Month – United States: 2012 with Comparisons	14
Prices Received for All Wheat – States and United States: June 2012 with Comparisons	15
Prices Received for Winter Wheat – States and United States: June 2012 with Comparisons	15
Prices Received for Durum Wheat – States and United States: June 2012 with Comparisons.....	16
Prices Received for Spring Wheat – States and United States: June 2012 with Comparisons	16
Prices Received for All Barley – States and United States: June 2012 with Comparisons.....	17
Prices Received for Malting Barley – States: June 2012 with Comparisons	17
Prices Received for Feed Barley – States: June 2012 with Comparisons	17
Prices Received for Corn – States and United States: June 2012 with Comparisons	18
Prices Received for Soybeans – States and United States: June 2012 with Comparisons	18
Prices Received for Oats – States and United States: June 2012 with Comparisons	19
Prices Received for Sorghum Grain – States and United States: June 2012 with Comparisons.....	19
Prices Received for Dry Beans – States and United States: June 2012 with Comparisons	20
Prices Received for Peanuts (In-Shell) – States and United States: June 2012 with Comparisons.....	20
Prices Received for Sunflower – States and United States: June 2012 with Comparisons.....	21
Prices Received for Canola – States and United States: June 2012 with Comparisons	21
Prices Received for Flaxseed – States and United States: June 2012 with Comparisons	21
Prices Received for Upland Cotton and Cottonseed – States and United States: June 2012 with Comparisons	22
Prices Received and Farm Marketings for Upland Cotton and Rice – United States: June 2012 with Comparisons	22
Prices Received for Hay by Type – States and United States: June 2012 with Comparisons.....	23
Prices Received for Apples – States and United States: June 2012 with Comparisons	23
Prices Received for Citrus Fruits by Utilization – States and United States: June 2011	24
Prices Received for Citrus Fruits by Utilization – States and United States: May 2012	25
Prices Received for Citrus Fruits by Utilization – States and United States: June 2012	26
Prices Received for Potatoes – States and United States: June 2012 with Comparisons.....	27
Prices Received for All Milk – States and United States: June 2012 with Comparisons.....	28
Prices Received for Milk Cows – States and United States: April 2012 with Comparisons	29
Commodity Parity Prices and Price as Percent of Parity Price – United States: June 2012 with Comparisons	30

Commodity Parity Prices – United States: June 2012 with Comparisons	31
Marketing Year for Specified Commodities	33
Prices Received for Sweet Potatoes, Market Year Average - States and United States: 2009-2011	33
Prices Received and Farm Marketings for Oats by Month – United States: Marketing Years 2009-2010 through 2011-2012	34
Prices Received and Farm Marketings for All Barley by Month – United States: Marketing Years 2009-2010 through 2011-2012	34
Prices Received and Farm Marketings for Malting Barley by Month – United States: Marketing Years 2009-2010 through 2011-2012	35
Prices Received and Farm Marketings for Feed Barley by Month – United States: Marketing Years 2009-2010 through 2011-2012	35
Prices Received and Farm Marketings for All Wheat by Month – United States: Marketing Years 2009-2010 through 2011-2012	36
Prices Received for Winter Wheat by Month, Marketing Year Average – United States: 2009-2010 through 2011-2012	36
Prices Received for Durum Wheat by Month, Marketing Year Average – United States: 2009-2010 through 2011-2012	37
Prices Received for Other Spring Wheat by Month, Marketing Year Average – United States: 2009-2010 through 2011-2012	37
Prices Received for Hard Red Spring Wheat by Month, Marketing Year Average – United States: 2009-2010 through 2011-2012	38
Prices Received for Hard Red Winter Wheat by Month, Marketing Year Average – United States: 2009-2010 through 2011-2012	38
Prices Received for Soft Red Winter Wheat by Month, Marketing Year Average – United States: 2009-2010 through 2011-2012	39
Prices Received for White Wheat by Month, Marketing Year Average – United States: 2009-2010 through 2011-2012	39
Reliability of Prices Received Estimates	40
Prices Paid by Farmers.....	41
Prices Paid Indexes and Related Parity Ratios – United States: June 2012 with Comparisons.....	42
Prices Paid Indexes and Annual Weights for Input Components and Sub-Components – United States: June 2012 with Comparisons.....	43
Paid Indexes by Month, All Items and Production Items – United States: 1990-1992=100 Chart	44
Paid Indexes, Annual Averages, Production Items, Interest, Taxes, and Wages – United States: 1990-1992=100 Chart	44
Paid Indexes by Farm Type, All Items – United States: 1990-1991=100 Chart.....	45
Paid Indexes by Origin, All Production Items – United States: 1990-1992=100 Chart	45
Paid Indexes by Non-Farm Sector, Supplies & Repairs, Fertilizer, Machinery, and Fuel – United States: 1990-1992=100 Chart	46
Paid Indexes by Month, Feed and Replacement Livestock – United States: 1990-1992=100 Chart.....	46
Feed Price Ratios – United States: June 2012 with Comparisons.....	47
Prices Received Used to Calculate Feed Price Ratios – United States: June 2012 with Comparisons.....	47
Prices Paid for Feeder Livestock – United States: June 2012 with Comparisons.....	47
Prices Paid and Value of Hatchery Production for Poultry – United States: 2009-2011	48
Reliability of Prices Paid Estimates	49
Information Contacts	50

Prices Received by Farmers

The June All Farm Products Index is 181 percent of its 1990-1992 base, up 1.7 percent from the May index and 0.6 percent above the June 2011 index.

All crops: The June index, at 210, increased 1.0 percent from May and 0.5 percent from June 2011. Index increases for fruits & nuts and commercial vegetables more than offset the index decreases for feed grains & hay, oilseeds, food grains, and potatoes & dry beans.

Food grains: The June index, at 213, is 2.3 percent below the previous month and down 12 percent from a year ago. The June price for all wheat, at \$6.37 per bushel, is down 30 cents from May and \$1.04 below June 2011.

Feed grains & hay: The June index, at 265, is down 2.9 percent from last month but 1.1 percent above a year ago. The corn price, at \$6.25 per bushel, is down 8 cents from last month and 13 cents below June 2011. The all hay price, at \$183 per ton, is down \$16.00 from May but \$20.00 higher than last June. Sorghum grain, at \$9.95 per cwt, is 45 cents below May and 55 cents below June last year.

Cotton, Upland: The June index, at 137, is down 2.1 percent from May but unchanged from last year. The June price, at 83.1 cents per pound, is down 1.5 cents from the previous month and 0.2 cent below last June.

Oilseeds: The June index, at 245, is down 2.0 percent from May but 3.4 percent higher than June 2011. The soybean price, at \$13.70 per bushel, decreased 30 cents from May but is 50 cents above June 2011.

Fruits & nuts: The June index, at 179, is up 5.3 percent from May and 13 percent higher than a year ago. Price increases for apples and oranges more than offset price decreases for peaches, strawberries, and lemons.

Commercial vegetables: The June index, at 166, is up 5.1 percent from last month but unchanged from June 2011. Price increases during June for broccoli and lettuce more than offset price declines for onions, snap beans, and cucumbers.

Potatoes & dry beans: The June index, at 180, is down 3.2 percent from last month and 8.2 percent below June 2011. The all potato price, at \$9.89 per cwt, is down 55 cents from May and \$1.70 below last June. The all dry bean price, at \$43.90 per cwt, is up 60 cents from the previous month and \$10.10 above June 2011.

Livestock and products: The June index, at 152, is 0.7 percent above last month but down 0.7 percent from June 2011. Compared with a year ago, prices are higher for cattle, broilers, calves, turkeys, and eggs. Prices for milk and hogs are down from last year.

Meat animals: The June index, at 161, is up 1.3 percent from last month and 10 percent higher than last year. The June hog price, at \$66.90 per cwt, is up \$4.10 from May but \$2.80 lower than a year ago. The June beef cattle price of \$122 per cwt is unchanged from last month but \$15.00 higher than June 2011.

Dairy products: The June index, at 123, is down 0.8 percent from a month ago and 24 percent lower than June last year. The June all milk price of \$16.10 per cwt is 10 cents less than last month and \$5.00 lower than June 2011.

Poultry & eggs: The June index, at 164, is up 0.6 percent from May and 5.8 percent above a year ago. The June market egg price, at 68.8 cents per dozen, increased 9.4 cents from May and is 0.1 cent above June 2011. The June broiler price, at 52.0 cents per pound, is down 1.0 cent from May but 3.0 cents above a year ago. The June turkey price, at 73.9 cents per pound, is up 1.3 cents from the previous month and 4.4 cents above a year earlier.

Prices Received Indexes – United States: June 2012 with Comparisons

[Revised historical price indexes for months not shown are available at www.nass.usda.gov]

Index	1910-1914 Base				1990-1992 Base		
	1990-1992 Average	June 2011	May 2012	June 2012	June 2011	May 2012	June 2012
	(percent)	(percent)	(percent)	(percent)	(percent)	(percent)	(percent)
All products	639	1139	1130	1147	180	178	181
All crops	500	1036	1032	1042	209	208	210
Food grains	325	771	691	676	243	218	213
Feed grains & hay	363	933	974	945	262	273	265
Cotton, Upland	517	705	716	703	137	140	137
Tobacco	1263	1491	1559	1559	99	103	103
Oilseeds	554	1301	1372	1345	237	250	245
Fruits & nuts	716	1112	1189	1241	159	170	178
Commercial vegetables	698	1183	1126	1188	166	158	166
Potatoes & dry beans	540	992	944	910	196	186	180
Other crops	493	643	645	645	131	131	131
Livestock and products	768	1169	1160	1167	153	151	152
Meat animals	1021	1490	1624	1643	146	159	161
Dairy products	799	1298	997	991	162	124	123
Poultry & eggs	282	436	457	460	155	163	164
Food commodities	(NA)	(NA)	(NA)	(NA)	171	166	170

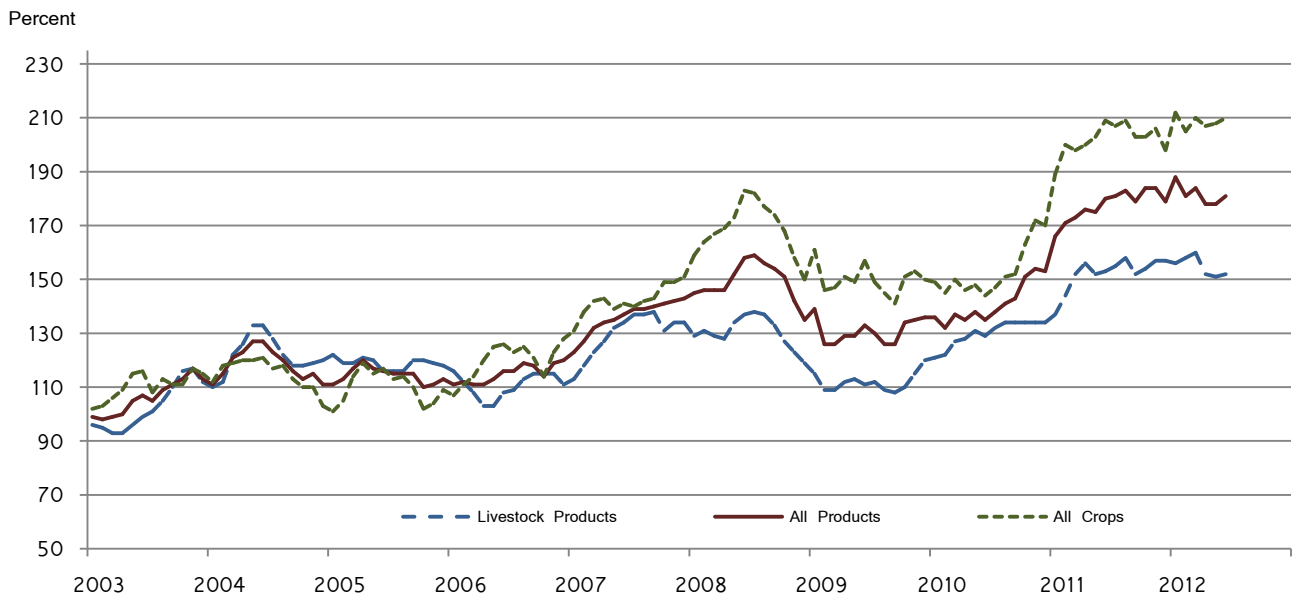
(NA) Not available.

Prices Received and Prices Paid Indexes by Month for Selected Groups – United States: 2011 and 2012, 1990-1992 Base

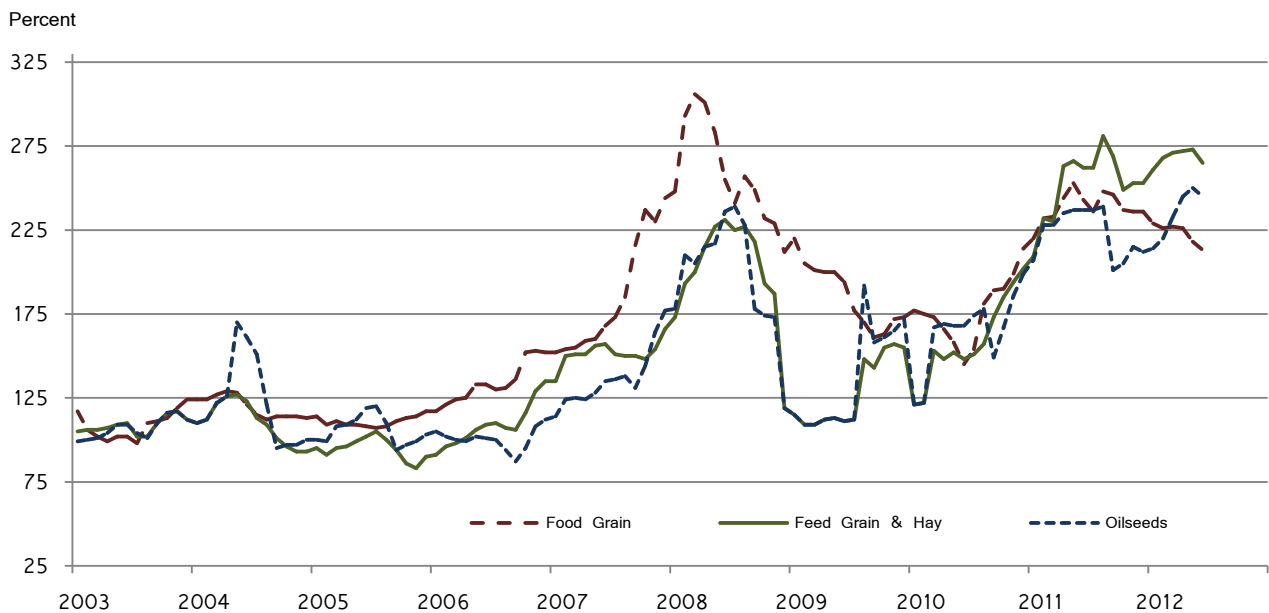
[Revised historical price indexes for months not shown are available at www.nass.usda.gov. Blank data cells indicate estimation period has not yet begun]

Month	Index of prices received						Index of prices paid			
	All farm products		All crops		Livestock and products		All items		Production items	
	2011	2012	2011	2012	2011	2012	2011	2012	2011	2012
	(percent)	(percent)	(percent)	(percent)	(percent)	(percent)	(percent)	(percent)	(percent)	(percent)
January	166	188	189	212	137	156	195	210	204	222
February	171	181	200	205	144	158	197	211	207	223
March	173	184	198	210	152	160	201	213	212	226
April	176	178	200	207	156	152	203	215	215	228
May	175	178	203	208	152	151	204	215	216	229
June	180	181	209	210	153	152	203	215	215	229
July	181		207		155		204		216	
August	183		209		158		205		217	
September	179		203		152		205		218	
October	184		203		154		205		217	
November	184		206		157		206		219	
December	179		198		157		206		218	

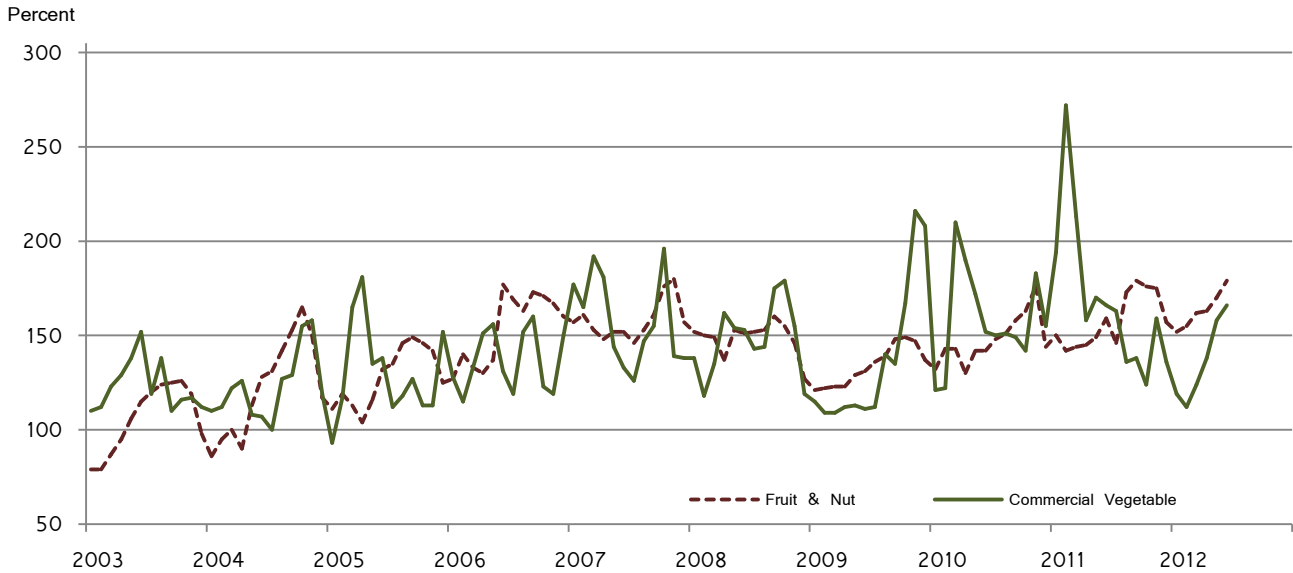
**Received Indexes by Month,
Livestock Products, All Products, and All Crops –
United States: 1990–1992=100**



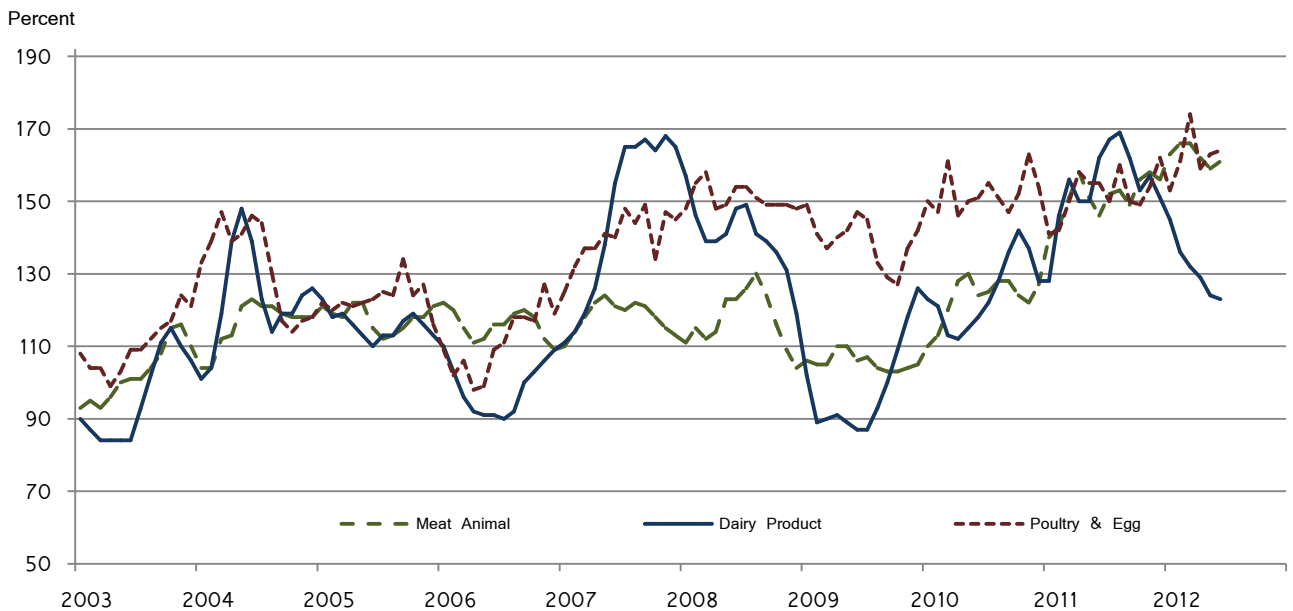
**Received Indexes by Month,
Food Grains, Feed Grains & Hay, and Oilseeds –
United States: 1990–1992=100**



**Received Indexes by Month,
Fruit & Nut and Commercial Vegetables –
United States: 1990–1992=100**



**Received Indexes by Month,
Meat Animal, Dairy Product, and Poultry & Egg –
United States: 1990–1992=100**



Prices Received for Field Crops and Fruits – United States: June 2012 with Comparisons

Commodity	Average 1990-1992	June 2011	May 2012	Preliminary June 2012
Field crops				
Austrian winter peas dollars/cwt	(NA)	(S)	(S)	(S)
Barley, all dollars/bushel	2.12	4.65	5.72	5.65
Feed dollars/bushel	1.90	4.74	4.89	4.59
Malting dollars/bushel	2.43	4.60	5.84	5.96
Beans, dry edible dollars/cwt	19.10	33.80	43.30	43.90
Canola dollars/cwt	(NA)	25.10	27.70	27.80
Chickpeas, all dollars/cwt	(NA)	37.00	33.60	(D)
Large dollars/cwt	(NA)	40.10	32.00	(D)
Small dollars/cwt	(NA)	27.50	(D)	(S)
Corn dollars/bushel	2.30	6.38	6.33	6.25
Cotton, Upland dollars/pound	0.606	0.833	0.846	0.831
Cottonseed ¹ dollars/ton	96.00	(NA)	(NA)	(NA)
Flaxseed dollars/bushel	4.27	15.40	14.90	13.10
Hay, all, baled dollars/ton	76.30	163.00	199.00	183.00
Alfalfa dollars/ton	77.20	180.00	215.00	201.00
Other dollars/ton	60.00	113.00	146.00	133.00
Lentils dollars/cwt	(NA)	26.00	22.40	23.40
Oats dollars/bushel	1.22	3.42	4.12	3.62
Peanuts, in-shell dollars/pound	0.304	0.233	0.338	0.352
Peas, dry edible dollars/cwt	(NA)	14.00	16.40	15.90
Potatoes dollars/cwt	5.82	11.59	10.44	9.89
Rice, all dollars/cwt	7.07	12.10	13.80	13.80
Long dollars/cwt	(NA)	11.00	13.30	13.30
Medium and short dollars/cwt	(NA)	18.40	15.30	15.40
Sorghum grain dollars/cwt	3.75	10.50	10.40	9.95
Soybeans dollars/bushel	5.61	13.20	14.00	13.70
Sunflowers, all dollars/cwt	9.50	29.00	29.00	27.70
Wheat, all dollars/bushel	2.96	7.41	6.67	6.37
Winter dollars/bushel	2.93	7.13	6.42	6.17
Durum dollars/bushel	2.86	9.18	8.95	9.04
Other spring dollars/bushel	3.11	9.26	7.93	7.74
Hard red winter ² dollars/bushel	(NA)	7.20	6.35	(NA)
Soft red winter ² dollars/bushel	(NA)	7.00	6.75	(NA)
Hard red spring ² dollars/bushel	(NA)	9.34	8.01	(NA)
White ² dollars/bushel	3.24	6.94	6.54	(NA)
Fruits				
Citrus, equivalent on-tree				
Grapefruit dollars/box	5.77	9.50	13.83	15.43
Lemons dollars/box	10.10	12.32	16.80	15.77
Oranges dollars/box	5.79	8.46	10.20	11.89
Tangelos dollars/box	5.82	(NA)	(NA)	(NA)
Tangerines and mandarins dollars/box	15.11	(NA)	(D)	(D)
Noncitrus, fresh				
Apples ³ dollars/pound	0.212	0.263	0.333	0.384
Grapes ³ dollars/ton	506.00	1,080.00	(NA)	1,410.00
Peaches ³ dollars/ton	432.00	705.00	1,390.00	886.00
Pears ³ dollars/ton	370.00	565.00	409.00	596.00
Strawberries dollars/cwt	56.00	72.70	82.70	74.40

(D) Withheld to avoid disclosing data for individual operations.

(NA) Not available.

(S) Insufficient number of reports to establish an estimate.

¹ Marketing year August - February.

² Preliminary estimates not set for this item.

³ Equivalent packinghouse-door returns for California, Michigan, New York (apples only), and Washington (apples, peaches, and pears). Prices as sold for other states.

Prices Received for Vegetables and Livestock – United States: June 2012 with Comparisons

[Price data source for livestock and poultry commodities is United States Department of Agriculture's Agricultural Marketing Service]

Commodity	Average 1990-1992	June 2011	May 2012	Preliminary June 2012
Vegetables, fresh ¹				
Asparagusdollars/cwt	79.80	80.80	118.00	98.40
Beans, snap ²dollars/cwt	(NA)	69.20	52.70	31.90
Broccolidollars/cwt	22.50	55.70	29.30	47.00
Cantaloupes ²dollars/cwt	(NA)	16.30	30.30	29.30
Carrotsdollars/cwt	13.20	35.10	27.40	27.20
Cauliflowerdollars/cwt	26.80	52.80	35.40	43.20
Celerydollars/cwt	11.60	17.10	15.80	13.10
Corn, sweetdollars/cwt	15.70	24.30	21.60	21.50
Cucumbers ²dollars/cwt	(NA)	31.90	34.50	25.00
Lettucedollars/cwt	11.90	17.10	19.00	21.80
Onions ³dollars/cwt	12.80	22.40	22.90	14.40
Tomatoesdollars/cwt	32.30	44.60	34.10	40.40
Livestock				
Calvesdollars/cwt	94.30	133.00	176.00	171.00
Cattle, all beefdollars/cwt	72.90	107.00	122.00	122.00
Cows ⁴dollars/cwt	49.60	75.90	87.70	86.80
Steers and heifersdollars/cwt	77.10	110.00	125.00	125.00
Milk cows ⁵dollars/head	1130.00	(NA)	(NA)	(NA)
Hogs, alldollars/cwt	47.70	69.70	62.80	66.90
Barrows and giltsdollars/cwt	48.40	70.40	63.20	67.50
Sowsdollars/cwt	39.50	53.70	52.10	51.70
Dairy and poultry				
Milk, all ⁶dollars/cwt	13.06	21.10	16.20	16.10
Fat test percent	3.66	3.60	3.63	3.58
Broilers, live ⁷dollars/pound	0.317	0.490	0.530	0.520
Eggs, all ⁸dollars/dozen	0.643	0.886	0.826	0.910
Market ^{8 9}dollars/dozen	0.546	0.687	0.594	0.688
Turkeys, live ^{8 10 11}dollars/pound	0.380	0.695	0.726	0.739
Adjusted for seasonal variation				
Eggs, alldollars/dozen	0.545	1.090	1.030	1.120
Seasonal factor percent	100	81	81	81
Milk, all ⁶dollars/cwt	9.71	21.70	17.10	16.60
Seasonal factor percent	100	97	94	97

(NA) Not available.

¹ Beginning January 2006, point of first sale. FOB shipping point for prior years.

² Monthly estimates began January 1995.

³ Includes some processing.

⁴ Beef cows and cull dairy cows sold for slaughter.

⁵ Animals sold for dairy herd replacement only. Prices available for January, April, July, and October.

⁶ Before deductions for hauling. Includes quality, quantity, and other premiums. Excludes hauling subsidies.

⁷ Live weight equivalent price.

⁸ Mid-month price.

⁹ Also referred to as table eggs.

¹⁰ Live weight equivalent price is used when actual live weight price is not available.

¹¹ Beginning January 2011, price reflects FOB shipping point basis. Prior year price reflects delivered basis.

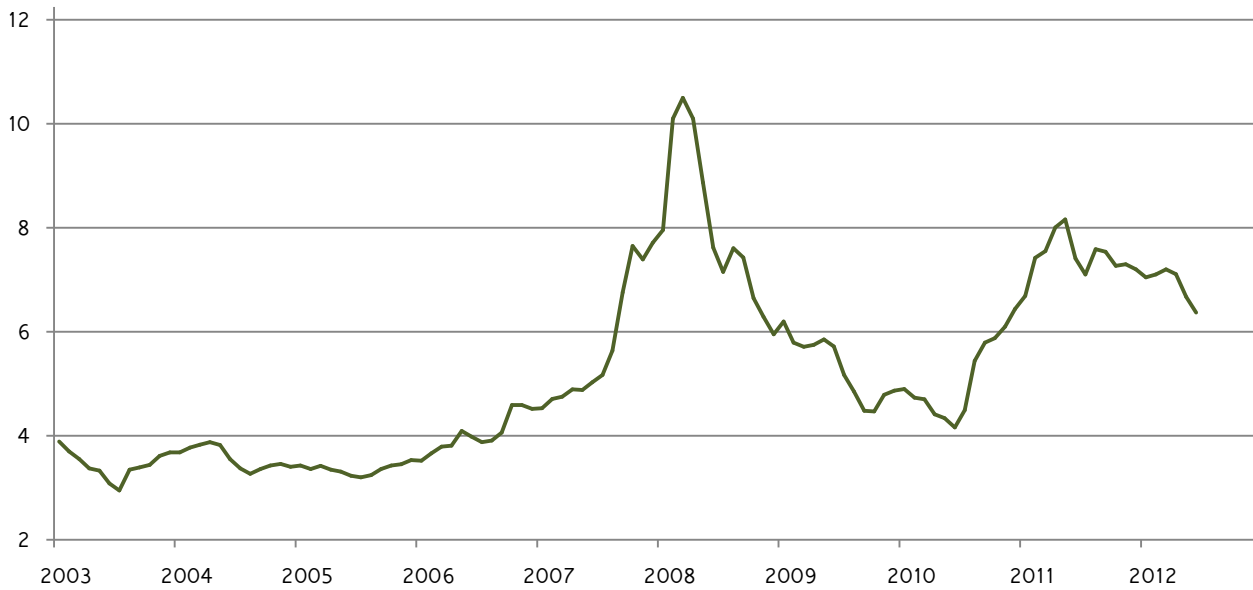
Prices Received for Corn by Month – United States

Dollars per bushel



Prices Received for Wheat by Month – United States

Dollars per bushel



Prices Received for Upland Cotton by Month – United States

Dollars per pound



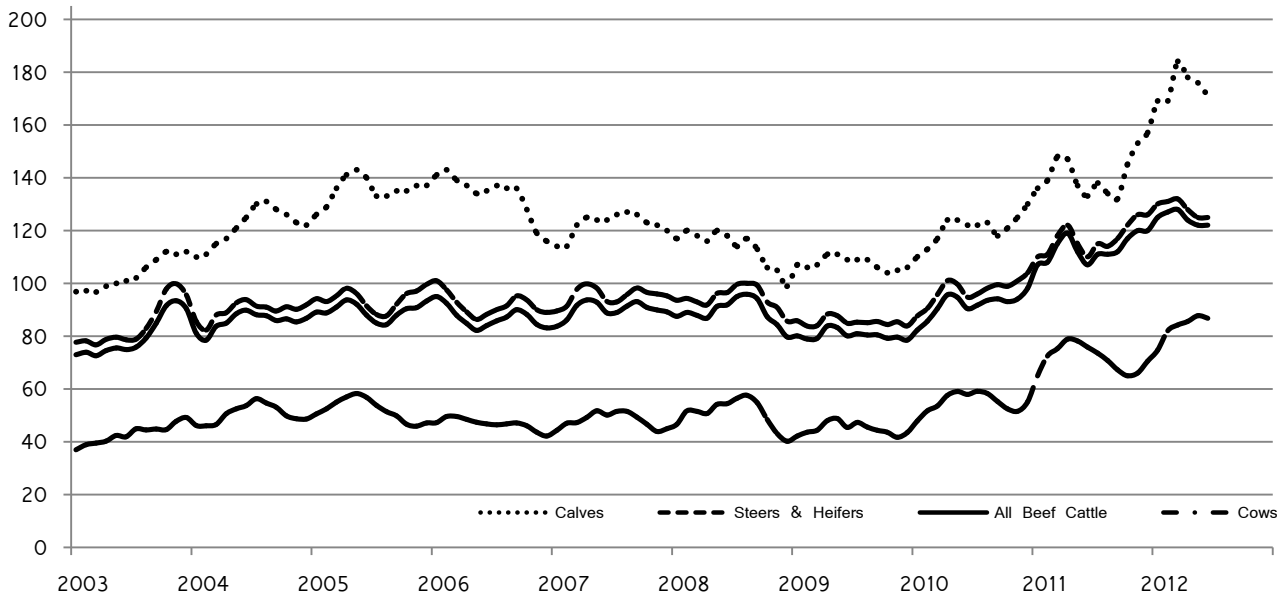
Prices Received for Soybeans by Month – United States

Dollars per bushel



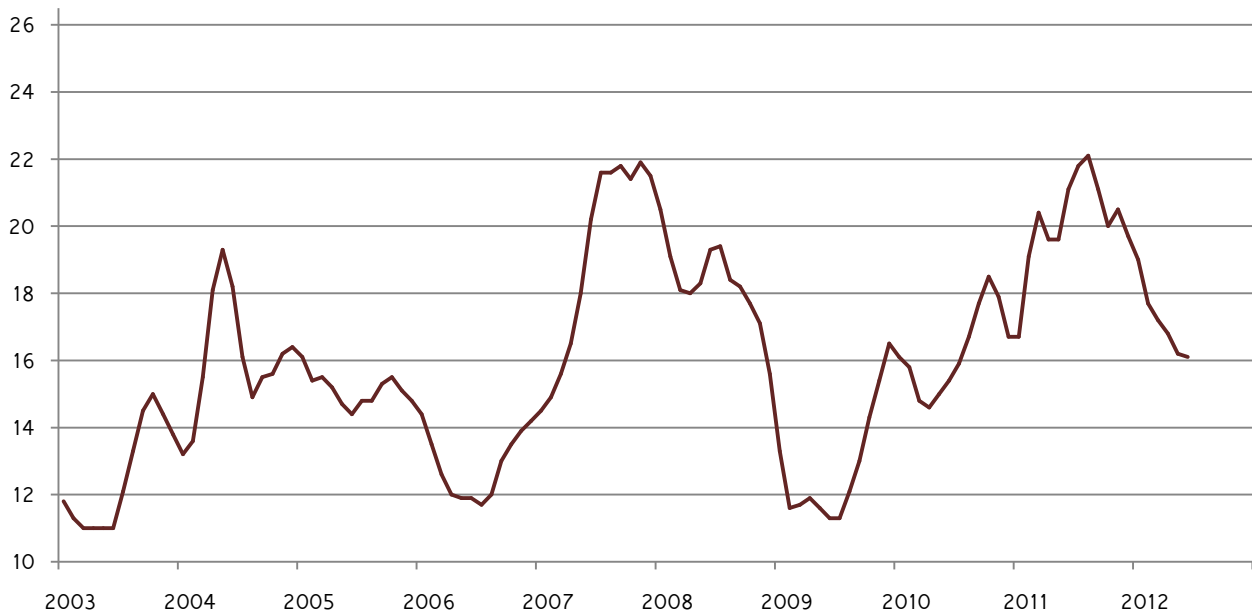
Prices Received for Cattle by Month – United States

Dollars per cwt



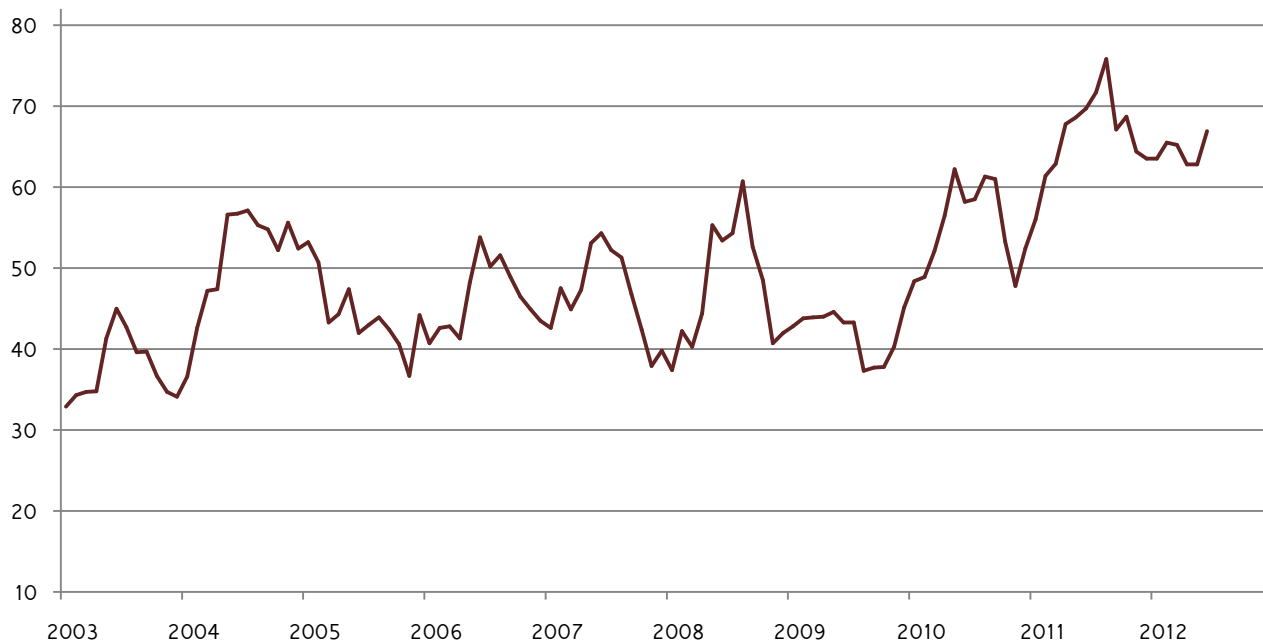
Prices Received for Milk by Month – United States

Dollars per cwt



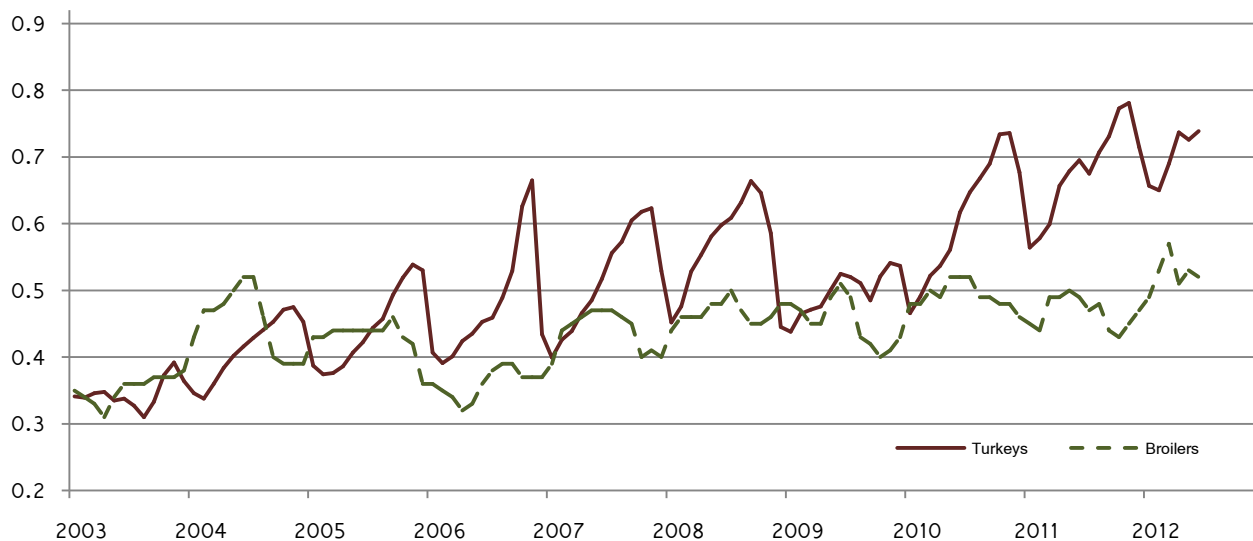
Prices Received for Hogs by Month – United States

Dollars per cwt



Prices Received for Poultry by Month – United States

Dollars per pound



Prices Received for All Wheat, Corn, and Soybeans by Month – United States: 2012 with Comparisons

[Current month prices are mid-month; prices for previous months and years are for the entire month. Blank data cells indicate estimation period has not yet begun]

Month	All wheat			Corn			Soybeans		
	2010	2011	Preliminary 2012	2010	2011	Preliminary 2012	2010	2011	Preliminary 2012
	(dollars per bushel)	(dollars per bushel)	(dollars per bushel)	(dollars per bushel)	(dollars per bushel)	(dollars per bushel)	(dollars per bushel)	(dollars per bushel)	(dollars per bushel)
January	4.90	6.69	7.05	3.66	4.94	6.07	9.79	11.60	11.90
February	4.73	7.42	7.10	3.55	5.65	6.28	9.41	12.70	12.20
March	4.70	7.55	7.20	3.55	5.53	6.35	9.39	12.70	13.00
April	4.41	8.01	7.11	3.41	6.36	6.34	9.47	13.10	13.70
May	4.34	8.16	6.67	3.48	6.32	6.33	9.41	13.20	14.00
June	4.16	7.41	6.37	3.41	6.38	6.25	9.45	13.20	13.70
July	4.49	7.10		3.49	6.33		9.79	13.20	
August	5.44	7.59		3.65	6.88		10.10	13.40	
September ...	5.79	7.54		4.08	6.37		9.98	12.20	
October	5.88	7.27		4.32	5.71		10.20	11.70	
November	6.10	7.30		4.55	5.84		11.10	11.70	
December	6.44	7.20		4.82	5.86		11.60	11.50	

Prices Received for Beef Cattle and All Hogs by Month – United States: 2012 with Comparisons

[Current month prices are mid-month; prices for previous months and years are for the entire month. Blank data cells indicate estimation period has not yet begun]

Month	Beef cattle ¹			All hogs ²		
	2010	2011	Preliminary 2012	2010	2011	Preliminary 2012
	(dollars per cwt)	(dollars per cwt)	(dollars per cwt)	(dollars per cwt)	(dollars per cwt)	(dollars per cwt)
January	82.30	107.00	125.00	48.40	56.00	63.50
February	85.70	108.00	127.00	48.90	61.40	65.50
March	90.40	115.00	128.00	52.10	62.90	65.20
April	95.60	119.00	124.00	56.50	67.80	62.80
May	94.70	112.00	122.00	62.20	68.60	62.80
June	90.40	107.00	122.00	58.20	69.70	66.90
July	91.70	111.00		58.50	71.70	
August	93.50	111.00		61.30	75.80	
September	94.10	112.00		61.00	67.10	
October	93.10	117.00		53.30	68.70	
November	94.00	120.00		47.80	64.40	
December	98.10	120.00		52.40	63.50	

¹ Cows and steers & heifers.

² Barrows & gilts and sows.

Prices Received for All Wheat – States and United States: June 2012 with Comparisons

State	June 2011	May 2012	Preliminary June 2012
	(dollars per bushel)	(dollars per bushel)	(dollars per bushel)
Arizona	8.13	(D)	(D)
Arkansas	7.42	6.72	6.20
California	(D)	(D)	(D)
Colorado	7.80	5.97	5.86
Idaho	7.63	7.21	7.22
Illinois	6.42	6.55	6.40
Indiana	6.03	6.60	6.09
Kansas	7.07	6.35	6.15
Michigan	6.27	6.59	6.35
Minnesota	8.58	7.68	7.79
Missouri	6.83	6.77	6.20
Montana	8.20	7.65	7.29
Nebraska	7.69	6.15	6.10
North Carolina	7.28	6.91	6.09
North Dakota	9.96	7.62	7.52
Ohio	6.90	6.88	6.76
Oklahoma	7.62	6.41	6.15
Oregon	7.44	6.90	6.58
South Dakota	9.27	7.12	6.78
Texas	7.03	6.24	6.07
Washington	7.67	6.96	6.53
United States	7.41	6.67	6.37

(D) Withheld to avoid disclosing data for individual operations.

Prices Received for Winter Wheat – States and United States: June 2012 with Comparisons

State	June 2011	May 2012	Preliminary June 2012
	(dollars per bushel)	(dollars per bushel)	(dollars per bushel)
Arkansas	7.42	6.72	6.20
California	(D)	(D)	(D)
Colorado	7.80	5.98	5.89
Idaho	6.99	6.55	6.50
Illinois	6.42	6.55	6.40
Indiana	6.03	6.60	6.09
Kansas	7.07	6.35	6.15
Michigan	6.27	6.59	6.35
Minnesota	(D)	(D)	6.30
Missouri	6.83	6.77	6.20
Montana	7.16	6.86	6.61
Nebraska	7.69	6.15	6.10
North Carolina	7.28	6.91	6.09
North Dakota	6.89	6.30	5.80
Ohio	6.90	6.88	6.76
Oklahoma	7.62	6.41	6.15
Oregon	7.13	6.85	6.50
South Dakota	7.38	6.30	6.10
Texas	7.03	6.24	6.07
Washington	7.08	6.53	6.27
United States	7.13	6.42	6.17

(D) Withheld to avoid disclosing data for individual operations.

Prices Received for Durum Wheat – States and United States: June 2012 with Comparisons

State	June 2011	May 2012	Preliminary June 2012
	(dollars per bushel)	(dollars per bushel)	(dollars per bushel)
Arizona	8.13	(D)	(D)
California	(S)	(S)	(S)
Idaho	(D)	(D)	(D)
Montana	9.06	10.40	(D)
North Dakota	11.70	7.68	7.15
United States	9.18	8.95	9.04

(D) Withheld to avoid disclosing data for individual operations.

(S) Insufficient number of reports to establish an estimate.

Prices Received for Spring Wheat – States and United States: June 2012 with Comparisons

State	June 2011	May 2012	Preliminary June 2012
	(dollars per bushel)	(dollars per bushel)	(dollars per bushel)
Colorado	(S)	(D)	(D)
Idaho	8.73	7.96	7.70
Minnesota	8.59	7.69	7.80
Montana	8.76	8.47	(D)
North Dakota	9.53	7.72	7.70
Oregon	8.94	7.29	7.00
South Dakota	10.10	7.74	7.80
Washington	9.38	8.04	7.50
United States	9.26	7.93	7.74

(D) Withheld to avoid disclosing data for individual operations.

(S) Insufficient number of reports to establish an estimate.

Prices Received for All Barley – States and United States: June 2012 with Comparisons

State	June 2011	May 2012	Preliminary June 2012
	(dollars per bushel)	(dollars per bushel)	(dollars per bushel)
California	5.56	(D)	(S)
Colorado	(D)	(D)	(D)
Idaho	4.31	5.90	6.26
Minnesota	5.69	(D)	(S)
Montana	4.55	5.51	5.21
North Dakota	4.65	5.56	5.63
Oregon	4.78	4.47	4.30
Utah	5.38	(D)	3.84
Washington	4.81	4.71	4.57
Wyoming	(D)	(D)	(D)
United States	4.65	5.72	5.65

(D) Withheld to avoid disclosing data for individual operations.

(S) Insufficient number of reports to establish an estimate.

Prices Received for Malting Barley – States: June 2012 with Comparisons

State	June 2011	May 2012	Preliminary June 2012
	(dollars per bushel)	(dollars per bushel)	(dollars per bushel)
Idaho	3.83	5.97	6.35
Minnesota	5.75	(D)	(S)
Montana	4.53	5.61	(D)
North Dakota	4.68	5.60	6.00
Wyoming	(S)	(S)	(S)

(D) Withheld to avoid disclosing data for individual operations.

(S) Insufficient number of reports to establish an estimate.

Prices Received for Feed Barley – States: June 2012 with Comparisons

State	June 2011	May 2012	Preliminary June 2012
	(dollars per bushel)	(dollars per bushel)	(dollars per bushel)
Idaho	5.69	5.06	4.85
Minnesota	4.69	(D)	(S)
Montana	4.62	4.65	(D)
North Dakota	4.61	4.78	4.75
Wyoming	(D)	(D)	(D)

(D) Withheld to avoid disclosing data for individual operations.

(S) Insufficient number of reports to establish an estimate.

Prices Received for Corn – States and United States: June 2012 with Comparisons

State	June 2011	May 2012	Preliminary June 2012
	(dollars per bushel)	(dollars per bushel)	(dollars per bushel)
Colorado	6.57	6.21	6.19
Illinois	6.56	6.39	6.40
Indiana	6.82	6.52	6.45
Iowa	6.30	6.30	6.20
Kansas	7.04	6.30	6.20
Kentucky	7.28	6.64	6.45
Michigan	6.77	6.18	6.10
Minnesota	5.79	6.06	6.10
Missouri	6.87	6.61	6.45
Nebraska	6.32	6.36	6.30
North Carolina	8.01	7.05	6.94
North Dakota	6.15	5.98	5.95
Ohio	6.89	6.46	6.43
Pennsylvania	7.73	6.89	6.69
South Dakota	6.15	6.10	6.04
Tennessee	6.66	6.79	6.70
Texas	7.74	6.84	6.30
Wisconsin	6.40	6.17	6.20
United States	6.38	6.33	6.25

Prices Received for Soybeans – States and United States: June 2012 with Comparisons

State	June 2011	May 2012	Preliminary June 2012
	(dollars per bushel)	(dollars per bushel)	(dollars per bushel)
Arkansas	12.80	13.80	13.80
Illinois	13.50	14.30	14.00
Indiana	13.40	14.20	13.90
Iowa	13.20	13.80	13.60
Kansas	13.70	13.70	13.50
Kentucky	13.80	14.50	14.30
Louisiana	12.50	13.60	(D)
Michigan	13.10	13.70	13.50
Minnesota	12.80	13.70	13.70
Mississippi	13.30	(D)	14.20
Missouri	13.60	14.10	13.90
Nebraska	13.00	13.80	13.40
North Carolina	14.00	14.10	14.10
North Dakota	12.70	13.60	13.20
Ohio	13.40	14.30	14.00
South Dakota	12.90	13.20	13.30
Tennessee	13.30	14.30	14.10
Wisconsin	12.40	13.70	13.70
United States	13.20	14.00	13.70

(D) Withheld to avoid disclosing data for individual operations.

Prices Received for Oats – States and United States: June 2012 with Comparisons

State	June 2011	May 2012	Preliminary June 2012
	(dollars per bushel)	(dollars per bushel)	(dollars per bushel)
Illinois	(S)	(D)	(S)
Iowa	3.72	4.04	3.60
Michigan	4.06	4.46	(D)
Minnesota	3.22	3.59	3.40
Montana	3.04	(D)	(S)
Nebraska	4.41	4.06	4.00
New York	(D)	3.91	(D)
North Dakota	3.02	3.54	(D)
Oregon	(D)	(S)	(S)
Pennsylvania	3.76	4.57	4.06
South Dakota	3.68	3.79	3.53
Texas	(S)	(D)	(D)
Wisconsin	3.33	3.79	3.65
United States	3.42	4.12	3.62

(D) Withheld to avoid disclosing data for individual operations.

(S) Insufficient number of reports to establish an estimate.

Prices Received for Sorghum Grain – States and United States: June 2012 with Comparisons

State	June 2011	May 2012	Preliminary June 2012
	(dollars per cwt)	(dollars per cwt)	(dollars per cwt)
Arkansas	(S)	(S)	(S)
Illinois	11.60	(D)	(S)
Kansas	12.00	10.30	10.10
Louisiana	(S)	(S)	(S)
Missouri	(D)	(S)	9.80
Nebraska	12.30	10.90	10.40
Oklahoma	12.30	10.40	10.10
Texas	10.00	11.50	9.80
United States	10.50	10.40	9.95

(D) Withheld to avoid disclosing data for individual operations.

(S) Insufficient number of reports to establish an estimate.

Prices Received for Dry Beans – States and United States: June 2012 with Comparisons

State	June 2011	May 2012	Preliminary June 2012
	(dollars per cwt)	(dollars per cwt)	(dollars per cwt)
California	49.60	50.80	40.80
Colorado	35.10	51.80	52.80
Idaho	30.40	47.60	49.50
Michigan	40.60	43.90	40.00
Minnesota	34.70	42.70	(D)
Nebraska	32.90	40.50	45.00
North Dakota	30.40	41.70	42.70
United States	33.80	43.30	43.90

(D) Withheld to avoid disclosing data for individual operations.

Prices Received for Peanuts (In-Shell) – States and United States: June 2012 with Comparisons

State	June 2011	May 2012	Preliminary June 2012
	(dollars per pound)	(dollars per pound)	(dollars per pound)
Alabama	0.220	0.331	0.349
Florida	0.225	0.265	0.333
Georgia	0.223	0.331	0.357
Mississippi	0.216	0.281	0.414
New Mexico	0.248	(S)	(S)
North Carolina	0.254	0.360	0.341
Oklahoma	(D)	(D)	(S)
South Carolina	0.254	(D)	0.360
Texas	0.266	0.444	0.327
Virginia	(D)	0.336	(S)
United States	0.233	0.338	0.352

(D) Withheld to avoid disclosing data for individual operations.

(S) Insufficient number of reports to establish an estimate.

Prices Received for Sunflower – States and United States: June 2012 with Comparisons

State	June 2011	May 2012	Preliminary June 2012
	(dollars per cwt)	(dollars per cwt)	(dollars per cwt)
Colorado	(D)	25.00	(D)
Kansas	(D)	24.80	24.20
Minnesota	23.90	(D)	(D)
North Dakota	28.10	29.80	29.40
South Dakota	30.20	27.90	(D)
United States	29.00	29.00	27.70

(D) Withheld to avoid disclosing data for individual operations.

Prices Received for Canola – States and United States: June 2012 with Comparisons

State	June 2011	May 2012	Preliminary June 2012
	(dollars per cwt)	(dollars per cwt)	(dollars per cwt)
Minnesota	(D)	(D)	(S)
North Dakota	25.20	27.70	27.80
United States	25.10	27.70	27.80

(D) Withheld to avoid disclosing data for individual operations.

(S) Insufficient number of reports to establish an estimate.

Prices Received for Flaxseed – States and United States: June 2012 with Comparisons

State	June 2011	May 2012	Preliminary June 2012
	(dollars per bushel)	(dollars per bushel)	(dollars per bushel)
North Dakota	15.40	14.90	13.10
United States	15.40	14.90	13.10

Prices Received for Upland Cotton and Cottonseed – States and United States: June 2012 with Comparisons

[Cottonseed marketing year August - February]

State	Cotton, Upland			Cottonseed		
	June 2011	May 2012	Preliminary June 2012	June 2011	May 2012	Preliminary June 2012
	(dollars per pound)	(dollars per pound)	(dollars per pound)	(dollars per ton)	(dollars per ton)	(dollars per ton)
Alabama	0.823	1.010	1.010	(NA)	(NA)	(NA)
Arizona	(D)	(D)	(D)	(NA)	(NA)	(NA)
Arkansas	0.823	1.010	1.010	(NA)	(NA)	(NA)
California	0.914	(D)	(S)	(NA)	(NA)	(NA)
Georgia	0.823	0.973	0.979	(NA)	(NA)	(NA)
Louisiana	0.823	1.010	1.010	(NA)	(NA)	(NA)
Mississippi	0.823	1.010	1.010	(NA)	(NA)	(NA)
North Carolina	0.823	1.010	(D)	(NA)	(NA)	(NA)
Tennessee	0.823	(D)	1.010	(NA)	(NA)	(NA)
Texas	0.827	0.777	(D)	(NA)	(NA)	(NA)
United States	0.833	0.846	0.831	(NA)	(NA)	(NA)

(D) Withheld to avoid disclosing data for individual operations.

(NA) Not available.

(S) Insufficient number of reports to establish an estimate.

Prices Received and Farm Marketings for Upland Cotton and Rice – United States: June 2012 with Comparisons

Item	June 2011	May 2012	Preliminary June 2012
Cotton, Upland			
Average price dollars/pound	0.833	0.846	0.831
Marketings ¹ 1,000 bales	137	793	(NA)
Rice, all			
Average price dollars/cwt	12.10	13.80	13.80
Marketings ² 1,000 cwt	11,317	13,212	(NA)
Rice, long			
Average price dollars/cwt	11.00	13.30	13.30
Marketings ² 1,000 cwt	9,573	9,689	(NA)
Rice, medium and short			
Average price dollars/cwt	18.40	15.30	15.40
Marketings ² 1,000 cwt	1,744	3,523	(NA)

(NA) Not available.

¹ Marketings based on a survey of cotton buyers in the major producing States - Alabama, Arizona, Arkansas, California, Georgia, Louisiana, Mississippi, North Carolina, Tennessee, and Texas.

² Purchases by private firms and rice (rough equivalent) shipped by cooperatives.

Prices Received for Hay by Type – States and United States: June 2012 with Comparisons

State	All hay			Alfalfa hay			Other hay		
	June 2011	May 2012	Preliminary June 2012	June 2011	May 2012	Preliminary June 2012	June 2011	May 2012	Preliminary June 2012
	(dollars per ton)	(dollars per ton)	(dollars per ton)	(dollars per ton)	(dollars per ton)	(dollars per ton)	(dollars per ton)	(dollars per ton)	(dollars per ton)
Arizona	226.00	250.00	240.00	230.00	255.00	245.00	170.00	195.00	195.00
California	218.00	221.00	204.00	238.00	227.00	211.00	137.00	186.00	174.00
Colorado	169.00	249.00	233.00	170.00	255.00	235.00	145.00	170.00	190.00
Idaho	189.00	178.00	187.00	191.00	180.00	190.00	145.00	120.00	120.00
Illinois	134.00	163.00	137.00	150.00	170.00	150.00	90.00	125.00	100.00
Iowa	122.00	134.00	137.00	125.00	142.00	142.00	86.00	92.00	93.00
Kansas	141.00	190.00	177.00	150.00	205.00	190.00	90.00	105.00	105.00
Kentucky	94.00	120.00	103.00	160.00	180.00	185.00	75.00	80.00	80.00
Michigan	97.00	113.00	105.00	100.00	120.00	110.00	80.00	95.00	90.00
Minnesota	105.00	136.00	136.00	115.00	150.00	150.00	80.00	95.00	95.00
Missouri	71.00	111.00	91.00	140.00	190.00	190.00	60.00	75.00	75.00
Montana	93.00	103.00	109.00	94.00	103.00	113.00	85.00	99.00	99.00
Nebraska	86.00	125.00	136.00	89.00	134.00	140.00	65.00	96.00	104.00
Nevada	173.00	223.00	213.00	175.00	225.00	215.00	135.00	175.00	172.00
New Mexico	230.00	280.00	270.00	235.00	286.00	276.00	175.00	220.00	205.00
New York	146.00	116.00	124.00	155.00	175.00	175.00	124.00	105.00	110.00
North Dakota	56.00	72.00	73.00	61.00	75.00	79.00	44.00	52.00	55.00
Ohio	125.00	170.00	140.00	167.00	209.00	207.00	98.00	118.00	97.00
Oklahoma	111.00	170.00	141.00	155.00	212.00	205.00	76.00	107.00	91.00
Oregon	207.00	228.00	204.00	213.00	230.00	224.00	187.00	226.00	183.00
Pennsylvania	156.00	168.00	156.00	175.00	200.00	172.00	147.00	165.00	152.00
South Dakota	95.00	123.00	142.00	99.00	128.00	149.00	81.00	103.00	116.00
Texas	139.00	144.00	140.00	204.00	220.00	225.00	115.00	105.00	108.00
Utah	172.00	203.00	196.00	173.00	205.00	198.00	141.00	163.00	158.00
Washington	170.00	234.00	227.00	165.00	240.00	230.00	185.00	220.00	220.00
Wisconsin	97.00	119.00	121.00	100.00	135.00	135.00	75.00	90.00	95.00
Wyoming	105.00	157.00	162.00	106.00	165.00	165.00	97.00	135.00	145.00
United States	163.00	199.00	183.00	180.00	215.00	201.00	113.00	146.00	133.00

Prices Received for Apples – States and United States: June 2012 with Comparisons

[Equivalent packinghouse-door returns for California, Michigan, New York, and Washington. Prices at point of first sale for other States]

State	Apples, fresh use		
	June 2011	May 2012	Preliminary June 2012
	(dollars per pound)	(dollars per pound)	(dollars per pound)
California	(NA)	(NA)	(NA)
Michigan	(NA)	0.305	(NA)
New York	0.278	0.281	0.323
Ohio	0.520	0.520	0.670
Pennsylvania	(S)	(NA)	(NA)
Virginia	(NA)	(NA)	(NA)
Washington	0.261	0.335	0.390
United States	0.263	0.333	0.384

(NA) Not available.

(S) Insufficient number of reports to establish an estimate.

Prices Received for Citrus Fruits by Utilization – States and United States: June 2011

[Net pounds per box: grapefruit in California-80, Florida-85, Texas-80; lemons-80; oranges in California-80, Florida-90, Texas-85; tangelos-90; tangerines and mandarins in Arizona and California-80, Florida-95]

Commodity, State, and type	FOB packed fresh	Equivalent returns					
		Packinghouse door			On-tree		
		All	Fresh	Process	All	Fresh	Process
	(dollars per box)	(dollars per box)	(dollars per box)	(dollars per box)	(dollars per box)	(dollars per box)	(dollars per box)
Grapefruit							
California ¹	18.00	11.60	11.60	(D)	9.50	9.50	(D)
United States	18.00	11.60	11.60	(D)	9.50	9.50	(D)
Lemons							
California	34.70	18.19	23.80	(D)	12.32	17.93	(D)
United States	34.70	18.19	23.80	(D)	12.32	17.93	(D)
Oranges							
California	22.40	10.41	13.78	(D)	7.96	11.37	(D)
Navel and miscellaneous	24.10	11.28	15.46	(D)	8.83	13.05	(D)
Valencia	21.40	9.87	12.76	(D)	7.42	10.35	(D)
Florida							
Valencia	23.90	11.19	13.90	11.10	8.58	11.20	8.50
United States	22.60	11.03	13.80	10.46	8.46	11.35	7.86

(D) Withheld to avoid disclosing data for individual operations.

¹ Some processed sales included in fresh sales.

Prices Received for Citrus Fruits by Utilization – States and United States: May 2012

[Net pounds per box: grapefruit in California-80, Florida-85, Texas-80; lemons-80; oranges in California-80, Florida-90, Texas-85; tangelos-90; tangerines and mandarins in Arizona and California-80, Florida-95]

Commodity, State, and type	FOB packed fresh	Equivalent returns					
		Packinghouse door			On-tree		
		All	Fresh	Process	All	Fresh	Process
	(dollars per box)	(dollars per box)	(dollars per box)	(dollars per box)	(dollars per box)	(dollars per box)	(dollars per box)
Grapefruit							
California ¹	22.50	15.97	15.97	(D)	13.83	13.83	(D)
Texas	(S)	(S)	(S)	(S)	(S)	(S)	(S)
United States	22.50	15.97	15.97	(D)	13.83	13.83	(D)
Lemons							
California	38.40	22.79	27.28	(D)	16.80	21.29	(D)
United States	38.40	22.79	27.28	(D)	16.80	21.29	(D)
Oranges							
California	26.30	16.22	17.46	(D)	13.74	15.00	(D)
Navel and miscellaneous	27.10	17.00	18.29	(D)	14.53	15.83	(D)
Valencia	24.70	14.75	15.89	(D)	12.28	13.43	(D)
Florida							
Valencia	25.00	11.95	14.75	11.90	9.25	11.90	9.20
United States	26.20	12.86	17.27	11.69	10.20	14.79	8.99
Tangerines and mandarins							
California	(D)	(D)	(D)	(D)	(D)	(D)	(D)
United States	(D)	(D)	(D)	(D)	(D)	(D)	(D)

(D) Withheld to avoid disclosing data for individual operations.

(S) Insufficient number of reports to establish an estimate.

¹ Some processed sales included in fresh sales.

Prices Received for Citrus Fruits by Utilization – States and United States: June 2012

[Net pounds per box: grapefruit in California-80, Florida-85, Texas-80; lemons-80; oranges in California-80, Florida-90, Texas-85; tangelos-90; tangerines and mandarins in Arizona and California-80, Florida-95]

Commodity, State, and type	FOB packed fresh	Equivalent returns					
		Packinghouse door			On-tree		
		All	Fresh	Process	All	Fresh	Process
	(dollars per box)	(dollars per box)	(dollars per box)	(dollars per box)	(dollars per box)	(dollars per box)	(dollars per box)
Grapefruit							
California ¹	24.10	17.57	17.57	(D)	15.43	15.43	(D)
United States	24.10	17.57	17.57	(D)	15.43	15.43	(D)
Lemons							
California	39.40	21.76	28.28	(D)	15.77	22.29	(D)
United States	39.40	21.76	28.28	(D)	15.77	22.29	(D)
Oranges							
California	25.30	14.37	16.51	(D)	11.89	14.05	(D)
Navel and miscellaneous	27.50	15.48	18.69	(D)	12.99	16.23	(D)
Valencia	23.90	13.60	15.09	(D)	11.12	12.63	(D)
Florida							
Valencia	(S)	(S)	(S)	(S)	(S)	(S)	(S)
United States	25.30	14.37	16.51	(D)	11.89	14.05	(D)
Tangerines and mandarins							
California	(D)	(D)	(D)	(D)	(D)	(D)	(D)
United States	(D)	(D)	(D)	(D)	(D)	(D)	(D)

(D) Withheld to avoid disclosing data for individual operations.

(S) Insufficient number of reports to establish an estimate.

¹ Some processed sales included in fresh sales.

Prices Received for Potatoes – States and United States: June 2012 with Comparisons

State	June 2011	May 2012	Preliminary June 2012
	(dollars per cwt)	(dollars per cwt)	(dollars per cwt)
California			
Spring	19.60	18.10	16.40
Fall	10.60	8.60	8.15
All ¹	19.20	16.30	15.60
Colorado			
Fresh ²	16.80	12.50	(D)
All ¹	14.10	10.60	9.95
Florida	13.10	(D)	(D)
Idaho			
Fresh ²	12.00	7.90	(D)
Processing	7.90	8.50	(D)
All ¹	9.55	8.50	7.95
Maine	10.30	11.20	(D)
Michigan	(S)	(S)	(S)
Minnesota	5.95	7.25	(D)
New York	(D)	16.30	(S)
North Carolina	11.80	(S)	(S)
North Dakota			
Fresh ²	(D)	(D)	(D)
Processing	7.80	6.30	(D)
All ¹	8.00	8.10	(D)
Oregon	10.50	8.85	8.60
Texas	(S)	(S)	(S)
Virginia	16.30	(S)	17.80
Washington			
Processing	7.60	8.15	(D)
All ¹	9.15	8.60	8.35
Wisconsin			
Fresh ²	(D)	(D)	(D)
Processing	(D)	(D)	(D)
All ¹	(D)	(D)	(D)
United States			
Fresh ²	17.49	13.91	(D)
Processing	8.21	8.01	(D)
All ¹	11.59	10.44	9.89

(D) Withheld to avoid disclosing data for individual operations.

(S) Insufficient number of reports to establish an estimate.

¹ Average price of potatoes sold for all uses, including table stock, processing, seed, and livestock feed.

² Fresh market prices only. Includes table stock prices.

Prices Received for All Milk – States and United States: June 2012 with Comparisons

[Before deduction for hauling. Includes quality, quantity, and other premiums. Excludes hauling subsidies]

State	June 2011		May 2012		Preliminary June 2012	
	Price	Fat test	Price	Fat test	Price	Fat test
	(dollars per cwt)	(percent)	(dollars per cwt)	(percent)	(dollars per cwt)	(percent)
Arizona	21.00	3.49	15.40	3.48	14.90	3.48
California	20.32	3.65	14.51	3.62	14.70	3.59
Colorado	20.80	3.47	16.50	3.44	16.20	3.43
Florida	25.30	3.60	20.10	3.58	19.50	3.59
Idaho	19.30	3.54	15.80	3.62	16.10	3.54
Illinois	21.70	3.59	16.70	3.60	16.40	3.55
Indiana	21.90	3.58	16.20	3.55	15.80	3.50
Iowa	21.20	3.57	16.60	3.64	16.30	3.56
Kansas	21.80	3.60	16.60	3.64	16.30	3.57
Michigan	21.60	3.53	16.80	3.57	16.30	3.51
Minnesota	21.20	3.63	17.30	3.74	17.40	3.68
Missouri	21.90	3.57	16.90	3.60	16.40	3.56
New Mexico	20.20	3.45	15.10	3.45	14.80	3.40
New York	22.40	3.60	17.30	3.66	16.80	3.60
Ohio	22.40	3.62	17.00	3.61	16.60	3.55
Oregon	22.10	3.67	17.20	3.70	16.90	3.66
Pennsylvania	22.90	3.60	17.90	3.62	17.40	3.60
Texas	21.60	3.68	16.30	3.70	16.00	3.66
Utah	20.50	3.58	15.10	3.60	14.50	3.57
Vermont	22.70	3.70	17.50	3.73	16.70	3.67
Virginia	24.00	3.56	18.70	3.63	18.20	3.59
Washington	21.70	3.67	16.30	3.70	16.00	3.66
Wisconsin	20.60	3.60	17.00	3.66	17.10	3.60
United States	21.10	3.60	16.20	3.63	16.10	3.58

Prices Received for Milk Cows – States and United States: April 2012 with Comparisons

[Animals sold for dairy herd replacement only. Prices estimated in January, April, July, and October]

State	April 2011 (dollars per head)	January 2012 (dollars per head)	April 2012 (dollars per head)
Arizona	1,450	1,500	1,500
California	1,300	1,400	1,300
Colorado	1,450	1,500	1,520
Florida	1,480	1,490	1,450
Idaho	1,450	1,450	1,450
Illinois	1,430	1,500	1,520
Indiana	1,450	1,450	1,450
Iowa	1,430	1,400	1,450
Kansas	1,400	1,400	1,450
Michigan	1,550	1,600	1,600
Minnesota	1,410	1,430	1,490
Missouri	1,280	1,200	1,300
New Mexico	1,380	1,380	1,350
New York	1,400	1,450	1,460
Ohio	1,470	1,500	1,510
Oregon	1,390	1,440	1,430
Pennsylvania	1,450	1,500	1,500
Texas	1,400	1,400	1,400
Utah	1,300	1,340	1,340
Vermont	1,550	1,550	1,600
Virginia	1,410	1,520	1,540
Washington	1,400	1,400	1,350
Wisconsin	1,560	1,550	1,560
United States	1,420	1,460	1,440

Commodity Parity Prices and Price as Percent of Parity Price – United States: June 2012 with Comparisons

[Parity prices are computed under the provisions of Title III, Subtitle a, Section 301 (a) of the Agricultural Adjustment Act of 1938 as amended by the Agricultural Acts of 1948, 1949, and 1956. See January *Agricultural Prices* for details on adjusted base price and parity price computations. Parity data not available for blank cells. Primary source of data for livestock and milk prices is United States Department of Agriculture's Agricultural Marketing Service]

Commodity and unit	Adjusted base price	Parity price			Price as percent of parity		
		June 2011	May 2012	June 2012	June 2011	May 2012	June 2012
	(dollars)	(dollars)	(dollars)	(dollars)	(percent)	(percent)	(percent)
Basic commodities							
All wheatbushel	0.634	16.50	17.90	18.10	45	37	35
Ricecwt	1.46	44.20	41.30	41.80	27	33	33
Cornbushel	0.414	10.40	11.70	11.80	61	54	53
Cotton							
Upland pound	0.072	1.93	2.04	2.06	43	41	40
American Pima pound	0.141	3.50	3.99	4.03	51	41	41
Peanuts pound	0.026	0.733	0.735	0.744	32	46	47
Designated nonbasic							
All milk, to plants ¹cwt	1.80	49.40	50.90	51.50	44	34	32
Honey, extracted ² pound	0.139	3.64	3.93	3.98	44	41	40
Wool and mohair							
Wool pound	0.104	2.50	2.94	2.97	46	57	56
Mohair pound	0.333	8.79	9.42	9.52	40	44	43
Other nonbasic							
Apples, fresh ³ pound	0.033	0.895	0.933	0.944	29	36	41
Barleybushel	0.436	11.50	12.30	12.50	40	47	45
Canolacwt	1.820	47.20	51.50	52.10	53	54	53
Cottonseed ton	17.40	418.00	492.00	498.00	41	56	55
Dry edible beanscwt	3.01	79.20	85.10	86.10	43	51	51
Flaxseedbushel	1.100	27.70	31.10	31.50	56	48	42
Oatsbushel	0.263	6.78	7.44	7.52	50	55	48
Potatoescwt	0.855	22.60	24.20	24.50	51	43	40
Sorghum graincwt	0.729	18.30	20.60	20.80	57	50	48
Soybeansbushel	1.000	25.70	28.30	28.60	51	49	48
Sunflower, allcwt	2.06	51.80	58.30	58.90	56	50	47
Citrus (equivalent on-tree)							
Grapefruitbox	0.690	18.00	19.50	19.70	53	71	78
Lemonsbox	1.37	36.90	38.70	39.20	33	43	40
Orangesbox	0.698	18.60	19.70	20.00	45	52	59
Tangerinesbox	1.49	38.80	42.10	42.60	53	104	130
Livestock and poultry							
Beef cattlecwt	10.10	274.00	286.00	289.00	39	43	42
Calvescwt	13.90	383.00	393.00	398.00	35	45	43
Hogscwt	5.53	149.00	156.00	158.00	47	40	42
Eggs ¹dozen	0.091	2.47	2.57	2.60	44	40	43
Turkeys, live pound	0.057	1.520	1.610	1.630	46	45	45

¹ Seasonally adjusted price as percentage of parity price.

² Wholesale extracted. Adjusted base price derived from state annual averages prices weighted by production. For 1982 through 1985 the national averages are the support prices.

³ Equivalent packinghouse-door returns for California, New York (apples only), Oregon (except peaches), and Washington. Price at point of first sale for other states.

Commodity Parity Prices – United States: June 2012 with Comparisons

[Parity prices are computed under the provisions of Title III, Subtitle a, Section 301 (a) of the Agricultural Adjustment Act of 1938 as amended by the Agricultural Acts of 1948, 1949, and 1956. See January *Agricultural Prices* for details on adjusted base price and parity price computations]

Commodity and unit	Adjusted base price	Parity price			
		June 2011	May 2012	June 2012	
	(dollars)	(dollars)	(dollars)	(dollars)	
Field crops and miscellaneous					
Hops	pound	0.306	8.33	8.65	8.75
Mustard seed	cwt	2.82	72.20	79.70	80.70
Rapeseed	cwt	2.23	58.10	63.10	63.80
Rye	bushel	0.525	13.30	14.80	15.00
Safflower	cwt	2.02	52.60	57.10	57.80
Spearmint oil	pound	1.50	39.10	42.40	42.90
Sweet potatoes	cwt	2.20	61.60	62.20	62.90
Tobacco					
Flue-cured, 11-14	pound	0.196	5.64	5.54	5.61
Fire-cured, 21-23	pound	0.283	7.95	8.00	8.09
Burley, 31	pound	0.202	5.81	5.71	5.78
Maryland, 32	pound	0.174	4.96	4.92	4.98
Dark air-cured, 35-37	pound	0.256	7.08	7.24	7.32
Pennsylvania seedleaf, 41	pound	0.182	5.18	5.15	5.21
Cigar binder, 51	pound	0.640	18.30	18.10	18.30
Noncitrus fruit					
Apples, processing ^{1 9}	ton	16.10	437.00	455.00	460.00
Apricots					
Fresh ^{2 9}	ton	114.00	3,090.00	3,220.00	3,260.00
Dried (California) ⁹	ton	262.00	7,110.00	7,410.00	7,490.00
Avocados ^{2 9}	ton	198.00	5,370.00	5,600.00	5,660.00
Cherries					
Sweet ⁹	ton	210.00	5,700.00	5,940.00	6,010.00
Tart ⁹	pound	0.034	0.922	0.962	0.972
Cranberry ^{3 9}	barrel	4.89	133.00	138.00	140.00
Dates (California) ^{2 9}	ton	183.00	4,960.00	5,180.00	5,230.00
Grapes					
Raisin variety ⁹	ton	117.00	3,170.00	3,310.00	3,350.00
Other dried ⁹	ton	65.40	1,770.00	1,850.00	1,870.00
Kiwifruit ⁹	ton	94.40	2,560.00	2,670.00	2,700.00
Nectarines, fresh (California) ^{2 9}	ton	55.30	1,500.00	1,560.00	1,580.00
Olives, canning (California) ^{3 9}	ton	87.40	2,370.00	2,470.00	2,500.00

See footnote(s) at end of table.

--continued

Commodity Parity Prices – United States: June 2012 with Comparisons (continued)

[Parity prices are computed under the provisions of Title III, Subtitle a, Section 301 (a) of the Agricultural Adjustment Act of 1938 as amended by the Agricultural Acts of 1948, 1949, and 1956. See January *Agricultural Prices* for details on adjusted base price and parity price computations]

Commodity and unit	Adjusted base price	Parity price			
		June 2011	May 2012	June 2012	
	(dollars)	(dollars)	(dollars)	(dollars)	
Noncitrus fruit - continued					
Papayas (Hawaii) ⁹	pound	0.046	1.25	1.30	1.32
Peaches					
Fresh ^{4 9}	ton	83.00	2,250.00	2,350.00	2,370.00
Dried (California) ⁹	ton	57.30	1,550.00	1,620.00	1,640.00
Processing, excludes dried					
Clingstone (California) ^{3 9}	ton	33.70	914.00	953.00	964.00
Pears					
Fresh ^{4 9}	ton	55.60	1,510.00	1,570.00	1,590.00
Dried (California) ^{1 9}	ton	178.00	4,830.00	5,030.00	5,090.00
Plums (California)					
Fresh, equivalent on-tree ⁹	ton	60.20	1,630.00	1,700.00	1,720.00
Prunes, dried (California) ^{1 9}	ton	147.00	3,990.00	4,160.00	4,200.00
Prunes and plums					
Fresh, excludes California ^{5 9}	ton	63.80	1,730.00	1,800.00	1,820.00
Processing, excludes dried ^{1 9}	ton	25.70	697.00	727.00	735.00
Tree nuts^{6 9}					
Almonds	pound	0.209	5.67	5.91	5.98
Hazelnuts	ton	183.00	4,960.00	5,180.00	5,230.00
Pistachios	pound	0.194	5.26	5.49	5.55
Walnuts	ton	177.00	4,800.00	5,010.00	5,060.00
Vegetables, fresh⁷					
Carrots ⁸	cwt	2.69	70.80	76.10	76.90
Cauliflower ⁸	cwt	4.31	116.00	122.00	123.00
Celery ⁸	cwt	2.01	55.60	56.80	57.50
Honeydew melons	cwt	2.09	58.90	59.10	59.80
Lettuce	cwt	2.29	63.80	64.80	65.50
Onions ⁸	cwt	1.49	42.60	42.10	42.60
Tomatoes	cwt	4.68	129.00	132.00	134.00

¹ Equivalent returns at processing plant door.

² Equivalent returns at packinghouse door.

³ Equivalent returns for bulk fruit at first delivery point.

⁴ Equivalent packinghouse-door returns for California, New York (apples only), Oregon (except peaches), and Washington. Price at point of first sale for other states.

⁵ Based on "as sold" prices for fresh fruit in all states.

⁶ Prices In-Shell basis except almonds which are shelled basis.

⁷ FOB shipping point prices.

⁸ Includes some processing.

⁹ Non-citrus fruit and tree nut estimates discontinued October 2011. The program was later reinstated with a publication date of March 15, 2012. Parity prices will be published in the July 2012 *Agricultural Prices* report to include these prices.

Marketing Year for Specified Commodities

Barley: June 1 to May 31 for United States; June 1 to May 31 for Arizona, California, Delaware, Maryland, North Carolina, Pennsylvania, Virginia; August 1 to July 31 for Alaska, Maine; July 1 to June 30 for all other states.

Oats: June 1 to May 31 for United States; May 1 to April 30 for Alabama, Georgia and Texas; June 1 to May 31 for Arkansas, North Carolina, Oklahoma, South Carolina, and Virginia; August 1 to July 31 for Maine and New York; September 1 to August 31 for Alaska; July 1 to June 30 for all other States.

Sweet Potatoes: July - June for United States; July 1 to June 30 for Alabama and California; July 1 to May 31 for Georgia, Louisiana, North Carolina and Texas; August 1 to May 31 for South Carolina, and Virginia; and August 1 to July 31 for New Jersey.

Wheat: June 1 to May 31 for United States; May 1 to April 30 for Alabama, Florida, Georgia, Louisiana, Mississippi, and Texas; June 1 to May 31 for Arizona, Arkansas, California, Delaware, Illinois, Indiana, Kansas, Kentucky, Maryland, Missouri, New Mexico, North Carolina, Oklahoma, South Carolina, Tennessee, and Virginia; July 1 to June 30 for all other States.

Prices Received for Sweet Potatoes, Market Year Average - States and United States: 2009-2011

State	2009	2010	2011
	(dollars per cwt)	(dollars per cwt)	(dollars per cwt)
Alabama	20.50	6.56	9.30
Arkansas	13.20	13.80	15.90
California	26.80	24.30	22.10
Florida	30.00	(D)	(D)
Louisiana	18.10	19.20	17.20
Mississippi	20.30	20.40	17.30
New Jersey	29.00	32.60	29.30
North Carolina	19.50	18.00	18.60
Texas	17.00	(D)	(D)
United States	21.80	19.80	18.80

(D) Withheld to avoid disclosing data for individual operations.

Prices Received and Farm Marketings for Oats by Month – United States: Marketing Years 2009-2010 through 2011-2012

[Marketing year average (MYA) prices are weighted average prices for the United States marketing year of June through May. Monthly farm marketings, based on a sample survey, as percent of total used for calculating MYA prices]

Month	Prices received			Farm marketing percentages		
	2009-2010	2010-2011	2011-2012	2009-2010	2010-2011	2011-2012
	(dollars per bushel)	(dollars per bushel)	(dollars per bushel)	(percent)	(percent)	(percent)
June	2.37	2.11	3.42	8.2	6.9	5.5
July	2.03	2.11	3.35	10.5	19.7	13.3
August	1.86	2.09	3.20	37.4	27.1	30.2
September	1.82	2.30	3.67	11.6	7.2	9.0
October	2.03	2.55	3.69	5.6	6.2	6.5
November	2.02	3.07	3.38	3.2	4.7	3.4
December	2.22	2.94	3.57	2.3	3.9	4.9
January ¹	2.19	3.13	3.56	3.2	6.7	5.2
February	2.30	3.27	3.47	4.2	5.0	5.0
March	2.29	3.28	3.77	6.5	5.1	4.4
April	2.25	3.54	3.84	4.5	5.0	5.0
May	2.20	3.55	4.12	2.8	2.5	7.6
MYA	2.02	2.52	3.49	100.0	100.0	100.0

¹ Second year.

Prices Received and Farm Marketings for All Barley by Month – United States: Marketing Years 2009-2010 through 2011-2012

[Marketing year average (MYA) prices are weighted average prices for the United States marketing year of June through May. Monthly farm marketings, based on a sample survey, as percent of total used for calculating MYA prices]

Month	Prices received			Farm marketing percentages		
	2009-2010	2010-2011	2011-2012	2009-2010	2010-2011	2011-2012
	(dollars per bushel)	(dollars per bushel)	(dollars per bushel)	(percent)	(percent)	(percent)
June	4.70	3.64	4.65	6.1	8.0	4.6
July	5.09	3.79	5.07	9.5	9.2	8.8
August	5.17	3.69	5.27	14.8	17.2	21.7
September	4.78	3.61	5.45	11.0	9.5	13.3
October	4.41	3.73	5.51	8.6	6.4	6.5
November	4.46	3.86	5.44	6.2	7.0	9.1
December	4.54	3.86	5.46	8.6	7.2	9.8
January ¹	4.68	3.86	5.44	10.5	9.3	7.6
February	4.53	3.95	5.41	8.3	8.0	7.4
March	4.22	4.29	5.34	7.7	8.2	5.7
April	4.08	4.41	5.69	4.7	6.4	2.6
May	4.25	4.15	5.72	4.0	3.6	2.9
MYA	4.66	3.86	5.35	100.0	100.0	100.0

¹ Second year.

Prices Received and Farm Marketings for Malting Barley by Month – United States: Marketing Years 2009-2010 through 2011-2012

[Marketing year average (MYA) prices are weighted average prices for the United States marketing year of June through May. Monthly farm marketings, based on a sample survey, as percent of total used for calculating MYA prices]

Month	Prices received			Farm marketing percentages		
	2009-2010	2010-2011	2011-2012	2009-2010	2010-2011	2011-2012
	(dollars per bushel)	(dollars per bushel)	(dollars per bushel)	(percent)	(percent)	(percent)
June	5.38	4.24	4.60	4.9	7.2	3.6
July	5.48	4.14	5.09	9.4	9.5	7.9
August	5.47	3.94	5.31	15.9	18.7	23.7
September	5.32	3.96	5.57	10.7	8.3	12.1
October	4.94	3.88	5.69	8.0	5.8	6.4
November	4.88	3.98	5.57	5.9	7.3	9.0
December	4.84	3.97	5.55	8.8	7.4	10.2
January ¹	4.87	3.97	5.54	11.3	9.3	7.9
February	4.70	4.06	5.50	8.7	8.0	7.9
March	4.43	4.29	5.43	8.0	8.9	5.9
April	4.55	4.22	5.87	4.3	6.0	2.4
May	4.51	4.04	5.84	4.1	3.6	3.0
MYA	5.02	4.05	5.44	100.0	100.0	100.0

¹ Second year.

Prices Received and Farm Marketings for Feed Barley by Month – United States: Marketing Years 2009-2010 through 2011-2012

[Marketing year average (MYA) prices are weighted average prices for the United States marketing year of June through May. Monthly farm marketings, based on a sample survey, as percent of total used for calculating MYA prices]

Month	Prices received			Farm marketing percentages		
	2009-2010	2010-2011	2011-2012	2009-2010	2010-2011	2011-2012
	(dollars per bushel)	(dollars per bushel)	(dollars per bushel)	(percent)	(percent)	(percent)
June	3.16	2.24	4.74	12.7	10.8	9.3
July	2.94	2.40	5.04	9.9	8.2	13.1
August	2.49	2.39	4.91	9.8	12.1	12.0
September	2.14	2.89	5.07	12.5	14.1	19.4
October	2.29	3.38	4.76	11.5	8.3	7.2
November	2.50	3.34	4.85	7.3	5.9	9.5
December	2.63	3.40	4.88	7.9	6.6	8.0
January ¹	2.63	3.46	4.81	5.9	9.4	6.0
February	3.11	3.56	4.74	5.9	7.9	5.2
March	2.66	4.26	4.76	6.2	5.5	4.4
April	2.40	4.89	5.10	6.9	8.0	3.6
May	2.49	4.61	4.89	3.5	3.2	2.3
MYA	2.61	3.22	4.91	100.0	100.0	100.0

¹ Second year.

Prices Received and Farm Marketings for All Wheat by Month – United States: Marketing Years 2009-2010 through 2011-2012

[Marketing year average (MYA) prices are weighted average prices for the United States marketing year of June through May. Monthly farm marketings, based on a sample survey, as percent of total used for calculating MYA prices]

Month	Prices received			Farm marketing percentages		
	2009-2010	2010-2011	2011-2012	2009-2010	2010-2011	2011-2012
	(dollars per bushel)	(dollars per bushel)	(dollars per bushel)	(percent)	(percent)	(percent)
June	5.72	4.16	7.41	10.8	10.4	14.4
July	5.17	4.49	7.10	18.3	25.6	15.7
August	4.85	5.44	7.59	10.8	13.5	15.0
September	4.48	5.79	7.54	9.5	9.3	7.5
October	4.47	5.88	7.27	9.7	5.4	3.7
November	4.79	6.10	7.30	6.8	4.2	4.9
December	4.87	6.44	7.20	6.3	6.6	7.7
January ¹	4.90	6.69	7.05	7.7	7.8	8.0
February	4.73	7.42	7.10	5.1	4.7	6.0
March	4.70	7.55	7.20	5.2	5.4	5.6
April	4.41	8.01	7.11	6.1	3.9	3.5
May	4.34	8.16	6.67	3.7	3.2	8.0
MYA	4.87	5.70	7.24	100.0	100.0	100.0

¹ Second year.

Prices Received for Winter Wheat by Month, Marketing Year Average – United States: 2009-2010 through 2011-2012

[Marketing year average (MYA) prices are weighted average prices for the United States marketing year of June through May]

Month	2009-2010	2010-2011	2011-2012
	(dollars per bushel)	(dollars per bushel)	(dollars per bushel)
June	5.47	4.05	7.13
July	5.02	4.47	6.77
August	4.67	5.47	7.27
September	4.20	5.76	7.00
October	4.27	5.83	6.53
November	4.60	6.02	6.44
December	4.68	6.40	6.41
January ¹	4.67	6.35	6.57
February	4.53	7.03	6.68
March	4.45	7.02	6.70
April	4.19	7.37	6.47
May	4.21	7.80	6.42
MYA	4.71	5.37	6.81

¹ Second year.

Prices Received for Durum Wheat by Month, Marketing Year Average – United States: 2009-2010 through 2011-2012

[Marketing year average (MYA) prices are weighted average prices for the United States marketing year of June through May]

Month	2009-2010	2010-2011	2011-2012
	(dollars per bushel)	(dollars per bushel)	(dollars per bushel)
June	7.26	4.58	9.18
July	7.57	4.44	10.20
August	5.83	4.45	10.20
September	4.95	4.89	10.80
October	4.86	5.07	9.60
November	4.59	5.55	10.30
December	4.91	5.71	10.30
January ¹	4.94	7.09	8.84
February	4.61	8.45	8.98
March	4.57	8.09	8.39
April	4.17	8.60	9.22
May	4.34	7.86	8.95
MYA	5.47	5.98	9.68

¹ Second year.

Prices Received for Other Spring Wheat by Month, Marketing Year Average – United States: 2009-2010 through 2011-2012

[Marketing year average (MYA) prices are weighted average prices for the United States marketing year of June through May]

Month	2009-2010	2010-2011	2011-2012
	(dollars per bushel)	(dollars per bushel)	(dollars per bushel)
June	6.66	4.58	9.26
July	5.96	4.71	8.45
August	5.54	5.47	8.28
September	4.85	5.97	8.09
October	5.00	6.14	8.19
November	5.19	6.35	8.43
December	5.18	6.60	8.25
January ¹	5.30	7.14	8.09
February	5.04	7.68	8.01
March	5.04	8.07	8.04
April	4.89	8.67	7.96
May	4.61	8.85	7.93
MYA	5.23	6.49	8.24

¹ Second year.

Prices Received for Hard Red Spring Wheat by Month, Marketing Year Average – United States: 2009-2010 through 2011-2012

[Marketing year average (MYA) prices are weighted average prices for the United States marketing year of June through May]

Month	2009-2010	2010-2011	2011-2012
	(dollars per bushel)	(dollars per bushel)	(dollars per bushel)
June	6.72	4.59	9.34
July	6.00	4.72	8.49
August	5.59	5.49	8.37
September	4.87	6.03	8.21
October	5.04	5.96	8.38
November	5.24	6.41	8.65
December	5.21	6.64	8.43
January ¹	5.33	7.22	8.33
February	5.06	7.70	8.22
March	5.06	8.12	8.13
April	4.92	8.75	8.05
May	4.63	8.95	8.01
MYA	5.26	6.54	8.38

¹ Second year.

Prices Received for Hard Red Winter Wheat by Month, Marketing Year Average – United States: 2009-2010 through 2011-2012

[Marketing year average (MYA) prices are weighted average prices for the United States marketing year of June through May]

Month	2009-2010	2010-2011	2011-2012
	(dollars per bushel)	(dollars per bushel)	(dollars per bushel)
June	5.96	3.94	7.20
July	5.36	4.38	6.96
August	4.84	5.42	7.42
September	4.32	5.82	7.27
October	4.28	6.09	6.82
November	4.68	6.15	6.66
December	4.68	6.51	6.54
January ¹	4.73	6.50	6.71
February	4.54	7.07	6.75
March	4.48	7.10	6.72
April	4.16	7.50	6.43
May	4.16	8.00	6.35
MYA	4.84	6.49	6.92

¹ Second year.

Prices Received for Soft Red Winter Wheat by Month, Marketing Year Average – United States: 2009-2010 through 2011-2012

[Marketing year average (MYA) prices are weighted average prices for the United States marketing year of June through May]

Month	2009-2010	2010-2011	2011-2012
	(dollars per bushel)	(dollars per bushel)	(dollars per bushel)
June	4.69	4.50	7.00
July	4.37	4.77	6.50
August	4.04	5.75	7.08
September	3.63	5.89	6.91
October	3.86	6.12	6.64
November	4.21	5.46	6.25
December	4.52	6.73	6.58
January ¹	4.49	6.31	6.85
February	4.37	7.11	7.10
March	4.14	6.70	6.70
April	4.26	7.27	6.67
May	4.37	7.09	6.75
MYA	4.35	5.16	6.78

¹ Second year.

Prices Received for White Wheat by Month, Marketing Year Average – United States: 2009-2010 through 2011-2012

[Marketing year average (MYA) prices are weighted average prices for the United States marketing year of June through May]

Month	2009-2010	2010-2011	2011-2012
	(dollars per bushel)	(dollars per bushel)	(dollars per bushel)
June	5.21	4.28	6.94
July	4.99	5.26	6.72
August	4.68	5.52	6.79
September	4.14	5.54	6.56
October	4.30	5.76	6.04
November	4.39	5.88	6.07
December	4.74	6.07	6.13
January ¹	4.59	6.05	6.17
February	4.56	6.78	6.44
March	4.52	6.65	6.63
April	4.34	7.06	6.55
May	4.34	7.22	6.54
MYA	4.52	5.88	6.42

¹ Second year.

Reliability of Prices Received Estimates

Definition: Prices received represent sales from producers to first buyers. They include all grades and qualities. The average commodity price from the survey multiplied by the total quantity marketed theoretically should give the total cash receipts for the commodity.

Survey procedures: Primary sales data used to determine grain prices were obtained from probability samples of about 1900 mills and elevators. These procedures ensure that virtually all grain moving into commercial channels has a chance of being included in the survey. Generally, States surveyed account for 90 percent or more of total United States production. Livestock prices are obtained from packers, stockyards, auctions, dealers, and market check data from AMS-USDA, private marketing organizations, and state commodity groups and agencies. Inter-farm sales of grain and livestock are not included since they represent very small percentages of the total marketings. Grain marketed for seed is also excluded. Fruit and vegetable prices are obtained from sample surveys and market check data from AMS-USDA, private marketing organizations, state agencies, and universities.

Summary and estimation procedures: Survey quantities sold are expanded by strata to state levels and used to weight average strata prices to a state average. State prices are then weighted to a United States price based on expanded marketings. Recommendations are prepared by the State Field Offices and reviewed by the Agricultural Statistics Board in Washington, D.C. State recommendations are reviewed for reasonableness with survey data, other States, and recent historic estimates.

Revisions: For most items, the current month's preliminary price represents a 3-5 day period around the 15th of the month. Previous month's prices represent actual dollars received for quantities sold during the entire month. Revisions are published in monthly issues of Agricultural Prices.

Reliability: United States price estimates based on probability surveys generally have a sampling error of less than one percent for the major commodities such as corn, wheat, soybeans, cotton, and rice. Current methods of summarization for non-probability commodities are not designed directly to calculate sampling errors. However, analytical measures approximate the United States relative sampling errors at around five percent. Any nonsampling errors are attributed to such things as the inability to obtain correct information, differences in interpreting questions or definitions, mistakes in coding or processing the data, etc. Efforts are made at each step in the survey process to minimize these nonsampling errors.

Prices Paid by Farmers

The June Index of Prices Paid for Commodities and Services, Interest, Taxes, and Farm Wage Rates (PPITW) at 215 (1990-1992=100) is unchanged from May 2012 but up 5.9 percent from June 2011.

Production index: The June index, at 229, was unchanged from last month but increased 6.5 percent from last year. Higher prices in June for complete feeds, concentrates, nitrogen, and supplements offset lower prices for diesel, hay & forages, LP gas, and gasoline.

Feed: The June index, at 257, increased 1.2 percent from May and 11 percent from last June. Since May, higher prices for complete feeds, concentrates, and supplements more than offset lower prices for hay & forages and feed grains.

Livestock and poultry: The June index, at 173, increased 0.6 percent from last month and 19 percent from last year. Since May, higher prices for feeder cattle offset lower prices for feeder pigs. The June feeder cattle price, at \$154.70 per cwt, is up \$1.00 per cwt from the May price. June feeder pigs averaged \$121.00 per cwt, down \$6.00 per cwt from May.

Fertilizer: The June index, at 348, is up 0.9 percent from May and 6.1 percent above June a year ago. Since May, higher prices for nitrogen more than offset lower prices for potash & phosphate and mixed fertilizer.

Chemicals: The June index, at 156, increased 2.6 percent from May and 9.1 percent from last June. Compared with last month, prices for herbicides, insecticides, and fungicides/other were higher.

Fuels: The June index, at 337, is down 6.1 percent from a month earlier and 9.7 percent below June 2011. Compared with last month, prices for diesel, LP gas, and gasoline are lower.

Machinery: The June index, at 257, was unchanged from May but is 6.2 percent above last June. Compared with last month, prices for other machinery are slightly lower.

Consumer price index: The May 2012 Consumer Price Index, as issued by the Bureau of Labor Statistics, for all urban consumers (CPI-U) decreased 0.1 percent before seasonal adjustment to a level of 229.815 (1982-1984=100). The April index is 230.085. For the 12 month period ending in May, the overall index increased 1.7 percent.

Prices Paid Indexes and Related Parity Ratios – United States: June 2012 with Comparisons

[Revised historical price indexes for months not shown are available at www.nass.usda.gov]

Indexes and ratios	1910-1914 Base			1990-1992 Base		
	June 2011	May 2012	June 2012	June 2011	May 2012	June 2012
	(percent)	(percent)	(percent)	(percent)	(percent)	(percent)
Prices paid by farmers for commodities, services, interest, taxes, and wage rates (PPITW)	2707	2860	2860	203	215	215
Production	2089	2219	2219	215	229	229
Feed	1127	1239	1257	231	254	257
Livestock and poultry	1866	2202	2207	146	172	173
Seeds	3327	3581	3581	336	362	362
Fertilizer	1203	1264	1277	328	345	348
Chemicals	886	942	967	143	152	156
Fuels	2875	2769	2597	373	359	337
Supplies and repairs	1179	1210	1210	166	170	170
Autos and trucks	3091	3132	3126	116	118	118
Machinery	6083	6450	6448	242	257	257
Building materials	2336	2389	2393	172	176	176
Services and rent	2132	2181	2185	(NA)	(NA)	(NA)
Services	(NA)	(NA)	(NA)	165	167	167
Rent	(NA)	(NA)	(NA)	205	212	212
Interest ¹	3381	3635	3635	135	145	145
Taxes ²	5935	6225	6225	222	232	232
Wage rates	7075	7373	7373	189	197	197
Production, interest, taxes, and wage rates (PITW)	2819	2993	2994	210	223	223
Family living-CPI ³	2144	2183	2180	167	170	170
Ratio (received/paid)	(NA)	(NA)	(NA)	89	83	84
Parity ratio ⁴	42	40	40	(NA)	(NA)	(NA)
Parity ratio adjusted ⁵	43	41	41	(NA)	(NA)	(NA)
PPITW adjusted for productivity ⁶	1455	1498	1497	(NA)	(NA)	(NA)
Crop sector (PPITW)	(NA)	(NA)	(NA)	213	222	222
Livestock sector (PPITW)	(NA)	(NA)	(NA)	193	207	207
Farm sector (production)	(NA)	(NA)	(NA)	219	245	247
Non-farm sector (production)	(NA)	(NA)	(NA)	213	220	219

(NA) Not available.

¹ Interest per acre on farm real estate debt and interest rate on farm non-real estate debt.

² Farm real estate taxes payable per acre.

³ Bureau of Labor Statistics, Consumer Price Index for all urban consumers (CPI-U), for the previous month converted by the USDA.

⁴ Ratio of index of prices received to PPITW (1910-1914=100).

⁵ Based on estimated cash receipts, from marketings and government payments, the preliminary adjustment factor is 1.044 for 2012 and the revised factor is 1.041 for 2011.

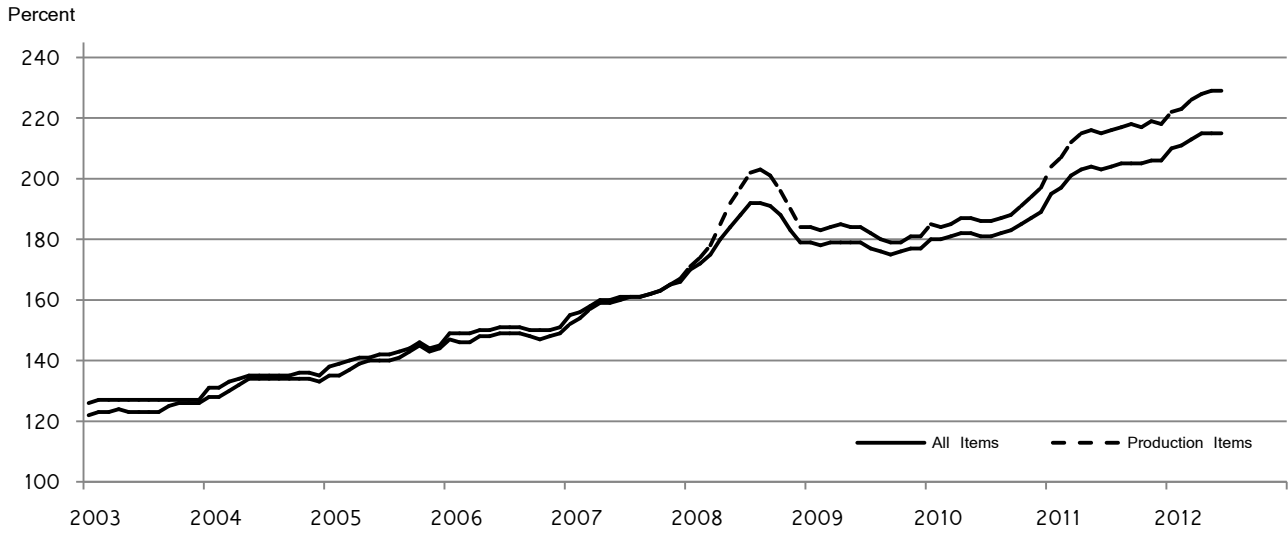
⁶ PPITW is adjusted based on productivity trend for the prior 15 years.

Prices Paid Indexes and Annual Weights for Input Components and Sub-Components – United States: June 2012 with Comparisons

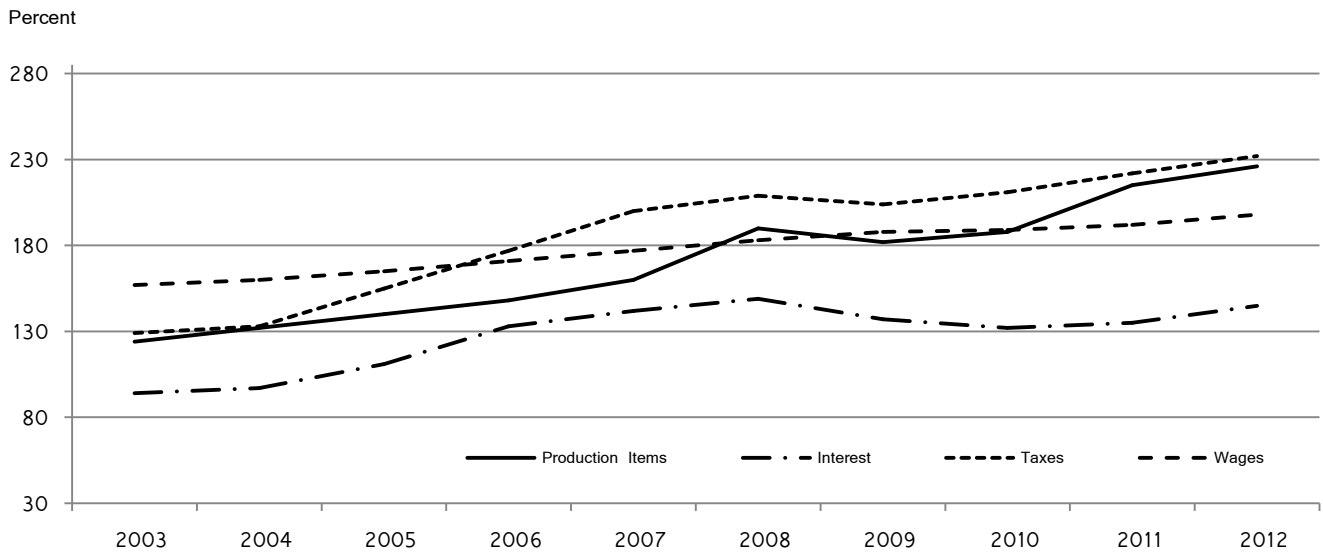
[Revised historical price indexes for months not shown are available at www.nass.usda.gov. Relative weights are a five year moving average]

	Relative weights		Indexes (1990-1992=100)		
	2011	2012	June 2011	May 2012	June 2012
	(percent)	(percent)	(percent)	(percent)	(percent)
Production items	70.6	71.1	215	229	229
Feed	12.2	12.7	231	254	257
Feed grains	1.7	1.8	270	270	265
Complete feeds	6.0	6.2	231	260	268
Hay and forages	1.5	1.6	203	249	231
Concentrates	1.9	2.0	213	228	240
Supplements	1.0	1.1	240	244	255
Livestock and poultry	8.5	8.3	146	172	173
Feeder cattle	6.6	6.5	150	182	183
Feeder pigs	0.7	0.7	121	138	132
Milk cow replacements	0.7	0.7	126	128	128
Poultry	0.5	0.5	158	158	158
Seeds	4.1	4.3	336	362	362
Field crops	3.7	3.9	356	381	381
Grasses and legumes	0.4	0.4	145	178	178
Fertilizer	5.5	5.7	328	345	348
Mixed fertilizer	2.4	2.5	310	312	312
Nitrogen	2.3	2.4	337	364	374
Potash and phosphate	0.8	0.8	362	391	388
Chemicals	3.3	3.2	143	152	156
Herbicides	2.1	2.0	129	137	140
Insecticides	0.7	0.7	166	173	177
Fungicides and other	0.5	0.5	172	190	195
Fuels	4.0	4.0	373	359	337
Diesel	2.5	2.5	405	408	388
Gasoline	0.8	0.8	318	323	310
LP gas	0.7	0.7	319	221	179
Supplies and repairs	4.6	4.6	166	170	170
Supplies	1.5	1.5	162	165	165
Repairs	3.0	3.0	168	173	173
Autos and trucks	1.4	1.2	116	118	118
Autos	0.2	0.2	115	116	116
Trucks	1.2	1.1	116	118	118
Machinery	4.3	4.3	242	257	257
Tractors	0.9	0.9	203	209	209
Self-propelled	1.7	1.7	254	275	275
Other machinery	1.6	1.6	253	266	266
Building materials	4.4	4.2	172	176	176
Services	12.1	12.0	165	167	167
Custom rates	1.2	1.2	148	148	148
Other services	10.9	10.7	167	169	170
Rent	6.3	6.6	205	212	212
Cash	3.4	3.5	262	270	270
Share	2.9	3.0	139	145	145
Interest	3.5	3.4	135	145	145
Taxes	3.1	3.1	222	232	232
Wage rates	7.4	7.2	189	197	197
Family living-CPI	15.4	15.3	167	170	170

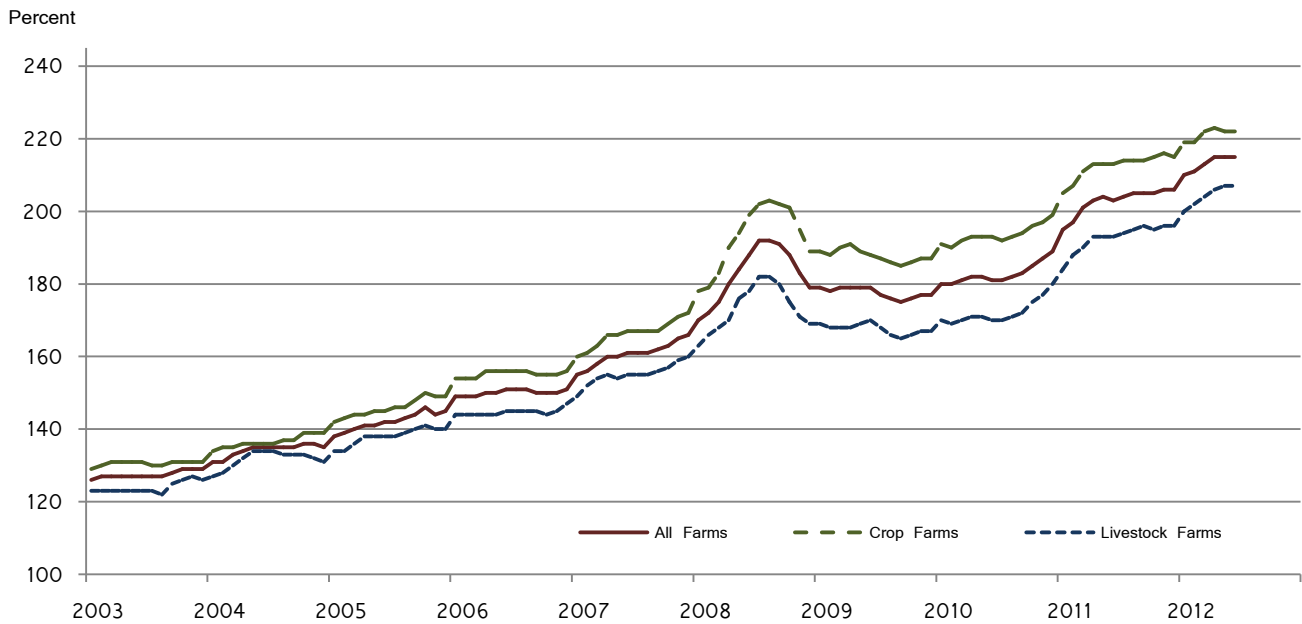
**Paid Indexes by Month,
All Items and Production Items –
United States: 1990–1992=100**



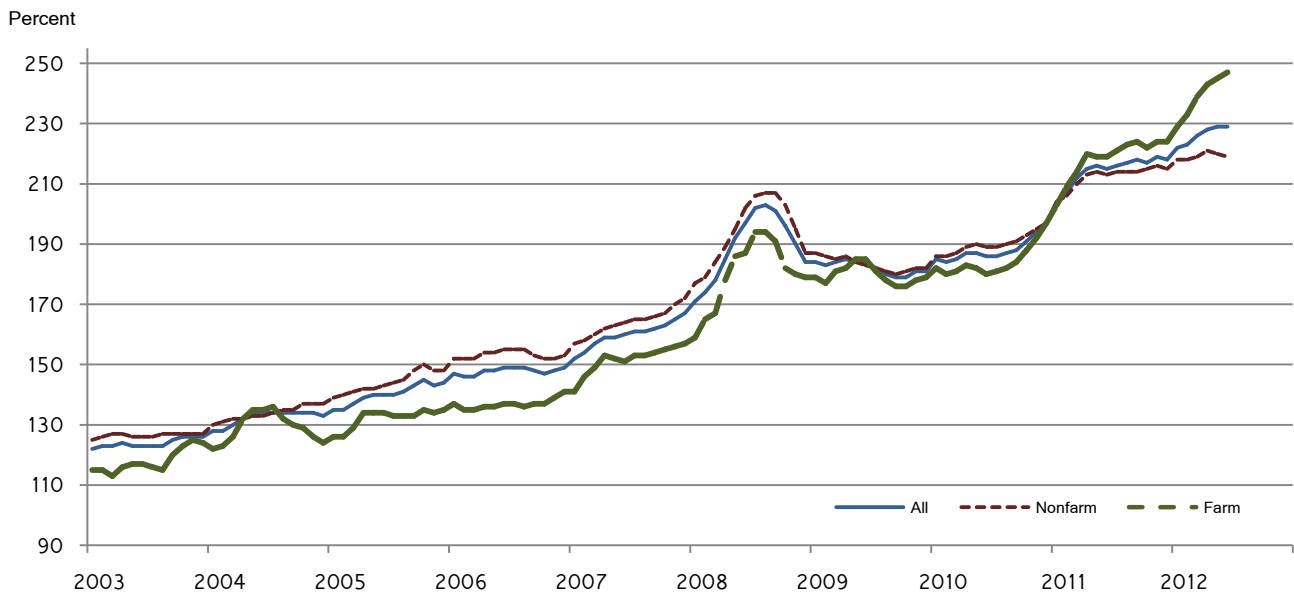
**Paid Indexes, Annual Averages,
Production Items, Interest, Taxes, and Wages –
United States: 1990–1992=100**



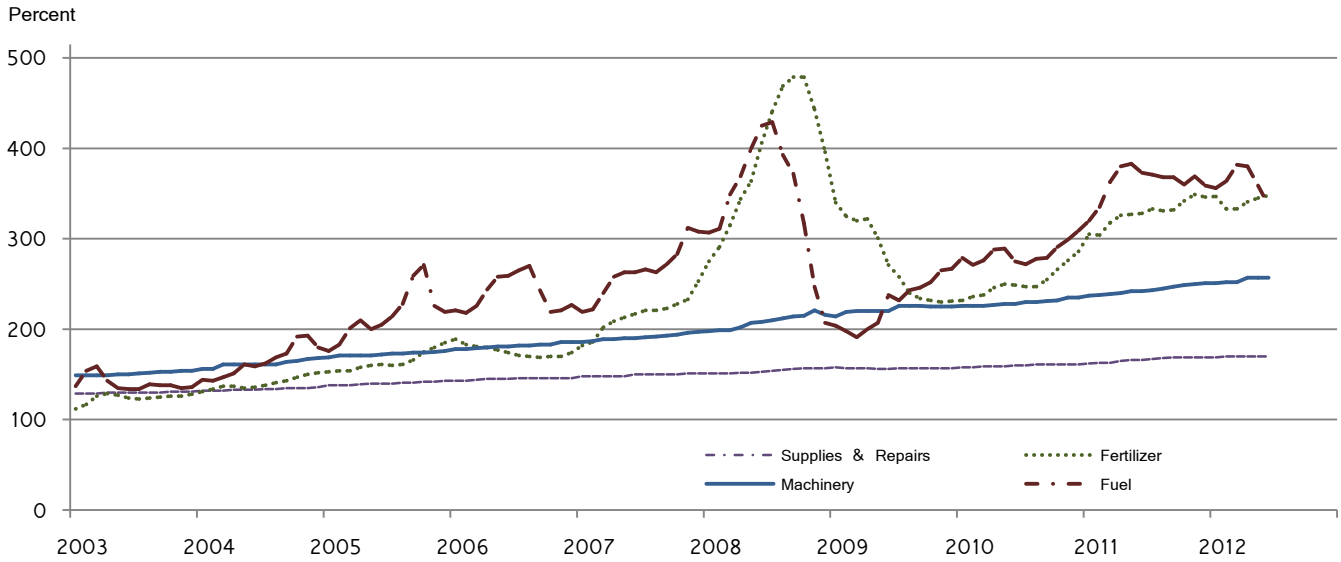
**Paid Indexes by Farm Type and Month,
All Items – United States: 1990–1992=100**



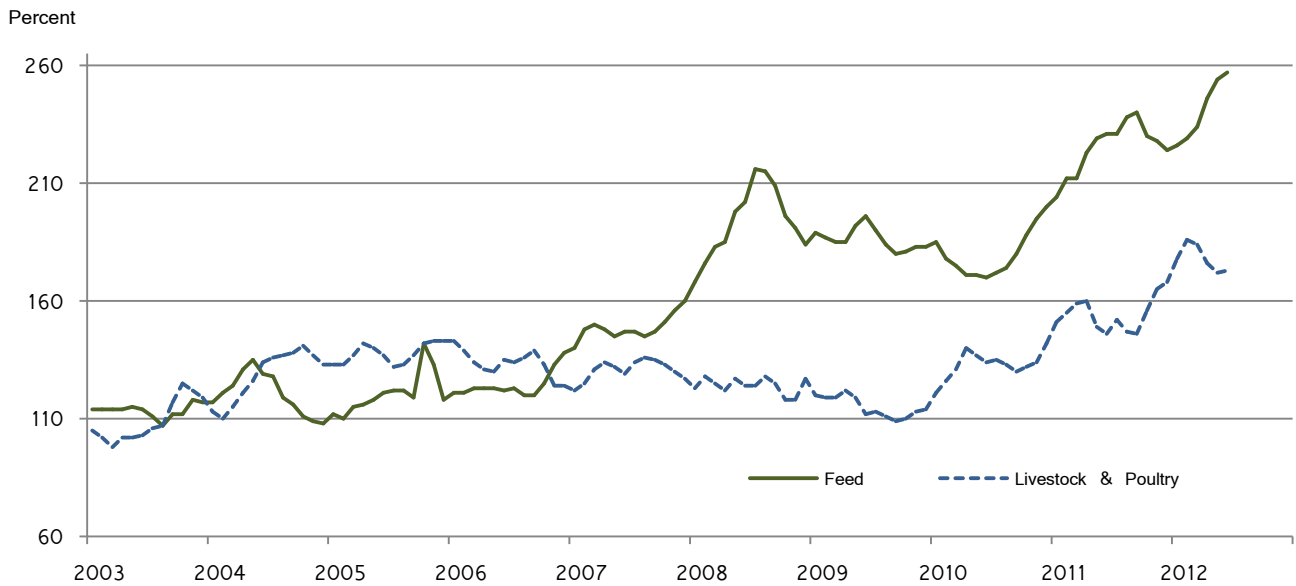
**Paid Indexes by Origin and Month,
All Production Items –
United States: 1990–1992=100**



**Paid Indexes by Non-Farm Sector and Month,
Supplies & Repairs, Fertilizer, Machinery, and
Fuel – United States: 1990-1992=100**



**Paid Indexes by Month,
Feed and Livestock & Poultry –
United States: 1990-1992=100**



Feed Price Ratios – United States: June 2012 with Comparisons

Feed price ratio ¹	June 2011	May 2012	Preliminary June 2012
Broiler-feed: pounds of broiler grower feed equal in value to 1 pound of broiler, live weight ²	3.1	3.2	3.2
Market egg feed: pounds of laying feed equal in value to 1 dozen eggs ³	4.9	4.2	4.9
Hog-corn: bushels of corn equal in value to 100 pounds of hog, live weight	10.9	9.9	10.7
Milk-feed: pounds of 16% mixed dairy feed equal in value to 1 pound of whole milk ⁴	1.87	1.35	1.38
Steer and heifer-corn: bushels of corn equal in value to 100 pounds of steer & heifers, live weight	17.2	19.7	20.0
Turkey-feed: pounds of turkey grower equal in value to 1 pound of turkey, live weight ⁵	4.8	5.0	5.2

¹ Effective January 1995, prices of commercial prepared feeds are based on current United States prices received for corn, soybeans, alfalfa hay, and all wheat.

² The price of commercial prepared broiler feed is based on current United States prices received for corn and soybeans. The modeled feed uses 58 percent corn and 42 percent soybeans.

³ The price of commercial prepared layer feed is based on current United States prices received for corn and soybeans. The modeled feed uses 75 percent corn and 25 percent soybeans.

⁴ The price of commercial prepared dairy feed is based on current United States prices received for corn, soybeans, and alfalfa hay. The modeled feed uses 51 percent corn, 41 percent alfalfa hay, and 8 percent soybeans.

⁵ The price of commercial prepared turkey feed is based on current United States prices received for corn, soybeans, and wheat. The modeled feed uses 51 percent corn, 28 percent soybeans, and 21 percent wheat.

Prices Received Used to Calculate Feed Price Ratios – United States: June 2012 with Comparisons

[Price data source for livestock and poultry commodities is United States Department of Agriculture's Agricultural Marketing Service]

Item	June 2011	May 2012	Preliminary June 2012
	(dollars)	(dollars)	(dollars)
Broilers, live pound	0.490	0.530	0.520
Eggs, market dozen	0.687	0.594	0.688
Hogs, all cwt	69.70	62.80	66.90
Milk, all cwt	21.10	16.20	16.10
Steers and heifers cwt	110.00	125.00	125.00
Turkeys, live pound	0.695	0.726	0.739
Corn bushel	6.38	6.33	6.25
Hay, alfalfa ton	180.00	215.00	201.00
Soybeans bushel	13.20	14.00	13.70
Wheat, all bushel	7.41	6.67	6.37

Prices Paid for Feeder Livestock – United States: June 2012 with Comparisons

[Price data source is United States Department of Agriculture's Agricultural Marketing Service]

Item	June 2011	May 2012	Preliminary June 2012
	(dollars)	(dollars)	(dollars)
Feeder cattle and calves cwt	126.80	153.70	154.70
Feeder pigs cwt	111.00	127.00	121.00

Prices Paid and Value of Hatchery Production for Poultry – United States: 2009-2011

	2009	2010	2011
	(dollars)	(dollars)	(dollars)
Poultry prices paid			
Broilers-type chicksper 100	26.60	27.00	28.20
Egg-type chicksper 100	81.20	83.00	86.70
Turkey poults each	1.32	1.43	1.47
	(1,000 dollars)	(1,000 dollars)	(1,000 dollars)
Value of hatchery production			
All chicks	2,614,912	2,708,098	2,761,358
All poults	362,399	393,866	409,292

Reliability of Prices Paid Estimates

Definition: Prices paid by farmers represent the average costs of inputs purchased by farmers and ranchers to produce agricultural commodities. Conceptually, the average price when multiplied by quantity purchased should equal total producer expenditures for the item.

Survey procedures: The prices paid data are obtained from establishments that sell goods and services to farmers and ranchers. Annually, about 8,500 firms are randomly selected from lists by type of item sold with an average response rate in the range of 75-80 percent. Firms are asked to report the price for the specified item "most commonly bought by farmers" or that was the "volume seller". Approximately 135 items are surveyed each March to represent all production input items purchased. The survey reference period for most items is the five business days centered around the 15th of the month. Separate prices paid surveys are conducted for agricultural chemicals, fuels, feed, fertilizer, machinery, and seed.

Summary and estimation procedures: The annual March Prices Paid Survey is summarized as a nonprobability survey. Average prices reported are aggregated to the region and United States level using weights available from expenditure data and other administrative sources. Price recommendations are prepared by the State Field Offices and Headquarters for review by the Agricultural Statistics Board in Washington, D.C. Also, the change in price level for individual items surveyed are combined to the regional and United States levels, and are published as prices paid indexes referenced to a specific base period. Prices paid indexes for new autos and trucks, building materials, farm supplies, motor supplies, and marketing containers are updated based on price changes measured in selected Bureau of Labor Statistics (BLS) indexes.

Revisions: Any revisions are published in the monthly and in annual issues of Agricultural Prices. The basis for revision must be supported by additional data that directly affect the level of the estimate. More revisions are likely for March when separate prices paid surveys are conducted, in lieu of BLS indexes, by the USDA to measure price change.

Reliability: Current methods of summarization for the March data are not designed directly to calculate sampling errors. However, analytical measures approximate the United States relative sampling errors for major items around 10 percent. Any nonsampling errors are attributed to such things as the inability to obtain correct information, differences in interpreting questions or definitions, mistakes in coding or processing the data, etc. Efforts are made at each step in the survey process to minimize these nonsampling errors.

Program change: Effective January 1, 1995, the National Agricultural Statistics Service updated the weights and changed the construction of its prices paid and received by farmers indexes. A Federal Register Notice dated October 28, 1994 discussed these program modifications.

A 1990-1992 reference and base period replaced the 1977 reference and 1971-1973 base weight period. Five-year moving average weights replaced the current fixed 1971-1973 base period weights. The 1910-1914=100 price indexes, required by statute for computing parity prices, were linked forward based on the changes in the new 1990-1992=100 indexes. The new indexes were constructed by multiplying the ratios of the current prices to the base period prices by the moving average weights (adjusted for seasonal marketing patterns for the prices received indexes).

Information Contacts

Direct general questions to Troy Joshua, Chief, Environmental, Economics and Demographics Branch at (202) 720-6146. Below are the commodity specialists to contact for additional information.

Crop Prices Received

Lance Honig, Chief, Crops Branch	(202) 720-2127
Jacqueline Moore, Head, Field Crops Section	(202) 720-2127
Suzanne Avilla – Peanuts, Rice.....	(202) 720-7688
Bryan Durham – Oats, Rye, Wheat.....	(202) 720-8068
Steve Maliszewski – Cotton, Cotton Ginnings, Sorghum.....	(202) 720-5944
Anthony Prillaman – Corn, Proso Millet, Flaxseed	(202) 720-9526
Julie Schmidt – Crop Weather, Barley, Hay	(202) 720-7621
Travis Thorson – Soybeans, Sunflower, Other Oilseeds.....	(202) 720-7369
Jorge Garcia-Pratts, Head, Fruits, Vegetables and Special Crops Section.....	(202) 720-2127
Debbie Flippin – Fresh and Processing Vegetables, Onions, Strawberries.....	(202) 720-2157
Fred Granja – Apples, Apricots, Cherries, Plums, Prunes, Tobacco	(202) 720-4288
Erika White – Floriculture, Maple Syrup, Nursery, Tree Nuts	(202) 720-4215
Chris Hawthorn – Citrus, Coffee, Sugar Crops, Grapes, Tropical Fruits.....	(202) 720-5412
Daphne Schaubert – Berries, Cranberries, Potatoes, Sweet Potatoes	(202) 720-4285
Dan Norris – Austrian Winter Peas, Dry Edible Peas, Lentils, Mints, Mushrooms, Peaches, Pears, Wrinkled Seed Peas, Dry Beans	(202) 720-3250

Livestock Prices Received

Dan Kerestes, Chief, Livestock Branch	(202) 720-3570
Scott Hollis, Head, Livestock Section.....	(202) 720-3570
Travis Averill – Cattle.....	(202) 720-3040
Mike Miller – Milk, Milk Cows	(202) 720-3278
Doug Bounds – Hogs	(202) 720-3106
Bruce Boess, Head, Poultry and Specialty Commodities Section.....	(202) 720-3570
Cody Brokmeyer – Turkeys.....	(202) 690-3237
LaKeya Jones – Honey	(202) 720-0585
Kim Linonis – Eggs.....	(202) 690-8632
Miste Salmon – Broilers.....	(202) 720-3244

Indexes, Prices Paid, and Parity Prices

Troy Joshua, Chief, Environmental, Economics and Demographics Branch.....	(202) 720-6146
Tony Dorn, Head, Economics Section	(202) 690-3223
Daryl Brinkman – Prices Received Indexes, Parity Prices	(202) 720-8844
Scott Shimmin – Grazing Fees.....	(202) 690-3231
Vincent Davis – Prices Paid Indexes, Prices Paid for Feed, Fertilizer, Agricultural Chemicals, Seeds, Farm Supplies and Repairs, Farm Machinery, Fuels, Feeder Livestock, Poultry Chicks, Feed Price Ratios, Autos & Trucks.....	(202) 690-3229

Access to NASS Reports

For your convenience, you may access NASS reports and products the following ways:

- All reports are available electronically, at no cost, on the NASS web site: <http://www.nass.usda.gov>
- Both national and state specific reports are available via a free e-mail subscription. To set-up this free subscription, visit <http://www.nass.usda.gov> and in the “Follow NASS” box under “Receive reports by Email,” click on “National” or “State” to select the reports you would like to receive.
- Printed reports may be purchased from the National Technical Information Service (NTIS) by calling toll-free (800) 999-6779, or (703) 605-6220 if calling from outside the United States or Canada. Accepted methods of payment are Visa, MasterCard, check, or money order.

For more information on NASS surveys and reports, call the NASS Agricultural Statistics Hotline at (800) 727-9540, 7:30 a.m. to 4:00 p.m. ET, or e-mail: nass@nass.usda.gov.

The United States Department of Agriculture (USDA) prohibits discrimination in all its programs and activities on the basis of race, color, national origin, age, disability, and where applicable, sex, marital status, familial status, parental status, religion, sexual orientation, political beliefs, genetic information, reprisal, or because all or a part of an individual's income is derived from any public assistance program. (Not all prohibited bases apply to all programs.) Persons with disabilities who require alternative means for communication of program information (Braille, large print, audiotape, etc.) should contact USDA's TARGET Center at (202) 720-2600 (voice and TDD).

To file a complaint of discrimination, write to USDA, Assistant Secretary for Civil Rights, Office of the Assistant Secretary for Civil Rights, 1400 Independence Avenue, S.W., Stop 9410, Washington, DC 20250-9410, or call toll-free at (866) 632-9992 (English) or (800) 877-8339 (TDD) or (866) 377-8642 (English Federal-relay) or (800) 845-6136 (Spanish Federal-relay). USDA is an equal opportunity provider and employer.