



# Agricultural Prices

ISSN: 1937-4216

Released September 27, 2012, by the National Agricultural Statistics Service (NASS), Agricultural Statistics Board, United States Department of Agriculture (USDA).

## September Farm Prices Received Index Increased 7 Points

The preliminary All Farm Products Index of Prices Received by Farmers in September, at 200 percent, based on 1990-1992=100, increased 7 points (3.6 percent) from August. The Crop Index is up 5 points (2.2 percent) but the Livestock Index was unchanged. Producers received higher prices for wheat, milk, cattle, and eggs and lower prices for corn, hogs, sweet corn, and broilers. In addition to prices, the overall index is also affected by the seasonal change based on a 3-year average mix of commodities producers sell. Increased monthly movement of soybeans, corn, apples, and peanuts offset the decreased marketing of cattle, wheat, broilers, and grapes.

The preliminary All Farm Products Index is up 20 points (11 percent) from September 2011. The Food Commodities Index, at 184, increased 6 points (3.4 percent) from last month and is 17 points (10 percent) higher than September 2011.

## Prices Paid Index up 3 Points

The September Index of Prices Paid for Commodities and Services, Interest, Taxes, and Farm Wage Rates (PPITW) is 219 percent of the 1990-1992 average. The index is up 3 points (1.4 percent) from August and 14 points (6.8 percent) above September 2011. Higher prices in September for complete feeds, supplements, feeder cattle, and diesel offset lower prices for nitrogen, mixed fertilizer, feed grains, and feeder pigs.

## Prices Received, Prices Paid, and Ratio of Prices Received to Prices Paid Indexes 1990-1992 Base – United States: September 2012 with Comparisons

Index	September	August	September
	2011	2012	2012
Prices received by farmers .....	180	193	200
Prices paid by farmers .....	205	216	219
Ratio of prices received to prices paid .....	88	89	91

## Contents

Prices Received by Farmers .....	4
Prices Received Indexes – United States: September 2012 with Comparisons .....	5
Prices Received and Prices Paid Indexes by Month for Selected Groups – United States: 2011 and 2012, 1990-1992 Base .....	5
Received Indexes by Month, Livestock Products, All Products, and All Crops – United States: 1990-1992=100 Chart.....	6
Received Indexes by Month, Food Grains, Feed Grains & Hay, and Oilseeds – United States: 1990-1992=100 Chart.....	6
Received Indexes by Month, Fruit & Nut and Commercial Vegetables – United States: 1990-1992=100 Chart.....	7
Received Indexes by Month, Meat Animal, Dairy Products, and Poultry & Eggs – United States: 1990-1992=100 Chart.....	7
Prices Received for Field Crops and Fruits – United States: September 2012 with Comparisons .....	8
Prices Received for Vegetables and Livestock – United States: September 2012 with Comparisons .....	9
Prices Received for Corn by Month – United States Chart.....	10
Prices Received for Wheat by Month – United States Chart .....	10
Prices Received for Cotton by Month – United States Chart.....	11
Prices Received for Soybeans by Month – United States Chart .....	11
Prices Received for Cattle by Month – United States Chart .....	12
Prices Received for Milk by Month – United States Chart.....	12
Prices Received for Hogs by Month – United States Chart .....	13
Prices Received for Poultry by Month – United States Chart.....	13
Prices Received for All Wheat, Corn, and Soybeans by Month – United States: 2012 with Comparisons .....	14
Prices Received for Beef Cattle and All Hogs by Month – United States: 2012 with Comparisons .....	14
Prices Received for All Wheat – States and United States: September 2012 with Comparisons .....	15
Prices Received for Winter Wheat – States and United States: September 2012 with Comparisons .....	15
Prices Received for Durum Wheat – States and United States: September 2012 with Comparisons .....	16
Prices Received for Spring Wheat – States and United States: September 2012 with Comparisons.....	16
Prices Received for All Barley – States and United States: September 2012 with Comparisons .....	17
Prices Received for Malting Barley – States: September 2012 with Comparisons.....	17
Prices Received for Feed Barley – States: September 2012 with Comparisons .....	17
Prices Received for Corn – States and United States: September 2012 with Comparisons.....	18
Prices Received for Soybeans – States and United States: September 2012 with Comparisons .....	18
Prices Received for Oats – States and United States: September 2012 with Comparisons .....	19
Prices Received for Sorghum Grain – States and United States: September 2012 with Comparisons .....	19
Prices Received for Dry Beans – States and United States: September 2012 with Comparisons.....	20
Prices Received for Peanuts (in shell) – States and United States: September 2012 with Comparisons .....	20
Prices Received for Sunflower – States and United States: September 2012 with Comparisons .....	21
Prices Received for Canola – States and United States: September 2012 with Comparisons .....	21
Prices Received for Flaxseed – States and United States: September 2012 with Comparisons.....	21
Prices Received for Upland Cotton and Cottonseed – States and United States: September 2012 with Comparisons .....	22
Prices Received and Farm Marketings for Upland Cotton and Rice – United States: September 2012 with Comparisons .....	22
Prices Received for Hay by Type – States and United States: September 2012 with Comparisons.....	23
Prices Received for Apples – States and United States: September 2012 with Comparisons .....	23
Prices Received for Citrus Fruits by Utilization – States and United States: September 2011.....	24
Prices Received for Citrus Fruits by Utilization – States and United States: August 2012 .....	25
Prices Received for Citrus Fruits by Utilization – States and United States: September 2012.....	26
Prices Received for Potatoes – States and United States: September 2012 with Comparisons .....	27
Prices Received for All Milk – States and United States: September 2012 with Comparisons.....	28
Prices Received for Milk Cows – States and United States: July 2012 with Comparisons .....	29

Commodity Parity Prices and Price as Percent of Parity Price – United States: September 2012 with Comparisons .....	30
Commodity Parity Prices – United States: September 2012 with Comparisons.....	31
Marketing Year for Specified Commodities .....	33
Dry Edible Peas Market Year Average Prices Received – States and United States: Marketing Years 2009 through 2011.....	34
Austrian Winter Peas Market Year Average Prices Received – States and United States: Marketing Years 2009 through 2011.....	34
Lentils Market Year Average Prices Received – States and United States: Marketing Years 2009 through 2011 .....	34
Lentils Prices Received and Farm Marketings by Month – United States: Marketing Years 2009-2010 through 2011-2012 .....	35
Dry Edible Peas Prices Received and Farm Marketings by Month – United States: Marketing Years 2009-2010 through 2011-2012 .....	35
Austrian Winter Peas Prices Received and Farm Marketings by Month – United States: Marketing Years 2009-2010 through 2011-2012 .....	36
Corn Prices Received and Farm Marketings by Month – United States: Marketing Years 2009-2010 through 2011-2012 .....	36
Sorghum Grain Market Year Average Prices Received – States and United States: Marketing Years 2009 through 2011.....	37
Sorghum Grain Farm Marketing Percent by Month – States and United States: Marketing Years 2010-2011 and 2011-2012 .....	37
Sorghum Grain Prices Received by Month – States and United States: Marketing Years 2010-2011 and 2011-2012 .....	38
Soybean Market Year Average Prices Received – States and United States: Marketing Years 2009 through 2011 .....	40
Soybean Prices Received by Month – States and United States: Marketing Years 2010-2011 and 2011-2012.....	41
Soybean Farm Marketing Percent by Month – States and United States: Marketing Years 2010-2011 and 2011-2012 .....	43
Reliability of Prices Received Estimates .....	44
Prices Paid by Farmers.....	45
Prices Paid Indexes and Related Parity Ratios – United States: September 2012 with Comparisons .....	46
Prices Paid Indexes and Annual Weights for Input Components and Sub-components – United States: September 2012 with Comparisons.....	47
Paid Indexes by Month, All Items and Production Items – United States: 1990-1992=100 Chart .....	48
Paid Indexes, Annual Averages, Production Items, Interest, Taxes, and Wages – United States: 1990-1992=100 Chart .....	48
Paid Indexes by Farm Type, All Items – United States: 1990-1992=100 Chart.....	49
Paid Indexes by Origin, All Production Items – United States: 1990-1992=100 Chart .....	49
Paid Indexes by Non-Farm Sector, Supplies & Repairs, Fertilizer, Machinery, and Fuel – United States: 1990-1992=100 Chart .....	50
Paid Indexes by Month, Feed and Replacement Livestock – United States: 1990-1992=100 Chart.....	50
Feed Price Ratios – United States: September 2012 with Comparisons.....	51
Prices Received Used to Calculate Feed Price Ratios – United States: September 2012 with Comparisons.....	51
Prices Paid for Feeder Livestock – United States: September 2012 with Comparisons.....	51
Reliability of Prices Paid Estimates .....	52
Information Contacts .....	53

## Prices Received by Farmers

The September All Farm Products Index is 200 percent of its 1990-1992 base, up 3.6 percent from the August index and 11 percent above the September 2011 index.

**All crops:** The September index, at 236, increased 2.2 percent from August and is 16 percent above September 2011. Index increases for fruits & nuts and food grains more than offset the index decreases for oilseeds and feed grains & hay.

**Food grains:** The September index, at 273, is 3.8 percent above the previous month and 11 percent above a year ago. The September all wheat price, at \$8.49 per bushel, is up 45 cents from August and 95 cents above September 2011.

**Feed grains & hay:** The September index, at 309, is down 1 percent from last month but 14 percent above a year ago. The corn price, at \$7.35 per bushel, is down 28 cents from last month but 97 cents above September 2011. The all hay price, at \$187 per ton, is up \$3.00 from August and \$7.00 higher than last September. Sorghum grain, at \$12.20 per cwt, is 90 cents above August and \$1.70 above September last year.

**Cotton, Upland:** The September index, at 119, is up 0.8 percent from August but 23 percent below last year. The September price, at 72.3 cents per pound, is up 0.9 cents from the previous month but 21.2 cents below last September.

**Oilseeds:** The September index, at 270, is down 5.9 percent from August but 34 percent higher than September 2011. The soybean price, at \$16.30 per bushel, increased 10 cents from August and is \$4.10 above September 2011.

**Fruits & nuts:** The September index, at 199, is up 12 percent from August and 9.9 percent higher than a year ago. Price increases for apples more than offset price decreases for peaches.

**Commercial vegetables:** The September index, at 153, is down 4.4 percent from last month but 11 percent above September 2011. Price decreases during September for sweet corn and onions more than offset price increases for broccoli and cucumbers.

**Potatoes & dry beans:** The September index, at 148, is up 2.1 percent from last month but 3.9 percent below September 2011. The all potato price, at \$7.60 per cwt, is down 20 cents from August and 45 cents below last September. The all dry bean price, at \$39.20 per cwt, is down 70 cents from the previous month and \$1.00 below September 2011.

**Livestock and products:** The September index, at 155, is unchanged from last month but up 2.0 percent from September 2011. Compared with a year ago, prices are higher for cattle, broilers, eggs, calves, and turkeys. Prices for milk and hogs are down from last year.

**Meat animals:** The September index, at 153, is down 1.9 percent from last month but 2.7 percent higher than last year. The September hog price, at \$56.50 per cwt, is down \$10.40 from August and \$10.60 lower than a year ago. The September beef cattle price of \$120 per cwt is up \$3.00 from last month and \$8.00 higher than September 2011.

**Dairy products:** The September index, at 146, is up 5.0 percent from a month ago but 9.9 percent lower than September last year. The September all milk price of \$19.10 per cwt is \$1.00 higher than last month but down \$2.00 from September 2011.

**Poultry & eggs:** The September index, at 168, is up 1.2 percent from August and 12 percent above a year ago. The September market egg price, at \$1.06 per dozen, increased 10.9 cents from August and is 20.2 cents above September 2011. The September broiler price, at 49.0 cents per pound, is down 1.0 cent from August but 5.0 cents above a year ago. The September turkey price, at 74.8 cents per pound, is up 0.4 cents from the previous month and is 1.7 cents higher than a year earlier.

## Prices Received Indexes – United States: September 2012 with Comparisons

[Revised historical price indexes for months not shown are available at [www.nass.usda.gov](http://www.nass.usda.gov)]

Index	1910-1914 Base				1990-1992 Base		
	1990-1992 Average	September 2011	August 2012	September 2012	September 2011	August 2012	September 2012
	(percent)	(percent)	(percent)	(percent)	(percent)	(percent)	(percent)
All products .....	639	1140	1224	1266	180	193	200
All crops .....	500	1009	1147	1171	204	231	236
Food grains .....	325	780	833	866	246	263	273
Feed grains & hay .....	363	965	1114	1102	271	312	309
Cotton, Upland .....	517	791	604	612	154	118	119
Tobacco .....	1263	1491	1559	1559	99	103	103
Oilseeds .....	554	1105	1574	1479	202	287	270
Fruits & nuts .....	716	1262	1236	1386	181	177	199
Commercial vegetables .....	698	989	1142	1094	138	160	153
Potatoes & dry beans .....	540	780	732	748	154	145	148
Other crops .....	493	644	651	651	131	132	132
Livestock and products .....	768	1167	1187	1190	152	155	155
Meat animals .....	1021	1521	1591	1560	149	156	153
Dairy products .....	799	1298	1114	1175	162	139	146
Poultry & eggs .....	282	420	466	471	150	166	168
Food commodities .....	(NA)	(NA)	(NA)	(NA)	167	178	184

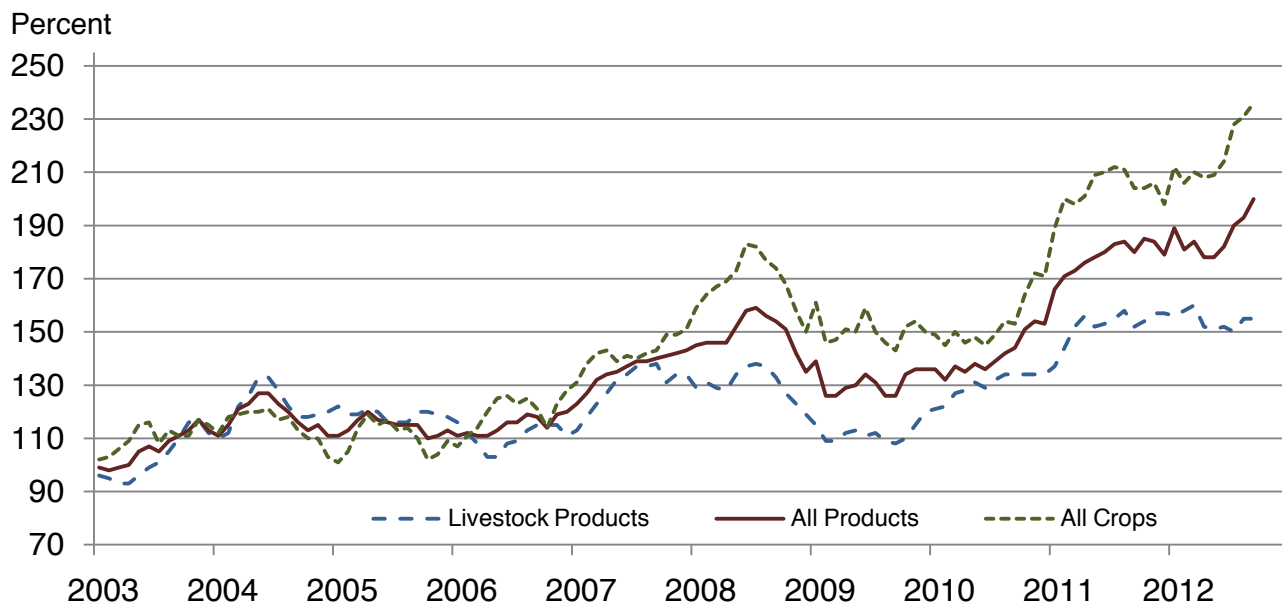
(NA) Not available.

## Prices Received and Prices Paid Indexes by Month for Selected Groups – United States: 2011 and 2012, 1990-1992 Base

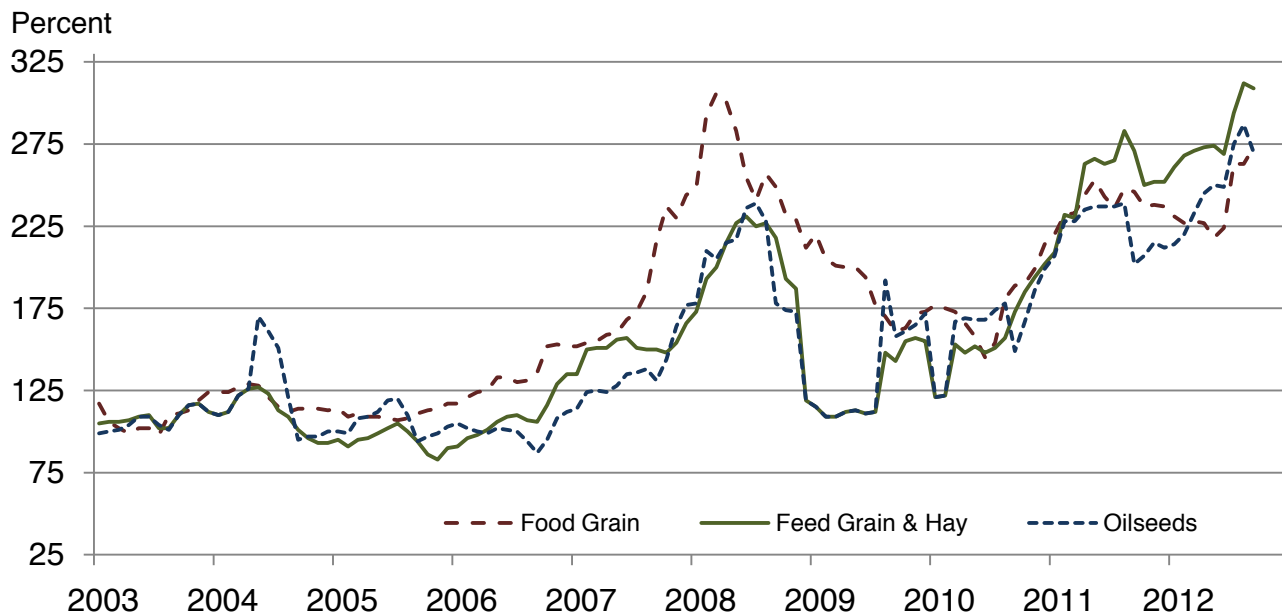
[Revised historical price indexes for months not shown are available at [www.nass.usda.gov](http://www.nass.usda.gov). Blank data cells indicate estimation period has not yet begun]

Month	Index of prices received						Index of prices paid			
	All farm products		All crops		Livestock and products		All items		Production items	
	2011	2012	2011	2012	2011	2012	2011	2012	2011	2012
	(percent)	(percent)	(percent)	(percent)	(percent)	(percent)	(percent)	(percent)	(percent)	(percent)
January .....	166	189	189	212	137	156	195	210	204	222
February .....	171	181	200	206	144	158	197	211	207	223
March .....	173	184	198	210	152	160	201	213	212	227
April .....	176	178	201	208	156	152	203	215	215	228
May .....	178	178	209	209	152	151	204	215	216	228
June .....	180	182	210	214	153	152	203	214	215	228
July .....	183	190	212	228	155	150	204	214	217	227
August .....	184	193	211	231	158	155	205	216	217	231
September .....	180	200	204	236	152	155	205	219	218	234
October .....	185		204		154		205		217	
November .....	184		206		157		206		219	
December .....	179		198		157		206		218	

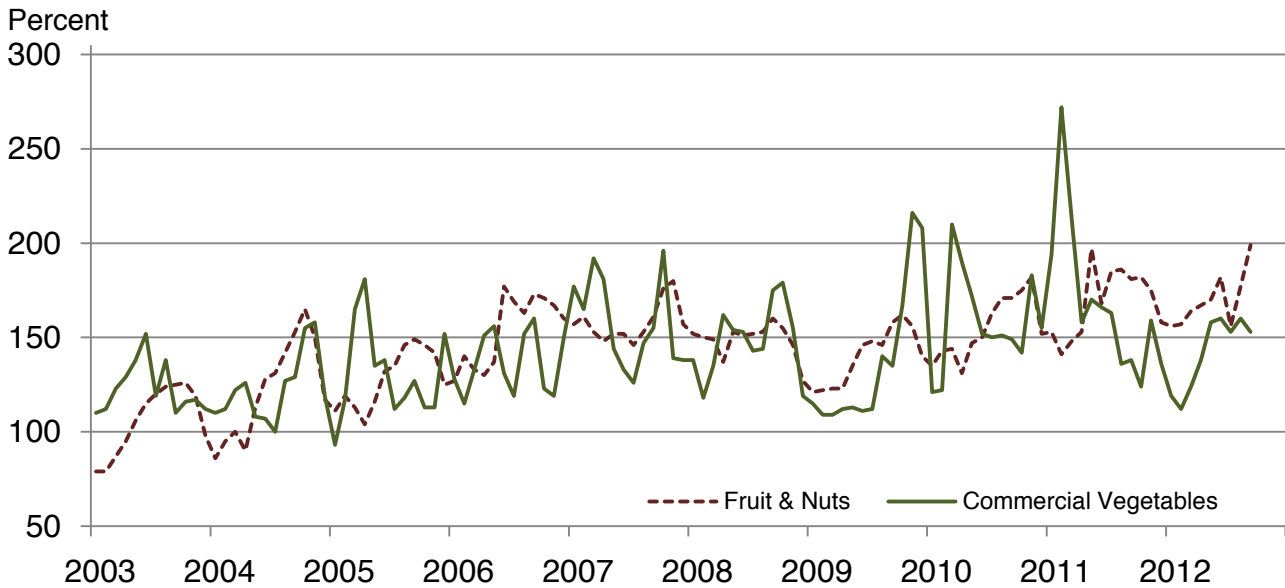
### Received Indexes by Month, Livestock Products, All Products, and All Crops – United States: 1990-1992=100



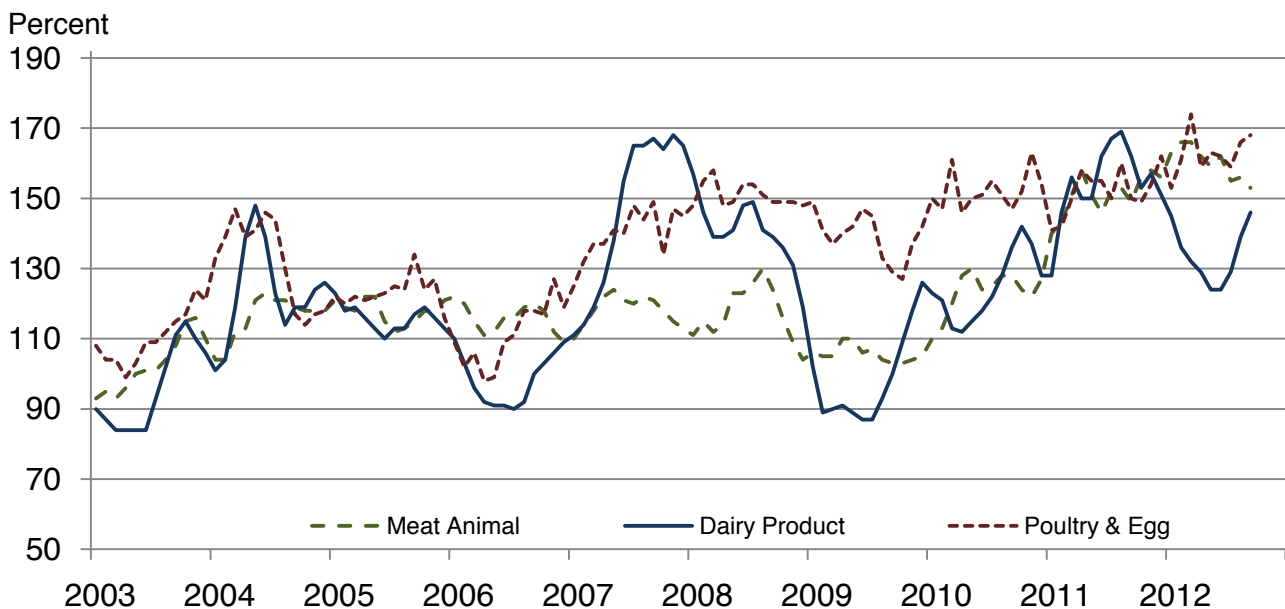
### Received Indexes by Month, Food Grains, Feed Grains & Hay, and Oilseeds – United States: 1990-1992=100



### Received Indexes by Month, Fruit & Nuts and Commercial Vegetables – United States: 1990-1992=100



### Received Indexes by Month, Meat Animal, Dairy Product, and Poultry & Egg – United States: 1990-1992=100



**Prices Received for Field Crops and Fruits – United States: September 2012 with Comparisons**

Commodity	Average 1990-1992	September 2011	August 2012	Preliminary September 2012
<b>Field crops</b>				
Austrian winter peas ..... dollars/cwt	(NA)	(S)	(S)	(S)
Barley, all ..... dollars/bushel	2.12	5.45	6.42	6.44
Feed ..... dollars/bushel	1.90	5.07	5.62	5.76
Malting ..... dollars/bushel	2.43	5.57	6.58	6.76
Beans, dry edible ..... dollars/cwt	19.10	40.20	39.90	39.20
Canola ..... dollars/cwt	(NA)	23.20	25.30	27.50
Chickpeas, all ..... dollars/cwt	(NA)	33.80	44.40	(D)
Large ..... dollars/cwt	(NA)	40.10	44.40	(D)
Small ..... dollars/cwt	(NA)	20.20	(S)	(S)
Corn ..... dollars/bushel	2.30	6.38	7.63	7.35
Cotton, Upland ..... dollars/pound	0.606	0.935	0.714	0.723
Cottonseed ..... dollars/ton	96.00	245.00	235.00	254.00
Flaxseed ..... dollars/bushel	4.27	13.50	13.30	13.10
Hay, all, baled ..... dollars/ton	76.30	180.00	184.00	187.00
Alfalfa ..... dollars/ton	77.20	198.00	203.00	205.00
Other ..... dollars/ton	60.00	129.00	140.00	142.00
Lentils ..... dollars/cwt	(NA)	29.10	18.00	19.80
Oats ..... dollars/bushel	1.22	3.67	3.81	3.75
Peanuts, in-shell ..... dollars/pound	0.304	0.235	0.304	0.353
Peas, dry edible ..... dollars/cwt	(NA)	15.30	14.20	14.90
Potatoes ..... dollars/cwt	5.82	8.05	7.80	7.60
Rice, all ..... dollars/cwt	7.07	14.40	14.40	14.60
Long ..... dollars/cwt	(NA)	13.70	14.00	14.10
Medium and short ..... dollars/cwt	(NA)	17.80	15.90	16.90
Sorghum grain ..... dollars/cwt	3.75	10.50	11.30	12.20
Soybeans ..... dollars/bushel	5.61	12.20	16.20	16.30
Sunflowers, all ..... dollars/cwt	9.50	32.90	28.50	29.30
Wheat, all ..... dollars/bushel	2.96	7.54	8.04	8.49
Winter ..... dollars/bushel	2.93	7.00	7.92	8.51
Durum ..... dollars/bushel	2.86	10.80	7.70	7.84
Other spring ..... dollars/bushel	3.11	8.09	8.27	8.52
Hard red winter <sup>1</sup> ..... dollars/bushel	(NA)	7.27	7.95	(NA)
Soft red winter <sup>1</sup> ..... dollars/bushel	(NA)	6.91	8.32	(NA)
Hard red spring <sup>1</sup> ..... dollars/bushel	(NA)	8.21	8.32	(NA)
White <sup>1</sup> ..... dollars/bushel	3.24	6.56	7.67	(NA)
<b>Fruits</b>				
<b>Citrus, equivalent on-tree</b>				
Grapefruit ..... dollars/box	5.77	9.50	10.33	10.13
Lemons ..... dollars/box	10.10	17.98	11.89	11.93
Oranges ..... dollars/box	5.79	7.60	7.81	10.23
Tangelos ..... dollars/box	5.82	(NA)	(NA)	(NA)
Tangerines and mandarins ..... dollars/box	15.11	(NA)	(NA)	(NA)
<b>Noncitrus, fresh</b>				
Apples <sup>2</sup> ..... dollars/pound	0.212	0.421	0.529	0.616
Grapes <sup>2</sup> ..... dollars/ton	506.00	820.00	780.00	840.00
Peaches <sup>2</sup> ..... dollars/ton	432.00	564.00	738.00	659.00
Pears <sup>2</sup> ..... dollars/ton	370.00	490.00	527.00	568.00
Strawberries ..... dollars/cwt	56.00	87.60	85.00	91.00

(D) Withheld to avoid disclosing data for individual operations.

(NA) Not available.

(S) Insufficient number of reports to establish an estimate.

<sup>1</sup> Preliminary estimates not set for this item.

<sup>2</sup> Equivalent packinghouse-door returns for California, Michigan, New York (apples only), and Washington (apples, peaches, and pears). Prices as sold for other states.



# Prices Received for Vegetables and Livestock – United States: September 2012 with Comparisons

[Price data source for livestock and poultry commodities is United States Department of Agriculture's Agricultural Marketing Service]

Commodity	Average 1990-1992	September 2011	August 2012	Preliminary September 2012
<b>Vegetables, fresh <sup>1</sup></b>				
Asparagus .....dollars/cwt	79.80	(S)	(S)	(S)
Beans, snap <sup>2</sup> .....dollars/cwt	(NA)	77.70	94.00	92.60
Broccoli .....dollars/cwt	22.50	33.60	28.10	38.10
Cantaloupes <sup>2</sup> .....dollars/cwt	(NA)	15.50	21.90	21.90
Carrots .....dollars/cwt	13.20	17.30	23.40	21.50
Cauliflower .....dollars/cwt	26.80	29.70	29.60	40.90
Celery .....dollars/cwt	11.60	16.30	22.10	25.90
Corn, sweet .....dollars/cwt	15.70	24.40	26.20	18.90
Cucumbers <sup>2</sup> .....dollars/cwt	(NA)	35.00	25.90	38.00
Lettuce .....dollars/cwt	11.90	14.80	19.20	20.30
Onions <sup>3</sup> .....dollars/cwt	12.80	8.59	15.00	11.40
Tomatoes .....dollars/cwt	32.30	35.50	31.70	34.80
<b>Livestock</b>				
Calves .....dollars/cwt	94.30	132.00	155.00	163.00
Cattle, all beef .....dollars/cwt	72.90	112.00	117.00	120.00
Cows <sup>4</sup> .....dollars/cwt	49.60	67.30	79.90	79.90
Steers and heifers .....dollars/cwt	77.10	117.00	120.00	124.00
Milk cows <sup>5</sup> .....dollars/head	1130.00	(NA)	(NA)	(NA)
Hogs, all .....dollars/cwt	47.70	67.10	66.90	56.50
Barrows and gilts .....dollars/cwt	48.40	67.20	68.00	57.10
Sows .....dollars/cwt	39.50	65.10	40.40	41.90
<b>Dairy and poultry</b>				
Milk, all <sup>6</sup> .....dollars/cwt	13.06	21.10	18.10	19.10
Fat test ..... percent	3.66	3.64	3.60	3.66
Broilers, live <sup>7</sup> .....dollars/pound	0.317	0.440	0.500	0.490
Eggs, all <sup>8</sup> .....dollars/dozen	0.643	1.020	1.130	1.230
Market <sup>8,9</sup> .....dollars/dozen	0.546	0.858	0.951	1.060
Turkeys, live <sup>8,10</sup> .....dollars/pound	0.380	0.731	0.744	0.748
<b>Adjusted for seasonal variation</b>				
Eggs, all .....dollars/dozen	0.545	1.020	1.130	1.230
Seasonal factor ..... percent	100	100	100	100
Milk, all <sup>6</sup> .....dollars/cwt	9.71	20.30	17.70	18.40
Seasonal factor ..... percent	100	104	102	104

(NA) Not available.

(S) Insufficient number of reports to establish an estimate.

<sup>1</sup> Beginning January 2006, point of first sale. FOB shipping point for prior years.

<sup>2</sup> Monthly estimates began January 1995.

<sup>3</sup> Includes some processing.

<sup>4</sup> Beef cows and cull dairy cows sold for slaughter.

<sup>5</sup> Animals sold for dairy herd replacement only. Prices available for January, April, July, and October.

<sup>6</sup> Before deductions for hauling. Includes quality, quantity, and other premiums. Excludes hauling subsidies.

<sup>7</sup> Live weight equivalent price.

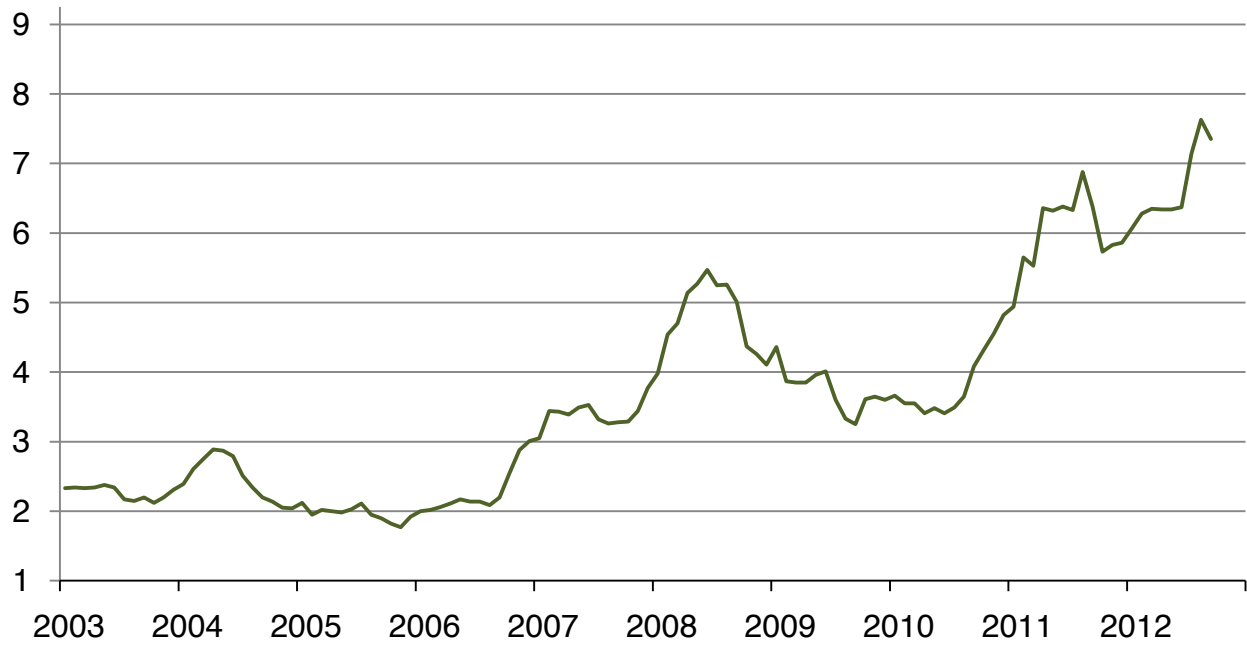
<sup>8</sup> Mid-month price.

<sup>9</sup> Also referred to as table eggs.

<sup>10</sup> Live weight equivalent price is used when actual live weight price is not available. Beginning January 2011, price reflects FOB shipping point basis. Prior year price reflects delivered basis.

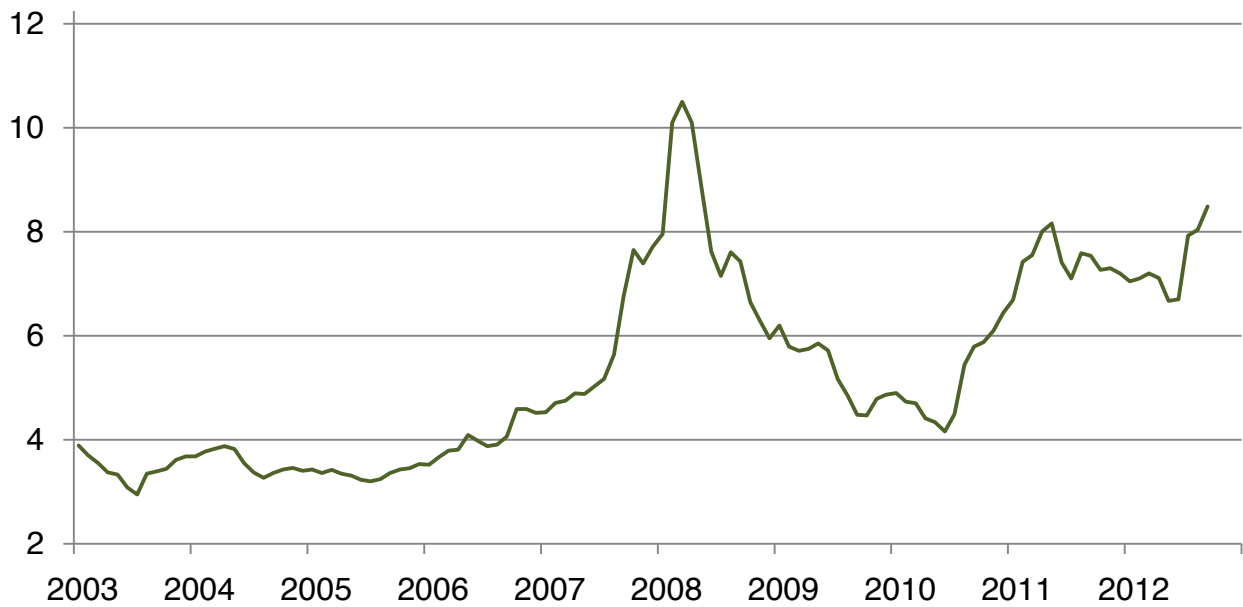
## Prices Received for Corn by Month – United States

Dollars per bushel



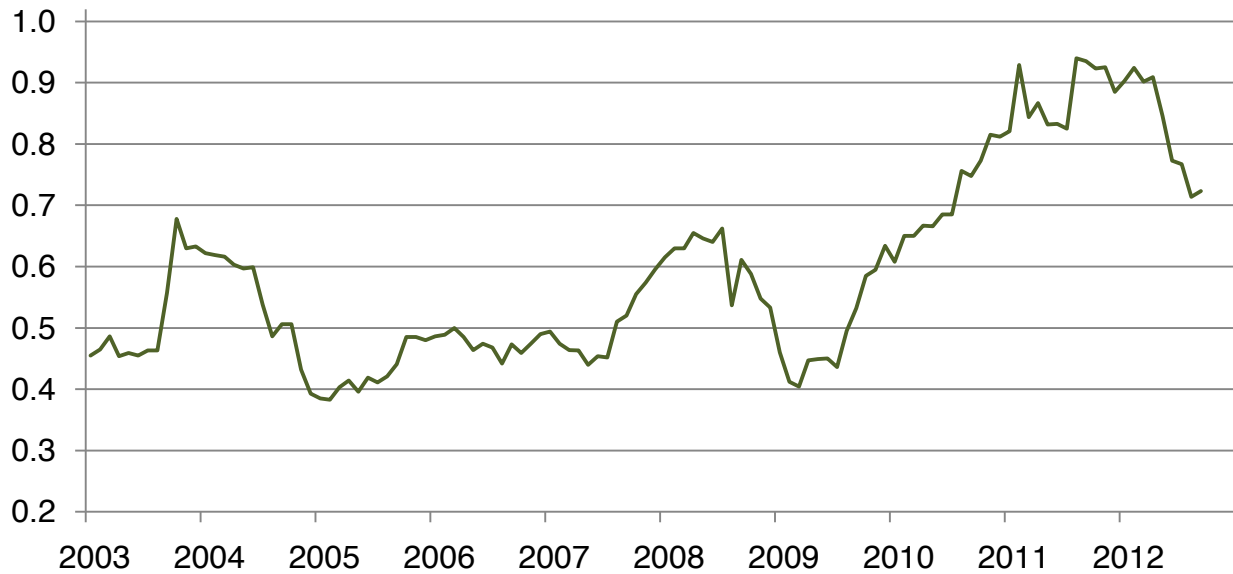
## Prices Received for Wheat by Month – United States

Dollars per bushel



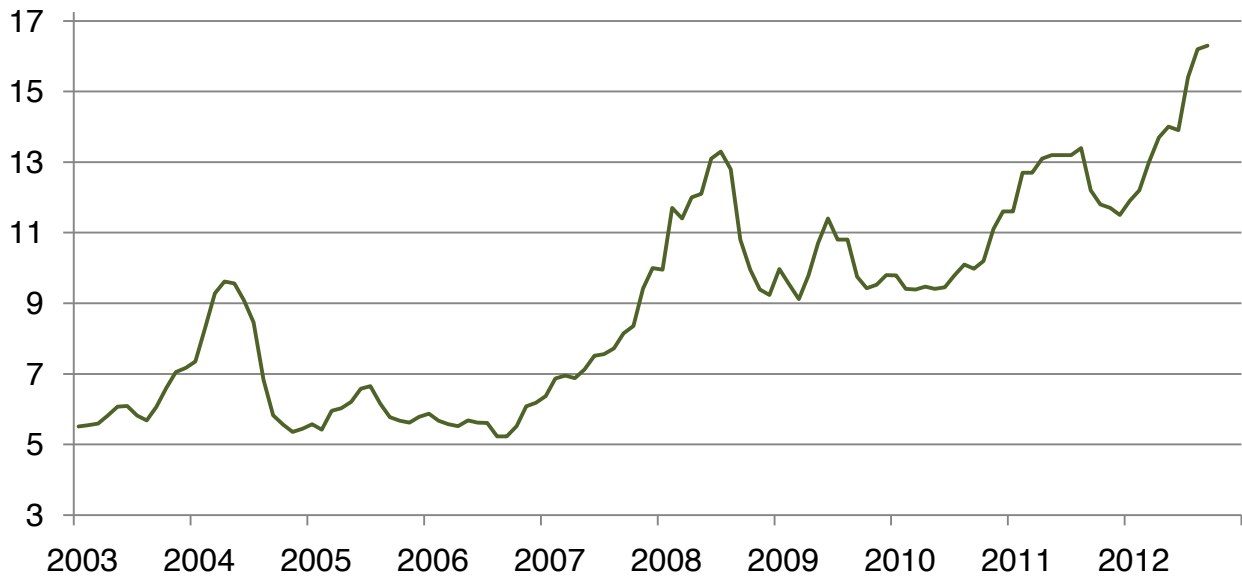
## Prices Received for Upland Cotton by Month – United States

Dollars per pound



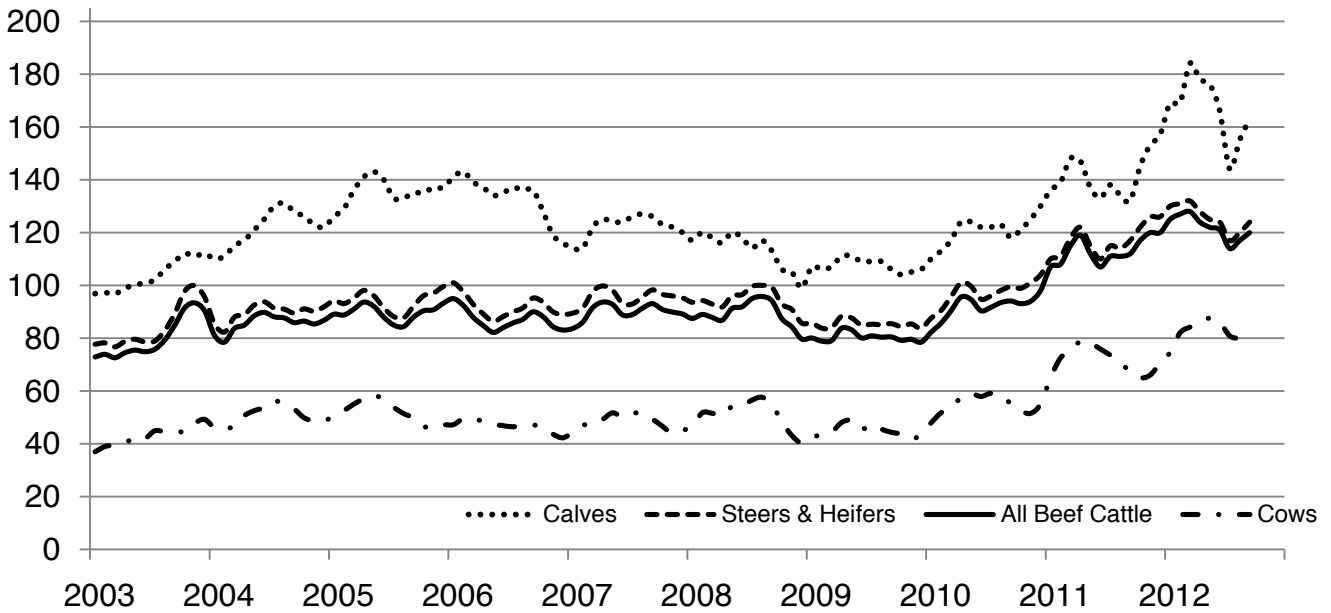
## Prices Received for Soybeans by Month – United States

Dollars per bushel



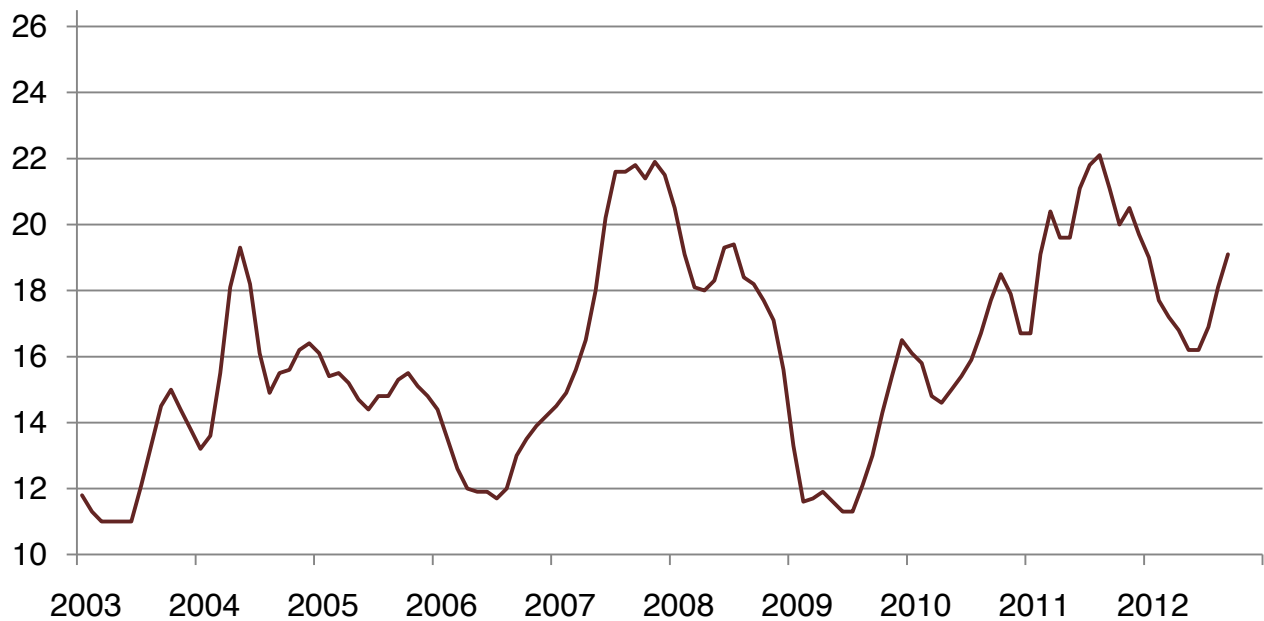
## Prices Received for Cattle by Month – United States

Dollars per cwt



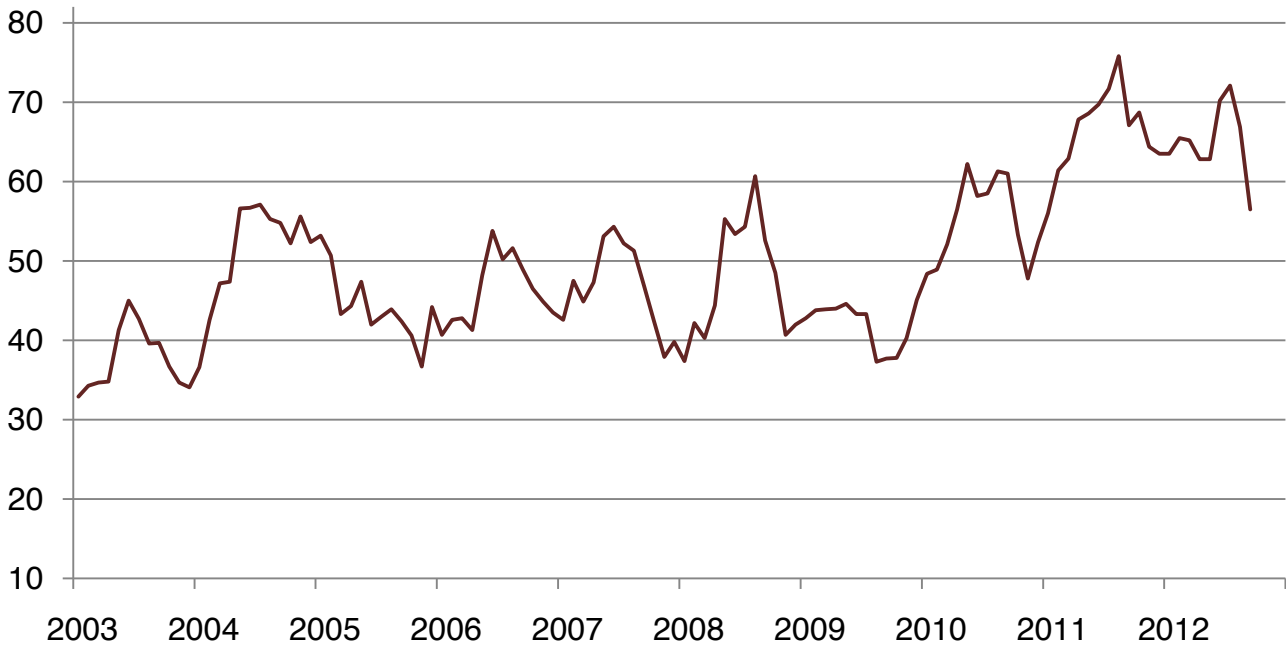
## Prices Received for Milk by Month – United States

Dollars per cwt



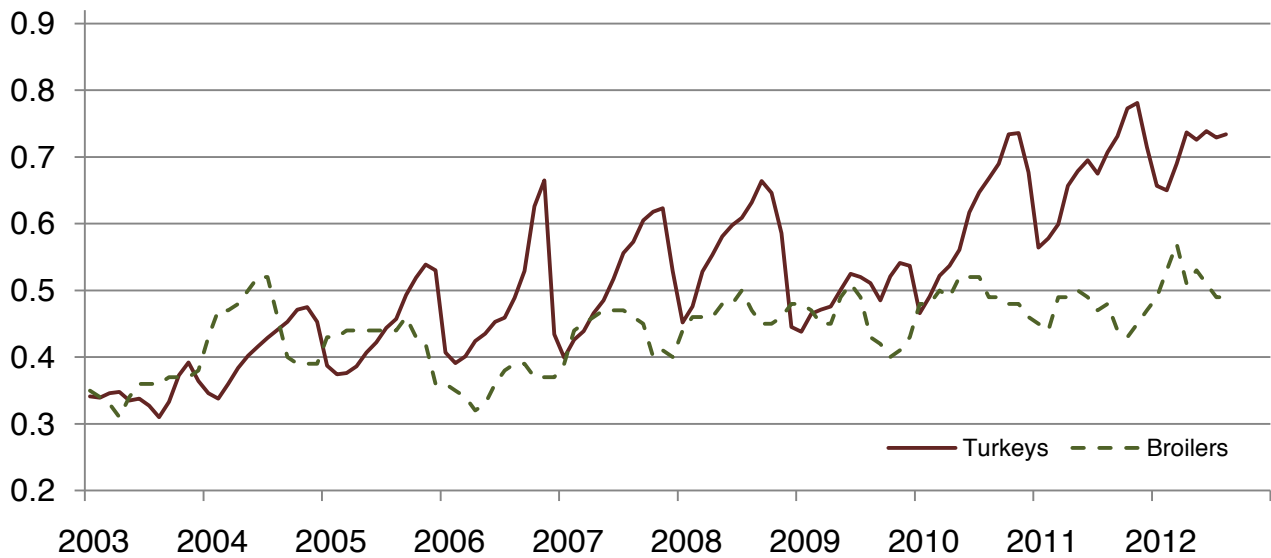
## Prices Received for Hogs by Month – United States

Dollars per cwt



## Prices Received for Poultry by Month – United States

Dollars per pound



## Prices Received for All Wheat, Corn, and Soybeans by Month – United States: 2012 with Comparisons

[Current month prices are mid-month; prices for previous months and years are for the entire month. Blank data cells indicate estimation period has not yet begun]

Month	All wheat			Corn			Soybeans		
	2010	2011	Preliminary 2012	2010	2011	Preliminary 2012	2010	2011	Preliminary 2012
	(dollars per bushel)	(dollars per bushel)	(dollars per bushel)	(dollars per bushel)	(dollars per bushel)	(dollars per bushel)	(dollars per bushel)	(dollars per bushel)	(dollars per bushel)
January .....	4.90	6.69	7.05	3.66	4.94	6.07	9.79	11.60	11.90
February .....	4.73	7.42	7.10	3.55	5.65	6.28	9.41	12.70	12.20
March .....	4.70	7.55	7.20	3.55	5.53	6.35	9.39	12.70	13.00
April .....	4.41	8.01	7.11	3.41	6.36	6.34	9.47	13.10	13.80
May .....	4.34	8.16	6.67	3.48	6.32	6.34	9.41	13.20	14.00
June .....	4.16	7.41	6.70	3.41	6.38	6.37	9.45	13.20	13.90
July .....	4.49	7.10	7.93	3.49	6.33	7.14	9.79	13.20	15.40
August .....	5.44	7.59	8.04	3.65	6.88	7.63	10.10	13.40	16.20
September .....	5.79	7.54	8.49	4.08	6.38	7.35	9.98	12.20	16.30
October .....	5.88	7.27		4.32	5.73		10.20	11.80	
November .....	6.10	7.30		4.55	5.83		11.10	11.70	
December .....	6.44	7.20		4.82	5.86		11.60	11.50	

## Prices Received for Beef Cattle and All Hogs by Month – United States: 2012 with Comparisons

[Current month prices are mid-month; prices for previous months and years are for the entire month. Blank data cells indicate estimation period has not yet begun]

Month	Beef cattle <sup>1</sup>			All hogs <sup>2</sup>		
	2010	2011	Preliminary 2012	2010	2011	Preliminary 2012
	(dollars per cwt)	(dollars per cwt)	(dollars per cwt)	(dollars per cwt)	(dollars per cwt)	(dollars per cwt)
January .....	82.30	107.00	125.00	48.40	56.00	63.50
February .....	85.70	108.00	127.00	48.90	61.40	65.50
March .....	90.40	115.00	128.00	52.10	62.90	65.20
April .....	95.60	119.00	124.00	56.50	67.80	62.80
May .....	94.70	112.00	122.00	62.20	68.60	62.80
June .....	90.40	107.00	121.00	58.20	69.70	70.20
July .....	91.70	111.00	114.00	58.50	71.70	72.10
August .....	93.50	111.00	117.00	61.30	75.80	66.90
September .....	94.10	112.00	120.00	61.00	67.10	56.50
October .....	93.10	117.00		53.30	68.70	
November .....	94.00	120.00		47.80	64.40	
December .....	98.10	120.00		52.40	63.50	

<sup>1</sup> Cows and steers & heifers.

<sup>2</sup> Barrows & gilts and sows.

**Prices Received for All Wheat – States and United States: September 2012 with Comparisons**

State	September 2011	August 2012	Preliminary September 2012
	(dollars per bushel)	(dollars per bushel)	(dollars per bushel)
Arizona .....	(D)	(D)	(D)
Arkansas .....	6.87	8.47	8.40
California .....	(D)	(D)	(D)
Colorado .....	6.84	7.91	8.32
Idaho .....	7.01	7.69	8.34
Illinois .....	7.16	8.42	8.60
Indiana .....	6.71	8.55	8.55
Kansas .....	7.53	8.34	8.70
Michigan .....	6.85	8.44	8.50
Minnesota .....	8.13	8.20	8.60
Missouri .....	6.83	7.88	8.30
Montana .....	7.89	7.92	8.71
Nebraska .....	7.15	7.85	8.20
North Carolina .....	7.55	7.77	8.00
North Dakota .....	8.27	8.04	8.28
Ohio .....	6.87	8.44	8.49
Oklahoma .....	7.60	8.42	8.50
Oregon .....	7.22	8.06	8.56
South Dakota .....	7.71	8.23	8.33
Texas .....	7.95	7.80	8.80
Washington .....	7.00	7.81	8.53
United States .....	7.54	8.04	8.49

(D) Withheld to avoid disclosing data for individual operations.

**Prices Received for Winter Wheat – States and United States: September 2012 with Comparisons**

State	September 2011	August 2012	Preliminary September 2012
	(dollars per bushel)	(dollars per bushel)	(dollars per bushel)
Arkansas .....	6.87	8.47	(D)
California .....	(D)	(D)	(D)
Colorado .....	7.27	7.92	8.33
Idaho .....	6.70	7.64	8.50
Illinois .....	7.16	8.42	8.60
Indiana .....	6.71	8.55	8.55
Kansas .....	7.53	8.34	8.70
Michigan .....	6.85	8.44	8.50
Minnesota .....	7.23	7.62	(S)
Missouri .....	6.83	7.88	8.30
Montana .....	6.84	7.69	8.60
Nebraska .....	7.15	7.85	8.20
North Carolina .....	7.55	7.77	8.00
North Dakota .....	7.01	7.48	7.75
Ohio .....	6.87	8.44	8.49
Oklahoma .....	7.60	8.42	8.50
Oregon .....	6.63	7.99	8.50
South Dakota .....	7.18	8.03	8.10
Texas .....	7.95	7.80	8.80
Washington .....	6.62	7.68	8.42
United States .....	7.00	7.92	8.51

(D) Withheld to avoid disclosing data for individual operations.

(S) Insufficient number of reports to establish an estimate.

**Prices Received for Durum Wheat – States and United States: September 2012 with Comparisons**

State	September 2011	August 2012	Preliminary September 2012
	(dollars per bushel)	(dollars per bushel)	(dollars per bushel)
Arizona .....	(D)	(D)	(D)
California .....	(S)	(S)	(S)
Idaho .....	8.77	(D)	(D)
Montana .....	10.20	7.51	8.10
North Dakota .....	11.40	7.48	7.80
United States .....	10.80	7.70	7.84

(D) Withheld to avoid disclosing data for individual operations.

(S) Insufficient number of reports to establish an estimate.

**Prices Received for Spring Wheat – States and United States: September 2012 with Comparisons**

State	September 2011	August 2012	Preliminary September 2012
	(dollars per bushel)	(dollars per bushel)	(dollars per bushel)
Colorado .....	(D)	(D)	(D)
Idaho .....	7.43	7.83	8.00
Minnesota .....	8.13	8.20	8.60
Montana .....	8.60	8.47	9.00
North Dakota .....	8.06	8.27	8.40
Oregon .....	8.94	8.30	8.90
South Dakota .....	8.39	8.38	8.50
Washington .....	8.32	8.35	9.00
United States .....	8.09	8.27	8.52

(D) Withheld to avoid disclosing data for individual operations.



### Prices Received for All Barley – States and United States: September 2012 with Comparisons

State	September 2011	August 2012	Preliminary September 2012
	(dollars per bushel)	(dollars per bushel)	(dollars per bushel)
California .....	(S)	(D)	(S)
Colorado .....	(D)	6.71	(D)
Idaho .....	5.89	6.56	7.18
Minnesota .....	(D)	(D)	(S)
Montana .....	5.23	6.30	6.16
North Dakota .....	5.42	6.14	6.23
Oregon .....	4.59	5.99	(D)
Utah .....	5.80	5.96	6.02
Washington .....	5.26	5.71	5.59
Wyoming .....	(D)	(D)	(D)
United States .....	5.45	6.42	6.44

(D) Withheld to avoid disclosing data for individual operations.

(S) Insufficient number of reports to establish an estimate.

### Prices Received for Malting Barley – States: September 2012 with Comparisons

State	September 2011	August 2012	Preliminary September 2012
	(dollars per bushel)	(dollars per bushel)	(dollars per bushel)
Idaho .....	5.96	6.63	7.25
Minnesota .....	(D)	(D)	(S)
Montana .....	5.25	6.49	6.28
North Dakota .....	5.49	6.46	6.40
Wyoming .....	(D)	(D)	(D)

(D) Withheld to avoid disclosing data for individual operations.

(S) Insufficient number of reports to establish an estimate.

### Prices Received for Feed Barley – States: September 2012 with Comparisons

State	September 2011	August 2012	Preliminary September 2012
	(dollars per bushel)	(dollars per bushel)	(dollars per bushel)
Idaho .....	5.33	5.83	6.00
Minnesota .....	(D)	5.34	(S)
Montana .....	5.08	5.28	5.56
North Dakota .....	4.75	5.44	5.70
Wyoming .....	(D)	(D)	(D)

(D) Withheld to avoid disclosing data for individual operations.

(S) Insufficient number of reports to establish an estimate.

**Prices Received for Corn – States and United States: September 2012 with Comparisons**

State	September 2011	August 2012	Preliminary September 2012
	(dollars per bushel)	(dollars per bushel)	(dollars per bushel)
Colorado .....	6.61	7.60	7.53
Illinois .....	6.10	7.58	7.20
Indiana .....	6.14	7.92	7.65
Iowa .....	6.63	7.89	7.50
Kansas .....	6.08	7.45	7.40
Kentucky .....	6.01	7.04	7.00
Michigan .....	6.71	7.96	7.75
Minnesota .....	6.43	7.54	7.35
Missouri .....	6.20	7.41	7.20
Nebraska .....	6.55	7.76	7.20
North Carolina .....	7.17	7.24	7.67
North Dakota .....	6.46	7.37	7.10
Ohio .....	6.95	8.09	7.70
Pennsylvania .....	7.02	8.59	8.33
South Dakota .....	6.62	7.39	7.00
Tennessee .....	6.32	6.98	7.20
Texas .....	6.34	7.29	7.19
Wisconsin .....	6.95	7.39	7.15
United States .....	6.38	7.63	7.35

**Prices Received for Soybeans – States and United States: September 2012 with Comparisons**

State	September 2011	August 2012	Preliminary September 2012
	(dollars per bushel)	(dollars per bushel)	(dollars per bushel)
Arkansas .....	11.80	14.70	15.60
Illinois .....	12.80	16.70	17.10
Indiana .....	12.90	16.40	16.90
Iowa .....	12.60	16.80	16.80
Kansas .....	12.10	16.60	16.90
Kentucky .....	12.60	16.40	16.50
Louisiana .....	12.00	13.90	15.00
Michigan .....	13.00	15.90	16.70
Minnesota .....	11.90	16.60	16.70
Mississippi .....	11.80	(D)	15.20
Missouri .....	12.70	16.90	16.90
Nebraska .....	11.70	16.60	16.40
North Carolina .....	13.30	17.00	16.90
North Dakota .....	11.60	15.40	15.30
Ohio .....	13.50	16.50	16.90
South Dakota .....	11.50	16.00	16.00
Tennessee .....	11.70	15.00	15.50
Wisconsin .....	13.40	16.60	16.70
United States .....	12.20	16.20	16.30

(D) Withheld to avoid disclosing data for individual operations.

## Prices Received for Oats – States and United States: September 2012 with Comparisons

State	September 2011	August 2012	Preliminary September 2012
	(dollars per bushel)	(dollars per bushel)	(dollars per bushel)
Illinois .....	(D)	3.99	(S)
Iowa .....	3.73	3.77	3.90
Michigan .....	3.52	4.12	4.00
Minnesota .....	3.10	3.56	3.60
Montana .....	(D)	(D)	(S)
Nebraska .....	3.89	4.21	3.80
New York .....	4.58	(D)	(D)
North Dakota .....	3.00	3.29	(D)
Oregon .....	(D)	(D)	(S)
Pennsylvania .....	4.08	3.98	4.02
South Dakota .....	3.46	3.77	3.75
Texas .....	(D)	(D)	(S)
Wisconsin .....	3.58	3.69	3.90
United States .....	3.67	3.81	3.75

(D) Withheld to avoid disclosing data for individual operations.

(S) Insufficient number of reports to establish an estimate.

## Prices Received for Sorghum Grain – States and United States: September 2012 with Comparisons

State	September 2011	August 2012	Preliminary September 2012
	(dollars per cwt)	(dollars per cwt)	(dollars per cwt)
Arkansas .....	10.10	11.10	10.70
Illinois .....	(S)	(D)	(S)
Kansas .....	11.60	13.30	12.90
Louisiana .....	10.20	11.60	10.40
Missouri .....	11.40	12.90	12.50
Nebraska .....	11.50	12.20	12.00
Oklahoma .....	11.90	12.80	11.90
Texas .....	12.10	10.90	12.60
United States .....	10.50	11.30	12.20

(D) Withheld to avoid disclosing data for individual operations.

(S) Insufficient number of reports to establish an estimate.

**Prices Received for Dry Beans – States and United States: September 2012 with Comparisons**

State	September 2011	August 2012	Preliminary September 2012
	(dollars per cwt)	(dollars per cwt)	(dollars per cwt)
California .....	55.00	(D)	(D)
Colorado .....	44.70	47.10	39.30
Idaho .....	33.60	50.00	50.00
Michigan .....	44.60	40.70	38.00
Minnesota .....	40.60	46.30	44.00
Nebraska .....	40.70	42.60	38.80
North Dakota .....	37.90	38.50	35.90
United States .....	40.20	39.90	39.20

(D) Withheld to avoid disclosing data for individual operations.

**Prices Received for Peanuts (in shell) – States and United States: September 2012 with Comparisons**

State	September 2011	August 2012	Preliminary September 2012
	(dollars per pound)	(dollars per pound)	(dollars per pound)
Alabama .....	0.215	(D)	0.356
Florida .....	0.214	(D)	0.358
Georgia .....	0.239	(D)	0.358
Mississippi .....	0.242	(S)	0.368
New Mexico .....	(S)	(S)	0.364
North Carolina .....	0.255	0.383	0.308
Oklahoma .....	(S)	(S)	(S)
South Carolina .....	0.265	0.305	0.316
Texas .....	0.472	0.583	0.301
Virginia .....	0.215	0.398	(S)
United States .....	0.235	0.304	0.353

(D) Withheld to avoid disclosing data for individual operations.

(S) Insufficient number of reports to establish an estimate.

**Prices Received for Sunflower – States and United States: September 2012 with Comparisons**

State	September 2011	August 2012	Preliminary September 2012
	(dollars per cwt)	(dollars per cwt)	(dollars per cwt)
Colorado .....	(S)	(D)	(S)
Kansas .....	33.50	(D)	29.10
Minnesota .....	(D)	(D)	(S)
North Dakota .....	31.80	25.80	28.40
South Dakota .....	34.60	29.20	30.50
United States .....	32.90	28.50	29.30

(D) Withheld to avoid disclosing data for individual operations.

(S) Insufficient number of reports to establish an estimate.

**Prices Received for Canola – States and United States: September 2012 with Comparisons**

State	September 2011	August 2012	Preliminary September 2012
	(dollars per cwt)	(dollars per cwt)	(dollars per cwt)
Minnesota .....	24.00	25.80	(S)
North Dakota .....	23.20	25.30	27.50
United States .....	23.20	25.30	27.50

(S) Insufficient number of reports to establish an estimate.

**Prices Received for Flaxseed – States and United States: September 2012 with Comparisons**

State	September 2011	August 2012	Preliminary September 2012
	(dollars per bushel)	(dollars per bushel)	(dollars per bushel)
North Dakota .....	13.50	13.30	13.10
United States .....	13.50	13.30	13.10

## Prices Received for Upland Cotton and Cottonseed – States and United States: September 2012 with Comparisons

[Cottonseed marketing year August - February]

State	Cotton, Upland			Cottonseed		
	September 2011	August 2012	Preliminary September 2012	September 2011	August 2012	Preliminary September 2012
	(dollars per pound)	(dollars per pound)	(dollars per pound)	(dollars per ton)	(dollars per ton)	(dollars per ton)
Alabama .....	0.864	(D)	(S)	(S)	(NA)	(S)
Arizona .....	(D)	0.668	(D)	(D)	(NA)	360.00
Arkansas .....	(D)	(D)	(S)	314.00	(NA)	275.00
California .....	(S)	(S)	(S)	(S)	(NA)	(S)
Georgia .....	(D)	(D)	(D)	(S)	(NA)	219.00
Louisiana .....	0.934	0.747	(D)	257.00	(NA)	222.00
Mississippi .....	(D)	(D)	(S)	(S)	(NA)	(S)
North Carolina .....	0.941	(D)	(S)	(S)	(NA)	(S)
Tennessee .....	(D)	(D)	(S)	(S)	(NA)	(S)
Texas .....	0.940	0.715	0.724	236.00	235.00	252.00
United States .....	0.935	0.714	0.723	245.00	235.00	254.00

(D) Withheld to avoid disclosing data for individual operations.

(NA) Not available.

(S) Insufficient number of reports to establish an estimate.

## Prices Received and Farm Marketings for Upland Cotton and Rice – United States: September 2012 with Comparisons

Item	September 2011	August 2012	Preliminary September 2012
Cotton, Upland			
Average price ..... dollars/pound	0.935	0.714	0.723
Marketings <sup>1</sup> ..... 1,000 bales	432	316	(NA)
Rice, all			
Average price ..... dollars/cwt	14.40	14.40	14.60
Marketings <sup>2</sup> ..... 1,000 cwt	12,507	10,493	(NA)
Rice, long			
Average price ..... dollars/cwt	13.70	14.00	14.10
Marketings <sup>2</sup> ..... 1,000 cwt	10,310	8,208	(NA)
Rice, medium and short			
Average price ..... dollars/cwt	17.80	15.90	16.90
Marketings <sup>2</sup> ..... 1,000 cwt	2,197	2,285	(NA)

(NA) Not available.

<sup>1</sup> Marketings based on a survey of cotton buyers in the major producing States - Alabama, Arizona, Arkansas, California, Georgia, Louisiana, Mississippi, North Carolina, Tennessee, and Texas.

<sup>2</sup> Purchases by private firms and rice (rough equivalent) shipped by cooperatives.

## Prices Received for Hay by Type – States and United States: September 2012 with Comparisons

State	All hay			Alfalfa hay			Other hay		
	September 2011	August 2012	Preliminary September 2012	September 2011	August 2012	Preliminary September 2012	September 2011	August 2012	Preliminary September 2012
	(dollars per ton)	(dollars per ton)	(dollars per ton)	(dollars per ton)	(dollars per ton)	(dollars per ton)	(dollars per ton)	(dollars per ton)	(dollars per ton)
Arizona .....	218.00	208.00	201.00	220.00	210.00	200.00	170.00	190.00	220.00
California .....	222.00	202.00	198.00	237.00	207.00	201.00	168.00	185.00	187.00
Colorado .....	196.00	233.00	231.00	200.00	235.00	235.00	160.00	210.00	205.00
Idaho .....	221.00	185.00	186.00	228.00	190.00	190.00	139.00	130.00	130.00
Illinois .....	140.00	153.00	151.00	155.00	180.00	165.00	100.00	130.00	120.00
Iowa .....	126.00	200.00	206.00	132.00	208.00	217.00	90.00	132.00	133.00
Kansas .....	157.00	182.00	192.00	185.00	210.00	220.00	95.00	115.00	125.00
Kentucky .....	107.00	124.00	116.00	175.00	195.00	195.00	80.00	90.00	90.00
Michigan .....	105.00	163.00	165.00	115.00	175.00	175.00	85.00	140.00	145.00
Minnesota .....	116.00	150.00	155.00	125.00	155.00	160.00	85.00	100.00	110.00
Missouri .....	89.00	94.00	97.00	225.00	200.00	200.00	70.00	80.00	80.00
Montana .....	91.00	124.00	142.00	91.00	125.00	144.00	91.00	117.00	113.00
Nebraska .....	112.00	179.00	197.00	122.00	202.00	219.00	90.00	135.00	146.00
Nevada .....	216.00	199.00	201.00	220.00	200.00	203.00	170.00	187.00	178.00
New Mexico .....	280.00	226.00	233.00	285.00	233.00	240.00	212.00	173.00	179.00
New York .....	99.00	131.00	131.00	115.00	175.00	175.00	95.00	117.00	117.00
North Dakota .....	69.00	104.00	126.00	71.00	110.00	131.00	53.00	72.00	83.00
Ohio .....	136.00	166.00	191.00	177.00	245.00	221.00	98.00	120.00	142.00
Oklahoma .....	123.00	154.00	153.00	222.00	223.00	229.00	117.00	110.00	109.00
Oregon .....	226.00	199.00	205.00	235.00	217.00	226.00	190.00	182.00	175.00
Pennsylvania .....	103.00	141.00	145.00	161.00	198.00	189.00	89.00	126.00	133.00
South Dakota .....	124.00	204.00	206.00	130.00	215.00	222.00	97.00	144.00	151.00
Texas .....	185.00	145.00	131.00	249.00	239.00	238.00	155.00	110.00	101.00
Utah .....	181.00	184.00	184.00	181.00	188.00	187.00	159.00	151.00	150.00
Washington .....	213.00	225.00	232.00	220.00	225.00	235.00	200.00	225.00	225.00
Wisconsin .....	111.00	124.00	121.00	120.00	140.00	135.00	80.00	95.00	95.00
Wyoming .....	136.00	195.00	205.00	140.00	200.00	210.00	120.00	180.00	190.00
United States .....	180.00	184.00	187.00	198.00	203.00	205.00	129.00	140.00	142.00

## Prices Received for Apples – States and United States: September 2012 with Comparisons

[Equivalent packinghouse-door returns for California, Michigan, New York, and Washington. Prices at point of first sale for other States]

State	Apples, fresh use		
	September 2011	August 2012	Preliminary September 2012
	(dollars per pound)	(dollars per pound)	(dollars per pound)
California .....	(NA)	0.756	0.583
Michigan .....	0.420	(NA)	0.615
New York .....	0.393	(NA)	0.602
Ohio .....	0.490	0.590	0.770
Pennsylvania .....	(S)	0.526	(S)
Virginia .....	0.430	(NA)	0.570
Washington .....	0.524	0.490	0.620
United States .....	0.421	0.529	0.616

(NA) Not available.

(S) Insufficient number of reports to establish an estimate.

## Prices Received for Citrus Fruits by Utilization – States and United States: September 2011

[Net pounds per box: grapefruit in California-80, Florida-85, Texas-80; lemons-80; oranges in California-80, Florida-90, Texas-85; tangelos-90; tangerines and mandarins in Arizona and California-80, Florida-95]

Commodity, State, and type	FOB packed fresh	Equivalent returns					
		Packinghouse door			On-tree		
		All	Fresh	Process	All	Fresh	Process
	(dollars per box)	(dollars per box)	(dollars per box)	(dollars per box)	(dollars per box)	(dollars per box)	(dollars per box)
Grapefruit							
California <sup>1</sup> .....	18.00	11.60	11.60	(D)	9.50	9.50	(D)
United States .....	18.00	11.60	11.60	(D)	9.50	9.50	(D)
Lemons							
California .....	39.70	23.97	28.58	(D)	17.98	22.59	(D)
United States .....	39.70	23.97	28.58	(D)	17.98	22.59	(D)
Oranges							
California .....	22.50	10.06	13.86	(D)	7.60	11.45	(D)
Valencia .....	22.50	10.06	13.86	(D)	7.60	11.45	(D)
United States .....	22.50	10.06	13.86	(D)	7.60	11.45	(D)

(D) Withheld to avoid disclosing data for individual operations.

<sup>1</sup> Some processed sales included in fresh sales.



## Prices Received for Citrus Fruits by Utilization – States and United States: August 2012

[Net pounds per box: grapefruit in California-80, Florida-85, Texas-80; lemons-80; oranges in California-80, Florida-90, Texas-85; tangelos-90; tangerines and mandarins in Arizona and California-80, Florida-95]

Commodity, State, and type	FOB packed fresh	Equivalent returns					
		Packinghouse door			On-tree		
		All	Fresh	Process	All	Fresh	Process
	(dollars per box)	(dollars per box)	(dollars per box)	(dollars per box)	(dollars per box)	(dollars per box)	(dollars per box)
Grapefruit							
California <sup>1</sup> .....	19.00	12.47	12.47	(D)	10.33	10.33	(D)
United States .....	19.00	12.47	12.47	(D)	10.33	10.33	(D)
Lemons							
California .....	36.60	18.00	25.26	(D)	11.89	19.15	(D)
United States .....	36.60	18.00	25.26	(D)	11.89	19.15	(D)
Oranges							
California .....	21.50	10.32	12.69	(D)	7.81	10.23	(D)
Valencia .....	21.50	10.32	12.69	(D)	7.81	10.23	(D)
United States .....	21.50	10.32	12.69	(D)	7.81	10.23	(D)

(D) Withheld to avoid disclosing data for individual operations.

<sup>1</sup> Some processed sales included in fresh sales.

## Prices Received for Citrus Fruits by Utilization – States and United States: September 2012

[Net pounds per box: grapefruit in California-80, Florida-85, Texas-80; lemons-80; oranges in California-80, Florida-90, Texas-85; tangelos-90; tangerines and mandarins in Arizona and California-80, Florida-95]

Commodity, State, and type	FOB packed fresh	Equivalent returns					
		Packinghouse door			On-tree		
		All	Fresh	Process	All	Fresh	Process
	(dollars per box)	(dollars per box)	(dollars per box)	(dollars per box)	(dollars per box)	(dollars per box)	(dollars per box)
Grapefruit							
California <sup>1</sup> .....	18.80	12.27	12.27	(D)	10.13	10.13	(D)
United States .....	18.80	12.27	12.27	(D)	10.13	10.13	(D)
Lemons							
California .....	35.20	18.04	23.86	(D)	11.93	17.75	(D)
United States .....	35.20	18.04	23.86	(D)	11.93	17.75	(D)
Oranges							
California .....	23.80	12.73	14.99	(D)	10.23	12.53	(D)
Valencia .....	23.80	12.73	14.99	(D)	10.23	12.53	(D)
United States .....	23.80	12.73	14.99	(D)	10.23	12.53	(D)

(D) Withheld to avoid disclosing data for individual operations.

<sup>1</sup> Some processed sales included in fresh sales.

## Prices Received for Potatoes – States and United States: September 2012 with Comparisons

State	September 2011	August 2012	Preliminary September 2012
	(dollars per cwt)	(dollars per cwt)	(dollars per cwt)
California			
Spring .....	(S)	(S)	(S)
Fall .....	(S)	(S)	(S)
All <sup>1</sup> .....	(S)	(S)	(S)
Colorado			
Fresh <sup>2</sup> .....	13.60	(S)	(D)
All <sup>1</sup> .....	12.10	(S)	6.95
Florida .....	(S)	(S)	(S)
Idaho			
Fresh <sup>2</sup> .....	9.70	6.60	(D)
Processing .....	6.60	7.90	(D)
All <sup>1</sup> .....	7.20	7.35	6.85
Maine .....	(D)	(D)	(D)
Michigan .....	9.30	9.60	9.75
Minnesota .....	13.30	6.75	(D)
New York .....	17.50	(S)	14.50
North Carolina .....	(S)	(S)	(S)
North Dakota			
Fresh <sup>2</sup> .....	20.30	(S)	(D)
Processing .....	6.80	(S)	(D)
All <sup>1</sup> .....	8.90	(S)	(D)
Oregon .....	6.90	7.65	7.35
Texas .....	(S)	(S)	(S)
Virginia .....	(S)	12.00	(S)
Washington			
Processing .....	6.05	7.40	7.35
All <sup>1</sup> .....	7.00	7.60	7.30
Wisconsin			
Fresh <sup>2</sup> .....	11.50	10.40	(D)
Processing .....	7.30	9.10	(D)
All <sup>1</sup> .....	9.55	9.90	(D)
United States			
Fresh <sup>2</sup> .....	13.69	8.35	(D)
Processing .....	6.56	7.65	(D)
All <sup>1</sup> .....	8.05	7.80	7.60

(D) Withheld to avoid disclosing data for individual operations.

(S) Insufficient number of reports to establish an estimate.

<sup>1</sup> Average price of potatoes sold for all uses, including table stock, processing, seed, and livestock feed.

<sup>2</sup> Fresh market prices only. Includes table stock prices.

## Prices Received for All Milk – States and United States: September 2012 with Comparisons

[Before deduction for hauling. Includes quality, quantity, and other premiums. Excludes hauling subsidies]

State	September 2011		August 2012		Preliminary September 2012	
	Price	Fat test	Price	Fat test	Price	Fat test
	(dollars per cwt)	(percent)	(dollars per cwt)	(percent)	(dollars per cwt)	(percent)
Arizona .....	21.00	3.46	17.70	3.54	18.80	3.55
California .....	18.99	3.64	16.42	3.62	17.40	3.64
Colorado .....	21.30	3.46	18.10	3.42	19.00	3.49
Florida .....	26.60	3.67	21.90	3.67	22.60	3.69
Idaho .....	18.90	3.56	17.60	3.58	18.20	3.62
Illinois .....	21.90	3.64	18.70	3.56	19.60	3.65
Indiana .....	22.90	3.64	18.10	3.53	19.00	3.62
Iowa .....	21.60	3.66	18.90	3.60	19.70	3.67
Kansas .....	22.10	3.67	18.60	3.54	19.60	3.63
Michigan .....	22.60	3.61	18.20	3.51	19.50	3.59
Minnesota .....	21.10	3.73	19.60	3.69	20.40	3.79
Missouri .....	22.70	3.63	18.40	3.57	19.30	3.65
New Mexico .....	20.30	3.48	17.30	3.51	18.30	3.55
New York .....	23.00	3.68	18.60	3.61	19.60	3.70
Ohio .....	22.90	3.66	18.60	3.56	19.60	3.65
Oregon .....	22.10	3.69	19.50	3.68	20.40	3.74
Pennsylvania .....	23.70	3.70	18.90	3.59	19.90	3.67
Texas .....	22.00	3.73	18.70	3.72	19.20	3.78
Utah .....	20.60	3.62	17.40	3.55	18.00	3.60
Vermont .....	23.00	3.73	18.80	3.64	19.80	3.72
Virginia .....	25.30	3.66	20.00	3.63	21.00	3.71
Washington .....	21.60	3.69	18.00	3.68	19.30	3.74
Wisconsin .....	21.20	3.67	19.20	3.61	20.30	3.69
United States .....	21.10	3.64	18.10	3.60	19.10	3.66

## Prices Received for Milk Cows – States and United States: July 2012 with Comparisons

[Animals sold for dairy herd replacement only. Prices estimated in January, April, July, and October]

State	July 2011 (dollars per head)	April 2012 (dollars per head)	July 2012 (dollars per head)
Arizona .....	1,500	1,500	1,450
California .....	1,400	1,300	1,300
Colorado .....	1,550	1,520	1,430
Florida .....	1,550	1,450	1,440
Idaho .....	1,500	1,450	1,400
Illinois .....	1,440	1,520	1,490
Indiana .....	1,500	1,450	1,400
Iowa .....	1,470	1,450	1,470
Kansas .....	1,400	1,450	1,400
Michigan .....	1,550	1,600	1,600
Minnesota .....	1,480	1,490	1,410
Missouri .....	1,290	1,300	1,200
New Mexico .....	1,460	1,350	1,350
New York .....	1,450	1,460	1,460
Ohio .....	1,520	1,510	1,460
Oregon .....	1,450	1,430	1,420
Pennsylvania .....	1,550	1,500	1,460
Texas .....	1,450	1,400	1,400
Utah .....	1,340	1,340	1,290
Vermont .....	1,650	1,600	1,550
Virginia .....	1,460	1,540	1,500
Washington .....	1,450	1,350	1,300
Wisconsin .....	1,570	1,560	1,560
United States .....	1,480	1,440	1,420

## Commodity Parity Prices and Price as Percent of Parity Price – United States: September 2012 with Comparisons

[Parity prices are computed under the provisions of Title III, Subtitle a, Section 301 (a) of the Agricultural Adjustment Act of 1938 as amended by the Agricultural Acts of 1948, 1949, and 1956. See January *Agricultural Prices* for details on adjusted base price and parity price computations. Parity data not available for blank cells. Primary source of data for livestock and milk prices is United States Department of Agriculture's Agricultural Marketing Service]

Commodity and unit	Adjusted base price	Parity price			Price as percent of parity		
		September 2011	August 2012	September 2012	September 2011	August 2012	September 2012
	(dollars)	(dollars)	(dollars)	(dollars)	(percent)	(percent)	(percent)
<b>Basic commodities</b>							
All wheat .....bushel	0.634	16.60	18.20	18.50	45	44	46
Rice .....cwt	1.46	44.50	41.90	42.50	32	34	34
Corn .....bushel	0.414	10.50	11.90	12.10	61	64	61
<b>Cotton</b>							
Upland ..... pound	0.072	1.94	2.07	2.10	48	34	34
American Pima ..... pound	0.141	3.52	4.05	4.11	51	40	40
Peanuts ..... pound	0.026	0.737	0.746	0.758	32	41	47
<b>Designated nonbasic</b>							
All milk, to plants <sup>1</sup> .....cwt	1.80	49.70	51.70	52.50	41	34	35
Honey, extracted <sup>2</sup> ..... pound	0.139	3.66	3.99	4.05	44	43	43
<b>Wool and mohair</b>							
Wool ..... pound	0.104	2.51	2.98	3.03	46	56	55
Mohair ..... pound	0.333	8.85	9.56	9.70	39	43	42
<b>Other nonbasic</b>							
Apples, fresh <sup>3</sup> ..... pound	0.033	0.901	0.947	0.962	47	56	64
Barley .....bushel	0.436	11.60	12.50	12.70	47	51	51
Canola .....cwt	1.820	47.50	52.20	53.00	49	48	52
Cottonseed ..... ton	17.40	420.00	499.00	507.00	58	47	50
Dry edible beans .....cwt	3.01	79.70	86.40	87.70	50	46	45
Flaxseed .....bushel	1.100	27.80	31.60	32.10	49	42	41
Oats .....bushel	0.263	6.83	7.55	7.66	54	50	49
Potatoes .....cwt	0.855	22.80	24.50	24.90	35	32	31
Sorghum grain .....cwt	0.729	18.40	20.90	21.20	57	54	58
Soybeans .....bushel	1.000	25.90	28.70	29.10	47	56	56
Sunflower, all .....cwt	2.06	52.10	59.10	60.00	63	48	49
<b>Citrus (equivalent on-tree)</b>							
Grapefruit .....box	0.690	18.10	19.80	20.10	52	52	50
Lemons .....box	1.37	37.10	39.30	39.90	48	30	30
Oranges .....box	0.698	18.70	20.00	20.30	41	39	50
Tangerines .....box	1.49	39.00	42.80	43.40	50	69	68
<b>Livestock and poultry</b>							
Beef cattle .....cwt	10.10	276.00	290.00	294.00	41	40	41
Calves .....cwt	13.90	385.00	399.00	405.00	34	39	40
Hogs .....cwt	5.53	150.00	159.00	161.00	45	42	35
Eggs <sup>1</sup> .....dozen	0.091	2.48	2.61	2.65	41	43	46
Turkeys, live ..... pound	0.057	1.530	1.640	1.660	48	45	45

<sup>1</sup> Seasonally adjusted price as percentage of parity price.

<sup>2</sup> Wholesale extracted. Adjusted base price derived from state annual averages prices weighted by production. For 1982 through 1985 the national averages are the support prices.

<sup>3</sup> Equivalent packinghouse-door returns for California, New York, Oregon, and Washington. Price at point of first sale for other states.

## Commodity Parity Prices – United States: September 2012 with Comparisons

[Parity prices are computed under the provisions of Title III, Subtitle a, Section 301 (a) of the Agricultural Adjustment Act of 1938 as amended by the Agricultural Acts of 1948, 1949, and 1956. See January *Agricultural Prices* for details on adjusted base price and parity price computations]

Commodity and unit	Adjusted base price	Parity price			
		September 2011	August 2012	September 2012	
	(dollars)	(dollars)	(dollars)	(dollars)	
<b>Field crops and miscellaneous</b>					
Hops .....	pound	0.306	8.38	8.78	8.92
Mustard seed .....	cwt	2.82	72.60	80.90	82.20
Rapeseed .....	cwt	2.23	58.40	64.00	65.00
Rye .....	bushel	0.525	13.40	15.10	15.30
Safflower .....	cwt	2.02	53.00	58.00	58.90
Spearmint oil .....	pound	1.50	39.30	43.10	43.70
Sweet potatoes .....	cwt	2.21	62.00	63.40	64.40
<b>Tobacco</b>					
Flue-cured, 11-14 .....	pound	0.196	5.68	5.63	5.71
Fire-cured, 21-23 .....	pound	0.283	8.00	8.12	8.25
Burley, 31 .....	pound	0.202	5.84	5.80	5.89
Maryland, 32 .....	pound	0.174	5.00	4.99	5.07
Dark air-cured, 35-37 .....	pound	0.256	7.13	7.35	7.46
Pennsylvania seedleaf, 41 .....	pound	0.184	5.21	5.28	5.36
Cigar binder, 51 .....	pound	0.642	18.40	18.40	18.70
<b>Noncitrus fruit</b>					
Apples, processing <sup>1</sup> .....	ton	16.50	440.00	474.00	481.00
Apricots					
Fresh <sup>2</sup> .....	ton	123.00	3,110.00	3,530.00	3,580.00
Dried (California) .....	ton	259.00	7,150.00	7,430.00	7,550.00
Avocados <sup>2</sup> .....	ton	204.00	5,410.00	5,850.00	5,940.00
Cherries					
Sweet .....	ton	215.00	5,730.00	6,170.00	6,270.00
Tart .....	pound	0.034	0.928	0.976	0.991
Cranberry <sup>3</sup> .....	barrel	4.84	133.00	139.00	141.00
Dates (California) <sup>2</sup> .....	ton	177.00	5,000.00	5,080.00	5,160.00
Grapes					
Raisin variety .....	ton	125.00	3,190.00	3,590.00	3,640.00
Other dried .....	ton	56.10	1,790.00	1,610.00	1,630.00
Kiwifruit .....	ton	94.10	2,580.00	2,700.00	2,740.00
Nectarines, fresh (California) <sup>2</sup> .....	ton	54.10	1,510.00	1,550.00	1,580.00
Olives, canning (California) <sup>3</sup> .....	ton	89.50	2,390.00	2,570.00	2,610.00

See footnote(s) at end of table.

--continued

## Commodity Parity Prices – United States: September 2012 with Comparisons (continued)

[Parity prices are computed under the provisions of Title III, Subtitle a, Section 301 (a) of the Agricultural Adjustment Act of 1938 as amended by the Agricultural Acts of 1948, 1949, and 1956. See January *Agricultural Prices* for details on adjusted base price and parity price computations]

Commodity and unit	Adjusted base price	Parity price			
		September 2011	August 2012	September 2012	
	(dollars)	(dollars)	(dollars)	(dollars)	
<b>Noncitrus fruit - continued</b>					
Papayas (Hawaii) <sup>9</sup> .....	pound	0.044	1.26	1.26	1.28
<b>Peaches</b>					
Fresh <sup>4 9</sup> .....	ton	81.90	2,270.00	2,350.00	2,390.00
Dried (California) <sup>9</sup> .....	ton	53.70	1,560.00	1,540.00	1,560.00
<b>Processing, excludes dried</b>					
Clingstone (California) <sup>3 9</sup> .....	ton	33.30	920.00	956.00	970.00
<b>Pears</b>					
Fresh <sup>4 9</sup> .....	ton	55.50	1,520.00	1,590.00	1,620.00
Dried (California) <sup>1 9</sup> .....	ton	171.00	4,860.00	4,910.00	4,980.00
<b>Plums (California)</b>					
Fresh, equivalent on-tree <sup>9</sup> .....	ton	58.70	1,640.00	1,680.00	1,710.00
Prunes, dried (California) <sup>1 9</sup> .....	ton	148.00	4,010.00	4,250.00	4,310.00
<b>Prunes and plums</b>					
Fresh, excludes California <sup>5 9</sup> .....	ton	62.40	1,740.00	1,790.00	1,820.00
Processing, excludes dried <sup>1 9</sup> .....	ton	25.20	702.00	723.00	734.00
<b>Tree nuts<sup>6 9</sup></b>					
Almonds .....	pound	0.213	5.71	6.11	6.21
Hazelnuts .....	ton	196.00	5,000.00	5,630.00	5,710.00
Pistachios .....	pound	0.196	5.30	5.63	5.71
Walnuts .....	ton	179.00	4,830.00	5,140.00	5,220.00
<b>Vegetables, fresh<sup>7</sup></b>					
Carrots <sup>8</sup> .....	cwt	2.69	71.30	77.20	78.40
Cauliflower <sup>8</sup> .....	cwt	4.31	116.00	124.00	126.00
Celery <sup>8</sup> .....	cwt	2.01	56.00	57.70	58.60
Honeydew melons .....	cwt	2.09	59.20	60.00	60.90
Lettuce .....	cwt	2.29	64.20	65.70	66.70
Onions <sup>8</sup> .....	cwt	1.49	42.90	42.80	43.40
Tomatoes .....	cwt	4.68	130.00	134.00	136.00

<sup>1</sup> Equivalent returns at processing plant door.

<sup>2</sup> Equivalent returns at packinghouse door.

<sup>3</sup> Equivalent returns for bulk fruit at first delivery point.

<sup>4</sup> Equivalent packinghouse-door returns for California, New York (apples only), Oregon (except peaches), and Washington. Price at point of first sale for other states.

<sup>5</sup> Based on "as sold" prices for fresh fruit in all states.

<sup>6</sup> Prices In-Shell basis except almonds which are shelled basis.

<sup>7</sup> FOB shipping point prices.

<sup>8</sup> Includes some processing.



## Marketing Year for Specified Commodities

**Corn for grain:** September 1 to August 31 for United States, Arizona, California, Delaware, Illinois, Indiana, Iowa, Kansas, Kentucky, Maryland, Missouri, Nebraska, New Mexico, Ohio, Pennsylvania, South Dakota, Virginia, and West Virginia; July 1 to June 30 for Texas; August 1 to July 31 for Alabama, Arkansas, Florida, Georgia, Louisiana, Mississippi, North Carolina, Oklahoma, South Carolina, and Tennessee; October 1 to September 30 for Colorado, Connecticut, Idaho, Maine, Massachusetts, Michigan, Minnesota, Montana, Nevada, New Hampshire, New Jersey, New York, North Dakota, Oregon, Rhode Island, Utah, Vermont, Washington, Wisconsin, and Wyoming.

**Sorghum for grain:** September 1 to August 31 for United States, Arizona, Colorado, Illinois, Kansas, Missouri, Nebraska, New Mexico, and South Dakota; June 1 to May 31 for Texas; August 1 to July 31 for Arkansas, Georgia, Louisiana, Mississippi, and Oklahoma.

**Soybeans:** September 1 to August 31 for United States and all States except Louisiana, Mississippi, and Texas; July 1 to June 30 for Texas; August 1 to July 31 for Louisiana and Mississippi.

**Austrian Winter Peas:** July 1 to June 30 for United States, Idaho, Montana, and Oregon.

**Dry Edible Peas:** July 1 to June 30 for United States, Idaho, Montana, North Dakota, Oregon, and Washington.

**Lentils:** July 1 to June 30 for United States, Idaho, Montana, North Dakota, and Washington.

**Dry Edible Peas Market Year Average Prices Received – States and United States: Marketing Years 2009 through 2011**

[Excludes both wrinkled seed peas and Austrian winter peas]

State	2009	2010	2011
	(dollars)	(dollars)	(dollars)
Idaho .....	10.40	11.10	15.40
Montana .....	8.46	9.13	14.80
North Dakota .....	8.44	9.47	15.30
Oregon .....	17.50	20.70	16.00
Washington .....	11.30	11.50	15.70
United States .....	8.98	9.77	15.30

**Austrian Winter Peas Market Year Average Prices Received – States and United States: Marketing Years 2009 through 2011**

State	2009	2010	2011
	(dollars)	(dollars)	(dollars)
Idaho .....	23.40	17.70	20.00
Montana .....	21.70	15.50	20.00
Oregon .....	21.80	20.40	16.20
United States .....	22.70	17.10	19.50

**Lentils Market Year Average Prices Received – States and United States: Marketing Years 2009 through 2011**

State	2009	2010	2011
	(dollars)	(dollars)	(dollars)
Idaho .....	26.80	27.90	31.50
Montana .....	27.20	23.90	23.70
North Dakota .....	26.60	25.10	20.40
Washington .....	26.80	30.20	31.40
United States .....	26.80	25.70	25.00

## Lentils Prices Received and Farm Marketings by Month – United States: Marketing Years 2009-2010 through 2011-2012

[Marketing year average (MYA) prices are weighted average prices for the United States marketing year of July - June. Monthly farm marketings, based on a sample survey, as percent of total used for calculating MYA prices]

Month	Prices received			Farm marketing percentages		
	2009-2010	2010-2011	2011-2012	2009-2010	2010-2011	2011-2012
	(dollars per cwt)	(dollars per cwt)	(dollars per cwt)	(percent)	(percent)	(percent)
July .....	33.50	27.00	27.30	0.8	1.0	3.0
August .....	27.00	21.30	24.90	5.5	11.9	6.4
September .....	25.60	23.30	29.10	14.4	21.6	11.3
October .....	25.40	25.00	28.70	18.7	11.5	12.5
November .....	25.90	25.60	24.60	13.4	11.5	8.7
December .....	27.10	26.80	24.30	16.6	9.4	6.9
January <sup>1</sup> .....	27.60	28.40	26.80	11.1	7.9	9.5
February .....	29.60	29.20	23.60	5.9	7.7	5.2
March .....	28.60	29.70	22.80	6.6	7.1	8.8
April .....	28.70	28.70	24.90	4.0	5.9	6.8
May .....	29.40	29.50	22.70	1.4	2.1	8.2
June .....	26.30	26.00	20.10	1.6	2.4	12.7
MYA .....	26.80	25.70	25.00	100.0	100.0	100.0

<sup>1</sup> Second year.

## Dry Edible Peas Prices Received and Farm Marketings by Month – United States: Marketing Years 2009-2010 through 2011-2012

[Marketing year average (MYA) prices are weighted average prices for the United States marketing year of July - June. Monthly farm marketings, based on a sample survey, as percent of total used for calculating MYA prices]

Month	Prices received			Farm marketing percentages		
	2009-2010	2010-2011	2011-2012	2009-2010	2010-2011	2011-2012
	(dollars per cwt)	(dollars per cwt)	(dollars per cwt)	(percent)	(percent)	(percent)
July .....	10.90	7.60	12.90	5.7	14.0	13.0
August .....	9.02	8.77	14.60	11.1	20.4	21.3
September .....	8.57	8.69	15.30	11.4	10.5	11.7
October .....	8.95	8.26	16.40	13.1	5.4	10.4
November .....	8.78	9.04	15.90	9.8	6.4	5.7
December .....	8.99	10.20	15.80	10.1	7.2	3.6
January <sup>1</sup> .....	9.79	10.50	15.70	9.3	7.2	7.3
February .....	9.14	12.10	15.30	8.5	3.6	4.0
March .....	8.49	10.90	15.70	5.9	9.1	6.3
April .....	8.43	12.00	16.30	5.6	6.7	8.4
May .....	9.35	12.60	16.50	3.7	4.8	4.3
June .....	7.48	14.00	16.10	5.8	4.7	4.0
MYA .....	8.98	9.77	15.30	100.0	100.0	100.0

<sup>1</sup> Second year.

## Austrian Winter Peas Prices Received and Farm Marketings by Month – United States: Marketing Years 2009-2010 through 2011-2012

[Marketing year average (MYA) prices are weighted average prices for the United States marketing year of July - June. Monthly farm marketings, based on a sample survey, as percent of total used for calculating MYA prices]

Month	Prices received			Farm marketing percentages		
	2009-2010	2010-2011	2011-2012	2009-2010	2010-2011	2011-2012
	(dollars per cwt)	(dollars per cwt)	(dollars per cwt)	(percent)	(percent)	(percent)
July .....	24.00	15.80	(S)	5.1	2.2	(S)
August .....	23.20	16.70	19.30	24.3	19.8	20.4
September .....	22.30	16.60	(S)	27.1	28.3	(S)
October .....	23.30	16.80	19.70	30.6	34.1	26.8
November .....	21.10	17.70	(S)	4.4	4.3	(S)
December .....	21.70	(S)	19.10	2.0	(S)	5.7
January <sup>1</sup> .....	23.20	(S)	19.90	2.2	(S)	18.9
February .....	(S)	20.00	19.70	(S)	6.5	9.2
March .....	(S)	(S)	(S)	(S)	(S)	(S)
April .....	19.40	18.50	(S)	1.1	0.4	(S)
May .....	(S)	19.00	(S)	(S)	1.2	(S)
June .....	(S)	(S)	(S)	(S)	(S)	(S)
MYA .....	22.70	17.10	19.50	100.0	100.0	100.0

(S) Insufficient number of reports to establish an estimate.

<sup>1</sup> Second year.

## Corn Prices Received and Farm Marketings by Month – United States: Marketing Years 2009-2010 through 2011-2012

[Marketing year average (MYA) prices are weighted average prices for the United States marketing year of September - August. Monthly farm marketings, based on a sample survey, as percent of total used for calculating MYA prices]

Month	Prices received			Farm marketing percentages		
	2009-2010	2010-2011	2011-2012	2009-2010	2010-2011	2011-2012
	(dollars per bushel)	(dollars per bushel)	(dollars per bushel)	(percent)	(percent)	(percent)
September .....	3.25	4.08	6.38	5.4	10.7	5.0
October .....	3.61	4.32	5.73	6.9	16.7	13.9
November .....	3.65	4.55	5.83	14.3	8.5	12.6
December .....	3.60	4.82	5.86	11.3	8.2	9.1
January <sup>1</sup> .....	3.66	4.94	6.07	11.3	15.7	15.2
February .....	3.55	5.65	6.28	6.7	6.8	8.1
March .....	3.55	5.53	6.35	7.2	7.4	8.8
April .....	3.41	6.36	6.34	7.1	5.9	5.3
May .....	3.48	6.32	6.34	6.4	4.7	5.1
June .....	3.41	6.38	6.37	6.8	5.3	5.9
July .....	3.49	6.33	7.14	8.9	5.5	5.7
August .....	3.65	6.88	7.63	7.7	4.6	5.3
MYA .....	3.55	5.18	6.22	100.0	100.0	100.0

<sup>1</sup> Second year.

**Sorghum Grain Market Year Average Prices Received – States and United States: Marketing Years 2009 through 2011**

State	2009	2010	2011
	(dollars per cwt)	(dollars per cwt)	(dollars per cwt)
Arizona .....	6.20	9.10	12.50
Arkansas .....	5.77	7.14	10.20
Colorado .....	5.28	9.00	10.70
Georgia .....	5.70	6.65	11.70
Illinois .....	6.86	10.40	10.50
Kansas .....	5.47	9.00	10.70
Louisiana .....	5.70	6.90	10.20
Mississippi .....	4.72	7.02	10.20
Missouri .....	5.86	10.20	11.00
Nebraska .....	5.62	8.74	10.50
New Mexico .....	6.12	9.60	10.60
Oklahoma .....	5.68	9.00	10.80
South Dakota .....	4.88	8.56	10.20
Texas .....	6.00	7.26	10.40
United States .....	5.75	8.96	10.70

**Sorghum Grain Farm Marketing Percent by Month – States and United States: Marketing Years 2010-2011 and 2011-2012**

[Monthly farm marketings, based on a sample survey, as a percent of total used for calculating marketing year average prices. Blank cells indicate month is outside State's designated marketing year]

State and Marketing Year	Jun	Jul	Aug	Sep	Oct	Nov	Dec	Jan	Feb	Mar	Apr	May	Jun	Jul	Aug
	(%)	(%)	(%)	(%)	(%)	(%)	(%)	(%)	(%)	(%)	(%)	(%)	(%)	(%)	(%)
Arkansas															
2010-2011 .....			70	26	1	1	1	1	-	-	-	-	-	-	
2011-2012 .....			13	48	18	3	8	7	1	1	-	-	-	1	
Illinois															
2010-2011 .....				15	23	10	4	9	3	6	8	10	3	4	5
2011-2012 .....				3	15	38	1	13	1	2	22	-	-	-	5
Kansas															
2010-2011 .....				5	29	17	19	11	5	3	4	3	2	1	1
2011-2012 .....				1	11	28	19	13	9	7	4	3	2	2	1
Louisiana															
2010-2011 .....			86	3	1	2	2	3	-	-	-	-	-	3	
2011-2012 .....			61	14	2	2	2	5	1	1	-	-	-	12	
Missouri															
2010-2011 .....				11	7	13	7	5	5	5	28	4	10	4	1
2011-2012 .....				8	24	14	8	12	3	14	4	-	6	-	7
Nebraska															
2010-2011 .....				4	31	21	10	16	3	3	4	3	3	1	1
2011-2012 .....				1	20	17	22	13	7	8	2	3	3	3	1
Oklahoma															
2010-2011 .....			6	15	15	11	17	17	5	3	5	3	2	1	
2011-2012 .....			9	4	3	26	21	10	7	11	4	1	1	3	
Texas															
2010-2011 .....	3	23	18	6	24	8	10	4	1	1	1	1			
2011-2012 .....	35	33	15	1	1	3	5	3	1	1	1	1			
United States															
2010-2011 .....				7.0	28.0	13.8	15.5	8.7	4.0	2.7	2.9	2.2	5.7	4.8	4.7
2011-2012 .....				2.6	8.1	16.4	12.2	8.5	5.2	4.4	2.7	1.6	4.2	19.4	14.7

- Represents zero.

**Sorghum Grain Prices Received by Month – States and United States: Marketing Years 2010-2011 and 2011-2012**

State	2010-2011							
	June	July	August	September	October	November	December	January <sup>1</sup>
	(dollars per cwt)	(dollars per cwt)	(dollars per cwt)	(dollars per cwt)	(dollars per cwt)	(dollars per cwt)	(dollars per cwt)	(dollars per cwt)
Arkansas .....	(S)	(S)	6.94	7.61	(D)	(D)	(D)	(D)
Illinois .....	(D)	(D)	6.66	7.35	9.55	9.26	10.80	10.70
Kansas .....	5.02	5.42	5.92	7.16	8.00	8.36	8.98	9.61
Louisiana .....	(D)	(D)	6.74	7.76	(D)	(D)	(D)	(D)
Missouri .....	(S)	5.45	5.78	7.10	7.90	8.18	9.02	9.00
Nebraska .....	5.38	5.35	5.96	6.59	7.77	8.21	8.86	8.99
Oklahoma .....	5.03	5.39	6.41	7.43	8.34	8.66	8.99	9.52
Texas .....	5.85	6.14	6.35	7.33	7.41	8.67	8.24	9.16
United States .....	5.38	5.97	6.36	7.26	7.80	8.44	8.79	9.49
State	2011-2012							
	June	July	August	September	October	November	December	January <sup>1</sup>
	(dollars per cwt)	(dollars per cwt)	(dollars per cwt)	(dollars per cwt)	(dollars per cwt)	(dollars per cwt)	(dollars per cwt)	(dollars per cwt)
Arkansas .....	(S)	(S)	10.90	10.10	9.71	9.74	(D)	11.00
Illinois .....	11.60	12.20	(D)	(S)	10.30	10.20	(D)	11.70
Kansas .....	12.00	11.60	12.20	11.60	10.70	10.70	10.50	10.80
Louisiana .....	(S)	(D)	10.10	10.20	(D)	(D)	(D)	(D)
Missouri .....	(D)	12.10	(D)	10.20	11.30	10.70	10.80	10.90
Nebraska .....	12.30	12.40	11.70	11.50	10.70	10.40	9.74	10.20
Oklahoma .....	12.30	11.10	11.80	11.90	10.40	10.20	10.50	10.80
Texas .....	10.00	10.30	10.60	12.10	10.90	10.70	11.80	11.40
United States .....	10.50	10.40	10.70	10.50	10.70	10.70	10.50	10.80

See footnote(s) at end of table.

--continued

**Sorghum Grain Prices Received by Month – States and United States: Marketing Years 2010-2011 and 2011-2012 (continued)**

State	2010-2011						
	February	March	April	May	June	July	August
	(dollars per cwt)	(dollars per cwt)	(dollars per cwt)	(dollars per cwt)	(dollars per cwt)	(dollars per cwt)	(dollars per cwt)
Arkansas .....	(S)	(S)	(S)	(S)	(S)	(S)	10.90
Illinois .....	12.40	10.50	(D)	12.40	11.60	12.20	(D)
Kansas .....	10.80	10.80	11.60	11.50	12.00	11.60	12.20
Louisiana .....	(D)	(S)	(S)	(D)	(S)	(D)	10.10
Missouri .....	11.40	(D)	(D)	(D)	(D)	12.10	(D)
Nebraska .....	10.60	10.30	11.60	11.10	12.30	12.40	11.70
Oklahoma .....	10.80	10.90	11.80	11.70	12.30	11.10	11.80
Texas .....	11.00	9.75	12.20	11.60	10.00	10.30	10.60
United States .....	10.90	10.60	11.70	11.60	10.50	10.40	10.70

State	2011-2012						
	February	March	April	May	June	July	August
	(dollars per cwt)	(dollars per cwt)	(dollars per cwt)	(dollars per cwt)	(dollars per cwt)	(dollars per cwt)	(dollars per cwt)
Arkansas .....	(D)	(D)	(D)	(S)	(S)	(D)	11.10
Illinois .....	(D)	(D)	(D)	(D)	(D)	(S)	(D)
Kansas .....	10.80	10.90	10.60	10.30	10.40	12.50	13.30
Louisiana .....	(D)	(D)	(D)	(S)	(S)	11.10	11.60
Missouri .....	10.70	10.90	(D)	(S)	(D)	(S)	12.90
Nebraska .....	10.60	10.90	10.90	10.90	10.90	12.00	12.20
Oklahoma .....	10.90	11.20	10.90	10.40	11.10	12.20	12.80
Texas .....	11.20	11.40	11.60	11.50	9.23	10.50	10.90
United States .....	10.80	10.90	10.60	10.40	9.56	10.60	11.30

(D) Withheld to avoid disclosing data for individual operations.

(S) Insufficient number of reports to establish an estimate.

<sup>1</sup> Second year.

**Soybean Market Year Average Prices Received – States and United States: Marketing Years 2009 through 2011**

State	2009 (dollars per bushel)	2010 (dollars per bushel)	2011 (dollars per bushel)
Alabama .....	10.00	11.10	12.00
Arkansas .....	9.66	10.90	12.30
Delaware .....	9.60	12.20	12.20
Florida .....	9.50	11.00	11.00
Georgia .....	9.80	11.70	12.10
Illinois .....	9.80	11.80	12.80
Indiana .....	9.80	11.50	12.70
Iowa .....	9.52	11.20	12.60
Kansas .....	9.38	11.50	12.10
Kentucky .....	9.90	11.40	12.40
Louisiana .....	9.66	10.50	12.00
Maryland .....	9.50	12.00	12.10
Michigan .....	9.54	11.10	12.10
Minnesota .....	9.39	10.90	12.40
Mississippi .....	9.24	10.40	12.00
Missouri .....	9.61	11.70	12.50
Nebraska .....	9.48	11.00	12.00
New Jersey .....	9.37	11.70	12.10
New York .....	9.10	11.40	12.30
North Carolina .....	9.59	12.00	12.10
North Dakota .....	9.26	10.90	11.90
Ohio .....	9.78	11.50	13.00
Oklahoma .....	9.40	11.40	11.90
Pennsylvania .....	9.40	12.10	12.50
South Carolina .....	9.50	11.80	12.00
South Dakota .....	9.18	10.90	12.20
Tennessee .....	9.74	11.10	12.20
Texas .....	9.25	10.40	12.00
Virginia .....	9.40	12.00	12.10
West Virginia .....	9.60	12.00	12.40
Wisconsin .....	9.62	10.80	12.40
United States .....	9.59	11.30	12.50



**Soybean Prices Received by Month – States and United States: Marketing Years 2010-2011 and 2011-2012**

State	2010-2011						
	August (dollars per bushel)	September (dollars per bushel)	October (dollars per bushel)	November (dollars per bushel)	December (dollars per bushel)	January <sup>1</sup> (dollars per bushel)	February (dollars per bushel)
Arkansas .....	10.10	10.10	10.80	11.40	11.50	11.20	12.80
Illinois .....	10.30	10.00	10.80	11.10	11.90	11.70	12.90
Indiana .....	10.50	10.10	10.60	11.50	12.20	11.70	13.00
Iowa .....	10.00	9.87	9.98	10.90	11.60	11.80	12.60
Kansas .....	10.20	9.82	10.50	11.50	12.20	12.60	13.20
Kentucky .....	10.00	9.79	10.70	11.40	11.40	11.50	12.60
Louisiana .....	9.75	10.10	10.80	12.10	10.30	10.90	12.50
Michigan .....	10.20	9.71	10.30	11.40	11.90	11.80	12.30
Minnesota .....	9.87	9.48	9.69	10.50	11.30	11.20	12.10
Mississippi .....	9.68	10.10	10.30	10.80	10.50	11.70	12.30
Missouri .....	10.20	10.10	10.50	11.30	11.80	11.60	12.40
Nebraska .....	9.93	9.71	9.98	10.90	11.80	11.40	12.40
North Carolina .....	10.80	11.00	10.90	11.20	11.80	12.10	13.30
North Dakota .....	9.58	9.50	9.83	10.50	10.70	10.90	12.50
Ohio .....	10.70	10.20	10.60	11.60	12.10	11.90	12.60
South Dakota .....	9.59	9.64	9.88	10.60	11.10	11.30	12.60
Tennessee .....	10.20	10.30	10.80	11.60	11.50	11.10	12.80
Wisconsin .....	10.20	9.80	10.20	10.80	11.60	11.50	12.90
United States .....	10.10	9.98	10.20	11.10	11.60	11.60	12.70
State	2011-2012						
	August (dollars per bushel)	September (dollars per bushel)	October (dollars per bushel)	November (dollars per bushel)	December (dollars per bushel)	January <sup>1</sup> (dollars per bushel)	February (dollars per bushel)
Arkansas .....	13.20	11.80	12.00	12.10	11.80	12.20	12.40
Illinois .....	13.70	12.80	11.90	11.90	11.80	12.10	12.40
Indiana .....	13.70	12.90	11.80	11.80	11.90	12.20	12.50
Iowa .....	13.50	12.60	11.80	11.60	11.30	11.80	12.10
Kansas .....	13.50	12.10	11.60	11.30	11.00	11.50	12.00
Kentucky .....	13.50	12.60	12.00	12.10	11.70	12.30	12.50
Louisiana .....	11.80	12.00	12.00	11.90	11.70	12.20	12.60
Michigan .....	13.30	13.00	11.60	11.50	11.20	11.70	12.10
Minnesota .....	13.00	11.90	11.50	11.50	11.20	11.70	12.00
Mississippi .....	13.60	11.80	11.80	11.90	12.00	11.90	12.30
Missouri .....	13.70	12.70	11.90	11.80	11.80	12.00	12.40
Nebraska .....	13.30	11.70	11.70	11.50	11.20	11.40	11.90
North Carolina .....	14.00	13.30	11.90	11.40	11.30	11.80	12.40
North Dakota .....	12.80	11.60	11.40	11.20	11.10	11.30	11.70
Ohio .....	13.60	13.50	11.90	11.80	11.80	12.20	12.60
South Dakota .....	13.00	11.50	11.50	11.50	11.10	11.60	12.00
Tennessee .....	13.00	11.70	11.90	12.10	12.00	12.10	12.40
Wisconsin .....	13.40	13.40	11.70	11.90	11.40	11.90	12.20
United States .....	13.40	12.20	11.80	11.70	11.50	11.90	12.20

See footnote(s) at end of table.

--continued

**Soybean Prices Received by Month – States and United States: Marketing Years 2010-2011 and 2011-2012 (continued)**

State	2010-2011					
	March	April	May	June	July	August
	(dollars per bushel)	(dollars per bushel)	(dollars per bushel)	(dollars per bushel)	(dollars per bushel)	(dollars per bushel)
Arkansas .....	12.50	13.10	12.00	12.80	13.80	13.20
Illinois .....	13.10	13.40	13.40	13.50	13.40	13.70
Indiana .....	12.80	13.30	13.70	13.40	13.70	13.70
Iowa .....	12.40	12.90	13.20	13.20	13.00	13.50
Kansas .....	12.90	13.20	13.50	13.70	13.40	13.50
Kentucky .....	13.00	13.60	13.60	13.80	13.70	13.50
Louisiana .....	13.30	12.00	12.80	12.50	12.30	11.80
Michigan .....	12.20	12.70	12.60	13.10	13.20	13.30
Minnesota .....	12.50	12.50	12.70	12.80	12.80	13.00
Mississippi .....	13.20	13.10	12.90	13.30	(D)	13.60
Missouri .....	12.60	13.50	13.60	13.60	13.50	13.70
Nebraska .....	12.60	12.90	13.10	13.00	13.10	13.30
North Carolina .....	13.20	13.50	13.80	14.00	14.00	14.00
North Dakota .....	12.50	12.40	12.50	12.70	12.80	12.80
Ohio .....	12.90	12.90	13.50	13.40	13.50	13.60
South Dakota .....	12.50	12.70	12.90	12.90	12.80	13.00
Tennessee .....	12.80	13.50	13.60	13.30	13.40	13.00
Wisconsin .....	12.00	12.40	12.60	12.40	12.90	13.40
United States .....	12.70	13.10	13.20	13.20	13.20	13.40
State	2011-2012					
	March	April	May	June	July	August
	(dollars per bushel)	(dollars per bushel)	(dollars per bushel)	(dollars per bushel)	(dollars per bushel)	(dollars per bushel)
Arkansas .....	13.20	14.00	13.80	14.30	16.50	14.70
Illinois .....	13.10	14.10	14.30	14.10	15.60	16.70
Indiana .....	13.10	14.00	14.10	14.10	15.90	16.40
Iowa .....	12.80	13.60	13.80	13.70	15.00	16.80
Kansas .....	12.90	13.60	13.70	13.90	15.50	16.60
Kentucky .....	13.10	14.20	14.50	13.80	16.40	16.40
Louisiana .....	12.90	13.90	13.60	(D)	14.20	13.90
Michigan .....	12.90	13.70	13.70	13.90	15.50	15.90
Minnesota .....	12.80	13.70	13.70	13.60	15.20	16.60
Mississippi .....	13.10	13.60	(D)	14.00	(D)	(D)
Missouri .....	13.10	13.90	14.10	14.10	16.20	16.90
Nebraska .....	12.70	13.60	13.80	13.60	15.30	16.60
North Carolina .....	13.30	14.00	14.10	14.50	15.70	17.00
North Dakota .....	12.60	13.20	13.60	13.50	14.70	15.40
Ohio .....	13.50	13.70	14.30	14.20	15.70	16.50
South Dakota .....	12.80	13.70	13.30	13.50	14.90	16.00
Tennessee .....	13.40	14.10	14.30	13.60	15.60	15.00
Wisconsin .....	12.90	13.40	13.70	14.10	14.80	16.60
United States .....	13.00	13.80	14.00	13.90	15.40	16.20

(D) Withheld to avoid disclosing data for individual operations.

<sup>1</sup> Second year.

## Soybean Farm Marketing Percent by Month – States and United States: Marketing Years 2010-2011 and 2011-2012

[Monthly farm marketings, based on a sample survey, as a percent of total used for calculating marketing year average prices. Blank cells indicate month is outside State's designated marketing year]

State and Marketing Year	Aug	Sep	Oct	Nov	Dec	Jan	Feb	Mar	Apr	May	Jun	Jul	Aug
	(%)	(%)	(%)	(%)	(%)	(%)	(%)	(%)	(%)	(%)	(%)	(%)	(%)
Arkansas													
2010-2011 .....		38	21	14	12	9	1	1	1	1	-	1	1
2011-2012 .....		9	26	27	10	13	3	2	1	-	1	1	7
Illinois													
2010-2011 .....		8	20	5	12	26	8	5	3	3	4	3	3
2011-2012 .....		2	15	5	10	24	12	9	7	4	5	5	2
Indiana													
2010-2011 .....		28	18	3	6	18	7	5	3	3	3	3	3
2011-2012 .....		3	28	8	5	15	11	9	5	5	4	4	3
Iowa													
2010-2011 .....		7	39	6	6	14	5	6	3	3	4	4	3
2011-2012 .....		3	27	4	6	12	11	11	9	3	4	6	4
Kansas													
2010-2011 .....		5	36	21	13	8	4	3	2	3	2	1	2
2011-2012 .....		3	27	11	14	11	12	8	5	2	1	3	3
Kentucky													
2010-2011 .....		5	32	6	9	28	9	4	2	2	1	1	1
2011-2012 .....		1	17	19	11	28	10	6	3	1	1	2	1
Louisiana													
2010-2011 .....	13	30	31	5	13	7	1	-	-	-	-	-	-
2011-2012 .....	11	33	22	8	8	9	5	2	1	-	-	1	-
Michigan													
2010-2011 .....		13	41	8	6	11	5	4	3	2	3	2	2
2011-2012 .....		1	34	14	8	12	10	9	5	3	2	1	1
Minnesota													
2010-2011 .....		7	35	8	9	14	5	4	3	4	4	4	3
2011-2012 .....		6	22	6	7	13	11	9	6	4	7	6	3
Mississippi													
2010-2011 .....	10	32	18	5	24	6	2	1	-	1	-	1	-
2011-2012 .....	2	20	22	10	22	14	6	2	1	-	-	1	-
Missouri													
2010-2011 .....		3	28	11	10	17	5	5	6	3	4	3	5
2011-2012 .....		4	24	12	10	15	11	10	6	2	2	3	1
Nebraska													
2010-2011 .....		9	33	8	7	24	5	3	2	2	2	2	3
2011-2012 .....		5	31	7	12	13	13	7	5	1	2	2	2
North Carolina													
2010-2011 .....		3	11	27	20	17	7	5	3	2	2	2	1
2011-2012 .....		1	9	28	20	17	8	5	4	3	1	1	3
North Dakota													
2010-2011 .....		4	34	9	9	17	5	4	2	1	5	7	3
2011-2012 .....		5	24	8	9	14	16	9	4	3	4	3	1
Ohio													
2010-2011 .....		20	29	6	7	13	5	6	3	2	3	3	3
2011-2012 .....		1	17	13	8	12	12	10	7	4	5	6	5
South Dakota													
2010-2011 .....		4	46	6	8	12	5	3	2	2	4	5	3
2011-2012 .....		4	29	4	7	11	14	10	7	4	4	3	3
Tennessee													
2010-2011 .....		21	39	8	6	16	3	1	1	1	1	2	1
2011-2012 .....		4	38	23	9	13	3	3	2	1	1	2	1
Wisconsin													
2010-2011 .....		9	53	6	4	11	2	3	3	3	2	2	2
2011-2012 .....		1	32	10	5	13	8	6	9	1	13	1	1
United States													
2010-2011 .....		11.0	30.6	7.4	9.2	17.2	5.5	4.4	2.9	2.8	3.1	3.0	2.9
2011-2012 .....		3.8	23.8	8.8	8.5	15.0	11.1	8.7	5.9	3.0	4.2	4.0	3.2

- Represents zero.

## Reliability of Prices Received Estimates

**Definition:** Prices received represent sales from producers to first buyers. They include all grades and qualities. The average commodity price from the survey multiplied by the total quantity marketed theoretically should give the total cash receipts for the commodity.

**Survey procedures:** Primary sales data used to determine grain prices were obtained from probability samples of about 1900 mills and elevators. These procedures ensure that virtually all grain moving into commercial channels has a chance of being included in the survey. Generally, States surveyed account for 90 percent or more of total United States production. Livestock prices are obtained from packers, stockyards, auctions, dealers, and market check data from AMS-USDA, private marketing organizations, and state commodity groups and agencies. Inter-farm sales of grain and livestock are not included since they represent very small percentages of the total marketings. Grain marketed for seed is also excluded. Fruit and vegetable prices are obtained from sample surveys and market check data from AMS-USDA, private marketing organizations, state agencies, and universities.

**Summary and estimation procedures:** Survey quantities sold are expanded by strata to state levels and used to weight average strata prices to a state average. State prices are then weighted to a United States price based on expanded marketings. Recommendations are prepared by the State Field Offices and reviewed by the Agricultural Statistics Board in Washington, D.C. State recommendations are reviewed for reasonableness with survey data, other States, and recent historic estimates.

**Revisions:** For most items, the current month's preliminary price represents a 3-5 day period around the 15th of the month. Previous month's prices represent actual dollars received for quantities sold during the entire month. Revisions are published in monthly issues of Agricultural Prices.

**Reliability:** United States price estimates based on probability surveys generally have a sampling error of less than one percent for the major commodities such as corn, wheat, soybeans, cotton, and rice. Current methods of summarization for non-probability commodities are not designed directly to calculate sampling errors. However, analytical measures approximate the United States relative sampling errors at around five percent. Any nonsampling errors are attributed to such things as the inability to obtain correct information, differences in interpreting questions or definitions, mistakes in coding or processing the data, etc. Efforts are made at each step in the survey process to minimize these nonsampling errors.

## Prices Paid by Farmers

The September Index of Prices Paid for Commodities and Services, Interest, Taxes, and Farm Wage Rates (PPITW) at 219 (1990-1992=100) is up 1.4 percent from August 2012 and 6.8 percent from September 2011.

**Production index:** The September index, at 234, increased 1.3 percent from last month and 7.3 percent from last year. Higher prices in September for complete feeds, supplements, feeder cattle, and diesel offset lower prices for nitrogen, mixed fertilizer, feed grains, and feeder pigs.

**Feed:** The September index, at 307, increased 7.0 percent from August and 27 percent from last September. Since August, higher prices for complete feeds, supplements, concentrates, and hay & forages offset lower prices for feed grains.

**Livestock and poultry:** The September index, at 155, increased 2.6 percent from last month and 6.2 percent from last year. Since August, higher prices for feeder cattle offset lower prices for feeder pigs. The September feeder cattle price, at \$143.80 per cwt, is up \$5.90 per cwt from the August price. September feeder pigs averaged \$40.00 per cwt, down \$6.00 per cwt from August.

**Fertilizer:** The September index, at 305, is down 5.9 percent from August and 8.1 percent below September a year ago. Since August, lower prices for nitrogen and mixed fertilizer more than offset higher prices for potash & phosphate.

**Chemicals:** The September index, at 154, was unchanged from August but increased 5.5 percent from last September. Compared with last month, prices for herbicides, insecticides, and fungicides/other are higher.

**Fuels:** The September index, at 370, is up 3.6 percent from a month earlier and 0.5 percent above September 2011. Compared with last month, prices for diesel, gasoline, and LP gas are higher.

**Machinery:** The September index, at 258, was unchanged from August but is 4.5 percent above last September. Compared with last month, prices for self-propelled machinery and other machinery are slightly lower.

**Consumer price index:** The August 2012 Consumer Price Index, as issued by the Bureau of Labor Statistics, for all urban consumers (CPI-U) increased 0.6 percent before seasonal adjustment to a level of 230.379 (1982-1984=100). The July index is 229.104. For the 12 month period ending in August, the overall index increased 1.7 percent.

## Prices Paid Indexes and Related Parity Ratios – United States: September 2012 with Comparisons

[Revised historical price indexes for months not shown are available at [www.nass.usda.gov](http://www.nass.usda.gov)]

Indexes and ratios	1910-1914 Base			1990-1992 Base		
	September 2011	August 2012	September 2012	September 2011	August 2012	September 2012
	(percent)	(percent)	(percent)	(percent)	(percent)	(percent)
Prices paid by farmers for commodities, services, interest, taxes, and wage rates (PPITW) .....	2731	2881	2914	205	216	219
Production .....	2112	2240	2271	218	231	234
Feed .....	1175	1403	1497	241	287	307
Livestock and poultry .....	1866	1924	1987	146	151	155
Seeds .....	3327	3581	3581	336	362	362
Fertilizer .....	1217	1186	1118	332	324	305
Chemicals .....	902	951	953	146	154	154
Fuels .....	2841	2754	2857	368	357	370
Supplies and repairs .....	1198	1213	1210	169	171	171
Autos and trucks .....	3071	3121	3119	116	117	117
Machinery .....	6190	6481	6475	247	258	258
Building materials .....	2345	2388	2392	173	176	176
Services and rent .....	2133	2194	2195	(NA)	(NA)	(NA)
Services .....	(NA)	(NA)	(NA)	165	169	169
Rent .....	(NA)	(NA)	(NA)	205	212	212
Interest <sup>1</sup> .....	3381	3635	3635	135	145	145
Taxes <sup>2</sup> .....	5935	6225	6225	222	232	232
Wage rates .....	7062	7373	7373	189	197	197
Production, interest, taxes, and wage rates (PITW) .....	2846	3017	3054	212	225	227
Family living-CPI <sup>3</sup> .....	2155	2188	2200	168	171	172
Ratio (received/paid) .....	(NA)	(NA)	(NA)	88	89	91
Parity ratio <sup>4</sup> .....	42	42	43	(NA)	(NA)	(NA)
Parity ratio adjusted <sup>5</sup> .....	43	44	45	(NA)	(NA)	(NA)
PPITW adjusted for productivity <sup>6</sup> .....	1460	1501	1508	(NA)	(NA)	(NA)
Crop sector (PPITW) .....	(NA)	(NA)	(NA)	214	221	220
Livestock sector (PPITW) .....	(NA)	(NA)	(NA)	196	212	217
Farm sector (production) .....	(NA)	(NA)	(NA)	224	255	266
Non-farm sector (production) .....	(NA)	(NA)	(NA)	214	218	216

(NA) Not available.

<sup>1</sup> Interest per acre on farm real estate debt and interest rate on farm non-real estate debt.

<sup>2</sup> Farm real estate taxes payable per acre.

<sup>3</sup> Bureau of Labor Statistics, Consumer Price Index for all urban consumers (CPI-U), for the previous month converted by the USDA.

<sup>4</sup> Ratio of index of prices received to PPITW (1910-1914=100).

<sup>5</sup> Based on estimated cash receipts, from marketings and government payments, the preliminary adjustment factor is 1.044 for 2012 and the revised factor is 1.041 for 2011.

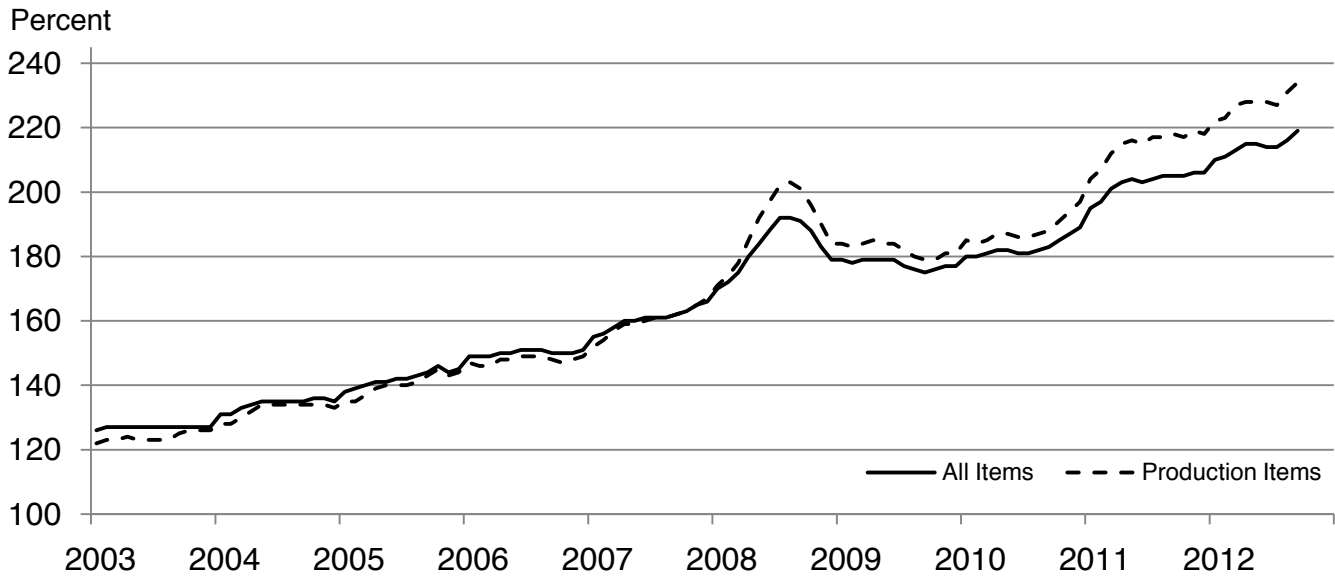
<sup>6</sup> PPITW is adjusted based on productivity trend for the prior 15 years.

## Prices Paid Indexes and Annual Weights for Input Components and Sub-components – United States: September 2012 with Comparisons

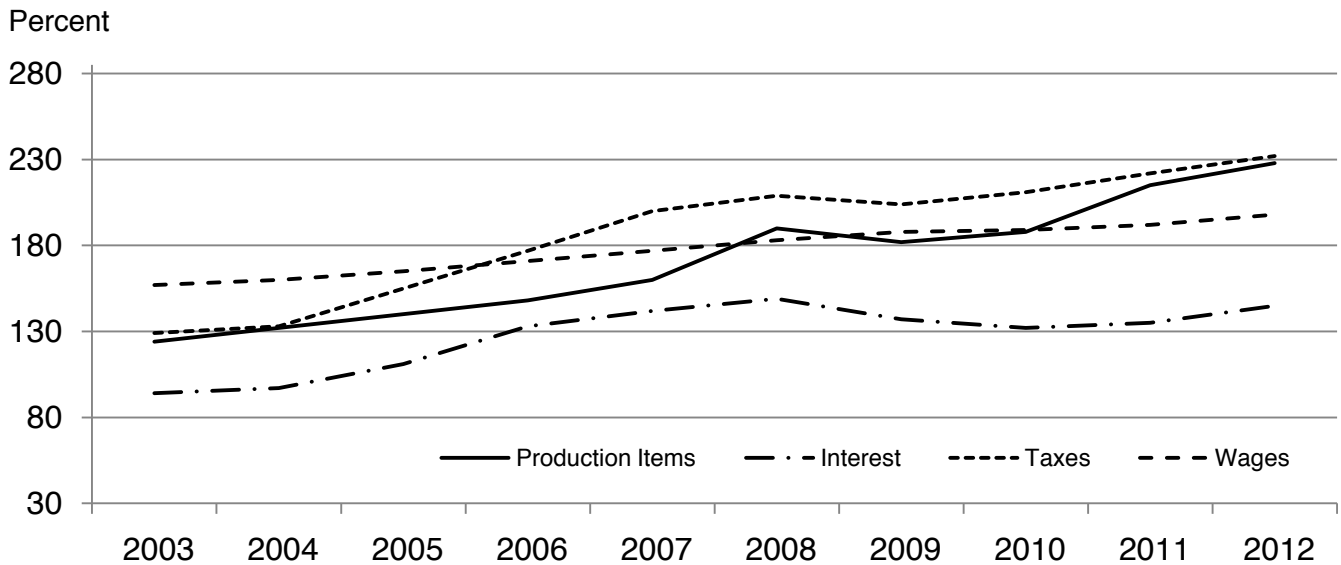
[Revised historical price indexes for months not shown are available at [www.nass.usda.gov](http://www.nass.usda.gov). Relative weights are a five year moving average]

	Relative weights		Indexes (1990-1992=100)		
	2011	2012	September 2011	August 2012	September 2012
	(percent)	(percent)	(percent)	(percent)	(percent)
Production items .....	70.6	71.1	218	231	234
Feed .....	12.2	12.7	241	287	307
Feed grains .....	1.7	1.8	271	319	313
Complete feeds .....	6.0	6.2	239	287	311
Hay and forages .....	1.5	1.6	226	236	239
Concentrates .....	1.9	2.0	216	283	299
Supplements .....	1.0	1.1	268	319	384
Livestock and poultry .....	8.5	8.3	146	151	155
Feeder cattle .....	6.6	6.5	151	163	170
Feeder pigs .....	0.7	0.7	108	50	44
Milk cow replacements .....	0.7	0.7	131	126	126
Poultry .....	0.5	0.5	158	158	158
Seeds .....	4.1	4.3	336	362	362
Field crops .....	3.7	3.9	356	381	381
Grasses and legumes .....	0.4	0.4	145	178	178
Fertilizer .....	5.5	5.7	332	324	305
Mixed fertilizer .....	2.4	2.5	310	295	277
Nitrogen .....	2.3	2.4	337	337	312
Potash and phosphate .....	0.8	0.8	387	373	375
Chemicals .....	3.3	3.2	146	154	154
Herbicides .....	2.1	2.0	131	138	138
Insecticides .....	0.7	0.7	169	174	174
Fungicides and other .....	0.5	0.5	175	191	192
Fuels .....	4.0	4.0	368	357	370
Diesel .....	2.5	2.5	395	408	424
Gasoline .....	0.8	0.8	313	322	334
LP gas .....	0.7	0.7	339	208	217
Supplies and repairs .....	4.6	4.6	169	171	171
Supplies .....	1.5	1.5	164	165	164
Repairs .....	3.0	3.0	171	174	174
Autos and trucks .....	1.4	1.2	116	117	117
Autos .....	0.2	0.2	115	115	115
Trucks .....	1.2	1.1	116	118	118
Machinery .....	4.3	4.3	247	258	258
Tractors .....	0.9	0.9	208	209	209
Self-propelled .....	1.7	1.7	259	276	275
Other machinery .....	1.6	1.6	256	269	269
Building materials .....	4.4	4.2	173	176	176
Services .....	12.1	12.0	165	169	169
Custom rates .....	1.2	1.2	148	157	157
Other services .....	10.9	10.7	167	170	170
Rent .....	6.3	6.6	205	212	212
Cash .....	3.4	3.5	262	270	270
Share .....	2.9	3.0	139	145	145
Interest .....	3.5	3.4	135	145	145
Taxes .....	3.1	3.1	222	232	232
Wage rates .....	7.4	7.2	189	197	197
Family living-CPI .....	15.4	15.3	168	171	172

## Paid Indexes by Month, All Items and Production Items – United States: 1990-1992=100

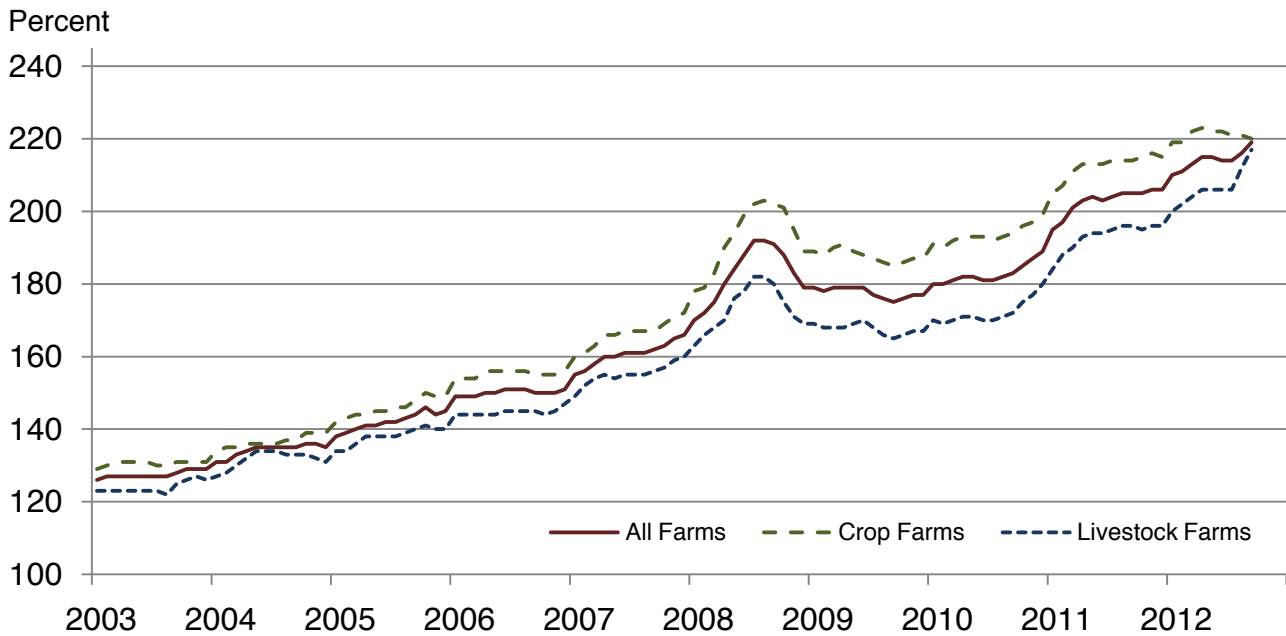


## Paid Indexes, Annual Averages, Production Items, Interest, Taxes, and Wages – United States: 1990-1992=100

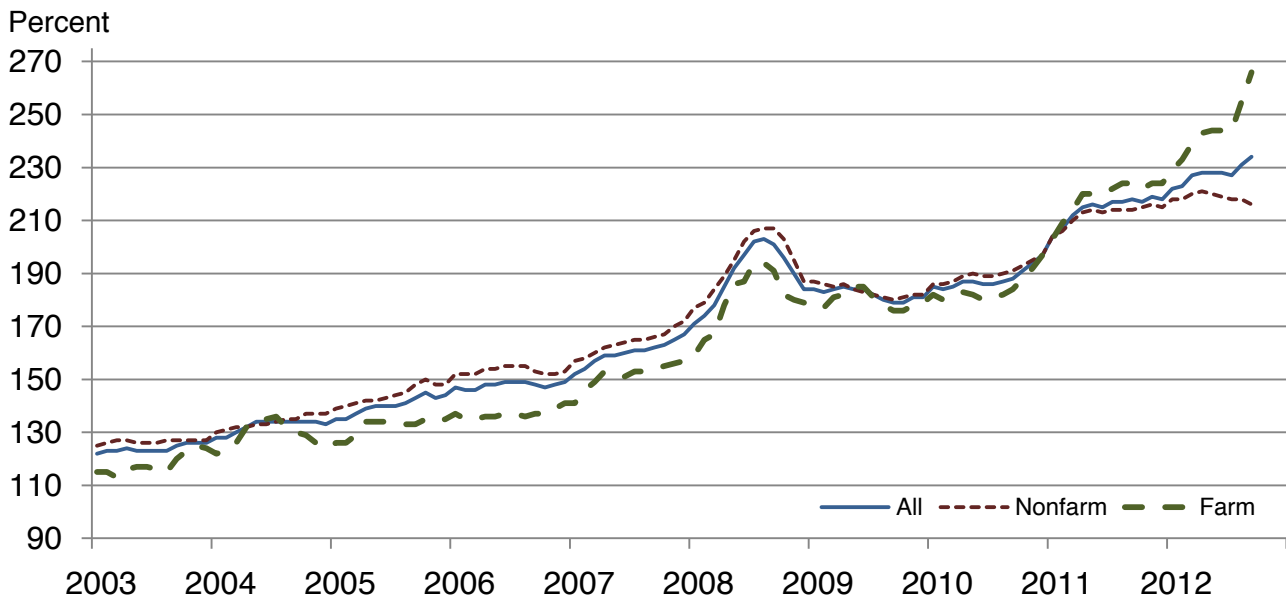




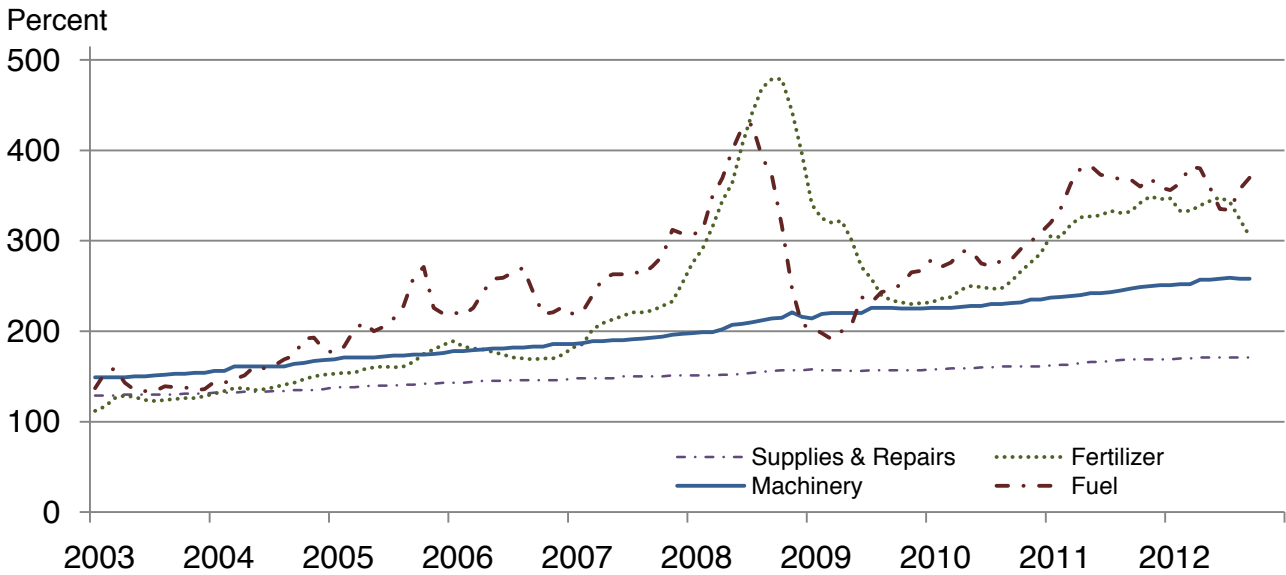
## Paid Indexes by Farm Type and Month, All Items – United States: 1990-1992=100



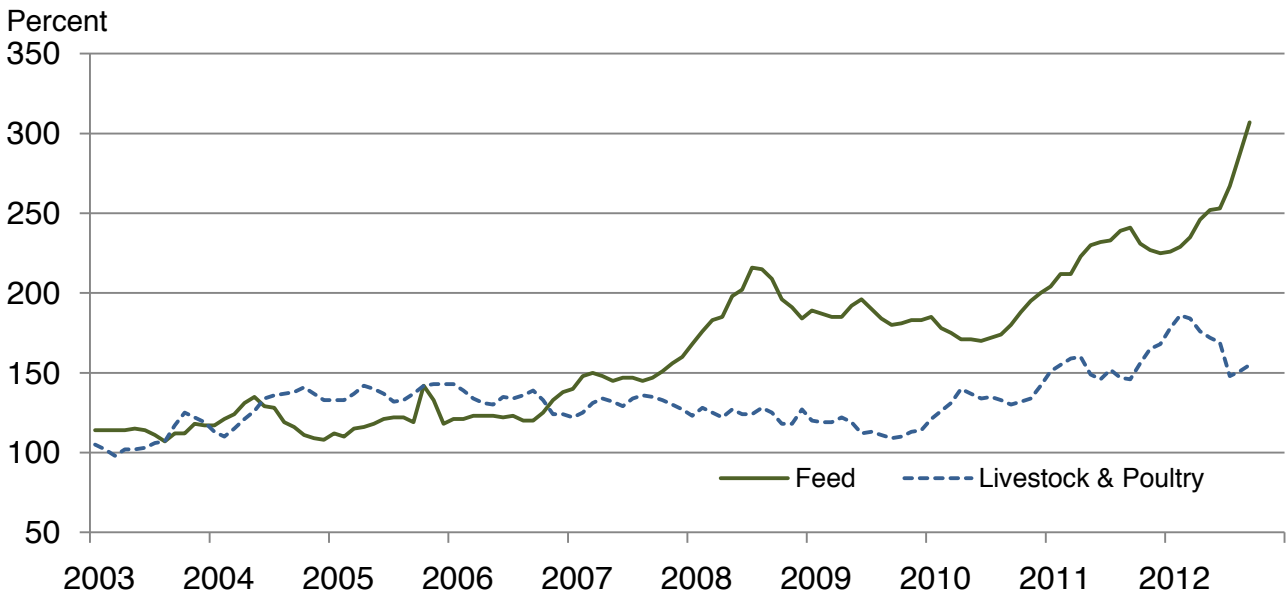
## Paid Indexes by Origin and Month, All Production Items – United States: 1990-1992=100



## Paid Indexes by Non-Farm Sector and Month, Supplies & Repairs, Fertilizer, Machinery, and Fuel – United States: 1990-1992=100



## Paid Indexes by Month, Feed and Livestock & Poultry – United States: 1990-1992=100



## Feed Price Ratios – United States: September 2012 with Comparisons

Feed price ratio <sup>1</sup>	September 2011	August 2012	Preliminary September 2012
Broiler-feed: pounds of broiler grower feed equal in value to 1 pound of broiler, live weight <sup>2</sup> .....	2.9	2.6	2.6
Market egg feed: pounds of laying feed equal in value to 1 dozen eggs <sup>3</sup> .....	6.3	5.6	6.4
Hog-corn: bushels of corn equal in value to 100 pounds of hog, live weight .....	10.5	8.8	7.7
Milk-feed: pounds of 16% mixed dairy feed equal in value to 1 pound of whole milk <sup>4</sup> .....	1.84	1.36	1.46
Steer and heifer-corn: bushels of corn equal in value to 100 pounds of steer & heifers, live weight .....	18.3	15.7	16.9
Turkey-feed: pounds of turkey grower equal in value to 1 pound of turkey, live weight <sup>5</sup> .....	5.2	4.3	4.3

<sup>1</sup> Effective January 1995, prices of commercial prepared feeds are based on current United States prices received for corn, soybeans, alfalfa hay, and all wheat.

<sup>2</sup> The price of commercial prepared broiler feed is based on current United States prices received for corn and soybeans. The modeled feed uses 58 percent corn and 42 percent soybeans.

<sup>3</sup> The price of commercial prepared layer feed is based on current United States prices received for corn and soybeans. The modeled feed uses 75 percent corn and 25 percent soybeans.

<sup>4</sup> The price of commercial prepared dairy feed is based on current United States prices received for corn, soybeans, and alfalfa hay. The modeled feed uses 51 percent corn, 41 percent alfalfa hay, and 8 percent soybeans.

<sup>5</sup> The price of commercial prepared turkey feed is based on current United States prices received for corn, soybeans, and wheat. The modeled feed uses 51 percent corn, 28 percent soybeans, and 21 percent wheat.

## Prices Received Used to Calculate Feed Price Ratios – United States: September 2012 with Comparisons

[Price data source for livestock and poultry commodities is United States Department of Agriculture's Agricultural Marketing Service]

Item	September 2011	August 2012	Preliminary September 2012
	(dollars)	(dollars)	(dollars)
Broilers, live ..... pound	0.440	0.500	0.490
Eggs, market ..... dozen	0.769	0.951	1.060
Hogs, all ..... cwt	67.10	66.90	56.50
Milk, all ..... cwt	21.10	18.10	19.10
Steers and heifers ..... cwt	117.00	120.00	124.00
Turkeys, live ..... pound	0.731	0.744	0.748
Corn ..... bushel	6.38	7.63	7.35
Hay, alfalfa ..... ton	198.00	203.00	205.00
Soybeans ..... bushel	12.20	16.20	16.30
Wheat, all ..... bushel	7.54	8.04	8.49

## Prices Paid for Feeder Livestock – United States: September 2012 with Comparisons

[Price data source is United States Department of Agriculture's Agricultural Marketing Service]

Item	September 2011	August 2012	Preliminary September 2012
	(dollars)	(dollars)	(dollars)
Feeder cattle and calves ..... cwt	127.40	137.90	143.80
Feeder pigs ..... cwt	99.00	46.00	40.00

## Reliability of Prices Paid Estimates

**Definition:** Prices paid by farmers represent the average costs of inputs purchased by farmers and ranchers to produce agricultural commodities. Conceptually, the average price when multiplied by quantity purchased should equal total producer expenditures for the item.

**Survey procedures:** The prices paid data are obtained from establishments that sell goods and services to farmers and ranchers. Annually, about 8,500 firms are randomly selected from lists by type of item sold with an average response rate in the range of 75-80 percent. Firms are asked to report the price for the specified item "most commonly bought by farmers" or that was the "volume seller". Approximately 135 items are surveyed each March to represent all production input items purchased. The survey reference period for most items is the five business days centered around the 15th of the month. Separate prices paid surveys are conducted for agricultural chemicals, fuels, feed, fertilizer, machinery, and seed.

**Summary and estimation procedures:** The annual March Prices Paid Survey is summarized as a nonprobability survey. Average prices reported are aggregated to the region and United States level using weights available from expenditure data and other administrative sources. Price recommendations are prepared by the State Field Offices and Headquarters for review by the Agricultural Statistics Board in Washington, D.C. Also, the change in price level for individual items surveyed are combined to the regional and United States levels, and are published as prices paid indexes referenced to a specific base period. Prices paid indexes for new autos and trucks, building materials, farm supplies, motor supplies, and marketing containers are updated based on price changes measured in selected Bureau of Labor Statistics (BLS) indexes.

**Revisions:** Any revisions are published in the monthly and in annual issues of Agricultural Prices. The basis for revision must be supported by additional data that directly affect the level of the estimate. More revisions are likely for March when separate prices paid surveys are conducted, in lieu of BLS indexes, by the USDA to measure price change.

**Reliability:** Current methods of summarization for the March data are not designed directly to calculate sampling errors. However, analytical measures approximate the United States relative sampling errors for major items around 10 percent. Any nonsampling errors are attributed to such things as the inability to obtain correct information, differences in interpreting questions or definitions, mistakes in coding or processing the data, etc. Efforts are made at each step in the survey process to minimize these nonsampling errors.

**Program change:** Effective January 1, 1995, the National Agricultural Statistics Service updated the weights and changed the construction of its prices paid and received by farmers indexes. A Federal Register Notice dated October 28, 1994 discussed these program modifications.

A 1990-1992 reference and base period replaced the 1977 reference and 1971-1973 base weight period. Five-year moving average weights replaced the current fixed 1971-1973 base period weights. The 1910-1914=100 price indexes, required by statute for computing parity prices, were linked forward based on the changes in the new 1990-1992=100 indexes. The new indexes were constructed by multiplying the ratios of the current prices to the base period prices by the moving average weights (adjusted for seasonal marketing patterns for the prices received indexes).

## Information Contacts

Direct general questions to Troy Joshua, Chief, Environmental, Economics and Demographics Branch at (202) 720-6146. Below are the commodity specialists to contact for additional information.

### Crop Prices Received

Lance Honig, Chief, Crops Branch .....	(202) 720-2127
Jacqueline Moore, Head, Field Crops Section.....	(202) 720-2127
Suzanne Avilla – Peanuts, Rice .....	(202) 720-7688
Jacqueline Moore – Oats, Rye, Wheat.....	(202) 720-2127
Steve Maliszewski – Cotton, Cotton Ginnings, Sorghum.....	(202) 720-5944
Anthony Prillaman – Corn, Proso Millet, Flaxseed.....	(202) 720-9526
Julie Schmidt – Crop Weather, Barley, Hay .....	(202) 720-7621
Travis Thorson – Soybeans, Sunflower, Other Oilseeds .....	(202) 720-7369
Jorge Garcia-Pratts, Head, Fruits, Vegetables and Special Crops Section.....	(202) 720-2127
Debbie Flippin – Fresh and Processing Vegetables, Onions, Strawberries .....	(202) 720-2157
Fred Granja – Apples, Apricots, Cherries, Plums, Prunes, Tobacco .....	(202) 720-4288
Erika White – Floriculture, Maple Syrup, Nursery, Tree Nuts .....	(202) 720-4215
Chris Hawthorn – Citrus, Coffee, Sugar Crops, Grapes, Tropical Fruits .....	(202) 720-5412
Daphne Schauber – Berries, Cranberries, Potatoes, Sweet Potatoes .....	(202) 720-4285
Dan Norris – Austrian Winter Peas, Dry Edible Peas, Lentils, Mints, Mushrooms, Peaches, Pears, Wrinkled Seed Peas, Dry Beans .....	(202) 720-3250

### Livestock Prices Received

Dan Kerestes, Chief, Livestock Branch.....	(202) 720-3570
Scott Hollis, Head, Livestock Section .....	(202) 720-3570
Travis Averill – Cattle.....	(202) 720-3040
Mike Miller – Milk, Milk Cows .....	(202) 720-3278
Doug Bounds – Hogs.....	(202) 720-3106
Bruce Boess, Head, Poultry and Specialty Commodities Section .....	(202) 720-3570
Cody Brokmeyer – Turkeys.....	(202) 690-3237
LaKeya Jones – Honey .....	(202) 720-0585
Kim Linonis – Eggs .....	(202) 690-8632
Miste Salmon – Broilers .....	(202) 720-3244

### Indexes, Prices Paid, and Parity Prices

Troy Joshua, Chief, Environmental, Economics and Demographics Branch .....	(202) 720-6146
Tony Dorn, Head, Economics Section.....	(202) 690-3223
Daryl Brinkman – Prices Received Indexes, Parity Prices .....	(202) 720-8844
Scott Shimmin – Grazing Fees .....	(202) 690-3231
Vincent Davis – Prices Paid Indexes, Prices Paid for Feed, Fertilizer, Agricultural Chemicals, Seeds, Farm Supplies and Repairs, Farm Machinery, Fuels, Feeder Livestock, Poultry Chicks, Feed Price Ratios, Autos & Trucks .....	(202) 690-3229

## Access to NASS Reports

For your convenience, you may access NASS reports and products the following ways:

- All reports are available electronically, at no cost, on the NASS web site: <http://www.nass.usda.gov>
- Both national and state specific reports are available via a free e-mail subscription. To set-up this free subscription, visit <http://www.nass.usda.gov> and in the "Follow NASS" box under "Receive reports by Email," click on "National" or "State" to select the reports you would like to receive.

For more information on NASS surveys and reports, call the NASS Agricultural Statistics Hotline at (800) 727-9540, 7:30 a.m. to 4:00 p.m. ET, or e-mail: [nass@nass.usda.gov](mailto:nass@nass.usda.gov).

The United States Department of Agriculture (USDA) prohibits discrimination in all its programs and activities on the basis of race, color, national origin, age, disability, and where applicable, sex, marital status, familial status, parental status, religion, sexual orientation, political beliefs, genetic information, reprisal, or because all or a part of an individual's income is derived from any public assistance program. (Not all prohibited bases apply to all programs.) Persons with disabilities who require alternative means for communication of program information (Braille, large print, audiotape, etc.) should contact USDA's TARGET Center at (202) 720-2600 (voice and TDD).

To file a complaint of discrimination, write to USDA, Assistant Secretary for Civil Rights, Office of the Assistant Secretary for Civil Rights, 1400 Independence Avenue, S.W., Stop 9410, Washington, DC 20250-9410, or call toll-free at (866) 632-9992 (English) or (800) 877-8339 (TDD) or (866) 377-8642 (English Federal-relay) or (800) 845-6136 (Spanish Federal-relay). USDA is an equal opportunity provider and employer.