



Agricultural Prices

ISSN: 1937-4216

Released March 27, 2013, by the National Agricultural Statistics Service (NASS), Agricultural Statistics Board, United States Department of Agriculture (USDA).

March Farm Prices Received Index Up 3 Points

The preliminary All Farm Products Index of Prices Received by Farmers in March, at 202 percent, based on 1990-1992=100, increased 3 points (1.5 percent) from February. The Crop Index is up 5 points (2.1 percent) and the Livestock Index increased 3 points (1.9 percent). Producers received higher prices for lettuce, broilers, corn, and eggs and lower prices for hogs, milk, wheat, and onions. In addition to prices, the overall index is also affected by the seasonal change based on a 3-year average mix of commodities producers sell. Increased monthly movement of strawberries, corn, broilers, and milk offset the decreased marketing of cattle, soybeans, cotton, and hay.

The preliminary All Farm Products Index is up 18 points (9.8 percent) from March 2012. The Food Commodities Index, at 185, increased 2 points (1.1 percent) from last month and is 13 points (7.6 percent) higher than March 2012.

Prices Paid Index Unchanged

The March Index of Prices Paid for Commodities and Services, Interest, Taxes, and Farm Wage Rates (PPITW) is 221 percent of the 1990-1992 average. The index is unchanged from February but 8 points (3.8 percent) above March 2012. Higher prices in March for nitrogen, feed grains, mixed fertilizer, and supplements offset lower prices for feeder cattle, feeder pigs, potash & phosphate, and diesel.

Prices Received, Prices Paid, and Ratio of Prices Received to Prices Paid Indexes 1990-1992 Base – United States: March 2013 with Comparisons

Index	March	February	March
	2012	2013	2013
Prices received by farmers	184	199	202
Prices paid by farmers	213	221	221
Ratio of prices received to prices paid	86	90	91

Contents

Prices Received by Farmers	4
Prices Received Indexes – United States: March 2013 with Comparisons	5
Prices Received and Prices Paid Indexes by Month for Selected Groups – United States: 2012 and 2013, 1990-1992 Base	5
Received Indexes by Month, Livestock Products, All Products, and All Crops – United States: 1990-1992=100 Chart.....	6
Received Indexes by Month, Food Grains, Feed Grains & Hay, and Oilseeds – United States: 1990-1992=100 Chart.....	6
Received Indexes by Month, Fruit & Nut and Commercial Vegetables – United States: 1990-1992=100 Chart.....	7
Received Indexes by Month, Meat Animal, Dairy Products, and Poultry & Eggs – United States: 1990-1992=100 Chart.....	7
Prices Received for Field Crops and Fruits – United States: March 2013 with Comparisons.....	8
Prices Received for Vegetables and Livestock – United States: March 2013 with Comparisons	9
Prices Received for Corn by Month – United States Chart.....	10
Prices Received for Wheat by Month – United States Chart	10
Prices Received for Upland Cotton by Month – United States Chart	11
Prices Received for Soybeans by Month – United States Chart	11
Prices Received for Cattle by Month – United States Chart	12
Prices Received for Milk by Month – United States Chart.....	12
Prices Received for Hogs by Month – United States Chart	13
Prices Received for Poultry by Month – United States Chart.....	13
Prices Received for All Wheat, Corn, and Soybeans by Month – United States: 2013 with Comparisons.....	14
Prices Received for Beef Cattle and All Hogs by Month – United States: 2013 with Comparisons	14
Prices Received for All Wheat – States and United States: March 2013 with Comparisons.....	15
Prices Received for Winter Wheat – States and United States: March 2013 with Comparisons.....	15
Prices Received for Durum Wheat – States and United States: March 2013 with Comparisons.....	16
Prices Received for Spring Wheat – States and United States: March 2013 with Comparisons	16
Prices Received for All Barley – States and United States: March 2013 with Comparisons.....	17
Prices Received for Malting Barley – States: March 2013 with Comparisons	17
Prices Received for Feed Barley – States: March 2013 with Comparisons	17
Prices Received for Corn – States and United States: March 2013 with Comparisons	18
Prices Received for Soybeans – States and United States: March 2013 with Comparisons	18
Prices Received for Oats – States and United States: March 2013 with Comparisons	19
Prices Received for Sorghum Grain – States and United States: March 2013 with Comparisons.....	19
Prices Received for Dry Beans – States and United States: March 2013 with Comparisons	20
Prices Received for Peanuts (in shell) – States and United States: March 2013 with Comparisons.....	20
Prices Received for Sunflower – States and United States: March 2013 with Comparisons.....	21
Prices Received for Canola – States and United States: March 2013 with Comparisons.....	21
Prices Received for Flaxseed – States and United States: March 2013 with Comparisons	21
Prices Received for Upland Cotton and Cottonseed – States and United States: March 2013 with Comparisons.....	22
Prices Received and Farm Marketings for Upland Cotton and Rice – United States: March 2013 with Comparisons	22
Prices Received for Hay by Type – States and United States: March 2013 with Comparisons	23
Prices Received for Apples – States and United States: March 2013 with Comparisons	23
Prices Received for Citrus Fruits by Utilization – States and United States: March 2012	24
Prices Received for Citrus Fruits by Utilization – States and United States: February 2013	25
Prices Received for Citrus Fruits by Utilization – States and United States: March 2013	26
Prices Received for Potatoes – States and United States: March 2013 with Comparisons.....	27
Prices Received for All Milk – States and United States: March 2013 with Comparisons.....	28
Prices Received for Milk Cows – States and United States: January 2013 with Comparisons.....	29
Commodity Parity Prices and Price as Percent of Parity Price – United States: March 2013 with Comparisons	30

Commodity Parity Prices – United States: March 2013 with Comparisons	31
Reliability of Prices Received Estimates	33
Prices Paid by Farmers.....	34
Prices Paid Indexes and Related Parity Ratios – United States: March 2013 with Comparisons.....	35
Prices Paid Indexes and Annual Weights for Input Components and Sub-components – United States: March 2013 with Comparisons.....	36
Paid Indexes by Month, All Items and Production Items – United States: 1990-1992=100 Chart	37
Paid Indexes, Annual Averages, Production Items, Interest, Taxes, and Wages – United States: 1990-1992=100 Chart	37
Paid Indexes by Farm Type, All Items – United States: 1990-1991=100 Chart.....	38
Paid Indexes by Origin, All Production Items – United States: 1990-1992=100 Chart	38
Paid Indexes by Non-Farm Sector, Supplies & Repairs, Fertilizer, Machinery, and Fuel – United States: 1990-1992=100 Chart	39
Paid Indexes by Month, Feed and Replacement Livestock – United States: 1990-1992=100 Chart.....	39
Feed Price Ratios – United States: March 2013 with Comparisons	40
Prices Received Used to Calculate Feed Price Ratios – United States: March 2013 with Comparisons.....	40
Prices Paid for Feeder Livestock – United States: March 2013 with Comparisons.....	40
Reliability of Prices Paid Estimates	41
Information Contacts	42

Prices Received by Farmers

The March All Farm Products Index is 202 percent of its 1990-1992 base, up 1.5 percent from the February index and 9.8 percent above the March 2012 index.

All crops: The March index, at 240, increased 2.1 percent from February and is 14 percent above March 2012. Index increases for feed grains & hay and commercial vegetables more than offset the index decreases for oilseeds and food grains.

Food grains: The March index, at 246, is 2.4 percent below the previous month but 7.4 percent above a year ago. The March price for all wheat, at \$7.66 per bushel, is down 31 cents from February but 46 cents higher than March 2012.

Feed grains & hay: The March index, at 307, is up 2.0 percent from last month and 13 percent above a year ago. The corn price, at \$7.18 per bushel, is up 14 cents from last month and 83 cents above March 2012. The all hay price, at \$196 per ton, increased \$2.00 from February and is \$13.00 higher than last March. Sorghum grain, at \$12.30 per cwt, is 20 cents above February and up \$1.40 from March last year.

Cotton, Upland: The March index, at 123, is down 0.8 percent from February and 17 percent below last year. The March price, at 74.6 cents per pound, is down 0.7 cents from the previous month and 15.4 cents below last March.

Oilseeds: The March index, at 252, is down 1.2 percent from February but 8.2 percent higher than March 2012. The soybean price, at \$14.50 per bushel, decreased 10 cents from February but is \$1.50 above March 2012.

Fruits & nuts: The March index, at 183, is up 1.1 percent from February and is 11 percent higher than a year ago. Price increases for strawberries and oranges more than offset the price decreases for apples and grapefruit.

Commercial vegetables: The March index, at 241, is up 14 percent from last month and is 96 percent above March 2012. Price increases during March for lettuce and tomatoes more than offset the price declines for celery and onions.

Potatoes & dry beans: The March index, at 144, is down 3.4 percent from last month and 21 percent below March 2012. The all potato price, at \$8.14 per cwt, is up 2 cents from February but down \$1.84 from last March. The all dry bean price, at \$32.00 per cwt, is down \$6.50 from the previous month and \$15.10 below March 2012.

Livestock and products: The March index, at 165, is 1.9 percent above last month and is 3.1 percent higher than March 2012. Compared with a year ago, prices are higher for broilers, milk, and eggs. Prices for hogs, cattle, calves, and turkeys are down from last year.

Meat animals: The March index, at 159, is down 1.2 percent from last month and 4.2 percent lower than a year earlier. The March hog price, at \$59.80 per cwt, is down \$4.70 from February and \$5.40 lower than a year ago. The March beef cattle price of \$125 per cwt is up \$2.00 from last month but \$3.00 lower than March 2012.

Dairy products: The March index, at 146, is down 2.0 percent from a month ago but 11 percent higher than March last year. The March all milk price of \$19.10 per cwt declined 40 cents from last month but is up \$1.90 from March 2012.

Poultry & eggs: The March index, at 197, is up 9.4 percent from February and 13 percent above a year earlier. The March market egg price, at 95.2 cents per dozen, increased 17.6 cents from February and is 16.1 cents higher than March 2012. The March broiler price, at 66.0 cents per pound, is up 5.0 cents from February and 9.0 cents above a year ago. The March turkey price, at 64.1 cents per pound, increased 1.4 cents from the previous month but is down 4.9 cents from a year earlier.

Prices Received Indexes – United States: March 2013 with Comparisons

[Revised historical price indexes for months not shown are available at www.nass.usda.gov]

Index	1910-1914 Base				1990-1992 Base		
	1990-1992 Average	March 2012	February 2013	March 2013	March 2012	February 2013	March 2013
	(percent)	(percent)	(percent)	(percent)	(percent)	(percent)	(percent)
All products	639	1168	1262	1280	184	199	202
All crops	500	1044	1163	1187	211	235	240
Food grains	325	727	798	780	229	252	246
Feed grains & hay	363	968	1074	1096	271	301	307
Cotton, Upland	517	762	637	631	149	124	123
Tobacco	1263	1559	1760	1760	103	116	116
Oilseeds	554	1279	1396	1381	233	255	252
Fruits & nuts	716	1153	1261	1280	165	181	183
Commercial vegetables	698	879	1516	1721	123	212	241
Potatoes & dry beans	540	925	756	731	182	149	144
Other crops	493	651	655	655	132	133	133
Livestock and products	768	1223	1245	1264	160	162	165
Meat animals	1021	1695	1637	1619	166	161	159
Dairy products	799	1058	1200	1175	132	149	146
Poultry & eggs	282	490	507	554	174	180	197
Food commodities	(NA)	(NA)	(NA)	(NA)	172	183	185

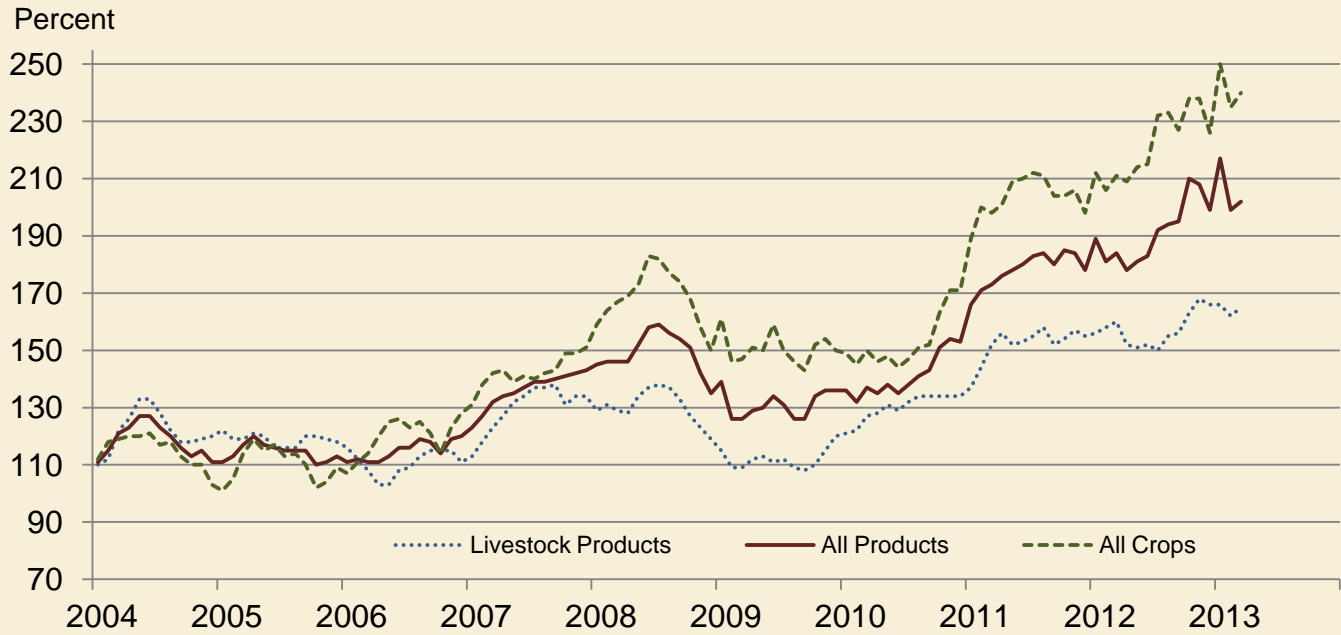
(NA) Not available.

Prices Received and Prices Paid Indexes by Month for Selected Groups – United States: 2012 and 2013, 1990-1992 Base

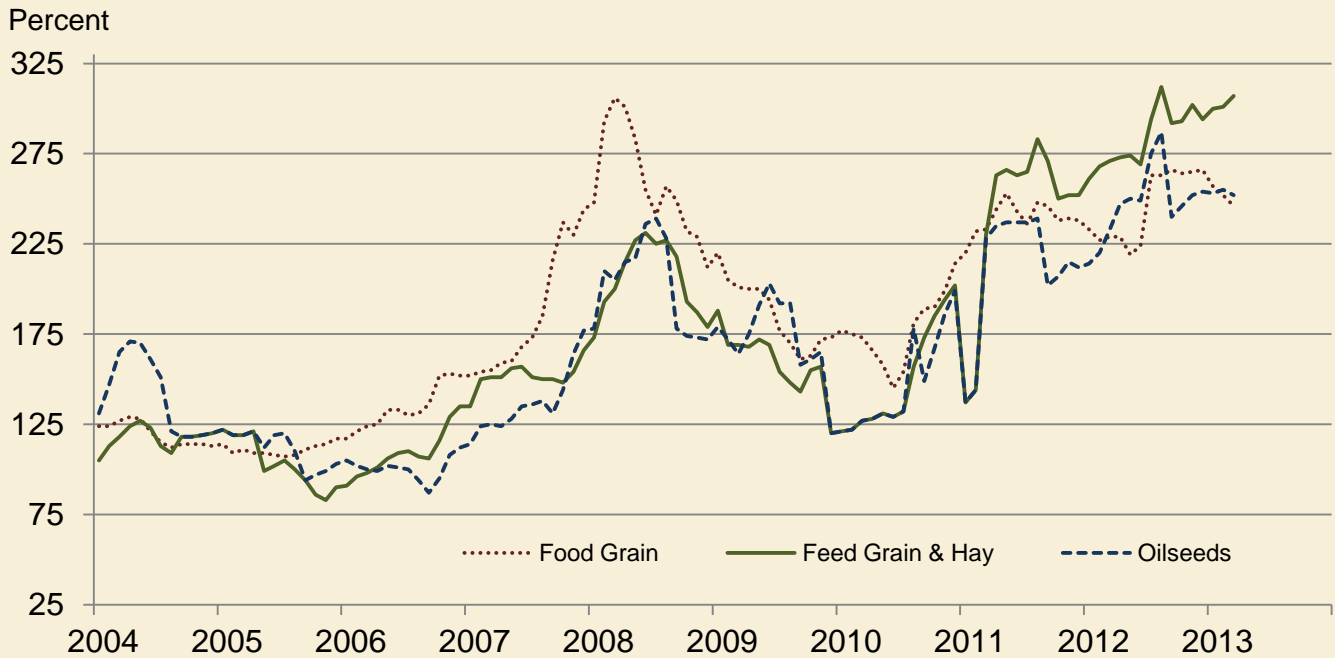
[Revised historical price indexes for months not shown are available at www.nass.usda.gov. Blank data cells indicate estimation period has not yet begun]

Month	Index of prices received						Index of prices paid			
	All farm products		All crops		Livestock and products		All items		Production items	
	2012	2013	2012	2013	2012	2013	2012	2013	2012	2013
	(percent)	(percent)	(percent)	(percent)	(percent)	(percent)	(percent)	(percent)	(percent)	(percent)
January	189	217	212	250	156	166	210	220	222	234
February	181	199	206	235	158	162	211	221	223	235
March	184	202	211	240	160	165	213	221	227	235
April	178		209		152		215		228	
May	181		214		151		215		229	
June	183		215		152		214		228	
July	192		232		150		214		227	
August	194		233		155		217		232	
September	195		227		156		218		233	
October	210		238		163		218		233	
November	208		238		168		217		232	
December	199		226		166		218		232	

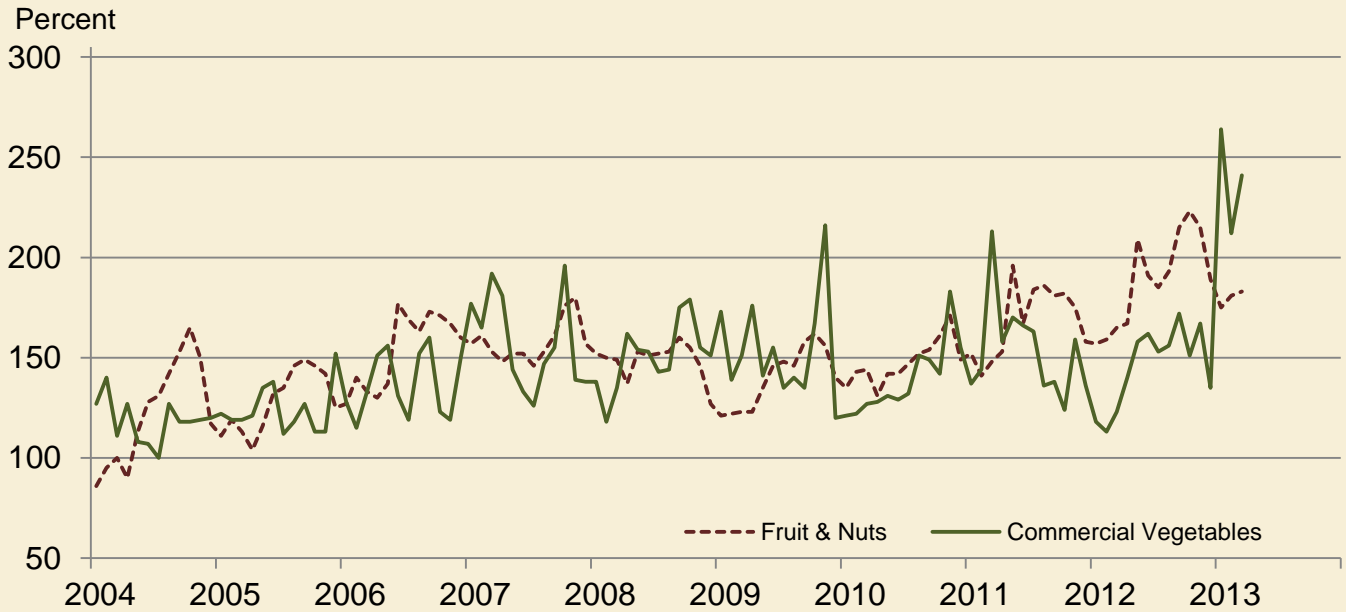
**Received Indexes by Month,
Livestock Products, All Products, and All Crops –
United States: 1990-1992=100**



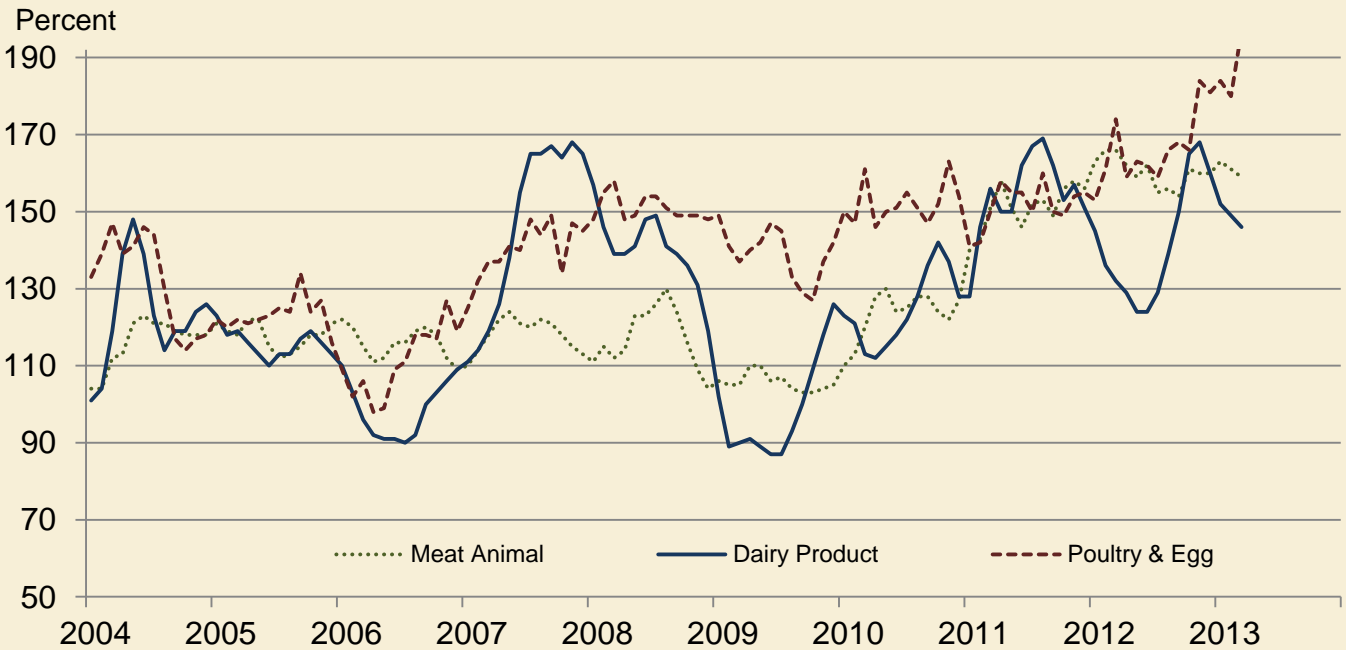
**Received Indexes by Month,
Food Grains, Feed Grains & Hay, and Oilseeds –
United States: 1990-1992=100**



**Received Indexes by Month,
Fruit & Nuts and Commercial Vegetables –
United States: 1990-1992=100**



**Received Indexes by Month,
Meat Animal, Dairy Product, and Poultry & Egg –
United States: 1990-1992=100**



Prices Received for Field Crops and Fruits – United States: March 2013 with Comparisons

Commodity	Average 1990-1992	March 2012	February 2013	Preliminary March 2013
Field crops				
Austrian winter peas	dollars/cwt (NA)	(S)	(D)	(S)
Barley, all	dollars/bushel 2.12	5.34	6.47	6.29
Feed	dollars/bushel 1.90	4.76	5.99	5.41
Malting	dollars/bushel 2.43	5.43	6.55	6.42
Beans, dry edible	dollars/cwt 19.10	47.10	38.50	32.00
Canola	dollars/cwt (NA)	27.10	27.80	26.80
Chickpeas, all	dollars/cwt (NA)	43.10	35.40	35.30
Large	dollars/cwt (NA)	45.20	36.30	38.90
Small	dollars/cwt (NA)	36.70	31.20	25.80
Corn	dollars/bushel 2.30	6.35	7.04	7.18
Cotton, Upland	dollars/pound 0.606	0.900	0.753	0.746
Cottonseed	dollars/ton 96.00	(NA)	217.00	(NA)
Flaxseed	dollars/bushel 4.27	13.30	14.30	13.90
Hay, all, baled	dollars/ton 76.30	183.00	194.00	196.00
Alfalfa	dollars/ton 77.20	200.00	218.00	219.00
Other	dollars/ton 60.00	147.00	148.00	149.00
Lentils	dollars/cwt (NA)	22.80	22.30	21.50
Oats	dollars/bushel 1.22	3.77	4.05	4.09
Peanuts, in-shell	dollars/pound 0.304	0.348	0.282	0.282
Peas, dry edible	dollars/cwt (NA)	15.70	16.40	17.40
Potatoes	dollars/cwt 5.82	9.98	8.12	8.14
Rice, all	dollars/cwt 7.07	14.10	14.80	15.30
Long	dollars/cwt (NA)	13.00	14.60	14.70
Medium and short	dollars/cwt (NA)	16.50	15.80	16.80
Sorghum grain	dollars/cwt 3.75	10.90	12.10	12.30
Soybeans	dollars/bushel 5.61	13.00	14.60	14.50
Sunflowers, all	dollars/cwt 9.50	28.80	25.90	24.70
Wheat, all	dollars/bushel 2.96	7.20	7.97	7.66
Winter	dollars/bushel 2.93	6.70	7.87	7.47
Durum	dollars/bushel 2.86	8.39	8.19	8.05
Other spring	dollars/bushel 3.11	8.04	8.10	7.86
Hard red winter ¹	dollars/bushel (NA)	6.72	7.76	(NA)
Soft red winter ¹	dollars/bushel (NA)	6.70	7.78	(NA)
Hard red spring ¹	dollars/bushel (NA)	8.13	8.10	(NA)
White ¹	dollars/bushel 3.24	6.63	8.03	(NA)
Fruits				
Citrus, equivalent on-tree				
Grapefruit	dollars/box 5.77	6.91	5.97	4.95
Lemons	dollars/box 10.10	12.51	7.22	7.26
Oranges	dollars/box 5.79	8.52	7.07	7.55
Tangelos	dollars/box 5.82	(S)	(S)	(S)
Tangerines and mandarins	dollars/box 15.11	24.11	19.96	24.92
Noncitrus, fresh				
Apples ²	dollars/pound 0.212	0.332	0.435	0.404
Grapes ²	dollars/ton 506.00	(S)	(S)	(S)
Peaches ²	dollars/ton 432.00	(S)	(S)	(S)
Pears ²	dollars/ton 370.00	301.00	778.00	753.00
Strawberries	dollars/cwt 56.00	103.00	123.00	131.00

(D) Withheld to avoid disclosing data for individual operations.

(NA) Not available.

(S) Insufficient number of reports to establish an estimate.

¹ Preliminary estimates not set for this item.

² Equivalent packinghouse-door returns for California, Michigan, New York (apples only), and Washington (apples, peaches, and pears). Prices as sold for other states.

Prices Received for Vegetables and Livestock – United States: March 2013 with Comparisons

[Price data source for livestock and poultry commodities is United States Department of Agriculture's Agricultural Marketing Service]

Commodity	Average 1990-1992	March 2012	February 2013	Preliminary March 2013
Vegetables, fresh ¹				
Asparagusdollars/cwt	79.80	108.00	(S)	(S)
Beans, snap ²dollars/cwt	(NA)	57.60	60.30	105.00
Broccolidollars/cwt	22.50	33.70	38.10	33.20
Cantaloupes ²dollars/cwt	(NA)	(S)	(S)	(S)
Carrotsdollars/cwt	13.20	26.80	28.50	30.60
Cauliflowerdollars/cwt	26.80	39.00	43.30	42.40
Celerydollars/cwt	11.60	12.50	47.00	31.90
Corn, sweetdollars/cwt	15.70	33.70	36.70	32.50
Cucumbers ²dollars/cwt	(NA)	(S)	(S)	(S)
Lettucedollars/cwt	11.90	12.00	31.70	51.30
Onions ³dollars/cwt	12.80	7.07	28.80	21.10
Tomatoesdollars/cwt	32.30	36.60	37.70	58.00
Livestock				
Calvesdollars/cwt	94.30	184.00	167.00	163.00
Cattle, all beefdollars/cwt	72.90	128.00	123.00	125.00
Cows ⁴dollars/cwt	49.60	84.20	80.80	82.90
Steers and heifersdollars/cwt	77.10	132.00	127.00	128.00
Milk cows ⁵dollars/head	1130.00	(NA)	(NA)	(NA)
Hogs, alldollars/cwt	47.70	65.20	64.50	59.80
Barrows and giltsdollars/cwt	48.40	65.50	65.10	59.80
Sowsdollars/cwt	39.50	59.60	49.20	59.90
Dairy and poultry				
Milk, all ⁶dollars/cwt	13.06	17.20	19.50	19.10
Fat test percent	3.66	3.70	3.82	3.77
Broilers, live ⁷dollars/pound	0.317	0.570	0.610	0.660
Eggs, all ⁸dollars/dozen	0.643	0.995	0.993	1.150
Market ^{8 9}dollars/dozen	0.546	0.791	0.776	0.952
Turkeys, live ^{8 10}dollars/pound	0.380	0.690	0.627	0.641
Adjusted for seasonal variation				
Eggs, alldollars/dozen	0.545	0.913	0.987	1.050
Seasonal factor percent	100	109	101	109
Milk, all ⁶dollars/cwt	9.71	18.00	19.80	19.90
Seasonal factor percent	100	95	98	96

(NA) Not available.

(S) Insufficient number of reports to establish an estimate.

¹ Beginning January 2006, point of first sale. FOB shipping point for prior years.

² Monthly estimates began January 1995.

³ Includes some processing.

⁴ Beef cows and cull dairy cows sold for slaughter.

⁵ Animals sold for dairy herd replacement only. Prices available for January, April, July, and October.

⁶ Before deductions for hauling. Includes quality, quantity, and other premiums. Excludes hauling subsidies.

⁷ Live weight equivalent price.

⁸ Mid-month price.

⁹ Also referred to as table eggs.

¹⁰ Live weight equivalent price is used when actual live weight price is not available. Beginning January 2011, price reflects FOB shipping point basis. Prior year price reflects delivered basis.

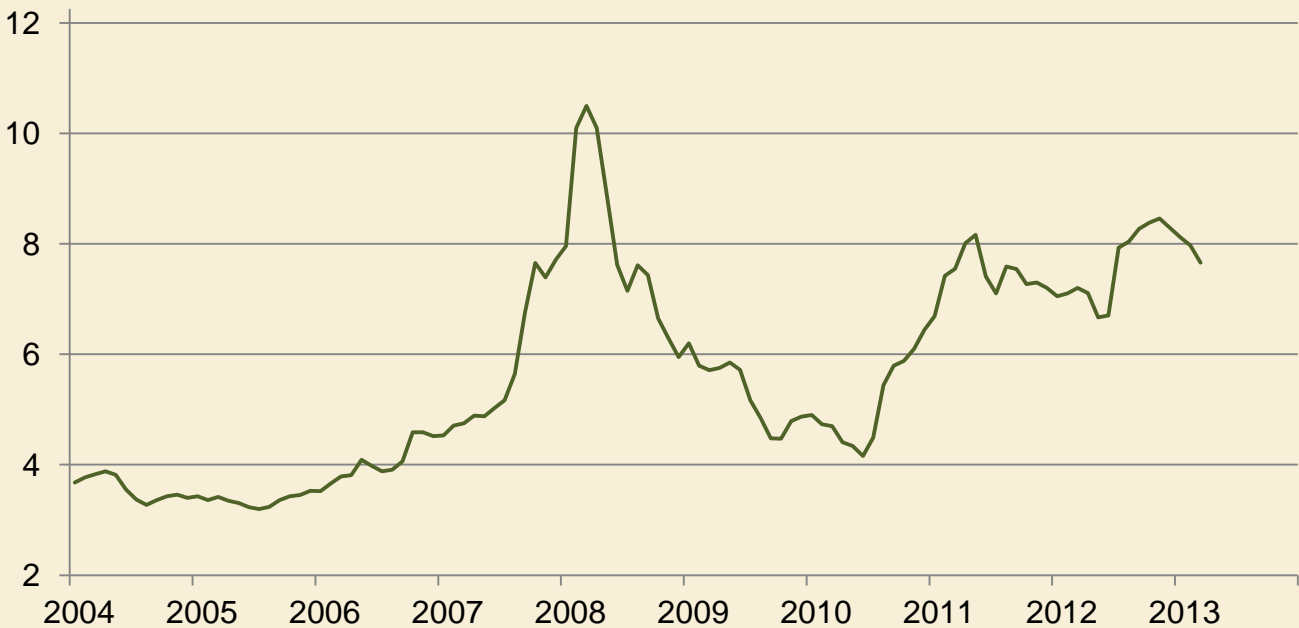
Prices Received for Corn by Month – United States

Dollars per bushel



Prices Received for Wheat by Month – United States

Dollars per bushel



Prices Received for Upland Cotton by Month – United States

Dollars per pound



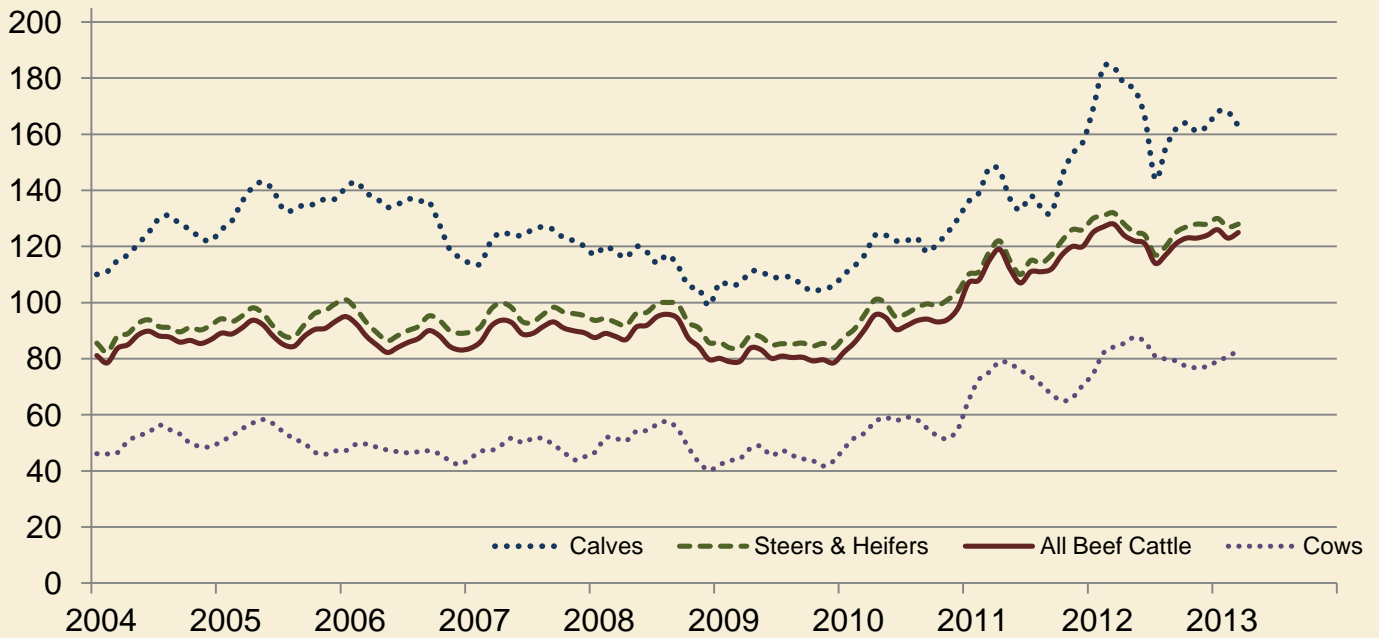
Prices Received for Soybeans by Month – United States

Dollars per bushel



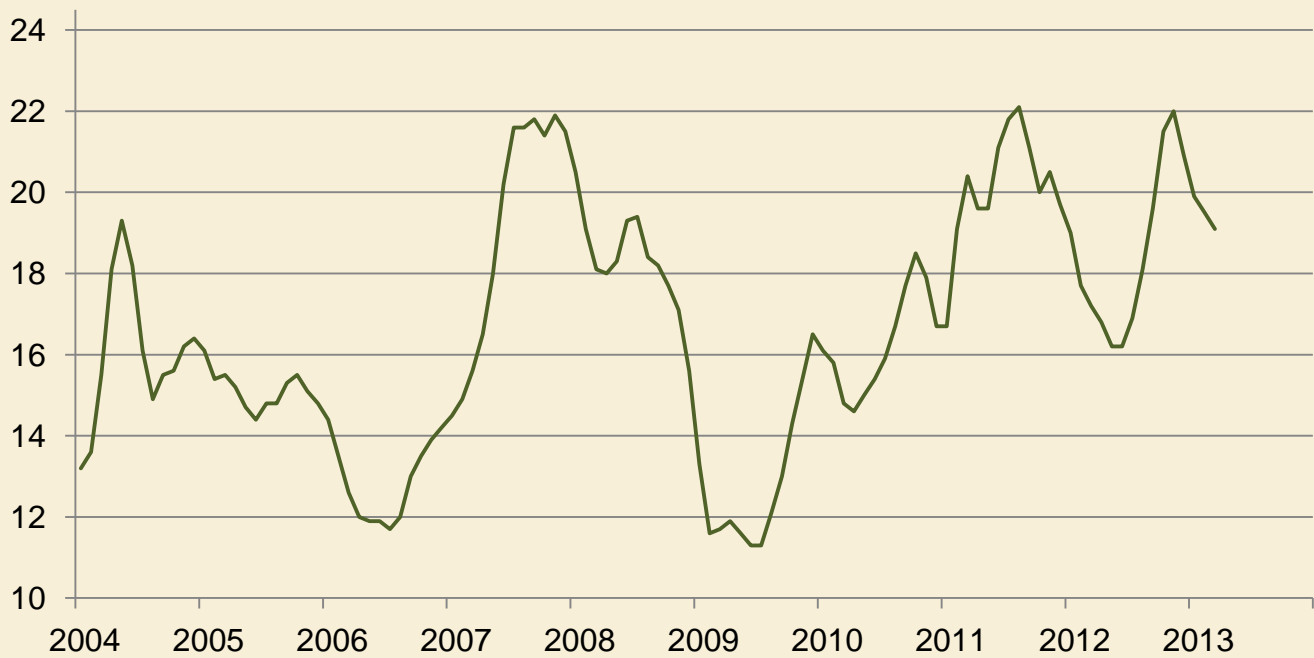
Prices Received for Cattle by Month – United States

Dollars per cwt



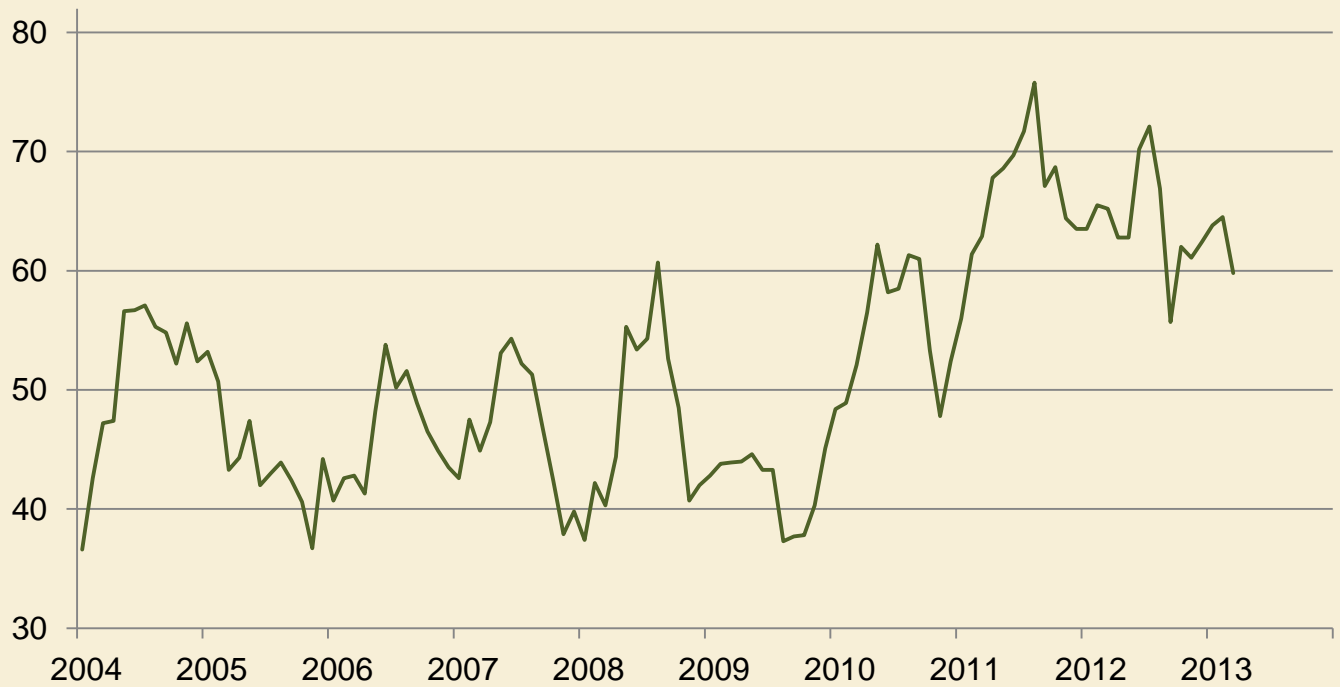
Prices Received for Milk by Month – United States

Dollars per cwt



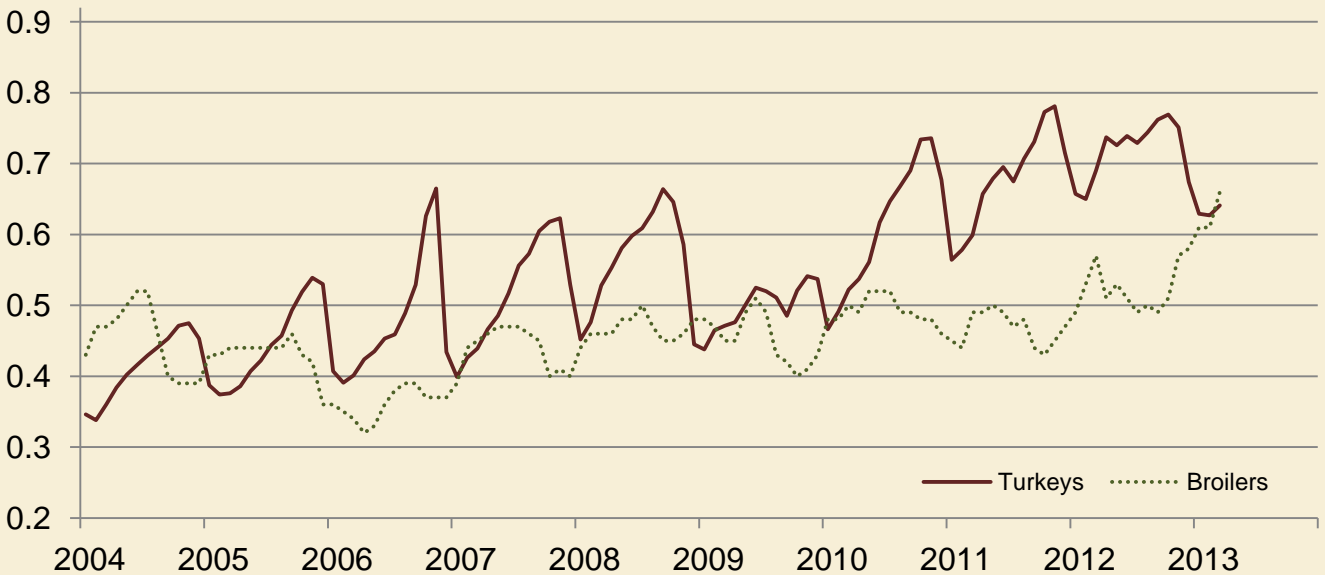
Prices Received for Hogs by Month – United States

Dollars per cwt



Prices Received for Poultry by Month – United States

Dollars per pound



Prices Received for All Wheat, Corn, and Soybeans by Month – United States: 2013 with Comparisons

[Current month prices are mid-month; prices for previous months and years are for the entire month. Blank data cells indicate estimation period has not yet begun]

Month	All wheat			Corn			Soybeans		
	2011	2012	Preliminary 2013	2011	2012	Preliminary 2013	2011	2012	Preliminary 2013
	(dollars per bushel)	(dollars per bushel)	(dollars per bushel)	(dollars per bushel)	(dollars per bushel)	(dollars per bushel)	(dollars per bushel)	(dollars per bushel)	(dollars per bushel)
January	6.69	7.05	8.12	4.94	6.07	6.96	11.60	11.90	14.30
February	7.42	7.10	7.97	5.65	6.28	7.04	12.70	12.20	14.60
March	7.55	7.20	7.66	5.53	6.35	7.18	12.70	13.00	14.50
April	8.01	7.11		6.36	6.34		13.10	13.80	
May	8.16	6.67		6.32	6.34		13.20	14.00	
June	7.41	6.70		6.38	6.37		13.20	13.90	
July	7.10	7.93		6.33	7.14		13.20	15.40	
August	7.59	8.04		6.88	7.63		13.40	16.20	
September	7.54	8.27		6.38	6.89		12.20	14.30	
October	7.27	8.38		5.73	6.77		11.80	14.20	
November	7.30	8.46		5.83	7.02		11.70	14.30	
December	7.20	8.29		5.86	6.87		11.50	14.30	

Prices Received for Beef Cattle and All Hogs by Month – United States: 2013 with Comparisons

[Current month prices are mid-month; prices for previous months and years are for the entire month. Blank data cells indicate estimation period has not yet begun]

Month	Beef cattle ¹			All hogs ²		
	2011	2012	Preliminary 2013	2011	2012	Preliminary 2013
	(dollars per cwt)	(dollars per cwt)	(dollars per cwt)	(dollars per cwt)	(dollars per cwt)	(dollars per cwt)
January	107.00	125.00	126.00	56.00	63.50	63.80
February	108.00	127.00	123.00	61.40	65.50	64.50
March	115.00	128.00	125.00	62.90	65.20	59.80
April	119.00	124.00		67.80	62.80	
May	112.00	122.00		68.60	62.80	
June	107.00	121.00		69.70	70.20	
July	111.00	114.00		71.70	72.10	
August	111.00	117.00		75.80	66.90	
September	112.00	121.00		67.10	55.70	
October	117.00	123.00		68.70	62.00	
November	120.00	123.00		64.40	61.10	
December	120.00	124.00		63.50	62.40	

¹ Cows and steers & heifers.

² Barrows & gilts and sows.

Prices Received for All Wheat – States and United States: March 2013 with Comparisons

State	March 2012	February 2013	Preliminary March 2013
	(dollars per bushel)	(dollars per bushel)	(dollars per bushel)
Arizona	(S)	(D)	(D)
Arkansas	(D)	(D)	(S)
California	(D)	(S)	(S)
Colorado	6.40	7.72	7.04
Idaho	7.24	8.19	8.50
Illinois	6.57	8.05	7.30
Indiana	7.06	7.80	7.07
Kansas	6.77	7.58	7.10
Michigan	6.62	7.51	7.00
Minnesota	8.07	7.94	7.70
Missouri	6.35	7.13	7.00
Montana	7.23	8.26	7.90
Nebraska	6.33	7.64	7.20
North Carolina	6.32	7.97	7.80
North Dakota	8.02	8.00	7.73
Ohio	6.81	7.67	7.10
Oklahoma	6.79	7.46	7.22
Oregon	6.82	8.19	8.65
South Dakota	7.24	8.05	7.50
Texas	7.68	7.22	7.10
Washington	6.76	8.04	8.32
United States	7.20	7.97	7.66

(D) Withheld to avoid disclosing data for individual operations.

(S) Insufficient number of reports to establish an estimate.

Prices Received for Winter Wheat – States and United States: March 2013 with Comparisons

State	March 2012	February 2013	Preliminary March 2013
	(dollars per bushel)	(dollars per bushel)	(dollars per bushel)
Arkansas	(D)	(D)	(D)
California	(D)	(S)	(S)
Colorado	6.40	7.72	7.04
Idaho	6.89	8.12	8.45
Illinois	6.57	8.05	7.30
Indiana	7.06	7.80	7.07
Kansas	6.77	7.58	7.10
Michigan	6.62	7.51	7.00
Minnesota	(D)	(S)	(S)
Missouri	6.35	7.13	7.00
Montana	6.43	8.22	7.68
Nebraska	6.33	7.64	7.20
North Carolina	6.32	7.97	7.80
North Dakota	6.50	7.56	7.10
Ohio	6.81	7.67	7.10
Oklahoma	6.79	7.46	7.22
Oregon	6.76	8.14	8.62
South Dakota	6.56	7.92	7.30
Texas	7.68	7.22	(D)
Washington	6.56	8.00	8.26
United States	6.70	7.87	7.47

(D) Withheld to avoid disclosing data for individual operations.

(S) Insufficient number of reports to establish an estimate.

Prices Received for Durum Wheat – States and United States: March 2013 with Comparisons

State	March 2012	February 2013	Preliminary March 2013
	(dollars per bushel)	(dollars per bushel)	(dollars per bushel)
Arizona	(S)	(D)	(D)
California	(S)	(S)	(S)
Idaho	(D)	(S)	(S)
Montana	9.04	8.10	(D)
North Dakota	8.19	8.21	8.10
United States	8.39	8.19	8.05

(D) Withheld to avoid disclosing data for individual operations.

(S) Insufficient number of reports to establish an estimate.

Prices Received for Spring Wheat – States and United States: March 2013 with Comparisons

State	March 2012	February 2013	Preliminary March 2013
	(dollars per bushel)	(dollars per bushel)	(dollars per bushel)
Colorado	6.18	(S)	(S)
Idaho	7.85	8.34	8.58
Minnesota	8.07	7.94	7.70
Montana	8.05	8.33	8.13
North Dakota	8.12	7.98	7.70
Oregon	7.22	(D)	(D)
South Dakota	8.11	8.11	7.60
Washington	7.68	8.24	8.52
United States	8.04	8.10	7.86

(D) Withheld to avoid disclosing data for individual operations.

(S) Insufficient number of reports to establish an estimate.

Prices Received for All Barley – States and United States: March 2013 with Comparisons

State	March 2012	February 2013	Preliminary March 2013
	(dollars per bushel)	(dollars per bushel)	(dollars per bushel)
California	(S)	(D)	(S)
Colorado	5.28	(D)	(S)
Idaho	5.27	6.56	6.59
Minnesota	(D)	(D)	(D)
Montana	5.51	6.49	6.32
North Dakota	5.42	6.31	6.24
Oregon	4.09	(D)	(D)
Utah	(D)	(D)	5.50
Washington	4.45	5.57	(D)
Wyoming	(D)	(D)	(D)
United States	5.34	6.47	6.29

(D) Withheld to avoid disclosing data for individual operations.

(S) Insufficient number of reports to establish an estimate.

Prices Received for Malting Barley – States: March 2013 with Comparisons

State	March 2012	February 2013	Preliminary March 2013
	(dollars per bushel)	(dollars per bushel)	(dollars per bushel)
Idaho	5.33	6.57	(D)
Minnesota	(D)	(S)	(S)
Montana	5.62	6.58	6.40
North Dakota	5.48	6.42	6.35
Wyoming	(D)	(D)	(D)

(D) Withheld to avoid disclosing data for individual operations.

(S) Insufficient number of reports to establish an estimate.

Prices Received for Feed Barley – States: March 2013 with Comparisons

State	March 2012	February 2013	Preliminary March 2013
	(dollars per bushel)	(dollars per bushel)	(dollars per bushel)
Idaho	4.60	6.46	(D)
Minnesota	(D)	(D)	(D)
Montana	4.65	5.28	(D)
North Dakota	4.92	5.42	(D)
Wyoming	(S)	(D)	(S)

(D) Withheld to avoid disclosing data for individual operations.

(S) Insufficient number of reports to establish an estimate.

Prices Received for Corn – States and United States: March 2013 with Comparisons

State	March 2012	February 2013	Preliminary March 2013
	(dollars per bushel)	(dollars per bushel)	(dollars per bushel)
Colorado	6.37	7.26	7.38
Illinois	6.48	7.04	7.30
Indiana	6.59	7.38	7.49
Iowa	6.23	7.00	7.20
Kansas	6.42	7.19	7.30
Kentucky	6.70	7.18	7.35
Michigan	6.44	6.92	7.00
Minnesota	6.19	6.88	6.95
Missouri	6.50	7.52	7.50
Nebraska	6.25	6.92	7.10
North Carolina	7.05	7.65	7.70
North Dakota	6.06	6.62	6.70
Ohio	6.51	7.18	7.29
Pennsylvania	7.03	7.36	7.41
South Dakota	6.17	6.88	7.00
Tennessee	6.97	7.80	7.90
Texas	7.08	7.17	7.23
Wisconsin	6.25	7.06	7.06
United States	6.35	7.04	7.18

Prices Received for Soybeans – States and United States: March 2013 with Comparisons

State	March 2012	February 2013	Preliminary March 2013
	(dollars per bushel)	(dollars per bushel)	(dollars per bushel)
Arkansas	13.20	14.90	14.80
Illinois	13.10	14.70	14.60
Indiana	13.10	14.80	14.60
Iowa	12.80	14.60	14.50
Kansas	12.90	14.50	14.30
Kentucky	13.10	14.60	14.60
Louisiana	12.90	14.70	15.00
Michigan	12.90	13.60	14.10
Minnesota	12.80	14.40	14.50
Mississippi	13.10	15.90	14.70
Missouri	13.10	14.80	14.80
Nebraska	12.70	14.40	14.40
North Carolina	13.30	14.20	14.20
North Dakota	12.60	14.20	14.00
Ohio	13.50	14.80	14.70
South Dakota	12.80	14.40	14.20
Tennessee	13.40	15.10	15.00
Wisconsin	12.90	14.40	14.50
United States	13.00	14.60	14.50

Prices Received for Oats – States and United States: March 2013 with Comparisons

State	March 2012	February 2013	Preliminary March 2013
	(dollars per bushel)	(dollars per bushel)	(dollars per bushel)
Illinois	(D)	(D)	(S)
Iowa	3.63	4.03	4.20
Michigan	3.77	(D)	(D)
Minnesota	3.53	4.00	3.80
Montana	2.97	(S)	(S)
Nebraska	3.95	(D)	(D)
New York	(D)	(D)	(D)
North Dakota	3.09	3.35	(S)
Oregon	(S)	(S)	(S)
Pennsylvania	4.44	(D)	4.33
South Dakota	3.59	4.37	4.26
Texas	(S)	(S)	(S)
Wisconsin	3.67	4.34	4.20
United States	3.77	4.05	4.09

(D) Withheld to avoid disclosing data for individual operations.

(S) Insufficient number of reports to establish an estimate.

Prices Received for Sorghum Grain – States and United States: March 2013 with Comparisons

State	March 2012	February 2013	Preliminary March 2013
	(dollars per cwt)	(dollars per cwt)	(dollars per cwt)
Arkansas	(D)	(D)	(S)
Illinois	(D)	12.30	(S)
Kansas	10.90	12.10	12.40
Louisiana	(D)	(D)	(S)
Missouri	10.90	12.80	12.50
Nebraska	10.90	12.20	12.40
Oklahoma	11.20	11.70	12.20
Texas	11.40	12.20	(D)
United States	10.90	12.10	12.30

(D) Withheld to avoid disclosing data for individual operations.

(S) Insufficient number of reports to establish an estimate.

Prices Received for Dry Beans – States and United States: March 2013 with Comparisons

State	March 2012	February 2013	Preliminary March 2013
	(dollars per cwt)	(dollars per cwt)	(dollars per cwt)
California	56.30	(D)	(S)
Colorado	50.50	36.00	34.80
Idaho	45.20	39.80	(D)
Michigan	50.10	(D)	36.20
Minnesota	49.90	47.80	(D)
Nebraska	40.90	37.40	36.20
North Dakota	45.70	32.00	30.50
United States	47.10	38.50	32.00

(D) Withheld to avoid disclosing data for individual operations.

(S) Insufficient number of reports to establish an estimate.

Prices Received for Peanuts (in shell) – States and United States: March 2013 with Comparisons

State	March 2012	February 2013	Preliminary March 2013
	(dollars per pound)	(dollars per pound)	(dollars per pound)
Alabama	0.340	0.212	0.244
Florida	0.360	0.266	0.279
Georgia	0.349	0.246	0.271
Mississippi	0.350	0.249	0.269
New Mexico	(S)	(D)	(S)
North Carolina	0.310	0.335	0.363
Oklahoma	(D)	0.361	0.354
South Carolina	0.371	0.311	0.304
Texas	0.378	0.489	0.346
Virginia	0.317	0.353	0.329
United States	0.348	0.282	0.282

(D) Withheld to avoid disclosing data for individual operations.

(S) Insufficient number of reports to establish an estimate.

Prices Received for Sunflower – States and United States: March 2013 with Comparisons

State	March 2012	February 2013	Preliminary March 2013
	(dollars per cwt)	(dollars per cwt)	(dollars per cwt)
Colorado	30.90	(S)	(S)
Kansas	29.90	27.80	27.40
Minnesota	(D)	(D)	(D)
North Dakota	28.80	26.10	24.70
South Dakota	28.20	25.40	24.00
United States	28.80	25.90	24.70

(D) Withheld to avoid disclosing data for individual operations.

(S) Insufficient number of reports to establish an estimate.

Prices Received for Canola – States and United States: March 2013 with Comparisons

State	March 2012	February 2013	Preliminary March 2013
	(dollars per cwt)	(dollars per cwt)	(dollars per cwt)
Minnesota	(D)	(D)	(S)
North Dakota	27.10	27.80	26.80
United States	27.10	27.80	26.80

(D) Withheld to avoid disclosing data for individual operations.

(S) Insufficient number of reports to establish an estimate.

Prices Received for Flaxseed – States and United States: March 2013 with Comparisons

State	March 2012	February 2013	Preliminary March 2013
	(dollars per bushel)	(dollars per bushel)	(dollars per bushel)
North Dakota	13.30	14.30	13.90
United States	13.30	14.30	13.90

Prices Received for Upland Cotton and Cottonseed – States and United States: March 2013 with Comparisons

[Cottonseed marketing year August - February]

State	Cotton, Upland			Cottonseed		
	March 2012	February 2013	Preliminary March 2013	March 2012	February 2013	Preliminary March 2013
	(dollars per pound)	(dollars per pound)	(dollars per pound)	(dollars per ton)	(dollars per ton)	(dollars per ton)
Alabama	0.954	0.788	0.741	(NA)	205.00	(NA)
Arizona	(D)	0.718	(D)	(NA)	(S)	(NA)
Arkansas	0.922	0.737	(D)	(NA)	(S)	(NA)
California	(D)	0.873	(S)	(NA)	(S)	(NA)
Georgia	0.930	0.761	0.768	(NA)	209.00	(NA)
Louisiana	0.929	0.740	(D)	(NA)	(S)	(NA)
Mississippi	0.970	0.741	0.741	(NA)	(S)	(NA)
North Carolina	0.916	0.743	0.741	(NA)	222.00	(NA)
Tennessee	0.943	0.739	(D)	(NA)	(S)	(NA)
Texas	0.831	0.726	(D)	(NA)	271.00	(NA)
United States	0.900	0.753	0.746	(NA)	217.00	(NA)

(D) Withheld to avoid disclosing data for individual operations.

(NA) Not available.

(S) Insufficient number of reports to establish an estimate.

Prices Received and Farm Marketings for Upland Cotton and Rice – United States: March 2013 with Comparisons

Item	March 2012	February 2013	Preliminary March 2013
Cotton, Upland			
Average price dollars/pound	0.900	0.753	0.746
Marketings ¹ 1,000 bales	808	843	(NA)
Rice, all			
Average price dollars/cwt	14.10	14.80	15.30
Marketings ² 1,000 cwt	14,682	14,029	(NA)
Rice, long			
Average price dollars/cwt	13.00	14.60	14.70
Marketings ² 1,000 cwt	10,050	11,895	(NA)
Rice, medium and short			
Average price dollars/cwt	16.50	15.80	16.80
Marketings ² 1,000 cwt	4,632	2,134	(NA)

(NA) Not available.

¹ Marketings based on a survey of cotton buyers in the major producing States - Alabama, Arizona, Arkansas, California, Georgia, Louisiana, Mississippi, North Carolina, Tennessee, and Texas.

² Purchases by private firms and rice (rough equivalent) shipped by cooperatives.

Prices Received for Hay by Type – States and United States: March 2013 with Comparisons

State	All hay			Alfalfa hay			Other hay		
	March 2012	February 2013	Preliminary March 2013	March 2012	February 2013	Preliminary March 2013	March 2012	February 2013	Preliminary March 2013
	(dollars per ton)	(dollars per ton)	(dollars per ton)	(dollars per ton)	(dollars per ton)	(dollars per ton)	(dollars per ton)	(dollars per ton)	(dollars per ton)
Arizona	256.00	201.00	219.00	260.00	200.00	220.00	195.00	210.00	200.00
California	239.00	205.00	201.00	245.00	209.00	204.00	215.00	190.00	185.00
Colorado	243.00	244.00	244.00	255.00	245.00	245.00	170.00	235.00	230.00
Idaho	206.00	199.00	207.00	210.00	200.00	210.00	145.00	150.00	150.00
Illinois	171.00	173.00	173.00	180.00	180.00	180.00	140.00	140.00	145.00
Iowa	139.00	226.00	232.00	149.00	240.00	248.00	94.00	155.00	160.00
Kansas	170.00	209.00	207.00	220.00	235.00	240.00	100.00	130.00	130.00
Kentucky	115.00	125.00	135.00	185.00	210.00	210.00	85.00	100.00	105.00
Michigan	114.00	227.00	241.00	125.00	235.00	245.00	80.00	205.00	230.00
Minnesota	136.00	228.00	231.00	145.00	255.00	245.00	90.00	165.00	160.00
Missouri	108.00	123.00	133.00	210.00	240.00	240.00	85.00	110.00	110.00
Montana	104.00	160.00	169.00	105.00	164.00	170.00	97.00	125.00	164.00
Nebraska	130.00	215.00	218.00	140.00	231.00	236.00	99.00	162.00	163.00
Nevada	223.00	205.00	202.00	226.00	205.00	203.00	175.00	163.00	186.00
New Mexico	290.00	229.00	228.00	301.00	236.00	235.00	224.00	175.00	175.00
New York	108.00	133.00	134.00	160.00	208.00	216.00	105.00	130.00	130.00
North Dakota	75.00	135.00	135.00	78.00	138.00	144.00	56.00	89.00	84.00
Ohio	145.00	227.00	235.00	192.00	260.00	255.00	111.00	210.00	220.00
Oklahoma	164.00	187.00	181.00	241.00	240.00	238.00	145.00	129.00	130.00
Oregon	235.00	217.00	206.00	246.00	220.00	227.00	208.00	212.00	177.00
Pennsylvania	183.00	185.00	176.00	228.00	209.00	204.00	174.00	170.00	164.00
South Dakota	122.00	216.00	221.00	129.00	230.00	230.00	85.00	158.00	170.00
Texas	190.00	119.00	115.00	276.00	242.00	239.00	162.00	95.00	90.00
Utah	173.00	182.00	171.00	173.00	184.00	175.00	141.00	148.00	142.00
Washington	232.00	227.00	223.00	245.00	230.00	225.00	215.00	220.00	220.00
Wisconsin	124.00	243.00	237.00	135.00	260.00	255.00	90.00	170.00	175.00
Wyoming	151.00	215.00	217.00	155.00	220.00	220.00	130.00	200.00	200.00
United States	183.00	194.00	196.00	200.00	218.00	219.00	147.00	148.00	149.00

Prices Received for Apples – States and United States: March 2013 with Comparisons

[Equivalent packinghouse-door returns for California, Michigan, New York, and Washington. Prices at point of first sale for other States]

State	Apples, fresh use		
	March 2012	February 2013	Preliminary March 2013
	(dollars per pound)	(dollars per pound)	(dollars per pound)
California	(NA)	(NA)	(NA)
Michigan	0.320	(NA)	(NA)
New York	0.298	0.461	0.452
Ohio	0.470	0.720	0.760
Pennsylvania	0.402	(S)	0.492
Virginia	0.350	0.560	0.540
Washington	0.338	0.429	0.397
United States	0.332	0.435	0.404

(NA) Not available.

(S) Insufficient number of reports to establish an estimate.

Prices Received for Citrus Fruits by Utilization – States and United States: March 2012

[Net pounds per box: grapefruit in California-80, Florida-85, Texas-80; lemons-80; oranges in California-80, Florida-90, Texas-85; tangelos-90; tangerines and mandarins in Arizona and California-80, Florida-95]

Commodity, State, and type	FOB packed fresh	Equivalent returns					
		Packinghouse door			On-tree		
		All	Fresh	Process	All	Fresh	Process
	(dollars per box)	(dollars per box)	(dollars per box)	(dollars per box)	(dollars per box)	(dollars per box)	(dollars per box)
Grapefruit							
California ¹	20.30	13.77	13.77	(D)	11.63	11.63	(D)
Florida	24.70	9.44	13.96	7.95	6.59	11.71	4.90
White	25.00	8.10	14.05	7.70	5.34	11.85	4.90
Colored	24.70	10.20	13.95	8.15	7.31	11.70	4.90
Texas	24.20	7.77	13.00	1.60	6.29	11.45	0.20
United States	23.70	9.53	13.72	7.36	6.91	11.64	4.47
Lemons							
Arizona	(D)	(D)	(D)	(D)	(D)	(D)	(D)
California	35.00	18.56	23.88	(D)	12.57	17.89	(D)
United States	35.00	18.50	23.88	(D)	12.51	17.89	(D)
Oranges							
California	22.10	11.36	13.32	(D)	8.87	10.86	(D)
Navel and miscellaneous	22.20	11.44	13.39	(D)	8.95	10.93	(D)
Valencia	(D)	(D)	(D)	(D)	(D)	(D)	(D)
Florida	25.30	11.09	14.15	11.00	8.39	11.35	8.30
Valencia	25.30	11.09	14.15	11.00	8.39	11.35	8.30
United States	22.50	11.17	13.43	10.55	8.52	10.96	7.85
Tangerines and mandarins							
California	(D)	(D)	(D)	(D)	(D)	(D)	(D)
Florida	32.90	15.66	19.50	9.65	11.78	15.95	5.25
United States	38.50	27.05	29.58	6.61	24.11	26.82	2.29

(D) Withheld to avoid disclosing data for individual operations.

¹ Some processed sales included in fresh sales.

Prices Received for Citrus Fruits by Utilization – States and United States: February 2013

[Net pounds per box: grapefruit in California-80, Florida-85, Texas-80; lemons-80; oranges in California-80, Florida-90, Texas-85; tangelos-90; tangerines and mandarins in Arizona and California-80, Florida-95]

Commodity, State, and type	FOB packed fresh	Equivalent returns					
		Packinghouse door			On-tree		
		All	Fresh	Process	All	Fresh	Process
	(dollars per box)	(dollars per box)	(dollars per box)	(dollars per box)	(dollars per box)	(dollars per box)	(dollars per box)
Grapefruit							
California ¹	20.50	13.84	13.84	(D)	11.66	11.66	(D)
Florida	21.60	8.33	10.84	6.71	5.57	8.60	3.62
White	24.70	8.58	13.75	7.00	5.92	11.55	4.20
Colored	21.00	8.23	10.25	6.55	5.43	8.00	3.30
Texas	25.30	7.99	13.90	1.60	6.49	12.32	0.17
United States	22.20	8.50	11.72	6.00	5.97	9.61	3.14
Lemons							
Arizona	(D)	(D)	(D)	(D)	(D)	(D)	(D)
California	29.30	13.03	20.22	(D)	7.63	14.32	(D)
United States	29.30	12.58	20.24	(D)	7.22	14.34	(D)
Oranges							
California	21.60	10.91	12.61	(D)	8.38	10.10	(D)
Navel and miscellaneous	21.60	10.91	12.61	(D)	8.38	10.10	(D)
Florida	21.80	8.86	10.65	8.80	6.35	8.05	6.30
Early and mids	21.80	8.86	10.65	8.80	6.35	8.05	6.30
United States	21.60	9.58	12.49	8.18	7.07	9.98	5.67
Tangelos							
Florida	(S)	(S)	(S)	(S)	(S)	(S)	(S)
United States	(S)	(S)	(S)	(S)	(S)	(S)	(S)
Tangerines and mandarins							
Arizona	(D)	(D)	(D)	(D)	(D)	(D)	(D)
California	(D)	(D)	(D)	(D)	(D)	(D)	(D)
Florida	33.50	16.17	20.10	7.55	12.35	16.55	3.15
United States	36.30	22.96	27.18	2.17	19.96	24.36	-1.73

(D) Withheld to avoid disclosing data for individual operations.

(S) Insufficient number of reports to establish an estimate.

¹ Some processed sales included in fresh sales.

Prices Received for Citrus Fruits by Utilization – States and United States: March 2013

[Net pounds per box: grapefruit in California-80, Florida-85, Texas-80; lemons-80; oranges in California-80, Florida-90, Texas-85; tangelos-90; tangerines and mandarins in Arizona and California-80, Florida-95]

Commodity, State, and type	FOB packed fresh	Equivalent returns					
		Packinghouse door			On-tree		
		All	Fresh	Process	All	Fresh	Process
	(dollars per box)	(dollars per box)	(dollars per box)	(dollars per box)	(dollars per box)	(dollars per box)	(dollars per box)
Grapefruit							
California ¹	14.40	7.74	7.74	(D)	5.56	5.56	(D)
Florida	21.00	7.62	10.18	6.70	4.80	7.94	3.67
White	21.30	7.32	10.35	7.00	4.57	8.15	4.20
Colored	20.90	7.82	10.15	6.40	4.95	7.90	3.15
Texas	25.00	6.94	13.60	1.60	5.45	12.02	0.17
United States	21.20	7.50	10.75	5.92	4.95	8.68	3.13
Lemons							
Arizona	(S)	(S)	(S)	(S)	(S)	(S)	(S)
California	28.70	12.65	19.62	(D)	7.26	13.72	(D)
United States	28.70	12.65	19.62	(D)	7.26	13.72	(D)
Oranges							
California	21.40	10.64	12.41	(D)	8.11	9.90	(D)
Navel and miscellaneous	21.40	10.64	12.41	(D)	8.11	9.90	(D)
Florida	21.10	10.00	9.99	10.00	7.30	7.20	7.30
Early and mids	(S)	(S)	(S)	(S)	(S)	(S)	(S)
Valencia	21.20	10.00	10.05	10.00	7.30	7.25	7.30
United States	21.40	10.20	12.25	9.35	7.55	9.72	6.66
Tangerines and mandarins							
Arizona	(S)	(S)	(S)	(S)	(S)	(S)	(S)
California	(D)	(D)	(D)	(D)	(D)	(D)	(D)
Florida	37.80	18.28	24.40	7.80	14.42	20.85	3.40
United States	40.10	27.84	31.21	2.76	24.92	28.43	-1.18

(D) Withheld to avoid disclosing data for individual operations.

(S) Insufficient number of reports to establish an estimate.

¹ Some processed sales included in fresh sales.

Prices Received for Potatoes – States and United States: March 2013 with Comparisons

State	March 2012	February 2013	Preliminary March 2013
	(dollars per cwt)	(dollars per cwt)	(dollars per cwt)
California			
Spring	(S)	(S)	(S)
Fall	8.75	6.75	6.75
All ¹	8.75	6.75	6.75
Colorado			
Fresh ²	12.90	6.90	(D)
All ¹	11.20	6.50	6.60
Florida	(D)	(D)	(D)
Idaho			
Fresh ²	9.70	4.10	(D)
Processing	8.60	8.20	(D)
All ¹	9.55	6.75	6.90
Maine	11.20	11.00	11.40
Michigan	13.30	12.30	12.70
Minnesota	6.70	8.90	(D)
New York	15.30	14.00	14.20
North Carolina	(S)	(S)	(S)
North Dakota			
Fresh ²	12.20	8.45	(D)
Processing	7.45	8.25	(D)
All ¹	9.35	8.50	(D)
Oregon	10.00	7.85	8.15
Texas	(S)	(S)	(S)
Virginia	(S)	(S)	(S)
Washington			
Processing	7.80	7.55	(D)
All ¹	8.80	7.60	7.70
Wisconsin			
Fresh ²	11.90	7.00	(D)
Processing	9.50	9.20	(D)
All ¹	11.00	8.60	(D)
United States			
Fresh ²	12.06	6.89	(D)
Processing	8.35	8.51	(D)
All ¹	9.98	8.12	8.14

(D) Withheld to avoid disclosing data for individual operations.

(S) Insufficient number of reports to establish an estimate.

¹ Average price of potatoes sold for all uses, including table stock, processing, seed, and livestock feed.

² Fresh market prices only. Includes table stock prices.

Prices Received for All Milk – States and United States: March 2013 with Comparisons

[Before deduction for hauling. Includes quality, quantity, and other premiums. Excludes hauling subsidies]

State	March 2012		February 2013		Preliminary March 2013	
	Price	Fat test	Price	Fat test	Price	Fat test
	(dollars per cwt)	(percent)	(dollars per cwt)	(percent)	(dollars per cwt)	(percent)
Arizona	16.50	3.52	18.60	3.55	18.40	3.50
California	15.51	3.69	18.01	3.80	17.70	3.73
Colorado	17.50	3.55	19.80	3.66	19.30	3.60
Florida	21.10	3.60	23.30	3.70	22.70	3.68
Idaho	16.70	3.65	18.50	3.85	18.40	3.80
Illinois	17.50	3.72	20.00	3.84	19.40	3.80
Indiana	17.50	3.64	20.10	3.82	19.70	3.75
Iowa	17.60	3.75	20.00	3.84	19.50	3.80
Kansas	17.60	3.78	19.90	3.82	19.60	3.78
Michigan	17.90	3.67	19.90	3.77	19.70	3.72
Minnesota	18.00	3.82	20.00	3.92	19.70	3.89
Missouri	17.60	3.69	20.00	3.83	19.50	3.78
New Mexico	15.90	3.53	18.40	3.67	18.10	3.55
New York	18.40	3.74	20.70	3.81	20.10	3.77
Ohio	18.50	3.74	20.90	3.89	20.20	3.83
Oregon	18.30	3.83	20.50	3.92	20.30	3.90
Pennsylvania	19.00	3.72	21.10	3.82	20.80	3.80
Texas	17.20	3.75	19.80	3.90	19.30	3.80
Utah	16.50	3.72	19.10	3.88	18.90	3.83
Vermont	18.50	3.81	20.80	3.87	20.00	3.85
Virginia	19.00	3.70	22.20	3.81	21.50	3.72
Washington	17.50	3.83	19.80	3.92	19.50	3.90
Wisconsin	17.70	3.73	19.70	3.85	19.40	3.83
United States	17.20	3.70	19.50	3.82	19.10	3.77

Prices Received for Milk Cows – States and United States: January 2013 with Comparisons

[Animals sold for dairy herd replacement only. Prices estimated in January, April, July, and October]

State	January 2012 (dollars per head)	October 2012 (dollars per head)	January 2013 (dollars per head)
Arizona	1,500	1,450	1,500
California	1,400	1,300	1,200
Colorado	1,500	1,430	1,500
Florida	1,490	1,470	1,470
Idaho	1,450	1,400	1,300
Illinois	1,500	1,420	1,450
Indiana	1,450	1,350	1,440
Iowa	1,420	1,420	1,400
Kansas	1,400	1,300	1,350
Michigan	1,600	1,500	1,600
Minnesota	1,430	1,350	1,400
Missouri	1,200	1,100	1,200
New Mexico	1,380	1,400	1,380
New York	1,450	1,410	1,400
Ohio	1,500	1,380	1,400
Oregon	1,440	1,360	1,300
Pennsylvania	1,500	1,430	1,430
Texas	1,400	1,370	1,350
Utah	1,340	1,240	1,280
Vermont	1,550	1,550	1,490
Virginia	1,520	1,470	1,520
Washington	1,400	1,300	1,300
Wisconsin	1,550	1,460	1,480
United States	1,460	1,390	1,370

Commodity Parity Prices and Price as Percent of Parity Price – United States: March 2013 with Comparisons

[Parity prices are computed under the provisions of Title III, Subtitle a, Section 301 (a) of the Agricultural Adjustment Act of 1938 as amended by the Agricultural Acts of 1948, 1949, and 1956. See January *Agricultural Prices* for details on adjusted base price and parity price computations. Parity data not available for blank cells. Primary source of data for livestock and milk prices is United States Department of Agriculture's Agricultural Marketing Service]

Commodity and unit	Adjusted base price	Parity price			Price as percent of parity		
		March 2012	February 2013	March 2013	March 2012	February 2013	March 2013
	(dollars)	(dollars)	(dollars)	(dollars)	(percent)	(percent)	(percent)
Basic commodities							
All wheatbushel	0.636	17.70	18.60	18.70	41	43	41
Ricecwt	1.65	40.80	48.20	48.50	35	31	32
Cornbushel	0.434	11.60	12.70	12.80	55	55	56
Cotton							
Upland pound	0.072	2.01	2.10	2.12	45	36	35
American Pima pound	0.133	3.94	3.89	3.91	37	32	32
Peanuts pound	0.027	0.726	0.789	0.794	48	36	36
Designated nonbasic							
All milk, to plants ¹cwt	1.75	50.30	51.10	51.50	36	39	39
Honey, extracted ² pound	0.141	3.88	4.12	4.15	45	42	42
Wool and mohair							
Wool pound	0.107	2.90	3.13	3.15	58	49	49
Mohair pound	0.336	9.30	9.82	9.89	45	40	39
Other nonbasic							
Apples, fresh ³ pound	0.032	0.922	0.935	0.941	36	47	43
Barleybushel	0.444	12.20	13.00	13.10	44	50	48
Canolacwt	1.880	50.80	54.90	55.30	53	51	48
Cottonseed ton	17.80	486.00	520.00	524.00	57	42	41
Dry edible beanscwt	3.01	84.10	88.00	88.60	56	44	36
Flaxseedbushel	1.110	30.70	32.40	32.70	43	44	43
Oatsbushel	0.265	7.35	7.74	7.80	51	52	52
Potatoescwt	0.822	23.90	24.00	24.20	42	34	34
Sorghum graincwt	0.758	20.40	22.10	22.30	53	55	55
Soybeansbushel	1.030	27.90	30.10	30.30	47	49	48
Sunflower, allcwt	2.10	57.50	61.40	61.80	50	42	40
Citrus (equivalent on-tree)							
Grapefruitbox	0.697	19.30	20.40	20.50	36	29	24
Lemonsbox	1.32	38.30	38.60	38.80	33	19	19
Orangesbox	0.711	19.50	20.80	20.90	44	34	36
Tangerinesbox	1.49	41.60	43.50	43.80	58	46	57
Livestock and poultry							
Beef cattlecwt	10.00	282.00	292.00	294.00	45	42	43
Calvescwt	13.70	388.00	400.00	403.00	47	42	40
Hogscwt	5.48	154.00	160.00	161.00	42	40	37
Eggs ¹dozen	0.089	2.54	2.60	2.62	36	38	40
Turkeys, live pound	0.057	1.590	1.670	1.680	43	38	38

¹ Seasonally adjusted price as percentage of parity price.

² Wholesale extracted. Adjusted base price derived from state annual averages prices weighted by production. For 1982 through 1985 the national averages are the support prices.

³ Equivalent packinghouse-door returns for California, New York, Oregon, and Washington. Price at point of first sale for other states.

Commodity Parity Prices – United States: March 2013 with Comparisons

[Parity prices are computed under the provisions of Title III, Subtitle a, Section 301 (a) of the Agricultural Adjustment Act of 1938 as amended by the Agricultural Acts of 1948, 1949, and 1956. See January *Agricultural Prices* for details on adjusted base price and parity price computations]

Commodity and unit	Adjusted base price	Parity price			
		March 2012	February 2013	March 2013	
	(dollars)	(dollars)	(dollars)	(dollars)	
Field crops and miscellaneous					
Hops	pound	0.303	8.55	8.85	8.91
Mustard seed	cwt	2.85	78.80	83.30	83.80
Rapeseed	cwt	2.25	62.30	65.70	66.20
Rye	bushel	0.535	14.70	15.60	15.70
Safflower	cwt	2.04	56.40	59.60	60.00
Spearmint oil	pound	1.50	41.90	43.80	44.10
Sweet potatoes	cwt	2.08	61.40	60.80	61.20
Tobacco					
Flue-cured, 11-14	pound	0.185	5.47	5.41	5.44
Fire-cured, 21-23	pound	0.267	7.90	7.80	7.86
Burley, 31	pound	0.188	5.64	5.49	5.53
Maryland, 32	pound	0.167	4.86	4.88	4.91
Dark air-cured, 35-37	pound	0.240	7.15	7.01	7.06
Pennsylvania seedleaf, 41	pound	0.176	5.08	5.14	5.18
Cigar binder, 51	pound	0.610	17.90	17.80	17.90
Noncitrus fruit					
Apples, processing ¹	ton	16.60	461.00	485.00	488.00
Apricots					
Fresh ²	ton	111.00	3,440.00	3,240.00	3,270.00
Dried (California)	ton	252.00	7,230.00	7,360.00	7,410.00
Avocados ²	ton	189.00	5,700.00	5,520.00	5,560.00
Cherries					
Sweet	ton	205.00	6,000.00	5,990.00	6,030.00
Tart	pound	0.033	0.950	0.964	0.971
Cranberry ³	barrel	4.68	135.00	137.00	138.00
Dates (California) ²	ton	161.00	4,940.00	4,700.00	4,740.00
Grapes					
Raisin variety	ton	133.00	3,490.00	3,890.00	3,910.00
Other dried	ton	61.70	1,570.00	1,800.00	1,820.00
Kiwifruit	ton	88.60	2,630.00	2,590.00	2,610.00
Nectarines, fresh (California) ²	ton	54.60	1,510.00	1,600.00	1,610.00
Olives, canning (California) ³	ton	87.70	2,500.00	2,560.00	2,580.00

See footnote(s) at end of table.

--continued

Commodity Parity Prices – United States: March 2013 with Comparisons (continued)

[Parity prices are computed under the provisions of Title III, Subtitle a, Section 301 (a) of the Agricultural Adjustment Act of 1938 as amended by the Agricultural Acts of 1948, 1949, and 1956. See January *Agricultural Prices* for details on adjusted base price and parity price computations]

Commodity and unit	Adjusted base price	Parity price			
		March 2012	February 2013	March 2013	
	(dollars)	(dollars)	(dollars)	(dollars)	
Noncitrus fruit - continued					
Papayas (Hawaii)	pound	0.038	1.23	1.11	1.12
Peaches					
Fresh ⁴	ton	80.20	2,290.00	2,340.00	2,360.00
Dried (California)	ton	48.50	1,500.00	1,420.00	1,430.00
Processing, excludes dried					
Clingstone (California) ³	ton	31.60	930.00	923.00	930.00
Pears					
Fresh ⁴	ton	54.70	1,550.00	1,600.00	1,610.00
Dried (California) ¹	ton	150.00	4,780.00	4,380.00	4,410.00
Plums (California)					
Fresh, equivalent on-tree	ton	58.10	1,640.00	1,700.00	1,710.00
Prunes, dried (California) ¹	ton	143.00	4,130.00	4,180.00	4,210.00
Prunes and plums					
Fresh, excludes California ⁵	ton	61.90	1,740.00	1,810.00	1,820.00
Processing, excludes dried ¹	ton	23.80	704.00	695.00	700.00
Tree nuts ⁶					
Almonds	pound	0.211	5.95	6.17	6.21
Hazelnuts	ton	191.00	5,470.00	5,580.00	5,620.00
Pistachios	pound	0.194	5.47	5.67	5.71
Walnuts	ton	185.00	5,000.00	5,410.00	5,440.00
Vegetables, fresh ⁷					
Carrots ⁸	cwt	2.57	75.10	75.10	75.60
Cauliflower ⁸	cwt	4.04	120.00	118.00	119.00
Celery ⁸	cwt	1.94	56.10	56.70	57.10
Honeydew melons	cwt	1.97	58.40	57.60	58.00
Lettuce	cwt	2.09	64.00	61.10	61.50
Onions ⁸	cwt	1.41	41.60	41.20	41.50
Tomatoes	cwt	4.30	131.00	126.00	127.00

¹ Equivalent returns at processing plant door.

² Equivalent returns at packinghouse door.

³ Equivalent returns for bulk fruit at first delivery point.

⁴ Equivalent packinghouse-door returns for California, New York (apples only), Oregon (except peaches), and Washington. Price at point of first sale for other states.

⁵ Based on "as sold" prices for fresh fruit in all states.

⁶ Prices In-Shell basis except almonds which are shelled basis.

⁷ FOB shipping point prices.

⁸ Includes some processing.

Reliability of Prices Received Estimates

Definition: Prices received represent sales from producers to first buyers. They include all grades and qualities. The average commodity price from the survey multiplied by the total quantity marketed theoretically should give the total cash receipts for the commodity.

Survey procedures: Primary sales data used to determine grain prices were obtained from probability samples of about 1900 mills and elevators. These procedures ensure that virtually all grain moving into commercial channels has a chance of being included in the survey. Generally, States surveyed account for 90 percent or more of total United States production. Livestock prices are obtained from packers, stockyards, auctions, dealers, and market check data from AMS-USDA, private marketing organizations, and state commodity groups and agencies. Inter-farm sales of grain and livestock are not included since they represent very small percentages of the total marketings. Grain marketed for seed is also excluded. Fruit and vegetable prices are obtained from sample surveys and market check data from AMS-USDA, private marketing organizations, state agencies, and universities.

Summary and estimation procedures: Survey quantities sold are expanded by strata to state levels and used to weight average strata prices to a state average. State prices are then weighted to a United States price based on expanded marketings. Recommendations are prepared by the State Field Offices and reviewed by the Agricultural Statistics Board in Washington, D.C. State recommendations are reviewed for reasonableness with survey data, other States, and recent historic estimates.

Revisions: For most items, the current month's preliminary price represents a 3-5 day period around the 15th of the month. Previous month's prices represent actual dollars received for quantities sold during the entire month. Revisions are published in monthly issues of *Agricultural Prices*.

Reliability: United States price estimates based on probability surveys generally have a sampling error of less than one percent for the major commodities such as corn, wheat, soybeans, cotton, and rice. Current methods of summarization for non-probability commodities are not designed directly to calculate sampling errors. However, analytical measures approximate the United States relative sampling errors at around five percent. Any nonsampling errors are attributed to such things as the inability to obtain correct information, differences in interpreting questions or definitions, mistakes in coding or processing the data, etc. Efforts are made at each step in the survey process to minimize these nonsampling errors.

Prices Paid by Farmers

The March Index of Prices Paid for Commodities and Services, Interest, Taxes, and Farm Wage Rates (PPITW) at 221 (1990-1992=100) was unchanged from February 2013 but up 3.8 percent from March 2012.

Production index: The March index, at 235, was unchanged from last month but increased 3.5 percent from last year. Higher prices in March for nitrogen, feed grains, mixed fertilizer, and supplements offset lower prices for feeder cattle, feeder pigs, potash & phosphate, and diesel.

Feed: The March index, at 277, increased 0.7 percent from February and increased 18 percent from last March. Since February, higher prices for feed grains, supplements, and hay & forages offset lower prices for complete feeds and concentrates.

Livestock and poultry: The March index, at 161, decreased 4.2 percent from last month and decreased 13 percent from last year. Since February, prices for feeder cattle and feeder pigs are lower. The March feeder cattle price, at \$139.10 per cwt, is down \$5.30 per cwt from the February price. March feeder pigs averaged \$159.00 per cwt, down \$25.00 per cwt from February.

Fertilizer: The March index, at 344, is up 1.5 percent from February and 3.3 percent above March a year ago. Since February, higher prices for nitrogen and mixed fertilizer more than offset lower prices for potash & phosphate.

Chemicals: The March index, at 154, decreased 0.6 percent from February but increased 1.3 percent from last March. Compared with last month, prices for herbicides, insecticides, and fungicides/other are lower.

Fuels: The March index, at 362, is down 0.3 percent from a month earlier and 5.2 percent below March 2012. Compared with last month, prices are lower for diesel but higher for gasoline and LP gas.

Machinery: The March index, at 258, was unchanged from February but is 2.4 percent above last March. Compared with last month, prices are higher for other machinery and tractors but lower for self-propelled machinery.

Consumer price index: The February 2013 Consumer Price Index, as issued by the Bureau of Labor Statistics, for all urban consumers (CPI-U) increased 0.8 percent before seasonal adjustment to a level of 232.166 (1982-1984=100). The January index is 230.280. For the 12 month period ending in February, the overall index increased 2.0 percent.

Prices Paid Indexes and Related Parity Ratios – United States: March 2013 with Comparisons

[Revised historical price indexes for months not shown are available at www.nass.usda.gov]

Indexes and ratios	1910-1914 Base			1990-1992 Base		
	March 2012	February 2013	March 2013	March 2012	February 2013	March 2013
	(percent)	(percent)	(percent)	(percent)	(percent)	(percent)
Prices paid by farmers for commodities, services, interest, taxes, and wage rates (PPITW)	2842	2940	2942	213	221	221
Production	2200	2285	2283	227	235	235
Feed	1146	1345	1350	235	275	277
Livestock and poultry	2350	2150	2060	184	168	161
Seeds	3606	3606	3606	364	364	364
Fertilizer	1219	1243	1260	333	339	344
Chemicals	939	957	954	152	155	154
Fuels	2950	2799	2796	382	363	362
Supplies and repairs	1207	1218	1218	170	172	172
Autos and trucks	3136	3172	3177	118	119	119
Machinery	6330	6468	6484	252	258	258
Building materials	2376	2426	2433	175	179	179
Services and rent	2180	2229	2230	(NA)	(NA)	(NA)
Services	(NA)	(NA)	(NA)	167	170	170
Rent	(NA)	(NA)	(NA)	212	217	217
Interest ¹	3684	3594	3594	147	143	143
Taxes ²	6080	6273	6273	227	234	234
Wage rates	7444	7599	7599	199	203	203
Production, interest, taxes, and wage rates (PITW)	2972	3081	3080	221	229	229
Family living-CPI ³	2179	2205	2223	170	172	174
Ratio (received/paid)	(NA)	(NA)	(NA)	86	90	91
Parity ratio ⁴	41	43	44	(NA)	(NA)	(NA)
Parity ratio adjusted ⁵	42	44	45	(NA)	(NA)	(NA)
PPITW adjusted for productivity ⁶	1497	1486	1489	(NA)	(NA)	(NA)
Crop sector (PPITW)	(NA)	(NA)	(NA)	222	227	227
Livestock sector (PPITW)	(NA)	(NA)	(NA)	204	215	214
Farm sector (production)	(NA)	(NA)	(NA)	240	257	256
Non-farm sector (production)	(NA)	(NA)	(NA)	220	223	224

(NA) Not available.

¹ Interest per acre on farm real estate debt and interest rate on farm non-real estate debt.

² Farm real estate taxes payable per acre.

³ Bureau of Labor Statistics, Consumer Price Index for all urban consumers (CPI-U), for the previous month converted by the USDA.

⁴ Ratio of index of prices received to PPITW (1910-1914=100).

⁵ Based on estimated cash receipts, from marketings and government payments, the preliminary adjustment factor is 1.044 for 2013 and the revised factor is 1.041 for 2012.

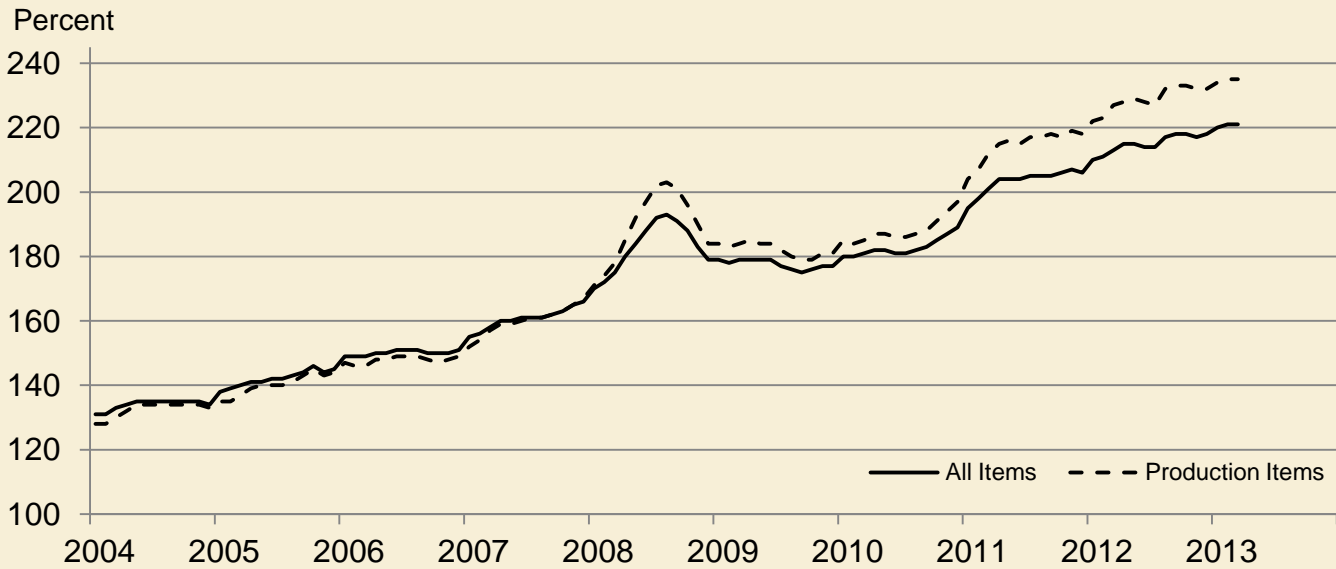
⁶ PPITW is adjusted based on productivity trend for the prior 15 years.

Prices Paid Indexes and Annual Weights for Input Components and Sub-components – United States: March 2013 with Comparisons

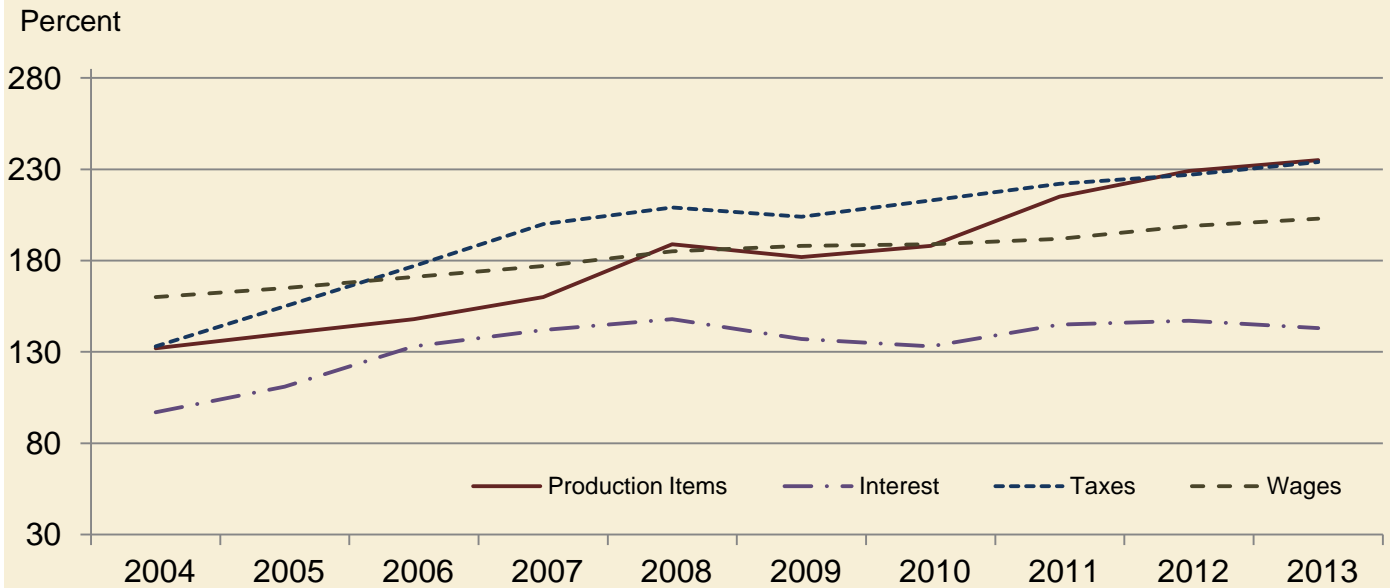
[Revised historical price indexes for months not shown are available at www.nass.usda.gov. Relative weights are a five year moving average]

	Relative weights		Indexes (1990-1992=100)		
	2012	2013	March 2012	February 2013	March 2013
	(percent)	(percent)	(percent)	(percent)	(percent)
Production items	71.1	71.9	227	235	235
Feed	12.7	13.4	235	275	277
Feed grains	1.8	1.9	272	302	307
Complete feeds	6.2	6.6	230	284	283
Hay and forages	1.6	1.7	239	252	254
Concentrates	2.0	2.1	210	241	240
Supplements	1.1	1.1	238	282	287
Livestock and poultry	8.3	8.0	184	168	161
Feeder cattle	6.5	6.3	188	171	164
Feeder pigs	0.7	0.6	215	200	173
Milk cow replacements	0.7	0.7	129	121	121
Poultry	0.5	0.5	158	158	158
Seeds	4.3	4.4	364	364	364
Field crops	3.9	4.0	384	384	384
Grasses and legumes	0.4	0.4	178	178	178
Fertilizer	5.7	6.1	333	339	344
Mixed fertilizer	2.5	2.7	321	297	300
Nitrogen	2.4	2.6	327	374	386
Potash and phosphate	0.8	0.9	386	368	355
Chemicals	3.2	3.2	152	155	154
Herbicides	2.0	2.0	136	139	138
Insecticides	0.7	0.7	176	175	175
Fungicides and other	0.5	0.5	182	193	192
Fuels	4.0	4.0	382	363	362
Diesel	2.5	2.5	423	422	419
Gasoline	0.8	0.8	333	319	323
LP gas	0.7	0.7	292	199	200
Supplies and repairs	4.6	4.5	170	172	172
Supplies	1.5	1.5	165	166	166
Repairs	3.0	3.0	173	174	174
Autos and trucks	1.2	1.2	118	119	119
Autos	0.2	0.2	115	117	117
Trucks	1.1	1.1	118	120	120
Machinery	4.3	4.5	252	258	258
Tractors	0.9	1.0	210	209	209
Self-propelled	1.7	1.8	270	271	270
Other machinery	1.6	1.7	259	272	274
Building materials	4.2	4.1	175	179	179
Services	12.0	11.7	167	170	170
Custom rates	1.2	1.2	157	157	157
Other services	10.7	10.5	168	171	172
Rent	6.6	6.7	212	217	217
Cash	3.5	3.6	270	278	278
Share	3.0	3.1	145	147	147
Interest	3.4	3.2	147	143	143
Taxes	3.1	3.1	227	234	234
Wage rates	7.2	6.9	199	203	203
Family living-CPI	15.3	15.0	170	172	174

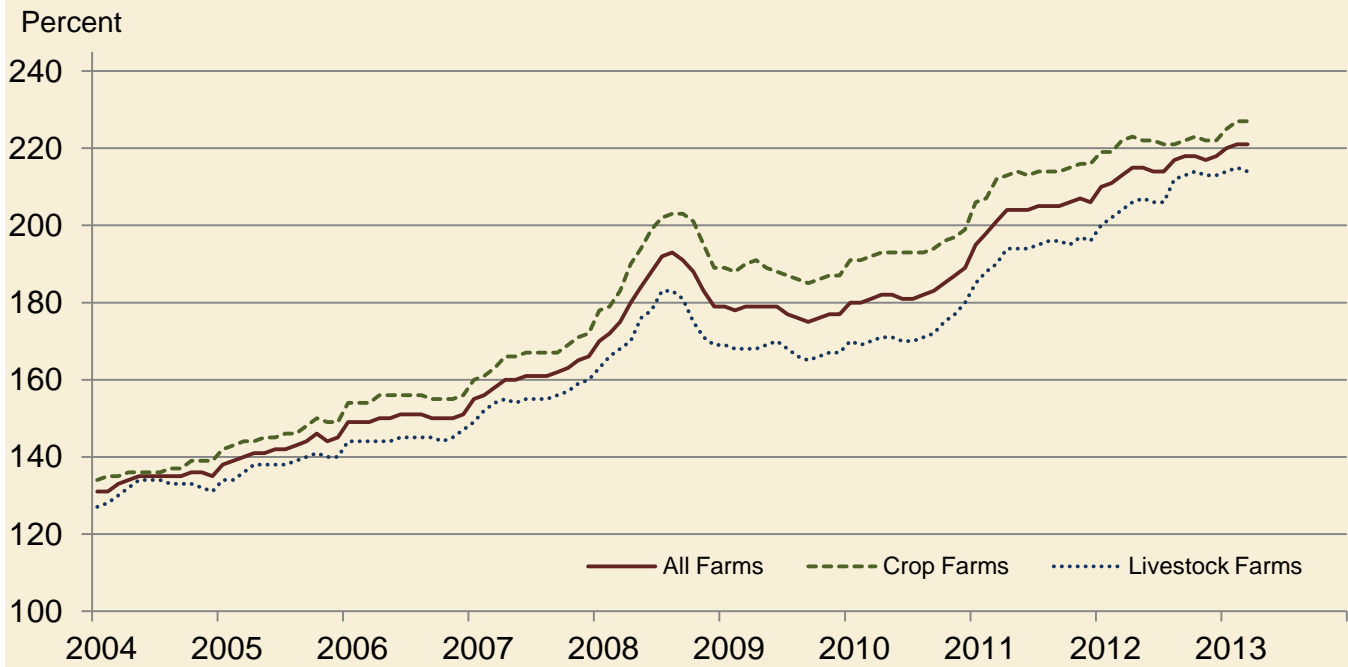
Paid Indexes by Month, All Items and Production Items – United States: 1990-1992=100



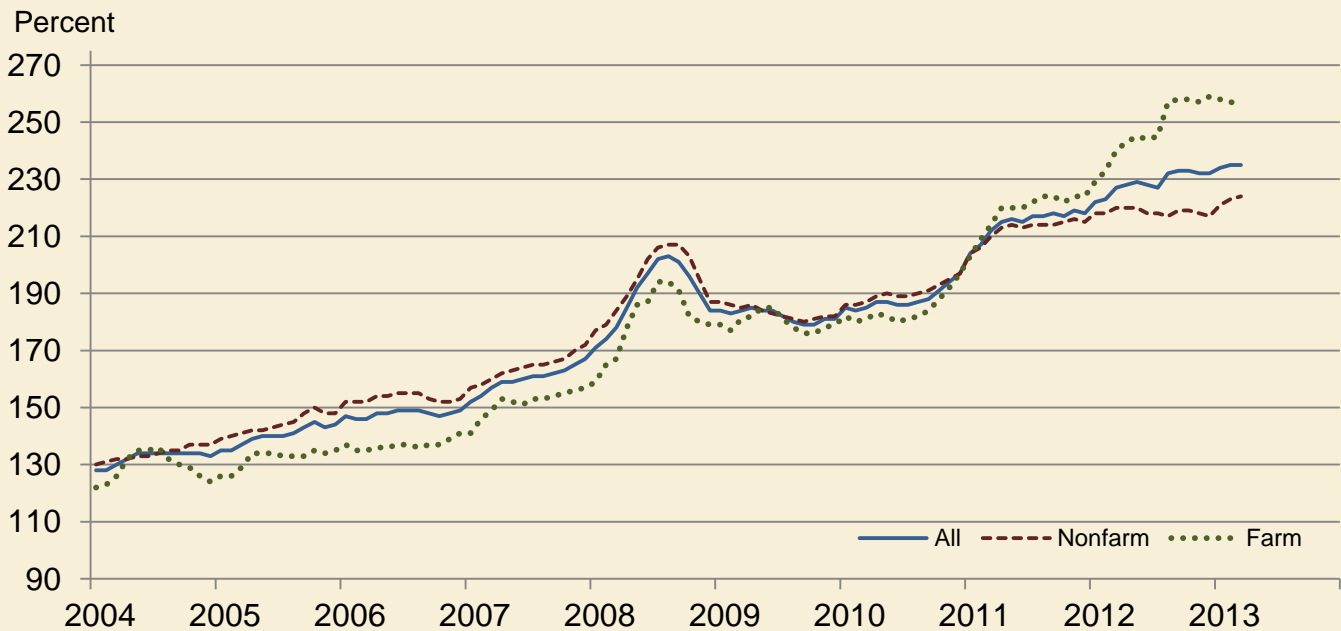
Paid Indexes, Annual Averages, Production Items, Interest, Taxes, and Wages – United States: 1990-1992=100



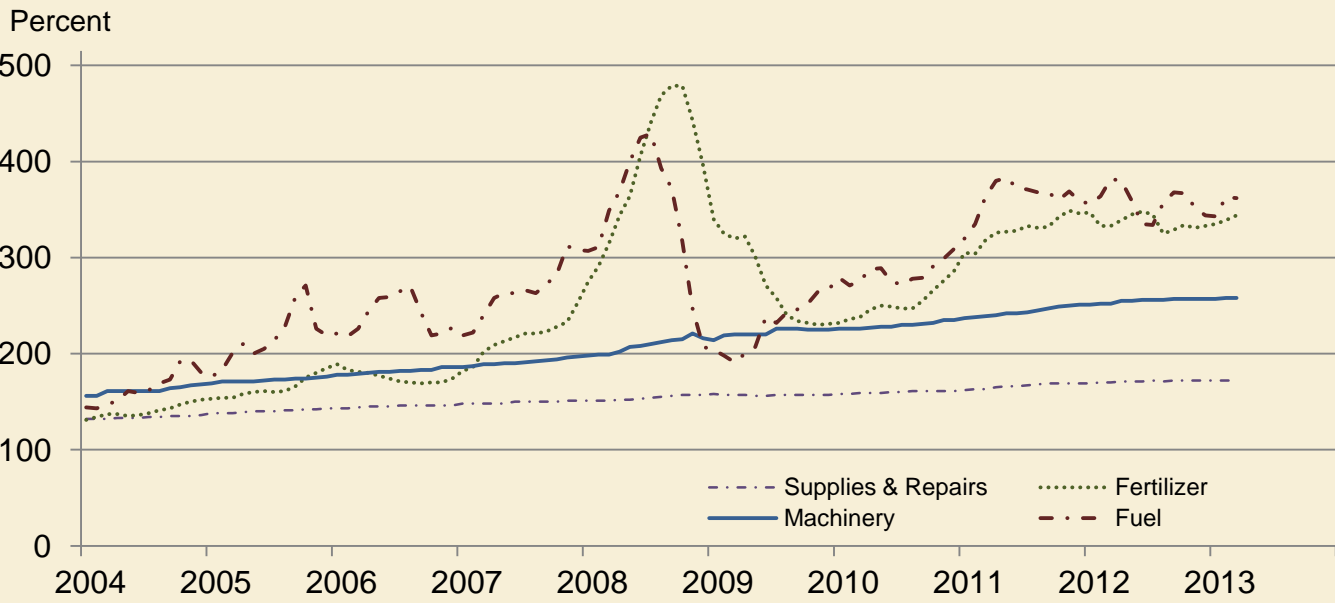
Paid Indexes by Farm Type and Month, All Items – United States: 1990-1992=100



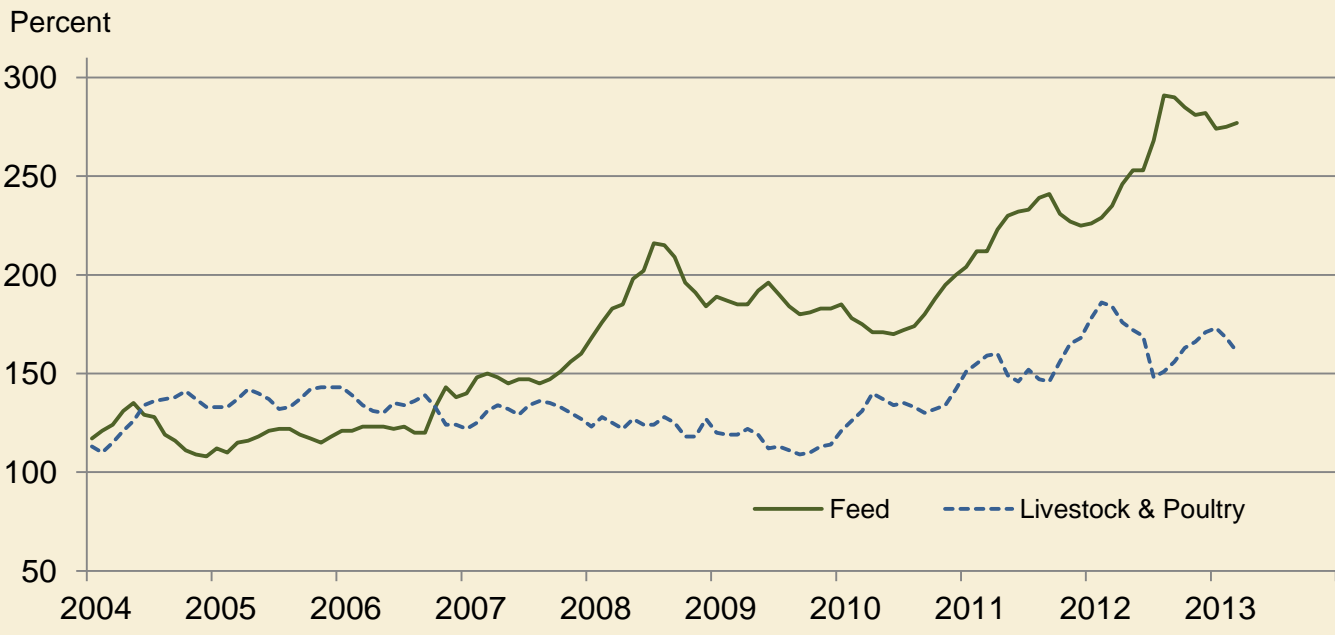
Paid Indexes by Origin and Month, All Production Items – United States: 1990-1992=100



Paid Indexes by Non-Farm Sector and Month, Supplies & Repairs, Fertilizer, Machinery, and Fuel – United States: 1990-1992=100



Paid Indexes by Month, Feed and Livestock & Poultry – United States: 1990-1992=100



Feed Price Ratios – United States: March 2013 with Comparisons

Feed price ratio ¹	March 2012	February 2013	Preliminary March 2013
Broiler-feed: pounds of broiler grower feed equal in value to 1 pound of broiler, live weight ²	3.6	3.5	3.8
Market egg feed: pounds of laying feed equal in value to 1 dozen eggs ³	5.7	5.0	6.1
Hog-corn: bushels of corn equal in value to 100 pounds of hog, live weight	10.3	9.2	8.3
Milk-feed: pounds of 16% mixed dairy feed equal in value to 1 pound of whole milk ⁴	1.48	1.52	1.47
Steer and heifer-corn: bushels of corn equal in value to 100 pounds of steer & heifers, live weight	20.8	18.0	17.8
Turkey-feed: pounds of turkey grower equal in value to 1 pound of turkey, live weight ⁵	4.8	3.9	4.0

¹ Effective January 1995, prices of commercial prepared feeds are based on current United States prices received for corn, soybeans, alfalfa hay, and all wheat.

² The price of commercial prepared broiler feed is based on current United States prices received for corn and soybeans. The modeled feed uses 58 percent corn and 42 percent soybeans.

³ The price of commercial prepared layer feed is based on current United States prices received for corn and soybeans. The modeled feed uses 75 percent corn and 25 percent soybeans.

⁴ The price of commercial prepared dairy feed is based on current United States prices received for corn, soybeans, and alfalfa hay. The modeled feed uses 51 percent corn, 41 percent alfalfa hay, and 8 percent soybeans.

⁵ The price of commercial prepared turkey feed is based on current United States prices received for corn, soybeans, and wheat. The modeled feed uses 51 percent corn, 28 percent soybeans, and 21 percent wheat.

Prices Received Used to Calculate Feed Price Ratios – United States: March 2013 with Comparisons

[Price data source for livestock and poultry commodities is United States Department of Agriculture's Agricultural Marketing Service]

Item	March 2012	February 2013	Preliminary March 2013
	(dollars)	(dollars)	(dollars)
Broilers, livepound	0.570	0.610	0.660
Eggs, marketdozen	0.791	0.776	0.952
Hogs, allcwt	65.20	64.50	59.80
Milk, allcwt	17.20	19.50	19.10
Steers and heiferscwt	132.00	127.00	128.00
Turkeys, livepound	0.690	0.627	0.641
Cornbushel	6.35	7.04	7.18
Hay, alfalfaton	200.00	218.00	219.00
Soybeansbushel	13.00	14.60	14.50
Wheat, allbushel	7.20	7.97	7.66

Prices Paid for Feeder Livestock – United States: March 2013 with Comparisons

[Price data source is United States Department of Agriculture's Agricultural Marketing Service]

Item	March 2012	February 2013	Preliminary March 2013
	(dollars)	(dollars)	(dollars)
Feeder cattle and calvescwt	159.40	144.40	139.10
Feeder pigscwt	198.00	184.00	159.00

Reliability of Prices Paid Estimates

Definition: Prices paid by farmers represent the average costs of inputs purchased by farmers and ranchers to produce agricultural commodities. Conceptually, the average price when multiplied by quantity purchased should equal total producer expenditures for the item.

Survey procedures: The prices paid data are obtained from establishments that sell goods and services to farmers and ranchers. Annually, about 8,500 firms are randomly selected from lists by type of item sold with an average response rate in the range of 75-80 percent. Firms are asked to report the price for the specified item "most commonly bought by farmers" or that was the "volume seller". Approximately 135 items are surveyed each March to represent all production input items purchased. The survey reference period for most items is the five business days centered around the 15th of the month. Separate prices paid surveys are conducted for agricultural chemicals, fuels, feed, fertilizer, machinery, and seed.

Summary and estimation procedures: The annual March Prices Paid Survey is summarized as a nonprobability survey. Average prices reported are aggregated to the region and United States level using weights available from expenditure data and other administrative sources. Price recommendations are prepared by the State Field Offices and Headquarters for review by the Agricultural Statistics Board in Washington, D.C. Also, the change in price level for individual items surveyed are combined to the regional and United States levels, and are published as prices paid indexes referenced to a specific base period. Prices paid indexes for new autos and trucks, building materials, farm supplies, motor supplies, and marketing containers are updated based on price changes measured in selected Bureau of Labor Statistics (BLS) indexes.

Revisions: Any revisions are published in the monthly and in annual issues of Agricultural Prices. The basis for revision must be supported by additional data that directly affect the level of the estimate. More revisions are likely for March when separate prices paid surveys are conducted, in lieu of BLS indexes, by the USDA to measure price change.

Reliability: Current methods of summarization for the March data are not designed directly to calculate sampling errors. However, analytical measures approximate the United States relative sampling errors for major items around 10 percent. Any nonsampling errors are attributed to such things as the inability to obtain correct information, differences in interpreting questions or definitions, mistakes in coding or processing the data, etc. Efforts are made at each step in the survey process to minimize these nonsampling errors.

Program change: Effective January 1, 1995, the National Agricultural Statistics Service updated the weights and changed the construction of its prices paid and received by farmers indexes. A Federal Register Notice dated October 28, 1994 discussed these program modifications.

A 1990-1992 reference and base period replaced the 1977 reference and 1971-1973 base weight period. Five-year moving average weights replaced the current fixed 1971-1973 base period weights. The 1910-1914=100 price indexes, required by statute for computing parity prices, were linked forward based on the changes in the new 1990-1992=100 indexes. The new indexes were constructed by multiplying the ratios of the current prices to the base period prices by the moving average weights (adjusted for seasonal marketing patterns for the prices received indexes).

Information Contacts

General

Troy Joshua, Chief, Environmental, Economics and Demographics Branch (202) 720-6146

Below are the commodity specialists to contact for additional information.

Crop Prices Received

Lance Honig, Chief, Crops Branch (202) 720-2127

Anthony Prillaman, Head, Field Crops Section (202) 720-2127

Angie Considine – Peanuts, Rice (202) 720-7688

Brent Chittenden – Oats, Rye, Wheat (202) 720-8068

Steve Maliszewski – Cotton, Cotton Ginnings, Sorghum (202) 720-5944

Anthony Prillaman – Corn, Proso Millet, Flaxseed (202) 720-2127

Julie Schmidt – Crop Weather, Barley, Hay (202) 720-7621

Travis Thorson – Soybeans, Sunflower, Other Oilseeds..... (202) 720-7369

Jorge Garcia-Pratts, Head, Fruits, Vegetables and Special Crops Section..... (202) 720-2127

Debbie Flippin – Fresh and Processing Vegetables, Onions, Strawberries..... (202) 720-2157

Fred Granja – Apples, Apricots, Cherries, Plums, Prunes, Tobacco (202) 720-4288

Erika White – Floriculture, Maple Syrup, Nursery, Tree Nuts (202) 720-4215

Chris Hawthorn – Citrus, Coffee, Sugar Crops, Grapes, Tropical Fruits..... (202) 720-5412

Daphne Schauber – Berries, Cranberries, Potatoes, Sweet Potatoes (202) 720-4285

Dan Norris – Austrian Winter Peas, Dry Edible Peas, Lentils, Mints, Mushrooms, Peaches, Pears,
Wrinkled Seed Peas, Dry Beans (202) 720-3250

Livestock Prices Received

Dan Kerestes, Chief, Livestock Branch (202) 720-3570

Scott Hollis, Head, Livestock Section..... (202) 720-3570

Travis Averill – Cattle..... (202) 720-3040

Mike Miller – Milk, Milk Cows (202) 720-3278

Doug Bounds – Hogs (202) 720-3106

Alissa Cowell-Mytar – Sheep, Lambs, and Goats (202) 720-4751

Bruce Boess, Head, Poultry and Specialty Commodities Section..... (202) 720-3570

Cody Brokmeyer – Turkeys..... (202) 690-3237

LaKeya Jones – Honey (202) 720-0585

Kim Linonis – Eggs..... (202) 690-8632

Miste Salmon – Broilers..... (202) 720-3244

Indexes, Prices Paid, and Parity Prices

Troy Joshua, Chief, Environmental, Economics and
Demographics Branch..... (202) 720-6146

Tony Dorn, Head, Economics Section (202) 690-3223

Daryl Brinkman – Prices Received Indexes, Parity Prices (202) 720-8844

Chris Dickerson – Prices Received Indexes, Parity Prices (202) 690-1348

Vincent Davis – Prices Paid Indexes, Prices Paid for Feed, Fertilizer, Agricultural Chemicals,
Seeds, Farm Supplies and Repairs, Farm Machinery, Fuels, Feeder Livestock, Poultry Chicks,
Feed Price Ratios, Autos & Trucks..... (202) 690-3229

Access to NASS Reports

For your convenience, you may access NASS reports and products the following ways:

- All reports are available electronically, at no cost, on the NASS web site: <http://www.nass.usda.gov>
- Both national and state specific reports are available via a free e-mail subscription. To set-up this free subscription, visit <http://www.nass.usda.gov> and in the “Follow NASS” box under “Receive reports by Email,” click on “National” or “State” to select the reports you would like to receive.

For more information on NASS surveys and reports, call the NASS Agricultural Statistics Hotline at (800) 727-9540, 7:30 a.m. to 4:00 p.m. ET, or e-mail: nass@nass.usda.gov.

The United States Department of Agriculture (USDA) prohibits discrimination in all its programs and activities on the basis of race, color, national origin, age, disability, and where applicable, sex, marital status, familial status, parental status, religion, sexual orientation, political beliefs, genetic information, reprisal, or because all or a part of an individual's income is derived from any public assistance program. (Not all prohibited bases apply to all programs.) Persons with disabilities who require alternative means for communication of program information (Braille, large print, audiotape, etc.) should contact USDA's TARGET Center at (202) 720-2600 (voice and TDD).

To file a complaint of discrimination, write to USDA, Assistant Secretary for Civil Rights, Office of the Assistant Secretary for Civil Rights, 1400 Independence Avenue, S.W., Stop 9410, Washington, DC 20250-9410, or call toll-free at (866) 632-9992 (English) or (800) 877-8339 (TDD) or (866) 377-8642 (English Federal-relay) or (800) 845-6136 (Spanish Federal-relay). USDA is an equal opportunity provider and employer.