



Agricultural Prices

ISSN: 1937-4216

Released May 31, 2013, by the National Agricultural Statistics Service (NASS), Agricultural Statistics Board, United States Department of Agriculture (USDA).

Special Note

USDA's National Agricultural Statistics Service is suspending a number of statistical surveys and reports for the remainder of the fiscal year resulting from reduced funding. Suspended commodity programs impacting the *Agricultural Prices* report are non-citrus fruit, tree nuts, vegetables, and milk cow replacement prices. Check the NASS website at www.nass.usda.gov for any future updates to these programs

May Farm Prices Received Index Advanced 2 Points

The preliminary All Farm Products Index of Prices Received by Farmers in May, at 194 percent, based on 1990-1992=100, increased 2 points (1.0 percent) from April. The Crop Index is down 1 point (0.5 percent) but the Livestock Index increased 6 points (3.7 percent). Producers received higher prices for eggs, hogs, soybeans, and broilers. Prices were lower for corn and wheat. In addition to prices, the overall index is also affected by the seasonal change based on a 3-year average mix of commodities producers sell. Increased monthly movement of broilers, sweet corn, and hay offset decreased marketings of soybeans, apples, wheat, and oranges.

The preliminary All Farm Products Index is up 14 points (7.8 percent) from May 2012. The Food Commodities Index, at 181, increased 3 points (1.7 percent) from last month and 12 points (7.1 percent) from May 2012.

Prices Paid Index Unchanged

The May Index of Prices Paid for Commodities and Services, Interest, Taxes, and Farm Wage Rates (PPITW) is 219 percent of the 1990-1992 average. The index is unchanged from April but 4 points (1.9 percent) above May 2012. Higher prices in May for nitrogen, gasoline, other machinery, and supplies offset lower prices for concentrates, feeder cattle, diesel, and complete feeds.

Prices Received, Prices Paid, and Ratio of Prices Received to Prices Paid Indexes 1990-1992 Base – United States: May 2013 with Comparisons

Index	May	April	May
	2012	2013	2013
Prices received by farmers	180	192	194
Prices paid by farmers	215	219	219
Ratio of prices received to prices paid	84	88	89

Contents

Prices Received by Farmers	4
Prices Received Indexes – United States: May 2013 with Comparisons	5
Prices Received and Prices Paid Indexes by Month for Selected Groups – United States: 2012 and 2013, 1990-1992 Base	5
Received Indexes by Month, Livestock Products, All Products, and All Crops – United States: 1990-1992=100 Chart.....	6
Received Indexes by Month, Food Grains, Feed Grains & Hay, and Oilseeds – United States: 1990-1992=100 Chart.....	6
Received Indexes by Month, Fruit & Nut and Commercial Vegetables – United States: 1990-1992=100 Chart.....	7
Received Indexes by Month, Meat Animal, Dairy Products, and Poultry & Eggs – United States: 1990-1992=100 Chart.....	7
Prices Received for Field Crops and Fruits – United States: May 2013 with Comparisons	8
Prices Received for Vegetables and Livestock – United States: May 2013 with Comparisons.....	9
Prices Received for Corn by Month – United States Chart.....	10
Prices Received for Wheat by Month – United States Chart	10
Prices Received for Upland Cotton by Month – United States Chart	11
Prices Received for Soybeans by Month – United States Chart	11
Prices Received for Cattle by Month – United States Chart	12
Prices Received for Milk by Month – United States Chart	12
Prices Received for Hogs by Month – United States Chart	13
Prices Received for Poultry by Month – United States Chart	13
Prices Received for All Wheat, Corn, and Soybeans by Month – United States: 2013 with Comparisons	14
Prices Received for Beef Cattle and All Hogs by Month – United States: 2013 with Comparisons	14
Prices Received for All Wheat – States and United States: May 2013 with Comparisons	15
Prices Received for Winter Wheat – States and United States: May 2013 with Comparisons	15
Prices Received for Durum Wheat – States and United States: May 2013 with Comparisons	16
Prices Received for Spring Wheat – States and United States: May 2013 with Comparisons	16
Prices Received for All Barley – States and United States: May 2013 with Comparisons.....	17
Prices Received for Malting Barley – States: May 2013 with Comparisons	17
Prices Received for Feed Barley – States: May 2013 with Comparisons	17
Prices Received for Corn – States and United States: May 2013 with Comparisons	18
Prices Received for Soybeans – States and United States: May 2013 with Comparisons	18
Prices Received for Oats – States and United States: May 2013 with Comparisons	19
Prices Received for Sorghum Grain – States and United States: May 2013 with Comparisons.....	19
Prices Received for Dry Beans – States and United States: May 2013 with Comparisons	20
Prices Received for Peanuts (in shell) – States and United States: May 2013 with Comparisons.....	20
Prices Received for Sunflower – States and United States: May 2013 with Comparisons.....	21
Prices Received for Canola – States and United States: May 2013 with Comparisons	21
Prices Received for Flaxseed – States and United States: May 2013 with Comparisons	21
Prices Received for Upland Cotton and Cottonseed – States and United States: May 2013 with Comparisons	22
Prices Received and Farm Marketings for Upland Cotton and Rice – United States: May 2013 with Comparisons.....	22
Prices Received for Hay by Type – States and United States: May 2013 with Comparisons.....	23
Prices Received for Apples – States and United States: May 2013 with Comparisons	23
Prices Received for Citrus Fruits by Utilization – States and United States: May 2012	24
Prices Received for Citrus Fruits by Utilization – States and United States: April 2013	25
Prices Received for Citrus Fruits by Utilization – States and United States: May 2013	26
Prices Received for Potatoes – States and United States: May 2013 with Comparisons.....	27
Prices Received for All Milk – States and United States: May 2013 with Comparisons.....	28
Prices Received for Milk Cows – States and United States: April 2013 with Comparisons	29
Commodity Parity Prices and Price as Percent of Parity Price – United States: May 2013 with Comparisons	30
Commodity Parity Prices – United States: May 2013 with Comparisons.....	31

Reliability of Prices Received Estimates	33
Prices Paid by Farmers.....	34
Prices Paid Indexes and Related Parity Ratios – United States: May 2013 with Comparisons.....	35
Prices Paid Indexes and Annual Weights for Input Components and Sub-components – United States: May 2013 with Comparisons	36
Paid Indexes by Month, All Items and Production Items – United States: 1990-1992=100 Chart	37
Paid Indexes, Annual Averages, Production Items, Interest, Taxes, and Wages – United States: 1990-1992=100 Chart	37
Paid Indexes by Farm Type, All Items – United States: 1990-1991=100 Chart.....	38
Paid Indexes by Origin, All Production Items – United States: 1990-1992=100 Chart	38
Paid Indexes by Non-Farm Sector, Supplies & Repairs, Fertilizer, Machinery, and Fuel – United States: 1990-1992=100 Chart	39
Paid Indexes by Month, Feed and Replacement Livestock – United States: 1990-1992=100 Chart.....	39
Feed Price Ratios – United States: May 2013 with Comparisons.....	40
Prices Received Used to Calculate Feed Price Ratios – United States: May 2013 with Comparisons.....	40
Prices Paid for Feeder Livestock – United States: May 2013 with Comparisons.....	40
Prices Paid Broiler-Feed Ratio Monthly and Annual Average – United States: 2009-2013	41
Prices Paid Market Egg-Feed Ratio Monthly and Annual Average – United States: 2009-2013.....	41
Prices Paid Turkey-Feed Ratio Monthly and Annual Average – United States: 2009-2013	41
Prices Paid Milk-Feed Ratio Monthly and Annual Average – United States: 2009-2013.....	42
Prices Paid Hog-Corn Ratio Monthly and Annual Average – United States: 2009-2013	42
Prices Paid Steer & Heifer-Corn Feed Ratio Monthly and Annual Average – United States: 2009-2013	42
Reliability of Prices Paid Estimates	43
Information Contacts	44

Prices Received by Farmers

The May All Farm Products Index is 194 percent of its 1990-1992 base, up 1.0 percent from the April index and 7.8 percent above the May 2012 index.

All crops: The May index, at 221, is down 0.5 percent from April but 3.3 percent higher than May 2012. Index decreases for feed grains & hay, commercial vegetables, and food grains more than offset index the increases for fruits & nuts, oilseeds, potatoes & dry beans, and upland cotton.

Food grains: The May index, at 244, is 1.2 percent below the previous month but 11 percent above a year ago. The May price for all wheat, at \$7.51 per bushel, is down 20 cents from April but 84 cents above May 2012.

Feed grains & hay: The May index, at 295, is down 1.7 percent from last month but 7.7 percent above a year ago. The corn price, at \$6.88 per bushel, is down 9 cents from last month but 54 cents above May 2012. The all hay price, at \$203 per ton, is \$3.00 higher than April and \$2.00 above last May. Sorghum grain, at \$11.20 per cwt, is 40 cents below April but 80 cents above May last year.

Cotton, Upland: The May index, at 125, is up 0.8 percent from April but 10 percent below last year. The May price, at 75.7 cents per pound, is up 0.3 cents from the previous month but 8.7 cents below last May.

Oilseeds: The May index, at 255, is up 2.0 percent from April and May 2012. The soybean price, at \$14.80 per bushel, increased 40 cents from April and is 80 cents higher than May 2012.

Fruits & nuts: The May index, at 170, is up 6.9 percent from April but 19 percent lower than a year ago.

Commercial vegetables: The May index, at 163, is down 2.4 percent from last month but 3.2 percent above May 2012.

Potatoes & dry beans: The May index, at 181, is up 8.4 percent from last month but 2.7 percent below May 2012. The all potato price, at \$10.52 per cwt, is up 89 cents from April and 8 cents higher than last May. The all dry bean price, at \$34.50 per cwt, is down 10 cents from the previous month and \$8.80 below May 2012.

Livestock and products: The May index, at 170, is 3.7 percent above last month and 13 percent higher than May 2012. Compared with a year ago, prices are higher for broilers, milk, market eggs, cattle, and hogs. Prices for turkeys and calves are down from last year.

Meat animals: The May index, at 163, is up 1.9 percent from last month and 2.5 percent higher than last year. The May hog price, at \$67.00 per cwt, is up \$5.20 from April and \$4.20 higher than a year ago. The May beef cattle price of \$125 per cwt is up \$1.00 from last month and \$3.00 higher than May 2012.

Dairy products: The May index, at 152, is up 2.0 percent from a month ago and 23 percent above May last year. The May all milk price of \$19.80 per cwt is 30 cents above last month and \$3.60 higher than May 2012.

Poultry & eggs: The May index, at 201, is up 7.5 percent from April and 25 percent above a year ago. The May market egg price, at 97.6 cents per dozen, is 33.0 cents higher than April and 38.1 cents above May 2012. The May broiler price, at 67.0 cents per pound, is up 2.0 cents from April and 15.0 cents above a year ago. The May turkey price, at 65.0 cents per pound, is down 1.2 cents from the previous month and 7.7 cents lower than a year earlier.

Prices Received Indexes – United States: May 2013 with Comparisons

[Revised historical price indexes for months not shown are available at www.nass.usda.gov]

Index	1910-1914 Base				1990-1992 Base		
	1990-1992 Average	May 2012	April 2013	May 2013	May 2012	April 2013	May 2013
	(percent)	(percent)	(percent)	(percent)	(percent)	(percent)	(percent)
All products	639	1144	1217	1232	180	192	194
All crops	500	1059	1102	1096	214	222	221
Food grains	325	694	783	774	219	247	244
Feed grains & hay	363	977	1068	1053	274	300	295
Cotton, Upland	517	714	638	641	139	124	125
Tobacco	1263	1559	1760	1760	103	116	116
Oilseeds	554	1371	1370	1396	250	250	255
Fruits & nuts	716	1457	1109	1186	209	159	170
Commercial vegetables	698	1128	1193	1163	158	167	163
Potatoes & dry beans	540	944	848	916	186	167	181
Other crops	493	651	655	655	132	133	133
Livestock and products	768	1155	1254	1303	151	164	170
Meat animals	1021	1624	1626	1662	159	160	163
Dairy products	799	997	1200	1218	124	149	152
Poultry & eggs	282	451	526	565	161	187	201
Food commodities	(NA)	(NA)	(NA)	(NA)	169	178	181

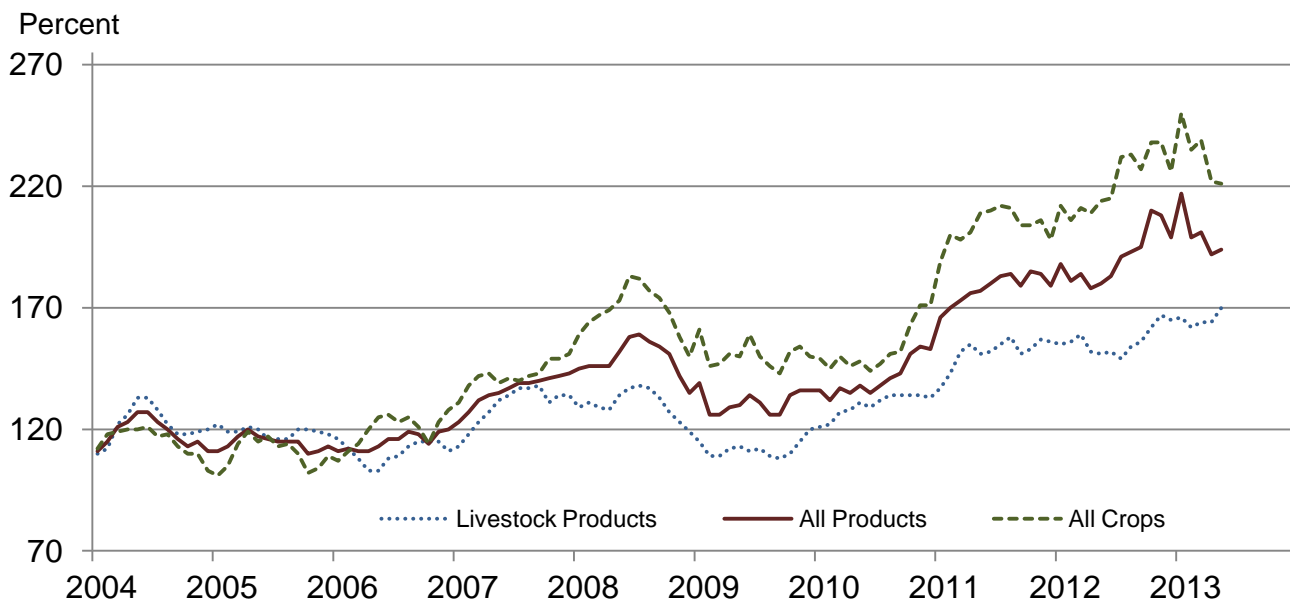
(NA) Not available.

Prices Received and Prices Paid Indexes by Month for Selected Groups – United States: 2012 and 2013, 1990-1992 Base

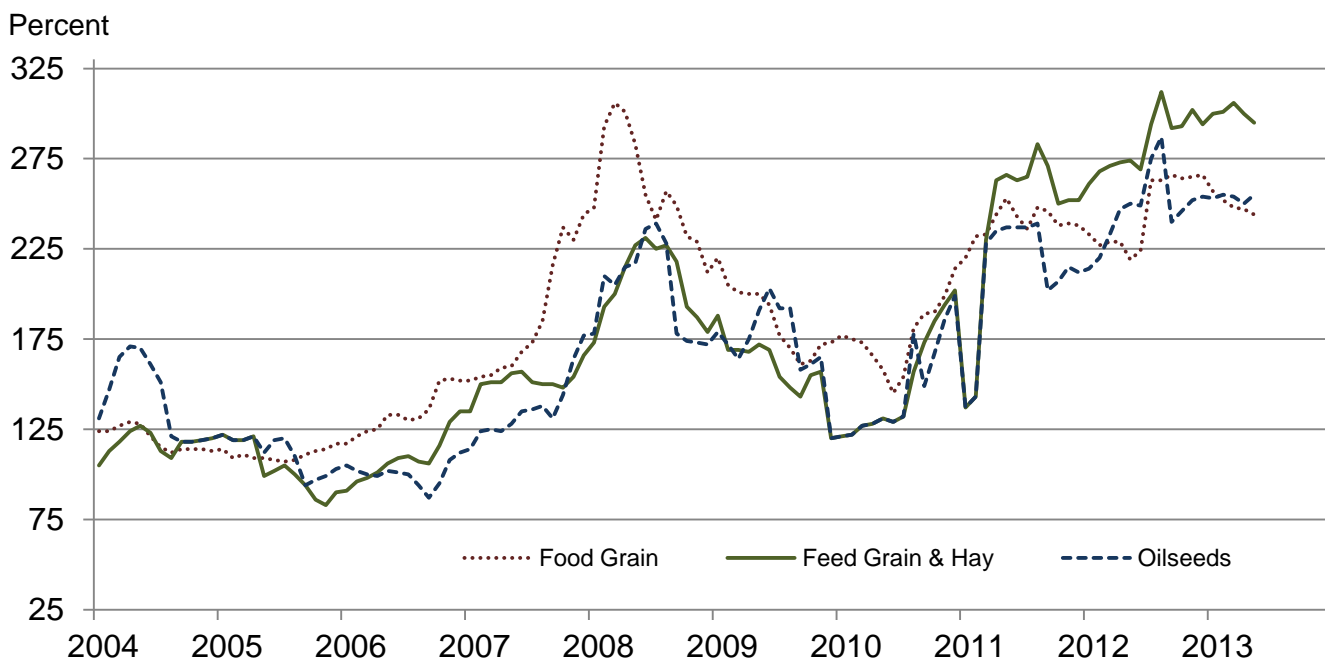
[Revised historical price indexes for months not shown are available at www.nass.usda.gov. Blank data cells indicate estimation period has not yet begun]

Month	Index of prices received						Index of prices paid			
	All farm products		All crops		Livestock and products		All items		Production items	
	2012	2013	2012	2013	2012	2013	2012	2013	2012	2013
	(percent)	(percent)	(percent)	(percent)	(percent)	(percent)	(percent)	(percent)	(percent)	(percent)
January	188	217	212	250	155	166	210	219	222	232
February	181	199	206	235	156	162	211	220	223	234
March	184	201	211	239	159	164	215	220	229	234
April	178	192	209	222	152	164	215	219	228	233
May	180	194	214	221	151	170	215	219	228	232
June	183		215		152		214		227	
July	191		232		149		213		227	
August	193		233		154		216		231	
September	195		227		156		217		232	
October	210		238		162		218		232	
November	208		238		167		217		231	
December	199		226		165		217		231	

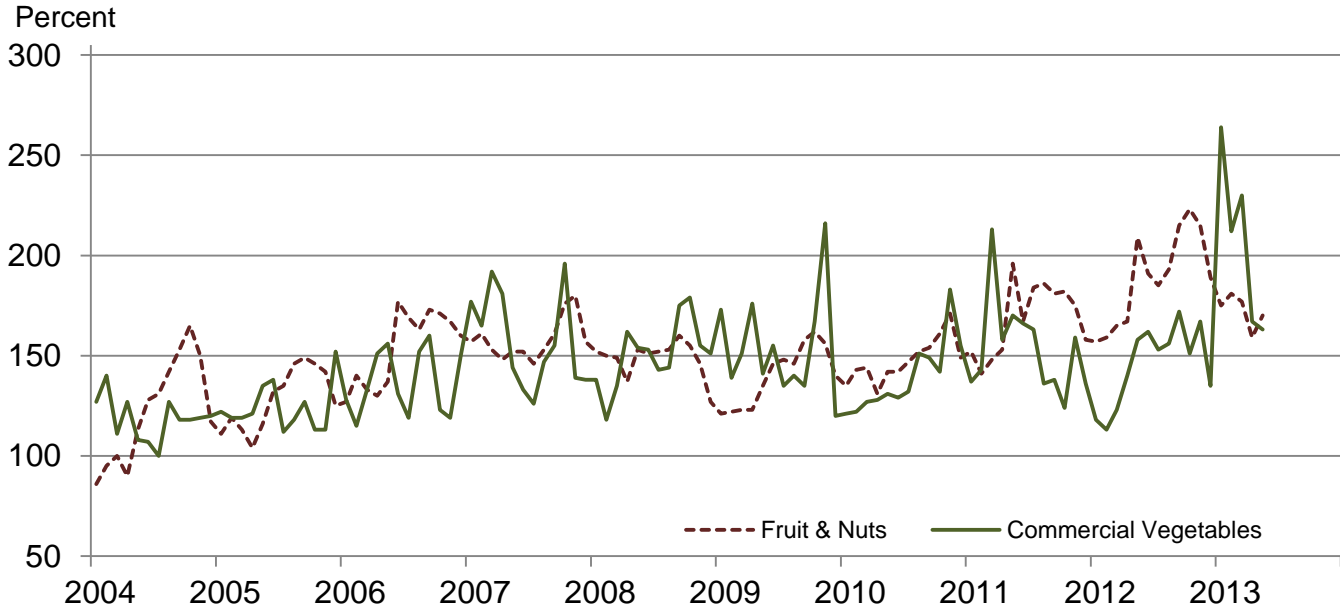
Received Indexes by Month, Livestock Products, All Products, and All Crops – United States: 1990-1992=100



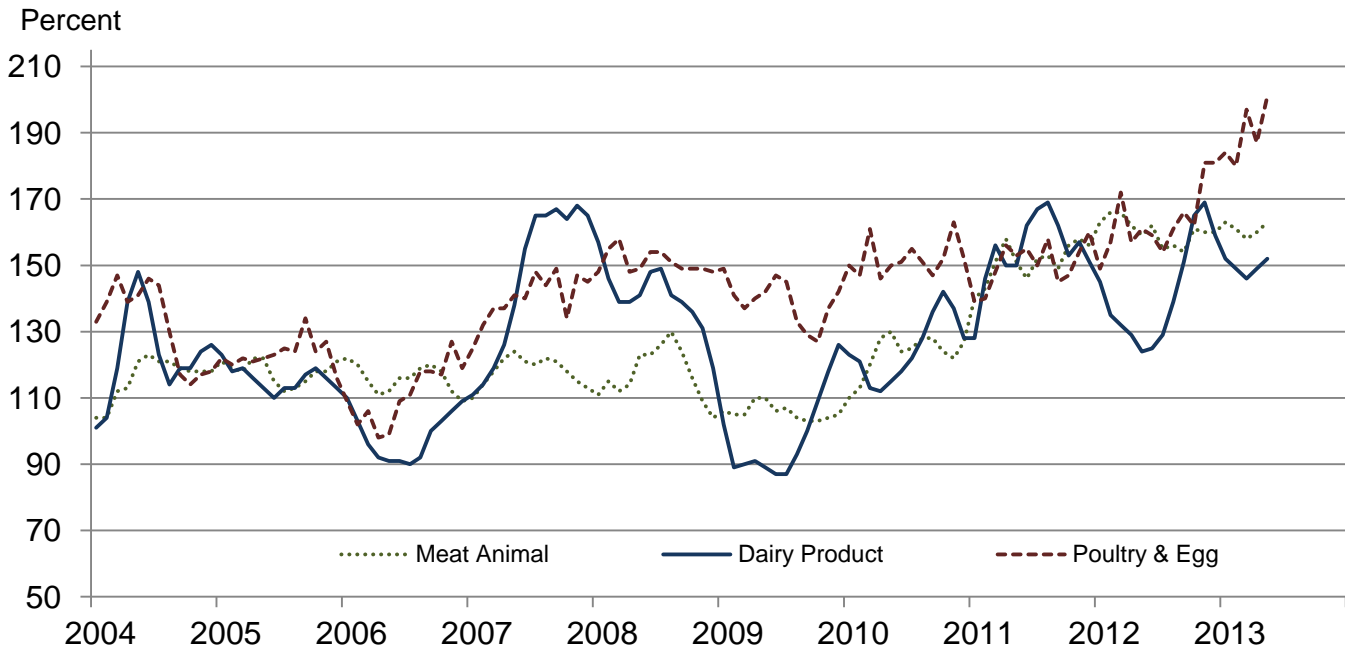
Received Indexes by Month, Food Grains, Feed Grains & Hay, and Oilseeds – United States: 1990-1992=100



**Received Indexes by Month,
Fruit & Nuts and Commercial Vegetables –
United States: 1990-1992=100**



**Received Indexes by Month,
Meat Animal, Dairy Product, and Poultry & Egg –
United States: 1990-1992=100**



Prices Received for Field Crops and Fruits – United States: May 2013 with Comparisons

Commodity	Average 1990-1992	May 2012	April 2013	Preliminary May 2013
Field crops				
Austrian winter peas	dollars/cwt	(NA)	(S)	(S)
Barley, all	dollars/bushel	2.12	5.72	6.30
Feed	dollars/bushel	1.90	4.89	5.55
Malting	dollars/bushel	2.43	5.84	6.48
Beans, dry edible	dollars/cwt	19.10	43.30	34.60
Canola	dollars/cwt	(NA)	27.70	27.50
Chickpeas, all	dollars/cwt	(NA)	34.30	35.70
Large	dollars/cwt	(NA)	32.00	37.00
Small	dollars/cwt	(NA)	37.40	26.20
Corn	dollars/bushel	2.30	6.34	6.97
Cotton, Upland	dollars/pound	0.606	0.844	0.754
Cottonseed	dollars/ton	96.00	(NA)	(NA)
Flaxseed	dollars/bushel	4.27	14.80	14.90
Hay, all, baled	dollars/ton	76.30	201.00	200.00
Alfalfa	dollars/ton	77.20	217.00	215.00
Other	dollars/ton	60.00	148.00	162.00
Lentils	dollars/cwt	(NA)	22.70	21.00
Oats	dollars/bushel	1.22	4.12	4.42
Peanuts, in-shell	dollars/pound	0.304	0.338	0.267
Peas, dry edible	dollars/cwt	(NA)	16.50	18.70
Potatoes	dollars/cwt	5.82	10.44	9.63
Rice, all	dollars/cwt	7.07	14.10	15.20
Long	dollars/cwt	(NA)	13.30	14.80
Medium and short	dollars/cwt	(NA)	16.50	16.50
Sorghum grain	dollars/cwt	3.75	10.40	11.60
Soybeans	dollars/bushel	5.61	14.00	14.40
Sunflowers, all	dollars/cwt	9.50	27.80	24.80
Wheat, all	dollars/bushel	2.96	6.67	7.71
Winter	dollars/bushel	2.93	6.42	7.52
Durum	dollars/bushel	2.86	8.95	8.01
Other spring	dollars/bushel	3.11	7.93	7.90
Hard red winter ¹	dollars/bushel	(NA)	6.35	7.49
Soft red winter ¹	dollars/bushel	(NA)	6.75	7.42
Hard red spring ¹	dollars/bushel	(NA)	8.01	7.91
White ¹	dollars/bushel	3.24	6.54	7.71
Fruits				
Citrus, equivalent on-tree				
Grapefruit	dollars/box	5.77	9.62	3.51
Lemons	dollars/box	10.10	17.19	9.18
Oranges	dollars/box	5.79	10.35	8.10
Tangelos	dollars/box	5.82	(S)	(S)
Tangerines and mandarins	dollars/box	15.11	(D)	(D)
Noncitrus, fresh				
Apples ²	dollars/pound	0.212	0.300	(NA)
Grapes ²	dollars/ton	506.00	(S)	(NA)
Peaches ²	dollars/ton	432.00	1,100.00	(NA)
Pears ²	dollars/ton	370.00	353.00	(NA)
Strawberries	dollars/cwt	56.00	82.70	(NA)

(D) Withheld to avoid disclosing data for individual operations.

(NA) Not available.

(S) Insufficient number of reports to establish an estimate.

¹ Preliminary estimates not set for this item.

² Equivalent packinghouse-door returns for California, Michigan, New York (apples only), and Washington (apples, peaches, and pears). Prices as sold for other states.

Prices Received for Vegetables and Livestock – United States: May 2013 with Comparisons

[Price data source for livestock and poultry commodities is United States Department of Agriculture's Agricultural Marketing Service]

Commodity	Average 1990-1992	May 2012	April 2013	Preliminary May 2013
Vegetables, fresh ¹				
Asparagusdollars/cwt	79.80	132.00	(NA)	(NA)
Beans, snap ²dollars/cwt	(NA)	54.50	(NA)	(NA)
Broccolidollars/cwt	22.50	31.40	(NA)	(NA)
Cantaloupes ²dollars/cwt	(NA)	25.20	(NA)	(NA)
Carrotsdollars/cwt	13.20	27.40	(NA)	(NA)
Cauliflowerdollars/cwt	26.80	35.40	(NA)	(NA)
Celerydollars/cwt	11.60	15.80	(NA)	(NA)
Corn, sweetdollars/cwt	15.70	21.10	(NA)	(NA)
Cucumbers ²dollars/cwt	(NA)	34.60	(NA)	(NA)
Lettucedollars/cwt	11.90	19.00	(NA)	(NA)
Onions ³dollars/cwt	12.80	26.30	(NA)	(NA)
Tomatoesdollars/cwt	32.30	34.10	(NA)	(NA)
Livestock				
Calvesdollars/cwt	94.30	176.00	155.00	151.00
Cattle, all beefdollars/cwt	72.90	122.00	124.00	125.00
Cows ⁴dollars/cwt	49.60	87.70	80.90	80.10
Steers and heifersdollars/cwt	77.10	125.00	128.00	129.00
Milk cows ⁵dollars/head	1130.00	(NA)	(NA)	(NA)
Hogs, alldollars/cwt	47.70	62.80	61.80	67.00
Barrows and giltsdollars/cwt	48.40	63.20	61.90	67.80
Sowsdollars/cwt	39.50	52.10	57.90	52.00
Dairy and poultry				
Milk, all ⁶dollars/cwt	13.06	16.20	19.50	19.80
Fat test percent	3.66	3.63	3.74	3.68
Broilers, live ⁷dollars/pound	0.317	0.520	0.650	0.670
Eggs, all ⁸dollars/dozen	0.643	0.828	0.882	1.170
Market ^{8 9}dollars/dozen	0.546	0.595	0.646	0.976
Turkeys, live ^{8 10}dollars/pound	0.380	0.727	0.662	0.650
Adjusted for seasonal variation				
Eggs, alldollars/dozen	0.545	1.000	0.991	1.410
Seasonal factor percent	100	82	89	83
Milk, all ⁶dollars/cwt	9.71	17.20	20.60	21.10
Seasonal factor percent	100	94	95	94

(NA) Not available.

¹ Beginning January 2006, point of first sale. FOB shipping point for prior years.

² Monthly estimates began January 1995.

³ Includes some processing.

⁴ Beef cows and cull dairy cows sold for slaughter.

⁵ Animals sold for dairy herd replacement only. Prices available for January, April, July, and October.

⁶ Before deductions for hauling. Includes quality, quantity, and other premiums. Excludes hauling subsidies.

⁷ Live weight equivalent price.

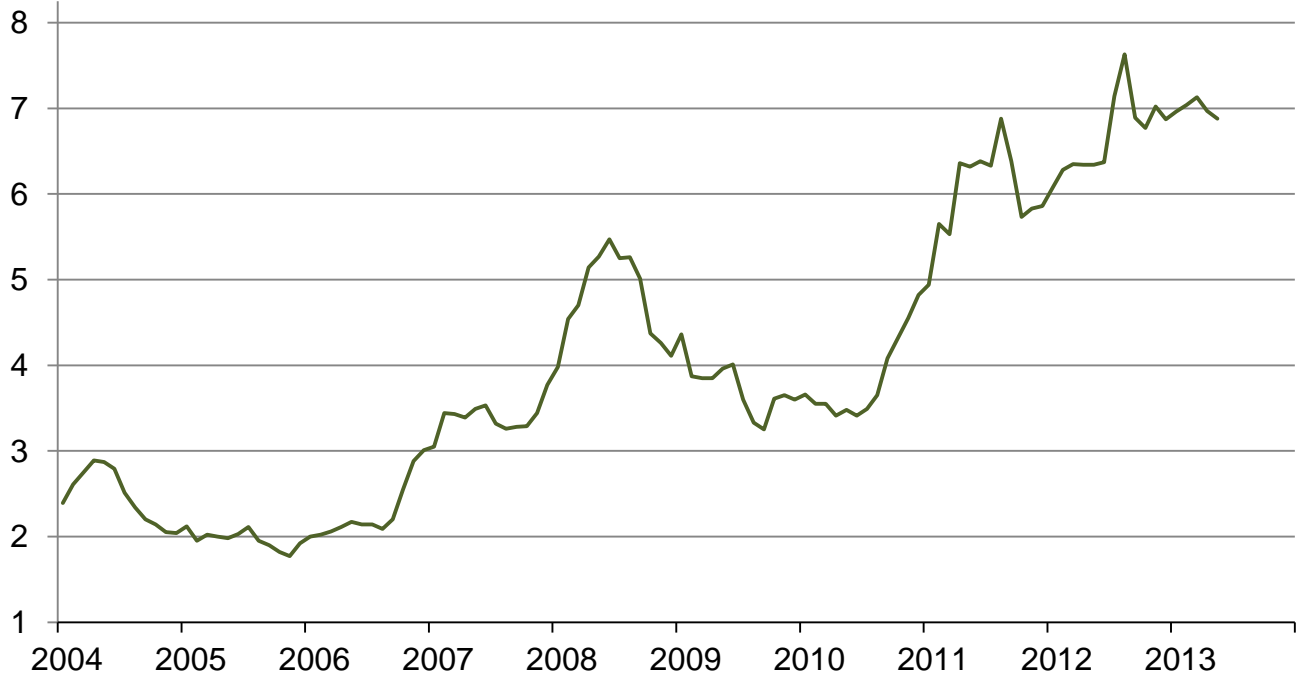
⁸ Mid-month price.

⁹ Also referred to as table eggs.

¹⁰ Live weight equivalent price is used when actual live weight price is not available. Beginning January 2011, price reflects FOB shipping point basis. Prior year price reflects delivered basis.

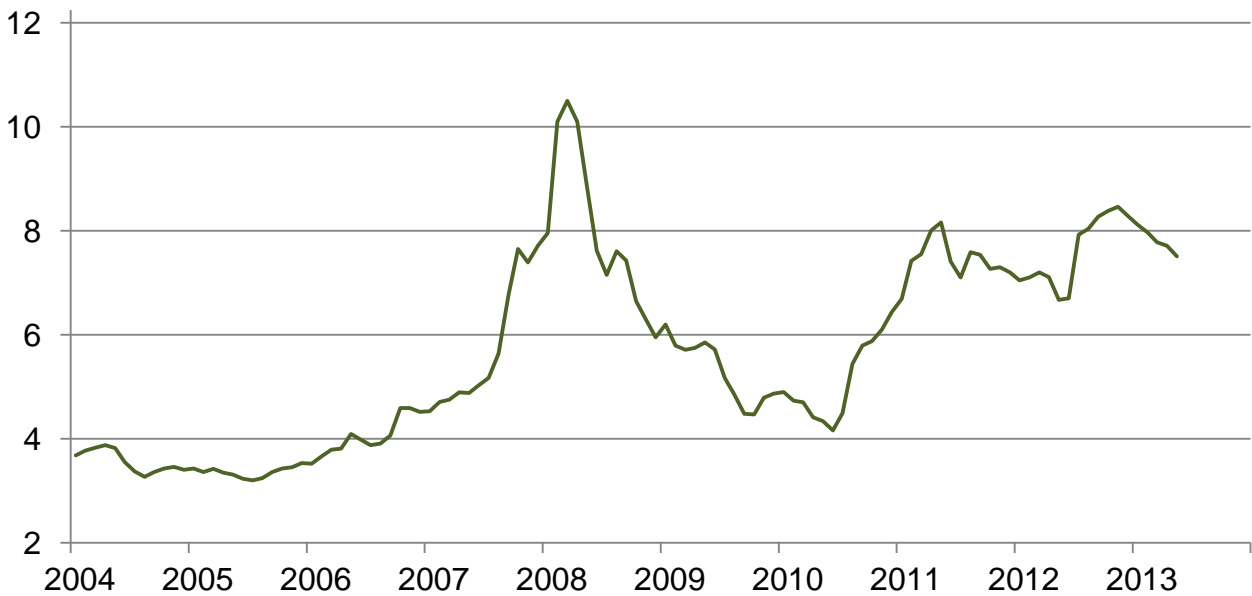
Prices Received for Corn by Month – United States

Dollars per bushel



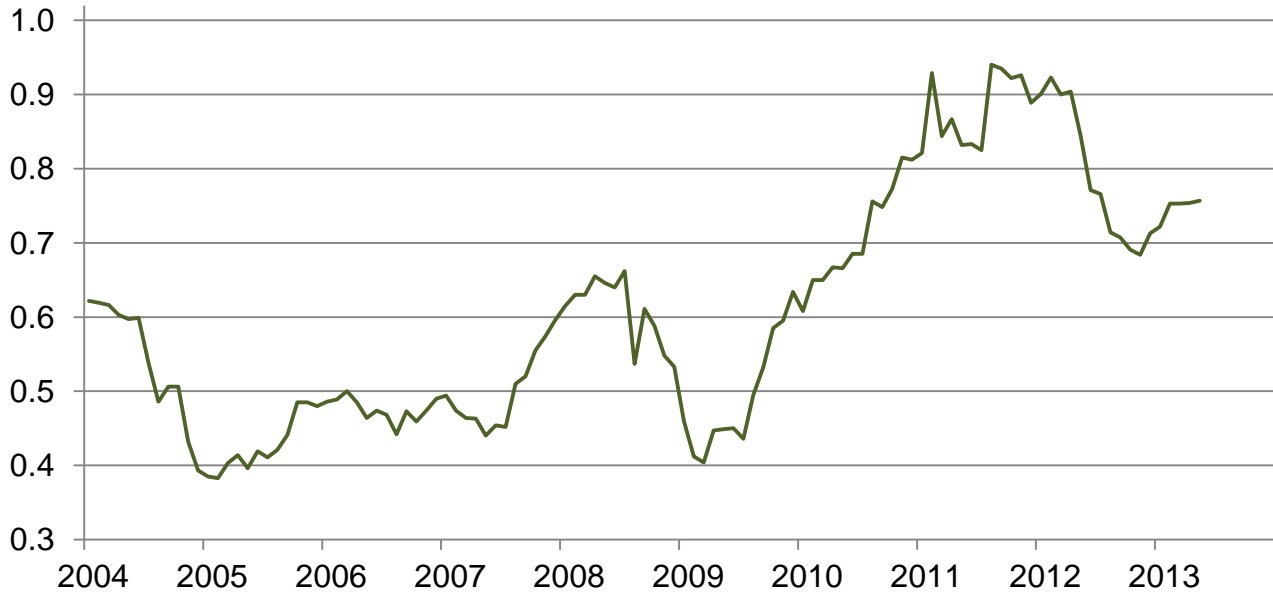
Prices Received for Wheat by Month – United States

Dollars per bushel



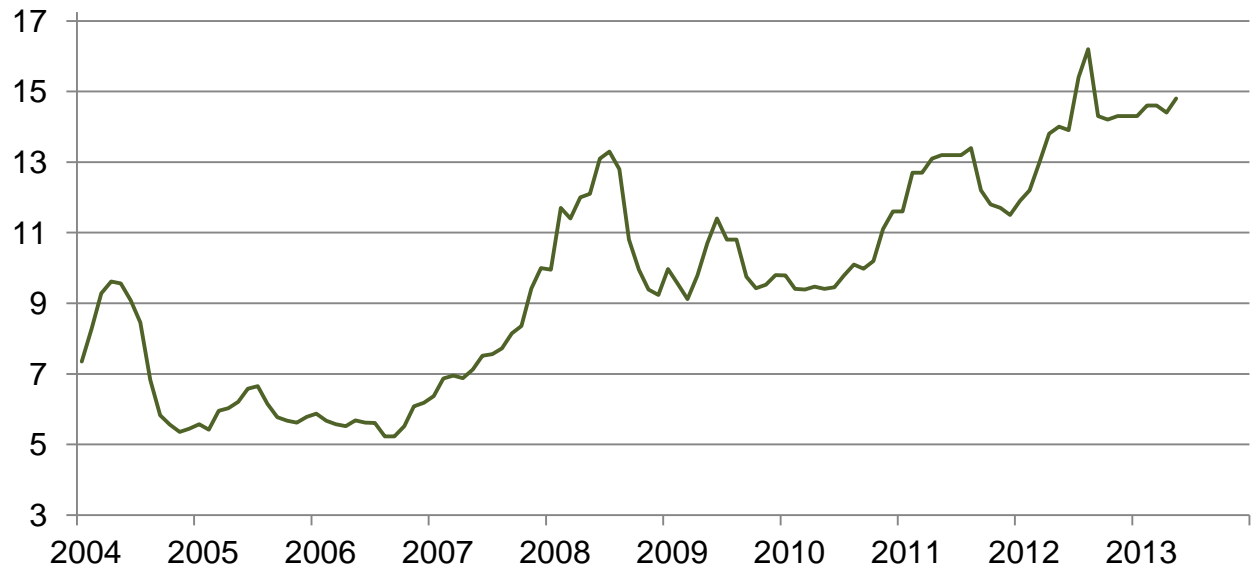
Prices Received for Upland Cotton by Month – United States

Dollars per pound



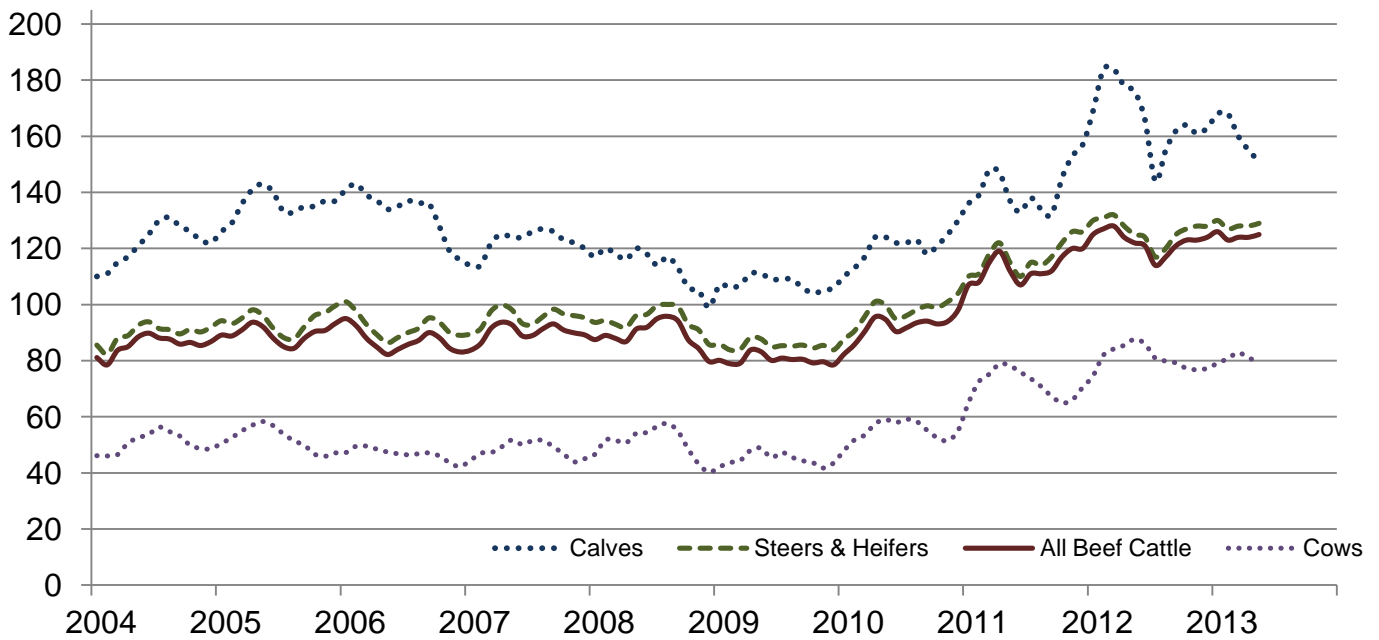
Prices Received for Soybeans by Month – United States

Dollars per bushel



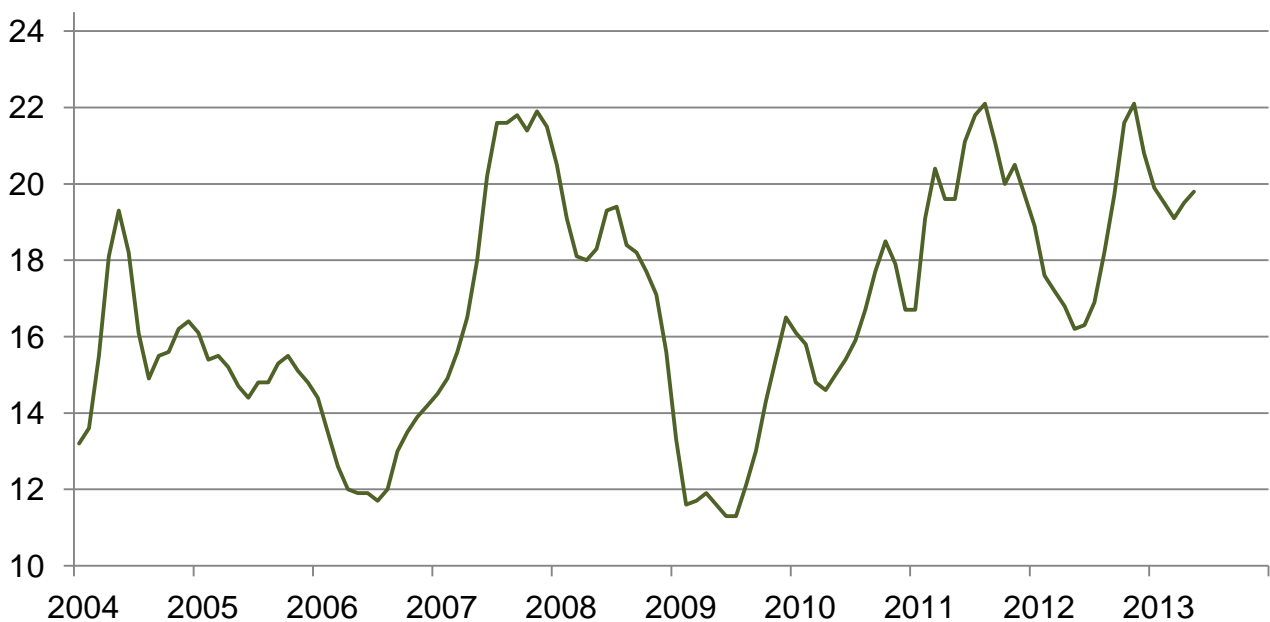
Prices Received for Cattle by Month – United States

Dollars per cwt



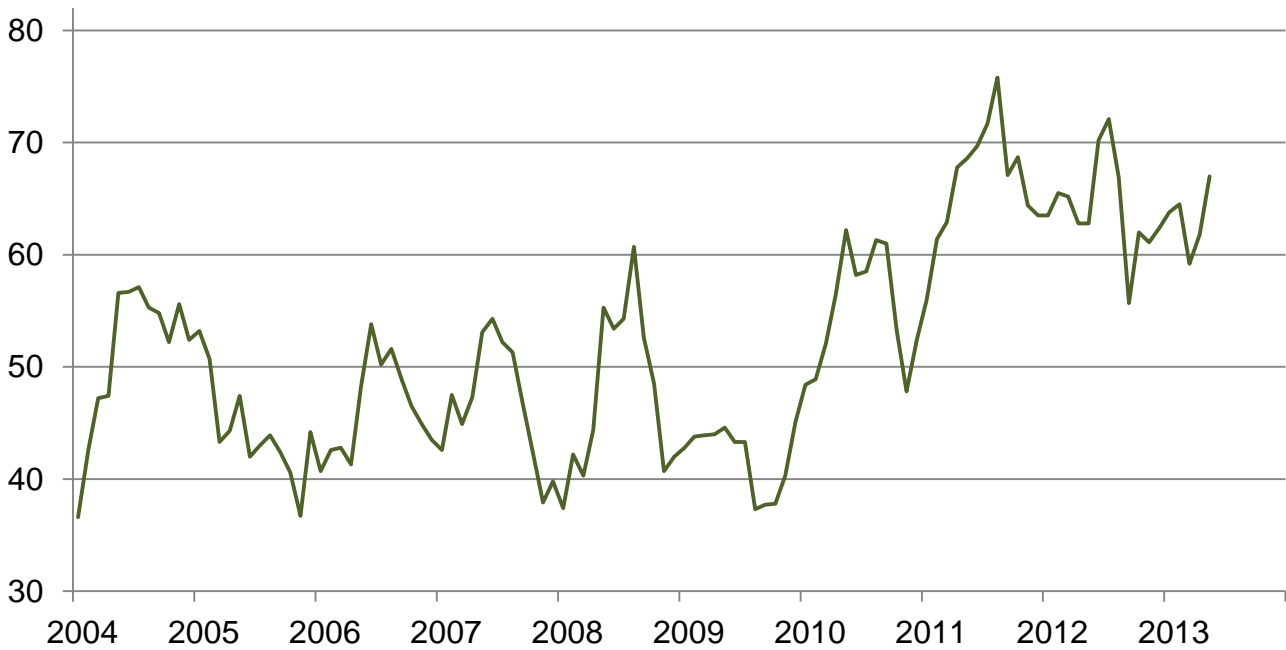
Prices Received for Milk by Month – United States

Dollars per cwt



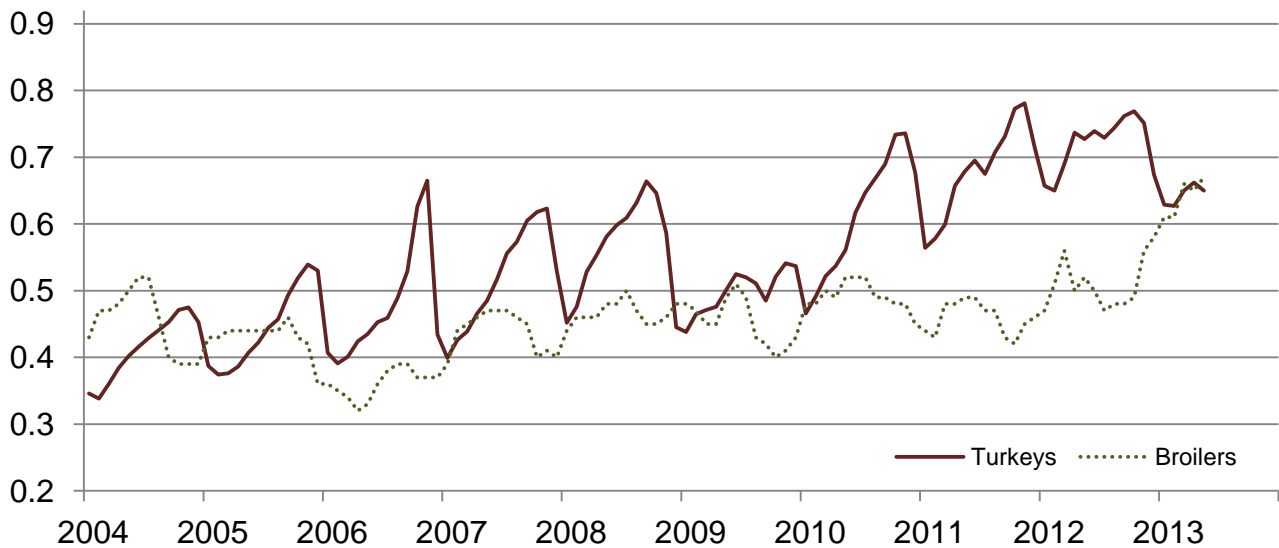
Prices Received for Hogs by Month – United States

Dollars per cwt



Prices Received for Poultry by Month – United States

Dollars per pound



Prices Received for All Wheat, Corn, and Soybeans by Month – United States: 2013 with Comparisons

[Current month prices are mid-month; prices for previous months and years are for the entire month. Blank data cells indicate estimation period has not yet begun]

Month	All wheat			Corn			Soybeans		
	2011	2012	Preliminary 2013	2011	2012	Preliminary 2013	2011	2012	Preliminary 2013
	(dollars per bushel)	(dollars per bushel)	(dollars per bushel)	(dollars per bushel)	(dollars per bushel)	(dollars per bushel)	(dollars per bushel)	(dollars per bushel)	(dollars per bushel)
January	6.69	7.05	8.12	4.94	6.07	6.96	11.60	11.90	14.30
February	7.42	7.10	7.97	5.65	6.28	7.04	12.70	12.20	14.60
March	7.55	7.20	7.78	5.53	6.35	7.13	12.70	13.00	14.60
April	8.01	7.11	7.71	6.36	6.34	6.97	13.10	13.80	14.40
May	8.16	6.67	7.51	6.32	6.34	6.88	13.20	14.00	14.80

Prices Received for Beef Cattle and All Hogs by Month – United States: 2013 with Comparisons

[Current month prices are mid-month; prices for previous months and years are for the entire month. Blank data cells indicate estimation period has not yet begun]

Month	Beef cattle ¹			All hogs ²		
	2011	2012	Preliminary 2013	2011	2012	Preliminary 2013
	(dollars per cwt)	(dollars per cwt)	(dollars per cwt)	(dollars per cwt)	(dollars per cwt)	(dollars per cwt)
January	107.00	125.00	126.00	56.00	63.50	63.80
February	108.00	127.00	123.00	61.40	65.50	64.50
March	115.00	128.00	124.00	62.90	65.20	59.20
April	119.00	124.00	124.00	67.80	62.80	61.80
May	112.00	122.00	125.00	68.60	62.80	67.00

¹ Cows and steers & heifers.

² Barrows & gilts and sows.

Prices Received for All Wheat – States and United States: May 2013 with Comparisons

State	May 2012	April 2013	Preliminary May 2013
	(dollars per bushel)	(dollars per bushel)	(dollars per bushel)
Arizona	(D)	(D)	(S)
Arkansas	6.72	(D)	(D)
California	(D)	8.86	(D)
Colorado	5.97	7.46	7.18
Idaho	7.21	7.90	8.06
Illinois	6.55	7.35	7.00
Indiana	6.60	7.23	7.00
Kansas	6.35	7.33	7.30
Michigan	6.59	7.29	7.30
Minnesota	7.68	7.74	7.60
Missouri	6.77	7.10	7.00
Montana	7.65	8.00	7.98
Nebraska	6.15	7.38	7.45
North Carolina	6.91	7.66	(D)
North Dakota	7.62	7.80	7.67
Ohio	6.88	7.49	7.30
Oklahoma	6.41	7.32	7.35
Oregon	6.90	8.07	7.97
South Dakota	7.12	7.69	7.59
Texas	6.24	7.03	(D)
Washington	6.96	7.89	7.75
United States	6.67	7.71	7.51

(D) Withheld to avoid disclosing data for individual operations.

(S) Insufficient number of reports to establish an estimate.

Prices Received for Winter Wheat – States and United States: May 2013 with Comparisons

State	May 2012	April 2013	Preliminary May 2013
	(dollars per bushel)	(dollars per bushel)	(dollars per bushel)
Arkansas	6.72	(D)	(D)
California	(D)	8.86	(D)
Colorado	5.98	7.46	7.18
Idaho	6.55	7.78	7.75
Illinois	6.55	7.35	7.00
Indiana	6.60	7.23	7.00
Kansas	6.35	7.33	7.30
Michigan	6.59	7.29	7.30
Minnesota	(D)	(D)	(S)
Missouri	6.77	7.10	7.00
Montana	6.86	7.92	7.73
Nebraska	6.15	7.38	7.45
North Carolina	6.91	7.66	(D)
North Dakota	6.30	7.36	7.20
Ohio	6.88	7.49	7.30
Oklahoma	6.41	7.32	7.35
Oregon	6.85	7.91	7.81
South Dakota	6.30	7.24	7.29
Texas	6.24	7.03	(D)
Washington	6.53	7.69	7.50
United States	6.42	7.52	7.37

(D) Withheld to avoid disclosing data for individual operations.

(S) Insufficient number of reports to establish an estimate.

Prices Received for Durum Wheat – States and United States: May 2013 with Comparisons

State	May 2012	April 2013	Preliminary May 2013
	(dollars per bushel)	(dollars per bushel)	(dollars per bushel)
Arizona	(D)	(D)	(S)
California	(S)	(S)	(S)
Idaho	(D)	(D)	(S)
Montana	10.40	8.17	(D)
North Dakota	7.68	7.97	7.90
United States	8.95	8.01	7.92

(D) Withheld to avoid disclosing data for individual operations.

(S) Insufficient number of reports to establish an estimate.

Prices Received for Spring Wheat – States and United States: May 2013 with Comparisons

State	May 2012	April 2013	Preliminary May 2013
	(dollars per bushel)	(dollars per bushel)	(dollars per bushel)
Colorado	(D)	(D)	(S)
Idaho	7.96	8.14	8.30
Minnesota	7.69	7.74	7.60
Montana	8.47	8.05	8.20
North Dakota	7.72	7.82	7.65
Oregon	7.29	8.52	8.43
South Dakota	7.74	7.86	7.70
Washington	8.04	8.37	8.33
United States	7.93	7.90	7.90

(D) Withheld to avoid disclosing data for individual operations.

(S) Insufficient number of reports to establish an estimate.

Prices Received for All Barley – States and United States: May 2013 with Comparisons

State	May 2012	April 2013	Preliminary May 2013
	(dollars per bushel)	(dollars per bushel)	(dollars per bushel)
California	(D)	(S)	(S)
Colorado	(D)	(S)	(S)
Idaho	5.90	6.28	6.28
Minnesota	(D)	(D)	(S)
Montana	5.51	6.32	5.99
North Dakota	5.56	6.39	6.03
Oregon	4.47	(D)	(D)
Utah	(D)	(D)	(D)
Washington	4.71	5.24	5.24
Wyoming	(D)	(D)	(S)
United States	5.72	6.30	6.07

(D) Withheld to avoid disclosing data for individual operations.

(S) Insufficient number of reports to establish an estimate.

Prices Received for Malting Barley – States: May 2013 with Comparisons

State	May 2012	April 2013	Preliminary May 2013
	(dollars per bushel)	(dollars per bushel)	(dollars per bushel)
Idaho	5.97	6.31	(D)
Minnesota	(D)	(D)	(S)
Montana	5.61	6.42	6.23
North Dakota	5.60	6.64	6.25
Wyoming	(S)	(S)	(S)

(D) Withheld to avoid disclosing data for individual operations.

(S) Insufficient number of reports to establish an estimate.

Prices Received for Feed Barley – States: May 2013 with Comparisons

State	May 2012	April 2013	Preliminary May 2013
	(dollars per bushel)	(dollars per bushel)	(dollars per bushel)
Idaho	5.06	6.06	(D)
Minnesota	(D)	(D)	(S)
Montana	4.65	5.76	(D)
North Dakota	4.78	5.40	4.75
Wyoming	(D)	(D)	(S)

(D) Withheld to avoid disclosing data for individual operations.

(S) Insufficient number of reports to establish an estimate.

Prices Received for Corn – States and United States: May 2013 with Comparisons

State	May 2012	April 2013	Preliminary May 2013
	(dollars per bushel)	(dollars per bushel)	(dollars per bushel)
Colorado	6.21	7.05	6.99
Illinois	6.39	6.89	6.80
Indiana	6.52	7.12	7.00
Iowa	6.31	7.10	6.90
Kansas	6.30	6.84	6.85
Kentucky	6.64	7.29	7.30
Michigan	6.18	6.58	6.50
Minnesota	6.06	6.76	6.80
Missouri	6.61	7.42	7.20
Nebraska	6.36	7.05	6.95
North Carolina	7.05	7.41	7.40
North Dakota	5.98	6.59	6.50
Ohio	6.46	7.02	7.14
Pennsylvania	6.89	6.99	7.18
South Dakota	6.09	6.59	6.67
Tennessee	6.79	7.28	7.40
Texas	6.84	7.43	(D)
Wisconsin	6.17	6.89	6.90
United States	6.34	6.97	6.88

(D) Withheld to avoid disclosing data for individual operations.

Prices Received for Soybeans – States and United States: May 2013 with Comparisons

State	May 2012	April 2013	Preliminary May 2013
	(dollars per bushel)	(dollars per bushel)	(dollars per bushel)
Arkansas	13.80	14.20	14.50
Illinois	14.30	14.60	15.00
Indiana	14.10	14.70	15.00
Iowa	13.80	14.40	14.90
Kansas	13.70	14.00	14.40
Kentucky	14.50	14.60	15.00
Louisiana	13.60	14.40	(D)
Michigan	13.70	13.80	14.30
Minnesota	13.70	14.20	14.50
Mississippi	(D)	14.50	(D)
Missouri	14.10	14.40	14.80
Nebraska	13.80	14.10	14.60
North Carolina	14.10	14.40	14.50
North Dakota	13.60	13.50	13.80
Ohio	14.30	14.50	15.00
South Dakota	13.30	14.00	14.50
Tennessee	14.30	14.60	14.90
Wisconsin	13.70	14.00	14.30
United States	14.00	14.40	14.80

(D) Withheld to avoid disclosing data for individual operations.

Prices Received for Oats – States and United States: May 2013 with Comparisons

State	May 2012	April 2013	Preliminary May 2013
	(dollars per bushel)	(dollars per bushel)	(dollars per bushel)
Illinois	(D)	(D)	(S)
Iowa	4.04	4.85	4.60
Michigan	4.46	(D)	(D)
Minnesota	3.59	3.90	3.80
Montana	(D)	(S)	(S)
Nebraska	4.06	(D)	(D)
New York	3.91	(D)	(D)
North Dakota	3.54	3.50	(D)
Oregon	(S)	(S)	(S)
Pennsylvania	4.57	(D)	4.60
South Dakota	3.79	4.36	3.90
Texas	(D)	(S)	(S)
Wisconsin	3.79	4.33	4.30
United States	4.12	4.42	4.10

(D) Withheld to avoid disclosing data for individual operations.

(S) Insufficient number of reports to establish an estimate.

Prices Received for Sorghum Grain – States and United States: May 2013 with Comparisons

State	May 2012	April 2013	Preliminary May 2013
	(dollars per cwt)	(dollars per cwt)	(dollars per cwt)
Arkansas	(S)	(D)	(D)
Illinois	(D)	12.90	(S)
Kansas	10.30	11.20	11.50
Louisiana	(S)	(D)	(S)
Missouri	(S)	11.90	11.60
Nebraska	10.90	(D)	12.20
Oklahoma	10.40	11.20	11.40
Texas	11.50	10.70	10.10
United States	10.40	11.60	11.20

(D) Withheld to avoid disclosing data for individual operations.

(S) Insufficient number of reports to establish an estimate.

Prices Received for Dry Beans – States and United States: May 2013 with Comparisons

State	May 2012	April 2013	Preliminary May 2013
	(dollars per cwt)	(dollars per cwt)	(dollars per cwt)
California	50.80	(D)	(D)
Colorado	51.80	35.40	33.20
Idaho	47.60	39.40	34.40
Michigan	43.90	42.30	(D)
Minnesota	42.70	39.00	39.50
Nebraska	40.50	36.60	36.60
North Dakota	41.70	31.90	31.70
United States	43.30	34.60	34.50

(D) Withheld to avoid disclosing data for individual operations.

Prices Received for Peanuts (in shell) – States and United States: May 2013 with Comparisons

State	May 2012	April 2013	Preliminary May 2013
	(dollars per pound)	(dollars per pound)	(dollars per pound)
Alabama	0.331	0.233	0.223
Florida	0.265	0.256	0.292
Georgia	0.331	0.249	0.261
Mississippi	0.281	0.313	0.363
New Mexico	(S)	(D)	(D)
North Carolina	0.360	0.352	0.358
Oklahoma	0.313	0.322	0.336
South Carolina	0.337	0.292	0.298
Texas	0.444	0.341	0.309
Virginia	0.336	0.346	(D)
United States	0.338	0.267	0.285

(D) Withheld to avoid disclosing data for individual operations.

(S) Insufficient number of reports to establish an estimate.

Prices Received for Sunflower – States and United States: May 2013 with Comparisons

State	May 2012	April 2013	Preliminary May 2013
	(dollars per cwt)	(dollars per cwt)	(dollars per cwt)
Colorado	25.20	(D)	(D)
Kansas	24.70	23.00	(D)
Minnesota	(D)	27.80	(D)
North Dakota	29.90	25.00	23.60
South Dakota	26.10	24.00	22.80
United States	27.80	24.80	23.60

(D) Withheld to avoid disclosing data for individual operations.

Prices Received for Canola – States and United States: May 2013 with Comparisons

State	May 2012	April 2013	Preliminary May 2013
	(dollars per cwt)	(dollars per cwt)	(dollars per cwt)
Minnesota	(D)	(D)	(S)
North Dakota	27.70	27.50	27.80
United States	27.70	27.50	27.80

(D) Withheld to avoid disclosing data for individual operations.

(S) Insufficient number of reports to establish an estimate.

Prices Received for Flaxseed – States and United States: May 2013 with Comparisons

State	May 2012	April 2013	Preliminary May 2013
	(dollars per bushel)	(dollars per bushel)	(dollars per bushel)
North Dakota	14.80	14.90	15.30
United States	14.80	14.90	15.30

Prices Received for Upland Cotton and Cottonseed – States and United States: May 2013 with Comparisons

[Cottonseed marketing year August - February]

State	Cotton, Upland			Cottonseed		
	May 2012	April 2013	Preliminary May 2013	May 2012	April 2013	Preliminary May 2013
	(dollars per pound)	(dollars per pound)	(dollars per pound)	(dollars per ton)	(dollars per ton)	(dollars per ton)
Alabama	1.010	0.762	0.760	(NA)	(NA)	(NA)
Arizona	(D)	(D)	(S)	(NA)	(NA)	(NA)
Arkansas	1.010	(D)	0.760	(NA)	(NA)	(NA)
California	(D)	(D)	(S)	(NA)	(NA)	(NA)
Georgia	0.973	0.767	(D)	(NA)	(NA)	(NA)
Louisiana	1.010	0.743	0.760	(NA)	(NA)	(NA)
Mississippi	1.010	(D)	0.760	(NA)	(NA)	(NA)
North Carolina	1.010	0.766	0.760	(NA)	(NA)	(NA)
Tennessee	(D)	0.762	0.760	(NA)	(NA)	(NA)
Texas	0.777	0.676	0.686	(NA)	(NA)	(NA)
United States	0.844	0.754	0.757	(NA)	(NA)	(NA)

(D) Withheld to avoid disclosing data for individual operations.

(NA) Not available.

(S) Insufficient number of reports to establish an estimate.

Prices Received and Farm Marketings for Upland Cotton and Rice – United States: May 2013 with Comparisons

Item	May 2012	April 2013	Preliminary May 2013
Cotton, Upland			
Average price dollars/pound	0.844	0.754	0.757
Marketings ¹ 1,000 bales	793	368	(NA)
Rice, all			
Average price dollars/cwt	14.10	15.20	15.70
Marketings ² 1,000 cwt	13,127	12,444	(NA)
Rice, long			
Average price dollars/cwt	13.30	14.80	15.40
Marketings ² 1,000 cwt	9,698	9,546	(NA)
Rice, medium and short			
Average price dollars/cwt	16.50	16.50	16.70
Marketings ² 1,000 cwt	3,429	2,898	(NA)

(NA) Not available.

¹ Marketings based on a survey of cotton buyers in the major producing States - Alabama, Arizona, Arkansas, California, Georgia, Louisiana, Mississippi, North Carolina, Tennessee, and Texas.

² Purchases by private firms and rice (rough equivalent) shipped by cooperatives.

Prices Received for Hay by Type – States and United States: May 2013 with Comparisons

State	All hay			Alfalfa hay			Other hay		
	May 2012	April 2013	Preliminary May 2013	May 2012	April 2013	Preliminary May 2013	May 2012	April 2013	Preliminary May 2013
	(dollars per ton)	(dollars per ton)	(dollars per ton)	(dollars per ton)	(dollars per ton)	(dollars per ton)	(dollars per ton)	(dollars per ton)	(dollars per ton)
Arizona	250.00	200.00	240.00	255.00	200.00	240.00	195.00	190.00	250.00
California	221.00	201.00	197.00	227.00	207.00	202.00	186.00	180.00	175.00
Colorado	249.00	243.00	244.00	255.00	245.00	245.00	170.00	230.00	225.00
Idaho	175.00	189.00	188.00	180.00	190.00	190.00	120.00	145.00	145.00
Illinois	138.00	165.00	160.00	170.00	180.00	195.00	125.00	140.00	145.00
Iowa	128.00	233.00	252.00	142.00	251.00	275.00	92.00	165.00	174.00
Kansas	190.00	213.00	215.00	205.00	240.00	235.00	105.00	130.00	135.00
Kentucky	120.00	139.00	145.00	180.00	210.00	205.00	80.00	105.00	105.00
Michigan	113.00	245.00	238.00	125.00	250.00	250.00	95.00	230.00	220.00
Minnesota	140.00	239.00	256.00	150.00	255.00	265.00	95.00	165.00	215.00
Missouri	111.00	127.00	150.00	190.00	240.00	240.00	75.00	110.00	110.00
Montana	102.00	160.00	159.00	103.00	160.00	162.00	99.00	162.00	147.00
Nebraska	128.00	227.00	225.00	134.00	246.00	236.00	96.00	177.00	166.00
Nevada	223.00	201.00	203.00	225.00	202.00	202.00	175.00	175.00	209.00
New Mexico	280.00	229.00	257.00	286.00	236.00	265.00	220.00	176.00	197.00
New York	113.00	140.00	143.00	175.00	205.00	205.00	105.00	135.00	135.00
North Dakota	74.00	124.00	135.00	75.00	126.00	137.00	52.00	84.00	89.00
Ohio	147.00	239.00	219.00	209.00	260.00	250.00	118.00	220.00	200.00
Oklahoma	170.00	193.00	177.00	212.00	240.00	226.00	107.00	130.00	104.00
Oregon	228.00	224.00	197.00	230.00	231.00	205.00	220.00	211.00	184.00
Pennsylvania	168.00	197.00	189.00	200.00	235.00	221.00	165.00	180.00	186.00
South Dakota	125.00	223.00	239.00	128.00	236.00	251.00	103.00	173.00	193.00
Texas	144.00	116.00	141.00	220.00	244.00	243.00	105.00	95.00	88.00
Utah	203.00	179.00	187.00	205.00	183.00	191.00	163.00	148.00	153.00
Washington	232.00	223.00	223.00	240.00	225.00	225.00	220.00	220.00	220.00
Wisconsin	126.00	239.00	264.00	135.00	255.00	275.00	90.00	175.00	215.00
Wyoming	160.00	218.00	217.00	165.00	220.00	223.00	135.00	200.00	200.00
United States	201.00	200.00	203.00	217.00	215.00	221.00	148.00	162.00	154.00

Prices Received for Apples – States and United States: May 2013 with Comparisons

[Equivalent packinghouse-door returns for California, Michigan, New York, and Washington. Prices at point of first sale for other States]

State	Apples, fresh use		
	May 2012	April 2013	Preliminary May 2013
	(dollars per pound)	(dollars per pound)	(dollars per pound)
California	(NA)	(NA)	(NA)
Michigan	0.300	(NA)	(NA)
New York	0.285	(NA)	(NA)
Ohio	0.520	(NA)	(NA)
Pennsylvania	(NA)	(NA)	(NA)
Virginia	(NA)	(NA)	(NA)
Washington	0.351	(NA)	(NA)
United States	0.300	(NA)	(NA)

(NA) Not available.

Prices Received for Citrus Fruits by Utilization – States and United States: May 2012

[Net pounds per box: grapefruit in California-80, Florida-85, Texas-80; lemons-80; oranges in California-80, Florida-90, Texas-85; tangelos-90; tangerines and mandarins in Arizona and California-80, Florida-95]

Commodity, State, and type	FOB packed fresh	Equivalent returns					
		Packinghouse door			On-tree		
		All	Fresh	Process	All	Fresh	Process
	(dollars per box)	(dollars per box)	(dollars per box)	(dollars per box)	(dollars per box)	(dollars per box)	(dollars per box)
Grapefruit							
California ¹	22.50	15.97	15.97	(D)	13.83	13.83	(D)
Texas	24.20	4.53	13.00	1.60	3.09	11.45	0.20
United States	22.70	11.48	15.53	(D)	9.62	13.47	(D)
Lemons							
California	38.40	23.18	27.28	(D)	17.19	21.29	(D)
United States	38.40	23.18	27.28	(D)	17.19	21.29	(D)
Oranges							
California	26.60	16.51	17.84	(D)	14.04	15.38	(D)
Navel and miscellaneous	27.60	17.32	18.79	(D)	14.85	16.33	(D)
Valencia	24.70	14.85	15.89	(D)	12.38	13.43	(D)
Florida	24.70	11.97	13.55	11.90	9.27	10.75	9.20
Valencia	24.70	11.97	13.55	11.90	9.27	10.75	9.20
United States	26.30	13.00	17.24	11.66	10.35	14.73	8.96
Tangerines and mandarins							
California	(D)	(D)	(D)	(D)	(D)	(D)	(D)
United States	(D)	(D)	(D)	(D)	(D)	(D)	(D)

(D) Withheld to avoid disclosing data for individual operations.

¹ Some processed sales included in fresh sales.

Prices Received for Citrus Fruits by Utilization – States and United States: April 2013

[Net pounds per box: grapefruit in California-80, Florida-85, Texas-80; lemons-80; oranges in California-80, Florida-90, Texas-85; tangelos-90; tangerines and mandarins in Arizona and California-80, Florida-95]

Commodity, State, and type	FOB packed fresh	Equivalent returns					
		Packinghouse door			On-tree		
		All	Fresh	Process	All	Fresh	Process
	(dollars per box)	(dollars per box)	(dollars per box)	(dollars per box)	(dollars per box)	(dollars per box)	(dollars per box)
Grapefruit							
California ¹	21.30	14.64	14.64	(D)	12.46	12.46	(D)
Florida	19.70	6.22	8.89	5.54	3.37	6.65	2.53
White	20.20	6.92	9.25	6.80	4.15	7.05	4.00
Colored	19.60	5.70	8.85	4.20	2.77	6.60	0.95
Texas	16.00	2.65	4.60	1.60	1.17	3.02	0.17
United States	18.80	5.80	9.04	4.12	3.51	7.06	1.68
Lemons							
California	32.60	14.55	23.52	(D)	9.18	17.62	(D)
United States	32.60	14.55	23.52	(D)	9.18	17.62	(D)
Oranges							
California	22.90	11.70	13.95	(D)	9.16	11.44	(D)
Navel and miscellaneous	23.00	11.65	14.01	(D)	9.11	11.50	(D)
Valencia	(D)	(D)	(D)	(D)	(D)	(D)	(D)
Florida	22.90	10.44	11.75	10.40	7.73	8.95	7.70
Valencia	22.90	10.44	11.75	10.40	7.73	8.95	7.70
United States	22.90	10.76	13.76	9.84	8.10	11.23	7.14
Tangerines and mandarins							
California	(D)	(D)	(D)	(D)	(D)	(D)	(D)
Florida	(S)	(S)	(S)	(S)	(S)	(S)	(S)
United States	(D)	(D)	(D)	(D)	(D)	(D)	(D)

(D) Withheld to avoid disclosing data for individual operations.

(S) Insufficient number of reports to establish an estimate.

¹ Some processed sales included in fresh sales.

Prices Received for Citrus Fruits by Utilization – States and United States: May 2013

[Net pounds per box: grapefruit in California-80, Florida-85, Texas-80; lemons-80; oranges in California-80, Florida-90, Texas-85; tangelos-90; tangerines and mandarins in Arizona and California-80, Florida-95]

Commodity, State, and type	FOB packed fresh	Equivalent returns					
		Packinghouse door			On-tree		
		All	Fresh	Process	All	Fresh	Process
	(dollars per box)	(dollars per box)	(dollars per box)	(dollars per box)	(dollars per box)	(dollars per box)	(dollars per box)
Grapefruit							
California ¹	17.10	10.44	10.44	(D)	8.26	8.26	(D)
Florida	(S)	(S)	(S)	(S)	(S)	(S)	(S)
White	(S)	(S)	(S)	(S)	(S)	(S)	(S)
Colored	(S)	(S)	(S)	(S)	(S)	(S)	(S)
Texas	(S)	(S)	(S)	(S)	(S)	(S)	(S)
United States	17.10	10.44	10.44	(D)	8.26	8.26	(D)
Lemons							
California	36.90	19.97	27.82	(D)	14.45	21.92	(D)
United States	36.90	19.97	27.82	(D)	14.45	21.92	(D)
Oranges							
California	25.80	14.98	16.84	(D)	12.45	14.33	(D)
Navel and miscellaneous	27.40	16.11	18.41	(D)	13.58	15.90	(D)
Valencia	(D)	(D)	(D)	(D)	(D)	(D)	(D)
Florida	25.90	11.11	14.75	11.00	8.41	11.95	8.30
Valencia	25.90	11.11	14.75	11.00	8.41	11.95	8.30
United States	25.80	11.96	16.62	10.67	9.30	14.08	7.97
Tangerines and mandarins							
California	(D)	(D)	(D)	(D)	(D)	(D)	(D)
United States	(D)	(D)	(D)	(D)	(D)	(D)	(D)

(D) Withheld to avoid disclosing data for individual operations.

(S) Insufficient number of reports to establish an estimate.

¹ Some processed sales included in fresh sales.

Prices Received for Potatoes – States and United States: May 2013 with Comparisons

State	May 2012	April 2013	Preliminary May 2013
	(dollars per cwt)	(dollars per cwt)	(dollars per cwt)
California			
Spring	18.10	25.30	24.90
Fall	8.60	6.75	6.95
All ¹	16.30	20.10	20.70
Colorado			
Fresh ²	12.50	6.50	(D)
All ¹	10.60	6.50	6.65
Florida	(D)	(D)	(D)
Idaho			
Fresh ²	7.90	3.80	(D)
Processing	8.50	8.30	(D)
All ¹	8.50	7.35	6.75
Maine	11.20	12.10	11.80
Michigan	(S)	13.60	13.40
Minnesota	7.25	9.40	(D)
New York	16.30	13.90	14.10
North Carolina	(S)	(S)	(S)
North Dakota			
Fresh ²	(D)	11.60	(D)
Processing	(D)	8.55	(D)
All ¹	8.10	9.10	(D)
Oregon	8.85	8.55	8.15
Texas	(S)	(S)	(S)
Virginia	(S)	(S)	(S)
Washington			
Processing	8.15	7.70	(D)
All ¹	8.60	7.70	7.45
Wisconsin			
Fresh ²	(D)	5.40	(D)
Processing	(D)	9.85	(D)
All ¹	(D)	9.30	(D)
United States			
Fresh ²	13.91	8.04	(D)
Processing	8.01	8.65	(D)
All ¹	10.44	9.63	10.52

(D) Withheld to avoid disclosing data for individual operations.

(S) Insufficient number of reports to establish an estimate.

¹ Average price of potatoes sold for all uses, including table stock, processing, seed, and livestock feed.

² Fresh market prices only. Includes table stock prices.

Prices Received for All Milk – States and United States: May 2013 with Comparisons

[Before deduction for hauling. Includes quality, quantity, and other premiums. Excludes hauling subsidies]

State	May 2012		April 2013		Preliminary May 2013	
	Price (dollars per cwt)	Fat test (percent)	Price (dollars per cwt)	Fat test (percent)	Price (dollars per cwt)	Fat test (percent)
Arizona	15.40	3.48	18.60	3.47	19.20	3.45
California	14.31	3.62	18.23	3.69	18.30	3.62
Colorado	16.50	3.44	19.50	3.57	20.00	3.49
Florida	20.10	3.58	22.80	3.64	22.70	3.60
Idaho	15.80	3.61	18.90	3.76	19.90	3.69
Illinois	17.00	3.62	20.00	3.79	20.30	3.72
Indiana	17.00	3.58	20.00	3.77	20.30	3.70
Iowa	16.80	3.66	20.10	3.85	20.50	3.80
Kansas	16.60	3.64	19.60	3.71	20.20	3.63
Michigan	16.80	3.57	19.80	3.70	19.90	3.63
Minnesota	17.30	3.74	20.00	3.89	20.70	3.84
Missouri	16.90	3.60	19.60	3.75	19.90	3.70
New Mexico	15.10	3.45	18.10	3.54	19.00	3.50
New York	17.30	3.66	20.50	3.74	20.60	3.68
Ohio	17.00	3.61	20.40	3.82	20.60	3.74
Oregon	17.20	3.70	20.40	3.85	21.00	3.77
Pennsylvania	17.90	3.63	20.80	3.75	21.00	3.70
Texas	16.40	3.70	19.70	3.80	19.80	3.75
Utah	15.10	3.60	18.80	3.75	19.30	3.71
Vermont	17.50	3.86	20.70	3.83	20.90	3.78
Virginia	18.70	3.63	21.60	3.70	22.00	3.66
Washington	16.30	3.70	19.80	3.85	20.30	3.77
Wisconsin	17.00	3.67	19.90	3.81	20.50	3.76
United States	16.20	3.63	19.50	3.74	19.80	3.68

Prices Received for Milk Cows – States and United States: April 2013 with Comparisons

[Animals sold for dairy herd replacement only. Prices estimated in January, April, July, and October]

State	April 2012 (dollars per head)	January 2013 (dollars per head)	April 2013 (dollars per head)
Arizona	1,500	1,500	(NA)
California	1,300	1,200	(NA)
Colorado	1,520	1,500	(NA)
Florida	1,450	1,470	(NA)
Idaho	1,450	1,300	(NA)
Illinois	1,520	1,450	(NA)
Indiana	1,450	1,440	(NA)
Iowa	1,450	1,400	(NA)
Kansas	1,450	1,350	(NA)
Michigan	1,600	1,600	(NA)
Minnesota	1,490	1,400	(NA)
Missouri	1,300	1,200	(NA)
New Mexico	1,350	1,380	(NA)
New York	1,460	1,400	(NA)
Ohio	1,510	1,400	(NA)
Oregon	1,430	1,300	(NA)
Pennsylvania	1,500	1,430	(NA)
Texas	1,400	1,350	(NA)
Utah	1,340	1,280	(NA)
Vermont	1,600	1,490	(NA)
Virginia	1,540	1,520	(NA)
Washington	1,350	1,300	(NA)
Wisconsin	1,560	1,480	(NA)
United States	1,440	1,370	(NA)

(NA) Not available.

Commodity Parity Prices and Price as Percent of Parity Price – United States: May 2013 with Comparisons

[Parity prices are computed under the provisions of Title III, Subtitle a, Section 301 (a) of the Agricultural Adjustment Act of 1938 as amended by the Agricultural Acts of 1948, 1949, and 1956. See January *Agricultural Prices* for details on adjusted base price and parity price computations. Parity data not available for blank cells. Primary source of data for livestock and milk prices is United States Department of Agriculture's Agricultural Marketing Service]

Commodity and unit	Adjusted base price	Parity price			Price as percent of parity			
		May 2012	April 2013	May 2013	May 2012	April 2013	May 2013	
	(dollars)	(dollars)	(dollars)	(dollars)	(percent)	(percent)	(percent)	
Basic commodities								
All wheat	bushel	0.636	17.90	18.60	18.50	37	41	41
Rice	cwt	1.65	41.30	48.30	48.00	34	31	33
Corn	bushel	0.434	11.70	12.70	12.60	54	55	55
Cotton								
Upland	pound	0.072	2.04	2.11	2.10	41	36	36
American Pima	pound	0.133	3.99	3.89	3.87	36	32	32
Peanuts	pound	0.027	0.735	0.790	0.786	46	34	36
Designated nonbasic								
All milk, to plants ¹	cwt	1.75	50.90	51.20	51.00	34	40	41
Honey, extracted ²	pound	0.141	3.93	4.12	4.11	44	42	42
Wool and mohair								
Wool	pound	0.107	2.94	3.13	3.12	57	49	49
Mohair	pound	0.336	9.42	9.83	9.78	44	40	40
Other nonbasic								
Apples, fresh ³	pound	0.032	0.933	0.936	0.932	32	42	41
Barley	bushel	0.444	12.30	13.00	12.90	47	48	47
Canola	cwt	1.880	51.50	55.00	54.70	54	50	51
Cottonseed	ton	17.80	492.00	521.00	518.00	56	42	42
Dry edible beans	cwt	3.01	85.10	88.00	87.70	51	39	39
Flaxseed	bushel	1.110	31.10	32.50	32.30	48	46	47
Oats	bushel	0.265	7.44	7.75	7.72	55	57	53
Potatoes	cwt	0.822	24.20	24.00	23.90	43	40	44
Sorghum grain	cwt	0.758	20.60	22.20	22.10	50	52	51
Soybeans	bushel	1.030	28.30	30.10	30.00	49	48	49
Sunflower, all	cwt	2.10	58.30	61.40	61.20	48	40	39
Citrus (equivalent on-tree)								
Grapefruit	box	0.697	19.50	20.40	20.30	49	17	41
Lemons	box	1.32	38.70	38.60	38.40	44	24	38
Oranges	box	0.711	19.70	20.80	20.70	53	39	45
Tangerines	box	1.49	42.10	43.60	43.40	116	72	135
Livestock and poultry								
Beef cattle	cwt	10.00	286.00	293.00	291.00	43	42	43
Calves	cwt	13.70	393.00	401.00	399.00	45	39	38
Hogs	cwt	5.48	156.00	160.00	160.00	40	39	42
Eggs ¹	dozen	0.089	2.57	2.60	2.59	39	38	54
Turkeys, live	pound	0.057	1.610	1.670	1.660	45	40	39

¹ Seasonally adjusted price as percentage of parity price.

² Wholesale extracted. Adjusted base price derived from state annual averages prices weighted by production. For 1982 through 1985 the national averages are the support prices.

³ Equivalent packinghouse-door returns for California, New York, Oregon, and Washington. Price at point of first sale for other states.

Commodity Parity Prices – United States: May 2013 with Comparisons

[Parity prices are computed under the provisions of Title III, Subtitle a, Section 301 (a) of the Agricultural Adjustment Act of 1938 as amended by the Agricultural Acts of 1948, 1949, and 1956. See January *Agricultural Prices* for details on adjusted base price and parity price computations]

Commodity and unit	Adjusted base price	Parity price			
		May 2012	April 2013	May 2013	
	(dollars)	(dollars)	(dollars)	(dollars)	
Field crops and miscellaneous					
Hops	pound	0.303	8.65	8.86	8.82
Mustard seed	cwt	2.85	79.70	83.40	83.00
Rapeseed	cwt	2.25	63.10	65.80	65.50
Rye	bushel	0.535	14.80	15.60	15.60
Safflower	cwt	2.04	57.10	59.70	59.40
Spearmint oil	pound	1.50	42.40	43.90	43.70
Sweet potatoes	cwt	2.08	62.20	60.80	60.60
Tobacco					
Flue-cured, 11-14	pound	0.185	5.54	5.41	5.39
Fire-cured, 21-23	pound	0.267	8.00	7.81	7.78
Burley, 31	pound	0.188	5.71	5.50	5.47
Maryland, 32	pound	0.167	4.92	4.88	4.86
Dark air-cured, 35-37	pound	0.240	7.24	7.02	6.99
Pennsylvania seedleaf, 41	pound	0.176	5.15	5.15	5.13
Cigar binder, 51	pound	0.610	18.10	17.80	17.80
Noncitrus fruit					
Apples, processing ¹	ton	16.60	467.00	486.00	483.00
Apricots					
Fresh ²	ton	111.00	3,480.00	3,250.00	3,230.00
Dried (California)	ton	252.00	7,320.00	7,370.00	7,340.00
Avocados ²	ton	189.00	5,770.00	5,530.00	5,500.00
Cherries					
Sweet	ton	205.00	6,080.00	6,000.00	5,970.00
Tart	pound	0.033	0.962	0.965	0.961
Cranberry ³	barrel	4.68	137.00	137.00	136.00
Dates (California) ²	ton	161.00	5,010.00	4,710.00	4,690.00
Grapes					
Raisin variety	ton	133.00	3,540.00	3,890.00	3,870.00
Other dried	ton	61.70	1,590.00	1,800.00	1,800.00
Kiwifruit	ton	88.60	2,660.00	2,590.00	2,580.00
Nectarines, fresh (California) ²	ton	54.60	1,530.00	1,600.00	1,590.00
Olives, canning (California) ³	ton	87.70	2,530.00	2,570.00	2,550.00

See footnote(s) at end of table.

--continued

Commodity Parity Prices – United States: May 2013 with Comparisons (continued)

[Parity prices are computed under the provisions of Title III, Subtitle a, Section 301 (a) of the Agricultural Adjustment Act of 1938 as amended by the Agricultural Acts of 1948, 1949, and 1956. See January *Agricultural Prices* for details on adjusted base price and parity price computations]

Commodity and unit	Adjusted base price	Parity price			
		May 2012	April 2013	May 2013	
	(dollars)	(dollars)	(dollars)	(dollars)	
Noncitrus fruit - continued					
Papayas (Hawaii)	pound	0.038	1.24	1.11	1.11
Peaches					
Fresh ⁴	ton	80.20	2,320.00	2,350.00	2,340.00
Dried (California)	ton	48.50	1,520.00	1,420.00	1,410.00
Processing, excludes dried					
Clingstone (California) ³	ton	31.60	942.00	924.00	920.00
Pears					
Fresh ⁴	ton	54.70	1,570.00	1,600.00	1,590.00
Dried (California) ¹	ton	150.00	4,840.00	4,390.00	4,370.00
Plums (California)					
Fresh, equivalent on-tree	ton	58.10	1,660.00	1,700.00	1,690.00
Prunes, dried (California) ¹	ton	143.00	4,190.00	4,180.00	4,160.00
Prunes and plums					
Fresh, excludes California ⁵	ton	61.90	1,760.00	1,810.00	1,800.00
Processing, excludes dried ¹	ton	23.80	713.00	696.00	693.00
Tree nuts ⁶					
Almonds	pound	0.211	6.02	6.17	6.14
Hazelnuts	ton	191.00	5,540.00	5,590.00	5,560.00
Pistachios	pound	0.194	5.54	5.67	5.65
Walnuts	ton	185.00	5,060.00	5,410.00	5,390.00
Vegetables, fresh ⁷					
Carrots ⁸	cwt	2.57	76.10	75.20	74.80
Cauliflower ⁸	cwt	4.04	122.00	118.00	118.00
Celery ⁸	cwt	1.94	56.80	56.70	56.50
Honeydew melons	cwt	1.97	59.10	57.60	57.40
Lettuce	cwt	2.09	64.80	61.10	60.90
Onions ⁸	cwt	1.41	42.10	41.20	41.10
Tomatoes	cwt	4.30	132.00	126.00	125.00

¹ Equivalent returns at processing plant door.

² Equivalent returns at packinghouse door.

³ Equivalent returns for bulk fruit at first delivery point.

⁴ Equivalent packinghouse-door returns for California, New York (apples only), Oregon (except peaches), and Washington. Price at point of first sale for other states.

⁵ Based on "as sold" prices for fresh fruit in all states.

⁶ Prices In-Shell basis except almonds which are shelled basis.

⁷ FOB shipping point prices.

⁸ Includes some processing.

Reliability of Prices Received Estimates

Definition: Prices received represent sales from producers to first buyers. They include all grades and qualities. The average commodity price from the survey multiplied by the total quantity marketed theoretically should give the total cash receipts for the commodity.

Survey procedures: Primary sales data used to determine grain prices were obtained from probability samples of about 1900 mills and elevators. These procedures ensure that virtually all grain moving into commercial channels has a chance of being included in the survey. Generally, States surveyed account for 90 percent or more of total United States production. Livestock prices are obtained from packers, stockyards, auctions, dealers, and market check data from AMS-USDA, private marketing organizations, and state commodity groups and agencies. Inter-farm sales of grain and livestock are not included since they represent very small percentages of the total marketings. Grain marketed for seed is also excluded. Fruit and vegetable prices are obtained from sample surveys and market check data from AMS-USDA, private marketing organizations, state agencies, and universities.

Summary and estimation procedures: Survey quantities sold are expanded by strata to state levels and used to weight average strata prices to a state average. State prices are then weighted to a United States price based on expanded marketings. Recommendations are prepared by the State Field Offices and reviewed by the Agricultural Statistics Board in Washington, D.C. State recommendations are reviewed for reasonableness with survey data, other States, and recent historic estimates.

Revisions: For most items, the current month's preliminary price represents a 3-5 day period around the 15th of the month. Previous month's prices represent actual dollars received for quantities sold during the entire month. Revisions are published in monthly issues of *Agricultural Prices*.

Reliability: United States price estimates based on probability surveys generally have a sampling error of less than one percent for the major commodities such as corn, wheat, soybeans, cotton, and rice. Current methods of summarization for non-probability commodities are not designed directly to calculate sampling errors. However, analytical measures approximate the United States relative sampling errors at around five percent. Any nonsampling errors are attributed to such things as the inability to obtain correct information, differences in interpreting questions or definitions, mistakes in coding or processing the data, etc. Efforts are made at each step in the survey process to minimize these nonsampling errors.

Prices Paid by Farmers

The May Index of Prices Paid for Commodities and Services, Interest, Taxes, and Farm Wage Rates (PPITW), at 219 (1990-1992=100), is unchanged from April 2013 but up 1.9 percent from May 2012.

Production index: The May index, at 232, decreased 0.4 percent from last month but increased 1.8 percent from last year. Lower prices in May for concentrates, feeder cattle, diesel, and complete feeds offset higher prices for nitrogen, gasoline, other machinery, and supplies.

Feed: The May index, at 261, decreased 1.5 percent from April but increased 4.0 percent from last May. Since April, prices for concentrates, complete feeds, feed grains, supplements, and hay & forages are lower.

Livestock and poultry: The May index, at 155, decreased 1.9 percent from last month and decreased 10 percent from last year. Since April, prices for feeder cattle and feeder pigs were lower. The May feeder cattle price, at \$134.50 per cwt, is down \$2.60 per cwt from the April price. May feeder pigs averaged \$132.00 per cwt, down \$10.00 per cwt from April.

Fertilizer: The May index, at 341, is up 2.1 percent from April but 0.6 percent below May a year ago. Since April, higher prices for nitrogen more than offset lower prices for mixed fertilizer and potash & phosphate.

Chemicals: The May index, at 152, decreased 1.9 percent from April but is unchanged from last May. Compared with last month, prices for herbicides, insecticides, and fungicides/other are lower.

Fuels: The May index, at 352, is down 1.1 percent from a month earlier and 2.5 percent below May 2012. Compared with last month, prices are lower for diesel but higher for gasoline and LP gas.

Machinery: The May index, at 263, is unchanged from April but 2.7 percent above last May. Compared with last month, prices are higher for other machinery but are unchanged for tractors and self-propelled machinery.

Consumer price index: The April 2013 Consumer Price Index, as issued by the Bureau of Labor Statistics, for all urban consumers (CPI-U) decreased 0.1 percent before seasonal adjustment to a level of 232.531 (1982-1984=100). The March index is 232.773. For the 12 month period ending in April, the overall index increased 1.1 percent.

Prices Paid Indexes and Related Parity Ratios – United States: May 2013 with Comparisons

[Revised historical price indexes for months not shown are available at www.nass.usda.gov]

Indexes and ratios	1910-1914 Base			1990-1992 Base		
	May 2012	April 2013	May 2013	May 2012	April 2013	May 2013
	(percent)	(percent)	(percent)	(percent)	(percent)	(percent)
Prices paid by farmers for commodities, services, interest, taxes, and wage rates (PPITW)	2857	2920	2912	215	219	219
Production	2217	2261	2254	228	233	232
Feed	1227	1295	1276	251	265	261
Livestock and poultry	2208	2023	1981	173	158	155
Seeds	3606	3776	3776	364	381	381
Fertilizer	1257	1224	1251	343	334	341
Chemicals	938	957	940	152	155	152
Fuels	2786	2744	2719	361	356	352
Supplies and repairs	1212	1220	1218	171	172	172
Autos and trucks	3132	3184	3192	118	120	120
Machinery	6411	6590	6598	256	263	263
Building materials	2395	2439	2440	176	179	180
Services and rent	2184	2229	2229	(NA)	(NA)	(NA)
Services	(NA)	(NA)	(NA)	167	170	170
Rent	(NA)	(NA)	(NA)	212	217	217
Interest ¹	3684	3594	3594	147	143	143
Taxes ²	6080	6273	6273	227	234	234
Wage rates	7372	7696	7696	197	206	206
Production, interest, taxes, and wage rates (PITW)	2989	3057	3048	222	228	227
Family living-CPI ³	2183	2209	2206	170	173	172
Ratio (received/paid)	(NA)	(NA)	(NA)	84	88	89
Parity ratio ⁴	40	42	42	(NA)	(NA)	(NA)
Parity ratio adjusted ⁵	41	43	43	(NA)	(NA)	(NA)
PPITW adjusted for productivity ⁶	1495	1490	1489	(NA)	(NA)	(NA)
Crop sector (PPITW)	(NA)	(NA)	(NA)	222	227	228
Livestock sector (PPITW)	(NA)	(NA)	(NA)	206	211	209
Farm sector (production)	(NA)	(NA)	(NA)	245	252	249
Non-farm sector (production)	(NA)	(NA)	(NA)	220	222	223

(NA) Not available.

¹ Interest per acre on farm real estate debt and interest rate on farm non-real estate debt.

² Farm real estate taxes payable per acre.

³ Bureau of Labor Statistics, Consumer Price Index for all urban consumers (CPI-U), for the previous month converted by the USDA.

⁴ Ratio of index of prices received to PPITW (1910-1914=100).

⁵ Based on estimated cash receipts, from marketings and government payments, the preliminary adjustment factor is 1.044 for 2013 and the revised factor is 1.041 for 2012.

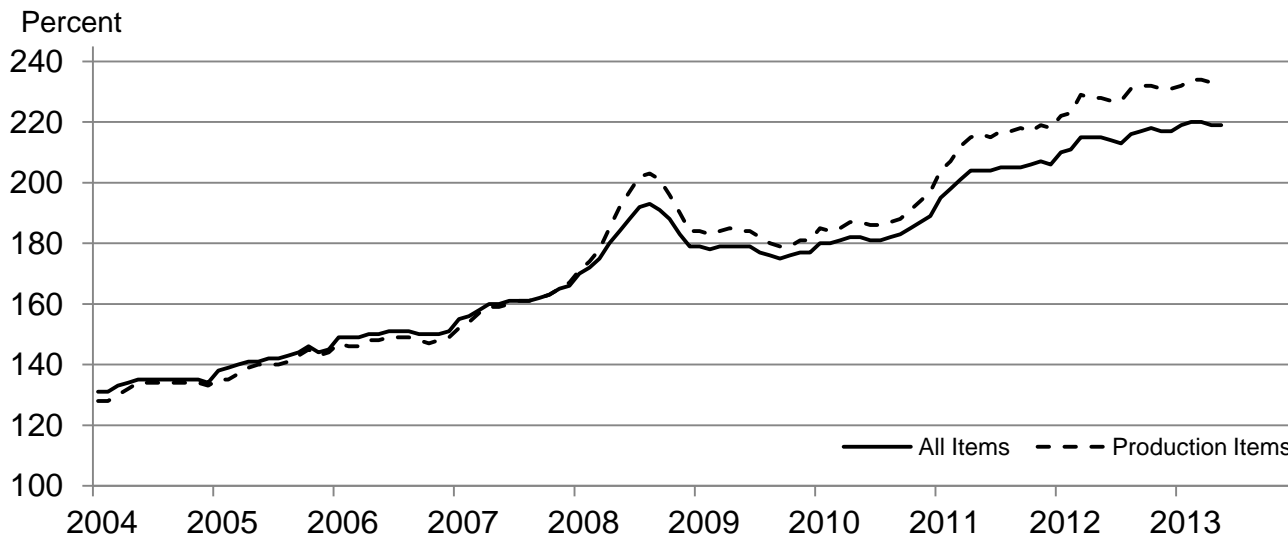
⁶ PPITW is adjusted based on productivity trend for the prior 15 years.

Prices Paid Indexes and Annual Weights for Input Components and Sub-components – United States: May 2013 with Comparisons

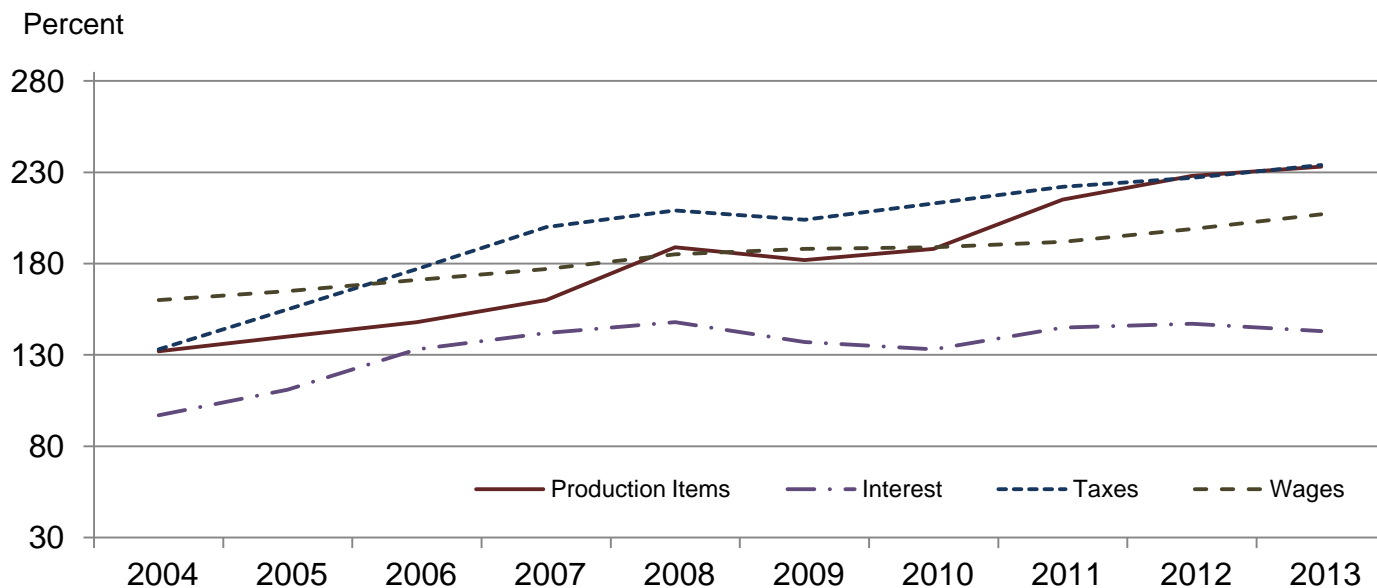
[Revised historical price indexes for months not shown are available at www.nass.usda.gov. Relative weights are a five year moving average]

	Relative weights		Indexes (1990-1992=100)		
	2012	2013	May 2012	April 2013	May 2013
	(percent)	(percent)	(percent)	(percent)	(percent)
Production items	71.1	71.9	228	233	232
Feed	12.7	13.4	251	265	261
Feed grains	1.8	1.9	271	298	293
Complete feeds	6.2	6.6	257	268	266
Hay and forages	1.6	1.7	252	259	258
Concentrates	2.0	2.1	224	234	221
Supplements	1.1	1.1	240	265	262
Livestock and poultry	8.3	8.0	173	158	155
Feeder cattle	6.5	6.3	182	162	159
Feeder pigs	0.7	0.6	138	155	144
Milk cow replacements	0.7	0.7	128	121	121
Poultry	0.5	0.5	166	166	166
Seeds	4.3	4.4	364	381	381
Field crops	3.9	4.0	384	402	402
Grasses and legumes	0.4	0.4	178	184	184
Fertilizer	5.7	6.1	343	334	341
Mixed fertilizer	2.5	2.7	310	291	290
Nitrogen	2.4	2.6	369	367	387
Potash and phosphate	0.8	0.9	371	369	366
Chemicals	3.2	3.2	152	155	152
Herbicides	2.0	2.0	138	138	136
Insecticides	0.7	0.7	172	180	177
Fungicides and other	0.5	0.5	181	187	183
Fuels	4.0	4.0	361	356	352
Diesel	2.5	2.5	409	393	387
Gasoline	0.8	0.8	323	308	311
LP gas	0.7	0.7	230	275	276
Supplies and repairs	4.6	4.5	171	172	172
Supplies	1.5	1.5	165	167	168
Repairs	3.0	3.0	174	174	174
Autos and trucks	1.2	1.2	118	120	120
Autos	0.2	0.2	116	117	117
Trucks	1.1	1.1	118	120	121
Machinery	4.3	4.5	256	263	263
Tractors	0.9	1.0	210	216	216
Self-propelled	1.7	1.8	271	279	279
Other machinery	1.6	1.7	266	273	273
Building materials	4.2	4.1	176	179	180
Services	12.0	11.7	167	170	170
Custom rates	1.2	1.2	157	157	157
Other services	10.7	10.5	169	171	171
Rent	6.6	6.7	212	217	217
Cash	3.5	3.6	270	278	278
Share	3.0	3.1	145	147	147
Interest	3.4	3.2	147	143	143
Taxes	3.1	3.1	227	234	234
Wage rates	7.2	6.9	197	206	206
Family living-CPI	15.3	15.0	170	173	172

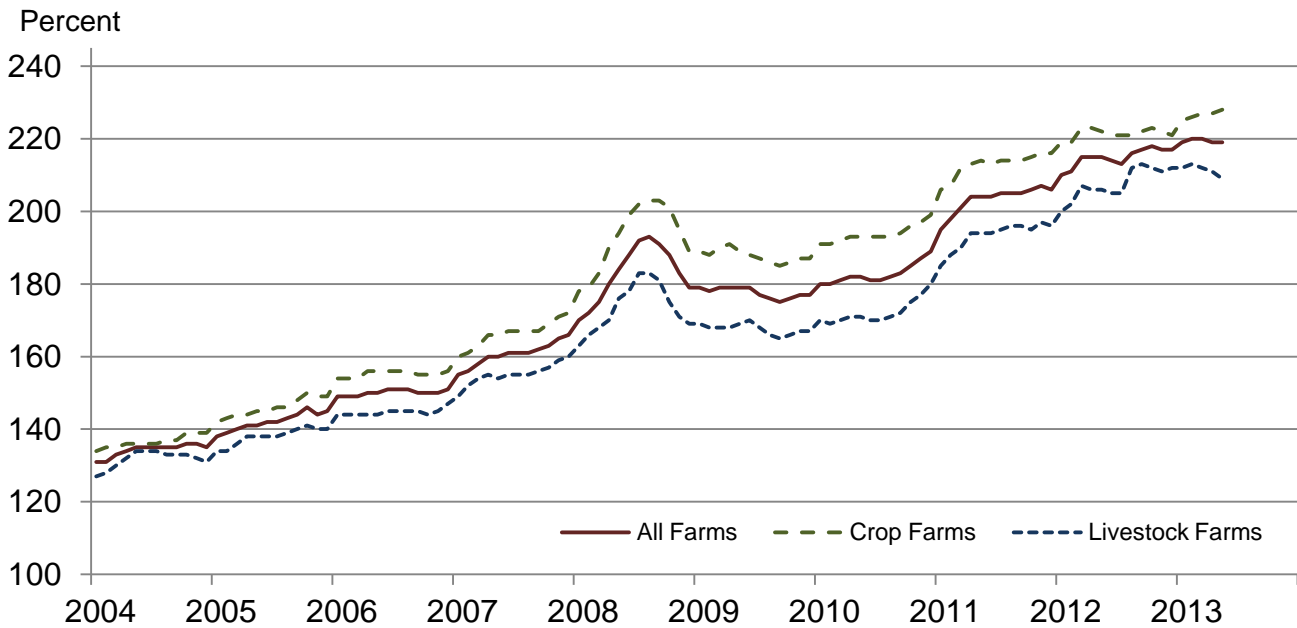
Paid Indexes by Month, All Items and Production Items – United States: 1990-1992=100



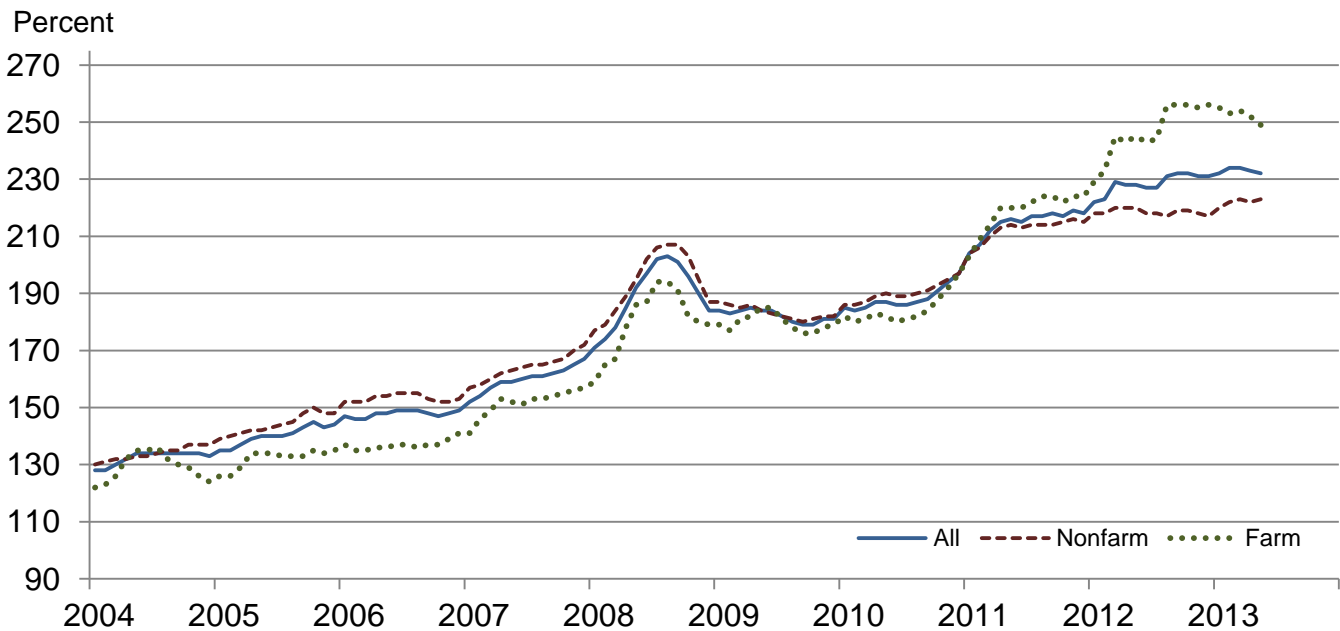
Paid Indexes, Annual Averages, Production Items, Interest, Taxes, and Wages – United States: 1990-1992=100



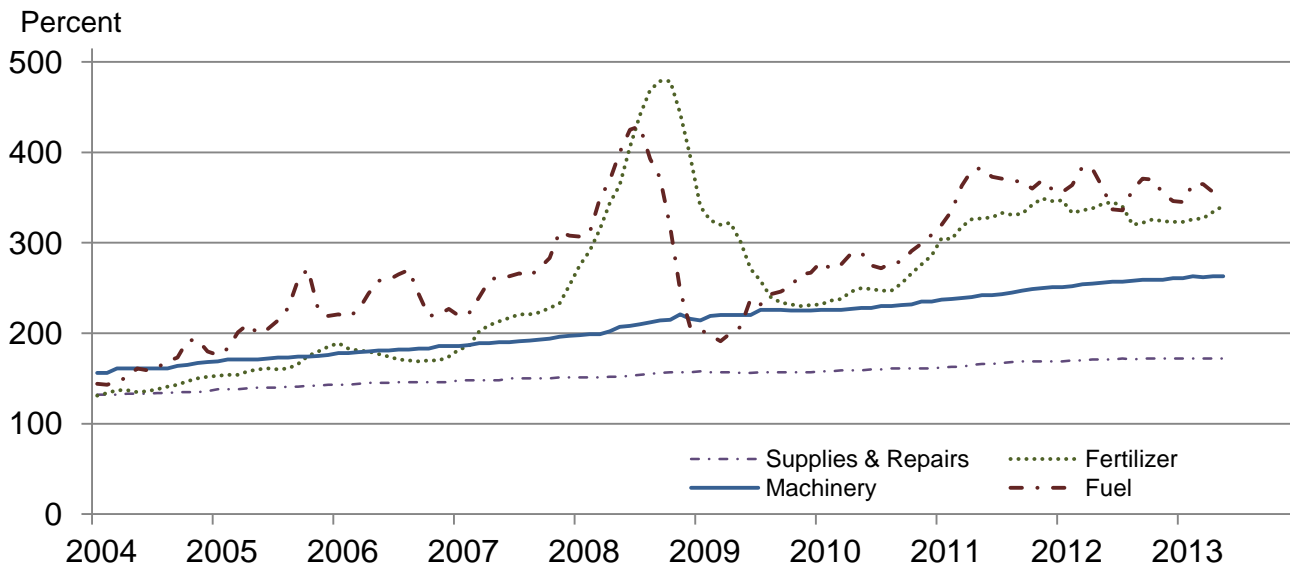
Paid Indexes by Farm Type and Month, All Items – United States: 1990-1992=100



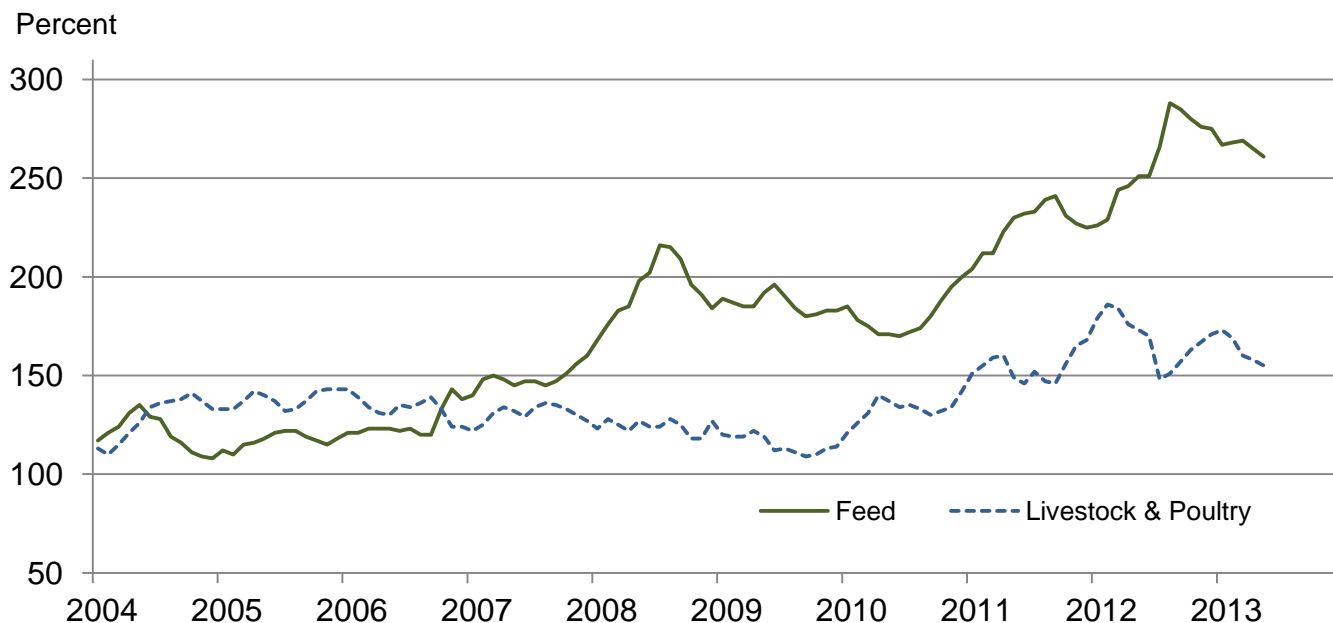
Paid Indexes by Origin and Month, All Production Items – United States: 1990-1992=100



Paid Indexes by Non-Farm Sector and Month, Supplies & Repairs, Fertilizer, Machinery, and Fuel – United States: 1990-1992=100



Paid Indexes by Month, Feed and Livestock & Poultry – United States: 1990-1992=100



Feed Price Ratios – United States: May 2013 with Comparisons

Feed price ratio ¹	May 2012	April 2013	Preliminary May 2013
Broiler-feed: pounds of broiler grower feed equal in value to 1 pound of broiler, live weight ²	3.2	3.8	3.8
Market egg feed: pounds of laying feed equal in value to 1 dozen eggs ³	4.2	4.2	6.3
Hog-corn: bushels of corn equal in value to 100 pounds of hog, live weight	9.9	8.9	9.7
Milk-feed: pounds of 16% mixed dairy feed equal in value to 1 pound of whole milk ⁴	1.34	1.54	1.55
Steer and heifer-corn: bushels of corn equal in value to 100 pounds of steer & heifers, live weight	19.7	18.4	18.8
Turkey-feed: pounds of turkey grower equal in value to 1 pound of turkey, live weight ⁵	5.0	4.2	4.1

¹ Effective January 1995, prices of commercial prepared feeds are based on current United States prices received for corn, soybeans, alfalfa hay, and all wheat.

² The price of commercial prepared broiler feed is based on current United States prices received for corn and soybeans. The modeled feed uses 58 percent corn and 42 percent soybeans.

³ The price of commercial prepared layer feed is based on current United States prices received for corn and soybeans. The modeled feed uses 75 percent corn and 25 percent soybeans.

⁴ The price of commercial prepared dairy feed is based on current United States prices received for corn, soybeans, and alfalfa hay. The modeled feed uses 51 percent corn, 41 percent alfalfa hay, and 8 percent soybeans.

⁵ The price of commercial prepared turkey feed is based on current United States prices received for corn, soybeans, and wheat. The modeled feed uses 51 percent corn, 28 percent soybeans, and 21 percent wheat.

Prices Received Used to Calculate Feed Price Ratios – United States: May 2013 with Comparisons

[Price data source for livestock and poultry commodities is United States Department of Agriculture's Agricultural Marketing Service]

Item	May 2012	April 2013	Preliminary May 2013
	(dollars)	(dollars)	(dollars)
Broilers, livepound	0.520	0.650	0.670
Eggs, marketdozen	0.595	0.646	0.976
Hogs, allcwt	62.80	61.80	67.00
Milk, allcwt	16.20	19.50	19.80
Steers and heiferscwt	125.00	128.00	129.00
Turkeys, livepound	0.727	0.662	0.650
Cornbushel	6.34	6.97	6.88
Hay, alfalfaton	217.00	215.00	221.00
Soybeansbushel	14.00	14.40	14.80
Wheat, allbushel	6.67	7.71	7.51

Prices Paid for Feeder Livestock – United States: May 2013 with Comparisons

[Price data source is United States Department of Agriculture's Agricultural Marketing Service]

Item	May 2012	April 2013	Preliminary May 2013
	(dollars)	(dollars)	(dollars)
Feeder cattle and calvescwt	153.70	137.10	134.50
Feeder pigscwt	127.00	142.00	132.00

Prices Paid Broiler-Feed Ratio Monthly and Annual Average – United States: 2009-2013

[The price of commercial prepared broiler feed is based on current United States prices received for corn and soybeans. The modeled feed uses 58 percent corn and 42 percent soybeans]

Year	January	February	March	April	May	June	July	August	September	October	November	December	Average ¹
2009	4.2	4.4	4.3	4.2	4.2	4.2	4.3	3.9	4.1	3.9	3.9	4.1	4.1
2010	4.5	4.7	4.9	4.8	5.1	5.1	5.0	4.5	4.4	4.1	3.8	3.4	4.5
2011	3.3	2.9	3.3	3.0	3.1	3.1	3.0	2.8	2.8	3.0	3.2	3.3	3.1
2012	3.2	3.4	3.6	3.1	3.2	3.1	2.6	2.5	2.8	2.9	3.2	3.4	3.1
2013	3.5	3.5	3.7	3.8	3.8								3.7

¹ Simple average of monthly ratios, January through December.

Prices Paid Market Egg-Feed Ratio Monthly and Annual Average – United States: 2009-2013

[The price of commercial prepared layer feed is based on current United States prices received for corn and soybeans. The modeled feed uses 75 percent corn and 25 percent soybeans]

Year	January	February	March	April	May	June	July	August	September	October	November	December	Average ¹
2009	9.0	7.0	7.2	8.4	4.3	3.8	5.6	6.5	6.8	7.3	10.0	10.6	7.2
2010	10.1	8.9	12.2	7.0	5.2	5.0	6.0	6.9	4.6	6.5	9.5	8.1	7.5
2011	5.8	6.0	5.2	6.4	4.5	4.9	4.9	6.7	5.7	6.8	6.8	8.7	6.0
2012	5.1	5.0	5.7	4.5	4.2	4.8	4.8	5.6	7.0	5.6	6.6	6.3	5.4
2013	5.6	5.0	6.1	4.2	6.3								5.5

¹ Simple average of monthly ratios, January through December.

Prices Paid Turkey-Feed Ratio Monthly and Annual Average – United States: 2009-2013

[The price of commercial prepared turkey feed is based on current United States prices received for corn, soybeans, and wheat. The modeled feed used 51 percent corn, 28 percent soybeans, and 21 percent wheat]

Year	January	February	March	April	May	June	July	August	September	October	November	December	Average ¹
2009	4.1	4.6	4.8	4.7	4.7	4.8	5.1	5.2	5.3	5.6	5.7	5.6	5.0
2010	4.8	5.3	5.6	5.9	6.2	6.9	6.9	6.7	6.6	6.8	6.4	5.6	6.2
2011	4.6	4.2	4.4	4.5	4.6	4.8	4.7	4.7	5.2	5.8	5.9	5.4	4.9
2012	4.8	4.7	4.8	5.0	5.0	5.1	4.4	4.3	4.8	4.9	4.7	4.3	4.7
2013	4.0	3.9	4.1	4.2	4.1								4.1

¹ Simple average of monthly ratios, January through December.

Prices Paid Milk-Feed Ratio Monthly and Annual Average – United States: 2009-2013

[The price of commercial prepared dairy feed is based on current United States prices received for corn, soybeans, and alfalfa. The modeled feed uses 51 percent corn, 8 percent soybeans, and 41 percent alfalfa]

Year	January	February	March	April	May	June	July	August	September	October	November	December	Average ¹
2009	1.60	1.51	1.55	1.58	1.49	1.47	1.59	1.80	2.00	2.11	2.26	2.42	1.78
2010	2.33	2.34	2.18	2.19	2.18	2.26	2.30	2.36	2.36	2.40	2.23	1.98	2.26
2011	1.96	2.01	2.12	1.81	1.71	1.86	1.88	1.83	1.84	1.82	1.89	1.81	1.88
2012	1.71	1.55	1.48	1.41	1.34	1.38	1.34	1.37	1.59	1.74	1.74	1.65	1.53
2013	1.57	1.52	1.48	1.54	1.55								1.53

¹ Simple average of monthly ratios, January through December.

Prices Paid Hog-Corn Ratio Monthly and Annual Average – United States: 2009-2013

[Number of bushels of corn equal in value to 100 pounds of all hogs, live weight]

Year	January	February	March	April	May	June	July	August	September	October	November	December	Average ¹
2009	9.8	11.3	11.4	11.4	11.3	10.8	12.0	11.2	11.6	10.5	11.0	12.5	11.2
2010	13.2	13.8	14.7	16.6	17.9	17.1	16.8	16.8	15.0	12.3	10.5	10.9	14.6
2011	11.3	10.9	11.4	10.7	10.9	10.9	11.3	11.0	10.5	12.0	11.0	10.8	11.1
2012	10.5	10.4	10.3	9.9	9.9	11.0	10.1	8.8	8.1	9.2	8.7	9.1	9.7
2013	9.2	9.2	8.3	8.9	9.7								9.1

¹ Simple average of monthly ratios, January through December.

Prices Paid Steer & Heifer-Corn Feed Ratio Monthly and Annual Average – United States: 2009-2013

[Number of bushels of corn equal in value to 100 pounds of steers & heifers, live weight]

Year	January	February	March	April	May	June	July	August	September	October	November	December	Average ¹
2009	19.7	21.7	21.8	22.9	22.1	21.2	23.7	25.6	26.3	23.4	23.4	23.3	22.9
2010	23.9	25.5	27.0	29.6	28.6	27.8	27.5	26.9	24.4	22.9	22.2	21.6	25.7
2011	22.3	19.6	21.3	19.2	18.2	17.2	18.2	16.6	18.3	21.3	21.6	21.5	19.6
2012	21.4	20.9	20.8	20.2	19.7	19.5	16.4	15.7	18.1	18.8	18.2	18.6	19.0
2013	18.7	18.0	18.0	18.4	18.8								18.4

¹ Simple average of monthly ratios, January through December.

Reliability of Prices Paid Estimates

Definition: Prices paid by farmers represent the average costs of inputs purchased by farmers and ranchers to produce agricultural commodities. Conceptually, the average price when multiplied by quantity purchased should equal total producer expenditures for the item.

Survey procedures: The prices paid data are obtained from establishments that sell goods and services to farmers and ranchers. Annually, about 8,500 firms are randomly selected from lists by type of item sold with an average response rate in the range of 75-80 percent. Firms are asked to report the price for the specified item "most commonly bought by farmers" or that was the "volume seller". Approximately 135 items are surveyed each March to represent all production input items purchased. The survey reference period for most items is the five business days centered around the 15th of the month. Separate prices paid surveys are conducted for agricultural chemicals, fuels, feed, fertilizer, machinery, and seed.

Summary and estimation procedures: The annual March Prices Paid Survey is summarized as a nonprobability survey. Average prices reported are aggregated to the region and United States level using weights available from expenditure data and other administrative sources. Price recommendations are prepared by the State Field Offices and Headquarters for review by the Agricultural Statistics Board in Washington, D.C. Also, the change in price level for individual items surveyed are combined to the regional and United States levels, and are published as prices paid indexes referenced to a specific base period. Prices paid indexes for new autos and trucks, building materials, farm supplies, motor supplies, and marketing containers are updated based on price changes measured in selected Bureau of Labor Statistics (BLS) indexes.

Revisions: Any revisions are published in the monthly and in annual issues of Agricultural Prices. The basis for revision must be supported by additional data that directly affect the level of the estimate. More revisions are likely for March when separate prices paid surveys are conducted, in lieu of BLS indexes, by the USDA to measure price change.

Reliability: Current methods of summarization for the March data are not designed directly to calculate sampling errors. However, analytical measures approximate the United States relative sampling errors for major items around 10 percent. Any nonsampling errors are attributed to such things as the inability to obtain correct information, differences in interpreting questions or definitions, mistakes in coding or processing the data, etc. Efforts are made at each step in the survey process to minimize these nonsampling errors.

Program change: Effective January 1, 1995, the National Agricultural Statistics Service updated the weights and changed the construction of its prices paid and received by farmers indexes. A Federal Register Notice dated October 28, 1994 discussed these program modifications.

A 1990-1992 reference and base period replaced the 1977 reference and 1971-1973 base weight period. Five-year moving average weights replaced the current fixed 1971-1973 base period weights. The 1910-1914=100 price indexes, required by statute for computing parity prices, were linked forward based on the changes in the new 1990-1992=100 indexes. The new indexes were constructed by multiplying the ratios of the current prices to the base period prices by the moving average weights (adjusted for seasonal marketing patterns for the prices received indexes).

Information Contacts

General

Troy Joshua, Chief, Environmental, Economics and Demographics Branch (202) 720-6146

Below are the commodity specialists to contact for additional information.

Crop Prices Received

Lance Honig, Chief, Crops Branch (202) 720-2127

Anthony Prillaman, Head, Field Crops Section (202) 720-2127

Angie Considine – Peanuts, Rice (202) 720-7688

Brent Chittenden – Oats, Rye, Wheat (202) 720-8068

Steve Maliszewski – Cotton, Cotton Ginnings, Sorghum (202) 720-5944

Chris Hawthorn – Corn, Proso Millet, Flaxseed (202) 720-9526

Julie Schmidt – Crop Weather, Barley, Hay (202) 720-7621

Travis Thorson – Soybeans, Sunflower, Other Oilseeds (202) 720-7369

Jorge Garcia-Pratts, Head, Fruits, Vegetables and Special Crops Section (202) 720-2127

Debbie Flippin – Fresh and Processing Vegetables, Onions, Strawberries (202) 720-2157

Fred Granja – Apples, Apricots, Cherries, Plums, Prunes, Tobacco (202) 720-4288

Erika White – Floriculture, Maple Syrup, Nursery, Tree Nuts (202) 720-4215

Chris Hawthorn – Citrus, Coffee, Sugar Crops, Grapes, Tropical Fruits (202) 720-9526

Daphne Schauber – Berries, Cranberries, Potatoes, Sweet Potatoes (202) 720-4285

Dan Norris – Austrian Winter Peas, Dry Edible Peas, Lentils, Mints, Mushrooms, Peaches, Pears,
Wrinkled Seed Peas, Dry Beans (202) 720-3250

Livestock Prices Received

Dan Kerestes, Chief, Livestock Branch (202) 720-3570

Scott Hollis, Head, Livestock Section (202) 720-3570

Travis Averill – Cattle (202) 720-3040

Mike Miller – Milk, Milk Cows (202) 720-3278

Doug Bounds – Hogs (202) 720-3106

Alissa Cowell-Mytar – Sheep, Lambs, and Goats (202) 720-4751

Bruce Boess, Head, Poultry and Specialty Commodities Section (202) 720-3570

Cody Brokmeyer – Turkeys (202) 690-3237

LaKeya Jones – Honey (202) 720-0585

Kim Linonis – Eggs (202) 690-8632

Miste Salmon – Broilers (202) 720-3244

Indexes, Prices Paid, and Parity Prices

Troy Joshua, Chief, Environmental, Economics and
Demographics Branch (202) 720-6146

Tony Dorn, Head, Economics Section (202) 690-3223

Daryl Brinkman – Prices Received Indexes, Parity Prices (202) 720-8844

Chris Dickerson – Prices Received Indexes, Parity Prices (202) 690-1348

Vincent Davis – Prices Paid Indexes, Prices Paid for Feed, Fertilizer, Agricultural Chemicals,
Seeds, Farm Supplies and Repairs, Farm Machinery, Fuels, Feeder Livestock, Poultry Chicks,
Feed Price Ratios, Autos & Trucks (202) 690-3229

Access to NASS Reports

For your convenience, you may access NASS reports and products the following ways:

- All reports are available electronically, at no cost, on the NASS web site: <http://www.nass.usda.gov>
- Both national and state specific reports are available via a free e-mail subscription. To set-up this free subscription, visit <http://www.nass.usda.gov> and in the “Follow NASS” box under “Receive reports by Email,” click on “National” or “State” to select the reports you would like to receive.

For more information on NASS surveys and reports, call the NASS Agricultural Statistics Hotline at (800) 727-9540, 7:30 a.m. to 4:00 p.m. ET, or e-mail: nass@nass.usda.gov.

The United States Department of Agriculture (USDA) prohibits discrimination in all its programs and activities on the basis of race, color, national origin, age, disability, and where applicable, sex, marital status, familial status, parental status, religion, sexual orientation, political beliefs, genetic information, reprisal, or because all or a part of an individual's income is derived from any public assistance program. (Not all prohibited bases apply to all programs.) Persons with disabilities who require alternative means for communication of program information (Braille, large print, audiotape, etc.) should contact USDA's TARGET Center at (202) 720-2600 (voice and TDD).

To file a complaint of discrimination, write to USDA, Assistant Secretary for Civil Rights, Office of the Assistant Secretary for Civil Rights, 1400 Independence Avenue, S.W., Stop 9410, Washington, DC 20250-9410, or call toll-free at (866) 632-9992 (English) or (800) 877-8339 (TDD) or (866) 377-8642 (English Federal-relay) or (800) 845-6136 (Spanish Federal-relay). USDA is an equal opportunity provider and employer.