



# Agricultural Prices

ISSN: 1937-4216

Released June 27, 2013, by the National Agricultural Statistics Service (NASS), Agricultural Statistics Board, United States Department of Agriculture (USDA).

## Special Note

USDA's National Agricultural Statistics Service is suspending a number of statistical surveys and reports for the remainder of the fiscal year resulting from reduced funding. Suspended commodity programs impacting the *Agricultural Prices* report are non-citrus fruit, tree nuts, vegetables, and milk cow replacement prices. Check the NASS website at [www.nass.usda.gov](http://www.nass.usda.gov) for any future updates to these programs

## June Farm Prices Received Index Increased 4 Points

The preliminary All Farm Products Index of Prices Received by Farmers in June, at 200 percent, based on 1990-1992=100, increased 4 points (2.0 percent) from May. The Crop Index is up 8 points (3.6 percent) but the Livestock Index decreased 2 points (1.2 percent). Producers received higher prices for oranges, hogs, and corn and lower prices for eggs, cattle, wheat, and broilers. In addition to prices, the overall index is also affected by the seasonal change based on a 3-year average mix of commodities producers sell. Increased monthly movement of wheat, hay, and corn offset the decreased marketing of cattle, oranges, milk, and broilers.

The preliminary All Farm Products Index is up 17 points (9.3 percent) from June 2012. The Food Commodities Index, at 186, increased 4 points (2.2 percent) from last month and is 14 points (8.1 percent) higher than June 2012.

## Prices Paid Index up 1 Point

The June Index of Prices Paid for Commodities and Services, Interest, Taxes, and Farm Wage Rates (PPITW) is 221 percent of the 1990-1992 average. The index is up 1 point (0.5 percent) from May and 7 points (3.3 percent) above June 2012. Higher prices in June for concentrates, nitrogen, other services, and feeder cattle more than offset lower prices for supplements, feeder pigs, and LP gas, and complete feeds.

## Prices Received, Prices Paid, and Ratio of Prices Received to Prices Paid Indexes 1990-1992 Base – United States: June 2013 with Comparisons

Index	June	May	June
	2012	2013	2013
Prices received by farmers .....	183	196	200
Prices paid by farmers .....	214	220	221
Ratio of prices received to prices paid .....	86	89	90

## Contents

Prices Received by Farmers .....	4
Prices Received Indexes – United States: June 2013 with Comparisons .....	5
Prices Received and Prices Paid Indexes by Month for Selected Groups – United States: 2012 and 2013, 1990-1992 Base .....	5
Received Indexes by Month, Livestock Products, All Products, and All Crops – United States: 1990-1992=100 Chart.....	6
Received Indexes by Month, Food Grains, Feed Grains & Hay, and Oilseeds – United States: 1990-1992=100 Chart.....	6
Received Indexes by Month, Fruit & Nut and Commercial Vegetables – United States: 1990-1992=100 Chart.....	7
Received Indexes by Month, Meat Animal, Dairy Products, and Poultry & Eggs – United States: 1990-1992=100 Chart.....	7
Prices Received for Field Crops and Fruits – United States: June 2013 with Comparisons .....	8
Prices Received for Vegetables and Livestock – United States: June 2013 with Comparisons.....	9
Prices Received for Corn by Month – United States Chart.....	10
Prices Received for Wheat by Month – United States Chart .....	10
Prices Received for Upland Cotton by Month – United States Chart .....	11
Prices Received for Soybeans by Month – United States Chart .....	11
Prices Received for Cattle by Month – United States Chart .....	12
Prices Received for Milk by Month – United States Chart .....	12
Prices Received for Hogs by Month – United States Chart .....	13
Prices Received for Poultry by Month – United States Chart .....	13
Prices Received for All Wheat, Corn, and Soybeans by Month – United States: 2013 with Comparisons .....	14
Prices Received for Beef Cattle and All Hogs by Month – United States: 2013 with Comparisons .....	14
Prices Received for All Wheat – States and United States: June 2013 with Comparisons .....	15
Prices Received for Winter Wheat – States and United States: June 2013 with Comparisons .....	15
Prices Received for Durum Wheat – States and United States: June 2013 with Comparisons .....	16
Prices Received for Spring Wheat – States and United States: June 2013 with Comparisons .....	16
Prices Received for All Barley – States and United States: June 2013 with Comparisons.....	17
Prices Received for Malting Barley – States: June 2013 with Comparisons .....	17
Prices Received for Feed Barley – States: June 2013 with Comparisons .....	17
Prices Received for Corn – States and United States: June 2013 with Comparisons .....	18
Prices Received for Soybeans – States and United States: June 2013 with Comparisons .....	18
Prices Received for Oats – States and United States: June 2013 with Comparisons .....	19
Prices Received for Sorghum Grain – States and United States: June 2013 with Comparisons.....	19
Prices Received for Dry Beans – States and United States: June 2013 with Comparisons .....	20
Prices Received for Peanuts (in shell) – States and United States: June 2013 with Comparisons.....	20
Prices Received for Sunflower – States and United States: June 2013 with Comparisons.....	21
Prices Received for Canola – States and United States: June 2013 with Comparisons .....	21
Prices Received for Flaxseed – States and United States: June 2013 with Comparisons .....	21
Prices Received for Upland Cotton and Cottonseed – States and United States: June 2013 with Comparisons .....	22
Prices Received and Farm Marketings for Upland Cotton and Rice – United States: June 2013 with Comparisons .....	22
Prices Received for Hay by Type – States and United States: June 2013 with Comparisons.....	23
Prices Received for Apples – States and United States: June 2013 with Comparisons .....	23
Prices Received for Citrus Fruits by Utilization – States and United States: June 2012 .....	24
Prices Received for Citrus Fruits by Utilization – States and United States: May 2013 .....	25
Prices Received for Citrus Fruits by Utilization – States and United States: June 2013 .....	26
Prices Received for Potatoes – States and United States: June 2013 with Comparisons.....	27
Prices Received for All Milk – States and United States: June 2013 with Comparisons.....	28
Prices Received for Milk Cows – States and United States: April 2013 with Comparisons .....	29
Commodity Parity Prices and Price as Percent of Parity Price – United States: June 2013 with Comparisons .....	30

Commodity Parity Prices – United States: June 2013 with Comparisons .....	31
Marketing Year for Specified Commodities .....	33
Prices Received for Sweet Potatoes, Market Year Average - States and United States: 2010-2012 .....	33
Prices Received and Farm Marketings for Oats by Month – United States: Marketing Years 2010-2011 through 2012-2013 .....	34
Prices Received and Farm Marketings for All Barley by Month – United States: Marketing Years 2010-2011 through 2012-2013 .....	34
Prices Received and Farm Marketings for Malting Barley by Month – United States: Marketing Years 2010-2011 through 2012-2013 .....	35
Prices Received and Farm Marketings for Feed Barley by Month – United States: Marketing Years 2010-2011 through 2012-2013 .....	35
Prices Received and Farm Marketings for All Wheat by Month – United States: Marketing Years 2010-2011 through 2012-2013 .....	36
Prices Received for Winter Wheat by Month, Marketing Year Average – United States: 2010-2011 through 2012-2013 .....	36
Prices Received for Durum Wheat by Month, Marketing Year Average – United States: 2010-2011 through 2012-2013 .....	37
Prices Received for Other Spring Wheat by Month, Marketing Year Average – United States: 2010-2011 through 2012-2013 .....	37
Prices Received for Hard Red Spring Wheat by Month, Marketing Year Average – United States: 2010-2011 through 2012-2013 .....	38
Prices Received for Hard Red Winter Wheat by Month, Marketing Year Average – United States: 2010-2011 through 2012-2013 .....	38
Prices Received for Soft Red Winter Wheat by Month, Marketing Year Average – United States: 2010-2011 through 2012-2013 .....	39
Prices Received for White Wheat by Month, Marketing Year Average – United States: 2010-2011 through 2012-2013 .....	39
Reliability of Prices Received Estimates .....	40
Prices Paid by Farmers.....	41
Prices Paid Indexes and Related Parity Ratios – United States: June 2013 with Comparisons.....	42
Prices Paid Indexes and Annual Weights for Input Components and Sub-components – United States: June 2013 with Comparisons.....	43
Paid Indexes by Month, All Items and Production Items – United States: 1990-1992=100 Chart .....	44
Paid Indexes, Annual Averages, Production Items, Interest, Taxes, and Wages – United States: 1990-1992=100 Chart .....	44
Paid Indexes by Farm Type, All Items – United States: 1990-1991=100 Chart.....	45
Paid Indexes by Origin, All Production Items – United States: 1990-1992=100 Chart .....	45
Paid Indexes by Non-Farm Sector, Supplies & Repairs, Fertilizer, Machinery, and Fuel – United States: 1990-1992=100 Chart .....	46
Paid Indexes by Month, Feed and Replacement Livestock – United States: 1990-1992=100 Chart.....	46
Feed Price Ratios – United States: June 2013 with Comparisons.....	47
Prices Received Used to Calculate Feed Price Ratios – United States: June 2013 with Comparisons.....	47
Prices Paid for Feeder Livestock – United States: June 2013 with Comparisons.....	47
Reliability of Prices Paid Estimates .....	48
Information Contacts .....	49

## Prices Received by Farmers

The June All Farm Products Index is 200 percent of its 1990-1992 base, up 2.0 percent from the May index and 9.3 percent above the June 2012 index.

**All crops:** The June index, at 232, increased 3.6 percent from May and is 7.9 percent above June 2012. Index increases for fruits & nuts and oilseeds more than offset the index decreases for food grains, feed grains & hay, and potatoes & dry beans.

**Food grains:** The June index, at 239, is 3.2 percent below the previous month but 6.7 percent above a year ago. The June price for all wheat, at \$7.13 per bushel, is down 55 cents from May but 43 cents higher than June 2012.

**Feed grains & hay:** The June index, at 298, is down 0.3 percent from last month but 11 percent above a year ago. The corn price, at \$7.02 per bushel, is up 5 cents from last month and 65 cents above June 2012. The all hay price, at \$199 per ton, is down \$4.00 from May but up \$16.00 from last June. Sorghum grain, at \$11.40 per cwt, is down 10 cents from May but \$1.84 above June last year.

**Cotton, Upland:** The June index, at 125, is up 0.8 percent from May but 1.6 percent below last year. The June price, at 75.6 cents per pound, is up 0.3 cents from the previous month but 1.5 cents lower than last June.

**Oilseeds:** The June index, at 260, is up 1.6 percent from May and 4.4 percent higher than June 2012. The soybean price, at \$15.10 per bushel, increased 20 cents from May and is \$1.20 above June 2012.

**Fruits & nuts:** The June index, at 187, is up 11 percent from May but 2.1 percent lower than a year ago. The price for oranges, at \$11.98 per box, is up \$2.68 from last month but down 51 cents from a year ago.

**Commercial vegetables:** The June index, at 166, is unchanged from last month but 2.5 percent above June 2012.

**Potatoes & dry beans:** The June index, at 209, is down 4.6 percent from last month but 16 percent above June 2012. The all potato price, at \$12.33 per cwt, is down 56 cents from May but up \$2.40 from last June. The all dry bean price, at \$37.10 per cwt, is up \$1.00 from the previous month but \$7.10 below June 2012.

**Livestock and products:** The June index, at 168, is 1.2 percent below last month but up 11 percent from June 2012. Compared to a year ago, lower prices for turkeys and calves more than offset higher prices for broilers, milk, hogs, cattle, and eggs.

**Meat animals:** The June index, at 163, is unchanged from last month but 0.6 percent higher than last year. The June hog price, at \$72.50 per cwt, is up \$3.90 from May and \$2.30 higher than a year ago. The June beef cattle price of \$122 per cwt is down \$2.00 from last month but \$1.00 higher than June 2012.

**Dairy products:** The June index, at 151, is unchanged from a month ago but 21 percent higher than June last year. The June all milk price of \$19.70 per cwt is unchanged from last month but up \$3.40 from June 2012.

**Poultry & eggs:** The June index, at 194, is down 4.4 percent from May but 22 percent above a year ago. The June market egg price, at 69.4 cents per dozen, decreased 28.2 cents from May but is 0.5 cents above June 2012. The June broiler price, at 67.0 cents per pound, is down 1.0 cent from May but 17.0 cents above a year ago. The June turkey price, at 65.8 cents per pound, is up 0.9 cents from the previous month but down 8.1 cents from a year earlier.

## Prices Received Indexes – United States: June 2013 with Comparisons

[Revised historical price indexes for months not shown are available at [www.nass.usda.gov](http://www.nass.usda.gov)]

Index	1910-1914 Base				1990-1992 Base		
	1990-1992 Average	June 2012	May 2013	June 2013	June 2012	May 2013	June 2013
	(percent)	(percent)	(percent)	(percent)	(percent)	(percent)	(percent)
All products .....	639	1159	1242	1271	183	196	200
All crops .....	500	1065	1111	1151	215	224	232
Food grains .....	325	710	782	757	224	247	239
Feed grains & hay .....	363	958	1066	1062	269	299	298
Cotton, Upland .....	517	653	637	640	127	124	125
Tobacco .....	1263	1559	1760	1760	103	116	116
Oilseeds .....	554	1364	1404	1427	249	256	260
Fruits & nuts .....	716	1335	1182	1306	191	169	187
Commercial vegetables .....	698	1158	1187	1188	162	166	166
Potatoes & dry beans .....	540	914	1108	1057	180	219	209
Other crops .....	493	651	655	655	132	133	133
Livestock and products .....	768	1163	1306	1287	152	170	168
Meat animals .....	1021	1648	1661	1660	162	163	163
Dairy products .....	799	1003	1212	1212	125	151	151
Poultry & eggs .....	282	447	571	545	159	203	194
Food commodities .....	(NA)	(NA)	(NA)	(NA)	172	182	186

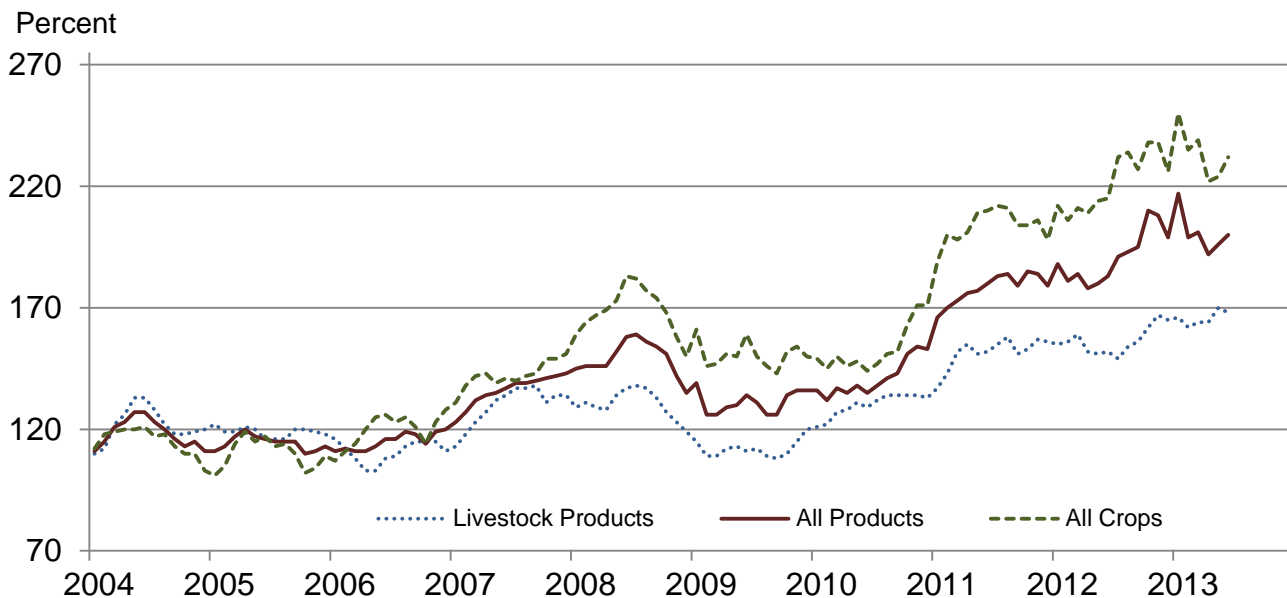
(NA) Not available.

## Prices Received and Prices Paid Indexes by Month for Selected Groups – United States: 2012 and 2013, 1990-1992 Base

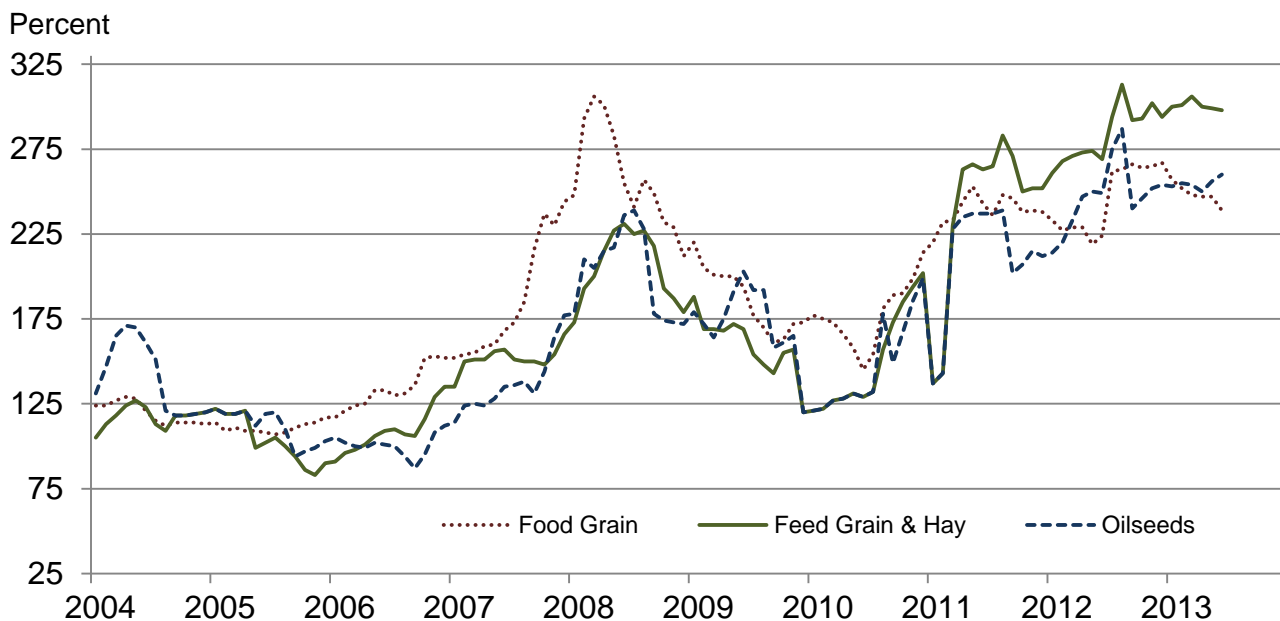
[Revised historical price indexes for months not shown are available at [www.nass.usda.gov](http://www.nass.usda.gov). Blank data cells indicate estimation period has not yet begun]

Month	Index of prices received						Index of prices paid			
	All farm products		All crops		Livestock and products		All items		Production items	
	2012	2013	2012	2013	2012	2013	2012	2013	2012	2013
	(percent)	(percent)	(percent)	(percent)	(percent)	(percent)	(percent)	(percent)	(percent)	(percent)
January .....	188	217	212	250	155	166	210	219	222	232
February .....	181	199	206	235	156	162	211	220	223	234
March .....	184	201	211	239	159	164	215	220	229	234
April .....	178	192	209	222	152	164	215	219	228	233
May .....	180	196	214	224	151	170	215	220	228	234
June .....	183	200	215	232	152	168	214	221	227	235
July .....	191		232		149		213		227	
August .....	193		234		154		216		231	
September .....	195		227		156		217		232	
October .....	210		238		162		218		232	
November .....	208		238		167		217		231	
December .....	199		226		165		217		231	

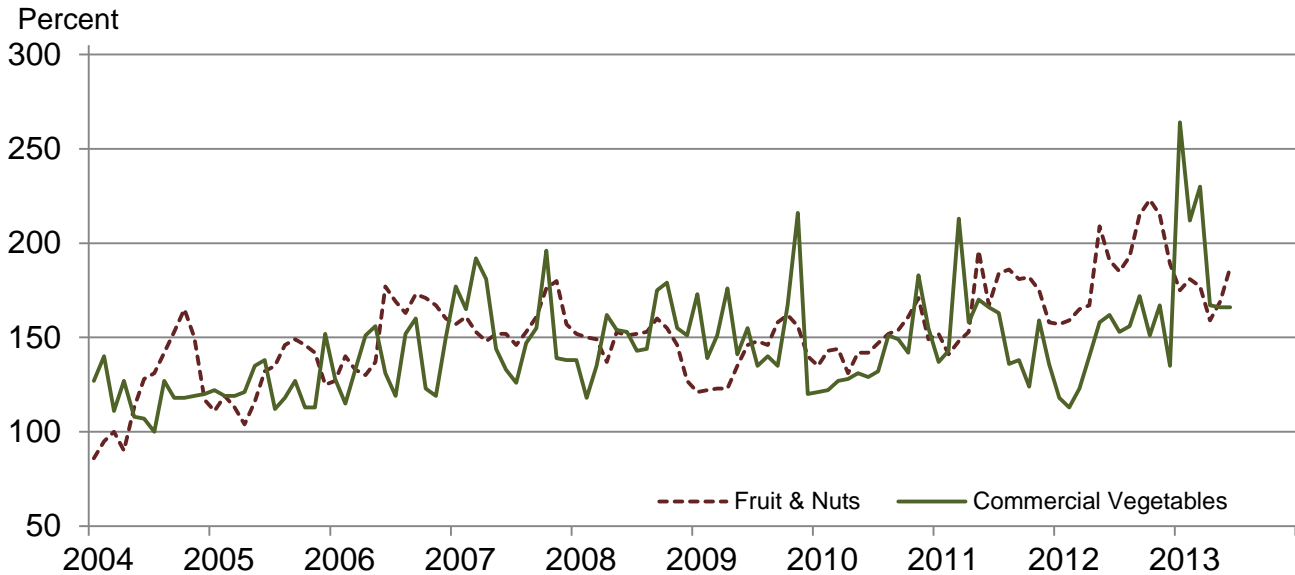
### Received Indexes by Month, Livestock Products, All Products, and All Crops – United States: 1990-1992=100



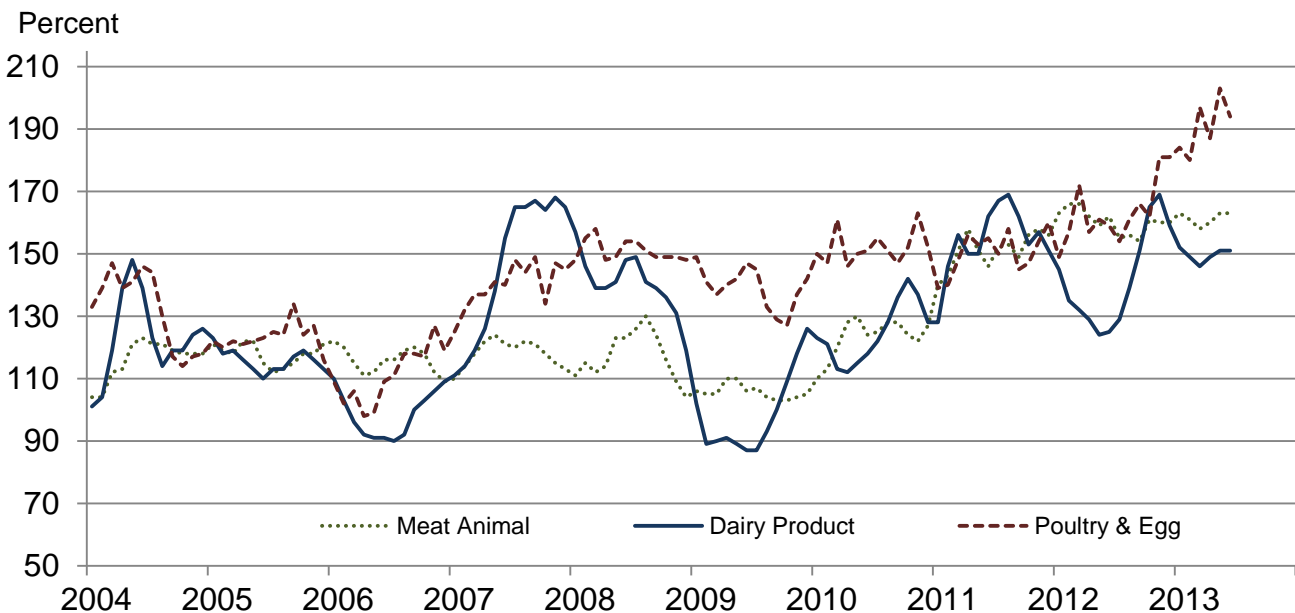
### Received Indexes by Month, Food Grains, Feed Grains & Hay, and Oilseeds – United States: 1990-1992=100



### Received Indexes by Month, Fruit & Nuts and Commercial Vegetables – United States: 1990-1992=100



### Received Indexes by Month, Meat Animal, Dairy Product, and Poultry & Egg – United States: 1990-1992=100



**Prices Received for Field Crops and Fruits – United States: June 2013 with Comparisons**

Commodity	Average 1990-1992	June 2012	May 2013	Preliminary June 2013
<b>Field crops</b>				
Austrian winter peas ..... dollars/cwt	(NA)	(S)	(S)	(S)
Barley, all ..... dollars/bushel	2.12	5.52	6.45	5.96
Feed ..... dollars/bushel	1.90	5.46	5.68	4.87
Malting ..... dollars/bushel	2.43	5.54	6.55	6.41
Beans, dry edible ..... dollars/cwt	19.10	44.20	36.10	37.10
Canola ..... dollars/cwt	(NA)	27.40	28.20	27.00
Chickpeas, all ..... dollars/cwt	(NA)	41.10	36.20	36.10
Large ..... dollars/cwt	(NA)	44.50	38.70	38.50
Small ..... dollars/cwt	(NA)	(D)	27.00	(D)
Corn ..... dollars/bushel	2.30	6.37	6.97	7.02
Cotton, Upland ..... dollars/pound	0.606	0.771	0.753	0.756
Cottonseed ..... dollars/ton	96.00	(NA)	(NA)	(NA)
Flaxseed ..... dollars/bushel	4.27	12.90	15.10	14.60
Hay, all, baled ..... dollars/ton	76.30	183.00	203.00	199.00
Alfalfa ..... dollars/ton	77.20	201.00	221.00	220.00
Other ..... dollars/ton	60.00	133.00	154.00	147.00
Lentils ..... dollars/cwt	(NA)	20.10	20.40	22.00
Oats ..... dollars/bushel	1.22	3.80	4.45	4.04
Peanuts, in-shell ..... dollars/pound	0.304	0.344	0.272	0.280
Peas, dry edible ..... dollars/cwt	(NA)	16.10	18.70	16.30
Potatoes ..... dollars/cwt	5.82	9.93	12.89	12.33
Rice, all ..... dollars/cwt	7.07	14.20	15.30	15.60
Long ..... dollars/cwt	(NA)	13.50	14.90	15.10
Medium and short ..... dollars/cwt	(NA)	15.80	17.00	17.20
Sorghum grain ..... dollars/cwt	3.75	9.56	11.50	11.40
Soybeans ..... dollars/bushel	5.61	13.90	14.90	15.10
Sunflowers, all ..... dollars/cwt	9.50	27.20	24.00	23.80
Wheat, all ..... dollars/bushel	2.96	6.70	7.68	7.13
Winter ..... dollars/bushel	2.93	6.55	7.49	7.02
Durum ..... dollars/bushel	2.86	8.31	8.06	8.12
Other spring ..... dollars/bushel	3.11	7.78	7.84	7.68
Hard red winter <sup>1</sup> ..... dollars/bushel	(NA)	6.53	7.56	(NA)
Soft red winter <sup>1</sup> ..... dollars/bushel	(NA)	6.59	7.31	(NA)
Hard red spring <sup>1</sup> ..... dollars/bushel	(NA)	7.81	7.86	(NA)
White <sup>1</sup> ..... dollars/bushel	3.24	6.61	7.42	(NA)
<b>Fruits</b>				
Citrus, equivalent on-tree				
Grapefruit ..... dollars/box	5.77	15.43	8.26	8.76
Lemons ..... dollars/box	10.10	16.10	14.45	16.77
Oranges ..... dollars/box	5.79	12.49	9.30	11.98
Tangelos ..... dollars/box	5.82	(S)	(S)	(S)
Tangerines and mandarins ..... dollars/box	15.11	(S)	(D)	(S)
Noncitrus, fresh				
Apples <sup>2</sup> ..... dollars/pound	0.212	0.384	(NA)	(NA)
Grapes <sup>2</sup> ..... dollars/ton	506.00	(S)	(NA)	(NA)
Peaches <sup>2</sup> ..... dollars/ton	432.00	836.00	(NA)	(NA)
Pears <sup>2</sup> ..... dollars/ton	370.00	594.00	(NA)	(NA)
Strawberries ..... dollars/cwt	56.00	74.40	(NA)	(NA)

(D) Withheld to avoid disclosing data for individual operations.

(NA) Not available.

(S) Insufficient number of reports to establish an estimate.

<sup>1</sup> Preliminary estimates not set for this item.

<sup>2</sup> Equivalent packinghouse-door returns for California, Michigan, New York (apples only), and Washington (apples, peaches, and pears). Prices as sold for other states.



## Prices Received for Vegetables and Livestock – United States: June 2013 with Comparisons

[Price data source for livestock and poultry commodities is United States Department of Agriculture's Agricultural Marketing Service]

Commodity	Average 1990-1992	June 2012	May 2013	Preliminary June 2013
<b>Vegetables, fresh <sup>1</sup></b>				
Asparagus .....dollars/cwt	79.80	107.00	(NA)	(NA)
Beans, snap <sup>2</sup> .....dollars/cwt	(NA)	45.20	(NA)	(NA)
Broccoli .....dollars/cwt	22.50	49.20	(NA)	(NA)
Cantaloupes <sup>2</sup> .....dollars/cwt	(NA)	20.80	(NA)	(NA)
Carrots .....dollars/cwt	13.20	27.50	(NA)	(NA)
Cauliflower .....dollars/cwt	26.80	38.90	(NA)	(NA)
Celery .....dollars/cwt	11.60	13.50	(NA)	(NA)
Corn, sweet .....dollars/cwt	15.70	22.80	(NA)	(NA)
Cucumbers <sup>2</sup> .....dollars/cwt	(NA)	23.50	(NA)	(NA)
Lettuce .....dollars/cwt	11.90	19.00	(NA)	(NA)
Onions <sup>3</sup> .....dollars/cwt	12.80	21.30	(NA)	(NA)
Tomatoes .....dollars/cwt	32.30	45.10	(NA)	(NA)
<b>Livestock</b>				
Calves .....dollars/cwt	94.30	166.00	151.00	146.00
Cattle, all beef .....dollars/cwt	72.90	121.00	124.00	122.00
Cows <sup>4</sup> .....dollars/cwt	49.60	86.00	80.60	80.10
Steers and heifers .....dollars/cwt	77.10	124.00	128.00	126.00
Milk cows <sup>5</sup> .....dollars/head	1130.00	(NA)	(NA)	(NA)
Hogs, all .....dollars/cwt	47.70	70.20	68.60	72.50
Barrows and gilts .....dollars/cwt	48.40	71.00	69.10	73.10
Sows .....dollars/cwt	39.50	51.80	55.20	58.40
<b>Dairy and poultry</b>				
Milk, all <sup>6</sup> .....dollars/cwt	13.06	16.30	19.70	19.70
Fat test ..... percent	3.66	3.60	3.67	3.62
Broilers, live <sup>7</sup> .....dollars/pound	0.317	0.500	0.680	0.670
Eggs, all <sup>8</sup> .....dollars/dozen	0.643	0.907	1.170	0.929
Market <sup>8 9</sup> .....dollars/dozen	0.546	0.689	0.976	0.694
Turkeys, live <sup>8 10</sup> .....dollars/pound	0.380	0.739	0.649	0.658
<b>Adjusted for seasonal variation</b>				
Eggs, all .....dollars/dozen	0.545	1.080	1.420	1.090
Seasonal factor ..... percent	100	84	83	85
Milk, all <sup>6</sup> .....dollars/cwt	9.71	17.10	20.90	20.60
Seasonal factor ..... percent	100	96	94	95

(NA) Not available.

<sup>1</sup> Beginning January 2006, point of first sale. FOB shipping point for prior years.

<sup>2</sup> Monthly estimates began January 1995.

<sup>3</sup> Includes some processing.

<sup>4</sup> Beef cows and cull dairy cows sold for slaughter.

<sup>5</sup> Animals sold for dairy herd replacement only. Prices available for January, April, July, and October.

<sup>6</sup> Before deductions for hauling. Includes quality, quantity, and other premiums. Excludes hauling subsidies.

<sup>7</sup> Live weight equivalent price.

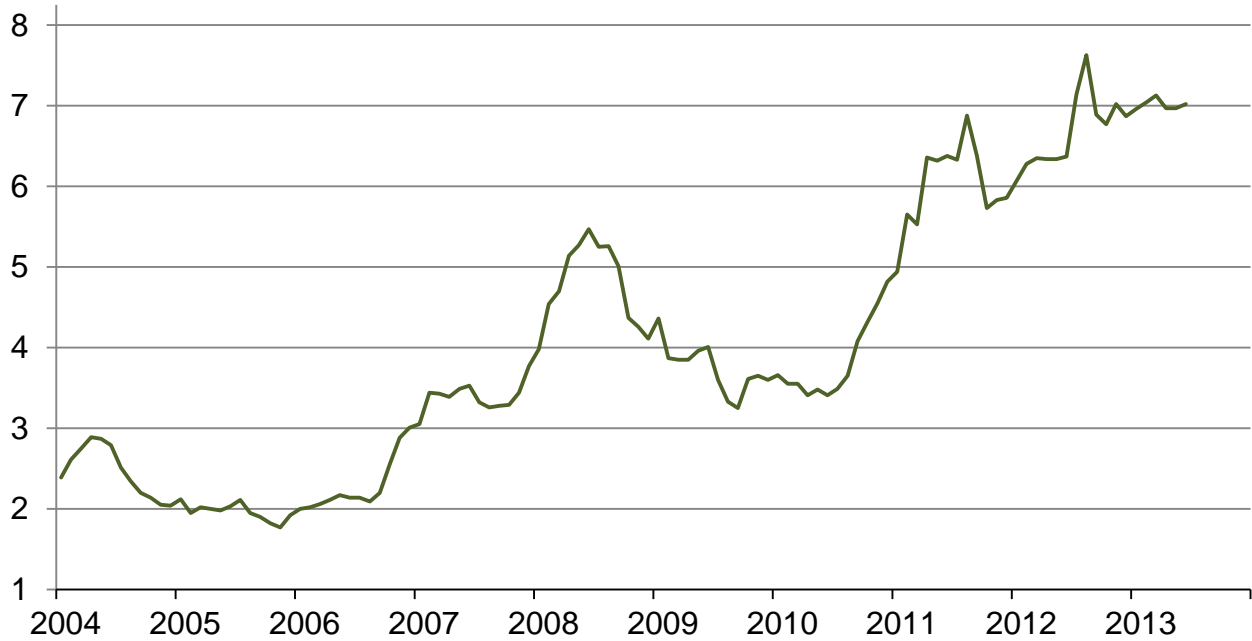
<sup>8</sup> Mid-month price.

<sup>9</sup> Also referred to as table eggs.

<sup>10</sup> Live weight equivalent price is used when actual live weight price is not available. Beginning January 2011, price reflects FOB shipping point basis. Prior year price reflects delivered basis.

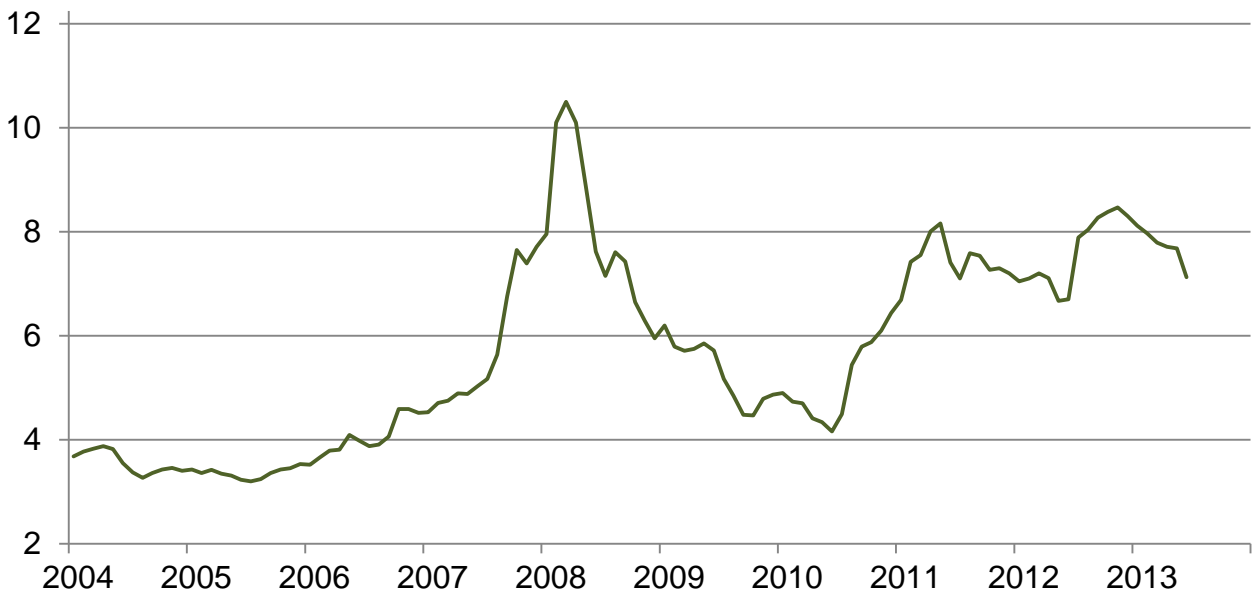
## Prices Received for Corn by Month – United States

Dollars per bushel



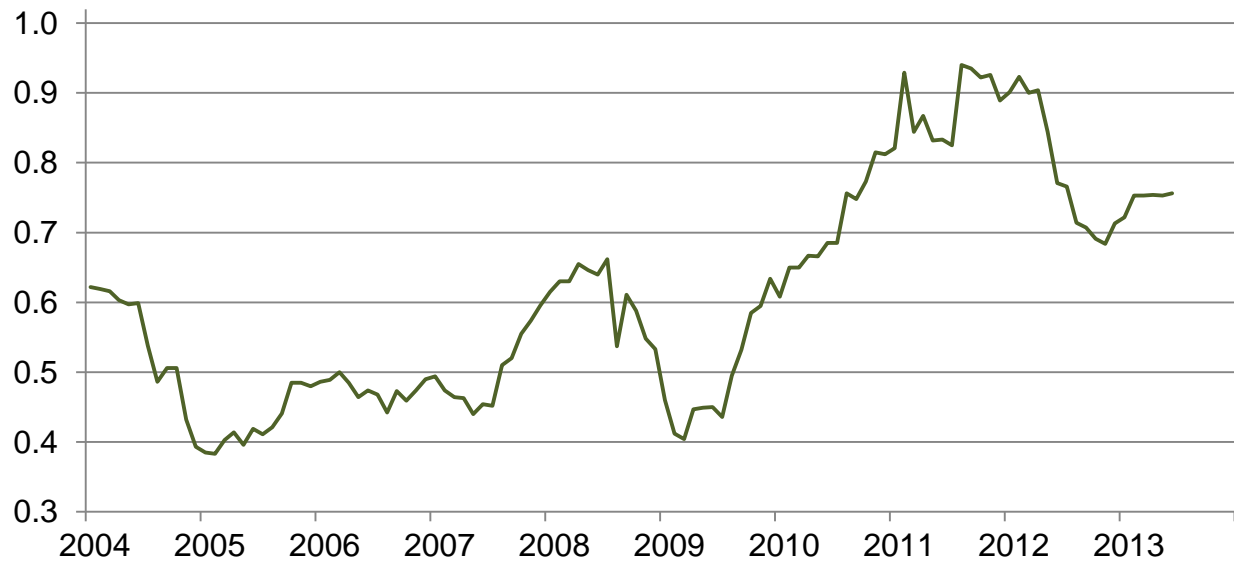
## Prices Received for Wheat by Month – United States

Dollars per bushel



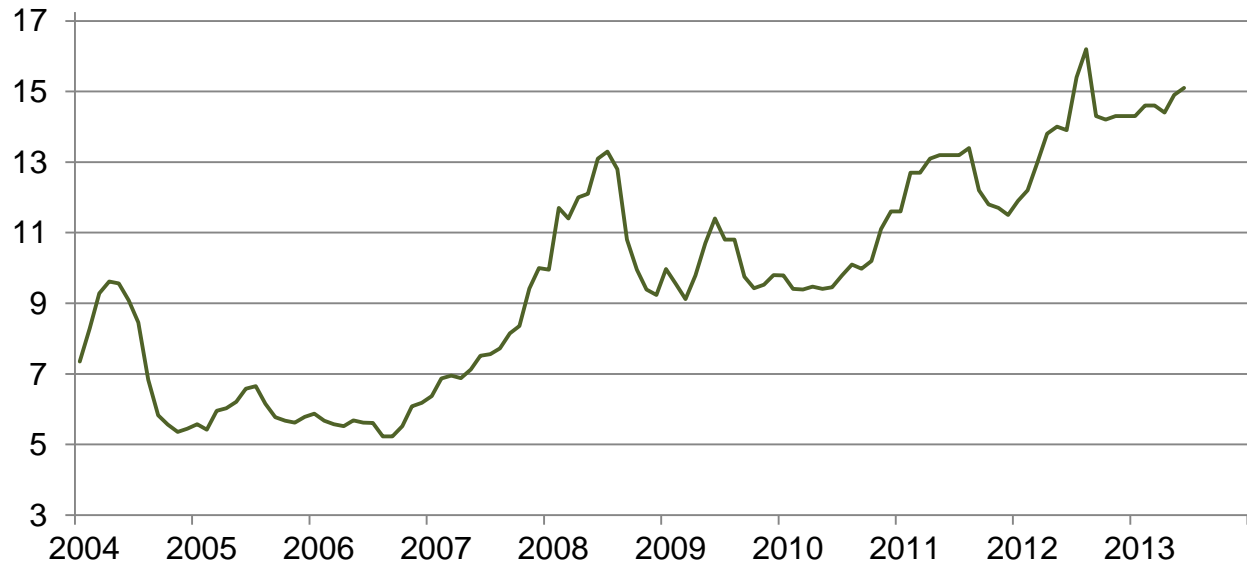
## Prices Received for Upland Cotton by Month – United States

Dollars per pound



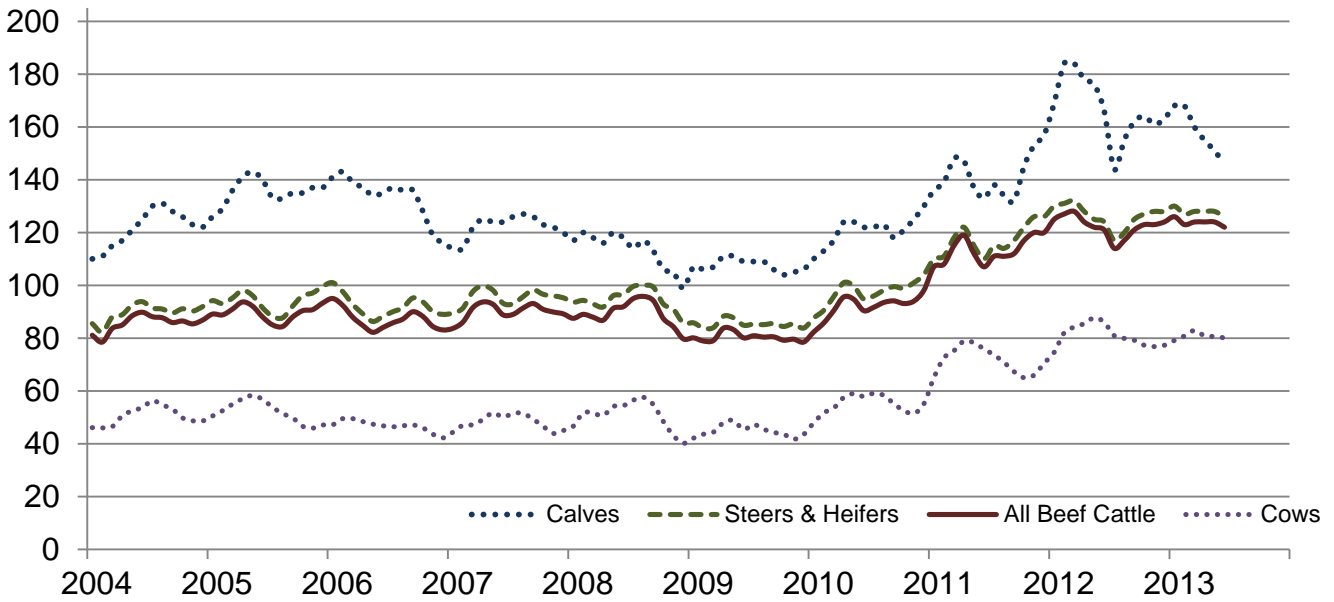
## Prices Received for Soybeans by Month – United States

Dollars per bushel



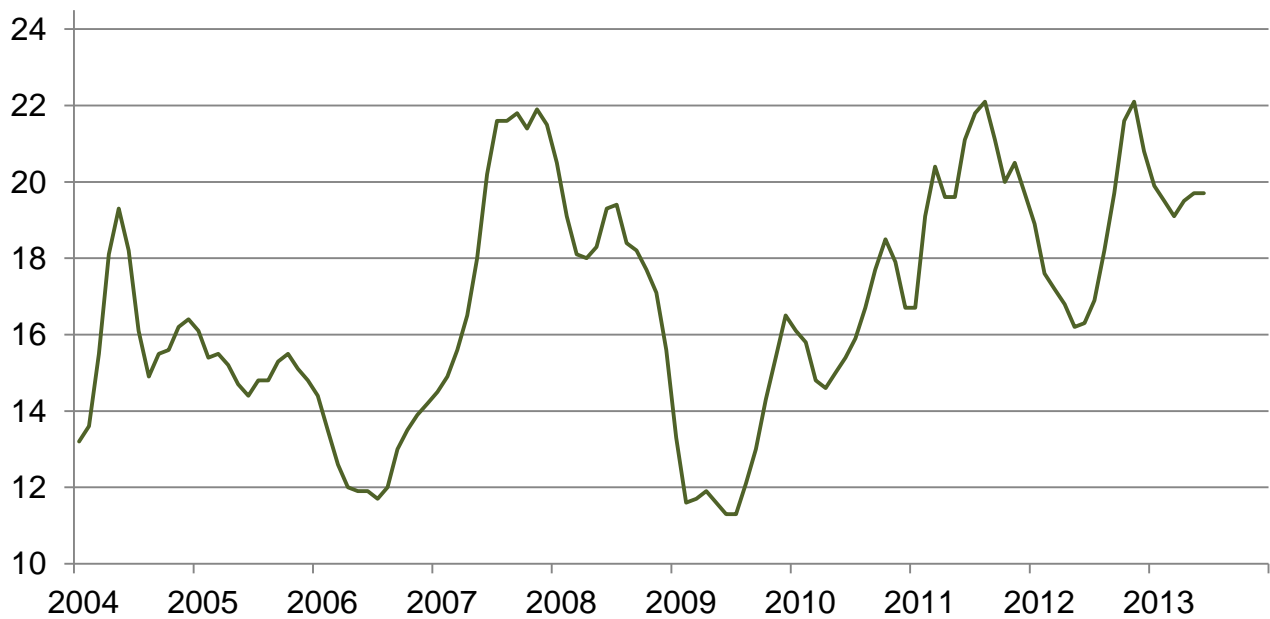
## Prices Received for Cattle by Month – United States

Dollars per cwt



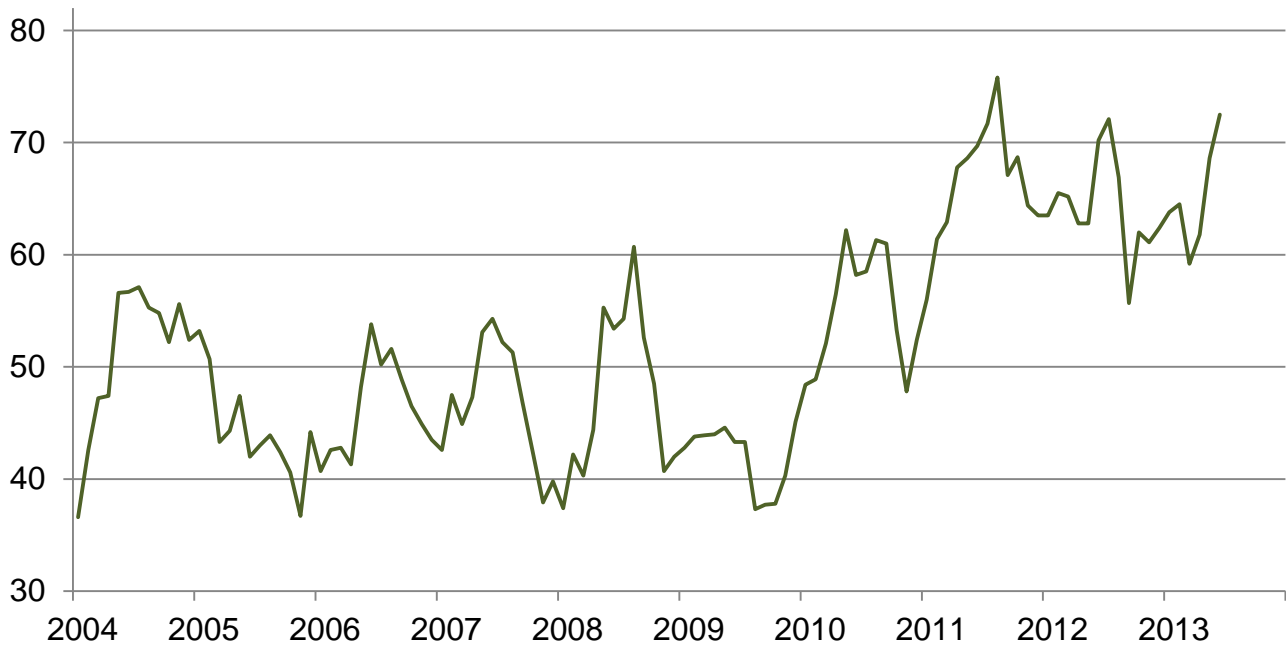
## Prices Received for Milk by Month – United States

Dollars per cwt



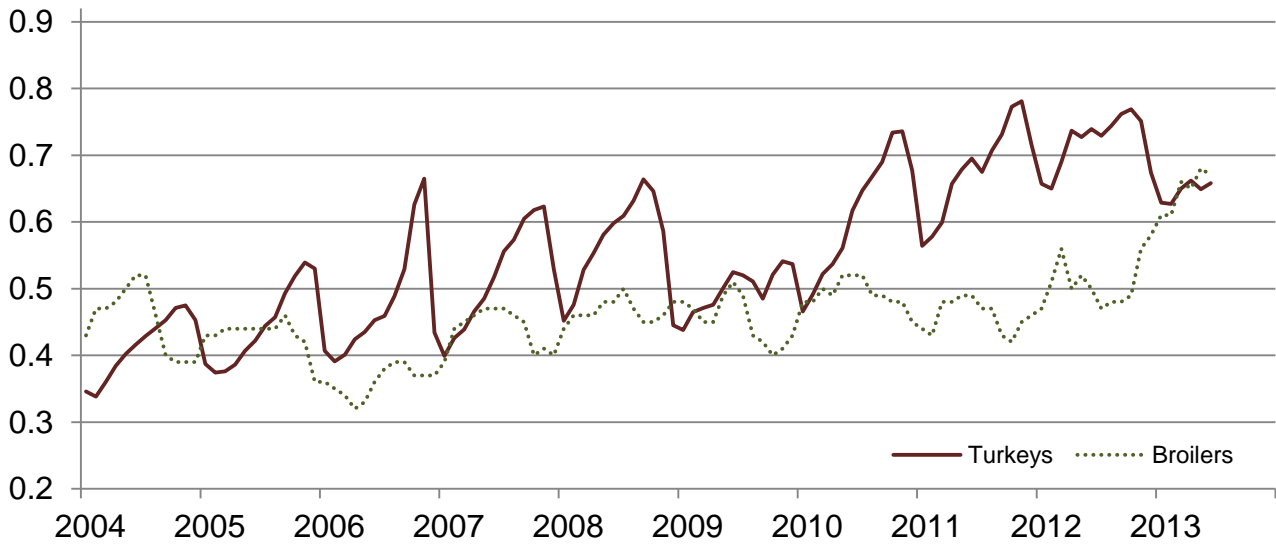
## Prices Received for Hogs by Month – United States

Dollars per cwt



## Prices Received for Poultry by Month – United States

Dollars per pound



## Prices Received for All Wheat, Corn, and Soybeans by Month – United States: 2013 with Comparisons

[Current month prices are mid-month; prices for previous months and years are for the entire month. Blank data cells indicate estimation period has not yet begun]

Month	All wheat			Corn			Soybeans		
	2011	2012	Preliminary 2013	2011	2012	Preliminary 2013	2011	2012	Preliminary 2013
	(dollars per bushel)	(dollars per bushel)	(dollars per bushel)	(dollars per bushel)	(dollars per bushel)	(dollars per bushel)	(dollars per bushel)	(dollars per bushel)	(dollars per bushel)
January .....	6.69	7.05	8.12	4.94	6.07	6.96	11.60	11.90	14.30
February .....	7.42	7.10	7.97	5.65	6.28	7.04	12.70	12.20	14.60
March .....	7.55	7.20	7.79	5.53	6.35	7.13	12.70	13.00	14.60
April .....	8.01	7.11	7.71	6.36	6.34	6.97	13.10	13.80	14.40
May .....	8.16	6.67	7.68	6.32	6.34	6.97	13.20	14.00	14.90
June .....	7.41	6.70	7.13	6.38	6.37	7.02	13.20	13.90	15.10
July .....	7.10	7.89		6.33	7.14		13.20	15.40	
August .....	7.59	8.04		6.88	7.63		13.40	16.20	
September .....	7.54	8.27		6.38	6.89		12.20	14.30	
October .....	7.27	8.38		5.73	6.77		11.80	14.20	
November .....	7.30	8.47		5.83	7.02		11.70	14.30	
December .....	7.20	8.30		5.86	6.87		11.50	14.30	

## Prices Received for Beef Cattle and All Hogs by Month – United States: 2013 with Comparisons

[Current month prices are mid-month; prices for previous months and years are for the entire month. Blank data cells indicate estimation period has not yet begun]

Month	Beef cattle <sup>1</sup>			All hogs <sup>2</sup>		
	2011	2012	Preliminary 2013	2011	2012	Preliminary 2013
	(dollars per cwt)	(dollars per cwt)	(dollars per cwt)	(dollars per cwt)	(dollars per cwt)	(dollars per cwt)
January .....	107.00	125.00	126.00	56.00	63.50	63.80
February .....	108.00	127.00	123.00	61.40	65.50	64.50
March .....	115.00	128.00	124.00	62.90	65.20	59.20
April .....	119.00	124.00	124.00	67.80	62.80	61.80
May .....	112.00	122.00	124.00	68.60	62.80	68.60
June .....	107.00	121.00	122.00	69.70	70.20	72.50
July .....	111.00	114.00		71.70	72.10	
August .....	111.00	117.00		75.80	66.90	
September .....	112.00	121.00		67.10	55.70	
October .....	117.00	123.00		68.70	62.00	
November .....	120.00	123.00		64.40	61.10	
December .....	120.00	124.00		63.50	62.40	

<sup>1</sup> Cows and steers & heifers.

<sup>2</sup> Barrows & gilts and sows.

## Prices Received for All Wheat – States and United States: June 2013 with Comparisons

State	June 2012	May 2013	Preliminary June 2013
	(dollars per bushel)	(dollars per bushel)	(dollars per bushel)
Arizona .....	9.33	(D)	(S)
Arkansas .....	6.67	(D)	6.90
California .....	7.58	(D)	(D)
Colorado .....	6.65	7.40	6.91
Idaho .....	7.11	7.83	7.77
Illinois .....	6.47	7.18	6.80
Indiana .....	6.62	7.08	6.77
Kansas .....	6.47	7.53	6.98
Michigan .....	6.64	6.95	6.55
Minnesota .....	7.74	7.89	7.70
Missouri .....	6.29	7.19	7.00
Montana .....	7.14	7.96	7.80
Nebraska .....	6.70	7.50	7.00
North Carolina .....	6.44	(D)	7.00
North Dakota .....	7.58	7.74	7.58
Ohio .....	7.02	7.52	7.15
Oklahoma .....	6.48	7.50	7.11
Oregon .....	6.66	7.91	(D)
South Dakota .....	7.29	7.79	7.37
Texas .....	6.63	7.38	7.33
Washington .....	6.91	7.56	7.22
United States .....	6.70	7.68	7.13

(D) Withheld to avoid disclosing data for individual operations.

(S) Insufficient number of reports to establish an estimate.

## Prices Received for Winter Wheat – States and United States: June 2013 with Comparisons

State	June 2012	May 2013	Preliminary June 2013
	(dollars per bushel)	(dollars per bushel)	(dollars per bushel)
Arkansas .....	6.67	(D)	6.90
California .....	7.30	(D)	(D)
Colorado .....	6.65	7.40	6.91
Idaho .....	6.71	7.64	7.60
Illinois .....	6.47	7.18	6.80
Indiana .....	6.62	7.08	6.77
Kansas .....	6.47	7.53	6.98
Michigan .....	6.64	6.95	6.55
Minnesota .....	(D)	(D)	(S)
Missouri .....	6.29	7.19	7.00
Montana .....	6.53	7.88	7.40
Nebraska .....	6.70	7.50	7.00
North Carolina .....	6.44	(D)	7.00
North Dakota .....	6.00	7.25	6.95
Ohio .....	7.02	7.52	7.15
Oklahoma .....	6.48	7.50	7.11
Oregon .....	6.63	7.89	(D)
South Dakota .....	6.47	7.31	6.95
Texas .....	6.63	7.38	7.33
Washington .....	6.63	7.43	7.00
United States .....	6.55	7.49	7.02

(D) Withheld to avoid disclosing data for individual operations.

(S) Insufficient number of reports to establish an estimate.

**Prices Received for Durum Wheat – States and United States: June 2013 with Comparisons**

State	June 2012	May 2013	Preliminary June 2013
	(dollars per bushel)	(dollars per bushel)	(dollars per bushel)
Arizona .....	9.33	(D)	(D)
California .....	(D)	(S)	(S)
Idaho .....	(D)	(S)	(S)
Montana .....	7.60	(D)	(D)
North Dakota .....	7.16	8.10	7.95
United States .....	8.31	8.06	8.12

(D) Withheld to avoid disclosing data for individual operations.

(S) Insufficient number of reports to establish an estimate.

**Prices Received for Spring Wheat – States and United States: June 2013 with Comparisons**

State	June 2012	May 2013	Preliminary June 2013
	(dollars per bushel)	(dollars per bushel)	(dollars per bushel)
Colorado .....	(D)	(S)	(S)
Idaho .....	7.53	8.12	8.05
Minnesota .....	7.74	7.89	7.70
Montana .....	7.90	8.03	7.95
North Dakota .....	7.78	7.72	7.55
Oregon .....	6.88	8.06	(D)
South Dakota .....	7.86	8.02	7.57
Washington .....	7.83	8.08	8.01
United States .....	7.78	7.84	7.68

(D) Withheld to avoid disclosing data for individual operations.

(S) Insufficient number of reports to establish an estimate.



### Prices Received for All Barley – States and United States: June 2013 with Comparisons

State	June 2012	May 2013	Preliminary June 2013
	(dollars per bushel)	(dollars per bushel)	(dollars per bushel)
California .....	5.73	(D)	(S)
Colorado .....	6.48	(S)	(S)
Idaho .....	5.13	6.48	(D)
Minnesota .....	(D)	7.04	(S)
Montana .....	5.77	6.46	6.09
North Dakota .....	5.65	6.58	5.80
Oregon .....	4.40	(D)	(D)
Utah .....	5.15	5.80	5.50
Washington .....	4.89	5.18	5.27
Wyoming .....	(S)	(D)	(S)
United States .....	5.52	6.45	5.96

(D) Withheld to avoid disclosing data for individual operations.

(S) Insufficient number of reports to establish an estimate.

### Prices Received for Malting Barley – States: June 2013 with Comparisons

State	June 2012	May 2013	Preliminary June 2013
	(dollars per bushel)	(dollars per bushel)	(dollars per bushel)
Idaho .....	5.16	6.50	(D)
Minnesota .....	(D)	(D)	(S)
Montana .....	5.80	6.56	6.16
North Dakota .....	5.72	6.70	6.50
Wyoming .....	(S)	(D)	(S)

(D) Withheld to avoid disclosing data for individual operations.

(S) Insufficient number of reports to establish an estimate.

### Prices Received for Feed Barley – States: June 2013 with Comparisons

State	June 2012	May 2013	Preliminary June 2013
	(dollars per bushel)	(dollars per bushel)	(dollars per bushel)
Idaho .....	4.70	6.12	(D)
Minnesota .....	(S)	7.10	(S)
Montana .....	5.63	5.19	5.19
North Dakota .....	5.54	4.68	4.75
Wyoming .....	(S)	(S)	(S)

(D) Withheld to avoid disclosing data for individual operations.

(S) Insufficient number of reports to establish an estimate.

## Prices Received for Corn – States and United States: June 2013 with Comparisons

State	June 2012	May 2013	Preliminary June 2013
	(dollars per bushel)	(dollars per bushel)	(dollars per bushel)
Colorado .....	6.37	6.98	7.19
Illinois .....	6.43	6.91	7.00
Indiana .....	6.55	7.16	7.20
Iowa .....	6.37	7.06	7.20
Kansas .....	6.30	7.00	7.18
Kentucky .....	6.57	7.08	7.20
Michigan .....	6.35	6.62	6.70
Minnesota .....	6.19	6.84	6.85
Missouri .....	6.54	7.30	7.30
Nebraska .....	6.35	6.99	7.20
North Carolina .....	7.00	7.48	7.50
North Dakota .....	6.06	6.39	6.50
Ohio .....	6.48	7.00	7.08
Pennsylvania .....	6.89	7.14	7.16
South Dakota .....	6.15	6.88	6.89
Tennessee .....	6.47	7.47	7.50
Texas .....	6.68	7.18	(D)
Wisconsin .....	6.44	6.78	6.80
United States .....	6.37	6.97	7.02

(D) Withheld to avoid disclosing data for individual operations.

## Prices Received for Soybeans – States and United States: June 2013 with Comparisons

State	June 2012	May 2013	Preliminary June 2013
	(dollars per bushel)	(dollars per bushel)	(dollars per bushel)
Arkansas .....	14.30	15.00	15.50
Illinois .....	14.10	15.10	15.50
Indiana .....	14.10	15.10	15.40
Iowa .....	13.70	14.90	15.10
Kansas .....	13.90	14.60	14.80
Kentucky .....	13.80	15.10	15.30
Louisiana .....	(D)	15.10	(S)
Michigan .....	13.90	14.50	15.00
Minnesota .....	13.60	14.70	14.80
Mississippi .....	14.00	(D)	(D)
Missouri .....	14.10	14.80	15.00
Nebraska .....	13.60	14.70	15.00
North Carolina .....	14.50	15.00	15.50
North Dakota .....	13.50	14.00	14.10
Ohio .....	14.20	14.90	15.30
South Dakota .....	13.50	14.60	14.70
Tennessee .....	13.60	15.00	15.20
Wisconsin .....	14.10	14.60	14.80
United States .....	13.90	14.90	15.10

(D) Withheld to avoid disclosing data for individual operations.

(S) Insufficient number of reports to establish an estimate.

### Prices Received for Oats – States and United States: June 2013 with Comparisons

State	June 2012	May 2013	Preliminary June 2013
	(dollars per bushel)	(dollars per bushel)	(dollars per bushel)
Illinois .....	(D)	(D)	(D)
Iowa .....	3.78	4.66	4.60
Michigan .....	(D)	4.38	3.96
Minnesota .....	3.63	3.97	3.90
Montana .....	(D)	3.55	(S)
Nebraska .....	4.45	(D)	(D)
New York .....	4.16	4.02	4.06
North Dakota .....	2.95	3.87	(D)
Oregon .....	(S)	(S)	(S)
Pennsylvania .....	4.51	4.63	4.50
South Dakota .....	3.49	4.42	4.23
Texas .....	(S)	(S)	(S)
Wisconsin .....	3.59	4.39	4.20
United States .....	3.80	4.45	4.04

(D) Withheld to avoid disclosing data for individual operations.

(S) Insufficient number of reports to establish an estimate.

### Prices Received for Sorghum Grain – States and United States: June 2013 with Comparisons

State	June 2012	May 2013	Preliminary June 2013
	(dollars per cwt)	(dollars per cwt)	(dollars per cwt)
Arkansas .....	(S)	(D)	(S)
Illinois .....	(D)	(D)	(S)
Kansas .....	10.40	11.40	11.50
Louisiana .....	(S)	(D)	(S)
Missouri .....	(D)	(D)	12.00
Nebraska .....	10.90	12.00	12.20
Oklahoma .....	11.10	11.10	11.20
Texas .....	9.23	11.50	11.40
United States .....	9.56	11.50	11.40

(D) Withheld to avoid disclosing data for individual operations.

(S) Insufficient number of reports to establish an estimate.

**Prices Received for Dry Beans – States and United States: June 2013 with Comparisons**

State	June 2012	May 2013	Preliminary June 2013
	(dollars per cwt)	(dollars per cwt)	(dollars per cwt)
California .....	(D) 48.90	48.90	(S) 34.50
Colorado .....	(D) 36.40	36.40	34.50
Idaho .....	45.60	39.30	36.90
Michigan .....	42.50	44.10	40.30
Minnesota .....	42.40	33.80	(S) 41.70
Nebraska .....	43.40	41.00	41.70
North Dakota .....	44.90	31.20	36.00
United States .....	44.20	36.10	37.10

(D) Withheld to avoid disclosing data for individual operations.

(S) Insufficient number of reports to establish an estimate.

**Prices Received for Peanuts (in shell) – States and United States: June 2013 with Comparisons**

State	June 2012	May 2013	Preliminary June 2013
	(dollars per pound)	(dollars per pound)	(dollars per pound)
Alabama .....	0.340	0.218	0.253
Florida .....	0.314	0.260	0.280
Georgia .....	0.355	0.253	0.275
Mississippi .....	0.318	0.364	0.318
New Mexico .....	(S) 0.344	(D) 0.348	(S) 0.351
North Carolina .....	0.344	0.348	0.351
Oklahoma .....	0.280	0.322	0.299
South Carolina .....	0.342	0.296	0.298
Texas .....	0.355	0.308	0.309
Virginia .....	0.315	0.342	(S) 0.309
United States .....	0.344	0.272	0.280

(D) Withheld to avoid disclosing data for individual operations.

(S) Insufficient number of reports to establish an estimate.

### Prices Received for Sunflower – States and United States: June 2013 with Comparisons

State	June 2012	May 2013	Preliminary June 2013
	(dollars per cwt)	(dollars per cwt)	(dollars per cwt)
Colorado .....	(D)	(D)	(S)
Kansas .....	25.40	(D)	(S)
Minnesota .....	33.00	29.20	(D)
North Dakota .....	27.20	23.90	23.40
South Dakota .....	25.30	23.40	23.20
United States .....	27.20	24.00	23.80

(D) Withheld to avoid disclosing data for individual operations.

(S) Insufficient number of reports to establish an estimate.

### Prices Received for Canola – States and United States: June 2013 with Comparisons

State	June 2012	May 2013	Preliminary June 2013
	(dollars per cwt)	(dollars per cwt)	(dollars per cwt)
Minnesota .....	(D)	(D)	(S)
North Dakota .....	27.40	28.20	27.00
United States .....	27.40	28.20	27.00

(D) Withheld to avoid disclosing data for individual operations.

(S) Insufficient number of reports to establish an estimate.

### Prices Received for Flaxseed – States and United States: June 2013 with Comparisons

State	June 2012	May 2013	Preliminary June 2013
	(dollars per bushel)	(dollars per bushel)	(dollars per bushel)
North Dakota .....	12.90	15.10	14.60
United States .....	12.90	15.10	14.60

## Prices Received for Upland Cotton and Cottonseed – States and United States: June 2013 with Comparisons

[Cottonseed marketing year August - February]

State	Cotton, Upland			Cottonseed		
	June 2012	May 2013	Preliminary June 2013	June 2012	May 2013	Preliminary June 2013
	(dollars per pound)	(dollars per pound)	(dollars per pound)	(dollars per ton)	(dollars per ton)	(dollars per ton)
Alabama .....	1.010	0.771	0.768	(NA)	(NA)	(NA)
Arizona .....	(D)	(D)	(S)	(NA)	(NA)	(NA)
Arkansas .....	(D)	0.768	0.755	(NA)	(NA)	(NA)
California .....	(D)	(D)	(S)	(NA)	(NA)	(NA)
Georgia .....	0.972	0.771	0.768	(NA)	(NA)	(NA)
Louisiana .....	(D)	(D)	0.768	(NA)	(NA)	(NA)
Mississippi .....	1.010	(D)	0.768	(NA)	(NA)	(NA)
North Carolina .....	1.010	0.768	0.768	(NA)	(NA)	(NA)
Tennessee .....	1.010	0.768	0.768	(NA)	(NA)	(NA)
Texas .....	0.704	(D)	(D)	(NA)	(NA)	(NA)
United States .....	0.771	0.753	0.756	(NA)	(NA)	(NA)

(D) Withheld to avoid disclosing data for individual operations.

(NA) Not available.

(S) Insufficient number of reports to establish an estimate.

## Prices Received and Farm Marketings for Upland Cotton and Rice – United States: June 2013 with Comparisons

Item	June 2012	May 2013	Preliminary June 2013
Cotton, Upland			
Average price ..... dollars/pound	0.771	0.753	0.756
Marketings <sup>1</sup> ..... 1,000 bales	725	266	(NA)
Rice, all			
Average price ..... dollars/cwt	14.20	15.30	15.60
Marketings <sup>2</sup> ..... 1,000 cwt	10,510	11,143	(NA)
Rice, long			
Average price ..... dollars/cwt	13.50	14.90	15.10
Marketings <sup>2</sup> ..... 1,000 cwt	7,129	9,226	(NA)
Rice, medium and short			
Average price ..... dollars/cwt	15.80	17.00	17.20
Marketings <sup>2</sup> ..... 1,000 cwt	3,381	1,917	(NA)

(NA) Not available.

<sup>1</sup> Marketings based on a survey of cotton buyers in the major producing States - Alabama, Arizona, Arkansas, California, Georgia, Louisiana, Mississippi, North Carolina, Tennessee, and Texas.

<sup>2</sup> Purchases by private firms and rice (rough equivalent) shipped by cooperatives.

## Prices Received for Hay by Type – States and United States: June 2013 with Comparisons

State	All hay			Alfalfa hay			Other hay		
	June 2012	May 2013	Preliminary June 2013	June 2012	May 2013	Preliminary June 2013	June 2012	May 2013	Preliminary June 2013
	(dollars per ton)	(dollars per ton)	(dollars per ton)	(dollars per ton)	(dollars per ton)	(dollars per ton)	(dollars per ton)	(dollars per ton)	(dollars per ton)
Arizona .....	240.00	240.00	219.00	245.00	240.00	220.00	195.00	250.00	190.00
California .....	204.00	197.00	204.00	211.00	202.00	211.00	174.00	175.00	178.00
Colorado .....	233.00	244.00	244.00	235.00	245.00	245.00	190.00	225.00	230.00
Idaho .....	187.00	188.00	216.00	190.00	190.00	220.00	120.00	145.00	160.00
Illinois .....	137.00	160.00	165.00	150.00	195.00	180.00	100.00	145.00	150.00
Iowa .....	137.00	252.00	270.00	142.00	275.00	280.00	93.00	174.00	180.00
Kansas .....	177.00	215.00	215.00	190.00	235.00	230.00	105.00	135.00	130.00
Kentucky .....	103.00	145.00	123.00	185.00	205.00	205.00	80.00	105.00	100.00
Michigan .....	105.00	238.00	206.00	110.00	250.00	210.00	90.00	220.00	190.00
Minnesota .....	136.00	256.00	229.00	150.00	265.00	240.00	95.00	215.00	190.00
Missouri .....	91.00	150.00	137.00	190.00	240.00	240.00	75.00	110.00	120.00
Montana .....	109.00	159.00	160.00	113.00	162.00	160.00	99.00	147.00	161.00
Nebraska .....	136.00	225.00	212.00	140.00	236.00	224.00	104.00	166.00	163.00
Nevada .....	213.00	203.00	205.00	215.00	202.00	205.00	172.00	209.00	209.00
New Mexico .....	270.00	257.00	252.00	276.00	265.00	260.00	205.00	197.00	194.00
New York .....	124.00	143.00	150.00	175.00	205.00	205.00	110.00	135.00	135.00
North Dakota .....	73.00	135.00	127.00	79.00	137.00	129.00	55.00	89.00	84.00
Ohio .....	140.00	219.00	211.00	207.00	250.00	225.00	97.00	200.00	195.00
Oklahoma .....	141.00	177.00	153.00	205.00	226.00	224.00	91.00	104.00	98.00
Oregon .....	204.00	197.00	189.00	224.00	205.00	206.00	183.00	184.00	172.00
Pennsylvania .....	156.00	189.00	181.00	172.00	221.00	201.00	152.00	186.00	176.00
South Dakota .....	142.00	239.00	221.00	149.00	251.00	232.00	116.00	193.00	177.00
Texas .....	140.00	141.00	132.00	225.00	243.00	241.00	108.00	88.00	91.00
Utah .....	196.00	187.00	186.00	198.00	191.00	190.00	158.00	153.00	153.00
Washington .....	227.00	223.00	219.00	230.00	225.00	215.00	220.00	220.00	230.00
Wisconsin .....	121.00	264.00	268.00	135.00	275.00	275.00	95.00	215.00	215.00
Wyoming .....	162.00	217.00	217.00	165.00	223.00	220.00	145.00	200.00	200.00
United States .....	183.00	203.00	199.00	201.00	221.00	220.00	133.00	154.00	147.00

## Prices Received for Apples – States and United States: June 2013 with Comparisons

[Equivalent packinghouse-door returns for California, Michigan, New York, and Washington. Prices at point of first sale for other States]

State	Apples, fresh use		
	June 2012	May 2013	Preliminary June 2013
	(dollars per pound)	(dollars per pound)	(dollars per pound)
California .....	(NA)	(NA)	(NA)
Michigan .....	(NA)	(NA)	(NA)
New York .....	0.323	(NA)	(NA)
Ohio .....	0.670	(NA)	(NA)
Pennsylvania .....	(NA)	(NA)	(NA)
Virginia .....	(NA)	(NA)	(NA)
Washington .....	0.390	(NA)	(NA)
United States .....	0.384	(NA)	(NA)

(NA) Not available.

## Prices Received for Citrus Fruits by Utilization – States and United States: June 2012

[Net pounds per box: grapefruit in California-80, Florida-85, Texas-80; lemons-80; oranges in California-80, Florida-90, Texas-85; tangelos-90; tangerines and mandarins in Arizona and California-80, Florida-95]

Commodity, State, and type	FOB packed fresh	Equivalent returns					
		Packinghouse door			On-tree		
		All	Fresh	Process	All	Fresh	Process
	(dollars per box)	(dollars per box)	(dollars per box)	(dollars per box)	(dollars per box)	(dollars per box)	(dollars per box)
Grapefruit							
California <sup>1</sup> .....	24.10	17.57	17.57	(D)	15.43	15.43	(D)
United States .....	24.10	17.57	17.57	(D)	15.43	15.43	(D)
Lemons							
California .....	39.40	22.09	28.28	(D)	16.10	22.29	(D)
United States .....	39.40	22.09	28.28	(D)	16.10	22.29	(D)
Oranges							
California .....	26.10	14.98	17.27	(D)	12.49	14.81	(D)
Navel and miscellaneous .....	27.90	16.07	19.09	(D)	13.58	16.63	(D)
Valencia .....	23.90	13.60	15.09	(D)	11.12	12.63	(D)
Florida .....	(S)	(S)	(S)	(S)	(S)	(S)	(S)
United States .....	26.10	14.98	17.27	(D)	12.49	14.81	(D)

(D) Withheld to avoid disclosing data for individual operations.

(S) Insufficient number of reports to establish an estimate.

<sup>1</sup> Some processed sales included in fresh sales.



## Prices Received for Citrus Fruits by Utilization – States and United States: May 2013

[Net pounds per box: grapefruit in California-80, Florida-85, Texas-80; lemons-80; oranges in California-80, Florida-90, Texas-85; tangelos-90; tangerines and mandarins in Arizona and California-80, Florida-95]

Commodity, State, and type	FOB packed fresh	Equivalent returns					
		Packinghouse door			On-tree		
		All	Fresh	Process	All	Fresh	Process
	(dollars per box)	(dollars per box)	(dollars per box)	(dollars per box)	(dollars per box)	(dollars per box)	(dollars per box)
Grapefruit							
California <sup>1</sup> .....	17.10	10.44	10.44	(D)	8.26	8.26	(D)
Florida .....	(S)	(S)	(S)	(S)	(S)	(S)	(S)
White .....	(S)	(S)	(S)	(S)	(S)	(S)	(S)
Colored .....	(S)	(S)	(S)	(S)	(S)	(S)	(S)
Texas .....	(S)	(S)	(S)	(S)	(S)	(S)	(S)
United States .....	17.10	10.44	10.44	(D)	8.26	8.26	(D)
Lemons							
California .....	36.90	19.97	27.82	(D)	14.45	21.92	(D)
United States .....	36.90	19.97	27.82	(D)	14.45	21.92	(D)
Oranges							
California .....	25.80	14.98	16.84	(D)	12.45	14.33	(D)
Navel and miscellaneous .....	27.40	16.11	18.41	(D)	13.58	15.90	(D)
Valencia .....	(D)	(D)	(D)	(D)	(D)	(D)	(D)
Florida .....	25.90	11.11	14.75	11.00	8.41	11.95	8.30
Valencia .....	25.90	11.11	14.75	11.00	8.41	11.95	8.30
United States .....	25.80	11.96	16.62	10.67	9.30	14.08	7.97
Tangerines and mandarins							
California .....	(D)	(D)	(D)	(D)	(D)	(D)	(D)
United States .....	(D)	(D)	(D)	(D)	(D)	(D)	(D)

(D) Withheld to avoid disclosing data for individual operations.

(S) Insufficient number of reports to establish an estimate.

<sup>1</sup> Some processed sales included in fresh sales.

## Prices Received for Citrus Fruits by Utilization – States and United States: June 2013

[Net pounds per box: grapefruit in California-80, Florida-85, Texas-80; lemons-80; oranges in California-80, Florida-90, Texas-85; tangelos-90; tangerines and mandarins in Arizona and California-80, Florida-95]

Commodity, State, and type	FOB packed fresh	Equivalent returns					
		Packinghouse door			On-tree		
		All	Fresh	Process	All	Fresh	Process
	(dollars per box)	(dollars per box)	(dollars per box)	(dollars per box)	(dollars per box)	(dollars per box)	(dollars per box)
Grapefruit							
California <sup>1</sup> .....	17.60	10.94	10.94	(D)	8.76	8.76	(D)
Florida .....	(S)	(S)	(S)	(S)	(S)	(S)	(S)
White .....	(S)	(S)	(S)	(S)	(S)	(S)	(S)
Colored .....	(S)	(S)	(S)	(S)	(S)	(S)	(S)
Texas .....	(S)	(S)	(S)	(S)	(S)	(S)	(S)
United States .....	17.60	10.94	10.94	(D)	8.76	8.76	(D)
Lemons							
California .....	39.60	22.31	30.52	(D)	16.77	24.62	(D)
United States .....	39.60	22.31	30.52	(D)	16.77	24.62	(D)
Oranges							
California .....	27.90	16.70	18.95	(D)	14.17	16.44	(D)
Navel and miscellaneous .....	33.20	21.37	24.21	(D)	18.84	21.70	(D)
Valencia .....	23.30	12.74	14.31	(D)	10.20	11.80	(D)
Florida .....	27.40	12.06	16.25	11.50	9.35	13.45	8.80
Valencia .....	27.40	12.06	16.25	11.50	9.35	13.45	8.80
United States .....	27.90	14.60	18.67	10.07	11.98	16.13	7.37
Tangerines and mandarins							
California .....	(S)	(S)	(S)	(S)	(S)	(S)	(S)
United States .....	(S)	(S)	(S)	(S)	(S)	(S)	(S)

(D) Withheld to avoid disclosing data for individual operations.

(S) Insufficient number of reports to establish an estimate.

<sup>1</sup> Some processed sales included in fresh sales.

## Prices Received for Potatoes – States and United States: June 2013 with Comparisons

State	June 2012	May 2013	Preliminary June 2013
	(dollars per cwt)	(dollars per cwt)	(dollars per cwt)
California			
Spring .....	15.60	26.00	26.30
Fall .....	8.10	7.10	7.85
All <sup>1</sup> .....	14.90	21.60	24.10
Colorado			
Fresh <sup>2</sup> .....	11.40	6.95	(D)
All <sup>1</sup> .....	9.30	6.60	8.50
Florida .....	(D)	(D)	(D)
Idaho			
Fresh <sup>2</sup> .....	7.40	4.50	(D)
Processing .....	8.40	8.20	(D)
All <sup>1</sup> .....	8.05	7.10	7.20
Maine .....	(D)	11.90	10.80
Michigan .....	(S)	13.40	(S)
Minnesota .....	5.80	10.50	(D)
New York .....	(S)	14.10	(S)
North Carolina .....	11.60	(S)	(S)
North Dakota			
Fresh <sup>2</sup> .....	(D)	11.80	(D)
Processing .....	(D)	10.20	(D)
All <sup>1</sup> .....	8.60	9.85	(D)
Oregon .....	8.95	8.55	8.95
Texas .....	(S)	(S)	(S)
Virginia .....	17.80	(S)	(S)
Washington			
Processing .....	8.25	7.90	(D)
All <sup>1</sup> .....	8.45	7.85	8.15
Wisconsin			
Fresh <sup>2</sup> .....	(S)	5.20	(D)
Processing .....	(S)	10.40	(D)
All <sup>1</sup> .....	(S)	8.65	(D)
United States			
Fresh <sup>2</sup> .....	12.58	9.33	(D)
Processing .....	8.54	8.75	(D)
All <sup>1</sup> .....	9.93	12.89	12.33

(D) Withheld to avoid disclosing data for individual operations.

(S) Insufficient number of reports to establish an estimate.

<sup>1</sup> Average price of potatoes sold for all uses, including table stock, processing, seed, and livestock feed.

<sup>2</sup> Fresh market prices only. Includes table stock prices.

## Prices Received for All Milk – States and United States: June 2013 with Comparisons

[Before deduction for hauling. Includes quality, quantity, and other premiums. Excludes hauling subsidies]

State	June 2012		May 2013		Preliminary June 2013	
	Price (dollars per cwt)	Fat test (percent)	Price (dollars per cwt)	Fat test (percent)	Price (dollars per cwt)	Fat test (percent)
Arizona .....	15.20	3.50	19.00	3.44	19.40	3.44
California .....	14.62	3.63	18.33	3.63	17.90	3.60
Colorado .....	16.20	3.41	19.70	3.47	20.00	3.42
Florida .....	19.90	3.62	22.80	3.64	24.00	3.65
Idaho .....	15.90	3.59	19.10	3.67	18.80	3.62
Illinois .....	17.00	3.57	20.30	3.67	20.40	3.62
Indiana .....	16.60	3.53	20.20	3.63	20.60	3.59
Iowa .....	17.10	3.62	20.40	3.78	20.60	3.72
Kansas .....	16.60	3.57	19.70	3.57	20.00	3.50
Michigan .....	16.40	3.52	20.00	3.59	20.30	3.53
Minnesota .....	17.40	3.68	20.50	3.82	20.40	3.76
Missouri .....	16.50	3.58	19.80	3.66	20.30	3.62
New Mexico .....	15.40	3.46	18.20	3.47	18.50	3.45
New York .....	17.00	3.61	20.50	3.67	20.90	3.62
Ohio .....	16.60	3.58	20.50	3.64	21.00	3.61
Oregon .....	17.30	3.70	21.20	3.77	21.40	3.72
Pennsylvania .....	17.50	3.59	21.00	3.66	21.40	3.60
Texas .....	16.80	3.69	19.80	3.75	19.80	3.70
Utah .....	14.60	3.54	19.20	3.65	19.20	3.60
Vermont .....	17.10	3.78	20.70	3.75	21.20	3.68
Virginia .....	18.70	3.59	21.60	3.63	22.20	3.59
Washington .....	16.00	3.70	20.10	3.77	20.20	3.72
Wisconsin .....	17.10	3.61	20.40	3.76	20.40	3.70
United States .....	16.30	3.60	19.70	3.67	19.70	3.62

## Prices Received for Milk Cows – States and United States: April 2013 with Comparisons

[Animals sold for dairy herd replacement only. Prices estimated in January, April, July, and October]

State	April 2012 (dollars per head)	January 2013 (dollars per head)	April 2013 (dollars per head)
Arizona .....	1,500	1,500	(NA)
California .....	1,300	1,200	(NA)
Colorado .....	1,520	1,500	(NA)
Florida .....	1,450	1,470	(NA)
Idaho .....	1,450	1,300	(NA)
Illinois .....	1,520	1,450	(NA)
Indiana .....	1,450	1,440	(NA)
Iowa .....	1,450	1,400	(NA)
Kansas .....	1,450	1,350	(NA)
Michigan .....	1,600	1,600	(NA)
Minnesota .....	1,490	1,400	(NA)
Missouri .....	1,300	1,200	(NA)
New Mexico .....	1,350	1,380	(NA)
New York .....	1,460	1,400	(NA)
Ohio .....	1,510	1,400	(NA)
Oregon .....	1,430	1,300	(NA)
Pennsylvania .....	1,500	1,430	(NA)
Texas .....	1,400	1,350	(NA)
Utah .....	1,340	1,280	(NA)
Vermont .....	1,600	1,490	(NA)
Virginia .....	1,540	1,520	(NA)
Washington .....	1,350	1,300	(NA)
Wisconsin .....	1,560	1,480	(NA)
United States .....	1,440	1,370	(NA)

(NA) Not available.

## Commodity Parity Prices and Price as Percent of Parity Price – United States: June 2013 with Comparisons

[Parity prices are computed under the provisions of Title III, Subtitle a, Section 301 (a) of the Agricultural Adjustment Act of 1938 as amended by the Agricultural Acts of 1948, 1949, and 1956. See January *Agricultural Prices* for details on adjusted base price and parity price computations. Parity data not available for blank cells. Primary source of data for livestock and milk prices is United States Department of Agriculture's Agricultural Marketing Service]

Commodity and unit	Adjusted base price	Parity price			Price as percent of parity		
		June 2012	May 2013	June 2013	June 2012	May 2013	June 2013
	(dollars)	(dollars)	(dollars)	(dollars)	(percent)	(percent)	(percent)
<b>Basic commodities</b>							
All wheat .....	0.636	18.10	18.50	18.70	37	42	38
Rice .....	1.65	41.80	48.00	48.60	34	32	32
Corn .....	0.434	11.80	12.60	12.80	54	55	55
<b>Cotton</b>							
Upland .....	0.072	2.06	2.10	2.12	37	36	36
American Pima .....	0.133	4.03	3.87	3.91	36	32	32
Peanuts .....	0.027	0.744	0.786	0.795	46	35	35
<b>Designated nonbasic</b>							
All milk, to plants <sup>1</sup> .....	1.75	51.50	51.00	51.50	33	41	40
Honey, extracted <sup>2</sup> .....	0.141	3.98	4.11	4.15	43	42	42
<b>Wool and mohair</b>							
Wool .....	0.107	2.97	3.12	3.15	56	49	49
Mohair .....	0.336	9.52	9.78	9.89	44	40	39
<b>Other nonbasic</b>							
Apples, fresh <sup>3</sup> .....	0.032	0.944	0.932	0.942	41	41	42
Barley .....	0.444	12.50	12.90	13.10	44	50	45
Canola .....	1.880	52.10	54.70	55.30	53	52	49
Cottonseed .....	17.80	498.00	518.00	524.00	55	42	41
Dry edible beans .....	3.01	86.10	87.70	88.60	51	41	42
Flaxseed .....	1.110	31.50	32.30	32.70	41	47	45
Oats .....	0.265	7.52	7.72	7.80	51	58	52
Potatoes .....	0.822	24.50	23.90	24.20	41	54	51
Sorghum grain .....	0.758	20.80	22.10	22.30	46	52	51
Soybeans .....	1.030	28.60	30.00	30.30	49	50	50
Sunflower, all .....	2.10	58.90	61.20	61.80	46	39	39
<b>Citrus (equivalent on-tree)</b>							
Grapefruit .....	0.697	19.70	20.30	20.50	78	41	43
Lemons .....	1.32	39.20	38.40	38.80	41	38	43
Oranges .....	0.711	20.00	20.70	20.90	62	45	57
Tangerines .....	1.49	42.60	43.40	43.90	115	135	134
<b>Livestock and poultry</b>							
Beef cattle .....	10.00	289.00	291.00	294.00	42	43	41
Calves .....	13.70	398.00	399.00	403.00	42	38	36
Hogs .....	5.48	158.00	160.00	161.00	44	43	45
Eggs <sup>1</sup> .....	0.089	2.60	2.59	2.62	42	55	42
Turkeys, live .....	0.057	1.630	1.660	1.680	45	39	39

<sup>1</sup> Seasonally adjusted price as percentage of parity price.

<sup>2</sup> Wholesale extracted. Adjusted base price derived from state annual averages prices weighted by production. For 1982 through 1985 the national averages are the support prices.

<sup>3</sup> Equivalent packinghouse-door returns for California, New York, Oregon, and Washington. Price at point of first sale for other states.

## Commodity Parity Prices – United States: June 2013 with Comparisons

[Parity prices are computed under the provisions of Title III, Subtitle a, Section 301 (a) of the Agricultural Adjustment Act of 1938 as amended by the Agricultural Acts of 1948, 1949, and 1956. See January *Agricultural Prices* for details on adjusted base price and parity price computations]

Commodity and unit	Adjusted base price	Parity price			
		June 2012	May 2013	June 2013	
	(dollars)	(dollars)	(dollars)	(dollars)	
<b>Field crops and miscellaneous</b>					
Hops .....	pound	0.303	8.75	8.82	8.92
Mustard seed .....	cwt	2.85	80.70	83.00	83.90
Rapeseed .....	cwt	2.25	63.80	65.50	66.20
Rye .....	bushel	0.535	15.00	15.60	15.70
Safflower .....	cwt	2.04	57.80	59.40	60.00
Spearmint oil .....	pound	1.50	42.90	43.70	44.10
Sweet potatoes .....	cwt	2.08	62.90	60.60	61.20
<b>Tobacco</b>					
Flue-cured, 11-14 .....	pound	0.185	5.61	5.39	5.44
Fire-cured, 21-23 .....	pound	0.267	8.09	7.78	7.86
Burley, 31 .....	pound	0.188	5.78	5.47	5.53
Maryland, 32 .....	pound	0.167	4.98	4.86	4.91
Dark air-cured, 35-37 .....	pound	0.240	7.32	6.99	7.06
Pennsylvania seedleaf, 41 .....	pound	0.176	5.21	5.13	5.18
Cigar binder, 51 .....	pound	0.610	18.30	17.80	18.00
<b>Noncitrus fruit</b>					
Apples, processing <sup>1</sup> .....	ton	16.60	472.00	483.00	489.00
Apricots					
Fresh <sup>2</sup> .....	ton	111.00	3,520.00	3,230.00	3,270.00
Dried (California) .....	ton	252.00	7,410.00	7,340.00	7,420.00
Avocados <sup>2</sup> .....	ton	189.00	5,830.00	5,500.00	5,560.00
Cherries					
Sweet .....	ton	205.00	6,150.00	5,970.00	6,030.00
Tart .....	pound	0.033	0.972	0.961	0.971
Cranberry <sup>3</sup> .....	barrel	4.68	138.00	136.00	138.00
Dates (California) <sup>2</sup> .....	ton	161.00	5,060.00	4,690.00	4,740.00
<b>Grapes</b>					
Raisin variety .....	ton	133.00	3,580.00	3,870.00	3,910.00
Other dried .....	ton	61.70	1,600.00	1,800.00	1,820.00
Kiwifruit .....	ton	88.60	2,690.00	2,580.00	2,610.00
Nectarines, fresh (California) <sup>2</sup> .....	ton	54.60	1,550.00	1,590.00	1,610.00
Olives, canning (California) <sup>3</sup> .....	ton	87.70	2,560.00	2,550.00	2,580.00

See footnote(s) at end of table.

--continued

## Commodity Parity Prices – United States: June 2013 with Comparisons (continued)

[Parity prices are computed under the provisions of Title III, Subtitle a, Section 301 (a) of the Agricultural Adjustment Act of 1938 as amended by the Agricultural Acts of 1948, 1949, and 1956. See January *Agricultural Prices* for details on adjusted base price and parity price computations]

Commodity and unit	Adjusted base price	Parity price			
		June 2012	May 2013	June 2013	
	(dollars)	(dollars)	(dollars)	(dollars)	
Noncitrus fruit - continued					
Papayas (Hawaii) .....	pound	0.038	1.26	1.11	1.12
Peaches					
Fresh <sup>4</sup> .....	ton	80.20	2,340.00	2,340.00	2,360.00
Dried (California) .....	ton	48.50	1,540.00	1,410.00	1,430.00
Processing, excludes dried					
Clingstone (California) <sup>3</sup> .....	ton	31.60	952.00	920.00	930.00
Pears					
Fresh <sup>4</sup> .....	ton	54.70	1,590.00	1,590.00	1,610.00
Dried (California) <sup>1</sup> .....	ton	150.00	4,890.00	4,370.00	4,410.00
Plums (California)					
Fresh, equivalent on-tree .....	ton	58.10	1,680.00	1,690.00	1,710.00
Prunes, dried (California) <sup>1</sup> .....	ton	143.00	4,230.00	4,160.00	4,210.00
Prunes and plums					
Fresh, excludes California <sup>5</sup> .....	ton	61.90	1,780.00	1,800.00	1,820.00
Processing, excludes dried <sup>1</sup> .....	ton	23.80	721.00	693.00	700.00
Tree nuts <sup>6</sup>					
Almonds .....	pound	0.211	6.09	6.14	6.21
Hazelnuts .....	ton	191.00	5,610.00	5,560.00	5,620.00
Pistachios .....	pound	0.194	5.61	5.65	5.71
Walnuts .....	ton	185.00	5,120.00	5,390.00	5,440.00
Vegetables, fresh <sup>7</sup>					
Carrots <sup>8</sup> .....	cwt	2.57	76.90	74.80	75.60
Cauliflower <sup>8</sup> .....	cwt	4.04	123.00	118.00	119.00
Celery <sup>8</sup> .....	cwt	1.94	57.50	56.50	57.10
Honeydew melons .....	cwt	1.97	59.80	57.40	58.00
Lettuce .....	cwt	2.09	65.50	60.90	61.50
Onions <sup>8</sup> .....	cwt	1.41	42.60	41.10	41.50
Tomatoes .....	cwt	4.30	134.00	125.00	127.00

<sup>1</sup> Equivalent returns at processing plant door.

<sup>2</sup> Equivalent returns at packinghouse door.

<sup>3</sup> Equivalent returns for bulk fruit at first delivery point.

<sup>4</sup> Equivalent packinghouse-door returns for California, New York (apples only), Oregon (except peaches), and Washington. Price at point of first sale for other states.

<sup>5</sup> Based on "as sold" prices for fresh fruit in all states.

<sup>6</sup> Prices In-Shell basis except almonds which are shelled basis.

<sup>7</sup> FOB shipping point prices.

<sup>8</sup> Includes some processing.



## Marketing Year for Specified Commodities

**Barley:** June 1 to May 31 for United States; June 1 to May 31 for Arizona, California, Delaware, Maryland, North Carolina, Pennsylvania, Virginia; August 1 to July 31 for Alaska, Maine; July 1 to June 30 for all other states.

**Oats:** June 1 to May 31 for United States; May 1 to April 30 for Alabama, Georgia and Texas; June 1 to May 31 for Arkansas, North Carolina, Oklahoma, South Carolina, and Virginia; August 1 to July 31 for Maine and New York; September 1 to August 31 for Alaska; July 1 to June 30 for all other States.

**Sweet Potatoes:** July - June for United States; July 1 to June 30 for Alabama and California; July 1 to May 31 for Arkansas, Louisiana, North Carolina and Texas; August 1 to July 31 for Mississippi and New Jersey; and January 1 to December 31 for Florida.

**Wheat:** June 1 to May 31 for United States; May 1 to April 30 for Alabama, Florida, Georgia, Louisiana, Mississippi, and Texas; June 1 to May 31 for Arizona, Arkansas, California, Delaware, Illinois, Indiana, Kansas, Kentucky, Maryland, Missouri, New Mexico, North Carolina, Oklahoma, South Carolina, Tennessee, and Virginia; July 1 to June 30 for all other States.

## Prices Received for Sweet Potatoes, Market Year Average - States and United States: 2010-2012

State	2010	2011	2012
	(dollars per cwt)	(dollars per cwt)	(dollars per cwt)
Alabama .....	6.56	9.30	17.30
Arkansas .....	13.80	15.90	30.60
California .....	24.30	22.10	22.70
Florida .....	(D)	(D)	27.80
Louisiana .....	19.20	17.20	18.50
Mississippi .....	20.40	17.30	17.90
New Jersey .....	32.60	29.30	24.20
North Carolina .....	18.00	18.60	13.00
Texas .....	(D)	(D)	14.00
United States .....	19.80	18.80	18.90

(D) Withheld to avoid disclosing data for individual operations.

## Prices Received and Farm Marketings for Oats by Month – United States: Marketing Years 2010-2011 through 2012-2013

[Marketing year average (MYA) prices are weighted average prices for the United States marketing year of June through May. Monthly farm marketings, based on a sample survey, as percent of total used for calculating MYA prices]

Month	Prices received			Farm marketing percentages		
	2010-2011	2011-2012	2012-2013	2010-2011	2011-2012	2012-2013
	(dollars per bushel)	(dollars per bushel)	(dollars per bushel)	(percent)	(percent)	(percent)
June .....	2.11	3.43	3.80	6.9	5.5	3.5
July .....	2.11	3.35	3.70	19.7	13.3	33.2
August .....	2.09	3.20	3.82	27.1	30.2	27.2
September .....	2.30	3.67	3.76	7.2	9.0	4.1
October .....	2.55	3.69	3.93	6.2	6.5	2.7
November .....	3.07	3.38	3.88	4.7	3.4	2.0
December .....	2.94	3.57	3.90	3.9	4.9	3.9
January <sup>1</sup> .....	3.13	3.56	4.06	6.7	5.2	3.8
February .....	3.27	3.47	4.14	5.0	5.0	2.8
March .....	3.28	3.77	4.20	5.1	4.4	6.2
April .....	3.54	3.84	4.43	5.0	5.0	5.1
May .....	3.55	4.12	4.45	2.5	7.6	5.5
MYA .....	2.52	3.49	3.89	100.0	100.0	100.0

<sup>1</sup> Second year.

## Prices Received and Farm Marketings for All Barley by Month – United States: Marketing Years 2010-2011 through 2012-2013

[Marketing year average (MYA) prices are weighted average prices for the United States marketing year of June through May. Monthly farm marketings, based on a sample survey, as percent of total used for calculating MYA prices]

Month	Prices received			Farm marketing percentages		
	2010-2011	2011-2012	2012-2013	2010-2011	2011-2012	2012-2013
	(dollars per bushel)	(dollars per bushel)	(dollars per bushel)	(percent)	(percent)	(percent)
June .....	3.64	4.65	5.52	8.0	4.6	2.3
July .....	3.79	5.07	6.25	9.2	8.8	8.9
August .....	3.69	5.27	6.54	17.2	21.7	23.2
September .....	3.61	5.45	6.42	9.5	13.3	13.1
October .....	3.73	5.51	6.49	6.4	6.5	7.6
November .....	3.86	5.44	6.49	7.0	9.1	6.6
December .....	3.86	5.46	6.44	7.2	9.8	6.9
January <sup>1</sup> .....	3.86	5.44	6.41	9.3	7.6	10.1
February .....	3.95	5.41	6.48	8.0	7.4	8.2
March .....	4.29	5.34	6.49	8.2	5.7	5.8
April .....	4.41	5.69	6.30	6.4	2.6	4.3
May .....	4.15	5.72	6.45	3.6	2.9	3.0
MYA .....	3.86	5.35	6.43	100.0	100.0	100.0

<sup>1</sup> Second year.

## Prices Received and Farm Marketings for Malting Barley by Month – United States: Marketing Years 2010-2011 through 2012-2013

[Marketing year average (MYA) prices are weighted average prices for the United States marketing year of June through May. Monthly farm marketings, based on a sample survey, as percent of total used for calculating MYA prices]

Month	Prices received			Farm marketing percentages		
	2010-2011	2011-2012	2012-2013	2010-2011	2011-2012	2012-2013
	(dollars per bushel)	(dollars per bushel)	(dollars per bushel)	(percent)	(percent)	(percent)
June .....	4.24	4.60	5.54	7.2	3.6	2.1
July .....	4.14	5.09	6.43	9.5	7.9	8.5
August .....	3.94	5.31	6.68	18.7	23.7	24.2
September .....	3.96	5.57	6.70	8.3	12.1	11.8
October .....	3.88	5.69	6.65	5.8	6.4	7.4
November .....	3.98	5.57	6.65	7.3	9.0	6.5
December .....	3.97	5.55	6.57	7.4	10.2	7.1
January <sup>1</sup> .....	3.97	5.54	6.49	9.3	7.9	10.8
February .....	4.06	5.50	6.56	8.0	7.9	8.5
March .....	4.29	5.43	6.64	8.9	5.9	5.9
April .....	4.22	5.87	6.48	6.0	2.4	4.1
May .....	4.04	5.84	6.55	3.6	3.0	3.1
MYA .....	4.05	5.44	6.58	100.0	100.0	100.0

<sup>1</sup> Second year.

## Prices Received and Farm Marketings for Feed Barley by Month – United States: Marketing Years 2010-2011 through 2012-2013

[Marketing year average (MYA) prices are weighted average prices for the United States marketing year of June through May. Monthly farm marketings, based on a sample survey, as percent of total used for calculating MYA prices]

Month	Prices received			Farm marketing percentages		
	2010-2011	2011-2012	2012-2013	2010-2011	2011-2012	2012-2013
	(dollars per bushel)	(dollars per bushel)	(dollars per bushel)	(percent)	(percent)	(percent)
June .....	2.24	4.74	5.46	10.8	9.3	3.3
July .....	2.40	5.04	5.53	8.2	13.1	11.2
August .....	2.39	4.91	5.61	12.1	12.0	19.2
September .....	2.89	5.07	5.58	14.1	19.4	20.3
October .....	3.38	4.76	5.72	8.3	7.2	8.8
November .....	3.34	4.85	5.67	5.9	9.5	6.8
December .....	3.40	4.88	5.53	6.6	8.0	5.4
January <sup>1</sup> .....	3.46	4.81	5.60	9.4	6.0	6.0
February .....	3.56	4.74	5.91	7.9	5.2	6.4
March .....	4.26	4.76	5.61	5.5	4.4	5.1
April .....	4.89	5.10	5.55	8.0	3.6	5.3
May .....	4.61	4.89	5.68	3.2	2.3	2.2
MYA .....	3.22	4.91	5.62	100.0	100.0	100.0

<sup>1</sup> Second year.

**Prices Received and Farm Marketings for All Wheat by Month – United States: Marketing Years 2010-2011 through 2012-2013**

[Marketing year average (MYA) prices are weighted average prices for the United States marketing year of June through May. Monthly farm marketings, based on a sample survey, as percent of total used for calculating MYA prices]

Month	Prices received			Farm marketing percentages		
	2010-2011	2011-2012	2012-2013	2010-2011	2011-2012	2012-2013
	(dollars per bushel)	(dollars per bushel)	(dollars per bushel)	(percent)	(percent)	(percent)
June .....	4.16	7.41	6.70	10.4	14.4	21.1
July .....	4.49	7.10	7.89	25.6	15.7	18.0
August .....	5.44	7.59	8.04	13.5	15.0	13.6
September .....	5.79	7.54	8.27	9.3	7.5	7.8
October .....	5.88	7.27	8.38	5.4	3.7	4.8
November .....	6.10	7.30	8.47	4.2	4.9	4.7
December .....	6.44	7.20	8.30	6.6	7.7	6.5
January <sup>1</sup> .....	6.69	7.05	8.12	7.8	8.0	6.8
February .....	7.42	7.10	7.97	4.7	6.0	4.0
March .....	7.55	7.20	7.79	5.4	5.6	5.2
April .....	8.01	7.11	7.71	3.9	3.5	4.5
May .....	8.16	6.67	7.68	3.2	8.0	3.0
MYA .....	5.70	7.24	7.77	100.0	100.0	100.0

<sup>1</sup> Second year.

**Prices Received for Winter Wheat by Month, Marketing Year Average – United States: 2010-2011 through 2012-2013**

[Marketing year average (MYA) prices are weighted average prices for the United States marketing year of June through May]

Month	2010-2011	2011-2012	2012-2013
	(dollars per bushel)	(dollars per bushel)	(dollars per bushel)
June .....	4.05	7.13	6.55
July .....	4.47	6.77	7.76
August .....	5.47	7.27	7.92
September .....	5.76	7.00	8.25
October .....	5.83	6.53	8.33
November .....	6.02	6.44	8.38
December .....	6.40	6.41	8.15
January <sup>1</sup> .....	6.35	6.57	8.01
February .....	7.03	6.68	7.85
March .....	7.02	6.70	7.63
April .....	7.37	6.47	7.52
May .....	7.80	6.42	7.49
MYA .....	5.37	6.81	7.55

<sup>1</sup> Second year.

## Prices Received for Durum Wheat by Month, Marketing Year Average – United States: 2010-2011 through 2012-2013

[Marketing year average (MYA) prices are weighted average prices for the United States marketing year of June through May]

Month	2010-2011	2011-2012	2012-2013
	(dollars per bushel)	(dollars per bushel)	(dollars per bushel)
June .....	4.58	9.18	8.31
July .....	4.44	10.20	8.67
August .....	4.45	10.20	7.76
September .....	4.89	10.80	7.77
October .....	5.07	9.60	7.61
November .....	5.55	10.30	8.11
December .....	5.71	10.30	8.31
January <sup>1</sup> .....	7.09	8.84	8.24
February .....	8.45	8.98	8.19
March .....	8.09	8.39	8.12
April .....	8.60	9.22	8.01
May .....	7.86	8.95	8.06
MYA .....	5.98	9.68	8.18

<sup>1</sup> Second year.

## Prices Received for Other Spring Wheat by Month, Marketing Year Average – United States: 2010-2011 through 2012-2013

[Marketing year average (MYA) prices are weighted average prices for the United States marketing year of June through May]

Month	2010-2011	2011-2012	2012-2013
	(dollars per bushel)	(dollars per bushel)	(dollars per bushel)
June .....	4.58	9.26	7.78
July .....	4.71	8.45	8.39
August .....	5.47	8.28	8.27
September .....	5.97	8.09	8.38
October .....	6.14	8.19	8.56
November .....	6.35	8.43	8.65
December .....	6.60	8.25	8.48
January <sup>1</sup> .....	7.14	8.09	8.34
February .....	7.68	8.01	8.11
March .....	8.07	8.04	7.95
April .....	8.67	7.96	7.90
May .....	8.85	7.93	7.84
MYA .....	6.49	8.24	8.24

<sup>1</sup> Second year.

**Prices Received for Hard Red Spring Wheat by Month, Marketing Year Average – United States: 2010-2011 through 2012-2013**

[Marketing year average (MYA) prices are weighted average prices for the United States marketing year of June through May]

Month	2010-2011	2011-2012	2012-2013
	(dollars per bushel)	(dollars per bushel)	(dollars per bushel)
June .....	4.59	9.34	7.81
July .....	4.72	8.49	8.41
August .....	5.49	8.37	8.32
September .....	6.03	8.21	8.42
October .....	5.96	8.38	8.60
November .....	6.41	8.65	8.69
December .....	6.64	8.43	8.50
January <sup>1</sup> .....	7.22	8.33	8.38
February .....	7.70	8.22	8.11
March .....	8.12	8.13	7.94
April .....	8.75	8.05	7.91
May .....	8.95	8.01	7.86
MYA .....	6.54	8.38	8.27

<sup>1</sup> Second year.

**Prices Received for Hard Red Winter Wheat by Month, Marketing Year Average – United States: 2010-2011 through 2012-2013**

[Marketing year average (MYA) prices are weighted average prices for the United States marketing year of June through May]

Month	2010-2011	2011-2012	2012-2013
	(dollars per bushel)	(dollars per bushel)	(dollars per bushel)
June .....	3.94	7.20	6.53
July .....	4.38	6.96	7.74
August .....	5.42	7.42	7.97
September .....	5.82	7.27	8.36
October .....	6.09	6.82	8.43
November .....	6.15	6.66	8.49
December .....	6.51	6.54	8.20
January <sup>1</sup> .....	6.50	6.71	8.02
February .....	7.07	6.75	7.75
March .....	7.10	6.72	7.50
April .....	7.50	6.43	7.49
May .....	8.00	6.35	7.56
MYA .....	6.49	6.92	7.56

<sup>1</sup> Second year.

**Prices Received for Soft Red Winter Wheat by Month, Marketing Year Average – United States: 2010-2011 through 2012-2013**

[Marketing year average (MYA) prices are weighted average prices for the United States marketing year of June through May]

Month	2010-2011	2011-2012	2012-2013
	(dollars per bushel)	(dollars per bushel)	(dollars per bushel)
June .....	4.50	7.00	6.59
July .....	4.77	6.50	7.84
August .....	5.75	7.08	8.30
September .....	5.89	6.91	8.38
October .....	6.12	6.64	8.35
November .....	5.46	6.25	8.34
December .....	6.73	6.58	8.19
January <sup>1</sup> .....	6.31	6.85	7.90
February .....	7.11	7.10	7.78
March .....	6.70	6.70	7.46
April .....	7.27	6.67	7.42
May .....	7.09	6.75	7.31
MYA .....	5.16	6.78	7.26

<sup>1</sup> Second year.

**Prices Received for White Wheat by Month, Marketing Year Average – United States: 2010-2011 through 2012-2013**

[Marketing year average (MYA) prices are weighted average prices for the United States marketing year of June through May]

Month	2010-2011	2011-2012	2012-2013
	(dollars per bushel)	(dollars per bushel)	(dollars per bushel)
June .....	4.28	6.94	6.61
July .....	5.26	6.72	7.76
August .....	5.52	6.79	7.66
September .....	5.54	6.56	7.99
October .....	5.76	6.04	8.10
November .....	5.88	6.07	8.14
December .....	6.07	6.13	7.99
January <sup>1</sup> .....	6.05	6.17	8.03
February .....	6.78	6.44	8.05
March .....	6.65	6.63	8.05
April .....	7.06	6.55	7.71
May .....	7.22	6.54	7.42
MYA .....	5.88	6.42	7.88

<sup>1</sup> Second year.

## Reliability of Prices Received Estimates

**Definition:** Prices received represent sales from producers to first buyers. They include all grades and qualities. The average commodity price from the survey multiplied by the total quantity marketed theoretically should give the total cash receipts for the commodity.

**Survey procedures:** Primary sales data used to determine grain prices were obtained from probability samples of about 1900 mills and elevators. These procedures ensure that virtually all grain moving into commercial channels has a chance of being included in the survey. Generally, States surveyed account for 90 percent or more of total United States production. Livestock prices are obtained from packers, stockyards, auctions, dealers, and market check data from AMS-USDA, private marketing organizations, and state commodity groups and agencies. Inter-farm sales of grain and livestock are not included since they represent very small percentages of the total marketings. Grain marketed for seed is also excluded. Fruit and vegetable prices are obtained from sample surveys and market check data from AMS-USDA, private marketing organizations, state agencies, and universities.

**Summary and estimation procedures:** Survey quantities sold are expanded by strata to state levels and used to weight average strata prices to a state average. State prices are then weighted to a United States price based on expanded marketings. Recommendations are prepared by the State Field Offices and reviewed by the Agricultural Statistics Board in Washington, D.C. State recommendations are reviewed for reasonableness with survey data, other States, and recent historic estimates.

**Revisions:** For most items, the current month's preliminary price represents a 3-5 day period around the 15th of the month. Previous month's prices represent actual dollars received for quantities sold during the entire month. Revisions are published in monthly issues of *Agricultural Prices*.

**Reliability:** United States price estimates based on probability surveys generally have a sampling error of less than one percent for the major commodities such as corn, wheat, soybeans, cotton, and rice. Current methods of summarization for non-probability commodities are not designed directly to calculate sampling errors. However, analytical measures approximate the United States relative sampling errors at around five percent. Any nonsampling errors are attributed to such things as the inability to obtain correct information, differences in interpreting questions or definitions, mistakes in coding or processing the data, etc. Efforts are made at each step in the survey process to minimize these nonsampling errors.



## Prices Paid by Farmers

The June Index of Prices Paid for Commodities and Services, Interest, Taxes, and Farm Wage Rates (PPITW) at 221 (1990-1992=100) is up 0.5 percent from May 2013 and 3.3 percent from June 2012.

**Production index:** The June index, at 235, increased 0.4 percent from last month and 3.5 percent from last year. Higher prices in June for concentrates, nitrogen, other services, and feeder cattle more than offset lower prices for supplements, feeder pigs, LP gas, diesel, and complete feeds.

**Feed:** The June index, at 274, increased 1.9 percent from May and 9.2 percent from last June. Since May, higher prices for concentrates and feed grains more than offset lower prices for supplements, hay & forages, and complete feeds.

**Livestock and poultry:** The June index, at 153, decreased 0.6 percent from last month and 10 percent from last year. Since May, lower prices for feeder pigs more than offset higher prices for feeder cattle. The June feeder cattle price, at \$133.80 per cwt, is up 50.00 cents per cwt from the May price. June feeder pigs averaged \$118.00 per cwt, down \$14.00 per cwt from May.

**Fertilizer:** The June index, at 350, is up 2.3 percent from May and 1.4 percent above June a year ago. Since May, prices for nitrogen, potash & phosphate, and mixed fertilizer are higher.

**Chemicals:** The June index, at 155, is unchanged from May but increased 1.3 percent from last June. Compared with last month, prices for herbicides, insecticides, and fungicides/other remained the same.

**Fuels:** The June index, at 349, is down 0.9 percent from a month earlier but 3.6 percent above June 2012. Compared with last month, prices are lower for LP gas and diesel but higher for gasoline.

**Machinery:** The June index, at 263, is unchanged from May but is 2.3 percent above last June. Compared with last month, prices are higher for other machinery and tractors but lower for self-propelled machinery.

**Consumer price index:** The May 2013 Consumer Price Index, as issued by the Bureau of Labor Statistics, for all urban consumers (CPI-U) increased 0.2 percent before seasonal adjustment to a level of 232.945 (1982-1984=100). The April index is 232.531. For the 12 month period ending in May, the overall index increased 1.4 percent.

## Prices Paid Indexes and Related Parity Ratios – United States: June 2013 with Comparisons

[Revised historical price indexes for months not shown are available at [www.nass.usda.gov](http://www.nass.usda.gov)]

Indexes and ratios	1910-1914 Base			1990-1992 Base		
	June 2012	May 2013	June 2013	June 2012	May 2013	June 2013
	(percent)	(percent)	(percent)	(percent)	(percent)	(percent)
Prices paid by farmers for commodities, services, interest, taxes, and wage rates (PPITW) .....	2844	2928	2943	214	220	221
Production .....	2204	2269	2283	227	234	235
Feed .....	1224	1313	1337	251	269	274
Livestock and poultry .....	2171	1968	1958	170	154	153
Seeds .....	3606	3776	3776	364	381	381
Fertilizer .....	1263	1252	1282	345	342	350
Chemicals .....	947	957	957	153	155	155
Fuels .....	2598	2718	2695	337	352	349
Supplies and repairs .....	1214	1220	1221	171	172	172
Autos and trucks .....	3132	3180	3176	118	120	119
Machinery .....	6436	6598	6605	257	263	263
Building materials .....	2395	2438	2436	176	179	179
Services and rent .....	2195	2233	2237	(NA)	(NA)	(NA)
Services .....	(NA)	(NA)	(NA)	169	171	171
Rent .....	(NA)	(NA)	(NA)	212	217	217
Interest <sup>1</sup> .....	3684	3594	3594	147	143	143
Taxes <sup>2</sup> .....	6080	6273	6273	227	234	234
Wage rates .....	7372	7696	7696	197	206	206
Production, interest, taxes, and wage rates (PITW) .....	2974	3066	3082	221	228	229
Family living-CPI <sup>3</sup> .....	2180	2212	2216	170	173	173
Ratio (received/paid) .....	(NA)	(NA)	(NA)	86	89	90
Parity ratio <sup>4</sup> .....	41	42	43	(NA)	(NA)	(NA)
Parity ratio adjusted <sup>5</sup> .....	42	44	44	(NA)	(NA)	(NA)
PPITW adjusted for productivity <sup>6</sup> .....	1492	1492	1494	(NA)	(NA)	(NA)
Crop sector (PPITW) .....	(NA)	(NA)	(NA)	221	228	229
Livestock sector (PPITW) .....	(NA)	(NA)	(NA)	205	211	212
Farm sector (production) .....	(NA)	(NA)	(NA)	243	253	255
Non-farm sector (production) .....	(NA)	(NA)	(NA)	218	223	224

(NA) Not available.

<sup>1</sup> Interest per acre on farm real estate debt and interest rate on farm non-real estate debt.

<sup>2</sup> Farm real estate taxes payable per acre.

<sup>3</sup> Bureau of Labor Statistics, Consumer Price Index for all urban consumers (CPI-U), for the previous month converted by the USDA.

<sup>4</sup> Ratio of index of prices received to PPITW (1910-1914=100).

<sup>5</sup> Based on estimated cash receipts, from marketings and government payments, the preliminary adjustment factor is 1.044 for 2013 and the revised factor is 1.041 for 2012.

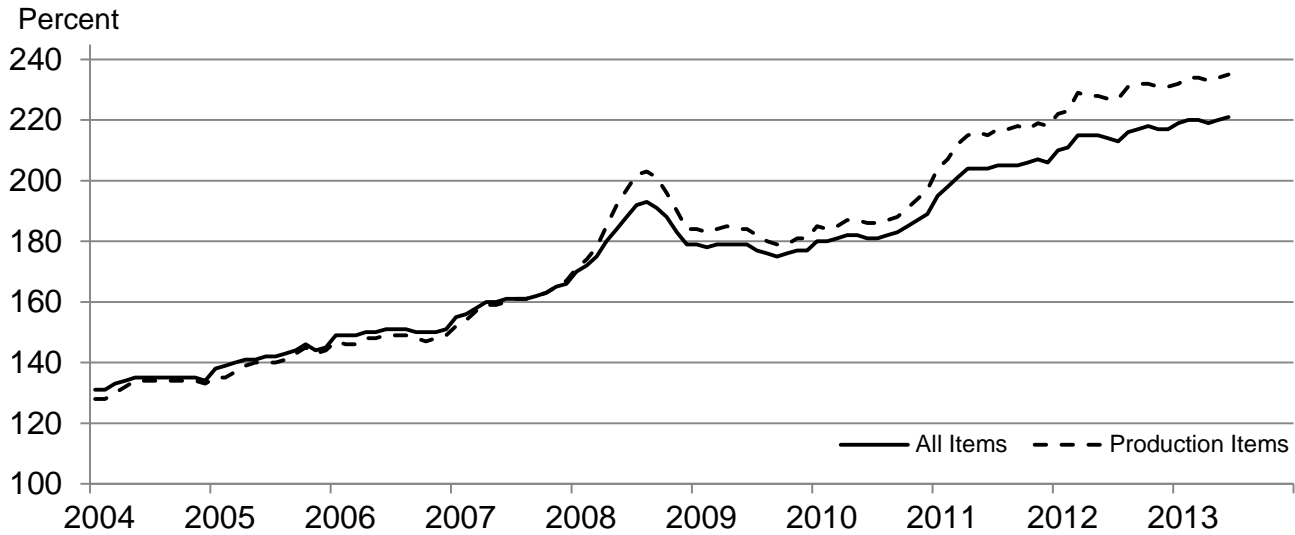
<sup>6</sup> PPITW is adjusted based on productivity trend for the prior 15 years.

## Prices Paid Indexes and Annual Weights for Input Components and Sub-components – United States: June 2013 with Comparisons

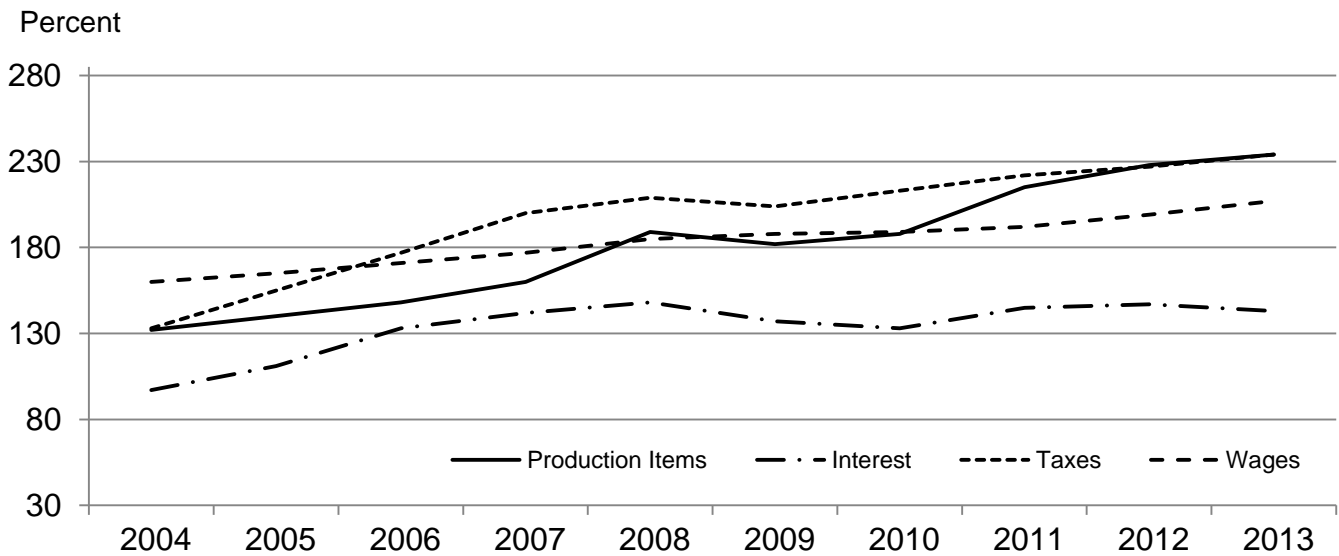
[Revised historical price indexes for months not shown are available at [www.nass.usda.gov](http://www.nass.usda.gov). Relative weights are a five year moving average]

	Relative weights		Indexes (1990-1992=100)		
	2012	2013	June 2012	May 2013	June 2013
	(percent)	(percent)	(percent)	(percent)	(percent)
Production items .....	71.1	71.9	227	234	235
Feed .....	12.7	13.4	251	269	274
Feed grains .....	1.8	1.9	268	298	298
Complete feeds .....	6.2	6.6	256	264	261
Hay and forages .....	1.6	1.7	231	258	253
Concentrates .....	2.0	2.1	241	280	336
Supplements .....	1.1	1.1	235	243	223
Livestock and poultry .....	8.3	8.0	170	154	153
Feeder cattle .....	6.5	6.3	178	157	158
Feeder pigs .....	0.7	0.6	134	144	128
Milk cow replacements .....	0.7	0.7	128	121	121
Poultry .....	0.5	0.5	166	166	166
Seeds .....	4.3	4.4	364	381	381
Field crops .....	3.9	4.0	384	402	402
Grasses and legumes .....	0.4	0.4	178	184	184
Fertilizer .....	5.7	6.1	345	342	350
Mixed fertilizer .....	2.5	2.7	312	292	292
Nitrogen .....	2.4	2.6	372	384	402
Potash and phosphate .....	0.8	0.9	366	372	376
Chemicals .....	3.2	3.2	153	155	155
Herbicides .....	2.0	2.0	139	138	138
Insecticides .....	0.7	0.7	174	180	180
Fungicides and other .....	0.5	0.5	183	187	187
Fuels .....	4.0	4.0	337	352	349
Diesel .....	2.5	2.5	385	387	386
Gasoline .....	0.8	0.8	307	312	314
LP gas .....	0.7	0.7	194	273	259
Supplies and repairs .....	4.6	4.5	171	172	172
Supplies .....	1.5	1.5	166	167	168
Repairs .....	3.0	3.0	174	174	174
Autos and trucks .....	1.2	1.2	118	120	119
Autos .....	0.2	0.2	116	116	116
Trucks .....	1.1	1.1	118	120	120
Machinery .....	4.3	4.5	257	263	263
Tractors .....	0.9	1.0	210	216	217
Self-propelled .....	1.7	1.8	272	279	278
Other machinery .....	1.6	1.7	267	273	274
Building materials .....	4.2	4.1	176	179	179
Services .....	12.0	11.7	169	171	171
Custom rates .....	1.2	1.2	157	157	157
Other services .....	10.7	10.5	170	172	173
Rent .....	6.6	6.7	212	217	217
Cash .....	3.5	3.6	270	278	278
Share .....	3.0	3.1	145	147	147
Interest .....	3.4	3.2	147	143	143
Taxes .....	3.1	3.1	227	234	234
Wage rates .....	7.2	6.9	197	206	206
Family living-CPI .....	15.3	15.0	170	173	173

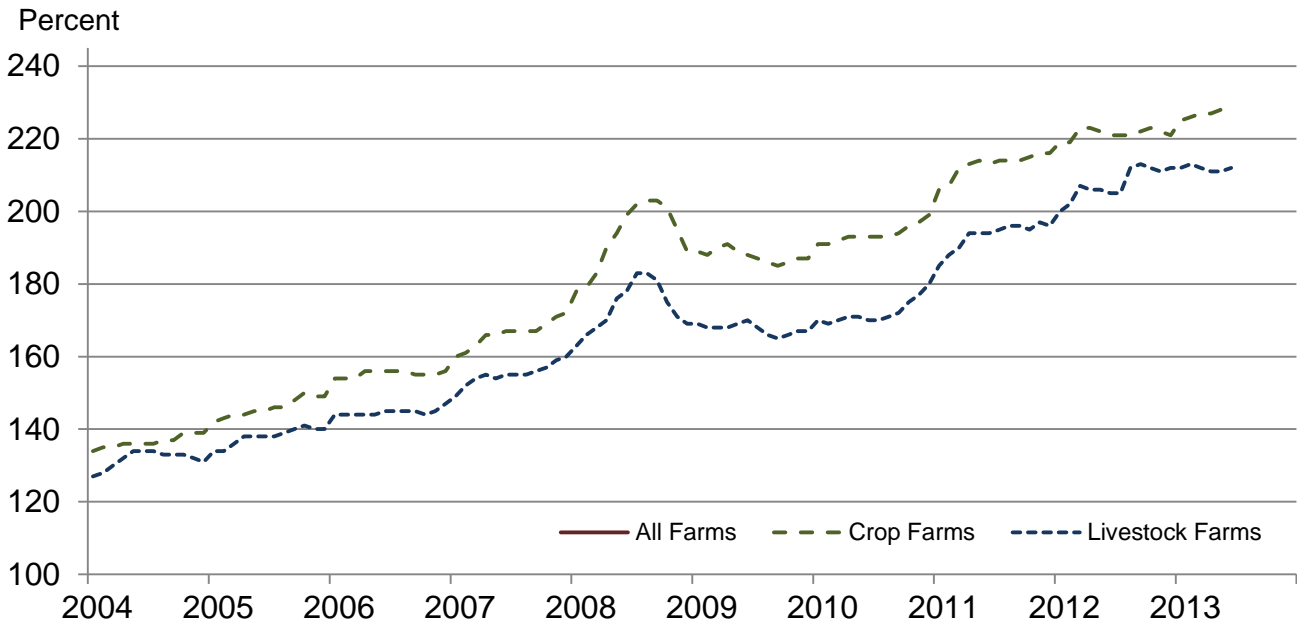
## Paid Indexes by Month, All Items and Production Items – United States: 1990-1992=100



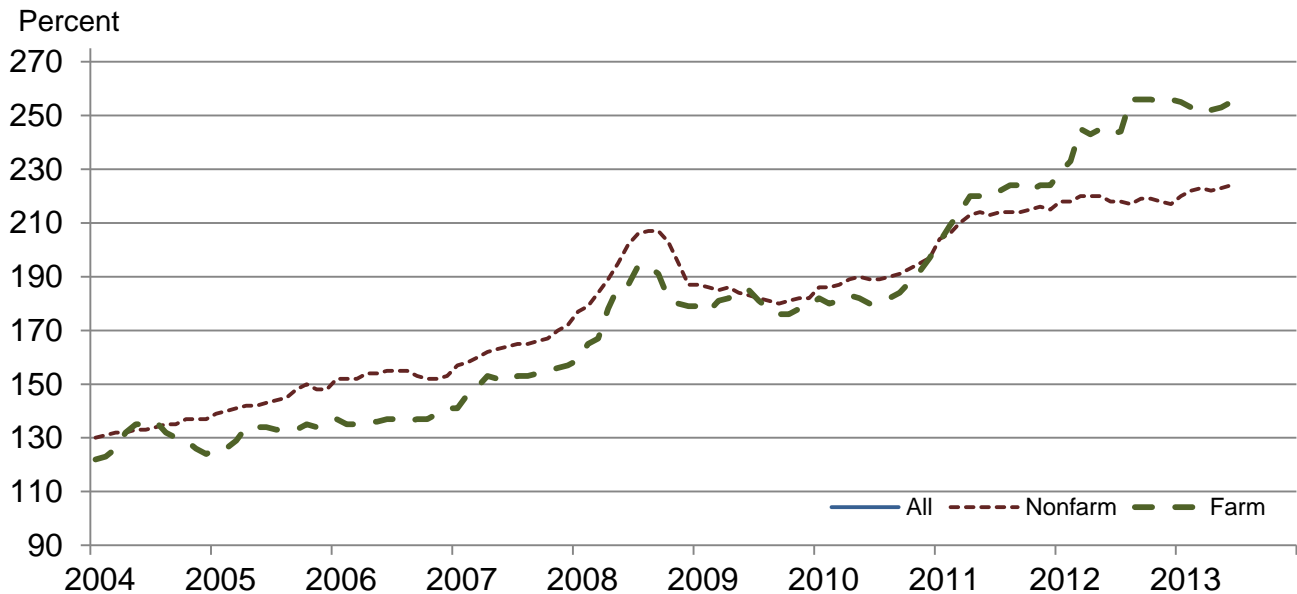
## Paid Indexes, Annual Averages, Production Items, Interest, Taxes, and Wages – United States: 1990-1992=100



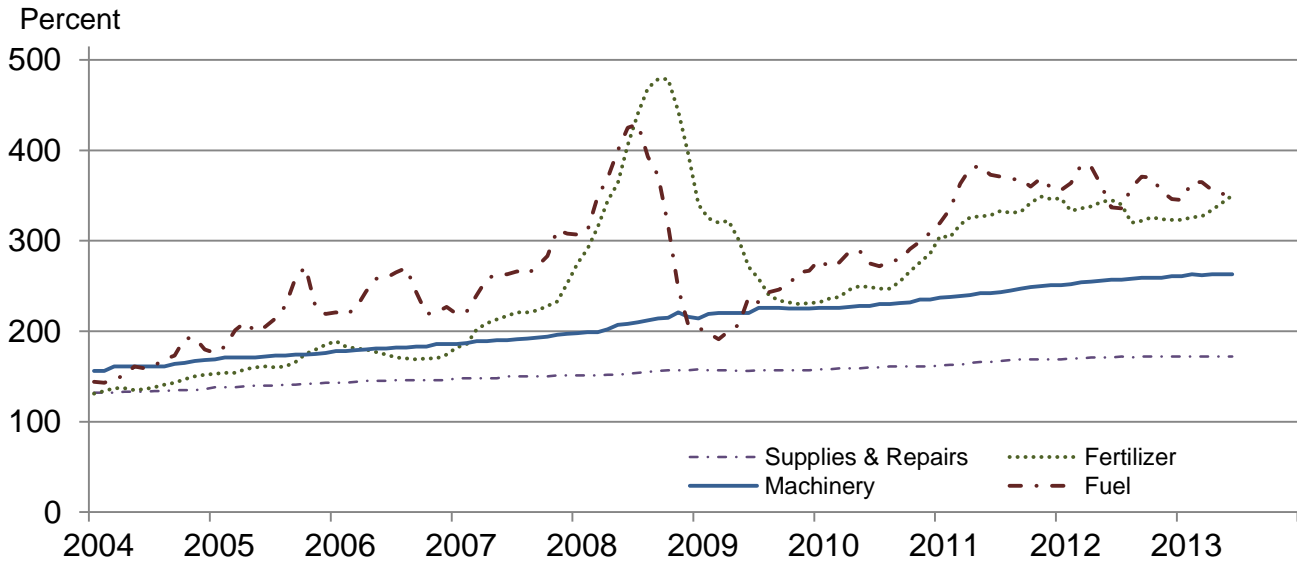
## Paid Indexes by Farm Type and Month, All Items – United States: 1990-1992=100



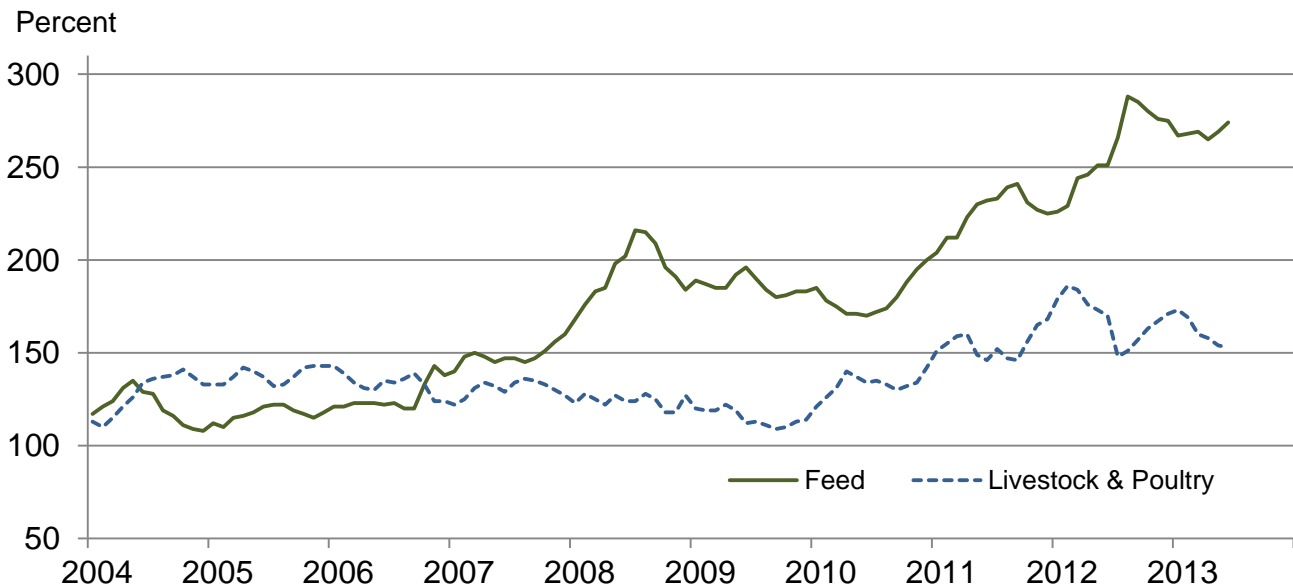
## Paid Indexes by Origin and Month, All Production Items – United States: 1990-1992=100



## Paid Indexes by Non-Farm Sector and Month, Supplies & Repairs, Fertilizer, Machinery, and Fuel – United States: 1990-1992=100



## Paid Indexes by Month, Feed and Livestock & Poultry – United States: 1990-1992=100



## Feed Price Ratios – United States: June 2013 with Comparisons

Feed price ratio <sup>1</sup>	June 2012	May 2013	Preliminary June 2013
Broiler-feed: pounds of broiler grower feed equal in value to 1 pound of broiler, live weight <sup>2</sup> .....	3.1	3.9	3.8
Market egg feed: pounds of laying feed equal in value to 1 dozen eggs <sup>3</sup> .....	4.8	6.3	4.4
Hog-corn: bushels of corn equal in value to 100 pounds of hog, live weight .....	11.0	9.8	10.3
Milk-feed: pounds of 16% mixed dairy feed equal in value to 1 pound of whole milk <sup>4</sup> .....	1.38	1.53	1.53
Steer and heifer-corn: bushels of corn equal in value to 100 pounds of steer & heifers, live weight .....	19.5	18.4	17.9
Turkey-feed: pounds of turkey grower equal in value to 1 pound of turkey, live weight <sup>5</sup> .....	5.1	4.1	4.1

<sup>1</sup> Effective January 1995, prices of commercial prepared feeds are based on current United States prices received for corn, soybeans, alfalfa hay, and all wheat.

<sup>2</sup> The price of commercial prepared broiler feed is based on current United States prices received for corn and soybeans. The modeled feed uses 58 percent corn and 42 percent soybeans.

<sup>3</sup> The price of commercial prepared layer feed is based on current United States prices received for corn and soybeans. The modeled feed uses 75 percent corn and 25 percent soybeans.

<sup>4</sup> The price of commercial prepared dairy feed is based on current United States prices received for corn, soybeans, and alfalfa hay. The modeled feed uses 51 percent corn, 41 percent alfalfa hay, and 8 percent soybeans.

<sup>5</sup> The price of commercial prepared turkey feed is based on current United States prices received for corn, soybeans, and wheat. The modeled feed uses 51 percent corn, 28 percent soybeans, and 21 percent wheat.

## Prices Received Used to Calculate Feed Price Ratios – United States: June 2013 with Comparisons

[Price data source for livestock and poultry commodities is United States Department of Agriculture's Agricultural Marketing Service]

Item	June 2012	May 2013	Preliminary June 2013
	(dollars)	(dollars)	(dollars)
Broilers, live ..... pound	0.500	0.680	0.670
Eggs, market ..... dozen	0.689	0.976	0.694
Hogs, all ..... cwt	70.20	68.60	72.50
Milk, all ..... cwt	16.30	19.70	19.70
Steers and heifers ..... cwt	124.00	128.00	126.00
Turkeys, live ..... pound	0.739	0.649	0.658
Corn ..... bushel	6.37	6.97	7.02
Hay, alfalfa ..... ton	201.00	221.00	220.00
Soybeans ..... bushel	13.90	14.90	15.10
Wheat, all ..... bushel	6.70	7.68	7.13

## Prices Paid for Feeder Livestock – United States: June 2013 with Comparisons

[Price data source is United States Department of Agriculture's Agricultural Marketing Service]

Item	June 2012	May 2013	Preliminary June 2013
	(dollars)	(dollars)	(dollars)
Feeder cattle and calves ..... cwt	150.90	133.30	133.80
Feeder pigs ..... cwt	123.00	132.00	118.00

## Reliability of Prices Paid Estimates

**Definition:** Prices paid by farmers represent the average costs of inputs purchased by farmers and ranchers to produce agricultural commodities. Conceptually, the average price when multiplied by quantity purchased should equal total producer expenditures for the item.

**Survey procedures:** The prices paid data are obtained from establishments that sell goods and services to farmers and ranchers. Annually, about 8,500 firms are randomly selected from lists by type of item sold with an average response rate in the range of 75-80 percent. Firms are asked to report the price for the specified item "most commonly bought by farmers" or that was the "volume seller". Approximately 135 items are surveyed each March to represent all production input items purchased. The survey reference period for most items is the five business days centered around the 15th of the month. Separate prices paid surveys are conducted for agricultural chemicals, fuels, feed, fertilizer, machinery, and seed.

**Summary and estimation procedures:** The annual March Prices Paid Survey is summarized as a nonprobability survey. Average prices reported are aggregated to the region and United States level using weights available from expenditure data and other administrative sources. Price recommendations are prepared by the State Field Offices and Headquarters for review by the Agricultural Statistics Board in Washington, D.C. Also, the change in price level for individual items surveyed are combined to the regional and United States levels, and are published as prices paid indexes referenced to a specific base period. Prices paid indexes for new autos and trucks, building materials, farm supplies, motor supplies, and marketing containers are updated based on price changes measured in selected Bureau of Labor Statistics (BLS) indexes.

**Revisions:** Any revisions are published in the monthly and in annual issues of Agricultural Prices. The basis for revision must be supported by additional data that directly affect the level of the estimate. More revisions are likely for March when separate prices paid surveys are conducted, in lieu of BLS indexes, by the USDA to measure price change.

**Reliability:** Current methods of summarization for the March data are not designed directly to calculate sampling errors. However, analytical measures approximate the United States relative sampling errors for major items around 10 percent. Any nonsampling errors are attributed to such things as the inability to obtain correct information, differences in interpreting questions or definitions, mistakes in coding or processing the data, etc. Efforts are made at each step in the survey process to minimize these nonsampling errors.

**Program change:** Effective January 1, 1995, the National Agricultural Statistics Service updated the weights and changed the construction of its prices paid and received by farmers indexes. A Federal Register Notice dated October 28, 1994 discussed these program modifications.

A 1990-1992 reference and base period replaced the 1977 reference and 1971-1973 base weight period. Five-year moving average weights replaced the current fixed 1971-1973 base period weights. The 1910-1914=100 price indexes, required by statute for computing parity prices, were linked forward based on the changes in the new 1990-1992=100 indexes. The new indexes were constructed by multiplying the ratios of the current prices to the base period prices by the moving average weights (adjusted for seasonal marketing patterns for the prices received indexes).



## Information Contacts

### General

Troy Joshua, Chief, Environmental, Economics and Demographics Branch ..... (202) 720-6146

Below are the commodity specialists to contact for additional information.

### Crop Prices Received

Lance Honig, Chief, Crops Branch ..... (202) 720-2127

Anthony Prillaman, Head, Field Crops Section ..... (202) 720-2127

Angie Considine – Peanuts, Rice ..... (202) 720-7688

Brent Chittenden – Oats, Rye, Wheat ..... (202) 720-8068

Steve Maliszewski – Cotton, Cotton Ginnings, Sorghum ..... (202) 720-5944

Chris Hawthorn – Corn, Proso Millet, Flaxseed ..... (202) 720-9526

Julie Schmidt – Crop Weather, Barley, Hay ..... (202) 720-7621

Travis Thorson – Soybeans, Sunflower, Other Oilseeds ..... (202) 720-7369

Jorge Garcia-Pratts, Head, Fruits, Vegetables and Special Crops Section ..... (202) 720-2127

Debbie Flippin – Fresh and Processing Vegetables, Onions, Strawberries ..... (202) 720-2157

Fred Granja – Apples, Apricots, Cherries, Plums, Prunes, Tobacco ..... (202) 720-4288

Erika White – Floriculture, Maple Syrup, Nursery, Tree Nuts ..... (202) 720-4215

Chris Hawthorn – Citrus, Coffee, Sugar Crops, Grapes, Tropical Fruits ..... (202) 720-9526

Daphne Schauber – Berries, Cranberries, Potatoes, Sweet Potatoes ..... (202) 720-4285

Dan Norris – Austrian Winter Peas, Dry Edible Peas, Lentils, Mints, Mushrooms, Peaches, Pears,  
Wrinkled Seed Peas, Dry Beans ..... (202) 720-3250

### Livestock Prices Received

Dan Kerestes, Chief, Livestock Branch ..... (202) 720-3570

Scott Hollis, Head, Livestock Section ..... (202) 720-3570

Travis Averill – Cattle ..... (202) 720-3040

Mike Miller – Milk, Milk Cows ..... (202) 720-3278

Doug Bounds – Hogs ..... (202) 720-3106

Alissa Cowell-Mytar – Sheep, Lambs, and Goats ..... (202) 720-4751

Bruce Boess, Head, Poultry and Specialty Commodities Section ..... (202) 720-3570

Cody Brokmeyer – Turkeys ..... (202) 690-3237

LaKeya Jones – Honey ..... (202) 720-0585

Kim Linonis – Eggs ..... (202) 690-8632

Miste Salmon – Broilers ..... (202) 720-3244

### Indexes, Prices Paid, and Parity Prices

Troy Joshua, Chief, Environmental, Economics and  
Demographics Branch ..... (202) 720-6146

Tony Dorn, Head, Economics Section ..... (202) 690-3223

Daryl Brinkman – Prices Received Indexes, Parity Prices ..... (202) 720-8844

Chris Dickerson – Prices Received Indexes, Parity Prices ..... (202) 690-1348

Vincent Davis – Prices Paid Indexes, Prices Paid for Feed, Fertilizer, Agricultural Chemicals,  
Seeds, Farm Supplies and Repairs, Farm Machinery, Fuels, Feeder Livestock, Poultry Chicks,  
Feed Price Ratios, Autos & Trucks ..... (202) 690-3229

## Access to NASS Reports

For your convenience, you may access NASS reports and products the following ways:

- All reports are available electronically, at no cost, on the NASS web site: <http://www.nass.usda.gov>
- Both national and state specific reports are available via a free e-mail subscription. To set-up this free subscription, visit <http://www.nass.usda.gov> and in the “Follow NASS” box under “Receive reports by Email,” click on “National” or “State” to select the reports you would like to receive.

For more information on NASS surveys and reports, call the NASS Agricultural Statistics Hotline at (800) 727-9540, 7:30 a.m. to 4:00 p.m. ET, or e-mail: [nass@nass.usda.gov](mailto:nass@nass.usda.gov).

The United States Department of Agriculture (USDA) prohibits discrimination in all its programs and activities on the basis of race, color, national origin, age, disability, and where applicable, sex, marital status, familial status, parental status, religion, sexual orientation, political beliefs, genetic information, reprisal, or because all or a part of an individual's income is derived from any public assistance program. (Not all prohibited bases apply to all programs.) Persons with disabilities who require alternative means for communication of program information (Braille, large print, audiotape, etc.) should contact USDA's TARGET Center at (202) 720-2600 (voice and TDD).

To file a complaint of discrimination, write to USDA, Assistant Secretary for Civil Rights, Office of the Assistant Secretary for Civil Rights, 1400 Independence Avenue, S.W., Stop 9410, Washington, DC 20250-9410, or call toll-free at (866) 632-9992 (English) or (800) 877-8339 (TDD) or (866) 377-8642 (English Federal-relay) or (800) 845-6136 (Spanish Federal-relay). USDA is an equal opportunity provider and employer.