



Released September 27, 2013, by the National Agricultural Statistics Service (NASS), Agricultural Statistics Board, United States Department of Agriculture (USDA).

Special Note

USDA's National Agricultural Statistics Service is suspending a number of statistical surveys and reports for the remainder of the fiscal year resulting from reduced funding. Suspended commodity programs impacting the *Agricultural Prices* report are non-citrus fruit, tree nuts, vegetables, and milk cow replacement prices. Check the NASS website at www.nass.usda.gov for any future updates to these programs

September Farm Prices Received Index Declined 4 Points

The preliminary All Farm Products Index of Prices Received by Farmers in September, at 185 percent, based on 1990-1992=100, decreased 4 points (2.1 percent) from August. The Crop Index is down 8 points (3.7 percent) and the Livestock Index decreased 1 point (0.6 percent). Producers received lower prices for corn, hogs, and wheat and higher prices for calves, milk, and cattle. In addition to prices, the overall index is also affected by the seasonal change based on a 3-year average mix of commodities producers sell. Increased monthly movement of soybeans, corn, potatoes, and hogs offset the decreased marketing of wheat, cattle, cotton, and broilers.

The preliminary All Farm Products Index is down 10 points (5.1 percent) from September 2012. The Food Commodities Index, at 181, is unchanged from last month but decreased 1 point (0.5 percent) from September 2012.

Prices Paid Index Down 3 Points

The September Index of Prices Paid for Commodities and Services, Interest, Taxes, and Farm Wage Rates (PPITW) is 213 percent of the 1990-1992 average. The index is down 3 points (-1.4 percent) from August and 4 points (-1.8 percent) below September 2012. Lower prices in September for concentrates, nitrogen, feed grains, and mixed fertilizer offset higher prices for feeder cattle, diesel, LP gas, and feeder pigs.

Prices Received, Prices Paid, and Ratio of Prices Received to Prices Paid Indexes 1990-1992 Base – United States: September 2013 with Comparisons

Index	September	August	September
	2012	2013	2013
Prices received by farmers	195	189	185
Prices paid by farmers	217	216	213
Ratio of prices received to prices paid	90	88	87

Contents

Prices Received by Farmers	4
Prices Received Indexes – United States: September 2013 with Comparisons	5
Prices Received and Prices Paid Indexes by Month for Selected Groups – United States: 2012 and 2013, 1990-1992 Base	5
Received Indexes by Month, Livestock Products, All Products, and All Crops – United States: 1990-1992=100 Chart.....	6
Received Indexes by Month, Food Grains, Feed Grains & Hay, and Oilseeds – United States: 1990-1992=100 Chart.....	6
Received Indexes by Month, Fruit & Nut and Commercial Vegetables – United States: 1990-1992=100 Chart.....	7
Received Indexes by Month, Meat Animal, Dairy Products, and Poultry & Eggs – United States: 1990-1992=100 Chart.....	7
Prices Received for Field Crops and Fruits – United States: September 2013 with Comparisons	8
Prices Received for Vegetables and Livestock – United States: September 2013 with Comparisons	9
Prices Received for Corn by Month – United States Chart.....	10
Prices Received for Wheat by Month – United States Chart	10
Prices Received for Cotton by Month – United States Chart.....	11
Prices Received for Soybeans by Month – United States Chart	11
Prices Received for Cattle by Month – United States Chart	12
Prices Received for Milk by Month – United States Chart.....	12
Prices Received for Hogs by Month – United States Chart	13
Prices Received for Poultry by Month – United States Chart.....	13
Prices Received for All Wheat, Corn, and Soybeans by Month – United States: 2013 with Comparisons	14
Prices Received for Beef Cattle and All Hogs by Month – United States: 2013 with Comparisons	14
Prices Received for All Wheat – States and United States: September 2013 with Comparisons	15
Prices Received for Winter Wheat – States and United States: September 2013 with Comparisons	15
Prices Received for Durum Wheat – States and United States: September 2013 with Comparisons	16
Prices Received for Spring Wheat – States and United States: September 2013 with Comparisons.....	16
Prices Received for All Barley – States and United States: September 2013 with Comparisons.....	17
Prices Received for Malting Barley – States: September 2013 with Comparisons.....	17
Prices Received for Feed Barley – States: September 2013 with Comparisons	17
Prices Received for Corn – States and United States: September 2013 with Comparisons.....	18
Prices Received for Soybeans – States and United States: September 2013 with Comparisons	18
Prices Received for Oats – States and United States: September 2013 with Comparisons	19
Prices Received for Sorghum Grain – States and United States: September 2013 with Comparisons	19
Prices Received for Dry Beans – States and United States: September 2013 with Comparisons.....	20
Prices Received for Peanuts (in shell) – States and United States: September 2013 with Comparisons	20
Prices Received for Sunflower – States and United States: September 2013 with Comparisons	21
Prices Received for Canola – States and United States: September 2013 with Comparisons	21
Prices Received for Flaxseed – States and United States: September 2013 with Comparisons.....	21
Prices Received for Upland Cotton and Cottonseed – States and United States: September 2013 with Comparisons	22
Prices Received and Farm Marketings for Upland Cotton and Rice – United States: September 2013 with Comparisons	22
Prices Received for Hay by Type – States and United States: September 2013 with Comparisons.....	23
Prices Received for Apples – States and United States: September 2013 with Comparisons	23
Prices Received for Citrus Fruits by Utilization – States and United States: September 2012.....	24
Prices Received for Citrus Fruits by Utilization – States and United States: August 2013	25
Prices Received for Citrus Fruits by Utilization – States and United States: September 2013.....	26
Prices Received for Potatoes – States and United States: September 2013 with Comparisons	27
Prices Received for All Milk – States and United States: September 2013 with Comparisons.....	28
Prices Received for Milk Cows – States and United States: July 2013 with Comparisons	29

Commodity Parity Prices and Price as Percent of Parity Price – United States: September 2013 with Comparisons	30
Commodity Parity Prices – United States: September 2013 with Comparisons.....	31
Marketing Year for Specified Commodities	33
Dry Edible Peas Market Year Average Prices Received – States and United States: Marketing Years 2010 through 2012.....	34
Austrian Winter Peas Market Year Average Prices Received – States and United States: Marketing Years 2010 through 2012.....	34
Lentils Market Year Average Prices Received – States and United States: Marketing Years 2010 through 2012	34
Lentils Prices Received and Farm Marketings by Month – United States: Marketing Years 2010-2011 through 2012-2013	35
Dry Edible Peas Prices Received and Farm Marketings by Month – United States: Marketing Years 2010-2011 through 2012-2013	35
Austrian Winter Peas Prices Received and Farm Marketings by Month – United States: Marketing Years 2010-2011 through 2012-2013	36
Corn Prices Received and Farm Marketings by Month – United States: Marketing Years 2010-2011 through 2012-2013	36
Sorghum Grain Market Year Average Prices Received – States and United States: Marketing Years 2010 through 2012.....	37
Sorghum Grain Farm Marketing Percent by Month – States and United States: Marketing Years 2011-2012 and 2012-2013	37
Sorghum Grain Prices Received by Month – States and United States: Marketing Years 2011-2012 and 2012-2013	38
Soybean Market Year Average Prices Received – States and United States: Marketing Years 2010 through 2012	40
Soybean Prices Received by Month – States and United States: Marketing Years 2011-2012 and 2012-2013.....	41
Soybean Farm Marketing Percent by Month – States and United States: Marketing Years 2011-2012 and 2012-2013	43
Reliability of Prices Received Estimates	44
Prices Paid by Farmers.....	45
Prices Paid Indexes and Related Parity Ratios – United States: September 2013 with Comparisons	46
Prices Paid Indexes and Annual Weights for Input Components and Sub-components – United States: September 2013 with Comparisons	47
Paid Indexes by Month, All Items and Production Items – United States: 1990-1992=100 Chart	48
Paid Indexes, Annual Averages, Production Items, Interest, Taxes, and Wages – United States: 1990-1992=100 Chart	48
Paid Indexes by Farm Type, All Items – United States: 1990-1992=100 Chart.....	49
Paid Indexes by Origin, All Production Items – United States: 1990-1992=100 Chart	49
Paid Indexes by Non-Farm Sector, Supplies & Repairs, Fertilizer, Machinery, and Fuel – United States: 1990-1992=100 Chart	50
Paid Indexes by Month, Feed and Replacement Livestock – United States: 1990-1992=100 Chart.....	50
Feed Price Ratios – United States: September 2013 with Comparisons.....	51
Prices Received Used to Calculate Feed Price Ratios – United States: September 2013 with Comparisons	51
Prices Paid for Feeder Livestock – United States: September 2013 with Comparisons.....	51
Reliability of Prices Paid Estimates	52
Information Contacts	53

Prices Received by Farmers

The September All Farm Products Index is 185 percent of its 1990-1992 base, down 2.1 percent from the August index and 5.1 percent below the September 2012 index.

All crops: The September index, at 206, decreased 3.7 percent from August and is 9.3 percent below September 2012. Index decreases for feed grains & hay and commercial vegetables more than offset the index increases for fruits & nuts and oilseeds.

Food grains: The September index, at 228, is down 1.3 percent from the previous month and 14 percent below a year ago. The September price for all wheat, at \$6.75 per bushel, is down 12 cents from August and \$1.52 below September 2012.

Feed grains & hay: The September index, at 230, declined 13 percent from last month and is 21 percent below a year ago. The corn price, at \$5.28 per bushel, is down 93 cents from last month and \$1.61 below September 2012. The all hay price, at \$176 per ton, is down \$4.00 from August and \$9.00 from last September. Sorghum grain, at \$8.15 per cwt, is 67 cents lower than August and \$3.35 below September last year.

Cotton, Upland: The September index, at 126, is down 0.8 percent from August but 7.7 percent above last year. The September price, at 76.1 cents per pound, is down 0.8 cents from the previous month but 5.4 cents higher than last September.

Oilseeds: The September index, at 241, is up 1.7 percent from August and 0.4 percent higher than September 2012. The soybean price, at \$13.80 per bushel, decreased 30 cents from August and is 50 cents below September 2012.

Fruits & nuts: The September index, at 208, is up 8.3 percent from August but 3.3 percent lower than a year ago. The price of oranges, at \$12.39 per box, increased \$2.39 from last month and is \$3.27 higher than last September.

Commercial vegetables: The September index, at 156, is down 19 percent from last month and 9.3 percent below September 2012.

Potatoes & dry beans: The September index, at 174, is down 10 percent from last month but 23 percent above September 2012. The all potato price, at \$9.40 per cwt, is down \$1.75 from August but up \$2.09 from last September. The all dry bean price, at \$40.40 per cwt, is up 40 cents from the previous month and \$2.20 above September 2012.

Livestock and products: The September index, at 162, is 0.6 percent below last month but up 3.8 percent from September 2012. Compared with a year ago, prices are higher for hogs, broilers, calves, cattle, and milk. Prices for eggs and turkeys are lower than last year.

Meat animals: The September index, at 165, is unchanged from last month but 7.1 percent higher than last year. The September hog price, at \$69.20 per cwt, is down \$5.00 from August but \$13.50 higher than a year ago. The September beef cattle price of \$123 per cwt is up \$1.00 from last month and \$2.00 higher than September 2012.

Dairy products: The September index, at 152, is up 2.0 percent from a month ago and 0.7 percent higher than September last year. The September all milk price of \$19.80 per cwt is up 30 cents from last month and 10 cents higher than September 2012.

Poultry & eggs: The September index, at 167, is down 1.2 percent from August but 0.6 percent above a year ago. The September market egg price, at 82.3 cents per dozen, decreased 4.7 cents from August and is 23.7 cents below September 2012. The September broiler price, at 53.0 cents per pound, is unchanged from August but 5.0 cents above a year ago. The September turkey price, at 66.7 cents per pound, is down 0.7 cents from the previous month and 9.5 cents from a year earlier.

Prices Received Indexes – United States: September 2013 with Comparisons

[Revised historical price indexes for months not shown are available at www.nass.usda.gov]

Index	1910-1914 Base				1990-1992 Base		
	1990-1992 Average	September 2012	August 2013	September 2013	September 2012	August 2013	September 2013
	(percent)	(percent)	(percent)	(percent)	(percent)	(percent)	(percent)
All products	639	1236	1201	1176	195	189	185
All crops	500	1125	1062	1020	227	214	206
Food grains	325	844	733	724	266	231	228
Feed grains & hay	363	1041	941	820	292	264	230
Cotton, Upland	517	598	651	644	117	127	126
Tobacco	1263	1559	1760	1760	103	116	116
Oilseeds	554	1314	1300	1322	240	237	241
Fruits & nuts	716	1502	1338	1449	215	192	208
Commercial vegetables	698	1226	1373	1111	172	192	156
Potatoes & dry beans	540	722	985	884	142	194	174
Other crops	493	647	645	645	131	131	131
Livestock and products	768	1196	1246	1245	156	163	162
Meat animals	1021	1564	1683	1681	154	165	165
Dairy products	799	1212	1200	1218	151	149	152
Poultry & eggs	282	465	474	470	166	169	167
Food commodities	(NA)	(NA)	(NA)	(NA)	182	181	181

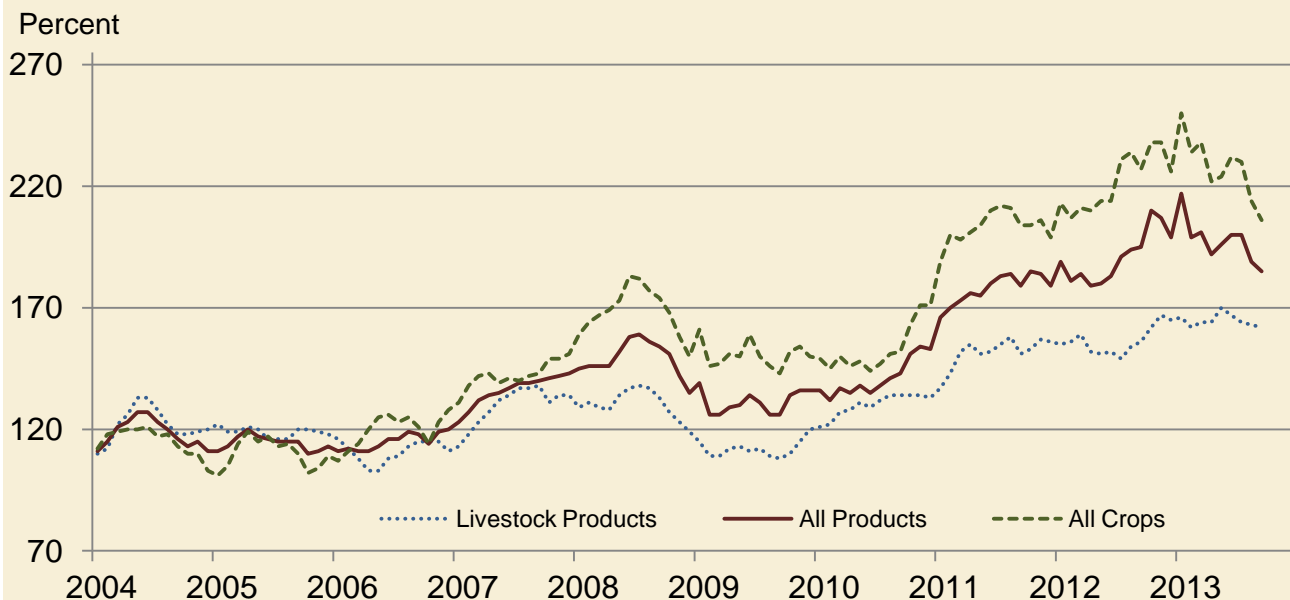
(NA) Not available.

Prices Received and Prices Paid Indexes by Month for Selected Groups – United States: 2012 and 2013, 1990-1992 Base

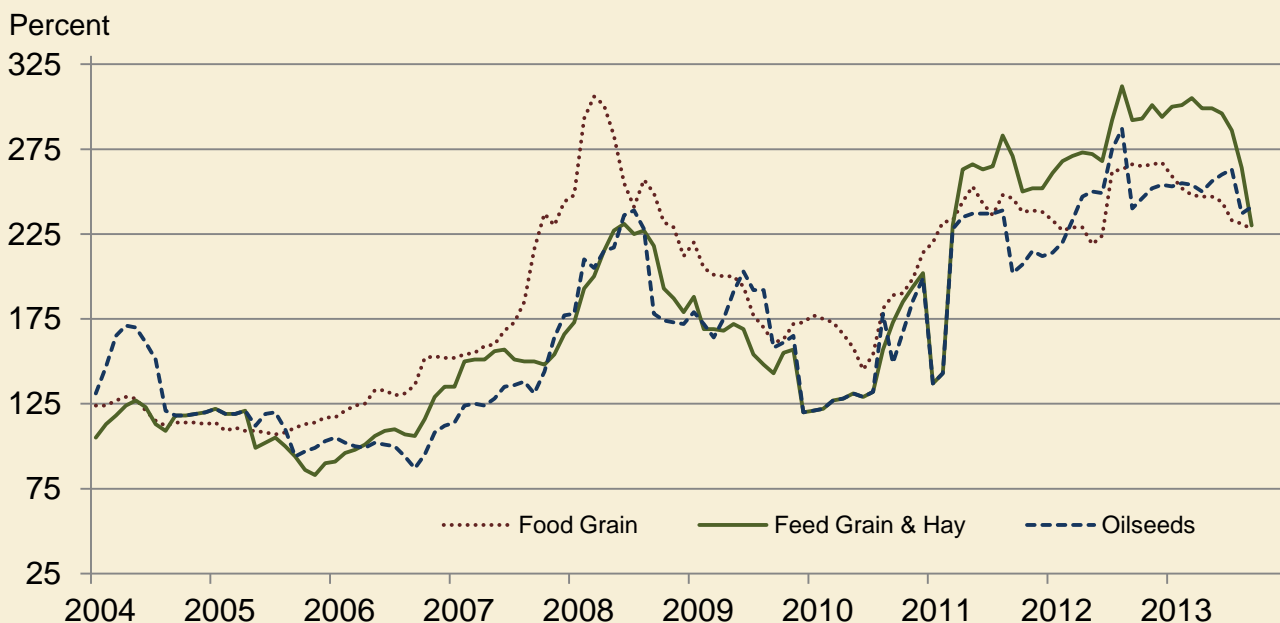
[Revised historical price indexes for months not shown are available at www.nass.usda.gov. Blank data cells indicate estimation period has not yet begun]

Month	Index of prices received						Index of prices paid			
	All farm products		All crops		Livestock and products		All items		Production items	
	2012	2013	2012	2013	2012	2013	2012	2013	2012	2013
	(percent)	(percent)	(percent)	(percent)	(percent)	(percent)	(percent)	(percent)	(percent)	(percent)
January	189	217	213	250	155	166	210	219	222	233
February	181	199	207	234	156	162	211	220	223	234
March	184	201	211	238	159	164	215	220	229	234
April	179	192	210	222	152	164	215	219	228	233
May	180	196	214	224	151	170	214	220	228	233
June	183	200	214	232	152	167	214	219	227	233
July	191	200	231	230	149	164	213	220	227	234
August	194	189	234	214	154	163	216	216	231	229
September	195	185	227	206	156	162	217	213	232	224
October	210		238		162		218		232	
November	207		238		167		217		231	
December	199		226		165		217		231	

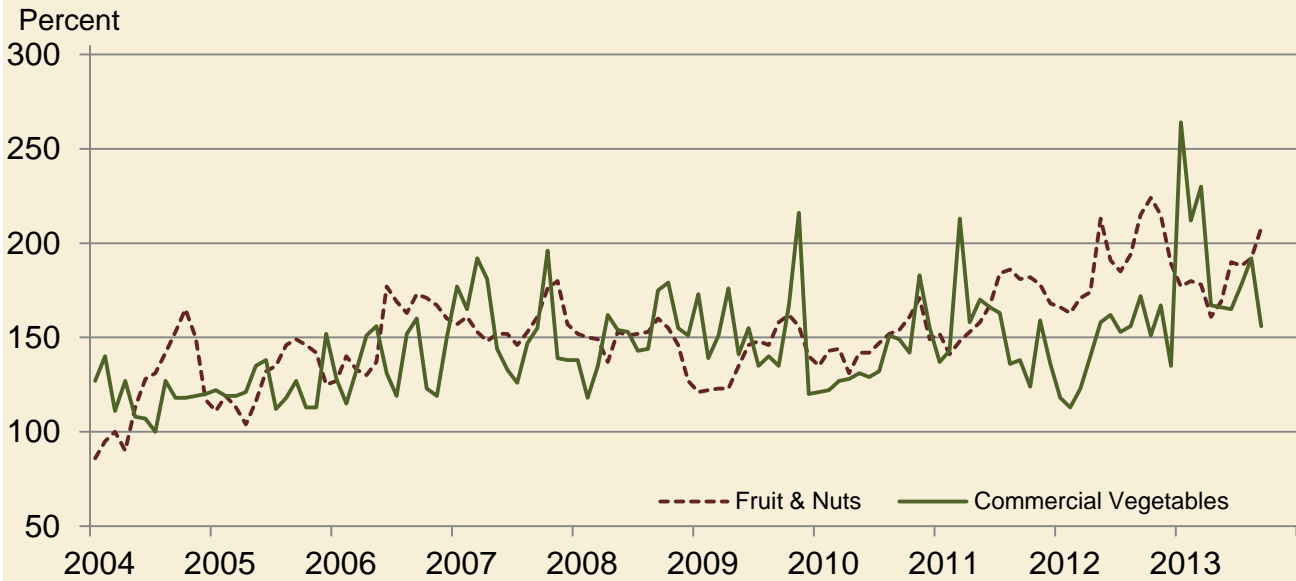
Received Indexes by Month, Livestock Products, All Products, and All Crops – United States: 1990-1992=100



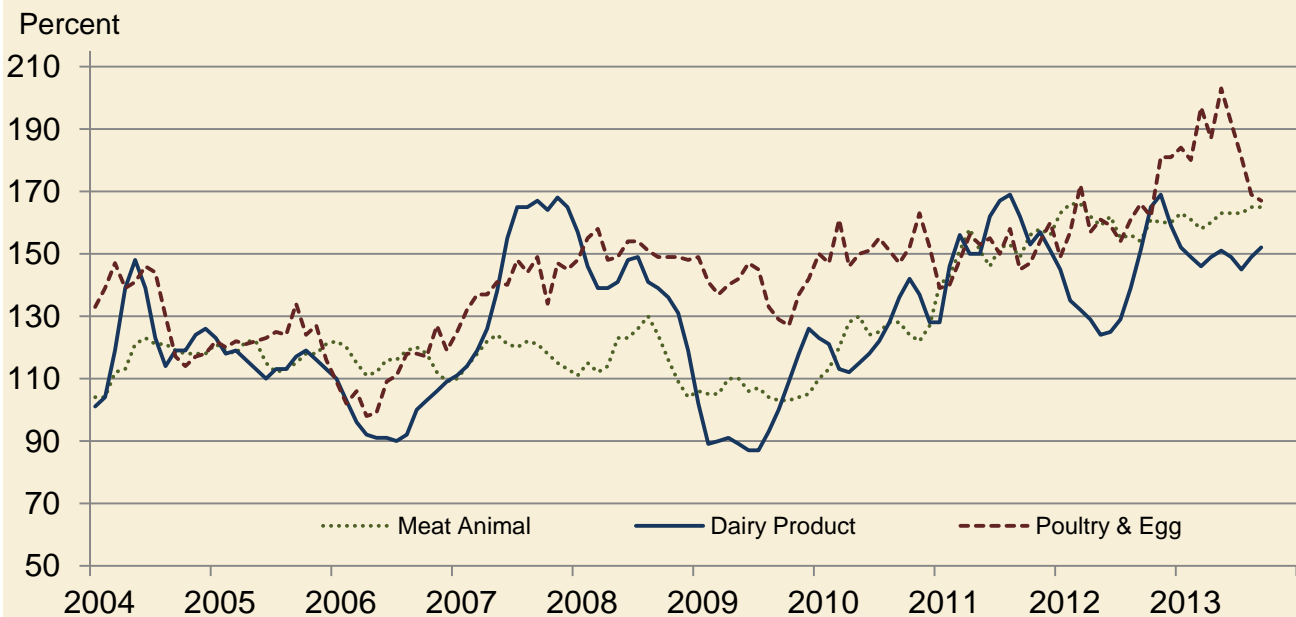
Received Indexes by Month, Food Grains, Feed Grains & Hay, and Oilseeds – United States: 1990-1992=100



Received Indexes by Month, Fruit & Nuts and Commercial Vegetables – United States: 1990-1992=100



Received Indexes by Month, Meat Animal, Dairy Product, and Poultry & Egg – United States: 1990-1992=100



Prices Received for Field Crops and Fruits – United States: September 2013 with Comparisons

Commodity	Average 1990-1992	September 2012	August 2013	Preliminary September 2013
Field crops				
Austrian winter peas dollars/cwt	(NA)	20.90	(D)	(S)
Barley, all dollars/bushel	2.12	6.42	6.13	5.25
Feed dollars/bushel	1.90	5.58	4.40	3.72
Malting dollars/bushel	2.43	6.70	6.55	5.91
Beans, dry edible dollars/cwt	19.10	38.20	40.00	40.40
Canola dollars/cwt	(NA)	27.00	22.20	20.00
Chickpeas, all dollars/cwt	(NA)	38.20	31.60	(S)
Large dollars/cwt	(NA)	40.40	32.90	(S)
Small dollars/cwt	(NA)	28.70	27.10	(S)
Corn dollars/bushel	2.30	6.89	6.21	5.28
Cotton, Upland dollars/pound	0.606	0.707	0.769	0.761
Cottonseed dollars/ton	96.00	254.00	(NA)	190.00
Flaxseed dollars/bushel	4.27	13.30	14.90	14.40
Hay, all, baled dollars/ton	76.30	185.00	180.00	176.00
Alfalfa dollars/ton	77.20	206.00	200.00	194.00
Other dollars/ton	60.00	140.00	140.00	136.00
Lentils dollars/cwt	(NA)	21.20	18.70	18.70
Oats dollars/bushel	1.22	3.76	3.63	3.68
Peanuts, in-shell dollars/pound	0.304	0.352	0.251	0.287
Peas, dry edible dollars/cwt	(NA)	14.50	14.50	12.80
Potatoes dollars/cwt	5.82	7.31	11.15	9.40
Rice, all dollars/cwt	7.07	14.30	15.80	16.30
Long dollars/cwt	(NA)	13.80	15.20	15.90
Medium and short dollars/cwt	(NA)	17.80	17.50	19.10
Sorghum grain dollars/cwt	3.75	11.50	8.82	8.15
Soybeans dollars/bushel	5.61	14.30	14.10	13.80
Sunflowers, all dollars/cwt	9.50	28.80	23.70	21.80
Wheat, all dollars/bushel	2.96	8.27	6.87	6.75
Winter dollars/bushel	2.93	8.25	6.81	6.71
Durum dollars/bushel	2.86	7.77	7.76	7.77
Other spring dollars/bushel	3.11	8.38	6.97	6.73
Hard red winter ¹ dollars/bushel	(NA)	8.36	6.94	(NA)
Soft red winter ¹ dollars/bushel	(NA)	8.38	6.34	(NA)
Hard red spring ¹ dollars/bushel	(NA)	8.42	6.98	(NA)
White ¹ dollars/bushel	3.24	7.99	6.90	(NA)
Fruits				
Citrus, equivalent on-tree				
Grapefruit dollars/box	5.77	10.13	6.36	8.76
Lemons dollars/box	10.10	14.94	28.45	29.99
Oranges dollars/box	5.79	9.08	10.00	12.39
Tangelos dollars/box	5.82	(S)	(S)	(S)
Tangerines and mandarins dollars/box	15.11	(S)	(S)	(S)
Noncitrus, fresh				
Apples ² dollars/pound	0.212	0.616	(NA)	(NA)
Grapes ² dollars/ton	506.00	1,130.00	(NA)	(NA)
Peaches ² dollars/ton	432.00	689.00	(NA)	(NA)
Pears ² dollars/ton	370.00	601.00	(NA)	(NA)
Strawberries dollars/cwt	56.00	87.60	(NA)	(NA)

(D) Withheld to avoid disclosing data for individual operations.

(NA) Not available.

(S) Insufficient number of reports to establish an estimate.

¹ Preliminary estimates not set for this item.

² Equivalent packinghouse-door returns for California, Michigan, New York (apples only), and Washington (apples, peaches, and pears). Prices as sold for other states.

Prices Received for Vegetables and Livestock – United States: September 2013 with Comparisons

[Price data source for livestock and poultry commodities is United States Department of Agriculture's Agricultural Marketing Service]

Commodity	Average 1990-1992	September 2012	August 2013	Preliminary September 2013
Vegetables, fresh ¹				
Asparagusdollars/cwt	79.80	(S)	(NA)	(NA)
Beans, snap ²dollars/cwt	(NA)	98.20	(NA)	(NA)
Broccolidollars/cwt	22.50	40.40	(NA)	(NA)
Cantaloupes ²dollars/cwt	(NA)	20.20	(NA)	(NA)
Carrotsdollars/cwt	13.20	21.70	(NA)	(NA)
Cauliflowerdollars/cwt	26.80	39.20	(NA)	(NA)
Celerydollars/cwt	11.60	24.80	(NA)	(NA)
Corn, sweetdollars/cwt	15.70	22.70	(NA)	(NA)
Cucumbers ²dollars/cwt	(NA)	26.80	(NA)	(NA)
Lettucedollars/cwt	11.90	20.50	(NA)	(NA)
Onions ³dollars/cwt	12.80	11.10	(NA)	(NA)
Tomatoesdollars/cwt	32.30	26.20	(NA)	(NA)
Livestock				
Calvesdollars/cwt	94.30	162.00	168.00	198.00
Cattle, all beefdollars/cwt	72.90	121.00	122.00	123.00
Cows ⁴dollars/cwt	49.60	79.20	82.80	84.00
Steers and heifersdollars/cwt	77.10	125.00	125.00	126.00
Milk cows ⁵dollars/head	1130.00	(NA)	(NA)	(NA)
Hogs, alldollars/cwt	47.70	55.70	74.20	69.20
Barrows and giltsdollars/cwt	48.40	56.30	74.10	69.10
Sowsdollars/cwt	39.50	39.10	75.90	70.70
Dairy and poultry				
Milk, all ⁶dollars/cwt	13.06	19.70	19.50	19.80
Fat test percent	3.66	3.70	3.63	3.69
Broilers, live ⁷dollars/pound	0.317	0.480	0.530	0.530
Eggs, all ⁸dollars/dozen	0.643	1.220	1.080	1.040
Market ^{8 9}dollars/dozen	0.546	1.060	0.870	0.823
Turkeys, live ^{8 10}dollars/pound	0.380	0.762	0.674	0.667
Adjusted for seasonal variation				
Eggs, alldollars/dozen	0.545	1.260	1.030	1.070
Seasonal factor percent	100	97	105	97
Milk, all ⁶dollars/cwt	9.71	18.90	19.10	19.00
Seasonal factor percent	100	104	102	104

(NA) Not available.

(S) Insufficient number of reports to establish an estimate.

¹ Beginning January 2006, point of first sale. FOB shipping point for prior years.

² Monthly estimates began January 1995.

³ Includes some processing.

⁴ Beef cows and cull dairy cows sold for slaughter.

⁵ Animals sold for dairy herd replacement only. Prices available for January, April, July, and October.

⁶ Before deductions for hauling. Includes quality, quantity, and other premiums. Excludes hauling subsidies.

⁷ Live weight equivalent price.

⁸ Mid-month price.

⁹ Also referred to as table eggs.

¹⁰ Live weight equivalent price is used when actual live weight price is not available. Beginning January 2011, price reflects FOB shipping point basis. Prior year price reflects delivered basis.

Prices Received for Corn by Month – United States

Dollars per bushel



Prices Received for Wheat by Month – United States

Dollars per bushel



Prices Received for Upland Cotton by Month – United States

Dollars per pound



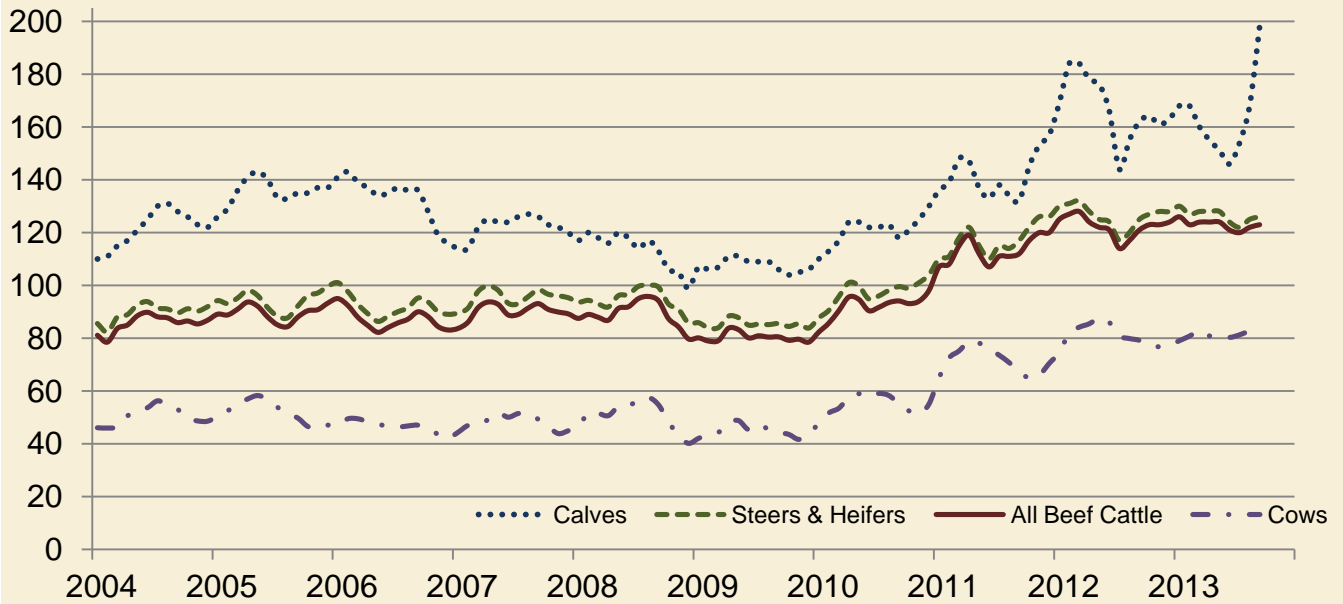
Prices Received for Soybeans by Month – United States

Dollars per bushel



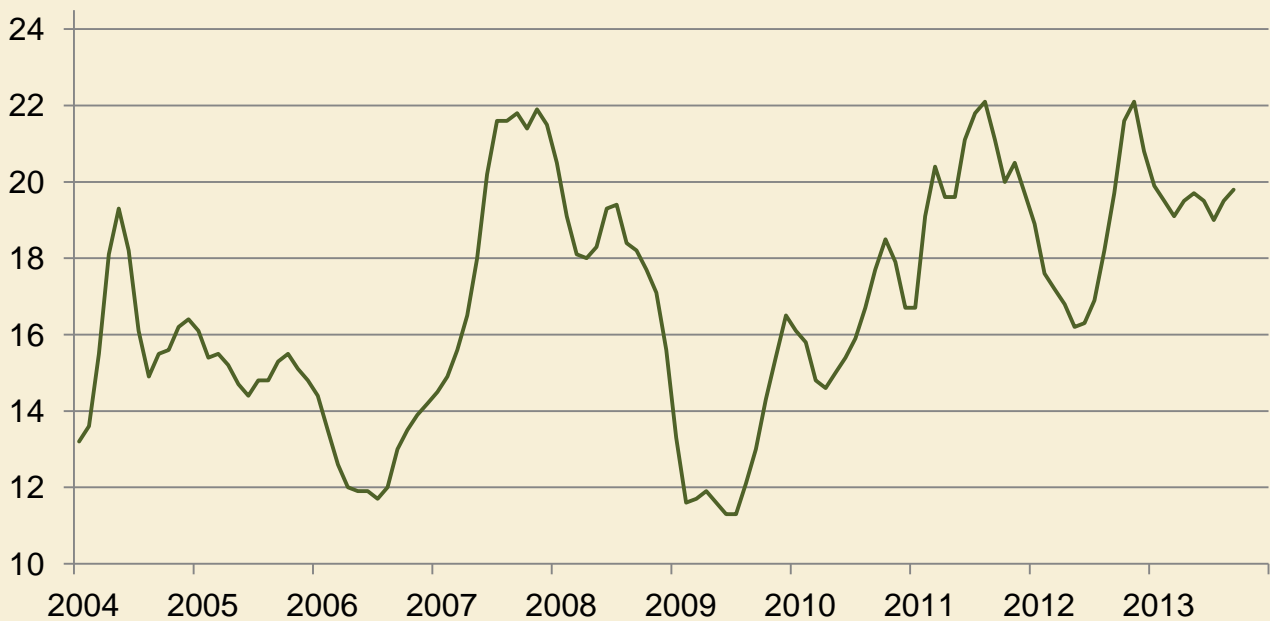
Prices Received for Cattle by Month – United States

Dollars per cwt



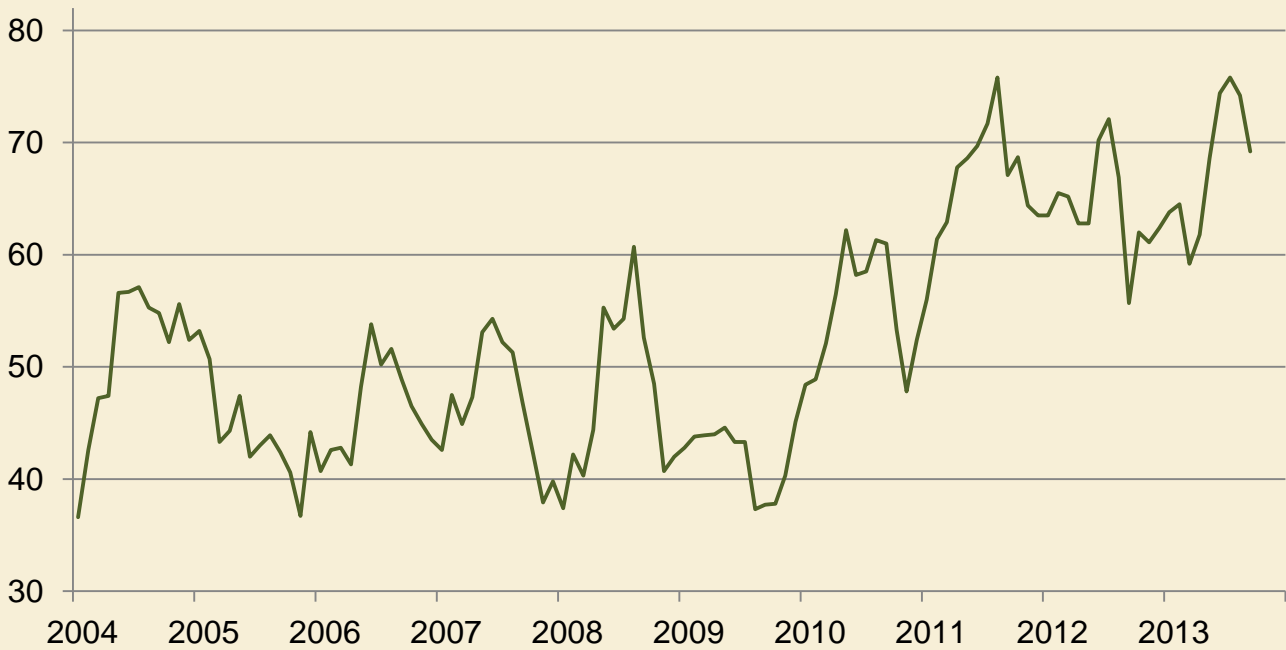
Prices Received for Milk by Month – United States

Dollars per cwt



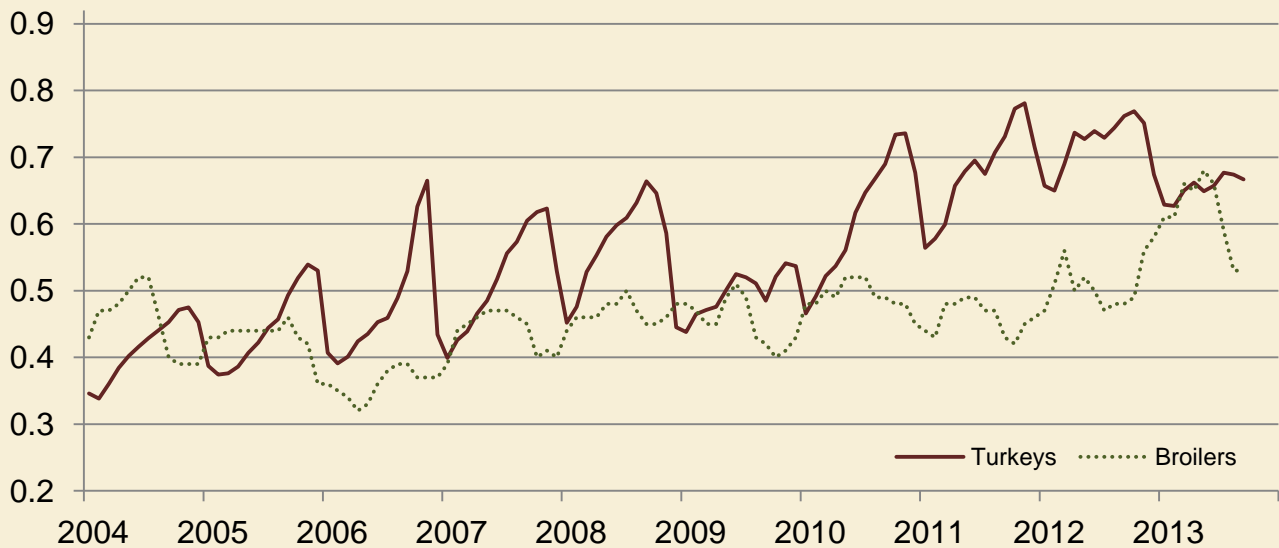
Prices Received for Hogs by Month – United States

Dollars per cwt



Prices Received for Poultry by Month – United States

Dollars per pound



Prices Received for All Wheat, Corn, and Soybeans by Month – United States: 2013 with Comparisons

[Current month prices are mid-month; prices for previous months and years are for the entire month. Blank data cells indicate estimation period has not yet begun]

Month	All wheat			Corn			Soybeans		
	2011	2012	Preliminary 2013	2011	2012	Preliminary 2013	2011	2012	Preliminary 2013
	(dollars per bushel)	(dollars per bushel)	(dollars per bushel)	(dollars per bushel)	(dollars per bushel)	(dollars per bushel)	(dollars per bushel)	(dollars per bushel)	(dollars per bushel)
January	6.69	7.05	8.12	4.94	6.07	6.96	11.60	11.90	14.30
February	7.42	7.10	7.97	5.65	6.28	7.04	12.70	12.20	14.60
March	7.55	7.20	7.79	5.53	6.35	7.13	12.70	13.00	14.60
April	8.01	7.11	7.71	6.36	6.34	6.97	13.10	13.80	14.40
May	8.16	6.67	7.68	6.32	6.34	6.97	13.20	14.00	14.90
June	7.41	6.70	7.32	6.38	6.37	6.97	13.20	13.90	15.10
July	7.10	7.89	6.93	6.33	7.14	6.79	13.20	15.40	15.30
August	7.59	8.04	6.87	6.88	7.63	6.21	13.40	16.20	14.10
September	7.54	8.27	6.75	6.38	6.89	5.28	12.20	14.30	13.80
October	7.27	8.38		5.73	6.78		11.80	14.20	
November	7.30	8.47		5.83	7.01		11.70	14.30	
December	7.20	8.30		5.86	6.87		11.50	14.30	

Prices Received for Beef Cattle and All Hogs by Month – United States: 2013 with Comparisons

[Current month prices are mid-month; prices for previous months and years are for the entire month. Blank data cells indicate estimation period has not yet begun]

Month	Beef cattle ¹			All hogs ²		
	2011	2012	Preliminary 2013	2011	2012	Preliminary 2013
	(dollars per cwt)	(dollars per cwt)	(dollars per cwt)	(dollars per cwt)	(dollars per cwt)	(dollars per cwt)
January	107.00	125.00	126.00	56.00	63.50	63.80
February	108.00	127.00	123.00	61.40	65.50	64.50
March	115.00	128.00	124.00	62.90	65.20	59.20
April	119.00	124.00	124.00	67.80	62.80	61.80
May	112.00	122.00	124.00	68.60	62.80	68.60
June	107.00	121.00	121.00	69.70	70.20	74.40
July	111.00	114.00	120.00	71.70	72.10	75.80
August	111.00	117.00	122.00	75.80	66.90	74.20
September	112.00	121.00	123.00	67.10	55.70	69.20
October	117.00	123.00		68.70	62.00	
November	120.00	123.00		64.40	61.10	
December	120.00	124.00		63.50	62.40	

¹ Cows and steers & heifers.

² Barrows & gilts and sows.

Prices Received for All Wheat – States and United States: September 2013 with Comparisons

State	September 2012	August 2013	Preliminary September 2013
	(dollars per bushel)	(dollars per bushel)	(dollars per bushel)
Arizona	(D)	8.32	7.75
Arkansas	7.89	6.56	(D)
California	(D)	(D)	(D)
Colorado	8.26	6.96	6.75
Idaho	7.98	6.81	6.94
Illinois	8.59	6.47	6.30
Indiana	8.88	6.15	6.10
Kansas	8.55	6.90	6.78
Michigan	8.37	6.43	6.23
Minnesota	8.53	6.84	6.60
Missouri	7.94	6.50	6.50
Montana	8.19	7.14	6.85
Nebraska	8.42	7.05	6.90
North Carolina	8.05	5.57	5.50
North Dakota	8.13	7.05	6.62
Ohio	8.41	6.45	6.33
Oklahoma	8.63	6.83	6.74
Oregon	8.13	7.10	7.14
South Dakota	8.31	6.83	6.60
Texas	7.99	7.08	6.92
Washington	8.13	7.12	6.98
United States	8.27	6.87	6.75

(D) Withheld to avoid disclosing data for individual operations.

Prices Received for Winter Wheat – States and United States: September 2013 with Comparisons

State	September 2012	August 2013	Preliminary September 2013
	(dollars per bushel)	(dollars per bushel)	(dollars per bushel)
Arkansas	7.89	6.56	(D)
California	(D)	(D)	(D)
Colorado	8.28	6.96	6.75
Idaho	7.90	6.80	6.75
Illinois	8.59	6.47	6.30
Indiana	8.88	6.15	6.10
Kansas	8.55	6.90	6.78
Michigan	8.37	6.43	6.23
Minnesota	(D)	5.91	(S)
Missouri	7.94	6.50	6.50
Montana	7.97	7.06	6.80
Nebraska	8.42	7.05	6.90
North Carolina	8.05	5.57	5.50
North Dakota	7.88	6.54	6.20
Ohio	8.41	6.45	6.33
Oklahoma	8.63	6.83	6.74
Oregon	8.08	7.08	7.10
South Dakota	8.13	6.80	6.50
Texas	7.99	7.08	6.92
Washington	8.04	7.05	6.90
United States	8.25	6.81	6.71

(D) Withheld to avoid disclosing data for individual operations.

(S) Insufficient number of reports to establish an estimate.

Prices Received for Durum Wheat – States and United States: September 2013 with Comparisons

State	September 2012	August 2013	Preliminary September 2013
	(dollars per bushel)	(dollars per bushel)	(dollars per bushel)
Arizona	(D)	8.32	7.75
California	(S)	(D)	(S)
Idaho	(D)	(D)	(D)
Montana	7.79	7.75	(D)
North Dakota	7.48	7.74	8.00
United States	7.77	7.76	7.77

(D) Withheld to avoid disclosing data for individual operations.

(S) Insufficient number of reports to establish an estimate.

Prices Received for Spring Wheat – States and United States: September 2013 with Comparisons

State	September 2012	August 2013	Preliminary September 2013
	(dollars per bushel)	(dollars per bushel)	(dollars per bushel)
Colorado	(D)	(S)	(S)
Idaho	8.15	6.84	7.40
Minnesota	8.53	6.91	6.60
Montana	8.42	7.18	6.80
North Dakota	8.35	6.93	6.50
Oregon	8.29	7.28	7.35
South Dakota	8.43	6.84	6.66
Washington	8.54	7.48	7.39
United States	8.38	6.97	6.73

(D) Withheld to avoid disclosing data for individual operations.

(S) Insufficient number of reports to establish an estimate.

Prices Received for All Barley – States and United States: September 2013 with Comparisons

State	September 2012	August 2013	Preliminary September 2013
	(dollars per bushel)	(dollars per bushel)	(dollars per bushel)
California	(D)	(D)	(S)
Colorado	6.65	(D)	(D)
Idaho	6.43	6.31	6.20
Minnesota	(D)	6.14	(S)
Montana	6.43	6.68	5.81
North Dakota	6.96	5.96	4.86
Oregon	6.32	4.39	3.87
Utah	5.91	4.33	4.34
Washington	5.49	4.52	3.66
Wyoming	(D)	(D)	(D)
United States	6.42	6.13	5.25

(D) Withheld to avoid disclosing data for individual operations.

(S) Insufficient number of reports to establish an estimate.

Prices Received for Malting Barley – States: September 2013 with Comparisons

State	September 2012	August 2013	Preliminary September 2013
	(dollars per bushel)	(dollars per bushel)	(dollars per bushel)
Idaho	6.57	6.72	6.47
Minnesota	(D)	(D)	(S)
Montana	6.51	6.73	5.84
North Dakota	7.04	6.17	5.30
Wyoming	(D)	(D)	(D)

(D) Withheld to avoid disclosing data for individual operations.

(S) Insufficient number of reports to establish an estimate.

Prices Received for Feed Barley – States: September 2013 with Comparisons

State	September 2012	August 2013	Preliminary September 2013
	(dollars per bushel)	(dollars per bushel)	(dollars per bushel)
Idaho	5.79	4.22	4.41
Minnesota	(D)	4.02	(S)
Montana	5.57	4.27	(D)
North Dakota	5.33	4.08	3.10
Wyoming	(D)	(D)	(D)

(D) Withheld to avoid disclosing data for individual operations.

(S) Insufficient number of reports to establish an estimate.

Prices Received for Corn – States and United States: September 2013 with Comparisons

State	September 2012	August 2013	Preliminary September 2013
	(dollars per bushel)	(dollars per bushel)	(dollars per bushel)
Colorado	6.67	6.80	5.79
Illinois	6.84	6.09	5.30
Indiana	7.37	6.38	5.10
Iowa	6.84	6.32	5.10
Kansas	6.87	6.13	5.10
Kentucky	6.75	6.10	5.50
Michigan	6.92	6.04	5.30
Minnesota	6.47	6.24	5.50
Missouri	7.30	6.42	5.50
Nebraska	6.88	6.45	5.60
North Carolina	7.45	5.85	5.30
North Dakota	6.26	5.97	4.80
Ohio	7.33	6.34	5.03
Pennsylvania	7.45	6.10	5.00
South Dakota	6.83	5.99	4.86
Tennessee	6.98	6.23	5.60
Texas	6.80	5.01	5.26
Wisconsin	7.05	6.18	5.40
United States	6.89	6.21	5.28

Prices Received for Soybeans – States and United States: September 2013 with Comparisons

State	September 2012	August 2013	Preliminary September 2013
	(dollars per bushel)	(dollars per bushel)	(dollars per bushel)
Arkansas	14.10	(D)	13.50
Illinois	15.20	14.20	13.90
Indiana	14.80	14.90	14.20
Iowa	14.40	14.20	14.20
Kansas	14.40	13.90	13.90
Kentucky	14.80	13.60	14.00
Louisiana	15.00	(D)	(D)
Michigan	13.60	14.40	13.70
Minnesota	14.20	14.30	13.70
Mississippi	14.30	12.70	13.50
Missouri	15.30	13.70	14.00
Nebraska	13.70	13.50	13.70
North Carolina	16.20	14.20	14.20
North Dakota	14.20	13.10	13.10
Ohio	14.80	14.60	14.20
South Dakota	14.20	13.80	13.40
Tennessee	14.30	13.20	14.00
Wisconsin	13.50	14.40	13.80
United States	14.30	14.10	13.80

(D) Withheld to avoid disclosing data for individual operations.

Prices Received for Oats – States and United States: September 2013 with Comparisons

State	September 2012	August 2013	Preliminary September 2013
	(dollars per bushel)	(dollars per bushel)	(dollars per bushel)
Illinois	(S)	3.83	(S)
Iowa	3.93	3.71	3.60
Michigan	(D)	3.51	3.90
Minnesota	3.54	3.85	3.85
Montana	(D)	(S)	(S)
Nebraska	(D)	(D)	(D)
New York	(D)	(D)	(D)
North Dakota	3.36	3.17	3.15
Oregon	(D)	(D)	(S)
Pennsylvania	3.91	3.76	3.81
South Dakota	3.84	3.54	3.61
Texas	(S)	(D)	(D)
Wisconsin	3.80	3.83	3.85
United States	3.76	3.63	3.68

(D) Withheld to avoid disclosing data for individual operations.

(S) Insufficient number of reports to establish an estimate.

Prices Received for Sorghum Grain – States and United States: September 2013 with Comparisons

State	September 2012	August 2013	Preliminary September 2013
	(dollars per cwt)	(dollars per cwt)	(dollars per cwt)
Arkansas	11.00	(D)	(D)
Illinois	12.80	(D)	(S)
Kansas	12.40	9.88	7.94
Louisiana	11.30	8.85	(D)
Missouri	11.80	11.90	10.00
Nebraska	11.70	10.20	8.80
Oklahoma	11.80	8.81	7.00
Texas	11.50	8.68	8.13
United States	11.50	8.82	8.15

(D) Withheld to avoid disclosing data for individual operations.

(S) Insufficient number of reports to establish an estimate.

Prices Received for Dry Beans – States and United States: September 2013 with Comparisons

State	September 2012	August 2013	Preliminary September 2013
	(dollars per cwt)	(dollars per cwt)	(dollars per cwt)
California	(D)	(D)	(S)
Colorado	41.70	(D)	(D)
Idaho	38.50	32.90	(D)
Michigan	40.70	(D)	42.50
Minnesota	40.60	(D)	(D)
Nebraska	39.50	42.60	42.90
North Dakota	36.20	39.30	38.60
United States	38.20	40.00	40.40

(D) Withheld to avoid disclosing data for individual operations.

(S) Insufficient number of reports to establish an estimate.

Prices Received for Peanuts (in shell) – States and United States: September 2013 with Comparisons

State	September 2012	August 2013	Preliminary September 2013
	(dollars per pound)	(dollars per pound)	(dollars per pound)
Alabama	0.360	0.233	(S)
Florida	0.353	0.225	(D)
Georgia	0.350	0.257	0.275
Mississippi	0.372	0.205	(S)
New Mexico	(D)	(S)	(S)
North Carolina	0.353	0.275	0.309
Oklahoma	(S)	(D)	(D)
South Carolina	0.345	0.271	(D)
Texas	0.334	0.263	(S)
Virginia	(D)	0.269	(D)
United States	0.352	0.251	0.287

(D) Withheld to avoid disclosing data for individual operations.

(S) Insufficient number of reports to establish an estimate.

Prices Received for Sunflower – States and United States: September 2013 with Comparisons

State	September 2012	August 2013	Preliminary September 2013
	(dollars per cwt)	(dollars per cwt)	(dollars per cwt)
Colorado	(D)	(S)	(S)
Kansas	(D)	20.60	(D)
Minnesota	(D)	26.10	(D)
North Dakota	29.00	23.90	23.20
South Dakota	28.00	22.20	(D)
United States	28.80	23.70	21.80

(D) Withheld to avoid disclosing data for individual operations.

(S) Insufficient number of reports to establish an estimate.

Prices Received for Canola – States and United States: September 2013 with Comparisons

State	September 2012	August 2013	Preliminary September 2013
	(dollars per cwt)	(dollars per cwt)	(dollars per cwt)
Minnesota	(D)	(S)	(S)
North Dakota	27.00	22.20	20.00
United States	27.00	22.20	20.00

(D) Withheld to avoid disclosing data for individual operations.

(S) Insufficient number of reports to establish an estimate.

Prices Received for Flaxseed – States and United States: September 2013 with Comparisons

State	September 2012	August 2013	Preliminary September 2013
	(dollars per bushel)	(dollars per bushel)	(dollars per bushel)
North Dakota	13.30	14.90	14.40
United States	13.30	14.90	14.40

Prices Received for Upland Cotton and Cottonseed – States and United States: September 2013 with Comparisons

[Cottonseed marketing year August - February]

State	Cotton, Upland			Cottonseed		
	September 2012	August 2013	Preliminary September 2013	September 2012	August 2013	Preliminary September 2013
	(dollars per pound)	(dollars per pound)	(dollars per pound)	(dollars per ton)	(dollars per ton)	(dollars per ton)
Alabama	(D)	(S)	(S)	(S)	(NA)	(S)
Arizona	(D)	(S)	(S)	360.00	(NA)	(S)
Arkansas	(D)	(S)	(S)	275.00	(NA)	(S)
California	(S)	(S)	(S)	(S)	(NA)	(S)
Georgia	0.818	(D)	0.768	219.00	(NA)	(S)
Louisiana	0.688	(S)	(S)	222.00	(NA)	272.00
Mississippi	(D)	(D)	(S)	(S)	(NA)	(S)
North Carolina	(D)	(D)	(S)	(S)	(NA)	(S)
Tennessee	(D)	(S)	(S)	(S)	(NA)	(S)
Texas	0.706	0.767	0.743	252.00	(NA)	185.00
United States	0.707	0.769	0.761	254.00	(NA)	190.00

(D) Withheld to avoid disclosing data for individual operations.

(NA) Not available.

(S) Insufficient number of reports to establish an estimate.

Prices Received and Farm Marketings for Upland Cotton and Rice – United States: September 2013 with Comparisons

Item	September 2012	August 2013	Preliminary September 2013
Cotton, Upland			
Average price dollars/pound	0.707	0.769	0.761
Marketings ¹ 1,000 bales	416	46	(NA)
Rice, all			
Average price dollars/cwt	14.30	15.80	16.30
Marketings ² 1,000 cwt	10,630	8,697	(NA)
Rice, long			
Average price dollars/cwt	13.80	15.20	15.90
Marketings ² 1,000 cwt	9,172	6,668	(NA)
Rice, medium and short			
Average price dollars/cwt	17.80	17.50	19.10
Marketings ² 1,000 cwt	1,458	2,029	(NA)

(NA) Not available.

¹ Marketings based on a survey of cotton buyers in the major producing States - Alabama, Arizona, Arkansas, California, Georgia, Louisiana, Mississippi, North Carolina, Tennessee, and Texas.

² Purchases by private firms and rice (rough equivalent) shipped by cooperatives.

Prices Received for Hay by Type – States and United States: September 2013 with Comparisons

State	All hay			Alfalfa hay			Other hay		
	September 2012	August 2013	Preliminary September 2013	September 2012	August 2013	Preliminary September 2013	September 2012	August 2013	Preliminary September 2013
	(dollars per ton)	(dollars per ton)	(dollars per ton)	(dollars per ton)	(dollars per ton)	(dollars per ton)	(dollars per ton)	(dollars per ton)	(dollars per ton)
Arizona	202.00	190.00	180.00	200.00	190.00	180.00	220.00	210.00	200.00
California	201.00	192.00	194.00	205.00	201.00	201.00	190.00	161.00	161.00
Colorado	232.00	244.00	234.00	235.00	245.00	235.00	205.00	230.00	230.00
Idaho	184.00	197.00	180.00	190.00	200.00	180.00	130.00	170.00	180.00
Illinois	156.00	163.00	161.00	165.00	190.00	175.00	120.00	140.00	125.00
Iowa	201.00	192.00	195.00	217.00	205.00	210.00	133.00	130.00	130.00
Kansas	190.00	180.00	193.00	220.00	211.00	225.00	125.00	108.00	119.00
Kentucky	115.00	127.00	120.00	195.00	195.00	195.00	90.00	95.00	95.00
Michigan	165.00	168.00	166.00	175.00	180.00	180.00	145.00	145.00	140.00
Minnesota	139.00	140.00	160.00	160.00	165.00	190.00	110.00	120.00	120.00
Missouri	115.00	126.00	123.00	210.00	240.00	235.00	100.00	110.00	105.00
Montana	141.00	137.00	139.00	144.00	140.00	140.00	113.00	123.00	130.00
Nebraska	199.00	189.00	168.00	219.00	209.00	181.00	146.00	151.00	136.00
Nevada	201.00	209.00	196.00	203.00	212.00	196.00	178.00	190.00	190.00
New Mexico	226.00	237.00	239.00	234.00	245.00	246.00	174.00	182.00	191.00
New York	137.00	152.00	152.00	175.00	205.00	205.00	117.00	135.00	137.00
North Dakota	119.00	109.00	113.00	131.00	115.00	118.00	83.00	77.00	76.00
Ohio	191.00	180.00	163.00	221.00	195.00	185.00	142.00	155.00	140.00
Oklahoma	121.00	140.00	128.00	229.00	205.00	190.00	113.00	99.00	95.00
Oregon	210.00	208.00	200.00	226.00	198.00	200.00	175.00	217.00	200.00
Pennsylvania	145.00	171.00	161.00	189.00	189.00	178.00	133.00	166.00	156.00
South Dakota	204.00	159.00	128.00	222.00	166.00	135.00	151.00	119.00	105.00
Texas	124.00	132.00	126.00	238.00	237.00	235.00	101.00	93.00	95.00
Utah	187.00	184.00	183.00	187.00	187.00	187.00	150.00	155.00	150.00
Washington	232.00	214.00	210.00	235.00	205.00	200.00	225.00	235.00	235.00
Wisconsin	145.00	151.00	182.00	155.00	160.00	200.00	110.00	120.00	120.00
Wyoming	207.00	195.00	190.00	210.00	200.00	195.00	195.00	180.00	175.00
United States	185.00	180.00	176.00	206.00	200.00	194.00	140.00	140.00	136.00

Prices Received for Apples – States and United States: September 2013 with Comparisons

[Equivalent packinghouse-door returns for California, Michigan, New York, and Washington. Prices at point of first sale for other States]

State	Apples, fresh use		
	September 2012	August 2013	Preliminary September 2013
	(dollars per pound)	(dollars per pound)	(dollars per pound)
California	0.408	(NA)	(NA)
Michigan	0.615	(NA)	(NA)
New York	0.556	(NA)	(NA)
Ohio	0.720	(NA)	(NA)
Pennsylvania	(S)	(NA)	(NA)
Virginia	0.360	(NA)	(NA)
Washington	0.625	(NA)	(NA)
United States	0.616	(NA)	(NA)

(NA) Not available.

(S) Insufficient number of reports to establish an estimate.

Prices Received for Citrus Fruits by Utilization – States and United States: September 2012

[Net pounds per box: grapefruit in California-80, Florida-85, Texas-80; lemons-80; oranges in California-80, Florida-90, Texas-85; tangelos-90; tangerines and mandarins in Arizona and California-80, Florida-95]

Commodity, State, and type	FOB packed fresh	Equivalent returns					
		Packinghouse door			On-tree		
		All	Fresh	Process	All	Fresh	Process
	(dollars per box)	(dollars per box)	(dollars per box)	(dollars per box)	(dollars per box)	(dollars per box)	(dollars per box)
Grapefruit							
California ¹	18.80	12.27	12.27	(D)	10.13	10.13	(D)
United States	18.80	12.27	12.27	(D)	10.13	10.13	(D)
Lemons							
California	35.20	20.48	26.12	(D)	14.88	20.22	(D)
United States	35.20	20.54	26.15	(D)	14.94	20.25	(D)
Oranges							
California	23.80	11.59	14.99	(D)	9.08	12.53	(D)
Valencia	23.80	11.59	14.99	(D)	9.08	12.53	(D)
United States	23.80	11.59	14.99	(D)	9.08	12.53	(D)

(D) Withheld to avoid disclosing data for individual operations.
¹ Some processed sales included in fresh sales.

Prices Received for Citrus Fruits by Utilization – States and United States: August 2013

[Net pounds per box: grapefruit in California-80, Florida-85, Texas-80; lemons-80; oranges in California-80, Florida-90, Texas-85; tangelos-90; tangerines and mandarins in Arizona and California-80, Florida-95]

Commodity, State, and type	FOB packed fresh	Equivalent returns					
		Packinghouse door			On-tree		
		All	Fresh	Process	All	Fresh	Process
	(dollars per box)	(dollars per box)	(dollars per box)	(dollars per box)	(dollars per box)	(dollars per box)	(dollars per box)
Grapefruit							
California ¹	15.20	8.54	8.54	(D)	6.36	6.36	(D)
United States	15.20	8.54	8.54	(D)	6.36	6.36	(D)
Lemons							
California	47.50	34.34	38.24	(D)	28.45	32.22	(D)
United States	47.50	34.34	38.24	(D)	28.45	32.22	(D)
Oranges							
California	23.40	12.54	14.41	(D)	10.00	11.90	(D)
Valencia	23.40	12.54	14.41	(D)	10.00	11.90	(D)
United States	23.40	12.54	14.41	(D)	10.00	11.90	(D)

(D) Withheld to avoid disclosing data for individual operations.

¹ Some processed sales included in fresh sales.

Prices Received for Citrus Fruits by Utilization – States and United States: September 2013

[Net pounds per box: grapefruit in California-80, Florida-85, Texas-80; lemons-80; oranges in California-80, Florida-90, Texas-85; tangelos-90; tangerines and mandarins in Arizona and California-80, Florida-95]

Commodity, State, and type	FOB packed fresh	Equivalent returns					
		Packinghouse door			On-tree		
		All	Fresh	Process	All	Fresh	Process
	(dollars per box)	(dollars per box)	(dollars per box)	(dollars per box)	(dollars per box)	(dollars per box)	(dollars per box)
Grapefruit							
California ¹	17.60	10.94	10.94	(D)	8.76	8.76	(D)
United States	17.60	10.94	10.94	(D)	8.76	8.76	(D)
Lemons							
California	47.70	35.92	38.44	(D)	29.99	32.42	(D)
United States	47.70	35.92	38.44	(D)	29.99	32.42	(D)
Oranges							
California	26.30	14.93	17.31	(D)	12.39	14.80	(D)
Valencia	26.30	14.93	17.31	(D)	12.39	14.80	(D)
United States	26.30	14.93	17.31	(D)	12.39	14.80	(D)

(D) Withheld to avoid disclosing data for individual operations.
¹ Some processed sales included in fresh sales.

Prices Received for Potatoes – States and United States: September 2013 with Comparisons

State	September 2012	August 2013	Preliminary September 2013
	(dollars per cwt)	(dollars per cwt)	(dollars per cwt)
California			
Spring	(S)	(S)	(S)
Fall	(S)	(S)	(S)
All ¹	(S)	(S)	(S)
Colorado			
Fresh ²	7.10	22.20	(D)
All ¹	6.85	22.20	17.30
Florida	(S)	(S)	(S)
Idaho			
Fresh ²	4.40	15.70	(D)
Processing	7.20	8.00	(D)
All ¹	6.70	10.60	8.20
Maine	(D)	(D)	(D)
Michigan	9.90	8.95	9.10
Minnesota	6.65	14.10	(D)
New York	14.00	(S)	16.00
North Carolina	(S)	(S)	(S)
North Dakota			
Fresh ²	11.30	(S)	(D)
Processing	8.30	(S)	(D)
All ¹	8.65	(S)	(D)
Oregon	6.55	9.20	8.65
Texas	(S)	(S)	(S)
Virginia	(S)	17.80	(S)
Washington			
Processing	6.45	7.35	(D)
All ¹	6.55	10.40	8.55
Wisconsin			
Fresh ²	8.80	(D)	(D)
Processing	7.80	(D)	(D)
All ¹	8.20	15.70	(D)
United States			
Fresh ²	7.42	19.66	(D)
Processing	7.28	7.74	(D)
All ¹	7.31	11.15	9.40

(D) Withheld to avoid disclosing data for individual operations.

(S) Insufficient number of reports to establish an estimate.

¹ Average price of potatoes sold for all uses, including table stock, processing, seed, and livestock feed.

² Fresh market prices only. Includes table stock prices.

Prices Received for All Milk – States and United States: September 2013 with Comparisons

[Before deduction for hauling. Includes quality, quantity, and other premiums. Excludes hauling subsidies]

State	September 2012		August 2013		Preliminary September 2013	
	Price	Fat test	Price	Fat test	Price	Fat test
	(dollars per cwt)	(percent)	(dollars per cwt)	(percent)	(dollars per cwt)	(percent)
Arizona	19.00	3.55	19.50	3.48	19.60	3.48
California	17.73	3.72	18.01	3.63	18.30	3.65
Colorado	19.50	3.51	20.00	3.47	20.10	3.48
Florida	22.90	3.70	23.80	3.60	24.00	3.63
Idaho	19.40	3.70	18.60	3.64	18.60	3.72
Illinois	20.50	3.70	20.30	3.64	20.40	3.70
Indiana	20.50	3.62	20.60	3.57	20.80	3.65
Iowa	20.50	3.72	20.10	3.68	20.40	3.77
Kansas	20.10	3.67	19.40	3.51	19.50	3.63
Michigan	19.70	3.60	20.30	3.53	20.50	3.61
Minnesota	21.30	3.79	19.60	3.73	19.90	3.83
Missouri	19.80	3.67	20.50	3.64	20.70	3.71
New Mexico	18.70	3.60	18.10	3.45	18.30	3.55
New York	20.00	3.69	20.60	3.62	20.80	3.70
Ohio	20.20	3.65	20.80	3.53	21.00	3.62
Oregon	21.20	3.76	20.80	3.74	20.90	3.81
Pennsylvania	20.80	3.68	21.00	3.61	21.30	3.65
Texas	20.10	3.80	19.60	3.72	19.60	3.78
Utah	18.80	3.67	18.50	3.60	18.80	3.63
Vermont	20.40	3.88	20.90	3.68	21.40	3.76
Virginia	21.50	3.70	23.00	3.57	23.30	3.66
Washington	19.50	3.76	20.10	3.74	20.30	3.81
Wisconsin	20.80	3.71	19.80	3.68	20.10	3.77
United States	19.70	3.70	19.50	3.63	19.80	3.69

Prices Received for Milk Cows – States and United States: July 2013 with Comparisons

[Animals sold for dairy herd replacement only. Prices estimated in January, April, July, and October]

State	July 2012 (dollars per head)	April 2013 (dollars per head)	July 2013 (dollars per head)
Arizona	1,450	(NA)	(NA)
California	1,300	(NA)	(NA)
Colorado	1,430	(NA)	(NA)
Florida	1,440	(NA)	(NA)
Idaho	1,400	(NA)	(NA)
Illinois	1,490	(NA)	(NA)
Indiana	1,400	(NA)	(NA)
Iowa	1,480	(NA)	(NA)
Kansas	1,400	(NA)	(NA)
Michigan	1,600	(NA)	(NA)
Minnesota	1,410	(NA)	(NA)
Missouri	1,200	(NA)	(NA)
New Mexico	1,350	(NA)	(NA)
New York	1,460	(NA)	(NA)
Ohio	1,460	(NA)	(NA)
Oregon	1,420	(NA)	(NA)
Pennsylvania	1,460	(NA)	(NA)
Texas	1,400	(NA)	(NA)
Utah	1,290	(NA)	(NA)
Vermont	1,550	(NA)	(NA)
Virginia	1,500	(NA)	(NA)
Washington	1,300	(NA)	(NA)
Wisconsin	1,560	(NA)	(NA)
United States	1,420	(NA)	(NA)

(NA) Not available.

Commodity Parity Prices and Price as Percent of Parity Price – United States: September 2013 with Comparisons

[Parity prices are computed under the provisions of Title III, Subtitle a, Section 301 (a) of the Agricultural Adjustment Act of 1938 as amended by the Agricultural Acts of 1948, 1949, and 1956. See January *Agricultural Prices* for details on adjusted base price and parity price computations. Parity data not available for blank cells. Primary source of data for livestock and milk prices is United States Department of Agriculture's Agricultural Marketing Service]

Commodity and unit	Adjusted base price	Parity price			Price as percent of parity		
		September 2012	August 2013	September 2013	September 2012	August 2013	September 2013
	(dollars)	(dollars)	(dollars)	(dollars)	(percent)	(percent)	(percent)
Basic commodities							
All wheatbushel	0.636	18.50	18.70	18.00	45	37	38
Ricecwt	1.65	42.50	48.50	46.70	34	33	35
Cornbushel	0.434	12.10	12.80	12.30	57	49	43
Cotton							
Upland pound	0.072	2.10	2.12	2.04	34	36	37
American Pima pound	0.133	4.11	3.91	3.77	35	32	33
Peanuts pound	0.027	0.758	0.794	0.764	46	32	38
Designated nonbasic							
All milk, to plants ¹cwt	1.75	52.50	51.40	49.50	36	37	38
Honey, extracted ² pound	0.141	4.05	4.14	3.99	43	42	43
Wool and mohair							
Wool pound	0.107	3.03	3.14	3.03	55	49	50
Mohair pound	0.336	9.70	9.88	9.51	43	39	41
Other nonbasic							
Apples, fresh ³ pound	0.032	0.962	0.940	0.906	64	41	55
Barleybushel	0.444	12.70	13.00	12.60	51	47	42
Canolacwt	1.880	53.00	55.30	53.20	51	40	38
Cottonseed ton	17.80	507.00	523.00	504.00	50	41	38
Dry edible beanscwt	3.01	87.70	88.50	85.20	44	45	47
Flaxseedbushel	1.110	32.10	32.60	31.40	41	46	46
Oatsbushel	0.265	7.66	7.79	7.50	49	47	49
Potatoescwt	0.822	24.90	24.20	23.30	29	46	40
Sorghum graincwt	0.758	21.20	22.30	21.50	54	40	38
Soybeansbushel	1.030	29.10	30.30	29.20	49	47	47
Sunflower, allcwt	2.10	60.00	61.70	59.50	48	38	37
Citrus (equivalent on-tree)							
Grapefruitbox	0.697	20.10	20.50	19.70	50	31	44
Lemonsbox	1.32	39.90	38.80	37.40	37	73	80
Orangesbox	0.711	20.30	20.90	20.10	45	48	62
Tangerinesbox	1.49	43.40	43.80	42.20	68	134	139
Livestock and poultry							
Beef cattlecwt	10.00	294.00	294.00	283.00	41	41	43
Calvescwt	13.70	405.00	403.00	388.00	40	42	51
Hogscwt	5.48	161.00	161.00	155.00	35	46	45
Eggs ¹dozen	0.089	2.65	2.62	2.52	48	39	42
Turkeys, live pound	0.057	1.660	1.680	1.610	46	40	41

¹ Seasonally adjusted price as percentage of parity price.

² Wholesale extracted. Adjusted base price derived from state annual averages prices weighted by production. For 1982 through 1985 the national averages are the support prices.

³ Equivalent packinghouse-door returns for California, New York, Oregon, and Washington. Price at point of first sale for other states.

Commodity Parity Prices – United States: September 2013 with Comparisons

[Parity prices are computed under the provisions of Title III, Subtitle a, Section 301 (a) of the Agricultural Adjustment Act of 1938 as amended by the Agricultural Acts of 1948, 1949, and 1956. See January *Agricultural Prices* for details on adjusted base price and parity price computations]

Commodity and unit	Adjusted base price	Parity price			
		September 2012	August 2013	September 2013	
	(dollars)	(dollars)	(dollars)	(dollars)	
Field crops and miscellaneous					
Hops	pound	0.303	8.92	8.91	8.58
Mustard seed	cwt	2.85	82.20	83.80	80.70
Rapeseed	cwt	2.25	65.00	66.10	63.70
Rye	bushel	0.535	15.30	15.70	15.10
Safflower	cwt	2.04	58.90	60.00	57.80
Spearmint oil	pound	1.50	43.70	44.10	42.50
Sweet potatoes	cwt	2.08	64.40	61.10	58.90
Tobacco					
Flue-cured, 11-14	pound	0.185	5.71	5.44	5.24
Fire-cured, 21-23	pound	0.267	8.25	7.85	7.56
Burley, 31	pound	0.188	5.89	5.53	5.32
Maryland, 32	pound	0.167	5.07	4.91	4.73
Dark air-cured, 35-37	pound	0.240	7.46	7.05	6.79
Pennsylvania seedleaf, 41	pound	0.176	5.36	5.17	4.98
Cigar binder, 51	pound	0.610	18.70	17.90	17.30
Noncitrus fruit					
Apples, processing ¹	ton	16.60	481.00	488.00	470.00
Apricots					
Fresh ²	ton	111.00	3,580.00	3,260.00	3,140.00
Dried (California)	ton	252.00	7,550.00	7,410.00	7,130.00
Avocados ²	ton	189.00	5,940.00	5,550.00	5,350.00
Cherries					
Sweet	ton	205.00	6,270.00	6,020.00	5,800.00
Tart	pound	0.033	0.991	0.970	0.934
Cranberry ³	barrel	4.68	141.00	138.00	132.00
Dates (California) ²	ton	161.00	5,160.00	4,730.00	4,560.00
Grapes					
Raisin variety	ton	133.00	3,640.00	3,910.00	3,770.00
Other dried	ton	61.70	1,630.00	1,810.00	1,750.00
Kiwifruit	ton	88.60	2,740.00	2,600.00	2,510.00
Nectarines, fresh (California) ²	ton	54.60	1,580.00	1,600.00	1,550.00
Olives, canning (California) ³	ton	87.70	2,610.00	2,580.00	2,480.00

See footnote(s) at end of table.

--continued

Commodity Parity Prices – United States: September 2013 with Comparisons (continued)

[Parity prices are computed under the provisions of Title III, Subtitle a, Section 301 (a) of the Agricultural Adjustment Act of 1938 as amended by the Agricultural Acts of 1948, 1949, and 1956. See January *Agricultural Prices* for details on adjusted base price and parity price computations]

Commodity and unit	Adjusted base price	Parity price			
		September 2012	August 2013	September 2013	
	(dollars)	(dollars)	(dollars)	(dollars)	
Noncitrus fruit - continued					
Papayas (Hawaii)	pound	0.038	1.28	1.12	1.08
Peaches					
Fresh ⁴	ton	80.20	2,390.00	2,360.00	2,270.00
Dried (California)	ton	48.50	1,560.00	1,430.00	1,370.00
Processing, excludes dried					
Clingstone (California) ³	ton	31.60	970.00	929.00	895.00
Pears					
Fresh ⁴	ton	54.70	1,620.00	1,610.00	1,550.00
Dried (California) ¹	ton	150.00	4,980.00	4,410.00	4,250.00
Plums (California)					
Fresh, equivalent on-tree	ton	58.10	1,710.00	1,710.00	1,640.00
Prunes, dried (California) ¹	ton	143.00	4,310.00	4,200.00	4,050.00
Prunes and plums					
Fresh, excludes California ⁵	ton	61.90	1,820.00	1,820.00	1,750.00
Processing, excludes dried ¹	ton	23.80	734.00	699.00	674.00
Tree nuts ⁶					
Almonds	pound	0.211	6.21	6.20	5.97
Hazelnuts	ton	191.00	5,710.00	5,610.00	5,410.00
Pistachios	pound	0.194	5.71	5.70	5.49
Walnuts	ton	185.00	5,220.00	5,440.00	5,240.00
Vegetables, fresh ⁷					
Carrots ⁸	cwt	2.57	78.40	75.50	72.80
Cauliflower ⁸	cwt	4.04	126.00	119.00	114.00
Celery ⁸	cwt	1.94	58.60	57.00	54.90
Honeydew melons	cwt	1.97	60.90	57.90	55.80
Lettuce	cwt	2.09	66.70	61.40	59.20
Onions ⁸	cwt	1.41	43.40	41.40	39.90
Tomatoes	cwt	4.30	136.00	126.00	122.00

¹ Equivalent returns at processing plant door.

² Equivalent returns at packinghouse door.

³ Equivalent returns for bulk fruit at first delivery point.

⁴ Equivalent packinghouse-door returns for California, New York (apples only), Oregon (except peaches), and Washington. Price at point of first sale for other states.

⁵ Based on "as sold" prices for fresh fruit in all states.

⁶ Prices In-Shell basis except almonds which are shelled basis.

⁷ FOB shipping point prices.

⁸ Includes some processing.

Marketing Year for Specified Commodities

Corn for grain: September 1 to August 31 for United States, Arizona, California, Delaware, Illinois, Indiana, Iowa, Kansas, Kentucky, Maryland, Missouri, Nebraska, New Mexico, Ohio, Pennsylvania, South Dakota, Virginia, and West Virginia; July 1 to June 30 for Texas; August 1 to July 31 for Alabama, Arkansas, Florida, Georgia, Louisiana, Mississippi, North Carolina, Oklahoma, South Carolina, and Tennessee; October 1 to September 30 for Colorado, Connecticut, Idaho, Maine, Massachusetts, Michigan, Minnesota, Montana, Nevada, New Hampshire, New Jersey, New York, North Dakota, Oregon, Rhode Island, Utah, Vermont, Washington, Wisconsin, and Wyoming.

Sorghum for grain: September 1 to August 31 for United States, Arizona, Colorado, Illinois, Kansas, Missouri, Nebraska, New Mexico, and South Dakota; June 1 to May 31 for Texas; August 1 to July 31 for Arkansas, Georgia, Louisiana, Mississippi, and Oklahoma.

Soybeans: September 1 to August 31 for United States and all States except Louisiana, Mississippi, and Texas; July 1 to June 30 for Texas; August 1 to July 31 for Louisiana and Mississippi.

Austrian Winter Peas: July 1 to June 30 for United States, Idaho, Montana, and Oregon.

Dry Edible Peas: July 1 to June 30 for United States, Idaho, Montana, North Dakota, Oregon, and Washington.

Lentils: July 1 to June 30 for United States, Idaho, Montana, North Dakota, and Washington.

Dry Edible Peas Market Year Average Prices Received – States and United States: Marketing Years 2010 through 2012

[Excludes both wrinkled seed peas and Austrian winter peas]

State	2010	2011	2012
	(dollars)	(dollars)	(dollars)
Idaho	11.10	15.40	17.50
Montana	9.13	14.80	14.60
North Dakota	9.47	15.30	15.90
Oregon	20.70	16.00	17.00
Washington	11.50	15.70	17.30
United States	9.77	15.30	15.70

Austrian Winter Peas Market Year Average Prices Received – States and United States: Marketing Years 2010 through 2012

State	2010	2011	2012
	(dollars)	(dollars)	(dollars)
Idaho	17.70	20.00	19.90
Montana	15.50	20.00	21.90
Oregon	20.40	16.20	20.40
United States	17.10	19.50	20.70

Lentils Market Year Average Prices Received – States and United States: Marketing Years 2010 through 2012

State	2010	2011	2012
	(dollars)	(dollars)	(dollars)
Idaho	27.90	31.50	27.80
Montana	23.90	23.70	19.50
North Dakota	25.10	20.40	18.70
Washington	30.20	31.40	27.20
United States	25.70	25.00	20.70

Lentils Prices Received and Farm Marketings by Month – United States: Marketing Years 2010-2011 through 2012-2013

[Marketing year average (MYA) prices are weighted average prices for the United States marketing year of July - June. Monthly farm marketings, based on a sample survey, as percent of total used for calculating MYA prices]

Month	Prices received			Farm marketing percentages		
	2010-2011	2011-2012	2012-2013	2010-2011	2011-2012	2012-2013
	(dollars per cwt)	(dollars per cwt)	(dollars per cwt)	(percent)	(percent)	(percent)
July	27.00	27.30	18.50	1.0	3.0	5.1
August	21.30	24.90	18.20	11.9	6.4	9.6
September	23.30	29.10	21.20	21.6	11.3	10.3
October	25.00	28.70	22.30	11.5	12.5	10.2
November	25.60	24.60	21.30	11.5	8.7	6.5
December	26.80	24.30	18.90	9.4	6.9	8.5
January ¹	28.40	26.80	21.00	7.9	9.5	6.4
February	29.20	23.60	22.60	7.7	5.2	12.7
March	29.70	22.80	20.20	7.1	8.8	12.7
April	28.70	24.90	21.00	5.9	6.8	7.1
May	29.50	22.70	20.40	2.1	8.2	5.5
June	26.00	20.10	22.00	2.4	12.7	5.4
MYA	25.70	25.00	20.70	100.0	100.0	100.0

¹ Second year.

Dry Edible Peas Prices Received and Farm Marketings by Month – United States: Marketing Years 2010-2011 through 2012-2013

[Marketing year average (MYA) prices are weighted average prices for the United States marketing year of July - June. Monthly farm marketings, based on a sample survey, as percent of total used for calculating MYA prices]

Month	Prices received			Farm marketing percentages		
	2010-2011	2011-2012	2012-2013	2010-2011	2011-2012	2012-2013
	(dollars per cwt)	(dollars per cwt)	(dollars per cwt)	(percent)	(percent)	(percent)
July	7.60	12.90	14.80	14.0	13.0	5.4
August	8.77	14.60	14.30	20.4	21.3	20.3
September	8.69	15.30	14.50	10.5	11.7	17.0
October	8.26	16.40	15.30	5.4	10.4	10.5
November	9.04	15.90	16.50	6.4	5.7	7.5
December	10.20	15.80	16.60	7.2	3.6	7.4
January ¹	10.50	15.70	16.30	7.2	7.3	10.0
February	12.10	15.30	16.60	3.6	4.0	8.5
March	10.90	15.70	17.80	9.1	6.3	6.8
April	12.00	16.30	18.70	6.7	8.4	2.9
May	12.60	16.50	18.60	4.8	4.3	1.9
June	14.00	16.10	19.40	4.7	4.0	1.8
MYA	9.77	15.30	15.70	100.0	100.0	100.0

¹ Second year.

Austrian Winter Peas Prices Received and Farm Marketings by Month – United States: Marketing Years 2010-2011 through 2012-2013

[Marketing year average (MYA) prices are weighted average prices for the United States marketing year of July - June. Monthly farm marketings, based on a sample survey, as percent of total used for calculating MYA prices]

Month	Prices received			Farm marketing percentages		
	2010-2011	2011-2012	2012-2013	2010-2011	2011-2012	2012-2013
	(dollars per cwt)	(dollars per cwt)	(dollars per cwt)	(percent)	(percent)	(percent)
July	15.80	(S)	(S)	2.2	(S)	(S)
August	16.70	19.30	20.50	19.8	20.4	8.8
September	16.60	(S)	20.90	28.3	(S)	31.8
October	16.80	19.70	20.90	34.1	26.8	12.2
November	17.70	(S)	(S)	4.3	(S)	(S)
December	(S)	19.10	20.60	(S)	5.7	7.9
January ¹	(S)	19.90	21.00	(S)	18.9	13.5
February	20.00	19.70	21.30	6.5	9.2	15.0
March	(S)	(S)	(S)	(S)	(S)	(S)
April	18.50	(S)	(S)	0.4	(S)	(S)
May	19.00	(S)	(S)	1.2	(S)	(S)
June	(S)	(S)	17.80	(S)	(S)	7.0
MYA	17.10	19.50	20.70	100.0	100.0	100.0

(S) Insufficient number of reports to establish an estimate.

¹ Second year.

Corn Prices Received and Farm Marketings by Month – United States: Marketing Years 2010-2011 through 2012-2013

[Marketing year average (MYA) prices are weighted average prices for the United States marketing year of September - August. Monthly farm marketings, based on a sample survey, as percent of total used for calculating MYA prices]

Month	Prices received			Farm marketing percentages		
	2010-2011	2011-2012	2012-2013	2010-2011	2011-2012	2012-2013
	(dollars per bushel)	(dollars per bushel)	(dollars per bushel)	(percent)	(percent)	(percent)
September	4.08	6.38	6.89	10.7	5.0	11.1
October	4.32	5.73	6.78	16.7	13.9	15.8
November	4.55	5.83	7.01	8.5	12.6	9.4
December	4.82	5.86	6.87	8.2	9.1	7.5
January ¹	4.94	6.07	6.96	15.7	15.2	14.0
February	5.65	6.28	7.04	6.8	8.1	6.2
March	5.53	6.35	7.13	7.4	8.8	8.7
April	6.36	6.34	6.97	5.9	5.3	4.9
May	6.32	6.34	6.97	4.7	5.1	5.2
June	6.38	6.37	6.97	5.3	5.9	5.8
July	6.33	7.14	6.79	5.5	5.7	6.0
August	6.88	7.63	6.21	4.6	5.3	5.4
MYA	5.18	6.22	6.89	100.0	100.0	100.0

¹ Second year.

Sorghum Grain Market Year Average Prices Received – States and United States: Marketing Years 2010 through 2012

State	2010	2011	2012
	(dollars per cwt)	(dollars per cwt)	(dollars per cwt)
Arizona	9.10	12.50	12.80
Arkansas	7.14	10.20	11.10
Colorado	9.00	10.70	12.50
Georgia	6.65	11.70	12.70
Illinois	10.40	10.50	12.00
Kansas	9.00	10.70	12.00
Louisiana	6.90	10.20	11.50
Mississippi	7.02	10.20	10.90
Missouri	10.20	11.00	12.30
Nebraska	8.74	10.50	12.10
New Mexico	9.60	10.60	13.30
Oklahoma	9.00	10.80	12.00
South Dakota	8.56	10.20	11.90
Texas	7.26	10.40	11.20
United States	8.96	10.70	11.30

Sorghum Grain Farm Marketing Percent by Month – States and United States: Marketing Years 2011-2012 and 2012-2013

[Monthly farm marketings, based on a sample survey, as a percent of total used for calculating marketing year average prices. Blank cells indicate month is outside State's designated marketing year]

State and Marketing Year	Jun	Jul	Aug	Sep	Oct	Nov	Dec	Jan	Feb	Mar	Apr	May	Jun	Jul	Aug
	(%)	(%)	(%)	(%)	(%)	(%)	(%)	(%)	(%)	(%)	(%)	(%)	(%)	(%)	(%)
Arkansas															
2011-2012			13	48	18	3	8	7	1	1	-	-	-	1	
2012-2013			49	30	4	2	4	5	1	1	3	-	1	-	
Illinois															
2011-2012				3	15	38	1	13	1	2	22	-	-	-	5
2012-2013				4	2	28	9	15	6	10	20	2	3	1	
Kansas															
2011-2012				1	11	28	19	13	9	7	4	3	2	2	1
2012-2013				2	12	25	9	17	6	12	4	4	4	3	2
Louisiana															
2011-2012			61	14	2	2	2	5	1	1	-	-	-	12	
2012-2013			65	20	6	1	1	4	2	-	-	-	-	1	
Missouri															
2011-2012				8	24	14	8	12	3	14	4	-	6	-	7
2012-2013				7	9	31	11	12	7	6	3	4	4	4	2
Nebraska															
2011-2012				1	20	17	22	13	7	8	2	3	3	3	1
2012-2013				6	15	13	9	17	8	10	6	6	5	2	3
Oklahoma															
2011-2012			9	4	3	26	21	10	7	11	4	1	1	3	
2012-2013			19	7	10	19	9	12	5	8	2	3	4	2	
Texas															
2011-2012	35	33	15	1	1	3	5	3	1	1	1	1			
2012-2013	7	39	18	4	10	9	4	5	1	2	-	1			
United States															
2011-2012				2.6	8.1	16.4	12.2	8.5	5.2	4.4	2.7	1.6	4.2	19.4	14.7
2012-2013				6.4	12.2	17.7	6.5	11.1	3.5	6.5	2.5	2.0	5.2	10.6	15.8

- Represents zero.

Sorghum Grain Prices Received by Month – States and United States: Marketing Years 2011-2012 and 2012-2013

State	2011-2012							
	June	July	August	September	October	November	December	January ¹
	(dollars per cwt)	(dollars per cwt)	(dollars per cwt)	(dollars per cwt)	(dollars per cwt)	(dollars per cwt)	(dollars per cwt)	(dollars per cwt)
Arkansas	(S)	(S)	10.90	10.10	9.71	9.74	(D)	11.00
Illinois	11.60	12.20	(D)	(S)	10.30	10.20	(D)	11.70
Kansas	12.00	11.60	12.20	11.60	10.70	10.70	10.50	10.80
Louisiana	(S)	(D)	10.10	10.20	(D)	(D)	(D)	(D)
Missouri	(D)	12.10	(D)	10.20	11.30	10.70	10.80	10.90
Nebraska	12.30	12.40	11.70	11.50	10.70	10.40	9.74	10.20
Oklahoma	12.30	11.10	11.80	11.90	10.40	10.20	10.50	10.80
Texas	10.00	10.30	10.60	12.10	10.90	10.70	11.80	11.40
United States	10.50	10.40	10.70	10.50	10.70	10.70	10.50	10.80

State	2012-2013							
	June	July	August	September	October	November	December	January ¹
	(dollars per cwt)	(dollars per cwt)	(dollars per cwt)	(dollars per cwt)	(dollars per cwt)	(dollars per cwt)	(dollars per cwt)	(dollars per cwt)
Arkansas	(S)	(D)	11.10	11.00	10.10	(D)	(D)	11.00
Illinois	(D)	(S)	(D)	12.80	(D)	11.40	11.40	11.80
Kansas	10.40	12.50	13.30	12.40	12.20	12.30	12.10	12.20
Louisiana	(S)	11.10	11.60	11.30	10.90	(D)	(D)	(D)
Missouri	(D)	(S)	12.90	11.80	11.90	12.40	12.30	11.90
Nebraska	10.90	12.00	12.20	11.70	12.40	12.20	11.70	12.20
Oklahoma	11.10	12.20	12.80	11.80	12.00	12.10	11.70	11.80
Texas	9.23	10.50	10.90	11.50	12.70	12.80	12.50	11.70
United States	9.56	10.60	11.30	11.50	12.40	12.40	12.20	12.00

See footnote(s) at end of table.

--continued

Sorghum Grain Prices Received by Month – States and United States: Marketing Years 2011-2012 and 2012-2013 (continued)

State	2011-2012						
	February	March	April	May	June	July	August
	(dollars per cwt)	(dollars per cwt)	(dollars per cwt)	(dollars per cwt)	(dollars per cwt)	(dollars per cwt)	(dollars per cwt)
Arkansas	(D)	(D)	(D)	(S)	(S)	(D)	11.10
Illinois	(D)	(D)	(D)	(D)	(D)	(S)	(D)
Kansas	10.80	10.90	10.60	10.30	10.40	12.50	13.30
Louisiana	(D)	(D)	(D)	(S)	(S)	11.10	11.60
Missouri	10.70	10.90	(D)	(S)	(D)	(S)	12.90
Nebraska	10.60	10.90	10.90	10.90	10.90	12.00	12.20
Oklahoma	10.90	11.20	10.90	10.40	11.10	12.20	12.80
Texas	11.20	11.40	11.60	11.50	9.23	10.50	10.90
United States	10.80	10.90	10.60	10.40	9.56	10.60	11.30
State	2012-2013						
	February	March	April	May	June	July	August
	(dollars per cwt)	(dollars per cwt)	(dollars per cwt)	(dollars per cwt)	(dollars per cwt)	(dollars per cwt)	(dollars per cwt)
Arkansas	(D)	(D)	(D)	(D)	(D)	(S)	(D)
Illinois	12.30	12.40	12.90	(D)	11.90	(D)	(D)
Kansas	12.10	12.20	11.20	11.30	11.80	10.60	9.88
Louisiana	(D)	(D)	(D)	(D)	(D)	(D)	8.85
Missouri	12.80	12.70	11.90	(D)	(D)	12.50	11.90
Nebraska	12.20	12.50	(D)	12.00	12.40	11.50	10.20
Oklahoma	11.70	12.00	11.20	11.10	11.40	10.80	8.81
Texas	12.20	11.80	10.70	11.50	(D)	9.48	8.68
United States	12.10	12.20	11.60	11.40	11.10	9.63	8.82

(D) Withheld to avoid disclosing data for individual operations.

(S) Insufficient number of reports to establish an estimate.

¹ Second year.

Soybean Market Year Average Prices Received – States and United States: Marketing Years 2010 through 2012

State	2010 (dollars per bushel)	2011 (dollars per bushel)	2012 (dollars per bushel)
Alabama	11.10	12.00	14.60
Arkansas	10.90	12.30	14.30
Delaware	12.20	12.20	14.40
Florida	11.00	11.00	14.00
Georgia	11.70	12.10	14.60
Illinois	11.80	12.80	14.60
Indiana	11.50	12.70	14.70
Iowa	11.20	12.60	14.40
Kansas	11.50	12.10	14.30
Kentucky	11.40	12.40	14.50
Louisiana	10.50	12.00	14.70
Maryland	12.00	12.10	14.20
Michigan	11.10	12.10	14.00
Minnesota	10.90	12.40	14.30
Mississippi	10.40	12.00	14.50
Missouri	11.70	12.50	14.50
Nebraska	11.00	12.00	14.10
New Jersey	11.70	12.10	13.90
New York	11.40	12.30	13.60
North Carolina	12.00	12.10	14.00
North Dakota	10.90	11.90	14.00
Ohio	11.50	13.00	14.60
Oklahoma	11.40	11.90	14.40
Pennsylvania	12.10	12.50	14.20
South Carolina	11.80	12.00	14.50
South Dakota	10.90	12.20	14.20
Tennessee	11.10	12.20	14.60
Texas	10.40	12.00	14.60
Virginia	12.00	12.10	14.00
West Virginia	12.00	12.40	14.30
Wisconsin	10.80	12.40	14.00
United States	11.30	12.50	14.40

Soybean Prices Received by Month – States and United States: Marketing Years 2011-2012 and 2012-2013

State	2011-2012						
	August (dollars per bushel)	September (dollars per bushel)	October (dollars per bushel)	November (dollars per bushel)	December (dollars per bushel)	January ¹ (dollars per bushel)	February (dollars per bushel)
Arkansas	13.20	11.80	12.00	12.10	11.80	12.20	12.40
Illinois	13.70	12.80	11.90	11.90	11.80	12.10	12.40
Indiana	13.70	12.90	11.80	11.80	11.90	12.20	12.50
Iowa	13.50	12.60	11.80	11.60	11.30	11.80	12.10
Kansas	13.50	12.10	11.60	11.30	11.00	11.50	12.00
Kentucky	13.50	12.60	12.00	12.10	11.70	12.30	12.50
Louisiana	11.80	12.00	12.00	11.90	11.70	12.20	12.60
Michigan	13.30	13.00	11.60	11.50	11.20	11.70	12.10
Minnesota	13.00	11.90	11.50	11.50	11.20	11.70	12.00
Mississippi	13.60	11.80	11.80	11.90	12.00	11.90	12.30
Missouri	13.70	12.70	11.90	11.80	11.80	12.00	12.40
Nebraska	13.30	11.70	11.70	11.50	11.20	11.40	11.90
North Carolina	14.00	13.30	11.90	11.40	11.30	11.80	12.40
North Dakota	12.80	11.60	11.40	11.20	11.10	11.30	11.70
Ohio	13.60	13.50	11.90	11.80	11.80	12.20	12.60
South Dakota	13.00	11.50	11.50	11.50	11.10	11.60	12.00
Tennessee	13.00	11.70	11.90	12.10	12.00	12.10	12.40
Wisconsin	13.40	13.40	11.70	11.90	11.40	11.90	12.20
United States	13.40	12.20	11.80	11.70	11.50	11.90	12.20
State	2012-2013						
	August (dollars per bushel)	September (dollars per bushel)	October (dollars per bushel)	November (dollars per bushel)	December (dollars per bushel)	January ¹ (dollars per bushel)	February (dollars per bushel)
Arkansas	14.70	14.10	14.30	14.50	14.60	14.50	14.90
Illinois	16.70	15.20	14.40	14.70	14.30	14.30	14.70
Indiana	16.40	14.80	14.50	14.60	14.50	14.60	14.80
Iowa	16.80	14.40	14.10	14.30	14.30	14.10	14.60
Kansas	16.60	14.40	14.30	14.10	14.10	14.00	14.50
Kentucky	16.40	14.80	14.30	14.40	14.50	14.50	14.60
Louisiana	13.90	15.00	14.80	14.50	14.50	15.40	14.70
Michigan	15.90	13.60	14.00	13.80	14.10	13.50	13.60
Minnesota	16.60	14.20	14.10	14.10	14.10	14.20	14.40
Mississippi	(D)	14.30	13.90	14.40	14.80	14.70	15.90
Missouri	16.90	15.30	14.40	14.30	14.30	14.30	14.80
Nebraska	16.60	13.70	14.00	14.00	14.20	13.90	14.40
North Carolina	17.00	16.20	14.30	13.80	13.70	14.00	14.20
North Dakota	15.40	14.20	13.90	13.90	14.10	13.80	14.10
Ohio	16.50	14.80	14.30	14.30	14.50	14.60	14.80
South Dakota	16.00	14.20	13.80	14.20	14.20	13.90	14.40
Tennessee	15.00	14.30	14.50	14.50	14.90	14.50	15.10
Wisconsin	16.60	13.50	13.90	14.10	14.00	13.90	14.40
United States	16.20	14.30	14.20	14.30	14.30	14.30	14.60

See footnote(s) at end of table.

--continued

Soybean Prices Received by Month – States and United States: Marketing Years 2011-2012 and 2012-2013 (continued)

State	2011-2012					
	March	April	May	June	July	August
	(dollars per bushel)	(dollars per bushel)	(dollars per bushel)	(dollars per bushel)	(dollars per bushel)	(dollars per bushel)
Arkansas	13.20	14.00	13.80	14.30	16.50	14.70
Illinois	13.10	14.10	14.30	14.10	15.60	16.70
Indiana	13.10	14.00	14.10	14.10	15.90	16.40
Iowa	12.80	13.60	13.80	13.70	15.00	16.80
Kansas	12.90	13.60	13.70	13.90	15.50	16.60
Kentucky	13.10	14.20	14.50	13.80	16.40	16.40
Louisiana	12.90	13.90	13.60	(D)	14.20	13.90
Michigan	12.90	13.70	13.70	13.90	15.50	15.90
Minnesota	12.80	13.70	13.70	13.60	15.20	16.60
Mississippi	13.10	13.60	(D)	14.00	(D)	(D)
Missouri	13.10	13.90	14.10	14.10	16.20	16.90
Nebraska	12.70	13.60	13.80	13.60	15.30	16.60
North Carolina	13.30	14.00	14.10	14.50	15.70	17.00
North Dakota	12.60	13.20	13.60	13.50	14.70	15.40
Ohio	13.50	13.70	14.30	14.20	15.70	16.50
South Dakota	12.80	13.70	13.30	13.50	14.90	16.00
Tennessee	13.40	14.10	14.30	13.60	15.60	15.00
Wisconsin	12.90	13.40	13.70	14.10	14.80	16.60
United States	13.00	13.80	14.00	13.90	15.40	16.20
State	2012-2013					
	March	April	May	June	July	August
	(dollars per bushel)	(dollars per bushel)	(dollars per bushel)	(dollars per bushel)	(dollars per bushel)	(dollars per bushel)
Arkansas	14.10	14.20	15.00	15.20	14.80	(D)
Illinois	14.70	14.60	15.10	15.50	15.50	14.20
Indiana	15.00	14.70	15.10	15.60	15.80	14.90
Iowa	14.60	14.40	14.90	15.20	15.40	14.20
Kansas	14.40	14.00	14.60	14.90	15.00	13.90
Kentucky	15.00	14.60	15.10	15.50	(D)	13.60
Louisiana	14.00	14.40	15.10	15.90	(D)	(D)
Michigan	14.20	13.80	14.50	15.00	15.00	14.40
Minnesota	14.40	14.20	14.70	14.80	15.00	14.30
Mississippi	14.00	14.50	(D)	15.60	14.10	12.70
Missouri	14.80	14.40	14.80	15.30	15.50	13.70
Nebraska	14.40	14.10	14.70	15.00	15.10	13.50
North Carolina	14.20	14.40	15.00	15.00	14.70	14.20
North Dakota	13.90	13.50	14.00	14.40	14.30	13.10
Ohio	14.80	14.50	14.90	15.30	15.70	14.60
South Dakota	14.30	14.00	14.60	14.70	14.90	13.80
Tennessee	14.90	14.60	15.00	15.50	(D)	13.20
Wisconsin	14.40	14.10	14.60	14.90	15.10	14.40
United States	14.60	14.40	14.90	15.10	15.30	14.10

(D) Withheld to avoid disclosing data for individual operations.

¹ Second year.

Soybean Farm Marketing Percent by Month – States and United States: Marketing Years 2011-2012 and 2012-2013

[Monthly farm marketings, based on a sample survey, as a percent of total used for calculating marketing year average prices. Blank cells indicate month is outside State's designated marketing year]

State and Marketing Year	Aug	Sep	Oct	Nov	Dec	Jan	Feb	Mar	Apr	May	Jun	Jul	Aug
	(%)	(%)	(%)	(%)	(%)	(%)	(%)	(%)	(%)	(%)	(%)	(%)	(%)
Arkansas													
2011-2012		9	26	27	10	13	3	2	1	-	1	1	7
2012-2013		16	36	17	13	8	3	1	1	1	-	1	3
Illinois													
2011-2012		2	15	5	10	24	12	9	7	4	5	5	2
2012-2013		4	20	9	10	23	9	4	5	7	3	4	2
Indiana													
2011-2012		3	28	8	5	15	11	9	5	5	4	4	3
2012-2013		6	31	8	7	15	7	5	5	6	3	4	3
Iowa													
2011-2012		3	27	4	6	12	11	11	9	3	4	6	4
2012-2013		11	20	9	5	12	7	8	6	9	5	5	3
Kansas													
2011-2012		3	27	11	14	11	12	8	5	2	1	3	3
2012-2013		4	28	11	10	17	7	5	5	5	3	3	2
Kentucky													
2011-2012		1	17	19	11	28	10	6	3	1	1	2	1
2012-2013		4	16	13	9	36	6	5	3	4	2	1	1
Louisiana													
2011-2012	11	33	22	8	8	9	5	2	1	-	-	1	
2012-2013	14	29	22	8	14	9	2	1	1	-	-	-	
Michigan													
2011-2012		1	34	14	8	12	10	9	5	3	2	1	1
2012-2013		7	40	11	5	11	6	3	3	5	4	3	2
Minnesota													
2011-2012		6	22	6	7	13	11	9	6	4	7	6	3
2012-2013		24	14	4	7	13	6	5	5	6	6	8	2
Mississippi													
2011-2012	2	20	22	10	22	14	6	2	1	-	-	1	
2012-2013	3	24	17	7	33	7	5	1	1	1	1	-	
Missouri													
2011-2012		4	24	12	10	15	11	10	6	2	2	3	1
2012-2013		3	23	15	8	15	7	6	6	7	5	3	2
Nebraska													
2011-2012		5	31	7	12	13	13	7	5	1	2	2	2
2012-2013		14	29	5	12	14	6	5	3	5	3	3	1
North Carolina													
2011-2012		1	9	28	20	17	8	5	4	3	1	1	3
2012-2013		1	7	27	19	21	6	6	3	3	2	2	3
North Dakota													
2011-2012		5	24	8	9	14	16	9	4	3	4	3	1
2012-2013		23	14	6	15	16	7	4	3	3	3	4	2
Ohio													
2011-2012		1	17	13	8	12	12	10	7	4	5	6	5
2012-2013		5	24	8	9	23	8	5	5	5	3	3	2
South Dakota													
2011-2012		4	29	4	7	11	14	10	7	4	4	3	3
2012-2013		23	14	4	11	12	9	4	4	5	4	7	3
Tennessee													
2011-2012		4	38	23	9	13	3	3	2	1	1	2	1
2012-2013		8	27	23	11	16	6	2	2	2	1	1	1
Wisconsin													
2011-2012		1	32	10	5	13	8	6	9	1	13	1	1
2012-2013		14	37	7	4	12	6	5	3	5	3	3	1
United States													
2011-2012		3.8	23.8	8.8	8.5	15.0	11.1	8.7	5.9	3.0	4.2	4.0	3.2
2012-2013		11.7	22.3	8.7	9.3	15.9	7.1	5.0	4.3	5.9	3.6	3.9	2.3

- Represents zero.

Reliability of Prices Received Estimates

Definition: Prices received represent sales from producers to first buyers. They include all grades and qualities. The average commodity price from the survey multiplied by the total quantity marketed theoretically should give the total cash receipts for the commodity.

Survey procedures: Primary sales data used to determine grain prices were obtained from probability samples of about 1900 mills and elevators. These procedures ensure that virtually all grain moving into commercial channels has a chance of being included in the survey. Generally, States surveyed account for 90 percent or more of total United States production. Livestock prices are obtained from packers, stockyards, auctions, dealers, and market check data from AMS-USDA, private marketing organizations, and state commodity groups and agencies. Inter-farm sales of grain and livestock are not included since they represent very small percentages of the total sales. Grain marketed for seed is also excluded. Fruit and vegetable prices are obtained from sample surveys and market check data from AMS-USDA, private marketing organizations, state agencies, and universities.

Summary and estimation procedures: Survey quantities sold are expanded by strata to state levels and used to weight average strata prices to a state average. State prices are then weighted to a United States price based on expanded sales. Recommendations are prepared by the State Field Offices and reviewed by the Agricultural Statistics Board in Washington, D.C. State recommendations are reviewed for reasonableness with survey data, other States, and recent historic estimates.

Revisions: For most items, the current month's preliminary price represents a 3-5 day period around the 15th of the month. Previous month's prices represent actual dollars received for quantities sold during the entire month. Revisions are published in monthly issues of *Agricultural Prices*.

Reliability: United States price estimates based on probability surveys generally have a sampling error of less than one percent for the major commodities such as corn, wheat, soybeans, cotton, and rice. Current methods of summarization for non-probability commodities are not designed directly to calculate sampling errors. However, analytical measures approximate the United States relative sampling errors at around five percent. Any non-sampling errors are attributed to such things as the inability to obtain correct information, differences in interpreting questions or definitions, mistakes in coding or processing the data, etc. Efforts are made at each step in the survey process to minimize these non-sampling errors.

Prices Paid by Farmers

The September Index of Prices Paid for Commodities and Services, Interest, Taxes, and Farm Wage Rates (PPITW), at 213 (1990-1992=100), is down 1.4 percent from August and down 1.8 percent from September 2012.

Production index: The September index, at 224, decreased 2.2 percent from last month and 3.4 percent from last year. Lower prices in September for concentrates, nitrogen, feed grains, and mixed fertilizer more than offset higher prices for feeder cattle, diesel, LP gas, and feeder pigs.

Feed: The September index, at 237, decreased 7.1 percent from August and decreased 17 percent from last September. Since August, prices for concentrates, feed grains, complete feeds, supplements, and hay & forages are lower.

Livestock and poultry: The September index, at 174, increased 1.8 percent from last month and 11 percent from last year. Since August, prices for feeder cattle and feeder pigs are higher. The September feeder cattle price, at \$153.90 per cwt, is up \$2.20 per cwt from the August price. September feeder pigs averaged \$142.00 per cwt, up \$8.00 per cwt from August.

Fertilizer: The September index, at 251, is down 10 percent from August and 22 percent below September a year ago. Since August, prices for nitrogen, mixed fertilizer, and potash & phosphate are lower.

Chemicals: The September index, at 157, decreased 0.6 percent from August but increased 1.9 percent from last September. Compared with last month, prices for herbicides, insecticides, and fungicides/other are lower.

Fuels: The September index, at 366, is up 1.7 percent from a month earlier but 1.3 percent below September 2012. Compared with last month, prices are higher for diesel and LP gas but lower for gasoline.

Machinery: The September index, at 263, is unchanged from August but 1.5 percent above last September. Compared with last month, prices for self-propelled machinery are lower.

Consumer price index: The August 2013 Consumer Price Index, as issued by the Bureau of Labor Statistics, for all urban consumers (CPI-U) increased 0.1 percent before seasonal adjustment to a level of 233.877 (1982-1984=100). The July index is 233.596. For the 12 month period ending in August, the overall index increased 1.5 percent.

Prices Paid Indexes and Related Parity Ratios – United States: September 2013 with Comparisons

[Revised historical price indexes for months not shown are available at www.nass.usda.gov]

Indexes and ratios	1910-1914 Base			1990-1992 Base		
	September 2012	August 2013	September 2013	September 2012	August 2013	September 2013
	(percent)	(percent)	(percent)	(percent)	(percent)	(percent)
Prices paid by farmers for commodities, services, interest, taxes, and wage rates (PPITW)	2892	2881	2831	217	216	213
Production	2252	2220	2169	232	229	224
Feed	1393	1244	1155	285	255	237
Livestock and poultry	2004	2186	2221	157	171	174
Seeds	3606	3776	3776	364	381	381
Fertilizer	1180	1028	922	322	280	251
Chemicals	954	974	972	154	158	157
Fuels	2859	2779	2827	371	360	366
Supplies and repairs	1220	1222	1219	172	172	172
Autos and trucks	3124	3170	3161	117	119	119
Machinery	6493	6603	6585	259	263	263
Building materials	2396	2438	2442	176	179	180
Services and rent	2193	2245	2246	(NA)	(NA)	(NA)
Services	(NA)	(NA)	(NA)	168	172	172
Rent	(NA)	(NA)	(NA)	212	217	217
Interest ¹	3684	3594	3594	147	143	143
Taxes ²	6080	6273	6273	227	234	234
Wage rates	7340	7696	7696	196	206	206
Production, interest, taxes, and wage rates (PITW)	3029	3008	2948	225	224	219
Family living-CPI ³	2198	2221	2224	172	173	174
Ratio (received/paid)	(NA)	(NA)	(NA)	90	88	87
Parity ratio ⁴	43	42	42	(NA)	(NA)	(NA)
Parity ratio adjusted ⁵	44	43	43	(NA)	(NA)	(NA)
PPITW adjusted for productivity ⁶	1500	1486	1479	(NA)	(NA)	(NA)
Crop sector (PPITW)	(NA)	(NA)	(NA)	222	223	220
Livestock sector (PPITW)	(NA)	(NA)	(NA)	212	209	205
Farm sector (production)	(NA)	(NA)	(NA)	256	250	242
Non-farm sector (production)	(NA)	(NA)	(NA)	219	217	213

(NA) Not available.

¹ Interest per acre on farm real estate debt and interest rate on farm non-real estate debt.

² Farm real estate taxes payable per acre.

³ Bureau of Labor Statistics, Consumer Price Index for all urban consumers (CPI-U), for the previous month converted by the USDA.

⁴ Ratio of index of prices received to PPITW (1910-1914=100).

⁵ Based on estimated cash receipts, from marketings and government payments, the preliminary adjustment factor is 1.044 for 2013 and the revised factor is 1.041 for 2012.

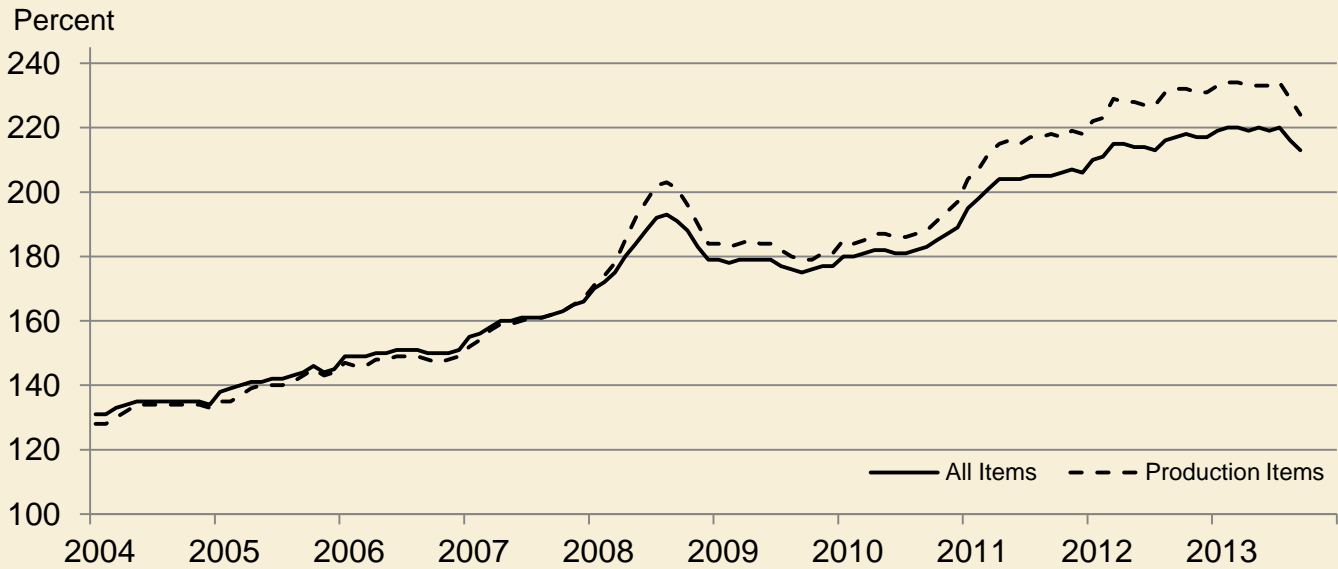
⁶ PPITW is adjusted based on productivity trend for the prior 15 years.

Prices Paid Indexes and Annual Weights for Input Components and Sub-components – United States: September 2013 with Comparisons

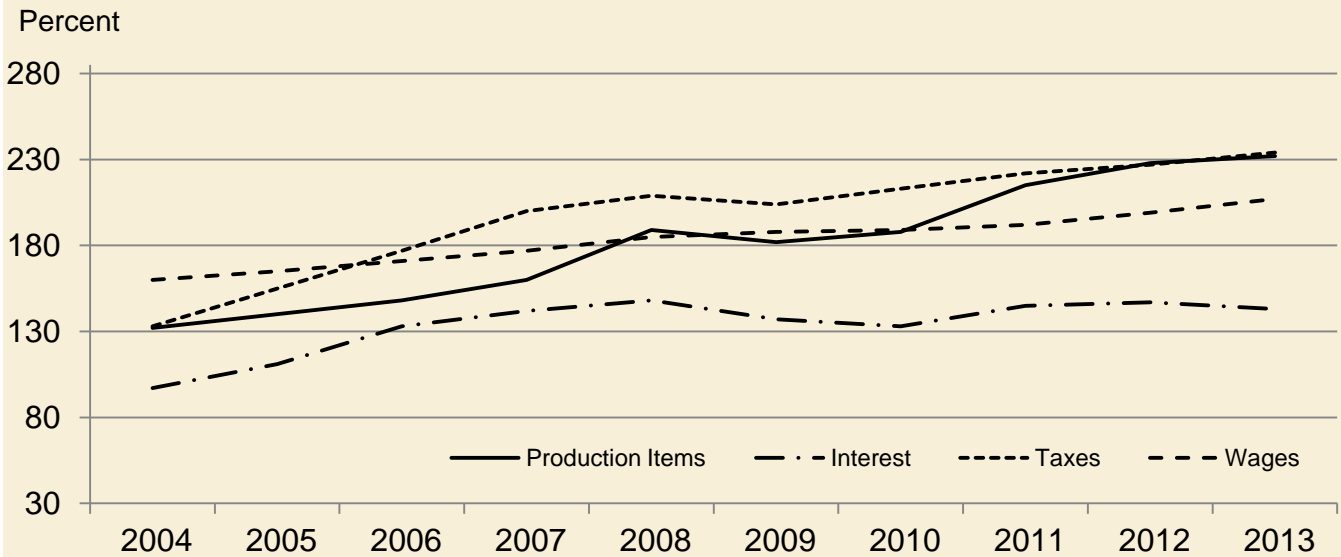
[Revised historical price indexes for months not shown are available at www.nass.usda.gov. Relative weights are a five year moving average]

	Relative weights		Indexes (1990-1992=100)		
	2012	2013	September 2012	August 2013	September 2013
	(percent)	(percent)	(percent)	(percent)	(percent)
Production items	71.1	71.9	232	229	224
Feed	12.7	13.4	285	255	237
Feed grains	1.8	1.9	294	261	225
Complete feeds	6.2	6.6	290	264	259
Hay and forages	1.6	1.7	239	234	227
Concentrates	2.0	2.1	297	252	194
Supplements	1.1	1.1	288	229	218
Livestock and poultry	8.3	8.0	157	171	174
Feeder cattle	6.5	6.3	171	179	182
Feeder pigs	0.7	0.6	46	146	155
Milk cow replacements	0.7	0.7	126	121	121
Poultry	0.5	0.5	166	166	166
Seeds	4.3	4.4	364	381	381
Field crops	3.9	4.0	384	402	402
Grasses and legumes	0.4	0.4	178	184	184
Fertilizer	5.7	6.1	322	280	251
Mixed fertilizer	2.5	2.7	286	268	246
Nitrogen	2.4	2.6	340	278	238
Potash and phosphate	0.8	0.9	382	328	311
Chemicals	3.2	3.2	154	158	157
Herbicides	2.0	2.0	139	141	140
Insecticides	0.7	0.7	177	184	183
Fungicides and other	0.5	0.5	185	190	190
Fuels	4.0	4.0	371	360	366
Diesel	2.5	2.5	419	391	397
Gasoline	0.8	0.8	333	309	306
LP gas	0.7	0.7	238	311	327
Supplies and repairs	4.6	4.5	172	172	172
Supplies	1.5	1.5	167	167	167
Repairs	3.0	3.0	174	175	174
Autos and trucks	1.2	1.2	117	119	119
Autos	0.2	0.2	115	116	115
Trucks	1.1	1.1	118	120	119
Machinery	4.3	4.5	259	263	263
Tractors	0.9	1.0	214	216	216
Self-propelled	1.7	1.8	274	280	278
Other machinery	1.6	1.7	268	273	273
Building materials	4.2	4.1	176	179	180
Services	12.0	11.7	168	172	172
Custom rates	1.2	1.2	157	157	157
Other services	10.7	10.5	170	174	174
Rent	6.6	6.7	212	217	217
Cash	3.5	3.6	270	278	278
Share	3.0	3.1	145	147	147
Interest	3.4	3.2	147	143	143
Taxes	3.1	3.1	227	234	234
Wage rates	7.2	6.9	196	206	206
Family living-CPI	15.3	15.0	172	173	174

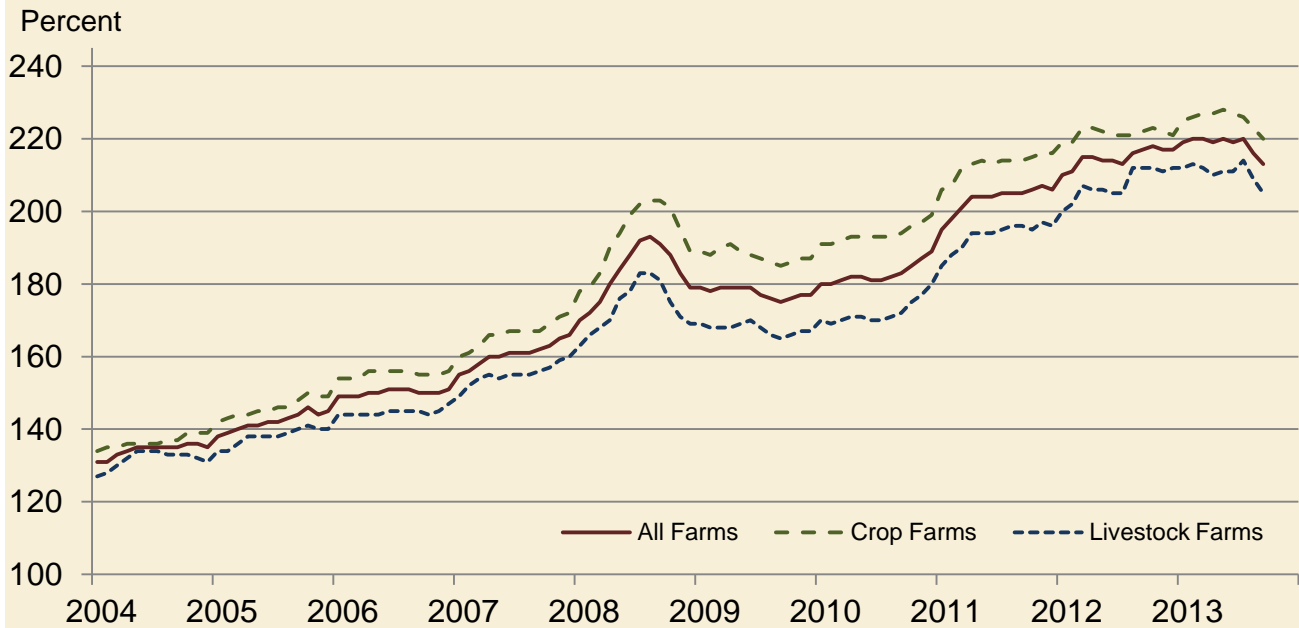
Paid Indexes by Month, All Items and Production Items – United States: 1990-1992=100



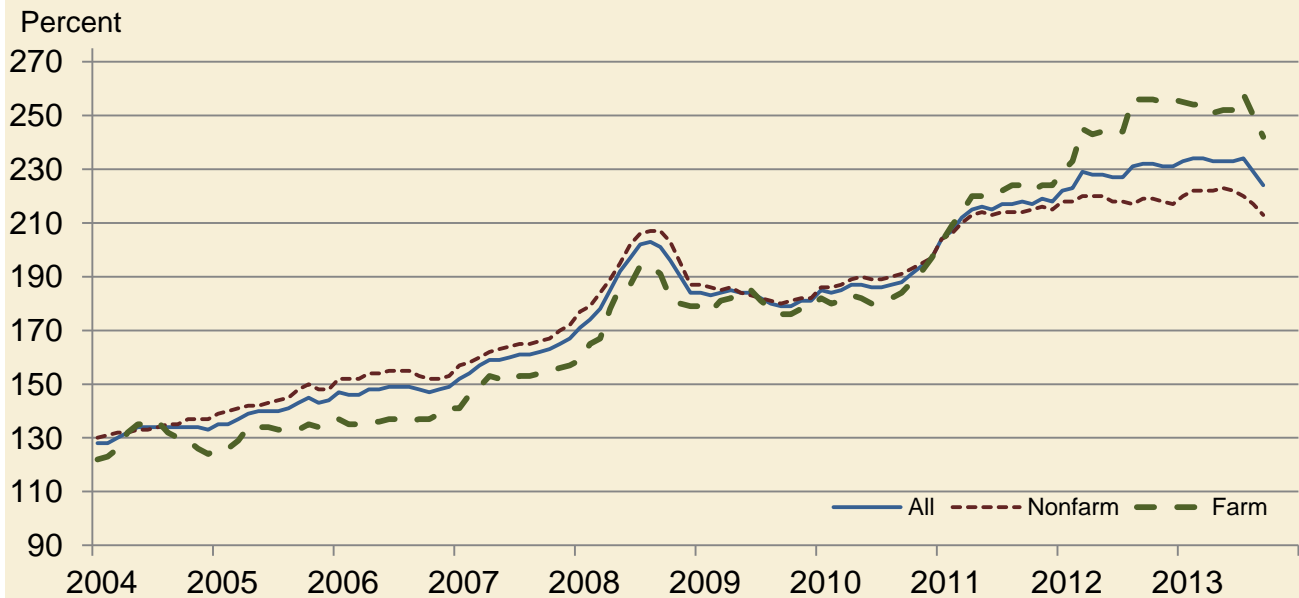
Paid Indexes, Annual Averages, Production Items, Interest, Taxes, and Wages – United States: 1990-1992=100



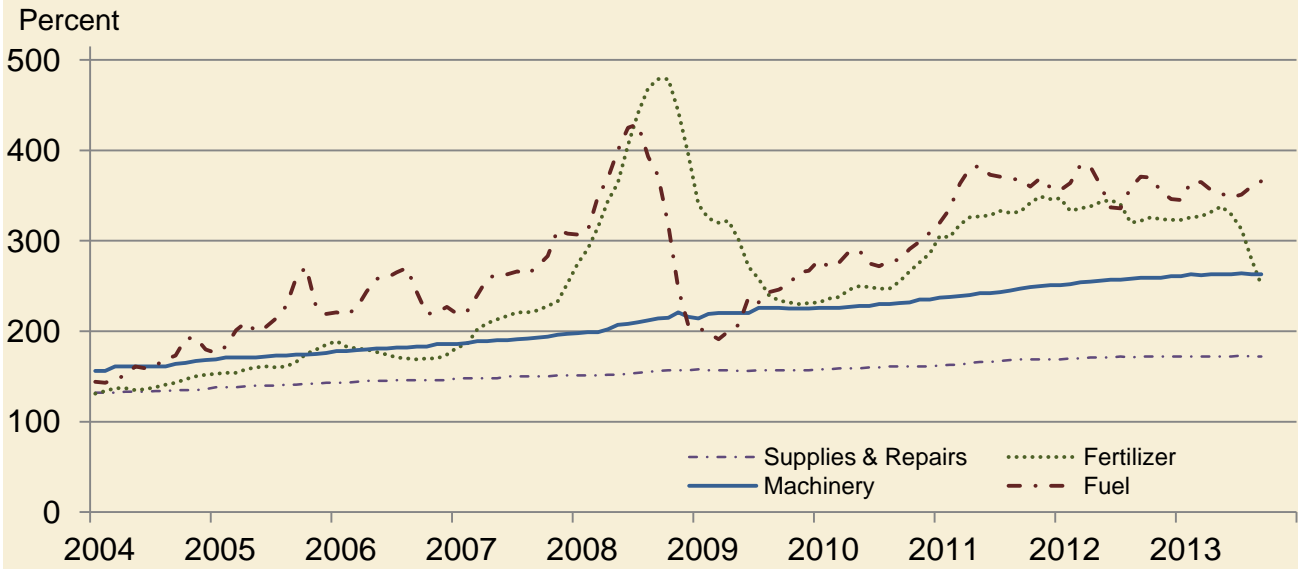
Paid Indexes by Farm Type and Month, All Items – United States: 1990-1992=100



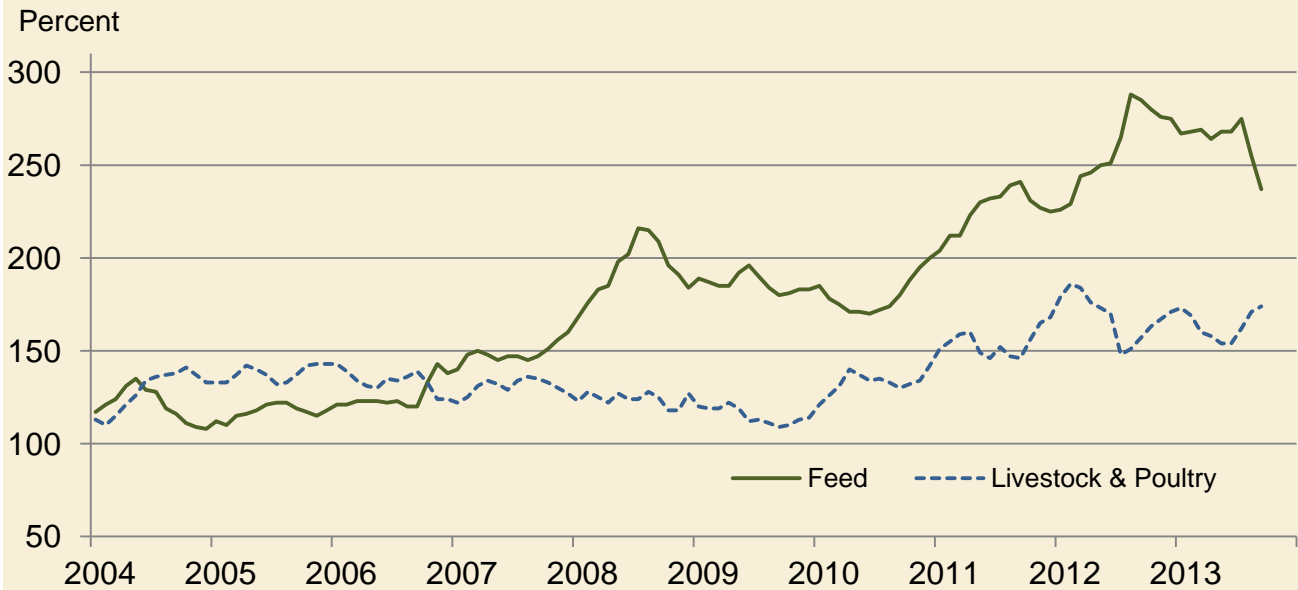
Paid Indexes by Origin and Month, All Production Items – United States: 1990-1992=100



Paid Indexes by Non-Farm Sector and Month, Supplies & Repairs, Fertilizer, Machinery, and Fuel – United States: 1990-1992=100



Paid Indexes by Month, Feed and Livestock & Poultry – United States: 1990-1992=100



Feed Price Ratios – United States: September 2013 with Comparisons

Feed price ratio ¹	September 2012	August 2013	Preliminary September 2013
Broiler-feed: pounds of broiler grower feed equal in value to 1 pound of broiler, live weight ²	2.8	3.3	3.5
Market egg feed: pounds of laying feed equal in value to 1 dozen eggs ³	7.0	6.1	6.4
Hog-corn: bushels of corn equal in value to 100 pounds of hog, live weight	8.1	11.9	13.1
Milk-feed: pounds of 16% mixed dairy feed equal in value to 1 pound of whole milk ⁴	1.59	1.68	1.86
Steer and heifer-corn: bushels of corn equal in value to 100 pounds of steer & heifers, live weight	18.1	20.1	23.9
Turkey-feed: pounds of turkey grower equal in value to 1 pound of turkey, live weight ⁵	4.8	4.6	4.9

¹ Effective January 1995, prices of commercial prepared feeds are based on current United States prices received for corn, soybeans, alfalfa hay, and all wheat.

² The price of commercial prepared broiler feed is based on current United States prices received for corn and soybeans. The modeled feed uses 58 percent corn and 42 percent soybeans.

³ The price of commercial prepared layer feed is based on current United States prices received for corn and soybeans. The modeled feed uses 75 percent corn and 25 percent soybeans.

⁴ The price of commercial prepared dairy feed is based on current United States prices received for corn, soybeans, and alfalfa hay. The modeled feed uses 51 percent corn, 41 percent alfalfa hay, and 8 percent soybeans.

⁵ The price of commercial prepared turkey feed is based on current United States prices received for corn, soybeans, and wheat. The modeled feed uses 51 percent corn, 28 percent soybeans, and 21 percent wheat.

Prices Received Used to Calculate Feed Price Ratios – United States: September 2013 with Comparisons

[Price data source for livestock and poultry commodities is United States Department of Agriculture's Agricultural Marketing Service]

Item	September 2012	August 2013	Preliminary September 2013
	(dollars)	(dollars)	(dollars)
Broilers, live pound	0.480	0.530	0.530
Eggs, market dozen	1.060	0.870	0.823
Hogs, all cwt	55.70	74.20	69.20
Milk, all cwt	19.70	19.50	19.80
Steers and heifers cwt	125.00	125.00	126.00
Turkeys, live pound	0.762	0.674	0.667
Corn bushel	6.89	6.21	5.28
Hay, alfalfa ton	206.00	200.00	194.00
Soybeans bushel	14.30	14.10	13.80
Wheat, all bushel	8.27	6.87	6.75

Prices Paid for Feeder Livestock – United States: September 2013 with Comparisons

[Price data source is United States Department of Agriculture's Agricultural Marketing Service]

Item	September 2012	August 2013	Preliminary September 2013
	(dollars)	(dollars)	(dollars)
Feeder cattle and calves cwt	144.60	151.70	153.90
Feeder pigs cwt	42.00	134.00	142.00

Reliability of Prices Paid Estimates

Definition: Prices paid by farmers represent the average costs of inputs purchased by farmers and ranchers to produce agricultural commodities. Conceptually, the average price when multiplied by quantity purchased should equal total producer expenditures for the item.

Survey procedures: The prices paid data are obtained from establishments that sell goods and services to farmers and ranchers. Annually, about 8,500 firms are randomly selected from lists by type of item sold with an average response rate in the range of 75-80 percent. Firms are asked to report the price for the specified item "most commonly bought by farmers" or that was the "volume seller". Approximately 135 items are surveyed each March to represent all production input items purchased. The survey reference period for most items is the five business days centered at the 15th of the month. Separate prices paid surveys are conducted for agricultural chemicals, fuels, feed, fertilizer, machinery, and seed.

Summary and estimation procedures: The annual March Prices Paid Survey is summarized as a non-probability survey. Average prices reported are aggregated to the region and United States level using weights available from expenditure data and other administrative sources. Price recommendations are prepared by the State Field Offices and Headquarters for review by the Agricultural Statistics Board in Washington, D.C. Also, the change in price level for individual items surveyed are combined to the regional and United States levels, and are published as prices paid indexes referenced to a specific base period. Prices paid indexes for new autos and trucks, building materials, farm supplies, motor supplies, and marketing containers are updated based on price changes measured in selected Bureau of Labor Statistics (BLS) indexes.

Revisions: Any revisions are published in the monthly and in annual issues of Agricultural Prices. The basis for revision must be supported by additional data that directly affect the level of the estimate. More revisions are likely for March when separate prices paid surveys are conducted, in lieu of BLS indexes, by the USDA to measure price change.

Reliability: Current methods of summarization for the March data are not designed directly to calculate sampling errors. However, analytical measures approximate the United States relative sampling errors for major items around 10 percent. Any non-sampling errors are attributed to such things as the inability to obtain correct information, differences in interpreting questions or definitions, mistakes in coding or processing the data, etc. Efforts are made at each step in the survey process to minimize these non-sampling errors.

Program change: Effective January 1, 1995, the National Agricultural Statistics Service updated the weights and changed the construction of its prices paid and received by farmers' indexes. A Federal Register Notice dated October 28, 1994 discussed these program modifications.

A 1990-1992 reference and base period replaced the 1977 reference and 1971-1973 base weight period. Five-year moving average weights replaced the current fixed 1971-1973 base period weights. The 1910-1914=100 price indexes, required by statute for computing parity prices, were linked forward based on the changes in the new 1990-1992=100 indexes. The new indexes were constructed by multiplying the ratios of the current prices to the base period prices by the moving average weights (adjusted for seasonal marketing patterns for the prices received indexes).

Information Contacts

General

Troy Joshua, Chief, Environmental, Economics and Demographics Branch (202) 720-6146

Below are the commodity specialists to contact for additional information.

Crop Prices Received

Lance Honig, Chief, Crops Branch (202) 720-2127

Anthony Prillaman, Head, Field Crops Section (202) 720-2127

Angie Considine – Peanuts, Rice (202) 720-7688

Brent Chittenden – Oats, Rye, Wheat (202) 720-8068

Angie Considine – Cotton, Cotton Ginnings, Sorghum (202) 720-7688

Chris Hawthorn – Corn, Proso Millet, Flaxseed (202) 720-9526

Anthony Prillaman – Crop Weather, Barley, Hay (202) 720-2127

Travis Thorson – Soybeans, Sunflower, Other Oilseeds (202) 720-7369

Jorge Garcia-Pratts, Head, Fruits, Vegetables and Special Crops Section (202) 720-2127

Debbie Flippin – Fresh and Processing Vegetables, Onions, Strawberries (202) 720-2157

Fred Granja – Apples, Apricots, Cherries, Plums, Prunes, Tobacco (202) 720-4288

Jorge Garcia-Pratts – Floriculture, Maple Syrup, Nursery, Tree Nuts (202) 720-2127

Lakeya Jones – Citrus, Coffee, Sugar Crops, Grapes, Tropical Fruits (202) 720-5412

Daphne Schauber – Berries, Cranberries, Potatoes, Sweet Potatoes (202) 720-4285

Dan Norris – Austrian Winter Peas, Dry Edible Peas, Lentils, Mints, Mushrooms, Peaches, Pears,
Wrinkled Seed Peas, Dry Beans (202) 720-3250

Livestock Prices Received

Dan Kerestes, Chief, Livestock Branch (202) 720-3570

Scott Hollis, Head, Livestock Section (202) 720-3570

Travis Averill – Cattle (202) 720-3040

Mike Miller – Milk, Milk Cows (202) 720-3278

Doug Bounds – Hogs (202) 720-3106

Alissa Cowell-Mytar – Sheep, Lambs, and Goats (202) 720-4751

Bruce Boess, Head, Poultry and Specialty Commodities Section (202) 720-3570

Cody Brokmeyer – Turkeys (202) 690-3237

Tom Kruchten – Honey (202) 690-4870

Kim Linonis – Eggs (202) 690-8632

Miste Salmon – Broilers (202) 720-3244

Indexes, Prices Paid, and Parity Prices

Troy Joshua, Chief, Environmental, Economics and
Demographics Branch (202) 720-6146

Tony Dorn, Head, Economics Section (202) 690-3223

Daryl Brinkman – Prices Received Indexes, Parity Prices (202) 720-8844

Chris Dickerson – Prices Received Indexes, Parity Prices, Grazing Fees (202) 690-1348

Vincent Davis – Prices Paid Indexes, Prices Paid for Feed, Fertilizer, Agricultural Chemicals,
Seeds, Farm Supplies and Repairs, Farm Machinery, Fuels, Feeder Livestock, Poultry Chicks,
Feed Price Ratios, Autos & Trucks (202) 690-3229

Access to NASS Reports

For your convenience, you may access NASS reports and products the following ways:

- All reports are available electronically, at no cost, on the NASS web site: <http://www.nass.usda.gov>
- Both national and state specific reports are available via a free e-mail subscription. To set-up this free subscription, visit <http://www.nass.usda.gov> and in the “Follow NASS” box under “Receive reports by Email,” click on “National” or “State” to select the reports you would like to receive.

For more information on NASS surveys and reports, call the NASS Agricultural Statistics Hotline at (800) 727-9540, 7:30 a.m. to 4:00 p.m. ET, or e-mail: nass@nass.usda.gov.

The U.S. Department of Agriculture (USDA) prohibits discrimination against its customers, employees, and applicants for employment on the bases of race, color, national origin, age, disability, sex, gender identity, religion, reprisal, and where applicable, political beliefs, marital status, familial or parental status, sexual orientation, or all or part of an individual's income is derived from any public assistance program, or protected genetic information in employment or in any program or activity conducted or funded by the Department. (Not all prohibited bases will apply to all programs and/or employment activities.)

If you wish to file a Civil Rights program complaint of discrimination, complete the [USDA Program Discrimination Complaint Form](#) (PDF), found online at http://www.ascr.usda.gov/complaint_filing_cust.html, or at any USDA office, or call (866) 632-9992 to request the form. You may also write a letter containing all of the information requested in the form. Send your completed complaint form or letter to us by mail at U.S. Department of Agriculture, Director, Office of Adjudication, 1400 Independence Avenue, S.W., Washington, D.C. 20250-9410, by fax (202) 690-7442 or email at program.intake@usda.gov.

USDA Data Users' Meeting
Monday, October 21, 2013

Crowne Plaza Chicago-Metro
Chicago, Illinois 60661
312-829-5000

The USDA's National Agricultural Statistics Service will be organizing an open forum for data users. The purpose will be to provide updates on pending changes in the various statistical and information programs and seek comments and input from data users. Other USDA agencies to be represented will include the Agricultural Marketing Service, the Economic Research Service, the Foreign Agricultural Service, and the World Agricultural Outlook Board. The Foreign Trade Division from the Census Bureau will also be included in the meeting.

For registration details or additional information for the Data Users' Meeting, see the NASS homepage at <http://www.nass.usda.gov/meeting/> or contact Rose Armstrong (NASS) at 202-690-8141 or at rose.armstrong@nass.usda.gov.

This Data Users' Meeting precedes the Industry Outlook Conference that will be held at the same location on Tuesday, October 22, 2013. The outlook meeting brings together analysts from various commodity sectors to discuss the outlook situation. For registration details or additional information for the Industry Outlook Conference, see the conference webpage on the LMIC website: <http://www.lmic.info/IOC/>. Or call the Livestock Marketing Information Center (LMIC) at 303-236-0460.