



# Agricultural Prices

ISSN: 1937-4216

Released November 27, 2013, by the National Agricultural Statistics Service (NASS), Agricultural Statistics Board, United States Department of Agriculture (USDA).

## Special Notes

USDA's National Agricultural Statistics Service is updating the price index methodology beginning with the January 2014 *Agricultural Prices Report*. Methodological changes include updating the current base reference (1990-1992) to 2011; increasing vegetable, fruit, and nut commodity coverage; reclassification of the prices received commodity groups; and updating monthly commodity market weights.

USDA's National Agricultural Statistics Service is suspending a number of statistical surveys and reports resulting from reduced funding. Suspended commodity programs impacting the *Agricultural Prices* report are non-citrus fruit, tree nuts, and vegetables. Check the NASS website at [www.nass.usda.gov](http://www.nass.usda.gov) for any future updates to these programs

## November Farm Prices Received Index Down 6 Points

The preliminary All Farm Products Index of Prices Received by Farmers in November, at 183 percent, based on 1990-1992=100, decreased 6 points (3.2 percent) from October. The Crop Index is down 12 points (5.9 percent) but the Livestock Index increased 5 points (3.0 percent). Producers received lower prices for corn but higher prices for eggs, soybeans, and cattle. In addition to prices, the overall index is also affected by the seasonal change based on a 3-year average mix of commodities producers sell. Increased monthly movement of corn, milk, cattle, and cotton offset the decreased marketing of soybeans, potatoes, and wheat.

The preliminary All Farm Products Index is down 24 points (12 percent) from November 2012. The Food Commodities Index, at 187, decreased 3 points (1.6 percent) from last month and decreased 4 points (2.1 percent) from November 2012.

## Prices Paid Index Down 2 Points

The November Index of Prices Paid for Commodities and Services, Interest, Taxes, and Farm Wage Rates (PPITW) is 213 percent of the 1990-1992 average. The index is down 2 points (0.9 percent) from October and 4 points (1.8 percent) below November 2012. Lower prices in November for concentrates, complete feeds, feed grains, and other services more than offset higher prices for feeder cattle, feeder pigs, mixed fertilizer, and LP gas.

## Prices Received, Prices Paid, and Ratio of Prices Received to Prices Paid Indexes 1990-1992 Base – United States: November 2013 with Comparisons

Index	November	October	November
	2012	2013	2013
Prices received by farmers .....	207	189	183
Prices paid by farmers .....	217	215	213
Ratio of prices received to prices paid .....	95	88	86

## Contents

Prices Received by Farmers .....	5
Prices Received Indexes – United States: November 2013 with Comparisons .....	6
Prices Received and Prices Paid Indexes by Month for Selected Groups – United States: 2012 and 2013, 1990-1992 Base .....	6
Received Indexes by Month, Livestock Products, All Products, and All Crops – United States: 1990-1992=100 Chart.....	7
Received Indexes by Month, Food Grains, Feed Grains & Hay, and Oilseeds – United States: 1990-1992=100 Chart.....	7
Received Indexes by Month, Fruit & Nut and Commercial Vegetables – United States: 1990-1992=100 Chart.....	8
Received Indexes by Month, Meat Animal, Dairy Products, and Poultry & Eggs – United States: 1990-1992=100 Chart.....	8
Prices Received for Field Crops and Fruits – United States: November 2013 with Comparisons .....	9
Prices Received for Vegetables and Livestock – United States: November 2013 with Comparisons .....	10
Prices Received for Corn by Month – United States Chart.....	11
Prices Received for Wheat by Month – United States Chart .....	11
Prices Received for Upland Cotton by Month – United States Chart .....	12
Prices Received for Soybeans by Month – United States Chart .....	12
Prices Received for Cattle by Month – United States Chart .....	13
Prices Received for Milk by Month – United States Chart .....	13
Prices Received for Hogs by Month – United States Chart .....	14
Prices Received for Poultry by Month – United States Chart .....	14
Prices Received for All Wheat, Corn, and Soybeans by Month – United States: 2013 with Comparisons .....	15
Prices Received for Beef Cattle and All Hogs by Month – United States: 2013 with Comparisons .....	15
Prices Received for All Wheat – States and United States: November 2013 with Comparisons .....	16
Prices Received for Winter Wheat – States and United States: November 2013 with Comparisons .....	16
Prices Received for Durum Wheat – States and United States: November 2013 with Comparisons .....	17
Prices Received for Spring Wheat – States and United States: November 2013 with Comparisons .....	17
Prices Received for All Barley – States and United States: November 2013 with Comparisons .....	18
Prices Received for Malting Barley – States: November 2013 with Comparisons.....	18
Prices Received for Feed Barley – States: November 2013 with Comparisons.....	18
Prices Received for Corn – States and United States: November 2013 with Comparisons.....	19
Prices Received for Soybeans – States and United States: November 2013 with Comparisons.....	19
Prices Received for Oats – States and United States: November 2013 with Comparisons.....	20
Prices Received for Sorghum Grain – States and United States: November 2013 with Comparisons .....	20
Prices Received for Dry Beans – States and United States: November 2013 with Comparisons .....	21
Prices Received for Peanuts (in shell) – States and United States: November 2013 with Comparisons .....	21
Prices Received for Sunflower – States and United States: November 2013 with Comparisons .....	22
Prices Received for Canola – States and United States: November 2013 with Comparisons.....	22
Prices Received for Flaxseed – States and United States: November 2013 with Comparisons.....	22
Prices Received for Upland Cotton and Cottonseed – States and United States: November 2013 with Comparisons .....	23
Prices Received and Farm Marketings for Upland Cotton and Rice – United States: November 2013 with Comparisons .....	23
Prices Received for Hay by Type – States and United States: November 2013 with Comparisons .....	24
Prices Received for Apples – States and United States: November 2013 with Comparisons.....	24
Prices Received for Citrus Fruits by Utilization – States and United States: November 2012.....	25
Prices Received for Citrus Fruits by Utilization – States and United States: October 2013.....	26
Prices Received for Citrus Fruits by Utilization – States and United States: November 2013.....	27
Prices Received for Potatoes – States and United States: November 2013 with Comparisons .....	28
Prices Received for All Milk – States and United States: November 2013 with Comparisons .....	29
Prices Received for Milk Cows – States and United States: October 2013 with Comparisons .....	30

Commodity Parity Prices and Price as Percent of Parity Price – United States: November 2013 with Comparisons .....	31
Commodity Parity Prices – United States: November 2013 with Comparisons .....	32
Marketing Year for Specified Commodities .....	34
Flaxseed Market Year Average Prices Received – States and United States: Marketing Years 2011 and 2012.....	34
Sunflowers Market Year Average Prices Received – States and United States: Marketing Years 2011 and 2012.....	34
Canola Market Year Average Prices Received – States and United States: Marketing Years 2011 and 2012.....	35
Proso Millet Market Year Average Prices Received – States and United States: Marketing Years 2011 and 2012 .....	35
Other Oilseeds Market Year Average Prices Received – United States: Marketing Years 2011 and 2012 .....	35
Safflower Market Year Average Prices Received – States and United States: Marketing Years 2011 and 2012 .....	35
Corn Market Year Average Prices Received – States and United States: Marketing Years 2011 and 2012 .....	36
All Dry Beans Market Year Average Prices Received – States and United States: Marketing Years 2011 and 2012 .....	37
Prices Received for Corn by Month – States and United States: Marketing Years 2011-2012 and 2012-2013.....	38
Prices Received for Flaxseed by Month – States and United States: Marketing Years 2011-2012.....	40
Prices Received for Flaxseed by Month – States and United States: Marketing Years 2012-2013.....	40
Prices Received for Canola by Month – States and United States: Marketing Years 2011-2012.....	41
Prices Received for Canola by Month – States and United States: Marketing Years 2012-2013.....	41
Prices Received for All Sunflowers by Month – States and United States: Marketing Years 2011-2012.....	42
Prices Received for All Sunflowers by Month – States and United States: Marketing Years 2012-2013.....	42
Prices Received for Oil Sunflowers by Month – States and United States: Marketing Years 2011-2012.....	43
Prices Received for Oil Sunflowers by Month – States and United States: Marketing Years 2012-2013.....	43
Prices Received for Non-Oil Sunflowers by Month – States and United States: Marketing Years 2011-2012 .....	44
Prices Received for Non-Oil Sunflowers by Month – States and United States: Marketing Years 2012-2013 .....	44
Prices Received for Dry Edible Beans by Month – States and United States: Marketing Years 2011-2012 .....	45
Prices Received for Dry Edible Beans by Month – States and United States: Marketing Years 2012-2013 .....	45
Percent of Corn Farm Marketings by Month – States and United States: Marketing Years 2011-2012 and 2012-2013 .....	46
Percent of All Sunflower Farm Marketings by Month – States and United States: Marketing Years 2011-2012 and 2012-2013 .....	47
Percent of Flaxseed Farm Marketings by Month – States and United States: Marketing Years 2011-2012 and 2012-2013 .....	47
Percent of Canola Farm Marketings by Month – States and United States: Marketing Years 2011-2012 and 2012-2013 .....	48
Percent of Dry Edible Bean Farm Marketings by Month – States and United States: Marketing Years 2011-2012 and 2012-2013 .....	48
Prices Received and Farm Marketings for All Chickpeas (Garbanzo) – United States: Marketing Years 2011-2012 and 2012-2013.....	49
Prices Received and Farm Marketings for Large Chickpeas – United States: Marketing Years 2011-2012 and 2012-2013 .....	49
Prices Received and Farm Marketings for Small Chickpeas (Garbanzo) – United States: Marketing Years 2011-2012 and 2012-2013.....	50
Reliability of Prices Received Estimates .....	51
Prices Paid by Farmers.....	52
Prices Paid Indexes and Related Parity Ratios – United States: November 2013 with Comparisons .....	53
Prices Paid Indexes and Annual Weights for Input Components and Sub-components – United States: November 2013 with Comparisons .....	54
Paid Indexes by Month, All Items and Production Items – United States: 1990-1992=100 Chart .....	55
Paid Indexes, Annual Averages, Production Items, Interest, Taxes, and Wages – United States: 1990-1992=100 Chart .....	55
Paid Indexes by Farm Type, All Items – United States: 1990-1991=100 Chart.....	56
Paid Indexes by Origin, All Production Items – United States: 1990-1992=100 Chart .....	56

Paid Indexes by Non-Farm Sector, Supplies & Repairs, Fertilizer, Machinery, and Fuel – United States: 1990-1992=100 Chart.....	57
Paid Indexes by Month, Feed and Replacement Livestock – United States: 1990-1992=100 Chart.....	57
Feed Price Ratios – United States: November 2013 with Comparisons .....	58
Prices Received Used to Calculate Feed Price Ratios – United States: November 2013 with Comparisons .....	58
Prices Paid for Feeder Livestock – United States: November 2013 with Comparisons .....	58
Reliability of Prices Paid Estimates .....	59
Information Contacts.....	60

## Prices Received by Farmers

The November All Farm Products Index is 183 percent of its 1990-1992 base, down 3.2 percent from the October index and 12 percent below the November 2012 index.

**All crops:** The November index, at 191, decreased 5.9 percent from October and is 20 percent below November 2012. Index decreases for feed grains & hay and commercial vegetables more than offset price increases for oilseeds and potatoes & dry beans.

**Food grains:** The November index, at 227, is 2.2 percent below the previous month and 15 percent below a year ago. The November price for all wheat, at \$6.80 per bushel, is down 20 cents from October and \$1.67 below November 2012.

**Feed grains & hay:** The November index, at 191, is down 6.4 percent from last month and 37 percent below a year ago. The corn price, at \$4.29 per bushel, is down 32 cents from last month and \$2.72 below November 2012. The all hay price, at \$171 per ton, is down \$6.00 from October and \$19.00 from last November. Sorghum grain, at \$7.42 per cwt, is 27 cents below October and \$4.98 below November last year.

**Cotton, Upland:** The November index, at 130, is up 0.8 percent from October and 14 percent above last year. The November price, at 78.6 cents per pound, is up 0.7 cents from the previous month and 9.4 cents above last November.

**Oilseeds:** The November index, at 226, is up 0.9 percent from October but 10 percent lower than November 2012. The soybean price, at \$12.70 per bushel, increased 20 cents from October but is \$1.60 below November 2012.

**Fruits & nuts:** The November index, at 210, is down 0.5 percent from October and 2.3 percent lower than a year ago. Prices for oranges and lemons decreased from last month.

**Commercial vegetables:** The November index, at 168, is down 13 percent from last month but 0.6 percent above November 2012.

**Potatoes & dry beans:** The November index, at 167, is up 7.1 percent from last month and 16 percent above November 2012. The all potato price, at \$9.03 per cwt, is up 93 cents from October and \$1.64 higher than last November. The all dry bean price, at \$39.50 per cwt, is down \$1.50 from the previous month but 30 cents above November 2012.

**Livestock and products:** The November index, at 172, is 3.0 percent above last month and November 2012. Compared with a year ago, prices are higher for cattle, eggs, calves, and hogs. Prices for milk, broilers, and turkeys are down from last year.

**Meat animals:** The November index, at 171, is up 0.6 percent from last month and 6.9 percent higher than last year. The November hog price, at \$64.70 per cwt, is down \$3.80 from October but \$3.60 higher than a year ago. The November beef cattle price of \$131 per cwt is up \$3.00 from last month and \$8.00 higher than November 2012.

**Dairy products:** The November index, at 163, is up 3.2 percent from a month ago but 3.6 percent lower than November last year. The November all milk price of \$21.30 per cwt is up 60 cents from last month but 80 cents lower than November 2012.

**Poultry & eggs:** The November index, at 183, is up 8.9 percent from October and 1.1 percent above a year ago. The November market egg price, at \$1.16 per dozen, increased 32.4 cents from October and 14.0 cents from November 2012. The November broiler price, at 55.0 cents per pound, is up 2.0 cents from October but 1.0 cent below a year ago. The November turkey price, at 70.3 cents per pound, is up 0.2 cents from the previous month but down 4.8 cents from a year earlier.

## Prices Received Indexes – United States: November 2013 with Comparisons

[Revised historical price indexes for months not shown are available at [www.nass.usda.gov](http://www.nass.usda.gov)]

Index	1910-1914 Base				1990-1992 Base		
	1990-1992 Average	November 2012	October 2013	November 2013	November 2012	October 2013	November 2013
	(percent)	(percent)	(percent)	(percent)	(percent)	(percent)	(percent)
All products .....	639	1315	1199	1162	207	189	183
All crops .....	500	1178	1006	949	238	203	191
Food grains .....	325	842	735	721	266	232	227
Feed grains & hay .....	363	1075	728	681	301	204	191
Cotton, Upland .....	517	586	659	665	114	129	130
Tobacco .....	1263	1559	1760	1760	103	116	116
Oilseeds .....	554	1383	1226	1239	252	224	226
Fruits & nuts .....	716	1503	1472	1467	215	211	210
Commercial vegetables .....	698	1196	1385	1197	167	194	168
Potatoes & dry beans .....	540	731	788	847	144	156	167
Other crops .....	493	643	645	645	131	131	131
Livestock and products .....	768	1283	1280	1318	167	167	172
Meat animals .....	1021	1630	1728	1740	160	170	171
Dairy products .....	799	1360	1274	1311	169	158	163
Poultry & eggs .....	282	509	473	512	181	168	183
Food commodities .....	(NA)	(NA)	(NA)	(NA)	191	190	187

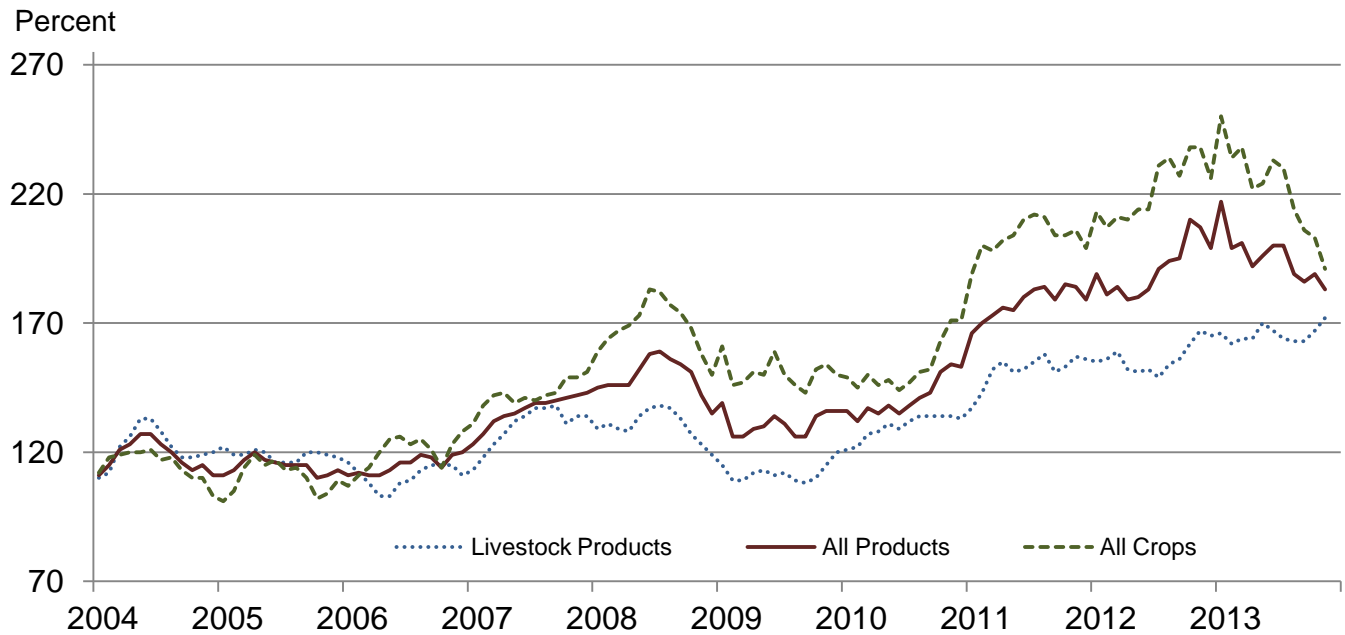
(NA) Not available.

## Prices Received and Prices Paid Indexes by Month for Selected Groups – United States: 2012 and 2013, 1990-1992 Base

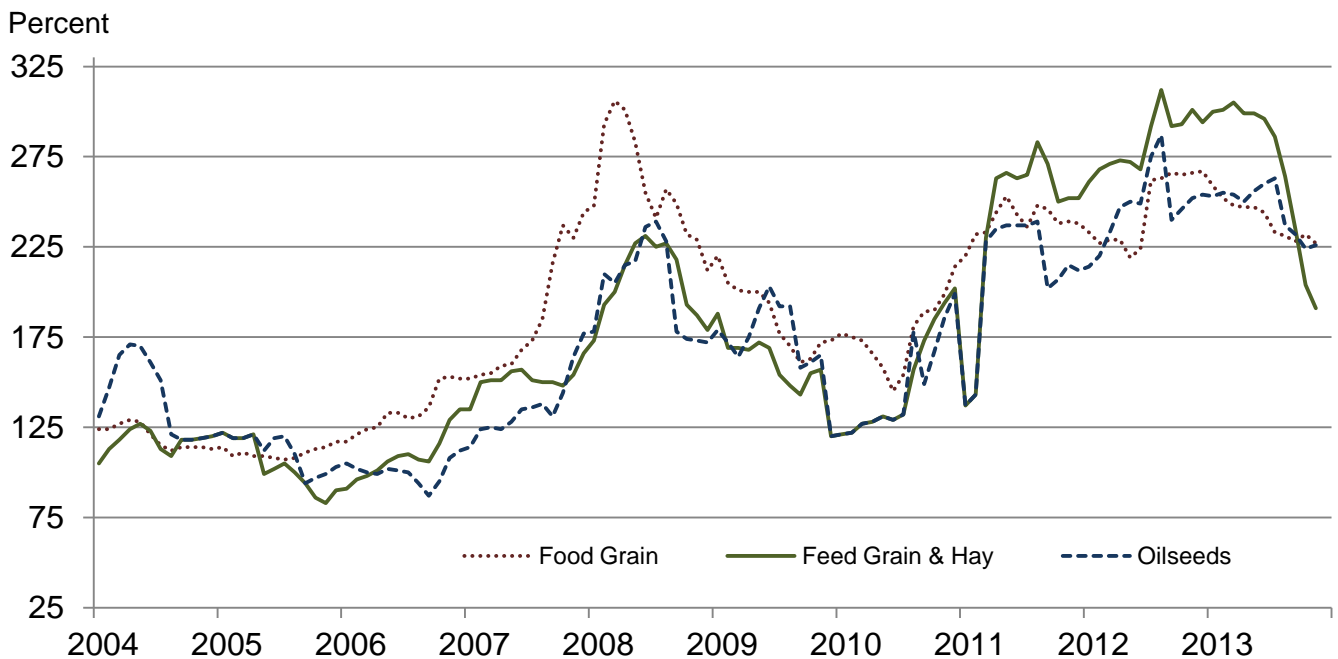
[Revised historical price indexes for months not shown are available at [www.nass.usda.gov](http://www.nass.usda.gov). Blank data cells indicate estimation period has not yet begun]

Month	Index of prices received						Index of prices paid			
	All farm products		All crops		Livestock and products		All items		Production items	
	2012	2013	2012	2013	2012	2013	2012	2013	2012	2013
	(percent)	(percent)	(percent)	(percent)	(percent)	(percent)	(percent)	(percent)	(percent)	(percent)
January .....	189	217	213	250	155	166	210	219	222	233
February .....	181	199	207	234	156	162	211	220	223	234
March .....	184	201	211	238	159	164	215	220	229	234
April .....	179	192	210	222	152	164	215	219	228	233
May .....	180	196	214	224	151	170	214	219	228	233
June .....	183	200	214	233	152	167	214	219	227	232
July .....	191	200	231	230	149	164	213	220	227	234
August .....	194	189	234	214	154	163	216	216	231	229
September .....	195	186	227	206	156	163	217	217	232	230
October .....	210	189	238	203	162	167	218	215	232	227
November .....	207	183	238	191	167	172	217	213	231	224
December .....	199		226		165		217		231	

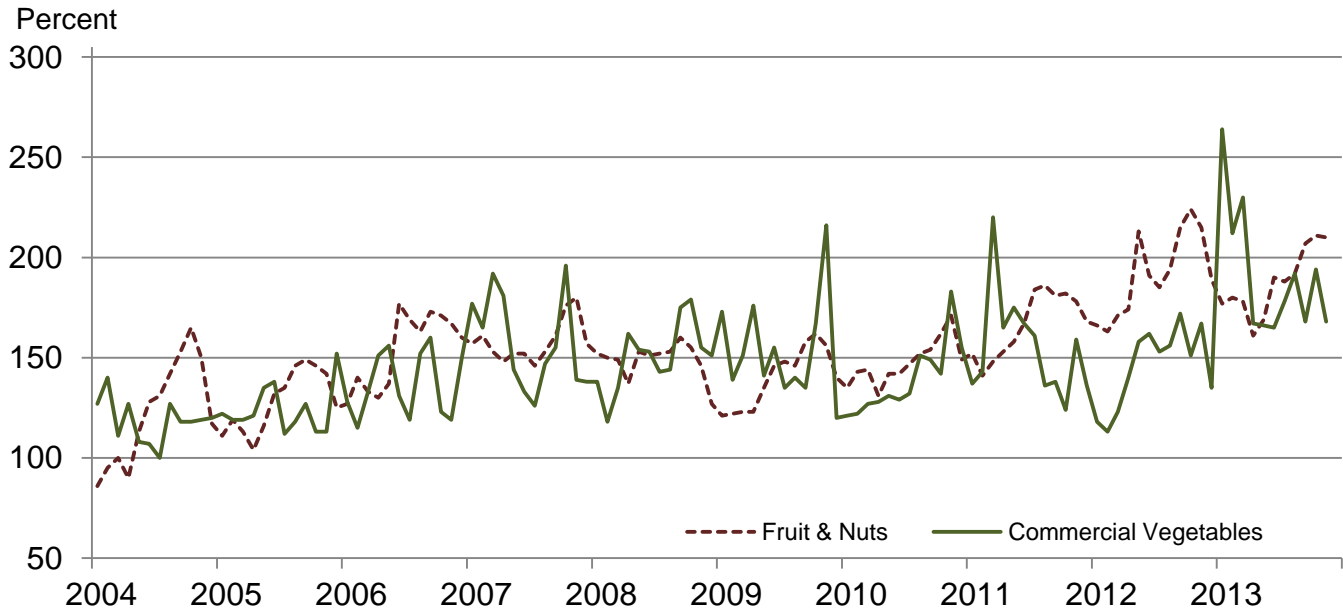
## Received Indexes by Month, Livestock Products, All Products, and All Crops – United States: 1990-1992=100



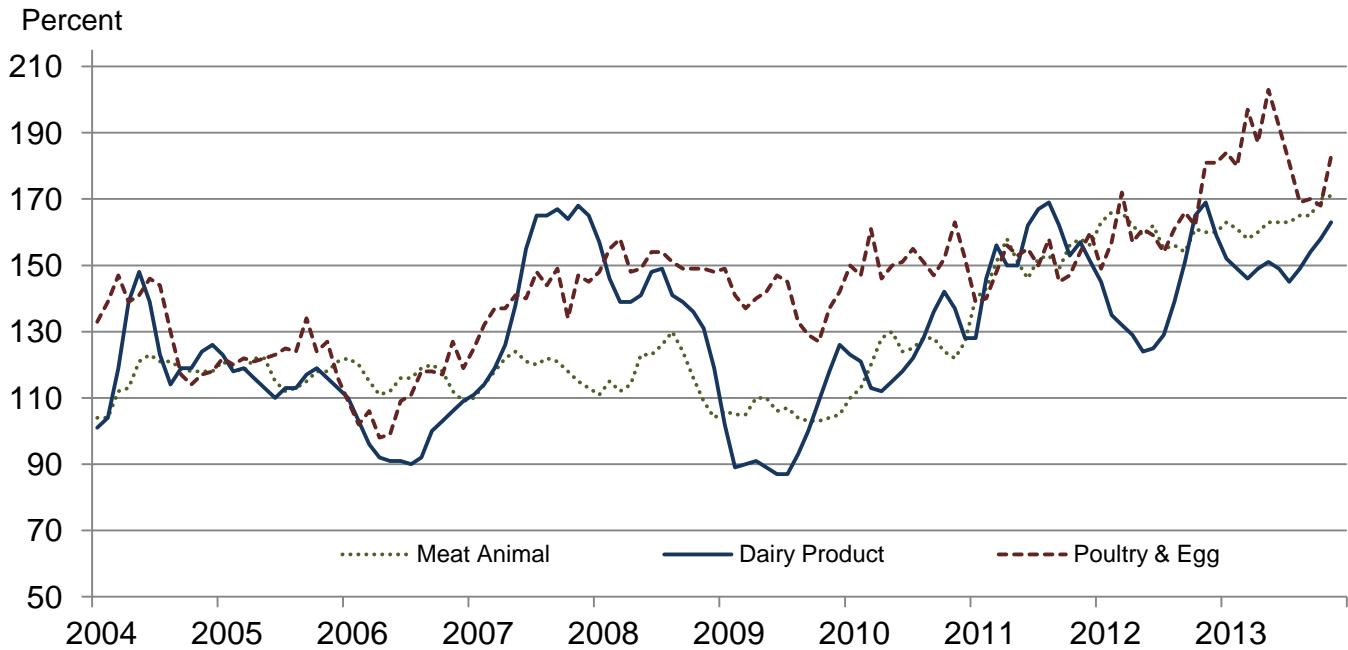
## Received Indexes by Month, Food Grains, Feed Grains & Hay, and Oilseeds – United States: 1990-1992=100



**Received Indexes by Month,  
Fruit & Nuts and Commercial Vegetables –  
United States: 1990-1992=100**



**Received Indexes by Month,  
Meat Animal, Dairy Product, and Poultry & Egg –  
United States: 1990-1992=100**





**Prices Received for Field Crops and Fruits – United States: November 2013 with Comparisons**

Commodity	Average 1990-1992	November 2012	October 2013	Preliminary November 2013
<b>Field crops</b>				
Austrian winter peas .....dollars/cwt	(NA)	(D)	25.40	(D)
Barley, all .....dollars/bushel	2.12	6.49	5.92	5.84
Feed .....dollars/bushel	1.90	5.67	4.10	3.89
Malting .....dollars/bushel	2.43	6.65	6.52	6.23
Beans, dry edible .....dollars/cwt	19.10	39.20	41.00	39.50
Canola .....dollars/cwt	(NA)	26.70	21.00	20.00
Chickpeas, all .....dollars/cwt	(NA)	37.70	30.80	28.80
Large .....dollars/cwt	(NA)	38.40	33.50	31.80
Small .....dollars/cwt	(NA)	30.00	25.10	22.10
Corn .....dollars/bushel	2.30	7.01	4.61	4.29
Cotton, Upland .....dollars/pound	0.606	0.692	0.779	0.786
Cottonseed .....dollars/ton	96.00	255.00	281.00	248.00
Flaxseed .....dollars/bushel	4.27	14.10	13.50	13.30
Hay, all, baled .....dollars/ton	76.30	190.00	177.00	171.00
Alfalfa .....dollars/ton	77.20	215.00	193.00	188.00
Other .....dollars/ton	60.00	144.00	141.00	135.00
Lentils .....dollars/cwt	(NA)	21.30	23.10	18.90
Oats .....dollars/bushel	1.22	3.88	3.46	3.43
Peanuts, in-shell .....dollars/pound	0.304	0.326	0.260	0.262
Peas, dry edible .....dollars/cwt	(NA)	16.50	15.50	15.00
Potatoes .....dollars/cwt	5.82	7.39	8.10	9.03
Rice, all .....dollars/cwt	7.07	14.60	15.40	15.70
Long .....dollars/cwt	(NA)	14.00	15.40	15.50
Medium and short .....dollars/cwt	(NA)	17.00	15.90	17.00
Sorghum grain .....dollars/cwt	3.75	12.40	7.69	7.42
Soybeans .....dollars/bushel	5.61	14.30	12.50	12.70
Sunflowers, all .....dollars/cwt	9.50	26.70	23.00	19.60
Wheat, all .....dollars/bushel	2.96	8.47	7.00	6.80
Winter .....dollars/bushel	2.93	8.38	7.07	6.73
Durum .....dollars/bushel	2.86	8.11	7.12	7.30
Other spring .....dollars/bushel	3.11	8.65	6.84	6.84
Hard red winter <sup>1</sup> .....dollars/bushel	(NA)	8.49	7.24	(NA)
Soft red winter <sup>1</sup> .....dollars/bushel	(NA)	8.34	6.66	(NA)
Hard red spring <sup>1</sup> .....dollars/bushel	(NA)	8.69	6.85	(NA)
White <sup>1</sup> .....dollars/bushel	3.24	8.14	6.76	(NA)
<b>Fruits</b>				
Citrus, equivalent on-tree				
Grapefruit .....dollars/box	5.77	7.68	(D)	7.96
Lemons .....dollars/box	10.10	13.96	33.71	30.51
Oranges .....dollars/box	5.79	8.92	12.94	11.94
Tangelos .....dollars/box	5.82	7.44	(S)	10.34
Tangerines and mandarins .....dollars/box	15.11	18.60	(D)	27.59
Noncitrus, fresh				
Apples <sup>2</sup> .....dollars/pound	0.212	0.479	(NA)	(NA)
Grapes <sup>2</sup> .....dollars/ton	506.00	1,770.00	(NA)	(NA)
Peaches <sup>2</sup> .....dollars/ton	432.00	(S)	(NA)	(NA)
Pears <sup>2</sup> .....dollars/ton	370.00	686.00	(NA)	(NA)
Strawberries .....dollars/cwt	56.00	139.00	(NA)	(NA)

(D) Withheld to avoid disclosing data for individual operations.

(NA) Not available.

(S) Insufficient number of reports to establish an estimate.

<sup>1</sup> Preliminary estimates not set for this item.

<sup>2</sup> Equivalent packinghouse-door returns for California, Michigan, New York (apples only), and Washington (apples, peaches, and pears). Prices as sold for other states.

# Prices Received for Vegetables and Livestock – United States: November 2013 with Comparisons

[Price data source for livestock and poultry commodities is United States Department of Agriculture's Agricultural Marketing Service]

Commodity	Average 1990-1992	November 2012	October 2013	Preliminary November 2013
<b>Vegetables, fresh <sup>1</sup></b>				
Asparagus ..... dollars/cwt	79.80	(S)	(NA)	(NA)
Beans, snap <sup>2</sup> ..... dollars/cwt	(NA)	55.90	(NA)	(NA)
Broccoli ..... dollars/cwt	22.50	35.40	(NA)	(NA)
Cantaloupes <sup>2</sup> ..... dollars/cwt	(NA)	(S)	(NA)	(NA)
Carrots ..... dollars/cwt	13.20	26.70	(NA)	(NA)
Cauliflower ..... dollars/cwt	26.80	47.60	(NA)	(NA)
Celery ..... dollars/cwt	11.60	20.30	(NA)	(NA)
Corn, sweet ..... dollars/cwt	15.70	26.60	(NA)	(NA)
Cucumbers <sup>2</sup> ..... dollars/cwt	(NA)	28.20	(NA)	(NA)
Lettuce ..... dollars/cwt	11.90	20.10	(NA)	(NA)
Onions <sup>3</sup> ..... dollars/cwt	12.80	12.40	(NA)	(NA)
Tomatoes ..... dollars/cwt	32.30	47.00	(NA)	(NA)
<b>Livestock</b>				
Calves ..... dollars/cwt	94.30	161.00	181.00	182.00
Cattle, all beef ..... dollars/cwt	72.90	123.00	128.00	131.00
Cows <sup>4</sup> ..... dollars/cwt	49.60	76.80	81.20	80.50
Steers and heifers ..... dollars/cwt	77.10	128.00	128.00	133.00
Milk cows <sup>5</sup> ..... dollars/head	1130.00	(NA)	(NA)	(NA)
Hogs, all ..... dollars/cwt	47.70	61.10	68.50	64.70
Barrows and gilts ..... dollars/cwt	48.40	61.20	68.40	64.50
Sows ..... dollars/cwt	39.50	58.90	71.90	68.70
<b>Dairy and poultry</b>				
Milk, all <sup>6</sup> ..... dollars/cwt	13.06	22.10	20.70	21.30
Fat test ..... percent	3.66	3.85	3.80	3.85
Broilers, live <sup>7</sup> ..... dollars/pound	0.317	0.560	0.530	0.550
Eggs, all <sup>8</sup> ..... dollars/dozen	0.643	1.180	1.040	1.330
Market <sup>8 9</sup> ..... dollars/dozen	0.546	1.020	0.836	1.160
Turkeys, live <sup>8 10</sup> ..... dollars/pound	0.380	0.751	0.701	0.703
<b>Adjusted for seasonal variation</b>				
Eggs, all ..... dollars/dozen	0.545	1.020	1.040	1.150
Seasonal factor ..... percent	100	116	100	116
Milk, all <sup>6</sup> ..... dollars/cwt	9.71	20.50	19.10	19.80
Seasonal factor ..... percent	100	108	108	108

(NA) Not available.

(S) Insufficient number of reports to establish an estimate.

<sup>1</sup> Beginning January 2006, point of first sale. FOB shipping point for prior years.

<sup>2</sup> Monthly estimates began January 1995.

<sup>3</sup> Includes some processing.

<sup>4</sup> Beef cows and cull dairy cows sold for slaughter.

<sup>5</sup> Animals sold for dairy herd replacement only. Prices available for January, April, July, and October.

<sup>6</sup> Before deductions for hauling. Includes quality, quantity, and other premiums. Excludes hauling subsidies.

<sup>7</sup> Live weight equivalent price.

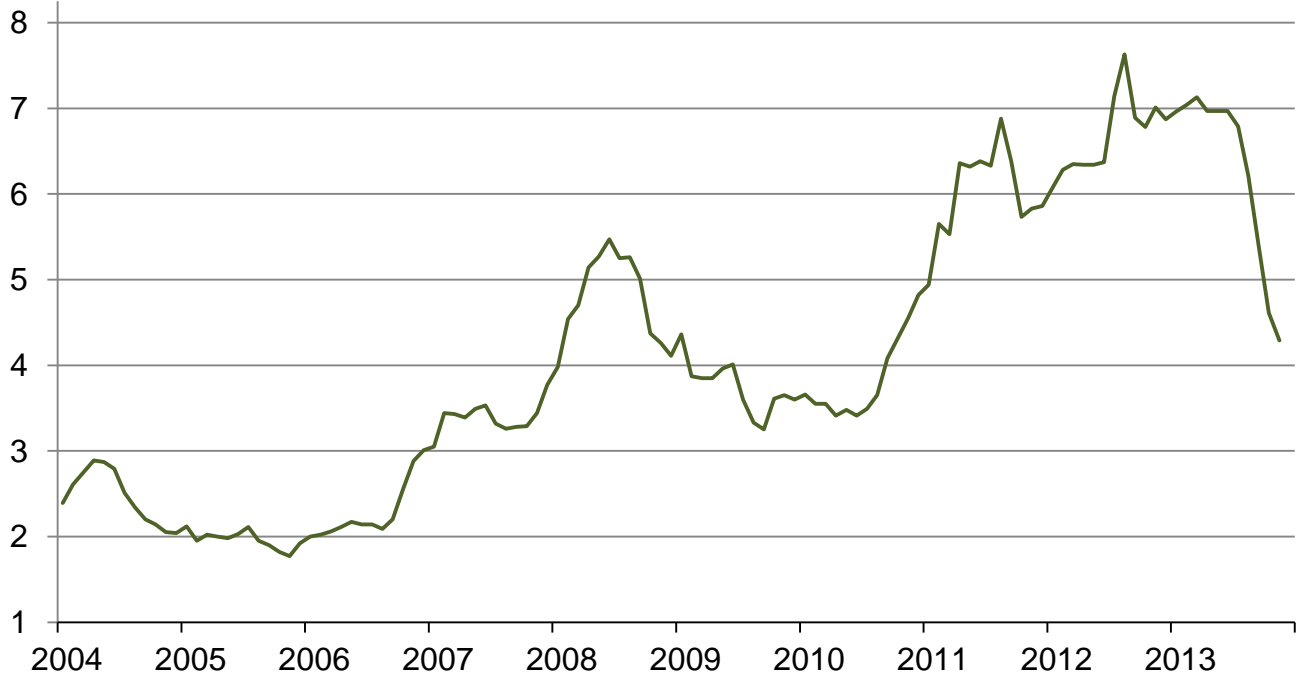
<sup>8</sup> Mid-month price.

<sup>9</sup> Also referred to as table eggs.

<sup>10</sup> Live weight equivalent price is used when actual live weight price is not available. Beginning January 2011, price reflects FOB shipping point basis. Prior year price reflects delivered basis.

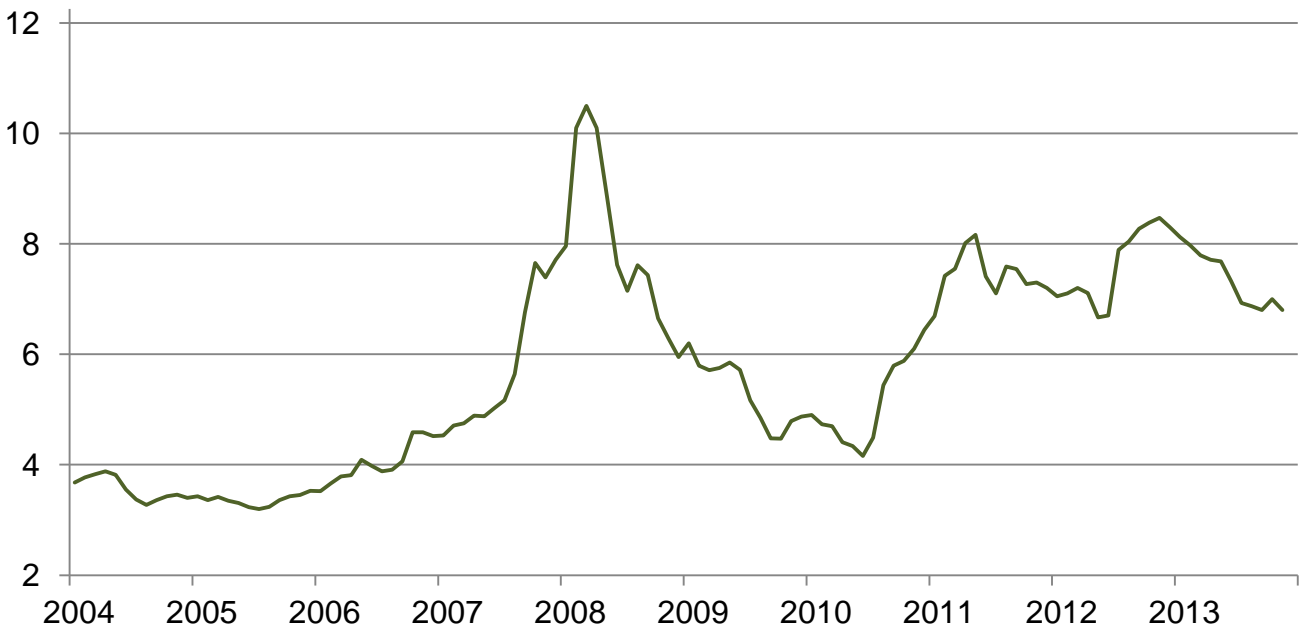
## Prices Received for Corn by Month – United States

Dollars per bushel



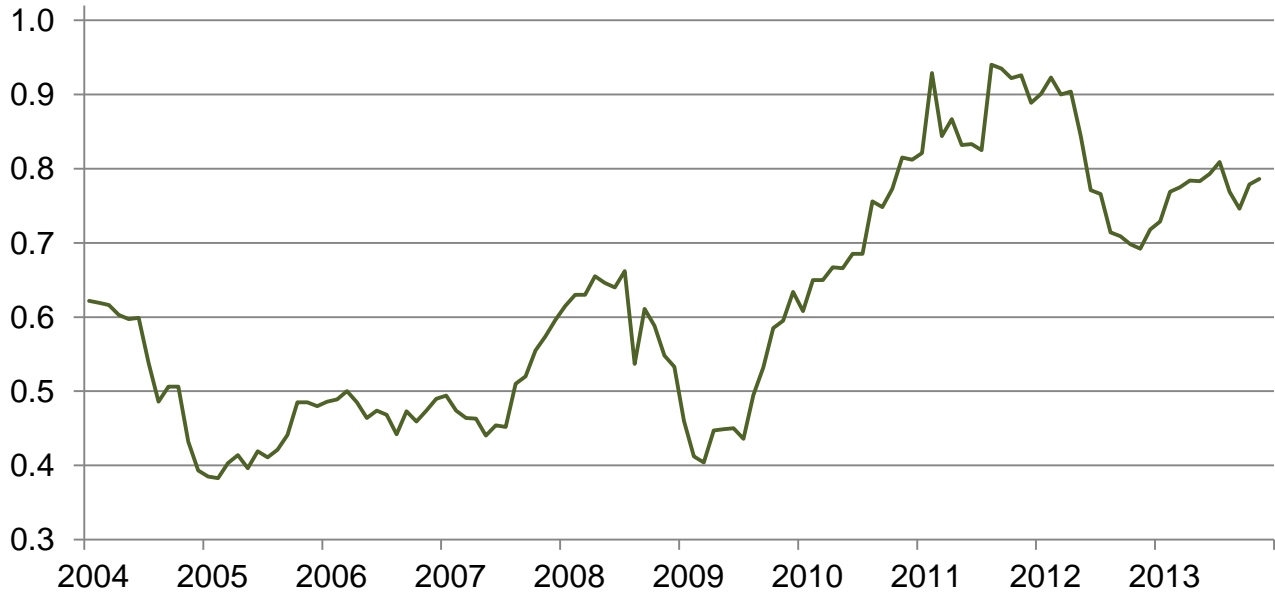
## Prices Received for Wheat by Month – United States

Dollars per bushel



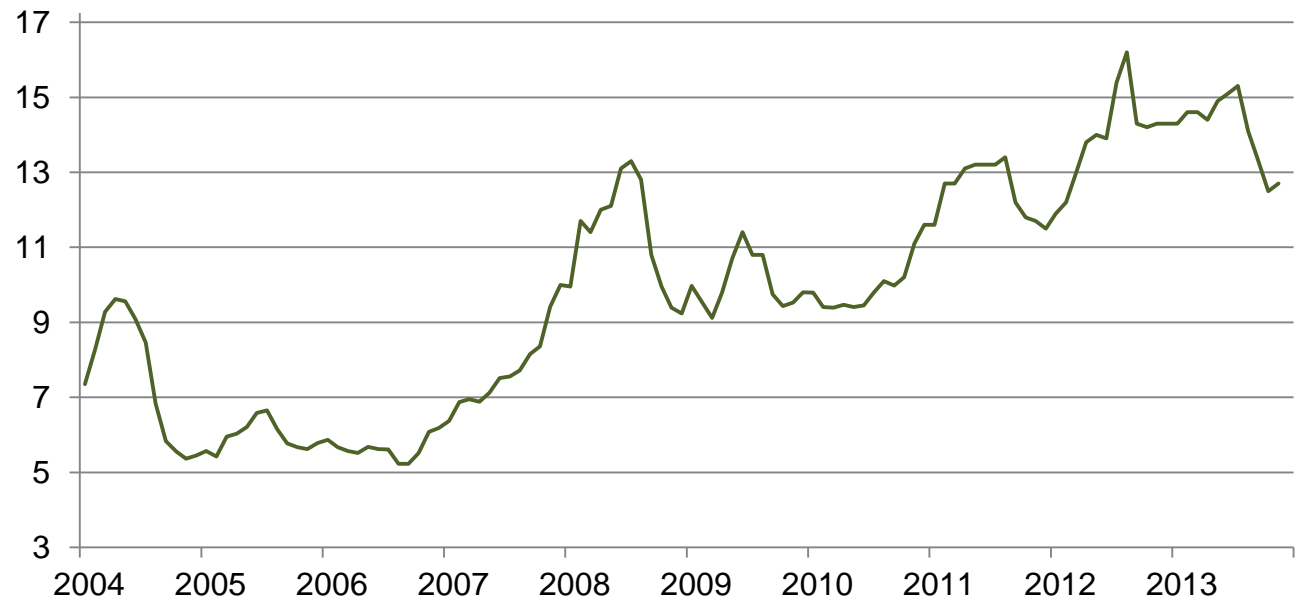
## Prices Received for Upland Cotton by Month – United States

Dollars per pound



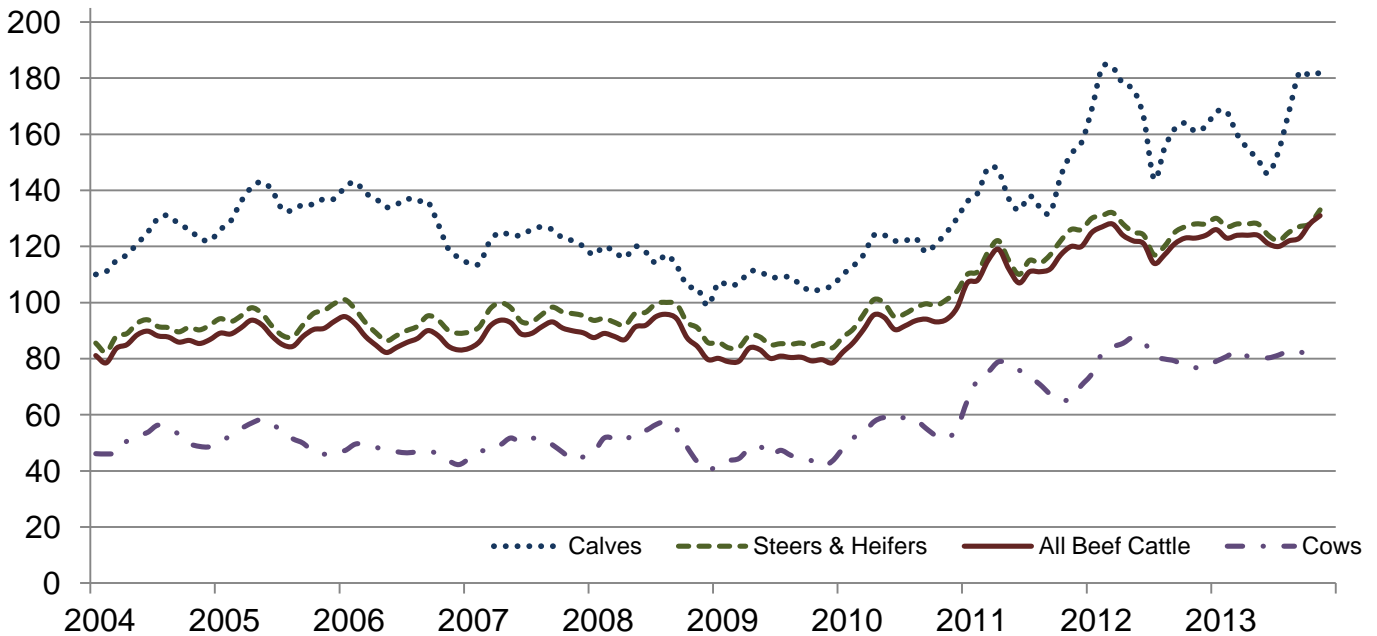
## Prices Received for Soybeans by Month – United States

Dollars per bushel



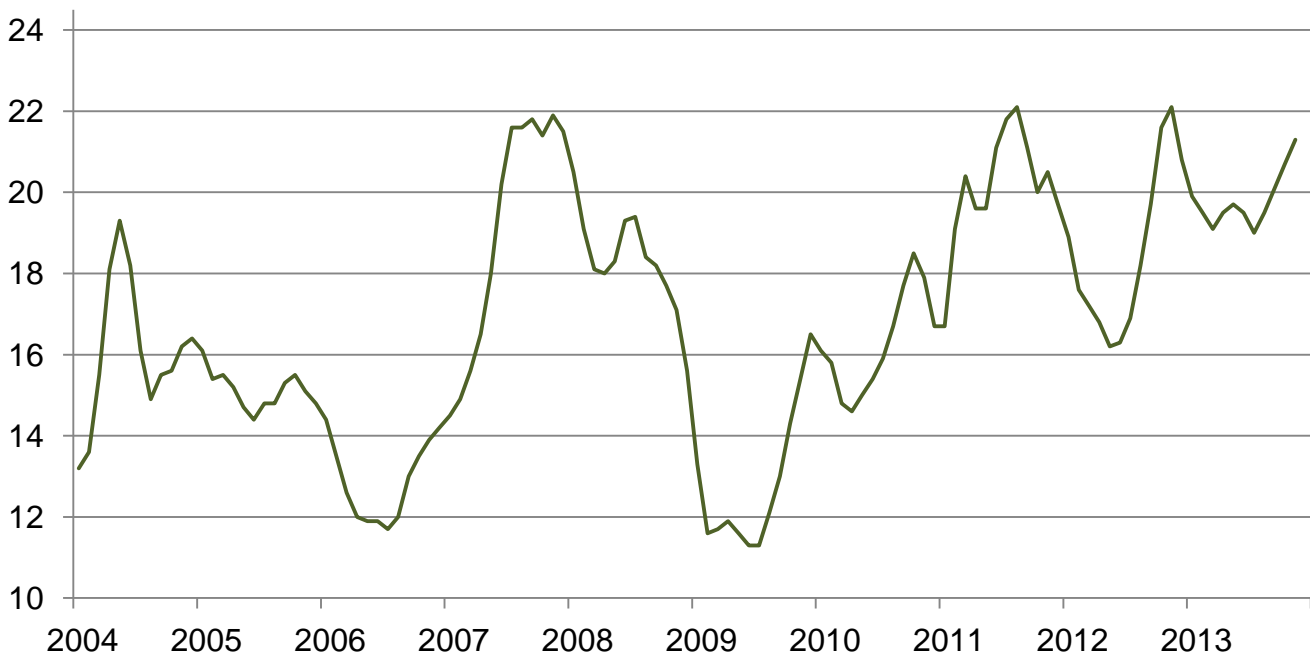
## Prices Received for Cattle by Month – United States

Dollars per cwt



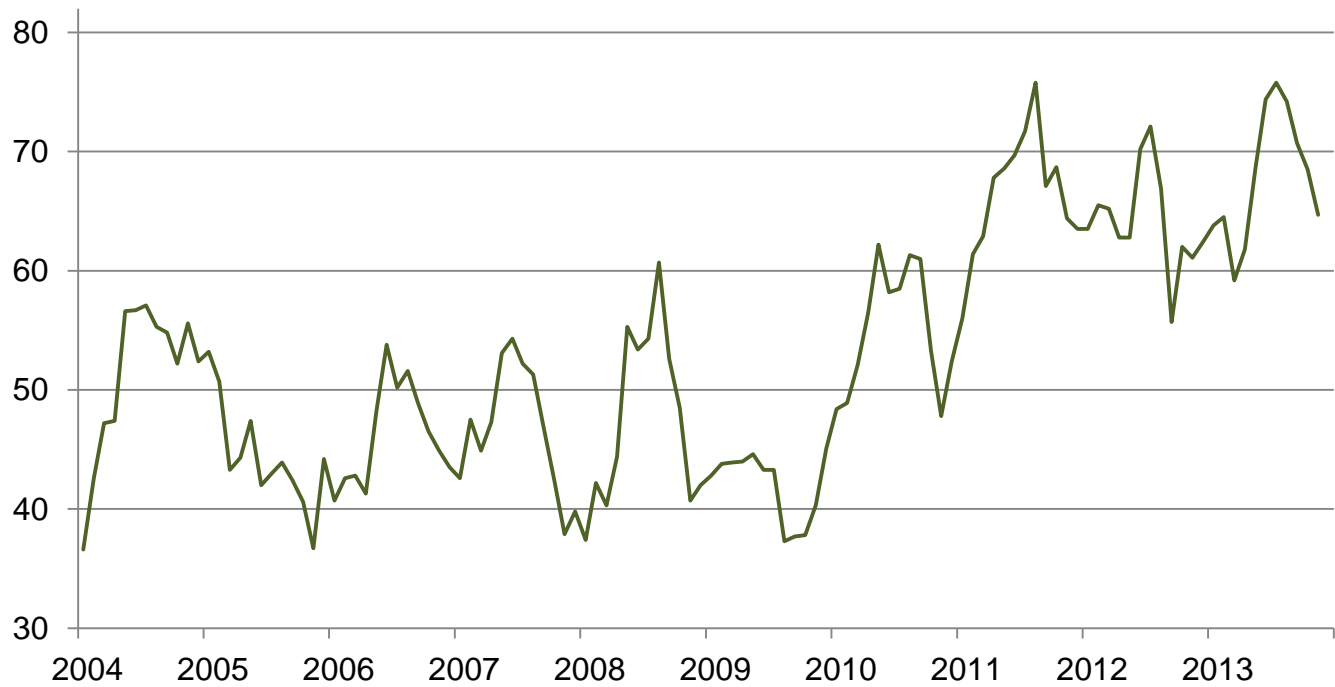
## Prices Received for Milk by Month – United States

Dollars per cwt



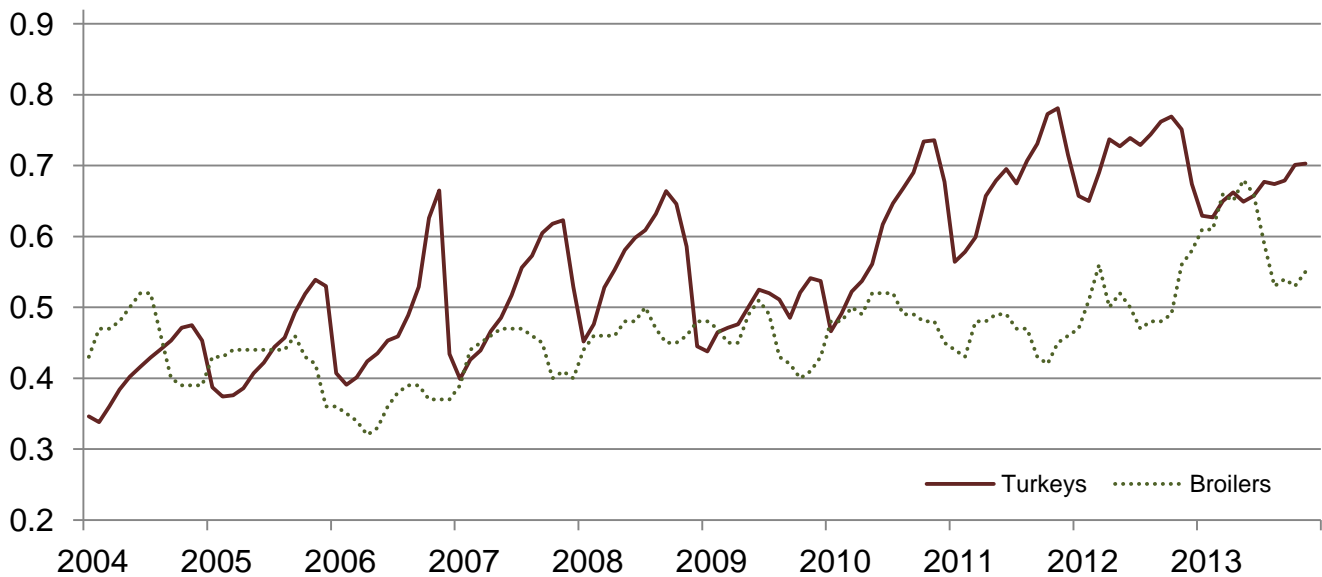
## Prices Received for Hogs by Month – United States

Dollars per cwt



## Prices Received for Poultry by Month – United States

Dollars per pound



## Prices Received for All Wheat, Corn, and Soybeans by Month – United States: 2013 with Comparisons

[Current month prices are mid-month; prices for previous months and years are for the entire month. Blank data cells indicate estimation period has not yet begun]

Month	All wheat			Corn			Soybeans		
	2011	2012	Preliminary 2013	2011	2012	Preliminary 2013	2011	2012	Preliminary 2013
	(dollars per bushel)	(dollars per bushel)	(dollars per bushel)	(dollars per bushel)	(dollars per bushel)	(dollars per bushel)	(dollars per bushel)	(dollars per bushel)	(dollars per bushel)
January .....	6.69	7.05	8.12	4.94	6.07	6.96	11.60	11.90	14.30
February .....	7.42	7.10	7.97	5.65	6.28	7.04	12.70	12.20	14.60
March .....	7.55	7.20	7.79	5.53	6.35	7.13	12.70	13.00	14.60
April .....	8.01	7.11	7.71	6.36	6.34	6.97	13.10	13.80	14.40
May .....	8.16	6.67	7.68	6.32	6.34	6.97	13.20	14.00	14.90
June .....	7.41	6.70	7.32	6.38	6.37	6.97	13.20	13.90	15.10
July .....	7.10	7.89	6.93	6.33	7.14	6.79	13.20	15.40	15.30
August .....	7.59	8.04	6.87	6.88	7.63	6.21	13.40	16.20	14.10
September ...	7.54	8.27	6.80	6.38	6.89	5.40	12.20	14.30	13.30
October .....	7.27	8.38	7.00	5.73	6.78	4.61	11.80	14.20	12.50
November ....	7.30	8.47	6.80	5.83	7.01	4.29	11.70	14.30	12.70
December ....	7.20	8.30		5.86	6.87		11.50	14.30	

## Prices Received for Beef Cattle and All Hogs by Month – United States: 2013 with Comparisons

[Current month prices are mid-month; prices for previous months and years are for the entire month. Blank data cells indicate estimation period has not yet begun]

Month	Beef cattle <sup>1</sup>			All hogs <sup>2</sup>		
	2011	2012	Preliminary 2013	2011	2012	Preliminary 2013
	(dollars per cwt)	(dollars per cwt)	(dollars per cwt)	(dollars per cwt)	(dollars per cwt)	(dollars per cwt)
January .....	107.00	125.00	126.00	56.00	63.50	63.80
February .....	108.00	127.00	123.00	61.40	65.50	64.50
March .....	115.00	128.00	124.00	62.90	65.20	59.20
April .....	119.00	124.00	124.00	67.80	62.80	61.80
May .....	112.00	122.00	124.00	68.60	62.80	68.60
June .....	107.00	121.00	121.00	69.70	70.20	74.40
July .....	111.00	114.00	120.00	71.70	72.10	75.80
August .....	111.00	117.00	122.00	75.80	66.90	74.20
September .....	112.00	121.00	123.00	67.10	55.70	70.70
October .....	117.00	123.00	128.00	68.70	62.00	68.50
November .....	120.00	123.00	131.00	64.40	61.10	64.70
December .....	120.00	124.00		63.50	62.40	

<sup>1</sup> Cows and steers & heifers.

<sup>2</sup> Barrows & gilts and sows.

**Prices Received for All Wheat – States and United States: November 2013 with Comparisons**

State	November 2012	October 2013	Preliminary November 2013
	(dollars per bushel)	(dollars per bushel)	(dollars per bushel)
Arizona .....	(D)	(D)	(D)
Arkansas .....	8.36	6.42	(D)
California .....	8.13	7.57	(D)
Colorado .....	8.31	7.30	6.59
Idaho .....	8.36	6.82	6.88
Illinois .....	8.23	6.56	6.40
Indiana .....	8.63	6.66	6.35
Kansas .....	8.69	7.31	6.84
Michigan .....	8.28	6.84	6.25
Minnesota .....	8.52	6.85	6.70
Missouri .....	8.34	6.87	6.50
Montana .....	8.49	7.01	7.11
Nebraska .....	8.47	7.16	6.80
North Carolina .....	8.15	5.62	6.00
North Dakota .....	8.45	6.80	6.64
Ohio .....	8.41	6.66	6.30
Oklahoma .....	8.56	7.29	6.82
Oregon .....	8.70	6.92	6.85
South Dakota .....	8.56	6.96	6.63
Texas .....	8.04	7.73	(D)
Washington .....	8.33	6.88	6.75
United States .....	8.47	7.00	6.80

(D) Withheld to avoid disclosing data for individual operations.

**Prices Received for Winter Wheat – States and United States: November 2013 with Comparisons**

State	November 2012	October 2013	Preliminary November 2013
	(dollars per bushel)	(dollars per bushel)	(dollars per bushel)
Arkansas .....	8.36	6.42	(D)
California .....	8.13	7.57	(D)
Colorado .....	8.32	7.32	6.59
Idaho .....	8.29	6.79	6.66
Illinois .....	8.23	6.56	6.40
Indiana .....	8.63	6.66	6.35
Kansas .....	8.69	7.31	6.84
Michigan .....	8.28	6.84	6.25
Minnesota .....	(D)	(D)	(S)
Missouri .....	8.34	6.87	6.50
Montana .....	8.28	7.15	6.92
Nebraska .....	8.47	7.16	6.80
North Carolina .....	8.15	5.62	6.00
North Dakota .....	8.12	6.52	6.10
Ohio .....	8.41	6.66	6.30
Oklahoma .....	8.56	7.29	6.82
Oregon .....	8.37	6.88	6.80
South Dakota .....	8.38	6.73	6.45
Texas .....	8.04	7.73	(D)
Washington .....	8.22	6.82	6.68
United States .....	8.38	7.07	6.73

(D) Withheld to avoid disclosing data for individual operations.

(S) Insufficient number of reports to establish an estimate.



### Prices Received for Durum Wheat – States and United States: November 2013 with Comparisons

State	November 2012	October 2013	Preliminary November 2013
	(dollars per bushel)	(dollars per bushel)	(dollars per bushel)
Arizona .....	(D)	(D)	(D)
California .....	(S)	(S)	(S)
Idaho .....	(D)	(D)	(S)
Montana .....	8.02	7.19	7.47
North Dakota .....	8.07	7.08	7.20
United States .....	8.11	7.12	7.30

(D) Withheld to avoid disclosing data for individual operations.

(S) Insufficient number of reports to establish an estimate.

### Prices Received for Spring Wheat – States and United States: November 2013 with Comparisons

State	November 2012	October 2013	Preliminary November 2013
	(dollars per bushel)	(dollars per bushel)	(dollars per bushel)
Colorado .....	(D)	(D)	(S)
Idaho .....	8.50	6.90	7.07
Minnesota .....	8.52	6.85	6.70
Montana .....	8.75	6.87	7.25
North Dakota .....	8.60	6.74	6.55
Oregon .....	9.26	7.23	7.21
South Dakota .....	8.74	7.04	6.70
Washington .....	8.80	7.21	7.15
United States .....	8.65	6.84	6.84

(D) Withheld to avoid disclosing data for individual operations.

(S) Insufficient number of reports to establish an estimate.

**Prices Received for All Barley – States and United States: November 2013 with Comparisons**

State	November 2012	October 2013	Preliminary November 2013
	(dollars per bushel)	(dollars per bushel)	(dollars per bushel)
California .....	(S)	(D)	(D)
Colorado .....	6.61	(D)	(D)
Idaho .....	6.57	6.30	6.52
Minnesota .....	(D)	(D)	(S)
Montana .....	6.48	6.35	5.69
North Dakota .....	6.54	6.17	5.57
Oregon .....	(D)	3.68	(D)
Utah .....	5.95	3.70	3.67
Washington .....	5.65	3.58	(D)
Wyoming .....	(D)	(D)	(D)
United States .....	6.49	5.92	5.84

(D) Withheld to avoid disclosing data for individual operations.

(S) Insufficient number of reports to establish an estimate.

**Prices Received for Malting Barley – States: November 2013 with Comparisons**

State	November 2012	October 2013	Preliminary November 2013
	(dollars per bushel)	(dollars per bushel)	(dollars per bushel)
Idaho .....	6.65	6.60	6.60
Minnesota .....	(D)	(D)	(S)
Montana .....	6.59	6.46	5.71
North Dakota .....	6.68	6.55	6.00
Wyoming .....	(D)	(D)	(D)

(D) Withheld to avoid disclosing data for individual operations.

(S) Insufficient number of reports to establish an estimate.

**Prices Received for Feed Barley – States: November 2013 with Comparisons**

State	November 2012	October 2013	Preliminary November 2013
	(dollars per bushel)	(dollars per bushel)	(dollars per bushel)
Idaho .....	5.78	4.16	(D)
Minnesota .....	(D)	(D)	(S)
Montana .....	5.65	3.79	(D)
North Dakota .....	5.42	4.49	3.85
Wyoming .....	(S)	(D)	(D)

(D) Withheld to avoid disclosing data for individual operations.

(S) Insufficient number of reports to establish an estimate.

## Prices Received for Corn – States and United States: November 2013 with Comparisons

State	November 2012	October 2013	Preliminary November 2013
	(dollars per bushel)	(dollars per bushel)	(dollars per bushel)
Colorado .....	6.69	5.02	4.35
Illinois .....	7.07	4.49	4.30
Indiana .....	7.43	4.33	4.20
Iowa .....	7.03	4.60	4.30
Kansas .....	7.09	4.74	4.32
Kentucky .....	7.15	4.35	4.20
Michigan .....	6.71	4.39	4.10
Minnesota .....	6.86	5.22	4.30
Missouri .....	7.60	4.50	4.40
Nebraska .....	6.90	4.71	4.45
North Carolina .....	7.62	4.75	4.60
North Dakota .....	6.64	4.42	4.00
Ohio .....	7.18	4.36	4.20
Pennsylvania .....	7.19	4.15	4.02
South Dakota .....	6.82	4.22	3.82
Tennessee .....	7.47	4.60	4.40
Texas .....	6.83	5.28	4.92
Wisconsin .....	6.76	4.65	4.40
United States .....	7.01	4.61	4.29

## Prices Received for Soybeans – States and United States: November 2013 with Comparisons

State	November 2012	October 2013	Preliminary November 2013
	(dollars per bushel)	(dollars per bushel)	(dollars per bushel)
Arkansas .....	14.50	13.00	13.10
Illinois .....	14.70	12.80	12.80
Indiana .....	14.60	12.60	12.70
Iowa .....	14.30	12.50	12.70
Kansas .....	14.10	12.40	12.50
Kentucky .....	14.40	12.60	12.80
Louisiana .....	14.50	13.20	13.20
Michigan .....	13.80	12.40	12.60
Minnesota .....	14.10	12.50	12.50
Mississippi .....	14.40	13.10	13.20
Missouri .....	14.30	12.60	12.90
Nebraska .....	14.00	12.30	12.30
North Carolina .....	13.80	12.80	12.90
North Dakota .....	13.90	12.30	12.30
Ohio .....	14.30	12.30	12.70
South Dakota .....	14.20	12.30	12.40
Tennessee .....	14.50	12.70	12.80
Wisconsin .....	14.10	12.20	12.60
United States .....	14.30	12.50	12.70

**Prices Received for Oats – States and United States: November 2013 with Comparisons**

State	November 2012	October 2013	Preliminary November 2013
	(dollars per bushel)	(dollars per bushel)	(dollars per bushel)
Illinois .....	(D)	(S)	(S)
Iowa .....	4.20	4.21	3.90
Michigan .....	(D)	(D)	(D)
Minnesota .....	3.79	3.71	3.75
Montana .....	(D)	(D)	(D)
Nebraska .....	(D)	4.04	3.45
New York .....	(D)	(D)	(D)
North Dakota .....	3.18	2.80	3.10
Oregon .....	(S)	(D)	(S)
Pennsylvania .....	(D)	3.70	3.90
South Dakota .....	3.97	3.54	3.43
Texas .....	(S)	(S)	(S)
Wisconsin .....	4.13	4.13	4.00
United States .....	3.88	3.46	3.43

(D) Withheld to avoid disclosing data for individual operations.

(S) Insufficient number of reports to establish an estimate.

**Prices Received for Sorghum Grain – States and United States: November 2013 with Comparisons**

State	November 2012	October 2013	Preliminary November 2013
	(dollars per cwt)	(dollars per cwt)	(dollars per cwt)
Arkansas .....	(D)	8.82	7.62
Illinois .....	11.40	7.19	(S)
Kansas .....	12.30	7.40	7.34
Louisiana .....	(D)	8.70	(D)
Missouri .....	12.40	7.71	8.00
Nebraska .....	12.20	7.38	7.25
Oklahoma .....	12.10	7.35	7.30
Texas .....	12.80	7.87	7.69
United States .....	12.40	7.69	7.42

(D) Withheld to avoid disclosing data for individual operations.

(S) Insufficient number of reports to establish an estimate.

### Prices Received for Dry Beans – States and United States: November 2013 with Comparisons

State	November 2012	October 2013	Preliminary November 2013
	(dollars per cwt)	(dollars per cwt)	(dollars per cwt)
California .....	54.70	(D)	(D)
Colorado .....	38.50	50.40	38.80
Idaho .....	40.30	37.70	38.00
Michigan .....	38.10	42.40	41.30
Minnesota .....	45.80	(D)	(D)
Nebraska .....	37.50	(S)	(S)
North Dakota .....	36.90	37.70	35.40
United States .....	39.20	41.00	39.50

(D) Withheld to avoid disclosing data for individual operations.

(S) Insufficient number of reports to establish an estimate.

### Prices Received for Peanuts (in shell) – States and United States: November 2013 with Comparisons

State	November 2012	October 2013	Preliminary November 2013
	(dollars per pound)	(dollars per pound)	(dollars per pound)
Alabama .....	0.268	0.240	0.239
Florida .....	(D)	0.250	0.260
Georgia .....	0.325	0.248	0.255
Mississippi .....	0.362	0.248	0.250
New Mexico .....	(S)	0.344	0.339
North Carolina .....	0.358	0.284	0.261
Oklahoma .....	0.340	0.325	0.327
South Carolina .....	0.336	0.279	0.258
Texas .....	0.350	0.317	0.311
Virginia .....	0.349	0.272	0.280
United States .....	0.326	0.260	0.262

(D) Withheld to avoid disclosing data for individual operations.

(S) Insufficient number of reports to establish an estimate.

**Prices Received for Sunflower – States and United States: November 2013 with Comparisons**

State	November 2012	October 2013	Preliminary November 2013
	(dollars per cwt)	(dollars per cwt)	(dollars per cwt)
Colorado .....	(D)	(S)	(S)
Kansas .....	31.80	25.80	24.20
Minnesota .....	31.30	24.90	(D)
North Dakota .....	27.00	21.90	20.60
South Dakota .....	23.90	22.30	17.70
United States .....	26.70	23.00	19.60

(D) Withheld to avoid disclosing data for individual operations.

(S) Insufficient number of reports to establish an estimate.

**Prices Received for Canola – States and United States: November 2013 with Comparisons**

State	November 2012	October 2013	Preliminary November 2013
	(dollars per cwt)	(dollars per cwt)	(dollars per cwt)
Minnesota .....	(D)	(D)	(S)
North Dakota .....	26.70	21.00	20.00
United States .....	26.70	21.00	20.00

(D) Withheld to avoid disclosing data for individual operations.

(S) Insufficient number of reports to establish an estimate.

**Prices Received for Flaxseed – States and United States: November 2013 with Comparisons**

State	November 2012	October 2013	Preliminary November 2013
	(dollars per bushel)	(dollars per bushel)	(dollars per bushel)
North Dakota .....	14.10	13.50	13.30
United States .....	14.10	13.50	13.30

## Prices Received for Upland Cotton and Cottonseed – States and United States: November 2013 with Comparisons

[Cottonseed marketing year August - February]

State	Cotton, Upland			Cottonseed		
	November 2012	October 2013	Preliminary November 2013	November 2012	October 2013	Preliminary November 2013
	(dollars per pound)	(dollars per pound)	(dollars per pound)	(dollars per ton)	(dollars per ton)	(dollars per ton)
Alabama .....	0.676	(D)	(D)	198.00	196.00	218.00
Arizona .....	0.782	(D)	(D)	269.00	(D)	272.00
Arkansas .....	0.692	(D)	(D)	246.00	255.00	260.00
California .....	(D)	(D)	(D)	365.00	376.00	375.00
Georgia .....	0.749	0.819	0.822	213.00	198.00	201.00
Louisiana .....	0.646	(D)	0.747	(S)	245.00	244.00
Mississippi .....	0.711	(D)	(D)	267.00	235.00	244.00
North Carolina .....	0.718	0.777	0.768	233.00	236.00	236.00
Tennessee .....	0.742	(D)	(D)	258.00	(S)	240.00
Texas .....	0.672	0.775	0.763	268.00	353.00	250.00
United States .....	0.692	0.779	0.786	255.00	281.00	248.00

(D) Withheld to avoid disclosing data for individual operations.

(S) Insufficient number of reports to establish an estimate.

## Prices Received and Farm Marketings for Upland Cotton and Rice – United States: November 2013 with Comparisons

Item	November 2012	October 2013	Preliminary November 2013
Cotton, Upland			
Average price .....dollars/pound	0.692	0.779	0.786
Marketings <sup>1</sup> .....1,000 bales	2,769	464	(NA)
Rice, all			
Average price .....dollars/cwt	14.60	15.40	15.70
Marketings <sup>2</sup> .....1,000 cwt	16,343	12,883	(NA)
Rice, long			
Average price .....dollars/cwt	14.00	15.40	15.50
Marketings <sup>2</sup> .....1,000 cwt	12,784	10,865	(NA)
Rice, medium and short			
Average price .....dollars/cwt	17.00	15.90	17.00
Marketings <sup>2</sup> .....1,000 cwt	3,559	2,018	(NA)

(NA) Not available.

<sup>1</sup> Marketings based on a survey of cotton buyers in the major producing States - Alabama, Arizona, Arkansas, California, Georgia, Louisiana, Mississippi, North Carolina, Tennessee, and Texas.

<sup>2</sup> Purchases by private firms and rice (rough equivalent) shipped by cooperatives.

## Prices Received for Hay by Type – States and United States: November 2013 with Comparisons

State	All hay			Alfalfa hay			Other hay		
	November 2012	October 2013	Preliminary November 2013	November 2012	October 2013	Preliminary November 2013	November 2012	October 2013	Preliminary November 2013
	(dollars per ton)	(dollars per ton)	(dollars per ton)	(dollars per ton)	(dollars per ton)	(dollars per ton)	(dollars per ton)	(dollars per ton)	(dollars per ton)
Arizona .....	197.00	185.00	170.00	195.00	185.00	170.00	215.00	190.00	180.00
California .....	202.00	195.00	199.00	210.00	198.00	208.00	180.00	182.00	170.00
Colorado .....	234.00	237.00	235.00	235.00	238.00	235.00	220.00	229.00	230.00
Idaho .....	196.00	189.00	180.00	200.00	190.00	180.00	140.00	180.00	170.00
Illinois .....	167.00	155.00	181.00	180.00	180.00	195.00	130.00	125.00	130.00
Iowa .....	202.00	176.00	184.00	213.00	195.00	193.00	137.00	130.00	130.00
Kansas .....	212.00	171.00	171.00	235.00	198.00	199.00	125.00	109.00	105.00
Kentucky .....	104.00	119.00	119.00	195.00	195.00	195.00	85.00	100.00	100.00
Michigan .....	237.00	176.00	187.00	240.00	185.00	200.00	230.00	150.00	155.00
Minnesota .....	174.00	151.00	165.00	225.00	180.00	200.00	130.00	120.00	135.00
Missouri .....	133.00	124.00	102.00	220.00	220.00	210.00	110.00	90.00	80.00
Montana .....	155.00	129.00	134.00	162.00	130.00	135.00	126.00	125.00	130.00
Nebraska .....	204.00	154.00	145.00	228.00	166.00	157.00	144.00	126.00	113.00
Nevada .....	209.00	209.00	205.00	210.00	208.00	207.00	185.00	212.00	190.00
New Mexico .....	251.00	242.00	242.00	264.00	250.00	250.00	197.00	186.00	185.00
New York .....	159.00	153.00	155.00	215.00	208.00	205.00	151.00	137.00	145.00
North Dakota .....	133.00	105.00	104.00	140.00	108.00	105.00	84.00	68.00	66.00
Ohio .....	216.00	166.00	182.00	255.00	190.00	210.00	188.00	150.00	145.00
Oklahoma .....	143.00	139.00	155.00	240.00	199.00	205.00	128.00	82.00	79.00
Oregon .....	214.00	205.00	204.00	222.00	202.00	215.00	200.00	210.00	190.00
Pennsylvania .....	168.00	182.00	192.00	221.00	194.00	200.00	157.00	177.00	188.00
South Dakota .....	207.00	159.00	148.00	226.00	166.00	155.00	147.00	121.00	124.00
Texas .....	114.00	123.00	111.00	255.00	236.00	230.00	97.00	96.00	92.00
Utah .....	182.00	173.00	168.00	182.00	175.00	170.00	147.00	155.00	145.00
Washington .....	232.00	205.00	203.00	235.00	195.00	195.00	225.00	230.00	225.00
Wisconsin .....	203.00	180.00	188.00	220.00	200.00	200.00	120.00	120.00	130.00
Wyoming .....	213.00	185.00	178.00	215.00	190.00	180.00	200.00	170.00	170.00
United States .....	190.00	177.00	171.00	215.00	193.00	188.00	144.00	141.00	135.00

## Prices Received for Apples – States and United States: November 2013 with Comparisons

[Equivalent packinghouse-door returns for California, Michigan, New York, and Washington. Prices at point of first sale for other States]

State	Apples, fresh use		
	November 2012	October 2013	Preliminary November 2013
	(dollars per pound)	(dollars per pound)	(dollars per pound)
California .....	0.368	(NA)	(NA)
Michigan .....	0.545	(NA)	(NA)
New York .....	0.514	(NA)	(NA)
Ohio .....	0.760	(NA)	(NA)
Pennsylvania .....	0.575	(NA)	(NA)
Virginia .....	0.410	(NA)	(NA)
Washington .....	0.463	(NA)	(NA)
United States .....	0.479	(NA)	(NA)

(NA) Not available.



## Prices Received for Citrus Fruits by Utilization – States and United States: November 2012

[Net pounds per box: grapefruit in California-80, Florida-85, Texas-80; lemons-80; oranges in California-80, Florida-90, Texas-85; tangelos-90; tangerines and mandarins in Arizona and California-80, Florida-95]

Commodity, State, and type	FOB packed fresh	Equivalent returns					
		Packinghouse door			On-tree		
		All	Fresh	Process	All	Fresh	Process
	(dollars per box)	(dollars per box)	(dollars per box)	(dollars per box)	(dollars per box)	(dollars per box)	(dollars per box)
Grapefruit							
California <sup>1</sup> .....	18.60	11.94	11.94	(D)	9.76	9.76	(D)
Florida .....	24.60	10.05	13.86	2.99	7.49	11.62	-0.15
White .....	26.90	9.35	15.95	3.10	6.85	13.75	0.30
Colored .....	24.30	10.20	13.55	2.95	7.63	11.30	-0.30
Texas .....	29.70	15.38	18.30	1.60	13.83	16.72	0.17
United States .....	23.90	10.20	13.63	2.99	7.68	11.40	-0.15
Lemons							
Arizona .....	(D)	(D)	(D)	(D)	(D)	(D)	(D)
California .....	32.20	20.11	23.12	(D)	14.39	17.22	(D)
United States .....	32.30	19.64	23.21	(D)	13.96	17.31	(D)
Oranges							
California .....	26.70	16.17	17.71	(D)	13.64	15.20	(D)
Navel and miscellaneous .....	26.70	16.17	17.71	(D)	13.64	15.20	(D)
Florida .....	26.40	9.06	15.25	7.07	6.53	12.65	4.57
Early and mids .....	26.40	9.06	15.25	7.07	6.53	12.65	4.57
United States .....	26.60	11.44	16.86	6.74	8.92	14.31	4.23
Tangelos							
Florida .....	24.50	10.20	12.85	5.40	7.44	10.10	2.60
United States .....	24.50	10.20	12.85	5.40	7.44	10.10	2.60
Tangerines and mandarins							
Arizona .....	(D)	(D)	(D)	(D)	(D)	(D)	(D)
California .....	(D)	(D)	(D)	(D)	(D)	(D)	(D)
Florida .....	35.20	16.26	21.80	5.02	12.43	18.25	0.62
United States .....	39.50	21.88	29.36	2.65	18.60	26.36	-1.34

(D) Withheld to avoid disclosing data for individual operations.

<sup>1</sup> Some processed sales included in fresh sales.

## Prices Received for Citrus Fruits by Utilization – States and United States: October 2013

[Net pounds per box: grapefruit in California-80, Florida-85, Texas-80; lemons-80; oranges in California-80, Florida-90, Texas-85; tangelos-90; tangerines and mandarins in Arizona and California-80, Florida-95]

Commodity, State, and type	FOB packed fresh	Equivalent returns					
		Packinghouse door			On-tree		
		All	Fresh	Process	All	Fresh	Process
	(dollars per box)	(dollars per box)	(dollars per box)	(dollars per box)	(dollars per box)	(dollars per box)	(dollars per box)
<b>Grapefruit</b>							
California <sup>1</sup> .....	(D)	(D)	(D)	(D)	(D)	(D)	(D)
Florida .....	(S)	(S)	(S)	(S)	(S)	(S)	(S)
White .....	(S)	(S)	(S)	(S)	(S)	(S)	(S)
Colored .....	(S)	(S)	(S)	(S)	(S)	(S)	(S)
United States .....	(D)	(D)	(D)	(D)	(D)	(D)	(D)
<b>Lemons</b>							
Arizona .....	(D)	(D)	(D)	(D)	(D)	(D)	(D)
California .....	50.00	39.03	40.74	(D)	33.07	34.72	(D)
United States .....	50.70	39.67	41.46	(D)	33.71	35.44	(D)
<b>Oranges</b>							
California .....	26.80	15.48	17.81	(D)	12.94	15.30	(D)
Valencia .....	26.80	15.48	17.81	(D)	12.94	15.30	(D)
Florida .....	(S)	(S)	(S)	(S)	(S)	(S)	(S)
Early and mids .....	(S)	(S)	(S)	(S)	(S)	(S)	(S)
United States .....	26.80	15.48	17.81	(D)	12.94	15.30	(D)
<b>Tangerines and mandarins</b>							
California .....	(D)	(D)	(D)	(D)	(D)	(D)	(D)
Florida .....	(S)	(S)	(S)	(S)	(S)	(S)	(S)
United States .....	(D)	(D)	(D)	(D)	(D)	(D)	(D)

(D) Withheld to avoid disclosing data for individual operations.

(S) Insufficient number of reports to establish an estimate.

<sup>1</sup> Some processed sales included in fresh sales.

## Prices Received for Citrus Fruits by Utilization – States and United States: November 2013

[Net pounds per box: grapefruit in California-80, Florida-85, Texas-80; lemons-80; oranges in California-80, Florida-90, Texas-85; tangelos-90; tangerines and mandarins in Arizona and California-80, Florida-95]

Commodity, State, and type	FOB packed fresh	Equivalent returns					
		Packinghouse door			On-tree		
		All	Fresh	Process	All	Fresh	Process
	(dollars per box)	(dollars per box)	(dollars per box)	(dollars per box)	(dollars per box)	(dollars per box)	(dollars per box)
Grapefruit							
California <sup>1</sup> .....	16.60	9.81	9.81	(D)	7.59	7.59	(D)
Florida .....	22.30	9.02	11.47	3.21	6.52	9.23	0.10
White .....	27.50	11.06	16.55	4.10	8.60	14.35	1.30
Colored .....	21.20	8.48	10.45	2.80	5.97	8.20	-0.45
Texas .....	34.30	18.00	22.70	1.60	16.43	21.09	0.14
United States .....	23.60	10.31	13.01	3.02	7.96	10.86	0.10
Lemons							
Arizona .....	(D)	(D)	(D)	(D)	(D)	(D)	(D)
California .....	49.10	37.22	39.84	(D)	31.29	33.82	(D)
United States .....	49.30	36.41	40.08	(D)	30.51	34.06	(D)
Oranges							
California .....	30.00	19.45	20.87	(D)	16.88	18.31	(D)
Navel and miscellaneous .....	30.40	19.88	21.23	(D)	17.30	18.67	(D)
Valencia .....	23.50	12.72	14.51	(D)	10.18	12.00	(D)
Florida .....	29.00	9.07	17.85	6.15	6.54	15.25	3.65
Early and mids .....	29.00	9.07	17.85	6.15	6.54	15.25	3.65
United States .....	29.80	14.49	20.27	5.63	11.94	17.71	3.11
Tangelos							
Florida .....	28.70	13.11	17.05	6.55	10.34	14.30	3.75
United States .....	28.70	13.11	17.05	6.55	10.34	14.30	3.75
Tangerines and mandarins .....							
Arizona .....	(D)	(D)	(D)	(NA)	(D)	(D)	(NA)
California .....	(D)	(D)	(D)	(D)	(D)	(D)	(D)
Florida .....	38.90	19.85	25.50	6.95	16.05	21.95	2.55
United States .....	46.60	30.81	36.65	3.92	27.59	33.68	-0.46

(D) Withheld to avoid disclosing data for individual operations.

(NA) Not available.

<sup>1</sup> Some processed sales included in fresh sales.

**Prices Received for Potatoes – States and United States: November 2013 with Comparisons**

State	November 2012	October 2013	Preliminary November 2013
	(dollars per cwt)	(dollars per cwt)	(dollars per cwt)
California			
Spring .....	(S)	(S)	(S)
Fall .....	6.75	9.15	9.15
All <sup>1</sup> .....	6.75	9.15	9.15
Colorado			
Fresh <sup>2</sup> .....	7.00	(D)	(D)
All <sup>1</sup> .....	6.50	10.20	(D)
Florida .....	(S)	(S)	(S)
Idaho			
Fresh <sup>2</sup> .....	4.60	8.00	(D)
Processing .....	7.00	7.60	(D)
All <sup>1</sup> .....	6.05	7.65	7.55
Maine .....	10.30	(D)	11.30
Michigan .....	11.50	10.00	12.20
Minnesota .....	6.30	9.80	(D)
New York .....	13.00	15.80	15.30
North Carolina .....	(S)	(S)	(S)
North Dakota			
Fresh <sup>2</sup> .....	9.40	17.10	(D)
Processing .....	9.15	10.20	(D)
All <sup>1</sup> .....	9.30	12.20	(D)
Oregon .....	6.80	7.40	8.55
Texas .....	(S)	(S)	(S)
Virginia .....	(S)	(S)	(S)
Washington			
Processing .....	6.80	6.40	(D)
All <sup>1</sup> .....	7.05	6.70	7.75
Wisconsin			
Fresh <sup>2</sup> .....	7.05	11.00	(D)
Processing .....	9.65	9.55	(D)
All <sup>1</sup> .....	8.45	10.20	(D)
United States			
Fresh <sup>2</sup> .....	6.61	11.32	(D)
Processing .....	7.79	7.37	(D)
All <sup>1</sup> .....	7.39	8.10	9.03

(D) Withheld to avoid disclosing data for individual operations.

(S) Insufficient number of reports to establish an estimate.

<sup>1</sup> Average price of potatoes sold for all uses, including table stock, processing, seed, and livestock feed.

<sup>2</sup> Fresh market prices only. Includes table stock prices.

## Prices Received for All Milk – States and United States: November 2013 with Comparisons

[Before deduction for hauling. Includes quality, quantity, and other premiums. Excludes hauling subsidies]

State	November 2012		October 2013		Preliminary November 2013	
	Price (dollars per cwt)	Fat test (percent)	Price (dollars per cwt)	Fat test (percent)	Price (dollars per cwt)	Fat test (percent)
Arizona .....	21.00	3.63	20.30	3.58	20.80	3.62
California .....	19.92	3.85	19.01	3.75	19.50	3.81
Colorado .....	22.20	3.70	21.20	3.65	21.50	3.70
Florida .....	25.70	3.76	24.60	3.64	25.20	3.65
Idaho .....	21.20	3.83	20.10	3.88	20.80	3.92
Illinois .....	23.50	3.91	21.20	3.82	21.60	3.88
Indiana .....	22.50	3.84	21.40	3.78	22.10	3.83
Iowa .....	23.00	3.91	21.30	3.84	21.90	3.89
Kansas .....	22.70	3.84	21.00	3.68	21.60	3.74
Michigan .....	22.40	3.80	21.00	3.73	21.80	3.77
Minnesota .....	23.30	3.93	21.10	3.95	21.70	4.00
Missouri .....	22.80	3.86	21.20	3.78	21.90	3.85
New Mexico .....	21.20	3.73	19.80	3.72	20.20	3.74
New York .....	22.80	3.85	22.00	3.81	22.50	3.86
Ohio .....	23.10	3.89	21.40	3.75	22.10	3.81
Oregon .....	23.80	3.92	22.20	3.98	22.70	4.00
Pennsylvania .....	23.60	3.85	22.00	3.73	22.50	3.80
Texas .....	22.30	3.93	21.60	3.89	22.00	3.91
Utah .....	21.80	3.84	20.50	3.87	20.80	3.90
Vermont .....	23.10	4.09	22.20	3.83	22.50	3.90
Virginia .....	24.70	3.87	24.00	3.72	24.70	3.82
Washington .....	22.00	3.92	21.50	3.98	22.20	4.00
Wisconsin .....	23.20	3.88	21.00	3.83	21.60	3.88
United States .....	22.10	3.85	20.70	3.80	21.30	3.85

## Prices Received for Milk Cows – States and United States: October 2013 with Comparisons

[Animals sold for dairy herd replacement only. Prices estimated in January, April, July, and October]

State	October 2012 (dollars per head)	July 2013 (dollars per head)	October 2013 (dollars per head)
Arizona .....	1,450	(NA)	1,500
California .....	1,300	(NA)	1,300
Colorado .....	1,430	(NA)	1,520
Florida .....	1,470	(NA)	1,550
Idaho .....	1,400	(NA)	1,300
Illinois .....	1,420	(NA)	1,420
Indiana .....	1,350	(NA)	1,450
Iowa .....	1,420	(NA)	1,380
Kansas .....	1,300	(NA)	1,350
Michigan .....	1,500	(NA)	1,600
Minnesota .....	1,350	(NA)	1,350
Missouri .....	1,100	(NA)	1,200
New Mexico .....	1,400	(NA)	1,440
New York .....	1,410	(NA)	1,410
Ohio .....	1,380	(NA)	1,400
Oregon .....	1,360	(NA)	1,300
Pennsylvania .....	1,430	(NA)	1,450
Texas .....	1,370	(NA)	1,450
Utah .....	1,240	(NA)	1,290
Vermont .....	1,550	(NA)	1,510
Virginia .....	1,470	(NA)	1,490
Washington .....	1,300	(NA)	1,300
Wisconsin .....	1,460	(NA)	1,490
United States .....	1,390	(NA)	1,400

(NA) Not available.

## Commodity Parity Prices and Price as Percent of Parity Price – United States: November 2013 with Comparisons

[Parity prices are computed under the provisions of Title III, Subtitle a, Section 301 (a) of the Agricultural Adjustment Act of 1938 as amended by the Agricultural Acts of 1948, 1949, and 1956. See January *Agricultural Prices* for details on adjusted base price and parity price computations. Parity data not available for blank cells. Primary source of data for livestock and milk prices is United States Department of Agriculture's Agricultural Marketing Service]

Commodity and unit	Adjusted base price	Parity price			Price as percent of parity		
		November 2012	October 2013	November 2013	November 2012	October 2013	November 2013
	(dollars)	(dollars)	(dollars)	(dollars)	(percent)	(percent)	(percent)
<b>Basic commodities</b>							
All wheat ..... bushel	0.636	18.30	18.40	18.00	46	38	38
Rice ..... cwt	1.65	42.20	47.80	46.80	35	32	34
Corn ..... bushel	0.434	12.00	12.60	12.30	58	37	35
<b>Cotton</b>							
Upland ..... pound	0.072	2.08	2.09	2.04	33	37	39
American Pima ..... pound	0.133	4.08	3.85	3.77	36	32	33
Peanuts ..... pound	0.027	0.752	0.782	0.765	43	33	34
<b>Designated nonbasic</b>							
All milk, to plants <sup>1</sup> ..... cwt	1.75	52.10	50.70	49.60	39	38	40
Honey, extracted <sup>2</sup> ..... pound	0.141	4.02	4.09	4.00	43	42	43
<b>Wool and mohair</b>							
Wool ..... pound	0.107	3.01	3.10	3.03	55	49	50
Mohair ..... pound	0.336	9.63	9.74	9.52	43	40	41
<b>Other nonbasic</b>							
Apples, fresh <sup>3</sup> ..... pound	0.032	0.955	0.927	0.907	50	46	42
Barley ..... bushel	0.444	12.60	12.90	12.60	52	46	46
Canola ..... cwt	1.880	52.70	54.50	53.30	51	39	38
Cottonseed ..... ton	17.80	503.00	516.00	504.00	51	54	49
Dry edible beans ..... cwt	3.01	87.10	87.20	85.30	45	47	46
Flaxseed ..... bushel	1.110	31.80	32.20	31.50	44	42	42
Oats ..... bushel	0.265	7.61	7.68	7.51	51	45	46
Potatoes ..... cwt	0.822	24.70	23.80	23.30	30	34	39
Sorghum grain ..... cwt	0.758	21.10	22.00	21.50	59	35	35
Soybeans ..... bushel	1.030	28.90	29.80	29.20	49	42	43
Sunflower, all ..... cwt	2.10	59.60	60.90	59.50	45	38	33
<b>Citrus (equivalent on-tree)</b>							
Grapefruit ..... box	0.697	20.00	20.20	19.80	38	39	40
Lemons ..... box	1.32	39.60	38.30	37.40	35	88	82
Oranges ..... box	0.711	20.20	20.60	20.10	44	63	59
Tangerines ..... box	1.49	43.10	43.20	42.20	43	129	65
<b>Livestock and poultry</b>							
Beef cattle ..... cwt	10.00	292.00	290.00	283.00	42	44	46
Calves ..... cwt	13.70	402.00	397.00	388.00	40	46	47
Hogs ..... cwt	5.48	160.00	159.00	155.00	38	43	42
Eggs <sup>1</sup> ..... dozen	0.089	2.63	2.58	2.52	39	40	46
Turkeys, live ..... pound	0.057	1.650	1.650	1.620	46	42	43

<sup>1</sup> Seasonally adjusted price as percentage of parity price.

<sup>2</sup> Wholesale extracted. Adjusted base price derived from state annual averages prices weighted by production. For 1982 through 1985 the national averages are the support prices.

<sup>3</sup> Equivalent packinghouse-door returns for California, New York, Oregon, and Washington. Price at point of first sale for other states.

## Commodity Parity Prices – United States: November 2013 with Comparisons

[Parity prices are computed under the provisions of Title III, Subtitle a, Section 301 (a) of the Agricultural Adjustment Act of 1938 as amended by the Agricultural Acts of 1948, 1949, and 1956. See January *Agricultural Prices* for details on adjusted base price and parity price computations]

Commodity and unit	Adjusted base price	Parity price			
		November 2012	October 2013	November 2013	
	(dollars)	(dollars)	(dollars)	(dollars)	
<b>Field crops and miscellaneous</b>					
Hops .....	pound	0.303	8.85	8.78	8.59
Mustard seed .....	cwt	2.85	81.60	82.60	80.80
Rapeseed .....	cwt	2.25	64.50	65.20	63.80
Rye .....	bushel	0.535	15.20	15.50	15.20
Safflower .....	cwt	2.04	58.40	59.10	57.80
Spearmint oil .....	pound	1.50	43.40	43.50	42.50
Sweet potatoes .....	cwt	2.08	63.90	60.30	58.90
<b>Tobacco</b>					
Flue-cured, 11-14 .....	pound	0.185	5.67	5.36	5.24
Fire-cured, 21-23 .....	pound	0.267	8.19	7.74	7.57
Burley, 31 .....	pound	0.188	5.84	5.45	5.33
Maryland, 32 .....	pound	0.167	5.03	4.84	4.73
Dark air-cured, 35-37 .....	pound	0.240	7.41	6.96	6.80
Pennsylvania seedleaf, 41 .....	pound	0.176	5.32	5.10	4.99
Cigar binder, 51 .....	pound	0.610	18.60	17.70	17.30
<b>Noncitrus fruit</b>					
Apples, processing <sup>1</sup> .....	ton	16.60	477.00	481.00	470.00
Apricots					
Fresh <sup>2</sup> .....	ton	111.00	3,560.00	3,220.00	3,150.00
Dried (California) .....	ton	252.00	7,490.00	7,300.00	7,140.00
Avocados <sup>2</sup> .....	ton	189.00	5,900.00	5,480.00	5,360.00
Cherries					
Sweet .....	ton	205.00	6,220.00	5,940.00	5,810.00
Tart .....	pound	0.033	0.984	0.956	0.935
Cranberry <sup>3</sup> .....	barrel	4.68	140.00	136.00	133.00
Dates (California) <sup>2</sup> .....	ton	161.00	5,120.00	4,670.00	4,560.00
Grapes					
Raisin variety .....	ton	133.00	3,620.00	3,850.00	3,770.00
Other dried .....	ton	61.70	1,620.00	1,790.00	1,750.00
Kiwifruit .....	ton	88.60	2,720.00	2,570.00	2,510.00
Nectarines, fresh (California) <sup>2</sup> .....	ton	54.60	1,570.00	1,580.00	1,550.00
Olives, canning (California) <sup>3</sup> .....	ton	87.70	2,590.00	2,540.00	2,490.00

See footnote(s) at end of table.

--continued



## Commodity Parity Prices – United States: November 2013 with Comparisons (continued)

[Parity prices are computed under the provisions of Title III, Subtitle a, Section 301 (a) of the Agricultural Adjustment Act of 1938 as amended by the Agricultural Acts of 1948, 1949, and 1956. See January *Agricultural Prices* for details on adjusted base price and parity price computations]

Commodity and unit	Adjusted base price	Parity price		
		November 2012	October 2013	November 2013
	(dollars)	(dollars)	(dollars)	(dollars)
Noncitrus fruit - continued				
Papayas (Hawaii) .....pound	0.038	1.27	1.10	1.08
Peaches				
Fresh <sup>4</sup> ..... ton	80.20	2,370.00	2,320.00	2,270.00
Dried (California) ..... ton	48.50	1,550.00	1,410.00	1,370.00
Processing, excludes dried				
Clingstone (California) <sup>3</sup> ..... ton	31.60	963.00	916.00	896.00
Pears				
Fresh <sup>4</sup> ..... ton	54.70	1,610.00	1,590.00	1,550.00
Dried (California) <sup>1</sup> ..... ton	150.00	4,950.00	4,350.00	4,250.00
Plums (California)				
Fresh, equivalent on-tree ..... ton	58.10	1,700.00	1,680.00	1,650.00
Prunes, dried (California) <sup>1</sup> ..... ton	143.00	4,280.00	4,140.00	4,050.00
Prunes and plums				
Fresh, excludes California <sup>5</sup> ..... ton	61.90	1,810.00	1,790.00	1,750.00
Processing, excludes dried <sup>1</sup> ..... ton	23.80	729.00	690.00	674.00
Tree nuts <sup>6</sup>				
Almonds .....pound	0.211	6.16	6.11	5.98
Hazelnuts ..... ton	191.00	5,670.00	5,540.00	5,410.00
Pistachios .....pound	0.194	5.67	5.62	5.50
Walnuts ..... ton	185.00	5,180.00	5,360.00	5,240.00
Vegetables, fresh <sup>7</sup>				
Carrots <sup>8</sup> ..... cwt	2.57	77.80	74.50	72.80
Cauliflower <sup>8</sup> ..... cwt	4.04	125.00	117.00	114.00
Celery <sup>8</sup> ..... cwt	1.94	58.10	56.20	55.00
Honeydew melons ..... cwt	1.97	60.50	57.10	55.80
Lettuce ..... cwt	2.09	66.20	60.60	59.20
Onions <sup>8</sup> ..... cwt	1.41	43.10	40.90	40.00
Tomatoes ..... cwt	4.30	135.00	125.00	122.00

<sup>1</sup> Equivalent returns at processing plant door.

<sup>2</sup> Equivalent returns at packinghouse door.

<sup>3</sup> Equivalent returns for bulk fruit at first delivery point.

<sup>4</sup> Equivalent packinghouse-door returns for California, New York (apples only), Oregon (except peaches), and Washington. Price at point of first sale for other states.

<sup>5</sup> Based on "as sold" prices for fresh fruit in all states.

<sup>6</sup> Prices In-Shell basis except almonds which are shelled basis.

<sup>7</sup> FOB shipping point prices.

<sup>8</sup> Includes some processing.

## Marketing Year for Specified Commodities

**Corn for Grain:** September 1 to August 31 for United States; July 1 to June 30 for Texas; August 1 to July 31 for Alabama, Arkansas, Florida, Georgia, Louisiana, Mississippi, North Carolina, Oklahoma, South Carolina, and Tennessee; September 1 to August 31 for Arizona, California, Delaware, Illinois, Indiana, Iowa, Kansas, Kentucky, Maryland, Missouri, Nebraska, New Mexico, Ohio, Pennsylvania, South Dakota, Virginia, and West Virginia; October 1 to September 30 for all other States.

**Dry Edible Beans:** September 1 to August 31 for United States and all States.

**Canola:** July 1 to June 30 for United States and all States.

**Chickpeas (Garbanzo):** September 1 to August 31 for United States.

**Flaxseed:** July 1 to June 30 for United States and all States.

**Sunflower:** September 1 to August 31 for United States; July 1 to June 30 for Texas; September 1 to August 31 for all other States.

### Flaxseed Market Year Average Prices Received – States and United States: Marketing Years 2011 and 2012

States	2011 (dollars per bushel)	2012 (dollars per bushel)
Minnesota .....	13.60	14.00
Montana .....	13.10	13.60
North Dakota .....	13.90	13.80
South Dakota .....	13.50	13.20
United States .....	13.90	13.80

### Sunflowers Market Year Average Prices Received – States and United States: Marketing Years 2011 and 2012

States	All		Oil		Non-oil	
	2011 (dollars per cwt)	2012 (dollars per cwt)	2011 (dollars per cwt)	2012 (dollars per cwt)	2011 (dollars per cwt)	2012 (dollars per cwt)
California .....	26.40	26.30	26.00	26.00	30.00	32.00
Colorado .....	31.80	31.10	(D)	(D)	(D)	(D)
Kansas .....	30.10	28.60	28.80	24.90	36.30	36.60
Minnesota .....	32.10	29.10	30.60	27.80	37.30	33.60
Nebraska .....	31.90	26.70	28.10	24.00	37.60	35.00
North Dakota .....	29.30	25.60	27.60	24.60	32.70	28.10
Oklahoma .....	27.10	26.40	26.60	25.00	33.00	36.00
South Dakota .....	27.90	24.30	27.50	24.00	34.60	33.40
Texas .....	31.10	31.50	(D)	(D)	(D)	(D)
Other States <sup>1</sup> .....	(X)	(X)	30.60	26.10	34.10	34.50
United States .....	29.10	25.40	28.00	24.40	33.80	29.60

(D) Withheld to avoid disclosing data for individual operations.

(X) Not applicable.

<sup>1</sup> Other States include data withheld above.

**Canola Market Year Average Prices Received – States and United States: Marketing Years 2011 and 2012**

States	2011	2012
	(dollars per cwt)	(dollars per cwt)
Idaho .....	20.00	25.80
Minnesota .....	24.20	26.40
Montana .....	22.00	26.20
North Dakota .....	24.00	26.50
Oklahoma .....	24.30	25.20
Oregon .....	23.50	24.00
Washington .....	22.60	26.10
Other States <sup>1</sup> .....	23.60	24.90
United States .....	24.00	26.50

<sup>1</sup> Other States include Colorado and Kansas.

**Proso Millet Market Year Average Prices Received – States and United States: Marketing Years 2011 and 2012**

States	2011	2012
	(dollars per bushel)	(dollars per bushel)
Colorado .....	5.90	16.40
Nebraska .....	6.05	12.80
South Dakota .....	6.49	14.80
United States .....	6.01	15.20

**Other Oilseeds Market Year Average Prices Received – United States: Marketing Years 2011 and 2012**

Year	Rapeseed <sup>1</sup>	Mustard Seed <sup>2</sup>
	(dollars per cwt)	(dollars per cwt)
2011 .....	27.00	33.60
2012 .....	26.10	35.80

<sup>1</sup> Includes Idaho, Minnesota, Oregon, and Washington.

<sup>2</sup> Includes Idaho, Montana, North Dakota, Oregon, and Washington.

**Safflower Market Year Average Prices Received – States and United States: Marketing Years 2011 and 2012**

States	2011	2012
	(dollars per cwt)	(dollars per cwt)
California .....	23.50	25.30
Montana .....	28.00	34.00
North Dakota .....	24.80	29.60
Utah .....	24.40	28.90
Other States <sup>1</sup> .....	26.50	30.50
United States .....	24.40	27.50

<sup>1</sup> Other States include Colorado, Idaho, and South Dakota.

**Corn Market Year Average Prices Received – States and United States: Marketing Years 2011 and 2012**

States	2011 (dollars per bushel)	2012 (dollars per bushel)
Alabama .....	6.32	7.18
Arizona .....	6.78	7.84
Arkansas .....	6.27	6.81
California .....	6.41	6.68
Colorado .....	6.15	6.86
Delaware .....	6.93	7.55
Florida .....	6.65	7.50
Georgia .....	7.30	7.90
Idaho .....	6.96	7.10
Illinois .....	6.25	6.87
Indiana .....	6.31	7.23
Iowa .....	6.20	6.92
Kansas .....	6.28	7.04
Kentucky .....	6.30	6.96
Louisiana .....	6.10	6.90
Maryland .....	6.70	7.30
Michigan .....	6.14	6.69
Minnesota .....	6.09	6.67
Mississippi .....	6.23	6.94
Missouri .....	6.40	7.34
Montana .....	6.47	7.21
Nebraska .....	6.11	6.85
New Jersey .....	6.80	7.40
New Mexico .....	6.35	7.30
New York .....	6.90	6.78
North Carolina .....	7.04	7.48
North Dakota .....	5.81	6.46
Ohio .....	6.44	7.09
Oklahoma .....	6.22	7.04
Oregon .....	6.95	6.96
Pennsylvania .....	7.05	7.21
South Carolina .....	6.60	7.50
South Dakota .....	6.03	6.72
Tennessee .....	6.56	7.28
Texas .....	6.61	7.12
Utah .....	6.97	7.59
Virginia .....	6.58	7.30
Washington .....	6.22	6.69
West Virginia .....	6.50	7.20
Wisconsin .....	6.02	6.69
Wyoming .....	6.20	7.05
United States .....	6.22	6.89

**All Dry Beans Market Year Average Prices Received – States and United States: Marketing Years 2011 and 2012**

States	2011 (dollars per cwt)	2012 (dollars per cwt)
Arizona .....	50.00	51.30
California .....	55.10	52.10
Colorado .....	47.40	39.00
Idaho .....	36.10	36.20
Kansas .....	45.00	36.00
Michigan .....	45.60	39.90
Minnesota .....	41.50	42.60
Montana .....	34.70	37.60
Nebraska .....	42.60	38.70
New Mexico .....	50.00	60.00
New York .....	48.20	51.20
North Dakota .....	39.90	35.10
Oregon .....	44.60	36.90
South Dakota .....	42.90	36.90
Texas .....	47.50	45.00
Washington .....	44.80	41.50
Wisconsin .....	57.00	54.50
Wyoming .....	39.40	36.80
United States .....	42.10	38.00

**Prices Received for Corn by Month – States and United States: Marketing Years 2011-2012 and 2012-2013**

States	2011-2012							
	Jul	Aug	Sep	Oct	Nov	Dec	Jan <sup>1</sup>	Feb
	(dollars per bushel)	(dollars per bushel)	(dollars per bushel)	(dollars per bushel)	(dollars per bushel)	(dollars per bushel)	(dollars per bushel)	(dollars per bushel)
Colorado .....	6.60	7.06	6.61	5.78	5.85	6.09	6.05	6.30
Illinois .....	6.56	6.96	6.10	5.84	5.90	5.92	6.12	6.37
Indiana .....	7.04	7.18	6.14	5.89	5.94	6.02	6.21	6.46
Iowa .....	6.19	6.84	6.63	5.65	5.75	5.78	5.99	6.21
Kansas .....	6.93	6.89	6.08	5.98	6.08	6.07	6.24	6.35
Kentucky .....	7.19	6.38	6.01	5.96	6.10	6.24	6.13	6.51
Michigan .....	6.82	7.22	6.71	5.80	5.70	5.64	5.97	6.14
Minnesota .....	5.83	6.49	6.43	5.42	5.57	5.52	5.85	6.05
Missouri .....	6.88	7.15	6.20	5.90	6.26	6.14	6.28	6.46
Nebraska .....	6.26	6.93	6.55	5.61	5.77	5.81	6.02	6.22
North Carolina .....	7.56	6.99	7.17	6.83	6.89	6.48	6.84	7.07
North Dakota .....	5.88	6.36	6.46	5.25	5.41	5.40	5.73	5.93
Ohio .....	7.06	7.40	6.95	6.03	6.03	6.04	6.19	6.43
Pennsylvania .....	7.54	8.52	7.02	6.91	6.79	6.63	6.73	7.07
South Dakota .....	6.10	6.75	6.62	5.68	5.68	5.65	5.93	6.06
Tennessee .....	7.05	6.32	6.32	6.32	6.52	6.30	6.56	6.75
Texas .....	6.47	7.00	6.34	6.39	6.28	6.52	6.73	7.03
Wisconsin .....	6.27	7.09	6.95	5.56	5.75	5.73	5.78	6.07
United States .....	6.33	6.88	6.38	5.73	5.83	5.86	6.07	6.28
States	2012-2013							
	Jul	Aug	Sep	Oct	Nov	Dec	Jan <sup>1</sup>	Feb
	(dollars per bushel)	(dollars per bushel)	(dollars per bushel)	(dollars per bushel)	(dollars per bushel)	(dollars per bushel)	(dollars per bushel)	(dollars per bushel)
Colorado .....	6.98	7.60	6.67	6.45	6.69	7.01	6.86	7.26
Illinois .....	7.30	7.58	6.84	6.84	7.07	6.73	6.87	7.05
Indiana .....	7.43	7.92	7.37	7.22	7.43	7.27	7.26	7.38
Iowa .....	7.17	7.89	6.84	6.82	7.03	6.92	7.06	7.01
Kansas .....	7.40	7.45	6.87	7.13	7.09	7.15	7.11	7.19
Kentucky .....	7.24	7.04	6.75	6.82	7.15	6.99	7.00	7.18
Michigan .....	7.63	7.96	6.92	6.81	6.71	6.93	6.81	6.92
Minnesota .....	6.87	7.54	6.47	6.56	6.86	6.68	6.77	6.88
Missouri .....	6.79	7.41	7.30	7.47	7.60	7.41	7.42	7.52
Nebraska .....	7.05	7.76	6.88	6.59	6.90	6.80	6.90	6.96
North Carolina .....	7.89	7.24	7.45	7.52	7.62	7.64	7.54	7.65
North Dakota .....	6.56	7.37	6.26	6.33	6.64	6.46	6.52	6.61
Ohio .....	7.45	8.09	7.33	7.06	7.18	7.17	7.15	7.18
Pennsylvania .....	7.75	8.59	7.45	7.37	7.19	7.31	7.39	7.36
South Dakota .....	6.73	7.39	6.83	6.61	6.82	6.71	6.85	6.88
Tennessee .....	8.14	6.98	6.98	7.36	7.47	7.47	7.43	7.80
Texas .....	7.08	7.29	6.80	7.11	6.83	7.32	7.23	7.17
Wisconsin .....	6.64	7.39	7.05	6.40	6.76	6.85	6.93	7.03
United States .....	7.14	7.63	6.89	6.78	7.01	6.87	6.96	7.04

See footnote(s) at end of table.

--continued

**Prices Received for Corn by Month – States and United States: Marketing Years 2011-2012 and 2012-2013 (continued)**

States	2011-2012						
	Mar	Apr	May	Jun	Jul	Aug	Sep
	(dollars per bushel)	(dollars per bushel)	(dollars per bushel)	(dollars per bushel)	(dollars per bushel)	(dollars per bushel)	(dollars per bushel)
Colorado .....	6.37	6.34	6.21	6.37	6.98	7.60	6.67
Illinois .....	6.48	6.44	6.39	6.43	7.30	7.58	6.84
Indiana .....	6.59	6.56	6.52	6.55	7.43	7.92	7.37
Iowa .....	6.23	6.23	6.31	6.37	7.17	7.89	6.84
Kansas .....	6.42	6.38	6.30	6.30	7.40	7.45	6.87
Kentucky .....	6.70	6.62	6.64	6.57	7.24	7.04	6.75
Michigan .....	6.44	6.24	6.18	6.35	7.63	7.96	6.92
Minnesota .....	6.19	6.06	6.06	6.19	6.87	7.54	6.47
Missouri .....	6.50	6.46	6.61	6.54	6.79	7.41	7.30
Nebraska .....	6.25	6.39	6.36	6.35	7.05	7.76	6.88
North Carolina .....	7.05	7.07	7.05	7.00	7.89	7.24	7.45
North Dakota .....	6.06	6.05	5.98	6.06	6.56	7.37	6.26
Ohio .....	6.51	6.50	6.46	6.48	7.45	8.09	7.33
Pennsylvania .....	7.03	6.99	6.89	6.89	7.75	8.59	7.45
South Dakota .....	6.17	6.07	6.09	6.15	6.73	7.39	6.83
Tennessee .....	6.97	6.92	6.79	6.47	8.14	6.98	6.98
Texas .....	7.08	7.16	6.84	6.68	7.08	7.29	6.80
Wisconsin .....	6.25	6.15	6.17	6.44	6.64	7.39	7.05
United States .....	6.35	6.34	6.34	6.37	7.14	7.63	6.89
States	2012-2013						
	Mar	Apr	May	Jun	Jul	Aug	Sep
	(dollars per bushel)	(dollars per bushel)	(dollars per bushel)	(dollars per bushel)	(dollars per bushel)	(dollars per bushel)	(dollars per bushel)
Colorado .....	7.21	7.00	6.98	7.30	7.06	6.80	6.07
Illinois .....	7.14	6.89	6.91	6.96	6.73	6.09	5.25
Indiana .....	7.48	7.12	7.16	7.15	6.71	6.38	5.22
Iowa .....	7.13	7.10	7.05	7.09	6.91	6.32	5.66
Kansas .....	7.30	6.84	7.00	7.11	6.70	6.13	5.13
Kentucky .....	7.02	7.29	7.08	7.26	6.89	6.10	5.11
Michigan .....	6.98	6.58	6.65	6.79	6.65	6.04	5.37
Minnesota .....	6.95	6.75	6.83	6.81	6.78	6.24	5.69
Missouri .....	7.48	7.42	7.30	7.28	7.12	6.42	5.06
Nebraska .....	7.10	7.05	6.99	7.05	7.05	6.45	5.64
North Carolina .....	7.62	7.41	7.48	7.63	7.06	5.85	4.92
North Dakota .....	6.77	6.59	6.39	6.47	6.37	5.97	5.67
Ohio .....	7.29	7.02	7.00	7.05	6.83	6.34	5.47
Pennsylvania .....	7.30	6.99	7.14	7.27	6.67	6.10	5.15
South Dakota .....	6.99	6.59	6.87	6.80	6.57	5.99	5.46
Tennessee .....	7.62	7.28	7.47	7.38	7.20	6.23	5.07
Texas .....	7.38	7.43	7.18	7.28	5.78	5.01	5.46
Wisconsin .....	7.06	6.95	6.77	6.80	6.80	6.18	5.68
United States .....	7.13	6.97	6.97	6.97	6.79	6.21	5.40

<sup>1</sup> Second year.

**Prices Received for Flaxseed by Month – States and United States: Marketing Years 2011-2012**

States	2011-2012					
	July	August	September	October	November	December
	(dollars per bushel)	(dollars per bushel)	(dollars per bushel)	(dollars per bushel)	(dollars per bushel)	(dollars per bushel)
North Dakota .....	15.40	14.40	13.60	13.90	13.90	13.50
United States .....	15.40	14.40	13.60	13.90	13.90	13.50

States	2011-2012					
	January <sup>1</sup>	February	March	April	May	June
	(dollars per bushel)	(dollars per bushel)	(dollars per bushel)	(dollars per bushel)	(dollars per bushel)	(dollars per bushel)
North Dakota .....	13.70	13.20	13.30	14.10	14.80	12.90
United States .....	13.70	13.20	13.30	14.10	14.80	12.90

<sup>1</sup> Second year.

**Prices Received for Flaxseed by Month – States and United States: Marketing Years 2012-2013**

States	2012-2013					
	July	August	September	October	November	December
	(dollars per bushel)	(dollars per bushel)	(dollars per bushel)	(dollars per bushel)	(dollars per bushel)	(dollars per bushel)
North Dakota .....	13.30	13.30	13.30	13.60	14.10	13.80
United States .....	13.30	13.30	13.30	13.60	14.10	13.80

States	2012-2013					
	January <sup>1</sup>	February	March	April	May	June
	(dollars per bushel)	(dollars per bushel)	(dollars per bushel)	(dollars per bushel)	(dollars per bushel)	(dollars per bushel)
North Dakota .....	13.70	14.30	14.40	14.90	15.40	15.20
United States .....	13.70	14.30	14.40	14.90	15.40	15.20

<sup>1</sup> Second year.



**Prices Received for Canola by Month – States and United States: Marketing Years 2011-2012**

States	2011-2012					
	July	August	September	October	November	December
	(dollars per cwt)	(dollars per cwt)	(dollars per cwt)	(dollars per cwt)	(dollars per cwt)	(dollars per cwt)
Minnesota .....	22.30	24.10	24.00	(D)	(D)	24.30
North Dakota .....	24.80	23.10	23.10	22.70	23.30	22.90
United States .....	24.60	23.10	23.10	22.80	23.30	23.00

States	2011-2012					
	January <sup>1</sup>	February	March	April	May	June
	(dollars per cwt)	(dollars per cwt)	(dollars per cwt)	(dollars per cwt)	(dollars per cwt)	(dollars per cwt)
Minnesota .....	(D)	25.90	(D)	27.90	(D)	(D)
North Dakota .....	23.40	24.80	27.10	27.80	27.70	27.40
United States .....	23.40	24.80	27.10	27.80	27.70	27.40

(D) Withheld to avoid disclosing data for individual operations.  
<sup>1</sup> Second year.

**Prices Received for Canola by Month – States and United States: Marketing Years 2012-2013**

States	2012-2013					
	July	August	September	October	November	December
	(dollars per cwt)	(dollars per cwt)	(dollars per cwt)	(dollars per cwt)	(dollars per cwt)	(dollars per cwt)
Minnesota .....	(D)	25.80	(D)	(D)	(D)	(D)
North Dakota .....	27.00	25.30	26.50	27.00	26.70	27.10
United States .....	26.90	25.30	26.50	27.00	26.70	27.10

States	2012-2013					
	January <sup>1</sup>	February	March	April	May	June
	(dollars per cwt)	(dollars per cwt)	(dollars per cwt)	(dollars per cwt)	(dollars per cwt)	(dollars per cwt)
Minnesota .....	23.70	(D)	(D)	(D)	(D)	(D)
North Dakota .....	26.80	27.80	27.30	27.50	28.10	27.40
United States .....	26.80	27.80	27.30	27.50	28.00	27.40

(D) Withheld to avoid disclosing data for individual operations.  
<sup>1</sup> Second year.

**Prices Received for All Sunflowers by Month – States and United States: Marketing Years 2011-2012**

States	2011-2012					
	September	October	November	December	January <sup>1</sup>	February
	(dollars per cwt)	(dollars per cwt)	(dollars per cwt)	(dollars per cwt)	(dollars per cwt)	(dollars per cwt)
Colorado .....	34.40	33.30	32.50	30.90	(D)	31.00
Kansas .....	33.10	32.40	30.50	28.30	(D)	29.80
Minnesota .....	(D)	31.00	35.10	30.80	32.30	34.80
North Dakota .....	31.20	30.70	30.30	31.00	27.80	32.40
South Dakota .....	34.60	27.80	27.40	28.10	30.10	26.60
United States .....	32.50	29.60	29.00	29.60	28.90	29.50

States	2011-2012					
	March	April	May	June	July	August
	(dollars per cwt)	(dollars per cwt)	(dollars per cwt)	(dollars per cwt)	(dollars per cwt)	(dollars per cwt)
Colorado .....	30.90	31.20	25.20	(D)	(D)	(D)
Kansas .....	29.90	31.30	24.70	25.40	(D)	(D)
Minnesota .....	(D)	30.50	(D)	33.00	30.10	(D)
North Dakota .....	28.80	27.70	29.90	27.20	27.00	27.20
South Dakota .....	28.20	27.30	26.10	25.30	26.30	29.20
United States .....	28.80	28.40	27.80	27.20	27.00	28.80

(D) Withheld to avoid disclosing data for individual operations.  
<sup>1</sup> Second year.

**Prices Received for All Sunflowers by Month – States and United States: Marketing Years 2012-2013**

States	2012-2013					
	September	October	November	December	January <sup>1</sup>	February
	(dollars per cwt)	(dollars per cwt)	(dollars per cwt)	(dollars per cwt)	(dollars per cwt)	(dollars per cwt)
Colorado .....	(D)	(D)	(D)	(D)	(D)	(D)
Kansas .....	(D)	27.80	31.80	25.80	(D)	26.80
Minnesota .....	(D)	30.20	31.30	30.40	29.30	(D)
North Dakota .....	29.70	28.40	27.00	25.70	27.10	26.40
South Dakota .....	28.00	24.60	23.90	24.00	24.60	25.50
United States .....	28.90	26.30	26.70	24.80	26.30	26.10

States	2012-2013					
	March	April	May	June	July	August
	(dollars per cwt)	(dollars per cwt)	(dollars per cwt)	(dollars per cwt)	(dollars per cwt)	(dollars per cwt)
Colorado .....	(D)	(D)	(S)	(D)	(S)	(D)
Kansas .....	24.40	23.00	(D)	(D)	(D)	20.60
Minnesota .....	28.30	27.80	29.20	27.20	(D)	26.30
North Dakota .....	24.40	25.00	23.90	24.10	23.80	23.90
South Dakota .....	24.30	24.00	23.40	24.20	23.60	22.20
United States .....	24.60	24.80	24.00	24.40	23.70	23.70

(D) Withheld to avoid disclosing data for individual operations.  
(S) Insufficient number of reports to establish an estimate.  
<sup>1</sup> Second year.

**Prices Received for Oil Sunflowers by Month – States and United States: Marketing Years 2011-2012**

States	2011-2012					
	September	October	November	December	January <sup>1</sup>	February
	(dollars per cwt)	(dollars per cwt)	(dollars per cwt)	(dollars per cwt)	(dollars per cwt)	(dollars per cwt)
Colorado .....	(S)	(D)	30.20	30.80	(D)	28.10
Kansas .....	(D)	(D)	29.40	28.20	(D)	26.00
Minnesota .....	(D)	30.30	(D)	29.90	31.70	31.40
North Dakota .....	37.30	30.00	28.90	29.10	26.40	27.80
South Dakota .....	34.40	27.40	27.20	27.50	29.50	26.20
United States .....	34.30	28.60	28.10	28.60	28.10	26.80

States	2011-2012					
	March	April	May	June	July	August
	(dollars per cwt)	(dollars per cwt)	(dollars per cwt)	(dollars per cwt)	(dollars per cwt)	(dollars per cwt)
Colorado .....	(D)	(D)	25.20	(D)	(S)	(D)
Kansas .....	27.30	(D)	24.70	(D)	(D)	(S)
Minnesota .....	28.20	29.30	(D)	(D)	28.00	(D)
North Dakota .....	26.30	25.90	27.20	24.90	24.10	26.70
South Dakota .....	27.60	26.50	25.50	24.90	26.20	29.10
United States .....	27.10	26.70	26.40	25.30	25.30	28.70

(D) Withheld to avoid disclosing data for individual operations.

(S) Insufficient number of reports to establish an estimate.

<sup>1</sup> Second year.

**Prices Received for Oil Sunflowers by Month – States and United States: Marketing Years 2012-2013**

States	2012-2013					
	September	October	November	December	January <sup>1</sup>	February
	(dollars per cwt)	(dollars per cwt)	(dollars per cwt)	(dollars per cwt)	(dollars per cwt)	(dollars per cwt)
Colorado .....	(D)	(D)	(D)	(D)	(D)	(D)
Kansas .....	(D)	26.00	25.10	24.50	(D)	(D)
Minnesota .....	(D)	29.10	31.00	29.40	28.90	(D)
North Dakota .....	29.20	28.00	26.30	24.60	26.50	23.90
South Dakota .....	27.90	24.30	23.80	23.90	24.60	24.80
United States .....	28.40	25.60	25.20	24.20	25.60	24.70

States	2012-2013					
	March	April	May	June	July	August
	(dollars per cwt)	(dollars per cwt)	(dollars per cwt)	(dollars per cwt)	(dollars per cwt)	(dollars per cwt)
Colorado .....	(D)	(D)	(S)	(D)	(S)	(D)
Kansas .....	23.40	21.90	(S)	(D)	(D)	(D)
Minnesota .....	25.30	(D)	(D)	(D)	(D)	22.60
North Dakota .....	23.30	23.30	23.10	23.00	22.60	22.40
South Dakota .....	24.10	23.00	23.20	22.80	22.60	20.50
United States .....	23.70	23.20	23.20	23.20	22.60	22.10

(D) Withheld to avoid disclosing data for individual operations.

(S) Insufficient number of reports to establish an estimate.

<sup>1</sup> Second year.

**Prices Received for Non-Oil Sunflowers by Month – States and United States: Marketing Years 2011-2012**

States	2011-2012					
	September	October	November	December	January <sup>1</sup>	February
	(dollars per cwt)	(dollars per cwt)	(dollars per cwt)	(dollars per cwt)	(dollars per cwt)	(dollars per cwt)
Colorado .....	(D)	(D)	(D)	(D)	(D)	(D)
Kansas .....	(D)	(D)	(D)	(D)	(D)	(D)
Minnesota .....	(S)	(D)	(D)	(D)	36.20	38.50
North Dakota .....	29.50	33.20	34.50	34.10	32.70	35.00
South Dakota .....	(D)	(D)	(D)	34.50	34.70	(D)
United States .....	31.40	35.10	35.50	34.20	33.50	35.60

States	2011-2012					
	March	April	May	June	July	August
	(dollars per cwt)	(dollars per cwt)	(dollars per cwt)	(dollars per cwt)	(dollars per cwt)	(dollars per cwt)
Colorado .....	(D)	(D)	(S)	(S)	(S)	(D)
Kansas .....	(D)	(D)	(S)	(S)	(S)	(D)
Minnesota .....	(D)	(D)	(D)	36.50	(D)	(S)
North Dakota .....	31.30	31.20	35.40	31.00	31.00	(D)
South Dakota .....	(D)	(D)	(D)	(D)	(D)	(D)
United States .....	32.50	33.60	34.80	31.70	31.50	29.70

(D) Withheld to avoid disclosing data for individual operations.

(S) Insufficient number of reports to establish an estimate.

<sup>1</sup> Second year.

**Prices Received for Non-Oil Sunflowers by Month – States and United States: Marketing Years 2012-2013**

States	2012-2013					
	September	October	November	December	January <sup>1</sup>	February
	(dollars per cwt)	(dollars per cwt)	(dollars per cwt)	(dollars per cwt)	(dollars per cwt)	(dollars per cwt)
Colorado .....	(D)	(D)	(D)	(D)	(D)	(D)
Kansas .....	(D)	(D)	(D)	(D)	(D)	(D)
Minnesota .....	(D)	(D)	(D)	(D)	(D)	(D)
North Dakota .....	32.30	29.40	29.00	33.30	(D)	28.00
South Dakota .....	(D)	(D)	(D)	(D)	(S)	(D)
United States .....	33.60	30.60	32.10	33.30	28.50	29.40

States	2012-2013					
	March	April	May	June	July	August
	(dollars per cwt)	(dollars per cwt)	(dollars per cwt)	(dollars per cwt)	(dollars per cwt)	(dollars per cwt)
Colorado .....	(D)	(D)	(S)	(D)	(S)	(S)
Kansas .....	(D)	(D)	(S)	(D)	(S)	(S)
Minnesota .....	33.00	(D)	(D)	(D)	(S)	(D)
North Dakota .....	28.00	27.70	25.00	30.70	26.70	26.40
South Dakota .....	(D)	(D)	(D)	(D)	(D)	(D)
United States .....	29.00	28.60	27.00	31.30	27.30	26.90

(D) Withheld to avoid disclosing data for individual operations.

(S) Insufficient number of reports to establish an estimate.

<sup>1</sup> Second year.

**Prices Received for Dry Edible Beans by Month – States and United States: Marketing Years 2011-2012**

States	2011-2012					
	September	October	November	December	January <sup>1</sup>	February
	(dollars per cwt)	(dollars per cwt)	(dollars per cwt)	(dollars per cwt)	(dollars per cwt)	(dollars per cwt)
California .....	55.00	57.90	67.40	51.20	(D)	50.30
Colorado .....	44.70	44.40	44.70	44.10	48.20	50.30
Idaho .....	33.50	30.20	37.90	42.40	35.20	44.60
Michigan .....	44.60	45.80	46.80	49.50	49.70	53.40
Minnesota .....	40.60	43.70	34.20	41.80	43.40	46.40
Nebraska .....	40.70	43.00	42.20	43.00	45.00	46.90
North Dakota .....	38.00	36.30	39.40	39.40	39.60	45.50
United States .....	40.30	41.60	39.90	42.00	42.10	46.70

States	2011-2012					
	March	April	May	June	July	August
	(dollars per cwt)	(dollars per cwt)	(dollars per cwt)	(dollars per cwt)	(dollars per cwt)	(dollars per cwt)
California .....	56.30	49.40	50.80	(D)	52.60	(D)
Colorado .....	50.50	50.70	51.80	(D)	54.00	47.10
Idaho .....	45.20	47.50	47.60	45.60	39.90	49.60
Michigan .....	50.10	43.00	43.90	42.50	43.10	40.70
Minnesota .....	49.90	47.80	42.70	42.40	52.80	46.30
Nebraska .....	40.90	46.60	40.50	43.40	42.40	42.60
North Dakota .....	45.70	47.60	41.70	44.90	44.40	38.30
United States .....	47.10	46.90	43.30	44.20	45.80	39.80

(D) Withheld to avoid disclosing data for individual operations.  
<sup>1</sup> Second year.

**Prices Received for Dry Edible Beans by Month – States and United States: Marketing Years 2012-2013**

States	2012-2013					
	September	October	November	December	January <sup>1</sup>	February
	(dollars per cwt)	(dollars per cwt)	(dollars per cwt)	(dollars per cwt)	(dollars per cwt)	(dollars per cwt)
California .....	(D)	51.70	54.70	56.60	49.30	(D)
Colorado .....	41.70	45.40	38.50	36.70	36.50	36.00
Idaho .....	38.70	32.60	40.30	35.30	40.60	39.40
Michigan .....	40.70	39.00	38.10	39.30	40.60	(D)
Minnesota .....	40.60	(D)	45.80	44.70	41.40	47.80
Nebraska .....	39.50	38.10	37.50	37.30	38.10	37.40
North Dakota .....	36.20	35.90	36.90	33.60	33.50	31.50
United States .....	38.20	37.60	39.20	37.80	37.30	37.70

States	2012-2013					
	March	April	May	June	July	August
	(dollars per cwt)	(dollars per cwt)	(dollars per cwt)	(dollars per cwt)	(dollars per cwt)	(dollars per cwt)
California .....	54.80	(D)	48.90	52.20	51.80	(D)
Colorado .....	35.50	35.30	36.40	39.60	(D)	(D)
Idaho .....	37.10	39.40	39.30	(D)	36.40	33.10
Michigan .....	41.40	42.30	44.10	46.40	44.70	(D)
Minnesota .....	44.40	39.00	33.80	(D)	(D)	(D)
Nebraska .....	35.90	36.60	41.00	38.10	39.70	42.60
North Dakota .....	31.10	31.90	31.30	35.90	39.70	39.30
United States .....	37.60	34.60	36.20	38.00	40.60	40.10

(D) Withheld to avoid disclosing data for individual operations.  
<sup>1</sup> Second year.

## Percent of Corn Farm Marketings by Month – States and United States: Marketing Years 2011-2012 and 2012-2013

[Monthly farm marketings are based on a sample survey and used as a percent of total for calculating MYA prices. Blank cells indicate month is outside State's designated marketing year as defined on page 34]

Year	Jul	Aug	Sep	Oct	Nov	Dec	Jan <sup>1</sup>	Feb	Mar	Apr	May	Jun	Jul	Aug	Sep
	(%)	(%)	(%)	(%)	(%)	(%)	(%)	(%)	(%)	(%)	(%)	(%)	(%)	(%)	(%)
<b>Colorado</b>															
2011-2012 .....				12	15	18	18	10	11	4	3	2	3	2	2
2012-2013 .....				16	16	16	17	5	11	5	5	3	2	2	2
<b>Illinois</b>															
2011-2012 .....			7	12	8	9	25	8	8	5	5	4	5	4	
2012-2013 .....			15	13	8	7	20	7	8	4	5	4	5	4	
<b>Indiana</b>															
2011-2012 .....			4	17	15	8	16	9	7	4	5	7	5	3	
2012-2013 .....			11	17	11	7	14	6	8	7	4	5	7	3	
<b>Iowa</b>															
2011-2012 .....			4	17	11	7	12	8	11	6	6	6	6	6	
2012-2013 .....			12	17	8	6	11	6	9	5	6	6	6	8	
<b>Kansas</b>															
2011-2012 .....			11	18	14	12	10	8	6	5	4	2	4	6	
2012-2013 .....			18	17	13	6	18	5	8	3	4	3	2	3	
<b>Kentucky</b>															
2011-2012 .....			15	13	6	8	25	8	7	4	2	3	3	6	
2012-2013 .....			19	9	7	6	25	6	11	4	4	4	3	2	
<b>Michigan</b>															
2011-2012 .....				10	22	10	14	9	8	6	5	5	5	3	3
2012-2013 .....				14	20	7	10	7	8	4	5	9	7	5	4
<b>Minnesota</b>															
2011-2012 .....				13	8	8	11	7	7	4	6	9	9	5	13
2012-2013 .....				18	6	7	12	6	9	4	5	11	11	6	5
<b>Missouri</b>															
2011-2012 .....			15	13	6	9	13	8	9	4	5	4	5	9	
2012-2013 .....			20	8	7	10	13	6	7	5	5	10	4	5	
<b>Nebraska</b>															
2011-2012 .....			3	13	19	13	12	8	9	5	5	5	4	4	
2012-2013 .....			9	19	10	9	15	7	9	4	4	5	4	5	
<b>North Carolina</b>															
2011-2012 .....		14	36	10	4	3	9	4	7	4	5	2	2		
2012-2013 .....		10	38	15	5	4	10	4	5	3	3	1	2		
<b>North Dakota</b>															
2011-2012 .....				13	13	12	14	10	8	4	4	8	5	3	6
2012-2013 .....				16	10	15	15	6	10	6	3	5	6	5	3
<b>Ohio</b>															
2011-2012 .....			2	6	18	9	15	9	10	6	7	7	6	5	
2012-2013 .....			6	14	15	7	13	6	10	7	7	6	5	4	
<b>Pennsylvania</b>															
2011-2012 .....			8	12	16	7	13	6	7	6	6	6	6	7	
2012-2013 .....			6	26	12	8	5	6	8	7	12	3	3	4	
<b>South Dakota</b>															
2011-2012 .....			3	18	10	9	14	10	9	5	5	7	6	4	
2012-2013 .....			7	17	8	11	13	5	10	4	5	7	7	6	
<b>Tennessee</b>															
2011-2012 .....		6	25	12	7	8	9	7	7	5	5	5	4		
2012-2013 .....		22	17	6	6	8	9	7	8	6	4	3	4		
<b>Texas</b>															
2011-2012 .....	5	3	7	15	17	14	13	7	6	6	2	5			
2012-2013 .....	16	28	12	11	13	5	8	2	2	1	1	1			
<b>Wisconsin</b>															
2011-2012 .....				12	21	8	12	6	11	7	3	12	4	2	2
2012-2013 .....				21	17	6	13	5	9	4	6	3	8	4	4
<b>United States</b>															
2011-2012 .....			5.0	13.9	12.6	9.1	15.2	8.1	8.8	5.3	5.1	5.9	5.7	5.3	
2012-2013 .....			11.1	15.8	9.4	7.5	14.0	6.2	8.7	4.9	5.2	5.8	6.0	5.4	

<sup>1</sup> Second year.

## Percent of All Sunflower Farm Marketings by Month – States and United States: Marketing Years 2011-2012 and 2012-2013

[Monthly farm marketings are based on a sample survey and used as a percent of total for calculating MYA prices]

Year	Sep	Oct	Nov	Dec	Jan <sup>1</sup>	Feb	Mar	Apr	May	Jun	Jul	Aug
	(%)	(%)	(%)	(%)	(%)	(%)	(%)	(%)	(%)	(%)	(%)	(%)
Colorado												
2011-2012 .....	2	34	17	24	14	2	2	2	1	1	-	1
2012-2013 .....	4	12	44	5	12	5	4	1	-	12	-	1
Kansas												
2011-2012 .....	3	20	26	15	25	3	3	3	1	1	-	-
2012-2013 .....	2	18	35	8	18	7	8	2	-	1	-	1
Minnesota												
2011-2012 .....	-	16	12	5	12	7	2	7	8	11	11	9
2012-2013 .....	5	14	7	9	8	5	8	6	27	8	1	2
North Dakota												
2011-2012 .....	3	9	20	15	19	4	7	3	2	7	8	3
2012-2013 .....	1	12	13	15	5	4	10	9	3	5	13	10
South Dakota												
2011-2012 .....	1	26	29	11	9	4	4	3	3	2	3	5
2012-2013 .....	4	23	12	27	5	5	6	5	5	2	4	2
United States												
2011-2012 .....	1.8	20.1	24.0	13.8	15.0	3.7	5.1	2.9	2.3	3.6	4.2	3.5
2012-2013 .....	2.7	17.0	13.8	19.7	5.4	4.4	7.8	7.2	4.4	4.0	8.0	5.6

- Represents zero.

<sup>1</sup> Second year.

## Percent of Flaxseed Farm Marketings by Month – States and United States: Marketing Years 2011-2012 and 2012-2013

[Monthly farm marketings are based on a sample survey and used as a percent of total for calculating MYA prices]

Year	Jul	Aug	Sep	Oct	Nov	Dec	Jan <sup>1</sup>	Feb	Mar	Apr	May	Jun
	(%)	(%)	(%)	(%)	(%)	(%)	(%)	(%)	(%)	(%)	(%)	(%)
North Dakota												
2011-2012 .....	13	7	10	12	3	9	13	5	9	6	5	8
2012-2013 .....	3	16	24	9	6	9	9	7	3	8	3	3
United States												
2011-2012 .....	13.6	7.0	9.7	11.6	3.4	9.2	12.8	4.9	9.1	5.7	4.7	8.3
2012-2013 .....	3.2	15.5	23.6	9.4	6.5	9.1	8.5	6.9	3.2	8.0	2.8	3.3

<sup>1</sup> Second year.

## Percent of Canola Farm Marketings by Month – States and United States: Marketing Years 2011-2012 and 2012-2013

[Monthly farm marketings are based on a sample survey and used as a percent of total for calculating MYA prices]

Year	Jul	Aug	Sep	Oct	Nov	Dec	Jan <sup>1</sup>	Feb	Mar	Apr	May	Jun
	(%)	(%)	(%)	(%)	(%)	(%)	(%)	(%)	(%)	(%)	(%)	(%)
Minnesota												
2011-2012 .....	15	17	17	11	10	16	2	6	3	1	1	1
2012-2013 .....	16	26	6	8	3	4	8	6	1	1	12	9
North Dakota												
2011-2012 .....	6	19	22	7	5	6	8	11	7	3	2	4
2012-2013 .....	2	29	14	3	4	14	13	6	6	5	2	2
United States												
2011-2012 .....	5.9	19.3	21.4	7.1	5.6	6.8	8.3	10.8	6.8	2.7	1.5	3.8
2012-2013 .....	2.1	29.4	13.7	3.2	3.6	13.9	13.2	6.3	5.7	4.6	1.7	2.6

<sup>1</sup> Second year.

## Percent of Dry Edible Bean Farm Marketings by Month – States and United States: Marketing Years 2011-2012 and 2012-2013

[Monthly farm marketings are based on a sample survey and used as a percent of total for calculating MYA prices]

Year	Sep	Oct	Nov	Dec	Jan <sup>1</sup>	Feb	Mar	Apr	May	Jun	Jul	Aug
	(%)	(%)	(%)	(%)	(%)	(%)	(%)	(%)	(%)	(%)	(%)	(%)
California												
2011-2012 .....	2	19	9	20	12	6	9	9	3	3	5	3
2012-2013 .....	3	9	18	16	13	3	13	4	5	4	4	8
Colorado												
2011-2012 .....	14	16	10	7	13	15	14	3	4	1	1	2
2012-2013 .....	10	4	4	21	11	9	4	2	2	6	6	21
Idaho												
2011-2012 .....	9	41	9	11	10	3	6	3	1	5	1	1
2012-2013 .....	8	34	11	14	13	2	7	3	2	2	2	2
Michigan												
2011-2012 .....	13	58	9	2	2	1	1	3	2	4	1	4
2012-2013 .....	18	35	8	7	5	3	4	1	2	3	1	13
Minnesota												
2011-2012 .....	16	14	26	5	12	11	6	3	1	2	-	4
2012-2013 .....	40	9	6	9	11	11	5	4	1	1	2	1
Nebraska												
2011-2012 .....	26	25	8	5	11	5	6	3	5	1	1	4
2012-2013 .....	32	15	5	5	6	11	4	3	3	4	7	5
North Dakota												
2011-2012 .....	15	17	7	12	14	6	6	4	2	2	2	13
2012-2013 .....	30	7	13	8	11	5	4	6	3	6	4	3
United States												
2011-2012 .....	14.6	28.6	11.0	8.2	10.3	5.7	5.1	3.7	1.9	2.7	1.1	7.1
2012-2013 .....	25.7	16.0	10.1	8.8	9.4	6.0	4.8	4.2	2.3	4.1	3.3	5.3

- Represents zero.

<sup>1</sup> Second year.



## Prices Received and Farm Marketings for All Chickpeas (Garbanzo) – United States: Marketing Years 2011-2012 and 2012-2013

[Marketing year average (MYA) prices are weighted average prices for the United States marketing year of September - August. Monthly farm marketings are based on a sample survey and used as a percent of total for calculating MYA prices]

Month	Prices received		Farm marketing percentages	
	2011-2012	2012-2013	2011-2012	2012-2013
	(dollars per cwt)	(dollars per cwt)	(percent)	(percent)
September .....	37.10	37.90	18.3	14.8
October .....	33.50	33.30	37.9	43.6
November .....	43.90	37.70	11.0	9.9
December .....	38.30	33.80	13.1	10.3
January <sup>1</sup> .....	33.70	39.00	3.3	4.3
February .....	41.90	35.30	2.2	3.4
March .....	43.10	39.00	3.4	2.2
April .....	45.80	35.70	2.9	1.7
May .....	34.30	36.50	1.5	2.4
June .....	41.10	31.30	2.7	3.4
July .....	45.30	31.40	1.2	1.8
August .....	40.00	31.60	2.5	2.2
MYA .....	37.30	34.90	100.0	100.0

<sup>1</sup> Second year.

## Prices Received and Farm Marketings for Large Chickpeas – United States: Marketing Years 2011-2012 and 2012-2013

[Large chickpeas are larger than 20/64 inch. Marketing year average (MYA) prices are weighted average prices for the United States marketing year of September - August. Monthly farm marketings are based on a sample survey and used as a percent of total for calculating MYA prices]

Month	Prices received		Farm marketing percentages	
	2011-2012	2012-2013	2011-2012	2012-2013
	(dollars per cwt)	(dollars per cwt)	(percent)	(percent)
September .....	41.10	40.30	19.3	16.5
October .....	42.40	37.60	31.6	36.9
November .....	44.90	38.40	13.5	12.7
December .....	39.00	36.90	15.6	9.4
January <sup>1</sup> .....	35.90	40.00	3.1	5.2
February .....	44.80	36.10	2.0	4.0
March .....	45.20	40.50	3.3	2.9
April .....	46.10	37.00	3.6	2.1
May .....	32.00	38.90	1.1	2.7
June .....	44.50	33.50	2.9	3.5
July .....	48.10	34.20	1.3	1.7
August .....	44.70	32.90	2.7	2.4
MYA .....	42.10	37.90	100.0	100.0

<sup>1</sup> Second year.

## Prices Received and Farm Marketings for Small Chickpeas (Garbanzo) – United States: Marketing Years 2011-2012 and 2012-2013

[Small chickpeas are smaller than 20/64 inch. Marketing year average (MYA) prices are weighted average prices for the United States marketing year of September - August. Monthly farm marketings are based on a sample survey and used as a percent of total for calculating MYA prices]

Month	Prices received		Farm marketing percentages	
	2011-2012	2012-2013	2011-2012	2012-2013
	(Dollars per Cwt)	(Dollars per Cwt)	(Percent)	(Percent)
September .....	19.90	28.80	15.2	10.2
October .....	17.80	26.90	60.5	60.6
November .....	26.70	30.00	2.6	2.0
December .....	30.80	28.00	5.0	12.3
January <sup>1</sup> .....	27.70	32.10	3.8	2.1
February .....	35.40	31.10	2.9	2.0
March .....	36.70	(D)	3.6	(D)
April .....	(D)	(D)	(D)	(D)
May .....	37.40	27.00	0.7	1.8
June .....	(D)	24.90	(D)	3.4
July .....	(D)	25.80	(D)	2.3
August .....	(D)	27.10	(D)	1.9
MYA .....	21.50	27.40	100.0	100.0

(D) Withheld to avoid disclosing data for individual operations.

<sup>1</sup> Second year.

## Reliability of Prices Received Estimates

**Definition:** Prices received represent sales from producers to first buyers. They include all grades and qualities. The average commodity price from the survey multiplied by the total quantity marketed theoretically should give the total cash receipts for the commodity.

**Survey procedures:** Primary sales data used to determine grain prices were obtained from probability samples of about 1900 mills and elevators. These procedures ensure that virtually all grain moving into commercial channels has a chance of being included in the survey. Generally, States surveyed account for 90 percent or more of total United States production. Livestock prices are obtained from packers, stockyards, auctions, dealers, and market check data from AMS-USDA, private marketing organizations, and state commodity groups and agencies. Inter-farm sales of grain and livestock are not included since they represent very small percentages of the total sales. Grain marketed for seed is also excluded. Fruit and vegetable prices are obtained from sample surveys and market check data from AMS-USDA, private marketing organizations, state agencies, and universities.

**Summary and estimation procedures:** Survey quantities sold are expanded by strata to state levels and used to weight average strata prices to a state average. State prices are then weighted to a United States price based on expanded sales. Recommendations are prepared by the State Field Offices and reviewed by the Agricultural Statistics Board in Washington, D.C. State recommendations are reviewed for reasonableness with survey data, other States, and recent historic estimates.

**Revisions:** For most items, the current month's preliminary price represents a 3-5 day period around the 15th of the month. Previous month's prices represent actual dollars received for quantities sold during the entire month. Revisions are published in monthly issues of *Agricultural Prices*.

**Reliability:** United States price estimates based on probability surveys generally have a sampling error of less than one percent for the major commodities such as corn, wheat, soybeans, cotton, and rice. Current methods of summarization for non-probability commodities are not designed directly to calculate sampling errors. However, analytical measures approximate the United States relative sampling errors at around five percent. Any non-sampling errors are attributed to such things as the inability to obtain correct information, differences in interpreting questions or definitions, mistakes in coding or processing the data, etc. Efforts are made at each step in the survey process to minimize these non-sampling errors.

## Prices Paid by Farmers

The November Index of Prices Paid for Commodities and Services, Interest, Taxes, and Farm Wage Rates (PPITW) at 213 (1990-1992=100), is down 0.9 percent from October and down 1.8 percent from November 2012.

**Production index:** The November index, at 224, decreased 1.3 percent from last month and 3.0 percent from last year. Lower prices in November for concentrates, complete feeds, feed grains, and other services more than offset higher prices for feeder cattle, feeder pigs, mixed fertilizer, and LP gas.

**Feed:** The November index, at 218, decreased 7.2 percent from October and 21 percent from last November. Since October, lower prices for concentrates, complete feeds, feed grains, and hay & forages more than offset higher prices for supplements.

**Livestock and poultry:** The November index, at 193, increased 2.1 percent from last month and 16 percent from last year. Since October, prices for feeder cattle and feeder pigs are higher. The November feeder cattle price, at \$170.00 per cwt, is up \$2.70 per cwt from the October price. November feeder pigs averaged \$188.00 per cwt, up \$14.00 per cwt from October.

**Fertilizer:** The November index, at 281, is unchanged from October but 13 percent below November a year ago. Since October, higher prices for mixed fertilizer and nitrogen offset lower prices for potash & phosphate.

**Chemicals:** The November index, at 160, increased 0.6 percent from October and 2.6 percent from last November. Compared with last month, prices for herbicides, insecticides, and fungicides/other are higher.

**Fuels:** The November index, at 356, is down 0.8 percent from a month earlier but 0.3 percent above November 2012. Compared with last month, prices are lower for diesel and gasoline but higher for LP gas.

**Machinery:** The November index, at 265, increased 0.4 percent from October and is 2.3 percent above last November. Compared with last month, prices for other machinery are higher.

**Consumer price index:** The October 2013 Consumer Price Index, as issued by the Bureau of Labor Statistics, for all urban consumers (CPI-U) decreased 0.3 percent before seasonal adjustment to a level of 233.546 (1982-1984=100). The September index is 234.149. For the 12 month period ending in October, the overall index increased 1.0 percent.

## Prices Paid Indexes and Related Parity Ratios – United States: November 2013 with Comparisons

[Revised historical price indexes for months not shown are available at [www.nass.usda.gov](http://www.nass.usda.gov)]

Indexes and ratios	1910-1914 Base			1990-1992 Base		
	November 2012	October 2013	November 2013	November 2012	October 2013	November 2013
	(percent)	(percent)	(percent)	(percent)	(percent)	(percent)
Prices paid by farmers for commodities, services, interest, taxes, and wage rates (PPITW) .....	2885	2863	2834	217	215	213
Production .....	2239	2202	2174	231	227	224
Feed .....	1346	1145	1066	276	235	218
Livestock and poultry .....	2131	2417	2464	167	189	193
Seeds .....	3606	3776	3776	364	381	381
Fertilizer .....	1189	1031	1031	324	281	281
Chemicals .....	967	985	989	156	159	160
Fuels .....	2741	2767	2746	355	359	356
Supplies and repairs .....	1220	1224	1226	172	172	173
Autos and trucks .....	3142	3176	3176	118	119	119
Machinery .....	6509	6623	6643	259	264	265
Building materials .....	2399	2440	2436	177	180	179
Services and rent .....	2182	2236	2225	(NA)	(NA)	(NA)
Services .....	(NA)	(NA)	(NA)	167	171	169
Rent .....	(NA)	(NA)	(NA)	212	217	217
Interest <sup>1</sup> .....	3684	3594	3594	147	143	143
Taxes <sup>2</sup> .....	6080	6273	6273	227	234	234
Wage rates .....	7599	7696	7696	203	206	206
Production, interest, taxes, and wage rates (PITW) .....	3022	2987	2955	225	222	220
Family living-CPI <sup>3</sup> .....	2187	2218	2212	171	173	173
Ratio (received/paid) .....	(NA)	(NA)	(NA)	95	88	86
Parity ratio <sup>4</sup> .....	46	42	41	(NA)	(NA)	(NA)
Parity ratio adjusted <sup>5</sup> .....	47	43	42	(NA)	(NA)	(NA)
PPITW adjusted for productivity <sup>6</sup> .....	1515	1483	1478	(NA)	(NA)	(NA)
Crop sector (PPITW) .....	(NA)	(NA)	(NA)	222	223	222
Livestock sector (PPITW) .....	(NA)	(NA)	(NA)	211	207	203
Farm sector (production) .....	(NA)	(NA)	(NA)	255	246	238
Non-farm sector (production) .....	(NA)	(NA)	(NA)	218	216	216

(NA) Not available.

<sup>1</sup> Interest per acre on farm real estate debt and interest rate on farm non-real estate debt.

<sup>2</sup> Farm real estate taxes payable per acre.

<sup>3</sup> Bureau of Labor Statistics, Consumer Price Index for all urban consumers (CPI-U), for the previous month converted by the USDA.

<sup>4</sup> Ratio of index of prices received to PPITW (1910-1914=100).

<sup>5</sup> Based on estimated cash receipts, from marketings and government payments, the preliminary adjustment factor is 1.044 for 2013 and the revised factor is 1.041 for 2012.

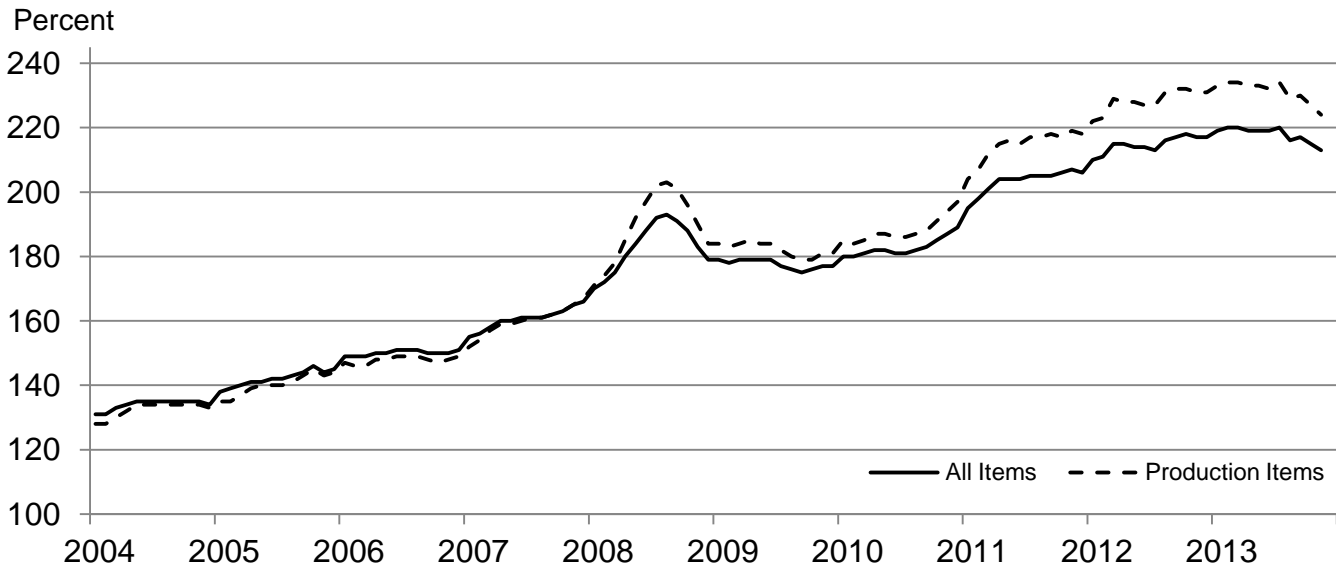
<sup>6</sup> PPITW is adjusted based on productivity trend for the prior 15 years.

## Prices Paid Indexes and Annual Weights for Input Components and Sub-components – United States: November 2013 with Comparisons

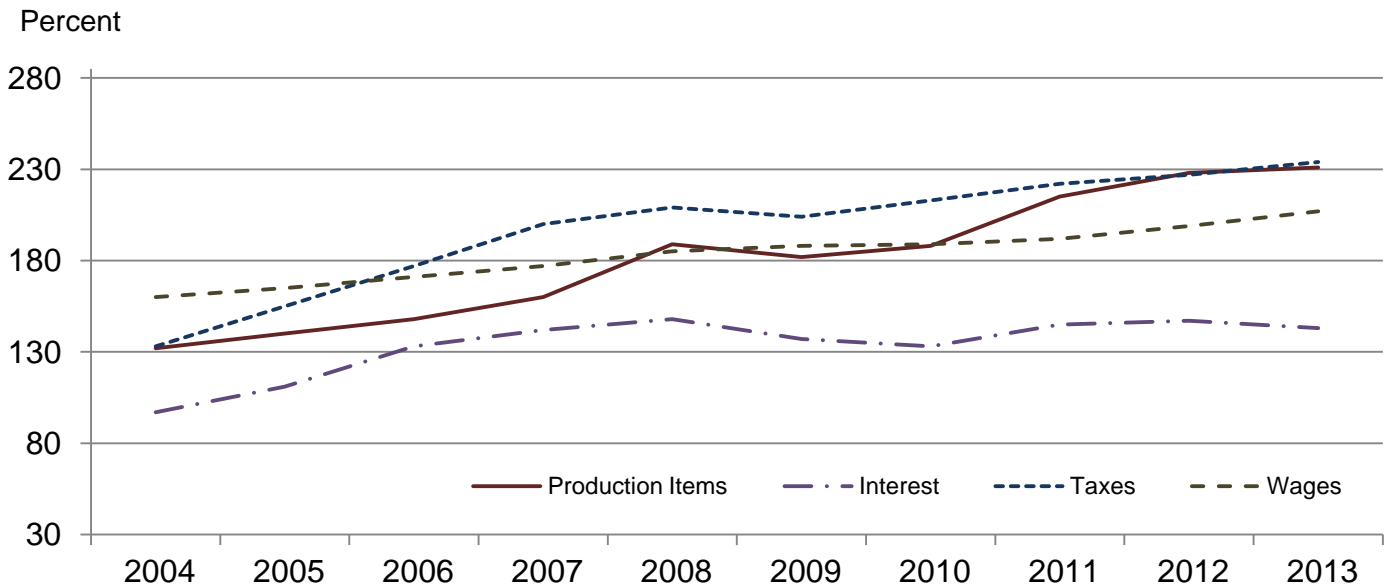
[Revised historical price indexes for months not shown are available at [www.nass.usda.gov](http://www.nass.usda.gov). Relative weights are a five year moving average]

	Relative weights		Indexes (1990-1992=100)		
	2012	2013	November 2012	October 2013	November 2013
	(percent)	(percent)	(percent)	(percent)	(percent)
Production items .....	71.1	71.9	231	227	224
Feed .....	12.7	13.4	276	235	218
Feed grains .....	1.8	1.9	302	201	188
Complete feeds .....	6.2	6.6	282	244	231
Hay and forages .....	1.6	1.7	248	230	222
Concentrates .....	2.0	2.1	254	242	197
Supplements .....	1.1	1.1	276	230	232
Livestock and poultry .....	8.3	8.0	167	189	193
Feeder cattle .....	6.5	6.3	174	198	201
Feeder pigs .....	0.7	0.6	138	189	205
Milk cow replacements .....	0.7	0.7	123	124	124
Poultry .....	0.5	0.5	166	166	166
Seeds .....	4.3	4.4	364	381	381
Field crops .....	3.9	4.0	384	402	402
Grasses and legumes .....	0.4	0.4	178	184	184
Fertilizer .....	5.7	6.1	324	281	281
Mixed fertilizer .....	2.5	2.7	286	270	274
Nitrogen .....	2.4	2.6	342	284	286
Potash and phosphate .....	0.8	0.9	391	306	291
Chemicals .....	3.2	3.2	156	159	160
Herbicides .....	2.0	2.0	141	142	143
Insecticides .....	0.7	0.7	180	186	186
Fungicides and other .....	0.5	0.5	188	192	193
Fuels .....	4.0	4.0	355	359	356
Diesel .....	2.5	2.5	405	389	384
Gasoline .....	0.8	0.8	299	290	280
LP gas .....	0.7	0.7	242	332	346
Supplies and repairs .....	4.6	4.5	172	172	173
Supplies .....	1.5	1.5	167	168	168
Repairs .....	3.0	3.0	174	175	175
Autos and trucks .....	1.2	1.2	118	119	119
Autos .....	0.2	0.2	116	115	115
Trucks .....	1.1	1.1	119	120	120
Machinery .....	4.3	4.5	259	264	265
Tractors .....	0.9	1.0	216	216	216
Self-propelled .....	1.7	1.8	275	280	280
Other machinery .....	1.6	1.7	269	275	277
Building materials .....	4.2	4.1	177	180	179
Services .....	12.0	11.7	167	171	169
Custom rates .....	1.2	1.2	157	157	157
Other services .....	10.7	10.5	168	172	171
Rent .....	6.6	6.7	212	217	217
Cash .....	3.5	3.6	270	278	278
Share .....	3.0	3.1	145	147	147
Interest .....	3.4	3.2	147	143	143
Taxes .....	3.1	3.1	227	234	234
Wage rates .....	7.2	6.9	203	206	206
Family living-CPI .....	15.3	15.0	171	173	173

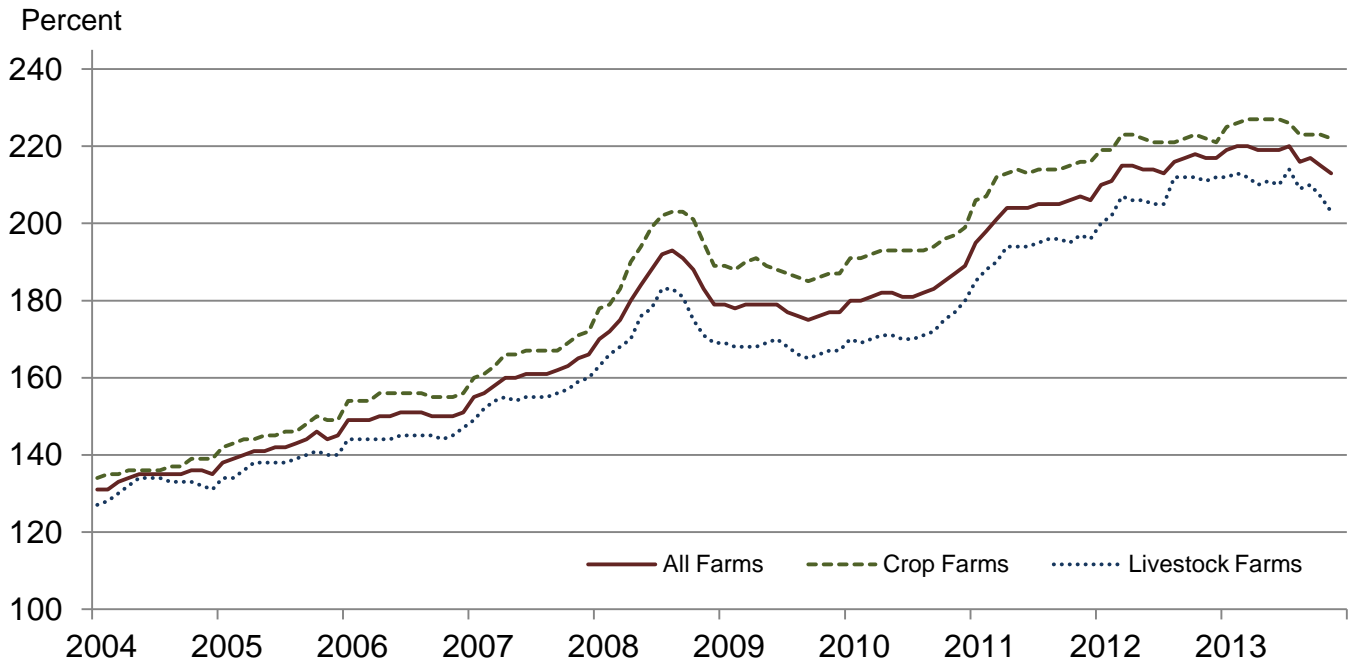
## Paid Indexes by Month, All Items and Production Items – United States: 1990-1992=100



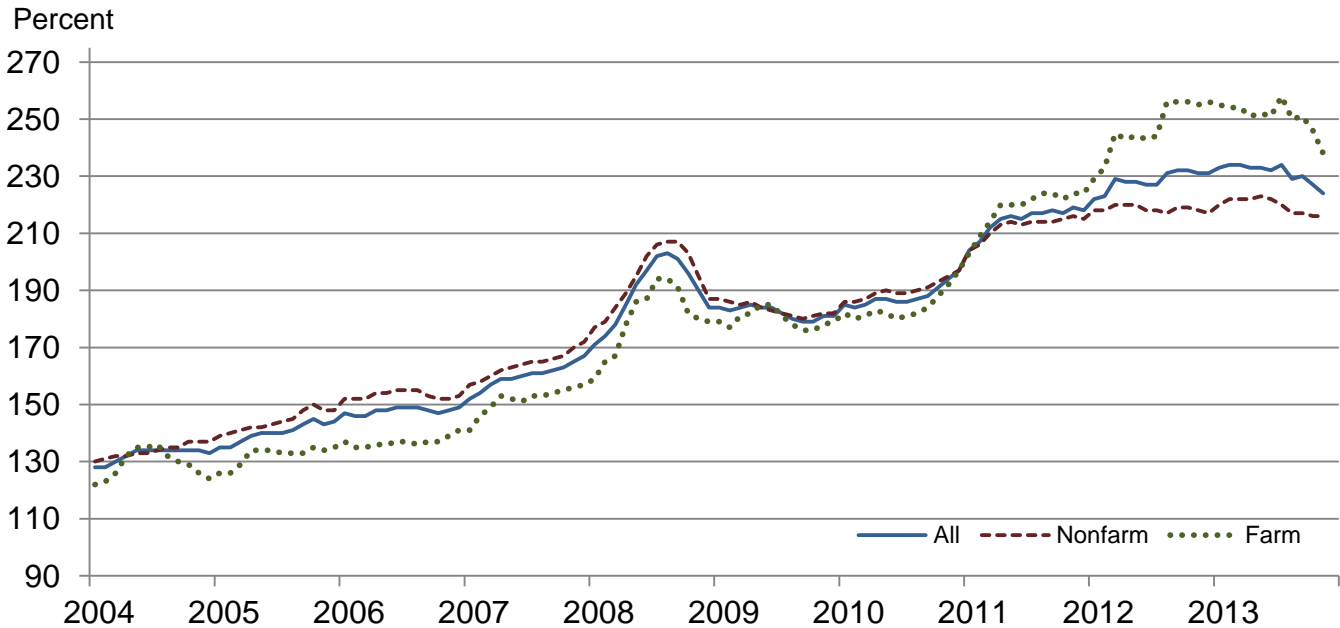
## Paid Indexes, Annual Averages, Production Items, Interest, Taxes, and Wages – United States: 1990-1992=100



## Paid Indexes by Farm Type and Month, All Items – United States: 1990-1992=100

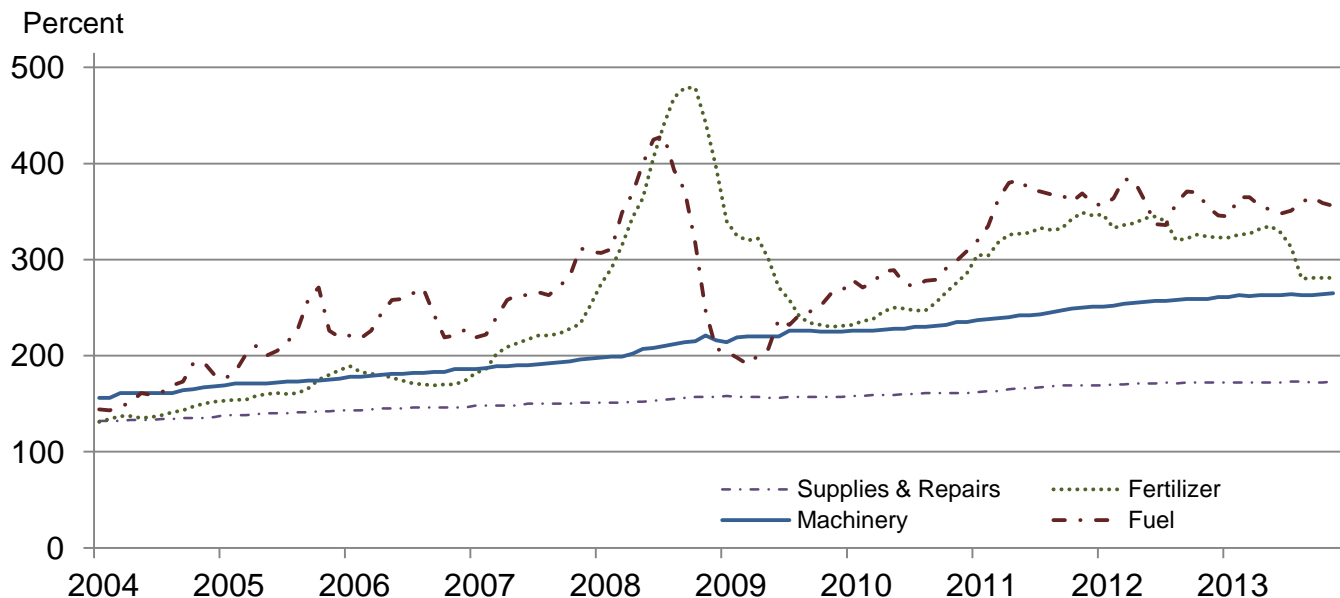


## Paid Indexes by Origin and Month, All Production Items – United States: 1990-1992=100

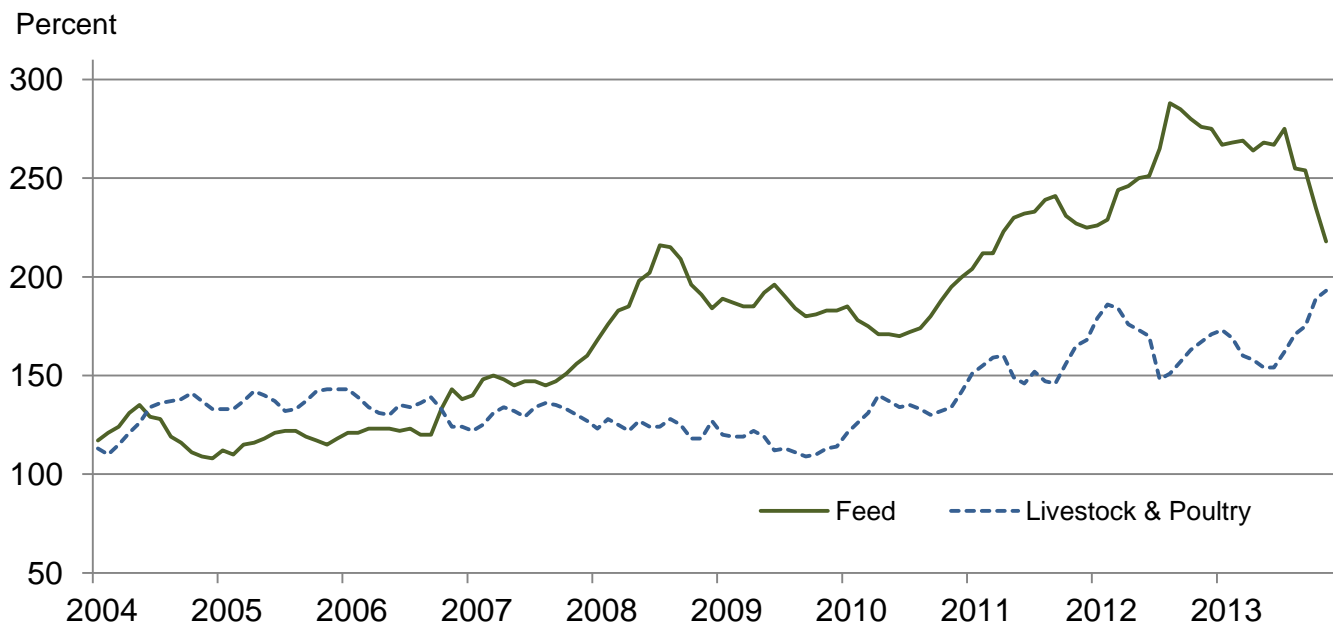




## Paid Indexes by Non-Farm Sector and Month, Supplies & Repairs, Fertilizer, Machinery, and Fuel – United States: 1990-1992=100



## Paid Indexes by Month, Feed and Livestock & Poultry – United States: 1990-1992=100



## Feed Price Ratios – United States: November 2013 with Comparisons

Feed price ratio <sup>1</sup>	November 2012	October 2013	Preliminary November 2013
Broiler-feed: pounds of broiler grower feed equal in value to 1 pound of broiler, live weight <sup>2</sup> .....	3.2	3.9	4.1
Market egg feed: pounds of laying feed equal in value to 1 dozen eggs <sup>3</sup> .....	6.6	7.3	10.5
Hog-corn: bushels of corn equal in value to 100 pounds of hog, live weight .....	8.7	14.9	15.1
Milk-feed: pounds of 16% mixed dairy feed equal in value to 1 pound of whole milk <sup>4</sup> .....	1.74	2.11	2.25
Steer and heifer-corn: bushels of corn equal in value to 100 pounds of steer & heifers, live weight .....	18.3	27.8	31.0
Turkey-feed: pounds of turkey grower equal in value to 1 pound of turkey, live weight <sup>5</sup> .....	4.7	5.6	5.8

<sup>1</sup> Effective January 1995, prices of commercial prepared feeds are based on current United States prices received for corn, soybeans, alfalfa hay, and all wheat.

<sup>2</sup> The price of commercial prepared broiler feed is based on current United States prices received for corn and soybeans. The modeled feed uses 58 percent corn and 42 percent soybeans.

<sup>3</sup> The price of commercial prepared layer feed is based on current United States prices received for corn and soybeans. The modeled feed uses 75 percent corn and 25 percent soybeans.

<sup>4</sup> The price of commercial prepared dairy feed is based on current United States prices received for corn, soybeans, and alfalfa hay. The modeled feed uses 51 percent corn, 41 percent alfalfa hay, and 8 percent soybeans.

<sup>5</sup> The price of commercial prepared turkey feed is based on current United States prices received for corn, soybeans, and wheat. The modeled feed uses 51 percent corn, 28 percent soybeans, and 21 percent wheat.

## Prices Received Used to Calculate Feed Price Ratios – United States: November 2013 with Comparisons

[Price data source for livestock and poultry commodities is United States Department of Agriculture's Agricultural Marketing Service]

Item	November 2012	October 2013	Preliminary November 2013
	(dollars)	(dollars)	(dollars)
Broilers, live .....pound	0.560	0.530	0.550
Eggs, market .....dozen	1.020	0.836	1.160
Hogs, all .....cwt	61.10	68.50	64.70
Milk, all .....cwt	22.10	20.70	21.30
Steers and heifers .....cwt	128.00	128.00	133.00
Turkeys, live .....pound	0.751	0.701	0.703
Corn .....bushel	7.01	4.61	4.29
Hay, alfalfa .....ton	215.00	193.00	188.00
Soybeans .....bushel	14.30	12.50	12.70
Wheat, all .....bushel	8.47	7.00	6.80

## Prices Paid for Feeder Livestock – United States: November 2013 with Comparisons

[Price data source is United States Department of Agriculture's Agricultural Marketing Service]

Item	November 2012	October 2013	Preliminary November 2013
	(dollars)	(dollars)	(dollars)
Feeder cattle and calves .....cwt	147.50	167.30	170.00
Feeder pigs .....cwt	127.00	174.00	188.00

## Reliability of Prices Paid Estimates

**Definition:** Prices paid by farmers represent the average costs of inputs purchased by farmers and ranchers to produce agricultural commodities. Conceptually, the average price when multiplied by quantity purchased should equal total producer expenditures for the item.

**Survey procedures:** The prices paid data are obtained from establishments that sell goods and services to farmers and ranchers. Annually, about 8,500 firms are randomly selected from lists by type of item sold with an average response rate in the range of 75-80 percent. Firms are asked to report the price for the specified item "most commonly bought by farmers" or that was the "volume seller". Approximately 135 items are surveyed each March to represent all production input items purchased. The survey reference period for most items is the five business days centered at the 15th of the month. Separate prices paid surveys are conducted for agricultural chemicals, fuels, feed, fertilizer, machinery, and seed.

**Summary and estimation procedures:** The annual March Prices Paid Survey is summarized as a non-probability survey. Average prices reported are aggregated to the region and United States level using weights available from expenditure data and other administrative sources. Price recommendations are prepared by the State Field Offices and Headquarters for review by the Agricultural Statistics Board in Washington, D.C. Also, the change in price level for individual items surveyed are combined to the regional and United States levels, and are published as prices paid indexes referenced to a specific base period. Prices paid indexes for new autos and trucks, building materials, farm supplies, motor supplies, and marketing containers are updated based on price changes measured in selected Bureau of Labor Statistics (BLS) indexes.

**Revisions:** Any revisions are published in the monthly and in annual issues of Agricultural Prices. The basis for revision must be supported by additional data that directly affect the level of the estimate. More revisions are likely for March when separate prices paid surveys are conducted, in lieu of BLS indexes, by the USDA to measure price change.

**Reliability:** Current methods of summarization for the March data are not designed directly to calculate sampling errors. However, analytical measures approximate the United States relative sampling errors for major items around 10 percent. Any non-sampling errors are attributed to such things as the inability to obtain correct information, differences in interpreting questions or definitions, mistakes in coding or processing the data, etc. Efforts are made at each step in the survey process to minimize these non-sampling errors.

**Program change:** Effective January 1, 1995, the National Agricultural Statistics Service updated the weights and changed the construction of its prices paid and received by farmers' indexes. A Federal Register Notice dated October 28, 1994 discussed these program modifications.

A 1990-1992 reference and base period replaced the 1977 reference and 1971-1973 base weight period. Five-year moving average weights replaced the current fixed 1971-1973 base period weights. The 1910-1914=100 price indexes, required by statute for computing parity prices, were linked forward based on the changes in the new 1990-1992=100 indexes. The new indexes were constructed by multiplying the ratios of the current prices to the base period prices by the moving average weights (adjusted for seasonal marketing patterns for the prices received indexes).

## Information Contacts

### General

Troy Joshua, Chief, Environmental, Economics and Demographics Branch ..... (202) 720-6146

Below are the commodity specialists to contact for additional information.

### Crop Prices Received

Lance Honig, Chief, Crops Branch ..... (202) 720-2127

Anthony Prillaman, Head, Field Crops Section ..... (202) 720-2127

Angie Considine – Peanuts, Rice ..... (202) 720-7688

Brent Chittenden – Oats, Rye, Wheat ..... (202) 720-8068

Angie Considine – Cotton, Cotton Ginnings, Sorghum ..... (202) 720-7688

Chris Hawthorn – Corn, Proso Millet, Flaxseed ..... (202) 720-9526

Cody Brokmeyer – Crop Weather, Barley, Hay ..... (202) 720-5944

Travis Thorson – Soybeans, Sunflower, Other Oilseeds..... (202) 720-7369

Jorge Garcia-Pratts, Head, Fruits, Vegetables and Special Crops Section..... (202) 720-2127

Debbie Flippin – Fresh and Processing Vegetables, Onions, Strawberries..... (202) 720-2157

Fred Granja – Apples, Apricots, Cherries, Plums, Prunes, Tobacco ..... (202) 720-4288

Jorge Garcia-Pratts – Floriculture, Maple Syrup, Nursery, Tree Nuts ..... (202) 720-2127

Lakeya Jones – Citrus, Coffee, Sugar Crops, Grapes, Tropical Fruits..... (202) 720-5412

Daphne Schauber – Berries, Cranberries, Potatoes, Sweet Potatoes ..... (202) 720-4285

Dan Norris – Austrian Winter Peas, Dry Edible Peas, Lentils, Mints, Mushrooms, Peaches, Pears,  
Wrinkled Seed Peas, Dry Beans ..... (202) 720-3250

### Livestock Prices Received

Dan Kerestes, Chief, Livestock Branch ..... (202) 720-3570

Scott Hollis, Head, Livestock Section..... (202) 720-3570

Travis Averill – Cattle..... (202) 720-3040

Mike Miller – Milk, Milk Cows ..... (202) 720-3278

Doug Bounds – Hogs ..... (202) 720-3106

Alissa Cowell-Mytar – Sheep, Lambs, and Goats ..... (202) 720-4751

Bruce Boess, Head, Poultry and Specialty Commodities Section..... (202) 720-3570

Doug Boline – Turkeys ..... (202) 720-0585

Tom Kruchten – Honey ..... (202) 690-4870

Kim Linonis – Eggs..... (202) 690-8632

Miste Salmon – Broilers..... (202) 720-3244

### Indexes, Prices Paid, and Parity Prices

Troy Joshua, Chief, Environmental, Economics and  
Demographics Branch..... (202) 720-6146

Tony Dorn, Head, Economics Section ..... (202) 690-3223

Daryl Brinkman – Prices Received Indexes, Parity Prices ..... (202) 720-8844

Chris Dickerson – Prices Received Indexes, Parity Prices, Grazing Fees ..... (202) 690-1348

Vincent Davis – Prices Paid Indexes, Prices Paid for Feed, Fertilizer, Agricultural Chemicals,  
Seeds, Farm Supplies and Repairs, Farm Machinery, Fuels, Feeder Livestock, Poultry Chicks,  
Feed Price Ratios, Autos & Trucks..... (202) 690-3229

## Access to NASS Reports

For your convenience, you may access NASS reports and products the following ways:

- All reports are available electronically, at no cost, on the NASS web site: <http://www.nass.usda.gov>
- Both national and state specific reports are available via a free e-mail subscription. To set-up this free subscription, visit <http://www.nass.usda.gov> and in the “Follow NASS” box under “Receive reports by Email,” click on “National” or “State” to select the reports you would like to receive.

For more information on NASS surveys and reports, call the NASS Agricultural Statistics Hotline at (800) 727-9540, 7:30 a.m. to 4:00 p.m. ET, or e-mail: [nass@nass.usda.gov](mailto:nass@nass.usda.gov).

The U.S. Department of Agriculture (USDA) prohibits discrimination against its customers, employees, and applicants for employment on the bases of race, color, national origin, age, disability, sex, gender identity, religion, reprisal, and where applicable, political beliefs, marital status, familial or parental status, sexual orientation, or all or part of an individual's income is derived from any public assistance program, or protected genetic information in employment or in any program or activity conducted or funded by the Department. (Not all prohibited bases will apply to all programs and/or employment activities.)

If you wish to file a Civil Rights program complaint of discrimination, complete the [USDA Program Discrimination Complaint Form](#) (PDF), found online at [http://www.ascr.usda.gov/complaint\\_filing\\_cust.html](http://www.ascr.usda.gov/complaint_filing_cust.html), or at any USDA office, or call (866) 632-9992 to request the form. You may also write a letter containing all of the information requested in the form. Send your completed complaint form or letter to us by mail at U.S. Department of Agriculture, Director, Office of Adjudication, 1400 Independence Avenue, S.W., Washington, D.C. 20250-9410, by fax (202) 690-7442 or email at [program.intake@usda.gov](mailto:program.intake@usda.gov).



United States  
Department of Agriculture

## Agricultural Outlook Forum

**February 20-21, 2014**  
**Crystal Gateway Marriott Hotel**  
**Arlington, Virginia**

# The Changing Face of Agriculture

USDA's annual event brings together leadership from throughout the agricultural community to discuss the

Changing Face of Agriculture.

### **Session topics include:**

New Agricultural Census  
Agriculture Supporting Our Veterans  
Women in Agriculture  
Agriculture & Social Media  
Food Price and Farm Income Outlooks  
Commodity and Weather Outlooks  
U.S. Farm Land  
International Trade  
Conservation  
Nutrition & Food Safety  
Nanotechnology  
Invasive Pests  
Know Your Farmer, Know Your Food  
Agroforestry  
Climate Variability  
Rural Economies  
Disease Challenges & the Citrus Industry  
Extension's 100-Year Anniversary

[www.usda.gov/oce/forum](http://www.usda.gov/oce/forum)

