



Agricultural Prices

ISSN: 1937-4216

Released December 30, 2013, by the National Agricultural Statistics Service (NASS), Agricultural Statistics Board, United States Department of Agriculture (USDA).

December Farm Prices Received Index Down 4 Points

The preliminary All Farm Products Index of Prices Received by Farmers in December, at 180 percent, based on 1990-1992=100, declined 4 points (2.2 percent) from November. The Crop Index is 6 points (3.1 percent) lower and the Livestock Index is down 1 point (0.6 percent). Producers received lower prices for corn, oranges, wheat, and hogs but higher prices for soybeans, milk, eggs, and rice. In addition to prices, the overall index is also affected by the seasonal change based on a 3-year average mix of commodities producers sell. Decreased marketing of corn, cattle, soybeans, and calves more than offset the increased monthly movement of wheat, milk, broilers, and cotton.

The preliminary All Farm Products Index is down 19 points (9.5 percent) from December 2012. The Food Commodities Index, at 185, declined 3 points (1.6 percent) from last month and 1 point (0.5 percent) from December 2012.

Prices Paid Index Down 1 Point

The December Index of Prices Paid for Commodities and Services, Interest, Taxes, and Farm Wage Rates (PPITW) is 213 percent of the 1990-1992 average. The index is down 1 point (0.5 percent) from November and 4 points (1.8 percent) below December 2012. Lower prices in December for complete feeds, concentrates, supplements, and potash & phosphate more than offset higher prices for LP gas, feeder pigs, diesel, and self-propelled machinery.

Prices Received, Prices Paid, and Ratio of Prices Received to Prices Paid Indexes 1990-1992 Base – United States: December 2013 with Comparisons

Index	December	November	December
	2012	2013	2013
Prices received by farmers	199	184	180
Prices paid by farmers	217	214	213
Ratio of prices received to prices paid	92	86	85

Contents

Prices Received by Farmers	2
Prices Received Indexes – United States: December 2013 with Comparisons	5
Prices Received and Prices Paid Indexes by Month for Selected Groups – United States: 2012 and 2013, 1990-1992 Base	5
Received Indexes by Month, Livestock Products, All Products, and All Crops – United States: 1990-1992=100 Chart.....	6
Received Indexes by Month, Food Grains, Feed Grains & Hay, and Oilseeds – United States: 1990-1992=100 Chart.....	6
Received Indexes by Month, Fruit & Nut and Commercial Vegetables – United States: 1990-1992=100 Chart.....	7
Received Indexes by Month, Meat Animal, Dairy Products, and Poultry & Eggs – United States: 1990-1992=100 Chart.....	7
Prices Received for Field Crops and Fruits – United States: December 2013 with Comparisons.....	8
Prices Received for Vegetables and Livestock – United States: December 2013 with Comparisons	9
Prices Received for Corn by Month – United States Chart.....	10
Prices Received for Wheat by Month – United States Chart	10
Prices Received for Upland Cotton by Month – United States Chart.....	11
Prices Received for Soybeans by Month – United States Chart	11
Prices Received for Cattle by Month – United States Chart	12
Prices Received for Milk by Month – United States Chart.....	12
Prices Received for Hogs by Month – United States Chart	13
Prices Received for Poultry by Month – United States Chart.....	13
Prices Received for All Wheat, Corn, and Soybeans by Month – United States: 2013 with Comparisons.....	14
Prices Received for Beef Cattle and All Hogs by Month – United States: 2013 with Comparisons	14
Prices Received for All Wheat – States and United States: December 2013 with Comparisons.....	15
Prices Received for Winter Wheat – States and United States: December 2013 with Comparisons.....	15
Prices Received for Durum Wheat – States and United States: December 2013 with Comparisons.....	16
Prices Received for Spring Wheat – States and United States: December 2013 with Comparisons	16
Prices Received for All Barley – States and United States: December 2013 with Comparisons.....	17
Prices Received for Malting Barley – States: December 2013 with Comparisons	17
Prices Received for Feed Barley – States: December 2013 with Comparisons	17
Prices Received for Corn – States and United States: December 2013 with Comparisons	18
Prices Received for Soybeans – States and United States: December 2013 with Comparisons.....	18
Prices Received for Oats – States and United States: December 2013 with Comparisons	19
Prices Received for Sorghum Grain – States and United States: December 2013 with Comparisons.....	19
Prices Received for Dry Beans – States and United States: December 2013 with Comparisons	20
Prices Received for Peanuts (in shell) – States and United States: December 2013 with Comparisons.....	20
Prices Received for Sunflower – States and United States: December 2013 with Comparisons.....	21
Prices Received for Canola – States and United States: December 2013 with Comparisons	21
Prices Received for Flaxseed – States and United States: December 2013 with Comparisons	21
Prices Received for Upland Cotton and Cottonseed – States and United States: December 2013 with Comparisons	22
Prices Received and Farm Marketings for Upland Cotton and Rice – United States: December 2013 with Comparisons	22
Prices Received for Hay by Type – States and United States: December 2013 with Comparisons.....	23
Prices Received for Apples – States and United States: December 2013 with Comparisons	23
Prices Received for Citrus Fruits by Utilization – States and United States: December 2012	24
Prices Received for Citrus Fruits by Utilization – States and United States: November 2013.....	25
Prices Received for Citrus Fruits by Utilization – States and United States: December 2013	26
Prices Received for Potatoes – States and United States: December 2013 with Comparisons.....	27
Prices Received for All Milk – States and United States: December 2013 with Comparisons.....	28
Prices Received for Milk Cows – States and United States: October 2013 with Comparisons	29

Commodity Parity Prices and Price as Percent of Parity Price – United States: December 2013 with Comparisons	30
Commodity Parity Prices – United States: December 2013 with Comparisons	31
Reliability of Prices Received Estimates	33
Prices Paid by Farmers.....	34
Prices Paid Indexes and Related Parity Ratios – United States: December 2013 with Comparisons.....	35
Prices Paid Indexes and Annual Weights for Input Components and Sub-components – United States: December 2013 with Comparisons.....	36
Paid Indexes by Month, All Items and Production Items – United States: 1990-1992=100 Chart	37
Paid Indexes, Annual Averages, Production Items, Interest, Taxes, and Wages – United States: 1990-1992=100 Chart	37
Paid Indexes by Farm Type, All Items – United States: 1990-1991=100 Chart.....	38
Paid Indexes by Origin, All Production Items – United States: 1990-1992=100 Chart	38
Paid Indexes by Non-Farm Sector, Supplies & Repairs, Fertilizer, Machinery, and Fuel – United States: 1990-1992=100 Chart	39
Paid Indexes by Month, Feed and Replacement Livestock – United States: 1990-1992=100 Chart.....	39
Feed Price Ratios – United States: December 2013 with Comparisons	40
Prices Received Used to Calculate Feed Price Ratios – United States: December 2013 with Comparisons.....	40
Prices Paid for Feeder Livestock – United States: December 2013 with Comparisons.....	40
Prices Paid for Feed – United States: 2008-2013.....	41
Annual Average Prices Paid for Feeder Livestock – United States: 2008-2013.....	41
Prices Paid by Farmers and Ranchers for Beef Cattle Production	42
Prices Received for Beef Cattle – Selected United States Regions: 2013	42
Reliability of Prices Paid Estimates	43
Calendar of Prices Received Features in the 2011 Agricultural Price Report	44
Calendar of Prices Paid Features in the 2011 Agricultural Price Report	47
Information Contacts	48

Prices Received by Farmers

The December All Farm Products Index is 180 percent of its 1990-1992 base, down 2.2 percent from the November index and 9.5 percent lower than the December 2012 index.

All crops: The December index, at 186, decreased 3.1 percent from November and is 18 percent below December 2012. Index decreases for feed grains & hay and food grains more than offset the index increase for oilseeds.

Food grains: The December index, at 223, is 2.2 percent below the previous month and 17 percent below a year ago. The December price for all wheat, at \$6.59 per bushel, is down 26 cents from November and \$1.71 below December 2012.

Feed grains & hay: The December index, at 192, is down 0.5 percent from last month and 35 percent below a year ago. The corn price, at \$4.31 per bushel, is 4 cents lower than last month and \$2.56 below December 2012. The all hay price, at \$168 per ton, is down \$3.00 from November and \$21.00 from last December. Sorghum grain, at \$7.44 per cwt, is 6 cents higher than November but \$4.76 lower than December last year.

Cotton, Upland: The December index, at 123, is down 0.8 percent from November but 4.2 percent above last year. The December price, at 74.5 cents per pound, is down 0.8 cents from the previous month but 2.7 cents higher than last December.

Oilseeds: The December index, at 230, is up 1.8 percent from November but 9.4 percent lower than December 2012. The soybean price, at \$13.00 per bushel, increased 30 cents from November but is \$1.30 lower than December 2012.

Fruits & nuts: The December index, at 190, is down 10 percent from November but 0.5 percent higher than a year ago. Prices for oranges are lower.

Commercial vegetables: The December index, at 136, is down 16 percent from last month and 0.7 percent below December 2012.

Potatoes & dry beans: The December index, at 165, is down 1.8 percent from last month but 13 percent above December 2012. The all potato price, at \$9.09 per cwt, is down 9 cents from November but up \$1.35 from last December. The all dry bean price, at \$37.90 per cwt, is down 80 cents from the previous month but 10 cents above December 2012.

Livestock and products: The December index, at 172, is 0.6 percent below last month but up 4.2 percent from December 2012. Compared with a year ago, prices are higher for cattle, market eggs, milk, calves, and turkeys. Prices for broilers and hogs are lower than last year.

Meat animals: The December index, at 167, is down 1.8 percent from last month but 4.4 percent higher than last year. The December hog price, at \$62.10 per cwt, is down \$1.50 from November and 30 cents lower than a year ago. The December beef cattle price of \$130 per cwt is unchanged from last month but \$6.00 higher than December 2012.

Dairy products: The December index, at 167, is up 1.2 percent from a month ago and 5.0 percent higher than December last year. The December all milk price of \$21.80 per cwt is up 20 cents from last month and \$1.00 higher than December 2012.

Poultry & eggs: The December index, at 185, is up 0.5 percent from November and 2.2 percent above a year ago. The December market egg price, at \$1.21 per dozen, increased 4.0 cents from November and is 25.3 cents higher than December 2012. The December broiler price, at 56.0 cents per pound, is unchanged from November but 2.0 cents below a year ago. The December turkey price, at 69.0 cents per pound, is down 1.0 cent from the previous month but up 1.6 cents from a year earlier.

Prices Received Indexes – United States: December 2013 with Comparisons

[Revised historical price indexes for months not shown are available at www.nass.usda.gov]

Index	1910-1914 Base				1990-1992 Base		
	1990-1992 Average	December 2012	November 2013	December 2013	December 2012	November 2013	December 2013
	(percent)	(percent)	(percent)	(percent)	(percent)	(percent)	(percent)
All products	639	1261	1166	1142	199	184	180
All crops	500	1118	952	924	226	192	186
Food grains	325	846	722	706	267	228	223
Feed grains & hay	363	1048	689	685	294	193	192
Cotton, Upland	517	608	637	631	118	124	123
Tobacco	1263	1760	1760	1760	116	116	116
Oilseeds	554	1393	1241	1259	254	226	230
Fruits & nuts	716	1320	1471	1326	189	211	190
Commercial vegetables	698	965	1155	969	135	162	136
Potatoes & dry beans	540	742	852	838	146	168	165
Other crops	493	643	645	645	131	131	131
Livestock and products	768	1268	1323	1316	165	173	172
Meat animals	1021	1627	1732	1696	160	170	167
Dairy products	799	1280	1329	1341	159	165	167
Poultry & eggs	282	508	518	520	181	184	185
Food commodities	(NA)	(NA)	(NA)	(NA)	186	188	185

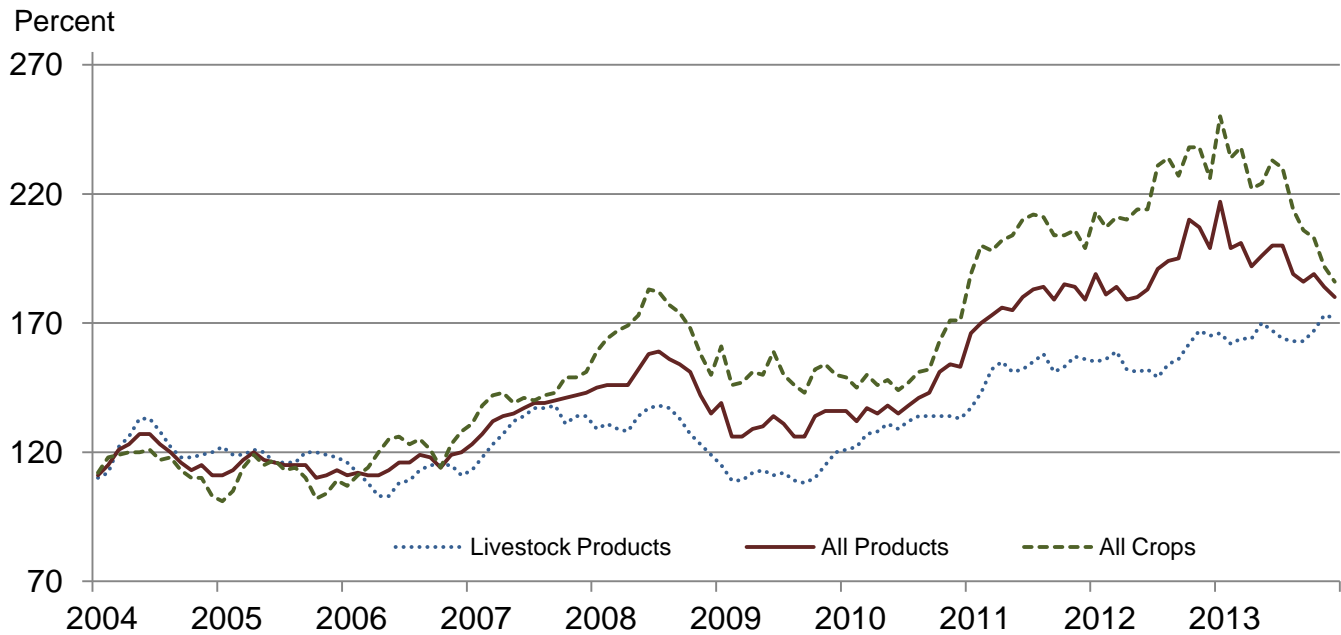
(NA) Not available.

Prices Received and Prices Paid Indexes by Month for Selected Groups – United States: 2012 and 2013, 1990-1992 Base

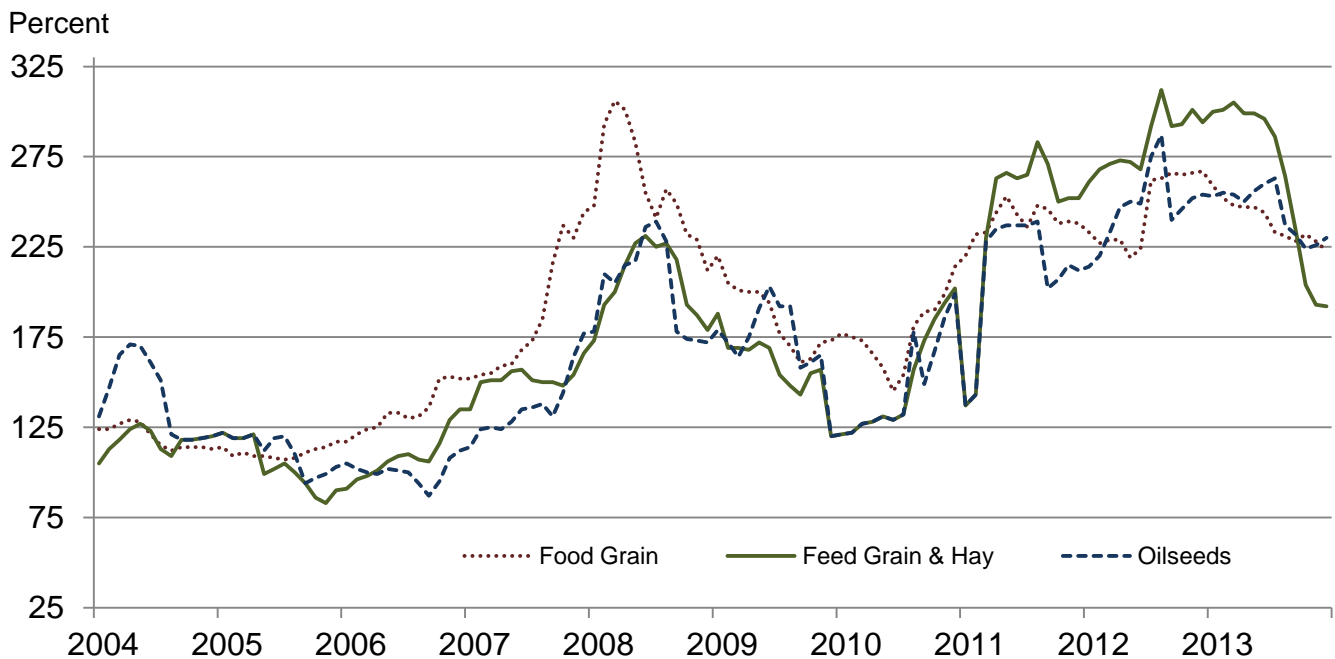
[Revised historical price indexes for months not shown are available at www.nass.usda.gov]

Month	Index of prices received						Index of prices paid			
	All farm products		All crops		Livestock and products		All items		Production items	
	2012	2013	2012	2013	2012	2013	2012	2013	2012	2013
	(percent)	(percent)	(percent)	(percent)	(percent)	(percent)	(percent)	(percent)	(percent)	(percent)
January	189	217	213	250	155	166	210	219	222	233
February	181	199	207	234	156	162	211	220	223	234
March	184	201	211	238	159	164	215	220	229	234
April	179	192	210	222	152	164	215	219	228	233
May	180	196	214	224	151	170	214	219	228	233
June	183	200	214	233	152	167	214	219	227	232
July	191	200	231	230	149	164	213	219	227	233
August	194	189	234	214	154	163	216	216	231	229
September	195	186	227	206	156	163	217	217	232	230
October	210	189	238	203	162	167	218	215	232	227
November	207	184	238	192	167	173	217	214	231	225
December	199	180	226	186	165	172	217	213	231	224

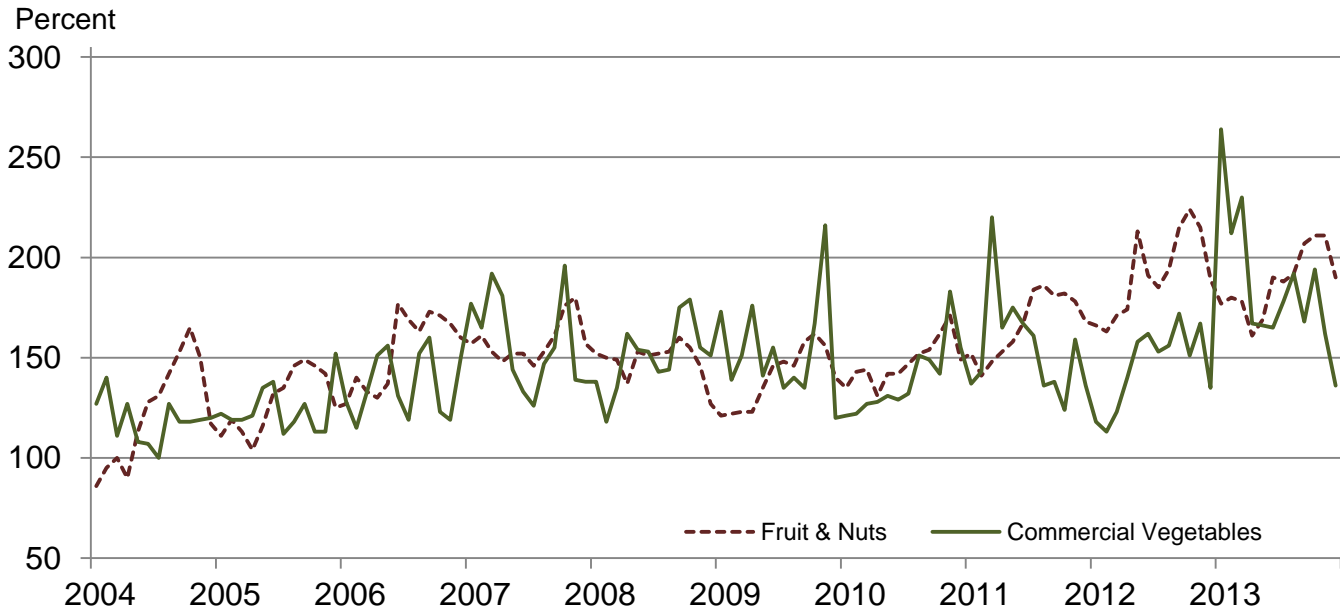
Received Indexes by Month, Livestock Products, All Products, and All Crops – United States: 1990-1992=100



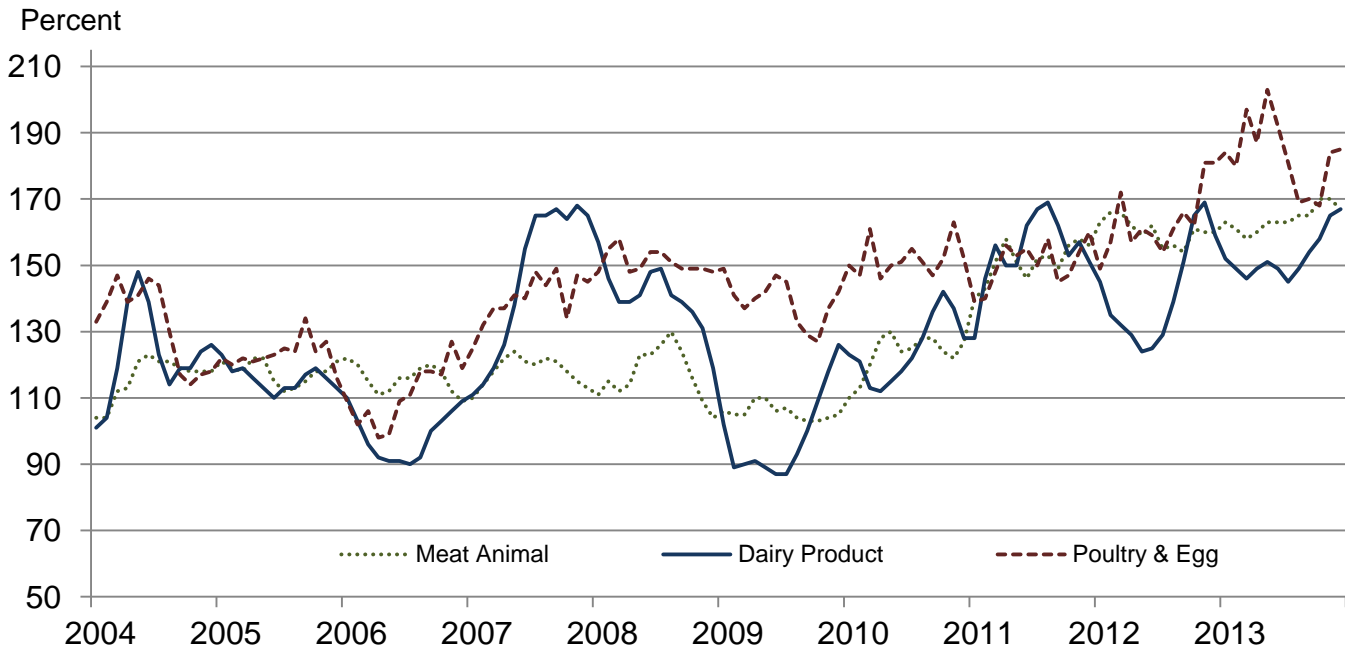
Received Indexes by Month, Food Grains, Feed Grains & Hay, and Oilseeds – United States: 1990-1992=100



**Received Indexes by Month,
Fruit & Nuts and Commercial Vegetables –
United States: 1990-1992=100**



**Received Indexes by Month,
Meat Animal, Dairy Product, and Poultry & Egg –
United States: 1990-1992=100**



Prices Received for Field Crops and Fruits – United States: December 2013 with Comparisons

Commodity	Average 1990-1992	December 2012	November 2013	Preliminary December 2013
Field crops				
Austrian winter peas dollars/cwt	(NA)	20.60	25.40	(D)
Barley, all dollars/bushel	2.12	6.44	6.12	5.61
Feed dollars/bushel	1.90	5.53	3.63	3.71
Malting dollars/bushel	2.43	6.57	6.63	6.09
Beans, dry edible dollars/cwt	19.10	37.80	38.70	37.90
Canola dollars/cwt	(NA)	27.10	20.40	19.00
Chickpeas, all dollars/cwt	(NA)	33.80	29.90	28.20
Large dollars/cwt	(NA)	36.90	30.20	28.20
Small dollars/cwt	(NA)	28.00	(D)	(S)
Corn dollars/bushel	2.30	6.87	4.35	4.31
Cotton, Upland dollars/pound	0.606	0.718	0.753	0.745
Cottonseed dollars/ton	96.00	252.00	248.00	246.00
Flaxseed dollars/bushel	4.27	13.80	13.40	13.60
Hay, all, baled dollars/ton	76.30	189.00	171.00	168.00
Alfalfa dollars/ton	77.20	217.00	188.00	187.00
Other dollars/ton	60.00	142.00	135.00	130.00
Lentils dollars/cwt	(NA)	18.90	19.50	19.60
Oats dollars/bushel	1.22	3.90	3.40	3.44
Peanuts, in-shell dollars/pound	0.304	0.369	0.266	0.225
Peas, dry edible dollars/cwt	(NA)	16.60	15.90	12.90
Potatoes dollars/cwt	5.82	7.74	9.18	9.09
Rice, all dollars/cwt	7.07	14.80	15.50	15.80
Long dollars/cwt	(NA)	14.10	15.30	15.50
Medium and short dollars/cwt	(NA)	16.90	15.80	16.50
Sorghum grain dollars/cwt	3.75	12.20	7.38	7.44
Soybeans dollars/bushel	5.61	14.30	12.70	13.00
Sunflowers, all dollars/cwt	9.50	24.80	20.80	19.70
Wheat, all dollars/bushel	2.96	8.30	6.85	6.59
Winter dollars/bushel	2.93	8.15	6.96	6.62
Durum dollars/bushel	2.86	8.31	6.75	6.76
Other spring dollars/bushel	3.11	8.48	6.70	6.54
Hard red winter ¹ dollars/bushel	(NA)	8.20	7.10	(NA)
Soft red winter ¹ dollars/bushel	(NA)	8.19	6.63	(NA)
Hard red spring ¹ dollars/bushel	(NA)	8.50	6.70	(NA)
White ¹ dollars/bushel	3.24	7.99	6.76	(NA)
Fruits				
Citrus, equivalent on-tree				
Grapefruit dollars/box	5.77	6.87	7.96	6.84
Lemons dollars/box	10.10	11.60	30.51	23.60
Oranges dollars/box	5.79	6.64	11.94	7.75
Tangelos dollars/box	5.82	12.89	10.34	7.56
Tangerines and mandarins dollars/box	15.11	21.86	27.59	24.92
Noncitrus, fresh				
Apples ² dollars/pound	0.212	0.474	(NA)	(NA)
Grapes ² dollars/ton	506.00	1,780.00	(NA)	(NA)
Peaches ² dollars/ton	432.00	(S)	(NA)	(NA)
Pears ² dollars/ton	370.00	713.00	(NA)	(NA)
Strawberries dollars/cwt	56.00	210.00	(NA)	(NA)

(D) Withheld to avoid disclosing data for individual operations.

(NA) Not available.

(S) Insufficient number of reports to establish an estimate.

¹ Preliminary estimates not set for this item.

² Equivalent packinghouse-door returns for California, Michigan, New York (apples only), and Washington (apples, peaches, and pears). Prices as sold for other states.

Prices Received for Vegetables and Livestock – United States: December 2013 with Comparisons

[Price data source for livestock and poultry commodities is United States Department of Agriculture's Agricultural Marketing Service]

Commodity	Average 1990-1992	December 2012	November 2013	Preliminary December 2013
Vegetables, fresh ¹				
Asparagusdollars/cwt	79.80	(S)	(NA)	(NA)
Beans, snap ²dollars/cwt	(NA)	58.50	(NA)	(NA)
Broccolidollars/cwt	22.50	27.90	(NA)	(NA)
Cantaloupes ²dollars/cwt	(NA)	(S)	(NA)	(NA)
Carrotsdollars/cwt	13.20	27.40	(NA)	(NA)
Cauliflowerdollars/cwt	26.80	40.00	(NA)	(NA)
Celerydollars/cwt	11.60	21.20	(NA)	(NA)
Corn, sweetdollars/cwt	15.70	27.80	(NA)	(NA)
Cucumbers ²dollars/cwt	(NA)	23.30	(NA)	(NA)
Lettucedollars/cwt	11.90	12.80	(NA)	(NA)
Onions ³dollars/cwt	12.80	17.50	(NA)	(NA)
Tomatoesdollars/cwt	32.30	49.40	(NA)	(NA)
Livestock				
Calvesdollars/cwt	94.30	163.00	192.00	194.00
Cattle, all beefdollars/cwt	72.90	124.00	130.00	130.00
Cows ⁴dollars/cwt	49.60	77.30	80.70	81.80
Steers and heifersdollars/cwt	77.10	128.00	132.00	132.00
Milk cows ⁵dollars/head	1130.00	(NA)	(NA)	(NA)
Hogs, alldollars/cwt	47.70	62.40	63.60	62.10
Barrows and giltsdollars/cwt	48.40	62.70	63.30	61.80
Sowsdollars/cwt	39.50	54.80	71.00	70.20
Dairy and poultry				
Milk, all ⁶dollars/cwt	13.06	20.80	21.60	21.80
Fat test percent	3.66	3.86	3.86	3.88
Broilers, live ⁷dollars/pound	0.317	0.580	0.560	0.560
Eggs, all ⁸dollars/dozen	0.643	1.130	1.330	1.360
Market ^{8 9}dollars/dozen	0.546	0.957	1.170	1.210
Turkeys, live ^{8 10}dollars/pound	0.380	0.674	0.700	0.690
Adjusted for seasonal variation				
Eggs, alldollars/dozen	0.545	0.934	1.150	1.120
Seasonal factor percent	100	121	115	121
Milk, all ⁶dollars/cwt	9.71	19.90	20.10	21.00
Seasonal factor percent	100	104	108	104

(NA) Not available.

(S) Insufficient number of reports to establish an estimate.

¹ Beginning January 2006, point of first sale. FOB shipping point for prior years.

² Monthly estimates began January 1995.

³ Includes some processing.

⁴ Beef cows and cull dairy cows sold for slaughter.

⁵ Animals sold for dairy herd replacement only. Prices available for January, April, July, and October.

⁶ Before deductions for hauling. Includes quality, quantity, and other premiums. Excludes hauling subsidies.

⁷ Live weight equivalent price.

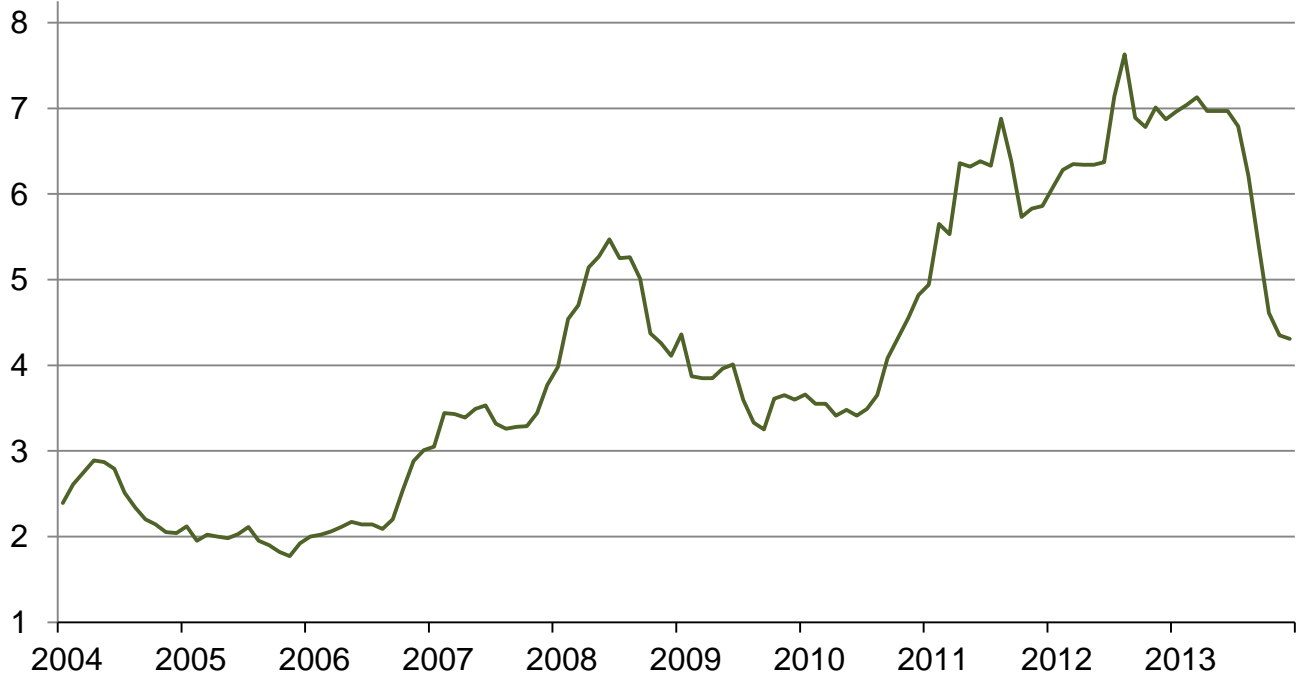
⁸ Mid-month price.

⁹ Also referred to as table eggs.

¹⁰ Live weight equivalent price is used when actual live weight price is not available. Beginning January 2011, price reflects FOB shipping point basis. Prior year price reflects delivered basis.

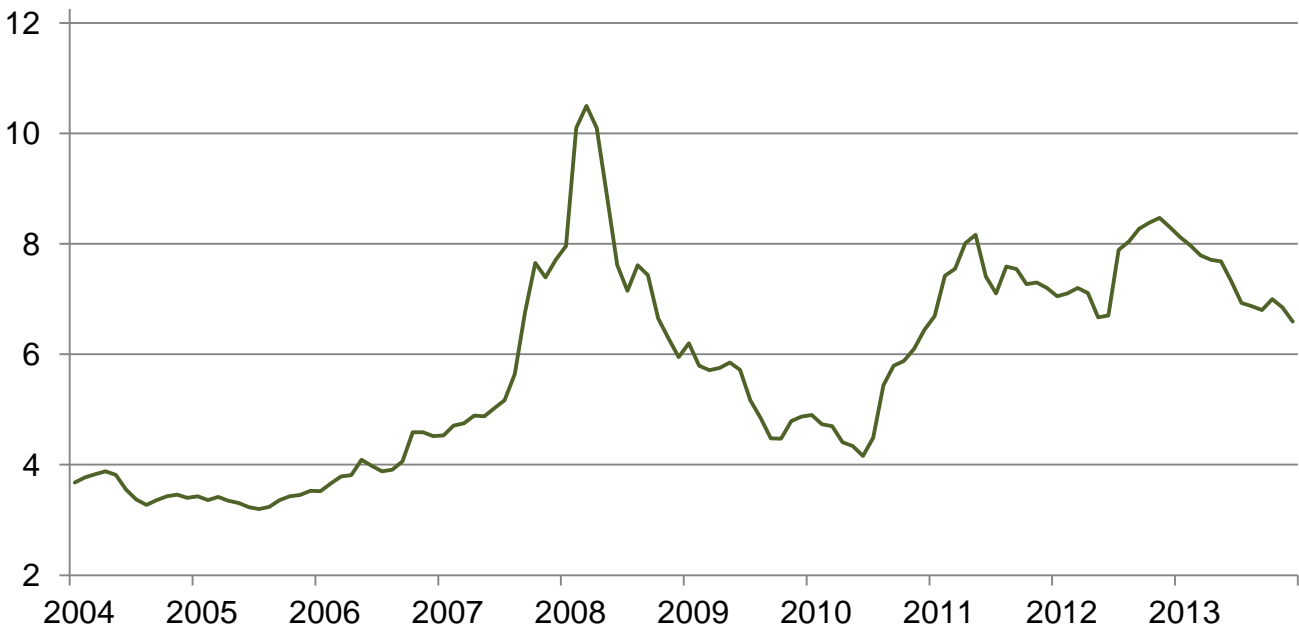
Prices Received for Corn by Month – United States

Dollars per bushel



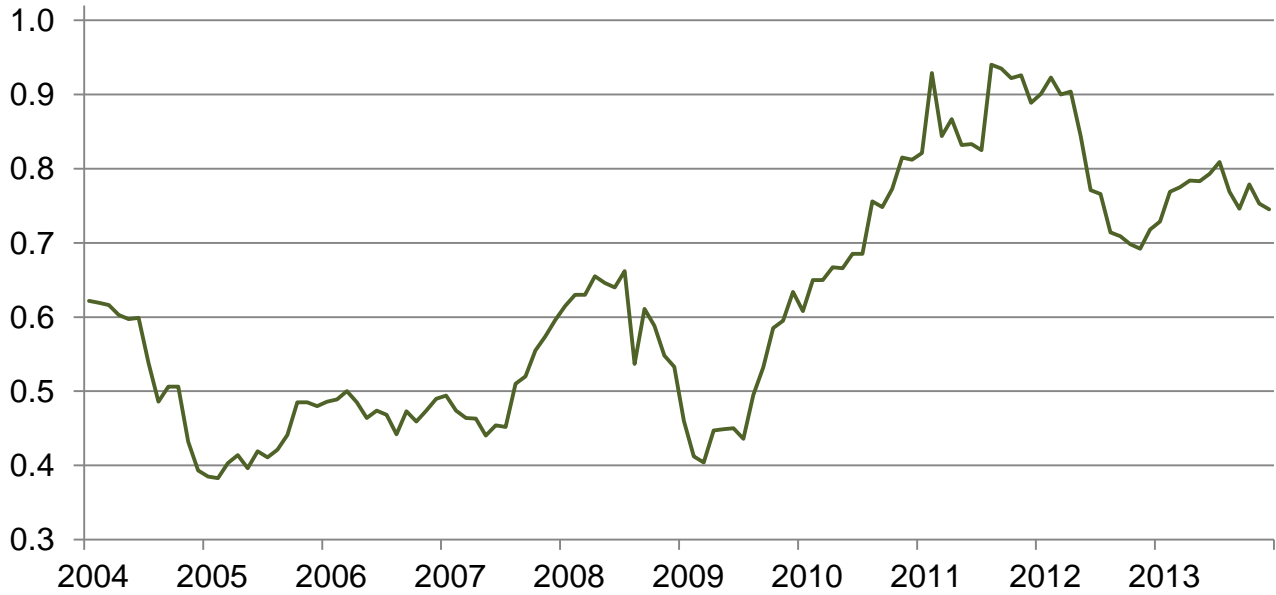
Prices Received for Wheat by Month – United States

Dollars per bushel



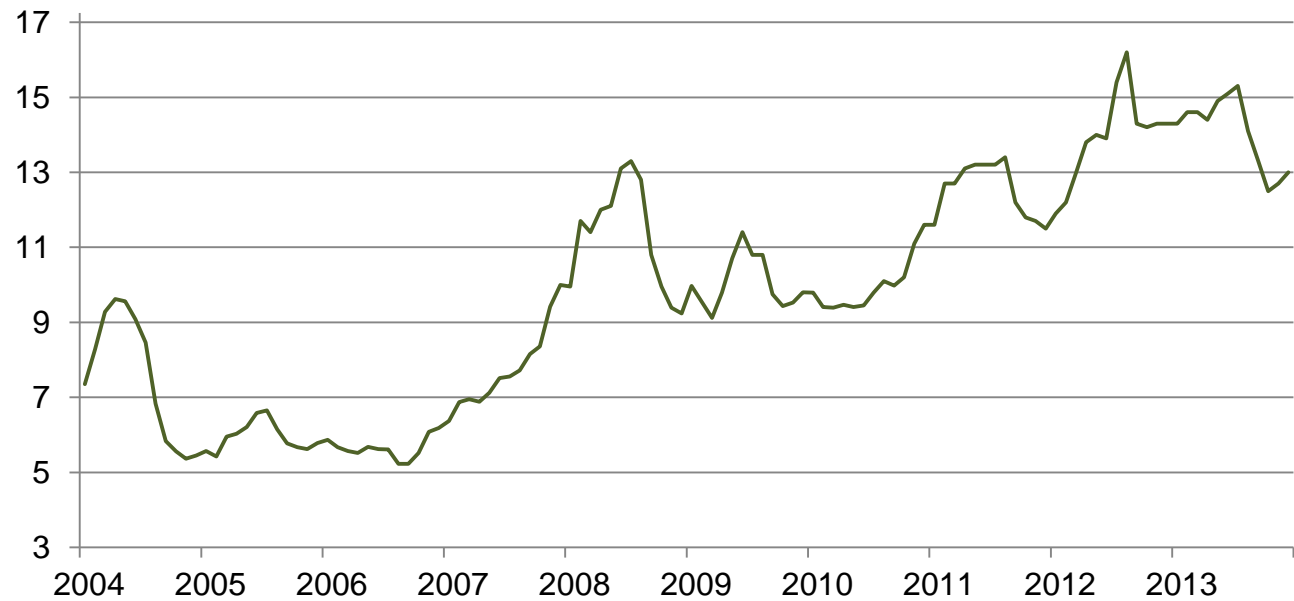
Prices Received for Upland Cotton by Month – United States

Dollars per pound



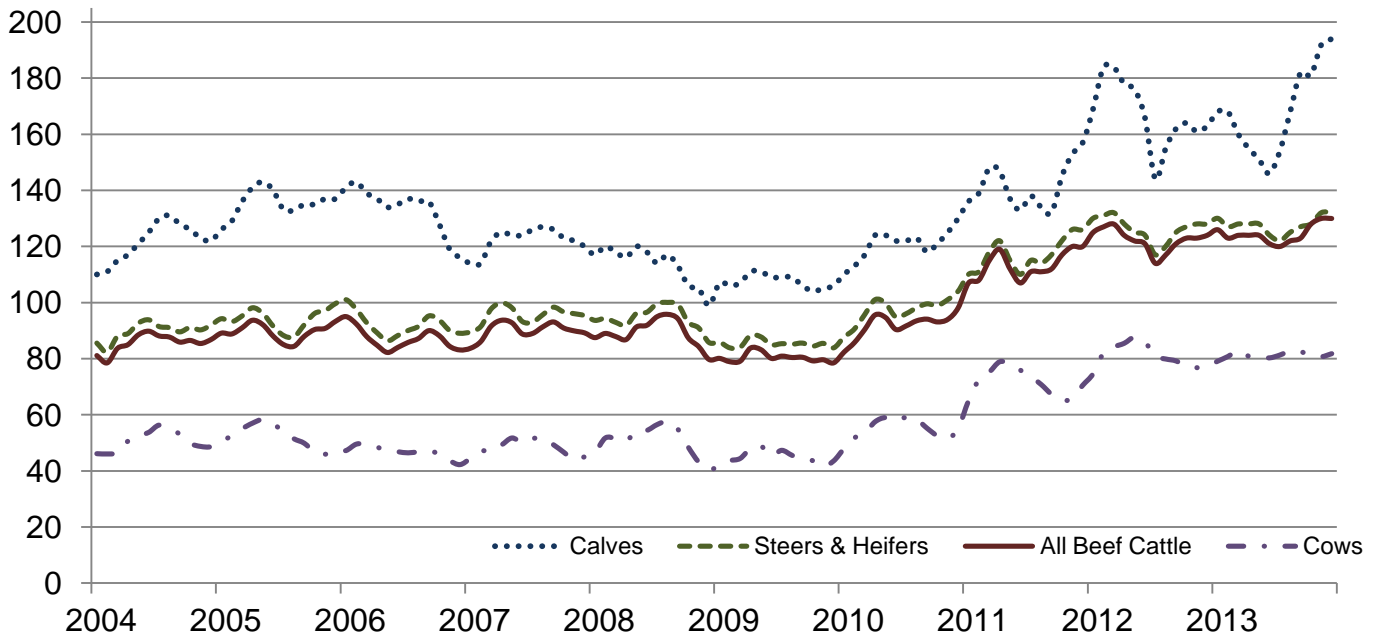
Prices Received for Soybeans by Month – United States

Dollars per bushel



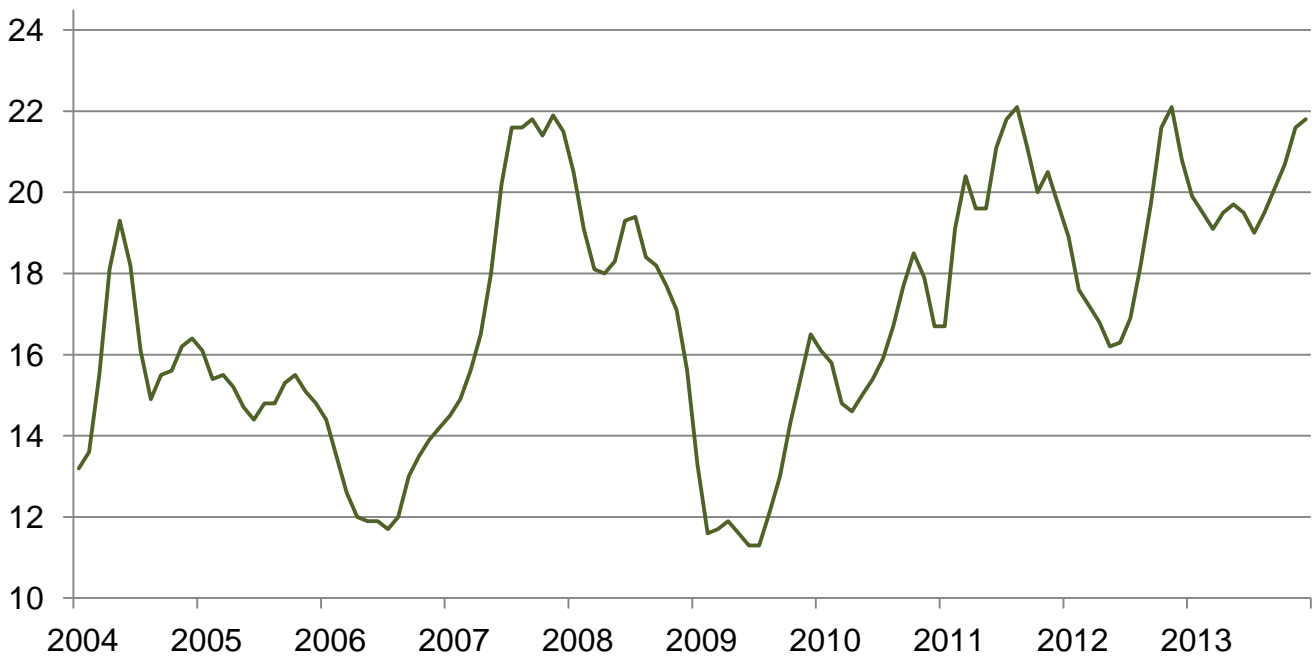
Prices Received for Cattle by Month – United States

Dollars per cwt



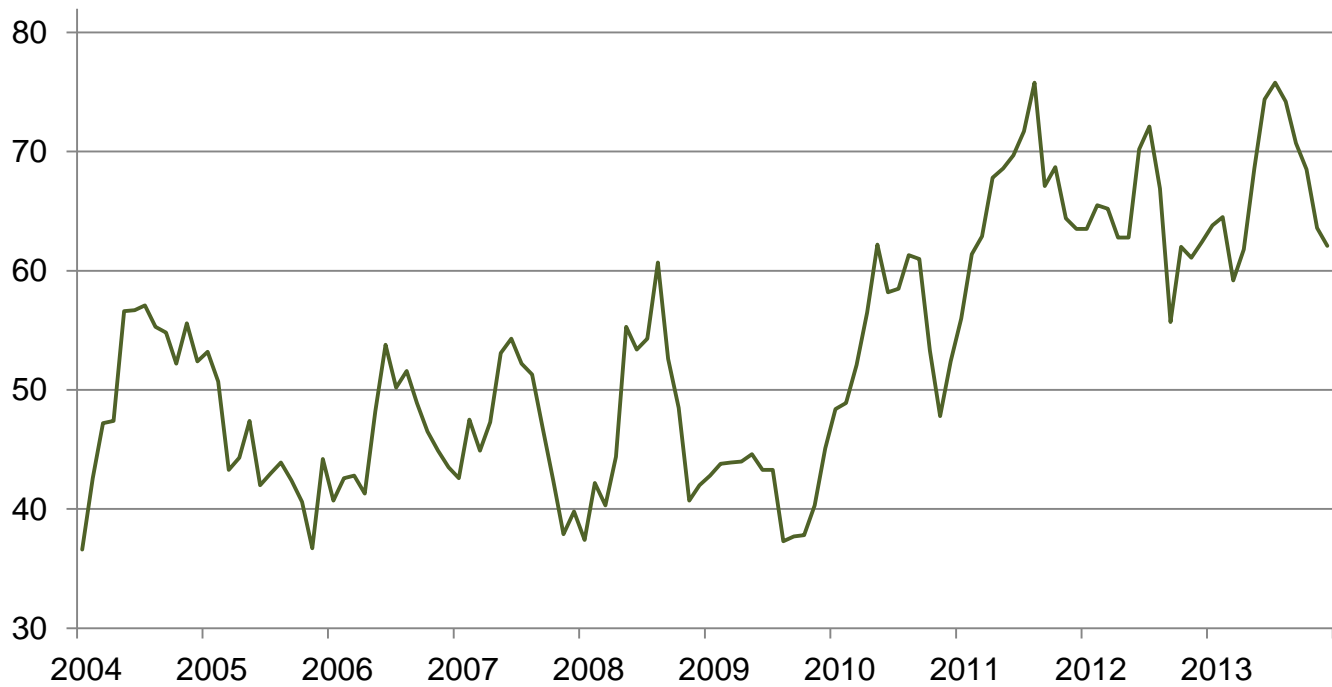
Prices Received for Milk by Month – United States

Dollars per cwt



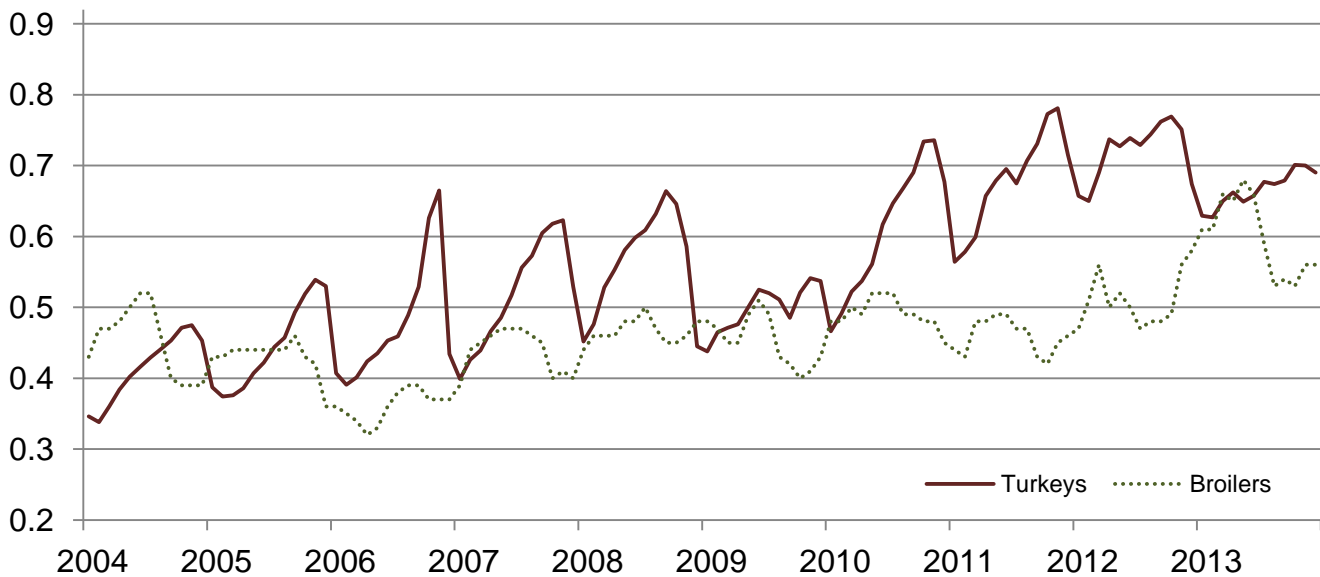
Prices Received for Hogs by Month – United States

Dollars per cwt



Prices Received for Poultry by Month – United States

Dollars per pound



Prices Received for All Wheat, Corn, and Soybeans by Month – United States: 2013 with Comparisons

[Current month prices are mid-month; prices for previous months and years are for the entire month]

Month	All wheat			Corn			Soybeans		
	2011	2012	Preliminary 2013	2011	2012	Preliminary 2013	2011	2012	Preliminary 2013
	(dollars per bushel)	(dollars per bushel)	(dollars per bushel)	(dollars per bushel)	(dollars per bushel)	(dollars per bushel)	(dollars per bushel)	(dollars per bushel)	(dollars per bushel)
January	6.69	7.05	8.12	4.94	6.07	6.96	11.60	11.90	14.30
February	7.42	7.10	7.97	5.65	6.28	7.04	12.70	12.20	14.60
March	7.55	7.20	7.79	5.53	6.35	7.13	12.70	13.00	14.60
April	8.01	7.11	7.71	6.36	6.34	6.97	13.10	13.80	14.40
May	8.16	6.67	7.68	6.32	6.34	6.97	13.20	14.00	14.90
June	7.41	6.70	7.32	6.38	6.37	6.97	13.20	13.90	15.10
July	7.10	7.89	6.93	6.33	7.14	6.79	13.20	15.40	15.30
August	7.59	8.04	6.87	6.88	7.63	6.21	13.40	16.20	14.10
September ...	7.54	8.27	6.80	6.38	6.89	5.40	12.20	14.30	13.30
October	7.27	8.38	7.00	5.73	6.78	4.61	11.80	14.20	12.50
November	7.30	8.47	6.85	5.83	7.01	4.35	11.70	14.30	12.70
December	7.20	8.30	6.59	5.86	6.87	4.31	11.50	14.30	13.00

Prices Received for Beef Cattle and All Hogs by Month – United States: 2013 with Comparisons

[Current month prices are mid-month; prices for previous months and years are for the entire month]

Month	Beef cattle ¹			All hogs ²		
	2011	2012	Preliminary 2013	2011	2012	Preliminary 2013
	(dollars per cwt)	(dollars per cwt)	(dollars per cwt)	(dollars per cwt)	(dollars per cwt)	(dollars per cwt)
January	107.00	125.00	126.00	56.00	63.50	63.80
February	108.00	127.00	123.00	61.40	65.50	64.50
March	115.00	128.00	124.00	62.90	65.20	59.20
April	119.00	124.00	124.00	67.80	62.80	61.80
May	112.00	122.00	124.00	68.60	62.80	68.60
June	107.00	121.00	121.00	69.70	70.20	74.40
July	111.00	114.00	120.00	71.70	72.10	75.80
August	111.00	117.00	122.00	75.80	66.90	74.20
September	112.00	121.00	123.00	67.10	55.70	70.70
October	117.00	123.00	128.00	68.70	62.00	68.50
November	120.00	123.00	130.00	64.40	61.10	63.60
December	120.00	124.00	130.00	63.50	62.40	62.10

¹ Cows and steers & heifers.

² Barrows & gilts and sows.

Prices Received for All Wheat – States and United States: December 2013 with Comparisons

State	December 2012	November 2013	Preliminary December 2013
	(dollars per bushel)	(dollars per bushel)	(dollars per bushel)
Arizona	(D)	(D)	(D)
Arkansas	8.59	(D)	(D)
California	7.82	8.11	(D)
Colorado	7.73	6.94	6.44
Idaho	8.29	6.99	7.01
Illinois	8.05	6.46	6.30
Indiana	8.56	6.43	6.25
Kansas	8.01	7.13	6.57
Michigan	7.80	6.56	6.40
Minnesota	8.41	6.48	6.40
Missouri	8.19	6.59	6.30
Montana	8.43	7.03	6.66
Nebraska	8.16	6.76	6.55
North Carolina	8.72	5.51	5.50
North Dakota	8.36	6.58	6.42
Ohio	8.30	6.74	6.67
Oklahoma	8.07	7.00	6.53
Oregon	7.84	7.10	6.91
South Dakota	8.48	6.62	6.50
Texas	8.45	6.92	6.80
Washington	8.35	6.83	6.77
United States	8.30	6.85	6.59

(D) Withheld to avoid disclosing data for individual operations.

Prices Received for Winter Wheat – States and United States: December 2013 with Comparisons

State	December 2012	November 2013	Preliminary December 2013
	(dollars per bushel)	(dollars per bushel)	(dollars per bushel)
Arkansas	8.59	(D)	(D)
California	7.82	8.11	(D)
Colorado	7.75	6.94	6.44
Idaho	8.25	6.99	6.83
Illinois	8.05	6.46	6.30
Indiana	8.56	6.43	6.25
Kansas	8.01	7.13	6.57
Michigan	7.80	6.56	6.40
Minnesota	(D)	(S)	(S)
Missouri	8.19	6.59	6.30
Montana	8.28	7.20	6.70
Nebraska	8.16	6.76	6.55
North Carolina	8.72	5.51	5.50
North Dakota	8.14	6.47	6.00
Ohio	8.30	6.74	6.67
Oklahoma	8.07	7.00	6.53
Oregon	7.81	7.03	6.85
South Dakota	8.31	6.36	6.34
Texas	8.45	6.92	6.80
Washington	8.26	6.79	6.73
United States	8.15	6.96	6.62

(D) Withheld to avoid disclosing data for individual operations.

(S) Insufficient number of reports to establish an estimate.

Prices Received for Durum Wheat – States and United States: December 2013 with Comparisons

State	December 2012	November 2013	Preliminary December 2013
	(dollars per bushel)	(dollars per bushel)	(dollars per bushel)
Arizona	(D)	(D)	(D)
California	(S)	(S)	(S)
Idaho	(D)	(S)	(S)
Montana	8.36	(D)	(D)
North Dakota	8.26	6.62	6.65
United States	8.31	6.75	6.76

(D) Withheld to avoid disclosing data for individual operations.

(S) Insufficient number of reports to establish an estimate.

Prices Received for Spring Wheat – States and United States: December 2013 with Comparisons

State	December 2012	November 2013	Preliminary December 2013
	(dollars per bushel)	(dollars per bushel)	(dollars per bushel)
Colorado	(D)	(S)	(S)
Idaho	8.32	6.97	7.25
Minnesota	8.41	6.48	6.40
Montana	8.71	6.87	6.57
North Dakota	8.41	6.57	6.40
Oregon	8.28	7.44	7.24
South Dakota	8.58	6.78	6.61
Washington	8.72	7.09	7.04
United States	8.48	6.70	6.54

(D) Withheld to avoid disclosing data for individual operations.

(S) Insufficient number of reports to establish an estimate.

Prices Received for All Barley – States and United States: December 2013 with Comparisons

State	December 2012	November 2013	Preliminary December 2013
	(dollars per bushel)	(dollars per bushel)	(dollars per bushel)
California	(S)	(D)	(S)
Colorado	6.83	(D)	(D)
Idaho	6.50	6.76	6.26
Minnesota	(D)	(D)	(S)
Montana	6.29	6.23	5.83
North Dakota	6.47	6.25	5.53
Oregon	(D)	3.71	(S)
Utah	(D)	(S)	(S)
Washington	5.62	3.61	3.50
Wyoming	(D)	(D)	(D)
United States	6.44	6.12	5.61

(D) Withheld to avoid disclosing data for individual operations.

(S) Insufficient number of reports to establish an estimate.

Prices Received for Malting Barley – States: December 2013 with Comparisons

State	December 2012	November 2013	Preliminary December 2013
	(dollars per bushel)	(dollars per bushel)	(dollars per bushel)
Idaho	6.57	6.86	6.41
Minnesota	(D)	(D)	(S)
Montana	6.41	6.35	5.85
North Dakota	6.59	6.88	5.90
Wyoming	(D)	(D)	(D)

(D) Withheld to avoid disclosing data for individual operations.

(S) Insufficient number of reports to establish an estimate.

Prices Received for Feed Barley – States: December 2013 with Comparisons

State	December 2012	November 2013	Preliminary December 2013
	(dollars per bushel)	(dollars per bushel)	(dollars per bushel)
Idaho	5.81	3.27	3.43
Minnesota	(D)	(S)	(S)
Montana	5.32	3.61	(D)
North Dakota	5.38	3.51	3.40
Wyoming	(S)	(D)	(D)

(D) Withheld to avoid disclosing data for individual operations.

(S) Insufficient number of reports to establish an estimate.

Prices Received for Corn – States and United States: December 2013 with Comparisons

State	December 2012	November 2013	Preliminary December 2013
	(dollars per bushel)	(dollars per bushel)	(dollars per bushel)
Colorado	7.01	4.71	4.35
Illinois	6.73	4.50	4.40
Indiana	7.27	4.17	4.30
Iowa	6.92	4.39	4.30
Kansas	7.15	4.38	4.22
Kentucky	6.99	4.50	4.50
Michigan	6.93	4.09	4.10
Minnesota	6.68	4.26	4.20
Missouri	7.41	4.42	4.40
Nebraska	6.80	4.46	4.45
North Carolina	7.64	4.83	4.85
North Dakota	6.46	4.09	3.80
Ohio	7.17	4.17	4.40
Pennsylvania	7.31	3.99	4.07
South Dakota	6.71	3.98	3.81
Tennessee	7.47	4.21	4.25
Texas	7.32	4.92	5.17
Wisconsin	6.85	4.13	4.10
United States	6.87	4.35	4.31

Prices Received for Soybeans – States and United States: December 2013 with Comparisons

State	December 2012	November 2013	Preliminary December 2013
	(dollars per bushel)	(dollars per bushel)	(dollars per bushel)
Arkansas	14.60	13.00	13.50
Illinois	14.30	12.80	13.00
Indiana	14.50	12.70	13.10
Iowa	14.30	12.70	12.90
Kansas	14.10	12.50	12.70
Kentucky	14.50	13.00	13.30
Louisiana	14.50	13.20	13.20
Michigan	14.10	12.50	12.90
Minnesota	14.10	12.50	12.70
Mississippi	14.80	13.00	13.50
Missouri	14.30	12.80	12.80
Nebraska	14.20	12.50	12.90
North Carolina	13.70	12.90	13.10
North Dakota	14.10	12.30	12.50
Ohio	14.50	12.70	13.30
South Dakota	14.20	12.20	12.50
Tennessee	14.90	12.80	13.10
Wisconsin	14.00	12.40	12.80
United States	14.30	12.70	13.00

Prices Received for Oats – States and United States: December 2013 with Comparisons

State	December 2012	November 2013	Preliminary December 2013
	(dollars per bushel)	(dollars per bushel)	(dollars per bushel)
Illinois	(D)	(S)	(S)
Iowa	4.15	4.24	4.25
Michigan	4.14	(D)	(D)
Minnesota	3.63	3.10	3.20
Montana	(D)	(D)	(S)
Nebraska	(D)	(D)	(D)
New York	(D)	(D)	(D)
North Dakota	3.41	2.89	(D)
Oregon	(S)	(D)	(S)
Pennsylvania	4.34	(D)	(D)
South Dakota	4.20	3.54	3.69
Texas	(S)	(S)	(S)
Wisconsin	3.99	3.97	4.00
United States	3.90	3.40	3.44

(D) Withheld to avoid disclosing data for individual operations.

(S) Insufficient number of reports to establish an estimate.

Prices Received for Sorghum Grain – States and United States: December 2013 with Comparisons

State	December 2012	November 2013	Preliminary December 2013
	(dollars per cwt)	(dollars per cwt)	(dollars per cwt)
Arkansas	(D)	9.05	(D)
Illinois	11.40	7.43	(S)
Kansas	12.10	7.23	7.26
Louisiana	(D)	(D)	(S)
Missouri	12.30	7.40	7.40
Nebraska	11.70	7.15	7.30
Oklahoma	11.70	7.34	7.40
Texas	12.50	7.63	8.02
United States	12.20	7.38	7.44

(D) Withheld to avoid disclosing data for individual operations.

(S) Insufficient number of reports to establish an estimate.

Prices Received for Dry Beans – States and United States: December 2013 with Comparisons

State	December 2012	November 2013	Preliminary December 2013
	(dollars per cwt)	(dollars per cwt)	(dollars per cwt)
California	56.60	61.50	62.60
Colorado	36.70	(S)	(S)
Idaho	35.30	(D)	(D)
Michigan	39.30	42.40	42.60
Minnesota	44.70	(D)	(S)
Nebraska	37.30	43.20	40.00
North Dakota	33.60	35.50	36.00
United States	37.80	38.70	37.90

(D) Withheld to avoid disclosing data for individual operations.

(S) Insufficient number of reports to establish an estimate.

Prices Received for Peanuts (in shell) – States and United States: December 2013 with Comparisons

State	December 2012	November 2013	Preliminary December 2013
	(dollars per pound)	(dollars per pound)	(dollars per pound)
Alabama	0.327	0.240	0.232
Florida	(D)	0.259	(D)
Georgia	0.331	0.252	(D)
Mississippi	0.329	0.254	0.191
New Mexico	(D)	0.339	(S)
North Carolina	0.352	0.261	0.188
Oklahoma	0.365	0.315	0.245
South Carolina	0.324	0.257	0.255
Texas	0.526	0.312	0.317
Virginia	0.324	0.279	(S)
United States	0.369	0.266	0.225

(D) Withheld to avoid disclosing data for individual operations.

(S) Insufficient number of reports to establish an estimate.

Prices Received for Sunflower – States and United States: December 2013 with Comparisons

State	December 2012	November 2013	Preliminary December 2013
	(dollars per cwt)	(dollars per cwt)	(dollars per cwt)
Colorado	(D)	(D)	(S)
Kansas	25.80	23.20	22.30
Minnesota	30.40	(D)	(D)
North Dakota	25.70	21.40	20.90
South Dakota	24.00	20.10	18.00
United States	24.80	20.80	19.70

(D) Withheld to avoid disclosing data for individual operations.

(S) Insufficient number of reports to establish an estimate.

Prices Received for Canola – States and United States: December 2013 with Comparisons

State	December 2012	November 2013	Preliminary December 2013
	(dollars per cwt)	(dollars per cwt)	(dollars per cwt)
Minnesota	(D)	(S)	(S)
North Dakota	27.10	20.40	19.00
United States	27.10	20.40	19.00

(D) Withheld to avoid disclosing data for individual operations.

(S) Insufficient number of reports to establish an estimate.

Prices Received for Flaxseed – States and United States: December 2013 with Comparisons

State	December 2012	November 2013	Preliminary December 2013
	(dollars per bushel)	(dollars per bushel)	(dollars per bushel)
North Dakota	13.80	13.40	13.60
United States	13.80	13.40	13.60

Prices Received for Upland Cotton and Cottonseed – States and United States: December 2013 with Comparisons

[Cottonseed marketing year August - February]

State	Cotton, Upland			Cottonseed		
	December 2012	November 2013	Preliminary December 2013	December 2012	November 2013	Preliminary December 2013
	(dollars per pound)	(dollars per pound)	(dollars per pound)	(dollars per ton)	(dollars per ton)	(dollars per ton)
Alabama	0.674	0.812	0.742	206.00	218.00	225.00
Arizona	0.803	0.784	(S)	280.00	272.00	262.00
Arkansas	0.730	0.840	(D)	(S)	260.00	(S)
California	0.930	0.928	(D)	369.00	375.00	365.00
Georgia	0.739	0.807	0.802	210.00	201.00	203.00
Louisiana	0.684	0.723	0.734	(S)	244.00	(S)
Mississippi	0.727	0.776	0.731	(S)	244.00	243.00
North Carolina	0.712	0.794	0.759	222.00	236.00	214.00
Tennessee	0.694	0.774	0.777	260.00	240.00	290.00
Texas	0.713	0.703	0.706	269.00	250.00	257.00
United States	0.718	0.753	0.745	252.00	248.00	246.00

(D) Withheld to avoid disclosing data for individual operations.

(S) Insufficient number of reports to establish an estimate.

Prices Received and Farm Marketings for Upland Cotton and Rice – United States: December 2013 with Comparisons

Item	December 2012	November 2013	Preliminary December 2013
Cotton, Upland			
Average price dollars/pound	0.718	0.753	0.745
Marketings ¹ 1,000 bales	3,278	1,833	(NA)
Rice, all			
Average price dollars/cwt	14.80	15.50	15.80
Marketings ² 1,000 cwt	15,272	9,419	(NA)
Rice, long			
Average price dollars/cwt	14.10	15.30	15.50
Marketings ² 1,000 cwt	11,332	6,876	(NA)
Rice, medium and short			
Average price dollars/cwt	16.90	15.80	16.50
Marketings ² 1,000 cwt	3,940	2,543	(NA)

(NA) Not available.

¹ Marketings based on a survey of cotton buyers in the major producing States - Alabama, Arizona, Arkansas, California, Georgia, Louisiana, Mississippi, North Carolina, Tennessee, and Texas.

² Purchases by private firms and rice (rough equivalent) shipped by cooperatives.

Prices Received for Hay by Type – States and United States: December 2013 with Comparisons

State	All hay			Alfalfa hay			Other hay		
	December 2012	November 2013	Preliminary December 2013	December 2012	November 2013	Preliminary December 2013	December 2012	November 2013	Preliminary December 2013
	(dollars per ton)	(dollars per ton)	(dollars per ton)	(dollars per ton)	(dollars per ton)	(dollars per ton)	(dollars per ton)	(dollars per ton)	(dollars per ton)
Arizona	191.00	170.00	190.00	190.00	170.00	190.00	210.00	180.00	190.00
California	205.00	199.00	192.00	212.00	208.00	198.00	183.00	170.00	170.00
Colorado	244.00	235.00	230.00	245.00	235.00	230.00	235.00	230.00	230.00
Idaho	197.00	180.00	170.00	200.00	180.00	170.00	140.00	170.00	170.00
Illinois	173.00	181.00	166.00	190.00	195.00	185.00	140.00	130.00	125.00
Iowa	198.00	184.00	176.00	220.00	193.00	195.00	145.00	130.00	130.00
Kansas	208.00	171.00	172.00	235.00	199.00	192.00	130.00	105.00	113.00
Kentucky	113.00	119.00	127.00	200.00	195.00	200.00	90.00	100.00	105.00
Michigan	215.00	187.00	171.00	220.00	200.00	180.00	200.00	155.00	145.00
Minnesota	209.00	165.00	177.00	245.00	200.00	205.00	155.00	135.00	136.00
Missouri	131.00	102.00	101.00	230.00	210.00	210.00	110.00	80.00	80.00
Montana	154.00	134.00	145.00	159.00	135.00	150.00	130.00	130.00	110.00
Nebraska	211.00	145.00	143.00	232.00	157.00	153.00	159.00	113.00	120.00
Nevada	203.00	205.00	196.00	205.00	207.00	196.00	174.00	190.00	180.00
New Mexico	243.00	242.00	237.00	260.00	250.00	245.00	175.00	185.00	180.00
New York	153.00	155.00	164.00	242.00	205.00	200.00	138.00	145.00	155.00
North Dakota	125.00	104.00	102.00	134.00	105.00	104.00	83.00	66.00	68.00
Ohio	208.00	182.00	168.00	248.00	210.00	190.00	183.00	145.00	155.00
Oklahoma	136.00	155.00	160.00	246.00	205.00	220.00	131.00	79.00	86.00
Oregon	203.00	204.00	188.00	222.00	215.00	190.00	177.00	190.00	185.00
Pennsylvania	166.00	192.00	184.00	238.00	200.00	200.00	154.00	188.00	174.00
South Dakota	209.00	148.00	139.00	230.00	155.00	145.00	155.00	124.00	117.00
Texas	108.00	111.00	100.00	251.00	230.00	234.00	93.00	92.00	82.00
Utah	192.00	168.00	168.00	192.00	170.00	170.00	154.00	145.00	145.00
Washington	228.00	203.00	206.00	230.00	195.00	195.00	225.00	225.00	225.00
Wisconsin	219.00	188.00	191.00	235.00	200.00	205.00	155.00	130.00	135.00
Wyoming	212.00	178.00	178.00	215.00	180.00	185.00	200.00	170.00	160.00
United States	189.00	171.00	168.00	217.00	188.00	187.00	142.00	135.00	130.00

Prices Received for Apples – States and United States: December 2013 with Comparisons

[Equivalent packinghouse-door returns for California, Michigan, New York, and Washington. Prices at point of first sale for other States]

State	Apples, fresh use		
	December 2012	November 2013	Preliminary December 2013
	(dollars per pound)	(dollars per pound)	(dollars per pound)
California	(NA)	(NA)	(NA)
Michigan	(NA)	(NA)	(NA)
New York	0.501	(NA)	(NA)
Ohio	0.600	(NA)	(NA)
Pennsylvania	0.558	(NA)	(NA)
Virginia	0.610	(NA)	(NA)
Washington	0.456	(NA)	(NA)
United States	0.474	(NA)	(NA)

(NA) Not available.

Prices Received for Citrus Fruits by Utilization – States and United States: December 2012

[Net pounds per box: grapefruit in California-80, Florida-85, Texas-80; lemons-80; oranges in California-80, Florida-90, Texas-85; tangelos-90; tangerines and mandarins in Arizona and California-80, Florida-95]

Commodity, State, and type	FOB packed fresh	Equivalent returns					
		Packinghouse door			On-tree		
		All	Fresh	Process	All	Fresh	Process
	(dollars per box)	(dollars per box)	(dollars per box)	(dollars per box)	(dollars per box)	(dollars per box)	(dollars per box)
Grapefruit							
California ¹	11.20	4.54	4.54	(D)	2.36	2.36	(D)
Florida	24.50	10.07	13.73	4.30	7.46	11.48	1.13
White	24.50	9.11	13.55	4.80	6.61	11.35	2.00
Colored	24.50	10.21	13.75	4.20	7.58	11.50	0.95
Texas	28.90	13.61	17.50	1.60	12.07	15.92	0.17
United States	22.10	9.42	12.10	4.30	6.87	9.87	1.13
Lemons							
Arizona	(D)	(D)	(D)	(D)	(D)	(D)	(D)
California	31.40	17.53	22.32	(D)	11.93	16.42	(D)
United States	31.50	17.18	22.38	(D)	11.60	16.48	(D)
Oranges							
California	24.40	14.27	15.41	(D)	11.75	12.90	(D)
Navel and miscellaneous	24.40	14.27	15.41	(D)	11.75	12.90	(D)
Florida	27.00	8.05	15.85	7.68	5.54	13.25	5.18
Early and mids	27.00	8.05	15.85	7.68	5.54	13.25	5.18
United States	24.90	9.15	15.49	7.56	6.64	12.97	5.05
Tangelos							
Florida	34.50	15.66	22.85	6.65	12.89	20.10	3.85
United States	34.50	15.66	22.85	6.65	12.89	20.10	3.85
Tangerines and mandarins							
Arizona	(D)	(D)	(D)	(NA)	(D)	(D)	(NA)
California	(D)	(D)	(D)	(D)	(D)	(D)	(D)
Florida	36.50	16.34	23.10	6.40	12.45	19.55	2.00
United States	40.20	24.91	31.08	1.94	21.86	28.26	-1.98

(D) Withheld to avoid disclosing data for individual operations.

(NA) Not available.

¹ Some processed sales included in fresh sales.

Prices Received for Citrus Fruits by Utilization – States and United States: November 2013

[Net pounds per box: grapefruit in California-80, Florida-85, Texas-80; lemons-80; oranges in California-80, Florida-90, Texas-85; tangelos-90; tangerines and mandarins in Arizona and California-80, Florida-95]

Commodity, State, and type	FOB packed fresh	Equivalent returns					
		Packinghouse door			On-tree		
		All	Fresh	Process	All	Fresh	Process
	(dollars per box)	(dollars per box)	(dollars per box)	(dollars per box)	(dollars per box)	(dollars per box)	(dollars per box)
Grapefruit							
California ¹	16.60	9.81	9.81	(D)	7.59	7.59	(D)
Florida	22.30	9.02	11.47	3.21	6.52	9.23	0.10
White	27.50	11.06	16.55	4.10	8.60	14.35	1.30
Colored	21.20	8.48	10.45	2.80	5.97	8.20	-0.45
Texas	34.30	18.00	22.70	1.60	16.43	21.09	0.14
United States	23.60	10.31	13.01	3.02	7.96	10.86	0.10
Lemons							
Arizona	(D)	(D)	(D)	(D)	(D)	(D)	(D)
California	49.10	37.22	39.84	(D)	31.29	33.82	(D)
United States	49.30	36.41	40.08	(D)	30.51	34.06	(D)
Oranges							
California	30.00	19.45	20.87	(D)	16.88	18.31	(D)
Navel and miscellaneous	30.40	19.88	21.23	(D)	17.30	18.67	(D)
Valencia	23.50	12.72	14.51	(D)	10.18	12.00	(D)
Florida	29.00	9.07	17.85	6.15	6.54	15.25	3.65
Early and mids	29.00	9.07	17.85	6.15	6.54	15.25	3.65
United States	29.80	14.49	20.27	5.63	11.94	17.71	3.11
Tangelos							
Florida	28.70	13.11	17.05	6.55	10.34	14.30	3.75
United States	28.70	13.11	17.05	6.55	10.34	14.30	3.75
Tangerines and mandarins							
Arizona	(D)	(D)	(D)	(NA)	(D)	(D)	(NA)
California	(D)	(D)	(D)	(D)	(D)	(D)	(D)
Florida	38.90	19.85	25.50	6.95	16.05	21.95	2.55
United States	46.60	30.81	36.65	3.92	27.59	33.68	-0.46

(D) Withheld to avoid disclosing data for individual operations.

(NA) Not available.

¹ Some processed sales included in fresh sales.

Prices Received for Citrus Fruits by Utilization – States and United States: December 2013

[Net pounds per box: grapefruit in California-80, Florida-85, Texas-80; lemons-80; oranges in California-80, Florida-90, Texas-85; tangelos-90; tangerines and mandarins in Arizona and California-80, Florida-95]

Commodity, State, and type	FOB packed fresh	Equivalent returns					
		Packinghouse door			On-tree		
		All	Fresh	Process	All	Fresh	Process
	(dollars per box)	(dollars per box)	(dollars per box)	(dollars per box)	(dollars per box)	(dollars per box)	(dollars per box)
Grapefruit							
California ¹	17.60	10.81	10.81	(D)	8.59	8.59	(D)
Florida	21.40	7.80	10.59	3.39	5.21	8.35	0.27
White	28.20	10.15	17.25	5.10	7.60	15.05	2.30
Colored	20.40	7.28	9.65	2.75	4.68	7.40	-0.50
Texas	34.00	16.28	22.40	1.60	14.71	20.79	0.14
United States	23.00	9.25	12.47	3.17	6.84	10.33	0.25
Lemons							
Arizona	(D)	(D)	(D)	(D)	(D)	(D)	(D)
California	45.40	30.31	36.14	(D)	24.51	30.12	(D)
United States	45.70	29.35	36.41	(D)	23.60	30.39	(D)
Oranges							
California	27.30	17.02	18.13	(D)	14.45	15.57	(D)
Navel and miscellaneous	27.30	17.02	18.13	(D)	14.45	15.57	(D)
Florida	30.50	8.40	19.35	7.65	5.89	16.75	5.15
Early and mids	30.50	8.40	19.35	7.65	5.89	16.75	5.15
United States	27.90	10.27	18.37	7.51	7.75	15.80	5.01
Tangelos							
Florida	24.30	10.33	12.65	6.50	7.56	9.90	3.70
United States	24.30	10.33	12.65	6.50	7.56	9.90	3.70
Tangerines and mandarins							
Arizona	(D)	(D)	(D)	(D)	(D)	(D)	(D)
California	(D)	(D)	(D)	(D)	(D)	(D)	(D)
Florida	37.00	17.75	23.60	6.60	13.91	20.05	2.20
United States	43.70	28.08	34.41	2.16	24.92	31.54	-2.20

(D) Withheld to avoid disclosing data for individual operations.

¹ Some processed sales included in fresh sales.

Prices Received for Potatoes – States and United States: December 2013 with Comparisons

State	December 2012	November 2013	Preliminary December 2013
	(dollars per cwt)	(dollars per cwt)	(dollars per cwt)
California			
Spring	(S)	(S)	(S)
Fall	6.80	9.50	9.50
All ¹	6.80	9.50	9.50
Colorado			
Fresh ²	7.05	11.10	(D)
All ¹	6.50	10.10	10.40
Florida	(S)	(S)	(S)
Idaho			
Fresh ²	4.30	7.30	(D)
Processing	7.80	7.90	(D)
All ¹	6.55	7.70	7.65
Maine	11.00	11.30	11.70
Michigan	11.70	12.30	12.30
Minnesota	6.35	10.50	(D)
New York	13.60	15.30	15.20
North Carolina	(S)	(S)	(S)
North Dakota			
Fresh ²	8.20	17.20	(D)
Processing	9.35	7.75	(D)
All ¹	9.05	11.40	(D)
Oregon	7.45	7.70	7.40
Texas	(S)	(S)	(S)
Virginia	(S)	(S)	(S)
Washington			
Processing	7.60	7.25	(D)
All ¹	7.55	8.05	8.40
Wisconsin			
Fresh ²	6.35	11.20	(D)
Processing	8.95	9.60	(D)
All ¹	7.75	10.50	(D)
United States			
Fresh ²	6.38	10.82	(D)
Processing	8.37	8.24	(D)
All ¹	7.74	9.18	9.09

(D) Withheld to avoid disclosing data for individual operations.

(S) Insufficient number of reports to establish an estimate.

¹ Average price of potatoes sold for all uses, including table stock, processing, seed, and livestock feed.

² Fresh market prices only. Includes table stock prices.

Prices Received for All Milk – States and United States: December 2013 with Comparisons

[Before deduction for hauling. Includes quality, quantity, and other premiums. Excludes hauling subsidies]

State	December 2012		November 2013		Preliminary December 2013	
	Price	Fat test	Price	Fat test	Price	Fat test
	(dollars per cwt)	(percent)	(dollars per cwt)	(percent)	(dollars per cwt)	(percent)
Arizona	20.10	3.64	20.90	3.58	21.00	3.55
California	18.60	3.87	20.01	3.85	20.50	3.88
Colorado	21.40	3.69	21.80	3.63	22.00	3.65
Florida	25.40	3.72	25.30	3.66	25.50	3.65
Idaho	19.60	3.88	20.70	3.91	20.70	3.94
Illinois	22.30	3.89	22.10	3.88	22.10	3.90
Indiana	21.50	3.83	22.20	3.85	22.40	3.87
Iowa	21.70	3.90	22.20	3.90	22.40	3.91
Kansas	21.30	3.82	21.90	3.81	22.10	3.84
Michigan	21.50	3.77	21.70	3.81	21.90	3.82
Minnesota	21.40	3.96	22.00	4.03	22.10	4.04
Missouri	22.10	3.85	22.20	3.86	22.40	3.87
New Mexico	19.70	3.73	20.50	3.66	20.50	3.65
New York	22.10	3.81	22.90	3.90	22.80	3.90
Ohio	22.40	3.90	22.20	3.84	22.40	3.86
Oregon	22.10	4.01	23.00	4.03	23.30	4.04
Pennsylvania	22.60	3.82	23.00	3.84	23.20	3.82
Texas	21.20	3.95	22.40	3.95	22.40	3.99
Utah	20.60	3.84	21.20	3.90	21.20	3.90
Vermont	22.20	4.07	23.00	3.90	22.80	3.91
Virginia	24.00	3.82	24.90	3.80	25.20	3.83
Washington	21.40	4.01	22.20	4.03	22.50	4.04
Wisconsin	21.30	3.86	21.80	3.89	21.90	3.89
United States	20.80	3.86	21.60	3.86	21.80	3.88

Prices Received for Milk Cows – States and United States: October 2013 with Comparisons

[Animals sold for dairy herd replacement only. Prices estimated in January, April, July, and October]

State	October 2012 (dollars per head)	July 2013 (dollars per head)	October 2013 (dollars per head)
Arizona	1,450	(NA)	1,500
California	1,300	(NA)	1,300
Colorado	1,430	(NA)	1,520
Florida	1,470	(NA)	1,550
Idaho	1,400	(NA)	1,300
Illinois	1,420	(NA)	1,420
Indiana	1,350	(NA)	1,450
Iowa	1,420	(NA)	1,380
Kansas	1,300	(NA)	1,350
Michigan	1,500	(NA)	1,600
Minnesota	1,350	(NA)	1,350
Missouri	1,100	(NA)	1,200
New Mexico	1,400	(NA)	1,440
New York	1,410	(NA)	1,410
Ohio	1,380	(NA)	1,400
Oregon	1,360	(NA)	1,300
Pennsylvania	1,430	(NA)	1,450
Texas	1,370	(NA)	1,450
Utah	1,240	(NA)	1,290
Vermont	1,550	(NA)	1,510
Virginia	1,470	(NA)	1,490
Washington	1,300	(NA)	1,300
Wisconsin	1,460	(NA)	1,490
United States	1,390	(NA)	1,400

(NA) Not available.

Commodity Parity Prices and Price as Percent of Parity Price – United States: December 2013 with Comparisons

[Parity prices are computed under the provisions of Title III, Subtitle a, Section 301 (a) of the Agricultural Adjustment Act of 1938 as amended by the Agricultural Acts of 1948, 1949, and 1956. See January *Agricultural Prices* for details on adjusted base price and parity price computations. Parity data not available for blank cells. Primary source of data for livestock and milk prices is United States Department of Agriculture's Agricultural Marketing Service]

Commodity and unit	Adjusted base price	Parity price			Price as percent of parity			
		December 2012	November 2013	December 2013	December 2012	November 2013	December 2013	
	(dollars)	(dollars)	(dollars)	(dollars)	(percent)	(percent)	(percent)	
Basic commodities								
All wheat	bushel	0.636	18.30	18.00	18.00	45	38	37
Rice	cwt	1.65	42.20	46.80	46.80	35	33	34
Corn	bushel	0.434	12.00	12.30	12.30	57	35	35
Cotton								
Upland	pound	0.072	2.08	2.04	2.04	35	37	37
American Pima	pound	0.133	4.07	3.77	3.77	36	33	33
Peanuts	pound	0.027	0.751	0.765	0.765	49	35	29
Designated nonbasic								
All milk, to plants ¹	cwt	1.75	52.00	49.60	49.60	38	41	42
Honey, extracted ²	pound	0.141	4.01	4.00	4.00	43	43	43
Wool and mohair								
Wool	pound	0.107	3.00	3.03	3.03	56	50	50
Mohair	pound	0.336	9.62	9.52	9.52	43	41	41
Other nonbasic								
Apples, fresh ³	pound	0.032	0.953	0.907	0.907	50	42	43
Barley	bushel	0.444	12.60	12.60	12.60	51	49	45
Canola	cwt	1.880	52.60	53.30	53.30	52	38	36
Cottonseed	ton	17.80	503.00	504.00	504.00	50	49	49
Dry edible beans	cwt	3.01	86.90	85.30	85.30	43	45	44
Flaxseed	bushel	1.110	31.80	31.50	31.50	43	43	43
Oats	bushel	0.265	7.60	7.51	7.51	51	45	46
Potatoes	cwt	0.822	24.70	23.30	23.30	31	39	39
Sorghum grain	cwt	0.758	21.10	21.50	21.50	58	34	35
Soybeans	bushel	1.030	28.90	29.20	29.20	49	43	45
Sunflower, all	cwt	2.10	59.50	59.50	59.50	42	35	33
Citrus (equivalent on-tree)								
Grapefruit	box	0.697	19.90	19.80	19.80	35	40	35
Lemons	box	1.32	39.60	37.40	37.40	29	82	63
Oranges	box	0.711	20.20	20.10	20.10	33	59	39
Tangerines	box	1.49	43.00	42.20	42.20	51	65	59
Livestock and poultry								
Beef cattle	cwt	10.00	292.00	283.00	283.00	42	46	46
Calves	cwt	13.70	401.00	388.00	388.00	41	49	50
Hogs	cwt	5.48	160.00	155.00	155.00	39	41	40
Eggs ¹	dozen	0.089	2.63	2.52	2.52	36	46	44
Turkeys, live	pound	0.057	1.650	1.620	1.620	41	43	43

¹ Seasonally adjusted price as percentage of parity price.

² Wholesale extracted. Adjusted base price derived from state annual averages prices weighted by production. For 1982 through 1985 the national averages are the support prices.

³ Equivalent packinghouse-door returns for California, New York, Oregon, and Washington. Price at point of first sale for other states.

Commodity Parity Prices – United States: December 2013 with Comparisons

[Parity prices are computed under the provisions of Title III, Subtitle a, Section 301 (a) of the Agricultural Adjustment Act of 1938 as amended by the Agricultural Acts of 1948, 1949, and 1956. See January *Agricultural Prices* for details on adjusted base price and parity price computations]

Commodity and unit	Adjusted base price	Parity price			
		December 2012	November 2013	December 2013	
	(dollars)	(dollars)	(dollars)	(dollars)	
Field crops and miscellaneous					
Hops	pound	0.303	8.84	8.59	8.59
Mustard seed	cwt	2.85	81.40	80.80	80.80
Rapeseed	cwt	2.25	64.40	63.80	63.80
Rye	bushel	0.535	15.20	15.20	15.20
Safflower	cwt	2.04	58.30	57.80	57.80
Spearmint oil	pound	1.50	43.30	42.50	42.50
Sweet potatoes	cwt	2.08	63.80	58.90	58.90
Tobacco					
Flue-cured, 11-14	pound	0.185	5.66	5.24	5.24
Fire-cured, 21-23	pound	0.267	8.17	7.57	7.57
Burley, 31	pound	0.188	5.83	5.33	5.33
Maryland, 32	pound	0.167	5.03	4.73	4.73
Dark air-cured, 35-37	pound	0.240	7.39	6.80	6.80
Pennsylvania seedleaf, 41	pound	0.176	5.31	4.99	4.99
Cigar binder, 51	pound	0.610	18.50	17.30	17.30
Noncitrus fruit					
Apples, processing ¹	ton	16.60	477.00	470.00	470.00
Apricots					
Fresh ²	ton	111.00	3,550.00	3,150.00	3,150.00
Dried (California)	ton	252.00	7,480.00	7,140.00	7,140.00
Avocados ²	ton	189.00	5,890.00	5,360.00	5,360.00
Cherries					
Sweet	ton	205.00	6,210.00	5,810.00	5,810.00
Tart	pound	0.033	0.982	0.935	0.935
Cranberry ³	barrel	4.68	140.00	133.00	133.00
Dates (California) ²	ton	161.00	5,110.00	4,560.00	4,560.00
Grapes					
Raisin variety	ton	133.00	3,610.00	3,770.00	3,770.00
Other dried	ton	61.70	1,620.00	1,750.00	1,750.00
Kiwifruit	ton	88.60	2,720.00	2,510.00	2,510.00
Nectarines, fresh (California) ²	ton	54.60	1,560.00	1,550.00	1,550.00
Olives, canning (California) ³	ton	87.70	2,580.00	2,490.00	2,490.00

See footnote(s) at end of table.

--continued

Commodity Parity Prices – United States: December 2013 with Comparisons (continued)

[Parity prices are computed under the provisions of Title III, Subtitle a, Section 301 (a) of the Agricultural Adjustment Act of 1938 as amended by the Agricultural Acts of 1948, 1949, and 1956. See January *Agricultural Prices* for details on adjusted base price and parity price computations]

Commodity and unit	Adjusted base price	Parity price			
		December 2012	November 2013	December 2013	
	(dollars)	(dollars)	(dollars)	(dollars)	
Noncitrus fruit - continued					
Papayas (Hawaii)	pound	0.038	1.27	1.08	1.08
Peaches					
Fresh ⁴	ton	80.20	2,370.00	2,270.00	2,270.00
Dried (California)	ton	48.50	1,550.00	1,370.00	1,370.00
Processing, excludes dried					
Clingstone (California) ³	ton	31.60	962.00	896.00	896.00
Pears					
Fresh ⁴	ton	54.70	1,600.00	1,550.00	1,550.00
Dried (California) ¹	ton	150.00	4,940.00	4,250.00	4,250.00
Plums (California)					
Fresh, equivalent on-tree	ton	58.10	1,700.00	1,650.00	1,650.00
Prunes, dried (California) ¹	ton	143.00	4,270.00	4,050.00	4,050.00
Prunes and plums					
Fresh, excludes California ⁵	ton	61.90	1,800.00	1,750.00	1,750.00
Processing, excludes dried ¹	ton	23.80	728.00	674.00	674.00
Tree nuts ⁶					
Almonds	pound	0.211	6.15	5.98	5.98
Hazelnuts	ton	191.00	5,660.00	5,410.00	5,410.00
Pistachios	pound	0.194	5.66	5.50	5.50
Walnuts	ton	185.00	5,170.00	5,240.00	5,240.00
Vegetables, fresh ⁷					
Carrots ⁸	cwt	2.57	77.70	72.80	72.80
Cauliflower ⁸	cwt	4.04	124.00	114.00	114.00
Celery ⁸	cwt	1.94	58.00	55.00	55.00
Honeydew melons	cwt	1.97	60.40	55.80	55.80
Lettuce	cwt	2.09	66.10	59.20	59.20
Onions ⁸	cwt	1.41	43.00	40.00	40.00
Tomatoes	cwt	4.30	135.00	122.00	122.00

¹ Equivalent returns at processing plant door.

² Equivalent returns at packinghouse door.

³ Equivalent returns for bulk fruit at first delivery point.

⁴ Equivalent packinghouse-door returns for California, New York (apples only), Oregon (except peaches), and Washington. Price at point of first sale for other states.

⁵ Based on "as sold" prices for fresh fruit in all states.

⁶ Prices In-Shell basis except almonds which are shelled basis.

⁷ FOB shipping point prices.

⁸ Includes some processing.

Reliability of Prices Received Estimates

Definition: Prices received represent sales from producers to first buyers. They include all grades and qualities. The average commodity price from the survey multiplied by the total quantity marketed theoretically should give the total cash receipts for the commodity.

Survey procedures: Primary sales data used to determine grain prices were obtained from probability samples of about 1900 mills and elevators. These procedures ensure that virtually all grain moving into commercial channels has a chance of being included in the survey. Generally, States surveyed account for 90 percent or more of total United States production. Livestock prices are obtained from packers, stockyards, auctions, dealers, and market check data from AMS-USDA, private marketing organizations, and state commodity groups and agencies. Inter-farm sales of grain and livestock are not included since they represent very small percentages of the total sales. Grain marketed for seed is also excluded. Fruit and vegetable prices are obtained from sample surveys and market check data from AMS-USDA, private marketing organizations, state agencies, and universities.

Summary and estimation procedures: Survey quantities sold are expanded by strata to state levels and used to weight average strata prices to a state average. State prices are then weighted to a United States price based on expanded sales. Recommendations are prepared by the State Field Offices and reviewed by the Agricultural Statistics Board in Washington, D.C. State recommendations are reviewed for reasonableness with survey data, other States, and recent historic estimates.

Revisions: For most items, the current month's preliminary price represents a 3-5 day period around the 15th of the month. Previous month's prices represent actual dollars received for quantities sold during the entire month. Revisions are published in monthly issues of *Agricultural Prices*.

Reliability: United States price estimates based on probability surveys generally have a sampling error of less than one percent for the major commodities such as corn, wheat, soybeans, cotton, and rice. Current methods of summarization for non-probability commodities are not designed directly to calculate sampling errors. However, analytical measures approximate the United States relative sampling errors at around five percent. Any non-sampling errors are attributed to such things as the inability to obtain correct information, differences in interpreting questions or definitions, mistakes in coding or processing the data, etc. Efforts are made at each step in the survey process to minimize these non-sampling errors.

Prices Paid by Farmers

The December Index of Prices Paid for Commodities and Services, Interest, Taxes, and Farm Wage Rates (PPITW) at 213 (1990-1992=100), is down 0.5 percent from November and 1.8 percent from December 2012.

Production index: The December index, at 224, decreased 0.4 percent from last month and 3.0 percent from last year. Lower prices in December for complete feeds, concentrates, supplements, and potash & phosphate more than offset higher prices for LP gas, feeder pigs, diesel, and self-propelled machinery.

Feed: The December index, at 214, decreased 4.0 percent from November and 22 percent from last December. Since November, prices for complete feeds, concentrates, supplements, hay & forages, and feed grains are lower.

Livestock and poultry: The December index, at 194, increased 0.5 percent from last month and 14 percent from last year. Since November, higher prices for feeder pigs more than offset lower prices for feeder cattle. The December feeder cattle price, at \$169.10 per cwt, is down 90 cents per cwt from the November price. December feeder pigs averaged \$213.00 per cwt, up \$22.00 per cwt from November.

Fertilizer: The December index, at 279, is down 0.4 percent from November and 14 percent below December a year ago. Since November, lower prices for potash & phosphate and mixed fertilizer more than offset higher prices for nitrogen.

Chemicals: The December index, at 155, decreased 1.3 percent from November and 0.6 percent from last December. Compared with last month, prices for herbicides, insecticides, and fungicides/other are lower.

Fuels: The December index, at 364, is up 2.2 percent from a month earlier and 5.2 percent above December 2012. Compared with last month, prices for LP gas, diesel, and gasoline are higher.

Machinery: The December index, at 269, increased 0.7 percent from November and is 3.1 percent above last December. Compared with last month, prices for self-propelled machinery, tractors, and other machinery are higher.

Consumer price index: The November 2013 Consumer Price Index, as issued by the Bureau of Labor Statistics, for all urban consumers (CPI-U) decreased 0.2 percent before seasonal adjustment to a level of 233.069 (1982-1984=100). The October index is 233.546. For the 12 month period ending in November, the overall index increased 1.2 percent.

Prices Paid Indexes and Related Parity Ratios – United States: December 2013 with Comparisons

[Revised historical price indexes for months not shown are available at www.nass.usda.gov]

Indexes and ratios	1910-1914 Base			1990-1992 Base		
	December 2012	November 2013	December 2013	December 2012	November 2013	December 2013
	(percent)	(percent)	(percent)	(percent)	(percent)	(percent)
Prices paid by farmers for commodities, services, interest, taxes, and wage rates (PPITW)	2883	2846	2834	217	214	213
Production	2238	2184	2173	231	225	224
Feed	1344	1091	1047	275	223	214
Livestock and poultry	2188	2467	2482	171	193	194
Seeds	3606	3776	3776	364	381	381
Fertilizer	1184	1027	1024	323	280	279
Chemicals	966	973	961	156	157	155
Fuels	2670	2749	2807	346	356	364
Supplies and repairs	1218	1225	1226	172	173	173
Autos and trucks	3151	3182	3188	119	120	120
Machinery	6537	6691	6759	261	267	269
Building materials	2404	2441	2442	177	180	180
Services and rent	2182	2233	2231	(NA)	(NA)	(NA)
Services	(NA)	(NA)	(NA)	167	171	170
Rent	(NA)	(NA)	(NA)	212	217	217
Interest ¹	3684	3594	3594	147	143	143
Taxes ²	6080	6273	6273	227	234	234
Wage rates	7599	7728	7728	203	207	207
Production, interest, taxes, and wage rates (PITW)	3021	2968	2955	225	221	220
Family living-CPI ³	2181	2214	2209	170	173	173
Ratio (received/paid)	(NA)	(NA)	(NA)	92	86	85
Parity ratio ⁴	44	41	40	(NA)	(NA)	(NA)
Parity ratio adjusted ⁵	45	42	41	(NA)	(NA)	(NA)
PPITW adjusted for productivity ⁶	1514	1482	1480	(NA)	(NA)	(NA)
Crop sector (PPITW)	(NA)	(NA)	(NA)	221	222	222
Livestock sector (PPITW)	(NA)	(NA)	(NA)	212	204	202
Farm sector (production)	(NA)	(NA)	(NA)	256	241	237
Non-farm sector (production)	(NA)	(NA)	(NA)	217	216	217

(NA) Not available.

¹ Interest per acre on farm real estate debt and interest rate on farm non-real estate debt.

² Farm real estate taxes payable per acre.

³ Bureau of Labor Statistics, Consumer Price Index for all urban consumers (CPI-U), for the previous month converted by the USDA.

⁴ Ratio of index of prices received to PPITW (1910-1914=100).

⁵ Based on estimated cash receipts, from marketings and government payments, the preliminary adjustment factor is 1.044 for 2013 and the revised factor is 1.041 for 2012.

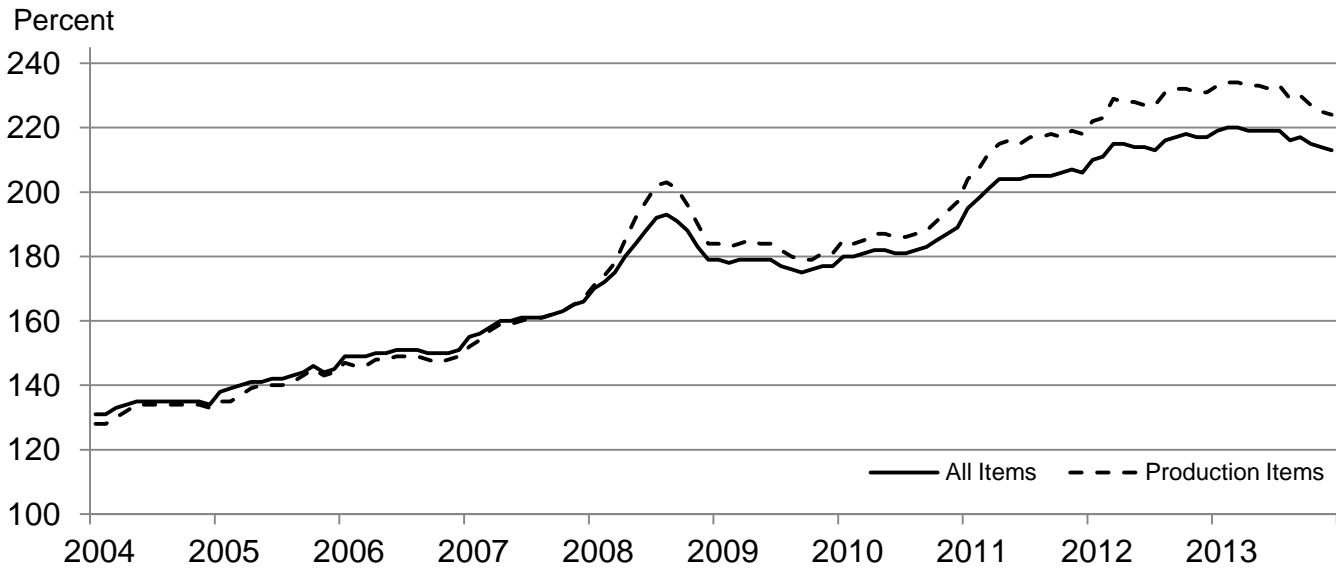
⁶ PPITW is adjusted based on productivity trend for the prior 15 years.

Prices Paid Indexes and Annual Weights for Input Components and Sub-components – United States: December 2013 with Comparisons

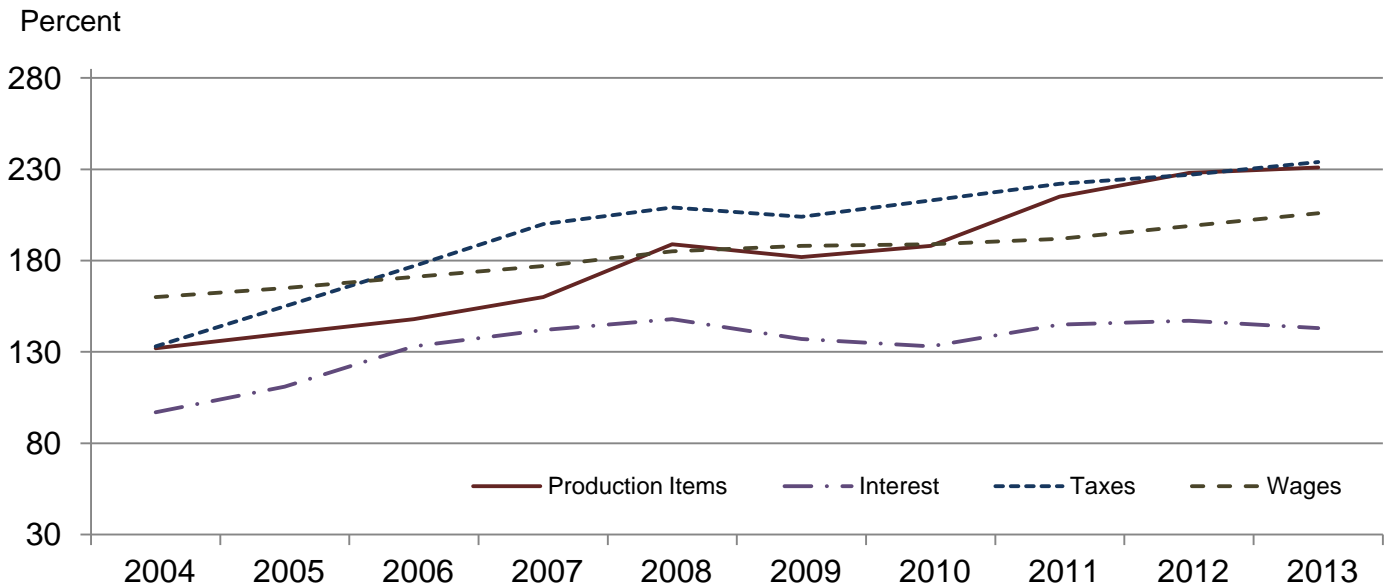
[Revised historical price indexes for months not shown are available at www.nass.usda.gov. Relative weights are a five year moving average]

	Relative weights		Indexes (1990-1992=100)		
	2012	2013	December 2012	November 2013	December 2013
	(percent)	(percent)	(percent)	(percent)	(percent)
Production items	71.1	71.9	231	225	224
Feed	12.7	13.4	275	223	214
Feed grains	1.8	1.9	296	191	189
Complete feeds	6.2	6.6	279	233	223
Hay and forages	1.6	1.7	248	222	218
Concentrates	2.0	2.1	260	227	213
Supplements	1.1	1.1	285	217	204
Livestock and poultry	8.3	8.0	171	193	194
Feeder cattle	6.5	6.3	176	201	200
Feeder pigs	0.7	0.6	174	208	232
Milk cow replacements	0.7	0.7	123	124	124
Poultry	0.5	0.5	166	166	166
Seeds	4.3	4.4	364	381	381
Field crops	3.9	4.0	384	402	402
Grasses and legumes	0.4	0.4	178	184	184
Fertilizer	5.7	6.1	323	280	279
Mixed fertilizer	2.5	2.7	284	270	270
Nitrogen	2.4	2.6	343	284	285
Potash and phosphate	0.8	0.9	385	298	291
Chemicals	3.2	3.2	156	157	155
Herbicides	2.0	2.0	140	141	139
Insecticides	0.7	0.7	181	183	181
Fungicides and other	0.5	0.5	188	190	187
Fuels	4.0	4.0	346	356	364
Diesel	2.5	2.5	400	384	388
Gasoline	0.8	0.8	287	282	283
LP gas	0.7	0.7	221	346	374
Supplies and repairs	4.6	4.5	172	173	173
Supplies	1.5	1.5	166	168	168
Repairs	3.0	3.0	174	175	175
Autos and trucks	1.2	1.2	119	120	120
Autos	0.2	0.2	116	115	116
Trucks	1.1	1.1	119	120	121
Machinery	4.3	4.5	261	267	269
Tractors	0.9	1.0	214	220	223
Self-propelled	1.7	1.8	278	284	288
Other machinery	1.6	1.7	269	276	277
Building materials	4.2	4.1	177	180	180
Services	12.0	11.7	167	171	170
Custom rates	1.2	1.2	157	157	157
Other services	10.7	10.5	168	172	172
Rent	6.6	6.7	212	217	217
Cash	3.5	3.6	270	278	278
Share	3.0	3.1	145	147	147
Interest	3.4	3.2	147	143	143
Taxes	3.1	3.1	227	234	234
Wage rates	7.2	6.9	203	207	207
Family living-CPI	15.3	15.0	170	173	173

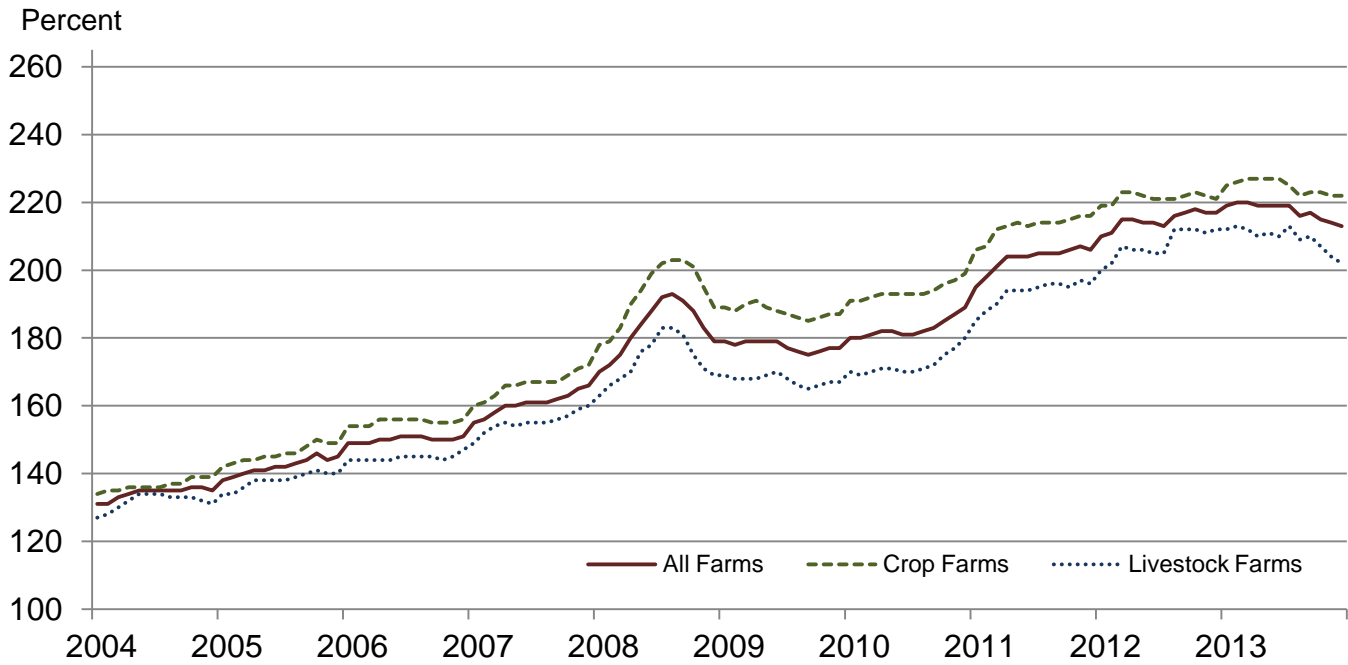
Paid Indexes by Month, All Items and Production Items – United States: 1990-1992=100



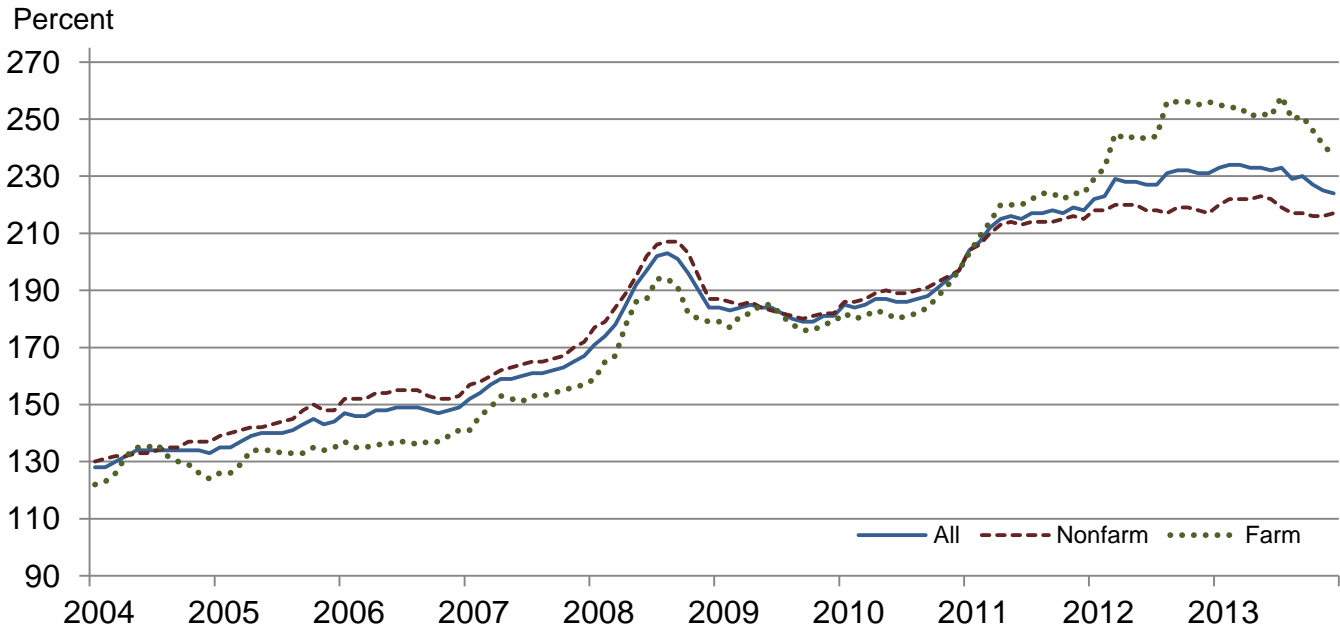
Paid Indexes, Annual Averages, Production Items, Interest, Taxes, and Wages – United States: 1990-1992=100



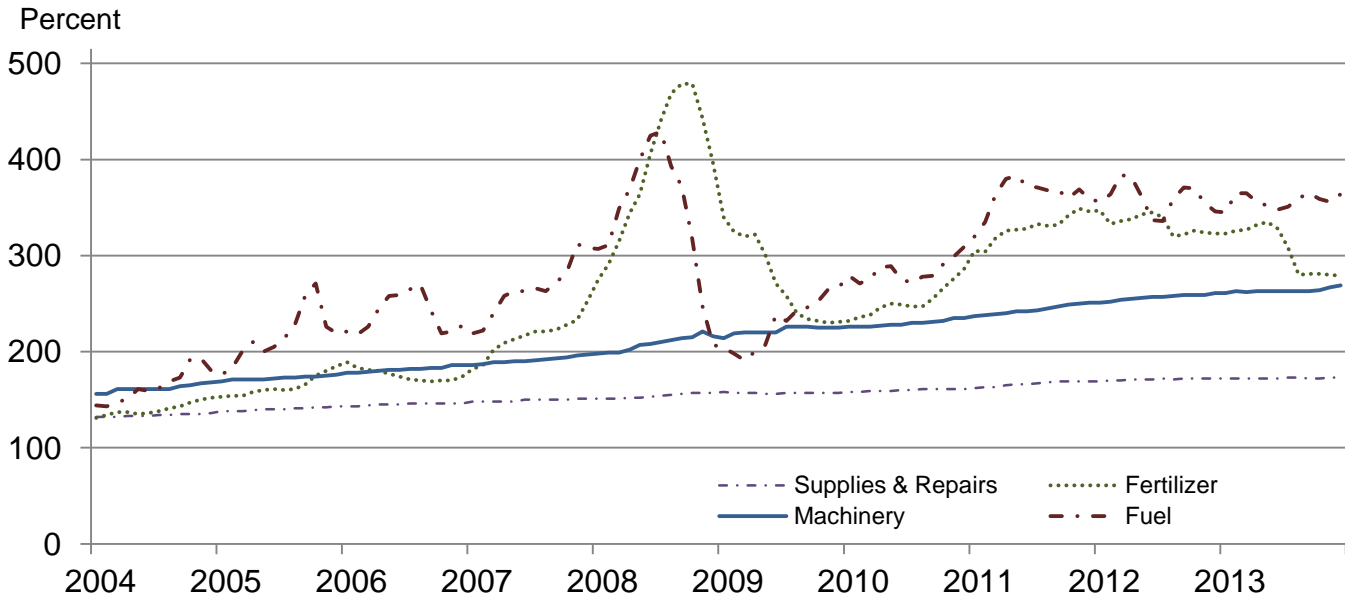
Paid Indexes by Farm Type and Month, All Items – United States: 1990-1992=100



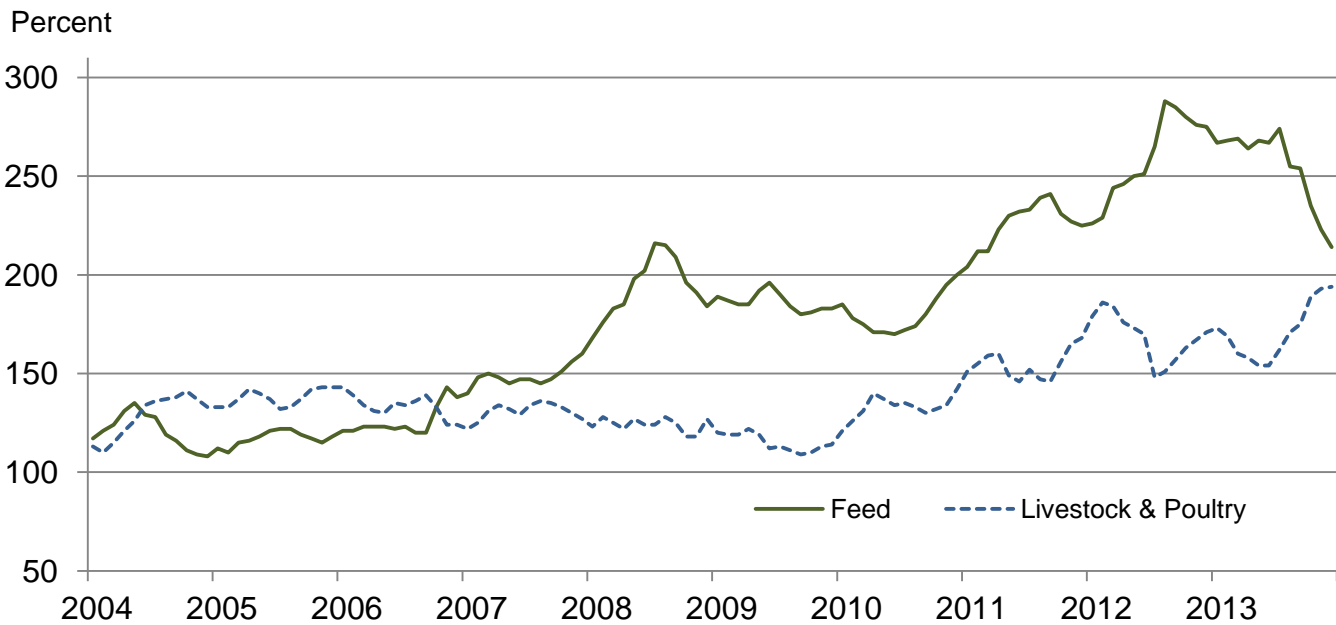
Paid Indexes by Origin and Month, All Production Items – United States: 1990-1992=100



Paid Indexes by Non-Farm Sector and Month, Supplies & Repairs, Fertilizer, Machinery, and Fuel – United States: 1990-1992=100



Paid Indexes by Month, Feed and Livestock & Poultry – United States: 1990-1992=100



Feed Price Ratios – United States: December 2013 with Comparisons

Feed price ratio ¹	December 2012	November 2013	Preliminary December 2013
Broiler-feed: pounds of broiler grower feed equal in value to 1 pound of broiler, live weight ²	3.4	4.2	4.1
Market egg feed: pounds of laying feed equal in value to 1 dozen eggs ³	6.3	10.5	10.8
Hog-corn: bushels of corn equal in value to 100 pounds of hog, live weight	9.1	14.6	14.4
Milk-feed: pounds of 16% mixed dairy feed equal in value to 1 pound of whole milk ⁴	1.65	2.27	2.30
Steer and heifer-corn: bushels of corn equal in value to 100 pounds of steer & heifers, live weight	18.6	30.3	30.6
Turkey-feed: pounds of turkey grower equal in value to 1 pound of turkey, live weight ⁵	4.3	5.7	5.6

¹ Effective January 1995, prices of commercial prepared feeds are based on current United States prices received for corn, soybeans, alfalfa hay, and all wheat.

² The price of commercial prepared broiler feed is based on current United States prices received for corn and soybeans. The modeled feed uses 58 percent corn and 42 percent soybeans.

³ The price of commercial prepared layer feed is based on current United States prices received for corn and soybeans. The modeled feed uses 75 percent corn and 25 percent soybeans.

⁴ The price of commercial prepared dairy feed is based on current United States prices received for corn, soybeans, and alfalfa hay. The modeled feed uses 51 percent corn, 41 percent alfalfa hay, and 8 percent soybeans.

⁵ The price of commercial prepared turkey feed is based on current United States prices received for corn, soybeans, and wheat. The modeled feed uses 51 percent corn, 28 percent soybeans, and 21 percent wheat.

Prices Received Used to Calculate Feed Price Ratios – United States: December 2013 with Comparisons

[Price data source for livestock and poultry commodities is United States Department of Agriculture's Agricultural Marketing Service]

Item	December 2012	November 2013	Preliminary December 2013
	(dollars)	(dollars)	(dollars)
Broilers, livepound	0.580	0.560	0.560
Eggs, marketdozen	0.957	1.170	1.210
Hogs, allcwt	62.40	63.60	62.10
Milk, allcwt	20.80	21.60	21.80
Steers and heiferscwt	128.00	132.00	132.00
Turkeys, livepound	0.674	0.700	0.690
Cornbushel	6.87	4.35	4.31
Hay, alfalfaton	217.00	188.00	187.00
Soybeansbushel	14.30	12.70	13.00
Wheat, allbushel	8.30	6.85	6.59

Prices Paid for Feeder Livestock – United States: December 2013 with Comparisons

[Price data source is United States Department of Agriculture's Agricultural Marketing Service]

Item	December 2012	November 2013	Preliminary December 2013
	(dollars)	(dollars)	(dollars)
Feeder cattle and calvescwt	149.30	170.00	169.10
Feeder pigscwt	160.00	191.00	213.00

Prices Paid for Feed – United States: 2008-2013

[April survey for years 2005-2008. March survey began 2009]

Item	2008	2009	2010	2011	2012	2013
	(dollars)	(dollars)	(dollars)	(dollars)	(dollars)	(dollars)
Alfalfa mealcwt	21.10		23.80	24.00	26.60	31.20
Alfalfa pelletscwt	21.30		23.20	24.10	27.10	30.90
Brancwt	19.10		22.70	24.70	26.40	29.70
Beef cattle concentrate, 32-36% protein ton	433		413	498	525	602
Corn mealcwt	13.70		12.80	17.10	20.40	22.30
Cottonseed meal, 41%cwt	23.00		25.40	26.60	27.80	31.40
Dairy feed						
14% protein ¹ ton	301		264	333	437	474
16% protein ¹ ton	313		274	369	442	481
18% protein ¹ ton	324		284	365	431	447
20% protein ¹ ton	320		274	356	407	414
32-38% protein concentrate ton	469		419	522	550	630
Hog feed						
14-18% protein ^{1 2} ton	345		303	385	475	490
38-42% protein concentrate ton	490		446	563	592	646
Molasses, liquidcwt	17.50		21.30	22.30	23.20	24.70
Poultry feed						
Broiler grower ¹ ton	387		456	502	591	639
Chick starter ¹ ton	416		485	541	597	628
Laying feed ¹ ton	371		374	450	527	552
Turkey grower ¹ ton	434		434	495	589	604
Soybean meal, 44%cwt	23.40		23.80	26.80	26.50	32.50
Soybean meal, over 44%cwt	22.40		21.20	24.80	24.10	29.40
Stock salt 50 pound	5.45		5.92	6.18	6.33	6.43
Trace mineral blocks 50 pound	6.60		8.02	8.16	7.59	7.80
	Index (1990-92=100)					
Feed Prices paid index ³ percent	194	186	180	226	260	255

¹ Complete ration feed, fed without mixing or supplementation.

² Excluding pig starter.

³ Annual average for all years.

Annual Average Prices Paid for Feeder Livestock – United States: 2008-2013

Item	2008	2009	2010	2011	2012	2013
	(dollars)	(dollars)	(dollars)	(dollars)	(dollars)	(dollars)
Broiler chicks100	26.30	26.60	27.00	28.20	29.70	(¹)
Egg-type chicks100	75.60	81.20	83.00	86.70	89.80	(¹)
Feeders and stockers						
Cattle and calves cwt	101.46	95.20	109.40	132.80	149.30	149.50
Feeder pigs cwt	93.00	100.40	155.90	144.60	126.30	157.60
Turkey poults each	1.44	1.32	1.43	1.47	1.51	(¹)
	Index (1990-92=100)					
Livestock and poultry Prices paid index ² percent	124	115	133	155	169	171

¹ Annual average data are published in April 2014.

² Annual average.

The data presented in the following tables are calculated and published for use by the Forest Service, USDA and the Bureau of Land Management, U.S. Department of the Interior in computing Public Land Grazing Fees.

2013 Prices Paid Index for Beef Cattle Production (1964-68=100): 994

The Index of Prices Paid by Farmers and Ranchers for Beef Cattle Production input items is for the period of November 2012 through October 2013. The components of this index include the production indexes of Fuels, Supplies & Repairs, Autos & Trucks, Tractors & Self Propelled Machinery, Other Machinery, Building Materials, Interest, Wage Rates, and Farm Services & Rent. These components are weighted to the overall index value by their importance in the cost of producing beef cattle. The weights are prescribed by Federal Regulation Title 43, Subpart 4100.

Prices Received for Beef Cattle – Selected United States Regions: 2013

[Average for November 2012 through October 2013]

State	Beef cattle
	(dollars per cwt)
17 Western States ¹	124.38
16 Western States ²	125.04
11 Western States ³	120.85
9 Great Plains States ⁴	125.88

¹ 17 Western States: Arizona, California, Colorado, Idaho, Kansas, Montana, Nebraska, Nevada, New Mexico, North Dakota, Oklahoma, Oregon, South Dakota, Texas, Utah, Washington, and Wyoming.

² 16 Western States: Arizona, California, Colorado, Idaho, Kansas, Montana, Nebraska, Nevada, New Mexico, North Dakota, Oklahoma, Oregon, South Dakota, Utah, Washington, and Wyoming.

³ 11 Western States: Arizona, California, Colorado, Idaho, Montana, Nevada, New Mexico, Oregon, Utah, Washington, and Wyoming.

⁴ 9 Great Plain States: Colorado, Kansas, Nebraska, New Mexico, North Dakota, Oklahoma, South Dakota, Texas, and Wyoming.

Reliability of Prices Paid Estimates

Definition: Prices paid by farmers represent the average costs of inputs purchased by farmers and ranchers to produce agricultural commodities. Conceptually, the average price when multiplied by quantity purchased should equal total producer expenditures for the item.

Survey procedures: The prices paid data are obtained from establishments that sell goods and services to farmers and ranchers. Annually, about 8,500 firms are randomly selected from lists by type of item sold with an average response rate in the range of 75-80 percent. Firms are asked to report the price for the specified item "most commonly bought by farmers" or that was the "volume seller". Approximately 135 items are surveyed each March to represent all production input items purchased. The survey reference period for most items is the five business days centered at the 15th of the month. Separate prices paid surveys are conducted for agricultural chemicals, fuels, feed, fertilizer, machinery, and seed.

Summary and estimation procedures: The annual March Prices Paid Survey is summarized as a non-probability survey. Average prices reported are aggregated to the region and United States level using weights available from expenditure data and other administrative sources. Price recommendations are prepared by the State Field Offices and Headquarters for review by the Agricultural Statistics Board in Washington, D.C. Also, the change in price level for individual items surveyed are combined to the regional and United States levels, and are published as prices paid indexes referenced to a specific base period. Prices paid indexes for new autos and trucks, building materials, farm supplies, motor supplies, and marketing containers are updated based on price changes measured in selected Bureau of Labor Statistics (BLS) indexes.

Revisions: Any revisions are published in the monthly and in annual issues of Agricultural Prices. The basis for revision must be supported by additional data that directly affect the level of the estimate. More revisions are likely for March when separate prices paid surveys are conducted, in lieu of BLS indexes, by the USDA to measure price change.

Reliability: Current methods of summarization for the March data are not designed directly to calculate sampling errors. However, analytical measures approximate the United States relative sampling errors for major items around 10 percent. Any non-sampling errors are attributed to such things as the inability to obtain correct information, differences in interpreting questions or definitions, mistakes in coding or processing the data, etc. Efforts are made at each step in the survey process to minimize these non-sampling errors.

Program change: Effective January 1, 1995, the National Agricultural Statistics Service updated the weights and changed the construction of its prices paid and received by farmers' indexes. A Federal Register Notice dated October 28, 1994 discussed these program modifications.

A 1990-1992 reference and base period replaced the 1977 reference and 1971-1973 base weight period. Five-year moving average weights replaced the current fixed 1971-1973 base period weights. The 1910-1914=100 price indexes, required by statute for computing parity prices, were linked forward based on the changes in the new 1990-1992=100 indexes. The new indexes were constructed by multiplying the ratios of the current prices to the base period prices by the moving average weights (adjusted for seasonal marketing patterns for the prices received indexes).

Calendar of Prices Received Features in the 2013 Agricultural Price Reports

Annual or Marketing Year Average Prices	Month Published
Austrian Winter Peas, United States	September
Barley, United States.....	June
by State and United States	August
Broilers, by State and United States.....	April
Canola, by State and United States	November
Cattle, by State and United States	February
Chickens, Other by State and United States.....	April
Chickpeas, by State and United States	November
Corn, United States	September
by State and United States	November
Cotton, by Type, State and United States.....	October
Cottonseed, by State and United States.....	October
Dry Beans, by State and United States.....	November
Dry Edible Peas, United States	September
Eggs, by State and United States.....	April
Flaxseed, by State and United States.....	November
Goats, by State and United States	February
Hay, by State and United States	August
Other Hay, 3-year Average by Region	February
Hogs, by State and United States	February
Lentils, United States	September
Milk, Sold to Plants, for All Milk, Price and Fat Test, by State and United States	April
Mohair, by State and United States.....	February
Mustard Seed, United States	November
Oats, United States	June
by State and United States	August
Peanuts, by State and United States	August
Potatoes, by State and United States, Preliminary	February
Proso Millet, by State and United States.....	November
Rapeseed, United States	November
Rice, United States (year-to-date)	August
by State and United States, by Length of Grain	January
Safflower, United States	November
Sheep and Lambs, by State and United States	February
Sorghum, by State and United States	September
Soybeans, by State and United States	September
Sweetpotatoes, by State and United States, Preliminary	January
Final and Revised	June
Sugarbeets, United States.....	July
Sugarcane, United States.....	July
Sunflower, by State and United States.....	November
Turkeys, by State and United States.....	April
Wheat, by Class, United States	June
by State and United States	August
Wool, by State and United States.....	February

Calendar of Prices Received Features in the 2013 Agricultural Price Reports (continued)

Monthly Prices Received – Revised	Month Published
Austrian Winter Peas, United States	September
Barley, by State and United States	August
Broilers, United States	April
Cattle, by State and United States	February
Chickens, by State and United States	April
Chickpeas, by State and United States	November
Corn, by State and United States	November
Cotton, by Type, State and United States	October
Cottonseed, by State and United States	October
Dry Beans, by State and United States	November
Dry Edible Peas, United States	September
Eggs, by State and United States	April
Flaxseed, by State and United States	November
Hay, by State and United States	August
Hogs, by State and United States	February
Lentils, United States	September
Milk, Sold to Plants, by Grade, Price and Fat Test by State and United States	April
Milk Cows, by Quarter, by State and United States	February
Oats, by State and United States	August
Peanuts, by State and United States	August
Potatoes, by State and United States, Preliminary	February
Rice, United States (year-to-date)	August
by State and United States, by Length of Grain	January
Sheep and Lambs, by State and United States	February
Sorghum, by State and United States	September
Soybeans, by State and United States	September
Sunflower, by State and United States	November
Wheat, by State and United States	August

Calendar of Prices Received Features in the 2013 Agricultural Price Reports (continued)

Monthly Marketing Percents	Month Published
Austrian Winter Peas, United States	September
Barley, United States.....	June
by State and United States	August
Chickpeas, by State and United States	November
Corn, United States	September
by State and United States	November
Cotton, Upland, by State and United States	October
Dry Beans, by State and United States.....	November
Dry Edible Peas, United States	September
Flaxseed, by State and United States.....	November
Hay, by State and United States	August
Lentils, United States	September
Oats, United States	June
by State and United States	August
Peanuts, by State and United States	August
Rice, United States (year-to-date)	August
Final	January
Sorghum, by State and United States	September
Soybeans, by State and United States	September
Sunflower, by State and United States	November
Wheat, United States	June
by State and United States	August

Prices Received Index Numbers - Revised

Index of Prices Received by Farmers, United States, by Month and Year	January, April, July, October
---	-------------------------------

Milk and Egg Prices Received, Adjusted for Seasonal Variation

Seasonally Adjusted Prices, Revised, United States	April
Seasonal Adjustment Factors, United States, program change	July

Parity Prices

Method of Computing	January
Average Prices Used for Parity Computations.....	January
Manufacturing Milk: Method of Computing Parity Price Equivalent	January
Average Price Received, United States.....	January

Calendar of Prices Paid Features in the 2013 Agricultural Price Reports

Indexes (1910-1914=100)	Month Published
PPITW, PITW, Production Items, Component Items, Interest, Taxes and Wage Rates, Family Living, Farm and Non-Farm Origin, Crop and Livestock Sectors, Adjusted for Productivity, Ratio, Parity Ratio and Adjusted Parity Ratio	
Annual Average (2009-2013)	January, April, July, October
By Month (2009-2013)	January, April, July, October
United States Current Month, Previous Month, Previous Year	Monthly

Indexes (1990-1992=100)	Month Published
PPITW, PITW, Production Items, Component and Subcomponent Items, Interest, Taxes and Wage Rates, Family Living Farm and Non-Farm Origin, Crop and Livestock Sectors, Adjusted for Productivity, Ratio, Parity Ratio and Adjusted Parity Ratio	
Annual Average (2009-2013)	January, April, July, October
By Month (2009-2013)	January, April, July, October
United States Current Month, Previous Month, Previous Year	Monthly

Prices Paid	Month Published
Farm Machinery, United States	April
Feed, by Region and United States	April
Feed, United States (2008-2013)	December
Feeder Livestock, United States	Monthly
Poultry, Chicks and Poults, Annual Average	April
Fertilizer Materials, Mixed Fertilizer and Agricultural Limestone, by Region and United States	April
Field Seeds, Retail United States	April
Fuels, by Region and United States	April
Agricultural Chemicals, United States	April

Feed-Price Ratios	Month Published
United States by Month and Annual Average, (January 2009- May 2013)	May
United States Current Month, Previous Month, Previous Year	Monthly

Prices Paid Program Overview	Month Published
Prices Paid Survey Months, Month Published and Geographic Levels of Estimates	January
Prices Paid Regions, and States Included	April

Private Grazing Fee Rates and Components of Federal Fees	Month Published
Grazing Fee Rates for Cattle by State, Region, and United States (2011 and 2012)	January
Prices Paid Index for Beef Cattle Production (1964-68=100)	December
Beef Cattle Prices Received, Selected Regions (November-October)	December
Other Hay Prices Received, Selected Eastern Regions	February

Information Contacts

General

Troy Joshua, Chief, Environmental, Economics and Demographics Branch (202) 720-6146

Below are the commodity specialists to contact for additional information.

Crop Prices Received

Lance Honig, Chief, Crops Branch (202) 720-2127

Anthony Prillaman, Head, Field Crops Section (202) 720-2127

Cody Brokmeyer – Peanuts, Rice (202) 720-7688

Brent Chittenden – Oats, Rye, Wheat (202) 720-8068

Angie Considine – Cotton, Cotton Ginnings, Sorghum (202) 720-5944

Chris Hawthorn – Corn, Proso Millet, Flaxseed (202) 720-9526

Tony Dahlman – Crop Weather, Barley, Hay (202) 720-5944

Travis Thorson – Soybeans, Sunflower, Other Oilseeds..... (202) 720-7369

Jorge Garcia-Pratts, Head, Fruits, Vegetables and Special Crops Section..... (202) 720-2127

Jorge Garcia-Pratts – Fresh and Processing Vegetables, Onions, Strawberries (202) 720-2127

Fred Granja – Apples, Apricots, Cherries, Plums, Prunes, Tobacco (202) 720-4288

Jorge Garcia-Pratts – Floriculture, Maple Syrup, Nursery, Tree Nuts (202) 720-2127

Lakeya Jones – Citrus, Coffee, Sugar Crops, Grapes, Tropical Fruits (202) 720-5412

Daphne Schauber – Berries, Cranberries, Potatoes, Sweet Potatoes (202) 720-4285

Dan Norris – Austrian Winter Peas, Dry Edible Peas, Lentils, Mints, Mushrooms, Peaches, Pears,
Wrinkled Seed Peas, Dry Beans (202) 720-3250

Livestock Prices Received

Dan Kerestes, Chief, Livestock Branch (202) 720-3570

Scott Hollis, Head, Livestock Section..... (202) 720-3570

Travis Averill – Cattle..... (202) 720-3040

Mike Miller – Milk, Milk Cows (202) 720-3278

Doug Bounds – Hogs (202) 720-3106

Alissa Cowell-Mytar – Sheep, Lambs, and Goats (202) 720-4751

Bruce Boess, Head, Poultry and Specialty Commodities Section..... (202) 720-3570

Doug Boline – Turkeys (202) 720-0585

Tom Kruchten – Honey (202) 690-4870

Kim Linonis – Eggs..... (202) 690-8632

Miste Salmon – Broilers..... (202) 720-3244

Indexes, Prices Paid, and Parity Prices

Troy Joshua, Chief, Environmental, Economics and
Demographics Branch..... (202) 720-6146

Tony Dorn, Head, Economics Section (202) 690-3223

Daryl Brinkman – Prices Received Indexes, Parity Prices (202) 720-8844

Chris Dickerson – Prices Received Indexes, Parity Prices, Grazing Fees (202) 690-1348

Vincent Davis – Prices Paid Indexes, Prices Paid for Feed, Fertilizer, Agricultural Chemicals,
Seeds, Farm Supplies and Repairs, Farm Machinery, Fuels, Feeder Livestock, Poultry Chicks,
Feed Price Ratios, Autos & Trucks..... (202) 690-3229

Access to NASS Reports

For your convenience, you may access NASS reports and products the following ways:

- All reports are available electronically, at no cost, on the NASS web site: <http://www.nass.usda.gov>
- Both national and state specific reports are available via a free e-mail subscription. To set-up this free subscription, visit <http://www.nass.usda.gov> and in the “Follow NASS” box under “Receive reports by Email,” click on “National” or “State” to select the reports you would like to receive.

For more information on NASS surveys and reports, call the NASS Agricultural Statistics Hotline at (800) 727-9540, 7:30 a.m. to 4:00 p.m. ET, or e-mail: nass@nass.usda.gov.

The U.S. Department of Agriculture (USDA) prohibits discrimination against its customers, employees, and applicants for employment on the bases of race, color, national origin, age, disability, sex, gender identity, religion, reprisal, and where applicable, political beliefs, marital status, familial or parental status, sexual orientation, or all or part of an individual's income is derived from any public assistance program, or protected genetic information in employment or in any program or activity conducted or funded by the Department. (Not all prohibited bases will apply to all programs and/or employment activities.)

If you wish to file a Civil Rights program complaint of discrimination, complete the [USDA Program Discrimination Complaint Form](#) (PDF), found online at http://www.ascr.usda.gov/complaint_filing_cust.html, or at any USDA office, or call (866) 632-9992 to request the form. You may also write a letter containing all of the information requested in the form. Send your completed complaint form or letter to us by mail at U.S. Department of Agriculture, Director, Office of Adjudication, 1400 Independence Avenue, S.W., Washington, D.C. 20250-9410, by fax (202) 690-7442 or email at program.intake@usda.gov.



United States
Department of Agriculture

Agricultural Outlook Forum

February 20-21, 2014
Crystal Gateway Marriott Hotel
Arlington, Virginia

The Changing Face of Agriculture

USDA's annual event brings together leadership
from throughout the agricultural community to discuss the

Changing Face of Agriculture.

Session topics include:

New Agricultural Census
Agriculture Supporting Our Veterans
Women in Agriculture
Agriculture & Social Media
Food Price and Farm Income Outlooks
Commodity and Weather Outlooks
U.S. Farm Land
International Trade
Conservation
Nutrition & Food Safety
Nanotechnology
Invasive Pests
Know Your Farmer, Know Your Food
Agroforestry
Climate Variability
Rural Economies
Disease Challenges & the Citrus Industry
Extension's 100-Year Anniversary

www.usda.gov/oce/forum

