



Agricultural Prices

ISSN: 1937-4216

Released February 28, 2014, by the National Agricultural Statistics Service (NASS), Agricultural Statistics Board, United States Department of Agriculture (USDA).

Special Notes

Agricultural Price Program Update http://www.nass.usda.gov/Surveys/Guide_to_NASS_Surveys/Prices/updates.pdf addresses methodological changes in the Price Program effective January 2014.

USDA's National Agricultural Statistics Service is suspending a number of statistical surveys and reports resulting from reduced funding. Suspended commodity programs impacting the *Agricultural Prices* report are non-citrus fruit, tree nuts, and vegetables. Check the NASS website at www.nass.usda.gov for any future updates to these programs

February Farm Prices Received Index Increased 7 Points

The preliminary All Farm Products Index of Prices Received by Farmers in February, at 106 percent, based on 2011=100, increased 7 points (7.1 percent) from January. The Crop Index is up 4 points (4.5 percent) and the Livestock Index increased 4 points (3.4 percent). Producers received higher prices for cattle, oranges, market eggs, and milk and lower prices for broilers, peanuts, grapefruit, and potatoes. In addition to prices, the overall index is also affected by the seasonal change based on a 3-year average mix of commodities producers sell. Increased monthly movement of cattle, milk, and broilers more than offset the decreased marketing of soybeans, corn, tobacco, and wheat.

The preliminary All Farm Products Index is down 3 points (2.8 percent) from February 2013. The Food Commodities Index, at 116, increased 6 points (5.5 percent) from last month and increased 8 points (7.4 percent) from February 2013.

Prices Paid Index Unchanged

The February Index of Prices Paid for Commodities and Services, Interest, Taxes, and Farm Wage Rates (PPITW) is at 107 (2011=100). The index is unchanged from January but 1 point (0.9 percent) above February 2013. Higher prices in February for concentrates, feeder pigs, LP gas, and complete feeds offset lower prices for supplements, feeder cattle, potash & phosphate, and nitrogen.

Prices Received, Prices Paid, and Ratio of Prices Received to Prices Paid Indexes 2011 Base – United States: February 2014 with Comparisons

Index	February	January	February
	2013	2014	2014
Prices received by farmers	109	99	106
Prices paid by farmers	106	107	107
Ratio of prices received to prices paid	103	93	99

Contents

Prices Received by Farmers	4
Prices Received Indexes – United States: February 2014 with Comparisons	5
Prices Received Indexes – United States: February 2014 with Comparisons	5
Prices Received Indexes by Month for Selected Groups – United States: 2013 and 2014, 2011 Base	6
Prices Paid Indexes by Month for Selected Groups – United States: 2013 and 2014, 2011 Base	6
Received Indexes by Month, Livestock Product, All Product, and All Crop – United States: 2011=100 Chart	7
Received Indexes by Month, Food Grain, Feed Grain, and Oilseed – United States: 2011=100 Chart	7
Received Indexes by Month, Fruit & Tree Nut and Commercial Vegetable – United States: 2011=100 Chart	8
Received Indexes by Month, Meat Animal, Dairy Product, and Poultry & Egg – United States: 2011=100 Chart	8
Prices Received for Field Crops and Fruits – United States: February 2014 with Comparisons	9
Prices Received for Vegetables and Livestock – United States: February 2014 with Comparisons	10
Prices Received for Corn by Month – United States Chart	11
Prices Received for Wheat by Month – United States Chart	11
Prices Received for Upland Cotton by Month – United States Chart	12
Prices Received for Soybeans by Month – United States Chart	12
Prices Received for Cattle by Month – United States Chart	13
Prices Received for Milk by Month – United States Chart	13
Prices Received for Hogs by Month – United States Chart	14
Prices Received for Poultry by Month – United States Chart	14
Prices Received for All Wheat, Corn, and Soybeans by Month – United States: 2014 with Comparisons	15
Prices Received for Beef Cattle and All Hogs by Month – United States: 2014 with Comparisons	15
Prices Received for All Wheat – States and United States: February 2014 with Comparisons	16
Prices Received for Winter Wheat – States and United States: February 2014 with Comparisons	16
Prices Received for Durum Wheat – States and United States: February 2014 with Comparisons	17
Prices Received for Spring Wheat – States and United States: February 2014 with Comparisons	17
Prices Received for All Barley – States and United States: February 2014 with Comparisons	18
Prices Received for Malting Barley – States: February 2014 with Comparisons	18
Prices Received for Feed Barley – States: February 2014 with Comparisons	18
Prices Received for Corn – States and United States: February 2014 with Comparisons	19
Prices Received for Soybeans – States and United States: February 2014 with Comparisons	19
Prices Received for Oats – States and United States: February 2014 with Comparisons	20
Prices Received for Sorghum Grain – States and United States: February 2014 with Comparisons	20
Prices Received for Dry Beans – States and United States: February 2014 with Comparisons	21
Prices Received for Peanuts (in shell) – States and United States: February 2014 with Comparisons	21
Prices Received for Sunflower – States and United States: February 2014 with Comparisons	22
Prices Received for Canola – States and United States: February 2014 with Comparisons	22
Prices Received for Flaxseed – States and United States: February 2014 with Comparisons	22
Prices Received for Upland Cotton and Cottonseed – States and United States: February 2014 with Comparisons	23
Prices Received and Farm Marketings for Upland Cotton and Rice – United States: February 2014 with Comparisons	23
Prices Received for Hay by Type – States and United States: February 2014 with Comparisons	24
Prices Received for Apples – States and United States: February 2014 with Comparisons	24
Prices Received for Citrus Fruits by Utilization – States and United States: February 2013	25
Prices Received for Citrus Fruits by Utilization – States and United States: January 2014	26
Prices Received for Citrus Fruits by Utilization – States and United States: February 2014	27
Prices Received for Potatoes – States and United States: February 2014 with Comparisons	28
Prices Received for All Milk – States and United States: February 2014 with Comparisons	29
Prices Received for Milk Cows – States and United States: January 2014 with Comparisons	30

Commodity Parity Prices and Price as Percent of Parity Price – United States: February 2014 with Comparisons	31
Commodity Parity Prices – United States: February 2014 with Comparisons	32
Marketing Year for Specified Commodities	34
Cattle Market Year Average Prices Received – United States: Marketing Years 2012 and 2013.....	34
Hog Market Year Average Prices Received – United States: Marketing Years 2012 and 2013	34
Milk Cow Market Year Average Prices Received – States and United States: Marketing Years 2012 and 2013	35
Prices Received for Cows, Steers and Heifers, Calves, Beef Cattle, and Milk Cows by Month – United States: Marketing Years 2012 and 2013.....	36
Prices Received for Barrows and Gilts, Sows, and All Hogs by Month – United States: Marketing Years 2012 and 2013	36
Prices Received for Milk Cows by Month – States and United States: 2013	37
Prices Received Value per Head for All Cattle and Calves – States and United States: January 1, 2013 and 2014	38
Prices Received Value per Head and Total Value for Hogs – States and United States: December 1, 2012 and 2013	39
Prices Received Value per Head and Total Value for Sheep and Lambs – States and United States: January 1, 2013 and 2014.....	40
Prices Received Value per Head and Total Value for Angora Goats – States and United States: January 1, 2013 and 2014	41
Other Hay Baled Market Year Average Prices Received – Selected Regions: 2009-2011, 2010-2012, and 2011-2013 Averages.....	41
Reliability of Prices Received Estimates	42
Prices Paid by Farmers.....	43
Prices Paid Indexes and Related Parity Ratios – United States: February 2014 with Comparisons.....	44
Prices Paid Indexes and Annual Weights for Input Components and Sub-components – United States: February 2014 with Comparisons.....	45
Paid Indexes by Month, All Items and Production Items – United States: 2011=100 Chart.....	46
Paid Indexes, Annual Averages, Production Items, Interest, Taxes, and Wages – United States: 2011=100 Chart.....	46
Paid Indexes by Farm Type, All Items – United States: 2011=100 Chart.....	47
Paid Indexes by Origin, All Production Items – United States: 2011=100 Chart.....	47
Paid Indexes by Non-Farm Sector, Supplies & Repairs, Fertilizer, Machinery, and Fuel – United States: 2011=100 Chart.....	48
Paid Indexes by Month, Feed and Replacement Livestock – United States: 2011=100 Chart.....	48
Feed Price Ratios – United States: February 2014 with Comparisons	49
Prices Received Used to Calculate Feed Price Ratios – United States: February 2014 with Comparisons.....	49
Prices Paid for Feeder Livestock – United States: February 2014 with Comparisons.....	49
Reliability of Prices Paid Estimates	50
Information Contacts	51

Price Program Quick Stats Links

Economics and Prices

http://www.nass.usda.gov/Statistics_by_Subject/Economics_and_Prices/index.asp

January 2014 Price Program Changes

http://www.nass.usda.gov/Surveys/Guide_to_NASS_Surveys/Prices/updates.pdf

Prices Received by Farmers

The February All Farm Products Index is 106 percent of its 2011 base, up 7.1 percent from the January index but 2.8 percent below the February 2013 index.

All crops: The February index, at 93, increased 4.5 percent from January but is 16 percent below February 2013. Index increases for oilseeds & grains and fruit & tree nut production more than offset the index decreases for vegetable & melon production and other crop production.

Food grains: The February index, at 99, is 3.1 percent above the previous month but 8.3 percent below a year ago. The February all wheat price, at \$6.67 per bushel, is up 1 cent from January but \$1.30 below February 2013.

Feed grains: The February index, at 75, is up 1.4 percent from last month but 36 percent below a year ago. The corn price, at \$4.47 per bushel, is up 5 cents from last month but \$2.57 below February 2013. Sorghum grain, at \$7.63 per cwt, is 11 cents above January but \$4.47 below February last year.

Oilseeds: The February index, at 103, is up 1.0 percent from January but 11 percent lower than February 2013. The soybean price, at \$13.10 per bushel, increased 20 cents from January but is \$1.50 below February 2013.

Fruits & nuts: The February index, at 122, is up 9.9 percent from January and 16 percent higher than a year ago. Price increases for oranges and tangerines more than offset price decreases for grapefruit and lemons.

Commercial vegetables: The February index, at 93, is down 1.1 percent from last month and 15 percent below February 2013. The all potato price, at \$9.06 per cwt, is down 30 cents from January but up 94 cents from a year ago.

Other crops: The February index, at 95, is unchanged from last month but 5.0 percent below February 2013. The all hay price, at \$168 per ton, is up \$3.00 from January but down \$24.00 from last February. The price for upland cotton, at 76.7 cents per pound, is down 0.2 cents from January and 0.2 cents below last February.

Livestock and products: The February index, at 120, is 3.4 percent above last month and up 13 percent from February 2013. Compared with a year ago, prices are higher for cattle, milk, eggs, calves, and turkeys. Prices for broilers and hogs are down from last year.

Meat animals: The February index, at 119, is up 3.5 percent from last month and 13 percent higher than last year. The February hog price, at \$63.30 per cwt, is up \$2.10 from January but is \$1.20 lower than a year ago. The February beef cattle price of \$144 per cwt is up \$6.00 from last month and \$21.00 higher than February 2013.

Dairy products: The February index, at 123, is up 5.1 percent from a month ago and 27 percent higher than February last year. The February all milk price of \$24.70 per cwt is up \$1.20 from last month and \$5.20 above February 2013.

Poultry & eggs: The February index, at 122, is up 1.7 percent from January and 0.8 percent above a year ago. The February market egg price, at \$1.23 per dozen, increased 32.4 cents from January and is 45.4 cents above February 2013. The February broiler price, at 55.0 cents per pound, is down 3.0 cents from January and 6.0 cents below a year ago. The February turkey price, at 66.7 cents per pound, is up 2.2 cents from the previous month and 4.0 cents from a year earlier.

Prices Received Indexes – United States: February 2014 with Comparisons

[Revised historical price indexes for months not shown are available at www.nass.usda.gov]

Index	2011 Base		
	February 2013	January 2014	February 2014
	(percent)	(percent)	(percent)
Agricultural Production	109	99	106
Crop Production	111	89	93
Grains and oilseed	116	86	87
Feed grain	117	74	75
Food grain	108	96	99
Oilseed	116	102	103
Fruit and tree nut	105	111	122
Commercial vegetable	109	94	93
Other crop	100	95	95
Livestock Production	106	116	120
Meat animal	105	115	119
Cattle	108	122	127
Hog	97	92	95
Dairy	97	117	123
Poultry and egg	121	120	122
Food Commodity	108	110	116

Prices Received Indexes – United States: February 2014 with Comparisons

[Revised historical price indexes for months not shown are available at www.nass.usda.gov]

Index	1910 - 1914 Base		
	February 2013	January 2014	February 2014
	(percent)	(percent)	(percent)
Agricultural Production	1120	1020	1094
Crop Production	964	780	814
Livestock Production	1236	1350	1398

Prices Received Indexes by Month for Selected Groups – United States: 2013 and 2014, 2011 Base

[Revised historical price indexes for months not shown are available at www.nass.usda.gov. Blank data cells indicate estimation period has not yet begun]

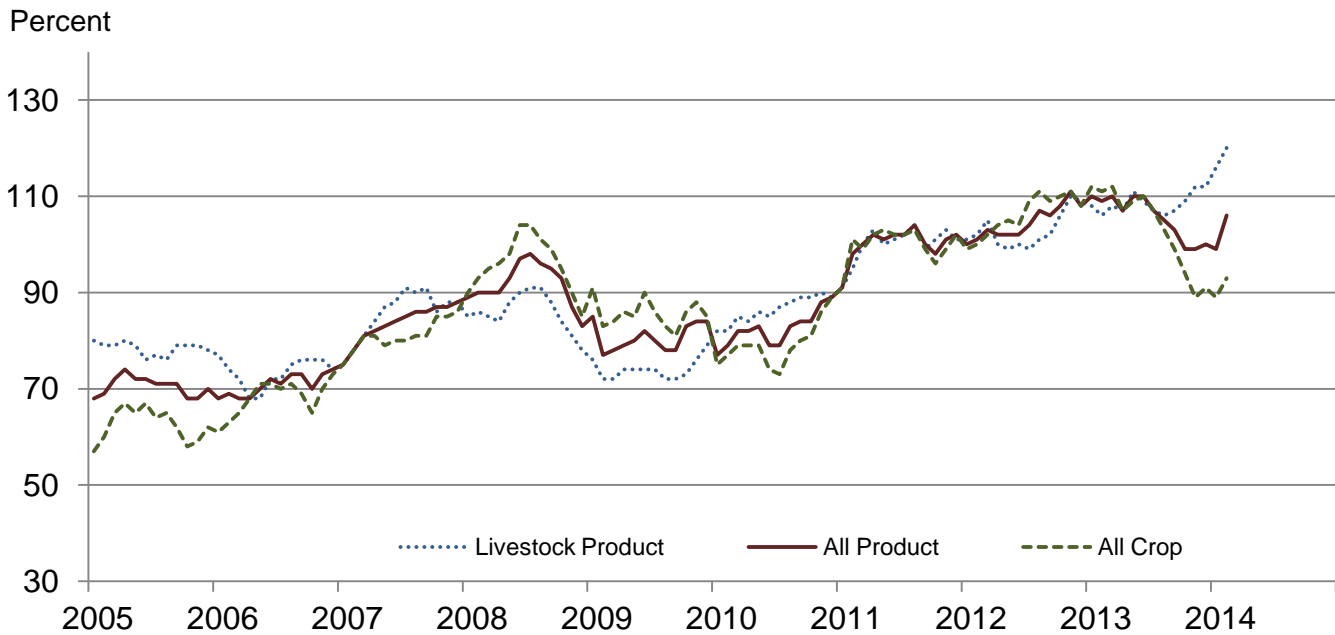
Month	Index of prices received							
	Agricultural Production		Crop Production		Livestock Production		Food Commodities	
	2013	2014	2013	2014	2013	2014	2013	2014
	(percent)	(percent)	(percent)	(percent)	(percent)	(percent)	(percent)	(percent)
January	110	99	112	89	108	116	110	110
February	109	106	111	93	106	120	108	116
March	110		112		108		109	
April	107		107		107		106	
May	110		109		111		110	
June	110		110		109		109	
July	107		107		107		106	
August	105		103		106		105	
September	103		99		107		106	
October	99		94		109		106	
November	99		89		112		108	
December	100		91		112		108	

Prices Paid Indexes by Month for Selected Groups – United States: 2013 and 2014, 2011 Base

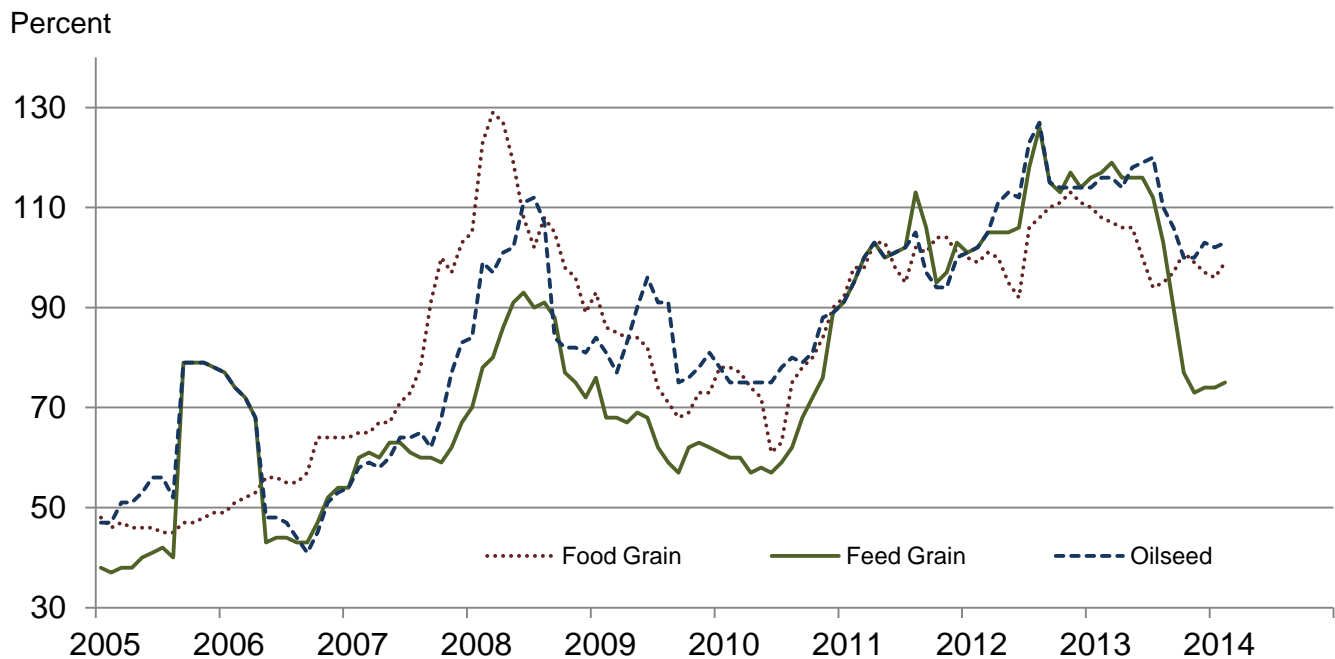
[Revised historical price indexes for months not shown are available at www.nass.usda.gov. Blank data cells indicate estimation period has not yet begun]

Month	Index of prices paid							
	All Items (PPITW)		Production		Crop Sector		Livestock Sector	
	2013	2014	2013	2014	2013	2014	2013	2014
	(percent)	(percent)	(percent)	(percent)	(percent)	(percent)	(percent)	(percent)
January	106	107	107	107	104	105	108	108
February	106	107	107	108	105	106	108	109
March	106		107		105		108	
April	105		106		105		106	
May	106		106		105		106	
June	105		106		105		106	
July	106		107		104		108	
August	105		105		104		106	
September	105		106		104		107	
October	105		106		104		107	
November	105		105		104		106	
December	105		105		104		106	

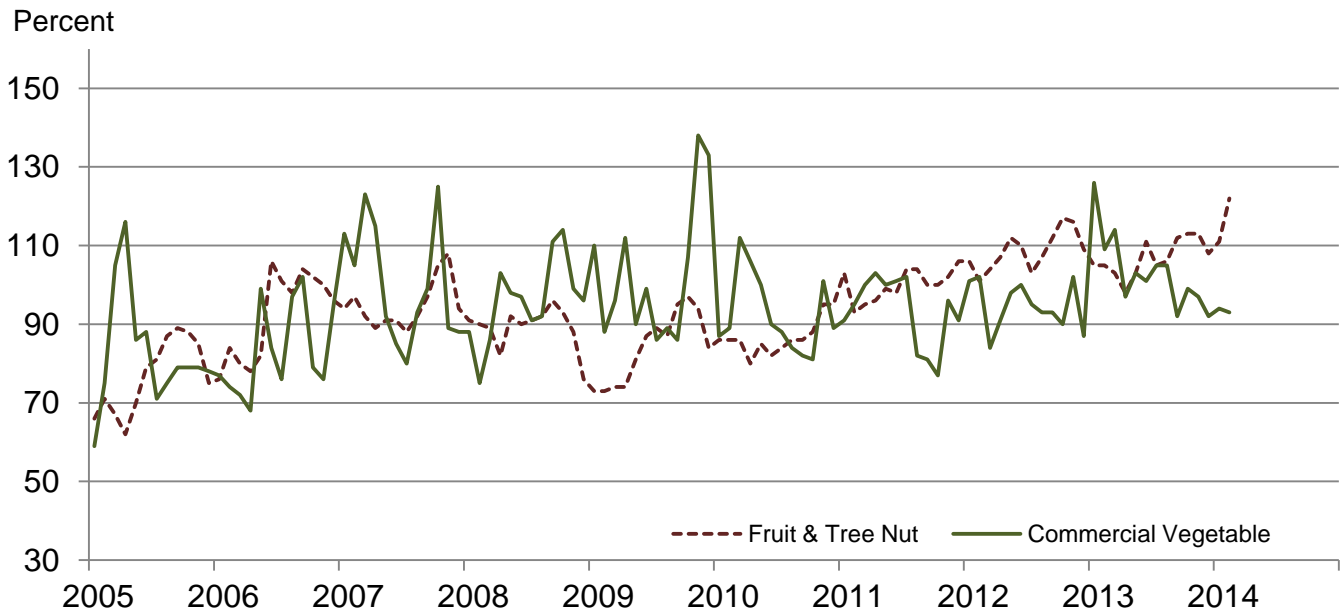
Received Indexes by Month, Livestock Product, All Product, and All Crop – United States: 2011=100



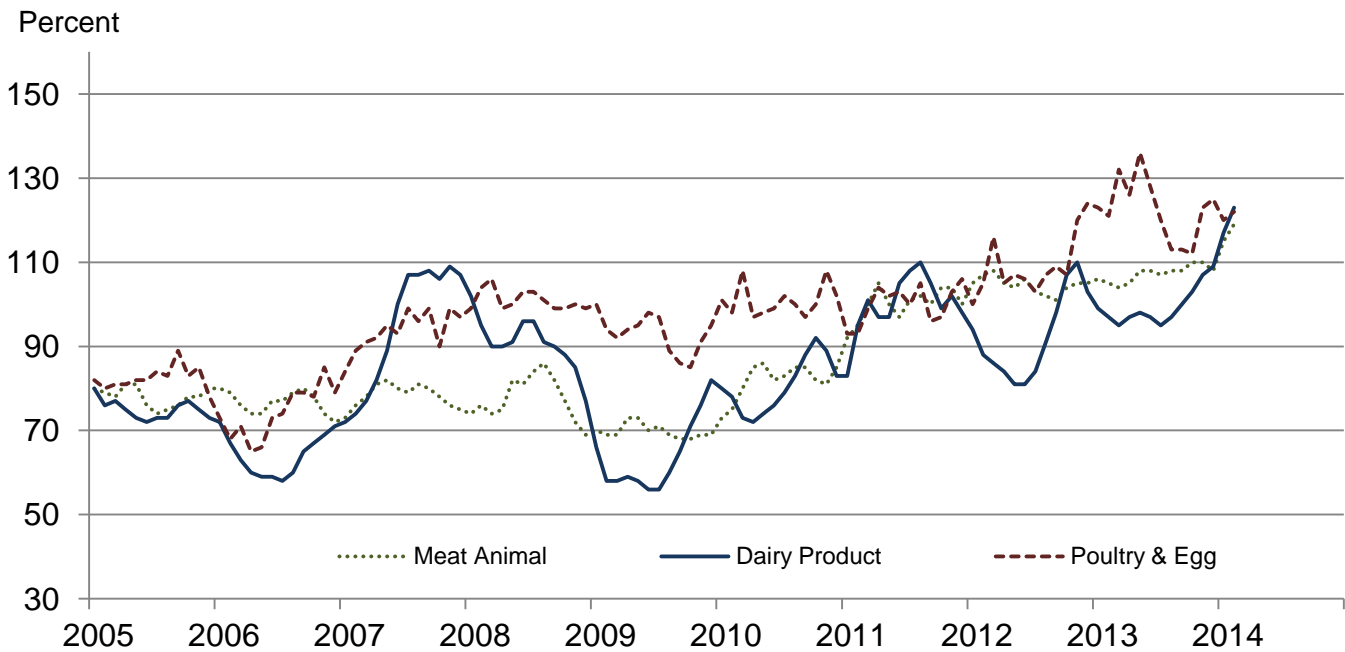
Received Indexes by Month, Food Grain, Feed Grain, and Oilseed – United States: 2011=100



**Received Indexes by Month,
Fruit & Tree Nut and Commercial Vegetable –
United States: 2011=100**



**Received Indexes by Month,
Meat Animal, Dairy Product, and Poultry & Egg –
United States: 2011=100**



Prices Received for Field Crops and Fruits – United States: February 2014 with Comparisons

Commodity	Average 2011	February 2013	January 2014	Preliminary February 2014
Field crops				
Austrian winter peasdollars/cwt	19.50	21.30	(S)	(S)
Barley, alldollars/bushel	4.79	6.48	6.02	5.77
Feeddollars/bushel	4.59	5.91	4.23	3.98
Maltingdollars/bushel	4.83	6.56	6.56	6.17
Beans, dry edibledollars/cwt	34.60	37.70	39.60	39.60
Canoladollars/cwt	23.10	27.80	18.40	17.30
Chickpeas, alldollars/cwt	35.70	35.30	29.20	27.90
Largedollars/cwt	39.20	36.10	29.80	28.30
Smalldollars/cwt	23.40	31.10	23.80	(D)
Corndollars/bushel	6.02	7.04	4.42	4.47
Cotton, Uplanddollars/pound	0.880	0.769	0.769	0.767
Cottonseeddollars/ton	131.00	217.00	230.00	227.00
Flaxseeddollars/bushel	14.20	14.30	13.30	13.00
Hay, all, baleddollars/ton	159.00	192.00	165.00	168.00
Alfalfadollars/ton	176.00	218.00	185.00	188.00
Otherdollars/ton	119.00	151.00	130.00	129.00
Lentilsdollars/cwt	27.50	22.60	18.60	17.90
Oatsdollars/bushel	3.42	4.14	3.70	3.60
Peanuts, in-shelldollars/pound	0.252	0.282	0.254	0.228
Peas, dry edibledollars/cwt	13.60	16.60	15.30	13.50
Potatoesdollars/cwt	9.78	8.12	9.36	9.06
Rice, alldollars/cwt	13.70	15.00	16.00	17.10
Longdollars/cwt	12.30	14.70	15.50	15.80
Medium and shortdollars/cwt	18.40	16.90	17.40	20.20
Sorghum graindollars/cwt	10.70	12.10	7.52	7.63
Soybeansdollars/bushel	12.50	14.60	12.90	13.10
Sunflowers, alldollars/cwt	29.00	26.10	20.30	22.60
Wheat, alldollars/bushel	7.44	7.97	6.66	6.67
Winterdollars/bushel	6.93	7.85	6.73	6.63
Durumdollars/bushel	9.22	8.19	7.06	6.87
Other springdollars/bushel	8.33	8.11	6.48	6.70
Hard red winter ¹dollars/bushel	7.07	7.75	6.73	(NA)
Soft red winter ¹dollars/bushel	6.77	7.78	6.25	(NA)
Hard red spring ¹dollars/bushel	8.38	8.11	6.46	(NA)
White ¹dollars/bushel	6.58	8.05	6.88	(NA)
Fruits				
Citrus, equivalent on-tree				
Grapefruitdollars/box	7.47	5.71	7.07	5.60
Lemonsdollars/box	12.30	7.28	22.69	20.96
Orangesdollars/box	8.16	7.05	8.04	11.80
Tangelosdollars/box	3.50	(NA)	6.60	(NA)
Tangerines and mandarinsdollars/box	15.30	20.57	22.33	26.32
Noncitrus, fresh				
Apples ²dollars/pound	0.325	0.435	(NA)	(NA)
Grapes ²dollars/ton	628.00	(S)	(NA)	(NA)
Peaches ²dollars/ton	507.00	(S)	(NA)	(NA)
Pears ²dollars/ton	559.00	778.00	(NA)	(NA)
Strawberriesdollars/cwt	104.00	123.00	(NA)	(NA)

(D) Withheld to avoid disclosing data for individual operations.

(NA) Not available.

(S) Insufficient number of reports to establish an estimate.

¹ Preliminary estimates not set for this item.

² Equivalent packinghouse-door returns for California, Michigan, New York (apples only), and Washington (apples, peaches, and pears). Prices as sold for other states.

Prices Received for Vegetables and Livestock – United States: February 2014 with Comparisons

[Price data source for livestock and poultry commodities is United States Department of Agriculture's Agricultural Marketing Service]

Commodity	Average 2011	February 2013	January 2014	Preliminary February 2014
Vegetables, fresh ¹				
Asparagus dollars/cwt	37.50	(S)	(NA)	(NA)
Beans, snap ² dollars/cwt	69.00	60.30	(NA)	(NA)
Broccoli dollars/cwt	41.60	38.10	(NA)	(NA)
Cantaloupes ² dollars/cwt	16.50	(S)	(NA)	(NA)
Carrots dollars/cwt	30.80	28.50	(NA)	(NA)
Cauliflower dollars/cwt	47.00	43.30	(NA)	(NA)
Celery dollars/cwt	22.50	47.00	(NA)	(NA)
Corn, sweet dollars/cwt	30.70	36.70	(NA)	(NA)
Cucumbers ² dollars/cwt	18.70	(S)	(NA)	(NA)
Lettuce dollars/cwt	24.30	31.70	(NA)	(NA)
Onions ³ dollars/cwt	11.90	28.80	(NA)	(NA)
Tomatoes dollars/cwt	51.20	37.70	(NA)	(NA)
Livestock				
Calves dollars/cwt	142.00	170.00	208.00	208.00
Cattle, all beef dollars/cwt	115.00	123.00	138.00	144.00
Cows ⁴ dollars/cwt	71.60	81.80	88.30	93.60
Steers and heifers dollars/cwt	117.00	125.00	140.00	145.00
Milk cows ⁵ dollars/head	1420.00	(NA)	1440.00	(NA)
Hogs, all dollars/cwt	66.50	64.50	61.20	63.30
Barrows and gilts dollars/cwt	66.80	65.10	61.10	63.40
Sows dollars/cwt	57.90	49.20	64.40	61.10
Dairy and poultry				
Milk, all ⁶ dollars/cwt	20.10	19.50	23.50	24.70
Fat test percent	3.71	3.82	3.84	3.80
Broilers, live ⁷ dollars/pound	0.459	0.610	0.580	0.550
Eggs, all ⁸ dollars/dozen	0.969	0.993	1.120	1.400
Market ^{8 9} dollars/dozen	0.796	0.776	0.906	1.230
Turkeys, live ^{8 10} dollars/pound	0.680	0.627	0.645	0.667
Adjusted for seasonal variation				
Eggs, all dollars/dozen	0.979	0.981	1.160	1.390
Seasonal factor percent	101	101	97	101
Milk, all ⁶ dollars/cwt	20.20	20.00	23.40	25.30
Seasonal factor percent	100	98	100	98

(NA) Not available.

(S) Insufficient number of reports to establish an estimate.

¹ Beginning January 2006, point of first sale. FOB shipping point for prior years.

² Monthly estimates began January 1995.

³ Includes some processing.

⁴ Beef cows and cull dairy cows sold for slaughter.

⁵ Animals sold for dairy herd replacement only. Prices available for January, April, July, and October.

⁶ Before deductions for hauling. Includes quality, quantity, and other premiums. Excludes hauling subsidies.

⁷ Live weight equivalent price.

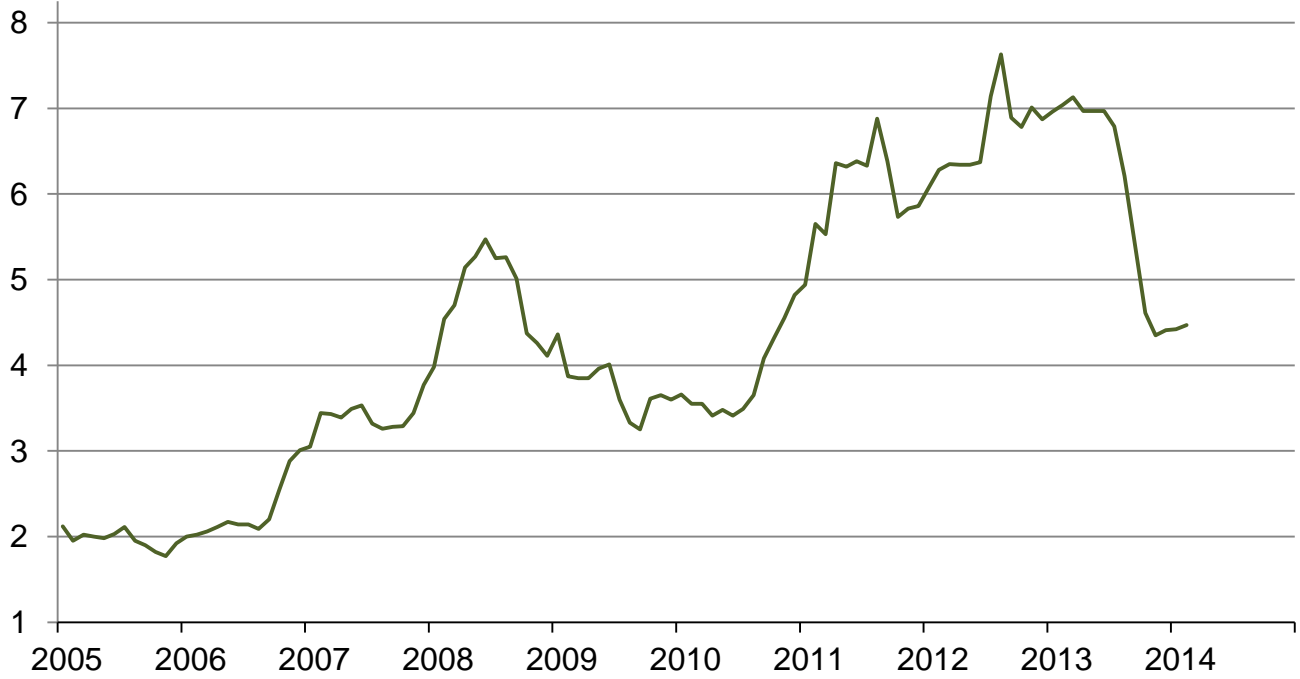
⁸ Mid-month price.

⁹ Also referred to as table eggs.

¹⁰ Live weight equivalent price is used when actual live weight price is not available. Beginning January 2011, price reflects FOB shipping point basis. Prior year price reflects delivered basis.

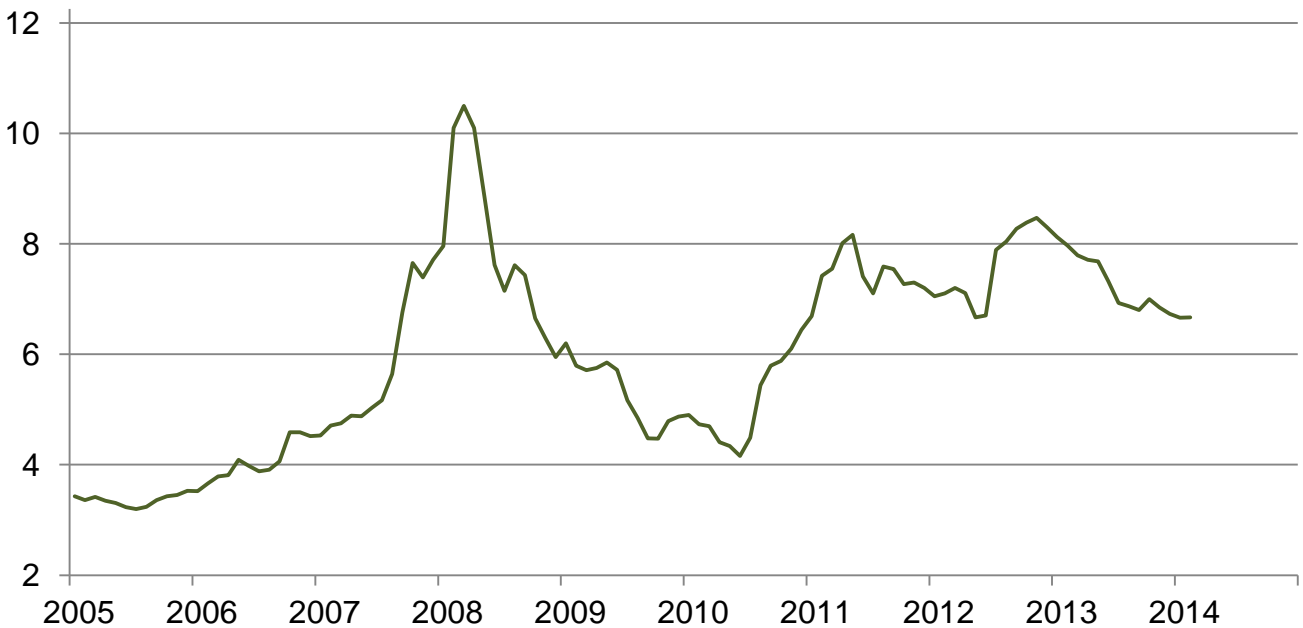
Prices Received for Corn by Month – United States

Dollars per bushel



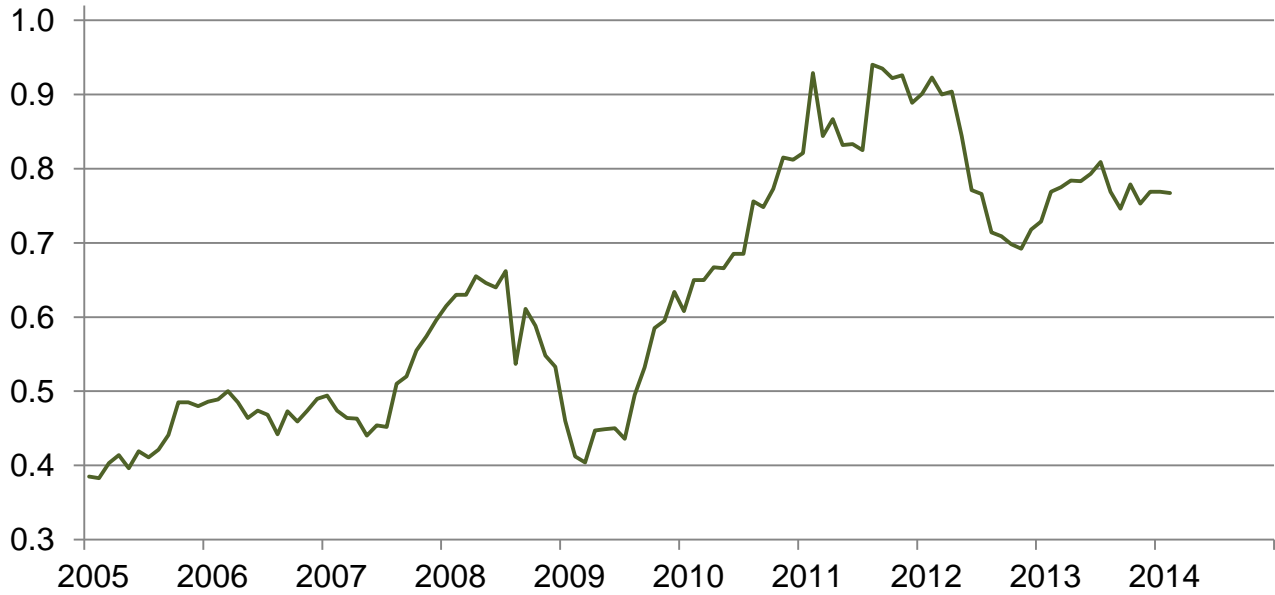
Prices Received for Wheat by Month – United States

Dollars per bushel



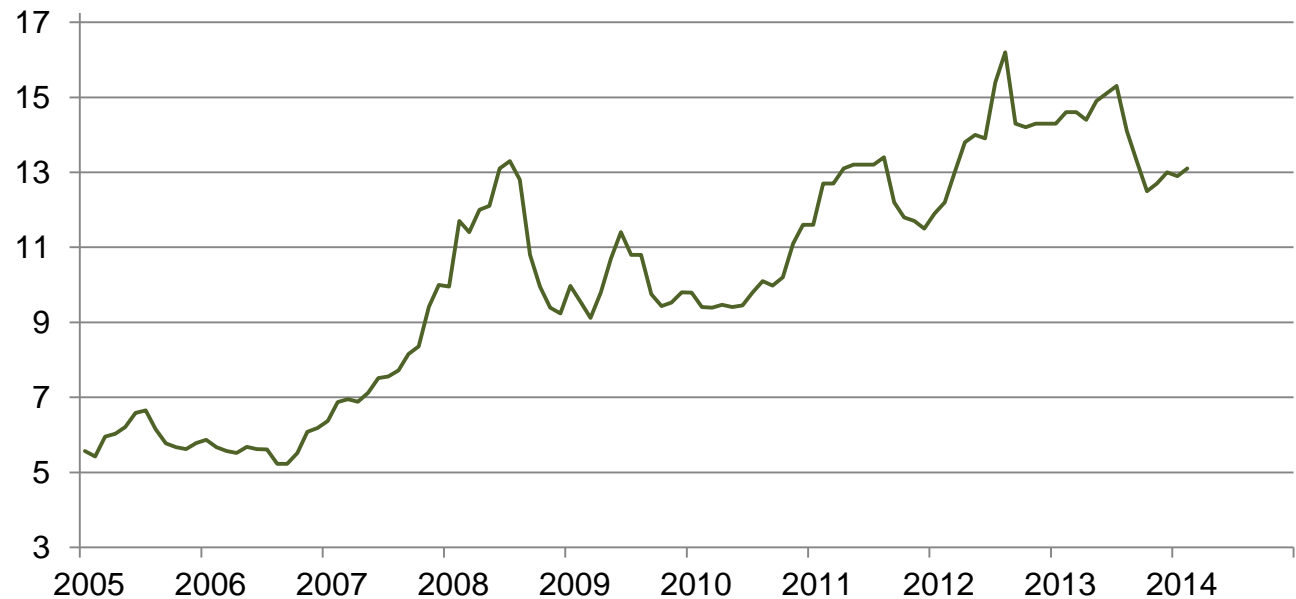
Prices Received for Upland Cotton by Month – United States

Dollars per pound



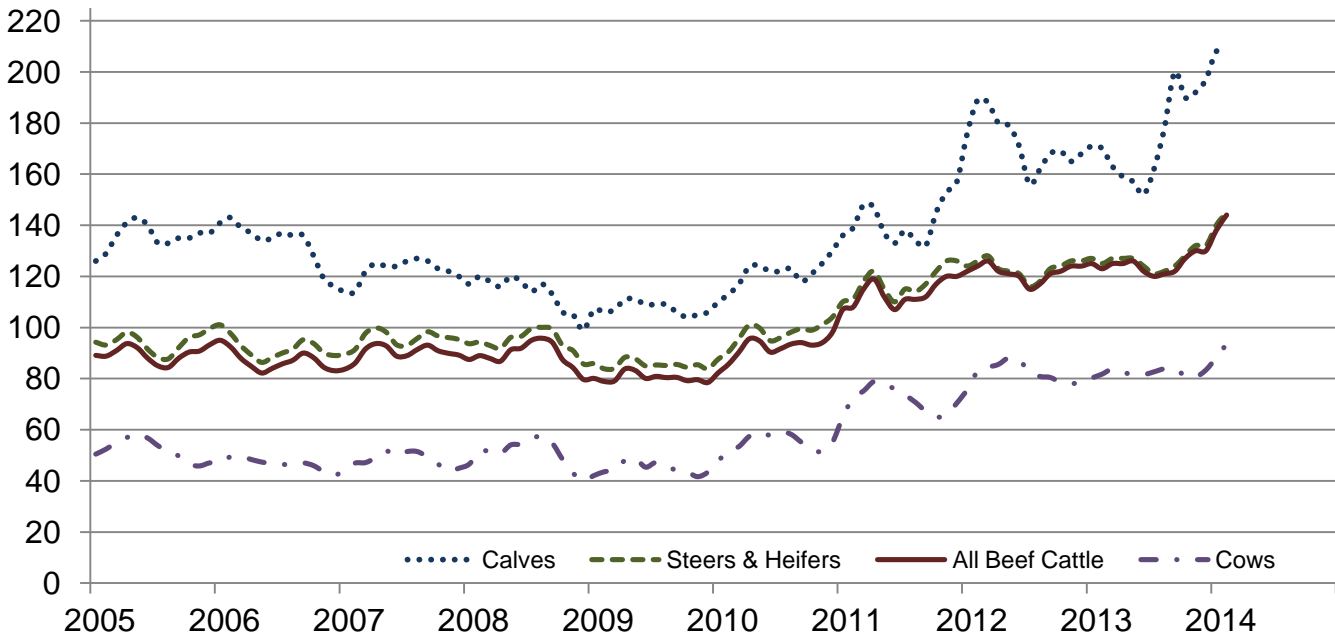
Prices Received for Soybeans by Month – United States

Dollars per bushel



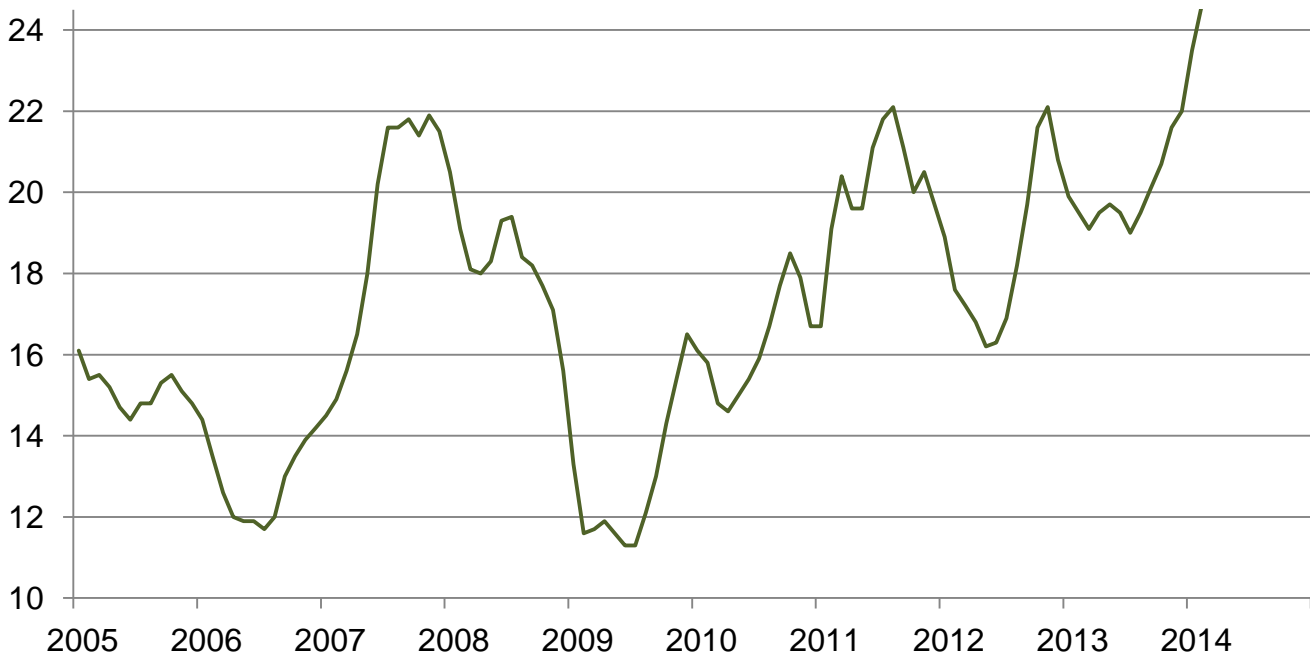
Prices Received for Cattle by Month – United States

Dollars per cwt



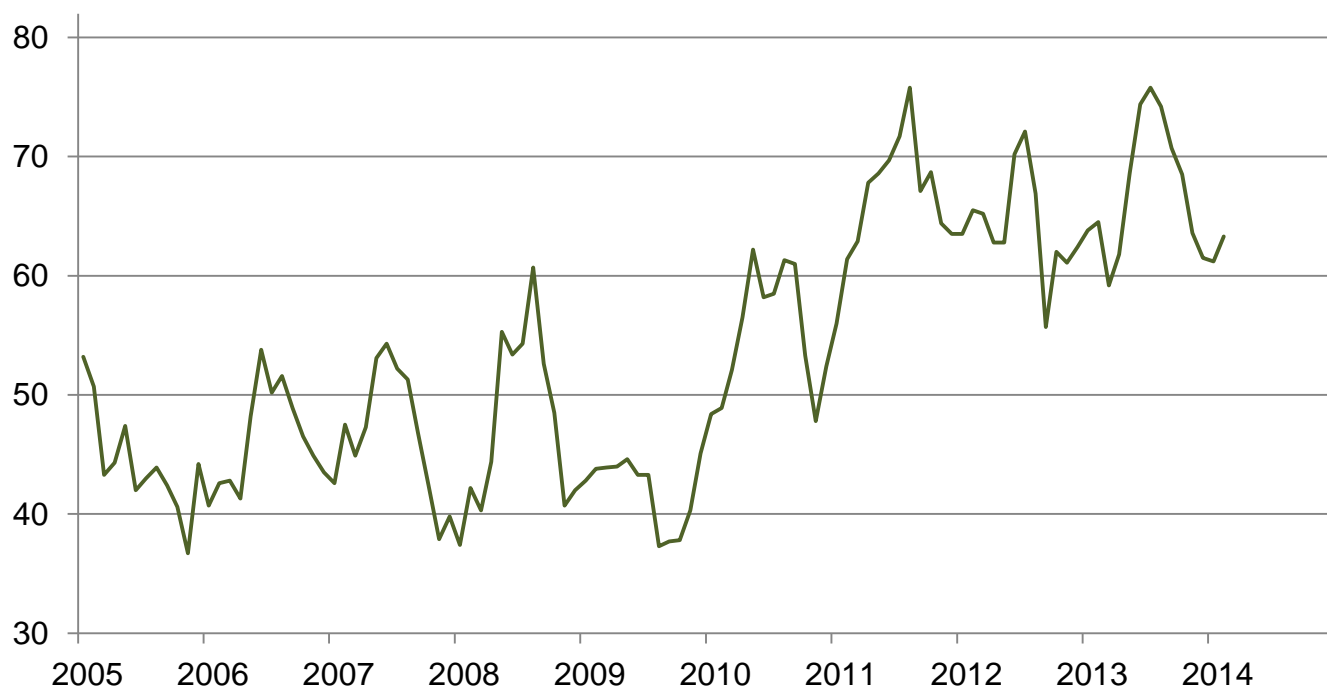
Prices Received for Milk by Month – United States

Dollars per cwt



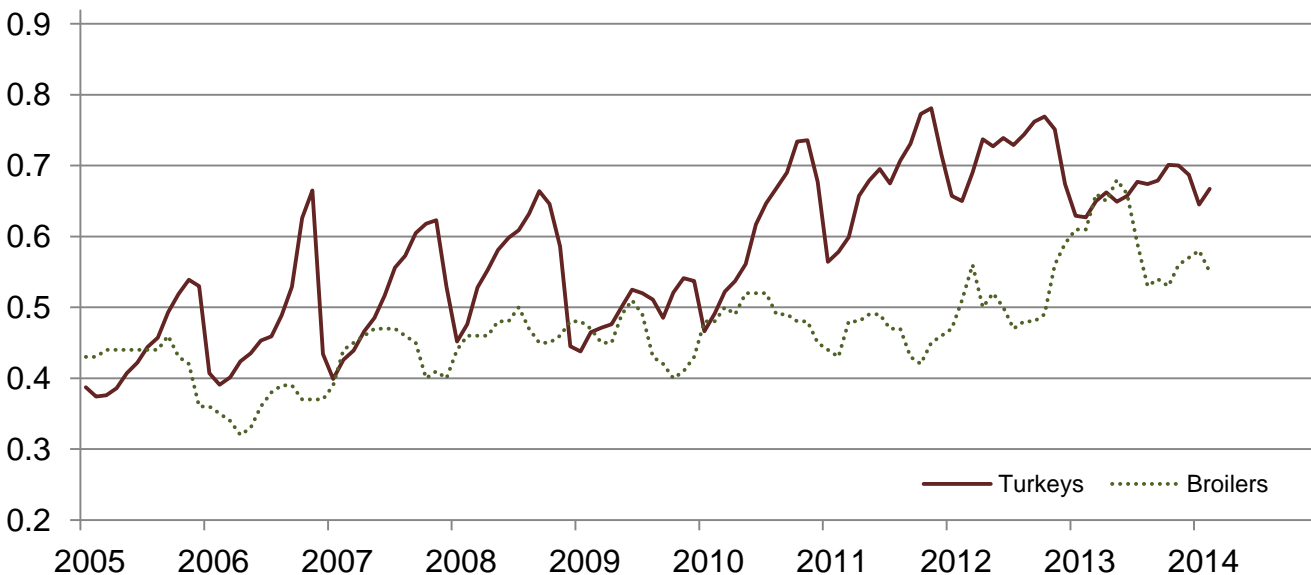
Prices Received for Hogs by Month – United States

Dollars per cwt



Prices Received for Poultry by Month – United States

Dollars per pound



Prices Received for All Wheat, Corn, and Soybeans by Month – United States: 2014 with Comparisons

[Current month prices are mid-month; prices for previous months and years are for the entire month. Blank data cells indicate estimation period has not yet begun]

Month	All wheat			Corn			Soybeans		
	2012	2013	Preliminary 2014	2012	2013	Preliminary 2014	2012	2013	Preliminary 2014
	(dollars per bushel)	(dollars per bushel)	(dollars per bushel)	(dollars per bushel)	(dollars per bushel)	(dollars per bushel)	(dollars per bushel)	(dollars per bushel)	(dollars per bushel)
January	7.05	8.12	6.66	6.07	6.96	4.42	11.90	14.30	12.90
February	7.10	7.97	6.67	6.28	7.04	4.47	12.20	14.60	13.10
March	7.20	7.79		6.35	7.13		13.00	14.60	
April	7.11	7.71		6.34	6.97		13.80	14.40	
May	6.67	7.68		6.34	6.97		14.00	14.90	
June	6.70	7.32		6.37	6.97		13.90	15.10	
July	7.89	6.93		7.14	6.79		15.40	15.30	
August	8.04	6.87		7.63	6.21		16.20	14.10	
September ...	8.27	6.80		6.89	5.40		14.30	13.30	
October	8.38	7.00		6.78	4.61		14.20	12.50	
November	8.47	6.85		7.01	4.35		14.30	12.70	
December	8.30	6.73		6.87	4.41		14.30	13.00	

Prices Received for Beef Cattle and All Hogs by Month – United States: 2014 with Comparisons

[Current month prices are mid-month; prices for previous months and years are for the entire month. Blank data cells indicate estimation period has not yet begun]

Month	Beef cattle ¹			All hogs ²		
	2012	2013	Preliminary 2014	2012	2013	Preliminary 2014
	(dollars per cwt)	(dollars per cwt)	(dollars per cwt)	(dollars per cwt)	(dollars per cwt)	(dollars per cwt)
January	122.00	125.00	138.00	63.50	63.80	61.20
February	124.00	123.00	144.00	65.50	64.50	63.30
March	126.00	125.00		65.20	59.20	
April	122.00	125.00		62.80	61.80	
May	121.00	126.00		62.80	68.60	
June	120.00	122.00		70.20	74.40	
July	115.00	120.00		72.10	75.80	
August	117.00	121.00		66.90	74.20	
September	121.00	122.00		55.70	70.70	
October	122.00	127.00		62.00	68.50	
November	124.00	130.00		61.10	63.60	
December	124.00	130.00		62.40	61.50	

¹ Cows and steers & heifers.

² Barrows & gilts and sows.

Prices Received for All Wheat – States and United States: February 2014 with Comparisons

State	February 2013	January 2014	Preliminary February 2014
	(dollars per bushel)	(dollars per bushel)	(dollars per bushel)
Arizona	(D)	(D)	(D)
Arkansas	(D)	(D)	(D)
California	(S)	(D)	(D)
Colorado	7.72	6.54	6.45
Idaho	8.02	7.02	(D)
Illinois	8.05	6.48	6.20
Indiana	7.80	6.11	6.05
Kansas	7.58	6.65	6.66
Michigan	7.51	6.59	6.15
Minnesota	7.94	6.36	6.60
Missouri	7.13	6.25	6.10
Montana	8.26	6.81	6.89
Nebraska	7.64	6.62	6.55
North Carolina	7.97	6.08	5.90
North Dakota	8.03	6.41	6.31
Ohio	7.67	6.13	6.05
Oklahoma	7.45	6.45	6.51
Oregon	8.20	7.11	(D)
South Dakota	8.05	6.46	6.65
Texas	7.22	7.31	6.70
Washington	8.05	6.99	7.11
United States	7.97	6.66	6.67

(D) Withheld to avoid disclosing data for individual operations.

(S) Insufficient number of reports to establish an estimate.

Prices Received for Winter Wheat – States and United States: February 2014 with Comparisons

State	February 2013	January 2014	Preliminary February 2014
	(dollars per bushel)	(dollars per bushel)	(dollars per bushel)
Arkansas	(D)	(D)	(D)
California	(D)	(D)	(D)
Colorado	7.72	6.55	6.45
Idaho	7.95	7.04	6.83
Illinois	8.05	6.48	6.20
Indiana	7.80	6.11	6.05
Kansas	7.58	6.65	6.66
Michigan	7.51	6.59	6.15
Minnesota	(S)	(D)	(S)
Missouri	7.13	6.25	6.10
Montana	8.22	7.02	6.75
Nebraska	7.64	6.62	6.55
North Carolina	7.97	6.08	5.90
North Dakota	7.56	5.94	5.85
Ohio	7.67	6.13	6.05
Oklahoma	7.45	6.45	6.51
Oregon	8.14	(D)	(D)
South Dakota	7.92	6.48	6.57
Texas	7.22	7.31	6.70
Washington	8.01	6.83	6.95
United States	7.85	6.73	6.63

(D) Withheld to avoid disclosing data for individual operations.

(S) Insufficient number of reports to establish an estimate.

Prices Received for Durum Wheat – States and United States: February 2014 with Comparisons

State	February 2013	January 2014	Preliminary February 2014
	(dollars per bushel)	(dollars per bushel)	(dollars per bushel)
Arizona	(D)	(D)	(D)
California	(S)	(S)	(S)
Idaho	(S)	(S)	(S)
Montana	8.10	7.01	(D)
North Dakota	8.22	7.03	6.85
United States	8.19	7.06	6.87

(D) Withheld to avoid disclosing data for individual operations.

(S) Insufficient number of reports to establish an estimate.

Prices Received for Spring Wheat – States and United States: February 2014 with Comparisons

State	February 2013	January 2014	Preliminary February 2014
	(dollars per bushel)	(dollars per bushel)	(dollars per bushel)
Colorado	(S)	(D)	(S)
Idaho	8.21	(D)	(D)
Minnesota	7.94	6.36	6.60
Montana	8.33	6.59	7.05
North Dakota	8.02	6.19	6.20
Oregon	(D)	7.41	7.33
South Dakota	8.11	6.45	6.71
Washington	8.27	7.53	7.60
United States	8.11	6.48	6.70

(D) Withheld to avoid disclosing data for individual operations.

(S) Insufficient number of reports to establish an estimate.

Prices Received for All Barley – States and United States: February 2014 with Comparisons

State	February 2013	January 2014	Preliminary February 2014
	(dollars per bushel)	(dollars per bushel)	(dollars per bushel)
California	(D)	(D)	(D)
Colorado	(D)	(D)	(D)
Idaho	6.57	6.29	6.58
Minnesota	(D)	6.75	(S)
Montana	6.49	6.49	5.72
North Dakota	6.42	5.99	5.64
Oregon	(D)	3.72	(D)
Utah	(D)	(D)	(D)
Washington	5.54	3.55	3.69
Wyoming	(D)	(D)	(D)
United States	6.48	6.02	5.77

(D) Withheld to avoid disclosing data for individual operations.

(S) Insufficient number of reports to establish an estimate.

Prices Received for Malting Barley – States: February 2014 with Comparisons

State	February 2013	January 2014	Preliminary February 2014
	(dollars per bushel)	(dollars per bushel)	(dollars per bushel)
Idaho	6.57	6.55	(D)
Minnesota	(D)	6.75	(S)
Montana	6.59	6.58	5.75
North Dakota	6.51	6.44	6.00
Wyoming	(D)	(D)	(D)

(D) Withheld to avoid disclosing data for individual operations.

(S) Insufficient number of reports to establish an estimate.

Prices Received for Feed Barley – States: February 2014 with Comparisons

State	February 2013	January 2014	Preliminary February 2014
	(dollars per bushel)	(dollars per bushel)	(dollars per bushel)
Idaho	6.49	4.56	(D)
Minnesota	(D)	(S)	(S)
Montana	5.28	3.36	(D)
North Dakota	5.43	3.76	3.60
Wyoming	(D)	(S)	(S)

(D) Withheld to avoid disclosing data for individual operations.

(S) Insufficient number of reports to establish an estimate.

Prices Received for Corn – States and United States: February 2014 with Comparisons

State	February 2013	January 2014	Preliminary February 2014
	(dollars per bushel)	(dollars per bushel)	(dollars per bushel)
Colorado	7.26	4.52	4.56
Illinois	7.05	4.47	4.50
Indiana	7.38	4.49	4.50
Iowa	7.01	4.43	4.50
Kansas	7.19	4.43	4.48
Kentucky	7.18	4.56	4.60
Michigan	6.92	4.13	4.30
Minnesota	6.88	4.38	4.50
Missouri	7.52	4.52	4.60
Nebraska	6.96	4.37	4.50
North Carolina	7.65	4.71	4.85
North Dakota	6.61	4.15	4.00
Ohio	7.18	4.37	4.50
Pennsylvania	7.36	4.50	4.49
South Dakota	6.88	4.11	4.03
Tennessee	7.80	4.68	4.75
Texas	7.17	5.04	4.98
Wisconsin	7.03	4.40	4.50
United States	7.04	4.42	4.47

Prices Received for Soybeans – States and United States: February 2014 with Comparisons

State	February 2013	January 2014	Preliminary February 2014
	(dollars per bushel)	(dollars per bushel)	(dollars per bushel)
Arkansas	14.90	13.30	13.30
Illinois	14.70	13.10	13.20
Indiana	14.80	13.20	13.40
Iowa	14.60	12.80	13.00
Kansas	14.50	12.60	12.70
Kentucky	14.60	13.20	13.40
Louisiana	14.70	(D)	(D)
Michigan	13.60	12.80	13.20
Minnesota	14.40	12.60	12.80
Mississippi	15.90	13.00	13.30
Missouri	14.80	13.10	13.20
Nebraska	14.40	12.70	13.00
North Carolina	14.20	12.90	13.30
North Dakota	14.10	12.40	12.40
Ohio	14.80	13.10	13.40
South Dakota	14.40	12.50	12.60
Tennessee	15.10	13.10	13.30
Wisconsin	14.40	12.80	13.00
United States	14.60	12.90	13.10

(D) Withheld to avoid disclosing data for individual operations.

Prices Received for Oats – States and United States: February 2014 with Comparisons

State	February 2013	January 2014	Preliminary February 2014
	(dollars per bushel)	(dollars per bushel)	(dollars per bushel)
Illinois	(D)	(D)	(S)
Iowa	4.03	4.05	4.10
Michigan	(D)	(D)	(D)
Minnesota	4.02	3.55	3.65
Montana	(S)	(S)	(S)
Nebraska	(D)	4.48	(D)
New York	(D)	(D)	(D)
North Dakota	3.24	3.11	(D)
Oregon	(S)	(S)	(S)
Pennsylvania	(D)	3.77	3.70
South Dakota	4.37	3.72	3.69
Texas	(S)	(S)	(S)
Wisconsin	4.33	4.00	4.00
United States	4.14	3.70	3.60

(D) Withheld to avoid disclosing data for individual operations.

(S) Insufficient number of reports to establish an estimate.

Prices Received for Sorghum Grain – States and United States: February 2014 with Comparisons

State	February 2013	January 2014	Preliminary February 2014
	(dollars per cwt)	(dollars per cwt)	(dollars per cwt)
Arkansas	(D)	(D)	(D)
Illinois	12.30	7.15	(S)
Kansas	12.10	7.34	7.54
Louisiana	(D)	(S)	(S)
Missouri	12.80	8.12	8.20
Nebraska	12.20	7.06	7.40
Oklahoma	11.70	7.26	7.50
Texas	12.20	7.90	8.37
United States	12.10	7.52	7.63

(D) Withheld to avoid disclosing data for individual operations.

(S) Insufficient number of reports to establish an estimate.

Prices Received for Dry Beans – States and United States: February 2014 with Comparisons

State	February 2013	January 2014	Preliminary February 2014
	(dollars per cwt)	(dollars per cwt)	(dollars per cwt)
California	(D)	56.60	(S)
Colorado	36.00	40.40	(D)
Idaho	39.40	32.20	38.50
Michigan	(D)	45.10	(D)
Minnesota	47.80	(S)	(S)
Nebraska	37.40	46.30	46.70
North Dakota	31.50	35.70	34.00
United States	37.70	39.60	39.60

(D) Withheld to avoid disclosing data for individual operations.

(S) Insufficient number of reports to establish an estimate.

Prices Received for Peanuts (in shell) – States and United States: February 2014 with Comparisons

State	February 2013	January 2014	Preliminary February 2014
	(dollars per pound)	(dollars per pound)	(dollars per pound)
Alabama	0.212	(D)	0.211
Florida	0.266	0.261	0.224
Georgia	0.246	0.242	0.223
Mississippi	0.249	0.209	(S)
New Mexico	(D)	(S)	(S)
North Carolina	0.335	0.271	(D)
Oklahoma	0.361	0.286	0.272
South Carolina	0.311	0.264	(S)
Texas	0.489	0.285	0.260
Virginia	0.353	(S)	(S)
United States	0.282	0.254	0.228

(D) Withheld to avoid disclosing data for individual operations.

(S) Insufficient number of reports to establish an estimate.

Prices Received for Sunflower – States and United States: February 2014 with Comparisons

State	February 2013	January 2014	Preliminary February 2014
	(dollars per cwt)	(dollars per cwt)	(dollars per cwt)
Colorado	(D)	(D)	(S)
Kansas	26.80	22.70	22.30
Minnesota	(D)	(D)	(S)
North Dakota	26.40	20.80	25.10
South Dakota	25.50	17.90	20.10
United States	26.10	20.30	22.60

(D) Withheld to avoid disclosing data for individual operations.

(S) Insufficient number of reports to establish an estimate.

Prices Received for Canola – States and United States: February 2014 with Comparisons

State	February 2013	January 2014	Preliminary February 2014
	(dollars per cwt)	(dollars per cwt)	(dollars per cwt)
Minnesota	(D)	(D)	(S)
North Dakota	27.80	18.30	17.30
United States	27.80	18.40	17.30

(D) Withheld to avoid disclosing data for individual operations.

(S) Insufficient number of reports to establish an estimate.

Prices Received for Flaxseed – States and United States: February 2014 with Comparisons

State	February 2013	January 2014	Preliminary February 2014
	(dollars per bushel)	(dollars per bushel)	(dollars per bushel)
North Dakota	14.30	13.30	13.00
United States	14.30	13.30	13.00

Prices Received for Upland Cotton and Cottonseed – States and United States: February 2014 with Comparisons

[Cottonseed marketing year August - February]

State	Cotton, Upland			Cottonseed		
	February 2013	January 2014	Preliminary February 2014	February 2013	January 2014	Preliminary February 2014
	(dollars per pound)	(dollars per pound)	(dollars per pound)	(dollars per ton)	(dollars per ton)	(dollars per ton)
Alabama	0.799	0.784	(D)	205.00	214.00	203.00
Arizona	0.746	0.777	(S)	(S)	270.00	(S)
Arkansas	0.764	0.760	(D)	(S)	(S)	(S)
California	0.898	(D)	(S)	(S)	(S)	(S)
Georgia	0.775	0.809	0.792	209.00	203.00	199.00
Louisiana	0.768	0.785	(D)	(S)	(S)	(S)
Mississippi	0.773	0.783	(D)	(S)	(S)	(S)
North Carolina	0.764	0.800	0.784	222.00	246.00	235.00
Tennessee	0.756	0.796	(D)	(S)	(S)	(S)
Texas	0.727	0.753	0.760	271.00	243.00	248.00
United States	0.769	0.769	0.767	217.00	230.00	227.00

(D) Withheld to avoid disclosing data for individual operations.

(S) Insufficient number of reports to establish an estimate.

Prices Received and Farm Marketings for Upland Cotton and Rice – United States: February 2014 with Comparisons

Item	February 2013	January 2014	Preliminary February 2014
Cotton, Upland			
Average pricedollars/pound	0.769	0.769	0.767
Marketings ¹1,000 bales	848	2,346	(NA)
Rice, all			
Average pricedollars/cwt	15.00	16.00	17.10
Marketings ²1,000 cwt	15,410	17,345	(NA)
Rice, long			
Average pricedollars/cwt	14.70	15.50	15.80
Marketings ²1,000 cwt	12,939	12,226	(NA)
Rice, medium and short			
Average pricedollars/cwt	16.90	17.40	20.20
Marketings ²1,000 cwt	2,471	5,119	(NA)

(NA) Not available.

¹ Marketings based on a survey of cotton buyers in the major producing States - Alabama, Arizona, Arkansas, California, Georgia, Louisiana, Mississippi, North Carolina, Tennessee, and Texas.

² Purchases by private firms and rice (rough equivalent) shipped by cooperatives.

Prices Received for Hay by Type – States and United States: February 2014 with Comparisons

State	All hay			Alfalfa hay			Other hay		
	February 2013	January 2014	Preliminary February 2014	February 2013	January 2014	Preliminary February 2014	February 2013	January 2014	Preliminary February 2014
	(dollars per ton)	(dollars per ton)	(dollars per ton)	(dollars per ton)	(dollars per ton)	(dollars per ton)	(dollars per ton)	(dollars per ton)	(dollars per ton)
Arizona	201.00	200.00	205.00	200.00	200.00	205.00	210.00	200.00	205.00
California	206.00	202.00	216.00	212.00	207.00	225.00	187.00	187.00	187.00
Colorado	244.00	225.00	229.00	245.00	225.00	230.00	235.00	225.00	225.00
Idaho	197.00	189.00	199.00	200.00	190.00	200.00	150.00	170.00	170.00
Illinois	173.00	167.00	174.00	180.00	180.00	185.00	140.00	120.00	125.00
Iowa	223.00	176.00	167.00	240.00	195.00	180.00	155.00	130.00	115.00
Kansas	206.00	156.00	155.00	235.00	172.00	171.00	130.00	107.00	106.00
Kentucky	122.00	123.00	118.00	210.00	200.00	195.00	100.00	100.00	95.00
Michigan	226.00	160.00	164.00	235.00	175.00	175.00	205.00	130.00	135.00
Minnesota	222.00	173.00	167.00	255.00	200.00	190.00	165.00	133.00	128.00
Missouri	129.00	98.00	93.00	240.00	205.00	205.00	110.00	80.00	80.00
Montana	159.00	141.00	136.00	164.00	145.00	140.00	125.00	120.00	110.00
Nebraska	214.00	147.00	133.00	231.00	154.00	142.00	162.00	124.00	105.00
Nevada	203.00	203.00	213.00	205.00	204.00	213.00	163.00	187.00	187.00
New Mexico	246.00	237.00	237.00	260.00	245.00	245.00	175.00	180.00	180.00
New York	135.00	166.00	167.00	208.00	205.00	190.00	130.00	160.00	165.00
North Dakota	130.00	102.00	101.00	138.00	104.00	104.00	89.00	71.00	67.00
Ohio	225.00	165.00	158.00	230.00	190.00	185.00	222.00	145.00	145.00
Oklahoma	146.00	150.00	151.00	240.00	198.00	206.00	130.00	89.00	92.00
Oregon	216.00	186.00	189.00	220.00	200.00	210.00	212.00	170.00	160.00
Pennsylvania	177.00	188.00	185.00	209.00	198.00	199.00	170.00	182.00	177.00
South Dakota	209.00	135.00	126.00	230.00	137.00	131.00	158.00	129.00	105.00
Texas	112.00	100.00	110.00	242.00	234.00	247.00	95.00	85.00	84.00
Utah	184.00	172.00	180.00	184.00	175.00	180.00	148.00	145.00	145.00
Washington	227.00	202.00	196.00	230.00	190.00	185.00	220.00	225.00	220.00
Wisconsin	244.00	190.00	183.00	260.00	200.00	195.00	170.00	132.00	129.00
Wyoming	217.00	174.00	174.00	220.00	180.00	180.00	200.00	155.00	155.00
United States ..	192.00	165.00	168.00	218.00	185.00	188.00	151.00	130.00	129.00

Prices Received for Apples – States and United States: February 2014 with Comparisons

[Equivalent packinghouse-door returns for California, Michigan, New York, and Washington. Prices at point of first sale for other States]

State	Apples, fresh use		
	February 2013	January 2014	Preliminary February 2014
	(dollars per pound)	(dollars per pound)	(dollars per pound)
California	(NA)	(NA)	(NA)
Michigan	(NA)	(NA)	(NA)
New York	0.461	(NA)	(NA)
Ohio	0.720	(NA)	(NA)
Pennsylvania	(S)	(NA)	(NA)
Virginia	0.560	(NA)	(NA)
Washington	0.429	(NA)	(NA)
United States	0.435	(NA)	(NA)

(NA) Not available.

(S) Insufficient number of reports to establish an estimate.

Prices Received for Citrus Fruits by Utilization – States and United States: February 2013

[Net pounds per box: grapefruit in California-80, Florida-85, Texas-80; lemons-80; oranges in California-80, Florida-90, Texas-85; tangelos-90; tangerines and mandarins in Arizona and California-80, Florida-95]

Commodity, State, and type	FOB packed fresh	Equivalent returns					
		Packinghouse door			On-tree		
		All	Fresh	Process	All	Fresh	Process
	(dollars per box)	(dollars per box)	(dollars per box)	(dollars per box)	(dollars per box)	(dollars per box)	(dollars per box)
Grapefruit							
California ¹	20.50	13.84	13.84	(D)	11.66	11.66	(D)
Florida	21.90	8.25	11.12	6.62	5.47	8.88	3.53
White	23.40	7.96	12.45	6.75	5.29	10.25	3.95
Colored	21.60	8.37	10.85	6.55	5.55	8.60	3.30
Texas	25.30	7.99	13.90	1.60	6.49	12.32	0.17
United States	21.80	8.46	11.39	6.62	5.71	9.16	3.53
Lemons							
Arizona	(D)	(D)	(D)	(D)	(D)	(D)	(D)
California	29.30	12.79	20.22	(D)	7.42	14.32	(D)
United States	29.30	12.64	20.27	(D)	7.28	14.37	(D)
Oranges							
California	21.60	10.96	12.61	(D)	8.42	10.10	(D)
Navel and miscellaneous	21.60	10.96	12.61	(D)	8.42	10.10	(D)
Florida	21.70	8.77	10.55	8.72	6.27	7.95	6.22
Early and mids	21.70	8.77	10.55	8.72	6.27	7.95	6.22
United States	21.60	9.57	12.51	8.09	7.05	9.99	5.58
Tangerines and mandarins							
Arizona	(D)	(D)	(D)	(D)	(D)	(D)	(D)
California	(D)	(D)	(D)	(D)	(D)	(D)	(D)
Florida	34.50	15.90	21.10	7.65	12.02	17.55	3.25
United States	36.60	23.54	27.62	2.35	20.57	24.84	-1.56

(D) Withheld to avoid disclosing data for individual operations.

¹ Some processed sales included in fresh sales.

Prices Received for Citrus Fruits by Utilization – States and United States: January 2014

[Net pounds per box: grapefruit in California-80, Florida-85, Texas-80; lemons-80; oranges in California-80, Florida-90, Texas-85; tangelos-90; tangerines and mandarins in Arizona and California-80, Florida-95]

Commodity, State, and type	FOB packed fresh	Equivalent returns					
		Packinghouse door			On-tree		
		All	Fresh	Process	All	Fresh	Process
	(dollars per box)	(dollars per box)	(dollars per box)	(dollars per box)	(dollars per box)	(dollars per box)	(dollars per box)
Grapefruit							
California ¹	16.90	10.11	10.11	(D)	7.89	7.89	(D)
Florida	22.60	8.80	11.79	5.11	6.17	9.54	2.00
White	27.40	9.14	16.45	6.20	6.51	14.25	3.40
Colored	22.00	8.72	11.25	4.60	6.09	9.00	1.35
Texas	29.20	12.19	17.60	1.60	10.63	15.99	0.14
United States	23.10	9.48	12.65	4.59	7.07	10.53	1.73
Lemons							
Arizona	(D)	(D)	(D)	(D)	(D)	(D)	(D)
California	47.20	29.65	37.94	(D)	23.92	31.92	(D)
United States	47.50	28.37	38.21	(D)	22.69	32.19	(D)
Oranges							
California	34.20	16.95	25.03	(D)	14.33	22.47	(D)
Navel and miscellaneous	34.20	16.95	25.03	(D)	14.33	22.47	(D)
Florida	27.50	8.95	16.35	8.75	6.45	13.75	6.25
Early and mids	27.50	8.95	16.35	8.75	6.45	13.75	6.25
United States	33.30	10.57	23.85	8.07	8.04	21.29	5.56
Tangelos							
Florida	23.10	9.38	11.45	7.30	6.60	8.70	4.50
United States	23.10	9.38	11.45	7.30	6.60	8.70	4.50
Tangerines and mandarins							
Arizona	(D)	(D)	(D)	(D)	(D)	(D)	(D)
California	(D)	(D)	(D)	(D)	(D)	(D)	(D)
Florida	45.00	24.59	31.60	7.35	20.79	28.05	2.95
United States	37.60	25.38	28.21	3.73	22.33	25.33	-0.64

(D) Withheld to avoid disclosing data for individual operations.

¹ Some processed sales included in fresh sales.

Prices Received for Citrus Fruits by Utilization – States and United States: February 2014

[Net pounds per box: grapefruit in California-80, Florida-85, Texas-80; lemons-80; oranges in California-80, Florida-90, Texas-85; tangelos-90; tangerines and mandarins in Arizona and California-80, Florida-95]

Commodity, State, and type	FOB packed fresh	Equivalent returns					
		Packinghouse door			On-tree		
		All	Fresh	Process	All	Fresh	Process
	(dollars per box)	(dollars per box)	(dollars per box)	(dollars per box)	(dollars per box)	(dollars per box)	(dollars per box)
Grapefruit							
California ¹	18.50	11.71	11.71	(D)	9.49	9.49	(D)
Florida	22.70	8.12	11.94	5.36	5.38	9.70	2.26
White	27.70	8.82	16.75	6.50	6.16	14.55	3.70
Colored	21.90	7.87	11.15	4.75	5.11	8.90	1.50
Texas	24.30	7.64	12.70	1.60	6.10	11.09	0.14
United States	22.80	8.12	12.08	4.84	5.60	9.96	1.97
Lemons							
Arizona	(D)	(D)	(D)	(D)	(D)	(D)	(D)
California	46.70	28.41	37.44	(D)	22.71	31.42	(D)
United States	46.70	26.59	37.48	(D)	20.96	31.46	(D)
Oranges							
California	36.00	21.31	26.83	(D)	18.71	24.27	(D)
Navel and miscellaneous	36.00	21.31	26.83	(D)	18.71	24.27	(D)
Florida	27.50	9.82	16.35	9.60	7.32	13.75	7.10
Early and mids	27.50	9.82	16.35	9.60	7.32	13.75	7.10
United States	35.50	14.34	26.19	8.44	11.80	23.63	5.91
Tangerines and mandarins							
Arizona	(D)	(D)	(D)	(D)	(D)	(D)	(D)
California	(D)	(D)	(D)	(D)	(D)	(D)	(D)
Florida	44.60	23.64	31.20	8.15	19.81	27.65	3.75
United States	42.80	29.36	33.73	2.35	26.32	30.91	-2.01

(D) ¹ Withheld to avoid disclosing data for individual operations.
Some processed sales included in fresh sales.

Prices Received for Potatoes – States and United States: February 2014 with Comparisons

State	February 2013	January 2014	Preliminary February 2014
	(dollars per cwt)	(dollars per cwt)	(dollars per cwt)
California			
Spring	(S)	(S)	(S)
Fall	6.75	9.60	9.60
All ¹	6.75	9.60	9.60
Colorado			
Fresh ²	6.90	9.80	(D)
All ¹	6.50	9.10	9.00
Florida	(D)	(S)	(S)
Idaho			
Fresh ²	4.10	7.30	(D)
Processing	8.20	7.75	(D)
All ¹	6.75	7.55	7.50
Maine	11.00	11.50	11.90
Michigan	12.30	13.30	14.80
Minnesota	8.90	10.80	10.80
New York	14.00	14.40	14.90
North Carolina	(S)	(S)	(S)
North Dakota			
Fresh ²	8.45	(D)	(D)
Processing	8.25	(D)	(D)
All ¹	8.50	10.60	(D)
Oregon	7.85	8.50	8.70
Texas	(S)	(S)	(S)
Virginia	(S)	(S)	(S)
Washington			
Processing	7.55	8.30	(D)
All ¹	7.60	9.20	9.15
Wisconsin			
Fresh ²	7.00	10.50	(D)
Processing	9.20	9.80	(D)
All ¹	8.60	10.10	9.25
United States			
Fresh ²	6.89	9.69	(D)
Processing	8.51	9.11	(D)
All ¹	8.12	9.36	9.06

(D) Withheld to avoid disclosing data for individual operations.

(S) Insufficient number of reports to establish an estimate.

¹ Average price of potatoes sold for all uses, including table stock, processing, seed, and livestock feed.

² Fresh market prices only. Includes table stock prices.

Prices Received for All Milk – States and United States: February 2014 with Comparisons

[Before deduction for hauling. Includes quality, quantity, and other premiums. Excludes hauling subsidies]

State	February 2013		January 2014		Preliminary February 2014	
	Price (dollars per cwt)	Fat test (percent)	Price (dollars per cwt)	Fat test (percent)	Price (dollars per cwt)	Fat test (percent)
Arizona	18.60	3.55	22.60	3.55	23.70	3.50
California	18.01	3.80	22.42	3.84	23.30	3.77
Colorado	19.80	3.66	23.00	3.61	24.20	3.60
Florida	23.30	3.70	26.60	3.64	27.10	3.62
Idaho	18.50	3.85	22.60	3.84	24.60	3.80
Illinois	20.00	3.84	23.90	3.85	25.00	3.80
Indiana	20.10	3.82	23.90	3.86	24.90	3.83
Iowa	20.00	3.84	23.90	3.86	25.00	3.83
Kansas	19.90	3.82	23.90	3.87	25.10	3.84
Michigan	19.90	3.77	23.50	3.82	24.50	3.79
Minnesota	20.00	3.92	23.80	3.96	25.00	3.93
Missouri	20.00	3.83	23.70	3.83	24.50	3.79
New Mexico	18.40	3.67	22.50	3.63	23.70	3.61
New York	20.70	3.81	24.30	3.86	25.60	3.85
Ohio	20.90	3.89	24.10	3.88	25.10	3.85
Oregon	20.50	3.92	25.00	4.00	26.50	3.94
Pennsylvania	21.10	3.82	24.90	3.86	26.10	3.80
Texas	19.80	3.90	24.40	3.94	25.50	3.90
Utah	19.10	3.88	22.30	3.87	23.50	3.85
Vermont	20.80	3.87	24.50	3.87	25.40	3.85
Virginia	22.20	3.81	25.80	3.78	26.90	3.77
Washington	19.80	3.92	24.10	4.00	25.70	3.94
Wisconsin	19.70	3.85	23.80	3.86	24.90	3.83
United States	19.50	3.82	23.50	3.84	24.70	3.80

Prices Received for Milk Cows – States and United States: January 2014 with Comparisons

[Animals sold for dairy herd replacement only. Milk cow price program suspended in 2013 during the April and July quarters. Quarterly U.S. milk cow prices are based on revised milk cow inventory.]

State	January 2013 (dollars per head)	October 2013 (dollars per head)	January 2014 (dollars per head)
Arizona	1,500	1,500	1,500
California	1,200	1,300	1,300
Colorado	1,500	1,520	1,540
Florida	1,470	1,550	1,560
Idaho	1,300	1,350	1,400
Illinois	1,450	1,420	1,500
Indiana	1,440	1,450	1,500
Iowa	1,400	1,380	1,450
Kansas	1,350	1,350	1,400
Michigan	1,600	1,600	1,650
Minnesota	1,400	1,350	1,410
Missouri	1,200	1,200	1,280
New Mexico	1,380	1,440	1,450
New York	1,400	1,420	1,430
Ohio	1,400	1,400	1,450
Oregon	1,300	1,300	1,350
Pennsylvania	1,430	1,450	1,500
Texas	1,350	1,450	1,450
Utah	1,280	1,290	1,350
Vermont	1,490	1,510	1,570
Virginia	1,520	1,490	1,520
Washington	1,300	1,300	1,350
Wisconsin	1,480	1,490	1,570
United States	1,370	1,400	1,440

Commodity Parity Prices and Price as Percent of Parity Price – United States: February 2014 with Comparisons

[Parity prices are computed under the provisions of Title III, Subtitle a, Section 301 (a) of the Agricultural Adjustment Act of 1938 as amended by the Agricultural Acts of 1948, 1949, and 1956. See January *Agricultural Prices* for details on adjusted base price and parity price computations. Parity data not available for blank cells. Primary source of data for livestock and milk prices is United States Department of Agriculture's Agricultural Marketing Service]

Commodity and unit	Adjusted base price	Parity price			Price as percent of parity		
		February 2013	January 2014	February 2014	February 2013	January 2014	February 2014
	(dollars)	(dollars)	(dollars)	(dollars)	(percent)	(percent)	(percent)
Basic commodities							
All wheat bushel	0.616	18.60	17.70	17.90	43	38	37
Rice cwt	1.32	48.20	37.90	38.40	31	42	45
Corn bushel	0.443	12.70	12.70	12.90	55	35	35
Cotton							
Upland pound	0.067	2.10	1.92	1.95	37	40	39
American Pima pound	0.137	3.89	3.93	3.98	32	42	42
Peanuts pound	0.025	0.789	0.703	0.727	36	36	31
Designated nonbasic							
All milk, to plants ¹ cwt	1.81	51.10	52.00	52.60	38	45	47
Honey, extracted ² pound	0.147	4.12	4.22	4.27	47	46	46
Wool and mohair							
Wool pound	0.109	3.13	3.13	3.17	49	46	46
Mohair pound	0.351	9.82	10.10	10.20	40	39	38
Other nonbasic							
Apples, fresh ³ pound	0.034	0.935	0.976	0.988	47	42	45
Barley bushel	0.452	13.00	13.00	13.10	50	46	44
Canola cwt	1.880	54.90	54.00	54.70	51	34	32
Cottonseed ton	19.10	520.00	548.00	555.00	42	42	41
Dry edible beans cwt	3.20	88.00	91.90	93.00	43	43	43
Flaxseed bushel	1.150	32.40	33.00	33.40	44	40	39
Oats bushel	0.284	7.74	8.15	8.26	53	45	44
Potatoes cwt	0.836	24.00	24.00	24.30	34	39	37
Sorghum grain cwt	0.749	22.10	21.50	21.80	55	35	35
Soybeans bushel	1.060	30.10	30.40	30.80	49	42	43
Sunflower, all cwt	2.12	61.40	60.90	61.60	43	33	37
Citrus (equivalent on-tree)							
Grapefruit box	0.726	20.40	20.80	21.10	28	34	27
Lemons box	1.36	38.60	39.00	39.50	19	58	53
Oranges box	0.770	20.80	22.10	22.40	34	36	53
Tangerines box	1.61	43.50	46.20	46.80	47	48	56
Livestock and poultry							
Beef cattle cwt	10.40	292.00	299.00	302.00	42	46	48
Calves cwt	14.30	400.00	411.00	416.00	43	51	50
Hogs cwt	5.76	160.00	165.00	167.00	40	37	38
Eggs ¹ dozen	0.092	2.60	2.64	2.67	38	44	52
Turkeys, live pound	0.060	1.670	1.720	1.740	38	38	38

¹ Seasonally adjusted price as percentage of parity price.

² Wholesale extracted. Adjusted base price derived from state annual averages prices weighted by production. For 1982 through 1985 the national averages are the support prices.

³ Equivalent packinghouse-door returns for California, New York, Oregon, and Washington. Price at point of first sale for other states.

Commodity Parity Prices – United States: February 2014 with Comparisons

[Parity prices are computed under the provisions of Title III, Subtitle a, Section 301 (a) of the Agricultural Adjustment Act of 1938 as amended by the Agricultural Acts of 1948, 1949, and 1956. See January *Agricultural Prices* for details on adjusted base price and parity price computations]

Commodity and unit	Adjusted base price	Parity price			
		February 2013	January 2014	February 2014	
	(dollars)	(dollars)	(dollars)	(dollars)	
Field crops and miscellaneous					
Hops	pound	0.318	8.85	9.13	9.24
Mustard seed	cwt	2.99	83.30	85.80	86.90
Rapeseed	cwt	2.29	65.70	65.70	66.60
Rye	bushel	0.583	15.60	16.70	16.90
Safflower	cwt	2.09	59.60	60.00	60.80
Spearmint oil	pound	1.60	43.80	45.90	46.50
Sweet potatoes	cwt	2.09	60.80	60.00	60.80
Tobacco					
Flue-cured, 11-14	pound	0.185	5.41	5.31	5.38
Fire-cured, 21-23	pound	0.267	7.80	7.67	7.76
Burley, 31	pound	0.188	5.49	5.40	5.47
Maryland, 32	pound	0.169	4.88	4.85	4.91
Dark air-cured, 35-37	pound	0.240	7.01	6.89	6.98
Pennsylvania seedleaf, 41	pound	0.183	5.14	5.25	5.32
Cigar binder, 51	pound	0.632	17.80	18.10	18.40
Noncitrus fruit					
Apples, processing ¹	ton	18.10	485.00	520.00	526.00
Apricots					
Fresh ²	ton	115.00	3,240.00	3,300.00	3,340.00
Dried (California)	ton	256.00	7,360.00	7,350.00	7,440.00
Avocados ²	ton	185.00	5,520.00	5,310.00	5,380.00
Cherries					
Sweet	ton	210.00	5,990.00	6,030.00	6,100.00
Tart	pound	0.033	0.964	0.947	0.959
Cranberry ³	barrel	4.75	137.00	136.00	138.00
Dates (California) ²	ton	161.00	4,700.00	4,620.00	4,680.00
Grapes					
Raisin variety	ton	139.00	3,890.00	3,990.00	4,040.00
Other dried	ton	62.20	1,800.00	1,790.00	1,810.00
Kiwifruit	ton	79.50	2,590.00	2,280.00	2,310.00
Nectarines, fresh (California) ²	ton	54.90	1,600.00	1,580.00	1,600.00
Olives, canning (California) ³	ton	91.10	2,560.00	2,620.00	2,650.00

See footnote(s) at end of table.

--continued

Commodity Parity Prices – United States: February 2014 with Comparisons (continued)

[Parity prices are computed under the provisions of Title III, Subtitle a, Section 301 (a) of the Agricultural Adjustment Act of 1938 as amended by the Agricultural Acts of 1948, 1949, and 1956. See January *Agricultural Prices* for details on adjusted base price and parity price computations]

Commodity and unit	Adjusted base price	Parity price		
		February 2013	January 2014	February 2014
	(dollars)	(dollars)	(dollars)	(dollars)
Noncitrus fruit - continued				
Papayas (Hawaii)pound	0.038	1.11	1.09	1.10
Peaches				
Fresh ⁴ ton	81.40	2,340.00	2,340.00	2,370.00
Dried (California) ton	48.10	1,420.00	1,380.00	1,400.00
Processing, excludes dried				
Clingstone (California) ³ ton	32.50	923.00	933.00	945.00
Pears				
Fresh ⁴ ton	56.10	1,600.00	1,610.00	1,630.00
Dried (California) ¹ ton	150.00	4,380.00	4,310.00	4,360.00
Plums (California)				
Fresh, equivalent on-tree ton	58.90	1,700.00	1,690.00	1,710.00
Prunes, dried (California) ¹ ton	148.00	4,180.00	4,250.00	4,300.00
Prunes and plums				
Fresh, excludes California ⁵ ton	62.90	1,810.00	1,810.00	1,830.00
Processing, excludes dried ¹ ton	23.20	695.00	666.00	674.00
Tree nuts ⁶				
Almondspound	0.213	6.17	6.12	6.19
Hazelnuts ton	198.00	5,580.00	5,680.00	5,760.00
Pistachiospound	0.198	5.67	5.68	5.76
Walnuts ton	171.00	5,410.00	4,910.00	4,970.00
Vegetables, fresh ⁷				
Carrots ⁸ cwt	2.60	75.10	74.60	75.60
Cauliflower ⁸ cwt	4.04	118.00	116.00	117.00
Celery ⁸ cwt	1.96	56.70	56.30	57.00
Honeydew melons cwt	1.94	57.60	55.70	56.40
Lettuce cwt	2.09	61.10	60.00	60.80
Onions ⁸ cwt	1.38	41.20	39.60	40.10
Tomatoes cwt	4.29	126.00	123.00	125.00

¹ Equivalent returns at processing plant door.

² Equivalent returns at packinghouse door.

³ Equivalent returns for bulk fruit at first delivery point.

⁴ Equivalent packinghouse-door returns for California, New York (apples only), Oregon (except peaches), and Washington. Price at point of first sale for other states.

⁵ Based on "as sold" prices for fresh fruit in all states.

⁶ Prices In-Shell basis except almonds which are shelled basis.

⁷ FOB shipping point prices.

⁸ Includes some processing.

Market Year for Specified Commodities

Cattle: January 1 - December 31.

Hogs: December 1 - November 30.

Cattle Market Year Average Prices Received – United States: Marketing Years 2012 and 2013

[All beef includes steer and heifers combined and cows. Cows include beef cows and cull dairy cows sold for slaughter. Milk cow prices are calendar year average of quarterly estimates. Program suspended during April and July quarters in 2013.]

Year	Cows	Steers and heifers	Calves	Beef Cattle	Milk cows
	(dollars per cwt)	(dollars per cwt)	(dollars per cwt)	(dollars per cwt)	(dollars per head)
2012	81.70	123.00	172.00	121.00	1,430.00
2013	82.30	126.00	181.00	125.00	1,380.00

Hog Market Year Average Prices Received – United States: Marketing Years 2012 and 2013

Year	Barrows and gilts	Sows	All
	(dollars per cwt)	(dollars per cwt)	(dollars per cwt)
2012	64.60	51.30	64.20
2013	67.30	62.90	67.20

Milk Cow Market Year Average Prices Received – States and United States: Marketing Years 2012 and 2013

[Calendar year average. Milk cow price program suspended in 2013 during the April and July quarters.]

State	2012 (dollars per head)	2013 (dollars per head)
Alabama	1,430.00	1,410.00
Alaska	1,250.00	1,200.00
Arizona	1,480.00	1,500.00
Arkansas	1,250.00	1,220.00
California	1,330.00	1,200.00
Colorado	1,470.00	1,510.00
Connecticut	1,460.00	1,430.00
Delaware	1,430.00	1,460.00
Florida	1,460.00	1,500.00
Georgia	1,500.00	1,500.00
Hawaii	1,530.00	1,500.00
Idaho	1,430.00	1,330.00
Illinois	1,480.00	1,440.00
Indiana	1,410.00	1,450.00
Iowa	1,440.00	1,390.00
Kansas	1,390.00	1,350.00
Kentucky	1,450.00	1,440.00
Louisiana	1,470.00	1,450.00
Maine	1,420.00	1,370.00
Maryland	1,490.00	1,490.00
Massachusetts	1,450.00	1,360.00
Michigan	1,580.00	1,600.00
Minnesota	1,420.00	1,380.00
Mississippi	1,380.00	1,320.00
Missouri	1,200.00	1,200.00
Montana	1,390.00	1,400.00
Nebraska	1,390.00	1,430.00
Nevada	1,290.00	1,280.00
New Hampshire	1,550.00	1,460.00
New Jersey	1,540.00	1,500.00
New Mexico	1,370.00	1,410.00
New York	1,450.00	1,410.00
North Carolina	1,550.00	1,490.00
North Dakota	1,300.00	1,350.00
Ohio	1,460.00	1,400.00
Oklahoma	1,300.00	1,300.00
Oregon	1,410.00	1,300.00
Pennsylvania	1,480.00	1,440.00
Rhode Island	1,430.00	1,460.00
South Carolina	1,510.00	1,450.00
South Dakota	1,390.00	1,400.00
Tennessee	1,430.00	1,420.00
Texas	1,390.00	1,400.00
Utah	1,300.00	1,290.00
Vermont	1,560.00	1,500.00
Virginia	1,510.00	1,510.00
Washington	1,340.00	1,300.00
West Virginia	1,510.00	1,420.00
Wisconsin	1,530.00	1,490.00
Wyoming	1,470.00	1,440.00
United States	1,430.00	1,380.00

Prices Received for Cows, Steers and Heifers, Calves, Beef Cattle, and Milk Cows by Month – United States: Marketing Years 2012 and 2013

[All beef includes steer & heifers combined and cows. Cows include beef cows and cull dairy cows sold for slaughter. Milk cow prices are calendar year average. Milk cow price program suspended during April and July quarters. Quarterly U.S. milk prices are based on revised milk cow inventory.]

Month	Cows		Steers and heifers		Calves		Beef cattle		Milk cows	
	2012	2013	2012	2013	2012	2013	2012	2013	2012	2013
	(dollars per cwt)	(dollars per cwt)	(dollars per cwt)	(dollars per cwt)	(dollars per cwt)	(dollars per cwt)	(dollars per cwt)	(dollars per cwt)	(dollars per head)	(dollars per head)
January	75.80	80.30	124.00	127.00	176.00	171.00	122.00	125.00	1,460.00	1,370.00
February	82.90	81.80	126.00	125.00	189.00	170.00	124.00	123.00	(NA)	(NA)
March	84.50	83.80	128.00	127.00	188.00	163.00	126.00	125.00	(NA)	(NA)
April	85.60	82.40	123.00	127.00	180.00	159.00	122.00	125.00	1,440.00	(NA)
May	88.20	81.80	122.00	127.00	179.00	157.00	121.00	126.00	(NA)	(NA)
June	87.30	81.60	121.00	124.00	171.00	152.00	120.00	122.00	(NA)	(NA)
July	82.70	82.70	116.00	121.00	156.00	162.00	115.00	120.00	1,420.00	(NA)
August	80.90	83.90	118.00	122.00	162.00	178.00	117.00	121.00	(NA)	(NA)
September	80.50	83.90	123.00	124.00	168.00	200.00	121.00	122.00	(NA)	(NA)
October	78.60	81.20	124.00	128.00	169.00	190.00	122.00	127.00	1,390.00	1,400.00
November	78.10	80.70	126.00	132.00	165.00	192.00	124.00	130.00	(NA)	(NA)
December	78.60	83.40	126.00	132.00	168.00	197.00	124.00	130.00	(NA)	(NA)

(NA) Not available.

Prices Received for Barrows and Gilts, Sows, and All Hogs by Month – United States: Marketing Years 2012 and 2013

[December preceding year]

Month	Barrows and gilts		Sows		All hogs	
	2012	2013	2012	2013	2012	2013
	(dollars per cwt)	(dollars per cwt)	(dollars per cwt)	(dollars per cwt)	(dollars per cwt)	(dollars per cwt)
December	63.70	62.70	55.90	54.80	63.50	62.40
January	63.70	64.40	56.60	49.40	63.50	63.80
February	65.80	65.10	58.30	49.20	65.50	64.50
March	65.50	59.10	59.60	62.70	65.20	59.20
April	63.10	61.90	55.20	57.90	62.80	61.80
May	63.20	69.10	52.10	55.20	62.80	68.60
June	71.00	75.00	51.80	60.00	70.20	74.40
July	73.10	76.00	47.90	72.60	72.10	75.80
August	68.00	74.10	40.40	75.90	66.90	74.20
September	56.30	70.60	39.10	74.40	55.70	70.70
October	62.70	68.40	43.30	71.90	62.00	68.50
November	61.20	63.30	58.90	71.00	61.10	63.60

Prices Received for Milk Cows by Month – States and United States: 2013

[Cows sold for dairy herd replacement. Milk cow price program suspended in 2013 during the April and July quarters. Quarterly U.S. milk cow prices are based on revised milk cow inventory.]

State	January 2013	April 2013	July 2013	October 2013
	(dollars per head)	(dollars per head)	(dollars per head)	(dollars per head)
Arizona	1,500	(NA)	(NA)	1,500
California	1,200	(NA)	(NA)	1,300
Colorado	1,500	(NA)	(NA)	1,520
Florida	1,470	(NA)	(NA)	1,550
Idaho	1,300	(NA)	(NA)	1,350
Illinois	1,450	(NA)	(NA)	1,420
Indiana	1,440	(NA)	(NA)	1,450
Iowa	1,400	(NA)	(NA)	1,380
Kansas	1,350	(NA)	(NA)	1,350
Michigan	1,600	(NA)	(NA)	1,600
Minnesota	1,400	(NA)	(NA)	1,350
Missouri	1,200	(NA)	(NA)	1,200
New Mexico	1,380	(NA)	(NA)	1,440
New York	1,400	(NA)	(NA)	1,420
Ohio	1,400	(NA)	(NA)	1,400
Oregon	1,300	(NA)	(NA)	1,300
Pennsylvania	1,430	(NA)	(NA)	1,450
Texas	1,350	(NA)	(NA)	1,450
Utah	1,280	(NA)	(NA)	1,290
Vermont	1,490	(NA)	(NA)	1,510
Virginia	1,520	(NA)	(NA)	1,490
Washington	1,300	(NA)	(NA)	1,300
Wisconsin	1,480	(NA)	(NA)	1,490
United States 2013	1,370	(NA)	(NA)	1,400

(NA) Not available.

**Prices Received Value per Head for All Cattle and Calves –
States and United States: January 1, 2013 and 2014**

State	Value per head		Total value	
	2013 (dollars)	2014 (dollars)	2013 (1,000 dollars)	2014 (1,000 dollars)
Alabama	940	1,010	1,146,800	1,252,400
Alaska	1,120	1,120	13,440	11,200
Arizona	1,140	1,190	1,026,000	1,094,800
Arkansas	970	1,030	1,552,000	1,709,800
California	1,140	1,180	6,042,000	6,195,000
Colorado	1,280	1,320	3,328,000	3,273,600
Connecticut	1,110	1,110	53,280	52,170
Delaware	1,040	1,110	18,720	17,760
Florida	950	1,020	1,577,000	1,652,400
Georgia	940	990	958,800	990,000
Hawaii	860	910	113,520	118,300
Idaho	1,210	1,220	2,867,700	2,671,800
Illinois	1,180	1,220	1,321,600	1,378,600
Indiana	1,030	1,100	834,300	957,000
Iowa	1,220	1,260	4,697,000	4,662,000
Kansas	1,160	1,220	6,786,000	7,076,000
Kentucky	1,000	1,070	2,240,000	2,236,300
Louisiana	940	1,010	733,200	797,900
Maine	1,080	1,080	91,800	91,800
Maryland	1,060	1,100	203,520	200,200
Massachusetts	1,020	1,020	39,780	39,780
Michigan	1,190	1,240	1,332,800	1,388,800
Minnesota	1,130	1,170	2,700,700	2,667,600
Mississippi	860	930	782,600	864,900
Missouri	1,100	1,150	4,015,000	4,370,000
Montana	1,380	1,430	3,588,000	3,646,500
Nebraska	1,250	1,300	7,875,000	7,995,000
Nevada	1,190	1,230	547,400	559,650
New Hampshire	1,140	1,150	37,620	36,800
New Jersey	1,120	1,150	34,720	33,350
New Mexico	1,120	1,190	1,500,800	1,535,100
New York	1,160	1,160	1,624,000	1,682,000
North Carolina	900	930	738,000	753,300
North Dakota	1,440	1,490	2,577,600	2,637,300
Ohio	1,100	1,160	1,353,000	1,450,000
Oklahoma	1,050	1,110	4,410,000	4,773,000
Oregon	1,140	1,180	1,459,200	1,510,400
Pennsylvania	1,130	1,190	1,819,300	1,927,800
Rhode Island	1,020	1,030	4,692	5,150
South Carolina	910	940	323,050	338,400
South Dakota	1,380	1,430	5,313,000	5,219,500
Tennessee	970	1,040	1,775,100	1,830,400
Texas	1,040	1,090	11,752,000	11,881,000
Utah	1,200	1,260	924,000	1,008,000
Vermont	1,210	1,210	326,700	314,600
Virginia	1,040	1,080	1,674,400	1,652,400
Washington	1,130	1,150	1,299,500	1,265,000
West Virginia	1,050	1,110	430,500	421,800
Wisconsin	1,200	1,250	4,140,000	4,187,500
Wyoming	1,340	1,390	1,728,600	1,765,300
United States	1,139	1,188	101,731,742	104,199,360

**Prices Received Value per Head and Total Value for Hogs –
States and United States: December 1, 2012 and 2013**

State	Value per head		Total value	
	2012 (dollars)	2013 (dollars)	2012 (1,000 dollars)	2013 (1,000 dollars)
Alabama	120	145	16,800	12,325
Alaska	190	200	190	200
Arizona	120	145	20,400	25,375
Arkansas	130	155	14,300	17,825
California	150	180	15,750	17,100
Colorado	110	130	79,200	89,700
Connecticut	150	180	375	630
Delaware	120	145	600	870
Florida	120	145	1,800	2,175
Georgia	105	110	16,275	15,510
Hawaii	150	160	1,725	1,840
Idaho	(D)	(D)	(D)	(D)
Illinois	115	130	529,000	604,500
Indiana	115	140	437,000	525,000
Iowa	120	145	2,472,000	2,972,500
Kansas	105	120	199,500	211,200
Kentucky	95	105	29,925	33,075
Louisiana	120	145	840	1,160
Maine	120	145	660	653
Maryland	120	145	2,160	3,190
Massachusetts	120	145	1,080	1,233
Michigan	130	150	141,700	159,000
Minnesota	135	160	1,032,750	1,280,000
Mississippi	120	145	49,800	72,500
Missouri	105	115	288,750	327,750
Montana	120	145	21,000	24,070
Nebraska	125	145	375,000	449,500
Nevada	150	180	405	360
New Hampshire	130	155	429	589
New Jersey	130	155	1,040	1,395
New Mexico	120	145	156	174
New York	105	125	7,245	8,250
North Carolina	97	115	873,000	1,000,500
North Dakota	120	145	16,200	19,575
Ohio	120	145	246,000	321,900
Oklahoma	105	125	243,600	248,750
Oregon	120	145	1,500	1,233
Pennsylvania	110	125	125,400	138,750
Rhode Island	120	145	192	276
South Carolina	100	115	24,000	28,175
South Dakota	125	145	150,000	175,450
Tennessee	105	125	15,750	21,875
Texas	98	120	80,360	72,000
Utah	120	145	88,800	102,950
Vermont	150	180	585	576
Virginia	94	115	21,620	29,325
Washington	(D)	(D)	(D)	(D)
West Virginia	120	145	720	725
Wisconsin	105	120	33,600	36,600
Wyoming	130	155	11,180	13,950
Idaho and Washington	120	145	7,800	8,990
United States	116	138	7,698,162	9,081,247

(D) Withheld to avoid disclosing data for individual operations.

Prices Received Value per Head and Total Value for Sheep and Lambs – States and United States: January 1, 2013 and 2014

State	Sheep and lambs			
	Value per head		Total value	
	2013	2014	2013	2014
	(dollars)	(dollars)	(1,000 dollars)	(1,000 dollars)
Arizona	143	138	20,020	20,700
California	176	188	100,320	103,400
Colorado	159	197	69,165	71,905
Idaho	184	195	43,240	48,750
Illinois	230	223	12,190	12,265
Indiana	228	234	12,540	11,700
Iowa	189	200	33,075	31,000
Kansas	193	190	12,545	14,250
Kentucky	191	200	8,213	9,800
Michigan	210	216	17,220	17,496
Minnesota	172	194	23,220	26,190
Missouri	170	179	12,750	13,962
Montana	192	184	45,120	40,480
Nebraska	199	239	15,920	18,164
Nevada	202	204	14,746	16,320
New England ¹	222	231	9,768	9,933
New Mexico	154	161	15,400	13,685
New York	184	183	12,880	13,725
North Carolina	190	191	4,940	5,157
North Dakota	168	193	12,432	12,738
Ohio	244	230	29,524	26,910
Oklahoma	223	238	16,725	15,470
Oregon	164	167	34,440	32,565
Pennsylvania	222	225	19,092	21,150
South Dakota	165	192	45,375	51,840
Tennessee	181	176	5,973	6,336
Texas	142	163	99,400	120,620
Utah	205	185	60,475	50,875
Virginia	175	189	15,225	15,687
Washington	194	198	10,476	10,890
West Virginia	190	184	5,700	5,888
Wisconsin	175	195	14,700	16,185
Wyoming	186	182	69,750	64,610
Other States ²	163	186	23,635	26,970
United States	177	188	946,194	977,616

¹ New England includes Connecticut, Maine, Massachusetts, New Hampshire, Rhode Island, and Vermont.

² Individual State estimates not available for States not shown, but are included in Other States.

Prices Received Value per Head and Total Value for Angora Goats – States and United States: January 1, 2013 and 2014

State	Angora goats			
	Value per head		Total value	
	2013	2014	2013	2014
	(dollars)	(dollars)	(1,000 dollars)	(1,000 dollars)
Arizona	90.00	75.00	2,430	1,725
California	80.00	85.00	280	289
New Mexico	100.00	83.00	1,200	789
Texas	122.00	121.00	8,784	9,075
4-State average	110.90	107.10	12,694	11,878

Other Hay Baled Market Year Average Prices Received – Selected Regions: 2009-2011, 2010-2012, and 2011-2013 Averages

[Prices provided to the Forest Service, United States Department of Agriculture to compute Eastern National Forest grazing fees]

Region	3-year average		
	2009-2011	2010-2012	2011-2013
	(dollars per ton)	(dollars per ton)	(dollars per ton)
Appalachia ¹	91.80	97.50	105.40
Corn Belt ²	68.60	84.00	104.70
Florida	147.10	156.70	166.10
Lake States ³	79.90	92.70	118.70
Northeast ⁴	118.30	127.50	144.60
Southeast/Delta ⁵	82.90	88.50	93.10

¹ Kentucky, North Carolina, Tennessee, Virginia, and West Virginia.

² Illinois, Indiana, Missouri, and Ohio.

³ Michigan, Minnesota, and Wisconsin.

⁴ Maine, New Hampshire, New York, Pennsylvania, and Vermont.

⁵ Alabama, Arkansas, Georgia, Louisiana, Mississippi, and South Carolina.

Reliability of Prices Received Estimates

Definition: Prices received represent sales from producers to first buyers. They include all grades and qualities. The average commodity price from the survey multiplied by the total quantity marketed theoretically should give the total cash receipts for the commodity.

Survey procedures: Primary sales data used to determine grain prices were obtained from probability samples of about 1900 mills and elevators. These procedures ensure that virtually all grain moving into commercial channels has a chance of being included in the survey. Generally, States surveyed account for 90 percent or more of total United States production. Livestock prices are obtained from packers, stockyards, auctions, dealers, and market check data from AMS-USDA, private marketing organizations, and state commodity groups and agencies. Inter-farm sales of grain and livestock are not included since they represent very small percentages of the total sales. Grain marketed for seed is also excluded. Fruit and vegetable prices are obtained from sample surveys and market check data from AMS-USDA, private marketing organizations, state agencies, and universities.

Summary and estimation procedures: Survey quantities sold are expanded by strata to state levels and used to weight average strata prices to a state average. State prices are then weighted to a United States price based on expanded sales. Recommendations are prepared by the State Field Offices and reviewed by the Agricultural Statistics Board in Washington, D.C. State recommendations are reviewed for reasonableness with survey data, other States, and recent historic estimates.

Revisions: For most items, the current month's preliminary price represents a 3-5 day period around the 15th of the month. Previous month's prices represent actual dollars received for quantities sold during the entire month. Revisions are published in monthly issues of *Agricultural Prices*.

Reliability: United States price estimates based on probability surveys generally have a sampling error of less than one percent for the major commodities such as corn, wheat, soybeans, cotton, and rice. Current methods of summarization for non-probability commodities are not designed directly to calculate sampling errors. However, analytical measures approximate the United States relative sampling errors at around five percent. Any non-sampling errors are attributed to such things as the inability to obtain correct information, differences in interpreting questions or definitions, mistakes in coding or processing the data, etc. Efforts are made at each step in the survey process to minimize these non-sampling errors.

After the Council on Food, Agricultural and Resource Economics (C-FARE) 2009 program review which included changes in farm production practices, plans were implemented to make necessary program improvements in the agricultural price program. The index group structure for prices received was modified to maintain a more universal structure and consistency with the required 1910-1914 series. Modifications implemented January 2014 include the following:

- Update the current 1990-1992 base reference period to 2011,
- Link the 1910-1914 series to the updated base reference period, 2011,
- Create index groups used universally by researchers, data users, and policymakers,
- Re-classify agricultural commodities into the index groups,
- Expand the commodity coverage for vegetable, melon, non-citrus, and tree nuts,
- Update monthly market weights, and
- Adjust (normalization) current five year moving average cash receipts and farm input cost weights.

Prices Paid by Farmers

The February Index of Prices Paid for Commodities and Services, Interest, Taxes, and Farm Wage Rates (PPITW) at 107 (2011=100), is unchanged from January 2014 but up 0.9 percent from February 2013.

Production index: The February index, at 108, increased 0.9 percent from last month and increased 0.9 percent from last year. Higher prices in February for concentrates, feeder pigs, LP gas, and complete feeds more than offset lower prices for supplements, feeder cattle, potash & phosphate, and nitrogen.

Feed: The February index, at 107, increased 2.9 percent from January but decreased 10 percent from last February. Since January, higher prices for concentrates, complete feeds, hay & forages, and feed grains more than offset lower prices for supplements.

Livestock and poultry: The February index, at 129, increased 0.8 percent from last month and 21 percent from last year. Since January, higher prices for feeder pigs more than offset lower prices for feeder cattle. The February feeder cattle price, at \$175.00 per cwt, is down \$1.30 per cwt from the January price. February feeder pigs averaged \$258.00 per cwt, up \$23.00 per cwt from January.

Fertilizer: The February index, at 87, is unchanged from January but 12 percent below February a year ago. Since January, higher prices for mixed fertilizer offset lower prices for potash & phosphate and nitrogen.

Chemicals: The February index, at 109, is unchanged from January but increased 0.9 percent from last February. Compared with last month, prices for herbicides, insecticides, and fungicides/other are slightly higher.

Fuels: The February index, at 107, is up 3.9 percent from a month earlier and 5.9 percent above February 2013. Compared with last month, prices for LP gas, diesel, and gasoline are higher.

Machinery: The February index, at 113, increased 1.8 percent from January and is 4.6 percent above last February. Compared with last month, prices for tractors and self-propelled machinery are higher.

Consumer price index: The January 2014 Consumer Price Index, as issued by the Bureau of Labor Statistics, for all urban consumers (CPI-U) increased 0.4 percent before seasonal adjustment to a level of 233.916 (1982-1984=100). The December index is 233.049. For the 12 month period ending in January, the overall index increased 1.6 percent.

Prices Paid Indexes and Related Parity Ratios – United States: February 2014 with Comparisons

[Revised historical price indexes for months not shown are available at www.nass.usda.gov]

Indexes and ratios	1910-1914 Base			2011 Base		
	February 2013	January 2014	February 2014	February 2013	January 2014	February 2014
	(percent)	(percent)	(percent)	(percent)	(percent)	(percent)
Prices paid by farmers for commodities, services, interest, taxes, and wage rates (PPITW)	2881	2884	2907	106	107	107
Production	2236	2233	2255	107	107	108
Feed	1310	1143	1175	119	104	107
Livestock and poultry	2106	2529	2540	107	128	129
Seeds	3521	3642	3642	107	111	111
Fertilizer	1196	1044	1043	99	87	87
Chemicals	969	978	979	108	109	109
Fuels	2815	2884	2993	101	103	107
Supplies and repairs	1222	1229	1231	104	104	104
Autos and trucks	3173	3193	3197	103	104	104
Machinery	6585	6808	6895	108	111	113
Building materials	2429	2454	2469	104	105	106
Services and rent	2231	2288	2295	(NA)	(NA)	(NA)
Services	(NA)	(NA)	(NA)	105	108	108
Rent	(NA)	(NA)	(NA)	104	107	107
Interest ¹	3572	3684	3684	98	101	101
Taxes ²	6137	6233	6233	103	105	105
Wage rates	7692	7654	7654	107	107	107
Production, interest, taxes, and wage rates (PITW)	3016	3016	3043	107	107	108
Family living-CPI ³	2205	2222	2230	103	104	104
Ratio (received/paid)	(NA)	(NA)	(NA)	103	93	99
Parity ratio ⁴	39	35	38	(NA)	(NA)	(NA)
Parity ratio adjusted ⁵	40	36	39	(NA)	(NA)	(NA)
PPITW adjusted for productivity ⁶	1414	1396	1401	(NA)	(NA)	(NA)
Crop sector (PPITW)	(NA)	(NA)	(NA)	105	105	106
Livestock sector (PPITW)	(NA)	(NA)	(NA)	108	108	109
Farm sector (production)	(NA)	(NA)	(NA)	113	112	114
Non-farm sector (production)	(NA)	(NA)	(NA)	104	104	105

(NA) Not available.

¹ Interest per acre on farm real estate debt and interest rate on farm non-real estate debt.

² Farm real estate taxes payable per acre.

³ Bureau of Labor Statistics, Consumer Price Index for all urban consumers (CPI-U), for the previous month converted by the USDA.

⁴ Ratio of index of prices received to PPITW (1910-1914=100).

⁵ Based on estimated cash receipts, from marketings and government payments, the preliminary adjustment factor is 1.044 for 2014 and the revised factor is 1.041 for 2013.

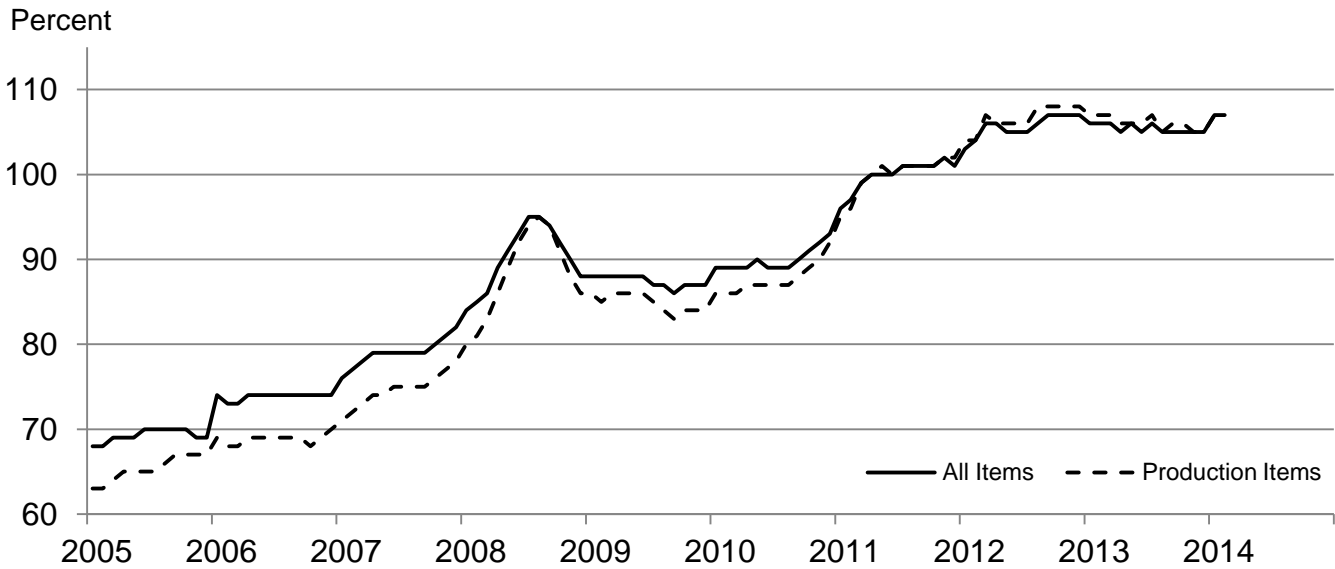
⁶ PPITW is adjusted based on productivity trend for the prior 15 years.

Prices Paid Indexes and Annual Weights for Input Components and Sub-components – United States: February 2014 with Comparisons

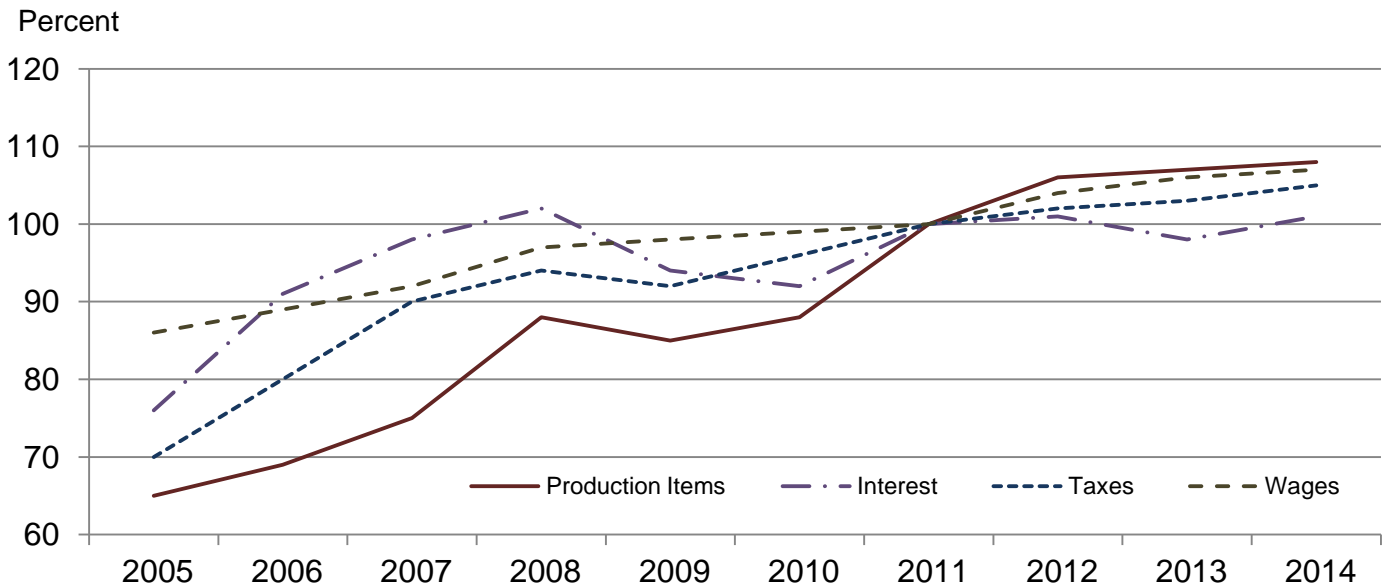
[Revised historical price indexes for months not shown are available at www.nass.usda.gov. Relative weights are a five year moving average]

	Relative weights		Indexes (2011=100)		
	2013	2014	February 2013	January 2014	February 2014
	(percent)	(percent)	(percent)	(percent)	(percent)
Production items	73.6	74.1	107	107	108
Feed	14.6	15.5	119	104	107
Feed grains	2.1	2.2	117	75	76
Complete feeds	7.2	7.6	120	105	106
Hay and forages	1.8	1.9	125	107	107
Concentrates	2.3	2.5	117	128	145
Supplements	1.2	1.3	109	96	91
Livestock and poultry	8.5	8.5	107	128	129
Feeder cattle	6.7	6.6	105	129	128
Feeder pigs	0.7	0.7	131	168	184
Milk cow replacements	0.7	0.7	96	101	101
Poultry	0.5	0.5	104	104	104
Seeds	4.8	4.9	107	111	111
Field crops	4.3	4.4	106	110	110
Grasses and legumes	0.4	0.5	117	120	120
Fertilizer	6.3	6.2	99	87	87
Mixed fertilizer	2.8	2.7	92	87	87
Nitrogen	2.6	2.6	108	89	89
Potash and phosphate	0.9	0.9	97	78	77
Chemicals	3.0	3.1	108	109	109
Herbicides	1.9	1.9	108	108	108
Insecticides	0.7	0.7	109	112	112
Fungicides and other	0.4	0.4	108	108	109
Fuels	4.5	4.1	101	103	107
Diesel	2.8	2.6	104	98	100
Gasoline	0.9	0.9	104	94	95
LP gas	0.8	0.7	80	131	146
Supplies and repairs	4.3	4.3	104	104	104
Supplies	1.4	1.4	103	105	105
Repairs	2.9	2.8	104	104	104
Autos and trucks	1.1	1.1	103	104	104
Autos	0.1	0.1	102	102	102
Trucks	1.0	1.0	103	104	104
Machinery	4.5	4.9	108	111	113
Tractors	1.0	1.1	105	111	114
Self-propelled	1.8	2.0	109	114	116
Other machinery	1.7	1.9	108	109	109
Building materials	3.8	3.7	104	105	106
Services	11.2	10.8	105	108	108
Custom rates	1.2	1.1	104	104	104
Other services	10.0	9.7	105	108	109
Rent	6.9	6.9	104	107	107
Cash	3.7	3.7	103	106	106
Share	3.2	3.2	105	108	108
Interest	2.9	2.6	98	101	101
Taxes	2.9	2.9	103	105	105
Wage rates	6.4	6.4	107	107	107
Family living-CPI	14.2	14.0	103	104	104

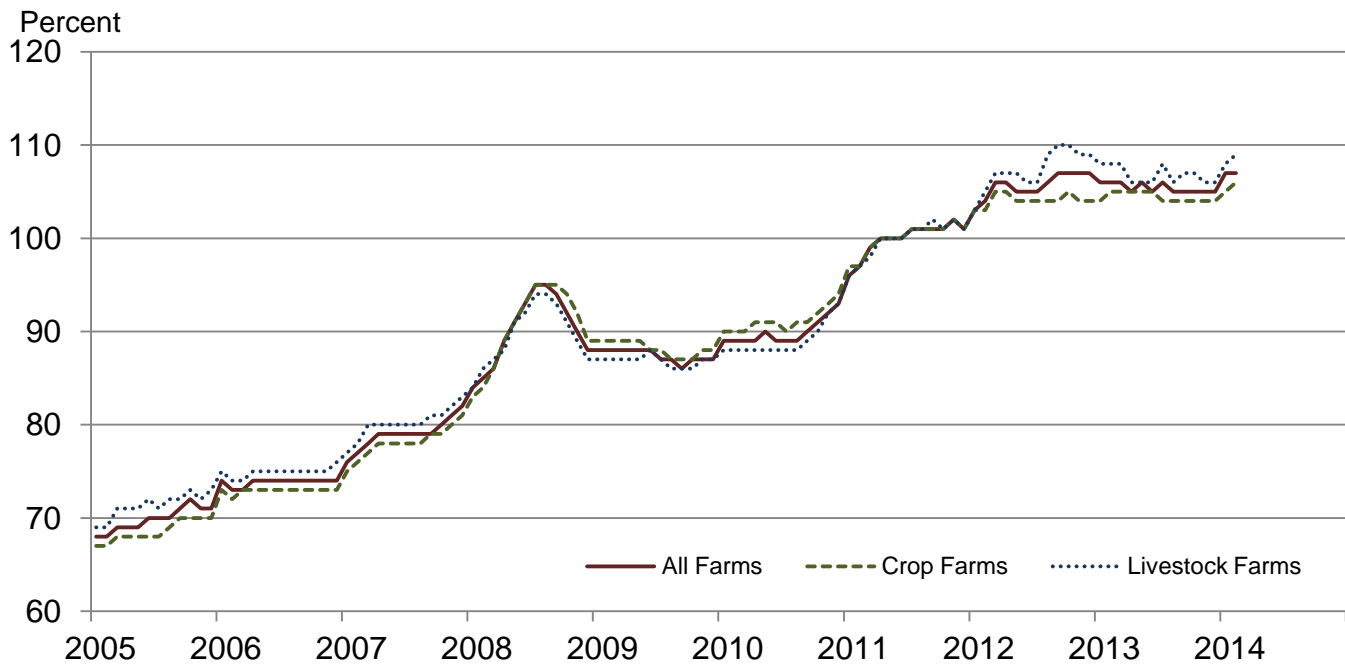
Paid Indexes by Month, All Items and Production Items – United States: 2011=100



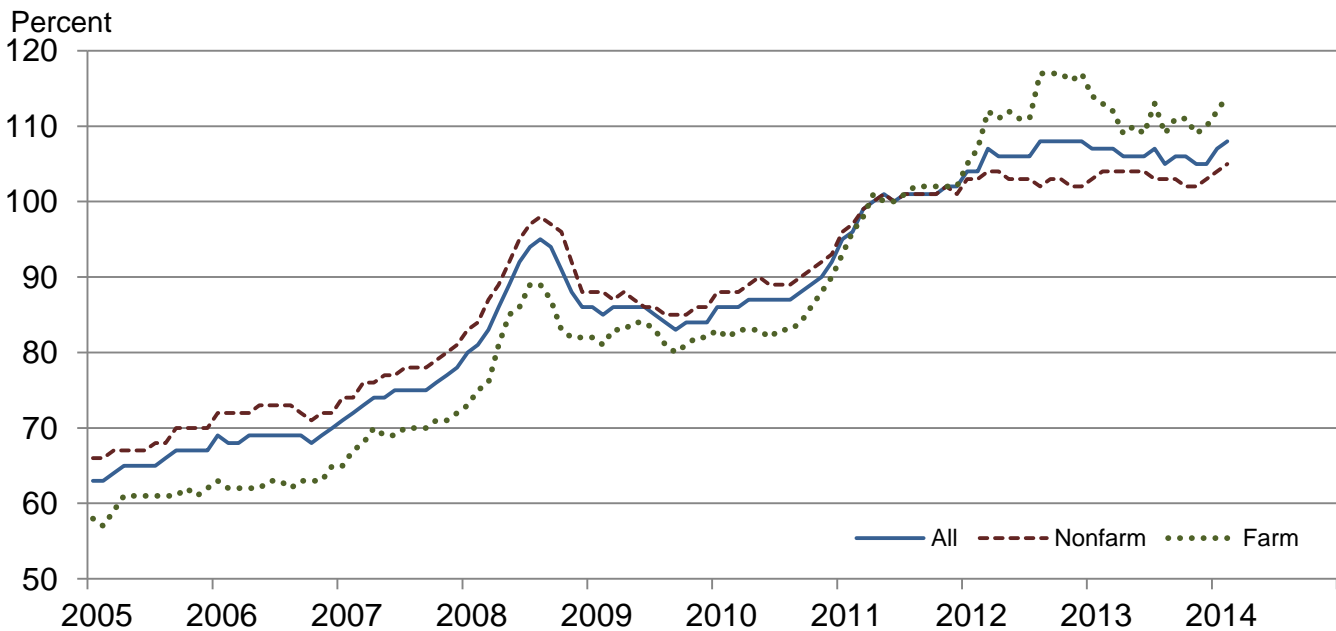
Paid Indexes, Annual Averages, Production Items, Interest, Taxes, and Wages – United States: 2011=100



Paid Indexes by Farm Type and Month, All Items – United States: 2011=100

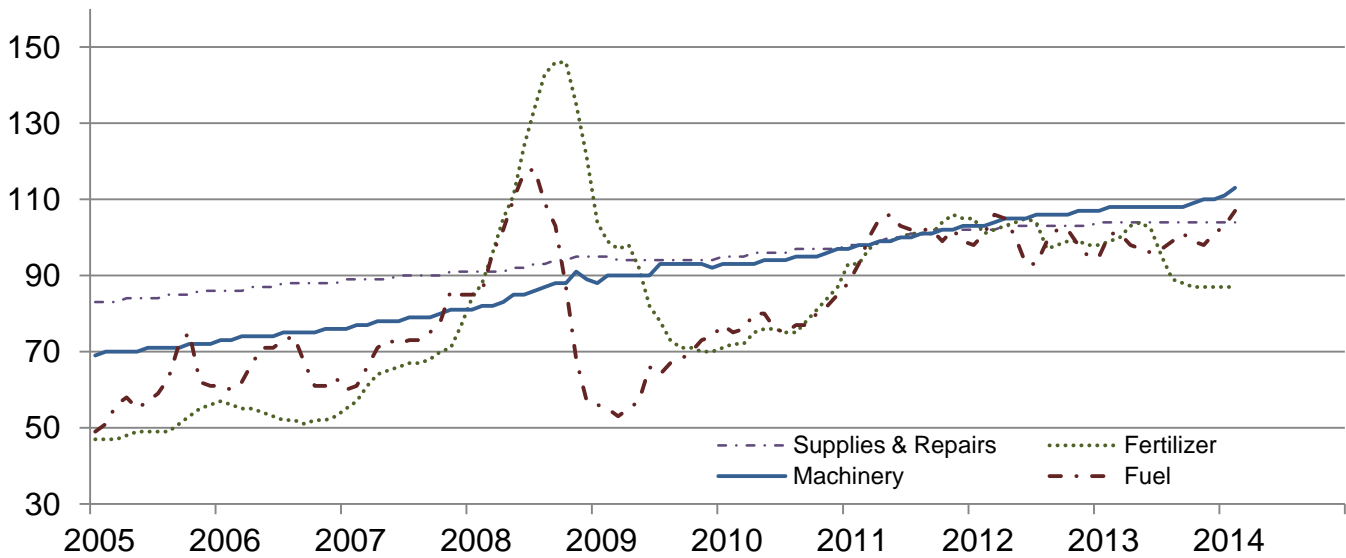


Paid Indexes by Origin and Month, All Production Items – United States: 2011=100



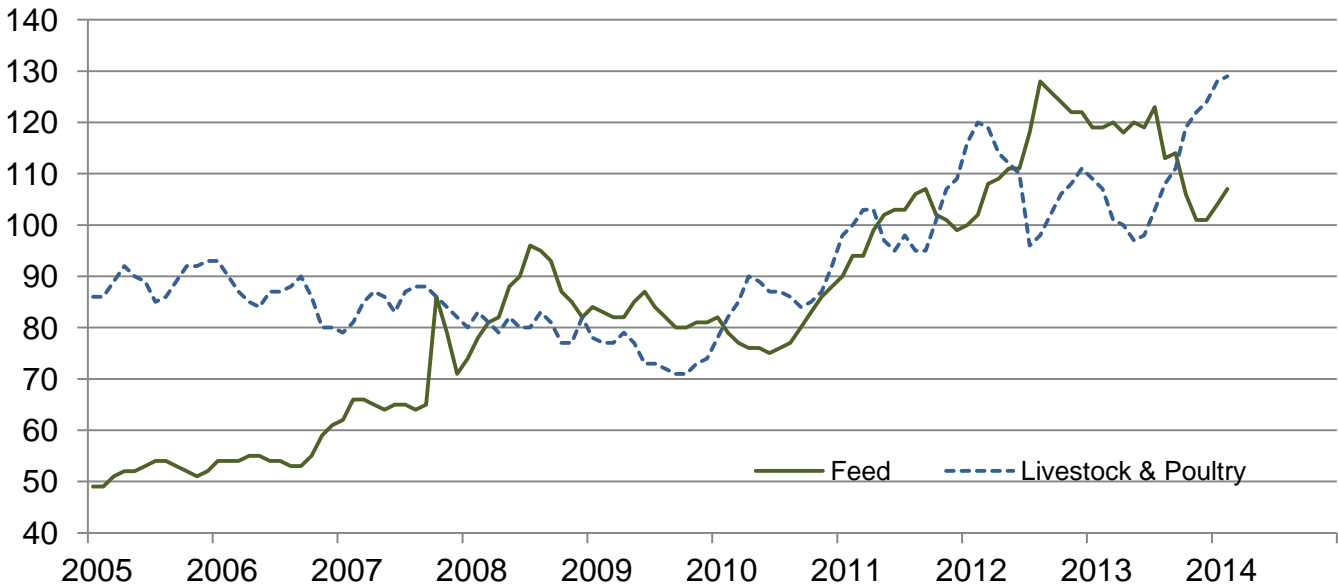
Paid Indexes by Non-Farm Sector and Month, Supplies & Repairs, Fertilizer, Machinery, and Fuel – United States: 2011=100

Percent



Paid Indexes by Month, Feed and Livestock & Poultry – United States: 2011=100

Percent



Feed Price Ratios – United States: February 2014 with Comparisons

Feed price ratio ¹	February 2013	January 2014	Preliminary February 2014
Broiler-feed: pounds of broiler grower feed equal in value to 1 pound of broiler, live weight ²	3.5	4.3	4.0
Market egg feed: pounds of laying feed equal in value to 1 dozen eggs ³	5.0	8.0	10.7
Hog-corn: bushels of corn equal in value to 100 pounds of hog, live weight	9.2	13.8	14.2
Milk-feed: pounds of 16% mixed dairy feed equal in value to 1 pound of whole milk ⁴	1.52	2.46	2.55
Steer and heifer-corn: bushels of corn equal in value to 100 pounds of steer & heifers, live weight	17.8	31.7	32.4
Turkey-feed: pounds of turkey grower equal in value to 1 pound of turkey, live weight ⁵	3.9	5.2	5.3

¹ Effective January 1995, prices of commercial prepared feeds are based on current United States prices received for corn, soybeans, alfalfa hay, and all wheat.

² The price of commercial prepared broiler feed is based on current United States prices received for corn and soybeans. The modeled feed uses 58 percent corn and 42 percent soybeans.

³ The price of commercial prepared layer feed is based on current United States prices received for corn and soybeans. The modeled feed uses 75 percent corn and 25 percent soybeans.

⁴ The price of commercial prepared dairy feed is based on current United States prices received for corn, soybeans, and alfalfa hay. The modeled feed uses 51 percent corn, 41 percent alfalfa hay, and 8 percent soybeans.

⁵ The price of commercial prepared turkey feed is based on current United States prices received for corn, soybeans, and wheat. The modeled feed uses 51 percent corn, 28 percent soybeans, and 21 percent wheat.

Prices Received Used to Calculate Feed Price Ratios – United States: February 2014 with Comparisons

[Price data source for livestock and poultry commodities is United States Department of Agriculture's Agricultural Marketing Service]

Item	February 2013	January 2014	Preliminary February 2014
	(dollars)	(dollars)	(dollars)
Broilers, live pound	0.610	0.580	0.550
Eggs, market dozen	0.776	0.906	1.230
Hogs, all cwt	64.50	61.20	63.30
Milk, all cwt	19.50	23.50	24.70
Steers and heifers cwt	125.00	140.00	145.00
Turkeys, live pound	0.627	0.645	0.667
Corn bushel	7.04	4.42	4.47
Hay, alfalfa ton			
Soybeans bushel	14.60	12.90	13.10
Wheat, all bushel	7.97	6.66	6.67

Prices Paid for Feeder Livestock – United States: February 2014 with Comparisons

[Price data source is United States Department of Agriculture's Agricultural Marketing Service]

Item	February 2013	January 2014	Preliminary February 2014
	(dollars)	(dollars)	(dollars)
Feeder cattle and calves cwt	144.40	176.30	175.00
Feeder pigs cwt	184.00	235.00	258.00

Reliability of Prices Paid Estimates

Definition: Prices paid by farmers represent the average costs of inputs purchased by farmers and ranchers to produce agricultural commodities. Conceptually, the average price when multiplied by quantity purchased should equal total producer expenditures for the item.

Survey procedures: The prices paid data are obtained from establishments that sell goods and services to farmers and ranchers. Annually, about 8,500 firms are randomly selected from lists by type of item sold with an average response rate in the range of 75-80 percent. Firms are asked to report the price for the specified item "most commonly bought by farmers" or that was the "volume seller". Approximately 135 items are surveyed each March to represent all production input items purchased. The survey reference period for most items is the five business days centered at the 15th of the month. Separate prices paid surveys are conducted for agricultural chemicals, fuels, feed, fertilizer, machinery, and seed.

Summary and estimation procedures: The annual March Prices Paid Survey is summarized as a non-probability survey. Average prices reported are aggregated to the region and United States level using weights available from expenditure data and other administrative sources. Price recommendations are prepared by the Regional Field Offices and Headquarters for review by the Agricultural Statistics Board in Washington, D.C. Also, the change in price level for individual items surveyed are combined to the regional and United States levels, and are published as prices paid indexes referenced to a specific base period. Prices paid indexes for new autos and trucks, building materials, farm supplies, motor supplies, and marketing containers are updated based on price changes measured in selected Bureau of Labor Statistics (BLS) indexes.

Revisions: Any revisions are published in the monthly and in annual issues of Agricultural Prices. The basis for revision must be supported by additional data that directly affect the level of the estimate. More revisions are likely for March when separate prices paid surveys are conducted, in lieu of BLS indexes, by the USDA to measure price change.

Reliability: Current methods of summarization for the March data are not designed directly to calculate sampling errors. However, analytical measures approximate the United States relative sampling errors for major items around 10 percent. Any non-sampling errors are attributed to such things as the inability to obtain correct information, differences in interpreting questions or definitions, mistakes in coding or processing the data, etc. Efforts are made at each step in the survey process to minimize these non-sampling errors.

Program change: Effective January 2014, the National Agricultural Statistics Service modified the five-year moving weights and updated the base reference period.

As of January 2014, the 1990-1992 base reference period is updated to 2011. Five-year moving average weights are adjusted (normalized) to minimize the effects of price changes. The 1910-1914=100 price indexes, required by statute for computing parity prices, were linked forward based on the changes in the new 2011=100 indexes. The new indexes were constructed by multiplying the ratios of the current prices to the base period prices by the moving average weights.

Information Contacts

General

Troy Joshua, Chief, Environmental, Economics and Demographics Branch (202) 720-6146

Below are the commodity specialists to contact for additional information.

Crop Prices Received

Lance Honig, Chief, Crops Branch (202) 720-2127

Anthony Prillaman, Head, Field Crops Section (202) 720-2127

Cody Brokmeyer – Peanuts, Rice (202) 720-7688

Brent Chittenden – Oats, Rye, Wheat (202) 720-8068

Angie Considine – Cotton, Cotton Ginnings, Sorghum (202) 720-5944

Tony Dahlman – Crop Weather, Barley, Hay (202) 720-7621

Chris Hawthorn – Corn, Proso Millet, Flaxseed (202) 720-9526

Travis Thorson – Soybeans, Sunflower, Other Oilseeds (202) 720-7369

Jorge Garcia-Pratts, Head, Fruits, Vegetables and Special Crops Section (202) 720-2127

Jorge Garcia-Pratts – Fresh and Processing Vegetables, Onions, Strawberries (202) 720-2127

Jorge Garcia-Pratts – Floriculture, Maple Syrup, Nursery, Tree Nuts (202) 720-2127

Fred Granja – Apples, Apricots, Cherries, Plums, Prunes, Tobacco (202) 720-4288

Lakeya Jones – Citrus, Coffee, Sugar Crops, Grapes, Tropical Fruits (202) 720-5412

Dan Norris – Austrian Winter Peas, Dry Edible Peas, Lentils, Mints, Mushrooms, Peaches, Pears,
Wrinkled Seed Peas, Dry Beans (202) 720-3250

Daphne Schauber – Berries, Cranberries, Potatoes, Sweet Potatoes (202) 720-4285

Livestock Prices Received

Dan Kerestes, Chief, Livestock Branch (202) 720-3570

Scott Hollis, Head, Livestock Section (202) 720-3570

Travis Averill – Cattle (202) 720-3040

Doug Bounds – Hogs (202) 720-3106

Mike Miller – Milk, Milk Cows (202) 720-3278

Alissa Cowell-Mytar – Sheep, Lambs, and Goats (202) 720-4751

Bruce Boess, Head, Poultry and Specialty Commodities Section (202) 720-3570

Dave Colwell – Honey (202) 720-8784

Michael Klamm – Turkeys (202) 690-3237

Kim Linonis – Eggs (202) 690-8632

Miste Salmon – Broilers (202) 720-3244

Indexes, Prices Paid, and Parity Prices

Troy Joshua, Chief, Environmental, Economics and
Demographics Branch (202) 720-6146

Tony Dorn, Head, Economics Section (202) 690-3223

Daryl Brinkman – Prices Received Indexes, Parity Prices (202) 720-8844

Vincent Davis – Prices Paid Indexes, Prices Paid for Feed, Fertilizer, Agricultural Chemicals,
Seeds, Farm Supplies and Repairs, Farm Machinery, Fuels, Feeder Livestock, Poultry Chicks,
Feed Price Ratios, Autos & Trucks (202) 690-3229

Chris Dickerson – Prices Received Indexes, Parity Prices, Grazing Fees (202) 690-1348

Access to NASS Reports

For your convenience, you may access NASS reports and products the following ways:

- All reports are available electronically, at no cost, on the NASS web site: <http://www.nass.usda.gov>
- Both national and state specific reports are available via a free e-mail subscription. To set-up this free subscription, visit <http://www.nass.usda.gov> and in the “Follow NASS” box under “Receive reports by Email,” click on “National” or “State” to select the reports you would like to receive.

For more information on NASS surveys and reports, call the NASS Agricultural Statistics Hotline at (800) 727-9540, 7:30 a.m. to 4:00 p.m. ET, or e-mail: nass@nass.usda.gov.

The U.S. Department of Agriculture (USDA) prohibits discrimination against its customers, employees, and applicants for employment on the bases of race, color, national origin, age, disability, sex, gender identity, religion, reprisal, and where applicable, political beliefs, marital status, familial or parental status, sexual orientation, or all or part of an individual's income is derived from any public assistance program, or protected genetic information in employment or in any program or activity conducted or funded by the Department. (Not all prohibited bases will apply to all programs and/or employment activities.)

If you wish to file a Civil Rights program complaint of discrimination, complete the [USDA Program Discrimination Complaint Form](#) (PDF), found online at http://www.ascr.usda.gov/complaint_filing_cust.html, or at any USDA office, or call (866) 632-9992 to request the form. You may also write a letter containing all of the information requested in the form. Send your completed complaint form or letter to us by mail at U.S. Department of Agriculture, Director, Office of Adjudication, 1400 Independence Avenue, S.W., Washington, D.C. 20250-9410, by fax (202) 690-7442 or email at program.intake@usda.gov.