



Agricultural Prices

ISSN: 1937-4216

Released May 30, 2014, by the National Agricultural Statistics Service (NASS), Agricultural Statistics Board, United States Department of Agriculture (USDA).

May Farm Prices Received Index Down 1 Point

The preliminary All Farm Products Index of Prices Received by Farmers in May, at 114 percent, based on 2011=100, decreased 1 point (0.9 percent) from April. The Crop Index is up 1 point (1.0 percent) but the Livestock Index decreased 1 point (0.8 percent). Producers received lower prices for hogs, milk, eggs, and cattle. Prices were higher for broilers, oranges and strawberries. In addition to prices, the overall index is also affected by the seasonal change based on a 3-year average mix of commodities producers sell. Increased monthly movement of cattle, hay, sweet corn, and broilers offset the decreased marketing of soybeans, hogs, calves, and apples.

The preliminary All Farm Products Index is up 4 points (3.6 percent) from May 2013. The Food Commodities Index, at 124, was unchanged from last month but increased 14 points (13 percent) from May 2013.

Prices Paid Index up 1 Point

The May Index of Prices Paid for Commodities and Services, Interest, Taxes, and Farm Wage Rates (PPITW) is 112 percent of its 2011 base. The index is up 1 point (0.9 percent) from April and 6 points (5.7 percent) above May 2013. Higher prices for complete feeds, feeder cattle, hay & forages, and potash & phosphate more offset lower prices in May for feeder pigs, concentrates, other services, and LP gas.

Prices Received, Prices Paid, and Ratio of Prices Received to Prices Paid Indexes 2011 Base – United States: May 2014 with Comparisons

Index	May	April	May
	2013	2014	2014
Prices received by farmers	110	115	114
Prices paid by farmers	106	111	112
Ratio of prices received to prices paid	104	104	102

Contents

Prices Received by Farmers	4
Prices Received Indexes as a Percent of 2011 Base – United States: May 2014 with Comparisons	5
Prices Received Indexes as a Percent of 1910-1914 Base – United States: May 2014 with Comparisons.....	5
Prices Received Indexes as a percent of 2001 Base by Month for Selected Groups – United States: 2013 and 2014.....	6
Prices Paid Indexes as a percent of 2011 Base by Month for Selected Groups – United States: 2013 and 2014.....	6
Received Indexes by Month, Livestock Products, All Products, and All Crops – United States: 2011=100 Chart.....	7
Received Indexes by Month, Food Grains, Feed Grains & Hay, and Oilseeds – United States: 2011=100 Chart.....	7
Received Indexes by Month, Fruit & Nut and Commercial Vegetables – United States: 2011=100 Chart.....	8
Received Indexes by Month, Meat Animal, Dairy Products, and Poultry & Eggs – United States: 2011=100 Chart.....	8
Prices Received for Field Crops and Fruits – United States: May 2014 with Comparisons	9
Prices Received for Vegetables and Livestock – United States: May 2014 with Comparisons.....	10
Prices Received for Corn by Month – United States Chart.....	11
Prices Received for Wheat by Month – United States Chart	11
Prices Received for Upland Cotton by Month – United States Chart.....	12
Prices Received for Soybeans by Month – United States Chart	12
Prices Received for Cattle by Month – United States Chart	13
Prices Received for Milk by Month – United States Chart.....	13
Prices Received for Hogs by Month – United States Chart	14
Prices Received for Poultry by Month – United States Chart.....	14
Prices Received for All Wheat, Corn, and Soybeans by Month – United States: 2014 with Comparisons	15
Prices Received for Beef Cattle and All Hogs by Month – United States: 2014 with Comparisons	15
Prices Received for All Wheat – States and United States: May 2014 with Comparisons	16
Prices Received for Winter Wheat – States and United States: May 2014 with Comparisons	16
Prices Received for Durum Wheat – States and United States: May 2014 with Comparisons.....	17
Prices Received for Spring Wheat – States and United States: May 2014 with Comparisons	17
Prices Received for All Barley – States and United States: May 2014 with Comparisons.....	18
Prices Received for Malting Barley – States: May 2014 with Comparisons	18
Prices Received for Feed Barley – States: May 2014 with Comparisons	18
Prices Received for Corn – States and United States: May 2014 with Comparisons	19
Prices Received for Soybeans – States and United States: May 2014 with Comparisons	19
Prices Received for Oats – States and United States: May 2014 with Comparisons	20
Prices Received for Sorghum Grain – States and United States: May 2014 with Comparisons.....	20
Prices Received for Dry Beans – States and United States: May 2014 with Comparisons	21
Prices Received for Peanuts (in shell) – States and United States: May 2014 with Comparisons.....	21
Prices Received for Sunflower – States and United States: May 2014 with Comparisons.....	22
Prices Received for Canola – States and United States: May 2014 with Comparisons	22
Prices Received for Flaxseed – States and United States: May 2014 with Comparisons	22
Prices Received for Upland Cotton and Cottonseed – States and United States: May 2014 with Comparisons	23
Prices Received and Farm Marketings for Upland Cotton and Rice – United States: May 2014 with Comparisons	23
Prices Received for Hay by Type – States and United States: May 2014 with Comparisons.....	24
Prices Received for Apples – States and United States: May 2014 with Comparisons	24
Prices Received for Citrus Fruits by Utilization – States and United States: May 2013	25
Prices Received for Citrus Fruits by Utilization – States and United States: April 2014	26
Prices Received for Citrus Fruits by Utilization – States and United States: May 2014	27
Prices Received for Potatoes – States and United States: May 2014 with Comparisons.....	28
Prices Received for All Milk – States and United States: May 2014 with Comparisons.....	29

Prices Received for Milk Cows – States and United States: April 2014 with Comparisons	30
Commodity Parity Prices and Price as Percent of Parity Price – United States: May 2014 with Comparisons	31
Commodity Parity Prices – United States: May 2014 with Comparisons	32
Reliability of Prices Received Estimates	34
Prices Paid by Farmers.....	35
Prices Paid Indexes and Related Parity Ratios – United States: May 2014 with Comparisons.....	36
Prices Paid Indexes and Annual Weights for Input Components and Sub-components – United States: May 2014 with Comparisons.....	37
Paid Indexes by Month, All Items and Production Items – United States: 2011=100 Chart.....	38
Paid Indexes, Annual Averages, Production Items, Interest, Taxes, and Wages – United States: 2011=100 Chart.....	38
Paid Indexes by Farm Type, All Items – United States: 2011=100 Chart.....	39
Paid Indexes by Origin, All Production Items – United States: 2011=100 Chart.....	39
Paid Indexes by Non-Farm Sector, Supplies & Repairs, Fertilizer, Machinery, and Fuel – United States: 2011=100 Chart.....	40
Paid Indexes by Month, Feed and Replacement Livestock – United States: 2011=100 Chart.....	40
Feed Price Ratios – United States: May 2014 with Comparisons.....	41
Prices Received Used to Calculate Feed Price Ratios – United States: May 2014 with Comparisons.....	41
Prices Paid for Feeder Livestock – United States: May 2014 with Comparisons.....	41
Prices Paid Broiler-Feed Ratio Monthly and Annual Average – United States: 2010-2014	42
Prices Paid Market Egg-Feed Ratio Monthly and Annual Average – United States: 2010-2014.....	42
Prices Paid Turkey-Feed Ratio Monthly and Annual Average – United States: 2010-2014	42
Prices Paid Milk-Feed Ratio Monthly and Annual Average – United States: 2010-2014.....	43
Prices Paid Hog-Corn Ratio Monthly and Annual Average – United States: 2010-2014	43
Prices Paid Steer & Heifer-Corn Feed Ratio Monthly and Annual Average – United States: 2010-2014	43
Reliability of Prices Paid Estimates	44
Information Contacts	45

Price Program Quick Stats Links

Economics and Prices

http://www.nass.usda.gov/Statistics_by_Subject/Economics_and_Prices/index.asp

January 2014 Price Program Changes

http://www.nass.usda.gov/Surveys/Guide_to_NASS_Surveys/Prices/updates.pdf

Prices Received by Farmers

The May All Farm Products Index is 114 percent of its 2011 base, down 0.9 percent from the April index but 3.6 percent above the May 2013 index.

All crops: The May index, at 98, increased 1.0 percent from April but is 10 percent below May 2013. Index increases for fruit & tree nut production more than offset the index decreases for oilseeds & grains and vegetable & melon production.

Food grains: The May index, at 103, is 4.0 percent higher than the previous month but 2.8 percent lower than a year ago. The May price for all wheat, at \$7.14 per bushel, is up 32 cents from April but 54 cents below May 2013.

Feed grains: The May index, at 79, is unchanged from last month but 32 percent below a year ago. The corn price, at \$4.71 per bushel, is unchanged from last month but \$2.26 below May 2013. Sorghum grain, at \$8.25 per cwt, is 30 cents below April and \$3.15 below May last year.

Oilseeds: The May index, at 114, is up 0.9 percent from April but 3.4 percent lower than May 2013. The soybean price, at \$14.50 per bushel, increased 20 cents from April but is 40 cents below May 2013.

Fruits & nuts: The May index, at 116, is up 4.5 percent from April and 13 percent higher than a year ago. Price increases for oranges and strawberries more than offset the price decrease for apples.

Commercial vegetables: The May index, at 100, is down 2.0 percent from last month and 2.9 percent below May 2013. Lower prices for onions and tomatoes more than offset the price increases during May for lettuce, cauliflower, and broccoli.

Other crops: The May index, at 107, is up 4.9 percent from last month and 0.9 percent above May 2013. The all hay price, at \$202.00 per ton, is \$11.00 higher than April but down \$1.00 from last May. The price for upland cotton, at 80.7 cents per pound, is up 0.2 cents from April and 2.4 cents above last May.

Livestock production: The May index, at 131, is 0.8 percent below last month but up 17 percent from May 2013. Compared with a year ago, prices are higher for cattle, milk, hogs, broilers, calves, and turkeys. The price for market eggs is down slightly from a year ago.

Meat animals: The May index, at 129, is down 2.3 percent from last month but 19 percent higher than last year. The May hog price, at \$83.60 per cwt, is down \$5.20 from April but \$15.00 higher than a year ago. The May beef cattle price of \$147 per cwt is down \$1.00 from last month but \$21.00 higher than May 2013.

Dairy products: The May index, at 123, is down 2.4 percent from a month ago but 26 percent higher than May last year. The May all milk price of \$24.70 per cwt is down 60 cents from last month but up \$5.00 from May 2013.

Poultry & eggs: The May index, at 143, is up 1.4 percent from April and 5.1 percent above a year ago. The May market egg price, at 97.0 cents per dozen, decreased 12.0 cents from April and is 0.7 cents less than May 2013. The May broiler price, at 72.0 cents per pound, is up 3.0 cents from April and 4.0 cents above a year ago. The May turkey price, at 72.5 cents per pound, is up 3.8 cents from the previous month and 7.6 cents higher than a year earlier.

Prices Received Indexes as a Percent of 2011 Base – United States: May 2014 with Comparisons

[Revised historical price indexes for months not shown are available at www.nass.usda.gov]

Index	2011 Base		
	May 2013	April 2014	May 2014
	(percent)	(percent)	(percent)
Agricultural Production	110	115	114
Crop Production	109	97	98
Grains and oilseed	115	92	91
Feed grain	116	79	79
Food grain	106	99	103
Oilseed	118	113	114
Fruit and tree nut	103	111	116
Commercial vegetable	103	102	100
Other crop	106	102	107
Livestock Production	112	132	131
Meat animal	108	132	129
Cattle	110	131	130
Hog	103	134	126
Dairy	98	126	123
Poultry and egg	136	141	143
Food Commodity	110	124	124

Prices Received Indexes as a Percent of 1910-1914 Base – United States: May 2014 with Comparisons

[Revised historical price indexes for months not shown are available at www.nass.usda.gov]

Index	1910 - 1914 Base		
	May 2013	April 2014	May 2014
	(percent)	(percent)	(percent)
Agricultural Production	1140	1184	1180
Crop Production	954	850	855
Livestock Production	1295	1533	1517

Prices Paid Indexes as a percent of 2011 Base by Month for Selected Groups – United States: 2013 and 2014

[Revised historical price indexes for months not shown are available at www.nass.usda.gov. Blank data cells indicate estimation period has not yet begun]

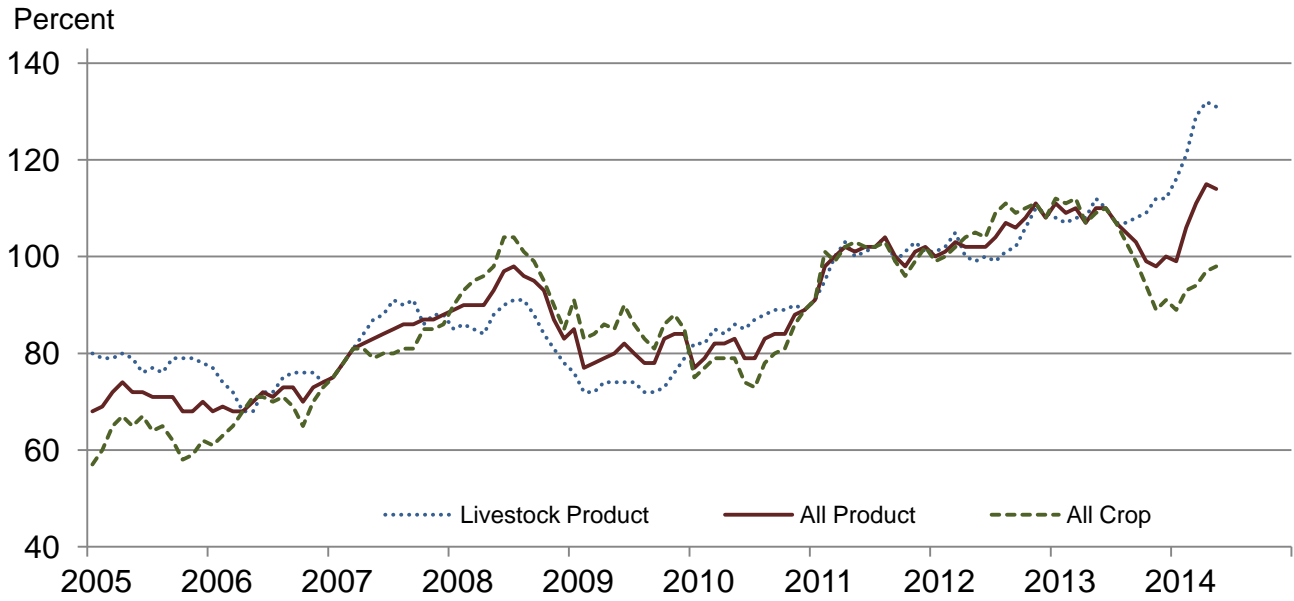
Month	2011 Base							
	All Items (PPITW)		Production		Crop Sector		Livestock Sector	
	2013	2014	2013	2014	2013	2014	2013	2014
	(percent)	(percent)	(percent)	(percent)	(percent)	(percent)	(percent)	(percent)
January	106	108	107	109	104	106	108	111
February	106	109	107	110	104	106	108	111
March	106	110	107	111	105	107	108	113
April	106	111	107	113	105	108	107	115
May	106	112	107	114	105	108	108	116
June	106		107		105		108	
July	107		109		104		110	
August	106		107		104		108	
September	107		108		104		109	
October	106		107		104		108	
November	106		106		104		107	
December	106		107		104		108	

Prices Received Indexes as a percent of 2001 Base by Month for Selected Groups – United States: 2013 and 2014

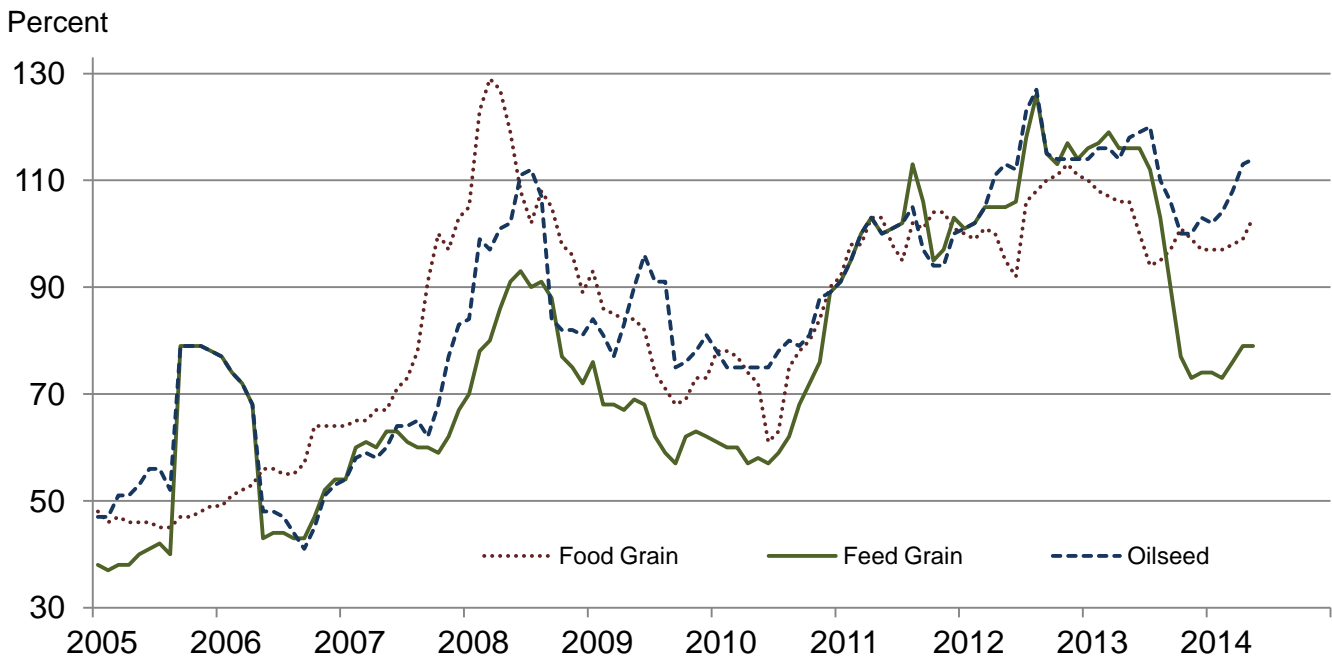
[Revised historical price indexes for months not shown are available at www.nass.usda.gov. Blank data cells indicate estimation period has not yet begun]

Month	2011 Base							
	Agricultural Production		Crop Production		Livestock Production		Food Commodities	
	2013	2014	2013	2014	2013	2014	2013	2014
	(percent)	(percent)	(percent)	(percent)	(percent)	(percent)	(percent)	(percent)
January	111	99	112	89	108	116	110	110
February	109	106	111	93	107	121	108	116
March	110	111	112	94	108	129	109	122
April	107	115	107	97	108	132	107	124
May	110	114	109	98	112	131	110	124
June	110		110		110		109	
July	107		107		107		106	
August	105		103		107		105	
September	103		99		108		106	
October	99		94		109		106	
November	98		89		112		108	
December	100		91		112		108	

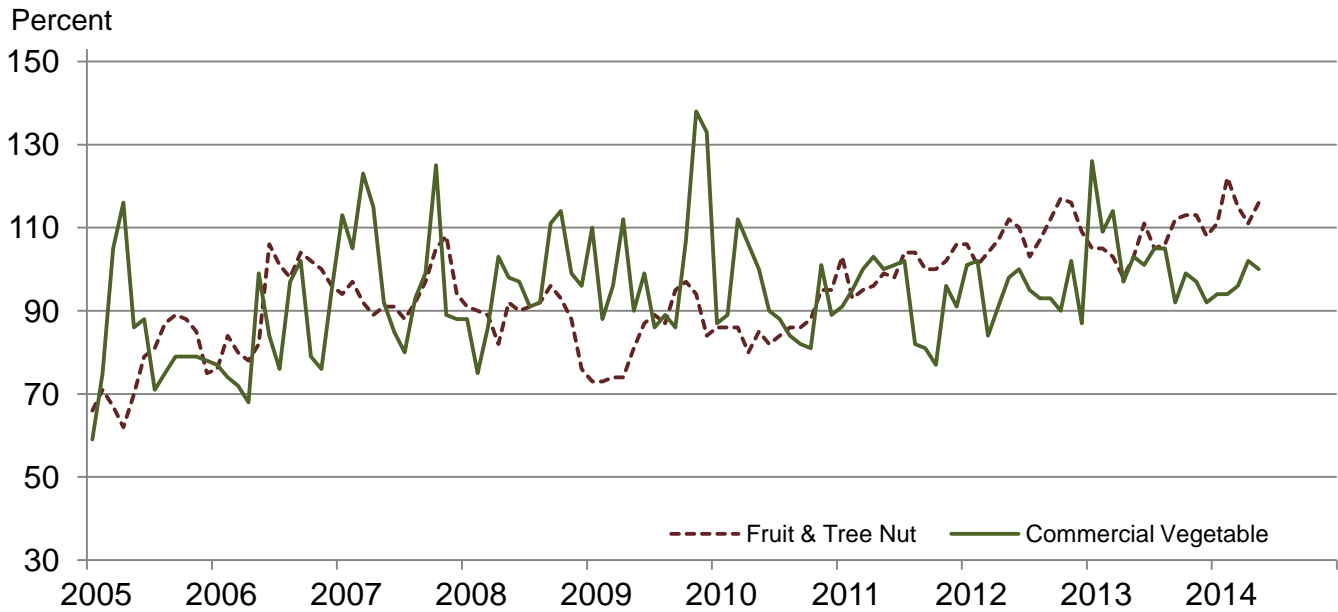
**Received Indexes by Month,
Livestock Product, All Product, and All Crop –
United States: 2011=100**



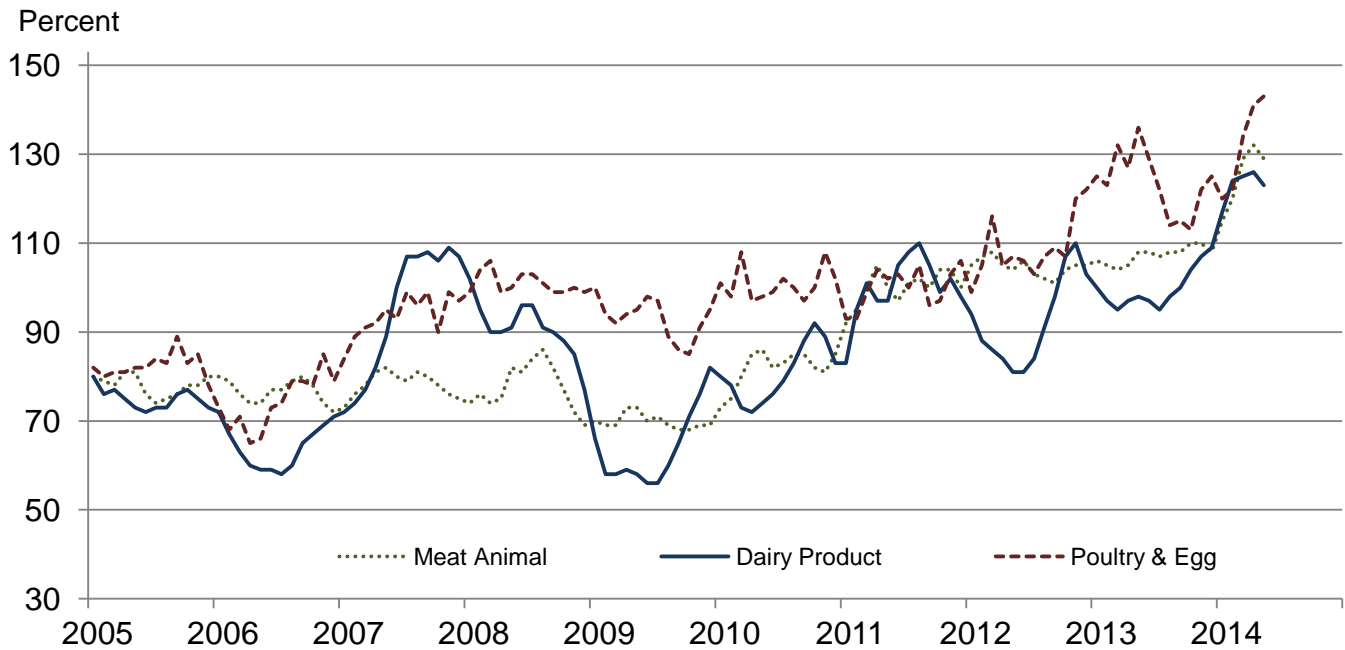
**Received Indexes by Month,
Food Grain, Feed Grain, and Oilseed –
United States: 2011=100**



**Received Indexes by Month,
Fruit & Tree Nut and Commercial Vegetable –
United States: 2011=100**



**Received Indexes by Month,
Meat Animal, Dairy Product, and Poultry & Egg –
United States: 2011=100**



Prices Received for Field Crops and Fruits – United States: May 2014 with Comparisons

Commodity	Average 2011	May 2013	April 2014	Preliminary May 2014
Field crops				
Austrian winter peasdollars/cwt	19.50	(S)	(S)	(S)
Barley, alldollars/bushel	4.79	6.45	5.93	6.18
Feeddollars/bushel	4.59	5.68	3.65	4.18
Maltingdollars/bushel	4.83	6.55	6.45	6.45
Beans, dry edibledollars/cwt	34.60	36.20	36.50	40.10
Canoladollars/cwt	23.10	28.00	19.30	20.30
Chickpeas, alldollars/cwt	35.70	36.50	25.70	31.50
Largedollars/cwt	39.20	38.90	26.80	31.50
Smalldollars/cwt	23.40	27.00	(D)	(D)
Corndollars/bushel	6.02	6.97	4.71	4.71
Cotton, Uplanddollars/pound	0.880	0.783	0.805	0.807
Cottonseeddollars/ton	131.00	(NA)	(NA)	(NA)
Flaxseeddollars/bushel	14.20	15.40	13.90	14.20
Hay, all, baleddollars/ton	159.00	203.00	191.00	202.00
Alfalfadollars/ton	176.00	221.00	206.00	224.00
Otherdollars/ton	119.00	153.00	151.00	150.00
Lentilsdollars/cwt	27.50	20.40	18.50	20.40
Oatsdollars/bushel	3.42	4.45	3.94	4.15
Peanuts, in-shelldollars/pound	0.252	0.271	0.242	0.238
Peas, dry edibledollars/cwt	13.60	18.60	13.40	14.10
Potatoesdollars/cwt	9.78	12.89	11.29	11.44
Rice, alldollars/cwt	13.70	15.50	16.10	16.70
Longdollars/cwt	12.30	14.90	15.60	15.70
Medium and shortdollars/cwt	18.40	18.00	18.10	18.90
Sorghum graindollars/cwt	10.70	11.40	8.55	8.25
Soybeansdollars/bushel	12.50	14.90	14.30	14.50
Sunflowers, alldollars/cwt	29.00	24.00	22.30	22.20
Wheat, alldollars/bushel	7.44	7.68	6.82	7.14
Winterdollars/bushel	6.93	7.49	7.08	7.24
Durumdollars/bushel	9.22	8.06	6.82	7.20
Other springdollars/bushel	8.33	7.84	6.61	6.84
Hard red winter ¹dollars/bushel	7.07	7.56	7.19	(NA)
Soft red winter ¹dollars/bushel	6.77	7.31	6.54	(NA)
Hard red spring ¹dollars/bushel	8.38	7.86	6.60	(NA)
White ¹dollars/bushel	6.58	7.42	7.05	(NA)
Fruits				
Citrus, equivalent on-tree				
Grapefruitdollars/box	7.47	8.26	4.79	7.89
Lemonsdollars/box	12.30	14.77	25.87	26.36
Orangesdollars/box	8.16	9.27	10.32	11.20
Tangelosdollars/box	3.50	(S)	(S)	(S)
Tangerines and mandarinsdollars/box	15.30	(D)	(D)	(D)
Noncitrus, fresh				
Apples ²dollars/pound	0.325	(NA)	0.396	0.349
Grapes ²dollars/ton	628.00	(NA)	(NA)	(NA)
Peaches ²dollars/ton	507.00	(NA)	(NA)	(S)
Pears ²dollars/ton	559.00	(NA)	592.00	686.00
Strawberriesdollars/cwt	104.00	(NA)	87.60	98.60

(D) Withheld to avoid disclosing data for individual operations.

(NA) Not available.

(S) Insufficient number of reports to establish an estimate.

¹ Preliminary estimates not set for this item.

² Equivalent packinghouse-door returns for California, Michigan, New York (apples only), and Washington (apples, peaches, and pears). Prices as sold for other states.

Prices Received for Vegetables and Livestock – United States: May 2014 with Comparisons

[Price data source for livestock and poultry commodities is United States Department of Agriculture's Agricultural Marketing Service]

Commodity	Average 2011	May 2013	April 2014	Preliminary May 2014
Vegetables, fresh ¹				
Asparagus dollars/cwt	37.50	(NA)	116.00	133.00
Beans, snap ² dollars/cwt	69.00	(NA)	52.30	69.30
Broccoli dollars/cwt	41.60	(NA)	40.10	48.10
Cantaloupes ² dollars/cwt	16.50	(NA)	(NA)	18.90
Carrots dollars/cwt	30.80	(NA)	28.20	27.20
Cauliflower dollars/cwt	47.00	(NA)	65.80	97.50
Celery dollars/cwt	22.50	(NA)	15.50	16.00
Corn, sweet dollars/cwt	30.70	(NA)	26.00	24.30
Cucumbers ² dollars/cwt	18.70	(NA)	26.20	19.80
Lettuce dollars/cwt	24.30	(NA)	18.20	21.60
Onions ³ dollars/cwt	11.90	(NA)	25.10	18.00
Tomatoes dollars/cwt	51.20	(NA)	45.20	29.00
Livestock				
Calves dollars/cwt	142.00	157.00	222.00	228.00
Cattle, all beef dollars/cwt	115.00	126.00	148.00	147.00
Cows ⁴ dollars/cwt	71.60	81.80	103.00	104.00
Steers and heifers dollars/cwt	117.00	127.00	150.00	148.00
Milk cows ⁵ dollars/head	1420.00	(NA)	1810.00	(NA)
Hogs, all dollars/cwt	66.50	68.60	88.80	83.60
Barrows and gilts dollars/cwt	66.80	69.10	88.40	83.20
Sows dollars/cwt	57.90	55.20	98.00	93.40
Dairy and poultry				
Milk, all ⁶ dollars/cwt	20.10	19.70	25.30	24.70
Fat test percent	3.71	3.68	3.71	3.66
Broilers, live ⁷ dollars/pound	0.459	0.680	0.690	0.720
Eggs, all ⁸ dollars/dozen	0.969	1.170	1.280	1.170
Market ^{8 9} dollars/dozen	0.796	0.977	1.090	0.970
Turkeys, live ^{8 10} dollars/pound	0.680	0.649	0.687	0.725
Adjusted for seasonal variation				
Eggs, all dollars/dozen	0.979	1.400	1.410	1.390
Seasonal factor percent	101	83	91	84
Milk, all ⁶ dollars/cwt	20.20	20.80	26.30	26.10
Seasonal factor percent	100	95	96	95

(NA) Not available.

¹ Beginning January 2006, point of first sale. FOB shipping point for prior years.

² Monthly estimates began January 1995.

³ Includes some processing.

⁴ Beef cows and cull dairy cows sold for slaughter.

⁵ Animals sold for dairy herd replacement only. Prices available for January, April, July, and October.

⁶ Before deductions for hauling. Includes quality, quantity, and other premiums. Excludes hauling subsidies.

⁷ Live weight equivalent price.

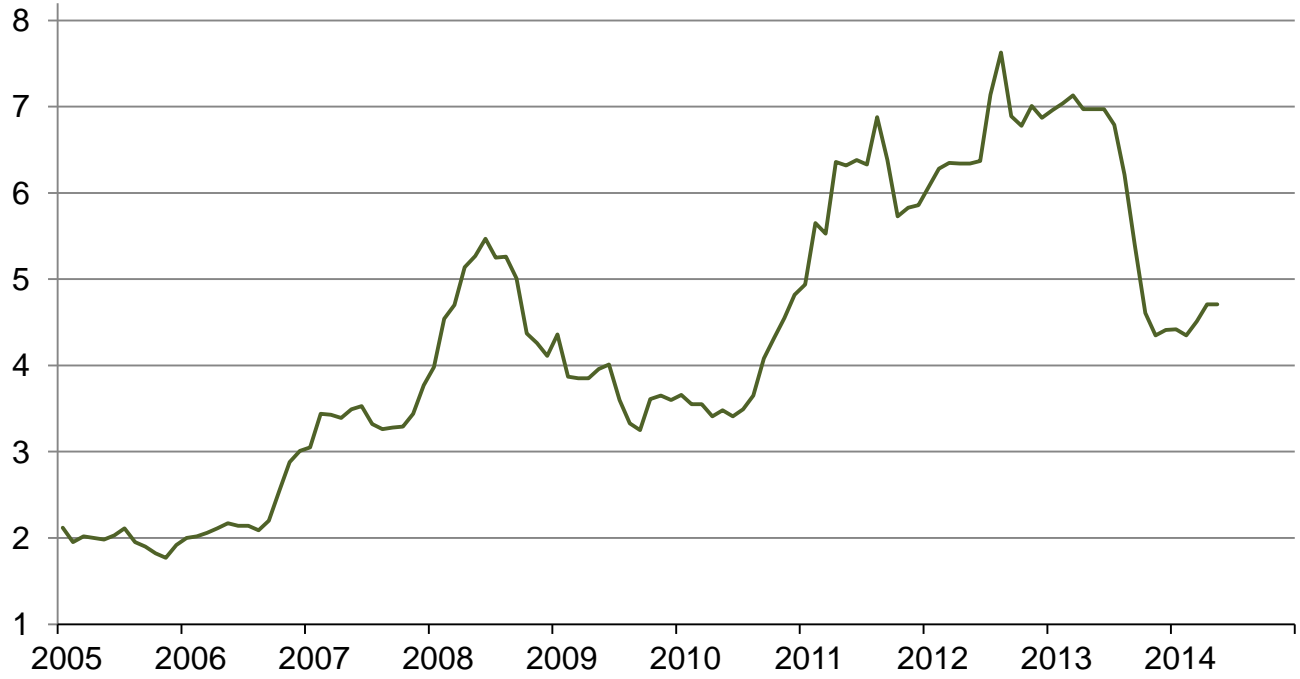
⁸ Mid-month price.

⁹ Also referred to as table eggs.

¹⁰ Live weight equivalent price is used when actual live weight price is not available. Beginning January 2011, price reflects FOB shipping point basis. Prior year price reflects delivered basis.

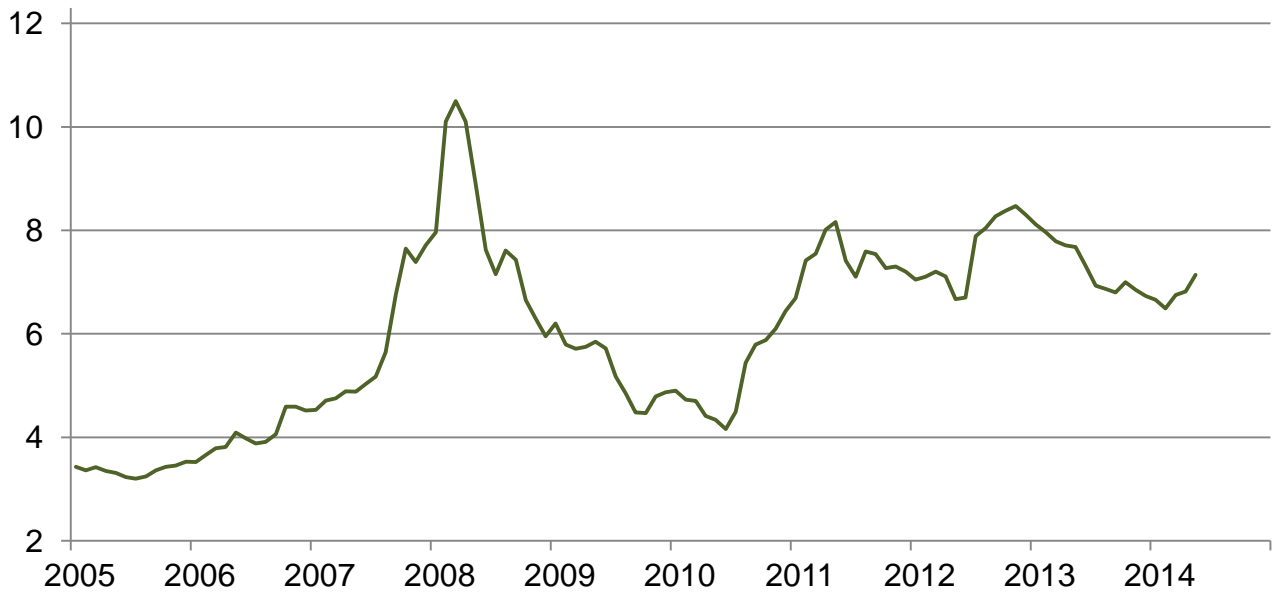
Prices Received for Corn by Month – United States

Dollars per bushel



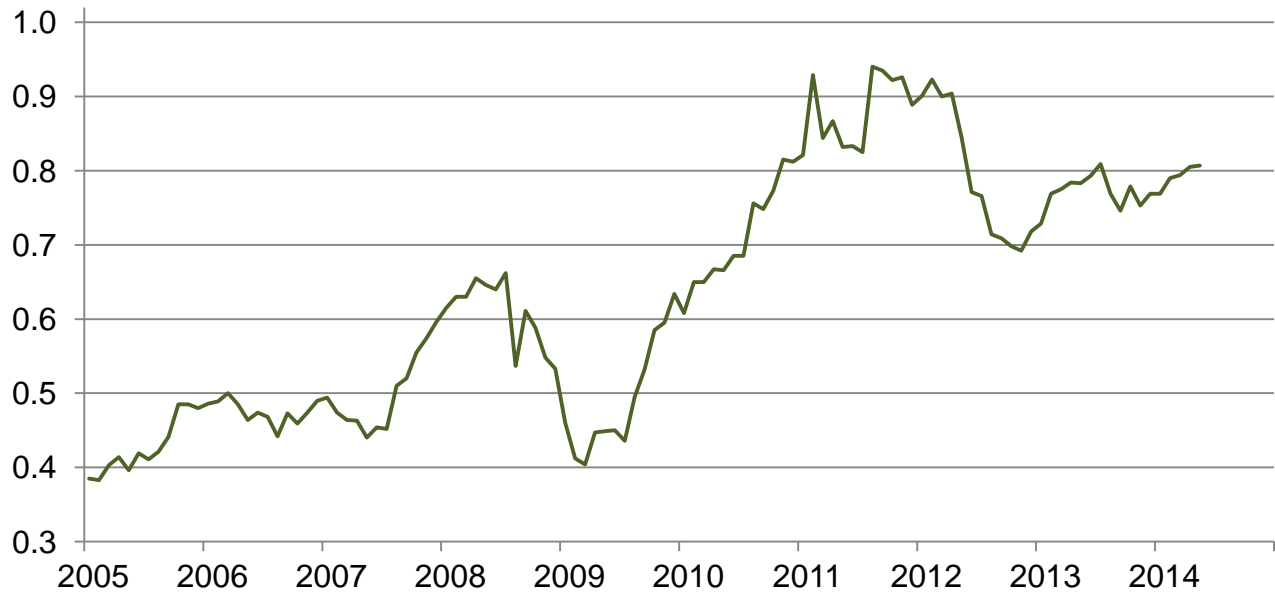
Prices Received for Wheat by Month – United States

Dollars per bushel



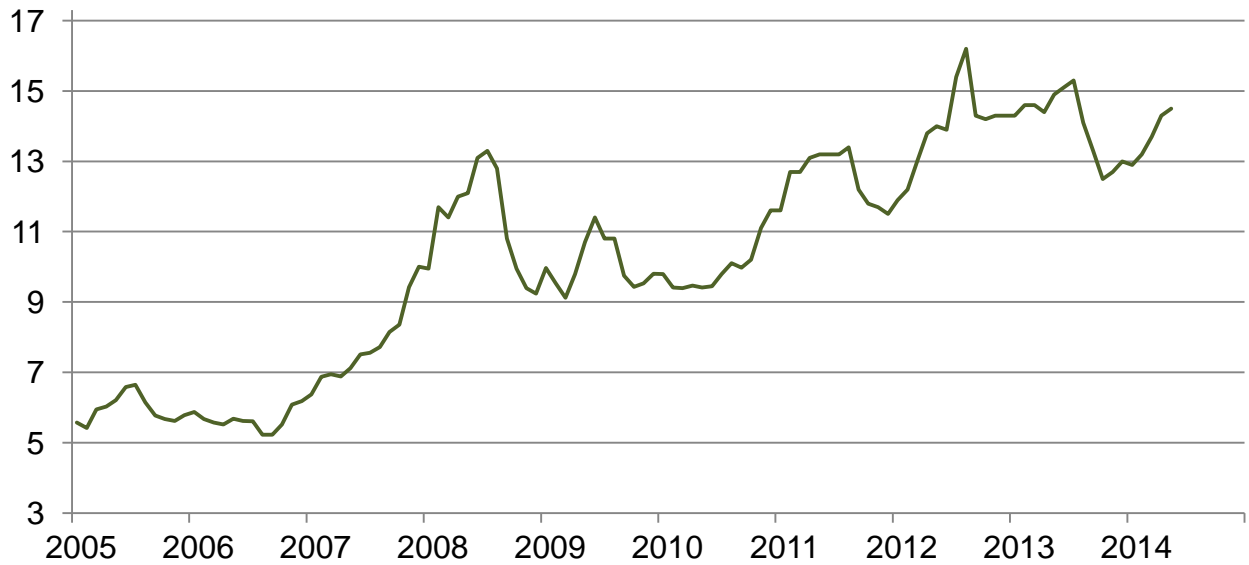
Prices Received for Upland Cotton by Month – United States

Dollars per pound



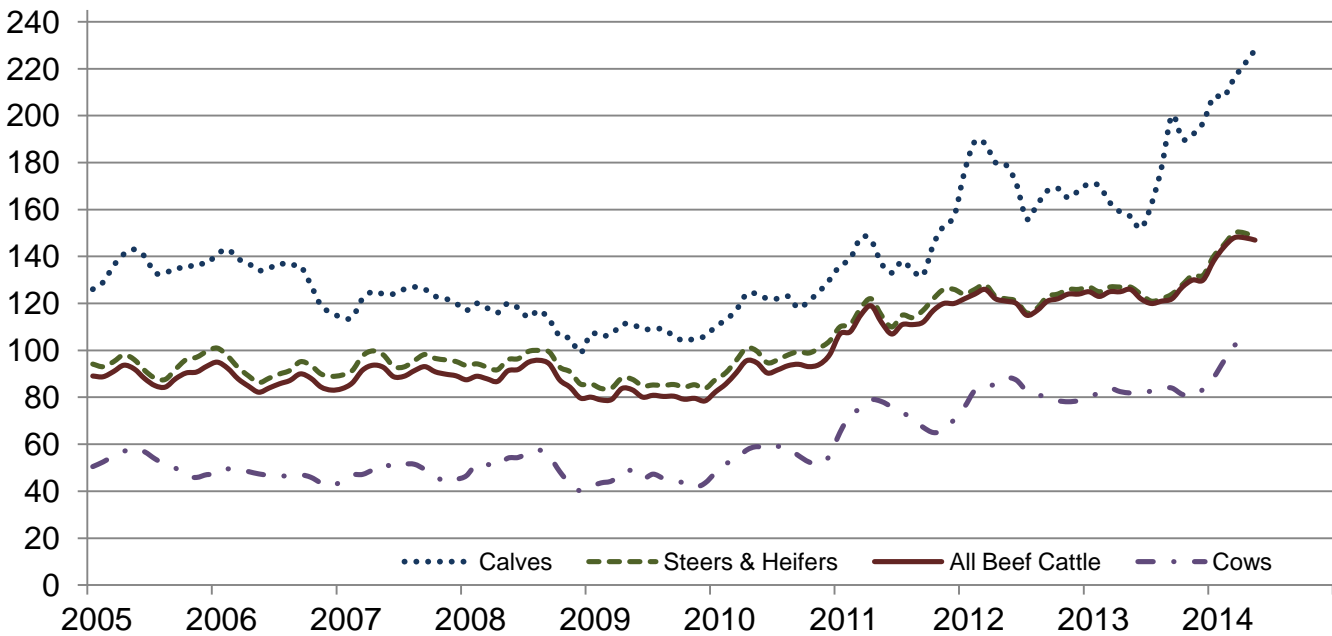
Prices Received for Soybeans by Month – United States

Dollars per bushel



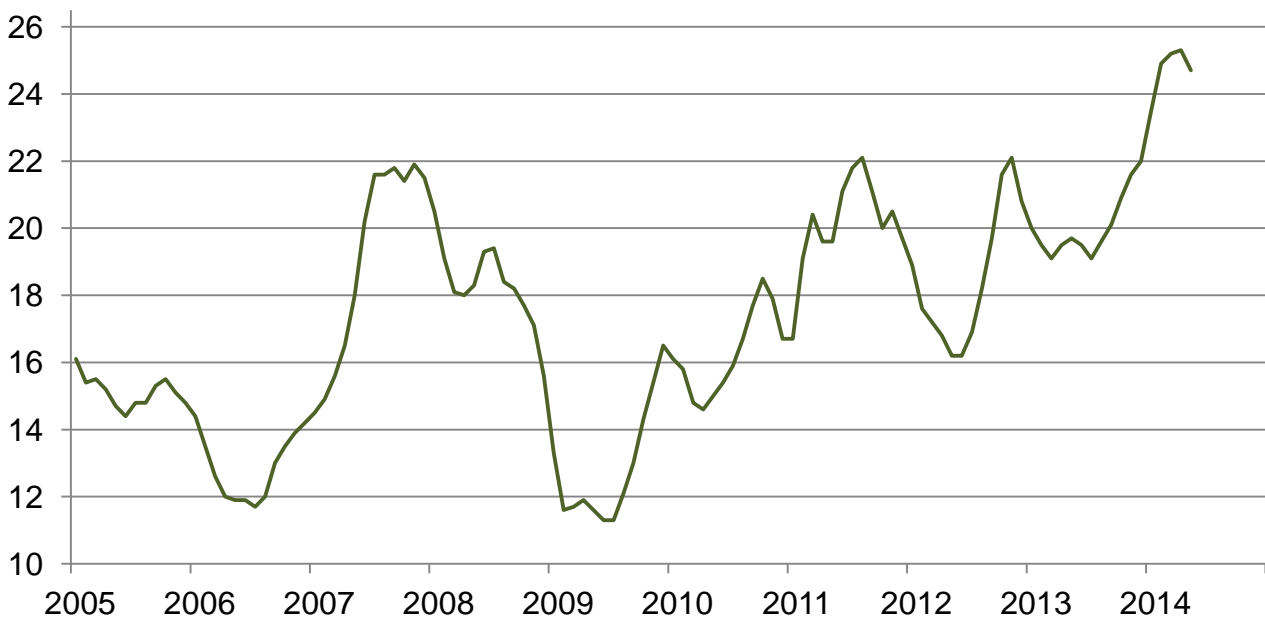
Prices Received for Cattle by Month – United States

Dollars per cwt



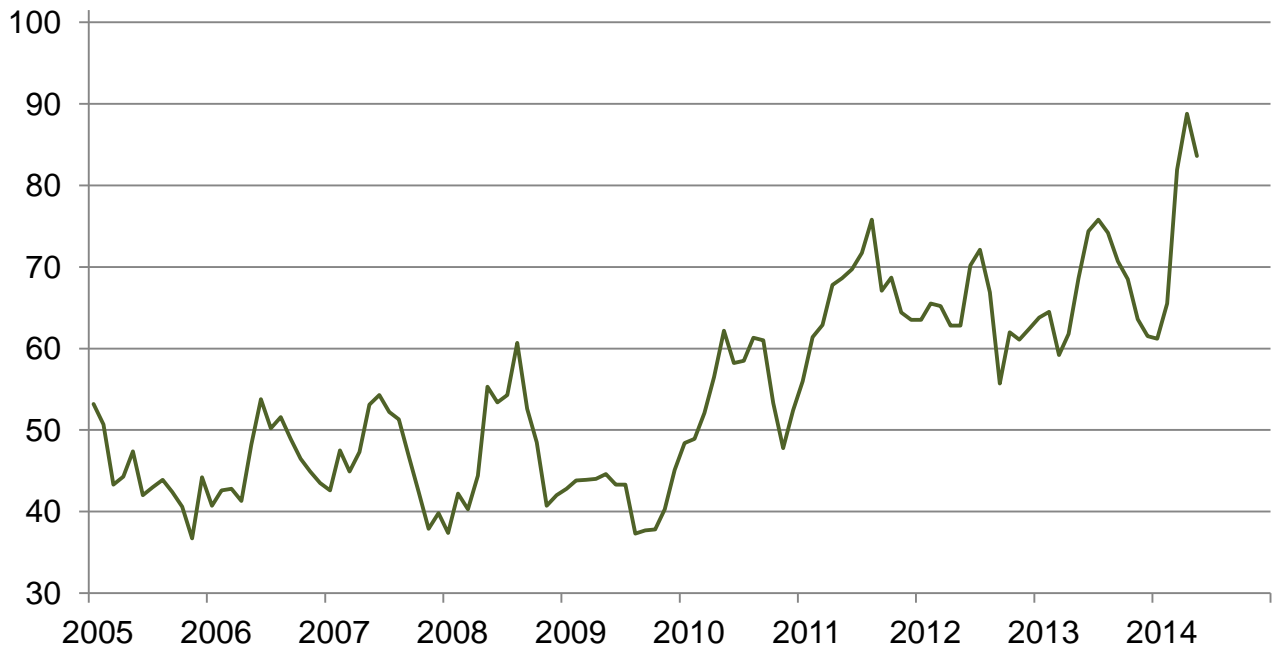
Prices Received for Milk by Month – United States

Dollars per cwt



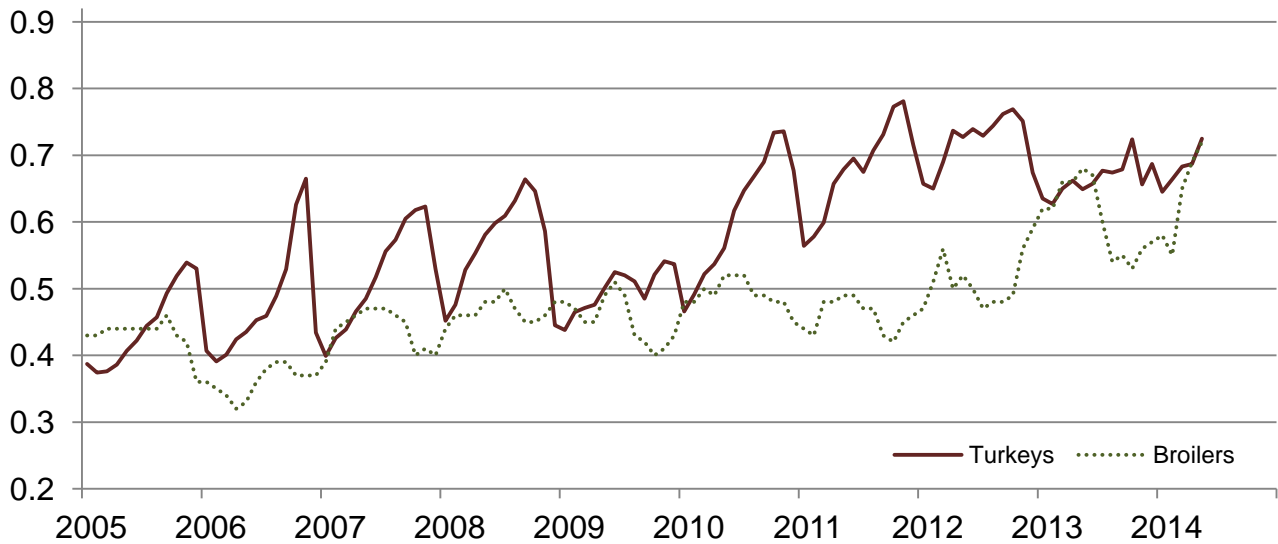
Prices Received for Hogs by Month – United States

Dollars per cwt



Prices Received for Poultry by Month – United States

Dollars per pound



Prices Received for All Wheat, Corn, and Soybeans by Month – United States: 2014 with Comparisons

[Current month prices are mid-month; prices for previous months and years are for the entire month. Blank data cells indicate estimation period has not yet begun]

Month	All wheat			Corn			Soybeans		
	2012	2013	Preliminary 2014	2012	2013	Preliminary 2014	2012	2013	Preliminary 2014
	(dollars per bushel)	(dollars per bushel)	(dollars per bushel)	(dollars per bushel)	(dollars per bushel)	(dollars per bushel)	(dollars per bushel)	(dollars per bushel)	(dollars per bushel)
January	7.05	8.12	6.66	6.07	6.96	4.42	11.90	14.30	12.90
February	7.10	7.97	6.49	6.28	7.04	4.35	12.20	14.60	13.20
March	7.20	7.79	6.75	6.35	7.13	4.51	13.00	14.60	13.70
April	7.11	7.71	6.82	6.34	6.97	4.71	13.80	14.40	14.30
May	6.67	7.68	7.14	6.34	6.97	4.71	14.00	14.90	14.50
June	6.70	7.32		6.37	6.97		13.90	15.10	
July	7.89	6.93		7.14	6.79		15.40	15.30	
August	8.04	6.87		7.63	6.21		16.20	14.10	
September	8.27	6.80		6.89	5.40		14.30	13.30	
October	8.38	7.00		6.78	4.61		14.20	12.50	
November	8.47	6.85		7.01	4.35		14.30	12.70	
December	8.30	6.73		6.87	4.41		14.30	13.00	

Prices Received for Beef Cattle and All Hogs by Month – United States: 2014 with Comparisons

[Current month prices are mid-month; prices for previous months and years are for the entire month. Blank data cells indicate estimation period has not yet begun]

Month	Beef cattle ¹			All hogs ²		
	2012	2013	Preliminary 2014	2012	2013	Preliminary 2014
	(dollars per cwt)	(dollars per cwt)	(dollars per cwt)	(dollars per cwt)	(dollars per cwt)	(dollars per cwt)
January	122.00	125.00	138.00	63.50	63.80	61.20
February	124.00	123.00	144.00	65.50	64.50	65.50
March	126.00	125.00	148.00	65.20	59.20	81.90
April	122.00	125.00	148.00	62.80	61.80	88.80
May	121.00	126.00	147.00	62.80	68.60	83.60
June	120.00	122.00		70.20	74.40	
July	115.00	120.00		72.10	75.80	
August	117.00	121.00		66.90	74.20	
September	121.00	122.00		55.70	70.70	
October	122.00	127.00		62.00	68.50	
November	124.00	130.00		61.10	63.60	
December	124.00	130.00		62.40	61.50	

¹ Cows and steers & heifers.

² Barrows & gilts and sows.

Prices Received for All Wheat – States and United States: May 2014 with Comparisons

State	May 2013	April 2014	Preliminary May 2014
	(dollars per bushel)	(dollars per bushel)	(dollars per bushel)
Arizona	(D)	(D)	(D)
Arkansas	(D)	6.53	6.50
California	(D)	(D)	(S)
Colorado	7.40	7.27	7.49
Idaho	7.83	7.30	7.37
Illinois	7.18	6.49	6.40
Indiana	7.08	6.34	6.30
Kansas	7.53	7.35	7.61
Michigan	6.95	6.82	6.50
Minnesota	7.89	6.75	7.00
Missouri	7.19	6.86	6.60
Montana	7.96	6.60	6.70
Nebraska	7.50	7.15	7.50
North Carolina	(D)	5.97	5.95
North Dakota	7.74	6.53	6.74
Ohio	7.52	6.59	6.50
Oklahoma	7.50	7.37	7.51
Oregon	7.91	7.21	7.31
South Dakota	7.79	6.99	7.05
Texas	7.38	8.15	7.80
Washington	7.56	7.07	7.29
United States	7.68	6.82	7.14

(D) Withheld to avoid disclosing data for individual operations.

(S) Insufficient number of reports to establish an estimate.

Prices Received for Winter Wheat – States and United States: May 2014 with Comparisons

State	May 2013	April 2014	Preliminary May 2014
	(dollars per bushel)	(dollars per bushel)	(dollars per bushel)
Arkansas	(D)	6.53	6.50
California	(D)	(D)	(S)
Colorado	7.40	7.27	7.49
Idaho	7.64	7.29	(D)
Illinois	7.18	6.49	6.40
Indiana	7.08	6.34	6.30
Kansas	7.53	7.35	7.61
Michigan	6.95	6.82	6.50
Minnesota	(D)	(D)	(S)
Missouri	7.19	6.86	6.60
Montana	7.88	6.78	6.80
Nebraska	7.50	7.15	7.50
North Carolina	(D)	5.97	5.95
North Dakota	7.25	6.37	6.65
Ohio	7.52	6.59	6.50
Oklahoma	7.50	7.37	7.51
Oregon	7.89	7.19	(D)
South Dakota	7.31	6.73	7.09
Texas	7.38	8.15	7.80
Washington	7.43	6.98	7.24
United States	7.49	7.08	7.24

(D) Withheld to avoid disclosing data for individual operations.

(S) Insufficient number of reports to establish an estimate.

Prices Received for Durum Wheat – States and United States: May 2014 with Comparisons

State	May 2013	April 2014	Preliminary May 2014
	(dollars per bushel)	(dollars per bushel)	(dollars per bushel)
Arizona	(D)	(D)	(D)
California	(S)	(S)	(S)
Idaho	(S)	(S)	(S)
Montana	(D)	6.81	(D)
North Dakota	8.10	6.81	6.70
United States	8.06	6.82	7.20

(D) Withheld to avoid disclosing data for individual operations.

(S) Insufficient number of reports to establish an estimate.

Prices Received for Spring Wheat – States and United States: May 2014 with Comparisons

State	May 2013	April 2014	Preliminary May 2014
	(dollars per bushel)	(dollars per bushel)	(dollars per bushel)
Colorado	(S)	(D)	(S)
Idaho	8.12	7.32	7.50
Minnesota	7.89	6.75	7.00
Montana	8.03	6.48	6.62
North Dakota	7.72	6.49	6.75
Oregon	8.06	7.38	7.51
South Dakota	8.02	7.16	7.02
Washington	8.08	7.55	7.57
United States	7.84	6.61	6.84

(D) Withheld to avoid disclosing data for individual operations.

(S) Insufficient number of reports to establish an estimate.

Prices Received for All Barley – States and United States: May 2014 with Comparisons

State	May 2013	April 2014	Preliminary May 2014
	(dollars per bushel)	(dollars per bushel)	(dollars per bushel)
California	(D)	(D)	(D)
Colorado	(S)	(D)	(S)
Idaho	6.48	6.44	(D)
Minnesota	7.04	5.50	(S)
Montana	6.46	5.82	6.09
North Dakota	6.58	5.93	5.75
Oregon	(D)	(D)	(D)
Utah	5.80	4.11	(D)
Washington	5.18	4.61	(D)
Wyoming	(D)	(D)	(S)
United States	6.45	5.93	6.18

(D) Withheld to avoid disclosing data for individual operations.

(S) Insufficient number of reports to establish an estimate.

Prices Received for Malting Barley – States: May 2014 with Comparisons

State	May 2013	April 2014	Preliminary May 2014
	(dollars per bushel)	(dollars per bushel)	(dollars per bushel)
Idaho	6.50	(D)	(D)
Minnesota	(D)	5.51	(S)
Montana	6.56	5.97	6.25
North Dakota	6.70	6.59	6.20
Wyoming	(D)	(D)	(S)

(D) Withheld to avoid disclosing data for individual operations.

(S) Insufficient number of reports to establish an estimate.

Prices Received for Feed Barley – States: May 2014 with Comparisons

State	May 2013	April 2014	Preliminary May 2014
	(dollars per bushel)	(dollars per bushel)	(dollars per bushel)
Idaho	6.12	4.78	(D)
Minnesota	7.10	(D)	(S)
Montana	5.19	3.16	(D)
North Dakota	4.68	3.36	3.20
Wyoming	(S)	(S)	(S)

(D) Withheld to avoid disclosing data for individual operations.

(S) Insufficient number of reports to establish an estimate.

Prices Received for Corn – States and United States: May 2014 with Comparisons

State	May 2013	April 2014	Preliminary May 2014
	(dollars per bushel)	(dollars per bushel)	(dollars per bushel)
Colorado	6.98	4.82	4.80
Illinois	6.91	4.84	4.80
Indiana	7.16	4.86	4.90
Iowa	7.05	4.76	4.70
Kansas	7.00	4.80	4.76
Kentucky	7.08	4.95	5.00
Michigan	6.65	4.66	4.60
Minnesota	6.83	4.48	4.55
Missouri	7.30	4.94	4.90
Nebraska	6.99	4.69	4.70
North Carolina	7.48	5.15	5.15
North Dakota	6.39	4.01	4.05
Ohio	7.00	4.68	4.70
Pennsylvania	7.14	5.05	5.05
South Dakota	6.87	4.19	4.21
Tennessee	7.47	5.23	5.20
Texas	7.18	5.28	5.38
Wisconsin	6.77	4.55	4.55
United States	6.97	4.71	4.71

Prices Received for Soybeans – States and United States: May 2014 with Comparisons

State	May 2013	April 2014	Preliminary May 2014
	(dollars per bushel)	(dollars per bushel)	(dollars per bushel)
Arkansas	15.00	14.60	14.50
Illinois	15.10	14.20	14.50
Indiana	15.10	14.60	14.80
Iowa	14.90	14.30	14.50
Kansas	14.60	14.40	14.50
Kentucky	15.10	14.40	14.40
Louisiana	15.10	14.80	(D)
Michigan	14.50	14.20	14.50
Minnesota	14.70	14.40	14.40
Mississippi	(D)	15.50	14.50
Missouri	14.80	14.60	14.60
Nebraska	14.70	14.20	14.30
North Carolina	15.00	14.70	14.70
North Dakota	14.00	13.10	13.10
Ohio	14.90	14.50	14.60
South Dakota	14.60	13.70	14.10
Tennessee	15.00	14.60	14.50
Wisconsin	14.60	14.00	14.30
United States	14.90	14.30	14.50

(D) Withheld to avoid disclosing data for individual operations.

Prices Received for Oats – States and United States: May 2014 with Comparisons

State	May 2013	April 2014	Preliminary May 2014
	(dollars per bushel)	(dollars per bushel)	(dollars per bushel)
Illinois	(D)	(S)	(S)
Iowa	4.66	4.81	4.70
Michigan	4.38	(D)	(D)
Minnesota	3.97	3.87	3.95
Montana	3.55	(D)	(S)
Nebraska	(D)	(D)	(D)
New York	4.02	(D)	(D)
North Dakota	3.87	2.96	(S)
Oregon	(S)	(D)	(S)
Pennsylvania	4.63	(D)	(D)
South Dakota	4.42	3.78	3.79
Texas	(S)	(D)	(D)
Wisconsin	4.39	4.72	4.25
United States	4.45	3.94	4.15

(D) Withheld to avoid disclosing data for individual operations.

(S) Insufficient number of reports to establish an estimate.

Prices Received for Sorghum Grain – States and United States: May 2014 with Comparisons

State	May 2013	April 2014	Preliminary May 2014
	(dollars per cwt)	(dollars per cwt)	(dollars per cwt)
Arkansas	(D)	(D)	9.00
Illinois	(D)	9.22	(S)
Kansas	11.30	8.19	8.08
Louisiana	(D)	(D)	(S)
Missouri	(D)	8.93	8.60
Nebraska	12.00	8.15	8.00
Oklahoma	11.10	8.43	8.10
Texas	11.50	9.65	9.25
United States	11.40	8.55	8.25

(D) Withheld to avoid disclosing data for individual operations.

(S) Insufficient number of reports to establish an estimate.

Prices Received for Dry Beans – States and United States: May 2014 with Comparisons

State	May 2013	April 2014	Preliminary May 2014
	(dollars per cwt)	(dollars per cwt)	(dollars per cwt)
California	48.90	66.00	(D)
Colorado	36.40	30.30	(D)
Idaho	39.30	32.40	(D)
Michigan	44.10	49.50	(D)
Minnesota	33.80	(D)	(D)
Nebraska	41.00	37.30	46.00
North Dakota	31.30	31.30	31.80
United States	36.20	36.50	40.10

(D) Withheld to avoid disclosing data for individual operations.

Prices Received for Peanuts (in shell) – States and United States: May 2014 with Comparisons

State	May 2013	April 2014	Preliminary May 2014
	(dollars per pound)	(dollars per pound)	(dollars per pound)
Alabama	0.218	0.224	0.218
Florida	0.257	0.252	0.240
Georgia	0.253	0.233	0.230
Mississippi	0.364	0.231	0.229
New Mexico	(D)	(S)	0.310
North Carolina	0.348	0.246	0.257
Oklahoma	0.322	0.278	0.308
South Carolina	0.296	0.244	0.251
Texas	0.308	0.350	0.334
Virginia	0.342	0.256	0.253
United States	0.271	0.242	0.238

(D) Withheld to avoid disclosing data for individual operations.

(S) Insufficient number of reports to establish an estimate.

Prices Received for Sunflower – States and United States: May 2014 with Comparisons

State	May 2013	April 2014	Preliminary May 2014
	(dollars per cwt)	(dollars per cwt)	(dollars per cwt)
Colorado	(S)	(S)	(S)
Kansas	(D)	(D)	(D)
Minnesota	29.20	(D)	(S)
North Dakota	23.90	23.40	24.60
South Dakota	23.40	20.00	20.80
United States	24.00	22.30	22.20

(D) Withheld to avoid disclosing data for individual operations.

(S) Insufficient number of reports to establish an estimate.

Prices Received for Canola – States and United States: May 2014 with Comparisons

State	May 2013	April 2014	Preliminary May 2014
	(dollars per cwt)	(dollars per cwt)	(dollars per cwt)
Minnesota	(D)	(D)	(S)
North Dakota	28.10	19.30	20.30
United States	28.00	19.30	20.30

(D) Withheld to avoid disclosing data for individual operations.

(S) Insufficient number of reports to establish an estimate.

Prices Received for Flaxseed – States and United States: May 2014 with Comparisons

State	May 2013	April 2014	Preliminary May 2014
	(dollars per bushel)	(dollars per bushel)	(dollars per bushel)
North Dakota	15.40	13.90	14.20
United States	15.40	13.90	14.20

Prices Received for Upland Cotton and Cottonseed – States and United States: May 2014 with Comparisons

[Cottonseed marketing year August - February]

State	Cotton, Upland			Cottonseed		
	May 2013	April 2014	Preliminary May 2014	May 2013	April 2014	Preliminary May 2014
	(dollars per pound)	(dollars per pound)	(dollars per pound)	(dollars per ton)	(dollars per ton)	(dollars per ton)
Alabama	0.802	(D)	(D)	(NA)	(NA)	(NA)
Arizona	(D)	(D)	(S)	(NA)	(NA)	(NA)
Arkansas	0.800	(D)	(D)	(NA)	(NA)	(NA)
California	(D)	(D)	(S)	(NA)	(NA)	(NA)
Georgia	0.802	(D)	(D)	(NA)	(NA)	(NA)
Louisiana	(D)	(D)	(D)	(NA)	(NA)	(NA)
Mississippi	(D)	(D)	(D)	(NA)	(NA)	(NA)
North Carolina	0.801	(D)	(D)	(NA)	(NA)	(NA)
Tennessee	0.791	(D)	(D)	(NA)	(NA)	(NA)
Texas	(D)	0.760	(D)	(NA)	(NA)	(NA)
United States	0.783	0.805	0.807	(NA)	(NA)	(NA)

(D) Withheld to avoid disclosing data for individual operations.

(NA) Not available.

(S) Insufficient number of reports to establish an estimate.

Prices Received and Farm Marketings for Upland Cotton and Rice – United States: May 2014 with Comparisons

Item	May 2013	April 2014	Preliminary May 2014
Cotton, Upland			
Average pricedollars/pound	0.783	0.805	0.807
Marketings ¹1,000 bales	266	206	(NA)
Rice, all			
Average pricedollars/cwt	15.50	16.10	16.70
Marketings ²1,000 cwt	11,213	8,820	(NA)
Rice, long			
Average pricedollars/cwt	14.90	15.60	15.70
Marketings ²1,000 cwt	9,097	6,986	(NA)
Rice, medium and short			
Average pricedollars/cwt	18.00	18.10	18.90
Marketings ²1,000 cwt	2,116	1,834	(NA)

(NA) Not available.

¹ Marketings based on a survey of cotton buyers in the major producing States - Alabama, Arizona, Arkansas, California, Georgia, Louisiana, Mississippi, North Carolina, Tennessee, and Texas.

² Purchases by private firms and rice (rough equivalent) shipped by cooperatives.

Prices Received for Hay by Type – States and United States: May 2014 with Comparisons

State	All hay			Alfalfa hay			Other hay		
	May 2013	April 2014	Preliminary May 2014	May 2013	April 2014	Preliminary May 2014	May 2013	April 2014	Preliminary May 2014
	(dollars per ton)	(dollars per ton)	(dollars per ton)	(dollars per ton)	(dollars per ton)	(dollars per ton)	(dollars per ton)	(dollars per ton)	(dollars per ton)
Arizona	240.00	225.00	240.00	240.00	225.00	240.00	250.00	220.00	230.00
California	197.00	239.00	246.00	202.00	250.00	260.00	175.00	200.00	205.00
Colorado	244.00	214.00	214.00	245.00	215.00	215.00	225.00	210.00	200.00
Idaho	187.00	199.00	193.00	190.00	200.00	195.00	145.00	170.00	170.00
Illinois	182.00	177.00	176.00	195.00	190.00	190.00	145.00	125.00	120.00
Iowa	247.00	161.00	161.00	275.00	175.00	180.00	174.00	110.00	112.00
Kansas	215.00	146.00	169.00	235.00	163.00	189.00	135.00	95.00	89.00
Kentucky	145.00	122.00	130.00	205.00	190.00	190.00	105.00	90.00	90.00
Michigan	238.00	139.00	154.00	250.00	150.00	170.00	220.00	105.00	130.00
Minnesota	251.00	158.00	169.00	265.00	181.00	186.00	215.00	118.00	123.00
Missouri	150.00	94.00	114.00	240.00	190.00	190.00	110.00	80.00	80.00
Montana	159.00	136.00	130.00	162.00	140.00	135.00	147.00	115.00	105.00
Nebraska	222.00	119.00	120.00	236.00	127.00	125.00	166.00	98.00	94.00
Nevada	203.00	226.00	235.00	202.00	229.00	240.00	209.00	217.00	220.00
New Mexico	257.00	232.00	256.00	265.00	240.00	265.00	197.00	175.00	190.00
New York	150.00	187.00	180.00	205.00	205.00	223.00	135.00	185.00	168.00
North Dakota	133.00	101.00	98.00	137.00	102.00	99.00	89.00	69.00	64.00
Ohio	186.00	136.00	140.00	232.00	165.00	165.00	163.00	110.00	125.00
Oklahoma	177.00	163.00	178.00	226.00	212.00	237.00	104.00	99.00	89.00
Oregon	199.00	220.00	208.00	205.00	220.00	220.00	184.00	220.00	190.00
Pennsylvania	189.00	212.00	205.00	221.00	233.00	230.00	186.00	202.00	202.00
South Dakota	241.00	127.00	131.00	251.00	133.00	139.00	193.00	101.00	97.00
Texas	141.00	105.00	121.00	243.00	245.00	252.00	88.00	82.00	82.00
Utah	187.00	170.00	170.00	191.00	170.00	170.00	153.00	140.00	140.00
Washington	223.00	198.00	199.00	225.00	185.00	190.00	220.00	220.00	220.00
Wisconsin	263.00	157.00	163.00	275.00	170.00	175.00	215.00	108.00	115.00
Wyoming	217.00	167.00	160.00	220.00	170.00	165.00	200.00	145.00	145.00
United States	203.00	191.00	202.00	221.00	206.00	224.00	153.00	151.00	150.00

Prices Received for Apples – States and United States: May 2014 with Comparisons

[Equivalent packinghouse-door returns for California, Michigan, New York, and Washington. Prices at point of first sale for other States]

State	Apples, fresh use		
	May 2013	April 2014	Preliminary May 2014
	(dollars per pound)	(dollars per pound)	(dollars per pound)
California	(NA)	(NA)	(NA)
Michigan	(NA)	0.315	0.325
New York	(NA)	0.260	0.290
Ohio	(NA)	(NA)	(NA)
Pennsylvania	(NA)	(NA)	0.410
Virginia	(NA)	0.420	(NA)
Washington	(NA)	0.600	0.413
United States	(NA)	0.396	0.349

(NA) Not available.

Prices Received for Citrus Fruits by Utilization – States and United States: May 2013

[Net pounds per box: grapefruit in California-80, Florida-85, Texas-80; lemons-80; oranges in California-80, Florida-90, Texas-85; tangelos-90; tangerines and mandarins in Arizona and California-80, Florida-95]

Commodity, State, and type	FOB packed fresh	Equivalent returns					
		Packinghouse door			On-tree		
		All	Fresh	Process	All	Fresh	Process
	(dollars per box)	(dollars per box)	(dollars per box)	(dollars per box)	(dollars per box)	(dollars per box)	(dollars per box)
Grapefruit							
California ¹	17.10	10.44	10.44	(D)	8.26	8.26	(D)
United States	17.10	10.44	10.44	(D)	8.26	8.26	(D)
Lemons							
California	36.90	20.31	27.82	(D)	14.77	21.92	(D)
United States	36.90	20.31	27.82	(D)	14.77	21.92	(D)
Oranges							
California	25.50	14.95	16.51	(D)	12.43	14.00	(D)
Navel and miscellaneous	27.40	16.51	18.41	(D)	13.98	15.90	(D)
Valencia	(D)	(D)	(D)	(D)	(D)	(D)	(D)
Florida	25.00	11.36	13.85	11.30	8.66	11.05	8.60
Valencia	25.00	11.36	13.85	11.30	8.66	11.05	8.60
United States	25.40	11.94	16.18	11.10	9.27	13.64	8.40
Tangerines and mandarins							
California	(D)	(D)	(D)	(D)	(D)	(D)	(D)
United States	(D)	(D)	(D)	(D)	(D)	(D)	(D)

(D) Withheld to avoid disclosing data for individual operations.

¹ Some processed sales included in fresh sales.

Prices Received for Citrus Fruits by Utilization – States and United States: April 2014

[Net pounds per box: grapefruit in California-80, Florida-85, Texas-80; lemons-80; oranges in California-80, Florida-90, Texas-85; tangelos-90; tangerines and mandarins in Arizona and California-80, Florida-95]

Commodity, State, and type	FOB packed fresh	Equivalent returns					
		Packinghouse door			On-tree		
		All	Fresh	Process	All	Fresh	Process
	(dollars per box)	(dollars per box)	(dollars per box)	(dollars per box)	(dollars per box)	(dollars per box)	(dollars per box)
Grapefruit							
California ¹	18.80	12.01	12.01	(D)	9.79	9.79	(D)
Florida	22.10	7.04	11.35	6.03	4.21	9.10	3.06
White	(S)	6.70	(S)	6.70	3.90	(S)	3.90
Colored	22.10	7.39	11.35	4.90	4.53	9.10	1.65
Texas	23.60	5.75	12.00	1.60	4.23	10.39	0.14
United States	21.60	7.15	11.79	4.79	4.79	9.78	2.25
Lemons							
California	48.40	31.64	39.14	(D)	25.87	33.12	(D)
United States	48.40	31.64	39.14	(D)	25.87	33.12	(D)
Oranges							
California	37.10	20.92	27.88	(D)	18.32	25.32	(D)
Navel and miscellaneous	38.00	21.05	28.83	(D)	18.45	26.27	(D)
Valencia	(D)	(D)	(D)	(D)	(D)	(D)	(D)
Florida	27.60	10.75	16.45	10.60	8.05	13.65	7.90
Valencia	27.60	10.75	16.45	10.60	8.05	13.65	7.90
United States	36.00	13.00	26.64	9.90	10.32	24.06	7.20
Tangerines and mandarins							
California	(D)	(D)	(D)	(D)	(D)	(D)	(D)
Florida	(S)	(S)	(S)	(S)	(S)	(S)	(S)
United States	(D)	(D)	(D)	(D)	(D)	(D)	(D)

(D) Withheld to avoid disclosing data for individual operations.

(S) Insufficient number of reports to establish an estimate.

¹ Some processed sales included in fresh sales.

Prices Received for Citrus Fruits by Utilization – States and United States: May 2014

[Net pounds per box: grapefruit in California-80, Florida-85, Texas-80; lemons-80; oranges in California-80, Florida-90, Texas-85; tangelos-90; tangerines and mandarins in Arizona and California-80, Florida-95]

Commodity, State, and type	FOB packed fresh	Equivalent returns					
		Packinghouse door			On-tree		
		All	Fresh	Process	All	Fresh	Process
	(dollars per box)	(dollars per box)	(dollars per box)	(dollars per box)	(dollars per box)	(dollars per box)	(dollars per box)
Grapefruit							
California ¹	16.90	10.11	10.11	(D)	7.89	7.89	(D)
Florida	(S)	(S)	(S)	(S)	(S)	(S)	(S)
White	(S)	(S)	(S)	(S)	(S)	(S)	(S)
Colored	(S)	(S)	(S)	(S)	(S)	(S)	(S)
Texas	(S)	(S)	(S)	(S)	(S)	(S)	(S)
United States	16.90	10.11	10.11	(D)	7.89	7.89	(D)
Lemons							
California	50.40	32.09	41.14	(D)	26.36	35.12	(D)
United States	50.40	32.09	41.14	(D)	26.36	35.12	(D)
Oranges							
California	36.30	20.91	27.10	(D)	18.31	24.54	(D)
Navel and miscellaneous	38.30	20.98	29.13	(D)	18.37	26.57	(D)
Valencia	33.10	20.78	23.93	(D)	18.20	21.37	(D)
Florida	32.40	12.01	21.25	11.70	9.30	18.45	9.00
Valencia	32.40	12.01	21.25	11.70	9.30	18.45	9.00
United States	35.70	13.88	26.30	11.06	11.20	23.71	8.36
Tangerines and mandarins							
California	(D)	(D)	(D)	(D)	(D)	(D)	(D)
United States	(D)	(D)	(D)	(D)	(D)	(D)	(D)

(D) Withheld to avoid disclosing data for individual operations.

(S) Insufficient number of reports to establish an estimate.

¹ Some processed sales included in fresh sales.

Prices Received for Potatoes – States and United States: May 2014 with Comparisons

State	May 2013	April 2014	Preliminary May 2014
	(dollars per cwt)	(dollars per cwt)	(dollars per cwt)
California			
Spring	26.00	18.90	18.90
Fall	7.10	9.25	9.30
All ¹	21.60	17.40	17.10
Colorado			
Fresh ²	6.95	12.20	(D)
All ¹	6.60	11.00	(D)
Florida	(D)	(D)	(D)
Idaho			
Fresh ²	4.50	6.20	6.20
Processing	8.20	8.00	8.00
All ¹	7.10	8.75	8.15
Maine	11.90	12.60	12.10
Michigan	13.40	14.90	15.30
Minnesota	10.50	10.40	10.80
New York	14.10	15.80	16.50
North Carolina	(S)	(S)	(S)
North Dakota			
Fresh ²	11.80	(D)	(D)
Processing	10.20	(D)	(D)
All ¹	9.85	10.60	(D)
Oregon	8.55	8.35	8.20
Texas	(S)	(S)	(S)
Virginia	(S)	(S)	(S)
Washington			
Processing	7.90	8.50	(D)
All ¹	7.85	9.20	8.85
Wisconsin			
Fresh ²	5.20	11.50	10.50
Processing	10.40	9.50	9.50
All ¹	8.65	10.70	10.70
United States			
Fresh ²	9.33	11.57	(D)
Processing	8.75	8.90	(D)
All ¹	12.89	11.29	11.44

(D) Withheld to avoid disclosing data for individual operations.

(S) Insufficient number of reports to establish an estimate.

¹ Average price of potatoes sold for all uses, including table stock, processing, seed, and livestock feed.

² Fresh market prices only. Includes table stock prices.

Prices Received for All Milk – States and United States: May 2014 with Comparisons

[Before deduction for hauling. Includes quality, quantity, and other premiums. Excludes hauling subsidies]

State	May 2013		April 2014		Preliminary May 2014	
	Price (dollars per cwt)	Fat test (percent)	Price (dollars per cwt)	Fat test (percent)	Price (dollars per cwt)	Fat test (percent)
Arizona	19.00	3.44	24.30	3.40	23.90	3.40
California	18.23	3.66	23.41	3.66	22.30	3.61
Colorado	19.70	3.47	25.00	3.53	24.90	3.50
Florida	22.80	3.63	28.70	3.53	29.20	3.53
Idaho	19.10	3.67	24.50	3.74	23.70	3.67
Illinois	20.30	3.71	26.20	3.74	25.60	3.65
Indiana	20.30	3.68	25.50	3.70	25.10	3.62
Iowa	20.40	3.76	26.20	3.75	25.80	3.69
Kansas	19.70	3.57	25.50	3.63	25.30	3.54
Michigan	20.00	3.61	25.40	3.70	25.00	3.63
Minnesota	20.50	3.82	26.60	3.89	25.90	3.85
New Mexico	18.20	3.47	23.40	3.50	23.40	3.50
New York	20.50	3.67	26.30	3.77	25.90	3.71
Ohio	20.60	3.72	25.80	3.72	25.40	3.63
Oregon	21.20	3.77	27.20	3.77	27.00	3.73
Pennsylvania	20.90	3.65	26.80	3.73	26.50	3.70
South Dakota ¹	21.30	3.95	26.50	3.93	25.90	3.85
Texas	19.80	3.75	26.20	3.79	26.00	3.76
Utah	19.20	3.65	24.60	3.71	24.50	3.70
Vermont	20.70	3.75	26.60	3.80	26.30	3.77
Virginia	21.60	3.63	27.40	3.63	27.40	3.58
Washington	20.10	3.77	25.70	3.77	24.80	3.73
Wisconsin	20.40	3.75	26.30	3.77	25.60	3.72
United States	19.70	3.68	25.30	3.71	24.70	3.66

¹ Beginning in March 2014, South Dakota was added and Missouri was removed from the monthly price program.

Prices Received for Milk Cows – States and United States: April 2014 with Comparisons

[Animals sold for dairy herd replacement only. Milk cow price program suspended in 2013 during the April and July quarters. Quarterly U.S. milk cow prices are based on revised milk cow inventory.]

State	April 2013 (dollars per head)	January 2014 (dollars per head)	April 2014 (dollars per head)
Arizona	(NA)	1,500	2,000
California	(NA)	1,300	1,800
Colorado	(NA)	1,540	2,000
Florida	(NA)	1,560	1,800
Idaho	(NA)	1,400	1,950
Illinois	(NA)	1,500	1,750
Indiana	(NA)	1,500	1,750
Iowa	(NA)	1,450	1,850
Kansas	(NA)	1,400	1,750
Michigan	(NA)	1,650	1,850
Minnesota	(NA)	1,410	1,830
New Mexico	(NA)	1,450	1,750
New York	(NA)	1,430	1,660
Ohio	(NA)	1,450	1,700
Oregon	(NA)	1,350	1,700
Pennsylvania	(NA)	1,500	1,800
South Dakota ¹	(NA)	1,470	1,750
Texas	(NA)	1,450	1,800
Utah	(NA)	1,350	1,750
Vermont	(NA)	1,570	1,760
Virginia	(NA)	1,520	1,770
Washington	(NA)	1,350	1,700
Wisconsin	(NA)	1,570	1,900
United States	(NA)	1,440	1,810

(NA) Not available.

¹ Beginning in March 2014, South Dakota was added and Missouri was removed from the monthly price program.

Commodity Parity Prices and Price as Percent of Parity Price – United States: May 2014 with Comparisons

[Parity prices are computed under the provisions of Title III, Subtitle a, Section 301 (a) of the Agricultural Adjustment Act of 1938 as amended by the Agricultural Acts of 1948, 1949, and 1956. See January *Agricultural Prices* for details on adjusted base price and parity price computations. Parity data not available for blank cells. Primary source of data for livestock and milk prices is United States Department of Agriculture's Agricultural Marketing Service]

Commodity and unit	Adjusted base price	Parity price			Price as percent of parity		
		May 2013	April 2014	May 2014	May 2013	April 2014	May 2014
	(dollars)	(dollars)	(dollars)	(dollars)	(percent)	(percent)	(percent)
Basic commodities							
All wheat bushel	0.616	18.50	18.60	18.70	42	37	38
Rice cwt	1.32	48.00	39.80	40.00	32	40	42
Corn bushel	0.443	12.60	13.40	13.40	55	35	35
Cotton							
Upland pound	0.067	2.10	2.02	2.03	37	40	40
American Pima pound	0.137	3.87	4.13	4.15	32	40	40
Peanuts pound	0.025	0.786	0.755	0.757	34	32	31
Designated nonbasic							
All milk, to plants ¹ cwt	1.81	51.00	54.60	54.80	41	48	48
Honey, extracted ² pound	0.147	4.11	4.44	4.45	48	48	48
Wool and mohair							
Wool pound	0.109	3.12	3.29	3.30	49	44	44
Mohair pound	0.351	9.78	10.60	10.60	40	37	37
Other nonbasic							
Apples, fresh ³ pound	0.034	0.932	1.030	1.030	41	38	34
Barley bushel	0.452	12.90	13.60	13.70	50	44	45
Canola cwt	1.880	54.70	56.70	56.90	51	34	36
Cottonseed ton	19.10	518.00	576.00	579.00	42	39	39
Dry edible beans cwt	3.20	87.70	96.60	96.90	41	38	41
Flaxseed bushel	1.150	32.30	34.70	34.80	48	40	41
Oats bushel	0.284	7.72	8.57	8.60	58	46	48
Potatoes cwt	0.836	23.90	25.20	25.30	54	45	45
Sorghum grain cwt	0.749	22.10	22.60	22.70	52	38	36
Soybeans bushel	1.060	30.00	32.00	32.10	50	45	45
Sunflower, all cwt	2.12	61.20	64.00	64.20	39	35	35
Citrus (equivalent on-tree)							
Grapefruit box	0.726	20.30	21.90	22.00	41	22	36
Lemons box	1.36	38.40	41.00	41.20	38	63	64
Oranges box	0.770	20.70	23.20	23.30	45	44	48
Tangerines box	1.61	43.40	48.60	48.80	135	77	119
Livestock and poultry							
Beef cattle cwt	10.40	291.00	314.00	315.00	43	47	47
Calves cwt	14.30	399.00	432.00	433.00	39	51	53
Hogs cwt	5.76	160.00	174.00	174.00	43	51	48
Eggs ¹ dozen	0.092	2.59	2.78	2.79	54	51	50
Turkeys, live pound	0.060	1.660	1.810	1.820	39	38	40

¹ Seasonally adjusted price as percentage of parity price.

² Wholesale extracted. Adjusted base price derived from state annual averages prices weighted by production. For 1982 through 1985 the national averages are the support prices.

³ Equivalent packinghouse-door returns for California, New York, Oregon, and Washington. Price at point of first sale for other states.

Commodity Parity Prices – United States: May 2014 with Comparisons

[Parity prices are computed under the provisions of Title III, Subtitle a, Section 301 (a) of the Agricultural Adjustment Act of 1938 as amended by the Agricultural Acts of 1948, 1949, and 1956. See January *Agricultural Prices* for details on adjusted base price and parity price computations]

Commodity and unit	Adjusted base price	Parity price			
		May 2013	April 2014	May 2014	
	(dollars)	(dollars)	(dollars)	(dollars)	
Field crops and miscellaneous					
Hops	pound	0.318	8.82	9.60	9.63
Mustard seed	cwt	2.99	83.00	90.20	90.60
Rapeseed	cwt	2.29	65.50	69.10	69.40
Rye	bushel	0.583	15.60	17.60	17.70
Safflower	cwt	2.09	59.40	63.10	63.30
Spearmint oil	pound	1.60	43.70	48.30	48.50
Sweet potatoes	cwt	2.09	60.60	63.10	63.30
Tobacco					
Flue-cured, 11-14	pound	0.185	5.39	5.58	5.60
Fire-cured, 21-23	pound	0.267	7.78	8.06	8.09
Burley, 31	pound	0.188	5.47	5.67	5.69
Maryland, 32	pound	0.169	4.86	5.10	5.12
Dark air-cured, 35-37	pound	0.240	6.99	7.24	7.27
Pennsylvania seedleaf, 41	pound	0.183	5.13	5.52	5.54
Cigar binder, 51	pound	0.632	17.80	19.10	19.10
Noncitrus fruit					
Apples, processing ¹	ton	18.10	483.00	546.00	548.00
Apricots					
Fresh ²	ton	115.00	3,230.00	3,470.00	3,480.00
Dried (California)	ton	256.00	7,340.00	7,730.00	7,750.00
Avocados ²	ton	185.00	5,500.00	5,580.00	5,600.00
Cherries					
Sweet	ton	210.00	5,970.00	6,340.00	6,360.00
Tart	pound	0.033	0.961	0.996	1.000
Cranberry ³	barrel	4.75	136.00	143.00	144.00
Dates (California) ²	ton	161.00	4,690.00	4,860.00	4,880.00
Grapes					
Raisin variety	ton	139.00	3,870.00	4,200.00	4,210.00
Other dried	ton	62.20	1,800.00	1,880.00	1,880.00
Kiwifruit	ton	79.50	2,580.00	2,400.00	2,410.00
Nectarines, fresh (California) ²	ton	54.90	1,590.00	1,660.00	1,660.00
Olives, canning (California) ³	ton	91.10	2,550.00	2,750.00	2,760.00

See footnote(s) at end of table.

--continued

Commodity Parity Prices – United States: May 2014 with Comparisons (continued)

[Parity prices are computed under the provisions of Title III, Subtitle a, Section 301 (a) of the Agricultural Adjustment Act of 1938 as amended by the Agricultural Acts of 1948, 1949, and 1956. See January *Agricultural Prices* for details on adjusted base price and parity price computations]

Commodity and unit	Adjusted base price	Parity price		
		May 2013	April 2014	May 2014
	(dollars)	(dollars)	(dollars)	(dollars)
Noncitrus fruit - continued				
Papayas (Hawaii)pound	0.038	1.11	1.15	1.15
Peaches				
Fresh ⁴ ton	81.40	2,340.00	2,460.00	2,470.00
Dried (California) ton	48.10	1,410.00	1,450.00	1,460.00
Processing, excludes dried				
Clingstone (California) ³ ton	32.50	920.00	981.00	984.00
Pears				
Fresh ⁴ ton	56.10	1,590.00	1,690.00	1,700.00
Dried (California) ¹ ton	150.00	4,370.00	4,530.00	4,540.00
Plums (California)				
Fresh, equivalent on-tree ton	58.90	1,690.00	1,780.00	1,780.00
Prunes, dried (California) ¹ ton	148.00	4,160.00	4,470.00	4,480.00
Prunes and plums				
Fresh, excludes California ⁵ ton	62.90	1,800.00	1,900.00	1,910.00
Processing, excludes dried ¹ ton	23.20	693.00	700.00	703.00
Tree nuts ⁶				
Almondspound	0.213	6.14	6.43	6.45
Hazelnuts ton	198.00	5,560.00	5,980.00	6,000.00
Pistachiospound	0.198	5.65	5.98	6.00
Walnuts ton	171.00	5,390.00	5,160.00	5,180.00
Vegetables, fresh ⁷				
Carrots ⁸ cwt	2.60	74.80	78.50	78.80
Cauliflower ⁸ cwt	4.04	118.00	122.00	122.00
Celery ⁸ cwt	1.96	56.50	59.20	59.40
Honeydew melons cwt	1.94	57.40	58.50	58.80
Lettuce cwt	2.09	60.90	63.10	63.30
Onions ⁸ cwt	1.38	41.10	41.60	41.80
Tomatoes cwt	4.29	125.00	129.00	130.00

¹ Equivalent returns at processing plant door.

² Equivalent returns at packinghouse door.

³ Equivalent returns for bulk fruit at first delivery point.

⁴ Equivalent packinghouse-door returns for California, New York (apples only), Oregon (except peaches), and Washington. Price at point of first sale for other states.

⁵ Based on "as sold" prices for fresh fruit in all states.

⁶ Prices In-Shell basis except almonds which are shelled basis.

⁷ FOB shipping point prices.

⁸ Includes some processing.

Reliability of Prices Received Estimates

Definition: Prices received represent sales from producers to first buyers. They include all grades and qualities. The average commodity price from the survey multiplied by the total quantity marketed theoretically should give the total cash receipts for the commodity.

Survey procedures: Primary sales data used to determine grain prices were obtained from probability samples of about 1900 mills and elevators. These procedures ensure that virtually all grain moving into commercial channels has a chance of being included in the survey. Generally, States surveyed account for 90 percent or more of total United States production. Livestock prices are obtained from packers, stockyards, auctions, dealers, and market check data from AMS-USDA, private marketing organizations, and state commodity groups and agencies. Inter-farm sales of grain and livestock are not included since they represent very small percentages of the total sales. Grain marketed for seed is also excluded. Fruit and vegetable prices are obtained from sample surveys and market check data from AMS-USDA, private marketing organizations, state agencies, and universities.

Summary and estimation procedures: Survey quantities sold are expanded by strata to state levels and used to weight average strata prices to a state average. State prices are then weighted to a United States price based on expanded sales. Recommendations are prepared by the Regional Field Offices and reviewed by the Agricultural Statistics Board in Washington, D.C. State recommendations are reviewed for reasonableness with survey data, other States, and recent historic estimates.

Revisions: For most items, the current month's preliminary price represents a 3-5 day period around the 15th of the month. Previous month's prices represent actual dollars received for quantities sold during the entire month. Revisions are published in monthly issues of *Agricultural Prices*.

Reliability: United States price estimates based on probability surveys generally have a sampling error of less than one percent for the major commodities such as corn, wheat, soybeans, cotton, and rice. Current methods of summarization for non-probability commodities are not designed directly to calculate sampling errors. However, analytical measures approximate the United States relative sampling errors at around five percent. Any non-sampling errors are attributed to such things as the inability to obtain correct information, differences in interpreting questions or definitions, mistakes in coding or processing the data, etc. Efforts are made at each step in the survey process to minimize these non-sampling errors.

After the Council on Food, Agricultural and Resource Economics (C-FARE) 2009 program review which included changes in farm production practices, plans were implemented to make necessary program improvements in the agricultural price program. The index group structure for prices received was modified to maintain a more universal structure and consistency with the required 1910-1914 series. Modifications implemented January 2014 include the following:

- Update the current 1990-1992 base reference period to 2011,
- Link the 1910-1914 series to the updated base reference period, 2011,
- Create index groups used universally by researchers, data users, and policymakers,
- Re-classify agricultural commodities into the index groups,
- Expand the commodity coverage for vegetable, melon, non-citrus, and tree nuts,
- Update monthly market weights, and
- Adjust (normalization) current five year moving average cash receipts and farm input cost weights.

Prices Paid by Farmers

The May Index of Prices Paid for Commodities and Services, Interest, Taxes, and Farm Wage Rates (PPITW) at 112 percent of its 2011 base, is up 0.9 percent from April 2014 and 5.7 percent from May 2013.

Production index: The May index, at 114, increased 0.9 percent from last month and 6.5 percent from last year. Higher prices for complete feeds, feeder cattle, hay & forages, and potash & phosphate more than offset lower prices in May for feeder pigs, concentrates, other services, and LP gas

Feed: The May index, at 120, increased 0.8 percent from April but decreased 1.6 percent from last May. Since April, higher prices for complete feeds, hay & forages, and supplements more than offset lower prices for concentrates and feed grains.

Livestock and poultry: The May index, at 144, increased 0.7 percent from last month and 48 percent from last year. Since April, higher prices for feeder cattle more than offset lower prices for feeder pigs. The May feeder cattle price, at \$193.00 per cwt, is up \$6.00 per cwt from the April price. May feeder pigs averaged \$308.00 per cwt, down \$25.00 per cwt from April.

Fertilizer: The May index, at 103, is up 3.0 percent from April but 1.9 below percent May a year ago. Prices for potash & phosphate, and nitrogen are higher compared with last month.

Chemicals: The May index, at 110, was unchanged from April but increased 1.9 percent from last May. Prices for herbicides and insecticides remained steady.

Fuels: The May index, at 102, is down 1.0 percent from a month earlier but 6.3 above percent May 2013. Compared with last month, prices are lower for LP gas and diesel but higher for gasoline.

Machinery: The May index, at 112, increased 0.9 percent from April and is 3.7 above percent last May. Prices are higher for self-propelled machinery and other machinery compared with last month.

Consumer price index: The April 2014 Consumer Price Index, as issued by the Bureau of Labor Statistics, for all urban consumers (CPI-U) increased 0.3 percent before seasonal adjustment to a level of 237.072 (1982-1984=100). The March index is 236.293. For the 12 month period ending in April, the overall index increased 2.0 percent.

Prices Paid Indexes and Related Parity Ratios – United States: May 2014 with Comparisons

[Revised historical price indexes for months not shown are available at www.nass.usda.gov]

Indexes and ratios	1910-1914 Base			2011 Base		
	May 2013	April 2014	May 2014	May 2013	April 2014	May 2014
	(percent)	(percent)	(percent)	(percent)	(percent)	(percent)
Prices paid by farmers for commodities, services, interest, taxes, and wage rates (PPITW)	2879	3014	3029	106	111	112
Production	2235	2362	2377	107	113	114
Feed	1341	1306	1327	122	119	120
Livestock and poultry	1925	2820	2840	97	143	144
Seeds	3643	3752	3752	111	114	114
Fertilizer	1262	1206	1241	105	100	103
Chemicals	969	989	990	108	110	110
Fuels	2695	2888	2859	96	103	102
Supplies and repairs	1223	1245	1251	104	106	106
Autos and trucks	3181	3216	3228	103	105	105
Machinery	6600	6811	6838	108	111	112
Building materials	2437	2477	2480	105	106	107
Services and rent	2222	2271	2266	(NA)	(NA)	(NA)
Services	(NA)	(NA)	(NA)	105	107	107
Rent	(NA)	(NA)	(NA)	104	107	107
Interest ¹	3572	3684	3684	98	101	101
Taxes ²	6137	6233	6233	103	105	105
Wage rates	7609	7679	7679	106	107	107
Production, interest, taxes, and wage rates (PITW)	3013	3168	3185	107	112	113
Family living-CPI ³	2213	2252	2259	104	105	106
Ratio (received/paid)	(NA)	(NA)	(NA)	104	104	102
Parity ratio ⁴	40	39	39	(NA)	(NA)	(NA)
Parity ratio adjusted ⁵	41	40	40	(NA)	(NA)	(NA)
PPITW adjusted for productivity ⁶	1410	1421	1424	(NA)	(NA)	(NA)
Crop sector (PPITW)	(NA)	(NA)	(NA)	105	108	108
Livestock sector (PPITW)	(NA)	(NA)	(NA)	108	115	116
Farm sector (production)	(NA)	(NA)	(NA)	112	125	126
Non-farm sector (production)	(NA)	(NA)	(NA)	104	106	106

(NA) Not available.

¹ Interest per acre on farm real estate debt and interest rate on farm non-real estate debt.

² Farm real estate taxes payable per acre.

³ Bureau of Labor Statistics, Consumer Price Index for all urban consumers (CPI-U), for the previous month converted by the USDA.

⁴ Ratio of index of prices received to PPITW (1910-1914=100).

⁵ Based on estimated cash receipts, from marketings and government payments, the preliminary adjustment factor is 1.044 for 2014 and the revised factor is 1.041 for 2013.

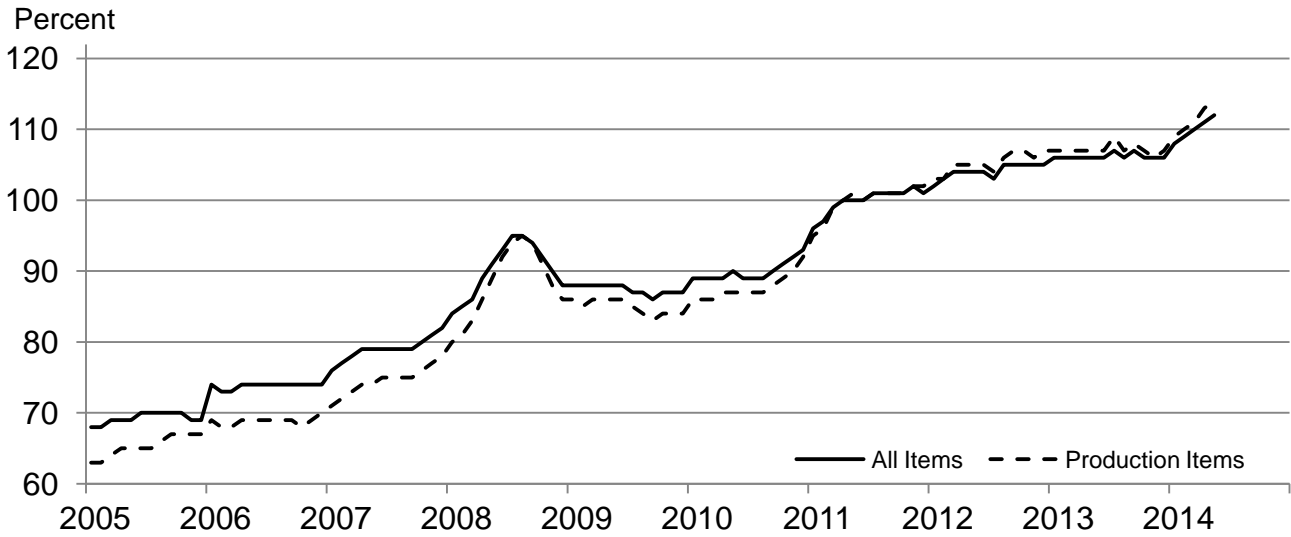
⁶ PPITW is adjusted based on productivity trend for the prior 15 years.

Prices Paid Indexes and Annual Weights for Input Components and Sub-components – United States: May 2014 with Comparisons

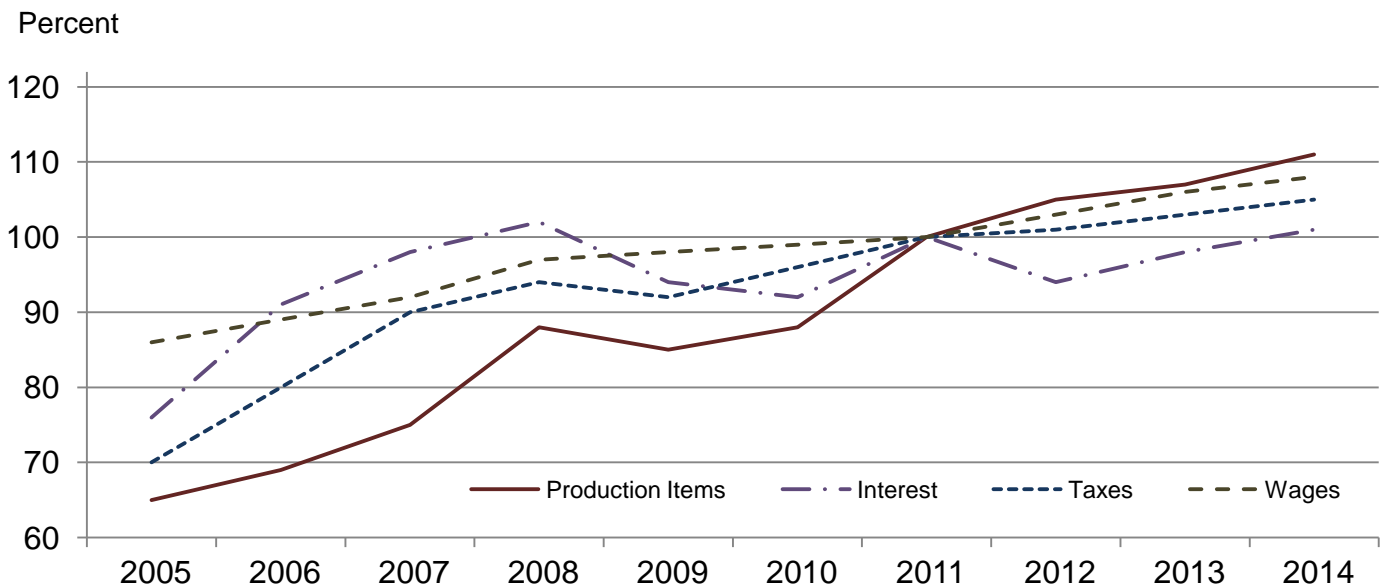
[Revised historical price indexes for months not shown are available at www.nass.usda.gov. Relative weights are a five year moving average]

	Relative weights		Indexes (2011=100)		
	2013	2014	May 2013	April 2014	May 2014
	(percent)	(percent)	(percent)	(percent)	(percent)
Production items	73.6	74.1	107	113	114
Feed	14.6	15.5	122	119	120
Feed grains	2.1	2.2	115	81	80
Complete feeds	7.2	7.6	120	127	130
Hay and forages	1.8	1.9	127	121	127
Concentrates	2.3	2.5	134	123	119
Supplements	1.2	1.3	111	123	127
Livestock and poultry	8.5	8.5	97	143	144
Feeder cattle	6.7	6.6	97	138	141
Feeder pigs	0.7	0.7	94	238	220
Milk cow replacements	0.7	0.7	96	127	127
Poultry	0.5	0.5	105	105	105
Seeds	4.8	4.9	111	114	114
Field crops	4.3	4.4	110	113	113
Grasses and legumes	0.4	0.5	120	123	123
Fertilizer	6.3	6.2	105	100	103
Mixed fertilizer	2.8	2.7	94	90	91
Nitrogen	2.6	2.6	117	109	112
Potash and phosphate	0.9	0.9	102	106	116
Chemicals	3.0	3.1	108	110	110
Herbicides	1.9	1.9	107	110	110
Insecticides	0.7	0.7	111	114	114
Fungicides and other	0.4	0.4	107	104	104
Fuels	4.5	4.1	96	103	102
Diesel	2.8	2.6	95	98	98
Gasoline	0.9	0.9	102	121	121
LP gas	0.8	0.7	94	101	95
Supplies and repairs	4.3	4.3	104	106	106
Supplies	1.4	1.4	104	106	107
Repairs	2.9	2.8	104	105	105
Autos and trucks	1.1	1.1	103	105	105
Autos	0.1	0.1	102	102	102
Trucks	1.0	1.0	104	105	105
Machinery	4.5	4.9	108	111	112
Tractors	1.0	1.1	106	108	108
Self-propelled	1.8	2.0	109	113	114
Other machinery	1.7	1.9	108	111	112
Building materials	3.8	3.7	105	106	107
Services	11.2	10.8	105	107	107
Custom rates	1.2	1.1	104	104	104
Other services	10.0	9.7	105	107	107
Rent	6.9	6.9	104	107	107
Cash	3.7	3.7	103	106	106
Share	3.2	3.2	105	108	108
Interest	2.9	2.6	98	101	101
Taxes	2.9	2.9	103	105	105
Wage rates	6.4	6.4	106	107	107
Family living-CPI	14.2	14.0	104	105	106

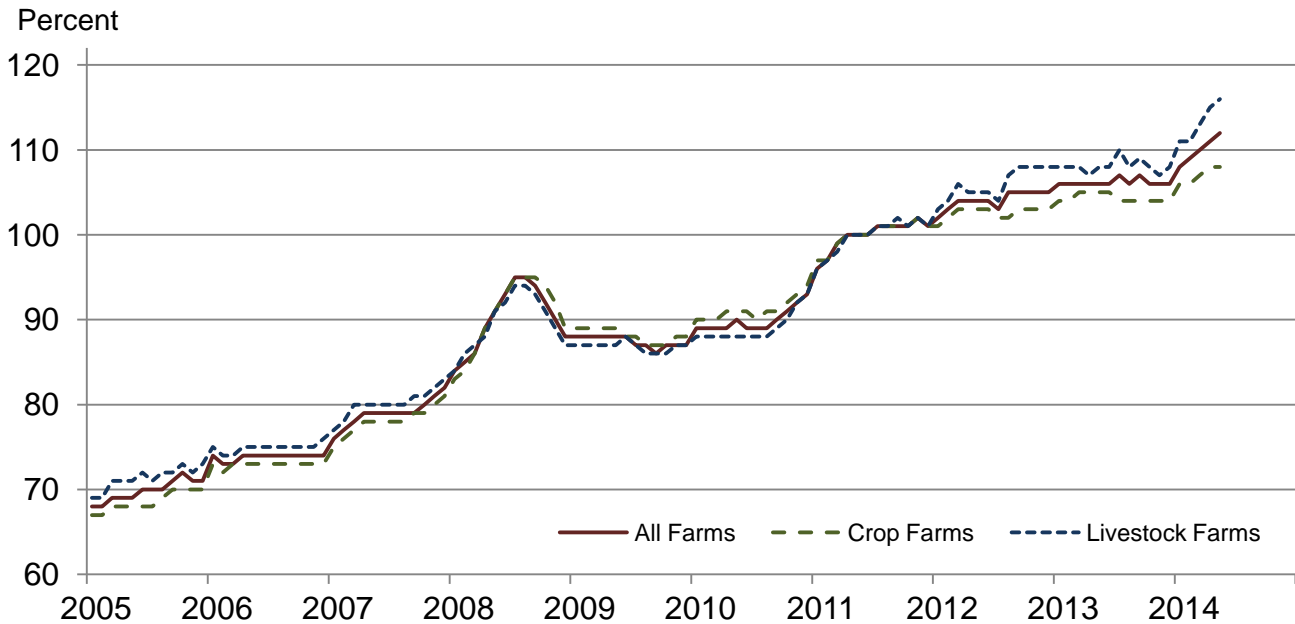
Paid Indexes by Month, All Items and Production Items – United States: 2011=100



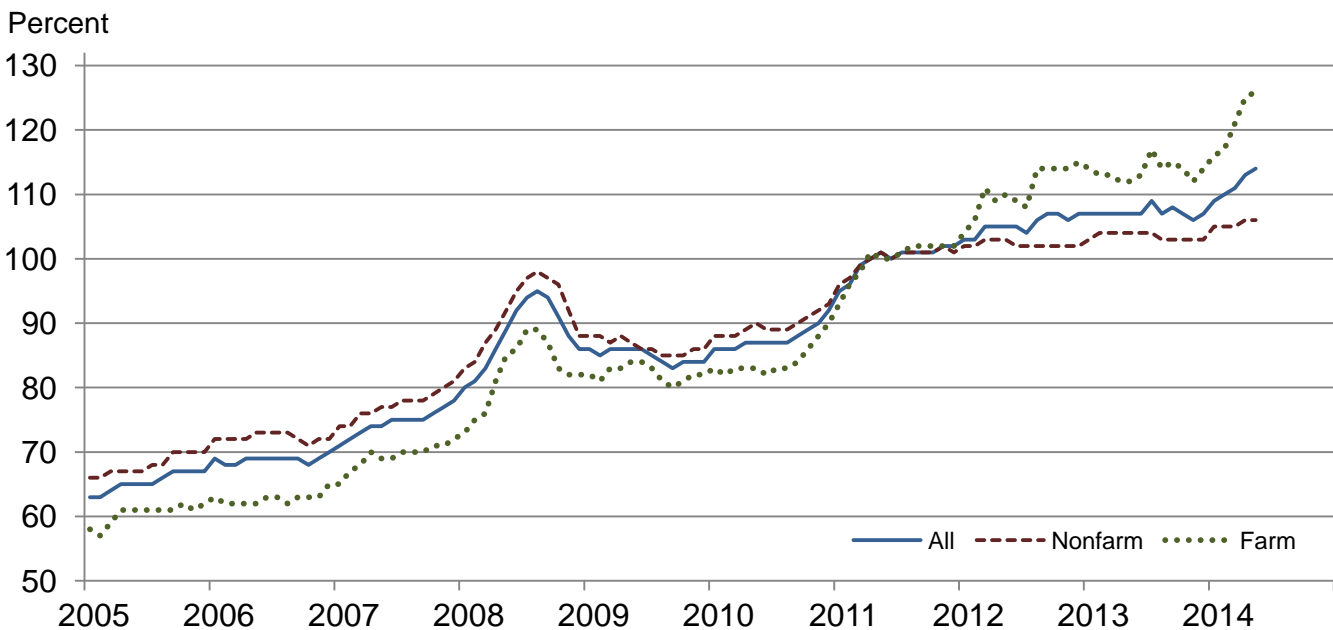
Paid Indexes, Annual Averages, Production Items, Interest, Taxes, and Wages – United States: 2011=100



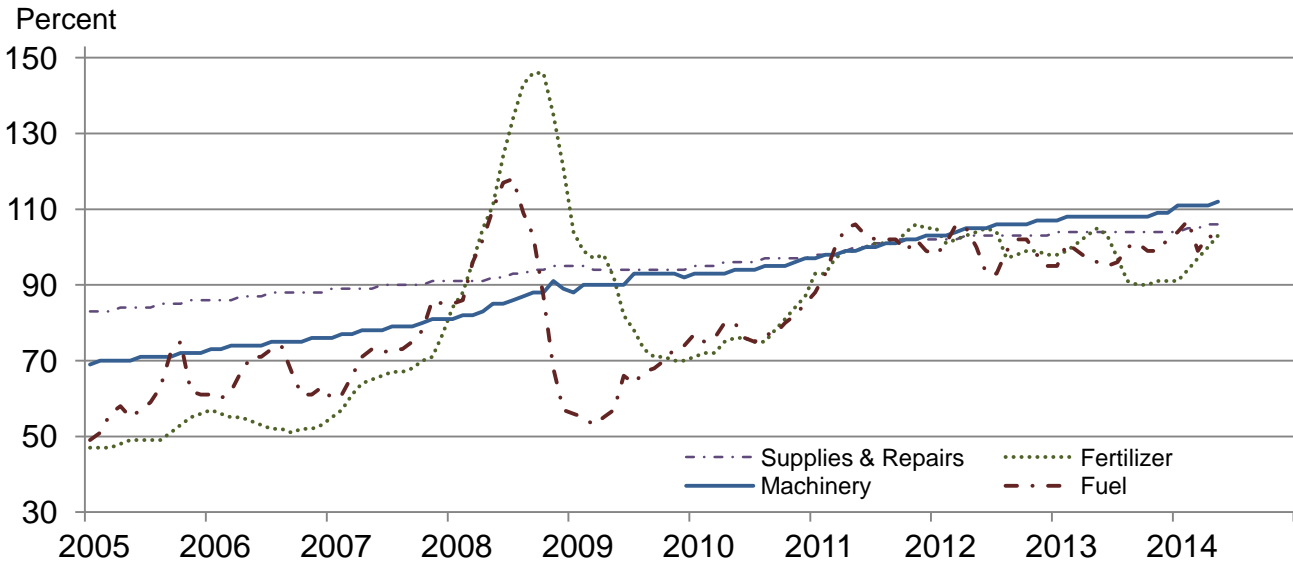
Paid Indexes by Farm Type and Month, All Items – United States: 2011=100



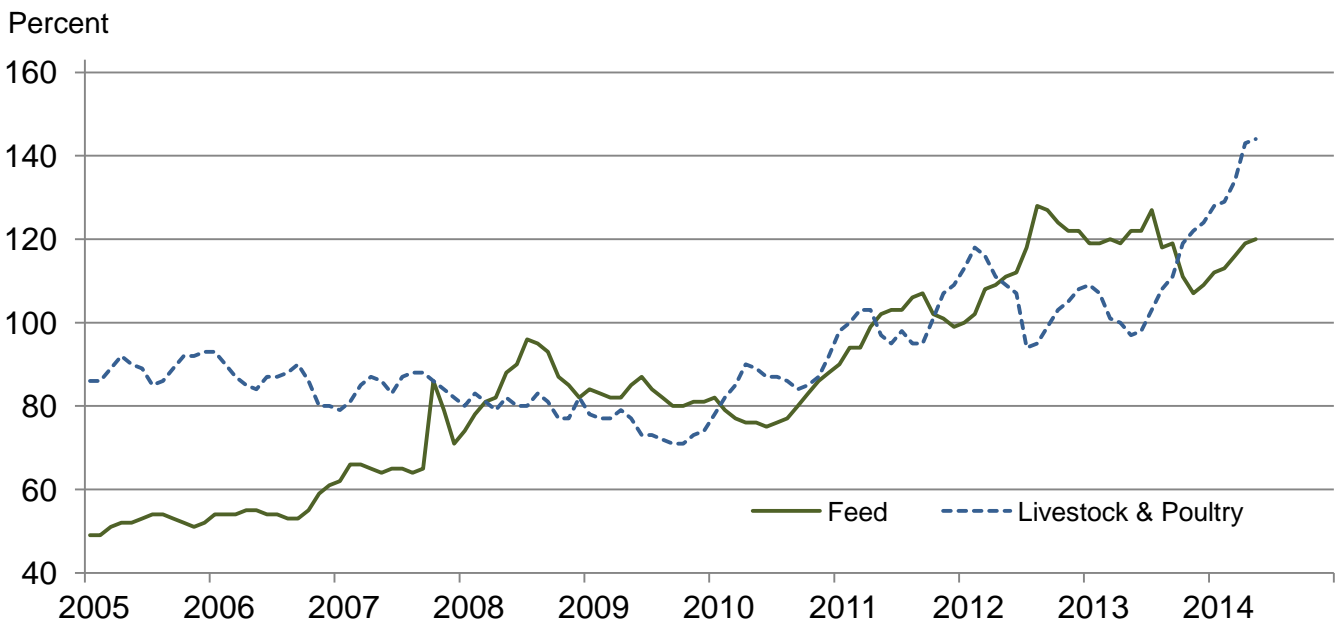
Paid Indexes by Origin and Month, All Production Items – United States: 2011=100



Paid Indexes by Non-Farm Sector and Month, Supplies & Repairs, Fertilizer, Machinery, and Fuel – United States: 2011=100



Paid Indexes by Month, Feed and Livestock & Poultry – United States: 2011=100



Feed Price Ratios – United States: May 2014 with Comparisons

Feed price ratio ¹	May 2013	April 2014	Preliminary May 2014
Broiler-feed: pounds of broiler grower feed equal in value to 1 pound of broiler, live weight ²	3.9	4.6	4.8
Market egg feed: pounds of laying feed equal in value to 1 dozen eggs ³	6.3	8.9	7.9
Hog-corn: bushels of corn equal in value to 100 pounds of hog, live weight	9.8	18.9	17.7
Milk-feed: pounds of 16% mixed dairy feed equal in value to 1 pound of whole milk ⁴	1.53	2.43	2.28
Steer and heifer-corn: bushels of corn equal in value to 100 pounds of steer & heifers, live weight	18.2	31.8	31.4
Turkey-feed: pounds of turkey grower equal in value to 1 pound of turkey, live weight ⁵	4.1	5.1	5.3

¹ Effective January 1995, prices of commercial prepared feeds are based on current United States prices received for corn, soybeans, alfalfa hay, and all wheat.

² The price of commercial prepared broiler feed is based on current United States prices received for corn and soybeans. The modeled feed uses 58 percent corn and 42 percent soybeans.

³ The price of commercial prepared layer feed is based on current United States prices received for corn and soybeans. The modeled feed uses 75 percent corn and 25 percent soybeans.

⁴ The price of commercial prepared dairy feed is based on current United States prices received for corn, soybeans, and alfalfa hay. The modeled feed uses 51 percent corn, 41 percent alfalfa hay, and 8 percent soybeans.

⁵ The price of commercial prepared turkey feed is based on current United States prices received for corn, soybeans, and wheat. The modeled feed uses 51 percent corn, 28 percent soybeans, and 21 percent wheat.

Prices Received Used to Calculate Feed Price Ratios – United States: May 2014 with Comparisons

[Price data source for livestock and poultry commodities is United States Department of Agriculture's Agricultural Marketing Service]

Item	May 2013	April 2014	Preliminary May 2014
	(dollars)	(dollars)	(dollars)
Broilers, live pound	0.680	0.690	0.720
Eggs, market dozen	0.977	1.090	0.970
Hogs, all cwt	68.60	88.80	83.60
Milk, all cwt	19.70	25.30	24.70
Steers and heifers cwt	127.00	150.00	148.00
Turkeys, live pound	0.649	0.687	0.725
Corn bushel	6.97	4.71	4.71
Hay, alfalfa ton	221.00	206.00	224.00
Soybeans bushel	14.90	14.30	14.50
Wheat, all bushel	7.68	6.82	7.14

Prices Paid for Feeder Livestock – United States: May 2014 with Comparisons

[Price data source is United States Department of Agriculture's Agricultural Marketing Service]

Item	May 2013	April 2014	Preliminary May 2014
	(dollars)	(dollars)	(dollars)
Feeder cattle and calves cwt	133.00	188.00	193.00
Feeder pigs cwt	132.00	333.00	308.00

Prices Paid Broiler-Feed Ratio Monthly and Annual Average – United States: 2010-2014

[The price of commercial prepared broiler feed is based on current United States prices received for corn and soybeans. The modeled feed uses 58 percent corn and 42 percent soybeans]

Year	January	February	March	April	May	June	July	August	September	October	November	December	Average ¹
2010	4.5	4.7	4.9	4.8	5.1	5.1	5.0	4.5	4.4	4.1	3.8	3.4	4.5
2011	3.3	2.9	3.3	3.0	3.1	3.1	3.0	2.8	2.8	3.0	3.2	3.3	3.1
2012	3.2	3.4	3.6	3.1	3.2	3.1	2.6	2.5	2.8	2.9	3.2	3.4	3.1
2013	3.6	3.5	3.7	3.8	3.9	3.8	3.4	3.3	3.7	3.9	4.2	4.2	3.8
2014	4.3	4.0	4.6	4.6	4.8								4.5

¹ Simple average of monthly ratios, January through December.

Prices Paid Market Egg-Feed Ratio Monthly and Annual Average – United States: 2010-2014

[The price of commercial prepared layer feed is based on current United States prices received for corn and soybeans. The modeled feed uses 75 percent corn and 25 percent soybeans]

Year	January	February	March	April	May	June	July	August	September	October	November	December	Average ¹
2010	10.1	8.9	12.2	7.0	5.2	5.0	6.0	6.9	4.6	6.5	9.5	8.1	7.5
2011	5.8	6.0	5.2	6.4	4.5	4.9	4.9	6.7	5.7	6.8	6.8	8.7	6.0
2012	5.1	5.0	5.7	4.5	4.2	4.8	4.8	5.6	7.0	5.6	6.6	6.3	5.4
2013	5.6	5.0	6.1	4.2	6.3	4.4	5.3	6.1	6.4	7.3	10.4	10.7	6.5
2014	8.0	10.9	8.9	8.9	7.9								8.9

¹ Simple average of monthly ratios, January through December.

Prices Paid Turkey-Feed Ratio Monthly and Annual Average – United States: 2010-2014

[The price of commercial prepared turkey feed is based on current United States prices received for corn, soybeans, and wheat. The modeled feed used 51 percent corn, 28 percent soybeans, and 21 percent wheat]

Year	January	February	March	April	May	June	July	August	September	October	November	December	Average ¹
2010	4.8	5.3	5.6	5.9	6.2	6.9	6.9	6.7	6.6	6.8	6.4	5.6	6.2
2011	4.6	4.2	4.4	4.5	4.6	4.8	4.7	4.7	5.2	5.8	5.9	5.4	4.9
2012	4.8	4.7	4.8	5.0	5.0	5.1	4.4	4.3	4.8	4.9	4.7	4.3	4.7
2013	4.0	3.9	4.1	4.2	4.1	4.1	4.3	4.6	5.0	5.8	5.3	5.5	4.6
2014	5.2	5.4	5.3	5.1	5.3								5.3

¹ Simple average of monthly ratios, January through December.

Prices Paid Milk-Feed Ratio Monthly and Annual Average – United States: 2010-2014

[The price of commercial prepared dairy feed is based on current United States prices received for corn, soybeans, and alfalfa. The modeled feed uses 51 percent corn, 8 percent soybeans, and 41 percent alfalfa]

Year	January	February	March	April	May	June	July	August	September	October	November	December	Average ¹
2010	2.33	2.34	2.18	2.19	2.18	2.26	2.30	2.36	2.36	2.40	2.23	1.98	2.26
2011	1.96	2.01	2.12	1.81	1.71	1.86	1.88	1.83	1.84	1.82	1.89	1.81	1.88
2012	1.71	1.55	1.48	1.41	1.34	1.37	1.33	1.37	1.59	1.74	1.74	1.65	1.52
2013	1.58	1.52	1.48	1.54	1.53	1.52	1.53	1.68	1.88	2.13	2.27	2.30	1.75
2014	2.46	2.60	2.56	2.43	2.28								2.47

¹ Simple average of monthly ratios, January through December.

Prices Paid Hog-Corn Ratio Monthly and Annual Average – United States: 2010-2014

[Number of bushels of corn equal in value to 100 pounds of all hogs, live weight]

Year	January	February	March	April	May	June	July	August	September	October	November	December	Average ¹
2010	13.2	13.8	14.7	16.6	17.9	17.1	16.8	16.8	15.0	12.3	10.5	10.9	14.6
2011	11.3	10.9	11.4	10.7	10.9	10.9	11.3	11.0	10.5	12.0	11.0	10.8	11.1
2012	10.5	10.4	10.3	9.9	9.9	11.0	10.1	8.8	8.1	9.1	8.7	9.1	9.7
2013	9.2	9.2	8.3	8.9	9.8	10.7	11.2	11.9	13.1	14.9	14.6	13.9	11.3
2014	13.8	15.1	18.2	18.9	17.7								16.7

¹ Simple average of monthly ratios, January through December.

Prices Paid Steer & Heifer-Corn Feed Ratio Monthly and Annual Average – United States: 2010-2014

[Number of bushels of corn equal in value to 100 pounds of steers & heifers, live weight]

Year	January	February	March	April	May	June	July	August	September	October	November	December	Average ¹
2010	23.9	25.5	27.0	29.6	28.6	27.8	27.5	26.9	24.4	22.9	22.2	21.6	25.7
2011	22.3	19.6	21.3	19.2	18.2	17.2	18.2	16.6	18.3	21.3	21.6	21.5	19.6
2012	20.4	20.1	20.2	19.4	19.2	19.0	16.2	15.5	17.9	18.3	18.0	18.3	18.5
2013	18.2	17.8	17.8	18.2	18.2	17.8	17.8	19.6	23.0	27.8	30.3	29.9	21.4
2014	31.7	33.3	33.3	31.8	31.4								32.3

¹ Simple average of monthly ratios, January through December.

Reliability of Prices Paid Estimates

Definition: Prices paid by farmers represent the average costs of inputs purchased by farmers and ranchers to produce agricultural commodities. Conceptually, the average price when multiplied by quantity purchased should equal total producer expenditures for the item.

Survey procedures: The prices paid data are obtained from establishments that sell goods and services to farmers and ranchers. Annually, about 8,500 firms are randomly selected from lists by type of item sold with an average response rate in the range of 75-80 percent. Firms are asked to report the price for the specified item "most commonly bought by farmers" or that was the "volume seller". Approximately 135 items are surveyed each March to represent all production input items purchased. The survey reference period for most items is the five business days centered at the 15th of the month. Separate prices paid surveys are conducted for agricultural chemicals, fuels, feed, fertilizer, machinery, and seed.

Summary and estimation procedures: The annual March Prices Paid Survey is summarized as a non-probability survey. Average prices reported are aggregated to the region and United States level using weights available from expenditure data and other administrative sources. Price recommendations are prepared by the Regional Field Offices and Headquarters for review by the Agricultural Statistics Board in Washington, D.C. Also, the change in price level for individual items surveyed are combined to the regional and United States levels, and are published as prices paid indexes referenced to a specific base period. Prices paid indexes for new autos and trucks, building materials, farm supplies, motor supplies, and marketing containers are updated based on price changes measured in selected Bureau of Labor Statistics (BLS) indexes.

Revisions: Any revisions are published in the monthly and in annual issues of Agricultural Prices. The basis for revision must be supported by additional data that directly affect the level of the estimate. More revisions are likely for March when separate prices paid surveys are conducted, in lieu of BLS indexes, by the USDA to measure price change.

Reliability: Current methods of summarization for the March data are not designed directly to calculate sampling errors. However, analytical measures approximate the United States relative sampling errors for major items around 10 percent. Any non-sampling errors are attributed to such things as the inability to obtain correct information, differences in interpreting questions or definitions, mistakes in coding or processing the data, etc. Efforts are made at each step in the survey process to minimize these non-sampling errors.

Program change: Effective January 2014, the National Agricultural Statistics Service modified the five-year moving weights and updated the base reference period.

As of January 2014, the 1990-1992 base reference period is updated to 2011. Five-year moving average weights are adjusted (normalized) to minimize the effects of price changes. The 1910-1914=100 price indexes, required by statute for computing parity prices, were linked forward based on the changes in the new 2011=100 indexes. The new indexes were constructed by multiplying the ratios of the current prices to the base period prices by the moving average weights.

Information Contacts

General

Troy Joshua, Chief, Environmental, Economics and Demographics Branch (202) 720-6146

Below are the commodity specialists to contact for additional information.

Crop Prices Received

Lance Honig, Chief, Crops Branch (202) 720-2127

Anthony Prillaman, Head, Field Crops Section (202) 720-2127

Cody Brokmeyer – Peanuts, Rice (202) 720-7688

Brent Chittenden – Oats, Rye, Wheat (202) 720-8068

Angie Considine – Cotton, Cotton Ginnings, Sorghum (202) 720-5944

Tony Dahlman – Crop Weather, Barley, Hay (202) 720-7621

Chris Hawthorn – Corn, Proso Millet, Flaxseed (202) 720-9526

Travis Thorson – Soybeans, Sunflower, Other Oilseeds (202) 720-7369

Jorge Garcia-Pratts, Head, Fruits, Vegetables and Special Crops Section (202) 720-2127

Jorge Garcia-Pratts – Fresh and Processing Vegetables, Onions, Strawberries (202) 720-2127

Jorge Garcia-Pratts – Floriculture, Maple Syrup, Nursery, Tree Nuts (202) 720-2127

Fred Granja – Apples, Apricots, Cherries, Plums, Prunes, Tobacco (202) 720-4288

Lakeya Jones – Citrus, Coffee, Sugar Crops, Grapes, Tropical Fruits (202) 720-5412

Dan Norris – Austrian Winter Peas, Dry Edible Peas, Lentils, Mints, Mushrooms, Peaches, Pears,
Wrinkled Seed Peas, Dry Beans (202) 720-3250

Daphne Schauber – Berries, Cranberries, Potatoes, Sweet Potatoes (202) 720-4285

Livestock Prices Received

Dan Kerestes, Chief, Livestock Branch (202) 720-3570

Scott Hollis, Head, Livestock Section (202) 720-3570

Travis Averill – Cattle (202) 720-3040

Doug Bounds – Hogs (202) 720-3106

Mike Miller – Milk, Milk Cows (202) 720-3278

Alissa Cowell-Mytar – Sheep, Lambs, and Goats (202) 720-4751

Bruce Boess, Head, Poultry and Specialty Commodities Section (202) 720-3570

Dave Colwell – Honey (202) 720-8784

Michael Klamm – Turkeys (202) 690-3237

Kim Linonis – Eggs (202) 690-8632

Miste Salmon – Broilers (202) 720-3244

Indexes, Prices Paid, and Parity Prices

Troy Joshua, Chief, Environmental, Economics and
Demographics Branch (202) 720-6146

Tony Dorn, Head, Economics Section (202) 690-3223

Daryl Brinkman – Prices Received Indexes, Parity Prices (202) 720-8844

Judy McDermott – Prices Paid Indexes, Prices Paid for Feed, Fertilizer, Agricultural Chemicals,
Seeds, Farm Supplies and Repairs, Farm Machinery, Fuels, Feeder Livestock, Poultry Chicks,
Feed Price Ratios, Autos & Trucks (202) 690-3229

Chris Dickerson – Prices Received Indexes, Parity Prices, Grazing Fees (202) 690-1348

Access to NASS Reports

For your convenience, you may access NASS reports and products the following ways:

- All reports are available electronically, at no cost, on the NASS web site: <http://www.nass.usda.gov>
- Both national and state specific reports are available via a free e-mail subscription. To set-up this free subscription, visit <http://www.nass.usda.gov> and in the “Follow NASS” box under “Receive reports by Email,” click on “National” or “State” to select the reports you would like to receive.

For more information on NASS surveys and reports, call the NASS Agricultural Statistics Hotline at (800) 727-9540, 7:30 a.m. to 4:00 p.m. ET, or e-mail: nass@nass.usda.gov.

The U.S. Department of Agriculture (USDA) prohibits discrimination against its customers, employees, and applicants for employment on the bases of race, color, national origin, age, disability, sex, gender identity, religion, reprisal, and where applicable, political beliefs, marital status, familial or parental status, sexual orientation, or all or part of an individual's income is derived from any public assistance program, or protected genetic information in employment or in any program or activity conducted or funded by the Department. (Not all prohibited bases will apply to all programs and/or employment activities.)

If you wish to file a Civil Rights program complaint of discrimination, complete the [USDA Program Discrimination Complaint Form](#) (PDF), found online at http://www.ascr.usda.gov/complaint_filing_cust.html, or at any USDA office, or call (866) 632-9992 to request the form. You may also write a letter containing all of the information requested in the form. Send your completed complaint form or letter to us by mail at U.S. Department of Agriculture, Director, Office of Adjudication, 1400 Independence Avenue, S.W., Washington, D.C. 20250-9410, by fax (202) 690-7442 or email at program.intake@usda.gov.