









































































































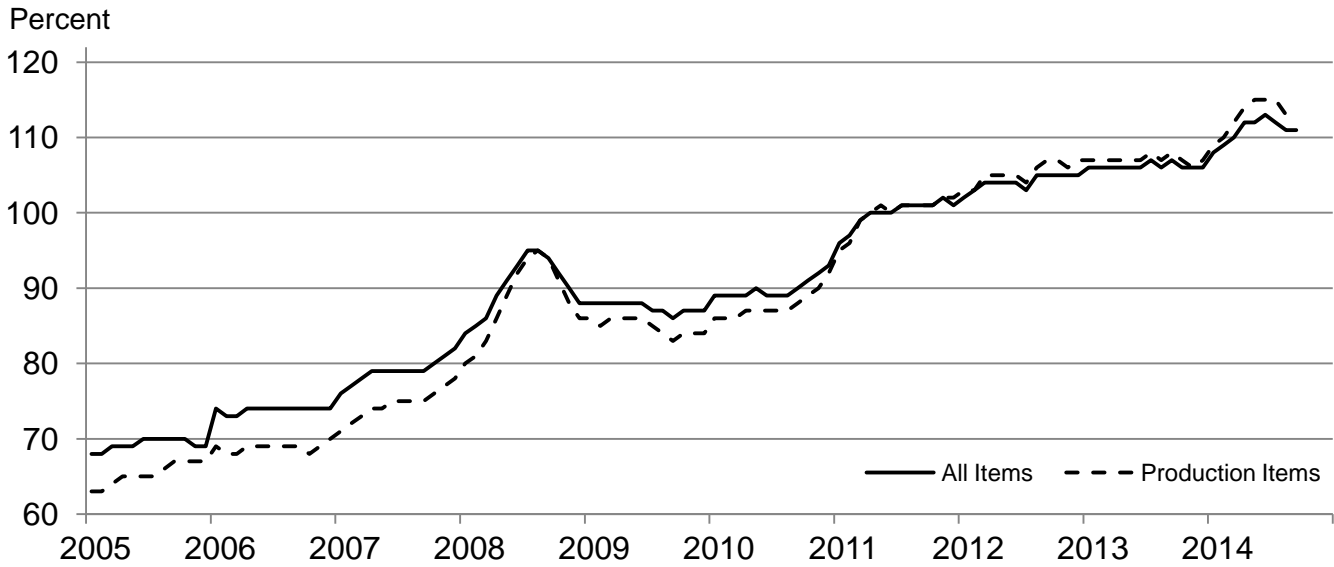
# Prices Paid Indexes and Annual Weights for Input Components and Sub-components – United States: September 2014 with Comparisons

[Revised historical price indexes for months not shown are available at [www.nass.usda.gov](http://www.nass.usda.gov). Relative weights are a five year moving average]

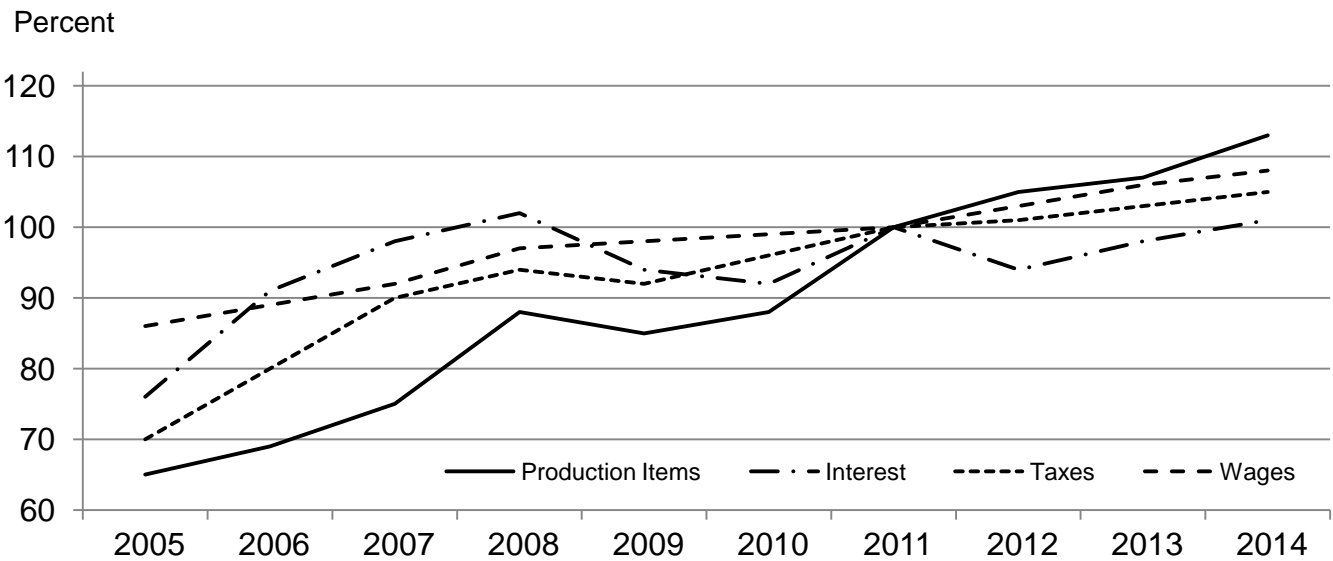
	Relative weights		Indexes (2011=100)		
	2013	2014	September 2013	August 2014	September 2014
	(percent)	(percent)	(percent)	(percent)	(percent)
Production items .....	73.6	74.1	108	113	113
Feed .....	14.6	15.5	119	110	107
Feed grains .....	2.1	2.2	89	64	59
Complete feeds .....	7.2	7.6	123	119	114
Hay and forages .....	1.8	1.9	111	116	111
Concentrates .....	2.3	2.5	142	123	123
Supplements .....	1.2	1.3	114	107	106
Livestock and poultry .....	8.5	8.5	111	160	162
Feeder cattle .....	6.7	6.6	114	165	171
Feeder pigs .....	0.7	0.7	103	164	142
Milk cow replacements .....	0.7	0.7	96	139	139
Poultry .....	0.5	0.5	105	105	105
Seeds .....	4.8	4.9	111	114	114
Field crops .....	4.3	4.4	110	113	113
Grasses and legumes .....	0.4	0.5	120	123	123
Fertilizer .....	6.3	6.2	90	95	95
Mixed fertilizer .....	2.8	2.7	85	86	86
Nitrogen .....	2.6	2.6	95	102	99
Potash and phosphate .....	0.9	0.9	92	105	109
Chemicals .....	3.0	3.1	109	110	110
Herbicides .....	1.9	1.9	108	110	110
Insecticides .....	0.7	0.7	112	113	114
Fungicides and other .....	0.4	0.4	105	103	104
Fuels .....	4.5	4.1	101	99	99
Diesel .....	2.8	2.6	97	95	94
Gasoline .....	0.9	0.9	107	115	114
LP gas .....	0.8	0.7	108	94	97
Supplies and repairs .....	4.3	4.3	104	106	106
Supplies .....	1.4	1.4	104	106	106
Repairs .....	2.9	2.8	104	106	106
Autos and trucks .....	1.1	1.1	103	104	104
Autos .....	0.1	0.1	101	101	101
Trucks .....	1.0	1.0	104	105	105
Machinery .....	4.5	4.9	108	111	111
Tractors .....	1.0	1.1	106	108	108
Self-propelled .....	1.8	2.0	109	113	113
Other machinery .....	1.7	1.9	108	112	112
Building materials .....	3.8	3.7	105	107	108
Services .....	11.2	10.8	106	110	109
Custom rates .....	1.2	1.1	106	109	109
Other services .....	10.0	9.7	106	110	109
Rent .....	6.9	6.9	104	107	107
Cash .....	3.7	3.7	103	106	106
Share .....	3.2	3.2	105	108	108
Interest .....	2.9	2.6	98	101	101
Taxes .....	2.9	2.9	103	105	105
Wage rates .....	6.4	6.4	104	107	107
Family living-CPI .....	14.2	14.0	104	106	106



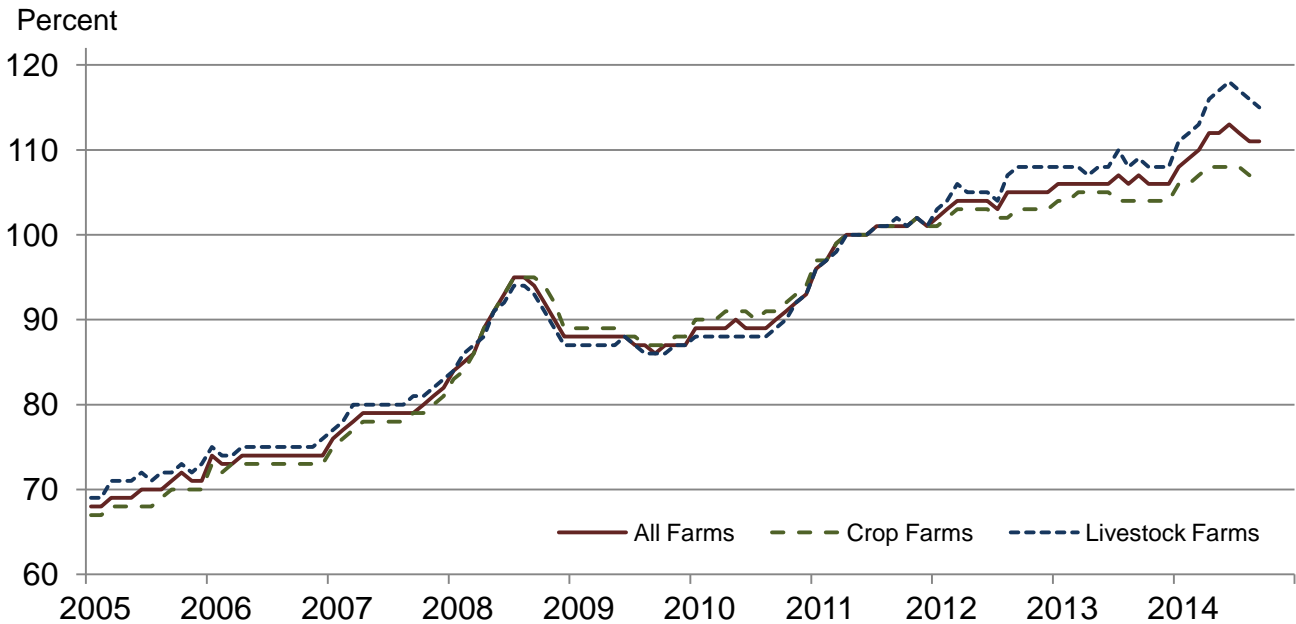
**Paid Indexes by Month,  
All Items and Production Items –  
United States: 2011=100**



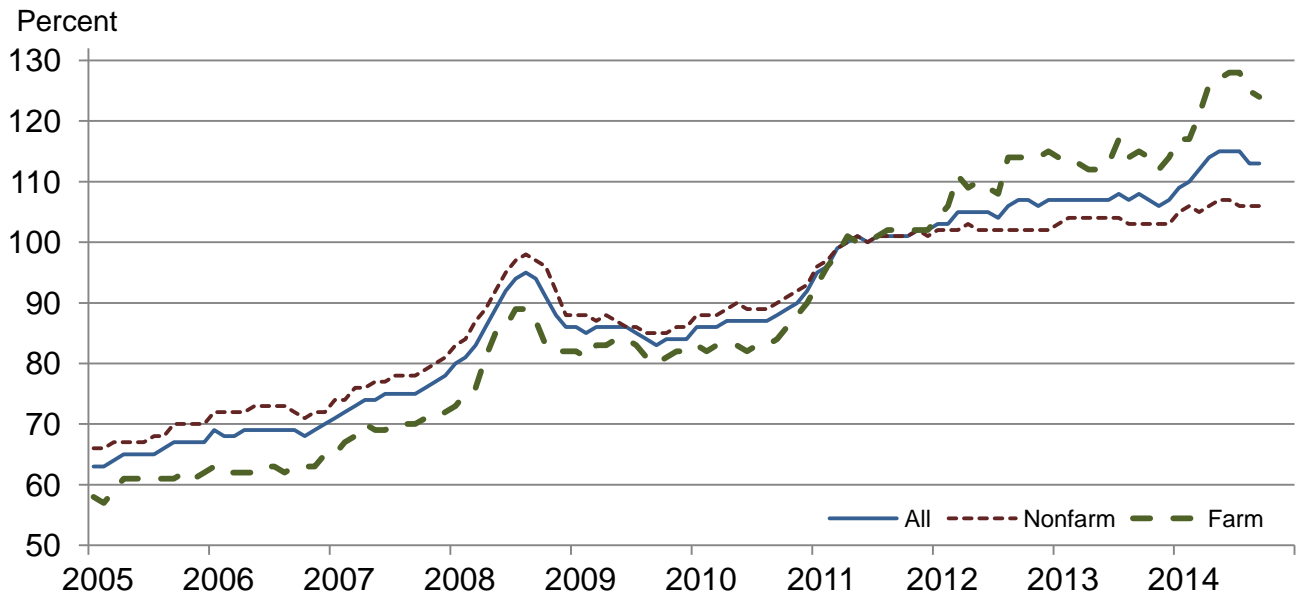
**Paid Indexes, Annual Averages,  
Production Items, Interest, Taxes, and Wages –  
United States: 2011=100**



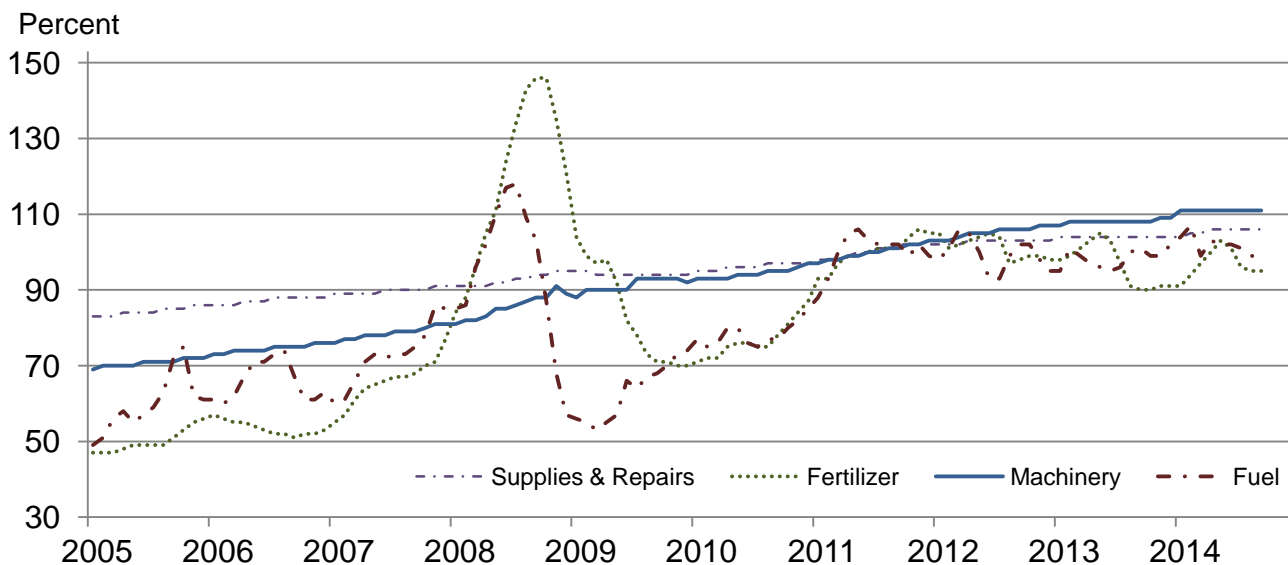
## Paid Indexes by Farm Type and Month, All Items – United States: 2011=100



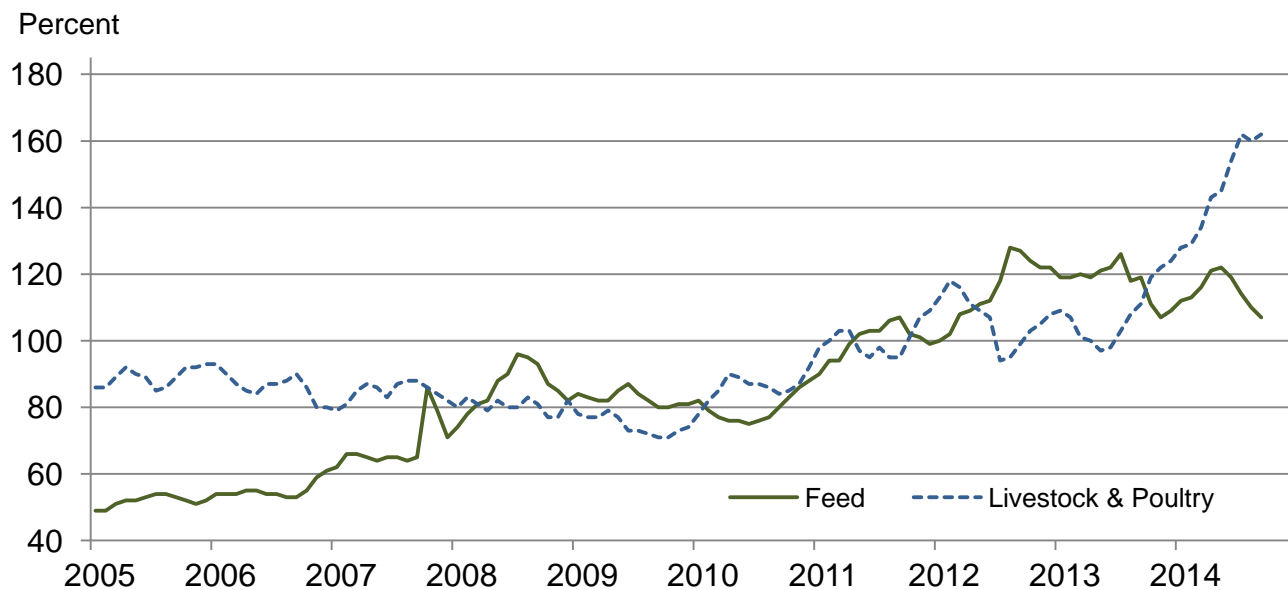
## Paid Indexes by Origin and Month, All Production Items – United States: 2011=100



## Paid Indexes by Non-Farm Sector and Month, Supplies & Repairs, Fertilizer, Machinery, and Fuel – United States: 2011=100



## Paid Indexes by Month, Feed and Livestock & Poultry – United States: 2011=100



## Feed Price Ratios – United States: September 2014 with Comparisons

Feed price ratio <sup>1</sup>	September 2013	August 2014	Preliminary September 2014
Broiler-feed: pounds of broiler grower feed equal in value to 1 pound of broiler, live weight <sup>2</sup> .....	3.7	4.9	5.8
Market egg feed: pounds of laying feed equal in value to 1 dozen eggs <sup>3</sup> .....	6.4	8.6	9.0
Hog-corn: bushels of corn equal in value to 100 pounds of hog, live weight .....	13.1	22.9	21.7
Milk-feed: pounds of 16% mixed dairy feed equal in value to 1 pound of whole milk <sup>4</sup> .....	1.88	2.61	2.90
Steer and heifer-corn: bushels of corn equal in value to 100 pounds of steer & heifers, live weight .....	23.0	43.8	46.4
Turkey-feed: pounds of turkey grower equal in value to 1 pound of turkey, live weight <sup>5</sup> .....	5.0	6.8	7.5

<sup>1</sup> Effective January 1995, prices of commercial prepared feeds are based on current United States prices received for corn, soybeans, alfalfa hay, and all wheat.

<sup>2</sup> The price of commercial prepared broiler feed is based on current United States prices received for corn and soybeans. The modeled feed uses 58 percent corn and 42 percent soybeans.

<sup>3</sup> The price of commercial prepared layer feed is based on current United States prices received for corn and soybeans. The modeled feed uses 75 percent corn and 25 percent soybeans.

<sup>4</sup> The price of commercial prepared dairy feed is based on current United States prices received for corn, soybeans, and alfalfa hay. The modeled feed uses 51 percent corn, 41 percent alfalfa hay, and 8 percent soybeans.

<sup>5</sup> The price of commercial prepared turkey feed is based on current United States prices received for corn, soybeans, and wheat. The modeled feed uses 51 percent corn, 28 percent soybeans, and 21 percent wheat.

## Prices Received Used to Calculate Feed Price Ratios – United States: September 2014 with Comparisons

[Price data source for livestock and poultry commodities is United States Department of Agriculture's Agricultural Marketing Service]

Item	September 2013	August 2014	Preliminary September 2014
	(dollars)	(dollars)	(dollars)
Broilers, live .....pound	0.550	0.610	0.660
Eggs, market .....dozen	0.823	0.861	0.825
Hogs, all .....cwt	70.70	83.20	73.40
Milk, all .....cwt	20.10	24.10	25.00
Steers and heifers .....cwt	124.00	159.00	157.00
Turkeys, live .....pound	0.679	0.756	0.773
Corn .....bushel	5.40	3.63	3.38
Hay, alfalfa .....ton	194.00	209.00	197.00
Soybeans .....bushel	13.30	12.40	11.20
Wheat, all .....bushel	6.80	5.98	5.72

## Prices Paid for Feeder Livestock – United States: September 2014 with Comparisons

[Price data source is United States Department of Agriculture's Agricultural Marketing Service]

Item	September 2013	August 2014	Preliminary September 2014
	(dollars)	(dollars)	(dollars)
Feeder cattle and calves .....cwt	156.00	227.00	234.00
Feeder pigs .....cwt	144.00	230.00	199.00

## Reliability of Prices Paid Estimates

**Definition:** Prices paid by farmers represent the average costs of inputs purchased by farmers and ranchers to produce agricultural commodities. Conceptually, the average price when multiplied by quantity purchased should equal total producer expenditures for the item.

**Survey procedures:** The prices paid data are obtained from establishments that sell goods and services to farmers and ranchers. Annually, about 8,500 firms are randomly selected from lists by type of item sold with an average response rate in the range of 75-80 percent. Firms are asked to report the price for the specified item "most commonly bought by farmers" or that was the "volume seller". Approximately 135 items are surveyed each March to represent all production input items purchased. The survey reference period for most items is the five business days centered at the 15th of the month. Separate prices paid surveys are conducted for agricultural chemicals, fuels, feed, fertilizer, machinery, and seed.

**Summary and estimation procedures:** The annual March Prices Paid Survey is summarized as a non-probability survey. Average prices reported are aggregated to the region and United States level using weights available from expenditure data and other administrative sources. Price recommendations are prepared by the Regional Field Offices and Headquarters for review by the Agricultural Statistics Board in Washington, D.C. Also, the change in price level for individual items surveyed are combined to the regional and United States levels, and are published as prices paid indexes referenced to a specific base period. Prices paid indexes for new autos and trucks, building materials, farm supplies, motor supplies, and marketing containers are updated based on price changes measured in selected Bureau of Labor Statistics (BLS) indexes.

**Revisions:** Any revisions are published in the monthly and in annual issues of Agricultural Prices. The basis for revision must be supported by additional data that directly affect the level of the estimate. More revisions are likely for March when separate prices paid surveys are conducted, in lieu of BLS indexes, by the USDA to measure price change.

**Reliability:** Current methods of summarization for the March data are not designed directly to calculate sampling errors. However, analytical measures approximate the United States relative sampling errors for major items around 10 percent. Any non-sampling errors are attributed to such things as the inability to obtain correct information, differences in interpreting questions or definitions, mistakes in coding or processing the data, etc. Efforts are made at each step in the survey process to minimize these non-sampling errors.

**Program change:** Effective January 2014, the National Agricultural Statistics Service modified the five-year moving weights and updated the base reference period.

As of January 2014, the 1990-1992 base reference period is updated to 2011. Five-year moving average weights are adjusted (normalized) to minimize the effects of price changes. The 1910-1914=100 price indexes, required by statute for computing parity prices, were linked forward based on the changes in the new 2011=100 indexes. The new indexes were constructed by multiplying the ratios of the current prices to the base period prices by the moving average weights.

## Information Contacts

### General

Troy Joshua, Chief, Environmental, Economics and Demographics Branch ..... (202) 720-6146

### Crop Prices Received

Lance Honig, Chief, Crops Branch ..... (202) 720-2127

Anthony Prillaman, Head, Field Crops Section ..... (202) 720-2127

Anthony Prillaman – Peanuts, Rice..... (202) 720-2127

Brent Chittenden – Oats, Rye, Wheat ..... (202) 720-8068

Angie Considine – Cotton, Cotton Ginnings, Sorghum ..... (202) 720-5944

Tony Dahlman – Crop Weather, Barley ..... (202) 720-7621

Chris Hawthorn – Corn, Flaxseed, Proso Millet ..... (202) 720-9526

James Johanson – County Estimates, Hay ..... (202) 690-8533

Travis Thorson – Soybeans, Sunflower, Other Oilseeds..... (202) 720-7369

Jorge Garcia-Pratts, Head, Fruits, Vegetables and Special Crops Section..... (202) 720-2127

Vincent Davis – Fresh and Processing Vegetables, Onions, Strawberries..... (202) 720-2157

Fred Granja – Apples, Apricots, Cherries, Plums, Prunes, Tobacco ..... (202) 720-9085

Lakeya Jones – Citrus, Coffee, Grapes, Sugar Crops, Tropical Fruits..... (202) 720-5412

Greg Lemmons – Berries, Cranberries, Potatoes, Sweet Potatoes ..... (202) 720-4285

Dave Losh – Hops ..... (360) 709-2400

Dan Norris – Austrian Winter Peas, Dry Edible Peas, Lentils, Mint, Mushrooms, Peaches, Pears,

Wrinkled Seed Peas, Dry Beans ..... (202) 720-3250

Daphne Schauber – Floriculture, Maple Syrup, Nursery, Tree Nuts ..... (202) 720-4215

### Livestock Prices Received

Dan Kerestes, Chief, Livestock Branch ..... (202) 720-3570

Scott Hollis, Head, Livestock Section..... (202) 720-3570

Travis Averill – Cattle..... (202) 720-3040

Doug Bounds – Hogs ..... (202) 720-3106

Mike Miller – Milk, Milk Cows ..... (202) 720-3278

Alissa Cowell-Mytar – Sheep, Lambs, and Goats..... (202) 720-4751

Bruce Boess, Head, Poultry and Specialty Commodities Section..... (202) 720-3570

Heidi Gleich – Broilers ..... (202) 720-0585

Michael Klamm – Turkeys..... (202) 690-3237

Kim Linonis – Eggs..... (202) 690-8632

Josh O’Rear – Honey ..... (202) 690-3676

### Indexes, Prices Paid, and Parity Prices

Troy Joshua, Chief, Environmental, Economics and  
Demographics Branch..... (202) 720-6146

Tony Dorn, Head, Economics Section ..... (202) 690-3223

Daryl Brinkman – Prices Received Indexes, Parity Prices..... (202) 720-8844

Chris Dickerson – Prices Received Indexes, Parity Prices..... (202) 690-1348

Joe Hagedorn – Cash Rents, Grazing Fees..... (202) 690-3231

Judy McDermott – Prices Paid Indexes, Prices Paid for Feed, Fertilizer, Chemicals, Seeds, Fuels,  
Farm Supplies and Repairs, Farm Machinery, Feeder Livestock, Poultry Chicks, Feed Price Ratios..... (202) 690-3229

## Access to NASS Reports

For your convenience, you may access NASS reports and products the following ways:

- All reports are available electronically, at no cost, on the NASS web site: <http://www.nass.usda.gov>
- Both national and state specific reports are available via a free e-mail subscription. To set-up this free subscription, visit <http://www.nass.usda.gov> and in the “Follow NASS” box under “Receive reports by Email,” click on “National” or “State” to select the reports you would like to receive.

For more information on NASS surveys and reports, call the NASS Agricultural Statistics Hotline at (800) 727-9540, 7:30 a.m. to 4:00 p.m. ET, or e-mail: [nass@nass.usda.gov](mailto:nass@nass.usda.gov).

The U.S. Department of Agriculture (USDA) prohibits discrimination against its customers, employees, and applicants for employment on the basis of race, color, national origin, age, disability, sex, gender identity, religion, reprisal, and where applicable, political beliefs, marital status, familial or parental status, sexual orientation, or all or part of an individual's income is derived from any public assistance program, or protected genetic information in employment or in any program or activity conducted or funded by the Department. (Not all prohibited bases will apply to all programs and/or employment activities.)

If you wish to file a Civil Rights program complaint of discrimination, complete the [USDA Program Discrimination Complaint Form](#) (PDF), found online at [http://www.ascr.usda.gov/complaint\\_filing\\_cust.html](http://www.ascr.usda.gov/complaint_filing_cust.html), or at any USDA office, or call (866) 632-9992 to request the form. You may also write a letter containing all of the information requested in the form. Send your completed complaint form or letter to us by mail at U.S. Department of Agriculture, Director, Office of Adjudication, 1400 Independence Avenue, S.W., Washington, D.C. 20250-9410, by fax (202) 690-7442 or email at [program.intake@usda.gov](mailto:program.intake@usda.gov).

## Price Program Quick Stats Links

Economics and Prices

[http://www.nass.usda.gov/Statistics\\_by\\_Subject/Economics\\_and\\_Prices/index.asp](http://www.nass.usda.gov/Statistics_by_Subject/Economics_and_Prices/index.asp)

January 2014 Price Program Changes

[http://www.nass.usda.gov/Surveys/Guide\\_to\\_NASS\\_Surveys/Prices/updates.pdf](http://www.nass.usda.gov/Surveys/Guide_to_NASS_Surveys/Prices/updates.pdf)