



# Agricultural Prices

ISSN: 1937-4216

Released November 26, 2014, by the National Agricultural Statistics Service (NASS), Agricultural Statistics Board, United States Department of Agriculture (USDA).

## Special Note

Beginning January 2015, NASS will publish full-month price data only. In addition, the method for computing annual indexes is revised. For details see, [http://www.nass.usda.gov/Surveys/Guide\\_to\\_NASS\\_Surveys/Prices/update2015.pdf](http://www.nass.usda.gov/Surveys/Guide_to_NASS_Surveys/Prices/update2015.pdf).

## Prices Received Index Increased 2 Points

The preliminary November Prices Received Index (Agricultural Production), at 101 percent, based on 2011=100, increased 2 points (2.0 percent) from October. The Prices Received Index includes crop and livestock production. At 80, the November Crop Production Index is unchanged. At 134, the Livestock Production Index decreased 2 points (1.5 percent). Producers received higher prices for eggs, cattle, lettuce, and soybeans and lower prices for hogs, milk, apples, and broilers. In addition to prices, the overall index is also affected by the seasonal change based on a 3-year average mix of commodities producers sell. Increased monthly movement of corn, cattle, milk, and cotton offset the decreased marketing of soybeans, grapes, potatoes, and wheat.

The preliminary Prices Received Index is up 2 points (2.0 percent) from November 2013. The Food Commodities Index, at 119, increased 7 points (6.3 percent) from last month and 10 points (9.2 percent) from November 2013.

## Prices Paid Index Down 1 Point

The preliminary November Prices Paid Index for Commodities and Services, Interest, Taxes, and Farm Wage Rates (PPITW), at 110 percent (2011=100), is down 1 point (-0.9 percent) from October, but 4 points (3.8 percent) above November 2013. Lower prices in November for complete feeds, concentrates, other services, and hay & forages more than offset higher prices for mixed fertilizer, nitrogen, trucks, and feed grains.

## Prices Received, Prices Paid, and Ratio of Prices Received to Prices Paid Indexes 2011 Base – United States: November 2014 with Comparisons

Index	November	October	November
	2013	2014	2014
Prices received by farmers .....	99	99	101
Prices paid by farmers .....	106	111	110
Ratio of prices received to prices paid .....	93	89	92

## Contents

Prices Received by Farmers .....	5
Prices Received Indexes as a Percent of 2011 Base – United States: November 2014 with Comparisons .....	6
Prices Received Indexes as a Percent of 1910-1914 Base – United States: November 2014 with Comparisons .....	6
Prices Received Indexes as a percent of 2011 Base by Month for Selected Groups – United States: 2013 and 2014.....	7
Prices Paid Indexes as a percent of 2011 Base by Month for Selected Groups – United States: 2013 and 2014.....	7
Received Indexes by Month, Livestock Products, All Products, and All Crops – United States: 2011=100 Chart.....	8
Received Indexes by Month, Food Grains, Feed Grains & Hay, and Oilseeds – United States: 2011=100 Chart.....	8
Received Indexes by Month, Fruit & Nut and Commercial Vegetables – United States: 2011=100 Chart.....	9
Received Indexes by Month, Meat Animal, Dairy Products, and Poultry & Eggs – United States: 2011=100 Chart.....	9
Prices Received for Field Crops and Fruits – United States: November 2014 with Comparisons .....	10
Prices Received for Vegetables and Livestock – United States: November 2014 with Comparisons .....	11
Prices Received for Corn by Month – United States Chart.....	12
Prices Received for Wheat by Month – United States Chart .....	12
Prices Received for Upland Cotton by Month – United States Chart.....	13
Prices Received for Soybeans by Month – United States Chart .....	13
Prices Received for Cattle by Month – United States Chart .....	14
Prices Received for Milk by Month – United States Chart.....	14
Prices Received for Hogs by Month – United States Chart .....	15
Prices Received for Poultry by Month – United States Chart.....	15
Prices Received for All Wheat, Corn, and Soybeans by Month – United States: 2014 with Comparisons .....	16
Prices Received for Beef Cattle and All Hogs by Month – United States: 2014 with Comparisons .....	16
Prices Received for All Wheat – States and United States: November 2014 with Comparisons .....	17
Prices Received for Winter Wheat – States and United States: November 2014 with Comparisons .....	17
Prices Received for Durum Wheat – States and United States: November 2014 with Comparisons .....	18
Prices Received for Spring Wheat – States and United States: November 2014 with Comparisons .....	18
Prices Received for All Barley – States and United States: November 2014 with Comparisons .....	19
Prices Received for Malting Barley – States: November 2014 with Comparisons.....	19
Prices Received for Feed Barley – States: November 2014 with Comparisons.....	19
Prices Received for Corn – States and United States: November 2014 with Comparisons.....	20
Prices Received for Soybeans – States and United States: November 2014 with Comparisons.....	20
Prices Received for Oats – States and United States: November 2014 with Comparisons.....	21
Prices Received for Sorghum Grain – States and United States: November 2014 with Comparisons .....	21
Prices Received for Dry Beans – States and United States: November 2014 with Comparisons .....	22
Prices Received for Peanuts (in shell) – States and United States: November 2014 with Comparisons .....	22
Prices Received for Sunflower – States and United States: November 2014 with Comparisons .....	23
Prices Received for Canola – States and United States: November 2014 with Comparisons.....	23
Prices Received for Flaxseed – States and United States: November 2014 with Comparisons.....	23
Prices Received for Upland Cotton and Cottonseed – States and United States: November 2014 with Comparisons .....	24
Prices Received and Farm Marketings for Upland Cotton and Rice – California, Other States, and United States: November 2014 with Comparisons .....	24
Prices Received for Hay by Type – States and United States: November 2014 with Comparisons .....	25
Prices Received for Apples – States and United States: November 2014 with Comparisons.....	25
Prices Received for Citrus Fruits by Utilization – States and United States: November 2013.....	26
Prices Received for Citrus Fruits by Utilization – States and United States: October 2014.....	27
Prices Received for Citrus Fruits by Utilization – States and United States: November 2014.....	28
Prices Received for Potatoes – States and United States: November 2014 with Comparisons .....	29

Prices Received for All Milk – States and United States: November 2014 with Comparisons.....	30
Prices Received for Milk Cows – States and United States: October 2014 with Comparisons.....	31
Commodity Parity Prices and Price as Percent of Parity Price – United States: November 2014 with Comparisons.....	32
Commodity Parity Prices – United States: November 2014 with Comparisons.....	33
Marketing Year for Specified Commodities.....	35
Flaxseed Market Year Average Prices Received – States and United States: Marketing Years 2012 and 2013.....	35
Sunflowers Market Year Average Prices Received – States and United States: Marketing Years 2012 and 2013.....	35
Canola Market Year Average Prices Received – States and United States: Marketing Years 2012 and 2013.....	36
Proso Millet Market Year Average Prices Received – States and United States: Marketing Years 2012 and 2013.....	36
Other Oilseeds Market Year Average Prices Received – United States: Marketing Years 2012 and 2013.....	36
Safflower Market Year Average Prices Received – States and United States: Marketing Years 2012 and 2013.....	36
Corn Market Year Average Prices Received – States and United States: Marketing Years 2012 and 2013.....	37
All Dry Beans Market Year Average Prices Received – States and United States: Marketing Years 2012 and 2013.....	38
Prices Received for Corn by Month – States and United States: Marketing Years 2012-2013 and 2013-2014.....	39
Prices Received for Flaxseed by Month – States and United States: Marketing Years 2012-2013.....	41
Prices Received for Flaxseed by Month – States and United States: Marketing Years 2013-2014.....	41
Prices Received for Canola by Month – States and United States: Marketing Years 2012-2013.....	42
Prices Received for Canola by Month – States and United States: Marketing Years 2013-2014.....	42
Prices Received for All Sunflowers by Month – States and United States: Marketing Years 2012-2013.....	43
Prices Received for All Sunflowers by Month – States and United States: Marketing Years 2013-2014.....	43
Prices Received for Oil Sunflowers by Month – States and United States: Marketing Years 2012-2013.....	44
Prices Received for Oil Sunflowers by Month – States and United States: Marketing Years 2013-2014.....	44
Prices Received for Non-Oil Sunflowers by Month – States and United States: Marketing Years 2012-2013.....	45
Prices Received for Non-Oil Sunflowers by Month – States and United States: Marketing Years 2013-2014.....	45
Prices Received for Dry Edible Beans by Month – States and United States: Marketing Years 2012-2013.....	46
Prices Received for Dry Edible Beans by Month – States and United States: Marketing Years 2013-2014.....	46
Percent of Corn Farm Marketings by Month – States and United States: Marketing Years 2012-2013 and 2013-2014.....	47
Percent of All Sunflower Farm Marketings by Month – States and United States: Marketing Years 2012-2013 and 2013-2014.....	48
Percent of Flaxseed Farm Marketings by Month – States and United States: Marketing Years 2012-2013 and 2013-2014.....	48
Percent of Canola Farm Marketings by Month – States and United States: Marketing Years 2012-2013 and 2013-2014.....	49
Percent of Dry Edible Bean Farm Marketings by Month – States and United States: Marketing Years 2012-2013 and 2013-2014.....	49
Prices Received and Farm Marketings for All Chickpeas (Garbanzo) – United States: Marketing Years 2012-2013 and 2013-2014.....	50
Prices Received and Farm Marketings for Large Chickpeas – United States: Marketing Years 2012-2013 and 2013-2014.....	50
Prices Received and Farm Marketings for Small Chickpeas (Garbanzo) – United States: Marketing Years 2012-2013 and 2013-2014.....	51
Reliability of Prices Received Estimates.....	52
Prices Paid by Farmers.....	53
Prices Paid Indexes and Related Parity Ratios – United States: November 2014 with Comparisons.....	54
Prices Paid Indexes and Annual Weights for Input Components and Sub-components – United States: November 2014 with Comparisons.....	55
Paid Indexes by Month, All Items and Production Items – United States: 2011=100 Chart.....	56
Paid Indexes, Annual Averages, Production Items, Interest, Taxes, and Wages – United States: 2011=100 Chart.....	56
Paid Indexes by Farm Type, All Items – United States: 2011=100 Chart.....	57

Paid Indexes by Origin, All Production Items – United States: 2011=100 Chart.....	57
Paid Indexes by Non-Farm Sector, Supplies & Repairs, Fertilizer, Machinery, and Fuel – United States: 2011=100 Chart.....	58
Paid Indexes by Month, Feed and Replacement Livestock – United States: 2011=100 Chart .....	58
Feed Price Ratios – United States: November 2014 with Comparisons .....	59
Prices Received Used to Calculate Feed Price Ratios – United States: November 2014 with Comparisons .....	59
Prices Paid for Feeder Livestock – United States: November 2014 with Comparisons .....	59
Reliability of Prices Paid Estimates .....	60
Information Contacts.....	61

## Prices Received by Farmers

The November 2014 Prices Received Index for agricultural production is 101 percent of its 2011 base, up 2.0 percent from October and 2.0 percent higher than November 2013.

**All crops:** The November 2014 index, at 80, is unchanged from October but is 11 percent lower than November 2013. The index increase for vegetable & melon production more than offset the index decrease for oilseeds & grains.

**Food grains:** The November 2014 index, at 88, is 4.8 percent higher than the previous month but 12 percent below a year ago. The November price for all wheat, at \$5.96 per bushel, is up 25 cents from October but down 89 cents from November 2013.

**Feed grains:** The index for November 2014, at 60, is unchanged from last month but 18 percent below a year ago. The corn price, at \$3.57 per bushel, is up 1 cent from last month but 80 cents less than November 2013. Sorghum grain, at \$6.60 per cwt, is 35 cents above October but 78 cents below November last year.

**Oilseeds:** The November 2014 index, at 80, is unchanged from October but 20 percent lower than November 2013. The soybean price, at \$10.10 per bushel, increased 13 cents from October but is \$2.60 less than November 2013.

**Fruit & tree nuts:** The index for November 2014, at 129, is up 1.6 percent from October and 7.5 percent higher than a year ago. Price increases during November for strawberries and grapes more than offset the lower price for apples.

**Commercial vegetables:** The November 2014 index, at 114, is up 20 percent from last month and 19 percent higher than November 2013. The price increase during November for lettuce more than offset the lower price for cucumbers.

**Other crops:** The index for November 2014, at 86, is down 7.5 percent from last month and 6.5 percent below November 2013. The all hay price, at \$164 per ton, is down \$9.00 from October and \$4.00 from last November. The price for upland cotton, at 65.2 cents per pound, is up 1.2 cents from October but down 10.7 cents from last November.

**Livestock & products.:** The November 2014 index, at 134, is 1.5 percent below last month but up 20 percent from November 2013. Compared with a year ago, prices are higher for cattle, calves, broilers, milk, market eggs, hogs, and turkeys.

**Meat animals:** The index for November 2014, at 139, is down 1.4 percent from last month but 26 percent higher than last year. The November hog price, at \$66.70 per cwt, is down \$10.30 from October but \$3.10 higher than a year ago. The November beef cattle price of \$166 per cwt is up \$5.00 from last month and \$36.00 higher than November 2013.

**Dairy:** The November 2014 index, at 116, is down 6.5 percent from October but 8.4 percent higher than November last year. The November all milk price of \$23.40 per cwt is down \$1.50 from last month but up \$1.80 from November 2013.

**Poultry & eggs:** The index for November 2014, at 140, is up 3.7 percent from October and 15 percent above a year ago. The November market egg price, at \$1.37 per dozen, increased 43.6 cents from October and is 21.0 cents above November 2013. The November broiler price, at 64.0 cents per pound, is down 2.0 cents from October but is 8.0 cents above a year ago. The November turkey price, at 77.8 cents per pound, is down 4.4 cents from last month but up 12.2 cents from a year earlier.

## Prices Received Indexes as a Percent of 2011 Base – United States: November 2014 with Comparisons

[Revised historical price indexes for months not shown are available at [www.nass.usda.gov](http://www.nass.usda.gov)]

Index	2011 Base		
	November 2013	October 2014	November 2014
	(percent)	(percent)	(percent)
Agricultural Production .....	99	99	101
Crop Production .....	90	80	80
Grains and oilseed .....	84	71	68
Feed grain .....	73	60	60
Food grain .....	100	84	88
Oilseed .....	100	80	80
Fruit and tree nut .....	120	127	129
Vegetable and melon .....	96	95	114
Other crop .....	92	93	86
Livestock Production .....	112	136	134
Meat animal .....	110	141	139
Cattle .....	115	149	153
Hog .....	96	116	100
Dairy .....	107	124	116
Poultry and egg .....	122	135	140
Food Commodity .....	109	112	119

## Prices Received Indexes as a Percent of 1910-1914 Base – United States: November 2014 with Comparisons

[Revised historical price indexes for months not shown are available at [www.nass.usda.gov](http://www.nass.usda.gov)]

Index	1910 - 1914 Base		
	November 2013	October 2014	November 2014
	(percent)	(percent)	(percent)
Agricultural Production .....	1018	1025	1043
Crop Production .....	784	699	700
Livestock Production .....	1299	1577	1559

## Prices Received Indexes as a percent of 2011 Base by Month for Selected Groups – United States: 2013 and 2014

[Revised historical price indexes for months not shown are available at [www.nass.usda.gov](http://www.nass.usda.gov). Blank data cells indicate estimation period has not yet begun]

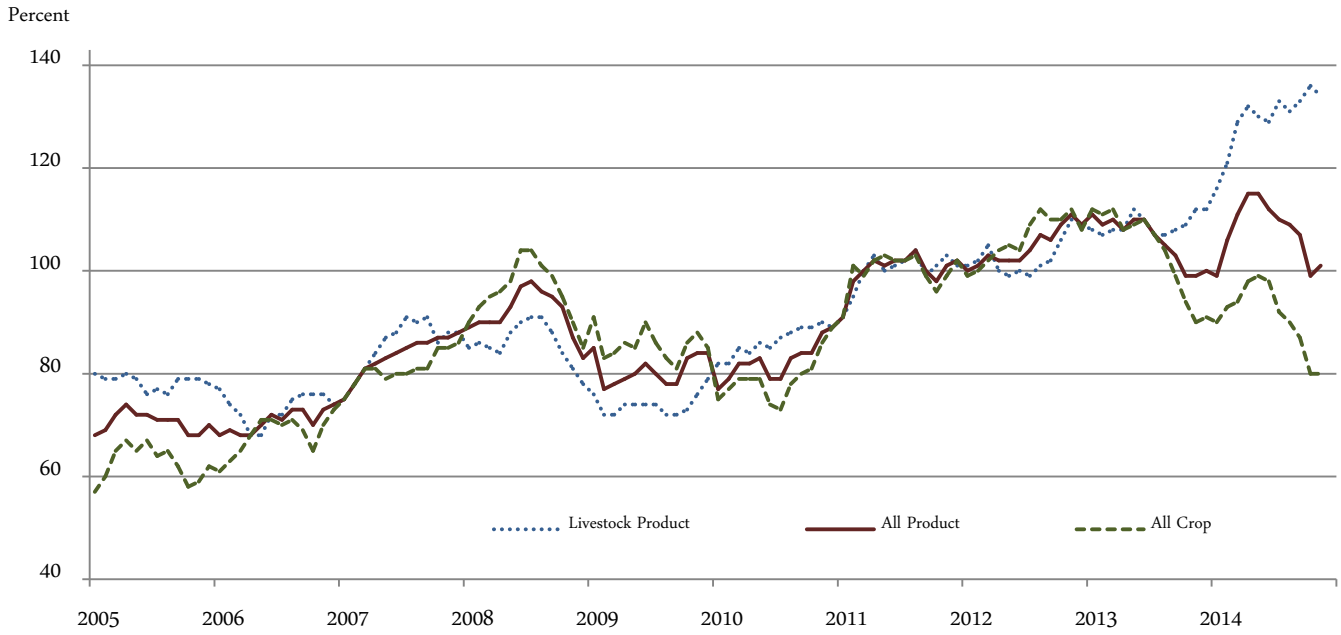
Month	2011 Base							
	Agricultural Production		Crop Production		Livestock Production		Food Commodities	
	2013	2014	2013	2014	2013	2014	2013	2014
	(percent)	(percent)	(percent)	(percent)	(percent)	(percent)	(percent)	(percent)
January .....	111	99	112	90	108	116	111	111
February .....	109	106	111	93	107	121	108	117
March .....	110	111	112	94	108	129	109	122
April .....	108	115	108	98	108	132	107	125
May .....	110	115	109	99	112	130	110	125
June .....	110	112	110	98	110	129	109	122
July .....	107	110	107	92	107	133	106	120
August .....	105	109	104	90	107	131	106	120
September .....	103	107	99	87	108	133	106	119
October .....	99	99	94	80	109	136	106	112
November .....	99	101	90	80	112	134	109	119
December .....	100		91		112		109	

## Prices Paid Indexes as a percent of 2011 Base by Month for Selected Groups – United States: 2013 and 2014

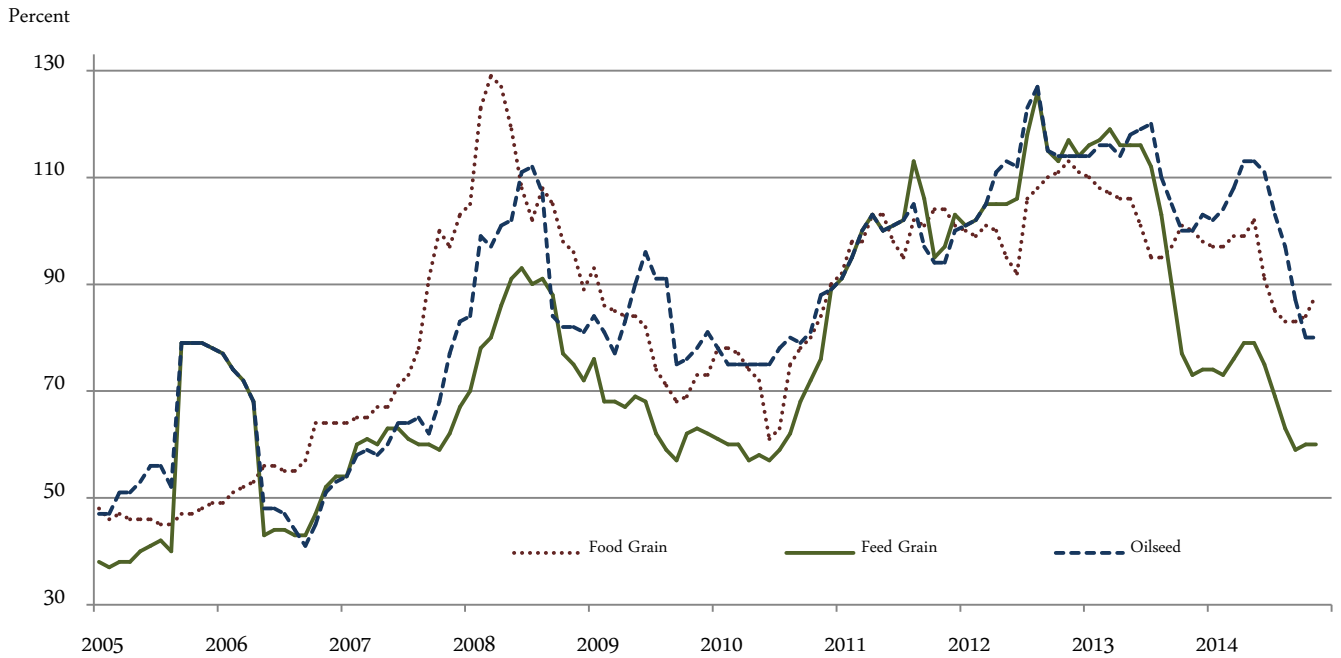
[Revised historical price indexes for months not shown are available at [www.nass.usda.gov](http://www.nass.usda.gov). Blank data cells indicate estimation period has not yet begun]

Month	2011 Base							
	All Items (PPITW)		Production		Crop Sector		Livestock Sector	
	2013	2014	2013	2014	2013	2014	2013	2014
	(percent)	(percent)	(percent)	(percent)	(percent)	(percent)	(percent)	(percent)
January .....	106	108	107	109	104	106	108	111
February .....	106	109	107	110	104	106	108	112
March .....	106	110	107	112	105	107	108	113
April .....	106	112	107	114	105	108	107	116
May .....	106	112	107	115	105	108	108	117
June .....	106	113	107	116	105	108	108	118
July .....	107	112	108	115	104	108	110	117
August .....	106	111	107	113	104	107	108	116
September .....	107	112	108	115	104	108	109	117
October .....	106	111	107	113	104	107	108	116
November .....	106	110	106	112	104	107	108	114
December .....	106		107		104		108	

Received Indexes by Month,  
 Livestock Product, All Product, and All Crop –  
 United States: 2011=100

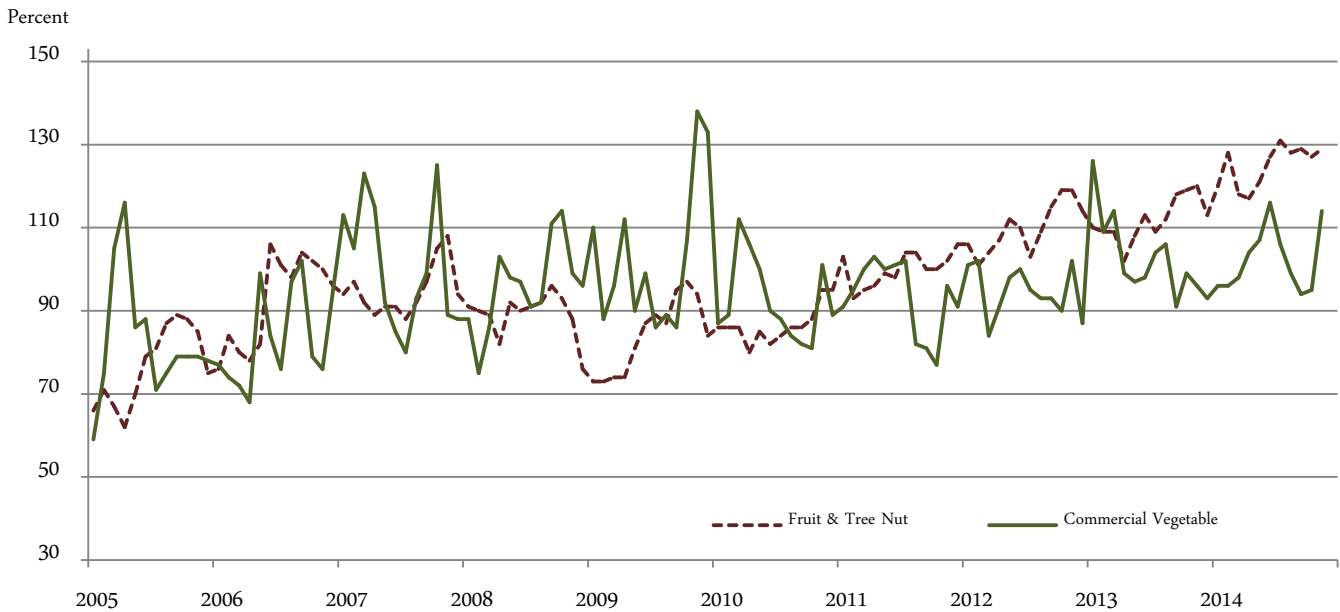


Received Indexes by Month,  
 Food Grain, Feed Grain, and Oilseed –  
 United States: 2011=100

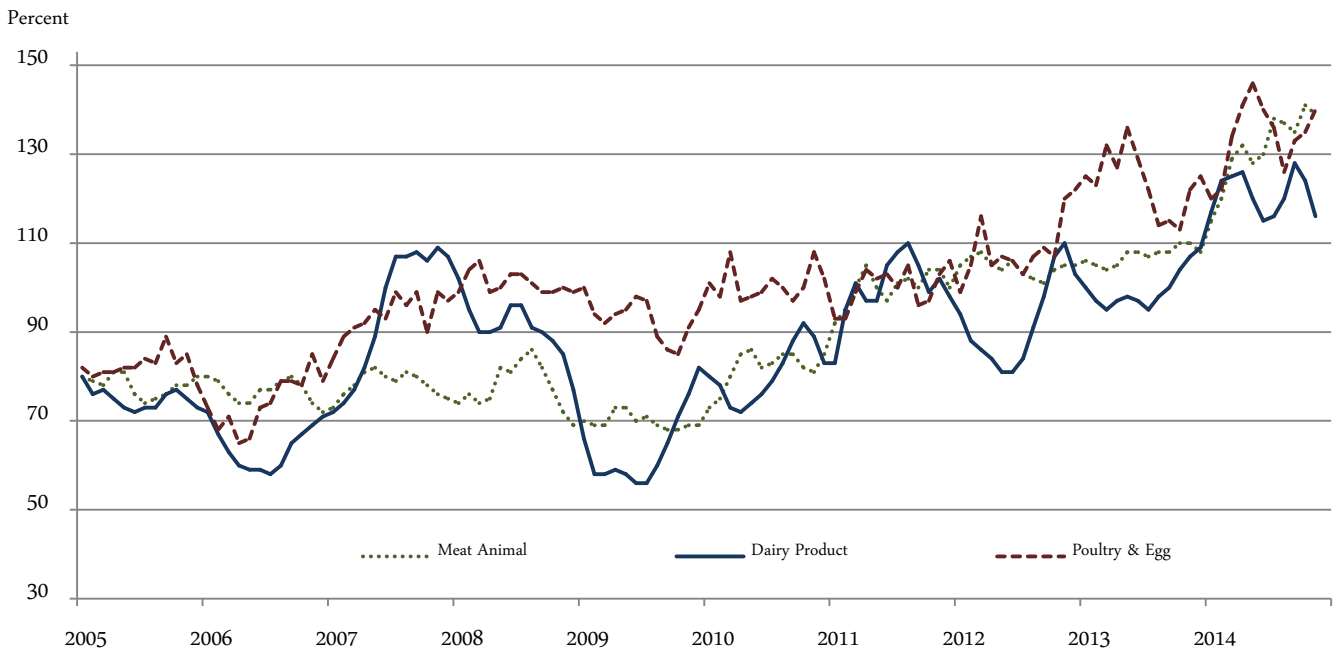




Received Indexes by Month,  
 Fruit & Tree Nut and Commercial Vegetable –  
 United States: 2011=100



Received Indexes by Month,  
 Meat Animal, Dairy Product, and Poultry & Egg –  
 United States: 2011=100



**Prices Received for Field Crops and Fruits – United States: November 2014 with Comparisons**

Commodity	Average 2011	November 2013	October 2014	Preliminary November 2014	
<b>Field crops</b>					
Austrian winter peas .....	dollars/cwt	19.50	22.80	(D)	(D)
Barley, all .....	dollars/bushel	4.79	6.20	4.95	4.46
Feed .....	dollars/bushel	4.59	3.63	2.94	2.59
Malting .....	dollars/bushel	4.83	6.61	5.80	6.01
Beans, dry edible .....	dollars/cwt	34.60	38.60	32.60	31.30
Canola .....	dollars/cwt	23.10	20.30	15.60	16.30
Chickpeas, all .....	dollars/cwt	35.70	29.80	27.10	26.20
Large .....	dollars/cwt	39.20	30.20	29.20	(D)
Small .....	dollars/cwt	23.40	(D)	22.80	21.30
Corn .....	dollars/bushel	6.02	4.37	3.56	3.57
Cotton, Upland .....	dollars/pound	0.880	0.759	0.640	0.652
Cottonseed <sup>1</sup> .....	dollars/ton	131.00	248.00	201.00	(NA)
Flaxseed .....	dollars/bushel	14.20	13.40	11.50	11.10
Hay, all, baled .....	dollars/ton	159.00	168.00	173.00	164.00
Alfalfa .....	dollars/ton	176.00	188.00	194.00	184.00
Other .....	dollars/ton	119.00	136.00	125.00	124.00
Lentils .....	dollars/cwt	27.50	19.50	23.80	23.70
Oats .....	dollars/bushel	3.42	3.63	3.13	2.97
Peanuts, in-shell .....	dollars/pound	0.252	0.266	0.210	0.213
Peas, dry edible .....	dollars/cwt	13.60	15.90	11.00	11.70
Potatoes .....	dollars/cwt	9.78	8.87	7.13	7.75
Rice, all .....	dollars/cwt	13.70	16.20	13.90	15.10
Long .....	dollars/cwt	12.30	15.30	12.90	13.50
Medium and short .....	dollars/cwt	18.40	18.40	18.50	18.00
Sorghum grain .....	dollars/cwt	10.70	7.38	6.25	6.60
Soybeans .....	dollars/bushel	12.50	12.70	9.97	10.10
Sunflowers, all .....	dollars/cwt	29.00	20.70	22.80	19.30
Wheat, all .....	dollars/bushel	7.44	6.85	5.71	5.96
Winter .....	dollars/bushel	6.93	6.96	5.66	5.83
Durum .....	dollars/bushel	9.22	6.72	8.52	8.80
Other spring .....	dollars/bushel	8.33	6.70	5.59	5.88
Hard red winter <sup>1</sup> .....	dollars/bushel	7.07	7.10	5.50	(NA)
Soft red winter <sup>1</sup> .....	dollars/bushel	6.77	6.63	4.95	(NA)
Hard red spring <sup>1</sup> .....	dollars/bushel	8.38	6.70	5.55	(NA)
White <sup>1</sup> .....	dollars/bushel	6.58	6.77	6.07	(NA)
<b>Fruits</b>					
<b>Citrus, equivalent on-tree</b>					
Grapefruit .....	dollars/box	7.47	8.54	14.27	9.27
Lemons .....	dollars/box	12.30	26.65	41.41	33.57
Oranges .....	dollars/box	8.16	13.07	9.97	14.88
Tangelos .....	dollars/box	3.50	(S)	(S)	(S)
Tangerines and mandarins .....	dollars/box	15.30	(S)	28.45	28.52
<b>Noncitrus, fresh</b>					
Apples <sup>2</sup> .....	dollars/pound	0.325	(NA)	0.436	0.330
Grapes <sup>2</sup> .....	dollars/ton	628.00	(NA)	1,610.00	1,750.00
Peaches <sup>2</sup> .....	dollars/ton	507.00	(NA)	(NA)	(NA)
Pears <sup>2</sup> .....	dollars/ton	559.00	(NA)	698.00	684.00
Strawberries .....	dollars/cwt	104.00	(NA)	112.00	188.00

(D) Withheld to avoid disclosing data for individual operations.

(NA) Not available.

(S) Insufficient number of reports to establish an estimate.

<sup>1</sup> Preliminary estimates not set for this item.

<sup>2</sup> Equivalent packinghouse-door returns for California, Michigan, New York (apples only), and Washington (apples, peaches, and pears). Prices as sold for other states.

## Prices Received for Vegetables and Livestock – United States: November 2014 with Comparisons

[Price data source for livestock and poultry commodities is United States Department of Agriculture's Agricultural Marketing Service]

Commodity	Average 2011	November 2013	October 2014	Preliminary November 2014
<b>Vegetables, fresh <sup>1</sup></b>				
Asparagus .....dollars/cwt	37.50	(NA)	(NA)	(NA)
Beans, snap <sup>2</sup> .....dollars/cwt	69.00	(NA)	(D)	67.00
Broccoli .....dollars/cwt	41.60	(NA)	32.90	44.50
Cantaloupes <sup>2</sup> .....dollars/cwt	16.50	(NA)	36.10	34.70
Carrots .....dollars/cwt	30.80	(NA)	26.80	24.60
Cauliflower .....dollars/cwt	47.00	(NA)	49.70	59.70
Celery .....dollars/cwt	22.50	(NA)	16.90	25.80
Corn, sweet .....dollars/cwt	30.70	(NA)	42.40	42.80
Cucumbers <sup>2</sup> .....dollars/cwt	18.70	(NA)	(D)	18.90
Lettuce .....dollars/cwt	24.30	(NA)	33.40	57.90
Onions <sup>3</sup> .....dollars/cwt	11.90	(NA)	10.20	8.99
Tomatoes .....dollars/cwt	51.20	(NA)	53.90	71.00
<b>Livestock</b>				
Calves .....dollars/cwt	142.00	192.00	307.00	304.00
Cattle, all beef .....dollars/cwt	115.00	130.00	161.00	166.00
Cows <sup>4</sup> .....dollars/cwt	71.60	80.70	116.00	114.00
Steers and heifers .....dollars/cwt	117.00	132.00	163.00	168.00
Milk cows <sup>5</sup> .....dollars/head	1420.00	(NA)	2120.00	(NA)
Hogs, all .....dollars/cwt	66.50	63.60	77.00	66.70
Barrows and gilts .....dollars/cwt	66.80	63.30	77.40	66.50
Sows .....dollars/cwt	57.90	71.00	66.40	73.20
<b>Dairy and poultry</b>				
Milk, all <sup>6</sup> .....dollars/cwt	20.10	21.60	24.90	23.40
Fat test ..... percent	3.71	3.87	3.78	3.84
Broilers, live <sup>7</sup> .....dollars/pound	0.459	0.560	0.660	0.640
Eggs, all <sup>8</sup> .....dollars/dozen	0.969	1.320	1.140	1.520
Market <sup>8 9</sup> .....dollars/dozen	0.796	1.160	0.934	1.370
Turkeys, live <sup>8 10</sup> .....dollars/pound	0.680	0.656	0.822	0.778
<b>Adjusted for seasonal variation</b>				
Eggs, all .....dollars/dozen	0.979	1.140	1.170	1.300
Seasonal factor ..... percent	101	116	97	117
Milk, all <sup>6</sup> .....dollars/cwt	20.20	20.50	23.70	22.20
Seasonal factor ..... percent	100	105	105	105

(D) Withheld to avoid disclosing data for individual operations.

(NA) Not available.

<sup>1</sup> Beginning January 2006, point of first sale. FOB shipping point for prior years.

<sup>2</sup> Monthly estimates began January 1995.

<sup>3</sup> Includes some processing.

<sup>4</sup> Beef cows and cull dairy cows sold for slaughter.

<sup>5</sup> Animals sold for dairy herd replacement only. Prices available for January, April, July, and October.

<sup>6</sup> Before deductions for hauling. Includes quality, quantity, and other premiums. Excludes hauling subsidies.

<sup>7</sup> Live weight equivalent price.

<sup>8</sup> Mid-month price.

<sup>9</sup> Also referred to as table eggs.

<sup>10</sup> Live weight equivalent price is used when actual live weight price is not available. Beginning January 2011, price reflects FOB shipping point basis. Prior year price reflects delivered basis.

### Prices Received for Corn by Month – United States

Dollars per bushel



### Prices Received for Wheat by Month – United States

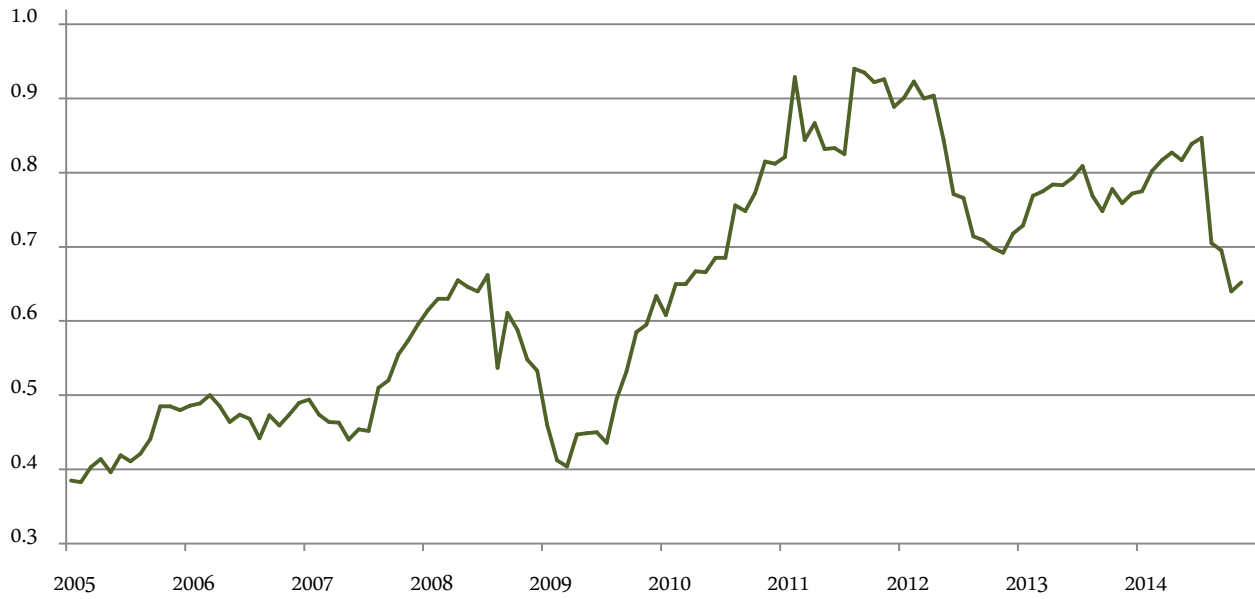
Dollars per bushel



## Prices Received for Upland Cotton by Month –

### United States

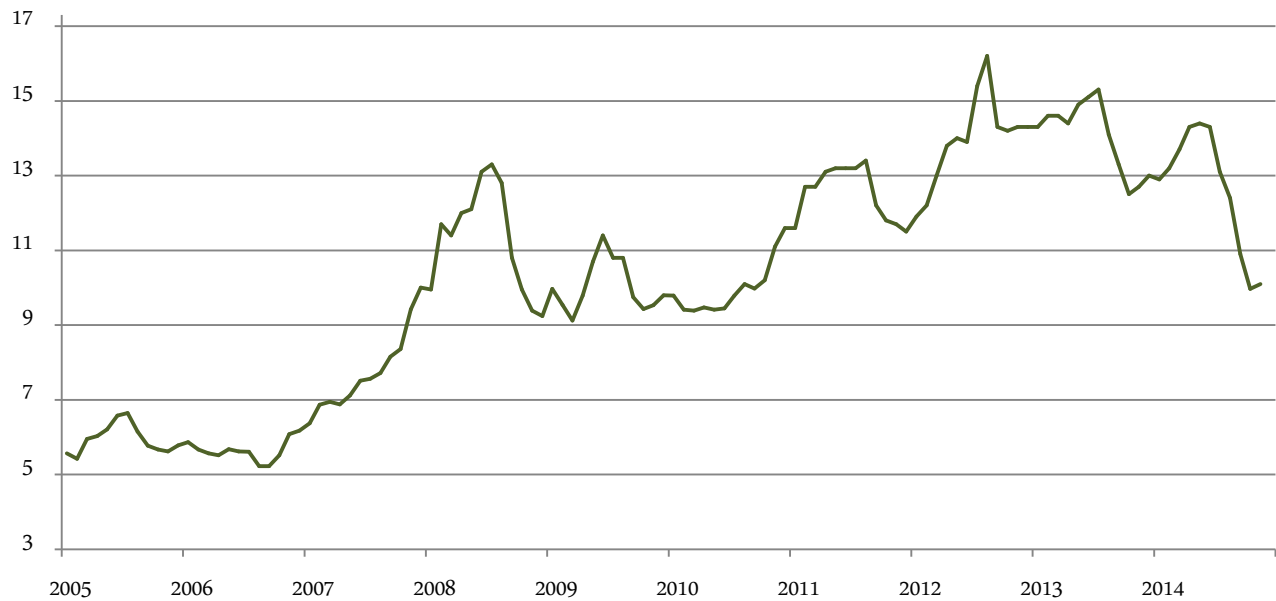
Dollars per pound



## Prices Received for Soybeans by Month –

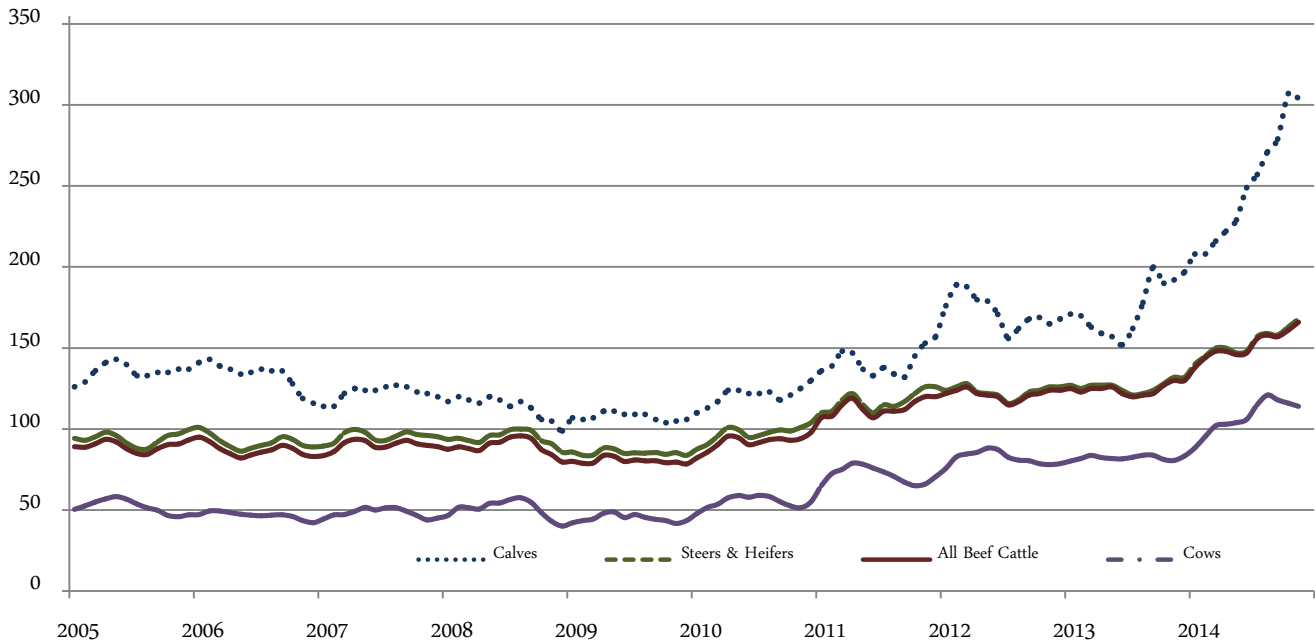
### United States

Dollars per bushel



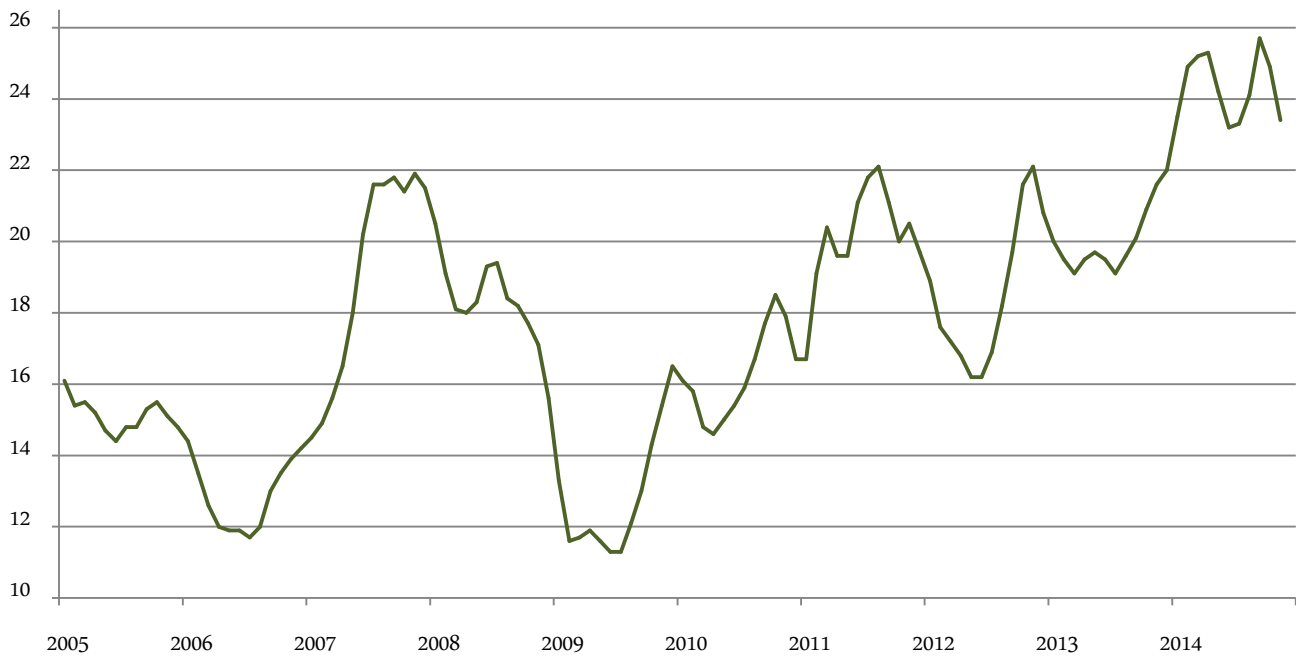
## Prices Received for Cattle by Month – United States

Dollars per cwt



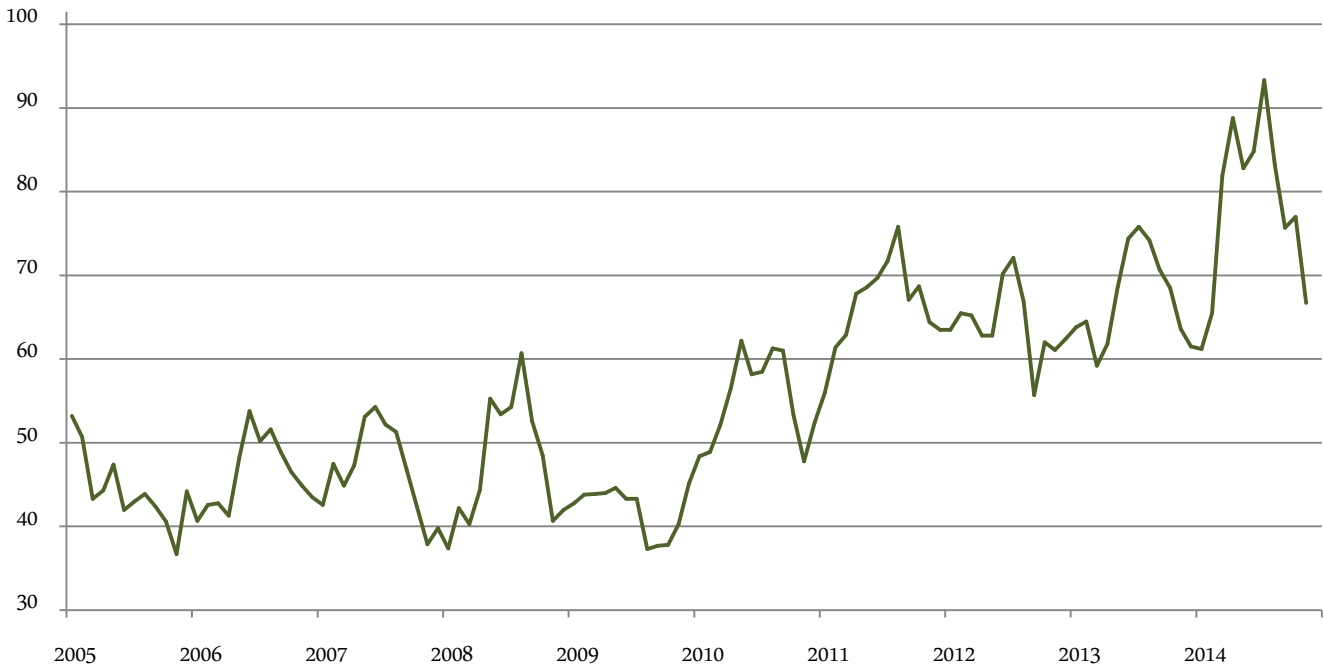
## Prices Received for Milk by Month – United States

Dollars per cwt



## Prices Received for Hogs by Month – United States

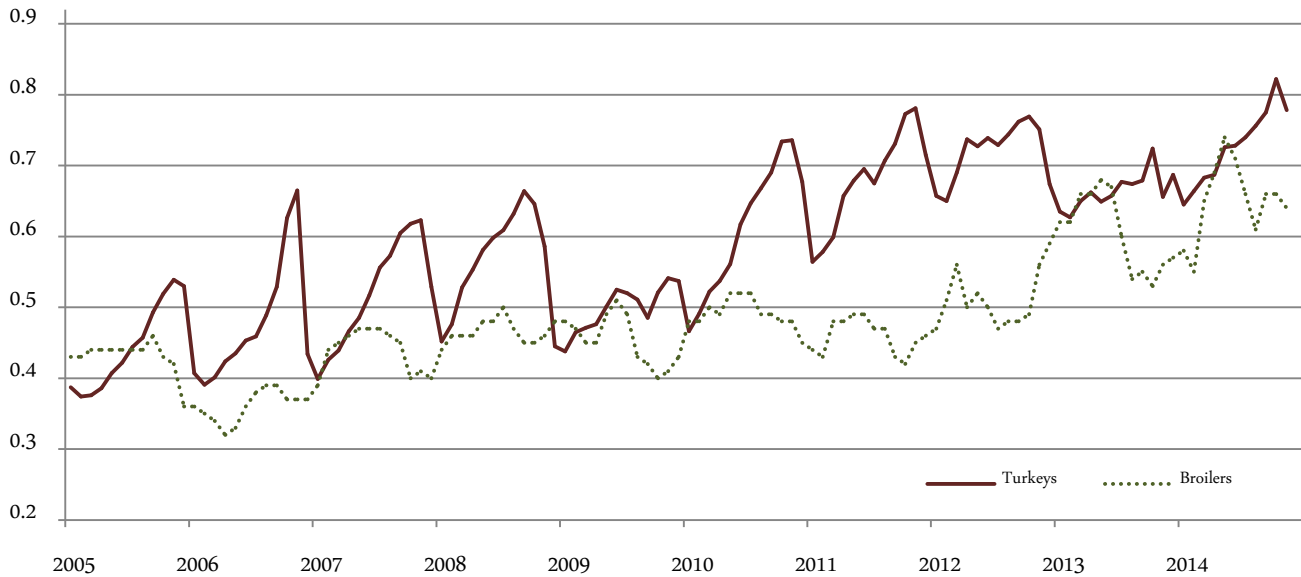
Dollars per cwt



## Prices Received for Poultry by Month –

### United States

Dollars per pound



## Prices Received for All Wheat, Corn, and Soybeans by Month – United States: 2014 with Comparisons

[Current month prices are mid-month; prices for previous months and years are for the entire month. Blank data cells indicate estimation period has not yet begun]

Month	All wheat			Corn			Soybeans		
	2012	2013	Preliminary 2014	2012	2013	Preliminary 2014	2012	2013	Preliminary 2014
	(dollars per bushel)	(dollars per bushel)	(dollars per bushel)	(dollars per bushel)	(dollars per bushel)	(dollars per bushel)	(dollars per bushel)	(dollars per bushel)	(dollars per bushel)
January .....	7.05	8.12	6.65	6.07	6.96	4.42	11.90	14.30	12.90
February .....	7.10	7.97	6.50	6.28	7.04	4.35	12.20	14.60	13.20
March .....	7.20	7.79	6.74	6.35	7.13	4.52	13.00	14.60	13.70
April .....	7.11	7.71	6.82	6.34	6.97	4.71	13.80	14.40	14.30
May .....	6.67	7.68	7.08	6.34	6.97	4.71	14.00	14.90	14.40
June .....	6.70	7.37	6.50	6.37	6.97	4.50	13.90	15.10	14.30
July .....	7.89	6.95	6.16	7.14	6.79	4.06	15.40	15.30	13.10
August .....	8.04	6.88	5.98	7.63	6.21	3.63	16.20	14.10	12.40
September .....	8.27	6.80	5.74	6.89	5.40	3.48	14.30	13.30	10.90
October .....	8.38	6.94	5.71	6.78	4.63	3.56	14.20	12.50	9.97
November .....	8.47	6.85	5.96	7.01	4.37	3.57	14.30	12.70	10.10
December .....	8.30	6.73		6.87	4.41		14.30	13.00	

## Prices Received for Beef Cattle and All Hogs by Month – United States: 2014 with Comparisons

[Current month prices are mid-month; prices for previous months and years are for the entire month. Blank data cells indicate estimation period has not yet begun]

Month	Beef cattle <sup>1</sup>			All hogs <sup>2</sup>		
	2012	2013	Preliminary 2014	2012	2013	Preliminary 2014
	(dollars per cwt)	(dollars per cwt)	(dollars per cwt)	(dollars per cwt)	(dollars per cwt)	(dollars per cwt)
January .....	122.00	125.00	138.00	63.50	63.80	61.20
February .....	124.00	123.00	144.00	65.50	64.50	65.50
March .....	126.00	125.00	148.00	65.20	59.20	81.90
April .....	122.00	125.00	148.00	62.80	61.80	88.80
May .....	121.00	126.00	146.00	62.80	68.60	82.80
June .....	120.00	122.00	147.00	70.20	74.40	84.80
July .....	115.00	120.00	156.00	72.10	75.80	93.30
August .....	117.00	121.00	158.00	66.90	74.20	83.20
September .....	121.00	122.00	157.00	55.70	70.70	75.70
October .....	122.00	127.00	161.00	62.00	68.50	77.00
November .....	124.00	130.00	166.00	61.10	63.60	66.70
December .....	124.00	130.00		62.40	61.50	

<sup>1</sup> Cows and steers & heifers.

<sup>2</sup> Barrows & gilts and sows.



**Prices Received for All Wheat – States and United States: November 2014 with Comparisons**

State	November 2013	October 2014	Preliminary November 2014
	(dollars per bushel)	(dollars per bushel)	(dollars per bushel)
Arizona .....	(D)	(D)	(D)
Arkansas .....	(D)	4.35	(D)
California .....	8.11	6.52	(D)
Colorado .....	6.94	5.44	5.57
Idaho .....	7.01	5.94	5.94
Illinois .....	6.46	4.62	4.70
Indiana .....	6.44	4.83	5.15
Kansas .....	7.13	5.57	5.61
Michigan .....	6.56	5.00	5.42
Minnesota .....	6.48	5.15	5.55
Missouri .....	6.59	4.84	5.00
Montana .....	7.03	5.87	6.34
Nebraska .....	6.76	5.18	5.30
North Carolina .....	5.51	5.34	(D)
North Dakota .....	6.57	5.50	5.77
Ohio .....	6.74	5.21	5.50
Oklahoma .....	7.00	5.67	5.69
Oregon .....	7.10	6.53	(D)
South Dakota .....	6.62	5.35	5.42
Texas .....	6.92	4.68	5.55
Washington .....	6.83	6.53	6.83
United States .....	6.85	5.71	5.96

(D) Withheld to avoid disclosing data for individual operations.

**Prices Received for Winter Wheat – States and United States: November 2014 with Comparisons**

State	November 2013	October 2014	Preliminary November 2014
	(dollars per bushel)	(dollars per bushel)	(dollars per bushel)
Arkansas .....	(D)	4.35	(D)
California .....	8.11	6.47	(D)
Colorado .....	6.94	5.45	5.57
Idaho .....	6.98	5.75	5.75
Illinois .....	6.46	4.62	4.70
Indiana .....	6.44	4.83	5.15
Kansas .....	7.13	5.57	5.61
Michigan .....	6.56	5.00	5.42
Minnesota .....	(S)	5.38	(S)
Missouri .....	6.59	4.84	5.00
Montana .....	7.20	5.45	5.86
Nebraska .....	6.76	5.18	5.30
North Carolina .....	5.51	5.34	(D)
North Dakota .....	6.46	4.28	4.78
Ohio .....	6.74	5.21	5.50
Oklahoma .....	7.00	5.67	5.69
Oregon .....	7.03	6.46	(D)
South Dakota .....	6.36	5.51	5.55
Texas .....	6.92	4.68	5.55
Washington .....	6.79	6.35	6.64
United States .....	6.96	5.66	5.83

(D) Withheld to avoid disclosing data for individual operations.

(S) Insufficient number of reports to establish an estimate.

**Prices Received for Durum Wheat – States and United States: November 2014 with Comparisons**

State	November 2013	October 2014	Preliminary November 2014
	(dollars per bushel)	(dollars per bushel)	(dollars per bushel)
Arizona .....	(D)	(D)	(D)
California .....	(S)	(D)	(S)
Idaho .....	(S)	(S)	(S)
Montana .....	(D)	(D)	(D)
North Dakota .....	6.61	8.61	8.75
United States .....	6.72	8.52	8.80

(D) Withheld to avoid disclosing data for individual operations.

(S) Insufficient number of reports to establish an estimate.

**Prices Received for Spring Wheat – States and United States: November 2014 with Comparisons**

State	November 2013	October 2014	Preliminary November 2014
	(dollars per bushel)	(dollars per bushel)	(dollars per bushel)
Colorado .....	(S)	(D)	(S)
Idaho .....	7.09	6.52	(D)
Minnesota .....	6.48	5.15	5.55
Montana .....	6.87	6.05	6.54
North Dakota .....	6.56	5.14	5.48
Oregon .....	7.44	6.98	(D)
South Dakota .....	6.78	5.24	5.33
Washington .....	7.09	7.38	7.77
United States .....	6.70	5.59	5.88

(D) Withheld to avoid disclosing data for individual operations.

(S) Insufficient number of reports to establish an estimate.

### Prices Received for All Barley – States and United States: November 2014 with Comparisons

State	November 2013	October 2014	Preliminary November 2014
	(dollars per bushel)	(dollars per bushel)	(dollars per bushel)
California .....	(D)	(D)	(S)
Colorado .....	(D)	(D)	(S)
Idaho .....	6.68	4.79	3.17
Minnesota .....	(D)	4.93	(S)
Montana .....	6.23	5.54	5.94
North Dakota .....	6.36	5.12	5.04
Oregon .....	3.71	(D)	(D)
Utah .....	(S)	(D)	(S)
Washington .....	3.61	3.11	3.59
Wyoming .....	(D)	(D)	(D)
United States .....	6.20	4.95	4.46

(D) Withheld to avoid disclosing data for individual operations.

(S) Insufficient number of reports to establish an estimate.

### Prices Received for Malting Barley – States: November 2014 with Comparisons

State	November 2013	October 2014	Preliminary November 2014
	(dollars per bushel)	(dollars per bushel)	(dollars per bushel)
Idaho .....	6.80	5.87	(D)
Minnesota .....	(D)	(D)	(S)
Montana .....	6.35	5.93	(D)
North Dakota .....	6.67	5.56	5.49
Wyoming .....	(D)	(D)	(D)

(D) Withheld to avoid disclosing data for individual operations.

(S) Insufficient number of reports to establish an estimate.

### Prices Received for Feed Barley – States: November 2014 with Comparisons

State	November 2013	October 2014	Preliminary November 2014
	(dollars per bushel)	(dollars per bushel)	(dollars per bushel)
Idaho .....	3.31	2.80	(D)
Minnesota .....	(D)	(D)	(S)
Montana .....	3.61	2.41	(D)
North Dakota .....	3.50	3.00	2.50
Wyoming .....	(D)	(D)	(D)

(D) Withheld to avoid disclosing data for individual operations.

(S) Insufficient number of reports to establish an estimate.

## Prices Received for Corn – States and United States: November 2014 with Comparisons

State	November 2013	October 2014	Preliminary November 2014
	(dollars per bushel)	(dollars per bushel)	(dollars per bushel)
Colorado .....	4.71	3.82	3.78
Illinois .....	4.50	3.58	3.50
Indiana .....	4.17	3.44	3.70
Iowa .....	4.43	3.62	3.50
Kansas .....	4.38	3.71	3.71
Kentucky .....	4.50	3.53	3.90
Michigan .....	4.10	3.56	3.60
Minnesota .....	4.30	3.51	3.75
Missouri .....	4.42	3.12	3.30
Nebraska .....	4.46	3.62	3.50
North Carolina .....	4.83	3.80	4.15
North Dakota .....	4.04	3.11	3.14
Ohio .....	4.17	3.48	3.80
Pennsylvania .....	3.99	3.52	3.86
South Dakota .....	3.97	3.09	3.18
Tennessee .....	4.50	3.48	3.90
Texas .....	4.92	4.58	4.14
Wisconsin .....	4.38	3.67	3.50
United States .....	4.37	3.56	3.57

## Prices Received for Soybeans – States and United States: November 2014 with Comparisons

State	November 2013	October 2014	Preliminary November 2014
	(dollars per bushel)	(dollars per bushel)	(dollars per bushel)
Arkansas .....	13.00	10.60	10.60
Illinois .....	12.80	10.20	10.20
Indiana .....	12.70	10.00	10.00
Iowa .....	12.70	10.00	10.00
Kansas .....	12.50	9.50	9.70
Kentucky .....	13.00	10.40	10.60
Louisiana .....	13.20	10.70	11.10
Michigan .....	12.50	10.00	10.00
Minnesota .....	12.60	10.00	10.40
Mississippi .....	13.00	11.00	10.50
Missouri .....	12.80	9.69	10.00
Nebraska .....	12.50	9.54	9.90
North Carolina .....	12.90	10.60	10.70
North Dakota .....	12.20	9.58	9.50
Ohio .....	12.70	10.10	10.20
South Dakota .....	12.20	9.24	9.55
Tennessee .....	12.80	10.30	10.50
Wisconsin .....	12.70	10.10	10.20
United States .....	12.70	9.97	10.10

### Prices Received for Oats – States and United States: November 2014 with Comparisons

State	November 2013	October 2014	Preliminary November 2014
	(dollars per bushel)	(dollars per bushel)	(dollars per bushel)
Illinois .....	(S)	(D)	(S)
Iowa .....	4.18	3.39	3.20
Michigan .....	(D)	3.25	(D)
Minnesota .....	3.09	3.12	3.10
Montana .....	(D)	(S)	(S)
Nebraska .....	(D)	(D)	(D)
New York .....	(D)	3.49	(D)
North Dakota .....	2.86	2.67	(D)
Oregon .....	(D)	(S)	(S)
Pennsylvania .....	(D)	(D)	(D)
South Dakota .....	3.54	2.90	3.04
Texas .....	(S)	(D)	(S)
Wisconsin .....	4.20	3.55	3.30
United States .....	3.63	3.13	2.97

(D) Withheld to avoid disclosing data for individual operations.

(S) Insufficient number of reports to establish an estimate.

### Prices Received for Sorghum Grain – States and United States: November 2014 with Comparisons

State	November 2013	October 2014	Preliminary November 2014
	(dollars per cwt)	(dollars per cwt)	(dollars per cwt)
Arkansas .....	9.05	6.97	7.20
Illinois .....	7.43	6.17	(S)
Kansas .....	7.23	6.03	6.51
Louisiana .....	(D)	(D)	(D)
Missouri .....	7.40	5.24	6.50
Nebraska .....	7.16	6.07	6.70
Oklahoma .....	7.33	6.28	7.10
Texas .....	7.63	6.36	6.80
United States .....	7.38	6.25	6.60

(D) Withheld to avoid disclosing data for individual operations.

(S) Insufficient number of reports to establish an estimate.

**Prices Received for Dry Beans – States and United States: November 2014 with Comparisons**

State	November 2013	October 2014	Preliminary November 2014
	(dollars per cwt)	(dollars per cwt)	(dollars per cwt)
California .....	61.50	63.70	(D)
Colorado .....	(S)	26.20	(D)
Idaho .....	(D)	37.50	(D)
Michigan .....	42.40	34.20	(D)
Minnesota .....	(D)	51.00	(D)
Nebraska .....	43.20	(D)	(D)
North Dakota .....	35.50	28.10	25.10
United States .....	38.60	32.60	31.30

(D) Withheld to avoid disclosing data for individual operations.

(S) Insufficient number of reports to establish an estimate.

**Prices Received for Peanuts (in shell) – States and United States: November 2014 with Comparisons**

State	November 2013	October 2014	Preliminary November 2014
	(dollars per pound)	(dollars per pound)	(dollars per pound)
Alabama .....	0.240	0.154	0.181
Florida .....	0.259	0.212	0.217
Georgia .....	0.252	0.198	0.204
Mississippi .....	0.254	0.174	0.207
New Mexico .....	0.339	(S)	(S)
North Carolina .....	0.261	0.266	(D)
Oklahoma .....	0.315	0.314	0.315
South Carolina .....	0.257	0.219	0.212
Texas .....	0.312	0.286	0.277
Virginia .....	0.279	0.267	0.250
United States .....	0.266	0.210	0.213

(D) Withheld to avoid disclosing data for individual operations.

(S) Insufficient number of reports to establish an estimate.

### Prices Received for Sunflower – States and United States: November 2014 with Comparisons

State	November 2013	October 2014	Preliminary November 2014
	(dollars per cwt)	(dollars per cwt)	(dollars per cwt)
Colorado .....	(D)	(S)	(S)
Kansas .....	22.10	(D)	(D)
Minnesota .....	(D)	19.40	(S)
North Dakota .....	21.10	19.50	21.50
South Dakota .....	20.10	21.10	17.00
United States .....	20.70	22.80	19.30

(D) Withheld to avoid disclosing data for individual operations.

(S) Insufficient number of reports to establish an estimate.

### Prices Received for Canola – States and United States: November 2014 with Comparisons

State	November 2013	October 2014	Preliminary November 2014
	(dollars per cwt)	(dollars per cwt)	(dollars per cwt)
Minnesota .....	(S)	(D)	(S)
North Dakota .....	20.30	15.60	16.30
United States .....	20.30	15.60	16.30

(D) Withheld to avoid disclosing data for individual operations.

(S) Insufficient number of reports to establish an estimate.

### Prices Received for Flaxseed – States and United States: November 2014 with Comparisons

State	November 2013	October 2014	Preliminary November 2014
	(dollars per bushel)	(dollars per bushel)	(dollars per bushel)
North Dakota .....	13.40	11.50	11.10
United States .....	13.40	11.50	11.10

## Prices Received for Upland Cotton and Cottonseed – States and United States: November 2014 with Comparisons

[Cottonseed marketing year August - February. Beginning with the 2014 marketing year, preliminary prices will no longer be published]

State	Cotton, Upland			Cottonseed <sup>1</sup>		
	November 2013	October 2014	Preliminary November 2014	October 2013	September 2014	October 2014
	(dollars per pound)	(dollars per pound)	(dollars per pound)	(dollars per ton)	(dollars per ton)	(dollars per ton)
Alabama .....	0.820	0.628	0.584	196.00	183.00	171.00
Arizona .....	0.786	0.671	(S)	(D)	180.00	326.00
Arkansas .....	0.843	0.636	0.609	255.00	272.00	224.00
California .....	0.956	(S)	(S)	376.00	(S)	361.00
Georgia .....	0.813	0.678	0.723	198.00	175.00	172.00
Louisiana .....	0.729	0.599	0.609	245.00	218.00	196.00
Mississippi .....	0.785	0.646	0.621	235.00	199.00	197.00
North Carolina .....	0.817	0.646	0.635	236.00	250.00	200.00
Tennessee .....	0.785	0.619	0.601	(S)	190.00	190.00
Texas .....	0.703	0.636	0.643	353.00	170.00	179.00
United States .....	0.759	0.640	0.652	283.00	175.00	201.00

(D) Withheld to avoid disclosing data for individual operations.

(S) Insufficient number of reports to establish an estimate.

<sup>1</sup> Preliminary price discontinued beginning September 2014.

## Prices Received and Farm Marketings for Upland Cotton and Rice – California, Other States, and United States: November 2014 with Comparisons

Item	November 2013	October 2014	Preliminary November 2014
Cotton, Upland			
United States			
Average Price ..... dollars/pound	0.759	0.640	0.652
Marketings <sup>1</sup> ..... 1,000 bales	1,880	905	(NA)
Rice, all			
United States			
Average Price ..... dollars/cwt	16.20	13.90	15.10
Marketings <sup>2</sup> ..... 1,000 cwt	9,430	16,338	(NA)
Rice, long			
United States			
Average Price ..... dollars/cwt	15.30	12.90	13.50
Marketings <sup>2</sup> ..... 1,000 cwt	6,876	13,468	(NA)
Rice, medium and short			
California			
Average Price ..... dollars/cwt	(NA)	21.30	20.80
Other States <sup>3</sup>			
Average Price ..... dollars/cwt	(NA)	15.30	14.80
United States			
Average Price ..... dollars/cwt	18.40	18.50	18.00
Marketings <sup>2</sup> ..... 1,000 cwt	2,554	2,870	(NA)

(NA) Not available.

<sup>1</sup> Marketings based on a survey of cotton buyers in the major producing States - Alabama, Arizona, Arkansas, California, Georgia, Louisiana, Mississippi, North Carolina, Tennessee, and Texas.

<sup>2</sup> Purchases by private firms and rice (rough equivalent) shipped by cooperatives.

<sup>3</sup> Other States include Arkansas, Louisiana, Mississippi, Missouri, and Texas.



## Prices Received for Hay by Type – States and United States: November 2014 with Comparisons

State	All hay			Alfalfa hay			Other hay		
	November 2013	October 2014	Preliminary November 2014	November 2013	October 2014	Preliminary November 2014	November 2013	October 2014	Preliminary November 2014
	(dollars per ton)	(dollars per ton)	(dollars per ton)	(dollars per ton)	(dollars per ton)	(dollars per ton)	(dollars per ton)	(dollars per ton)	(dollars per ton)
Arizona .....	171.00	180.00	180.00	170.00	180.00	180.00	180.00	220.00	220.00
California .....	200.00	218.00	211.00	208.00	230.00	225.00	170.00	165.00	165.00
Colorado .....	234.00	215.00	215.00	235.00	215.00	215.00	230.00	210.00	210.00
Idaho .....	179.00	197.00	218.00	180.00	200.00	220.00	170.00	170.00	170.00
Illinois .....	177.00	149.00	162.00	195.00	175.00	180.00	130.00	110.00	115.00
Iowa .....	182.00	131.00	144.00	193.00	152.00	153.00	130.00	99.00	104.00
Kansas .....	170.00	148.00	140.00	199.00	170.00	157.00	105.00	98.00	99.00
Kentucky .....	117.00	110.00	110.00	195.00	190.00	190.00	100.00	90.00	90.00
Michigan .....	181.00	146.00	166.00	200.00	165.00	185.00	155.00	125.00	140.00
Minnesota .....	168.00	115.00	130.00	200.00	133.00	160.00	135.00	93.00	100.00
Missouri .....	112.00	86.00	87.00	210.00	170.00	170.00	80.00	70.00	70.00
Montana .....	134.00	129.00	128.00	135.00	130.00	130.00	130.00	120.00	120.00
Nebraska .....	142.00	93.00	91.00	157.00	97.00	96.00	113.00	83.00	79.00
Nevada .....	206.00	235.00	236.00	207.00	235.00	235.00	190.00	230.00	250.00
New Mexico .....	239.00	240.00	234.00	250.00	250.00	245.00	185.00	165.00	155.00
New York .....	147.00	163.00	151.00	205.00	190.00	195.00	145.00	160.00	150.00
North Dakota .....	101.00	74.00	82.00	105.00	80.00	83.00	66.00	55.00	59.00
Ohio .....	169.00	140.00	146.00	205.00	190.00	185.00	145.00	110.00	120.00
Oklahoma .....	103.00	129.00	152.00	209.00	170.00	185.00	83.00	89.00	103.00
Oregon .....	206.00	227.00	223.00	215.00	235.00	240.00	190.00	215.00	200.00
Pennsylvania .....	191.00	204.00	208.00	200.00	234.00	223.00	188.00	190.00	200.00
South Dakota .....	148.00	113.00	111.00	155.00	117.00	117.00	124.00	90.00	90.00
Texas .....	112.00	104.00	96.00	230.00	234.00	234.00	92.00	74.00	73.00
Utah .....	170.00	200.00	185.00	170.00	200.00	185.00	145.00	160.00	150.00
Washington .....	203.00	219.00	216.00	195.00	215.00	215.00	225.00	230.00	220.00
Wisconsin .....	185.00	136.00	157.00	200.00	157.00	173.00	130.00	90.00	95.00
Wyoming .....	179.00	140.00	137.00	180.00	145.00	140.00	170.00	125.00	125.00
United States .....	168.00	173.00	164.00	188.00	194.00	184.00	136.00	125.00	124.00

## Prices Received for Apples – States and United States: November 2014 with Comparisons

[Equivalent packinghouse-door returns for California, Michigan, New York, and Washington. Prices at point of first sale for other States]

State	Apples, fresh use		
	November 2013	October 2014	Preliminary November 2014
	(dollars per pound)	(dollars per pound)	(dollars per pound)
California .....	(NA)	0.388	(NA)
Michigan .....	(NA)	(NA)	0.365
New York .....	(NA)	0.380	0.340
Ohio .....	(NA)	(NA)	(NA)
Pennsylvania .....	(NA)	0.370	0.350
Virginia .....	(NA)	0.280	0.280
Washington .....	(NA)	0.458	0.325
United States .....	(NA)	0.436	0.330

(NA) Not available.

## Prices Received for Citrus Fruits by Utilization – States and United States: November 2013

[Net pounds per box: grapefruit in California-80, Florida-85, Texas-80; lemons-80; oranges in California-80, Florida-90, Texas-85; tangelos-90; tangerines and mandarins in Arizona and California-80, Florida-95]

Commodity, State, and type	FOB packed fresh	Equivalent returns					
		Packinghouse door			On-tree		
		All	Fresh	Process	All	Fresh	Process
	(dollars per box)	(dollars per box)	(dollars per box)	(dollars per box)	(dollars per box)	(dollars per box)	(dollars per box)
Grapefruit							
California <sup>1</sup> .....	16.60	9.81	9.81	(D)	7.59	7.59	(D)
Florida .....	24.80	11.11	14.04	3.18	8.61	11.79	0.01
White .....	26.60	11.28	15.65	4.60	8.84	13.45	1.80
Colored .....	24.60	11.08	13.85	2.85	8.58	11.60	-0.40
Texas .....	34.30	18.04	22.70	1.60	16.46	21.09	0.14
United States .....	24.10	11.02	13.67	3.18	8.54	11.42	0.01
Lemons							
Arizona .....	(D)	(D)	(D)	(D)	(D)	(D)	(D)
California .....	48.00	33.65	38.74	(D)	27.81	32.72	(D)
United States .....	48.20	32.44	38.95	(D)	26.65	32.93	(D)
Oranges							
California .....	29.90	19.00	20.73	(D)	16.43	18.17	(D)
Navel and miscellaneous .....	29.90	19.00	20.73	(D)	16.43	18.17	(D)
Florida .....	28.00	10.81	16.85	5.99	8.27	14.25	3.49
Early and mids .....	28.00	10.81	16.85	5.99	8.27	14.25	3.49
United States .....	29.40	15.63	19.75	4.94	13.07	17.18	2.40
Tangelos							
Florida .....	27.70	12.94	16.05	6.45	10.18	13.30	3.65
United States .....	27.70	12.94	16.05	6.45	10.18	13.30	3.65
Tangerines and mandarins							
Arizona .....	(D)	(D)	(D)	(NA)	(D)	(D)	(NA)
California .....	(D)	(D)	(D)	(D)	(D)	(D)	(D)
Florida .....	37.60	19.56	24.20	6.88	15.78	20.65	2.48
United States .....	45.00	26.40	34.54	2.85	23.01	31.48	-1.52

(D) Withheld to avoid disclosing data for individual operations.

(NA) Not available.

<sup>1</sup> Some processed sales included in fresh sales.

## Prices Received for Citrus Fruits by Utilization – States and United States: October 2014

[Net pounds per box: grapefruit in California-80, Florida-85, Texas-80; lemons-80; oranges in California-80, Florida-90, Texas-85; tangelos-90; tangerines and mandarins in Arizona and California-80, Florida-95]

Commodity, State, and type	FOB packed fresh	Equivalent returns					
		Packinghouse door			On-tree		
		All	Fresh	Process	All	Fresh	Process
	(dollars per box)	(dollars per box)	(dollars per box)	(dollars per box)	(dollars per box)	(dollars per box)	(dollars per box)
Grapefruit .....							
California <sup>1</sup> .....	16.60	9.81	9.81	(D)	7.59	7.59	(D)
Florida .....	32.60	18.19	21.85	3.00	15.75	19.60	-0.25
Colored .....	32.60	18.19	21.85	3.00	15.75	19.60	-0.25
United States .....	29.20	16.67	19.25	3.00	14.27	17.01	-0.25
Lemons							
Arizona .....	(D)	(D)	(D)	(D)	(D)	(D)	(D)
California .....	60.20	45.99	50.75	(D)	39.97	44.61	(D)
United States .....	61.50	47.43	52.08	(D)	41.41	45.94	(D)
Oranges							
California .....	27.50	12.60	18.33	(D)	9.97	15.77	(D)
Valencia .....	27.50	12.60	18.33	(D)	9.97	15.77	(D)
United States .....	27.50	12.60	18.33	(D)	9.97	15.77	(D)
Tangerines and mandarins							
California .....	(D)	(D)	(D)	(D)	(D)	(D)	(D)
Florida .....	34.70	17.59	21.30	7.00	13.82	17.75	2.60
United States .....	49.40	31.43	38.66	3.88	28.45	35.54	1.44

(D) Withheld to avoid disclosing data for individual operations.

<sup>1</sup> Some processed sales included in fresh sales.

## Prices Received for Citrus Fruits by Utilization – States and United States: November 2014

[Net pounds per box: grapefruit in California-80, Florida-85, Texas-80; lemons-80; oranges in California-80, Florida-90, Texas-85; tangelos-90; tangerines and mandarins in Arizona and California-80, Florida-95]

Commodity, State, and type	FOB packed fresh	Equivalent returns					
		Packinghouse door			On-tree		
		All	Fresh	Process	All	Fresh	Process
	(dollars per box)	(dollars per box)	(dollars per box)	(dollars per box)	(dollars per box)	(dollars per box)	(dollars per box)
<b>Grapefruit</b>							
California <sup>1</sup> .....	16.60	9.67	9.67	(D)	7.41	7.41	(D)
Florida .....	24.70	10.98	13.96	3.14	8.48	11.72	-0.06
White .....	27.50	11.08	16.55	2.75	8.49	14.35	-0.45
Colored .....	24.20	10.96	13.45	3.30	8.48	11.20	0.10
Texas .....	29.60	14.97	18.00	1.60	13.39	16.39	0.14
United States .....	24.40	11.46	14.04	2.95	9.13	11.90	-0.03
<b>Lemons</b>							
Arizona .....	(D)	(D)	(D)	(D)	(D)	(D)	(D)
California .....	56.10	39.53	46.65	(D)	33.59	40.51	(D)
United States .....	57.10	39.48	47.60	(D)	33.57	41.46	(D)
<b>Oranges</b>							
California .....	31.30	19.26	22.00	(D)	16.63	19.39	(D)
Navel and miscellaneous .....	32.10	20.15	22.75	(D)	17.52	20.14	(D)
Valencia .....	(D)	(D)	(D)	(D)	(D)	(D)	(D)
Florida							
Early and mids .....	34.00	13.05	22.85	5.40	10.51	20.25	2.90
United States .....	31.80	17.49	22.14	3.77	14.88	19.54	1.17
<b>Tangelos</b>							
Florida .....	(S)	(S)	(S)	(S)	(S)	(S)	(S)
United States .....	(S)	(S)	(S)	(S)	(S)	(S)	(S)
<b>Tangerines and mandarins</b>							
Arizona .....	(D)	(D)	(D)	(NA)	(D)	(D)	(NA)
California .....	(D)	(D)	(D)	(D)	(D)	(D)	(D)
Florida .....	40.40	20.36	27.00	7.45	16.52	23.45	3.05
United States .....	52.00	31.87	42.24	2.53	28.52	39.28	-1.90

(D) Withheld to avoid disclosing data for individual operations.

(NA) Not available.

(S) Insufficient number of reports to establish an estimate.

<sup>1</sup> Some processed sales included in fresh sales.

## Prices Received for Potatoes – States and United States: November 2014 with Comparisons

State	November 2013	October 2014	Preliminary November 2014
	(dollars per cwt)	(dollars per cwt)	(dollars per cwt)
California			
Spring .....	(S)	(S)	(S)
Fall .....	10.10	(S)	9.25
All <sup>1</sup> .....	10.10	(S)	9.25
Colorado			
Fresh <sup>2</sup> .....	11.10	10.70	(D)
All <sup>1</sup> .....	9.95	9.30	9.60
Florida .....	(S)	(S)	(S)
Idaho			
Fresh <sup>2</sup> .....	7.30	5.20	(D)
Processing .....	7.90	6.70	(D)
All <sup>1</sup> .....	7.65	6.15	6.35
Maine .....	9.75	(D)	(D)
Michigan .....	11.80	(D)	(D)
Minnesota .....	8.75	(D)	(D)
New York .....	12.90	(D)	(D)
North Carolina .....	(S)	(S)	(S)
North Dakota			
Fresh <sup>2</sup> .....	17.20	(D)	(D)
Processing .....	7.75	(D)	(D)
All <sup>1</sup> .....	10.90	9.10	(D)
Oregon .....	8.05	6.50	6.65
Texas .....	(S)	(S)	(S)
Virginia .....	(S)	(S)	(S)
Washington			
Processing .....	7.25	6.25	(D)
All <sup>1</sup> .....	8.00	6.35	6.50
Wisconsin			
Fresh <sup>2</sup> .....	10.70	(D)	(D)
Processing .....	9.20	(D)	(D)
All <sup>1</sup> .....	9.90	(D)	(D)
United States			
Fresh <sup>2</sup> .....	10.55	7.86	(D)
Processing .....	8.06	6.92	(D)
All <sup>1</sup> .....	8.87	7.13	7.75

(D) Withheld to avoid disclosing data for individual operations.

(S) Insufficient number of reports to establish an estimate.

<sup>1</sup> Average price of potatoes sold for all uses, including table stock, processing, seed, and livestock feed.

<sup>2</sup> Fresh market prices only. Includes table stock prices.

## Prices Received for All Milk – States and United States: November 2014 with Comparisons

[Before deduction for hauling. Includes quality, quantity, and other premiums. Excludes hauling subsidies]

State	November 2013		October 2014		Preliminary November 2014	
	Price	Fat test	Price	Fat test	Price	Fat test
	(dollars per cwt)	(percent)	(dollars per cwt)	(percent)	(dollars per cwt)	(percent)
Arizona .....	20.90	3.58	23.60	3.50	22.30	3.55
California .....	20.01	3.85	22.72	3.74	20.60	3.81
Colorado .....	21.80	3.63	24.80	3.57	23.70	3.60
Florida .....	25.30	3.65	28.80	3.69	28.60	3.71
Idaho .....	20.70	3.90	24.20	3.80	22.90	3.86
Illinois .....	22.10	3.89	25.80	3.83	24.40	3.89
Indiana .....	22.20	3.85	25.20	3.76	24.40	3.83
Iowa .....	22.00	3.90	25.70	3.76	24.50	3.81
Kansas .....	21.90	3.81	24.90	3.71	23.90	3.79
Michigan .....	21.70	3.83	24.30	3.74	23.60	3.81
Minnesota .....	21.90	4.02	26.30	3.94	24.60	3.99
New Mexico .....	20.50	3.66	23.50	3.65	22.40	3.68
New York .....	22.90	3.90	25.90	3.81	24.50	3.87
Ohio .....	22.40	3.98	25.20	3.81	24.40	3.87
Oregon .....	23.00	4.03	27.00	3.88	25.50	3.95
Pennsylvania .....	23.20	3.84	26.10	3.77	24.80	3.80
South Dakota <sup>1</sup> .....	22.70	4.14	26.20	4.01	24.80	4.09
Texas .....	22.40	3.95	25.60	3.91	24.70	3.95
Utah .....	21.20	3.90	24.90	3.77	23.70	3.80
Vermont .....	23.00	3.90	25.80	3.77	24.70	3.83
Virginia .....	24.90	3.80	27.80	3.69	26.50	3.75
Washington .....	22.20	4.03	25.10	3.88	23.00	3.95
Wisconsin .....	21.80	3.89	26.10	3.83	24.40	3.88
United States .....	21.60	3.87	24.90	3.78	23.40	3.84

<sup>1</sup> Beginning in March 2014, South Dakota was added and Missouri was removed from the monthly price program.

## Prices Received for Milk Cows – States and United States: October 2014 with Comparisons

[Animals sold for dairy herd replacement only. Quarterly United States milk cow prices are based on revised milk cow inventory]

State	October 2013 (dollars per head)	July 2014 (dollars per head)	October 2014 (dollars per head)
Arizona .....	1,500	2,100	2,200
California .....	1,300	2,000	2,200
Colorado .....	1,520	2,200	2,260
Florida .....	1,550	1,900	2,190
Idaho .....	1,350	2,000	2,150
Illinois .....	1,420	1,860	2,050
Indiana .....	1,450	1,850	2,050
Iowa .....	1,380	1,990	2,100
Kansas .....	1,350	2,050	2,100
Michigan .....	1,600	1,950	2,100
Minnesota .....	1,350	1,950	2,070
New Mexico .....	1,440	1,950	2,100
New York .....	1,420	1,800	2,010
Ohio .....	1,400	1,800	1,950
Oregon .....	1,300	1,900	2,100
Pennsylvania .....	1,450	1,880	2,000
South Dakota <sup>1</sup> .....	1,420	1,950	2,050
Texas .....	1,450	2,000	2,100
Utah .....	1,290	1,850	2,000
Vermont .....	1,510	1,880	2,030
Virginia .....	1,490	1,890	2,100
Washington .....	1,300	1,950	2,050
Wisconsin .....	1,490	2,100	2,220
United States .....	1,410	1,970	2,120

<sup>1</sup> Beginning in March 2014, South Dakota was added and Missouri was removed from the monthly price program.

## Commodity Parity Prices and Price as Percent of Parity Price – United States: November 2014 with Comparisons

[Parity prices are computed under the provisions of Title III, Subtitle a, Section 301 (a) of the Agricultural Adjustment Act of 1938 as amended by the Agricultural Acts of 1948, 1949, and 1956. See January *Agricultural Prices* for details on adjusted base price and parity price computations. Parity data not available for blank cells. Primary source of data for livestock and milk prices is United States Department of Agriculture's Agricultural Marketing Service]

Commodity and unit	Adjusted base price	Parity price			Price as percent of parity		
		November 2013	October 2014	November 2014	November 2013	October 2014	November 2014
	(dollars)	(dollars)	(dollars)	(dollars)	(percent)	(percent)	(percent)
<b>Basic commodities</b>							
All wheat .....bushel	0.616	18.00	18.70	18.40	38	31	32
Rice .....cwt	1.32	46.80	40.20	39.40	35	35	38
Corn .....bushel	0.442	12.30	13.50	13.20	36	26	27
<b>Cotton</b>							
Upland ..... pound	0.066	2.04	2.01	1.97	37	32	33
American Pima ..... pound	0.137	3.77	4.17	4.09	33	41	42
Peanuts ..... pound	0.024	0.765	0.730	0.716	35	29	30
<b>Designated nonbasic</b>							
All milk, to plants <sup>1</sup> .....cwt	1.81	49.60	55.10	54.00	41	43	41
Honey, extracted <sup>2</sup> ..... pound	0.147	4.00	4.47	4.39	50	47	48
<b>Wool and mohair</b>							
Wool ..... pound	0.114	3.03	3.47	3.40	50	42	43
Mohair ..... pound	0.361	9.52	11.00	10.80	41	39	39
<b>Other nonbasic</b>							
Apples, fresh <sup>3</sup> ..... pound	0.034	0.907	1.030	1.010	42	42	33
Barley .....bushel	0.452	12.60	13.80	13.50	49	36	33
Canola .....cwt	1.870	53.30	56.90	55.80	38	27	29
Cottonseed ..... ton	19.10	504.00	581.00	570.00	49	31	32
Dry edible beans .....cwt	3.20	85.30	97.40	95.50	45	33	33
Flaxseed .....bushel	1.150	31.50	35.00	34.30	43	33	32
Oats .....bushel	0.284	7.51	8.64	8.48	48	36	35
Potatoes .....cwt	0.835	23.30	25.40	24.90	38	28	31
Sorghum grain .....cwt	0.748	21.50	22.80	22.30	34	27	30
Soybeans .....bushel	1.060	29.20	32.30	31.60	43	31	32
Sunflower, all .....cwt	2.12	59.50	64.50	63.30	35	35	30
<b>Citrus (equivalent on-tree)</b>							
Grapefruit .....box	0.724	19.80	22.00	21.60	43	65	43
Lemons .....box	1.36	37.40	41.40	40.60	71	100	83
Oranges .....box	0.769	20.10	23.40	23.00	65	43	65
Tangerines .....box	1.61	42.20	49.00	48.10	55	58	59
<b>Livestock and poultry</b>							
Beef cattle .....cwt	10.40	283.00	316.00	310.00	46	51	54
Calves .....cwt	14.30	388.00	435.00	427.00	49	71	71
Hogs .....cwt	5.75	155.00	175.00	172.00	41	44	39
Eggs <sup>1</sup> .....dozen	0.092	2.52	2.80	2.75	45	42	47
Turkeys, live ..... pound	0.060	1.620	1.830	1.790	40	45	43

<sup>1</sup> Seasonally adjusted price as percentage of parity price.

<sup>2</sup> Wholesale extracted. Adjusted base price derived from state annual averages prices weighted by production. For 1982 through 1985 the national averages are the support prices.

<sup>3</sup> Equivalent packinghouse-door returns for California, New York, Oregon, and Washington. Price at point of first sale for other states.



## Commodity Parity Prices – United States: November 2014 with Comparisons

[Parity prices are computed under the provisions of Title III, Subtitle a, Section 301 (a) of the Agricultural Adjustment Act of 1938 as amended by the Agricultural Acts of 1948, 1949, and 1956. See January *Agricultural Prices* for details on adjusted base price and parity price computations]

Commodity and unit	Adjusted base price	Parity price			
		November 2013	October 2014	November 2014	
	(dollars)	(dollars)	(dollars)	(dollars)	
<b>Field crops and miscellaneous</b>					
Hops .....	pound	0.318	8.59	9.68	9.49
Mustard seed .....	cwt	2.99	80.80	91.00	89.30
Rapeseed .....	cwt	2.29	63.80	69.70	68.40
Rye .....	bushel	0.582	15.20	17.70	17.40
Safflower .....	cwt	2.09	57.80	63.60	62.40
Spearmint oil .....	pound	1.60	42.50	48.70	47.80
Sweet potatoes .....	cwt	2.09	58.90	63.60	62.40
<b>Tobacco</b>					
Flue-cured, 11-14 .....	pound	0.185	5.24	5.63	5.52
Fire-cured, 21-23 .....	pound	0.266	7.57	8.09	7.94
Burley, 31 .....	pound	0.187	5.33	5.69	5.58
Maryland, 32 .....	pound	0.169	4.73	5.14	5.04
Dark air-cured, 35-37 .....	pound	0.240	6.80	7.30	7.16
Pennsylvania seedleaf, 41 .....	pound	0.182	4.99	5.54	5.43
Cigar binder, 51 .....	pound	0.637	17.30	19.40	19.00
<b>Noncitrus fruit</b>					
Apples, processing <sup>1</sup> .....	ton	18.10	470.00	551.00	540.00
Apricots					
Fresh <sup>2</sup> .....	ton	116.00	3,150.00	3,530.00	3,460.00
Dried (California) .....	ton	262.00	7,140.00	7,970.00	7,820.00
Avocados <sup>2</sup> .....	ton	185.00	5,360.00	5,630.00	5,520.00
Cherries					
Sweet .....	ton	216.00	5,810.00	6,570.00	6,450.00
Tart .....	pound	0.033	0.935	1.000	0.985
Cranberry <sup>3</sup> .....	barrel	4.61	133.00	140.00	138.00
Dates (California) <sup>2</sup> .....	ton	162.00	4,560.00	4,930.00	4,840.00
<b>Grapes</b>					
Raisin variety .....	ton	142.00	3,770.00	4,320.00	4,240.00
Other dried .....	ton	65.50	1,750.00	1,990.00	1,960.00
Kiwifruit .....	ton	89.50	2,510.00	2,720.00	2,670.00
Nectarines, fresh (California) <sup>2</sup> .....	ton	57.50	1,550.00	1,750.00	1,720.00
Olives, canning (California) <sup>3</sup> .....	ton	93.80	2,490.00	2,850.00	2,800.00

See footnote(s) at end of table.

--continued

## Commodity Parity Prices – United States: November 2014 with Comparisons (continued)

[Parity prices are computed under the provisions of Title III, Subtitle a, Section 301 (a) of the Agricultural Adjustment Act of 1938 as amended by the Agricultural Acts of 1948, 1949, and 1956. See January *Agricultural Prices* for details on adjusted base price and parity price computations]

Commodity and unit	Adjusted base price	Parity price			
		November 2013	October 2014	November 2014	
	(dollars)	(dollars)	(dollars)	(dollars)	
Noncitrus fruit - continued					
Papayas (Hawaii) .....	pound	0.042	1.08	1.28	1.25
Peaches					
Fresh <sup>4</sup> .....	ton	83.40	2,270.00	2,540.00	2,490.00
Dried (California) .....	ton	47.80	1,370.00	1,450.00	1,430.00
Processing, excludes dried					
Clingstone (California) <sup>3</sup> .....	ton	33.00	896.00	1,000.00	985.00
Pears					
Fresh <sup>4</sup> .....	ton	56.90	1,550.00	1,730.00	1,700.00
Dried (California) <sup>1</sup> .....	ton	141.00	4,250.00	4,290.00	4,210.00
Plums (California)					
Fresh, equivalent on-tree .....	ton	60.10	1,650.00	1,830.00	1,790.00
Prunes, dried (California) <sup>1</sup> .....	ton	152.00	4,050.00	4,630.00	4,540.00
Prunes and plums					
Fresh, excludes California <sup>5</sup> .....	ton	62.80	1,750.00	1,910.00	1,870.00
Processing, excludes dried <sup>1</sup> .....	ton	24.50	674.00	746.00	731.00
Tree nuts <sup>6</sup>					
Almonds .....	pound	0.227	5.98	6.91	6.78
Hazelnuts .....	ton	208.00	5,410.00	6,330.00	6,210.00
Pistachios .....	pound	0.208	5.50	6.33	6.21
Walnuts .....	ton	203.00	5,240.00	6,180.00	6,060.00
Vegetables, fresh <sup>7</sup>					
Carrots <sup>8</sup> .....	cwt	2.66	72.80	80.90	79.40
Cauliflower <sup>8</sup> .....	cwt	4.11	114.00	125.00	123.00
Celery <sup>8</sup> .....	cwt	2.05	55.00	62.40	61.20
Honeydew melons .....	cwt	1.97	55.80	59.90	58.80
Lettuce .....	cwt	2.16	59.20	65.70	64.50
Onions <sup>8</sup> .....	cwt	1.34	40.00	40.80	40.00
Tomatoes .....	cwt	4.33	122.00	132.00	129.00

<sup>1</sup> Equivalent returns at processing plant door.

<sup>2</sup> Equivalent returns at packinghouse door.

<sup>3</sup> Equivalent returns for bulk fruit at first delivery point.

<sup>4</sup> Equivalent packinghouse-door returns for California, New York (apples only), Oregon (except peaches), and Washington. Price at point of first sale for other states.

<sup>5</sup> Based on "as sold" prices for fresh fruit in all states.

<sup>6</sup> Prices In-Shell basis except almonds which are shelled basis.

<sup>7</sup> FOB shipping point prices.

<sup>8</sup> Includes some processing.

## Marketing Year for Specified Commodities

**Corn for Grain:** September 1 to August 31 for United States; July 1 to June 30 for Texas; August 1 to July 31 for Alabama, Arkansas, Florida, Georgia, Louisiana, Mississippi, North Carolina, Oklahoma, South Carolina, and Tennessee; September 1 to August 31 for Arizona, California, Delaware, Illinois, Indiana, Iowa, Kansas, Kentucky, Maryland, Missouri, Nebraska, New Mexico, Ohio, Pennsylvania, South Dakota, Virginia, and West Virginia; October 1 to September 30 for all other States.

**Dry Edible Beans:** September 1 to August 31 for United States and all States.

**Canola:** July 1 to June 30 for United States and all States.

**Chickpeas (Garbanzo):** September 1 to August 31 for United States.

**Flaxseed:** July 1 to June 30 for United States and all States.

**Sunflower:** September 1 to August 31 for United States; July 1 to June 30 for Texas; September 1 to August 31 for all other States.

### Flaxseed Market Year Average Prices Received – States and United States: Marketing Years 2012 and 2013

States	2012	2013
	(dollars per bushel)	(dollars per bushel)
Minnesota .....	14.00	13.80
Montana .....	13.60	14.00
North Dakota .....	13.80	13.80
South Dakota .....	13.20	13.50
United States .....	13.80	13.80

### Sunflowers Market Year Average Prices Received – States and United States: Marketing Years 2012 and 2013

States	All		Oil		Non-oil	
	2012	2013	2012	2013	2012	2013
	(dollars per cwt)	(dollars per cwt)	(dollars per cwt)	(dollars per cwt)	(dollars per cwt)	(dollars per cwt)
California .....	26.30	27.10	26.00	27.00	32.00	29.00
Colorado .....	31.10	25.60	(D)	(D)	(D)	(D)
Kansas .....	28.60	22.30	24.90	18.80	36.60	33.30
Minnesota .....	29.10	22.50	27.80	22.20	33.60	24.30
Nebraska .....	26.70	23.30	24.00	17.40	35.00	33.10
North Dakota .....	25.60	23.20	24.60	20.30	28.10	30.80
Oklahoma .....	26.40	23.90	25.00	19.10	36.00	33.70
South Dakota .....	24.30	19.60	24.00	18.60	33.40	32.20
Texas .....	31.50	23.50	(D)	(D)	(D)	(D)
Other States <sup>1</sup> .....	(X)	(X)	26.10	20.20	34.50	30.90
United States .....	25.40	21.40	24.40	19.30	29.60	31.30

(D) Withheld to avoid disclosing data for individual operations.

(X) Not applicable.

<sup>1</sup> Other States include data withheld above.

**Canola Market Year Average Prices Received – States and United States: Marketing Years 2012 and 2013**

States	2012	2013
	(dollars per cwt)	(dollars per cwt)
Idaho .....	25.80	22.00
Minnesota .....	26.40	26.40
Montana .....	26.20	19.00
North Dakota .....	26.50	20.60
Oklahoma .....	25.20	20.30
Oregon .....	24.00	22.00
Washington .....	26.10	21.50
Other States <sup>1</sup> .....	24.90	19.60
United States .....	26.50	20.60

<sup>1</sup> Other States include Colorado and Kansas.

**Proso Millet Market Year Average Prices Received – States and United States: Marketing Years 2012 and 2013**

States	2012	2013
	(dollars per bushel)	(dollars per bushel)
Colorado .....	16.40	4.31
Nebraska .....	12.80	4.73
South Dakota .....	14.80	4.94
United States .....	15.20	4.61

**Other Oilseeds Market Year Average Prices Received – United States: Marketing Years 2012 and 2013**

Year	Rapeseed <sup>1</sup>	Mustard Seed <sup>2</sup>
	(dollars per cwt)	(dollars per cwt)
2012 .....	26.10	35.80
2013 .....	25.10	37.20

<sup>1</sup> Includes Idaho, Minnesota, Oregon, and Washington.

<sup>2</sup> Includes Idaho, Montana, North Dakota, Oregon, and Washington.

**Safflower Market Year Average Prices Received – States and United States: Marketing Years 2012 and 2013**

States	2012	2013
	(dollars per cwt)	(dollars per cwt)
California .....	25.30	26.50
Montana .....	34.00	31.00
North Dakota .....	29.60	27.80
Utah .....	28.90	27.30
Other States <sup>1</sup> .....	30.70	28.50
United States .....	27.60	27.90

<sup>1</sup> Other States include Colorado, Idaho, and South Dakota.

**Corn Market Year Average Prices Received – States and United States: Marketing Years  
2012 and 2013**

States	2012 (dollars per bushel)	2013 (dollars per bushel)
Alabama .....	7.18	4.71
Arizona .....	7.84	5.89
Arkansas .....	6.81	5.12
California .....	6.68	5.33
Colorado .....	6.86	4.61
Delaware .....	7.55	4.94
Florida .....	7.50	4.51
Georgia .....	7.90	5.17
Idaho .....	7.10	4.91
Illinois .....	6.87	4.52
Indiana .....	7.23	4.47
Iowa .....	6.92	4.49
Kansas .....	7.04	4.49
Kentucky .....	6.96	4.67
Louisiana .....	6.90	5.10
Maryland .....	7.30	4.84
Michigan .....	6.69	4.18
Minnesota .....	6.67	4.30
Mississippi .....	6.94	5.05
Missouri .....	7.34	4.57
Montana .....	7.21	4.27
Nebraska .....	6.85	4.47
New Jersey .....	7.40	4.66
New Mexico .....	7.30	5.18
New York .....	6.78	4.52
North Carolina .....	7.48	4.96
North Dakota .....	6.46	3.91
Ohio .....	7.09	4.41
Oklahoma .....	7.04	5.09
Oregon .....	6.96	5.44
Pennsylvania .....	7.21	4.47
South Carolina .....	7.50	4.67
South Dakota .....	6.72	4.05
Tennessee .....	7.28	4.87
Texas .....	7.12	5.14
Utah .....	7.59	5.47
Virginia .....	7.30	4.80
Washington .....	6.69	5.29
West Virginia .....	7.20	4.70
Wisconsin .....	6.69	4.38
Wyoming .....	7.05	4.08
United States .....	6.89	4.46

**All Dry Beans Market Year Average Prices Received – States and United States: Marketing Years 2012 and 2013**

States	2012	2013
	(dollars per cwt)	(dollars per cwt)
Arizona .....	51.30	42.20
California .....	52.10	56.80
Colorado .....	39.00	39.70
Idaho .....	36.20	34.30
Kansas .....	36.00	36.90
Michigan .....	39.90	43.10
Minnesota .....	42.60	50.30
Montana .....	37.60	30.10
Nebraska .....	38.70	43.80
New Mexico .....	60.00	60.00
New York .....	51.20	48.70
North Dakota .....	35.10	35.30
Oregon .....	36.90	38.30
South Dakota .....	36.90	36.00
Texas .....	45.00	46.00
Washington .....	41.50	33.10
Wisconsin .....	54.50	55.00
Wyoming .....	36.80	33.70
United States .....	38.00	39.10

**Prices Received for Corn by Month – States and United States: Marketing Years 2012-2013 and 2013-2014**

States	2012-2013							
	Jul	Aug	Sep	Oct	Nov	Dec	Jan <sup>1</sup>	Feb
	(dollars per bushel)	(dollars per bushel)	(dollars per bushel)	(dollars per bushel)	(dollars per bushel)	(dollars per bushel)	(dollars per bushel)	(dollars per bushel)
Colorado .....	6.98	7.60	6.67	6.45	6.69	7.01	6.86	7.26
Illinois .....	7.30	7.58	6.84	6.84	7.07	6.73	6.87	7.05
Indiana .....	7.43	7.92	7.37	7.22	7.43	7.27	7.26	7.38
Iowa .....	7.17	7.89	6.84	6.82	7.03	6.92	7.06	7.01
Kansas .....	7.40	7.45	6.87	7.13	7.09	7.15	7.11	7.19
Kentucky .....	7.24	7.04	6.75	6.82	7.15	6.99	7.00	7.18
Michigan .....	7.63	7.96	6.92	6.81	6.71	6.93	6.81	6.92
Minnesota .....	6.87	7.54	6.47	6.56	6.86	6.68	6.77	6.88
Missouri .....	6.79	7.41	7.30	7.47	7.60	7.41	7.42	7.52
Nebraska .....	7.05	7.76	6.88	6.59	6.90	6.80	6.90	6.96
North Carolina .....	7.89	7.24	7.45	7.52	7.62	7.64	7.54	7.65
North Dakota .....	6.56	7.37	6.26	6.33	6.64	6.46	6.52	6.61
Ohio .....	7.45	8.09	7.33	7.06	7.18	7.17	7.15	7.18
Pennsylvania .....	7.75	8.59	7.45	7.37	7.19	7.31	7.39	7.36
South Dakota .....	6.73	7.39	6.83	6.61	6.82	6.71	6.85	6.88
Tennessee .....	8.14	6.98	6.98	7.36	7.47	7.47	7.43	7.80
Texas .....	7.08	7.29	6.80	7.11	6.83	7.32	7.23	7.17
Wisconsin .....	6.64	7.39	7.05	6.40	6.76	6.85	6.93	7.03
United States .....	7.14	7.63	6.89	6.78	7.01	6.87	6.96	7.04
States	2013-2014							
	Jul	Aug	Sep	Oct	Nov	Dec	Jan <sup>1</sup>	Feb
	(dollars per bushel)	(dollars per bushel)	(dollars per bushel)	(dollars per bushel)	(dollars per bushel)	(dollars per bushel)	(dollars per bushel)	(dollars per bushel)
Colorado .....	7.06	6.80	6.07	5.02	4.71	4.58	4.52	4.49
Illinois .....	6.73	6.09	5.25	4.49	4.50	4.58	4.47	4.36
Indiana .....	6.71	6.38	5.11	4.34	4.17	4.37	4.49	4.48
Iowa .....	6.91	6.32	5.66	4.64	4.43	4.32	4.43	4.43
Kansas .....	6.70	6.13	5.13	4.74	4.38	4.43	4.43	4.43
Kentucky .....	6.89	6.10	5.11	4.35	4.50	4.74	4.56	4.65
Michigan .....	6.65	6.04	5.37	4.46	4.10	4.03	4.13	4.25
Minnesota .....	6.78	6.24	5.69	5.20	4.30	4.51	4.38	4.19
Missouri .....	7.12	6.42	5.08	4.51	4.42	4.48	4.52	4.49
Nebraska .....	7.05	6.45	5.64	4.72	4.46	4.42	4.37	4.27
North Carolina .....	7.06	5.85	4.92	4.75	4.83	4.72	4.71	4.78
North Dakota .....	6.37	5.97	5.67	4.32	4.04	4.07	4.16	3.83
Ohio .....	6.83	6.34	5.57	4.36	4.17	4.31	4.36	4.37
Pennsylvania .....	6.67	6.10	5.15	4.15	3.99	4.16	4.50	4.61
South Dakota .....	6.57	5.99	5.42	4.21	3.97	3.96	4.11	4.10
Tennessee .....	7.20	6.23	5.04	4.62	4.50	4.73	4.68	4.92
Texas .....	5.78	5.01	5.46	5.28	4.92	5.08	5.04	4.67
Wisconsin .....	6.80	6.18	5.68	4.68	4.38	4.31	4.40	4.30
United States .....	6.79	6.21	5.40	4.63	4.37	4.41	4.42	4.35

See footnote(s) at end of table.

--continued

**Prices Received for Corn by Month – States and United States: Marketing Years 2012-2013 and 2013-2014 (continued)**

States	2012-2013						
	Mar	Apr	May	Jun	Jul	Aug	Sep
	(dollars per bushel)	(dollars per bushel)	(dollars per bushel)	(dollars per bushel)	(dollars per bushel)	(dollars per bushel)	(dollars per bushel)
Colorado .....	7.21	7.00	6.98	7.30	7.06	6.80	6.07
Illinois .....	7.14	6.89	6.91	6.96	6.73	6.09	5.25
Indiana .....	7.48	7.12	7.16	7.15	6.71	6.38	5.11
Iowa .....	7.13	7.10	7.05	7.09	6.91	6.32	5.66
Kansas .....	7.30	6.84	7.00	7.11	6.70	6.13	5.13
Kentucky .....	7.02	7.29	7.08	7.26	6.89	6.10	5.11
Michigan .....	6.98	6.58	6.65	6.79	6.65	6.04	5.37
Minnesota .....	6.95	6.75	6.83	6.81	6.78	6.24	5.69
Missouri .....	7.48	7.42	7.30	7.28	7.12	6.42	5.08
Nebraska .....	7.10	7.05	6.99	7.05	7.05	6.45	5.64
North Carolina .....	7.62	7.41	7.48	7.63	7.06	5.85	4.92
North Dakota .....	6.77	6.59	6.39	6.47	6.37	5.97	5.67
Ohio .....	7.29	7.02	7.00	7.05	6.83	6.34	5.57
Pennsylvania .....	7.30	6.99	7.14	7.27	6.67	6.10	5.15
South Dakota .....	6.99	6.59	6.87	6.80	6.57	5.99	5.42
Tennessee .....	7.62	7.28	7.47	7.38	7.20	6.23	5.04
Texas .....	7.38	7.43	7.18	7.28	5.78	5.01	5.46
Wisconsin .....	7.06	6.95	6.77	6.80	6.80	6.18	5.68
United States .....	7.13	6.97	6.97	6.97	6.79	6.21	5.40
States	2013-2014						
	Mar	Apr	May	Jun	Jul	Aug	Sep
	(dollars per bushel)	(dollars per bushel)	(dollars per bushel)	(dollars per bushel)	(dollars per bushel)	(dollars per bushel)	(dollars per bushel)
Colorado .....	4.65	4.82	4.91	4.80	4.62	4.33	3.95
Illinois .....	4.56	4.84	4.77	4.68	4.12	3.74	3.51
Indiana .....	4.68	4.86	4.91	4.63	4.07	3.88	3.54
Iowa .....	4.55	4.76	4.71	4.49	4.06	3.61	3.51
Kansas .....	4.67	4.80	4.79	4.56	4.14	3.63	3.38
Kentucky .....	4.79	4.95	5.02	4.87	4.45	4.10	3.81
Michigan .....	4.47	4.68	4.64	4.39	3.93	3.55	3.55
Minnesota .....	4.35	4.48	4.43	4.38	3.95	3.46	3.22
Missouri .....	4.71	4.94	5.03	4.70	4.21	3.75	3.47
Nebraska .....	4.46	4.70	4.67	4.56	4.20	3.68	3.54
North Carolina .....	5.11	5.15	5.19	5.13	4.98	4.54	3.90
North Dakota .....	3.94	4.01	4.21	4.00	3.67	3.35	2.94
Ohio .....	4.57	4.69	4.89	4.49	4.13	3.62	3.53
Pennsylvania .....	4.87	5.05	5.10	4.74	4.21	3.97	3.69
South Dakota .....	4.10	4.19	4.24	4.07	3.67	3.13	2.91
Tennessee .....	4.83	5.25	5.33	5.19	5.03	3.96	3.61
Texas .....	5.14	5.28	5.05	4.67	5.13	3.67	4.02
Wisconsin .....	4.47	4.55	4.72	4.56	4.28	3.80	3.53
United States .....	4.52	4.71	4.71	4.50	4.06	3.63	3.48

<sup>1</sup> Second year.



**Prices Received for Flaxseed by Month – States and United States: Marketing Years 2012-2013**

States	2012-2013					
	July	August	September	October	November	December
	(dollars per bushel)	(dollars per bushel)	(dollars per bushel)	(dollars per bushel)	(dollars per bushel)	(dollars per bushel)
North Dakota .....	13.30	13.30	13.30	13.60	14.10	13.80
United States .....	13.30	13.30	13.30	13.60	14.10	13.80

States	2012-2013					
	January <sup>1</sup>	February	March	April	May	June
	(dollars per bushel)	(dollars per bushel)	(dollars per bushel)	(dollars per bushel)	(dollars per bushel)	(dollars per bushel)
North Dakota .....	13.70	14.30	14.40	14.90	15.40	15.20
United States .....	13.70	14.30	14.40	14.90	15.40	15.20

<sup>1</sup> Second year.

**Prices Received for Flaxseed by Month – States and United States: Marketing Years 2013-2014**

States	2013-2014					
	July	August	September	October	November	December
	(dollars per bushel)	(dollars per bushel)	(dollars per bushel)	(dollars per bushel)	(dollars per bushel)	(dollars per bushel)
North Dakota .....	15.10	14.90	13.10	13.40	13.40	13.40
United States .....	15.10	14.90	13.10	13.40	13.40	13.40

States	2013-2014					
	January <sup>1</sup>	February	March	April	May	June
	(dollars per bushel)	(dollars per bushel)	(dollars per bushel)	(dollars per bushel)	(dollars per bushel)	(dollars per bushel)
North Dakota .....	13.80	13.80	13.50	13.90	14.90	14.40
United States .....	13.80	13.80	13.50	13.90	14.90	14.40

<sup>1</sup> Second year.

**Prices Received for Canola by Month – States and United States: Marketing Years 2012-2013**

States	2012-2013					
	July	August	September	October	November	December
	(dollars per cwt)	(dollars per cwt)	(dollars per cwt)	(dollars per cwt)	(dollars per cwt)	(dollars per cwt)
Minnesota .....	(D)	25.80	(D)	(D)	(D)	(D)
North Dakota .....	27.00	25.30	26.50	27.00	26.70	27.10
United States .....	26.90	25.30	26.50	27.00	26.70	27.10

States	2012-2013					
	January <sup>1</sup>	February	March	April	May	June
	(dollars per cwt)	(dollars per cwt)	(dollars per cwt)	(dollars per cwt)	(dollars per cwt)	(dollars per cwt)
Minnesota .....	23.70	(D)	(D)	(D)	(D)	(D)
North Dakota .....	26.80	27.80	27.30	27.50	28.10	27.40
United States .....	26.80	27.80	27.30	27.50	28.00	27.40

(D) Withheld to avoid disclosing data for individual operations.

<sup>1</sup> Second year.

**Prices Received for Canola by Month – States and United States: Marketing Years 2013-2014**

States	2013-2014					
	July	August	September	October	November	December
	(dollars per cwt)	(dollars per cwt)	(dollars per cwt)	(dollars per cwt)	(dollars per cwt)	(dollars per cwt)
Minnesota .....	(D)	(S)	(D)	(D)	(S)	(D)
North Dakota .....	26.20	22.20	20.70	20.70	20.30	20.60
United States .....	26.30	22.20	20.70	20.70	20.30	20.70

States	2013-2014					
	January <sup>1</sup>	February	March	April	May	June
	(dollars per cwt)	(dollars per cwt)	(dollars per cwt)	(dollars per cwt)	(dollars per cwt)	(dollars per cwt)
Minnesota .....	(D)	(D)	(D)	(D)	(S)	(D)
North Dakota .....	19.80	18.00	18.40	19.50	21.70	20.80
United States .....	19.80	18.50	18.40	19.50	21.70	20.80

(D) Withheld to avoid disclosing data for individual operations.

(S) Insufficient number of reports to establish an estimate.

<sup>1</sup> Second year.

**Prices Received for All Sunflowers by Month – States and United States: Marketing Years 2012-2013**

States	2012-2013					
	September	October	November	December	January <sup>1</sup>	February
	(dollars per cwt)	(dollars per cwt)	(dollars per cwt)	(dollars per cwt)	(dollars per cwt)	(dollars per cwt)
Colorado .....	(D)	(D)	(D)	(D)	(D)	(D)
Kansas .....	(D)	27.80	31.80	25.80	(D)	26.80
Minnesota .....	(D)	30.20	31.30	30.40	29.30	(D)
North Dakota .....	29.70	28.40	27.00	25.70	27.10	26.40
South Dakota .....	28.00	24.60	23.90	24.00	24.60	25.50
United States .....	28.90	26.30	26.70	24.80	26.30	26.10

States	2012-2013					
	March	April	May	June	July	August
	(dollars per cwt)	(dollars per cwt)	(dollars per cwt)	(dollars per cwt)	(dollars per cwt)	(dollars per cwt)
Colorado .....	(D)	(D)	(S)	(D)	(S)	(D)
Kansas .....	24.40	23.00	(D)	(D)	(D)	20.60
Minnesota .....	28.30	27.80	29.20	27.20	(D)	26.30
North Dakota .....	24.40	25.00	23.90	24.10	23.80	23.90
South Dakota .....	24.30	24.00	23.40	24.20	23.60	22.20
United States .....	24.60	24.80	24.00	24.40	23.70	23.70

(D) Withheld to avoid disclosing data for individual operations.

(S) Insufficient number of reports to establish an estimate.

<sup>1</sup> Second year.

**Prices Received for All Sunflowers by Month – States and United States: Marketing Years 2013-2014**

States	2013-2014					
	September	October	November	December	January <sup>1</sup>	February
	(dollars per cwt)	(dollars per cwt)	(dollars per cwt)	(dollars per cwt)	(dollars per cwt)	(dollars per cwt)
Colorado .....	(D)	(D)	(D)	(D)	(D)	(D)
Kansas .....	(D)	24.00	22.10	20.40	22.10	20.90
Minnesota .....	(D)	24.90	(D)	(D)	(D)	23.30
North Dakota .....	24.10	21.40	21.10	22.30	19.60	25.20
South Dakota .....	19.80	22.10	20.10	18.10	18.10	18.80
United States .....	22.40	22.80	20.70	18.80	19.60	22.80

States	2013-2014					
	March	April	May	June	July	August
	(dollars per cwt)	(dollars per cwt)	(dollars per cwt)	(dollars per cwt)	(dollars per cwt)	(dollars per cwt)
Colorado .....	(D)	(D)	(D)	(D)	(D)	(D)
Kansas .....	24.60	(D)	28.00	(D)	(D)	(D)
Minnesota .....	(D)	(D)	(D)	(D)	(D)	(D)
North Dakota .....	22.90	23.30	25.30	25.60	24.70	24.40
South Dakota .....	19.10	20.00	22.60	20.70	19.80	16.80
United States .....	21.60	22.30	24.10	22.80	22.10	22.40

(D) Withheld to avoid disclosing data for individual operations.

<sup>1</sup> Second year.

**Prices Received for Oil Sunflowers by Month – States and United States: Marketing Years 2012-2013**

States	2012-2013					
	September	October	November	December	January <sup>1</sup>	February
	(dollars per cwt)	(dollars per cwt)	(dollars per cwt)	(dollars per cwt)	(dollars per cwt)	(dollars per cwt)
Colorado .....	(D)	(D)	(D)	(D)	(D)	(D)
Kansas .....	(D)	26.00	25.10	24.50	(D)	(D)
Minnesota .....	(D)	29.10	31.00	29.40	28.90	(D)
North Dakota .....	29.20	28.00	26.30	24.60	26.50	23.90
South Dakota .....	27.90	24.30	23.80	23.90	24.60	24.80
United States .....	28.40	25.60	25.20	24.20	25.60	24.70

States	2012-2013					
	March	April	May	June	July	August
	(dollars per cwt)	(dollars per cwt)	(dollars per cwt)	(dollars per cwt)	(dollars per cwt)	(dollars per cwt)
Colorado .....	(D)	(D)	(S)	(D)	(S)	(D)
Kansas .....	23.40	21.90	(S)	(D)	(D)	(D)
Minnesota .....	25.30	(D)	(D)	(D)	(D)	22.60
North Dakota .....	23.30	23.30	23.10	23.00	22.60	22.40
South Dakota .....	24.10	23.00	23.20	22.80	22.60	20.50
United States .....	23.70	23.20	23.20	23.20	22.60	22.10

(D) Withheld to avoid disclosing data for individual operations.

(S) Insufficient number of reports to establish an estimate.

<sup>1</sup> Second year.

**Prices Received for Oil Sunflowers by Month – States and United States: Marketing Years 2013-2014**

States	2013-2014					
	September	October	November	December	January <sup>1</sup>	February
	(dollars per cwt)	(dollars per cwt)	(dollars per cwt)	(dollars per cwt)	(dollars per cwt)	(dollars per cwt)
Colorado .....	(S)	(D)	(D)	(D)	(D)	(D)
Kansas .....	(D)	18.70	19.20	18.40	18.00	(D)
Minnesota .....	(D)	(D)	(D)	(D)	23.30	22.80
North Dakota .....	21.10	20.40	19.40	20.80	18.80	20.60
South Dakota .....	19.60	17.90	18.00	18.00	18.10	18.20
United States .....	20.20	18.70	18.50	18.20	18.70	20.00

States	2013-2014					
	March	April	May	June	July	August
	(dollars per cwt)	(dollars per cwt)	(dollars per cwt)	(dollars per cwt)	(dollars per cwt)	(dollars per cwt)
Colorado .....	(D)	(D)	(D)	(D)	(D)	(D)
Kansas .....	(D)	(D)	(D)	(D)	(D)	(D)
Minnesota .....	(D)	(D)	(D)	(D)	(D)	(D)
North Dakota .....	19.90	20.30	21.60	21.20	21.50	20.80
South Dakota .....	18.90	18.70	21.70	20.60	19.80	16.50
United States .....	19.40	19.70	21.70	20.70	20.50	19.40

(D) Withheld to avoid disclosing data for individual operations.

(S) Insufficient number of reports to establish an estimate.

<sup>1</sup> Second year.

**Prices Received for Non-Oil Sunflowers by Month – States and United States: Marketing Years 2012-2013**

States	2012-2013					
	September	October	November	December	January <sup>1</sup>	February
	(dollars per cwt)	(dollars per cwt)	(dollars per cwt)	(dollars per cwt)	(dollars per cwt)	(dollars per cwt)
Colorado .....	(D)	(D)	(D)	(D)	(D)	(D)
Kansas .....	(D)	(D)	(D)	(D)	(D)	(D)
Minnesota .....	(D)	(D)	(D)	(D)	(D)	(D)
North Dakota .....	32.30	29.40	29.00	33.30	(D)	28.00
South Dakota .....	(D)	(D)	(D)	(D)	(S)	(D)
United States .....	33.60	30.60	32.10	33.30	28.50	29.40

States	2012-2013					
	March	April	May	June	July	August
	(dollars per cwt)	(dollars per cwt)	(dollars per cwt)	(dollars per cwt)	(dollars per cwt)	(dollars per cwt)
Colorado .....	(D)	(D)	(S)	(S)	(S)	(D)
Kansas .....	(D)	(D)	(S)	(D)	(S)	(S)
Minnesota .....	33.00	(D)	(D)	(D)	(S)	(D)
North Dakota .....	28.00	27.70	25.00	30.70	26.70	26.40
South Dakota .....	(D)	(D)	(D)	(D)	(D)	(D)
United States .....	29.00	28.60	27.00	31.30	27.30	26.90

(D) Withheld to avoid disclosing data for individual operations.

(S) Insufficient number of reports to establish an estimate.

<sup>1</sup> Second year.

**Prices Received for Non-Oil Sunflowers by Month – States and United States: Marketing Years 2013-2014**

States	2013-2014					
	September	October	November	December	January <sup>1</sup>	February
	(dollars per cwt)	(dollars per cwt)	(dollars per cwt)	(dollars per cwt)	(dollars per cwt)	(dollars per cwt)
Colorado .....	(D)	(D)	(D)	(D)	(D)	(D)
Kansas .....	(D)	(D)	(D)	(D)	(D)	(D)
Minnesota .....	(S)	(D)	(D)	(D)	(S)	(D)
North Dakota .....	28.70	23.00	27.30	29.30	32.40	(D)
South Dakota .....	(D)	(D)	(D)	(D)	(S)	(D)
United States .....	30.30	30.90	30.00	31.80	34.00	32.00

States	2013-2014					
	March	April	May	June	July	August
	(dollars per cwt)	(dollars per cwt)	(dollars per cwt)	(dollars per cwt)	(dollars per cwt)	(dollars per cwt)
Colorado .....	(D)	(D)	(D)	(S)	(S)	(S)
Kansas .....	(D)	(S)	(D)	(S)	(S)	(S)
Minnesota .....	(S)	(D)	(D)	(S)	(S)	(S)
North Dakota .....	33.00	(D)	(D)	(D)	(D)	(D)
South Dakota .....	(D)	(D)	(D)	(D)	(S)	(D)
United States .....	33.00	32.00	30.80	30.80	32.40	31.80

(D) Withheld to avoid disclosing data for individual operations.

(S) Insufficient number of reports to establish an estimate.

<sup>1</sup> Second year.

**Prices Received for Dry Edible Beans by Month – States and United States: Marketing Years 2012-2013**

States	2012-2013					
	September	October	November	December	January <sup>1</sup>	February
	(dollars per cwt)	(dollars per cwt)	(dollars per cwt)	(dollars per cwt)	(dollars per cwt)	(dollars per cwt)
California .....	(D)	51.70	54.70	56.60	49.30	(D)
Colorado .....	41.70	45.40	38.50	36.70	36.50	36.00
Idaho .....	38.70	32.60	40.30	35.30	40.60	39.40
Michigan .....	40.70	39.00	38.10	39.30	40.60	(D)
Minnesota .....	40.60	(D)	45.80	44.70	41.40	47.80
Nebraska .....	39.50	38.10	37.50	37.30	38.10	37.40
North Dakota .....	36.20	35.90	36.90	33.60	33.50	31.50
United States .....	38.20	37.60	39.20	37.80	37.30	37.70

States	2012-2013					
	March	April	May	June	July	August
	(dollars per cwt)	(dollars per cwt)	(dollars per cwt)	(dollars per cwt)	(dollars per cwt)	(dollars per cwt)
California .....	54.80	(D)	48.90	52.20	51.80	(D)
Colorado .....	35.50	35.30	36.40	39.60	(D)	(D)
Idaho .....	37.10	39.40	39.30	(D)	36.40	33.10
Michigan .....	41.40	42.30	44.10	46.40	44.70	(D)
Minnesota .....	44.40	39.00	33.80	(D)	(D)	(D)
Nebraska .....	35.90	36.60	41.00	38.10	39.70	42.60
North Dakota .....	31.10	31.90	31.30	35.90	39.70	39.30
United States .....	37.60	34.60	36.20	38.00	40.60	40.10

(D) Withheld to avoid disclosing data for individual operations.

<sup>1</sup> Second year.

**Prices Received for Dry Edible Beans by Month – States and United States: Marketing Years 2013-2014**

States	2013-2014					
	September	October	November	December	January <sup>1</sup>	February
	(dollars per cwt)	(dollars per cwt)	(dollars per cwt)	(dollars per cwt)	(dollars per cwt)	(dollars per cwt)
California .....	43.00	(D)	61.50	55.20	56.60	(D)
Colorado .....	39.60	50.40	(S)	38.90	40.40	37.90
Idaho .....	33.90	37.40	(D)	(D)	32.20	(D)
Michigan .....	42.70	42.40	42.40	42.70	45.10	46.20
Minnesota .....	(S)	(D)	(D)	(D)	(S)	(D)
Nebraska .....	(D)	45.30	43.20	43.90	46.30	41.70
North Dakota .....	37.60	37.00	35.50	36.40	35.70	32.50
United States .....	39.20	40.60	38.60	39.80	39.60	39.00

States	2013-2014					
	March	April	May	June	July	August
	(dollars per cwt)	(dollars per cwt)	(dollars per cwt)	(dollars per cwt)	(dollars per cwt)	(dollars per cwt)
California .....	54.60	66.00	56.90	62.40	(D)	(D)
Colorado .....	35.20	30.30	(D)	31.80	(D)	33.10
Idaho .....	30.00	32.40	38.00	30.60	35.10	33.20
Michigan .....	(D)	49.50	53.20	48.90	58.50	(D)
Minnesota .....	(D)	(D)	(D)	(S)	(S)	(S)
Nebraska .....	54.00	(D)	(D)	47.70	44.00	30.70
North Dakota .....	31.30	31.30	31.70	30.70	31.70	25.80
United States .....	38.10	36.50	38.10	35.80	36.40	35.90

(D) Withheld to avoid disclosing data for individual operations.

(S) Insufficient number of reports to establish an estimate.

<sup>1</sup> Second year.

## Percent of Corn Farm Marketings by Month – States and United States: Marketing Years 2012-2013 and 2013-2014

[Monthly farm marketings are based on a sample survey and used as a percent of total for calculating MYA prices. Blank cells indicate month is outside State's designated marketing year as defined on page 34]

Year	Jul	Aug	Sep	Oct	Nov	Dec	Jan <sup>1</sup>	Feb	Mar	Apr	May	Jun	Jul	Aug	Sep
	(%)	(%)	(%)	(%)	(%)	(%)	(%)	(%)	(%)	(%)	(%)	(%)	(%)	(%)	(%)
<b>Colorado</b>															
2012-2013 .....				16	16	16	17	5	11	5	5	3	2	2	2
2013-2014 .....				6	17	12	21	13	9	5	4	3	3	3	4
<b>Illinois</b>															
2012-2013 .....			15	13	8	7	20	7	8	4	5	4	5	4	
2013-2014 .....			3	11	10	7	19	10	10	10	6	5	4	5	
<b>Indiana</b>															
2012-2013 .....			11	17	11	7	14	6	8	7	4	5	7	3	
2013-2014 .....			3	15	10	7	14	10	12	8	4	5	7	5	
<b>Iowa</b>															
2012-2013 .....			12	17	8	6	11	6	9	5	6	6	6	8	
2013-2014 .....			6	12	13	8	11	9	9	7	6	6	7	6	
<b>Kansas</b>															
2012-2013 .....			18	17	13	6	18	5	8	3	4	3	2	3	
2013-2014 .....			4	18	14	12	16	10	7	4	2	3	3	7	
<b>Kentucky</b>															
2012-2013 .....			19	9	7	6	25	6	11	4	4	4	3	2	
2013-2014 .....			9	12	9	9	20	13	10	7	3	3	2	3	
<b>Michigan</b>															
2012-2013 .....				14	20	7	10	7	8	4	5	9	7	5	4
2013-2014 .....				7	16	11	13	10	8	7	6	5	7	6	4
<b>Minnesota</b>															
2012-2013 .....				18	6	7	12	6	9	4	5	11	11	6	5
2013-2014 .....				12	10	9	10	9	8	7	5	8	8	8	6
<b>Missouri</b>															
2012-2013 .....			20	8	7	10	13	6	7	5	5	10	4	5	
2013-2014 .....			10	10	8	8	13	9	10	7	6	5	6	8	
<b>Nebraska</b>															
2012-2013 .....			9	19	10	9	15	7	9	4	4	5	4	5	
2013-2014 .....			4	10	15	12	15	9	9	5	4	6	5	6	
<b>North Carolina</b>															
2012-2013 .....		10	38	15	5	4	10	4	5	3	3	1	2		
2013-2014 .....		7	31	12	5	6	10	7	8	6	4	2	2		
<b>North Dakota</b>															
2012-2013 .....				16	10	15	15	6	10	6	3	5	6	5	3
2013-2014 .....				3	11	11	12	9	11	8	4	9	11	8	3
<b>Ohio</b>															
2012-2013 .....			6	14	15	7	13	6	10	7	7	6	5	4	
2013-2014 .....			4	18	17	5	11	9	10	8	4	5	5	4	
<b>Pennsylvania</b>															
2012-2013 .....			6	26	12	8	5	6	8	7	12	3	3	4	
2013-2014 .....			6	17	17	6	11	10	8	6	7	5	2	5	
<b>South Dakota</b>															
2012-2013 .....			7	17	8	11	13	5	10	4	5	7	7	6	
2013-2014 .....			4	10	13	8	15	11	9	7	4	6	7	6	
<b>Tennessee</b>															
2012-2013 .....		22	17	6	6	8	9	7	8	6	4	3	4		
2013-2014 .....		2	32	23	7	4	14	4	6	3	2	2	1		
<b>Texas</b>															
2012-2013 .....	16	28	12	11	13	5	8	2	2	1	1	1			
2013-2014 .....	4	8	15	16	16	12	12	5	4	4	2	2			
<b>Wisconsin</b>															
2012-2013 .....				21	17	6	13	5	9	4	6	3	8	4	4
2013-2014 .....				8	19	16	16	6	6	6	4	7	5	4	3
<b>United States</b>															
2012-2013 .....			11.1	15.8	9.4	7.5	14.0	6.2	8.7	4.9	5.2	5.8	6.0	5.4	
2013-2014 .....			5.1	11.6	12.3	8.8	14.2	9.4	9.1	7.3	4.8	5.7	5.9	5.8	

<sup>1</sup> Second year.

**Percent of All Sunflower Farm Marketings by Month – States and United States: Marketing Years 2012-2013 and 2013-2014**

[Monthly farm marketings are based on a sample survey and used as a percent of total for calculating MYA prices]

Year	Sep	Oct	Nov	Dec	Jan <sup>1</sup>	Feb	Mar	Apr	May	Jun	Jul	Aug
	(%)	(%)	(%)	(%)	(%)	(%)	(%)	(%)	(%)	(%)	(%)	(%)
Colorado												
2012-2013 .....	4	12	44	5	12	5	4	1	-	12	-	1
2013-2014 .....	2	23	25	12	11	5	5	1	2	7	6	1
Kansas												
2012-2013 .....	2	18	35	8	18	7	8	2	-	1	-	1
2013-2014 .....	1	21	23	15	15	6	6	1	2	4	5	1
Minnesota												
2012-2013 .....	5	14	7	9	8	5	8	6	27	8	1	2
2013-2014 .....	2	3	14	7	24	28	2	6	11	1	1	1
North Dakota												
2012-2013 .....	1	12	13	15	5	4	10	9	3	5	13	10
2013-2014 .....	3	4	13	2	11	8	10	13	7	8	10	11
South Dakota												
2012-2013 .....	4	23	12	27	5	5	6	5	5	2	4	2
2013-2014 .....	3	8	25	21	8	3	5	5	4	7	8	3
United States												
2012-2013 .....	2.7	17.0	13.8	19.7	5.4	4.4	7.8	7.2	4.4	4.0	8.0	5.6
2013-2014 .....	2.4	7.5	19.9	12.4	10.2	6.0	7.0	8.1	5.2	7.0	8.2	6.1

- Represents zero.

<sup>1</sup> Second year.

**Percent of Flaxseed Farm Marketings by Month – States and United States: Marketing Years 2012-2013 and 2013-2014**

[Monthly farm marketings are based on a sample survey and used as a percent of total for calculating MYA prices]

Year	Jul	Aug	Sep	Oct	Nov	Dec	Jan <sup>1</sup>	Feb	Mar	Apr	May	Jun
	(%)	(%)	(%)	(%)	(%)	(%)	(%)	(%)	(%)	(%)	(%)	(%)
North Dakota												
2012-2013 .....	3	16	24	9	6	9	9	7	3	8	3	3
2013-2014 .....	9	5	13	22	11	5	10	3	8	3	4	7
United States												
2012-2013 .....	3.2	15.5	23.6	9.4	6.5	9.1	8.5	6.9	3.2	8.0	2.8	3.3
2013-2014 .....	8.6	5.5	13.1	21.4	11.2	5.4	10.0	3.4	7.7	2.8	4.2	6.7

<sup>1</sup> Second year.



## Percent of Canola Farm Marketings by Month – States and United States: Marketing Years 2012-2013 and 2013-2014

[Monthly farm marketings are based on a sample survey and used as a percent of total for calculating MYA prices]

Year	Jul	Aug	Sep	Oct	Nov	Dec	Jan <sup>1</sup>	Feb	Mar	Apr	May	Jun
	(%)	(%)	(%)	(%)	(%)	(%)	(%)	(%)	(%)	(%)	(%)	(%)
Minnesota												
2012-2013 .....	16	26	6	8	3	4	8	6	1	1	12	9
2013-2014 .....	16	-	7	7	-	18	8	35	3	5	-	1
North Dakota												
2012-2013 .....	2	29	14	3	4	14	13	6	6	5	2	2
2013-2014 .....	4	15	18	8	6	7	16	6	9	6	1	4
United States												
2012-2013 .....	2.1	29.4	13.7	3.2	3.6	13.9	13.2	6.3	5.7	4.6	1.7	2.6
2013-2014 .....	4.8	16.2	19.6	9.4	7.2	6.1	8.4	8.0	9.9	4.5	1.6	4.3

- Represents zero.

<sup>1</sup> Second year.

## Percent of Dry Edible Bean Farm Marketings by Month – States and United States: Marketing Years 2012-2013 and 2013-2014

[Monthly farm marketings are based on a sample survey and used as a percent of total for calculating MYA prices]

Year	Sep	Oct	Nov	Dec	Jan <sup>1</sup>	Feb	Mar	Apr	May	Jun	Jul	Aug
	(%)	(%)	(%)	(%)	(%)	(%)	(%)	(%)	(%)	(%)	(%)	(%)
California												
2012-2013 .....	3	9	18	16	13	3	13	4	5	4	4	8
2013-2014 .....	6	9	11	9	20	8	11	12	7	4	1	2
Colorado												
2012-2013 .....	10	4	4	21	11	9	4	2	2	6	6	21
2013-2014 .....	43	13	-	6	16	3	4	10	2	1	1	1
Idaho												
2012-2013 .....	8	34	11	14	13	2	7	3	2	2	2	2
2013-2014 .....	11	7	6	24	10	2	11	3	6	6	3	11
Michigan												
2012-2013 .....	18	35	8	7	5	3	4	1	2	3	1	13
2013-2014 .....	18	53	10	4	3	1	1	1	1	2	1	5
Minnesota												
2012-2013 .....	40	9	6	9	11	11	5	4	1	1	2	1
2013-2014 .....	-	8	4	8	-	37	20	18	2	-	3	-
Nebraska												
2012-2013 .....	32	15	5	5	6	11	4	3	3	4	7	5
2013-2014 .....	32	19	10	7	9	5	2	1	-	1	13	1
North Dakota												
2012-2013 .....	30	7	13	8	11	5	4	6	3	6	4	3
2013-2014 .....	25	21	13	5	9	5	3	7	3	3	4	2
United States												
2012-2013 .....	25.7	16.0	10.1	8.8	9.4	6.0	4.8	4.2	2.3	4.1	3.3	5.3
2013-2014 .....	22.2	26.3	10.9	6.8	8.3	4.2	3.8	5.0	2.7	3.0	3.5	3.3

- Represents zero.

<sup>1</sup> Second year.

## Prices Received and Farm Marketings for All Chickpeas (Garbanzo) – United States: Marketing Years 2012-2013 and 2013-2014

[Marketing year average (MYA) prices are weighted average prices for the United States marketing year of September - August. Monthly farm marketings are based on a sample survey and used as a percent of total for calculating MYA prices]

Month	Prices received		Farm marketing percentages	
	2012-2013	2013-2014	2012-2013	2013-2014
	(dollars per cwt)	(dollars per cwt)	(percent)	(percent)
September .....	37.90	33.50	14.8	20.0
October .....	33.30	31.60	43.6	16.0
November .....	37.70	29.80	9.9	11.3
December .....	33.80	27.10	10.3	12.8
January <sup>1</sup> .....	39.00	29.40	4.3	10.1
February .....	35.30	27.30	3.4	2.5
March .....	39.00	27.00	2.2	8.8
April .....	35.70	25.80	1.7	2.1
May .....	36.50	27.50	2.4	2.1
June .....	31.30	26.70	3.4	3.7
July .....	31.40	24.60	1.8	2.5
August .....	31.60	32.70	2.2	8.1
MYA .....	34.90	30.00	100.0	100.0

<sup>1</sup> Second year.

## Prices Received and Farm Marketings for Large Chickpeas – United States: Marketing Years 2012-2013 and 2013-2014

[Large chickpeas are larger than 20/64 inch. Marketing year average (MYA) prices are weighted average prices for the United States marketing year of September - August. Monthly farm marketings are based on a sample survey and used as a percent of total for calculating MYA prices]

Month	Prices received		Farm marketing percentages	
	2012-2013	2013-2014	2012-2013	2013-2014
	(dollars per cwt)	(dollars per cwt)	(percent)	(percent)
September .....	40.30	33.90	16.5	21.6
October .....	37.60	33.20	36.9	14.4
November .....	38.40	30.20	12.7	12.2
December .....	36.90	27.80	9.4	12.9
January <sup>1</sup> .....	40.00	30.10	5.2	10.3
February .....	36.10	28.50	4.0	2.3
March .....	40.50	27.60	2.9	8.9
April .....	37.00	26.80	2.1	1.9
May .....	38.90	29.80	2.7	1.8
June .....	33.50	27.30	3.5	3.6
July .....	34.20	29.20	1.7	1.5
August .....	32.90	33.30	2.4	8.6
MYA .....	37.90	30.90	100.0	100.0

<sup>1</sup> Second year.

## Prices Received and Farm Marketings for Small Chickpeas (Garbanzo) – United States: Marketing Years 2012-2013 and 2013-2014

[Small chickpeas are smaller than 20/64 inch. Marketing year average (MYA) prices are weighted average prices for the United States marketing year of September - August. Monthly farm marketings are based on a sample survey and used as a percent of total for calculating MYA prices]

Month	Prices received		Farm marketing percentages	
	2012-2013	2013-2014	2012-2013	2013-2014
	(Dollars per Cwt)	(Dollars per Cwt)	(Percent)	(Percent)
September .....	28.80	24.00	10.2	8.0
October .....	26.90	25.10	60.6	28.6
November .....	30.00	(D)	2.0	(D)
December .....	28.00	21.10	12.3	12.3
January <sup>1</sup> .....	32.10	23.80	2.1	8.6
February .....	31.10	21.40	2.0	3.7
March .....	(D)	21.80	(D)	8.1
April .....	(D)	(D)	(D)	(D)
May .....	27.00	(D)	1.8	(D)
June .....	24.90	22.10	3.4	3.7
July .....	25.80	19.50	2.3	10.6
August .....	27.10	(D)	1.9	(D)
MYA .....	27.40	22.70	100.0	100.0

(D) Withheld to avoid disclosing data for individual operations.

<sup>1</sup> Second year.

## Reliability of Prices Received Estimates

**Definition:** Prices received represent sales from producers to first buyers. They include all grades and qualities. The average commodity price from the survey multiplied by the total quantity marketed theoretically should give the total cash receipts for the commodity.

**Survey procedures:** Primary sales data used to determine grain prices were obtained from probability samples of about 1900 mills and elevators. These procedures ensure that virtually all grain moving into commercial channels has a chance of being included in the survey. Generally, States surveyed account for 90 percent or more of total United States production. Livestock prices are obtained from packers, stockyards, auctions, dealers, and market check data from AMS-USDA, private marketing organizations, and state commodity groups and agencies. Inter-farm sales of grain and livestock are not included since they represent very small percentages of the total sales. Grain marketed for seed is also excluded. Fruit and vegetable prices are obtained from sample surveys and market check data from AMS-USDA, private marketing organizations, state agencies, and universities.

**Summary and estimation procedures:** Survey quantities sold are expanded by strata to state levels and used to weight average strata prices to a state average. State prices are then weighted to a United States price based on expanded sales. Recommendations are prepared by the Regional Field Offices and reviewed by the Agricultural Statistics Board in Washington, D.C. State recommendations are reviewed for reasonableness with survey data, other States, and recent historic estimates.

**Revisions:** For most items, the current month's preliminary price represents a 3-5 day period around the 15th of the month. Previous month's prices represent actual dollars received for quantities sold during the entire month. Revisions are published in monthly issues of *Agricultural Prices*.

**Reliability:** United States price estimates based on probability surveys generally have a sampling error of less than one percent for the major commodities such as corn, wheat, soybeans, cotton, and rice. Current methods of summarization for non-probability commodities are not designed directly to calculate sampling errors. However, analytical measures approximate the United States relative sampling errors at around five percent. Any non-sampling errors are attributed to such things as the inability to obtain correct information, differences in interpreting questions or definitions, mistakes in coding or processing the data, etc. Efforts are made at each step in the survey process to minimize these non-sampling errors.

After the Council on Food, Agricultural and Resource Economics (C-FARE) 2009 program review which included changes in farm production practices, plans were implemented to make necessary program improvements in the agricultural price program. The index group structure for prices received was modified to maintain a more universal structure and consistency with the required 1910-1914 series. Modifications implemented January 2014 include the following:

- Update the current 1990-1992 base reference period to 2011,
- Link the 1910-1914 series to the updated base reference period, 2011,
- Create index groups used universally by researchers, data users, and policymakers,
- Re-classify agricultural commodities into the index groups,
- Expand the commodity coverage for vegetable, melon, non-citrus, and tree nuts,
- Update monthly market weights, and
- Adjust (normalization) current five year moving average cash receipts and farm input cost weights.

## Prices Paid by Farmers

The November Index of Prices Paid for Commodities and Services, Interest, Taxes, and Farm Wage Rates (PPITW) at 110 (2011=100), is down 0.9 percent from October 2014 but up 3.8 percent from November 2013.

**Production index:** The November index, at 112, is down 0.9 percent from last month but up 5.7 percent from last year. Lower prices in November for complete feeds, concentrates, other services, and hay & forages more than offset higher prices for mixed fertilizer, nitrogen, trucks, and feed grains.

**Feed:** The November index, at 98, is down 4.9 percent from October but is up 8.4 percent from last November. Since October, lower prices for complete feeds, concentrates, hay & forages, and supplements more than offset higher prices for feed grains.

**Livestock and poultry:** The November index, at 176, is up 0.6 percent from last month and 44 percent from last year. Since October, prices are down for feeder pigs and feeder cattle. The November feeder cattle price, at \$257.00 per cwt, is unchanged from last month. November feeder pigs averaged \$204.00 per cwt, down \$6.00 per cwt from October.

**Fertilizer:** The November index, at 95, is unchanged from October but 4.4 percent above November a year ago. Since October, higher prices for mixed fertilizer and nitrogen offset lower prices for potash & phosphate.

**Chemicals:** The November index, at 110, is unchanged from October and last November. Compared with last month, prices are slightly lower for herbicides, insecticides, and fungicides/other.

**Fuels:** The November index, at 90, is down 3.2 percent from a month earlier and 9.1 percent from November 2013. Since October, prices have declined for LP gas, gasoline, and diesel.

**Machinery:** The November index, at 111, is unchanged from October but 1.8 percent above last November. Compared with last month, prices are lower for other machinery.

**Consumer price index:** The October 2014 Consumer Price Index, as issued by the Bureau of Labor Statistics, for all urban consumers (CPI-U) is down 0.3 percent before seasonal adjustment to a level of 237.433 (1982-1984=100). The September index is 238.031. For the 12 month period ending in October, the overall index rose 1.7 percent.

## Prices Paid Indexes and Related Parity Ratios – United States: November 2014 with Comparisons

[Revised historical price indexes for months not shown are available at [www.nass.usda.gov](http://www.nass.usda.gov)]

Indexes and ratios	1910-1914 Base			2011 Base		
	November 2013	October 2014	November 2014	November 2013	October 2014	November 2014
	(percent)	(percent)	(percent)	(percent)	(percent)	(percent)
Prices paid by farmers for commodities, services, interest, taxes, and wage rates (PPITW) .....	2863	3013	2985	106	111	110
Production .....	2217	2359	2330	106	113	112
Feed .....	1180	1131	1079	107	103	98
Livestock and poultry .....	2408	3491	3481	122	177	176
Seeds .....	3643	3752	3752	111	114	114
Fertilizer .....	1093	1143	1141	91	95	95
Chemicals .....	989	991	988	110	110	110
Fuels .....	2771	2604	2513	99	93	90
Supplies and repairs .....	1227	1252	1253	104	106	106
Autos and trucks .....	3183	3214	3224	104	105	105
Machinery .....	6663	6803	6801	109	111	111
Building materials .....	2438	2498	2501	105	107	108
Services and rent .....	2225	2289	2279	(NA)	(NA)	(NA)
Services .....	(NA)	(NA)	(NA)	105	109	108
Rent .....	(NA)	(NA)	(NA)	104	107	107
Interest <sup>1</sup> .....	3572	3684	3684	98	101	101
Taxes <sup>2</sup> .....	6137	6233	6233	103	105	105
Wage rates .....	7654	7756	7756	107	108	108
Production, interest, taxes, and wage rates (PITW) .....	2993	3166	3133	106	112	111
Family living-CPI <sup>3</sup> .....	2214	2255	2250	104	106	105
Ratio (received/paid) .....	(NA)	(NA)	(NA)	93	89	92
Parity ratio <sup>4</sup> .....	36	34	35	(NA)	(NA)	(NA)
Parity ratio adjusted <sup>5</sup> .....	37	35	36	(NA)	(NA)	(NA)
PPITW adjusted for productivity <sup>6</sup> .....	1410	1426	1421	(NA)	(NA)	(NA)
Crop sector (PPITW) .....	(NA)	(NA)	(NA)	104	107	107
Livestock sector (PPITW) .....	(NA)	(NA)	(NA)	108	116	114
Farm sector (production) .....	(NA)	(NA)	(NA)	112	126	124
Non-farm sector (production) .....	(NA)	(NA)	(NA)	103	105	104

(NA) Not available.

<sup>1</sup> Interest per acre on farm real estate debt and interest rate on farm non-real estate debt.

<sup>2</sup> Farm real estate taxes payable per acre.

<sup>3</sup> Bureau of Labor Statistics, Consumer Price Index for all urban consumers (CPI-U), for the previous month converted by the USDA.

<sup>4</sup> Ratio of index of prices received to PPITW (1910-1914=100).

<sup>5</sup> Based on estimated cash receipts, from marketings and government payments, the preliminary adjustment factor is 1.028 for 2014 and the revised factor is 1.028 for 2013.

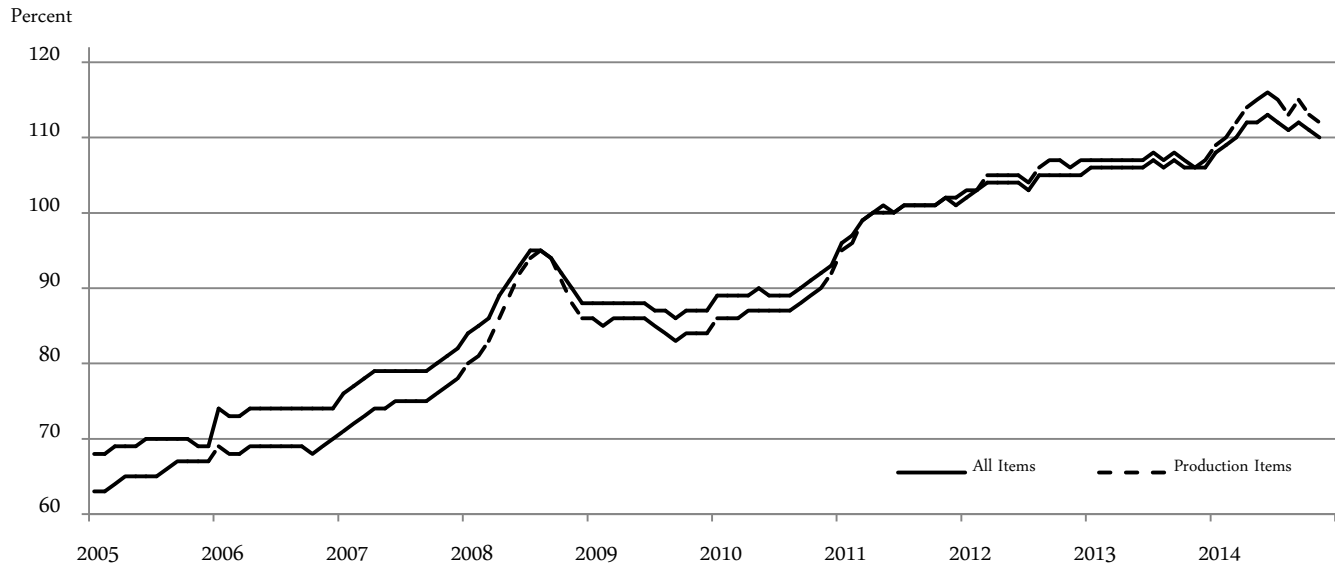
<sup>6</sup> PPITW is adjusted based on productivity trend for the prior 15 years.

## Prices Paid Indexes and Annual Weights for Input Components and Sub-components – United States: November 2014 with Comparisons

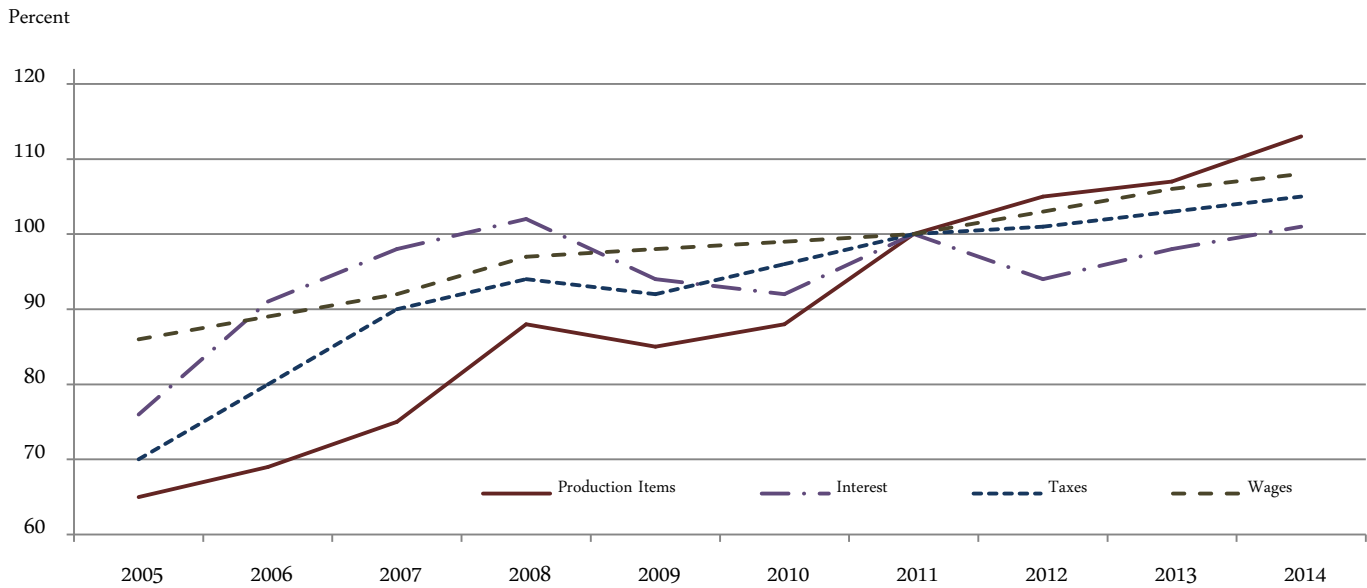
[Revised historical price indexes for months not shown are available at [www.nass.usda.gov](http://www.nass.usda.gov). Relative weights are a five year moving average]

	Relative weights		Indexes (2011=100)		
	2013	2014	November 2013	October 2014	November 2014
	(percent)	(percent)	(percent)	(percent)	(percent)
Production items .....	73.6	74.1	106	113	112
Feed .....	14.6	15.5	107	103	98
Feed grains .....	2.1	2.2	75	61	61
Complete feeds .....	7.2	7.6	115	113	107
Hay and forages .....	1.8	1.9	110	108	104
Concentrates .....	2.3	2.5	108	102	96
Supplements .....	1.2	1.3	110	106	102
Livestock and poultry .....	8.5	8.5	122	177	176
Feeder cattle .....	6.7	6.6	124	188	188
Feeder pigs .....	0.7	0.7	136	150	146
Milk cow replacements .....	0.7	0.7	99	149	149
Poultry .....	0.5	0.5	105	105	105
Seeds .....	4.8	4.9	111	114	114
Field crops .....	4.3	4.4	110	113	113
Grasses and legumes .....	0.4	0.5	120	123	123
Fertilizer .....	6.3	6.2	91	95	95
Mixed fertilizer .....	2.8	2.7	86	86	87
Nitrogen .....	2.6	2.6	97	102	102
Potash and phosphate .....	0.9	0.9	87	102	99
Chemicals .....	3.0	3.1	110	110	110
Herbicides .....	1.9	1.9	110	111	110
Insecticides .....	0.7	0.7	113	114	114
Fungicides and other .....	0.4	0.4	106	104	104
Fuels .....	4.5	4.1	99	93	90
Diesel .....	2.8	2.6	95	91	90
Gasoline .....	0.9	0.9	102	105	99
LP gas .....	0.8	0.7	113	86	78
Supplies and repairs .....	4.3	4.3	104	106	106
Supplies .....	1.4	1.4	105	106	107
Repairs .....	2.9	2.8	104	106	106
Autos and trucks .....	1.1	1.1	104	105	105
Autos .....	0.1	0.1	101	101	102
Trucks .....	1.0	1.0	104	105	105
Machinery .....	4.5	4.9	109	111	111
Tractors .....	1.0	1.1	107	108	108
Self-propelled .....	1.8	2.0	110	113	113
Other machinery .....	1.7	1.9	109	112	111
Building materials .....	3.8	3.7	105	107	108
Services .....	11.2	10.8	105	109	108
Custom rates .....	1.2	1.1	106	109	109
Other services .....	10.0	9.7	105	109	108
Rent .....	6.9	6.9	104	107	107
Cash .....	3.7	3.7	103	106	106
Share .....	3.2	3.2	105	108	108
Interest .....	2.9	2.6	98	101	101
Taxes .....	2.9	2.9	103	105	105
Wage rates .....	6.4	6.4	107	108	108
Family living-CPI .....	14.2	14.0	104	106	105

**Paid Indexes by Month,  
All Items and Production Items –  
United States: 2011=100**



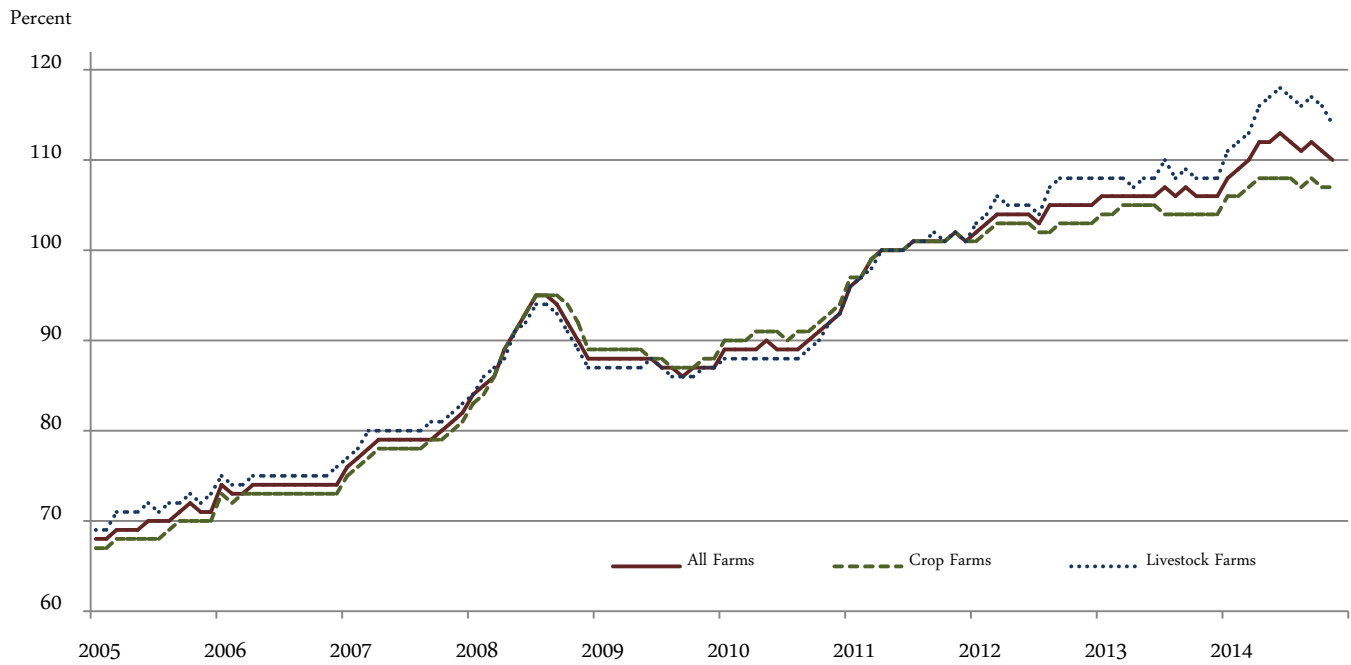
**Paid Indexes, Annual Averages,  
Production Items, Interest, Taxes, and Wages –  
United States: 2011=100**





**Paid Indexes by Farm Type and Month, All Items –**

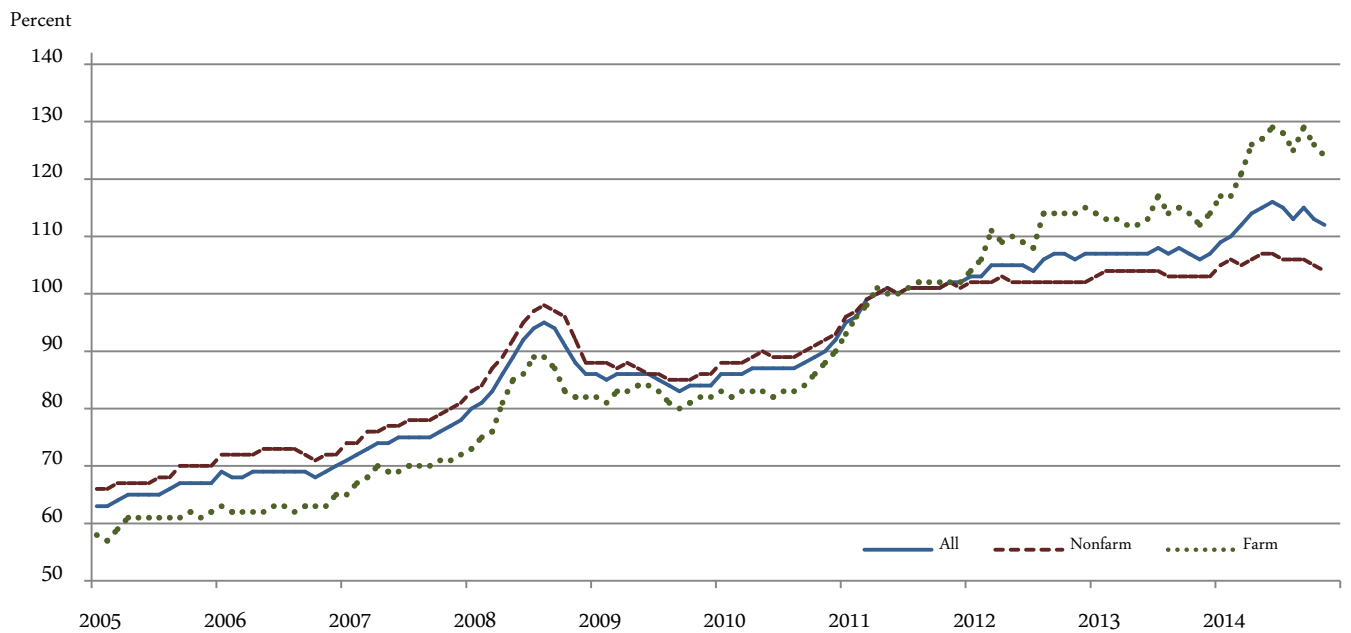
**United States: 2011=100**



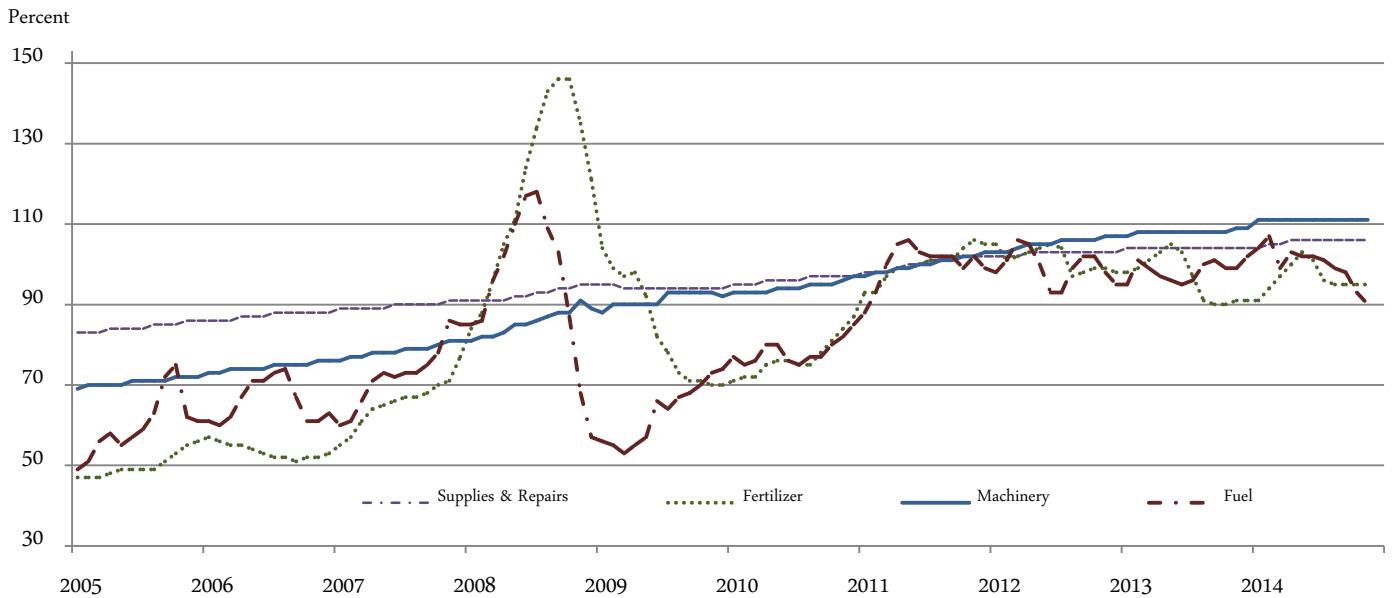
**Paid Indexes by Origin and Month,**

**All Production Items –**

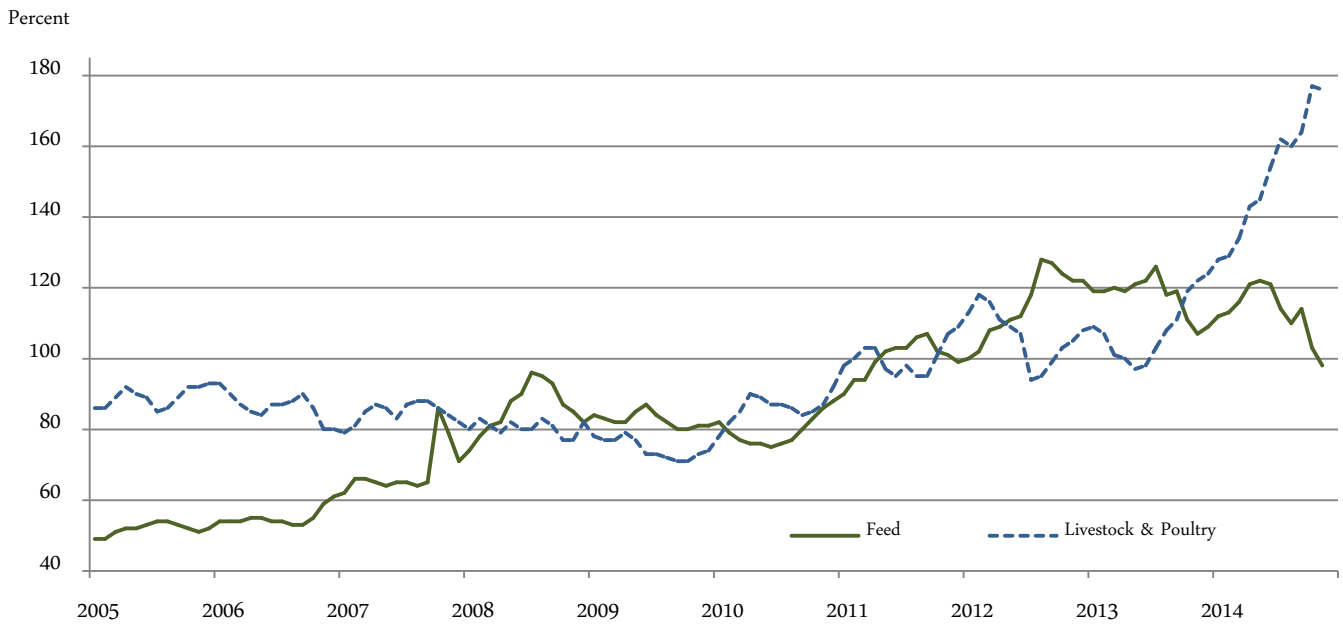
**United States: 2011=100**



**Paid Indexes by Non-Farm Sector and Month,  
Supplies & Repairs, Fertilizer, Machinery, and Fuel –  
United States: 2011=100**



**Paid Indexes by Month,  
Feed and Livestock & Poultry –  
United States: 2011=100**



## Feed Price Ratios – United States: November 2014 with Comparisons

Feed price ratio <sup>1</sup>	November 2013	October 2014	Preliminary November 2014
Broiler-feed: pounds of broiler grower feed equal in value to 1 pound of broiler, live weight <sup>2</sup> .....	4.2	6.2	5.9
Market egg feed: pounds of laying feed equal in value to 1 dozen eggs <sup>3</sup> .....	10.4	10.5	15.2
Hog-corn: bushels of corn equal in value to 100 pounds of hog, live weight .....	14.6	21.6	18.7
Milk-feed: pounds of 16% mixed dairy feed equal in value to 1 pound of whole milk <sup>4</sup> .....	2.27	2.91	2.80
Steer and heifer-corn: bushels of corn equal in value to 100 pounds of steer & heifers, live weight .....	30.2	45.8	47.1
Turkey-feed: pounds of turkey grower equal in value to 1 pound of turkey, live weight <sup>5</sup> .....	5.3	8.3	7.7

<sup>1</sup> Effective January 1995, prices of commercial prepared feeds are based on current United States prices received for corn, soybeans, alfalfa hay, and all wheat.

<sup>2</sup> The price of commercial prepared broiler feed is based on current United States prices received for corn and soybeans. The modeled feed uses 58 percent corn and 42 percent soybeans.

<sup>3</sup> The price of commercial prepared layer feed is based on current United States prices received for corn and soybeans. The modeled feed uses 75 percent corn and 25 percent soybeans.

<sup>4</sup> The price of commercial prepared dairy feed is based on current United States prices received for corn, soybeans, and alfalfa hay. The modeled feed uses 51 percent corn, 41 percent alfalfa hay, and 8 percent soybeans.

<sup>5</sup> The price of commercial prepared turkey feed is based on current United States prices received for corn, soybeans, and wheat. The modeled feed uses 51 percent corn, 28 percent soybeans, and 21 percent wheat.

## Prices Received Used to Calculate Feed Price Ratios – United States: November 2014 with Comparisons

[Price data source for livestock and poultry commodities is United States Department of Agriculture's Agricultural Marketing Service]

Item	November 2013	October 2014	Preliminary November 2014
	(dollars)	(dollars)	(dollars)
Broilers, live ..... pound	0.560	0.660	0.640
Eggs, market ..... dozen	1.160	0.934	1.370
Hogs, all ..... cwt	63.60	77.00	66.70
Milk, all ..... cwt	21.60	24.90	23.40
Steers and heifers ..... cwt	132.00	163.00	168.00
Turkeys, live ..... pound	0.656	0.822	0.778
Corn ..... bushel	4.37	3.56	3.57
Hay, alfalfa ..... ton	188.00	194.00	184.00
Soybeans ..... bushel	12.70	9.97	10.10
Wheat, all ..... bushel	6.85	5.71	5.96

## Prices Paid for Feeder Livestock – United States: November 2014 with Comparisons

[Price data source is United States Department of Agriculture's Agricultural Marketing Service]

Item	November 2013	October 2014	Preliminary November 2014
	(dollars)	(dollars)	(dollars)
Feeder cattle and calves ..... cwt	170.00	257.00	257.00
Feeder pigs ..... cwt	191.00	210.00	204.00

## Reliability of Prices Paid Estimates

**Definition:** Prices paid by farmers represent the average costs of inputs purchased by farmers and ranchers to produce agricultural commodities. Conceptually, the average price when multiplied by quantity purchased should equal total producer expenditures for the item.

**Survey procedures:** The prices paid data are obtained from establishments that sell goods and services to farmers and ranchers. Annually, about 8,500 firms are randomly selected from lists by type of item sold with an average response rate in the range of 75-80 percent. Firms are asked to report the price for the specified item "most commonly bought by farmers" or that was the "volume seller". Approximately 135 items are surveyed each March to represent all production input items purchased. The survey reference period for most items is the five business days centered at the 15th of the month. Separate prices paid surveys are conducted for agricultural chemicals, fuels, feed, fertilizer, machinery, and seed.

**Summary and estimation procedures:** The annual March Prices Paid Survey is summarized as a non-probability survey. Average prices reported are aggregated to the region and United States level using weights available from expenditure data and other administrative sources. Price recommendations are prepared by the Regional Field Offices and Headquarters for review by the Agricultural Statistics Board in Washington, D.C. Also, the change in price level for individual items surveyed are combined to the regional and United States levels, and are published as prices paid indexes referenced to a specific base period. Prices paid indexes for new autos and trucks, building materials, farm supplies, motor supplies, and marketing containers are updated based on price changes measured in selected Bureau of Labor Statistics (BLS) indexes.

**Revisions:** Any revisions are published in the monthly and in annual issues of Agricultural Prices. The basis for revision must be supported by additional data that directly affect the level of the estimate. More revisions are likely for March when separate prices paid surveys are conducted, in lieu of BLS indexes, by the USDA to measure price change.

**Reliability:** Current methods of summarization for the March data are not designed directly to calculate sampling errors. However, analytical measures approximate the United States relative sampling errors for major items around 10 percent. Any non-sampling errors are attributed to such things as the inability to obtain correct information, differences in interpreting questions or definitions, mistakes in coding or processing the data, etc. Efforts are made at each step in the survey process to minimize these non-sampling errors.

**Program change:** Effective January 2014, the National Agricultural Statistics Service modified the five-year moving weights and updated the base reference period.

As of January 2014, the 1990-1992 base reference period is updated to 2011. Five-year moving average weights are adjusted (normalized) to minimize the effects of price changes. The 1910-1914=100 price indexes, required by statute for computing parity prices, were linked forward based on the changes in the new 2011=100 indexes. The new indexes were constructed by multiplying the ratios of the current prices to the base period prices by the moving average weights.

## Information Contacts

### General

Troy Joshua, Chief, Environmental, Economics and Demographics Branch ..... (202) 720-6146

### Crop Prices Received

Lance Honig, Chief, Crops Branch ..... (202) 720-2127

Anthony Prillaman, Head, Field Crops Section ..... (202) 720-2127

Anthony Prillaman – Peanuts, Rice ..... (202) 720-2127

Brent Chittenden – Oats, Rye, Wheat ..... (202) 720-8068

Angie Considine – Cotton, Cotton Ginnings, Sorghum ..... (202) 720-5944

Tony Dahlman – Crop Weather, Barley ..... (202) 720-7621

Chris Hawthorn – Corn, Flaxseed, Proso Millet ..... (202) 720-9526

James Johanson – County Estimates, Hay ..... (202) 690-8533

Travis Thorson – Soybeans, Sunflower, Other Oilseeds ..... (202) 720-7369

Jorge Garcia-Pratts, Head, Fruits, Vegetables and Special Crops Section ..... (202) 720-2127

Vincent Davis – Fresh and Processing Vegetables, Onions, Strawberries ..... (202) 720-2157

Fleming Gibson – Citrus, Coffee, Grapes, Sugar Crops, Tropical Fruits ..... (202) 720-5412

Greg Lemmons – Berries, Cranberries, Potatoes, Sweet Potatoes ..... (202) 720-4285

Dave Losh – Hops ..... (360) 709-2400

Dan Norris – Austrian Winter Peas, Dry Edible Peas, Lentils, Mint, Mushrooms, Peaches, Pears,

Wrinkled Seed Peas, Dry Beans ..... (202) 720-3250

Daphne Schauber – Floriculture, Maple Syrup, Nursery, Tree Nuts ..... (202) 720-4215

Chris Singh – Apples, Apricots, Cherries, Plums, Prunes, Tobacco ..... (202) 720-4288

### Livestock Prices Received

Dan Kerestes, Chief, Livestock Branch ..... (202) 720-3570

Scott Hollis, Head, Livestock Section ..... (202) 720-3570

Travis Averill – Cattle and Cattle on Feed ..... (202) 720-3040

Doug Bounds – Hogs and Pigs ..... (202) 720-3106

Mike Miller – Milk, Milk Cows ..... (202) 720-3278

Evan Schulz – Sheep and Goats ..... (202) 720-6147

Bruce Boess, Head, Poultry and Specialty Commodities Section ..... (202) 720-3570

Heidi Gleich – Broilers ..... (202) 720-0585

Michael Klamm – Turkeys ..... (202) 690-3237

Kim Linonis – Eggs ..... (202) 690-8632

Josh O’Rear – Honey ..... (202) 690-3676

### Indexes, Prices Paid, and Parity Prices

Troy Joshua, Chief, Environmental, Economics and  
Demographics Branch ..... (202) 720-6146

Tony Dorn, Head, Economics Section ..... (202) 690-3223

Daryl Brinkman – Prices Received Indexes, Parity Prices ..... (202) 720-8844

Chris Dickerson – Prices Received Indexes, Parity Prices ..... (202) 690-1348

Joe Hagedorn – Cash Rents, Grazing Fees ..... (202) 690-3231

Judy McDermott – Prices Paid Indexes, Prices Paid for Feed, Fertilizer, Chemicals, Seeds, Fuels,  
Farm Supplies and Repairs, Farm Machinery, Feeder Livestock, Poultry Chicks, Feed Price Ratios ..... (202) 690-3229

## Access to NASS Reports

For your convenience, you may access NASS reports and products the following ways:

- All reports are available electronically, at no cost, on the NASS web site: <http://www.nass.usda.gov>
- Both national and state specific reports are available via a free e-mail subscription. To set-up this free subscription, visit <http://www.nass.usda.gov> and in the “Follow NASS” box under “Receive reports by Email,” click on “National” or “State” to select the reports you would like to receive.

For more information on NASS surveys and reports, call the NASS Agricultural Statistics Hotline at (800) 727-9540, 7:30 a.m. to 4:00 p.m. ET, or e-mail: [nass@nass.usda.gov](mailto:nass@nass.usda.gov).

The U.S. Department of Agriculture (USDA) prohibits discrimination against its customers, employees, and applicants for employment on the basis of race, color, national origin, age, disability, sex, gender identity, religion, reprisal, and where applicable, political beliefs, marital status, familial or parental status, sexual orientation, or all or part of an individual's income is derived from any public assistance program, or protected genetic information in employment or in any program or activity conducted or funded by the Department. (Not all prohibited bases will apply to all programs and/or employment activities.)

If you wish to file a Civil Rights program complaint of discrimination, complete the [USDA Program Discrimination Complaint Form](#) (PDF), found online at [http://www.ascr.usda.gov/complaint\\_filing\\_cust.html](http://www.ascr.usda.gov/complaint_filing_cust.html), or at any USDA office, or call (866) 632-9992 to request the form. You may also write a letter containing all of the information requested in the form. Send your completed complaint form or letter to us by mail at U.S. Department of Agriculture, Director, Office of Adjudication, 1400 Independence Avenue, S.W., Washington, D.C. 20250-9410, by fax (202) 690-7442 or email at [program.intake@usda.gov](mailto:program.intake@usda.gov).

## Price Program Quick Stats Links

Economics and Prices

[http://www.nass.usda.gov/Statistics\\_by\\_Subject/Economics\\_and\\_Prices/index.asp](http://www.nass.usda.gov/Statistics_by_Subject/Economics_and_Prices/index.asp)

January 2014 Price Program Update

[http://www.nass.usda.gov/Surveys/Guide\\_to\\_NASS\\_Surveys/Prices/updates.pdf](http://www.nass.usda.gov/Surveys/Guide_to_NASS_Surveys/Prices/updates.pdf)

January 2015 Price Program Update

[http://www.nass.usda.gov/Surveys/Guide\\_to\\_NASS\\_Surveys/Prices/update2015.pdf](http://www.nass.usda.gov/Surveys/Guide_to_NASS_Surveys/Prices/update2015.pdf)



## USDA 2015 Agricultural Outlook Forum

### Smart Agriculture in the 21<sup>st</sup> Century

Crystal Gateway Marriott Hotel

Arlington, VA

Feb. 19-20, 2015

### SAVE the Date!

The USDA Outlook Forum, first held in 1923, brings together renowned speakers including farmers, ranchers, economists, academics, statisticians, consultants, industry leaders, and government policymakers. The Secretary of Agriculture will present the keynote address, followed by a distinguished guest speaker. The economic outlook for the coming year will be presented by the USDA Chief Economist. In addition, a plenary panel of industry leaders will discuss an important topic relevant to agriculture.

- **February 19** includes a morning plenary, a networking luncheon, five concurrent afternoon sessions, and a dinner speaker.
- **February 20** includes a day of 5 concurrent sessions and luncheon speakers.

#### Session Topics are expected to include:

- Perspectives on Global & U.S. Trade
- Tomorrow's Opportunities
- Big Data
- Commodity Situation and Outlook
- Food Price & Farm Income Outlook
- Conservation & Regulation
- Water Issues
- Weather, Drought & Big Data
- Climate Change
- Moving Feed, Food & Fuel to Market
- 100-Year Anniversary of USDA Market News
- Nutrition & New Opportunities for Producers
- Regional Approaches to Rural Growth
- Bio-Economy
- Antimicrobial Resistance
- Agriculture & Bees
- Local Foods
- Food Waste

Register in November at: [www.usda.gov/oce/forum](http://www.usda.gov/oce/forum)