



Agricultural Prices

ISSN: 1937-4216

Released December 30, 2014, by the National Agricultural Statistics Service (NASS), Agricultural Statistics Board, United States Department of Agriculture (USDA).

Special Note

Beginning January 2015, NASS will publish full-month price data only. In addition, the method for computing annual indexes is revised. For details see, http://www.nass.usda.gov/Surveys/Guide_to_NASS_Surveys/Prices/update2015.pdf.

December Farm Prices Received Index Up 1 Point

The preliminary December Prices Received Index (Agricultural Production), at 102 percent, based on 2011=100, increased 1 point (1.0 percent) from November. At 82, the December Crop Production Index is up 2 points (2.5 percent). At 129, the Livestock Production Index decreased 5 points (3.7 percent). Producers received higher prices for corn, market eggs, wheat, and cattle but lower prices for milk, broilers, lettuce, and oranges. In addition to prices, the five-year average monthly mix of commodities producers market impacts the monthly indexes. Increased monthly movement of wheat, oranges, broilers, and milk offset the decreased marketing of corn, calves, soybeans, and grapes.

The preliminary Prices Received Index is up 2 points (2.0 percent) from December 2013. The Food Commodities Index, at 116, decreased 3 points (2.5 percent) from last month but increased 7 points (6.4 percent) from December 2013.

Prices Paid Index Unchanged

The preliminary December Index of Prices Paid for Commodities and Services, Interest, Taxes, and Farm Wage Rates (PPITW), at 111 percent (2011=100), is unchanged from November but is 5 points (4.7 percent) above December 2013. Lower prices in December for feeder cattle, LP gas, diesel, and gasoline offset higher prices for concentrates, feed grains, feeder pigs, and supplements.

Prices Received, Prices Paid, and Ratio of Prices Received to Prices Paid Indexes 2011 Base – United States: December 2014 with Comparisons

Index	December	November	December
	2013	2014	2014
Prices received by farmers	100	101	102
Prices paid by farmers	106	111	111
Ratio of prices received to prices paid	94	91	92

Contents

Prices Received by Farmers	2
Prices Received Indexes as a Percent of 2011 Base – United States: December 2014 with Comparisons.....	5
Prices Received Indexes as a Percent of 1910-1914 Base – United States: December 2014 with Comparisons.....	5
Prices Received Indexes as a percent of 2011 Base by Month for Selected Groups – United States: 2013 and 2014.....	6
Prices Paid Indexes as a percent of 2011 Base by Month for Selected Groups – United States: 2013 and 2014.....	6
Received Indexes by Month, Livestock Products, All Products, and All Crops – United States: 2011=100 Chart.....	7
Received Indexes by Month, Food Grains, Feed Grains & Hay, and Oilseeds – United States: 2011=100 Chart.....	7
Received Indexes by Month, Fruit & Nut and Commercial Vegetables – United States: 2011=100 Chart.....	8
Received Indexes by Month, Meat Animal, Dairy Products, and Poultry & Eggs – United States: 2011=100 Chart.....	8
Prices Received for Field Crops and Fruits – United States: December 2014 with Comparisons.....	9
Prices Received for Vegetables and Livestock – United States: December 2014 with Comparisons	10
Prices Received for Corn by Month – United States Chart.....	11
Prices Received for Wheat by Month – United States Chart	11
Prices Received for Upland Cotton by Month – United States Chart.....	12
Prices Received for Soybeans by Month – United States Chart	12
Prices Received for Cattle by Month – United States Chart	13
Prices Received for Milk by Month – United States Chart.....	13
Prices Received for Hogs by Month – United States Chart	14
Prices Received for Poultry by Month – United States Chart.....	14
Prices Received for All Wheat, Corn, and Soybeans by Month – United States: 2014 with Comparisons.....	15
Prices Received for Beef Cattle and All Hogs by Month – United States: 2014 with Comparisons	15
Prices Received for All Wheat – States and United States: December 2014 with Comparisons.....	16
Prices Received for Winter Wheat – States and United States: December 2014 with Comparisons.....	16
Prices Received for Durum Wheat – States and United States: December 2014 with Comparisons.....	17
Prices Received for Spring Wheat – States and United States: December 2014 with Comparisons	17
Prices Received for All Barley – States and United States: December 2014 with Comparisons.....	18
Prices Received for Malting Barley – States: December 2014 with Comparisons	18
Prices Received for Feed Barley – States: December 2014 with Comparisons	18
Prices Received for Corn – States and United States: December 2014 with Comparisons	19
Prices Received for Soybeans – States and United States: December 2014 with Comparisons.....	19
Prices Received for Oats – States and United States: December 2014 with Comparisons	20
Prices Received for Sorghum Grain – States and United States: December 2014 with Comparisons.....	20
Prices Received for Dry Beans – States and United States: December 2014 with Comparisons	21
Prices Received for Peanuts (in shell) – States and United States: December 2014 with Comparisons.....	21
Prices Received for Sunflower – States and United States: December 2014 with Comparisons.....	22
Prices Received for Canola – States and United States: December 2014 with Comparisons	22
Prices Received for Flaxseed – States and United States: December 2014 with Comparisons	22
Prices Received for Hops – States and United States: 2012 through 2014.....	22
Prices Received for Upland Cotton and Cottonseed – States and United States: December 2014 with Comparisons	23
Prices Received and Farm Marketings for Upland Cotton and Rice – California, Other States, and United States: December 2014 with Comparisons.....	23
Prices Received for Hay by Type – States and United States: December 2014 with Comparisons.....	24
Prices Received for Apples – States and United States: December 2014 with Comparisons	24
Prices Received for Citrus Fruits by Utilization – States and United States: December 2013	25
Prices Received for Citrus Fruits by Utilization – States and United States: November 2014.....	26
Prices Received for Citrus Fruits by Utilization – States and United States: December 2014	27

Prices Received for Potatoes – States and United States: December 2014 with Comparisons.....	28
Prices Received for All Milk – States and United States: December 2014 with Comparisons	29
Prices Received for Milk Cows – States and United States: October 2014 with Comparisons.....	30
Commodity Parity Prices and Price as Percent of Parity Price – United States: December 2014 with Comparisons	31
Commodity Parity Prices – United States: December 2014 with Comparisons	32
Reliability of Prices Received Estimates	34
Prices Paid by Farmers.....	35
Prices Paid Indexes and Related Parity Ratios – United States: December 2014 with Comparisons.....	36
Prices Paid Indexes and Annual Weights for Input Components and Sub-components – United States: December 2014 with Comparisons.....	37
Paid Indexes by Month, All Items and Production Items – United States: 2011=100 Chart.....	38
Paid Indexes, Annual Averages, Production Items, Interest, Taxes, and Wages – United States: 2011=100 Chart.....	38
Paid Indexes by Farm Type, All Items – United States: 2011=100 Chart	39
Paid Indexes by Origin, All Production Items – United States: 2011=100 Chart.....	39
Paid Indexes by Non-Farm Sector, Supplies & Repairs, Fertilizer, Machinery, and Fuel – United States: 2011=100 Chart.....	40
Paid Indexes by Month, Feed and Replacement Livestock – United States: 2011=100 Chart.....	40
Feed Price Ratios – United States: December 2014 with Comparisons	41
Prices Received Used to Calculate Feed Price Ratios – United States: December 2014 with Comparisons.....	41
Prices Paid for Feeder Livestock – United States: December 2014 with Comparisons.....	41
Prices Paid for Feed – United States: 2009-2014.....	42
Annual Average Prices Paid for Feeder Livestock – United States: 2009-2014.....	42
Prices Paid by Farmers and Ranchers for Beef Cattle Production	43
Prices Received for Beef Cattle – Selected United States Regions: 2014	43
Reliability of Prices Paid Estimates	44
Calendar of Prices Received Features in the 2014 Agricultural Price Report	45
Calendar of Prices Paid Features in the 2014 Agricultural Price Report	48
Information Contacts	49

Prices Received by Farmers

The December Prices Received Index for agricultural production is 102 percent of its 2011 base, up 1.0 percent from the November index and 2.0 percent higher than the December 2013 index.

All crops: The December index, at 82, increased 2.5 percent from November but is 9.9 percent below December 2013. Index increases for oilseeds & grains more than offset the index decreases for vegetable & melon production, fruit & tree nut production, and other crop production.

Food grains: At 92, the index for December is 4.5 percent above the previous month but 6.1 percent below a year ago. The December price for all wheat, at \$6.53 per bushel, is up 48 cents from November but is 20 cents below December 2013.

Feed grains: The December index, at 64, is up 6.7 percent from last month but 14 percent below a year ago. The corn price, at \$3.77 per bushel, is up 19 cents from last month but is 64 cents below December 2013. At \$7.49 per cwt, sorghum grain is 90 cents above November but is unchanged from December last year.

Oilseeds: At 81, the December index is unchanged from November but 21 percent lower than December 2013. The soybean price, at \$10.20 per bushel, is unchanged from November but is \$2.80 below December 2013.

Fruits & nuts: The December index, at 120, is down 6.2 percent from November but is 6.2 percent higher than a year ago. Price decreases during December for oranges and lemons more than offset price increases for strawberries and tangerines.

Commercial vegetables: At 97, the index for December is down 13 percent from last month but is 4.3 percent above December 2013. Lower prices for lettuce more than offset price increases during December for cauliflower.

Other crops: The December index, at 84, is down 1.2 percent from last month and 8.7 percent below December 2013. The all hay price, at up \$159 per ton, is down \$5.00 from November and \$4.00 from last December. At 61.5 cents per pound, the price for upland cotton is down 0.7 cents from November and 15.7 cents less than last December.

Livestock and products: The index for December, at 129, is 3.7 percent below last month but is up 15 percent from December 2013. Compared with a year ago, the price for milk is down from last year. Prices are higher for cattle, market eggs, calves, hogs, broilers, and turkeys.

Meat animals: At 137, the December index is down 2.1 percent from last month but is 27 percent higher than last year. At \$66.50 per cwt, the December hog price is down 20 cents from November but is \$5.00 higher than a year ago. The December beef cattle price of \$168 per cwt is up \$1.00 from last month and \$38.00 higher than December 2013.

Dairy products: The index for December, at 101, is down 11 percent from a month ago and 7.3 percent lower than December last year. The December all milk price of \$20.30 per cwt is down \$2.70 from last month and \$1.70 less than December 2013.

Poultry & eggs: At 138, the December index is down 2.1 percent from November but is 11 percent higher than a year ago. The December market egg price, at \$1.66 per dozen, increased 29.0 cents from November and is up 45.0 cents from December 2013. The December broiler price, at 59.0 cents per pound, is down 5.0 cents from November but is 3.0 cents above a year ago. At 73.4 cents per pound, the December turkey price is down 8.7 cents from the previous month but is 4.7 cents higher than a year earlier.

Prices Received Indexes as a Percent of 2011 Base – United States: December 2014 with Comparisons

[Revised historical price indexes for months not shown are available at www.nass.usda.gov]

Index	2011 Base		
	December 2013	November 2014	December 2014
	(percent)	(percent)	(percent)
Agricultural Production	100	101	102
Crop Production	91	80	82
Grains and oilseed	86	69	72
Feed grain	74	60	64
Food grain	98	88	92
Oilseed	103	81	81
Fruit and tree nut	113	128	120
Vegetable and melon	93	112	97
Other crop	92	85	84
Livestock Production	112	134	129
Meat animal	108	140	137
Cattle	115	154	152
Hog	92	100	100
Dairy	109	114	101
Poultry and egg	124	141	138
Food Commodity	109	119	116

Prices Received Indexes as a Percent of 1910-1914 Base – United States: December 2014 with Comparisons

[Revised historical price indexes for months not shown are available at www.nass.usda.gov]

Index	1910 - 1914 Base		
	December 2013	November 2014	December 2014
	(percent)	(percent)	(percent)
Agricultural Production	1031	1044	1048
Crop Production	794	699	717
Livestock Production	1302	1561	1502

Prices Received Indexes as a percent of 2011 Base by Month for Selected Groups – United States: 2013 and 2014

[Revised historical price indexes for months not shown are available at www.nass.usda.gov]

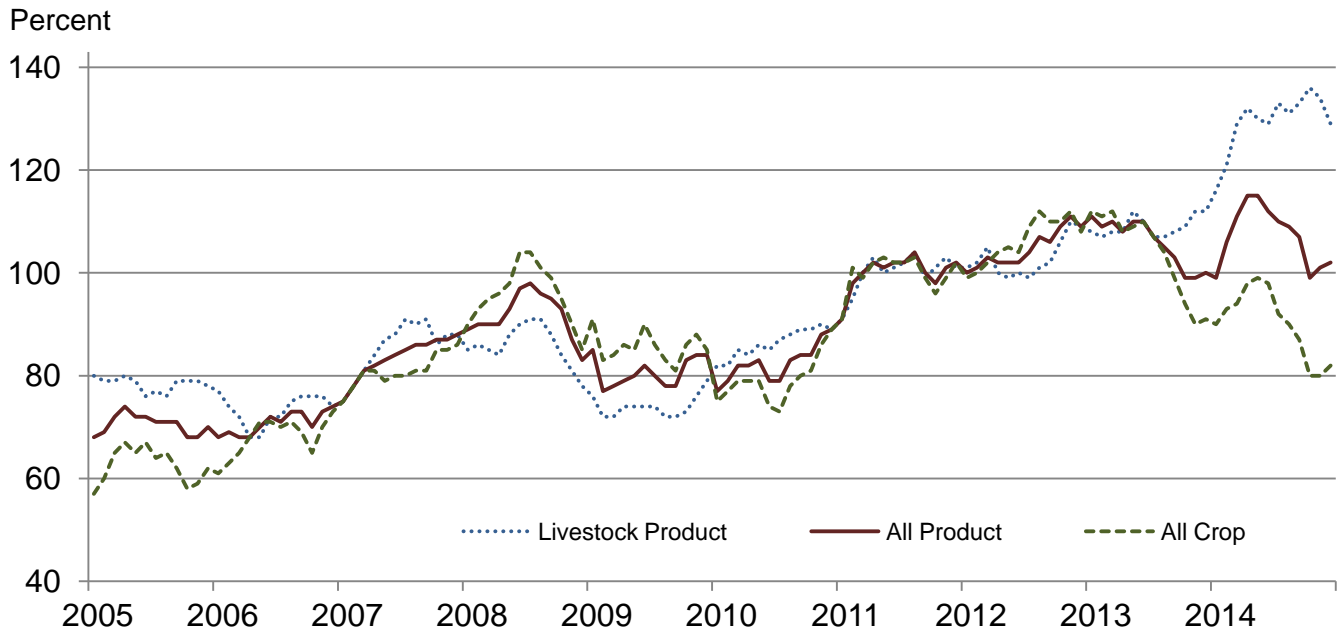
Month	2011 Base							
	Agricultural Production		Crop Production		Livestock Production		Food Commodities	
	2013	2014	2013	2014	2013	2014	2013	2014
	(percent)	(percent)	(percent)	(percent)	(percent)	(percent)	(percent)	(percent)
January	111	99	112	90	108	116	111	111
February	109	106	111	93	107	121	108	117
March	110	111	112	94	108	129	109	122
April	108	115	108	98	108	132	107	125
May	110	115	109	99	112	130	110	125
June	110	112	110	98	110	129	109	122
July	107	110	107	92	107	133	106	120
August	105	109	104	90	107	131	106	120
September	103	107	99	87	108	133	106	119
October	99	99	94	80	109	136	106	112
November	99	101	90	80	112	134	109	119
December	100	102	91	82	112	129	109	116

Prices Paid Indexes as a percent of 2011 Base by Month for Selected Groups – United States: 2013 and 2014

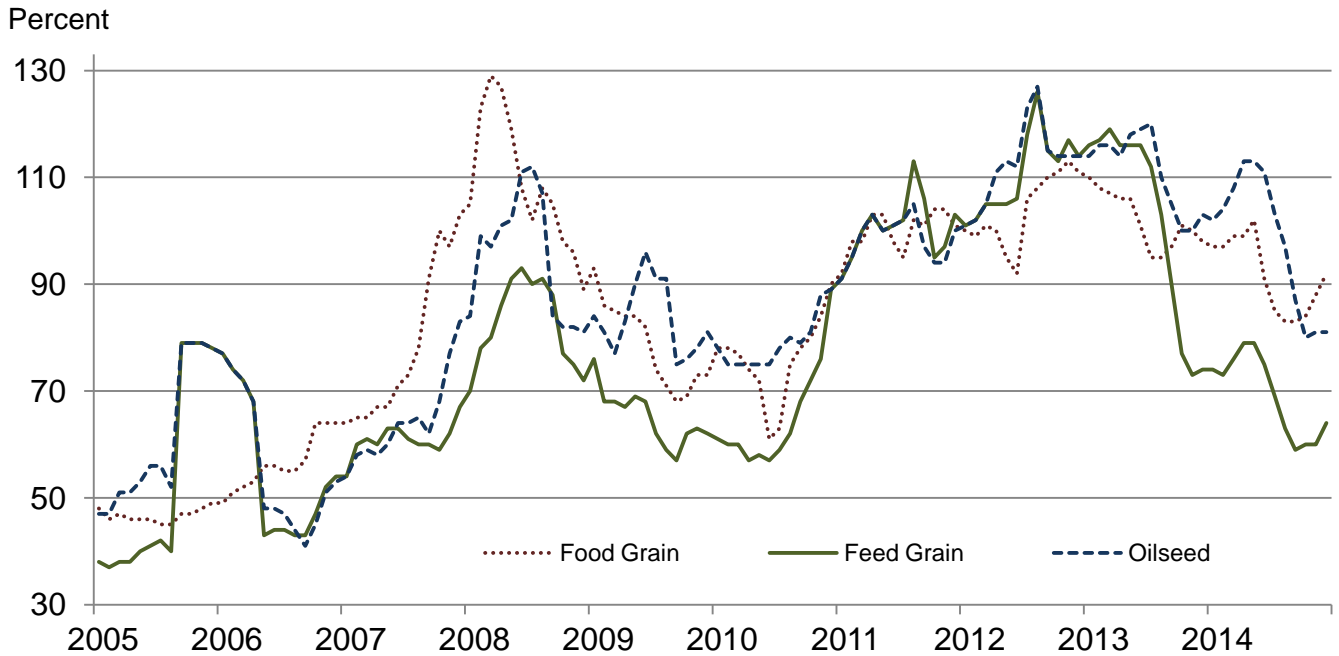
[Revised historical price indexes for months not shown are available at www.nass.usda.gov]

Month	2011 Base							
	All Items (PPITW)		Production		Crop Sector		Livestock Sector	
	2013	2014	2013	2014	2013	2014	2013	2014
	(percent)	(percent)	(percent)	(percent)	(percent)	(percent)	(percent)	(percent)
January	106	108	107	109	104	106	108	111
February	106	109	107	110	104	106	108	112
March	106	110	107	112	105	107	108	113
April	106	112	107	114	105	108	107	116
May	106	112	107	115	105	108	108	117
June	106	113	107	116	105	108	108	118
July	107	112	108	115	104	108	110	118
August	106	111	107	113	104	107	108	116
September	107	112	108	115	104	108	109	117
October	106	111	107	113	104	107	108	116
November	106	111	106	113	104	107	108	116
December	106	111	107	113	104	106	108	116

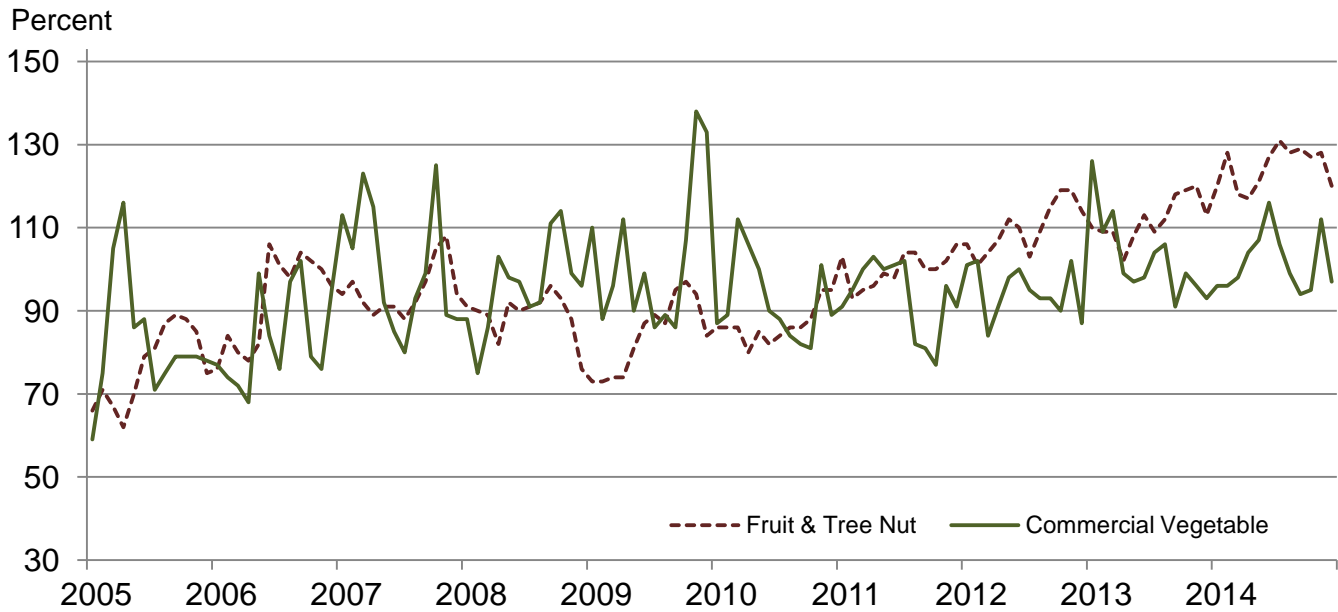
Received Indexes by Month, Livestock Product, All Product, and All Crop – United States: 2011=100



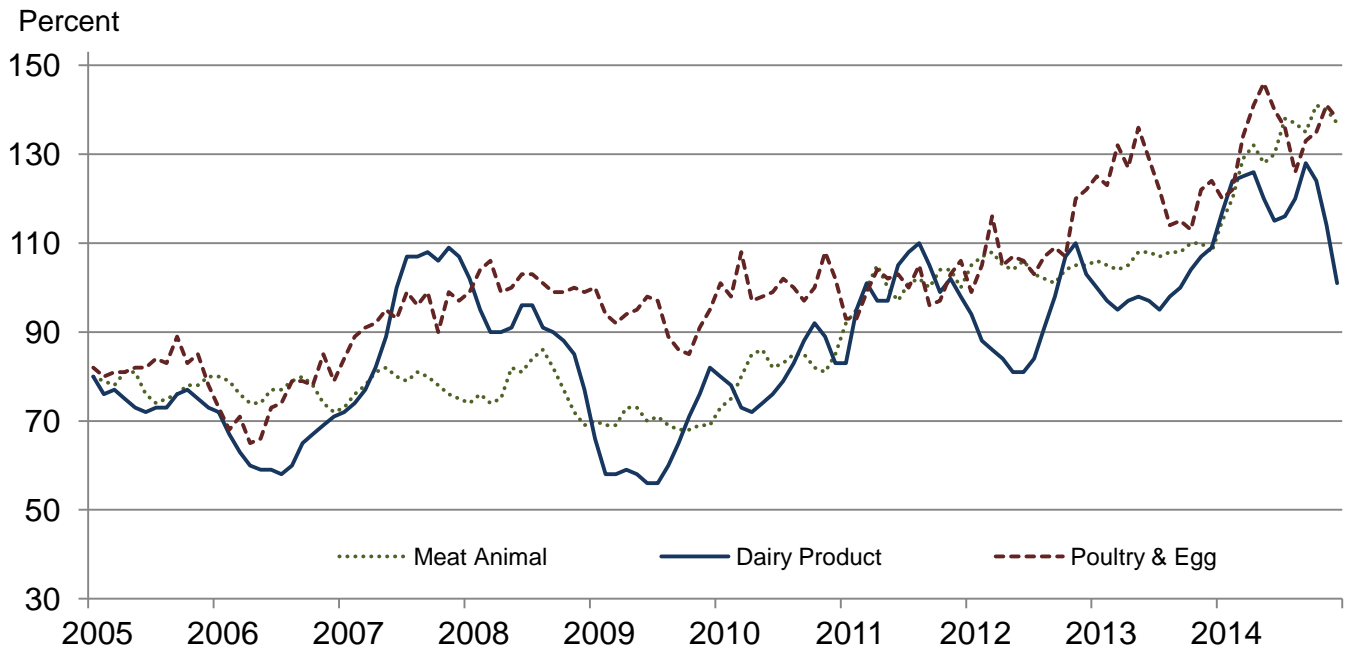
Received Indexes by Month, Food Grain, Feed Grain, and Oilseed – United States: 2011=100



**Received Indexes by Month,
Fruit & Tree Nut and Commercial Vegetable –
United States: 2011=100**



**Received Indexes by Month,
Meat Animal, Dairy Product, and Poultry & Egg –
United States: 2011=100**



Prices Received for Field Crops and Fruits – United States: December 2014 with Comparisons

Commodity	Average 2011	December 2013	November 2014	Preliminary December 2014
Field crops				
Austrian winter peasdollars/cwt	19.50	(D)	(D)	(S)
Barley, alldollars/bushel	4.79	6.11	5.12	5.17
Feeddollars/bushel	4.59	3.65	2.83	2.75
Maltingdollars/bushel	4.83	6.52	5.69	5.85
Beans, dry edibledollars/cwt	34.60	39.80	30.50	34.00
Canoladollars/cwt	23.10	20.70	17.10	16.80
Chickpeas, alldollars/cwt	35.70	27.10	25.60	24.20
Largedollars/cwt	39.20	27.80	27.40	(D)
Smalldollars/cwt	23.40	21.10	22.40	21.30
Corndollars/bushel	6.02	4.41	3.58	3.77
Cotton, Uplanddollars/pound	0.880	0.772	0.622	0.615
Cottonseed ¹dollars/ton	131.00	246.00	198.00	(NA)
Flaxseeddollars/bushel	14.20	13.40	11.60	11.50
Hay, all, baleddollars/ton	159.00	163.00	164.00	159.00
Alfalfadollars/ton	176.00	186.00	184.00	182.00
Otherdollars/ton	119.00	133.00	124.00	119.00
Lentilsdollars/cwt	27.50	19.90	25.20	30.20
Oatsdollars/bushel	3.42	3.59	2.96	3.05
Peanuts, in-shelldollars/pound	0.252	0.246	0.214	0.206
Peas, dry edibledollars/cwt	13.60	14.60	12.00	13.00
Potatoesdollars/cwt	9.78	9.02	7.99	8.25
Rice, alldollars/cwt	13.70	16.30	14.40	14.60
Longdollars/cwt	12.30	15.50	12.50	12.70
Medium and shortdollars/cwt	18.40	18.40	17.30	18.70
Sorghum graindollars/cwt	10.70	7.49	6.59	7.49
Soybeansdollars/bushel	12.50	13.00	10.20	10.20
Sunflowers, alldollars/cwt	29.00	18.80	19.80	20.50
Wheat, alldollars/bushel	7.44	6.73	6.05	6.53
Winterdollars/bushel	6.93	6.84	5.86	6.11
Durumdollars/bushel	9.22	6.90	11.00	10.80
Other springdollars/bushel	8.33	6.55	5.74	6.21
Hard red winter ¹dollars/bushel	7.07	6.85	5.65	(NA)
Soft red winter ¹dollars/bushel	6.77	6.13	5.21	(NA)
Hard red spring ¹dollars/bushel	8.38	6.53	5.70	(NA)
White ¹dollars/bushel	6.58	6.98	6.50	(NA)
Fruits				
Citrus, equivalent on-tree				
Grapefruitdollars/box	7.47	7.51	9.13	7.44
Lemonsdollars/box	12.30	23.52	33.57	25.48
Orangesdollars/box	8.16	6.93	14.88	9.61
Tangelosdollars/box	3.50	8.74	(S)	9.29
Tangerines and mandarinsdollars/box	15.30	24.41	28.52	30.71
Noncitrus, fresh				
Apples ²dollars/pound	0.325	(NA)	0.330	0.321
Grapes ²dollars/ton	628.00	(NA)	1,750.00	1,670.00
Peaches ²dollars/ton	507.00	(NA)	(NA)	(NA)
Pears ²dollars/ton	559.00	(NA)	684.00	711.00
Strawberriesdollars/cwt	104.00	(NA)	152.00	186.00

(D) Withheld to avoid disclosing data for individual operations.

(NA) Not available.

(S) Insufficient number of reports to establish an estimate.

¹ Preliminary estimates not set for this item.

² Equivalent packinghouse-door returns for California, Michigan, New York (apples only), and Washington (apples, peaches, and pears). Prices as sold for other states.

Prices Received for Vegetables and Livestock – United States: December 2014 with Comparisons

[Price data source for livestock and poultry commodities is United States Department of Agriculture's Agricultural Marketing Service]

Commodity	Average 2011	December 2013	November 2014	Preliminary December 2014
Vegetables, fresh ¹				
Asparagus dollars/cwt	37.50	(NA)	(NA)	(NA)
Beans, snap ² dollars/cwt	69.00	(NA)	62.00	80.20
Broccoli dollars/cwt	41.60	(NA)	45.00	34.60
Cantaloupes ² dollars/cwt	16.50	(NA)	31.90	21.30
Carrots dollars/cwt	30.80	(NA)	28.00	33.00
Cauliflower dollars/cwt	47.00	(NA)	67.60	112.00
Celery dollars/cwt	22.50	(NA)	26.60	25.80
Corn, sweet dollars/cwt	30.70	(NA)	40.70	38.10
Cucumbers ² dollars/cwt	18.70	(NA)	24.80	34.40
Lettuce dollars/cwt	24.30	(NA)	49.10	17.40
Onions ³ dollars/cwt	11.90	(NA)	9.12	9.49
Tomatoes dollars/cwt	51.20	(NA)	71.80	73.70
Livestock				
Calves dollars/cwt	142.00	197.00	305.00	305.00
Cattle, all beef dollars/cwt	115.00	130.00	167.00	168.00
Cows ⁴ dollars/cwt	71.60	83.40	115.00	116.00
Steers and heifers dollars/cwt	117.00	132.00	169.00	170.00
Milk cows ⁵ dollars/head	1420.00	(NA)	(NA)	(NA)
Hogs, all dollars/cwt	66.50	61.50	66.70	66.50
Barrows and gilts dollars/cwt	66.80	61.30	66.40	66.30
Sows dollars/cwt	57.90	70.10	74.20	71.80
Dairy and poultry				
Milk, all ⁶ dollars/cwt	20.10	22.00	23.00	20.30
Fat test percent	3.71	3.89	3.86	3.87
Broilers, live ⁷ dollars/pound	0.459	0.560	0.640	0.590
Eggs, all ⁸ dollars/dozen	0.969	1.360	1.520	1.770
Market ^{8 9} dollars/dozen	0.796	1.210	1.370	1.660
Turkeys, live ¹⁰ dollars/pound	0.680	0.687	0.821	0.734
Adjusted for seasonal variation				
Eggs, all dollars/dozen	0.979	1.130	1.330	1.480
Seasonal factor percent	101	121	114	120
Milk, all ⁶ dollars/cwt	20.20	21.70	21.80	20.10
Seasonal factor percent	100	101	106	101

(NA) Not available.

¹ Beginning January 2006, point of first sale. FOB shipping point for prior years.

² Monthly estimates began January 1995.

³ Includes some processing.

⁴ Beef cows and cull dairy cows sold for slaughter.

⁵ Animals sold for dairy herd replacement only. Prices available for January, April, July, and October.

⁶ Before deductions for hauling. Includes quality, quantity, and other premiums. Excludes hauling subsidies.

⁷ Live weight equivalent price.

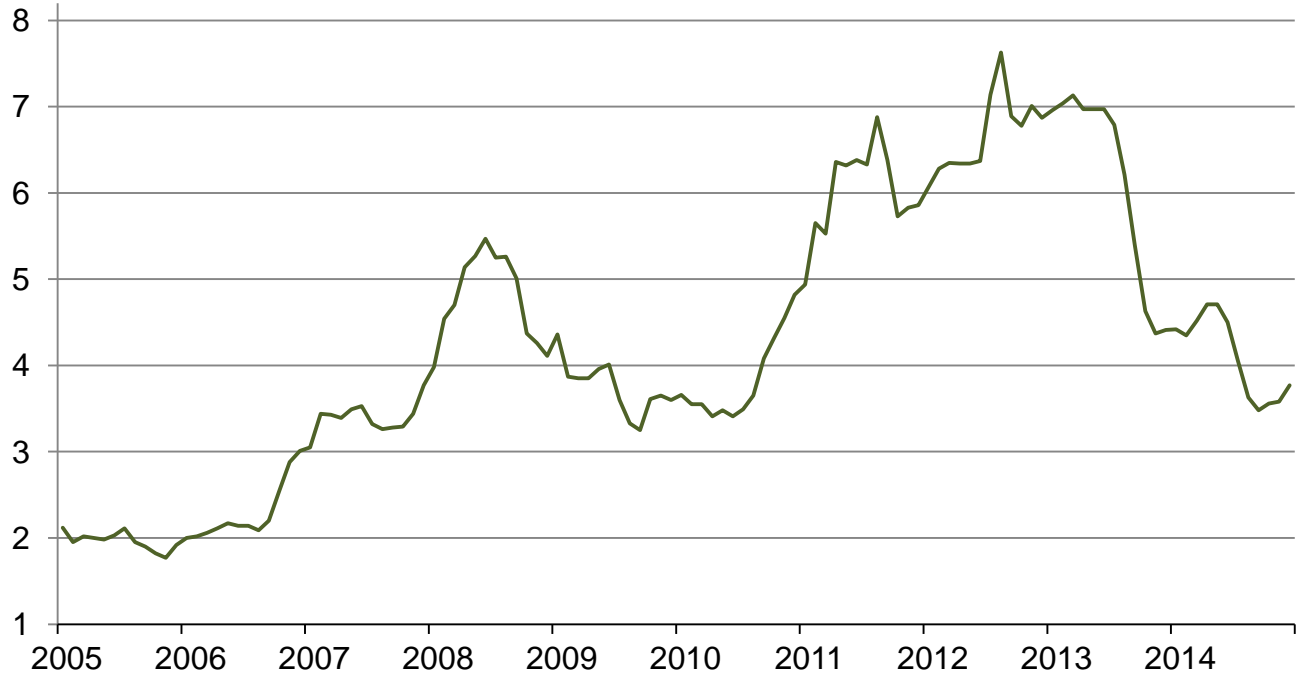
⁸ Mid-month price.

⁹ Also referred to as table eggs.

¹⁰ Live weight equivalent price is used when actual live weight price is not available. Beginning January 2011, price reflects FOB shipping point basis. Prior year price reflects delivered basis.

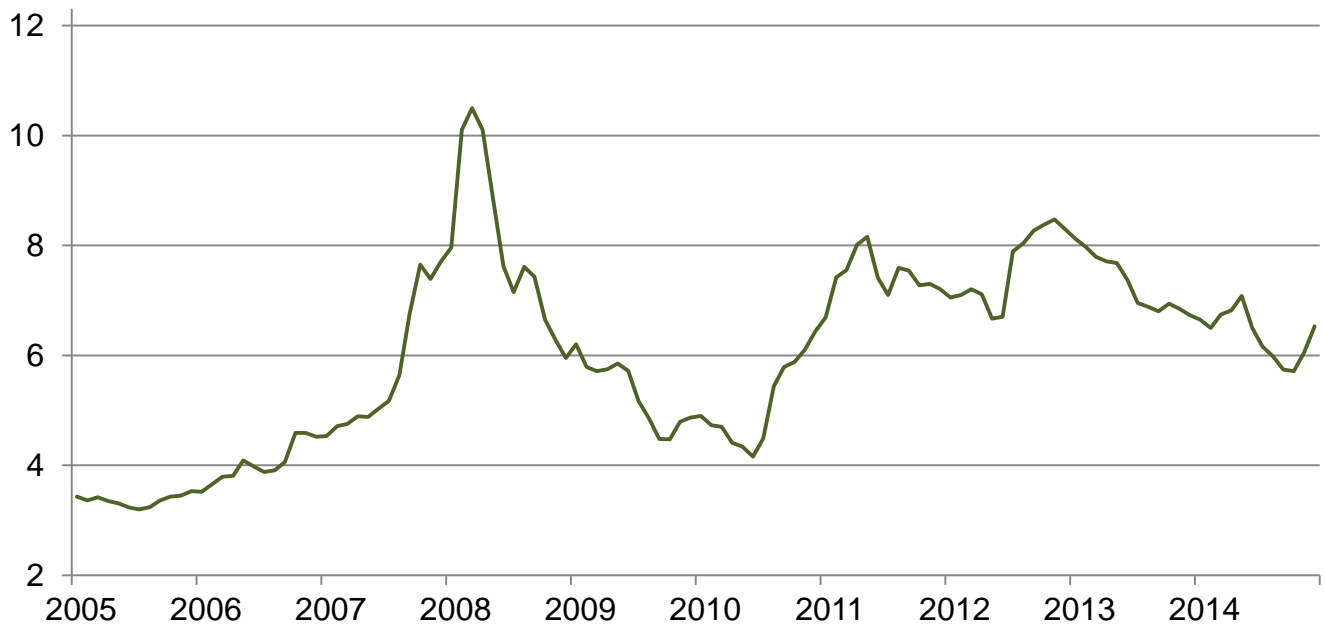
Prices Received for Corn by Month – United States

Dollars per bushel



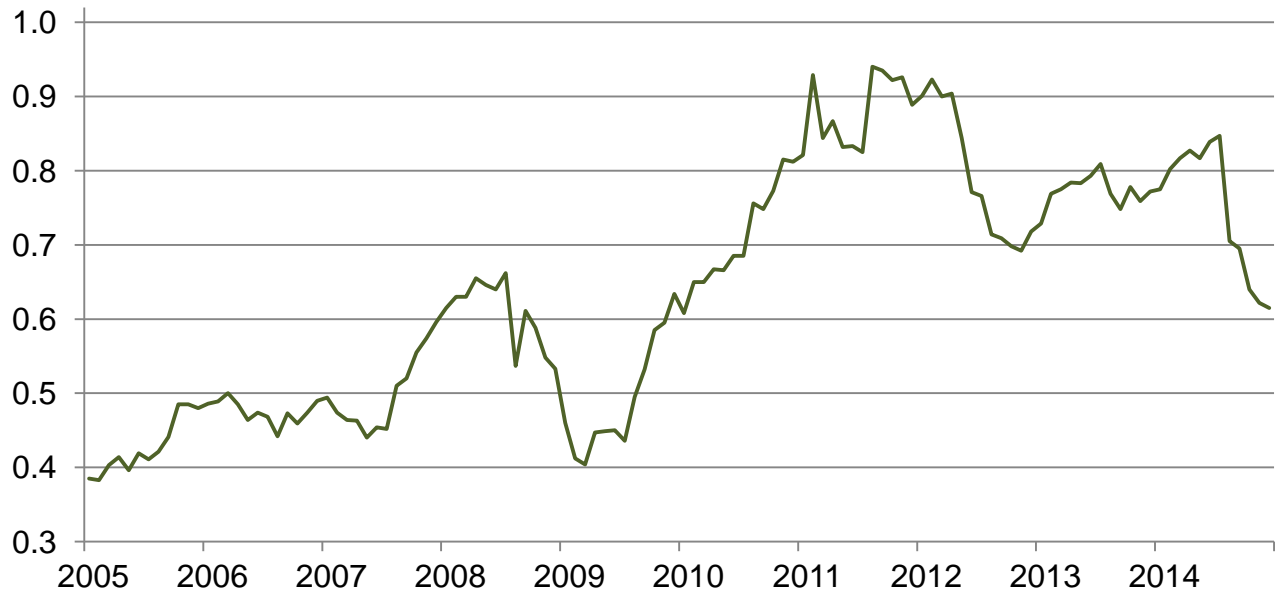
Prices Received for Wheat by Month – United States

Dollars per bushel



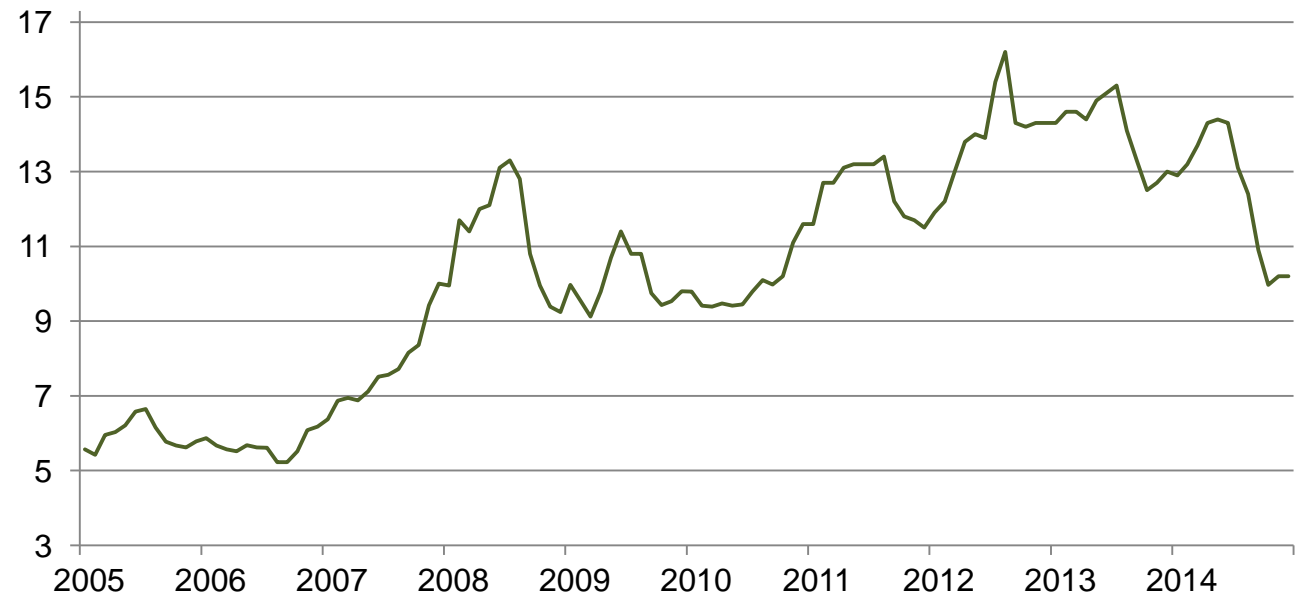
Prices Received for Upland Cotton by Month – United States

Dollars per pound



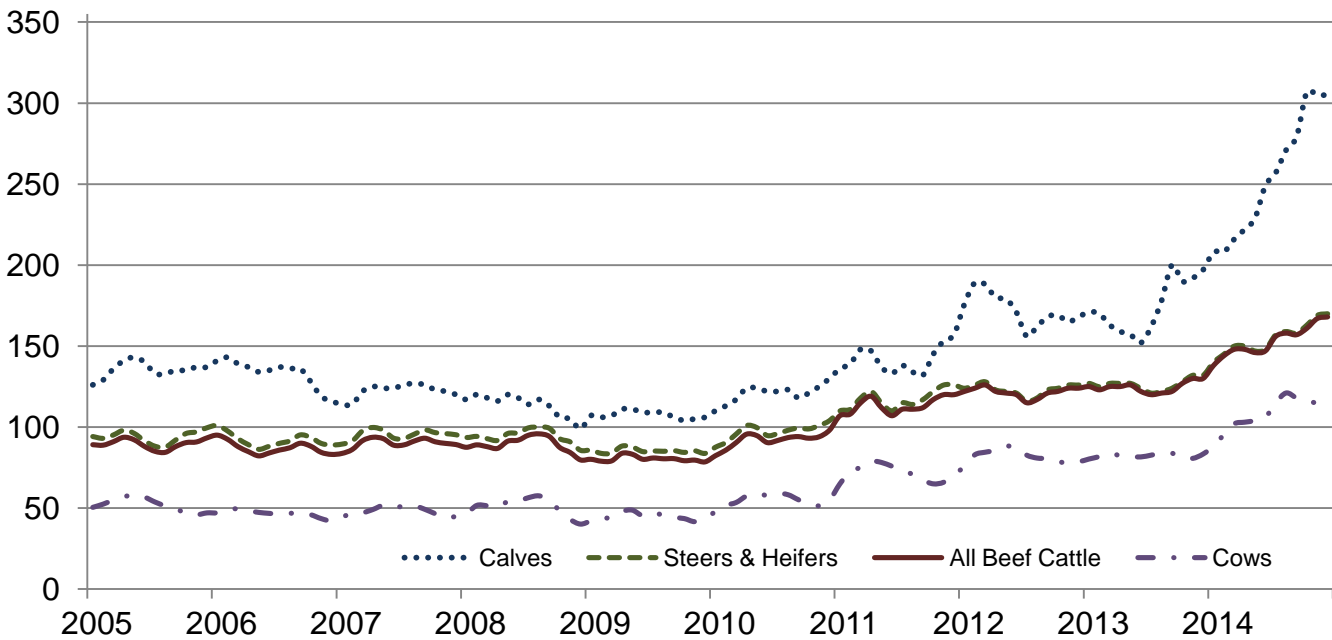
Prices Received for Soybeans by Month – United States

Dollars per bushel



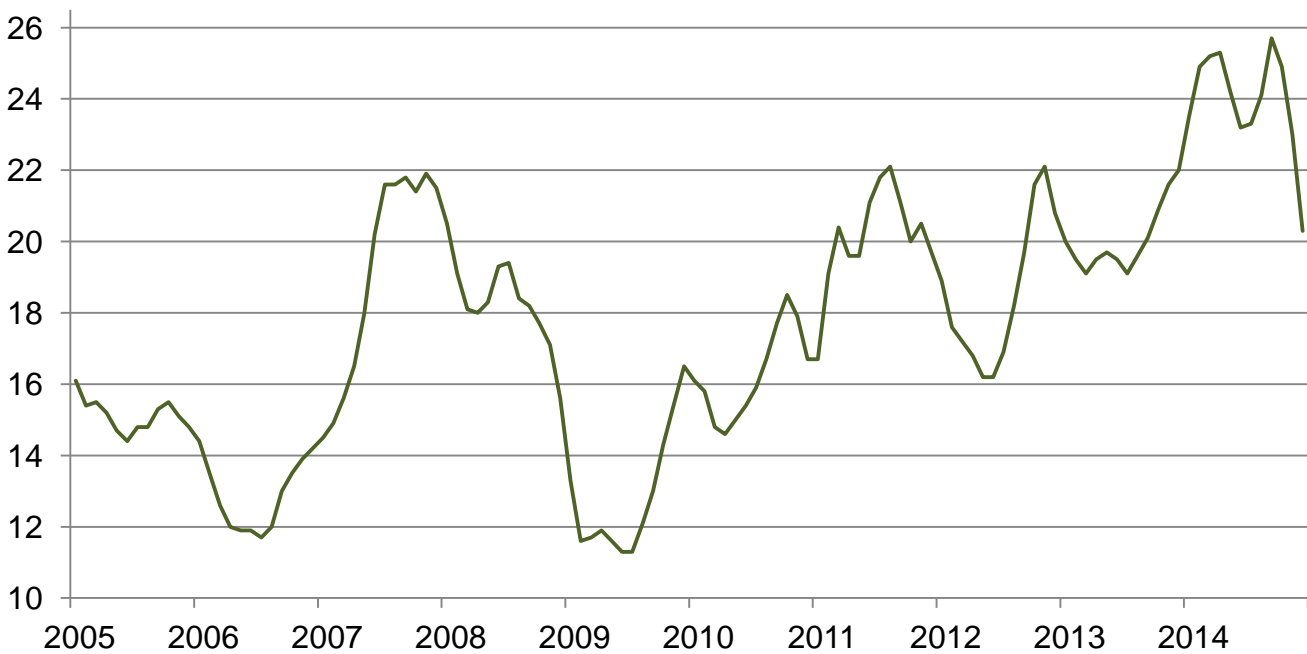
Prices Received for Cattle by Month – United States

Dollars per cwt



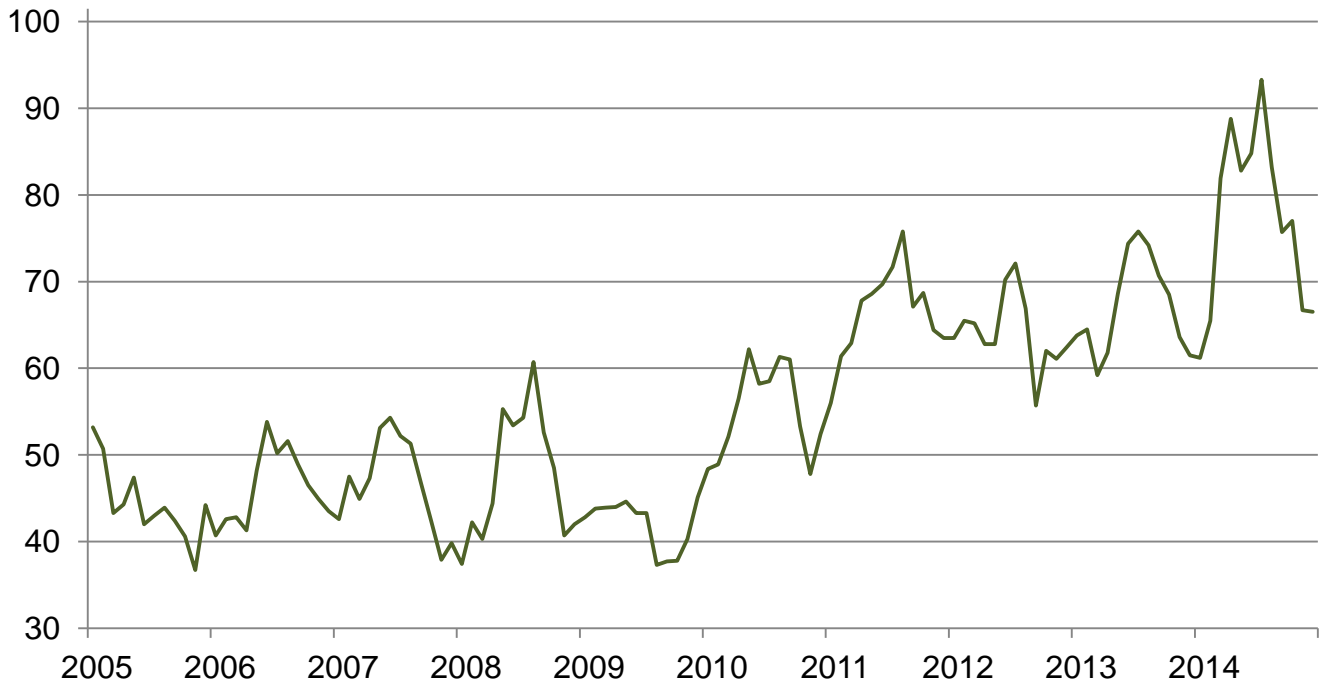
Prices Received for Milk by Month – United States

Dollars per cwt



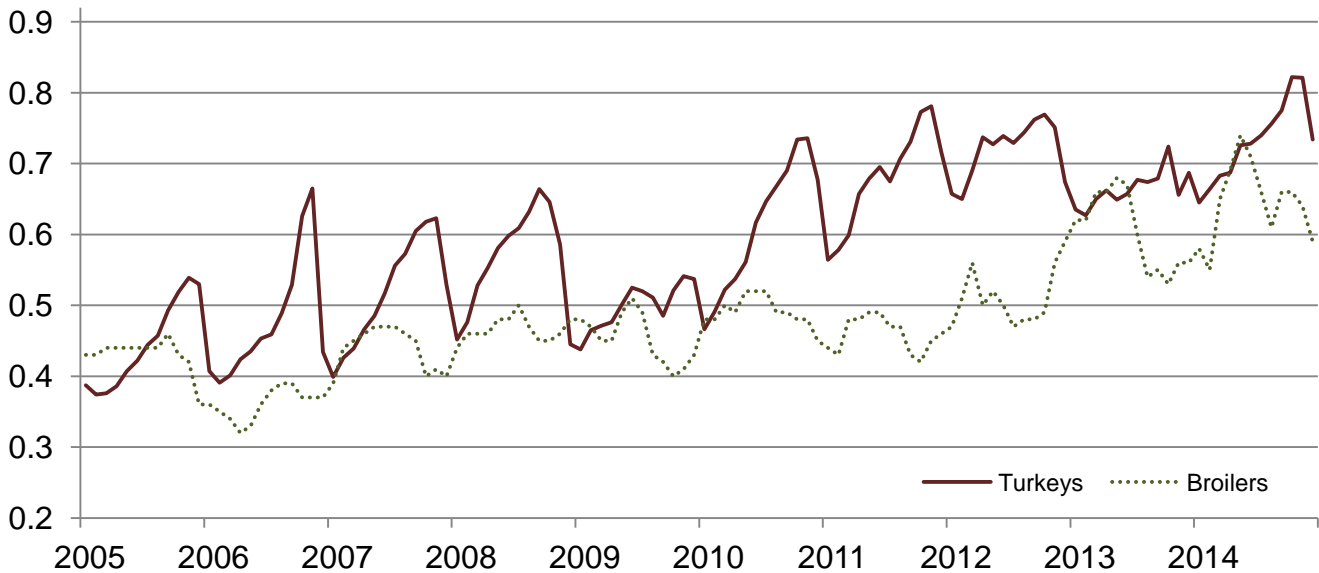
Prices Received for Hogs by Month – United States

Dollars per cwt



Prices Received for Poultry by Month – United States

Dollars per pound



Prices Received for All Wheat, Corn, and Soybeans by Month – United States: 2014 with Comparisons

[Current month prices are mid-month; prices for previous months and years are for the entire month]

Month	All wheat			Corn			Soybeans		
	2012	2013	Preliminary 2014	2012	2013	Preliminary 2014	2012	2013	Preliminary 2014
	(dollars per bushel)	(dollars per bushel)	(dollars per bushel)	(dollars per bushel)	(dollars per bushel)	(dollars per bushel)	(dollars per bushel)	(dollars per bushel)	(dollars per bushel)
January	7.05	8.12	6.65	6.07	6.96	4.42	11.90	14.30	12.90
February	7.10	7.97	6.50	6.28	7.04	4.35	12.20	14.60	13.20
March	7.20	7.79	6.74	6.35	7.13	4.52	13.00	14.60	13.70
April	7.11	7.71	6.82	6.34	6.97	4.71	13.80	14.40	14.30
May	6.67	7.68	7.08	6.34	6.97	4.71	14.00	14.90	14.40
June	6.70	7.37	6.50	6.37	6.97	4.50	13.90	15.10	14.30
July	7.89	6.95	6.16	7.14	6.79	4.06	15.40	15.30	13.10
August	8.04	6.88	5.98	7.63	6.21	3.63	16.20	14.10	12.40
September ...	8.27	6.80	5.74	6.89	5.40	3.48	14.30	13.30	10.90
October	8.38	6.94	5.71	6.78	4.63	3.56	14.20	12.50	9.97
November	8.47	6.85	6.05	7.01	4.37	3.58	14.30	12.70	10.20
December	8.30	6.73	6.53	6.87	4.41	3.77	14.30	13.00	10.20

Prices Received for Beef Cattle and All Hogs by Month – United States: 2014 with Comparisons

[Current month prices are mid-month; prices for previous months and years are for the entire month]

Month	Beef cattle ¹			All hogs ²		
	2012	2013	Preliminary 2014	2012	2013	Preliminary 2014
	(dollars per cwt)	(dollars per cwt)	(dollars per cwt)	(dollars per cwt)	(dollars per cwt)	(dollars per cwt)
January	122.00	125.00	138.00	63.50	63.80	61.20
February	124.00	123.00	144.00	65.50	64.50	65.50
March	126.00	125.00	148.00	65.20	59.20	81.90
April	122.00	125.00	148.00	62.80	61.80	88.80
May	121.00	126.00	146.00	62.80	68.60	82.80
June	120.00	122.00	147.00	70.20	74.40	84.80
July	115.00	120.00	156.00	72.10	75.80	93.30
August	117.00	121.00	158.00	66.90	74.20	83.20
September	121.00	122.00	157.00	55.70	70.70	75.70
October	122.00	127.00	161.00	62.00	68.50	77.00
November	124.00	130.00	167.00	61.10	63.60	66.70
December	124.00	130.00	168.00	62.40	61.50	66.50

¹ Cows and steers & heifers.

² Barrows & gilts and sows.

Prices Received for All Wheat – States and United States: December 2014 with Comparisons

State	December 2013	November 2014	Preliminary December 2014
	(dollars per bushel)	(dollars per bushel)	(dollars per bushel)
Arizona	(D)	(D)	(D)
Arkansas	6.80	4.86	5.20
California	(D)	(D)	(D)
Colorado	6.73	5.61	6.14
Idaho	7.01	6.35	6.44
Illinois	6.36	4.91	5.10
Indiana	6.22	4.38	5.25
Kansas	6.72	5.68	6.09
Michigan	6.37	5.65	5.90
Minnesota	6.54	5.39	5.95
Missouri	6.42	5.10	5.50
Montana	7.04	6.82	7.08
Nebraska	6.62	5.37	6.10
North Carolina	5.32	5.16	5.20
North Dakota	6.32	5.95	6.63
Ohio	6.24	5.53	6.10
Oklahoma	6.54	5.73	6.16
Oregon	7.25	7.23	(D)
South Dakota	6.50	5.62	6.03
Texas	6.84	5.57	6.25
Washington	7.02	6.67	6.88
United States	6.73	6.05	6.53

(D) Withheld to avoid disclosing data for individual operations.

Prices Received for Winter Wheat – States and United States: December 2014 with Comparisons

State	December 2013	November 2014	Preliminary December 2014
	(dollars per bushel)	(dollars per bushel)	(dollars per bushel)
Arkansas	6.80	4.86	5.20
California	(D)	(D)	(D)
Colorado	6.73	5.71	6.14
Idaho	7.03	6.02	(D)
Illinois	6.36	4.91	5.10
Indiana	6.22	4.38	5.25
Kansas	6.72	5.68	6.09
Michigan	6.37	5.65	5.90
Minnesota	6.39	(D)	(S)
Missouri	6.42	5.10	5.50
Montana	7.18	5.71	5.75
Nebraska	6.62	5.37	6.10
North Carolina	5.32	5.16	5.20
North Dakota	5.98	4.18	4.70
Ohio	6.24	5.53	6.10
Oklahoma	6.54	5.73	6.16
Oregon	7.25	7.16	(D)
South Dakota	6.20	5.62	5.83
Texas	6.84	5.57	6.25
Washington	6.97	6.52	6.74
United States	6.84	5.86	6.11

(D) Withheld to avoid disclosing data for individual operations.

(S) Insufficient number of reports to establish an estimate.

Prices Received for Durum Wheat – States and United States: December 2014 with Comparisons

State	December 2013	November 2014	Preliminary December 2014
	(dollars per bushel)	(dollars per bushel)	(dollars per bushel)
Arizona	(D)	(D)	(D)
California	(S)	(S)	(S)
Idaho	(S)	(S)	(S)
Montana	(D)	10.90	10.20
North Dakota	6.83	11.00	11.30
United States	6.90	11.00	10.80

(D) Withheld to avoid disclosing data for individual operations.

(S) Insufficient number of reports to establish an estimate.

Prices Received for Spring Wheat – States and United States: December 2014 with Comparisons

State	December 2013	November 2014	Preliminary December 2014
	(dollars per bushel)	(dollars per bushel)	(dollars per bushel)
Colorado	(S)	(D)	(S)
Idaho	(D)	7.05	7.10
Minnesota	6.54	5.39	5.95
Montana	6.87	6.58	6.96
North Dakota	6.17	5.33	5.87
Oregon	7.27	7.61	(D)
South Dakota	6.60	5.62	6.14
Washington	7.30	7.43	7.62
United States	6.55	5.74	6.21

(D) Withheld to avoid disclosing data for individual operations.

(S) Insufficient number of reports to establish an estimate.

Prices Received for All Barley – States and United States: December 2014 with Comparisons

State	December 2013	November 2014	Preliminary December 2014
	(dollars per bushel)	(dollars per bushel)	(dollars per bushel)
California	(S)	(D)	(S)
Colorado	(D)	(D)	(S)
Idaho	6.44	5.04	(D)
Minnesota	(D)	5.38	(S)
Montana	6.17	4.98	5.17
North Dakota	6.37	5.40	5.27
Oregon	3.95	(D)	(D)
Utah	3.84	(D)	(D)
Washington	3.59	3.18	3.60
Wyoming	(D)	(D)	(D)
United States	6.11	5.12	5.17

(D) Withheld to avoid disclosing data for individual operations.

(S) Insufficient number of reports to establish an estimate.

Prices Received for Malting Barley – States: December 2014 with Comparisons

State	December 2013	November 2014	Preliminary December 2014
	(dollars per bushel)	(dollars per bushel)	(dollars per bushel)
Idaho	6.64	5.82	(D)
Minnesota	(D)	5.38	(S)
Montana	6.26	5.69	5.89
North Dakota	6.55	5.60	5.54
Wyoming	(D)	(D)	(D)

(D) Withheld to avoid disclosing data for individual operations.

(S) Insufficient number of reports to establish an estimate.

Prices Received for Feed Barley – States: December 2014 with Comparisons

State	December 2013	November 2014	Preliminary December 2014
	(dollars per bushel)	(dollars per bushel)	(dollars per bushel)
Idaho	3.35	2.93	(D)
Minnesota	(D)	(S)	(S)
Montana	3.47	2.25	(D)
North Dakota	4.29	2.95	2.80
Wyoming	(D)	(D)	(D)

(D) Withheld to avoid disclosing data for individual operations.

(S) Insufficient number of reports to establish an estimate.

Prices Received for Corn – States and United States: December 2014 with Comparisons

State	December 2013	November 2014	Preliminary December 2014
	(dollars per bushel)	(dollars per bushel)	(dollars per bushel)
Colorado	4.58	4.05	3.96
Illinois	4.58	3.61	3.70
Indiana	4.37	3.50	3.90
Iowa	4.32	3.63	3.80
Kansas	4.43	3.75	3.90
Kentucky	4.74	3.61	3.90
Michigan	4.03	3.57	3.80
Minnesota	4.51	3.51	3.70
Missouri	4.48	3.25	3.50
Nebraska	4.42	3.70	3.90
North Carolina	4.72	4.34	4.45
North Dakota	4.07	3.27	3.29
Ohio	4.31	3.59	3.90
Pennsylvania	4.16	3.75	4.19
South Dakota	3.96	3.24	3.44
Tennessee	4.73	3.94	4.20
Texas	5.08	4.31	4.22
Wisconsin	4.31	3.61	3.75
United States	4.41	3.58	3.77

Prices Received for Soybeans – States and United States: December 2014 with Comparisons

State	December 2013	November 2014	Preliminary December 2014
	(dollars per bushel)	(dollars per bushel)	(dollars per bushel)
Arkansas	13.20	10.80	10.60
Illinois	13.20	10.30	10.20
Indiana	13.10	10.20	10.40
Iowa	13.00	10.20	10.10
Kansas	12.80	9.73	9.74
Kentucky	13.20	10.50	10.50
Louisiana	(D)	10.90	11.20
Michigan	13.00	10.10	10.10
Minnesota	12.70	9.95	9.85
Mississippi	13.20	11.10	10.80
Missouri	13.10	9.99	10.00
Nebraska	12.80	9.75	9.80
North Carolina	12.90	10.20	10.10
North Dakota	12.60	9.46	9.53
Ohio	13.10	10.40	10.30
South Dakota	12.70	9.52	9.66
Tennessee	13.20	10.70	10.70
Wisconsin	13.10	10.10	10.20
United States	13.00	10.20	10.20

(D) Withheld to avoid disclosing data for individual operations.

Prices Received for Oats – States and United States: December 2014 with Comparisons

State	December 2013	November 2014	Preliminary December 2014
	(dollars per bushel)	(dollars per bushel)	(dollars per bushel)
Illinois	(S)	(D)	(S)
Iowa	4.03	3.37	3.30
Michigan	2.82	3.27	(D)
Minnesota	3.31	3.00	3.00
Montana	(S)	(D)	(S)
Nebraska	(D)	(D)	(D)
New York	(D)	(D)	(D)
North Dakota	3.10	2.63	(D)
Oregon	(S)	(D)	(S)
Pennsylvania	3.77	3.55	(D)
South Dakota	3.47	3.18	3.02
Texas	(S)	(S)	(S)
Wisconsin	4.19	3.89	3.40
United States	3.59	2.96	3.05

(D) Withheld to avoid disclosing data for individual operations.

(S) Insufficient number of reports to establish an estimate.

Prices Received for Sorghum Grain – States and United States: December 2014 with Comparisons

State	December 2013	November 2014	Preliminary December 2014
	(dollars per cwt)	(dollars per cwt)	(dollars per cwt)
Arkansas	(D)	7.34	7.40
Illinois	7.49	6.17	(S)
Kansas	7.31	6.54	7.39
Louisiana	(D)	7.86	(D)
Missouri	8.14	6.12	7.00
Nebraska	7.18	6.68	7.60
Oklahoma	7.27	6.83	7.80
Texas	7.75	6.84	7.70
United States	7.49	6.59	7.49

(D) Withheld to avoid disclosing data for individual operations.

(S) Insufficient number of reports to establish an estimate.

Prices Received for Dry Beans – States and United States: December 2014 with Comparisons

State	December 2013	November 2014	Preliminary December 2014
	(dollars per cwt)	(dollars per cwt)	(dollars per cwt)
California	55.20	70.50	76.20
Colorado	38.90	23.50	(D)
Idaho	(D)	31.90	29.40
Michigan	42.70	33.90	(D)
Minnesota	(D)	(S)	(S)
Nebraska	43.90	25.40	(D)
North Dakota	36.40	28.10	29.70
United States	39.80	30.50	34.00

(D) Withheld to avoid disclosing data for individual operations.

(S) Insufficient number of reports to establish an estimate.

Prices Received for Peanuts (in shell) – States and United States: December 2014 with Comparisons

State	December 2013	November 2014	Preliminary December 2014
	(dollars per pound)	(dollars per pound)	(dollars per pound)
Alabama	0.194	0.181	0.207
Florida	0.242	0.222	0.213
Georgia	0.223	0.203	0.199
Mississippi	0.194	0.204	0.195
New Mexico	(S)	(S)	(S)
North Carolina	0.254	(D)	0.259
Oklahoma	0.244	0.313	0.096
South Carolina	0.247	0.207	0.119
Texas	0.352	0.277	0.206
Virginia	(S)	0.250	(S)
United States	0.246	0.214	0.206

(D) Withheld to avoid disclosing data for individual operations.

(S) Insufficient number of reports to establish an estimate.

Prices Received for Sunflower – States and United States: December 2014 with Comparisons

State	December 2013	November 2014	Preliminary December 2014
	(dollars per cwt)	(dollars per cwt)	(dollars per cwt)
Colorado	(D)	(D)	(S)
Kansas	20.40	20.00	21.60
Minnesota	(D)	(D)	(S)
North Dakota	22.30	20.50	21.80
South Dakota	18.10	17.90	(D)
United States	18.80	19.80	20.50

(D) Withheld to avoid disclosing data for individual operations.

(S) Insufficient number of reports to establish an estimate.

Prices Received for Canola – States and United States: December 2014 with Comparisons

State	December 2013	November 2014	Preliminary December 2014
	(dollars per cwt)	(dollars per cwt)	(dollars per cwt)
Minnesota	(D)	(D)	(S)
North Dakota	20.60	17.10	16.80
United States	20.70	17.10	16.80

(D) Withheld to avoid disclosing data for individual operations.

(S) Insufficient number of reports to establish an estimate.

Prices Received for Flaxseed – States and United States: December 2014 with Comparisons

State	December 2013	November 2014	Preliminary December 2014
	(dollars per bushel)	(dollars per bushel)	(dollars per bushel)
North Dakota	13.40	11.60	11.50
United States	13.40	11.60	11.50

Prices Received for Hops – States and United States: 2012 through 2014

State	2012	2013	Preliminary 2014
	(dollars per pound)	(dollars per pound)	(dollars per pound)
Idaho	2.69	2.62	2.75
Oregon	3.91	3.76	4.34
Washington	3.10	3.37	3.89
United States	3.17	3.35	3.83

Prices Received for Upland Cotton and Cottonseed – States and United States: December 2014 with Comparisons

[Cottonseed marketing year August - February. Beginning with the 2014 marketing year, preliminary prices will no longer be published]

State	Cotton, Upland			Cottonseed ¹		
	December 2013	November 2014	Preliminary December 2014	November 2013	October 2014	November 2014
	(dollars per pound)	(dollars per pound)	(dollars per pound)	(dollars per ton)	(dollars per ton)	(dollars per ton)
Alabama	0.803	0.585	0.593	218.00	171.00	184.00
Arizona	0.805	0.624	(S)	272.00	326.00	229.00
Arkansas	0.761	0.616	(D)	260.00	224.00	216.00
California	0.921	(D)	(S)	375.00	361.00	314.00
Georgia	0.823	0.682	0.649	201.00	172.00	173.00
Louisiana	0.758	0.585	0.575	244.00	196.00	182.00
Mississippi	0.792	0.606	0.627	244.00	197.00	192.00
North Carolina	0.805	0.638	0.622	236.00	200.00	198.00
Tennessee	0.794	0.655	0.591	240.00	190.00	228.00
Texas	0.748	0.609	0.611	250.00	179.00	183.00
United States	0.772	0.622	0.615	248.00	201.00	198.00

(D) Withheld to avoid disclosing data for individual operations.

(S) Insufficient number of reports to establish an estimate.

¹ Preliminary price discontinued beginning September 2014.

Prices Received and Farm Marketings for Upland Cotton and Rice – California, Other States, and United States: December 2014 with Comparisons

Item	December 2013	November 2014	Preliminary December 2014
Cotton, Upland			
United States			
Average Pricedollars/pound	0.772	0.622	0.615
Marketings ¹1,000 bales	3,261	1,396	(NA)
Rice, all			
United States			
Average Pricedollars/cwt	16.30	14.40	14.60
Marketings ²1,000 cwt	11,552	15,312	(NA)
Rice, long			
United States			
Average Pricedollars/cwt	15.50	12.50	12.70
Marketings ²1,000 cwt	8,147	9,182	(NA)
Rice, medium and short			
California			
Average Pricedollars/cwt	(NA)	18.40	20.80
Other States ³			
Average Pricedollars/cwt	(NA)	15.10	15.30
United States			
Average Pricedollars/cwt	18.40	17.30	18.70
Marketings ²1,000 cwt	3,405	6,130	(NA)

(NA) Not available.

¹ Marketings based on a survey of cotton buyers in the major producing States - Alabama, Arizona, Arkansas, California, Georgia, Louisiana, Mississippi, North Carolina, Tennessee, and Texas.

² Purchases by private firms and rice (rough equivalent) shipped by cooperatives.

³ Other States include Arkansas, Louisiana, Mississippi, Missouri, and Texas.

Prices Received for Hay by Type – States and United States: December 2014 with Comparisons

State	All hay			Alfalfa hay			Other hay		
	December 2013	November 2014	Preliminary December 2014	December 2013	November 2014	Preliminary December 2014	December 2013	November 2014	Preliminary December 2014
	(dollars per ton)	(dollars per ton)	(dollars per ton)	(dollars per ton)	(dollars per ton)	(dollars per ton)	(dollars per ton)	(dollars per ton)	(dollars per ton)
Arizona	190.00	180.00	180.00	190.00	180.00	180.00	190.00	220.00	220.00
California	192.00	211.00	201.00	198.00	225.00	215.00	170.00	165.00	155.00
Colorado	230.00	215.00	205.00	230.00	215.00	205.00	230.00	210.00	200.00
Idaho	170.00	218.00	199.00	170.00	220.00	200.00	170.00	170.00	170.00
Illinois	162.00	162.00	164.00	185.00	180.00	185.00	125.00	115.00	125.00
Iowa	169.00	144.00	133.00	195.00	153.00	153.00	130.00	104.00	104.00
Kansas	161.00	140.00	139.00	192.00	157.00	154.00	113.00	99.00	92.00
Kentucky	125.00	110.00	118.00	200.00	190.00	195.00	105.00	90.00	95.00
Michigan	161.00	166.00	159.00	180.00	185.00	180.00	145.00	140.00	140.00
Minnesota	181.00	130.00	132.00	205.00	160.00	154.00	136.00	100.00	94.00
Missouri	107.00	87.00	86.00	210.00	170.00	170.00	80.00	70.00	70.00
Montana	143.00	128.00	123.00	150.00	130.00	125.00	110.00	120.00	115.00
Nebraska	141.00	91.00	94.00	153.00	96.00	98.00	120.00	79.00	85.00
Nevada	196.00	236.00	235.00	196.00	235.00	235.00	180.00	250.00	230.00
New Mexico	234.00	234.00	229.00	245.00	245.00	240.00	180.00	155.00	150.00
New York	156.00	151.00	137.00	200.00	195.00	212.00	155.00	150.00	135.00
North Dakota	99.00	82.00	83.00	104.00	83.00	85.00	68.00	59.00	59.00
Ohio	175.00	146.00	141.00	200.00	185.00	175.00	155.00	120.00	115.00
Oklahoma	101.00	152.00	147.00	203.00	185.00	188.00	94.00	103.00	96.00
Oregon	188.00	223.00	213.00	190.00	240.00	240.00	185.00	200.00	180.00
Pennsylvania	179.00	208.00	221.00	200.00	223.00	240.00	174.00	200.00	208.00
South Dakota	138.00	111.00	113.00	145.00	117.00	119.00	117.00	90.00	94.00
Texas	101.00	96.00	93.00	234.00	234.00	232.00	82.00	73.00	74.00
Utah	170.00	185.00	185.00	170.00	185.00	185.00	145.00	150.00	150.00
Washington	204.00	216.00	213.00	195.00	215.00	215.00	225.00	220.00	210.00
Wisconsin	190.00	157.00	150.00	205.00	173.00	165.00	135.00	95.00	95.00
Wyoming	180.00	137.00	136.00	185.00	140.00	140.00	160.00	125.00	125.00
United States	163.00	164.00	159.00	186.00	184.00	182.00	133.00	124.00	119.00

Prices Received for Apples – States and United States: December 2014 with Comparisons

[Equivalent packinghouse-door returns for California, Michigan, New York, and Washington. Prices at point of first sale for other States]

State	Apples, fresh use		
	December 2013	November 2014	Preliminary December 2014
	(dollars per pound)	(dollars per pound)	(dollars per pound)
California	(NA)	(NA)	(NA)
Michigan	(NA)	0.365	0.380
New York	(NA)	0.340	0.310
Ohio	(NA)	(NA)	(NA)
Pennsylvania	(NA)	0.350	0.380
Virginia	(NA)	0.280	0.270
Washington	(NA)	0.325	0.308
United States	(NA)	0.330	0.321

(NA) Not available.

Prices Received for Citrus Fruits by Utilization – States and United States: December 2013

[Net pounds per box: grapefruit in California-80, Florida-85, Texas-80; lemons-80; oranges in California-80, Florida-90, Texas-85; tangelos-90; tangerines and mandarins in Arizona and California-80, Florida-95]

Commodity, State, and type	FOB packed fresh	Equivalent returns					
		Packinghouse door			On-tree		
		All	Fresh	Process	All	Fresh	Process
	(dollars per box)	(dollars per box)	(dollars per box)	(dollars per box)	(dollars per box)	(dollars per box)	(dollars per box)
Grapefruit							
California ¹	17.60	10.81	10.81	(D)	8.59	8.59	(D)
Florida	25.00	10.01	14.22	4.06	7.40	11.98	0.93
White	28.40	10.98	17.45	5.85	8.44	15.25	3.05
Colored	24.40	9.77	13.65	3.40	7.14	11.40	0.15
Texas	34.00	16.53	22.40	1.60	14.96	20.79	0.14
United States	23.90	10.09	13.71	4.06	7.51	11.47	0.93
Lemons							
Arizona	(D)	(D)	(D)	(D)	(D)	(D)	(D)
California	45.50	30.03	36.24	(D)	24.24	30.22	(D)
United States	45.80	29.27	36.55	(D)	23.52	30.53	(D)
Oranges							
California	27.70	14.75	18.53	(D)	12.16	15.97	(D)
Navel and miscellaneous	27.70	14.75	18.53	(D)	12.16	15.97	(D)
Florida	27.20	8.14	16.05	7.67	5.64	13.45	5.17
Early and mids	27.20	8.14	16.05	7.67	5.64	13.45	5.17
United States	27.60	9.45	17.98	7.28	6.93	15.41	4.77
Tangelos							
Florida	26.90	11.51	15.25	6.85	8.74	12.50	4.05
United States	26.90	11.51	15.25	6.85	8.74	12.50	4.05
Tangerines and mandarins							
Arizona	(D)	(D)	(D)	(D)	(D)	(D)	(D)
California	(D)	(D)	(D)	(D)	(D)	(D)	(D)
Florida	37.70	17.36	24.30	6.95	13.47	20.75	2.55
United States	43.60	27.61	34.25	2.88	24.41	31.37	-1.49

(D) Withheld to avoid disclosing data for individual operations.

¹ Some processed sales included in fresh sales.

Prices Received for Citrus Fruits by Utilization – States and United States: November 2014

[Net pounds per box: grapefruit in California-80, Florida-85, Texas-80; lemons-80; oranges in California-80, Florida-90, Texas-85; tangelos-90; tangerines and mandarins in Arizona and California-80, Florida-95]

Commodity, State, and type	FOB packed fresh	Equivalent returns					
		Packinghouse door			On-tree		
		All	Fresh	Process	All	Fresh	Process
	(dollars per box)	(dollars per box)	(dollars per box)	(dollars per box)	(dollars per box)	(dollars per box)	(dollars per box)
Grapefruit							
California ¹	16.60	9.67	9.67	(D)	7.41	7.41	(D)
Florida	24.70	10.98	13.96	3.14	8.48	11.72	-0.06
White	27.50	11.08	16.55	2.75	8.49	14.35	-0.45
Colored	24.20	10.96	13.45	3.30	8.48	11.20	0.10
Texas	29.60	14.97	18.00	1.60	13.39	16.39	0.14
United States	24.40	11.46	14.04	2.95	9.13	11.90	-0.03
Lemons							
Arizona	(D)	(D)	(D)	(D)	(D)	(D)	(D)
California	56.10	39.53	46.65	(D)	33.59	40.51	(D)
United States	57.10	39.48	47.60	(D)	33.57	41.46	(D)
Oranges							
California	31.30	19.26	22.00	(D)	16.63	19.39	(D)
Navel and miscellaneous	32.10	20.15	22.75	0.38	17.52	20.14	-2.40
Valencia	(D)	(D)	(D)	(D)	(D)	(D)	(D)
Florida	34.00	13.05	22.85	5.40	10.51	20.25	2.90
Early and mids	34.00	13.05	22.85	5.40	10.51	20.25	2.90
United States	31.80	17.49	22.14	3.77	14.88	19.54	1.17
Tangelos	(S)	(S)	(S)	(S)	(S)	(S)	(S)
Florida	(S)	(S)	(S)	(S)	(S)	(S)	(S)
United States	(S)	(S)	(S)	(S)	(S)	(S)	(S)
Tangerines and mandarins							
Arizona	(D)	(D)	(D)	(D)	(D)	(D)	(D)
California	(D)	(D)	(D)	(D)	(D)	(D)	(D)
Florida	40.40	20.36	27.00	7.45	16.52	23.45	3.05
United States	52.00	31.87	42.24	2.53	28.52	39.28	-1.90

(D) Withheld to avoid disclosing data for individual operations.

(S) Insufficient number of reports to establish an estimate.

¹ Some processed sales included in fresh sales.

Prices Received for Citrus Fruits by Utilization – States and United States: December 2014

[Net pounds per box: grapefruit in California-80, Florida-85, Texas-80; lemons-80; oranges in California-80, Florida-90, Texas-85; tangelos-90; tangerines and mandarins in Arizona and California-80, Florida-95]

Commodity, State, and type	FOB packed fresh	Equivalent returns					
		Packinghouse door			On-tree		
		All	Fresh	Process	All	Fresh	Process
	(dollars per box)	(dollars per box)	(dollars per box)	(dollars per box)	(dollars per box)	(dollars per box)	(dollars per box)
Grapefruit							
California ¹	17.60	10.67	10.67	(D)	8.41	8.41	(D)
Florida	23.80	9.50	13.01	3.81	6.89	10.76	0.61
White	26.10	8.36	15.15	4.20	5.54	12.95	1.00
Colored	23.50	9.74	12.75	3.65	7.18	10.50	0.45
Texas	25.20	10.39	13.60	1.60	8.82	11.99	0.14
United States	23.50	9.79	12.93	3.39	7.44	10.85	0.52
Lemons							
Arizona	(D)	(D)	(D)	(D)	(D)	(D)	(D)
California	51.10	31.58	41.65	(D)	25.78	35.51	(D)
United States	51.70	31.26	42.24	(D)	25.48	36.10	(D)
Oranges							
California	30.90	19.71	21.55	(D)	17.08	18.94	(D)
Navel and miscellaneous	30.90	19.71	21.55	(D)	17.08	18.94	(D)
Florida	34.60	9.57	23.45	8.45	7.06	20.85	5.95
Early and mids	34.60	9.57	23.45	8.45	7.06	20.85	5.95
United States	31.60	12.15	21.92	8.20	9.61	19.31	5.69
Tangelos							
Florida	27.10	12.06	15.45	6.35	9.29	12.70	3.55
United States	27.10	12.06	15.45	6.35	9.29	12.70	3.55
Tangerines and mandarins							
Arizona	(D)	(D)	(D)	(D)	(D)	(D)	(D)
California	(D)	(D)	(D)	(D)	(D)	(D)	(D)
Florida	42.60	21.49	29.20	7.35	17.64	25.65	2.95
United States	51.80	33.95	42.41	2.44	30.71	39.49	-1.99

(D) Withheld to avoid disclosing data for individual operations.

¹ Some processed sales included in fresh sales.

Prices Received for Potatoes – States and United States: December 2014 with Comparisons

State	December 2013	November 2014	Preliminary December 2014
	(dollars per cwt)	(dollars per cwt)	(dollars per cwt)
California			
Spring	(S)	(S)	(S)
Fall	10.20	9.35	9.55
All ¹	10.20	9.35	9.55
Colorado			
Fresh ²	9.80	9.90	(D)
All ¹	8.95	9.05	9.05
Florida	(S)	(S)	(S)
Idaho			
Fresh ²	7.15	5.90	(D)
Processing	7.55	6.80	(D)
All ¹	7.35	6.45	6.55
Maine	10.70	(D)	(D)
Michigan	11.90	(D)	(D)
Minnesota	9.10	(D)	(D)
New York	12.50	(D)	(D)
North Carolina	(S)	(S)	(S)
North Dakota			
Fresh ²	13.80	(D)	(D)
Processing	9.45	(D)	(D)
All ¹	10.70	(D)	(D)
Oregon	7.45	6.90	7.15
Texas	(S)	(S)	(S)
Virginia	(S)	(S)	(S)
Washington			
Processing	8.10	6.85	(D)
All ¹	9.00	7.05	7.25
Wisconsin			
Fresh ²	10.00	(D)	(D)
Processing	10.60	(D)	(D)
All ¹	10.30	(D)	(D)
United States			
Fresh ²	9.87	8.37	(D)
Processing	8.64	7.75	(D)
All ¹	9.02	7.99	8.25

(D) Withheld to avoid disclosing data for individual operations.

(S) Insufficient number of reports to establish an estimate.

¹ Average price of potatoes sold for all uses, including table stock, processing, seed, and livestock feed.

² Fresh market prices only. Includes table stock prices.

Prices Received for All Milk – States and United States: December 2014 with Comparisons

[Before deduction for hauling. Includes quality, quantity, and other premiums. Excludes hauling subsidies]

State	December 2013		November 2014		Preliminary December 2014	
	Price (dollars per cwt)	Fat test (percent)	Price (dollars per cwt)	Fat test (percent)	Price (dollars per cwt)	Fat test (percent)
Arizona	21.50	3.62	21.80	3.54	19.80	3.55
California	20.81	3.88	20.53	3.81	17.90	3.87
Colorado	21.90	3.64	23.40	3.66	21.00	3.65
Florida	25.60	3.62	27.30	3.70	25.20	3.68
Idaho	21.00	3.93	22.40	3.90	20.40	3.92
Illinois	22.40	3.92	24.10	3.91	21.10	3.92
Indiana	22.60	3.88	23.50	3.85	21.20	3.87
Iowa	22.30	3.91	23.90	3.83	21.20	3.84
Kansas	22.30	3.91	23.40	3.88	20.90	3.93
Michigan	22.10	3.85	23.00	3.77	20.90	3.79
Minnesota	22.00	4.01	24.40	4.02	21.00	4.01
New Mexico	20.90	3.71	21.10	3.73	19.10	3.70
New York	23.20	3.87	23.80	3.89	21.00	3.88
Ohio	22.80	3.98	23.60	3.88	21.30	3.90
Oregon	23.20	4.08	24.90	4.00	22.60	4.05
Pennsylvania	23.70	3.86	24.30	3.83	21.60	3.85
South Dakota ¹	22.90	4.12	24.50	4.08	21.40	4.09
Texas	22.80	4.00	23.90	4.00	21.40	4.00
Utah	21.50	3.95	23.80	3.84	21.30	3.85
Vermont	23.40	3.90	24.20	3.91	21.70	3.91
Virginia	25.20	3.80	26.30	3.82	24.00	3.91
Washington	22.90	4.08	22.70	4.00	20.70	4.05
Wisconsin	22.00	3.87	24.40	3.89	20.80	3.87
United States	22.00	3.89	23.00	3.86	20.30	3.87

¹ Beginning in March 2014, South Dakota was added and Missouri was removed from the monthly price program.

Prices Received for Milk Cows – States and United States: October 2014 with Comparisons

[Animals sold for dairy herd replacement only. Quarterly United States milk cow prices are based on revised milk cow inventory]

State	October 2013 (dollars per head)	July 2014 (dollars per head)	October 2014 (dollars per head)
Arizona	1,500	2,100	2,200
California	1,300	2,000	2,200
Colorado	1,520	2,200	2,260
Florida	1,550	1,900	2,190
Idaho	1,350	2,000	2,150
Illinois	1,420	1,860	2,050
Indiana	1,450	1,850	2,050
Iowa	1,380	1,990	2,100
Kansas	1,350	2,050	2,100
Michigan	1,600	1,950	2,100
Minnesota	1,350	1,950	2,070
New Mexico	1,440	1,950	2,100
New York	1,420	1,800	2,010
Ohio	1,400	1,800	1,950
Oregon	1,300	1,900	2,100
Pennsylvania	1,450	1,880	2,000
South Dakota ¹	1,420	1,950	2,050
Texas	1,450	2,000	2,100
Utah	1,290	1,850	2,000
Vermont	1,510	1,880	2,030
Virginia	1,490	1,890	2,100
Washington	1,300	1,950	2,050
Wisconsin	1,490	2,100	2,220
United States	1,410	1,970	2,120

¹ Beginning in March 2014, South Dakota was added and Missouri was removed from the monthly price program.

Commodity Parity Prices and Price as Percent of Parity Price – United States: December 2014 with Comparisons

[Parity prices are computed under the provisions of Title III, Subtitle a, Section 301 (a) of the Agricultural Adjustment Act of 1938 as amended by the Agricultural Acts of 1948, 1949, and 1956. See January *Agricultural Prices* for details on adjusted base price and parity price computations. Parity data not available for blank cells. Primary source of data for livestock and milk prices is United States Department of Agriculture's Agricultural Marketing Service]

Commodity and unit	Adjusted base price	Parity price			Price as percent of parity		
		December 2013	November 2014	December 2014	December 2013	November 2014	December 2014
	(dollars)	(dollars)	(dollars)	(dollars)	(percent)	(percent)	(percent)
Basic commodities							
All wheat bushel	0.616	18.00	18.40	18.50	37	33	35
Rice cwt	1.32	46.80	39.40	39.60	35	37	37
Corn bushel	0.442	12.30	13.20	13.30	36	27	28
Cotton							
Upland pound	0.066	2.04	1.97	1.98	38	32	31
American Pima pound	0.137	3.77	4.09	4.11	33	42	42
Peanuts pound	0.024	0.765	0.716	0.720	32	30	29
Designated nonbasic							
All milk, to plants ¹ cwt	1.81	49.60	54.00	54.30	44	40	37
Honey, extracted ² pound	0.147	4.00	4.39	4.41	53	48	48
Wool and mohair							
Wool pound	0.114	3.03	3.40	3.42	50	43	42
Mohair pound	0.361	9.52	10.80	10.80	41	39	39
Other nonbasic							
Apples, fresh ³ pound	0.034	0.907	1.010	1.020	43	33	31
Barley bushel	0.452	12.60	13.50	13.60	48	38	38
Canola cwt	1.870	53.30	55.80	56.10	39	31	30
Cottonseed ton	19.10	504.00	570.00	573.00	49	32	35
Dry edible beans cwt	3.20	85.30	95.50	95.90	47	32	35
Flaxseed bushel	1.150	31.50	34.30	34.50	43	34	33
Oats bushel	0.284	7.51	8.48	8.51	48	35	36
Potatoes cwt	0.835	23.30	24.90	25.00	39	32	33
Sorghum grain cwt	0.748	21.50	22.30	22.40	35	30	33
Soybeans bushel	1.060	29.20	31.60	31.80	45	32	32
Sunflower, all cwt	2.12	59.50	63.30	63.60	32	31	32
Citrus (equivalent on-tree)							
Grapefruit box	0.724	19.80	21.60	21.70	38	42	34
Lemons box	1.36	37.40	40.60	40.80	63	83	62
Oranges box	0.769	20.10	23.00	23.10	34	65	42
Tangerines box	1.61	42.20	48.10	48.30	58	59	64
Livestock and poultry							
Beef cattle cwt	10.40	283.00	310.00	312.00	46	54	54
Calves cwt	14.30	388.00	427.00	429.00	51	71	71
Hogs cwt	5.75	155.00	172.00	172.00	40	39	39
Eggs ¹ dozen	0.092	2.52	2.75	2.76	45	48	54
Turkeys, live pound	0.060	1.620	1.790	1.800	42	46	41

¹ Seasonally adjusted price as percentage of parity price.

² Wholesale extracted. Adjusted base price derived from state annual averages prices weighted by production. For 1982 through 1985 the national averages are the support prices.

³ Equivalent packinghouse-door returns for California, New York, Oregon, and Washington. Price at point of first sale for other states.

Commodity Parity Prices – United States: December 2014 with Comparisons

[Parity prices are computed under the provisions of Title III, Subtitle a, Section 301 (a) of the Agricultural Adjustment Act of 1938 as amended by the Agricultural Acts of 1948, 1949, and 1956. See January *Agricultural Prices* for details on adjusted base price and parity price computations]

Commodity and unit	Adjusted base price	Parity price			
		December 2013	November 2014	December 2014	
	(dollars)	(dollars)	(dollars)	(dollars)	
Field crops and miscellaneous					
Hops	pound	0.318	8.59	9.49	9.53
Mustard seed	cwt	2.99	80.80	89.30	89.60
Rapeseed	cwt	2.29	63.80	68.40	68.70
Rye	bushel	0.582	15.20	17.40	17.40
Safflower	cwt	2.09	57.80	62.40	62.70
Spearmint oil	pound	1.60	42.50	47.80	48.00
Sweet potatoes	cwt	2.09	58.90	62.40	62.70
Tobacco					
Flue-cured, 11-14	pound	0.185	5.24	5.52	5.55
Fire-cured, 21-23	pound	0.266	7.57	7.94	7.97
Burley, 31	pound	0.187	5.33	5.58	5.61
Maryland, 32	pound	0.169	4.73	5.04	5.07
Dark air-cured, 35-37	pound	0.240	6.80	7.16	7.20
Pennsylvania seedleaf, 41	pound	0.182	4.99	5.43	5.46
Cigar binder, 51	pound	0.637	17.30	19.00	19.10
Noncitrus fruit					
Apples, processing ¹	ton	18.10	470.00	540.00	543.00
Apricots					
Fresh ²	ton	116.00	3,150.00	3,460.00	3,480.00
Dried (California)	ton	262.00	7,140.00	7,820.00	7,850.00
Avocados ²	ton	185.00	5,360.00	5,520.00	5,550.00
Cherries					
Sweet	ton	216.00	5,810.00	6,450.00	6,480.00
Tart	pound	0.033	0.935	0.985	0.989
Cranberry ³	barrel	4.61	133.00	138.00	138.00
Dates (California) ²	ton	162.00	4,560.00	4,840.00	4,860.00
Grapes					
Raisin variety	ton	142.00	3,770.00	4,240.00	4,260.00
Other dried	ton	65.50	1,750.00	1,960.00	1,960.00
Kiwifruit	ton	89.50	2,510.00	2,670.00	2,680.00
Nectarines, fresh (California) ²	ton	57.50	1,550.00	1,720.00	1,720.00
Olives, canning (California) ³	ton	93.80	2,490.00	2,800.00	2,810.00

See footnote(s) at end of table.

--continued

Commodity Parity Prices – United States: December 2014 with Comparisons (continued)

[Parity prices are computed under the provisions of Title III, Subtitle a, Section 301 (a) of the Agricultural Adjustment Act of 1938 as amended by the Agricultural Acts of 1948, 1949, and 1956. See January *Agricultural Prices* for details on adjusted base price and parity price computations]

Commodity and unit	Adjusted base price	Parity price		
		December 2013	November 2014	December 2014
	(dollars)	(dollars)	(dollars)	(dollars)
Noncitrus fruit - continued				
Papayas (Hawaii)pound	0.042	1.08	1.25	1.26
Peaches				
Fresh ⁴ ton	83.40	2,270.00	2,490.00	2,500.00
Dried (California) ton	47.80	1,370.00	1,430.00	1,430.00
Processing, excludes dried				
Clingstone (California) ³ ton	33.00	896.00	985.00	989.00
Pears				
Fresh ⁴ ton	56.90	1,550.00	1,700.00	1,710.00
Dried (California) ¹ ton	141.00	4,250.00	4,210.00	4,230.00
Plums (California)				
Fresh, equivalent on-tree ton	60.10	1,650.00	1,790.00	1,800.00
Prunes, dried (California) ¹ ton	152.00	4,050.00	4,540.00	4,560.00
Prunes and plums				
Fresh, excludes California ⁵ ton	62.80	1,750.00	1,870.00	1,880.00
Processing, excludes dried ¹ ton	24.50	674.00	731.00	735.00
Tree nuts ⁶				
Almondspound	0.227	5.98	6.78	6.81
Hazelnuts ton	208.00	5,410.00	6,210.00	6,240.00
Pistachiospound	0.208	5.50	6.21	6.24
Walnuts ton	203.00	5,240.00	6,060.00	6,090.00
Vegetables, fresh ⁷				
Carrots ⁸ cwt	2.66	72.80	79.40	79.70
Cauliflower ⁸ cwt	4.11	114.00	123.00	123.00
Celery ⁸ cwt	2.05	55.00	61.20	61.50
Honeydew melons cwt	1.97	55.80	58.80	59.10
Lettuce cwt	2.16	59.20	64.50	64.80
Onions ⁸ cwt	1.34	40.00	40.00	40.20
Tomatoes cwt	4.33	122.00	129.00	130.00

¹ Equivalent returns at processing plant door.

² Equivalent returns at packinghouse door.

³ Equivalent returns for bulk fruit at first delivery point.

⁴ Equivalent packinghouse-door returns for California, New York (apples only), Oregon (except peaches), and Washington. Price at point of first sale for other states.

⁵ Based on "as sold" prices for fresh fruit in all states.

⁶ Prices In-Shell basis except almonds which are shelled basis.

⁷ FOB shipping point prices.

⁸ Includes some processing.

Reliability of Prices Received Estimates

Definition: Prices received represent sales from producers to first buyers. They include all grades and qualities. The average commodity price from the survey multiplied by the total quantity marketed theoretically should give the total cash receipts for the commodity.

Survey procedures: Primary sales data used to determine grain prices were obtained from probability samples of about 1900 mills and elevators. These procedures ensure that virtually all grain moving into commercial channels has a chance of being included in the survey. Generally, States surveyed account for 90 percent or more of total United States production. Livestock prices are obtained from packers, stockyards, auctions, dealers, and market check data from AMS-USDA, private marketing organizations, and state commodity groups and agencies. Inter-farm sales of grain and livestock are not included since they represent very small percentages of the total sales. Grain marketed for seed is also excluded. Fruit and vegetable prices are obtained from sample surveys and market check data from AMS-USDA, private marketing organizations, state agencies, and universities.

Summary and estimation procedures: Survey quantities sold are expanded by strata to state levels and used to weight average strata prices to a state average. State prices are then weighted to a United States price based on expanded sales. Recommendations are prepared by the Regional Field Offices and reviewed by the Agricultural Statistics Board in Washington, D.C. State recommendations are reviewed for reasonableness with survey data, other States, and recent historic estimates.

Revisions: For most items, the current month's preliminary price represents a 3-5 day period around the 15th of the month. Previous month's prices represent actual dollars received for quantities sold during the entire month. Revisions are published in monthly issues of *Agricultural Prices*.

Reliability: United States price estimates based on probability surveys generally have a sampling error of less than one percent for the major commodities such as corn, wheat, soybeans, cotton, and rice. Current methods of summarization for non-probability commodities are not designed directly to calculate sampling errors. However, analytical measures approximate the United States relative sampling errors at around five percent. Any non-sampling errors are attributed to such things as the inability to obtain correct information, differences in interpreting questions or definitions, mistakes in coding or processing the data, etc. Efforts are made at each step in the survey process to minimize these non-sampling errors.

After the Council on Food, Agricultural and Resource Economics (C-FARE) 2009 program review which included changes in farm production practices, plans were implemented to make necessary program improvements in the agricultural price program. The index group structure for prices received was modified to maintain a more universal structure and consistency with the required 1910-1914 series. Modifications implemented January 2014 include the following:

- Update the current 1990-1992 base reference period to 2011,
- Link the 1910-1914 series to the updated base reference period, 2011,
- Create index groups used universally by researchers, data users, and policymakers,
- Re-classify agricultural commodities into the index groups,
- Expand the commodity coverage for vegetable, melon, non-citrus, and tree nuts,
- Update monthly market weights, and
- Adjust (normalization) current five year moving average cash receipts and farm input cost weights.

Prices Paid by Farmers

The December Index of Prices Paid for Commodities and Services, Interest, Taxes, and Farm Wage Rates (PPITW), at 111 (2011=100), is unchanged from November 2014 but is up 4.7 percent from December 2013.

Production index: The December index, at 113, is unchanged from last month but is 5.6 percent higher than last year. Lower prices in December for feeder cattle, LP gas, diesel, and gasoline offset higher prices for concentrates, feed grains, feeder pigs, and supplements.

Feed: The December index, at 106, increased 1.0 percent from November but decreased 2.8 percent from last December. Since November, higher prices for concentrates, feed grains, and supplements more than offset lower prices for complete feeds and hay & forages.

Livestock and poultry: The December index, at 174, decreased 1.7 percent from last month but increased 40 percent from last year. Since last month, lower prices for feeder cattle more than offset higher prices for feeder pigs. The December feeder cattle price, at \$253.00 per cwt, is down \$5.00 per cwt from the November price. December feeder pigs averaged \$217.00 per cwt, up \$11.00 per cwt from November.

Fertilizer: The December index, at 92, is down 2.1 percent from November but is 1.1 percent above December a year ago. Since November, lower prices were reported for nitrogen, mixed fertilizer, and potash & phosphate.

Chemicals: The December index, at 110, is unchanged from November and from last December. Compared with last month, prices are slightly lower for herbicides, insecticides, and fungicides/other.

Fuels: The December index, at 82, is down 7.9 percent from a month earlier and 20 percent below December 2013. Since November, lower prices were reported for LP gas, diesel, and gasoline.

Machinery: The December index, at 110, decreased 0.9 percent from November but is 0.9 percent above last December. Compared with last month, lower prices for self-propelled machinery more than offset higher tractor prices.

Consumer price index: The November 2014 Consumer Price Index, as issued by the Bureau of Labor Statistics, for all urban consumers (CPI-U) decreased 0.5 percent before seasonal adjustment to a level of 236.151 (1982-1984=100). The October index is 237.433. For the 12 month period ending in November, the overall index increased 1.3 percent.

Prices Paid Indexes and Related Parity Ratios – United States: December 2014 with Comparisons

[Revised historical price indexes for months not shown are available at www.nass.usda.gov]

Indexes and ratios	1910-1914 Base			2011 Base		
	December 2013	November 2014	December 2014	December 2013	November 2014	December 2014
	(percent)	(percent)	(percent)	(percent)	(percent)	(percent)
Prices paid by farmers for commodities, services, interest, taxes, and wage rates (PPITW)	2878	3013	2998	106	111	111
Production	2233	2361	2348	107	113	113
Feed	1200	1161	1172	109	105	106
Livestock and poultry	2442	3490	3445	124	177	174
Seeds	3643	3752	3752	111	114	114
Fertilizer	1091	1126	1110	91	94	92
Chemicals	989	990	988	110	110	110
Fuels	2843	2483	2289	102	89	82
Supplies and repairs	1227	1253	1253	104	106	106
Autos and trucks	3189	3220	3225	104	105	105
Machinery	6686	6764	6727	109	111	110
Building materials	2439	2498	2498	105	107	107
Services and rent	2228	2285	2281	(NA)	(NA)	(NA)
Services	(NA)	(NA)	(NA)	106	108	108
Rent	(NA)	(NA)	(NA)	104	107	107
Interest ¹	3572	3684	3684	98	101	101
Taxes ²	6137	6233	6233	103	105	105
Wage rates	7654	7756	7756	107	108	108
Production, interest, taxes, and wage rates (PITW)	3011	3169	3154	107	112	112
Family living-CPI ³	2214	2243	2231	104	105	104
Ratio (received/paid)	(NA)	(NA)	(NA)	94	91	92
Parity ratio ⁴	36	35	35	(NA)	(NA)	(NA)
Parity ratio adjusted ⁵	37	36	36	(NA)	(NA)	(NA)
PPITW adjusted for productivity ⁶	1412	1424	1421	(NA)	(NA)	(NA)
Crop sector (PPITW)	(NA)	(NA)	(NA)	104	107	106
Livestock sector (PPITW)	(NA)	(NA)	(NA)	108	116	116
Farm sector (production)	(NA)	(NA)	(NA)	114	128	128
Non-farm sector (production)	(NA)	(NA)	(NA)	103	104	103

(NA) Not available.

¹ Interest per acre on farm real estate debt and interest rate on farm non-real estate debt.

² Farm real estate taxes payable per acre.

³ Bureau of Labor Statistics, Consumer Price Index for all urban consumers (CPI-U), for the previous month converted by the USDA.

⁴ Ratio of index of prices received to PPITW (1910-1914=100).

⁵ Based on estimated cash receipts, from marketings and government payments, the preliminary adjustment factor is 1.028 for 2014 and the revised factor is 1.028 for 2013.

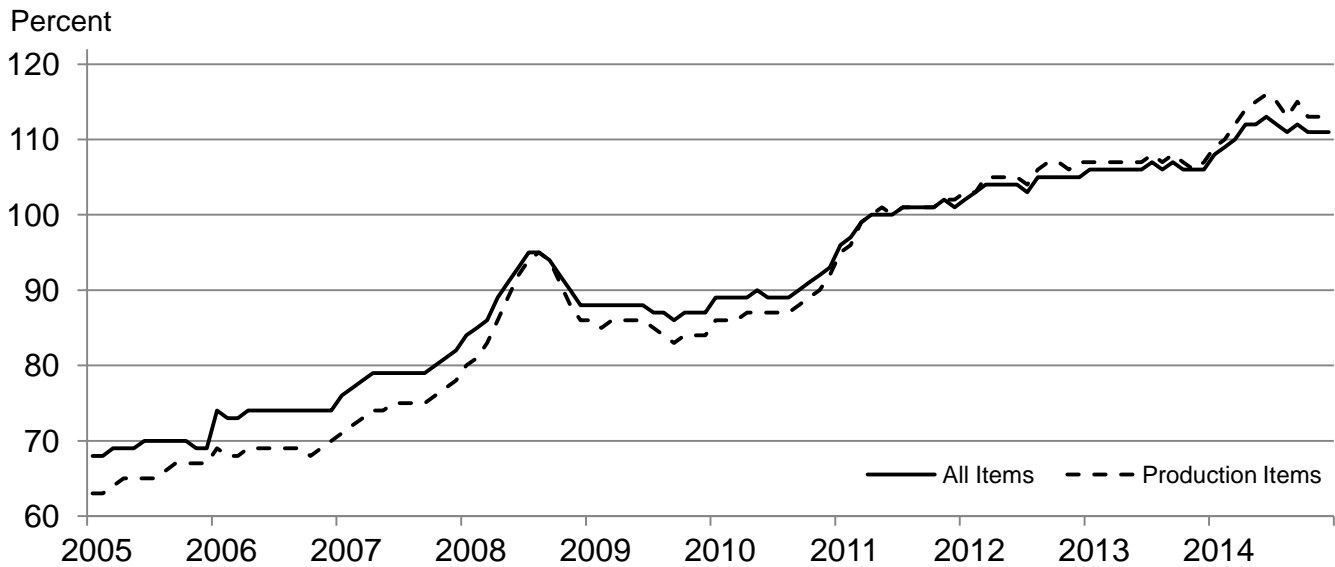
⁶ PPITW is adjusted based on productivity trend for the prior 15 years.

Prices Paid Indexes and Annual Weights for Input Components and Sub-components – United States: December 2014 with Comparisons

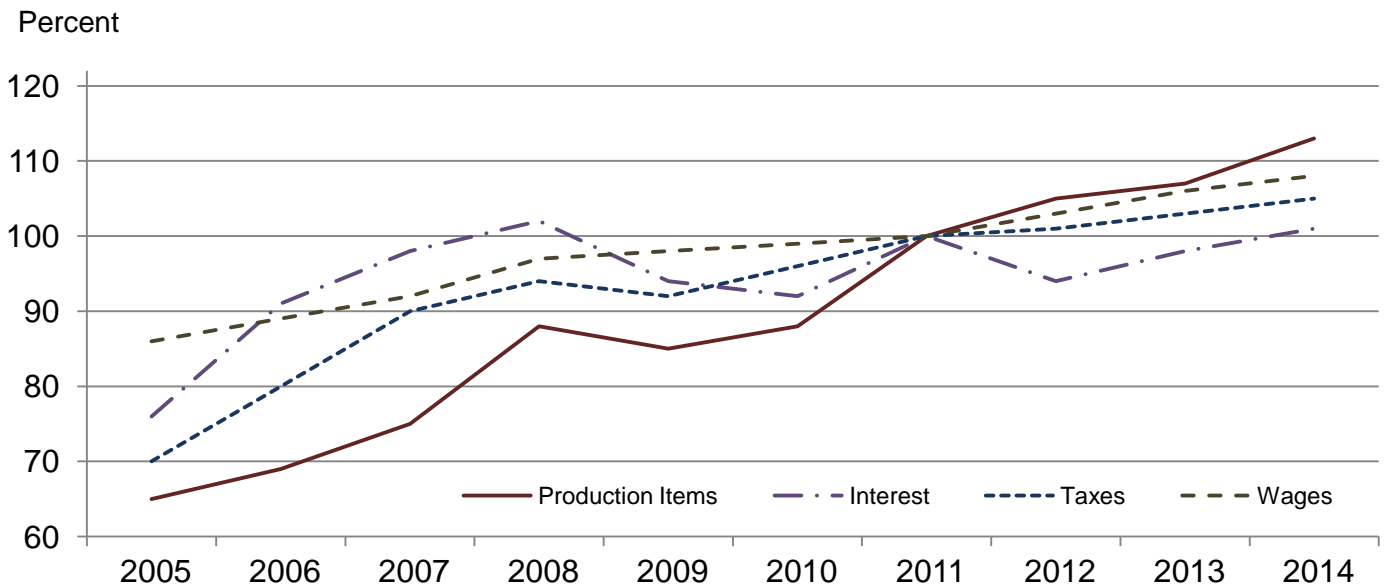
[Revised historical price indexes for months not shown are available at www.nass.usda.gov. Relative weights are a five year moving average]

	Relative weights		Indexes (2011=100)		
	2013	2014	December 2013	November 2014	December 2014
	(percent)	(percent)	(percent)	(percent)	(percent)
Production items	73.6	74.1	107	113	113
Feed	14.6	15.5	109	105	106
Feed grains	2.1	2.2	75	62	65
Complete feeds	7.2	7.6	116	112	111
Hay and forages	1.8	1.9	108	104	103
Concentrates	2.3	2.5	113	124	130
Supplements	1.2	1.3	117	107	109
Livestock and poultry	8.5	8.5	124	177	174
Feeder cattle	6.7	6.6	125	188	184
Feeder pigs	0.7	0.7	154	147	155
Milk cow replacements	0.7	0.7	99	149	149
Poultry	0.5	0.5	105	105	105
Seeds	4.8	4.9	111	114	114
Field crops	4.3	4.4	110	113	113
Grasses and legumes	0.4	0.5	120	123	123
Fertilizer	6.3	6.2	91	94	92
Mixed fertilizer	2.8	2.7	86	85	84
Nitrogen	2.6	2.6	97	100	98
Potash and phosphate	0.9	0.9	85	101	101
Chemicals	3.0	3.1	110	110	110
Herbicides	1.9	1.9	110	110	110
Insecticides	0.7	0.7	113	114	114
Fungicides and other	0.4	0.4	105	104	104
Fuels	4.5	4.1	102	89	82
Diesel	2.8	2.6	96	90	87
Gasoline	0.9	0.9	104	97	89
LP gas	0.8	0.7	120	74	54
Supplies and repairs	4.3	4.3	104	106	106
Supplies	1.4	1.4	105	106	106
Repairs	2.9	2.8	104	106	106
Autos and trucks	1.1	1.1	104	105	105
Autos	0.1	0.1	102	102	102
Trucks	1.0	1.0	104	105	105
Machinery	4.5	4.9	109	111	110
Tractors	1.0	1.1	107	108	108
Self-propelled	1.8	2.0	111	111	110
Other machinery	1.7	1.9	109	112	112
Building materials	3.8	3.7	105	107	107
Services	11.2	10.8	106	108	108
Custom rates	1.2	1.1	106	109	109
Other services	10.0	9.7	105	108	108
Rent	6.9	6.9	104	107	107
Cash	3.7	3.7	103	106	106
Share	3.2	3.2	105	108	108
Interest	2.9	2.6	98	101	101
Taxes	2.9	2.9	103	105	105
Wage rates	6.4	6.4	107	108	108
Family living-CPI	14.2	14.0	104	105	104

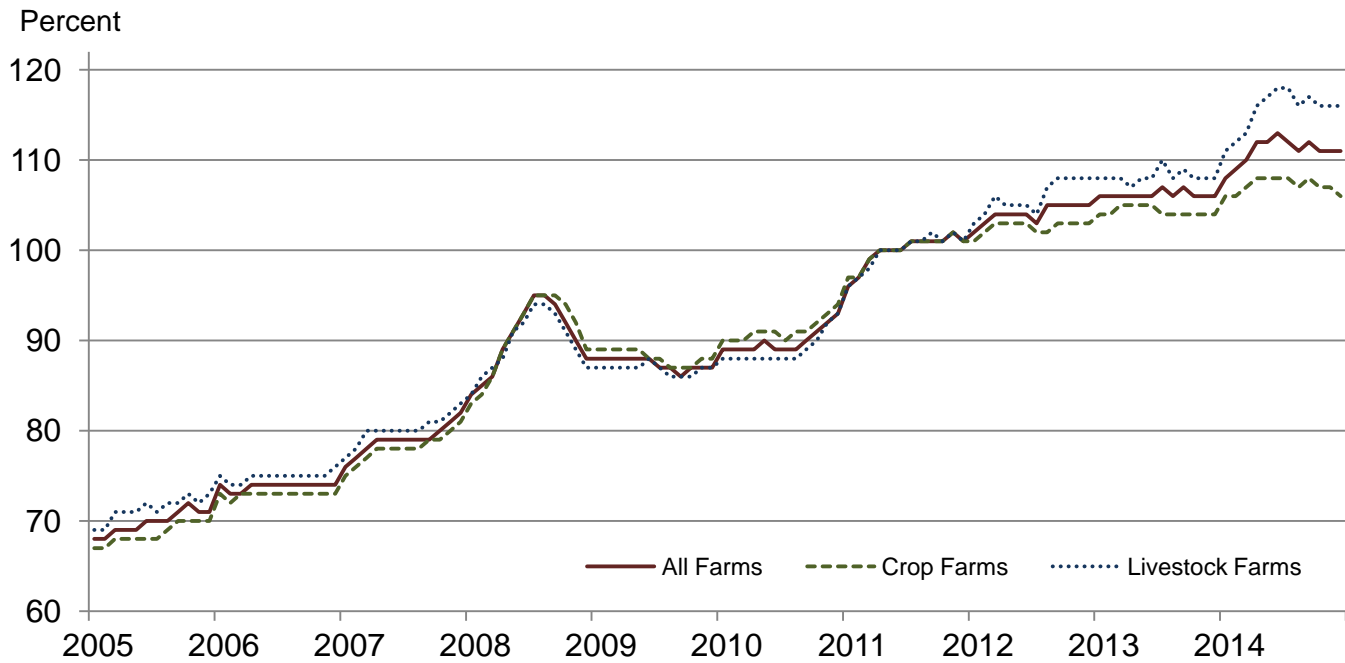
Paid Indexes by Month, All Items and Production Items – United States: 2011=100



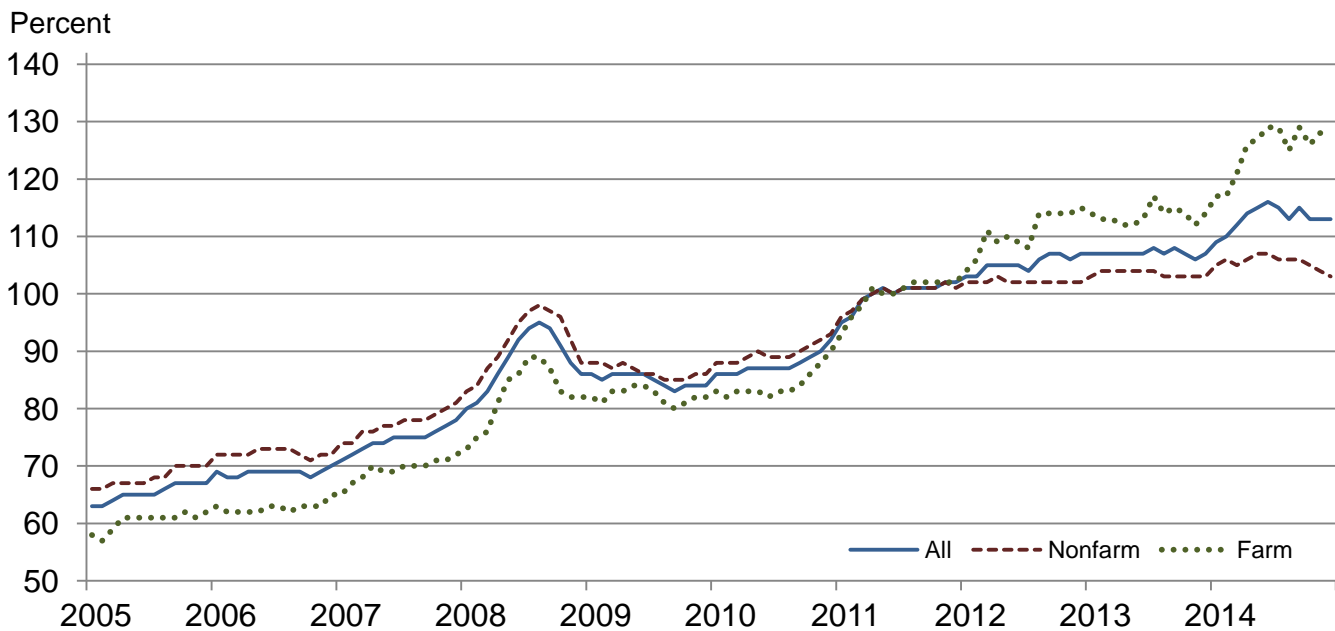
Paid Indexes, Annual Averages, Production Items, Interest, Taxes, and Wages – United States: 2011=100



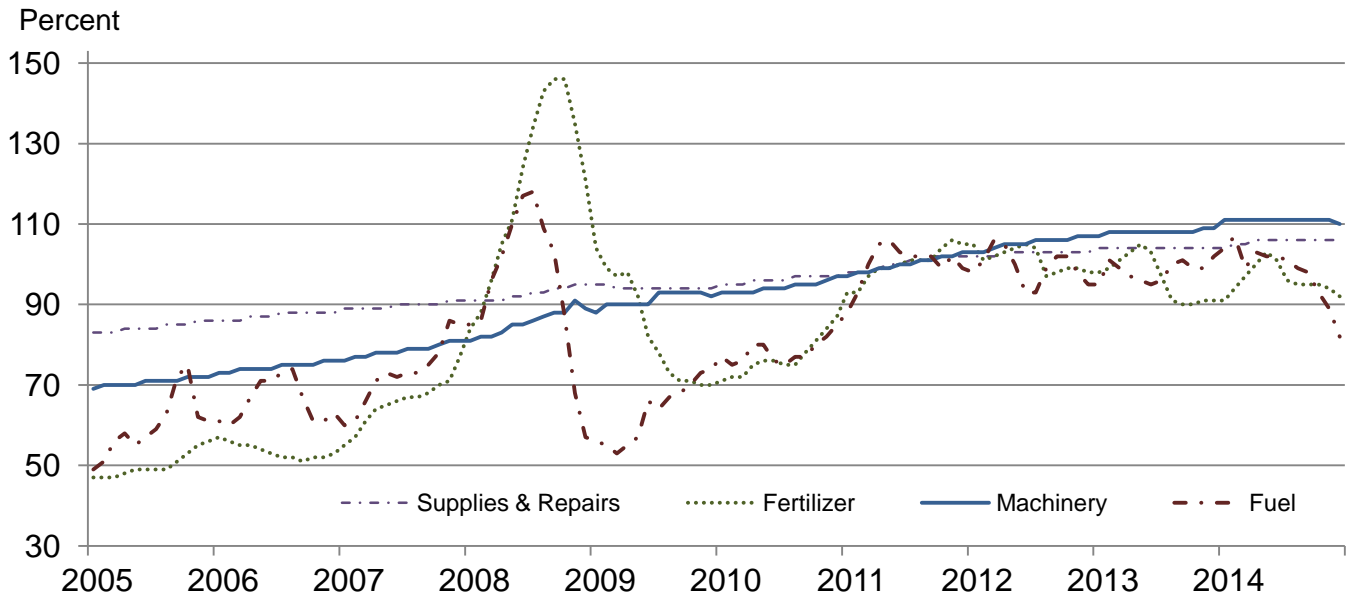
Paid Indexes by Farm Type and Month, All Items – United States: 2011=100



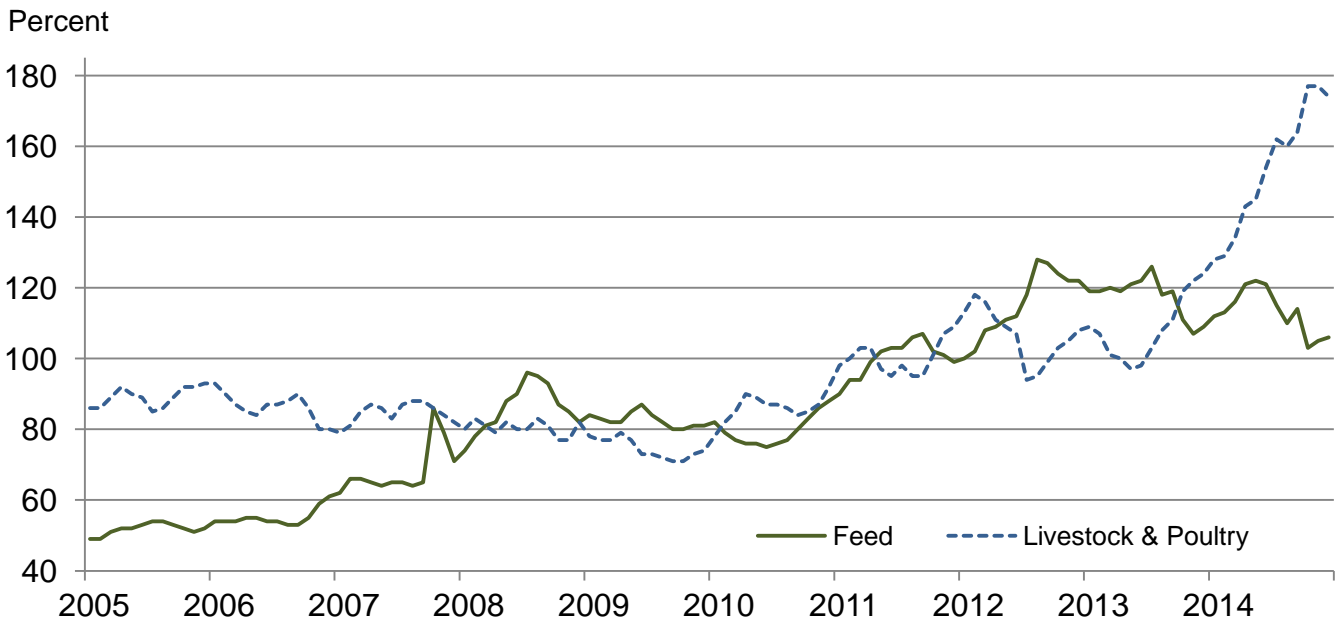
Paid Indexes by Origin and Month, All Production Items – United States: 2011=100



Paid Indexes by Non-Farm Sector and Month, Supplies & Repairs, Fertilizer, Machinery, and Fuel – United States: 2011=100



Paid Indexes by Month, Feed and Livestock & Poultry – United States: 2011=100



Feed Price Ratios – United States: December 2014 with Comparisons

Feed price ratio ¹	December 2013	November 2014	Preliminary December 2014
Broiler-feed: pounds of broiler grower feed equal in value to 1 pound of broiler, live weight ²	4.1	5.9	5.3
Market egg feed: pounds of laying feed equal in value to 1 dozen eggs ³	10.7	15.1	17.9
Hog-corn: bushels of corn equal in value to 100 pounds of hog, live weight	13.9	18.6	17.6
Milk-feed: pounds of 16% mixed dairy feed equal in value to 1 pound of whole milk ⁴	2.30	2.74	2.38
Steer and heifer-corn: bushels of corn equal in value to 100 pounds of steer & heifers, live weight	29.9	47.2	45.1
Turkey-feed: pounds of turkey grower equal in value to 1 pound of turkey, live weight ⁵	5.5	8.1	7.0

¹ Effective January 1995, prices of commercial prepared feeds are based on current United States prices received for corn, soybeans, alfalfa hay, and all wheat.

² The price of commercial prepared broiler feed is based on current United States prices received for corn and soybeans. The modeled feed uses 58 percent corn and 42 percent soybeans.

³ The price of commercial prepared layer feed is based on current United States prices received for corn and soybeans. The modeled feed uses 75 percent corn and 25 percent soybeans.

⁴ The price of commercial prepared dairy feed is based on current United States prices received for corn, soybeans, and alfalfa hay. The modeled feed uses 51 percent corn, 41 percent alfalfa hay, and 8 percent soybeans.

⁵ The price of commercial prepared turkey feed is based on current United States prices received for corn, soybeans, and wheat. The modeled feed uses 51 percent corn, 28 percent soybeans, and 21 percent wheat.

Prices Received Used to Calculate Feed Price Ratios – United States: December 2014 with Comparisons

[Price data source for livestock and poultry commodities is United States Department of Agriculture's Agricultural Marketing Service]

Item	December 2013	November 2014	Preliminary December 2014
	(dollars)	(dollars)	(dollars)
Broilers, live pound	0.560	0.640	0.590
Eggs, market dozen	1.210	1.370	1.660
Hogs, all cwt	61.50	66.70	66.50
Milk, all cwt	22.00	23.00	20.30
Steers and heifers cwt	132.00	169.00	170.00
Turkeys, live pound	0.687	0.821	0.734
Corn bushel	4.41	3.58	3.77
Hay, alfalfa ton	186.00	184.00	183.00
Soybeans bushel	13.00	10.20	10.20
Wheat, all bushel	6.73	6.05	6.53

Prices Paid for Feeder Livestock – United States: December 2014 with Comparisons

[Price data source is United States Department of Agriculture's Agricultural Marketing Service]

Item	December 2013	November 2014	Preliminary December 2014
	(dollars)	(dollars)	(dollars)
Feeder cattle and calves cwt	171.00	258.00	253.00
Feeder pigs cwt	215.00	206.00	217.00

Prices Paid for Feed – United States: 2009-2014

[Prices collected on annual March Survey]

Item	2009	2010	2011	2012	2013	2014
	(dollars)	(dollars)	(dollars)	(dollars)	(dollars)	(dollars)
Alfalfa meal cwt	23.90	23.80	24.00	26.60	31.20	32.10
Alfalfa pellets cwt	24.10	23.20	24.10	27.10	30.90	31.90
Bran cwt	23.20	22.70	24.70	26.40	29.70	30.70
Beef cattle concentrate, 32-36% protein ton	488	413	498	525	602	617
Corn meal cwt	13.40	12.80	17.10	20.40	22.30	23.00
Cottonseed meal, 41% cwt	25.60	25.40	26.60	27.80	31.40	32.90
Dairy feed						
14% protein ¹ ton	285	264	333	437	474	487
16% protein ¹ ton	293	274	369	442	481	502
18% protein ¹ ton	297	284	365	431	447	470
20% protein ¹ ton	295	274	356	407	414	434
32-38% protein concentrate ton	458	419	522	550	630	654
Hog feed						
14-18% protein ^{1 2} ton	328	303	385	475	490	507
38-42% protein concentrate ton	493	446	563	592	646	666
Molasses, liquid cwt	22.20	21.30	22.30	23.20	24.70	25.70
Poultry feed						
Broiler grower ¹ ton	464	456	502	591	639	654
Chick starter ¹ ton	501	485	541	597	628	644
Laying feed ¹ ton	391	374	450	527	552	581
Turkey grower ¹ ton	466	434	495	589	604	619
Soybean meal, 44% cwt	23.20	23.80	26.80	26.50	32.50	34.10
Soybean meal, over 44% cwt	22.00	21.20	24.80	24.10	29.40	31.00
Stock salt 50 pound	5.93	5.92	6.18	6.33	6.43	6.60
Trace mineral blocks 50 pound	7.09	8.02	8.16	7.59	7.80	8.07
	Index (2011=100)					
Feed Prices paid index ³ percent	82	80	100	115	118	113

¹ Complete ration feed, fed without mixing or supplementation.

² Excluding pig starter.

³ Annual average for all years.

Annual Average Prices Paid for Feeder Livestock – United States: 2009-2014

Item	2009	2010	2011	2012	2013	2014
	(dollars)	(dollars)	(dollars)	(dollars)	(dollars)	(dollars)
Broiler chicks 100	26.60	27.00	28.20	29.50	29.90	(¹)
Egg-type chicks 100	81.20	83.00	86.70	89.70	93.40	(¹)
Feeders and stockers						
Cattle and calves cwt	95.20	109.40	132.80	149.30	149.60	215.60
Feeder pigs cwt	100.40	155.90	144.60	126.30	157.80	254.30
Turkey poults each	1.32	1.43	1.47	1.54	1.67	(¹)
	Index (2011=100)					
Livestock and poultry Prices paid index ² percent	75	86	100	107	108	154

¹ Annual average data are published in April 2015.

² Annual average.

The data presented in the following tables are calculated and published for use by the Forest Service, USDA and the Bureau of Land Management, U.S. Department of the Interior in computing Public Land Grazing Fees.

2014 Prices Paid Index for Beef Cattle Production (1964-68=100): 1015

The Index of Prices Paid by Farmers and Ranchers for Beef Cattle Production input items is for the period of November 2013 through October 2014. The components of this index include the production indexes of Fuels, Supplies & Repairs, Autos & Trucks, Tractors & Self Propelled Machinery, Other Machinery, Building Materials, Interest, Wage Rates, and Farm Services & Rent. These components are weighted to the overall index value by their importance in the cost of producing beef cattle. The weights are prescribed by Federal Regulation Title 43, Subpart 4100.

Prices Received for Beef Cattle – Selected United States Regions: 2014

[Average for November 2013 through October 2014]

State	Beef cattle
	(dollars per cwt)
17 Western States ¹	145.50
16 Western States ²	145.22
11 Western States ³	142.34
9 Great Plains States ⁴	146.67

¹ 17 Western States: Arizona, California, Colorado, Idaho, Kansas, Montana, Nebraska, Nevada, New Mexico, North Dakota, Oklahoma, Oregon, South Dakota, Texas, Utah, Washington, and Wyoming.

² 16 Western States: Arizona, California, Colorado, Idaho, Kansas, Montana, Nebraska, Nevada, New Mexico, North Dakota, Oklahoma, Oregon, South Dakota, Utah, Washington, and Wyoming.

³ 11 Western States: Arizona, California, Colorado, Idaho, Montana, Nevada, New Mexico, Oregon, Utah, Washington, and Wyoming.

⁴ 9 Great Plain States: Colorado, Kansas, Nebraska, New Mexico, North Dakota, Oklahoma, South Dakota, Texas, and Wyoming.

Reliability of Prices Paid Estimates

Definition: Prices paid by farmers represent the average costs of inputs purchased by farmers and ranchers to produce agricultural commodities. Conceptually, the average price when multiplied by quantity purchased should equal total producer expenditures for the item.

Survey procedures: The prices paid data are obtained from establishments that sell goods and services to farmers and ranchers. Annually, about 8,500 firms are randomly selected from lists by type of item sold with an average response rate in the range of 75-80 percent. Firms are asked to report the price for the specified item "most commonly bought by farmers" or that was the "volume seller". Approximately 135 items are surveyed each March to represent all production input items purchased. The survey reference period for most items is the five business days centered at the 15th of the month. Separate prices paid surveys are conducted for agricultural chemicals, fuels, feed, fertilizer, machinery, and seed.

Summary and estimation procedures: The annual March Prices Paid Survey is summarized as a non-probability survey. Average prices reported are aggregated to the region and United States level using weights available from expenditure data and other administrative sources. Price recommendations are prepared by the Regional Field Offices and Headquarters for review by the Agricultural Statistics Board in Washington, D.C. Also, the change in price level for individual items surveyed are combined to the regional and United States levels, and are published as prices paid indexes referenced to a specific base period. Prices paid indexes for new autos and trucks, building materials, farm supplies, motor supplies, and marketing containers are updated based on price changes measured in selected Bureau of Labor Statistics (BLS) indexes.

Revisions: Any revisions are published in the monthly and in annual issues of Agricultural Prices. The basis for revision must be supported by additional data that directly affect the level of the estimate. More revisions are likely for March when separate prices paid surveys are conducted, in lieu of BLS indexes, by the USDA to measure price change.

Reliability: Current methods of summarization for the March data are not designed directly to calculate sampling errors. However, analytical measures approximate the United States relative sampling errors for major items around 10 percent. Any non-sampling errors are attributed to such things as the inability to obtain correct information, differences in interpreting questions or definitions, mistakes in coding or processing the data, etc. Efforts are made at each step in the survey process to minimize these non-sampling errors.

Program change: Effective January 2014, the National Agricultural Statistics Service modified the five-year moving weights and updated the base reference period.

As of January 2014, the 1990-1992 base reference period is updated to 2011. Five-year moving average weights are adjusted (normalized) to minimize the effects of price changes. The 1910-1914=100 price indexes, required by statute for computing parity prices, were linked forward based on the changes in the new 2011=100 indexes. The new indexes were constructed by multiplying the ratios of the current prices to the base period prices by the moving average weights.

Calendar of Prices Received Features in the 2014 Agricultural Price Reports

Annual or Marketing Year Average Prices	Month Published
Austrian Winter Peas, United States	September
Barley, United States	June
by State and United States	August
Broilers, by State and United States.....	April
Canola, by State and United States	November
Cattle, by State and United States	February
Chickens, Other by State and United States.....	April
Chickpeas, by State and United States.....	November
Corn, United States	September
by State and United States	November
Cotton, by Type, State and United States	October
Cottonseed, by State and United States	October
Dry Beans, by State and United States.....	November
Dry Edible Peas, United States	September
Eggs, by State and United States	April
Flaxseed, by State and United States	November
Goats, by State and United States	February
Hay, by State and United States.....	August
Other Hay, 3-year Average by Region	February
Hogs, by State and United States	February
Lentils, United States	September
Milk, Sold to Plants, for All Milk, Price and Fat Test, by State and United States	April
Mohair, by State and United States.....	February
Mustard Seed, United States	November
Oats, United States	June
by State and United States	August
Peanuts, by State and United States	August
Potatoes, by State and United States, Preliminary	February
Proso Millet, by State and United States.....	November
Rapeseed, United States	November
Rice, United States (year-to-date)	August
by State and United States, by Length of Grain	January
Safflower, United States	November
Sheep and Lambs, by State and United States	February
Sorghum, by State and United States.....	September
Soybeans, by State and United States	September
Sweetpotatoes, by State and United States, Preliminary	January
Final and Revised	June
Sugarbeets, United States.....	July
Sugarcane, United States.....	July
Sunflower, by State and United States.....	November
Turkeys, by State and United States	April
Wheat, by Class, United States	June
by State and United States	August
Wool, by State and United States.....	February

Calendar of Prices Received Features in the 2014 Agricultural Price Reports (continued)

Monthly Prices Received – Revised	Month Published
Austrian Winter Peas, United States	September
Barley, by State and United States	August
Broilers, United States.....	April
Cattle, by State and United States	February
Chickens, by State and United States.....	April
Chickpeas, by State and United States	November
Corn, by State and United States.....	November
Cotton, by Type, State and United States.....	October
Cottonseed, by State and United States.....	October
Dry Beans, by State and United States.....	November
Dry Edible Peas, United States	September
Eggs, by State and United States.....	April
Flaxseed, by State and United States.....	November
Hay, by State and United States	August
Hogs, by State and United States	February
Lentils, United States	September
Milk, Sold to Plants, by Grade, Price and Fat Test by State and United States	April
Milk Cows, by Quarter, by State and United States.....	February
Oats, by State and United States	August
Peanuts, by State and United States	August
Potatoes, by State and United States, Preliminary	February
Rice, United States (year-to-date)	August
by State and United States, by Length of Grain	January
Sheep and Lambs, by State and United States	February
Sorghum, by State and United States	September
Soybeans, by State and United States	September
Sunflower, by State and United States	November
Wheat, by State and United States	August

Calendar of Prices Received Features in the 2014 Agricultural Price Reports (continued)

Monthly Marketing Percents	Month Published
Austrian Winter Peas, United States	September
Barley, United States	June
by State and United States	August
Chickpeas, by State and United States	November
Corn, United States	September
by State and United States	November
Cotton, Upland, by State and United States	October
Dry Beans, by State and United States	November
Dry Edible Peas, United States	September
Flaxseed, by State and United States	November
Hay, by State and United States	August
Lentils, United States	September
Oats, United States	June
by State and United States	August
Peanuts, by State and United States	August
Rice, United States (year-to-date)	August
Final	January
Sorghum, by State and United States	September
Soybeans, by State and United States	September
Sunflower, by State and United States	November
Wheat, United States	June
by State and United States	August
Prices Received Index Numbers - Revised	
Index of Prices Received by Farmers, United States, by Month and Year	January, April, July, October
Milk and Egg Prices Received, Adjusted for Seasonal Variation	
Seasonally Adjusted Prices, Revised, United States	April
Seasonal Adjustment Factors, United States, program change	July
Parity Prices	
Method of Computing	January, July
Average Prices Used for Parity Computations	January, July
Average Price Received, United States	January, July

Calendar of Prices Paid Features in the 2014 Agricultural Price Reports

Indexes (1910-1914=100)

Month Published

PPITW, PITW, Production Items, Component Items, Interest, Taxes and Wage Rates, Family Living, Farm and Non-Farm Origin, Crop and Livestock Sectors, Adjusted for Productivity, Ratio, Parity Ratio and Adjusted Parity Ratio	
Annual Average (2010-2014)	January, April, July, October
By Month (2010-2014)	January, April, July, October
United States Current Month, Previous Month, Previous Year	Monthly

Indexes (2011=100)

Month Published

PPITW, PITW, Production Items, Component and Subcomponent Items, Interest, Taxes and Wage Rates, Family Living Farm and Non-Farm Origin, Crop and Livestock Sectors, Adjusted for Productivity, Ratio, Parity Ratio and Adjusted Parity Ratio	
Annual Average (2010--2014)	January, April, July, October
By Month (2010-2014)	January, April, July, October
United States Current Month, Previous Month, Previous Year	Monthly

Prices Paid

Month Published

Farm Machinery, United States	April
Feed, by Region and United States	April
Feed, United States (2009-2014)	December
Feeder Livestock, United States	Monthly
Poultry, Broiler Chicks, Egg-type Chicks, and Turkey Poults, Annual Average	April
Fertilizer Materials, Mixed Fertilizer and Agricultural Limestone, by Region and United States	April
Field Seeds, Retail United States	April
Fuels, by Region and United States	April
Agricultural Chemicals, United States	April

Feed-Price Ratios

Month Published

United States by Month and Annual Average, (January 2010- May 2014)	May
United States Current Month, Previous Month, Previous Year	Monthly

Prices Paid Program Overview

Month Published

Prices Paid Survey Months, Month Published and Geographic Levels of Estimates	January
Prices Paid Regions, and States Included	April

Private Grazing Fee Rates and Components of Federal Fees

Month Published

Grazing Fee Rates for Cattle by State, Region, and United States (2013 and 2014)	January
Prices Paid Index for Beef Cattle Production (1964-68=100)	December
Beef Cattle Prices Received, Selected Regions (November-October)	December
Other Hay Prices Received, Selected Eastern Regions	February

Information Contacts

General

Troy Joshua, Chief, Environmental, Economics and Demographics Branch (202) 720-6146

Crop Prices Received

Lance Honig, Chief, Crops Branch (202) 720-2127

Anthony Prillaman, Head, Field Crops Section (202) 720-2127

Anthony Prillaman – Peanuts, Rice (202) 720-2127

Brent Chittenden – Oats, Rye, Wheat (202) 720-8068

Angie Considine – Cotton, Cotton Ginnings, Sorghum (202) 720-5944

Tony Dahlman – Crop Weather, Barley (202) 720-7621

Chris Hawthorn – Corn, Flaxseed, Proso Millet (202) 720-9526

James Johanson – County Estimates, Hay (202) 690-8533

Travis Thorson – Soybeans, Sunflower, Other Oilseeds (202) 720-7369

Jorge Garcia-Pratts, Head, Fruits, Vegetables and Special Crops Section (202) 720-2127

Vincent Davis – Fresh and Processing Vegetables, Onions, Strawberries (202) 720-2157

Fleming Gibson – Citrus, Coffee, Grapes, Sugar Crops, Tropical Fruits (202) 720-5412

Greg Lemmons – Berries, Cranberries, Potatoes, Sweet Potatoes (202) 720-4285

Dave Losh – Hops (360) 709-2400

Dan Norris – Austrian Winter Peas, Dry Edible Peas, Lentils, Mint, Mushrooms, Peaches, Pears,

Wrinkled Seed Peas, Dry Beans (202) 720-3250

Daphne Schauber – Floriculture, Maple Syrup, Nursery, Tree Nuts (202) 720-4215

Chris Singh – Apples, Apricots, Cherries, Plums, Prunes, Tobacco (202) 720-4288

Livestock Prices Received

Dan Kerestes, Chief, Livestock Branch (202) 720-3570

Scott Hollis, Head, Livestock Section (202) 720-3570

Travis Averill – Cattle and Cattle on Feed (202) 720-3040

Doug Bounds – Hogs and Pigs (202) 720-3106

Mike Miller – Milk, Milk Cows (202) 720-3278

Evan Schulz – Sheep and Goats (202) 720-6147

Bruce Boess, Head, Poultry and Specialty Commodities Section (202) 720-3570

Heidi Gleich – Broilers (202) 720-0585

Michael Klamm – Turkeys (202) 690-3237

Kim Linonis – Eggs (202) 690-8632

Josh O’Rear – Honey (202) 690-3676

Indexes, Prices Paid, and Parity Prices

Troy Joshua, Chief, Environmental, Economics and
Demographics Branch (202) 720-6146

Tony Dorn, Head, Economics Section (202) 690-3223

Daryl Brinkman – Prices Received Indexes, Parity Prices (202) 720-8844

Joe Hagedorn – Cash Rents, Grazing Fees (202) 690-3231

Judy McDermott – Prices Paid Indexes, Prices Paid for Feed, Fertilizer, Chemicals, Seeds, Fuels,
Farm Supplies and Repairs, Farm Machinery, Feeder Livestock, Poultry Chicks, Feed Price Ratios (202) 690-3229

Access to NASS Reports

For your convenience, you may access NASS reports and products the following ways:

- All reports are available electronically, at no cost, on the NASS web site: <http://www.nass.usda.gov>
- Both national and state specific reports are available via a free e-mail subscription. To set-up this free subscription, visit <http://www.nass.usda.gov> and in the “Follow NASS” box under “Receive reports by Email,” click on “National” or “State” to select the reports you would like to receive.

For more information on NASS surveys and reports, call the NASS Agricultural Statistics Hotline at (800) 727-9540, 7:30 a.m. to 4:00 p.m. ET, or e-mail: nass@nass.usda.gov.

The U.S. Department of Agriculture (USDA) prohibits discrimination against its customers, employees, and applicants for employment on the basis of race, color, national origin, age, disability, sex, gender identity, religion, reprisal, and where applicable, political beliefs, marital status, familial or parental status, sexual orientation, or all or part of an individual's income is derived from any public assistance program, or protected genetic information in employment or in any program or activity conducted or funded by the Department. (Not all prohibited bases will apply to all programs and/or employment activities.)

If you wish to file a Civil Rights program complaint of discrimination, complete the [USDA Program Discrimination Complaint Form](#) (PDF), found online at http://www.ascr.usda.gov/complaint_filing_cust.html, or at any USDA office, or call (866) 632-9992 to request the form. You may also write a letter containing all of the information requested in the form. Send your completed complaint form or letter to us by mail at U.S. Department of Agriculture, Director, Office of Adjudication, 1400 Independence Avenue, S.W., Washington, D.C. 20250-9410, by fax (202) 690-7442 or email at program.intake@usda.gov.

Price Program Quick Stats Links

Economics and Prices

http://www.nass.usda.gov/Statistics_by_Subject/Economics_and_Prices/index.asp

January 2014 Price Program Update

http://www.nass.usda.gov/Surveys/Guide_to_NASS_Surveys/Prices/updates.pdf

January 2015 Price Program Update

http://www.nass.usda.gov/Surveys/Guide_to_NASS_Surveys/Prices/update2015.pdf



USDA 2015 Agricultural Outlook Forum

Smart Agriculture in the 21st Century

Crystal Gateway Marriott Hotel

Arlington, VA

Feb. 19-20, 2015

SAVE the Date!

The USDA Outlook Forum, first held in 1923, brings together renowned speakers including farmers, ranchers, economists, academics, statisticians, consultants, industry leaders, and government policymakers. The Secretary of Agriculture will present the keynote address, followed by a distinguished guest speaker. The economic outlook for the coming year will be presented by the USDA Chief Economist. In addition, a plenary panel of industry leaders will discuss an important topic relevant to agriculture.

- **February 19** includes a morning plenary, a networking luncheon, five concurrent afternoon sessions, and a dinner speaker.
- **February 20** includes a day of 5 concurrent sessions and luncheon speakers.

Session Topics are expected to include:

- Perspectives on Global & U.S. Trade
- Tomorrow's Opportunities
- Big Data
- Commodity Situation and Outlook
- Food Price & Farm Income Outlook
- Conservation & Regulation
- Water Issues
- Weather, Drought & Big Data
- Climate Change
- Moving Feed, Food & Fuel to Market
- 100-Year Anniversary of USDA Market News
- Nutrition & New Opportunities for Producers
- Regional Approaches to Rural Growth
- Bio-Economy
- Antimicrobial Resistance
- Agriculture & Bees
- Local Foods
- Food Waste

Register in November at: www.usda.gov/oce/forum