



# Agricultural Prices

ISSN: 1937-4216

Released January 30, 2015, by the National Agricultural Statistics Service (NASS), Agricultural Statistics Board, United States Department of Agriculture (USDA).

## Special Note

Beginning January 2015, NASS will publish full-month price data only. In addition, the method for computing annual indexes is revised. For details see, [http://www.nass.usda.gov/Surveys/Guide\\_to\\_NASS\\_Surveys/Prices/update2015.pdf](http://www.nass.usda.gov/Surveys/Guide_to_NASS_Surveys/Prices/update2015.pdf).

## December Farm Prices Received Index Down 1 Point

The December Prices Received Index (Agricultural Production), at 100, based on 2011=100, decreased 1 point (1.0 percent) from November. At 82, the December Crop Production Index is up 1 point (1.2 percent). At 127, the Livestock Production Index decreased 7 points (5.2 percent). Producers received lower prices for milk, broilers, lettuce, and cattle. Higher prices were received for corn, eggs, soybeans, and grain sorghum. In addition to prices, the indexes are impacted by the five-year average monthly mix of commodities producers market. Increased monthly movement of wheat, broilers, oranges, and milk offset the decreased marketing of corn, calves, grapes, and soybeans.

The Prices Received Index is unchanged from December 2013. The Food Commodities Index, at 114, decreased 6 points (5.0 percent) from the previous month but increased 5 points (4.6 percent) from December 2013.

## December Prices Paid Index Unchanged

The December Index of Prices Paid for Commodities and Services, Interest, Taxes, and Farm Wage Rates (PPITW), at 111 percent (2011=100), is unchanged from November but is 5 points (4.7 percent) above December 2013. Lower prices in December for feeder cattle, LP gas, diesel, and gasoline offset higher prices for complete feeds, feed grains, feeder pigs, and supplements.

## Prices Received, Prices Paid, and Ratio of Prices Received to Prices Paid Indexes 2011 Base – United States: December 2014 with Comparisons

Item	December 2013	November 2014	December 2014
Prices received by farmers .....	100	101	100
Prices paid by farmers .....	106	111	111
Ratio of prices received to prices paid .....	94	91	90

## Contents

Prices Received by Farmers .....	4
Prices Received Indexes as a Percent of 2011 Base – United States: December 2014 with Comparisons.....	5
Prices Received Indexes as a Percent of 1910-1914 Base – United States: December 2014 with Comparisons.....	5
Prices Received Indexes as a percent of 2011 Base by Month for Selected Groups – United States: 2013 and 2014.....	5
Prices Paid Indexes as a percent of 2011 Base by Month for Selected Groups – United States: 2013 and 2014.....	6
Received and Paid Indexes, Annual Average – United States: 2011=100 Chart.....	6
Crop Farm Received and Paid Indexes, All Items by Quarter – United States: 2011=100 Chart.....	7
Livestock Farm Received and Paid Indexes All Items by Quarter – United States: 2011=100 Chart.....	7
Received Indexes by Month, Livestock Products, All Products, and All Crops – United States: 2011=100 Chart.....	8
Received Indexes by Month, Food Grains, Feed Grains & Hay, and Oilseeds – United States: 2011=100 Chart.....	8
Received Indexes by Month, Fruit & Nut and Commercial Vegetables – United States: 2011=100 Chart.....	9
Received Indexes by Month, Meat Animal, Dairy Products, and Poultry & Eggs – United States: 2011=100 Chart.....	9
Prices Received for Field Crops and Fruits – United States: December 2014 with Comparisons.....	10
Prices Received for Vegetables and Livestock – United States: December 2014 with Comparisons .....	11
Prices Received for Corn by Month – United States Chart.....	12
Prices Received for Wheat by Month – United States Chart .....	12
Prices Received for Upland Cotton by Month – United States Chart.....	13
Prices Received for Soybeans by Month – United States Chart .....	13
Prices Received for Cattle by Month – United States Chart .....	14
Prices Received for Milk by Month – United States Chart.....	14
Prices Received for Hogs by Month – United States Chart .....	15
Prices Received for Poultry by Month – United States Chart.....	15
Prices Received for All Wheat, Corn, and Soybeans by Month – United States: 2014 with Comparisons.....	16
Prices Received for Beef Cattle and All Hogs by Month – United States: 2014 with Comparisons .....	16
Prices Received for All Wheat – States and United States: December 2014 with Comparisons.....	17
Prices Received for Winter Wheat – States and United States: December 2014 with Comparisons.....	17
Prices Received for Durum Wheat – States and United States: December 2014 with Comparisons.....	18
Prices Received for Spring Wheat – States and United States: December 2014 with Comparisons .....	18
Prices Received for All Barley – States and United States: December 2014 with Comparisons.....	19
Prices Received for Malting Barley – States: December 2014 with Comparisons .....	19
Prices Received for Feed Barley – States: December 2014 with Comparisons.....	19
Prices Received for Corn – States and United States: December 2014 with Comparisons .....	20
Prices Received for Soybeans – States and United States: December 2014 with Comparisons.....	20
Prices Received for Oats – States and United States: December 2014 with Comparisons .....	21
Prices Received for Sorghum Grain – States and United States: December 2014 with Comparisons.....	21
Prices Received for Dry Beans – States and United States: December 2014 with Comparisons .....	22
Prices Received for Peanuts (in shell) – States and United States: December 2014 with Comparisons.....	22
Prices Received for Sunflower – States and United States: December 2014 with Comparisons.....	23
Prices Received for Canola – States and United States: December 2014 with Comparisons .....	23
Prices Received for Flaxseed – States and United States: December 2014 with Comparisons .....	23
Prices Received for Upland Cotton and Cottonseed – States and United States: December 2014 with Comparisons .....	24
Prices Received and Farm Marketings for Upland Cotton and Rice – United States: December 2014 with Comparisons .....	24
Prices Received for Hay by Type – States and United States: December 2014 with Comparisons.....	25
Prices Received for Apples – States and United States: December 2014 with Comparisons .....	25
Prices Received for Citrus Fruits by Utilization – States and United States: December 2013 .....	26
Prices Received for Citrus Fruits by Utilization – States and United States: November 2014.....	27

Prices Received for Citrus Fruits by Utilization – States and United States: December 2014 .....	28
Prices Received for Potatoes – States and United States: December 2014 with Comparisons.....	29
Prices Received for All Milk – States and United States: December 2014 with Comparisons .....	30
Prices Received for Milk Cows – States and United States: January 2015 with Comparisons .....	31
Commodity Parity Prices and Price as Percent of Parity Price – United States: December 2014 with Comparisons .....	32
Commodity Parity Prices – United States: December 2014 with Comparisons .....	33
Commodity Parity Prices – United States: December 2014 with Comparisons (continued).....	34
Marketing Year for Specified Commodities .....	35
Sweet Potato Market Year Average Prices Received – States and United States: Marketing Years 2013 and 2014 .....	35
Rice Market Year Average Prices Received by All and Length of Grain – States and United States: Marketing Years 2012 and 2013 .....	35
All Rice Prices Received and Farm Marketings – United States: Marketing Years 2012-2013 through 2014-2015 .....	36
Long Grain Rice Prices Received and Farm Marketings – United States: Marketing Years 2012-2013 through 2014-2015 .....	36
Medium and Short Grain Rice Prices Received and Farm Marketings – United States: Marketing Years 2012-2013 through 2014-2015 .....	37
Medium and Short Grain Rice Prices Received – California and Other States: Marketing Years 2013-2014 through 2014-2015 .....	37
Reliability of Prices Received Estimates .....	38
Prices Paid by Farmers.....	39
Prices Paid Indexes and Related Parity Ratios – United States: December 2014 with Comparisons.....	40
Prices Paid Indexes and Annual Weights for Input Components and Sub-components – United States: December 2014 with Comparisons.....	41
Paid Indexes by Month, All Items and Production Items – United States: 2011=100 Chart.....	42
Paid Indexes, Annual Averages, Production Items, Interest, Taxes, and Wages – United States: 2011=100 Chart.....	42
Paid Indexes by Farm Type, All Items – United States: 2011=100 Chart .....	43
Paid Indexes by Origin, All Production Items – United States: 2011=100 Chart.....	43
Paid Indexes by Non-Farm Sector, Supplies & Repairs, Fertilizer, Machinery, and Fuel – United States: 2011=100 Chart.....	44
Paid Indexes by Month, Feed and Livestock & Poultry – United States: 2011=100 Chart.....	44
Feed Price Ratios – United States: December 2014 with Comparisons .....	45
Prices Received Used to Calculate Feed Price Ratios – United States: December 2014 with Comparisons.....	45
Prices Paid for Feeder Livestock – United States: December 2014 with Comparisons.....	45
Grazing Fee Rates for Cattle – States, Regions, and United States: 2013 and 2014 .....	46
Reliability of Prices Paid Estimates .....	47
Information Contacts .....	48

## December Prices Received by Farmers

The December Prices Received Index for agricultural production is 100 percent of its 2011 base, down 1.0 percent from the November index but unchanged from the December 2013 index.

**Crop Production:** The December index, at 82, increased 1.2 percent from November but is 9.9 percent below December 2013. Index increases for oilseeds & grains more than offset the index decreases for fruit & tree nut production and vegetable & melon production.

**Feed grain:** The December index, at 64, is up 6.7 percent from last month but is 14 percent below a year ago. The corn price, at \$3.78 per bushel, is up 20 cents from last month but is down 63 cents from December 2013. At \$7.33 per cwt, sorghum grain is 74 cents above November but is 16 cents below December a year earlier.

**Food grain:** At 86, the index for December is 2.3 percent lower than the previous month and 12 percent below a year earlier. The December price for all wheat, at \$6.11 per bushel, is up 6 cents from November but is 62 cents below December 2013.

**Oilseed:** At 82, the index for December is up 1.2 percent from November but is 20 percent lower than December 2013. The soybean price, at \$10.30 per bushel, increased 10 cents from November but is \$2.70 below December a year earlier.

**Fruit & tree nut:** The December index, at 119, is down 7.0 percent from November but is 5.3 percent higher than a year earlier. Price decreases during December for oranges more than offset price increases for strawberries.

**Vegetable and melon:** At 96, the index for December is down 14 percent from the previous month but is 3.2 percent above December 2013. Price decreases during December for lettuce more than offset price increases for potatoes, carrots, cauliflower, and cucumbers.

**Other crop:** The December index, at 83, is down 2.4 percent from the previous month and 9.8 percent below December 2013. The all hay price, at \$159 per ton, is down \$5.00 from November and \$4.00 lower than December 2013. At 60.4 cents per pound, the price for upland cotton is down 1.8 cents from November and 16.8 cents below December 2013.

**Livestock production:** The index for December, at 127, is 5.2 percent below the previous month but is up 13 percent from December a year earlier. Compared with a year ago, prices are higher for cattle, market eggs, calves, hogs, broilers, and turkeys. The price for milk is down from a year earlier.

**Meat animal:** At 134, the December index is down 4.3 percent from the previous month but is 23 percent higher than a year earlier. At \$64.30 per cwt, the December hog price is down \$2.40 from November but is \$2.80 higher than a year earlier. The December beef cattle price of \$164 per cwt is down \$3.00 from the previous month but is \$34.00 higher than December 2013.

**Dairy:** The index for December, at 101, is down 11 percent from the previous month and 7.3 percent lower than December a year earlier. The December all milk price of \$20.40 per cwt is down \$2.60 from November and down \$1.60 from December 2013.

**Poultry & egg:** At 137, the December index is down 2.8 percent from November but is 10 percent above 2013. The December market egg price, at \$1.66 per dozen, increased 29.0 cents from November and is 45.0 cents above December 2013. The December broiler price, at 58.0 cents per pound, is down 6.0 cents from November but is 2.0 cents above a year earlier. At 73.4 cents per pound, the December turkey price is down 8.7 cents from the previous month but is up 4.7 cents from 2013.

## Prices Received Indexes as a Percent of 2011 Base – United States: December 2014 with Comparisons

[Revised historical price indexes for months not shown are available at [www.nass.usda.gov](http://www.nass.usda.gov)]

Index	2011 Base		
	December 2013	November 2014	December 2014
	(percent)	(percent)	(percent)
Agricultural Production .....	100	101	100
Crop Production .....	91	81	82
Grains and oilseed .....	86	69	72
Feed grain .....	74	60	64
Food grain .....	98	88	86
Oilseed .....	103	81	82
Fruit and tree nut .....	113	128	119
Vegetable and melon .....	93	112	96
Other crop .....	92	85	83
Livestock Production .....	112	134	127
Meat animal .....	109	140	134
Cattle .....	115	154	149
Hog .....	92	100	97
Dairy .....	109	114	101
Poultry and egg .....	124	141	137
Food Commodity .....	109	120	114

## Prices Received Indexes as a Percent of 1910-1914 Base – United States: December 2014 with Comparisons

[Revised historical price indexes for months not shown are available at [www.nass.usda.gov](http://www.nass.usda.gov)]

Index	1910 - 1914 Base		
	December 2013	November 2014	December 2014
	(percent)	(percent)	(percent)
Agricultural Production .....	1031	1045	1037
Crop Production .....	794	703	715
Livestock Production .....	1302	1560	1478

## Prices Received Indexes as a percent of 2011 Base by Month for Selected Groups – United States: 2013 and 2014

[Revised historical price indexes for months not shown are available at [www.nass.usda.gov](http://www.nass.usda.gov). Blank data cells indicate estimation period has not yet begun]

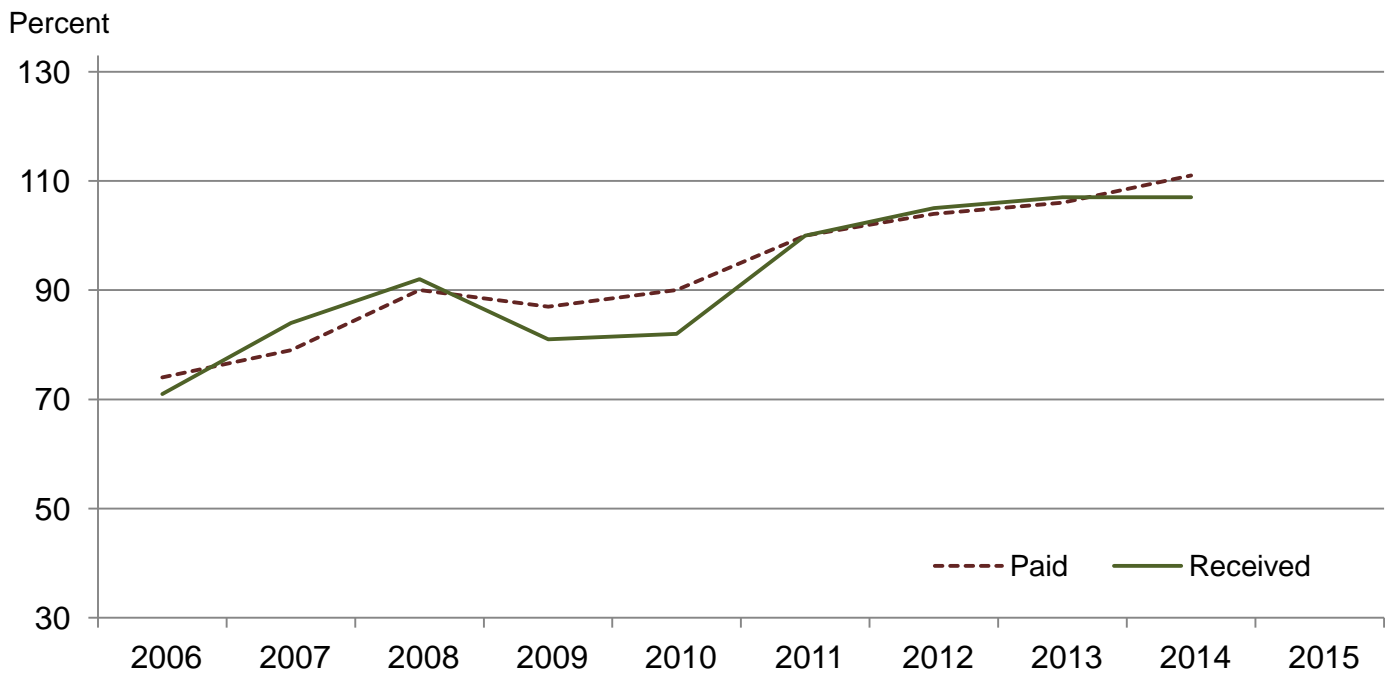
Month	2011 Base							
	Agricultural Production		Crop Production		Livestock Production		Food Commodities	
	2013	2014	2013	2014	2013	2014	2013	2014
	(percent)	(percent)	(percent)	(percent)	(percent)	(percent)	(percent)	(percent)
January .....	111	99	112	90	109	116	111	111
February .....	109	106	111	94	107	121	108	117
March .....	110	111	112	95	108	129	109	122
April .....	108	115	108	98	108	132	107	125
May .....	110	115	109	99	112	130	110	125
June .....	110	112	110	98	110	129	109	122
July .....	107	109	107	93	107	133	106	120
August .....	105	109	104	91	107	131	106	120
September .....	103	107	99	87	108	133	106	119
October .....	100	99	94	81	109	136	106	112
November .....	99	101	90	81	112	134	109	120
December .....	100	100	91	82	112	127	109	114

**Prices Paid Indexes as a percent of 2011 Base by Month for Selected Groups – United States: 2013 and 2014**

[Revised historical price indexes for months not shown are available at [www.nass.usda.gov](http://www.nass.usda.gov). Blank data cells indicate estimation period has not yet begun]

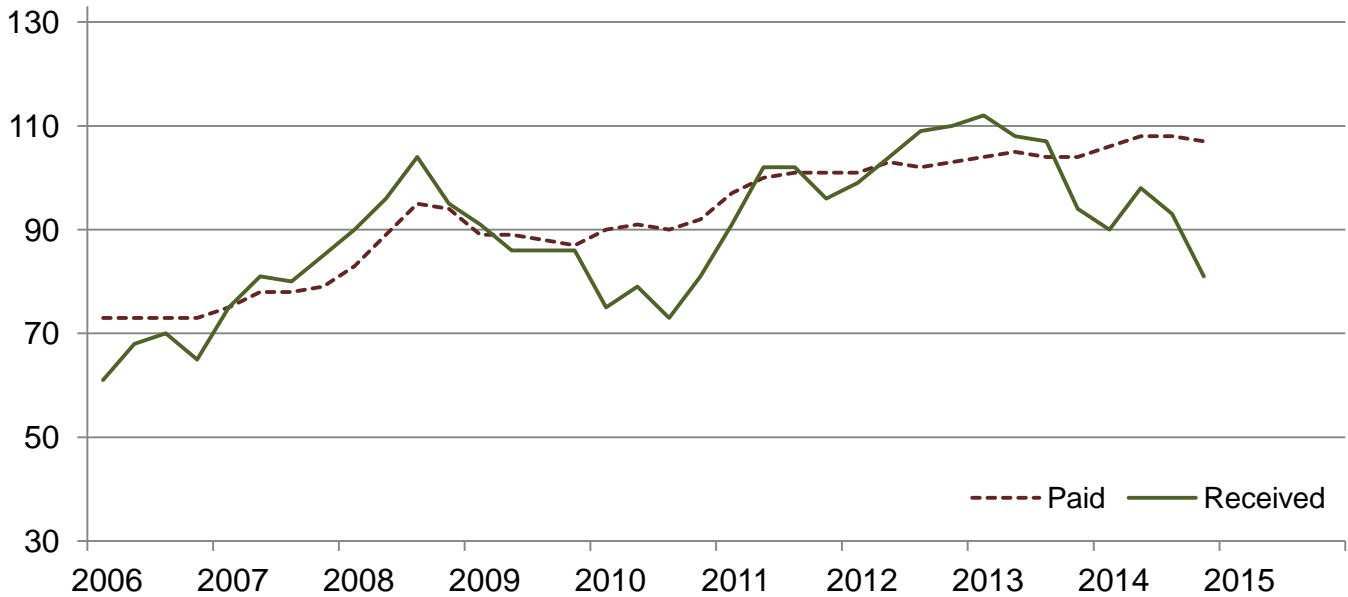
Month	2011 Base							
	All Items (PPITW)		Production		Crop Sector		Livestock Sector	
	2013	2014	2013	2014	2013	2014	2013	2014
	(percent)	(percent)	(percent)	(percent)	(percent)	(percent)	(percent)	(percent)
January .....	106	108	107	109	104	106	108	111
February .....	106	109	107	110	104	106	108	112
March .....	106	110	107	112	105	107	108	113
April .....	106	112	107	114	105	108	107	116
May .....	106	112	107	115	105	108	108	117
June .....	106	113	107	116	105	108	108	118
July .....	107	112	108	115	104	108	110	118
August .....	106	111	107	114	104	107	108	116
September .....	107	112	108	115	104	108	109	117
October .....	106	111	107	113	104	107	108	116
November .....	106	111	106	113	104	107	108	116
December .....	106	111	107	113	104	106	108	116

**Received and Paid Indexes, Annual Average – United States: 2011=100**



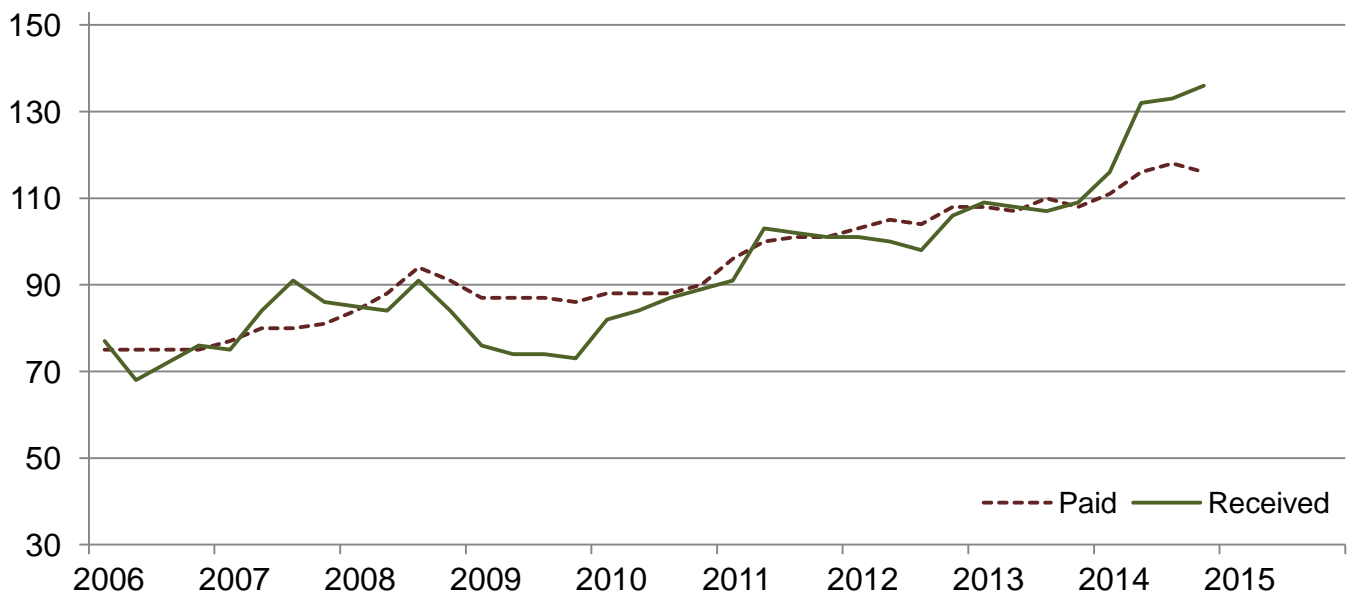
## Crop Farm Received and Paid Indexes, All Items by Quarter – United States: 2011=100

Percent

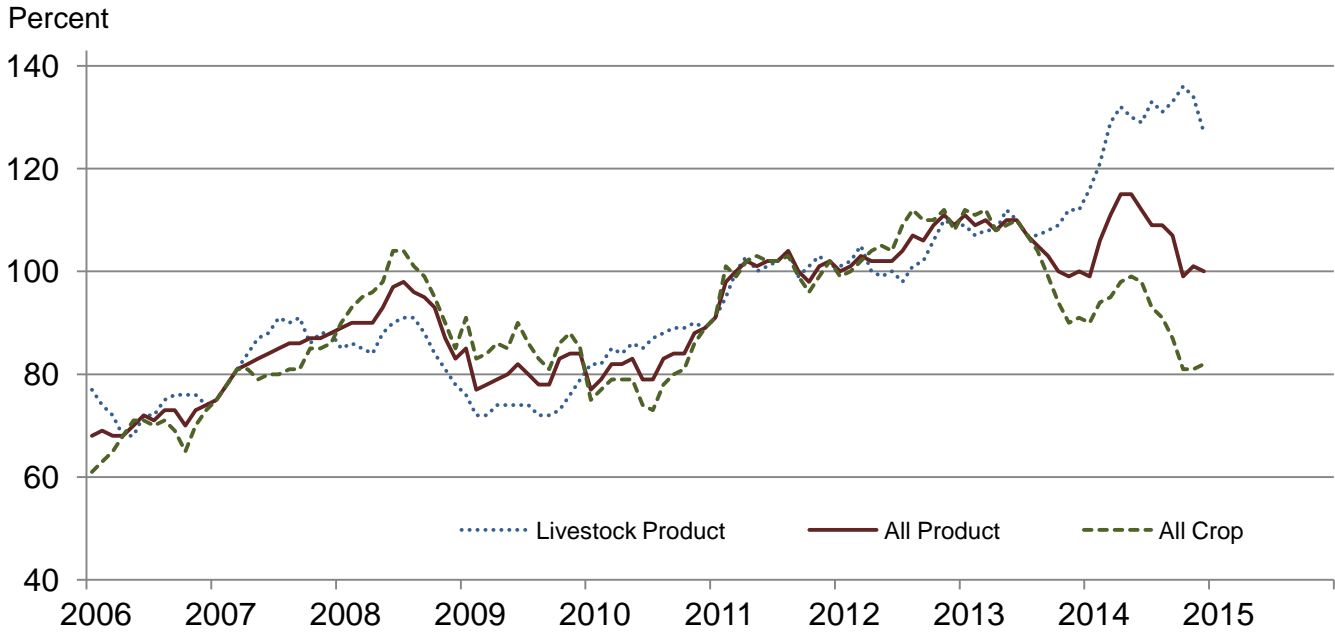


## Livestock Farm Received and Paid Indexes, All Items by Quarter – United States: 2011=100

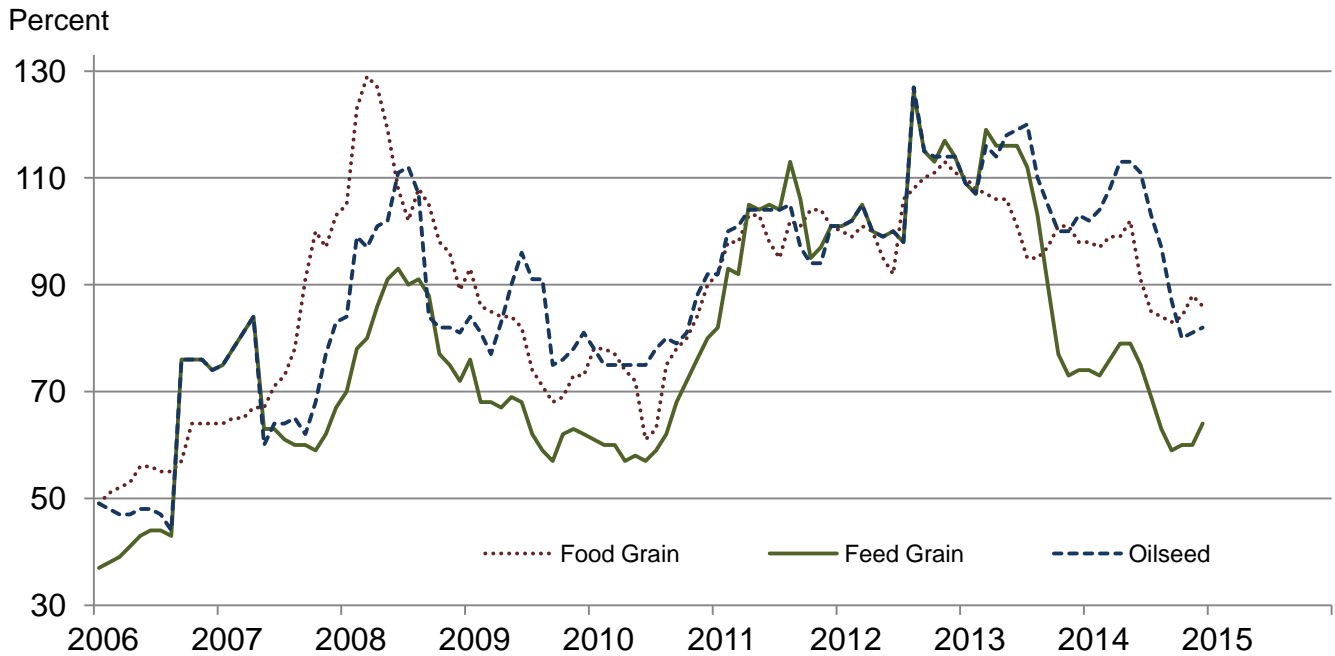
Percent



**Received Indexes by Month,  
Livestock Product, All Product, and All Crop –  
United States: 2011=100**

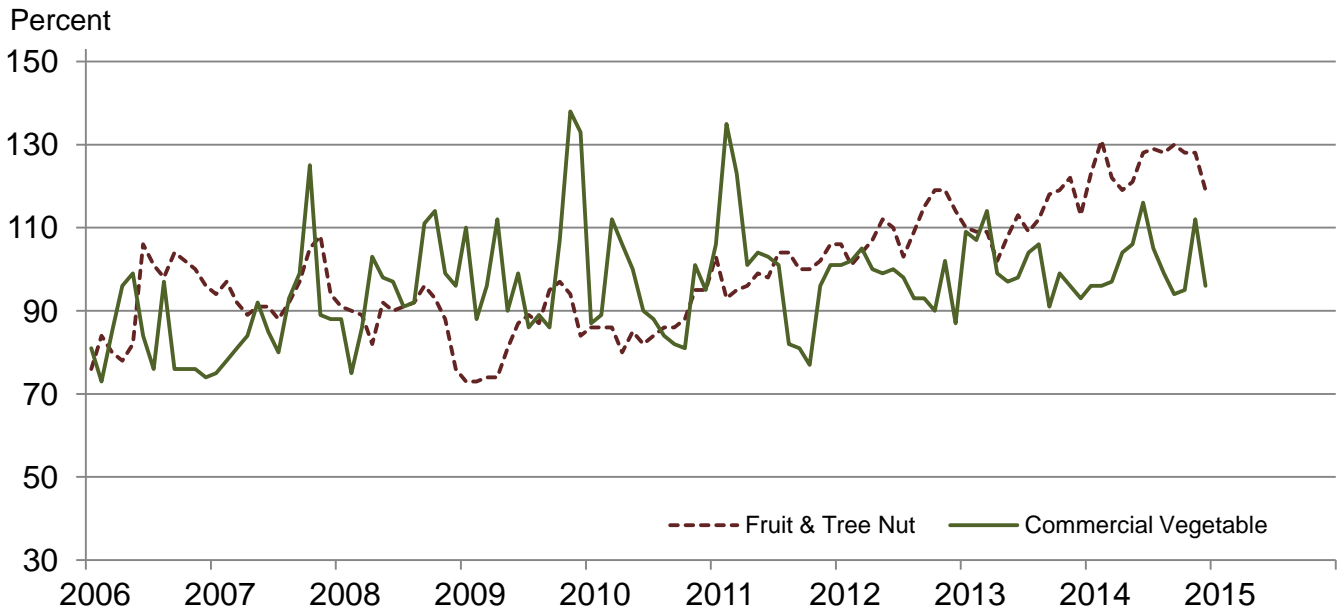


**Received Indexes by Month,  
Food Grain, Feed Grain, and Oilseed –  
United States: 2011=100**

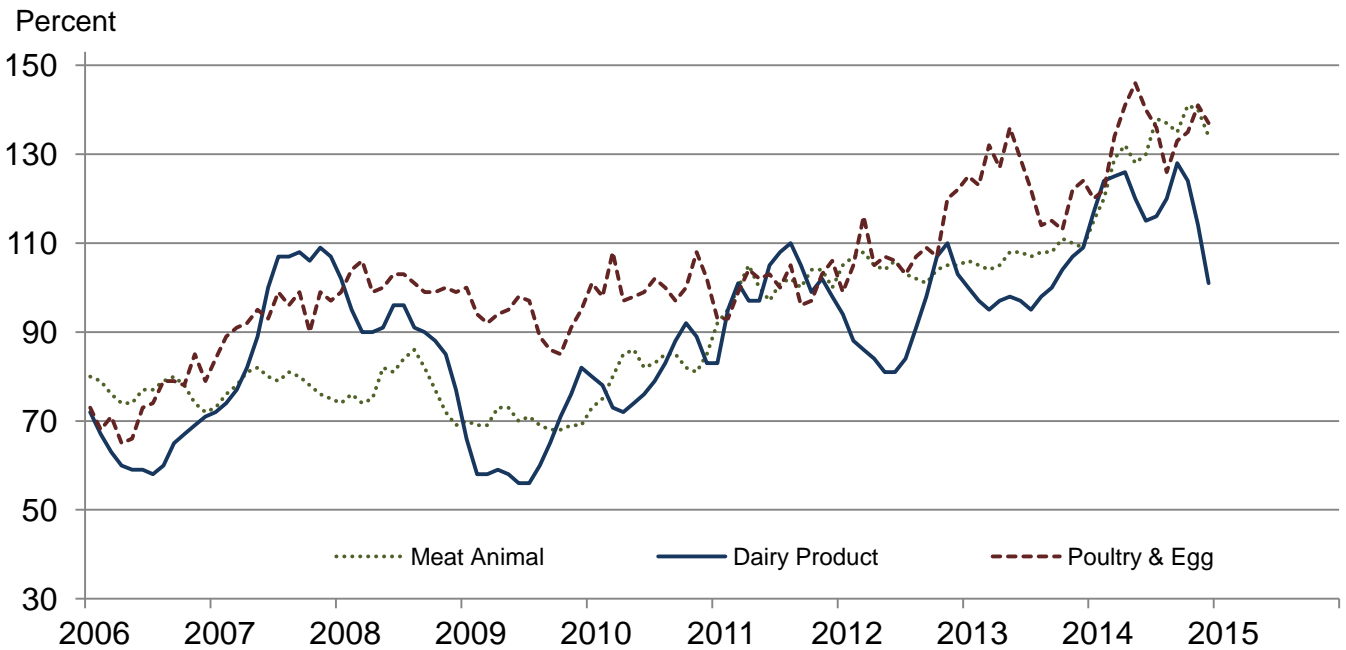




**Received Indexes by Month,  
Fruit & Tree Nut and Commercial Vegetable –  
United States: 2011=100**



**Received Indexes by Month,  
Meat Animal, Dairy Product, and Poultry & Egg –  
United States: 2011=100**



**Prices Received for Field Crops and Fruits – United States: December 2014 with Comparisons**

Commodity	Average 2011	December 2013	November 2014	December 2014
Austrian winter peas ..... dollars/cwt	19.50	(D)	(D)	(D)
Barley, all ..... dollars/bushel	4.79	6.11	5.12	5.15
Feed ..... dollars/bushel	4.59	3.65	2.83	2.99
Malting ..... dollars/bushel	4.83	6.52	5.69	5.64
Beans, dry edible ..... dollars/cwt	34.60	39.80	30.50	34.00
Canola ..... dollars/cwt	23.10	20.70	17.10	16.60
Chickpeas, all ..... dollars/cwt	35.70	27.10	25.60	25.30
Large ..... dollars/cwt	39.20	27.80	27.40	26.60
Small ..... dollars/cwt	23.40	21.10	22.40	20.10
Corn ..... dollars/bushel	6.02	4.41	3.58	3.78
Cotton, Upland ..... dollars/pound	0.880	0.772	0.622	0.604
Cottonseed ..... dollars/ton	131.00	246.00	198.00	186.00
Flaxseed ..... dollars/bushel	14.20	13.40	11.60	11.40
Hay, all, baled ..... dollars/ton	159.00	163.00	164.00	159.00
Alfalfa ..... dollars/ton	176.00	186.00	184.00	183.00
Other ..... dollars/ton	119.00	133.00	124.00	117.00
Lentils ..... dollars/cwt	27.50	19.90	25.20	29.90
Oats ..... dollars/bushel	3.42	3.59	2.96	3.20
Peanuts, in-shell ..... dollars/pound	0.252	0.246	0.214	0.210
Peas, dry edible ..... dollars/cwt	13.60	14.60	12.00	11.60
Potatoes ..... dollars/cwt	9.78	9.02	7.99	8.64
Rice, all ..... dollars/cwt	13.70	16.50	14.40	13.40
Long ..... dollars/cwt	12.30	15.50	12.50	12.40
Medium and short ..... dollars/cwt	18.40	18.90	17.30	17.20
Sorghum grain ..... dollars/cwt	10.70	7.49	6.59	7.33
Soybeans ..... dollars/bushel	12.50	13.00	10.20	10.30
Sunflowers, all ..... dollars/cwt	29.00	18.80	19.80	19.60
Wheat, all ..... dollars/bushel	7.44	6.73	6.05	6.11
Winter ..... dollars/bushel	6.93	6.84	5.86	6.15
Durum ..... dollars/bushel	9.22	6.90	11.00	10.30
Other spring ..... dollars/bushel	8.33	6.55	5.74	5.78
Hard red winter ..... dollars/bushel	7.07	6.85	5.65	6.08
Soft red winter ..... dollars/bushel	6.77	6.13	5.21	5.66
Hard red spring ..... dollars/bushel	8.38	6.53	5.70	5.76
White ..... dollars/bushel	6.58	6.98	6.50	6.60
Grapefruit ..... dollars/box	7.47	7.51	9.13	6.95
Lemons ..... dollars/box	12.30	23.52	33.57	21.68
Oranges ..... dollars/box	8.16	6.93	14.88	9.12
Tangelos ..... dollars/box	3.50	8.74	(S)	9.33
Tangerines and mandarins ..... dollars/box	15.30	24.41	28.52	24.61
Apples <sup>1</sup> ..... dollars/pound	0.325	(NA)	0.329	0.324
Grapes <sup>1</sup> ..... dollars/ton	628.00	(NA)	1,630.00	1,650.00
Peaches <sup>1</sup> ..... dollars/ton	507.00	(NA)	(NA)	(NA)
Pears <sup>1</sup> ..... dollars/ton	559.00	(NA)	684.00	705.00
Strawberries ..... dollars/cwt	104.00	(NA)	152.00	209.00

(D) Withheld to avoid disclosing data for individual operations.

(NA) Not available.

(S) Insufficient number of reports to establish an estimate.

<sup>1</sup> Equivalent packinghouse-door returns for California, Michigan, New York (apples only), and Washington (apples, peaches, and pears). Prices as sold for other states.

## Prices Received for Vegetables and Livestock – United States: December 2014 with Comparisons

[Price data source for livestock and poultry commodities is United States Department of Agriculture's Agricultural Marketing Service]

Commodity	Average 2011	December 2013	November 2014	December 2014
<b>Vegetables, fresh <sup>1</sup></b>				
Asparagus .....dollars/cwt	37.50	(NA)	(NA)	(NA)
Beans, snap <sup>2</sup> .....dollars/cwt	69.00	(NA)	62.00	70.20
Broccoli .....dollars/cwt	41.60	(NA)	45.00	33.10
Cantaloupes <sup>2</sup> .....dollars/cwt	16.50	(NA)	31.90	21.30
Carrots .....dollars/cwt	30.80	(NA)	28.00	33.40
Cauliflower .....dollars/cwt	47.00	(NA)	67.60	84.80
Celery .....dollars/cwt	22.50	(NA)	26.60	28.70
Corn, sweet .....dollars/cwt	30.70	(NA)	40.70	41.40
Cucumbers <sup>2</sup> .....dollars/cwt	18.70	(NA)	24.80	34.20
Lettuce .....dollars/cwt	24.30	(NA)	49.10	15.90
Onions <sup>3</sup> .....dollars/cwt	11.90	(NA)	9.12	9.56
Tomatoes .....dollars/cwt	51.20	(NA)	71.80	66.70
<b>Livestock</b>				
Calves .....dollars/cwt	142.00	197.00	305.00	303.00
Cattle, all beef .....dollars/cwt	115.00	130.00	167.00	164.00
Cows <sup>4</sup> .....dollars/cwt	71.60	83.40	115.00	115.00
Steers and heifers .....dollars/cwt	117.00	132.00	169.00	166.00
Milk cows <sup>5 6</sup> .....dollars/head	1420.00	1440.00	2120.00	1990.00
Hogs, all .....dollars/cwt	66.50	61.50	66.70	64.30
Barrows and gilts .....dollars/cwt	66.80	61.30	66.40	64.20
Sows .....dollars/cwt	57.90	70.10	74.20	65.80
<b>Dairy and poultry</b>				
Milk, all <sup>7</sup> .....dollars/cwt	20.10	22.00	23.00	20.40
Fat test ..... percent	3.71	3.89	3.86	3.87
Broilers, live <sup>8</sup> .....dollars/pound	0.459	0.560	0.640	0.580
Eggs, all <sup>9</sup> .....dollars/dozen	0.969	1.36	1.52	1.77
Market <sup>9 10</sup> .....dollars/dozen	0.796	1.21	1.37	1.66
Turkeys, live <sup>9 11</sup> .....dollars/pound	0.680	0.687	0.821	0.734
<b>Adjusted for seasonal variation</b>				
Eggs, all .....dollars/dozen	0.979	1.13	1.33	1.48
Seasonal factor ..... percent	101	121	114	120
Milk, all <sup>7</sup> .....dollars/cwt	20.20	21.70	21.80	20.10
Seasonal factor ..... percent	100	101	105	101

(NA) Not available.

<sup>1</sup> Beginning January 2006, point of first sale. FOB shipping point for prior years.

<sup>2</sup> Monthly estimates began January 1995.

<sup>3</sup> Includes some processing.

<sup>4</sup> Beef cows and cull dairy cows sold for slaughter.

<sup>5</sup> Animals sold for dairy herd replacement only. Prices available for January, April, July, and October.

<sup>6</sup> Milk cow prices are for January 2014, October 2014, and January 2015.

<sup>7</sup> Before deductions for hauling. Includes quality, quantity, and other premiums. Excludes hauling subsidies.

<sup>8</sup> Live weight equivalent price.

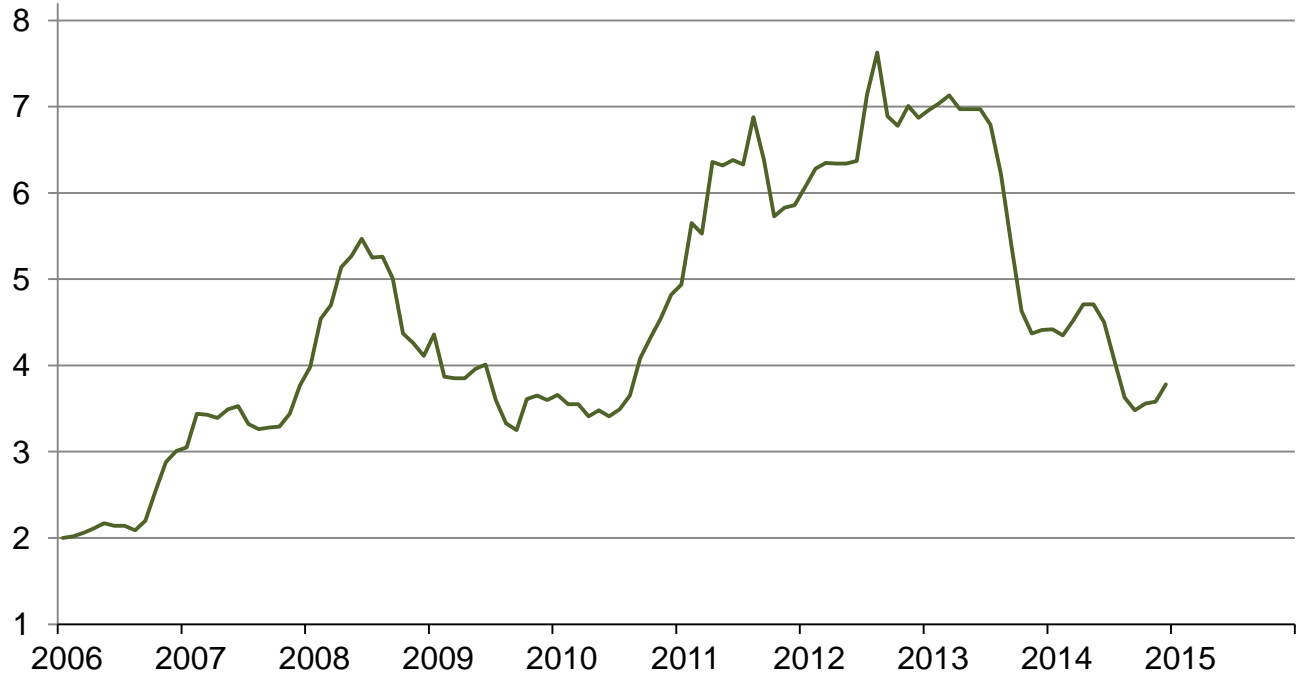
<sup>9</sup> Mid-month price.

<sup>10</sup> Also referred to as table eggs.

<sup>11</sup> Live weight equivalent price is used when actual live weight price is not available. Beginning January 2011, price reflects FOB shipping point basis. Prior year price reflects delivered basis.

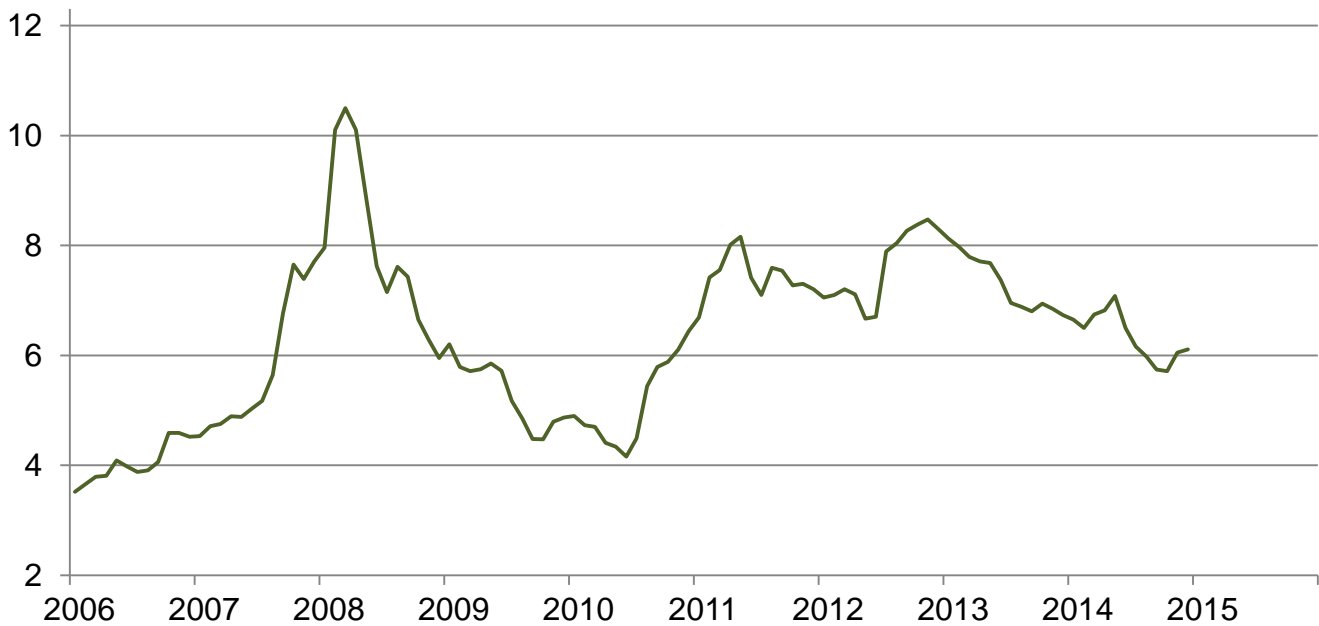
## Prices Received for Corn by Month – United States

Dollars per bushel



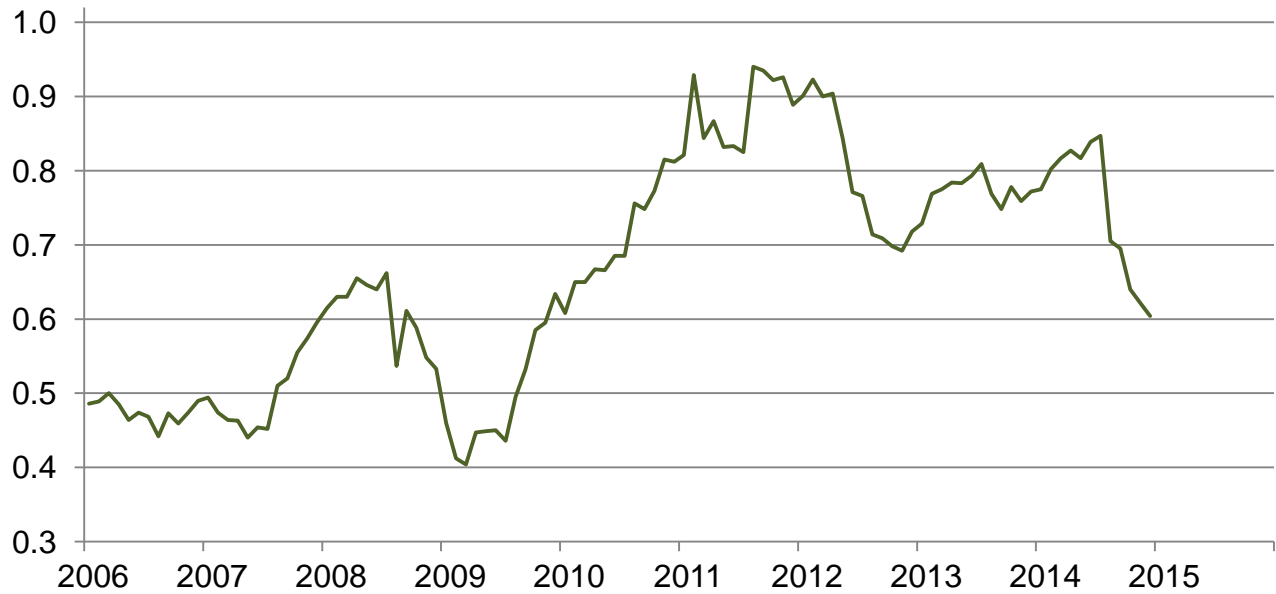
## Prices Received for Wheat by Month – United States

Dollars per bushel



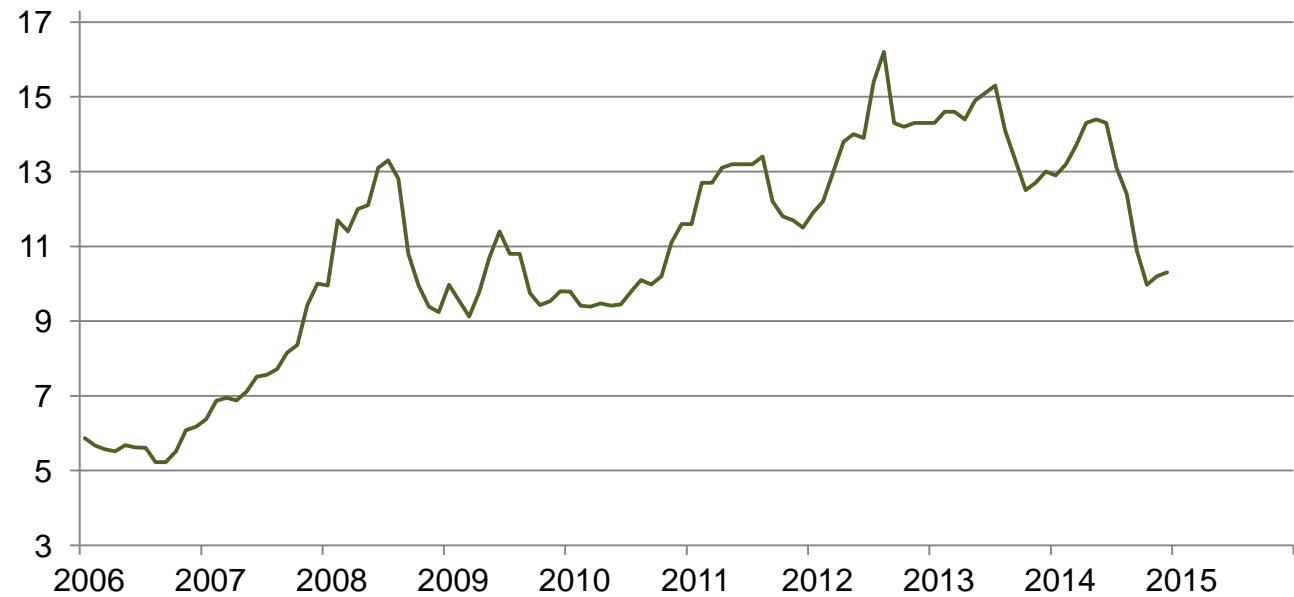
## Prices Received for Upland Cotton by Month – United States

Dollars per pound



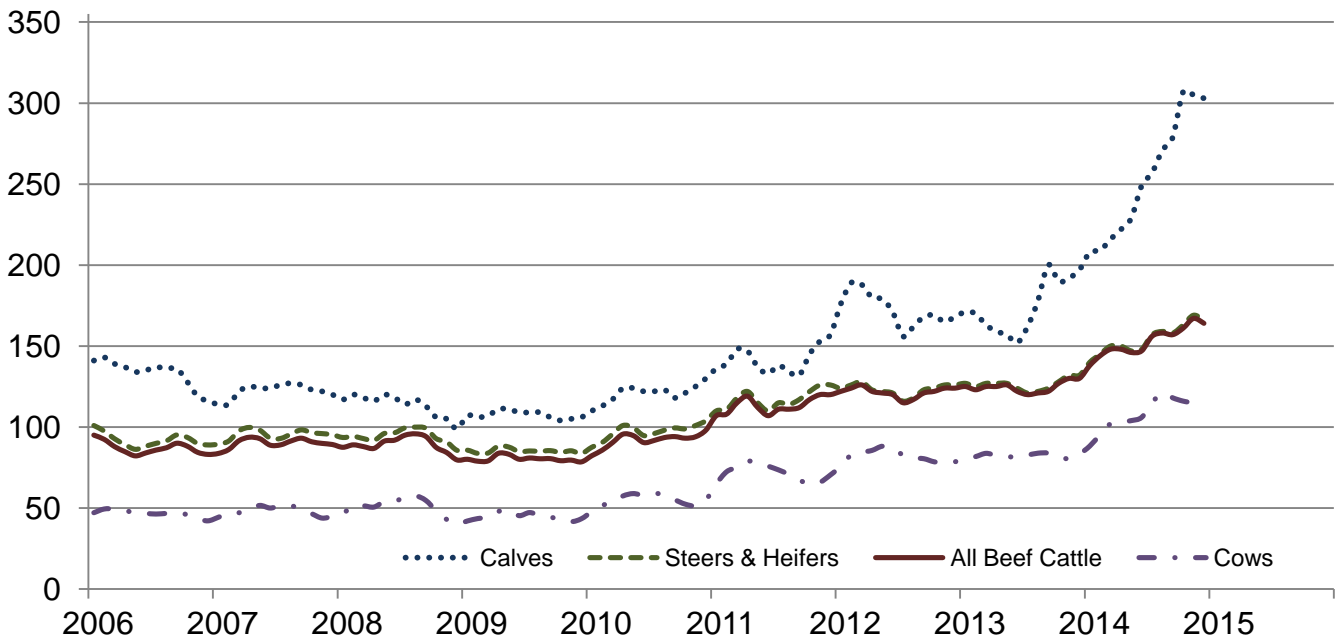
## Prices Received for Soybeans by Month – United States

Dollars per bushel



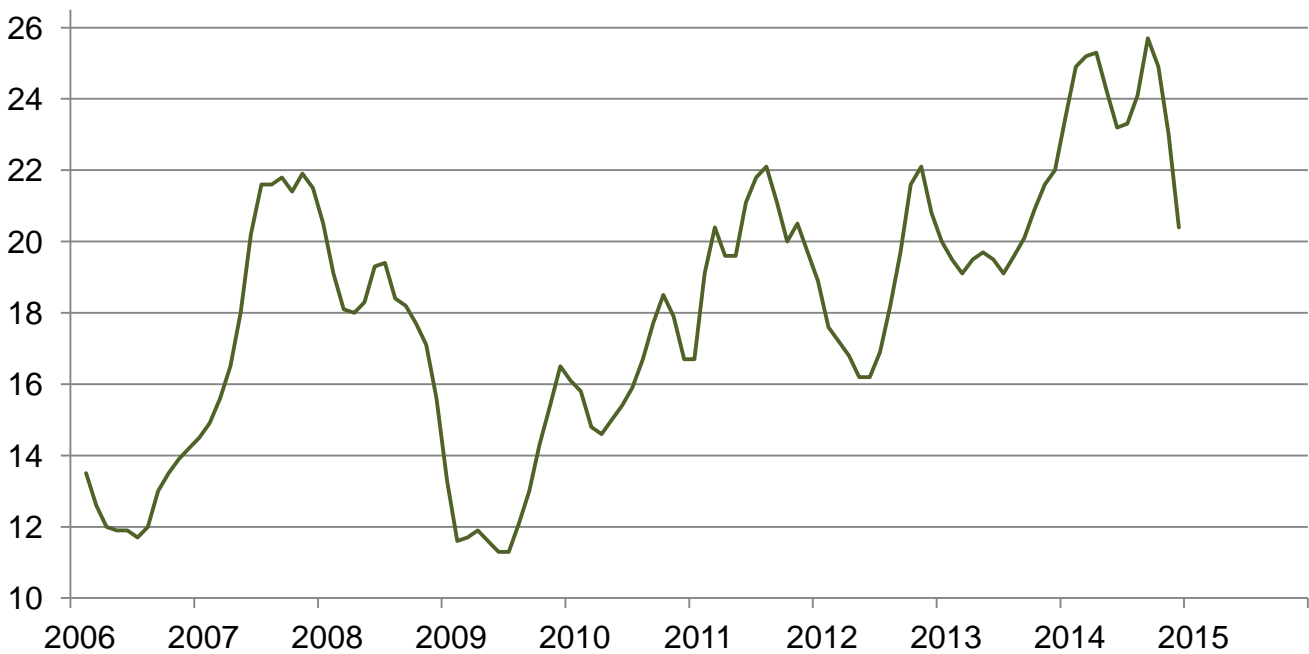
## Prices Received for Cattle by Month – United States

Dollars per cwt



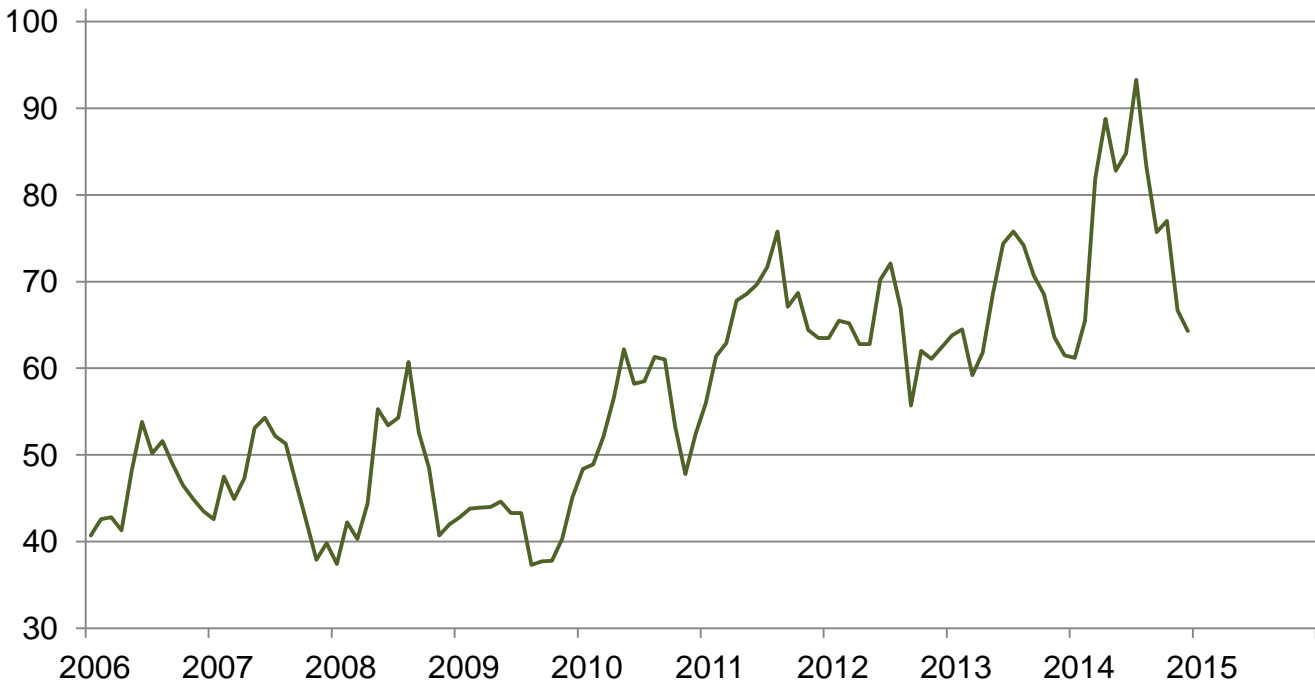
## Prices Received for Milk by Month – United States

Dollars per cwt



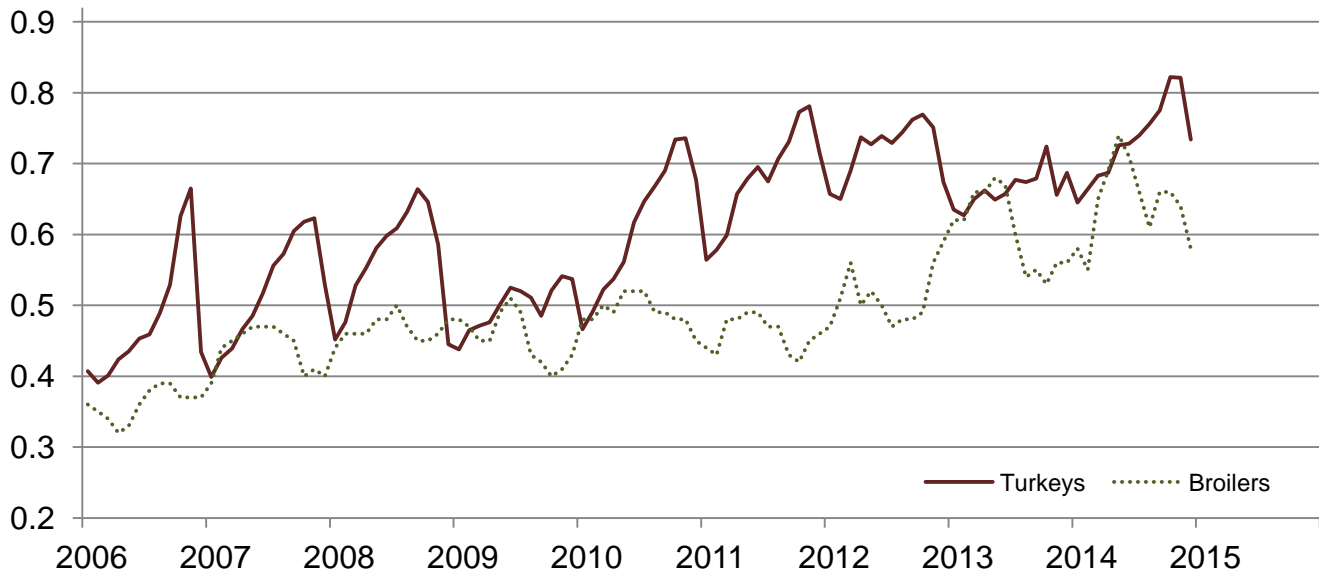
## Prices Received for Hogs by Month – United States

Dollars per cwt



## Prices Received for Poultry by Month – United States

Dollars per pound



## Prices Received for All Wheat, Corn, and Soybeans by Month – United States: 2014 with Comparisons

[Blank data cells indicate estimation period has not yet begun]

Month	All wheat			Corn			Soybeans		
	2012	2013	2014	2012	2013	2014	2012	2013	2014
	(dollars per bushel)	(dollars per bushel)	(dollars per bushel)	(dollars per bushel)	(dollars per bushel)	(dollars per bushel)	(dollars per bushel)	(dollars per bushel)	(dollars per bushel)
January .....	7.05	8.12	6.65	6.07	6.96	4.42	11.90	14.30	12.90
February .....	7.10	7.97	6.50	6.28	7.04	4.35	12.20	14.60	13.20
March .....	7.20	7.79	6.74	6.35	7.13	4.52	13.00	14.60	13.70
April .....	7.11	7.71	6.82	6.34	6.97	4.71	13.80	14.40	14.30
May .....	6.67	7.68	7.08	6.34	6.97	4.71	14.00	14.90	14.40
June .....	6.70	7.37	6.50	6.37	6.97	4.50	13.90	15.10	14.30
July .....	7.89	6.95	6.16	7.14	6.79	4.06	15.40	15.30	13.10
August .....	8.04	6.88	5.98	7.63	6.21	3.63	16.20	14.10	12.40
September .....	8.27	6.80	5.74	6.89	5.40	3.48	14.30	13.30	10.90
October .....	8.38	6.94	5.71	6.78	4.63	3.56	14.20	12.50	9.97
November .....	8.47	6.85	6.05	7.01	4.37	3.58	14.30	12.70	10.20
December .....	8.30	6.73	6.11	6.87	4.41	3.78	14.30	13.00	10.30

## Prices Received for Beef Cattle and All Hogs by Month – United States: 2014 with Comparisons

[Blank data cells indicate estimation period has not yet begun]

Month	Beef cattle <sup>1</sup>			All hogs <sup>2</sup>		
	2012	2013	2014	2012	2013	2014
	(dollars per cwt)	(dollars per cwt)	(dollars per cwt)	(dollars per cwt)	(dollars per cwt)	(dollars per cwt)
January .....	122.00	125.00	138.00	63.50	63.80	61.20
February .....	124.00	123.00	144.00	65.50	64.50	65.50
March .....	126.00	125.00	148.00	65.20	59.20	81.90
April .....	122.00	125.00	148.00	62.80	61.80	88.80
May .....	121.00	126.00	146.00	62.80	68.60	82.80
June .....	120.00	122.00	147.00	70.20	74.40	84.80
July .....	115.00	120.00	156.00	72.10	75.80	93.30
August .....	117.00	121.00	158.00	66.90	74.20	83.20
September .....	121.00	122.00	157.00	55.70	70.70	75.70
October .....	122.00	127.00	161.00	62.00	68.50	77.00
November .....	124.00	130.00	167.00	61.10	63.60	66.70
December .....	124.00	130.00	164.00	62.40	61.50	64.30

<sup>1</sup> Cows and steers & heifers.

<sup>2</sup> Barrows & gilts and sows.



## Prices Received for All Wheat – States and United States: December 2014 with Comparisons

State	December 2013	November 2014	December 2014
	(dollars per bushel)	(dollars per bushel)	(dollars per bushel)
Arizona .....	(D)	(D)	(D)
Arkansas .....	6.80	4.86	5.97
California .....	(D)	(D)	7.24
Colorado .....	6.73	5.61	6.18
Idaho .....	7.01	6.35	6.17
Illinois .....	6.36	4.91	5.35
Indiana .....	6.22	4.38	5.42
Kansas .....	6.72	5.68	6.19
Michigan .....	6.37	5.65	6.11
Minnesota .....	6.54	5.39	5.64
Missouri .....	6.42	5.10	5.63
Montana .....	7.04	6.82	6.36
Nebraska .....	6.62	5.37	5.93
North Carolina .....	5.32	5.16	5.29
North Dakota .....	6.32	5.95	5.91
Ohio .....	6.24	5.53	6.09
Oklahoma .....	6.54	5.73	6.23
Oregon .....	7.25	7.23	7.30
South Dakota .....	6.50	5.62	5.87
Texas .....	6.84	5.57	6.03
Washington .....	7.02	6.67	6.82
United States .....	6.73	6.05	6.11

(D) Withheld to avoid disclosing data for individual operations.

## Prices Received for Winter Wheat – States and United States: December 2014 with Comparisons

State	December 2013	November 2014	December 2014
	(dollars per bushel)	(dollars per bushel)	(dollars per bushel)
Arkansas .....	6.80	4.86	5.97
California .....	(D)	(D)	7.24
Colorado .....	6.73	5.71	6.19
Idaho .....	7.03	6.02	6.08
Illinois .....	6.36	4.91	5.35
Indiana .....	6.22	4.38	5.42
Kansas .....	6.72	5.68	6.19
Michigan .....	6.37	5.65	6.11
Minnesota .....	6.39	(D)	5.56
Missouri .....	6.42	5.10	5.63
Montana .....	7.18	5.71	5.99
Nebraska .....	6.62	5.37	5.93
North Carolina .....	5.32	5.16	5.29
North Dakota .....	5.98	4.18	4.83
Ohio .....	6.24	5.53	6.09
Oklahoma .....	6.54	5.73	6.23
Oregon .....	7.25	7.16	7.25
South Dakota .....	6.20	5.62	5.82
Texas .....	6.84	5.57	6.03
Washington .....	6.97	6.52	6.69
United States .....	6.84	5.86	6.15

(D) Withheld to avoid disclosing data for individual operations.

**Prices Received for Durum Wheat – States and United States: December 2014 with Comparisons**

State	December 2013	November 2014	December 2014
	(dollars per bushel)	(dollars per bushel)	(dollars per bushel)
Arizona .....	(D)	(D)	(D)
California .....	(S)	(S)	(S)
Idaho .....	(S)	(S)	(D)
Montana .....	(D)	10.90	10.60
North Dakota .....	6.83	11.00	10.30
United States .....	6.90	11.00	10.30

(D) Withheld to avoid disclosing data for individual operations.

(S) Insufficient number of reports to establish an estimate.

**Prices Received for Spring Wheat – States and United States: December 2014 with Comparisons**

State	December 2013	November 2014	December 2014
	(dollars per bushel)	(dollars per bushel)	(dollars per bushel)
Colorado .....	(S)	(D)	(D)
Idaho .....	(D)	7.05	6.23
Minnesota .....	6.54	5.39	5.64
Montana .....	6.87	6.58	6.21
North Dakota .....	6.17	5.33	5.53
Oregon .....	7.27	7.61	7.64
South Dakota .....	6.60	5.62	5.90
Washington .....	7.30	7.43	7.46
United States .....	6.55	5.74	5.78

(D) Withheld to avoid disclosing data for individual operations.

(S) Insufficient number of reports to establish an estimate.

### Prices Received for All Barley – States and United States: December 2014 with Comparisons

State	December 2013	November 2014	December 2014
	(dollars per bushel)	(dollars per bushel)	(dollars per bushel)
California .....	(S)	(D)	(S)
Colorado .....	(D)	(D)	(S)
Idaho .....	6.44	5.04	5.22
Minnesota .....	(D)	5.38	5.45
Montana .....	6.17	4.98	4.90
North Dakota .....	6.37	5.40	5.34
Oregon .....	3.95	(D)	(D)
Utah .....	3.84	(D)	(D)
Washington .....	3.59	3.18	3.35
Wyoming .....	(D)	(D)	(D)
United States .....	6.11	5.12	5.15

(D) Withheld to avoid disclosing data for individual operations.

(S) Insufficient number of reports to establish an estimate.

### Prices Received for Malting Barley – States: December 2014 with Comparisons

State	December 2013	November 2014	December 2014
	(dollars per bushel)	(dollars per bushel)	(dollars per bushel)
Idaho .....	6.64	5.82	5.75
Minnesota .....	(D)	5.38	5.45
Montana .....	6.26	5.69	5.58
North Dakota .....	6.55	5.60	5.45
Wyoming .....	(D)	(D)	(D)

(D) Withheld to avoid disclosing data for individual operations.

### Prices Received for Feed Barley – States: December 2014 with Comparisons

State	December 2013	November 2014	December 2014
	(dollars per bushel)	(dollars per bushel)	(dollars per bushel)
Idaho .....	3.35	2.93	2.91
Minnesota .....	(D)	(S)	(D)
Montana .....	3.47	2.25	2.71
North Dakota .....	4.29	2.95	2.51
Wyoming .....	(D)	(D)	(S)

(D) Withheld to avoid disclosing data for individual operations.

(S) Insufficient number of reports to establish an estimate.

**Prices Received for Corn – States and United States: December 2014 with Comparisons**

State	December 2013	November 2014	December 2014
	(dollars per bushel)	(dollars per bushel)	(dollars per bushel)
Colorado .....	4.58	4.05	4.13
Illinois .....	4.58	3.61	3.79
Indiana .....	4.37	3.50	3.80
Iowa .....	4.32	3.63	3.79
Kansas .....	4.43	3.75	3.90
Kentucky .....	4.74	3.61	3.95
Michigan .....	4.03	3.57	3.63
Minnesota .....	4.51	3.51	3.73
Missouri .....	4.48	3.25	3.61
Nebraska .....	4.42	3.70	3.79
North Carolina .....	4.72	4.34	4.51
North Dakota .....	4.07	3.27	3.32
Ohio .....	4.31	3.59	3.85
Pennsylvania .....	4.16	3.75	3.95
South Dakota .....	3.96	3.24	3.43
Tennessee .....	4.73	3.94	4.26
Texas .....	5.08	4.31	4.50
Wisconsin .....	4.31	3.61	3.67
United States .....	4.41	3.58	3.78

**Prices Received for Soybeans – States and United States: December 2014 with Comparisons**

State	December 2013	November 2014	December 2014
	(dollars per bushel)	(dollars per bushel)	(dollars per bushel)
Arkansas .....	13.20	10.80	10.70
Illinois .....	13.20	10.30	10.50
Indiana .....	13.10	10.20	10.50
Iowa .....	13.00	10.20	10.00
Kansas .....	12.80	9.73	9.75
Kentucky .....	13.20	10.50	10.70
Louisiana .....	(D)	10.90	10.90
Michigan .....	13.00	10.10	10.10
Minnesota .....	12.70	9.95	10.10
Mississippi .....	13.20	11.10	11.10
Missouri .....	13.10	9.99	10.20
Nebraska .....	12.80	9.75	9.88
North Carolina .....	12.90	10.20	10.10
North Dakota .....	12.60	9.46	9.65
Ohio .....	13.10	10.40	10.60
South Dakota .....	12.70	9.52	9.87
Tennessee .....	13.20	10.70	10.70
Wisconsin .....	13.10	10.10	10.00
United States .....	13.00	10.20	10.30

(D) Withheld to avoid disclosing data for individual operations.

### Prices Received for Oats – States and United States: December 2014 with Comparisons

State	December 2013	November 2014	December 2014
	(dollars per bushel)	(dollars per bushel)	(dollars per bushel)
Illinois .....	(S)	(D)	(S)
Iowa .....	4.03	3.37	3.76
Michigan .....	2.82	3.27	(D)
Minnesota .....	3.31	3.00	2.89
Montana .....	(S)	(D)	(D)
Nebraska .....	(D)	(D)	2.92
New York .....	(D)	(D)	(D)
North Dakota .....	3.10	2.63	2.37
Oregon .....	(S)	(D)	(D)
Pennsylvania .....	3.77	3.55	(S)
South Dakota .....	3.47	3.18	3.15
Texas .....	(S)	(S)	(S)
Wisconsin .....	4.19	3.89	3.23
United States .....	3.59	2.96	3.20

(D) Withheld to avoid disclosing data for individual operations.

(S) Insufficient number of reports to establish an estimate.

### Prices Received for Sorghum Grain – States and United States: December 2014 with Comparisons

State	December 2013	November 2014	December 2014
	(dollars per cwt)	(dollars per cwt)	(dollars per cwt)
Arkansas .....	(D)	7.34	7.25
Illinois .....	7.49	6.17	(D)
Kansas .....	7.31	6.54	7.30
Louisiana .....	(D)	7.86	(D)
Missouri .....	8.14	6.12	6.98
Nebraska .....	7.18	6.68	7.48
Oklahoma .....	7.27	6.83	7.80
Texas .....	7.75	6.84	7.24
United States .....	7.49	6.59	7.33

(D) Withheld to avoid disclosing data for individual operations.

**Prices Received for Dry Beans – States and United States: December 2014 with Comparisons**

State	December 2013	November 2014	December 2014
	(dollars per cwt)	(dollars per cwt)	(dollars per cwt)
California .....	55.20	70.50	65.60
Colorado .....	38.90	23.50	24.00
Idaho .....	(D)	31.90	27.10
Michigan .....	42.70	33.90	38.10
Minnesota .....	(D)	(S)	(D)
Nebraska .....	43.90	25.40	(D)
North Dakota .....	36.40	28.10	29.80
United States .....	39.80	30.50	34.00

(D) Withheld to avoid disclosing data for individual operations.

(S) Insufficient number of reports to establish an estimate.

**Prices Received for Peanuts (in shell) – States and United States: December 2014 with Comparisons**

State	December 2013	November 2014	December 2014
	(dollars per pound)	(dollars per pound)	(dollars per pound)
Alabama .....	0.194	0.181	0.208
Florida .....	0.242	0.222	0.216
Georgia .....	0.223	0.203	0.203
Mississippi .....	0.194	0.204	0.190
New Mexico .....	(S)	(S)	(S)
North Carolina .....	0.254	(D)	0.258
Oklahoma .....	0.244	0.313	0.093
South Carolina .....	0.247	0.207	0.243
Texas .....	0.352	0.277	0.202
Virginia .....	(S)	0.250	(S)
United States .....	0.246	0.214	0.210

(D) Withheld to avoid disclosing data for individual operations.

(S) Insufficient number of reports to establish an estimate.

**Prices Received for Sunflower – States and United States: December 2014 with Comparisons**

State	December 2013	November 2014	December 2014
	(dollars per cwt)	(dollars per cwt)	(dollars per cwt)
Colorado .....	(D)	(D)	(D)
Kansas .....	20.40	20.00	19.30
Minnesota .....	(D)	(D)	(D)
North Dakota .....	22.30	20.50	21.80
South Dakota .....	18.10	17.90	17.50
United States .....	18.80	19.80	19.60

(D) Withheld to avoid disclosing data for individual operations.

**Prices Received for Canola – States and United States: December 2014 with Comparisons**

State	December 2013	November 2014	December 2014
	(dollars per cwt)	(dollars per cwt)	(dollars per cwt)
Minnesota .....	(D)	(D)	(D)
North Dakota .....	20.60	17.10	16.60
United States .....	20.70	17.10	16.60

(D) Withheld to avoid disclosing data for individual operations.

**Prices Received for Flaxseed – States and United States: December 2014 with Comparisons**

State	December 2013	November 2014	December 2014
	(dollars per bushel)	(dollars per bushel)	(dollars per bushel)
North Dakota .....	13.40	11.60	11.40
United States .....	13.40	11.60	11.40

## Prices Received for Upland Cotton and Cottonseed – States and United States: December 2014 with Comparisons

[Cottonseed marketing year August - February]

State	Cotton, Upland			Cottonseed		
	December 2013	November 2014	December 2014	December 2013	November 2014	December 2014
	(dollars per pound)	(dollars per pound)	(dollars per pound)	(dollars per ton)	(dollars per ton)	(dollars per ton)
Alabama .....	0.803	0.585	0.624	225.00	184.00	186.00
Arizona .....	0.805	0.624	0.654	262.00	229.00	282.00
Arkansas .....	0.761	0.616	0.598	(S)	216.00	(S)
California .....	0.921	(D)	(D)	365.00	314.00	(S)
Georgia .....	0.823	0.682	0.624	203.00	173.00	173.00
Louisiana .....	0.758	0.585	0.598	(S)	182.00	(S)
Mississippi .....	0.792	0.606	0.598	243.00	192.00	(S)
North Carolina .....	0.805	0.638	0.627	214.00	198.00	195.00
Tennessee .....	0.794	0.655	0.599	290.00	228.00	(S)
Texas .....	0.748	0.609	0.592	257.00	183.00	183.00
United States .....	0.772	0.622	0.604	246.00	198.00	186.00

(D) Withheld to avoid disclosing data for individual operations.

(S) Insufficient number of reports to establish an estimate.

## Prices Received and Farm Marketings for Upland Cotton and Rice – United States: December 2014 with Comparisons

Item	December 2013	November 2014	December 2014
Cotton, Upland			
Average price ..... dollars/pound	0.772	0.622	0.604
Marketings <sup>1</sup> ..... 1,000 bales	3,261	1,396	3,507
Rice, all			
Average price ..... dollars/cwt	16.50	14.40	13.40
Marketings <sup>2</sup> ..... 1,000 cwt	11,544	15,253	16,453
Rice, long			
Average price ..... dollars/cwt	15.50	12.50	12.40
Marketings <sup>2</sup> ..... 1,000 cwt	8,144	9,179	13,159
Rice, medium and short			
California			
Average price ..... dollars/cwt	19.90	18.30	19.80
Other States <sup>3</sup>			
Average price ..... dollars/cwt	15.90	15.10	15.20
United States			
Average price ..... dollars/cwt	18.90	17.30	17.20
Marketings <sup>2</sup> ..... 1,000 cwt	3,400	6,074	3,294

<sup>1</sup> Marketings based on a survey of cotton buyers in the major producing States - Alabama, Arizona, Arkansas, California, Georgia, Louisiana, Mississippi, North Carolina, Tennessee, and Texas.

<sup>2</sup> Purchases by private firms and rice (rough equivalent) shipped by cooperatives.

<sup>3</sup> Other States include Arkansas, Louisiana, Mississippi, Missouri, and Texas.



## Prices Received for Hay by Type – States and United States: December 2014 with Comparisons

State	All hay			Alfalfa hay			Other hay		
	December 2013	November 2014	December 2014	December 2013	November 2014	December 2014	December 2013	November 2014	December 2014
	(dollars per ton)	(dollars per ton)	(dollars per ton)	(dollars per ton)	(dollars per ton)	(dollars per ton)	(dollars per ton)	(dollars per ton)	(dollars per ton)
Arizona .....	190.00	180.00	200.00	190.00	180.00	200.00	190.00	220.00	220.00
California .....	192.00	211.00	206.00	198.00	225.00	220.00	170.00	165.00	160.00
Colorado .....	230.00	215.00	200.00	230.00	215.00	200.00	230.00	210.00	195.00
Idaho .....	170.00	218.00	199.00	170.00	220.00	200.00	170.00	170.00	170.00
Illinois .....	162.00	162.00	157.00	185.00	180.00	180.00	125.00	115.00	115.00
Iowa .....	169.00	144.00	133.00	195.00	153.00	153.00	130.00	104.00	104.00
Kansas .....	161.00	140.00	139.00	192.00	157.00	154.00	113.00	99.00	92.00
Kentucky .....	125.00	110.00	118.00	200.00	190.00	195.00	105.00	90.00	95.00
Michigan .....	161.00	166.00	159.00	180.00	185.00	180.00	145.00	140.00	140.00
Minnesota .....	181.00	130.00	136.00	205.00	160.00	160.00	136.00	100.00	94.00
Missouri .....	107.00	87.00	90.00	210.00	170.00	170.00	80.00	70.00	75.00
Montana .....	143.00	128.00	123.00	150.00	130.00	125.00	110.00	120.00	115.00
Nebraska .....	141.00	91.00	94.00	153.00	96.00	98.00	120.00	79.00	85.00
Nevada .....	196.00	236.00	234.00	196.00	235.00	235.00	180.00	250.00	220.00
New Mexico .....	234.00	234.00	224.00	245.00	245.00	235.00	180.00	155.00	145.00
New York .....	156.00	151.00	135.00	200.00	195.00	222.00	155.00	150.00	132.00
North Dakota .....	99.00	82.00	83.00	104.00	83.00	85.00	68.00	59.00	59.00
Ohio .....	175.00	146.00	141.00	200.00	185.00	175.00	155.00	120.00	115.00
Oklahoma .....	101.00	152.00	145.00	203.00	185.00	193.00	94.00	103.00	86.00
Oregon .....	188.00	223.00	218.00	190.00	240.00	240.00	185.00	200.00	190.00
Pennsylvania .....	179.00	208.00	221.00	200.00	223.00	240.00	174.00	200.00	208.00
South Dakota .....	138.00	111.00	113.00	145.00	117.00	119.00	117.00	90.00	94.00
Texas .....	101.00	96.00	87.00	234.00	234.00	233.00	82.00	73.00	67.00
Utah .....	170.00	185.00	180.00	170.00	185.00	180.00	145.00	150.00	145.00
Washington .....	204.00	216.00	210.00	195.00	215.00	210.00	225.00	220.00	210.00
Wisconsin .....	190.00	157.00	150.00	205.00	173.00	165.00	135.00	95.00	95.00
Wyoming .....	180.00	137.00	136.00	185.00	140.00	140.00	160.00	125.00	125.00
United States ...	163.00	164.00	159.00	186.00	184.00	183.00	133.00	124.00	117.00

## Prices Received for Apples – States and United States: December 2014 with Comparisons

[Equivalent packinghouse-door returns for California, Michigan, New York, and Washington. Prices at point of first sale for other States]

State	Apples, fresh use		
	December 2013	November 2014	December 2014
	(dollars per pound)	(dollars per pound)	(dollars per pound)
California .....	(NA)	(NA)	(NA)
Michigan .....	(NA)	0.365	0.370
New York .....	(NA)	0.340	0.300
Ohio .....	(NA)	(NA)	(NA)
Pennsylvania .....	(NA)	0.350	0.380
Virginia .....	(NA)	0.280	0.270
Washington .....	(NA)	0.325	0.314
United States .....	(NA)	0.329	0.324

(NA) Not available.

## Prices Received for Citrus Fruits by Utilization – States and United States: December 2013

[Net pounds per box: grapefruit in California-80, Florida-85, Texas-80; lemons-80; oranges in California-80, Florida-90, Texas-85; tangelos-90; tangerines and mandarins in Arizona and California-80, Florida-95]

Commodity, State, and type	FOB packed fresh	Equivalent returns					
		Packinghouse door			On-tree		
		All	Fresh	Process	All	Fresh	Process
	(dollars per box)	(dollars per box)	(dollars per box)	(dollars per box)	(dollars per box)	(dollars per box)	(dollars per box)
<b>Grapefruit</b>							
California <sup>1</sup> .....	17.60	10.81	10.81	(D)	8.59	8.59	(D)
Florida .....	25.00	10.01	14.22	4.06	7.40	11.98	0.93
White .....	28.40	10.98	17.45	5.85	8.44	15.25	3.05
Colored .....	24.40	9.77	13.65	3.40	7.14	11.40	0.15
Texas .....	34.00	16.53	22.40	1.60	14.96	20.79	0.14
United States .....	23.90	10.09	13.71	4.06	7.51	11.47	0.93
<b>Lemons</b>							
Arizona .....	(D)	(D)	(D)	(D)	(D)	(D)	(D)
California .....	45.50	30.03	36.24	(D)	24.24	30.22	(D)
United States .....	45.80	29.27	36.55	(D)	23.52	30.53	(D)
<b>Oranges</b>							
California .....	27.70	14.75	18.53	(D)	12.16	15.97	(D)
Navel and miscellaneous .....	27.70	14.75	18.53	(D)	12.16	15.97	(D)
Florida .....	27.20	8.14	16.05	7.67	5.64	13.45	5.17
Early and mids .....	27.20	8.14	16.05	7.67	5.64	13.45	5.17
United States .....	27.60	9.45	17.98	7.28	6.93	15.41	4.77
<b>Tangelos</b>							
Florida .....	26.90	11.51	15.25	6.85	8.74	12.50	4.05
United States .....	26.90	11.51	15.25	6.85	8.74	12.50	4.05
<b>Tangerines and mandarins</b>							
Arizona .....	(D)	(D)	(D)	(D)	(D)	(D)	(D)
California .....	(D)	(D)	(D)	(D)	(D)	(D)	(D)
Florida .....	37.70	17.36	24.30	6.95	13.47	20.75	2.55
United States .....	43.60	27.61	34.25	2.88	24.41	31.37	-1.49

(D) Withheld to avoid disclosing data for individual operations.

<sup>1</sup> Some processed sales included in fresh sales.

## Prices Received for Citrus Fruits by Utilization – States and United States: November 2014

[Net pounds per box: grapefruit in California-80, Florida-85, Texas-80; lemons-80; oranges in California-80, Florida-90, Texas-85; tangelos-90; tangerines and mandarins in Arizona and California-80, Florida-95]

Commodity, State, and type	FOB packed fresh	Equivalent returns					
		Packinghouse door			On-tree		
		All	Fresh	Process	All	Fresh	Process
	(dollars per box)	(dollars per box)	(dollars per box)	(dollars per box)	(dollars per box)	(dollars per box)	(dollars per box)
Grapefruit							
California <sup>1</sup> .....	16.60	9.67	9.67	(D)	7.41	7.41	(D)
Florida .....	24.70	10.98	13.96	3.14	8.48	11.72	-0.06
White .....	27.50	11.08	16.55	2.75	8.49	14.35	-0.45
Colored .....	24.20	10.96	13.45	3.30	8.48	11.20	0.10
Texas .....	29.60	14.97	18.00	1.60	13.39	16.39	0.14
United States .....	24.40	11.46	14.04	2.95	9.13	11.90	-0.03
Lemons							
Arizona .....	(D)	(D)	(D)	(D)	(D)	(D)	(D)
California .....	56.10	39.53	46.65	(D)	33.59	40.51	(D)
United States .....	57.10	39.48	47.60	(D)	33.57	41.46	(D)
Oranges							
California .....	31.30	19.26	22.00	(D)	16.63	19.39	(D)
Navel and miscellaneous .....	32.10	20.15	22.75	0.38	17.52	20.14	-2.40
Valencia .....	(D)	(D)	(D)	(D)	(D)	(D)	(D)
Florida .....	34.00	13.05	22.85	5.40	10.51	20.25	2.90
Early and mids .....	34.00	13.05	22.85	5.40	10.51	20.25	2.90
United States .....	31.80	17.49	22.14	3.77	14.88	19.54	1.17
Tangelos .....	(S)	(S)	(S)	(S)	(S)	(S)	(S)
Florida .....	(S)	(S)	(S)	(S)	(S)	(S)	(S)
United States .....	(S)	(S)	(S)	(S)	(S)	(S)	(S)
Tangerines and mandarins							
Arizona .....	(D)	(D)	(D)	(D)	(D)	(D)	(D)
California .....	(D)	(D)	(D)	(D)	(D)	(D)	(D)
Florida .....	40.40	20.36	27.00	7.45	16.52	23.45	3.05
United States .....	52.00	31.87	42.24	2.53	28.52	39.28	-1.90

(D) Withheld to avoid disclosing data for individual operations.

(S) Insufficient number of reports to establish an estimate.

<sup>1</sup> Some processed sales included in fresh sales.

## Prices Received for Citrus Fruits by Utilization – States and United States: December 2014

[Net pounds per box: grapefruit in California-80, Florida-85, Texas-80; lemons-80; oranges in California-80, Florida-90, Texas-85; tangelos-90; tangerines and mandarins in Arizona and California-80, Florida-95]

Commodity, State, and type	FOB packed fresh	Equivalent returns					
		Packinghouse door			On-tree		
		All	Fresh	Process	All	Fresh	Process
	(dollars per box)	(dollars per box)	(dollars per box)	(dollars per box)	(dollars per box)	(dollars per box)	(dollars per box)
Grapefruit							
California <sup>1</sup> .....	17.60	10.67	10.67	(D)	8.41	8.41	(D)
Florida .....	23.40	9.10	12.61	2.27	6.53	10.36	-0.93
White .....	25.20	9.11	14.25	3.25	6.44	12.05	0.05
Colored .....	23.20	9.10	12.45	2.10	6.54	10.20	-1.10
Texas .....	22.85	9.24	11.25	1.60	7.66	9.64	0.14
United States .....	22.60	9.26	12.04	2.16	6.95	9.95	-0.75
Lemons							
Arizona .....	(D)	(D)	(D)	(D)	(D)	(D)	(D)
California .....	50.20	26.93	40.75	(D)	21.26	34.61	(D)
United States .....	50.50	27.36	41.01	(D)	21.68	34.87	(D)
Oranges							
California .....	31.10	19.38	21.75	(D)	16.75	19.14	(D)
Navel and miscellaneous .....	31.10	19.38	21.75	(D)	16.75	19.14	(D)
Florida .....	33.40	9.45	22.25	8.80	6.94	19.65	6.30
Early and mids .....	33.40	9.45	22.25	8.80	6.94	19.65	6.30
United States .....	31.50	11.65	21.83	8.53	9.12	19.22	6.02
Tangelos							
Florida .....	26.70	12.10	15.05	6.65	9.33	12.30	3.85
United States .....	26.70	12.10	15.05	6.65	9.33	12.30	3.85
Tangerines and mandarins							
Arizona .....	(D)	(D)	(D)	(D)	(D)	(D)	(D)
California .....	(D)	(D)	(D)	(D)	(D)	(D)	(D)
Florida .....	42.30	21.26	28.90	7.60	17.40	25.35	3.20
United States .....	42.80	27.80	33.40	2.88	24.61	30.49	-1.55

(D) Withheld to avoid disclosing data for individual operations.

<sup>1</sup> Some processed sales included in fresh sales.

## Prices Received for Potatoes – States and United States: December 2014 with Comparisons

State	December 2013	November 2014	December 2014
	(dollars per cwt)	(dollars per cwt)	(dollars per cwt)
California			
Spring .....	(S)	(S)	(S)
Fall .....	10.20	9.35	9.55
All <sup>1</sup> .....	10.20	9.35	9.55
Colorado			
Fresh <sup>2</sup> .....	9.80	9.90	10.20
All <sup>1</sup> .....	8.95	9.05	9.45
Florida .....	(S)	(S)	(S)
Idaho			
Fresh <sup>2</sup> .....	7.15	5.90	6.30
Processing .....	7.55	6.80	7.10
All <sup>1</sup> .....	7.35	6.45	6.60
Maine .....	10.70	(D)	(D)
Michigan .....	11.90	(D)	(D)
Minnesota .....	9.10	(D)	9.20
New York .....	12.50	(D)	(D)
North Carolina .....	(S)	(S)	(S)
North Dakota			
Fresh <sup>2</sup> .....	13.80	(D)	(D)
Processing .....	9.45	(D)	(D)
All <sup>1</sup> .....	10.70	(D)	(D)
Oregon .....	7.45	6.90	7.25
Texas .....	(S)	(S)	16.30
Virginia .....	(S)	(S)	(S)
Washington			
Processing .....	8.10	6.85	8.10
All <sup>1</sup> .....	9.00	7.05	8.40
Wisconsin			
Fresh <sup>2</sup> .....	10.00	(D)	(D)
Processing .....	10.60	(D)	(D)
All <sup>1</sup> .....	10.30	(D)	(D)
United States			
Fresh <sup>2</sup> .....	9.87	8.37	8.68
Processing .....	8.64	7.75	8.58
All <sup>1</sup> .....	9.02	7.99	8.64

(D) Withheld to avoid disclosing data for individual operations.

(S) Insufficient number of reports to establish an estimate.

<sup>1</sup> Average price of potatoes sold for all uses, including table stock, processing, seed, and livestock feed.

<sup>2</sup> Fresh market prices only. Includes table stock prices.

## Prices Received for All Milk – States and United States: December 2014 with Comparisons

[Before deduction for hauling. Includes quality, quantity, and other premiums. Excludes hauling subsidies]

State	December 2013		November 2014		December 2014	
	Price (dollars per cwt)	Fat test (percent)	Price (dollars per cwt)	Fat test (percent)	Price (dollars per cwt)	Fat test (percent)
Arizona .....	21.50	3.62	21.80	3.54	19.60	3.57
California .....	20.81	3.88	20.53	3.81	17.71	3.87
Colorado .....	21.90	3.64	23.40	3.66	21.60	3.70
Florida .....	25.60	3.62	27.30	3.70	26.90	3.65
Idaho .....	21.00	3.93	22.40	3.90	19.30	3.91
Illinois .....	22.40	3.92	24.10	3.91	21.10	3.95
Indiana .....	22.60	3.88	23.50	3.85	21.20	3.87
Iowa .....	22.30	3.91	23.90	3.83	20.90	3.80
Kansas .....	22.30	3.91	23.40	3.88	20.70	3.90
Michigan .....	22.10	3.85	23.00	3.77	20.50	3.83
Minnesota .....	22.00	4.01	24.40	4.02	20.60	3.97
New Mexico .....	20.90	3.71	21.10	3.73	19.40	3.70
New York .....	23.20	3.87	23.80	3.89	22.30	3.90
Ohio .....	22.80	3.98	23.60	3.88	21.80	3.94
Oregon .....	23.20	4.08	24.90	4.00	21.70	4.09
Pennsylvania .....	23.70	3.86	24.30	3.83	22.60	3.86
South Dakota <sup>1</sup> .....	22.90	4.12	24.50	4.08	21.20	4.08
Texas .....	22.80	4.00	23.90	4.00	20.70	4.00
Utah .....	21.50	3.95	23.80	3.84	21.50	3.84
Vermont .....	23.40	3.90	24.20	3.91	22.60	3.93
Virginia .....	25.20	3.80	26.30	3.82	25.00	3.81
Washington .....	22.90	4.08	22.70	4.00	21.30	4.09
Wisconsin .....	22.00	3.87	24.40	3.89	20.80	3.84
United States .....	22.00	3.89	23.00	3.86	20.40	3.87

<sup>1</sup> Beginning in March 2014, South Dakota was added and Missouri was removed from the monthly price program.

## Prices Received for Milk Cows – States and United States: January 2015 with Comparisons

[Animals sold for dairy herd replacement only. Quarterly United States milk cow prices are based on revised milk cow inventory]

State	January 2014 (dollars per head)	October 2014 (dollars per head)	January 2015 (dollars per head)
Arizona .....	1,500	2,200	2,000
California .....	1,300	2,200	1,800
Colorado .....	1,540	2,260	2,100
Florida .....	1,560	2,190	2,170
Idaho .....	1,400	2,150	2,000
Illinois .....	1,500	2,050	2,100
Indiana .....	1,500	2,050	2,100
Iowa .....	1,450	2,100	2,030
Kansas .....	1,400	2,100	2,100
Michigan .....	1,650	2,100	2,200
Minnesota .....	1,410	2,070	1,870
New Mexico .....	1,450	2,100	2,000
New York .....	1,430	2,010	1,910
Ohio .....	1,450	1,950	2,000
Oregon .....	1,350	2,100	2,000
Pennsylvania .....	1,500	2,000	2,000
South Dakota <sup>1</sup> .....	1,470	2,050	1,980
Texas .....	1,450	2,100	2,100
Utah .....	1,350	2,000	1,900
Vermont .....	1,570	2,030	1,980
Virginia .....	1,520	2,100	2,060
Washington .....	1,350	2,050	1,950
Wisconsin .....	1,570	2,220	2,160
United States .....	1,440	2,120	1,990

<sup>1</sup> Beginning in March 2014, South Dakota was added and Missouri was removed from the monthly price program.

## Commodity Parity Prices and Price as Percent of Parity Price – United States: December 2014 with Comparisons

[Parity prices are computed under the provisions of Title III, Subtitle a, Section 301 (a) of the Agricultural Adjustment Act of 1938 as amended by the Agricultural Acts of 1948, 1949, and 1956. See January *Agricultural Prices* for details on adjusted base price and parity price computations. Parity data not available for blank cells. Primary source of data for livestock and milk prices is United States Department of Agriculture's Agricultural Marketing Service]

Commodity and unit	Adjusted base price	Parity price			Price as percent of parity		
		December 2013	November 2014	December 2014	December 2013	November 2014	December 2014
	(dollars)	(dollars)	(dollars)	(dollars)	(percent)	(percent)	(percent)
<b>Basic commodities</b>							
All wheat .....	0.616	18.00	18.40	18.50	37	33	35
Rice .....	1.32	46.80	39.40	39.60	35	37	37
Corn .....	0.442	12.30	13.20	13.30	36	27	28
<b>Cotton</b>							
Upland .....	0.066	2.04	1.97	1.98	38	32	31
American Pima .....	0.137	3.77	4.09	4.11	33	42	42
Peanuts .....	0.024	0.765	0.716	0.720	32	30	29
<b>Designated nonbasic</b>							
All milk, to plants <sup>1</sup> .....	1.81	49.60	54.00	54.30	44	40	37
Honey, extracted <sup>2</sup> .....	0.147	4.00	4.39	4.41	53	48	48
<b>Wool and mohair</b>							
Wool .....	0.114	3.03	3.40	3.42	50	43	42
Mohair .....	0.361	9.52	10.80	10.80	41	39	39
<b>Other nonbasic</b>							
Apples, fresh <sup>3</sup> .....	0.034	0.907	1.010	1.020	43	33	32
Barley .....	0.452	12.60	13.50	13.60	48	38	38
Canola .....	1.870	53.30	55.80	56.10	39	31	30
Cottonseed .....	19.10	504.00	570.00	573.00	49	32	32
Dry edible beans .....	3.20	85.30	95.50	95.90	47	32	35
Flaxseed .....	1.150	31.50	34.30	34.50	43	34	33
Oats .....	0.284	7.51	8.48	8.51	48	35	36
Potatoes .....	0.835	23.30	24.90	25.00	39	32	33
Sorghum grain .....	0.748	21.50	22.30	22.40	35	30	33
Soybeans .....	1.060	29.20	31.60	31.80	45	32	32
Sunflower, all .....	2.12	59.50	63.30	63.60	32	31	32
<b>Citrus (equivalent on-tree)</b>							
Grapefruit .....	0.724	19.80	21.60	21.70	38	42	32
Lemons .....	1.36	37.40	40.60	40.80	63	83	53
Oranges .....	0.769	20.10	23.00	23.10	34	65	39
Tangerines .....	1.61	42.20	48.10	48.30	58	59	51
<b>Livestock and poultry</b>							
Beef cattle .....	10.40	283.00	310.00	312.00	46	54	54
Calves .....	14.30	388.00	427.00	429.00	51	71	71
Hogs .....	5.75	155.00	172.00	173.00	40	39	38
Eggs <sup>1</sup> .....	0.092	2.52	2.75	2.76	45	48	54
Turkeys, live .....	0.060	1.620	1.790	1.800	42	46	41

<sup>1</sup> Seasonally adjusted price as percentage of parity price.

<sup>2</sup> Wholesale extracted. Adjusted base price derived from state annual averages prices weighted by production. For 1982 through 1985 the national averages are the support prices.

<sup>3</sup> Equivalent packinghouse-door returns for California, New York, Oregon, and Washington. Price at point of first sale for other states.



## Commodity Parity Prices – United States: December 2014 with Comparisons

[Parity prices are computed under the provisions of Title III, Subtitle a, Section 301 (a) of the Agricultural Adjustment Act of 1938 as amended by the Agricultural Acts of 1948, 1949, and 1956. See January *Agricultural Prices* for details on adjusted base price and parity price computations]

Commodity and unit	Adjusted base price	Parity price			
		December 2013	November 2014	December 2014	
	(dollars)	(dollars)	(dollars)	(dollars)	
<b>Field crops and miscellaneous</b>					
Hops .....	pound	0.318	8.59	9.49	9.53
Mustard seed .....	cwt	2.99	80.80	89.30	89.60
Rapeseed .....	cwt	2.29	63.80	68.40	68.70
Rye .....	bushel	0.582	15.20	17.40	17.40
Safflower .....	cwt	2.09	57.80	62.40	62.70
Spearmint oil .....	pound	1.60	42.50	47.80	48.00
Sweet potatoes .....	cwt	2.09	58.90	62.40	62.70
<b>Tobacco</b>					
Flue-cured, 11-14 .....	pound	0.185	5.24	5.52	5.55
Fire-cured, 21-23 .....	pound	0.266	7.57	7.94	7.97
Burley, 31 .....	pound	0.187	5.33	5.58	5.61
Maryland, 32 .....	pound	0.169	4.73	5.04	5.07
Dark air-cured, 35-37 .....	pound	0.240	6.80	7.16	7.20
Pennsylvania seedleaf, 41 .....	pound	0.182	4.99	5.43	5.46
Cigar binder, 51 .....	pound	0.637	17.30	19.00	19.00
<b>Noncitrus fruit</b>					
Apples, processing <sup>1</sup> .....	ton	18.10	470.00	540.00	543.00
Apricots					
Fresh <sup>2</sup> .....	ton	116.00	3,150.00	3,460.00	3,480.00
Dried (California) .....	ton	262.00	7,140.00	7,820.00	7,850.00
Avocados <sup>2</sup> .....	ton	185.00	5,360.00	5,520.00	5,550.00
Cherries					
Sweet .....	ton	216.00	5,810.00	6,450.00	6,480.00
Tart .....	pound	0.033	0.935	0.985	0.989
Cranberry <sup>3</sup> .....	barrel	4.61	133.00	138.00	138.00
Dates (California) <sup>2</sup> .....	ton	162.00	4,560.00	4,840.00	4,860.00
<b>Grapes</b>					
Raisin variety .....	ton	142.00	3,770.00	4,240.00	4,260.00
Other dried .....	ton	65.50	1,750.00	1,960.00	1,960.00
Kiwifruit .....	ton	89.50	2,510.00	2,670.00	2,680.00
Nectarines, fresh (California) <sup>2</sup> .....	ton	57.50	1,550.00	1,720.00	1,720.00
Olives, canning (California) <sup>3</sup> .....	ton	93.80	2,490.00	2,800.00	2,810.00

See footnote(s) at end of table.

--continued

## Commodity Parity Prices – United States: December 2014 with Comparisons (continued)

[Parity prices are computed under the provisions of Title III, Subtitle a, Section 301 (a) of the Agricultural Adjustment Act of 1938 as amended by the Agricultural Acts of 1948, 1949, and 1956. See January *Agricultural Prices* for details on adjusted base price and parity price computations]

Commodity and unit	Adjusted base price	Parity price			
		December 2013	November 2014	December 2014	
	(dollars)	(dollars)	(dollars)	(dollars)	
Noncitrus fruit - continued					
Papayas (Hawaii) .....	pound	0.042	1.08	1.25	1.26
Peaches					
Fresh <sup>4</sup> .....	ton	83.40	2,270.00	2,490.00	2,500.00
Dried (California) .....	ton	47.80	1,370.00	1,430.00	1,430.00
Processing, excludes dried					
Clingstone (California) <sup>3</sup> .....	ton	33.00	896.00	985.00	989.00
Pears					
Fresh <sup>4</sup> .....	ton	56.90	1,550.00	1,700.00	1,710.00
Dried (California) <sup>1</sup> .....	ton	141.00	4,250.00	4,210.00	4,230.00
Plums (California)					
Fresh, equivalent on-tree .....	ton	60.10	1,650.00	1,790.00	1,800.00
Prunes, dried (California) <sup>1</sup> .....	ton	152.00	4,050.00	4,540.00	4,560.00
Prunes and plums					
Fresh, excludes California <sup>5</sup> .....	ton	62.80	1,750.00	1,870.00	1,880.00
Processing, excludes dried <sup>1</sup> .....	ton	24.50	674.00	731.00	735.00
Tree nuts <sup>6</sup>					
Almonds .....	pound	0.227	5.98	6.78	6.81
Hazelnuts .....	ton	208.00	5,410.00	6,210.00	6,240.00
Pistachios .....	pound	0.208	5.50	6.21	6.24
Walnuts .....	ton	203.00	5,240.00	6,060.00	6,090.00
Vegetables, fresh <sup>7</sup>					
Carrots <sup>8</sup> .....	cwt	2.66	72.80	79.40	79.80
Cauliflower <sup>8</sup> .....	cwt	4.11	114.00	123.00	123.00
Celery <sup>8</sup> .....	cwt	2.05	55.00	61.20	61.50
Honeydew melons .....	cwt	1.97	55.80	58.80	59.10
Lettuce .....	cwt	2.16	59.20	64.50	64.80
Onions <sup>8</sup> .....	cwt	1.34	40.00	40.00	40.20
Tomatoes .....	cwt	4.33	122.00	129.00	130.00

<sup>1</sup> Equivalent returns at processing plant door.

<sup>2</sup> Equivalent returns at packinghouse door.

<sup>3</sup> Equivalent returns for bulk fruit at first delivery point.

<sup>4</sup> Equivalent packinghouse-door returns for California, New York (apples only), Oregon (except peaches), and Washington. Price at point of first sale for other states.

<sup>5</sup> Based on "as sold" prices for fresh fruit in all states.

<sup>6</sup> Prices In-Shell basis except almonds which are shelled basis.

<sup>7</sup> FOB shipping point prices.

<sup>8</sup> Includes some processing.

## Marketing Year for Specified Commodities

**Rice:** August 1 to July 31 for United States; July 1 to June 30 for Louisiana and Texas; August 1 to July 31 for Arkansas and Mississippi; October 1 to September 30 for California; September 1 to August 31 for Missouri.

**Sweet Potatoes:** July - June for United States; July 1 to June 30 for Alabama and California; July 1 to May 31 for Arkansas, Louisiana, North Carolina and Texas; August 1 to July 31 for Mississippi and New Jersey; and January 1 to December 31 for Florida.

## Sweet Potato Market Year Average Prices Received – States and United States: Marketing Years 2013 and 2014

State	2013	2014 <sup>1</sup>
	(dollars per cwt)	(dollars per cwt)
Alabama .....	28.50	17.80
Arkansas .....	32.20	(D)
California .....	24.60	28.40
Florida .....	(D)	(D)
Louisiana .....	17.90	19.10
Mississippi .....	16.40	16.60
New Jersey .....	29.50	41.30
North Carolina .....	24.90	22.40
Texas .....	(D)	29.60
United States .....	24.10	23.60

(D) Withheld to avoid disclosing data for individual operations.

<sup>1</sup> Preliminary.

## Rice Market Year Average Prices Received by All and Length of Grain – States and United States: Marketing Years 2012 and 2013

State	2012	2013
	(dollars per cwt)	(dollars per cwt)
<b>All rice</b>		
Arkansas .....	14.30	15.20
California .....	18.60	20.90
Louisiana .....	14.40	15.50
Mississippi .....	14.60	15.40
Missouri .....	14.10	15.10
Texas .....	15.20	16.40
United States <sup>1</sup> .....	15.10	16.30
<b>Long grain</b>		
United States <sup>1</sup> .....	14.50	15.40
<b>Medium and short grain</b>		
California .....	18.40	20.70
Other States <sup>1</sup> .....	14.70	15.70
United States <sup>1</sup> .....	17.40	19.20

<sup>1</sup> Based on state prices weighted by marketings for August through July.

## All Rice Prices Received and Farm Marketings – United States: Marketing Years 2012-2013 through 2014-2015

[Marketing year average (MYA) prices are weighted average prices for the United States marketing year of August through July. Blank data cells indicate estimation period has not yet begun]

Month	Prices received			Farm marketings <sup>1</sup>		
	2012-2013	2013-2014	2014-2015 <sup>2</sup>	2012-2013	2013-2014	2014-2015 <sup>2</sup>
	(dollars per cwt)	(dollars per cwt)	(dollars per cwt)	(1,000 cwt)	(1,000 cwt)	(1,000 cwt)
August .....	14.80	15.80	15.60	10,856	8,879	9,679
September .....	14.50	15.60	14.50	10,630	11,420	9,857
October .....	14.50	16.10	14.00	13,969	13,239	16,395
November .....	15.00	16.30	14.40	16,513	9,462	15,253
December .....	15.00	16.50	13.40	15,260	11,544	16,453
January <sup>3</sup> .....	15.30	17.10		18,957	19,762	
February .....	15.00	16.70		15,410	13,495	
March .....	15.20	16.40		14,224	12,694	
April .....	15.40	16.20		12,521	8,573	
May .....	15.50	16.20		11,213	7,858	
June .....	15.50	16.30		9,829	7,777	
July .....	15.60	16.10		8,840	8,013	
MYA .....	15.10	16.30		158,222	132,716	

<sup>1</sup> Purchases from producers as reported by private firms and rice (rough equivalent) shipped from producers as reported by cooperative mills.

<sup>2</sup> Prices and marketings include late reports and revised data for August 2014 - November 2014. Final monthly prices and marketings and MYA prices will be published in the January 2016 *Agricultural Prices* report.

<sup>3</sup> Second year.

## Long Grain Rice Prices Received and Farm Marketings – United States: Marketing Years 2012-2013 through 2014-2015

[Marketing year average (MYA) prices are weighted average prices for the United States marketing year of August through July. Blank data cells indicate estimation period has not yet begun]

Month	Prices received			Farm marketings <sup>1</sup>		
	2012-2013	2013-2014	2014-2015 <sup>2</sup>	2012-2013	2013-2014	2014-2015 <sup>2</sup>
	(dollars per cwt)	(dollars per cwt)	(dollars per cwt)	(1,000 cwt)	(1,000 cwt)	(1,000 cwt)
August .....	14.10	15.20	14.30	8,176	6,566	7,615
September .....	13.90	15.30	13.70	9,172	10,032	8,388
October .....	14.00	15.40	12.90	11,843	10,856	13,465
November .....	14.20	15.40	12.50	12,815	6,873	9,179
December .....	14.20	15.50	12.40	11,326	8,144	13,159
January <sup>3</sup> .....	14.50	15.50		13,967	12,223	
February .....	14.70	15.50		12,939	9,794	
March .....	14.70	15.50		11,117	9,729	
April .....	14.80	15.60		9,540	6,983	
May .....	14.90	15.50		9,097	6,218	
June .....	15.00	15.60		7,545	6,356	
July .....	15.00	15.40		6,508	6,691	
MYA .....	14.50	15.40		124,045	100,465	

<sup>1</sup> Purchases from producers as reported by private firms and rice (rough equivalent) shipped from producers as reported by cooperative mills.

<sup>2</sup> Prices and marketings include late reports and revised data for August 2014 - November 2014. Final monthly prices and marketings and MYA prices will be published in the January 2016 *Agricultural Prices* report.

<sup>3</sup> Second year.

## Medium and Short Grain Rice Prices Received and Farm Marketings – United States: Marketing Years 2012-2013 through 2014-2015

[Marketing year average (MYA) prices are weighted average prices for the United States marketing year of August through July. Blank data cells indicate estimation period has not yet begun]

Month	Prices received			Farm marketings <sup>1</sup>		
	2012-2013	2013-2014	2014-2015 <sup>2</sup>	2012-2013	2013-2014	2014-2015 <sup>2</sup>
	(dollars per cwt)	(dollars per cwt)	(dollars per cwt)	(1,000 cwt)	(1,000 cwt)	(1,000 cwt)
August .....	16.70	17.40	20.30	2,680	2,313	2,064
September ....	17.90	17.80	18.90	1,458	1,388	1,469
October .....	17.60	19.50	18.90	2,126	2,383	2,930
November .....	18.10	18.90	17.30	3,698	2,589	6,074
December .....	17.30	18.90	17.20	3,934	3,400	3,294
January <sup>3</sup> .....	17.70	19.80		4,990	7,539	
February .....	16.90	19.60		2,471	3,701	
March .....	17.00	19.30		3,107	2,965	
April .....	17.40	18.50		2,981	1,590	
May .....	18.00	18.70		2,116	1,640	
June .....	17.30	19.70		2,284	1,421	
July .....	17.20	19.90		2,332	1,322	
MYA .....	17.40	19.20		34,177	32,251	

<sup>1</sup> Purchases from producers as reported by private firms and rice (rough equivalent) shipped from producers as reported by cooperative mills.

<sup>2</sup> Prices and marketings include late reports and revised data for August 2014 - November 2014. Final monthly prices and marketings and MYA prices will be published in the January 2016 *Agricultural Prices* report.

<sup>3</sup> Second year.

## Medium and Short Grain Rice Prices Received – California and Other States: Marketing Years 2013-2014 through 2014-2015

[Marketing year for California: October - September. Marketing Year for Other States: August - July. Other States include Arkansas, Louisiana, Mississippi, Missouri, and Texas. Blank data cells indicate estimation period has not yet begun]

Month	California		Other States	
	2013-2014	2014-2015 <sup>1</sup>	2013-2014	2014-2015 <sup>1</sup>
	(dollars per cwt)	(dollars per cwt)	(dollars per cwt)	(dollars per cwt)
August .....	(NA)	21.10	15.00	15.60
September ....	(NA)	20.70	15.40	15.70
October .....	21.50	21.90	15.50	15.30
November .....	19.90	18.30	15.40	15.10
December .....	19.90	19.80	15.90	15.20
January <sup>2</sup> .....	20.60		15.70	
February .....	21.10		15.80	
March .....	20.60		16.10	
April .....	20.40		16.10	
May .....	21.20		15.90	
June .....	20.80		15.90	
July .....	21.20		15.80	
August .....	21.10		15.60	
September ....	20.70		15.70	
MYA .....	20.70		15.70	

(NA) Not available.

<sup>1</sup> Prices and marketings include late reports and revised data for August 2014 - November 2014. Final monthly prices and marketings and MYA prices will be published in the January 2016 *Agricultural Prices* report.

<sup>2</sup> Second year.

## Reliability of Prices Received Estimates

**Definition:** Prices received represent sales from producers to first buyers. They include all grades and qualities. The average commodity price from the survey multiplied by the total quantity marketed theoretically should give the total cash receipts for the commodity.

**Survey procedures:** Primary sales data used to determine grain prices were obtained from probability samples of about 1900 mills and elevators. These procedures ensure that virtually all grain moving into commercial channels has a chance of being included in the survey. Generally, States surveyed account for 90 percent or more of total United States production. Livestock prices are obtained from packers, stockyards, auctions, dealers, and market check data from AMS-USDA, private marketing organizations, and state commodity groups and agencies. Inter-farm sales of grain and livestock are not included since they represent very small percentages of the total sales. Grain marketed for seed is also excluded. Fruit and vegetable prices are obtained from sample surveys and market check data from AMS-USDA, private marketing organizations, state agencies, and universities.

**Summary and estimation procedures:** Survey quantities sold are expanded by strata to state levels and used to weight average strata prices to a state average. State prices are then weighted to a United States price based on expanded sales. Recommendations are prepared by the Regional Field Offices and reviewed by the Agricultural Statistics Board in Washington, D.C. State recommendations are reviewed for reasonableness with survey data, other States, and recent historic estimates.

**Revisions:** For most items, the current month's preliminary price represents a 3-5 day period around the 15th of the month. Previous month's prices represent actual dollars received for quantities sold during the entire month. Revisions are published in monthly issues of *Agricultural Prices*.

**Reliability:** United States price estimates based on probability surveys generally have a sampling error of less than one percent for the major commodities such as corn, wheat, soybeans, cotton, and rice. Current methods of summarization for non-probability commodities are not designed directly to calculate sampling errors. However, analytical measures approximate the United States relative sampling errors at around five percent. Any non-sampling errors are attributed to such things as the inability to obtain correct information, differences in interpreting questions or definitions, mistakes in coding or processing the data, etc. Efforts are made at each step in the survey process to minimize these non-sampling errors.

After the Council on Food, Agricultural and Resource Economics (C-FARE) 2009 program review which included changes in farm production practices, plans were implemented to make necessary program improvements in the agricultural price program. The index group structure for prices received was modified to maintain a more universal structure and consistency with the required 1910-1914 series. Modifications implemented January 2014 include the following:

- Update the current 1990-1992 base reference period to 2011,
- Link the 1910-1914 series to the updated base reference period, 2011,
- Create index groups used universally by researchers, data users, and policymakers,
- Re-classify agricultural commodities into the index groups,
- Expand the commodity coverage for vegetable, melon, non-citrus, and tree nuts,
- Update monthly market weights, and
- Adjust (normalization) current five year moving average cash receipts and farm input cost weights.

## December Prices Paid by Farmers

The December Index of Prices Paid for Commodities and Services, Interest, Taxes, and Farm Wage Rates (PPITW), at 111 (2011=100), is unchanged from November 2014 but up 4.7 percent from December 2013.

**Production index:** The December index, at 113, is unchanged from last month but is 5.6 percent higher than last year. Lower prices in December for feeder cattle, LP gas, diesel, and gasoline more than offset higher prices for complete feeds, feed grains, feeder pigs, and supplements.

**Feed:** The December index, at 107, increased 1.9 percent from November but decreased 1.8 percent from last December. Since November, higher prices for complete feeds, feed grains, and supplements more than offset lower prices for hay & forages and concentrates.

**Livestock and poultry:** The December index, at 173, decreased 2.3 percent from last month but increased 40 percent from last year. Since November, lower prices for feeder cattle more than offset higher prices for feeder pigs. The December feeder cattle price, at \$250.00 per cwt, is down \$7.00 per cwt from the November price. December feeder pigs averaged \$217.00 per cwt, up \$11.00 per cwt from November.

**Fertilizer:** The December index, at 94, is unchanged from November but is 3.3 percent above December a year ago. Since November, higher prices for mixed fertilizer and nitrogen offset lower prices for potash & phosphate.

**Chemicals:** The December index, at 111, is up 0.9 percent from November and 0.9 percent from last December. Compared with last month, prices for herbicides, insecticides, and fungicides/other are slightly higher.

**Fuels:** The December index, at 79, is down 11 percent from a month earlier and 23 percent below December 2013. Compared with last month, prices are lower for LP gas, diesel, and gasoline.

**Machinery:** The December index, at 111, is unchanged from November but is 1.8 percent above last December. Compared with last month, prices are slightly higher for other machinery.

**Consumer price index:** The November 2014 Consumer Price Index, as issued by the Bureau of Labor Statistics, for all urban consumers (CPI-U) decreased 0.5 percent before seasonal adjustment to a level of 236.151 (1982-1984=100). The October index is 237.433. For the 12 month period ending in November, the overall index increased 32.2 percent.

## Prices Paid Indexes and Related Parity Ratios – United States: December 2014 with Comparisons

[Revised historical price indexes for months not shown are available at [www.nass.usda.gov](http://www.nass.usda.gov)]

Indexes and ratios	1910-1914 Base			2011 Base		
	December 2013	November 2014	December 2014	December 2013	November 2014	December 2014
	(percent)	(percent)	(percent)	(percent)	(percent)	(percent)
Prices paid by farmers for commodities, services, interest, taxes, and wage rates (PPITW) .....	2878	3013	3000	106	111	111
Production .....	2233	2361	2349	107	113	113
Feed .....	1200	1161	1178	109	105	107
Livestock and poultry .....	2442	3488	3417	124	177	173
Seeds .....	3643	3752	3752	111	114	114
Fertilizer .....	1091	1126	1134	91	94	94
Chemicals .....	989	990	994	110	110	111
Fuels .....	2843	2483	2207	102	89	79
Supplies and repairs .....	1227	1253	1252	104	106	106
Autos and trucks .....	3189	3220	3224	104	105	105
Machinery .....	6686	6764	6771	109	111	111
Building materials .....	2439	2498	2496	105	107	107
Services and rent .....	2228	2285	2286	(NA)	(NA)	(NA)
Services .....	(NA)	(NA)	(NA)	106	108	108
Rent .....	(NA)	(NA)	(NA)	104	107	107
Interest <sup>1</sup> .....	3572	3684	3684	98	101	101
Taxes <sup>2</sup> .....	6137	6233	6233	103	105	105
Wage rates .....	7654	7756	7756	107	108	108
Production, interest, taxes, and wage rates (PITW) .....	3011	3169	3155	107	112	112
Family living-CPI <sup>3</sup> .....	2214	2243	2231	104	105	104
Ratio (received/paid) .....	(NA)	(NA)	(NA)	94	91	90
Parity ratio <sup>4</sup> .....	36	35	35	(NA)	(NA)	(NA)
Parity ratio adjusted <sup>5</sup> .....	37	36	36	(NA)	(NA)	(NA)
PPITW adjusted for productivity <sup>6</sup> .....	1412	1424	1421	(NA)	(NA)	(NA)
Crop sector (PPITW) .....	(NA)	(NA)	(NA)	104	107	106
Livestock sector (PPITW) .....	(NA)	(NA)	(NA)	108	116	116
Farm sector (production) .....	(NA)	(NA)	(NA)	114	128	128
Non-farm sector (production) .....	(NA)	(NA)	(NA)	103	104	103

(NA) Not available.

<sup>1</sup> Interest per acre on farm real estate debt and interest rate on farm non-real estate debt.

<sup>2</sup> Farm real estate taxes payable per acre.

<sup>3</sup> Bureau of Labor Statistics, Consumer Price Index for all urban consumers (CPI-U), for the previous month converted by the USDA.

<sup>4</sup> Ratio of index of prices received to PPITW (1910-1914=100).

<sup>5</sup> Based on estimated cash receipts, from marketings and government payments, the preliminary adjustment factor is 1.028 for 2015 and the revised factor is 1.028 for 2014.

<sup>6</sup> PPITW is adjusted based on productivity trend for the prior 15 years.

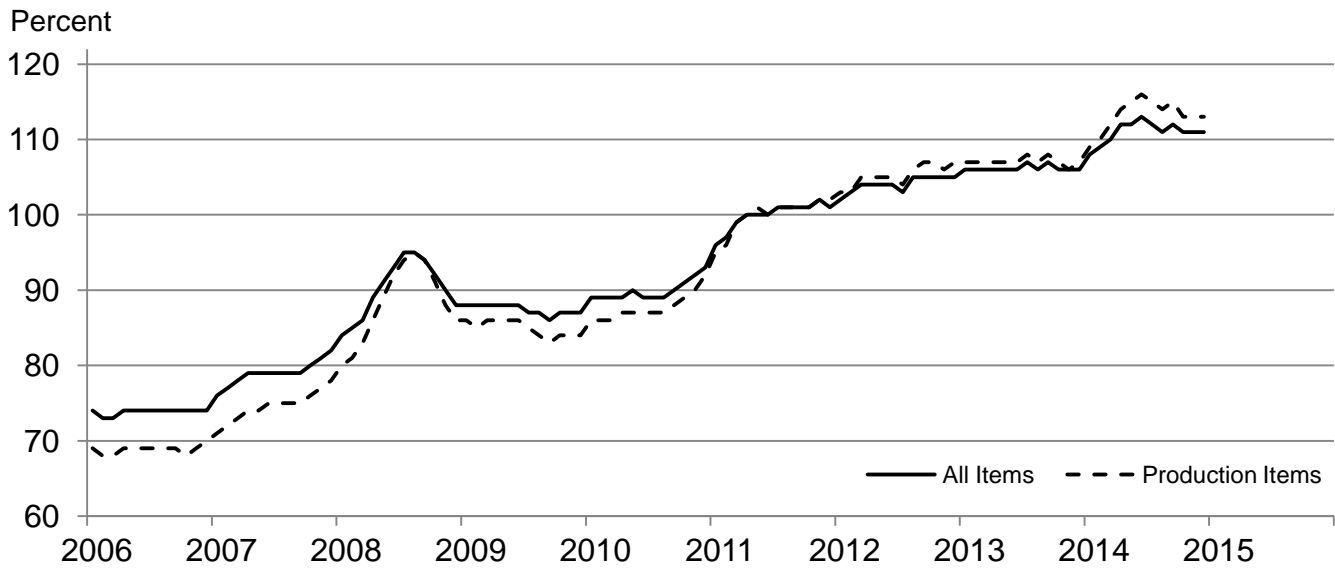


## Prices Paid Indexes and Annual Weights for Input Components and Sub-components – United States: December 2014 with Comparisons

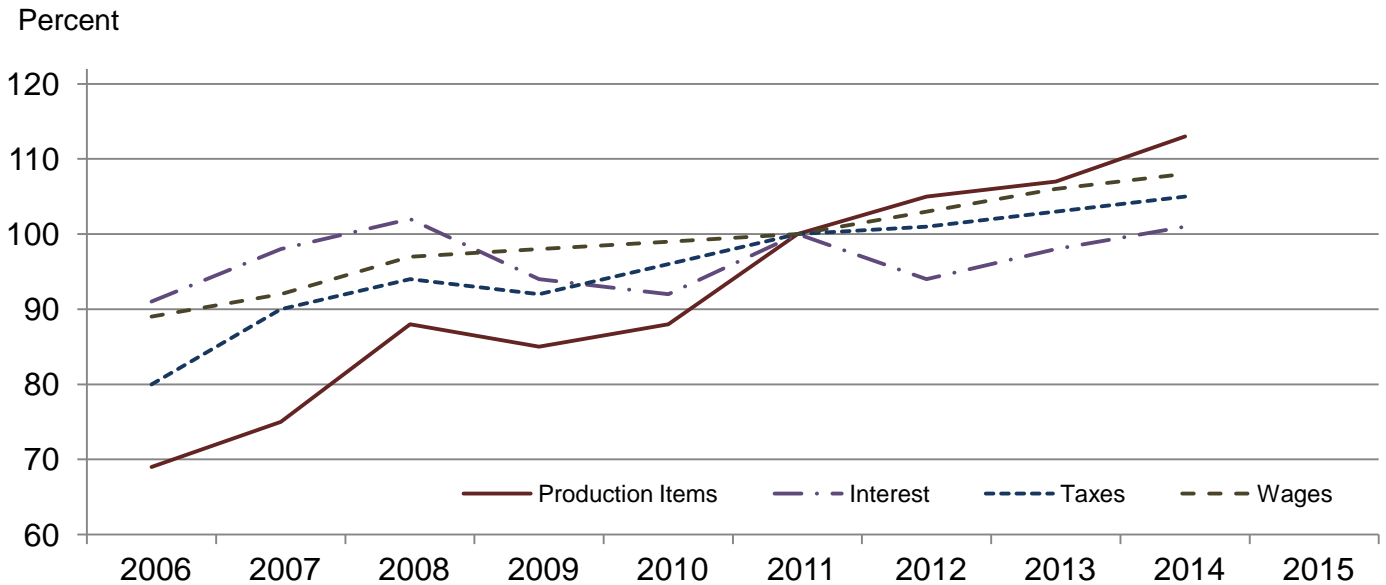
[Revised historical price indexes for months not shown are available at [www.nass.usda.gov](http://www.nass.usda.gov). Relative weights are a five year moving average]

	Relative weights		Indexes (2011=100)		
	2013	2014	December 2013	November 2014	December 2014
	(percent)	(percent)	(percent)	(percent)	(percent)
Production items .....	73.6	74.1	107	113	113
Feed .....	14.6	15.5	109	105	107
Feed grains .....	2.1	2.2	75	62	65
Complete feeds .....	7.2	7.6	116	112	114
Hay and forages .....	1.8	1.9	108	104	102
Concentrates .....	2.3	2.5	113	124	123
Supplements .....	1.2	1.3	117	107	111
Livestock and poultry .....	8.5	8.5	124	177	173
Feeder cattle .....	6.7	6.6	125	188	183
Feeder pigs .....	0.7	0.7	154	147	155
Milk cow replacements .....	0.7	0.7	99	149	149
Poultry .....	0.5	0.5	105	105	105
Seeds .....	4.8	4.9	111	114	114
Field crops .....	4.3	4.4	110	113	113
Grasses and legumes .....	0.4	0.5	120	123	123
Fertilizer .....	6.3	6.2	91	94	94
Mixed fertilizer .....	2.8	2.7	86	85	87
Nitrogen .....	2.6	2.6	97	100	100
Potash and phosphate .....	0.9	0.9	85	101	99
Chemicals .....	3.0	3.1	110	110	111
Herbicides .....	1.9	1.9	110	110	111
Insecticides .....	0.7	0.7	113	114	114
Fungicides and other .....	0.4	0.4	105	104	104
Fuels .....	4.5	4.1	102	89	79
Diesel .....	2.8	2.6	96	90	84
Gasoline .....	0.9	0.9	104	97	85
LP gas .....	0.8	0.7	120	74	51
Supplies and repairs .....	4.3	4.3	104	106	106
Supplies .....	1.4	1.4	105	106	106
Repairs .....	2.9	2.8	104	106	106
Autos and trucks .....	1.1	1.1	104	105	105
Autos .....	0.1	0.1	102	102	101
Trucks .....	1.0	1.0	104	105	105
Machinery .....	4.5	4.9	109	111	111
Tractors .....	1.0	1.1	107	108	108
Self-propelled .....	1.8	2.0	111	111	111
Other machinery .....	1.7	1.9	109	112	112
Building materials .....	3.8	3.7	105	107	107
Services .....	11.2	10.8	106	108	108
Custom rates .....	1.2	1.1	106	109	109
Other services .....	10.0	9.7	105	108	108
Rent .....	6.9	6.9	104	107	107
Cash .....	3.7	3.7	103	106	106
Share .....	3.2	3.2	105	108	108
Interest .....	2.9	2.6	98	101	101
Taxes .....	2.9	2.9	103	105	105
Wage rates .....	6.4	6.4	107	108	108
Family living-CPI .....	14.2	14.0	104	105	104

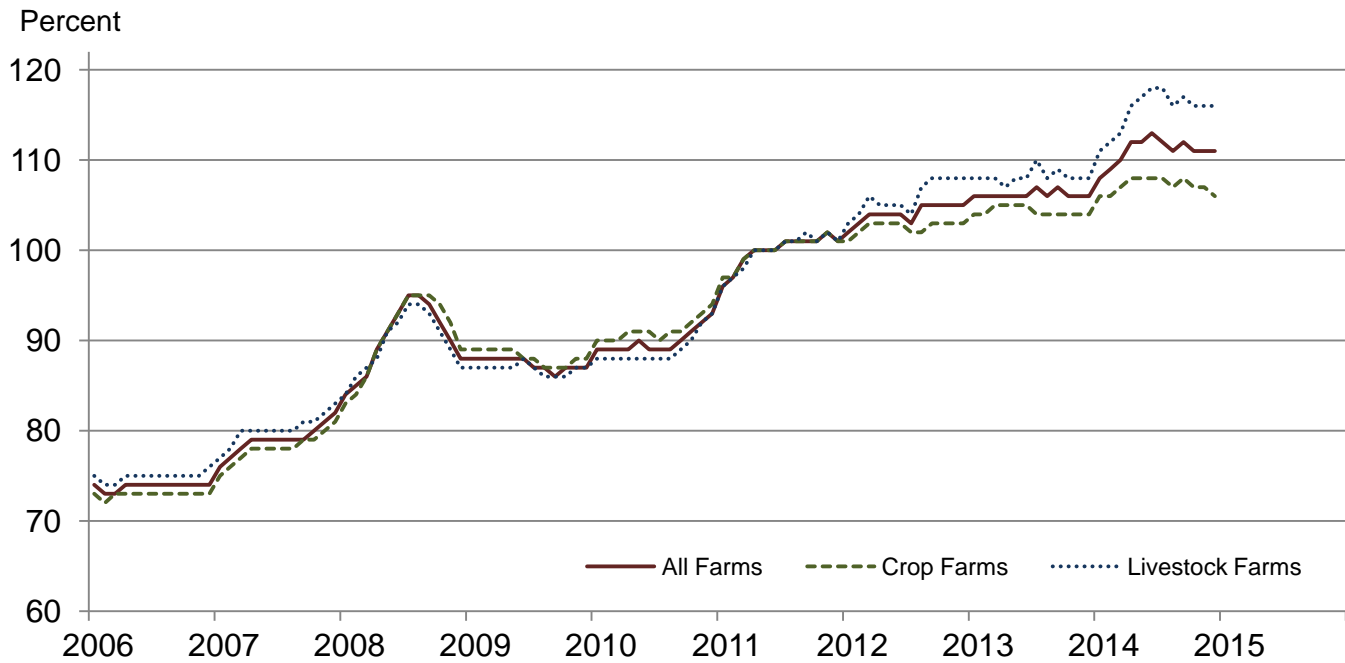
## Paid Indexes by Month, All Items and Production Items – United States: 2011=100



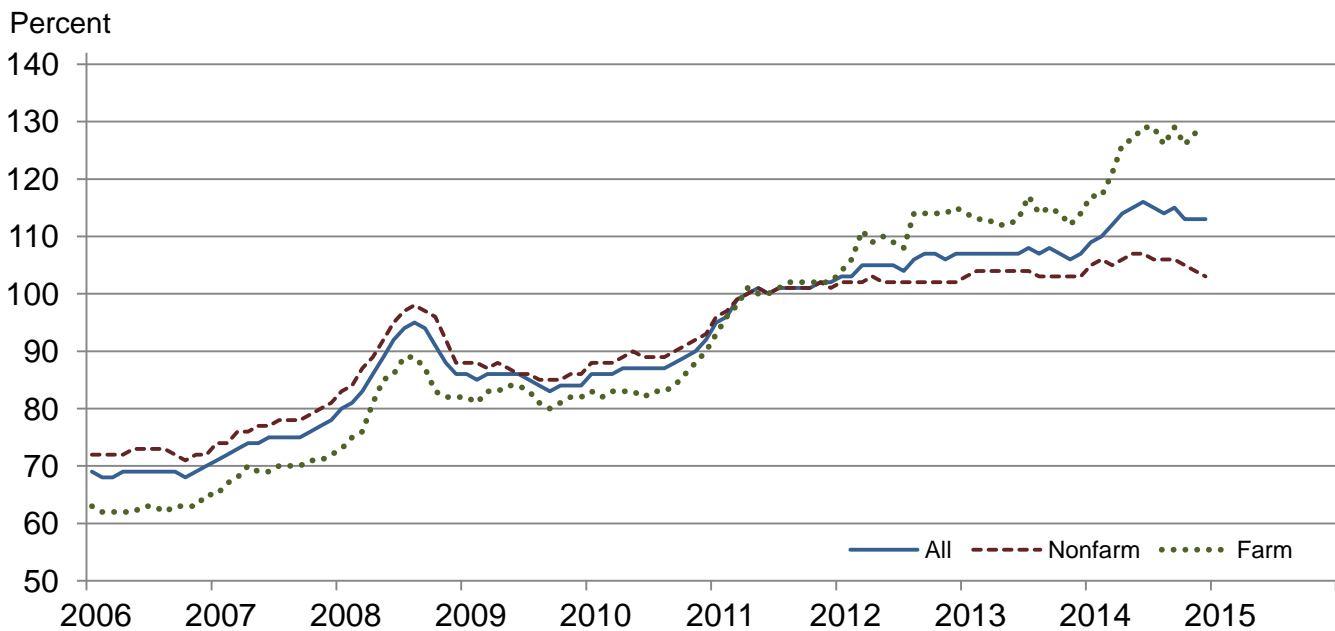
## Paid Indexes, Annual Averages, Production Items, Interest, Taxes, and Wages – United States: 2011=100



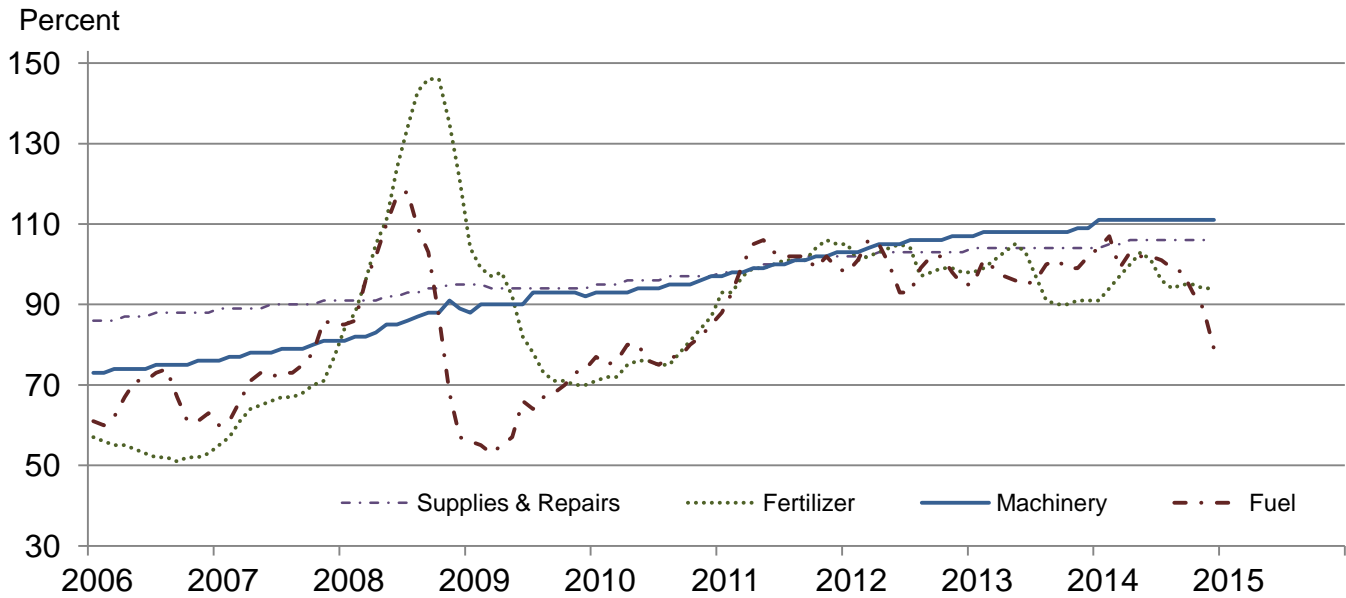
## Paid Indexes by Farm Type and Month, All Items – United States: 2011=100



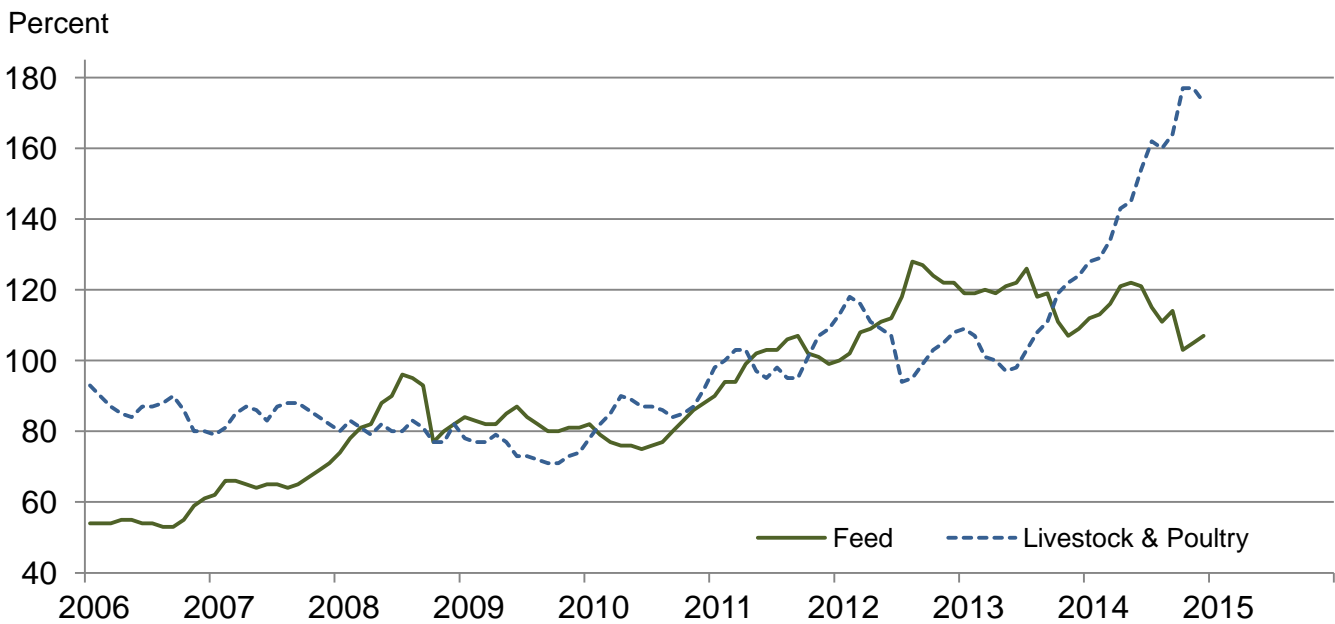
## Paid Indexes by Origin and Month, All Production Items – United States: 2011=100



## Paid Indexes by Non-Farm Sector and Month, Supplies & Repairs, Fertilizer, Machinery, and Fuel – United States: 2011=100



## Paid Indexes by Month, Feed and Livestock & Poultry – United States: 2011=100



## Feed Price Ratios – United States: December 2014 with Comparisons

Feed price ratio <sup>1</sup>	December 2013	November 2014	December 2014
Broiler-feed: pounds of broiler grower feed equal in value to 1 pound of broiler, live weight <sup>2</sup> .....	4.1	5.9	5.2
Market egg feed: pounds of laying feed equal in value to 1 dozen eggs <sup>3</sup> .....	10.7	15.1	17.7
Hog-corn: bushels of corn equal in value to 100 pounds of hog, live weight .....	13.9	18.6	17.0
Milk-feed: pounds of 16% mixed dairy feed equal in value to 1 pound of whole milk <sup>4</sup> .....	2.30	2.74	2.38
Steer & heifer-corn: bushels of corn equal in value to 100 pounds of steer & heifers, live weight .....	29.9	47.2	43.9
Turkey-feed: pounds of turkey grower equal in value to 1 pound of turkey, live weight <sup>5</sup> .....	5.5	8.1	7.1

<sup>1</sup> Effective January 1995, prices of commercial prepared feeds are based on current United States prices received for corn, soybeans, alfalfa hay, and all wheat.

<sup>2</sup> The price of commercial prepared broiler feed is based on current United States prices received for corn and soybeans. The modeled feed uses 58 percent corn and 42 percent soybeans.

<sup>3</sup> The price of commercial prepared layer feed is based on current United States prices received for corn and soybeans. The modeled feed uses 75 percent corn and 25 percent soybeans.

<sup>4</sup> The price of commercial prepared dairy feed is based on current United States prices received for corn, soybeans, and alfalfa. The modeled feed uses 51 percent corn, 8 percent soybeans, and 41 percent alfalfa.

<sup>5</sup> The price of commercial prepared turkey feed is based on current United States prices received for corn, soybeans, and wheat. The modeled feed used 51 percent corn, 28 percent soybeans, and 21 percent wheat.

## Prices Received Used to Calculate Feed Price Ratios – United States: December 2014 with Comparisons

[Price data source for livestock and poultry commodities is United States Department of Agriculture's Agriculture Marketing Service]

Item	December 2013	November 2014	December 2014
	(dollars)	(dollars)	(dollars)
Broilers, live ..... pound	0.560	0.640	0.580
Eggs, market .....dozen	1.210	1.370	1.660
Hogs, all ..... cwt	61.50	66.70	64.30
Milk, all ..... cwt	22.00	23.00	20.40
Steers and heifers ..... cwt	132.00	169.00	166.00
Turkeys, live ..... pound	0.687	0.821	0.734
Corn .....bushel	4.41	3.58	3.78
Hay, alfalfa ..... ton	186.00	184.00	183.00
Soybeans .....bushel	13.00	10.20	10.30
Wheat, all .....bushel	6.73	6.05	6.11

## Prices Paid for Feeder Livestock – United States: December 2014 with Comparisons

[Price data source is United States Department of Agriculture's Agriculture Marketing Service]

Item	December 2013	November 2014	December 2014
	(dollars)	(dollars)	(dollars)
Feeder cattle & calves ..... cwt	171.00	258.00	250.00
Feeder pigs ..... cwt	215.00	206.00	217.00

## Grazing Fee Rates for Cattle – States, Regions, and United States: 2013 and 2014

State	Survey average rates <sup>1</sup>					
	Animal unit <sup>2</sup>		Cow-calf		Per head	
	2013	2014	2013	2014	2013	2014
	(dollars per month)	(dollars per month)	(dollars per month)	(dollars per month)	(dollars per month)	(dollars per month)
Arizona .....	9.00	9.00	(S)	(S)	12.00	(S)
California .....	19.50	20.00	23.50	25.10	21.00	22.50
Colorado .....	17.50	17.00	20.00	20.00	19.00	19.00
Idaho .....	15.50	16.50	19.00	19.00	15.50	18.50
Kansas .....	17.00	18.00	21.00	22.00	18.50	21.50
Montana .....	21.00	23.00	23.60	26.00	20.80	23.00
Nebraska .....	33.50	38.00	40.50	44.50	34.00	35.00
Nevada .....	(S)	11.50	(S)	(S)	(S)	(S)
New Mexico .....	13.00	13.50	(S)	(S)	14.00	15.50
North Dakota .....	18.00	19.20	21.50	22.00	18.00	18.00
Oklahoma .....	(S)	(S)	(S)	(S)	(S)	14.00
Oregon .....	15.00	17.00	17.80	19.50	19.00	19.00
South Dakota .....	27.90	30.00	33.30	35.00	28.50	32.50
Texas .....	(S)	(S)	(S)	(S)	12.00	14.00
Utah .....	14.50	15.00	18.50	19.00	16.00	16.50
Washington .....	13.50	13.50	15.00	16.50	14.50	15.00
Wyoming .....	18.70	20.00	21.00	22.00	19.40	21.00
17-State <sup>3</sup> .....	18.30	19.90	21.40	23.20	18.90	20.70
16-State <sup>4</sup> .....	20.10	21.60	23.80	25.40	21.00	22.60
11-State <sup>5</sup> .....	17.50	18.20	20.30	21.60	18.50	19.70
9-State <sup>6</sup> .....	18.50	20.30	21.50	23.50	18.90	20.90

(S) Insufficient number of reports to establish an estimate.

<sup>1</sup> The average rates are estimates based on survey indications of monthly lease rates for private, non-irrigated grazing land from the January Cattle Survey.

<sup>2</sup> Includes animal unit plus cow-calf rates. Cow-calf rate converted to animal unit (AUM) using (1 aum=cow-calf \*0.833).

<sup>3</sup> 17 Western States: Arizona, California, Colorado, Idaho, Kansas, Montana, Nebraska, Nevada, New Mexico, North Dakota, Oklahoma, Oregon, South Dakota, Texas, Utah, Washington, and Wyoming.

<sup>4</sup> 16 Western States: Arizona, California, Colorado, Idaho, Kansas, Montana, Nebraska, Nevada, New Mexico, North Dakota, Oklahoma, Oregon, South Dakota, Utah, Washington, and Wyoming.

<sup>5</sup> 11 Western States: Arizona, California, Colorado, Idaho, Montana, Nevada, New Mexico, Oregon, Utah, Washington, and Wyoming.

<sup>6</sup> 9 Great Plains States: Colorado, Kansas, Nebraska, New Mexico, North Dakota, Oklahoma, South Dakota, Texas, and Wyoming.

## Reliability of Prices Paid Estimates

**Definition:** Prices paid by farmers represent the average costs of inputs purchased by farmers and ranchers to produce agricultural commodities. Conceptually, the average price when multiplied by quantity purchased should equal total producer expenditures for the item.

**Survey procedures:** The prices paid data are obtained from establishments that sell goods and services to farmers and ranchers. Annually, about 8,500 firms are randomly selected from lists by type of item sold with an average response rate in the range of 75-80 percent. Firms are asked to report the price for the specified item "most commonly bought by farmers" or that was the "volume seller". Approximately 135 items are surveyed each March to represent all production input items purchased. The survey reference period for most items is the five business days centered at the 15th of the month. Separate prices paid surveys are conducted for agricultural chemicals, fuels, feed, fertilizer, machinery, and seed.

**Summary and estimation procedures:** The annual March Prices Paid Survey is summarized as a non-probability survey. Average prices reported are aggregated to the region and United States level using weights available from expenditure data and other administrative sources. Price recommendations are prepared by the Regional Field Offices and Headquarters for review by the Agricultural Statistics Board in Washington, D.C. Also, the change in price level for individual items surveyed are combined to the regional and United States levels, and are published as prices paid indexes referenced to a specific base period. Prices paid indexes for new autos and trucks, building materials, farm supplies, motor supplies, and marketing containers are updated based on price changes measured in selected Bureau of Labor Statistics (BLS) indexes.

**Revisions:** Any revisions are published in the monthly and in annual issues of Agricultural Prices. The basis for revision must be supported by additional data that directly affect the level of the estimate. More revisions are likely for March when separate prices paid surveys are conducted, in lieu of BLS indexes, by the USDA to measure price change.

**Reliability:** Current methods of summarization for the March data are not designed directly to calculate sampling errors. However, analytical measures approximate the United States relative sampling errors for major items around 10 percent. Any non-sampling errors are attributed to such things as the inability to obtain correct information, differences in interpreting questions or definitions, mistakes in coding or processing the data, etc. Efforts are made at each step in the survey process to minimize these non-sampling errors.

**Program change:** Effective January 2014, the National Agricultural Statistics Service modified the five-year moving weights and updated the base reference period.

As of January 2014, the 1990-1992 base reference period is updated to 2011. Five-year moving average weights are adjusted (normalized) to minimize the effects of price changes. The 1910-1914=100 price indexes, required by statute for computing parity prices, were linked forward based on the changes in the new 2011=100 indexes. The new indexes were constructed by multiplying the ratios of the current prices to the base period prices by the moving average weights.

## Information Contacts

### General

Troy Joshua, Chief, Environmental, Economics and Demographics Branch ..... (202) 720-6146

### Crop Prices Received

Lance Honig, Chief, Crops Branch ..... (202) 720-2127

Anthony Prillaman, Head, Field Crops Section ..... (202) 720-2127

Brent Chittenden – Oats, Rye, Wheat ..... (202) 720-8068

Angie Considine – Cotton, Cotton Ginnings, Sorghum ..... (202) 720-5944

Tony Dahlman – Crop Weather, Barley ..... (202) 720-7621

Chris Hawthorn – Corn, Flaxseed, Proso Millet ..... (202) 720-9526

James Johanson – County Estimates, Hay ..... (202) 690-8533

Bianca Pruneda – Peanuts, Rice ..... (202) 720-7688

Travis Thorson – Soybeans, Sunflower, Other Oilseeds ..... (202) 720-7369

Jorge Garcia-Pratts, Head, Fruits, Vegetables and Special Crops Section ..... (202) 720-2127

Vincent Davis – Fresh and Processing Vegetables, Onions, Strawberries ..... (202) 720-2157

Fleming Gibson – Citrus, Coffee, Grapes, Sugar Crops, Tropical Fruits ..... (202) 720-5412

Greg Lemmons – Berries, Cranberries, Potatoes, Sweet Potatoes ..... (202) 720-4285

Dave Losh – Hops ..... (360) 709-2400

Dan Norris – Austrian Winter Peas, Dry Edible Peas, Lentils, Mint, Mushrooms, Peaches, Pears,

Wrinkled Seed Peas, Dry Beans ..... (202) 720-3250

Daphne Schaubert – Floriculture, Maple Syrup, Nursery, Tree Nuts ..... (202) 720-4215

Chris Singh – Apples, Apricots, Cherries, Plums, Prunes, Tobacco ..... (202) 720-4288

### Livestock Prices Received

Dan Kerestes, Chief, Livestock Branch ..... (202) 720-3570

Scott Hollis, Head, Livestock Section ..... (202) 720-3570

Travis Averill – Cattle and Cattle on Feed ..... (202) 720-3040

Doug Bounds – Hogs and Pigs ..... (202) 720-3106

Mike Miller – Milk, Milk Cows ..... (202) 720-3278

Evan Schulz – Sheep and Goats ..... (202) 720-6147

Bruce Boess, Head, Poultry and Specialty Commodities Section ..... (202) 720-3570

Heidi Gleich – Broilers ..... (202) 720-0585

Michael Klamm – Turkeys ..... (202) 690-3237

Kim Linonis – Eggs ..... (202) 690-8632

Josh O’Rear – Honey ..... (202) 690-3676

### Indexes, Prices Paid, and Parity Prices

Troy Joshua, Chief, Environmental, Economics and  
Demographics Branch ..... (202) 720-6146

Tony Dorn, Head, Economics Section ..... (202) 690-3223

Daryl Brinkman – Prices Received Indexes, Parity Prices ..... (202) 720-8844

Joe Hagedorn – Cash Rents, Grazing Fees ..... (202) 690-3231

Judy McDermott – Prices Paid Indexes, Prices Paid for Feed, Fertilizer, Chemicals, Seeds, Fuels,  
Farm Supplies and Repairs, Farm Machinery, Feeder Livestock, Poultry Chicks, Feed Price Ratios ..... (202) 690-3229



## Access to NASS Reports

For your convenience, you may access NASS reports and products the following ways:

- All reports are available electronically, at no cost, on the NASS web site: <http://www.nass.usda.gov>
- Both national and state specific reports are available via a free e-mail subscription. To set-up this free subscription, visit <http://www.nass.usda.gov> and in the “Follow NASS” box under “Receive reports by Email,” click on “National” or “State” to select the reports you would like to receive.

For more information on NASS surveys and reports, call the NASS Agricultural Statistics Hotline at (800) 727-9540, 7:30 a.m. to 4:00 p.m. ET, or e-mail: [nass@nass.usda.gov](mailto:nass@nass.usda.gov).

The U.S. Department of Agriculture (USDA) prohibits discrimination against its customers, employees, and applicants for employment on the basis of race, color, national origin, age, disability, sex, gender identity, religion, reprisal, and where applicable, political beliefs, marital status, familial or parental status, sexual orientation, or all or part of an individual's income is derived from any public assistance program, or protected genetic information in employment or in any program or activity conducted or funded by the Department. (Not all prohibited bases will apply to all programs and/or employment activities.)

If you wish to file a Civil Rights program complaint of discrimination, complete the [USDA Program Discrimination Complaint Form](#) (PDF), found online at [http://www.ascr.usda.gov/complaint\\_filing\\_cust.html](http://www.ascr.usda.gov/complaint_filing_cust.html), or at any USDA office, or call (866) 632-9992 to request the form. You may also write a letter containing all of the information requested in the form. Send your completed complaint form or letter to us by mail at U.S. Department of Agriculture, Director, Office of Adjudication, 1400 Independence Avenue, S.W., Washington, D.C. 20250-9410, by fax (202) 690-7442 or email at [program.intake@usda.gov](mailto:program.intake@usda.gov).