



# Agricultural Prices

ISSN: 1937-4216

Released March 30, 2015, by the National Agricultural Statistics Service (NASS), Agricultural Statistics Board, United States Department of Agriculture (USDA).

## Special Note

Annual March Survey prices paid data will no longer be published in the April *Agricultural Prices* Report. See [http://www.nass.usda.gov/Surveys/Guide\\_to\\_NASS\\_Surveys/Prices/updateApr2015.pdf](http://www.nass.usda.gov/Surveys/Guide_to_NASS_Surveys/Prices/updateApr2015.pdf) for details. Historic Prices Received and Paid Index tables will only be published in January. The current and revised indexes will continue to be posted to Quick Stats each month.

## February Farm Prices Received Index Up 3 Points

The February Prices Received Index (Agricultural Production), at 100, based on 2011=100, increased 3 points (3.1 percent) from January. At 85, the February Crop Production Index is up 2 points (2.4 percent). At 115, the Livestock Production Index decreased 5 points (4.2 percent). Producers received higher prices for eggs, tomatoes, oranges, and hay but lower prices for broilers, cattle, hogs, and lettuce. In addition to prices, the indexes are impacted by the five-year average monthly mix of commodities producers market. Increased monthly movement of cattle, milk, broilers, and hogs offset the decreased marketing of soybeans, corn, and wheat.

The Prices Received Index is down 7 points (6.5 percent) from February 2014. The Food Commodities Index, at 108, decreased 1 point (0.9 percent) from the previous month and 9 points (7.7 percent) from February 2014.

## February Prices Paid Index Unchanged

The February Index of Prices Paid for Commodities and Services, Interest, Taxes, and Farm Wage Rates (PPITW), at 109 (2011=100), is unchanged from January 2015 and February 2014. Higher prices in February for herbicides, LP gas, Insecticides, and potash & phosphates offset lower prices for feeder cattle, complete feeds, feeder pigs, and diesel.

## Prices Received, Prices Paid, and Ratio of Prices Received to Prices Paid Indexes 2011 Base – United States: February 2015 with Comparisons

Item	February 2014	January 2015	February 2015
Prices received by farmers .....	107	97	100
Prices paid by farmers .....	109	109	109
Ratio of prices received to prices paid .....	98	89	92

## Contents

Prices Received by Farmers .....	4
Prices Received Indexes as a Percent of 2011 Base – United States: February 2015 with Comparisons.....	5
Prices Received Indexes as a Percent of 1910-1914 Base – United States: February 2015 with Comparisons.....	5
Prices Received Indexes as a percent of 2011 Base by Month for Selected Groups – United States: 2014 and 2015.....	5
Prices Paid Indexes as a percent of 2011 Base by Month for Selected Groups – United States: 2014 and 2015.....	6
Received and Paid Indexes, Annual Average – United States: 2011=100 Chart.....	6
Crop Farm Received and Paid Indexes, All Items by Quarter – United States: 2011=100 Chart.....	7
Livestock Farm Received and Paid Indexes All Items by Quarter – United States: 2011=100 Chart.....	7
Received Indexes by Month, Livestock Product, All Product, and All Crop – United States: 2011=100 Chart.....	8
Received Indexes by Month, Food Grain, Feed Grain, and Oilseed – United States: 2011=100 Chart.....	8
Received Indexes by Month, Fruit & Tree Nut and Commercial Vegetable – United States: 2011=100 Chart.....	9
Received Indexes by Month, Meat Animal, Dairy Product, and Poultry & Egg – United States: 2011=100 Chart.....	9
Prices Received for Field Crops and Fruits – United States: February 2015 with Comparisons.....	10
Prices Received for Vegetables and Livestock – United States: February 2015 with Comparisons .....	11
Prices Received for Corn by Month – United States Chart.....	12
Prices Received for Wheat by Month – United States Chart .....	12
Prices Received for Upland Cotton by Month – United States Chart.....	13
Prices Received for Soybeans by Month – United States Chart .....	13
Prices Received for Cattle by Month – United States Chart .....	14
Prices Received for Milk by Month – United States Chart.....	14
Prices Received for Hogs by Month – United States Chart .....	15
Prices Received for Poultry by Month – United States Chart.....	15
Prices Received for All Wheat, Corn, and Soybeans by Month – United States: 2015 with Comparisons.....	16
Prices Received for Beef Cattle and All Hogs by Month – United States: 2015 with Comparisons .....	16
Prices Received for All Wheat – States and United States: February 2015 with Comparisons.....	17
Prices Received for Winter Wheat – States and United States: February 2015 with Comparisons.....	17
Prices Received for Durum Wheat – States and United States: February 2015 with Comparisons.....	18
Prices Received for Spring Wheat – States and United States: February 2015 with Comparisons .....	18
Prices Received for All Barley – States and United States: February 2015 with Comparisons.....	19
Prices Received for Malting Barley – States: February 2015 with Comparisons .....	19
Prices Received for Feed Barley – States: February 2015 with Comparisons .....	19
Prices Received for Corn – States and United States: February 2015 with Comparisons .....	20
Prices Received for Soybeans – States and United States: February 2015 with Comparisons .....	20
Prices Received for Oats – States and United States: February 2015 with Comparisons.....	21
Prices Received for Sorghum Grain – States and United States: February 2015 with Comparisons.....	21
Prices Received for Dry Beans – States and United States: February 2015 with Comparisons .....	22
Prices Received for Peanuts (in shell) – States and United States: February 2015 with Comparisons.....	22
Prices Received for Sunflower – States and United States: February 2015 with Comparisons.....	23
Prices Received for Canola – States and United States: February 2015 with Comparisons .....	23
Prices Received for Flaxseed – States and United States: February 2015 with Comparisons .....	23
Prices Received for Upland Cotton and Cottonseed – States and United States: February 2015 with Comparisons .....	24
Prices Received and Farm Marketings for Upland Cotton and Rice – United States: February 2015 with Comparisons .....	24
Prices Received for Hay by Type – States and United States: February 2015 with Comparisons.....	25

Prices Received for Apples – States and United States: February 2015 with Comparisons.....	25
Prices Received for Citrus Fruits by Utilization – States and United States: February 2014 .....	26
Prices Received for Citrus Fruits by Utilization – States and United States: January 2015 .....	27
Prices Received for Citrus Fruits by Utilization – States and United States: February 2015 .....	28
Prices Received for Potatoes – States and United States: February 2015 with Comparisons.....	29
Prices Received for All Milk – States and United States: February 2015 with Comparisons .....	30
Prices Received for Milk Cows – States and United States: January 2015 with Comparisons .....	31
Commodity Parity Prices and Price as Percent of Parity Price – United States: February 2015 with Comparisons .....	32
Commodity Parity Prices – United States: February 2015 with Comparisons .....	33
Commodity Parity Prices – United States: February 2015 with Comparisons (continued).....	34
Reliability of Prices Received Estimates .....	35
Prices Paid by Farmers.....	36
Prices Paid Indexes and Related Parity Ratios – United States: February 2015 with Comparisons.....	37
Prices Paid Indexes and Annual Weights for Input Components and Sub-components – United States: February 2015 with Comparisons.....	38
Paid Indexes by Month, All Items and Production Items – United States: 2011=100 Chart.....	39
Paid Indexes, Annual Averages, Production Items, Interest, Taxes, and Wages – United States: 2011=100 Chart.....	39
Paid Indexes by Farm Type, All Items – United States: 2011=100 Chart .....	40
Paid Indexes by Origin, All Production Items – United States: 2011=100 Chart.....	40
Paid Indexes by Non-Farm Sector, Supplies & Repairs, Fertilizer, Machinery, and Fuel – United States: 2011=100 Chart.....	41
Paid Indexes by Month, Feed and Replacement Livestock – United States: 2011=100 Chart .....	41
Feed Price Ratios – United States: February 2015 with Comparisons .....	42
Prices Received Used to Calculate Feed Price Ratios – United States: February 2015 with Comparisons.....	42
Prices Paid for Feeder Livestock – United States: February 2015 with Comparisons.....	42
Reliability of Prices Paid Estimates .....	43
Information Contacts .....	44

## February Prices Received by Farmers

The February Prices Received Index for agricultural production is 100 percent of its 2011 base, up 3.1 percent from the January index but 6.5 percent below the February 2014 index.

**Crop Production:** The February index, at 85, increased 2.4 percent from January but is 11 percent below February 2014. Increased marketing of fruits & tree nuts and vegetables more than offset lower movement of oilseeds, feed grains, food grains, and other crops.

**Feed grain:** The February index, at 64, is unchanged from last month but is 12 percent below a year ago. The corn price, at \$3.79 per bushel, is down 2 cents from last month and 56 cents below February 2014. At \$7.86 per cwt, sorghum grain is up 46 cents from January and 21 cents above February a year earlier.

**Food grain:** At 84, the index for February is 5.6 percent lower than the previous month and is 13 percent below a year earlier. The February price for all wheat, at \$5.89 per bushel, is down 25 cents from January and 61 cents below February 2014.

**Oilseed:** At 79, the index for February is down 3.7 percent from January and 24 percent lower than February 2014. The soybean price, at \$9.92 per bushel, decreased 38 cents from January and is \$3.28 below February a year earlier.

**Fruit and tree nut:** The February index, at 124, decreased 1.6 percent from January and is 8.1 percent lower than a year earlier. Price decreases during February for lemons and apples more than offset the price increase for oranges.

**Vegetable and melon:** At 87, the index for February is down 22 percent from the previous month and 9.4 percent below February 2014. Prices were lower for lettuce and broccoli but higher for tomatoes.

**Other crop:** The February index, at 80, is down 1.2 percent from the previous month and 13 percent below February 2014. The all hay price, at \$155 per ton, is up \$3.00 from January but is \$12.00 lower than February 2014. At 57.4 cents per pound, the price for upland cotton is down 1.2 cents from January and 22.8 cents below February 2014.

**Livestock Production:** The index for February, at 115, is 4.2 percent below the previous month and down 5.0 percent from February a year earlier. Compared with a year ago, prices are lower for milk, hogs, and broilers but higher for cattle, calves, market eggs, and turkeys.

**Meat animal:** At 125, the February index is down 4.6 percent from the previous month but 5.0 percent higher than a year earlier. At \$50.40 per cwt, the February hog price is down \$7.00 from January and \$15.10 lower than a year earlier. The February beef cattle price of \$159 per cwt is down \$5.00 from the previous month but is \$15.00 higher than February 2014.

**Dairy product:** The index for February, at 84, is down 4.5 percent from the previous month and 32 percent lower than February a year earlier. The February all milk price of \$16.80 per cwt is down 80 cents from January and \$8.10 from February 2014.

**Poultry and egg:** At 125, the February index is down 1.6 percent from January but is 2.5 percent above 2014. The February market egg price, at \$1.41 per dozen, is up 34.0 cents from January and 18.0 cents above February 2014. The February broiler price, at 54.0 cents per pound, is down 6.0 cents from January and 1.0 cent below a year earlier. At 66.9 cents per pound, the February turkey price is up 0.7 cents from the previous month and 0.5 cents from 2014.

## Prices Received Indexes as a Percent of 2011 Base – United States: February 2015 with Comparisons

[Revised historical price indexes for months not shown are available at [www.nass.usda.gov](http://www.nass.usda.gov)]

Index	2011 Base		
	February 2014	January 2015	February 2015
	(percent)	(percent)	(percent)
Agricultural Production .....	107	97	100
Crop Production .....	95	83	85
Grains and oilseed .....	86	74	73
Feed grain .....	73	64	64
Food grain .....	97	89	84
Oilseed .....	104	82	79
Fruit and tree nut .....	135	126	124
Vegetable and melon .....	96	111	87
Other crop .....	92	81	80
Livestock Production .....	121	120	115
Meat animal .....	119	131	125
Cattle .....	127	148	142
Hog .....	98	86	76
Dairy .....	124	88	84
Poultry and egg .....	122	127	125
Food Commodity .....	117	109	108

## Prices Received Indexes as a Percent of 1910-1914 Base – United States: February 2015 with Comparisons

[Revised historical price indexes for months not shown are available at [www.nass.usda.gov](http://www.nass.usda.gov)]

Index	1910 - 1914 Base		
	February 2014	January 2015	February 2015
	(percent)	(percent)	(percent)
Agricultural Production .....	1102	1005	1031
Crop Production .....	824	720	737
Livestock Production .....	1403	1399	1337

## Prices Received Indexes as a percent of 2011 Base by Month for Selected Groups – United States: 2014 and 2015

[Revised historical price indexes for months not shown are available at [www.nass.usda.gov](http://www.nass.usda.gov). Blank data cells indicate estimation period has not yet begun]

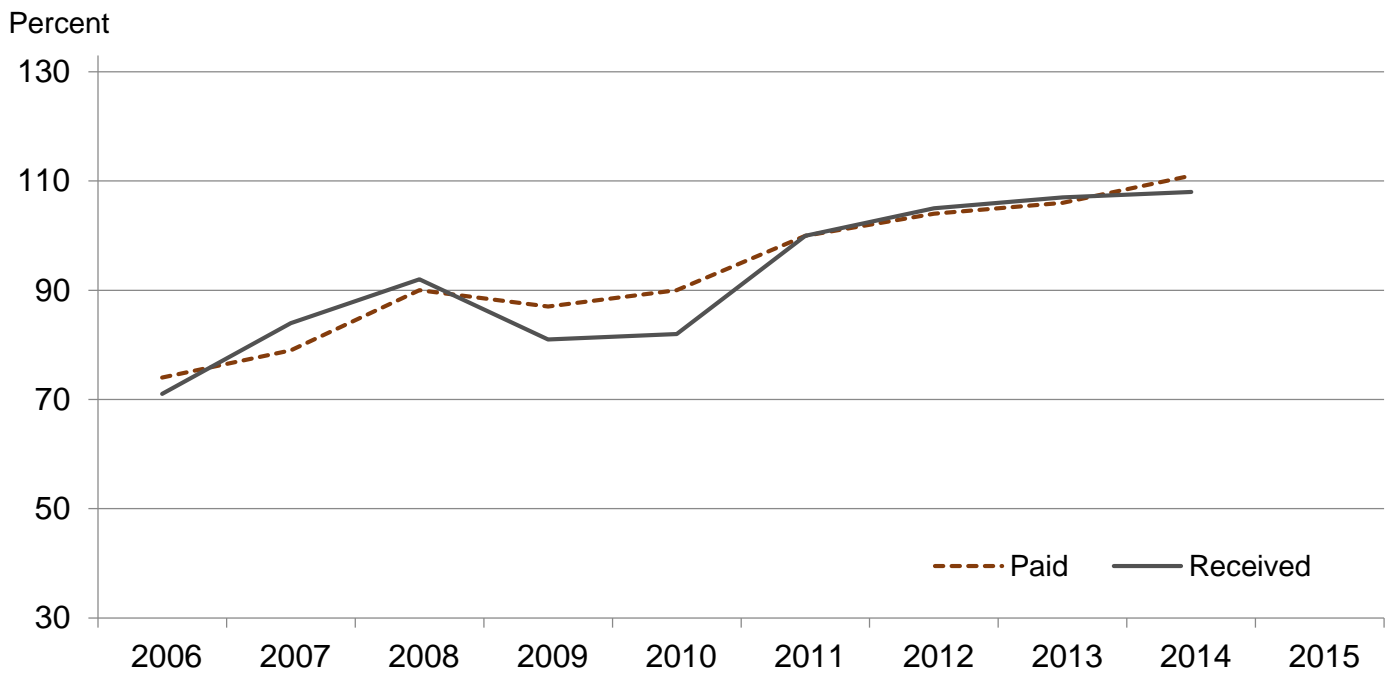
Month	2011 Base							
	Agricultural Production		Crop Production		Livestock Production		Food Commodities	
	2014	2015	2014	2015	2014	2015	2014	2015
	(percent)	(percent)	(percent)	(percent)	(percent)	(percent)	(percent)	(percent)
January .....	100	97	91	83	116	120	111	109
February .....	107	100	95	85	121	115	117	108
March .....	112		96		129		123	
April .....	115		99		132		126	
May .....	115		100		130		125	
June .....	113		99		128		123	
July .....	110		93		133		120	
August .....	110		92		131		121	
September .....	108		88		132		120	
October .....	100		81		136		113	
November .....	102		82		134		120	
December .....	101		83		127		115	

## Prices Paid Indexes as a percent of 2011 Base by Month for Selected Groups – United States: 2014 and 2015

[Revised historical price indexes for months not shown are available at [www.nass.usda.gov](http://www.nass.usda.gov). Blank data cells indicate estimation period has not yet begun]

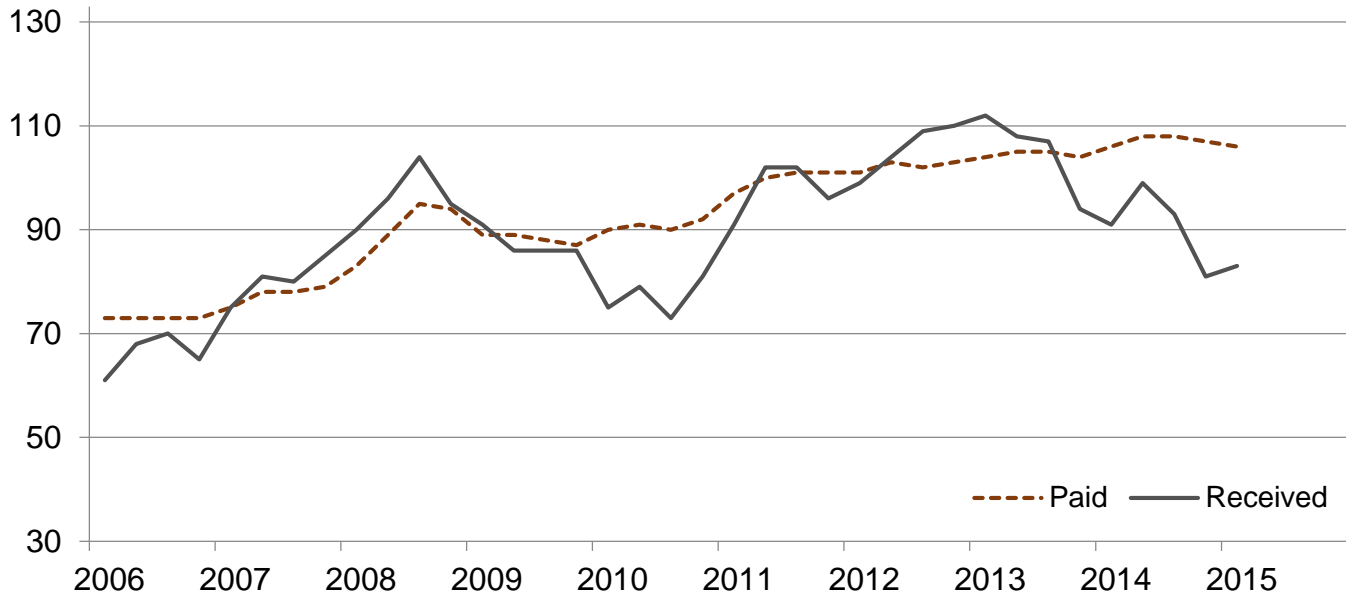
Month	2011 Base							
	All Items (PPITW)		Production		Crop Sector		Livestock Sector	
	2014	2015	2014	2015	2014	2015	2014	2015
	(percent)	(percent)	(percent)	(percent)	(percent)	(percent)	(percent)	(percent)
January .....	108	109	110	111	106	106	111	113
February .....	109	109	110	110	107	106	112	112
March .....	110		112		107		113	
April .....	112		114		108		116	
May .....	112		115		108		117	
June .....	113		116		108		118	
July .....	112		115		108		117	
August .....	111		114		107		116	
September .....	112		115		107		117	
October .....	111		113		107		116	
November .....	111		114		107		116	
December .....	111		113		106		116	

## Received and Paid Indexes, Annual Average – United States: 2011=100



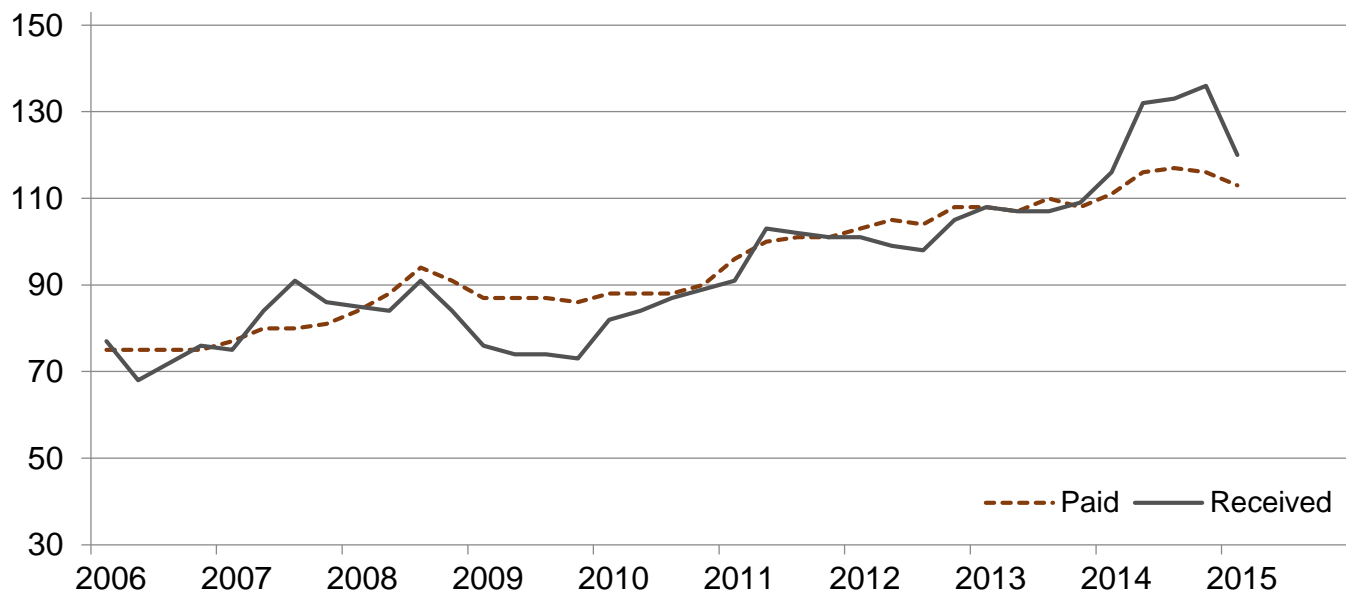
## Crop Farm Received and Paid Indexes, All Items by Quarter – United States: 2011=100

Percent

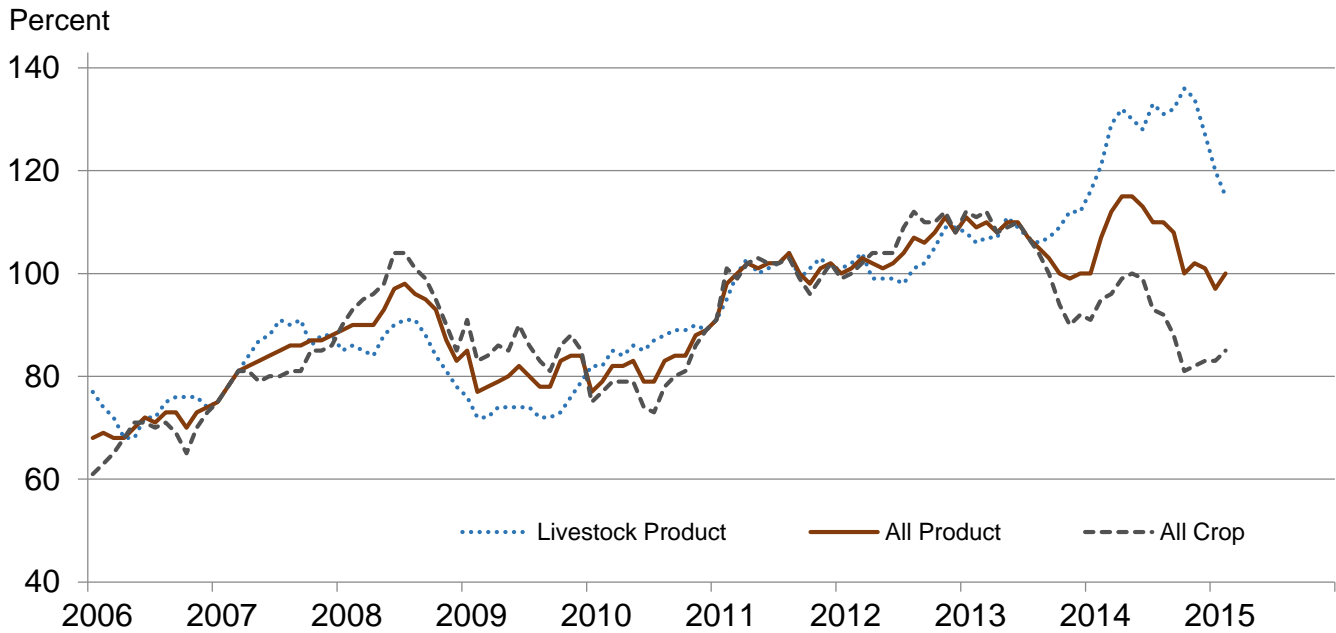


## Livestock Farm Received and Paid Indexes, All Items by Quarter – United States: 2011=100

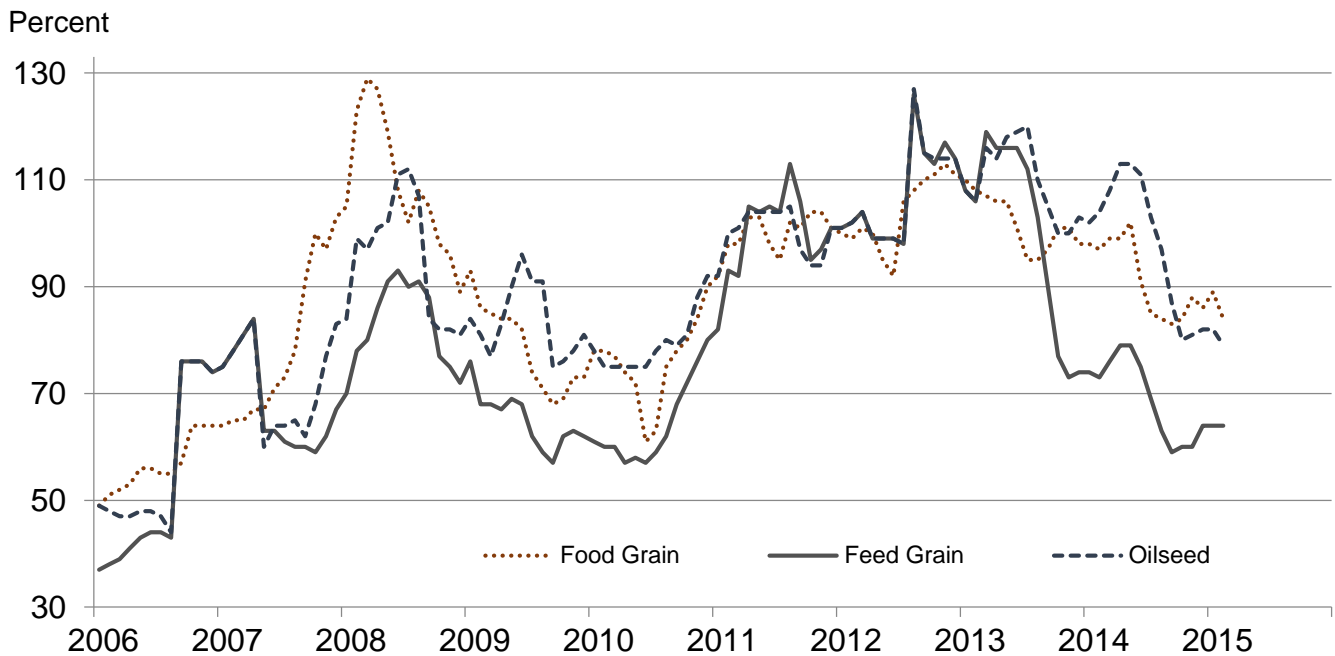
Percent



**Received Indexes by Month,  
Livestock Product, All Product, and All Crop –  
United States: 2011=100**

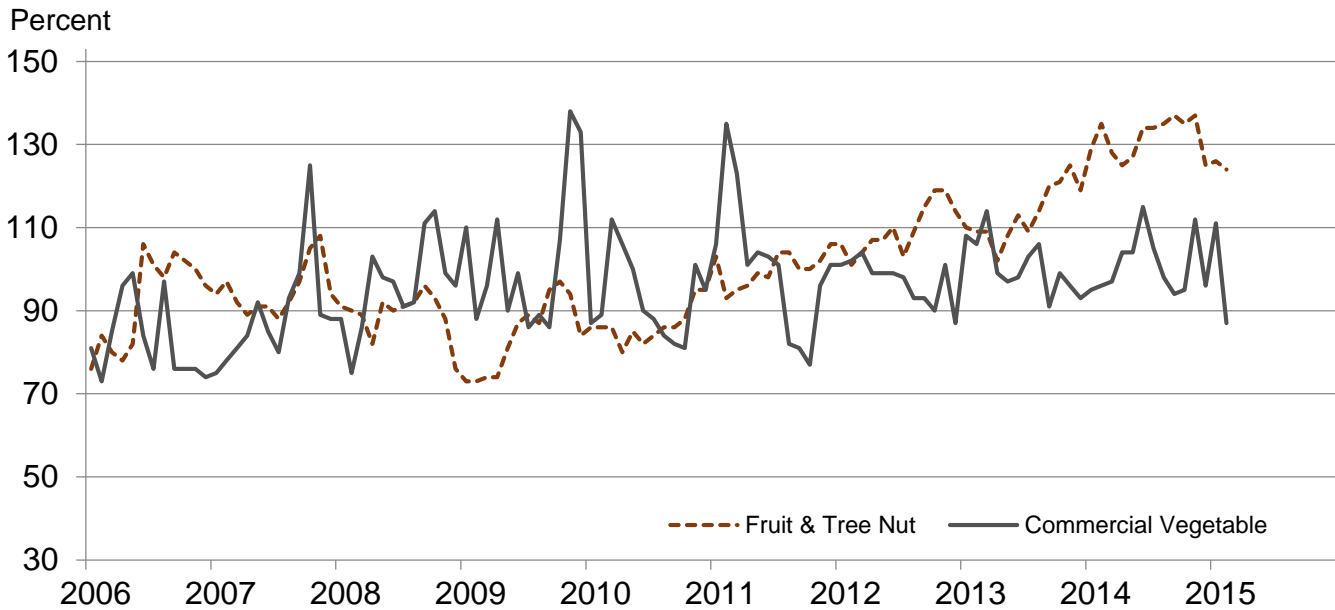


**Received Indexes by Month,  
Food Grain, Feed Grain, and Oilseed –  
United States: 2011=100**

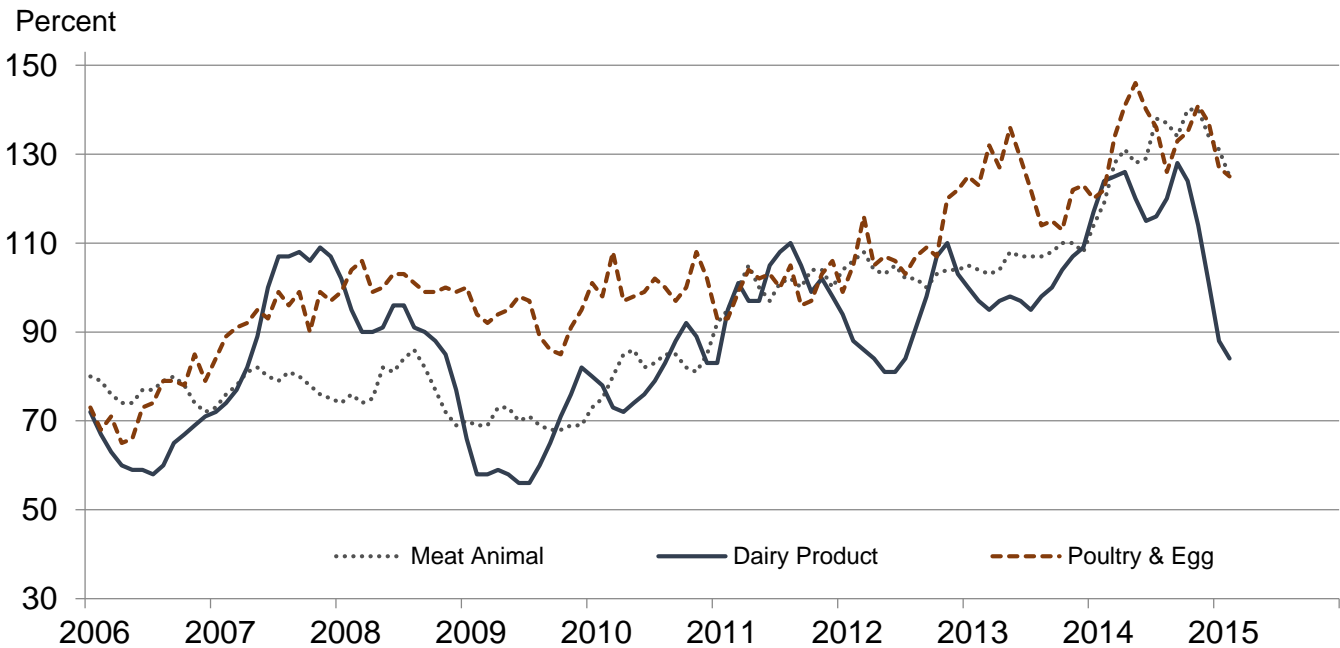




### Received Indexes by Month, Fruit & Tree Nut and Commercial Vegetable – United States: 2011=100



### Received Indexes by Month, Meat Animal, Dairy Product, and Poultry & Egg – United States: 2011=100



**Prices Received for Field Crops and Fruits – United States: February 2015 with Comparisons**

Commodity	2011=100 Base	February 2014	January 2015	February 2015
Austrian winter peas ..... dollars/cwt	19.50	(S)	(D)	(S)
Barley, all ..... dollars/bushel	4.79	5.94	4.82	5.21
Feed ..... dollars/bushel	4.59	3.77	2.98	2.94
Malting ..... dollars/bushel	4.83	6.43	5.46	5.67
Beans, dry edible ..... dollars/cwt	34.60	39.00	32.90	32.40
Canola ..... dollars/cwt	23.10	18.50	17.80	17.20
Chickpeas, all ..... dollars/cwt	35.70	27.30	26.70	22.90
Large ..... dollars/cwt	39.20	28.50	31.30	28.50
Small ..... dollars/cwt	23.40	21.40	18.20	19.80
Corn ..... dollars/bushel	6.02	4.35	3.81	3.79
Cotton, Upland ..... dollars/pound	0.880	0.802	0.586	0.574
Cottonseed ..... dollars/ton	131.00	226.00	191.00	196.00
Flaxseed ..... dollars/bushel	14.20	13.80	11.70	11.50
Hay, all, baled ..... dollars/ton	159.00	167.00	152.00	155.00
Alfalfa ..... dollars/ton	176.00	190.00	174.00	172.00
Other ..... dollars/ton	119.00	138.00	118.00	127.00
Lentils ..... dollars/cwt	27.50	19.40	25.40	29.80
Oats ..... dollars/bushel	3.42	3.75	3.02	3.08
Peanuts, in-shell ..... dollars/pound	0.252	0.243	0.225	0.223
Peas, dry edible ..... dollars/cwt	13.60	15.10	12.30	12.20
Potatoes ..... dollars/cwt	9.78	9.22	9.07	8.91
Rice, all ..... dollars/cwt	13.70	16.70	14.60	12.90
Long ..... dollars/cwt	12.30	15.50	12.50	11.80
Medium and short ..... dollars/cwt	18.40	19.60	19.00	17.80
Sorghum grain ..... dollars/cwt	10.70	7.65	7.40	7.86
Soybeans ..... dollars/bushel	12.50	13.20	10.30	9.92
Sunflowers, all ..... dollars/cwt	29.00	22.80	19.30	20.60
Wheat, all ..... dollars/bushel	7.44	6.50	6.14	5.89
Winter ..... dollars/bushel	6.93	6.58	6.02	5.70
Durum ..... dollars/bushel	9.22	6.43	9.88	10.10
Other spring ..... dollars/bushel	8.33	6.40	5.83	5.55
Hard red winter ..... dollars/bushel	7.07	6.64	5.94	5.54
Soft red winter ..... dollars/bushel	6.77	5.90	5.69	5.48
Hard red spring ..... dollars/bushel	8.38	6.39	5.82	5.53
White ..... dollars/bushel	6.58	6.61	6.37	6.35
Grapefruit ..... dollars/box	7.47	5.78	6.09	4.83
Lemons ..... dollars/box	12.30	21.69	18.20	12.43
Oranges ..... dollars/box	8.16	10.71	9.28	9.65
Tangelos ..... dollars/box	3.50	(S)	7.78	(S)
Tangerines and mandarins ..... dollars/box	15.30	24.88	14.49	(D)
Apples <sup>1</sup> ..... dollars/pound	0.325	(NA)	0.320	0.297
Grapes <sup>1</sup> ..... dollars/ton	628.00	(NA)	(S)	(S)
Peaches <sup>1</sup> ..... dollars/ton	507.00	(NA)	(S)	(S)
Pears <sup>1</sup> ..... dollars/ton	559.00	(NA)	728.00	731.00
Strawberries ..... dollars/cwt	104.00	(NA)	135.00	101.00

(D) Withheld to avoid disclosing data for individual operations.

(NA) Not available.

(S) Insufficient number of reports to establish an estimate.

<sup>1</sup> Equivalent packinghouse-door returns for California, Michigan, New York (apples only), and Washington (apples, peaches, and pears). Prices as sold for other states.

## Prices Received for Vegetables and Livestock – United States: February 2015 with Comparisons

[Price data source for livestock and poultry commodities is United States Department of Agriculture's Agricultural Marketing Service]

Commodity	2011=100 Base	February 2014	January 2015	February 2015
<b>Vegetables, fresh <sup>1</sup></b>				
Asparagus .....dollars/cwt	37.50	(NA)	(NA)	(NA)
Beans, snap <sup>2</sup> .....dollars/cwt	69.00	(NA)	40.80	53.90
Broccoli .....dollars/cwt	41.60	(NA)	67.30	29.90
Cantaloupes <sup>2</sup> .....dollars/cwt	16.50	(NA)	(NA)	(NA)
Carrots .....dollars/cwt	30.80	(NA)	33.80	33.00
Cauliflower .....dollars/cwt	47.00	(NA)	58.40	40.10
Celery .....dollars/cwt	22.50	(NA)	19.40	14.60
Corn, sweet .....dollars/cwt	30.70	(NA)	39.80	40.00
Cucumbers <sup>2</sup> .....dollars/cwt	18.70	(NA)	30.60	27.60
Lettuce .....dollars/cwt	24.30	(NA)	38.20	15.20
Onions <sup>3</sup> .....dollars/cwt	11.90	(NA)	8.39	7.67
Tomatoes .....dollars/cwt	51.20	(NA)	34.80	49.40
<b>Livestock</b>				
Calves .....dollars/cwt	142.00	209.00	288.00	277.00
Cattle, all beef .....dollars/cwt	115.00	144.00	164.00	159.00
Cows <sup>4</sup> .....dollars/cwt	71.60	95.40	112.00	110.00
Steers and heifers .....dollars/cwt	117.00	145.00	166.00	161.00
Milk cows <sup>5 6</sup> .....dollars/head	1420.00	1440.00	2120.00	1990.00
Hogs, all .....dollars/cwt	66.50	65.50	57.40	50.40
Barrows and gilts .....dollars/cwt	66.80	65.60	57.70	50.80
Sows .....dollars/cwt	57.90	63.40	48.00	39.70
<b>Dairy and poultry</b>				
Milk, all <sup>7</sup> .....dollars/cwt	20.10	24.90	17.60	16.80
Fat test ..... percent	3.71	3.81	3.84	3.82
Broilers, live <sup>8</sup> .....dollars/pound	0.459	0.550	0.600	0.540
Eggs, all <sup>9</sup> .....dollars/dozen	0.969	1.40	1.25	1.55
Market <sup>9 10</sup> .....dollars/dozen	0.796	1.230	1.07	1.41
Turkeys, live <sup>11</sup> .....dollars/pound	0.680	0.664	0.662	0.669
<b>Adjusted for seasonal variation</b>				
Eggs, all .....dollars/dozen	0.979	1.35	1.31	1.49
Seasonal factor ..... percent	101	104	95	104
Milk, all <sup>7</sup> .....dollars/cwt	20.20	24.70	17.60	16.60
Seasonal factor ..... percent	100	101	100	101

(NA) Not available.

<sup>1</sup> Beginning January 2006, point of first sale. FOB shipping point for prior years.

<sup>2</sup> Monthly estimates began January 1995.

<sup>3</sup> Includes some processing.

<sup>4</sup> Beef cows and cull dairy cows sold for slaughter.

<sup>5</sup> Animals sold for dairy herd replacement only. Prices available for January, April, July, and October.

<sup>6</sup> Milk cow prices are for January 2014, October 2014, and January 2015.

<sup>7</sup> Before deductions for hauling. Includes quality, quantity, and other premiums. Excludes hauling subsidies.

<sup>8</sup> Live weight equivalent price.

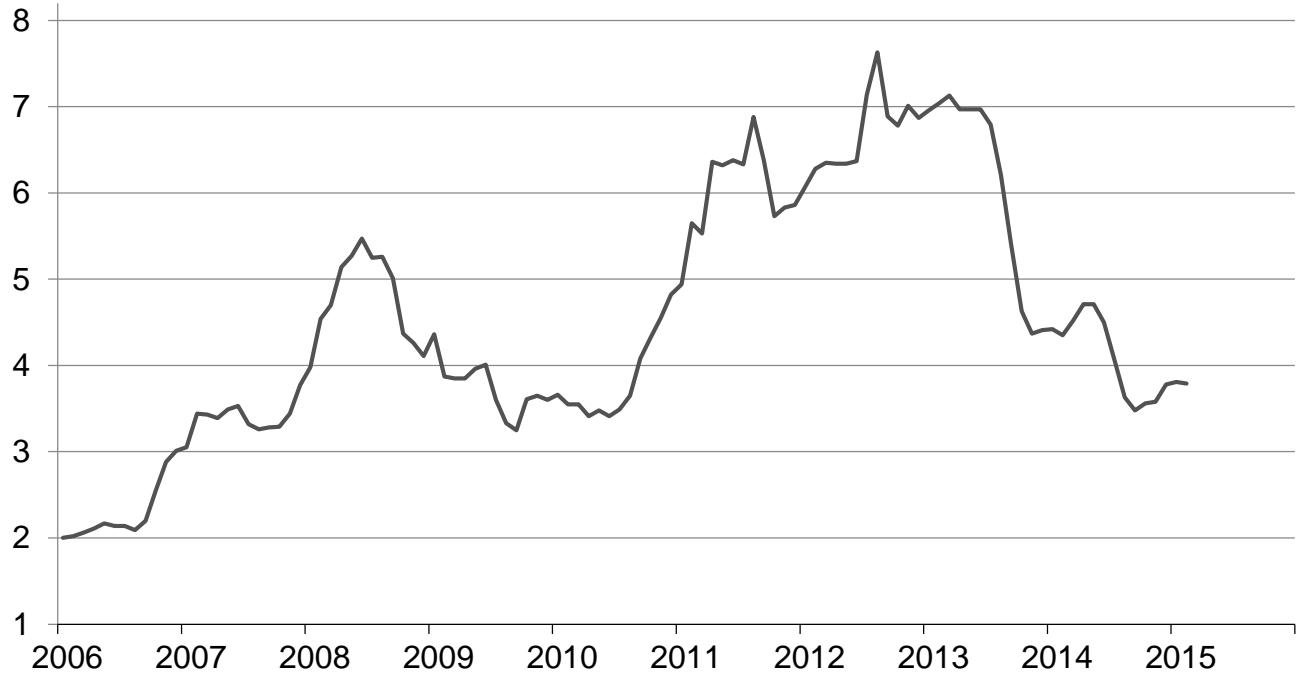
<sup>9</sup> Mid-month price.

<sup>10</sup> Also referred to as table eggs.

<sup>11</sup> Live weight equivalent price is used when actual live weight price is not available. Beginning January 2011, price reflects FOB shipping point basis. Prior year price reflects delivered basis.

## Prices Received for Corn by Month – United States

Dollars per bushel



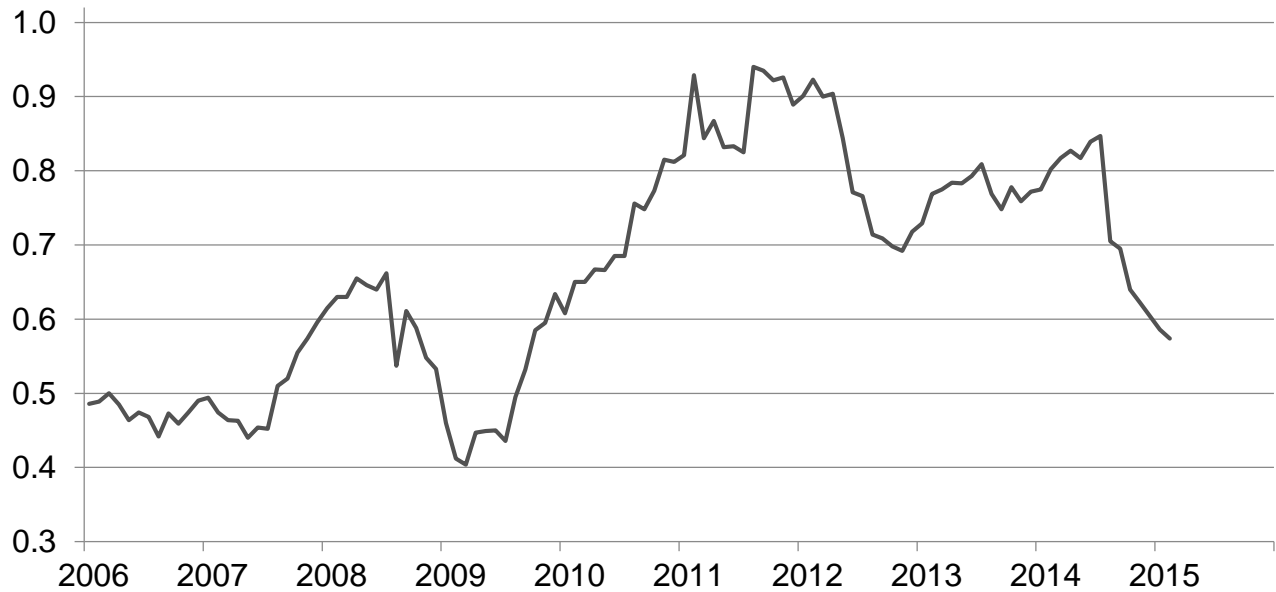
## Prices Received for Wheat by Month – United States

Dollars per bushel



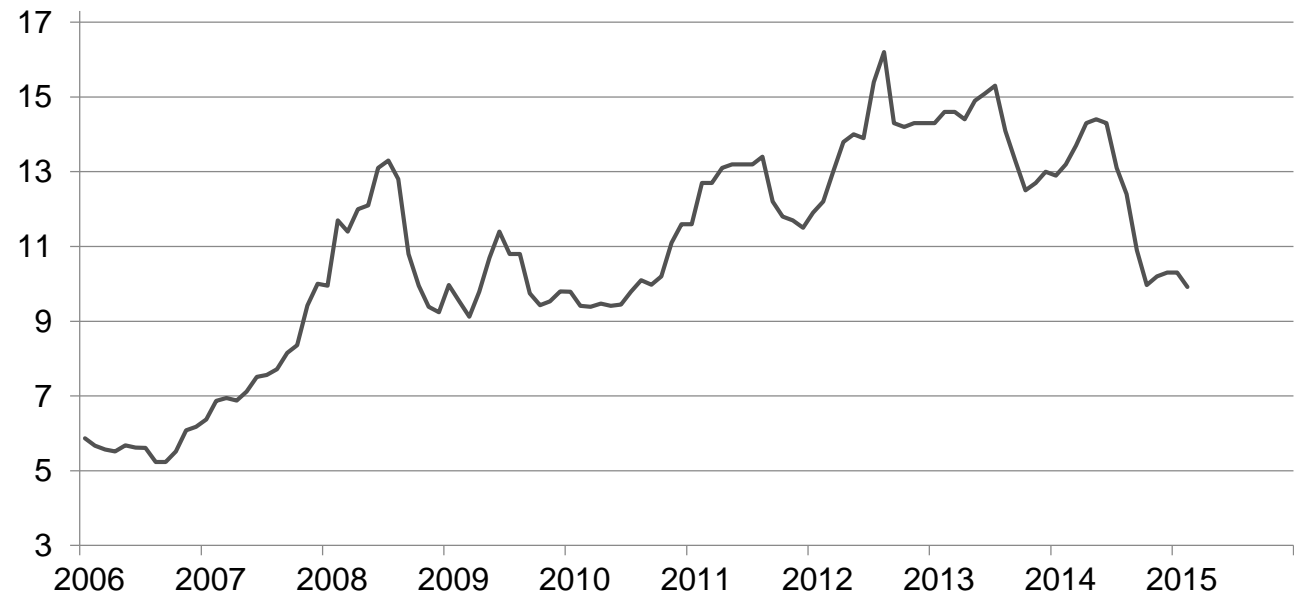
## Prices Received for Upland Cotton by Month – United States

Dollars per pound



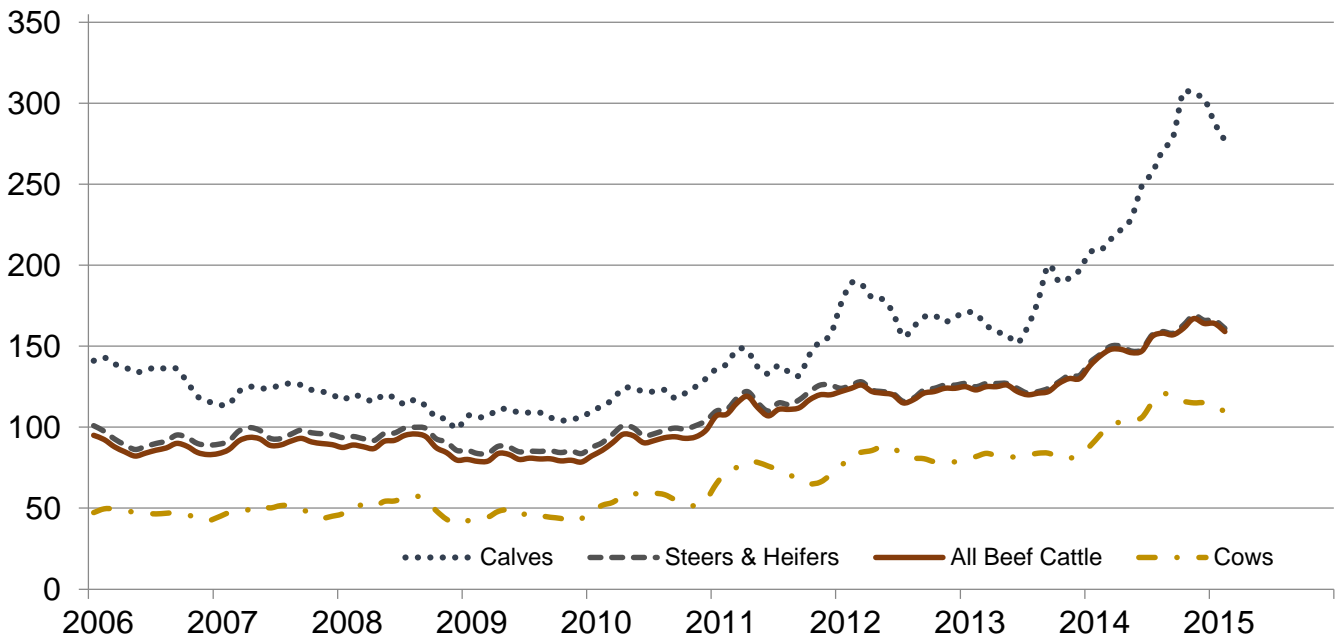
## Prices Received for Soybeans by Month – United States

Dollars per bushel



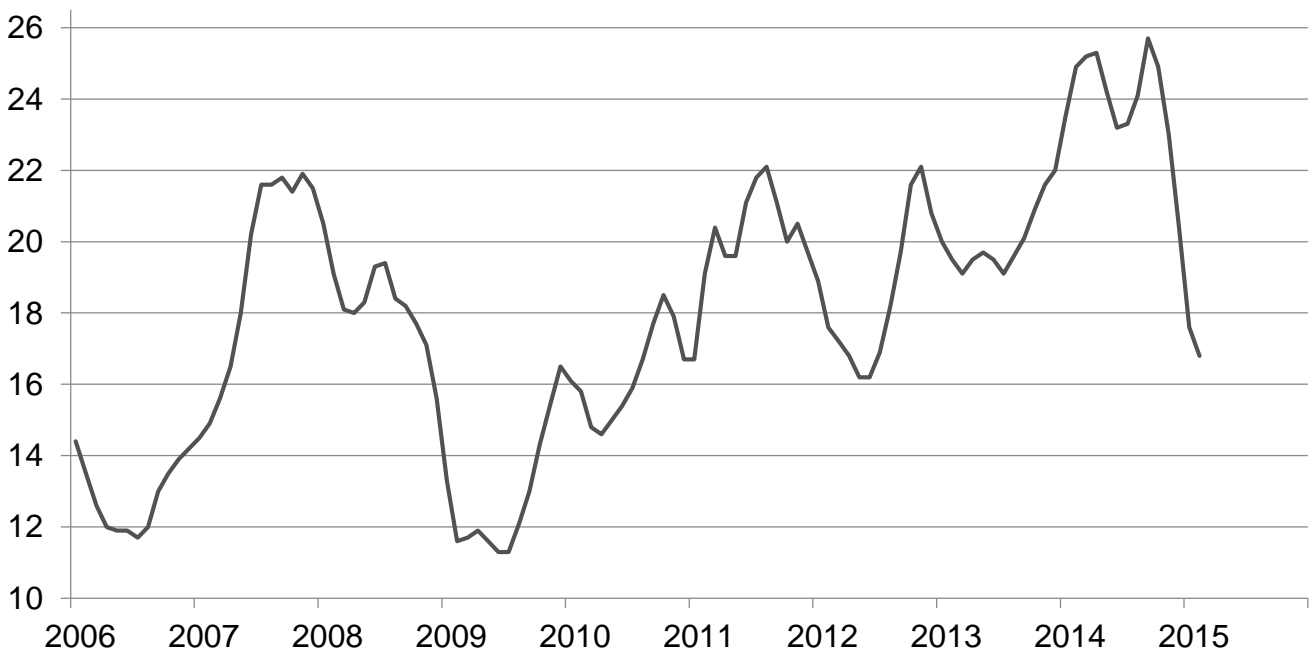
## Prices Received for Cattle by Month – United States

Dollars per cwt



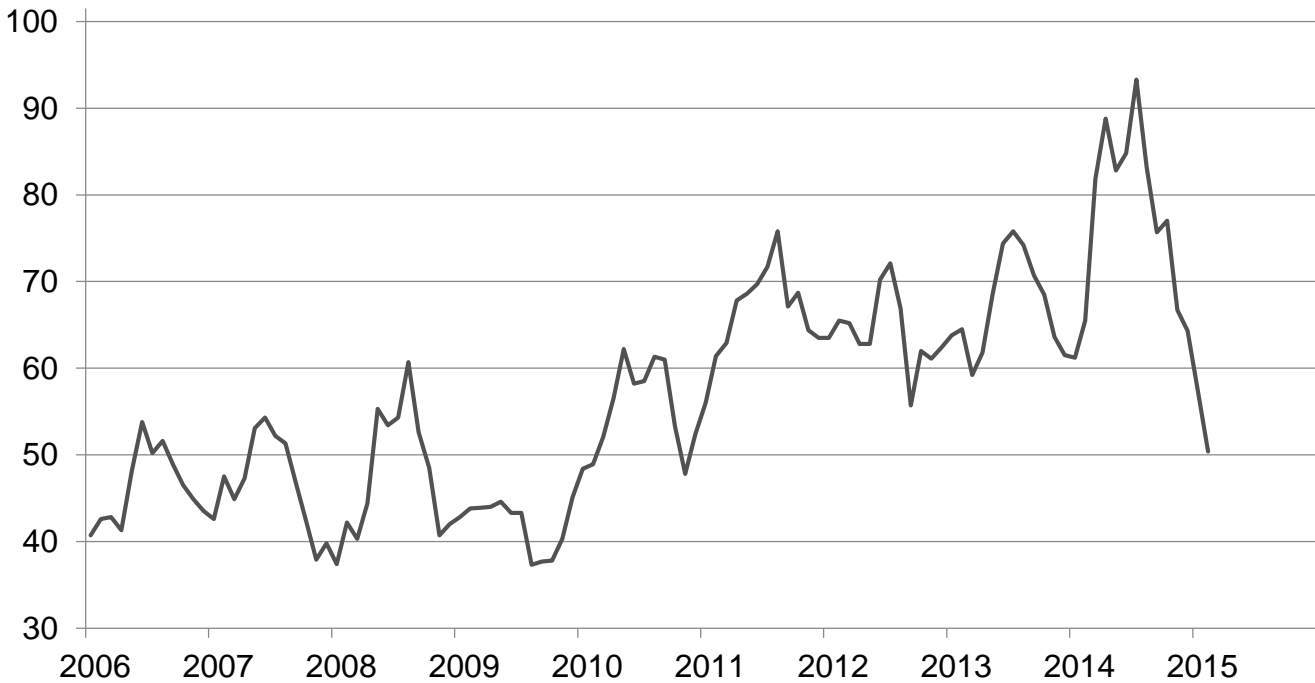
## Prices Received for Milk by Month – United States

Dollars per cwt



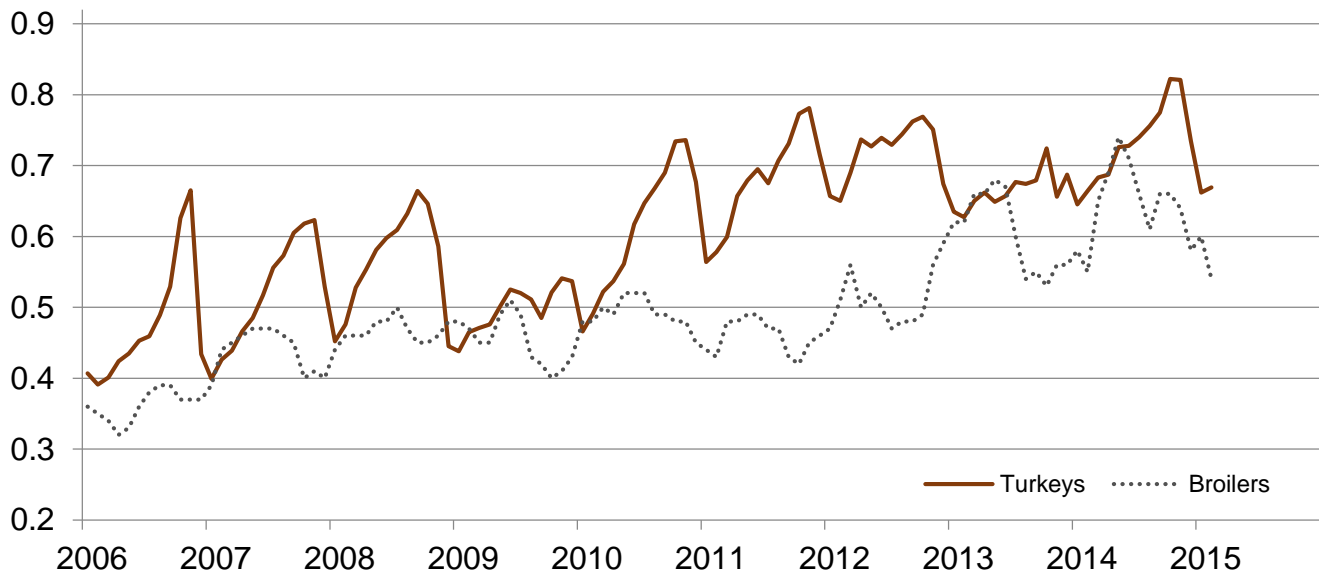
## Prices Received for Hogs by Month – United States

Dollars per cwt



## Prices Received for Poultry by Month – United States

Dollars per pound



## Prices Received for All Wheat, Corn, and Soybeans by Month – United States: 2015 with Comparisons

[Blank data cells indicate estimation period has not yet begun]

Month	All wheat			Corn			Soybeans		
	2013	2014	2015	2013	2014	2015	2013	2014	2015
	(dollars per bushel)	(dollars per bushel)	(dollars per bushel)	(dollars per bushel)	(dollars per bushel)	(dollars per bushel)	(dollars per bushel)	(dollars per bushel)	(dollars per bushel)
January .....	8.12	6.65	6.14	6.96	4.42	3.81	14.30	12.90	10.30
February .....	7.97	6.50	5.89	7.04	4.35	3.79	14.60	13.20	9.92
March .....	7.79	6.74		7.13	4.52		14.60	13.70	
April .....	7.71	6.82		6.97	4.71		14.40	14.30	
May .....	7.68	7.08		6.97	4.71		14.90	14.40	
June .....	7.37	6.50		6.97	4.50		15.10	14.30	
July .....	6.95	6.16		6.79	4.06		15.30	13.10	
August .....	6.88	5.98		6.21	3.63		14.10	12.40	
September .....	6.80	5.74		5.40	3.48		13.30	10.90	
October .....	6.94	5.71		4.63	3.56		12.50	9.97	
November .....	6.85	6.05		4.37	3.58		12.70	10.20	
December .....	6.73	6.11		4.41	3.78		13.00	10.30	

## Prices Received for Beef Cattle and All Hogs by Month – United States: 2015 with Comparisons

[Blank data cells indicate estimation period has not yet begun]

Month	Beef cattle <sup>1</sup>			All hogs <sup>2</sup>		
	2013	2014	2015	2013	2014	2015
	(dollars per cwt)	(dollars per cwt)	(dollars per cwt)	(dollars per cwt)	(dollars per cwt)	(dollars per cwt)
January .....	125.00	138.00	164.00	63.80	61.20	57.40
February .....	123.00	144.00	159.00	64.50	65.50	50.40
March .....	125.00	148.00		59.20	81.90	
April .....	125.00	148.00		61.80	88.80	
May .....	126.00	146.00		68.60	82.80	
June .....	122.00	147.00		74.40	84.80	
July .....	120.00	156.00		75.80	93.30	
August .....	121.00	158.00		74.20	83.20	
September .....	122.00	157.00		70.70	75.70	
October .....	127.00	161.00		68.50	77.00	
November .....	130.00	167.00		63.60	66.70	
December .....	130.00	164.00		61.50	64.30	

<sup>1</sup> Cows and steers & heifers.

<sup>2</sup> Barrows & gilts and sows.



## Prices Received for All Wheat – States and United States: February 2015 with Comparisons

State	February 2014	January 2015	February 2015
	(dollars per bushel)	(dollars per bushel)	(dollars per bushel)
Arizona .....	(D)	(D)	(S)
Arkansas .....	5.92	5.17	5.96
California .....	7.29	6.97	(D)
Colorado .....	6.58	5.66	5.45
Idaho .....	6.88	5.99	6.03
Illinois .....	6.04	5.58	5.33
Indiana .....	6.09	5.42	5.48
Kansas .....	6.59	5.98	5.35
Michigan .....	6.00	6.14	5.93
Minnesota .....	6.29	5.80	5.68
Missouri .....	6.03	5.49	4.95
Montana .....	6.57	6.76	6.48
Nebraska .....	6.47	5.73	5.63
North Carolina .....	5.20	5.69	5.43
North Dakota .....	6.20	6.08	5.72
Ohio .....	5.87	5.96	5.47
Oklahoma .....	6.47	6.17	5.66
Oregon .....	6.75	6.74	6.60
South Dakota .....	6.70	5.68	5.45
Texas .....	6.44	5.60	5.52
Washington .....	6.75	6.58	6.37
United States .....	6.50	6.14	5.89

(D) Withheld to avoid disclosing data for individual operations.

(S) Insufficient number of reports to establish an estimate.

## Prices Received for Winter Wheat – States and United States: February 2015 with Comparisons

State	February 2014	January 2015	February 2015
	(dollars per bushel)	(dollars per bushel)	(dollars per bushel)
Arkansas .....	5.92	5.17	5.96
California .....	7.29	6.97	(D)
Colorado .....	6.58	5.66	5.45
Idaho .....	6.79	5.94	5.95
Illinois .....	6.04	5.58	5.33
Indiana .....	6.09	5.42	5.48
Kansas .....	6.59	5.98	5.35
Michigan .....	6.00	6.14	5.93
Minnesota .....	(D)	(D)	(D)
Missouri .....	6.03	5.49	4.95
Montana .....	6.85	6.31	5.85
Nebraska .....	6.47	5.73	5.63
North Carolina .....	5.20	5.69	5.43
North Dakota .....	6.04	4.50	4.22
Ohio .....	5.87	5.96	5.47
Oklahoma .....	6.47	6.17	5.66
Oregon .....	6.74	6.73	6.60
South Dakota .....	6.42	5.43	5.24
Texas .....	6.44	5.60	5.52
Washington .....	6.64	6.44	6.29
United States .....	6.58	6.02	5.70

(D) Withheld to avoid disclosing data for individual operations.

**Prices Received for Durum Wheat – States and United States: February 2015 with Comparisons**

State	February 2014	January 2015	February 2015
	(dollars per bushel)	(dollars per bushel)	(dollars per bushel)
Arizona .....	(D)	(D)	(S)
California .....	(S)	(S)	(S)
Idaho .....	(S)	(D)	(D)
Montana .....	6.57	(D)	10.80
North Dakota .....	6.33	9.89	9.56
United States .....	6.43	9.88	10.10

(D) Withheld to avoid disclosing data for individual operations.

(S) Insufficient number of reports to establish an estimate.

**Prices Received for Spring Wheat – States and United States: February 2015 with Comparisons**

State	February 2014	January 2015	February 2015
	(dollars per bushel)	(dollars per bushel)	(dollars per bushel)
Colorado .....	(S)	(D)	(D)
Idaho .....	7.12	6.00	6.15
Minnesota .....	6.29	5.80	5.69
Montana .....	6.41	6.51	5.91
North Dakota .....	6.17	5.52	5.25
Oregon .....	6.83	6.82	6.65
South Dakota .....	6.79	5.89	5.59
Washington .....	7.25	7.29	6.84
United States .....	6.40	5.83	5.55

(D) Withheld to avoid disclosing data for individual operations.

(S) Insufficient number of reports to establish an estimate.

### Prices Received for All Barley – States and United States: February 2015 with Comparisons

State	February 2014	January 2015	February 2015
	(dollars per bushel)	(dollars per bushel)	(dollars per bushel)
California .....	(D)	(D)	(S)
Colorado .....	4.02	(D)	(D)
Idaho .....	6.38	4.45	5.49
Minnesota .....	6.32	5.68	5.43
Montana .....	6.38	4.60	5.05
North Dakota .....	5.87	5.29	5.20
Oregon .....	(D)	(D)	(D)
Utah .....	3.88	(D)	(D)
Washington .....	3.53	3.33	3.97
Wyoming .....	(D)	(S)	(D)
United States .....	5.94	4.82	5.21

(D) Withheld to avoid disclosing data for individual operations.

(S) Insufficient number of reports to establish an estimate.

### Prices Received for Malting Barley – States: February 2015 with Comparisons

State	February 2014	January 2015	February 2015
	(dollars per bushel)	(dollars per bushel)	(dollars per bushel)
Idaho .....	6.70	5.48	6.13
Minnesota .....	6.29	5.69	5.33
Montana .....	6.49	5.59	5.82
North Dakota .....	6.13	5.38	5.38
Wyoming .....	(D)	(S)	(D)

(D) Withheld to avoid disclosing data for individual operations.

(S) Insufficient number of reports to establish an estimate.

### Prices Received for Feed Barley – States: February 2015 with Comparisons

State	February 2014	January 2015	February 2015
	(dollars per bushel)	(dollars per bushel)	(dollars per bushel)
Idaho .....	3.63	2.84	2.82
Minnesota .....	(D)	(D)	(D)
Montana .....	3.20	2.36	2.43
North Dakota .....	3.99	2.40	2.87
Wyoming .....	(S)	(S)	(S)

(D) Withheld to avoid disclosing data for individual operations.

(S) Insufficient number of reports to establish an estimate.

### Prices Received for Corn – States and United States: February 2015 with Comparisons

State	February 2014	January 2015	February 2015
	(dollars per bushel)	(dollars per bushel)	(dollars per bushel)
Colorado .....	4.49	4.09	3.78
Illinois .....	4.36	3.82	3.77
Indiana .....	4.48	3.86	3.93
Iowa .....	4.43	3.85	3.79
Kansas .....	4.43	3.95	3.82
Kentucky .....	4.65	4.05	4.13
Michigan .....	4.25	3.76	3.69
Minnesota .....	4.19	3.70	3.65
Missouri .....	4.49	3.58	3.70
Nebraska .....	4.27	3.84	3.90
North Carolina .....	4.78	4.43	4.63
North Dakota .....	3.83	3.45	3.39
Ohio .....	4.37	3.87	3.95
Pennsylvania .....	4.61	4.11	4.07
South Dakota .....	4.10	3.41	3.43
Tennessee .....	4.92	4.00	4.06
Texas .....	4.67	4.51	4.53
Wisconsin .....	4.30	3.71	3.77
United States .....	4.35	3.81	3.79

### Prices Received for Soybeans – States and United States: February 2015 with Comparisons

State	February 2014	January 2015	February 2015
	(dollars per bushel)	(dollars per bushel)	(dollars per bushel)
Arkansas .....	13.50	10.70	10.50
Illinois .....	13.40	10.50	10.10
Indiana .....	13.40	10.50	10.20
Iowa .....	13.10	10.20	9.92
Kansas .....	13.20	9.77	9.61
Kentucky .....	13.50	10.60	10.20
Louisiana .....	13.80	10.80	11.40
Michigan .....	13.30	10.40	9.88
Minnesota .....	12.90	10.20	9.78
Mississippi .....	13.60	10.50	10.50
Missouri .....	13.50	10.10	9.91
Nebraska .....	13.00	9.99	9.60
North Carolina .....	13.40	10.20	10.00
North Dakota .....	12.50	9.50	9.10
Ohio .....	13.40	10.60	10.30
South Dakota .....	12.70	9.79	9.30
Tennessee .....	13.50	10.80	10.40
Wisconsin .....	13.20	10.20	10.00
United States .....	13.20	10.30	9.92

### Prices Received for Oats – States and United States: February 2015 with Comparisons

State	February 2014	January 2015	February 2015
	(dollars per bushel)	(dollars per bushel)	(dollars per bushel)
Illinois .....	(S)	(D)	(D)
Iowa .....	5.17	3.76	4.26
Michigan .....	3.84	(D)	(D)
Minnesota .....	3.77	3.06	2.99
Montana .....	(S)	(S)	(D)
Nebraska .....	4.12	2.90	3.39
New York .....	3.96	(S)	(D)
North Dakota .....	(D)	2.39	2.26
Oregon .....	(S)	(S)	(S)
Pennsylvania .....	4.11	3.85	4.26
South Dakota .....	3.62	3.22	3.20
Texas .....	(S)	(S)	(S)
Wisconsin .....	4.61	3.30	3.58
United States .....	3.75	3.02	3.08

(D) Withheld to avoid disclosing data for individual operations.

(S) Insufficient number of reports to establish an estimate.

### Prices Received for Sorghum Grain – States and United States: February 2015 with Comparisons

State	February 2014	January 2015	February 2015
	(dollars per cwt)	(dollars per cwt)	(dollars per cwt)
Arkansas .....	(D)	7.01	7.66
Illinois .....	(D)	6.50	(D)
Kansas .....	7.61	7.44	7.87
Louisiana .....	7.56	(D)	7.57
Missouri .....	7.96	6.75	7.53
Nebraska .....	7.50	7.48	8.05
Oklahoma .....	7.58	7.85	8.02
Texas .....	7.74	7.26	7.69
United States .....	7.65	7.40	7.86

(D) Withheld to avoid disclosing data for individual operations.

**Prices Received for Dry Beans – States and United States: February 2015 with Comparisons**

State	February 2014	January 2015	February 2015
	(dollars per cwt)	(dollars per cwt)	(dollars per cwt)
California .....	(D)	58.10	69.20
Colorado .....	37.90	46.30	(D)
Idaho .....	(D)	35.20	28.70
Michigan .....	46.20	(D)	40.40
Minnesota .....	(D)	(D)	(D)
Nebraska .....	41.70	(D)	34.90
North Dakota .....	32.50	30.50	26.10
United States .....	39.00	32.90	32.40

(D) Withheld to avoid disclosing data for individual operations.

**Prices Received for Peanuts (in shell) – States and United States: February 2015 with Comparisons**

State	February 2014	January 2015	February 2015
	(dollars per pound)	(dollars per pound)	(dollars per pound)
Alabama .....	0.211	0.206	0.211
Florida .....	0.247	0.195	0.216
Georgia .....	0.237	0.200	0.206
Mississippi .....	(S)	0.214	0.210
New Mexico .....	(S)	0.306	(S)
North Carolina .....	0.268	0.213	0.254
Oklahoma .....	0.272	(S)	(S)
South Carolina .....	(D)	0.242	0.228
Texas .....	0.261	0.398	0.349
Virginia .....	0.275	(S)	(S)
United States .....	0.243	0.225	0.223

(D) Withheld to avoid disclosing data for individual operations.

(S) Insufficient number of reports to establish an estimate.

### Prices Received for Sunflower – States and United States: February 2015 with Comparisons

State	February 2014	January 2015	February 2015
	(dollars per cwt)	(dollars per cwt)	(dollars per cwt)
Colorado .....	(D)	(D)	(D)
Kansas .....	20.90	19.40	23.40
Minnesota .....	23.30	(D)	(S)
North Dakota .....	25.20	19.40	22.10
South Dakota .....	18.80	18.20	18.70
United States .....	22.80	19.30	20.60

(D) Withheld to avoid disclosing data for individual operations.

(S) Insufficient number of reports to establish an estimate.

### Prices Received for Canola – States and United States: February 2015 with Comparisons

State	February 2014	January 2015	February 2015
	(dollars per cwt)	(dollars per cwt)	(dollars per cwt)
Minnesota .....	(D)	(D)	(S)
North Dakota .....	18.00	17.80	17.20
United States .....	18.50	17.80	17.20

(D) Withheld to avoid disclosing data for individual operations.

(S) Insufficient number of reports to establish an estimate.

### Prices Received for Flaxseed – States and United States: February 2015 with Comparisons

State	February 2014	January 2015	February 2015
	(dollars per bushel)	(dollars per bushel)	(dollars per bushel)
North Dakota .....	13.80	11.70	11.50
United States .....	13.80	11.70	11.50

## Prices Received for Upland Cotton and Cottonseed – States and United States: February 2015 with Comparisons

[Cottonseed marketing year August - February]

State	Cotton, Upland			Cottonseed		
	February 2014	January 2015	February 2015	February 2014	January 2015	February 2015
	(dollars per pound)	(dollars per pound)	(dollars per pound)	(dollars per ton)	(dollars per ton)	(dollars per ton)
Alabama .....	0.828	0.524	0.634	203.00	167.00	(S)
Arizona .....	(D)	(D)	0.645	(S)	263.00	286.00
Arkansas .....	(D)	0.625	0.623	(S)	(S)	(S)
California .....	(D)	(D)	(D)	(S)	305.00	(S)
Georgia .....	0.831	0.608	0.638	199.00	177.00	167.00
Louisiana .....	(D)	0.620	0.653	(S)	(S)	(S)
Mississippi .....	0.819	0.623	0.626	(S)	(S)	(S)
North Carolina .....	0.821	0.626	0.629	235.00	214.00	(S)
Tennessee .....	0.813	0.613	0.617	(S)	(S)	(S)
Texas .....	0.768	0.581	0.541	248.00	182.00	182.00
United States .....	0.802	0.586	0.574	226.00	191.00	196.00

(D) Withheld to avoid disclosing data for individual operations.

(S) Insufficient number of reports to establish an estimate.

## Prices Received and Farm Marketings for Upland Cotton and Rice – United States: February 2015 with Comparisons

Item	February 2014	January 2015	February 2015
<b>Cotton, Upland</b>			
Average price ..... dollars/pound	0.802	0.586	0.574
Marketings <sup>1</sup> ..... 1,000 bales	650	2,359	1,827
<b>Rice, all</b>			
Average price ..... dollars/cwt	16.70	14.60	12.90
Marketings <sup>2</sup> ..... 1,000 cwt	13,495	16,459	12,269
<b>Rice, long</b>			
Average price ..... dollars/cwt	15.50	12.50	11.80
Marketings <sup>2</sup> ..... 1,000 cwt	9,794	11,257	10,143
<b>Rice, medium and short</b>			
<b>California</b>			
Average price ..... dollars/cwt	21.10	21.00	21.80
<b>Other States <sup>3</sup></b>			
Average price ..... dollars/cwt	15.80	15.10	14.90
<b>United States</b>			
Average price ..... dollars/cwt	19.60	19.00	17.80
Marketings <sup>2</sup> ..... 1,000 cwt	3,701	5,202	2,126

<sup>1</sup> Marketings based on a survey of cotton buyers in the major producing States - Alabama, Arizona, Arkansas, California, Georgia, Louisiana, Mississippi, North Carolina, Tennessee, and Texas.

<sup>2</sup> Purchases by private firms and rice (rough equivalent) shipped by cooperatives.

<sup>3</sup> Other States include Arkansas, Louisiana, Mississippi, Missouri, and Texas.



## Prices Received for Hay by Type – States and United States: February 2015 with Comparisons

State	All hay			Alfalfa hay			Other hay		
	February 2014	January 2015	February 2015	February 2014	January 2015	February 2015	February 2014	January 2015	February 2015
	(dollars per ton)	(dollars per ton)	(dollars per ton)	(dollars per ton)	(dollars per ton)	(dollars per ton)	(dollars per ton)	(dollars per ton)	(dollars per ton)
Arizona .....	205.00	215.00	200.00	205.00	215.00	200.00	205.00	210.00	195.00
California .....	217.00	192.00	187.00	225.00	200.00	190.00	187.00	160.00	170.00
Colorado .....	229.00	194.00	194.00	230.00	195.00	195.00	225.00	190.00	190.00
Idaho .....	198.00	188.00	179.00	200.00	190.00	180.00	170.00	165.00	165.00
Illinois .....	171.00	167.00	169.00	185.00	180.00	180.00	125.00	120.00	120.00
Iowa .....	165.00	138.00	129.00	180.00	156.00	140.00	115.00	107.00	94.00
Kansas .....	146.00	138.00	132.00	171.00	153.00	142.00	106.00	92.00	101.00
Kentucky .....	116.00	123.00	128.00	195.00	200.00	205.00	95.00	100.00	105.00
Michigan .....	155.00	167.00	173.00	175.00	185.00	190.00	135.00	130.00	130.00
Minnesota .....	170.00	109.00	103.00	190.00	125.00	114.00	128.00	80.00	79.00
Missouri .....	105.00	96.00	93.00	205.00	165.00	165.00	80.00	85.00	85.00
Montana .....	135.00	123.00	124.00	140.00	125.00	125.00	110.00	115.00	120.00
Nebraska .....	131.00	94.00	93.00	142.00	99.00	95.00	105.00	83.00	88.00
Nevada .....	213.00	228.00	224.00	213.00	230.00	225.00	187.00	200.00	200.00
New Mexico .....	234.00	219.00	219.00	245.00	230.00	230.00	180.00	140.00	140.00
New York .....	165.00	131.00	131.00	190.00	220.00	225.00	165.00	128.00	130.00
North Dakota .....	99.00	84.00	87.00	104.00	85.00	89.00	67.00	60.00	58.00
Ohio .....	165.00	146.00	138.00	185.00	180.00	175.00	145.00	120.00	120.00
Oklahoma .....	110.00	130.00	137.00	197.00	165.00	191.00	97.00	86.00	79.00
Oregon .....	186.00	211.00	210.00	210.00	225.00	220.00	160.00	190.00	200.00
Pennsylvania .....	182.00	227.00	230.00	199.00	242.00	238.00	177.00	217.00	225.00
South Dakota .....	123.00	109.00	108.00	131.00	113.00	111.00	105.00	91.00	89.00
Texas .....	110.00	82.00	98.00	247.00	233.00	234.00	84.00	65.00	72.00
Utah .....	180.00	180.00	180.00	180.00	180.00	180.00	145.00	145.00	145.00
Washington .....	197.00	210.00	197.00	185.00	210.00	200.00	220.00	210.00	190.00
Wisconsin .....	181.00	130.00	117.00	195.00	136.00	125.00	129.00	100.00	88.00
Wyoming .....	176.00	136.00	131.00	180.00	140.00	135.00	155.00	125.00	120.00
United States ...	167.00	152.00	155.00	190.00	174.00	172.00	138.00	118.00	127.00

## Prices Received for Apples – States and United States: February 2015 with Comparisons

[Equivalent packinghouse-door returns for California, Michigan, New York, and Washington. Prices at point of first sale for other States]

State	Apples, fresh use		
	February 2014	January 2015	February 2015
	(dollars per pound)	(dollars per pound)	(dollars per pound)
California .....	(NA)	(NA)	(NA)
Michigan .....	(NA)	0.300	0.285
New York .....	(NA)	0.270	0.270
Ohio .....	(NA)	(NA)	(NA)
Pennsylvania .....	(NA)	0.350	0.400
Virginia .....	(NA)	0.290	0.280
Washington .....	(NA)	0.327	0.296
United States .....	(NA)	0.320	0.297

(NA) Not available.

## Prices Received for Citrus Fruits by Utilization – States and United States: February 2014

[Net pounds per box: grapefruit in California-80, Florida-85, Texas-80; lemons-80; oranges in California-80, Florida-90, Texas-85; tangelos-90; tangerines and mandarins in Arizona and California-80, Florida-95]

Commodity, State, and type	FOB packed fresh	Equivalent returns					
		Packinghouse door			On-tree		
		All	Fresh	Process	All	Fresh	Process
	(dollars per box)	(dollars per box)	(dollars per box)	(dollars per box)	(dollars per box)	(dollars per box)	(dollars per box)
<b>Grapefruit</b>							
California <sup>1</sup> .....	18.50	11.71	11.71	(D)	9.49	9.49	(D)
Florida .....	25.10	8.46	14.35	5.38	5.66	12.11	2.29
White .....	29.10	8.81	18.15	6.65	6.13	15.95	3.85
Colored .....	24.40	8.33	13.65	4.70	5.48	11.40	1.45
Texas .....	24.30	7.48	12.70	1.60	5.94	11.09	0.14
United States .....	24.50	8.56	14.13	5.38	5.78	11.89	2.29
<b>Lemons</b>							
Arizona .....	(D)	(D)	(D)	(D)	(D)	(D)	(D)
California .....	46.10	27.47	36.84	(D)	21.80	30.82	(D)
United States .....	46.10	27.36	36.81	(D)	21.69	30.79	(D)
<b>Oranges</b>							
California .....	35.40	20.45	26.23	(D)	17.86	23.67	(D)
Navel and miscellaneous .....	35.40	20.45	26.23	(D)	17.86	23.67	(D)
Valencia .....	(S)	(S)	(S)	(S)	(S)	(S)	(S)
Florida .....	25.20	9.63	14.05	9.50	7.13	11.45	7.00
Early and mids .....	25.20	9.63	14.05	9.50	7.13	11.45	7.00
Valencia .....	(S)	(S)	(S)	(S)	(S)	(S)	(S)
United States .....	34.70	13.24	25.40	8.53	10.71	22.84	6.01
<b>Tangelos</b>							
Florida .....	(S)	(S)	(S)	(S)	(S)	(S)	(S)
United States .....	(S)	(S)	(S)	(S)	(S)	(S)	(S)
<b>Tangerines and mandarins</b>							
Arizona .....	(D)	(D)	(D)	(D)	(D)	(D)	(D)
California .....	(D)	(D)	(D)	(D)	(D)	(D)	(D)
Florida .....	41.20	21.42	27.80	7.95	17.59	24.25	3.55
United States .....	42.50	27.98	33.36	2.04	24.88	30.53	-2.32

(D) Withheld to avoid disclosing data for individual operations.

(S) Insufficient number of reports to establish an estimate.

<sup>1</sup> Some processed sales included in fresh sales.

## Prices Received for Citrus Fruits by Utilization – States and United States: January 2015

[Net pounds per box: grapefruit in California-80, Florida-85, Texas-80; lemons-80; oranges in California-80, Florida-90, Texas-85; tangelos-90; tangerines and mandarins in Arizona and California-80, Florida-95]

Commodity, State, and type	FOB packed fresh	Equivalent returns					
		Packinghouse door			On-tree		
		All	Fresh	Process	All	Fresh	Process
	(dollars per box)	(dollars per box)	(dollars per box)	(dollars per box)	(dollars per box)	(dollars per box)	(dollars per box)
<b>Grapefruit</b>							
California <sup>1</sup> .....	16.90	9.97	9.97	(D)	7.71	7.71	(D)
Florida .....	21.90	8.09	11.17	4.89	5.38	8.93	1.69
White .....	22.30	7.88	11.35	6.00	5.03	9.15	2.80
Colored .....	21.90	8.14	11.15	4.55	5.45	8.90	1.35
Texas .....	23.50	9.77	11.90	1.60	8.19	10.29	0.14
United States .....	21.50	8.56	11.16	4.59	6.09	9.06	1.55
<b>Lemons</b>							
Arizona .....	(D)	(D)	(D)	(D)	(D)	(D)	(D)
California .....	48.30	23.87	38.85	(D)	18.27	32.71	(D)
United States .....	48.50	23.80	39.05	(D)	18.20	32.91	(D)
<b>Oranges</b>							
California .....	30.40	18.43	21.05	(D)	15.79	18.44	(D)
Navel and miscellaneous .....	30.40	18.43	21.05	(D)	15.79	18.44	(D)
Valencia .....	(S)	(S)	(S)	(S)	(S)	(S)	(S)
Florida .....	29.00	9.88	17.85	9.64	7.38	15.25	7.14
Early and mids .....	29.00	9.88	17.85	9.64	7.38	15.25	7.14
Valencia .....	(S)	(S)	(S)	(S)	(S)	(S)	(S)
United States .....	30.30	11.81	20.72	9.30	9.28	18.11	6.79
<b>Tangelos</b>							
Florida .....	25.70	10.55	14.05	7.00	7.78	11.30	4.20
United States .....	25.70	10.55	14.05	7.00	7.78	11.30	4.20
<b>Tangerines and mandarins</b>							
Arizona .....	(D)	(D)	(D)	(D)	(D)	(D)	(D)
California .....	(D)	(D)	(D)	(D)	(D)	(D)	(D)
Florida .....	45.50	24.61	32.10	7.10	20.81	28.55	2.70
United States .....	30.80	17.69	21.45	1.97	14.49	18.55	-2.46

(D) Withheld to avoid disclosing data for individual operations.

(S) Insufficient number of reports to establish an estimate.

<sup>1</sup> Some processed sales included in fresh sales.

## Prices Received for Citrus Fruits by Utilization – States and United States: February 2015

[Net pounds per box: grapefruit in California-80, Florida-85, Texas-80; lemons-80; oranges in California-80, Florida-90, Texas-85; tangelos-90; tangerines and mandarins in Arizona and California-80, Florida-95]

Commodity, State, and type	FOB packed fresh	Equivalent returns					
		Packinghouse door			On-tree		
		All	Fresh	Process	All	Fresh	Process
	(dollars per box)	(dollars per box)	(dollars per box)	(dollars per box)	(dollars per box)	(dollars per box)	(dollars per box)
<b>Grapefruit</b>							
California <sup>1</sup> .....	18.50	11.57	11.57	(D)	9.31	9.31	(D)
Florida .....	21.90	7.12	11.16	4.43	4.30	8.92	1.23
White .....	23.90	8.10	12.95	6.40	5.16	10.75	3.20
Colored .....	21.60	6.82	10.85	3.65	4.04	8.60	0.45
Texas .....	23.30	8.13	11.70	1.60	6.57	10.09	0.14
United States .....	22.10	7.41	11.32	4.11	4.83	9.22	1.10
<b>Lemons</b>							
Arizona .....	(D)	(D)	(D)	(D)	(D)	(D)	(D)
California .....	47.10	18.11	37.65	(D)	12.69	31.51	(D)
United States .....	46.80	17.84	37.40	(D)	12.43	31.26	(D)
<b>Oranges</b>							
California .....	28.70	16.09	19.35	(D)	13.45	16.74	(D)
Navel and miscellaneous .....	28.70	16.09	19.35	(D)	13.45	16.74	(D)
Valencia .....	(S)	(S)	(S)	(S)	(S)	(S)	(S)
Florida .....	27.30	10.29	16.15	10.10	7.78	13.55	7.60
Early and mids .....	27.30	10.29	16.15	10.10	7.78	13.55	7.60
Valencia .....	(S)	(S)	(S)	(S)	(S)	(S)	(S)
United States .....	28.60	12.20	19.12	9.32	9.65	16.51	6.80
<b>Tangelos</b>							
Florida .....	(S)	(S)	(S)	(S)	(S)	(S)	(S)
United States .....	(S)	(S)	(S)	(S)	(S)	(S)	(S)
<b>Tangerines and mandarins</b>							
Arizona .....	(D)	(D)	(D)	(D)	(D)	(D)	(D)
California .....	(D)	(D)	(D)	(D)	(D)	(D)	(D)
Florida .....	45.40	24.14	32.00	6.65	20.33	28.45	2.25
United States .....	(D)	(D)	(D)	(D)	(D)	(D)	(D)

(D) Withheld to avoid disclosing data for individual operations.

(S) Insufficient number of reports to establish an estimate.

<sup>1</sup> Some processed sales included in fresh sales.

## Prices Received for Potatoes – States and United States: February 2015 with Comparisons

State	February 2014 (dollars per cwt)	January 2015 (dollars per cwt)	February 2015 (dollars per cwt)
California			
Spring .....	(S)	(S)	(S)
Fall .....	10.00	9.60	9.50
All <sup>1</sup> .....	10.00	9.60	9.50
Colorado			
Fresh <sup>2</sup> .....	9.60	10.40	9.45
All <sup>1</sup> .....	9.05	9.50	8.65
Florida .....	(D)	(S)	21.50
Idaho			
Fresh <sup>2</sup> .....	6.25	6.70	5.70
Processing .....	8.80	7.85	7.75
All <sup>1</sup> .....	7.90	7.40	7.05
Maine .....	10.90	(D)	(D)
Michigan .....	12.40	(D)	(D)
Minnesota .....	(D)	9.10	10.00
New York .....	12.80	(D)	(D)
North Carolina .....	(S)	(S)	(S)
North Dakota			
Fresh <sup>2</sup> .....	(D)	(D)	(D)
Processing .....	(D)	(D)	(D)
All <sup>1</sup> .....	9.75	(D)	(D)
Oregon .....	9.05	8.50	7.95
Texas .....	(S)	(D)	(D)
Virginia .....	(S)	(S)	(S)
Washington			
Processing .....	8.25	8.20	8.05
All <sup>1</sup> .....	8.95	8.75	8.60
Wisconsin			
Fresh <sup>2</sup> .....	11.20	9.85	10.50
Processing .....	7.90	10.20	9.45
All <sup>1</sup> .....	9.45	10.10	10.70
United States			
Fresh <sup>2</sup> .....	9.67	9.21	8.92
Processing .....	8.76	8.87	8.47
All <sup>1</sup> .....	9.22	9.07	8.91

(D) Withheld to avoid disclosing data for individual operations.

(S) Insufficient number of reports to establish an estimate.

<sup>1</sup> Average price of potatoes sold for all uses, including table stock, processing, seed, and livestock feed.

<sup>2</sup> Fresh market prices only. Includes table stock prices.

## Prices Received for All Milk – States and United States: February 2015 with Comparisons

[Before deduction for hauling. Includes quality, quantity, and other premiums. Excludes hauling subsidies]

State	February 2014		January 2015		February 2015	
	Price (dollars per cwt)	Fat test (percent)	Price (dollars per cwt)	Fat test (percent)	Price (dollars per cwt)	Fat test (percent)
Arizona .....	23.70	3.45	16.40	3.54	15.50	3.48
California .....	23.13	3.76	15.81	3.80	14.72	3.76
Colorado .....	24.50	3.63	18.70	3.72	17.70	3.65
Florida .....	27.60	3.63	22.60	3.61	21.20	3.64
Idaho .....	23.90	3.84	16.80	3.87	16.40	3.82
Illinois .....	25.80	3.84	18.40	3.85	17.70	3.84
Indiana .....	25.20	3.83	18.10	3.85	17.10	3.84
Iowa .....	25.80	3.83	17.40	3.84	17.10	3.83
Kansas .....	25.30	3.83	17.50	3.88	17.20	3.84
Michigan .....	24.90	3.79	17.60	3.75	16.60	3.81
Minnesota .....	26.10	3.95	18.30	3.95	17.70	3.94
New Mexico .....	23.80	3.58	16.40	3.75	16.00	3.67
New York .....	25.70	3.86	18.70	3.90	17.90	3.91
Ohio .....	25.20	3.85	18.70	3.86	17.80	3.92
Oregon .....	26.90	3.92	18.90	3.96	18.00	3.87
Pennsylvania .....	25.90	3.85	19.20	3.84	18.30	3.83
South Dakota .....	26.20	4.06	18.90	4.09	18.50	4.06
Texas .....	26.00	3.91	18.20	4.03	17.60	3.94
Utah .....	24.10	3.81	17.80	3.83	16.50	3.76
Vermont .....	25.80	3.85	19.00	3.95	18.30	3.98
Virginia .....	26.90	3.76	20.60	3.80	19.20	3.79
Washington .....	25.40	3.92	17.50	3.96	16.80	3.87
Wisconsin .....	25.70	3.84	18.40	3.84	17.70	3.84
United States .....	24.90	3.81	17.60	3.84	16.80	3.82

## Prices Received for Milk Cows – States and United States: January 2015 with Comparisons

[Animals sold for dairy herd replacement only. Quarterly United States milk cow prices are based on revised milk cow inventory]

State	January 2014 (dollars per head)	October 2014 (dollars per head)	January 2015 (dollars per head)
Arizona .....	1,500.00	2,200.00	2,000.00
California .....	1,300.00	2,200.00	1,800.00
Colorado .....	1,540.00	2,260.00	2,100.00
Florida .....	1,560.00	2,190.00	2,170.00
Idaho .....	1,400.00	2,150.00	2,000.00
Illinois .....	1,500.00	2,050.00	2,100.00
Indiana .....	1,500.00	2,050.00	2,100.00
Iowa .....	1,450.00	2,100.00	2,030.00
Kansas .....	1,400.00	2,100.00	2,100.00
Michigan .....	1,650.00	2,100.00	2,200.00
Minnesota .....	1,410.00	2,070.00	1,870.00
New Mexico .....	1,450.00	2,100.00	2,000.00
New York .....	1,430.00	2,010.00	1,910.00
Ohio .....	1,450.00	1,950.00	2,000.00
Oregon .....	1,350.00	2,100.00	2,000.00
Pennsylvania .....	1,500.00	2,000.00	2,000.00
South Dakota .....	1,470.00	2,050.00	1,980.00
Texas .....	1,450.00	2,100.00	2,100.00
Utah .....	1,350.00	2,000.00	1,900.00
Vermont .....	1,570.00	2,030.00	1,980.00
Virginia .....	1,520.00	2,100.00	2,060.00
Washington .....	1,350.00	2,050.00	1,950.00
Wisconsin .....	1,570.00	2,220.00	2,160.00
United States .....	1,440.00	2,120.00	1,990.00

## Commodity Parity Prices and Price as Percent of Parity Price – United States: February 2015 with Comparisons

[Parity prices are computed under the provisions of Title III, Subtitle a, Section 301 (a) of the Agricultural Adjustment Act of 1938 as amended by the Agricultural Acts of 1948, 1949, and 1956. See January *Agricultural Prices* for details on adjusted base price and parity price computations. Parity data not available for blank cells. Primary source of data for livestock and milk prices is United States Department of Agriculture's Agricultural Marketing Service]

Commodity and unit	Adjusted base price	Parity price			Price as percent of parity		
		February 2014	January 2015	February 2015	February 2014	January 2015	February 2015
	(dollars)	(dollars)	(dollars)	(dollars)	(percent)	(percent)	(percent)
<b>Basic commodities</b>							
All wheat .....bushel	0.624	17.90	18.50	18.40	36	33	33
Rice .....cwt	1.34	38.40	39.70	39.50	43	37	37
Corn .....bushel	0.444	12.90	13.10	13.10	34	29	29
<b>Cotton</b>							
Upland ..... pound	0.066	1.95	1.95	1.94	41	30	30
American Pima ..... pound	0.136	3.98	4.02	4.01	43	39	39
Peanuts ..... pound	0.024	0.727	0.710	0.707	33	32	32
Small chickpeas .....cwt <sup>4</sup>	2.200	(NA)	65.00	64.80	(NA)	28	28
Large chickpeas .....cwt <sup>4</sup>	3.330	(NA)	98.50	98.10	(NA)	32	32
Lentils .....cwt <sup>4</sup>	2.280	(NA)	67.50	67.10	(NA)	38	38
<b>Designated nonbasic</b>							
All milk, to plants <sup>1</sup> .....cwt	1.83	52.60	54.10	53.90	47	33	31
Honey, extracted <sup>2</sup> ..... pound	0.150	4.27	4.44	4.42	50	48	48
<b>Wool and mohair</b>							
Wool ..... pound	0.117	3.17	3.46	3.45	46	42	42
Mohair ..... pound	0.378	10.20	11.20	11.10	41	43	44
<b>Other nonbasic</b>							
Apples, fresh <sup>3</sup> ..... pound	0.033	0.988	0.976	0.972	45	33	31
Barley .....bushel	0.467	13.10	13.80	13.80	45	35	35
Canola .....cwt	1.880	54.70	55.60	55.40	34	32	32
Cottonseed ..... ton	19.20	555.00	568.00	565.00	41	32	32
Dry edible beans .....cwt	3.25	93.00	96.20	95.70	42	34	34
Flaxseed .....bushel	1.170	33.40	34.60	34.50	41	34	34
Oats .....bushel	0.295	8.26	8.73	8.69	45	35	35
Potatoes .....cwt	0.846	24.30	25.00	24.90	38	36	36
Sorghum grain .....cwt	0.757	21.80	22.40	22.30	35	33	33
Soybeans .....bushel	1.080	30.80	32.00	31.80	43	32	32
Sunflower, all .....cwt	2.13	61.60	63.00	62.70	37	31	31
<b>Citrus (equivalent on-tree)</b>							
Grapefruit .....box	0.777	21.10	23.00	22.90	27	26	21
Lemons .....box	1.49	39.50	44.10	43.90	55	41	28
Oranges .....box	0.806	22.40	23.80	23.70	48	39	41
Tangerines .....box	1.75	46.80	51.80	51.50	53	28	23
<b>Livestock and poultry</b>							
Beef cattle .....cwt	10.80	302.00	320.00	318.00	48	51	50
Calves .....cwt	15.30	416.00	453.00	451.00	50	64	61
Hogs .....cwt	5.81	167.00	172.00	171.00	39	33	30
Eggs <sup>1</sup> .....dozen	0.094	2.67	2.78	2.77	51	47	54
Turkeys, live ..... pound	0.061	1.740	1.800	1.800	38	37	37

(NA) Not available.

<sup>1</sup> Seasonally adjusted price as percentage of parity price.

<sup>2</sup> Wholesale extracted. Adjusted base price derived from state annual averages prices weighted by production. For 1982 through 1985 the national averages are the support prices.

<sup>3</sup> Equivalent packinghouse-door returns for California, New York, Oregon, and Washington. Price at point of first sale for other states.



## Commodity Parity Prices – United States: February 2015 with Comparisons

[Parity prices are computed under the provisions of Title III, Subtitle a, Section 301 (a) of the Agricultural Adjustment Act of 1938 as amended by the Agricultural Acts of 1948, 1949, and 1956. See January *Agricultural Prices* for details on adjusted base price and parity price computations]

Commodity and unit	Adjusted base price	Parity price			
		February 2014	January 2015	February 2015	
	(dollars)	(dollars)	(dollars)	(dollars)	
<b>Field crops and miscellaneous</b>					
Hops .....	pound	0.325	9.24	9.62	9.57
Mustard seed .....	cwt	3.07	86.90	90.80	90.40
Rapeseed .....	cwt	2.43	66.60	71.90	71.60
Rye .....	bushel	0.614	16.90	18.20	18.10
Safflower .....	cwt	2.16	60.80	63.90	63.60
Spearmint oil .....	pound	1.64	46.50	48.50	48.30
Sweet potatoes .....	cwt	2.08	60.80	61.50	61.30
<b>Tobacco</b>					
Flue-cured, 11-14 .....	pound	0.181	5.38	5.36	5.33
Fire-cured, 21-23 .....	pound	0.259	7.76	7.66	7.63
Burley, 31 .....	pound	0.181	5.47	5.36	5.33
Maryland, 32 .....	pound	0.171	4.91	5.06	5.04
Dark air-cured, 35-37 .....	pound	0.234	6.98	6.92	6.89
Pennsylvania seedleaf, 41 .....	pound	0.181	5.32	5.36	5.33
Cigar binder, 51 .....	pound	0.632	18.40	18.70	18.60
<b>Noncitrus fruit</b>					
Apples, processing <sup>1</sup> .....	ton	18.10	526.00	536.00	533.00
Apricots					
Fresh <sup>2</sup> .....	ton	119.00	3,340.00	3,520.00	3,500.00
Dried (California) .....	ton	257.00	7,440.00	7,600.00	7,570.00
Avocados <sup>2</sup> .....	ton	183.00	5,380.00	5,410.00	5,390.00
Cherries					
Sweet .....	ton	215.00	6,100.00	6,360.00	6,330.00
Tart .....	pound	0.033	0.959	0.976	0.972
Cranberry <sup>3</sup> .....	barrel	4.44	138.00	131.00	131.00
Dates (California) <sup>2</sup> .....	ton	152.00	4,680.00	4,500.00	4,480.00
Grapes (California)					
Raisin variety .....	ton	144.00	4,040.00	4,260.00	4,240.00
Wine, processing .....	ton	66.60	(NA)	1,970.00	1,960.00
Kiwifruit .....	ton	90.00	2,310.00	2,660.00	2,650.00
Nectarines, fresh (California) <sup>2</sup> .....	ton	60.90	1,600.00	1,800.00	1,790.00
Olives, canning (California) <sup>3</sup> .....	ton	95.60	2,650.00	2,830.00	2,820.00

See footnote(s) at end of table.

--continued

## Commodity Parity Prices – United States: February 2015 with Comparisons (continued)

[Parity prices are computed under the provisions of Title III, Subtitle a, Section 301 (a) of the Agricultural Adjustment Act of 1938 as amended by the Agricultural Acts of 1948, 1949, and 1956. See January *Agricultural Prices* for details on adjusted base price and parity price computations]

Commodity and unit	Adjusted base price	Parity price			
		February 2014	January 2015	February 2015	
	(dollars)	(dollars)	(dollars)	(dollars)	
<b>Noncitrus fruit - continued</b>					
Papayas (Hawaii) .....	pound	0.041	1.10	1.21	1.21
<b>Peaches</b>					
Fresh <sup>4</sup> .....	ton	87.00	2,370.00	2,570.00	2,560.00
Dried (California) .....	ton	46.50	1,400.00	1,380.00	1,370.00
<b>Processing, excludes dried</b>					
Clingstone (California) <sup>3</sup> .....	ton	33.50	945.00	991.00	987.00
Pears, Fresh <sup>4</sup> .....	ton	57.70	1,630.00	1,710.00	1,700.00
<b>Plums (California)</b>					
Fresh, equivalent on-tree .....	ton	62.30	1,710.00	1,840.00	1,830.00
Prunes, dried (California) <sup>1</sup> .....	ton	157.00	4,300.00	4,650.00	4,620.00
<b>Prunes and plums</b>					
Fresh, excludes California <sup>5</sup> .....	ton	62.90	1,830.00	1,860.00	1,850.00
Processing, excludes dried <sup>1</sup> .....	ton	23.90	674.00	707.00	704.00
<b>Tree nuts <sup>6</sup></b>					
Almonds .....	pound	0.236	6.19	6.98	6.95
Hazelnuts .....	ton	222.00	5,760.00	6,570.00	6,540.00
Pistachios .....	pound	0.227	5.76	6.72	6.69
Walnuts .....	ton	223.00	4,970.00	6,600.00	6,570.00
<b>Vegetables, fresh <sup>7</sup></b>					
Carrots <sup>8</sup> .....	cwt	2.63	75.60	77.80	77.50
Cauliflower <sup>8</sup> .....	cwt	4.17	117.00	123.00	123.00
Celery <sup>8</sup> .....	cwt	1.99	57.00	58.90	58.60
Honeydew melons .....	cwt	1.98	56.40	58.60	58.30
Lettuce .....	cwt	2.17	60.80	64.20	63.90
Onions <sup>8</sup> .....	cwt	1.41	40.10	41.70	41.50
Tomatoes .....	cwt	4.21	125.00	125.00	124.00

(NA) Not available.

<sup>1</sup> Equivalent returns at processing plant door.

<sup>2</sup> Equivalent returns at packinghouse door.

<sup>3</sup> Equivalent returns for bulk fruit at first delivery point.

<sup>4</sup> Equivalent packinghouse-door returns for California, New York (apples only), Oregon (except peaches), and Washington. Price at point of first sale for other states.

<sup>5</sup> Based on "as sold" prices for fresh fruit in all states.

<sup>6</sup> Prices In-Shell basis except almonds which are shelled basis.

<sup>7</sup> FOB shipping point prices.

<sup>8</sup> Includes some processing.

## Reliability of Prices Received Estimates

**Definition:** Prices received represent sales from producers to first buyers. They include all grades and qualities. The average commodity price from the survey multiplied by the total quantity marketed theoretically should give the total cash receipts for the commodity.

**Survey procedures:** Primary sales data used to determine grain prices were obtained from probability samples of about 1900 mills and elevators. These procedures ensure that virtually all grain moving into commercial channels has a chance of being included in the survey. Generally, States surveyed account for 90 percent or more of total United States production. Livestock prices are obtained from packers, stockyards, auctions, dealers, and market check data from AMS-USDA, private marketing organizations, and state commodity groups and agencies. Inter-farm sales of grain and livestock are not included since they represent very small percentages of the total sales. Grain marketed for seed is also excluded. Fruit and vegetable prices are obtained from sample surveys and market check data from AMS-USDA, private marketing organizations, state agencies, and universities.

**Summary and estimation procedures:** Survey quantities sold are expanded by strata to state levels and used to weight average strata prices to a state average. State prices are then weighted to a United States price based on expanded sales. Recommendations are prepared by the Regional Field Offices and reviewed by the Agricultural Statistics Board in Washington, D.C. State recommendations are reviewed for reasonableness with survey data, other States, and recent historic estimates.

**Revisions:** In general, revisions are made during annual commodity market year estimation time, following five-year Census revisions, or when later information is received. Revisions are published in monthly issues of *Agricultural Prices*.

**Reliability:** United States price estimates based on probability surveys generally have a sampling error of less than one percent for the major commodities such as corn, wheat, soybeans, cotton, and rice. Current methods of summarization for non-probability commodities are not designed directly to calculate sampling errors. However, analytical measures approximate the United States relative sampling errors at around five percent. Any non-sampling errors are attributed to such things as the inability to obtain correct information, differences in interpreting questions or definitions, mistakes in coding or processing the data, etc. Efforts are made at each step in the survey process to minimize these non-sampling errors.

After the Council on Food, Agricultural and Resource Economics (C-FARE) 2009 program review which included changes in farm production practices, plans were implemented to make necessary program improvements in the agricultural price program. The index group structure for prices received was modified to maintain a more universal structure and consistency with the required 1910-1914 series. Modifications implemented January 2014 include the following:

- Update the current 1990-1992 base reference period to 2011,
- Link the 1910-1914 series to the updated base reference period, 2011,
- Create index groups used universally by researchers, data users, and policymakers,
- Re-classify agricultural commodities into the index groups,
- Expand the commodity coverage for vegetable, melon, non-citrus, and tree nuts,
- Update monthly market weights, and
- Adjust (normalization) current five year moving average cash receipts and farm input cost weights.

Modifications implemented January 2015 include the following:

- Preliminary prices discontinued
- Annual index to replace the annual average index

## February Prices Paid by Farmers

The February Index of Prices Paid for Commodities and Services, Interest, Taxes, and Farm Wage Rates (PPITW), at 109 (2011=100), is unchanged from January 2015 and February 2014.

**Production index:** The February index, at 110, is down 0.9 percent from last month but is unchanged from last year. Lower prices in February for feeder cattle, complete feeds, feeder pigs, and diesel more than offset higher prices for herbicides, LP gas, insecticides, and potash & phosphate.

**Feed:** The February index, at 104, decreased 1.0 percent from January and 8.0 percent from last February. Since January, lower prices for complete feeds, concentrates, and supplements more than offset higher prices for hay & forages and feed grains.

**Livestock and poultry:** The February index, at 152, decreased 5.6 percent from last month but is 18 percent above last year. Since January, prices are lower for feeder cattle and feeder pigs. The February feeder cattle price, at \$219.00 per cwt, is down \$12.00 per cwt from the January price. February feeder pigs averaged \$175.00 per cwt, down \$25.00 per cwt from January.

**Fertilizer:** The February index, at 95, is up 1.1 percent from January and February a year ago. Since January, higher prices for potash & phosphate and nitrogen more than offset lower prices for mixed fertilizer.

**Chemicals:** The February index, at 108, is up 6.9 percent from January but is down 2.7 percent from last February. Compared with last month, prices are higher for herbicides, insecticides, and fungicides/other.

**Fuels:** The February index, at 68, is unchanged from a month earlier but is 36 percent below February 2014. Since January, lower prices for diesel offset higher prices for LP gas and gasoline.

**Machinery:** The February index, at 112, is unchanged from January but is 0.9 percent above last February. Since January, lower prices for other machinery and self-propelled machinery offset higher prices for tractors.

**Consumer price index:** The January 2015 Consumer Price Index, as issued by the Bureau of Labor Statistics, for all urban consumers (CPI-U) decreased 0.5 percent before seasonal adjustment to a level of 233.707 (1982-1984=100). The December index is 234.812. For the 12 month period ending in January, the overall index decreased 0.1 percent.

## Prices Paid Indexes and Related Parity Ratios – United States: February 2015 with Comparisons

[Revised historical price indexes for months not shown are available at [www.nass.usda.gov](http://www.nass.usda.gov)]

Indexes and ratios	1910-1914 Base			2011 Base		
	February 2014	January 2015	February 2015	February 2014	January 2015	February 2015
	(percent)	(percent)	(percent)	(percent)	(percent)	(percent)
Prices paid by farmers for commodities, services, interest, taxes, and wage rates (PPITW) .....	2949	2959	2945	109	109	109
Production .....	2298	2308	2292	110	111	110
Feed .....	1245	1160	1149	113	105	104
Livestock and poultry .....	2553	3171	3006	129	161	152
Seeds .....	3643	3752	3752	111	114	114
Fertilizer .....	1128	1132	1141	94	94	95
Chemicals .....	993	903	968	111	101	108
Fuels .....	2983	1914	1913	107	68	68
Supplies and repairs .....	1235	1253	1253	105	106	106
Autos and trucks .....	3207	3224	3240	104	105	105
Machinery .....	6775	6829	6848	111	112	112
Building materials .....	2468	2501	2502	106	108	108
Services and rent .....	2299	2358	2357	(NA)	(NA)	(NA)
Services .....	(NA)	(NA)	(NA)	108	112	112
Rent .....	(NA)	(NA)	(NA)	108	110	110
Interest <sup>1</sup> .....	3504	3539	3539	96	97	97
Taxes <sup>2</sup> .....	6233	6376	6376	105	107	107
Wage rates .....	7826	7756	7756	109	108	108
Production, interest, taxes, and wage rates (PITW) .....	3093	3107	3089	110	110	110
Family living-CPI <sup>3</sup> .....	2230	2220	2230	104	104	104
Ratio (received/paid) .....	(NA)	(NA)	(NA)	98	89	92
Parity ratio <sup>4</sup> .....	37	34	35	(NA)	(NA)	(NA)
Parity ratio adjusted <sup>5</sup> .....	38	35	36	(NA)	(NA)	(NA)
PPITW adjusted for productivity <sup>6</sup> .....	1413	1398	1397	(NA)	(NA)	(NA)
Crop sector (PPITW) .....	(NA)	(NA)	(NA)	107	106	106
Livestock sector (PPITW) .....	(NA)	(NA)	(NA)	112	113	112
Farm sector (production) .....	(NA)	(NA)	(NA)	117	123	120
Non-farm sector (production) .....	(NA)	(NA)	(NA)	106	103	104

(NA) Not available.

<sup>1</sup> Interest per acre on farm real estate debt and interest rate on farm non-real estate debt.

<sup>2</sup> Farm real estate taxes payable per acre.

<sup>3</sup> Bureau of Labor Statistics, Consumer Price Index for all urban consumers (CPI-U), for the previous month converted by the USDA.

<sup>4</sup> Ratio of index of prices received to PPITW (1910-1914=100).

<sup>5</sup> Based on estimated cash receipts, from marketings and government payments, the preliminary adjustment factor is 1.026 for 2015 and the revised factor is 1.026 for 2014.

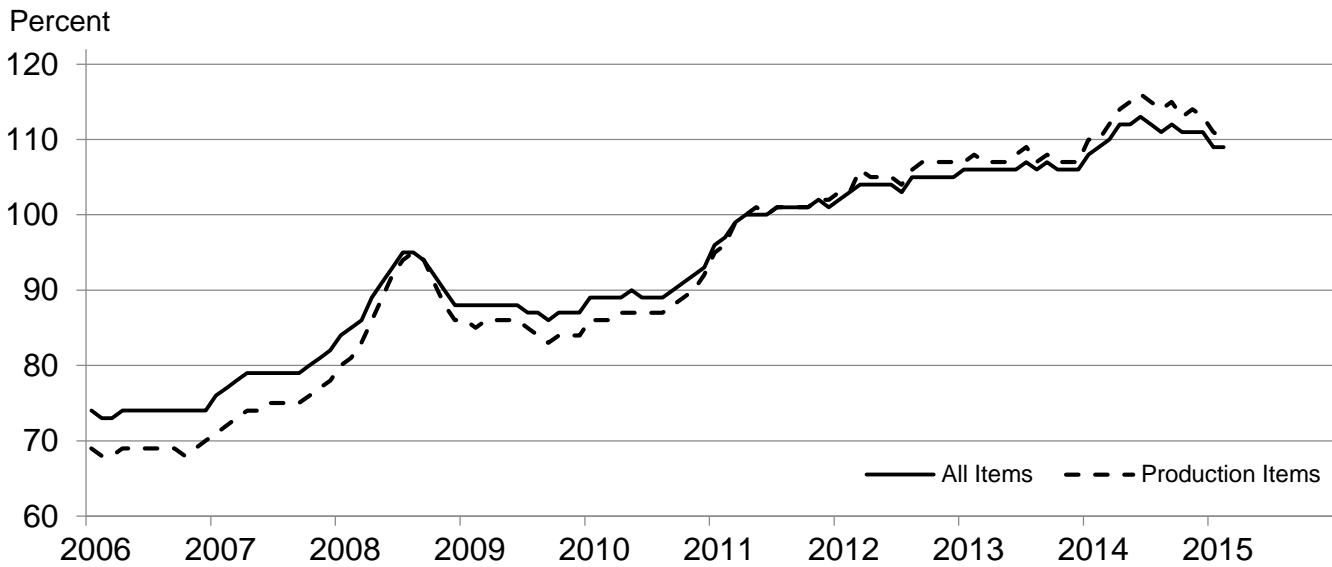
<sup>6</sup> PPITW is adjusted based on productivity trend for the prior 15 years.

## Prices Paid Indexes and Annual Weights for Input Components and Sub-components – United States: February 2015 with Comparisons

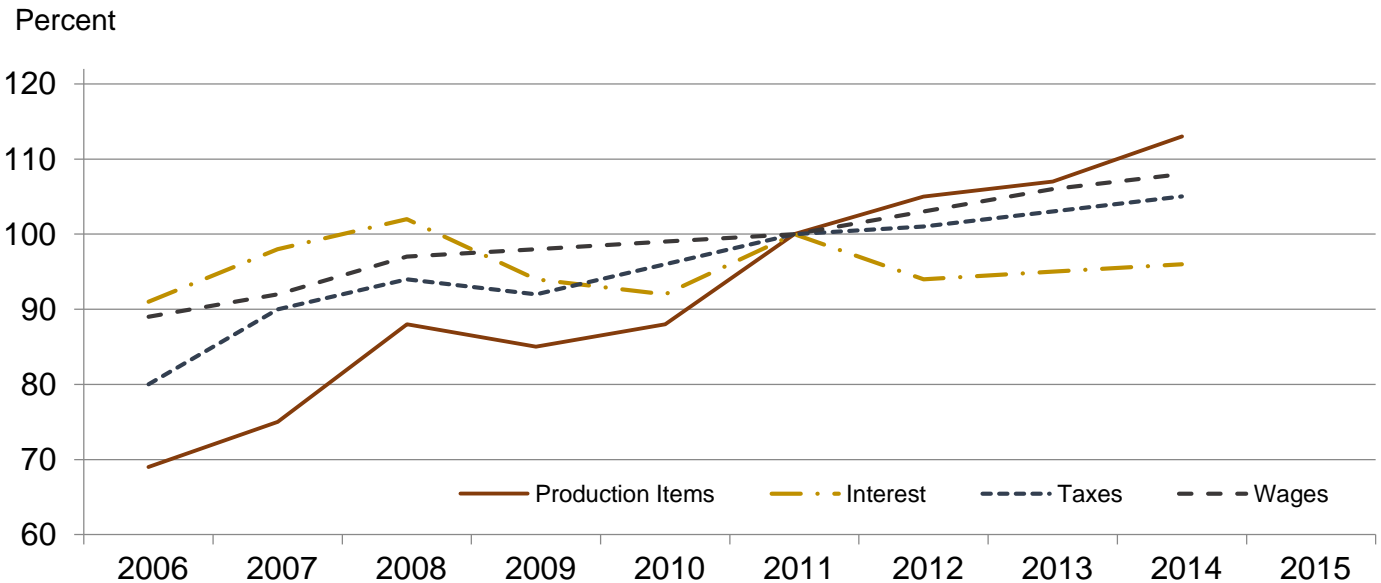
[Revised historical price indexes for months not shown are available at [www.nass.usda.gov](http://www.nass.usda.gov). Relative weights are a five year moving average]

	Relative weights		Indexes (2011=100)		
	2014	2015	February 2014	January 2015	February 2015
	(percent)	(percent)	(percent)	(percent)	(percent)
Production items .....	74.1	74.6	110	111	110
Feed .....	15.5	15.5	113	105	104
Feed grains .....	2.2	2.2	74	66	66
Complete feeds .....	7.6	7.6	120	117	115
Hay and forages .....	1.9	1.9	111	99	101
Concentrates .....	2.5	2.5	126	106	103
Supplements .....	1.3	1.3	117	115	115
Livestock and poultry .....	8.5	8.3	129	161	152
Feeder cattle .....	6.6	6.4	128	169	160
Feeder pigs .....	0.7	0.7	184	143	125
Milk cow replacements .....	0.7	0.7	101	140	140
Poultry .....	0.5	0.5	105	105	105
Seeds .....	4.9	5.0	111	114	114
Field crops .....	4.4	4.5	110	113	113
Grasses and legumes .....	0.5	0.5	120	123	123
Fertilizer .....	6.2	6.4	94	94	95
Mixed fertilizer .....	2.7	2.8	87	87	87
Nitrogen .....	2.6	2.7	102	101	101
Potash and phosphate .....	0.9	0.9	89	96	102
Chemicals .....	3.1	3.2	111	101	108
Herbicides .....	1.9	2.0	111	101	108
Insecticides .....	0.7	0.7	114	104	111
Fungicides and other .....	0.4	0.5	105	95	102
Fuels .....	4.1	4.0	107	68	68
Diesel .....	2.6	2.5	98	74	71
Gasoline .....	0.9	0.8	110	72	75
LP gas .....	0.7	0.7	134	44	53
Supplies and repairs .....	4.3	4.3	105	106	106
Supplies .....	1.4	1.4	105	106	106
Repairs .....	2.8	2.9	104	106	106
Autos and trucks .....	1.1	1.1	104	105	105
Autos .....	0.1	0.1	102	101	102
Trucks .....	1.0	1.0	105	105	106
Machinery .....	4.9	5.2	111	112	112
Tractors .....	1.1	1.1	108	108	110
Self-propelled .....	2.0	2.1	113	112	112
Other machinery .....	1.9	2.0	110	114	113
Building materials .....	3.7	3.7	106	108	108
Services .....	10.8	10.8	108	112	112
Custom rates .....	1.1	1.1	109	109	109
Other services .....	9.7	9.7	108	112	112
Rent .....	6.9	7.1	108	110	110
Cash .....	3.7	3.8	109	110	110
Share .....	3.2	3.3	108	110	110
Interest .....	2.6	2.3	96	97	97
Taxes .....	2.9	2.8	105	107	107
Wage rates .....	6.4	6.4	109	108	108
Family living-CPI .....	14.0	13.9	104	104	104

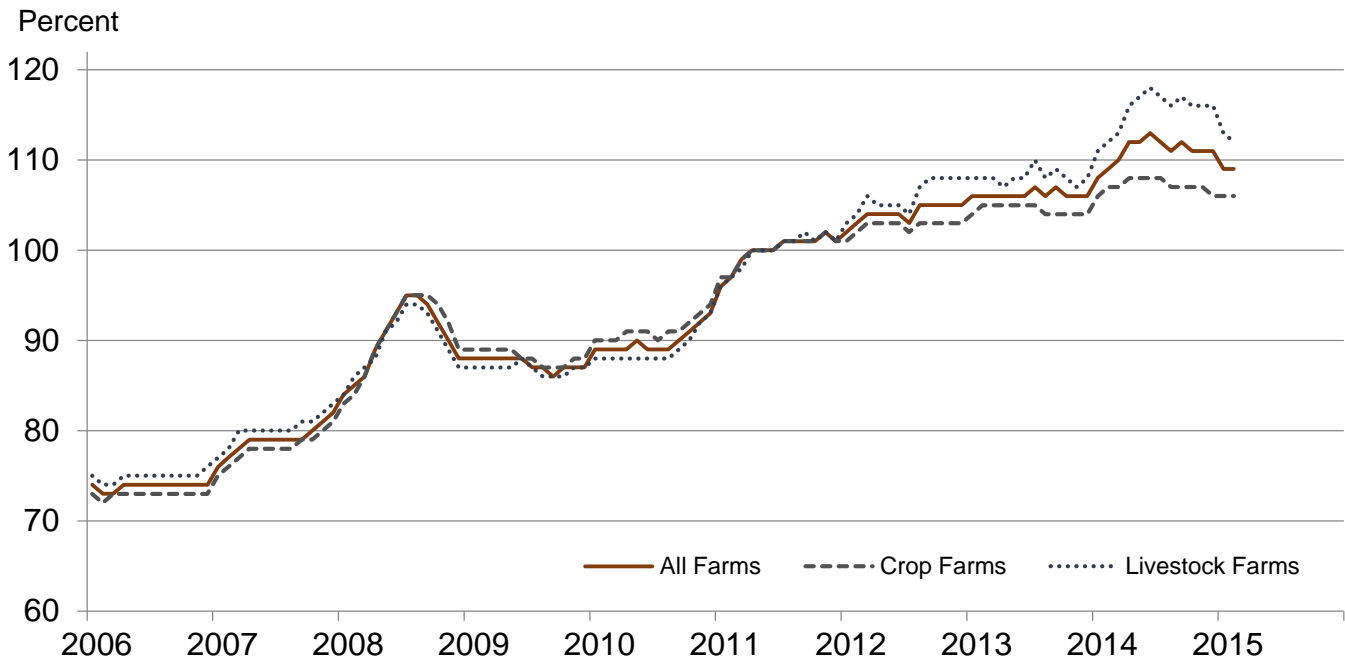
## Paid Indexes by Month, All Items and Production Items – United States: 2011=100



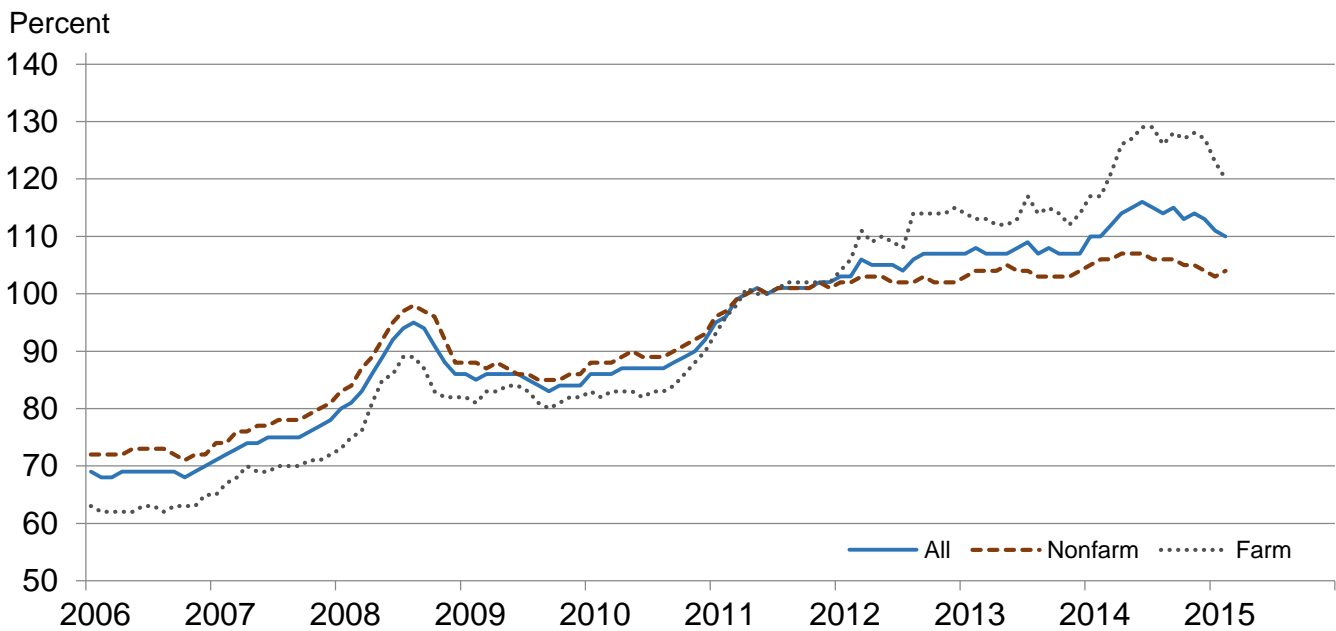
## Paid Indexes, Annual Averages, Production Items, Interest, Taxes, and Wages – United States: 2011=100



## Paid Indexes by Farm Type and Month, All Items – United States: 2011=100

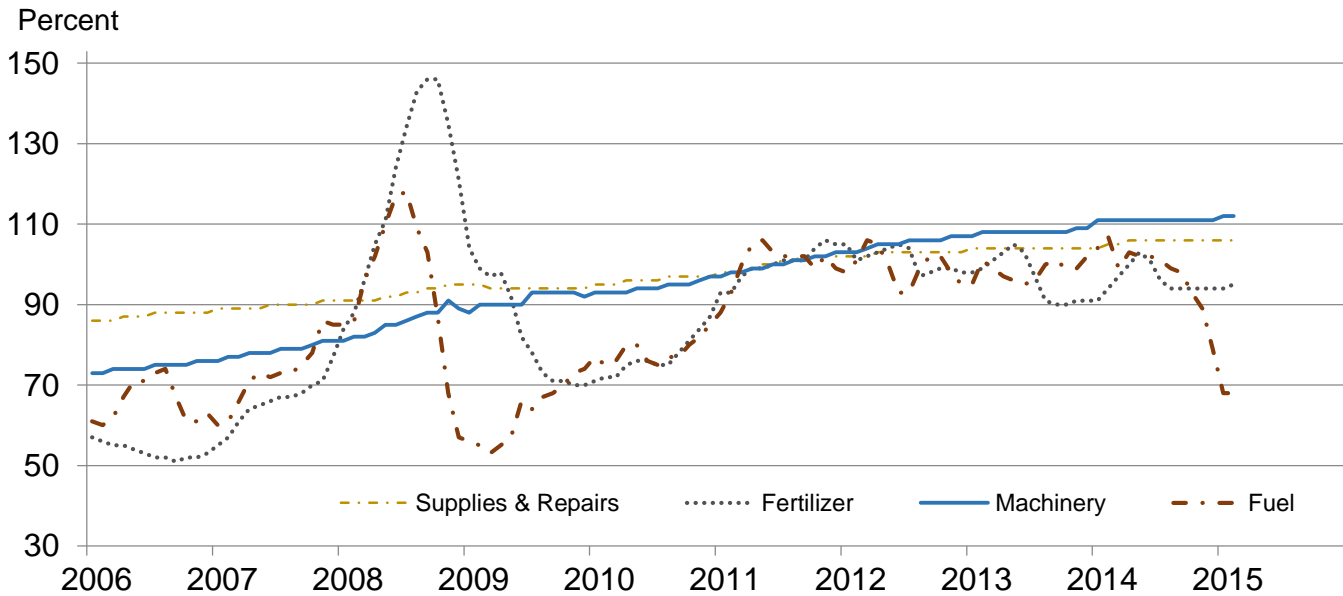


## Paid Indexes by Origin and Month, All Production Items – United States: 2011=100

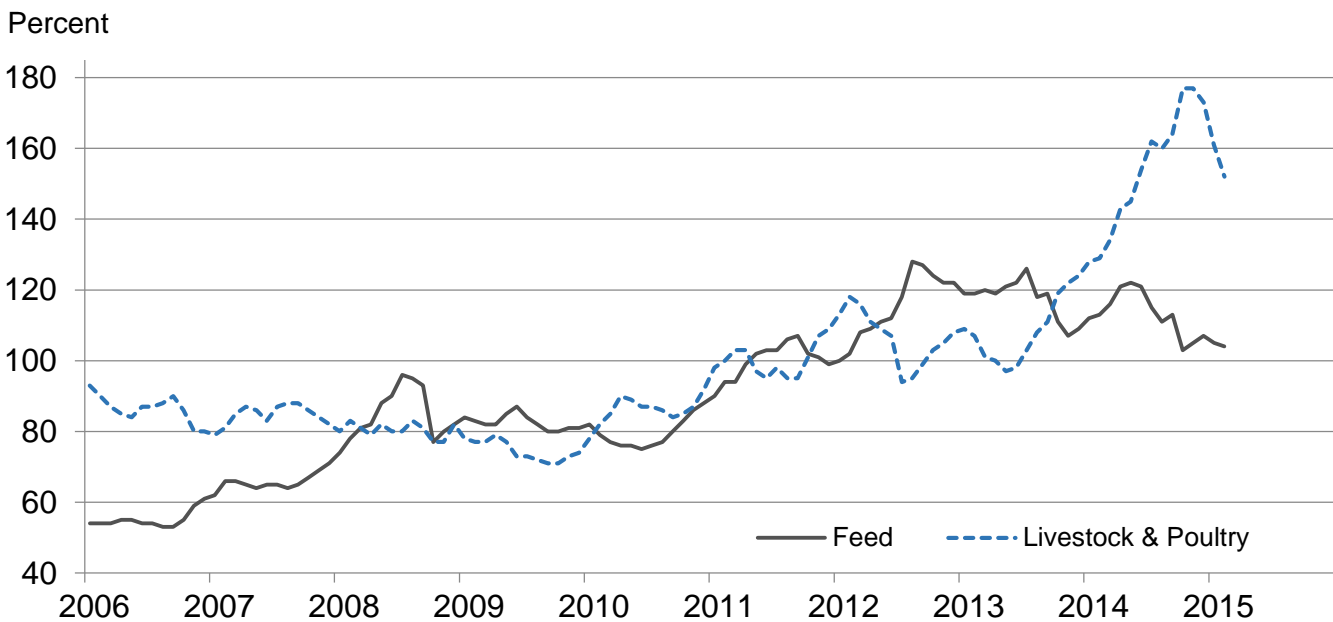




## Paid Indexes by Non-Farm Sector and Month, Supplies & Repairs, Fertilizer, Machinery, and Fuel – United States: 2011=100



## Paid Indexes by Month, Feed and Livestock & Poultry – United States: 2011=100



## Feed Price Ratios – United States: February 2015 with Comparisons

Feed price ratio <sup>1</sup>	February 2014	January 2015	February 2015
Broiler-feed: pounds of broiler grower feed equal in value to 1 pound of broiler, live weight <sup>2</sup> .....	4.0	5.4	5.0
Market egg feed: pounds of laying feed equal in value to 1 dozen eggs <sup>3</sup> .....	10.9	11.4	15.3
Hog-corn: bushels of corn equal in value to 100 pounds of hog, live weight .....	15.1	15.1	13.3
Milk-feed: pounds of 16% mixed dairy feed equal in value to 1 pound of whole milk <sup>4</sup> .....	2.59	2.09	2.02
Steer & heifer-corn: bushels of corn equal in value to 100 pounds of steer & heifers, live weight .....	33.3	43.6	42.5
Turkey-feed: pounds of turkey grower equal in value to 1 pound of turkey, live weight <sup>5</sup> .....	5.4	6.3	6.6

<sup>1</sup> Effective January 1995, prices of commercial prepared feeds are based on current United States prices received for corn, soybeans, alfalfa hay, and all wheat.

<sup>2</sup> The price of commercial prepared broiler feed is based on current United States prices received for corn and soybeans. The modeled feed uses 58 percent corn and 42 percent soybeans.

<sup>3</sup> The price of commercial prepared layer feed is based on current United States prices received for corn and soybeans. The modeled feed uses 75 percent corn and 25 percent soybeans.

<sup>4</sup> The price of commercial prepared dairy feed is based on current United States prices received for corn, soybeans, and alfalfa. The modeled feed uses 51 percent corn, 8 percent soybeans, and 41 percent alfalfa.

<sup>5</sup> The price of commercial prepared turkey feed is based on current United States prices received for corn, soybeans, and wheat. The modeled feed used 51 percent corn, 28 percent soybeans, and 21 percent wheat.

## Prices Received Used to Calculate Feed Price Ratios – United States: February 2015 with Comparisons

[Price data source for livestock and poultry commodities is United States Department of Agriculture's Agriculture Marketing Service]

Item	February 2014	January 2015	February 2015
	(dollars)	(dollars)	(dollars)
Broilers, live ..... pound	0.550	0.600	0.540
Eggs, market ..... dozen	1.230	1.070	1.410
Hogs, all .....cwt	65.50	57.40	50.40
Milk, all .....cwt	24.90	17.60	16.80
Steers and heifers .....cwt	145.00	166.00	161.00
Turkeys, live ..... pound	0.664	0.662	0.669
Corn ..... bushel	4.35	3.81	3.79
Hay, alfalfa ..... ton	190.00	174.00	172.00
Soybeans ..... bushel	13.20	10.30	9.92
Wheat, all ..... bushel	6.50	6.14	5.89

## Prices Paid for Feeder Livestock – United States: February 2015 with Comparisons

[Price data source is United States Department of Agriculture's Agriculture Marketing Service]

Item	February 2014	January 2015	February 2015
	(dollars)	(dollars)	(dollars)
Feeder cattle & calves .....cwt	176.00	231.00	219.00
Feeder pigs .....cwt	258.00	200.00	175.00

## Reliability of Prices Paid Estimates

**Definition:** Prices paid by farmers represent the average costs of inputs purchased by farmers and ranchers to produce agricultural commodities. Conceptually, the average price when multiplied by quantity purchased should equal total producer expenditures for the item.

**Survey procedures:** The prices paid data are obtained from establishments that sell goods and services to farmers and ranchers. Annually, about 8,500 firms are randomly selected from lists by type of item sold with an average response rate in the range of 75-80 percent. Firms are asked to report the price for the specified item "most commonly bought by farmers" or that was the "volume seller". Approximately 135 items are surveyed each March to represent all production input items purchased. The survey reference period for most items is the five business days centered at the 15th of the month. Separate prices paid surveys are conducted for agricultural chemicals, fuels, feed, fertilizer, machinery, and seed.

**Summary and estimation procedures:** The annual March Prices Paid Survey is summarized as a non-probability survey. Average prices reported are aggregated to the region and United States level using weights available from expenditure data and other administrative sources. Price recommendations are prepared by the Regional Field Offices and Headquarters for review by the Agricultural Statistics Board in Washington, D.C. Also, the change in price level for individual items surveyed are combined to the regional and United States levels, and are published as prices paid indexes referenced to a specific base period. Prices paid indexes for new autos and trucks, building materials, farm supplies, motor supplies, and marketing containers are updated based on price changes measured in selected Bureau of Labor Statistics (BLS) indexes.

**Revisions:** Any revisions are published in the monthly and in annual issues of Agricultural Prices. The basis for revision must be supported by additional data that directly affect the level of the estimate. More revisions are likely for March when separate prices paid surveys are conducted, in lieu of BLS indexes, by the USDA to measure price change.

**Reliability:** Current methods of summarization for the March data are not designed directly to calculate sampling errors. However, analytical measures approximate the United States relative sampling errors for major items around 10 percent. Any non-sampling errors are attributed to such things as the inability to obtain correct information, differences in interpreting questions or definitions, mistakes in coding or processing the data, etc. Efforts are made at each step in the survey process to minimize these non-sampling errors.

**Program change:** Effective January 2014, the National Agricultural Statistics Service modified the five-year moving weights and updated the base reference period.

As of January 2014, the 1990-1992 base reference period is updated to 2011. Five-year moving average weights are adjusted (normalized) to minimize the effects of price changes. The 1910-1914=100 price indexes, required by statute for computing parity prices, were linked forward based on the changes in the new 2011=100 indexes. The new indexes were constructed by multiplying the ratios of the current prices to the base period prices by the moving average weights.

## Information Contacts

### General

Troy Joshua, Chief, Environmental, Economics and Demographics Branch ..... (202) 720-6146

### Crop Prices Received

Lance Honig, Chief, Crops Branch ..... (202) 720-2127

Anthony Prillaman, Head, Field Crops Section ..... (202) 720-2127

Angie Considine – Cotton, Cotton Ginnings, Sorghum ..... (202) 720-5944

Tony Dahlman – Crop Weather, Barley ..... (202) 720-7621

Chris Hawthorn – Corn, Flaxseed, Proso Millet ..... (202) 720-9526

James Johanson – County Estimates, Hay ..... (202) 690-8533

Anthony Prillaman – Oats, Rye, Wheat ..... (202) 720-2127

Bianca Pruneda – Peanuts, Rice ..... (202) 720-7688

Travis Thorson – Soybeans, Sunflower, Other Oilseeds ..... (202) 720-7369

Jorge Garcia-Pratts, Head, Fruits, Vegetables and Special Crops Section ..... (202) 720-2127

Vincent Davis – Fresh and Processing Vegetables, Onions, Strawberries ..... (202) 720-2157

Fleming Gibson – Citrus, Coffee, Grapes, Sugar Crops, Tropical Fruits ..... (202) 720-5412

Greg Lemmons – Berries, Cranberries, Potatoes, Sweet Potatoes ..... (202) 720-4285

Dave Losh – Hops ..... (360) 709-2400

Dan Norris – Austrian Winter Peas, Dry Edible Peas, Lentils, Mint, Mushrooms, Peaches, Pears,  
Wrinkled Seed Peas, Dry Beans ..... (202) 720-3250

Daphne Schauber – Floriculture, Maple Syrup, Nursery, Tree Nuts ..... (202) 720-4215

Chris Singh – Apples, Apricots, Cherries, Plums, Prunes, Tobacco ..... (202) 720-4288

### Livestock Prices Received

Dan Kerestes, Chief, Livestock Branch ..... (202) 720-3570

Scott Hollis, Head, Livestock Section ..... (202) 720-3570

Travis Averill – Cattle and Cattle on Feed ..... (202) 720-3040

Doug Bounds – Hogs and Pigs ..... (202) 720-3106

Mike Miller – Milk, Milk Cows ..... (202) 720-3278

Evan Schulz – Sheep and Goats ..... (202) 720-6147

Bruce Boess, Head, Poultry and Specialty Commodities Section ..... (202) 720-3570

Heidi Gleich – Broilers ..... (202) 720-0585

Michael Klamm – Turkeys ..... (202) 690-3237

Kim Linonis – Eggs ..... (202) 690-8632

Josh O’Rear – Honey ..... (202) 690-3676

### Indexes, Prices Paid, and Parity Prices

Troy Joshua, Chief, Environmental, Economics and  
Demographics Branch ..... (202) 720-6146

Tony Dorn, Head, Economics Section ..... (202) 690-3223

Daryl Brinkman – Prices Received Indexes, Parity Prices ..... (202) 720-8844

Greg Gholson – Prices Received Indexes, Parity Prices, Prices Paid ..... (202) 690-1348

Joe Hagedorn – Cash Rents, Grazing Fees ..... (202) 690-3231

Judy McDermott – Prices Paid Indexes, Prices Paid for Feed, Fertilizer, Chemicals, Seeds, Fuels,  
Farm Supplies and Repairs, Farm Machinery, Feeder Livestock, Poultry Chicks, Feed Price Ratios ..... (202) 690-3229

## Access to NASS Reports

For your convenience, you may access NASS reports and products the following ways:

- All reports are available electronically, at no cost, on the NASS web site: <http://www.nass.usda.gov>
- Both national and state specific reports are available via a free e-mail subscription. To set-up this free subscription, visit <http://www.nass.usda.gov> and in the “Follow NASS” box under “Receive reports by Email,” click on “National” or “State” to select the reports you would like to receive.

For more information on NASS surveys and reports, call the NASS Agricultural Statistics Hotline at (800) 727-9540, 7:30 a.m. to 4:00 p.m. ET, or e-mail: [nass@nass.usda.gov](mailto:nass@nass.usda.gov).

The U.S. Department of Agriculture (USDA) prohibits discrimination against its customers, employees, and applicants for employment on the basis of race, color, national origin, age, disability, sex, gender identity, religion, reprisal, and where applicable, political beliefs, marital status, familial or parental status, sexual orientation, or all or part of an individual's income is derived from any public assistance program, or protected genetic information in employment or in any program or activity conducted or funded by the Department. (Not all prohibited bases will apply to all programs and/or employment activities.)

If you wish to file a Civil Rights program complaint of discrimination, complete the [USDA Program Discrimination Complaint Form](#) (PDF), found online at [http://www.ascr.usda.gov/complaint\\_filing\\_cust.html](http://www.ascr.usda.gov/complaint_filing_cust.html), or at any USDA office, or call (866) 632-9992 to request the form. You may also write a letter containing all of the information requested in the form. Send your completed complaint form or letter to us by mail at U.S. Department of Agriculture, Director, Office of Adjudication, 1400 Independence Avenue, S.W., Washington, D.C. 20250-9410, by fax (202) 690-7442 or email at [program.intake@usda.gov](mailto:program.intake@usda.gov).

## Price Program Quick Stats Links

Economics and Prices

[http://www.nass.usda.gov/Statistics\\_by\\_Subject/Economics\\_and\\_Prices/index.asp](http://www.nass.usda.gov/Statistics_by_Subject/Economics_and_Prices/index.asp)

January 2014 Price Program Update

[http://www.nass.usda.gov/Surveys/Guide\\_to\\_NASS\\_Surveys/Prices/updates.pdf](http://www.nass.usda.gov/Surveys/Guide_to_NASS_Surveys/Prices/updates.pdf)

January 2015 Price Program Update

[http://www.nass.usda.gov/Surveys/Guide\\_to\\_NASS\\_Surveys/Prices/update2015.pdf](http://www.nass.usda.gov/Surveys/Guide_to_NASS_Surveys/Prices/update2015.pdf)

April 2015 Price Program Update

[http://www.nass.usda.gov/Surveys/Guide\\_to\\_NASS\\_Surveys/Prices/updateApr2015.pdf](http://www.nass.usda.gov/Surveys/Guide_to_NASS_Surveys/Prices/updateApr2015.pdf)