



# Agricultural Prices

ISSN: 1937-4216

Released April 30, 2015, by the National Agricultural Statistics Service (NASS), Agricultural Statistics Board, United States Department of Agriculture (USDA).

## Special Note

Annual March Survey prices paid data will no longer be published in the April *Agricultural Prices* Report. See [http://www.nass.usda.gov/Surveys/Guide\\_to\\_NASS\\_Surveys/Prices/updateApr2015.pdf](http://www.nass.usda.gov/Surveys/Guide_to_NASS_Surveys/Prices/updateApr2015.pdf) for details. Historic Prices Received and Paid Index tables will only be published in January. The current and revised indexes will continue to be posted to Quick Stats each month.

## March Farm Prices Received Index Increased 3 Points

The March Prices Received Index (Agricultural Production), at 102, based on 2011=100, increased 3 points (3.0 percent) from February. At 86, the March Crop Production Index is up 1 point (1.2 percent). At 117, the Livestock Production Index increased 3 points (2.6 percent). Producers received higher prices for broilers, eggs, cattle, and oranges but lower prices for milk, wheat, soybeans, and apples. In addition to prices, the indexes are impacted by the five-year average monthly mix of commodities producers market. Increased monthly movement of cattle, strawberries, calves, and milk offset the decreased marketing of cotton, soybeans, and hay.

The Prices Received Index is down 9 points (8.1 percent) from March 2014. The Food Commodities Index, at 110, increased 3 points (2.8 percent) from the previous month but decreased 12 points (9.8 percent) from March 2014.

## March Prices Paid Index up 1 Point

The March Index of Prices Paid for Commodities and Services, Interest, Taxes, and Farm Wage Rates (PPITW), at 110 (2011=100), is up 1 point (0.9 percent) from February but is unchanged from March 2014. Higher prices in March for feeder cattle, hay & forages, gasoline, and field crop seeds more than offset lower prices for complete feeds, nitrogen, other services, and supplements.

## Prices Received, Prices Paid, and Ratio of Prices Received to Prices Paid Indexes 2011 Base – United States: March 2015 with Comparisons

Item	March 2014	February 2015	March 2015
Prices received by farmers .....	111	99	102
Prices paid by farmers .....	110	109	110
Ratio of prices received to prices paid .....	101	91	93

## Contents

Prices Received by Farmers .....	4
Prices Received Indexes as a Percent of 2011 Base – United States: March 2015 with Comparisons.....	5
Prices Received Indexes as a Percent of 1910-1914 Base – United States: March 2015 with Comparisons.....	5
Prices Received Indexes as a percent of 2011 Base by Month for Selected Groups – United States: 2014 and 2015.....	5
Prices Paid Indexes as a percent of 2011 Base by Month for Selected Groups – United States: 2014 and 2015.....	6
Received and Paid Indexes, Annual Average – United States: 2011=100 Chart.....	6
Crop Farm Received and Paid Indexes, All Items by Quarter – United States: 2011=100 Chart.....	7
Livestock Farm Received and Paid Indexes All Items by Quarter – United States: 2011=100 Chart.....	7
Received Indexes by Month, Livestock Product, All Product, and All Crop – United States: 2011=100 Chart.....	8
Received Indexes by Month, Food Grain, Feed Grain, and Oilseed – United States: 2011=100 Chart.....	8
Received Indexes by Month, Fruit & Tree Nut and Commercial Vegetable – United States: 2011=100 Chart.....	9
Received Indexes by Month, Meat Animal, Dairy Product, and Poultry & Egg – United States: 2011=100 Chart.....	9
Prices Received for Field Crops and Fruits – United States: March 2015 with Comparisons.....	10
Prices Received for Vegetables and Livestock – United States: March 2015 with Comparisons .....	11
Prices Received for Corn by Month – United States Chart.....	12
Prices Received for Wheat by Month – United States Chart .....	12
Prices Received for Upland Cotton by Month – United States Chart.....	13
Prices Received for Soybeans by Month – United States Chart .....	13
Prices Received for Cattle by Month – United States Chart .....	14
Prices Received for Milk by Month – United States Chart.....	14
Prices Received for Hogs by Month – United States Chart .....	15
Prices Received for Poultry by Month – United States Chart.....	15
Prices Received for All Wheat, Corn, and Soybeans by Month – United States: 2015 with Comparisons.....	16
Prices Received for Beef Cattle and All Hogs by Month – United States: 2015 with Comparisons .....	16
Prices Received for All Wheat – States and United States: March 2015 with Comparisons.....	17
Prices Received for Winter Wheat – States and United States: March 2015 with Comparisons.....	17
Prices Received for Durum Wheat – States and United States: March 2015 with Comparisons.....	18
Prices Received for Spring Wheat – States and United States: March 2015 with Comparisons .....	18
Prices Received for All Barley – States and United States: March 2015 with Comparisons.....	19
Prices Received for Malting Barley – States: March 2015 with Comparisons .....	19
Prices Received for Feed Barley – States: March 2015 with Comparisons .....	19
Prices Received for Corn – States and United States: March 2015 with Comparisons .....	20
Prices Received for Soybeans – States and United States: March 2015 with Comparisons .....	20
Prices Received for Oats – States and United States: March 2015 with Comparisons .....	21
Prices Received for Sorghum Grain – States and United States: March 2015 with Comparisons.....	21
Prices Received for Dry Beans – States and United States: March 2015 with Comparisons .....	22
Prices Received for Peanuts (in shell) – States and United States: March 2015 with Comparisons.....	22
Prices Received for Sunflower – States and United States: March 2015 with Comparisons.....	23
Prices Received for Canola – States and United States: March 2015 with Comparisons .....	23
Prices Received for Flaxseed – States and United States: March 2015 with Comparisons .....	23
Prices Received for Upland Cotton and Cottonseed – States and United States: March 2015 with Comparisons .....	24
Prices Received and Farm Marketings for Upland Cotton and Rice – United States: March 2015 with Comparisons .....	24
Prices Received for Hay by Type – States and United States: March 2015 with Comparisons .....	25
Prices Received for Apples – States and United States: March 2015 with Comparisons .....	25

Prices Received for Citrus Fruits by Utilization – States and United States: March 2014 .....	26
Prices Received for Citrus Fruits by Utilization – States and United States: February 2015 .....	27
Prices Received for Citrus Fruits by Utilization – States and United States: March 2015 .....	28
Prices Received for Potatoes – States and United States: March 2015 with Comparisons.....	29
Prices Received for All Milk – States and United States: March 2015 with Comparisons .....	30
Prices Received for Milk Cows – States and United States: April 2015 with Comparisons .....	31
Commodity Parity Prices and Price as Percent of Parity Price – United States: March 2015 with Comparisons .....	32
Commodity Parity Prices – United States: March 2015 with Comparisons .....	33
Marketing Year for Specified Commodities .....	35
Prices Received for Broilers by Month – United States: 2009-2014 .....	35
Prices Received for Turkeys by Month – United States: 2009-2014 .....	35
Prices Received for All Eggs by Month – United States: 2009-2014.....	36
Prices Received for Market Eggs by Month – United States: 2009-2014 .....	36
Prices Received for All Milk Sold at Plants by Month – States and United States: 2013 .....	37
Prices Received for All Milk Sold at Plants by Month – States and United States: 2014 .....	38
Prices Received for All Milk Sold at Plants, Monthly Fat Test – States and United States: 2013 .....	39
Prices Received for All Milk Sold at Plants, Monthly Fat Test – States and United States: 2014 .....	40
Adjustment for Seasonal Variation – All Eggs and All Milk .....	41
Prices Received for All Eggs Adjusted for Seasonal Variation by Month – United States: 2011-2014.....	41
Prices Received for All Eggs as a Percentage of Parity Price by Month – United States: 2011-2014 .....	41
Prices Received for All Eggs Adjustment Factors by Month – United States: 2011-2014.....	41
Prices Received for All Milk Adjusted for Seasonal Variation by Month – United States: 2011-2014.....	42
Prices Received for All Milk as a Percentage of Parity Price by Month – United States: 2011-2014.....	42
Prices Received for All Milk Adjustment Factors by Month – United States: 2011-2014.....	42
Reliability of Prices Received Estimates .....	43
Prices Paid by Farmers.....	44
Prices Paid Indexes and Related Parity Ratios – United States: March 2015 with Comparisons.....	45
Prices Paid Indexes and Annual Weights for Input Components and Sub-components – United States: March 2015 with Comparisons.....	46
Paid Indexes by Month, All Items and Production Items – United States: 2011=100 Chart.....	47
Paid Indexes, Annual Averages, Production Items, Interest, Taxes, and Wages – United States: 2011=100 Chart.....	47
Paid Indexes by Farm Type, All Items – United States: 2011=100 Chart .....	48
Paid Indexes by Origin, All Production Items – United States: 2011=100 Chart.....	48
Paid Indexes by Non-Farm Sector, Supplies & Repairs, Fertilizer, Machinery, and Fuel – United States: 2011=100 Chart.....	49
Paid Indexes by Month, Feed and Replacement Livestock – United States: 2011=100 Chart.....	49
Feed Price Ratios – United States: March 2015 with Comparisons .....	50
Prices Received Used to Calculate Feed Price Ratios – United States: March 2015 with Comparisons.....	50
Prices Paid for Feeder Livestock – United States: March 2015 with Comparisons.....	50
Reliability of Prices Paid Estimates .....	51
Information Contacts .....	52

## March Prices Received by Farmers

The March Prices Received Index for agricultural production is 102 percent of its 2011 base, up 3.0 percent from the February index but 8.1 percent below the March 2014 index.

**Crop Production:** The March index, at 86, increased 1.2 percent from February but is 9.5 percent below March 2014. Index increases for vegetable & melon, fruit & tree nut, and other crop production more than offset the index decrease for food grain production.

**Feed grain:** The March index, at 64, is unchanged from last month but is 16 percent below a year ago. The corn price, at \$3.81 per bushel, is up 2 cents from last month but is down 71 cents from March 2014. At \$8.00 per cwt, sorghum grain is 14 cents above February but 24 cents below March a year earlier.

**Food grain:** At 82, the index for March is 2.4 percent lower than the previous month and 17 percent below a year earlier. The March price for all wheat, at \$5.70 per bushel, is down 19 cents from February and is \$1.04 below March 2014.

**Oilseed:** At 79, the index for March is unchanged from February but is 27 percent lower than March 2014. The soybean price, at \$9.84 per bushel, decreased 8 cents from February and is \$3.86 below March a year earlier.

**Fruit and tree nut:** The March index, at 128, is up 3.2 percent from February and 2.4 percent higher than a year earlier. The price increase during March for oranges more than offset the price decrease for apples.

**Vegetable and melon:** At 95, the index for March is up 9.2 percent from the previous month but is down 2.1 percent from March 2014. Price increases during March for lettuce and broccoli more than offset price declines for tomatoes and sweet corn.

**Other crop:** The March index, at 83, is up 3.8 percent from the previous month but is 11 percent below March 2014. The all hay price, at \$160 per ton, is up \$5.00 from February but is \$10.00 lower than March 2014. At 59.9 cents per pound, the price for upland cotton is up 2.5 cents from February but is 21.8 cents below March 2014.

**Livestock Production:** The index for March, at 117, is 2.6 percent above the previous month but is down 8.6 percent from March a year earlier. Compared with a year ago, prices are higher for cattle, calves, and market eggs. Prices for milk, hogs, and broilers are down from a year earlier. Turkey prices are unchanged.

**Meat animal:** At 127, the March index is up 1.6 percent from the previous month but is 0.8 percent lower than a year earlier. At \$50.30 per cwt, the March hog price is down 10 cents from February and \$31.60 lower than a year earlier. The March beef cattle price of \$160 per cwt is up \$1.00 from the previous month and \$12.00 higher than March 2014.

**Dairy:** The index for March, at 83, is down 1.2 percent from the previous month and 34 percent lower than March a year earlier. The March all milk price of \$16.60 per cwt is down 20 cents from February and \$8.50 from March 2014.

**Poultry and egg:** At 133, the March index is up 12 percent from February but is 0.7 percent below 2014. The March market egg price, at \$1.41 per dozen, increased 29.0 cents from February and is 36.0 cents above March 2014. The March broiler price, at 59.0 cents per pound, is up 5.0 cents from February but is 6.0 cents below a year earlier. At 68.3 cents per pound, the March turkey price is up 1.4 cents from the previous month but is unchanged from 2014.

## Prices Received Indexes as a Percent of 2011 Base – United States: March 2015 with Comparisons

[Revised historical price indexes for months not shown are available at [www.nass.usda.gov](http://www.nass.usda.gov)]

Index	2011 Base		
	March 2014	February 2015	March 2015
	(percent)	(percent)	(percent)
Agricultural Production .....	111	99	102
Crop Production .....	95	85	86
Grains and oilseed .....	88	73	72
Feed grain .....	76	64	64
Food grain .....	99	84	82
Oilseed .....	108	79	79
Fruit and tree nut .....	125	124	128
Vegetable and melon .....	97	87	95
Other crop .....	93	80	83
Livestock Production .....	128	114	117
Meat animal .....	128	125	127
Cattle .....	131	142	144
Hog .....	123	76	76
Dairy .....	125	84	83
Poultry and egg .....	134	119	133
Food Commodity .....	122	107	110

## Prices Received Indexes as a Percent of 1910-1914 Base – United States: March 2015 with Comparisons

[Revised historical price indexes for months not shown are available at [www.nass.usda.gov](http://www.nass.usda.gov)]

Index	1910 - 1914 Base		
	March 2014	February 2015	March 2015
	(percent)	(percent)	(percent)
Agricultural Production .....	1148	1025	1055
Crop Production .....	830	737	748
Livestock Production .....	1492	1322	1362

## Prices Received Indexes as a percent of 2011 Base by Month for Selected Groups – United States: 2014 and 2015

[Revised historical price indexes for months not shown are available at [www.nass.usda.gov](http://www.nass.usda.gov). Blank data cells indicate estimation period has not yet begun]

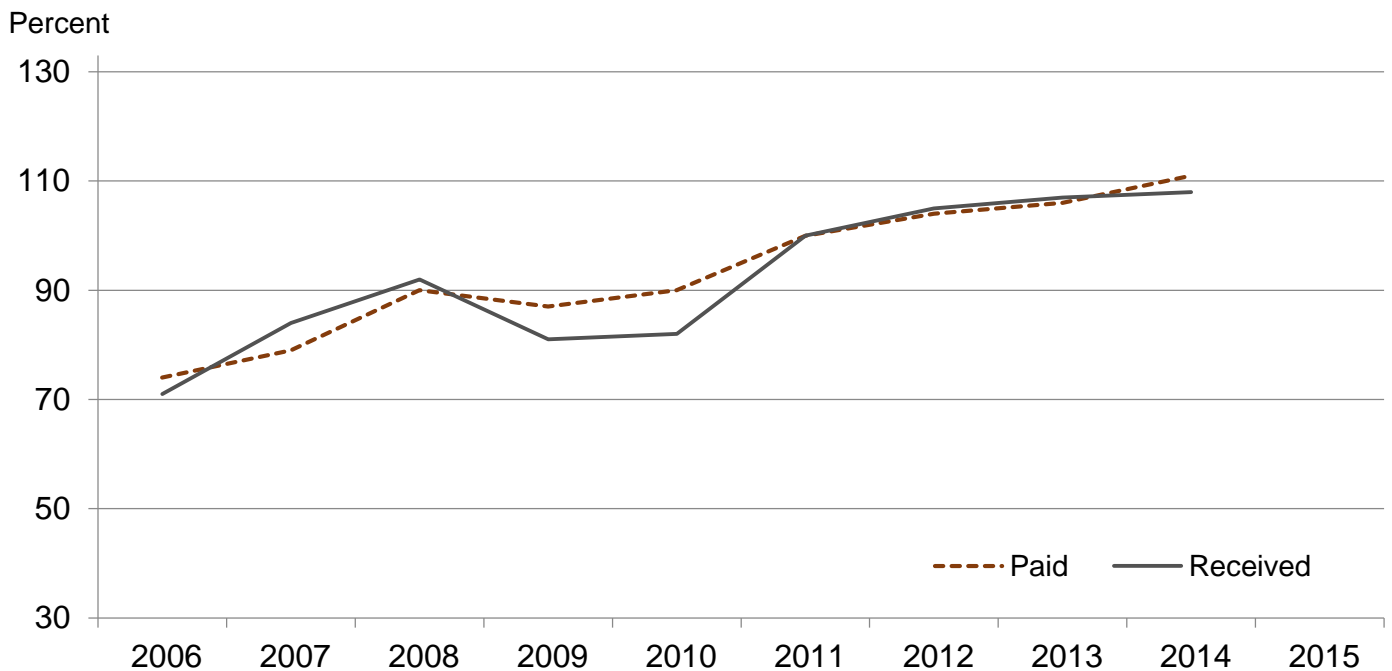
Month	2011 Base							
	Agricultural Production		Crop Production		Livestock Production		Food Commodities	
	2014	2015	2014	2015	2014	2015	2014	2015
	(percent)	(percent)	(percent)	(percent)	(percent)	(percent)	(percent)	(percent)
January .....	100	97	91	83	116	120	111	109
February .....	107	99	95	85	121	114	117	107
March .....	111	102	95	86	128	117	122	110
April .....	115		99		131		125	
May .....	115		100		130		125	
June .....	113		99		128		122	
July .....	110		93		133		120	
August .....	110		92		130		121	
September .....	108		88		132		120	
October .....	100		81		135		113	
November .....	102		82		134		120	
December .....	101		83		127		115	

## Prices Paid Indexes as a percent of 2011 Base by Month for Selected Groups – United States: 2014 and 2015

[Revised historical price indexes for months not shown are available at [www.nass.usda.gov](http://www.nass.usda.gov). Blank data cells indicate estimation period has not yet begun]

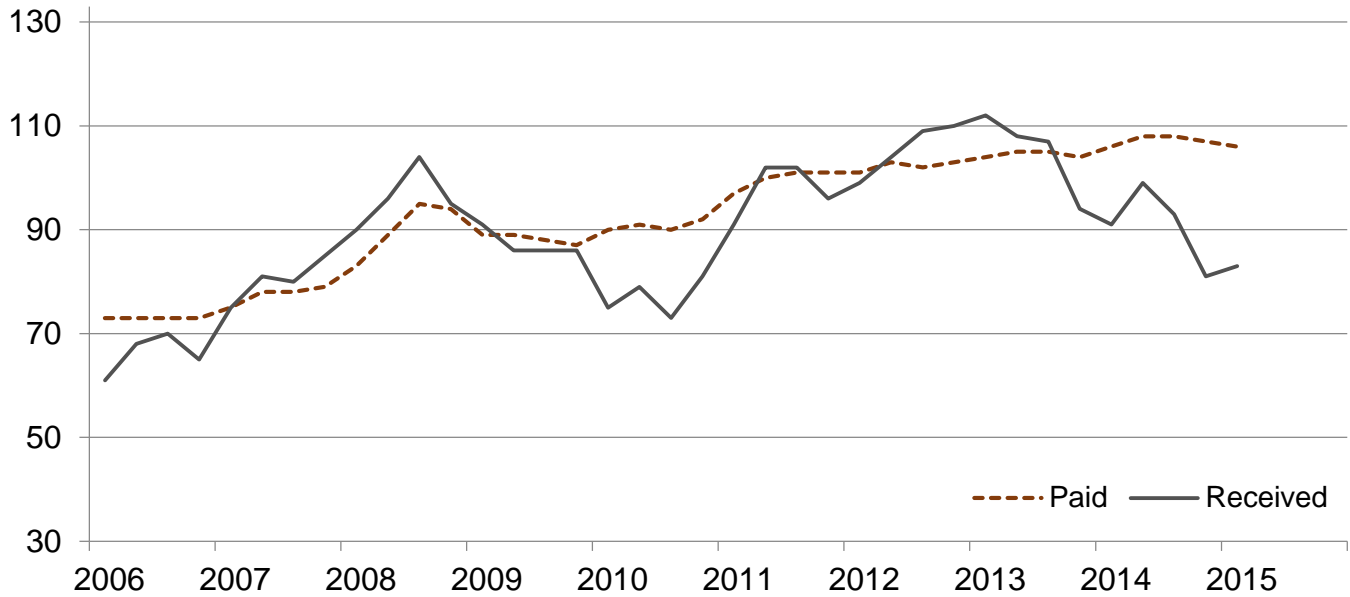
Month	2011 Base							
	All Items (PPITW)		Production		Crop Sector		Livestock Sector	
	2014	2015	2014	2015	2014	2015	2014	2015
	(percent)	(percent)	(percent)	(percent)	(percent)	(percent)	(percent)	(percent)
January .....	108	110	110	111	106	106	111	114
February .....	109	109	110	111	107	106	112	113
March .....	110	110	112	111	107	106	113	114
April .....	112		114		108		116	
May .....	113		115		108		117	
June .....	113		116		108		119	
July .....	113		115		108		118	
August .....	112		114		107		117	
September .....	112		115		107		118	
October .....	112		114		107		117	
November .....	112		114		107		117	
December .....	111		114		106		117	

## Received and Paid Indexes, Annual Average – United States: 2011=100



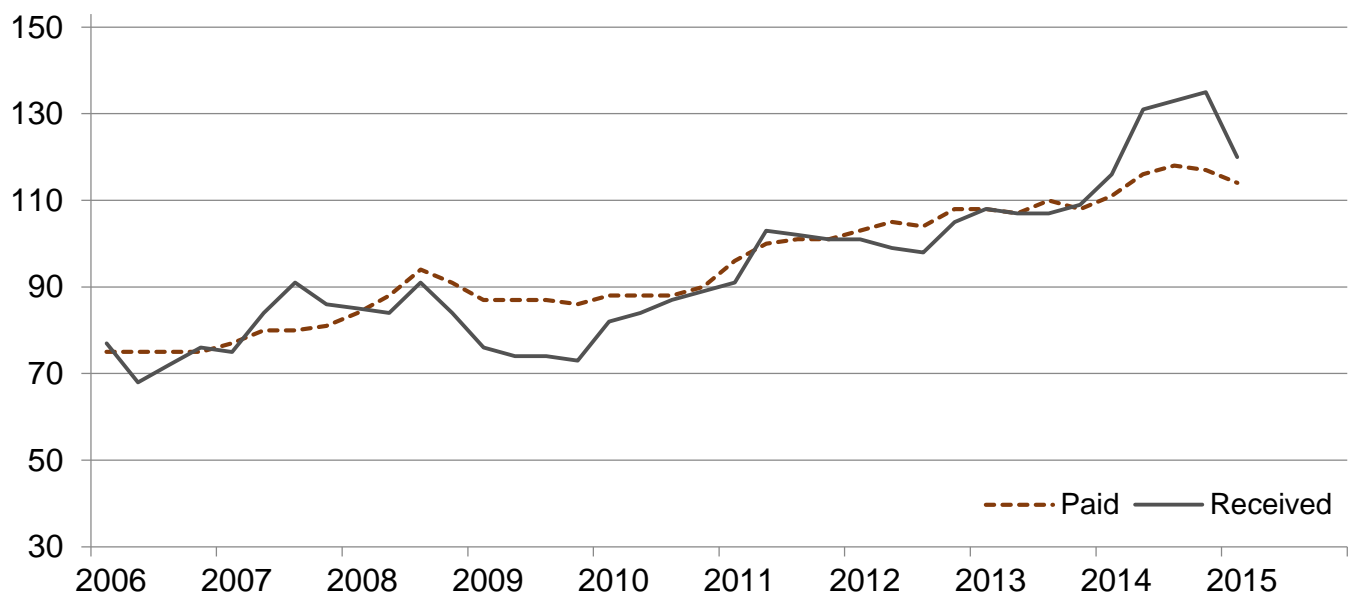
## Crop Farm Received and Paid Indexes, All Items by Quarter – United States: 2011=100

Percent

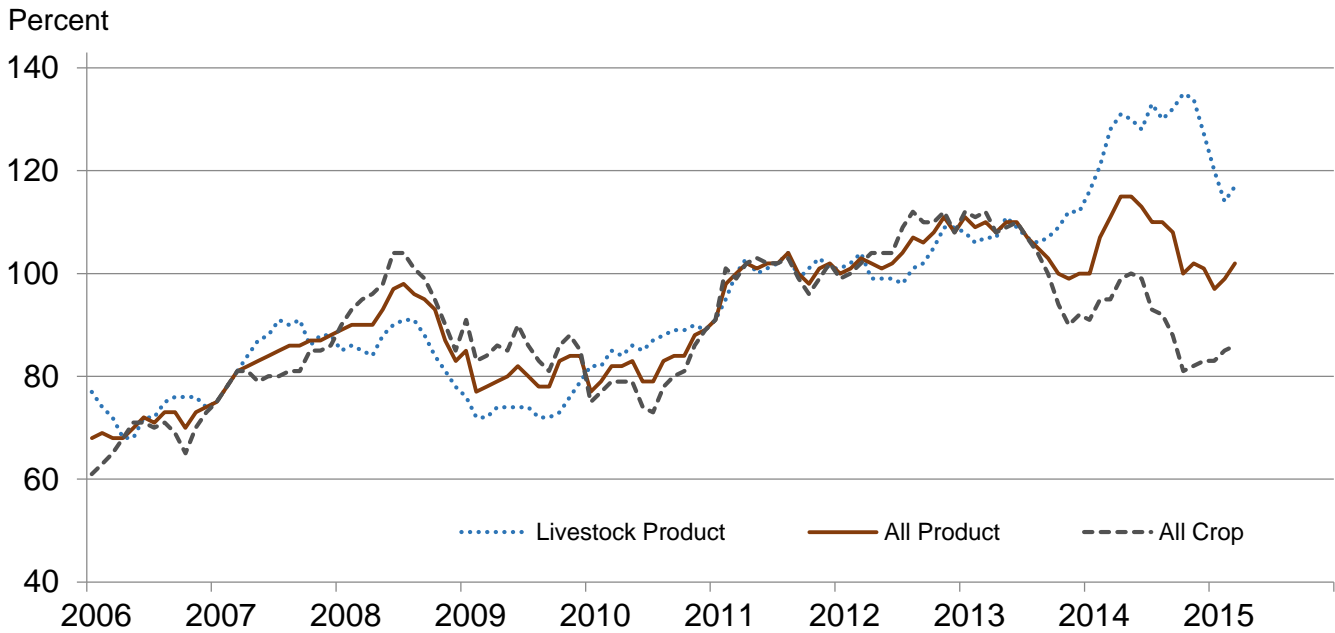


## Livestock Farm Received and Paid Indexes, All Items by Quarter – United States: 2011=100

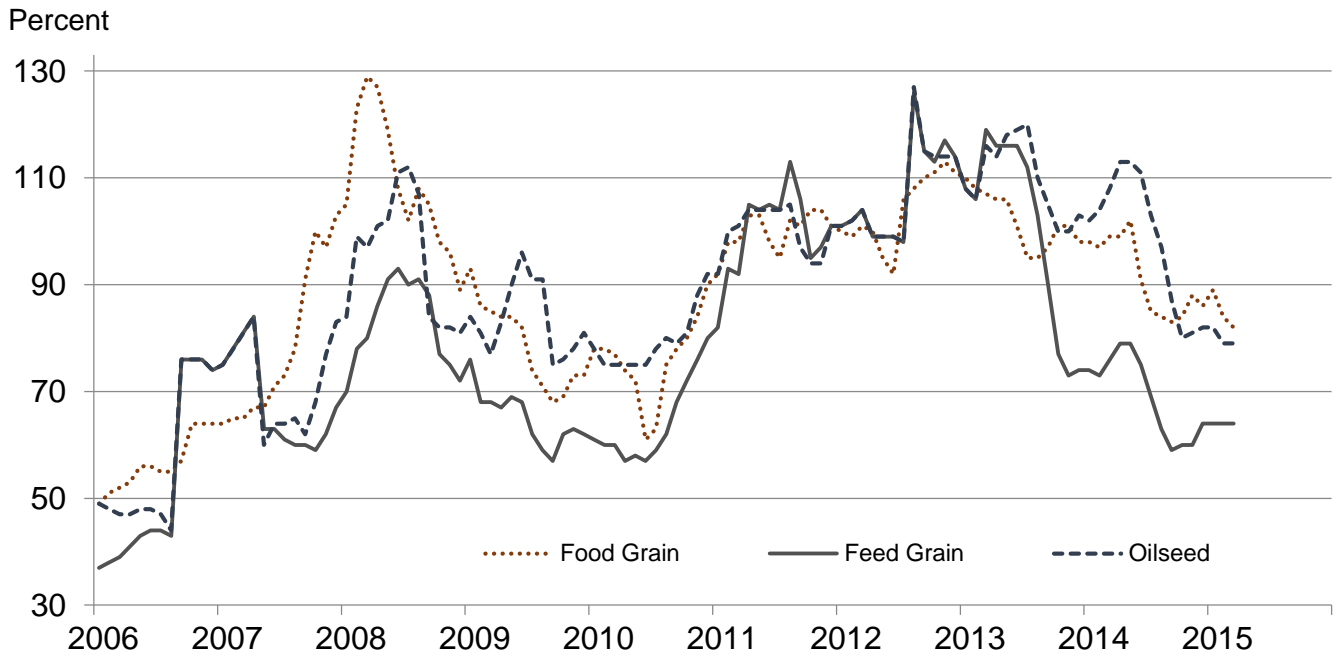
Percent



### Received Indexes by Month, Livestock Product, All Product, and All Crop – United States: 2011=100

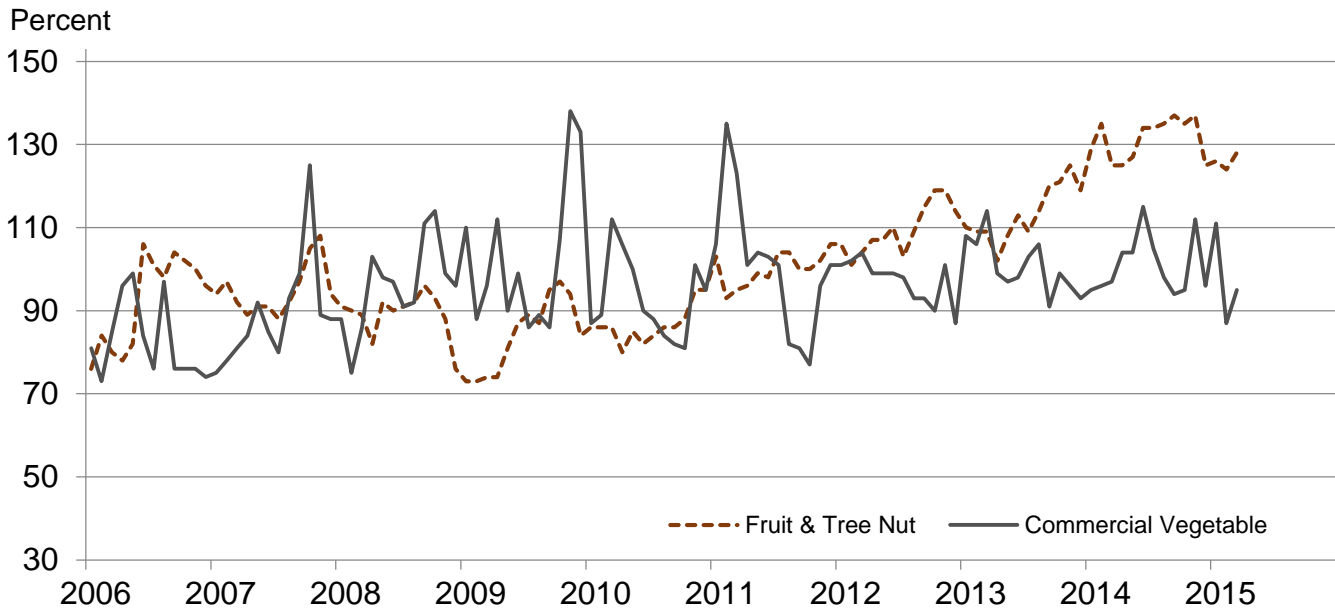


### Received Indexes by Month, Food Grain, Feed Grain, and Oilseed – United States: 2011=100

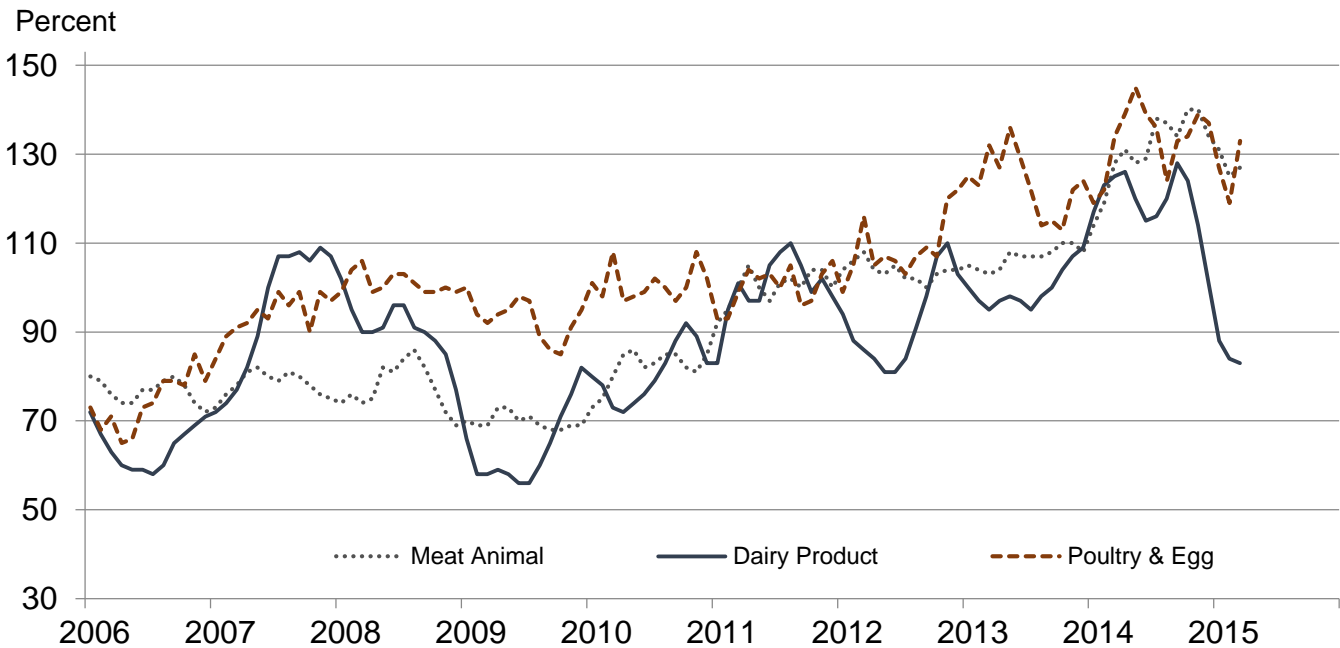




**Received Indexes by Month,  
Fruit & Tree Nut and Commercial Vegetable –  
United States: 2011=100**



**Received Indexes by Month,  
Meat Animal, Dairy Product, and Poultry & Egg –  
United States: 2011=100**



**Prices Received for Field Crops and Fruits – United States: March 2015 with Comparisons**

Commodity	2011=100 Base	March 2014	February 2015	March 2015	
<b>Field crops</b>					
Austrian winter peas .....	dollars/cwt	19.50	(S)	(S)	(D)
Barley, all .....	dollars/bushel	4.79	5.94	5.21	4.78
Feed .....	dollars/bushel	4.59	3.81	2.94	3.05
Malting .....	dollars/bushel	4.83	6.30	5.67	5.33
Beans, dry edible .....	dollars/cwt	34.60	38.10	32.40	33.80
Canola .....	dollars/cwt	23.10	18.40	17.20	16.60
Chickpeas, all .....	dollars/cwt	35.70	27.00	22.90	31.30
Large .....	dollars/cwt	39.20	27.60	28.50	34.80
Small .....	dollars/cwt	23.40	21.80	19.80	21.20
Corn .....	dollars/bushel	6.02	4.52	3.79	3.81
Cotton, Upland .....	dollars/pound	0.880	0.817	0.574	0.599
Cottonseed .....	dollars/ton	131.00	(NA)	196.00	(NA)
Flaxseed .....	dollars/bushel	14.20	13.50	11.50	11.50
Hay, all, baled .....	dollars/ton	159.00	170.00	155.00	160.00
Alfalfa .....	dollars/ton	176.00	193.00	172.00	172.00
Other .....	dollars/ton	119.00	142.00	127.00	136.00
Lentils .....	dollars/cwt	27.50	18.90	29.80	27.70
Oats .....	dollars/bushel	3.42	4.13	3.08	2.91
Peanuts, in-shell .....	dollars/pound	0.252	0.250	0.223	0.225
Peas, dry edible .....	dollars/cwt	13.60	13.40	12.20	12.30
Potatoes .....	dollars/cwt	9.78	9.47	8.91	9.21
Rice, all .....	dollars/cwt	13.70	16.40	12.90	12.40
Long .....	dollars/cwt	12.30	15.50	11.80	11.30
Medium and short .....	dollars/cwt	18.40	19.30	17.80	17.40
Sorghum grain .....	dollars/cwt	10.70	8.24	7.86	8.00
Soybeans .....	dollars/bushel	12.50	13.70	9.92	9.84
Sunflowers, all .....	dollars/cwt	29.00	21.60	20.60	22.20
Wheat, all .....	dollars/bushel	7.44	6.74	5.89	5.70
Winter .....	dollars/bushel	6.93	6.92	5.70	5.55
Durum .....	dollars/bushel	9.22	6.69	10.10	9.54
Other spring .....	dollars/bushel	8.33	6.56	5.55	5.53
Hard red winter .....	dollars/bushel	7.07	7.08	5.54	5.38
Soft red winter .....	dollars/bushel	6.77	6.30	5.48	5.13
Hard red spring .....	dollars/bushel	8.38	6.55	5.53	5.51
White .....	dollars/bushel	6.58	6.81	6.35	6.24
<b>Fruits</b>					
Citrus, equivalent on-tree					
Grapefruit .....	dollars/box	7.47	5.60	4.83	4.87
Lemons .....	dollars/box	12.30	21.31	12.43	16.20
Oranges .....	dollars/box	8.16	10.90	9.65	10.83
Tangelos .....	dollars/box	3.50	(S)	(S)	(S)
Tangerines and mandarins .....	dollars/box	15.30	26.29	(D)	(D)
Noncitrus, fresh					
Apples <sup>1</sup> .....	dollars/pound	0.325	(NA)	0.297	0.279
Grapes <sup>1</sup> .....	dollars/ton	628.00	(NA)	(S)	(S)
Peaches <sup>1</sup> .....	dollars/ton	507.00	(NA)	(S)	(S)
Pears <sup>1</sup> .....	dollars/ton	559.00	(NA)	731.00	652.00
Strawberries .....	dollars/cwt	104.00	(NA)	101.00	63.60

(D) Withheld to avoid disclosing data for individual operations.

(NA) Not available.

(S) Insufficient number of reports to establish an estimate.

<sup>1</sup> Equivalent packinghouse-door returns for California, Michigan, New York (apples only), and Washington (apples, peaches, and pears). Prices as sold for other states.

## Prices Received for Vegetables and Livestock – United States: March 2015 with Comparisons

[Price data source for livestock and poultry commodities is United States Department of Agriculture's Agricultural Marketing Service]

Commodity	2011=100 Base	March 2014	February 2015	March 2015
<b>Vegetables, fresh <sup>1</sup></b>				
Asparagus .....dollars/cwt	37.50	(NA)	(NA)	113.00
Beans, snap <sup>2</sup> .....dollars/cwt	69.00	(NA)	53.90	60.50
Broccoli .....dollars/cwt	41.60	(NA)	29.90	47.80
Cantaloupes <sup>2</sup> .....dollars/cwt	16.50	(NA)	(NA)	(NA)
Carrots .....dollars/cwt	30.80	(NA)	33.00	32.20
Cauliflower .....dollars/cwt	47.00	(NA)	40.10	85.10
Celery .....dollars/cwt	22.50	(NA)	14.60	14.00
Corn, sweet .....dollars/cwt	30.70	(NA)	40.00	31.70
Cucumbers <sup>2</sup> .....dollars/cwt	18.70	(NA)	27.60	40.80
Lettuce .....dollars/cwt	24.30	(NA)	15.20	19.10
Onions <sup>3</sup> .....dollars/cwt	11.90	(NA)	7.67	7.89
Tomatoes .....dollars/cwt	51.20	(NA)	49.40	44.20
<b>Livestock</b>				
Calves .....dollars/cwt	142.00	216.00	277.00	290.00
Cattle, all beef .....dollars/cwt	115.00	148.00	159.00	160.00
Cows <sup>4</sup> .....dollars/cwt	71.60	102.00	110.00	114.00
Steers and heifers .....dollars/cwt	117.00	150.00	161.00	162.00
Milk cows <sup>5 6</sup> .....dollars/head	1420.00	1810.00	1990.00	1970.00
Hogs, all .....dollars/cwt	66.50	81.90	50.40	50.30
Barrows and gilts .....dollars/cwt	66.80	82.00	50.80	50.70
Sows .....dollars/cwt	57.90	79.30	39.70	38.20
<b>Dairy and poultry</b>				
Milk, all <sup>7</sup> .....dollars/cwt	20.10	25.10	16.80	16.60
Fat test ..... percent	3.71	3.77	3.82	3.78
Broilers, live <sup>8</sup> .....dollars/pound	0.459	0.650	0.540	0.590
Eggs, all <sup>9</sup> .....dollars/dozen	0.969	1.24	1.29	1.55
Market <sup>9 10</sup> .....dollars/dozen	0.796	1.05	1.12	1.41
Turkeys, live <sup>11</sup> .....dollars/pound	0.680	0.683	0.669	0.683
<b>Adjusted for seasonal variation</b>				
Eggs, all .....dollars/dozen	0.979	1.15	1.30	1.44
Seasonal factor ..... percent	101	108	100	108
Milk, all <sup>7</sup> .....dollars/cwt	20.20	25.50	16.80	16.80
Seasonal factor ..... percent	100	99	100	99

(NA) Not available.

<sup>1</sup> Beginning January 2006, point of first sale. FOB shipping point for prior years.

<sup>2</sup> Monthly estimates began January 1995.

<sup>3</sup> Includes some processing.

<sup>4</sup> Beef cows and cull dairy cows sold for slaughter.

<sup>5</sup> Animals sold for dairy herd replacement only. Prices available for January, April, July, and October.

<sup>6</sup> Milk cow prices are for April 2014, January 2015, and April 2015.

<sup>7</sup> Before deductions for hauling. Includes quality, quantity, and other premiums. Excludes hauling subsidies.

<sup>8</sup> Live weight equivalent price.

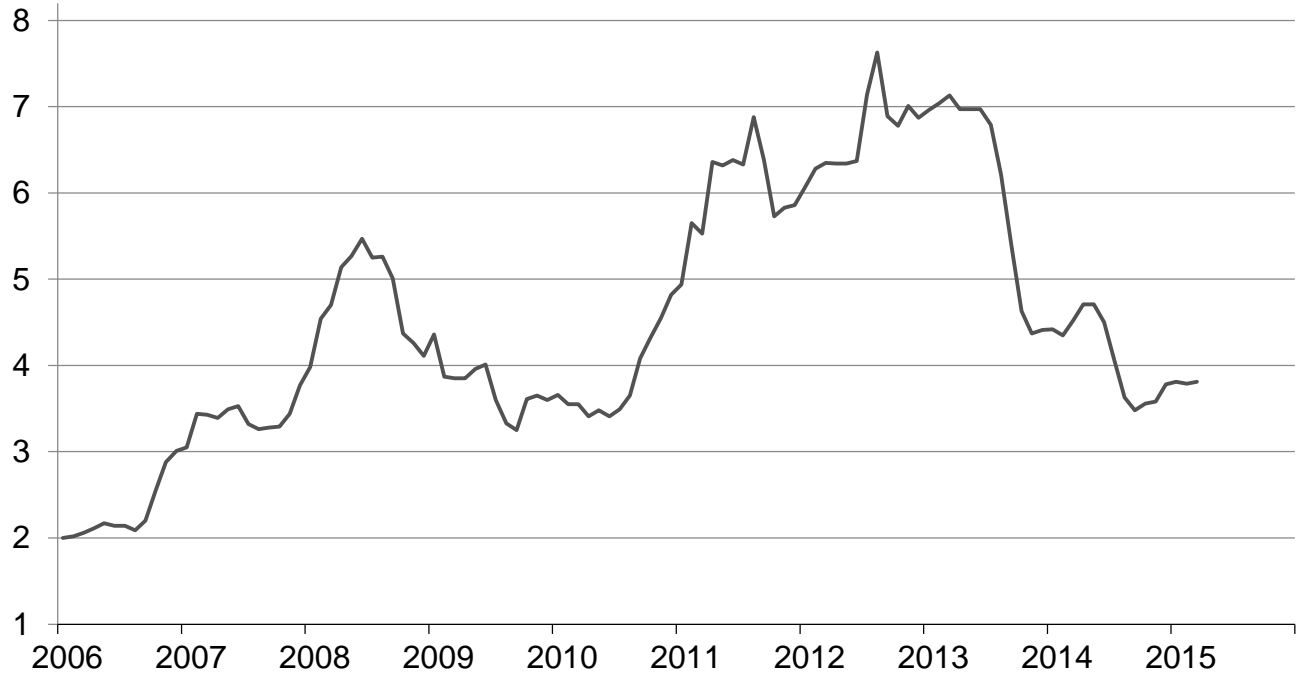
<sup>9</sup> Mid-month price.

<sup>10</sup> Also referred to as table eggs.

<sup>11</sup> Live weight equivalent price is used when actual live weight price is not available. Beginning January 2011, price reflects FOB shipping point basis. Prior year price reflects delivered basis.

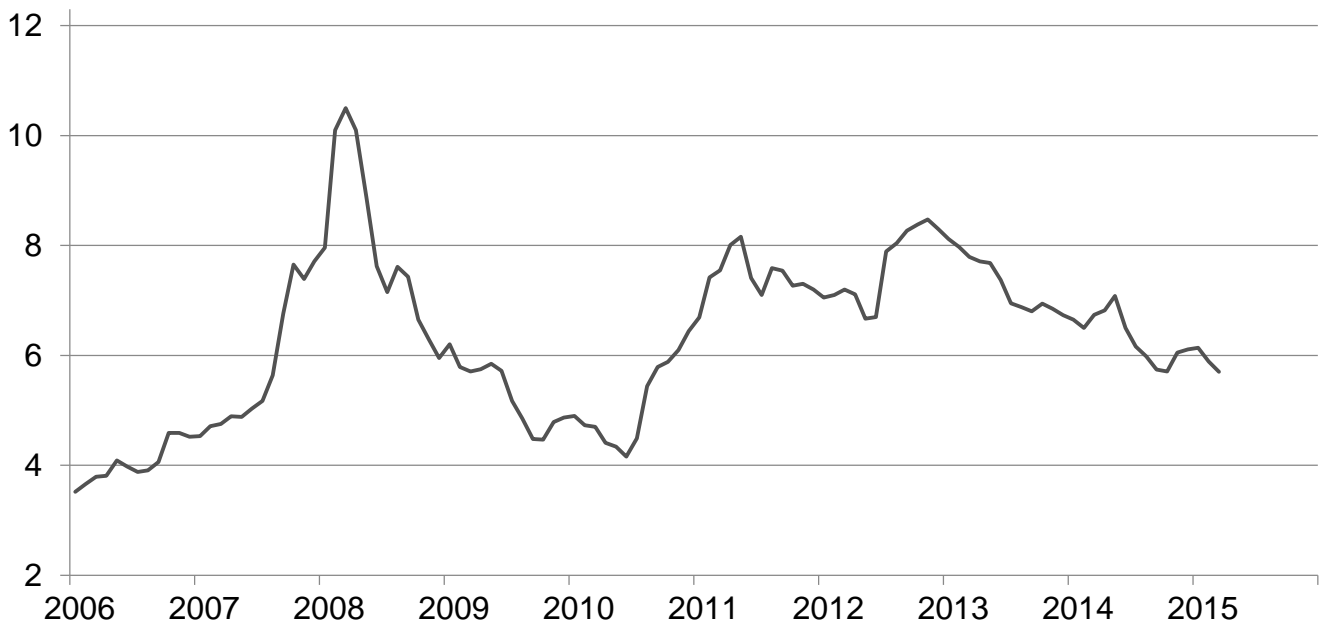
## Prices Received for Corn by Month – United States

Dollars per bushel



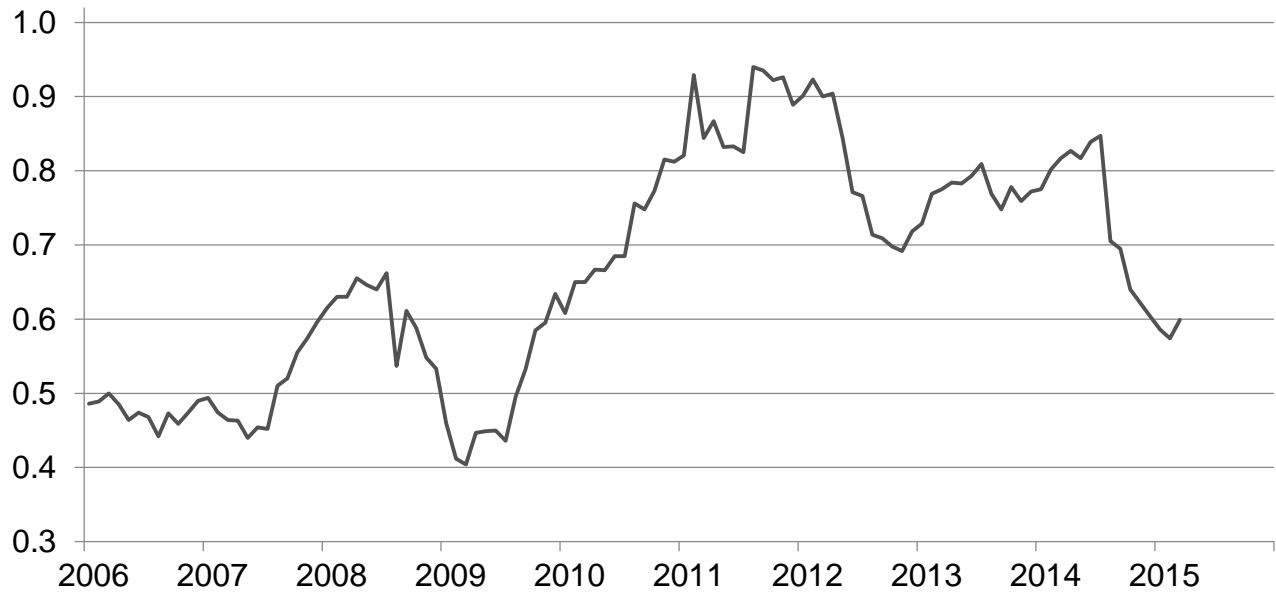
## Prices Received for Wheat by Month – United States

Dollars per bushel



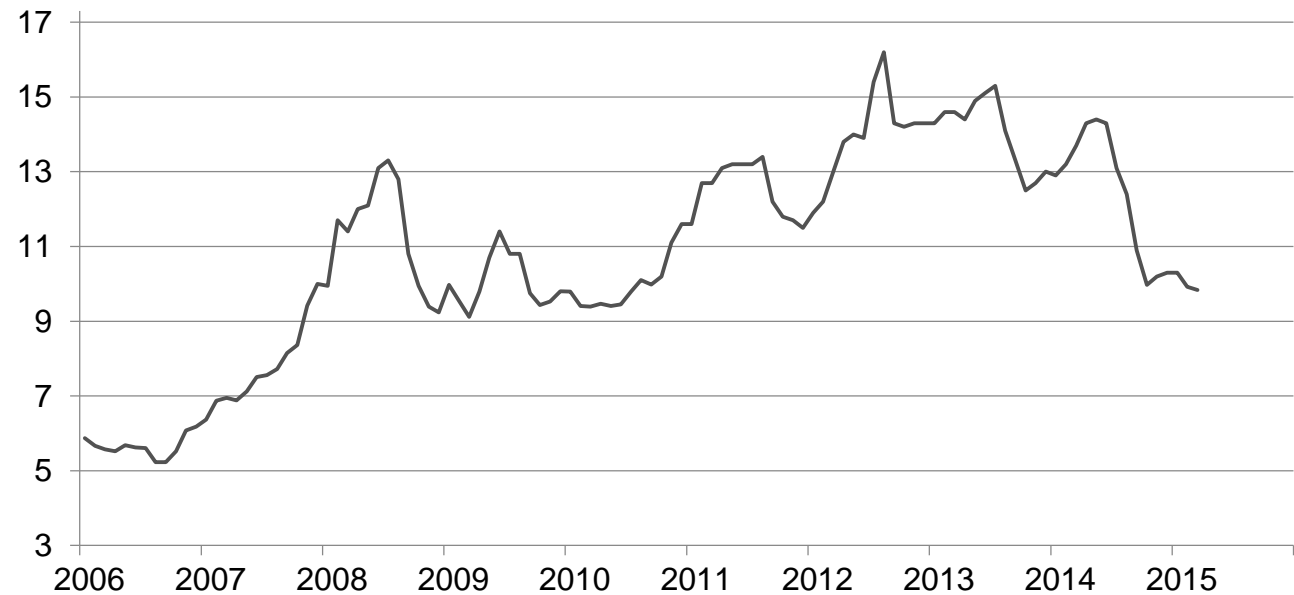
## Prices Received for Upland Cotton by Month – United States

Dollars per pound



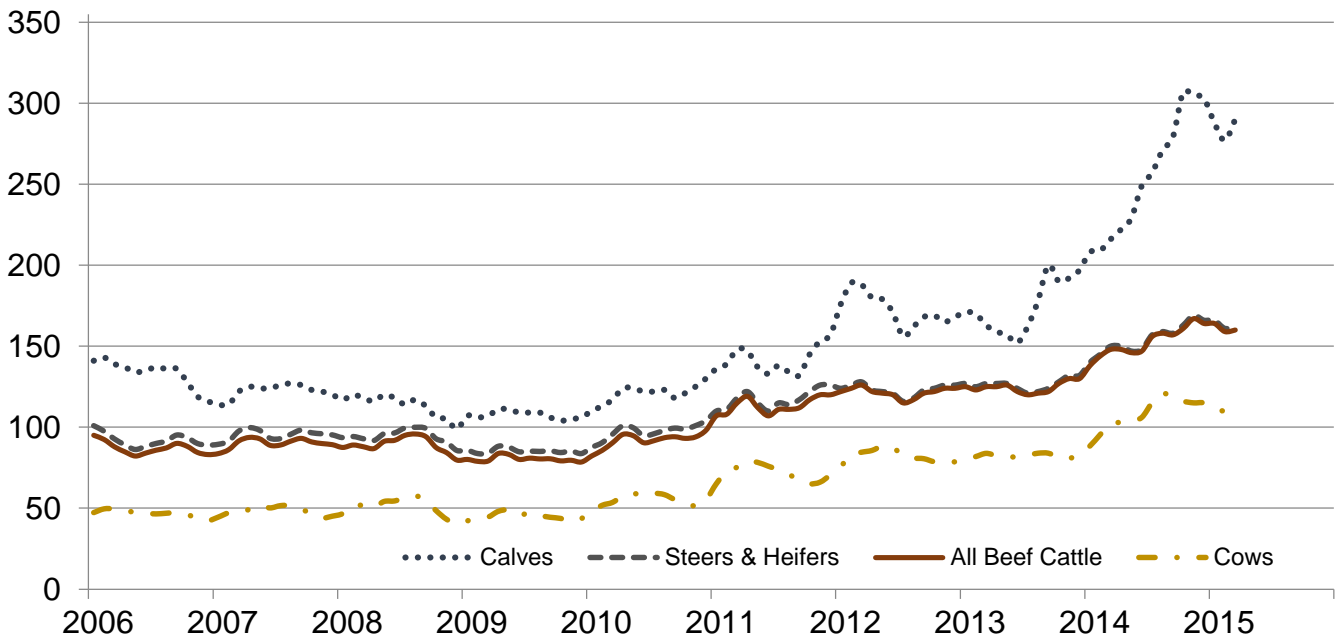
## Prices Received for Soybeans by Month – United States

Dollars per bushel



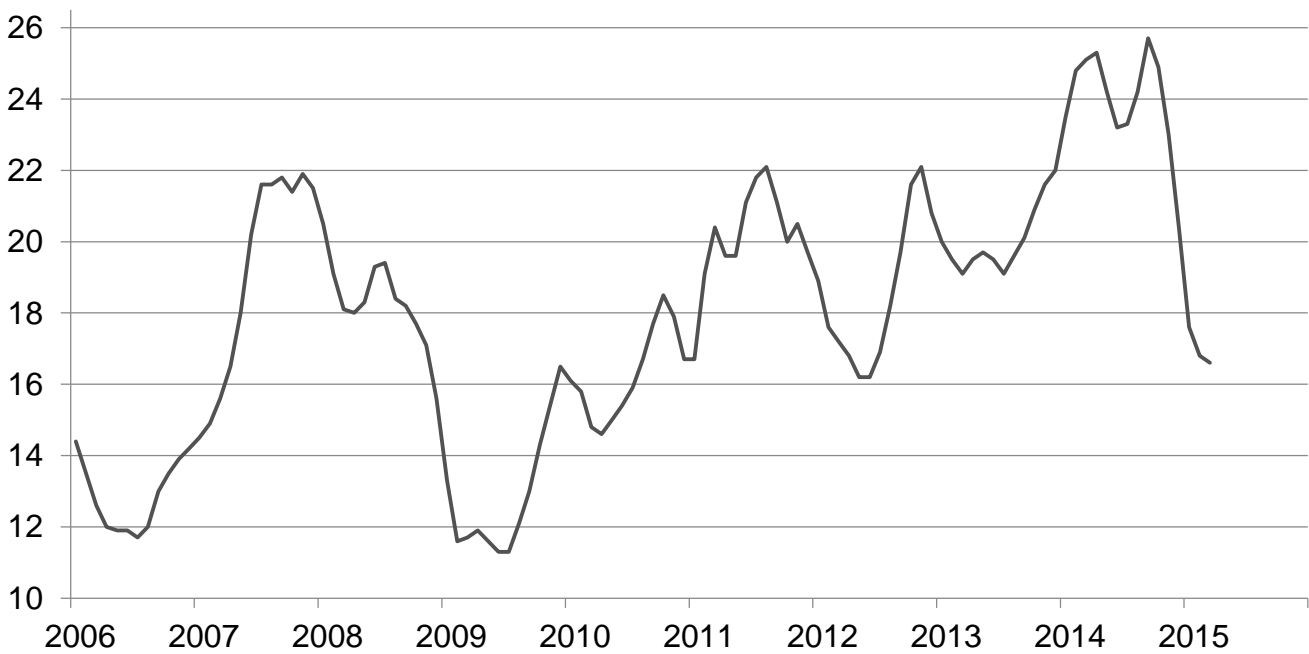
## Prices Received for Cattle by Month – United States

Dollars per cwt



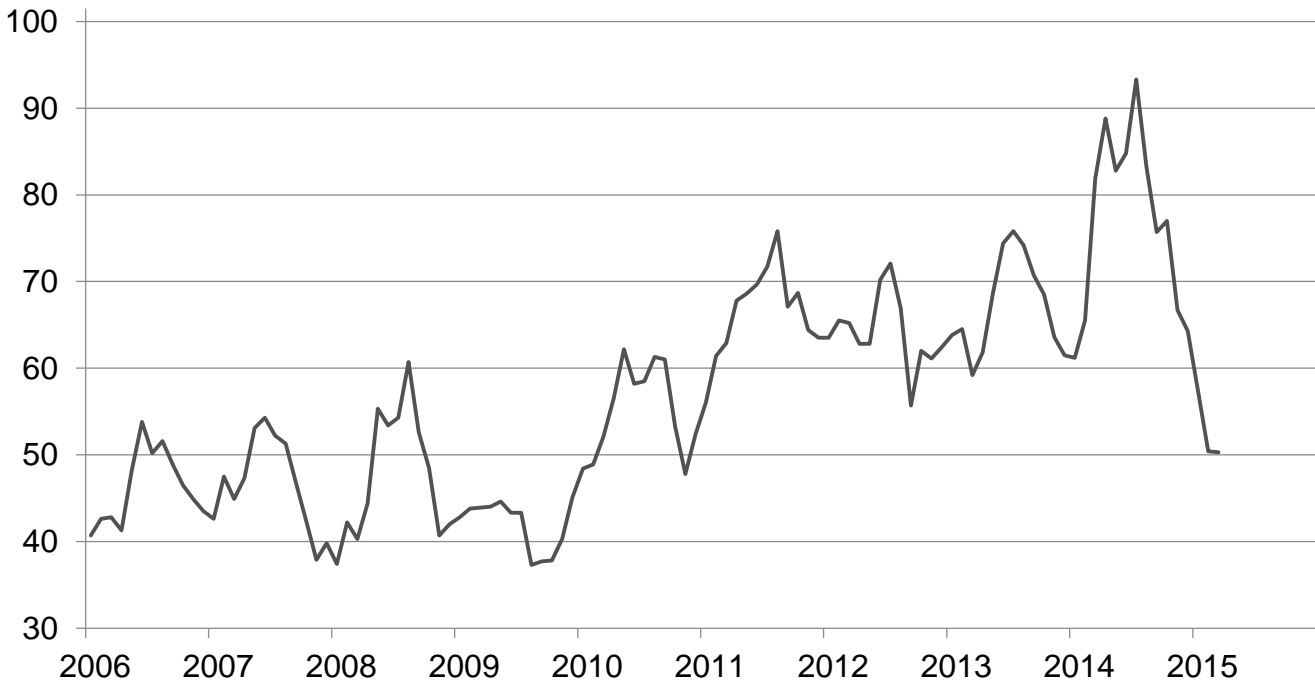
## Prices Received for Milk by Month – United States

Dollars per cwt



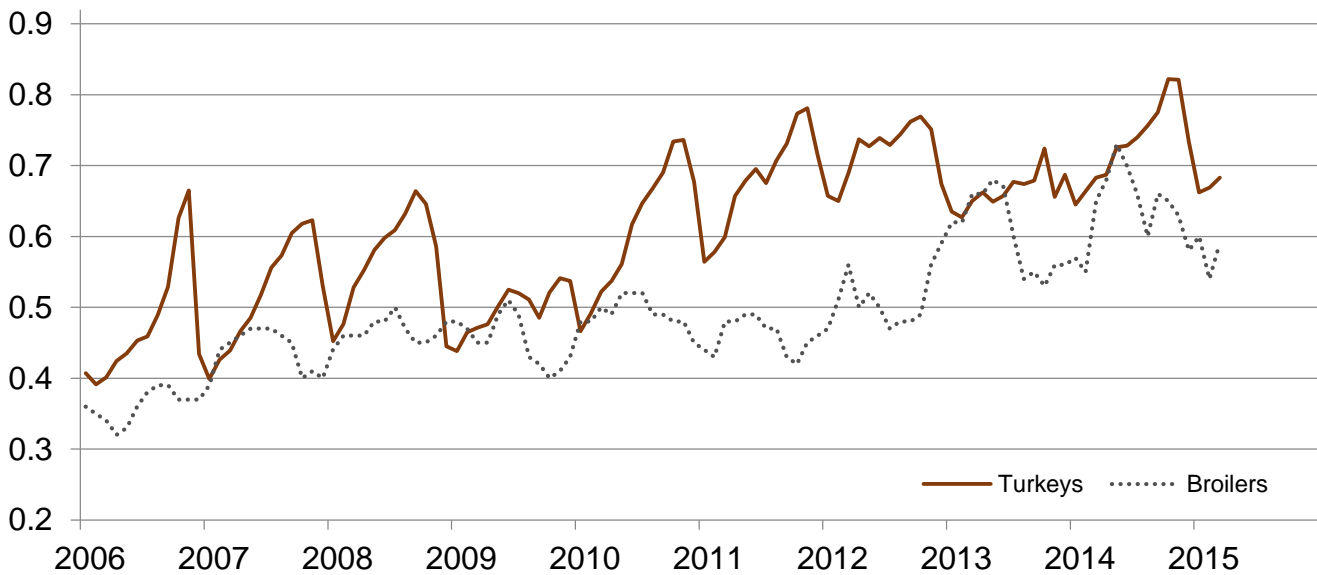
## Prices Received for Hogs by Month – United States

Dollars per cwt



## Prices Received for Poultry by Month – United States

Dollars per pound



## Prices Received for All Wheat, Corn, and Soybeans by Month – United States: 2015 with Comparisons

[Blank data cells indicate estimation period has not yet begun]

Month	All wheat			Corn			Soybeans		
	2013	2014	2015	2013	2014	2015	2013	2014	2015
	(dollars per bushel)	(dollars per bushel)	(dollars per bushel)	(dollars per bushel)	(dollars per bushel)	(dollars per bushel)	(dollars per bushel)	(dollars per bushel)	(dollars per bushel)
January .....	8.12	6.65	6.14	6.96	4.42	3.81	14.30	12.90	10.30
February .....	7.97	6.50	5.89	7.04	4.35	3.79	14.60	13.20	9.92
March .....	7.79	6.74	5.70	7.13	4.52	3.81	14.60	13.70	9.84
April .....	7.71	6.82		6.97	4.71		14.40	14.30	
May .....	7.68	7.08		6.97	4.71		14.90	14.40	
June .....	7.37	6.50		6.97	4.50		15.10	14.30	
July .....	6.95	6.16		6.79	4.06		15.30	13.10	
August .....	6.88	5.98		6.21	3.63		14.10	12.40	
September .....	6.80	5.74		5.40	3.48		13.30	10.90	
October .....	6.94	5.71		4.63	3.56		12.50	9.97	
November .....	6.85	6.05		4.37	3.58		12.70	10.20	
December .....	6.73	6.11		4.41	3.78		13.00	10.30	

## Prices Received for Beef Cattle and All Hogs by Month – United States: 2015 with Comparisons

[Blank data cells indicate estimation period has not yet begun]

Month	Beef cattle <sup>1</sup>			All hogs <sup>2</sup>		
	2013	2014	2015	2013	2014	2015
	(dollars per cwt)	(dollars per cwt)	(dollars per cwt)	(dollars per cwt)	(dollars per cwt)	(dollars per cwt)
January .....	125.00	138.00	164.00	63.80	61.20	57.40
February .....	123.00	144.00	159.00	64.50	65.50	50.40
March .....	125.00	148.00	160.00	59.20	81.90	50.30
April .....	125.00	148.00		61.80	88.80	
May .....	126.00	146.00		68.60	82.80	
June .....	122.00	147.00		74.40	84.80	
July .....	120.00	156.00		75.80	93.30	
August .....	121.00	158.00		74.20	83.20	
September .....	122.00	157.00		70.70	75.70	
October .....	127.00	161.00		68.50	77.00	
November .....	130.00	167.00		63.60	66.70	
December .....	130.00	164.00		61.50	64.30	

<sup>1</sup> Cows and steers & heifers.

<sup>2</sup> Barrows & gilts and sows.



## Prices Received for All Wheat – States and United States: March 2015 with Comparisons

State	March 2014	February 2015	March 2015
	(dollars per bushel)	(dollars per bushel)	(dollars per bushel)
Arizona .....	(D)	(S)	(S)
Arkansas .....	(D)	5.96	4.81
California .....	(D)	(D)	(D)
Colorado .....	7.09	5.45	5.21
Idaho .....	7.48	6.03	6.13
Illinois .....	6.42	5.33	4.45
Indiana .....	6.07	5.48	5.47
Kansas .....	7.14	5.35	5.20
Michigan .....	6.60	5.93	5.98
Minnesota .....	6.67	5.68	5.29
Missouri .....	6.51	4.95	4.65
Montana .....	6.57	6.48	6.14
Nebraska .....	7.06	5.63	5.46
North Carolina .....	5.64	5.43	5.23
North Dakota .....	6.44	5.72	5.60
Ohio .....	6.38	5.47	5.29
Oklahoma .....	7.12	5.66	5.37
Oregon .....	6.86	6.60	6.73
South Dakota .....	7.05	5.45	5.45
Texas .....	6.88	5.52	5.04
Washington .....	6.97	6.37	6.23
United States .....	6.74	5.89	5.70

(D) Withheld to avoid disclosing data for individual operations.

(S) Insufficient number of reports to establish an estimate.

## Prices Received for Winter Wheat – States and United States: March 2015 with Comparisons

State	March 2014	February 2015	March 2015
	(dollars per bushel)	(dollars per bushel)	(dollars per bushel)
Arkansas .....	(D)	5.96	4.81
California .....	(D)	(D)	(D)
Colorado .....	7.13	5.45	5.21
Idaho .....	7.44	5.95	6.01
Illinois .....	6.42	5.33	4.45
Indiana .....	6.07	5.48	5.47
Kansas .....	7.14	5.35	5.20
Michigan .....	6.60	5.93	5.98
Minnesota .....	(D)	(D)	(D)
Missouri .....	6.51	4.95	4.65
Montana .....	6.83	5.85	5.57
Nebraska .....	7.06	5.63	5.46
North Carolina .....	5.64	5.43	5.23
North Dakota .....	6.39	4.22	3.92
Ohio .....	6.38	5.47	5.29
Oklahoma .....	7.12	5.66	5.37
Oregon .....	6.83	6.60	6.70
South Dakota .....	6.72	5.24	5.12
Texas .....	6.88	5.52	5.04
Washington .....	6.87	6.29	6.13
United States .....	6.92	5.70	5.55

(D) Withheld to avoid disclosing data for individual operations.

**Prices Received for Durum Wheat – States and United States: March 2015 with Comparisons**

State	March 2014	February 2015	March 2015
	(dollars per bushel)	(dollars per bushel)	(dollars per bushel)
Arizona .....	(D)	(S)	(S)
California .....	(S)	(S)	(S)
Idaho .....	(S)	(D)	(D)
Montana .....	6.55	10.80	10.20
North Dakota .....	6.70	9.56	9.26
United States .....	6.69	10.10	9.54

(D) Withheld to avoid disclosing data for individual operations.

(S) Insufficient number of reports to establish an estimate.

**Prices Received for Spring Wheat – States and United States: March 2015 with Comparisons**

State	March 2014	February 2015	March 2015
	(dollars per bushel)	(dollars per bushel)	(dollars per bushel)
Colorado .....	(D)	(D)	(D)
Idaho .....	7.63	6.15	6.59
Minnesota .....	6.67	5.69	5.29
Montana .....	6.42	5.91	6.01
North Dakota .....	6.40	5.25	5.30
Oregon .....	7.08	6.65	6.94
South Dakota .....	7.19	5.59	5.63
Washington .....	7.48	6.84	6.78
United States .....	6.56	5.55	5.53

(D) Withheld to avoid disclosing data for individual operations.

### Prices Received for All Barley – States and United States: March 2015 with Comparisons

State	March 2014	February 2015	March 2015
	(dollars per bushel)	(dollars per bushel)	(dollars per bushel)
California .....	(D)	(S)	(S)
Colorado .....	(D)	(D)	(S)
Idaho .....	(D)	5.49	4.69
Minnesota .....	(D)	5.43	5.24
Montana .....	6.14	5.05	4.65
North Dakota .....	5.88	5.20	4.94
Oregon .....	3.84	(D)	(D)
Utah .....	4.08	(D)	(D)
Washington .....	3.78	3.97	3.53
Wyoming .....	(D)	(D)	(D)
United States .....	5.94	5.21	4.78

(D) Withheld to avoid disclosing data for individual operations.

(S) Insufficient number of reports to establish an estimate.

### Prices Received for Malting Barley – States: March 2015 with Comparisons

State	March 2014	February 2015	March 2015
	(dollars per bushel)	(dollars per bushel)	(dollars per bushel)
Idaho .....	6.72	6.13	5.85
Minnesota .....	(D)	5.33	5.25
Montana .....	6.27	5.82	5.65
North Dakota .....	6.10	5.38	5.11
Wyoming .....	(D)	(D)	(D)

(D) Withheld to avoid disclosing data for individual operations.

### Prices Received for Feed Barley – States: March 2015 with Comparisons

State	March 2014	February 2015	March 2015
	(dollars per bushel)	(dollars per bushel)	(dollars per bushel)
Idaho .....	4.45	2.82	3.67
Minnesota .....	(D)	(D)	(D)
Montana .....	3.38	2.43	2.71
North Dakota .....	3.64	2.87	2.80
Wyoming .....	(S)	(S)	(D)

(D) Withheld to avoid disclosing data for individual operations.

(S) Insufficient number of reports to establish an estimate.

### Prices Received for Corn – States and United States: March 2015 with Comparisons

State	March 2014	February 2015	March 2015
	(dollars per bushel)	(dollars per bushel)	(dollars per bushel)
Colorado .....	4.65	3.78	3.94
Illinois .....	4.56	3.77	3.80
Indiana .....	4.68	3.93	3.94
Iowa .....	4.55	3.79	3.83
Kansas .....	4.67	3.82	3.91
Kentucky .....	4.79	4.13	4.20
Michigan .....	4.47	3.69	3.74
Minnesota .....	4.35	3.65	3.66
Missouri .....	4.71	3.70	3.76
Nebraska .....	4.46	3.90	3.88
North Carolina .....	5.11	4.63	4.56
North Dakota .....	3.94	3.39	3.30
Ohio .....	4.57	3.95	3.93
Pennsylvania .....	4.87	4.07	4.08
South Dakota .....	4.10	3.43	3.44
Tennessee .....	4.83	4.06	4.18
Texas .....	5.14	4.53	4.46
Wisconsin .....	4.47	3.77	3.72
United States .....	4.52	3.79	3.81

### Prices Received for Soybeans – States and United States: March 2015 with Comparisons

State	March 2014	February 2015	March 2015
	(dollars per bushel)	(dollars per bushel)	(dollars per bushel)
Arkansas .....	14.00	10.50	10.30
Illinois .....	13.80	10.10	10.10
Indiana .....	13.90	10.20	10.10
Iowa .....	13.70	9.92	9.76
Kansas .....	13.50	9.61	9.39
Kentucky .....	13.80	10.20	10.30
Louisiana .....	13.70	11.40	10.70
Michigan .....	13.80	9.88	9.91
Minnesota .....	13.30	9.78	9.52
Mississippi .....	14.00	10.50	10.30
Missouri .....	14.00	9.91	9.96
Nebraska .....	13.70	9.60	9.53
North Carolina .....	14.10	10.00	10.10
North Dakota .....	12.70	9.10	9.06
Ohio .....	14.10	10.30	10.10
South Dakota .....	13.10	9.30	9.22
Tennessee .....	13.90	10.40	11.10
Wisconsin .....	13.40	10.00	9.72
United States .....	13.70	9.92	9.84

### Prices Received for Oats – States and United States: March 2015 with Comparisons

State	March 2014	February 2015	March 2015
	(dollars per bushel)	(dollars per bushel)	(dollars per bushel)
Illinois .....	(S)	(D)	(S)
Iowa .....	4.92	4.26	3.27
Michigan .....	4.74	(D)	3.25
Minnesota .....	3.96	2.99	3.08
Montana .....	(S)	(D)	(S)
Nebraska .....	4.01	3.39	(D)
New York .....	(D)	(D)	(D)
North Dakota .....	3.56	2.26	2.25
Oregon .....	(D)	(S)	(S)
Pennsylvania .....	4.05	4.26	4.03
South Dakota .....	3.68	3.20	2.67
Texas .....	(S)	(S)	(S)
Wisconsin .....	4.61	3.58	3.29
United States .....	4.13	3.08	2.91

(D) Withheld to avoid disclosing data for individual operations.

(S) Insufficient number of reports to establish an estimate.

### Prices Received for Sorghum Grain – States and United States: March 2015 with Comparisons

State	March 2014	February 2015	March 2015
	(dollars per cwt)	(dollars per cwt)	(dollars per cwt)
Arkansas .....	(D)	7.66	(D)
Illinois .....	8.23	(D)	(D)
Kansas .....	8.01	7.87	8.04
Louisiana .....	(D)	7.57	(D)
Missouri .....	8.40	7.53	7.63
Nebraska .....	7.82	8.05	8.14
Oklahoma .....	8.23	8.02	7.89
Texas .....	8.96	7.69	7.76
United States .....	8.24	7.86	8.00

(D) Withheld to avoid disclosing data for individual operations.

**Prices Received for Dry Beans – States and United States: March 2015 with Comparisons**

State	March 2014	February 2015	March 2015
	(dollars per cwt)	(dollars per cwt)	(dollars per cwt)
California .....	54.60	69.20	59.80
Colorado .....	35.20	(D)	23.40
Idaho .....	30.00	28.70	30.00
Michigan .....	(D)	40.40	46.20
Minnesota .....	(D)	(D)	46.70
Nebraska .....	54.00	34.90	(D)
North Dakota .....	31.30	26.10	24.40
United States .....	38.10	32.40	33.80

(D) Withheld to avoid disclosing data for individual operations.

**Prices Received for Peanuts (in shell) – States and United States: March 2015 with Comparisons**

State	March 2014	February 2015	March 2015
	(dollars per pound)	(dollars per pound)	(dollars per pound)
Alabama .....	(D)	0.211	0.208
Florida .....	0.254	0.216	0.214
Georgia .....	0.238	0.206	0.212
Mississippi .....	(S)	0.210	(S)
New Mexico .....	0.264	(S)	0.310
North Carolina .....	0.262	0.254	0.271
Oklahoma .....	0.274	(S)	0.239
South Carolina .....	0.251	0.228	0.268
Texas .....	0.361	0.349	0.238
Virginia .....	(D)	(S)	0.269
United States .....	0.250	0.223	0.225

(D) Withheld to avoid disclosing data for individual operations.

(S) Insufficient number of reports to establish an estimate.

### Prices Received for Sunflower – States and United States: March 2015 with Comparisons

State	March 2014	February 2015	March 2015
	(dollars per cwt)	(dollars per cwt)	(dollars per cwt)
Colorado .....	(D)	(D)	(D)
Kansas .....	24.60	23.40	22.20
Minnesota .....	(D)	(S)	(D)
North Dakota .....	22.90	22.10	23.00
South Dakota .....	19.10	18.70	19.50
United States .....	21.60	20.60	22.20

(D) Withheld to avoid disclosing data for individual operations.

(S) Insufficient number of reports to establish an estimate.

### Prices Received for Canola – States and United States: March 2015 with Comparisons

State	March 2014	February 2015	March 2015
	(dollars per cwt)	(dollars per cwt)	(dollars per cwt)
Minnesota .....	(D)	(S)	(S)
North Dakota .....	18.40	17.20	16.60
United States .....	18.40	17.20	16.60

(D) Withheld to avoid disclosing data for individual operations.

(S) Insufficient number of reports to establish an estimate.

### Prices Received for Flaxseed – States and United States: March 2015 with Comparisons

State	March 2014	February 2015	March 2015
	(dollars per bushel)	(dollars per bushel)	(dollars per bushel)
North Dakota .....	13.50	11.50	11.50
United States .....	13.50	11.50	11.50

## Prices Received for Upland Cotton and Cottonseed – States and United States: March 2015 with Comparisons

[Cottonseed marketing year August - February]

State	Cotton, Upland			Cottonseed		
	March 2014	February 2015	March 2015	March 2014	February 2015	March 2015
	(dollars per pound)	(dollars per pound)	(dollars per pound)	(dollars per ton)	(dollars per ton)	(dollars per ton)
Alabama .....	0.836	0.634	0.648	(NA)	(S)	(NA)
Arizona .....	(D)	0.645	(D)	(NA)	286.00	(NA)
Arkansas .....	0.735	0.623	(D)	(NA)	(S)	(NA)
California .....	(D)	(D)	(D)	(NA)	(S)	(NA)
Georgia .....	0.846	0.638	0.646	(NA)	167.00	(NA)
Louisiana .....	(D)	0.653	0.640	(NA)	(S)	(NA)
Mississippi .....	(D)	0.626	0.648	(NA)	(S)	(NA)
North Carolina .....	0.839	0.629	0.648	(NA)	(S)	(NA)
Tennessee .....	(D)	0.617	0.599	(NA)	(S)	(NA)
Texas .....	0.789	0.541	0.527	(NA)	182.00	(NA)
United States .....	0.817	0.574	0.599	(NA)	196.00	(NA)

(D) Withheld to avoid disclosing data for individual operations.

(NA) Not available.

(S) Insufficient number of reports to establish an estimate.

## Prices Received and Farm Marketings for Upland Cotton and Rice – United States: March 2015 with Comparisons

Item	March 2014	February 2015	March 2015
Cotton, Upland			
Average price ..... dollars/pound	0.817	0.574	0.599
Marketings <sup>1</sup> ..... 1,000 bales	460	1,827	570
Rice, all			
Average price ..... dollars/cwt	16.40	12.90	12.40
Marketings <sup>2</sup> ..... 1,000 cwt	12,694	12,269	13,983
Rice, long			
Average price ..... dollars/cwt	15.50	11.80	11.30
Marketings <sup>2</sup> ..... 1,000 cwt	9,729	10,143	11,423
Rice, medium and short			
California			
Average price ..... dollars/cwt	20.60	21.80	20.50
Other States <sup>3</sup>			
Average price ..... dollars/cwt	16.10	14.90	14.90
United States			
Average price ..... dollars/cwt	19.30	17.80	17.40
Marketings <sup>2</sup> ..... 1,000 cwt	2,965	2,126	2,560

<sup>1</sup> Marketings based on a survey of cotton buyers in the major producing States - Alabama, Arizona, Arkansas, California, Georgia, Louisiana, Mississippi, North Carolina, Tennessee, and Texas.

<sup>2</sup> Purchases by private firms and rice (rough equivalent) shipped by cooperatives.

<sup>3</sup> Other States include Arkansas, Louisiana, Mississippi, Missouri, and Texas.



## Prices Received for Hay by Type – States and United States: March 2015 with Comparisons

State	All hay			Alfalfa hay			Other hay		
	March 2014	February 2015	March 2015	March 2014	February 2015	March 2015	March 2014	February 2015	March 2015
	(dollars per ton)	(dollars per ton)	(dollars per ton)	(dollars per ton)	(dollars per ton)	(dollars per ton)	(dollars per ton)	(dollars per ton)	(dollars per ton)
Arizona .....	215.00	200.00	200.00	215.00	200.00	200.00	210.00	195.00	165.00
California .....	223.00	187.00	186.00	230.00	190.00	190.00	200.00	170.00	160.00
Colorado .....	225.00	194.00	194.00	225.00	195.00	195.00	225.00	190.00	190.00
Idaho .....	194.00	179.00	169.00	195.00	180.00	170.00	170.00	165.00	160.00
Illinois .....	179.00	169.00	158.00	190.00	180.00	170.00	130.00	120.00	110.00
Iowa .....	164.00	129.00	129.00	180.00	140.00	140.00	115.00	94.00	96.00
Kansas .....	128.00	132.00	118.00	172.00	142.00	134.00	92.00	101.00	82.00
Kentucky .....	121.00	128.00	139.00	195.00	205.00	210.00	95.00	105.00	110.00
Michigan .....	149.00	173.00	163.00	170.00	190.00	170.00	125.00	130.00	140.00
Minnesota .....	175.00	103.00	111.00	189.00	114.00	120.00	127.00	79.00	80.00
Missouri .....	107.00	93.00	95.00	195.00	165.00	165.00	80.00	85.00	80.00
Montana .....	134.00	124.00	124.00	140.00	125.00	125.00	110.00	120.00	115.00
Nebraska .....	122.00	93.00	91.00	133.00	95.00	94.00	104.00	88.00	85.00
Nevada .....	228.00	224.00	215.00	229.00	225.00	215.00	217.00	200.00	210.00
New Mexico .....	230.00	219.00	193.00	245.00	230.00	200.00	180.00	140.00	140.00
New York .....	164.00	131.00	166.00	185.00	225.00	225.00	164.00	130.00	165.00
North Dakota .....	94.00	87.00	80.00	101.00	89.00	84.00	70.00	58.00	59.00
Ohio .....	160.00	138.00	140.00	185.00	175.00	180.00	140.00	120.00	110.00
Oklahoma .....	107.00	137.00	137.00	178.00	191.00	207.00	93.00	79.00	74.00
Oregon .....	212.00	210.00	203.00	225.00	220.00	210.00	180.00	200.00	185.00
Pennsylvania .....	188.00	230.00	241.00	204.00	238.00	244.00	183.00	225.00	240.00
South Dakota .....	120.00	108.00	109.00	127.00	111.00	113.00	100.00	89.00	92.00
Texas .....	111.00	98.00	98.00	244.00	234.00	228.00	83.00	72.00	71.00
Utah .....	175.00	180.00	170.00	175.00	180.00	170.00	140.00	145.00	135.00
Washington .....	192.00	197.00	197.00	180.00	200.00	200.00	215.00	190.00	190.00
Wisconsin .....	175.00	117.00	116.00	190.00	125.00	125.00	128.00	88.00	88.00
Wyoming .....	168.00	131.00	127.00	170.00	135.00	130.00	150.00	120.00	110.00
United States ...	170.00	155.00	160.00	193.00	172.00	172.00	142.00	127.00	136.00

## Prices Received for Apples – States and United States: March 2015 with Comparisons

[Equivalent packinghouse-door returns for California, Michigan, New York, and Washington. Prices at point of first sale for other States]

State	Apples, fresh use		
	March 2014	February 2015	March 2015
	(dollars per pound)	(dollars per pound)	(dollars per pound)
California .....	(NA)	(NA)	(NA)
Michigan .....	(NA)	0.285	0.300
New York .....	(NA)	0.270	0.260
Pennsylvania .....	(NA)	0.400	0.380
Virginia .....	(NA)	0.280	0.280
Washington .....	(NA)	0.296	0.279
United States .....	(NA)	0.297	0.279

(NA) Not available.

## Prices Received for Citrus Fruits by Utilization – States and United States: March 2014

[Net pounds per box: grapefruit in California-80, Florida-85, Texas-80; lemons-80; oranges in California-80, Florida-90, Texas-85; tangelos-90; tangerines and mandarins in Arizona and California-80, Florida-95]

Commodity, State, and type	FOB packed fresh	Equivalent returns					
		Packinghouse door			On-tree		
		All	Fresh	Process	All	Fresh	Process
	(dollars per box)	(dollars per box)	(dollars per box)	(dollars per box)	(dollars per box)	(dollars per box)	(dollars per box)
<b>Grapefruit</b>							
California <sup>1</sup> .....	18.00	11.21	11.21	(D)	8.99	8.99	(D)
Florida .....	25.40	8.30	14.59	5.80	5.46	12.34	2.72
White .....	29.60	7.96	18.65	7.10	5.20	16.45	4.30
Colored .....	25.00	8.45	14.25	5.00	5.57	12.00	1.75
Texas .....	25.00	6.81	13.40	1.60	5.28	11.79	0.14
United States .....	24.40	8.42	14.15	5.80	5.60	11.91	2.72
<b>Lemons</b>							
Arizona .....	(D)	(D)	(D)	(D)	(D)	(D)	(D)
California .....	46.10	27.21	36.84	(D)	21.54	30.82	(D)
United States .....	46.00	26.97	36.76	(D)	21.31	30.74	(D)
<b>Oranges</b>							
California .....	35.10	19.03	25.94	(D)	16.42	23.38	(D)
Navel and miscellaneous .....	35.30	19.08	26.13	(D)	16.48	23.57	(D)
Valencia .....	(D)	(D)	(D)	(D)	(D)	(D)	(D)
Florida .....	26.20	10.60	15.05	10.20	7.89	12.25	7.50
Early and mids .....	(S)	(S)	(S)	(S)	(S)	(S)	(S)
Valencia .....	26.20	10.60	15.05	10.20	7.89	12.25	7.50
United States .....	33.60	13.58	24.07	8.82	10.90	21.47	6.12
<b>Tangelos</b>							
Florida .....	(S)	(S)	(S)	(S)	(S)	(S)	(S)
United States .....	(S)	(S)	(S)	(S)	(S)	(S)	(S)
<b>Tangerines and mandarins</b>							
Arizona .....	(S)	(S)	(S)	(S)	(S)	(S)	(S)
California .....	(D)	(D)	(D)	(D)	(D)	(D)	(D)
Florida .....	35.50	15.82	22.10	8.10	11.89	18.55	3.70
United States .....	43.20	29.37	34.09	3.82	26.29	31.26	-0.56

(D) Withheld to avoid disclosing data for individual operations.

(S) Insufficient number of reports to establish an estimate.

<sup>1</sup> Some processed sales included in fresh sales.

## Prices Received for Citrus Fruits by Utilization – States and United States: February 2015

[Net pounds per box: grapefruit in California-80, Florida-85, Texas-80; lemons-80; oranges in California-80, Florida-90, Texas-85; tangelos-90; tangerines and mandarins in Arizona and California-80, Florida-95]

Commodity, State, and type	FOB packed fresh	Equivalent returns					
		Packinghouse door			On-tree		
		All	Fresh	Process	All	Fresh	Process
	(dollars per box)	(dollars per box)	(dollars per box)	(dollars per box)	(dollars per box)	(dollars per box)	(dollars per box)
Grapefruit							
California <sup>1</sup> .....	18.50	11.57	11.57	(D)	9.31	9.31	(D)
Florida .....	21.90	7.12	11.16	4.43	4.30	8.92	1.23
White .....	23.90	8.10	12.95	6.40	5.16	10.75	3.20
Colored .....	21.60	6.82	10.85	3.65	4.04	8.60	0.45
Texas .....	23.30	8.13	11.70	1.60	6.57	10.09	0.14
United States .....	22.10	7.41	11.32	4.11	4.83	9.22	1.10
Lemons							
Arizona .....	(D)	(D)	(D)	(D)	(D)	(D)	(D)
California .....	47.10	18.11	37.65	(D)	12.69	31.51	(D)
United States .....	46.80	17.84	37.40	(D)	12.43	31.26	(D)
Oranges							
California .....	28.70	16.09	19.35	(D)	13.45	16.74	(D)
Navel and miscellaneous .....	28.70	16.09	19.35	(D)	13.45	16.74	(D)
Valencia .....	(S)	(S)	(S)	(S)	(S)	(S)	(S)
Florida .....	27.30	10.29	16.15	10.10	7.78	13.55	7.60
Early and mids .....	27.30	10.29	16.15	10.10	7.78	13.55	7.60
Valencia .....	(S)	(S)	(S)	(S)	(S)	(S)	(S)
United States .....	28.60	12.20	19.12	9.32	9.65	16.51	6.80
Tangelos .....							
Florida .....	(S)	(S)	(S)	(S)	(S)	(S)	(S)
United States .....	(S)	(S)	(S)	(S)	(S)	(S)	(S)
Tangerines and mandarins							
Arizona .....	(D)	(D)	(D)	(D)	(D)	(D)	(D)
California .....	(D)	(D)	(D)	(D)	(D)	(D)	(D)
Florida .....	45.40	24.14	32.00	6.65	20.33	28.45	2.25
United States .....	(D)	(D)	(D)	(D)	(D)	(D)	(D)

(D) Withheld to avoid disclosing data for individual operations.

(S) Insufficient number of reports to establish an estimate.

<sup>1</sup> Some processed sales included in fresh sales.

## Prices Received for Citrus Fruits by Utilization – States and United States: March 2015

[Net pounds per box: grapefruit in California-80, Florida-85, Texas-80; lemons-80; oranges in California-80, Florida-90, Texas-85; tangelos-90; tangerines and mandarins in Arizona and California-80, Florida-95]

Commodity, State, and type	FOB packed fresh	Equivalent returns					
		Packinghouse door			On-tree		
		All	Fresh	Process	All	Fresh	Process
	(dollars per box)	(dollars per box)	(dollars per box)	(dollars per box)	(dollars per box)	(dollars per box)	(dollars per box)
<b>Grapefruit</b>							
California <sup>1</sup> .....	18.00	11.07	11.07	(D)	8.81	8.81	(D)
Florida .....	22.60	7.40	11.78	5.56	4.48	9.54	2.36
White .....	24.80	7.01	13.85	6.05	3.93	11.65	2.85
Colored .....	22.30	7.53	11.55	5.35	4.66	9.30	2.15
Texas .....	22.40	6.99	10.80	1.60	5.45	9.19	0.14
United States .....	21.90	7.53	11.44	5.14	4.87	9.35	2.13
<b>Lemons</b>							
Arizona .....	(D)	(D)	(D)	(D)	(D)	(D)	(D)
California .....	45.70	22.02	36.25	(D)	16.43	30.11	(D)
United States .....	45.60	21.78	36.17	(D)	16.20	30.03	(D)
<b>Oranges</b>							
California .....	28.10	15.08	18.75	(D)	12.43	16.14	(D)
Navel and miscellaneous .....	28.10	15.12	18.75	(D)	12.48	16.14	(D)
Valencia .....	(D)	(D)	(D)	(D)	(D)	(D)	(D)
Florida .....	27.50	11.94	16.35	11.60	9.23	13.55	8.90
Early and mids .....	(S)	(S)	(S)	(S)	(S)	(S)	(S)
Valencia .....	27.50	11.94	16.35	11.60	9.23	13.55	8.90
United States .....	28.10	13.51	18.55	9.66	10.83	15.93	6.94
<b>Tangelos</b>							
Florida .....	(S)	(S)	(S)	(S)	(S)	(S)	(S)
United States .....	(S)	(S)	(S)	(S)	(S)	(S)	(S)
<b>Tangerines and mandarins</b>							
Arizona .....	(S)	(S)	(S)	(S)	(S)	(S)	(S)
California .....	(D)	(D)	(D)	(D)	(D)	(D)	(D)
Florida .....	45.00	23.25	31.60	6.55	19.42	28.05	2.15
United States .....	(D)	(D)	(D)	(D)	(D)	(D)	(D)

(D) Withheld to avoid disclosing data for individual operations.

(S) Insufficient number of reports to establish an estimate.

<sup>1</sup> Some processed sales included in fresh sales.

## Prices Received for Potatoes – States and United States: March 2015 with Comparisons

State	March 2014 (dollars per cwt)	February 2015 (dollars per cwt)	March 2015 (dollars per cwt)
California			
Spring .....	(S)	(S)	(S)
Fall .....	9.95	9.50	9.40
All <sup>1</sup> .....	9.95	9.50	9.40
Colorado			
Fresh <sup>2</sup> .....	9.70	9.45	9.00
All <sup>1</sup> .....	9.00	8.65	8.45
Florida .....	(D)	21.50	17.80
Idaho			
Fresh <sup>2</sup> .....	6.50	5.70	5.35
Processing .....	7.70	7.75	7.85
All <sup>1</sup> .....	7.80	7.05	7.75
Maine .....	11.20	(D)	(D)
Michigan .....	12.90	(D)	(D)
Minnesota .....	10.00	10.00	9.20
New York .....	14.40	(D)	(D)
North Carolina .....	(S)	(S)	(S)
North Dakota			
Fresh <sup>2</sup> .....	10.10	(D)	(D)
Processing .....	9.35	(D)	(D)
All <sup>1</sup> .....	9.80	(D)	(D)
Oregon .....	9.05	7.95	9.60
Texas .....	(S)	(D)	(D)
Virginia .....	(S)	(S)	(S)
Washington			
Processing .....	8.55	8.05	8.15
All <sup>1</sup> .....	9.10	8.60	8.50
Wisconsin			
Fresh <sup>2</sup> .....	11.00	10.50	9.90
Processing .....	9.60	9.45	8.90
All <sup>1</sup> .....	10.60	10.70	10.80
United States			
Fresh <sup>2</sup> .....	10.25	8.92	8.72
Processing .....	8.58	8.47	8.59
All <sup>1</sup> .....	9.47	8.91	9.21

(D) Withheld to avoid disclosing data for individual operations.

(S) Insufficient number of reports to establish an estimate.

<sup>1</sup> Average price of potatoes sold for all uses, including table stock, processing, seed, and livestock feed.

<sup>2</sup> Fresh market prices only. Includes table stock prices.

## Prices Received for All Milk – States and United States: March 2015 with Comparisons

[Before deduction for hauling. Includes quality, quantity, and other premiums. Excludes hauling subsidies]

State	March 2014		February 2015		March 2015	
	Price (dollars per cwt)	Fat test (percent)	Price (dollars per cwt)	Fat test (percent)	Price (dollars per cwt)	Fat test (percent)
Arizona .....	24.10	3.44	15.50	3.48	15.20	3.42
California .....	23.62	3.70	14.72	3.76	14.92	3.70
Colorado .....	24.80	3.59	17.70	3.65	17.30	3.64
Florida .....	28.50	3.59	21.20	3.64	20.20	3.55
Idaho .....	24.30	3.78	16.40	3.82	16.40	3.81
Illinois .....	25.80	3.85	17.70	3.84	17.50	3.84
Indiana .....	25.40	3.77	17.10	3.84	16.70	3.82
Iowa .....	25.80	3.82	17.10	3.83	17.10	3.80
Kansas .....	25.40	3.76	17.20	3.84	16.70	3.74
Michigan .....	25.20	3.78	16.60	3.81	16.20	3.78
Minnesota .....	26.10	3.93	17.70	3.94	17.10	3.89
New Mexico .....	23.50	3.55	16.00	3.67	15.70	3.62
New York .....	26.50	3.85	17.90	3.91	17.60	3.87
Ohio .....	25.70	3.87	17.80	3.92	17.50	3.90
Oregon .....	27.00	3.91	18.00	3.87	17.90	3.87
Pennsylvania .....	26.30	3.81	18.30	3.83	17.70	3.80
South Dakota .....	26.00	3.98	18.50	4.06	18.20	4.06
Texas .....	26.10	3.86	17.60	3.94	17.20	3.93
Utah .....	24.10	3.76	16.50	3.76	16.40	3.74
Vermont .....	26.30	3.86	18.30	3.98	17.90	3.94
Virginia .....	27.70	3.73	19.20	3.79	18.30	3.73
Washington .....	25.90	3.91	16.80	3.87	16.40	3.87
Wisconsin .....	25.70	3.81	17.70	3.84	17.60	3.81
United States .....	25.10	3.77	16.80	3.82	16.60	3.78

## Prices Received for Milk Cows – States and United States: April 2015 with Comparisons

[Animals sold for dairy herd replacement only. Quarterly United States milk cow prices are based on revised milk cow inventory]

State	April 2014 (dollars per head)	January 2015 (dollars per head)	April 2015 (dollars per head)
Arizona .....	2,000.00	2,000.00	2,000.00
California .....	1,800.00	1,800.00	2,000.00
Colorado .....	2,000.00	2,100.00	2,100.00
Florida .....	1,800.00	2,170.00	2,100.00
Idaho .....	1,950.00	2,000.00	1,900.00
Illinois .....	1,750.00	2,100.00	2,000.00
Indiana .....	1,750.00	2,100.00	1,900.00
Iowa .....	1,850.00	2,030.00	1,950.00
Kansas .....	1,750.00	2,100.00	1,950.00
Michigan .....	1,850.00	2,200.00	2,100.00
Minnesota .....	1,830.00	1,870.00	1,860.00
New Mexico .....	1,750.00	2,000.00	2,000.00
New York .....	1,660.00	1,910.00	1,820.00
Ohio .....	1,700.00	2,000.00	1,850.00
Oregon .....	1,700.00	2,000.00	2,000.00
Pennsylvania .....	1,800.00	2,000.00	1,890.00
South Dakota .....	1,750.00	1,980.00	1,840.00
Texas .....	1,800.00	2,100.00	2,000.00
Utah .....	1,750.00	1,900.00	1,900.00
Vermont .....	1,760.00	1,980.00	1,880.00
Virginia .....	1,770.00	2,060.00	1,930.00
Washington .....	1,700.00	1,950.00	1,850.00
Wisconsin .....	1,900.00	2,160.00	2,080.00
United States .....	1,810.00	1,990.00	1,970.00

## Commodity Parity Prices and Price as Percent of Parity Price – United States: March 2015 with Comparisons

[Parity prices are computed under the provisions of Title III, Subtitle a, Section 301 (a) of the Agricultural Adjustment Act of 1938 as amended by the Agricultural Acts of 1948, 1949, and 1956. See January *Agricultural Prices* for details on adjusted base price and parity price computations. Parity data not available for blank cells. Primary source of data for livestock and milk prices is United States Department of Agriculture's Agricultural Marketing Service]

Commodity and unit	Adjusted base price	Parity price			Price as percent of parity		
		March 2014	February 2015	March 2015	March 2014	February 2015	March 2015
	(dollars)	(dollars)	(dollars)	(dollars)	(percent)	(percent)	(percent)
<b>Basic commodities</b>							
All wheat .....bushel	0.624	17.90	18.40	18.50	38	32	31
Rice .....cwt	1.34	38.40	39.50	39.80	43	33	31
Corn .....bushel	0.444	12.90	13.10	13.20	35	29	29
<b>Cotton</b>							
Upland ..... pound	0.066	1.95	1.94	1.96	42	30	31
American Pima ..... pound	0.136	3.99	4.01	4.04	43	39	39
Peanuts ..... pound	0.024	0.727	0.707	0.713	34	32	32
Small chickpeas .....cwt <sup>4</sup>	2.200	(NA)	64.80	65.30	(NA)	31	32
Large chickpeas .....cwt <sup>4</sup>	3.330	(NA)	98.10	98.90	(NA)	29	35
Lentils .....cwt <sup>4</sup>	2.280	(NA)	67.10	67.70	(NA)	44	41
<b>Designated nonbasic</b>							
All milk, to plants <sup>1</sup> .....cwt	1.83	52.70	53.90	54.30	48	31	31
Honey, extracted <sup>2</sup> ..... pound	0.150	4.28	4.42	4.45	50	48	48
<b>Wool and mohair</b>							
Wool ..... pound	0.117	3.17	3.45	3.47	46	42	42
Mohair ..... pound	0.378	10.20	11.10	11.20	41	44	43
<b>Other nonbasic</b>							
Apples, fresh <sup>3</sup> ..... pound	0.033	0.989	0.972	0.980	36	31	28
Barley .....bushel	0.467	13.10	13.80	13.90	45	38	34
Canola .....cwt	1.880	54.70	55.40	55.80	34	31	30
Cottonseed ..... ton	19.20	556.00	565.00	570.00	41	35	34
Dry edible beans .....cwt	3.25	93.10	95.70	96.50	41	34	35
Flaxseed .....bushel	1.170	33.50	34.50	34.70	40	33	33
Oats .....bushel	0.295	8.26	8.69	8.76	50	35	33
Potatoes .....cwt	0.846	24.30	24.90	25.10	39	36	37
Sorghum grain .....cwt	0.757	21.80	22.30	22.50	38	35	36
Soybeans .....bushel	1.080	30.80	31.80	32.10	44	31	31
Sunflower, all .....cwt	2.13	61.70	62.70	63.20	35	33	35
<b>Citrus (equivalent on-tree)</b>							
Grapefruit .....box	0.777	21.10	22.90	23.10	27	21	21
Lemons .....box	1.49	39.60	43.90	44.20	54	28	37
Oranges .....box	0.806	22.40	23.70	23.90	49	41	45
Tangerines .....box	1.75	46.80	51.50	52.00	56	23	28
<b>Livestock and poultry</b>							
Beef cattle .....cwt	10.80	303.00	318.00	321.00	49	50	50
Calves .....cwt	15.30	416.00	451.00	454.00	52	61	64
Hogs .....cwt	5.81	168.00	171.00	172.00	49	29	29
Eggs <sup>1</sup> .....dozen	0.094	2.68	2.77	2.79	43	47	52
Turkeys, live ..... pound	0.061	1.750	1.800	1.810	39	37	38

(NA) Not available.

<sup>1</sup> Seasonally adjusted price as percentage of parity price.

<sup>2</sup> Wholesale extracted. Adjusted base price derived from state annual averages prices weighted by production. For 1982 through 1985 the national averages are the support prices.

<sup>3</sup> Equivalent packinghouse-door returns for California, New York, Oregon, and Washington. Price at point of first sale for other states.



## Commodity Parity Prices – United States: March 2015 with Comparisons

[Parity prices are computed under the provisions of Title III, Subtitle a, Section 301 (a) of the Agricultural Adjustment Act of 1938 as amended by the Agricultural Acts of 1948, 1949, and 1956. See January *Agricultural Prices* for details on adjusted base price and parity price computations]

Commodity and unit	Adjusted base price	Parity price			
		March 2014	February 2015	March 2015	
	(dollars)	(dollars)	(dollars)	(dollars)	
<b>Field crops and miscellaneous</b>					
Hops .....	pound	0.325	9.25	9.57	9.65
Mustard seed .....	cwt	3.07	87.00	90.40	91.10
Rapeseed .....	cwt	2.43	66.60	71.60	72.10
Rye .....	bushel	0.614	17.00	18.10	18.20
Safflower .....	cwt	2.16	60.80	63.60	64.10
Spearmint oil .....	pound	1.64	46.50	48.30	48.70
Sweet potatoes .....	cwt	2.08	60.80	61.30	61.80
<b>Tobacco</b>					
Flue-cured, 11-14 .....	pound	0.181	5.38	5.33	5.37
Fire-cured, 21-23 .....	pound	0.259	7.77	7.63	7.69
Burley, 31 .....	pound	0.181	5.47	5.33	5.37
Maryland, 32 .....	pound	0.171	4.92	5.04	5.08
Dark air-cured, 35-37 .....	pound	0.234	6.98	6.89	6.95
Pennsylvania seedleaf, 41 .....	pound	0.181	5.32	5.33	5.37
Cigar binder, 51 .....	pound	0.632	18.40	18.60	18.80
<b>Noncitrus fruit</b>					
Apples, processing <sup>1 2</sup> .....	ton	18.10	527.00	533.00	537.00
Apricots					
Fresh <sup>3</sup> .....	ton	119.00	3,350.00	3,500.00	3,530.00
Dried (California) .....	ton	257.00	7,450.00	7,570.00	7,630.00
Avocados <sup>2 3</sup> .....	ton	183.00	5,380.00	5,390.00	5,430.00
Cherries					
Sweet .....	ton	215.00	6,110.00	6,330.00	6,380.00
Tart <sup>2</sup> .....	pound	0.033	0.960	0.972	0.980
Cranberry <sup>2 4</sup> .....	barrel	4.44	138.00	131.00	132.00
Dates (California) <sup>3</sup> .....	ton	152.00	4,680.00	4,480.00	4,510.00
Grapes (California)					
Raisin variety <sup>5</sup> .....	ton	144.00	4,040.00	4,240.00	4,280.00
Wine, processing .....	ton	66.60	(NA)	1,960.00	1,980.00
Kiwifruit <sup>2</sup> .....	ton	90.00	2,310.00	2,650.00	2,670.00
Nectarines, fresh (California) <sup>3</sup> .....	ton	60.90	1,600.00	1,790.00	1,810.00
Olives, canning (California) <sup>4</sup> .....	ton	95.60	2,650.00	2,820.00	2,840.00

See footnote(s) at end of table.

--continued

## Commodity Parity Prices – United States: March 2015 with Comparisons (continued)

[Parity prices are computed under the provisions of Title III, Subtitle a, Section 301 (a) of the Agricultural Adjustment Act of 1938 as amended by the Agricultural Acts of 1948, 1949, and 1956. See January *Agricultural Prices* for details on adjusted base price and parity price computations]

Commodity and unit	Adjusted base price	Parity price		
		March 2014	February 2015	March 2015
	(dollars)	(dollars)	(dollars)	(dollars)
Noncitrus fruit - continued				
Papayas (Hawaii) .....pound	0.041	1.11	1.21	1.22
Peaches				
Fresh <sup>4 6</sup> .....ton	87.00	2,370.00	2,560.00	2,580.00
Dried (California) <sup>1 5</sup> .....ton	46.50	1,400.00	1,370.00	1,380.00
Processing, excludes dried				
Clingstone (California) <sup>4</sup> .....ton	33.50	945.00	987.00	995.00
Pears, Fresh <sup>6</sup> .....ton	57.70	1,630.00	1,700.00	1,710.00
Plums (California) equivalent on-tree				
Fresh <sup>7</sup> .....ton	62.30	1,710.00	1,830.00	1,850.00
Processing .....ton	16.90	256.00	498.00	502.00
Prunes, dried (California) <sup>1 2 5</sup> .....ton	157.00	4,310.00	4,620.00	4,660.00
Prunes and plums				
Fresh, excludes California <sup>7</sup> .....ton	62.90	1,830.00	1,850.00	1,870.00
Processing, excludes dried <sup>1</sup> .....ton	23.90	675.00	704.00	710.00
Strawberries				
Fresh <sup>10</sup> .....pound	9.040	256.00	266.00	268.00
Processing .....pound	3.380	95.40	99.50	100.00
Sugar crops				
Sugarbeets <sup>2 8</sup> .....ton	5.34	158.00	157.00	159.00
Sugarcane <sup>2 8</sup> .....ton	3.55	103.00	105.00	105.00
Tree nuts <sup>9</sup>				
Almonds .....pound	0.236	6.20	6.95	7.01
Hazelnuts .....ton	222.00	5,760.00	6,540.00	6,590.00
Pistachios .....pound	0.227	5.76	6.69	6.74
Walnuts .....ton	223.00	4,970.00	6,570.00	6,620.00
Vegetables, fresh <sup>10</sup>				
Carrots <sup>11</sup> .....cwt	2.63	75.60	77.50	78.10
Cauliflower <sup>11</sup> .....cwt	4.17	118.00	123.00	124.00
Celery <sup>11</sup> .....cwt	1.99	57.00	58.60	59.10
Honeydew melons .....cwt	1.98	56.40	58.30	58.80
Lettuce .....cwt	2.17	60.80	63.90	64.40
Onions <sup>11</sup> .....cwt	1.41	40.10	41.50	41.90
Tomatoes .....cwt	4.21	125.00	124.00	125.00

<sup>1</sup> Equivalent returns at processing plant door.

<sup>2</sup> Adjusted base price is carried forward from the previous year since current marketing year average price is not yet available.

<sup>3</sup> Equivalent returns at packinghouse door.

<sup>4</sup> Equivalent returns for bulk fruit at first delivery point.

<sup>5</sup> Dried basis.

<sup>6</sup> Equivalent packinghouse-door returns for California, New York (apples only), Oregon (except peaches), and Washington. Price at point of first sale for other states.

<sup>7</sup> Based on "as sold" prices for fresh fruit in all states.

<sup>8</sup> Relates to prices including abverage conditional payments per ton made under the sugar acts of 1937 and 1948. Crop deficiency and abandonment payments not included.

<sup>9</sup> Prices In-Shell basis except almonds which are shelled basis.

<sup>10</sup> FOB shipping point price.

<sup>11</sup> Includes some processing.

## Marketing Year for Specified Commodities

**Broilers:** December 1, previous year through November 30 for the United States.

**Eggs:** December 1, previous year to November 30 for the United States.

**Milk:** January 1 to December 31 for the United States.

**Turkeys:** January 1 to December 31 for the United States.

### Prices Received for Broilers by Month – United States: 2009-2014

[Live weight equivalent price]

Year	December <sup>1</sup>	January	February	March	April	May
	(dollars per pound)	(dollars per pound)	(dollars per pound)	(dollars per pound)	(dollars per pound)	(dollars per pound)
2009 .....	0.480	0.480	0.470	0.450	0.450	0.490
2010 .....	0.430	0.480	0.480	0.500	0.490	0.520
2011 .....	0.450	0.440	0.430	0.480	0.480	0.490
2012 .....	0.460	0.470	0.510	0.560	0.500	0.520
2013 .....	0.590	0.620	0.620	0.660	0.660	0.680
2014 .....	0.560	0.570	0.550	0.650	0.680	0.730
Year	June	July	August	September	October	November
	(dollars per pound)	(dollars per pound)	(dollars per pound)	(dollars per pound)	(dollars per pound)	(dollars per pound)
2009 .....	0.510	0.490	0.430	0.420	0.400	0.410
2010 .....	0.520	0.520	0.490	0.490	0.480	0.480
2011 .....	0.490	0.470	0.470	0.430	0.420	0.450
2012 .....	0.500	0.470	0.480	0.480	0.490	0.560
2013 .....	0.670	0.600	0.540	0.550	0.530	0.560
2014 .....	0.700	0.660	0.600	0.660	0.650	0.630

<sup>1</sup> December preceding year.

### Prices Received for Turkeys by Month – United States: 2009-2014

[Live weight equivalent price]

Year	January	February	March	April	May	June
	(dollars per pound)	(dollars per pound)	(dollars per pound)	(dollars per pound)	(dollars per pound)	(dollars per pound)
2009 .....	0.438	0.465	0.471	0.476	0.501	0.525
2010 .....	0.466	0.491	0.522	0.537	0.561	0.617
2011 .....	0.564	0.578	0.599	0.657	0.679	0.695
2012 .....	0.657	0.650	0.690	0.737	0.727	0.739
2013 .....	0.635	0.627	0.650	0.662	0.649	0.657
2014 .....	0.645	0.664	0.683	0.687	0.726	0.728
Year	July	August	September	October	November	December
	(dollars per pound)	(dollars per pound)	(dollars per pound)	(dollars per pound)	(dollars per pound)	(dollars per pound)
2009 .....	0.520	0.511	0.485	0.521	0.541	0.537
2010 .....	0.647	0.668	0.690	0.734	0.736	0.677
2011 .....	0.675	0.707	0.731	0.773	0.781	0.715
2012 .....	0.729	0.744	0.762	0.769	0.751	0.674
2013 .....	0.677	0.674	0.679	0.724	0.656	0.687
2014 .....	0.740	0.756	0.775	0.822	0.821	0.734

## Prices Received for All Eggs by Month – United States: 2009-2014

[Includes hatching and market eggs]

Year	December <sup>1</sup>	January	February	March	April	May
	(dollars per dozen)	(dollars per dozen)	(dollars per dozen)	(dollars per dozen)	(dollars per dozen)	(dollars per dozen)
2009 .....	0.996	1.030	0.811	0.813	0.921	0.619
2010 .....	1.060	1.030	0.920	1.160	0.769	0.636
2011 .....	1.070	0.848	0.949	0.843	1.050	0.821
2012 .....	1.220	0.881	0.887	0.990	0.862	0.826
2013 .....	1.120	1.060	0.991	1.140	0.879	1.170
2014 .....	1.380	1.120	1.400	1.240	1.270	1.170
Year	June	July	August	September	October	November
	(dollars per dozen)	(dollars per dozen)	(dollars per dozen)	(dollars per dozen)	(dollars per dozen)	(dollars per dozen)
2009 .....	0.595	0.709	0.760	0.745	0.801	1.010
2010 .....	0.618	0.710	0.790	0.635	0.814	1.130
2011 .....	0.884	0.878	1.140	0.944	1.020	1.020
2012 .....	0.905	0.967	1.120	1.220	1.020	1.180
2013 .....	0.926	1.030	1.070	1.030	1.040	1.320
2014 .....	1.090	1.240	1.080	1.050	1.140	1.520

<sup>1</sup> December preceding year.

## Prices Received for Market Eggs by Month – United States: 2009-2014

Year	December <sup>1</sup>	January	February	March	April	May
	(dollars per dozen)	(dollars per dozen)	(dollars per dozen)	(dollars per dozen)	(dollars per dozen)	(dollars per dozen)
2009 .....	0.864	0.901	0.642	0.647	0.774	0.417
2010 .....	0.944	0.906	0.775	1.060	0.600	0.442
2011 .....	0.919	0.660	0.776	0.654	0.888	0.622
2012 .....	1.100	0.667	0.669	0.792	0.641	0.596
2013 .....	0.957	0.863	0.776	0.952	0.645	0.977
2014 .....	1.210	0.907	1.230	1.050	1.090	0.971
Year	June	July	August	September	October	November
	(dollars per dozen)	(dollars per dozen)	(dollars per dozen)	(dollars per dozen)	(dollars per dozen)	(dollars per dozen)
2009 .....	0.389	0.524	0.585	0.571	0.638	0.884
2010 .....	0.423	0.528	0.625	0.447	0.655	1.020
2011 .....	0.687	0.684	0.991	0.769	0.857	0.862
2012 .....	0.688	0.764	0.949	1.060	0.837	1.020
2013 .....	0.695	0.821	0.870	0.823	0.836	1.160
2014 .....	0.874	1.050	0.861	0.825	0.935	1.370

<sup>1</sup> December preceding year.

**Prices Received for All Milk Sold at Plants by Month – States and United States: 2013**

State	January	February	March	April	May	June
	(dollars per cwt)	(dollars per cwt)	(dollars per cwt)	(dollars per cwt)	(dollars per cwt)	(dollars per cwt)
Arizona .....	19.20	18.60	18.30	18.60	19.00	19.30
California .....	17.92	17.81	17.31	18.23	18.23	17.81
Colorado .....	20.30	19.80	19.50	19.50	19.70	19.60
Florida .....	23.80	23.30	23.00	22.80	22.80	23.50
Idaho .....	19.20	18.50	18.20	18.80	19.10	18.80
Illinois .....	20.80	20.10	19.90	20.00	20.30	20.00
Indiana .....	20.60	20.10	20.00	20.00	20.30	20.40
Iowa .....	20.70	20.00	19.70	20.10	20.40	20.10
Kansas .....	20.40	19.90	19.40	19.60	19.70	19.30
Michigan .....	20.50	19.90	19.70	19.80	20.00	20.20
Minnesota .....	20.60	19.90	19.50	20.00	20.50	19.90
New Mexico .....	19.00	18.40	17.80	18.10	18.20	18.00
New York .....	21.00	20.70	20.40	20.50	20.50	20.60
Ohio .....	21.20	20.90	20.30	20.50	20.60	20.80
Oregon .....	21.40	20.50	20.10	20.40	21.20	20.90
Pennsylvania .....	21.40	21.10	20.90	21.00	20.90	21.20
South Dakota .....	21.10	20.40	20.10	20.80	21.20	20.30
Texas .....	20.30	19.80	19.40	19.70	19.80	19.60
Utah .....	19.90	19.10	18.60	18.80	19.20	19.10
Vermont .....	21.20	20.80	20.50	20.70	20.70	20.80
Virginia .....	22.90	22.20	21.60	21.60	21.60	22.20
Washington .....	20.50	19.80	19.50	19.80	20.10	20.10
Wisconsin .....	20.50	19.70	19.40	19.90	20.40	19.90
United States .....	20.00	19.50	19.10	19.50	19.70	19.50
State	July	August	September	October	November	December
	(dollars per cwt)	(dollars per cwt)	(dollars per cwt)	(dollars per cwt)	(dollars per cwt)	(dollars per cwt)
Arizona .....	19.20	19.50	19.90	20.30	20.90	21.50
California .....	17.51	18.11	18.71	19.41	20.01	20.81
Colorado .....	19.30	20.00	20.30	21.20	21.80	21.90
Florida .....	23.70	23.80	24.20	24.60	25.30	25.60
Idaho .....	18.10	18.60	19.10	20.10	20.70	21.00
Illinois .....	19.60	20.20	20.70	21.20	22.10	22.40
Indiana .....	20.20	20.70	20.90	21.40	22.20	22.60
Iowa .....	19.40	20.00	20.40	21.20	22.00	22.30
Kansas .....	18.90	19.40	20.00	21.00	21.90	22.30
Michigan .....	19.90	20.40	20.60	21.00	21.70	22.10
Minnesota .....	19.00	19.80	20.20	21.10	21.90	22.00
New Mexico .....	17.80	18.10	18.90	19.80	20.50	20.90
New York .....	20.20	20.60	21.40	22.00	22.90	23.20
Ohio .....	20.70	21.20	21.30	21.60	22.40	22.80
Oregon .....	20.10	20.80	21.30	22.20	23.00	23.20
Pennsylvania .....	20.90	21.20	21.90	22.20	23.20	23.70
South Dakota .....	19.70	20.30	20.80	21.80	22.50	22.70
Texas .....	19.30	19.60	20.50	21.60	22.40	22.80
Utah .....	18.20	18.50	19.50	20.50	21.20	21.50
Vermont .....	20.50	20.90	21.60	22.20	23.00	23.40
Virginia .....	22.50	23.00	23.40	24.00	24.90	25.20
Washington .....	19.60	20.10	20.60	21.50	22.20	22.90
Wisconsin .....	19.10	19.80	20.20	20.90	21.80	22.00
United States .....	19.10	19.60	20.10	20.90	21.60	22.00

**Prices Received for All Milk Sold at Plants by Month – States and United States: 2014**

State	January	February	March	April	May	June
	(dollars per cwt)	(dollars per cwt)	(dollars per cwt)	(dollars per cwt)	(dollars per cwt)	(dollars per cwt)
Arizona .....	22.60	23.70	24.10	24.30	23.60	23.00
California .....	22.22	22.91	23.62	23.41	22.01	21.91
Colorado .....	23.00	24.50	24.80	25.00	24.30	23.60
Florida .....	26.60	27.60	28.50	28.70	29.40	27.70
Idaho .....	22.60	23.90	24.30	24.50	23.00	22.50
Illinois .....	23.80	25.70	25.80	26.00	24.90	23.50
Indiana .....	23.90	25.20	25.40	25.50	24.60	23.40
Iowa .....	23.90	25.70	25.80	26.10	24.90	23.70
Kansas .....	23.90	25.40	25.40	25.50	24.30	22.70
Michigan .....	23.50	24.90	25.20	25.40	24.50	23.50
Minnesota .....	24.00	26.00	26.10	26.60	25.00	23.40
New Mexico .....	22.50	23.80	23.50	23.40	22.40	20.90
New York .....	24.60	26.10	26.50	26.60	26.10	25.10
Ohio .....	24.10	25.20	25.70	25.80	24.80	23.70
Oregon .....	25.00	26.90	27.00	27.20	25.10	24.70
Pennsylvania .....	25.00	26.10	26.30	26.90	26.40	25.30
South Dakota .....	24.30	25.40	26.00	26.00	24.90	23.50
Texas .....	24.40	26.00	26.10	26.20	24.90	23.30
Utah .....	22.30	24.10	24.10	24.60	24.40	23.00
Vermont .....	24.60	25.70	26.30	26.50	26.20	24.90
Virginia .....	25.80	26.90	27.70	27.40	27.30	26.20
Washington .....	24.10	25.40	25.90	25.70	25.00	24.30
Wisconsin .....	23.80	25.70	25.70	26.20	24.70	23.20
United States .....	23.50	24.80	25.10	25.30	24.20	23.20
State	July	August	September	October	November	December
	(dollars per cwt)	(dollars per cwt)	(dollars per cwt)	(dollars per cwt)	(dollars per cwt)	(dollars per cwt)
Arizona .....	23.50	24.00	24.60	23.60	21.80	19.60
California .....	21.59	22.60	23.62	22.93	20.52	17.90
Colorado .....	23.30	24.10	25.60	24.80	23.40	21.60
Florida .....	28.20	29.20	29.80	28.80	27.30	26.90
Idaho .....	22.40	23.20	25.10	24.20	22.40	19.40
Illinois .....	23.80	24.80	26.60	26.20	24.10	21.20
Indiana .....	23.50	24.70	26.30	25.20	23.50	21.20
Iowa .....	23.80	24.70	26.40	25.60	23.70	20.90
Kansas .....	22.90	23.60	25.70	25.10	23.60	20.60
Michigan .....	23.70	24.40	26.20	24.30	23.00	20.50
Minnesota .....	23.70	24.60	27.10	26.50	24.40	20.50
New Mexico .....	21.10	21.90	23.80	23.50	21.10	19.40
New York .....	25.20	26.20	27.30	25.60	23.80	22.30
Ohio .....	23.90	24.90	26.30	25.20	23.60	21.80
Oregon .....	24.90	25.70	28.10	27.00	24.90	21.70
Pennsylvania .....	25.30	26.50	26.30	26.30	24.40	22.60
South Dakota .....	23.70	24.70	26.60	26.20	24.50	21.20
Texas .....	23.40	24.30	26.10	25.60	23.90	20.70
Utah .....	22.50	23.80	25.00	24.90	23.80	21.50
Vermont .....	25.30	26.20	27.40	25.90	24.10	22.80
Virginia .....	26.60	27.90	28.70	27.80	26.30	25.00
Washington .....	24.60	25.30	26.70	25.10	22.70	21.30
Wisconsin .....	23.40	24.30	26.60	26.10	24.30	20.70
United States .....	23.30	24.20	25.70	24.90	23.00	20.40

**Prices Received for All Milk Sold at Plants, Monthly Fat Test – States and United States: 2013**

State	January	February	March	April	May	June
	(percent)	(percent)	(percent)	(percent)	(percent)	(percent)
Arizona .....	3.63	3.56	3.49	3.47	3.44	3.43
California .....	3.90	3.82	3.74	3.69	3.66	3.65
Colorado .....	3.70	3.66	3.62	3.57	3.47	3.40
Florida .....	3.70	3.70	3.69	3.64	3.63	3.62
Idaho .....	3.91	3.85	3.80	3.76	3.67	3.63
Illinois .....	3.90	3.86	3.88	3.82	3.71	3.67
Indiana .....	3.86	3.87	3.88	3.79	3.68	3.62
Iowa .....	3.88	3.87	3.87	3.84	3.76	3.70
Kansas .....	3.86	3.82	3.78	3.71	3.57	3.50
Michigan .....	3.79	3.78	3.78	3.72	3.61	3.56
Minnesota .....	3.95	3.94	3.93	3.89	3.82	3.76
New Mexico .....	3.74	3.67	3.62	3.54	3.47	3.39
New York .....	3.80	3.81	3.78	3.74	3.67	3.64
Ohio .....	3.92	3.91	3.92	3.84	3.72	3.71
Oregon .....	4.01	3.92	3.92	3.85	3.77	3.76
Pennsylvania .....	3.81	3.81	3.78	3.74	3.65	3.60
South Dakota .....	4.05	4.02	4.00	3.96	3.91	3.85
Texas .....	3.97	3.90	3.87	3.80	3.75	3.67
Utah .....	3.94	3.88	3.80	3.75	3.65	3.60
Vermont .....	3.89	3.87	3.83	3.83	3.75	3.70
Virginia .....	3.82	3.81	3.79	3.70	3.63	3.59
Washington .....	4.01	3.92	3.92	3.85	3.77	3.76
Wisconsin .....	3.86	3.86	3.84	3.81	3.75	3.69
United States .....	3.87	3.83	3.79	3.74	3.68	3.64
State	July	August	September	October	November	December
	(percent)	(percent)	(percent)	(percent)	(percent)	(percent)
Arizona .....	3.46	3.48	3.51	3.58	3.58	3.62
California .....	3.62	3.65	3.72	3.83	3.85	3.88
Colorado .....	3.40	3.47	3.49	3.65	3.63	3.64
Florida .....	3.60	3.60	3.62	3.64	3.65	3.62
Idaho .....	3.60	3.66	3.73	3.89	3.90	3.93
Illinois .....	3.63	3.66	3.71	3.83	3.89	3.90
Indiana .....	3.57	3.62	3.66	3.75	3.85	3.88
Iowa .....	3.63	3.68	3.70	3.84	3.90	3.91
Kansas .....	3.40	3.51	3.52	3.68	3.81	3.91
Michigan .....	3.55	3.60	3.64	3.72	3.83	3.85
Minnesota .....	3.70	3.76	3.79	3.94	4.02	4.01
New Mexico .....	3.38	3.45	3.49	3.72	3.66	3.71
New York .....	3.57	3.62	3.73	3.81	3.90	3.87
Ohio .....	3.68	3.71	3.78	3.88	3.98	3.98
Oregon .....	3.73	3.74	3.82	3.98	4.03	4.08
Pennsylvania .....	3.57	3.61	3.67	3.74	3.84	3.86
South Dakota .....	3.80	3.84	3.84	4.02	4.08	4.06
Texas .....	3.66	3.72	3.76	3.89	3.95	4.00
Utah .....	3.55	3.60	3.71	3.87	3.90	3.95
Vermont .....	3.65	3.68	3.73	3.83	3.90	3.90
Virginia .....	3.55	3.57	3.63	3.72	3.80	3.80
Washington .....	3.73	3.74	3.82	3.98	4.03	4.08
Wisconsin .....	3.65	3.68	3.71	3.83	3.89	3.87
United States .....	3.60	3.65	3.70	3.82	3.87	3.89

**Prices Received for All Milk Sold at Plants, Monthly Fat Test – States and United States: 2014**

State	January	February	March	April	May	June
	(percent)	(percent)	(percent)	(percent)	(percent)	(percent)
Arizona .....	3.55	3.45	3.44	3.40	3.41	3.41
California .....	3.81	3.74	3.70	3.66	3.62	3.59
Colorado .....	3.61	3.63	3.59	3.53	3.49	3.43
Florida .....	3.64	3.63	3.59	3.53	3.51	3.52
Idaho .....	3.84	3.85	3.78	3.74	3.66	3.58
Illinois .....	3.88	3.86	3.85	3.76	3.70	3.61
Indiana .....	3.85	3.82	3.77	3.67	3.58	3.53
Iowa .....	3.86	3.83	3.82	3.75	3.69	3.63
Kansas .....	3.87	3.83	3.76	3.63	3.56	3.49
Michigan .....	3.84	3.81	3.78	3.69	3.63	3.56
Minnesota .....	3.98	3.94	3.93	3.88	3.83	3.75
New Mexico .....	3.63	3.58	3.55	3.50	3.45	3.40
New York .....	3.86	3.86	3.85	3.77	3.70	3.65
Ohio .....	3.96	3.93	3.87	3.76	3.68	3.64
Oregon .....	4.00	3.92	3.91	3.77	3.79	3.78
Pennsylvania .....	3.86	3.84	3.81	3.73	3.66	3.61
South Dakota .....	4.02	4.01	3.98	3.92	3.87	3.79
Texas .....	3.94	3.91	3.86	3.79	3.73	3.69
Utah .....	3.87	3.81	3.76	3.71	3.65	3.59
Vermont .....	3.88	3.86	3.86	3.80	3.75	3.70
Virginia .....	3.78	3.76	3.73	3.63	3.54	3.52
Washington .....	4.00	3.92	3.91	3.77	3.79	3.78
Wisconsin .....	3.86	3.84	3.81	3.76	3.71	3.65
United States .....	3.84	3.81	3.77	3.71	3.66	3.61
State	July	August	September	October	November	December
	(percent)	(percent)	(percent)	(percent)	(percent)	(percent)
Arizona .....	3.43	3.43	3.48	3.50	3.53	3.57
California .....	3.59	3.61	3.66	3.74	3.80	3.81
Colorado .....	3.42	3.44	3.53	3.57	3.66	3.70
Florida .....	3.56	3.58	3.64	3.69	3.70	3.65
Idaho .....	3.60	3.64	3.74	3.80	3.90	3.92
Illinois .....	3.60	3.65	3.73	3.84	3.93	3.98
Indiana .....	3.52	3.60	3.64	3.74	3.85	3.82
Iowa .....	3.63	3.60	3.70	3.79	3.86	3.82
Kansas .....	3.49	3.47	3.58	3.71	3.88	3.90
Michigan .....	3.56	3.61	3.65	3.74	3.81	3.78
Minnesota .....	3.76	3.77	3.87	3.96	4.01	3.96
New Mexico .....	3.40	3.44	3.54	3.65	3.73	3.70
New York .....	3.63	3.67	3.73	3.81	3.89	3.90
Ohio .....	3.63	3.67	3.70	3.81	3.92	3.91
Oregon .....	3.79	3.81	3.90	3.88	4.00	4.09
Pennsylvania .....	3.58	3.64	3.68	3.78	3.85	3.86
South Dakota .....	3.81	3.84	3.92	4.01	4.08	4.08
Texas .....	3.69	3.72	3.79	3.88	4.00	4.00
Utah .....	3.56	3.59	3.70	3.77	3.84	3.84
Vermont .....	3.68	3.71	3.76	3.82	3.92	3.93
Virginia .....	3.51	3.57	3.60	3.69	3.82	3.81
Washington .....	3.79	3.81	3.90	3.88	4.00	4.09
Wisconsin .....	3.66	3.68	3.76	3.84	3.89	3.85
United States .....	3.61	3.64	3.71	3.79	3.86	3.86



## Adjustment for Seasonal Variation - All Eggs and All Milk

Base prices used in calculating parity prices are averages of prices received by farmers for ten years; therefore, any seasonal variation is largely averaged out. To facilitate comparisons with parity prices, monthly prices for All Eggs and All Milk are adjusted for seasonal variation. The seasonally adjusted price is calculated by dividing the monthly price by the adjustment factor.

### Prices Received for All Eggs Adjusted for Seasonal Variation by Month – United States: 2011-2014

State	Prices received adjusted for seasonal variation, dollars per dozen											
	Dec <sup>1</sup>	Jan	Feb	Mar	Apr	May	Jun	Jul	Aug	Sep	Oct	Nov
2011 .....	0.871	0.758	0.900	0.759	1.100	1.010	1.090	1.010	1.150	1.020	1.040	0.909
2012 .....	1.000	0.813	0.866	0.913	0.966	1.000	1.080	1.050	1.080	1.260	1.010	1.020
2013 .....	0.934	1.020	0.981	1.090	0.976	1.400	1.070	1.090	1.040	1.070	1.040	1.140
2014 .....	1.130	1.180	1.350	1.150	1.410	1.350	1.240	1.280	1.040	1.100	1.170	1.330

<sup>1</sup> December preceding year.

### Prices Received for All Eggs as a Percentage of Parity Price by Month – United States: 2011-2014

State	Seasonally adjusted price as a percentage of parity price, percent											
	Dec <sup>1</sup>	Jan	Feb	Mar	Apr	May	Jun	Jul	Aug	Sep	Oct	Nov
2011 .....	38	32	38	31	45	41	44	41	47	41	42	37
2012 .....	40	32	34	36	37	39	42	40	41	48	38	39
2013 .....	36	39	38	42	38	54	41	42	40	42	40	45
2014 .....	45	45	51	43	51	48	44	46	38	40	42	48

<sup>1</sup> December preceding year.

### Prices Received for All Eggs Adjustment Factors by Month – United States: 2011-2014

State	Seasonal price adjustment factors, percent											
	Dec <sup>1</sup>	Jan	Feb	Mar	Apr	May	Jun	Jul	Aug	Sep	Oct	Nov
2011 .....	124	112	106	112	96	82	81	87	99	100	98	112
2012 .....	121	108	102	109	90	82	84	92	104	97	101	116
2013 .....	121	104	101	105	91	83	87	95	104	96	100	116
2014 .....	121	95	104	108	91	87	88	97	104	95	97	114

<sup>1</sup> December preceding year.

**Prices Received for All Milk Adjusted for Seasonal Variation by Month – United States: 2011-2014**

State	Prices received adjusted for seasonal variation, dollars per cwt											
	Dec <sup>1</sup>	Jan	Feb	Mar	Apr	May	Jun	Jul	Aug	Sep	Oct	Nov
2011 .....	15.50	16.60	19.30	21.80	20.90	20.80	21.70	22.00	21.60	20.30	18.70	19.50
2012 .....	19.10	19.10	18.00	18.00	17.70	17.20	17.10	17.20	17.90	18.90	19.90	20.50
2013 .....	19.90	19.70	20.00	20.10	20.50	20.80	20.40	19.60	19.50	19.60	19.80	20.50
2014 .....	21.70	23.40	24.70	25.50	26.30	25.30	24.30	24.10	24.20	25.00	23.70	21.80

<sup>1</sup> December preceding year.

**Prices Received for All Milk as a Percentage of Parity Price by Month – United States: 2011-2014**

State	Seasonally adjusted price as a percentage of parity price, percent											
	Dec <sup>1</sup>	Jan	Feb	Mar	Apr	May	Jun	Jul	Aug	Sep	Oct	Nov
2011 .....	33	35	41	45	42	42	44	44	44	41	38	39
2012 .....	38	38	36	36	35	34	33	33	35	36	38	39
2013 .....	38	38	39	39	40	41	40	38	38	40	39	41
2014 .....	44	45	47	48	48	46	44	44	44	46	43	40

<sup>1</sup> December preceding year.

**Prices Received for All Milk Adjustment Factors by Month – United States: 2011-2014**

State	Seasonal price adjustment factors, percent											
	Dec <sup>1</sup>	Jan	Feb	Mar	Apr	May	Jun	Jul	Aug	Sep	Oct	Nov
2011 .....	108	101	99	94	94	94	97	99	103	104	107	105
2012 .....	103	100	98	95	95	94	96	98	102	104	109	108
2013 .....	104	101	98	95	95	95	96	97	100	102	104	105
2014 .....	101	101	101	99	96	96	95	97	100	103	105	105

<sup>1</sup> December preceding year.

## Reliability of Prices Received Estimates

**Definition:** Prices received represent sales from producers to first buyers. They include all grades and qualities. The average commodity price from the survey multiplied by the total quantity marketed theoretically should give the total cash receipts for the commodity.

**Survey procedures:** Primary sales data used to determine grain prices were obtained from probability samples of about 1900 mills and elevators. These procedures ensure that virtually all grain moving into commercial channels has a chance of being included in the survey. Generally, States surveyed account for 90 percent or more of total United States production. Livestock prices are obtained from packers, stockyards, auctions, dealers, and market check data from AMS-USDA, private marketing organizations, and state commodity groups and agencies. Inter-farm sales of grain and livestock are not included since they represent very small percentages of the total sales. Grain marketed for seed is also excluded. Fruit and vegetable prices are obtained from sample surveys and market check data from AMS-USDA, private marketing organizations, state agencies, and universities.

**Summary and estimation procedures:** Survey quantities sold are expanded by strata to state levels and used to weight average strata prices to a state average. State prices are then weighted to a United States price based on expanded sales. Recommendations are prepared by the Regional Field Offices and reviewed by the Agricultural Statistics Board in Washington, D.C. State recommendations are reviewed for reasonableness with survey data, other States, and recent historic estimates.

**Revisions:** In general, revisions are made during annual commodity market year estimation time, following five-year Census revisions, or when later information is received. Revisions are published in monthly issues of *Agricultural Prices*.

**Reliability:** United States price estimates based on probability surveys generally have a sampling error of less than one percent for the major commodities such as corn, wheat, soybeans, cotton, and rice. Current methods of summarization for non-probability commodities are not designed directly to calculate sampling errors. However, analytical measures approximate the United States relative sampling errors at around five percent. Any non-sampling errors are attributed to such things as the inability to obtain correct information, differences in interpreting questions or definitions, mistakes in coding or processing the data, etc. Efforts are made at each step in the survey process to minimize these non-sampling errors.

After the Council on Food, Agricultural and Resource Economics (C-FARE) 2009 program review which included changes in farm production practices, plans were implemented to make necessary program improvements in the agricultural price program. The index group structure for prices received was modified to maintain a more universal structure and consistency with the required 1910-1914 series. Modifications implemented January 2014 include the following:

- Update the current 1990-1992 base reference period to 2011,
- Link the 1910-1914 series to the updated base reference period, 2011,
- Create index groups used universally by researchers, data users, and policymakers,
- Re-classify agricultural commodities into the index groups,
- Expand the commodity coverage for vegetable, melon, non-citrus, and tree nuts,
- Update monthly market weights, and
- Adjust (normalization) current five year moving average cash receipts and farm input cost weights.

Modifications implemented January 2015 include the following:

- Preliminary prices discontinued
- Annual index to replace the annual average index

## March Prices Paid by Farmers

The March Index of Prices Paid for Commodities and Services, Interest, Taxes, and Farm Wage Rates (PPITW), at 110 (2011=100), is up 0.9 percent from February but is unchanged from March 2014.

**Production index:** The March index, at 111, is unchanged from last month but is 0.9 percent lower than last year. Higher prices for feeder cattle, hay & forages, gasoline, and field crop seeds offset lower prices in March for complete feeds, nitrogen, other services, and supplements.

**Feed:** The March index, at 108, decreased 0.9 percent from February and is 6.9 percent below last March. Since February, lower prices for complete feeds, supplements, and concentrates more than offset higher prices for hay & forages and feed grains.

**Livestock and poultry:** The March index, at 156, increased 2.6 percent from last month and is 16 percent above last year. Since February, higher prices for feeder cattle more than offset lower prices for feeder pigs. The March feeder cattle price, at \$227.00 per cwt, is up \$8.00 per cwt from the February price. March feeder pigs averaged \$172.00 per cwt, down \$3.00 per cwt from February.

**Fertilizer:** The March index, at 90, is unchanged from February and is 7.2 percent below March a year ago. Since February, higher prices for mixed fertilizer and potash & phosphate offset lower prices for nitrogen.

**Chemicals:** The March index, at 106, is unchanged from February but is down 3.6 percent from last March. Compared with last month, higher prices for fungicides/other offset lower prices for insecticides.

**Fuels:** The March index, at 69, is up 1.5 percent from a month earlier but is down 30 percent from March 2014. Compared with last month, prices are higher for gasoline and diesel but lower for LP gas.

**Machinery:** The March index, at 115, is unchanged from February but is 3.6 percent above last March. Compared with last month, prices are slightly higher for self-propelled and other machinery.

**Consumer price index:** The February 2015 Consumer Price Index, as issued by the Bureau of Labor Statistics, for all urban consumers (CPI-U) increased 0.4 percent before seasonal adjustment to a level of 234.7722 (1982-1984=100). The January index is 233.707. For the 12 month period ending in February, the overall index decreased 0.4 percent.

## Prices Paid Indexes and Related Parity Ratios – United States: March 2015 with Comparisons

[Revised historical price indexes for months not shown are available at [www.nass.usda.gov](http://www.nass.usda.gov)]

Indexes and ratios	1910-1914 Base			2011 Base		
	March 2014	February 2015	March 2015	March 2014	February 2015	March 2015
	(percent)	(percent)	(percent)	(percent)	(percent)	(percent)
Prices paid by farmers for commodities, services, interest, taxes, and wage rates (PPITW) .....	2977	2957	2969	110	109	110
Production .....	2325	2305	2314	112	111	111
Feed .....	1279	1198	1195	116	109	108
Livestock and poultry .....	2641	2998	3087	134	152	156
Seeds .....	3749	3749	3755	114	114	114
Fertilizer .....	1172	1089	1084	97	90	90
Chemicals .....	988	955	955	110	106	106
Fuels .....	2764	1890	1920	99	68	69
Supplies and repairs .....	1238	1253	1254	105	106	106
Autos and trucks .....	3205	3240	3248	104	105	106
Machinery .....	6785	7021	7037	111	115	115
Building materials .....	2477	2502	2506	106	108	108
Services and rent .....	2301	2357	2352	(NA)	(NA)	(NA)
Services .....	(NA)	(NA)	(NA)	108	112	111
Rent .....	(NA)	(NA)	(NA)	108	110	110
Interest <sup>1</sup> .....	3504	3539	3539	96	97	97
Taxes <sup>2</sup> .....	6233	6376	6376	105	107	107
Wage rates .....	7826	7756	7756	109	108	108
Production, interest, taxes, and wage rates (PITW) .....	3125	3104	3115	111	110	110
Family living-CPI <sup>3</sup> .....	2245	2230	2243	105	104	105
Ratio (received/paid) .....	(NA)	(NA)	(NA)	101	91	93
Parity ratio <sup>4</sup> .....	39	35	36	(NA)	(NA)	(NA)
Parity ratio adjusted <sup>5</sup> .....	40	36	37	(NA)	(NA)	(NA)
PPITW adjusted for productivity <sup>6</sup> .....	1419	1399	1402	(NA)	(NA)	(NA)
Crop sector (PPITW) .....	(NA)	(NA)	(NA)	107	106	106
Livestock sector (PPITW) .....	(NA)	(NA)	(NA)	113	113	114
Farm sector (production) .....	(NA)	(NA)	(NA)	121	122	123
Non-farm sector (production) .....	(NA)	(NA)	(NA)	106	104	104

(NA) Not available.

<sup>1</sup> Interest per acre on farm real estate debt and interest rate on farm non-real estate debt.

<sup>2</sup> Farm real estate taxes payable per acre.

<sup>3</sup> Bureau of Labor Statistics, Consumer Price Index for all urban consumers (CPI-U), for the previous month converted by the USDA.

<sup>4</sup> Ratio of index of prices received to PPITW (1910-1914=100).

<sup>5</sup> Based on estimated cash receipts, from marketings and government payments, the preliminary adjustment factor is 1.026 for 2015 and the revised factor is 1.026 for 2014.

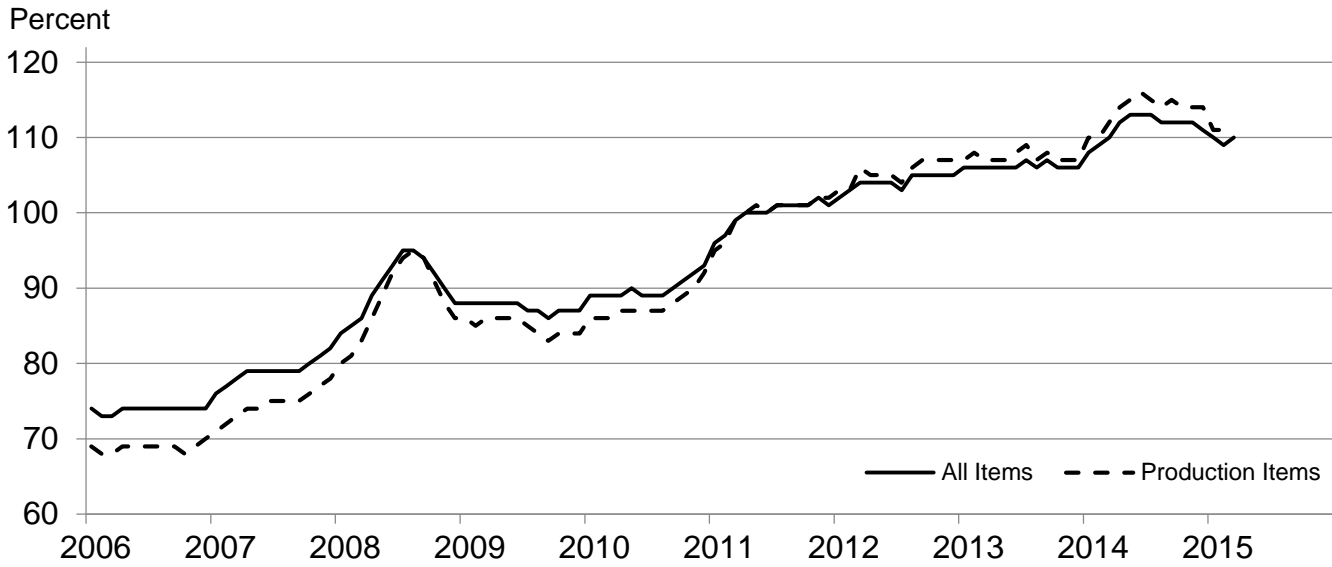
<sup>6</sup> PPITW is adjusted based on productivity trend for the prior 15 years.

# Prices Paid Indexes and Annual Weights for Input Components and Sub-components – United States: March 2015 with Comparisons

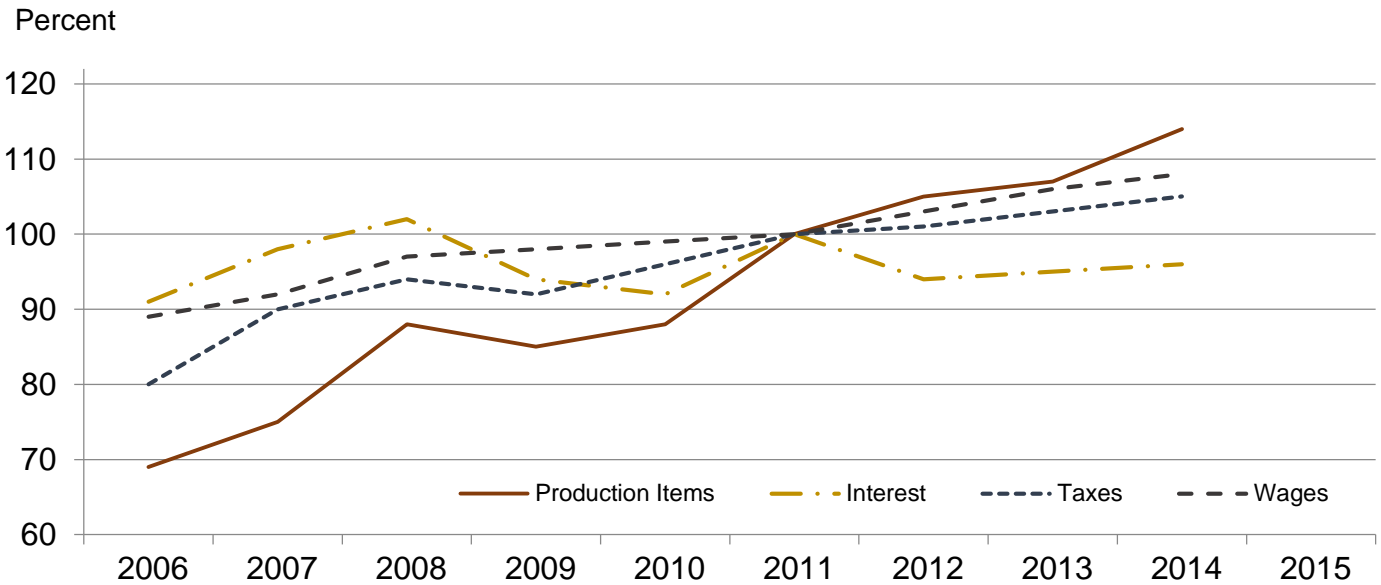
[Revised historical price indexes for months not shown are available at [www.nass.usda.gov](http://www.nass.usda.gov). Relative weights are a five year moving average]

	Relative weights		Indexes (2011=100)		
	2014	2015	March 2014	February 2015	March 2015
	(percent)	(percent)	(percent)	(percent)	(percent)
Production items .....	74.1	74.6	112	111	111
Feed .....	15.5	15.5	116	109	108
Feed grains .....	2.2	2.2	78	66	66
Complete feeds .....	7.6	7.6	124	117	116
Hay and forages .....	1.9	1.9	113	101	104
Concentrates .....	2.5	2.5	127	121	121
Supplements .....	1.3	1.3	120	120	118
Livestock and poultry .....	8.5	8.3	134	152	156
Feeder cattle .....	6.6	6.4	132	160	166
Feeder pigs .....	0.7	0.7	205	125	123
Milk cow replacements .....	0.7	0.7	101	140	140
Poultry .....	0.5	0.5	102	102	102
Seeds .....	4.9	5.0	114	114	114
Field crops .....	4.4	4.5	113	113	114
Grasses and legumes .....	0.5	0.5	123	123	120
Fertilizer .....	6.2	6.4	97	90	90
Mixed fertilizer .....	2.7	2.8	90	86	86
Nitrogen .....	2.6	2.7	106	96	94
Potash and phosphate .....	0.9	0.9	96	89	90
Chemicals .....	3.1	3.2	110	106	106
Herbicides .....	1.9	2.0	110	107	107
Insecticides .....	0.7	0.7	114	107	107
Fungicides and other .....	0.4	0.5	104	103	103
Fuels .....	4.1	4.0	99	68	69
Diesel .....	2.6	2.5	99	65	65
Gasoline .....	0.9	0.8	99	63	68
LP gas .....	0.7	0.7	98	83	81
Supplies and repairs .....	4.3	4.3	105	106	106
Supplies .....	1.4	1.4	105	106	107
Repairs .....	2.8	2.9	105	106	106
Autos and trucks .....	1.1	1.1	104	105	106
Autos .....	0.1	0.1	102	102	102
Trucks .....	1.0	1.0	105	106	106
Machinery .....	4.9	5.2	111	115	115
Tractors .....	1.1	1.1	108	110	110
Self-propelled .....	2.0	2.1	113	118	119
Other machinery .....	1.9	2.0	111	115	115
Building materials .....	3.7	3.7	106	108	108
Services .....	10.8	10.8	108	112	111
Custom rates .....	1.1	1.1	109	109	109
Other services .....	9.7	9.7	108	112	112
Rent .....	6.9	7.1	108	110	110
Cash .....	3.7	3.8	109	110	110
Share .....	3.2	3.3	108	110	110
Interest .....	2.6	2.3	96	97	97
Taxes .....	2.9	2.8	105	107	107
Wage rates .....	6.4	6.4	109	108	108
Family living-CPI .....	14.0	13.9	105	104	105

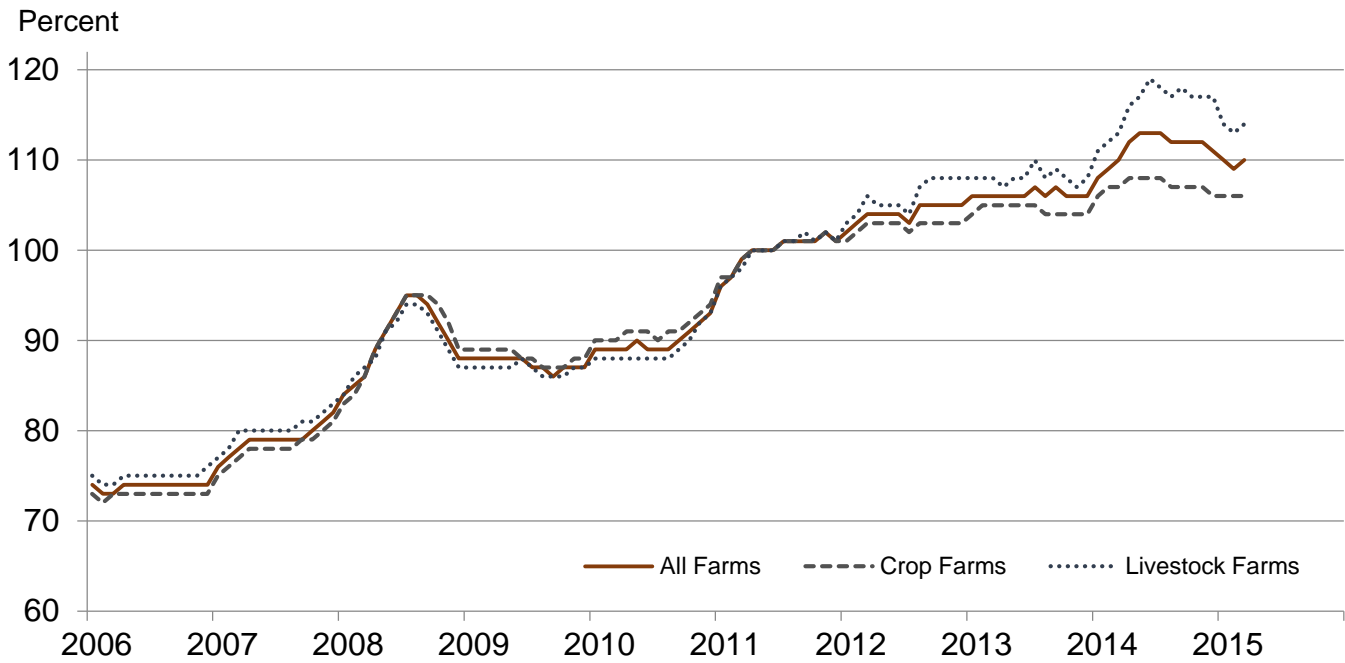
## Paid Indexes by Month, All Items and Production Items – United States: 2011=100



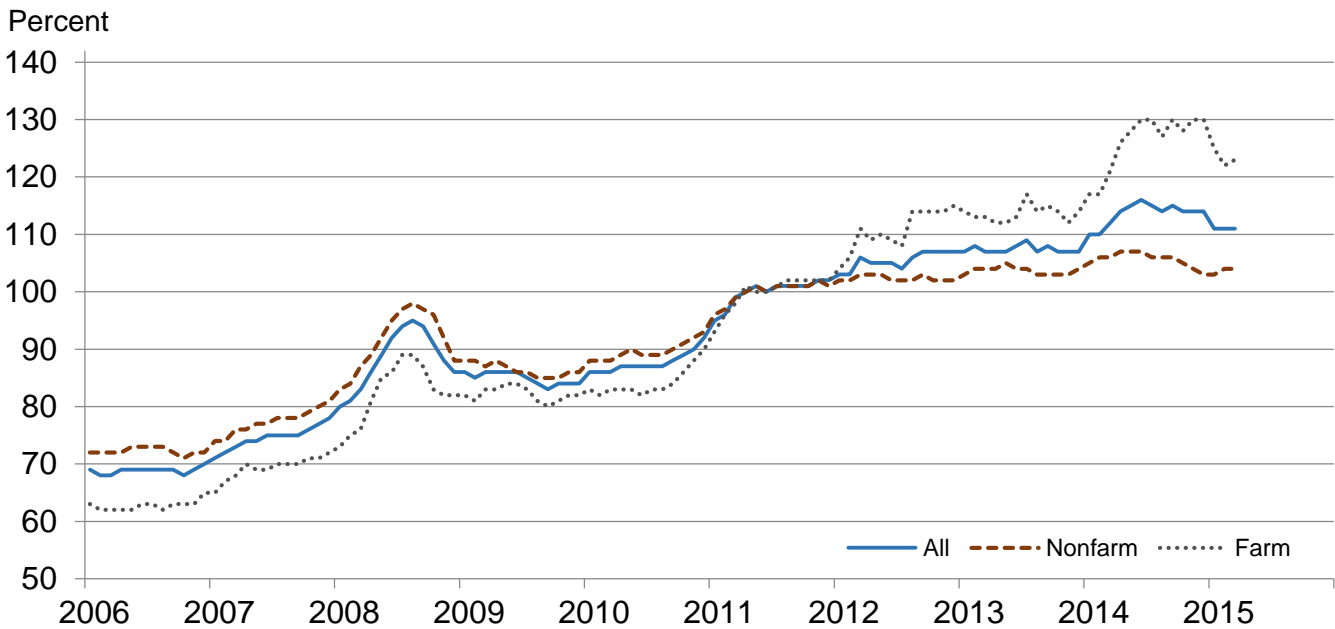
## Paid Indexes, Annual Averages, Production Items, Interest, Taxes, and Wages – United States: 2011=100



## Paid Indexes by Farm Type and Month, All Items – United States: 2011=100

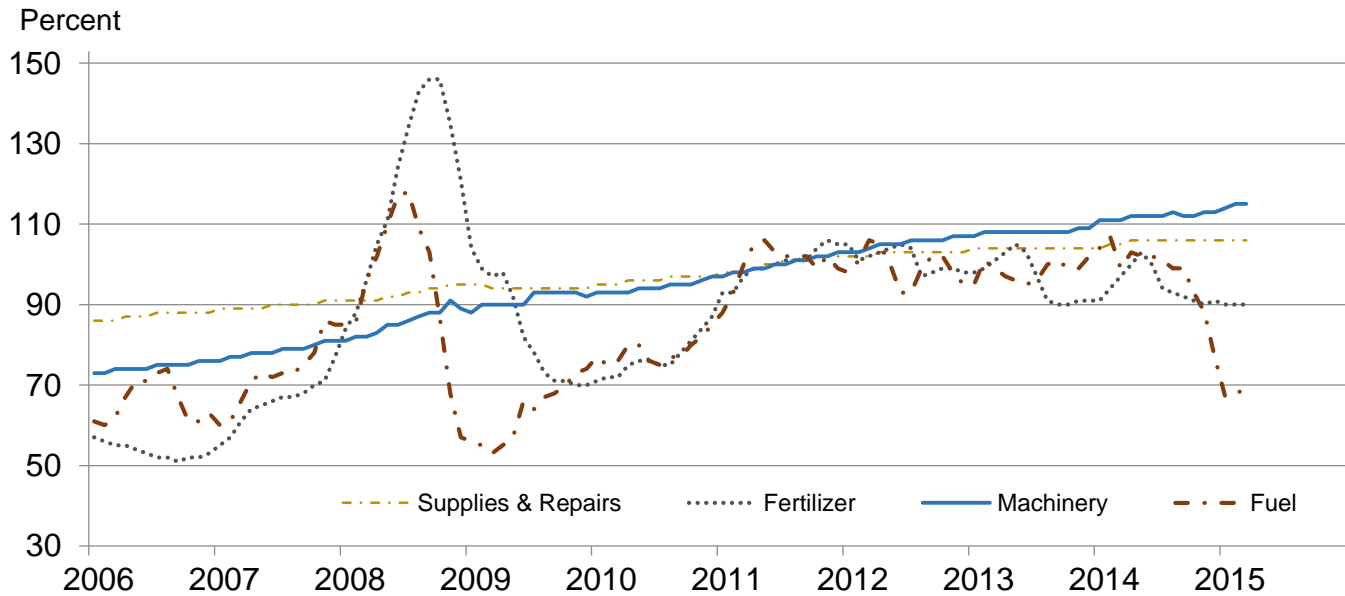


## Paid Indexes by Origin and Month, All Production Items – United States: 2011=100

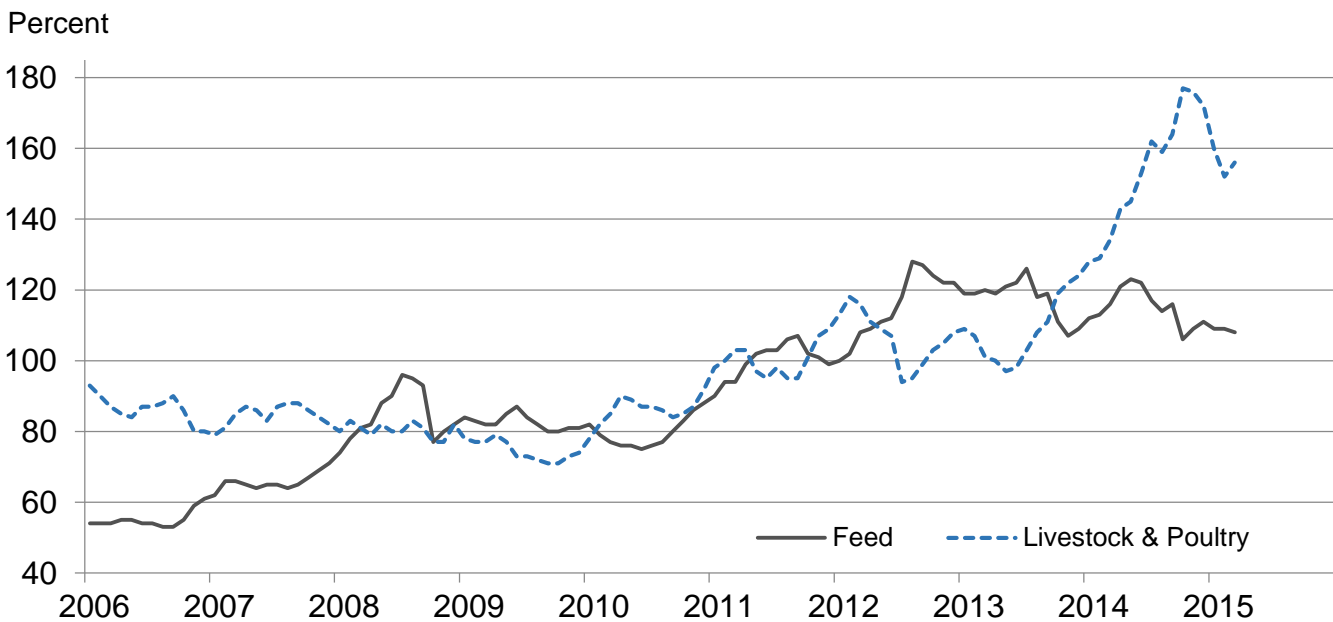




## Paid Indexes by Non-Farm Sector and Month, Supplies & Repairs, Fertilizer, Machinery, and Fuel – United States: 2011=100



## Paid Indexes by Month, Feed and Livestock & Poultry – United States: 2011=100



## Feed Price Ratios – United States: March 2015 with Comparisons

Feed price ratio <sup>1</sup>	March 2014	February 2015	March 2015
Broiler-feed: pounds of broiler grower feed equal in value to 1 pound of broiler, live weight <sup>2</sup> .....	4.6	5.0	5.4
Market egg feed: pounds of laying feed equal in value to 1 dozen eggs <sup>3</sup> .....	8.9	12.2	15.3
Hog-corn: bushels of corn equal in value to 100 pounds of hog, live weight .....	18.1	13.3	13.2
Milk-feed: pounds of 16% mixed dairy feed equal in value to 1 pound of whole milk <sup>4</sup> .....	2.54	2.02	2.00
Steer & heifer-corn: bushels of corn equal in value to 100 pounds of steer & heifers, live weight .....	33.2	42.5	42.5
Turkey-feed: pounds of turkey grower equal in value to 1 pound of turkey, live weight <sup>5</sup> .....	5.3	6.6	6.8

<sup>1</sup> Effective January 1995, prices of commercial prepared feeds are based on current United States prices received for corn, soybeans, alfalfa hay, and all wheat.

<sup>2</sup> The price of commercial prepared broiler feed is based on current United States prices received for corn and soybeans. The modeled feed uses 58 percent corn and 42 percent soybeans.

<sup>3</sup> The price of commercial prepared layer feed is based on current United States prices received for corn and soybeans. The modeled feed uses 75 percent corn and 25 percent soybeans.

<sup>4</sup> The price of commercial prepared dairy feed is based on current United States prices received for corn, soybeans, and alfalfa. The modeled feed uses 51 percent corn, 8 percent soybeans, and 41 percent alfalfa.

<sup>5</sup> The price of commercial prepared turkey feed is based on current United States prices received for corn, soybeans, and wheat. The modeled feed used 51 percent corn, 28 percent soybeans, and 21 percent wheat.

## Prices Received Used to Calculate Feed Price Ratios – United States: March 2015 with Comparisons

[Price data source for livestock and poultry commodities is United States Department of Agriculture's Agriculture Marketing Service]

Item	March 2014	February 2015	March 2015
	(dollars)	(dollars)	(dollars)
Broilers, live ..... pound	0.650	0.540	0.590
Eggs, market ..... dozen	1.050	1.120	1.410
Hogs, all .....cwt	81.90	50.40	50.30
Milk, all .....cwt	25.10	16.80	16.60
Steers and heifers .....cwt	150.00	161.00	162.00
Turkeys, live ..... pound	0.683	0.669	0.683
Corn ..... bushel	4.52	3.79	3.81
Hay, alfalfa ..... ton	193.00	172.00	172.00
Soybeans ..... bushel	13.70	9.92	9.84
Wheat, all ..... bushel	6.74	5.89	5.70

## Prices Paid for Feeder Livestock – United States: March 2015 with Comparisons

[Price data source is United States Department of Agriculture's Agriculture Marketing Service]

Item	March 2014	February 2015	March 2015
	(dollars)	(dollars)	(dollars)
Feeder cattle & calves .....cwt	181.00	219.00	227.00
Feeder pigs .....cwt	287.00	175.00	172.00

## Reliability of Prices Paid Estimates

**Definition:** Prices paid by farmers represent the average costs of inputs purchased by farmers and ranchers to produce agricultural commodities. Conceptually, the average price when multiplied by quantity purchased should equal total producer expenditures for the item.

**Survey procedures:** The prices paid data are obtained from establishments that sell goods and services to farmers and ranchers. Annually, about 8,500 firms are randomly selected from lists by type of item sold with an average response rate in the range of 75-80 percent. Firms are asked to report the price for the specified item "most commonly bought by farmers" or that was the "volume seller". Approximately 135 items are surveyed each March to represent all production input items purchased. The survey reference period for most items is the five business days centered at the 15th of the month. Separate prices paid surveys are conducted for agricultural chemicals, fuels, feed, fertilizer, machinery, and seed.

**Summary and estimation procedures:** The annual March Prices Paid Survey is summarized as a non-probability survey. Average prices reported are aggregated to the region and United States level using weights available from expenditure data and other administrative sources. Price recommendations are prepared by the Regional Field Offices and Headquarters for review by the Agricultural Statistics Board in Washington, D.C. Also, the change in price level for individual items surveyed are combined to the regional and United States levels, and are published as prices paid indexes referenced to a specific base period. Prices paid indexes for new autos and trucks, building materials, farm supplies, motor supplies, and marketing containers are updated based on price changes measured in selected Bureau of Labor Statistics (BLS) indexes.

**Revisions:** Any revisions are published in the monthly and in annual issues of Agricultural Prices. The basis for revision must be supported by additional data that directly affect the level of the estimate. More revisions are likely for March when separate prices paid surveys are conducted, in lieu of BLS indexes, by the USDA to measure price change.

**Reliability:** Current methods of summarization for the March data are not designed directly to calculate sampling errors. However, analytical measures approximate the United States relative sampling errors for major items around 10 percent. Any non-sampling errors are attributed to such things as the inability to obtain correct information, differences in interpreting questions or definitions, mistakes in coding or processing the data, etc. Efforts are made at each step in the survey process to minimize these non-sampling errors.

**Program change:** Effective January 2014, the National Agricultural Statistics Service modified the five-year moving weights and updated the base reference period.

As of January 2014, the 1990-1992 base reference period is updated to 2011. Five-year moving average weights are adjusted (normalized) to minimize the effects of price changes. The 1910-1914=100 price indexes, required by statute for computing parity prices, were linked forward based on the changes in the new 2011=100 indexes. The new indexes were constructed by multiplying the ratios of the current prices to the base period prices by the moving average weights.

## Information Contacts

### General

Troy Joshua, Chief, Environmental, Economics and Demographics Branch ..... (202) 720-6146

### Crop Prices Received

Lance Honig, Chief, Crops Branch ..... (202) 720-2127

Anthony Prillaman, Head, Field Crops Section ..... (202) 720-2127

Angie Considine – Cotton, Cotton Ginnings, Sorghum ..... (202) 720-5944

Tony Dahlman – Crop Weather, Barley ..... (202) 720-7621

Chris Hawthorn – Corn, Flaxseed, Proso Millet ..... (202) 720-9526

James Johanson – County Estimates, Hay ..... (202) 690-8533

Jean Porter – Oats, Rye, Wheat ..... (202) 720-8068

Bianca Pruneda – Peanuts, Rice ..... (202) 720-7688

Travis Thorson – Soybeans, Sunflower, Other Oilseeds ..... (202) 720-7369

Jorge Garcia-Pratts, Head, Fruits, Vegetables and Special Crops Section ..... (202) 720-2127

Vincent Davis – Fresh and Processing Vegetables, Onions, Strawberries ..... (202) 720-2157

Fleming Gibson – Citrus, Coffee, Grapes, Sugar Crops, Tropical Fruits ..... (202) 720-5412

Greg Lemmons – Berries, Cranberries, Potatoes, Sweet Potatoes ..... (202) 720-4285

Dave Losh – Hops ..... (360) 709-2400

Dan Norris – Austrian Winter Peas, Dry Edible Peas, Lentils, Mint, Mushrooms, Peaches, Pears,

Wrinkled Seed Peas, Dry Beans ..... (202) 720-3250

Daphne Schauber – Floriculture, Maple Syrup, Nursery, Tree Nuts ..... (202) 720-4215

Chris Singh – Apples, Apricots, Cherries, Plums, Prunes, Tobacco ..... (202) 720-4288

### Livestock Prices Received

Dan Kerestes, Chief, Livestock Branch ..... (202) 720-3570

Scott Hollis, Head, Livestock Section ..... (202) 720-3570

Travis Averill – Cattle and Cattle on Feed ..... (202) 720-3040

Doug Bounds – Hogs and Pigs ..... (202) 720-3106

Mike Miller – Milk, Milk Cows ..... (202) 720-3278

Evan Schulz – Sheep and Goats ..... (202) 720-6147

Bruce Boess, Head, Poultry and Specialty Commodities Section ..... (202) 720-3570

Heidi Gleich – Broilers ..... (202) 720-0585

Michael Klamm – Turkeys ..... (202) 690-3237

Kim Linonis – Eggs ..... (202) 690-8632

Josh O’Rear – Honey ..... (202) 690-3676

### Indexes, Prices Paid, and Parity Prices

Troy Joshua, Chief, Environmental, Economics and  
Demographics Branch ..... (202) 720-6146

Tony Dorn, Head, Economics Section ..... (202) 690-3223

Daryl Brinkman – Prices Received Indexes, Parity Prices ..... (202) 720-8844

Greg Gholson – Prices Received Indexes, Parity Prices, Prices Paid ..... (202) 690-1348

Joe Hagedorn – Cash Rents, Grazing Fees ..... (202) 690-3231

Judy McDermott – Prices Paid Indexes, Prices Paid for Feed, Fertilizer, Chemicals, Seeds, Fuels,  
Farm Supplies and Repairs, Farm Machinery, Feeder Livestock, Poultry Chicks, Feed Price Ratios ..... (202) 690-3229

## Access to NASS Reports

For your convenience, you may access NASS reports and products the following ways:

- All reports are available electronically, at no cost, on the NASS web site: <http://www.nass.usda.gov>
- Both national and state specific reports are available via a free e-mail subscription. To set-up this free subscription, visit <http://www.nass.usda.gov> and in the “Follow NASS” box under “Receive reports by Email,” click on “National” or “State” to select the reports you would like to receive.

For more information on NASS surveys and reports, call the NASS Agricultural Statistics Hotline at (800) 727-9540, 7:30 a.m. to 4:00 p.m. ET, or e-mail: [nass@nass.usda.gov](mailto:nass@nass.usda.gov).

The U.S. Department of Agriculture (USDA) prohibits discrimination against its customers, employees, and applicants for employment on the basis of race, color, national origin, age, disability, sex, gender identity, religion, reprisal, and where applicable, political beliefs, marital status, familial or parental status, sexual orientation, or all or part of an individual's income is derived from any public assistance program, or protected genetic information in employment or in any program or activity conducted or funded by the Department. (Not all prohibited bases will apply to all programs and/or employment activities.)

If you wish to file a Civil Rights program complaint of discrimination, complete the [USDA Program Discrimination Complaint Form](#) (PDF), found online at [http://www.ascr.usda.gov/complaint\\_filing\\_cust.html](http://www.ascr.usda.gov/complaint_filing_cust.html), or at any USDA office, or call (866) 632-9992 to request the form. You may also write a letter containing all of the information requested in the form. Send your completed complaint form or letter to us by mail at U.S. Department of Agriculture, Director, Office of Adjudication, 1400 Independence Avenue, S.W., Washington, D.C. 20250-9410, by fax (202) 690-7442 or email at [program.intake@usda.gov](mailto:program.intake@usda.gov).

## Price Program Quick Stats Links

Economics and Prices

[http://www.nass.usda.gov/Statistics\\_by\\_Subject/Economics\\_and\\_Prices/index.asp](http://www.nass.usda.gov/Statistics_by_Subject/Economics_and_Prices/index.asp)

January 2014 Price Program Update

[http://www.nass.usda.gov/Surveys/Guide\\_to\\_NASS\\_Surveys/Prices/updates.pdf](http://www.nass.usda.gov/Surveys/Guide_to_NASS_Surveys/Prices/updates.pdf)

January 2015 Price Program Update

[http://www.nass.usda.gov/Surveys/Guide\\_to\\_NASS\\_Surveys/Prices/update2015.pdf](http://www.nass.usda.gov/Surveys/Guide_to_NASS_Surveys/Prices/update2015.pdf)

April 2015 Price Program Update

[http://www.nass.usda.gov/Surveys/Guide\\_to\\_NASS\\_Surveys/Prices/updateApr2015.pdf](http://www.nass.usda.gov/Surveys/Guide_to_NASS_Surveys/Prices/updateApr2015.pdf)