



# Agricultural Prices

ISSN: 1937-4216

Released June 29, 2015, by the National Agricultural Statistics Service (NASS), Agricultural Statistics Board, United States Department of Agriculture (USDA).

## May Farm Prices Received Index Up 3.9 percent

The May Prices Received Index (Agricultural Production), at 107, increased 3.9 percent from April. At 90, the Crop Production Index advanced 1.1 percent. The Livestock Production Index increased 5.2 percent to 122. Producers received higher prices for eggs, hogs, and broilers. Lower prices were realized for cattle, corn, and tomatoes. In addition to prices, the indexes are impacted by the five-year average monthly mix of commodities producers market. Increased monthly movement of cattle, hay, sweet corn, and broilers offset the decreased marketing of soybeans, calves, hogs, and apples.

The Prices Received Index is down 7.0 percent from the previous year. The Food Commodities Index, at 115, is up 3.6 percent from the previous month but is 8.0 percent lower than May 2014.

## May Prices Paid Index Down 0.9 Percent

The May Index of Prices Paid for Commodities and Services, Interest, Taxes, and Farm Wage Rates (PPITW), at 109, is down 0.9 percent from April and 3.5 percent below May 2014. Lower prices in May for complete feeds, concentrates, LP gas, and supplements more than offset higher prices for nitrogen, diesel, gasoline, and mixed fertilizer.

## Prices Received, Prices Paid, and Ratio of Prices Received to Prices Paid Indexes 2011 Base – United States: May 2015 with Comparisons

Index Group	May 2014	April 2015	May 2015
Prices received by farmers .....	115	103	107
Prices paid by farmers .....	113	110	109
Ratio of prices received to prices paid .....	102	94	98

## Contents

Prices Received by Farmers .....	4
Prices Received Indexes, 2011 Base – United States: May 2015 with Comparisons .....	5
Prices Received Indexes, 1910-1914 Base – United States: May 2015 with Comparisons .....	5
Prices Received Indexes, 2011 Base by Month for Selected Groups – United States: 2014 and 2015 .....	5
Prices Paid Indexes, 2011 Base by Month for Selected Groups – United States: 2014 and 2015 .....	6
Received and Paid Indexes, Annual Average – United States: 2011=100 Chart .....	6
Crop Farm Received and Paid Indexes, All Items by Quarter – United States: 2011=100 Chart .....	7
Livestock Farm Received and Paid Indexes All Items by Quarter – United States: 2011=100 Chart .....	7
Received Indexes by Month, Livestock Product, All Product, and All Crop – United States: 2011=100 Chart .....	8
Received Indexes by Month, Food Grain, Feed Grain, and Oilseed – United States: 2011=100 Chart .....	8
Received Indexes by Month, Fruit & Tree Nut and Commercial Vegetable – United States: 2011=100 Chart .....	9
Received Indexes by Month, Meat Animal, Dairy Product, and Poultry & Egg – United States: 2011=100 Chart .....	9
Prices Received for Field Crops and Fruits – United States: May 2015 with Comparisons .....	10
Prices Received for Vegetables and Livestock – United States: May 2015 with Comparisons .....	11
Prices Received for Corn by Month – United States Chart .....	12
Prices Received for Wheat by Month – United States Chart .....	12
Prices Received for Upland Cotton by Month – United States Chart .....	13
Prices Received for Soybeans by Month – United States Chart .....	13
Prices Received for Cattle by Month – United States Chart .....	14
Prices Received for Milk by Month – United States Chart .....	14
Prices Received for Hogs by Month – United States Chart .....	15
Prices Received for Poultry by Month – United States Chart .....	15
Prices Received for All Wheat, Corn, and Soybeans by Month – United States: 2015 with Comparisons .....	16
Prices Received for Beef Cattle and All Hogs by Month – United States: 2015 with Comparisons .....	16
Prices Received for All Wheat – States and United States: May 2015 with Comparisons .....	17
Prices Received for Winter Wheat – States and United States: May 2015 with Comparisons .....	17
Prices Received for Durum Wheat – States and United States: May 2015 with Comparisons .....	18
Prices Received for Spring Wheat – States and United States: May 2015 with Comparisons .....	18
Prices Received for Oats – States and United States: May 2015 with Comparisons .....	18
Prices Received for All Barley – States and United States: May 2015 with Comparisons .....	19
Prices Received for Malting Barley – States: May 2015 with Comparisons .....	19
Prices Received for Feed Barley – States: May 2015 with Comparisons .....	19
Prices Received for Sorghum Grain – States and United States: May 2015 with Comparisons .....	19
Prices Received for Corn – States and United States: May 2015 with Comparisons .....	20
Prices Received for Soybeans – States and United States: May 2015 with Comparisons .....	20
Prices Received for Dry Beans – States and United States: May 2015 with Comparisons .....	21
Prices Received for Peanuts (in shell) – States and United States: May 2015 with Comparisons .....	21
Prices Received for Sunflower – States and United States: May 2015 with Comparisons .....	21
Prices Received for Canola – States and United States: May 2015 with Comparisons .....	21
Prices Received for Upland Cotton and Cottonseed – States and United States: May 2015 with Comparisons .....	22
Prices Received and Farm Marketings for Upland Cotton and Rice – United States: May 2015 with Comparisons .....	22
Prices Received for Flaxseed – States and United States: May 2015 with Comparisons .....	22
Prices Received for Hay by Type – States and United States: May 2015 with Comparisons .....	23
Prices Received for Apples – States and United States: May 2015 with Comparisons .....	23
Prices Received for Citrus Fruits by Utilization – States and United States: May 2014 .....	24

Prices Received for Citrus Fruits by Utilization – States and United States: April 2015 .....	25
Prices Received for Citrus Fruits by Utilization – States and United States: May 2015 .....	26
Prices Received for Potatoes – States and United States: May 2015 with Comparisons.....	27
Prices Received for All Milk – States and United States: May 2015 with Comparisons .....	28
Prices Received for Milk Cows – States and United States: April 2015 with Comparisons .....	29
Commodity Parity Prices and Price as Percent of Parity Price – United States: May 2015 with Comparisons .....	30
Commodity Parity Prices – United States: May 2015 with Comparisons .....	31
Marketing Year for Specified Commodities .....	33
Prices Received and Farm Marketings for All Barley by Month – United States: Marketing Years 2012-2013 through 2014-2015 .....	33
Prices Received and Farm Marketings for Malting Barley by Month – United States: Marketing Years 2012-2013 through 2014-2015 .....	34
Prices Received and Farm Marketings for Feed Barley by Month – United States: Marketing Years 2012-2013 through 2014-2015 .....	34
Prices Received and Farm Marketings for Oats by Month – United States: Marketing Years 2012-2013 through 2014-2015 .....	35
Prices Received for Sweet Potatoes, Market Year Average - States and United States: 2012-2014.....	35
Prices Received and Farm Marketings for All Wheat by Month – United States: Marketing Years 2012-2013 through 2014-2015 .....	36
Prices Received for Winter Wheat by Month, Marketing Year Average – United States: 2012-2013 through 2014-2015 .....	36
Prices Received for Durum Wheat by Month, Marketing Year Average – United States: 2012-2013 through 2014-2015 .....	37
Prices Received for Other Spring Wheat by Month, Marketing Year Average – United States: 2012-2013 through 2014-2015 .....	37
Prices Received for Hard Red Spring Wheat by Month, Marketing Year Average – United States: 2012-2013 through 2014-2015 .....	38
Prices Received for Hard Red Winter Wheat by Month, Marketing Year Average – United States: 2012-2013 through 2014-2015 .....	38
Prices Received for Soft Red Winter Wheat by Month, Marketing Year Average – United States: 2012-2013 through 2014-2015 .....	39
Prices Received for White Wheat by Month, Marketing Year Average – United States: 2012-2013 through 2014-2015 .....	39
Reliability of Prices Received Estimates .....	40
Prices Paid by Farmers.....	41
Prices Paid Indexes and Related Parity Ratios – United States: May 2015 with Comparisons.....	42
Prices Paid Indexes and Annual Weights for Input Components and Sub-components – United States: May 2015 with Comparisons.....	43
Paid Indexes by Month, All Items and Production Items – United States: 2011=100 Chart.....	44
Paid Indexes, Annual Averages, Production Items, Interest, Taxes, and Wages – United States: 2011=100 Chart.....	44
Paid Indexes by Farm Type, All Items – United States: 2011=100 Chart.....	45
Paid Indexes by Origin, All Production Items – United States: 2011=100 Chart.....	45
Paid Indexes by Non-Farm Sector, Supplies & Repairs, Fertilizer, Machinery, and Fuel – United States: 2011=100 Chart.....	46
Paid Indexes by Month, Feed and Replacement Livestock – United States: 2011=100 Chart.....	46
Feed Price Ratios – United States: May 2015 with Comparisons.....	47
Prices Received Used to Calculate Feed Price Ratios – United States: May 2015 with Comparisons.....	47
Prices Paid for Feeder Livestock – United States: May 2015 with Comparisons.....	47
Reliability of Prices Paid Estimates .....	48
Information Contacts .....	49

## May Prices Received by Farmers

The May Prices Received Index for agricultural production at 107 percent of its 2011 base is up 3.9 percent from the April index but is 7.0 percent below the May 2014 index.

**Crop Production:** The May index, at 90, increased 1.1 percent from April but is 10 percent lower than May 2014. Index increases for fruit & tree nut production more than offset the index decrease for oilseed & grain production.

**Feed grain:** The May index, at 61, is down 3.2 percent from last month and is 23 percent below a year ago. The corn price, at \$3.62 per bushel, is down 13 cents from last month and \$1.09 from May 2014. At \$7.57 per cwt, sorghum grain is 33 cents less than April and 65 cents below May a year earlier.

**Food grain:** At 79, the index for May is 2.5 percent lower than the previous month and 23 percent below a year earlier. The May price for all wheat, at \$5.33 per bushel, is down 23 cents from April and is \$1.75 below May 2014.

**Oilseed:** At 77, the index for May is down 1.3 percent from April and is 32 percent lower than May 2014. The soybean price, at \$9.60 per bushel, decreased 10 cents from April and is \$4.80 below May a year earlier.

**Fruit and tree nut:** The May index, at 134, is up 6.3 percent from April and is 5.5 percent higher than a year earlier. Price increases for lemons and grapefruit more than offset price decreases during May for apples and oranges.

**Vegetable and melon:** At 102, the index for May is down 2.9 percent from the previous month and 3.8 percent below May 2014. Lower prices for tomatoes and potatoes during May more than offset higher prices for lettuce and celery.

**Other crop:** The May index, at 91, is up 5.8 percent from the previous month but is down 11 percent from May 2014. The all hay price, at \$175 per ton, is up \$2.00 from April but is \$27.00 lower than May 2014. At 64.1 cents per pound, the price for upland cotton is up 1.7 cents from April but is 17.6 cents below May 2014.

**Livestock Production:** The index for May, at 122, is 5.2 percent above the previous month but is down 6.2 percent from May a year earlier. Compared with a year ago, prices are higher for cattle, market eggs, calves, and turkeys. Prices for milk, hogs, and broilers are down from a year earlier.

**Meat animal:** At 130, the May index is up 2.4 percent from the previous month and 1.6 percent higher than a year earlier. At \$58.90 per cwt, the May hog price is up \$9.90 from April but is \$23.90 lower than a year earlier. The May beef cattle price of \$160 per cwt is down \$2.00 from the previous month but is \$14.00 higher than May 2014.

**Dairy:** The index for May, at 83, is up 1.2 percent from the previous month but is 31 percent lower than May a year earlier. The May all milk price of \$16.70 per cwt is up 20 cents from April but is down \$7.50 from May 2014.

**Poultry and egg:** At 146, the May index is up 13 percent from April and 0.7 percent above 2014. The May market egg price, at \$1.61 per dozen, increased 73.8 cents from April and is 63.9 cents above May 2014. The May broiler price, at 65.0 cents per pound, is up 1.0 cent from April but is 8.0 cents below a year earlier. At 75.9 cents per pound, the May turkey price is up 5.7 cents from the previous month and 3.3 cents from 2014.

## Prices Received Indexes, 2011 Base – United States: May 2015 with Comparisons

[Revised historical price indexes for months not shown are available at [www.nass.usda.gov](http://www.nass.usda.gov)]

Index Group	2011 Base		
	May 2014	April 2015	May 2015
	(percent)	(percent)	(percent)
Agricultural Production .....	115	103	107
Crop Production .....	100	89	90
Grain and oilseed .....	91	71	69
Feed grain .....	79	63	61
Food grain .....	102	81	79
Oilseed .....	113	78	77
Fruit and tree nut .....	127	126	134
Vegetable and melon .....	106	105	102
Other crop .....	102	86	91
Livestock Production .....	130	116	122
Meat animal .....	128	127	130
Cattle .....	129	146	143
Hog .....	125	74	89
Dairy .....	120	82	83
Poultry and egg .....	145	129	146
Food Commodity .....	125	111	115

## Prices Received Indexes, 1910-1914 Base – United States: May 2015 with Comparisons

[Revised historical price indexes for months not shown are available at [www.nass.usda.gov](http://www.nass.usda.gov)]

Index Group	1910 - 1914 Base		
	May 2014	April 2015	May 2015
	(percent)	(percent)	(percent)
Agricultural Production .....	1185	1068	1104
Crop Production .....	873	775	785
Livestock Production .....	1505	1352	1414

## Prices Received Indexes, 2011 Base by Month for Selected Groups – United States: 2014 and 2015

[Revised historical price indexes for months not shown are available at [www.nass.usda.gov](http://www.nass.usda.gov). Blank data cells indicate estimation period has not yet begun]

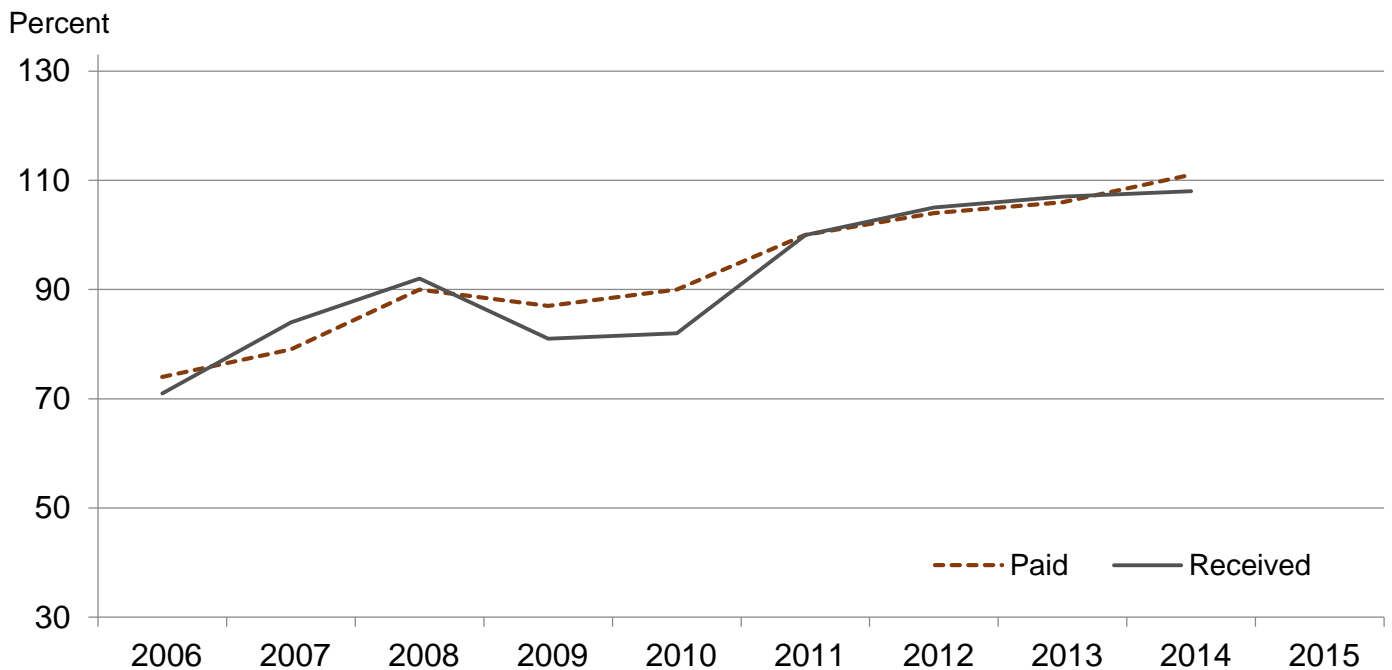
Month	2011 Base							
	Agricultural Production		Crop Production		Livestock Production		Food Commodities	
	2014	2015	2014	2015	2014	2015	2014	2015
	(percent)	(percent)	(percent)	(percent)	(percent)	(percent)	(percent)	(percent)
January .....	100	97	91	83	116	120	111	109
February .....	107	99	95	85	121	114	117	107
March .....	111	102	95	86	128	117	122	110
April .....	115	103	99	89	131	116	125	111
May .....	115	107	100	90	130	122	125	115
June .....	113		99		128		122	
July .....	110		93		133		120	
August .....	110		92		130		121	
September .....	108		88		132		120	
October .....	100		81		135		113	
November .....	102		82		134		120	
December .....	101		83		127		115	

## Prices Paid Indexes, 2011 Base by Month for Selected Groups – United States: 2014 and 2015

[Revised historical price indexes for months not shown are available at [www.nass.usda.gov](http://www.nass.usda.gov). Blank data cells indicate estimation period has not yet begun]

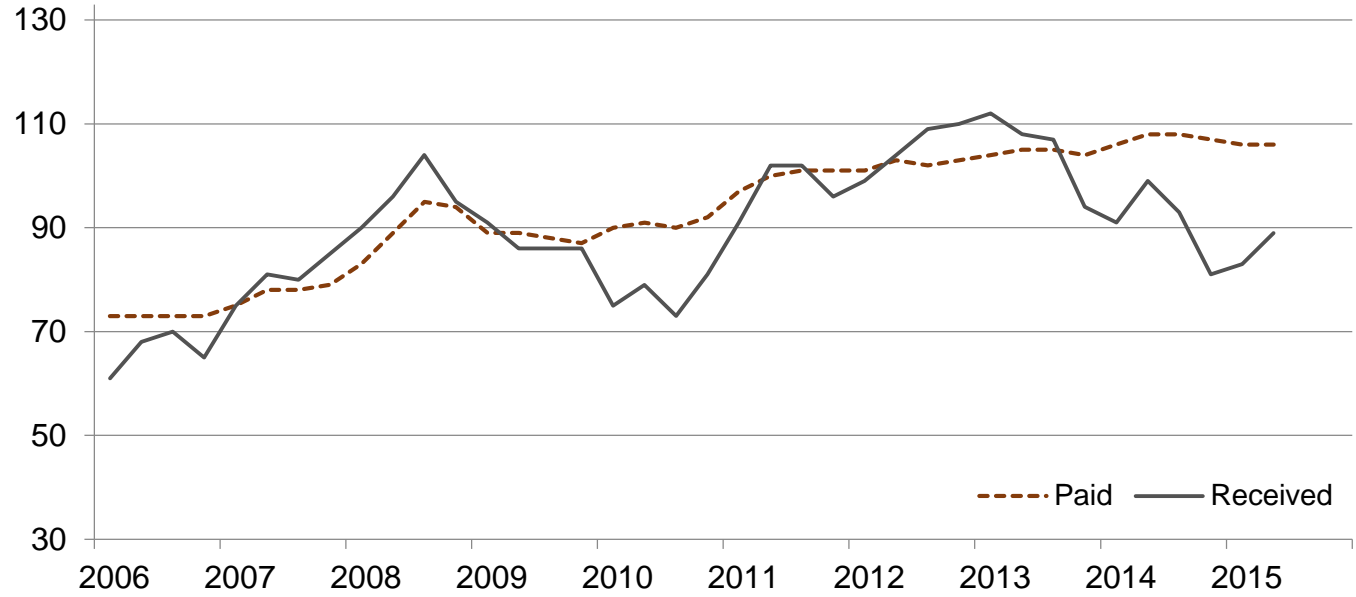
Month	2011 Base							
	All Items (PPITW)		Production		Crop Sector		Livestock Sector	
	2014	2015	2014	2015	2014	2015	2014	2015
	(percent)	(percent)	(percent)	(percent)	(percent)	(percent)	(percent)	(percent)
January .....	108	110	110	111	106	106	111	114
February .....	109	110	110	111	107	106	112	113
March .....	110	110	112	111	107	106	113	114
April .....	112	110	114	111	108	106	116	113
May .....	113	109	115	111	108	106	117	113
June .....	113		116		108		119	
July .....	113		115		108		118	
August .....	112		114		107		117	
September .....	112		115		107		118	
October .....	112		114		107		117	
November .....	112		114		107		117	
December .....	111		114		106		117	

## Received and Paid Indexes, Annual Average – United States: 2011=100



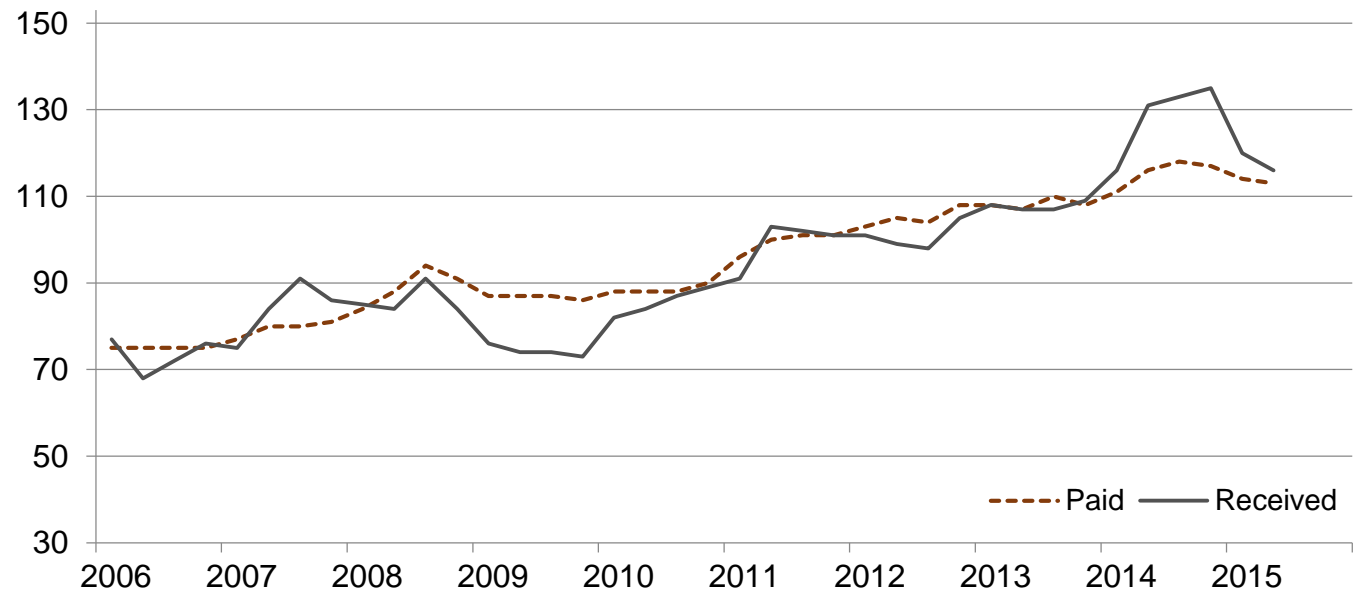
### Crop Farm Received and Paid Indexes, All Items by Quarter – United States: 2011=100

Percent

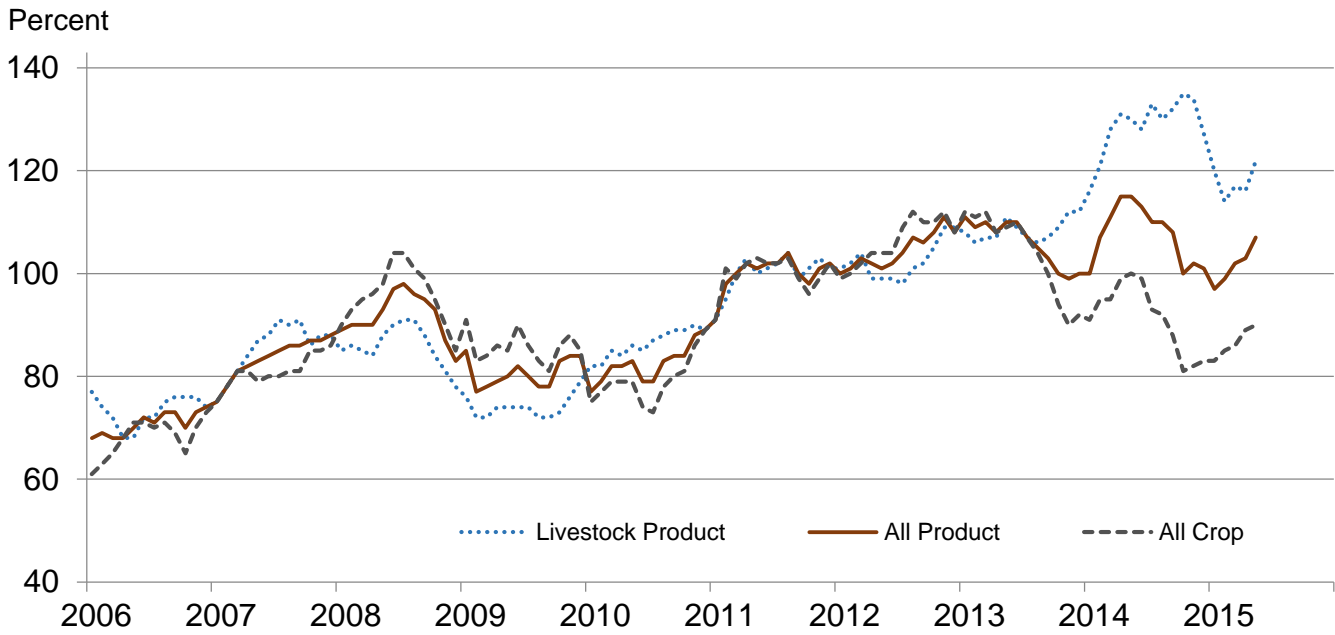


### Livestock Farm Received and Paid Indexes, All Items by Quarter – United States: 2011=100

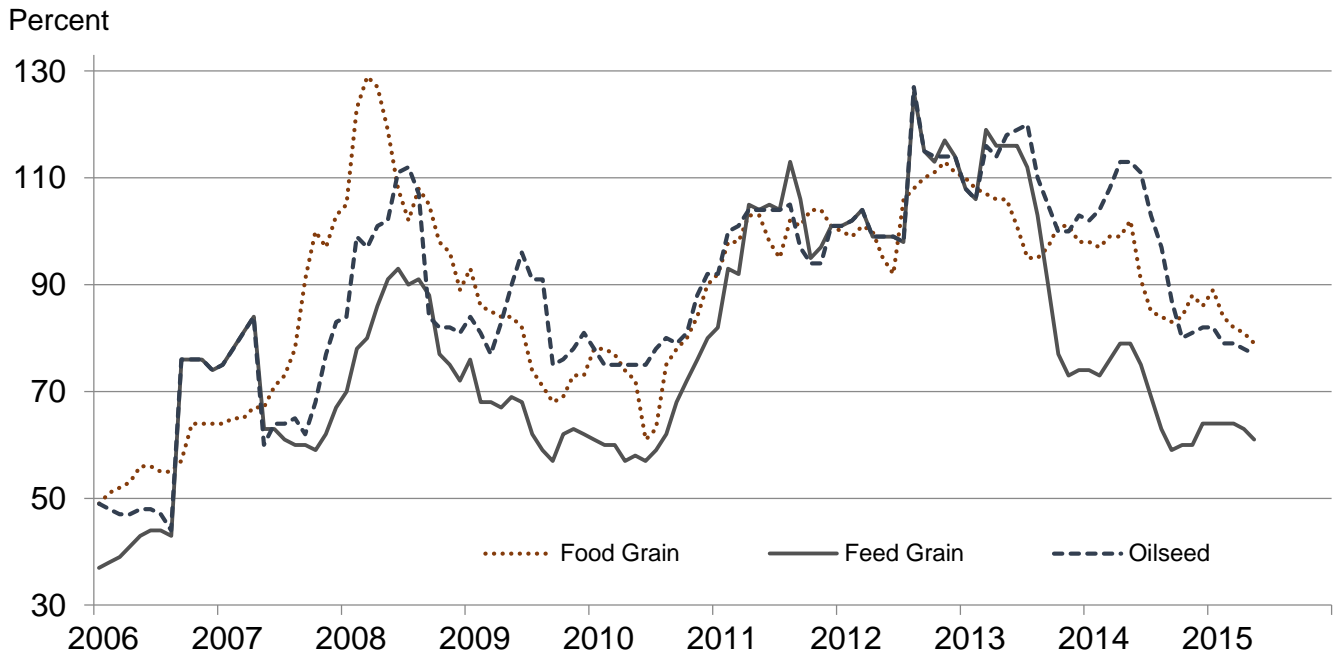
Percent



**Received Indexes by Month,  
Livestock Product, All Product, and All Crop –  
United States: 2011=100**

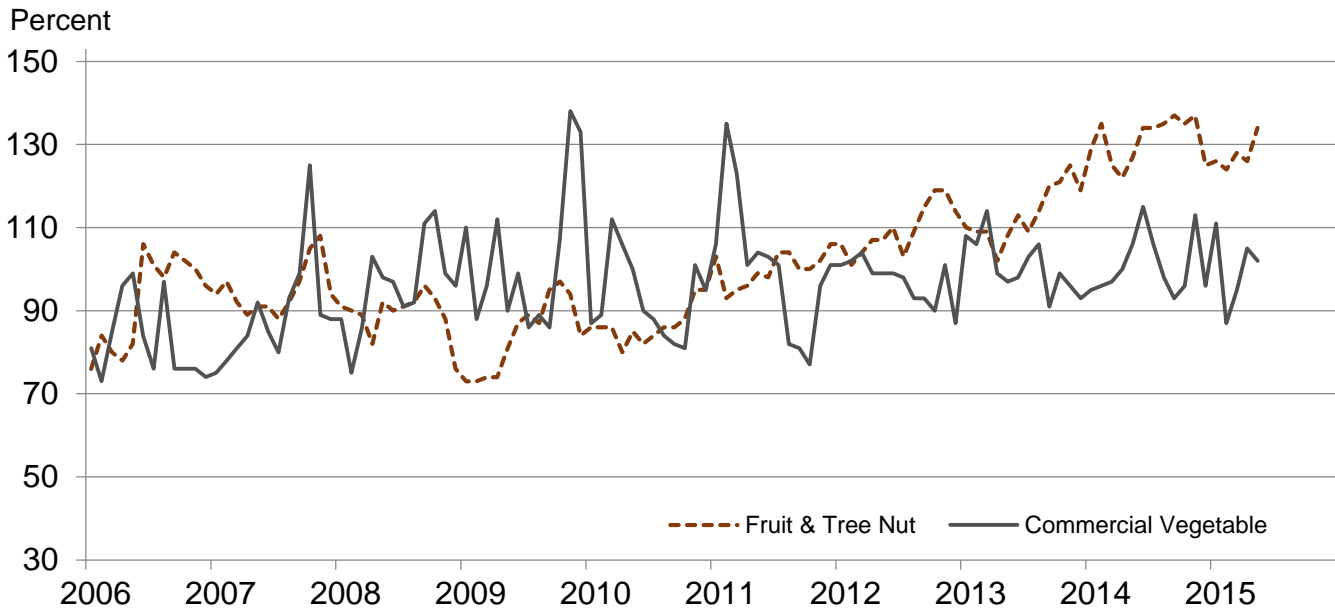


**Received Indexes by Month,  
Food Grain, Feed Grain, and Oilseed –  
United States: 2011=100**

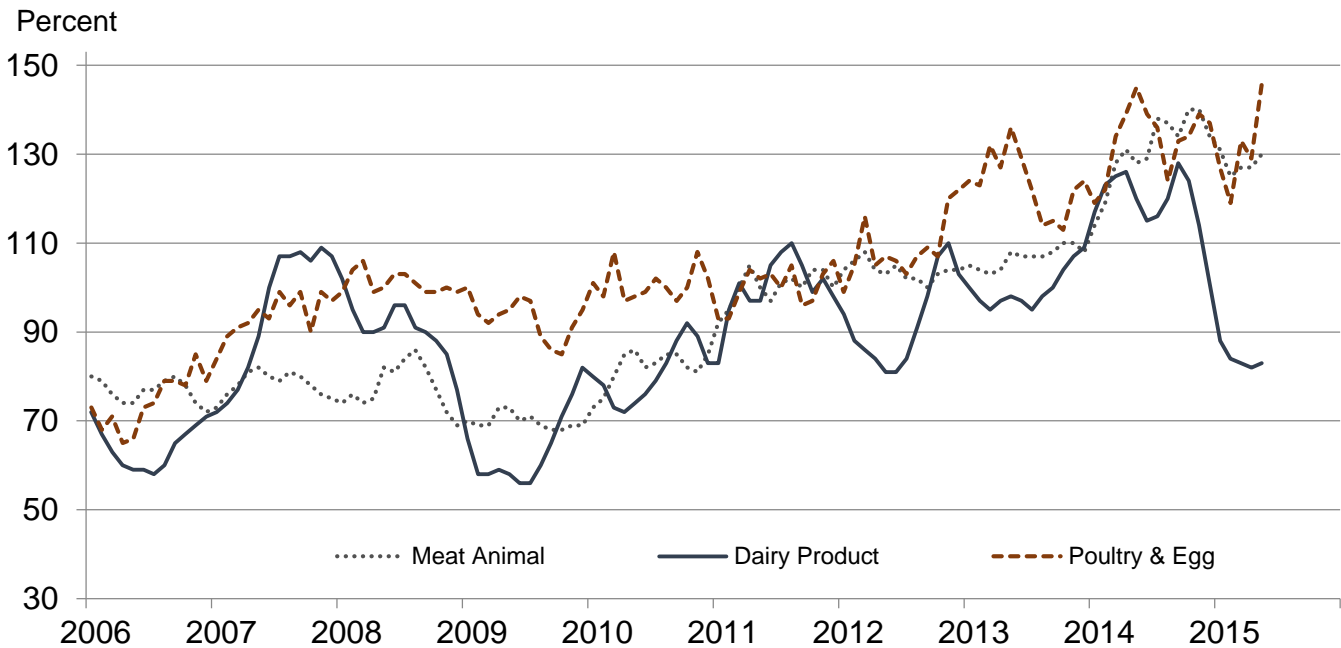




**Received Indexes by Month,  
Fruit & Tree Nut and Commercial Vegetable –  
United States: 2011=100**



**Received Indexes by Month,  
Meat Animal, Dairy Product, and Poultry & Egg –  
United States: 2011=100**



**Prices Received for Field Crops and Fruits – United States: May 2015 with Comparisons**

Commodity	2011 Base Price	May 2014	April 2015	May 2015	
<b>Field crops</b>					
Austrian winter peas .....	dollars/cwt	19.50	(S)	(D)	(S)
Barley, all .....	dollars/bushel	4.79	5.94	4.94	4.75
Feed .....	dollars/bushel	4.59	4.15	3.05	2.90
Malting .....	dollars/bushel	4.83	6.37	5.75	5.62
Beans, dry edible .....	dollars/cwt	34.60	38.10	32.20	35.70
Canola .....	dollars/cwt	23.10	21.70	16.30	16.80
Chickpeas, all .....	dollars/cwt	35.70	27.50	23.10	26.90
Large .....	dollars/cwt	39.20	29.80	25.20	27.50
Small .....	dollars/cwt	23.40	(D)	19.20	(D)
Corn .....	dollars/bushel	6.02	4.71	3.75	3.62
Cotton, Upland .....	dollars/pound	0.880	0.817	0.624	0.641
Cottonseed .....	dollars/ton	131.00	(NA)	(NA)	(NA)
Flaxseed .....	dollars/bushel	14.20	14.90	12.00	12.10
Hay, all, baled .....	dollars/ton	159.00	202.00	173.00	175.00
Alfalfa .....	dollars/ton	176.00	225.00	184.00	192.00
Other .....	dollars/ton	119.00	151.00	142.00	134.00
Lentils .....	dollars/cwt	27.50	18.50	27.20	29.90
Oats .....	dollars/bushel	3.42	3.98	2.82	2.90
Peanuts, in-shell .....	dollars/pound	0.252	0.237	0.221	0.225
Peas, dry edible .....	dollars/cwt	13.60	13.10	13.70	13.70
Potatoes .....	dollars/cwt	9.78	9.53	9.82	9.40
Rice, all .....	dollars/cwt	13.70	16.20	12.50	12.50
Long .....	dollars/cwt	12.30	15.50	11.00	11.00
Medium and short .....	dollars/cwt	18.40	18.70	17.50	17.20
Sorghum grain .....	dollars/cwt	10.70	8.22	7.90	7.57
Soybeans .....	dollars/bushel	12.50	14.40	9.70	9.60
Sunflowers, all .....	dollars/cwt	29.00	24.10	23.20	26.40
Wheat, all .....	dollars/bushel	7.44	7.08	5.56	5.33
Winter .....	dollars/bushel	6.93	7.26	5.50	5.19
Durum .....	dollars/bushel	9.22	7.21	7.79	8.02
Other spring .....	dollars/bushel	8.33	6.85	5.51	5.29
Hard red winter .....	dollars/bushel	7.07	7.39	5.36	5.08
Soft red winter .....	dollars/bushel	6.77	6.73	4.94	5.04
Hard red spring .....	dollars/bushel	8.38	6.85	5.50	5.28
White .....	dollars/bushel	6.58	7.12	6.26	5.77
<b>Fruits</b>					
Citrus, equivalent on-tree					
Grapefruit .....	dollars/box	7.47	7.89	5.32	6.68
Lemons .....	dollars/box	12.30	24.54	22.76	32.59
Oranges .....	dollars/box	8.16	10.27	9.85	9.70
Tangelos .....	dollars/box	3.50	(S)	(S)	(S)
Tangerines and mandarins .....	dollars/box	15.30	(S)	(D)	(S)
Noncitrus, fresh					
Apples <sup>1</sup> .....	dollars/pound	0.325	0.390	0.261	0.243
Grapes <sup>1</sup> .....	dollars/ton	628.00	(S)	(S)	2,330.00
Peaches <sup>1</sup> .....	dollars/ton	507.00	(S)	(S)	1,480.00
Pears <sup>1</sup> .....	dollars/ton	559.00	686.00	607.00	619.00
Strawberries .....	dollars/cwt	104.00	96.10	76.80	72.60

(D) Withheld to avoid disclosing data for individual operations.

(NA) Not available.

(S) Insufficient number of reports to establish an estimate.

<sup>1</sup> Equivalent packinghouse-door returns for California, Michigan, New York (apples only), and Washington (apples, peaches, and pears). Prices as sold for other states.

## Prices Received for Vegetables and Livestock – United States: May 2015 with Comparisons

[Price data source for livestock and poultry commodities is United States Department of Agriculture's Agricultural Marketing Service]

Commodity	2011 Base Price	May 2014	April 2015	May 2015
<b>Vegetables, fresh <sup>1</sup></b>				
Asparagus .....dollars/cwt	37.50	131.00	143.00	133.00
Beans, snap <sup>2</sup> .....dollars/cwt	69.00	74.20	54.80	85.30
Broccoli .....dollars/cwt	41.60	48.00	50.60	54.50
Cantaloupes <sup>2</sup> .....dollars/cwt	16.50	20.50	(NA)	17.30
Carrots .....dollars/cwt	30.80	27.20	31.80	31.40
Cauliflower .....dollars/cwt	47.00	79.10	87.80	108.00
Celery .....dollars/cwt	22.50	15.80	18.60	26.80
Corn, sweet .....dollars/cwt	30.70	25.40	29.60	26.80
Cucumbers <sup>2</sup> .....dollars/cwt	18.70	40.00	24.00	23.40
Lettuce .....dollars/cwt	24.30	26.10	23.10	25.10
Onions <sup>3</sup> .....dollars/cwt	11.90	27.20	18.90	19.30
Tomatoes .....dollars/cwt	51.20	39.10	45.20	24.00
<b>Livestock</b>				
Calves .....dollars/cwt	142.00	229.00	288.00	288.00
Cattle, all beef .....dollars/cwt	115.00	146.00	162.00	160.00
Cows <sup>4</sup> .....dollars/cwt	71.60	104.00	113.00	114.00
Steers and heifers .....dollars/cwt	117.00	147.00	164.00	161.00
Milk cows <sup>5 6</sup> .....dollars/head	1420.00	1810.00	1990.00	1970.00
Hogs, all .....dollars/cwt	66.50	82.80	49.00	58.90
Barrows and gilts .....dollars/cwt	66.80	82.60	49.40	60.00
Sows .....dollars/cwt	57.90	89.30	38.50	31.40
<b>Dairy and poultry</b>				
Milk, all <sup>7</sup> .....dollars/cwt	20.10	24.20	16.50	16.70
Fat test ..... percent	3.71	3.66	3.72	3.67
Broilers, live <sup>8</sup> .....dollars/pound	0.459	0.730	0.640	0.650
Eggs, all <sup>9</sup> .....dollars/dozen	0.969	1.17	1.08	1.73
Market <sup>9 10</sup> .....dollars/dozen	0.796	0.971	0.872	1.61
Turkeys, live <sup>11</sup> .....dollars/pound	0.680	0.726	0.702	0.759
<b>Adjusted for seasonal variation</b>				
Eggs, all .....dollars/dozen	0.979	1.28	1.20	1.87
Seasonal factor ..... percent	101	91	90	93
Milk, all <sup>7</sup> .....dollars/cwt	20.20	25.00	16.80	17.20
Seasonal factor ..... percent	100	97	98	97

(NA) Not available.

<sup>1</sup> Beginning January 2006, point of first sale. FOB shipping point for prior years.

<sup>2</sup> Monthly estimates began January 1995.

<sup>3</sup> Includes some processing.

<sup>4</sup> Beef cows and cull dairy cows sold for slaughter.

<sup>5</sup> Animals sold for dairy herd replacement only. Prices available for January, April, July, and October.

<sup>6</sup> Milk cow prices are for April 2014, January 2015, and April 2015.

<sup>7</sup> Before deductions for hauling. Includes quality, quantity, and other premiums. Excludes hauling subsidies.

<sup>8</sup> Live weight equivalent price.

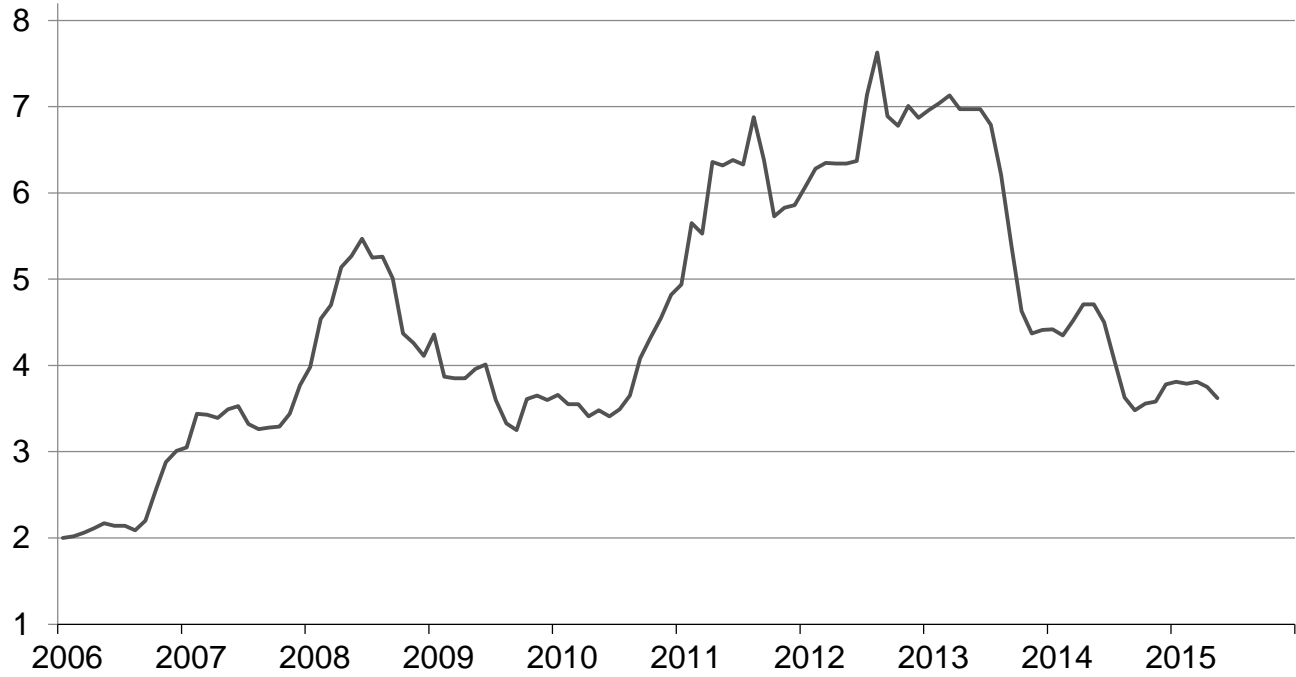
<sup>9</sup> Mid-month price.

<sup>10</sup> Also referred to as table eggs.

<sup>11</sup> Live weight equivalent price is used when actual live weight price is not available. Beginning January 2011, price reflects FOB shipping point basis. Prior year price reflects delivered basis.

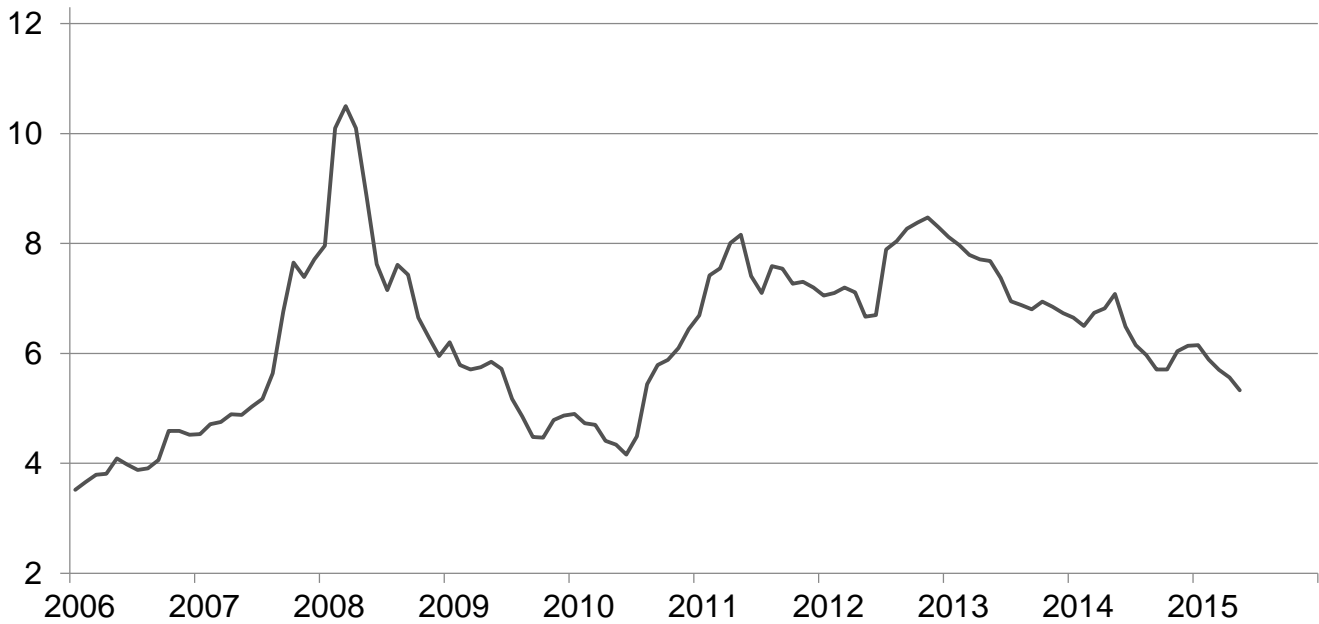
## Prices Received for Corn by Month – United States

Dollars per bushel



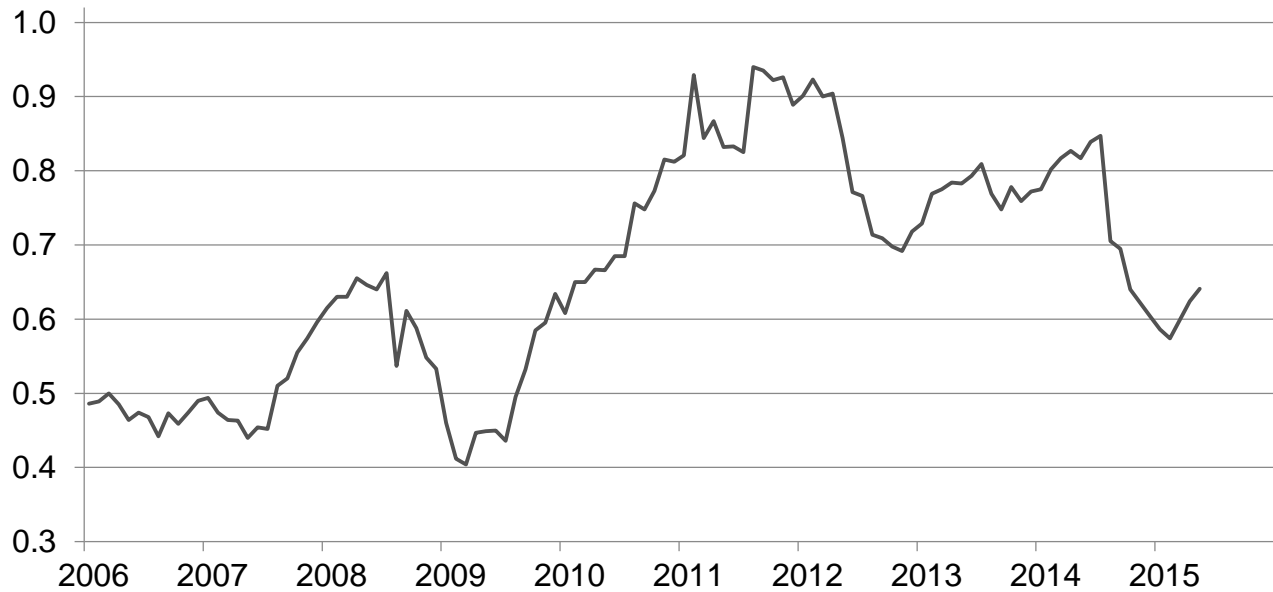
## Prices Received for Wheat by Month – United States

Dollars per bushel



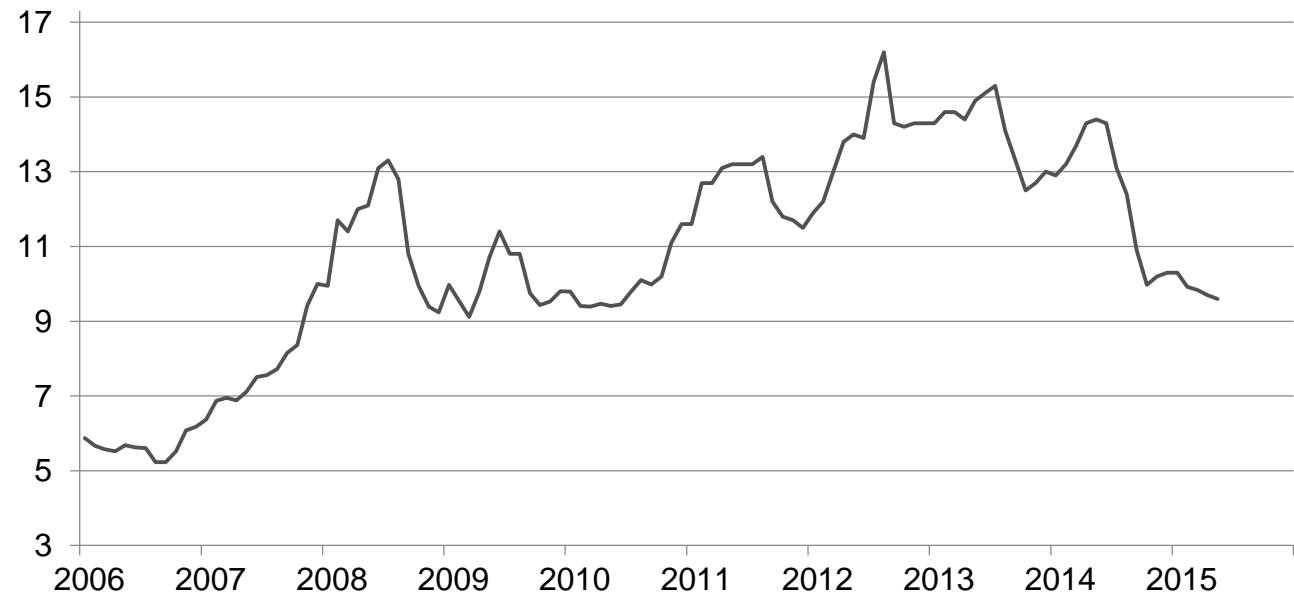
## Prices Received for Upland Cotton by Month – United States

Dollars per pound



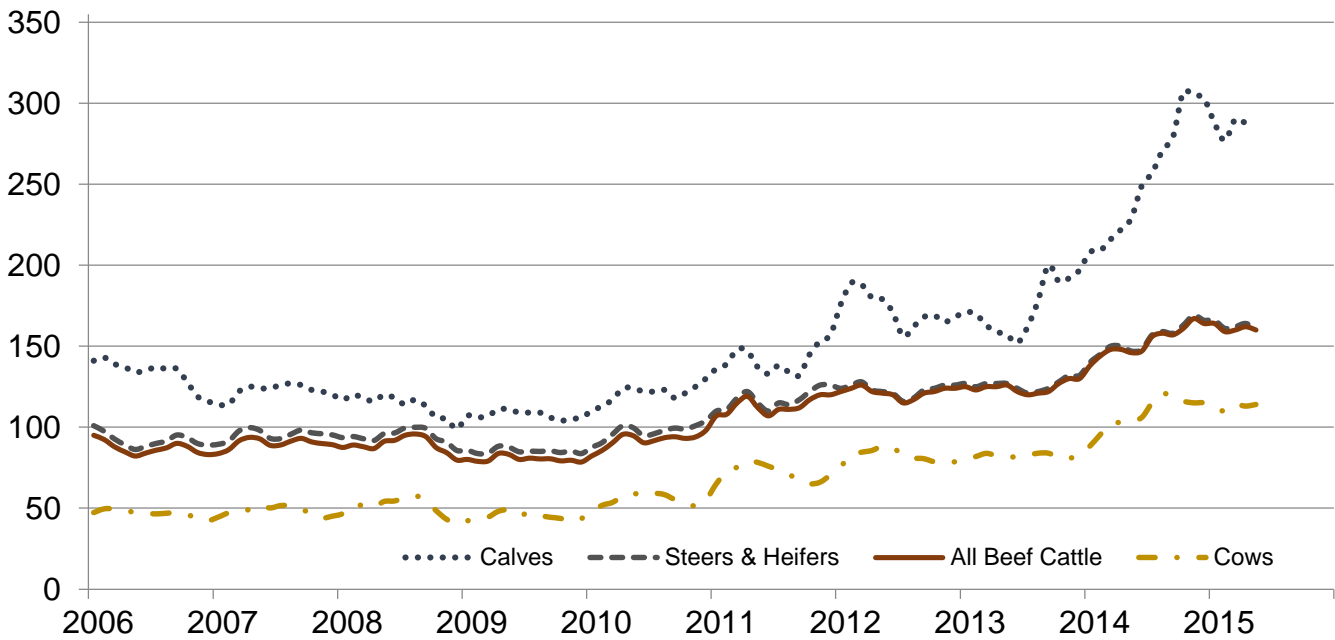
## Prices Received for Soybeans by Month – United States

Dollars per bushel



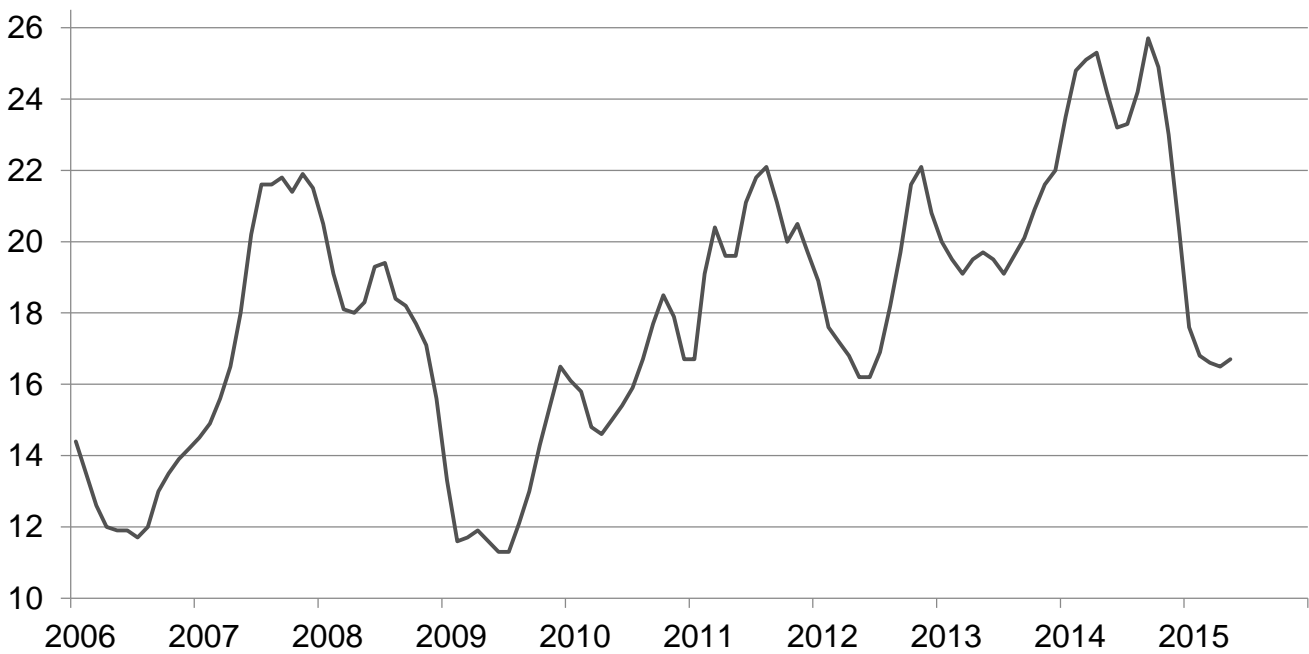
## Prices Received for Cattle by Month – United States

Dollars per cwt



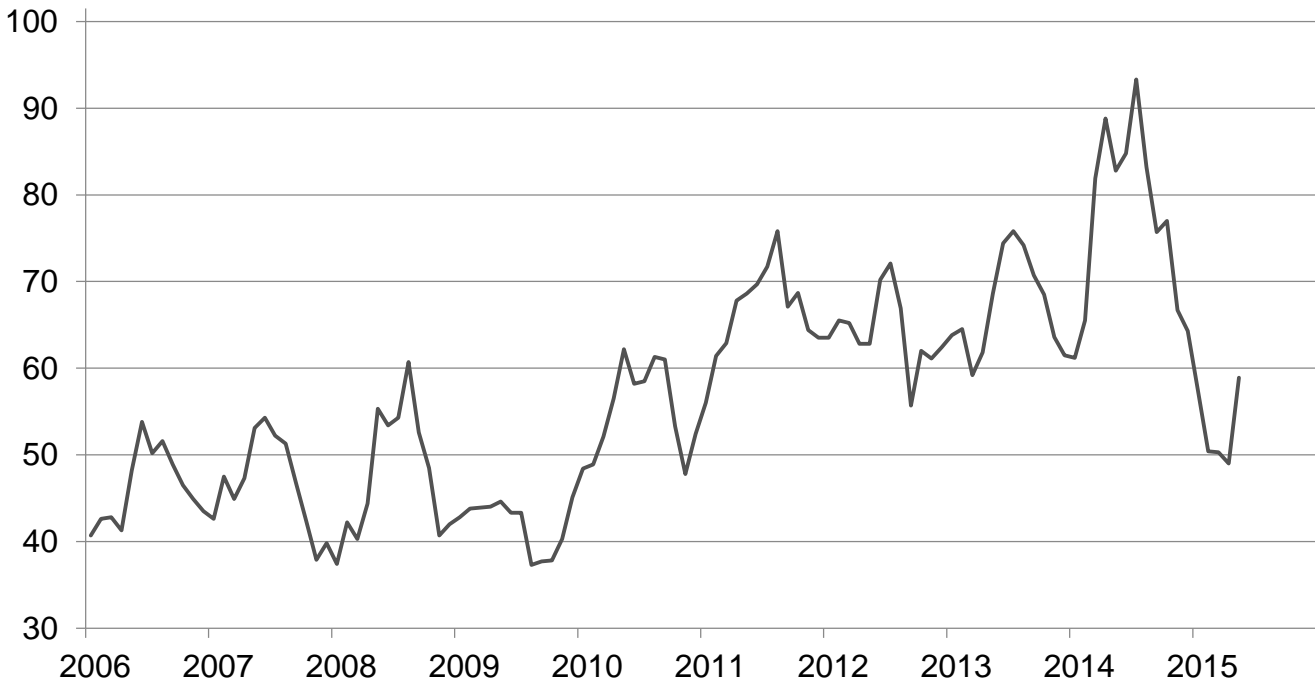
## Prices Received for Milk by Month – United States

Dollars per cwt



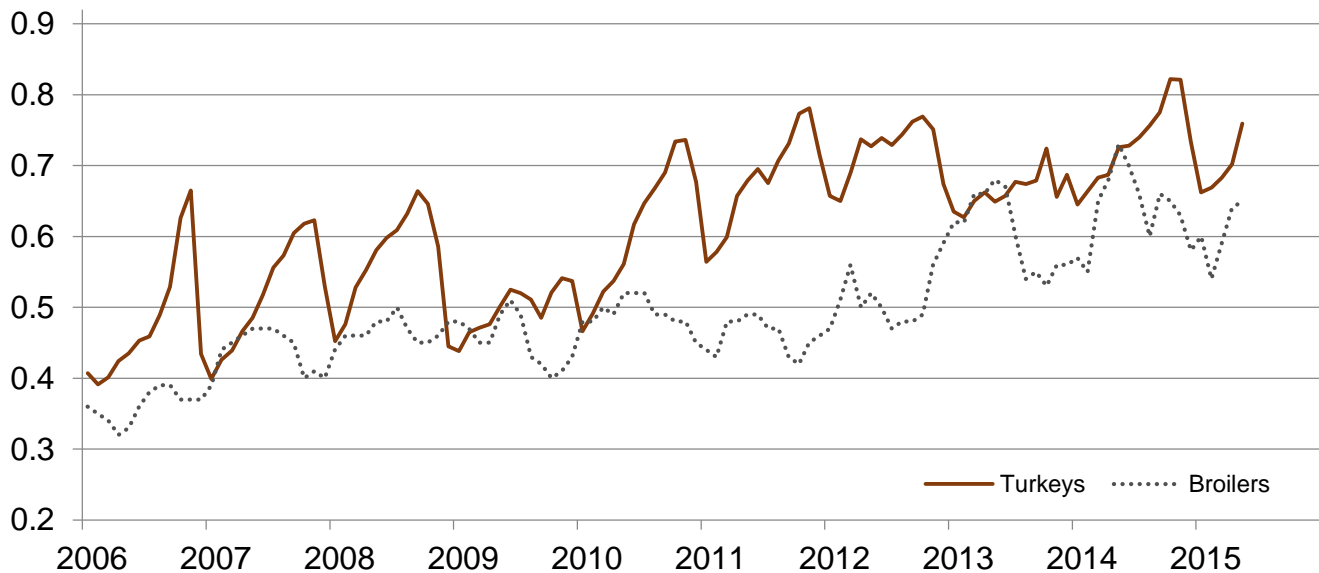
## Prices Received for Hogs by Month – United States

Dollars per cwt



## Prices Received for Poultry by Month – United States

Dollars per pound



## Prices Received for All Wheat, Corn, and Soybeans by Month – United States: 2015 with Comparisons

[Blank data cells indicate estimation period has not yet begun]

Month	All wheat			Corn			Soybeans		
	2013	2014	2015	2013	2014	2015	2013	2014	2015
	(dollars per bushel)	(dollars per bushel)	(dollars per bushel)	(dollars per bushel)	(dollars per bushel)	(dollars per bushel)	(dollars per bushel)	(dollars per bushel)	(dollars per bushel)
January .....	8.12	6.65	6.15	6.96	4.42	3.81	14.30	12.90	10.30
February .....	7.97	6.50	5.89	7.04	4.35	3.79	14.60	13.20	9.92
March .....	7.79	6.74	5.70	7.13	4.52	3.81	14.60	13.70	9.84
April .....	7.71	6.82	5.56	6.97	4.71	3.75	14.40	14.30	9.70
May .....	7.68	7.08	5.33	6.97	4.71	3.62	14.90	14.40	9.60
June .....	7.37	6.49		6.97	4.50		15.10	14.30	
July .....	6.95	6.15		6.79	4.06		15.30	13.10	
August .....	6.88	5.97		6.21	3.63		14.10	12.40	
September .....	6.80	5.71		5.40	3.48		13.30	10.90	
October .....	6.94	5.71		4.63	3.56		12.50	9.97	
November .....	6.85	6.04		4.37	3.58		12.70	10.20	
December .....	6.73	6.14		4.41	3.78		13.00	10.30	

## Prices Received for Beef Cattle and All Hogs by Month – United States: 2015 with Comparisons

[Blank data cells indicate estimation period has not yet begun]

Month	Beef cattle <sup>1</sup>			All hogs <sup>2</sup>		
	2013	2014	2015	2013	2014	2015
	(dollars per cwt)	(dollars per cwt)	(dollars per cwt)	(dollars per cwt)	(dollars per cwt)	(dollars per cwt)
January .....	125.00	138.00	164.00	63.80	61.20	57.40
February .....	123.00	144.00	159.00	64.50	65.50	50.40
March .....	125.00	148.00	160.00	59.20	81.90	50.30
April .....	125.00	148.00	162.00	61.80	88.80	49.00
May .....	126.00	146.00	160.00	68.60	82.80	58.90
June .....	122.00	147.00		74.40	84.80	
July .....	120.00	156.00		75.80	93.30	
August .....	121.00	158.00		74.20	83.20	
September .....	122.00	157.00		70.70	75.70	
October .....	127.00	161.00		68.50	77.00	
November .....	130.00	167.00		63.60	66.70	
December .....	130.00	164.00		61.50	64.30	

<sup>1</sup> Cows and steers & heifers.

<sup>2</sup> Barrows & gilts and sows.



## Prices Received for All Wheat – States and United States: May 2015 with Comparisons

State	May 2014	April 2015	May 2015
	(dollars per bushel)	(dollars per bushel)	(dollars per bushel)
Arizona .....	(D)	(S)	(D)
Arkansas .....	7.13	4.89	(D)
California .....	(D)	(D)	(D)
Colorado .....	7.42	5.11	4.85
Idaho .....	7.15	6.07	6.02
Illinois .....	6.45	4.39	4.10
Indiana .....	6.24	4.83	4.72
Kansas .....	7.58	5.43	4.96
Michigan .....	6.93	6.18	5.89
Minnesota .....	6.88	4.85	5.48
Missouri .....	7.17	5.16	4.72
Montana .....	6.79	6.18	5.67
Nebraska .....	7.29	5.37	4.91
North Carolina .....	5.87	5.01	5.50
North Dakota .....	6.77	5.30	5.16
Ohio .....	6.71	5.39	4.90
Oklahoma .....	7.58	5.41	5.20
Oregon .....	7.30	6.62	6.25
South Dakota .....	7.26	5.23	5.16
Texas .....	7.83	5.38	4.82
Washington .....	7.31	6.24	5.62
United States .....	7.08	5.56	5.33

(D) Withheld to avoid disclosing data for individual operations.

(S) Insufficient number of reports to establish an estimate.

## Prices Received for Winter Wheat – States and United States: May 2015 with Comparisons

State	May 2014	April 2015	May 2015
	(dollars per bushel)	(dollars per bushel)	(dollars per bushel)
Arkansas .....	(D)	(D)	(D)
California .....	(D)	(D)	(D)
Colorado .....	7.42	5.12	4.90
Idaho .....	7.07	5.90	5.78
Illinois .....	6.45	4.39	4.10
Indiana .....	6.24	4.83	4.72
Kansas .....	7.58	5.43	4.96
Michigan .....	6.93	6.18	5.89
Minnesota .....	6.98	(S)	5.09
Missouri .....	7.17	5.16	4.72
Montana .....	6.89	5.75	5.54
Nebraska .....	7.29	5.37	4.91
North Carolina .....	5.87	5.01	5.50
North Dakota .....	6.60	3.79	3.47
Ohio .....	6.71	5.39	4.90
Oklahoma .....	7.58	5.41	5.20
Oregon .....	7.27	6.59	6.22
South Dakota .....	7.08	4.79	5.01
Texas .....	7.83	5.38	4.82
Washington .....	7.22	6.13	5.57
United States .....	7.26	5.50	5.19

(D) Withheld to avoid disclosing data for individual operations.

(S) Insufficient number of reports to establish an estimate.

### Prices Received for Durum Wheat – States and United States: May 2015 with Comparisons

State	May 2014	April 2015	May 2015
	(dollars per bushel)	(dollars per bushel)	(dollars per bushel)
Arizona .....	(D)	(S)	(D)
California .....	(S)	(S)	(D)
Idaho .....	(D)	(D)	(D)
Montana .....	(D)	(D)	(D)
North Dakota .....	7.10	7.79	7.40
United States .....	7.21	7.79	8.02

(D) Withheld to avoid disclosing data for individual operations.

(S) Insufficient number of reports to establish an estimate.

### Prices Received for Spring Wheat – States and United States: May 2015 with Comparisons

State	May 2014	April 2015	May 2015
	(dollars per bushel)	(dollars per bushel)	(dollars per bushel)
Colorado .....	(S)	(D)	(D)
Idaho .....	7.29	6.62	6.53
Minnesota .....	6.88	4.85	5.49
Montana .....	6.75	6.44	5.56
North Dakota .....	6.71	5.12	4.98
Oregon .....	7.53	6.86	6.49
South Dakota .....	7.37	5.66	5.23
Washington .....	7.75	6.82	5.92
United States .....	6.85	5.51	5.29

(D) Withheld to avoid disclosing data for individual operations.

(S) Insufficient number of reports to establish an estimate.

### Prices Received for Oats – States and United States: May 2015 with Comparisons

State	May 2014	April 2015	May 2015
	(dollars per bushel)	(dollars per bushel)	(dollars per bushel)
Illinois .....	(S)	(D)	(D)
Iowa .....	4.95	3.62	2.98
Michigan .....	3.45	3.28	(D)
Minnesota .....	3.87	2.94	2.61
Montana .....	(D)	(S)	(D)
Nebraska .....	4.88	(D)	(D)
New York .....	(D)	(D)	(D)
North Dakota .....	3.05	2.10	(D)
Oregon .....	(D)	(S)	(S)
Pennsylvania .....	(D)	(D)	(D)
South Dakota .....	3.90	2.99	2.50
Texas .....	(D)	(S)	(D)
Wisconsin .....	4.52	3.03	2.93
United States .....	3.98	2.82	2.90

(D) Withheld to avoid disclosing data for individual operations.

(S) Insufficient number of reports to establish an estimate.

### Prices Received for All Barley – States and United States: May 2015 with Comparisons

State	May 2014	April 2015	May 2015
	(dollars per bushel)	(dollars per bushel)	(dollars per bushel)
California .....	(D)	(S)	(D)
Colorado .....	(D)	7.89	(S)
Idaho .....	6.54	3.69	4.79
Minnesota .....	(D)	5.45	4.97
Montana .....	5.62	5.07	4.45
North Dakota .....	5.98	5.09	5.16
Oregon .....	(D)	3.85	(D)
Utah .....	4.08	(D)	(D)
Washington .....	4.39	3.45	4.59
Wyoming .....	(S)	(D)	(D)
United States .....	5.94	4.94	4.75

(D) Withheld to avoid disclosing data for individual operations.

(S) Insufficient number of reports to establish an estimate.

### Prices Received for Malting Barley – States: May 2015 with Comparisons

State	May 2014	April 2015	May 2015
	(dollars per bushel)	(dollars per bushel)	(dollars per bushel)
Idaho .....	6.73	6.05	6.05
Minnesota .....	(D)	5.38	5.05
Montana .....	5.95	6.33	5.72
North Dakota .....	6.26	5.37	5.41
Wyoming .....	(S)	(D)	(D)

(D) Withheld to avoid disclosing data for individual operations.

(S) Insufficient number of reports to establish an estimate.

### Prices Received for Feed Barley – States: May 2015 with Comparisons

State	May 2014	April 2015	May 2015
	(dollars per bushel)	(dollars per bushel)	(dollars per bushel)
Idaho .....	4.57	2.71	2.76
Minnesota .....	(D)	(D)	(D)
Montana .....	3.39	2.52	2.51
North Dakota .....	3.72	3.62	3.55
Wyoming .....	(S)	(S)	(D)

(D) Withheld to avoid disclosing data for individual operations.

(S) Insufficient number of reports to establish an estimate.

### Prices Received for Sorghum Grain – States and United States: May 2015 with Comparisons

State	May 2014	April 2015	May 2015
	(dollars per cwt)	(dollars per cwt)	(dollars per cwt)
Arkansas .....	(D)	7.37	7.65
Illinois .....	9.00	7.10	(D)
Kansas .....	8.18	7.96	7.52
Louisiana .....	(D)	(D)	(D)
Missouri .....	9.00	7.21	7.07
Nebraska .....	8.15	7.68	8.69
Oklahoma .....	8.04	7.90	7.42
Texas .....	8.21	7.55	7.26
United States .....	8.22	7.90	7.57

(D) Withheld to avoid disclosing data for individual operations.

## Prices Received for Corn – States and United States: May 2015 with Comparisons

State	May 2014	April 2015	May 2015
	(dollars per bushel)	(dollars per bushel)	(dollars per bushel)
Colorado .....	4.91	3.86	3.64
Illinois .....	4.77	3.72	3.62
Indiana .....	4.91	3.84	3.74
Iowa .....	4.71	3.74	3.60
Kansas .....	4.79	3.86	3.81
Kentucky .....	5.02	4.09	3.81
Michigan .....	4.64	3.78	3.59
Minnesota .....	4.43	3.60	3.56
Missouri .....	5.03	3.78	3.63
Nebraska .....	4.67	3.83	3.70
North Carolina .....	5.19	4.42	4.10
North Dakota .....	4.21	3.39	3.47
Ohio .....	4.89	3.83	3.71
Pennsylvania .....	5.10	4.06	3.70
South Dakota .....	4.24	3.38	3.33
Tennessee .....	5.33	4.18	3.96
Texas .....	5.05	4.25	4.12
Wisconsin .....	4.72	3.73	3.47
United States .....	4.71	3.75	3.62

## Prices Received for Soybeans – States and United States: May 2015 with Comparisons

State	May 2014	April 2015	May 2015
	(dollars per bushel)	(dollars per bushel)	(dollars per bushel)
Arkansas .....	14.30	10.10	9.88
Illinois .....	14.30	9.91	9.68
Indiana .....	14.80	9.94	9.91
Iowa .....	14.70	9.58	9.57
Kansas .....	14.50	9.29	9.35
Kentucky .....	14.80	10.20	10.00
Louisiana .....	13.00	10.50	10.20
Michigan .....	14.90	10.00	9.61
Minnesota .....	14.00	9.73	9.50
Mississippi .....	14.60	10.10	9.95
Missouri .....	14.80	9.77	9.68
Nebraska .....	14.50	9.35	9.40
North Carolina .....	15.00	10.00	9.77
North Dakota .....	13.20	8.85	8.78
Ohio .....	15.00	9.83	9.71
South Dakota .....	14.00	9.08	9.13
Tennessee .....	14.40	10.00	9.88
Wisconsin .....	14.70	9.64	9.40
United States .....	14.40	9.70	9.60

### Prices Received for Dry Beans – States and United States: May 2015 with Comparisons

State	May 2014	April 2015	May 2015
	(dollars per cwt)	(dollars per cwt)	(dollars per cwt)
California .....	56.90	59.50	(D)
Colorado .....	(D)	22.70	(D)
Idaho .....	38.00	29.10	39.20
Michigan .....	53.20	39.80	38.90
Minnesota .....	(D)	(D)	(D)
Nebraska .....	(D)	(D)	25.40
North Dakota .....	31.70	30.40	25.30
United States .....	38.10	32.20	35.70

(D) Withheld to avoid disclosing data for individual operations.

### Prices Received for Peanuts (in shell) – States and United States: May 2015 with Comparisons

State	May 2014	April 2015	May 2015
	(dollars per pound)	(dollars per pound)	(dollars per pound)
Alabama .....	0.217	0.205	0.206
Florida .....	0.230	0.213	0.212
Georgia .....	0.230	0.209	0.209
Mississippi .....	0.230	0.223	0.214
New Mexico .....	0.310	(S)	0.301
North Carolina .....	0.258	0.277	0.247
Oklahoma .....	0.308	(S)	0.237
South Carolina .....	0.250	0.264	0.251
Texas .....	0.344	0.297	0.274
Virginia .....	0.254	0.274	0.273
United States .....	0.237	0.221	0.225

(S) Insufficient number of reports to establish an estimate.

### Prices Received for Sunflower – States and United States: May 2015 with Comparisons

State	May 2014	April 2015	May 2015
	(dollars per cwt)	(dollars per cwt)	(dollars per cwt)
Colorado .....	(D)	(D)	(D)
Kansas .....	28.00	22.00	(D)
Minnesota .....	(D)	21.00	27.10
North Dakota .....	25.30	23.80	28.20
South Dakota .....	22.60	22.80	24.40
United States .....	24.10	23.20	26.40

(D) Withheld to avoid disclosing data for individual operations.

### Prices Received for Canola – States and United States: May 2015 with Comparisons

State	May 2014	April 2015	May 2015
	(dollars per cwt)	(dollars per cwt)	(dollars per cwt)
Minnesota .....	(S)	(D)	(S)
North Dakota .....	21.70	16.30	16.80
United States .....	21.70	16.30	16.80

(D) Withheld to avoid disclosing data for individual operations.

(S) Insufficient number of reports to establish an estimate.

## Prices Received for Upland Cotton and Cottonseed – States and United States: May 2015 with Comparisons

[Cottonseed marketing year August - February]

State	Cotton, Upland			Cottonseed		
	May 2014	April 2015	May 2015	May 2014	April 2015	May 2015
	(dollars per pound)	(dollars per pound)	(dollars per pound)	(dollars per ton)	(dollars per ton)	(dollars per ton)
Alabama .....	(D)	(D)	(D)	(NA)	(NA)	(NA)
Arizona .....	(D)	(D)	(D)	(NA)	(NA)	(NA)
Arkansas .....	(D)	(D)	(D)	(NA)	(NA)	(NA)
California .....	(D)	(D)	(D)	(NA)	(NA)	(NA)
Georgia .....	(D)	0.659	(D)	(NA)	(NA)	(NA)
Louisiana .....	(D)	(D)	(D)	(NA)	(NA)	(NA)
Mississippi .....	(D)	0.658	(D)	(NA)	(NA)	(NA)
North Carolina .....	(D)	(D)	(D)	(NA)	(NA)	(NA)
Tennessee .....	0.842	0.644	0.644	(NA)	(NA)	(NA)
Texas .....	0.643	0.531	0.569	(NA)	(NA)	(NA)
United States .....	0.817	0.624	0.641	(NA)	(NA)	(NA)

(D) Withheld to avoid disclosing data for individual operations.

(NA) Not available.

## Prices Received and Farm Marketings for Upland Cotton and Rice – United States: May 2015 with Comparisons

Item	May 2014	April 2015	May 2015
Cotton, Upland			
Average price ..... dollars/pound	0.817	0.624	0.641
Marketings <sup>1</sup> ..... 1,000 bales	151	399	258
Rice, all			
Average price ..... dollars/cwt	16.20	12.50	12.50
Marketings <sup>2</sup> ..... 1,000 cwt	7,858	15,306	12,979
Rice, long			
Average price ..... dollars/cwt	15.50	11.00	11.00
Marketings <sup>2</sup> ..... 1,000 cwt	6,218	11,923	9,896
Rice, medium and short			
California			
Average price ..... dollars/cwt	21.20	21.00	21.20
Other States <sup>3</sup>			
Average price ..... dollars/cwt	15.90	14.40	13.80
United States			
Average price ..... dollars/cwt	18.70	17.50	17.20
Marketings <sup>2</sup> ..... 1,000 cwt	1,640	3,383	3,083

<sup>1</sup> Marketings based on a survey of cotton buyers in the major producing States - Alabama, Arizona, Arkansas, California, Georgia, Louisiana, Mississippi, North Carolina, Tennessee, and Texas.

<sup>2</sup> Purchases by private firms and rice (rough equivalent) shipped by cooperatives.

<sup>3</sup> Other States include Arkansas, Louisiana, Mississippi, Missouri, and Texas.

## Prices Received for Flaxseed – States and United States: May 2015 with Comparisons

State	May 2014	April 2015	May 2015
	(dollars per bushel)	(dollars per bushel)	(dollars per bushel)
North Dakota .....	14.90	12.00	12.10
United States .....	14.90	12.00	12.10

## Prices Received for Hay by Type – States and United States: May 2015 with Comparisons

State	All hay			Alfalfa hay			Other hay		
	May 2014	April 2015	May 2015	May 2014	April 2015	May 2015	May 2014	April 2015	May 2015
	(dollars per ton)	(dollars per ton)	(dollars per ton)	(dollars per ton)	(dollars per ton)	(dollars per ton)	(dollars per ton)	(dollars per ton)	(dollars per ton)
Arizona .....	240.00	200.00	200.00	240.00	200.00	200.00	230.00	200.00	200.00
California .....	246.00	209.00	199.00	260.00	215.00	215.00	205.00	175.00	140.00
Colorado .....	214.00	196.00	191.00	215.00	195.00	190.00	200.00	200.00	195.00
Idaho .....	193.00	160.00	164.00	195.00	160.00	165.00	170.00	155.00	150.00
Illinois .....	165.00	140.00	139.00	190.00	165.00	155.00	120.00	100.00	100.00
Iowa .....	156.00	123.00	115.00	180.00	135.00	129.00	112.00	95.00	90.00
Kansas .....	169.00	125.00	114.00	189.00	132.00	117.00	89.00	102.00	100.00
Kentucky .....	130.00	142.00	150.00	190.00	210.00	210.00	90.00	110.00	110.00
Michigan .....	155.00	164.00	155.00	170.00	175.00	165.00	130.00	130.00	140.00
Minnesota .....	171.00	110.00	136.00	186.00	123.00	148.00	123.00	84.00	96.00
Missouri .....	114.00	91.00	106.00	190.00	165.00	165.00	80.00	80.00	80.00
Montana .....	128.00	124.00	123.00	135.00	125.00	125.00	105.00	115.00	115.00
Nebraska .....	117.00	94.00	99.00	125.00	96.00	102.00	94.00	90.00	93.00
Nevada .....	235.00	214.00	200.00	240.00	215.00	200.00	220.00	190.00	190.00
New Mexico .....	256.00	194.00	216.00	265.00	200.00	225.00	190.00	160.00	170.00
New York .....	171.00	161.00	203.00	223.00	220.00	250.00	168.00	160.00	200.00
North Dakota .....	94.00	86.00	81.00	99.00	87.00	82.00	64.00	61.00	56.00
Ohio .....	145.00	146.00	137.00	165.00	175.00	175.00	125.00	120.00	115.00
Oklahoma .....	178.00	141.00	151.00	237.00	187.00	195.00	89.00	79.00	85.00
Oregon .....	212.00	194.00	197.00	220.00	200.00	205.00	190.00	180.00	175.00
Pennsylvania .....	205.00	246.00	232.00	230.00	245.00	238.00	202.00	246.00	231.00
South Dakota .....	133.00	113.00	114.00	139.00	118.00	120.00	97.00	94.00	90.00
Texas .....	121.00	94.00	122.00	252.00	230.00	224.00	82.00	72.00	70.00
Utah .....	170.00	175.00	175.00	170.00	175.00	175.00	140.00	140.00	140.00
Washington .....	199.00	195.00	195.00	190.00	195.00	200.00	220.00	195.00	185.00
Wisconsin .....	161.00	113.00	124.00	175.00	124.00	136.00	115.00	79.00	86.00
Wyoming .....	161.00	118.00	122.00	165.00	120.00	125.00	145.00	100.00	115.00
United States ...	202.00	173.00	175.00	225.00	184.00	192.00	151.00	142.00	134.00

## Prices Received for Apples – States and United States: May 2015 with Comparisons

[Equivalent packinghouse-door returns for California, Michigan, New York, and Washington. Prices at point of first sale for other States]

State	Apples, fresh use		
	May 2014	April 2015	May 2015
	(dollars per pound)	(dollars per pound)	(dollars per pound)
California .....	(S)	(S)	(S)
Michigan .....	0.325	0.310	0.320
New York .....	0.260	0.250	0.260
Pennsylvania .....	(S)	(S)	(S)
Virginia .....	(S)	0.290	(S)
Washington .....	0.396	0.260	0.238
United States .....	0.390	0.261	0.243

(S) Insufficient number of reports to establish an estimate.

## Prices Received for Citrus Fruits by Utilization – States and United States: May 2014

[Net pounds per box: grapefruit in California-80, Florida-85, Texas-80; lemons-80; oranges in California-80, Florida-90, Texas-85; tangelos-90; tangerines and mandarins in Arizona and California-80, Florida-95]

Commodity, State, and type	FOB packed fresh	Equivalent returns					
		Packinghouse door			On-tree		
		All	Fresh	Process	All	Fresh	Process
	(dollars per box)	(dollars per box)	(dollars per box)	(dollars per box)	(dollars per box)	(dollars per box)	(dollars per box)
<b>Grapefruit</b>							
California <sup>1</sup> .....	16.90	10.11	10.11	(D)	7.89	7.89	(D)
Florida, all .....	(S)	(S)	(S)	(S)	(S)	(S)	(S)
White .....	(S)	(S)	(S)	(S)	(S)	(S)	(S)
Colored .....	(S)	(S)	(S)	(S)	(S)	(S)	(S)
Texas .....	(S)	(S)	(S)	(S)	(S)	(S)	(S)
United States .....	16.90	10.11	10.11	(D)	7.89	7.89	(D)
<b>Lemons</b>							
Arizona .....	(S)	(S)	(S)	(S)	(S)	(S)	(S)
California .....	50.30	30.21	41.04	(D)	24.54	35.02	(D)
United States .....	50.30	30.21	41.04	(D)	24.54	35.02	(D)
<b>Oranges</b>							
California, all .....	35.00	16.09	25.87	(D)	13.46	23.31	(D)
Navel and miscellaneous .....	36.60	14.69	27.43	(D)	12.05	24.87	(D)
Valencia .....	32.70	19.19	23.53	(D)	16.59	20.97	(D)
Florida, all .....	32.00	12.09	20.85	11.70	9.39	18.05	9.00
Early and mids .....	(S)	(S)	(S)	(S)	(S)	(S)	(S)
Valencia .....	32.00	12.09	20.85	11.70	9.39	18.05	9.00
United States .....	34.40	12.96	24.83	10.63	10.27	22.22	7.92
<b>Tangelos</b>							
Florida .....	(S)	(S)	(S)	(S)	(S)	(S)	(S)
United States .....	(S)	(S)	(S)	(S)	(S)	(S)	(S)
<b>Tangerines and mandarins</b>							
Arizona .....	(S)	(S)	(S)	(S)	(S)	(S)	(S)
California .....	(S)	(S)	(S)	(S)	(S)	(S)	(S)
Florida .....	(S)	(S)	(S)	(S)	(S)	(S)	(S)
United States .....	(S)	(S)	(S)	(S)	(S)	(S)	(S)

(D) Withheld to avoid disclosing data for individual operations.

(S) Insufficient number of reports to establish an estimate.

<sup>1</sup> Some processed sales included in fresh sales.



## Prices Received for Citrus Fruits by Utilization – States and United States: April 2015

[Net pounds per box: grapefruit in California-80, Florida-85, Texas-80; lemons-80; oranges in California-80, Florida-90, Texas-85; tangelos-90; tangerines and mandarins in Arizona and California-80, Florida-95]

Commodity, State, and type	FOB packed fresh	Equivalent returns					
		Packinghouse door			On-tree		
		All	Fresh	Process	All	Fresh	Process
	(dollars per box)	(dollars per box)	(dollars per box)	(dollars per box)	(dollars per box)	(dollars per box)	(dollars per box)
Grapefruit							
California <sup>1</sup> .....	18.80	11.87	11.87	(D)	9.61	9.61	(D)
Florida, all .....	24.10	6.74	13.35	5.89	3.65	11.10	2.69
White .....	(S)	6.00	(S)	6.00	2.80	(S)	2.80
Colored .....	24.10	8.30	13.35	5.55	5.44	11.10	2.35
Texas .....	25.60	8.45	14.00	1.60	6.91	12.39	0.14
United States .....	22.60	7.89	13.03	5.13	5.32	11.03	2.24
Lemons							
Arizona .....	(S)	(S)	(S)	(S)	(S)	(S)	(S)
California .....	46.10	28.59	36.65	(D)	22.76	30.51	(D)
United States .....	46.10	28.59	36.65	(D)	22.76	30.51	(D)
Oranges							
California, all .....	28.50	14.17	19.17	(D)	11.51	16.56	(D)
Navel and miscellaneous .....	29.00	14.21	19.65	(D)	11.55	17.04	(D)
Valencia .....	(D)	(D)	(D)	(D)	(D)	(D)	(D)
Florida, all .....	27.20	11.95	16.05	11.80	9.25	13.25	9.10
Early and mids .....	(S)	(S)	(S)	(S)	(S)	(S)	(S)
Valencia .....	27.20	11.95	16.05	11.80	9.25	13.25	9.10
United States .....	28.40	12.54	18.81	10.77	9.85	16.18	8.06
Tangelos							
Florida .....	(S)	(S)	(S)	(S)	(S)	(S)	(S)
United States .....	(S)	(S)	(S)	(S)	(S)	(S)	(S)
Tangerines and mandarins							
Arizona .....	(S)	(S)	(S)	(S)	(S)	(S)	(S)
California .....	(D)	(D)	(D)	(D)	(D)	(D)	(D)
Florida .....	(S)	(S)	(S)	(S)	(S)	(S)	(S)
United States .....	(D)	(D)	(D)	(D)	(D)	(D)	(D)

(D) Withheld to avoid disclosing data for individual operations.

(S) Insufficient number of reports to establish an estimate.

<sup>1</sup> Some processed sales included in fresh sales.

## Prices Received for Citrus Fruits by Utilization – States and United States: May 2015

[Net pounds per box: grapefruit in California-80, Florida-85, Texas-80; lemons-80; oranges in California-80, Florida-90, Texas-85; tangelos-90; tangerines and mandarins in Arizona and California-80, Florida-95]

Commodity, State, and type	FOB packed fresh	Equivalent returns					
		Packinghouse door			On-tree		
		All	Fresh	Process	All	Fresh	Process
	(dollars per box)	(dollars per box)	(dollars per box)	(dollars per box)	(dollars per box)	(dollars per box)	(dollars per box)
<b>Grapefruit</b>							
California <sup>1</sup> .....	16.90	9.97	9.97	(D)	7.71	7.71	(D)
Florida, all .....	(S)	(S)	(S)	(S)	(S)	(S)	(S)
White .....	(S)	(S)	(S)	(S)	(S)	(S)	(S)
Colored .....	(S)	(S)	(S)	(S)	(S)	(S)	(S)
Texas .....	(S)	(S)	(S)	(S)	(S)	(S)	(S)
United States .....	17.50	8.91	10.25	(S)	6.68	8.02	(S)
<b>Lemons</b>							
Arizona .....	(S)	(S)	(S)	(S)	(S)	(S)	(S)
California .....	53.40	38.56	43.95	(D)	32.59	37.81	(D)
United States .....	53.40	38.56	43.95	(D)	32.59	37.81	(D)
<b>Oranges</b>							
California, all .....	28.70	13.97	19.32	(D)	11.31	16.71	(D)
Navel and miscellaneous .....	29.70	13.50	20.35	(D)	10.84	17.74	(D)
Valencia .....	26.70	15.04	17.35	(D)	12.39	14.74	(D)
Florida, all .....	27.20	12.02	16.05	11.90	9.32	13.25	9.20
Early and mids .....	(S)	(S)	(S)	(S)	(S)	(S)	(S)
Valencia .....	27.20	12.02	16.05	11.90	9.32	13.25	9.20
United States .....	28.50	12.40	18.85	11.16	9.70	16.21	8.45
<b>Tangelos</b>							
Florida .....	(S)	(S)	(S)	(S)	(S)	(S)	(S)
United States .....	(S)	(S)	(S)	(S)	(S)	(S)	(S)
<b>Tangerines and mandarins</b>							
Arizona .....	(S)	(S)	(S)	(S)	(S)	(S)	(S)
California .....	(S)	(S)	(S)	(S)	(S)	(S)	(S)
Florida .....	(S)	(S)	(S)	(S)	(S)	(S)	(S)
United States .....	(S)	(S)	(S)	(S)	(S)	(S)	(S)

(D) Withheld to avoid disclosing data for individual operations.

(S) Insufficient number of reports to establish an estimate.

<sup>1</sup> Some processed sales included in fresh sales.

## Prices Received for Potatoes – States and United States: May 2015 with Comparisons

State	May 2014	April 2015	May 2015
	(dollars per cwt)	(dollars per cwt)	(dollars per cwt)
California, all <sup>1</sup> .....	13.70	17.80	16.80
Spring .....	14.20	22.90	18.20
Fall .....	10.10	9.55	9.55
Colorado, all <sup>1</sup> .....	10.60	8.05	7.45
Fresh <sup>2</sup> .....	12.10	8.70	8.35
Florida .....	(D)	16.80	14.40
Idaho, all <sup>1</sup> .....	7.45	8.75	7.60
Fresh <sup>2</sup> .....	7.35	5.60	5.55
Processing .....	7.35	7.85	8.15
Maine .....	11.60	(D)	11.10
Michigan .....	13.20	(D)	13.70
Minnesota .....	9.35	8.55	6.95
New York .....	16.10	(D)	14.30
North Carolina .....	(S)	(S)	(S)
North Dakota, all <sup>1</sup> .....	10.20	(D)	(D)
Fresh <sup>2</sup> .....	9.10	(D)	(D)
Processing .....	9.60	(D)	(D)
Oregon .....	9.40	9.95	9.15
Texas .....	(S)	(D)	(D)
Virginia .....	(S)	(S)	(S)
Washington, all <sup>1</sup> .....	8.75	8.60	8.35
Processing .....	8.40	8.25	8.20
Wisconsin, all <sup>1</sup> .....	9.45	11.60	10.40
Fresh <sup>2</sup> .....	10.50	10.60	10.70
Processing .....	8.60	9.55	9.65
United States, all <sup>1</sup> .....	9.53	9.82	9.40
Fresh <sup>2</sup> .....	11.53	9.51	10.42
Processing .....	8.55	8.67	8.70

(D) Withheld to avoid disclosing data for individual operations.

(S) Insufficient number of reports to establish an estimate.

<sup>1</sup> Average price of potatoes sold for all uses, including table stock, processing, seed, and livestock feed.

<sup>2</sup> Fresh market prices only. Includes table stock prices.

## Prices Received for All Milk – States and United States: May 2015 with Comparisons

[Before deduction for hauling. Includes quality, quantity, and other premiums. Excludes hauling subsidies]

State	May 2014		April 2015		May 2015	
	Price (dollars per cwt)	Fat test (percent)	Price (dollars per cwt)	Fat test (percent)	Price (dollars per cwt)	Fat test (percent)
Arizona .....	23.60	3.41	15.10	3.40	15.50	3.40
California .....	22.01	3.62	14.52	3.66	15.12	3.63
Colorado .....	24.30	3.49	17.30	3.59	17.40	3.58
Florida .....	29.40	3.51	20.10	3.51	20.50	3.52
Idaho .....	23.00	3.66	16.50	3.76	16.60	3.72
Illinois .....	24.90	3.70	17.30	3.73	17.30	3.68
Indiana .....	24.60	3.58	17.00	3.70	16.50	3.65
Iowa .....	24.90	3.69	16.90	3.74	17.10	3.70
Kansas .....	24.30	3.56	16.20	3.65	16.30	3.63
Michigan .....	24.50	3.63	16.20	3.65	16.00	3.60
Minnesota .....	25.00	3.83	17.40	3.83	17.80	3.81
New Mexico .....	22.40	3.45	15.50	3.52	16.00	3.47
New York .....	26.10	3.70	17.50	3.78	17.60	3.70
Ohio .....	24.80	3.68	17.30	3.76	17.20	3.69
Oregon .....	25.10	3.79	18.00	3.87	18.50	3.78
Pennsylvania .....	26.40	3.66	17.60	3.71	17.80	3.62
South Dakota .....	24.90	3.87	18.40	4.00	18.40	3.95
Texas .....	24.90	3.73	16.90	3.82	17.10	3.79
Utah .....	24.40	3.65	16.40	3.71	16.70	3.63
Vermont .....	26.20	3.75	17.80	3.87	18.00	3.78
Virginia .....	27.30	3.54	17.90	3.63	17.90	3.56
Washington .....	25.00	3.79	16.30	3.87	16.70	3.78
Wisconsin .....	24.70	3.71	17.70	3.76	17.70	3.69
United States .....	24.20	3.66	16.50	3.72	16.70	3.67

## Prices Received for Milk Cows – States and United States: April 2015 with Comparisons

[Animals sold for dairy herd replacement only. Quarterly United States milk cow prices are based on revised milk cow inventory]

State	April 2014 (dollars per head)	January 2015 (dollars per head)	April 2015 (dollars per head)
Arizona .....	2,000.00	2,000.00	2,000.00
California .....	1,800.00	1,800.00	2,000.00
Colorado .....	2,000.00	2,100.00	2,100.00
Florida .....	1,800.00	2,170.00	2,100.00
Idaho .....	1,950.00	2,000.00	1,900.00
Illinois .....	1,750.00	2,100.00	2,000.00
Indiana .....	1,750.00	2,100.00	1,900.00
Iowa .....	1,850.00	2,030.00	1,950.00
Kansas .....	1,750.00	2,100.00	1,950.00
Michigan .....	1,850.00	2,200.00	2,100.00
Minnesota .....	1,830.00	1,870.00	1,860.00
New Mexico .....	1,750.00	2,000.00	2,000.00
New York .....	1,660.00	1,910.00	1,820.00
Ohio .....	1,700.00	2,000.00	1,850.00
Oregon .....	1,700.00	2,000.00	2,000.00
Pennsylvania .....	1,800.00	2,000.00	1,890.00
South Dakota .....	1,750.00	1,980.00	1,840.00
Texas .....	1,800.00	2,100.00	2,000.00
Utah .....	1,750.00	1,900.00	1,900.00
Vermont .....	1,760.00	1,980.00	1,880.00
Virginia .....	1,770.00	2,060.00	1,930.00
Washington .....	1,700.00	1,950.00	1,850.00
Wisconsin .....	1,900.00	2,160.00	2,080.00
United States .....	1,810.00	1,990.00	1,970.00

## Commodity Parity Prices and Price as Percent of Parity Price – United States: May 2015 with Comparisons

[Parity prices are computed under the provisions of Title III, Subtitle a, Section 301 (a) of the Agricultural Adjustment Act of 1938 as amended by the Agricultural Acts of 1948, 1949, and 1956. See January *Agricultural Prices* for details on adjusted base price and parity price computations. Parity data not available for blank cells. Primary source of data for livestock and milk prices is United States Department of Agriculture's Agricultural Marketing Service]

Commodity and unit	Adjusted base price	Parity price			Price as percent of parity		
		May 2014	April 2015	May 2015	May 2014	April 2015	May 2015
	(dollars)	(dollars)	(dollars)	(dollars)	(percent)	(percent)	(percent)
<b>Basic commodities</b>							
All wheat .....bushel	0.624	18.70	18.50	18.50	38	30	29
Rice .....cwt	1.34	40.00	39.80	39.70	41	31	31
Corn .....bushel	0.444	13.40	13.20	13.20	35	28	27
<b>Cotton</b>							
Upland ..... pound	0.066	2.03	1.96	1.95	40	32	33
American Pima ..... pound	0.136	4.15	4.04	4.03	41	39	39
Peanuts ..... pound	0.024	0.757	0.713	0.711	31	31	32
Small chickpeas <sup>1</sup> .....cwt	2.200	(NA)	65.30	65.20	(NA)	29	35
Large chickpeas <sup>1</sup> .....cwt	3.330	(NA)	98.90	98.60	(NA)	25	28
Lentils <sup>1</sup> .....cwt	2.280	(NA)	67.70	67.50	(NA)	40	44
<b>Designated nonbasic</b>							
All milk, to plants <sup>2</sup> .....cwt	1.83	54.80	54.30	54.20	46	31	32
Honey, extracted <sup>3</sup> ..... pound	0.150	4.45	4.45	4.44	48	48	48
<b>Wool and mohair</b>							
Wool ..... pound	0.117	3.30	3.47	3.47	44	42	42
Mohair ..... pound	0.378	10.60	11.20	11.20	40	43	43
<b>Other nonbasic</b>							
Apples, fresh <sup>4</sup> ..... pound	0.033	1.030	0.980	0.977	38	27	25
Barley .....bushel	0.467	13.70	13.90	13.80	43	36	34
Canola .....cwt	1.880	56.90	55.80	55.70	38	29	30
Cottonseed ..... ton	19.20	579.00	570.00	569.00	39	34	34
Dry edible beans .....cwt	3.25	96.90	96.50	96.30	39	33	37
Flaxseed .....bushel	1.170	34.80	34.70	34.70	43	35	35
Oats .....bushel	0.295	8.60	8.76	8.74	46	32	33
Potatoes .....cwt	0.846	25.30	25.10	25.10	38	39	37
Sorghum grain .....cwt	0.757	22.70	22.50	22.40	36	35	34
Soybeans .....bushel	1.080	32.10	32.10	32.00	45	30	30
Sunflower, all .....cwt	2.13	64.20	63.20	63.10	38	37	42
<b>Citrus (equivalent on-tree)</b>							
Grapefruit .....box	0.777	22.00	23.10	23.00	36	23	29
Lemons .....box	1.49	41.20	44.20	44.10	60	51	74
Oranges .....box	0.806	23.30	23.90	23.90	44	41	41
Tangerines .....box	1.75	48.80	52.00	51.80	145	25	71
<b>Livestock and poultry</b>							
Beef cattle .....cwt	10.80	315.00	321.00	320.00	46	50	50
Calves .....cwt	15.30	433.00	454.00	453.00	53	63	64
Hogs .....cwt	5.81	174.00	172.00	172.00	48	28	34
Eggs <sup>1</sup> .....dozen	0.094	2.79	2.79	2.78	46	43	67
Turkeys, live ..... pound	0.061	1.820	1.810	1.810	40	39	42

(NA) Not available.

<sup>1</sup> Parity prices began January 2015.

<sup>2</sup> Seasonally adjusted price as percentage of parity price.

<sup>3</sup> Wholesale extracted. Adjusted base price derived from state annual averages prices weighted by production. For 1982 through 1985 the national averages are the support prices.

<sup>4</sup> Equivalent packinghouse-door returns for California, New York, Oregon, and Washington. Price at point of first sale for other states.

## Commodity Parity Prices – United States: May 2015 with Comparisons

[Parity prices are computed under the provisions of Title III, Subtitle a, Section 301 (a) of the Agricultural Adjustment Act of 1938 as amended by the Agricultural Acts of 1948, 1949, and 1956. See January *Agricultural Prices* for details on adjusted base price and parity price computations]

Commodity and unit	Adjusted base price	Parity price			
		May 2014	April 2015	May 2015	
	(dollars)	(dollars)	(dollars)	(dollars)	
<b>Field crops and miscellaneous</b>					
Hops .....	pound	0.325	9.63	9.65	9.63
Mustard seed .....	cwt	3.07	90.60	91.10	90.90
Rapeseed .....	cwt	2.43	69.40	72.10	72.00
Rye .....	bushel	0.614	17.70	18.20	18.20
Safflower .....	cwt	2.16	63.30	64.10	64.00
Spearmint oil .....	pound	1.64	48.50	48.70	48.60
Sweet potatoes .....	cwt	2.08	63.30	61.80	61.60
<b>Tobacco</b>					
Flue-cured, 11-14 .....	pound	0.181	5.60	5.37	5.36
Fire-cured, 21-23 .....	pound	0.259	8.09	7.69	7.67
Burley, 31 .....	pound	0.181	5.69	5.37	5.36
Maryland, 32 .....	pound	0.171	5.12	5.08	5.07
Dark air-cured, 35-37 .....	pound	0.234	7.27	6.95	6.93
Pennsylvania seedleaf, 41 .....	pound	0.181	5.54	5.37	5.36
Cigar binder, 51 .....	pound	0.632	19.10	18.80	18.70
<b>Noncitrus fruit</b>					
Apples, processing <sup>1 2</sup> .....	ton	18.10	548.00	537.00	536.00
Apricots					
Fresh <sup>3</sup> .....	ton	119.00	3,480.00	3,530.00	3,520.00
Dried (California) .....	ton	257.00	7,750.00	7,630.00	7,610.00
Avocados <sup>2 3</sup> .....	ton	183.00	5,600.00	5,430.00	5,420.00
Cherries					
Sweet .....	ton	215.00	6,360.00	6,380.00	6,370.00
Tart <sup>2</sup> .....	pound	0.033	1.000	0.980	0.977
Cranberry <sup>2 4</sup> .....	barrel	4.44	144.00	132.00	132.00
Dates (California) <sup>3</sup> .....	ton	152.00	4,880.00	4,510.00	4,500.00
Grapes (California)					
Raisin variety <sup>5</sup> .....	ton	144.00	4,210.00	4,280.00	4,270.00
Wine, processing .....	ton	66.60	(NA)	1,980.00	1,970.00
Kiwifruit <sup>2</sup> .....	ton	90.00	2,410.00	2,670.00	2,670.00
Nectarines, fresh (California) <sup>3</sup> .....	ton	60.90	1,660.00	1,810.00	1,800.00
Olives, canning (California) <sup>4</sup> .....	ton	95.60	2,760.00	2,840.00	2,830.00

See footnote(s) at end of table.

--continued

## Commodity Parity Prices – United States: May 2015 with Comparisons (continued)

[Parity prices are computed under the provisions of Title III, Subtitle a, Section 301 (a) of the Agricultural Adjustment Act of 1938 as amended by the Agricultural Acts of 1948, 1949, and 1956. See January *Agricultural Prices* for details on adjusted base price and parity price computations]

Commodity and unit	Adjusted base price	Parity price		
		May 2014	April 2015	May 2015
	(dollars)	(dollars)	(dollars)	(dollars)
<b>Noncitrus fruit - continued</b>				
Papayas (Hawaii) .....pound	0.041	1.15	1.22	1.21
Peaches				
Fresh <sup>4 6</sup> .....ton	87.00	2,470.00	2,580.00	2,580.00
Dried (California) <sup>1 5</sup> .....ton	46.50	1,460.00	1,380.00	1,380.00
Processing, excludes dried				
Clingstone (California) <sup>4</sup> .....ton	33.50	984.00	995.00	992.00
Pears, Fresh <sup>6</sup> .....ton	57.70	1,700.00	1,710.00	1,710.00
Plums (California) equivalent on-tree				
Fresh <sup>7</sup> .....ton	62.30	1,780.00	1,850.00	1,850.00
Prunes, dried (California) <sup>1 2 5</sup> .....ton	157.00	4,480.00	4,660.00	4,650.00
Prunes and plums				
Fresh, excludes California <sup>7</sup> .....ton	62.90	1,910.00	1,870.00	1,860.00
Processing, excludes dried <sup>1</sup> .....ton	23.90	703.00	710.00	708.00
Strawberries				
Fresh <sup>10</sup> .....pound	9.040	266.00	268.00	268.00
Processing .....pound	3.38	99.40	100.00	100.00
Sugar crops				
Sugarbeets <sup>2 8</sup> .....ton	5.34	165.00	159.00	158.00
Sugarcane <sup>2 8</sup> .....ton	3.55	107.00	105.00	105.00
<b>Tree nuts <sup>9</sup></b>				
Almonds .....pound	0.236	6.45	7.01	6.99
Hazelnuts .....ton	222.00	6,000.00	6,590.00	6,580.00
Pistachios .....pound	0.227	6.00	6.74	6.72
Walnuts .....ton	223.00	5,180.00	6,620.00	6,610.00
<b>Vegetables, fresh <sup>10</sup></b>				
Carrots <sup>11</sup> .....cwt	2.63	78.80	78.10	77.90
Cauliflower <sup>11</sup> .....cwt	4.17	122.00	124.00	124.00
Celery <sup>11</sup> .....cwt	1.99	59.40	59.10	58.90
Honeydew melons .....cwt	1.98	58.80	58.80	58.60
Lettuce .....cwt	2.17	63.30	64.40	64.30
Onions <sup>11</sup> .....cwt	1.41	41.80	41.90	41.80
Tomatoes .....cwt	4.21	130.00	125.00	125.00

(NA) Not available.

<sup>1</sup> Equivalent returns at processing plant door.

<sup>2</sup> Adjusted base price is carried forward from the previous year since current marketing year average price is not yet available.

<sup>3</sup> Equivalent returns at packinghouse door.

<sup>4</sup> Equivalent returns for bulk fruit at first delivery point.

<sup>5</sup> Dried basis.

<sup>6</sup> Equivalent packinghouse-door returns for California, New York (apples only), Oregon (except peaches), and Washington. Price at point of first sale for other states.

<sup>7</sup> Based on "as sold" prices for fresh fruit in all states.

<sup>8</sup> Relates to prices including average conditional payments per ton made under the sugar acts of 1937 and 1948. Crop deficiency and abandonment payments not included.

<sup>9</sup> Prices In-Shell basis except almonds which are shelled basis.

<sup>10</sup> FOB shipping point price.

<sup>11</sup> Includes some processing.



## Marketing Year for Specified Commodities

**Barley:** June 1 to May 31 for United States; June 1 to May 31 for Arizona, California, Delaware, Maryland, North Carolina, Pennsylvania, Virginia; August 1 to July 31 for Alaska, Maine; July 1 to June 30 for all other states.

**Oats:** June 1 to May 31 for United States; May 1 to April 30 for Alabama, Georgia and Texas; June 1 to May 31 for Arkansas, North Carolina, Oklahoma, South Carolina, and Virginia; August 1 to July 31 for Maine and New York; September 1 to August 31 for Alaska; July 1 to June 30 for all other States.

**Sweet Potatoes:** July - June for United States; July 1 to June 30 for Alabama and California; July 1 to May 31 for Arkansas, Louisiana, North Carolina and Texas; August 1 to July 31 for Mississippi and New Jersey; and January 1 to December 31 for Florida.

**Wheat:** June 1 to May 31 for United States; May 1 to April 30 for Alabama, Florida, Georgia, Louisiana, Mississippi, and Texas; June 1 to May 31 for Arizona, Arkansas, California, Delaware, Illinois, Indiana, Kansas, Kentucky, Maryland, Missouri, New Mexico, North Carolina, Oklahoma, South Carolina, Tennessee, and Virginia; July 1 to June 30 for all other States.

## Prices Received and Farm Marketings for All Barley by Month – United States: Marketing Years 2012-2013 through 2014-2015

[Marketing year average (MYA) prices are weighted average prices for the United States marketing year of June through May. Monthly farm marketings, based on a sample survey, as percent of total used for calculating MYA prices]

Month	Prices received			Farm marketing percentages		
	2012-2013	2013-2014	2014-2015	2012-2013	2013-2014	2014-2015
	(dollars per bushel)	(dollars per bushel)	(dollars per bushel)	(percent)	(percent)	(percent)
June .....	5.52	6.35	6.01	2.3	4.9	7.6
July .....	6.25	6.38	5.62	8.9	5.1	8.0
August .....	6.54	6.15	5.60	23.2	20.6	19.4
September .....	6.42	5.88	5.31	13.1	13.5	14.5
October .....	6.49	5.94	5.24	7.6	8.9	6.3
November .....	6.49	6.20	5.09	6.6	8.0	4.9
December .....	6.44	6.11	5.16	6.9	7.8	7.8
January <sup>1</sup> .....	6.41	6.04	4.86	10.1	9.3	9.0
February .....	6.48	5.94	5.22	8.2	6.8	8.0
March .....	6.49	5.94	4.87	5.8	5.7	7.0
April .....	6.30	5.90	4.94	4.3	5.1	3.8
May .....	6.45	5.94	4.75	3.0	4.3	3.7
MYA .....	6.43	6.06	5.30	100.0	100.0	100.0

<sup>1</sup> Second year.

## Prices Received and Farm Marketings for Malting Barley by Month – United States: Marketing Years 2012-2013 through 2014-2015

[Marketing year average (MYA) prices are weighted average prices for the United States marketing year of June through May. Monthly farm marketings, based on a sample survey, as percent of total used for calculating MYA prices]

Month	Prices received			Farm marketing percentages		
	2012-2013	2013-2014	2014-2015	2012-2013	2013-2014	2014-2015
	(dollars per bushel)	(dollars per bushel)	(dollars per bushel)	(percent)	(percent)	(percent)
June .....	5.54	6.68	6.30	2.1	3.9	8.1
July .....	6.43	6.56	5.90	8.5	5.6	8.6
August .....	6.68	6.56	6.11	24.2	20.9	19.7
September .....	6.70	6.44	5.91	11.8	12.5	14.4
October .....	6.65	6.49	5.76	7.4	8.6	6.3
November .....	6.65	6.61	5.69	6.5	8.6	4.8
December .....	6.57	6.52	5.63	7.1	8.3	8.1
January <sup>1</sup> .....	6.49	6.52	5.47	10.8	9.2	8.5
February .....	6.56	6.43	5.67	8.5	7.0	8.3
March .....	6.64	6.30	5.39	5.9	6.1	6.8
April .....	6.48	6.45	5.75	4.1	5.0	3.3
May .....	6.55	6.37	5.62	3.1	4.3	3.1
MYA .....	6.58	6.50	5.83	100.0	100.0	100.0

<sup>1</sup> Second year.

## Prices Received and Farm Marketings for Feed Barley by Month – United States: Marketing Years 2012-2013 through 2014-2015

[Marketing year average (MYA) prices are weighted average prices for the United States marketing year of June through May. Monthly farm marketings, based on a sample survey, as percent of total used for calculating MYA prices]

Month	Prices received			Farm marketing percentages		
	2012-2013	2013-2014	2014-2015	2012-2013	2013-2014	2014-2015
	(dollars per bushel)	(dollars per bushel)	(dollars per bushel)	(percent)	(percent)	(percent)
June .....	5.46	5.75	4.32	3.3	8.7	5.8
July .....	5.53	5.17	3.85	11.2	3.2	5.7
August .....	5.61	4.42	3.31	19.2	19.8	18.0
September .....	5.58	4.25	2.97	20.3	17.3	14.9
October .....	5.72	4.10	3.13	8.8	10.3	6.2
November .....	5.67	3.63	2.84	6.8	5.6	5.2
December .....	5.53	3.65	2.99	5.4	5.6	7.0
January <sup>1</sup> .....	5.60	4.21	2.99	6.0	9.7	11.0
February .....	5.91	3.77	2.94	6.4	6.2	6.6
March .....	5.61	3.81	3.08	5.1	4.2	7.9
April .....	5.55	3.77	3.05	5.3	5.3	5.8
May .....	5.68	4.15	2.90	2.2	4.1	5.9
MYA .....	5.62	4.28	3.17	100.0	100.0	100.0

<sup>1</sup> Second year.

## Prices Received and Farm Marketings for Oats by Month – United States: Marketing Years 2012-2013 through 2014-2015

[Marketing year average (MYA) prices are weighted average prices for the United States marketing year of June through May. Monthly farm marketings, based on a sample survey, as percent of total used for calculating MYA prices]

Month	Prices received			Farm marketing percentages		
	2012-2013	2013-2014	2014-2015	2012-2013	2013-2014	2014-2015
	(dollars per bushel)	(dollars per bushel)	(dollars per bushel)	(percent)	(percent)	(percent)
June .....	3.80	3.93	3.73	3.5	3.9	4.2
July .....	3.70	3.88	3.49	33.2	8.5	10.7
August .....	3.82	3.67	3.24	27.2	40.4	31.4
September .....	3.76	3.57	3.20	4.1	9.1	20.6
October .....	3.93	3.49	3.16	2.7	4.2	6.3
November .....	3.88	3.63	2.95	2.0	2.0	4.1
December .....	3.90	3.59	3.21	3.9	2.1	3.5
January <sup>1</sup> .....	4.06	3.70	3.02	3.8	5.0	6.7
February .....	4.14	3.75	3.08	2.8	6.4	4.8
March .....	4.20	4.13	2.96	6.2	7.2	2.8
April .....	4.43	3.96	2.82	5.1	5.7	3.4
May .....	4.45	3.98	2.90	5.5	5.5	1.5
MYA .....	3.89	3.75	3.21	100.0	100.0	100.0

(D) Withheld to avoid disclosing data for individual operations.

(NA) Not available.

(S) Insufficient number of reports to establish an estimate.

<sup>1</sup> Second year.

## Prices Received for Sweet Potatoes, Market Year Average - States and United States: 2012-2014

State	2012	2013	2014
	(dollars per cwt)	(dollars per cwt)	(dollars per cwt)
Alabama .....	17.30	28.50	24.10
Arkansas .....	30.60	32.20	(D)
California .....	22.70	24.60	30.10
Florida .....	(D)	(D)	(D)
Louisiana .....	18.50	17.90	17.40
Mississippi .....	17.90	16.40	19.30
New Jersey .....	24.20	29.50	36.90
North Carolina .....	13.00	24.90	22.00
Texas .....	(D)	(D)	27.60
United States .....	17.40	24.10	23.90

(D) Withheld to avoid disclosing data for individual operations.

**Prices Received and Farm Marketings for All Wheat by Month – United States: Marketing Years 2012-2013 through 2014-2015**

[Marketing year average (MYA) prices are weighted average prices for the United States marketing year of June through May. Monthly farm marketings, based on a sample survey, as percent of total used for calculating MYA prices]

Month	Prices received			Farm marketing percentages		
	2012-2013	2013-2014	2014-2015	2012-2013	2013-2014	2014-2015
	(dollars per bushel)	(dollars per bushel)	(dollars per bushel)	(percent)	(percent)	(percent)
June .....	6.70	7.37	6.49	21.2	8.4	10.9
July .....	7.89	6.95	6.15	18.0	19.1	18.1
August .....	8.04	6.88	5.97	13.6	13.4	12.7
September .....	8.27	6.80	5.71	7.8	11.3	10.7
October .....	8.38	6.94	5.71	4.8	8.0	7.4
November .....	8.47	6.85	6.04	4.7	4.0	6.1
December .....	8.30	6.73	6.14	6.4	5.7	10.3
January <sup>1</sup> .....	8.12	6.65	6.15	6.8	7.7	7.1
February .....	7.97	6.50	5.89	4.0	6.4	4.3
March .....	7.79	6.74	5.70	5.2	8.4	5.8
April .....	7.71	6.82	5.56	4.5	4.9	3.3
May .....	7.68	7.08	5.33	3.0	2.7	3.3
MYA .....	7.77	6.87	5.99	100.0	100.0	100.0

<sup>1</sup> Second year.

**Prices Received for Winter Wheat by Month, Marketing Year Average – United States: 2012-2013 through 2014-2015**

[Marketing year average (MYA) prices are weighted average prices for the United States marketing year of June through May]

Month	2012-2013	2013-2014	2014-2015
	(dollars per bushel)	(dollars per bushel)	(dollars per bushel)
June .....	6.55	7.18	6.34
July .....	7.76	6.85	5.99
August .....	7.92	6.81	5.90
September .....	8.25	6.80	5.69
October .....	8.33	7.07	5.65
November .....	8.38	6.96	5.87
December .....	8.15	6.84	6.14
January <sup>1</sup> .....	8.01	6.72	6.02
February .....	7.85	6.58	5.70
March .....	7.63	6.92	5.55
April .....	7.52	7.07	5.50
May .....	7.49	7.26	5.19
MYA .....	7.55	6.89	5.92

<sup>1</sup> Second year.

## Prices Received for Durum Wheat by Month, Marketing Year Average – United States: 2012-2013 through 2014-2015

[Marketing year average (MYA) prices are weighted average prices for the United States marketing year of June through May]

Month	2012-2013	2013-2014	2014-2015
	(dollars per bushel)	(dollars per bushel)	(dollars per bushel)
June .....	8.31	8.51	7.96
July .....	8.67	8.32	8.13
August .....	7.76	7.73	8.03
September .....	7.77	7.84	8.25
October .....	7.61	7.03	8.48
November .....	8.11	6.72	11.00
December .....	8.31	6.90	10.70
January <sup>1</sup> .....	8.24	7.01	9.89
February .....	8.19	6.43	10.10
March .....	8.12	6.69	9.50
April .....	8.01	6.80	7.79
May .....	8.06	7.21	8.02
MYA .....	8.18	7.46	8.81

<sup>1</sup> Second year.

## Prices Received for Other Spring Wheat by Month, Marketing Year Average – United States: 2012-2013 through 2014-2015

[Marketing year average (MYA) prices are weighted average prices for the United States marketing year of June through May]

Month	2012-2013	2013-2014	2014-2015
	(dollars per bushel)	(dollars per bushel)	(dollars per bushel)
June .....	7.78	7.72	6.60
July .....	8.39	7.30	6.23
August .....	8.27	6.97	5.93
September .....	8.38	6.71	5.51
October .....	8.56	6.66	5.57
November .....	8.65	6.70	5.73
December .....	8.48	6.55	5.80
January <sup>1</sup> .....	8.34	6.48	5.84
February .....	8.11	6.40	5.55
March .....	7.95	6.56	5.53
April .....	7.90	6.61	5.51
May .....	7.84	6.85	5.29
MYA .....	8.24	6.73	5.75

<sup>1</sup> Second year.

**Prices Received for Hard Red Spring Wheat by Month, Marketing Year Average – United States:  
2012-2013 through 2014-2015**

[Marketing year average (MYA) prices are weighted average prices for the United States marketing year of June through May]

Month	2012-2013	2013-2014	2014-2015
	(dollars per bushel)	(dollars per bushel)	(dollars per bushel)
June .....	7.81	7.73	6.60
July .....	8.41	7.30	6.22
August .....	8.32	6.98	5.89
September .....	8.42	6.72	5.49
October .....	8.60	6.66	5.53
November .....	8.69	6.70	5.69
December .....	8.50	6.53	5.77
January <sup>1</sup> .....	8.38	6.46	5.82
February .....	8.11	6.39	5.53
March .....	7.94	6.55	5.52
April .....	7.91	6.60	5.50
May .....	7.86	6.85	5.28
MYA .....	8.27	6.73	5.73

<sup>1</sup> Second year.

**Prices Received for Hard Red Winter Wheat by Month, Marketing Year Average – United States:  
2012-2013 through 2014-2015**

[Marketing year average (MYA) prices are weighted average prices for the United States marketing year of June through May]

Month	2012-2013	2013-2014	2014-2015
	(dollars per bushel)	(dollars per bushel)	(dollars per bushel)
June .....	6.53	7.35	6.94
July .....	7.74	7.05	6.41
August .....	7.97	6.95	6.03
September .....	8.36	6.92	5.58
October .....	8.43	7.25	5.48
November .....	8.49	7.10	5.66
December .....	8.20	6.85	6.08
January <sup>1</sup> .....	8.02	6.72	5.95
February .....	7.75	6.64	5.54
March .....	7.50	7.08	5.38
April .....	7.49	7.18	5.36
May .....	7.56	7.39	5.08
MYA .....	7.56	7.03	6.02

<sup>1</sup> Second year.

**Prices Received for Soft Red Winter Wheat by Month, Marketing Year Average – United States: 2012-2013 through 2014-2015**

[Marketing year average (MYA) prices are weighted average prices for the United States marketing year of June through May]

Month	2012-2013	2013-2014	2014-2015
	(dollars per bushel)	(dollars per bushel)	(dollars per bushel)
June .....	6.59	6.92	5.51
July .....	7.84	6.55	5.32
August .....	8.30	6.33	5.13
September .....	8.38	6.22	4.94
October .....	8.35	6.59	4.95
November .....	8.34	6.63	5.23
December .....	8.19	6.13	5.64
January <sup>1</sup> .....	7.90	6.24	5.67
February .....	7.78	5.90	5.48
March .....	7.46	6.30	5.13
April .....	7.42	6.54	4.94
May .....	7.31	6.73	5.04
MYA .....	7.26	6.53	5.34

<sup>1</sup> Second year.

**Prices Received for White Wheat by Month, Marketing Year Average – United States: 2012-2013 through 2014-2015**

[Marketing year average (MYA) prices are weighted average prices for the United States marketing year of June through May]

Month	2012-2013	2013-2014	2014-2015
	(dollars per bushel)	(dollars per bushel)	(dollars per bushel)
June .....	6.61	7.29	6.99
July .....	7.76	7.19	6.61
August .....	7.66	6.92	6.40
September .....	7.99	6.71	6.30
October .....	8.10	6.76	6.15
November .....	8.14	6.77	6.51
December .....	7.99	6.98	6.60
January <sup>1</sup> .....	8.03	6.85	6.39
February .....	8.05	6.61	6.34
March .....	8.05	6.81	6.25
April .....	7.71	7.05	6.26
May .....	7.42	7.12	5.77
MYA .....	7.88	6.85	6.37

<sup>1</sup> Second year.

## Reliability of Prices Received Estimates

**Definition:** Prices received represent sales from producers to first buyers. They include all grades and qualities. The average commodity price from the survey multiplied by the total quantity marketed theoretically should give the total cash receipts for the commodity.

**Survey procedures:** Primary sales data used to determine grain prices were obtained from probability samples of about 1900 mills and elevators. These procedures ensure that virtually all grain moving into commercial channels has a chance of being included in the survey. Generally, States surveyed account for 90 percent or more of total United States production. Livestock prices are obtained from packers, stockyards, auctions, dealers, and market check data from AMS-USDA, private marketing organizations, and state commodity groups and agencies. Inter-farm sales of grain and livestock are not included since they represent very small percentages of the total sales. Grain marketed for seed is also excluded. Fruit and vegetable prices are obtained from sample surveys and market check data from AMS-USDA, private marketing organizations, state agencies, and universities.

**Summary and estimation procedures:** Survey quantities sold are expanded by strata to state levels and used to weight average strata prices to a state average. State prices are then weighted to a United States price based on expanded sales. Recommendations are prepared by the Regional Field Offices and reviewed by the Agricultural Statistics Board in Washington, D.C. State recommendations are reviewed for reasonableness with survey data, other States, and recent historic estimates.

**Revisions:** In general, revisions are made during annual commodity market year estimation time, following five-year Census revisions, or when later information is received. Revisions are published in monthly issues of *Agricultural Prices*.

**Reliability:** United States price estimates based on probability surveys generally have a sampling error of less than one percent for the major commodities such as corn, wheat, soybeans, cotton, and rice. Current methods of summarization for non-probability commodities are not designed directly to calculate sampling errors. However, analytical measures approximate the United States relative sampling errors at around five percent. Any non-sampling errors are attributed to such things as the inability to obtain correct information, differences in interpreting questions or definitions, mistakes in coding or processing the data, etc. Efforts are made at each step in the survey process to minimize these non-sampling errors.

**Program Changes:** After the Council on Food, Agricultural and Resource Economics (C-FARE) 2009 program review which included changes in farm production practices, plans were implemented to make necessary program improvements in the agricultural price program. The index group structure for prices received was modified to maintain a more universal structure and consistency with the required 1910-1914 series.

Modifications implemented January 2014 include the following: update the current 1990-1992 base reference period to 2011, link the 1910-1914 series to the updated base reference period, 2011, create index groups used universally by researchers, data users, and policymakers, re-classify agricultural commodities into the index groups, expand the commodity coverage for vegetable, melon, non-citrus, and tree nuts, update monthly market weights, and adjust (normalization) current five year moving average cash receipts and farm input cost weights.

Modifications implemented January 2015 include the following: discontinue preliminary prices and replace the annual average index with an annual index.

See Price Program Quick Stats Links at end of this report for program change details.



## May Prices Paid by Farmers

The May Index of Prices Paid for Commodities and Services, Interest, Taxes, and Farm Wage Rates (PPITW), at 109, is down 0.9 percent from April and 3.5 percent below May 2014.

**Production index:** The May index, at 111, is unchanged from last month but is 3.5 percent lower than last May. Lower prices in May for complete feeds, concentrates, LP gas, and supplements offset higher prices for nitrogen, diesel, gasoline, and mixed fertilizer.

**Feed:** The May index, at 104, decreased 1.9 percent from April and is down 15 percent from last May. Since April, lower prices for complete feeds, concentrates, supplements, and feed grains more than offset higher prices for hay & forages.

**Livestock and poultry:** The May index, at 159, is unchanged from last month but increased 9.7 percent from last year. Since April, feeder cattle prices remained steady while feeder pig prices were lower. The May feeder cattle price, at \$233.00 per cwt, is unchanged from the April price. May feeder pigs averaged \$157.00 per cwt, down \$4.00 per cwt from April.

**Fertilizer:** The May index, at 92, is up 1.1 percent from April but is 11 percent below May a year ago. Since April, higher prices for nitrogen and mixed fertilizer more than offset lower prices for potash & phosphate.

**Chemicals:** The May index, at 106, is unchanged from April but is down 2.8 percent from last May. Compared with last month, prices are slightly higher for herbicides, insecticides and fungicides/other.

**Fuels:** The May index, at 68, is up 1.5 percent from a month earlier but is 33 percent below May 2014. Compared with last month, higher prices for diesel and gasoline more than offset lower prices for LP gas.

**Machinery:** The May index, at 115, was unchanged from April but is 2.7 percent above last May. Compared with last month, lower prices for self-propelled machinery offset higher prices for other machinery.

**Consumer price index:** The April 2015 Consumer Price Index, as issued by the Bureau of Labor Statistics, for all urban consumers (CPI-U) increased 0.2 percent before seasonal adjustment to a level of 236.599 (1982-1984=100). The March index is 236.119. For the 12 month period ending in April, the overall index decreased 0.2 percent.

## Prices Paid Indexes and Related Parity Ratios – United States: May 2015 with Comparisons

[Revised historical price indexes for months not shown are available at [www.nass.usda.gov](http://www.nass.usda.gov)]

Index Group and Ratios	1910-1914 Base			2011 Base		
	May 2014	April 2015	May 2015	May 2014	April 2015	May 2015
	(percent)	(percent)	(percent)	(percent)	(percent)	(percent)
Prices paid by farmers for commodities, services, interest, taxes, and wage rates (PPITW) .....	3045	2969	2962	113	110	109
Production .....	2396	2311	2302	115	111	111
Feed .....	1352	1169	1145	123	106	104
Livestock and poultry .....	2859	3145	3133	145	159	159
Seeds .....	3749	3755	3755	114	114	114
Fertilizer .....	1234	1095	1107	103	91	92
Chemicals .....	978	955	956	109	106	106
Fuels .....	2858	1879	1904	102	67	68
Supplies and repairs .....	1248	1252	1249	106	106	106
Autos and trucks .....	3215	3257	3258	105	106	106
Machinery .....	6835	7002	7003	112	115	115
Building materials .....	2486	2510	2503	107	108	108
Services and rent .....	2307	2355	2355	(NA)	(NA)	(NA)
Services .....	(NA)	(NA)	(NA)	109	112	111
Rent .....	(NA)	(NA)	(NA)	108	110	110
Interest <sup>1</sup> .....	3504	3539	3539	96	97	97
Taxes <sup>2</sup> .....	6233	6376	6376	105	107	107
Wage rates .....	7686	7865	7865	107	110	110
Production, interest, taxes, and wage rates (PITW) .....	3204	3114	3104	114	110	110
Family living-CPI <sup>3</sup> .....	2260	2248	2259	106	105	106
Ratio (received/paid) .....	(NA)	(NA)	(NA)	102	94	98
Parity ratio <sup>4</sup> .....	39	36	37	(NA)	(NA)	(NA)
Parity ratio adjusted <sup>5</sup> .....	40	37	38	(NA)	(NA)	(NA)
PPITW adjusted for productivity <sup>6</sup> .....	1422	1409	1409	(NA)	(NA)	(NA)
Crop sector (PPITW) .....	(NA)	(NA)	(NA)	108	106	106
Livestock sector (PPITW) .....	(NA)	(NA)	(NA)	117	113	113
Farm sector (production) .....	(NA)	(NA)	(NA)	128	123	121
Non-farm sector (production) .....	(NA)	(NA)	(NA)	107	104	104

(NA) Not available.

<sup>1</sup> Interest per acre on farm real estate debt and interest rate on farm non-real estate debt.

<sup>2</sup> Farm real estate taxes payable per acre.

<sup>3</sup> Bureau of Labor Statistics, Consumer Price Index for all urban consumers (CPI-U), for the previous month converted by the USDA.

<sup>4</sup> Ratio of index of prices received to PPITW (1910-1914=100).

<sup>5</sup> Based on estimated cash receipts, from marketings and government payments, the preliminary adjustment factor is 1.026 for 2015 and the revised factor is 1.026 for 2014.

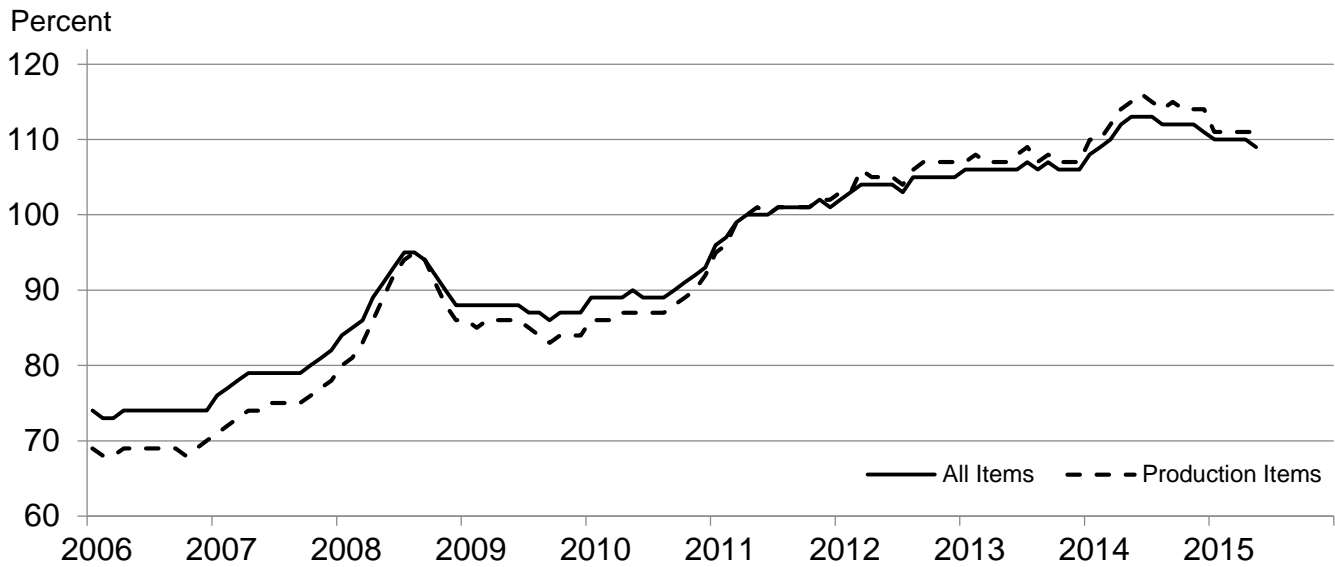
<sup>6</sup> PPITW is adjusted based on productivity trend for the prior 15 years.

## Prices Paid Indexes and Annual Weights for Input Components and Sub-components – United States: May 2015 with Comparisons

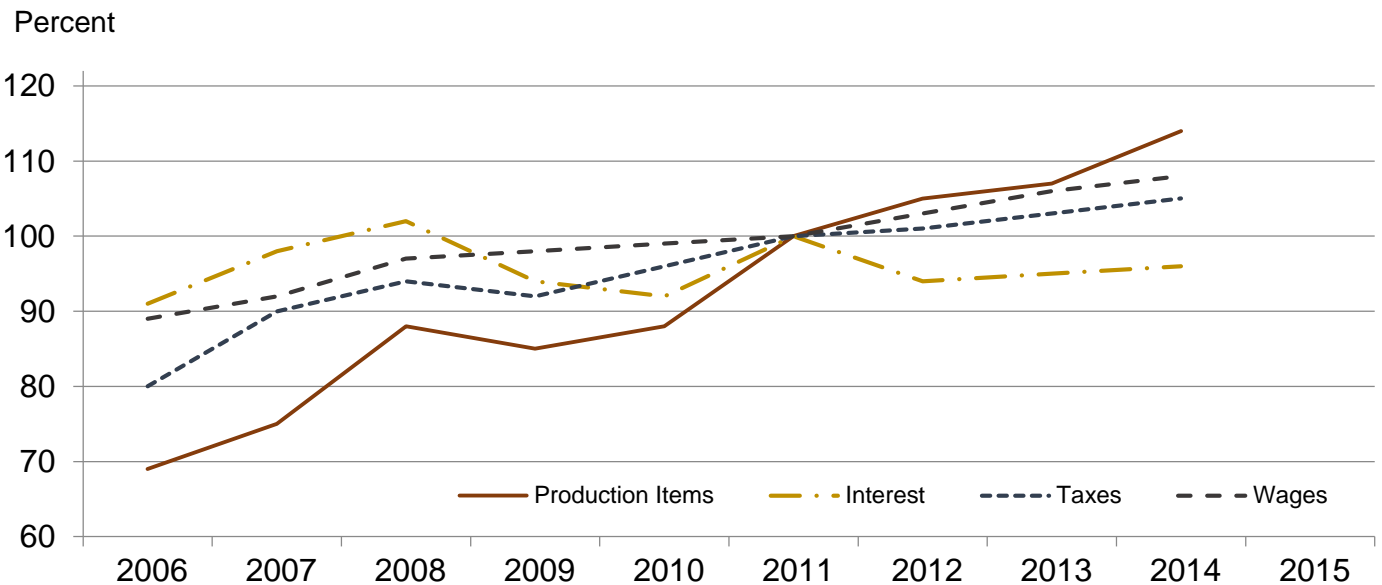
[Revised historical price indexes for months not shown are available at [www.nass.usda.gov](http://www.nass.usda.gov). Relative weights are a five year moving average]

Index Group	Relative weights		Indexes (2011=100)		
	2014	2015	May 2014	April 2015	May 2015
	(percent)	(percent)	(percent)	(percent)	(percent)
Production items .....	74.1	74.6	115	111	111
Feed .....	15.5	15.5	123	106	104
Feed grains .....	2.2	2.2	80	65	63
Complete feeds .....	7.6	7.6	129	115	113
Hay and forages .....	1.9	1.9	128	110	110
Concentrates .....	2.5	2.5	139	111	107
Supplements .....	1.3	1.3	120	109	105
Livestock and poultry .....	8.5	8.3	145	159	159
Feeder cattle .....	6.6	6.4	143	170	170
Feeder pigs .....	0.7	0.7	217	115	112
Milk cow replacements .....	0.7	0.7	127	139	139
Poultry .....	0.5	0.5	102	102	102
Seeds .....	4.9	5.0	114	114	114
Field crops .....	4.4	4.5	113	114	114
Grasses and legumes .....	0.5	0.5	123	120	120
Fertilizer .....	6.2	6.4	103	91	92
Mixed fertilizer .....	2.7	2.8	91	86	87
Nitrogen .....	2.6	2.7	114	96	98
Potash and phosphate .....	0.9	0.9	105	91	89
Chemicals .....	3.1	3.2	109	106	106
Herbicides .....	1.9	2.0	109	107	107
Insecticides .....	0.7	0.7	112	107	107
Fungicides and other .....	0.4	0.5	103	103	104
Fuels .....	4.1	4.0	102	67	68
Diesel .....	2.6	2.5	96	63	65
Gasoline .....	0.9	0.8	118	68	75
LP gas .....	0.7	0.7	105	82	70
Supplies and repairs .....	4.3	4.3	106	106	106
Supplies .....	1.4	1.4	106	107	106
Repairs .....	2.8	2.9	106	106	106
Autos and trucks .....	1.1	1.1	105	106	106
Autos .....	0.1	0.1	102	102	102
Trucks .....	1.0	1.0	105	107	107
Machinery .....	4.9	5.2	112	115	115
Tractors .....	1.1	1.1	108	110	110
Self-propelled .....	2.0	2.1	114	120	120
Other machinery .....	1.9	2.0	112	112	112
Building materials .....	3.7	3.7	107	108	108
Services .....	10.8	10.8	109	112	111
Custom rates .....	1.1	1.1	109	109	109
Other services .....	9.7	9.7	109	112	112
Rent .....	6.9	7.1	108	110	110
Cash .....	3.7	3.8	109	110	110
Share .....	3.2	3.3	108	110	110
Interest .....	2.6	2.3	96	97	97
Taxes .....	2.9	2.8	105	107	107
Wage rates .....	6.4	6.4	107	110	110
Family living-CPI .....	14.0	13.9	106	105	106

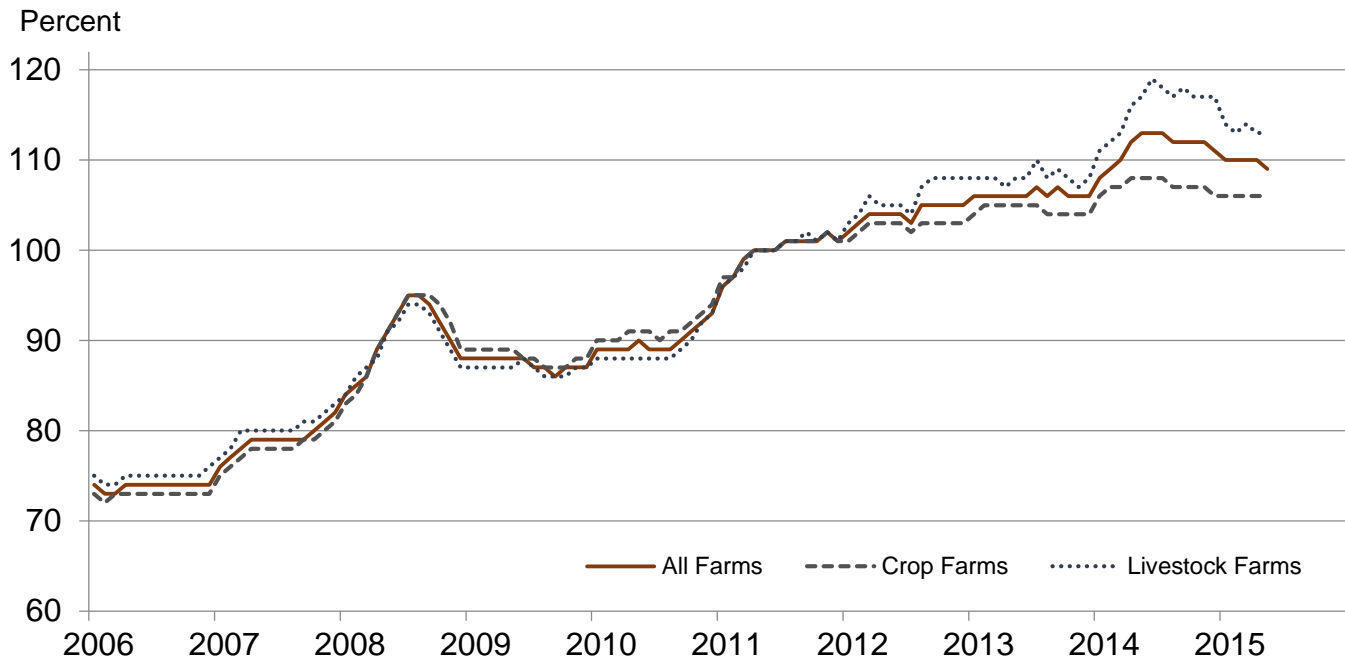
## Paid Indexes by Month, All Items and Production Items – United States: 2011=100



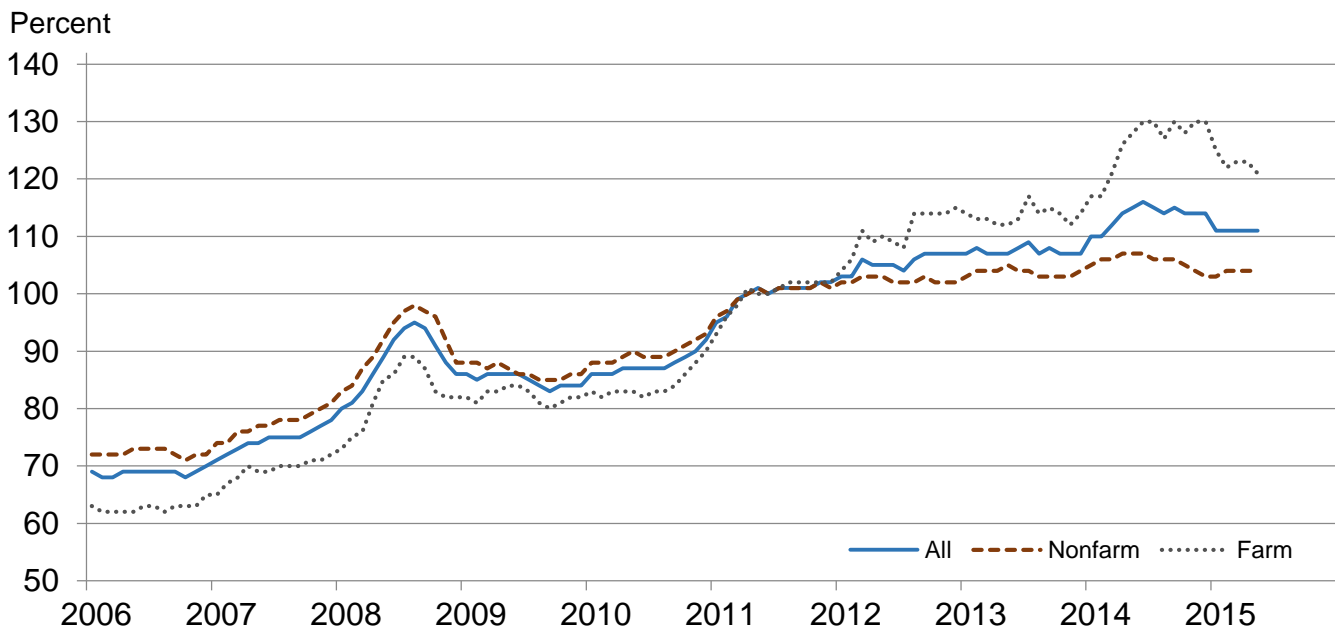
## Paid Indexes, Annual Averages, Production Items, Interest, Taxes, and Wages – United States: 2011=100



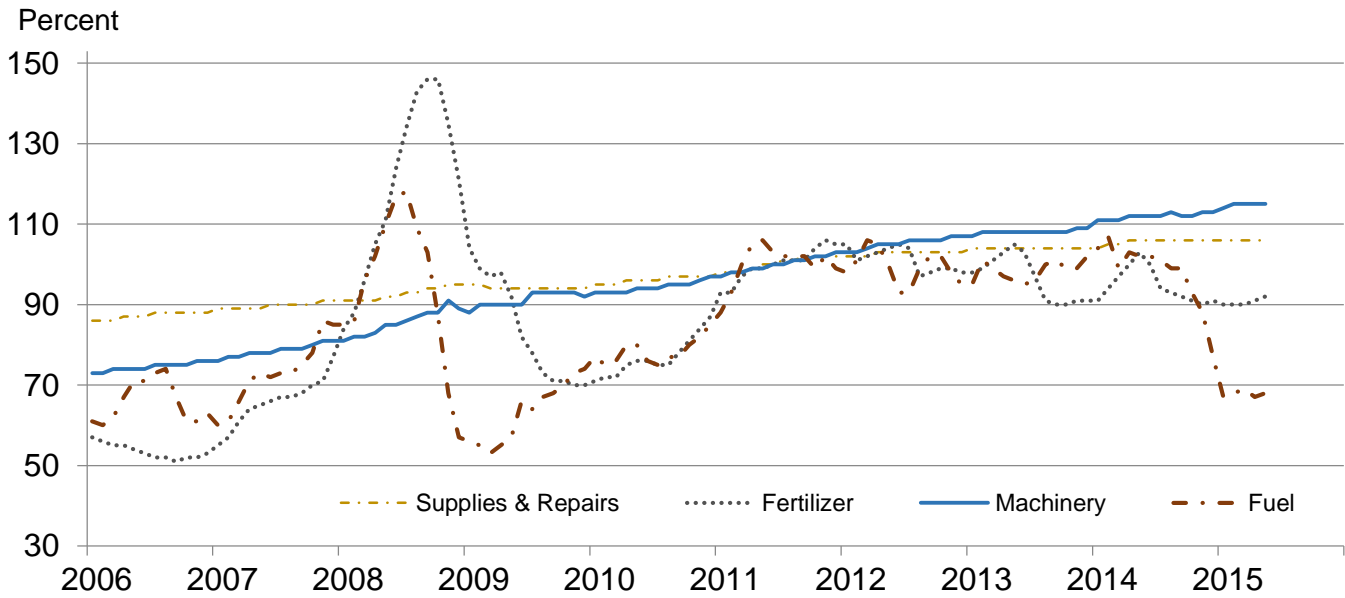
## Paid Indexes by Farm Type and Month, All Items – United States: 2011=100



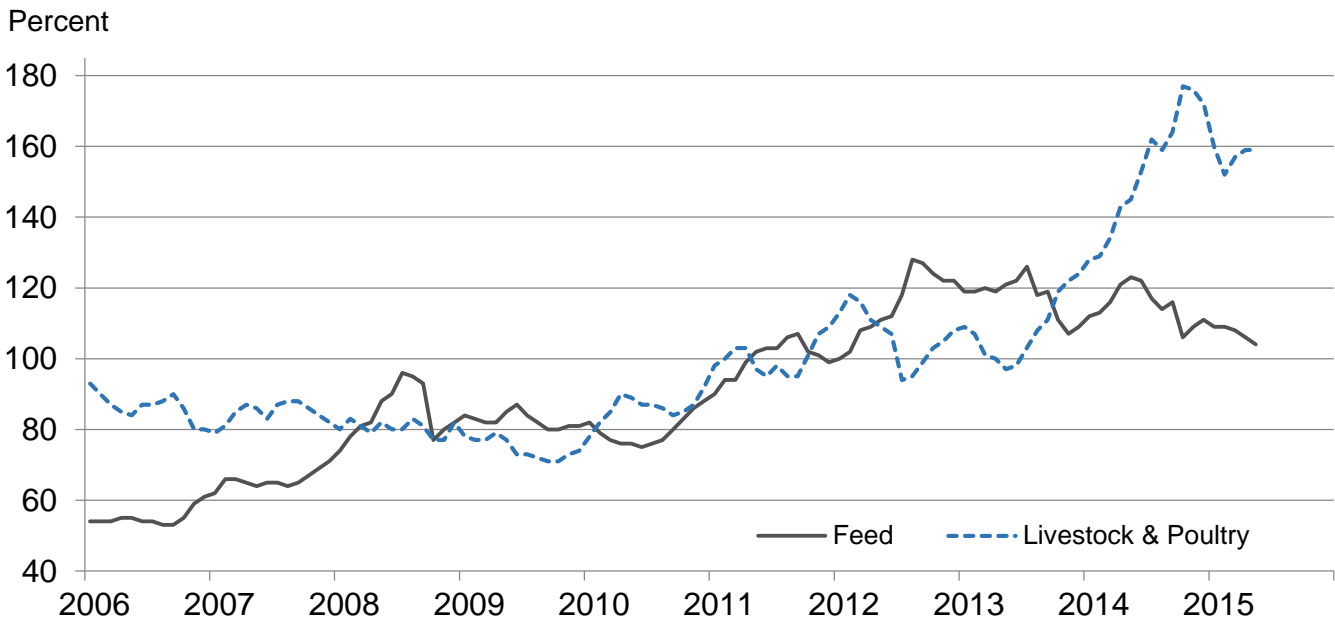
## Paid Indexes by Origin and Month, All Production Items – United States: 2011=100



## Paid Indexes by Non-Farm Sector and Month, Supplies & Repairs, Fertilizer, Machinery, and Fuel – United States: 2011=100



## Paid Indexes by Month, Feed and Livestock & Poultry – United States: 2011=100



## Feed Price Ratios – United States: May 2015 with Comparisons

Feed price ratio <sup>1</sup>	May 2014	April 2015	May 2015
Broiler-feed: pounds of broiler grower feed equal in value to 1 pound of broiler, live weight <sup>2</sup> .....	4.9	6.0	6.2
Market egg feed: pounds of laying feed equal in value to 1 dozen eggs <sup>3</sup> .....	7.9	9.6	18.2
Hog-corn: bushels of corn equal in value to 100 pounds of hog, live weight .....	17.6	13.1	16.3
Milk-feed: pounds of 16% mixed dairy feed equal in value to 1 pound of whole milk <sup>4</sup> .....	2.24	1.95	1.96
Steer & heifer-corn: bushels of corn equal in value to 100 pounds of steer & heifers, live weight .....	31.2	43.7	44.5
Turkey-feed: pounds of turkey grower equal in value to 1 pound of turkey, live weight <sup>5</sup> .....	5.4	7.1	7.9

<sup>1</sup> Effective January 1995, prices of commercial prepared feeds are based on current United States prices received for corn, soybeans, alfalfa hay, and all wheat.

<sup>2</sup> The price of commercial prepared broiler feed is based on current United States prices received for corn and soybeans. The modeled feed uses 58 percent corn and 42 percent soybeans.

<sup>3</sup> The price of commercial prepared layer feed is based on current United States prices received for corn and soybeans. The modeled feed uses 75 percent corn and 25 percent soybeans.

<sup>4</sup> The price of commercial prepared dairy feed is based on current United States prices received for corn, soybeans, and alfalfa. The modeled feed uses 51 percent corn, 8 percent soybeans, and 41 percent alfalfa.

<sup>5</sup> The price of commercial prepared turkey feed is based on current United States prices received for corn, soybeans, and wheat. The modeled feed uses 51 percent corn, 28 percent soybeans, and 21 percent wheat.

## Prices Received Used to Calculate Feed Price Ratios – United States: May 2015 with Comparisons

[Price data source for livestock and poultry commodities is United States Department of Agriculture's Agriculture Marketing Service]

Item	May 2014	April 2015	May 2015
	(dollars)	(dollars)	(dollars)
Broilers, live ..... pound	0.730	0.640	0.650
Eggs, market .....dozen	0.971	0.872	1.610
Hogs, all ..... cwt	82.80	49.00	58.90
Milk, all ..... cwt	24.20	16.50	16.70
Steers and heifers ..... cwt	147.00	164.00	161.00
Turkeys, live ..... pound	0.726	0.702	0.759
Corn .....bushel	4.71	3.75	3.62
Hay, alfalfa ..... ton	225.00	184.00	192.00
Soybeans .....bushel	14.40	9.70	9.60
Wheat, all .....bushel	7.08	5.56	5.33

## Prices Paid for Feeder Livestock – United States: May 2015 with Comparisons

[Price data source is United States Department of Agriculture's Agriculture Marketing Service]

Item	May 2014	April 2015	May 2015
	(dollars)	(dollars)	(dollars)
Feeder cattle & calves ..... cwt	195.00	233.00	233.00
Feeder pigs ..... cwt	304.00	161.00	157.00

## Reliability of Prices Paid Estimates

**Definition:** Prices paid by farmers represent the average costs of inputs purchased by farmers and ranchers to produce agricultural commodities. Conceptually, the average price when multiplied by quantity purchased should equal total producer expenditures for the item.

**Survey procedures:** The prices paid data are obtained from establishments that sell goods and services to farmers and ranchers. Annually, about 8,500 firms are randomly selected from lists by type of item sold with an average response rate in the range of 75-80 percent. Firms are asked to report the price for the specified item "most commonly bought by farmers" or that was the "volume seller". Approximately 135 items are surveyed each March to represent all production input items purchased. The survey reference period for most items is the five business days centered at the 15th of the month. Separate prices paid surveys are conducted for agricultural chemicals, fuels, feed, fertilizer, machinery, and seed.

**Summary and estimation procedures:** The annual March Prices Paid Survey is summarized as a non-probability survey. Average prices reported are aggregated to the region and United States level using weights available from expenditure data and other administrative sources. Price recommendations are prepared by the Regional Field Offices and Headquarters for review by the Agricultural Statistics Board in Washington, D.C. Also, the change in price level for individual items surveyed are combined to the regional and United States levels, and are published as prices paid indexes referenced to a specific base period. Prices paid indexes for new autos and trucks, building materials, farm supplies, motor supplies, and marketing containers are updated based on price changes measured in selected Bureau of Labor Statistics (BLS) indexes.

**Revisions:** Any revisions are published in the monthly and in annual issues of Agricultural Prices. The basis for revision must be supported by additional data that directly affect the level of the estimate. More revisions are likely for March when separate prices paid surveys are conducted, in lieu of BLS indexes, by the USDA to measure price change.

**Reliability:** Current methods of summarization for the March data are not designed directly to calculate sampling errors. However, analytical measures approximate the United States relative sampling errors for major items around 10 percent. Any non-sampling errors are attributed to such things as the inability to obtain correct information, differences in interpreting questions or definitions, mistakes in coding or processing the data, etc. Efforts are made at each step in the survey process to minimize these non-sampling errors.

**Program change:** Effective January 2014, the National Agricultural Statistics Service modified the five-year moving weights and updated the base reference period. In January 2015, publication of preliminary prices was suspended, and the annual average index was replaced by an annual index.

As of January 2014, the 1990-1992 base reference period is updated to 2011. Five-year moving average weights are adjusted (normalized) to minimize the effects of price changes. The 1910-1914=100 price indexes, required by statute for computing parity prices, were linked forward based on the changes in the new 2011=100 indexes. The new indexes were constructed by multiplying the ratios of the current prices to the base period prices by the moving average weights.



## Information Contacts

### General

Troy Joshua, Chief, Environmental, Economics and Demographics Branch ..... (202) 720-6146

### Crop Prices Received

Lance Honig, Chief, Crops Branch ..... (202) 720-2127

Anthony Prillaman, Head, Field Crops Section ..... (202) 720-2127

Angie Considine – Cotton, Cotton Ginnings, Sorghum ..... (202) 720-5944

Tony Dahlman – Crop Weather, Barley ..... (202) 720-7621

Chris Hawthorn – Corn, Flaxseed, Proso Millet ..... (202) 720-9526

James Johanson – County Estimates, Hay ..... (202) 690-8533

Jean Porter – Oats, Rye, Wheat ..... (202) 720-8068

Bianca Pruneda – Peanuts, Rice ..... (202) 720-7688

Travis Thorson – Soybeans, Sunflower, Other Oilseeds ..... (202) 720-7369

Jorge Garcia-Pratts, Head, Fruits, Vegetables and Special Crops Section ..... (202) 720-2127

Vincent Davis – Fresh and Processing Vegetables, Onions, Strawberries ..... (202) 720-2157

Fleming Gibson – Citrus, Coffee, Grapes, Sugar Crops, Tropical Fruits ..... (202) 720-5412

Greg Lemmons – Berries, Cranberries, Potatoes, Sweet Potatoes ..... (202) 720-4285

Dave Losh – Hops ..... (360) 709-2400

Dan Norris – Austrian Winter Peas, Dry Edible Peas, Lentils, Mint, Mushrooms, Peaches, Pears,

Wrinkled Seed Peas, Dry Beans ..... (202) 720-3250

Daphne Schauber – Floriculture, Maple Syrup, Nursery, Tree Nuts ..... (202) 720-4215

Chris Singh – Apples, Apricots, Cherries, Plums, Prunes, Tobacco ..... (202) 720-4288

### Livestock Prices Received

Dan Kerestes, Chief, Livestock Branch ..... (202) 720-3570

Scott Hollis, Head, Livestock Section ..... (202) 720-3570

Travis Averill – Cattle and Cattle on Feed ..... (202) 720-3040

Doug Bounds – Hogs and Pigs ..... (202) 720-3106

Mike Miller – Milk, Milk Cows ..... (202) 720-3278

Evan Schulz – Sheep and Goats ..... (202) 720-6147

Bruce Boess, Head, Poultry and Specialty Commodities Section ..... (202) 720-3570

Heidi Gleich – Broilers ..... (202) 720-0585

Michael Klamm – Turkeys ..... (202) 690-3237

Kim Linonis – Eggs ..... (202) 690-8632

Josh O’Rear – Honey ..... (202) 690-3676

### Indexes, Prices Paid, and Parity Prices

Troy Joshua, Chief, Environmental, Economics and  
Demographics Branch ..... (202) 720-6146

Tony Dorn, Head, Economics Section ..... (202) 690-3223

Daryl Brinkman – Prices Received Indexes, Parity Prices ..... (202) 720-8844

Greg Gholson – Prices Received Indexes, Parity Prices, Prices Paid ..... (202) 690-1348

Joe Hagedorn – Cash Rents, Grazing Fees ..... (202) 690-3231

Judy McDermott – Prices Paid Indexes, Prices Paid for Feed, Fertilizer, Chemicals, Seeds, Fuels,  
Farm Supplies and Repairs, Farm Machinery, Feeder Livestock, Poultry Chicks, Feed Price Ratios ..... (202) 690-3229

## Access to NASS Reports

For your convenience, you may access NASS reports and products the following ways:

- All reports are available electronically, at no cost, on the NASS web site: <http://www.nass.usda.gov>
- Both national and state specific reports are available via a free e-mail subscription. To set-up this free subscription, visit <http://www.nass.usda.gov> and in the “Follow NASS” box under “Receive reports by Email,” click on “National” or “State” to select the reports you would like to receive.

For more information on NASS surveys and reports, call the NASS Agricultural Statistics Hotline at (800) 727-9540, 7:30 a.m. to 4:00 p.m. ET, or e-mail: [nass@nass.usda.gov](mailto:nass@nass.usda.gov).

The U.S. Department of Agriculture (USDA) prohibits discrimination against its customers, employees, and applicants for employment on the basis of race, color, national origin, age, disability, sex, gender identity, religion, reprisal, and where applicable, political beliefs, marital status, familial or parental status, sexual orientation, or all or part of an individual's income is derived from any public assistance program, or protected genetic information in employment or in any program or activity conducted or funded by the Department. (Not all prohibited bases will apply to all programs and/or employment activities.)

If you wish to file a Civil Rights program complaint of discrimination, complete the [USDA Program Discrimination Complaint Form](#) (PDF), found online at [http://www.ascr.usda.gov/complaint\\_filing\\_cust.html](http://www.ascr.usda.gov/complaint_filing_cust.html), or at any USDA office, or call (866) 632-9992 to request the form. You may also write a letter containing all of the information requested in the form. Send your completed complaint form or letter to us by mail at U.S. Department of Agriculture, Director, Office of Adjudication, 1400 Independence Avenue, S.W., Washington, D.C. 20250-9410, by fax (202) 690-7442 or email at [program.intake@usda.gov](mailto:program.intake@usda.gov).

## Price Program Quick Stats Links

Economics and Prices

[http://www.nass.usda.gov/Statistics\\_by\\_Subject/Economics\\_and\\_Prices/index.asp](http://www.nass.usda.gov/Statistics_by_Subject/Economics_and_Prices/index.asp)

January 2014 Price Program Update

[http://www.nass.usda.gov/Surveys/Guide\\_to\\_NASS\\_Surveys/Prices/updates.pdf](http://www.nass.usda.gov/Surveys/Guide_to_NASS_Surveys/Prices/updates.pdf)

January 2015 Price Program Update

[http://www.nass.usda.gov/Surveys/Guide\\_to\\_NASS\\_Surveys/Prices/update2015.pdf](http://www.nass.usda.gov/Surveys/Guide_to_NASS_Surveys/Prices/update2015.pdf)

April 2015 Price Program Update

[http://www.nass.usda.gov/Surveys/Guide\\_to\\_NASS\\_Surveys/Prices/updateApr2015.pdf](http://www.nass.usda.gov/Surveys/Guide_to_NASS_Surveys/Prices/updateApr2015.pdf)