



Agricultural Prices

ISSN: 1937-4216

Released November 30, 2015, by the National Agricultural Statistics Service (NASS), Agricultural Statistics Board, United States Department of Agriculture (USDA).

Special Note

USDA's National Agricultural Statistics Service is updating the rounding for the Prices Received and Prices Paid 2011=100 Index series beginning with the February 2016 *Agricultural Prices* report.

October Farm Prices Received Index Down 9.2 Percent

The October Prices Received Index (Agricultural Production), at 89, decreased 9.2 percent from September. At 80, the Crop Production Index decreased 8.0 percent. The Livestock Production Index, at 104, decreased 4.6 percent. Producers received lower prices for cattle, market eggs, lettuce, and broilers but higher prices for sweet corn, milk, strawberries, and hogs. In addition to prices, the indexes are influenced by the monthly mix of commodities producers market. Increased monthly movement of soybeans, corn, cotton, and calves offset the decreased marketing of cattle, milk, broilers, and wheat.

The Prices Received Index is down 11 percent from the previous year. The Food Commodities Index, at 95, decreased 7.8 percent from September and is down 15 percent from October 2014.

October Prices Paid Index Unchanged

The October Index of Prices Paid for Commodities and Services, Interest, Taxes, and Farm Wage Rates (PPITW), at 107, is unchanged from September but is down 4.5 percent from October 2014. Lower prices in October for concentrates, nitrogen, other services, and complete feeds offset higher prices for wage rates, feeder cattle, feeder pigs, and hay & forages.

Prices Received, Prices Paid, and Ratio of Prices Received to Prices Paid Indexes 2011 Base – United States: October 2015 with Comparisons

Index Group	October 2014	September 2015	October 2015
Prices received by farmers	100	98	89
Prices paid by farmers	112	107	107
Ratio of prices received to prices paid	89	92	83

Contents

Prices Received by Farmers	5
Prices Received Indexes, 2011 Base – United States: October 2015 with Comparisons.....	6
Prices Received Indexes, 1910-1914 Base – United States: October 2015 with Comparisons	6
Prices Received Indexes, 2011 Base by Month for Selected Groups – United States: 2014 and 2015	6
Prices Paid Indexes, 2011 Base by Month for Selected Groups – United States: 2014 and 2015	7
Received and Paid Indexes, Annual Average – United States: 2011=100 Chart.....	7
Crop Farm Received and Paid Indexes, All Items by Quarter – United States: 2011=100 Chart.....	8
Livestock Farm Received and Paid Indexes All Items by Quarter – United States: 2011=100 Chart.....	8
Received Indexes by Month, Agricultural, Crop, and Livestock Production – United States: 2011=100 Chart.....	9
Received Indexes by Month, Feed Grain, Food Grain, and Oilseed – United States: 2011=100 Chart	9
Received Indexes by Month, Fruit & Tree Nut and Vegetable & Melon – United States: 2011=100 Chart.....	10
Received Indexes by Month, Dairy, Meat Animal, and Poultry & Egg – United States: 2011=100 Chart	10
Prices Received for Field Crops and Fruits – United States: October 2015 with Comparisons	11
Prices Received for Vegetables and Livestock – United States: October 2015 with Comparisons.....	12
Prices Received for Corn by Month – United States Chart.....	13
Prices Received for Wheat by Month – United States Chart	13
Prices Received for Upland Cotton by Month – United States Chart	14
Prices Received for Soybeans by Month – United States Chart	14
Prices Received for Cattle by Month – United States Chart	15
Prices Received for Milk by Month – United States Chart.....	15
Prices Received for Hogs by Month – United States Chart	16
Prices Received for Poultry by Month – United States Chart.....	16
Prices Received for All Wheat, Corn, and Soybeans by Month – United States: 2015 with Comparisons.....	17
Prices Received for Beef Cattle and All Hogs by Month – United States: 2015 with Comparisons	17
Prices Received for All Wheat – States and United States: October 2015 with Comparisons	18
Prices Received for Winter Wheat – States and United States: October 2015 with Comparisons	18
Prices Received for Durum Wheat – States and United States: October 2015 with Comparisons	19
Prices Received for Spring Wheat – States and United States: October 2015 with Comparisons.....	19
Prices Received for Oats – States and United States: October 2015 with Comparisons.....	19
Prices Received for All Barley – States and United States: October 2015 with Comparisons	20
Prices Received for Malting Barley – States and United States: October 2015 with Comparisons.....	20
Prices Received for Feed Barley – States and United States: October 2015 with Comparisons.....	20
Prices Received for Sorghum Grain – States and United States: October 2015 with Comparisons	20
Prices Received for Corn – States and United States: October 2015 with Comparisons.....	21
Prices Received for Soybeans – States and United States: October 2015 with Comparisons.....	21
Prices Received for Dry Beans – States and United States: October 2015 with Comparisons.....	22
Prices Received for Peanuts (in shell) – States and United States: October 2015 with Comparisons	22
Prices Received for Sunflower – States and United States: October 2015 with Comparisons	22
Prices Received for Canola – States and United States: October 2015 with Comparisons.....	22
Prices Received for Flaxseed – States and United States: October 2015 with Comparisons.....	23
Prices Received for Upland Cotton and Cottonseed – States and United States: October 2015 with Comparisons.....	23
Prices Received and Farm Marketings for Upland Cotton and Rice – United States: October 2015 with Comparisons	23
Prices Received for Hay by Type – States and United States: October 2015 with Comparisons.....	24
Prices Received for Apples – States and United States: October 2015 with Comparisons.....	24
Prices Received for Citrus Fruits by Utilization – States and United States: October 2014.....	25
Prices Received for Citrus Fruits by Utilization – States and United States: September 2015.....	26
Prices Received for Citrus Fruits by Utilization – States and United States: October 2015.....	27
Prices Received for Potatoes – States and United States: October 2015 with Comparisons	28
Prices Received for All Milk – States and United States: October 2015 with Comparisons	29
Prices Received for Milk Cows – States and United States: October 2015 with Comparisons	29
Parity Price Overview	30

Commodity Parity Prices and Price as Percent of Parity Price – United States: October 2015 with Comparisons.....	31
Commodity Parity Prices – United States: October 2015 with Comparisons	32
Marketing Year for Specified Commodities	34
Market Year Average Prices Received for Flaxseed – States and United States: Marketing Years 2013 and 2014	34
Market Year Average Prices Received for Sunflowers – States and United States: Marketing Years 2013 and 2014	34
Market Year Average Prices Received for Canola – States and United States: Marketing Years 2013 and 2014	35
Market Year Average Prices Received for Proso Millet – States and United States: Marketing Years 2013 and 2014	35
Market Year Average Prices Received for Other Oilseeds – United States: Marketing Years 2013 and 2014.....	35
Market Year Average Prices Received for Safflower – States and United States: Marketing Years 2013 and 2014	35
Market Year Average Prices Received for Corn – States and United States: Marketing Years 2013 and 2014	36
Market Year Average Prices Received for All Dry Beans – States and United States: Marketing Years 2013 and 2014	37
Prices Received for Corn by Month – States and United States: Marketing Year 2013-2014	38
Prices Received for Corn by Month – States and United States: Marketing Year 2014-2015	39
Prices Received for Flaxseed by Month – States and United States: Marketing Years 2013-2014 and 2014-2015	40
Prices Received for Canola by Month – States and United States: Marketing Years 2014-2015.....	40
Prices Received for All Sunflowers by Month – States and United States: Marketing Years 2013-2014 and 2014-2015	41
Prices Received for Oil Sunflowers by Month – States and United States: Marketing Years 2013-2014 and 2014-2015	42
Prices Received for Non-Oil Sunflowers by Month – States and United States: Marketing Years 2013-2014 and 2014-2015	43
Prices Received for Dry Edible Beans by Month – States and United States: Marketing Years 2013-2014 and 2014-2015	44
Marketing Percentages of Corn by Month – States and United States: Marketing Years 2013-2014 and 2014-2015	45
Marketing Percentages of All Sunflowers by Month – States and United States: Marketing Years 2013-2014 and 2014-2015	46
Marketing Percentages of Flaxseed by Month – States and United States: Marketing Years 2013-2014 and 2014-2015	46
Marketing Percentages of Canola by Month – States and United States: Marketing Years 2013-2014 and 2014-2015	47
Marketing Percentages of Dry Edible Beans by Month – States and United States: Marketing Years 2013-2014 and 2014-2015	47
Prices Received and Marketing Percentages for All Chickpeas (Garbanzo) by Month – United States: Marketing Years 2013-2014 and 2014-2015.....	48
Prices Received and Marketing Percentages for Large Chickpeas by Month – United States: Marketing Years 2013-2014 and 2014-2015	48
Prices Received and Marketing Percentages for Small Chickpeas (Garbanzo) by Month – United States: Marketing Years 2013-2014 and 2014-2015	49
Reliability of Prices Received Estimates	50
Prices Paid by Farmers.....	51
Prices Paid Indexes and Related Parity Ratios – United States: October 2015 with Comparisons	52
Prices Paid Indexes and Annual Weights for Input Components and Sub-components – United States: October 2015 with Comparisons	53
Paid Indexes by Month, All Items and Production Items – United States: 2011=100 Chart.....	54
Paid Indexes, Annual Averages, Production Items, Interest, Taxes, and Wages – United States: 2011=100 Chart	54
Paid Indexes by Farm Type and Month, All Items – United States: 2011=100 Chart.....	55
Paid Indexes by Origin and Month, All Production Items – United States: 2011=100 Chart	55
Paid Indexes by Farm Origin and Month, Feed and Livestock & Poultry – United States: 2011=100 Chart	56

Paid Indexes by Non-farm Origin and Month, Fertilizer, Fuels, Machinery, and Supplies & Repairs, –	
United States: 2011=100 Chart.....	56
Feed Price Ratios – United States: October 2015 with Comparisons	57
Prices Received Used to Calculate Feed Price Ratios – United States: October 2015 with Comparisons	57
Prices Paid for Feeder Livestock – United States: October 2015 with Comparisons	57
Reliability of Prices Paid Estimates	58
Information Contacts.....	59

October Prices Received by Farmers

The October Prices Received Index for agricultural production is 89 percent of its 2011 base, down 9.2 percent from the September index and 11 percent below the October 2014 index.

Crop Production: The October index, at 80, decreased 8.0 percent from September and is 1.2 percent lower than October 2014. Index decreases for other crop and vegetable & melon production more than offset the increase for fruit & tree nut production index.

Feed grain: The October index, at 62, is down 1.6 percent from September but is 3.3 percent above a year ago. The corn price, at \$3.67 per bushel, is down 1 cent from September but is 10 cents higher than October 2014. At \$6.26 per cwt, sorghum grain is \$1.10 below September but unchanged from October a year earlier.

Food grain: At 73, the index for October is 5.8 percent higher than September but is 13 percent lower than a year earlier. The October price for all wheat, at \$4.87 per bushel, is up 15 cents from September but is 84 cents below October 2014.

Oilseed: At 70, the index for October is down 2.8 percent from September and 13 percent lower than October 2014. The soybean price, at \$8.81 per bushel, decreased 24 cents from September and is \$1.16 below October a year earlier.

Fruit and tree nut: The October index, at 132, is up 2.3 percent from September but is 0.8 percent lower than a year earlier. The price increase during October for strawberries more than offset the price decrease for apples.

Vegetable and melon: At 102, the index for October is down 4.7 percent from September but is 6.3 percent higher than October 2014. Price declines during October for lettuce and potatoes more than offset price increases for sweet corn and cucumbers.

Other crop: The October index, at 84, is down 6.7 percent from September and 8.7 percent below October 2014. The all hay price, at \$146 per ton, is up \$1.00 from September but \$25.00 lower than October 2014. At 57.8 cents per pound, the price for upland cotton is down 2.5 cents from September and 6.7 cents below October 2014.

Livestock Production: The index for October, at 104, is 4.6 percent below September and down 23 percent from October a year earlier. Compared with a year ago, prices are lower for cattle, broilers, milk, hogs, and calves but higher for market eggs and turkeys.

Meat animal: At 109, the October index is down 4.4 percent from the previous month and 22 percent lower than a year earlier. At \$55.50 per cwt, the October hog price is up \$1.00 from September but is down \$21.50 from a year earlier. The October beef cattle price of \$128 per cwt is down \$11.00 from September and \$33.00 lower than October 2014.

Dairy: The index for October, at 88, is up 1.1 percent from September but is 29 percent lower than October a year earlier. The October all milk price of \$17.70 per cwt is up 20 cents from September but is down \$7.20 from October 2014.

Poultry and egg: At 108, the October index is down 10 percent from September and 19 percent below October 2014. The October market egg price, at \$1.26 per dozen, decreased 54.0 cents from September but is 32.5 cents above October 2014. The October broiler price, at 41.0 cents per pound, is down 2.0 cents from September and 24.0 cents below a year earlier. At 97.2 cents per pound, the October turkey price is up 4.7 cents from September and 15.0 cents from October 2014.

Prices Received Indexes, 2011 Base – United States: October 2015 with Comparisons

[Revised historical price indexes for months not shown are available at www.nass.usda.gov]

Index Group	2011 Base		
	October 2014	September 2015	October 2015
	(percent)	(percent)	(percent)
Agricultural Production	100	98	89
Crop Production	81	87	80
Grain and oilseed	71	67	67
Feed grain	60	63	62
Food grain	84	69	73
Oilseed	80	72	70
Fruit and tree nut	133	129	132
Vegetable and melon	96	107	102
Other crop	92	90	84
Livestock Production	135	109	104
Meat animal	140	114	109
Cattle	149	125	118
Hog	116	82	83
Dairy	124	87	88
Poultry and egg	134	120	108
Food Commodity	112	103	95

Prices Received Indexes, 1910-1914 Base – United States: October 2015 with Comparisons

[Revised historical price indexes for months not shown are available at www.nass.usda.gov]

Index Group	1910 - 1914 Base		
	October 2014	September 2015	October 2015
	(percent)	(percent)	(percent)
Agricultural Production	1029	1006	919
Crop Production	708	759	697
Livestock Production	1571	1269	1211

Prices Received Indexes, 2011 Base by Month for Selected Groups – United States: 2014 and 2015

[Revised historical price indexes for months not shown are available at www.nass.usda.gov. Blank data cells indicate estimation period has not yet begun]

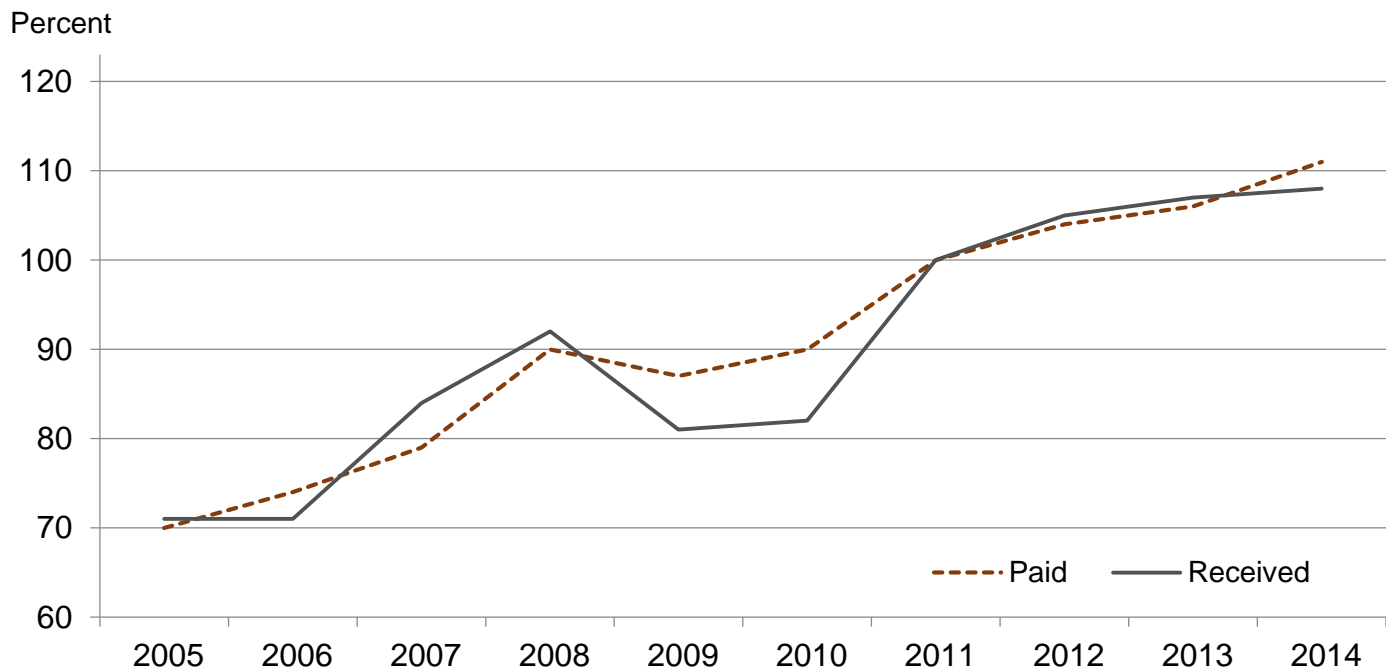
Month	2011 Base							
	Agricultural Production		Crop Production		Livestock Production		Food Commodities	
	2014	2015	2014	2015	2014	2015	2014	2015
	(percent)	(percent)	(percent)	(percent)	(percent)	(percent)	(percent)	(percent)
January	99	97	91	82	116	120	111	108
February	107	99	94	84	121	114	117	107
March	112	102	96	86	128	117	123	110
April	115	103	100	89	131	116	126	111
May	115	107	100	90	130	122	125	115
June	113	105	99	88	128	121	123	113
July	110	99	93	86	133	115	121	106
August	109	102	91	88	130	117	121	110
September	107	98	87	87	132	109	119	103
October	100	89	81	80	135	104	112	95
November	102		82		134		120	
December	101		83		127		115	

Prices Paid Indexes, 2011 Base by Month for Selected Groups – United States: 2014 and 2015

[Revised historical price indexes for months not shown are available at www.nass.usda.gov. Blank data cells indicate estimation period has not yet begun]

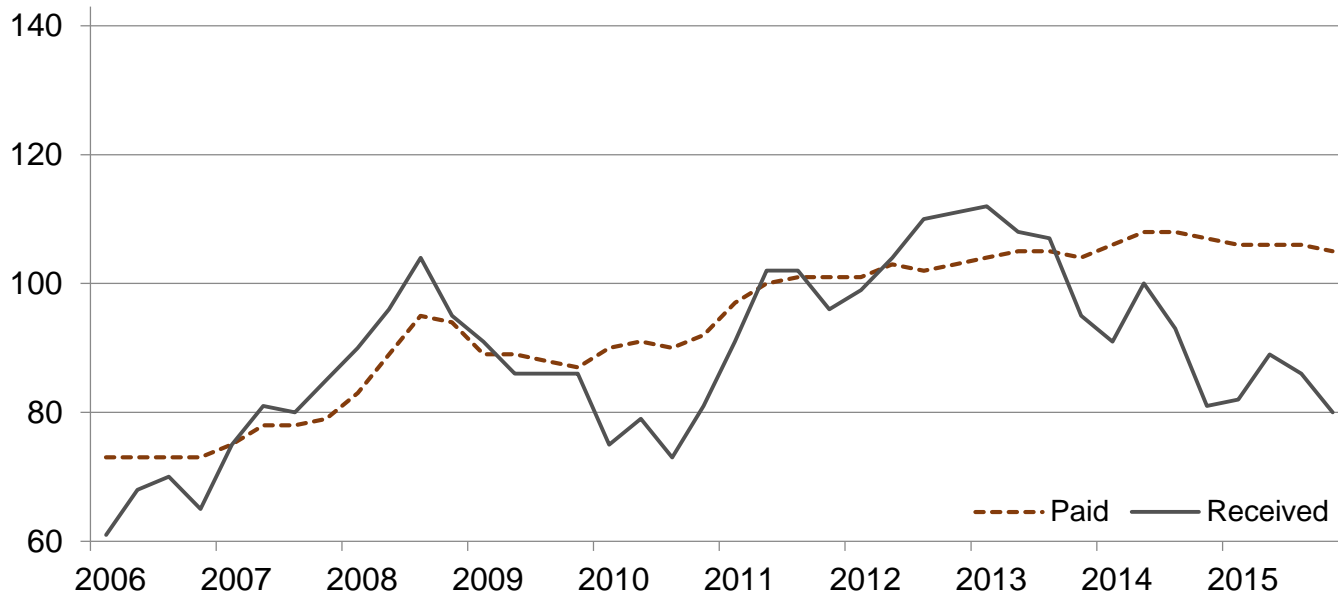
Month	2011 Base							
	All Items (PPITW)		Production		Crop Sector		Livestock Sector	
	2014	2015	2014	2015	2014	2015	2014	2015
	(percent)	(percent)	(percent)	(percent)	(percent)	(percent)	(percent)	(percent)
January	108	110	110	111	106	106	111	114
February	109	110	110	111	107	106	112	113
March	110	110	112	111	107	106	113	114
April	112	110	114	111	108	106	116	114
May	112	110	115	111	108	106	117	113
June	113	110	116	111	108	106	118	113
July	113	109	115	110	108	106	118	112
August	112	108	114	109	107	106	116	111
September	112	107	115	107	107	105	118	109
October	112	107	114	107	107	105	117	109
November	112		114		107		117	
December	111		114		106		117	

Received and Paid Indexes, Annual Average – United States: 2011=100



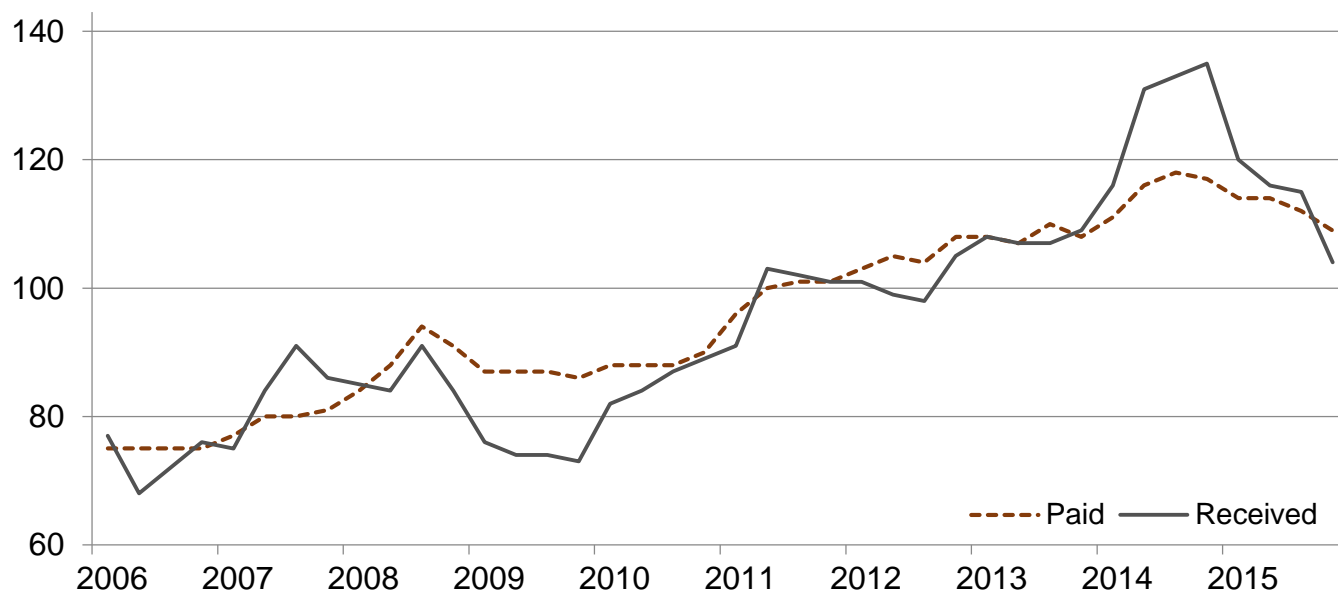
Crop Farm Received and Paid Indexes, All Items by Quarter – United States: 2011=100

Percent

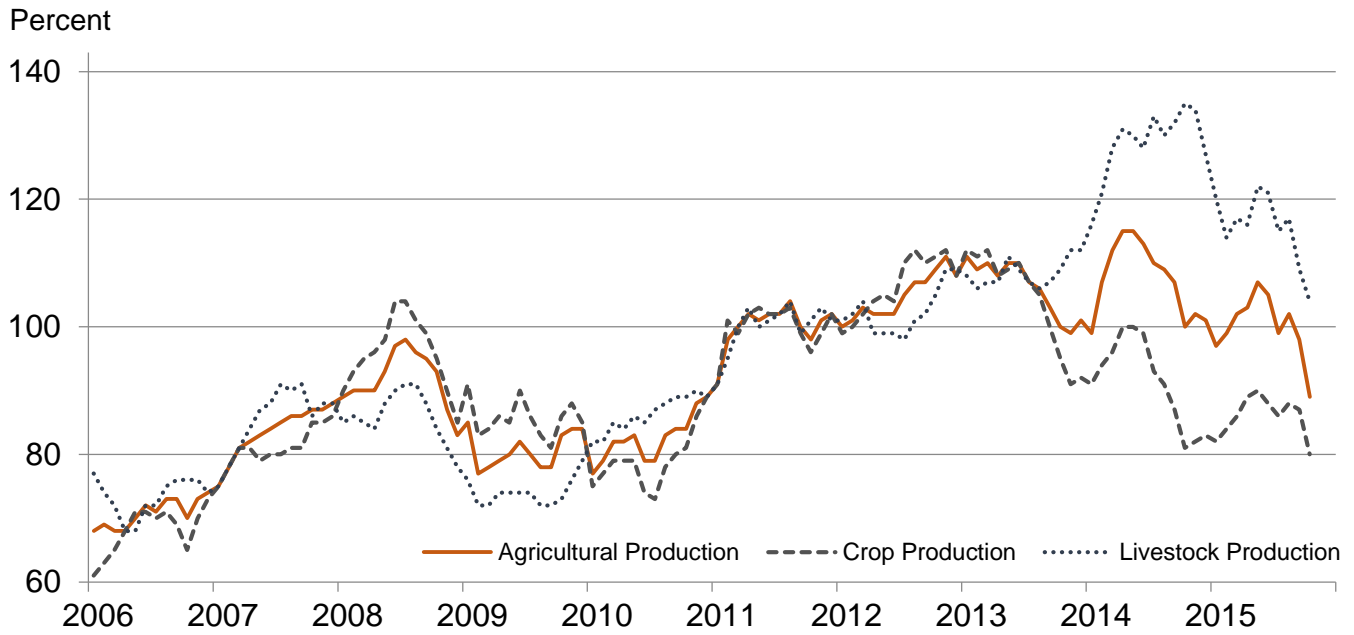


Livestock Farm Received and Paid Indexes, All Items by Quarter – United States: 2011=100

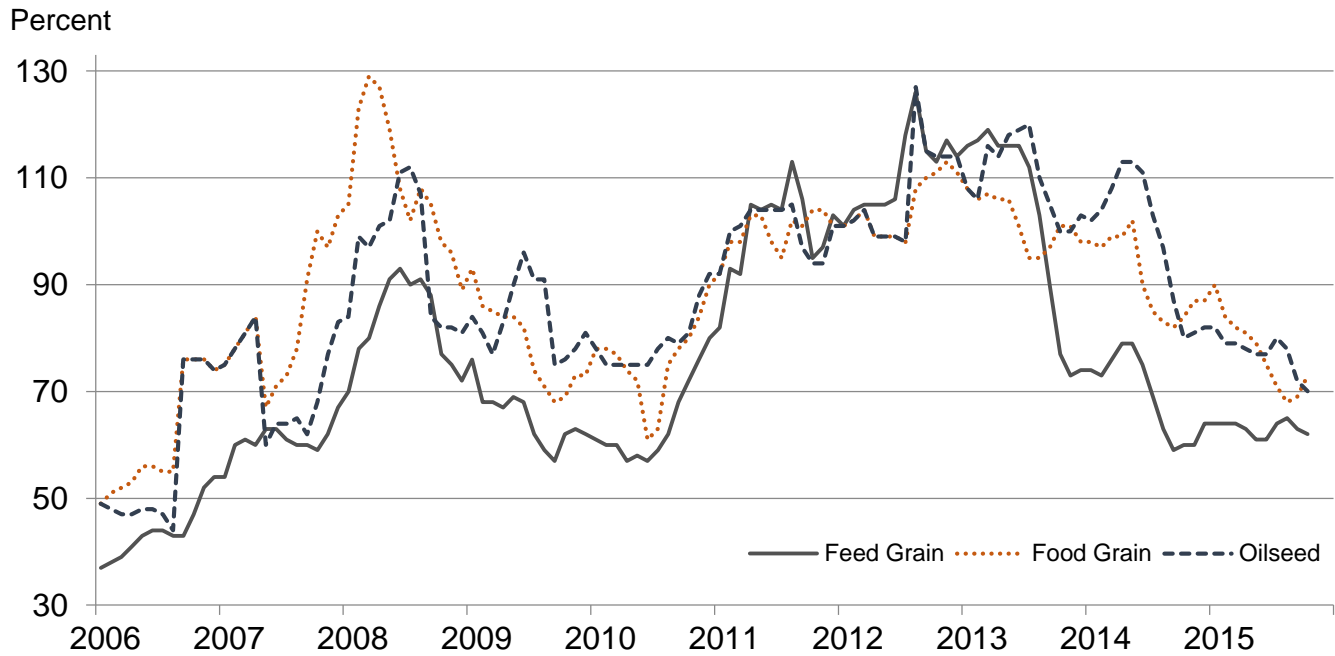
Percent



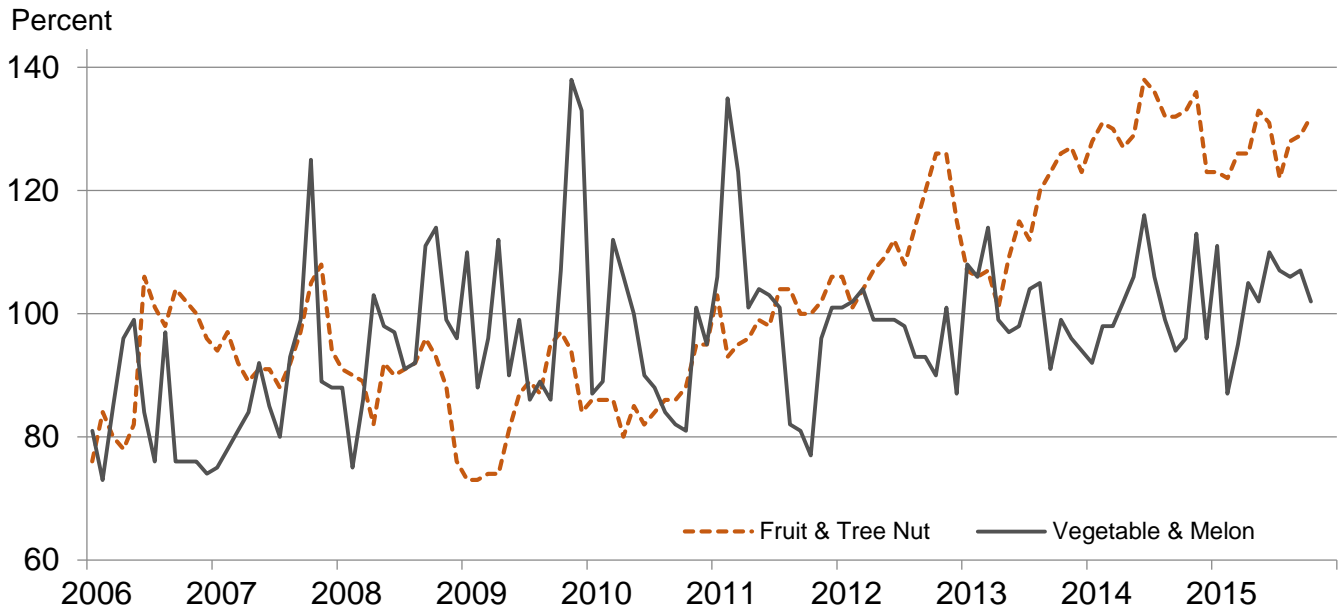
Received Indexes by Month, Agricultural, Crop, and Livestock Production – United States: 2011=100



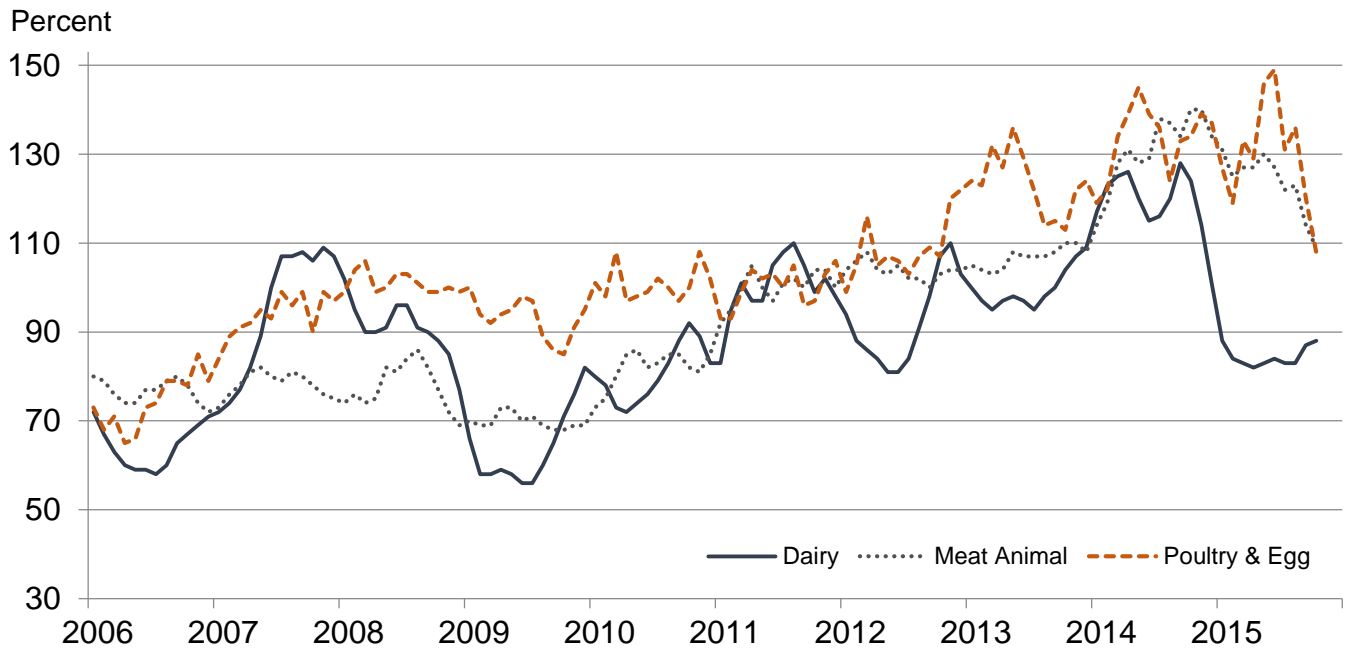
Received Indexes by Month, Feed Grain, Food Grain, and Oilseed – United States: 2011=100



**Received Indexes by Month,
Fruit & Tree Nut and Vegetable & Melon –
United States: 2011=100**



**Received Indexes by Month,
Dairy, Meat Animal, and Poultry & Egg –
United States: 2011=100**



Prices Received for Field Crops and Fruits – United States: October 2015 with Comparisons

Commodity	2011 Base Price	October 2014	September 2015	October 2015
Field crops				
Austrian winter peas	dollars/cwt 19.50	(D)	(D)	26.30
Barley, all	dollars/bushel 4.79	5.24	5.49	5.54
Feed	dollars/bushel 4.59	3.13	3.25	2.98
Malting	dollars/bushel 4.83	5.76	5.73	5.78
Beans, dry edible	dollars/cwt 34.60	32.20	27.30	27.30
Canola	dollars/cwt 23.10	15.80	15.10	14.80
Chickpeas, all	dollars/cwt 35.70	26.00	28.70	26.60
Large	dollars/cwt 39.20	29.70	29.40	27.20
Small	dollars/cwt 23.40	21.00	23.50	22.90
Corn	dollars/bushel 6.02	3.57	3.68	3.67
Cotton, Upland	dollars/pound 0.880	0.645	0.603	0.578
Cottonseed	dollars/ton 131.00	201.00	203.00	235.00
Flaxseed	dollars/bushel 14.20	11.50	9.07	8.59
Hay, all, baled	dollars/ton 159.00	171.00	145.00	146.00
Alfalfa	dollars/ton 176.00	193.00	157.00	156.00
Other	dollars/ton 119.00	128.00	119.00	124.00
Lentils	dollars/cwt 27.50	23.70	28.40	29.40
Oats	dollars/bushel 3.42	3.16	2.03	2.20
Peanuts, in-shell	dollars/pound 0.252	0.210	0.201	0.187
Peas, dry edible	dollars/cwt 13.60	11.00	12.40	10.90
Potatoes	dollars/cwt 9.78	7.30	7.45	7.23
Rice, all	dollars/cwt 13.70	14.00	11.60	12.30
Long	dollars/cwt 12.30	12.90	10.90	11.50
Medium and short	dollars/cwt 18.40	18.70	15.70	14.90
Sorghum grain	dollars/cwt 10.70	6.26	7.36	6.26
Soybeans	dollars/bushel 12.50	9.97	9.05	8.81
Sunflowers, all	dollars/cwt 29.00	21.70	25.20	18.60
Wheat, all	dollars/bushel 7.44	5.71	4.72	4.87
Winter	dollars/bushel 6.93	5.65	4.64	4.79
Durum	dollars/bushel 9.22	8.48	6.36	6.56
Other spring	dollars/bushel 8.33	5.57	4.68	4.80
Hard red winter	dollars/bushel 7.07	5.48	4.35	4.46
Soft red winter	dollars/bushel 6.77	4.95	4.31	4.55
Hard red spring	dollars/bushel 8.38	5.53	4.63	4.74
White	dollars/bushel 6.58	6.15	5.49	5.62
Fruits				
Citrus, equivalent on-tree				
Grapefruit	dollars/box 7.47	12.33	7.64	13.79
Lemons	dollars/box 12.30	38.47	31.02	36.18
Oranges	dollars/box 8.16	13.82	14.80	15.28
Tangelos	dollars/box 3.50	(S)	(S)	(S)
Tangerines and mandarins	dollars/box 15.30	(D)	(S)	(S)
Noncitrus, fresh				
Apples ¹	dollars/pound 0.325	0.402	0.430	0.414
Grapes ¹	dollars/ton 628.00	1,530.00	1,490.00	1,510.00
Peaches ¹	dollars/ton 507.00	(S)	828.00	(S)
Pears ¹	dollars/ton 559.00	696.00	708.00	744.00
Strawberries	dollars/cwt 104.00	112.00	71.30	100.00

(D) Withheld to avoid disclosing data for individual operations.

(S) Insufficient number of reports to establish an estimate.

¹ Equivalent packinghouse-door returns for California, Michigan, New York (apples only), and Washington (apples, peaches, and pears). Prices are sold for other states.

Prices Received for Vegetables and Livestock – United States: October 2015 with Comparisons

[Price data source for livestock and poultry commodities is United States Department of Agriculture's Agricultural Marketing Service]

Commodity	2011 Base Price	October 2014	September 2015	October 2015
Vegetables, fresh ¹				
Asparagus dollars/cwt	37.50	(NA)	(NA)	(S)
Beans, snap ² dollars/cwt	69.00	63.10	(D)	(D)
Broccoli dollars/cwt	41.60	34.60	57.10	58.10
Cantaloupes ² dollars/cwt	16.50	36.10	27.70	22.30
Carrots dollars/cwt	30.80	26.90	30.40	31.30
Cauliflower dollars/cwt	47.00	43.20	55.50	68.60
Celery dollars/cwt	22.50	16.90	22.70	28.00
Corn, sweet dollars/cwt	30.70	42.20	32.30	47.90
Cucumbers ² dollars/cwt	18.70	37.00	33.00	(D)
Lettuce dollars/cwt	24.30	33.40	48.90	34.40
Onions ³ dollars/cwt	11.90	10.30	11.80	12.50
Tomatoes dollars/cwt	51.20	54.60	35.80	41.80
Livestock				
Calves dollars/cwt	142.00	307.00	241.00	234.00
Cattle, all beef dollars/cwt	115.00	161.00	139.00	128.00
Cows ⁴ dollars/cwt	71.60	116.00	104.00	89.50
Steers and heifers dollars/cwt	117.00	163.00	140.00	129.00
Milk cows ^{5 6} dollars/head	1,420.00	2,120.00	2,030.00	1,980.00
Hogs, all dollars/cwt	66.50	77.00	54.50	55.50
Barrows and gilts dollars/cwt	66.80	77.40	54.90	55.40
Sows dollars/cwt	57.90	66.40	45.20	57.40
Dairy and poultry				
Milk, all ⁷ dollars/cwt	20.10	24.90	17.50	17.70
Fat test percent	3.71	3.79	3.69	3.80
Broilers, live ⁸ dollars/pound	0.459	0.650	0.430	0.410
Eggs, all ⁹ dollars/dozen	0.969	1.14	1.90	1.44
Market ^{9 10} dollars/dozen	0.796	0.935	1.80	1.26
Turkeys, live ¹¹ dollars/pound	0.680	0.822	0.925	0.972
Adjusted for seasonal variation				
Eggs, all dollars/dozen	0.979	1.21	2.10	1.54
Seasonal factor percent	101	95	91	94
Milk, all ⁷ dollars/cwt	20.20	23.20	16.70	16.50
Seasonal factor percent	100	107	105	107

(D) Withheld to avoid disclosing data for individual operations.

(NA) Not available.

(S) Insufficient number of reports to establish an estimate.

¹ Beginning January 2006, point of first sale. FOB shipping point for prior years.

² Monthly estimates began January 1995.

³ Includes some processing.

⁴ Beef cows and cull dairy cows sold for slaughter.

⁵ Animals sold for dairy herd replacement only. Prices available for January, April, July, and October.

⁶ Milk cow prices are for October 2014, July 2015, and October 2015.

⁷ Before deductions for hauling. Includes quality, quantity, and other premiums. Excludes hauling subsidies.

⁸ Live weight equivalent price.

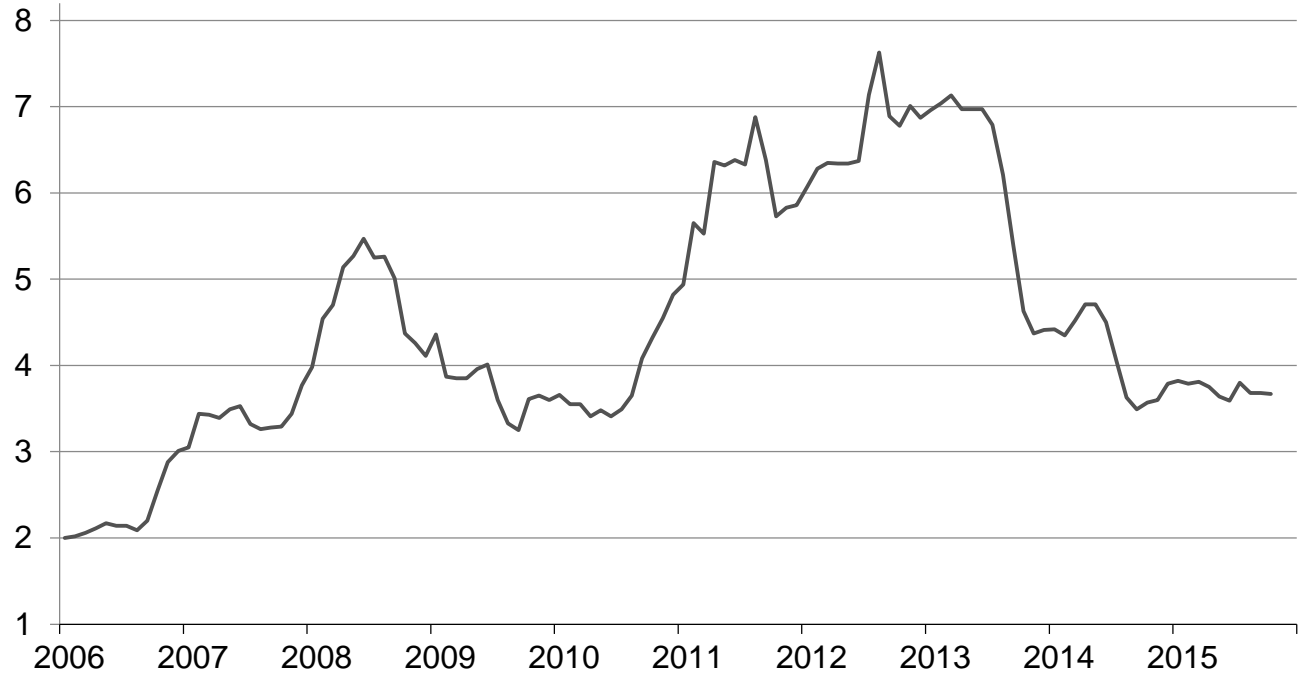
⁹ Mid-month price.

¹⁰ Also referred to as table eggs.

¹¹ Live weight equivalent price is used when actual live weight price is not available. Beginning January 2011, price reflects FOB shipping point basis. Prior year price reflects delivered basis.

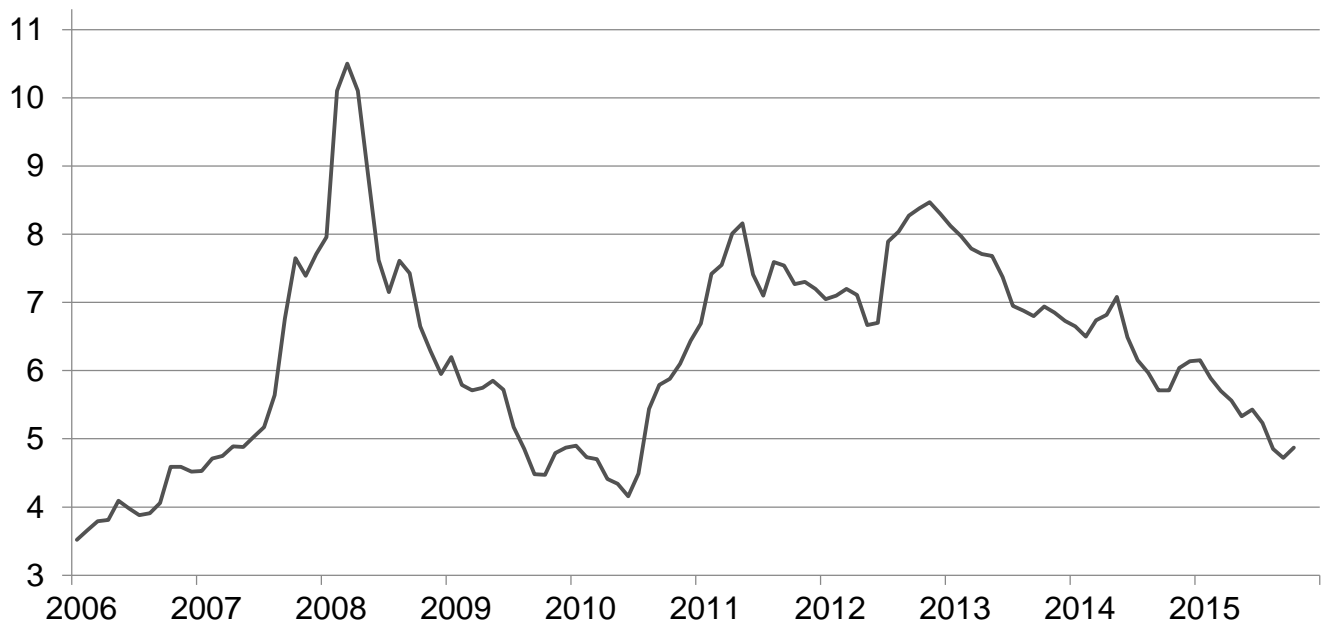
Prices Received for Corn by Month – United States

Dollars per bushel



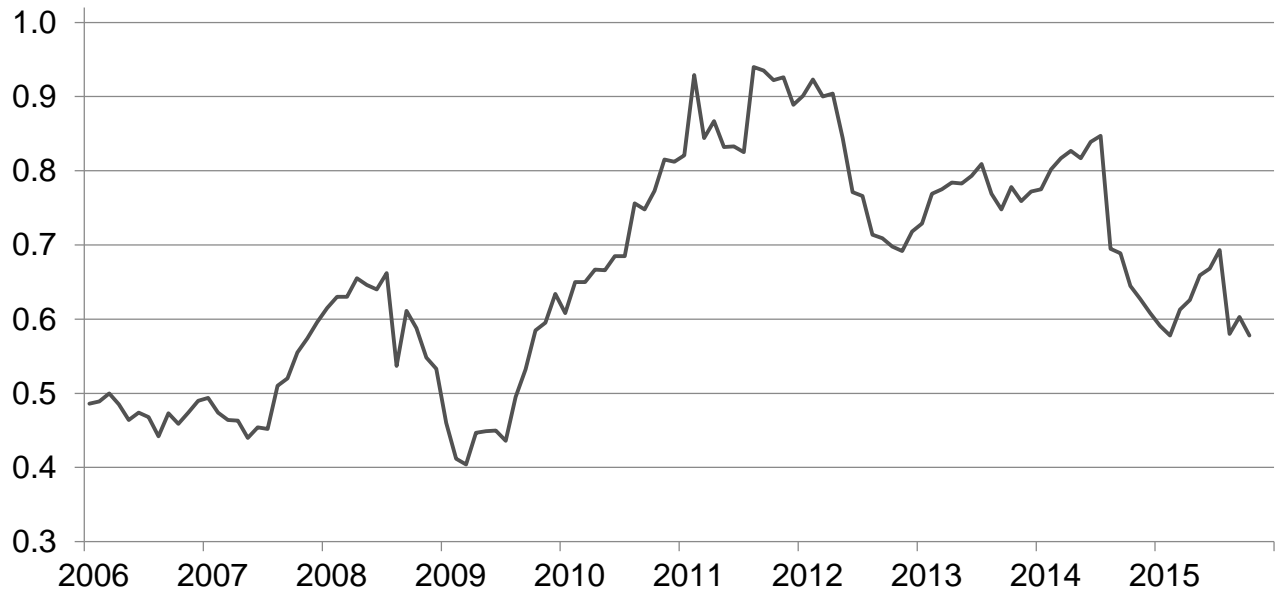
Prices Received for Wheat by Month – United States

Dollars per bushel



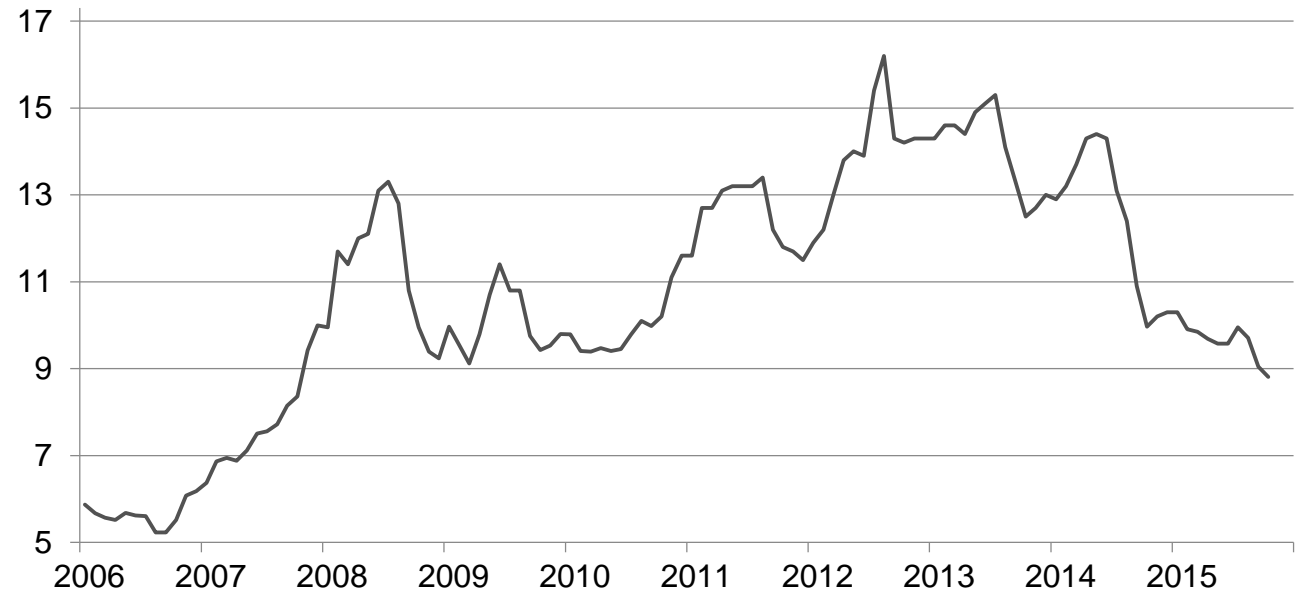
Prices Received for Upland Cotton by Month – United States

Dollars per pound



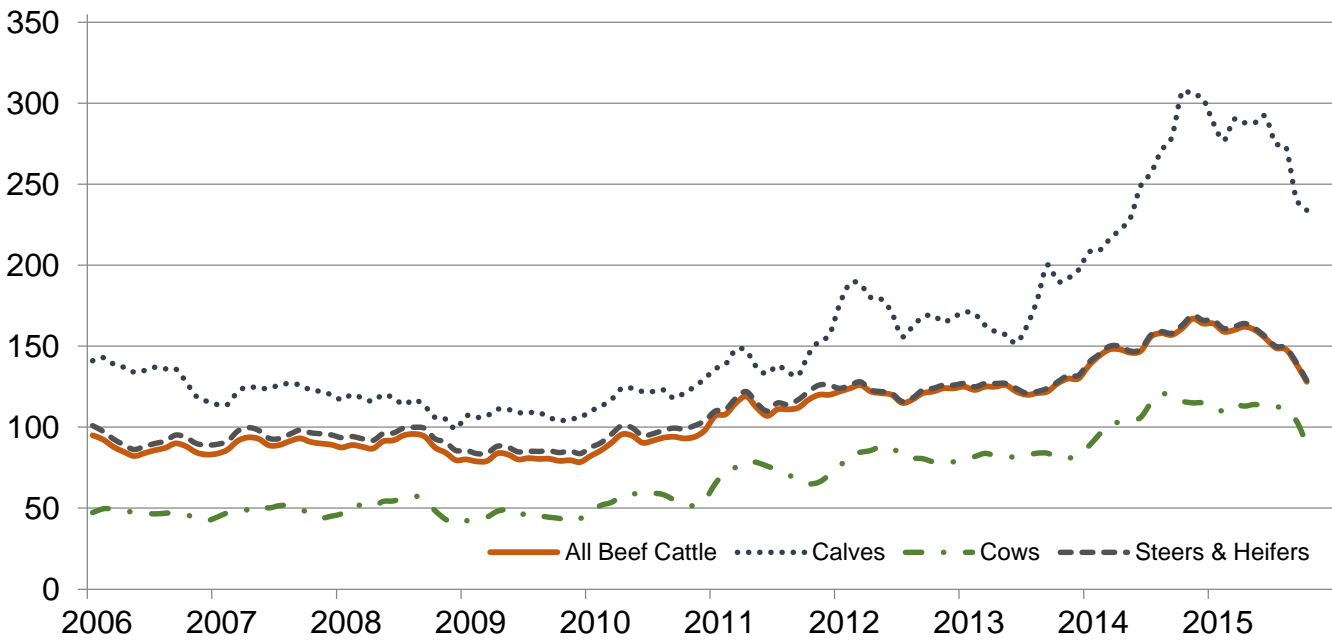
Prices Received for Soybeans by Month – United States

Dollars per bushel



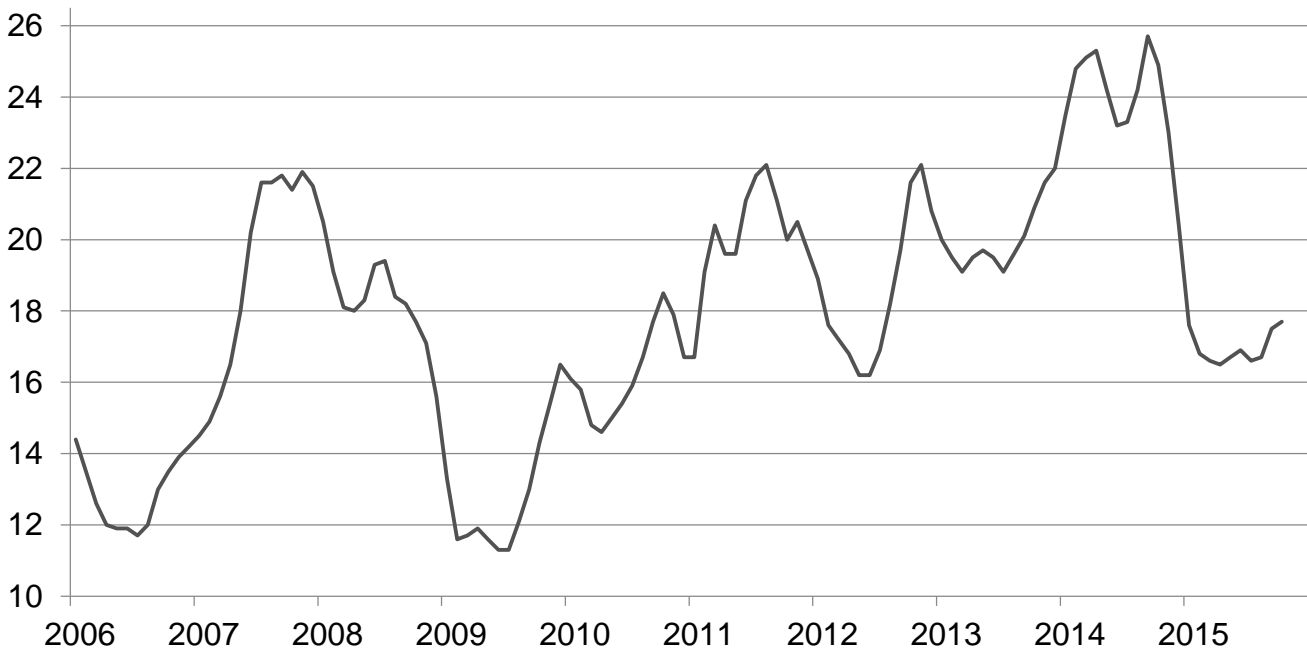
Prices Received for Cattle by Month – United States

Dollars per cwt



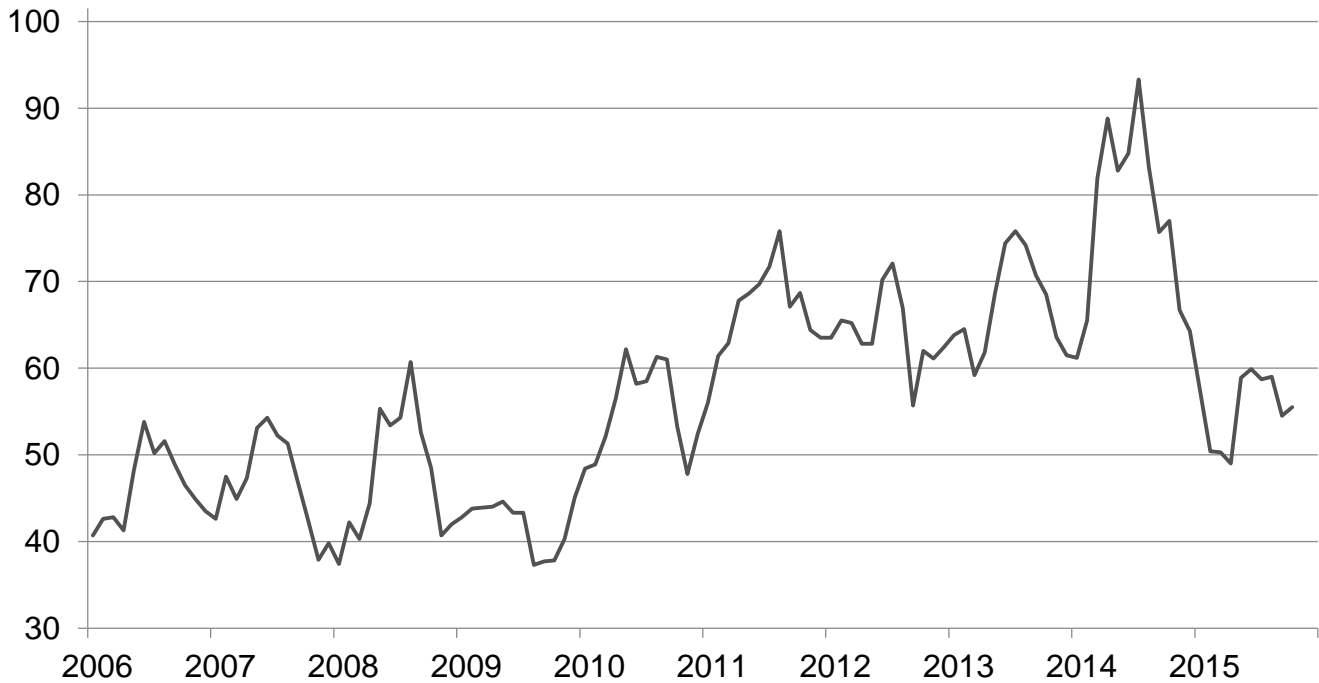
Prices Received for Milk by Month – United States

Dollars per cwt



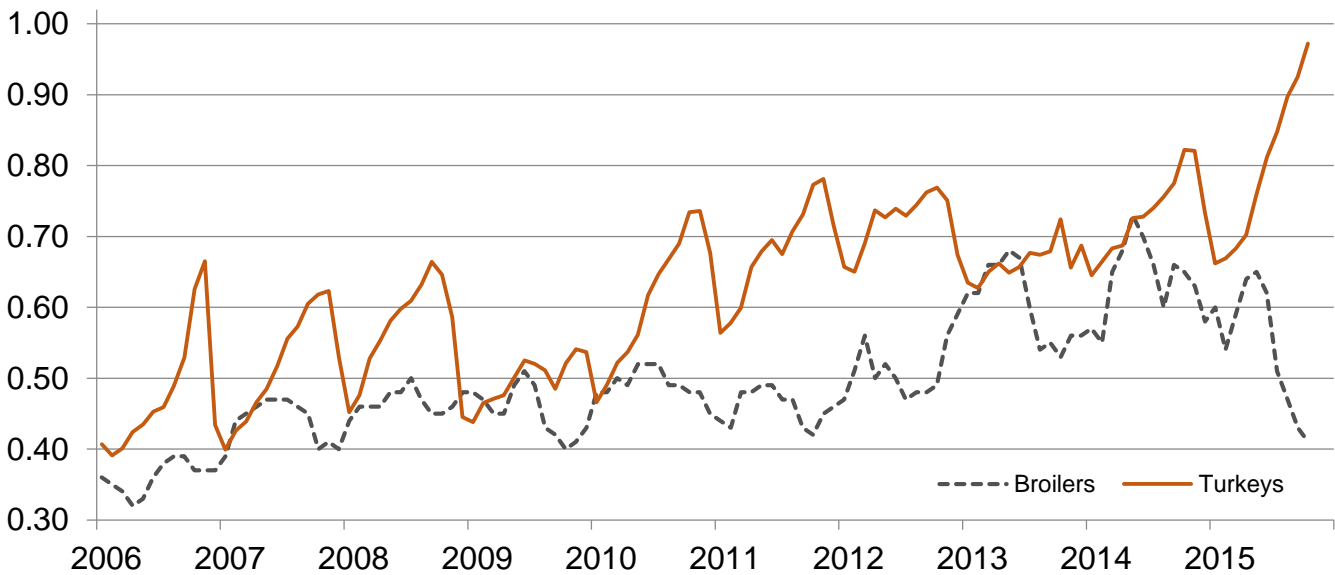
Prices Received for Hogs by Month – United States

Dollars per cwt



Prices Received for Poultry by Month – United States

Dollars per pound



Prices Received for All Wheat, Corn, and Soybeans by Month – United States: 2015 with Comparisons

[Blank data cells indicate estimation period has not yet begun]

Month	All wheat			Corn			Soybeans		
	2013	2014	2015	2013	2014	2015	2013	2014	2015
	(dollars per bushel)	(dollars per bushel)	(dollars per bushel)	(dollars per bushel)	(dollars per bushel)	(dollars per bushel)	(dollars per bushel)	(dollars per bushel)	(dollars per bushel)
January	8.12	6.65	6.15	6.96	4.42	3.82	14.30	12.90	10.30
February	7.97	6.50	5.89	7.04	4.35	3.79	14.60	13.20	9.91
March	7.79	6.74	5.70	7.13	4.52	3.81	14.60	13.70	9.85
April	7.71	6.82	5.56	6.97	4.71	3.75	14.40	14.30	9.69
May	7.68	7.08	5.33	6.97	4.71	3.64	14.90	14.40	9.58
June	7.37	6.49	5.43	6.97	4.50	3.59	15.10	14.30	9.58
July	6.95	6.15	5.23	6.79	4.06	3.80	15.30	13.10	9.95
August	6.88	5.97	4.85	6.21	3.63	3.68	14.10	12.40	9.71
September	6.80	5.71	4.72	5.40	3.49	3.68	13.30	10.90	9.05
October	6.94	5.71	4.87	4.63	3.57	3.67	12.50	9.97	8.81
November	6.85	6.04		4.37	3.60		12.70	10.20	
December	6.73	6.14		4.41	3.79		13.00	10.30	

Prices Received for Beef Cattle and All Hogs by Month – United States: 2015 with Comparisons

[Blank data cells indicate estimation period has not yet begun]

Month	Beef cattle ¹			All hogs ²		
	2013	2014	2015	2013	2014	2015
	(dollars per cwt)	(dollars per cwt)	(dollars per cwt)	(dollars per cwt)	(dollars per cwt)	(dollars per cwt)
January	125.00	138.00	164.00	63.80	61.20	57.40
February	123.00	144.00	159.00	64.50	65.50	50.40
March	125.00	148.00	160.00	59.20	81.90	50.30
April	125.00	148.00	162.00	61.80	88.80	49.00
May	126.00	146.00	160.00	68.60	82.80	58.90
June	122.00	147.00	155.00	74.40	84.80	59.90
July	120.00	156.00	149.00	75.80	93.30	58.70
August	121.00	158.00	148.00	74.20	83.20	59.00
September	122.00	157.00	139.00	70.70	75.70	54.50
October	127.00	161.00	128.00	68.50	77.00	55.50
November	130.00	167.00		63.60	66.70	
December	130.00	164.00		61.50	64.30	

¹ Cows and steers & heifers.

² Barrows & gilts and sows.

Prices Received for All Wheat – States and United States: October 2015 with Comparisons

State	October 2014	September 2015	October 2015
	(dollars per bushel)	(dollars per bushel)	(dollars per bushel)
Arizona	(D)	(D)	6.01
Arkansas	4.35	(D)	(D)
California	6.52	(D)	5.58
Colorado	5.44	4.20	4.10
Idaho	6.03	5.04	5.43
Illinois	4.62	3.72	3.85
Indiana	4.83	4.37	4.98
Kansas	5.57	4.32	4.39
Michigan	5.06	5.50	5.64
Minnesota	5.15	4.50	4.70
Missouri	4.84	3.14	2.93
Montana	5.87	4.67	4.95
Nebraska	5.19	4.12	4.13
North Carolina	5.33	5.17	5.57
North Dakota	5.49	4.83	4.92
Ohio	5.18	4.05	4.31
Oklahoma	5.67	4.63	4.59
Oregon	6.53	5.43	5.37
South Dakota	5.36	4.58	4.58
Texas	4.68	4.08	4.30
Washington	6.50	5.45	5.69
United States	5.71	4.72	4.87

(D) Withheld to avoid disclosing data for individual operations.

Prices Received for Winter Wheat – States and United States: October 2015 with Comparisons

State	October 2014	September 2015	October 2015
	(dollars per bushel)	(dollars per bushel)	(dollars per bushel)
Arkansas	4.35	(D)	(D)
California	6.47	(D)	5.58
Colorado	5.45	4.21	4.10
Idaho	5.87	5.04	5.44
Illinois	4.62	3.72	3.85
Indiana	4.83	4.37	4.98
Kansas	5.57	4.32	4.39
Michigan	5.06	5.50	5.64
Minnesota	5.38	4.15	3.78
Missouri	4.84	3.14	2.93
Montana	5.45	4.52	4.75
Nebraska	5.19	4.12	4.13
North Carolina	5.33	5.17	5.57
North Dakota	4.31	3.76	3.80
Ohio	5.18	4.05	4.31
Oklahoma	5.67	4.63	4.59
Oregon	6.46	5.42	5.36
South Dakota	5.51	4.17	4.20
Texas	4.68	4.08	4.30
Washington	6.32	5.42	5.64
United States	5.65	4.64	4.79

(D) Withheld to avoid disclosing data for individual operations.

Prices Received for Durum Wheat – States and United States: October 2015 with Comparisons

State	October 2014	September 2015	October 2015
	(dollars per bushel)	(dollars per bushel)	(dollars per bushel)
Arizona	(D)	(D)	6.01
California	(D)	(S)	(S)
Idaho	(S)	(D)	(D)
Montana	(D)	(S)	(D)
North Dakota	8.56	6.61	6.51
United States	8.48	6.36	6.56

(D) Withheld to avoid disclosing data for individual operations.

(S) Insufficient number of reports to establish an estimate.

Prices Received for Spring Wheat – States and United States: October 2015 with Comparisons

State	October 2014	September 2015	October 2015
	(dollars per bushel)	(dollars per bushel)	(dollars per bushel)
Colorado	(D)	3.97	4.07
Idaho	6.48	5.03	5.40
Minnesota	5.15	4.51	4.71
Montana	6.05	4.79	4.82
North Dakota	5.14	4.56	4.59
Oregon	6.98	5.49	5.46
South Dakota	5.25	4.67	4.66
Washington	7.38	5.59	5.93
United States	5.57	4.68	4.80

(D) Withheld to avoid disclosing data for individual operations.

Prices Received for Oats – States and United States: October 2015 with Comparisons

State	October 2014	September 2015	October 2015
	(dollars per bushel)	(dollars per bushel)	(dollars per bushel)
Illinois	(D)	(D)	(D)
Iowa	3.39	2.62	3.11
Michigan	3.26	1.93	1.89
Minnesota	3.12	1.83	1.88
Montana	(S)	(S)	(D)
Nebraska	(D)	2.13	2.83
New York	3.49	2.30	(D)
North Dakota	2.71	2.02	1.89
Oregon	(S)	(S)	(S)
Pennsylvania	(D)	3.31	3.23
South Dakota	2.91	2.07	2.00
Texas	(D)	(S)	(D)
Wisconsin	3.59	1.91	1.82
United States	3.16	2.03	2.20

(D) Withheld to avoid disclosing data for individual operations.

(S) Insufficient number of reports to establish an estimate.

Prices Received for All Barley – States and United States: October 2015 with Comparisons

State	October 2014	September 2015	October 2015
	(dollars per bushel)	(dollars per bushel)	(dollars per bushel)
California	(D)	(D)	(D)
Colorado	(D)	6.13	(D)
Idaho	5.38	5.72	5.67
Minnesota	4.93	5.36	4.93
Montana	5.54	6.19	5.85
North Dakota	5.32	4.85	4.84
Oregon	(D)	3.24	(D)
Utah	(D)	(D)	(D)
Washington	3.21	3.40	3.47
Wyoming	(D)	5.58	(D)
United States	5.24	5.49	5.54

(D) Withheld to avoid disclosing data for individual operations.

Prices Received for Malting Barley – States and United States: October 2015 with Comparisons

State	October 2014	September 2015	October 2015
	(dollars per bushel)	(dollars per bushel)	(dollars per bushel)
Idaho	5.87	5.92	6.00
Minnesota	(D)	5.36	4.89
Montana	5.93	6.22	5.93
North Dakota	5.55	5.06	5.11
Wyoming	(D)	5.61	(D)
United States	5.76	5.73	5.78

(D) Withheld to avoid disclosing data for individual operations.

Prices Received for Feed Barley – States and United States: October 2015 with Comparisons

State	October 2014	September 2015	October 2015
	(dollars per bushel)	(dollars per bushel)	(dollars per bushel)
Idaho	2.79	3.00	2.79
Minnesota	(D)	5.66	(D)
Montana	2.41	2.65	2.78
North Dakota	3.48	2.70	2.71
Wyoming	(D)	(D)	(S)
United States	3.13	3.25	2.98

(D) Withheld to avoid disclosing data for individual operations.

(S) Insufficient number of reports to establish an estimate.

Prices Received for Sorghum Grain – States and United States: October 2015 with Comparisons

State	October 2014	September 2015	October 2015
	(dollars per cwt)	(dollars per cwt)	(dollars per cwt)
Arkansas	6.97	7.86	7.16
Illinois	6.23	6.64	6.43
Kansas	6.03	6.39	6.04
Louisiana	(D)	(D)	(D)
Missouri	5.24	7.23	7.09
Nebraska	6.07	6.47	6.20
Oklahoma	6.28	6.58	6.46
Texas	6.36	7.28	6.60
United States	6.26	7.36	6.26

(D) Withheld to avoid disclosing data for individual operations.

Prices Received for Corn – States and United States: October 2015 with Comparisons

State	October 2014	September 2015	October 2015
	(dollars per bushel)	(dollars per bushel)	(dollars per bushel)
Colorado	3.82	3.80	3.99
Illinois	3.58	3.69	3.71
Indiana	3.48	3.85	3.87
Iowa	3.62	3.57	3.58
Kansas	3.71	3.88	3.85
Kentucky	3.52	3.78	3.78
Michigan	3.51	3.73	3.63
Minnesota	3.51	3.42	3.49
Missouri	3.12	3.67	3.62
Nebraska	3.63	3.63	3.68
North Carolina	3.80	4.28	4.39
North Dakota	3.09	3.33	3.35
Ohio	3.48	3.82	3.79
Pennsylvania	3.52	3.97	3.79
South Dakota	3.09	3.33	3.37
Tennessee	3.48	3.82	3.94
Texas	4.58	4.07	4.31
Wisconsin	3.72	3.58	3.57
United States	3.57	3.68	3.67

Prices Received for Soybeans – States and United States: October 2015 with Comparisons

State	October 2014	September 2015	October 2015
	(dollars per bushel)	(dollars per bushel)	(dollars per bushel)
Arkansas	10.60	9.76	9.48
Illinois	10.20	9.12	9.00
Indiana	10.00	9.00	8.80
Iowa	10.00	8.83	8.69
Kansas	9.50	8.71	8.45
Kentucky	10.40	9.19	9.32
Louisiana	10.70	9.82	9.62
Michigan	10.10	8.92	8.73
Minnesota	10.00	8.72	8.64
Mississippi	11.00	9.95	9.78
Missouri	9.69	8.98	9.14
Nebraska	9.54	8.75	8.67
North Carolina	10.60	9.55	8.94
North Dakota	9.58	8.68	8.46
Ohio	10.10	8.88	8.80
South Dakota	9.22	8.45	8.43
Tennessee	10.30	9.37	9.39
Wisconsin	10.10	8.62	8.56
United States	9.97	9.05	8.81

Prices Received for Dry Beans – States and United States: October 2015 with Comparisons

State	October 2014	September 2015	October 2015
	(dollars per cwt)	(dollars per cwt)	(dollars per cwt)
California	63.70	74.80	70.00
Colorado	26.20	32.70	26.70
Idaho	35.40	29.50	34.20
Michigan	34.10	31.00	28.60
Minnesota	51.00	30.80	34.30
Nebraska	(D)	(D)	(D)
North Dakota	28.00	25.40	24.40
United States	32.20	27.30	27.30

(D) Withheld to avoid disclosing data for individual operations.

Prices Received for Peanuts (in shell) – States and United States: October 2015 with Comparisons

State	October 2014	September 2015	October 2015
	(dollars per pound)	(dollars per pound)	(dollars per pound)
Alabama	0.154	0.182	0.162
Florida	0.212	0.191	0.190
Georgia	0.198	0.195	0.191
Mississippi	0.174	0.179	0.153
New Mexico	(S)	(S)	(S)
North Carolina	0.266	(D)	(D)
Oklahoma	0.314	0.210	0.204
South Carolina	0.219	0.216	0.148
Texas	0.286	0.239	0.201
Virginia	0.267	0.221	(S)
United States	0.210	0.201	0.187

(D) Withheld to avoid disclosing data for individual operations.

(S) Insufficient number of reports to establish an estimate.

Prices Received for Sunflower – States and United States: October 2015 with Comparisons

State	October 2014	September 2015	October 2015
	(dollars per cwt)	(dollars per cwt)	(dollars per cwt)
Colorado	(D)	(S)	(D)
Kansas	(D)	19.70	25.20
Minnesota	19.40	23.50	20.80
North Dakota	19.50	27.80	19.10
South Dakota	21.10	24.00	16.00
United States	21.70	25.20	18.60

(D) Withheld to avoid disclosing data for individual operations.

(S) Insufficient number of reports to establish an estimate.

Prices Received for Canola – States and United States: October 2015 with Comparisons

State	October 2014	September 2015	October 2015
	(dollars per cwt)	(dollars per cwt)	(dollars per cwt)
Minnesota	(D)	(D)	(D)
North Dakota	15.80	15.10	14.80
United States	15.80	15.10	14.80

(D) Withheld to avoid disclosing data for individual operations.

Prices Received for Flaxseed – States and United States: October 2015 with Comparisons

State	October 2014	September 2015	October 2015
	(dollars per bushel)	(dollars per bushel)	(dollars per bushel)
North Dakota	11.50	9.07	8.59
United States	11.50	9.07	8.59

Prices Received for Upland Cotton and Cottonseed – States and United States: October 2015 with Comparisons

[Cottonseed marketing year August - February]

State	Cotton, Upland			Cottonseed		
	October 2014	September 2015	October 2015	October 2014	September 2015	October 2015
	(dollars per pound)	(dollars per pound)	(dollars per pound)	(dollars per ton)	(dollars per ton)	(dollars per ton)
Alabama	0.633	(S)	0.615	171.00	199.00	203.00
Arizona	0.656	(S)	0.621	326.00	(S)	(D)
Arkansas	0.637	(D)	0.582	224.00	255.00	251.00
California	(S)	(S)	(S)	361.00	(S)	360.00
Georgia	0.685	(D)	0.647	172.00	192.00	198.00
Louisiana	0.603	(S)	0.587	196.00	254.00	233.00
Mississippi	0.645	(S)	0.647	197.00	251.00	257.00
North Carolina	0.685	(D)	0.587	200.00	207.00	227.00
Tennessee	0.618	(D)	(D)	190.00	(S)	(S)
Texas	0.635	0.604	0.558	179.00	193.00	223.00
United States	0.645	0.603	0.578	201.00	203.00	235.00

(D) Withheld to avoid disclosing data for individual operations.

(S) Insufficient number of reports to establish an estimate.

Prices Received and Farm Marketings for Upland Cotton and Rice – United States: October 2015 with Comparisons

Item	October 2014	September 2015	October 2015
Cotton, Upland			
Average pricedollars/pound	0.645	0.603	0.578
Marketings ¹1,000 bales	980	214	523
Rice, all			
Average pricedollars/cwt	14.00	11.60	12.30
Marketings ²1,000 cwt	17,572	11,882	16,319
Rice, long			
Average pricedollars/cwt	12.90	10.90	11.50
Marketings ²1,000 cwt	14,332	10,140	12,730
Rice, medium and short			
California			
Average pricedollars/cwt	22.50	20.50	20.20
Other States ³			
Average pricedollars/cwt	14.80	12.20	12.10
United States			
Average pricedollars/cwt	18.70	15.70	14.90
Marketings ²1,000 cwt	3,240	1,742	3,589

¹ Marketings based on a survey of cotton buyers in the major producing States - Alabama, Arizona, Arkansas, California, Georgia, Louisiana, Mississippi, North Carolina, Tennessee, and Texas.

² Purchases by private firms and rice (rough equivalent) shipped by cooperatives.

³ Other States include Arkansas, Louisiana, Mississippi, Missouri, and Texas.

Prices Received for Hay by Type – States and United States: October 2015 with Comparisons

State	All hay			Alfalfa hay			Other hay		
	October 2014	September 2015	October 2015	October 2014	September 2015	October 2015	October 2014	September 2015	October 2015
	(dollars per ton)	(dollars per ton)	(dollars per ton)	(dollars per ton)	(dollars per ton)	(dollars per ton)	(dollars per ton)	(dollars per ton)	(dollars per ton)
Arizona	183.00	130.00	135.00	180.00	130.00	135.00	220.00	170.00	170.00
California	217.00	159.00	154.00	230.00	165.00	160.00	165.00	135.00	130.00
Colorado	215.00	191.00	180.00	215.00	190.00	180.00	210.00	195.00	180.00
Idaho	197.00	164.00	159.00	200.00	165.00	160.00	170.00	150.00	150.00
Illinois	152.00	141.00	143.00	175.00	155.00	160.00	110.00	100.00	110.00
Iowa	132.00	110.00	107.00	144.00	117.00	118.00	105.00	87.00	91.00
Kansas	149.00	110.00	111.00	170.00	123.00	125.00	98.00	78.00	79.00
Kentucky	109.00	133.00	131.00	190.00	215.00	215.00	90.00	105.00	110.00
Michigan	149.00	156.00	161.00	165.00	165.00	180.00	125.00	135.00	140.00
Minnesota	125.00	76.00	97.00	143.00	85.00	124.00	91.00	63.00	64.00
Missouri	86.00	87.00	89.00	170.00	160.00	160.00	70.00	75.00	75.00
Montana	128.00	124.00	124.00	130.00	125.00	125.00	120.00	120.00	120.00
Nebraska	93.00	83.00	87.00	97.00	87.00	87.00	83.00	75.00	86.00
Nevada	235.00	166.00	166.00	235.00	165.00	165.00	230.00	200.00	200.00
New Mexico	238.00	183.00	192.00	250.00	190.00	200.00	165.00	135.00	145.00
New York	165.00	141.00	197.00	190.00	155.00	213.00	160.00	138.00	194.00
North Dakota	73.00	83.00	84.00	80.00	86.00	86.00	55.00	61.00	62.00
Ohio	140.00	158.00	164.00	190.00	195.00	210.00	110.00	120.00	135.00
Oklahoma	100.00	107.00	112.00	170.00	159.00	150.00	89.00	77.00	73.00
Oregon	228.00	197.00	194.00	235.00	200.00	205.00	215.00	190.00	170.00
Pennsylvania	198.00	211.00	234.00	234.00	217.00	249.00	190.00	209.00	227.00
South Dakota	112.00	103.00	108.00	117.00	107.00	112.00	90.00	85.00	93.00
Texas	97.00	102.00	100.00	234.00	220.00	206.00	74.00	69.00	75.00
Utah	199.00	160.00	160.00	200.00	160.00	160.00	160.00	130.00	130.00
Washington	220.00	176.00	173.00	215.00	175.00	170.00	230.00	180.00	180.00
Wisconsin	146.00	91.00	85.00	159.00	100.00	98.00	90.00	64.00	57.00
Wyoming	140.00	114.00	116.00	145.00	120.00	120.00	125.00	95.00	105.00
United States ..	171.00	145.00	146.00	193.00	157.00	156.00	128.00	119.00	124.00

Prices Received for Apples – States and United States: October 2015 with Comparisons

[Equivalent packinghouse-door returns for California, Michigan, New York, Pennsylvania, and Washington. Prices at point of first sale for other States]

State	Apples, fresh use		
	October 2014	September 2015	October 2015
	(dollars per pound)	(dollars per pound)	(dollars per pound)
California	0.234	0.431	0.444
Michigan	0.445	0.335	0.355
New York	0.380	0.359	0.344
Pennsylvania	0.303	0.356	0.346
Virginia	0.300	0.310	0.330
Washington	0.408	0.465	0.439
United States	0.402	0.430	0.414

Prices Received for Citrus Fruits by Utilization – States and United States: October 2014

[Net pounds per box: grapefruit in California-80, Florida-85, Texas-80; lemons-80; oranges in California-80, Florida-90, Texas-85; tangelos-90; tangerines and mandarins in Arizona and California-80, Florida-95]

Commodity, State, and type	FOB packed fresh	Equivalent returns					
		Packinghouse door			On-tree		
		All	Fresh	Process	All	Fresh	Process
	(dollars per box)	(dollars per box)	(dollars per box)	(dollars per box)	(dollars per box)	(dollars per box)	(dollars per box)
Grapefruit							
California ¹	(D)	14.44	(D)	(D)	12.51	(D)	(D)
Florida, all	28.30	14.41	17.44	2.90	12.02	15.20	-0.08
White	28.00	12.80	17.10	2.60	10.52	14.95	(D)
Red	28.30	14.75	17.50	3.00	12.34	15.25	-0.10
Texas	30.50	15.48	18.90	(D)	13.90	17.29	(D)
United States	28.10	14.56	17.57	2.55	12.33	15.42	-0.04
Lemons							
Arizona	(D)	(D)	(D)	(D)	(D)	(D)	(D)
California	60.00	43.77	50.55	(D)	37.81	44.41	(D)
United States	60.50	44.43	51.02	(D)	38.47	44.88	(D)
Oranges							
California, all	27.50	16.90	18.33	(D)	14.32	15.77	(D)
Navel and miscellaneous	(S)	(S)	(S)	(S)	(S)	(S)	(S)
Valencia	27.50	16.90	18.33	(D)	14.32	15.77	(D)
Florida, all	(S)	(S)	(S)	(S)	(S)	(S)	(S)
Early and mids	(S)	(S)	(S)	(S)	(S)	(S)	(S)
Valencia	(S)	(S)	(S)	(S)	(S)	(S)	(S)
United States	28.00	16.41	18.28	5.87	13.82	15.70	3.19
Tangelos							
Florida	(S)	(S)	(S)	(S)	(S)	(S)	(S)
United States	(S)	(S)	(S)	(S)	(S)	(S)	(S)
Tangerines and mandarins							
Arizona	(S)	(S)	(S)	(S)	(S)	(S)	(S)
California	(D)	(D)	(D)	(S)	(D)	(D)	(S)
Florida	38.90	21.57	25.50	7.32	18.12	22.25	3.12
United States	(D)	(D)	(D)	7.32	(D)	(D)	3.12

(D) Withheld to avoid disclosing data for individual operations.

(S) Insufficient number of reports to establish an estimate.

¹ Some processed sales included in fresh sales.

Prices Received for Citrus Fruits by Utilization – States and United States: September 2015

[Net pounds per box: grapefruit in California-80, Florida-85, Texas-80; lemons-80; oranges in California-80, Florida-90, Texas-85; tangelos-90; tangerines and mandarins in Arizona and California-80, Florida-95]

Commodity, State, and type	FOB packed fresh	Equivalent returns					
		Packinghouse door			On-tree		
		All	Fresh	Process	All	Fresh	Process
	(dollars per box)	(dollars per box)	(dollars per box)	(dollars per box)	(dollars per box)	(dollars per box)	(dollars per box)
Grapefruit							
California ¹	(D)	10.36	(D)	(D)	7.64	(D)	(D)
Florida, all	(S)	(S)	(S)	(S)	(S)	(S)	(S)
White	(S)	(S)	(S)	(S)	(S)	(S)	(S)
Red	(S)	(S)	(S)	(S)	(S)	(S)	(S)
Texas	(S)	(S)	(S)	(S)	(S)	(S)	(S)
United States	(D)	10.36	(D)	(D)	7.64	(D)	(D)
Lemons							
Arizona	(D)	(D)	(D)	(D)	(D)	(D)	(D)
California	51.60	36.59	41.96	(D)	30.51	35.70	(D)
United States	52.00	37.10	42.36	(D)	31.02	36.10	(D)
Oranges							
California, all	32.00	17.46	22.65	(D)	14.80	20.04	(D)
Navel and miscellaneous	(S)	(S)	(S)	(S)	(S)	(S)	(S)
Valencia	32.00	17.46	22.65	(D)	14.80	20.04	(D)
Florida, all	(S)	(S)	(S)	(S)	(S)	(S)	(S)
Early and mids	(S)	(S)	(S)	(S)	(S)	(S)	(S)
Valencia	(S)	(S)	(S)	(S)	(S)	(S)	(S)
United States	32.00	17.46	22.65	(D)	14.80	20.04	(D)
Tangelos							
Florida	(S)	(S)	(S)	(S)	(S)	(S)	(S)
United States	(S)	(S)	(S)	(S)	(S)	(S)	(S)
Tangerines and mandarins							
California	(S)	(S)	(S)	(S)	(S)	(S)	(S)
Florida	(S)	(S)	(S)	(S)	(S)	(S)	(S)
United States	(S)	(S)	(S)	(S)	(S)	(S)	(S)

(D) Withheld to avoid disclosing data for individual operations.

(S) Insufficient number of reports to establish an estimate.

¹ Some processed sales included in fresh sales.

Prices Received for Citrus Fruits by Utilization – States and United States: October 2015

[Net pounds per box: grapefruit in California-80, Florida-85, Texas-80; lemons-80; oranges in California-80, Florida-90, Texas-85; tangelos-90; tangerines and mandarins in Arizona and California-80, Florida-95]

Commodity, State, and type	FOB packed fresh	Equivalent returns					
		Packinghouse door			On-tree		
		All	Fresh	Process	All	Fresh	Process
	(dollars per box)	(dollars per box)	(dollars per box)	(dollars per box)	(dollars per box)	(dollars per box)	(dollars per box)
Grapefruit							
California ¹	(D)	8.74	(D)	(D)	5.96	(D)	(D)
Florida, all	(S)	(S)	(S)	(S)	(S)	(S)	(S)
White	(S)	(S)	(S)	(S)	(S)	(S)	(S)
Red	(S)	(S)	(S)	(S)	(S)	(S)	(S)
Texas	(S)	(S)	(S)	(S)	(S)	(S)	(S)
United States	(D)	16.06	(D)	(D)	13.79	(D)	(D)
Lemons							
Arizona	(D)	(D)	(D)	(D)	(D)	(D)	(D)
California	55.40	42.00	45.76	(D)	35.85	39.50	(D)
United States	55.80	42.32	46.17	(D)	36.18	39.91	(D)
Oranges							
California, all	33.20	19.83	23.85	(D)	17.19	21.24	(D)
Navel and miscellaneous	(S)	(S)	(S)	(S)	(S)	(S)	(S)
Valencia	33.20	19.83	23.85	(D)	17.19	21.24	(D)
Florida, all	37.00	21.02	25.85	6.25	18.41	23.25	3.60
Early and mids	(S)	(S)	(S)	(S)	(S)	(S)	(S)
Valencia	(S)	(S)	(S)	(S)	(S)	(S)	(S)
Texas, all	17.20	5.30	5.60	2.38	3.49	3.77	0.72
Early and mids	17.20	5.30	5.60	2.38	3.49	3.77	0.72
Valencia	(S)	(S)	(S)	(S)	(S)	(S)	(S)
United States	31.20	17.78	20.95	(D)	15.28	18.49	(D)
Tangelos							
Florida	(S)	(S)	(S)	(S)	(S)	(S)	(S)
United States	(S)	(S)	(S)	(S)	(S)	(S)	(S)
Tangerines and mandarins							
California	(S)	(S)	(S)	(S)	(S)	(S)	(S)
Florida	45.70	26.98	32.30	6.80	23.54	29.05	2.60
United States	(D)	(D)	(D)	(D)	(D)	(D)	(D)

(D) Withheld to avoid disclosing data for individual operations.

(S) Insufficient number of reports to establish an estimate.

¹ Some processed sales included in fresh sales.

Prices Received for Potatoes – States and United States: October 2015 with Comparisons

State	October 2014	September 2015	October 2015
	(dollars per cwt)	(dollars per cwt)	(dollars per cwt)
California, all ¹	(S)	(S)	(S)
Spring	(S)	(S)	(S)
Fall	(S)	(S)	(S)
Colorado, all ¹	9.25	9.65	8.25
Fresh ²	10.70	10.50	9.85
Florida	(S)	(S)	(S)
Idaho, all ¹	6.35	6.30	6.45
Fresh ²	(D)	5.10	5.75
Processing	(D)	6.65	6.65
Maine	(D)	(D)	(D)
Michigan	(D)	(D)	(D)
Minnesota	8.95	9.60	9.75
New York	(D)	(D)	(D)
North Carolina	(S)	(S)	(S)
North Dakota, all ¹	9.05	(D)	(D)
Fresh ²	(D)	(D)	(D)
Processing	(D)	(D)	(D)
Oregon	6.50	6.80	7.15
Texas	(D)	(D)	(D)
Virginia	(S)	(S)	(S)
Washington, all ¹	6.35	6.55	6.55
Processing	(D)	6.20	6.35
Wisconsin, all ¹	8.95	9.00	8.40
Fresh ²	9.20	9.50	8.90
Processing	8.60	8.55	8.05
United States, all ¹	7.30	7.45	7.23
Fresh ²	8.97	8.44	8.70
Processing	6.88	7.15	6.85

(D) Withheld to avoid disclosing data for individual operations.

(S) Insufficient number of reports to establish an estimate.

¹ Average price of potatoes sold for all uses, including table stock, processing, seed, and livestock feed.

² Fresh market prices only. Includes table stock prices.

Prices Received for All Milk – States and United States: October 2015 with Comparisons

[Before deduction for hauling. Includes quality, quantity, and other premiums. Excludes hauling subsidies]

State	October 2014		September 2015		October 2015	
	Price	Fat test	Price	Fat test	Price	Fat test
	(dollars per cwt)	(percent)	(dollars per cwt)	(percent)	(dollars per cwt)	(percent)
Arizona	23.60	3.50	16.30	3.44	16.80	3.51
California	22.93	3.74	15.72	3.68	16.13	3.76
Colorado	24.80	3.57	18.20	3.54	18.20	3.62
Florida	28.80	3.69	22.20	3.66	21.50	3.66
Idaho	24.20	3.80	16.90	3.78	17.10	3.84
Illinois	26.20	3.84	17.80	3.73	17.90	3.82
Indiana	25.20	3.74	17.60	3.65	18.00	3.75
Iowa	25.60	3.79	17.80	3.72	17.60	3.85
Kansas	25.10	3.71	17.20	3.59	17.40	3.74
Michigan	24.30	3.74	17.20	3.60	17.30	3.70
Minnesota	26.50	3.96	17.80	3.81	17.70	3.96
New Mexico	23.50	3.65	16.60	3.45	16.60	3.58
New York	25.60	3.81	18.60	3.70	19.20	3.85
Ohio	25.20	3.81	18.40	3.70	18.80	3.83
Oregon	27.00	3.88	19.20	3.85	19.40	4.00
Pennsylvania	26.30	3.78	18.90	3.67	19.40	3.82
South Dakota	26.20	4.01	18.40	3.95	18.70	4.09
Texas	25.60	3.88	18.20	3.79	18.40	3.92
Utah	24.90	3.77	17.00	3.71	17.40	3.80
Vermont	25.90	3.82	18.70	3.75	19.30	3.88
Virginia	27.80	3.69	20.50	3.64	20.60	3.78
Washington	25.10	3.88	18.00	3.85	18.50	4.00
Wisconsin	26.10	3.84	17.90	3.69	17.60	3.80
United States	24.90	3.79	17.50	3.69	17.70	3.80

Prices Received for Milk Cows – States and United States: October 2015 with Comparisons

[Animals sold for dairy herd replacement only. Quarterly United States milk cow prices are based on revised milk cow inventory]

State	October 2014	July 2015	October 2015
	(dollars per head)	(dollars per head)	(dollars per head)
Arizona	2,200.00	2,100.00	2,100.00
California	2,200.00	2,200.00	2,100.00
Colorado	2,260.00	2,100.00	2,000.00
Florida	2,190.00	2,100.00	2,030.00
Idaho	2,150.00	2,000.00	2,050.00
Illinois	2,050.00	2,000.00	1,900.00
Indiana	2,050.00	1,950.00	1,900.00
Iowa	2,100.00	2,050.00	1,980.00
Kansas	2,100.00	2,000.00	1,900.00
Michigan	2,100.00	2,100.00	2,100.00
Minnesota	2,070.00	1,880.00	1,820.00
New Mexico	2,100.00	2,000.00	1,900.00
New York	2,010.00	1,890.00	1,750.00
Ohio	1,950.00	1,850.00	1,800.00
Oregon	2,100.00	2,000.00	1,950.00
Pennsylvania	2,000.00	1,890.00	1,820.00
South Dakota	2,050.00	1,900.00	1,850.00
Texas	2,100.00	2,000.00	2,000.00
Utah	2,000.00	2,000.00	1,900.00
Vermont	2,030.00	1,940.00	1,870.00
Virginia	2,100.00	1,950.00	1,880.00
Washington	2,050.00	1,950.00	1,950.00
Wisconsin	2,220.00	2,090.00	2,050.00
United States	2,120.00	2,030.00	1,980.00

Parity Price Overview

Parity prices, based on data from January 2015, and adjusted base price data from which parity prices are computed are presented in the tables on the following pages. Parity prices are computed under the provisions of Title III, Subtitle A, Section 301(a) of the Agricultural Adjustment Act of 1938 as amended by the Agricultural Acts of 1948, 1949, 1954, and 1956.

The parity prices shown in this report are based on the provisions of the amended Act. Briefly, the actual method of computation is as follows:

- a. The average of prices received by farmers for individual commodities for the 10 preceding years is calculated (for 2015, the 10-average includes the years 2005-2014). An allowance for unredeemed loans and other supplemental payments resulting from price support programs, such as the deficiency payments for grains and cotton, is included for those commodities for which applicable.
- b. This 10-year average is divided by the average of the Index of Prices Received by Farmers for the same 10 preceding calendar years, adjusted to include an allowance for unredeemed loans and other supplemental price support operations, to give an "adjusted base price".
- c. Parity prices are computed by multiplying the "adjusted base prices" by the current Parity Index (the Index of Prices Paid by Farmers, including Interest, Taxes, and Wage Rates, 1910-1914=100).

Parity prices are calculated in terms of prices received by farmers in the local markets in which they ordinarily sell. This means that the parity prices apply to the average of all classes and grades of the commodity as sold by all farmers in the United States, except as otherwise specified. Fruits and vegetables for fresh use and for processing are usually considered separate commodities and separate parity prices are calculated. The Agricultural Marketing Agreement Act of 1937 provided for parity prices for certain commodities covered by a marketing agreement or order program. Under present legislation, United States parity prices, with appropriate adjustments where needed, may be used for the purpose of this Act.

Commodity Parity Prices and Price as Percent of Parity Price – United States: October 2015 with Comparisons

[Parity prices are computed under the provisions of Title III, Subtitle a, Section 301 (a) of the Agricultural Adjustment Act of 1938 as amended by the Agricultural Acts of 1948, 1949, and 1956. See January *Agricultural Prices* for details on adjusted base price and parity price computations. Parity data not available for blank cells. Primary source of data for livestock and milk prices is United States Department of Agriculture's Agricultural Marketing Service]

Commodity and unit	Adjusted base price	Parity price			Price as percent of parity			
		October 2014	September 2015	October 2015	October 2014	September 2015	October 2015	
	(dollars)	(dollars)	(dollars)	(dollars)	(percent)	(percent)	(percent)	
Basic commodities								
All wheat	bushel	0.624	18.70	18.10	18.10	31	26	27
Rice	cwt	1.34	40.20	38.80	38.80	35	30	32
Corn	bushel	0.444	13.50	12.90	12.90	26	29	28
Cotton								
Upland	pound	0.066	2.01	1.91	1.91	32	32	30
American Pima	pound	0.136	4.17	3.94	3.94	41	39	39
Peanuts	pound	0.024	0.730	0.695	0.696	29	29	27
Small chickpeas ¹	cwt	2.200	(NA)	63.70	63.80	(NA)	37	36
Large chickpeas ¹	cwt	3.330	(NA)	96.50	96.50	(NA)	30	28
Lentils ¹	cwt	2.280	(NA)	66.10	66.10	(NA)	43	44
Designated nonbasic								
All milk, to plants ²	cwt	1.83	55.10	53.00	53.10	42	32	31
Honey, extracted ³	pound	0.150	4.47	4.35	4.35	47	49	49
Wool and mohair								
Wool	pound	0.117	3.47	3.39	3.39	42	43	43
Mohair	pound	0.378	11.00	11.00	11.00	38	44	44
Other nonbasic								
Apples, fresh ⁴	pound	0.033	1.030	0.956	0.957	39	45	43
Barley	bushel	0.467	13.80	13.50	13.50	38	41	41
Canola	cwt	1.880	56.90	54.50	54.50	28	28	27
Cottonseed	ton	19.20	581.00	556.00	557.00	35	37	42
Dry edible beans	cwt	3.25	97.40	94.20	94.20	33	29	29
Flaxseed	bushel	1.170	35.00	33.90	33.90	33	27	25
Oats	bushel	0.295	8.64	8.55	8.55	37	24	26
Potatoes	cwt	0.846	25.40	24.50	24.50	29	30	30
Sorghum grain	cwt	0.757	22.80	21.90	21.90	27	34	29
Soybeans	bushel	1.080	32.30	31.30	31.30	31	29	28
Sunflower, all	cwt	2.13	64.50	61.70	61.70	34	41	30
Citrus (equivalent on-tree)								
Grapefruit	box	0.777	22.00	22.50	22.50	56	34	61
Lemons	box	1.49	41.40	43.20	43.20	93	72	84
Oranges	box	0.806	23.40	23.30	23.40	59	64	65
Tangerines	box	1.75	49.00	50.70	50.70	77	49	60
Livestock and poultry								
Beef cattle	cwt	10.80	316.00	313.00	313.00	51	44	41
Calves	cwt	15.30	435.00	443.00	444.00	71	54	53
Hogs	cwt	5.81	175.00	168.00	168.00	44	32	33
Eggs ¹	dozen	0.094	2.80	2.72	2.73	43	77	56
Turkeys, live	pound	0.061	1.830	1.770	1.770	45	52	55

(NA) Not available.

¹ Parity prices began January 2015.

² Seasonally adjusted price as percentage of parity price.

³ Wholesale extracted. Adjusted base price derived from state annual averages prices weighted by production. For 1982 through 1985 the national averages are the support prices.

⁴ Equivalent packinghouse-door returns for California, New York, Oregon, and Washington. Price at point of first sale for other states.

Commodity Parity Prices – United States: October 2015 with Comparisons

[Parity prices are computed under the provisions of Title III, Subtitle a, Section 301 (a) of the Agricultural Adjustment Act of 1938 as amended by the Agricultural Acts of 1948, 1949, and 1956. See January *Agricultural Prices* for details on adjusted base price and parity price computations]

Commodity and unit	Adjusted base price	Parity price			
		October 2014	September 2015	October 2015	
	(dollars)	(dollars)	(dollars)	(dollars)	
Field crops and miscellaneous					
Hops	pound	0.325	9.68	9.42	9.42
Mustard seed	cwt	3.07	91.00	88.90	89.00
Rapeseed	cwt	2.43	69.70	70.40	70.40
Rye	bushel	0.614	17.70	17.80	17.80
Safflower	cwt	2.16	63.60	62.60	62.60
Spearmint oil	pound	1.64	48.70	47.50	47.50
Sweet potatoes	cwt	2.08	63.60	60.30	60.30
Tobacco					
Flue-cured, 11-14	pound	0.181	5.63	5.24	5.25
Fire-cured, 21-23	pound	0.259	8.09	7.50	7.51
Burley, 31	pound	0.181	5.69	5.24	5.25
Maryland, 32	pound	0.171	5.14	4.95	4.96
Dark air-cured, 35-37	pound	0.234	7.30	6.78	6.78
Pennsylvania seedleaf, 41	pound	0.181	5.54	5.24	5.25
Cigar binder, 51	pound	0.632	19.40	18.30	18.30
Noncitrus fruit					
Apples, processing ^{1 2}	ton	18.10	551.00	524.00	525.00
Apricots					
Fresh ³	ton	119.00	3,530.00	3,450.00	3,450.00
Dried (California)	ton	257.00	7,970.00	7,450.00	7,450.00
Avocados ^{2 3}	ton	183.00	5,630.00	5,300.00	5,310.00
Cherries					
Sweet	ton	215.00	6,570.00	6,230.00	6,230.00
Tart ²	pound	0.033	1.000	0.956	0.957
Cranberry ^{2 4}	barrel	4.44	140.00	129.00	129.00
Dates (California) ³	ton	152.00	4,930.00	4,400.00	4,410.00
Grapes (California)					
Raisin variety ⁵	ton	144.00	4,320.00	4,170.00	4,170.00
Wine, processing	ton	66.60	(NA)	1,930.00	1,930.00
Kiwifruit ²	ton	90.00	2,720.00	2,610.00	2,610.00
Nectarines, fresh (California) ³	ton	60.90	1,750.00	1,760.00	1,770.00
Olives, canning (California) ⁴	ton	95.60	2,850.00	2,770.00	2,770.00

See footnote(s) at end of table.

--continued

Commodity Parity Prices – United States: October 2015 with Comparisons (continued)

[Parity prices are computed under the provisions of Title III, Subtitle a, Section 301 (a) of the Agricultural Adjustment Act of 1938 as amended by the Agricultural Acts of 1948, 1949, and 1956. See January *Agricultural Prices* for details on adjusted base price and parity price computations]

Commodity and unit	Adjusted base price	Parity price		
		October 2014	September 2015	October 2015
	(dollars)	(dollars)	(dollars)	(dollars)
Noncitrus fruit - continued				
Papayas (Hawaii) pound	0.041	1.28	1.19	1.19
Peaches				
Fresh ^{4 6} ton	87.00	2,540.00	2,520.00	2,520.00
Dried (California) ^{1 5} ton	46.50	1,450.00	1,350.00	1,350.00
Processing, excludes dried Clingstone (California) ⁴ ton	33.50	1,000.00	970.00	971.00
Pears, Fresh ⁶ ton	57.70	1,730.00	1,670.00	1,670.00
Plums (California) equivalent on-tree				
Fresh ⁷ ton	62.30	1,830.00	1,800.00	1,810.00
Prunes, dried (California) ^{1 2 5} ton	157.00	4,630.00	4,550.00	4,550.00
Prunes and plums				
Fresh, excludes California ⁷ ton	62.90	1,910.00	1,820.00	1,820.00
Processing, excludes dried ¹ ton	23.90	746.00	692.00	693.00
Strawberries				
Fresh ¹⁰ pound	9.040	267.00	262.00	262.00
Processing pound	3.38	99.80	97.90	98.00
Sugar crops				
Sugarbeets ^{2 8} ton	5.34	166.00	155.00	155.00
Sugarcane ^{2 8} ton	3.55	107.00	103.00	103.00
Tree nuts ⁹				
Almonds pound	0.236	6.91	6.84	6.84
Hazelnuts ton	222.00	6,330.00	6,430.00	6,440.00
Pistachios pound	0.227	6.33	6.58	6.58
Walnuts ton	223.00	6,180.00	6,460.00	6,460.00
Vegetables, fresh ¹⁰				
Carrots ¹¹ cwt	2.63	80.90	76.20	76.20
Cauliflower ¹¹ cwt	4.17	125.00	121.00	121.00
Celery ¹¹ cwt	1.99	62.40	57.70	57.70
Honeydew melons cwt	1.98	59.90	57.40	57.40
Lettuce cwt	2.17	65.70	62.90	62.90
Onions ¹¹ cwt	1.41	40.80	40.80	40.90
Tomatoes cwt	4.21	132.00	122.00	122.00

(NA) Not available.

¹ Equivalent returns at processing plant door.

² Adjusted base price is carried forward from the previous year since current marketing year average price is not yet available.

³ Equivalent returns at packinghouse door.

⁴ Equivalent returns for bulk fruit at first delivery point.

⁵ Dried basis.

⁶ Equivalent packinghouse-door returns for California, New York (apples only), Oregon (except peaches), and Washington. Price at point of first sale for other states.

⁷ Based on "as sold" prices for fresh fruit in all states.

⁸ Relates to prices including average conditional payments per ton made under the sugar acts of 1937 and 1948. Crop deficiency and abandonment payments not included.

⁹ Prices In-Shell basis except almonds which are shelled basis.

¹⁰ FOB shipping point price.

¹¹ Includes some processing.

Marketing Year for Specified Commodities

Corn for Grain: September 1 to August 31 for United States; July 1 to June 30 for Texas; August 1 to July 31 for Alabama, Arkansas, Florida, Georgia, Louisiana, Mississippi, North Carolina, Oklahoma, South Carolina, and Tennessee; September 1 to August 31 for Arizona, California, Delaware, Illinois, Indiana, Iowa, Kansas, Kentucky, Maryland, Missouri, Nebraska, New Mexico, Ohio, Pennsylvania, South Dakota, Virginia, and West Virginia; October 1 to September 30 for all other States.

Dry Edible Beans: September 1 to August 31 for United States and all States.

Canola: July 1 to June 30 for United States and all States.

Chickpeas (Garbanzo): September 1 to August 31 for United States.

Flaxseed: July 1 to June 30 for United States and all States.

Sunflower: September 1 to August 31 for United States; July 1 to June 30 for Texas; September 1 to August 31 for all other States.

Market Year Average Prices Received for Flaxseed – States and United States: Marketing Years 2013 and 2014

States	2013 (dollars per bushel)	2014 (dollars per bushel)
Minnesota	13.80	11.00
Montana	14.00	11.80
North Dakota	13.80	11.80
South Dakota	13.50	11.50
United States	13.80	11.80

Market Year Average Prices Received for Sunflowers – States and United States: Marketing Years 2013 and 2014

States	All		Oil		Non-oil	
	2013 (dollars per cwt)	2014 (dollars per cwt)	2013 (dollars per cwt)	2014 (dollars per cwt)	2013 (dollars per cwt)	2014 (dollars per cwt)
California	27.10	25.20	27.00	25.00	29.00	28.00
Colorado	25.60	26.10	(D)	(D)	(D)	(D)
Kansas	22.30	22.20	18.80	(D)	33.30	(D)
Minnesota	22.50	24.50	22.20	(D)	24.30	(D)
Nebraska	23.60	23.30	17.40	17.10	33.10	33.00
North Dakota	23.20	22.60	20.30	19.50	30.80	31.50
Oklahoma	23.90	24.00	19.10	18.70	33.70	34.00
South Dakota	19.60	19.60	18.60	18.80	32.20	31.60
Texas	23.50	25.90	(D)	(D)	(D)	(D)
Other States ¹	(X)	(X)	20.20	20.00	30.90	31.00
United States	21.40	21.70	19.30	19.30	31.30	31.50

(D) Withheld to avoid disclosing data for individual operations.

(X) Not applicable.

¹ Other States include data withheld above.

Market Year Average Prices Received for Canola – States and United States: Marketing Years 2013 and 2014

States	2013	2014
	(dollars per cwt)	(dollars per cwt)
Idaho	22.00	16.00
Minnesota	26.40	19.70
Montana	19.00	16.10
North Dakota	20.60	16.90
Oklahoma	20.30	15.00
Oregon	22.00	18.70
Washington	21.50	18.40
Other States ¹	19.60	16.90
United States	20.60	16.90

¹ Other States include Colorado and Kansas.

Market Year Average Prices Received for Proso Millet – States and United States: Marketing Years 2013 and 2014

States	2013	2014
	(dollars per bushel)	(dollars per bushel)
Colorado	4.31	3.30
Nebraska	4.73	3.25
South Dakota	4.94	3.66
United States	4.61	3.35

Market Year Average Prices Received for Other Oilseeds – United States: Marketing Years 2013 and 2014

Oilseed	2013	2014
	(dollars per cwt)	(dollars per cwt)
Mustard Seed ¹	37.20	34.80
Rapeseed ²	25.10	34.90

¹ Includes Idaho, Montana, North Dakota, Oregon, and Washington.

² Includes Idaho, Minnesota, Oregon, and Washington.

Market Year Average Prices Received for Safflower – States and United States: Marketing Years 2013 and 2014

States	2013	2014
	(dollars per cwt)	(dollars per cwt)
California	26.50	24.40
Montana	31.00	27.00
North Dakota	27.80	24.20
Utah	27.30	25.60
Other States ¹	28.50	24.40
United States	27.90	25.00

¹ Other States include Colorado, Idaho, and South Dakota.

Market Year Average Prices Received for Corn – States and United States: Marketing Years 2013 and 2014

States	2013 (dollars per bushel)	2014 (dollars per bushel)
Alabama	4.71	3.75
Arizona	5.89	5.36
Arkansas	5.12	4.13
California	5.33	4.81
Colorado	4.61	3.95
Delaware	4.94	3.83
Florida	4.51	3.65
Georgia	5.17	4.17
Idaho	4.91	4.16
Illinois	4.52	3.71
Indiana	4.47	3.75
Iowa	4.49	3.71
Kansas	4.49	3.78
Kentucky	4.67	3.94
Louisiana	5.10	4.15
Maryland	4.84	3.79
Michigan	4.18	3.65
Minnesota	4.30	3.58
Mississippi	5.05	4.24
Missouri	4.57	3.54
Montana	4.27	3.77
Nebraska	4.47	3.77
New Jersey	4.66	3.80
New Mexico	5.18	4.35
New York	4.52	4.11
North Carolina	4.96	4.19
North Dakota	3.91	3.34
Ohio	4.41	3.78
Oklahoma	5.09	4.11
Oregon	5.44	4.45
Pennsylvania	4.47	3.90
South Carolina	4.67	3.90
South Dakota	4.05	3.34
Tennessee	4.87	3.81
Texas	5.14	4.42
Utah	5.47	4.13
Virginia	4.80	3.90
Washington	5.29	4.90
West Virginia	4.70	3.85
Wisconsin	4.38	3.67
Wyoming	4.08	3.80
United States	4.46	3.70

Market Year Average Prices Received for All Dry Beans – States and United States: Marketing Years 2013 and 2014

States	2013 (dollars per cwt)	2014 (dollars per cwt)
Arizona	42.20	58.10
California	56.80	63.50
Colorado	39.70	25.90
Idaho	34.30	33.00
Kansas	36.90	(D)
Michigan	43.10	35.30
Minnesota	50.30	43.10
Montana	30.10	20.80
Nebraska	43.80	30.70
New Mexico	60.00	60.00
New York	48.70	(D)
North Dakota	35.30	28.20
Oregon	38.30	40.10
South Dakota	36.00	33.20
Texas	46.00	46.00
Washington	33.10	32.40
Wisconsin	55.00	54.00
Wyoming	33.70	33.50
United States	39.10	32.30

(D) Withheld to avoid disclosing data for individual operations.

Prices Received for Corn by Month – States and United States: Marketing Year 2013-2014

States	2013-2014							
	July	August	September	October	November	December	January ¹	February
	(dollars per bushel)	(dollars per bushel)	(dollars per bushel)	(dollars per bushel)	(dollars per bushel)	(dollars per bushel)	(dollars per bushel)	(dollars per bushel)
Colorado	7.06	6.80	6.07	5.02	4.71	4.58	4.52	4.49
Illinois	6.73	6.09	5.25	4.49	4.50	4.58	4.47	4.36
Indiana	6.71	6.38	5.11	4.34	4.17	4.37	4.49	4.48
Iowa	6.91	6.32	5.66	4.64	4.43	4.32	4.43	4.43
Kansas	6.70	6.13	5.13	4.74	4.38	4.43	4.43	4.43
Kentucky	6.89	6.10	5.11	4.35	4.50	4.74	4.56	4.65
Michigan	6.65	6.04	5.37	4.46	4.10	4.03	4.13	4.25
Minnesota	6.78	6.24	5.69	5.20	4.30	4.51	4.38	4.19
Missouri	7.12	6.42	5.08	4.51	4.42	4.48	4.52	4.49
Nebraska	7.05	6.45	5.64	4.72	4.46	4.42	4.37	4.27
North Carolina	7.06	5.85	4.92	4.75	4.83	4.72	4.71	4.78
North Dakota	6.37	5.97	5.67	4.32	4.04	4.07	4.16	3.83
Ohio	6.83	6.34	5.57	4.36	4.17	4.31	4.36	4.37
Pennsylvania	6.67	6.10	5.15	4.15	3.99	4.16	4.50	4.61
South Dakota	6.57	5.99	5.42	4.21	3.97	3.96	4.11	4.10
Tennessee	7.20	6.23	5.04	4.62	4.50	4.73	4.68	4.92
Texas	5.78	5.01	5.46	5.28	4.92	5.08	5.04	4.67
Wisconsin	6.80	6.18	5.68	4.68	4.38	4.31	4.40	4.30
United States	6.79	6.21	5.40	4.63	4.37	4.41	4.42	4.35
States	March	April	May	June	July	August	September	
	(dollars per bushel)	(dollars per bushel)	(dollars per bushel)	(dollars per bushel)	(dollars per bushel)	(dollars per bushel)	(dollars per bushel)	
Colorado	4.65	4.82	4.91	4.80	4.62	4.33	3.95	
Illinois	4.56	4.84	4.77	4.68	4.12	3.74	3.51	
Indiana	4.68	4.86	4.91	4.63	4.07	3.88	3.59	
Iowa	4.55	4.76	4.71	4.49	4.06	3.61	3.51	
Kansas	4.67	4.80	4.79	4.56	4.14	3.63	3.38	
Kentucky	4.79	4.95	5.02	4.87	4.45	4.10	3.81	
Michigan	4.47	4.68	4.64	4.39	3.93	3.55	3.55	
Minnesota	4.35	4.48	4.43	4.38	3.95	3.46	3.22	
Missouri	4.71	4.94	5.03	4.70	4.21	3.75	3.46	
Nebraska	4.46	4.70	4.67	4.56	4.20	3.68	3.58	
North Carolina	5.11	5.15	5.19	5.13	4.98	4.54	3.90	
North Dakota	3.94	4.01	4.21	4.00	3.67	3.35	2.94	
Ohio	4.57	4.69	4.89	4.49	4.13	3.62	3.55	
Pennsylvania	4.87	5.05	5.10	4.74	4.21	3.97	3.69	
South Dakota	4.10	4.19	4.24	4.07	3.67	3.13	2.91	
Tennessee	4.83	5.25	5.33	5.19	5.03	3.96	3.61	
Texas	5.14	5.28	5.05	4.67	5.13	3.67	4.02	
Wisconsin	4.47	4.55	4.72	4.56	4.28	3.80	3.53	
United States	4.52	4.71	4.71	4.50	4.06	3.63	3.49	

¹ Second year.

Prices Received for Corn by Month – States and United States: Marketing Year 2014-2015

States	2014-2015							
	July	August	September	October	November	December	January ¹	February
	(dollars per bushel)	(dollars per bushel)	(dollars per bushel)	(dollars per bushel)	(dollars per bushel)	(dollars per bushel)	(dollars per bushel)	(dollars per bushel)
Colorado	4.62	4.33	3.95	3.82	4.05	4.13	4.10	3.78
Illinois	4.12	3.74	3.51	3.58	3.63	3.81	3.82	3.78
Indiana	4.07	3.88	3.59	3.48	3.54	3.80	3.86	3.93
Iowa	4.06	3.61	3.51	3.62	3.63	3.79	3.86	3.80
Kansas	4.14	3.63	3.38	3.71	3.75	3.90	3.94	3.82
Kentucky	4.45	4.10	3.81	3.52	3.65	3.95	4.08	4.13
Michigan	3.93	3.55	3.55	3.51	3.56	3.63	3.75	3.69
Minnesota	3.95	3.46	3.22	3.51	3.51	3.73	3.71	3.63
Missouri	4.21	3.75	3.46	3.12	3.25	3.62	3.58	3.70
Nebraska	4.20	3.68	3.58	3.63	3.73	3.79	3.88	3.90
North Carolina	4.98	4.54	3.90	3.80	4.34	4.51	4.43	4.63
North Dakota	3.67	3.35	2.94	3.09	3.27	3.49	3.44	3.39
Ohio	4.13	3.62	3.55	3.48	3.59	3.90	3.87	3.95
Pennsylvania	4.21	3.97	3.69	3.52	3.75	3.95	4.11	4.07
South Dakota	3.67	3.13	2.91	3.09	3.27	3.43	3.41	3.43
Tennessee	5.03	3.96	3.61	3.48	3.94	4.26	4.00	4.06
Texas	5.13	3.67	4.02	4.58	4.31	4.50	4.51	4.53
Wisconsin	4.28	3.80	3.53	3.72	3.61	3.69	3.74	3.75
United States	4.06	3.63	3.49	3.57	3.60	3.79	3.82	3.79
States	March	April	May	June	July	August	September	
	(dollars per bushel)	(dollars per bushel)	(dollars per bushel)	(dollars per bushel)	(dollars per bushel)	(dollars per bushel)	(dollars per bushel)	
Colorado	3.94	3.86	3.64	3.73	4.07	3.82	3.80	
Illinois	3.79	3.71	3.62	3.65	3.85	3.63	3.69	
Indiana	3.94	3.84	3.74	3.67	4.03	3.90	3.85	
Iowa	3.83	3.74	3.61	3.58	3.78	3.67	3.57	
Kansas	3.91	3.86	3.81	3.74	4.04	3.80	3.88	
Kentucky	4.20	4.09	3.86	3.88	4.12	4.06	3.78	
Michigan	3.73	3.78	3.58	3.39	3.88	3.69	3.73	
Minnesota	3.66	3.60	3.56	3.46	3.65	3.46	3.42	
Missouri	3.75	3.78	3.64	3.61	3.84	3.70	3.67	
Nebraska	3.88	3.83	3.76	3.68	3.82	3.72	3.63	
North Carolina	4.56	4.42	4.10	4.18	4.68	4.31	4.28	
North Dakota	3.30	3.39	3.47	3.20	3.40	3.29	3.33	
Ohio	3.93	3.83	3.71	3.71	4.02	3.94	3.82	
Pennsylvania	4.08	4.06	3.70	3.94	4.01	4.08	3.97	
South Dakota	3.44	3.38	3.33	3.37	3.53	3.38	3.33	
Tennessee	4.18	4.18	3.96	4.00	4.03	3.94	3.82	
Texas	4.46	4.25	4.07	3.97	4.48	4.26	4.07	
Wisconsin	3.72	3.73	3.48	3.48	3.78	3.67	3.58	
United States	3.81	3.75	3.64	3.59	3.80	3.68	3.68	

¹ Second year.

Prices Received for Flaxseed by Month – States and United States: Marketing Years 2013-2014 and 2014-2015

States	2013-2014					
	July	August	September	October	November	December
	(dollars per bushel)	(dollars per bushel)	(dollars per bushel)	(dollars per bushel)	(dollars per bushel)	(dollars per bushel)
North Dakota	15.10	14.90	13.10	13.40	13.40	13.40
United States	15.10	14.90	13.10	13.40	13.40	13.40
States	January ¹	February	March	April	May	June
	(dollars per bushel)	(dollars per bushel)	(dollars per bushel)	(dollars per bushel)	(dollars per bushel)	(dollars per bushel)
North Dakota	13.80	13.80	13.50	13.90	14.90	14.40
United States	13.80	13.80	13.50	13.90	14.90	14.40
States	2014-2015					
	(dollars per bushel)	(dollars per bushel)	(dollars per bushel)	(dollars per bushel)	(dollars per bushel)	(dollars per bushel)
North Dakota	14.00	13.30	11.70	11.50	11.60	11.40
United States	14.00	13.30	11.70	11.50	11.60	11.40
States	January ¹	February	March	April	May	June
	(dollars per bushel)	(dollars per bushel)	(dollars per bushel)	(dollars per bushel)	(dollars per bushel)	(dollars per bushel)
North Dakota	11.70	11.50	11.50	12.00	12.10	11.40
United States	11.70	11.50	11.50	12.00	12.10	11.40

¹ Second year.

Prices Received for Canola by Month – States and United States: Marketing Years 2014-2015

States	2013-2014					
	July	August	September	October	November	December
	(dollars per cwt)	(dollars per cwt)	(dollars per cwt)	(dollars per cwt)	(dollars per cwt)	(dollars per cwt)
Minnesota	(D)	(S)	(D)	(D)	(S)	(D)
North Dakota	26.20	22.20	20.70	20.70	20.30	20.60
United States	26.30	22.20	20.70	20.70	20.30	20.70
States	January ¹	February	March	April	May	June
	(dollars per cwt)	(dollars per cwt)	(dollars per cwt)	(dollars per cwt)	(dollars per cwt)	(dollars per cwt)
Minnesota	(D)	(D)	(D)	(D)	(S)	(D)
North Dakota	19.80	18.00	18.40	19.50	21.70	20.80
United States	19.80	18.50	18.40	19.50	21.70	20.80
States	2014-2015					
	(dollars per cwt)	(dollars per cwt)	(dollars per cwt)	(dollars per cwt)	(dollars per cwt)	(dollars per cwt)
Minnesota	(D)	(D)	(D)	(D)	(D)	(D)
North Dakota	20.70	17.80	16.20	15.80	17.10	16.60
United States	20.70	17.80	16.20	15.80	17.10	16.60
States	January ¹	February	March	April	May	June
	(dollars per cwt)	(dollars per cwt)	(dollars per cwt)	(dollars per cwt)	(dollars per cwt)	(dollars per cwt)
Minnesota	(D)	(S)	(S)	(D)	(S)	(S)
North Dakota	17.80	17.20	16.60	16.30	16.70	17.80
United States	17.80	17.20	16.60	16.30	16.70	17.80

(D) Withheld to avoid disclosing data for individual operations.

(S) Insufficient number of reports to establish an estimate.

¹ Second year.

Prices Received for All Sunflowers by Month – States and United States: Marketing Years 2013-2014 and 2014-2015

States	2013-2014					
	September	October	November	December	January ¹	February
	(dollars per cwt)	(dollars per cwt)	(dollars per cwt)	(dollars per cwt)	(dollars per cwt)	(dollars per cwt)
Colorado	(D)	(D)	(D)	(D)	(D)	(D)
Kansas	(D)	24.00	22.10	20.40	22.10	20.90
Minnesota	(D)	24.90	(D)	(D)	(D)	23.30
North Dakota	24.10	21.40	21.10	22.30	19.60	25.20
South Dakota	19.80	22.10	20.10	18.10	18.10	18.80
United States	22.40	22.80	20.70	18.80	19.60	22.80
States	March	April	May	June	July	August
	(dollars per cwt)	(dollars per cwt)	(dollars per cwt)	(dollars per cwt)	(dollars per cwt)	(dollars per cwt)
Colorado	(D)	(D)	(D)	(D)	(D)	(D)
Kansas	24.60	(D)	28.00	(D)	(D)	(D)
Minnesota	(D)	(D)	(D)	(D)	(D)	(D)
North Dakota	22.90	23.30	25.30	25.60	24.70	24.40
South Dakota	19.10	20.00	22.60	20.70	19.80	16.80
United States	21.60	22.30	24.10	22.80	22.10	22.40
States	2014-2015					
States	September	October	November	December	January ¹	February
	(dollars per cwt)	(dollars per cwt)	(dollars per cwt)	(dollars per cwt)	(dollars per cwt)	(dollars per cwt)
Colorado	(D)	(D)	(D)	(D)	(D)	(D)
Kansas	25.10	(D)	24.70	18.60	19.00	22.80
Minnesota	20.10	19.40	(D)	(D)	(D)	(S)
North Dakota	19.80	19.50	20.50	21.90	19.40	22.10
South Dakota	19.20	21.10	17.80	17.60	18.20	18.70
United States	20.20	21.70	20.30	19.70	19.10	21.50
States	March	April	May	June	July	August
	(dollars per cwt)	(dollars per cwt)	(dollars per cwt)	(dollars per cwt)	(dollars per cwt)	(dollars per cwt)
Colorado	(D)	(D)	(D)	(D)	(D)	(D)
Kansas	21.50	22.00	(D)	(D)	(D)	(D)
Minnesota	(D)	21.00	27.10	25.30	24.70	25.10
North Dakota	23.70	23.80	28.30	25.50	28.50	26.70
South Dakota	19.50	22.80	24.40	26.40	19.40	28.30
United States	22.50	23.20	26.40	25.40	26.40	24.20

(D) Withheld to avoid disclosing data for individual operations.

(S) Insufficient number of reports to establish an estimate.

¹ Second year.

Prices Received for Oil Sunflowers by Month – States and United States: Marketing Years 2013-2014 and 2014-2015

States	2013-2014					
	September	October	November	December	January ¹	February
	(dollars per cwt)	(dollars per cwt)	(dollars per cwt)	(dollars per cwt)	(dollars per cwt)	(dollars per cwt)
Colorado	(S)	(D)	(D)	(D)	(D)	(D)
Kansas	(D)	18.70	19.20	18.40	18.00	(D)
Minnesota	(D)	(D)	(D)	(D)	23.30	22.80
North Dakota	21.10	20.40	19.40	20.80	18.80	20.60
South Dakota	19.60	17.90	18.00	18.00	18.10	18.20
United States	20.20	18.70	18.50	18.20	18.70	20.00
States	March	April	May	June	July	August
	(dollars per cwt)	(dollars per cwt)	(dollars per cwt)	(dollars per cwt)	(dollars per cwt)	(dollars per cwt)
Colorado	(D)	(D)	(D)	(D)	(D)	(D)
Kansas	(D)	(D)	(D)	(D)	(D)	(D)
Minnesota	(D)	(D)	(D)	(D)	(D)	(D)
North Dakota	19.90	20.30	21.60	21.20	21.50	20.80
South Dakota	18.90	18.70	21.70	20.60	19.80	16.50
United States	19.40	19.70	21.70	20.70	20.50	19.40
States	2014-2015					
States	September	October	November	December	January ¹	February
	(dollars per cwt)	(dollars per cwt)	(dollars per cwt)	(dollars per cwt)	(dollars per cwt)	(dollars per cwt)
Colorado	(D)	(D)	(D)	(D)	(D)	(D)
Kansas	(D)	(D)	(D)	17.80	(D)	(D)
Minnesota	20.10	19.40	(D)	(D)	(D)	(S)
North Dakota	19.20	18.50	17.90	18.30	19.30	20.10
South Dakota	19.20	17.80	17.10	17.30	18.00	18.60
United States	19.30	18.10	17.50	17.70	18.90	19.40
States	March	April	May	June	July	August
	(dollars per cwt)	(dollars per cwt)	(dollars per cwt)	(dollars per cwt)	(dollars per cwt)	(dollars per cwt)
Colorado	(D)	(D)	(D)	(D)	(D)	(D)
Kansas	(D)	(D)	(D)	(D)	(D)	(D)
Minnesota	(D)	20.40	(D)	23.40	25.60	26.00
North Dakota	19.50	20.50	22.40	22.60	23.60	21.00
South Dakota	19.50	22.30	23.80	25.20	17.90	28.30
United States	20.10	21.40	23.30	23.00	21.80	21.30

(D) Withheld to avoid disclosing data for individual operations.

(S) Insufficient number of reports to establish an estimate.

¹ Second year.

Prices Received for Non-Oil Sunflowers by Month – States and United States: Marketing Years 2013-2014 and 2014-2015

States	2013-2014					
	September	October	November	December	January ¹	February
	(dollars per cwt)	(dollars per cwt)	(dollars per cwt)	(dollars per cwt)	(dollars per cwt)	(dollars per cwt)
Colorado	(D)	(D)	(D)	(D)	(D)	(D)
Kansas	(D)	(D)	(D)	(D)	(D)	(D)
Minnesota	(S)	(D)	(D)	(D)	(S)	(D)
North Dakota	28.70	23.00	27.30	29.30	32.40	(D)
South Dakota	(D)	(D)	(D)	(D)	(S)	(D)
United States	30.30	30.90	30.00	31.80	34.00	32.00
States	March	April	May	June	July	August
	(dollars per cwt)	(dollars per cwt)	(dollars per cwt)	(dollars per cwt)	(dollars per cwt)	(dollars per cwt)
Colorado	(D)	(D)	(D)	(S)	(S)	(S)
Kansas	(D)	(S)	(D)	(S)	(S)	(S)
Minnesota	(S)	(D)	(D)	(S)	(S)	(S)
North Dakota	33.00	(D)	(D)	(D)	(D)	(D)
South Dakota	(D)	(D)	(D)	(D)	(S)	(D)
United States	33.00	32.00	30.80	30.80	32.40	31.80
States	2014-2015					
States	September	October	November	December	January ¹	February
	(dollars per cwt)	(dollars per cwt)	(dollars per cwt)	(dollars per cwt)	(dollars per cwt)	(dollars per cwt)
Colorado	(D)	(D)	(D)	(D)	(D)	(D)
Kansas	(D)	(D)	(D)	(D)	(D)	(D)
Minnesota	(S)	(S)	(S)	(D)	(D)	(S)
North Dakota	31.20	31.40	(D)	(D)	23.00	(D)
South Dakota	(S)	(D)	(D)	(D)	(D)	(D)
United States	33.60	32.80	32.60	31.30	25.80	31.90
States	March	April	May	June	July	August
	(dollars per cwt)	(dollars per cwt)	(dollars per cwt)	(dollars per cwt)	(dollars per cwt)	(dollars per cwt)
Colorado	(D)	(D)	(D)	(D)	(D)	(D)
Kansas	(D)	(D)	(S)	(S)	(S)	(D)
Minnesota	(D)	(D)	(D)	(D)	(D)	(D)
North Dakota	(D)	(D)	(D)	29.80	(D)	(D)
South Dakota	(D)	(D)	(D)	29.90	33.20	(D)
United States	32.00	31.00	31.40	29.60	31.60	29.10

(D) Withheld to avoid disclosing data for individual operations.

(S) Insufficient number of reports to establish an estimate.

¹ Second year.

Prices Received for Dry Edible Beans by Month – States and United States: Marketing Years 2013-2014 and 2014-2015

States	2013-2014					
	September	October	November	December	January ¹	February
	(dollars per cwt)	(dollars per cwt)	(dollars per cwt)	(dollars per cwt)	(dollars per cwt)	(dollars per cwt)
California	43.00	(D)	61.50	55.20	56.60	(D)
Colorado	39.60	50.40	(S)	38.90	40.40	37.90
Idaho	33.90	37.40	(D)	(D)	32.20	(D)
Michigan	42.70	42.40	42.40	42.70	45.10	46.20
Minnesota	(S)	(D)	(D)	(D)	(S)	(D)
Nebraska	(D)	45.30	43.20	43.90	46.30	41.70
North Dakota	37.60	37.00	35.50	36.40	35.70	32.50
United States	39.20	40.60	38.60	39.80	39.60	39.00
States	March	April	May	June	July	August
	(dollars per cwt)	(dollars per cwt)	(dollars per cwt)	(dollars per cwt)	(dollars per cwt)	(dollars per cwt)
California	54.60	66.00	56.90	62.40	(D)	(D)
Colorado	35.20	30.30	(D)	31.80	(D)	33.10
Idaho	30.00	32.40	38.00	30.60	35.10	33.20
Michigan	(D)	49.50	53.20	48.90	58.50	(D)
Minnesota	(D)	(D)	(D)	(S)	(S)	(S)
Nebraska	54.00	(D)	(D)	47.70	44.00	30.70
North Dakota	31.30	31.30	31.70	30.70	31.70	25.80
United States	38.10	36.50	38.10	35.80	36.40	35.90
States	2014-2015					
	September	October	November	December	January ¹	February
	(dollars per cwt)	(dollars per cwt)	(dollars per cwt)	(dollars per cwt)	(dollars per cwt)	(dollars per cwt)
California	69.70	63.70	70.50	65.60	58.10	69.20
Colorado	27.20	26.20	23.50	24.00	46.30	(D)
Idaho	29.30	35.40	31.90	27.10	35.20	26.40
Michigan	36.00	34.10	33.90	38.10	(D)	40.40
Minnesota	47.50	51.00	(S)	(D)	(D)	(D)
Nebraska	(D)	(D)	25.40	(D)	(D)	34.90
North Dakota	29.10	28.00	28.10	29.70	30.60	26.10
United States	33.00	32.20	30.60	34.10	33.00	32.10
States	March	April	May	June	July	August
	(dollars per cwt)	(dollars per cwt)	(dollars per cwt)	(dollars per cwt)	(dollars per cwt)	(dollars per cwt)
California	59.80	59.50	(D)	(D)	68.90	59.00
Colorado	23.40	22.70	(D)	(D)	27.30	22.30
Idaho	30.40	29.10	39.20	29.60	(D)	28.70
Michigan	46.20	39.80	38.90	45.10	(D)	(D)
Minnesota	46.50	(D)	(D)	26.70	26.10	23.60
Nebraska	(D)	(D)	25.40	(D)	(D)	20.60
North Dakota	24.40	30.40	25.40	23.70	22.00	23.00
United States	33.80	32.20	35.90	28.90	27.50	29.00

(D) Withheld to avoid disclosing data for individual operations.

(S) Insufficient number of reports to establish an estimate.

¹ Second year.

Marketing Percentages of Corn by Month – States and United States: Marketing Years 2013-2014 and 2014-2015

[Monthly farm marketings are based on a sample survey and used as a percent of total for calculating MYA prices. Blank cells indicate month is outside State's designated marketing year as defined on page 34]

Year	Jul	Aug	Sep	Oct	Nov	Dec	Jan ¹	Feb	Mar	Apr	May	Jun	Jul	Aug	Sep
	(%)	(%)	(%)	(%)	(%)	(%)	(%)	(%)	(%)	(%)	(%)	(%)	(%)	(%)	(%)
Colorado															
2013-2014				6	17	12	21	13	9	5	4	3	3	3	4
2014-2015				7	13	15	13	8	12	9	5	4	6	4	4
Illinois															
2013-2014			3	11	10	7	19	10	10	10	6	5	4	5	
2014-2015			5	13	12	10	17	7	6	4	5	9	7	5	
Indiana															
2013-2014			3	15	10	7	14	10	12	8	4	5	7	5	
2014-2015			6	12	16	8	15	6	8	6	4	7	7	5	
Iowa															
2013-2014			6	12	13	8	11	9	9	7	6	6	7	6	
2014-2015			5	8	15	8	11	7	8	5	5	10	10	8	
Kansas															
2013-2014			4	18	14	12	16	10	7	4	2	3	3	7	
2014-2015			11	19	13	13	11	6	7	3	3	6	5	3	
Kentucky															
2013-2014			9	12	9	9	20	13	10	7	3	3	2	3	
2014-2015			12	13	6	7	21	8	10	6	4	6	4	3	
Michigan															
2013-2014				7	16	11	13	10	8	7	6	5	7	6	4
2014-2015				7	13	15	11	7	8	7	6	9	8	3	6
Minnesota															
2013-2014				12	10	9	10	9	8	7	5	8	8	8	6
2014-2015				9	10	10	10	5	8	5	7	12	11	7	6
Missouri															
2013-2014			10	10	8	8	13	9	10	7	6	5	6	8	
2014-2015			9	12	11	12	14	6	7	6	6	7	6	4	
Nebraska															
2013-2014			4	10	15	12	15	9	9	5	4	6	5	6	
2014-2015			5	8	15	12	12	7	8	5	5	11	8	4	
North Carolina															
2013-2014		7	31	12	5	6	10	7	8	6	4	2	2		
2014-2015		8	32	14	4	6	8	6	5	4	4	5	4		
North Dakota															
2013-2014				3	11	11	12	9	11	8	4	9	11	8	3
2014-2015				7	11	11	10	7	7	5	4	10	15	6	7
Ohio															
2013-2014			4	18	17	5	11	9	10	8	4	5	5	4	
2014-2015			6	10	13	9	12	7	10	8	5	9	6	5	
Pennsylvania															
2013-2014			6	17	17	6	11	10	8	6	7	5	2	5	
2014-2015			5	11	14	11	6	8	10	9	6	6	8	6	
South Dakota															
2013-2014			4	10	13	8	15	11	9	7	4	6	7	6	
2014-2015			5	11	15	9	10	8	8	4	4	10	11	5	
Tennessee															
2013-2014		2	32	23	7	4	14	4	6	3	2	2	1		
2014-2015		2	31	21	5	11	12	3	4	3	2	3	3		
Texas															
2013-2014	4	8	15	16	16	12	12	5	4	4	2	2			
2014-2015	4	6	6	31	10	16	12	5	3	1	1	5			
Wisconsin															
2013-2014				8	19	16	16	6	6	6	4	7	5	4	3
2014-2015				7	18	13	14	6	8	5	5	9	8	3	4
United States															
2013-2014			5.1	11.6	12.3	8.8	14.2	9.4	9.1	7.3	4.8	5.7	5.9	5.8	
2014-2015			6.0	10.7	13.1	10.2	12.8	6.6	7.4	5.2	4.8	9.4	8.4	5.4	

¹ Second year.

Marketing Percentages of All Sunflowers by Month – States and United States: Marketing Years 2013-2014 and 2014-2015

[Monthly farm marketings are based on a sample survey and used as a percent of total for calculating MYA prices]

Year	Sep	Oct	Nov	Dec	Jan ¹	Feb	Mar	Apr	May	Jun	Jul	Aug
	(%)	(%)	(%)	(%)	(%)	(%)	(%)	(%)	(%)	(%)	(%)	(%)
Colorado												
2013-2014	2	23	25	12	11	5	5	1	2	7	6	1
2014-2015	6	24	23	6	10	12	4	2	1	2	1	9
Kansas												
2013-2014	1	21	23	15	15	6	6	1	2	4	5	1
2014-2015	4	19	20	13	15	9	3	2	1	3	1	10
Minnesota												
2013-2014	2	3	14	7	24	28	2	6	11	1	1	1
2014-2015	4	6	1	12	4	11	24	5	8	12	5	8
North Dakota												
2013-2014	3	4	13	2	11	8	10	13	7	8	10	11
2014-2015	2	7	16	13	14	8	11	9	4	7	7	2
South Dakota												
2013-2014	3	8	25	21	8	3	5	5	4	7	8	3
2014-2015	7	14	15	15	10	11	10	8	5	2	2	1
United States												
2013-2014	2.4	7.5	19.9	12.4	10.2	6.0	7.0	8.1	5.2	7.0	8.2	6.1
2014-2015	4.0	10.7	15.1	13.8	11.9	9.4	11.0	7.6	4.2	4.9	4.7	2.7

¹ Second year.

Marketing Percentages of Flaxseed by Month – States and United States: Marketing Years 2013-2014 and 2014-2015

[Monthly farm marketings are based on a sample survey and used as a percent of total for calculating MYA prices]

Year	Jul	Aug	Sep	Oct	Nov	Dec	Jan ¹	Feb	Mar	Apr	May	Jun
	(%)	(%)	(%)	(%)	(%)	(%)	(%)	(%)	(%)	(%)	(%)	(%)
North Dakota												
2013-2014	8.6	5.5	13.1	21.4	11.2	5.4	10.0	3.4	7.7	2.8	4.2	6.7
2014-2015	4.6	2.5	24.2	24.4	13.0	8.2	4.5	2.6	4.6	3.0	3.5	4.9
United States												
2013-2014	8.6	5.5	13.1	21.4	11.2	5.4	10.0	3.4	7.7	2.8	4.2	6.7
2014-2015	4.6	2.5	24.2	24.4	13.0	8.2	4.5	2.6	4.6	3.0	3.5	4.9

¹ Second year.

Marketing Percentages of Canola by Month – States and United States: Marketing Years 2013-2014 and 2014-2015

[Monthly farm marketings are based on a sample survey and used as a percent of total for calculating MYA prices]

Year	Jul	Aug	Sep	Oct	Nov	Dec	Jan ¹	Feb	Mar	Apr	May	Jun
	(%)	(%)	(%)	(%)	(%)	(%)	(%)	(%)	(%)	(%)	(%)	(%)
Minnesota												
2013-2014	16	-	7	7	-	18	8	35	3	5	-	1
2014-2015	3	17	14	17	4	14	24	-	-	7	-	-
North Dakota												
2013-2014	4	15	18	8	6	7	16	6	9	6	1	4
2014-2015	3	3	25	11	7	11	16	5	5	3	4	7
United States												
2013-2014	4.8	16.2	19.6	9.4	7.2	6.1	8.4	8.0	9.9	4.5	1.6	4.3
2014-2015	3.3	3.2	25.0	11.1	7.4	10.8	16.0	4.8	4.6	2.9	3.8	7.1

- Represents zero.

¹ Second year.

Marketing Percentages of Dry Edible Beans by Month – States and United States: Marketing Years 2013-2014 and 2014-2015

[Monthly farm marketings are based on a sample survey and used as a percent of total for calculating MYA prices]

Year	Sep	Oct	Nov	Dec	Jan ¹	Feb	Mar	Apr	May	Jun	Jul	Aug
	(%)	(%)	(%)	(%)	(%)	(%)	(%)	(%)	(%)	(%)	(%)	(%)
California												
2013-2014	6	9	11	9	20	8	11	12	7	4	1	2
2014-2015	4	8	9	16	11	16	12	7	8	4	1	4
Colorado												
2013-2014	43	13	-	6	16	3	4	10	2	1	1	1
2014-2015	25	17	9	1	5	12	9	9	4	2	3	4
Idaho												
2013-2014	11	7	6	24	10	2	11	3	6	6	3	11
2014-2015	10	7	7	9	12	4	7	5	27	6	3	3
Michigan												
2013-2014	18	53	10	4	3	1	1	1	1	2	1	5
2014-2015	23	48	9	3	3	2	1	1	1	1	1	7
Minnesota												
2013-2014	-	8	4	8	-	37	20	18	2	-	3	-
2014-2015	36	23	-	1	7	2	8	1	1	16	1	4
Nebraska												
2013-2014	32	19	10	7	9	5	2	1	-	1	13	1
2014-2015	34	11	3	4	8	11	8	1	2	2	9	7
North Dakota												
2013-2014	25	21	13	5	9	5	3	7	3	3	4	2
2014-2015	22	22	14	5	15	8	3	3	2	2	2	2
United States												
2013-2014	22.2	26.3	10.9	6.8	8.3	4.2	3.8	5.0	2.7	3.0	3.5	3.3
2014-2015	22.9	25.1	10.2	5.1	10.4	6.4	4.2	2.6	3.9	2.6	2.5	4.1

- Represents zero.

¹ Second year.

Prices Received and Marketing Percentages for All Chickpeas (Garbanzo) by Month – United States: Marketing Years 2013-2014 and 2014-2015

[Marketing year average (MYA) prices are weighted average prices for the United States marketing year of September - August. Monthly farm marketings are based on a sample survey and used as a percent of total for calculating MYA prices]

Month	Prices received		Farm marketing percentages	
	2013-2014	2014-2015	2013-2014	2014-2015
	(dollars per cwt)	(dollars per cwt)	(percent)	(percent)
September	33.50	28.10	20.0	22.9
October	31.60	26.00	16.0	9.0
November	29.80	25.60	11.3	12.6
December	27.10	25.30	12.8	11.3
January ¹	29.40	26.70	10.1	6.6
February	27.30	23.80	2.5	5.5
March	27.00	31.40	8.8	2.5
April	25.80	23.10	2.1	3.7
May	27.50	26.90	2.1	3.7
June	26.70	25.90	3.7	4.2
July	24.60	29.90	2.5	6.0
August	32.70	28.60	8.1	12.0
MYA	30.00	26.90	100.0	100.0

¹ Second year.

Prices Received and Marketing Percentages for Large Chickpeas by Month – United States: Marketing Years 2013-2014 and 2014-2015

[Large chickpeas are larger than 20/64 inch. Marketing year average (MYA) prices are weighted average prices for the United States marketing year of September - August. Monthly farm marketings are based on a sample survey and used as a percent of total for calculating MYA prices]

Month	Prices received		Farm marketing percentages	
	2013-2014	2014-2015	2013-2014	2014-2015
	(dollars per cwt)	(dollars per cwt)	(percent)	(percent)
September	33.90	28.60	21.6	26.8
October	33.20	29.70	14.4	6.6
November	30.20	27.40	12.2	10.5
December	27.80	26.70	12.9	11.4
January ¹	30.10	31.30	10.3	5.5
February	28.50	26.30	2.3	4.4
March	27.60	35.00	8.9	2.4
April	26.80	25.20	1.9	3.1
May	29.80	27.50	1.8	4.1
June	27.30	28.00	3.6	4.0
July	29.20	30.60	1.5	7.1
August	33.30	29.30	8.6	14.1
MYA	30.90	28.60	100.0	100.0

¹ Second year.

Prices Received and Marketing Percentages for Small Chickpeas (Garbanzo) by Month – United States: Marketing Years 2013-2014 and 2014-2015

[Small chickpeas are smaller than 20/64 inch. Marketing year average (MYA) prices are weighted average prices for the United States marketing year of September - August. Monthly farm marketings are based on a sample survey and used as a percent of total for calculating MYA prices]

Month	Prices received		Farm marketing percentages	
	2013-2014	2014-2015	2013-2014	2014-2015
	(Dollars per Cwt)	(Dollars per Cwt)	(Percent)	(Percent)
September	24.00	22.30	8.0	8.6
October	25.10	21.00	28.6	17.6
November	(D)	22.40	(D)	20.1
December	21.10	20.10	12.3	10.7
January ¹	23.80	18.20	8.6	10.4
February	21.40	19.70	3.7	9.5
March	21.80	21.20	8.1	2.9
April	(D)	19.20	(D)	5.9
May	(D)	(D)	(D)	(D)
June	22.10	20.20	3.7	5.1
July	19.50	(D)	10.6	(D)
August	(D)	20.70	(D)	4.8
MYA	22.70	20.80	100.0	100.0

(D) Withheld to avoid disclosing data for individual operations.

¹ Second year.

Reliability of Prices Received Estimates

Definition: Prices received represent sales from producers to first buyers. They include all grades and qualities. The average commodity price from the survey multiplied by the total quantity marketed theoretically should give the total cash receipts for the commodity.

Survey procedures: Primary sales data used to determine grain prices were obtained from probability samples of about 1,900 mills and elevators. These procedures ensure that virtually all grain moving into commercial channels has a chance of being included in the survey. Generally, States surveyed account for 90 percent or more of total United States production. Livestock prices are obtained from packers, stockyards, auctions, dealers, and market check data from AMS-USDA, private marketing organizations, and state commodity groups and agencies. Inter-farm sales of grain and livestock are not included since they represent very small percentages of the total sales. Grain marketed for seed is also excluded. Fruit and vegetable prices are obtained from sample surveys and market check data from AMS-USDA, private marketing organizations, state agencies, and universities.

Summary and estimation procedures: Survey quantities sold are expanded by strata to state levels and used to weight average strata prices to a state average. State prices are then weighted to a United States price based on expanded sales. Recommendations are prepared by the Regional Field Offices and reviewed by the Agricultural Statistics Board in Washington, D.C. State recommendations are reviewed for reasonableness with survey data, other States, and recent historic estimates.

Revisions: In general, revisions are made during annual commodity market year estimation time, following five-year Census revisions, or when later information is received. Revisions are published in monthly issues of *Agricultural Prices*.

Reliability: United States price estimates based on probability surveys generally have a sampling error of less than one percent for the major commodities such as corn, wheat, soybeans, cotton, and rice. Current methods of summarization for non-probability commodities are not designed directly to calculate sampling errors. However, analytical measures approximate the United States relative sampling errors at around five percent. Any non-sampling errors are attributed to such things as the inability to obtain correct information, differences in interpreting questions or definitions, mistakes in coding or processing the data, etc. Efforts are made at each step in the survey process to minimize these non-sampling errors.

Program Changes: After the Council on Food, Agricultural and Resource Economics (C-FARE) 2009 program review which included changes in farm production practices, plans were implemented to make necessary program improvements in the agricultural price program. The index group structure for prices received was modified to maintain a more universal structure and consistency with the required 1910-1914 series.

Modifications implemented January 2014 include the following: update the current 1990-1992 base reference period to 2011, link the 1910-1914 series to the updated base reference period, 2011, create index groups used universally by researchers, data users, and policymakers, re-classify agricultural commodities into the index groups, expand the commodity coverage for vegetable, melon, non-citrus, and tree nuts, update monthly market weights, and adjust (normalization) current five year moving average cash receipts and farm input cost weights.

Modifications implemented January 2015 discontinued preliminary prices and replaced the annual average index with an annual index.

See Price Program Quick Stats Links at end of this report for program change details.

October Prices Paid by Farmers

The October Index of Prices Paid for Commodities and Services, Interest, Taxes, and Farm Wage Rates (PPITW), at 107, is unchanged from September 2015 but is down 4.5 percent from October 2014.

Production index: The October index, at 107, is unchanged from September but is 6.1 percent lower than last year. Lower prices in October for concentrates, nitrogen, other services, and complete feeds offset higher prices for feeder cattle, feeder pigs, hay & forages, and diesel.

Feed: The October index, at 102, decreased 1.9 percent from September and is down 3.8 percent from last October. Since September, lower prices for concentrates, complete feeds, and feed grains more than offset higher prices for hay & forages.

Livestock and poultry: The October index, at 137, increased 0.7 percent from September but is down 23 percent from last year. Since September, lower prices for milk cows more than offset higher prices for feeder cattle and feeder pigs. The October feeder cattle price, at \$199.00 per cwt, is up \$2.00 per cwt from the September price. October feeder pigs averaged \$117.00 per cwt, up \$14.00 per cwt from September.

Fertilizer: The October index, at 86, is down 2.3 percent from September and 5.5 percent below October 2014. Since September, prices are lower for nitrogen, mixed fertilizer, and potash & phosphate.

Chemicals: The October index, at 107, is unchanged from September but is down 2.7 percent from last October.

Fuels: The October index, at 60, is unchanged from September but is 35 percent below October 2014. Compared with September, prices are higher for diesel but lower for gasoline and LP gas.

Machinery: The October index, at 115, is unchanged from September but is 2.7 percent above last October.

Consumer price index: The October 2015 Consumer Price Index, as issued by the Bureau of Labor Statistics, for all urban consumers (CPI-U) decreased slightly before seasonal adjustment to a level of 237.838 (1982-1984=100). The September index is 237.947. For the 12 month period ending in October, the overall index increased slightly.

Prices Paid Indexes and Related Parity Ratios – United States: October 2015 with Comparisons

[Revised historical price indexes for months not shown are available at www.nass.usda.gov]

Index Group and Ratios	1910-1914 Base			2011 Base		
	October 2014	September 2015	October 2015	October 2014	September 2015	October 2015
	(percent)	(percent)	(percent)	(percent)	(percent)	(percent)
Prices paid by farmers for commodities, services, interest, taxes, and wage rates (PPITW)	3022	2900	2899	112	107	107
Production	2371	2235	2228	114	107	107
Feed	1167	1143	1129	106	104	102
Livestock and poultry	3487	2675	2714	177	136	137
Seeds	3746	3755	3755	114	114	114
Fertilizer	1098	1061	1033	91	88	86
Chemicals	986	957	959	110	107	107
Fuels	2611	1690	1682	93	60	60
Supplies and repairs	1252	1243	1243	106	105	105
Autos and trucks	3214	3234	3233	105	105	105
Machinery	6875	7044	7052	112	115	115
Building materials	2499	2489	2488	107	107	107
Services and rent	2308	2368	2358	(NA)	(NA)	(NA)
Services	(NA)	(NA)	(NA)	109	113	112
Rent	(NA)	(NA)	(NA)	108	110	110
Interest ¹	3504	3539	3539	96	97	97
Taxes ²	6233	6376	6376	105	107	107
Wage rates	7756	7980	8204	108	111	115
Production, interest, taxes, and wage rates (PITW)	3177	3028	3026	113	107	107
Family living-CPI ³	2255	2260	2259	106	106	106
Ratio (received/paid)	(NA)	(NA)	(NA)	89	92	83
Parity ratio ⁴	34	35	32	(NA)	(NA)	(NA)
Parity ratio adjusted ⁵	35	36	33	(NA)	(NA)	(NA)
PPITW adjusted for productivity ⁶	1423	1407	1421	(NA)	(NA)	(NA)
Crop sector (PPITW)	(NA)	(NA)	(NA)	107	105	105
Livestock sector (PPITW)	(NA)	(NA)	(NA)	117	109	109
Farm sector (production)	(NA)	(NA)	(NA)	128	115	115
Non-farm sector (production)	(NA)	(NA)	(NA)	105	103	102

(NA) Not available.

¹ Interest per acre on farm real estate debt and interest rate on farm non-real estate debt.

² Farm real estate taxes payable per acre.

³ Bureau of Labor Statistics, Consumer Price Index for all urban consumers (CPI-U), for the previous month converted by the USDA.

⁴ Ratio of index of prices received to PPITW (1910-1914=100).

⁵ Based on estimated cash receipts, from marketings and government payments, the preliminary adjustment factor is 1.026 for 2015 and the revised factor is 1.026 for 2014.

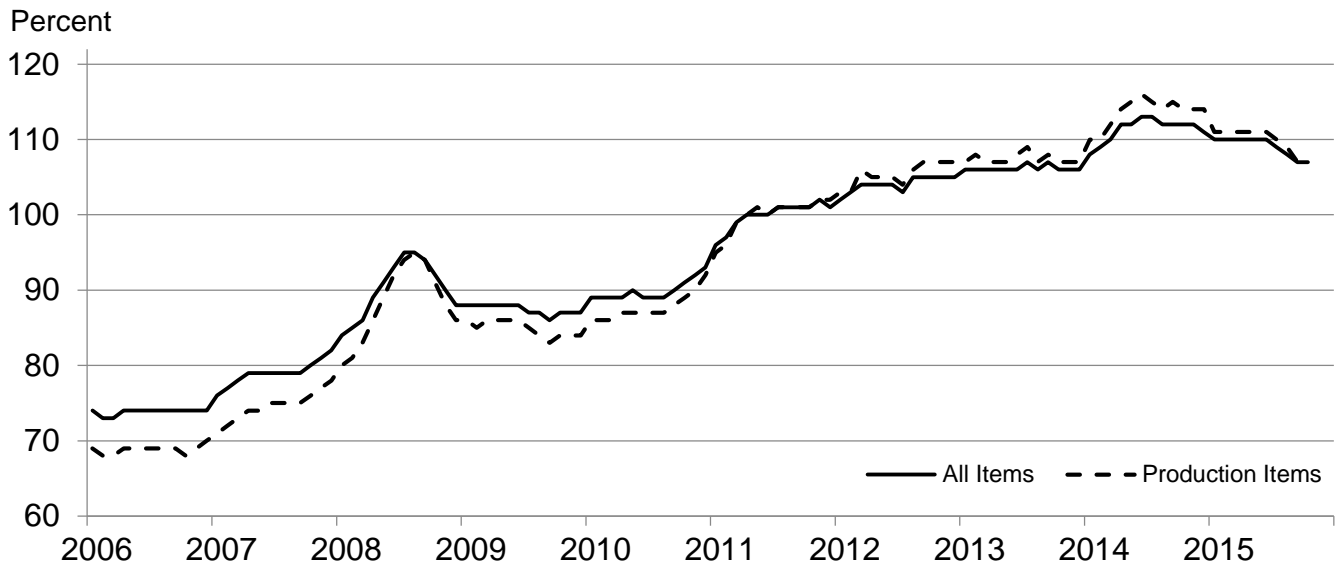
⁶ PPITW is adjusted based on productivity trend for the prior 15 years.

Prices Paid Indexes and Annual Weights for Input Components and Sub-components – United States: October 2015 with Comparisons

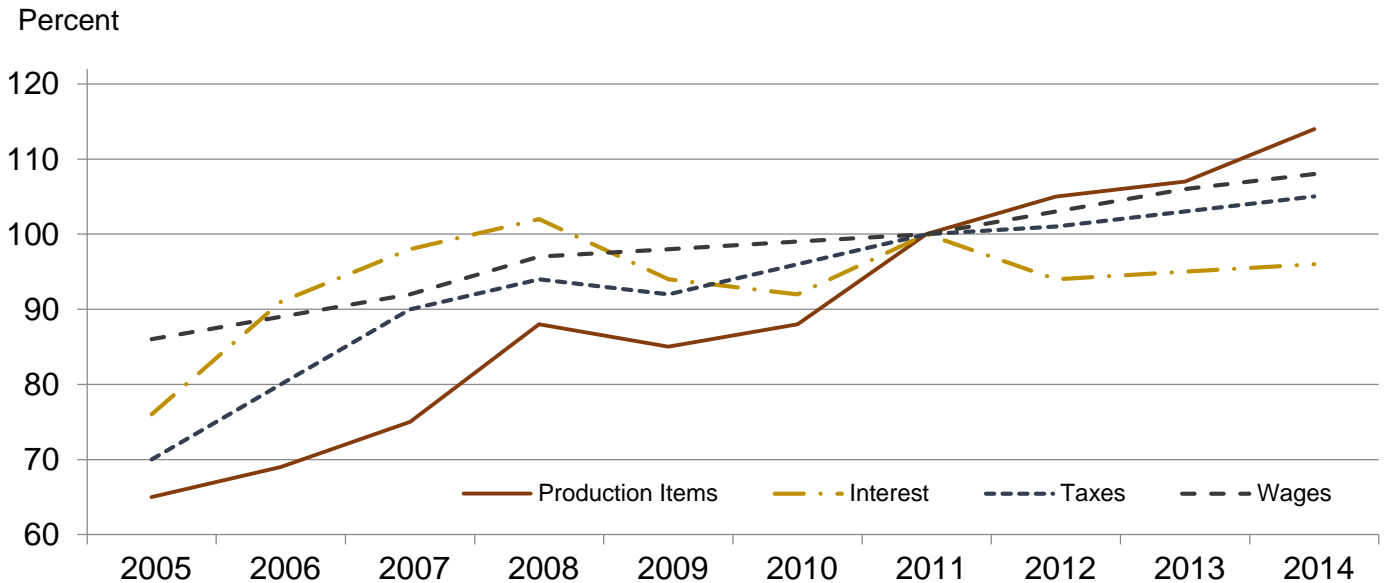
[Revised historical price indexes for months not shown are available at www.nass.usda.gov. Relative weights are a five year moving average]

Index Group	Relative weights		Indexes (2011=100)		
	2014	2015	October 2014	September 2015	October 2015
	(percent)	(percent)	(percent)	(percent)	(percent)
Production items	74.1	74.6	114	107	107
Feed	15.5	15.5	106	104	102
Feed grains	2.2	2.2	61	64	62
Complete feeds	7.6	7.6	115	112	111
Hay and forages	1.9	1.9	109	93	95
Concentrates	2.5	2.5	114	114	110
Supplements	1.3	1.3	110	116	116
Livestock and poultry	8.5	8.3	177	136	137
Feeder cattle	6.6	6.4	188	144	146
Feeder pigs	0.7	0.7	150	74	84
Milk cow replacements	0.7	0.7	149	143	139
Poultry	0.5	0.5	102	102	102
Seeds	4.9	5.0	114	114	114
Field crops	4.4	4.5	113	114	114
Grasses and legumes	0.5	0.5	123	120	120
Fertilizer	6.2	6.4	91	88	86
Mixed fertilizer	2.7	2.8	85	86	85
Nitrogen	2.6	2.7	97	92	88
Potash and phosphate	0.9	0.9	94	84	82
Chemicals	3.1	3.2	110	107	107
Herbicides	1.9	2.0	110	107	107
Insecticides	0.7	0.7	112	107	108
Fungicides and other	0.4	0.5	105	104	104
Fuels	4.1	4.0	93	60	60
Diesel	2.6	2.5	86	57	57
Gasoline	0.9	0.8	95	66	64
LP gas	0.7	0.7	117	68	67
Supplies and repairs	4.3	4.3	106	105	105
Supplies	1.4	1.4	106	106	106
Repairs	2.8	2.9	106	105	105
Autos and trucks	1.1	1.1	105	105	105
Autos	0.1	0.1	101	101	101
Trucks	1.0	1.0	105	106	106
Machinery	4.9	5.2	112	115	115
Tractors	1.1	1.1	108	110	110
Self-propelled	2.0	2.1	115	119	119
Other machinery	1.9	2.0	112	115	115
Building materials	3.7	3.7	107	107	107
Services	10.8	10.8	109	113	112
Custom rates	1.1	1.1	109	112	112
Other services	9.7	9.7	109	113	112
Rent	6.9	7.1	108	110	110
Cash	3.7	3.8	109	110	110
Share	3.2	3.3	108	110	110
Interest	2.6	2.3	96	97	97
Taxes	2.9	2.8	105	107	107
Wage rates	6.4	6.4	108	111	115
Family living-CPI	14.0	13.9	106	106	106

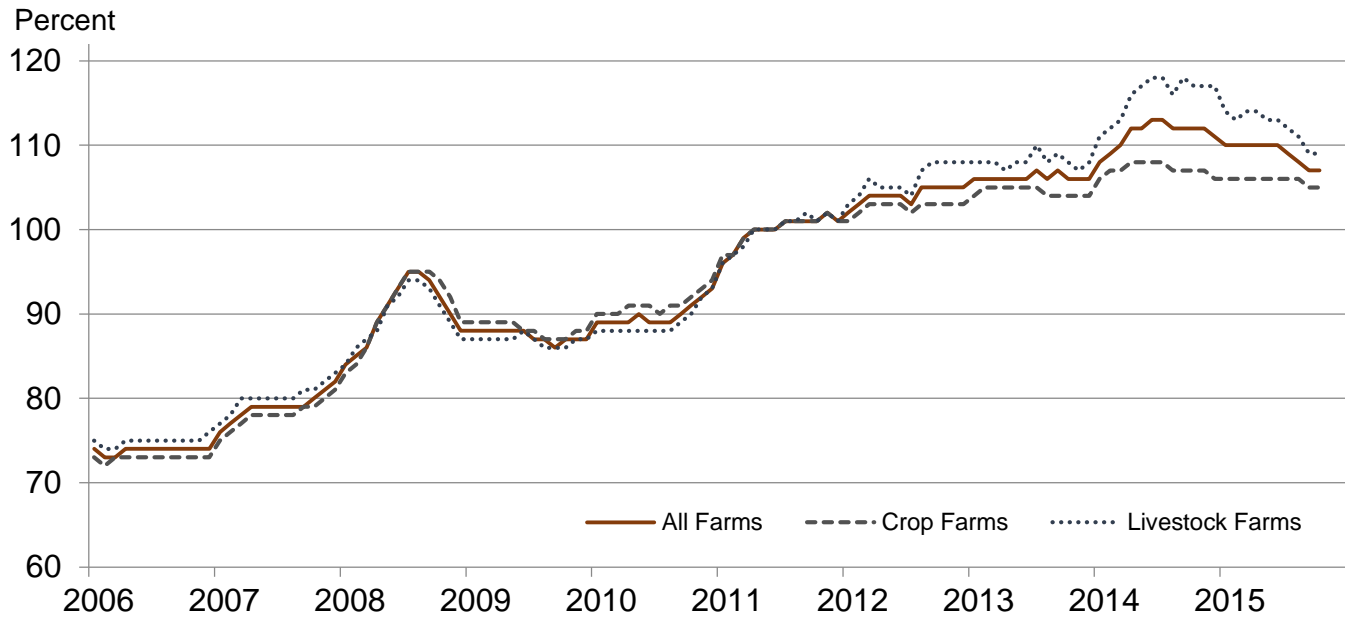
Paid Indexes by Month, All Items and Production Items – United States: 2011=100



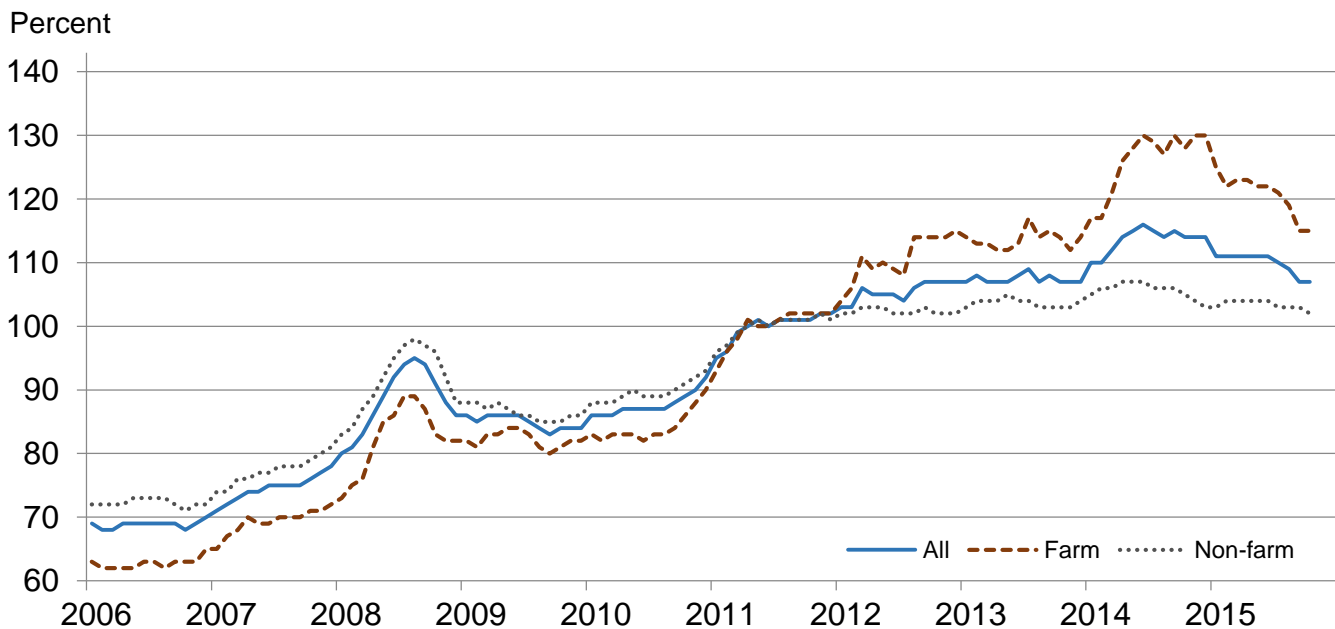
Paid Indexes, Annual Averages, Production Items, Interest, Taxes, and Wages – United States: 2011=100



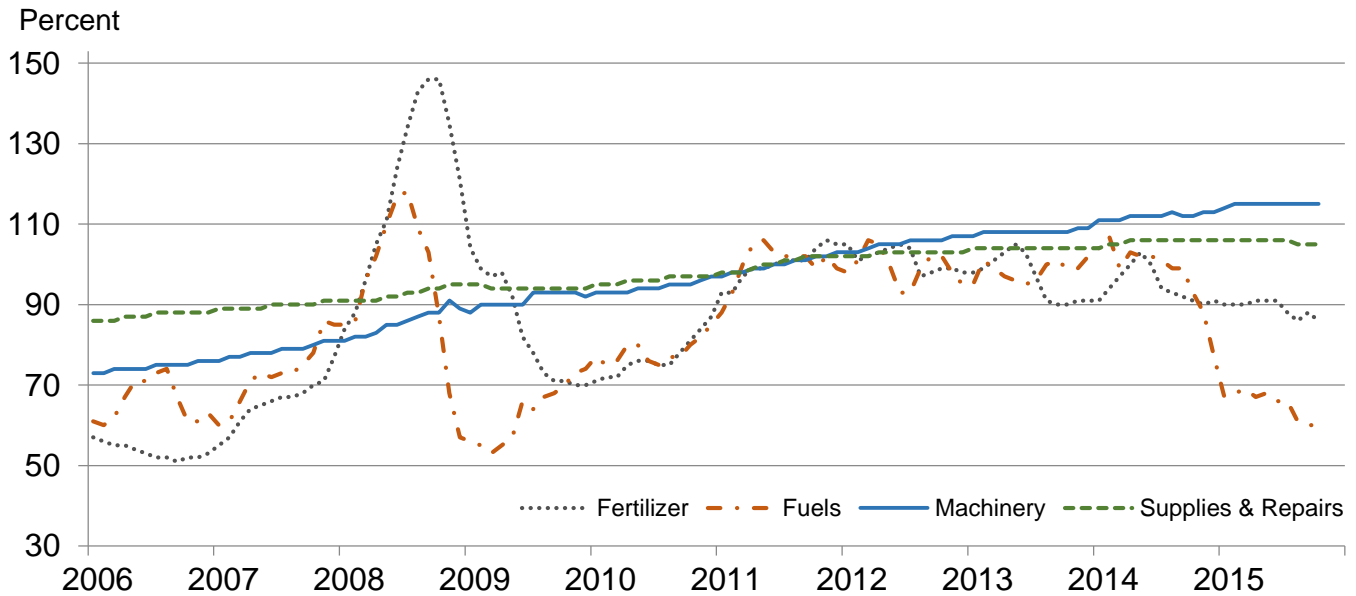
Paid Indexes by Farm Type and Month, All Items – United States: 2011=100



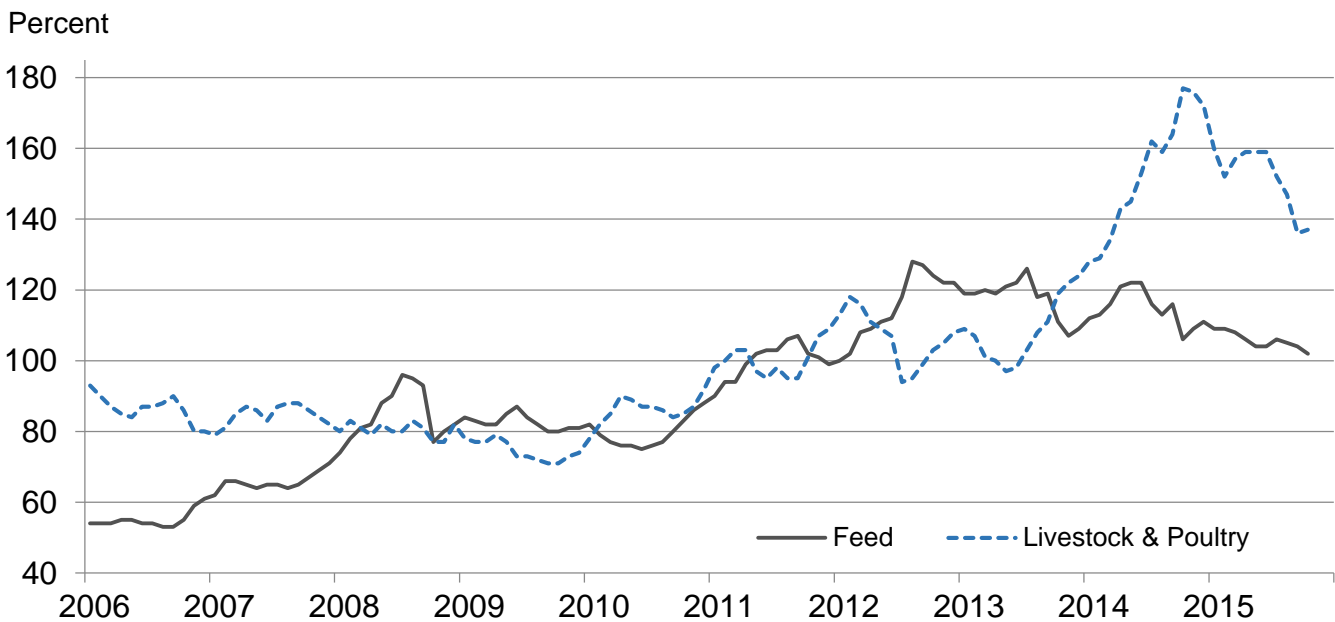
Paid Indexes by Origin and Month, All Production Items – United States: 2011=100



Paid Indexes by Non-farm Origin and Month, Fertilizer, Fuels, Machinery, and Supplies & Repairs – United States: 2011=100



Paid Indexes by Farm Origin and Month, Feed and Livestock & Poultry – United States: 2011=100



Feed Price Ratios – United States: October 2015 with Comparisons

Feed price ratio ¹	October 2014	September 2015	October 2015
Broiler-feed: pounds of broiler grower feed equal in value to 1 pound of broiler, live weight ²	6.1	4.2	4.1
Market egg feed: pounds of laying feed equal in value to 1 dozen eggs ³	10.5	20.7	14.7
Hog-corn: bushels of corn equal in value to 100 pounds of hog, live weight	21.6	14.8	15.1
Milk-feed: pounds of 16% mixed dairy feed equal in value to 1 pound of whole milk ⁴	2.92	2.25	2.29
Steer & heifer-corn: bushels of corn equal in value to 100 pounds of steer & heifers, live weight	45.7	38.0	35.1
Turkey-feed: pounds of turkey grower equal in value to 1 pound of turkey, live weight ⁵	8.3	10.0	10.6

¹ Effective January 1995, prices of commercial prepared feeds are based on current United States prices received for corn, soybeans, alfalfa hay, and all wheat.

² The price of commercial prepared broiler feed is based on current United States prices received for corn and soybeans. The modeled feed uses 58 percent corn and 42 percent soybeans.

³ The price of commercial prepared layer feed is based on current United States prices received for corn and soybeans. The modeled feed uses 75 percent corn and 25 percent soybeans.

⁴ The price of commercial prepared dairy feed is based on current United States prices received for corn, soybeans, and alfalfa. The modeled feed uses 51 percent corn, 8 percent soybeans, and 41 percent alfalfa.

⁵ The price of commercial prepared turkey feed is based on current United States prices received for corn, soybeans, and wheat. The modeled feed uses 51 percent corn, 28 percent soybeans, and 21 percent wheat.

Prices Received Used to Calculate Feed Price Ratios – United States: October 2015 with Comparisons

[Price data source for livestock and poultry commodities is United States Department of Agriculture's Agriculture Marketing Service]

Item	October 2014	September 2015	October 2015
	(dollars)	(dollars)	(dollars)
Broilers, live pound	0.650	0.430	0.410
Eggs, market dozen	0.935	1.80	1.26
Hogs, allcwt	77.00	54.50	55.50
Milk, allcwt	24.90	17.50	17.70
Steers and heiferscwt	163.00	140.00	129.00
Turkeys, live pound	0.822	0.925	0.972
Corn bushel	3.57	3.68	3.67
Hay, alfalfa ton	193.00	157.00	156.00
Soybeans bushel	9.97	9.05	8.81
Wheat, all bushel	5.71	4.72	4.87

Prices Paid for Feeder Livestock – United States: October 2015 with Comparisons

[Price data source is United States Department of Agriculture's Agriculture Marketing Service]

Item	October 2014	September 2015	October 2015
	(dollars)	(dollars)	(dollars)
Feeder cattle & calvescwt	257.00	197.00	199.00
Feeder pigscwt	210.00	103.00	117.00

Reliability of Prices Paid Estimates

Definition: Prices paid by farmers represent the average costs of inputs purchased by farmers and ranchers to produce agricultural commodities. Conceptually, the average price when multiplied by quantity purchased should equal total producer expenditures for the item.

Survey procedures: The prices paid data are obtained from establishments that sell goods and services to farmers and ranchers. Annually, about 8,500 firms are randomly selected from lists by type of item sold with an average response rate in the range of 75-80 percent. Firms are asked to report the price for the specified item "most commonly bought by farmers" or that was the "volume seller". Approximately 135 items are surveyed each March to represent all production input items purchased. The survey reference period for most items is the five business days centered at the 15th of the month. Separate prices paid surveys are conducted for agricultural chemicals, fuels, feed, fertilizer, machinery, and seed.

Summary and estimation procedures: The annual March Prices Paid Survey is summarized as a non-probability survey. Average prices reported are aggregated to the region and United States level using weights available from expenditure data and other administrative sources. Price recommendations are prepared by the Regional Field Offices and Headquarters for review by the Agricultural Statistics Board in Washington, D.C. Also, the change in price level for individual items surveyed are combined to the regional and United States levels, and are published as prices paid indexes referenced to a specific base period. Prices paid indexes for new autos and trucks, building materials, farm supplies, motor supplies, and marketing containers are updated based on price changes measured in selected Bureau of Labor Statistics (BLS) indexes.

Revisions: Any revisions are published in the monthly and in annual issues of Agricultural Prices. The basis for revision must be supported by additional data that directly affect the level of the estimate. More revisions are likely for March when separate prices paid surveys are conducted, in lieu of BLS indexes, by the USDA to measure price change.

Reliability: Current methods of summarization for the March data are not designed directly to calculate sampling errors. However, analytical measures approximate the United States relative sampling errors for major items around 10 percent. Any non-sampling errors are attributed to such things as the inability to obtain correct information, differences in interpreting questions or definitions, mistakes in coding or processing the data, etc. Efforts are made at each step in the survey process to minimize these non-sampling errors.

Program change: Effective January 2014, the National Agricultural Statistics Service modified the five-year moving weights and updated the base reference period. In January 2015, publication of preliminary prices was suspended, and the annual average index was replaced by an annual index.

As of January 2014, the 1990-1992 base reference period was updated to 2011. Five-year moving average weights are adjusted (normalized) to minimize the effects of price changes. The 1910-1914=100 price indexes, required by statute for computing parity prices, were linked forward based on the changes in the new 2011=100 indexes. The new indexes were constructed by multiplying the ratios of the current prices to the base period prices by the moving average weights.

Information Contacts

General

Troy Joshua, Chief, Environmental, Economics and Demographics Branch (202) 720-6146

Crop Prices Received

Lance Honig, Chief, Crops Branch (202) 720-2127

Anthony Prillaman, Head, Field Crops Section (202) 720-2127

Angie Considine – Cotton, Cotton Ginnings, Sorghum (202) 720-5944

Tony Dahlman – Oats, Soybeans (202) 720-7621

Chris Hawthorn – Corn, Flaxseed, Proso Millet (202) 720-9526

James Johanson – County Estimates, Hay (202) 690-8533

Scott Matthews – Barley, Crop Weather (202) 720-7621

Jean Porter – Rye, Wheat (202) 720-8068

Bianca Pruneda – Peanuts, Rice (202) 720-7688

Travis Thorson – Sunflower, Canola, Safflower, Rapeseed, Mustard Seed (202) 720-7369

Jorge Garcia-Pratts, Head, Fruits, Vegetables and Special Crops Section (202) 720-2127

Vincent Davis – Fresh and Processing Vegetables, Onions, Strawberries (202) 720-2157

Fleming Gibson – Citrus, Coffee, Grapes, Sugar Crops, Tropical Fruits (202) 720-5412

Greg Lemmons – Berries, Cranberries, Potatoes, Sweet Potatoes (202) 720-4285

Dave Losh – Hops (360) 709-2400

Dan Norris – Austrian Winter Peas, Dry Edible Peas, Lentils, Mint, Mushrooms, Peaches, Pears,
Wrinkled Seed Peas, Dry Beans (202) 720-3250

Daphne Schauber – Floriculture, Maple Syrup, Nursery, Tree Nuts (202) 720-4215

Chris Singh – Apples, Apricots, Cherries, Plums, Prunes, Tobacco (202) 720-4288

Livestock Prices Received

Dan Kerestes, Chief, Livestock Branch (202) 720-3570

Scott Hollis, Head, Livestock Section (202) 720-3570

Doug Bounds – Hogs and Pigs (202) 720-3106

Dave Colwell – Sheep and Goats (202) 720-8784

Michael Klamm – Cattle and Cattle on Feed (202) 720-3040

Mike Miller – Milk, Milk Cows (202) 720-3278

Bruce Boess, Head, Poultry and Specialty Commodities Section (202) 720-3570

Heidi Gleich – Broilers (202) 720-0585

Kim Linonis – Eggs (202) 690-8632

Sammy Neal – Turkeys (202) 720-3244

Josh O’Rear – Honey (202) 690-3676

Indexes, Prices Paid, and Parity Prices

Troy Joshua, Chief, Environmental, Economics and Demographics Branch (202) 720-6146

Tony Dorn, Head, Economics Section (202) 690-3223

Daryl Brinkman – Prices Received Indexes, Parity Prices (202) 720-8844

Courtney Charles – Prices Paid, Prices Paid Indexes (202) 690-3229

Greg Gholson – Prices Received Indexes, Parity Prices, Prices Paid Indexes, Prices Paid for Feed,
Fertilizer, Chemicals, Seeds, Fuels, Farm Supplies and Repairs, Farm Machinery, Feeder Livestock,
Poultry Chicks, Feed Price Ratios (202) 690-1348

Joe Hagedorn – Cash Rents, Grazing Fees (202) 690-3231

Access to NASS Reports

For your convenience, you may access NASS reports and products the following ways:

- All reports are available electronically, at no cost, on the NASS web site: <http://www.nass.usda.gov>
- Both national and state specific reports are available via a free e-mail subscription. To set-up this free subscription, visit <http://www.nass.usda.gov> and click on “National” or “State” in upper right corner above “search” box to create an account and select the reports you would like to receive.

For more information on NASS surveys and reports, call the NASS Agricultural Statistics Hotline at (800) 727-9540, 7:30 a.m. to 4:00 p.m. ET, or e-mail: nass@nass.usda.gov.

The U.S. Department of Agriculture (USDA) prohibits discrimination against its customers, employees, and applicants for employment on the basis of race, color, national origin, age, disability, sex, gender identity, religion, reprisal, and where applicable, political beliefs, marital status, familial or parental status, sexual orientation, or all or part of an individual's income is derived from any public assistance program, or protected genetic information in employment or in any program or activity conducted or funded by the Department. (Not all prohibited bases will apply to all programs and/or employment activities.)

If you wish to file a Civil Rights program complaint of discrimination, complete the [USDA Program Discrimination Complaint Form](#) (PDF), found online at http://www.ascr.usda.gov/complaint_filing_cust.html, or at any USDA office, or call (866) 632-9992 to request the form. You may also write a letter containing all of the information requested in the form. Send your completed complaint form or letter to us by mail at U.S. Department of Agriculture, Director, Office of Adjudication, 1400 Independence Avenue, S.W., Washington, D.C. 20250-9410, by fax (202) 690-7442 or email at program.intake@usda.gov.

Price Program Links

Economics and Prices

http://www.nass.usda.gov/Statistics_by_Subject/Economics_and_Prices/index.php

January 2014 Price Program Update

http://www.nass.usda.gov/Surveys/Guide_to_NASS_Surveys/Prices/updates.pdf

January 2015 Price Program Update

http://www.nass.usda.gov/Surveys/Guide_to_NASS_Surveys/Prices/update2015.pdf

April 2015 Price Program Update

http://www.nass.usda.gov/Surveys/Guide_to_NASS_Surveys/Prices/updateApr2015.pdf