



Agricultural Prices

ISSN: 1937-4216

Released February 29, 2016, by the National Agricultural Statistics Service (NASS), Agricultural Statistics Board, United States Department of Agriculture (USDA).

January Farm Prices Received Index Decreased 0.7 Percent

The January Prices Received Index (Agricultural Production), at 89.2, decreased 0.7 percent from December. At 80.7, the Crop Production Index is down 3.9 percent. At 99.9, the Livestock Production Index increased 2.9 percent. Producers received lower prices for milk, lettuce, broccoli, and cauliflower but higher prices for cattle, broilers, and tomatoes. In addition to prices, the indexes are influenced by the monthly mix of commodities producers market. Increased monthly movement of dry beans, cattle, soybeans, and corn offset the decreased marketing of cotton, broilers, market eggs, and hay.

The Prices Received Index is down 8.1 percent from the previous year. The Food Commodities Index, at 95.8, decreased 0.8 percent from December and is down 12 percent from January 2015.

January Prices Paid Index Up 1.0 Percent

The January Prices Paid Index for Commodities and Services, Interest, Taxes, and Farm Wage Rates (PPITW), at 107.0, is up 1.0 percent from December but is down 4.0 percent from January 2015. Higher prices for other services, feeder pigs, and feeder cattle more than offset lower prices for nitrogen, milk cows, diesel, and hay & forages.

Prices Received, Prices Paid, and Ratio of Prices Received to Prices Paid Indexes 2011 Base – United States: January 2016 with Comparisons

Index Group	January 2015	December 2015	January 2016
	(percent)	(percent)	(percent)
Prices received by farmers	97.1	89.8	89.2
Prices paid by farmers	111.5	105.9	107.0
Ratio of prices received to prices paid	87	85	83

Contents

Prices Received by Farmers	4
Prices Received Indexes, 2011 Base – United States: January 2016 with Comparisons	5
Prices Received Indexes, 1910-1914 Base – United States: January 2016 with Comparisons	5
Prices Received Indexes, 2011 Base by Month for Selected Groups – United States: 2015 and 2016	5
Prices Paid Indexes, 2011 Base by Month for Selected Groups – United States: 2015 and 2016	6
Received and Paid Indexes, Annual Average – United States: 2011=100 Chart	6
Crop Farm Received and Paid Indexes, All Items by Quarter – United States: 2011=100 Chart	7
Livestock Farm Received and Paid Indexes All Items by Quarter – United States: 2011=100 Chart	7
Received Indexes by Month, Agricultural, Crop, and Livestock Production – United States: 2011=100 Chart	8
Received Indexes by Month, Feed Grain, Food Grain, and Oilseed – United States: 2011=100 Chart	8
Received Indexes by Month, Fruit & Tree Nut and Vegetable & Melon – United States: 2011=100 Chart	9
Received Indexes by Month, Dairy, Meat Animal, and Poultry & Egg – United States: 2011=100 Chart	9
Prices Received for Field Crops and Fruits – United States: January 2016 with Comparisons	10
Prices Received for Vegetables and Livestock – United States: January 2016 with Comparisons	11
Prices Received for Corn by Month – United States Chart	12
Prices Received for Wheat by Month – United States Chart	12
Prices Received for Upland Cotton by Month – United States Chart	13
Prices Received for Soybeans by Month – United States Chart	13
Prices Received for Cattle by Month – United States Chart	14
Prices Received for Milk by Month – United States Chart	14
Prices Received for Hogs by Month – United States Chart	15
Prices Received for Poultry by Month – United States Chart	15
Prices Received for All Wheat, Corn, and Soybeans by Month – United States: 2016 with Comparisons	16
Prices Received for Beef Cattle and All Hogs by Month – United States: 2016 with Comparisons	16
Prices Received for All Wheat – States and United States: January 2016 with Comparisons	17
Prices Received for Winter Wheat – States and United States: January 2016 with Comparisons	17
Prices Received for Durum Wheat – States and United States: January 2016 with Comparisons	18
Prices Received for Spring Wheat – States and United States: January 2016 with Comparisons	18
Prices Received for Oats – States and United States: January 2016 with Comparisons	18
Prices Received for All Barley – States and United States: January 2016 with Comparisons	19
Prices Received for Malting Barley – States and United States: January 2016 with Comparisons	19
Prices Received for Feed Barley – States and United States: January 2016 with Comparisons	19
Prices Received for Sorghum Grain – States and United States: January 2016 with Comparisons	19
Prices Received for Corn – States and United States: January 2016 with Comparisons	20
Prices Received for Soybeans – States and United States: January 2016 with Comparisons	20
Prices Received for Dry Beans – States and United States: January 2016 with Comparisons	21
Prices Received for Peanuts (in shell) – States and United States: January 2016 with Comparisons	21
Prices Received for Sunflower – States and United States: January 2016 with Comparisons	21
Prices Received for Canola – States and United States: January 2016 with Comparisons	21
Prices Received for Flaxseed – States and United States: January 2016 with Comparisons	22
Prices Received for Upland Cotton and Cottonseed – States and United States: January 2016 with Comparisons	22
Prices Received and Farm Marketings for Upland Cotton and Rice – United States: January 2016 with Comparisons	22
Prices Received for Hay by Type – States and United States: January 2016 with Comparisons	23
Prices Received for Apples – States and United States: January 2016 with Comparisons	23
Prices Received for Citrus Fruits by Utilization – States and United States: January 2015	24
Prices Received for Citrus Fruits by Utilization – States and United States: December 2015	25
Prices Received for Citrus Fruits by Utilization – States and United States: January 2016	26
Prices Received for Potatoes – States and United States: January 2016 with Comparisons	27
Prices Received for All Milk – States and United States: January 2016 with Comparisons	28
Prices Received for Milk Cows – States and United States: January 2016 with Comparisons	28
Commodity Parity Prices and Price as Percent of Parity Price – United States: January 2016 with Comparisons	29

Commodity Parity Prices – United States: January 2016 with Comparisons	30
Marketing Year for Specified Commodities	32
Cattle Market Year Average Prices Received – United States: Marketing Years 2014 and 2015.....	32
Hog Market Year Average Prices Received – United States: Marketing Years 2014 and 2015	32
Milk Cow Market Year Average Prices Received – States and United States: Marketing Years 2014 and 2015	33
Prices Received for Cows, Steers and Heifers, Calves, Beef Cattle, and Milk Cows by Month – United States: Marketing Years 2014 and 2015.....	34
Prices Received for Barrows and Gilts, Sows, and All Hogs by Month – United States: Marketing Years 2014 and 2015	34
Prices Received for Milk Cows by Month – States and United States: 2015	35
Prices Received Value per Head for All Cattle and Calves – States and United States: January 1, 2015 and 2016	36
Prices Received Value per Head and Total Value for Hogs – States and United States: December 1, 2014 and 2015	37
Prices Received Value per Head and Total Value for Sheep and Lambs – States and United States: January 1, 2015 and 2016.....	38
Prices Received Value per Head and Total Value for Angora Goats – States and United States: January 1, 2015 and 2016	39
Other Hay Baled Market Year Average Prices Received – Selected Regions: 2011-2013, 2012-2014, and 2013-2015 Averages.....	39
Parity Price Overview	40
Prices Received For Average Base Period – United States: January 1910-December 1914	41
The Parity Ratio	42
Prices Received Adjusted Base Prices and Parity Prices – United States: January 2016	43
Prices Received Calendar Year Average Prices and Index used to Calculate Agricultural Commodity Parity Prices – United States: 2006-2015.....	48
Reliability of Prices Received Estimates	58
Prices Paid by Farmers.....	59
Prices Paid Indexes and Related Parity Ratios – United States: January 2016 with Comparisons.....	60
Prices Paid Indexes and Annual Weights for Input Components and Sub-components – United States: January 2016 with Comparisons.....	61
Paid Indexes by Month, All Items and Production Items – United States: 2011=100 Chart.....	62
Paid Indexes, Annual Averages, Production Items, Interest, Taxes, and Wages – United States: 2011=100 Chart	62
Paid Indexes by Farm Type and Month, All Items – United States: 2011=100 Chart.....	63
Paid Indexes by Origin and Month, All Production Items – United States: 2011=100 Chart	63
Paid Indexes by Non-Farm Origin and Month, Chemicals, Fertilizer, and Fuels – United States: 2011=100 Chart	64
Paid Indexes by Non-Farm Origin and Month, Machinery and Supplies & Repairs – United States: 2011=100 Chart	64
Paid Indexes by Farm Origin and Month, Feed and Livestock & Poultry – United States: 2011=100 Chart	65
Feed Price Ratios – United States: January 2016 with Comparisons	66
Prices Received Used to Calculate Feed Price Ratios – United States: January 2016 with Comparisons.....	66
Prices Paid for Feeder Livestock – United States: January 2016 with Comparisons.....	66
Reliability of Prices Paid Estimates	67
Information Contacts	68

January Prices Received by Farmers

The January Prices Received Index for agricultural production is 89.2 percent of its 2011 base, down 0.7 percent from the December index and 8.1 percent below the January 2015 index.

Crop production: The January index, at 80.7, decreased 3.9 percent from December and is 1.9 percent below January 2015. Index decreases for other crop and vegetable & melon production more than offset the index increases for grain & oilseed and fruit & tree nut production. Within the Crop Production Index, see the following:

Grain and oilseed: The January index, at 67.9, is up 3.0 percent from December but is down 8.1 percent from January 2015. The higher food grain index more than offset the lower oilseed index and feed grain index. Within the Grain and Oilseed Index, see the following:

Feed grain: The January index, at 61.4, is down 0.2 percent from last month and is 4.2 percent below a year ago. The corn price, at \$3.66 per bushel, is up 1 cent from last month but is down 16 cents from January 2015. At \$5.60 per cwt, sorghum grain is 16 cents lower than December and \$1.80 below January a year earlier.

Food grain: At 78.7, the index for January is 11 percent higher than December but is 13 percent below a year earlier. The January price for all wheat, at \$4.82 per bushel, is up 11 cents from December but is \$1.33 below January 2015.

Oilseed: At 69.7, the index for January is down 0.4 percent from December and 15 percent lower than January 2015. The soybean price, at \$8.71 per bushel, decreased 5 cents from December and is \$1.59 lower than January a year earlier.

Fruit and tree nut: The January index, at 134.8, is up 1.0 percent from December and 9.6 percent higher than a year earlier. Price increases for apples during January more than offset lower prices for oranges.

Vegetable and melon: At 129.1, the index for January is down 4.7 percent from the previous month but up 17 percent from January 2015. Price decreases during January for lettuce, broccoli, and cauliflower more than offset price increases for tomatoes, onions, and celery.

Other crop: The January index, at 76.5, is down 4.0 percent from the previous month and 3.8 percent lower than January 2015. The all hay price, at \$137.00 per ton, is down \$5.00 from December and \$12.00 less than January 2015. At 58.0 cents per pound, the price for upland cotton is down 1.9 cents from December and 1.1 cents below January 2015.

Livestock production: The index for January, at 99.9, is 2.9 percent above the previous month but down 17 percent from January a year earlier. Compared with a year ago, prices are lower for cattle, hogs, broilers, calves, milk, and market eggs and higher for turkeys. Within the Livestock Production Index, see the following:

Meat animal: At 103.0, the January index is up 7.3 percent from the previous month but is 22 percent lower than a year earlier. At \$43.60 per cwt, the January hog price is up 80 cents from December but is \$13.80 lower than a year earlier. The January beef cattle price of \$130.00 per cwt is up \$8.00 from the previous month but \$34.00 lower than January 2015.

Dairy: The index for January, at 80.1, is down 6.4 percent from the previous month and is 8.6 percent lower than January a year earlier. The January all milk price of \$16.10 per cwt is down \$1.10 from December and \$1.50 lower than January 2015.

Poultry and egg: At 113.9, the January index is up 2.2 percent from December but down 10 percent from 2015. The January market egg price, at 96.8 cents per dozen, decreased 7.2 cents from December and 10.2 cents from January 2015. The January broiler price, at 51.0 cents per pound, is up 4.0 cents from December but is down 9.0 cents from a year earlier. At 78.9 cents per pound, the January turkey price is down 9.7 cents from the previous month but 12.7 cents higher than January 2015.

Prices Received Indexes, 2011 Base – United States: January 2016 with Comparisons

[Revised historical price indexes for months not shown are available at www.nass.usda.gov]

Index Group	2011 Base		
	January 2015	December 2015	January 2016
	(percent)	(percent)	(percent)
Agricultural production	97.1	89.8	89.2
Crop production	82.3	84.0	80.7
Grain and oilseed	74.2	65.9	67.9
Feed grain	64.1	61.5	61.4
Food grain	90.1	71.1	78.7
Oilseed	82.2	70.0	69.7
Fruit and tree nut	123.0	133.4	134.8
Vegetable and melon	110.6	135.4	129.1
Other crop	79.5	79.7	76.5
Livestock production	120.5	97.1	99.9
Meat animal	131.5	96.0	103.0
Cattle	147.7	108.6	115.4
Hog	86.3	64.4	65.6
Dairy	87.6	85.6	80.1
Poultry and egg	126.8	111.4	113.9
Food commodity	108.5	96.6	95.8

Prices Received Indexes, 1910-1914 Base – United States: January 2016 with Comparisons

[Revised historical price indexes for months not shown are available at www.nass.usda.gov]

Index Group	1910 - 1914 Base		
	January 2015	December 2015	January 2016
	(percent)	(percent)	(percent)
Agricultural production	1002	927	921
Crop production	718	733	704
Livestock production	1399	1127	1160

Prices Received Indexes, 2011 Base by Month for Selected Groups – United States: 2015 and 2016

[Revised historical price indexes for months not shown are available at www.nass.usda.gov. Blank data cells indicate estimation period has not yet begun]

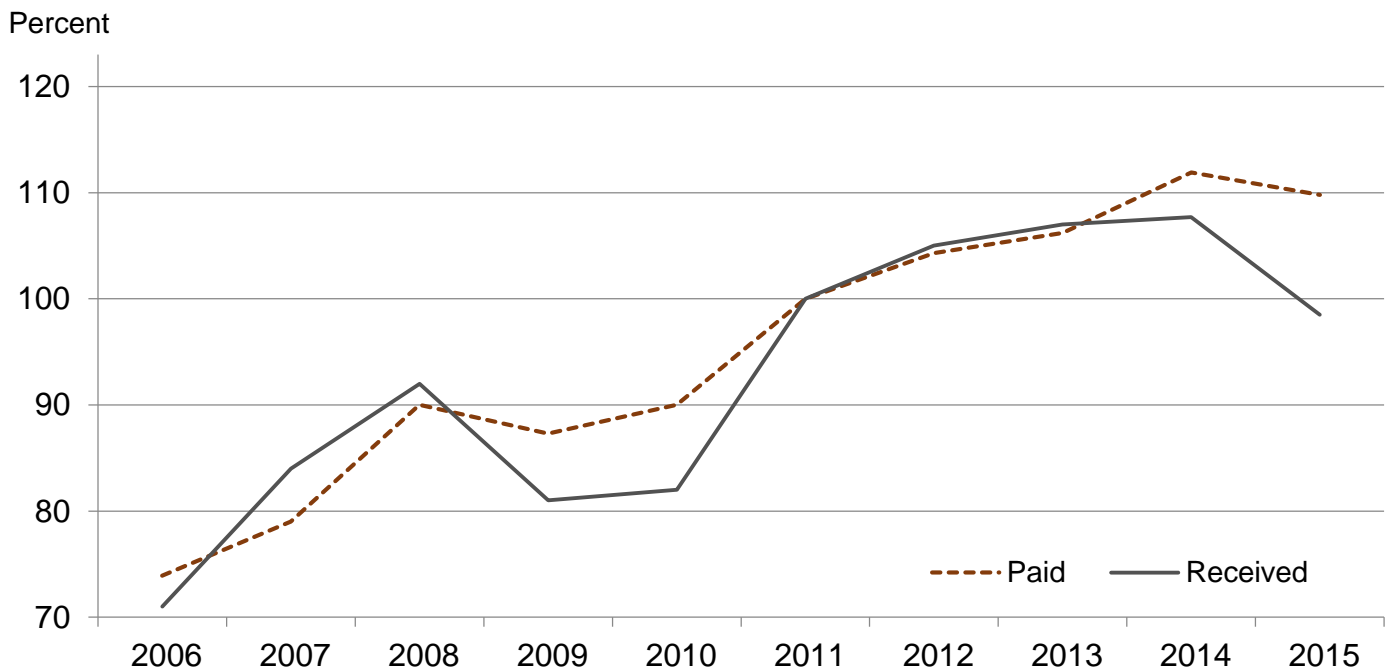
Month	2011 Base							
	Agricultural production		Crop production		Livestock production		Food commodities	
	2015	2016	2015	2016	2015	2016	2015	2016
	(percent)	(percent)	(percent)	(percent)	(percent)	(percent)	(percent)	(percent)
January	97.1	89.2	82.3	80.7	120.5	99.9	108.5	95.8
February	98.9		84.0		113.9		106.8	
March	102.1		85.5		117.3		110.2	
April	103.4		88.6		116.4		110.6	
May	107.1		90.3		121.9		115.6	
June	104.6		88.2		121.0		112.9	
July	99.2		85.9		115.2		105.6	
August	102.1		87.8		117.1		109.6	
September	97.5		87.1		109.3		103.5	
October	88.9		79.7		104.3		94.5	
November	91.9		82.1		105.3		101.3	
December	89.8		84.0		97.1		96.6	

Prices Paid Indexes, 2011 Base by Month for Selected Groups – United States: 2015 and 2016

[Revised historical price indexes for months not shown are available at www.nass.usda.gov. Blank data cells indicate estimation period has not yet begun]

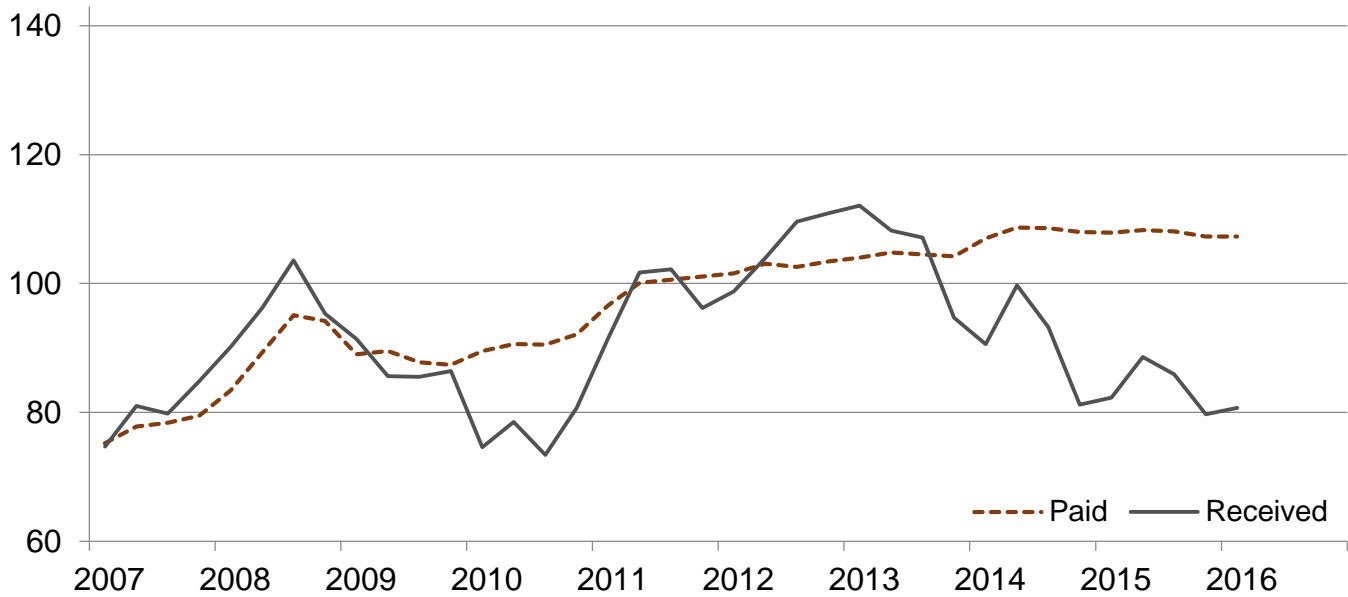
Month	2011 Base							
	All items (PPITW)		Production		Crop sector		Livestock sector	
	2015	2016	2015	2016	2015	2016	2015	2016
	(percent)	(percent)	(percent)	(percent)	(percent)	(percent)	(percent)	(percent)
January	111.5	107.0	112.7	105.9	107.9	107.3	115.3	106.7
February	111.0		112.0		108.3		114.0	
March	111.4		112.5		108.4		114.7	
April	111.2		112.3		108.3		114.4	
May	111.0		112.0		108.4		113.8	
June	111.1		112.0		108.5		113.9	
July	110.6		111.2		108.1		113.4	
August	109.9		110.3		107.6		112.3	
September	108.6		108.5		107.3		109.9	
October	108.6		108.3		107.3		109.9	
November	107.4		106.8		107.0		107.9	
December	105.9		104.8		106.5		105.2	

Received and Paid Indexes, Annual Average – United States: 2011=100



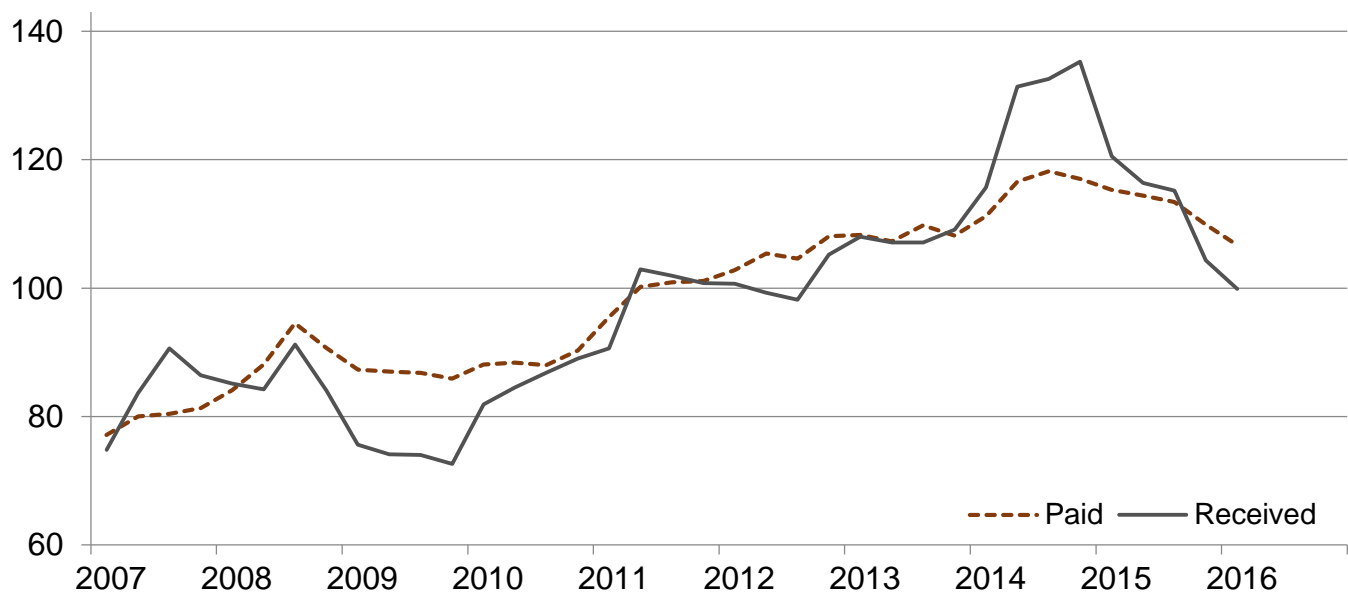
Crop Farm Received and Paid Indexes, All Items by Quarter – United States: 2011=100

Percent

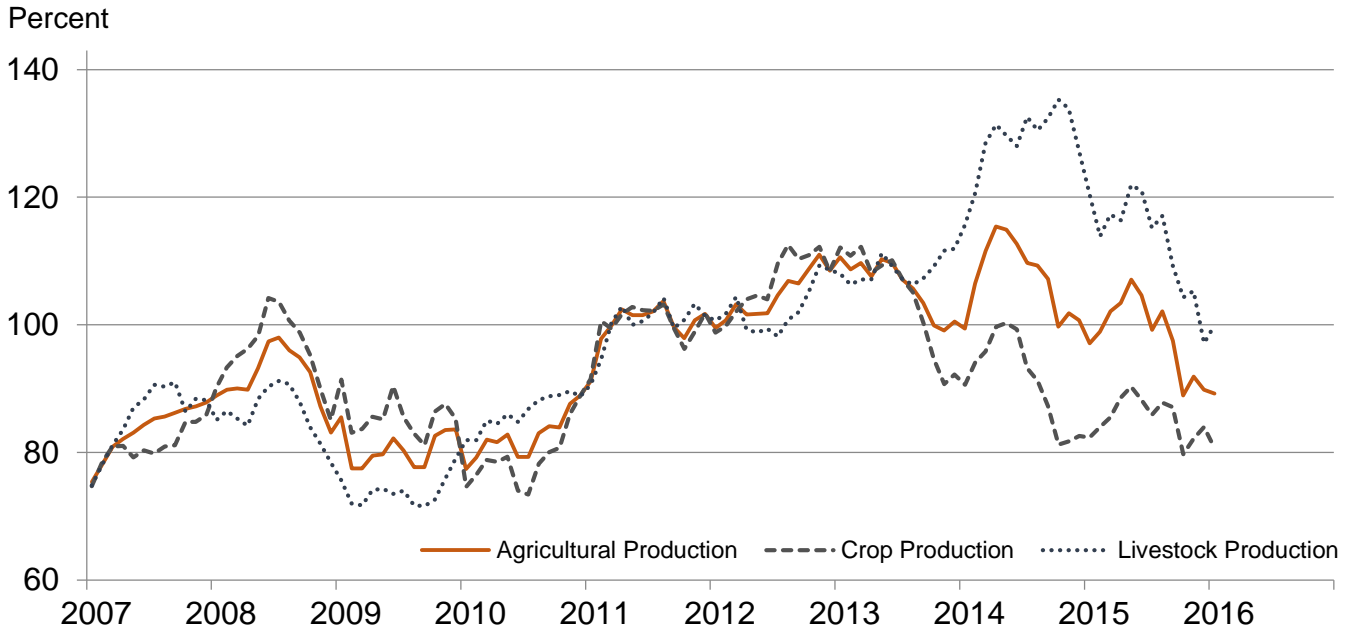


Livestock Farm Received and Paid Indexes, All Items by Quarter – United States: 2011=100

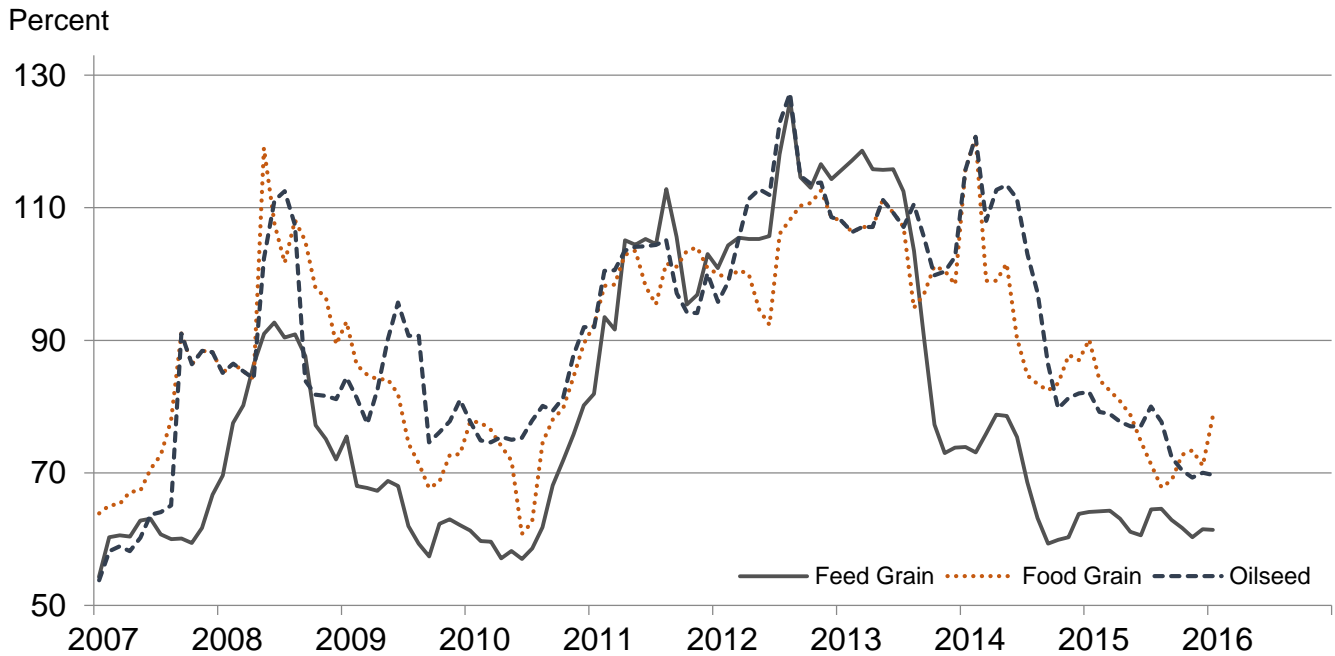
Percent



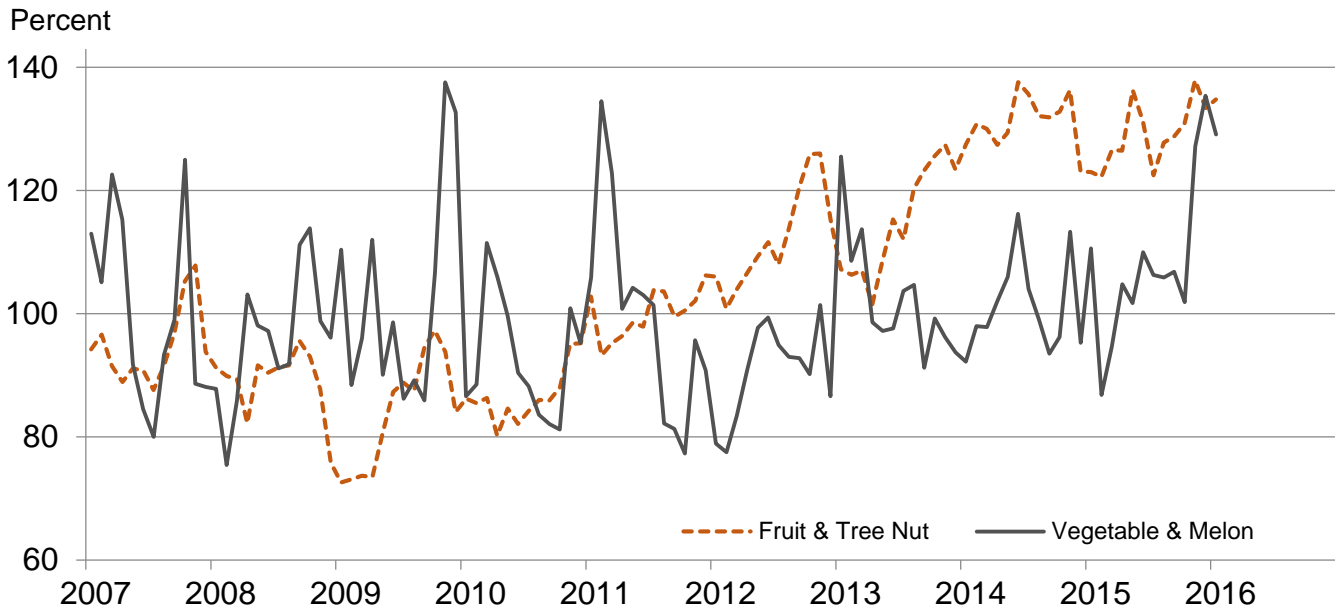
**Received Indexes by Month,
Agricultural, Crop, and Livestock Production –
United States: 2011=100**



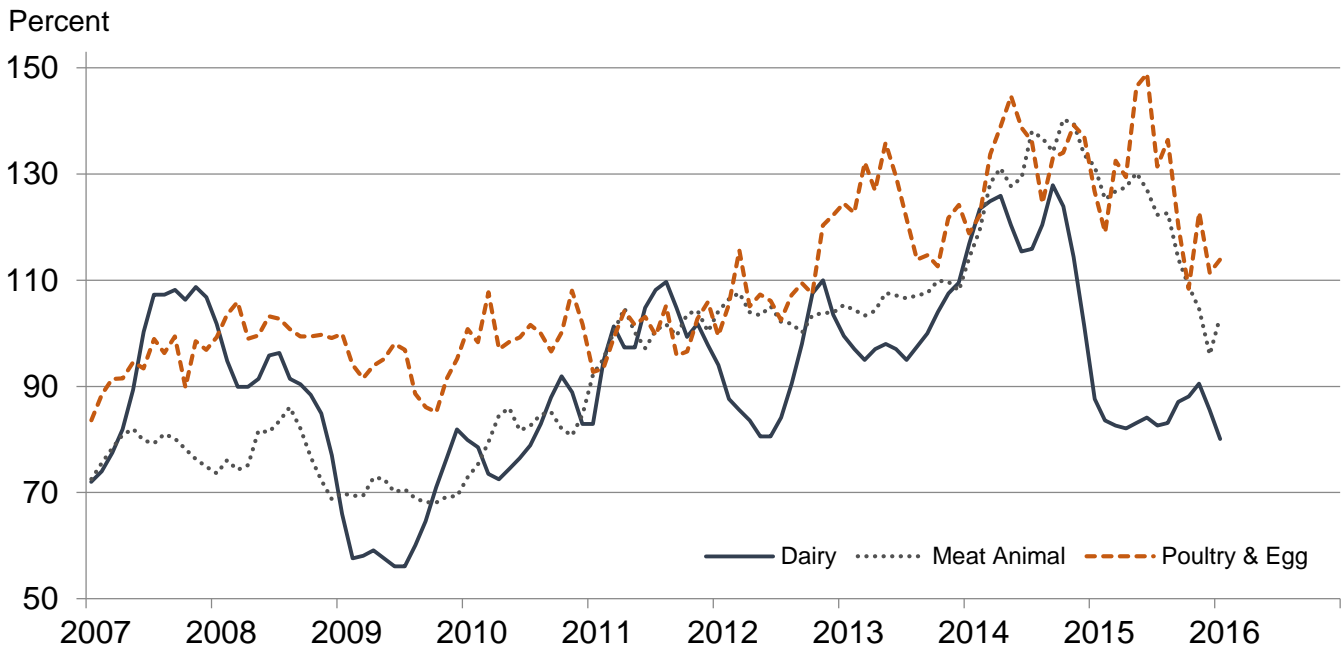
**Received Indexes by Month,
Feed Grain, Food Grain, and Oilseed –
United States: 2011=100**



**Received Indexes by Month,
Fruit & Tree Nut and Vegetable & Melon –
United States: 2011=100**



**Received Indexes by Month,
Dairy, Meat Animal, and Poultry & Egg –
United States: 2011=100**



Prices Received for Field Crops and Fruits – United States: January 2016 with Comparisons

Commodity	2011 Base Price	January 2015	December 2015	January 2016
Field crops				
Austrian winter peas	dollars/cwt 19.50	(D)	(D)	(D)
Barley, all	dollars/bushel 4.79	4.86	5.89	5.46
Feed	dollars/bushel 4.59	2.99	3.12	3.14
Malting	dollars/bushel 4.83	5.47	5.99	5.67
Beans, dry edible	dollars/cwt 34.60	33.00	23.70	28.50
Canola	dollars/cwt 23.10	17.80	14.90	13.80
Chickpeas, all	dollars/cwt 35.70	26.70	28.20	28.60
Large	dollars/cwt 39.20	31.30	32.20	34.00
Small	dollars/cwt 23.40	18.20	25.20	22.20
Corn	dollars/bushel 6.02	3.82	3.65	3.66
Cotton, Upland	dollars/pound 0.880	0.591	0.599	0.580
Cottonseed	dollars/ton 131.00	194.00	217.00	228.00
Flaxseed	dollars/bushel 14.20	11.70	8.62	8.45
Hay, all, baled	dollars/ton 159.00	149.00	142.00	137.00
Alfalfa	dollars/ton 176.00	170.00	150.00	147.00
Other	dollars/ton 119.00	122.00	129.00	121.00
Lentils	dollars/cwt 27.50	25.40	29.50	31.40
Oats	dollars/bushel 3.42	3.02	2.11	1.92
Peanuts, in-shell	dollars/pound 0.252	0.225	0.178	0.193
Peas, dry edible	dollars/cwt 13.60	12.30	12.50	13.20
Potatoes	dollars/cwt 9.78	9.12	8.54	8.58
Rice, all	dollars/cwt 13.70	15.10	12.80	13.60
Long	dollars/cwt 12.30	12.50	11.40	11.50
Medium and short	dollars/cwt 18.40	20.40	16.20	16.90
Sorghum grain	dollars/cwt 10.70	7.40	5.76	5.60
Soybeans	dollars/bushel 12.50	10.30	8.76	8.71
Sunflowers, all	dollars/cwt 29.00	19.10	19.40	20.00
Wheat, all	dollars/bushel 7.44	6.15	4.71	4.82
Winter	dollars/bushel 6.93	6.02	4.49	4.63
Durum	dollars/bushel 9.22	9.89	6.93	6.60
Other spring	dollars/bushel 8.33	5.84	4.77	4.80
Hard red winter	dollars/bushel 7.07	5.95	4.33	4.37
Soft red winter	dollars/bushel 6.77	5.67	4.52	4.47
Hard red spring	dollars/bushel 8.38	5.82	4.76	4.77
White	dollars/bushel 6.58	6.39	5.37	5.47
Fruits				
Citrus, equivalent on-tree				
Grapefruit	dollars/box 7.47	7.03	10.79	10.05
Lemons	dollars/box 12.30	18.53	24.02	22.77
Oranges	dollars/box 8.16	9.35	9.71	9.30
Tangelos	dollars/box 3.50	14.29	10.30	(S)
Tangerines and mandarins	dollars/box 15.30	(D)	(D)	(D)
Non-citrus, fresh				
Apples ¹	dollars/pound 0.325	0.316	0.454	0.453
Grapes ¹	dollars/ton 628.00	(S)	2,070.00	(S)
Peaches ¹	dollars/ton 507.00	(S)	(S)	(S)
Pears ¹	dollars/ton 559.00	725.00	813.00	848.00
Strawberries	dollars/cwt 104.00	135.00	193.00	195.00

(D) Withheld to avoid disclosing data for individual operations.

(S) Insufficient number of reports to establish an estimate.

¹ Equivalent packinghouse-door returns for California, Michigan, New York (apples only), Pennsylvania (apples only), and Washington (apples, peaches, and pears). Prices as sold for other states.

Prices Received for Vegetables and Livestock – United States: January 2016 with Comparisons

[Price data source for livestock and poultry commodities is United States Department of Agriculture's Agricultural Marketing Service]

Commodity	2011 Base Price	January 2015	December 2015	January 2016
Vegetables, fresh ¹				
Asparagus dollars/cwt	37.50	(NA)	(S)	(D)
Beans, snap ² dollars/cwt	69.00	40.80	118.00	95.90
Broccoli dollars/cwt	41.60	67.30	84.70	50.80
Cantaloupes ² dollars/cwt	16.50	(NA)	(S)	(NA)
Carrots dollars/cwt	30.80	33.80	32.90	34.40
Cauliflower dollars/cwt	47.00	58.40	184.00	59.10
Celery dollars/cwt	22.50	19.40	59.80	67.20
Corn, sweet dollars/cwt	30.70	39.80	26.00	43.80
Cucumbers ² dollars/cwt	18.70	30.60	38.40	35.00
Lettuce dollars/cwt	24.30	38.20	51.90	42.00
Onions ³ dollars/cwt	11.90	8.39	12.20	14.40
Tomatoes dollars/cwt	51.20	34.80	42.50	108.00
Livestock				
Calves dollars/cwt	142.00	288.00	193.00	196.00
Cattle, all beef dollars/cwt	115.00	164.00	122.00	130.00
Cows ⁴ dollars/cwt	71.60	112.00	74.80	74.20
Steers and heifers dollars/cwt	117.00	166.00	123.00	132.00
Milk cows ^{5 6} dollars/head	1,420.00	1,990.00	1,980.00	1,830.00
Hogs, all dollars/cwt	66.50	57.40	42.80	43.60
Barrows and gilts dollars/cwt	66.80	57.70	43.30	44.00
Sows dollars/cwt	57.90	48.00	28.40	31.50
Dairy and poultry				
Milk, all ⁷ dollars/cwt	20.10	17.60	17.20	16.10
Fat test percent	3.71	3.84	3.89	3.89
Broilers, live ⁸ dollars/pound	0.459	0.600	0.470	0.510
Eggs, all ⁹ dollars/dozen	0.969	1.25	1.24	1.18
Market ^{9 10} dollars/dozen	0.796	1.07	1.04	0.968
Turkeys, live ¹¹ dollars/pound	0.680	0.662	0.886	0.789
Adjusted for seasonal variation				
Eggs, all dollars/dozen	0.979	1.35	1.05	1.29
Seasonal factor percent	101	93	118	92
Milk, all ⁷ dollars/cwt	20.20	18.10	17.00	16.60
Seasonal factor percent	100	97	101	97

(D) Withheld to avoid disclosing data for individual operations.

(NA) Not available.

(S) Insufficient number of reports to establish an estimate.

¹ Beginning January 2006, point of first sale. FOB shipping point for prior years.

² Monthly estimates began January 1995.

³ Includes some processing.

⁴ Beef cows and cull dairy cows sold for slaughter.

⁵ Animals sold for dairy herd replacement only. Prices available for January, April, July, and October.

⁶ Milk cow prices are for January 2015, October 2015, and January 2016.

⁷ Before deductions for hauling. Includes quality, quantity, and other premiums. Excludes hauling subsidies.

⁸ Live weight equivalent price.

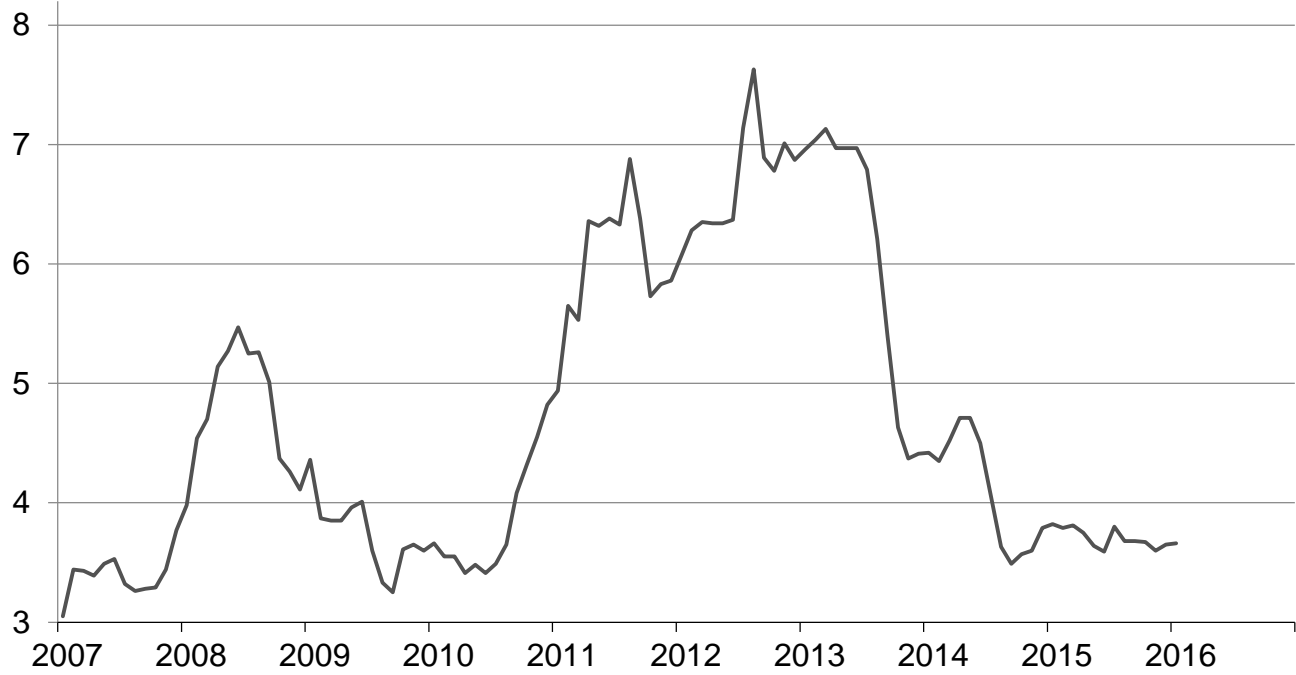
⁹ Mid-month price.

¹⁰ Also referred to as table eggs.

¹¹ Live weight equivalent price is used when actual live weight price is not available. Beginning January 2011, price reflects FOB shipping point basis. Prior year price reflects delivered basis.

Prices Received for Corn by Month – United States

Dollars per bushel



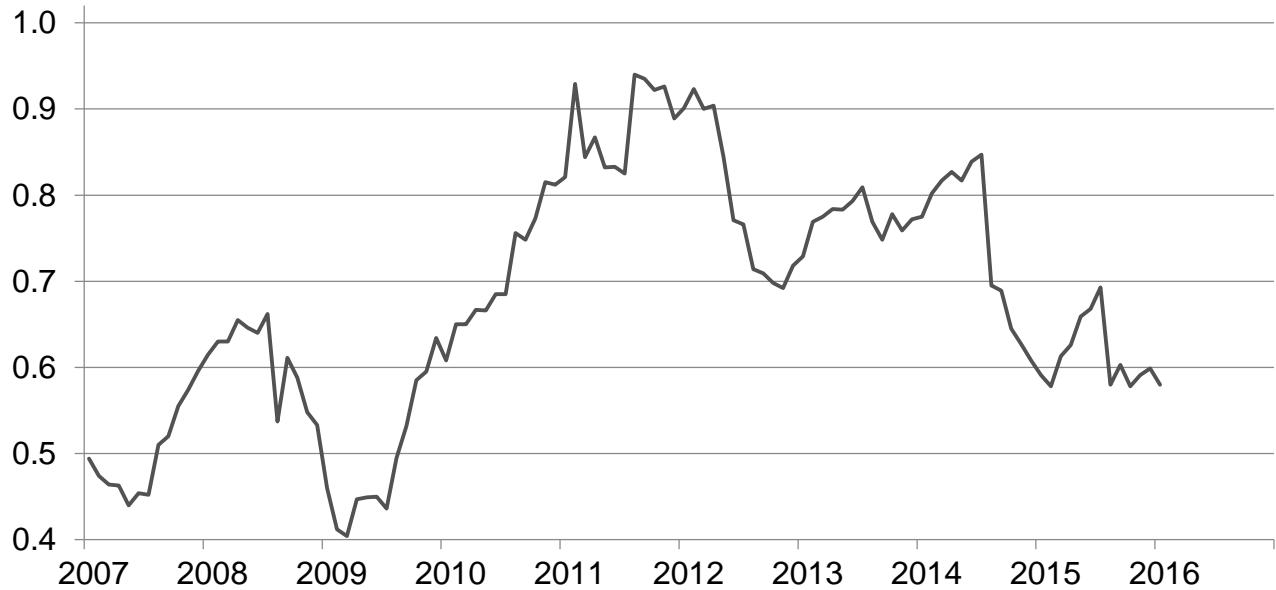
Prices Received for Wheat by Month – United States

Dollars per bushel



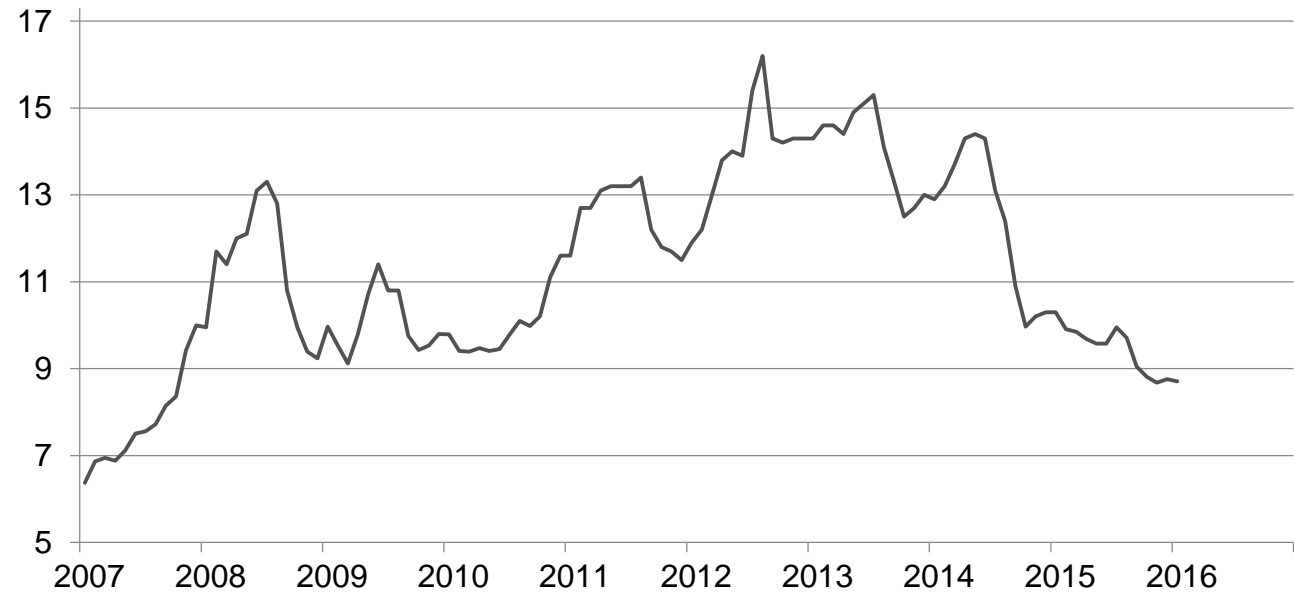
Prices Received for Upland Cotton by Month – United States

Dollars per pound



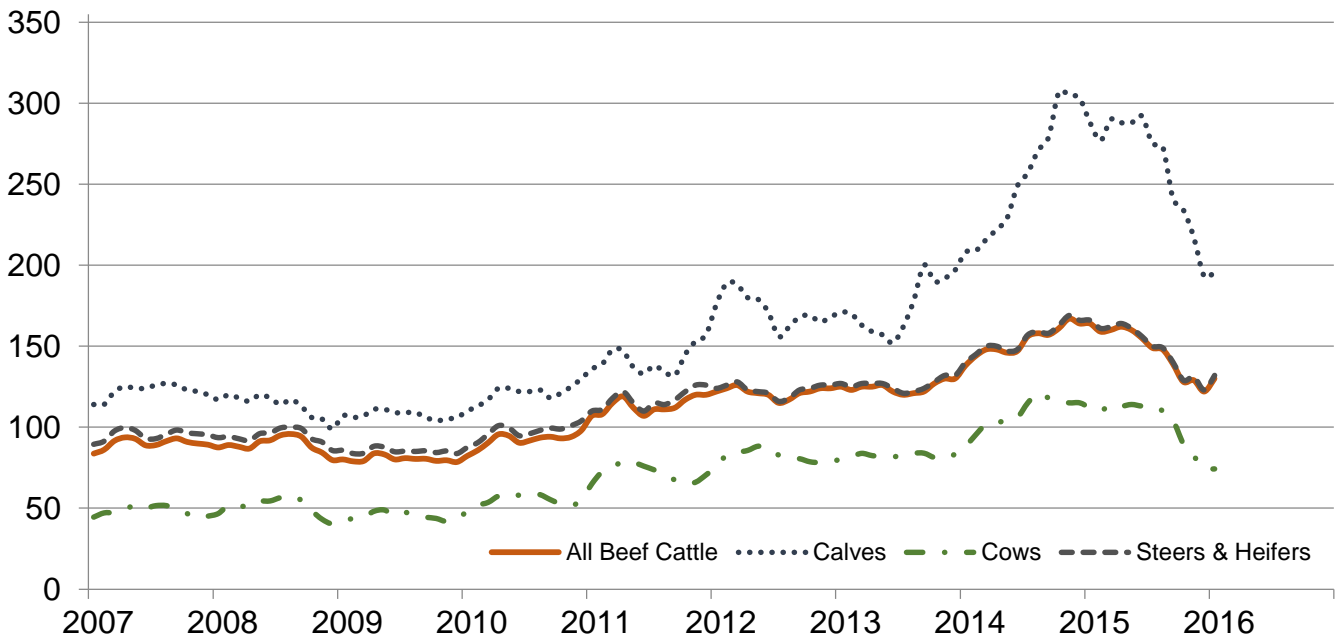
Prices Received for Soybeans by Month – United States

Dollars per bushel



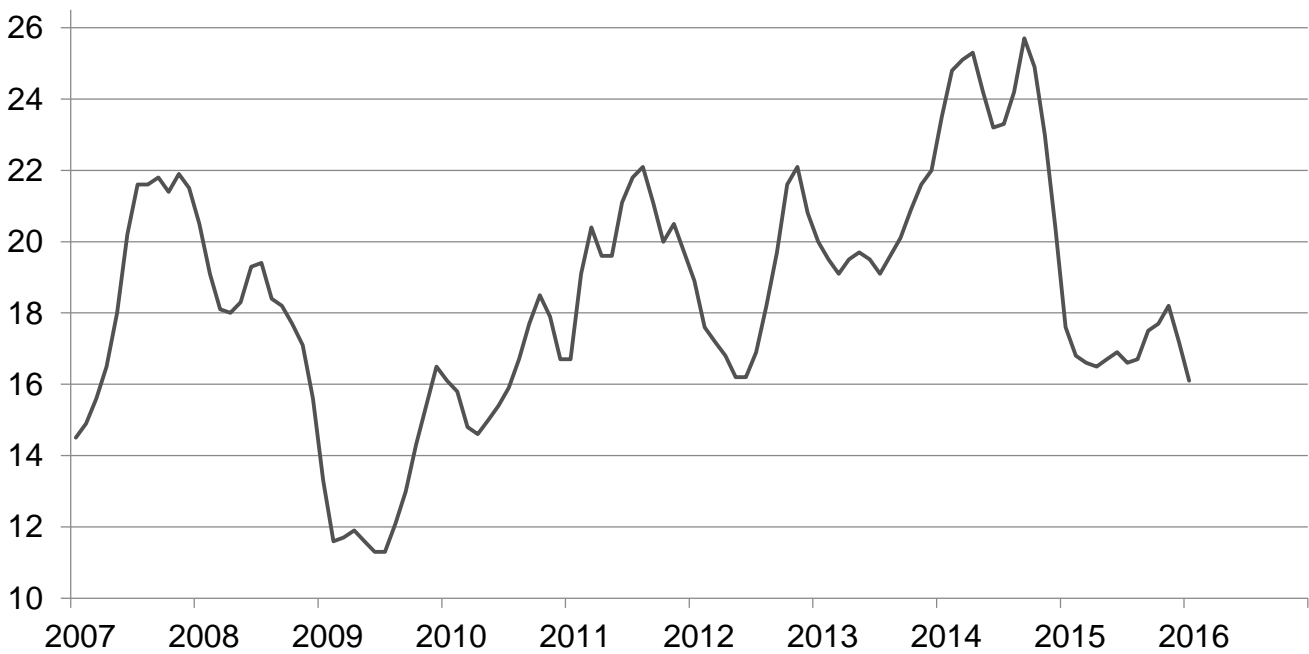
Prices Received for Cattle by Month – United States

Dollars per cwt



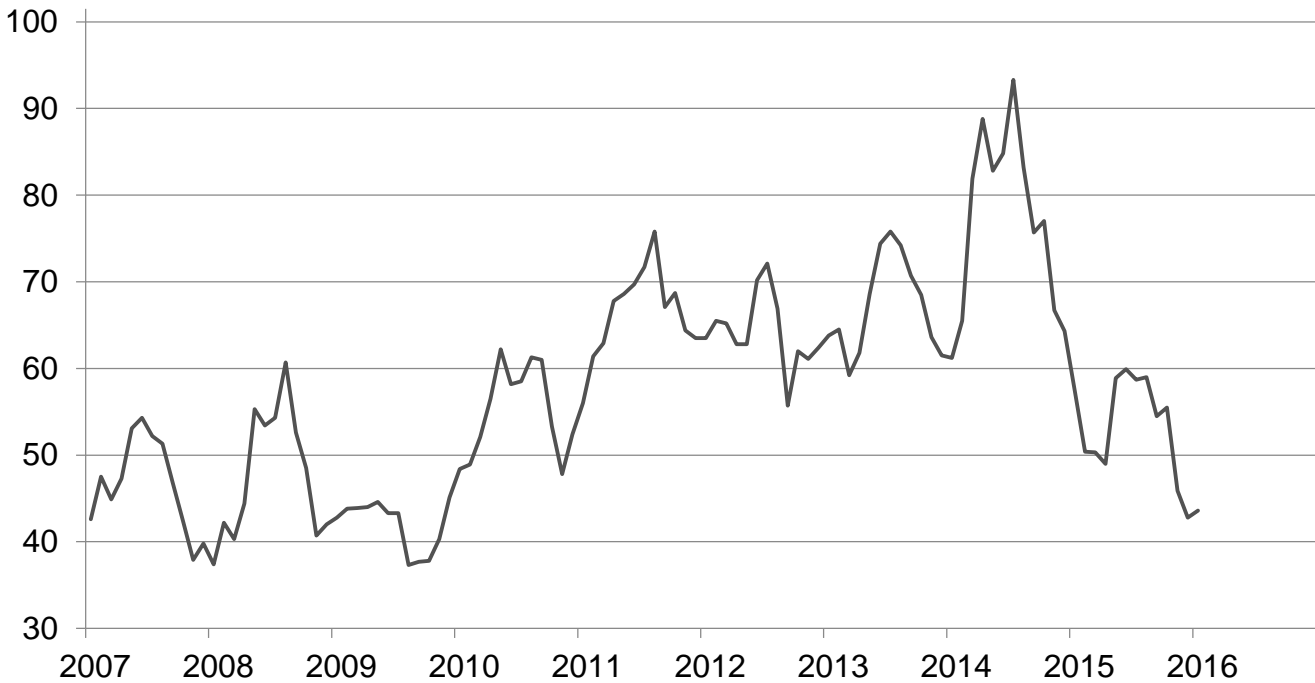
Prices Received for Milk by Month – United States

Dollars per cwt



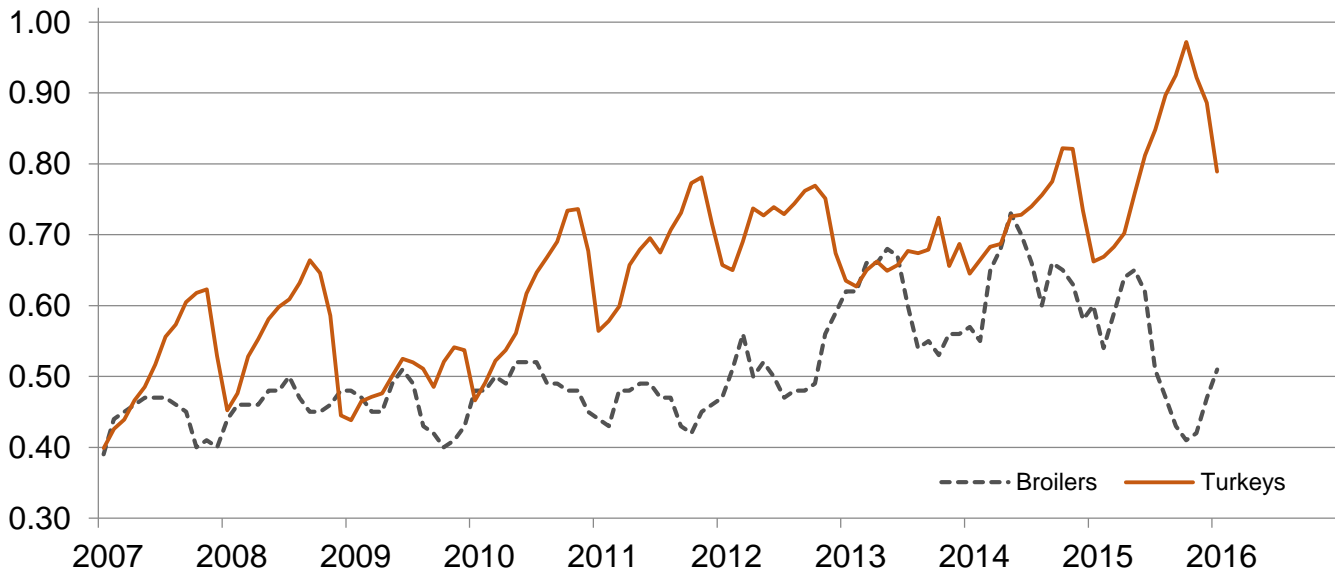
Prices Received for Hogs by Month – United States

Dollars per cwt



Prices Received for Poultry by Month – United States

Dollars per pound



Prices Received for All Wheat, Corn, and Soybeans by Month – United States: 2016 with Comparisons

[Blank data cells indicate estimation period has not yet begun]

Month	All wheat			Corn			Soybeans		
	2014	2015	2016	2014	2015	2016	2014	2015	2016
	(dollars per bushel)	(dollars per bushel)	(dollars per bushel)	(dollars per bushel)	(dollars per bushel)	(dollars per bushel)	(dollars per bushel)	(dollars per bushel)	(dollars per bushel)
January	6.65	6.15	4.82	4.42	3.82	3.66	12.90	10.30	8.71
February	6.50	5.89		4.35	3.79		13.20	9.91	
March	6.74	5.70		4.52	3.81		13.70	9.85	
April	6.82	5.56		4.71	3.75		14.30	9.69	
May	7.08	5.33		4.71	3.64		14.40	9.58	
June	6.49	5.43		4.50	3.59		14.30	9.58	
July	6.15	5.23		4.06	3.80		13.10	9.95	
August	5.97	4.85		3.63	3.68		12.40	9.71	
September	5.71	4.72		3.49	3.68		10.90	9.05	
October	5.71	4.87		3.57	3.67		9.97	8.81	
November	6.04	4.86		3.60	3.60		10.20	8.68	
December	6.14	4.71		3.79	3.65		10.30	8.76	

Prices Received for Beef Cattle and All Hogs by Month – United States: 2016 with Comparisons

[Blank data cells indicate estimation period has not yet begun]

Month	Beef cattle ¹			All hogs ²		
	2014	2015	2016	2014	2015	2016
	(dollars per cwt)	(dollars per cwt)	(dollars per cwt)	(dollars per cwt)	(dollars per cwt)	(dollars per cwt)
January	138.00	164.00	130.00	61.20	57.40	43.60
February	144.00	159.00		65.50	50.40	
March	148.00	160.00		81.90	50.30	
April	148.00	162.00		88.80	49.00	
May	146.00	160.00		82.80	58.90	
June	147.00	155.00		84.80	59.90	
July	156.00	149.00		93.30	58.70	
August	158.00	148.00		83.20	59.00	
September	157.00	139.00		75.70	54.50	
October	161.00	128.00		77.00	55.50	
November	167.00	129.00		66.70	45.90	
December	164.00	122.00		64.30	42.80	

¹ Cows and steers & heifers.

² Barrows & gilts and sows.

Prices Received for All Wheat – States and United States: January 2016 with Comparisons

State	January 2015	December 2015	January 2016
	(dollars per bushel)	(dollars per bushel)	(dollars per bushel)
Arizona	(D)	(D)	(D)
Arkansas	5.17	4.09	(D)
California	6.97	5.43	5.40
Colorado	5.66	4.06	4.06
Idaho	6.01	5.35	4.95
Illinois	5.58	3.65	3.68
Indiana	5.42	5.05	4.59
Kansas	5.99	4.18	4.34
Michigan	6.15	5.63	5.14
Minnesota	5.82	4.72	4.79
Missouri	5.50	3.73	3.52
Montana	6.76	5.17	5.05
Nebraska	5.73	4.00	4.06
North Carolina	5.69	4.98	5.46
North Dakota	6.07	4.86	4.99
Ohio	5.94	4.38	4.41
Oklahoma	6.19	4.45	4.34
Oregon	6.74	5.25	5.31
South Dakota	5.68	4.70	4.81
Texas	5.60	3.84	3.61
Washington	6.59	5.36	5.59
United States	6.15	4.71	4.82

(D) Withheld to avoid disclosing data for individual operations.

Prices Received for Winter Wheat – States and United States: January 2016 with Comparisons

State	January 2015	December 2015	January 2016
	(dollars per bushel)	(dollars per bushel)	(dollars per bushel)
Arkansas	5.17	4.09	(D)
California	6.97	5.45	5.40
Colorado	5.66	4.07	4.05
Idaho	5.91	5.32	4.87
Illinois	5.58	3.65	3.68
Indiana	5.42	5.05	4.59
Kansas	5.99	4.18	4.34
Michigan	6.15	5.63	5.14
Minnesota	(D)	(D)	(D)
Missouri	5.50	3.73	3.52
Montana	6.31	4.91	4.80
Nebraska	5.73	4.00	4.06
North Carolina	5.69	4.98	5.46
North Dakota	4.55	3.71	3.42
Ohio	5.94	4.38	4.41
Oklahoma	6.19	4.45	4.34
Oregon	6.73	5.23	5.31
South Dakota	5.43	4.17	4.23
Texas	5.60	3.84	3.61
Washington	6.47	5.31	5.58
United States	6.02	4.49	4.63

(D) Withheld to avoid disclosing data for individual operations.

Prices Received for Durum Wheat – States and United States: January 2016 with Comparisons

State	January 2015	December 2015	January 2016
	(dollars per bushel)	(dollars per bushel)	(dollars per bushel)
Arizona	(D)	(D)	(D)
California	(S)	(D)	(S)
Idaho	(D)	(D)	(S)
Montana	(D)	(D)	(D)
North Dakota	9.90	7.02	6.40
United States	9.89	6.93	6.60

(D) Withheld to avoid disclosing data for individual operations.

(S) Insufficient number of reports to establish an estimate.

Prices Received for Spring Wheat – States and United States: January 2016 with Comparisons

State	January 2015	December 2015	January 2016
	(dollars per bushel)	(dollars per bushel)	(dollars per bushel)
Colorado	(D)	(D)	(D)
Idaho	6.22	5.40	5.16
Minnesota	5.82	4.72	4.80
Montana	6.51	4.95	4.89
North Dakota	5.52	4.64	4.64
Oregon	6.82	5.37	5.34
South Dakota	5.89	4.83	4.94
Washington	7.25	5.59	5.67
United States	5.84	4.77	4.80

(D) Withheld to avoid disclosing data for individual operations.

Prices Received for Oats – States and United States: January 2016 with Comparisons

State	January 2015	December 2015	January 2016
	(dollars per bushel)	(dollars per bushel)	(dollars per bushel)
Illinois	(D)	(D)	(D)
Iowa	3.77	2.64	2.62
Michigan	(D)	(D)	2.53
Minnesota	3.08	2.12	2.31
Montana	(S)	(S)	(D)
Nebraska	2.90	(D)	(D)
New York	(S)	2.33	(S)
North Dakota	2.39	2.26	2.32
Oregon	(S)	(S)	(S)
Pennsylvania	3.85	(D)	(D)
South Dakota	3.22	2.03	2.10
Texas	(S)	(D)	(S)
Wisconsin	3.30	1.89	1.48
United States	3.02	2.11	1.92

(D) Withheld to avoid disclosing data for individual operations.

(S) Insufficient number of reports to establish an estimate.

Prices Received for All Barley – States and United States: January 2016 with Comparisons

State	January 2015	December 2015	January 2016
	(dollars per bushel)	(dollars per bushel)	(dollars per bushel)
California	(D)	(D)	5.04
Colorado	(D)	(D)	6.24
Idaho	4.59	6.22	5.68
Minnesota	5.67	5.22	5.00
Montana	4.60	6.06	5.88
North Dakota	5.29	5.00	4.77
Oregon	(D)	(D)	(D)
Utah	(D)	3.56	3.48
Washington	3.33	2.96	3.18
Wyoming	(S)	(D)	(D)
United States	4.86	5.89	5.46

(D) Withheld to avoid disclosing data for individual operations.

(S) Insufficient number of reports to establish an estimate.

Prices Received for Malting Barley – States and United States: January 2016 with Comparisons

State	January 2015	December 2015	January 2016
	(dollars per bushel)	(dollars per bushel)	(dollars per bushel)
Idaho	5.56	6.48	6.04
Minnesota	5.68	5.30	5.04
Montana	5.59	6.11	5.97
North Dakota	5.38	5.04	4.96
Wyoming	(S)	(D)	(D)
United States	5.47	5.99	5.67

(D) Withheld to avoid disclosing data for individual operations.

(S) Insufficient number of reports to establish an estimate.

Prices Received for Feed Barley – States and United States: January 2016 with Comparisons

State	January 2015	December 2015	January 2016
	(dollars per bushel)	(dollars per bushel)	(dollars per bushel)
Idaho	2.87	3.00	3.23
Minnesota	(D)	2.93	3.53
Montana	2.36	(D)	2.66
North Dakota	2.40	2.29	2.40
Wyoming	(S)	(D)	(S)
United States	2.99	3.12	3.14

(D) Withheld to avoid disclosing data for individual operations.

(S) Insufficient number of reports to establish an estimate.

Prices Received for Sorghum Grain – States and United States: January 2016 with Comparisons

State	January 2015	December 2015	January 2016
	(dollars per cwt)	(dollars per cwt)	(dollars per cwt)
Arkansas	7.01	7.20	7.30
Illinois	6.50	6.72	6.96
Kansas	7.45	5.57	5.43
Louisiana	(D)	7.76	(D)
Missouri	6.69	6.44	6.17
Nebraska	7.47	5.78	5.68
Oklahoma	7.95	6.04	5.98
Texas	7.26	6.20	5.94
United States	7.40	5.76	5.60

(D) Withheld to avoid disclosing data for individual operations.

Prices Received for Corn – States and United States: January 2016 with Comparisons

State	January 2015 (dollars per bushel)	December 2015 (dollars per bushel)	January 2016 (dollars per bushel)
Colorado	4.10	3.66	3.78
Illinois	3.82	3.79	3.72
Indiana	3.86	3.88	3.97
Iowa	3.86	3.53	3.55
Kansas	3.94	3.63	3.61
Kentucky	4.08	3.96	3.96
Michigan	3.75	3.56	3.65
Minnesota	3.71	3.44	3.47
Missouri	3.58	3.80	3.73
Nebraska	3.88	3.64	3.58
North Carolina	4.43	4.41	4.40
North Dakota	3.44	3.23	3.23
Ohio	3.87	4.01	3.90
Pennsylvania	4.11	3.93	3.87
South Dakota	3.41	3.32	3.27
Tennessee	4.00	4.01	4.00
Texas	4.51	4.12	4.43
Wisconsin	3.74	3.38	3.51
United States	3.82	3.65	3.66

Prices Received for Soybeans – States and United States: January 2016 with Comparisons

State	January 2015 (dollars per bushel)	December 2015 (dollars per bushel)	January 2016 (dollars per bushel)
Arkansas	10.70	9.32	9.15
Illinois	10.50	8.99	8.97
Indiana	10.50	8.95	8.93
Iowa	10.20	8.45	8.46
Kansas	9.78	8.27	8.25
Kentucky	10.60	9.22	9.24
Louisiana	10.80	9.67	9.65
Michigan	10.40	8.40	8.58
Minnesota	10.20	8.55	8.33
Mississippi	10.50	9.83	9.37
Missouri	10.10	8.91	8.97
Nebraska	9.98	8.36	8.42
North Carolina	10.20	8.36	8.06
North Dakota	9.50	8.23	8.22
Ohio	10.70	9.06	9.15
South Dakota	9.79	8.26	8.34
Tennessee	10.80	9.21	9.29
Wisconsin	10.20	8.44	8.68
United States	10.30	8.76	8.71

Prices Received for Dry Beans – States and United States: January 2016 with Comparisons

State	January 2015	December 2015	January 2016
	(dollars per cwt)	(dollars per cwt)	(dollars per cwt)
California	58.10	71.70	69.30
Colorado	46.30	26.20	28.20
Idaho	35.20	33.90	33.80
Michigan	(D)	25.30	28.50
Minnesota	(D)	29.40	35.70
Nebraska	(D)	(D)	(D)
North Dakota	30.60	21.00	21.80
United States	33.00	23.70	28.50

(D) Withheld to avoid disclosing data for individual operations.

Prices Received for Peanuts (in shell) – States and United States: January 2016 with Comparisons

State	January 2015	December 2015	January 2016
	(dollars per pound)	(dollars per pound)	(dollars per pound)
Alabama	0.206	0.141	0.172
Florida	0.195	0.153	0.159
Georgia	0.200	0.183	0.195
Mississippi	0.214	0.112	0.052
New Mexico	0.306	(S)	(S)
North Carolina	0.213	0.208	0.058
Oklahoma	(S)	0.211	0.178
South Carolina	0.242	0.082	0.172
Texas	0.398	0.207	0.218
Virginia	(S)	(S)	(S)
United States	0.225	0.178	0.193

(S) Insufficient number of reports to establish an estimate.

Prices Received for Sunflower – States and United States: January 2016 with Comparisons

State	January 2015	December 2015	January 2016
	(dollars per cwt)	(dollars per cwt)	(dollars per cwt)
Colorado	(D)	(D)	(S)
Kansas	19.00	20.10	20.90
Minnesota	(D)	19.00	18.90
North Dakota	19.40	21.30	20.50
South Dakota	18.20	17.30	18.60
United States	19.10	19.40	20.00

(D) Withheld to avoid disclosing data for individual operations.

(S) Insufficient number of reports to establish an estimate.

Prices Received for Canola – States and United States: January 2016 with Comparisons

State	January 2015	December 2015	January 2016
	(dollars per cwt)	(dollars per cwt)	(dollars per cwt)
Minnesota	(D)	(S)	(D)
North Dakota	17.80	14.90	13.80
United States	17.80	14.90	13.80

(D) Withheld to avoid disclosing data for individual operations.

(S) Insufficient number of reports to establish an estimate.

Prices Received for Flaxseed – States and United States: January 2016 with Comparisons

State	January 2015	December 2015	January 2016
	(dollars per bushel)	(dollars per bushel)	(dollars per bushel)
North Dakota	11.70	8.62	8.45
United States	11.70	8.62	8.45

Prices Received for Upland Cotton and Cottonseed – States and United States: January 2016 with Comparisons

[Cottonseed marketing year August - February]

State	Cotton, Upland			Cottonseed		
	January 2015	December 2015	January 2016	January 2015	December 2015	January 2016
	(dollars per pound)	(dollars per pound)	(dollars per pound)	(dollars per ton)	(dollars per ton)	(dollars per ton)
Alabama	0.529	0.609	0.595	167.00	203.00	192.00
Arizona	(D)	0.638	0.630	263.00	323.00	317.00
Arkansas	0.642	0.609	0.618	(S)	(S)	(S)
California	(D)	(S)	(D)	305.00	(D)	(S)
Georgia	0.619	0.623	0.592	177.00	194.00	197.00
Louisiana	0.645	0.579	0.598	(S)	270.00	(S)
Mississippi	0.647	0.608	0.611	(S)	265.00	(S)
North Carolina	0.642	0.559	0.569	235.00	218.00	(S)
Tennessee	0.624	0.608	0.589	(S)	(S)	(S)
Texas	0.581	0.591	0.566	182.00	225.00	229.00
United States	0.591	0.599	0.580	194.00	217.00	228.00

(D) Withheld to avoid disclosing data for individual operations.

(S) Insufficient number of reports to establish an estimate.

Prices Received and Farm Marketings for Upland Cotton and Rice – United States: January 2016 with Comparisons

Item	January 2015	December 2015	January 2016
Cotton, Upland			
Average price dollars/pound	0.591	0.599	0.580
Marketings ¹ 1,000 bales	2,359	2,359	1,602
Rice, all			
Average price dollars/cwt	15.10	12.80	13.60
Marketings ² 1,000 cwt	17,091	14,793	19,007
Rice, long			
Average price dollars/cwt	12.50	11.40	11.50
Marketings ² 1,000 cwt	11,456	10,432	11,606
Rice, medium and short			
California			
Average price dollars/cwt	23.20	18.90	18.50
Other States ³			
Average price dollars/cwt	14.90	11.80	11.50
United States			
Average price dollars/cwt	20.40	16.20	16.90
Marketings ² 1,000 cwt	5,635	4,361	7,401

¹ Marketings based on a survey of cotton buyers in the major producing States - Alabama, Arizona, Arkansas, California, Georgia, Louisiana, Mississippi, North Carolina, Tennessee, and Texas.

² Purchases by private firms and rice (rough equivalent) shipped by cooperatives.

³ Other States include Arkansas, Louisiana, Mississippi, Missouri, and Texas.

Prices Received for Hay by Type – States and United States: January 2016 with Comparisons

State	All hay			Alfalfa hay			Other hay		
	January 2015	December 2015	January 2016	January 2015	December 2015	January 2016	January 2015	December 2015	January 2016
	(dollars per ton)	(dollars per ton)	(dollars per ton)	(dollars per ton)	(dollars per ton)	(dollars per ton)	(dollars per ton)	(dollars per ton)	(dollars per ton)
Arizona	215.00	141.00	160.00	215.00	140.00	160.00	210.00	200.00	200.00
California	190.00	157.00	157.00	200.00	165.00	165.00	160.00	120.00	120.00
Colorado	194.00	159.00	159.00	195.00	160.00	160.00	190.00	150.00	150.00
Idaho	188.00	188.00	168.00	190.00	190.00	170.00	165.00	150.00	150.00
Illinois	167.00	150.00	153.00	180.00	170.00	165.00	120.00	110.00	110.00
Iowa	132.00	110.00	114.00	142.00	120.00	122.00	107.00	94.00	101.00
Kansas	139.00	105.00	94.00	153.00	114.00	106.00	92.00	76.00	77.00
Kentucky	125.00	139.00	140.00	200.00	220.00	225.00	100.00	115.00	115.00
Michigan	159.00	144.00	143.00	185.00	160.00	150.00	130.00	130.00	130.00
Minnesota	109.00	93.00	88.00	122.00	105.00	100.00	78.00	73.00	67.00
Missouri	98.00	95.00	94.00	165.00	170.00	170.00	85.00	80.00	80.00
Montana	123.00	119.00	114.00	125.00	120.00	115.00	115.00	110.00	110.00
Nebraska	95.00	85.00	85.00	99.00	89.00	87.00	83.00	76.00	80.00
Nevada	229.00	161.00	151.00	230.00	160.00	150.00	200.00	175.00	160.00
New Mexico	221.00	179.00	179.00	230.00	185.00	185.00	140.00	145.00	145.00
New York	133.00	173.00	180.00	220.00	225.00	225.00	128.00	170.00	178.00
North Dakota	82.00	77.00	80.00	85.00	78.00	82.00	60.00	57.00	56.00
Ohio	145.00	150.00	154.00	180.00	200.00	210.00	120.00	110.00	110.00
Oklahoma	95.00	136.00	128.00	165.00	180.00	161.00	86.00	83.00	86.00
Oregon	209.00	186.00	186.00	225.00	200.00	200.00	190.00	170.00	170.00
Pennsylvania	221.00	234.00	211.00	242.00	231.00	215.00	217.00	234.00	209.00
South Dakota	108.00	107.00	102.00	113.00	111.00	107.00	91.00	92.00	90.00
Texas	78.00	97.00	101.00	233.00	205.00	212.00	65.00	82.00	89.00
Utah	180.00	160.00	160.00	180.00	160.00	160.00	145.00	130.00	130.00
Washington	210.00	169.00	163.00	210.00	160.00	155.00	210.00	185.00	180.00
Wisconsin	129.00	91.00	104.00	133.00	98.00	110.00	100.00	64.00	79.00
Wyoming	137.00	111.00	111.00	140.00	115.00	115.00	125.00	100.00	100.00
United States ...	149.00	142.00	137.00	170.00	150.00	147.00	122.00	129.00	121.00

Prices Received for Apples – States and United States: January 2016 with Comparisons

[Equivalent packinghouse-door returns for California, Michigan, New York, Pennsylvania, and Washington. Prices at point of first sale for other States]

State	Apples, fresh use		
	January 2015	December 2015	January 2016
	(dollars per pound)	(dollars per pound)	(dollars per pound)
California	(S)	(S)	(S)
Michigan	0.305	0.335	0.325
New York	0.270	0.298	0.247
Pennsylvania	0.287	0.379	0.335
Virginia	0.300	0.250	0.250
Washington	0.327	0.477	0.495
United States	0.316	0.454	0.453

(S) Insufficient number of reports to establish an estimate.

Prices Received for Citrus Fruits by Utilization – States and United States: January 2015

[Net pounds per box: grapefruit in California-80, Florida-85, Texas-80; lemons-80; oranges in California-80, Florida-90, Texas-85; tangelos-90; tangerines and mandarins in California-80, Florida-95]

Commodity, State, and type	FOB packed fresh	Equivalent returns					
		Packinghouse door			On-tree		
		All	Fresh	Process	All	Fresh	Process
	(dollars per box)	(dollars per box)	(dollars per box)	(dollars per box)	(dollars per box)	(dollars per box)	(dollars per box)
Grapefruit							
California	(D)	14.80	(D)	(D)	12.80	(D)	(D)
Florida, all	23.80	8.99	12.98	4.89	6.38	10.74	1.91
White	23.00	8.12	12.10	6.00	5.68	9.95	3.40
Red	23.90	9.17	13.10	4.55	6.53	10.85	1.45
Texas	23.50	9.37	11.90	(D)	7.80	10.29	(D)
United States	23.70	9.37	12.96	4.38	7.03	10.90	1.65
Lemons							
Arizona	(D)	(D)	(D)	(D)	(D)	(D)	(D)
California	48.40	24.35	38.95	(D)	18.73	32.81	(D)
United States	48.40	24.14	38.98	(D)	18.53	32.84	(D)
Oranges							
California, all	29.80	17.58	20.45	(D)	14.95	17.84	(D)
Navel and miscellaneous	29.80	17.58	20.45	(D)	14.95	17.84	(D)
Valencia	(S)	(S)	(S)	(S)	(S)	(S)	(S)
Florida, all	26.60	10.55	15.45	10.40	7.90	12.85	7.75
Early and mids	26.60	10.55	15.45	10.40	7.90	12.85	7.75
Valencia	(S)	(S)	(S)	(S)	(S)	(S)	(S)
United States	29.40	11.99	19.87	10.03	9.35	17.26	7.38
Tangelos							
Florida	40.00	17.72	28.35	7.00	14.29	25.20	3.30
United States	40.00	17.72	28.35	7.00	14.29	25.20	3.30
Tangerines and mandarins							
Arizona	(D)	(D)	(D)	(D)	(D)	(D)	(D)
California	(D)	(D)	(D)	(D)	(D)	(D)	(D)
Florida	42.10	21.94	28.70	7.08	18.40	25.45	2.88
United States	(D)	(D)	(D)	2.76	(D)	(D)	-1.60

(D) Withheld to avoid disclosing data for individual operations.

(S) Insufficient number of reports to establish an estimate.

Prices Received for Citrus Fruits by Utilization – States and United States: December 2015

[Net pounds per box: grapefruit in California-80, Florida-85, Texas-80; lemons-80; oranges in California-80, Florida-90, Texas-85; tangelos-90; tangerines and mandarins in California-80, Florida-95]

Commodity, State, and type	FOB packed fresh	Equivalent returns					
		Packinghouse door			On-tree		
		All	Fresh	Process	All	Fresh	Process
	(dollars per box)	(dollars per box)	(dollars per box)	(dollars per box)	(dollars per box)	(dollars per box)	(dollars per box)
Grapefruit							
California	(D)	19.17	(D)	(D)	16.73	(D)	(D)
Florida, all	28.10	13.20	17.26	7.09	10.66	15.02	4.11
White	31.00	12.86	20.10	6.75	10.47	17.95	4.15
Red	27.60	13.27	16.80	7.20	10.71	14.55	4.10
Texas	27.10	10.96	15.50	(D)	9.40	13.89	(D)
United States	27.80	13.01	17.19	5.29	10.79	15.14	2.74
Lemons							
Arizona	(D)	(D)	(D)	(D)	(D)	(D)	(D)
California	52.30	30.57	42.66	(D)	24.71	36.40	(D)
United States	52.00	29.86	42.39	(D)	24.02	36.13	(D)
Oranges							
California, all	31.60	19.67	22.06	(D)	16.99	19.40	(D)
Navel and miscellaneous	31.60	19.67	22.06	(D)	16.99	19.40	(D)
Valencia	(S)	(S)	(S)	(S)	(S)	(S)	(S)
Florida, all	31.40	9.62	20.25	8.95	6.97	17.65	6.30
Early and mids	31.40	9.62	20.25	8.95	6.97	17.65	6.30
Valencia	(S)	(S)	(S)	(S)	(S)	(S)	(S)
Texas, all	30.40	14.57	18.80	(D)	12.79	16.97	(D)
Early and mids	30.40	14.57	18.80	(D)	12.79	16.97	(D)
Valencia	(S)	(S)	(S)	(S)	(S)	(S)	(S)
United States	31.50	12.35	21.63	8.53	9.71	19.02	5.88
Tangelos							
Florida	29.80	13.64	18.15	5.50	10.30	15.00	1.80
United States	29.80	13.64	18.15	5.50	10.30	15.00	1.80
Tangerines and mandarins							
California	(D)	(D)	(D)	(D)	(D)	(D)	(D)
Florida	51.70	27.53	38.30	6.90	23.95	35.05	2.70
United States	(D)	(D)	(D)	(D)	(D)	(D)	(D)

(D) Withheld to avoid disclosing data for individual operations.

(S) Insufficient number of reports to establish an estimate.

Prices Received for Citrus Fruits by Utilization – States and United States: January 2016

[Net pounds per box: grapefruit in California-80, Florida-85, Texas-80; lemons-80; oranges in California-80, Florida-90, Texas-85; tangelos-90; tangerines and mandarins in California-80, Florida-95]

Commodity, State, and type	FOB packed fresh	Equivalent returns					
		Packinghouse door			On-tree		
		All	Fresh	Process	All	Fresh	Process
	(dollars per box)	(dollars per box)	(dollars per box)	(dollars per box)	(dollars per box)	(dollars per box)	(dollars per box)
Grapefruit							
California	(D)	17.82	(D)	(D)	15.34	(D)	(D)
Florida, all	28.00	12.91	17.21	8.87	10.30	14.98	5.90
White	32.40	12.87	21.50	7.75	10.44	19.35	5.15
Red	27.20	12.93	16.40	9.25	10.26	14.15	6.15
Texas	27.80	9.72	16.20	(D)	8.18	14.59	(D)
United States	27.90	12.37	17.27	6.88	10.05	15.20	4.27
Lemons							
Arizona	(D)	(D)	(D)	(D)	(D)	(D)	(D)
California	50.00	29.77	40.36	(D)	23.87	34.10	(D)
United States	49.50	28.64	39.89	(D)	22.77	33.63	(D)
Oranges							
California, all	29.10	17.12	19.56	(D)	14.44	16.90	(D)
Navel and miscellaneous	29.10	17.12	19.56	(D)	14.44	16.90	(D)
Valencia	(S)	(S)	(S)	(S)	(S)	(S)	(S)
Florida, all	30.60	10.09	19.43	9.86	7.44	16.83	7.21
Early and mids	30.60	10.07	19.45	9.85	7.42	16.85	7.20
Valencia	(S)	(S)	(S)	(S)	(S)	(S)	(S)
Texas, all	32.80	18.99	21.20	(D)	17.18	19.37	(D)
Early and mids	32.80	18.99	21.20	(D)	17.18	19.37	(D)
Valencia	(S)	(S)	(S)	(S)	(S)	(S)	(S)
United States	29.30	11.95	19.61	9.43	9.30	16.98	6.77
Tangelos							
Florida	(S)	(S)	(S)	(S)	(S)	(S)	(S)
United States	(S)	(S)	(S)	(S)	(S)	(S)	(S)
Tangerines and mandarins							
California	(D)	(D)	(D)	(D)	(D)	(D)	(D)
Florida	57.30	38.41	43.90	6.55	35.02	40.65	2.35
United States	(D)	(D)	(D)	(D)	(D)	(D)	(D)

(D) Withheld to avoid disclosing data for individual operations.

(S) Insufficient number of reports to establish an estimate.

Prices Received for Potatoes – States and United States: January 2016 with Comparisons

State	January 2015 (dollars per cwt)	December 2015 (dollars per cwt)	January 2016 (dollars per cwt)
California, all ¹	13.40	9.85	13.50
Spring	21.20	(S)	17.20
Fall	9.30	9.85	9.85
Colorado, all ¹	9.30	8.05	8.95
Fresh ²	10.40	9.40	9.95
Florida	(S)	(S)	(S)
Idaho, all ¹	7.40	6.45	6.75
Fresh ²	6.70	5.55	6.05
Processing	7.85	7.30	7.20
Maine	(D)	(D)	(D)
Michigan	(D)	(D)	(D)
Minnesota	9.10	10.20	10.40
New York	(D)	(D)	(D)
North Carolina	(S)	(S)	(S)
North Dakota, all ¹	(D)	(D)	(D)
Fresh ²	(D)	(D)	(D)
Processing	(D)	(D)	(D)
Oregon	8.60	8.45	8.70
Texas	(D)	(D)	(D)
Virginia	(S)	(S)	(S)
Washington, all ¹	8.70	8.10	8.05
Processing	8.20	7.85	7.60
Wisconsin, all ¹	10.00	8.95	9.15
Fresh ²	9.85	9.00	8.90
Processing	10.20	8.90	9.30
United States, all ¹	9.12	8.54	8.58
Fresh ²	9.65	8.88	8.76
Processing	8.72	8.29	8.30

(D) Withheld to avoid disclosing data for individual operations.

(S) Insufficient number of reports to establish an estimate.

¹ Average price of potatoes sold for all uses, including table stock, processing, seed, and livestock feed.

² Fresh market prices only. Includes table stock prices.

Prices Received for All Milk – States and United States: January 2016 with Comparisons

[Before deduction for hauling. Includes quality, quantity, and other premiums. Excludes hauling subsidies]

State	January 2015		December 2015		January 2016	
	Price	Fat test	Price	Fat test	Price	Fat test
	(dollars per cwt)	(percent)	(dollars per cwt)	(percent)	(dollars per cwt)	(percent)
Arizona	16.40	3.54	16.70	3.62	15.20	3.64
California	15.81	3.80	15.82	3.88	15.12	3.85
Colorado	18.70	3.72	18.10	3.78	16.60	3.79
Florida	22.60	3.61	21.50	3.62	19.80	3.62
Idaho	16.80	3.87	16.70	4.02	15.60	4.02
Illinois	18.40	3.85	17.40	3.89	16.30	3.91
Indiana	18.10	3.85	17.50	3.85	16.30	3.85
Iowa	17.40	3.84	17.20	3.93	15.90	3.94
Kansas	17.50	3.88	16.70	3.89	15.70	3.85
Michigan	17.60	3.75	16.50	3.74	15.30	3.74
Minnesota	18.30	3.95	17.00	4.01	16.50	4.00
New Mexico	16.40	3.75	16.00	3.78	15.00	3.75
New York	18.70	3.90	18.80	3.86	17.00	3.89
Ohio	18.70	3.86	17.80	3.89	16.90	3.89
Oregon	18.90	3.96	18.80	4.14	17.50	4.09
Pennsylvania	19.20	3.84	19.20	3.85	17.40	3.89
South Dakota	18.90	4.09	18.20	4.18	17.00	4.16
Texas	18.20	4.03	17.80	4.08	16.50	4.06
Utah	17.80	3.83	17.80	4.00	16.00	3.98
Vermont	19.00	3.95	19.00	3.86	17.20	3.91
Virginia	20.60	3.80	20.20	3.79	18.70	3.81
Washington	17.50	3.96	18.30	4.14	16.40	4.09
Wisconsin	18.40	3.84	17.20	3.85	16.00	3.85
United States	17.60	3.84	17.20	3.89	16.10	3.89

Prices Received for Milk Cows – States and United States: January 2016 with Comparisons

[Animals sold for dairy herd replacement only. Quarterly United States milk cow prices are based on revised milk cow inventory]

State	January 2015	October 2015	January 2016
	(dollars per head)	(dollars per head)	(dollars per head)
Arizona	2,000.00	2,100.00	1,900.00
California	1,800.00	2,100.00	1,800.00
Colorado	2,100.00	2,000.00	1,900.00
Florida	2,170.00	2,030.00	1,800.00
Idaho	2,000.00	2,050.00	1,850.00
Illinois	2,100.00	1,900.00	1,850.00
Indiana	2,100.00	1,900.00	1,800.00
Iowa	2,030.00	1,980.00	1,860.00
Kansas	2,100.00	1,900.00	1,830.00
Michigan	2,200.00	2,100.00	2,000.00
Minnesota	1,870.00	1,820.00	1,730.00
New Mexico	2,000.00	1,900.00	1,900.00
New York	1,910.00	1,750.00	1,700.00
Ohio	2,000.00	1,800.00	1,750.00
Oregon	2,000.00	1,950.00	1,850.00
Pennsylvania	2,000.00	1,820.00	1,780.00
South Dakota	1,980.00	1,850.00	1,700.00
Texas	2,100.00	2,000.00	1,850.00
Utah	1,900.00	1,900.00	1,700.00
Vermont	1,980.00	1,870.00	1,830.00
Virginia	2,060.00	1,880.00	1,770.00
Washington	1,950.00	1,950.00	1,800.00
Wisconsin	2,160.00	2,050.00	1,910.00
United States	1,990.00	1,980.00	1,830.00

Commodity Parity Prices and Price as Percent of Parity Price – United States: January 2016 with Comparisons

[Parity prices are computed under the provisions of Title III, Subtitle a, Section 301 (a) of the Agricultural Adjustment Act of 1938 as amended by the Agricultural Acts of 1948, 1949, and 1956. See January *Agricultural Prices* for details on adjusted base price and parity price computations. Parity data not available for blank cells. Primary source of data for livestock and milk prices is United States Department of Agriculture's Agricultural Marketing Service]

Commodity and unit	Adjusted base price	Parity price			Price as percent of parity			
		January 2015	December 2015	January 2016	January 2015	December 2015	January 2016	
	(dollars)	(dollars)	(dollars)	(dollars)	(percent)	(percent)	(percent)	
Basic commodities								
All wheat	bushel	0.626	18.50	17.60	18.10	33	27	27
Rice	cwt	1.37	39.70	37.90	39.70	38	34	34
Corn	bushel	0.450	13.10	12.50	13.00	29	29	28
Cotton								
Upland	pound	0.067	1.95	1.87	1.94	30	32	30
American Pima	pound	0.133	4.02	3.84	3.85	39	40	34
Peanuts	pound	0.023	0.710	0.678	0.666	32	26	29
Small chickpeas ¹	cwt	2.250	65.00	62.20	65.20	28	41	34
Large chickpeas ¹	cwt	3.270	98.50	94.10	94.70	32	34	36
Lentils ¹	cwt	2.380	67.50	64.40	68.90	38	46	46
Designated non-basic								
All milk, to plants ²	cwt	1.80	54.10	51.70	52.10	33	33	32
Honey, extracted ³	pound	0.157	4.44	4.24	4.55	48	50	47
Wool and mohair								
Wool	pound	0.121	3.46	3.31	3.50	42	44	41
Mohair	pound	0.394	11.20	10.70	11.40	43	45	46
Other non-basic								
Apples, fresh ⁴	pound	0.033	0.976	0.933	0.956	32	49	47
Barley	bushel	0.484	13.80	13.20	14.00	35	45	39
Canola	cwt	1.890	55.60	53.10	54.70	32	28	25
Cottonseed	ton	20.00	568.00	543.00	579.00	34	40	39
Dry edible beans	cwt	3.21	96.20	91.80	93.00	34	26	31
Flaxseed	bushel	1.150	34.60	33.10	33.30	34	26	25
Oats	bushel	0.296	8.73	8.34	8.57	35	25	22
Potatoes	cwt	0.857	25.00	23.90	24.80	36	36	35
Sorghum grain	cwt	0.778	22.40	21.40	22.50	33	27	25
Soybeans	bushel	1.080	32.00	30.50	31.30	32	29	28
Sunflower, all	cwt	2.16	63.00	60.20	62.60	30	32	32
Citrus (equivalent on-tree)								
Grapefruit	box	0.660	23.00	22.00	19.10	31	49	53
Lemons	box	1.62	44.10	42.10	46.90	42	57	49
Oranges	box	0.865	23.80	22.80	25.10	39	43	37
Tangerines	box	1.79	51.80	49.50	51.80	29	30	35
Livestock and poultry								
Beef cattle	cwt	11.10	320.00	305.00	321.00	51	40	40
Broilers	pound	0.050	1.48	1.41	1.45	41	33	35
Calves	cwt	16.20	453.00	432.00	469.00	64	45	42
Eggs ²	dozen	0.103	2.78	2.66	2.98	49	39	43
Hogs	cwt	5.70	172.00	164.00	165.00	33	26	26
Turkeys, live	pound	0.063	1.800	1.720	1.820	37	52	43

¹ Parity prices began January 2015.

² Seasonally adjusted price as percentage of parity price.

³ Wholesale extracted. Adjusted base price derived from state annual averages prices weighted by production. For 1982 through 1985 the national averages are the support prices.

⁴ Equivalent packinghouse-door returns for California, New York, Oregon, and Washington. Price at point of first sale for other states.

Commodity Parity Prices – United States: January 2016 with Comparisons

[Parity prices are computed under the provisions of Title III, Subtitle a, Section 301 (a) of the Agricultural Adjustment Act of 1938 as amended by the Agricultural Acts of 1948, 1949, and 1956. See January *Agricultural Prices* for details on adjusted base price and parity price computations]

Commodity and unit	Adjusted base price	Parity price			
		January 2015	December 2015	January 2016	
	(dollars)	(dollars)	(dollars)	(dollars)	
Field crops and miscellaneous					
Hops	pound	0.338	9.62	9.18	9.79
Mustard seed	cwt	3.17	90.80	86.80	91.80
Rapeseed	cwt	2.66	71.90	68.70	77.00
Rye	bushel	0.630	18.20	17.40	18.20
Safflower	cwt	2.23	63.90	61.00	64.60
Spearmint oil	pound	1.70	48.50	46.30	49.20
Sweet potatoes	cwt	2.08	61.50	58.80	60.20
Tobacco					
Flue-cured, 11-14	pound	0.180	5.36	5.12	5.21
Fire-cured, 21-23	pound	0.255	7.66	7.32	7.38
Burley, 31	pound	0.179	5.36	5.12	5.18
Maryland, 32	pound	0.171	5.06	4.83	4.95
Dark air-cured, 35-37	pound	0.230	6.92	6.61	6.66
Pennsylvania seedleaf, 41	pound	0.184	5.36	5.12	5.33
Cigar binder, 51	pound	0.629	18.70	17.90	18.20
Non-citrus fruit					
Apples, processing ^{1 2}	ton	18.30	536.00	512.00	530.00
Apricots					
Fresh ³	ton	116.00	3,520.00	3,360.00	3,360.00
Dried (California)	ton	251.00	7,600.00	7,260.00	7,270.00
Avocados ^{2 3}	ton	178.00	5,410.00	5,170.00	5,150.00
Cherries					
Sweet	ton	209.00	6,360.00	6,080.00	6,050.00
Tart ²	pound	0.032	0.976	0.933	0.927
Cranberry ^{2 4}	barrel	4.32	131.00	125.00	125.00
Dates (California) ³	ton	147.00	4,500.00	4,300.00	4,260.00
Grapes (California)					
Raisin variety ⁵	ton	140.00	4,260.00	4,070.00	4,050.00
Wine, processing	ton	64.90	(NA)	1,880.00	1,880.00
Kiwifruit ²	ton	91.40	2,660.00	2,540.00	2,650.00
Nectarines, fresh (California) ³	ton	60.50	1,800.00	1,720.00	1,750.00
Olives, canning (California) ⁴	ton	93.10	2,830.00	2,700.00	2,700.00

See footnote(s) at end of table.

--continued

Commodity Parity Prices – United States: January 2016 with Comparisons (continued)

[Parity prices are computed under the provisions of Title III, Subtitle a, Section 301 (a) of the Agricultural Adjustment Act of 1938 as amended by the Agricultural Acts of 1948, 1949, and 1956. See January *Agricultural Prices* for details on adjusted base price and parity price computations]

Commodity and unit	Adjusted base price	Parity price		
		January 2015	December 2015	January 2016
	(dollars)	(dollars)	(dollars)	(dollars)
Non-citrus fruit - continued				
Papayas (Hawaii) pound	0.041	1.21	1.16	1.19
Peaches				
Fresh ^{4 6} ton	84.80	2,570.00	2,460.00	2,460.00
Dried (California) ^{1 5} ton	46.10	1,380.00	1,310.00	1,340.00
Processing, excludes dried				
Clingstone (California) ⁴ ton	32.60	991.00	947.00	944.00
Pears, Fresh ⁶ ton	56.00	1,710.00	1,630.00	1,620.00
Plums (California) equivalent on-tree				
Fresh ⁷ ton	60.60	1,840.00	1,760.00	1,750.00
Prunes, dried (California) ^{1 2 5} ton	154.00	4,650.00	4,440.00	4,460.00
Prunes and plums				
Fresh, excludes California ⁷ ton	61.20	1,860.00	1,780.00	1,770.00
Processing, excludes dried ¹ ton	23.80	707.00	675.00	689.00
Strawberries				
Fresh ¹⁰ pound	8.900	267.00	255.00	258.00
Processing pound	3.44	100.00	95.50	99.60
Sugar crops				
Sugar beets ^{2 8} ton	5.26	158.00	151.00	152.00
Sugarcane ^{2 8} ton	3.52	105.00	100.00	102.00
Tree nuts ⁹				
Almonds pound	0.227	6.98	6.67	6.57
Hazelnuts ton	217.00	6,570.00	6,270.00	6,280.00
Pistachios pound	0.227	6.72	6.42	6.57
Walnuts ton	236.00	6,600.00	6,300.00	6,830.00
Vegetables, fresh ¹⁰				
Carrots ¹¹ cwt	2.67	77.80	74.30	77.30
Cauliflower ¹¹ cwt	4.29	123.00	118.00	124.00
Celery ¹¹ cwt	2.05	58.90	56.20	59.40
Honeydew melons cwt	1.96	58.60	56.00	56.80
Lettuce cwt	2.26	64.20	61.30	65.40
Onions ¹¹ cwt	1.42	41.70	39.80	41.10
Tomatoes cwt	4.14	125.00	119.00	120.00

(NA) Not available.

¹ Equivalent returns at processing plant door.

² Adjusted base price is carried forward from the previous year since current marketing year average price is not yet available.

³ Equivalent returns at packinghouse door.

⁴ Equivalent returns for bulk fruit at first delivery point.

⁵ Dried basis.

⁶ Equivalent packinghouse-door returns for California, New York (apples only), Oregon (except peaches), and Washington. Price at point of first sale for other states.

⁷ Based on "as sold" prices for fresh fruit in all states.

⁸ Relates to prices including average conditional payments per ton made under the sugar acts of 1937 and 1948. Crop deficiency and abandonment payments not included.

⁹ Prices In-Shell basis except almonds which are shelled basis.

¹⁰ FOB shipping point price.

¹¹ Includes some processing.

Market Year for Specified Commodities

Cattle: January 1 - December 31.

Milk Cows: January 1 – December 31.

Hogs: December 1 - November 30.

Cattle Market Year Average Prices Received – United States: Marketing Years 2014 and 2015

[All beef includes steer and heifers combined and cows. Cows include beef cows and cull dairy cows sold for slaughter. Milk cow prices are calendar year average of quarterly estimates.]

Year	Cows	Steers and heifers	Calves	Beef cattle	Milk cows
	(dollars per cwt)	(dollars per cwt)	(dollars per cwt)	(dollars per cwt)	(dollars per head)
2014	107.00	153.00	261.00	152.00	1,830.00
2015	103.00	148.00	247.00	147.00	1,990.00

Hog Market Year Average Prices Received – United States: Marketing Years 2014 and 2015

Year	Barrows and gilts	Sows	All
	(dollars per cwt)	(dollars per cwt)	(dollars per cwt)
2014	76.50	77.70	76.50
2015	55.70	44.90	55.30

Milk Cow Market Year Average Prices Received – States and United States: Marketing Years 2014 and 2015

State	2014 (dollars per head)	2015 (dollars per head)
Alabama	1,490.00	1,720.00
Alaska	1,300.00	1,450.00
Arizona	1,950.00	2,050.00
Arkansas	1,650.00	1,780.00
California	1,830.00	2,030.00
Colorado	2,000.00	2,080.00
Connecticut	1,730.00	1,830.00
Delaware	1,850.00	1,950.00
Florida	1,860.00	2,100.00
Georgia	1,820.00	1,960.00
Hawaii	1,500.00	1,530.00
Idaho	1,880.00	1,990.00
Illinois	1,790.00	2,000.00
Indiana	1,800.00	1,960.00
Iowa	1,850.00	2,000.00
Kansas	1,830.00	1,990.00
Kentucky	1,780.00	1,920.00
Louisiana	1,770.00	2,000.00
Maine	1,560.00	1,780.00
Maryland	1,830.00	1,920.00
Massachusetts	1,640.00	1,820.00
Michigan	1,890.00	2,130.00
Minnesota	1,820.00	1,860.00
Mississippi	1,700.00	1,940.00
Missouri	1,580.00	1,750.00
Montana	1,680.00	1,880.00
Nebraska	1,870.00	2,010.00
Nevada	1,800.00	1,900.00
New Hampshire	1,750.00	1,820.00
New Jersey	1,920.00	2,000.00
New Mexico	1,810.00	1,980.00
New York	1,730.00	1,840.00
North Carolina	1,830.00	2,010.00
North Dakota	1,600.00	1,760.00
Ohio	1,730.00	1,880.00
Oklahoma	1,700.00	1,930.00
Oregon	1,760.00	1,990.00
Pennsylvania	1,800.00	1,900.00
Rhode Island	1,500.00	1,750.00
South Carolina	1,890.00	1,950.00
South Dakota	1,810.00	1,890.00
Tennessee	1,720.00	1,920.00
Texas	1,840.00	2,030.00
Utah	1,740.00	1,930.00
Vermont	1,810.00	1,920.00
Virginia	1,820.00	1,960.00
Washington	1,760.00	1,930.00
West Virginia	1,700.00	1,880.00
Wisconsin	1,950.00	2,100.00
Wyoming	1,650.00	1,950.00
United States	1,830.00	1,990.00

Prices Received for Cows, Steers and Heifers, Calves, Beef Cattle, and Milk Cows by Month – United States: Marketing Years 2014 and 2015

[All beef includes steer & heifers combined and cows. Cows include beef cows and cull dairy cows sold for slaughter. Milk cow prices are calendar year average. Quarterly United States milk cow prices are based on revised milk cow inventory.]

Month	Cows		Steers and heifers		Calves		Beef cattle		Milk cows	
	2014	2015	2014	2015	2014	2015	2014	2015	2014	2015
	(dollars per cwt)	(dollars per cwt)	(dollars per cwt)	(dollars per cwt)	(dollars per cwt)	(dollars per cwt)	(dollars per cwt)	(dollars per cwt)	(dollars per head)	(dollars per head)
January	88.30	112.00	140.00	166.00	208.00	288.00	138.00	164.00	1,440.00	1,990.00
February	95.40	110.00	145.00	161.00	209.00	277.00	144.00	159.00	(NA)	(NA)
March	102.00	114.00	150.00	162.00	216.00	290.00	148.00	160.00	(NA)	(NA)
April	103.00	113.00	150.00	164.00	222.00	288.00	148.00	162.00	1,810.00	1,970.00
May	104.00	114.00	147.00	161.00	229.00	288.00	146.00	160.00	(NA)	(NA)
June	106.00	113.00	148.00	156.00	249.00	292.00	147.00	155.00	(NA)	(NA)
July	115.00	113.00	157.00	150.00	257.00	275.00	156.00	149.00	1,970.00	2,030.00
August	121.00	110.00	159.00	149.00	271.00	273.00	158.00	148.00	(NA)	(NA)
September	118.00	104.00	158.00	140.00	279.00	241.00	157.00	139.00	(NA)	(NA)
October	116.00	89.50	163.00	129.00	307.00	234.00	161.00	128.00	2,120.00	1,980.00
November	115.00	82.00	169.00	131.00	305.00	217.00	167.00	129.00	(NA)	(NA)
December	115.00	74.80	166.00	123.00	303.00	193.00	164.00	122.00	(NA)	(NA)

(NA) Not available.

Prices Received for Barrows and Gilts, Sows, and All Hogs by Month – United States: Marketing Years 2014 and 2015

[December preceding year]

Month	Barrows and gilts		Sows		All hogs	
	2014	2015	2014	2015	2014	2015
	(dollars per cwt)	(dollars per cwt)	(dollars per cwt)	(dollars per cwt)	(dollars per cwt)	(dollars per cwt)
December	61.30	64.20	70.10	65.80	61.50	64.30
January	61.10	57.70	64.40	48.00	61.20	57.40
February	65.60	50.80	63.40	39.70	65.50	50.40
March	82.00	50.70	79.30	38.20	81.90	50.30
April	88.40	49.40	98.00	38.50	88.80	49.00
May	82.60	60.00	89.30	31.40	82.80	58.90
June	85.00	60.80	80.40	36.80	84.80	59.90
July	93.60	59.50	85.10	40.00	93.30	58.70
August	82.90	59.30	91.60	50.70	83.20	59.00
September	76.00	54.90	67.10	45.20	75.70	54.50
October	77.40	55.40	66.40	57.40	77.00	55.50
November	66.40	45.80	74.20	48.50	66.70	45.90

Prices Received for Milk Cows by Month – States and United States: 2015

[Cows sold for dairy herd replacement. Quarterly United States milk cow prices are based on revised milk cow inventory.]

State	January 2015	April 2015	July 2015	October 2015
	(dollars per head)	(dollars per head)	(dollars per head)	(dollars per head)
Arizona	2,000.00	2,000.00	2,100.00	2,100.00
California	1,800.00	2,000.00	2,200.00	2,100.00
Colorado	2,100.00	2,100.00	2,100.00	2,000.00
Florida	2,170.00	2,100.00	2,100.00	2,030.00
Idaho	2,000.00	1,900.00	2,000.00	2,050.00
Illinois	2,100.00	2,000.00	2,000.00	1,900.00
Indiana	2,100.00	1,900.00	1,950.00	1,900.00
Iowa	2,030.00	1,950.00	2,050.00	1,980.00
Kansas	2,100.00	1,950.00	2,000.00	1,900.00
Michigan	2,200.00	2,100.00	2,100.00	2,100.00
Minnesota	1,870.00	1,860.00	1,880.00	1,820.00
New Mexico	2,000.00	2,000.00	2,000.00	1,900.00
New York	1,910.00	1,820.00	1,890.00	1,750.00
Ohio	2,000.00	1,850.00	1,850.00	1,800.00
Oregon	2,000.00	2,000.00	2,000.00	1,950.00
Pennsylvania	2,000.00	1,890.00	1,890.00	1,820.00
South Dakota	1,980.00	1,840.00	1,900.00	1,850.00
Texas	2,100.00	2,000.00	2,000.00	2,000.00
Utah	1,900.00	1,900.00	2,000.00	1,900.00
Vermont	1,980.00	1,880.00	1,940.00	1,870.00
Virginia	2,060.00	1,930.00	1,950.00	1,880.00
Washington	1,950.00	1,850.00	1,950.00	1,950.00
Wisconsin	2,160.00	2,080.00	2,090.00	2,050.00
United States 2015	1,990.00	1,970.00	2,030.00	1,980.00

**Prices Received Value per Head for All Cattle and Calves –
States and United States: January 1, 2015 and 2016**

State	Value per head		Total value	
	2015 (dollars)	2016 (dollars)	2015 (1,000 dollars)	2016 (1,000 dollars)
Alabama	1,380	1,310	1,656,000	1,637,500
Alaska	1,220	1,200	12,200	13,200
Arizona	1,470	1,390	1,293,600	1,251,000
Arkansas	1,510	1,270	2,461,300	2,159,000
California	1,520	1,460	7,752,000	7,592,000
Colorado	1,670	1,490	4,258,500	4,023,000
Connecticut	1,430	1,400	67,210	68,600
Delaware	1,330	1,280	22,610	20,480
Florida	1,530	1,410	2,570,400	2,382,900
Georgia	1,380	1,260	1,421,400	1,386,000
Hawaii	1,070	1,010	142,310	141,400
Idaho	1,650	1,480	3,762,000	3,552,000
Illinois	1,590	1,350	1,780,800	1,593,000
Indiana	1,430	1,330	1,244,100	1,183,700
Iowa	1,530	1,390	5,890,500	5,490,500
Kansas	1,490	1,430	8,791,000	8,937,500
Kentucky	1,400	1,220	2,870,000	2,647,400
Louisiana	1,530	1,400	1,208,700	1,092,000
Maine	1,300	1,340	110,500	108,540
Maryland	1,460	1,280	270,100	243,200
Massachusetts	1,300	1,300	49,400	49,400
Michigan	1,570	1,430	1,758,400	1,644,500
Minnesota	1,470	1,310	3,410,400	3,170,200
Mississippi	1,360	1,270	1,224,000	1,193,800
Missouri	1,570	1,350	6,280,000	5,535,000
Montana	2,040	1,620	5,100,000	4,293,000
Nebraska	1,600	1,450	10,000,000	9,352,500
Nevada	1,740	1,460	748,200	635,100
New Hampshire	1,390	1,380	41,700	48,300
New Jersey	1,380	1,380	38,640	38,640
New Mexico	1,690	1,530	2,247,700	2,111,400
New York	1,490	1,380	2,145,600	2,014,800
North Carolina	1,240	1,170	992,000	936,000
North Dakota	2,060	1,650	3,378,400	2,805,000
Ohio	1,410	1,310	1,748,400	1,624,400
Oklahoma	1,590	1,400	7,234,500	6,790,000
Oregon	1,650	1,440	2,145,000	1,900,800
Pennsylvania	1,500	1,330	2,295,000	2,128,000
Rhode Island	1,380	1,360	6,900	6,800
South Carolina	1,340	1,220	448,900	414,800
South Dakota	2,000	1,590	7,400,000	6,280,500
Tennessee	1,420	1,240	2,442,400	2,269,200
Texas	1,530	1,400	17,901,000	16,380,000
Utah	1,750	1,490	1,365,000	1,236,700
Vermont	1,510	1,440	392,600	374,400
Virginia	1,400	1,200	2,058,000	1,776,000
Washington	1,530	1,380	1,759,500	1,587,000
West Virginia	1,460	1,270	540,200	495,300
Wisconsin	1,630	1,420	5,705,000	4,970,000
Wyoming	2,130	1,630	2,769,000	2,135,300
United States	1,584	1,410	141,211,070	129,719,760

**Prices Received Value per Head and Total Value for Hogs –
States and United States: December 1, 2014 and 2015**

State	Value per head		Total value	
	2014 (dollars)	2015 (dollars)	2014 (1,000 dollars)	2015 (1,000 dollars)
Alabama	150	100	16,500	10,000
Alaska	205	195	246	273
Arizona	150	100	20,850	13,200
Arkansas	165	90	18,975	14,940
California	185	125	20,350	11,875
Colorado	140	99	98,000	69,300
Connecticut	185	125	481	313
Delaware	150	100	600	300
Florida	150	100	2,550	1,600
Georgia	120	82	18,600	13,120
Hawaii	170	150	1,530	1,350
Idaho	(D)	(D)	(D)	(D)
Illinois	140	99	658,000	499,950
Indiana	145	98	536,500	367,500
Iowa	150	98	3,195,000	2,038,400
Kansas	125	87	230,000	167,910
Kentucky	105	79	35,700	32,785
Louisiana	150	100	1,200	800
Maine	150	100	675	450
Maryland	150	100	3,150	2,100
Massachusetts	150	100	1,350	1,100
Michigan	155	110	181,350	122,100
Minnesota	170	110	1,377,000	874,500
Mississippi	150	100	86,250	51,500
Missouri	125	87	356,250	261,000
Montana	150	100	26,400	17,500
Nebraska	145	100	464,000	330,000
Nevada	185	125	370	125
New Hampshire	160	105	576	410
New Jersey	160	105	1,600	1,260
New Mexico	150	100	195	150
New York	130	87	9,100	6,612
North Carolina	120	77	1,056,000	677,600
North Dakota	150	100	21,000	13,800
Ohio	155	105	345,650	259,350
Oklahoma	130	100	275,600	210,000
Oregon	150	100	1,350	1,000
Pennsylvania	130	91	148,200	105,560
Rhode Island	150	100	240	150
South Carolina	125	81	31,875	19,035
South Dakota	155	105	196,850	142,800
Tennessee	130	87	27,300	19,140
Texas	125	82	101,250	70,520
Utah	150	100	91,500	67,000
Vermont	185	125	648	500
Virginia	115	80	32,200	21,600
Washington	(D)	(D)	(D)	(D)
West Virginia	150	100	600	500
Wisconsin	125	92	38,750	29,440
Wyoming	160	105	13,280	11,025
Idaho and Washington	150	100	8,550	5,200
United States	144	96	9,754,191	6,566,642

(D) Withheld to avoid disclosing data for individual operations.

**Prices Received Value per Head and Total Value for Sheep and Lambs –
States and United States: January 1, 2015 and 2016**

State	Sheep and lambs			
	Value per head		Total value	
	2015	2016	2015	2016
	(dollars)	(dollars)	(1,000 dollars)	(1,000 dollars)
Arizona	165	170	24,750	24,650
California	231	198	138,600	113,850
Colorado	209	206	87,780	89,610
Idaho	223	200	57,980	51,000
Illinois	224	212	12,768	12,720
Indiana	232	216	11,600	10,800
Iowa	228	222	39,900	38,850
Kansas	230	220	15,180	14,300
Kentucky	195	214	9,360	11,342
Michigan	218	208	16,568	17,056
Minnesota	243	205	31,590	25,625
Missouri	195	182	16,575	16,016
Montana	235	215	50,525	49,450
Nebraska	261	232	21,141	18,560
Nevada	262	229	18,078	13,740
New England ¹	230	244	9,890	10,248
New Mexico	202	193	18,180	17,370
New York	215	208	17,200	16,640
North Carolina	203	187	6,090	5,984
North Dakota	213	195	13,632	14,235
Ohio	231	227	27,951	27,240
Oklahoma	243	230	12,879	10,580
Oregon	188	182	36,660	34,580
Pennsylvania	222	213	19,092	20,022
South Dakota	229	203	58,395	51,765
Tennessee	184	217	8,096	10,416
Texas	175	182	126,000	133,770
Utah	234	223	67,860	63,555
Virginia	196	195	14,700	14,625
Washington	235	220	12,220	11,000
West Virginia	214	199	7,062	7,164
Wisconsin	240	206	18,480	15,656
Wyoming	211	207	72,795	73,485
Other States ²	206	187	29,870	29,920
United States	214	202	1,129,447	1,075,824

¹ New England includes Connecticut, Maine, Massachusetts, New Hampshire, Rhode Island, and Vermont.

² Individual State estimates not available for States not shown, but are included in Other States.

Prices Received Value per Head and Total Value for Angora Goats – States and United States: January 1, 2015 and 2016

State	Angora goats			
	Value per head		Total value	
	2015	2016	2015	2016
	(dollars)	(dollars)	(1,000 dollars)	(1,000 dollars)
Arizona	90.00	95.00	3,240	3,325
California	90.00	95.00	306	342
New Mexico	89.00	95.00	979	950
Texas	145.00	130.00	12,325	10,140
4-State average	124.40	116.60	16,850	14,757

Other Hay Baled Market Year Average Prices Received – Selected Regions: 2011-2013, 2012-2014, and 2013-2015 Averages

[Prices provided to the Forest Service, United States Department of Agriculture to compute Eastern National Forest grazing fees]

Region	3-year average		
	2011-2013	2012-2014	2013-2015
	(dollars per ton)	(dollars per ton)	(dollars per ton)
Appalachia ¹	105.40	103.90	110.10
Corn Belt ²	104.70	103.10	96.70
Florida	166.10	164.50	159.10
Lake States ³	118.70	124.80	109.40
Northeast ⁴	144.60	160.80	175.70
Southeast/Delta ⁵	93.10	95.80	99.70

¹ Kentucky, North Carolina, Tennessee, Virginia, and West Virginia.

² Illinois, Indiana, Missouri, and Ohio.

³ Michigan, Minnesota, and Wisconsin.

⁴ Maine, New Hampshire, New York, Pennsylvania, and Vermont.

⁵ Alabama, Arkansas, Georgia, Louisiana, Mississippi, and South Carolina.

Parity Prices

Parity prices based on data January 2016 and adjusted base price data from which parity prices are computed, are presented in the table on pages 43 through 46. Annual average prices for 2006 through 2015 for use in parity computations, and ten-year averages for 2005-2014 and 2006-2015 are shown on pages 48 through 57.

Parity Prices shown on the following pages are computed under the provisions of Title III, Subtitle A, Section 301(a) of the Agricultural Adjustment Act of 1938 as amended by the Agricultural Acts of 1948, 1949, 1954, and 1956.

The major provisions of the amended Act relating to the calculation of parity prices are as follows:

"(1) (A) The 'parity price' for any agricultural commodity, as of any date, shall be determined by multiplying the adjusted base price of such commodity as of such date by the parity index as of such date."

"(B) The 'adjusted base price' of any agricultural commodity, as of any date, shall be (i) the average of the prices received by farmers for such commodity, at such time as the Secretary may select during each year of the ten-year period ending on the 31st of December last before such date, or during each marketing season beginning in such period if the Secretary determines use of a calendar year basis to be impracticable, divided by (ii) the ratio of the general level of prices received by farmers for agricultural commodities during the period January 1910 to December 1914, inclusive."

"(C) The 'parity index', as of any date, shall be the ratio of (i) the general level of prices for articles and services that farmers buy, wages paid hired farm labor, interest on farm indebtedness secured by farm real estate, and taxes on farm real estate, for the calendar month ending last before such date to (ii) the general level of such prices, wages, rates, and taxes during the period January 1910 to December 1914, inclusive."

"(D) The prices and indexes provided for herein, and the data used in computing them, shall be determined by the Secretary, whose determination shall be final."

Section 301(a) (1) (F) outlines authority for the Secretary of Agriculture to make special adjustments in the method of computing parity prices for particular commodities if the method outlined in the Act results in parity prices seriously out of line with those of other commodities.

The parity prices shown in this report are based on the provisions of the amended Act. Briefly, the actual method of computation is as follows:

- a. The average of prices received by farmers for individual commodities for the 10 preceding years is calculated (for 2015 it is the 2005-2014 average). An allowance for unredeemed loans and other supplemental payments resulting from price support programs, such as the deficiency payments for grains and cotton, is included for those commodities for which applicable.
- b. This 10-year average is divided by the average of the Index of Prices Received by Farmers for the same 10 preceding calendar years, adjusted to include an allowance for unredeemed loans and other supplemental price support operations, to give an "adjusted base price".
- c. Parity prices are computed by multiplying the "adjusted base prices" by the current Parity Index (the Index of Prices Paid by Farmers, including Interest, Taxes, and Wage Rates, 1910-1914=100).

Parity prices are calculated in terms of prices received by farmers in the local markets in which they ordinarily sell. This means that the parity prices apply to the average of all classes and grades of the commodity as sold by all farmers in the United States, except as otherwise specified. Fruits and vegetables for fresh use and for processing are usually considered separate commodities and separate parity prices are calculated. The Agricultural Marketing Agreement Act of 1937 provided for parity prices for certain commodities covered by a marketing agreement or order program. Under present legislation, United States parity prices, with appropriate adjustments where needed, may be used for the purpose of this Act.

The indexes used in the computation of parity prices are published currently in *Agricultural Prices*. For the purpose of illustrating the computation of parity prices, the calculation of the parity price for corn based on data for January 2016 is given below.

The 120-month, January 2006-December 2015 average of prices received by farmers for corn was \$4.47 per bushel, adjusted to allow for unredeemed loans and other supplemental payments resulting from price support operations. The 120-month average of the Index of Prices Received by Farmers, adjusted to include an allowance for unredeemed loans, etc., was 993 (1910-1914=100). The adjusted base price is obtained by dividing \$4.47 by 9.93 (0.450). The adjusted base prices when multiplied by 2896 percent, the Parity Index (1910-1914=100), results in the corn parity price of \$13.00 for January 2016.

Prices Received For Average Base Period – United States: January 1910-December 1914

Commodity and unit	Average Price
All wheat dollars/bushel	0.880
Rice rough dollars/cwt	1.81
Corn dollars/bushel	0.649
Oats dollars/bushel	0.399
All barley dollars/bushel	0.617
All hay, baled dollars/ton	11.90
Cotton, Upland cents/pound	11.92
Peanuts cents/pound	4.83
Cottonseed dollars/ton	21.80
Flaxseed dollars/bushel	1.68
Potatoes dollars/cwt	1.13
Sweet potatoes dollars/cwt	1.61
Dry edible beans dollars/cwt	3.39
All beef cattle dollars/cwt	5.52
Calves dollars/cwt	6.84
All hogs dollars/cwt	7.29
Lambs dollars/cwt	5.96
Sheep dollars/cwt	4.59
All milk dollars/cwt	1.61
All eggs cents/dozen	21.60
Turkeys, live cents/pound	14.30
Wool cents/pound	17.80

Parity Ratio

The parity ratio (the Index of Prices Received by Farmers for the products they sell divided by the Parity Index (1910-1914=100) provides an indication of the per unit purchasing power of farm commodities generally in terms of the goods and services currently bought by farmers, in relation to purchasing power of farm products in the 1910-1914 base period. Thus, a Parity Ratio less than 100 indicates that the average per unit purchasing power of all farm products is lower than during the 1910-1914 period.

The parity ratio is a measure of price relationships. The ratio is not a measure of farm income, farmers' total purchasing power, or farmers' welfare. The latter depends upon a number of factors other than price relationships, such as changes in production efficiency and technology, quantities of farm products sold, and supplementary income, including that from off-farm jobs and federal programs.

An adjusted parity ratio is computed and published which incorporates supplementary income for federal farm programs. A "preliminary adjusted parity ratio reflecting government payments" based on the forecast of direct government payments for the year is published each quarter in *Agricultural Prices*.

Prices Received Adjusted Base Prices and Parity Prices – United States: January 2016

Commodity and unit	Adjusted base price ¹	Parity price ²	
	(dollars)	(dollars)	
Basic commodities			
All wheat ³	bushel	0.626	18.10
Rice ³	cwt	1.37	39.70
Corn ³	bushel	0.450	13.00
Cotton			
Upland ³	pound	0.067	1.94
American Pima	pound	0.133	3.85
Peanuts	pound	0.023	0.666
Tobacco			
Flue-cured, 11-14	pound	0.180	5.21
Fire-cured, 21-23	pound	0.255	7.38
Burley, 31	pound	0.179	5.18
Maryland, 32	pound	0.171	4.95
Dark air-cured, 35-37	pound	0.230	6.66
Pennsylvania seedleaf, 41	pound	0.184	5.33
Cigar binder, 51	pound	0.629	18.20
Cigar wrapper, 61	pound	2.43	70.40
Small chickpeas	cwt	2.250	65.200
Large chickpeas	cwt	3.270	94.700
Lentils	cwt	2.380	68.900
Designated nonbasic commodities			
Soybeans ³	bushel	1.080	31.30
All milk sold to plants	cwt	1.80	52.10
Honey, wholesale	pound	0.157	4.55
Wool and mohair			
Wool ³	pound	0.121	3.50
Mohair	pound	0.394	11.40
Other nonbasic commodities			
Field crops and miscellaneous			
All barley ³	bushel	0.484	14.00
Canola	cwt	1.89	54.70
Cottonseed	ton	20.00	579.00
Dry edible beans	cwt	3.21	93.00
Flaxseed	bushel	1.150	33.30
Hay, baled	ton	14.70	426.00
Hops	pound	0.338	9.79
Mustard seed	cwt	3.17	91.80
Oats ³	bushel	0.296	8.57
Peppermint oil ³	pound	2.00	57.90
Potatoes	cwt	0.857	24.80
Rapeseed	cwt	2.66	77.00
Rye	bushel	0.630	18.20
Safflower	cwt	2.23	64.60
Sorghum grain ³	cwt	0.778	22.50
Spearmint oil	pound	1.70	49.20
Sunflower	cwt	2.16	62.60
Sweet potatoes	cwt	2.08	60.20

See footnote(s) at end of table.

--continued

Prices Received Adjusted Base Prices and Parity Prices – United States: January 2016 (continued)

Commodity and unit	Adjusted base price ¹	Parity price ²
	(dollars)	(dollars)
Citrus (equivalent on-tree)		
Grapefruit ⁴box	0.660	19.10
Lemons ⁴box	1.62	46.90
Oranges ⁴box	0.865	25.10
Tangerines ⁴box	1.79	51.80
Deciduous and other fruit		
Apples		
Fresh ⁶pound	0.033	0.956
Processing ⁴ ton	18.30	530.00
Apricots		
Fresh ton	116.00	3,360.00
Processing		
Dried (California) ⁵ ton	251.00	7,270.00
Excluding dried ton	37.30	1,080.00
Avocados ⁴ ton	178.00	5,150.00
Cherries		
Sweet ton	209.00	6,050.00
Tart ⁴pound	0.032	0.927
Cranberries ⁴ barrel	4.32	125.00
Dates (California) ⁷ ton	147.00	4,260.00
Grapes		
Raisin varieties dried (California) ⁵ ton	140.00	4,050.00
Wine, processing (California) ton	64.90	1,880.00
Kiwifruit ⁴ ton	91.40	2,650.00
Nectarines (California)		
Fresh ⁷ ton	60.50	1,750.00
Olives (California) ⁹		
Processing		
Crushed for oil ton	57.80	1,670.00
Excluding crushed ton	83.90	2,430.00
Canning ton	93.10	2,700.00
Papayas (Hawaii), freshpound	0.041	1.190
Peaches		
Fresh ^{6,9} ton	84.80	2,460.00
Processing		
Dried (California) ^{8,5} ton	46.10	1,340.00
Excluding dried		
Clingstone (California) ⁹ ton	32.60	944.00
Freestone ⁸ ton	26.00	753.00
Pears		
Fresh ⁶ ton	56.00	1,620.00
Processing ⁸		
Excluding dried ton	23.60	683.00

See footnote(s) at end of table.

--continued

Prices Received Adjusted Base Prices and Parity Prices – United States: January 2016 (continued)

Commodity and unit	Adjusted base price ¹	Parity price ²
	(dollars)	(dollars)
Deciduous and other fruit, continued		
Plums (California) equiv on-tree		
Fresh ¹⁰ ton	60.60	1,750.00
Processing ton	11.00	319.00
Prunes, dried (California) ^{4 5} ton	154.00	4,460.00
Prunes & plums (excluding California)		
Fresh ¹⁰ ton	61.20	1,770.00
Processing ⁸ ton	23.80	689.00
Strawberries		
Fresh ¹⁰ pound	8.900	258.00
Processing pound	3.440	99.60
Sugar crops		
Sugarbeets ^{4 12} ton	5.26	152.00
Sugarcane ^{4 12} ton	3.52	102.00
Tree nuts ¹³		
Almonds pound	0.227	6.57
Hazelnuts ton	217.00	6,280.00
Pecans, all ton	340.00	9,840.00
Pistachio, all pound	0.227	6.57
Walnuts ton	236.00	6,830.00
Vegetables, fresh ¹¹		
Asparagus cwt	11.30	327.00
Broccoli ¹⁴ cwt	3.88	112.00
Carrots ¹⁴ cwt	2.67	77.30
Cauliflower ¹⁴ cwt	4.29	124.00
Celery ¹⁴ cwt	2.05	59.40
Honeydew melons cwt	1.96	56.80
Lettuce cwt	2.26	65.40
Onions ¹⁴ cwt	1.42	41.10
Sweet corn cwt	2.63	76.20
Tomatoes cwt	4.14	120.00
Vegetables, processing ⁸		
Asparagus ton	144.00	4,170.00
Green peas ton	34.60	1,000.00
Snap beans ton	22.60	654.00
Sweet corn ton	10.70	310.00
Tomatoes ton	8.13	235.00
Livestock and products		
Beef cattle cwt	11.10	321.00
Broilers pound	0.050	1.45
Calves cwt	16.20	469.00
Eggs dozen	0.103	2.98
Hogs cwt	5.70	165.00
Turkeys pound	0.063	1.82

See footnote(s) at end of table.

--continued

Prices Received Adjusted Base Prices and Parity Prices – United States: January 2016 (continued)

Commodity and unit	Adjusted base price ¹	Parity price ²
	(dollars)	(dollars)
Discontinued nonbasic commodities ¹⁵		
Field crops and miscellaneous		
Crude pine gum barrel	13.900	403.00
Dry field peas cwt	1.890	54.70
Popcorn cwt	1.810	52.40
Tobacco		
Virginia fire-cured, 21 pound	0.254	7.36
Kentucky-Tennessee fire-cured, 22-23 pound	0.319	9.24
Dark air-cured, 35-36 pound	0.282	8.17
Sun-cured, 37 pound	0.235	6.81
Cigar filler & binder 42-44, 54-55 pound	0.222	6.43
Puerto Rican filler, 46 pound	0.155	4.49
Tobacco, 62 ¹⁶ pound	3.300	95.60
Citrus (equiv on-tree)		
Temples box	0.370	10.80
Deciduous and other fruit		
Berries, processing		
Blackberries pound	0.620	18.00
Black raspberries pound	0.106	3.07
Boysenberries/youngberries pound	0.088	2.55
Gooseberries pound	0.037	1.070
Loganberries pound	0.060	1.74
Red raspberries pound	0.084	2.43
Grapes, excluding raisin variety dried ton	65.500	1,897.00
Nectarines, processing ¹⁷ ton	4.210	122.00
Pears, dried ton	171.000	4,950.00
Seed crops		
Alfalfa cwt	19.300	559.00
Bentgrass cwt	18.900	547.00
Chewings fescue cwt	10.000	290.00
Crimson clover cwt	8.400	243.00
Hairy vetch cwt	5.810	168.00
Ladino clover cwt	24.700	715.00
Lespedeza cwt	8.310	241.00
Merion Kentucky bluegrass cwt	22.000	637.00
Orchardgrass cwt	7.160	207.00
Red clover cwt	12.000	348.00
Red fescue cwt	10.100	292.00
Tall fescue cwt	3.670	106.00
Timothy cwt	6.400	185.00
Vegetables, fresh		
Artichokes cwt	4.550	132.00
Cabbage cwt	1.380	40.00
Cantaloupes cwt	2.130	61.70
Cucumbers cwt	2.280	66.00
Eggplant cwt	2.410	69.80
Escarole cwt	3.100	89.80
Garlic cwt	2.930	84.90
Green peppers cwt	3.600	104.00
Snap beans cwt	4.510	131.00
Spinach cwt	3.950	114.00
Watermelon cwt	0.846	24.50
Vegetables, processing		
Beets ton	7.790	226.00
Cabbage ton	6.010	174.00
Lima beans ton	67.000	1,940.00
Spinach ton	14.500	420.00
Livestock and products		
Beeswax pound	0.291	8.43
Lambs cwt	11.700	339.00
Sheep cwt	4.380	127.00

See footnote(s) at end of table.

--continued

Prices Received Adjusted Base Prices and Parity Prices – United States: January 2015 (continued)

(NA) Not available.

- 1/ Adjusted base price 1910-1914 derived by dividing the average of 10 season average prices 2005-2014, including an allowance where appropriate for unredeemed loans and other supplemental payments resulting from price support operations, by 967 percent (120-month, January 2005-December 2014 average of the index of prices received by farmers adjusted to include an allowance for unredeemed loans and other supplemental payments) unless otherwise noted.
- 2/ Legally applicable parity prices for the following calendar month.
- 3/ Adjusted base price 1910-1914 derived from 120-month, January 2005-December 2014 average including an allowance where appropriate for unredeemed loans and other supplemental payments resulting from price support operations.
- 4/ The 2012 marketing year average prices are not yet available for these commodities. Therefore, the adjusted base prices are brought forward from 2011, except citrus items (excluding limes) and cranberries.
- 5/ Dried basis.
- 6/ Prices are equivalent packinghouse-door returns for California, Michigan, New York (apples only), and Washington (apples, peaches, and pears). Prices "as sold" for other states.
- 7/ Equivalent returns at packinghouse-door.
- 8/ Equivalent returns at processing plant door.
- 9/ Equivalent returns for bulk fruit at first delivery point.
- 10/ Based on 'as sold' prices for fresh fruit in all states.
- 11/ Prices are average FOB shipping point.
- 12/ Relates to prices including average conditional payments per ton made under the sugar acts of 1937 and 1948. Crop deficiency and abandonment payments not included.
- 13/ Prices on in-shell basis except almonds which are on shelled basis.
- 14/ Includes some processing.
- 15/ Monthly and/or season average prices are no longer estimated for these items. Therefore, the adjusted base price is brought forward from July 1986.
- 16/ Monthly and/or season average prices are no longer estimated for this item. The adjusted base price is brought forward from 1988.
- 17/ Processing prices combined with fresh beginning in 2002.

Prices Received Calendar Year Average Prices and Index used to Calculate Agricultural Commodity Parity Prices – United States: 2006-2015

[Average used to compute "adjusted base prices". Averages for 2015 and 2006-2015 are preliminary. Simple average of monthly prices]

Commodity and unit	2006	2007	2008	2009	2010	2011	2012
Prices received index, 1910-1914=100 percent	730	862	947	832	850	1,032	1,083
	(dollars)	(dollars)	(dollars)	(dollars)	(dollars)	(dollars)	(dollars)
Basic commodities							
Cornbushel	2.28	3.39	4.78	3.75	3.83	6.02	6.67
Cotton, Upland pound	0.475	0.500	0.608	0.492	0.710	0.880	0.795
All wheatbushel	4.03	5.76	8.02	5.30	5.12	7.44	7.60
Peanuts pound	0.17	0.19	0.21	0.24	0.21	0.25	0.34
Ricecwt	8.73	10.50	16.20	15.20	13.20	13.70	14.50
Small chickpeas cwt	15.50	15.70	26.70	19.90	22.80	23.40	30.50
Large chickpeascwt	27.80	28.40	35.30	31.10	28.50	39.20	41.20
Lentilscwt	10.50	17.20	32.40	29.10	26.60	27.50	21.80
Designated nonbasic commodities							
All milkcwt	12.90	19.10	18.30	12.80	16.30	20.10	18.50
Other nonbasic commodities							
Field crops and miscellaneous							
All barleybushel	2.72	3.59	5.00	4.83	4.00	4.79	5.98
All dry beanscwt	19.50	25.60	34.30	31.00	27.90	34.60	42.40
Flaxseedbushel	5.50	8.73	15.40	8.60	10.20	14.20	13.60
All hay, baled ton	105.00	124.00	148.00	117.00	110.00	159.00	184.00
Oatsbushel	1.82	2.44	3.29	2.30	2.37	3.42	3.80
Sorghumcwt	4.34	6.27	8.12	5.59	6.50	10.70	11.10
Soybeansbushel	5.65	7.74	11.30	10.10	9.97	12.50	14.00
All sunflowercwt	12.00	17.00	25.30	18.70	16.80	29.10	27.80
Fruit							
Apples, fresh ² pound	0.270	0.325	0.394	0.233	0.262	0.325	0.411
Livestock and products							
Beef cattlecwt	87.10	90.00	89.20	80.40	92.00	113.00	122.00
Broilers pound	0.361	0.439	0.466	0.453	0.492	0.459	0.511
Calvescwt	133.00	122.00	114.00	108.00	121.00	142.00	173.00
Eggs dozen	0.590	0.929	1.060	0.823	0.857	0.968	0.998
All hogscwt	46.30	46.70	47.70	42.00	55.10	66.50	64.20
Turkeys pound	0.476	0.520	0.564	0.499	0.612	0.680	0.719

See footnote(s) at end of table.

--continued

Prices Received Calendar Year Average Prices and Index used to Calculate Agricultural Commodity Parity Prices – United States: 2006-2015 (continued)

[Average used to compute "adjusted base prices". Averages for 2015 and 2006-2015 are preliminary. Simple average of monthly prices]

Commodity and unit	2013	2014	2015	2005-2014 Average	2006-2015 Average	
					As computed	For parity purposes ¹
Prices received index, 1910-1914=100percent	1,104	1,112	1,016	928	957	993
	(dollars)	(dollars)	(dollars)	(dollars)	(dollars)	(dollars)
Basic commodities						
Cornbushel	6.15	4.11	3.71	4.29	4.47	4.47
Cotton, Uplandpound	0.772	0.749	0.615	0.641	0.660	0.660
All wheatbushel	7.32	6.33	5.28	6.03	6.22	6.22
Peanutspound	0.27	0.23	0.21	0.23	0.23	0.23
Ricecwt	15.70	15.60	12.50	13.00	13.60	13.60
Small chickpeascwt	25.50	21.60	21.70	21.30	22.30	22.30
Large chickpeascwt	34.90	28.80	29.30	32.20	32.50	32.50
Lentilscwt	21.10	21.10	28.50	22.00	23.60	23.60
Designated nonbasic commodities						
All milkcwt	20.10	24.00	17.10	17.70	17.90	17.90
Other nonbasic commodities						
Field crops and miscellaneous						
All barleybushel	6.26	5.65	5.25	4.53	4.81	4.81
All dry beanscwt	38.40	35.80	29.80	31.40	31.90	31.90
Flaxseedbushel	14.30	13.20	10.60	11.30	11.40	11.40
All hay, baled ton	183.00	178.00	153.00	140.00	146.00	146.00
Oatsbushel	3.92	3.54	2.54	2.85	2.94	2.94
Sorghumcwt	9.97	7.41	7.28	7.32	7.73	7.73
Soybeansbushel	14.10	12.50	9.49	10.40	10.70	10.70
All sunflowercwt	23.50	21.60	22.50	20.60	21.40	21.40
Fruit						
Apples, fresh ²pound	0.408	0.378	0.315	0.318	0.332	0.332
Livestock and products						
Beef cattlecwt	125.00	153.00	148.00	104.00	110.00	110.00
Broilerspound	0.604	0.638	0.529	0.485	0.495	0.495
Calvescwt	174.00	255.00	263.00	148.00	161.00	161.00
Eggsdozen	1.090	1.260	1.650	0.912	1.020	1.020
All hogscwt	67.20	77.10	53.50	56.20	56.60	56.60
Turkeyspound	0.665	0.732	0.811	0.591	0.628	0.628

¹ Includes an allowance for price support operations as authorized by the Secretary of Agriculture, January 30, 1956. This entry is omitted for commodities not affected by the adjustment.

² Equivalent packinghouse-door returns for California, New York (applies only starting in 1985), Oregon (except peaches), and Washington. Prices "as sold" for other states.

Prices Received Market Year Average Prices used to Calculate Agricultural Commodity Parity Prices – United States: 2006-2015

[Average used to compute "adjusted base prices". Averages for 2015 and 2006-2015 are preliminary. Prices are the averages for the marketing season computed by weighting state prices by quantities sold]

Commodity and unit	2006	2007	2008	2009	2010	2011
	(dollars)	(dollars)	(dollars)	(dollars)	(dollars)	(dollars)
Basic Commodities						
Cotton, American Pima	0.943	0.988	0.990	1.170	1.790	1.450
Tobacco						
Flue-cured 11-14	1.496	1.527	1.757	1.754	1.690	1.682
Fire-cured 21-23	2.392	2.401	2.460	2.468	2.467	2.557
Burley 31	1.638	1.601	1.669	1.709	1.549	1.751
Maryland 32	1.500	(D)	(D)	1.600	1.550	1.550
Dark air-cured 35-37	2.200	2.197	2.246	2.242	2.242	2.278
Pennsylvania seedleaf, 41	1.550	1.650	1.700	1.700	1.750	1.700
Cigar binder, 51	6.586	6.472	5.805	5.039	5.245	6.200
Cigar wrapper, 61	21.700	(D)	(D)	(D)	(D)	(D)
Designated nonbasic commodities						
Honey	1.005	1.077	1.421	1.473	1.619	1.765
Wool and mohair ¹						
Wool	0.680	0.870	0.980	0.790	1.150	1.670
Mohair	3.59	3.64	3.31	2.65	3.49	4.16
Other nonbasic commodities						
Field crops and miscellaneous						
Canola	11.90	18.30	18.70	16.20	19.30	24.00
Cottonseed	111.00	162.00	223.00	158.00	161.00	260.00
Hops	2.05	2.99	4.03	3.57	3.28	3.14
Mustard seed	13.70	28.00	43.80	30.40	25.90	33.60
Peppermint oil	12.70	13.60	15.90	20.10	20.30	23.10
Potatoes	7.31	7.51	9.09	8.25	9.20	9.41
Rapeseed	14.90	17.70	25.30	26.30	23.40	27.00
Rye	3.32	5.01	6.35	5.06	5.18	7.81
Safflower	13.50	18.60	24.80	17.10	17.20	24.40
Spearmint oil	11.30	12.60	14.90	16.50	16.20	18.60
Sweet potatoes	18.20	18.30	21.20	21.80	19.80	18.80

See footnote(s) at end of table.

--continued

Prices Received Market Year Average Prices used to Calculate Agricultural Commodity Parity Prices – United States: 2006-2015 (continued)

[Average used to compute "adjusted base prices". Averages for 2015 and 2006-2015 are preliminary. Prices are the averages for the marketing season computed by weighting state prices by quantities sold]

Commodity and unit	2012	2013	2014	2015	Ten-year Average	
					2005-2014 Period	2006-2015 Period
	(dollars)	(dollars)	(dollars)	(dollars)	(dollars)	(dollars)
Basic Commodities						
Cotton, American Pima pound	1.240	1.720	1.550	1.326	1.310	1.320
Tobacco						
Flue-cured 11-14 pound	1.983	2.115	2.026	1.881	1.750	1.790
Fire-cured 21-23 pound	2.578	2.625	2.673	2.698	2.500	2.530
Burley 31 pound	1.968	2.061	1.942	1.946	1.750	1.780
Maryland 32 pound	(D)	1.900	1.950	1.900	1.650	1.700
Dark air-cured 35-37 pound	2.287	2.352	2.380	2.392	2.260	2.280
Pennsylvania seedleaf, 41 pound	1.950	2.100	2.100	2.100	1.770	1.830
Cigar binder, 51 pound	6.538	(D)	(D)	(D)	6.110	6.250
Cigar wrapper, 61 pound	(D)	(D)	(D)	(D)	24.500	24.100
Designated nonbasic commodities						
Honey pound	1.992	2.161	2.141	(NA)	1.450	(NA)
Wool and mohair ¹						
Wool pound	1.520	1.450	1.460	1.450	1.130	1.200
Mohair pound	3.89	4.23	4.85	5.30	3.65	3.91
Other nonbasic commodities						
Field crops and miscellaneous						
Canola cwt	26.50	20.60	16.90	15.50	18.20	18.80
Cottonseed ton	252.00	246.00	194.00	227.00	186.00	199.00
Hops pound	3.17	3.35	3.67	4.38	3.12	3.36
Mustard seed cwt	35.80	37.20	34.80	31.80	29.70	31.50
Peppermint oil pound	24.10	23.90	23.00	21.80	18.90	19.90
Potatoes cwt	8.63	9.75	8.88	(NA)	8.18	(NA)
Rapeseed cwt	26.10	25.10	34.90	43.20	23.50	26.40
Rye bushel	7.69	7.95	7.74	6.52	5.94	6.26
Safflower cwt	27.60	27.90	25.00	24.50	20.90	22.10
Spearmint oil pound	19.50	18.90	19.80	20.30	15.90	16.90
Sweet potatoes cwt	17.40	24.10	23.90	23.10	20.20	20.70

See footnote(s) at end of table.

--continued

Prices Received Market Year Average Prices used to Calculate Agricultural Commodity Parity Prices – United States: 2006-2015 (continued)

[Average used to compute "adjusted base prices". Averages for 2015 and 2006-2015 are preliminary. Prices are the averages for the marketing season computed by weighting state prices by quantities sold]

Commodity and unit	2006	2007	2008	2009	2010	2011
	(dollars)	(dollars)	(dollars)	(dollars)	(dollars)	(dollars)
Fruit, citrus (equivalent on-tree) ²						
Grapefruitbox	8.74	5.19	4.80	4.37	6.76	7.09
Lemonsbox	10.59	15.98	26.59	8.32	11.29	10.93
Orangesbox	6.11	9.84	6.74	6.62	7.67	8.31
Tangerinesbox	10.64	14.81	14.25	14.77	14.70	17.74
Deciduous and other fruit						
Apples ³						
Processington	129.00	190.00	198.00	132.00	187.00	226.00
Apricots						
Fresh ⁴ton	1,450.00	829.00	918.00	1,150.00	1,350.00	1,050.00
Processing ³						
Dried (California) ⁵ton	2,600.00	1,510.00	2,360.00	2,970.00	2,860.00	2,720.00
Excluding driedton	314.00	325.00	350.00	371.00	368.00	357.00
Avocadoston	1,800.00	1,770.00	1,850.00	1,440.00	2,750.00	1,540.00
Cherries						
Sweetton	1,620.00	1,820.00	2,390.00	1,330.00	2,330.00	2,530.00
Tartpound	0.215	0.273	0.377	0.192	0.222	0.300
Cranberriesbarrel	41.10	50.70	58.10	44.20	43.90	44.80
Dates (California)ton	2,140.00	2,290.00	1,260.00	1,180.00	1,270.00	1,320.00
Grapes						
Raisin varieties						
Dried (California) ⁵ton	1,070.00	1,040.00	1,130.00	1,130.00	1,510.00	1,660.00
Wine, processing (California)ton	583.00	565.00	610.00	612.00	574.00	637.00
Kiwifruit ⁶ton	911.00	950.00	888.00	847.00	768.00	775.00
Nectarines						
Fresh ^{6 7}ton	522.00	340.00	367.00	631.00	553.00	582.00
Olives (California)						
Processing ⁸						
Crushed for oilton	405.00	775.00	670.00	540.00	532.00	556.00
Excluding crushedton	855.00	643.00	705.00	814.00	692.00	987.00
Canning ⁸ton	926.00	700.00	767.00	855.00	862.00	1,060.00

See footnote(s) at end of table.

--continued

Prices Received Market Year Average Prices used to Calculate Agricultural Commodity Parity Prices – United States: 2006-2015 (continued)

[Average used to compute "adjusted base prices". Averages for 2015 and 2006-2015 are preliminary. Prices are the averages for the marketing season computed by weighting state prices by quantities sold]

Commodity and unit	2012	2013	2014	2015	Ten-year Average	
					2005-2014 Period	2006-2015 Period
	(dollars)	(dollars)	(dollars)	(dollars)	(dollars)	(dollars)
Fruit, citrus (equivalent on-tree) ²						
Grapefruit box	7.65	6.51	7.25	7.16	7.10	6.55
Lemons box	15.13	12.05	25.40	25.09	14.40	16.10
Oranges box	10.14	8.27	11.64	10.53	7.98	8.59
Tangerines box	19.16	22.45	27.96	21.73	16.90	17.80
Deciduous and other fruit						
Apples ³						
Processing ton	281.00	197.00	177.00	(NA)	182.00	(NA)
Apricots						
Fresh ⁴ ton	1,140.00	1,190.00	1,360.00	(NA)	1,080.00	(NA)
Processing ³						
Dried (California) ⁵ ton	2,470.00	2,980.00	2,410.00	(NA)	2,450.00	(NA)
Excluding dried ton	411.00	451.00	488.00	(NA)	349.00	(NA)
Avocados ton	1,675.00	(NA)	1,780.00	(NA)	1,770.00	(NA)
Cherries						
Sweet ton	2,020.00	2,610.00	2,140.00	(NA)	2,020.00	(NA)
Tart pound	0.594	0.359	0.355	(NA)	0.310	(NA)
Cranberries barrel	47.90	32.40	30.90	(NA)	43.10	(NA)
Dates (California) ton	1,340.00	1,220.00	1,190.00	(NA)	1,480.00	(NA)
Grapes						
Raisin varieties						
Dried (California) ⁵ ton	1,880.00	1,630.00	1,820.00	(NA)	1,330.00	(NA)
Wine, processing (California) ton	773.00	753.00	753.00	(NA)	562.00	(NA)
Kiwifruit ⁶ ton	1,020.00	1,110.00	1,190.00	(NA)	908.00	(NA)
Nectarines						
Fresh ⁶ ton	767.00	837.00	906.00	(NA)	545.00	(NA)
Olives (California)						
Processing ⁸						
Crushed for oil ton	550.00	582.00	608.00	(NA)	550.00	(NA)
Excluding crushed ton	1,040.00	1,000.00	1,030.00	(NA)	789.00	(NA)
Canning ⁸ ton	1,110.00	1,110.00	1,180.00	(NA)	876.00	(NA)

See footnote(s) at end of table.

--continued

Prices Received Market Year Average Prices used to Calculate Agricultural Commodity Parity Prices – United States: 2006-2015 (continued)

[Average used to compute "adjusted base prices". Averages for 2015 and 2006-2015 are preliminary. Prices are the averages for the marketing season computed by weighting state prices by quantities sold]

Commodity and unit	2006	2007	2008	2009	2010	2011
	(dollars)	(dollars)	(dollars)	(dollars)	(dollars)	(dollars)
Papayas, fresh (Hawaii) pound	0.413	0.417	0.455	0.467	0.380	0.350
Peaches						
Fresh ⁴ ton	779.00	706.00	684.00	811.00	788.00	825.00
Processing ³						
Dried (California) ton	802.00	530.00	452.00	359.00	278.00	411.00
Excluding dried						
Clingstone (California) ton	292.00	304.00	347.00	338.00	325.00	303.00
Freestone ton	240.00	235.00	239.00	263.00	257.00	261.00
Pears						
Fresh ⁹ ton	528.00	534.00	589.00	458.00	599.00	451.00
Processing ³						
Excluding dried ton	199.00	214.00	227.00	224.00	243.00	237.00
Plums (California)						
Fresh ton	(D)	(D)	(D)	(D)	(D)	(D)
Processing ton	(D)	(D)	(D)	(D)	(D)	(D)
Prunes, dried (California) ³ ton	1,390.00	1,450.00	1,500.00	1,230.00	1,350.00	1,310.00
Prunes & plums, excluding California						
Fresh ⁴ ton	639.00	622.00	547.00	472.00	551.00	482.00
Processing ³ ton	267.00	213.00	171.00	149.00	193.00	235.00
Strawberries						
Fresh ^{10 11} pound	0.722	0.821	0.841	0.861	0.908	0.940
Processing ton	28.400	27.700	36.000	30.900	29.200	34.800
Sugar crops ¹²						
Sugarbeets ton	44.20	42.00	48.10	51.50	66.90	69.40
Sugarcane for sugar ton	30.40	29.40	29.50	34.80	41.70	47.20

See footnote(s) at end of table.

--continued

Prices Received Market Year Average Prices used to Calculate Agricultural Commodity Parity Prices – United States: 2006-2015 (continued)

[Average used to compute "adjusted base prices". Averages for 2015 and 2006-2015 are preliminary. Prices are the averages for the marketing season computed by weighting state prices by quantities sold]

Commodity and unit	2012	2013	2014	2015	Ten-year Average	
					2005-2014 Period	2006-2015 Period
	(dollars)	(dollars)	(dollars)	(dollars)	(dollars)	(dollars)
Papayas, fresh (Hawaii) pound	(NA)	0.360	0.490	(NA)	0.392	(NA)
Peaches						
Fresh ⁴ ton	967.00	956.00	1,190.00	(NA)	778.00	(NA)
Processing ³						
Dried (California) ton	327.00	419.00	493.00	(NA)	446.00	(NA)
Excluding dried						
Clingstone (California) ton	348.00	364.00	369.00	(NA)	314.00	(NA)
Freestone ton	254.00	288.00	357.00	(NA)	241.00	(NA)
Pears						
Fresh ⁹ ton	656.00	599.00	684.00	(NA)	531.00	(NA)
Processing ³						
Excluding dried ton	238.00	276.00	287.00	(NA)	458.00	(NA)
Plums (California)						
Fresh ton	(D)	(D)	(D)	(NA)	(D)	(NA)
Processing ton	(D)	(D)	(D)	(NA)	(D)	(NA)
Prunes, dried (California) ³ ton	1,330.00	2,000.00	2,470.00	(NA)	1,450.00	(NA)
Prunes & plums, excluding California						
Fresh ⁴ ton	739.00	608.00	656.00	(NA)	589.00	(NA)
Processing ³ ton	228.00	345.00	301.00	(NA)	229.00	(NA)
Strawberries						
Fresh ^{10 11} pound	0.918	0.965	1.050	0.790	0.874	0.884
Processing ton	33.400	34.900	42.600	44.000	32.700	34.200
Sugar crops ¹²						
Sugarbeets ton	66.40	46.60	46.00	(NA)	51.60	(NA)
Sugarcane for sugar ton	41.90	31.40	34.70	(NA)	34.30	(NA)

See footnote(s) at end of table.

--continued

Prices Received Market Year Average Prices used to Calculate Agricultural Commodity Parity Prices – United States: 2006-2015 (continued)

[Average used to compute "adjusted base prices". Averages for 2015 and 2006-2015 are preliminary. Prices are the averages for the marketing season computed by weighting state prices by quantities sold]

Commodity and unit	2006	2007	2008	2009	2010	2011
	(dollars)	(dollars)	(dollars)	(dollars)	(dollars)	(dollars)
Tree nuts ¹³						
Almonds pound	2.06	1.75	1.45	1.65	1.79	1.99
Hazelnuts ton	1,080.00	2,040.00	1,620.00	1,690.00	2,410.00	2,330.00
Pecans, all pound	1.560	1.120	1.340	1.430	2.300	2.430
Pistachio, all pound	1.89	1.41	2.05	1.67	2.22	1.98
Walnuts ton	1,630.00	2,290.00	1,280.00	1,710.00	2,040.00	2,900.00
Mushrooms, all pound	1.05	1.16	1.18	1.17	1.17	1.18
Vegetables, fresh ¹⁰						
Asparagus cwt	88.90	98.90	103.00	108.00	122.00	122.00
Broccoli cwt	33.70	36.70	36.20	39.80	37.60	35.40
Carrots cwt	20.60	22.10	24.50	25.20	26.60	32.50
Cauliflower cwt	32.30	34.40	40.70	44.30	41.80	46.80
Celery ¹⁴ cwt	18.40	20.80	18.70	20.40	18.90	20.00
Honeydew melons cwt	18.20	17.70	17.80	15.60	15.50	22.10
Lettuce cwt	16.90	21.70	20.10	22.40	21.10	23.00
Onions ¹⁴ cwt	16.10	11.10	11.90	15.00	15.60	10.90
Sweet corn cwt	23.00	22.70	26.00	29.50	25.90	26.70
Tomatoes cwt	43.70	34.80	45.30	40.40	48.20	36.10
Vegetables, processing ³						
Asparagus ton	1,150.00	1,260.00	1,360.00	1,330.00	1,360.00	1,510.00
Green peas ton	247.00	259.00	360.00	319.00	287.00	416.00
Snap beans ton	157.00	168.00	219.00	191.00	192.00	235.00
Sweet corn ton	66.80	81.80	120.00	104.00	85.30	116.00
Tomatoes ton	66.40	71.20	79.80	87.20	72.50	75.60

See footnote(s) at end of table.

--continued

Prices Received Market Year Average Prices used to Calculate Agricultural Commodity Parity Prices – United States: 2006-2015 (continued)

[Average used to compute "adjusted base prices". Averages for 2015 and 2006-2015 are preliminary. Prices are the averages for the marketing season computed by weighting state prices by quantities sold]

Commodity and unit	2012	2013	2014	2015	Ten-year Average	
					2005-2014 Period	2006-2015 Period
	(dollars)	(dollars)	(dollars)	(dollars)	(dollars)	(dollars)
Tree nuts ¹³						
Almonds pound	2.58	3.21	3.19	(NA)	2.15	(NA)
Hazelnuts ton	1,830.00	2,680.00	3,600.00	(NA)	1,940.00	(NA)
Pecans, all pound	1.570	1.730	1.960	(NA)	1.670	(NA)
Pistachio, all pound	2.61	3.48	3.10	(NA)	2.07	(NA)
Walnuts ton	3,030.00	3,710.00	3,230.00	(NA)	2,340.00	(NA)
Mushrooms, all pound	1.22	1.24	1.24	1.29	1.17	1.19
Vegetables, fresh ¹⁰						
Asparaguscwt	117.00	131.00	106.00	119.00	108.00	112.00
Broccolicwt	33.80	43.20	40.70	48.10	36.60	38.50
Carrotscwt	26.60	28.60	27.10	31.40	25.40	26.50
Cauliflowercwt	35.90	44.50	50.10	55.40	40.30	42.60
Celery ¹⁴cwt	18.40	25.80	17.20	25.60	19.20	20.40
Honeydew melonscwt	20.70	20.90	23.70	22.70	19.10	19.50
Lettucecwt	17.70	26.70	24.40	29.00	21.00	22.40
Onions ¹⁴cwt	14.20	15.00	13.60	17.60	13.60	14.10
Sweet corncwt	26.30	28.20	28.70	24.00	25.90	26.10
Tomatoescwt	30.50	44.60	41.50	46.00	40.70	41.10
Vegetables, processing ³						
Asparagus ton	1,570.00	1,570.00	1,530.00	1,650.00	1,370.00	1,430.00
Green peas ton	434.00	427.00	367.00	320.00	339.00	344.00
Snap beans ton	271.00	320.00	250.00	233.00	214.00	224.00
Sweet corn ton	127.00	140.00	113.00	103.00	102.00	106.00
Tomatoes ton	76.70	90.10	99.30	97.00	77.10	80.70

(D) Withheld to avoid disclosing data for individual operations.

(NA) Not available.

¹ Average local market price; does not include incentive payment per pound, the 2005-2014 and 2006-2015 averages for parity purposes include this allowance.

² Consistent with legislation quoted in this report, citrus prices shown for 2015 relate to the citrus crop designated as 2014-2015 in the production reports.

³ Equivalent returns at processing plant door.

⁴ Based on "as sold" prices for fresh fruit in all states.

⁵ Dried basis.

⁶ Equivalent returns at packinghouse-door. Includes some processing beginning in 2002.

⁷ Processed estimates discontinued in 2009.

⁸ Equivalent returns for bulk fruit at first delivery point.

⁹ Equivalent packinghouse-door returns for California, New York (applies only starting in 1985), Oregon (except peaches), and Washington. Prices "as sold" for other states.

¹⁰ Average F.O.B. shipping point prices.

¹¹ Includes strawberries for processing in states where the processing crop is not estimated separately.

¹² Prices include average conditional payments per ton made under the sugar acts of 1937 and 1948. Crop deficiency and abandonment payments not included.

¹³ Prices on in-shell basis except almonds which are on shelled basis.

¹⁴ Includes some processing.

Reliability of Prices Received Estimates

Definition: Prices received represent sales from producers to first buyers. They include all grades and qualities. The average commodity price from the survey multiplied by the total quantity marketed theoretically should give the total cash receipts for the commodity.

Survey procedures: Primary sales data used to determine grain prices were obtained from probability samples of about 1,900 mills and elevators. These procedures ensure that virtually all grain moving into commercial channels has a chance of being included in the survey. Generally, States surveyed account for 90 percent or more of total United States production. Livestock prices are obtained from packers, stockyards, auctions, dealers, and market check data from AMS-USDA, private marketing organizations, and state commodity groups and agencies. Inter-farm sales of grain and livestock are not included since they represent very small percentages of the total sales. Grain marketed for seed is also excluded. Fruit and vegetable prices are obtained from sample surveys and market check data from AMS-USDA, private marketing organizations, state agencies, and universities.

Summary and estimation procedures: Survey quantities sold are expanded by strata to state levels and used to weight average strata prices to a state average. State prices are then weighted to a United States price based on expanded sales. Recommendations are prepared by the Regional Field Offices and reviewed by the Agricultural Statistics Board in Washington, D.C. State recommendations are reviewed for reasonableness with survey data, other States, and recent historic estimates.

Revisions: In general, revisions are made during annual commodity market year estimation time, following five-year Census revisions, or when later information is received. Revisions are published in monthly issues of *Agricultural Prices*.

Reliability: United States price estimates based on probability surveys generally have a sampling error of less than one percent for the major commodities such as corn, wheat, soybeans, cotton, and rice. Current methods of summarization for non-probability commodities are not designed directly to calculate sampling errors. However, analytical measures approximate the United States relative sampling errors at around five percent. Any non-sampling errors are attributed to such things as the inability to obtain correct information, differences in interpreting questions or definitions, mistakes in coding or processing the data, etc. Efforts are made at each step in the survey process to minimize these non-sampling errors.

Program Changes: After the Council on Food, Agricultural and Resource Economics (C-FARE) 2009 program review which included changes in farm production practices, plans were implemented to make necessary program improvements in the agricultural price program. The index group structure for prices received was modified to maintain a more universal structure and consistency with the required 1910-1914 series.

Modifications implemented January 2014 include the following: update the current 1990-1992 base reference period to 2011, link the 1910-1914 series to the updated base reference period, 2011, create index groups used universally by researchers, data users, and policymakers, re-classify agricultural commodities into the index groups, expand the commodity coverage for vegetable, melon, non-citrus, and tree nuts, update monthly market weights, and adjust (normalization) current five year moving average cash receipts and farm input cost weights.

Modifications implemented January 2015 discontinued preliminary prices and replaced the annual average index with an annual index.

See Price Program Quick Stats Links at end of this report for program change details.

January Prices Paid by Farmers

The January Prices Paid Index for Commodities and Services, Interest, Taxes, and Farm Wage Rates (PPITW), at 107.0, is up 1.0 percent from December 2015 but is down 4.0 percent from January 2015.

Production: The January index, at 105.9, is up 1.0 percent from December but is 6.0 percent lower than last year. Higher prices for other services, feeder pigs, and feeder cattle more than offset lower prices for nitrogen, milk cows, diesel, and hay & forages.

Feed: At 97.2, the January index decreased 1.4 percent from December and is down 11 percent from last January. Since December, prices are lower for hay & forages, complete feeds, concentrates, supplements, and feed grains.

Livestock and poultry: The January index, at 119.5, increased 3.1 percent from December but is down 25 percent from last year. Since December, higher prices for feeder pigs and feeder cattle more than offset lower prices for milk cows. The January feeder cattle price, at \$164.00 per cwt, is up \$3.00 per cwt from the December price. January feeder pigs averaged \$167.00 per cwt, up \$41.00 per cwt from December.

Fertilizer: The index for January, at 82.8, is down 3.9 percent from December and 8.2 percent below January a year ago. Since December, prices are lower for nitrogen, mixed fertilizer, and potash & phosphate.

Chemicals: The January index, at 106.8, is up 0.6 percent from December and up 7.6 percent from last January. Compared with last month, prices are higher for herbicides, insecticides, and fungicides & other.

Fuels: At 50.1, the January index is down 7.6 percent from December and 25 percent below January 2015. Compared with December, prices are lower for diesel, LP gas, and gasoline.

Machinery: The index for January, at 116.4, is unchanged from December but is 1.8 percent above last January.

Consumer Price Index: The January 2016 Consumer Price Index, as issued by the Bureau of Labor Statistics, for all urban consumers (CPI-U) increased 1.4 percent over the last 12 months to an index level of 236.916 (1982-84=100). For the month, the index increased 0.2 percent prior to seasonal adjustment.

Prices Paid Indexes and Related Parity Ratios – United States: January 2016 with Comparisons

[Revised historical price indexes for months not shown are available at www.nass.usda.gov]

Index Group and Ratios	1910-1914 Base			2011 Base		
	January 2015	December 2015	January 2016	January 2015	December 2015	January 2016
	(percent)	(percent)	(percent)	(percent)	(percent)	(percent)
Prices paid by farmers for commodities, services, interest, taxes, and wage rates (PPITW)	3016	2865	2896	111.5	105.9	107.0
Production	2346	2181	2205	112.7	104.8	105.9
Feed	1206	1087	1071	109.4	98.6	97.2
Livestock and poultry	3167	2288	2360	160.4	115.9	119.5
Seeds	3746	3755	3755	114.0	114.3	114.3
Fertilizer	1086	1038	996	90.2	86.2	82.8
Chemicals	892	954	959	99.3	106.2	106.8
Fuels	1870	1517	1402	66.8	54.2	50.1
Supplies and repairs	1255	1243	1242	106.4	105.4	105.3
Autos and trucks	3224	3242	3255	104.9	105.5	105.9
Machinery	6986	7116	7116	114.3	116.4	116.4
Building materials	2503	2487	2487	107.6	106.9	106.9
Services and rent	2472	2463	2517	(NA)	(NA)	(NA)
Services	(NA)	(NA)	(NA)	113.6	112.9	116.2
Rent	(NA)	(NA)	(NA)	120.8	120.8	122.0
Interest ¹	3643	3643	3846	99.9	99.9	105.5
Taxes ²	7335	7335	7623	123.6	123.6	128.4
Wage rates	8018	8204	8204	112.0	114.6	114.6
Family living-CPI ³	2220	2247	2251	103.9	105.2	105.3
Production, interest, taxes, and wage rates (PITW)	3177	2989	3025	112.7	106.0	107.3
Ratio (received/paid)	(NA)	(NA)	(NA)	87	85	83
Parity ratio ⁴	33	32	32	(NA)	(NA)	(NA)
Parity ratio adjusted ⁵	34	33	33	(NA)	(NA)	(NA)
PPITW adjusted for productivity ⁶	1461	1452	1429	(NA)	(NA)	(NA)
Crop sector (PPITW)	(NA)	(NA)	(NA)	107.9	106.5	107.3
Livestock sector (PPITW)	(NA)	(NA)	(NA)	115.3	105.2	106.7
Farm sector (production)	(NA)	(NA)	(NA)	125.0	106.3	107.9
Non-farm sector (production)	(NA)	(NA)	(NA)	105.0	103.8	104.6

(NA) Not available.

¹ Interest per acre on farm real estate debt and interest rate on farm non-real estate debt.

² Farm real estate taxes payable per acre.

³ Bureau of Labor Statistics, Consumer Price Index for all urban consumers (CPI-U), converted by the USDA.

⁴ Ratio of index of prices received to PPITW (1910-1914=100).

⁵ Based on estimated cash receipts, from marketings and government payments, the preliminary adjustment factor is 1.026 for 2016 and the revised factor is 1.026 for 2015.

⁶ PPITW is adjusted based on productivity trend for the prior 15 years.

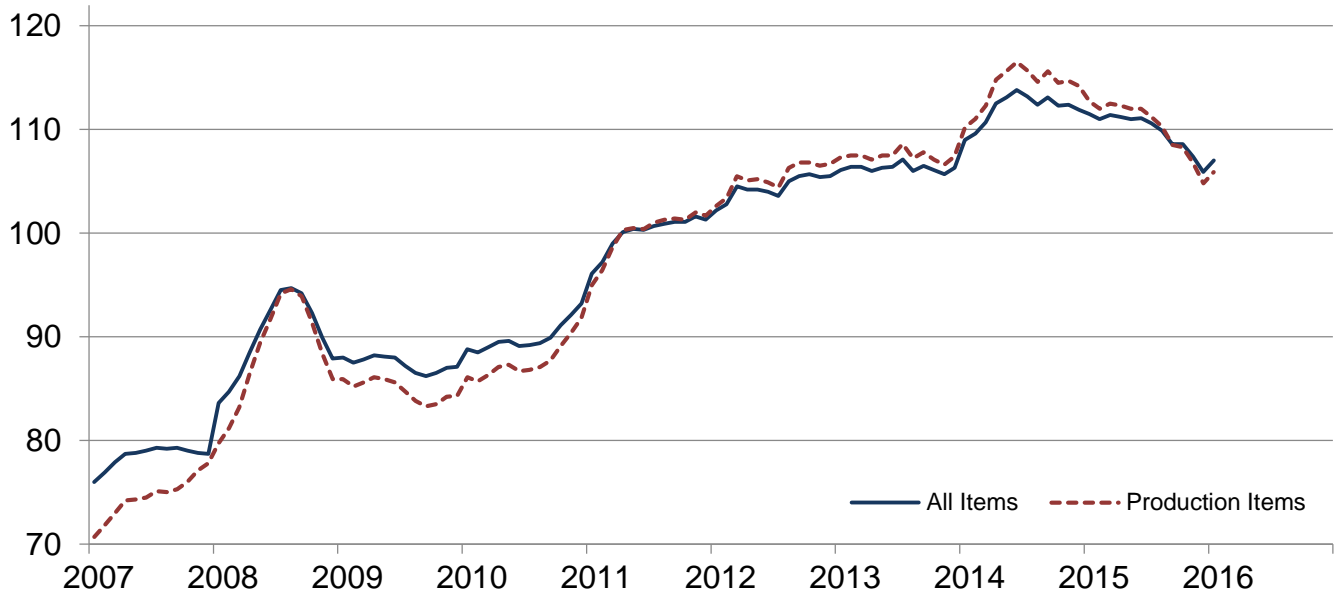
Prices Paid Indexes and Annual Weights for Input Components and Sub-components – United States: January 2016 with Comparisons

[Revised historical price indexes for months not shown are available at www.nass.usda.gov. Relative weights are a five year moving average]

Index Group	Relative weights		Indexes (2011=100)		
	2015	2016	January 2015	December 2015	January 2016
	(percent)	(percent)	(percent)	(percent)	(percent)
Production items	74.6	75.6	112.7	104.8	105.9
Feed	15.5	14.5	109.4	98.6	97.2
Feed grains	2.2	2.1	65.8	61.6	61.2
Complete feeds	7.6	7.1	119.0	108.5	107.7
Hay and forages	1.9	1.8	98.9	94.1	90.5
Concentrates	2.5	2.3	122.2	95.8	93.8
Supplements	1.3	1.2	119.6	116.1	114.2
Livestock and poultry	8.3	10.5	160.4	115.9	119.5
Feeder cattle	6.4	8.2	168.9	117.2	120.0
Feeder pigs	0.7	0.8	142.9	90.0	119.3
Milk cow replacements	0.7	0.9	140.1	139.4	128.9
Poultry	0.5	0.6	102.0	102.0	102.0
Seeds	5.0	5.0	114.0	114.3	114.3
Field crops	4.5	4.5	113.1	113.7	113.7
Grasses and legumes	0.5	0.5	122.5	119.9	119.9
Fertilizer	6.4	6.2	90.2	86.2	82.8
Mixed fertilizer	2.8	2.7	86.1	83.9	82.6
Nitrogen	2.7	2.6	96.1	91.1	84.9
Potash and phosphate	0.9	0.9	85.5	78.7	76.7
Chemicals	3.2	3.2	99.3	106.2	106.8
Herbicides	2.0	2.0	99.6	106.6	107.2
Insecticides	0.7	0.7	100.4	106.9	107.5
Fungicides and other	0.5	0.5	96.1	103.3	103.9
Fuels	4.0	3.7	66.8	54.2	50.1
Diesel	2.5	2.3	68.7	52.2	48.4
Gasoline	0.8	0.8	61.2	57.4	55.1
LP gas	0.7	0.6	66.8	57.9	50.2
Supplies and repairs	4.3	4.2	106.4	105.4	105.3
Supplies	1.4	1.4	106.3	105.8	106.1
Repairs	2.9	2.8	106.4	105.2	104.9
Autos and trucks	1.1	1.2	104.9	105.5	105.9
Autos	0.1	0.2	101.5	101.0	101.5
Trucks	1.0	1.0	105.4	106.2	106.6
Machinery	5.2	5.5	114.3	116.4	116.4
Tractors	1.1	1.2	107.8	110.4	110.4
Self-propelled	2.1	2.2	117.6	121.4	120.9
Other machinery	2.0	2.1	114.6	114.7	115.2
Building materials	3.7	3.7	107.6	106.9	106.9
Services	10.8	10.8	113.6	112.9	116.2
Custom rates	1.1	1.1	111.8	111.8	111.8
Other services	9.7	9.7	113.8	113.0	116.7
Rent	7.1	7.1	120.8	120.8	122.0
Cash	3.8	3.8	128.5	128.5	129.0
Share	3.3	3.3	111.8	111.8	114.0
Interest	2.3	2.2	99.9	99.9	105.5
Taxes	2.8	2.8	123.6	123.6	128.4
Wage rates	6.4	6.2	112.0	114.6	114.6
Family living-CPI	13.9	13.2	103.9	105.2	105.3

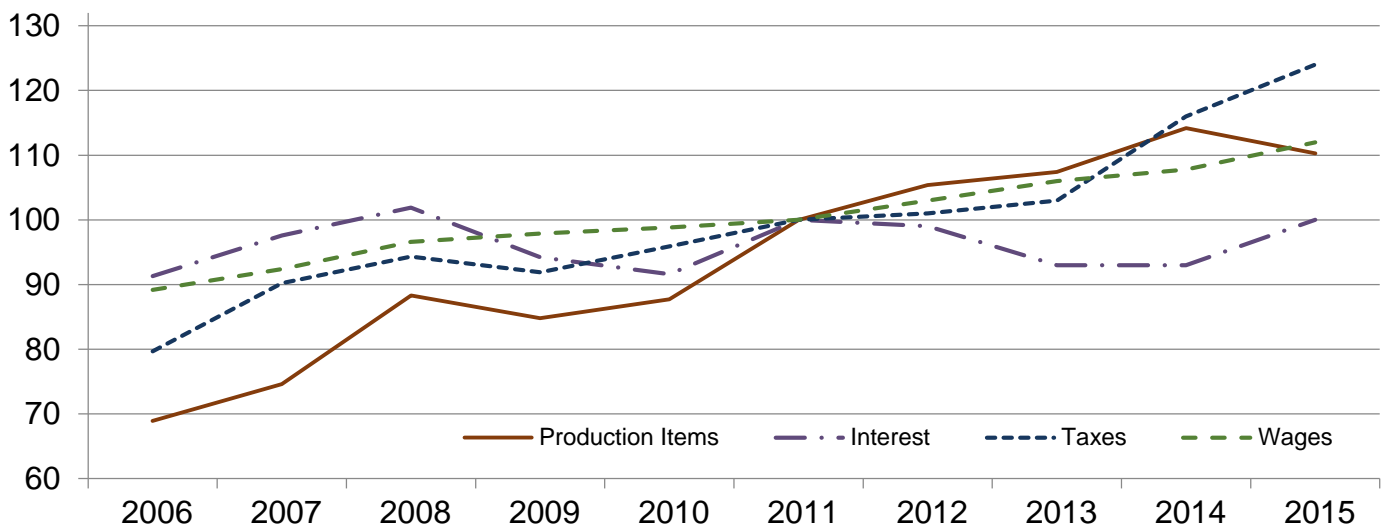
Paid Indexes by Month, All Items and Production Items – United States: 2011=100

Percent

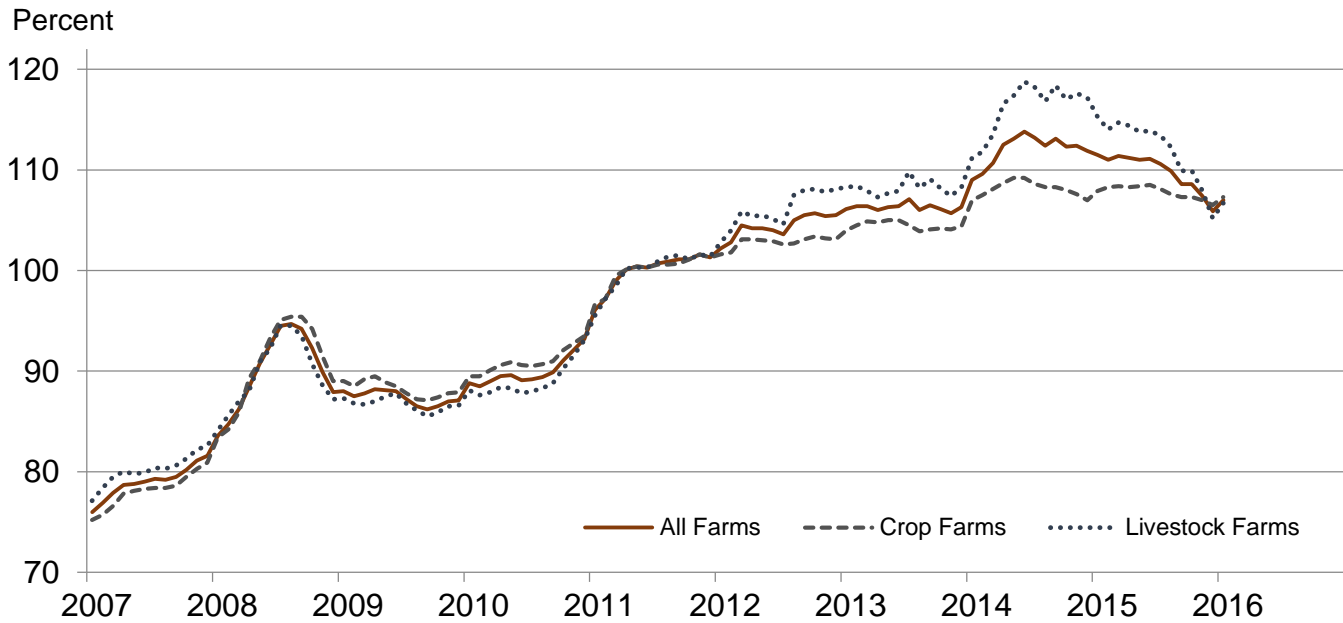


Paid Indexes, Annual Averages, Production Items, Interest, Taxes, and Wages – United States: 2011=100

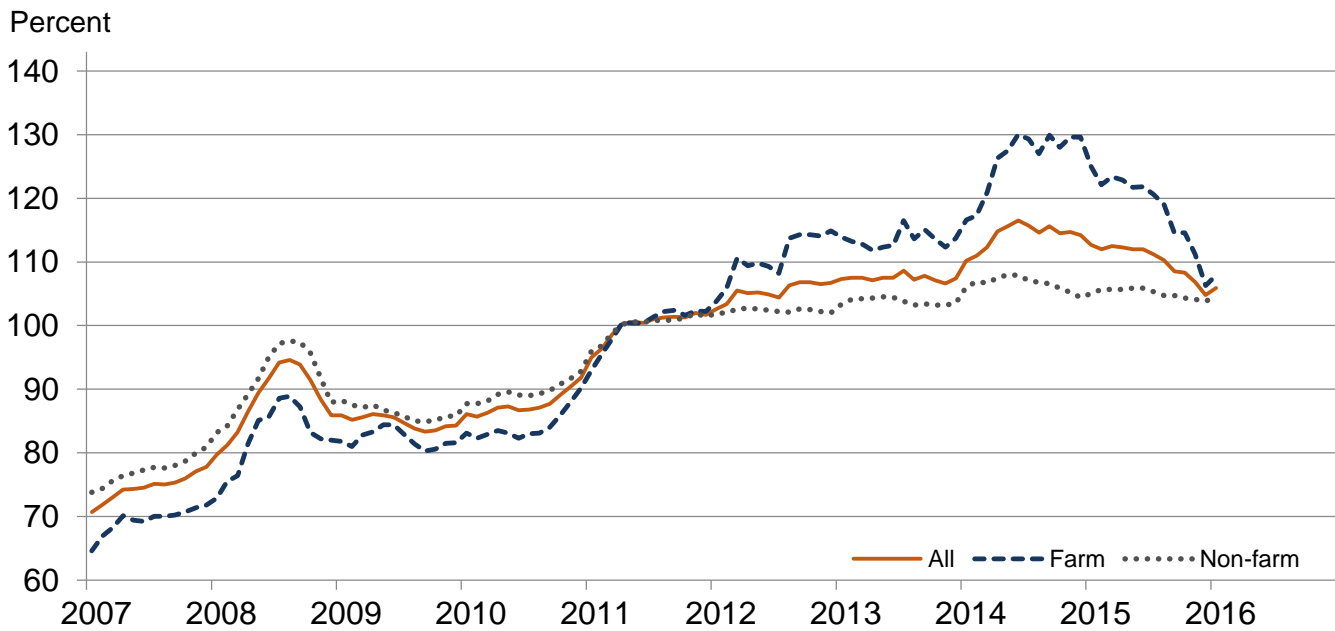
Percent



Paid Indexes by Farm Type and Month, All Items – United States: 2011=100

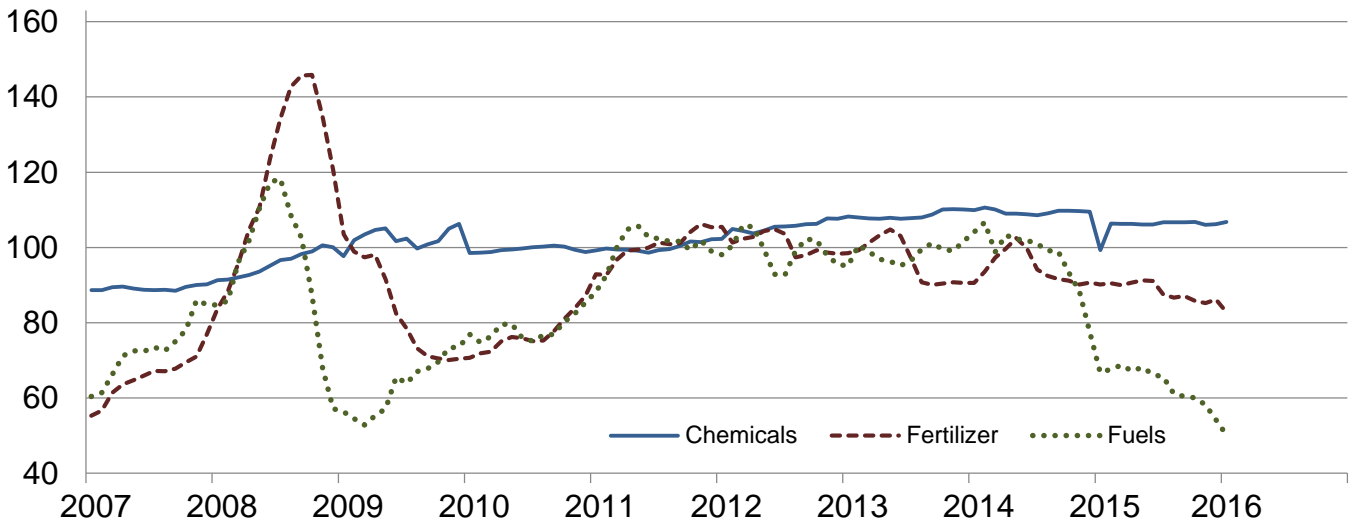


Paid Indexes by Origin and Month, All Production Items – United States: 2011=100



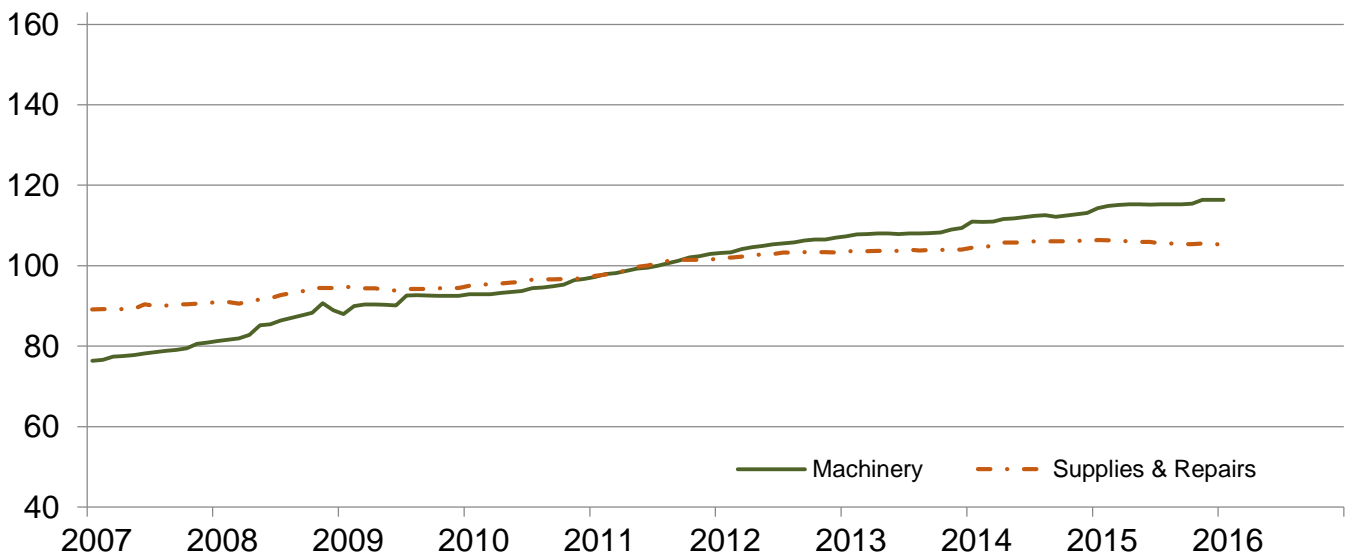
Paid Indexes by Non-farm Origin and Month, Chemicals, Fertilizer, and Fuels – United States: 2011=100

Percent



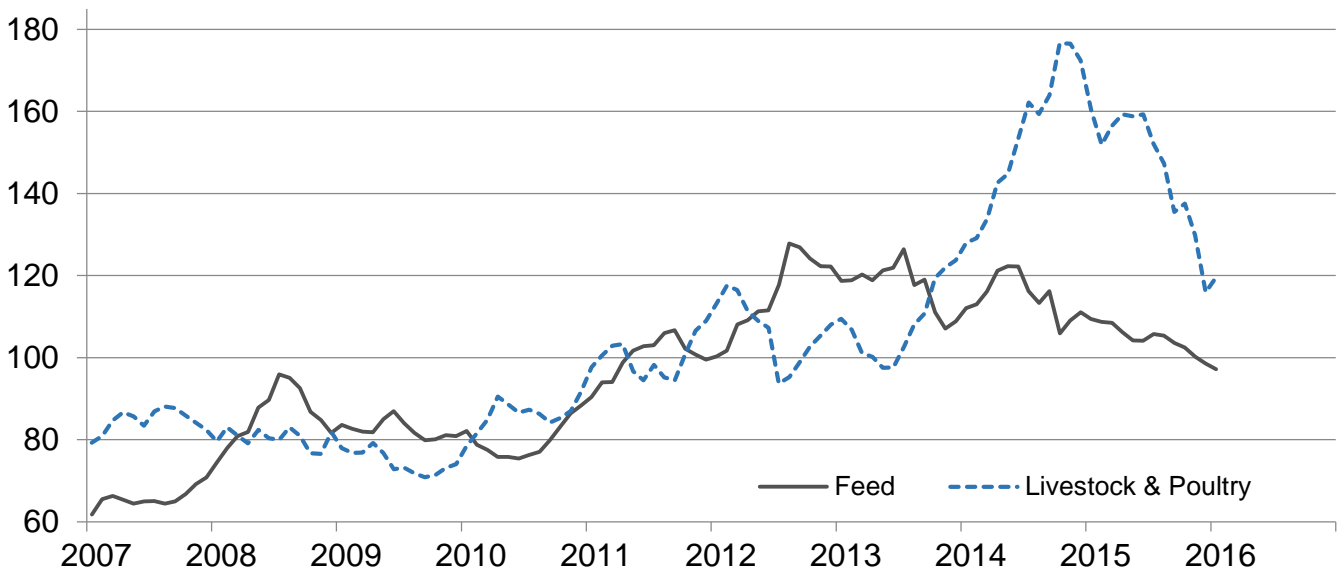
Paid Indexes by Non-farm Origin and Month, Machinery and Supplies & Repairs – United States: 2011=100

Percent



Paid Indexes by Farm Origin and Month, Feed and Livestock & Poultry – United States: 2011=100

Percent



Feed Price Ratios – United States: January 2016 with Comparisons

Feed price ratio ¹	January 2015	December 2015	January 2016
Broiler-feed: pounds of broiler grower feed equal in value to 1 pound of broiler, live weight ²	5.4	4.7	5.2
Market egg feed: pounds of laying feed equal in value to 1 dozen eggs ³	11.4	12.2	11.3
Hog-corn: bushels of corn equal in value to 100 pounds of hog, live weight	15.0	11.7	11.9
Milk-feed: pounds of 16% mixed dairy feed equal in value to 1 pound of whole milk ⁴	2.11	2.27	2.14
Steer & heifer-corn: bushels of corn equal in value to 100 pounds of steer & heifers, live weight	43.5	33.7	36.1
Turkey-feed: pounds of turkey grower equal in value to 1 pound of turkey, live weight ⁵	6.3	9.8	8.7

¹ Effective January 1995, prices of commercial prepared feeds are based on current United States prices received for corn, soybeans, alfalfa hay, and all wheat.

² The price of commercial prepared broiler feed is based on current United States prices received for corn and soybeans. The modeled feed uses 58 percent corn and 42 percent soybeans.

³ The price of commercial prepared layer feed is based on current United States prices received for corn and soybeans. The modeled feed uses 75 percent corn and 25 percent soybeans.

⁴ The price of commercial prepared dairy feed is based on current United States prices received for corn, soybeans, and alfalfa. The modeled feed uses 51 percent corn, 8 percent soybeans, and 41 percent alfalfa.

⁵ The price of commercial prepared turkey feed is based on current United States prices received for corn, soybeans, and wheat. The modeled feed uses 51 percent corn, 28 percent soybeans, and 21 percent wheat.

Prices Received Used to Calculate Feed Price Ratios – United States: January 2016 with Comparisons

[Price data source for livestock and poultry commodities is United States Department of Agriculture's Agriculture Marketing Service]

Item	January 2015	December 2015	January 2016
	(dollars)	(dollars)	(dollars)
Broilers, livepound	0.600	0.470	0.510
Eggs, marketdozen	1.07	1.04	0.968
Hogs, allcwt	57.40	42.80	43.60
Milk, allcwt	17.60	17.20	16.10
Steers and heiferscwt	166.00	123.00	132.00
Turkeys, livepound	0.662	0.886	0.789
Cornbushel	3.82	3.65	3.66
Hay, alfalfaton	170.00	150.00	147.00
Soybeansbushel	10.30	8.76	8.71
Wheat, allbushel	6.15	4.71	4.82

Prices Paid for Feeder Livestock – United States: January 2016 with Comparisons

[Price data source is United States Department of Agriculture's Agriculture Marketing Service]

Item	January 2015	December 2015	January 2016
	(dollars)	(dollars)	(dollars)
Feeder cattle & calvescwt	231.00	161.00	164.00
Feeder pigscwt	200.00	126.00	167.00

Reliability of Prices Paid Estimates

Definition: Prices paid by farmers represent the average costs of inputs purchased by farmers and ranchers to produce agricultural commodities. Conceptually, the average price when multiplied by quantity purchased should equal total producer expenditures for the item.

Survey procedures: The prices paid data are obtained from establishments that sell goods and services to farmers and ranchers. Annually, about 8,500 firms are randomly selected from lists by type of item sold with an average response rate in the range of 75-80 percent. Firms are asked to report the price for the specified item "most commonly bought by farmers" or that was the "volume seller". Approximately 135 items are surveyed each March to represent all production input items purchased. The survey reference period for most items is the five business days centered at the 15th of the month. Separate prices paid surveys are conducted for agricultural chemicals, fuels, feed, fertilizer, machinery, and seed.

Summary and estimation procedures: The annual March Prices Paid Survey is summarized as a non-probability survey. Average prices reported are aggregated to the region and United States level using weights available from expenditure data and other administrative sources. Price recommendations are prepared by the Regional Field Offices and Headquarters for review by the Agricultural Statistics Board in Washington, D.C. Also, the change in price level for individual items surveyed are combined to the regional and United States levels, and are published as prices paid indexes referenced to a specific base period. Prices paid indexes for new autos and trucks, building materials, farm supplies, motor supplies, and marketing containers are updated based on price changes measured in selected Bureau of Labor Statistics (BLS) indexes.

Revisions: Any revisions are published in the monthly and in annual issues of Agricultural Prices. The basis for revision must be supported by additional data that directly affect the level of the estimate. More revisions are likely for March when separate prices paid surveys are conducted, in lieu of BLS indexes, by the USDA to measure price change.

Reliability: Current methods of summarization for the March data are not designed directly to calculate sampling errors. However, analytical measures approximate the United States relative sampling errors for major items around 10 percent. Any non-sampling errors are attributed to such things as the inability to obtain correct information, differences in interpreting questions or definitions, mistakes in coding or processing the data, etc. Efforts are made at each step in the survey process to minimize these non-sampling errors.

Program change: Effective January 2014, the National Agricultural Statistics Service modified the five-year moving weights and updated the base reference period. In January 2015, publication of preliminary prices was suspended, and the annual average index was replaced by an annual index.

As of January 2014, the 1990-1992 base reference period was updated to 2011. Five-year moving average weights are adjusted (normalized) to minimize the effects of price changes. The 1910-1914=100 price indexes, required by statute for computing parity prices, were linked forward based on the changes in the new 2011=100 indexes. The new indexes were constructed by multiplying the ratios of the current prices to the base period prices by the moving average weights.

Information Contacts

General

Troy Joshua, Chief, Environmental, Economics and Demographics Branch (202) 720-6146

Crop Prices Received

Lance Honig, Chief, Crops Branch (202) 720-2127

Anthony Prillaman, Head, Field Crops Section (202) 720-2127

Angie Considine – Cotton, Cotton Ginnings, Sorghum (202) 720-5944

Tony Dahlman – Oats, Soybeans (202) 720-7621

Chris Hawthorn – Corn, Flaxseed, Proso Millet (202) 720-9526

James Johanson – County Estimates, Hay (202) 690-8533

Scott Matthews – Barley, Crop Weather (202) 720-7621

Jean Porter – Rye, Wheat (202) 720-8068

Bianca Pruneda – Peanuts, Rice (202) 720-7688

Travis Thorson – Sunflower, Canola, Safflower, Rapeseed, Mustard Seed (202) 720-7369

Jorge Garcia-Pratts, Head, Fruits, Vegetables and Special Crops Section (202) 720-2127

Vincent Davis – Fresh and Processing Vegetables, Onions, Strawberries (202) 720-2157

Fleming Gibson – Citrus, Coffee, Sugar Crops, Tropical Fruits (202) 720-5412

Greg Lemmons – Berries, Cranberries, Potatoes, Sweet Potatoes (202) 720-4285

Dave Losh – Hops (360) 709-2400

Dan Norris – Austrian Winter Peas, Dry Edible Peas, Lentils, Mint, Mushrooms, Peaches, Pears,
Wrinkled Seed Peas, Dry Beans (202) 720-3250

Daphne Schauber – Floriculture, Grapes, Maple Syrup, Nursery, Tree Nuts (202) 720-4215

Chris Singh – Apples, Apricots, Cherries, Plums, Prunes, Tobacco (202) 720-4288

Livestock Prices Received

Dan Kerestes, Chief, Livestock Branch (202) 720-3570

Scott Hollis, Head, Livestock Section (202) 720-3570

Doug Bounds – Hogs and Pigs (202) 720-3106

Dave Colwell – Sheep and Goats (202) 720-8784

Michael Klamm – Cattle and Cattle on Feed (202) 720-3040

Mike Miller – Milk, Milk Cows (202) 720-3278

Bruce Boess, Head, Poultry and Specialty Commodities Section (202) 720-3570

Heidi Gleich – Broilers (202) 720-0585

Kim Linonis – Eggs (202) 690-8632

Sammy Neal – Turkeys (202) 720-3244

Josh O’Rear – Honey (202) 690-3676

Indexes, Prices Paid, and Parity Prices

Troy Joshua, Chief, Environmental, Economics and Demographics Branch (202) 720-6146

Tony Dorn, Head, Economics Section (202) 690-3223

Daryl Brinkman – Prices Received Indexes, Parity Prices (202) 720-8844

Courtney Charles – Prices Paid, Prices Paid Indexes (202) 690-3229

Greg Gholson – Prices Received Indexes, Parity Prices, Prices Paid Indexes, Prices Paid for Feed,
Fertilizer, Chemicals, Seeds, Fuels, Farm Supplies and Repairs, Farm Machinery, Feeder Livestock,
Poultry Chicks, Feed Price Ratios (202) 690-1348

Joe Hagedorn – Cash Rents, Grazing Fees (202) 690-3231

Access to NASS Reports

For your convenience, you may access NASS reports and products the following ways:

- All reports are available electronically, at no cost, on the NASS web site: <http://www.nass.usda.gov>
- Both national and state specific reports are available via a free e-mail subscription. To set-up this free subscription, visit <http://www.nass.usda.gov> and click on “National” or “State” in upper right corner above “search” box to create an account and select the reports you would like to receive.

For more information on NASS surveys and reports, call the NASS Agricultural Statistics Hotline at (800) 727-9540, 7:30 a.m. to 4:00 p.m. ET, or e-mail: nass@nass.usda.gov.

The U.S. Department of Agriculture (USDA) prohibits discrimination against its customers, employees, and applicants for employment on the basis of race, color, national origin, age, disability, sex, gender identity, religion, reprisal, and where applicable, political beliefs, marital status, familial or parental status, sexual orientation, or all or part of an individual's income is derived from any public assistance program, or protected genetic information in employment or in any program or activity conducted or funded by the Department. (Not all prohibited bases will apply to all programs and/or employment activities.)

If you wish to file a Civil Rights program complaint of discrimination, complete the [USDA Program Discrimination Complaint Form](#) (PDF), found online at http://www.ascr.usda.gov/complaint_filing_cust.html, or at any USDA office, or call (866) 632-9992 to request the form. You may also write a letter containing all of the information requested in the form. Send your completed complaint form or letter to us by mail at U.S. Department of Agriculture, Director, Office of Adjudication, 1400 Independence Avenue, S.W., Washington, D.C. 20250-9410, by fax (202) 690-7442 or email at program.intake@usda.gov.

Price Program Links

Economics and Prices

http://www.nass.usda.gov/Statistics_by_Subject/Economics_and_Prices/index.php

January 2014 Price Program Update

http://www.nass.usda.gov/Surveys/Guide_to_NASS_Surveys/Prices/updates.pdf

January 2015 Price Program Update

http://www.nass.usda.gov/Surveys/Guide_to_NASS_Surveys/Prices/update2015.pdf

April 2015 Price Program Update

http://www.nass.usda.gov/Surveys/Guide_to_NASS_Surveys/Prices/updateApr2015.pdf

February 2016 Price Program Update

http://www.nass.usda.gov/Surveys/Guide_to_NASS_Surveys/Prices/updateFeb2016.pdf