



Agricultural Prices

ISSN: 1937-4216

Released March 30, 2016, by the National Agricultural Statistics Service (NASS), Agricultural Statistics Board, United States Department of Agriculture (USDA).

February Farm Prices Received Index Increased 3.9 Percent

The February Prices Received Index (Agricultural Production), at 92.7, increased 3.9 percent from January 2016. At 84.2, the Crop Production Index increased 4.3 percent. At 99.6, the Livestock Production Index decreased 0.3 percent. Producers received higher prices for hogs, cattle, oranges, and calves but lower prices for broilers, lettuce, dry beans, and corn. In addition to prices, the indexes are influenced by the monthly mix of commodities producers market. Increased monthly movement of cattle, milk, broilers, and hogs offset the decreased marketing of soybeans, corn, dry beans, and wheat.

The Prices Received Index is down 6.4 percent from the previous year. The Food Commodities Index, at 97.6, increased 1.9 percent from the previous month but decreased 8.6 percent from February 2015.

February Prices Paid Index Down 0.4 Percent

The February Index of Prices Paid for Commodities and Services, Interest, Taxes, and Farm Wage Rates (PPITW), at 106.6, is down 0.4 percent from January 2016 and 4.0 percent from February 2015. Lower prices in February for feeder cattle, nitrogen, complete feeds, and diesel more than offset higher prices for feeder pigs, self-propelled machinery, LP gas, and trucks.

Prices Received, Prices Paid, and Ratio of Prices Received to Prices Paid Indexes 2011 Base – United States: February 2016 with Comparisons

Index Group	February 2015	January 2016	February 2016
	(percent)	(percent)	(percent)
Prices received by farmers	99.0	89.2	92.7
Prices paid by farmers	111.0	107.0	106.6
Ratio of prices received to prices paid	89	83	87

Contents

Prices Received by Farmers	4
Prices Received Indexes, 2011 Base – United States: February 2016 with Comparisons	5
Prices Received Indexes, 1910-1914 Base – United States: February 2016 with Comparisons	5
Prices Received Indexes, 2011 Base by Month for Selected Groups – United States: 2015 and 2016	5
Prices Paid Indexes, 2011 Base by Month for Selected Groups – United States: 2015 and 2016	6
Received and Paid Indexes, Annual Average – United States: 2011=100 Chart	6
Crop Farm Received and Paid Indexes, All Items by Quarter – United States: 2011=100 Chart	7
Livestock Farm Received and Paid Indexes All Items by Quarter – United States: 2011=100 Chart	7
Received Indexes by Month, Agricultural, Crop, and Livestock Production – United States: 2011=100 Chart	8
Received Indexes by Month, Feed Grain, Food Grain, and Oilseed – United States: 2011=100 Chart	8
Received Indexes by Month, Fruit & Tree Nut and Vegetable & Melon – United States: 2011=100 Chart	9
Received Indexes by Month, Dairy, Meat Animal, and Poultry & Egg – United States: 2011=100 Chart	9
Prices Received for Field Crops and Fruits – United States: February 2016 with Comparisons	10
Prices Received for Vegetables and Livestock – United States: February 2016 with Comparisons	11
Prices Received for Corn by Month – United States Chart	12
Prices Received for Wheat by Month – United States Chart	12
Prices Received for Upland Cotton by Month – United States Chart	13
Prices Received for Soybeans by Month – United States Chart	13
Prices Received for Cattle by Month – United States Chart	14
Prices Received for Milk by Month – United States Chart	14
Prices Received for Hogs by Month – United States Chart	15
Prices Received for Poultry by Month – United States Chart	15
Prices Received for All Wheat, Corn, and Soybeans by Month – United States: 2016 with Comparisons	16
Prices Received for Beef Cattle and All Hogs by Month – United States: 2016 with Comparisons	16
Prices Received for All Wheat – States and United States: February 2016 with Comparisons	17
Prices Received for Winter Wheat – States and United States: February 2016 with Comparisons	17
Prices Received for Durum Wheat – States and United States: February 2016 with Comparisons	18
Prices Received for Spring Wheat – States and United States: February 2016 with Comparisons	18
Prices Received for Oats – States and United States: February 2016 with Comparisons	18
Prices Received for All Barley – States and United States: February 2016 with Comparisons	19
Prices Received for Malting Barley – States and United States: February 2016 with Comparisons	19
Prices Received for Feed Barley – States and United States: February 2016 with Comparisons	19
Prices Received for Sorghum Grain – States and United States: February 2016 with Comparisons	19
Prices Received for Corn – States and United States: February 2016 with Comparisons	20
Prices Received for Soybeans – States and United States: February 2016 with Comparisons	20
Prices Received for Dry Beans – States and United States: February 2016 with Comparisons	21
Prices Received for Peanuts (in shell) – States and United States: February 2016 with Comparisons	21
Prices Received for Sunflower – States and United States: February 2016 with Comparisons	21
Prices Received for Canola – States and United States: February 2016 with Comparisons	21
Prices Received for Flaxseed – States and United States: February 2016 with Comparisons	22
Prices Received for Upland Cotton and Cottonseed – States and United States: February 2016 with Comparisons	22
Prices Received and Farm Marketings for Upland Cotton and Rice – United States: February 2016 with Comparisons	22
Prices Received for Hay by Type – States and United States: February 2016 with Comparisons	23
Prices Received for Apples – States and United States: February 2016 with Comparisons	23
Prices Received for Citrus Fruits by Utilization – States and United States: February 2015	24
Prices Received for Citrus Fruits by Utilization – States and United States: January 2016	25
Prices Received for Citrus Fruits by Utilization – States and United States: February 2016	26
Prices Received for Potatoes – States and United States: February 2016 with Comparisons	27
Prices Received for All Milk – States and United States: February 2016 with Comparisons	28
Prices Received for Milk Cows – States and United States: January 2016 with Comparisons	28

Commodity Parity Prices and Price as Percent of Parity Price – United States: February 2016 with Comparisons	29
Commodity Parity Prices – United States: February 2016 with Comparisons	30
Commodity Parity Prices – United States: February 2016 with Comparisons (continued).....	31
Reliability of Prices Received Estimates	32
Prices Paid by Farmers.....	33
Prices Paid Indexes and Related Parity Ratios – United States: February 2016 with Comparisons.....	34
Prices Paid Indexes and Annual Weights for Input Components and Sub-components – United States: February 2016 with Comparisons.....	35
Paid Indexes by Month, All Items and Production Items – United States: 2011=100 Chart.....	36
Paid Indexes, Annual Averages, Production Items, Interest, Taxes, and Wages – United States: 2011=100 Chart	36
Paid Indexes by Farm Type and Month, All Items – United States: 2011=100 Chart.....	37
Paid Indexes by Origin and Month, All Production Items – United States: 2011=100 Chart	37
Paid Indexes by Non-Farm Origin and Month, Chemicals, Fertilizer, and Fuels – United States: 2011=100 Chart	38
Paid Indexes by Non-Farm Origin and Month, Machinery and Supplies & Repairs – United States: 2011=100 Chart	38
Paid Indexes by Farm Origin and Month, Feed and Livestock & Poultry – United States: 2011=100 Chart	39
Feed Price Ratios – United States: February 2016 with Comparisons	40
Prices Received Used to Calculate Feed Price Ratios – United States: February 2016 with Comparisons.....	40
Prices Paid for Feeder Livestock – United States: February 2016 with Comparisons.....	40
Reliability of Prices Paid Estimates	41
Information Contacts	42

February Prices Received by Farmers

The February Prices Received Index for agricultural production is 92.7 percent of its 2011 base, up 3.9 percent from the January 2016 index but 6.4 percent below the February 2015 index.

Crop production: The February index, at 84.2, increased 4.3 percent from January and 0.2 percent from February 2015. Index increases for fruit & tree nut production more than offset the index decreases for grain & oilseed and vegetable & melon production.

Grain and oilseed: The February index, at 65.6, is down 3.4 percent from January and 9.6 percent lower than February 2015. The lower food grain production index contributed the most to the decline.

Feed grain: The February index, at 60.3, is 1.8 percent lower than the previous month and 6.1 percent below a year earlier. The corn price, at \$3.57 per bushel, is down 9 cents from last month and 22 cents below February 2015. At \$5.48 per cwt, sorghum grain is 12 cents lower than January and \$2.38 below February a year earlier.

Food grain: At 71.2, the index for February is 9.5 percent lower than the previous month and down 15 percent from a year earlier. The February price for all wheat, at \$4.61 per bushel, is down 21 cents from January and \$1.28 from February 2015.

Oilseed: At 68.4, the index for February is down 1.9 percent from January and 14 percent lower than February 2015. The soybean price, at \$8.51 per bushel, decreased 20 cents from January and \$1.40 from February a year earlier.

Fruit and tree nut: The February index, at 136.1, is up 1.0 percent from January and 12 percent higher than a year earlier. The price increase for oranges during February more than offset the price decrease for strawberries.

Vegetable and melon: At 102.8, the index for February is down 20 percent from the previous month but 18 percent higher than February 2015. The lower lettuce price during February more than offset higher onion and sweet corn prices.

Other crop: The February index, at 74.3, is down 2.9 percent from January and 5.7 percent lower than February 2015. The all hay price, at \$136.00 per ton, is down \$1.00 from January and \$17.00 from February 2015. At 57.2 cents per pound, the price for upland cotton decreased 0.8 cents from January and 0.6 cents from February 2015.

Livestock production: The index for February, at 99.6, declined 0.3 percent from the previous month and down 13 percent from February a year earlier. Compared with a year ago, only the turkey price is higher but prices for cattle, broilers, calves, milk, market eggs, and hogs are lower than a year earlier.

Meat animal: At 106.6, the February index is up 3.5 percent from the previous month but 15 percent lower than a year earlier. At \$49.60 per cwt, the February hog price is up \$6.00 from January but is down 80 cents from a year earlier. The February beef cattle price of \$132.00 per cwt is up \$2.00 from the previous month but \$27.00 lower than February 2015.

Dairy: The index for February, at 78.1, is down 2.5 percent from the previous month and 6.6 percent from February a year earlier. The February all milk price of \$15.70 per cwt is down 40 cents from January and \$1.10 below February 2015.

Poultry and egg: At 106.7, the February index is down 6.3 percent from January and 10 percent less than February 2015. The February market egg price, at 97.0 cents per dozen, increased 0.1 cents from January but is 15 cents less than February 2015. The February broiler price, at 46.0 cents per pound, is down 5.0 cents from January and 8.0 cents from a year earlier. At 79.4 cents per pound, the February turkey price is up 0.5 cents from the previous month and 12.5 cents from February 2015.

Prices Received Indexes, 2011 Base – United States: February 2016 with Comparisons

[Revised historical price indexes for months not shown are available at www.nass.usda.gov]

Index Group	2011 Base		
	February 2015	January 2016	February 2016
	(percent)	(percent)	(percent)
Agricultural production	99.0	89.2	92.7
Crop production	84.0	80.7	84.2
Grain and oilseed	72.6	67.9	65.6
Feed grain	64.2	61.4	60.3
Food grain	84.0	78.7	71.2
Oilseed	79.2	69.7	68.4
Fruit and tree nut	121.9	134.8	136.1
Vegetable and melon	87.4	129.1	102.8
Other crop	78.8	76.5	74.3
Livestock production	113.9	99.9	99.6
Meat animal	125.2	103.0	106.6
Cattle	142.3	115.4	117.0
Hog	75.8	65.6	74.6
Dairy	83.6	80.1	78.1
Poultry and egg	119.0	113.9	106.7
Food commodity	106.8	95.8	97.6

Prices Received Indexes, 1910-1914 Base – United States: February 2016 with Comparisons

[Revised historical price indexes for months not shown are available at www.nass.usda.gov]

Index Group	1910 - 1914 Base		
	February 2015	January 2016	February 2016
	(percent)	(percent)	(percent)
Agricultural production	1021	921	956
Crop production	733	704	735
Livestock production	1322	1160	1157

Prices Received Indexes, 2011 Base by Month for Selected Groups – United States: 2015 and 2016

[Revised historical price indexes for months not shown are available at www.nass.usda.gov. Blank data cells indicate estimation period has not yet begun]

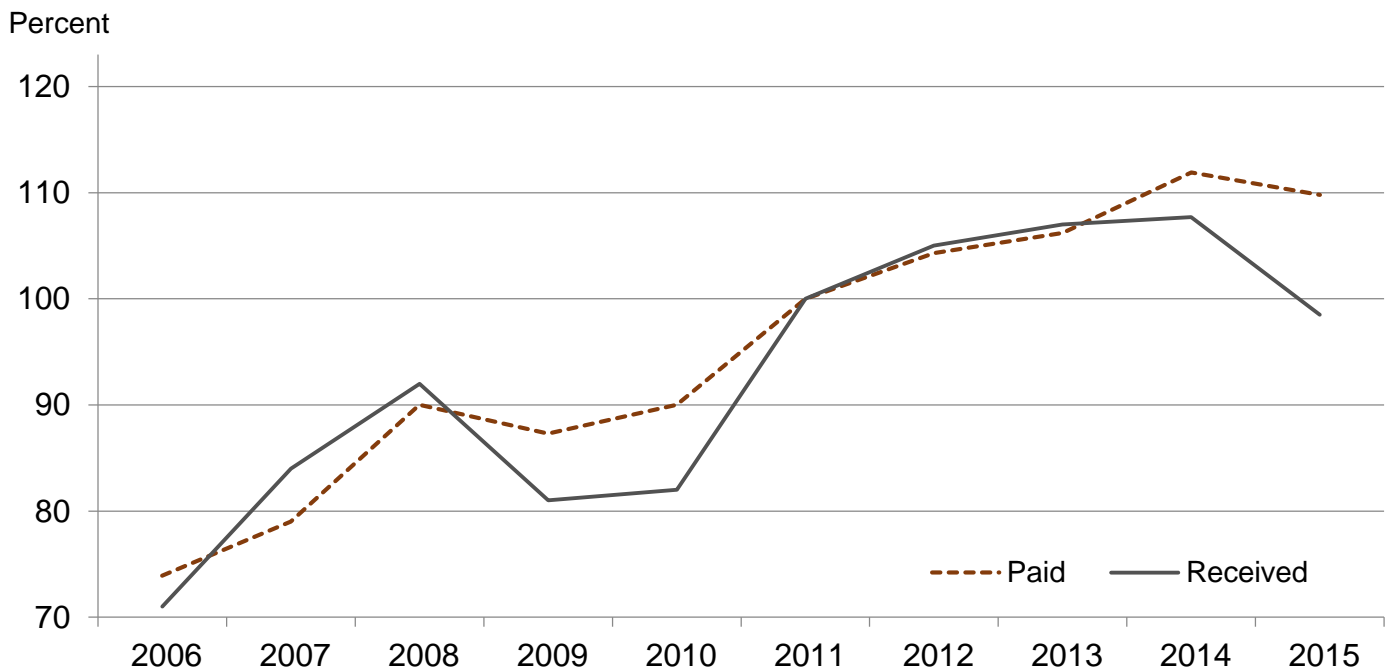
Month	2011 Base							
	Agricultural production		Crop production		Livestock production		Food commodities	
	2015	2016	2015	2016	2015	2016	2015	2016
	(percent)	(percent)	(percent)	(percent)	(percent)	(percent)	(percent)	(percent)
January	97.1	89.2	82.3	80.7	120.5	99.9	108.5	95.8
February	99.0	92.7	84.0	84.2	113.9	99.6	106.8	97.6
March	102.1		85.5		117.3		110.2	
April	103.4		88.6		116.4		110.6	
May	107.1		90.3		121.9		115.6	
June	104.6		88.2		121.0		112.9	
July	99.2		85.9		115.2		105.6	
August	102.1		87.8		117.1		109.6	
September	97.5		87.1		109.3		103.5	
October	88.9		79.7		104.3		94.5	
November	91.9		82.1		105.3		101.3	
December	89.8		84.0		97.1		96.6	

Prices Paid Indexes, 2011 Base by Month for Selected Groups – United States: 2015 and 2016

[Revised historical price indexes for months not shown are available at www.nass.usda.gov. Blank data cells indicate estimation period has not yet begun]

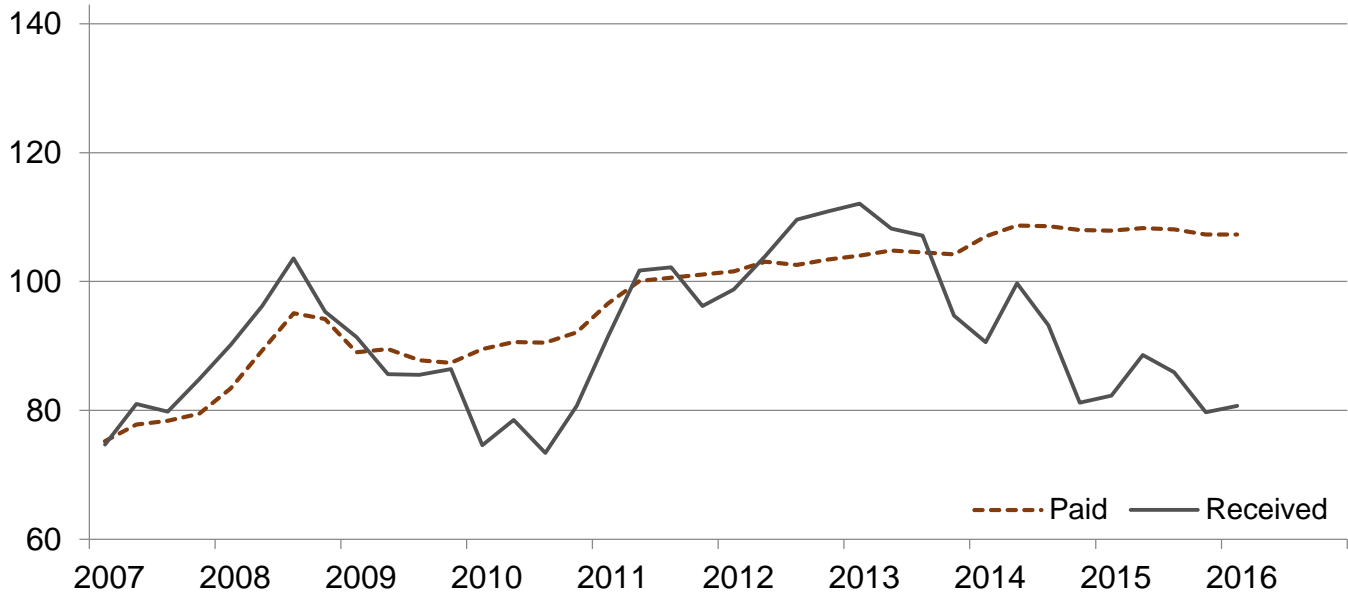
Month	2011 Base							
	All items (PPITW)		Production		Crop sector		Livestock sector	
	2015	2016	2015	2016	2015	2016	2015	2016
	(percent)	(percent)	(percent)	(percent)	(percent)	(percent)	(percent)	(percent)
January	111.5	107.0	112.7	105.9	107.9	107.3	115.3	106.7
February	111.0	106.6	112.0	105.3	108.3	106.9	114.0	106.2
March	111.4		112.5		108.4		114.7	
April	111.2		112.3		108.3		114.4	
May	111.0		112.0		108.4		113.8	
June	111.1		112.0		108.5		113.9	
July	110.6		111.2		108.1		113.4	
August	109.9		110.3		107.6		112.3	
September	108.6		108.5		107.3		109.9	
October	108.5		108.2		107.3		109.9	
November	107.4		106.8		107.0		107.9	
December	105.9		104.8		106.5		105.2	

Received and Paid Indexes, Annual Average – United States: 2011=100



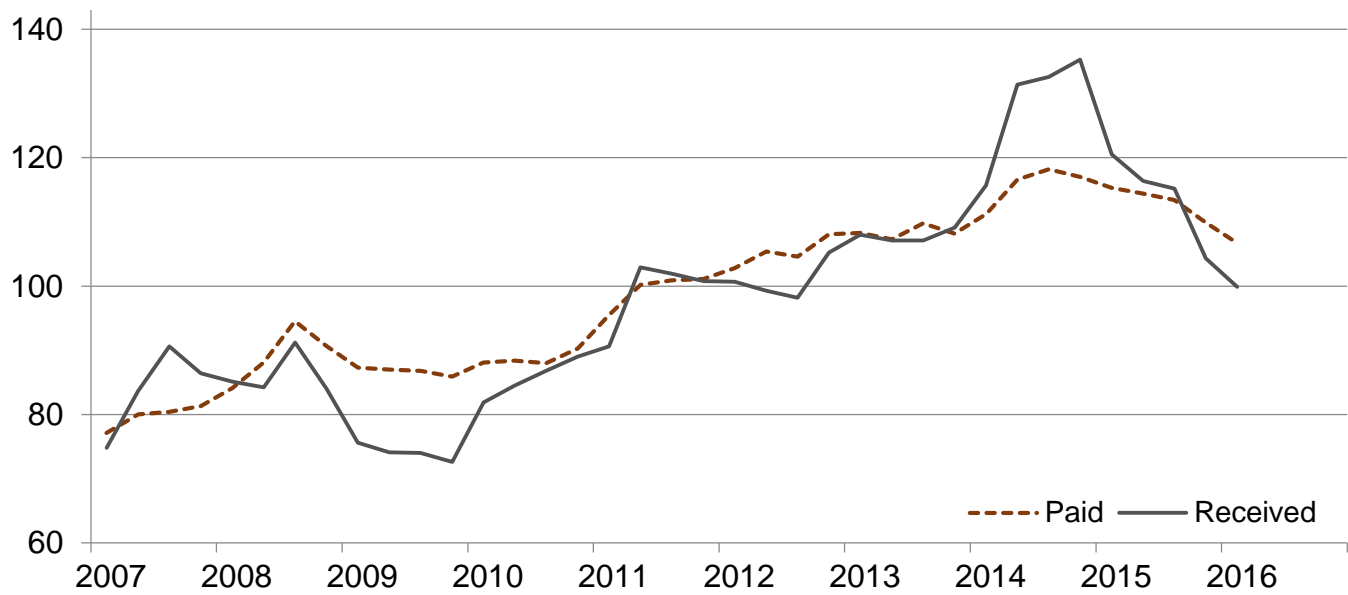
Crop Farm Received and Paid Indexes, All Items by Quarter – United States: 2011=100

Percent

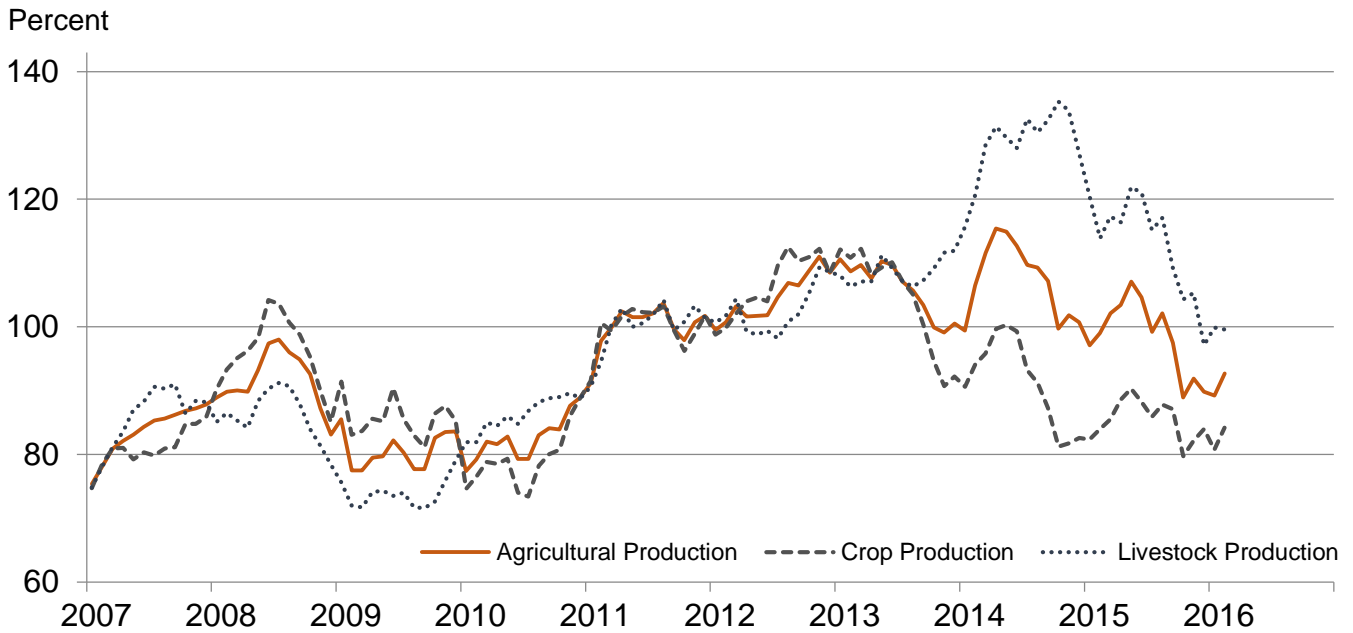


Livestock Farm Received and Paid Indexes, All Items by Quarter – United States: 2011=100

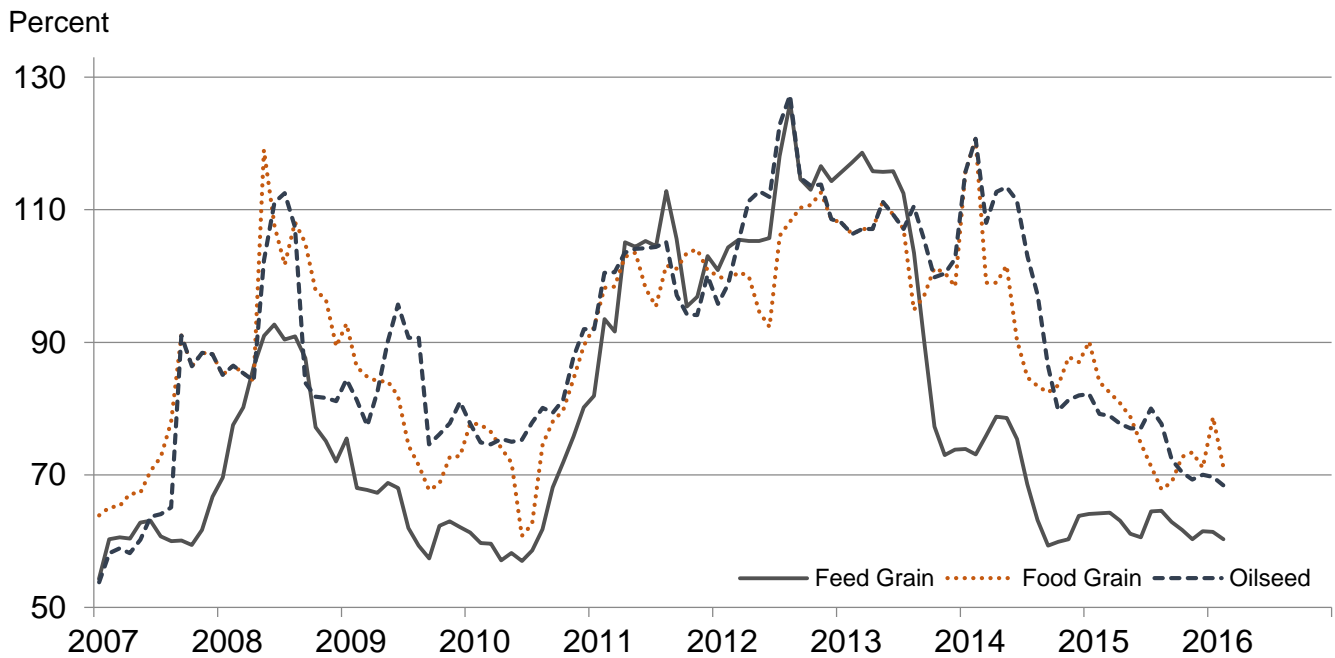
Percent



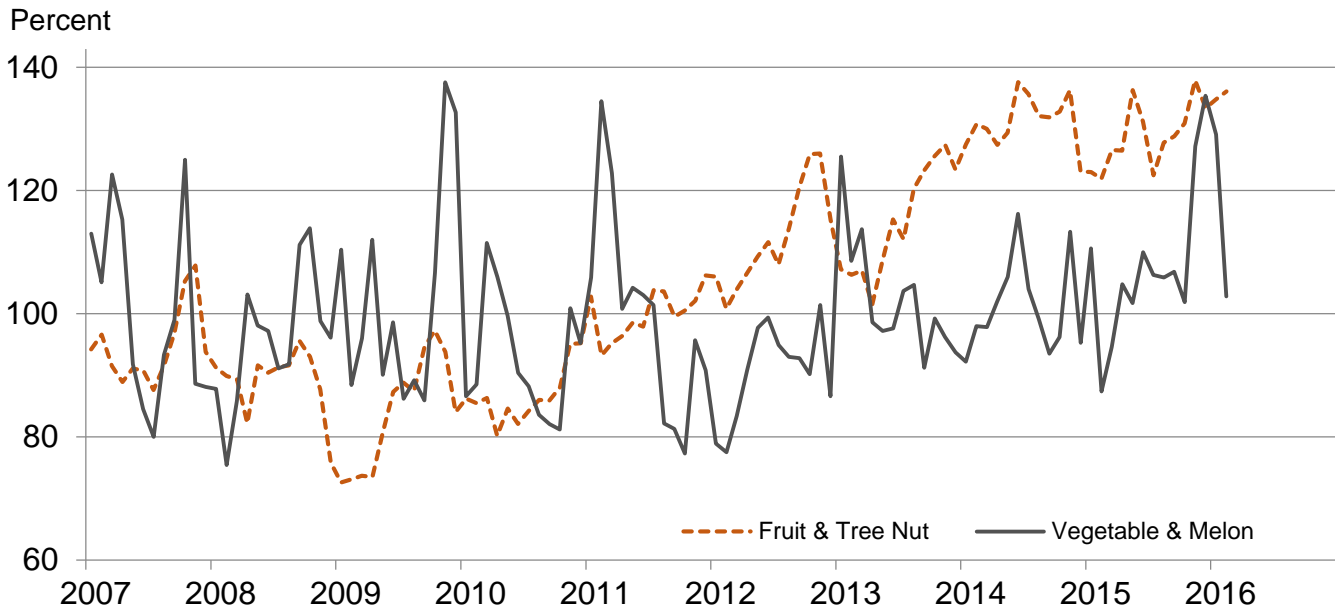
Received Indexes by Month, Agricultural, Crop, and Livestock Production – United States: 2011=100



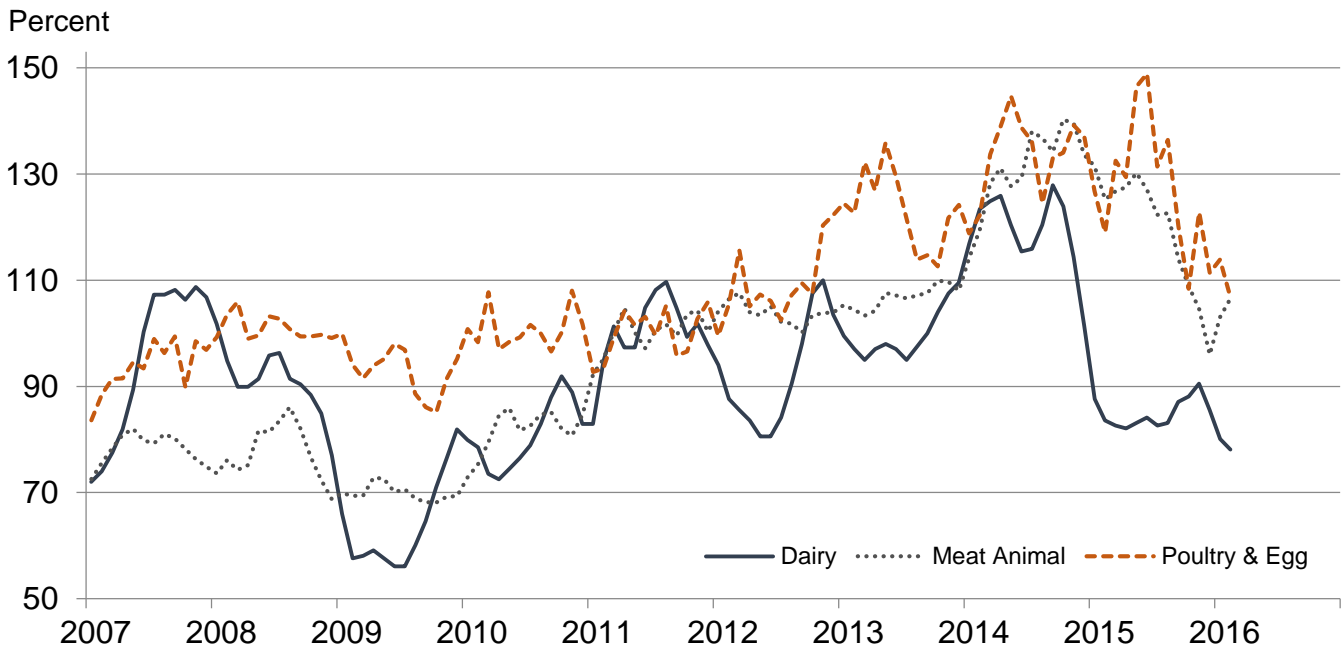
Received Indexes by Month, Feed Grain, Food Grain, and Oilseed – United States: 2011=100



**Received Indexes by Month,
Fruit & Tree Nut and Vegetable & Melon –
United States: 2011=100**



**Received Indexes by Month,
Dairy, Meat Animal, and Poultry & Egg –
United States: 2011=100**



Prices Received for Field Crops and Fruits – United States: February 2016 with Comparisons

Commodity	2011 Base Price	February 2015	January 2016	February 2016	
Field crops					
Austrian winter peas	dollars/cwt	19.50	(S)	(D)	(S)
Barley, all	dollars/bushel	4.79	5.22	5.46	5.50
Feed	dollars/bushel	4.59	2.94	3.14	3.06
Malting	dollars/bushel	4.83	5.67	5.67	5.70
Beans, dry edible	dollars/cwt	34.60	32.10	28.50	24.80
Canola	dollars/cwt	23.10	17.20	13.80	15.30
Chickpeas, all	dollars/cwt	35.70	23.80	28.60	28.90
Large	dollars/cwt	39.20	26.30	34.00	32.60
Small	dollars/cwt	23.40	19.70	22.20	24.80
Corn	dollars/bushel	6.02	3.79	3.66	3.57
Cotton, Upland	dollars/pound	0.880	0.578	0.580	0.572
Cottonseed	dollars/ton	131.00	196.00	228.00	236.00
Flaxseed	dollars/bushel	14.20	11.50	8.45	8.10
Hay, all, baled	dollars/ton	159.00	153.00	137.00	136.00
Alfalfa	dollars/ton	176.00	167.00	147.00	142.00
Other	dollars/ton	119.00	131.00	121.00	125.00
Lentils	dollars/cwt	27.50	29.70	31.40	36.00
Oats	dollars/bushel	3.42	3.08	1.92	2.21
Peanuts, in-shell	dollars/pound	0.252	0.222	0.193	0.197
Peas, dry edible	dollars/cwt	13.60	12.30	13.20	14.90
Potatoes	dollars/cwt	9.78	9.14	8.58	8.48
Rice, all	dollars/cwt	13.70	12.80	13.60	12.30
Long	dollars/cwt	12.30	11.80	11.50	11.50
Medium and short	dollars/cwt	18.40	17.10	16.90	15.00
Sorghum grain	dollars/cwt	10.70	7.86	5.60	5.48
Soybeans	dollars/bushel	12.50	9.91	8.71	8.51
Sunflowers, all	dollars/cwt	29.00	21.50	20.00	20.50
Wheat, all	dollars/bushel	7.44	5.89	4.82	4.61
Winter	dollars/bushel	6.93	5.70	4.63	4.47
Durum	dollars/bushel	9.22	10.10	6.60	5.97
Other spring	dollars/bushel	8.33	5.55	4.80	4.56
Hard red winter	dollars/bushel	7.07	5.54	4.37	4.22
Soft red winter	dollars/bushel	6.77	5.48	4.47	4.55
Hard red spring	dollars/bushel	8.38	5.53	4.77	4.54
White	dollars/bushel	6.58	6.34	5.47	4.93
Fruits					
Citrus, equivalent on-tree					
Grapefruit	dollars/box	7.47	5.43	10.05	8.88
Lemons	dollars/box	12.30	13.44	22.77	21.97
Oranges	dollars/box	8.16	9.85	9.30	9.78
Tangelos	dollars/box	3.50	8.06	(S)	(S)
Tangerines and mandarins	dollars/box	15.30	(D)	(D)	(D)
Non-citrus, fresh					
Apples ¹	dollars/pound	0.325	0.292	0.453	0.449
Grapes ¹	dollars/ton	628.00	(S)	(S)	(S)
Peaches ¹	dollars/ton	507.00	(S)	(S)	(S)
Pears ¹	dollars/ton	559.00	729.00	848.00	790.00
Strawberries	dollars/cwt	104.00	101.00	195.00	167.00

(D) Withheld to avoid disclosing data for individual operations.

(S) Insufficient number of reports to establish an estimate.

¹ Equivalent packinghouse-door returns for California, Michigan, New York (apples only), Pennsylvania (apples only), and Washington (apples, peaches, and pears). Prices as sold for other states.

Prices Received for Vegetables and Livestock – United States: February 2016 with Comparisons

[Price data source for livestock and poultry commodities is United States Department of Agriculture's Agricultural Marketing Service]

Commodity	2011 Base Price	February 2015	January 2016	February 2016
Vegetables, fresh ¹				
Asparagus	dollars/cwt 37.50	(NA)	(D)	115.00
Beans, snap ²	dollars/cwt 69.00	53.90	95.90	125.00
Broccoli	dollars/cwt 41.60	29.90	50.80	26.80
Cantaloupes ²	dollars/cwt 16.50	(NA)	(NA)	(NA)
Carrots	dollars/cwt 30.80	33.00	34.40	35.80
Cauliflower	dollars/cwt 47.00	40.10	59.10	45.30
Celery	dollars/cwt 22.50	14.60	67.20	29.90
Corn, sweet	dollars/cwt 30.70	40.00	43.80	58.70
Cucumbers ²	dollars/cwt 18.70	27.60	35.00	(NA)
Lettuce	dollars/cwt 24.30	15.20	42.00	20.90
Onions ³	dollars/cwt 11.90	7.67	14.40	15.30
Tomatoes	dollars/cwt 51.20	49.40	108.00	88.30
Livestock				
Calves	dollars/cwt 142.00	277.00	196.00	201.00
Cattle, all beef	dollars/cwt 115.00	159.00	130.00	132.00
Cows ⁴	dollars/cwt 71.60	110.00	74.20	77.50
Steers and heifers	dollars/cwt 117.00	161.00	132.00	134.00
Milk cows ^{5 6}	dollars/head 1,420.00	1,990.00	1,980.00	1,830.00
Hogs, all	dollars/cwt 66.50	50.40	43.60	49.60
Barrows and gilts	dollars/cwt 66.80	50.80	44.00	49.80
Sows	dollars/cwt 57.90	39.70	31.50	45.40
Dairy and poultry				
Milk, all ⁷	dollars/cwt 20.10	16.80	16.10	15.70
Fat test	percent 3.71	3.82	3.89	3.84
Broilers, live ⁸	dollars/pound 0.459	0.540	0.510	0.460
Eggs, all ⁹	dollars/dozen 0.969	1.29	1.18	1.18
Market ^{9 10}	dollars/dozen 0.796	1.12	0.969	0.970
Turkeys, live ¹¹	dollars/pound 0.680	0.669	0.789	0.794
Adjusted for seasonal variation				
Eggs, all	dollars/dozen 0.979	1.31	1.29	1.20
Seasonal factor	percent 101	98	92	99
Milk, all ⁷	dollars/cwt 20.20	17.30	16.50	16.10
Seasonal factor	percent 100	97	98	97

(D) Withheld to avoid disclosing data for individual operations.

(NA) Not available.

¹ Beginning January 2006, point of first sale. FOB shipping point for prior years.

² Monthly estimates began January 1995.

³ Includes some processing.

⁴ Beef cows and cull dairy cows sold for slaughter.

⁵ Animals sold for dairy herd replacement only. Prices available for January, April, July, and October.

⁶ Milk cow prices are for January 2015, October 2015, and January 2016.

⁷ Before deductions for hauling. Includes quality, quantity, and other premiums. Excludes hauling subsidies.

⁸ Live weight equivalent price.

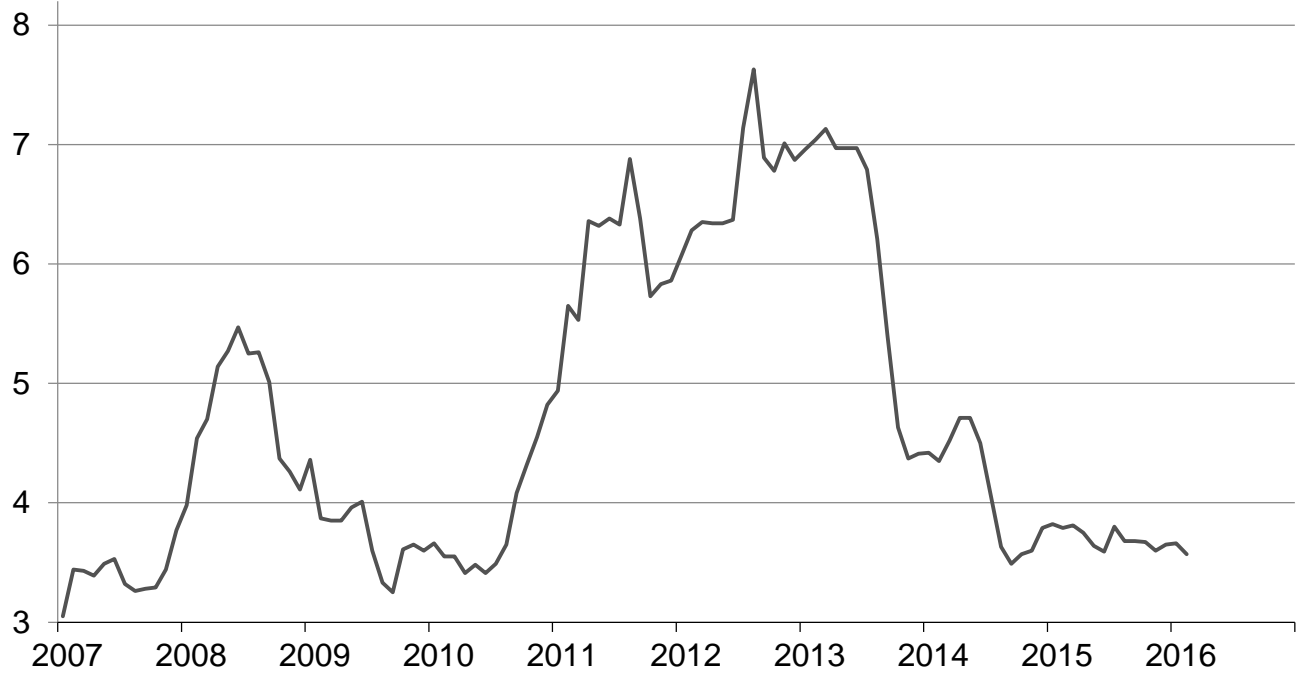
⁹ Mid-month price.

¹⁰ Also referred to as table eggs.

¹¹ Live weight equivalent price is used when actual live weight price is not available. Beginning January 2011, price reflects FOB shipping point basis. Prior year price reflects delivered basis.

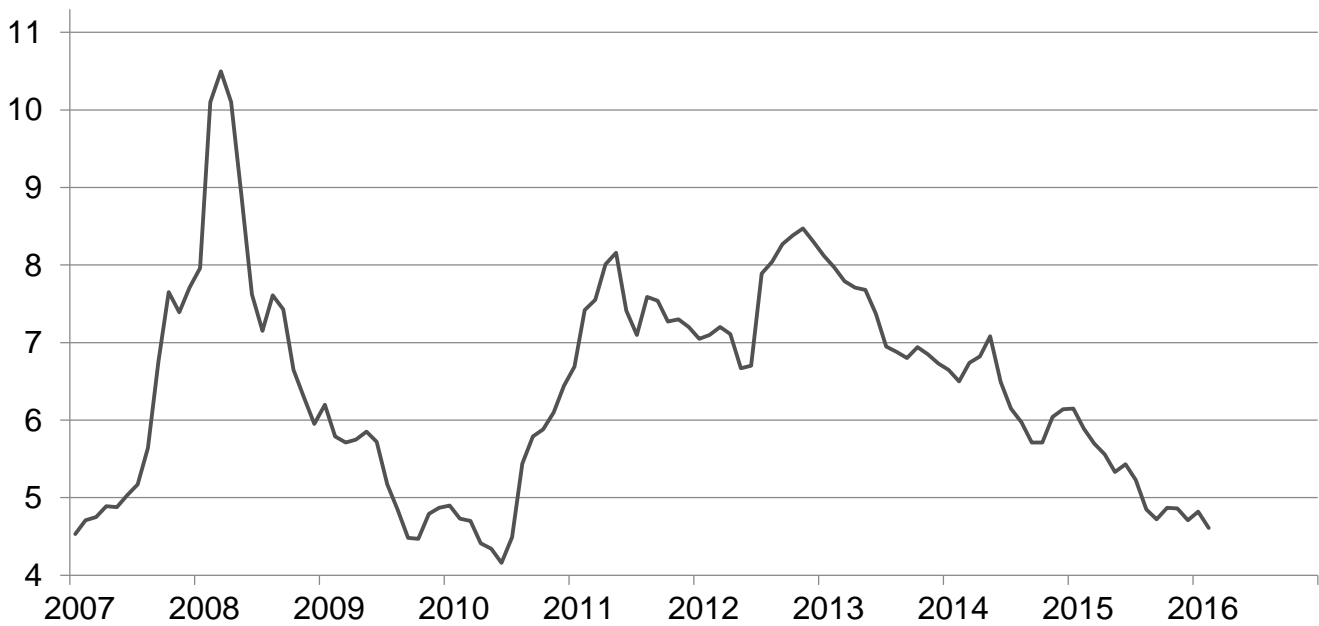
Prices Received for Corn by Month – United States

Dollars per bushel



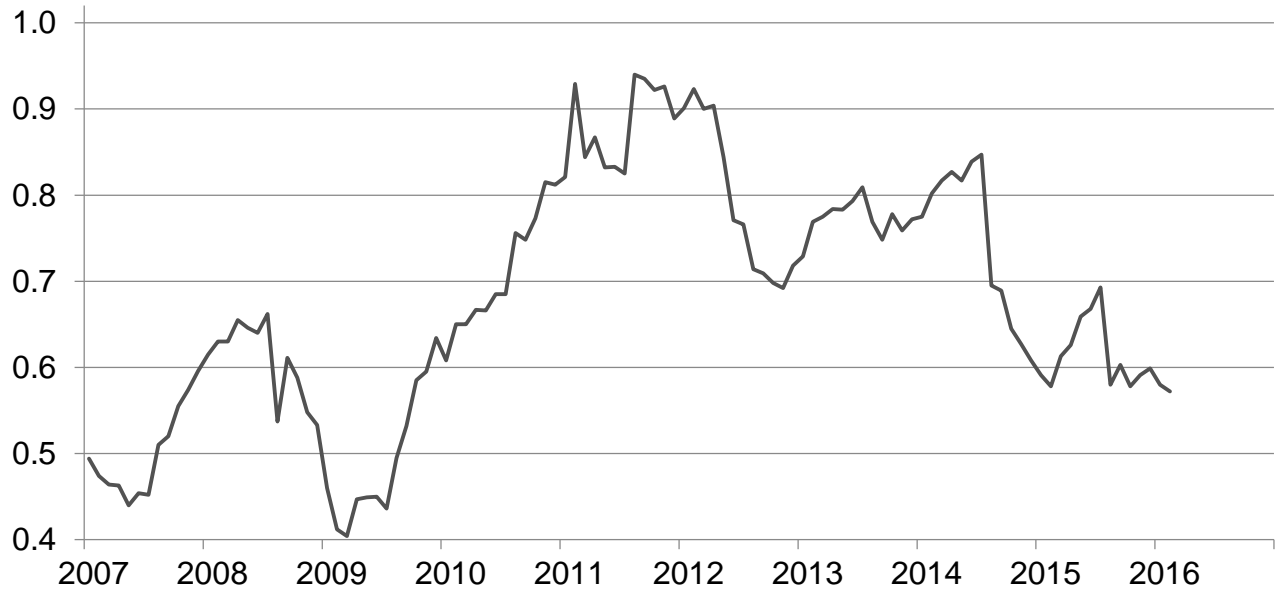
Prices Received for Wheat by Month – United States

Dollars per bushel



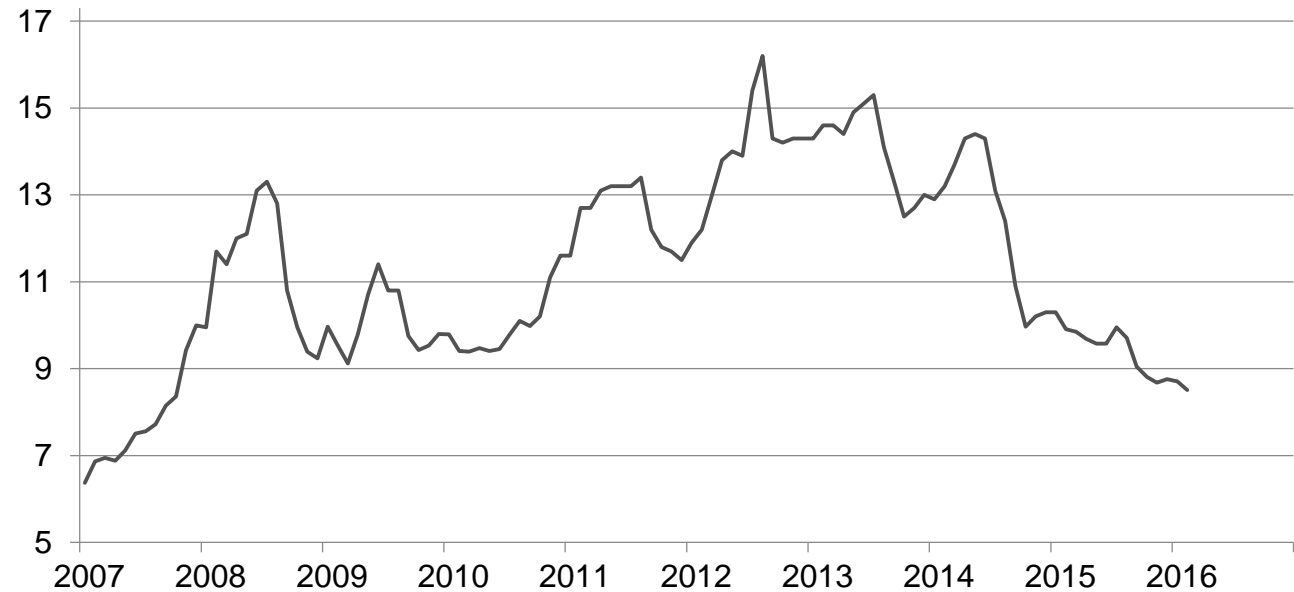
Prices Received for Upland Cotton by Month – United States

Dollars per pound



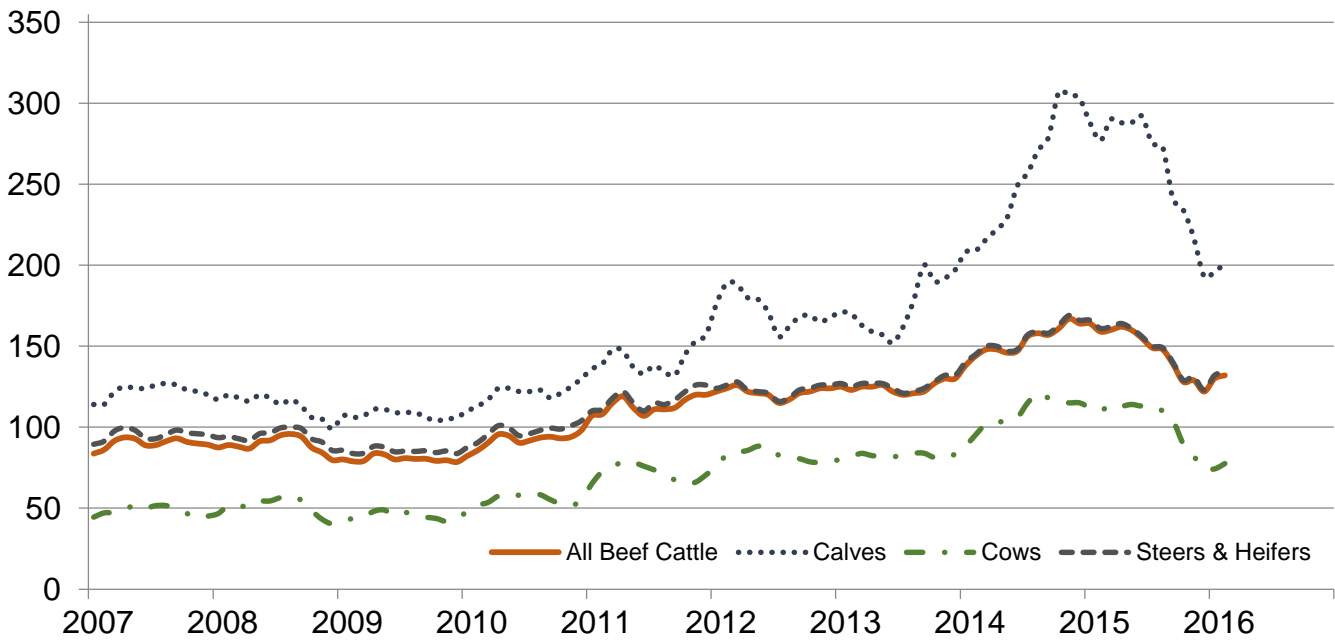
Prices Received for Soybeans by Month – United States

Dollars per bushel



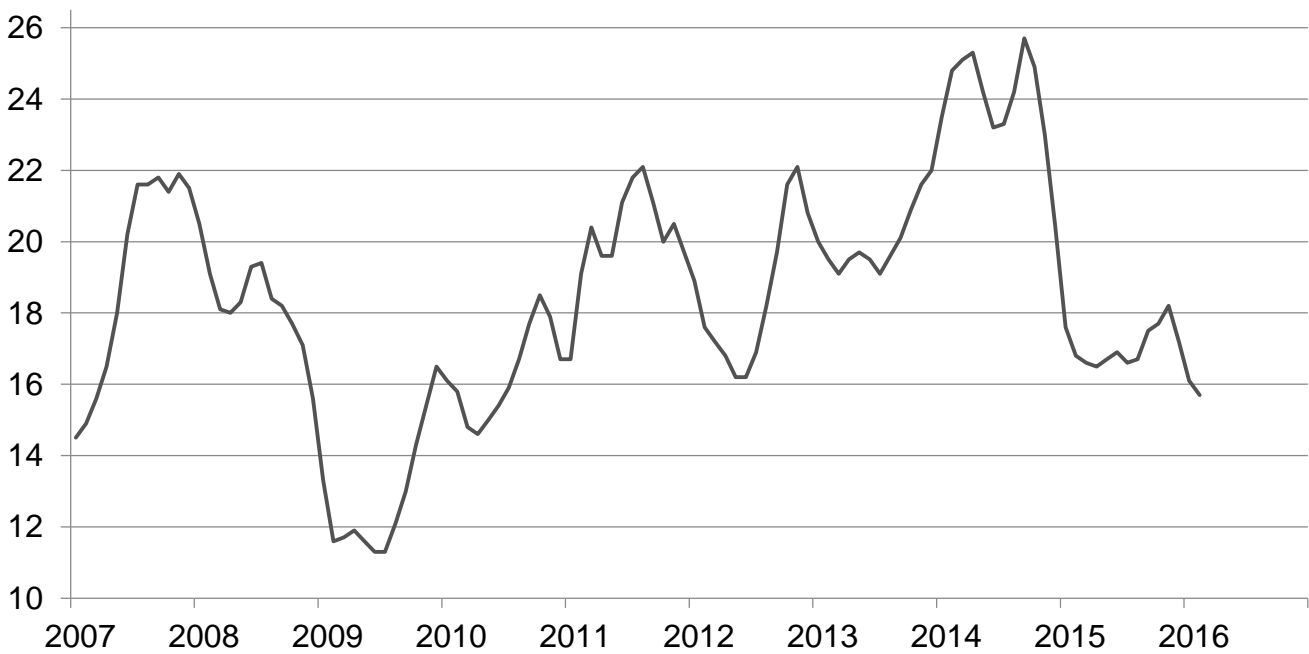
Prices Received for Cattle by Month – United States

Dollars per cwt



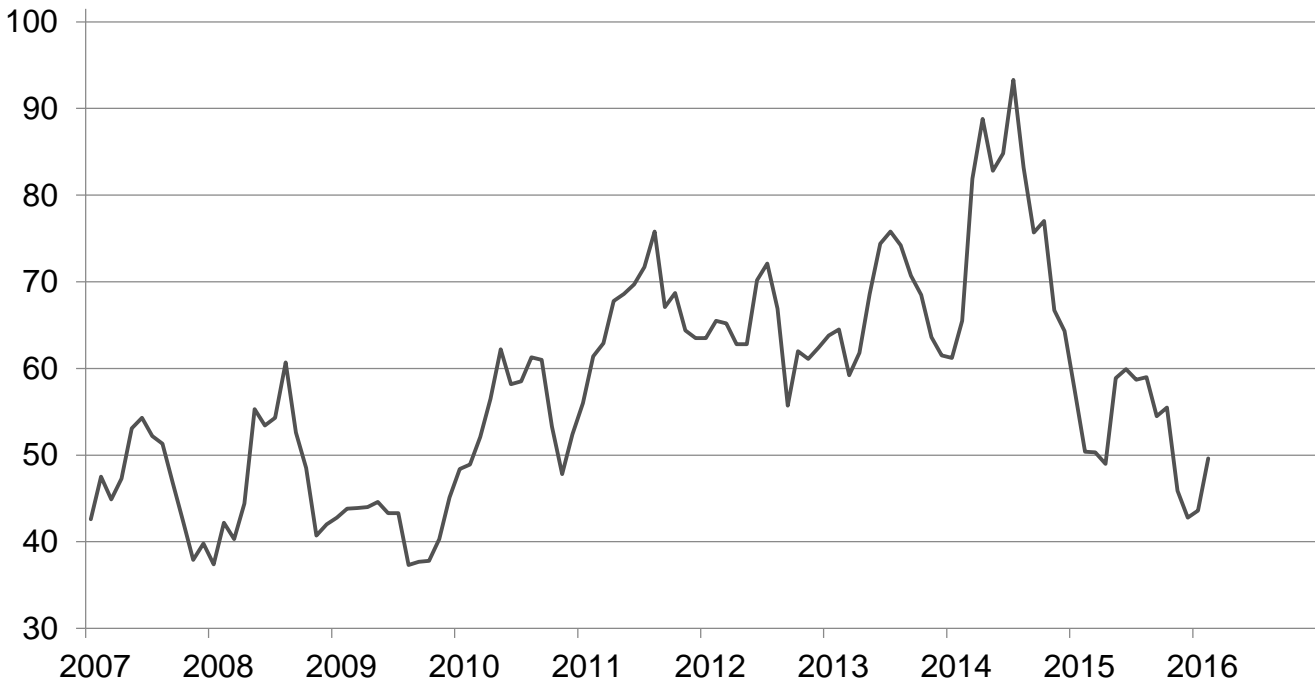
Prices Received for Milk by Month – United States

Dollars per cwt



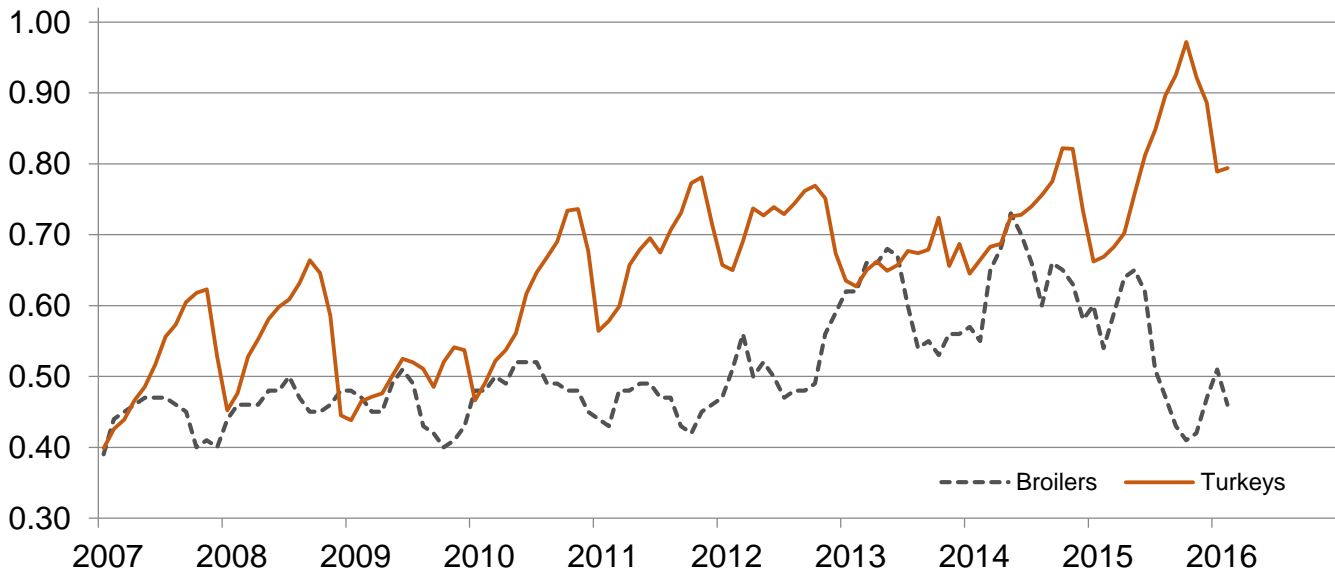
Prices Received for Hogs by Month – United States

Dollars per cwt



Prices Received for Poultry by Month – United States

Dollars per pound



Prices Received for All Wheat, Corn, and Soybeans by Month – United States: 2016 with Comparisons

[Blank data cells indicate estimation period has not yet begun]

Month	All wheat			Corn			Soybeans		
	2014	2015	2016	2014	2015	2016	2014	2015	2016
	(dollars per bushel)	(dollars per bushel)	(dollars per bushel)	(dollars per bushel)	(dollars per bushel)	(dollars per bushel)	(dollars per bushel)	(dollars per bushel)	(dollars per bushel)
January	6.65	6.15	4.82	4.42	3.82	3.66	12.90	10.30	8.71
February	6.50	5.89	4.61	4.35	3.79	3.57	13.20	9.91	8.51
March	6.74	5.70		4.52	3.81		13.70	9.85	
April	6.82	5.56		4.71	3.75		14.30	9.69	
May	7.08	5.33		4.71	3.64		14.40	9.58	
June	6.49	5.43		4.50	3.59		14.30	9.58	
July	6.15	5.23		4.06	3.80		13.10	9.95	
August	5.97	4.85		3.63	3.68		12.40	9.71	
September	5.71	4.72		3.49	3.68		10.90	9.05	
October	5.71	4.87		3.57	3.67		9.97	8.81	
November	6.04	4.86		3.60	3.60		10.20	8.68	
December	6.14	4.71		3.79	3.65		10.30	8.76	

Prices Received for Beef Cattle and All Hogs by Month – United States: 2016 with Comparisons

[Blank data cells indicate estimation period has not yet begun]

Month	Beef cattle ¹			All hogs ²		
	2014	2015	2016	2014	2015	2016
	(dollars per cwt)	(dollars per cwt)	(dollars per cwt)	(dollars per cwt)	(dollars per cwt)	(dollars per cwt)
January	138.00	164.00	130.00	61.20	57.40	43.60
February	144.00	159.00	132.00	65.50	50.40	49.60
March	148.00	160.00		81.90	50.30	
April	148.00	162.00		88.80	49.00	
May	146.00	160.00		82.80	58.90	
June	147.00	155.00		84.80	59.90	
July	156.00	149.00		93.30	58.70	
August	158.00	148.00		83.20	59.00	
September	157.00	139.00		75.70	54.50	
October	161.00	128.00		77.00	55.50	
November	167.00	129.00		66.70	45.90	
December	164.00	122.00		64.30	42.80	

¹ Cows and steers & heifers.

² Barrows & gilts and sows.

Prices Received for All Wheat – States and United States: February 2016 with Comparisons

State	February 2015	January 2016	February 2016
	(dollars per bushel)	(dollars per bushel)	(dollars per bushel)
Arizona	(S)	(D)	(D)
Arkansas	5.96	(D)	4.44
California	(D)	5.40	5.18
Colorado	5.45	4.06	4.37
Idaho	6.03	4.95	(D)
Illinois	5.34	3.68	3.61
Indiana	5.48	4.59	5.14
Kansas	5.35	4.34	4.01
Michigan	5.93	5.14	5.59
Minnesota	5.67	4.79	4.46
Missouri	4.95	3.52	3.94
Montana	6.48	5.05	4.74
Nebraska	5.63	4.06	3.63
North Carolina	5.43	5.46	5.19
North Dakota	5.72	4.99	4.69
Ohio	5.47	4.41	4.41
Oklahoma	5.66	4.34	4.27
Oregon	6.60	5.31	4.87
South Dakota	5.45	4.81	4.35
Texas	5.52	3.61	3.72
Washington	6.34	5.59	5.03
United States	5.89	4.82	4.61

(D) Withheld to avoid disclosing data for individual operations.

(S) Insufficient number of reports to establish an estimate.

Prices Received for Winter Wheat – States and United States: February 2016 with Comparisons

State	February 2015	January 2016	February 2016
	(dollars per bushel)	(dollars per bushel)	(dollars per bushel)
Arkansas	5.96	(D)	4.44
California	(D)	5.40	5.18
Colorado	5.45	4.05	4.44
Idaho	5.93	4.87	4.76
Illinois	5.34	3.68	3.61
Indiana	5.48	4.59	5.14
Kansas	5.35	4.34	4.01
Michigan	5.93	5.14	5.59
Minnesota	(D)	(D)	(D)
Missouri	4.95	3.52	3.94
Montana	5.85	4.80	4.49
Nebraska	5.63	4.06	3.63
North Carolina	5.43	5.46	5.19
North Dakota	4.22	3.42	3.53
Ohio	5.47	4.41	4.41
Oklahoma	5.66	4.34	4.27
Oregon	6.60	5.31	4.83
South Dakota	5.24	4.23	4.07
Texas	5.52	3.61	3.72
Washington	6.26	5.58	4.98
United States	5.70	4.63	4.47

(D) Withheld to avoid disclosing data for individual operations.

Prices Received for Durum Wheat – States and United States: February 2016 with Comparisons

State	February 2015	January 2016	February 2016
	(dollars per bushel)	(dollars per bushel)	(dollars per bushel)
Arizona	(S)	(D)	(D)
California	(S)	(S)	(S)
Idaho	(D)	(S)	(D)
Montana	10.80	(D)	(D)
North Dakota	9.56	6.40	5.92
United States	10.10	6.60	5.97

(D) Withheld to avoid disclosing data for individual operations.

(S) Insufficient number of reports to establish an estimate.

Prices Received for Spring Wheat – States and United States: February 2016 with Comparisons

State	February 2015	January 2016	February 2016
	(dollars per bushel)	(dollars per bushel)	(dollars per bushel)
Colorado	(D)	(D)	(D)
Idaho	6.27	5.16	(D)
Minnesota	5.68	4.80	4.46
Montana	5.91	4.89	4.79
North Dakota	5.25	4.64	4.44
Oregon	6.65	5.34	5.15
South Dakota	5.59	4.94	4.41
Washington	6.82	5.67	5.28
United States	5.55	4.80	4.56

(D) Withheld to avoid disclosing data for individual operations.

Prices Received for Oats – States and United States: February 2016 with Comparisons

State	February 2015	January 2016	February 2016
	(dollars per bushel)	(dollars per bushel)	(dollars per bushel)
Illinois	(D)	(D)	(D)
Iowa	4.26	2.62	2.41
Michigan	(D)	2.53	(D)
Minnesota	2.97	2.31	1.90
Montana	(D)	(D)	(D)
Nebraska	3.39	(D)	(D)
New York	(D)	(S)	2.15
North Dakota	2.26	2.32	(D)
Oregon	(S)	(S)	(D)
Pennsylvania	4.26	(D)	(D)
South Dakota	3.20	2.10	1.88
Texas	(S)	(S)	(D)
Wisconsin	3.58	1.48	1.67
United States	3.08	1.92	2.21

(D) Withheld to avoid disclosing data for individual operations.

(S) Insufficient number of reports to establish an estimate.

Prices Received for All Barley – States and United States: February 2016 with Comparisons

State	February 2015	January 2016	February 2016
	(dollars per bushel)	(dollars per bushel)	(dollars per bushel)
California	(S)	5.04	(D)
Colorado	(D)	6.24	6.24
Idaho	5.53	5.68	(D)
Minnesota	5.43	5.00	4.95
Montana	5.05	5.88	5.97
North Dakota	5.20	4.77	4.79
Oregon	(D)	(D)	2.66
Utah	(D)	3.48	(D)
Washington	3.96	3.18	3.31
Wyoming	(D)	(D)	(D)
United States	5.22	5.46	5.50

(D) Withheld to avoid disclosing data for individual operations.

(S) Insufficient number of reports to establish an estimate.

Prices Received for Malting Barley – States and United States: February 2016 with Comparisons

State	February 2015	January 2016	February 2016
	(dollars per bushel)	(dollars per bushel)	(dollars per bushel)
Idaho	6.13	6.04	(D)
Minnesota	5.33	5.04	4.95
Montana	5.82	5.97	6.10
North Dakota	5.38	4.96	4.98
Wyoming	(D)	(D)	(D)
United States	5.67	5.67	5.70

(D) Withheld to avoid disclosing data for individual operations.

Prices Received for Feed Barley – States and United States: February 2016 with Comparisons

State	February 2015	January 2016	February 2016
	(dollars per bushel)	(dollars per bushel)	(dollars per bushel)
Idaho	2.82	3.23	3.47
Minnesota	(D)	3.53	(S)
Montana	2.43	2.66	2.76
North Dakota	2.87	2.40	2.90
Wyoming	(S)	(S)	(S)
United States	2.94	3.14	3.06

(D) Withheld to avoid disclosing data for individual operations.

(S) Insufficient number of reports to establish an estimate.

Prices Received for Sorghum Grain – States and United States: February 2016 with Comparisons

State	February 2015	January 2016	February 2016
	(dollars per cwt)	(dollars per cwt)	(dollars per cwt)
Arkansas	7.66	7.30	7.08
Illinois	(D)	6.96	6.11
Kansas	7.87	5.43	5.37
Louisiana	7.57	(D)	(D)
Missouri	7.53	6.17	6.49
Nebraska	8.05	5.68	5.72
Oklahoma	8.11	5.98	5.81
Texas	7.69	5.94	5.37
United States	7.86	5.60	5.48

(D) Withheld to avoid disclosing data for individual operations.

Prices Received for Corn – States and United States: February 2016 with Comparisons

State	February 2015	January 2016	February 2016
	(dollars per bushel)	(dollars per bushel)	(dollars per bushel)
Colorado	3.78	3.78	3.51
Illinois	3.78	3.72	3.63
Indiana	3.93	3.97	3.92
Iowa	3.80	3.55	3.48
Kansas	3.82	3.61	3.62
Kentucky	4.13	3.96	3.95
Michigan	3.69	3.65	3.71
Minnesota	3.63	3.47	3.31
Missouri	3.70	3.73	3.72
Nebraska	3.90	3.58	3.55
North Carolina	4.63	4.40	4.43
North Dakota	3.39	3.23	3.16
Ohio	3.95	3.90	3.86
Pennsylvania	4.07	3.87	3.86
South Dakota	3.43	3.27	3.23
Tennessee	4.06	4.00	3.91
Texas	4.53	4.43	4.25
Wisconsin	3.75	3.51	3.44
United States	3.79	3.66	3.57

Prices Received for Soybeans – States and United States: February 2016 with Comparisons

State	February 2015	January 2016	February 2016
	(dollars per bushel)	(dollars per bushel)	(dollars per bushel)
Arkansas	10.50	9.15	8.98
Illinois	10.10	8.97	8.73
Indiana	10.20	8.93	8.80
Iowa	9.84	8.46	8.36
Kansas	9.61	8.25	8.33
Kentucky	10.20	9.24	9.04
Louisiana	11.40	9.65	9.02
Michigan	9.88	8.58	8.67
Minnesota	9.74	8.33	8.12
Mississippi	10.50	9.37	9.06
Missouri	9.91	8.97	8.82
Nebraska	9.60	8.42	8.28
North Carolina	10.00	8.06	8.51
North Dakota	9.10	8.22	8.10
Ohio	10.30	9.15	8.87
South Dakota	9.30	8.34	8.15
Tennessee	10.40	9.29	9.05
Wisconsin	10.00	8.68	8.54
United States	9.91	8.71	8.51

Prices Received for Dry Beans – States and United States: February 2016 with Comparisons

State	February 2015	January 2016	February 2016
	(dollars per cwt)	(dollars per cwt)	(dollars per cwt)
California	69.20	69.30	67.60
Colorado	(D)	28.20	24.30
Idaho	26.40	33.80	31.20
Michigan	40.40	28.50	(D)
Minnesota	(D)	35.70	25.10
Nebraska	34.90	(D)	(D)
North Dakota	26.10	21.80	22.30
United States	32.10	28.50	24.80

(D) Withheld to avoid disclosing data for individual operations.

Prices Received for Peanuts (in shell) – States and United States: February 2016 with Comparisons

State	February 2015	January 2016	February 2016
	(dollars per pound)	(dollars per pound)	(dollars per pound)
Alabama	0.211	0.172	0.193
Florida	0.216	0.159	0.195
Georgia	0.205	0.195	0.192
Mississippi	0.210	0.052	(S)
New Mexico	(S)	(S)	(S)
North Carolina	0.254	0.058	(D)
Oklahoma	(S)	0.178	0.203
South Carolina	0.228	0.172	0.200
Texas	0.349	0.218	0.221
Virginia	(S)	(S)	0.212
United States	0.222	0.193	0.197

(D) Withheld to avoid disclosing data for individual operations.

(S) Insufficient number of reports to establish an estimate.

Prices Received for Sunflower – States and United States: February 2016 with Comparisons

State	February 2015	January 2016	February 2016
	(dollars per cwt)	(dollars per cwt)	(dollars per cwt)
Colorado	(D)	(S)	(S)
Kansas	22.80	20.90	21.10
Minnesota	(S)	18.90	23.30
North Dakota	22.10	20.50	20.60
South Dakota	18.70	18.60	17.00
United States	21.50	20.00	20.50

(D) Withheld to avoid disclosing data for individual operations.

(S) Insufficient number of reports to establish an estimate.

Prices Received for Canola – States and United States: February 2016 with Comparisons

State	February 2015	January 2016	February 2016
	(dollars per cwt)	(dollars per cwt)	(dollars per cwt)
Minnesota	(S)	(D)	(D)
North Dakota	17.20	13.80	15.20
United States	17.20	13.80	15.30

(D) Withheld to avoid disclosing data for individual operations.

(S) Insufficient number of reports to establish an estimate.

Prices Received for Flaxseed – States and United States: February 2016 with Comparisons

State	February 2015	January 2016	February 2016
	(dollars per bushel)	(dollars per bushel)	(dollars per bushel)
North Dakota	11.50	8.45	8.10
United States	11.50	8.45	8.10

Prices Received for Upland Cotton and Cottonseed – States and United States: February 2016 with Comparisons

[Cottonseed marketing year August - February]

State	Cotton, Upland			Cottonseed		
	February 2015	January 2016	February 2016	February 2015	January 2016	February 2016
	(dollars per pound)	(dollars per pound)	(dollars per pound)	(dollars per ton)	(dollars per ton)	(dollars per ton)
Alabama	0.654	0.595	0.651	(S)	192.00	213.00
Arizona	0.638	0.630	0.619	286.00	317.00	(S)
Arkansas	0.642	0.618	0.603	(S)	(S)	(S)
California	(D)	(D)	(D)	(S)	(S)	(S)
Georgia	0.651	0.592	0.597	167.00	197.00	201.00
Louisiana	0.670	0.598	(D)	(S)	(S)	(S)
Mississippi	0.646	0.611	0.593	(S)	(S)	(S)
North Carolina	0.640	0.569	0.504	(S)	(S)	200.00
Tennessee	0.625	0.589	0.589	(S)	(S)	(S)
Texas	0.541	0.566	0.550	182.00	229.00	242.00
United States	0.578	0.580	0.572	196.00	228.00	236.00

(D) Withheld to avoid disclosing data for individual operations.

(S) Insufficient number of reports to establish an estimate.

Prices Received and Farm Marketings for Upland Cotton and Rice – United States: February 2016 with Comparisons

Item	February 2015	January 2016	February 2016
Cotton, Upland			
Average price dollars/pound	0.578	0.580	0.572
Marketings ¹ 1,000 bales	1,827	1,602	1,017
Rice, all			
Average price dollars/cwt	12.80	13.60	12.30
Marketings ² 1,000 cwt	12,456	19,007	15,646
Rice, long			
Average price dollars/cwt	11.80	11.50	11.50
Marketings ² 1,000 cwt	10,047	11,606	11,914
Rice, medium and short			
California			
Average price dollars/cwt	21.10	18.50	17.90
Other States ³			
Average price dollars/cwt	14.40	11.50	11.30
United States			
Average price dollars/cwt	17.10	16.90	15.00
Marketings ² 1,000 cwt	2,409	7,401	3,732

¹ Marketings based on a survey of cotton buyers in the major producing States - Alabama, Arizona, Arkansas, California, Georgia, Louisiana, Mississippi, North Carolina, Tennessee, and Texas.

² Purchases by private firms and rice (rough equivalent) shipped by cooperatives.

³ Other States include Arkansas, Louisiana, Mississippi, Missouri, and Texas.

Prices Received for Hay by Type – States and United States: February 2016 with Comparisons

State	All hay			Alfalfa hay			Other hay		
	February 2015	January 2016	February 2016	February 2015	January 2016	February 2016	February 2015	January 2016	February 2016
	(dollars per ton)	(dollars per ton)	(dollars per ton)	(dollars per ton)	(dollars per ton)	(dollars per ton)	(dollars per ton)	(dollars per ton)	(dollars per ton)
Arizona	200.00	160.00	151.00	200.00	160.00	150.00	195.00	200.00	200.00
California	186.00	157.00	155.00	190.00	165.00	160.00	170.00	120.00	125.00
Colorado	194.00	159.00	159.00	195.00	160.00	160.00	190.00	150.00	150.00
Idaho	179.00	168.00	150.00	180.00	170.00	150.00	165.00	150.00	150.00
Illinois	169.00	153.00	154.00	180.00	165.00	165.00	120.00	110.00	105.00
Iowa	122.00	114.00	101.00	128.00	122.00	107.00	92.00	101.00	83.00
Kansas	134.00	94.00	95.00	142.00	106.00	105.00	101.00	77.00	78.00
Kentucky	128.00	140.00	136.00	205.00	225.00	225.00	105.00	115.00	110.00
Michigan	166.00	143.00	128.00	190.00	150.00	135.00	130.00	130.00	110.00
Minnesota	104.00	88.00	82.00	113.00	100.00	90.00	78.00	67.00	65.00
Missouri	98.00	94.00	94.00	165.00	170.00	170.00	85.00	80.00	80.00
Montana	124.00	114.00	119.00	125.00	115.00	120.00	120.00	110.00	110.00
Nebraska	93.00	85.00	85.00	95.00	87.00	87.00	88.00	80.00	80.00
Nevada	225.00	151.00	146.00	225.00	150.00	145.00	200.00	160.00	160.00
New Mexico	221.00	179.00	179.00	230.00	185.00	185.00	140.00	145.00	145.00
New York	133.00	180.00	180.00	225.00	225.00	216.00	130.00	178.00	179.00
North Dakota	85.00	80.00	77.00	89.00	82.00	79.00	58.00	56.00	57.00
Ohio	138.00	154.00	136.00	175.00	210.00	190.00	120.00	110.00	110.00
Oklahoma	99.00	128.00	112.00	191.00	161.00	142.00	79.00	86.00	79.00
Oregon	209.00	186.00	170.00	220.00	200.00	180.00	200.00	170.00	160.00
Pennsylvania	227.00	211.00	217.00	238.00	215.00	211.00	225.00	209.00	220.00
South Dakota	107.00	102.00	96.00	111.00	107.00	101.00	89.00	90.00	85.00
Texas	91.00	101.00	105.00	234.00	212.00	204.00	72.00	89.00	86.00
Utah	180.00	160.00	160.00	180.00	160.00	160.00	145.00	130.00	130.00
Washington	196.00	163.00	163.00	200.00	155.00	155.00	190.00	180.00	180.00
Wisconsin	120.00	104.00	82.00	125.00	110.00	90.00	88.00	79.00	53.00
Wyoming	132.00	111.00	106.00	135.00	115.00	110.00	120.00	100.00	95.00
United States ...	153.00	137.00	136.00	167.00	147.00	142.00	131.00	121.00	125.00

Prices Received for Apples – States and United States: February 2016 with Comparisons

[Equivalent packinghouse-door returns for California, Michigan, New York, Pennsylvania, and Washington. Prices at point of first sale for other States]

State	Apples, fresh use		
	February 2015	January 2016	February 2016
	(dollars per pound)	(dollars per pound)	(dollars per pound)
California	(S)	(S)	(S)
Michigan	0.290	0.325	0.345
New York	0.270	0.247	0.269
Pennsylvania	0.328	0.335	0.273
Virginia	0.290	0.250	0.250
Washington	0.296	0.495	0.480
United States	0.292	0.453	0.449

(S) Insufficient number of reports to establish an estimate.

Prices Received for Citrus Fruits by Utilization – States and United States: February 2015

[Net pounds per box: grapefruit in California-80, Florida-85, Texas-80; lemons-80; oranges in California-80, Florida-90, Texas-85; tangelos-90; tangerines and mandarins in California-80, Florida-95]

Commodity, State, and type	FOB packed fresh	Equivalent returns					
		Packinghouse door			On-tree		
		All	Fresh	Process	All	Fresh	Process
	(dollars per box)	(dollars per box)	(dollars per box)	(dollars per box)	(dollars per box)	(dollars per box)	(dollars per box)
Grapefruit							
California	(D)	10.52	(D)	(D)	8.46	(D)	(D)
Florida, all	23.80	7.74	12.94	4.47	5.06	10.70	1.51
White	24.70	8.14	13.80	6.40	5.65	11.65	3.80
Red	23.60	7.62	12.80	3.70	4.89	10.55	0.60
Texas	23.20	8.11	11.60	(D)	6.56	9.99	(D)
United States	23.30	7.90	12.51	4.13	5.43	10.43	1.35
Lemons							
Arizona	(D)	(D)	(D)	(D)	(D)	(D)	(D)
California	47.10	18.75	37.65	(D)	13.31	31.51	(D)
United States	46.80	18.89	37.38	(D)	13.44	31.24	(D)
Oranges							
California, all	28.70	16.08	19.35	(D)	13.44	16.74	(D)
Navel and miscellaneous	28.70	16.08	19.35	(D)	13.44	16.74	(D)
Valencia	(S)	(S)	(S)	(S)	(S)	(S)	(S)
Florida, all	25.20	10.93	14.08	10.81	8.28	11.43	8.16
Early and mids	24.40	10.86	13.25	10.80	8.21	10.65	8.15
Valencia	(S)	(S)	(S)	(S)	(S)	(S)	(S)
United States	28.40	12.49	18.87	10.06	9.85	16.26	7.40
Tangelos							
Florida	38.00	11.64	26.35	7.50	8.06	23.20	3.80
United States	38.00	11.64	26.35	7.50	8.06	23.20	3.80
Tangerines and mandarins							
Arizona	(D)	(D)	(D)	(D)	(D)	(D)	(D)
California	(D)	(D)	(D)	(D)	(D)	(D)	(D)
Florida	42.00	21.32	28.60	6.75	17.75	25.35	2.55
United States	(D)	(D)	(D)	(D)	(D)	(D)	(D)

(D) Withheld to avoid disclosing data for individual operations.

(S) Insufficient number of reports to establish an estimate.

Prices Received for Citrus Fruits by Utilization – States and United States: January 2016

[Net pounds per box: grapefruit in California-80, Florida-85, Texas-80; lemons-80; oranges in California-80, Florida-90, Texas-85; tangelos-90; tangerines and mandarins in California-80, Florida-95]

Commodity, State, and type	FOB packed fresh	Equivalent returns					
		Packinghouse door			On-tree		
		All	Fresh	Process	All	Fresh	Process
	(dollars per box)	(dollars per box)	(dollars per box)	(dollars per box)	(dollars per box)	(dollars per box)	(dollars per box)
Grapefruit							
California	(D)	17.82	(D)	(D)	15.34	(D)	(D)
Florida, all	28.00	12.91	17.21	8.87	10.30	14.98	5.90
White	32.40	12.87	21.50	7.75	10.44	19.35	5.15
Red	27.20	12.93	16.40	9.25	10.26	14.15	6.15
Texas	27.80	9.72	16.20	(D)	8.18	14.59	(D)
United States	27.90	12.37	17.27	6.88	10.05	15.20	4.27
Lemons							
Arizona	(D)	(D)	(D)	(D)	(D)	(D)	(D)
California	50.00	29.77	40.36	(D)	23.87	34.10	(D)
United States	49.50	28.64	39.89	(D)	22.77	33.63	(D)
Oranges							
California, all	29.10	17.12	19.56	(D)	14.44	16.90	(D)
Navel and miscellaneous	29.10	17.12	19.56	(D)	14.44	16.90	(D)
Valencia	(S)	(S)	(S)	(S)	(S)	(S)	(S)
Florida, all	30.60	10.09	19.43	9.86	7.44	16.83	7.21
Early and mids	30.60	10.07	19.45	9.85	7.42	16.85	7.20
Valencia	(S)	(S)	(S)	(S)	(S)	(S)	(S)
Texas, all	32.80	18.99	21.20	(D)	17.18	19.37	(D)
Early and mids	32.80	18.99	21.20	(D)	17.18	19.37	(D)
Valencia	(S)	(S)	(S)	(S)	(S)	(S)	(S)
United States	29.30	11.95	19.61	9.43	9.30	16.98	6.77
Tangelos							
Florida	(S)	(S)	(S)	(S)	(S)	(S)	(S)
United States	(S)	(S)	(S)	(S)	(S)	(S)	(S)
Tangerines and mandarins							
California	(D)	(D)	(D)	(D)	(D)	(D)	(D)
Florida	57.30	38.41	43.90	6.55	35.02	40.65	2.35
United States	(D)	(D)	(D)	(D)	(D)	(D)	(D)

(D) Withheld to avoid disclosing data for individual operations.

(S) Insufficient number of reports to establish an estimate.

Prices Received for Citrus Fruits by Utilization – States and United States: February 2016

[Net pounds per box: grapefruit in California-80, Florida-85, Texas-80; lemons-80; oranges in California-80, Florida-90, Texas-85; tangelos-90; tangerines and mandarins in California-80, Florida-95]

Commodity, State, and type	FOB packed fresh	Equivalent returns					
		Packinghouse door			On-tree		
		All	Fresh	Process	All	Fresh	Process
	(dollars per box)	(dollars per box)	(dollars per box)	(dollars per box)	(dollars per box)	(dollars per box)	(dollars per box)
Grapefruit							
California	(D)	17.24	(D)	(D)	14.83	(D)	(D)
Florida, all	28.00	11.73	17.17	9.28	9.02	14.94	6.36
White	30.30	10.28	19.40	8.60	7.75	17.25	6.00
Red	27.60	12.31	16.80	9.65	9.52	14.55	6.55
Texas	30.50	8.72	18.90	(D)	7.20	17.29	(D)
United States	28.40	11.32	17.78	7.71	8.88	15.69	5.07
Lemons							
Arizona	(D)	(D)	(D)	(D)	(D)	(D)	(D)
California	49.60	28.38	39.96	(D)	22.52	33.70	(D)
United States	49.50	27.81	39.85	(D)	21.97	33.59	(D)
Oranges							
California, all	26.50	14.39	16.96	(D)	11.70	14.30	(D)
Navel and miscellaneous	26.50	14.39	16.96	(D)	11.70	14.30	(D)
Valencia	(S)	(S)	(S)	(S)	(S)	(S)	(S)
Florida, all	30.10	11.16	18.91	10.81	8.45	16.22	8.09
Early and mids	31.60	10.84	20.45	10.50	8.19	17.85	7.85
Valencia	28.90	11.57	17.75	11.20	8.78	15.00	8.40
Texas, all	32.20	14.87	20.60	(D)	13.10	18.77	(D)
Early and mids	32.20	14.87	20.60	(D)	13.10	18.77	(D)
Valencia	(S)	(S)	(S)	(S)	(S)	(S)	(S)
United States	26.90	12.47	17.20	9.73	9.78	14.56	7.01
Tangelos							
Florida	(S)	(S)	(S)	(S)	(S)	(S)	(S)
United States	(S)	(S)	(S)	(S)	(S)	(S)	(S)
Tangerines and mandarins							
California	(D)	(D)	(D)	(D)	(D)	(D)	(D)
Florida	49.20	28.21	35.80	6.75	24.72	32.55	2.55
United States	(D)	(D)	(D)	(D)	(D)	(D)	(D)

(D) Withheld to avoid disclosing data for individual operations.

(S) Insufficient number of reports to establish an estimate.

Prices Received for Potatoes – States and United States: February 2016 with Comparisons

State	February 2015 (dollars per cwt)	January 2016 (dollars per cwt)	February 2016 (dollars per cwt)
California, all ¹	12.70	13.50	12.50
Spring	16.40	17.20	15.60
Fall	9.20	9.85	9.90
Colorado, all ¹	8.60	8.95	8.75
Fresh ²	9.45	9.95	10.10
Florida	21.60	(S)	20.00
Idaho, all ¹	7.15	6.75	6.55
Fresh ²	5.70	6.05	5.70
Processing	7.75	7.20	7.00
Maine	(D)	(D)	(D)
Michigan	(D)	(D)	(D)
Minnesota	10.00	10.40	10.20
New York	(D)	(D)	(D)
North Carolina	(S)	(S)	(S)
North Dakota, all ¹	(D)	(D)	(D)
Fresh ²	(D)	(D)	(D)
Processing	(D)	(D)	(D)
Oregon	8.05	8.70	8.40
Texas	(D)	(D)	(D)
Virginia	(S)	(S)	(S)
Washington, all ¹	8.60	8.05	8.30
Processing	8.05	7.60	7.90
Wisconsin, all ¹	11.20	9.15	9.35
Fresh ²	10.50	8.90	8.95
Processing	9.45	9.30	9.35
United States, all ¹	9.14	8.58	8.48
Fresh ²	9.63	8.76	8.47
Processing	8.44	8.30	8.12

(D) Withheld to avoid disclosing data for individual operations.

(S) Insufficient number of reports to establish an estimate.

¹ Average price of potatoes sold for all uses, including table stock, processing, seed, and livestock feed.

² Fresh market prices only. Includes table stock prices.

Prices Received for All Milk – States and United States: February 2016 with Comparisons

[Before deduction for hauling. Includes quality, quantity, and other premiums. Excludes hauling subsidies]

State	February 2015		January 2016		February 2016	
	Price	Fat test	Price	Fat test	Price	Fat test
	(dollars per cwt)	(percent)	(dollars per cwt)	(percent)	(dollars per cwt)	(percent)
Arizona	15.50	3.48	15.20	3.64	14.30	3.50
California	14.72	3.76	15.12	3.85	14.32	3.78
Colorado	17.70	3.65	16.60	3.79	16.20	3.71
Florida	21.20	3.64	19.80	3.62	18.90	3.65
Idaho	16.40	3.82	15.60	4.02	15.70	3.92
Illinois	17.70	3.84	16.30	3.91	15.80	3.87
Indiana	17.10	3.84	16.30	3.85	15.80	3.83
Iowa	17.10	3.83	15.90	3.94	15.60	3.91
Kansas	17.20	3.84	15.70	3.85	15.30	3.72
Michigan	16.60	3.81	15.30	3.74	14.80	3.74
Minnesota	17.70	3.94	16.50	4.00	16.10	3.98
New Mexico	16.00	3.67	15.00	3.75	14.60	3.66
New York	17.90	3.91	17.00	3.89	16.70	3.90
Ohio	17.80	3.92	16.90	3.89	16.60	3.88
Oregon	18.00	3.87	17.50	4.09	17.20	4.01
Pennsylvania	18.30	3.83	17.40	3.89	17.10	3.89
South Dakota	18.50	4.06	17.00	4.16	16.80	4.14
Texas	17.60	3.94	16.50	4.06	16.00	3.98
Utah	16.50	3.76	16.00	3.98	15.60	3.92
Vermont	18.30	3.98	17.20	3.91	16.90	3.89
Virginia	19.20	3.79	18.70	3.81	17.70	3.83
Washington	16.80	3.87	16.40	4.09	16.00	4.01
Wisconsin	17.70	3.84	16.00	3.85	16.10	3.85
United States	16.80	3.82	16.10	3.89	15.70	3.84

Prices Received for Milk Cows – States and United States: January 2016 with Comparisons

[Animals sold for dairy herd replacement only. Quarterly United States milk cow prices are based on revised milk cow inventory]

State	January 2015	October 2015	January 2016
	(dollars per head)	(dollars per head)	(dollars per head)
Arizona	2,000.00	2,100.00	1,900.00
California	1,800.00	2,100.00	1,800.00
Colorado	2,100.00	2,000.00	1,900.00
Florida	2,170.00	2,030.00	1,800.00
Idaho	2,000.00	2,050.00	1,850.00
Illinois	2,100.00	1,900.00	1,850.00
Indiana	2,100.00	1,900.00	1,800.00
Iowa	2,030.00	1,980.00	1,860.00
Kansas	2,100.00	1,900.00	1,830.00
Michigan	2,200.00	2,100.00	2,000.00
Minnesota	1,870.00	1,820.00	1,730.00
New Mexico	2,000.00	1,900.00	1,900.00
New York	1,910.00	1,750.00	1,700.00
Ohio	2,000.00	1,800.00	1,750.00
Oregon	2,000.00	1,950.00	1,850.00
Pennsylvania	2,000.00	1,820.00	1,780.00
South Dakota	1,980.00	1,850.00	1,700.00
Texas	2,100.00	2,000.00	1,850.00
Utah	1,900.00	1,900.00	1,700.00
Vermont	1,980.00	1,870.00	1,830.00
Virginia	2,060.00	1,880.00	1,770.00
Washington	1,950.00	1,950.00	1,800.00
Wisconsin	2,160.00	2,050.00	1,910.00
United States	1,990.00	1,980.00	1,830.00

Commodity Parity Prices and Price as Percent of Parity Price – United States: February 2016 with Comparisons

[Parity prices are computed under the provisions of Title III, Subtitle a, Section 301 (a) of the Agricultural Adjustment Act of 1938 as amended by the Agricultural Acts of 1948, 1949, and 1956. See January *Agricultural Prices* for details on adjusted base price and parity price computations. Parity data not available for blank cells. Primary source of data for livestock and milk prices is United States Department of Agriculture's Agricultural Marketing Service]

Commodity and unit	Adjusted base price	Parity price			Price as percent of parity		
		February 2015	January 2016	February 2016	February 2015	January 2016	February 2016
	(dollars)	(dollars)	(dollars)	(dollars)	(percent)	(percent)	(percent)
Basic commodities							
All wheat	0.626	18.40	18.10	18.10	32	27	25
Rice	1.37	39.50	39.70	39.50	32	34	31
Corn	0.450	13.10	13.00	13.00	29	28	27
Cotton							
Upland	0.067	1.94	1.94	1.93	30	30	30
American Pima	0.133	4.01	3.85	3.84	39	34	35
Peanuts	0.023	0.707	0.666	0.663	31	29	30
Small chickpeas ¹	2.250	64.80	65.20	64.90	30	34	38
Large chickpeas ¹	3.270	98.10	94.70	94.30	27	36	35
Lentils ¹	2.380	67.10	68.90	68.60	44	46	52
Designated non-basic							
All milk, to plants ²	1.80	53.90	52.10	51.90	32	32	31
Honey, extracted ³	0.157	4.42	4.55	4.53	48	47	47
Wool and mohair							
Wool	0.121	3.45	3.50	3.49	42	41	42
Mohair	0.394	11.10	11.40	11.40	44	46	46
Other non-basic							
Apples, fresh ⁴	0.033	0.972	0.956	0.952	30	47	47
Barley	0.484	13.80	14.00	14.00	38	39	39
Canola	1.890	55.40	54.70	54.50	31	25	28
Cottonseed	20.00	565.00	579.00	577.00	35	39	41
Dry edible beans	3.21	95.70	93.00	92.60	34	31	27
Flaxseed	1.150	34.50	33.30	33.20	33	25	24
Oats	0.296	8.69	8.57	8.54	35	22	26
Potatoes	0.857	24.90	24.80	24.70	37	35	34
Sorghum grain	0.778	22.30	22.50	22.40	35	25	24
Soybeans	1.080	31.80	31.30	31.10	31	28	27
Sunflower, all	2.16	62.70	62.60	62.30	34	32	33
Citrus (equivalent on-tree)							
Grapefruit	0.660	22.90	19.10	19.00	24	53	47
Lemons	1.62	43.90	46.90	46.70	31	49	47
Oranges	0.865	23.70	25.10	24.90	42	37	39
Tangerines	1.79	51.50	51.80	51.60	30	35	37
Livestock and poultry							
Beef cattle	11.10	318.00	321.00	320.00	50	40	41
Broilers	0.050	1.48	1.45	1.44	36	35	32
Calves	16.20	451.00	469.00	467.00	61	42	43
Eggs ²	0.103	2.77	2.98	2.97	47	43	40
Hogs	5.70	171.00	165.00	164.00	29	26	30
Turkeys, live	0.063	1.800	1.820	1.820	37	43	44

¹ Parity prices began January 2015.

² Seasonally adjusted price as percentage of parity price.

³ Wholesale extracted. Adjusted base price derived from state annual averages prices weighted by production. For 1982 through 1985 the national averages are the support prices.

⁴ Equivalent packinghouse-door returns for California, New York, Oregon, and Washington. Price at point of first sale for other states.

Commodity Parity Prices – United States: February 2016 with Comparisons

[Parity prices are computed under the provisions of Title III, Subtitle a, Section 301 (a) of the Agricultural Adjustment Act of 1938 as amended by the Agricultural Acts of 1948, 1949, and 1956. See January *Agricultural Prices* for details on adjusted base price and parity price computations]

Commodity and unit	Adjusted base price	Parity price			
		February 2015	January 2016	February 2016	
	(dollars)	(dollars)	(dollars)	(dollars)	
Field crops and miscellaneous					
Hops	pound	0.338	9.57	9.79	9.75
Mustard seed	cwt	3.17	90.40	91.80	91.40
Rapeseed	cwt	2.66	71.60	77.00	76.70
Rye	bushel	0.630	18.10	18.20	18.20
Safflower	cwt	2.23	63.60	64.60	64.30
Spearmint oil	pound	1.70	48.30	49.20	49.00
Sweet potatoes	cwt	2.08	61.30	60.20	60.00
Tobacco					
Flue-cured, 11-14	pound	0.180	5.33	5.21	5.19
Fire-cured, 21-23	pound	0.255	7.63	7.38	7.35
Burley, 31	pound	0.179	5.33	5.18	5.16
Maryland, 32	pound	0.171	5.04	4.95	4.93
Dark air-cured, 35-37	pound	0.230	6.89	6.66	6.63
Pennsylvania seedleaf, 41	pound	0.184	5.33	5.33	5.31
Cigar binder, 51	pound	0.629	18.60	18.20	18.10
Non-citrus fruit					
Apples, processing ^{1 2}	ton	18.30	533.00	530.00	528.00
Apricots					
Fresh ³	ton	116.00	3,500.00	3,360.00	3,350.00
Dried (California)	ton	251.00	7,570.00	7,270.00	7,240.00
Avocados ^{2 3}	ton	178.00	5,390.00	5,150.00	5,130.00
Cherries					
Sweet	ton	209.00	6,330.00	6,050.00	6,030.00
Tart ²	pound	0.032	0.972	0.927	0.923
Cranberry ^{2 4}	barrel	4.32	131.00	125.00	125.00
Dates (California) ³	ton	147.00	4,480.00	4,260.00	4,240.00
Grapes (California)					
Raisin variety ⁵	ton	140.00	4,240.00	4,050.00	4,040.00
Wine, processing	ton	64.90	(NA)	1,880.00	1,870.00
Kiwifruit ²	ton	91.40	2,650.00	2,650.00	2,640.00
Nectarines, fresh (California) ³	ton	60.50	1,790.00	1,750.00	1,740.00
Olives, canning (California) ⁴	ton	93.10	2,820.00	2,700.00	2,690.00

See footnote(s) at end of table.

--continued

Commodity Parity Prices – United States: February 2016 with Comparisons (continued)

[Parity prices are computed under the provisions of Title III, Subtitle a, Section 301 (a) of the Agricultural Adjustment Act of 1938 as amended by the Agricultural Acts of 1948, 1949, and 1956. See January *Agricultural Prices* for details on adjusted base price and parity price computations]

Commodity and unit	Adjusted base price	Parity price		
		February 2015	January 2016	February 2016
	(dollars)	(dollars)	(dollars)	(dollars)
Non-citrus fruit - continued				
Papayas (Hawaii) pound	0.041	1.21	1.19	1.18
Peaches				
Fresh ^{4 6} ton	84.80	2,560.00	2,460.00	2,450.00
Dried (California) ^{1 5} ton	46.10	1,370.00	1,340.00	1,330.00
Processing, excludes dried				
Clingstone (California) ⁴ ton	32.60	987.00	944.00	940.00
Pears, Fresh ⁶ ton	56.00	1,700.00	1,620.00	1,620.00
Plums (California) equivalent on-tree				
Fresh ⁷ ton	60.60	1,830.00	1,750.00	1,750.00
Prunes, dried (California) ^{1 2 5} ton	154.00	4,620.00	4,460.00	4,440.00
Prunes and plums				
Fresh, excludes California ⁷ ton	61.20	1,850.00	1,770.00	1,770.00
Processing, excludes dried ¹ ton	23.80	704.00	689.00	686.00
Strawberries				
Fresh ¹⁰ pound	8.900	266.00	258.00	257.00
Processing pound	3.44	99.50	99.60	99.20
Sugar crops				
Sugar beets ^{2 8} ton	5.26	157.00	152.00	152.00
Sugarcane ^{2 8} ton	3.52	105.00	102.00	102.00
Tree nuts ⁹				
Almonds pound	0.227	6.95	6.57	6.55
Hazelnuts ton	217.00	6,540.00	6,280.00	6,260.00
Pistachios pound	0.227	6.69	6.57	6.55
Walnuts ton	236.00	6,570.00	6,830.00	6,810.00
Vegetables, fresh ¹⁰				
Carrots ¹¹ cwt	2.67	77.50	77.30	77.00
Cauliflower ¹¹ cwt	4.29	123.00	124.00	124.00
Celery ¹¹ cwt	2.05	58.60	59.40	59.10
Honeydew melons cwt	1.96	58.30	56.80	56.50
Lettuce cwt	2.26	63.90	65.40	65.20
Onions ¹¹ cwt	1.42	41.50	41.10	41.00
Tomatoes cwt	4.14	124.00	120.00	119.00

¹ Equivalent returns at processing plant door.

² Adjusted base price is carried forward from the previous year since current marketing year average price is not yet available.

³ Equivalent returns at packinghouse door.

⁴ Equivalent returns for bulk fruit at first delivery point.

⁵ Dried basis.

⁶ Equivalent packinghouse-door returns for California, New York (apples only), Oregon (except peaches), and Washington. Price at point of first sale for other states.

⁷ Based on "as sold" prices for fresh fruit in all states.

⁸ Relates to prices including average conditional payments per ton made under the sugar acts of 1937 and 1948. Crop deficiency and abandonment payments not included.

⁹ Prices In-Shell basis except almonds which are shelled basis.

¹⁰ FOB shipping point price.

¹¹ Includes some processing.

Reliability of Prices Received Estimates

Definition: Prices received represent sales from producers to first buyers. They include all grades and qualities. The average commodity price from the survey multiplied by the total quantity marketed theoretically should give the total cash receipts for the commodity.

Survey procedures: Primary sales data used to determine grain prices were obtained from probability samples of about 1,900 mills and elevators. These procedures ensure that virtually all grain moving into commercial channels has a chance of being included in the survey. Generally, States surveyed account for 90 percent or more of total United States production. Livestock prices are obtained from packers, stockyards, auctions, dealers, and market check data from AMS-USDA, private marketing organizations, and state commodity groups and agencies. Inter-farm sales of grain and livestock are not included since they represent very small percentages of the total sales. Grain marketed for seed is also excluded. Fruit and vegetable prices are obtained from sample surveys and market check data from AMS-USDA, private marketing organizations, state agencies, and universities.

Summary and estimation procedures: Survey quantities sold are expanded by strata to state levels and used to weight average strata prices to a state average. State prices are then weighted to a United States price based on expanded sales. Recommendations are prepared by the Regional Field Offices and reviewed by the Agricultural Statistics Board in Washington, D.C. State recommendations are reviewed for reasonableness with survey data, other States, and recent historic estimates.

Revisions: In general, revisions are made during annual commodity market year estimation time, following five-year Census revisions, or when later information is received. Revisions are published in monthly issues of *Agricultural Prices*.

Reliability: United States price estimates based on probability surveys generally have a sampling error of less than one percent for the major commodities such as corn, wheat, soybeans, cotton, and rice. Current methods of summarization for non-probability commodities are not designed directly to calculate sampling errors. However, analytical measures approximate the United States relative sampling errors at around five percent. Any non-sampling errors are attributed to such things as the inability to obtain correct information, differences in interpreting questions or definitions, mistakes in coding or processing the data, etc. Efforts are made at each step in the survey process to minimize these non-sampling errors.

Program Changes: After the Council on Food, Agricultural and Resource Economics (C-FARE) 2009 program review which included changes in farm production practices, plans were implemented to make necessary program improvements in the agricultural price program. The index group structure for prices received was modified to maintain a more universal structure and consistency with the required 1910-1914 series.

Modifications implemented January 2014 include the following: update the current 1990-1992 base reference period to 2011, link the 1910-1914 series to the updated base reference period, 2011, create index groups used universally by researchers, data users, and policymakers, re-classify agricultural commodities into the index groups, expand the commodity coverage for vegetable, melon, non-citrus, and tree nuts, update monthly market weights, and adjust (normalization) current five year moving average cash receipts and farm input cost weights.

Modifications implemented January 2015 discontinued preliminary prices and replaced the annual average index with an annual index.

See Price Program Quick Stats Links at end of this report for program change details.

February Prices Paid by Farmers

The February Index of Prices Paid for Commodities and Services, Interest, Taxes, and Farm Wage Rates (PPITW), at 106.6, is down 0.4 percent from January 2016 and 4.0 percent from February 2015.

Production: The February index, at 105.3, is down 0.6 percent from January and 6.0 percent lower than last year. Lower prices for feeder cattle, nitrogen, complete feeds, and diesel more than offset higher prices for feeder pigs, self-propelled machinery, LP gas, and trucks.

Feed: At 96.3, the February index decreased 0.9 percent from January and 11 percent from last February. Since January, prices are lower for complete feeds, feed grains, supplements, hay & forages, and concentrates.

Livestock and poultry: The February index, at 119.2, decreased 0.3 percent from January and 22 percent from last year. Since January, lower prices for feeder cattle more than offset higher prices for feeder pigs. The February feeder cattle price, at \$162.00 per cwt, is down \$2.00 per cwt from the January price. February feeder pigs averaged \$188.00 per cwt, up \$21.00 per cwt from January.

Fertilizer: The index for February, at 79.3, is down 4.2 percent from January and 12 percent below February a year ago. Since January, prices are lower for nitrogen, mixed fertilizer, and potash & phosphate.

Chemicals: The February index, at 106.6, is down 0.2 percent from January but up 0.2 percent from last February. Compared with last month, prices are lower for herbicides, insecticides, and fungicides & other chemicals.

Fuels: At 48.0, the February index is down 4.2 percent from January and 29 percent below February 2015. Compared with January, prices are lower for diesel and gasoline but higher for LP gas.

Machinery: The index for February, at 117.1, increased 0.6 percent from January and 1.9 percent from last February.

Consumer Price Index: The February 2016 Consumer Price Index, as issued by the Bureau of Labor Statistics, for all urban consumers (CPI-U) increased 1.0 percent over the last 12 months to an index level of 237.111 (1982-1984=100). For the month, the index increased 0.1 percent prior to seasonal adjustment.

Prices Paid Indexes and Related Parity Ratios – United States: February 2016 with Comparisons

[Revised historical price indexes for months not shown are available at www.nass.usda.gov]

Index Group and Ratios	1910-1914 Base			2011 Base		
	February 2015	January 2016	February 2016	February 2015	January 2016	February 2016
	(percent)	(percent)	(percent)	(percent)	(percent)	(percent)
Prices paid by farmers for commodities, services, interest, taxes, and wage rates (PPITW)	3004	2896	2884	111.0	107.0	106.6
Production	2331	2205	2193	112.0	105.9	105.3
Feed	1197	1071	1061	108.7	97.2	96.3
Livestock and poultry	2998	2360	2353	151.9	119.5	119.2
Seeds	3746	3755	3755	114.0	114.3	114.3
Fertilizer	1089	996	955	90.5	82.8	79.3
Chemicals	955	959	957	106.4	106.8	106.6
Fuels	1890	1402	1343	67.6	50.1	48.0
Supplies and repairs	1254	1242	1239	106.3	105.3	105.1
Autos and trucks	3240	3255	3272	105.4	105.9	106.5
Machinery	7021	7116	7157	114.9	116.4	117.1
Building materials	2503	2487	2485	107.6	106.9	106.8
Services and rent	2472	2517	2516	(NA)	(NA)	(NA)
Services	(NA)	(NA)	(NA)	113.5	116.2	116.1
Rent	(NA)	(NA)	(NA)	120.8	122.0	122.0
Interest ¹	3643	3846	3846	99.9	105.5	105.5
Taxes ²	7335	7623	7623	123.6	128.4	128.4
Wage rates	8018	8204	8204	112.0	114.6	114.6
Family living-CPI ³	2230	2251	2252	104.4	105.3	105.4
Production, interest, taxes, and wage rates (PITW)	3160	3025	3010	112.1	107.3	106.7
Ratio (received/paid)	(NA)	(NA)	(NA)	89	83	87
Parity ratio ⁴	34	32	33	(NA)	(NA)	(NA)
Parity ratio adjusted ⁵	35	33	34	(NA)	(NA)	(NA)
PPITW adjusted for productivity ⁶	1460	1429	1428	(NA)	(NA)	(NA)
Crop sector (PPITW)	(NA)	(NA)	(NA)	108.3	107.3	106.9
Livestock sector (PPITW)	(NA)	(NA)	(NA)	114.0	106.7	106.2
Farm sector (production)	(NA)	(NA)	(NA)	122.1	107.9	107.3
Non-farm sector (production)	(NA)	(NA)	(NA)	105.7	104.6	104.0

(NA) Not available.

¹ Interest per acre on farm real estate debt and interest rate on farm non-real estate debt.

² Farm real estate taxes payable per acre.

³ Bureau of Labor Statistics, Consumer Price Index for all urban consumers (CPI-U), converted by the USDA.

⁴ Ratio of index of prices received to PPITW (1910-1914=100).

⁵ Based on estimated cash receipts, from marketings and government payments, the preliminary adjustment factor is 1.026 for 2016 and the revised factor is 1.026 for 2015.

⁶ PPITW is adjusted based on productivity trend for the prior 15 years.

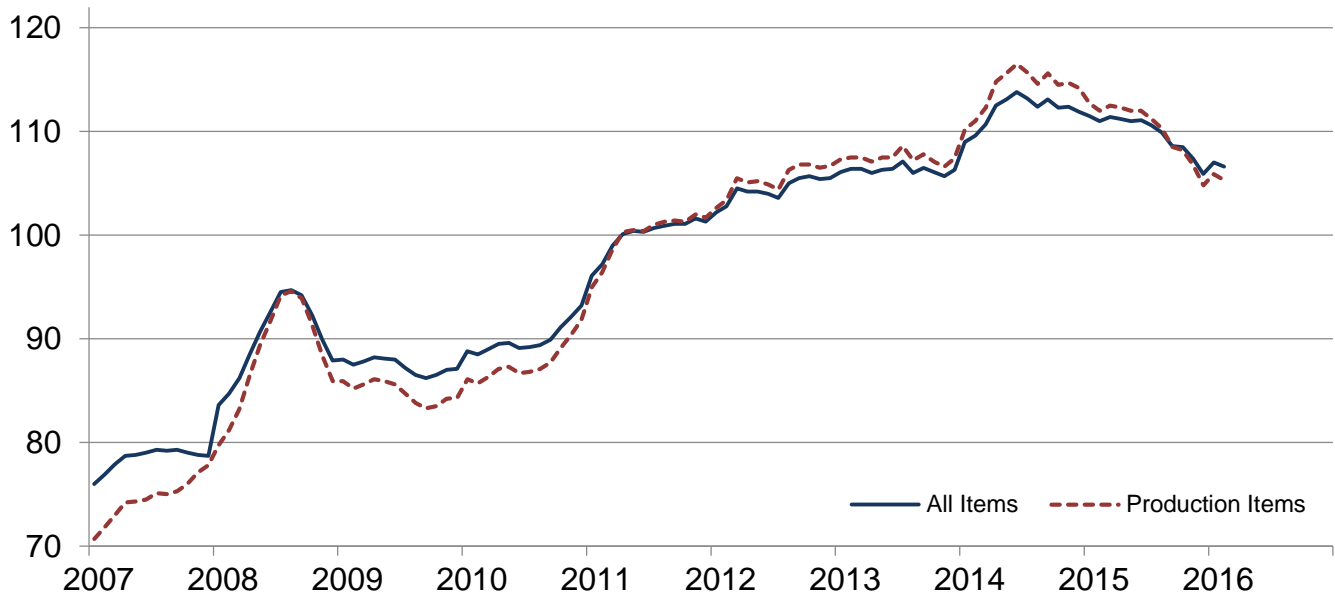
Prices Paid Indexes and Annual Weights for Input Components and Sub-components – United States: February 2016 with Comparisons

[Revised historical price indexes for months not shown are available at www.nass.usda.gov. Relative weights are a five year moving average]

Index Group	Relative weights		Indexes (2011=100)		
	2015	2016	February 2015	January 2016	February 2016
	(percent)	(percent)	(percent)	(percent)	(percent)
Production items	74.6	75.6	112.0	105.9	105.3
Feed	15.5	14.5	108.7	97.2	96.3
Feed grains	2.2	2.1	66.3	61.2	60.0
Complete feeds	7.6	7.1	117.2	107.7	106.6
Hay and forages	1.9	1.8	100.7	90.5	90.0
Concentrates	2.5	2.3	120.8	93.8	93.4
Supplements	1.3	1.2	119.7	114.2	112.4
Livestock and poultry	8.3	10.5	151.9	119.5	119.2
Feeder cattle	6.4	8.2	159.7	120.0	118.0
Feeder pigs	0.7	0.8	125.0	119.3	134.3
Milk cow replacements	0.7	0.9	140.1	128.9	128.9
Poultry	0.5	0.6	102.0	102.0	102.0
Seeds	5.0	5.0	114.0	114.3	114.3
Field crops	4.5	4.5	113.1	113.7	113.7
Grasses and legumes	0.5	0.5	122.5	119.9	119.9
Fertilizer	6.4	6.2	90.5	82.8	79.3
Mixed fertilizer	2.8	2.7	85.8	82.6	80.8
Nitrogen	2.7	2.6	96.0	84.9	80.2
Potash and phosphate	0.9	0.9	88.9	76.7	72.1
Chemicals	3.2	3.2	106.4	106.8	106.6
Herbicides	2.0	2.0	106.7	107.2	107.0
Insecticides	0.7	0.7	107.3	107.5	107.3
Fungicides and other	0.5	0.5	103.2	103.9	103.6
Fuels	4.0	3.7	67.6	50.1	48.0
Diesel	2.5	2.3	65.0	48.4	45.1
Gasoline	0.8	0.8	62.7	55.1	50.1
LP gas	0.7	0.6	82.9	50.2	56.1
Supplies and repairs	4.3	4.2	106.3	105.3	105.1
Supplies	1.4	1.4	106.2	106.1	106.1
Repairs	2.9	2.8	106.4	104.9	104.6
Autos and trucks	1.1	1.2	105.4	105.9	106.5
Autos	0.1	0.2	102.0	101.5	102.0
Trucks	1.0	1.0	105.9	106.6	107.1
Machinery	5.2	5.5	114.9	116.4	117.1
Tractors	1.1	1.2	109.6	110.4	110.5
Self-propelled	2.1	2.2	118.1	120.9	122.6
Other machinery	2.0	2.1	114.5	115.2	115.2
Building materials	3.7	3.7	107.6	106.9	106.8
Services	10.8	10.8	113.5	116.2	116.1
Custom rates	1.1	1.1	111.8	111.8	111.8
Other services	9.7	9.7	113.7	116.7	116.6
Rent	7.1	7.1	120.8	122.0	122.0
Cash	3.8	3.8	128.5	129.0	129.0
Share	3.3	3.3	111.8	114.0	114.0
Interest	2.3	2.2	99.9	105.5	105.5
Taxes	2.8	2.8	123.6	128.4	128.4
Wage rates	6.4	6.2	112.0	114.6	114.6
Family living-CPI	13.9	13.2	104.4	105.3	105.4

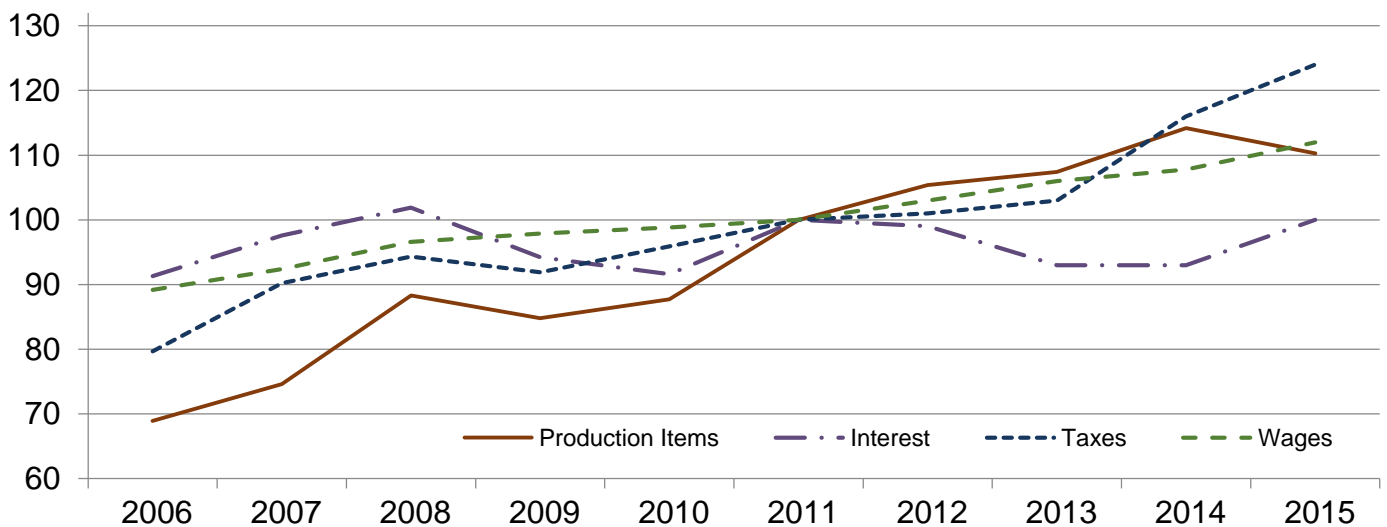
Paid Indexes by Month, All Items and Production Items – United States: 2011=100

Percent

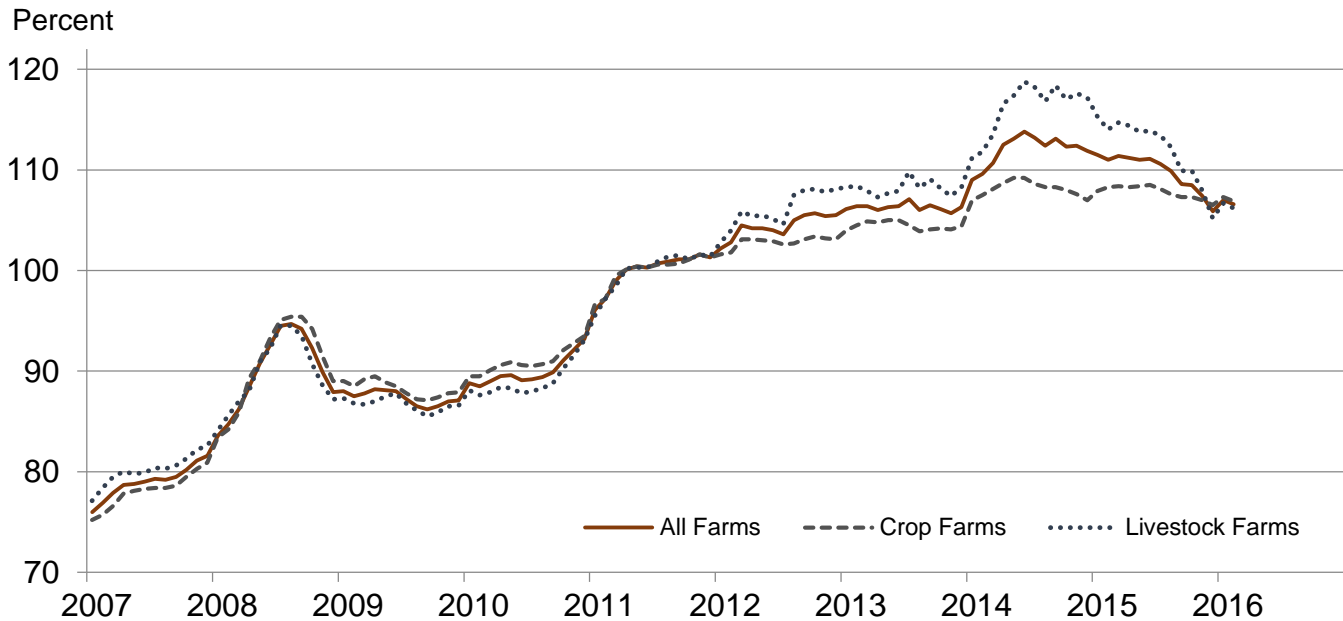


Paid Indexes, Annual Averages, Production Items, Interest, Taxes, and Wages – United States: 2011=100

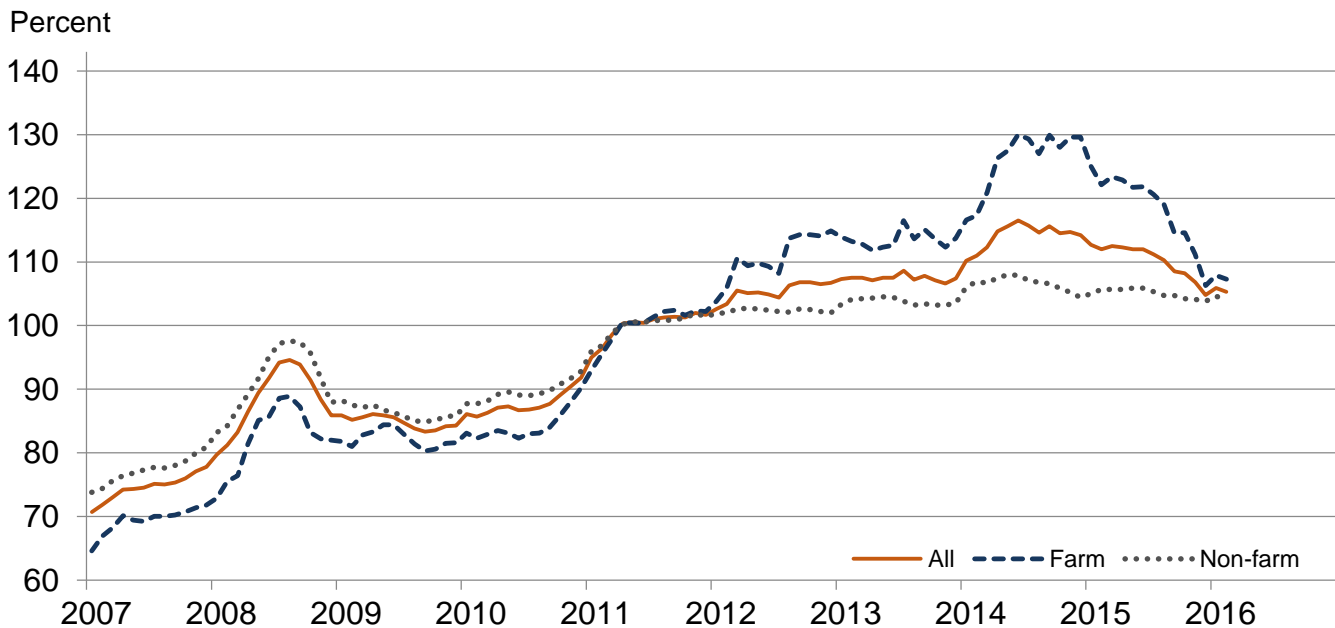
Percent



Paid Indexes by Farm Type and Month, All Items – United States: 2011=100

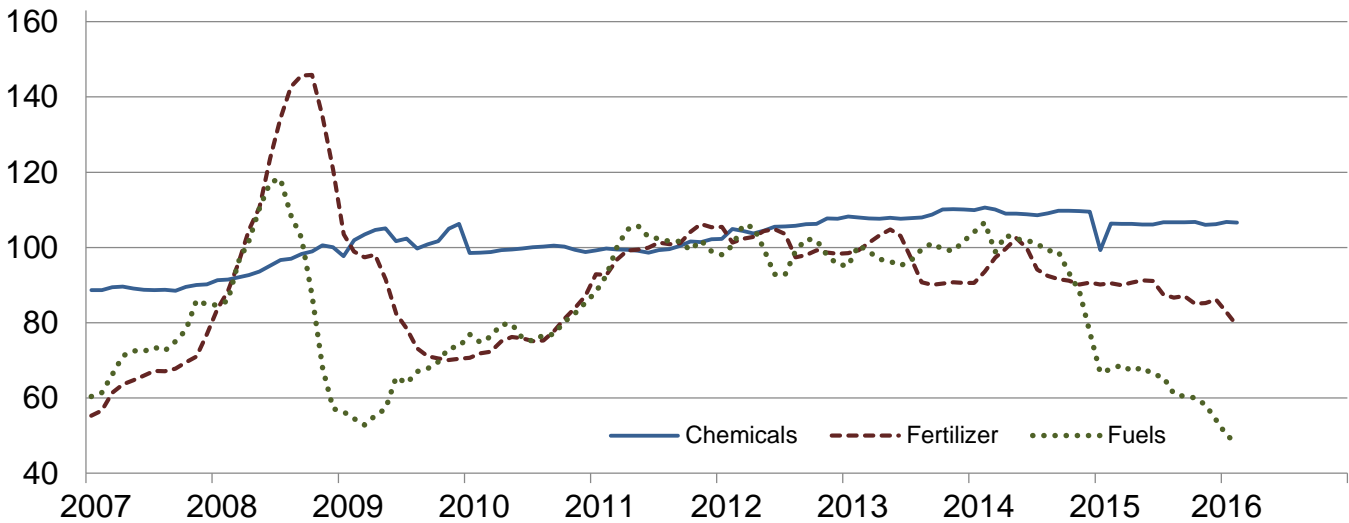


Paid Indexes by Origin and Month, All Production Items – United States: 2011=100



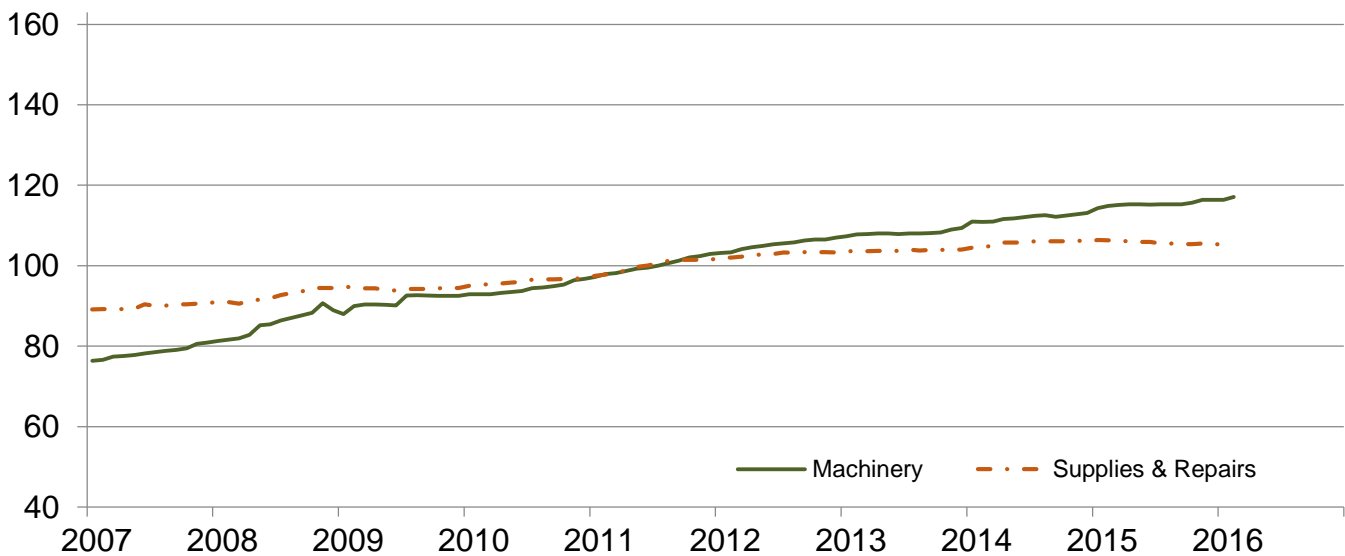
**Paid Indexes by Non-farm Origin and Month,
Chemicals, Fertilizer, and Fuels –
United States: 2011=100**

Percent



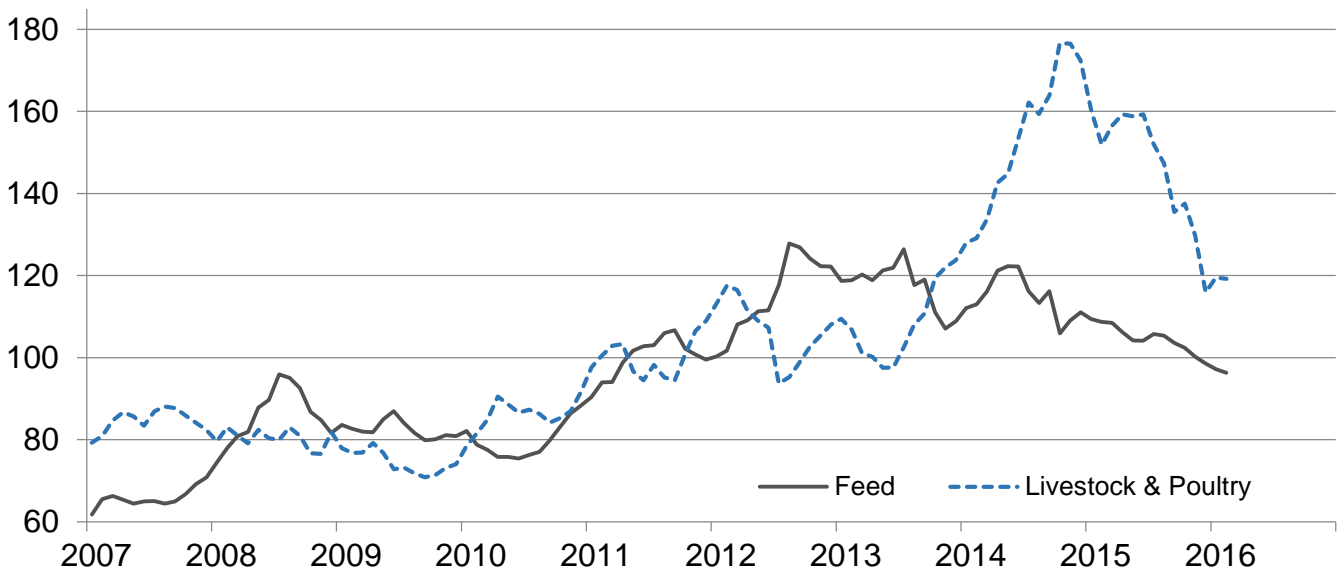
**Paid Indexes by Non-farm Origin and Month,
Machinery and Supplies & Repairs –
United States: 2011=100**

Percent



Paid Indexes by Farm Origin and Month, Feed and Livestock & Poultry – United States: 2011=100

Percent



Feed Price Ratios – United States: February 2016 with Comparisons

Feed price ratio ¹	February 2015	January 2016	February 2016
Broiler-feed: pounds of broiler grower feed equal in value to 1 pound of broiler, live weight ²	5.0	5.2	4.8
Market egg feed: pounds of laying feed equal in value to 1 dozen eggs ³	12.2	11.4	11.6
Hog-corn: bushels of corn equal in value to 100 pounds of hog, live weight	13.3	11.9	13.9
Milk-feed: pounds of 16% mixed dairy feed equal in value to 1 pound of whole milk ⁴	2.05	2.14	2.15
Steer & heifer-corn: bushels of corn equal in value to 100 pounds of steer & heifers, live weight	42.5	36.1	37.5
Turkey-feed: pounds of turkey grower equal in value to 1 pound of turkey, live weight ⁵	6.6	8.7	9.0

¹ Effective January 1995, prices of commercial prepared feeds are based on current United States prices received for corn, soybeans, alfalfa hay, and all wheat.

² The price of commercial prepared broiler feed is based on current United States prices received for corn and soybeans. The modeled feed uses 58 percent corn and 42 percent soybeans.

³ The price of commercial prepared layer feed is based on current United States prices received for corn and soybeans. The modeled feed uses 75 percent corn and 25 percent soybeans.

⁴ The price of commercial prepared dairy feed is based on current United States prices received for corn, soybeans, and alfalfa. The modeled feed uses 51 percent corn, 8 percent soybeans, and 41 percent alfalfa.

⁵ The price of commercial prepared turkey feed is based on current United States prices received for corn, soybeans, and wheat. The modeled feed uses 51 percent corn, 28 percent soybeans, and 21 percent wheat.

Prices Received Used to Calculate Feed Price Ratios – United States: February 2016 with Comparisons

[Price data source for livestock and poultry commodities is United States Department of Agriculture's Agriculture Marketing Service]

Item	February 2015	January 2016	February 2016
	(dollars)	(dollars)	(dollars)
Broilers, livepound	0.540	0.510	0.460
Eggs, marketdozen	1.12	0.969	0.970
Hogs, allcwt	50.40	43.60	49.60
Milk, allcwt	16.80	16.10	15.70
Steers and heiferscwt	161.00	132.00	134.00
Turkeys, livepound	0.669	0.789	0.794
Cornbushel	3.79	3.66	3.57
Hay, alfalfaton	167.00	147.00	142.00
Soybeansbushel	9.91	8.71	8.51
Wheat, allbushel	5.89	4.82	4.61

Prices Paid for Feeder Livestock – United States: February 2016 with Comparisons

[Price data source is United States Department of Agriculture's Agriculture Marketing Service]

Item	February 2015	January 2016	February 2016
	(dollars)	(dollars)	(dollars)
Feeder cattle & calvescwt	219.00	164.00	162.00
Feeder pigscwt	175.00	167.00	188.00

Reliability of Prices Paid Estimates

Definition: Prices paid by farmers represent the average costs of inputs purchased by farmers and ranchers to produce agricultural commodities. Conceptually, the average price when multiplied by quantity purchased should equal total producer expenditures for the item.

Survey procedures: The prices paid data are obtained from establishments that sell goods and services to farmers and ranchers. Annually, about 8,500 firms are randomly selected from lists by type of item sold with an average response rate in the range of 75-80 percent. Firms are asked to report the price for the specified item "most commonly bought by farmers" or that was the "volume seller". Approximately 135 items are surveyed each March to represent all production input items purchased. The survey reference period for most items is the five business days centered at the 15th of the month. Separate prices paid surveys are conducted for agricultural chemicals, fuels, feed, fertilizer, machinery, and seed.

Summary and estimation procedures: The annual March Prices Paid Survey is summarized as a non-probability survey. Average prices reported are aggregated to the region and United States level using weights available from expenditure data and other administrative sources. Price recommendations are prepared by the Regional Field Offices and Headquarters for review by the Agricultural Statistics Board in Washington, D.C. Also, the change in price level for individual items surveyed are combined to the regional and United States levels, and are published as prices paid indexes referenced to a specific base period. Prices paid indexes for new autos and trucks, building materials, farm supplies, motor supplies, and marketing containers are updated based on price changes measured in selected Bureau of Labor Statistics (BLS) indexes.

Revisions: Any revisions are published in the monthly and in annual issues of Agricultural Prices. The basis for revision must be supported by additional data that directly affect the level of the estimate. More revisions are likely for March when separate prices paid surveys are conducted, in lieu of BLS indexes, by the USDA to measure price change.

Reliability: Current methods of summarization for the March data are not designed directly to calculate sampling errors. However, analytical measures approximate the United States relative sampling errors for major items around 10 percent. Any non-sampling errors are attributed to such things as the inability to obtain correct information, differences in interpreting questions or definitions, mistakes in coding or processing the data, etc. Efforts are made at each step in the survey process to minimize these non-sampling errors.

Program change: Effective January 2014, the National Agricultural Statistics Service modified the five-year moving weights and updated the base reference period. In January 2015, publication of preliminary prices was suspended, and the annual average index was replaced by an annual index.

As of January 2014, the 1990-1992 base reference period was updated to 2011. Five-year moving average weights are adjusted (normalized) to minimize the effects of price changes. The 1910-1914=100 price indexes, required by statute for computing parity prices, were linked forward based on the changes in the new 2011=100 indexes. The new indexes were constructed by multiplying the ratios of the current prices to the base period prices by the moving average weights.

Information Contacts

General

Troy Joshua, Chief, Environmental, Economics and Demographics Branch (202) 720-6146

Crop Prices Received

Lance Honig, Chief, Crops Branch (202) 720-2127

Anthony Prillaman, Head, Field Crops Section (202) 720-2127

Angie Considine – Cotton, Cotton Ginnings, Sorghum (202) 720-5944

Tony Dahlman – Oats, Soybeans (202) 720-7621

Chris Hawthorn – Corn, Flaxseed, Proso Millet (202) 720-9526

James Johanson – County Estimates, Hay (202) 690-8533

Scott Matthews – Barley, Crop Weather (202) 720-7621

Jean Porter – Rye, Wheat (202) 720-8068

Bianca Pruneda – Peanuts, Rice (202) 720-7688

Travis Thorson – Sunflower, Canola, Safflower, Rapeseed, Mustard Seed (202) 720-7369

Jorge Garcia-Pratts, Head, Fruits, Vegetables and Special Crops Section (202) 720-2127

Vincent Davis – Fresh and Processing Vegetables, Onions, Strawberries (202) 720-2157

Fleming Gibson – Citrus, Coffee, Sugar Crops, Tropical Fruits (202) 720-5412

Greg Lemmons – Berries, Cranberries, Potatoes, Sweet Potatoes (202) 720-4285

Dave Losh – Hops (360) 709-2400

Dan Norris – Austrian Winter Peas, Dry Edible Peas, Lentils, Mint, Mushrooms, Peaches, Pears,
Wrinkled Seed Peas, Dry Beans (202) 720-3250

Daphne Schauber – Floriculture, Grapes, Maple Syrup, Nursery, Tree Nuts (202) 720-4215

Chris Singh – Apples, Apricots, Cherries, Plums, Prunes, Tobacco (202) 720-4288

Livestock Prices Received

Dan Kerestes, Chief, Livestock Branch (202) 720-3570

Scott Hollis, Head, Livestock Section (202) 720-3570

Doug Bounds – Hogs and Pigs (202) 720-3106

Dave Colwell – Sheep and Goats (202) 720-8784

Michael Klamm – Cattle and Cattle on Feed (202) 720-3040

Mike Miller – Milk, Milk Cows (202) 720-3278

Bruce Boess, Head, Poultry and Specialty Commodities Section (202) 720-3570

Heidi Gleich – Broilers (202) 720-0585

Kim Linonis – Eggs (202) 690-8632

Sammy Neal – Turkeys (202) 720-3244

Josh O’Rear – Honey (202) 690-3676

Indexes, Prices Paid, and Parity Prices

Troy Joshua, Chief, Environmental, Economics and Demographics Branch (202) 720-6146

Tony Dorn, Head, Economics Section (202) 690-3223

Daryl Brinkman – Prices Received Indexes, Parity Prices (202) 720-8844

Courtney Charles – Prices Paid, Prices Paid Indexes (202) 690-3229

Greg Gholson – Prices Received Indexes, Parity Prices, Prices Paid Indexes, Prices Paid for Feed,
Fertilizer, Chemicals, Seeds, Fuels, Farm Supplies and Repairs, Farm Machinery, Feeder Livestock,
Poultry Chicks, Feed Price Ratios (202) 690-1348

Joe Hagedorn – Cash Rents, Grazing Fees (202) 690-3231

Access to NASS Reports

For your convenience, you may access NASS reports and products the following ways:

- All reports are available electronically, at no cost, on the NASS web site: <http://www.nass.usda.gov>
- Both national and state specific reports are available via a free e-mail subscription. To set-up this free subscription, visit <http://www.nass.usda.gov> and click on “National” or “State” in upper right corner above “search” box to create an account and select the reports you would like to receive.

For more information on NASS surveys and reports, call the NASS Agricultural Statistics Hotline at (800) 727-9540, 7:30 a.m. to 4:00 p.m. ET, or e-mail: nass@nass.usda.gov.

The U.S. Department of Agriculture (USDA) prohibits discrimination against its customers, employees, and applicants for employment on the basis of race, color, national origin, age, disability, sex, gender identity, religion, reprisal, and where applicable, political beliefs, marital status, familial or parental status, sexual orientation, or all or part of an individual's income is derived from any public assistance program, or protected genetic information in employment or in any program or activity conducted or funded by the Department. (Not all prohibited bases will apply to all programs and/or employment activities.)

If you wish to file a Civil Rights program complaint of discrimination, complete the [USDA Program Discrimination Complaint Form](#) (PDF), found online at http://www.ascr.usda.gov/complaint_filing_cust.html, or at any USDA office, or call (866) 632-9992 to request the form. You may also write a letter containing all of the information requested in the form. Send your completed complaint form or letter to us by mail at U.S. Department of Agriculture, Director, Office of Adjudication, 1400 Independence Avenue, S.W., Washington, D.C. 20250-9410, by fax (202) 690-7442 or email at program.intake@usda.gov.

Price Program Links

Economics and Prices

http://www.nass.usda.gov/Statistics_by_Subject/Economics_and_Prices/index.php

January 2014 Price Program Update

http://www.nass.usda.gov/Surveys/Guide_to_NASS_Surveys/Prices/updates.pdf

January 2015 Price Program Update

http://www.nass.usda.gov/Surveys/Guide_to_NASS_Surveys/Prices/update2015.pdf

April 2015 Price Program Update

http://www.nass.usda.gov/Surveys/Guide_to_NASS_Surveys/Prices/updateApr2015.pdf

February 2016 Price Program Update

http://www.nass.usda.gov/Surveys/Guide_to_NASS_Surveys/Prices/updateFeb2016.pdf