



# Agricultural Prices

ISSN: 1937-4216

Released April 29, 2016, by the National Agricultural Statistics Service (NASS), Agricultural Statistics Board, United States Department of Agriculture (USDA).

## March Farm Prices Received Index Increased 0.3 Percent

The March Prices Received Index (Agricultural Production), at 92.8, increased 0.3 percent from February. At 83.0, the Crop Production Index decreased 1.4 percent. At 100.2, the Livestock Production Index increased 1.0 percent. Producers received higher prices for cattle, broilers, and dry beans but lower prices for strawberries, milk, and eggs. Compared to a year earlier, the Prices Received Index decreased 9.1 percent and the Crop Production Index is down 2.9 percent. The Livestock Production Index increased 15 percent from March 2015. In addition to prices, the indexes are influenced by the monthly mix of commodities producers market. Increased monthly movement of cattle, strawberries, calves, and milk offset the decreased marketing of cotton, soybeans, apples, and hay. The Food Commodities Index, at 97.3, is unchanged from the previous month but down 12 percent from March 2015.

## March Prices Paid Index Up 0.2 Percent

The March index of Prices Paid for Commodities and Services, Interest, Taxes, and Farm Wage Rates (PPITW), at 107.1, is up 0.2 percent from February 2016 but down 3.9 percent from March 2015. Higher prices in March for feeder cattle, LP gas, diesel, and feeder pigs more than offset lower prices for field crop seeds, mixed fertilizer, supplements, and self-propelled machinery.

## Prices Received, Prices Paid, and Ratio of Prices Received to Prices Paid Indexes 2011 Base – United States: March 2016 with Comparisons

Index Group	March 2015	February 2016	March 2016
	(percent)	(percent)	(percent)
Prices received by farmers .....	102.1	92.5	92.8
Prices paid by farmers .....	111.4	106.9	107.1
Ratio of prices received to prices paid .....	92	86	87

## Contents

Prices Received by Farmers .....	4
Prices Received Indexes, 2011 Base – United States: March 2016 with Comparisons .....	5
Prices Received Indexes, 1910-1914 Base – United States: March 2016 with Comparisons .....	5
Prices Received Indexes, 2011 Base by Month for Selected Groups – United States: 2015 and 2016 .....	5
Prices Paid Indexes, 2011 Base by Month for Selected Groups – United States: 2015 and 2016 .....	6
Received and Paid Indexes, Annual Average – United States: 2011=100 Chart .....	6
Crop Farm Received and Paid Indexes, All Items by Quarter – United States: 2011=100 Chart .....	7
Livestock Farm Received and Paid Indexes All Items by Quarter – United States: 2011=100 Chart .....	7
Received Indexes by Month, Agricultural, Crop, and Livestock Production – United States: 2011=100 Chart .....	8
Received Indexes by Month, Feed Grain, Food Grain, and Oilseed – United States: 2011=100 Chart .....	8
Received Indexes by Month, Fruit & Tree Nut and Vegetable & Melon – United States: 2011=100 Chart .....	9
Received Indexes by Month, Dairy, Meat Animal, and Poultry & Egg – United States: 2011=100 Chart .....	9
Prices Received for Field Crops and Fruits – United States: March 2016 with Comparisons .....	10
Prices Received for Vegetables and Livestock – United States: March 2016 with Comparisons .....	11
Prices Received for Corn by Month – United States Chart .....	12
Prices Received for Wheat by Month – United States Chart .....	12
Prices Received for Upland Cotton by Month – United States Chart .....	13
Prices Received for Soybeans by Month – United States Chart .....	13
Prices Received for Cattle by Month – United States Chart .....	14
Prices Received for Milk by Month – United States Chart .....	14
Prices Received for Hogs by Month – United States Chart .....	15
Prices Received for Poultry by Month – United States Chart .....	15
Prices Received for All Wheat, Corn, and Soybeans by Month – United States: 2016 with Comparisons .....	16
Prices Received for Beef Cattle and All Hogs by Month – United States: 2016 with Comparisons .....	16
Prices Received for All Wheat – States and United States: March 2016 with Comparisons .....	17
Prices Received for Winter Wheat – States and United States: March 2016 with Comparisons .....	17
Prices Received for Durum Wheat – States and United States: March 2016 with Comparisons .....	18
Prices Received for Spring Wheat – States and United States: March 2016 with Comparisons .....	18
Prices Received for Oats – States and United States: March 2016 with Comparisons .....	18
Prices Received for All Barley – States and United States: March 2016 with Comparisons .....	19
Prices Received for Malting Barley – States and United States: March 2016 with Comparisons .....	19
Prices Received for Feed Barley – States and United States: March 2016 with Comparisons .....	19
Prices Received for Sorghum Grain – States and United States: March 2016 with Comparisons .....	19
Prices Received for Corn – States and United States: March 2016 with Comparisons .....	20
Prices Received for Soybeans – States and United States: March 2016 with Comparisons .....	20
Prices Received for Dry Beans – States and United States: March 2016 with Comparisons .....	21
Prices Received for Peanuts (in shell) – States and United States: March 2016 with Comparisons .....	21
Prices Received for Sunflower – States and United States: March 2016 with Comparisons .....	21
Prices Received for Canola – States and United States: March 2016 with Comparisons .....	21
Prices Received for Flaxseed – States and United States: March 2016 with Comparisons .....	22
Prices Received for Upland Cotton and Cottonseed – States and United States: March 2016 with Comparisons .....	22
Prices Received and Farm Marketings for Upland Cotton and Rice – United States: March 2016 with Comparisons .....	22
Prices Received for Hay by Type – States and United States: March 2016 with Comparisons .....	23
Prices Received for Apples – States and United States: March 2016 with Comparisons .....	23
Prices Received for Citrus Fruits by Utilization – States and United States: March 2015 .....	24
Prices Received for Citrus Fruits by Utilization – States and United States: February 2016 .....	25
Prices Received for Citrus Fruits by Utilization – States and United States: March 2016 .....	26
Prices Received for Potatoes – States and United States: March 2016 with Comparisons .....	27
Prices Received for All Milk – States and United States: March 2016 with Comparisons .....	28
Prices Received for Milk Cows – States and United States: April 2016 with Comparisons .....	28
Commodity Parity Prices and Price as Percent of Parity Price – United States: March 2016 with Comparisons .....	29

Commodity Parity Prices – United States: March 2016 with Comparisons .....	30
Marketing Year for Specified Commodities .....	32
Prices Received for Broilers by Month – United States: 2010-2015 .....	32
Prices Received for Turkeys by Month – United States: 2010-2015 .....	32
Prices Received for All Eggs by Month – United States: 2010-2015 .....	33
Prices Received for Market Eggs by Month – United States: 2010-2015 .....	33
Prices Received for All Milk Sold at Plants by Month – States and United States: 2014 .....	34
Prices Received for All Milk Sold at Plants by Month – States and United States: 2015 .....	35
Prices Received for All Milk Sold at Plants, Monthly Fat Test – States and United States: 2014 .....	36
Prices Received for All Milk Sold at Plants, Monthly Fat Test – States and United States: 2015 .....	37
Adjustment for Seasonal Variation – All Eggs and All Milk .....	38
Prices Received for All Eggs Adjusted for Seasonal Variation by Month – United States: 2012-2015 .....	38
Prices Received for All Eggs as a Percentage of Parity Price by Month – United States: 2012-2015 .....	38
Prices Received for All Eggs Adjustment Factors by Month – United States: 2012-2015 .....	38
Prices Received for All Milk Adjusted for Seasonal Variation by Month – United States: 2012-2015 .....	39
Prices Received for All Milk as a Percentage of Parity Price by Month – United States: 2012-2015 .....	39
Prices Received for All Milk Adjustment Factors by Month – United States: 2012-2015 .....	39
Reliability of Prices Received Estimates .....	40
Prices Paid by Farmers .....	41
Prices Paid Indexes and Related Parity Ratios – United States: March 2016 with Comparisons .....	42
Prices Paid Indexes and Annual Weights for Input Components and Sub-components – United States: March 2016 with Comparisons .....	43
Paid Indexes by Month, All Items and Production Items – United States: 2011=100 Chart .....	44
Paid Indexes, Annual Averages, Production Items, Interest, Taxes, and Wages – United States: 2011=100 Chart .....	44
Paid Indexes by Farm Type and Month, All Items – United States: 2011=100 Chart .....	45
Paid Indexes by Origin and Month, All Production Items – United States: 2011=100 Chart .....	45
Paid Indexes by Non-Farm Origin and Month, Chemicals, Fertilizer, and Fuels – United States: 2011=100 Chart .....	46
Paid Indexes by Non-Farm Origin and Month, Machinery and Supplies & Repairs – United States: 2011=100 Chart .....	46
Paid Indexes by Farm Origin and Month, Feed and Livestock & Poultry – United States: 2011=100 Chart .....	47
Feed Price Ratios – United States: March 2016 with Comparisons .....	48
Prices Received Used to Calculate Feed Price Ratios – United States: March 2016 with Comparisons .....	48
Prices Paid for Feeder Livestock – United States: March 2016 with Comparisons .....	48
Reliability of Prices Paid Estimates .....	49
Information Contacts .....	50

## March Prices Received by Farmers

The March Prices Received Index for agricultural production is 92.8 percent of its 2011 base, up 0.3 percent from the February 2016 index but 9.1 percent below the March 2015 index.

**Crop production:** The March index, at 83.0, decreased 1.4 percent from February and is 2.9 percent below March 2015. The index decrease for fruit and tree nut production more than offset the index increase for grain and oilseed production.

**Grain and oilseed:** The March index, at 66.1 is up 0.8 percent from February but is 8.2 percent lower than March 2015. The higher Food Grain Index contributed the most to the increase.

**Feed grain:** The March index, at 60.3, is unchanged from last month but is 6.2 percent below a year ago. The corn price, at \$3.57 per bushel, is unchanged from last month but is down 24 cents from March 2015. At \$5.67 per cwt, sorghum grain is 19 cents higher than February but \$2.33 less than March a year earlier.

**Food grain:** At 72.8, the index for March is 2.2 percent higher than the previous month but is 12 percent below a year earlier. The March price for all wheat, at \$4.40 per bushel, is down 21 cents from February and is \$1.30 below March 2015.

**Oilseed:** At 68.8, the index for March is up 0.6 percent from February but 13 percent lower than March 2015. The soybean price, at \$8.56 per bushel, increased 5 cents from February but is \$1.29 below March a year earlier.

**Fruit and tree nut:** The March index, at 125.5, is down 7.8 percent from February and 0.9 percent lower than a year earlier. Price decreases during March for strawberries and oranges more than offset price increases for lemons and apples.

**Vegetable and melon:** At 99.3, the index for March is down 3.4 percent from the previous month but 4.5 percent above March 2015. Price declines for lettuce and tomatoes more than offset price increases during March for potatoes and broccoli.

**Other crop:** The March index, at 74.5, is up 0.3 percent from the previous month but down 9.4 percent from March 2015. The all hay price, at \$138.00 per ton, is up \$2.00 from February but down \$19.00 from March 2015. At 55.2 cents per pound, the price for upland cotton is down 2.0 cents from February and is 6.1 cents less than March 2015.

**Livestock production:** The index for March, at 100.2, is 1.0 percent above the previous month but down 15 percent from March a year earlier. Compared with a year ago, prices are higher for turkeys and lower for cattle, broilers, market eggs, calves, milk, and hogs.

**Meat animal:** At 108.7, the March index is up 2.0 percent from the previous month but 14 percent lower than a year earlier. At \$50.00 per cwt, the March hog price is up 40 cents from February but 30 cents lower than a year earlier. The March beef cattle price of \$135 per cwt is \$3.00 higher than the previous month but down \$25.00 from March 2015.

**Dairy:** The index for March, at 76.1, is down 2.6 percent from the previous month and 7.9 percent lower than March a year earlier. The March all milk price of \$15.30 per cwt is down 40 cents from February and \$1.30 from March 2015.

**Poultry and egg:** At 106.5, the March index is up 1.8 percent from February but 19 percent below March 2015. The March market egg price, at 72.9 cents per dozen, decreased 12.0 cents from February and 68.1 cents from March 2015. The March broiler price, at 49.0 cents per pound, is up 3.0 cents from February but down 10.0 cents from a year earlier. At 78.9 cents per pound, the March turkey price is down 0.5 cents from the previous month but up 10.6 cents from March 2015.

## Prices Received Indexes, 2011 Base – United States: March 2016 with Comparisons

[Revised historical price indexes for months not shown are available at [www.nass.usda.gov](http://www.nass.usda.gov)]

Index Group	2011 Base		
	March 2015	February 2016	March 2016
	(percent)	(percent)	(percent)
Agricultural production .....	102.1	92.5	92.8
Crop production .....	85.5	84.2	83.0
Grain and oilseed .....	72.0	65.6	66.1
Feed grain .....	64.3	60.3	60.3
Food grain .....	82.4	71.2	72.8
Oilseed .....	78.9	68.4	68.8
Fruit and tree nut .....	126.6	136.1	125.5
Vegetable and melon .....	95.0	102.8	99.3
Other crop .....	82.2	74.3	74.5
Livestock production .....	117.3	99.2	100.2
Meat animal .....	126.8	106.6	108.7
Cattle .....	144.4	117.0	119.5
Hog .....	75.6	74.6	75.2
Dairy .....	82.6	78.1	76.1
Poultry and egg .....	132.3	104.6	106.5
Food commodity .....	110.2	97.3	97.3

## Prices Received Indexes, 1910-1914 Base – United States: March 2016 with Comparisons

[Revised historical price indexes for months not shown are available at [www.nass.usda.gov](http://www.nass.usda.gov)]

Index Group	1910 - 1914 Base		
	March 2015	February 2016	March 2016
	(percent)	(percent)	(percent)
Agricultural production .....	1053	954	957
Crop production .....	746	735	724
Livestock production .....	1362	1152	1164

## Prices Received Indexes, 2011 Base by Month for Selected Groups – United States: 2015 and 2016

[Revised historical price indexes for months not shown are available at [www.nass.usda.gov](http://www.nass.usda.gov). Blank data cells indicate estimation period has not yet begun]

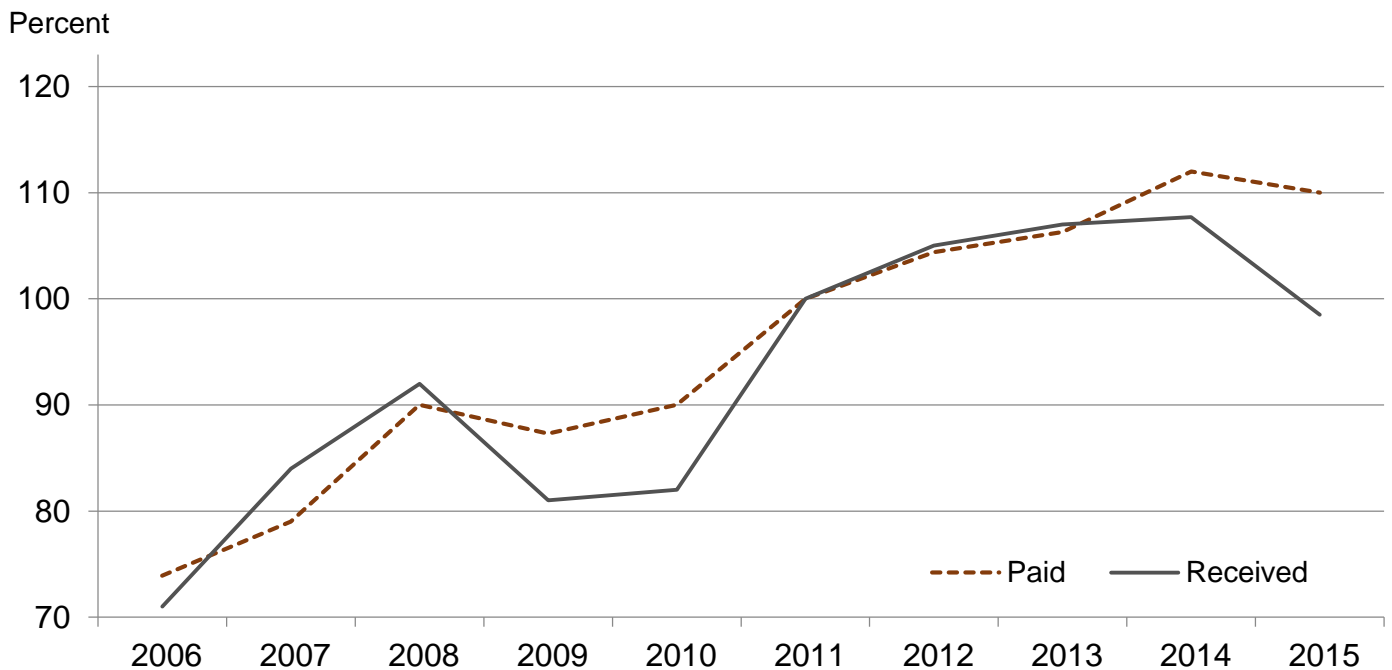
Month	2011 Base							
	Agricultural production		Crop production		Livestock production		Food commodities	
	2015	2016	2015	2016	2015	2016	2015	2016
	(percent)	(percent)	(percent)	(percent)	(percent)	(percent)	(percent)	(percent)
January .....	97.1	89.2	82.3	80.7	120.4	99.9	108.5	95.8
February .....	99.0	92.5	84.0	84.2	113.9	99.2	106.8	97.3
March .....	102.1	92.8	85.5	83.0	117.3	100.2	110.2	97.3
April .....	103.4		88.6		116.4		110.6	
May .....	107.2		90.3		122.0		115.7	
June .....	104.7		88.2		121.1		112.9	
July .....	99.2		85.9		115.3		105.6	
August .....	102.1		87.8		117.1		109.6	
September .....	97.5		87.1		109.3		103.5	
October .....	88.9		79.7		104.2		94.5	
November .....	91.9		82.1		105.3		101.3	
December .....	89.9		84.0		97.2		96.7	

## Prices Paid Indexes, 2011 Base by Month for Selected Groups – United States: 2015 and 2016

[Revised historical price indexes for months not shown are available at [www.nass.usda.gov](http://www.nass.usda.gov). Blank data cells indicate estimation period has not yet begun]

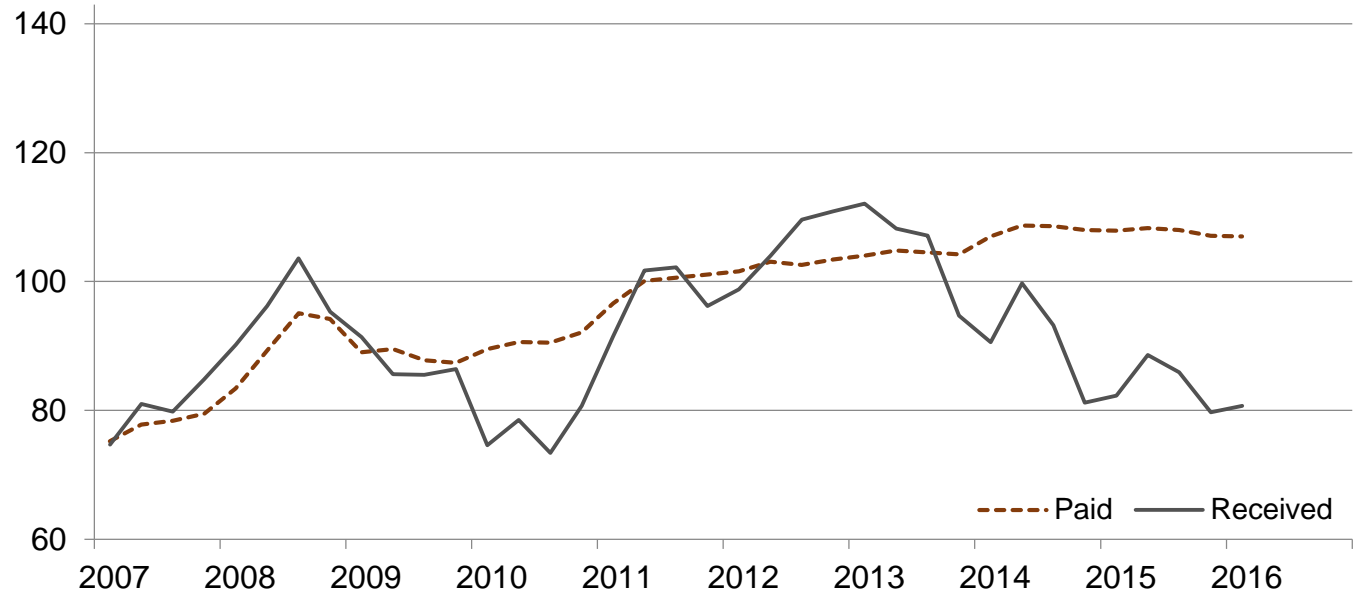
Month	2011 Base							
	All items (PPITW)		Production		Crop sector		Livestock sector	
	2015	2016	2015	2016	2015	2016	2015	2016
	(percent)	(percent)	(percent)	(percent)	(percent)	(percent)	(percent)	(percent)
January .....	111.5	107.3	112.7	106.3	107.9	107.0	115.3	107.7
February .....	111.0	106.9	112.0	105.8	108.3	106.6	114.0	107.3
March .....	111.4	107.1	112.5	105.9	108.4	106.5	114.7	107.8
April .....	111.3		112.4		108.3		114.5	
May .....	111.1		112.1		108.3		114.1	
June .....	111.2		112.2		108.4		114.3	
July .....	110.8		111.5		108.0		113.9	
August .....	110.1		110.6		107.5		113.0	
September .....	108.8		108.9		107.1		110.6	
October .....	108.8		108.6		107.1		110.7	
November .....	107.7		107.1		106.6		108.9	
December .....	106.2		105.2		106.2		106.2	

## Received and Paid Indexes, Annual Average – United States: 2011=100



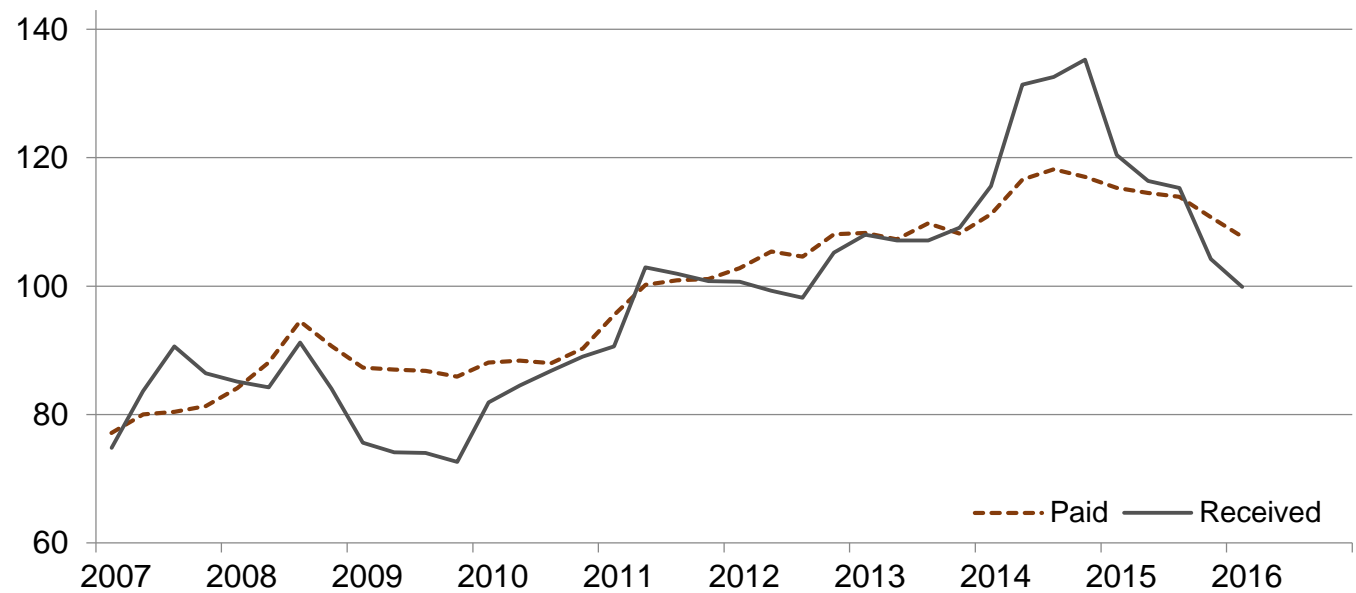
## Crop Farm Received and Paid Indexes, All Items by Quarter – United States: 2011=100

Percent

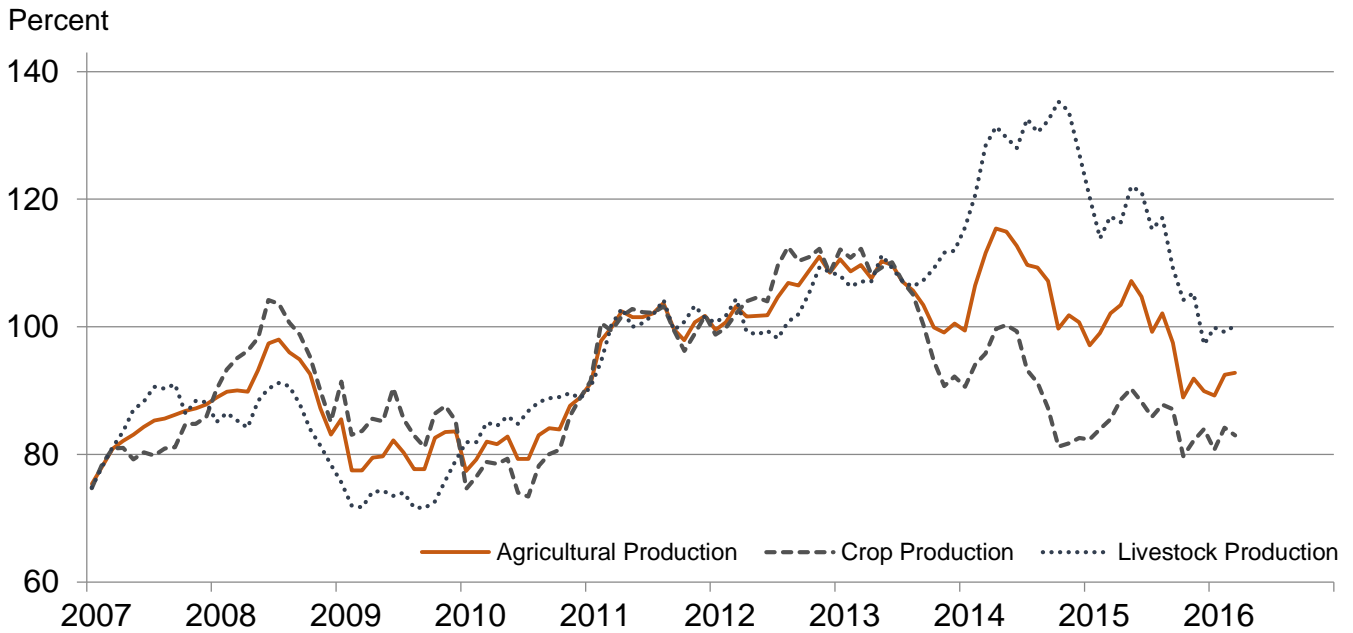


## Livestock Farm Received and Paid Indexes, All Items by Quarter – United States: 2011=100

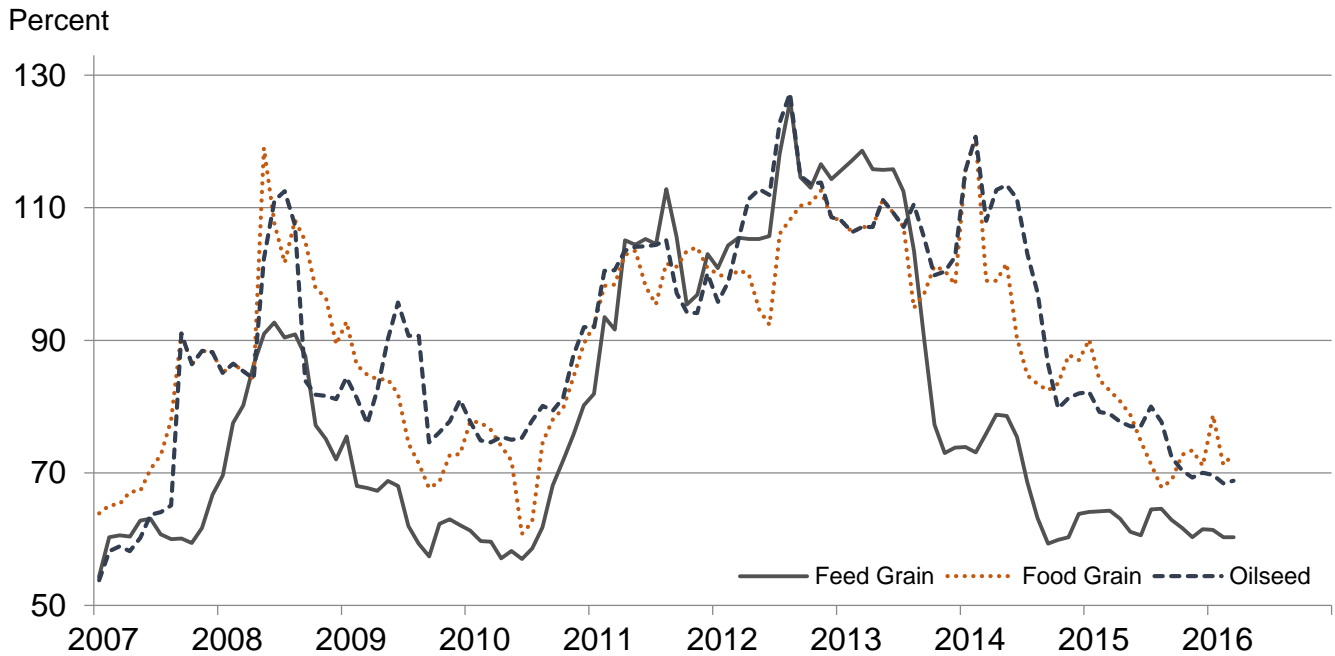
Percent



## Received Indexes by Month, Agricultural, Crop, and Livestock Production – United States: 2011=100

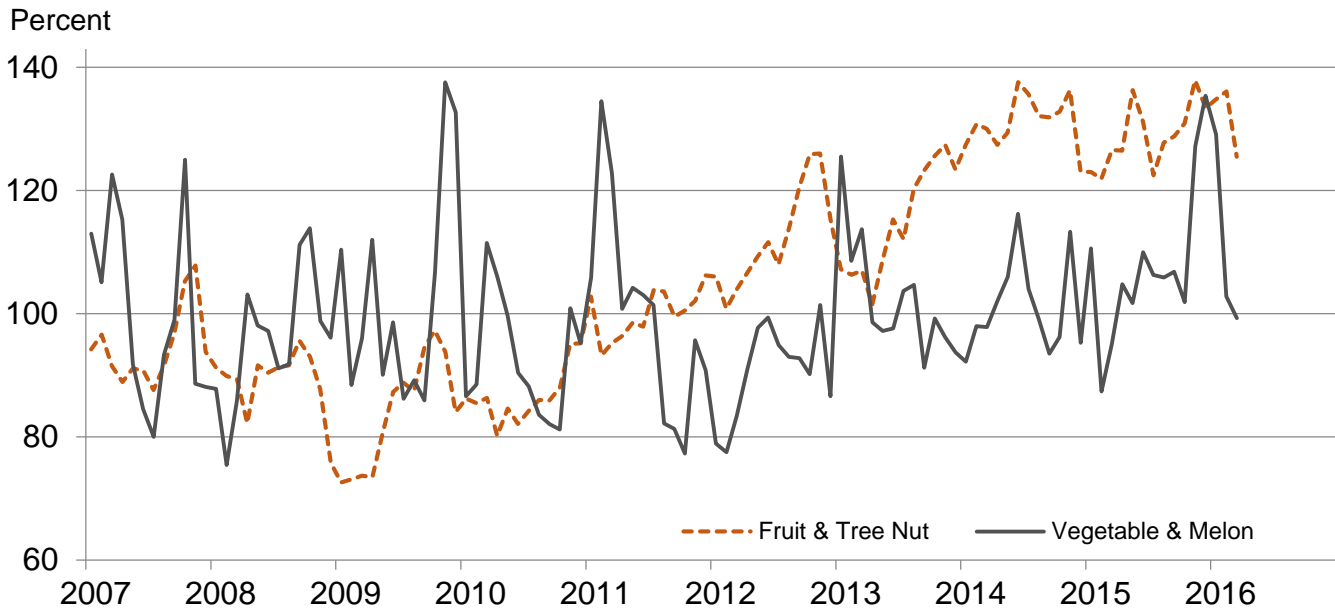


## Received Indexes by Month, Feed Grain, Food Grain, and Oilseed – United States: 2011=100

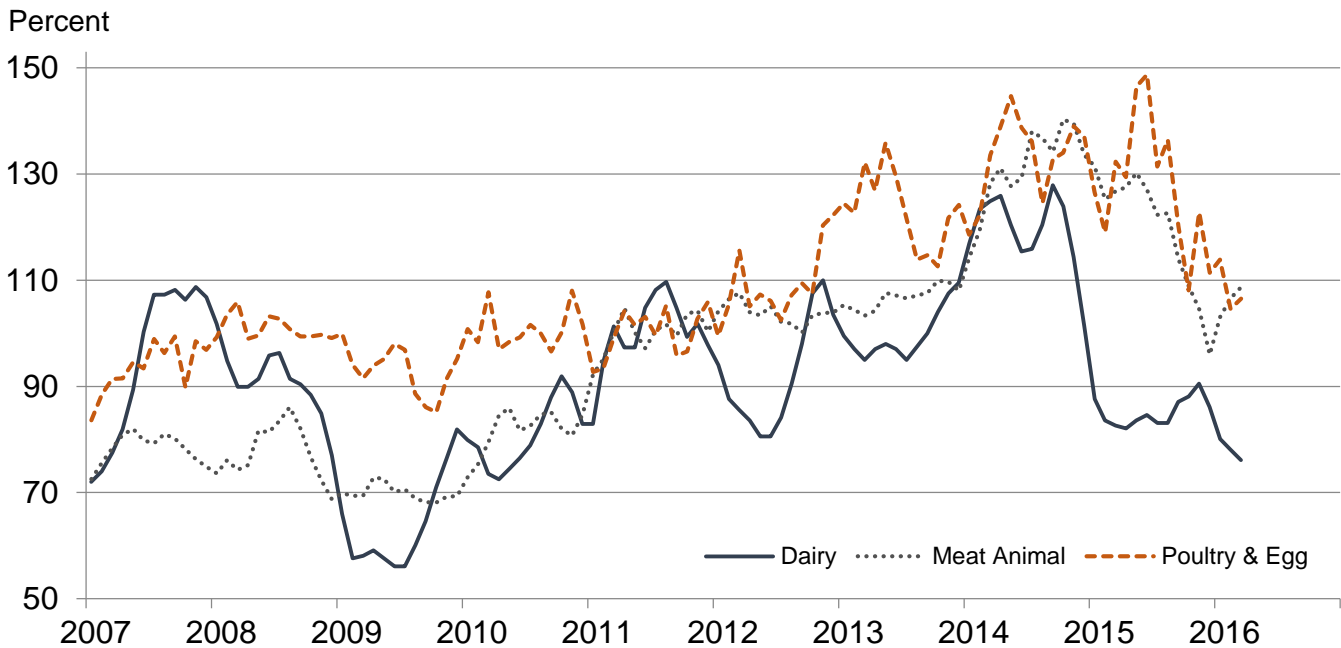




**Received Indexes by Month,  
Fruit & Tree Nut and Vegetable & Melon –  
United States: 2011=100**



**Received Indexes by Month,  
Dairy, Meat Animal, and Poultry & Egg –  
United States: 2011=100**



**Prices Received for Field Crops and Fruits – United States: March 2016 with Comparisons**

Commodity	2011 Base Price	March 2015	February 2016	March 2016	
<b>Field crops</b>					
Austrian winter peas .....	dollars/cwt	19.50	26.00	(S)	(D)
Barley, all .....	dollars/bushel	4.79	4.87	5.50	5.40
Feed .....	dollars/bushel	4.59	3.08	3.06	2.77
Malting .....	dollars/bushel	4.83	5.39	5.70	5.61
Beans, dry edible .....	dollars/cwt	34.60	33.80	24.80	26.60
Canola .....	dollars/cwt	23.10	16.60	15.30	15.10
Chickpeas, all .....	dollars/cwt	35.70	31.40	28.90	29.20
Large .....	dollars/cwt	39.20	35.00	32.60	30.70
Small .....	dollars/cwt	23.40	21.20	24.80	24.80
Corn .....	dollars/bushel	6.02	3.81	3.57	3.57
Cotton, Upland .....	dollars/pound	0.880	0.613	0.572	0.552
Cottonseed .....	dollars/ton	131.00	(NA)	236.00	(NA)
Flaxseed .....	dollars/bushel	14.20	11.50	8.10	8.36
Hay, all, baled .....	dollars/ton	159.00	157.00	136.00	138.00
Alfalfa .....	dollars/ton	176.00	169.00	142.00	144.00
Other .....	dollars/ton	119.00	140.00	125.00	126.00
Lentils .....	dollars/cwt	27.50	27.90	36.00	38.80
Oats .....	dollars/bushel	3.42	2.96	2.21	2.20
Peanuts, in-shell .....	dollars/pound	0.252	0.225	0.197	0.192
Peas, dry edible .....	dollars/cwt	13.60	12.30	14.90	13.70
Potatoes .....	dollars/cwt	9.78	9.38	8.48	9.38
Rice, all .....	dollars/cwt	13.70	12.60	12.30	11.80
Long .....	dollars/cwt	12.30	11.40	11.50	11.00
Medium and short .....	dollars/cwt	18.40	17.60	15.00	14.50
Sorghum grain .....	dollars/cwt	10.70	8.00	5.48	5.67
Soybeans .....	dollars/bushel	12.50	9.85	8.51	8.56
Sunflowers, all .....	dollars/cwt	29.00	22.50	20.50	21.40
Wheat, all .....	dollars/bushel	7.44	5.70	4.61	4.40
Winter .....	dollars/bushel	6.93	5.55	4.47	4.27
Durum .....	dollars/bushel	9.22	9.50	5.97	6.04
Other spring .....	dollars/bushel	8.33	5.53	4.56	4.47
Hard red winter .....	dollars/bushel	7.07	5.38	4.22	4.19
Soft red winter .....	dollars/bushel	6.77	5.13	4.55	4.21
Hard red spring .....	dollars/bushel	8.38	5.52	4.54	4.46
White .....	dollars/bushel	6.58	6.25	4.93	4.65
<b>Fruits</b>					
Citrus, equivalent on-tree					
Grapefruit .....	dollars/box	7.47	5.34	8.88	8.46
Lemons .....	dollars/box	12.30	16.14	21.97	24.64
Oranges .....	dollars/box	8.16	11.32	9.78	9.19
Tangelos .....	dollars/box	3.50	(S)	(S)	(S)
Tangerines and mandarins .....	dollars/box	15.30	(D)	(D)	(D)
Non-citrus, fresh					
Apples <sup>1</sup> .....	dollars/pound	0.325	0.278	0.449	0.460
Grapes <sup>1</sup> .....	dollars/ton	628.00	(S)	(S)	(S)
Peaches <sup>1</sup> .....	dollars/ton	507.00	(S)	(S)	(S)
Pears <sup>1</sup> .....	dollars/ton	559.00	652.00	790.00	749.00
Strawberries .....	dollars/cwt	104.00	63.60	167.00	81.00

(D) Withheld to avoid disclosing data for individual operations.

(NA) Not available.

(S) Insufficient number of reports to establish an estimate.

<sup>1</sup> Equivalent packinghouse-door returns for California, Michigan, New York (apples only), Pennsylvania (apples only), and Washington (apples, peaches, and pears). Prices as sold for other states.

## Prices Received for Vegetables and Livestock – United States: March 2016 with Comparisons

[Price data source for livestock and poultry commodities is United States Department of Agriculture's Agricultural Marketing Service]

Commodity	2011 Base Price	March 2015	February 2016	March 2016
<b>Vegetables, fresh <sup>1</sup></b>				
Asparagus .....	dollars/cwt 37.50	113.00	115.00	103.00
Beans, snap .....	dollars/cwt 69.00	60.50	125.00	119.00
Broccoli .....	dollars/cwt 41.60	47.80	26.80	30.90
Cantaloupes .....	dollars/cwt 16.50	(NA)	(NA)	(D)
Carrots .....	dollars/cwt 30.80	32.20	35.80	34.90
Cauliflower .....	dollars/cwt 47.00	85.10	45.30	39.80
Celery .....	dollars/cwt 22.50	14.00	29.90	18.80
Corn, sweet .....	dollars/cwt 30.70	31.70	58.70	67.50
Cucumbers .....	dollars/cwt 18.70	40.80	(NA)	48.70
Lettuce .....	dollars/cwt 24.30	19.10	20.90	15.40
Onions <sup>2</sup> .....	dollars/cwt 11.90	7.89	15.30	14.90
Tomatoes .....	dollars/cwt 51.20	44.20	88.30	70.90
<b>Livestock</b>				
Calves .....	dollars/cwt 142.00	290.00	201.00	199.00
Cattle, all beef .....	dollars/cwt 115.00	160.00	132.00	135.00
Cows <sup>3</sup> .....	dollars/cwt 71.60	114.00	77.50	80.00
Steers and heifers .....	dollars/cwt 117.00	162.00	134.00	137.00
Milk cows <sup>4 5</sup> .....	dollars/head 1,420.00	1,970.00	1,830.00	1,820.00
Hogs, all .....	dollars/cwt 66.50	50.30	49.60	50.00
Barrows and gilts .....	dollars/cwt 66.80	50.70	49.80	50.50
Sows .....	dollars/cwt 57.90	38.20	45.40	36.30
<b>Dairy and poultry</b>				
Milk, all <sup>6</sup> .....	dollars/cwt 20.10	16.60	15.70	15.30
Fat test .....	percent 3.71	3.78	3.84	3.80
Broilers, live <sup>7</sup> .....	dollars/pound 0.459	0.590	0.460	0.490
Eggs, all <sup>8</sup> .....	dollars/dozen 0.969	1.54	1.08	0.968
Market <sup>8 9</sup> .....	dollars/dozen 0.796	1.41	0.849	0.729
Turkeys, live <sup>10</sup> .....	dollars/pound 0.680	0.683	0.794	0.789
<b>Adjusted for seasonal variation</b>				
Eggs, all .....	dollars/dozen 0.979	1.54	1.11	0.98
Seasonal factor .....	percent 101	100	98	99
Milk, all .....	dollars/cwt 20.20	17.10	16.10	15.70
Seasonal factor .....	percent 100	97	97	97

(D) Withheld to avoid disclosing data for individual operations.

(NA) Not available.

<sup>1</sup> Point of first sale.

<sup>2</sup> Includes some processing.

<sup>3</sup> Beef cows and cull dairy cows sold for slaughter.

<sup>4</sup> Animals sold for dairy herd replacement only. Prices available for January, April, July, and October.

<sup>5</sup> Milk cow prices are for April 2015, January 2016, and April 2016.

<sup>6</sup> Before deductions for hauling. Includes quality, quantity, and other premiums. Excludes hauling subsidies.

<sup>7</sup> Live weight equivalent price.

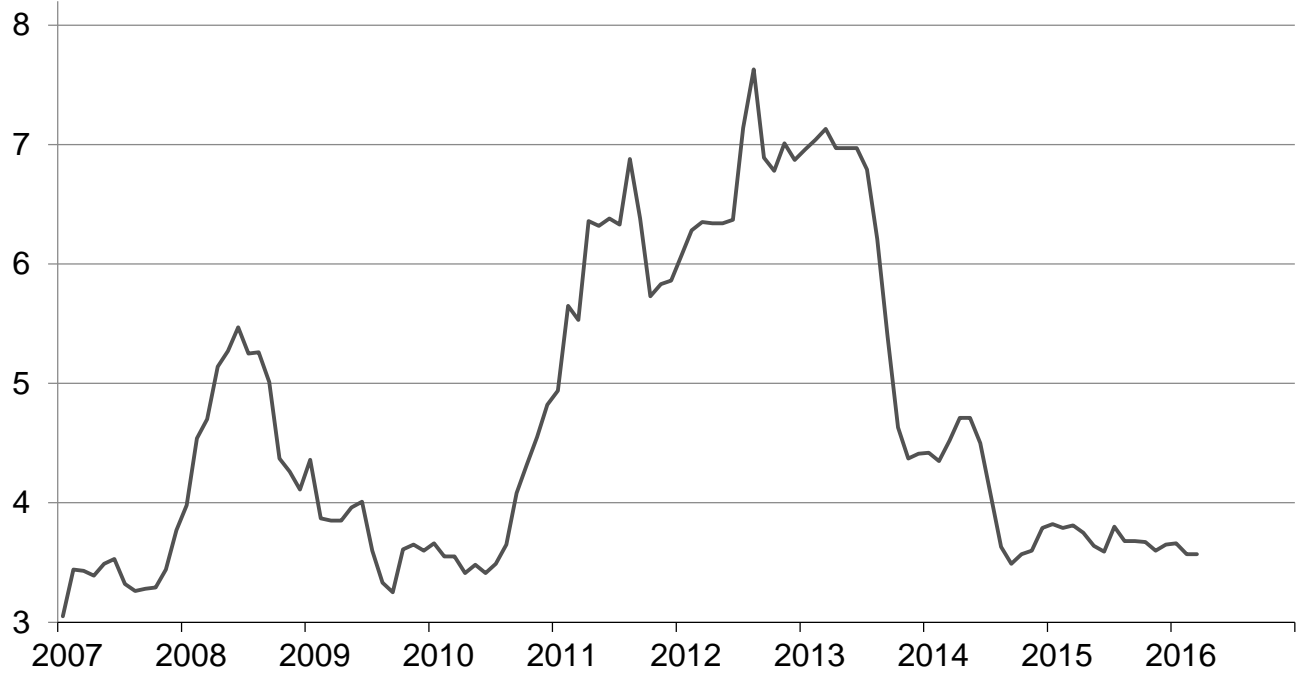
<sup>8</sup> Mid-month price.

<sup>9</sup> Also referred to as table eggs.

<sup>10</sup> Live weight equivalent price is used when actual live weight price is not available. Beginning January 2011, price reflects FOB shipping point basis. Prior year price reflects delivered basis.

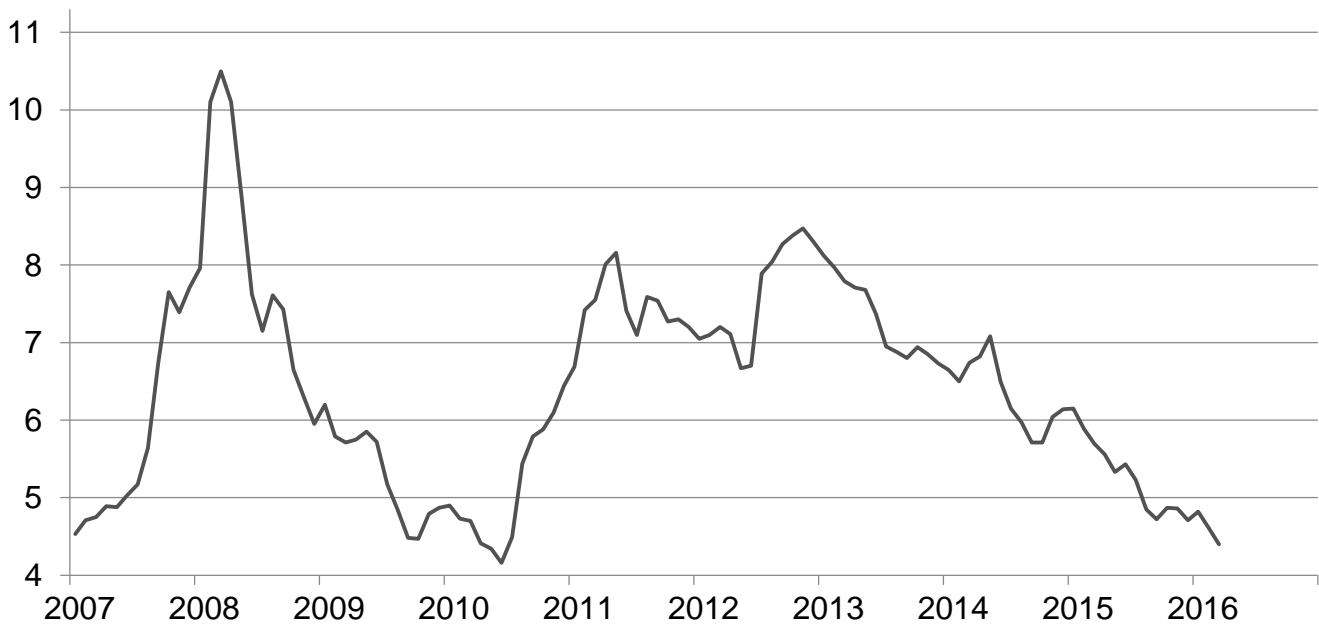
## Prices Received for Corn by Month – United States

Dollars per bushel



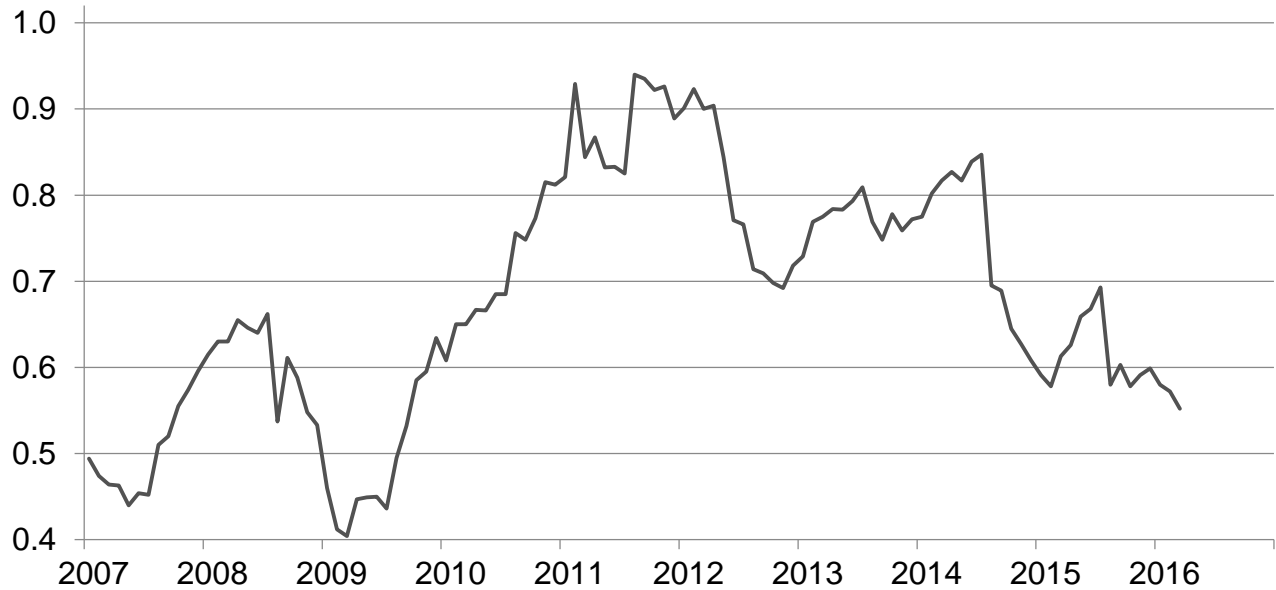
## Prices Received for Wheat by Month – United States

Dollars per bushel



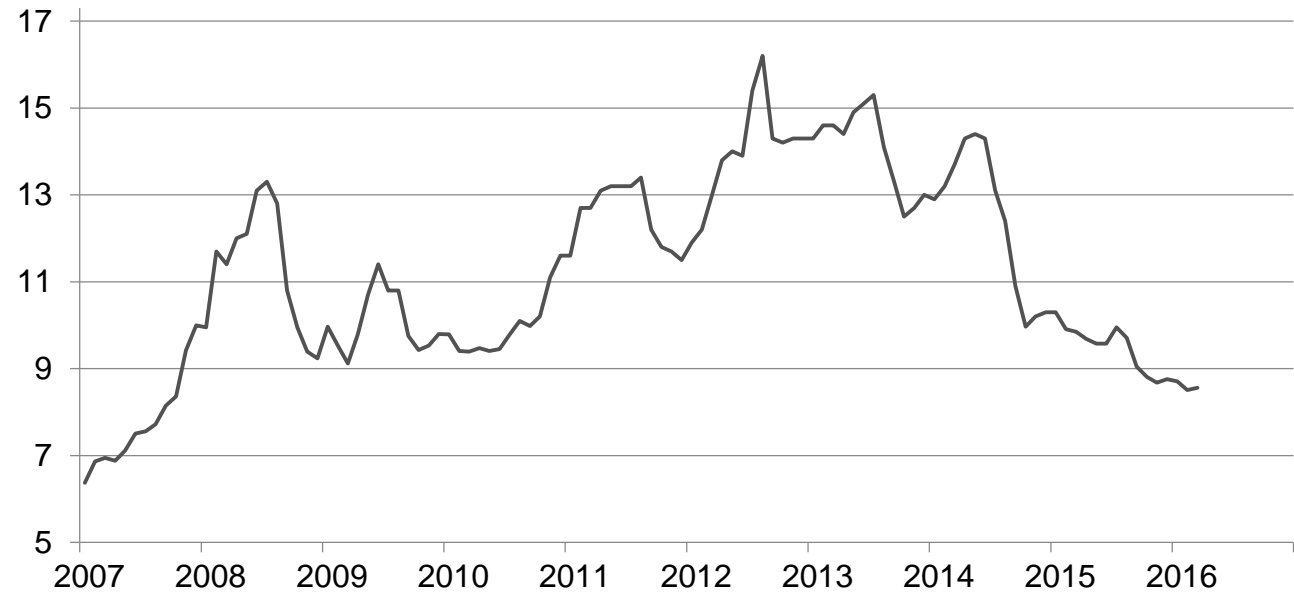
## Prices Received for Upland Cotton by Month – United States

Dollars per pound



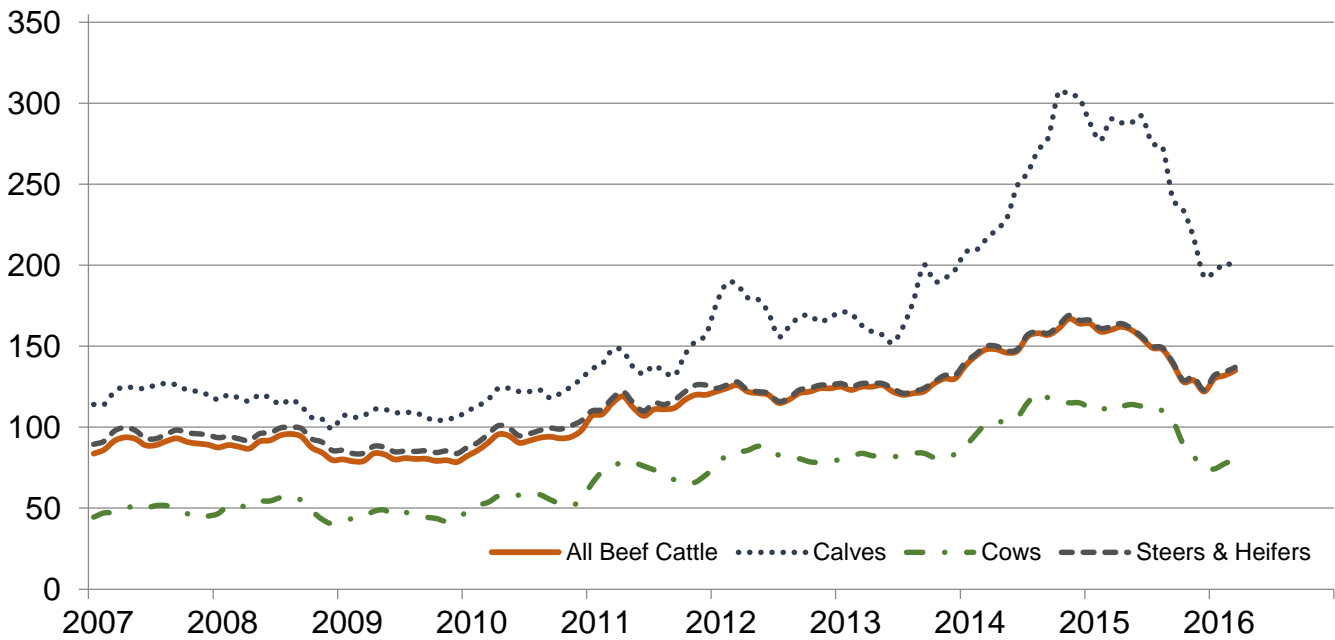
## Prices Received for Soybeans by Month – United States

Dollars per bushel



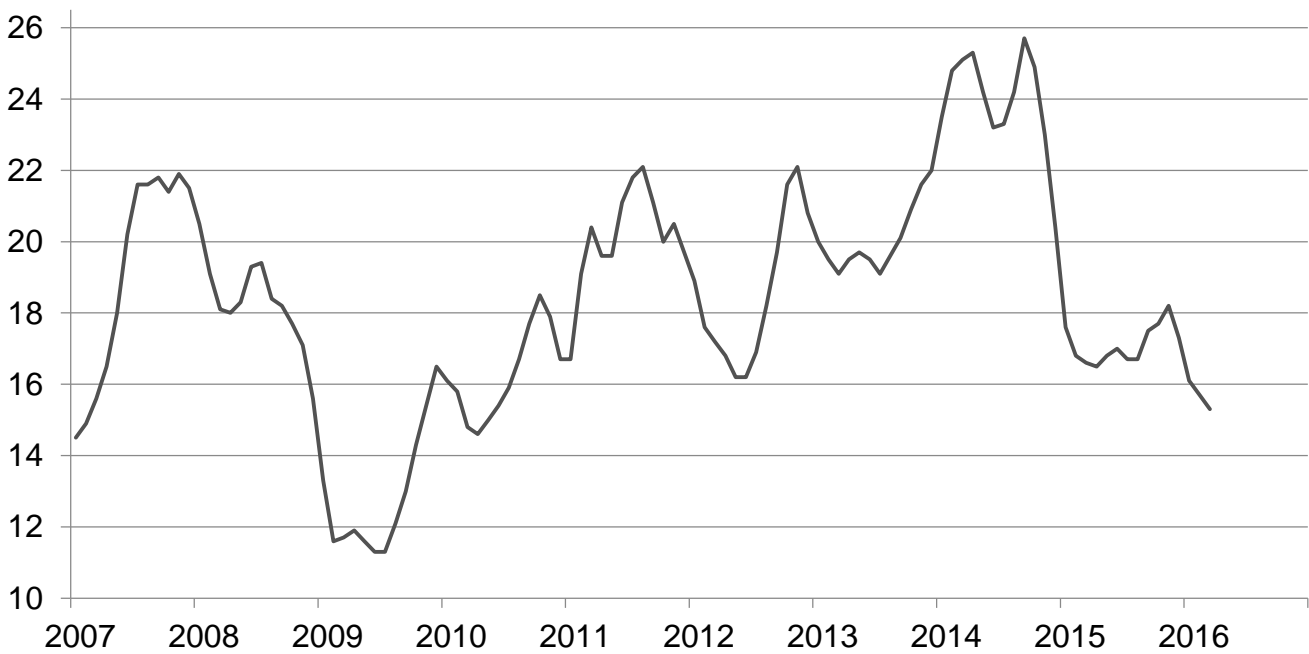
## Prices Received for Cattle by Month – United States

Dollars per cwt



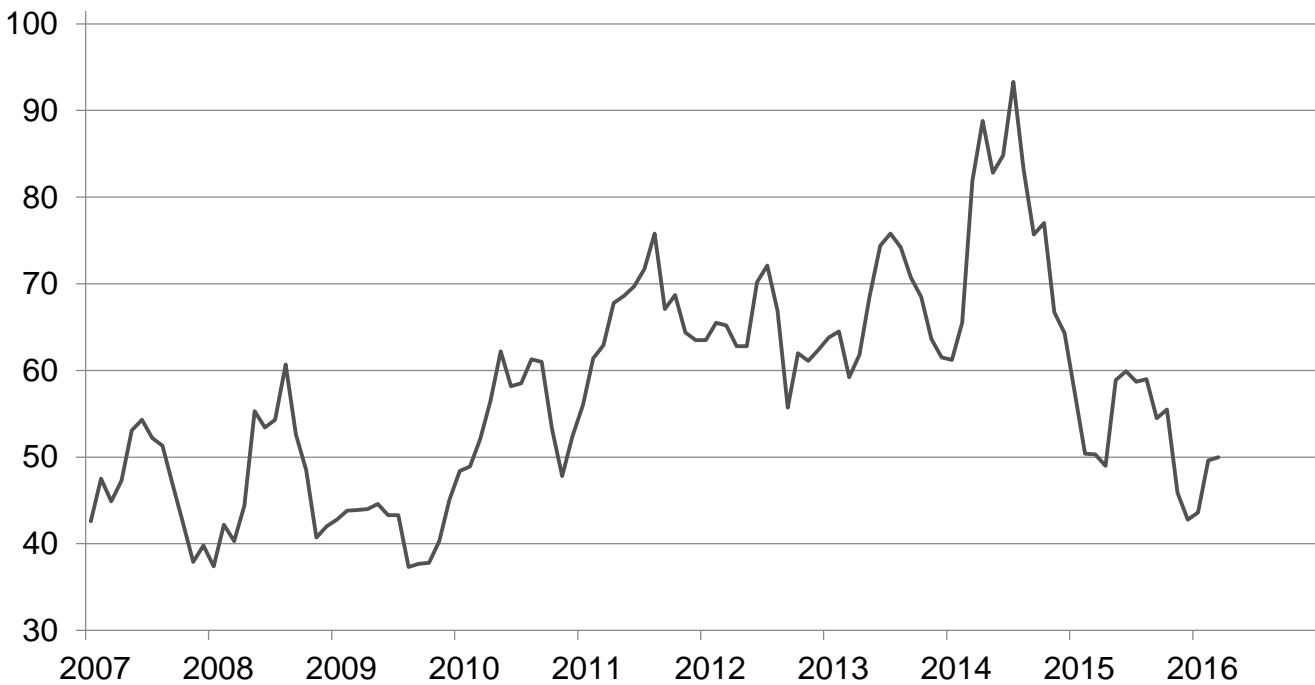
## Prices Received for Milk by Month – United States

Dollars per cwt



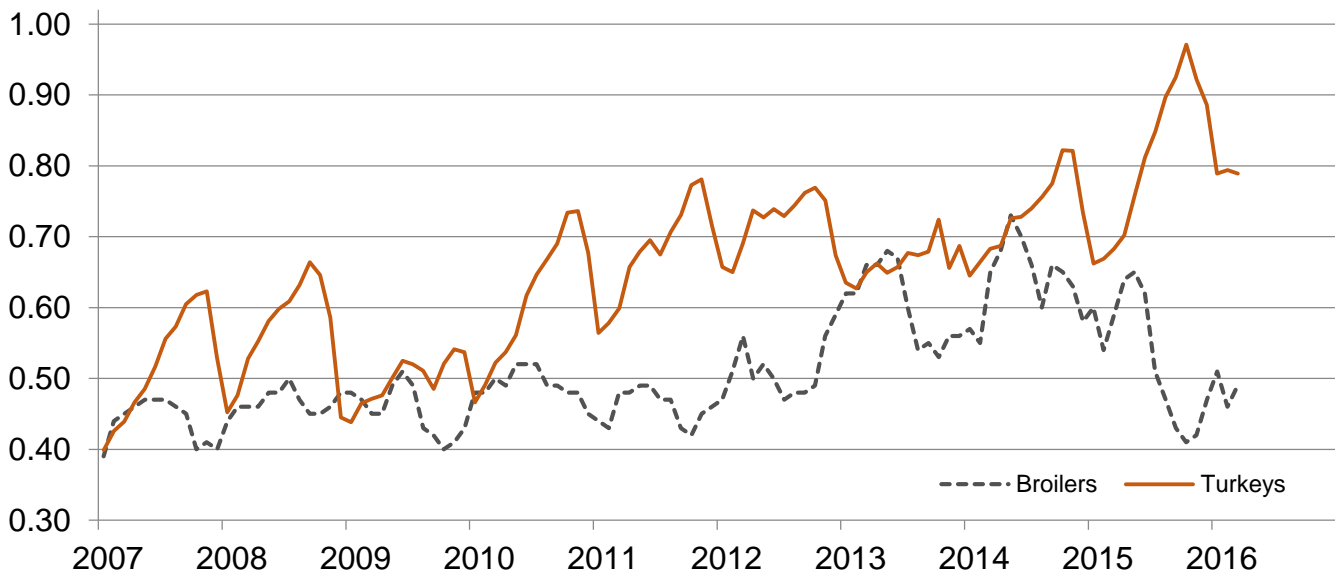
## Prices Received for Hogs by Month – United States

Dollars per cwt



## Prices Received for Poultry by Month – United States

Dollars per pound



## Prices Received for All Wheat, Corn, and Soybeans by Month – United States: 2016 with Comparisons

[Blank data cells indicate estimation period has not yet begun]

Month	All wheat			Corn			Soybeans		
	2014	2015	2016	2014	2015	2016	2014	2015	2016
	(dollars per bushel)	(dollars per bushel)	(dollars per bushel)	(dollars per bushel)	(dollars per bushel)	(dollars per bushel)	(dollars per bushel)	(dollars per bushel)	(dollars per bushel)
January .....	6.65	6.15	4.82	4.42	3.82	3.66	12.90	10.30	8.71
February .....	6.50	5.89	4.61	4.35	3.79	3.57	13.20	9.91	8.51
March .....	6.74	5.70	4.40	4.52	3.81	3.57	13.70	9.85	8.56
April .....	6.82	5.56		4.71	3.75		14.30	9.69	
May .....	7.08	5.33		4.71	3.64		14.40	9.58	
June .....	6.49	5.43		4.50	3.59		14.30	9.58	
July .....	6.15	5.23		4.06	3.80		13.10	9.95	
August .....	5.97	4.85		3.63	3.68		12.40	9.71	
September .....	5.71	4.72		3.49	3.68		10.90	9.05	
October .....	5.71	4.87		3.57	3.67		9.97	8.81	
November .....	6.04	4.86		3.60	3.60		10.20	8.68	
December .....	6.14	4.71		3.79	3.65		10.30	8.76	

## Prices Received for Beef Cattle and All Hogs by Month – United States: 2016 with Comparisons

[Blank data cells indicate estimation period has not yet begun]

Month	Beef cattle <sup>1</sup>			All hogs <sup>2</sup>		
	2014	2015	2016	2014	2015	2016
	(dollars per cwt)	(dollars per cwt)	(dollars per cwt)	(dollars per cwt)	(dollars per cwt)	(dollars per cwt)
January .....	138.00	164.00	130.00	61.20	57.40	43.60
February .....	144.00	159.00	132.00	65.50	50.40	49.60
March .....	148.00	160.00	135.00	81.90	50.30	50.00
April .....	148.00	162.00		88.80	49.00	
May .....	146.00	160.00		82.80	58.90	
June .....	147.00	155.00		84.80	59.90	
July .....	156.00	149.00		93.30	58.70	
August .....	158.00	148.00		83.20	59.00	
September .....	157.00	139.00		75.70	54.50	
October .....	161.00	128.00		77.00	55.50	
November .....	167.00	129.00		66.70	45.90	
December .....	164.00	122.00		64.30	42.80	

<sup>1</sup> Cows and steers & heifers.

<sup>2</sup> Barrows & gilts and sows.



## Prices Received for All Wheat – States and United States: March 2016 with Comparisons

State	March 2015	February 2016	March 2016
	(dollars per bushel)	(dollars per bushel)	(dollars per bushel)
Arizona .....	(S)	(D)	(S)
Arkansas .....	4.81	4.44	(D)
California .....	(D)	5.18	4.15
Colorado .....	5.21	4.37	3.88
Idaho .....	6.13	(D)	4.65
Illinois .....	4.46	3.61	3.04
Indiana .....	5.47	5.14	4.48
Kansas .....	5.20	4.01	4.03
Michigan .....	5.96	5.59	5.25
Minnesota .....	5.29	4.46	4.48
Missouri .....	4.67	3.94	4.24
Montana .....	6.14	4.74	4.53
Nebraska .....	5.46	3.63	3.89
North Carolina .....	5.23	5.19	5.37
North Dakota .....	5.60	4.69	4.50
Ohio .....	5.29	4.41	4.39
Oklahoma .....	5.37	4.27	4.13
Oregon .....	6.73	4.87	4.73
South Dakota .....	5.45	4.35	4.32
Texas .....	5.04	3.72	3.81
Washington .....	6.24	5.03	4.81
United States .....	5.70	4.61	4.40

(D) Withheld to avoid disclosing data for individual operations.

(S) Insufficient number of reports to establish an estimate.

## Prices Received for Winter Wheat – States and United States: March 2016 with Comparisons

State	March 2015	February 2016	March 2016
	(dollars per bushel)	(dollars per bushel)	(dollars per bushel)
Arkansas .....	4.81	4.44	(D)
California .....	(D)	5.18	4.15
Colorado .....	5.21	4.44	3.88
Idaho .....	6.02	4.76	4.62
Illinois .....	4.46	3.61	3.04
Indiana .....	5.47	5.14	4.48
Kansas .....	5.20	4.01	4.03
Michigan .....	5.96	5.59	5.25
Minnesota .....	(D)	(D)	(D)
Missouri .....	4.67	3.94	4.24
Montana .....	5.57	4.49	4.44
Nebraska .....	5.46	3.63	3.89
North Carolina .....	5.23	5.19	5.37
North Dakota .....	3.93	3.53	3.59
Ohio .....	5.29	4.41	4.39
Oklahoma .....	5.37	4.27	4.13
Oregon .....	6.70	4.83	4.72
South Dakota .....	5.12	4.07	3.89
Texas .....	5.04	3.72	3.81
Washington .....	6.14	4.98	4.79
United States .....	5.55	4.47	4.27

(D) Withheld to avoid disclosing data for individual operations.

### Prices Received for Durum Wheat – States and United States: March 2016 with Comparisons

State	March 2015	February 2016	March 2016
	(dollars per bushel)	(dollars per bushel)	(dollars per bushel)
Arizona .....	(S)	(D)	(S)
California .....	(S)	(S)	(S)
Idaho .....	(D)	(D)	(D)
Montana .....	10.20	(D)	(D)
North Dakota .....	9.18	5.92	5.92
United States .....	9.50	5.97	6.04

(D) Withheld to avoid disclosing data for individual operations.

(S) Insufficient number of reports to establish an estimate.

### Prices Received for Spring Wheat – States and United States: March 2016 with Comparisons

State	March 2015	February 2016	March 2016
	(dollars per bushel)	(dollars per bushel)	(dollars per bushel)
Colorado .....	(D)	(D)	(D)
Idaho .....	6.51	(D)	4.68
Minnesota .....	5.29	4.46	4.49
Montana .....	6.01	4.79	4.47
North Dakota .....	5.31	4.44	4.42
Oregon .....	6.94	5.15	4.79
South Dakota .....	5.63	4.41	4.54
Washington .....	6.79	5.28	4.98
United States .....	5.53	4.56	4.47

(D) Withheld to avoid disclosing data for individual operations.

### Prices Received for Oats – States and United States: March 2016 with Comparisons

State	March 2015	February 2016	March 2016
	(dollars per bushel)	(dollars per bushel)	(dollars per bushel)
Illinois .....	(S)	(D)	(D)
Iowa .....	3.27	2.41	2.83
Michigan .....	3.25	(D)	2.10
Minnesota .....	3.08	1.90	2.05
Montana .....	(S)	(D)	(S)
Nebraska .....	(D)	(D)	(D)
New York .....	(D)	2.15	2.22
North Dakota .....	2.25	(D)	2.11
Oregon .....	(S)	(D)	(D)
Pennsylvania .....	4.03	(D)	(D)
South Dakota .....	2.67	1.88	1.90
Texas .....	(S)	(D)	(S)
Wisconsin .....	3.29	1.67	1.62
United States .....	2.96	2.21	2.20

(D) Withheld to avoid disclosing data for individual operations.

(S) Insufficient number of reports to establish an estimate.

### Prices Received for All Barley – States and United States: March 2016 with Comparisons

State	March 2015	February 2016	March 2016
	(dollars per bushel)	(dollars per bushel)	(dollars per bushel)
California .....	(S)	(D)	(D)
Colorado .....	(S)	6.24	6.24
Idaho .....	4.69	(D)	6.01
Minnesota .....	5.24	4.95	5.55
Montana .....	4.65	5.97	5.40
North Dakota .....	5.08	4.79	4.96
Oregon .....	(D)	2.66	(D)
Utah .....	(D)	(D)	(D)
Washington .....	3.53	3.31	3.20
Wyoming .....	(D)	(D)	(D)
United States .....	4.87	5.50	5.40

(D) Withheld to avoid disclosing data for individual operations.

(S) Insufficient number of reports to establish an estimate.

### Prices Received for Malting Barley – States and United States: March 2016 with Comparisons

State	March 2015	February 2016	March 2016
	(dollars per bushel)	(dollars per bushel)	(dollars per bushel)
Idaho .....	5.85	(D)	6.14
Minnesota .....	5.25	4.95	5.55
Montana .....	5.65	6.10	5.67
North Dakota .....	5.24	4.98	5.10
Wyoming .....	(D)	(D)	(D)
United States .....	5.39	5.70	5.61

(D) Withheld to avoid disclosing data for individual operations.

### Prices Received for Feed Barley – States and United States: March 2016 with Comparisons

State	March 2015	February 2016	March 2016
	(dollars per bushel)	(dollars per bushel)	(dollars per bushel)
Idaho .....	3.67	3.47	2.87
Minnesota .....	(D)	(S)	(S)
Montana .....	2.71	2.76	(D)
North Dakota .....	3.02	2.90	2.31
Wyoming .....	(D)	(S)	(D)
United States .....	3.08	3.06	2.77

(D) Withheld to avoid disclosing data for individual operations.

(S) Insufficient number of reports to establish an estimate.

### Prices Received for Sorghum Grain – States and United States: March 2016 with Comparisons

State	March 2015	February 2016	March 2016
	(dollars per cwt)	(dollars per cwt)	(dollars per cwt)
Arkansas .....	(D)	7.08	6.62
Illinois .....	(D)	6.11	5.75
Kansas .....	8.04	5.37	5.28
Louisiana .....	(D)	(D)	(D)
Missouri .....	7.62	6.49	7.32
Nebraska .....	8.14	5.72	5.46
Oklahoma .....	7.89	5.81	5.72
Texas .....	7.76	5.37	6.21
United States .....	8.00	5.48	5.67

(D) Withheld to avoid disclosing data for individual operations.

### Prices Received for Corn – States and United States: March 2016 with Comparisons

State	March 2015	February 2016	March 2016
	(dollars per bushel)	(dollars per bushel)	(dollars per bushel)
Colorado .....	3.94	3.51	3.61
Illinois .....	3.79	3.63	3.68
Indiana .....	3.94	3.92	3.93
Iowa .....	3.83	3.48	3.47
Kansas .....	3.91	3.62	3.50
Kentucky .....	4.20	3.95	3.85
Michigan .....	3.73	3.71	3.57
Minnesota .....	3.66	3.31	3.25
Missouri .....	3.75	3.72	3.71
Nebraska .....	3.88	3.55	3.49
North Carolina .....	4.56	4.43	4.40
North Dakota .....	3.30	3.16	3.21
Ohio .....	3.93	3.86	3.87
Pennsylvania .....	4.08	3.86	3.91
South Dakota .....	3.44	3.23	3.20
Tennessee .....	4.18	3.91	3.76
Texas .....	4.46	4.25	4.05
Wisconsin .....	3.72	3.44	3.43
United States .....	3.81	3.57	3.57

### Prices Received for Soybeans – States and United States: March 2016 with Comparisons

State	March 2015	February 2016	March 2016
	(dollars per bushel)	(dollars per bushel)	(dollars per bushel)
Arkansas .....	10.30	8.98	9.25
Illinois .....	10.10	8.73	8.83
Indiana .....	10.10	8.80	8.90
Iowa .....	9.76	8.36	8.46
Kansas .....	9.39	8.33	8.38
Kentucky .....	10.30	9.04	8.84
Louisiana .....	10.70	9.02	9.29
Michigan .....	9.91	8.67	8.77
Minnesota .....	9.52	8.12	8.17
Mississippi .....	10.30	9.06	9.04
Missouri .....	9.97	8.82	8.86
Nebraska .....	9.53	8.28	8.30
North Carolina .....	10.10	8.51	8.79
North Dakota .....	9.06	8.10	8.06
Ohio .....	10.10	8.87	8.88
South Dakota .....	9.22	8.15	8.25
Tennessee .....	11.10	9.05	8.98
Wisconsin .....	9.72	8.54	8.54
United States .....	9.85	8.51	8.56

### Prices Received for Dry Beans – States and United States: March 2016 with Comparisons

State	March 2015	February 2016	March 2016
	(dollars per cwt)	(dollars per cwt)	(dollars per cwt)
California .....	59.80	67.60	77.10
Colorado .....	23.40	24.30	25.50
Idaho .....	30.40	31.20	(D)
Michigan .....	46.20	(D)	(D)
Minnesota .....	46.50	25.10	25.00
Nebraska .....	(D)	(D)	(D)
North Dakota .....	24.40	22.30	23.20
United States .....	33.80	24.80	26.60

(D) Withheld to avoid disclosing data for individual operations.

### Prices Received for Peanuts (in shell) – States and United States: March 2016 with Comparisons

State	March 2015	February 2016	March 2016
	(dollars per pound)	(dollars per pound)	(dollars per pound)
Alabama .....	0.208	0.193	0.188
Florida .....	0.214	0.195	0.179
Georgia .....	0.212	0.192	0.190
Mississippi .....	(S)	(S)	0.162
New Mexico .....	0.310	(S)	(S)
North Carolina .....	0.271	(D)	(S)
Oklahoma .....	0.239	0.203	0.207
South Carolina .....	0.268	0.200	0.197
Texas .....	0.238	0.221	0.245
Virginia .....	0.269	0.212	(S)
United States .....	0.225	0.197	0.192

(D) Withheld to avoid disclosing data for individual operations.

(S) Insufficient number of reports to establish an estimate.

### Prices Received for Sunflower – States and United States: March 2016 with Comparisons

State	March 2015	February 2016	March 2016
	(dollars per cwt)	(dollars per cwt)	(dollars per cwt)
Colorado .....	(D)	(S)	(S)
Kansas .....	21.50	21.10	22.40
Minnesota .....	(D)	23.30	23.20
North Dakota .....	23.70	20.60	20.90
South Dakota .....	19.50	17.00	19.20
United States .....	22.50	20.50	21.40

(D) Withheld to avoid disclosing data for individual operations.

(S) Insufficient number of reports to establish an estimate.

### Prices Received for Canola – States and United States: March 2016 with Comparisons

State	March 2015	February 2016	March 2016
	(dollars per cwt)	(dollars per cwt)	(dollars per cwt)
Minnesota .....	(S)	(D)	(S)
North Dakota .....	16.60	15.20	15.10
United States .....	16.60	15.30	15.10

(D) Withheld to avoid disclosing data for individual operations.

(S) Insufficient number of reports to establish an estimate.

## Prices Received for Flaxseed – States and United States: March 2016 with Comparisons

State	March 2015	February 2016	March 2016
	(dollars per bushel)	(dollars per bushel)	(dollars per bushel)
North Dakota .....	11.50	8.10	8.36
United States .....	11.50	8.10	8.36

## Prices Received for Upland Cotton and Cottonseed – States and United States: March 2016 with Comparisons

[Cottonseed marketing year August - February]

State	Cotton, Upland			Cottonseed		
	March 2015	February 2016	March 2016	March 2015	February 2016	March 2016
	(dollars per pound)	(dollars per pound)	(dollars per pound)	(dollars per ton)	(dollars per ton)	(dollars per ton)
Alabama .....	0.677	0.651	0.578	(NA)	213.00	(NA)
Arizona .....	(D)	0.619	0.640	(NA)	(S)	(NA)
Arkansas .....	(D)	0.603	0.587	(NA)	(S)	(NA)
California .....	(D)	(D)	(D)	(NA)	(S)	(NA)
Georgia .....	0.673	0.597	0.547	(NA)	201.00	(NA)
Louisiana .....	0.670	(D)	0.587	(NA)	(S)	(NA)
Mississippi .....	0.676	0.593	(D)	(NA)	(S)	(NA)
North Carolina .....	0.671	0.504	0.558	(NA)	200.00	(NA)
Tennessee .....	0.617	0.589	0.568	(NA)	(S)	(NA)
Texas .....	0.526	0.550	0.545	(NA)	242.00	(NA)
United States .....	0.613	0.572	0.552	(NA)	236.00	(NA)

(D) Withheld to avoid disclosing data for individual operations.

(NA) Not available.

(S) Insufficient number of reports to establish an estimate.

## Prices Received and Farm Marketings for Upland Cotton and Rice – United States: March 2016 with Comparisons

Item	March 2015	February 2016	March 2016
Cotton, Upland			
Average price ..... dollars/pound	0.613	0.572	0.552
Marketings <sup>1</sup> ..... 1,000 bales	570	1,017	1,046
Rice, all			
Average price ..... dollars/cwt	12.60	12.30	11.80
Marketings <sup>2</sup> ..... 1,000 cwt	14,560	15,646	13,779
Rice, long			
Average price ..... dollars/cwt	11.40	11.50	11.00
Marketings <sup>2</sup> ..... 1,000 cwt	11,772	11,914	10,770
Rice, medium and short			
California			
Average price ..... dollars/cwt	21.10	17.90	17.80
Other States <sup>3</sup>			
Average price ..... dollars/cwt	14.70	11.30	10.80
United States			
Average price ..... dollars/cwt	17.60	15.00	14.50
Marketings <sup>2</sup> ..... 1,000 cwt	2,788	3,732	3,009

<sup>1</sup> Marketings based on a survey of cotton buyers in the major producing States - Alabama, Arizona, Arkansas, California, Georgia, Louisiana, Mississippi, North Carolina, Tennessee, and Texas.

<sup>2</sup> Purchases by private firms and rice (rough equivalent) shipped by cooperatives.

<sup>3</sup> Other States include Arkansas, Louisiana, Mississippi, Missouri, and Texas.

## Prices Received for Hay by Type – States and United States: March 2016 with Comparisons

State	All hay			Alfalfa hay			Other hay		
	March 2015	February 2016	March 2016	March 2015	February 2016	March 2016	March 2015	February 2016	March 2016
	(dollars per ton)	(dollars per ton)	(dollars per ton)	(dollars per ton)	(dollars per ton)	(dollars per ton)	(dollars per ton)	(dollars per ton)	(dollars per ton)
Arizona .....	198.00	151.00	180.00	200.00	150.00	180.00	165.00	200.00	195.00
California .....	183.00	155.00	160.00	190.00	160.00	165.00	160.00	125.00	130.00
Colorado .....	194.00	159.00	176.00	195.00	160.00	180.00	190.00	150.00	150.00
Idaho .....	169.00	150.00	150.00	170.00	150.00	150.00	160.00	150.00	150.00
Illinois .....	159.00	154.00	156.00	170.00	165.00	170.00	110.00	105.00	100.00
Iowa .....	126.00	101.00	97.00	132.00	107.00	102.00	96.00	83.00	82.00
Kansas .....	118.00	95.00	91.00	134.00	105.00	100.00	82.00	78.00	71.00
Kentucky .....	139.00	136.00	147.00	210.00	225.00	225.00	110.00	110.00	115.00
Michigan .....	159.00	128.00	125.00	170.00	135.00	130.00	140.00	110.00	110.00
Minnesota .....	114.00	82.00	80.00	122.00	90.00	85.00	80.00	65.00	61.00
Missouri .....	96.00	94.00	90.00	165.00	170.00	160.00	80.00	80.00	75.00
Montana .....	123.00	119.00	118.00	125.00	120.00	120.00	115.00	110.00	110.00
Nebraska .....	92.00	85.00	86.00	94.00	87.00	89.00	85.00	80.00	77.00
Nevada .....	215.00	146.00	131.00	215.00	145.00	130.00	210.00	160.00	150.00
New Mexico .....	188.00	179.00	179.00	200.00	185.00	185.00	140.00	145.00	145.00
New York .....	167.00	180.00	159.00	225.00	216.00	236.00	165.00	179.00	157.00
North Dakota .....	79.00	77.00	72.00	84.00	79.00	75.00	59.00	57.00	54.00
Ohio .....	139.00	136.00	143.00	180.00	190.00	180.00	110.00	110.00	115.00
Oklahoma .....	108.00	112.00	108.00	207.00	142.00	138.00	74.00	79.00	81.00
Oregon .....	201.00	170.00	170.00	210.00	180.00	170.00	185.00	160.00	170.00
Pennsylvania .....	241.00	217.00	197.00	244.00	211.00	198.00	240.00	220.00	196.00
South Dakota .....	108.00	96.00	93.00	113.00	101.00	95.00	92.00	85.00	81.00
Texas .....	91.00	105.00	104.00	228.00	204.00	195.00	71.00	86.00	85.00
Utah .....	170.00	160.00	145.00	170.00	160.00	145.00	135.00	130.00	120.00
Washington .....	196.00	163.00	153.00	200.00	155.00	145.00	190.00	180.00	170.00
Wisconsin .....	118.00	82.00	86.00	125.00	90.00	96.00	88.00	53.00	56.00
Wyoming .....	126.00	106.00	113.00	130.00	110.00	115.00	110.00	95.00	100.00
United States ...	157.00	136.00	138.00	169.00	142.00	144.00	140.00	125.00	126.00

## Prices Received for Apples – States and United States: March 2016 with Comparisons

[Equivalent packinghouse-door returns for California, Michigan, New York, Pennsylvania, and Washington. Prices at point of first sale for other States]

State	Apples, fresh use		
	March 2015	February 2016	March 2016
	(dollars per pound)	(dollars per pound)	(dollars per pound)
California .....	(S)	(S)	(S)
Michigan .....	0.310	0.345	0.365
New York .....	0.260	0.269	0.249
Pennsylvania .....	0.312	0.273	0.339
Virginia .....	0.300	0.250	0.250
Washington .....	0.279	0.480	0.488
United States .....	0.278	0.449	0.460

(S) Insufficient number of reports to establish an estimate.

## Prices Received for Citrus Fruits by Utilization – States and United States: March 2015

[Net pounds per box: grapefruit in California-80, Florida-85, Texas-80; lemons-80; oranges in California-80, Florida-90, Texas-85; tangelos-90; tangerines and mandarins in California-80, Florida-95]

Commodity, State, and type	FOB packed fresh	Equivalent returns					
		Packinghouse door			On-tree		
		All	Fresh	Process	All	Fresh	Process
	(dollars per box)	(dollars per box)	(dollars per box)	(dollars per box)	(dollars per box)	(dollars per box)	(dollars per box)
<b>Grapefruit</b>							
California .....	(D)	10.28	(D)	(D)	8.18	(D)	(D)
Florida, all .....	24.40	7.79	13.58	5.57	5.03	11.34	2.62
White .....	25.50	6.78	14.60	6.05	4.22	12.45	3.45
Red .....	24.30	8.11	13.50	5.35	5.29	11.25	2.25
Texas .....	22.40	7.04	10.80	(D)	5.49	9.19	(D)
United States .....	22.70	7.85	12.42	5.11	5.34	10.33	2.34
<b>Lemons</b>							
Arizona .....	(S)	(S)	(S)	(S)	(S)	(S)	(S)
California .....	45.70	21.75	36.25	(D)	16.17	30.11	(D)
United States .....	45.60	21.72	36.19	(D)	16.14	30.05	(D)
<b>Oranges</b>							
California, all .....	28.10	15.03	18.75	(D)	12.39	16.14	(D)
Navel and miscellaneous .....	28.10	15.03	18.75	(D)	12.38	16.14	(D)
Valencia .....	(D)	(D)	(D)	(D)	(D)	(D)	(D)
Florida, all .....	27.00	13.26	15.88	13.09	10.47	13.14	10.30
Early and mids .....	(S)	(S)	(S)	(S)	(S)	(S)	(S)
Valencia .....	27.20	13.36	16.05	13.20	10.57	13.30	10.40
United States .....	28.00	14.04	18.50	11.24	11.32	15.88	8.45
<b>Tangelos</b>							
Florida .....	(S)	(S)	(S)	(S)	(S)	(S)	(S)
United States .....	(S)	(S)	(S)	(S)	(S)	(S)	(S)
<b>Tangerines and mandarins</b>							
Arizona .....	(D)	(D)	(D)	(D)	(D)	(D)	(D)
California .....	(D)	(D)	(D)	(D)	(D)	(D)	(D)
Florida .....	41.80	21.18	28.40	6.55	17.62	25.15	2.35
United States .....	(D)	(D)	(D)	(D)	(D)	(D)	(D)

(D) Withheld to avoid disclosing data for individual operations.

(S) Insufficient number of reports to establish an estimate.



## Prices Received for Citrus Fruits by Utilization – States and United States: February 2016

[Net pounds per box: grapefruit in California-80, Florida-85, Texas-80; lemons-80; oranges in California-80, Florida-90, Texas-85; tangelos-90; tangerines and mandarins in California-80, Florida-95]

Commodity, State, and type	FOB packed fresh	Equivalent returns					
		Packinghouse door			On-tree		
		All	Fresh	Process	All	Fresh	Process
	(dollars per box)	(dollars per box)	(dollars per box)	(dollars per box)	(dollars per box)	(dollars per box)	(dollars per box)
Grapefruit							
California .....	(D)	17.24	(D)	(D)	14.83	(D)	(D)
Florida, all .....	28.00	11.73	17.17	9.28	9.02	14.94	6.36
White .....	30.30	10.28	19.40	8.60	7.75	17.25	6.00
Red .....	27.60	12.31	16.80	9.65	9.52	14.55	6.55
Texas .....	30.50	8.72	18.90	(D)	7.20	17.29	(D)
United States .....	28.40	11.32	17.78	7.71	8.88	15.69	5.07
Lemons							
Arizona .....	(D)	(D)	(D)	(D)	(D)	(D)	(D)
California .....	49.60	28.38	39.96	(D)	22.52	33.70	(D)
United States .....	49.50	27.81	39.85	(D)	21.97	33.59	(D)
Oranges							
California, all .....	26.50	14.39	16.96	(D)	11.70	14.30	(D)
Navel and miscellaneous .....	26.50	14.39	16.96	(D)	11.70	14.30	(D)
Valencia .....	(S)	(S)	(S)	(S)	(S)	(S)	(S)
Florida, all .....	30.10	11.16	18.91	10.81	8.45	16.22	8.09
Early and mids .....	31.60	10.84	20.45	10.50	8.19	17.85	7.85
Valencia .....	28.90	11.57	17.75	11.20	8.78	15.00	8.40
Texas, all .....	32.20	14.87	20.60	(D)	13.10	18.77	(D)
Early and mids .....	32.20	14.87	20.60	(D)	13.10	18.77	(D)
Valencia .....	(S)	(S)	(S)	(S)	(S)	(S)	(S)
United States .....	26.90	12.47	17.20	9.73	9.78	14.56	7.01
Tangelos							
Florida .....	(S)	(S)	(S)	(S)	(S)	(S)	(S)
United States .....	(S)	(S)	(S)	(S)	(S)	(S)	(S)
Tangerines and mandarins							
California .....	(D)	(D)	(D)	(D)	(D)	(D)	(D)
Florida .....	49.20	28.21	35.80	6.75	24.72	32.55	2.55
United States .....	(D)	(D)	(D)	(D)	(D)	(D)	(D)

(D) Withheld to avoid disclosing data for individual operations.

(S) Insufficient number of reports to establish an estimate.

## Prices Received for Citrus Fruits by Utilization – States and United States: March 2016

[Net pounds per box: grapefruit in California-80, Florida-85, Texas-80; lemons-80; oranges in California-80, Florida-90, Texas-85; tangelos-90; tangerines and mandarins in California-80, Florida-95]

Commodity, State, and type	FOB packed fresh	Equivalent returns					
		Packinghouse door			On-tree		
		All	Fresh	Process	All	Fresh	Process
	(dollars per box)	(dollars per box)	(dollars per box)	(dollars per box)	(dollars per box)	(dollars per box)	(dollars per box)
<b>Grapefruit</b>							
California .....	(D)	16.62	(D)	(D)	14.14	(D)	(D)
Florida, all .....	27.00	11.13	16.17	9.12	8.42	13.93	6.22
White .....	30.70	9.17	19.80	8.70	6.59	17.65	6.10
Red .....	26.80	11.97	16.00	9.40	9.20	13.75	6.30
Texas .....	31.70	8.95	20.10	(D)	7.43	18.49	(D)
United States .....	28.50	10.77	18.02	6.74	8.46	15.99	4.26
<b>Lemons</b>							
Arizona .....	(S)	(S)	(S)	(S)	(S)	(S)	(S)
California .....	48.30	30.61	38.66	(D)	24.64	32.40	(D)
United States .....	48.30	30.61	38.66	(D)	24.64	32.40	(D)
<b>Oranges</b>							
California, all .....	24.80	12.35	15.24	(D)	9.65	12.58	(D)
Navel and miscellaneous .....	24.50	12.11	14.96	(D)	9.41	12.30	(D)
Valencia .....	(D)	(D)	(D)	(D)	(D)	(D)	(D)
Florida, all .....	27.70	11.66	16.51	11.51	8.87	13.77	8.71
Early and mids .....	(S)	(S)	(S)	(S)	(S)	(S)	(S)
Valencia .....	27.30	11.64	16.15	11.50	8.84	13.40	8.70
Texas, all .....	35.40	20.07	23.81	(S)	18.27	21.98	(S)
Early and mids .....	(S)	(S)	(S)	(S)	(S)	(S)	(S)
Valencia .....	35.70	22.21	24.10	(D)	20.39	22.27	(D)
United States .....	25.30	11.95	15.56	10.58	9.19	12.92	7.78
<b>Tangelos</b>							
Florida .....	(S)	(S)	(S)	(S)	(S)	(S)	(S)
United States .....	(S)	(S)	(S)	(S)	(S)	(S)	(S)
<b>Tangerines and mandarins</b>							
California .....	(D)	(D)	(D)	(D)	(D)	(D)	(D)
Florida .....	41.90	18.48	28.50	8.10	14.76	25.25	3.90
United States .....	(D)	(D)	(D)	0.35	(D)	(D)	-4.15

(D) Withheld to avoid disclosing data for individual operations.

(S) Insufficient number of reports to establish an estimate.

## Prices Received for Potatoes – States and United States: March 2016 with Comparisons

State	March 2015	February 2016	March 2016
	(dollars per cwt)	(dollars per cwt)	(dollars per cwt)
California, all <sup>1</sup> .....	11.70	12.50	11.70
Spring .....	15.40	15.60	15.20
Fall .....	9.05	9.90	9.95
Colorado, all <sup>1</sup> .....	8.50	8.75	8.90
Fresh <sup>2</sup> .....	9.00	10.10	10.30
Florida .....	17.90	20.00	20.40
Idaho, all <sup>1</sup> .....	7.55	6.55	7.95
Fresh <sup>2</sup> .....	5.35	5.70	5.45
Processing .....	7.85	7.00	7.50
Maine .....	(D)	(D)	(D)
Michigan .....	(D)	(D)	(D)
Minnesota .....	9.30	10.20	10.60
New York .....	(D)	(D)	(D)
North Carolina .....	(S)	(S)	(S)
North Dakota, all <sup>1</sup> .....	(D)	(D)	(D)
Fresh <sup>2</sup> .....	(D)	(D)	(D)
Processing .....	(D)	(D)	(D)
Oregon .....	9.60	8.40	10.20
Texas .....	(D)	(D)	(D)
Virginia .....	(S)	(S)	(S)
Washington, all <sup>1</sup> .....	8.50	8.30	8.45
Processing .....	8.15	7.90	8.00
Wisconsin, all <sup>1</sup> .....	11.20	9.35	10.70
Fresh <sup>2</sup> .....	9.90	8.95	8.70
Processing .....	8.90	9.35	9.35
United States, all <sup>1</sup> .....	9.38	8.48	9.38
Fresh <sup>2</sup> .....	9.55	8.47	8.79
Processing .....	8.50	8.12	8.30

(D) Withheld to avoid disclosing data for individual operations.

(S) Insufficient number of reports to establish an estimate.

<sup>1</sup> Average price of potatoes sold for all uses, including table stock, processing, seed, and livestock feed.

<sup>2</sup> Fresh market prices only. Includes table stock prices.

## Prices Received for All Milk – States and United States: March 2016 with Comparisons

[Before deduction for hauling. Includes quality, quantity, and other premiums. Excludes hauling subsidies]

State	March 2015		February 2016		March 2016	
	Price	Fat test	Price	Fat test	Price	Fat test
	(dollars per cwt)	(percent)	(dollars per cwt)	(percent)	(dollars per cwt)	(percent)
Arizona .....	15.20	3.42	14.30	3.50	14.00	3.50
California .....	14.92	3.70	14.32	3.78	14.13	3.75
Colorado .....	17.30	3.64	16.20	3.71	15.70	3.66
Florida .....	20.20	3.55	18.90	3.65	18.30	3.57
Idaho .....	16.30	3.80	15.70	3.92	15.00	3.86
Illinois .....	17.40	3.85	15.80	3.87	15.40	3.80
Indiana .....	16.70	3.77	15.80	3.83	15.10	3.75
Iowa .....	16.90	3.83	15.60	3.91	15.50	3.86
Kansas .....	16.60	3.74	15.30	3.72	14.90	3.70
Michigan .....	16.20	3.75	14.80	3.74	14.10	3.70
Minnesota .....	17.40	3.91	16.10	3.98	15.80	3.95
New Mexico .....	15.70	3.62	14.60	3.66	14.60	3.59
New York .....	17.60	3.87	16.70	3.90	16.20	3.86
Ohio .....	17.50	3.86	16.60	3.88	16.00	3.84
Oregon .....	17.90	3.87	17.20	4.01	16.80	3.93
Pennsylvania .....	17.90	3.81	17.10	3.89	16.30	3.83
South Dakota .....	18.30	4.06	16.80	4.14	16.60	4.10
Texas .....	17.20	3.93	16.00	3.98	16.00	3.94
Utah .....	16.40	3.74	15.60	3.92	14.90	3.81
Vermont .....	18.00	3.93	16.90	3.89	16.50	3.86
Virginia .....	18.30	3.74	17.70	3.83	17.00	3.73
Washington .....	16.40	3.87	16.00	4.01	15.30	3.93
Wisconsin .....	17.60	3.81	16.10	3.85	15.80	3.81
United States .....	16.60	3.78	15.70	3.84	15.30	3.80

## Prices Received for Milk Cows – States and United States: April 2016 with Comparisons

[Animals sold for dairy herd replacement only. Quarterly United States milk cow prices are based on revised milk cow inventory]

State	April 2015	January 2016	April 2016
	(dollars per head)	(dollars per head)	(dollars per head)
Arizona .....	2,000.00	1,900.00	1,950.00
California .....	2,000.00	1,800.00	1,800.00
Colorado .....	2,100.00	1,900.00	1,950.00
Florida .....	2,100.00	1,800.00	1,790.00
Idaho .....	1,900.00	1,850.00	1,900.00
Illinois .....	2,000.00	1,850.00	1,700.00
Indiana .....	1,900.00	1,800.00	1,700.00
Iowa .....	1,950.00	1,860.00	1,860.00
Kansas .....	1,950.00	1,830.00	1,830.00
Michigan .....	2,100.00	2,000.00	1,900.00
Minnesota .....	1,860.00	1,730.00	1,850.00
New Mexico .....	2,000.00	1,900.00	1,900.00
New York .....	1,820.00	1,700.00	1,670.00
Ohio .....	1,850.00	1,750.00	1,700.00
Oregon .....	2,000.00	1,850.00	1,900.00
Pennsylvania .....	1,890.00	1,780.00	1,700.00
South Dakota .....	1,840.00	1,700.00	1,730.00
Texas .....	2,000.00	1,850.00	1,900.00
Utah .....	1,900.00	1,700.00	1,750.00
Vermont .....	1,880.00	1,830.00	1,850.00
Virginia .....	1,930.00	1,770.00	1,660.00
Washington .....	1,850.00	1,800.00	1,800.00
Wisconsin .....	2,080.00	1,910.00	1,910.00
United States .....	1,970.00	1,830.00	1,820.00

## Commodity Parity Prices and Price as Percent of Parity Price – United States: March 2016 with Comparisons

[Parity prices are computed under the provisions of Title III, Subtitle a, Section 301 (a) of the Agricultural Adjustment Act of 1938 as amended by the Agricultural Acts of 1948, 1949, and 1956. See January *Agricultural Prices* for details on adjusted base price and parity price computations. Parity data not available for blank cells. Primary source of data for livestock and milk prices is United States Department of Agriculture's Agricultural Marketing Service]

Commodity and unit	Adjusted base price	Parity price			Price as percent of parity			
		March 2015	February 2016	March 2016	March 2015	February 2016	March 2016	
	(dollars)	(dollars)	(dollars)	(dollars)	(percent)	(percent)	(percent)	
<b>Basic commodities</b>								
All wheat .....	bushel	0.626	18.50	18.10	18.10	31	25	24
Rice .....	cwt	1.37	39.80	39.50	39.70	32	31	30
Corn .....	bushel	0.450	13.20	13.00	13.00	29	27	27
<b>Cotton</b>								
Upland .....	pound	0.067	1.96	1.93	1.94	31	30	28
American Pima .....	pound	0.133	4.04	3.84	3.85	38	35	34
Peanuts .....	pound	0.023	0.713	0.663	0.667	32	30	29
Small chickpeas <sup>1</sup> .....	cwt	2.250	65.30	64.90	65.20	32	38	38
Large chickpeas <sup>1</sup> .....	cwt	3.270	98.90	94.30	94.80	35	35	32
Lentils <sup>1</sup> .....	cwt	2.380	67.70	68.60	69.00	41	52	56
<b>Designated non-basic</b>								
All milk, to plants <sup>2</sup> .....	cwt	1.80	54.30	51.90	52.20	31	31	30
Honey, extracted <sup>3</sup> .....	pound	0.157	4.45	4.53	4.55	48	47	47
<b>Wool and mohair</b>								
Wool .....	pound	0.121	3.47	3.49	3.51	42	42	41
Mohair .....	pound	0.394	11.20	11.40	11.40	43	46	46
<b>Other non-basic</b>								
Apples, fresh <sup>4</sup> .....	pound	0.033	0.980	0.952	0.956	28	47	48
Barley .....	bushel	0.484	13.90	14.00	14.00	35	39	39
Canola .....	cwt	1.890	55.80	54.50	54.80	30	28	28
Cottonseed .....	ton	20.00	570.00	577.00	580.00	34	41	41
Dry edible beans .....	cwt	3.21	96.50	92.60	93.00	35	27	29
Flaxseed .....	bushel	1.150	34.70	33.20	33.30	33	24	25
Oats .....	bushel	0.296	8.76	8.54	8.58	34	26	26
Potatoes .....	cwt	0.857	25.10	24.70	24.80	37	34	38
Sorghum grain .....	cwt	0.778	22.50	22.40	22.50	36	24	25
Soybeans .....	bushel	1.080	32.10	31.10	31.30	31	27	27
Sunflower, all .....	cwt	2.16	63.20	62.30	62.60	36	33	34
<b>Citrus (equivalent on-tree)</b>								
Grapefruit .....	box	0.660	23.10	19.00	19.10	23	47	44
Lemons .....	box	1.62	44.20	46.70	46.90	37	47	53
Oranges .....	box	0.865	23.90	24.90	25.10	47	39	37
Tangerines .....	box	1.79	52.00	51.60	51.90	39	37	35
<b>Livestock and poultry</b>								
Beef cattle .....	cwt	11.10	321.00	320.00	322.00	50	41	42
Broilers .....	pound	0.050	1.68	1.44	1.45	35	32	34
Calves .....	cwt	16.20	454.00	467.00	469.00	64	43	42
Eggs <sup>2</sup> .....	dozen	0.103	2.79	2.97	2.98	55	40	32
Hogs .....	cwt	5.70	172.00	164.00	165.00	29	30	30
Turkeys, live .....	pound	0.063	1.810	1.820	1.830	38	44	43

<sup>1</sup> Parity prices began January 2015.

<sup>2</sup> Seasonally adjusted price as percentage of parity price.

<sup>3</sup> Wholesale extracted. Adjusted base price derived from state annual averages prices weighted by production. For 1982 through 1985 the national averages are the support prices.

<sup>4</sup> Equivalent packinghouse-door returns for California, New York, Oregon, and Washington. Price at point of first sale for other states.

## Commodity Parity Prices – United States: March 2016 with Comparisons

[Parity prices are computed under the provisions of Title III, Subtitle a, Section 301 (a) of the Agricultural Adjustment Act of 1938 as amended by the Agricultural Acts of 1948, 1949, and 1956. See January *Agricultural Prices* for details on adjusted base price and parity price computations]

Commodity and unit	Adjusted base price	Parity price		
		March 2015	February 2016	March 2016
	(dollars)	(dollars)	(dollars)	(dollars)
<b>Field crops and miscellaneous</b>				
Hops .....	0.338	9.65	9.75	9.80
Mustard seed .....	3.17	91.10	91.40	91.90
Rapeseed .....	2.66	72.10	76.70	77.10
Rye .....	0.630	18.20	18.20	18.30
Safflower .....	2.23	64.10	64.30	64.60
Spearmint oil .....	1.70	48.70	49.00	49.30
Sweet potatoes .....	2.08	61.80	60.00	60.30
<b>Tobacco</b>				
Flue-cured, 11-14 .....	0.180	5.37	5.19	5.22
Fire-cured, 21-23 .....	0.255	7.69	7.35	7.39
Burley, 31 .....	0.179	5.37	5.16	5.19
Maryland, 32 .....	0.171	5.08	4.93	4.96
Dark air-cured, 35-37 .....	0.230	6.95	6.63	6.67
Pennsylvania seedleaf, 41 .....	0.184	5.37	5.31	5.33
Cigar binder, 51 .....	0.629	18.80	18.10	18.20
<b>Non-citrus fruit</b>				
Apples, processing <sup>1 2</sup> .....	18.30	537.00	528.00	530.00
Apricots				
Fresh <sup>3</sup> .....	116.00	3,530.00	3,350.00	3,360.00
Dried (California) .....	251.00	7,630.00	7,240.00	7,270.00
Avocados <sup>2 3</sup> .....	178.00	5,430.00	5,130.00	5,160.00
Cherries				
Sweet .....	209.00	6,380.00	6,030.00	6,060.00
Tart <sup>2</sup> .....	0.032	0.980	0.923	0.927
Cranberry <sup>2 4</sup> .....	4.32	132.00	125.00	125.00
Dates (California) <sup>3</sup> .....	147.00	4,510.00	4,240.00	4,260.00
Grapes (California)				
Raisin variety <sup>5</sup> .....	140.00	4,280.00	4,040.00	4,060.00
Wine, processing .....	64.90	(NA)	1,870.00	1,880.00
Kiwifruit <sup>2</sup> .....	91.40	2,670.00	2,640.00	2,650.00
Nectarines, fresh (California) <sup>3</sup> .....	60.50	1,810.00	1,740.00	1,750.00
Olives, canning (California) <sup>4</sup> .....	93.10	2,840.00	2,690.00	2,700.00

See footnote(s) at end of table.

--continued

## Commodity Parity Prices – United States: March 2016 with Comparisons (continued)

[Parity prices are computed under the provisions of Title III, Subtitle a, Section 301 (a) of the Agricultural Adjustment Act of 1938 as amended by the Agricultural Acts of 1948, 1949, and 1956. See January *Agricultural Prices* for details on adjusted base price and parity price computations]

Commodity and unit	Adjusted base price	Parity price		
		March 2015	February 2016	March 2016
	(dollars)	(dollars)	(dollars)	(dollars)
<b>Non-citrus fruit - continued</b>				
Papayas (Hawaii) ..... pound	0.041	1.22	1.18	1.19
<b>Peaches</b>				
Fresh <sup>4 6</sup> ..... ton	84.80	2,580.00	2,450.00	2,460.00
Dried (California) <sup>1 5</sup> ..... ton	46.10	1,380.00	1,330.00	1,340.00
Processing, excludes dried Clingstone (California) <sup>4</sup> ..... ton	32.60	995.00	940.00	945.00
Pears, Fresh <sup>6</sup> ..... ton	56.00	1,710.00	1,620.00	1,620.00
<b>Plums (California) equivalent on-tree</b>				
Fresh <sup>7</sup> ..... ton	60.60	1,850.00	1,750.00	1,760.00
Prunes, dried (California) <sup>1 2 5</sup> ..... ton	154.00	4,660.00	4,440.00	4,460.00
<b>Prunes and plums</b>				
Fresh, excludes California <sup>7</sup> ..... ton	61.20	1,870.00	1,770.00	1,770.00
Processing, excludes dried <sup>1</sup> ..... ton	23.80	710.00	686.00	690.00
<b>Strawberries</b>				
Fresh <sup>10</sup> ..... pound	8.900	268.00	257.00	258.00
Processing ..... pound	3.44	100.00	99.20	99.70
<b>Sugar crops</b>				
Sugar beets <sup>2 8</sup> ..... ton	5.26	159.00	152.00	152.00
Sugarcane <sup>2 8</sup> ..... ton	3.52	105.00	102.00	102.00
<b>Tree nuts <sup>9</sup></b>				
Almonds ..... pound	0.227	7.01	6.55	6.58
Hazelnuts ..... ton	217.00	6,590.00	6,260.00	6,290.00
Pistachios ..... pound	0.227	6.74	6.55	6.58
Walnuts ..... ton	236.00	6,620.00	6,810.00	6,840.00
<b>Vegetables, fresh <sup>10</sup></b>				
Carrots <sup>11</sup> ..... cwt	2.67	78.10	77.00	77.40
Cauliflower <sup>11</sup> ..... cwt	4.29	124.00	124.00	124.00
Celery <sup>11</sup> ..... cwt	2.05	59.10	59.10	59.40
Honeydew melons ..... cwt	1.96	58.80	56.50	56.80
Lettuce ..... cwt	2.26	64.40	65.20	65.50
Onions <sup>11</sup> ..... cwt	1.42	41.90	41.00	41.20
Tomatoes ..... cwt	4.14	125.00	119.00	120.00

(NA) Not available.

<sup>1</sup> Equivalent returns at processing plant door.

<sup>2</sup> Adjusted base price is carried forward from the previous year since current marketing year average price is not yet available.

<sup>3</sup> Equivalent returns at packinghouse door.

<sup>4</sup> Equivalent returns for bulk fruit at first delivery point.

<sup>5</sup> Dried basis.

<sup>6</sup> Equivalent packinghouse-door returns for California, New York (apples only), Oregon (except peaches), and Washington. Price at point of first sale for other states.

<sup>7</sup> Based on "as sold" prices for fresh fruit in all states.

<sup>8</sup> Relates to prices including average conditional payments per ton made under the sugar acts of 1937 and 1948. Crop deficiency and abandonment payments not included.

<sup>9</sup> Prices In-Shell basis except almonds which are shelled basis.

<sup>10</sup> FOB shipping point price.

<sup>11</sup> Includes some processing.

## Marketing Year for Specified Commodities

**Broilers:** December 1, previous year through November 30 for the United States.

**Eggs:** December 1, previous year to November 30 for the United States.

**Milk:** January 1 to December 31 for the United States.

**Turkeys:** January 1 to December 31 for the United States.

### Prices Received for Broilers by Month – United States: 2010-2015

[Live weight equivalent price]

Year	December <sup>1</sup>	January	February	March	April	May
	(dollars per pound)	(dollars per pound)	(dollars per pound)	(dollars per pound)	(dollars per pound)	(dollars per pound)
2010 .....	0.430	0.480	0.480	0.500	0.490	0.520
2011 .....	0.450	0.440	0.430	0.480	0.480	0.490
2012 .....	0.460	0.470	0.510	0.560	0.500	0.520
2013 .....	0.590	0.620	0.620	0.660	0.660	0.680
2014 .....	0.560	0.570	0.550	0.650	0.680	0.730
2015 .....	0.580	0.600	0.540	0.590	0.640	0.650
Year	June	July	August	September	October	November
	(dollars per pound)	(dollars per pound)	(dollars per pound)	(dollars per pound)	(dollars per pound)	(dollars per pound)
2010 .....	0.520	0.520	0.490	0.490	0.480	0.480
2011 .....	0.490	0.470	0.470	0.430	0.420	0.450
2012 .....	0.500	0.470	0.480	0.480	0.490	0.560
2013 .....	0.670	0.600	0.540	0.550	0.530	0.560
2014 .....	0.700	0.660	0.600	0.660	0.650	0.630
2015 .....	0.620	0.510	0.470	0.430	0.410	0.420

<sup>1</sup> December preceding year.

### Prices Received for Turkeys by Month – United States: 2010-2015

[Live weight equivalent price]

Year	January	February	March	April	May	June
	(dollars per pound)	(dollars per pound)	(dollars per pound)	(dollars per pound)	(dollars per pound)	(dollars per pound)
2010 .....	0.466	0.491	0.522	0.537	0.561	0.617
2011 .....	0.564	0.578	0.599	0.657	0.679	0.695
2012 .....	0.657	0.650	0.690	0.737	0.727	0.739
2013 .....	0.635	0.627	0.650	0.662	0.649	0.657
2014 .....	0.645	0.664	0.683	0.687	0.726	0.728
2015 .....	0.662	0.669	0.683	0.702	0.759	0.812
Year	July	August	September	October	November	December
	(dollars per pound)	(dollars per pound)	(dollars per pound)	(dollars per pound)	(dollars per pound)	(dollars per pound)
2010 .....	0.647	0.668	0.690	0.734	0.736	0.677
2011 .....	0.675	0.707	0.731	0.773	0.781	0.715
2012 .....	0.729	0.744	0.762	0.769	0.751	0.674
2013 .....	0.677	0.674	0.679	0.724	0.656	0.687
2014 .....	0.740	0.756	0.775	0.822	0.821	0.734
2015 .....	0.848	0.897	0.925	0.971	0.922	0.886



## Prices Received for All Eggs by Month – United States: 2010-2015

[Includes hatching and market eggs]

Year	December <sup>1</sup>	January	February	March	April	May
	(dollars per dozen)	(dollars per dozen)	(dollars per dozen)	(dollars per dozen)	(dollars per dozen)	(dollars per dozen)
2010 .....	1.060	1.030	0.920	1.160	0.769	0.636
2011 .....	1.070	0.848	0.949	0.843	1.050	0.821
2012 .....	1.220	0.881	0.887	0.990	0.862	0.826
2013 .....	1.120	1.060	0.991	1.140	0.879	1.170
2014 .....	1.380	1.110	1.400	1.230	1.270	1.170
2015 .....	1.770	1.240	1.290	1.540	1.080	1.730
Year	June	July	August	September	October	November
	(dollars per dozen)	(dollars per dozen)	(dollars per dozen)	(dollars per dozen)	(dollars per dozen)	(dollars per dozen)
2010 .....	0.618	0.710	0.790	0.635	0.814	1.130
2011 .....	0.884	0.878	1.140	0.944	1.020	1.020
2012 .....	0.905	0.967	1.120	1.220	1.020	1.180
2013 .....	0.926	1.030	1.070	1.030	1.040	1.320
2014 .....	1.090	1.240	1.080	1.040	1.140	1.510
2015 .....	2.000	1.900	2.390	1.900	1.430	2.000

<sup>1</sup> December preceding year.

## Prices Received for Market Eggs by Month – United States: 2010-2015

Year	December <sup>1</sup>	January	February	March	April	May
	(dollars per dozen)	(dollars per dozen)	(dollars per dozen)	(dollars per dozen)	(dollars per dozen)	(dollars per dozen)
2010 .....	0.944	0.906	0.775	1.060	0.600	0.442
2011 .....	0.919	0.660	0.776	0.654	0.888	0.622
2012 .....	1.100	0.667	0.669	0.792	0.641	0.596
2013 .....	0.957	0.863	0.776	0.952	0.645	0.977
2014 .....	1.210	0.906	1.230	1.040	1.090	0.972
2015 .....	1.660	1.060	1.110	1.410	0.870	1.610
Year	June	July	August	September	October	November
	(dollars per dozen)	(dollars per dozen)	(dollars per dozen)	(dollars per dozen)	(dollars per dozen)	(dollars per dozen)
2010 .....	0.423	0.528	0.625	0.447	0.655	1.020
2011 .....	0.687	0.684	0.991	0.769	0.857	0.862
2012 .....	0.688	0.764	0.949	1.060	0.837	1.020
2013 .....	0.695	0.821	0.870	0.823	0.836	1.160
2014 .....	0.876	1.050	0.864	0.824	0.934	1.370
2015 .....	1.920	1.800	2.380	1.800	1.260	1.930

<sup>1</sup> December preceding year.

**Prices Received for All Milk Sold at Plants by Month – States and United States: 2014**

State	January	February	March	April	May	June
	(dollars per cwt)	(dollars per cwt)	(dollars per cwt)	(dollars per cwt)	(dollars per cwt)	(dollars per cwt)
Arizona .....	22.60	23.70	24.10	24.30	23.60	23.00
California .....	22.22	22.91	23.62	23.41	22.01	21.91
Colorado .....	23.00	24.50	24.80	25.00	24.30	23.60
Florida .....	26.60	27.60	28.50	28.70	29.40	27.70
Idaho .....	22.60	23.90	24.30	24.50	23.00	22.50
Illinois .....	23.80	25.70	25.80	26.00	24.90	23.50
Indiana .....	23.90	25.20	25.40	25.50	24.60	23.40
Iowa .....	23.90	25.70	25.80	26.10	24.90	23.70
Kansas .....	23.90	25.40	25.40	25.50	24.30	22.70
Michigan .....	23.50	24.90	25.20	25.40	24.50	23.50
Minnesota .....	24.00	26.00	26.10	26.60	25.00	23.40
New Mexico .....	22.50	23.80	23.50	23.40	22.40	20.90
New York .....	24.60	26.10	26.50	26.60	26.10	25.10
Ohio .....	24.10	25.20	25.70	25.80	24.80	23.70
Oregon .....	25.00	26.90	27.00	27.20	25.10	24.70
Pennsylvania .....	25.00	26.10	26.30	26.90	26.40	25.30
South Dakota .....	24.30	25.40	26.00	26.00	24.90	23.50
Texas .....	24.40	26.00	26.10	26.20	24.90	23.30
Utah .....	22.30	24.10	24.10	24.60	24.40	23.00
Vermont .....	24.60	25.90	26.30	26.50	26.10	25.10
Virginia .....	25.80	26.90	27.70	27.40	27.30	26.20
Washington .....	24.10	25.40	25.90	25.70	25.00	24.30
Wisconsin .....	23.80	25.70	25.70	26.20	24.70	23.20
United States .....	23.50	24.80	25.10	25.30	24.20	23.20
State	July	August	September	October	November	December
	(dollars per cwt)	(dollars per cwt)	(dollars per cwt)	(dollars per cwt)	(dollars per cwt)	(dollars per cwt)
Arizona .....	23.50	24.00	24.60	23.60	21.80	19.60
California .....	21.59	22.60	23.62	22.93	20.52	17.90
Colorado .....	23.30	24.10	25.60	24.80	23.40	21.60
Florida .....	28.20	29.20	29.80	28.80	27.30	26.90
Idaho .....	22.40	23.20	25.10	24.20	22.40	19.40
Illinois .....	23.80	24.80	26.60	26.20	24.10	21.20
Indiana .....	23.50	24.70	26.30	25.20	23.50	21.20
Iowa .....	23.80	24.70	26.40	25.60	23.70	20.90
Kansas .....	22.90	23.60	25.70	25.10	23.60	20.60
Michigan .....	23.70	24.40	26.20	24.30	23.00	20.50
Minnesota .....	23.70	24.60	27.10	26.50	24.40	20.50
New Mexico .....	21.10	21.90	23.80	23.50	21.10	19.40
New York .....	25.20	26.20	27.30	25.60	23.80	22.30
Ohio .....	23.90	24.90	26.30	25.20	23.60	21.80
Oregon .....	24.90	25.70	28.10	27.00	24.90	21.70
Pennsylvania .....	25.30	26.50	26.30	26.30	24.40	22.60
South Dakota .....	23.70	24.70	26.60	26.20	24.50	21.20
Texas .....	23.40	24.30	26.10	25.60	23.90	20.70
Utah .....	22.50	23.80	25.00	24.90	23.80	21.50
Vermont .....	25.30	26.10	27.20	25.80	24.10	22.80
Virginia .....	26.60	27.90	28.70	27.80	26.30	25.00
Washington .....	24.60	25.30	26.70	25.10	22.70	21.30
Wisconsin .....	23.40	24.30	26.60	26.10	24.30	20.70
United States .....	23.30	24.20	25.70	24.90	23.00	20.40

**Prices Received for All Milk Sold at Plants by Month – States and United States: 2015**

State	January	February	March	April	May	June
	(dollars per cwt)	(dollars per cwt)	(dollars per cwt)	(dollars per cwt)	(dollars per cwt)	(dollars per cwt)
Arizona .....	16.40	15.50	15.20	15.10	15.50	15.80
California .....	15.81	14.72	14.92	14.52	15.12	15.72
Colorado .....	18.70	17.70	17.30	17.30	17.40	17.40
Florida .....	22.60	21.20	20.20	20.10	20.50	20.90
Idaho .....	16.80	16.40	16.30	16.50	16.60	16.70
Illinois .....	18.20	17.50	17.40	17.30	17.30	17.50
Indiana .....	18.10	17.10	16.70	17.00	16.50	16.50
Iowa .....	17.60	17.20	16.90	16.90	16.90	17.30
Kansas .....	17.50	17.00	16.60	16.20	16.40	16.30
Michigan .....	17.60	16.60	16.20	16.20	16.00	16.00
Minnesota .....	18.30	17.70	17.40	17.60	17.80	17.90
New Mexico .....	16.40	16.00	15.70	15.50	16.00	15.60
New York .....	18.70	17.90	17.60	17.50	17.60	17.70
Ohio .....	18.70	17.80	17.50	17.30	17.20	17.10
Oregon .....	18.90	18.00	17.90	18.00	18.50	18.50
Pennsylvania .....	19.10	18.40	17.90	17.60	17.80	18.20
South Dakota .....	19.00	18.50	18.30	18.40	18.40	18.70
Texas .....	18.20	17.60	17.20	17.00	17.10	17.20
Utah .....	17.80	16.50	16.40	16.40	16.70	16.90
Vermont .....	19.20	18.30	18.00	17.90	18.00	18.20
Virginia .....	20.60	19.20	18.30	17.90	17.90	18.50
Washington .....	17.50	16.80	16.40	16.30	16.70	16.50
Wisconsin .....	18.40	17.60	17.60	17.60	17.80	18.00
United States .....	17.60	16.80	16.60	16.50	16.80	17.00
State	July	August	September	October	November	December
	(dollars per cwt)	(dollars per cwt)	(dollars per cwt)	(dollars per cwt)	(dollars per cwt)	(dollars per cwt)
Arizona .....	15.60	15.60	16.30	16.80	17.60	16.70
California .....	15.12	15.23	15.72	16.13	16.12	15.82
Colorado .....	17.20	17.30	18.20	18.20	19.00	18.10
Florida .....	21.40	21.00	22.20	21.50	22.20	21.50
Idaho .....	16.30	16.50	16.90	17.10	17.60	16.70
Illinois .....	17.40	17.40	17.80	18.10	18.60	17.60
Indiana .....	16.40	16.30	17.60	18.00	19.00	17.50
Iowa .....	17.10	17.10	17.80	17.70	18.00	17.20
Kansas .....	16.30	16.60	17.50	17.70	18.50	17.00
Michigan .....	15.90	16.00	17.20	17.30	17.80	16.50
Minnesota .....	17.40	17.50	17.80	17.70	17.70	17.00
New Mexico .....	15.90	15.40	16.60	16.60	17.50	16.00
New York .....	17.40	17.40	18.60	19.20	20.00	18.80
Ohio .....	17.10	17.10	18.40	18.80	19.60	17.80
Oregon .....	18.00	18.20	19.20	19.40	19.80	18.80
Pennsylvania .....	17.50	17.70	18.90	19.40	20.20	19.10
South Dakota .....	18.10	18.20	18.40	18.70	19.00	18.20
Texas .....	17.20	17.60	18.20	18.40	19.10	17.80
Utah .....	16.70	16.70	17.00	17.40	18.40	17.80
Vermont .....	17.90	17.80	19.00	19.50	20.30	19.10
Virginia .....	19.10	19.30	20.50	20.60	21.40	20.20
Washington .....	16.10	16.00	18.00	18.50	19.40	18.30
Wisconsin .....	17.60	17.60	17.90	17.90	18.20	17.30
United States .....	16.70	16.70	17.50	17.70	18.20	17.30

**Prices Received for All Milk Sold at Plants, Monthly Fat Test – States and United States: 2014**

State	January	February	March	April	May	June
	(percent)	(percent)	(percent)	(percent)	(percent)	(percent)
Arizona .....	3.55	3.45	3.44	3.40	3.41	3.41
California .....	3.81	3.74	3.70	3.66	3.62	3.59
Colorado .....	3.61	3.63	3.59	3.53	3.49	3.43
Florida .....	3.64	3.63	3.59	3.53	3.51	3.52
Idaho .....	3.84	3.85	3.78	3.74	3.66	3.58
Illinois .....	3.88	3.86	3.85	3.76	3.70	3.61
Indiana .....	3.85	3.82	3.77	3.67	3.58	3.53
Iowa .....	3.86	3.83	3.82	3.75	3.69	3.63
Kansas .....	3.87	3.83	3.76	3.63	3.56	3.49
Michigan .....	3.84	3.81	3.78	3.69	3.63	3.56
Minnesota .....	3.98	3.94	3.93	3.88	3.83	3.75
New Mexico .....	3.63	3.58	3.55	3.50	3.45	3.40
New York .....	3.86	3.86	3.85	3.77	3.70	3.65
Ohio .....	3.96	3.93	3.87	3.76	3.68	3.64
Oregon .....	4.00	3.92	3.91	3.77	3.79	3.78
Pennsylvania .....	3.86	3.84	3.81	3.73	3.66	3.61
South Dakota .....	4.02	4.01	3.98	3.92	3.87	3.79
Texas .....	3.94	3.91	3.86	3.79	3.73	3.69
Utah .....	3.87	3.81	3.76	3.71	3.65	3.59
Vermont .....	3.88	3.86	3.86	3.80	3.75	3.70
Virginia .....	3.78	3.76	3.73	3.63	3.54	3.52
Washington .....	4.00	3.92	3.91	3.77	3.79	3.78
Wisconsin .....	3.86	3.84	3.81	3.76	3.71	3.65
United States .....	3.84	3.81	3.77	3.71	3.66	3.61
State	July	August	September	October	November	December
	(percent)	(percent)	(percent)	(percent)	(percent)	(percent)
Arizona .....	3.43	3.43	3.48	3.50	3.53	3.57
California .....	3.59	3.61	3.66	3.74	3.80	3.81
Colorado .....	3.42	3.44	3.53	3.57	3.66	3.70
Florida .....	3.56	3.58	3.64	3.69	3.70	3.65
Idaho .....	3.60	3.64	3.74	3.80	3.90	3.92
Illinois .....	3.60	3.65	3.73	3.84	3.93	3.98
Indiana .....	3.52	3.60	3.64	3.74	3.85	3.82
Iowa .....	3.63	3.60	3.70	3.79	3.86	3.82
Kansas .....	3.49	3.47	3.58	3.71	3.88	3.90
Michigan .....	3.56	3.61	3.65	3.74	3.81	3.78
Minnesota .....	3.76	3.77	3.87	3.96	4.01	3.96
New Mexico .....	3.40	3.44	3.54	3.65	3.73	3.70
New York .....	3.63	3.67	3.73	3.81	3.89	3.90
Ohio .....	3.63	3.67	3.70	3.81	3.92	3.91
Oregon .....	3.79	3.81	3.90	3.88	4.00	4.09
Pennsylvania .....	3.58	3.64	3.68	3.78	3.85	3.86
South Dakota .....	3.81	3.84	3.92	4.01	4.08	4.08
Texas .....	3.69	3.72	3.79	3.88	4.00	4.00
Utah .....	3.56	3.59	3.70	3.77	3.84	3.84
Vermont .....	3.68	3.71	3.76	3.82	3.92	3.93
Virginia .....	3.51	3.57	3.60	3.69	3.82	3.81
Washington .....	3.79	3.81	3.90	3.88	4.00	4.09
Wisconsin .....	3.66	3.68	3.76	3.84	3.89	3.85
United States .....	3.61	3.64	3.71	3.79	3.86	3.86

**Prices Received for All Milk Sold at Plants, Monthly Fat Test – States and United States: 2015**

State	January	February	March	April	May	June
	(percent)	(percent)	(percent)	(percent)	(percent)	(percent)
Arizona .....	3.54	3.48	3.42	3.40	3.40	3.43
California .....	3.80	3.76	3.70	3.66	3.63	3.62
Colorado .....	3.72	3.65	3.64	3.59	3.58	3.49
Florida .....	3.61	3.64	3.55	3.51	3.52	3.56
Idaho .....	3.88	3.83	3.80	3.77	3.72	3.70
Illinois .....	3.87	3.86	3.85	3.73	3.67	3.62
Indiana .....	3.82	3.81	3.77	3.69	3.60	3.54
Iowa .....	3.86	3.86	3.83	3.76	3.72	3.66
Kansas .....	3.88	3.84	3.74	3.65	3.63	3.57
Michigan .....	3.78	3.80	3.75	3.67	3.60	3.55
Minnesota .....	3.94	3.93	3.91	3.85	3.82	3.73
New Mexico .....	3.75	3.67	3.62	3.52	3.47	3.44
New York .....	3.90	3.91	3.87	3.78	3.70	3.65
Ohio .....	3.90	3.91	3.86	3.75	3.66	3.62
Oregon .....	3.96	3.87	3.87	3.87	3.78	3.77
Pennsylvania .....	3.78	3.83	3.81	3.71	3.63	3.58
South Dakota .....	4.08	4.06	4.06	4.00	3.95	3.89
Texas .....	4.03	3.94	3.93	3.82	3.79	3.75
Utah .....	3.83	3.76	3.74	3.71	3.63	3.58
Vermont .....	3.94	3.96	3.93	3.86	3.78	3.74
Virginia .....	3.80	3.79	3.74	3.63	3.56	3.53
Washington .....	3.96	3.87	3.87	3.87	3.78	3.77
Wisconsin .....	3.85	3.84	3.81	3.76	3.71	3.66
United States .....	3.84	3.82	3.78	3.72	3.67	3.63
State	July	August	September	October	November	December
	(percent)	(percent)	(percent)	(percent)	(percent)	(percent)
Arizona .....	3.37	3.39	3.44	3.51	3.63	3.62
California .....	3.59	3.63	3.68	3.76	3.82	3.88
Colorado .....	3.44	3.46	3.54	3.62	3.75	3.78
Florida .....	3.60	3.61	3.66	3.66	3.64	3.62
Idaho .....	3.63	3.72	3.79	3.85	3.98	4.03
Illinois .....	3.60	3.61	3.74	3.83	3.91	3.91
Indiana .....	3.53	3.51	3.58	3.69	3.77	3.77
Iowa .....	3.65	3.66	3.73	3.86	3.93	3.94
Kansas .....	3.51	3.51	3.59	3.74	3.85	3.89
Michigan .....	3.54	3.55	3.59	3.70	3.73	3.74
Minnesota .....	3.71	3.74	3.81	3.95	3.99	4.00
New Mexico .....	3.43	3.40	3.45	3.58	3.72	3.78
New York .....	3.65	3.64	3.70	3.85	3.88	3.86
Ohio .....	3.61	3.60	3.69	3.81	3.88	3.89
Oregon .....	3.74	3.77	3.85	4.00	4.12	4.14
Pennsylvania .....	3.58	3.62	3.67	3.81	3.85	3.84
South Dakota .....	3.85	3.88	3.95	4.10	4.16	4.18
Texas .....	3.71	3.72	3.79	3.92	4.04	4.08
Utah .....	3.54	3.63	3.71	3.80	3.95	4.00
Vermont .....	3.72	3.70	3.75	3.87	3.87	3.84
Virginia .....	3.54	3.56	3.64	3.78	3.81	3.79
Washington .....	3.74	3.77	3.85	4.00	4.12	4.14
Wisconsin .....	3.63	3.64	3.69	3.81	3.86	3.86
United States .....	3.61	3.63	3.69	3.80	3.87	3.89

## Adjustment for Seasonal Variation - All Eggs and All Milk

Base prices used in calculating parity prices are averages of prices received by farmers for ten years; therefore, any seasonal variation is largely averaged out. To facilitate comparisons with parity prices, monthly prices for All Eggs and All Milk are adjusted for seasonal variation. The seasonally adjusted price is calculated by dividing the monthly price by the adjustment factor.

### Prices Received for All Eggs Adjusted for Seasonal Variation by Month – United States: 2012-2015

State	Prices received adjusted for seasonal variation, dollars per dozen											
	Dec <sup>1</sup>	Jan	Feb	Mar	Apr	May	Jun	Jul	Aug	Sep	Oct	Nov
2012 .....	1.000	0.813	0.866	0.913	0.966	1.000	1.080	1.050	1.080	1.260	1.010	1.020
2013 .....	0.934	1.020	0.981	1.090	0.976	1.400	1.070	1.090	1.040	1.070	1.040	1.140
2014 .....	1.130	1.180	1.350	1.150	1.400	1.280	1.220	1.260	1.070	1.160	1.210	1.350
2015 .....	1.520	1.350	1.310	1.540	1.200	1.830	2.250	1.970	2.350	2.100	1.540	1.720

<sup>1</sup> December preceding year.

### Prices Received for All Eggs as a Percentage of Parity Price by Month – United States: 2012-2015

State	Seasonally adjusted price as a percentage of parity price, percent											
	Dec <sup>1</sup>	Jan	Feb	Mar	Apr	May	Jun	Jul	Aug	Sep	Oct	Nov
2012 .....	40	32	34	36	37	39	42	40	41	48	38	39
2013 .....	36	39	38	42	38	54	41	42	40	42	40	45
2014 .....	45	45	51	43	50	46	44	45	39	42	43	49
2015 .....	55	49	47	51	43	66	81	71	85	77	56	64

<sup>1</sup> December preceding year.

### Prices Received for All Eggs Adjustment Factors by Month – United States: 2012-2015

State	Seasonal price adjustment factors, percent											
	Dec <sup>1</sup>	Jan	Feb	Mar	Apr	May	Jun	Jul	Aug	Sep	Oct	Nov
2012 .....	121	108	102	109	90	82	84	92	104	97	101	116
2013 .....	121	104	101	105	91	83	87	95	104	96	100	116
2014 .....	121	95	104	108	91	91	90	98	101	91	95	113
2015 .....	116	93	98	100	90	95	90	97	102	91	94	116

<sup>1</sup> December preceding year.

### Prices Received for All Milk Adjusted for Seasonal Variation by Month – United States: 2012-2015

State	Prices received adjusted for seasonal variation, dollars per cwt											
	Dec <sup>1</sup>	Jan	Feb	Mar	Apr	May	Jun	Jul	Aug	Sep	Oct	Nov
2012 .....	19.10	19.10	18.00	18.00	17.70	17.20	17.10	17.20	17.90	18.90	19.90	20.50
2013 .....	19.90	19.70	20.00	20.10	20.50	20.80	20.40	19.60	19.50	19.60	19.80	20.50
2014 .....	21.70	23.40	24.70	25.50	25.60	25.00	24.40	24.40	24.40	24.60	23.20	21.60
2015 .....	20.20	18.10	17.30	17.10	16.80	17.30	17.70	17.40	16.80	16.70	16.60	17.10

<sup>1</sup> December preceding year.

### Prices Received for All Milk as a Percentage of Parity Price by Month – United States: 2012-2015

State	Seasonally adjusted price as a percentage of parity price, percent											
	Dec <sup>1</sup>	Jan	Feb	Mar	Apr	May	Jun	Jul	Aug	Sep	Oct	Nov
2012 .....	38	38	36	36	35	34	33	33	35	36	38	39
2013 .....	38	38	39	39	40	41	40	38	38	40	39	41
2014 .....	44	45	47	48	47	46	44	44	45	45	42	40
2015 .....	37	33	32	31	31	32	33	32	31	32	31	33

<sup>1</sup> December preceding year.

### Prices Received for All Milk Adjustment Factors by Month – United States: 2012-2015

State	Seasonal price adjustment factors, percent											
	Dec <sup>1</sup>	Jan	Feb	Mar	Apr	May	Jun	Jul	Aug	Sep	Oct	Nov
2012 .....	103	100	98	95	95	94	96	98	102	104	109	108
2013 .....	104	101	98	95	95	95	96	97	100	102	104	105
2014 .....	101	101	101	99	99	97	95	95	99	104	107	107
2015 .....	101	97	97	97	98	97	96	96	99	105	107	106

<sup>1</sup> December preceding year.

## Reliability of Prices Received Estimates

**Definition:** Prices received represent sales from producers to first buyers. They include all grades and qualities. The average commodity price from the survey multiplied by the total quantity marketed theoretically should give the total cash receipts for the commodity.

**Survey procedures:** Primary sales data used to determine grain prices were obtained from probability samples of about 1,900 mills and elevators. These procedures ensure that virtually all grain moving into commercial channels has a chance of being included in the survey. Generally, States surveyed account for 90 percent or more of total United States production. Livestock prices are obtained from packers, stockyards, auctions, dealers, and market check data from AMS-USDA, private marketing organizations, and state commodity groups and agencies. Inter-farm sales of grain and livestock are not included since they represent very small percentages of the total sales. Grain marketed for seed is also excluded. Fruit and vegetable prices are obtained from sample surveys and market check data from AMS-USDA, private marketing organizations, state agencies, and universities.

**Summary and estimation procedures:** Survey quantities sold are expanded by strata to state levels and used to weight average strata prices to a state average. State prices are then weighted to a United States price based on expanded sales. Recommendations are prepared by the Regional Field Offices and reviewed by the Agricultural Statistics Board in Washington, D.C. State recommendations are reviewed for reasonableness with survey data, other States, and recent historic estimates.

**Revisions:** In general, revisions are made during annual commodity market year estimation time, following five-year Census revisions, or when later information is received. Revisions are published in monthly issues of *Agricultural Prices*.

**Reliability:** United States price estimates based on probability surveys generally have a sampling error of less than one percent for the major commodities such as corn, wheat, soybeans, cotton, and rice. Current methods of summarization for non-probability commodities are not designed directly to calculate sampling errors. However, analytical measures approximate the United States relative sampling errors at around five percent. Any non-sampling errors are attributed to such things as the inability to obtain correct information, differences in interpreting questions or definitions, mistakes in coding or processing the data, etc. Efforts are made at each step in the survey process to minimize these non-sampling errors.

**Program Changes:** After the Council on Food, Agricultural and Resource Economics (C-FARE) 2009 program review which included changes in farm production practices, plans were implemented to make necessary program improvements in the agricultural price program. The index group structure for prices received was modified to maintain a more universal structure and consistency with the required 1910-1914 series.

Modifications implemented January 2014 include the following: update the current 1990-1992 base reference period to 2011, link the 1910-1914 series to the updated base reference period, 2011, create index groups used universally by researchers, data users, and policymakers, re-classify agricultural commodities into the index groups, expand the commodity coverage for vegetable, melon, non-citrus, and tree nuts, update monthly market weights, and adjust (normalization) current five year moving average cash receipts and farm input cost weights.

Modifications implemented January 2015 discontinued preliminary prices and replaced the annual average index with an annual index.

The February 2016 program update changed the rounding of the 2011 base period indexes to nearest tenth of a percent. The 1910-1914 base period indexes remain rounded to the nearest whole number.

See Price Program Quick Stats Links at end of this report for program change details.



## March Prices Paid by Farmers

The March index of Prices Paid for Commodities and Services, Interest, Taxes, and Farm Wage Rates (PPITW), at 107.1, is up 0.2 percent from February 2016 but down 3.9 percent from March 2015.

**Production:** The March index, at 105.9, is up 0.1 percent from February but 5.9 percent lower than last year. Higher prices in March for feeder cattle, LP gas, diesel, and feeder pigs more than offset lower prices for field crop seeds, mixed fertilizer, supplements, and self-propelled machinery.

**Feed:** At 100.7, the March index increased 0.1 percent from February but is down 7.2 percent from last March. Since February, higher prices for hay & forages, concentrates, and feed grains more than offset lower prices for supplements and complete feeds.

**Livestock and poultry:** The March index, at 120.7, increased 1.2 percent from February but is down 23 percent from last year. Since February, prices are higher for feeder cattle and feeder pigs. The March feeder cattle price, at \$163.00 per cwt, is up \$1.00 per cwt from the February price. March feeder pigs averaged \$195.00 per cwt, up \$7.00 per cwt from February.

**Fertilizer:** The index for March, at 75.5, is down 0.4 percent from February and 16 percent below March a year ago. Since February, lower prices for mixed fertilizer and nitrogen more than offset higher prices for potash and phosphate.

**Chemicals:** The March index, at 108.8, is up 0.2 percent from February and 2.4 percent from last March. Compared with the previous month, higher prices for herbicides and insecticides more than offset lower prices for fungicides and other chemicals.

**Fuels:** At 51.7, the March index is up 8.8 percent from February but 25 percent below March 2015. Compared with February, prices are higher for LP gas, diesel, and gasoline.

**Machinery:** The index for March, at 114.4, decreased 0.3 percent from February and 0.6 percent from last March. Compared with the previous month, prices are lower for self-propelled machinery and other machinery.

**Consumer Price Index:** The March 2016 Consumer Price Index, as issued by the Bureau of Labor Statistics, for all urban consumers (CPI-U) increased 0.9 percent over the last 12 months to an index level of 238.132 (1982-1984=100). For the month, the index increased 0.4 percent prior to seasonal adjustment.

## Prices Paid Indexes and Related Parity Ratios – United States: March 2016 with Comparisons

[Revised historical price indexes for months not shown are available at [www.nass.usda.gov](http://www.nass.usda.gov)]

Index Group and Ratios	1910-1914 Base			2011 Base		
	March 2015	February 2016	March 2016	March 2015	February 2016	March 2016
	(percent)	(percent)	(percent)	(percent)	(percent)	(percent)
Prices paid by farmers for commodities, services, interest, taxes, and wage rates (PPITW) .....	3016	2893	2898	111.4	106.9	107.1
Production .....	2342	2202	2205	112.5	105.8	105.9
Feed .....	1195	1109	1110	108.5	100.6	100.7
Livestock and poultry .....	3092	2354	2382	156.6	119.3	120.7
Seeds .....	3755	3755	3643	114.3	114.3	110.9
Fertilizer .....	1084	912	909	90.0	75.8	75.5
Chemicals .....	955	975	977	106.3	108.6	108.8
Fuels .....	1920	1328	1445	68.7	47.5	51.7
Supplies and repairs .....	1254	1239	1242	106.3	105.1	105.3
Autos and trucks .....	3248	3272	3277	105.7	106.5	106.6
Machinery .....	7037	7011	6988	115.1	114.7	114.4
Building materials .....	2503	2485	2487	107.6	106.8	106.9
Services and rent .....	2467	2516	2516	(NA)	(NA)	(NA)
Services .....	(NA)	(NA)	(NA)	113.2	116.1	116.1
Rent .....	(NA)	(NA)	(NA)	120.8	122.0	122.0
Interest <sup>1</sup> .....	3643	3846	3846	99.9	105.5	105.5
Taxes <sup>2</sup> .....	7335	7623	7623	123.6	128.4	128.4
Wage rates .....	8018	8204	8204	112.0	114.6	114.6
Family living-CPI <sup>3</sup> .....	2243	2252	2262	105.0	105.4	105.9
Production, interest, taxes, and wage rates (PITW) .....	3172	3021	3025	112.5	107.1	107.3
Ratio (received/paid) .....	(NA)	(NA)	(NA)	92	86	87
Parity ratio <sup>4</sup> .....	35	33	33	(NA)	(NA)	(NA)
Parity ratio adjusted <sup>5</sup> .....	36	34	34	(NA)	(NA)	(NA)
PPITW adjusted for productivity <sup>6</sup> .....	1463	1429	1431	(NA)	(NA)	(NA)
Crop sector (PPITW) .....	(NA)	(NA)	(NA)	108.4	106.6	106.5
Livestock sector (PPITW) .....	(NA)	(NA)	(NA)	114.7	107.3	107.8
Farm sector (production) .....	(NA)	(NA)	(NA)	123.4	109.4	109.4
Non-farm sector (production) .....	(NA)	(NA)	(NA)	105.7	103.4	103.7

(NA) Not available.

<sup>1</sup> Interest per acre on farm real estate debt and interest rate on farm non-real estate debt.

<sup>2</sup> Farm real estate taxes payable per acre.

<sup>3</sup> Bureau of Labor Statistics, Consumer Price Index for all urban consumers (CPI-U), converted by the USDA.

<sup>4</sup> Ratio of index of prices received to PPITW (1910-1914=100).

<sup>5</sup> Based on estimated cash receipts, from marketings and government payments, the preliminary adjustment factor is 1.026 for 2016 and the revised factor is 1.026 for 2015.

<sup>6</sup> PPITW is adjusted based on productivity trend for the prior 15 years.

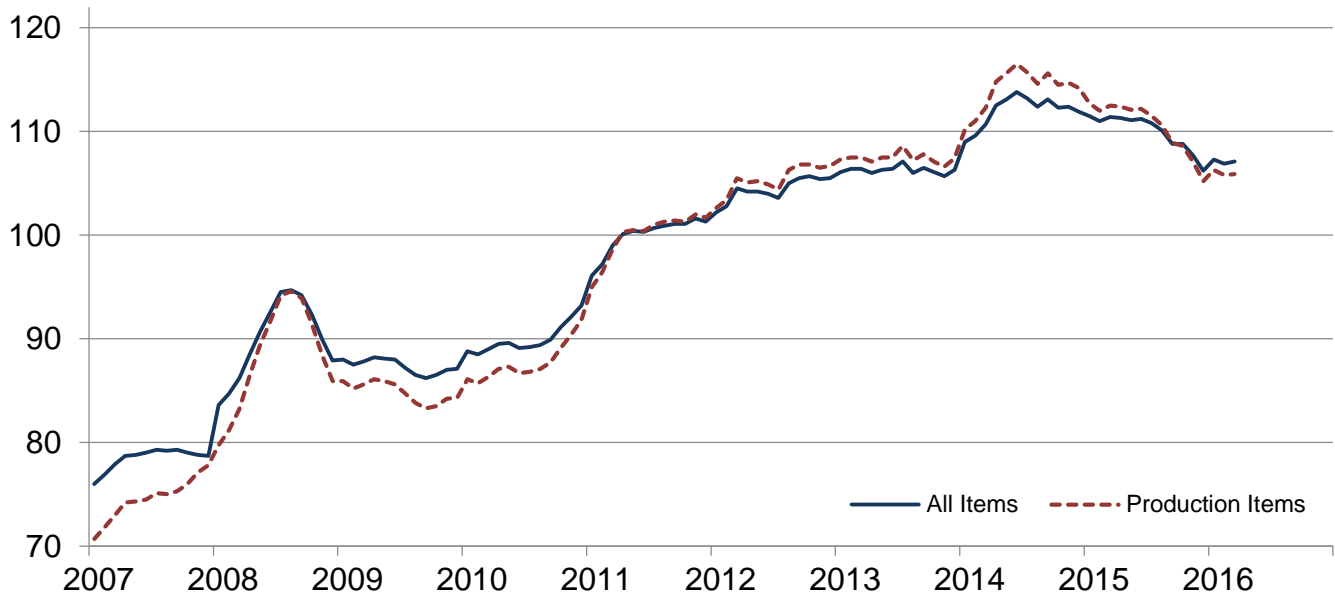
## Prices Paid Indexes and Annual Weights for Input Components and Sub-components – United States: March 2016 with Comparisons

[Revised historical price indexes for months not shown are available at [www.nass.usda.gov](http://www.nass.usda.gov). Relative weights are a five year moving average]

Index Group	Relative weights		Indexes (2011=100)		
	2015	2016	March 2015	February 2016	March 2016
	(percent)	(percent)	(percent)	(percent)	(percent)
Production items .....	74.6	75.6	112.5	105.8	105.9
Feed .....	15.5	14.5	108.5	100.6	100.7
Feed grains .....	2.2	2.1	66.4	60.0	60.2
Complete feeds .....	7.6	7.1	116.3	110.5	110.4
Hay and forages .....	1.9	1.8	104.3	90.0	91.0
Concentrates .....	2.5	2.3	120.6	106.2	106.8
Supplements .....	1.3	1.2	118.1	117.8	116.1
Livestock and poultry .....	8.3	10.5	156.6	119.3	120.7
Feeder cattle .....	6.4	8.2	165.9	118.0	119.3
Feeder pigs .....	0.7	0.8	122.9	134.3	139.3
Milk cow replacements .....	0.7	0.9	140.1	128.9	128.9
Poultry .....	0.5	0.6	102.9	102.9	102.9
Seeds .....	5.0	5.0	114.3	114.3	110.9
Field crops .....	4.5	4.5	113.7	113.7	109.5
Grasses and legumes .....	0.5	0.5	119.9	119.9	124.0
Fertilizer .....	6.4	6.2	90.0	75.8	75.5
Mixed fertilizer .....	2.8	2.7	86.2	75.8	74.8
Nitrogen .....	2.7	2.6	94.2	77.1	77.0
Potash and phosphate .....	0.9	0.9	89.5	71.8	73.0
Chemicals .....	3.2	3.2	106.3	108.6	108.8
Herbicides .....	2.0	2.0	106.7	110.4	110.7
Insecticides .....	0.7	0.7	107.0	108.9	109.1
Fungicides and other .....	0.5	0.5	103.4	100.2	99.9
Fuels .....	4.0	3.7	68.7	47.5	51.7
Diesel .....	2.5	2.3	65.4	45.0	47.1
Gasoline .....	0.8	0.8	68.2	49.2	54.4
LP gas .....	0.7	0.6	81.2	54.4	65.3
Supplies and repairs .....	4.3	4.2	106.3	105.1	105.3
Supplies .....	1.4	1.4	106.1	106.1	106.2
Repairs .....	2.9	2.8	106.4	104.6	104.8
Autos and trucks .....	1.1	1.2	105.7	106.5	106.6
Autos .....	0.1	0.2	102.1	102.0	101.8
Trucks .....	1.0	1.0	106.2	107.1	107.3
Machinery .....	5.2	5.5	115.1	114.7	114.4
Tractors .....	1.1	1.2	109.5	110.6	110.6
Self-propelled .....	2.1	2.2	118.7	118.8	118.0
Other machinery .....	2.0	2.1	114.7	112.9	112.7
Building materials .....	3.7	3.7	107.6	106.8	106.9
Services .....	10.8	10.8	113.2	116.1	116.1
Custom rates .....	1.1	1.1	111.8	111.8	111.8
Other services .....	9.7	9.7	113.3	116.6	116.6
Rent .....	7.1	7.1	120.8	122.0	122.0
Cash .....	3.8	3.8	128.5	129.0	129.0
Share .....	3.3	3.3	111.8	114.0	114.0
Interest .....	2.3	2.2	99.9	105.5	105.5
Taxes .....	2.8	2.8	123.6	128.4	128.4
Wage rates .....	6.4	6.2	112.0	114.6	114.6
Family living-CPI .....	13.9	13.2	105.0	105.4	105.9

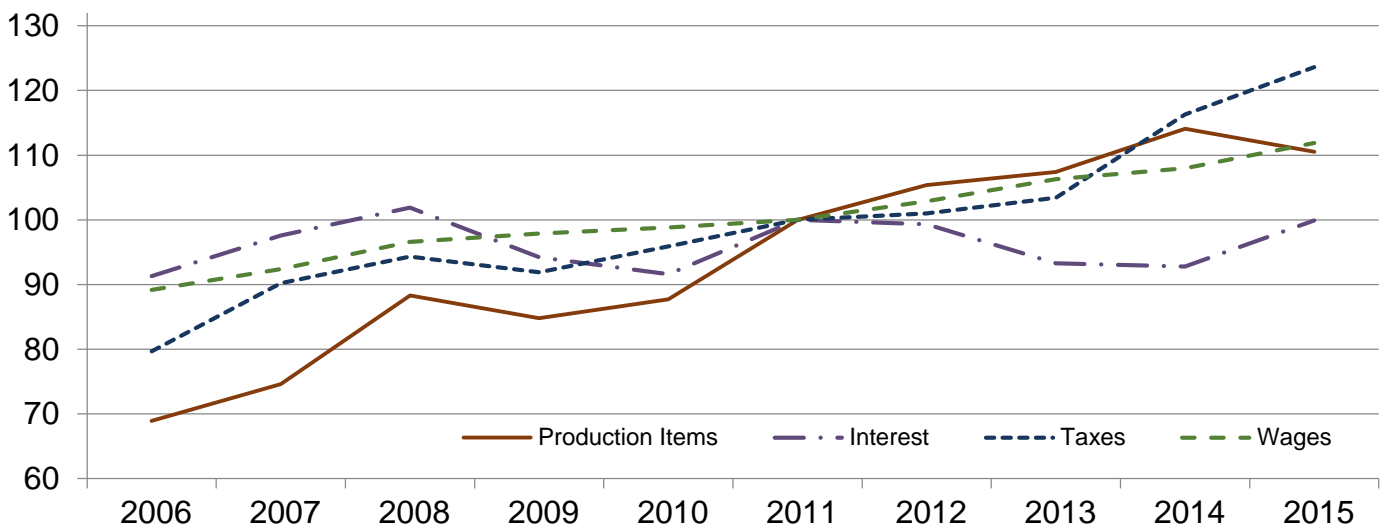
## Paid Indexes by Month, All Items and Production Items – United States: 2011=100

Percent

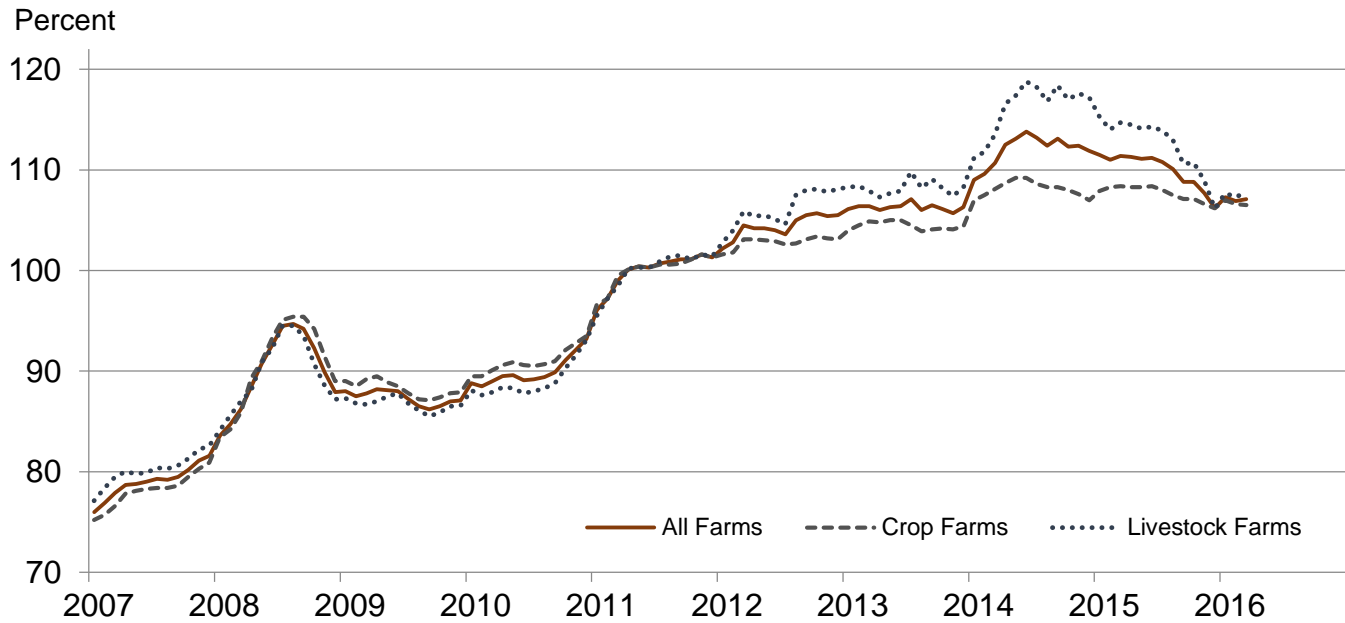


## Paid Indexes, Annual Averages, Production Items, Interest, Taxes, and Wages – United States: 2011=100

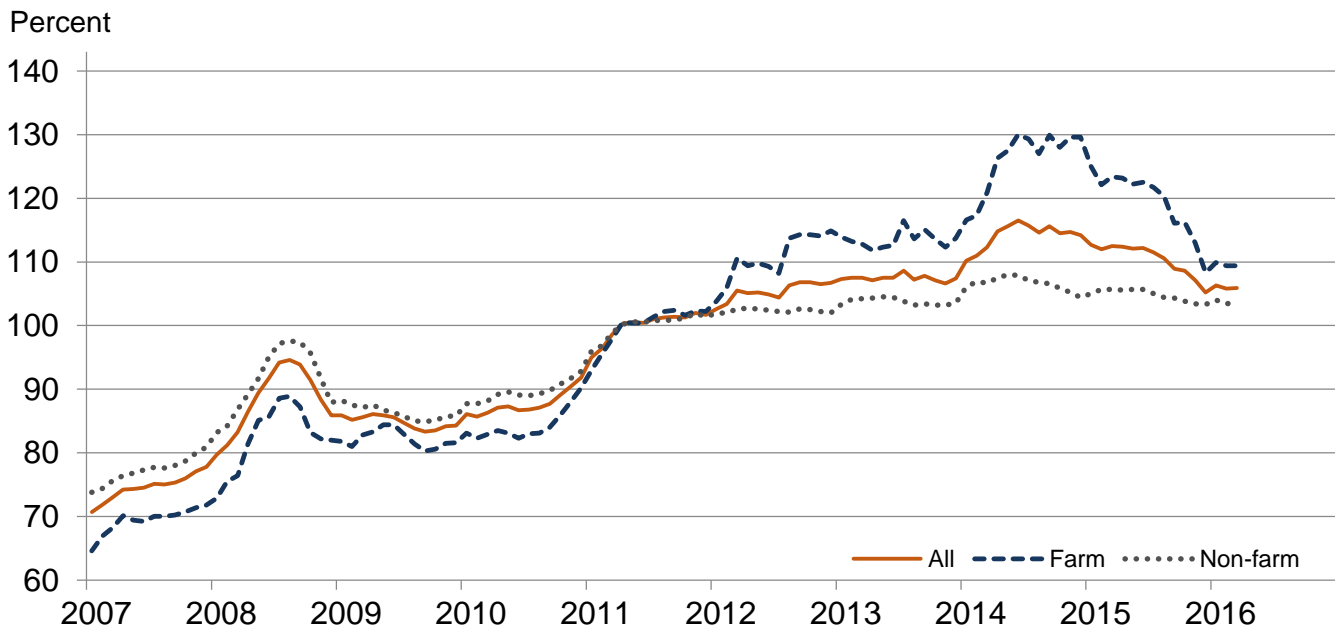
Percent



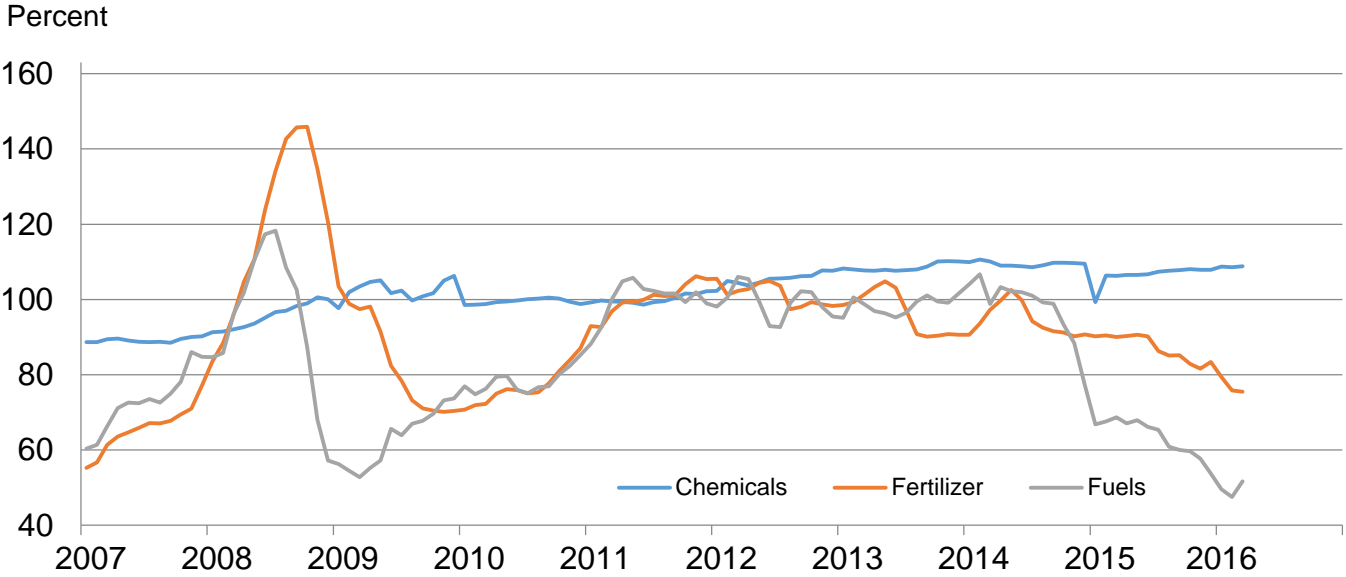
## Paid Indexes by Farm Type and Month, All Items – United States: 2011=100



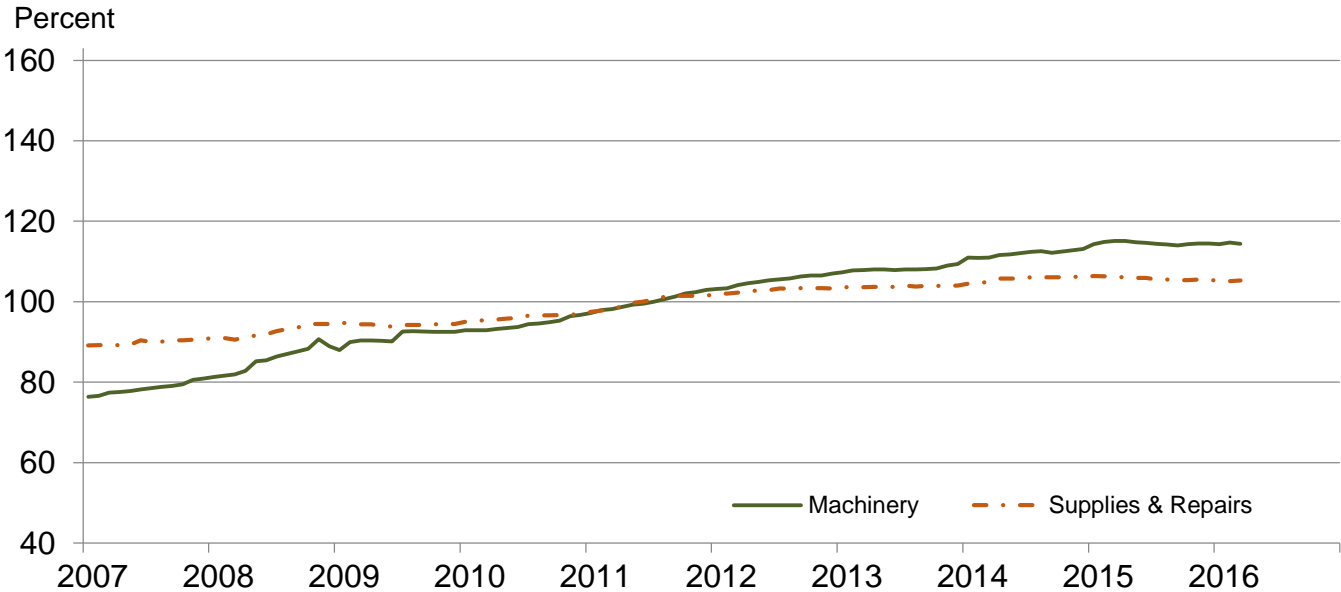
## Paid Indexes by Origin and Month, All Production Items – United States: 2011=100



**Paid Indexes by Non-farm Origin and Month,  
Chemicals, Fertilizer, and Fuels –  
United States: 2011=100**

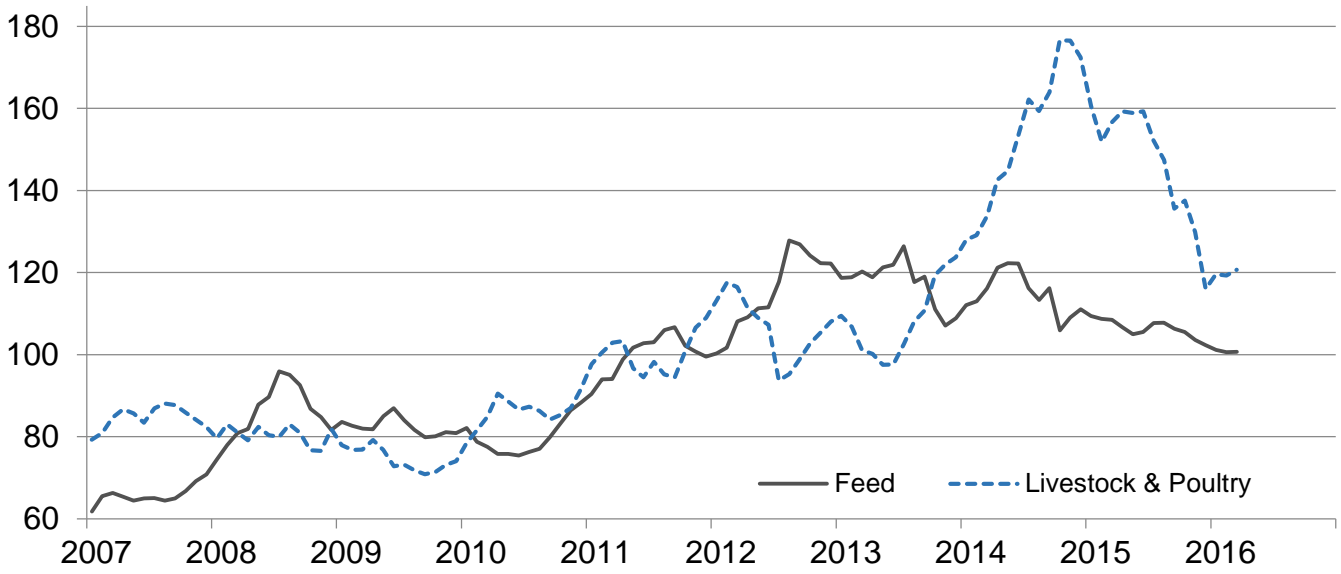


**Paid Indexes by Non-farm Origin and Month,  
Machinery and Supplies & Repairs –  
United States: 2011=100**



# Paid Indexes by Farm Origin and Month, Feed and Livestock & Poultry – United States: 2011=100

Percent



## Feed Price Ratios – United States: March 2016 with Comparisons

Feed price ratio <sup>1</sup>	March 2015	February 2016	March 2016
Broiler-feed: pounds of broiler grower feed equal in value to 1 pound of broiler, live weight <sup>2</sup> .....	5.4	4.8	5.1
Market egg feed: pounds of laying feed equal in value to 1 dozen eggs <sup>3</sup> .....	15.3	10.2	8.7
Hog-corn: bushels of corn equal in value to 100 pounds of hog, live weight .....	13.2	13.9	14.0
Milk-feed: pounds of 16% mixed dairy feed equal in value to 1 pound of whole milk <sup>4</sup> .....	2.01	2.15	2.08
Steer & heifer-corn: bushels of corn equal in value to 100 pounds of steer & heifers, live weight .....	42.5	37.5	38.4
Turkey-feed: pounds of turkey grower equal in value to 1 pound of turkey, live weight <sup>5</sup> .....	6.8	9.0	9.0

<sup>1</sup> Effective January 1995, prices of commercial prepared feeds are based on current United States prices received for corn, soybeans, alfalfa hay, and all wheat.

<sup>2</sup> The price of commercial prepared broiler feed is based on current United States prices received for corn and soybeans. The modeled feed uses 58 percent corn and 42 percent soybeans.

<sup>3</sup> The price of commercial prepared layer feed is based on current United States prices received for corn and soybeans. The modeled feed uses 75 percent corn and 25 percent soybeans.

<sup>4</sup> The price of commercial prepared dairy feed is based on current United States prices received for corn, soybeans, and alfalfa. The modeled feed uses 51 percent corn, 8 percent soybeans, and 41 percent alfalfa.

<sup>5</sup> The price of commercial prepared turkey feed is based on current United States prices received for corn, soybeans, and wheat. The modeled feed uses 51 percent corn, 28 percent soybeans, and 21 percent wheat.

## Prices Received Used to Calculate Feed Price Ratios – United States: March 2016 with Comparisons

[Price data source for livestock and poultry commodities is United States Department of Agriculture's Agriculture Marketing Service]

Item	March 2015	February 2016	March 2016
	(dollars)	(dollars)	(dollars)
Broilers, live .....pound	0.590	0.460	0.490
Eggs, market .....dozen	1.41	0.849	0.729
Hogs, all .....cwt	50.30	49.60	50.00
Milk, all .....cwt	16.60	15.70	15.30
Steers and heifers .....cwt	162.00	134.00	137.00
Turkeys, live .....pound	0.683	0.794	0.789
Corn .....bushel	3.81	3.57	3.57
Hay, alfalfa .....ton	169.00	142.00	144.00
Soybeans .....bushel	9.85	8.51	8.56
Wheat, all .....bushel	5.70	4.61	4.40

## Prices Paid for Feeder Livestock – United States: March 2016 with Comparisons

[Price data source is United States Department of Agriculture's Agriculture Marketing Service]

Item	March 2015	February 2016	March 2016
	(dollars)	(dollars)	(dollars)
Feeder cattle & calves .....cwt	227.00	162.00	163.00
Feeder pigs .....cwt	172.00	188.00	195.00



## Reliability of Prices Paid Estimates

**Definition:** Prices paid by farmers represent the average costs of inputs purchased by farmers and ranchers to produce agricultural commodities. Conceptually, the average price when multiplied by quantity purchased should equal total producer expenditures for the item.

**Survey procedures:** The prices paid data are obtained from establishments that sell goods and services to farmers and ranchers. Annually, about 8,500 firms are randomly selected from lists by type of item sold with an average response rate in the range of 75-80 percent. Firms are asked to report the price for the specified item "most commonly bought by farmers" or that was the "volume seller". Approximately 135 items are surveyed each March to represent all production input items purchased. The survey reference period for most items is the five business days centered at the 15th of the month. Separate prices paid surveys are conducted for agricultural chemicals, fuels, feed, fertilizer, machinery, and seed.

**Summary and estimation procedures:** The annual March Prices Paid Survey is summarized as a non-probability survey. Average prices reported are aggregated to the region and United States level using weights available from expenditure data and other administrative sources. Price recommendations are prepared by the Regional Field Offices and Headquarters for review by the Agricultural Statistics Board in Washington, D.C. Also, the change in price level for individual items surveyed are combined to the regional and United States levels, and are published as prices paid indexes referenced to a specific base period. Prices paid indexes for new autos and trucks, building materials, farm supplies, motor supplies, and marketing containers are updated based on price changes measured in selected Bureau of Labor Statistics (BLS) indexes.

**Revisions:** Any revisions are published in the monthly and in annual issues of Agricultural Prices. The basis for revision must be supported by additional data that directly affect the level of the estimate. More revisions are likely for March when separate prices paid surveys are conducted, in lieu of BLS indexes, by the USDA to measure price change.

**Reliability:** Current methods of summarization for the March data are not designed directly to calculate sampling errors. However, analytical measures approximate the United States relative sampling errors for major items around 10 percent. Any non-sampling errors are attributed to such things as the inability to obtain correct information, differences in interpreting questions or definitions, mistakes in coding or processing the data, etc. Efforts are made at each step in the survey process to minimize these non-sampling errors.

**Program change:** Effective January 2014, the National Agricultural Statistics Service modified the five-year moving weights and updated the base reference period. In January 2015, publication of preliminary prices was suspended, and the annual average index was replaced by an annual index.

As of January 2014, the 1990-1992 base reference period was updated to 2011. Five-year moving average weights are adjusted (normalized) to minimize the effects of price changes. The 1910-1914=100 price indexes, required by statute for computing parity prices, were linked forward based on the changes in the new 2011=100 indexes. The new indexes were constructed by multiplying the ratios of the current prices to the base period prices by the moving average weights.

Modifications implemented January 2015 discontinued preliminary prices and replaced the annual average index with an annual index.

The April 2015 program update discontinued publication of the annual March survey prices paid data.

The February 2016 program update changed the rounding of the 2011 base period indexes to nearest tenth of a percent. The 1910-1914 base period indexes remain rounded to the nearest whole number.

## Information Contacts

### General

Troy Joshua, Chief, Environmental, Economics and Demographics Branch ..... (202) 720-6146

### Crop Prices Received

Lance Honig, Chief, Crops Branch ..... (202) 720-2127

Anthony Prillaman, Head, Field Crops Section ..... (202) 720-2127

Angie Considine – Cotton, Cotton Ginnings, Sorghum ..... (202) 720-5944

Tony Dahlman – Oats, Soybeans ..... (202) 720-7621

Chris Hawthorn – Corn, Flaxseed, Proso Millet ..... (202) 720-9526

James Johanson – County Estimates, Hay ..... (202) 690-8533

Scott Matthews – Barley, Crop Weather ..... (202) 720-7621

Jean Porter – Rye, Wheat ..... (202) 720-8068

Bianca Pruneda – Peanuts, Rice ..... (202) 720-7688

Travis Thorson – Sunflower, Canola, Safflower, Rapeseed, Mustard Seed ..... (202) 720-7369

Jorge Garcia-Pratts, Head, Fruits, Vegetables and Special Crops Section ..... (202) 720-2127

Vincent Davis – Fresh and Processing Vegetables, Onions, Strawberries ..... (202) 720-2157

Fleming Gibson – Citrus, Coffee, Sugar Crops, Tropical Fruits ..... (202) 720-5412

Greg Lemmons – Berries, Cranberries, Potatoes, Sweet Potatoes ..... (202) 720-4285

Dave Losh – Hops ..... (360) 709-2400

Dan Norris – Austrian Winter Peas, Dry Edible Peas, Lentils, Mint, Mushrooms, Peaches, Pears,  
Wrinkled Seed Peas, Dry Beans ..... (202) 720-3250

Daphne Schauber – Floriculture, Grapes, Maple Syrup, Nursery, Tree Nuts ..... (202) 720-4215

Chris Singh – Apples, Apricots, Cherries, Plums, Prunes, Tobacco ..... (202) 720-4288

### Livestock Prices Received

Dan Kerestes, Chief, Livestock Branch ..... (202) 720-3570

Scott Hollis, Head, Livestock Section ..... (202) 720-3570

Doug Bounds – Hogs and Pigs ..... (202) 720-3106

Dave Colwell – Sheep and Goats ..... (202) 720-8784

Michael Klamm – Cattle and Cattle on Feed ..... (202) 720-3040

Mike Miller – Milk, Milk Cows ..... (202) 720-3278

Bruce Boess, Head, Poultry and Specialty Commodities Section ..... (202) 720-3570

Heidi Gleich – Broilers ..... (202) 720-0585

Kim Linonis – Eggs ..... (202) 690-8632

Sammy Neal – Turkeys ..... (202) 720-3244

Josh O’Rear – Honey ..... (202) 690-3676

### Indexes, Prices Paid, and Parity Prices

Troy Joshua, Chief, Environmental, Economics and Demographics Branch ..... (202) 720-6146

Tony Dorn, Head, Economics Section ..... (202) 690-3223

Daryl Brinkman – Prices Received Indexes, Parity Prices ..... (202) 720-8844

Courtney Charles – Prices Paid, Prices Paid Indexes ..... (202) 690-3229

Greg Gholson – Prices Received Indexes, Parity Prices, Prices Paid Indexes, Prices Paid for Feed,  
Fertilizer, Chemicals, Seeds, Fuels, Farm Supplies and Repairs, Farm Machinery, Feeder Livestock,  
Poultry Chicks, Feed Price Ratios ..... (202) 690-1348

Joe Hagedorn – Cash Rents, Grazing Fees ..... (202) 690-3231

## Access to NASS Reports

For your convenience, you may access NASS reports and products the following ways:

- All reports are available electronically, at no cost, on the NASS web site: <http://www.nass.usda.gov>
- Both national and state specific reports are available via a free e-mail subscription. To set-up this free subscription, visit <http://www.nass.usda.gov> and click on “National” or “State” in upper right corner above “search” box to create an account and select the reports you would like to receive.

For more information on NASS surveys and reports, call the NASS Agricultural Statistics Hotline at (800) 727-9540, 7:30 a.m. to 4:00 p.m. ET, or e-mail: [nass@nass.usda.gov](mailto:nass@nass.usda.gov).

The U.S. Department of Agriculture (USDA) prohibits discrimination against its customers, employees, and applicants for employment on the basis of race, color, national origin, age, disability, sex, gender identity, religion, reprisal, and where applicable, political beliefs, marital status, familial or parental status, sexual orientation, or all or part of an individual's income is derived from any public assistance program, or protected genetic information in employment or in any program or activity conducted or funded by the Department. (Not all prohibited bases will apply to all programs and/or employment activities.)

If you wish to file a Civil Rights program complaint of discrimination, complete the [USDA Program Discrimination Complaint Form](#) (PDF), found online at [http://www.ascr.usda.gov/complaint\\_filing\\_cust.html](http://www.ascr.usda.gov/complaint_filing_cust.html), or at any USDA office, or call (866) 632-9992 to request the form. You may also write a letter containing all of the information requested in the form. Send your completed complaint form or letter to us by mail at U.S. Department of Agriculture, Director, Office of Adjudication, 1400 Independence Avenue, S.W., Washington, D.C. 20250-9410, by fax (202) 690-7442 or email at [program.intake@usda.gov](mailto:program.intake@usda.gov).

## Price Program Links

Economics and Prices

[http://www.nass.usda.gov/Statistics\\_by\\_Subject/Economics\\_and\\_Prices/index.php](http://www.nass.usda.gov/Statistics_by_Subject/Economics_and_Prices/index.php)

January 2014 Price Program Update

[http://www.nass.usda.gov/Surveys/Guide\\_to\\_NASS\\_Surveys/Prices/updates.pdf](http://www.nass.usda.gov/Surveys/Guide_to_NASS_Surveys/Prices/updates.pdf)

January 2015 Price Program Update

[http://www.nass.usda.gov/Surveys/Guide\\_to\\_NASS\\_Surveys/Prices/update2015.pdf](http://www.nass.usda.gov/Surveys/Guide_to_NASS_Surveys/Prices/update2015.pdf)

April 2015 Price Program Update

[http://www.nass.usda.gov/Surveys/Guide\\_to\\_NASS\\_Surveys/Prices/updateApr2015.pdf](http://www.nass.usda.gov/Surveys/Guide_to_NASS_Surveys/Prices/updateApr2015.pdf)

February 2016 Price Program Update

[http://www.nass.usda.gov/Surveys/Guide\\_to\\_NASS\\_Surveys/Prices/updateFeb2016.pdf](http://www.nass.usda.gov/Surveys/Guide_to_NASS_Surveys/Prices/updateFeb2016.pdf)