



Agricultural Prices

ISSN: 1937-4216

Released June 29, 2016, by the National Agricultural Statistics Service (NASS), Agricultural Statistics Board, United States Department of Agriculture (USDA).

May Farm Prices Received Index Up 2.0 Percent

The May Prices Received Index (Agricultural Production), at 94.9, increased 2.0 percent from April 2016. At 90.7, the Crop Production Index increased 5.0 percent. The Livestock Production Index, at 97.9, increased 0.1 percent. Producers received higher prices for hogs, broilers, dry beans, and lettuce but lower prices for cattle, milk, strawberries, and market eggs. Compared with a year earlier, the Prices Received Index is down 12 percent, the Crop Production Index up 0.4 percent, and the Livestock Production Index down 20 percent. In addition to prices, the indexes are influenced by the monthly mix of commodities producers market. Increased monthly movement of cattle, hay, sweet corn, and broilers offset the decreased marketing of soybeans, dry beans, calves, and hogs. The Food Commodities Index, at 99.0, increased 2.4 percent from the previous month but is down 14 percent from May 2015.

May Prices Paid Index Up 0.5 Percent

The May Index of Prices Paid for Commodities and Services, Interest, Taxes, and Farm Wage Rates (PPITW), at 107.1, is up 0.5 percent from April 2016 but is down 3.6 percent from May 2015. Higher prices in May for feed concentrates, complete feeds, diesel, and LP gas more than offset lower prices for feeder cattle, feeder pigs, and hay & forages.

Prices Received, Prices Paid, and Ratio of Prices Received to Prices Paid Indexes 2011 Base – United States: May 2016 with Comparisons

Index Group	May 2015	April 2016	May 2016
	(percent)	(percent)	(percent)
Prices received by farmers	107.2	93.0	94.9
Prices paid by farmers	111.1	106.6	107.1
Ratio of prices received to prices paid	96	87	89

Contents

Prices Received by Farmers	4
Prices Received Indexes, 2011 Base – United States: May 2016 with Comparisons	5
Prices Received Indexes, 1910-1914 Base – United States: May 2016 with Comparisons	5
Prices Received Indexes, 2011 Base by Month for Selected Groups – United States: 2015 and 2016	5
Prices Paid Indexes, 2011 Base by Month for Selected Groups – United States: 2015 and 2016	6
Received and Paid Indexes, Annual Average – United States: 2011=100 Chart	6
Crop Farm Received and Paid Indexes, All Items by Quarter – United States: 2011=100 Chart	7
Livestock Farm Received and Paid Indexes All Items by Quarter – United States: 2011=100 Chart	7
Received Indexes by Month, Agricultural, Crop, and Livestock Production – United States: 2011=100 Chart	8
Received Indexes by Month, Feed Grain, Food Grain, and Oilseed – United States: 2011=100 Chart	8
Received Indexes by Month, Fruit & Tree Nut, and Vegetable & Melon – United States: 2011=100 Chart	9
Received Indexes by Month, Dairy, Meat Animal, and Poultry & Egg – United States: 2011=100 Chart	9
Prices Received for Field Crops and Fruits – United States: May 2016 with Comparisons	10
Prices Received for Vegetables and Livestock – United States: May 2016 with Comparisons.....	11
Prices Received for Corn by Month – United States Chart.....	12
Prices Received for Wheat by Month – United States Chart	12
Prices Received for Upland Cotton by Month – United States Chart	13
Prices Received for Soybeans by Month – United States Chart	13
Prices Received for Cattle by Month – United States Chart	14
Prices Received for Milk by Month – United States Chart	14
Prices Received for Hogs by Month – United States Chart	15
Prices Received for Poultry by Month – United States Chart.....	15
Prices Received for All Wheat, Corn, and Soybeans by Month – United States: 2016 with Comparisons	16
Prices Received for Beef Cattle and All Hogs by Month – United States: 2016 with Comparisons	16
Prices Received for All Wheat – States and United States: May 2016 with Comparisons	17
Prices Received for Winter Wheat – States and United States: May 2016 with Comparisons	17
Prices Received for Durum Wheat – States and United States: May 2016 with Comparisons	18
Prices Received for Spring Wheat – States and United States: May 2016 with Comparisons	18
Prices Received for Oats – States and United States: May 2016 with Comparisons	18
Prices Received for All Barley – States and United States: May 2016 with Comparisons.....	19
Prices Received for Malting Barley – States and United States: May 2016 with Comparisons	19
Prices Received for Feed Barley – States and United States: May 2016 with Comparisons	19
Prices Received for Sorghum Grain – States and United States: May 2016 with Comparisons.....	19
Prices Received for Corn – States and United States: May 2016 with Comparisons	20
Prices Received for Soybeans – States and United States: May 2016 with Comparisons	20
Prices Received for Dry Beans – States and United States: May 2016 with Comparisons	21
Prices Received for Peanuts (in shell) – States and United States: May 2016 with Comparisons.....	21
Prices Received for Sunflower – States and United States: May 2016 with Comparisons.....	21
Prices Received for Canola – States and United States: May 2016 with Comparisons	21
Prices Received for Flaxseed – States and United States: May 2016 with Comparisons	22
Prices Received for Upland Cotton and Cottonseed – States and United States: May 2016 with Comparisons	22
Prices Received and Farm Marketings for Upland Cotton and Rice – United States: May 2016 with Comparisons	22
Prices Received for Hay by Type – States and United States: May 2016 with Comparisons.....	23
Prices Received for Apples – States and United States: May 2016 with Comparisons	23
Prices Received for Citrus Fruits by Utilization – States and United States: May 2015	24
Prices Received for Citrus Fruits by Utilization – States and United States: April 2016	25
Prices Received for Citrus Fruits by Utilization – States and United States: May 2016	26
Prices Received for Potatoes – States and United States: May 2016 with Comparisons.....	27
Prices Received for All Milk – States and United States: May 2016 with Comparisons.....	28
Prices Received for Milk Cows – States and United States: April 2016 with Comparisons	28
Commodity Parity Prices and Price as Percent of Parity Price – United States: May 2016 with Comparisons	29

Commodity Parity Prices – United States: May 2016 with Comparisons	30
Marketing Year for Specified Commodities	32
Prices Received and Farm Marketings for All Barley by Month – United States: Marketing Years 2013-2014 through 2015-2016	32
Prices Received and Farm Marketings for Malting Barley by Month – United States: Marketing Years 2013-2014 through 2015-2016	33
Prices Received and Farm Marketings for Feed Barley by Month – United States: Marketing Years 2013-2014 through 2015-2016	33
Prices Received and Farm Marketings for Oats by Month – United States: Marketing Years 2013-2014 through 2015-2016	34
Prices Received for Sweet Potatoes, Market Year Average - States and United States: 2013-2015	34
Prices Received and Farm Marketings for All Wheat by Month – United States: Marketing Years 2013-2014 through 2015-2016	35
Prices Received for Winter Wheat by Month, Marketing Year Average – United States: 2013-2014 through 2015-2016	35
Prices Received for Durum Wheat by Month, Marketing Year Average – United States: 2013-2014 through 2015-2016	36
Prices Received for Other Spring Wheat by Month, Marketing Year Average – United States: 2013-2014 through 2015-2016	36
Prices Received for Hard Red Spring Wheat by Month, Marketing Year Average – United States: 2013-2014 through 2015-2016	37
Prices Received for Hard Red Winter Wheat by Month, Marketing Year Average – United States: 2013-2014 through 2015-2016	37
Prices Received for Soft Red Winter Wheat by Month, Marketing Year Average – United States: 2013-2014 through 2015-2016	38
Prices Received for White Wheat by Month, Marketing Year Average – United States: 2013-2014 through 2015-2016	38
Reliability of Prices Received Estimates	39
Prices Paid by Farmers.....	40
Prices Paid Indexes and Related Parity Ratios – United States: May 2016 with Comparisons.....	41
Prices Paid Indexes and Annual Weights for Input Components and Sub-components – United States: May 2016 with Comparisons.....	42
Paid Indexes by Month, All Items and Production Items – United States: 2011=100 Chart.....	43
Paid Indexes, Annual Averages, Production Items, Interest, Taxes, and Wages – United States: 2011=100 Chart	43
Paid Indexes by Farm Type and Month, All Items – United States: 2011=100 Chart.....	44
Paid Indexes by Origin and Month, All Production Items – United States: 2011=100 Chart	44
Paid Indexes by Non-Farm Origin and Month, Chemicals, Fertilizer, and Fuels – United States: 2011=100 Chart	45
Paid Indexes by Non-Farm Origin and Month, Machinery and Supplies & Repairs – United States: 2011=100 Chart	45
Paid Indexes by Farm Origin and Month, Feed and Livestock & Poultry – United States: 2011=100 Chart	46
Feed Price Ratios – United States: May 2016 with Comparisons.....	47
Prices Received Used to Calculate Feed Price Ratios – United States: May 2016 with Comparisons.....	47
Prices Paid for Feeder Livestock – United States: May 2016 with Comparisons.....	47
Reliability of Prices Paid Estimates	48
Information Contacts	49

May Prices Received by Farmers

The May Prices Received Index for agricultural production is 94.9 percent of its 2011 base, up 2.0 percent from the April 2016 index but 12 percent below the May 2015 index.

Crop production: The May index, at 90.7, increased 5.0 percent from April and is slightly above May 2015. Higher grain & oilseed and vegetable & melon production indexes led the increase.

Grain and oilseed: The May index, at 70.2, is up 4.6 percent from April and 2.2 percent from May 2015. Oilseed, feed grain, and food grain indexes are all higher.

Feed grain: The May index, at 61.6, is up 2.7 percent from last month and is 0.8 percent higher than a year ago. The corn price, at \$3.68 per bushel, is up 10 cents from last month and 4 cents from May 2015. At \$5.56 per cwt, sorghum grain is 20 cents higher than April but is \$2.01 lower than May a year earlier.

Food grain: At 79.4, the index for May is 9.7 percent higher than the previous month and is up 0.9 percent from a year earlier. The May price for all wheat, at \$4.45 per bushel, is down 1 cent from April and is 88 cents less than May 2015.

Oilseed: At 77.8, the index for May is up 7.3 percent from April and is 1.0 percent higher than May 2015. The soybean price, at \$9.76 per bushel, increased 72 cents from April and 18 cents from May a year earlier.

Fruit and tree nut: The May index, at 122.0, is unchanged from April but is 11 percent lower than a year earlier. Price increases during May for lemons, oranges, and grapefruit offset price decreases for strawberries and apples.

Vegetable and melon: At 112.8, the index for May is up 11 percent from the previous month and May 2015. Price increases during May for lettuce more than offset price declines for tomatoes and sweet corn.

Other crop: The May index, at 77.4, increased 1.6 percent from the previous month but is down 15 percent from May 2015. The all hay price, at \$140.00 per ton, is down \$6.00 from April and \$35.00 lower than May 2015. At 57.6 cents per pound, the price for upland cotton is up 1.8 cents from April but is down 8.3 cents from May 2015.

Livestock production: The index for May, at 97.9, increased 0.1 percent from the previous month but is down 20 percent from May a year earlier. Compared with a year ago, prices are lower for cattle, market eggs, broilers, milk, calves, and hogs and higher for turkeys.

Meat animal: At 106.2, the May index is up 0.3 percent from the previous month but is 18 percent lower than a year earlier. At \$57.20 per cwt, the May hog price is up \$6.20 from April but is down \$1.70 from a year earlier. The May beef cattle price of \$128.00 per cwt decreased \$3.00 from the previous month and \$32.00 from May 2015.

Dairy: The index for May, at 72.1, declined 3.4 percent from the previous month and is 14 percent lower than May a year earlier. The May all milk price of \$14.50 per cwt is down 50 cents from April and \$2.30 from May 2015.

Poultry and egg: At 108.9, the May index is up 3.2 percent from April but is down 26 percent from May 2015. The May market egg price, at 24.1 cents per dozen, decreased 14.9 cents from April and \$1.37 from May 2015. The May broiler price, at 56.0 cents per pound, is up 4.0 cents from April but is down 9.0 cents from a year earlier. At 82.9 cents per pound, the May turkey price is down 0.3 cents from the previous month but is 7.0 cents higher than May 2015.

Prices Received Indexes, 2011 Base – United States: May 2016 with Comparisons

[Revised historical price indexes for months not shown are available at www.nass.usda.gov]

Index Group	2011 Base		
	May 2015	April 2016	May 2016
	(percent)	(percent)	(percent)
Agricultural production	107.2	93.0	94.9
Crop production	90.3	86.4	90.7
Grain and oilseed	68.7	67.1	70.2
Feed grain	61.1	60.0	61.6
Food grain	78.7	72.4	79.4
Oilseed	77.0	72.5	77.8
Fruit and tree nut	136.3	122.0	122.0
Vegetable and melon	101.4	101.9	112.8
Other crop	90.5	76.2	77.4
Livestock production	122.0	97.8	97.9
Meat animal	130.2	105.9	106.2
Cattle	143.2	115.3	112.1
Hog	88.6	76.7	86.0
Dairy	83.6	74.6	72.1
Poultry and egg	146.5	105.5	108.9
Food commodity	115.7	96.7	99.0

Prices Received Indexes, 1910-1914 Base – United States: May 2016 with Comparisons

[Revised historical price indexes for months not shown are available at www.nass.usda.gov]

Index Group	1910 - 1914 Base		
	May 2015	April 2016	May 2016
	(percent)	(percent)	(percent)
Agricultural production	1106	959	979
Crop production	787	754	791
Livestock production	1416	1135	1137

Prices Received Indexes, 2011 Base by Month for Selected Groups – United States: 2015 and 2016

[Revised historical price indexes for months not shown are available at www.nass.usda.gov. Blank data cells indicate estimation period has not yet begun]

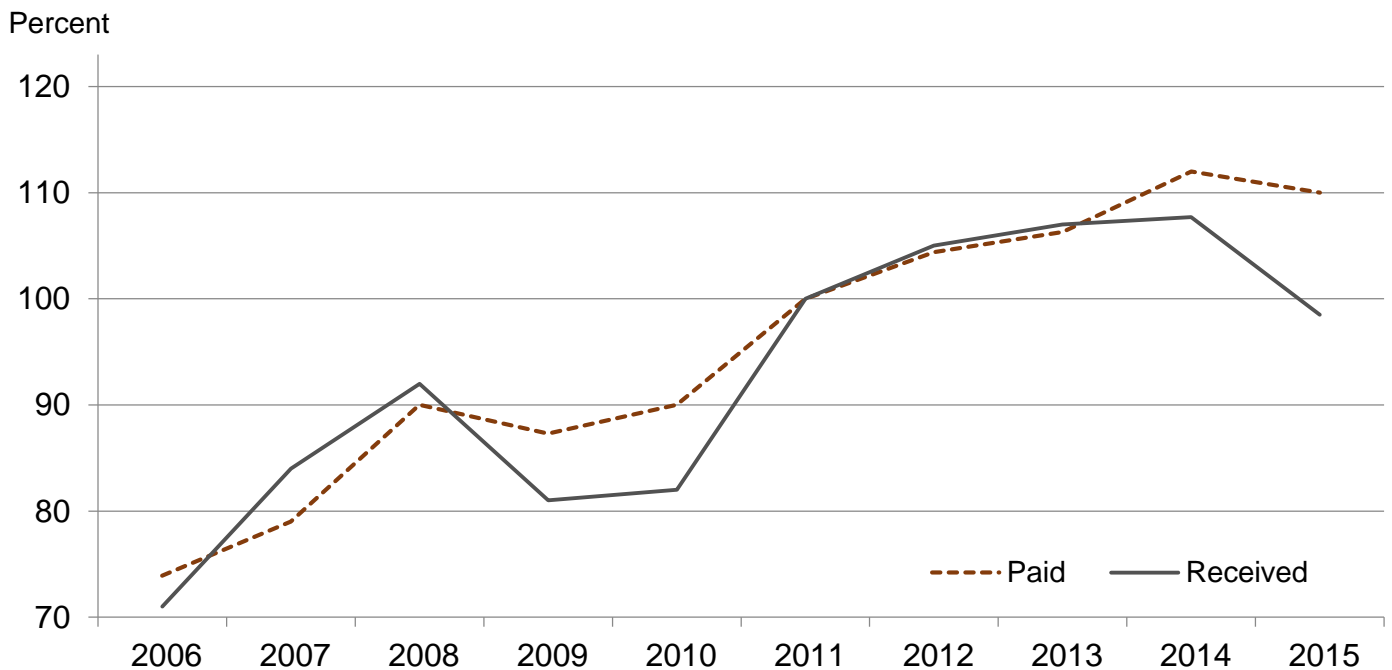
Month	2011 Base							
	Agricultural production		Crop production		Livestock production		Food commodities	
	2015	2016	2015	2016	2015	2016	2015	2016
	(percent)	(percent)	(percent)	(percent)	(percent)	(percent)	(percent)	(percent)
January	97.1	89.2	82.3	80.7	120.4	99.9	108.5	95.8
February	99.0	92.4	84.0	84.2	113.9	99.2	106.8	97.3
March	102.1	92.8	85.5	83.0	117.3	100.2	110.2	97.3
April	103.4	93.0	88.6	86.4	116.4	97.8	110.6	96.7
May	107.2	94.9	90.3	90.7	122.0	97.9	115.7	99.0
June	104.7		88.2		121.1		112.9	
July	99.2		85.9		115.3		105.6	
August	102.1		87.8		117.1		109.6	
September	97.5		87.1		109.3		103.5	
October	88.9		79.7		104.2		94.5	
November	91.9		82.1		105.3		101.3	
December	89.9		84.0		97.2		96.7	

Prices Paid Indexes, 2011 Base by Month for Selected Groups – United States: 2015 and 2016

[Revised historical price indexes for months not shown are available at www.nass.usda.gov. Blank data cells indicate estimation period has not yet begun]

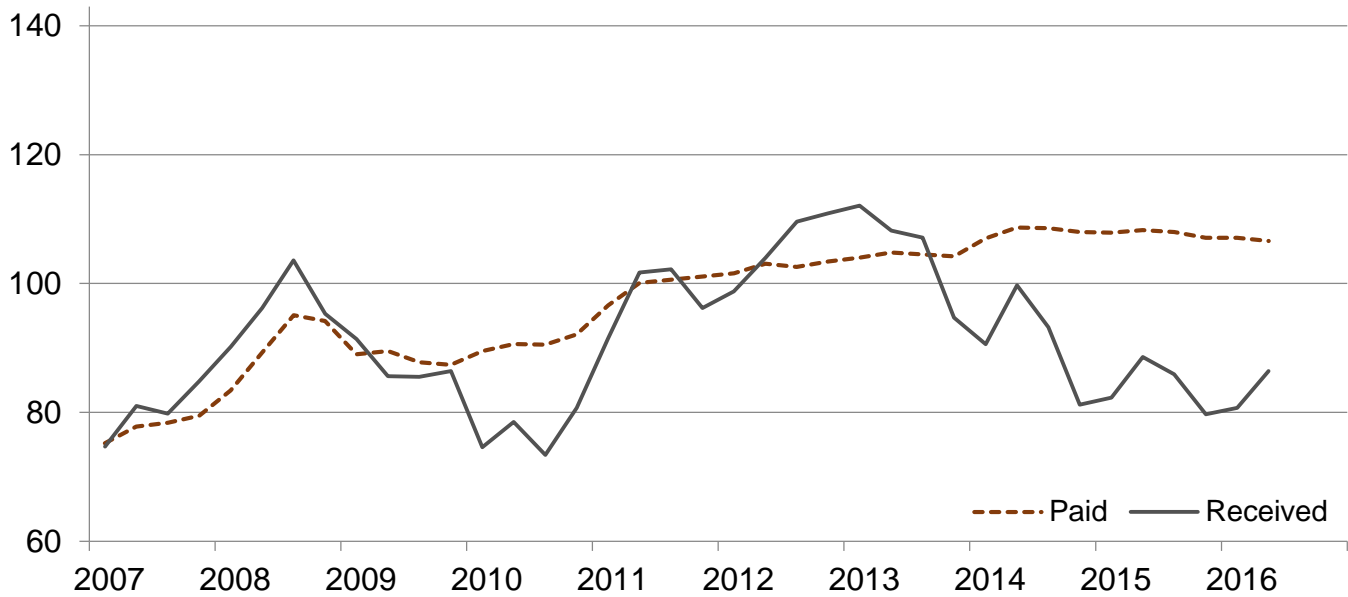
Month	2011 Base							
	All items (PPITW)		Production		Crop sector		Livestock sector	
	2015	2016	2015	2016	2015	2016	2015	2016
	(percent)	(percent)	(percent)	(percent)	(percent)	(percent)	(percent)	(percent)
January	111.5	107.3	112.7	106.4	107.9	107.1	115.3	107.7
February	111.0	106.9	112.0	105.8	108.3	106.6	114.0	107.3
March	111.4	107.1	112.5	106.0	108.4	106.5	114.7	107.8
April	111.3	106.6	112.4	105.3	108.3	106.6	114.5	106.7
May	111.1	107.1	112.1	105.8	108.3	106.8	114.1	107.5
June	111.2		112.2		108.4		114.3	
July	110.8		111.5		108.0		113.9	
August	110.1		110.6		107.5		113.0	
September	108.8		108.9		107.1		110.6	
October	108.8		108.6		107.1		110.7	
November	107.7		107.1		106.6		108.9	
December	106.2		105.2		106.2		106.2	

Received and Paid Indexes, Annual Average – United States: 2011=100



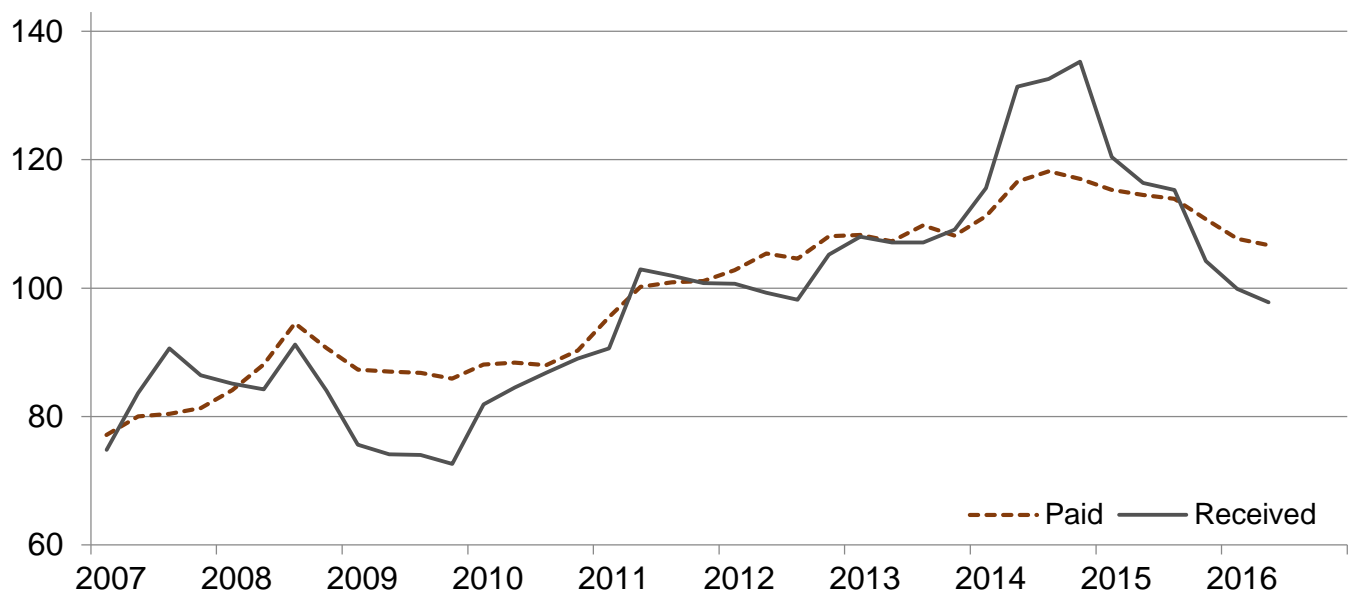
Crop Farm Received and Paid Indexes, All Items by Quarter – United States: 2011=100

Percent

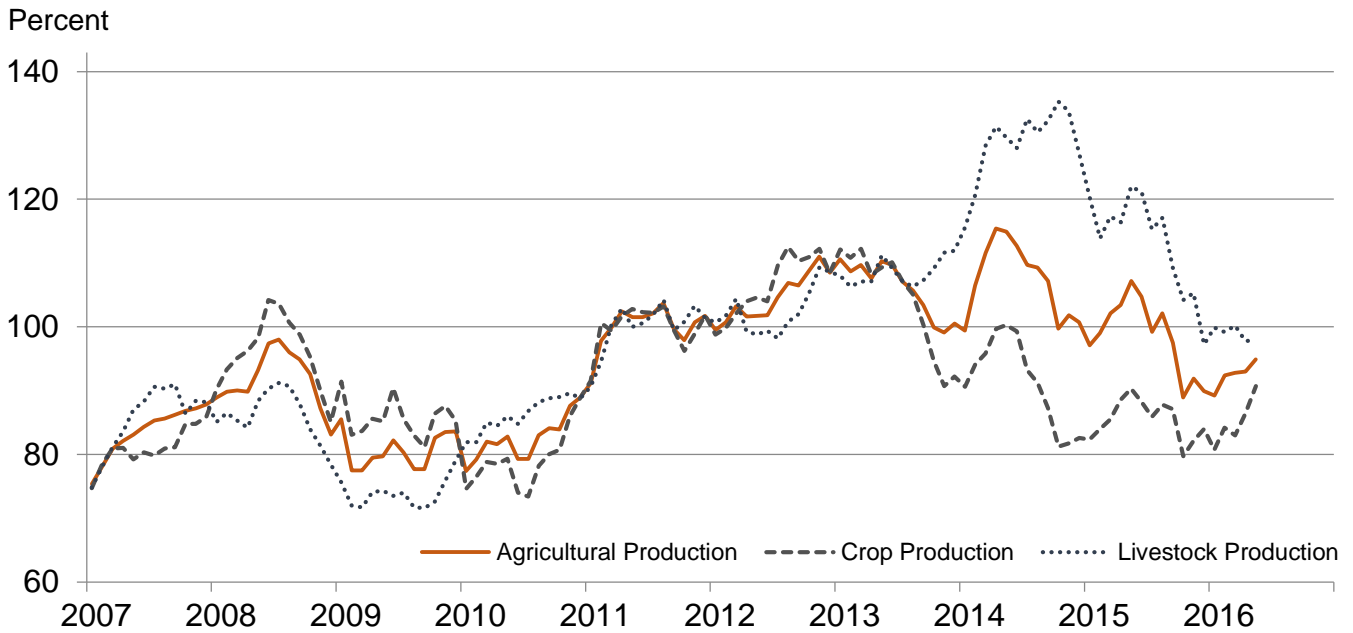


Livestock Farm Received and Paid Indexes, All Items by Quarter – United States: 2011=100

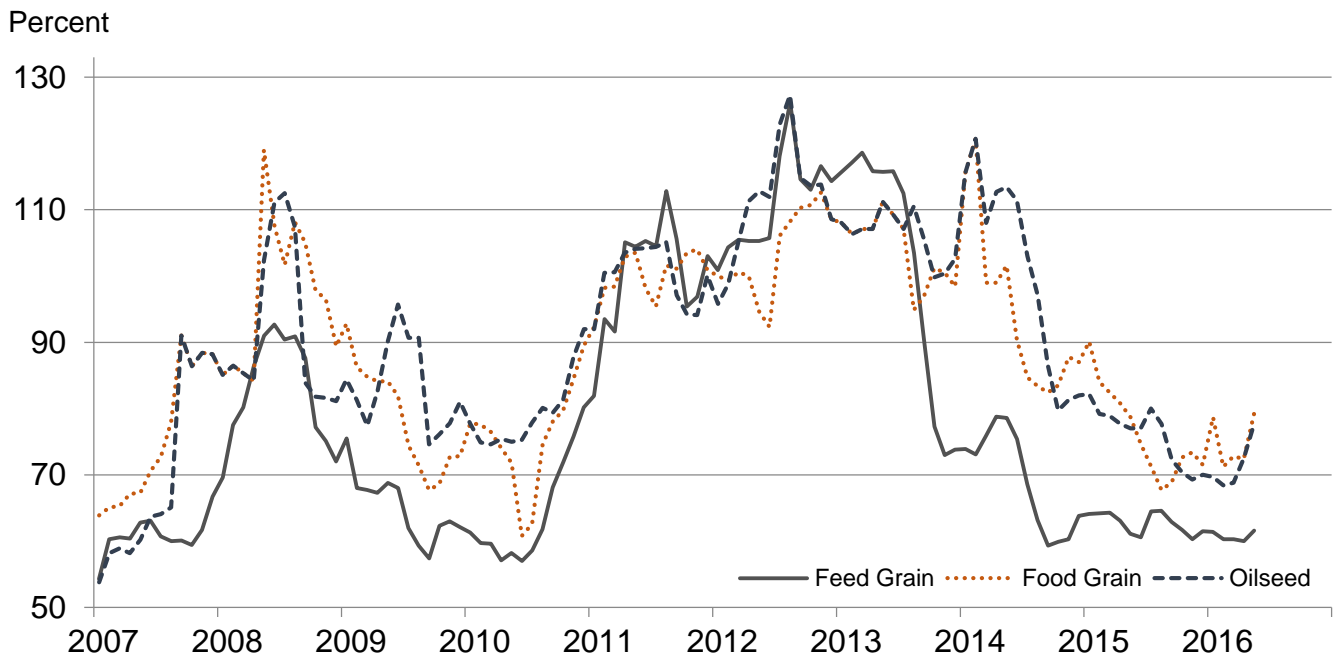
Percent



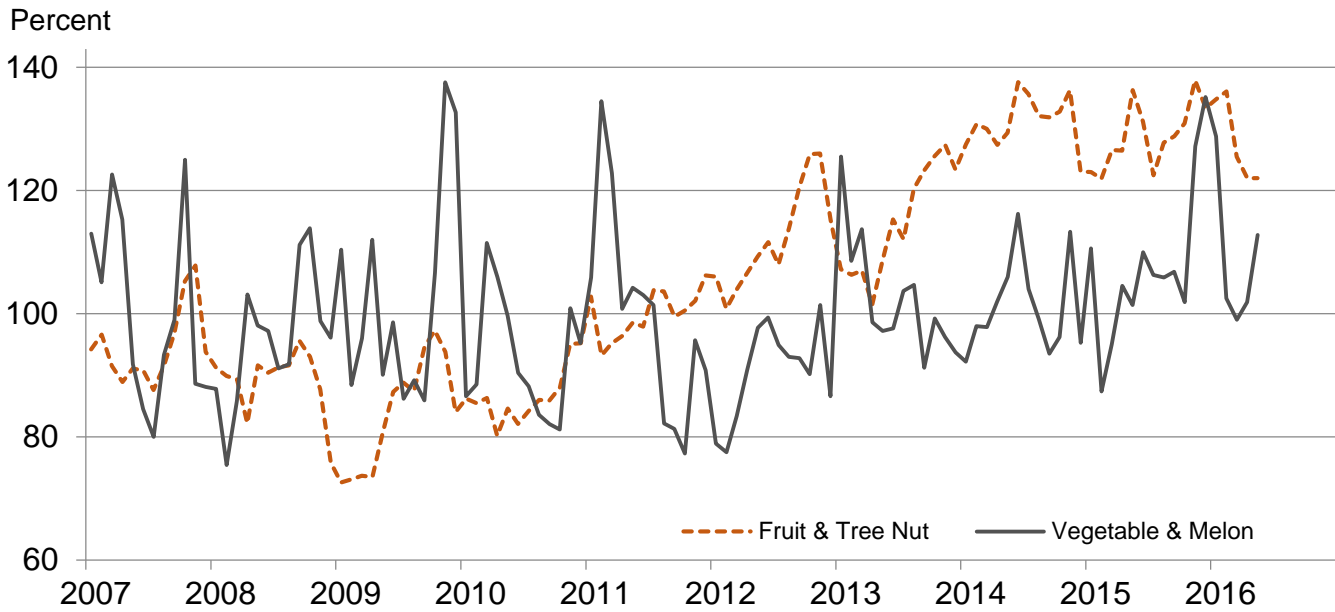
Received Indexes by Month, Agricultural, Crop, and Livestock Production – United States: 2011=100



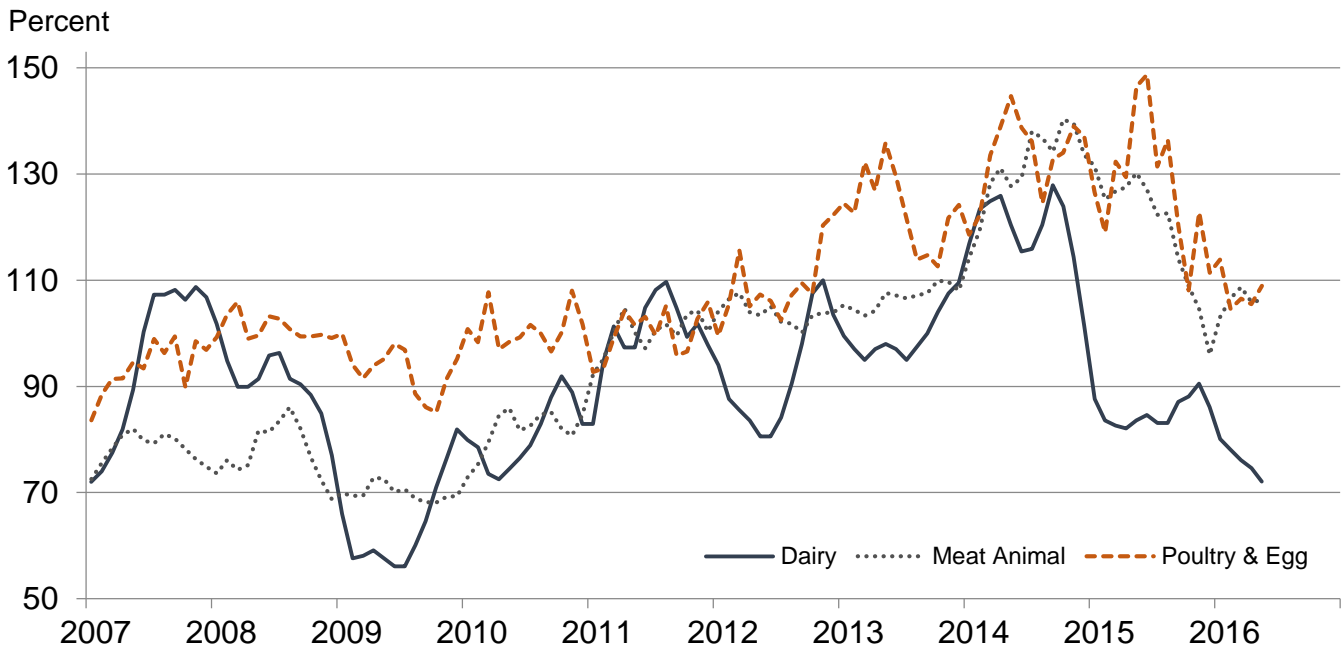
Received Indexes by Month, Feed Grain, Food Grain, and Oilseed – United States: 2011=100



**Received Indexes by Month,
Fruit & Tree Nut and Vegetable & Melon –
United States: 2011=100**



**Received Indexes by Month,
Dairy, Meat Animal, and Poultry & Egg –
United States: 2011=100**



Prices Received for Field Crops and Fruits – United States: May 2016 with Comparisons

Commodity	2011 Base Price	May 2015	April 2016	May 2016	
Field crops					
Austrian winter peas	dollars/cwt	19.50	(S)	(S)	(D)
Barley, all	dollars/bushel	4.79	4.75	5.29	5.59
Feed	dollars/bushel	4.59	2.90	2.82	3.67
Malting	dollars/bushel	4.83	5.62	5.71	6.03
Beans, dry edible	dollars/cwt	34.60	35.90	26.80	32.80
Canola	dollars/cwt	23.10	16.70	16.10	(D)
Chickpeas, all	dollars/cwt	35.70	26.90	28.40	29.00
Large	dollars/cwt	39.20	27.50	32.50	30.70
Small	dollars/cwt	23.40	(D)	25.20	27.30
Corn	dollars/bushel	6.02	3.64	3.58	3.68
Cotton, Upland	dollars/pound	0.880	0.659	0.558	0.576
Cottonseed	dollars/ton	131.00	(NA)	(NA)	(NA)
Flaxseed	dollars/bushel	14.20	12.10	8.09	7.93
Hay, all, baled	dollars/ton	159.00	175.00	146.00	140.00
Alfalfa	dollars/ton	176.00	192.00	153.00	147.00
Other	dollars/ton	119.00	134.00	130.00	122.00
Lentils	dollars/cwt	27.50	29.90	36.20	42.70
Oats	dollars/bushel	3.42	2.90	1.97	2.26
Peanuts, in-shell	dollars/pound	0.252	0.225	0.196	0.193
Peas, dry edible	dollars/cwt	13.60	13.70	17.20	16.70
Potatoes	dollars/cwt	9.78	9.26	9.94	9.80
Rice, all	dollars/cwt	13.70	12.50	11.30	11.50
Long	dollars/cwt	12.30	10.90	10.70	10.70
Medium and short	dollars/cwt	18.40	17.50	13.80	14.50
Sorghum grain	dollars/cwt	10.70	7.57	5.36	5.56
Soybeans	dollars/bushel	12.50	9.58	9.04	9.76
Sunflowers, all	dollars/cwt	29.00	26.40	20.90	19.50
Wheat, all	dollars/bushel	7.44	5.33	4.46	4.45
Winter	dollars/bushel	6.93	5.19	4.31	4.28
Durum	dollars/bushel	9.22	8.02	6.24	6.57
Other spring	dollars/bushel	8.33	5.29	4.55	4.64
Hard red winter	dollars/bushel	7.07	5.08	4.13	4.08
Soft red winter	dollars/bushel	6.77	5.04	4.38	4.52
Hard red spring	dollars/bushel	8.38	5.28	4.56	4.62
White	dollars/bushel	6.58	5.77	4.62	4.88
Fruits					
Citrus, equivalent on-tree					
Grapefruit	dollars/box	7.47	5.47	10.48	14.98
Lemons	dollars/box	12.30	31.76	24.33	30.48
Oranges	dollars/box	8.16	10.74	9.19	9.67
Tangelos	dollars/box	3.50	(S)	(S)	(S)
Tangerines and mandarins	dollars/box	15.30	(S)	(D)	(D)
Non-citrus, fresh					
Apples ¹	dollars/pound	0.325	0.243	0.435	0.397
Grapes ¹	dollars/ton	628.00	2,330.00	(S)	2,580.00
Peaches ¹	dollars/ton	507.00	1,480.00	(S)	1,350.00
Pears ¹	dollars/ton	559.00	619.00	793.00	911.00
Strawberries	dollars/cwt	104.00	72.60	84.30	68.60

(D) Withheld to avoid disclosing data for individual operations.

(NA) Not available.

(S) Insufficient number of reports to establish an estimate.

¹ Equivalent packinghouse-door returns for California, Michigan, New York (apples only), Pennsylvania (apples only), and Washington (apples, peaches, and pears). Prices as sold for other states.

Prices Received for Vegetables and Livestock – United States: May 2016 with Comparisons

[Price data source for livestock and poultry commodities is United States Department of Agriculture's Agricultural Marketing Service]

Commodity	2011 Base Price	May 2015	April 2016	May 2016
Vegetables, fresh ¹				
Asparagus	dollars/cwt 37.50	133.00	125.00	122.00
Beans, snap	dollars/cwt 69.00	85.30	42.80	46.40
Broccoli	dollars/cwt 41.60	54.50	39.30	48.10
Cantaloupes	dollars/cwt 16.50	17.30	(D)	23.80
Carrots	dollars/cwt 30.80	31.40	38.60	39.30
Cauliflower	dollars/cwt 47.00	108.00	53.70	82.00
Celery	dollars/cwt 22.50	26.80	20.00	26.20
Corn, sweet	dollars/cwt 30.70	26.80	34.30	26.20
Cucumbers	dollars/cwt 18.70	23.40	26.20	36.10
Lettuce	dollars/cwt 24.30	25.10	20.80	32.50
Onions ²	dollars/cwt 11.90	19.30	21.10	25.80
Tomatoes	dollars/cwt 51.20	24.00	38.60	30.40
Livestock				
Calves	dollars/cwt 142.00	288.00	183.00	173.00
Cattle, all beef	dollars/cwt 115.00	160.00	131.00	128.00
Cows ³	dollars/cwt 71.60	114.00	81.50	79.60
Steers and heifers	dollars/cwt 117.00	161.00	133.00	129.00
Milk cows ⁴	dollars/head 1,420.00	(NA)	1,820.00	(NA)
Hogs, all	dollars/cwt 66.50	58.90	51.00	57.20
Barrows and gilts	dollars/cwt 66.80	60.00	51.40	57.50
Sows	dollars/cwt 57.90	31.40	41.30	49.00
Dairy and poultry				
Milk, all ⁵	dollars/cwt 20.10	16.80	15.00	14.50
Fat test	percent 3.71	3.67	3.76	3.72
Broilers, live ⁶	dollars/pound 0.459	0.650	0.520	0.560
Eggs, all ⁷	dollars/dozen 0.969	1.73	0.677	0.549
Market ^{7 8}	dollars/dozen 0.796	1.61	0.390	0.241
Turkeys, live ⁹	dollars/pound 0.680	0.759	0.832	0.829
Adjusted for seasonal variation				
Eggs, all	dollars/dozen 0.979	1.89	0.75	0.60
Seasonal factor	percent 101	91	91	92
Milk, all	dollars/cwt 20.20	17.30	15.30	14.90
Seasonal factor	percent 100	97	98	97

(D) Withheld to avoid disclosing data for individual operations.

(NA) Not available.

¹ Point of first sale.

² Includes some processing.

³ Beef cows and cull dairy cows sold for slaughter.

⁴ Animals sold for dairy herd replacement only. Prices available for January, April, July, and October.

⁵ Before deductions for hauling. Includes quality, quantity, and other premiums. Excludes hauling subsidies.

⁶ Live weight equivalent price.

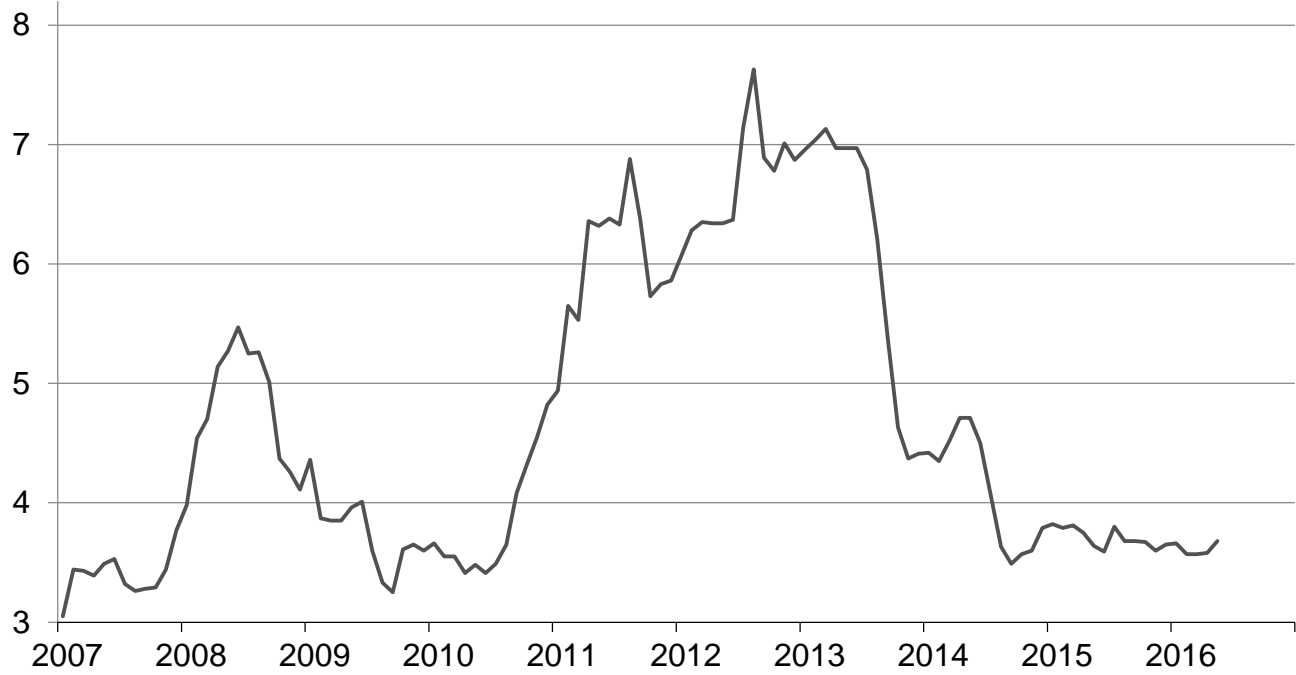
⁷ Mid-month price.

⁸ Also referred to as table eggs.

⁹ Live weight equivalent price is used when actual live weight price is not available. Beginning January 2011, price reflects FOB shipping point basis. Prior year price reflects delivered basis.

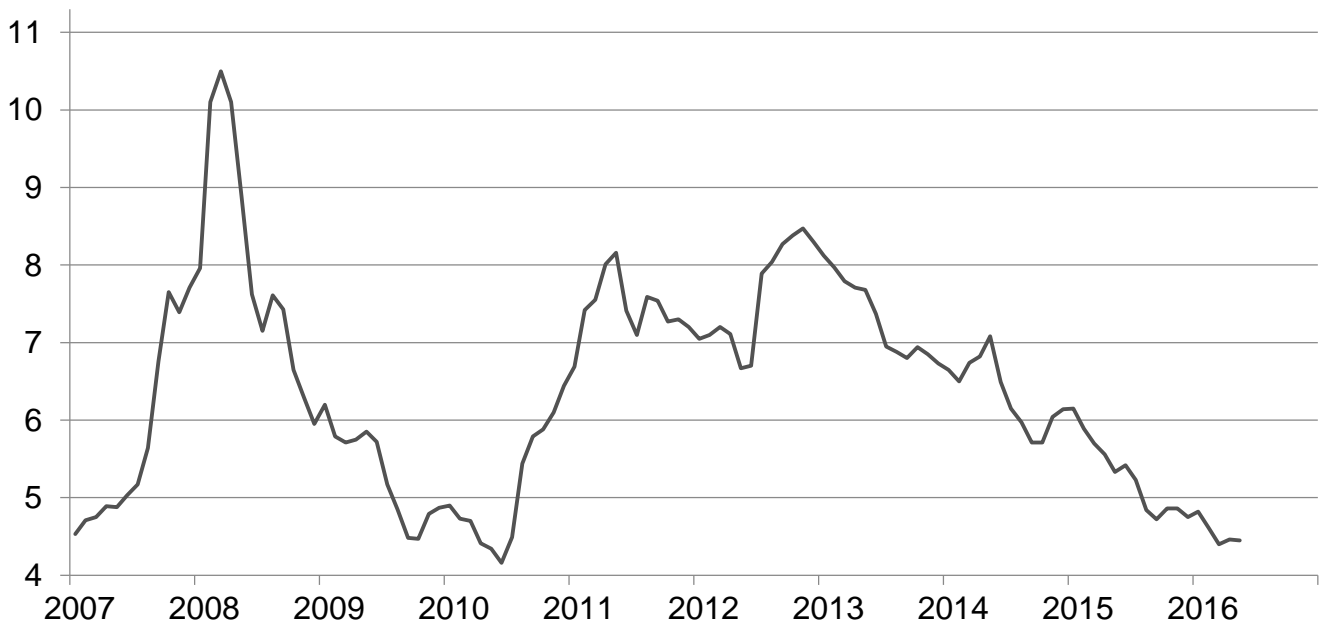
Prices Received for Corn by Month – United States

Dollars per bushel



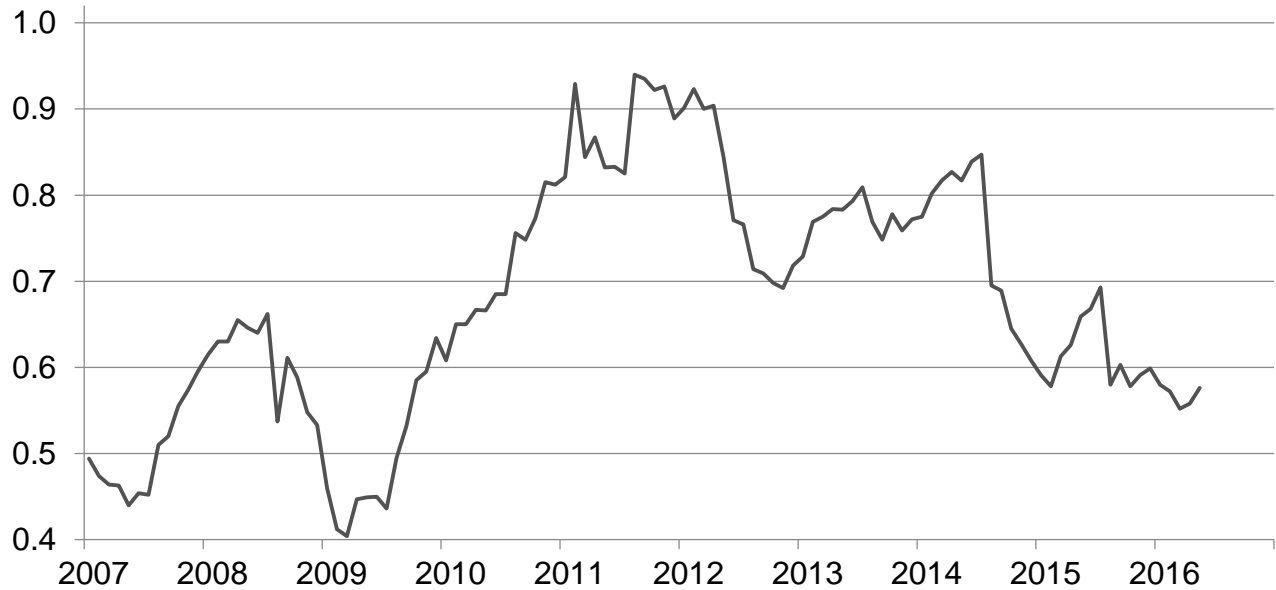
Prices Received for Wheat by Month – United States

Dollars per bushel



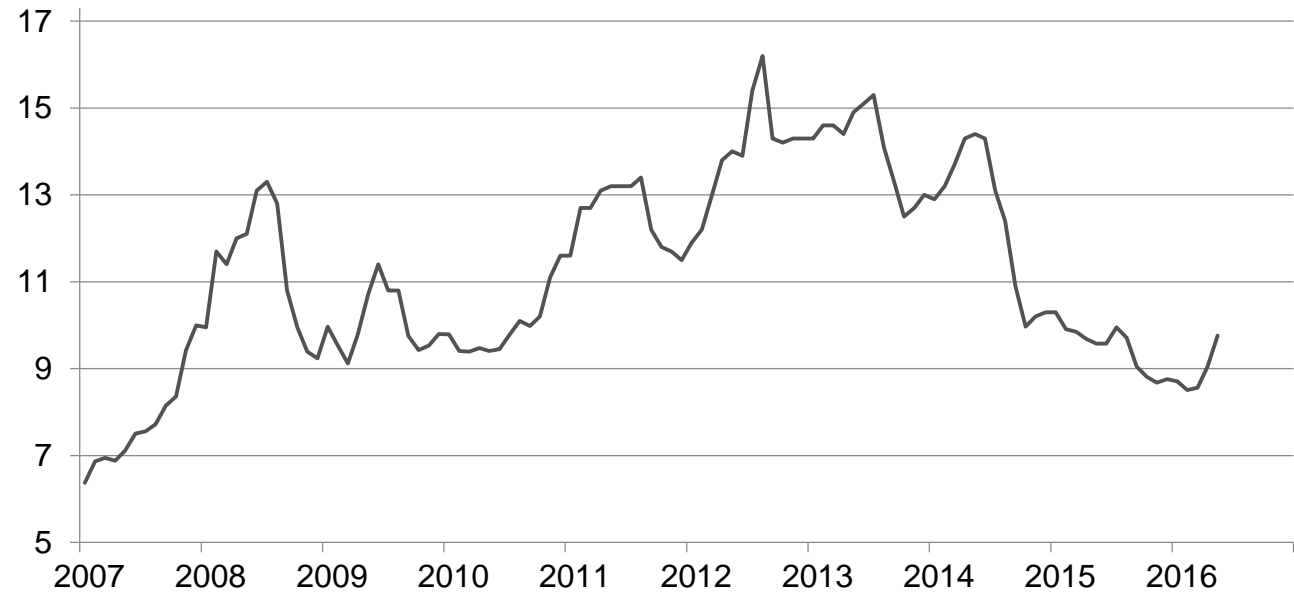
Prices Received for Upland Cotton by Month – United States

Dollars per pound



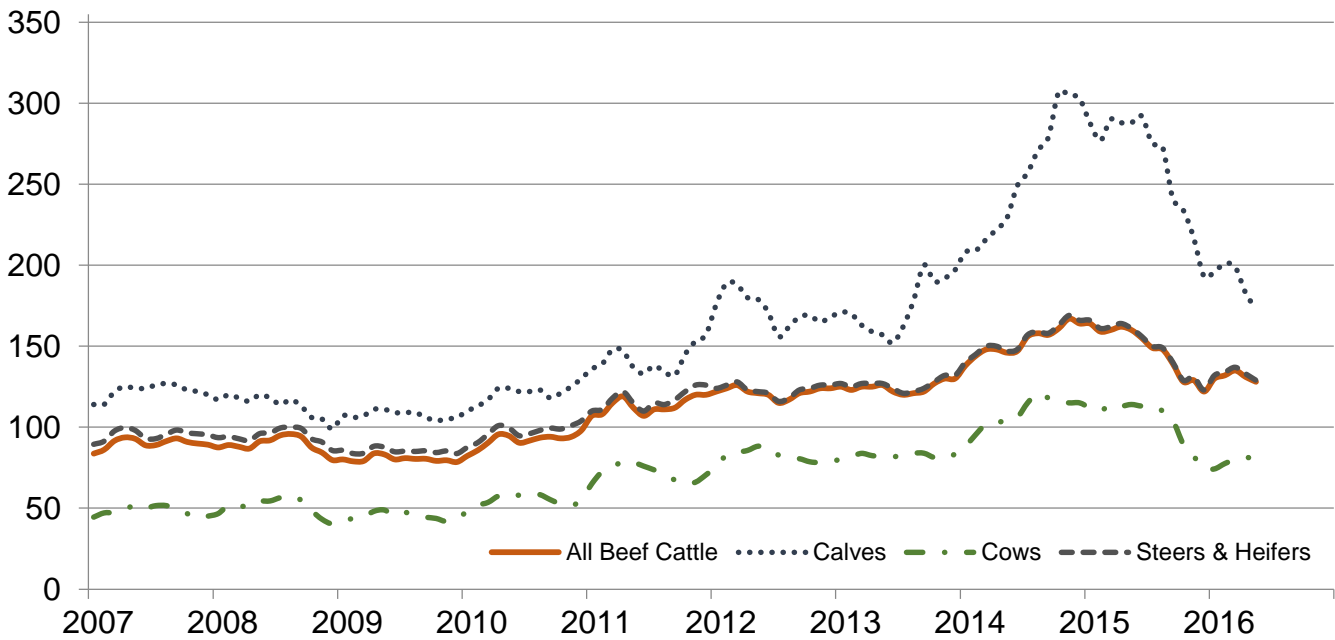
Prices Received for Soybeans by Month – United States

Dollars per bushel



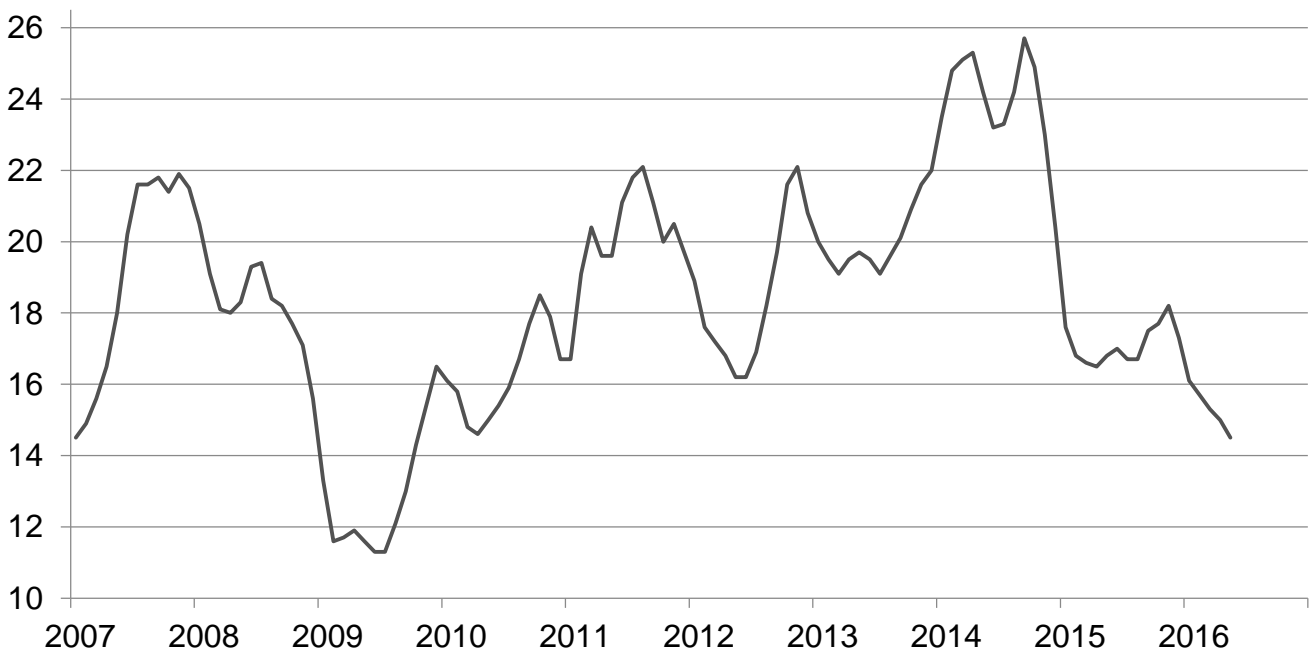
Prices Received for Cattle by Month – United States

Dollars per cwt



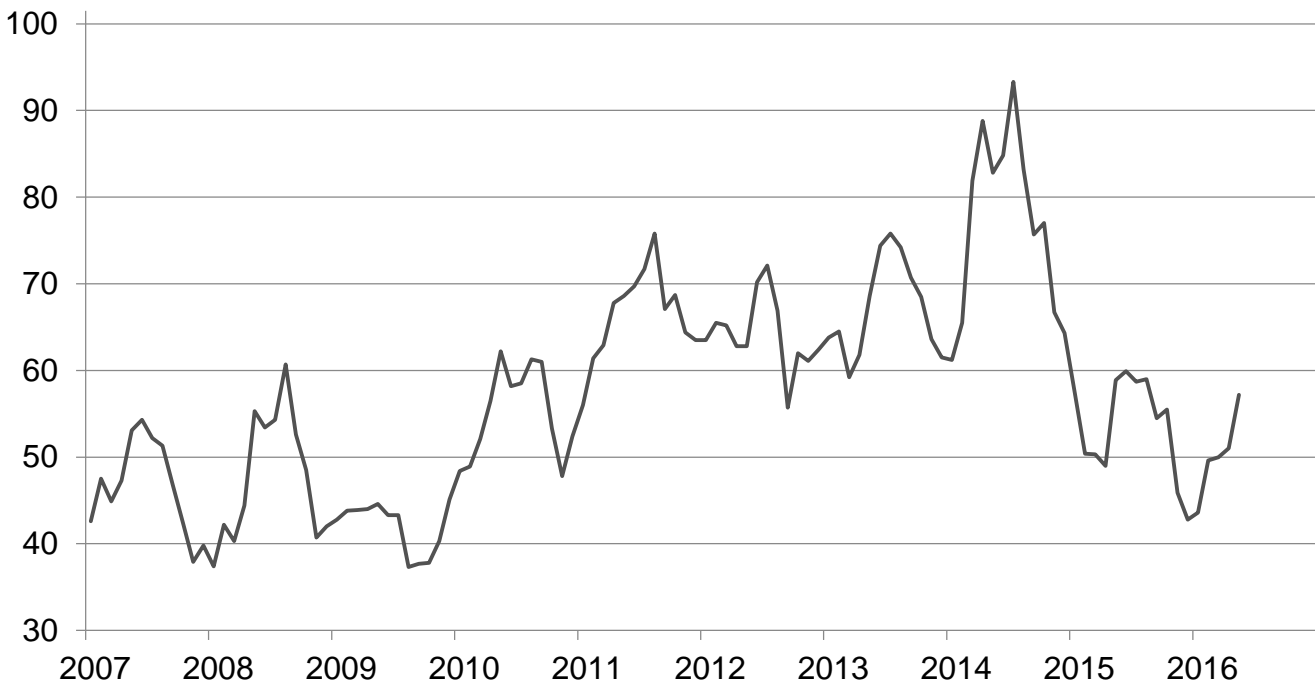
Prices Received for Milk by Month – United States

Dollars per cwt



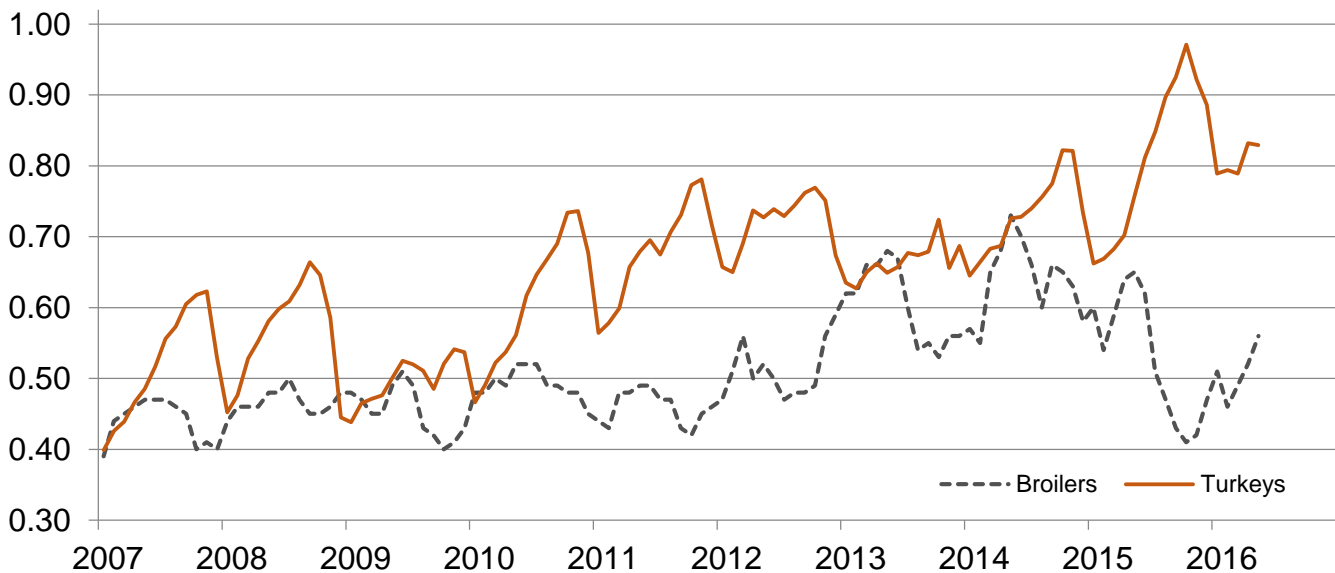
Prices Received for Hogs by Month – United States

Dollars per cwt



Prices Received for Poultry by Month – United States

Dollars per pound



Prices Received for All Wheat, Corn, and Soybeans by Month – United States: 2016 with Comparisons

[Blank data cells indicate estimation period has not yet begun]

Month	All wheat			Corn			Soybeans		
	2014	2015	2016	2014	2015	2016	2014	2015	2016
	(dollars per bushel)	(dollars per bushel)	(dollars per bushel)	(dollars per bushel)	(dollars per bushel)	(dollars per bushel)	(dollars per bushel)	(dollars per bushel)	(dollars per bushel)
January	6.65	6.15	4.82	4.42	3.82	3.66	12.90	10.30	8.71
February	6.50	5.89	4.61	4.35	3.79	3.57	13.20	9.91	8.51
March	6.74	5.70	4.40	4.52	3.81	3.57	13.70	9.85	8.56
April	6.82	5.56	4.46	4.71	3.75	3.58	14.30	9.69	9.04
May	7.08	5.33	4.45	4.71	3.64	3.68	14.40	9.58	9.76
June	6.49	5.42		4.50	3.59		14.30	9.58	
July	6.15	5.23		4.06	3.80		13.10	9.95	
August	5.97	4.84		3.63	3.68		12.40	9.71	
September	5.71	4.72		3.49	3.68		10.90	9.05	
October	5.71	4.86		3.57	3.67		9.97	8.81	
November	6.04	4.86		3.60	3.60		10.20	8.68	
December	6.14	4.75		3.79	3.65		10.30	8.76	

Prices Received for Beef Cattle and All Hogs by Month – United States: 2016 with Comparisons

[Blank data cells indicate estimation period has not yet begun]

Month	Beef cattle ¹			All hogs ²		
	2014	2015	2016	2014	2015	2016
	(dollars per cwt)	(dollars per cwt)	(dollars per cwt)	(dollars per cwt)	(dollars per cwt)	(dollars per cwt)
January	138.00	164.00	130.00	61.20	57.40	43.60
February	144.00	159.00	132.00	65.50	50.40	49.60
March	148.00	160.00	135.00	81.90	50.30	50.00
April	148.00	162.00	131.00	88.80	49.00	51.00
May	146.00	160.00	128.00	82.80	58.90	57.20
June	147.00	155.00		84.80	59.90	
July	156.00	149.00		93.30	58.70	
August	158.00	148.00		83.20	59.00	
September	157.00	139.00		75.70	54.50	
October	161.00	128.00		77.00	55.50	
November	167.00	129.00		66.70	45.90	
December	164.00	122.00		64.30	42.80	

¹ Cows and steers & heifers.

² Barrows & gilts and sows.

Prices Received for All Wheat – States and United States: May 2016 with Comparisons

State	May 2015	April 2016	May 2016
	(dollars per bushel)	(dollars per bushel)	(dollars per bushel)
Arizona	(D)	(D)	(D)
Arkansas	(D)	(D)	(S)
California	(D)	(D)	5.16
Colorado	4.85	3.93	3.71
Idaho	6.02	4.38	4.56
Illinois	4.10	4.24	3.82
Indiana	4.72	4.20	4.41
Kansas	4.96	4.02	3.96
Michigan	5.89	5.27	5.53
Minnesota	5.48	4.34	4.60
Missouri	4.72	4.12	4.01
Montana	5.67	4.62	4.62
Nebraska	4.91	3.96	4.46
North Carolina	5.50	5.04	5.22
North Dakota	5.16	4.52	4.65
Ohio	4.90	3.99	3.78
Oklahoma	5.20	4.09	3.88
Oregon	6.25	4.91	5.21
South Dakota	5.16	4.29	4.27
Texas	4.82	3.99	3.87
Washington	5.62	4.85	4.86
United States	5.33	4.46	4.45

(D) Withheld to avoid disclosing data for individual operations.

(S) Insufficient number of reports to establish an estimate.

Prices Received for Winter Wheat – States and United States: May 2016 with Comparisons

State	May 2015	April 2016	May 2016
	(dollars per bushel)	(dollars per bushel)	(dollars per bushel)
Arkansas	(D)	(D)	(S)
California	(D)	(D)	4.85
Colorado	4.90	3.93	3.71
Idaho	5.78	4.22	4.50
Illinois	4.10	4.24	3.82
Indiana	4.72	4.20	4.41
Kansas	4.96	4.02	3.96
Michigan	5.89	5.27	5.53
Minnesota	5.09	(D)	(S)
Missouri	4.72	4.12	4.01
Montana	5.54	4.32	4.34
Nebraska	4.91	3.96	(D)
North Carolina	5.50	5.04	5.22
North Dakota	3.47	3.68	3.40
Ohio	4.90	3.99	3.78
Oklahoma	5.20	4.09	3.88
Oregon	6.22	4.89	5.20
South Dakota	5.01	3.78	3.78
Texas	4.82	3.99	3.87
Washington	5.57	4.77	4.80
United States	5.19	4.31	4.28

(D) Withheld to avoid disclosing data for individual operations.

(S) Insufficient number of reports to establish an estimate.

Prices Received for Durum Wheat – States and United States: May 2016 with Comparisons

State	May 2015	April 2016	May 2016
	(dollars per bushel)	(dollars per bushel)	(dollars per bushel)
Arizona	(D)	(D)	(D)
California	(D)	(S)	(D)
Idaho	(D)	(D)	(D)
Montana	8.22	(D)	(D)
North Dakota	7.40	6.30	6.51
United States	8.02	6.24	6.57

(D) Withheld to avoid disclosing data for individual operations.

(S) Insufficient number of reports to establish an estimate.

Prices Received for Spring Wheat – States and United States: May 2016 with Comparisons

State	May 2015	April 2016	May 2016
	(dollars per bushel)	(dollars per bushel)	(dollars per bushel)
Colorado	(D)	(D)	(D)
Idaho	6.53	4.65	4.70
Minnesota	5.49	4.34	4.60
Montana	5.56	4.70	4.72
North Dakota	4.98	4.45	4.50
Oregon	6.49	5.05	5.30
South Dakota	5.23	4.54	4.59
Washington	5.92	5.24	5.12
United States	5.29	4.55	4.64

(D) Withheld to avoid disclosing data for individual operations.

Prices Received for Oats – States and United States: May 2016 with Comparisons

State	May 2015	April 2016	May 2016
	(dollars per bushel)	(dollars per bushel)	(dollars per bushel)
Illinois	(D)	(D)	(D)
Iowa	2.98	2.54	2.53
Michigan	(D)	1.94	2.29
Minnesota	2.61	1.79	1.98
Montana	(D)	(D)	(S)
Nebraska	(D)	1.94	(D)
New York	(D)	(D)	(D)
North Dakota	(D)	1.91	1.79
Oregon	(S)	(D)	(S)
Pennsylvania	(D)	(D)	(D)
South Dakota	2.50	1.81	1.93
Texas	(D)	(S)	(D)
Wisconsin	2.93	1.65	1.64
United States	2.90	1.97	2.26

(D) Withheld to avoid disclosing data for individual operations.

(S) Insufficient number of reports to establish an estimate.

Prices Received for All Barley – States and United States: May 2016 with Comparisons

State	May 2015	April 2016	May 2016
	(dollars per bushel)	(dollars per bushel)	(dollars per bushel)
California	(D)	(S)	4.89
Colorado	(S)	(S)	6.24
Idaho	4.79	6.15	(D)
Minnesota	4.97	5.26	4.26
Montana	4.45	5.22	(D)
North Dakota	5.16	4.87	5.00
Oregon	(D)	(D)	(S)
Utah	(D)	(D)	(S)
Washington	4.59	3.03	2.68
Wyoming	(D)	(S)	(D)
United States	4.75	5.29	5.59

(D) Withheld to avoid disclosing data for individual operations.

(S) Insufficient number of reports to establish an estimate.

Prices Received for Malting Barley – States and United States: May 2016 with Comparisons

State	May 2015	April 2016	May 2016
	(dollars per bushel)	(dollars per bushel)	(dollars per bushel)
Idaho	6.05	6.45	(D)
Minnesota	5.05	5.48	4.40
Montana	5.72	5.61	(D)
North Dakota	5.41	5.23	5.42
Wyoming	(D)	(S)	(D)
United States	5.62	5.71	6.03

(D) Withheld to avoid disclosing data for individual operations.

(S) Insufficient number of reports to establish an estimate.

Prices Received for Feed Barley – States and United States: May 2016 with Comparisons

State	May 2015	April 2016	May 2016
	(dollars per bushel)	(dollars per bushel)	(dollars per bushel)
Idaho	2.76	3.31	3.27
Minnesota	(D)	(D)	(D)
Montana	2.51	(D)	(D)
North Dakota	3.55	2.29	2.97
Wyoming	(D)	(S)	(S)
United States	2.90	2.82	3.67

(D) Withheld to avoid disclosing data for individual operations.

(S) Insufficient number of reports to establish an estimate.

Prices Received for Sorghum Grain – States and United States: May 2016 with Comparisons

State	May 2015	April 2016	May 2016
	(dollars per cwt)	(dollars per cwt)	(dollars per cwt)
Arkansas	7.65	6.68	(D)
Illinois	(D)	(D)	6.22
Kansas	7.52	5.35	5.55
Louisiana	(D)	(D)	(S)
Missouri	7.00	6.12	6.24
Nebraska	8.69	5.40	5.53
Oklahoma	7.42	5.37	5.72
Texas	7.26	5.16	5.40
United States	7.57	5.36	5.56

(D) Withheld to avoid disclosing data for individual operations.

(S) Insufficient number of reports to establish an estimate.

Prices Received for Corn – States and United States: May 2016 with Comparisons

State	May 2015	April 2016	May 2016
	(dollars per bushel)	(dollars per bushel)	(dollars per bushel)
Colorado	3.64	3.60	3.64
Illinois	3.62	3.70	3.83
Indiana	3.74	3.98	4.09
Iowa	3.61	3.52	3.60
Kansas	3.81	3.54	3.86
Kentucky	3.86	3.90	4.01
Michigan	3.58	3.71	3.75
Minnesota	3.56	3.37	3.49
Missouri	3.64	3.73	3.79
Nebraska	3.76	3.49	3.55
North Carolina	4.10	4.43	4.59
North Dakota	3.47	3.29	3.42
Ohio	3.71	3.91	4.02
Pennsylvania	3.70	4.07	4.17
South Dakota	3.33	3.26	3.36
Tennessee	3.96	3.81	4.10
Texas	4.07	3.89	4.06
Wisconsin	3.48	3.50	3.57
United States	3.64	3.58	3.68

Prices Received for Soybeans – States and United States: May 2016 with Comparisons

State	May 2015	April 2016	May 2016
	(dollars per bushel)	(dollars per bushel)	(dollars per bushel)
Arkansas	9.88	(D)	10.20
Illinois	9.69	9.28	10.10
Indiana	9.91	9.28	10.10
Iowa	9.50	8.93	9.61
Kansas	9.35	8.94	9.66
Kentucky	10.10	9.40	10.20
Louisiana	10.20	(D)	(D)
Michigan	9.61	9.12	9.72
Minnesota	9.51	9.00	9.69
Mississippi	9.95	9.66	10.70
Missouri	9.67	9.27	9.94
Nebraska	9.34	8.74	9.54
North Carolina	9.77	9.36	10.10
North Dakota	8.78	8.50	9.30
Ohio	9.71	9.51	9.99
South Dakota	9.13	8.64	9.30
Tennessee	9.88	9.45	9.96
Wisconsin	9.40	8.99	9.69
United States	9.58	9.04	9.76

(D) Withheld to avoid disclosing data for individual operations.

Prices Received for Dry Beans – States and United States: May 2016 with Comparisons

State	May 2015	April 2016	May 2016
	(dollars per cwt)	(dollars per cwt)	(dollars per cwt)
California	(D)	(D)	75.00
Colorado	(D)	29.00	25.60
Idaho	39.20	32.00	25.40
Michigan	38.90	25.20	27.00
Minnesota	(D)	25.40	26.00
Nebraska	25.40	(D)	(D)
North Dakota	25.40	23.60	25.90
United States	35.90	26.80	32.80

(D) Withheld to avoid disclosing data for individual operations.

Prices Received for Peanuts (in shell) – States and United States: May 2016 with Comparisons

State	May 2015	April 2016	May 2016
	(dollars per pound)	(dollars per pound)	(dollars per pound)
Alabama	0.206	0.185	0.180
Florida	0.212	0.187	0.186
Georgia	0.208	0.196	0.193
Mississippi	0.214	0.189	0.187
New Mexico	0.301	(S)	(S)
North Carolina	0.247	(D)	0.200
Oklahoma	0.237	0.198	0.209
South Carolina	0.251	0.196	0.149
Texas	0.274	0.225	0.239
Virginia	0.273	(S)	0.213
United States	0.225	0.196	0.193

(D) Withheld to avoid disclosing data for individual operations.

(S) Insufficient number of reports to establish an estimate.

Prices Received for Sunflower – States and United States: May 2016 with Comparisons

State	May 2015	April 2016	May 2016
	(dollars per cwt)	(dollars per cwt)	(dollars per cwt)
Colorado	(D)	(S)	(S)
Kansas	(D)	20.70	(D)
Minnesota	27.10	(D)	18.60
North Dakota	28.30	21.30	19.70
South Dakota	24.40	19.50	19.40
United States	26.40	20.90	19.50

(D) Withheld to avoid disclosing data for individual operations.

(S) Insufficient number of reports to establish an estimate.

Prices Received for Canola – States and United States: May 2016 with Comparisons

State	May 2015	April 2016	May 2016
	(dollars per cwt)	(dollars per cwt)	(dollars per cwt)
Minnesota	(S)	(S)	(S)
North Dakota	16.70	16.10	(D)
United States	16.70	16.10	(D)

(D) Withheld to avoid disclosing data for individual operations.

(S) Insufficient number of reports to establish an estimate.

Prices Received for Flaxseed – States and United States: May 2016 with Comparisons

State	May 2015	April 2016	May 2016
	(dollars per bushel)	(dollars per bushel)	(dollars per bushel)
North Dakota	12.10	8.09	7.93
United States	12.10	8.09	7.93

Prices Received for Upland Cotton and Cottonseed – States and United States: May 2016 with Comparisons

[Cottonseed marketing year August - February]

State	Cotton, Upland			Cottonseed		
	May 2015	April 2016	May 2016	May 2015	April 2016	May 2016
	(dollars per pound)	(dollars per pound)	(dollars per pound)	(dollars per ton)	(dollars per ton)	(dollars per ton)
Alabama	(D)	0.561	0.593	(NA)	(NA)	(NA)
Arizona	(D)	(D)	(D)	(NA)	(NA)	(NA)
Arkansas	(D)	(D)	(D)	(NA)	(NA)	(NA)
California	(D)	(D)	(D)	(NA)	(NA)	(NA)
Georgia	(D)	0.604	0.592	(NA)	(NA)	(NA)
Louisiana	(D)	(D)	(D)	(NA)	(NA)	(NA)
Mississippi	(D)	(D)	(D)	(NA)	(NA)	(NA)
North Carolina	(D)	0.555	(D)	(NA)	(NA)	(NA)
Tennessee	0.667	0.596	(D)	(NA)	(NA)	(NA)
Texas	0.567	0.549	0.569	(NA)	(NA)	(NA)
United States	0.659	0.558	0.576	(NA)	(NA)	(NA)

(D) Withheld to avoid disclosing data for individual operations.

(NA) Not available.

Prices Received and Farm Marketings for Upland Cotton and Rice – United States: May 2016 with Comparisons

Item	May 2015	April 2016	May 2016
Cotton, Upland			
Average price dollars/pound	0.659	0.558	0.576
Marketings ¹ 1,000 bales	258	783	363
Rice, all			
Average price dollars/cwt	12.50	11.30	11.50
Marketings ² 1,000 cwt	13,145	13,803	13,745
Rice, long			
Average price dollars/cwt	10.90	10.70	10.70
Marketings ² 1,000 cwt	9,945	11,007	10,663
Rice, medium and short			
California			
Average price dollars/cwt	21.40	17.80	17.90
Other States ³			
Average price dollars/cwt	13.80	10.40	10.40
United States			
Average price dollars/cwt	17.50	13.80	14.50
Marketings ² 1,000 cwt	3,200	2,796	3,082

¹ Marketings based on a survey of cotton buyers in the major producing States - Alabama, Arizona, Arkansas, California, Georgia, Louisiana, Mississippi, North Carolina, Tennessee, and Texas.

² Purchases by private firms and rice (rough equivalent) shipped by cooperatives.

³ Other States include Arkansas, Louisiana, Mississippi, Missouri, and Texas.

Prices Received for Hay by Type – States and United States: May 2016 with Comparisons

State	All hay			Alfalfa hay			Other hay		
	May 2015	April 2016	May 2016	May 2015	April 2016	May 2016	May 2015	April 2016	May 2016
	(dollars per ton)	(dollars per ton)	(dollars per ton)	(dollars per ton)	(dollars per ton)	(dollars per ton)	(dollars per ton)	(dollars per ton)	(dollars per ton)
Arizona	200.00	180.00	155.00	200.00	180.00	155.00	200.00	160.00	160.00
California	199.00	156.00	153.00	215.00	165.00	160.00	140.00	115.00	125.00
Colorado	191.00	177.00	160.00	190.00	180.00	160.00	195.00	160.00	160.00
Idaho	164.00	140.00	135.00	165.00	140.00	135.00	150.00	140.00	140.00
Illinois	129.00	155.00	145.00	155.00	170.00	165.00	100.00	100.00	95.00
Iowa	120.00	98.00	92.00	128.00	104.00	96.00	97.00	83.00	85.00
Kansas	114.00	90.00	83.00	117.00	105.00	92.00	100.00	74.00	67.00
Kentucky	150.00	147.00	159.00	210.00	225.00	225.00	110.00	110.00	115.00
Michigan	154.00	123.00	112.00	165.00	125.00	120.00	140.00	115.00	100.00
Minnesota	139.00	85.00	85.00	148.00	99.00	93.00	97.00	56.00	59.00
Missouri	106.00	92.00	96.00	165.00	160.00	160.00	80.00	75.00	75.00
Montana	123.00	123.00	127.00	125.00	125.00	130.00	115.00	115.00	115.00
Nebraska	100.00	84.00	88.00	102.00	88.00	90.00	93.00	79.00	77.00
Nevada	200.00	126.00	159.00	200.00	125.00	160.00	190.00	140.00	130.00
New Mexico	216.00	164.00	164.00	225.00	165.00	165.00	170.00	155.00	155.00
New York	205.00	174.00	176.00	250.00	206.00	206.00	200.00	173.00	173.00
North Dakota	81.00	75.00	69.00	82.00	76.00	70.00	56.00	58.00	57.00
Ohio	137.00	148.00	133.00	175.00	185.00	190.00	115.00	115.00	100.00
Oklahoma	151.00	120.00	122.00	195.00	142.00	147.00	85.00	91.00	84.00
Oregon	195.00	177.00	170.00	205.00	175.00	160.00	175.00	180.00	190.00
Pennsylvania	232.00	190.00	190.00	238.00	189.00	198.00	231.00	190.00	189.00
South Dakota	112.00	96.00	89.00	120.00	100.00	91.00	90.00	81.00	82.00
Texas	122.00	102.00	125.00	224.00	192.00	187.00	70.00	87.00	93.00
Utah	175.00	145.00	120.00	175.00	145.00	120.00	140.00	115.00	100.00
Washington	195.00	147.00	150.00	200.00	140.00	145.00	185.00	160.00	160.00
Wisconsin	128.00	89.00	82.00	136.00	96.00	90.00	86.00	67.00	55.00
Wyoming	123.00	113.00	111.00	125.00	115.00	115.00	115.00	100.00	100.00
United States ...	175.00	146.00	140.00	192.00	153.00	147.00	134.00	130.00	122.00

Prices Received for Apples – States and United States: May 2016 with Comparisons

[Equivalent packinghouse-door returns for California, Michigan, New York, Pennsylvania, and Washington. Prices at point of first sale for other States]

State	Apples, fresh use		
	May 2015	April 2016	May 2016
	(dollars per pound)	(dollars per pound)	(dollars per pound)
California	(S)	(S)	(S)
Michigan	0.320	0.380	0.390
New York	0.260	0.249	0.243
Pennsylvania	(S)	0.334	0.340
Virginia	(S)	0.240	(S)
Washington	0.238	0.482	0.408
United States	0.243	0.435	0.397

(S) Insufficient number of reports to establish an estimate.

Prices Received for Citrus Fruits by Utilization – States and United States: May 2015

[Net pounds per box: grapefruit in California-80, Florida-85, Texas-80; lemons-80; oranges in California-80, Florida-90, Texas-85; tangelos-90; tangerines and mandarins in California-80, Florida-95]

Commodity, State, and type	FOB packed fresh	Equivalent returns					
		Packinghouse door			On-tree		
		All	Fresh	Process	All	Fresh	Process
	(dollars per box)	(dollars per box)	(dollars per box)	(dollars per box)	(dollars per box)	(dollars per box)	(dollars per box)
Grapefruit							
California	(D)	8.79	(D)	(D)	6.80	(D)	(D)
Florida, all	(S)	(S)	(S)	(S)	(S)	(S)	(S)
White	(S)	(S)	(S)	(S)	(S)	(S)	(S)
Red	(S)	(S)	(S)	(S)	(S)	(S)	(S)
Texas	22.40	4.52	10.80	(D)	3.01	9.19	(D)
United States	(D)	7.41	(D)	(D)	5.47	(D)	(D)
Lemons							
Arizona	(S)	(S)	(S)	(S)	(S)	(S)	(S)
California	53.40	37.71	43.95	(D)	31.76	37.81	(D)
United States	53.40	37.71	43.95	(D)	31.76	37.81	(D)
Oranges							
California, all	28.90	13.75	19.51	(D)	11.09	16.90	(D)
Navel and miscellaneous	29.70	13.50	20.35	(D)	10.84	17.74	(D)
Valencia	26.70	14.46	17.35	(D)	11.81	14.74	(D)
Florida, all	26.70	13.46	15.55	13.40	10.66	12.80	10.60
Early and mids	(S)	(S)	(S)	(S)	(S)	(S)	(S)
Valencia	26.70	13.46	15.55	13.40	10.66	12.80	10.60
United States	28.60	13.51	18.95	12.56	10.74	16.32	9.76
Tangelos							
Florida	(S)	(S)	(S)	(S)	(S)	(S)	(S)
United States	(S)	(S)	(S)	(S)	(S)	(S)	(S)
Tangerines and mandarins							
Arizona	(D)	(D)	(D)	(D)	(D)	(D)	(D)
California	(D)	(D)	(D)	(D)	(D)	(D)	(D)
Florida	(S)	(S)	(S)	(S)	(S)	(S)	(S)
United States	(S)	(S)	(S)	(D)	(S)	(S)	(D)

(D) Withheld to avoid disclosing data for individual operations.

(S) Insufficient number of reports to establish an estimate.

Prices Received for Citrus Fruits by Utilization – States and United States: April 2016

[Net pounds per box: grapefruit in California-80, Florida-85, Texas-80; lemons-80; oranges in California-80, Florida-90, Texas-85; tangelos-90; tangerines and mandarins in California-80, Florida-95]

Commodity, State, and type	FOB packed fresh	Equivalent returns					
		Packinghouse door			On-tree		
		All	Fresh	Process	All	Fresh	Process
	(dollars per box)	(dollars per box)	(dollars per box)	(dollars per box)	(dollars per box)	(dollars per box)	(dollars per box)
Grapefruit							
California	(D)	16.11	(D)	(D)	13.50	(D)	(D)
Florida, all	29.00	14.03	18.20	9.91	11.42	15.95	6.95
White	(S)	8.15	(S)	8.15	5.55	(S)	5.55
Red	29.00	15.00	18.20	10.60	12.39	15.95	7.50
Texas	31.70	8.82	20.10	(D)	7.30	18.49	(D)
United States	29.30	12.66	20.04	3.80	10.48	17.94	1.52
Lemons							
Arizona	(S)	(S)	(S)	(S)	(S)	(S)	(S)
California	48.30	30.29	38.66	(D)	24.33	32.40	(D)
United States	48.30	30.29	38.66	(D)	24.33	32.40	(D)
Oranges							
California, all	25.10	11.97	15.52	(D)	9.26	12.86	(D)
Navel and miscellaneous	24.60	11.65	15.06	(D)	8.95	12.40	(D)
Valencia	(D)	(D)	(D)	(D)	(D)	(D)	(D)
Florida, all	28.70	11.89	17.55	11.70	9.09	14.80	8.90
Early and mids	(S)	(S)	(S)	(S)	(S)	(S)	(S)
Valencia	28.70	11.89	17.55	11.70	9.09	14.80	8.90
Texas, all	34.90	18.24	23.33	(D)	16.45	21.50	(D)
Early and mids	(S)	(S)	(S)	(S)	(S)	(S)	(S)
Valencia	35.70	17.77	24.10	(D)	15.98	22.27	(D)
United States	25.60	11.95	15.86	10.71	9.19	13.21	7.91
Tangelos							
Florida	(S)	(S)	(S)	(S)	(S)	(S)	(S)
United States	(S)	(S)	(S)	(S)	(S)	(S)	(S)
Tangerines and mandarins							
California	(D)	(D)	(D)	(D)	(D)	(D)	(D)
Florida	41.20	20.83	27.80	8.45	17.24	24.55	4.25
United States	(D)	(D)	(D)	-0.04	(D)	(D)	-4.54

(D) Withheld to avoid disclosing data for individual operations.

(S) Insufficient number of reports to establish an estimate.

Prices Received for Citrus Fruits by Utilization – States and United States: May 2016

[Net pounds per box: grapefruit in California-80, Florida-85, Texas-80; lemons-80; oranges in California-80, Florida-90, Texas-85; tangelos-90; tangerines and mandarins in California-80, Florida-95]

Commodity, State, and type	FOB packed fresh	Equivalent returns					
		Packinghouse door			On-tree		
		All	Fresh	Process	All	Fresh	Process
	(dollars per box)	(dollars per box)	(dollars per box)	(dollars per box)	(dollars per box)	(dollars per box)	(dollars per box)
Grapefruit							
California	(D)	17.56	(D)	(D)	14.97	(D)	(D)
Florida, all	(S)	(S)	(S)	(S)	(S)	(S)	(S)
White	(S)	(S)	(S)	(S)	(S)	(S)	(S)
Red	(S)	(S)	(S)	(S)	(S)	(S)	(S)
Texas	(S)	(S)	(S)	(D)	(S)	(S)	(D)
United States	(D)	17.57	(D)	(D)	14.98	(D)	(D)
Lemons							
Arizona	(S)	(S)	(S)	(S)	(S)	(S)	(S)
California	53.20	36.51	43.56	(D)	30.48	37.30	(D)
United States	53.20	36.51	43.56	(D)	30.48	37.30	(D)
Oranges							
California, all	26.50	12.85	16.97	(D)	10.14	14.31	(D)
Navel and miscellaneous	26.10	12.03	16.56	(D)	9.32	13.90	(D)
Valencia	(D)	(D)	(D)	(D)	(D)	(D)	(D)
Florida, all	31.10	12.15	19.95	11.80	9.35	17.20	9.00
Early and mids	(S)	(S)	(S)	(S)	(S)	(S)	(S)
Valencia	31.10	12.15	19.95	11.80	9.35	17.20	9.00
Texas, all	35.70	24.10	24.10	(D)	22.27	22.27	(D)
Early and mids	(S)	(S)	(S)	(S)	(S)	(S)	(S)
Valencia	35.70	24.10	24.10	(S)	22.27	22.27	(S)
United States	26.90	12.44	17.25	10.26	9.67	14.59	7.45
Tangelos							
Florida	(S)	(S)	(S)	(S)	(S)	(S)	(S)
United States	(S)	(S)	(S)	(S)	(S)	(S)	(S)
Tangerines and mandarins							
California	(D)	(D)	(D)	(D)	(D)	(D)	(D)
Florida	(S)	(S)	(S)	(S)	(S)	(S)	(S)
United States	(D)	(D)	(D)	(D)	(D)	(D)	(D)

(D) Withheld to avoid disclosing data for individual operations.

(S) Insufficient number of reports to establish an estimate.

Prices Received for Potatoes – States and United States: May 2016 with Comparisons

State	May 2015 (dollars per cwt)	April 2016 (dollars per cwt)	May 2016 (dollars per cwt)
California, all ¹	13.70	13.40	19.70
Spring	15.10	16.20	22.30
Fall	9.20	9.90	10.00
Colorado, all ¹	7.50	8.35	8.45
Fresh ²	8.35	10.10	10.20
Florida	15.00	18.80	16.00
Idaho, all ¹	7.60	8.95	7.50
Fresh ²	5.55	5.35	5.60
Processing	8.15	7.50	6.10
Maine	(D)	(D)	(D)
Michigan	(D)	(D)	(D)
Minnesota	6.95	10.40	10.20
New York	14.30	(D)	(D)
North Carolina	(S)	(S)	(S)
North Dakota, all ¹	(D)	(D)	(D)
Fresh ²	(D)	(D)	(D)
Processing	(D)	(D)	(D)
Oregon	9.20	12.70	10.30
Texas	(D)	(D)	(D)
Virginia	(S)	(S)	(S)
Washington, all ¹	8.35	8.70	8.50
Processing	8.20	(D)	(D)
Wisconsin, all ¹	10.90	9.65	11.40
Fresh ²	10.70	8.80	10.90
Processing	9.65	9.45	9.50
United States, all ¹	9.26	9.94	9.80
Fresh ²	9.65	9.10	10.76
Processing	8.76	8.65	8.40

(D) Withheld to avoid disclosing data for individual operations.

(S) Insufficient number of reports to establish an estimate.

¹ Average price of potatoes sold for all uses, including table stock, processing, seed, and livestock feed.

² Fresh market prices only. Includes table stock prices.

Prices Received for All Milk – States and United States: May 2016 with Comparisons

[Before deduction for hauling. Includes quality, quantity, and other premiums. Excludes hauling subsidies]

State	May 2015		April 2016		May 2016	
	Price	Fat test	Price	Fat test	Price	Fat test
	(dollars per cwt)	(percent)	(dollars per cwt)	(percent)	(dollars per cwt)	(percent)
Arizona	15.50	3.40	13.90	3.50	13.80	3.50
California	15.12	3.63	13.63	3.71	12.92	3.68
Colorado	17.40	3.58	15.70	3.65	15.20	3.62
Florida	20.50	3.52	18.50	3.52	18.30	3.52
Idaho	16.60	3.72	14.70	3.82	14.20	3.75
Illinois	17.30	3.67	15.20	3.78	14.60	3.71
Indiana	16.50	3.60	15.10	3.70	14.70	3.63
Iowa	16.90	3.72	15.30	3.84	14.60	3.78
Kansas	16.40	3.63	14.80	3.68	14.20	3.62
Michigan	16.00	3.60	14.00	3.66	13.50	3.58
Minnesota	17.80	3.82	15.60	3.91	14.80	3.85
New Mexico	16.00	3.47	14.40	3.55	14.00	3.51
New York	17.60	3.70	16.10	3.83	15.80	3.78
Ohio	17.20	3.66	16.00	3.79	15.60	3.71
Oregon	18.50	3.78	16.60	3.86	15.90	3.89
Pennsylvania	17.80	3.63	16.20	3.79	15.90	3.74
South Dakota	18.40	3.95	16.20	4.05	15.30	3.98
Texas	17.10	3.79	15.80	3.91	14.90	3.88
Utah	16.70	3.63	14.90	3.76	14.40	3.73
Vermont	18.00	3.78	16.40	3.83	16.00	3.78
Virginia	17.90	3.56	16.40	3.66	16.40	3.64
Washington	16.70	3.78	15.10	3.86	15.00	3.89
Wisconsin	17.80	3.71	15.60	3.79	14.70	3.76
United States	16.80	3.67	15.00	3.76	14.50	3.72

Prices Received for Milk Cows – States and United States: April 2016 with Comparisons

[Animals sold for dairy herd replacement only. Quarterly United States milk cow prices are based on revised milk cow inventory]

State	April 2015	January 2016	April 2016
	(dollars per head)	(dollars per head)	(dollars per head)
Arizona	2,000.00	1,900.00	1,950.00
California	2,000.00	1,800.00	1,800.00
Colorado	2,100.00	1,900.00	1,950.00
Florida	2,100.00	1,800.00	1,790.00
Idaho	1,900.00	1,850.00	1,900.00
Illinois	2,000.00	1,850.00	1,700.00
Indiana	1,900.00	1,800.00	1,700.00
Iowa	1,950.00	1,860.00	1,860.00
Kansas	1,950.00	1,830.00	1,830.00
Michigan	2,100.00	2,000.00	1,900.00
Minnesota	1,860.00	1,730.00	1,850.00
New Mexico	2,000.00	1,900.00	1,900.00
New York	1,820.00	1,700.00	1,670.00
Ohio	1,850.00	1,750.00	1,700.00
Oregon	2,000.00	1,850.00	1,900.00
Pennsylvania	1,890.00	1,780.00	1,700.00
South Dakota	1,840.00	1,700.00	1,730.00
Texas	2,000.00	1,850.00	1,900.00
Utah	1,900.00	1,700.00	1,750.00
Vermont	1,880.00	1,830.00	1,850.00
Virginia	1,930.00	1,770.00	1,660.00
Washington	1,850.00	1,800.00	1,800.00
Wisconsin	2,080.00	1,910.00	1,910.00
United States	1,970.00	1,830.00	1,820.00

Commodity Parity Prices and Price as Percent of Parity Price – United States: May 2016 with Comparisons

[Parity prices are computed under the provisions of Title III, Subtitle a, Section 301 (a) of the Agricultural Adjustment Act of 1938 as amended by the Agricultural Acts of 1948, 1949, and 1956. See January *Agricultural Prices* for details on adjusted base price and parity price computations. Parity data not available for blank cells. Primary source of data for livestock and milk prices is United States Department of Agriculture's Agricultural Marketing Service]

Commodity and unit	Adjusted base price	Parity price			Price as percent of parity			
		May 2015	April 2016	May 2016	May 2015	April 2016	May 2016	
	(dollars)	(dollars)	(dollars)	(dollars)	(percent)	(percent)	(percent)	
Basic commodities								
All wheat	bushel	0.626	18.50	18.10	18.10	29	25	25
Rice	cwt	1.37	39.70	39.50	39.70	31	29	29
Corn	bushel	0.450	13.20	13.00	13.00	28	28	28
Cotton								
Upland	pound	0.067	1.95	1.93	1.94	34	29	30
American Pima	pound	0.133	4.03	3.84	3.85	38	35	34
Peanuts	pound	0.023	0.711	0.664	0.667	32	30	29
Small chickpeas ¹	cwt	2.250	65.20	64.90	65.20	35	39	42
Large chickpeas ¹	cwt	3.270	98.60	94.30	94.80	28	34	32
Lentils ¹	cwt	2.380	67.50	68.70	69.00	44	53	62
Designated non-basic								
All milk, to plants ²	cwt	1.80	54.20	51.90	52.20	32	29	29
Honey, extracted ³	pound	0.157	4.44	4.53	4.55	48	47	47
Wool and mohair								
Wool	pound	0.121	3.47	3.49	3.51	42	42	41
Mohair	pound	0.394	11.20	11.40	11.40	43	46	46
Other non-basic								
Apples, fresh ⁴	pound	0.033	0.977	0.952	0.956	25	46	42
Barley	bushel	0.484	13.80	14.00	14.00	34	38	40
Canola	cwt	1.890	55.70	54.50	54.80	30	30	32
Cottonseed	ton	20.00	569.00	577.00	580.00	34	41	41
Dry edible beans	cwt	3.21	96.30	92.60	93.00	37	29	35
Flaxseed	bushel	1.150	34.70	33.20	33.30	35	24	24
Oats	bushel	0.296	8.74	8.54	8.58	33	23	26
Potatoes	cwt	0.857	25.10	24.70	24.80	37	40	40
Sorghum grain	cwt	0.778	22.40	22.40	22.50	34	24	25
Soybeans	bushel	1.080	32.00	31.20	31.30	30	29	31
Sunflower, all	cwt	2.16	63.10	62.30	62.60	42	34	31
Citrus (equivalent on-tree)								
Grapefruit	box	0.660	23.00	19.00	19.10	24	55	78
Lemons	box	1.62	44.10	46.70	46.90	72	52	65
Oranges	box	0.865	23.90	25.00	25.10	45	37	39
Tangerines	box	1.79	51.80	51.60	51.90	77	32	58
Livestock and poultry								
Beef cattle	cwt	11.10	320.00	320.00	322.00	50	41	40
Broilers	pound	0.050	1.48	1.44	1.45	44	36	39
Calves	cwt	16.20	453.00	467.00	469.00	64	39	37
Eggs ²	dozen	0.103	2.78	2.97	2.98	68	25	20
Hogs	cwt	5.70	172.00	164.00	165.00	34	31	35
Turkeys, live	pound	0.063	1.810	1.820	1.830	42	46	45

¹ Parity prices began January 2015.

² Seasonally adjusted price as percentage of parity price.

³ Wholesale extracted. Adjusted base price derived from state annual averages prices weighted by production. For 1982 through 1985 the national averages are the support prices.

⁴ Equivalent packinghouse-door returns for California, New York, Oregon, and Washington. Price at point of first sale for other states.

Commodity Parity Prices – United States: May 2016 with Comparisons

[Parity prices are computed under the provisions of Title III, Subtitle a, Section 301 (a) of the Agricultural Adjustment Act of 1938 as amended by the Agricultural Acts of 1948, 1949, and 1956. See January *Agricultural Prices* for details on adjusted base price and parity price computations]

Commodity and unit	Adjusted base price	Parity price		
		May 2015	April 2016	May 2016
	(dollars)	(dollars)	(dollars)	(dollars)
Field crops and miscellaneous				
Hops pound	0.338	9.63	9.75	9.80
Mustard seed cwt	3.17	90.90	91.50	91.90
Rapeseed cwt	2.66	72.00	76.70	77.10
Rye bushel	0.630	18.20	18.20	18.30
Safflower cwt	2.23	64.00	64.30	64.60
Spearmint oil pound	1.70	48.60	49.00	49.30
Sweet potatoes cwt	2.08	61.60	60.00	60.30
Tobacco				
Flue-cured, 11-14 pound	0.180	5.36	5.19	5.22
Fire-cured, 21-23 pound	0.255	7.67	7.36	7.39
Burley, 31 pound	0.179	5.36	5.16	5.19
Maryland, 32 pound	0.171	5.07	4.93	4.96
Dark air-cured, 35-37 pound	0.230	6.93	6.64	6.67
Pennsylvania seedleaf, 41 pound	0.184	5.36	5.31	5.33
Cigar binder, 51 pound	0.629	18.70	18.10	18.20
Non-citrus fruit				
Apples, processing ^{1 2} ton	18.30	536.00	528.00	530.00
Apricots				
Fresh ³ ton	116.00	3,520.00	3,350.00	3,360.00
Dried (California) ton	251.00	7,610.00	7,240.00	7,270.00
Avocados ^{2 3} ton	178.00	5,420.00	5,140.00	5,160.00
Cherries				
Sweet ton	209.00	6,370.00	6,030.00	6,060.00
Tart ² pound	0.032	0.977	0.923	0.927
Cranberry ^{2 4} barrel	4.32	132.00	125.00	125.00
Dates (California) ³ ton	147.00	4,500.00	4,240.00	4,260.00
Grapes (California)				
Raisin variety ⁵ ton	140.00	4,270.00	4,040.00	4,060.00
Wine, processing ton	64.90	(NA)	1,870.00	1,880.00
Kiwifruit ² ton	91.40	2,670.00	2,640.00	2,650.00
Nectarines, fresh (California) ³ ton	60.50	1,800.00	1,750.00	1,750.00
Olives, canning (California) ⁴ ton	93.10	2,830.00	2,690.00	2,700.00

See footnote(s) at end of table.

--continued

Commodity Parity Prices – United States: May 2016 with Comparisons (continued)

[Parity prices are computed under the provisions of Title III, Subtitle a, Section 301 (a) of the Agricultural Adjustment Act of 1938 as amended by the Agricultural Acts of 1948, 1949, and 1956. See January *Agricultural Prices* for details on adjusted base price and parity price computations]

Commodity and unit	Adjusted base price	Parity price		
		May 2015	April 2016	May 2016
	(dollars)	(dollars)	(dollars)	(dollars)
Non-citrus fruit - continued				
Papayas (Hawaii) pound	0.041	1.21	1.18	1.19
Peaches				
Fresh ^{4 6} ton	84.80	2,580.00	2,450.00	2,460.00
Dried (California) ^{1 5} ton	46.10	1,380.00	1,330.00	1,340.00
Processing, excludes dried Clingstone (California) ⁴ ton	32.60	992.00	941.00	945.00
Pears, Fresh ⁶ ton	56.00	1,710.00	1,620.00	1,620.00
Plums (California) equivalent on-tree				
Fresh ⁷ ton	60.60	1,850.00	1,750.00	1,760.00
Prunes, dried (California) ^{1 2 5} ton	154.00	4,650.00	4,440.00	4,460.00
Prunes and plums				
Fresh, excludes California ⁷ ton	61.20	1,860.00	1,770.00	1,770.00
Processing, excludes dried ¹ ton	23.80	708.00	687.00	690.00
Strawberries				
Fresh ¹⁰ pound	8.900	268.00	257.00	258.00
Processing pound	3.44	100.00	99.20	99.70
Sugar crops				
Sugar beets ^{2 8} ton	5.26	158.00	152.00	152.00
Sugarcane ^{2 8} ton	3.52	105.00	102.00	102.00
Tree nuts ⁹				
Almonds pound	0.227	6.99	6.55	6.58
Hazelnuts ton	217.00	6,580.00	6,260.00	6,290.00
Pistachios pound	0.227	6.72	6.55	6.58
Walnuts ton	236.00	6,610.00	6,810.00	6,840.00
Vegetables, fresh ¹⁰				
Carrots ¹¹ cwt	2.67	77.90	77.00	77.40
Cauliflower ¹¹ cwt	4.29	124.00	124.00	124.00
Celery ¹¹ cwt	2.05	58.90	59.10	59.40
Honeydew melons cwt	1.96	58.60	56.50	56.80
Lettuce cwt	2.26	64.30	65.20	65.50
Onions ¹¹ cwt	1.42	41.80	41.00	41.20
Tomatoes cwt	4.14	125.00	119.00	120.00

(NA) Not available.

¹ Equivalent returns at processing plant door.

² Adjusted base price is carried forward from the previous year since current marketing year average price is not yet available.

³ Equivalent returns at packinghouse door.

⁴ Equivalent returns for bulk fruit at first delivery point.

⁵ Dried basis.

⁶ Equivalent packinghouse-door returns for California, New York (apples only), Oregon (except peaches), and Washington. Price at point of first sale for other states.

⁷ Based on "as sold" prices for fresh fruit in all states.

⁸ Relates to prices including average conditional payments per ton made under the sugar acts of 1937 and 1948. Crop deficiency and abandonment payments not included.

⁹ Prices In-Shell basis except almonds which are shelled basis.

¹⁰ FOB shipping point price.

¹¹ Includes some processing.

Marketing Year for Specified Commodities

Barley: June 1 to May 31 for United States; June 1 to May 31 for Arizona, California, Delaware, Maryland, North Carolina, Pennsylvania, Virginia; August 1 to July 31 for Alaska, Maine; July 1 to June 30 for all other states.

Oats: June 1 to May 31 for United States; May 1 to April 30 for Alabama, Georgia and Texas; June 1 to May 31 for Arkansas, North Carolina, Oklahoma, South Carolina, and Virginia; August 1 to July 31 for Maine and New York; September 1 to August 31 for Alaska; July 1 to June 30 for all other States.

Sweet Potatoes: July - June for United States; July 1 to June 30 for Alabama and California; July 1 to May 31 for Arkansas, Louisiana, North Carolina and Texas; August 1 to July 31 for Mississippi and New Jersey; and January 1 to December 31 for Florida.

Wheat: June 1 to May 31 for United States; May 1 to April 30 for Alabama, Florida, Georgia, Louisiana, Mississippi, and Texas; June 1 to May 31 for Arizona, Arkansas, California, Delaware, Illinois, Indiana, Kansas, Kentucky, Maryland, Missouri, New Mexico, North Carolina, Oklahoma, South Carolina, Tennessee, and Virginia; July 1 to June 30 for all other States.

Prices Received and Farm Marketings for All Barley by Month – United States: Marketing Years 2013-2014 through 2015-2016

[Marketing year average (MYA) prices are weighted average prices for the United States marketing year of June through May. Monthly farm marketings, based on a sample survey, as percent of total used for calculating MYA prices]

Month	Prices received			Farm marketing percentages		
	2013-2014	2014-2015	2015-2016	2013-2014	2014-2015	2015-2016
	(dollars per bushel)	(dollars per bushel)	(dollars per bushel)	(percent)	(percent)	(percent)
June	6.35	6.01	5.04	4.9	7.6	4.6
July	6.38	5.62	5.19	5.1	8.1	8.3
August	6.15	5.60	5.59	20.6	19.3	16.7
September	5.88	5.31	5.49	13.5	14.5	11.0
October	5.94	5.24	5.54	8.9	6.3	8.1
November	6.20	5.09	5.55	8.0	4.9	8.2
December	6.11	5.16	5.88	7.8	7.8	13.5
January ¹	6.04	4.86	5.47	9.3	9.0	8.5
February	5.94	5.22	5.51	6.8	8.0	8.8
March	5.94	4.87	5.43	5.7	7.0	5.7
April	5.90	4.94	5.29	5.1	3.8	3.4
May	5.94	4.75	5.59	4.3	3.7	3.2
MYA	6.06	5.30	5.52	100.0	100.0	100.0

¹ Second year.

Prices Received and Farm Marketings for Malting Barley by Month – United States: Marketing Years 2013-2014 through 2015-2016

[Marketing year average (MYA) prices are weighted average prices for the United States marketing year of June through May. Monthly farm marketings, based on a sample survey, as percent of total used for calculating MYA prices]

Month	Prices received			Farm marketing percentages		
	2013-2014	2014-2015	2015-2016	2013-2014	2014-2015	2015-2016
	(dollars per bushel)	(dollars per bushel)	(dollars per bushel)	(percent)	(percent)	(percent)
June	6.68	6.30	5.68	3.9	8.1	3.6
July	6.56	5.90	5.73	5.6	8.6	7.5
August	6.56	6.11	5.91	20.9	19.7	16.6
September	6.44	5.91	5.74	12.5	14.4	11.1
October	6.49	5.76	5.78	8.6	6.3	8.2
November	6.61	5.69	5.80	8.6	4.8	8.4
December	6.52	5.63	5.99	8.3	8.1	14.5
January ¹	6.52	5.47	5.68	9.2	8.5	8.7
February	6.43	5.67	5.70	7.0	8.3	9.2
March	6.30	5.39	5.64	6.1	6.8	5.9
April	6.45	5.75	5.71	5.0	3.3	3.3
May	6.37	5.62	6.03	4.3	3.1	3.0
MYA	6.50	5.83	5.80	100.0	100.0	100.0

¹ Second year.

Prices Received and Farm Marketings for Feed Barley by Month – United States: Marketing Years 2013-2014 through 2015-2016

[Marketing year average (MYA) prices are weighted average prices for the United States marketing year of June through May. Monthly farm marketings, based on a sample survey, as percent of total used for calculating MYA prices]

Month	Prices received			Farm marketing percentages		
	2013-2014	2014-2015	2015-2016	2013-2014	2014-2015	2015-2016
	(dollars per bushel)	(dollars per bushel)	(dollars per bushel)	(percent)	(percent)	(percent)
June	5.75	4.32	3.55	8.7	5.8	12.7
July	5.17	3.85	2.97	3.2	5.7	14.9
August	4.42	3.31	3.00	19.8	18.0	17.1
September	4.25	2.97	3.24	17.3	14.9	10.2
October	4.10	3.13	2.97	10.3	6.2	6.4
November	3.63	2.84	3.03	5.6	5.2	6.9
December	3.65	2.99	3.11	5.6	7.0	5.1
January ¹	4.21	2.99	3.14	9.7	11.0	6.3
February	3.77	2.94	3.07	6.2	6.6	6.2
March	3.81	3.08	2.79	4.2	7.9	3.9
April	3.77	3.05	2.82	5.3	5.8	4.6
May	4.15	2.90	3.67	4.1	5.9	5.7
MYA	4.28	3.17	3.13	100.0	100.0	100.0

¹ Second year.

Prices Received and Farm Marketings for Oats by Month – United States: Marketing Years 2013-2014 through 2015-2016

[Marketing year average (MYA) prices are weighted average prices for the United States marketing year of June through May. Monthly farm marketings, based on a sample survey, as percent of total used for calculating MYA prices]

Month	Prices received			Farm marketing percentages		
	2013-2014	2014-2015	2015-2016	2013-2014	2014-2015	2015-2016
	(dollars per bushel)	(dollars per bushel)	(dollars per bushel)	(percent)	(percent)	(percent)
June	3.93	3.73	2.83	3.9	4.2	2.6
July	3.88	3.49	2.33	8.5	10.7	10.0
August	3.67	3.24	2.07	40.4	31.4	42.0
September	3.57	3.20	2.04	9.1	20.6	14.9
October	3.49	3.16	2.20	4.2	6.3	3.3
November	3.63	2.95	2.11	2.0	4.1	3.9
December	3.59	3.21	2.12	2.1	3.5	4.2
January ¹	3.70	3.02	1.93	5.0	6.7	4.3
February	3.75	3.08	2.21	6.4	4.8	4.2
March	4.13	2.96	2.20	7.2	2.8	3.3
April	3.96	2.82	1.97	5.7	3.4	4.7
May	3.98	2.90	2.26	5.5	1.5	2.6
MYA	3.75	3.21	2.12	100.0	100.0	100.0

¹ Second year.

Prices Received for Sweet Potatoes, Market Year Average - States and United States: 2013-2015

State	2013	2014	2015
	(dollars per cwt)	(dollars per cwt)	(dollars per cwt)
Alabama	28.50	24.10	21.40
Arkansas	32.20	(D)	27.20
California	24.60	30.10	23.70
Florida	(D)	(D)	(D)
Louisiana	17.90	17.40	21.60
Mississippi	16.40	19.30	20.90
New Jersey	29.50	36.90	31.50
North Carolina	24.90	22.00	19.40
Texas	(D)	27.60	(D)
Other States ¹	42.50	36.60	43.10
United States	24.10	23.90	21.80

(D) Withheld to avoid disclosing data for individual operations.

¹ Other States include South Carolina and Virginia.

Prices Received and Farm Marketings for All Wheat by Month – United States: Marketing Years 2013-2014 through 2015-2016

[Marketing year average (MYA) prices are weighted average prices for the United States marketing year of June through May. Monthly farm marketings, based on a sample survey, as percent of total used for calculating MYA prices]

Month	Prices received			Farm marketing percentages		
	2013-2014	2014-2015	2015-2016	2013-2014	2014-2015	2015-2016
	(dollars per bushel)	(dollars per bushel)	(dollars per bushel)	(percent)	(percent)	(percent)
June	7.37	6.49	5.42	8.4	10.9	13.3
July	6.95	6.15	5.23	19.1	18.1	19.0
August	6.88	5.97	4.84	13.4	12.7	11.1
September	6.80	5.71	4.72	11.3	10.7	8.3
October	6.94	5.71	4.86	8.0	7.4	5.8
November	6.85	6.04	4.86	4.0	6.1	4.3
December	6.73	6.14	4.75	5.7	10.3	8.0
January ¹	6.65	6.15	4.82	7.7	7.1	7.4
February	6.50	5.89	4.61	6.4	4.3	4.7
March	6.74	5.70	4.40	8.4	5.8	7.0
April	6.82	5.56	4.46	4.9	3.3	6.7
May	7.08	5.33	4.45	2.7	3.3	4.4
MYA	6.87	5.99	4.89	100.0	100.0	100.0

¹ Second year.

Prices Received for Winter Wheat by Month, Marketing Year Average – United States: 2013-2014 through 2015-2016

[Marketing year average (MYA) prices are weighted average prices for the United States marketing year of June through May]

Month	2013-2014	2014-2015	2015-2016
	(dollars per bushel)	(dollars per bushel)	(dollars per bushel)
June	7.18	6.34	5.20
July	6.85	5.99	5.15
August	6.81	5.90	4.80
September	6.80	5.69	4.64
October	7.07	5.65	4.76
November	6.96	5.87	4.66
December	6.84	6.14	4.57
January ¹	6.72	6.02	4.63
February	6.58	5.70	4.47
March	6.92	5.55	4.28
April	7.07	5.50	4.31
May	7.26	5.19	4.28
MYA	6.89	5.92	4.80

¹ Second year.

Prices Received for Durum Wheat by Month, Marketing Year Average – United States: 2013-2014 through 2015-2016

[Marketing year average (MYA) prices are weighted average prices for the United States marketing year of June through May]

Month	2013-2014	2014-2015	2015-2016
	(dollars per bushel)	(dollars per bushel)	(dollars per bushel)
June	8.51	7.96	9.16
July	8.32	8.13	8.74
August	7.73	8.03	7.28
September	7.84	8.25	6.36
October	7.03	8.48	6.57
November	6.72	11.00	6.97
December	6.90	10.70	6.93
January ¹	7.01	9.89	6.60
February	6.43	10.10	6.08
March	6.69	9.50	6.03
April	6.80	7.79	6.24
May	7.21	8.02	6.57
MYA	7.46	8.81	7.36

¹ Second year.

Prices Received for Other Spring Wheat by Month, Marketing Year Average – United States: 2013-2014 through 2015-2016

[Marketing year average (MYA) prices are weighted average prices for the United States marketing year of June through May]

Month	2013-2014	2014-2015	2015-2016
	(dollars per bushel)	(dollars per bushel)	(dollars per bushel)
June	7.72	6.60	5.20
July	7.30	6.23	5.15
August	6.97	5.93	4.71
September	6.71	5.51	4.68
October	6.66	5.57	4.78
November	6.70	5.73	4.91
December	6.55	5.80	4.80
January ¹	6.48	5.84	4.81
February	6.40	5.55	4.56
March	6.56	5.53	4.47
April	6.61	5.51	4.55
May	6.85	5.29	4.64
MYA	6.73	5.75	4.78

¹ Second year.

**Prices Received for Hard Red Spring Wheat by Month, Marketing Year Average – United States:
2013-2014 through 2015-2016**

[Marketing year average (MYA) prices are weighted average prices for the United States marketing year of June through May]

Month	2013-2014	2014-2015	2015-2016
	(dollars per bushel)	(dollars per bushel)	(dollars per bushel)
June	7.73	6.60	5.18
July	7.30	6.22	5.13
August	6.98	5.89	4.67
September	6.72	5.49	4.63
October	6.66	5.53	4.73
November	6.70	5.69	4.88
December	6.53	5.77	4.77
January ¹	6.46	5.82	4.77
February	6.39	5.53	4.54
March	6.55	5.52	4.46
April	6.60	5.50	4.56
May	6.85	5.28	4.62
MYA	6.73	5.73	4.75

¹ Second year.

**Prices Received for Hard Red Winter Wheat by Month, Marketing Year Average – United States:
2013-2014 through 2015-2016**

[Marketing year average (MYA) prices are weighted average prices for the United States marketing year of June through May]

Month	2013-2014	2014-2015	2015-2016
	(dollars per bushel)	(dollars per bushel)	(dollars per bushel)
June	7.35	6.94	5.26
July	7.05	6.41	5.21
August	6.95	6.03	4.55
September	6.92	5.58	4.35
October	7.25	5.48	4.46
November	7.10	5.66	4.30
December	6.85	6.08	4.34
January ¹	6.72	5.95	4.37
February	6.64	5.54	4.22
March	7.08	5.38	4.19
April	7.18	5.36	4.13
May	7.39	5.08	4.08
MYA	7.03	6.02	4.68

¹ Second year.

Prices Received for Soft Red Winter Wheat by Month, Marketing Year Average – United States: 2013-2014 through 2015-2016

[Marketing year average (MYA) prices are weighted average prices for the United States marketing year of June through May]

Month	2013-2014	2014-2015	2015-2016
	(dollars per bushel)	(dollars per bushel)	(dollars per bushel)
June	6.92	5.51	4.91
July	6.55	5.32	4.69
August	6.33	5.13	4.54
September	6.22	4.94	4.31
October	6.59	4.95	4.56
November	6.63	5.23	4.37
December	6.13	5.64	4.52
January ¹	6.24	5.67	4.48
February	5.90	5.48	4.54
March	6.30	5.13	4.21
April	6.54	4.94	4.38
May	6.73	5.04	4.52
MYA	6.53	5.34	4.66

¹ Second year.

Prices Received for White Wheat by Month, Marketing Year Average – United States: 2013-2014 through 2015-2016

[Marketing year average (MYA) prices are weighted average prices for the United States marketing year of June through May]

Month	2013-2014	2014-2015	2015-2016
	(dollars per bushel)	(dollars per bushel)	(dollars per bushel)
June	7.29	6.99	5.79
July	7.19	6.61	6.34
August	6.92	6.40	6.00
September	6.71	6.30	5.49
October	6.76	6.15	5.57
November	6.77	6.51	5.44
December	6.98	6.60	5.35
January ¹	6.85	6.39	5.48
February	6.61	6.34	4.94
March	6.81	6.25	4.63
April	7.05	6.26	4.62
May	7.12	5.77	4.88
MYA	6.85	6.37	5.38

¹ Second year.

Reliability of Prices Received Estimates

Definition: Prices received represent sales from producers to first buyers. They include all grades and qualities. The average commodity price from the survey multiplied by the total quantity marketed theoretically should give the total cash receipts for the commodity.

Survey procedures: Primary sales data used to determine grain prices were obtained from probability samples of about 1,900 mills and elevators. These procedures ensure that virtually all grain moving into commercial channels has a chance of being included in the survey. Generally, States surveyed account for 90 percent or more of total United States production. Livestock prices are obtained from packers, stockyards, auctions, dealers, and market check data from AMS-USDA, private marketing organizations, and state commodity groups and agencies. Inter-farm sales of grain and livestock are not included since they represent very small percentages of the total sales. Grain marketed for seed is also excluded. Fruit and vegetable prices are obtained from sample surveys and market check data from AMS-USDA, private marketing organizations, state agencies, and universities.

Summary and estimation procedures: Survey quantities sold are expanded by strata to state levels and used to weight average strata prices to a state average. State prices are then weighted to a United States price based on expanded sales. Recommendations are prepared by the Regional Field Offices and reviewed by the Agricultural Statistics Board in Washington, D.C. State recommendations are reviewed for reasonableness with survey data, other States, and recent historic estimates.

Revisions: In general, revisions are made during annual commodity market year estimation time, following five-year Census revisions, or when later information is received. Revisions are published in monthly issues of *Agricultural Prices*.

Reliability: United States price estimates based on probability surveys generally have a sampling error of less than one percent for the major commodities such as corn, wheat, soybeans, cotton, and rice. Current methods of summarization for non-probability commodities are not designed directly to calculate sampling errors. However, analytical measures approximate the United States relative sampling errors at around five percent. Any non-sampling errors are attributed to such things as the inability to obtain correct information, differences in interpreting questions or definitions, mistakes in coding or processing the data, etc. Efforts are made at each step in the survey process to minimize these non-sampling errors.

Program Changes: After the Council on Food, Agricultural and Resource Economics (C-FARE) 2009 program review which included changes in farm production practices, plans were implemented to make necessary program improvements in the agricultural price program. The index group structure for prices received was modified to maintain a more universal structure and consistency with the required 1910-1914 series.

Modifications implemented January 2014 include the following: update the current 1990-1992 base reference period to 2011, link the 1910-1914 series to the updated base reference period, 2011, create index groups used universally by researchers, data users, and policymakers, re-classify agricultural commodities into the index groups, expand the commodity coverage for vegetable, melon, non-citrus, and tree nuts, update monthly market weights, and adjust (normalization) current five year moving average cash receipts and farm input cost weights.

Modifications implemented January 2015 discontinued preliminary prices and replaced the annual average index with an annual index.

The February 2016 program update changed the rounding of the 2011 base period indexes to nearest tenth of a percent. The 1910-1914 base period indexes remain rounded to the nearest whole number.

See Price Program Links at end of this report for program change details.

May Prices Paid by Farmers

The May Index of Prices Paid for Commodities and Services, Interest, Taxes, and Farm Wage Rates (PPITW), at 107.1, is up 0.5 percent from April 2016 but is down 3.6 percent from May 2015.

Production: The May index, at 105.8, is up 0.5 percent from April but is 5.6 percent lower than last year. Higher prices for feed concentrates, complete feeds, diesel, and LP gas more than offset lower prices for feeder cattle, feeder pigs, and hay & forages.

Feed: At 106.6, the May index increased 6.4 percent from April and is up 1.5 percent from last May. Since April, higher prices for concentrates, complete feeds, and feed grains more than offset lower prices for hay & forages and supplements.

Livestock and poultry: The May index, at 109.2, decreased 5.3 percent from April and is down 31 percent from last year. Compared with April, prices are lower for feeder cattle and feeder pigs. The May feeder cattle price, at \$147.00 per cwt, is down \$8.00 from the April price. May feeder pigs averaged \$160.00 per cwt, down \$28.00 from April.

Fertilizer: The index for May, at 76.3, is up 0.4 percent from April but is 16 percent below May a year ago. Since April, higher prices for mixed fertilizer and nitrogen more than offset lower prices for potash and phosphate.

Chemicals: The May index, at 108.8, is unchanged from April but is up 2.2 percent from last May.

Fuels: At 58.0, the May index is up 8.4 percent from April but is 15 percent below May 2015. Compared with April, prices are higher for diesel, LP gas, and gasoline.

Machinery: The index for May, at 114.1, decreased 0.1 percent from April and 0.6 percent from May 2015. Compared with last month, prices are lower for self-propelled machinery.

Consumer Price Index: The May 2016 Consumer Price Index for All Urban Consumers (CPI-U), as issued by the Bureau of Labor Statistics, increased 1.0 percent over the last 12 months to an index level of 240.236 (1982-1984=100). For the month, the index increased 0.4 percent prior to seasonal adjustment.

Prices Paid Indexes and Related Parity Ratios – United States: May 2016 with Comparisons

[Revised historical price indexes for months not shown are available at www.nass.usda.gov]

Index Group and Ratios	1910-1914 Base			2011 Base		
	May 2015	April 2016	May 2016	May 2015	April 2016	May 2016
	(percent)	(percent)	(percent)	(percent)	(percent)	(percent)
Prices paid by farmers for commodities, services, interest, taxes, and wage rates (PPITW)	3006	2885	2898	111.1	106.6	107.1
Production	2333	2191	2203	112.1	105.3	105.8
Feed	1157	1104	1174	105.0	100.2	106.6
Livestock and poultry	3136	2276	2155	158.9	115.3	109.2
Seeds	3755	3643	3643	114.3	110.9	110.9
Fertilizer	1091	915	919	90.6	76.0	76.3
Chemicals	956	977	977	106.5	108.8	108.8
Fuels	1901	1496	1623	67.9	53.5	58.0
Supplies and repairs	1250	1243	1242	105.9	105.4	105.3
Autos and trucks	3258	3272	3267	106.0	106.4	106.3
Machinery	7018	6978	6975	114.8	114.2	114.1
Building materials	2505	2496	2499	107.7	107.3	107.4
Services and rent	2471	2519	2516	(NA)	(NA)	(NA)
Services	(NA)	(NA)	(NA)	113.5	116.3	116.1
Rent	(NA)	(NA)	(NA)	120.8	122.0	122.0
Interest ¹	3643	3846	3846	99.9	105.5	105.5
Taxes ²	7335	7623	7623	123.6	128.4	128.4
Wage rates	7858	8159	8159	109.7	113.9	113.9
Family living-CPI ³	2259	2273	2282	105.7	106.4	106.8
Production, interest, taxes, and wage rates (PITW)	3157	3007	3021	111.9	106.6	107.1
Ratio (received/paid)	(NA)	(NA)	(NA)	96	87	89
Parity ratio ⁴	37	33	34	(NA)	(NA)	(NA)
Parity ratio adjusted ⁵	38	34	35	(NA)	(NA)	(NA)
PPITW adjusted for productivity ⁶	1454	1427	1430	(NA)	(NA)	(NA)
Crop sector (PPITW)	(NA)	(NA)	(NA)	108.3	106.6	106.8
Livestock sector (PPITW)	(NA)	(NA)	(NA)	114.1	106.7	107.5
Farm sector (production)	(NA)	(NA)	(NA)	122.2	107.3	108.2
Non-farm sector (production)	(NA)	(NA)	(NA)	105.7	103.9	104.3

(NA) Not available.

¹ Interest per acre on farm real estate debt and interest rate on farm non-real estate debt.

² Farm real estate taxes payable per acre.

³ Bureau of Labor Statistics, Consumer Price Index for all urban consumers (CPI-U), converted by the USDA.

⁴ Ratio of index of prices received to PPITW (1910-1914=100).

⁵ Based on estimated cash receipts, from marketings and government payments, the preliminary adjustment factor is 1.026 for 2016 and the revised factor is 1.026 for 2015.

⁶ PPITW is adjusted based on productivity trend for the prior 15 years.

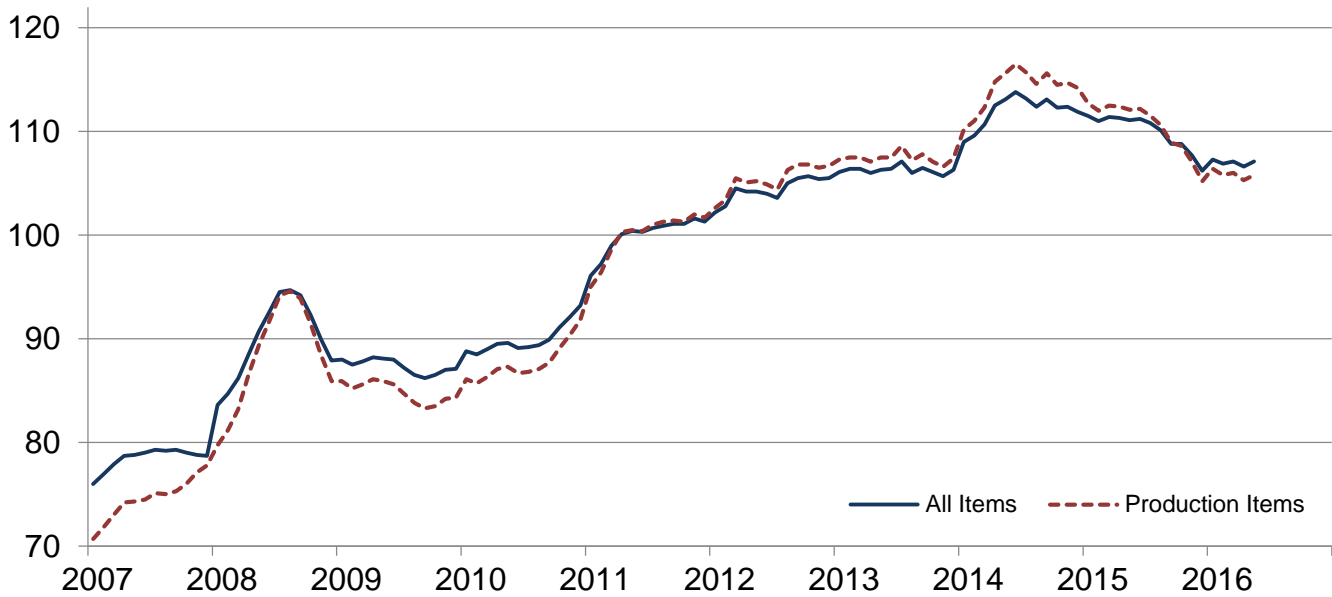
Prices Paid Indexes and Annual Weights for Input Components and Sub-components – United States: May 2016 with Comparisons

[Revised historical price indexes for months not shown are available at www.nass.usda.gov. Relative weights are a five year moving average]

Index Group	Relative weights		Indexes (2011=100)		
	2015	2016	May 2015	April 2016	May 2016
	(percent)	(percent)	(percent)	(percent)	(percent)
Production items	74.6	75.6	112.1	105.3	105.8
Feed	15.5	14.5	105.0	100.2	106.6
Feed grains	2.2	2.1	63.5	59.7	61.7
Complete feeds	7.6	7.1	113.7	110.1	112.9
Hay and forages	1.9	1.8	110.5	95.5	90.8
Concentrates	2.5	2.3	109.5	101.8	135.6
Supplements	1.3	1.2	108.8	115.0	114.7
Livestock and poultry	8.3	10.5	158.9	115.3	109.2
Feeder cattle	6.4	8.2	170.1	112.9	107.2
Feeder pigs	0.7	0.8	112.1	134.3	114.3
Milk cow replacements	0.7	0.9	138.7	128.2	128.2
Poultry	0.5	0.6	102.9	102.9	102.9
Seeds	5.0	5.0	114.3	110.9	110.9
Field crops	4.5	4.5	113.7	109.5	109.5
Grasses and legumes	0.5	0.5	119.9	124.0	124.0
Fertilizer	6.4	6.2	90.6	76.0	76.3
Mixed fertilizer	2.8	2.7	86.1	75.1	75.8
Nitrogen	2.7	2.6	96.1	77.6	77.8
Potash and phosphate	0.9	0.9	88.7	74.1	73.3
Chemicals	3.2	3.2	106.5	108.8	108.8
Herbicides	2.0	2.0	107.1	110.7	110.7
Insecticides	0.7	0.7	107.1	109.1	109.1
Fungicides and other	0.5	0.5	102.6	99.9	99.9
Fuels	4.0	3.7	67.9	53.5	58.0
Diesel	2.5	2.3	65.2	48.5	52.1
Gasoline	0.8	0.8	74.8	58.2	62.3
LP gas	0.7	0.6	69.6	66.1	74.6
Supplies and repairs	4.3	4.2	105.9	105.4	105.3
Supplies	1.4	1.4	106.3	106.1	106.3
Repairs	2.9	2.8	105.8	105.0	104.8
Autos and trucks	1.1	1.2	106.0	106.4	106.3
Autos	0.1	0.2	102.1	101.5	101.3
Trucks	1.0	1.0	106.6	107.2	107.0
Machinery	5.2	5.5	114.8	114.2	114.1
Tractors	1.1	1.2	109.6	110.6	110.6
Self-propelled	2.1	2.2	118.4	117.6	117.5
Other machinery	2.0	2.1	114.2	112.7	112.7
Building materials	3.7	3.7	107.7	107.3	107.4
Services	10.8	10.8	113.5	116.3	116.1
Custom rates	1.1	1.1	111.8	111.8	111.8
Other services	9.7	9.7	113.7	116.9	116.6
Rent	7.1	7.1	120.8	122.0	122.0
Cash	3.8	3.8	128.5	129.0	129.0
Share	3.3	3.3	111.8	114.0	114.0
Interest	2.3	2.2	99.9	105.5	105.5
Taxes	2.8	2.8	123.6	128.4	128.4
Wage rates	6.4	6.2	109.7	113.9	113.9
Family living-CPI	13.9	13.2	105.7	106.4	106.8

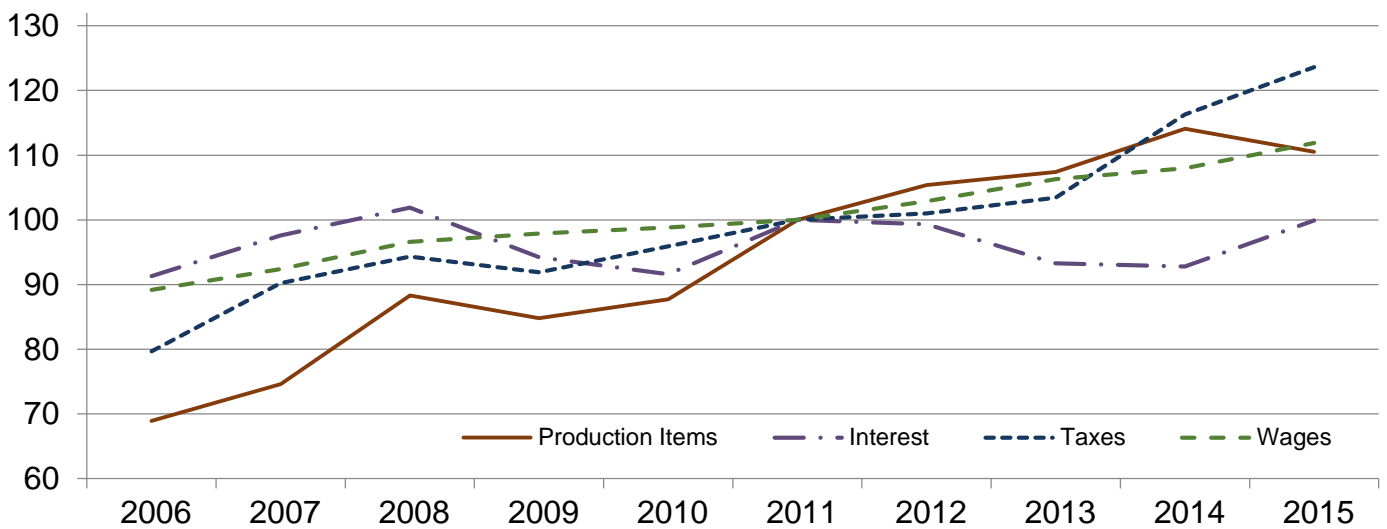
Paid Indexes by Month, All Items and Production Items – United States: 2011=100

Percent

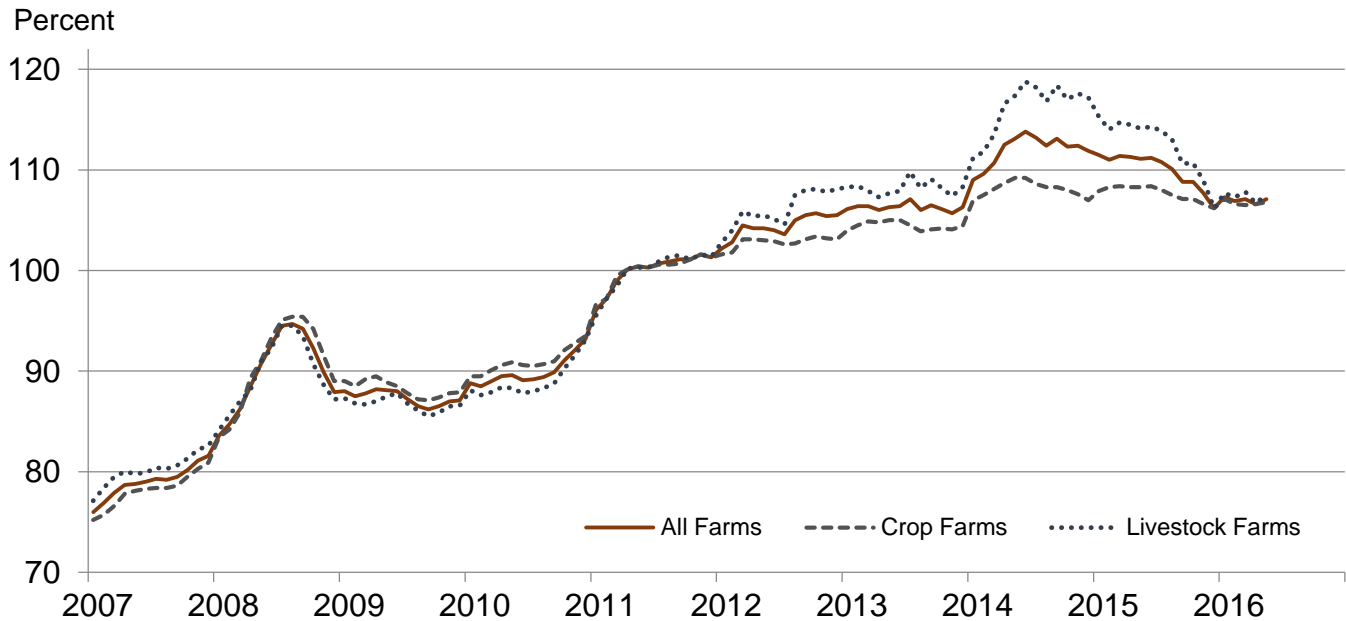


Paid Indexes, Annual Averages, Production Items, Interest, Taxes, and Wages – United States: 2011=100

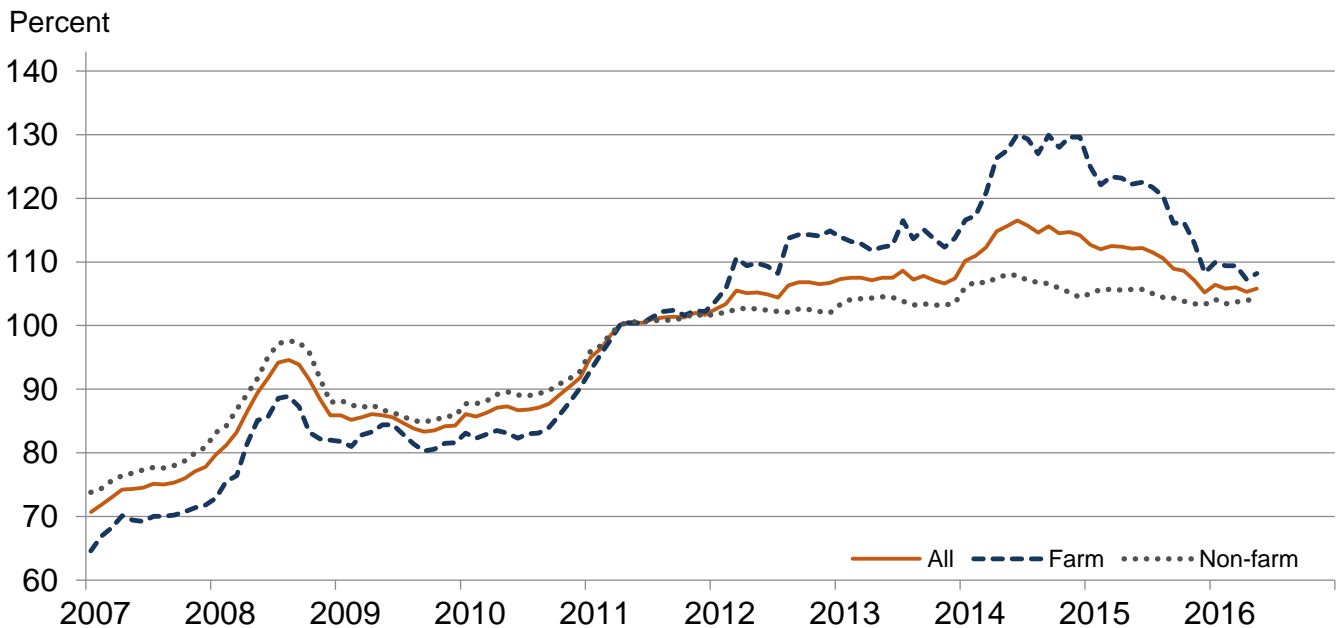
Percent



Paid Indexes by Farm Type and Month, All Items – United States: 2011=100

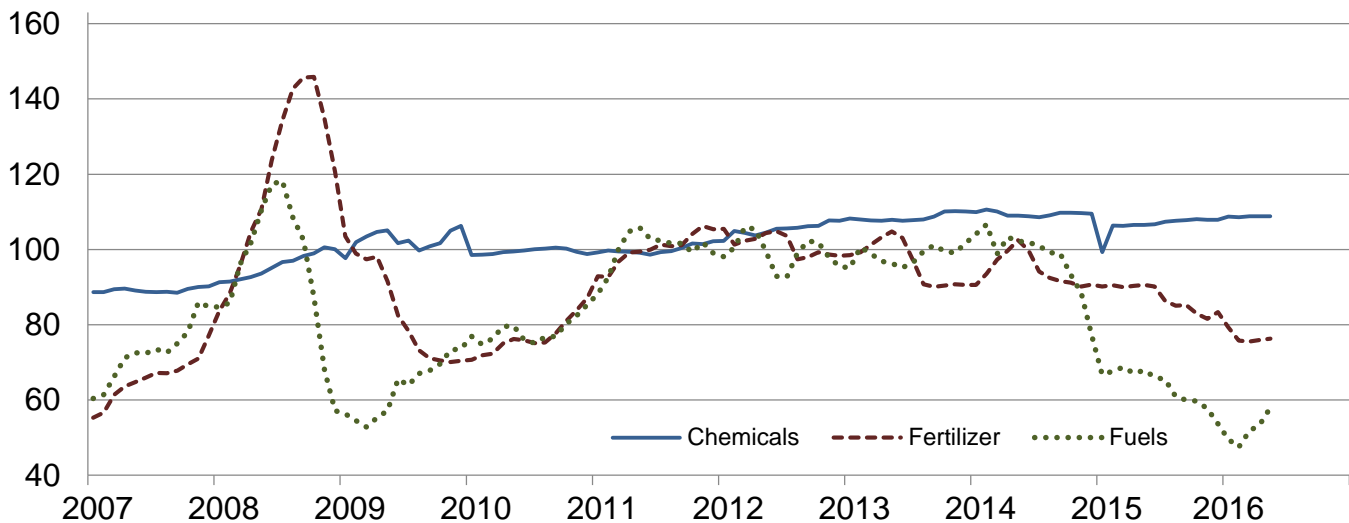


Paid Indexes by Origin and Month, All Production Items – United States: 2011=100



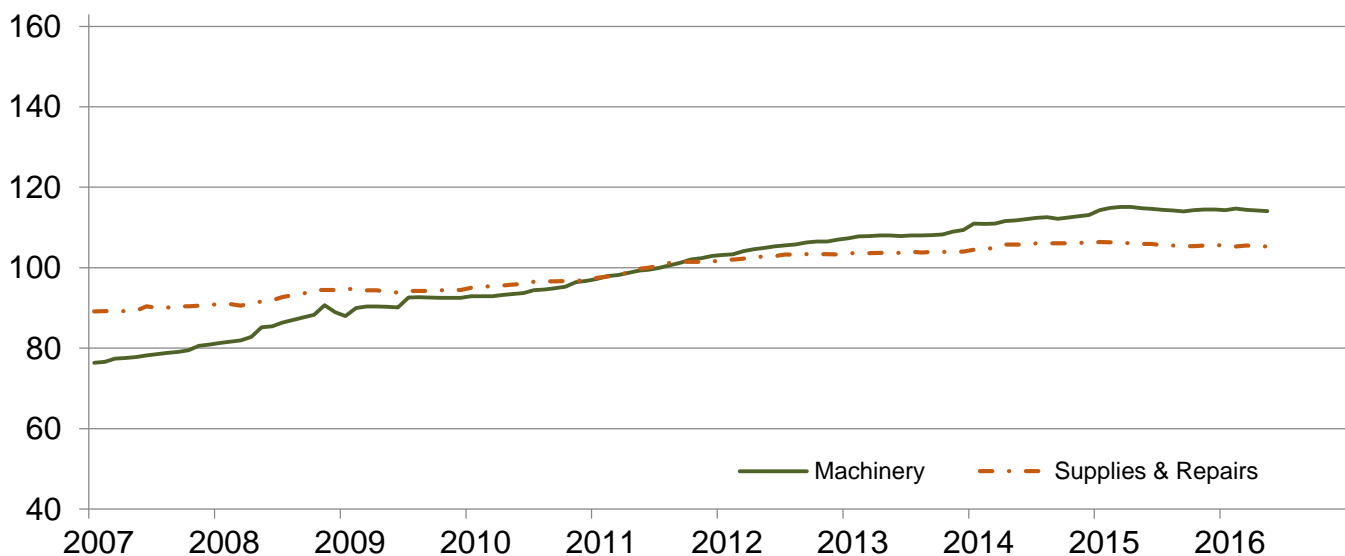
Paid Indexes by Non-farm Origin and Month, Chemicals, Fertilizer, and Fuels – United States: 2011=100

Percent

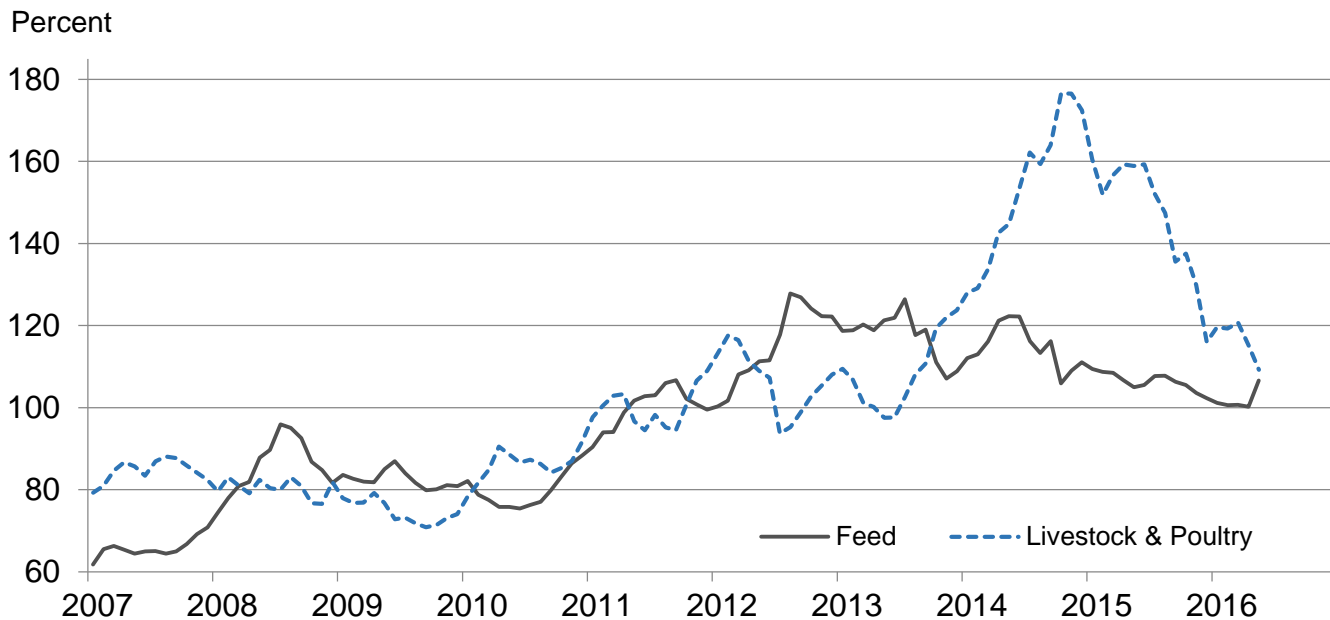


Paid Indexes by Non-farm Origin and Month, Machinery and Supplies & Repairs – United States: 2011=100

Percent



Paid Indexes by Farm Origin and Month, Feed and Livestock & Poultry – United States: 2011=100



Feed Price Ratios – United States: May 2016 with Comparisons

Feed price ratio ¹	May 2015	April 2016	May 2016
Broiler-feed: pounds of broiler grower feed equal in value to 1 pound of broiler, live weight ²	6.2	5.2	5.3
Market egg feed: pounds of laying feed equal in value to 1 dozen eggs ³	18.2	4.6	2.7
Hog-corn: bushels of corn equal in value to 100 pounds of hog, live weight	16.2	14.2	15.5
Milk-feed: pounds of 16% mixed dairy feed equal in value to 1 pound of whole milk ⁴	1.97	1.97	1.89
Steer & heifer-corn: bushels of corn equal in value to 100 pounds of steer & heifers, live weight	44.2	37.2	35.1
Turkey-feed: pounds of turkey grower equal in value to 1 pound of turkey, live weight ⁵	7.9	9.2	8.8

¹ Effective January 1995, prices of commercial prepared feeds are based on current United States prices received for corn, soybeans, alfalfa hay, and all wheat.

² The price of commercial prepared broiler feed is based on current United States prices received for corn and soybeans. The modeled feed uses 58 percent corn and 42 percent soybeans.

³ The price of commercial prepared layer feed is based on current United States prices received for corn and soybeans. The modeled feed uses 75 percent corn and 25 percent soybeans.

⁴ The price of commercial prepared dairy feed is based on current United States prices received for corn, soybeans, and alfalfa. The modeled feed uses 51 percent corn, 8 percent soybeans, and 41 percent alfalfa.

⁵ The price of commercial prepared turkey feed is based on current United States prices received for corn, soybeans, and wheat. The modeled feed uses 51 percent corn, 28 percent soybeans, and 21 percent wheat.

Prices Received Used to Calculate Feed Price Ratios – United States: May 2016 with Comparisons

[Price data source for livestock and poultry commodities is United States Department of Agriculture's Agriculture Marketing Service]

Item	May 2015	April 2016	May 2016
	(dollars)	(dollars)	(dollars)
Broilers, live pound	0.650	0.520	0.560
Eggs, market dozen	1.61	0.390	0.241
Hogs, allcwt	58.90	51.00	57.20
Milk, allcwt	16.80	15.00	14.50
Steers and heiferscwt	161.00	133.00	129.00
Turkeys, live pound	0.759	0.832	0.829
Corn bushel	3.64	3.58	3.68
Hay, alfalfa ton	192.00	153.00	147.00
Soybeans bushel	9.58	9.04	9.76
Wheat, all bushel	5.33	4.46	4.45

Prices Paid for Feeder Livestock – United States: May 2016 with Comparisons

[Price data source is United States Department of Agriculture's Agriculture Marketing Service]

Item	May 2015	April 2016	May 2016
	(dollars)	(dollars)	(dollars)
Feeder cattle & calvescwt	233.00	155.00	147.00
Feeder pigscwt	157.00	188.00	160.00

Reliability of Prices Paid Estimates

Definition: Prices paid by farmers represent the average costs of inputs purchased by farmers and ranchers to produce agricultural commodities. Conceptually, the average price when multiplied by quantity purchased should equal total producer expenditures for the item.

Survey procedures: The prices paid data are obtained from establishments that sell goods and services to farmers and ranchers. Annually, about 8,500 firms are randomly selected from lists by type of item sold with an average response rate in the range of 75-80 percent. Firms are asked to report the price for the specified item "most commonly bought by farmers" or that was the "volume seller". Approximately 135 items are surveyed each March to represent all production input items purchased. The survey reference period for most items is the five business days centered at the 15th of the month. Separate prices paid surveys are conducted for agricultural chemicals, fuels, feed, fertilizer, machinery, and seed.

Summary and estimation procedures: The annual March Prices Paid Survey is summarized as a non-probability survey. Average prices reported are aggregated to the region and United States level using weights available from expenditure data and other administrative sources. Price recommendations are prepared by the Regional Field Offices and Headquarters for review by the Agricultural Statistics Board in Washington, D.C. Also, the change in price level for individual items surveyed are combined to the regional and United States levels, and are published as prices paid indexes referenced to a specific base period. Prices paid indexes for new autos and trucks, building materials, farm supplies, motor supplies, and marketing containers are updated based on price changes measured in selected Bureau of Labor Statistics (BLS) indexes.

Revisions: Any revisions are published in the monthly and in annual issues of Agricultural Prices. The basis for revision must be supported by additional data that directly affect the level of the estimate. More revisions are likely for March when separate prices paid surveys are conducted, in lieu of BLS indexes, by the USDA to measure price change.

Reliability: Current methods of summarization for the March data are not designed directly to calculate sampling errors. However, analytical measures approximate the United States relative sampling errors for major items around 10 percent. Any non-sampling errors are attributed to such things as the inability to obtain correct information, differences in interpreting questions or definitions, mistakes in coding or processing the data, etc. Efforts are made at each step in the survey process to minimize these non-sampling errors.

Program change: Effective January 2014, the National Agricultural Statistics Service modified the five-year moving weights and updated the base reference period. In January 2015, publication of preliminary prices was suspended, and the annual average index was replaced by an annual index.

As of January 2014, the 1990-1992 base reference period was updated to 2011. Five-year moving average weights are adjusted (normalized) to minimize the effects of price changes. The 1910-1914=100 price indexes, required by statute for computing parity prices, were linked forward based on the changes in the new 2011=100 indexes. The new indexes were constructed by multiplying the ratios of the current prices to the base period prices by the moving average weights.

Modifications implemented January 2015 discontinued preliminary prices and replaced the annual average index with an annual index.

The April 2015 program update discontinued publication of the annual March survey prices paid data.

The February 2016 program update changed the rounding of the 2011 base period indexes to nearest tenth of a percent. The 1910-1914 base period indexes remain rounded to the nearest whole number.

See Price Program Links at end of this report for program change details.

Information Contacts

General

Troy Joshua, Chief, Environmental, Economics and Demographics Branch (202) 720-6146

Crop Prices Received

Lance Honig, Chief, Crops Branch (202) 720-2127

Anthony Prillaman, Head, Field Crops Section (202) 720-2127

Angie Considine – Cotton, Cotton Ginnings, Sorghum (202) 720-5944

Tony Dahlman – Oats, Soybeans (202) 720-7621

Chris Hawthorn – Corn, Flaxseed, Proso Millet (202) 720-9526

James Johanson – County Estimates, Hay (202) 690-8533

Scott Matthews – Barley, Crop Weather (202) 720-7621

Jean Porter – Rye, Wheat (202) 720-8068

Bianca Pruneda – Peanuts, Rice (202) 720-7688

Travis Thorson – Sunflower, Canola, Safflower, Rapeseed, Mustard Seed (202) 720-7369

Jorge Garcia-Pratts, Head, Fruits, Vegetables and Special Crops Section (202) 720-2127

Vincent Davis – Fresh and Processing Vegetables, Onions, Strawberries (202) 720-2157

Fleming Gibson – Citrus, Coffee, Sugar Crops, Tropical Fruits (202) 720-5412

Greg Lemmons – Berries, Cranberries, Potatoes, Sweet Potatoes (202) 720-4285

Dave Losh – Hops (360) 709-2400

Dan Norris – Austrian Winter Peas, Dry Edible Peas, Lentils, Mint, Mushrooms, Peaches, Pears,
Wrinkled Seed Peas, Dry Beans (202) 720-3250

Daphne Schauber – Floriculture, Grapes, Maple Syrup, Nursery, Tree Nuts (202) 720-4215

Chris Singh – Apples, Apricots, Cherries, Plums, Prunes, Tobacco (202) 720-4288

Livestock Prices Received

Dan Kerestes, Chief, Livestock Branch (202) 720-3570

Scott Hollis, Head, Livestock Section (202) 720-3570

Doug Bounds – Hogs and Pigs (202) 720-3106

Dave Colwell – Sheep and Goats (202) 720-8784

Michael Klamm – Cattle and Cattle on Feed (202) 720-3040

Mike Miller – Milk, Milk Cows (202) 720-3278

Bruce Boess, Head, Poultry and Specialty Commodities Section (202) 720-3570

Heidi Gleich – Broilers (202) 720-0585

Kim Linonis – Eggs (202) 690-8632

Sammy Neal – Turkeys (202) 720-3244

Josh O’Rear – Honey (202) 690-3676

Indexes, Prices Paid, and Parity Prices

Troy Joshua, Chief, Environmental, Economics and Demographics Branch (202) 720-6146

Tony Dorn, Head, Economics Section (202) 690-3223

Daryl Brinkman – Prices Received Indexes, Parity Prices (202) 720-8844

Courtney Charles – Prices Paid, Prices Paid Indexes (202) 690-3229

Greg Gholson – Prices Received Indexes, Parity Prices, Prices Paid Indexes, Prices Paid for Feed,
Fertilizer, Chemicals, Seeds, Fuels, Farm Supplies and Repairs, Farm Machinery, Feeder Livestock,
Poultry Chicks, Feed Price Ratios (202) 690-1348

Joe Hagedorn – Cash Rents, Grazing Fees (202) 690-3231

Access to NASS Reports

For your convenience, you may access NASS reports and products the following ways:

- All reports are available electronically, at no cost, on the NASS web site: www.nass.usda.gov
- Both national and state specific reports are available via a free e-mail subscription. To set-up this free subscription, visit www.nass.usda.gov and click on “National” or “State” in upper right corner above “search” box to create an account and select the reports you would like to receive.

For more information on NASS surveys and reports, call the NASS Agricultural Statistics Hotline at (800) 727-9540, 7:30 a.m. to 4:00 p.m. ET, or e-mail: nass@nass.usda.gov.

The U.S. Department of Agriculture (USDA) prohibits discrimination against its customers, employees, and applicants for employment on the basis of race, color, national origin, age, disability, sex, gender identity, religion, reprisal, and where applicable, political beliefs, marital status, familial or parental status, sexual orientation, or all or part of an individual's income is derived from any public assistance program, or protected genetic information in employment or in any program or activity conducted or funded by the Department. (Not all prohibited bases will apply to all programs and/or employment activities.)

If you wish to file a Civil Rights program complaint of discrimination, complete the [USDA Program Discrimination Complaint Form](#) (PDF), found online at http://www.ascr.usda.gov/complaint_filing_cust.html, or at any USDA office, or call (866) 632-9992 to request the form. You may also write a letter containing all of the information requested in the form. Send your completed complaint form or letter to us by mail at U.S. Department of Agriculture, Director, Office of Adjudication, 1400 Independence Avenue, S.W., Washington, D.C. 20250-9410, by fax (202) 690-7442 or email at program.intake@usda.gov.

Price Program Links

Economics and Prices

http://www.nass.usda.gov/Statistics_by_Subject/Economics_and_Prices/index.php

January 2014 Price Program Update

http://www.nass.usda.gov/Surveys/Guide_to_NASS_Surveys/Prices/updates.pdf

January 2015 Price Program Update

http://www.nass.usda.gov/Surveys/Guide_to_NASS_Surveys/Prices/update2015.pdf

April 2015 Price Program Update

http://www.nass.usda.gov/Surveys/Guide_to_NASS_Surveys/Prices/updateApr2015.pdf

February 2016 Price Program Update

http://www.nass.usda.gov/Surveys/Guide_to_NASS_Surveys/Prices/updateFeb2016.pdf