



Cattle

Released July 21, 2000, by the National Agricultural Statistics Service (NASS), Agricultural Statistics Board, U.S. Department of Agriculture. For information on "Cattle" call Greg Thessen at 202-720-3040, office hours 7:30 a.m. to 4:00 p.m. ET.

July 1 Cattle Inventory Down 1 Percent

All cattle and calves in the United States as of July 1, 2000, totaled 106.4 million head, 1 percent below the 107.0 million on July 1, 1999 and 1 percent below the 107.7 million two years ago.

All cows and heifers that have calved, at 43.2 million, were slightly below the 43.3 million on July 1, 1999 and 1 percent below the 43.6 million two years ago.

- **Beef cows**, at 34.0 million, were down 1 percent from July 1, 1999 and 1 percent below two years ago.
- **Milk cows**, at 9.25 million, were up 1 percent from July 1, 1999 and 1 percent above two years ago.

Other class estimates on July 1, 2000, and the changes from July 1 last year and two years ago, respectively, are as follows:

- **All heifers** 500 pounds and over, 16.5 million, down 1 percent from both years.
- **Beef replacement heifers**, 4.7 million, down 2 percent and down 6 percent.
- **Milk replacement heifers**, 3.7 million, unchanged and up 3 percent.
- **Other heifers**, 8.1 million, unchanged from both years.
- **Steers** weighing 500 pounds and over, 14.3 million, down 1 percent and down 2 percent.
- **Bulls** weighing 500 pounds and over, 2.1 million, down 5 percent from both years.
- **Calves under 500 pounds**, 30.3 million, down 1 percent from both years.
- **All cattle and calves on feed** for slaughter, 12.3 million, up 7 percent and up 12 percent.

Calf Crop Up Slightly

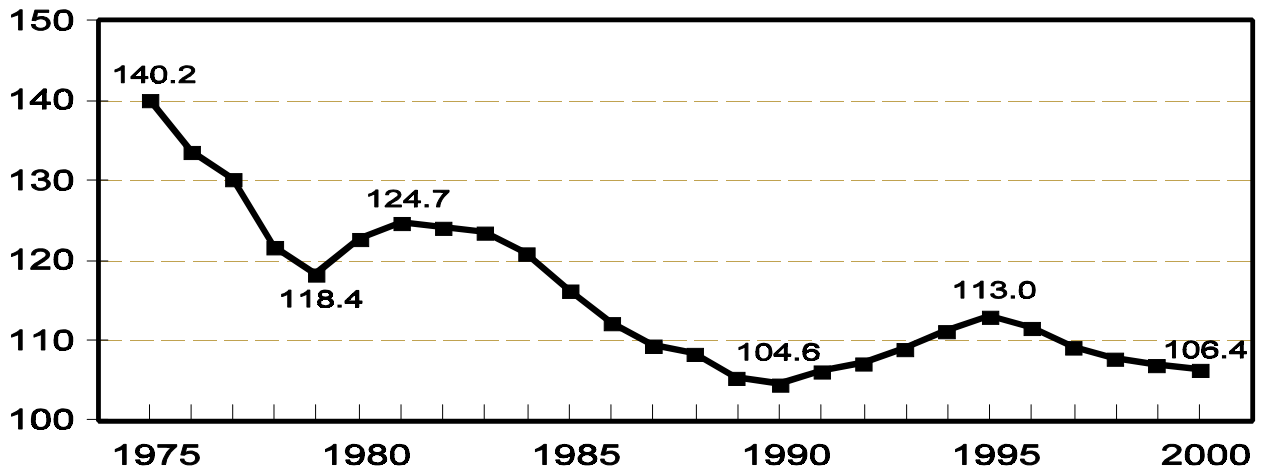
The 2000 calf crop is expected to be 38.9 million, up slightly from 1999 and 1998. Calves born during the first half of the year are estimated at 28.6 million, up slightly from both years.

Special Note

The July 1 report will now include selected State level estimates for all cattle and calves, all cows, beef cows, milk cows, and calf crop. The eleven selected States include, California, Colorado, Iowa, Kansas, Missouri, Montana, Nebraska, Oklahoma, South Dakota, Texas, and Wisconsin which accounted for 60 percent of the July 1, 2000 all cattle and calf inventory. This is in addition to the U.S. level estimates that have been published in the past. Data from 1999 will reflect this change to provide the user with comparable data for 1999 and 2000.

United States Cattle Inventory July 1, 1975-2000

Million Head



This report was approved on July 21, 2000.

Acting Secretary of
Agriculture
I. Miley Gonzalez

Agricultural Statistics Board
Chairperson
Frederic A. Vogel

**Cattle and Calves: Number by Class and Calf Crop,
United States, July 1, 1998-2000**

Class	1998	1999	2000	2000 as % of 1999
	<i>1,000 Head</i>	<i>1,000 Head</i>	<i>1,000 Head</i>	<i>Percent</i>
Cattle and Calves	107,700	107,000	106,400	99
Cows and Heifers That Have Calved	43,600	43,300	43,200	100
Beef Cows	34,400	34,150	33,950	99
Milk Cows	9,200	9,150	9,250	101
Heifers 500 Pounds and Over	16,700	16,600	16,500	99
For Beef Cow Replacement	5,000	4,800	4,700	98
For Milk Cow Replacement	3,600	3,700	3,700	100
Other Heifers	8,100	8,100	8,100	100
Steers 500 Pounds and Over	14,600	14,400	14,300	99
Bulls 500 Pounds and Over	2,200	2,200	2,100	95
Calves Under 500 Pounds	30,600	30,500	30,300	99
Calf Crop	38,812	38,710	38,900	100
Cattle on Feed	11,000	11,500	12,300	107

**Calf Crop: Number and Percent of Total by Six-Month Period,
United States, 1998-1999 and Preliminary Calf Crop, 2000**

Period	1998		1999		2000	
	Number	% of Total	Number	% of Total	Number	% of Total
	<i>1,000 Hd</i>	<i>Percent</i>	<i>1,000 Hd</i>	<i>Percent</i>	<i>1,000 Hd</i>	<i>Percent</i>
Jan 1 - Jun 30	28,500	73.4	28,500	73.6	28,600	73.5
Jul 1 - Dec 31	10,312	26.6	10,210	26.4	10,300	26.5
Total	38,812	100.0	38,710	100.0	38,900	100.0

**Cattle and Calves: Balance Sheet, United States,
January 1 - June 30, 1998-2000 ¹**

Item	1998	1999	2000
	<i>Million Head</i>	<i>Million Head</i>	<i>Million Head</i>
January 1 Inventory	99.7	99.1	98.0
Calf Crop and Imports	29.5	29.5	29.6
Total Supply ²	129.3	128.6	127.7
Slaughter	18.5	18.6	18.9
Deaths and Exports	2.7	2.5	2.6
Total Disappearance ²	21.1	21.1	21.4
Residual ²	-0.4	-0.4	0.1
July 1 Inventory	107.7	107.0	106.4

¹ Preliminary.

² Totals may not add due to rounding.

**Cattle and Calves: Number by Class, State, and United States,
July 1, 1999-2000**

State	All Cattle and Calves			All Cows That Have Calved		
	1999	2000	2000 as % of 1999	1999	2000	2000 as % of 1999
	<i>1,000 Head</i>	<i>1,000 Head</i>	<i>Percent</i>	<i>1,000 Head</i>	<i>1,000 Head</i>	<i>Percent</i>
CA	4,950	5,000	101	2,260	2,310	102
CO	3,500	3,500	100	950	960	101
IA	3,950	3,950	100	1,250	1,250	100
KS	6,900	6,950	101	1,740	1,720	99
MO	4,750	4,700	99	2,220	2,220	100
MT	3,700	3,750	101	1,590	1,630	103
NE	7,350	7,250	99	2,120	2,080	98
OK	5,500	5,500	100	2,100	2,100	100
SD	4,800	4,900	102	1,910	1,950	102
TX	14,900	14,900	100	6,150	6,100	99
WI	3,750	3,700	99	1,620	1,600	99
Oth Sts	42,950	42,300	98	19,390	19,280	99
US	107,000	106,400	99	43,300	43,200	100
	Beef Cows That Have Calved			Milk Cows That Have Calved		
	<i>1,000 Head</i>	<i>1,000 Head</i>	<i>Percent</i>	<i>1,000 Head</i>	<i>1,000 Head</i>	<i>Percent</i>
CA	795	785	99	1,465	1,525	104
CO	868	875	101	82	85	104
IA	1,034	1,035	100	216	215	100
KS	1,655	1,630	98	85	90	106
MO	2,062	2,066	100	158	154	97
MT	1,572	1,612	103	18	18	100
NE	2,047	2,005	98	73	75	103
OK	2,008	2,009	100	92	91	99
SD	1,808	1,847	102	102	103	101
TX	5,805	5,750	99	345	350	101
WI	252	255	101	1,368	1,345	98
Oth Sts	14,244	14,081	99	5,146	5,199	101
US	34,150	33,950	99	9,150	9,250	101

Calf Crop: Number by State and United States, 1999-2000

State	1999	2000 ¹	2000 as % 1999
	<i>1,000 Head</i>	<i>1,000 Head</i>	<i>Percent</i>
CA	1,950	2,000	103
CO	870	880	101
IA	1,150	1,150	100
KS	1,450	1,440	99
MO	2,060	2,070	100
MT	1,570	1,620	103
NE	1,860	1,840	99
OK	1,870	1,890	101
SD	1,780	1,800	101
TX	5,150	5,300	103
WI	1,450	1,430	99
Oth Sts	17,550	17,480	100
US	38,710	38,900	100

¹ Preliminary.

Reliability of July 1 Cattle and Calves Estimates

Survey Procedures: A random sample of U.S. producers was surveyed to provide data for these estimates. Survey procedures ensured that all cattle producers, regardless of size, had a chance to be included in the survey. Data were collected during the first half of June from almost 40,000 small and medium sized operations. These operators were contacted by face-to-face personal interviews. About 9,700 large producers and feedlots were contacted during the first half of July by mail, telephone, and face-to-face personal interviews. Operators were asked to report inventories as of the first of the month and calf crop for the entire year of 2000.

Estimating Procedures: These cattle estimates were prepared by the Agricultural Statistics Board after reviewing National and State indications and analysis. National and State survey data were reviewed for reasonableness with each other and with estimates from the previous year using a balance sheet. The balance sheet begins with the previous inventory estimate, adds to it estimates of births and imports for the first six months, and subtracts estimates of slaughter, exports, and deaths for the first six months of the current year. This indicated ending inventory level is compared to the Agricultural Statistics Board estimate for reasonableness.

Revision Policy: Revisions to previous estimates are made to improve year to year and item to item relationships. Estimates for the previous year are subject to revision when current estimates are made and when the January 1 cattle inventory estimates are made. The reviews are primarily based on livestock slaughter and additional foreign trade and survey data. Estimates will also be reviewed after data from the five-year Census of Agriculture are available. No revisions will be made after that date.

Reliability: Since all cattle operators are not included in the sample, survey estimates are subject to sampling variability. Survey results are also subject to non-sampling errors such as omissions, duplications, and mistakes in reporting, recording, and processing the data. The effects of these errors cannot be measured directly. They are minimized through rigid quality controls in the data collection process and through a careful review of all reported data for consistency and reasonableness.

To assist users in evaluating the reliability of estimates in this report, the "**Root Mean Square Error**" is shown for selected items in the following table. The "Root Mean Square Error" is a statistical measure based on past performance and is computed using the differences between first and latest estimates. The "Root Mean Square Error" for cattle inventory estimates over the past 20 years is 0.6 percent. This means that chances are 2 out of 3 that the final estimate will not be above or below the current estimate of 106.4 million head by more than 0.6 percent. Chances are 9 out of 10 that the difference will not exceed 1.1 percent.

The table below also shows a 20 year record of the range of differences between first and latest estimates for selected items. Using estimates of all cattle and calves as an example, changes between the first inventory estimate and the latest estimate during the past 20 years have averaged 274,000 head, ranging from 0 to 1,500,000 head. During this period the initial inventory estimate has been below the latest estimate 5 times, above the latest estimate 9 times, and unchanged 6 times. This does not imply that the July 1 estimate is likely to understate or overstate final inventory.

Reliability of July 1 Cattle Estimates ^{1 2}

Item	Root Mean Square Error	90 Percent Confidence Level		Difference Between First and Latest Estimates			Number of Years	
		Percent	Head	Average	Smallest	Largest	First Above Latest	First Below Latest
All Cattle	0.6	1.1	1,170	274	0	1,500	9	5
All Cows	0.8	1.4	605	119	0	1,100	9	6
Calf Crop	1.7	2.9	1,128	229	23	1,236	13	7

¹ Based on data from July 1980 through July 1999.

² Data in the above table do not reflect the 1-3 percent changes made during the 1989-93 historic revision period. The root mean square error's would be about 1 percentage point higher if these were included.

The next "Cattle" report will be released at 3 p.m. ET on January 26, 2001.

The United States Department of Agriculture (USDA) prohibits discrimination in all its programs on the basis of race, color, national origin, gender, religion, age, disability, political beliefs, sexual orientation, and marital or family status. (Not all prohibited bases apply to all programs.) Persons with disabilities who require alternative means for communication of program information (braille, large print, audiotape, etc.) should contact the USDA's TARGET Center at 202-720-2600 (voice and TDD).

To file a complaint of discrimination, write USDA, Director, Office of Civil Rights, Room 326-W, Whitten Building, 14th and Independence Avenue, SW, Washington, D.C., 20250-9410, or call 202-720-5964 (voice or TDD). USDA is an equal opportunity provider and employer.

ACCESS TO REPORTS!!

For your convenience, there are several ways to obtain NASS reports, data products, and services:

INTERNET ACCESS

All NASS reports are available free of charge on the worldwide Internet. For access, connect to the Internet and go to the NASS Home Page at: <http://www.usda.gov/nass/>. Select "Today's Reports" or Publications and then Reports by Calendar or Publications and then Search, by Title or Subject.

E-MAIL SUBSCRIPTION

There are two options for subscribing via e-mail. All NASS reports are available by subscription free of charge direct to your e-mail address. 1) Starting with the NASS Home Page at <http://www.usda.gov/nass/>, click on **Publications**, then click on the **Subscribe by E-mail** button which takes you to the page describing e-mail delivery of reports. Finally, click on **Go to the Subscription Page** and follow the instructions. 2) If you do NOT have Internet access, send an e-mail message to: usda-reports@usda.mannlib.cornell.edu. In the body of the message type the word: **list**.

AUTOFAX ACCESS

NASSFax service is available for some reports from your fax machine. Please call 202-720-2000, using the handset attached to your fax. Respond to the voice prompts. Document 0411 is a list of available reports.

PRINTED REPORTS OR DATA PRODUCTS

CALL OUR TOLL-FREE ORDER DESK: 800-999-6779 (U.S. and Canada)
Other areas, please call 703-834-0125 FAX: 703-834-0110
(Visa, MasterCard, check, or money order acceptable for payment.)

ASSISTANCE

For **assistance** with general agricultural statistics or further information about NASS or its products or services, contact the **Agricultural Statistics Hotline** at **800-727-9540**, 7:30 a.m. to 4:00 p.m. ET, or e-mail: nass@nass.usda.gov.