



# Cattle

---

Released July 22, 2005, by the National Agricultural Statistics Service (NASS), Agricultural Statistics Board, U.S. Department of Agriculture. For information on *Cattle* call Mike Miller at 202-720-3040, office hours 7:30 a.m. to 4:00 p.m. ET.

## July 1 Cattle Inventory Up 1 Percent

**All cattle and calves** in the United States as of July 1, 2005, totaled 104.5 million head, 1 percent above the 103.6 million on July 1, 2004 and 1 percent above the 103.9 million two years ago.

**All cows and heifers** that have calved, at 42.8 million, were 1 percent above the 42.5 million on July 1, 2004 and slightly above the 42.7 million two years ago.

- **Beef cows**, at 33.8 million, were up 1 percent from July 1, 2004 and up slightly from two years ago.
- **Milk cows**, at 9.05 million, were up 1 percent from July 1, 2004 but down 1 percent from two years ago.

Other class estimates on July 1, 2005 and the changes from July 1, 2004, are as follows:

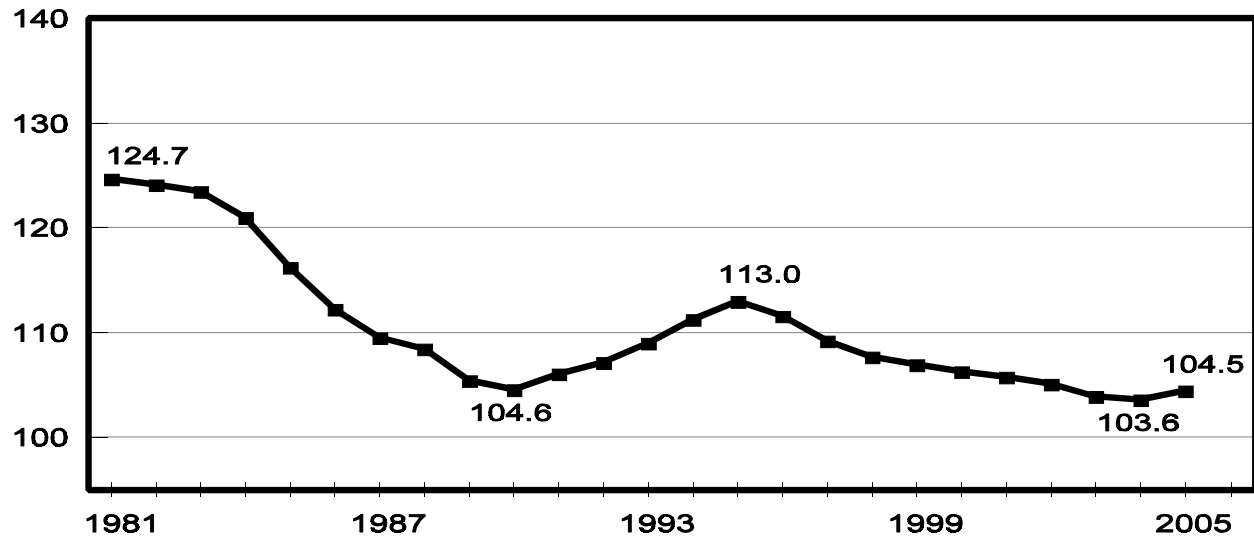
- **All heifers** 500 pounds and over, 16.2 million, up 2 percent.
- **Beef replacement heifers**, 5.0 million, up 4 percent.
- **Milk replacement heifers**, 3.7 million, up 3 percent.
- **Other heifers**, 7.5 million, down 1 percent.
- **Steers** weighing 500 pounds and over, 14.4 million, up 1 percent.
- **Bulls** weighing 500 pounds and over, 2.1 million, up 2 percent.
- **Calves under 500 pounds**, 29.0 million, up slightly.
- **All cattle and calves on feed** for slaughter, 12.0 million, up 2 percent.

## Calf Crop Up Slightly

The 2005 calf crop is expected to be 37.8 million, up slightly from 2004 but down slightly from 2003. Calves born during the first half of the year are estimated at 27.5 million, up slightly from 2004 but down 1 percent from 2003.

### United States Cattle Inventory July 1, 1981 - 2005

Million Head



---

This report was approved on July 22, 2005.

Secretary of  
Agriculture  
Mike Johanns

Agricultural Statistics Board  
Chairperson  
Rich Allen

**Cattle and Calves: Number by Class and Calf Crop,  
United States, July 1, 2003-2005**

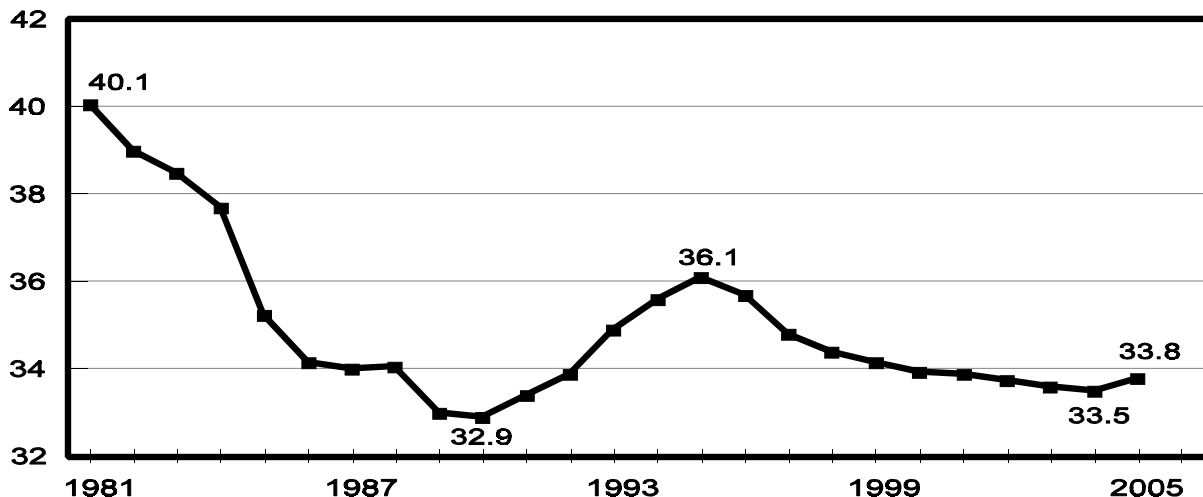
Class	2003	2004	2005	2005 as % of 2004
	<i>1,000 Head</i>	<i>1,000 Head</i>	<i>1,000 Head</i>	<i>Percent</i>
Cattle and Calves	103,900	103,600	104,500	101
Cows and Heifers That Have Calved	42,700	42,500	42,800	101
Beef Cows	33,600	33,500	33,750	101
Milk Cows	9,100	9,000	9,050	101
Heifers 500 Pounds and Over	15,900	15,950	16,200	102
For Beef Cow Replacement	4,600	4,800	5,000	104
For Milk Cow Replacement	3,600	3,600	3,700	103
Other Heifers	7,700	7,550	7,500	99
Steers 500 Pounds and Over	14,200	14,200	14,400	101
Bulls 500 Pounds and Over	2,100	2,050	2,100	102
Calves Under 500 Pounds	29,000	28,900	29,000	100
Calf Crop	37,903	37,625	37,800	100
Cattle on Feed	11,810	11,800	12,000	102

**Calf Crop: Number and Percent of Total by Six-Month Period,  
United States, 2003-2004 and Preliminary Calf Crop, 2005**

Period	2003		2004		2005	
	Number	% of Total	Number	% of Total	Number	% of Total
	<i>1,000 Hd</i>	<i>Percent</i>	<i>1,000 Hd</i>	<i>Percent</i>	<i>1,000 Hd</i>	<i>Percent</i>
Jan 1 - Jun 30	27,700	73.1	27,400	72.8	27,450	72.6
Jul 1 - Dec 31	10,203	26.9	10,225	27.2	10,350	27.4
Total	37,903	100.0	37,625	100.0	37,800	100.0

**United States Beef Cow Inventory  
July 1, 1981 - 2005**

Million Head



## Reliability of July 1 Cattle and Calves Estimates

**Survey Procedures:** A random sample of U.S. producers was surveyed to provide data for these estimates. Survey procedures ensured that all cattle producers, regardless of size, had a chance to be included in the survey. Data were collected during the first half of June from about 40,000 small and medium sized operations. These operators were contacted by face-to-face personal interviews. About 10,000 large producers and feedlots were contacted during the first half of July by mail, telephone, and face-to-face personal interviews. Operators were asked to report inventories as of the first of the month and calf crop for the entire year of 2005.

**Estimating Procedures:** These cattle estimates were prepared by the Agricultural Statistics Board after reviewing National and State indications and analysis. National and State survey data were reviewed for reasonableness with each other and with estimates from the previous year using a balance sheet. The balance sheet begins with the previous inventory estimate, adds to it estimates of births and imports for the first six months, and subtracts estimates of slaughter, exports, and deaths for the first six months of the current year. This indicated ending inventory level is compared to the Agricultural Statistics Board estimate for reasonableness.

**Revision Policy:** Revisions to previous estimates are made to improve year to year and item to item relationships. Estimates for the previous year are subject to revision when current estimates are made and when the January 1 cattle inventory estimates are made. The reviews are primarily based on livestock slaughter and additional foreign trade and survey data. Estimates will also be reviewed after data from the five-year Census of Agriculture are available. No revisions will be made after that date.

**Reliability:** Since all cattle operators are not included in the sample, survey estimates are subject to sampling variability. Survey results are also subject to non-sampling errors such as omissions, duplications, and mistakes in reporting, recording, and processing the data. The effects of these errors cannot be measured directly. They are minimized through rigid quality controls in the data collection process and through a careful review of all reported data for consistency and reasonableness.

To assist users in evaluating the reliability of estimates in this report, the "**Root Mean Square Error**" is shown for selected items in the following table. The "Root Mean Square Error" is a statistical measure based on past performance and is computed using the differences between first and latest estimates. The "Root Mean Square Error" for cattle inventory estimates over the past 20 years is 0.5 percent. This means that chances are 2 out of 3 that the final estimate will not be above or below the current estimate of 104.5 million head by more than 0.5 percent. Chances are 9 out of 10 that the difference will not exceed 0.8 percent.

The table below also shows a 20 year record of the range of differences between first and latest estimates for selected items. Using estimates of all cattle and calves as an example, changes between the first inventory estimate and the latest estimate during the past 20 years have averaged 333,000 head, ranging from 0 to 1,300,000 head. During this period the initial inventory estimate has been below the latest estimate 4 times, above the latest estimate 10 times, and unchanged 6 times. This does not imply that the July 1 estimate is likely to understate or overstate final inventory.

**Reliability of July 1 Cattle Estimates<sup>1 2</sup>**

Item	Root Mean Square Error	90 Percent Confidence Level		Difference Between First and Latest Estimates			Number of Years	
		Percent	Head	Average	Smallest	Largest	First Above Latest	First Below Latest
	<i>Percent</i>	<i>Percent</i>	<i>1,000 Head</i>	<i>1,000 Head</i>	<i>1,000 Head</i>	<i>1,000 Head</i>	<i>Number</i>	<i>Number</i>
All Cattle	0.5	0.8	877	333	0	1,300	10	4
All Cows	0.8	1.4	606	187	0	1,100	7	5
Calf Crop	1.6	2.7	1,029	497	23	1,236	15	5

<sup>1</sup> Based on data from July 1985 through July 2004.

<sup>2</sup> Data in the above table do not reflect the 1-3 percent changes made during the 1989-93 historic revision period. The root mean square error's would be about 1 percentage point higher if these were included.

## ACCESS TO REPORTS!!

---

For your convenience, there are several ways to obtain NASS reports, data products, and services:

### INTERNET ACCESS

All NASS reports are available free of charge on the worldwide Internet. For access, connect to the Internet and go to the NASS Home Page at: [www.usda.gov/nass/](http://www.usda.gov/nass/). Select "Today's Reports" or Publications and then Reports Calendar or Publications and then Search, by Title or Subject.

### E-MAIL SUBSCRIPTION

All NASS reports are available by subscription free of charge direct to your e-mail address. Starting with the NASS Home Page at [www.usda.gov/nass/](http://www.usda.gov/nass/), click on **Publications**, then click on the **Subscribe by E-mail** button which takes you to the page describing e-mail delivery of reports. Finally, click on **Go to the Subscription Page** and follow the instructions.

-----

### PRINTED REPORTS OR DATA PRODUCTS

**CALL OUR TOLL-FREE ORDER DESK: 800-999-6779 (U.S. and Canada)**  
**Other areas, please call 703-605-6220      FAX: 703-605-6900**  
**(Visa, MasterCard, check, or money order acceptable for payment.)**

-----

### ASSISTANCE

For **assistance** with general agricultural statistics or further information about NASS or its products or services, contact the **Agricultural Statistics Hotline** at **800-727-9540**, 7:30 a.m. to 4:00 p.m. ET, or e-mail: [nass@nass.usda.gov](mailto:nass@nass.usda.gov).

The U.S. Department of Agriculture (USDA) prohibits discrimination in all its programs and activities on the basis of race, color, national origin, sex, religion, age, disability, political beliefs, sexual orientation, and marital or family status. (Not all prohibited bases apply to all programs.) Persons with disabilities who require alternative means for communication of program information (Braille, large print, audiotape, etc.) should contact USDA's TARGET Center at 202-720-2600 (voice and TDD).

To file a complaint of discrimination, write USDA, Director, Office of Civil Rights, Room 326-W, Whitten Building, 14th and Independence Avenue, SW, Washington, DC 20250-9410 or call 202-720-5964 (voice and TDD). USDA is an equal opportunity provider and employer.