



NASS

FACT FINDERS FOR AGRICULTURE
UNITED STATES DEPARTMENT OF AGRICULTURE

Washington, D.C.

Cattle

Released July 20, 2007, by the National Agricultural Statistics Service (NASS), Agricultural Statistics Board, U.S. Department of Agriculture. For information on *Cattle* call Mike Miller at 202-720-3040, office hours 7:30 a.m. to 4:00 p.m. ET.

July 1 Cattle Inventory Down Slightly

All cattle and calves in the United States as of July 1, 2007, totaled 104.8 million head, slightly below the 105.2 million on July 1, 2006 but 1 percent above the 104.2 million two years ago.

All cows and heifers that have calved, at 42.5 million, were down slightly from the 42.6 million on July 1, 2006 but unchanged from two years ago.

- **Beef cows**, at 33.4 million, were down slightly from July 1, 2006 and July 1, 2005.
- **Milk cows**, at 9.15 million, were unchanged from July 1, 2006 but up 1 percent from two years ago.

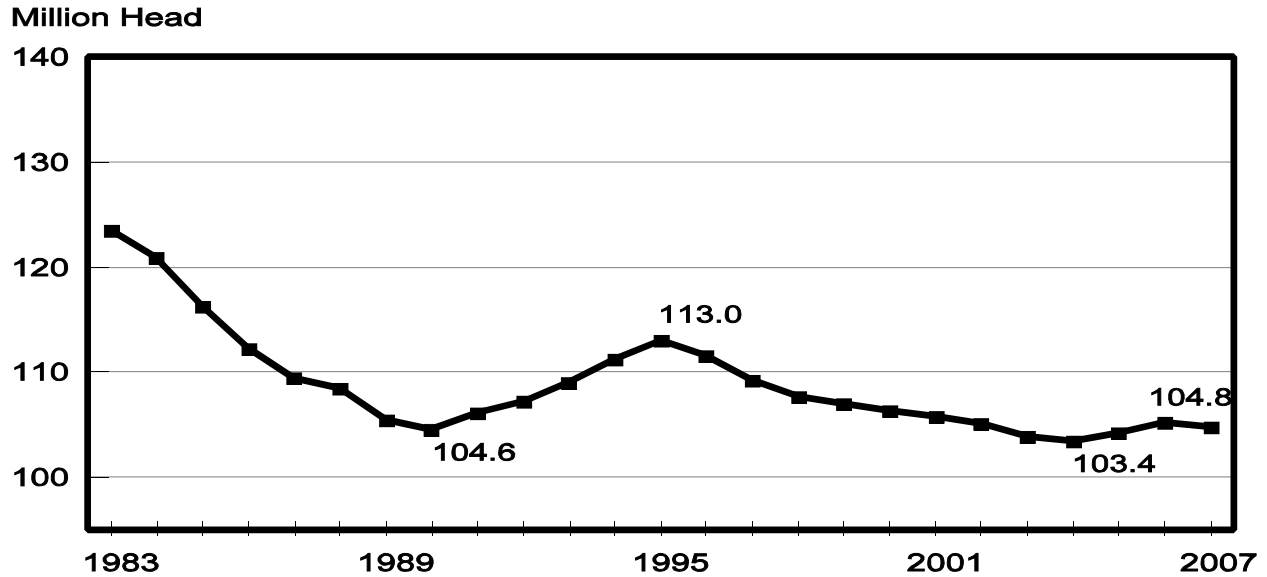
Other class estimates on July 1, 2007 and the changes from July 1, 2006, are as follows:

- **All heifers** 500 pounds and over, 16.6 million, unchanged.
- **Beef replacement heifers**, 4.7 million, down 6 percent.
- **Milk replacement heifers**, 3.9 million, up 3 percent.
- **Other heifers**, 8.0 million, up 3 percent.
- **Steers** weighing 500 pounds and over, 14.9 million, down 1 percent.
- **Bulls** weighing 500 pounds and over, 2.1 million, unchanged.
- **Calves under 500 pounds**, 28.7 million, down 1 percent.
- **All cattle and calves on feed** for slaughter, 12.3 million, down 2 percent.

Calf Crop Down Slightly

The 2007 calf crop is expected to be 37.4 million, down slightly from 2006 and 2005. Calves born during the first half of the year are estimated at 27.2 million, down 1 percent from 2006 and 2005.

United States Cattle Inventory July 1, 1983 - 2007



This report was approved on July 20, 2007.

Acting Secretary of
Agriculture
Charles F. Conner

Agricultural Statistics Board
Chairperson
Carol C. House

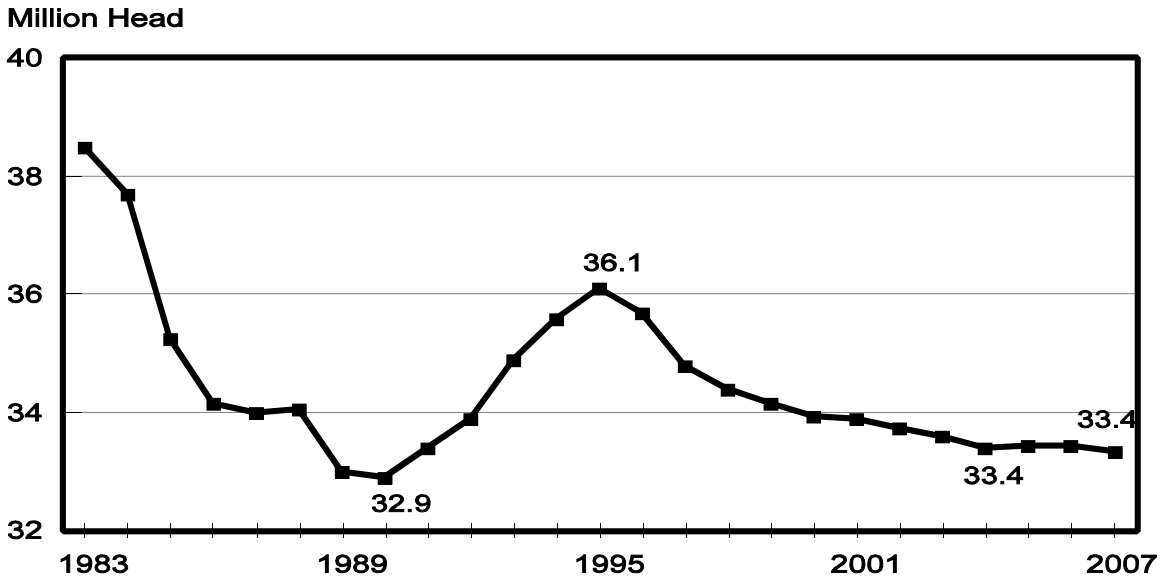
**Cattle and Calves: Number by Class and Calf Crop,
United States, July 1, 2005-2007**

| Class | 2005 | 2006 | 2007 | 2007 as % of 2006 |
|-----------------------------------|-------------------|-------------------|-------------------|----------------------|
| | <i>1,000 Head</i> | <i>1,000 Head</i> | <i>1,000 Head</i> | <i>Percent</i> |
| Cattle and Calves | 104,200 | 105,200 | 104,800 | 100 |
| Cows and Heifers That Have Calved | 42,500 | 42,600 | 42,500 | 100 |
| Beef Cows | 33,450 | 33,450 | 33,350 | 100 |
| Milk Cows | 9,050 | 9,150 | 9,150 | 100 |
| Heifers 500 Pounds and Over | 16,200 | 16,600 | 16,600 | 100 |
| For Beef Cow Replacement | 5,000 | 5,000 | 4,700 | 94 |
| For Milk Cow Replacement | 3,700 | 3,800 | 3,900 | 103 |
| Other Heifers | 7,500 | 7,800 | 8,000 | 103 |
| Steers 500 Pounds and Over | 14,500 | 15,000 | 14,900 | 99 |
| Bulls 500 Pounds and Over | 2,100 | 2,100 | 2,100 | 100 |
| Calves Under 500 Pounds | 28,900 | 28,900 | 28,700 | 99 |
| Calf Crop | 37,575 | 37,567 | 37,400 | 100 |
| Cattle on Feed | 12,000 | 12,500 | 12,300 | 98 |

**Calf Crop: Number and Percent of Total by Six-Month Period,
United States, 2005-2006 and Preliminary Calf Crop, 2007**

| Period | 2005 | | 2006 | | 2007 | |
|----------------|-----------------|----------------|-----------------|----------------|-----------------|----------------|
| | Number | % of Total | Number | % of Total | Number | % of Total |
| | <i>1,000 Hd</i> | <i>Percent</i> | <i>1,000 Hd</i> | <i>Percent</i> | <i>1,000 Hd</i> | <i>Percent</i> |
| Jan 1 - Jun 30 | 27,300 | 72.7 | 27,350 | 72.8 | 27,150 | 72.6 |
| Jul 1 - Dec 31 | 10,275 | 27.3 | 10,217 | 27.2 | 10,250 | 27.4 |
| Total | 37,575 | 100.0 | 37,567 | 100.0 | 37,400 | 100.0 |

**United States Beef Cow Inventory
July 1, 1983 - 2007**



Reliability of July 1 Cattle and Calves Estimates

Survey Procedures: A random sample of U.S. producers was surveyed to provide data for these estimates. Survey procedures ensured that all cattle producers, regardless of size, had a chance to be included in the survey. Data were collected during the first half of June from about 40,000 small and medium sized operations. These operators were contacted by face-to-face personal interviews. About 10,000 large producers and feedlots were contacted during the first half of July by mail, telephone, and face-to-face personal interviews. Operators were asked to report inventories as of the first of the month and calf crop for the entire year of 2007.

Estimating Procedures: These cattle estimates were prepared by the Agricultural Statistics Board after reviewing National and State indications and analysis. National and State survey data were reviewed for reasonableness with each other and with estimates from the previous year using a balance sheet. The balance sheet begins with the previous inventory estimate, adds to it estimates of births and imports for the first six months, and subtracts estimates of slaughter, exports, and deaths for the first six months of the current year. This indicated ending inventory level is compared to the Agricultural Statistics Board estimate for reasonableness.

Revision Policy: Revisions to previous estimates are made to improve year to year and item to item relationships. Estimates for the previous year are subject to revision when current estimates are made and when the January 1 cattle inventory estimates are made. The reviews are primarily based on livestock slaughter and additional foreign trade and survey data. Estimates will also be reviewed after data from the five-year Census of Agriculture are available. No revisions will be made after that date.

Reliability: Since all cattle operators are not included in the sample, survey estimates are subject to sampling variability. Survey results are also subject to non-sampling errors such as omissions, duplications, and mistakes in reporting, recording, and processing the data. The effects of these errors cannot be measured directly. They are minimized through rigid quality controls in the data collection process and through a careful review of all reported data for consistency and reasonableness.

To assist users in evaluating the reliability of estimates in this report, the "**Root Mean Square Error**" is shown for selected items in the following table. The "Root Mean Square Error" is a statistical measure based on past performance and is computed using the differences between first and latest estimates. The "Root Mean Square Error" for cattle inventory estimates over the past 20 years is 0.5 percent. This means that chances are 2 out of 3 that the final estimate will not be above or below the current estimate of 104.8 million head by more than 0.5 percent. Chances are 9 out of 10 that the difference will not exceed 0.9 percent.

The table below also shows a 20 year record of the range of differences between first and latest estimates for selected items. Using estimates of all cattle and calves as an example, changes between the first inventory estimate and the latest estimate during the past 20 years have averaged 400,000 head, ranging from 0 to 1,300,000 head. During this period the initial inventory estimate has been below the latest estimate 4 times, above the latest estimate 13 times, and unchanged 3 times. This does not imply that the July 1 estimate is likely to understate or overstate final inventory.

Reliability of July 1 Cattle Estimates ^{1 2}

| Item | Root Mean Square Error | 90 Percent Confidence Level | | Difference Between First and Latest Estimates | | | Number of Years | |
|------------|------------------------|-----------------------------|-------------------|---|-------------------|-------------------|--------------------|--------------------|
| | | Percent | Head | Average | Smallest | Largest | First Above Latest | First Below Latest |
| | <i>Percent</i> | <i>Percent</i> | <i>1,000 Head</i> | <i>1,000 Head</i> | <i>1,000 Head</i> | <i>1,000 Head</i> | <i>Number</i> | <i>Number</i> |
| All Cattle | 0.5 | 0.9 | 921 | 400 | 0 | 1,300 | 13 | 4 |
| All Cows | 0.9 | 1.5 | 643 | 240 | 0 | 1,100 | 10 | 5 |
| Calf Crop | 1.5 | 2.6 | 980 | 460 | 23 | 1,236 | 15 | 5 |

¹ Based on data from July 1987 through July 2006.

² Data in the above table do not reflect the 1-3 percent changes made during the 1989-93 historic revision period. The root mean square error's would be about 1 percentage point higher if these were included.

Information Contacts

Listed below are the commodity specialists in the Livestock Branch of the National Agricultural Statistics Service to contact for additional information.

- Dan Kerestes, Chief, Livestock Branch (202) 720-3570
- Shawn Clark, Head, Livestock Section (202) 720-3570
 - Bruce Boess - Hogs and Pigs (202) 720-3106
 - Shawn Clark - Dairy Products (202) 690-3236
 - Jason Hardegree - Milk Production and Milk Cows (202) 720-3278
 - Scott Hollis - Sheep & Lambs, Goats & Kids (202) 720-4751
 - Mike Miller - Cattle, Cattle on Feed (202) 720-3040
 - Benita Hodge - Livestock Slaughter (515) 284-4340
 - Charmaine Wilson - Dairy Products Prices (202) 690-2168

ACCESS TO REPORTS!!

For your convenience, there are several ways to obtain NASS reports, data products, and services:

INTERNET ACCESS

All NASS reports are available free of charge on the worldwide Internet. For access, connect to the Internet and go to the NASS Home Page at: www.nass.usda.gov.

E-MAIL SUBSCRIPTION

All NASS reports are available by subscription free of charge direct to your e-mail address. Starting with the NASS Home Page at www.nass.usda.gov, under the right navigation, *Receive reports by Email*, click on **National** or **State**. Follow the instructions on the screen.

PRINTED REPORTS OR DATA PRODUCTS

CALL OUR TOLL-FREE ORDER DESK: 800-999-6779 (U.S. and Canada)
Other areas, please call 703-605-6220 FAX: 703-605-6900
(Visa, MasterCard, check, or money order acceptable for payment.)

ASSISTANCE

For **assistance** with general agricultural statistics or further information about NASS or its products or services, contact the **Agricultural Statistics Hotline** at **800-727-9540**, 7:30 a.m. to 4:00 p.m. ET, or e-mail: nass@nass.usda.gov.

The U.S. Department of Agriculture (USDA) prohibits discrimination in all its programs and activities on the basis of race, color, national origin, age, disability, and where applicable, sex, marital status, familial status, parental status, religion, sexual orientation, genetic information, political beliefs, reprisal, or because all or a part of an individual's income is derived from any public assistance program. (Not all prohibited bases apply to all programs.) Persons with disabilities who require alternative means for communication of program information (Braille, large print, audiotape, etc.) should contact USDA's TARGET Center at (202) 720-2600 (voice and TDD).

To file a complaint of discrimination, write to USDA, Director, Office of Civil Rights, 1400 Independence Avenue, S.W., Washington, D.C. 20250-9410, or call (800) 795-3272 (voice) or (202) 720-6382 (TDD). USDA is an equal opportunity provider and employer.