

Cattle on Feed



USDA
Washington, D.C.

Released February 14, 1997, by the National Agricultural Statistics Service (NASS), Agricultural Statistics Board, U.S. Department of Agriculture. For information on "Cattle On Feed" call Dean Groskurth at (202) 720-3040, office hours 8:00 a.m. to 4:30 p.m. ET. For assistance with general agricultural statistics, information about NASS, its products or services, contact the NASS Information Hotline at 1-800-727-9540 or E-mail: nass@nass.usda.gov. The "Cattle On Feed" U.S. Summary is available on AutoFax, (202) 720-2000, report 3100. See page 24.

U.S. Cattle on Feed Up 4 Percent

Cattle and calves on feed for slaughter market in the United States for feedlots with capacity of 1,000 or more head totaled 10.31 million head on February 1, 1997. The inventory was 4 percent above February 1, 1996.

Placements in feedlots during January totaled 1.87 million, 21 percent above 1996. Net placements were 1.78 million. During January, placements of cattle and calves weighing less than 600 pounds were 408,000, 600-699 pounds were 652,000, 700-799 pounds were 515,000, and 800 pounds and greater were 292,000.

Marketings of fed cattle during January totaled 2.02 million, 5 percent above 1996.

Other disappearance totaled 92,000 during January, 42 percent above the previous year.

Cattle on Feed in Historic 7 States Up 6 Percent

Cattle on feed February 1, 1997, in the historic 7 States for feedlots with capacity of 1,000 or more head totaled 8.78 million, up 6 percent from the previous year and 8 percent above February 1, 1995.

Placements in feedlots during January totaled 1.64 million, 25 percent above 1996 and 1 percent above 1995.

Marketings during January totaled 1.74 million, 7 percent above 1996 and 17 percent above 1995.

Other disappearance during January was 65,000 head, 33 percent above 1996 and 10 percent above 1995.

1996 Cattle on Feed and Annual Size Group Estimates

This report contains all of the 1996 cattle on feed estimates for feedlots with capacity of 1,000 or more head. The only revisions made were to February 1, 1996 estimates. Also included are the number of feedlots, inventory, and annual marketings by size group for 1996.

**Cattle on Feed: Number on Feed, Placements, Marketings, and
Other Disappearance, 1,000+ Capacity Feedlots,
United States, February 1, 1996-97**

Item	Number		1997 as % of
	1996	1997	1996
	<i>1,000 Head</i>	<i>1,000 Head</i>	<i>Percent</i>
On Feed Jan ¹	10,346	10,558	102
Placed on Feed During Jan	*1,549	1,867	121
Fed Cattle Marketed During Jan	*1,930	2,022	105
Other Disappearance During Jan ²	65	92	142
On Feed Feb 1 ¹	9,900	10,311	104

* Revised.

¹ Cattle and calves on feed are animals for slaughter market being fed a ration of grain or other concentrates and are expected to produce a carcass that will grade select or better.

² Includes death losses, movement from feedlots to pastures and shipments to other feedlots for further feeding.

**Cattle on Feed: Number on Feed, Placements, Marketings, and
Other Disappearance, 1,000+ Capacity Feedlots,
United States, January 1, 1996-97**

Item	Number		1997 as % of
	1996	1997	1996
	<i>1,000 Head</i>	<i>1,000 Head</i>	<i>Percent</i>
On Feed Dec 1 ¹	10,347	10,633	103
Placed on Feed During Dec	1,728	1,695	98
Fed Cattle Marketed During Dec	1,661	1,684	101
Other Disappearance During Dec ²	68	86	126
On Feed Jan 1 ¹	10,346	10,558	102

¹ Cattle and calves on feed are animals for slaughter market being fed a ration of grain or other concentrates and are expected to produce a carcass that will grade select or better.

² Includes death losses, movement from feedlots to pastures and shipments to other feedlots for further feeding.

**Cattle on Feed: Number on Feed, Placements, Marketings, and
Other Disappearance, 1,000+ Capacity Feedlots,
7 States, February 1, 1995-97**

Item	Number			1997 as % of	
	1995	1996	1997	1995	1996
	<i>1,000 Head</i>	<i>1,000 Head</i>	<i>1,000 Head</i>	<i>Percent</i>	<i>Percent</i>
On Feed Jan ¹	8,031	8,667	8,943	111	103
Placed on Feed During Jan	1,631	*1,312	1,643	101	125
Fed Cattle Marketed During Jan	1,484	*1,626	1,738	117	107
Other Disappearance During Jan ²	59	49	65	110	133
On Feed Feb 1 ¹	8,119	8,304	8,783	108	106

* Revised.

¹ Cattle and calves on feed are animals for slaughter market being fed a ration of grain or other concentrates and are expected to produce a carcass that will grade select or better.

² Includes death losses, movement from feedlots to pastures and shipments to other feedlots for further feeding.

**Cattle on Feed: Number on Feed, Placements, Marketings, and
Other Disappearance, 1,000+ Capacity Feedlots,
7 States, January 1, 1995-97**

Item	Number			1997 as % of	
	1995	1996	1997	1995	1996
	<i>1,000 Head</i>	<i>1,000 Head</i>	<i>1,000 Head</i>	<i>Percent</i>	<i>Percent</i>
On Feed Dec 1 ¹	8,198	8,685	9,003	110	104
Placed on Feed During Dec	1,345	1,446	1,423	106	98
Fed Cattle Marketed During Dec	1,432	1,412	1,415	99	100
Other Disappearance During Dec ²	80	52	68	85	131
On Feed Jan 1 ¹	8,031	8,667	8,943	111	103

¹ Cattle and calves on feed are animals for slaughter market being fed a ration of grain or other concentrates and are expected to produce a carcass that will grade select or better.

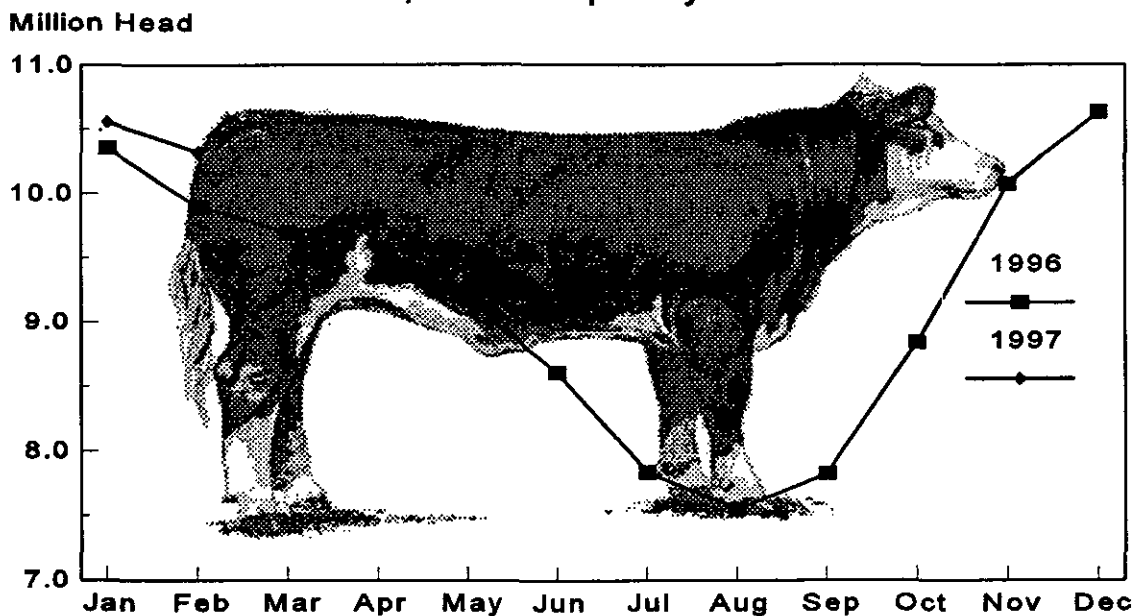
² Includes death losses, movement from feedlots to pastures and shipments to other feedlots for further feeding.

**Cattle on Feed: Number on Feed, 1,000+ Capacity Feedlots,
by Month, State, and United States 1996-97¹**

State	Feb 1, 1996	Jan 1, 1997	Feb 1, 1997		
			Number	as % of 1996	as % of Jan
	<i>1,000 Head</i>	<i>1,000 Head</i>	<i>1,000 Head</i>	<i>Percent</i>	<i>Percent</i>
AZ	204	233	223	109	96
CA	340	375	370	109	99
CO	1,000	1,110	1,050	105	95
ID	235	260	235	100	90
IA	370	355	360	97	101
KS	2,060	2,190	2,190	106	100
NE	1,870	2,060	2,070	111	100
NM	120	137	129	108	94
OK	400	395	390	98	99
SD	180	168	157	87	93
TX	2,460	2,620	2,520	102	96
WA	151	155	137	91	88
Oth Sts	510	500	480	94	96
US	9,900	10,558	10,311	104	98

¹ Cattle and calves on feed are animals for slaughter market being fed a ration of grain or other concentrates and are expected to produce a carcass that will grade select or better.

**United States Cattle on Feed
1,000+ Capacity Feedlots**



**Cattle on Feed: Number Placed on Feed, 1,000+ Capacity Feedlots,
by Month, State, and United States 1996-97**

State	During Jan 1996	During Dec 1996	During Jan 1997		
			Number	as % of 1996	as % of Dec
	<i>1,000 Head</i>	<i>1,000 Head</i>	<i>1,000 Head</i>	<i>Percent</i>	<i>Percent</i>
AZ	15	28	28	187	100
CA	50	60	50	100	83
CO	180	*175	220	122	126
ID	28	41	35	125	85
IA	50	35	45	90	129
KS	*340	*390	490	144	126
NE	360	375	425	118	113
NM	10	22	12	120	55
OK	70	73	72	103	99
SD	25	27	22	88	81
TX	317	360	385	121	107
WA	29	29	28	97	97
Oth Sts	75	80	55	73	69
US	*1,549	1,695	1,867	121	110

* Revised.

**Cattle on Feed: Number Placed on Feed by Weight Group, 1,000+ Capacity
Feedlots, by Month, State, and United States, 1995-97**

State	During January									
	Less 600		600-699		700-799		800 Plus		Total	
	1996	1997	1996	1997	1996	1997	1996	1997	1996	1997
	<i>1,000 Head</i>	<i>1,000 Head</i>	<i>1,000 Head</i>	<i>1,000 Head</i>	<i>1,000 Head</i>	<i>1,000 Head</i>	<i>1,000 Head</i>	<i>1,000 Head</i>	<i>1,000 Head</i>	<i>1,000 Head</i>
CO	15	28	50	55	75	83	40	54	180	220
KS	*47	82	*137	210	*110	144	*46	54	*340	490
NE	32	67	120	144	127	114	81	100	360	425
TX	79	119	143	158	82	89	13	19	317	385
Oth Sts	87	112	100	85	105	85	60	65	352	347
US	*260	408	*550	652	*499	515	*240	292	*1,549	1,867
	During December									
	Less 600		600-699		700-799		800 Plus		Total	
	1995	1996	1995	1996	1995	1996	1995	1996	1995	1996
	<i>1,000 Head</i>	<i>1,000 Head</i>	<i>1,000 Head</i>	<i>1,000 Head</i>	<i>1,000 Head</i>	<i>1,000 Head</i>	<i>1,000 Head</i>	<i>1,000 Head</i>	<i>1,000 Head</i>	<i>1,000 Head</i>
CO	32	*32	60	*58	55	*50	32	*35	179	*175
KS	105	*88	144	*148	118	*104	43	*50	410	*390
NE	55	81	122	100	106	114	87	80	370	375
TX	120	123	183	144	56	75	15	18	374	360
Oth Sts	145	155	100	85	75	75	75	80	395	395
US	457	*479	609	*535	410	418	252	*263	1,728	1,695

* Revised.

**Cattle on Feed: Number Marketed, 1,000+ Capacity Feedlots,
by Month, State, and United States 1996-97**

State	During Jan 1996	During Dec 1996	During Jan 1997		
			Number	as % of 1996	as % of Dec
	<i>1,000 Head</i>	<i>1,000 Head</i>	<i>1,000 Head</i>	<i>Percent</i>	<i>Percent</i>
AZ	32	31	34	106	110
CA	50	45	45	90	100
CO	225	*170	270	120	159
ID	51	59	56	110	95
IA	54	34	39	72	115
KS	*430	*420	480	112	114
NE	380	355	400	105	113
NM	24	17	19	79	112
OK	80	70	74	93	106
SD	31	20	26	84	130
TX	455	360	470	103	131
WA	38	48	44	116	92
Oth Sts	80	55	65	81	118
US	*1,930	1,684	2,022	105	120

* Revised.

**Cattle on Feed: Other Disappearance, 1,000+ Capacity Feedlots,
by Month, State, and United States 1996-97¹**

State	During Jan 1996	During Dec 1996	During Jan 1997		
			Number	as % of 1996	as % of Dec
	<i>1,000 Head</i>	<i>1,000 Head</i>	<i>1,000 Head</i>	<i>Percent</i>	<i>Percent</i>
AZ	1	2	4	400	200
CA	10	10	10	100	100
CO	5	5	10	200	200
ID	2	7	4	200	57
IA	1	1	1	100	100
KS	10	20	10	100	50
NE	10	10	15	150	150
NM	2	1	1	50	100
OK	2	3	3	150	100
SD	4	1	7	175	700
TX	12	20	15	125	75
WA	1	1	2	200	200
Oth Sts	5	5	10	200	200
US	65	86	92	142	107

¹ Includes death losses, movement from feedlots to pastures, and shipments to other feedlots for further feeding.

**Cattle on Feed: Number on Feed, 1,000+ Capacity Feedlots,
by Month, State, 7-States, and United States, 1996 ¹**

State	Jan 1	Feb 1	Mar 1	Apr 1	May 1	Jun 1
	<i>1,000 Head</i>	<i>1,000 Head</i>	<i>1,000 Head</i>	<i>1,000 Head</i>	<i>1,000 Head</i>	<i>1,000 Head</i>
AZ	222	204	202	206	188	183
CA	350	340	320	305	305	325
CO	1,050	1,000	990	1,030	1,000	890
ID	260	235	220	235	225	230
IA	375	370	370	355	325	295
KS	2,160	2,060	2,020	2,080	2,010	1,850
NE	1,900	1,870	1,880	1,900	1,740	1,530
NM	136	120	116	102	91	92
OK	412	400	390	400	380	355
SD	190	180	177	177	172	146
TX	2,610	2,460	2,370	2,410	2,190	2,180
WA	161	151	141	142	127	135
7 States	8,667	8,304	8,152	8,286	7,758	7,253
Oth Sts	520	510	500	470	420	390
US	10,346	9,900	9,696	9,812	9,173	8,601
	Jul 1	Aug 1	Sep 1	Oct 1	Nov 1	Dec 1
	<i>1,000 Head</i>	<i>1,000 Head</i>	<i>1,000 Head</i>	<i>1,000 Head</i>	<i>1,000 Head</i>	<i>1,000 Head</i>
AZ	173	177	182	201	224	238
CA	345	345	350	355	355	370
CO	750	660	710	960	1,080	1,110
ID	225	230	250	275	285	285
IA	250	225	230	260	315	355
KS	1,690	1,700	1,790	1,930	2,170	2,240
NE	1,280	1,210	1,310	1,570	1,890	2,050
NM	98	94	90	95	129	133
OK	330	315	300	330	375	395
SD	121	105	101	110	130	162
TX	2,090	2,020	2,040	2,210	2,500	2,640
WA	138	145	168	185	180	175
7 States	6,578	6,337	6,612	7,486	8,534	9,003
Oth Sts	350	320	310	360	440	480
US	7,840	7,546	7,831	8,841	10,073	10,633

¹ Cattle and calves on feed are animals for slaughter market being fed a ration of grain or other concentrates and are expected to produce a carcass that will grade select or better.

**Cattle on Feed: Number Placed on Feed, 1,000+ Capacity Feedlots,
by Month, State, 7 States, and United States, 1995-96**

State	During					
	Dec	Jan	Feb	Mar	Apr	May
	<i>1,000 Head</i>	<i>1,000 Head</i>	<i>1,000 Head</i>	<i>1,000 Head</i>	<i>1,000 Head</i>	<i>1,000 Head</i>
AZ	23	15	27	37	27	37
CA	45	50	40	40	55	75
CO	179	180	215	240	130	85
ID	31	28	39	50	40	54
IA	45	50	54	44	33	33
KS	410	*340	360	430	345	300
NE	370	360	370	350	230	270
NM	14	10	15	27	21	28
OK	68	70	73	82	55	69
SD	40	25	33	27	20	12
TX	374	317	375	525	330	500
WA	24	29	32	31	18	34
7 States	1,446	*1,312	1,441	1,666	1,150	1,300
Oth Sts	105	75	80	65	60	60
US	1,728	*1,549	1,713	1,948	1,364	1,557
	During					
	Jun	Jul	Aug	Sep	Oct	Nov
	<i>1,000 Head</i>	<i>1,000 Head</i>	<i>1,000 Head</i>	<i>1,000 Head</i>	<i>1,000 Head</i>	<i>1,000 Head</i>
AZ	31	41	40	48	51	43
CA	70	50	55	55	55	70
CO	80	145	275	405	275	195
ID	51	59	67	73	75	70
IA	22	32	55	74	105	80
KS	310	495	570	520	610	500
NE	190	310	460	565	640	480
NM	21	14	14	16	56	29
OK	60	74	68	85	119	87
SD	13	14	21	40	45	50
TX	365	410	510	600	800	585
WA	37	42	55	47	41	34
7 States	1,068	1,483	1,965	2,267	2,536	1,953
Oth Sts	55	60	75	125	135	125
US	1,305	1,746	2,265	2,653	3,007	2,348

* Revised.

**Cattle on Feed: Number Placed on Feed by Weight Group, 1,000+ Capacity
Feedlots, by Month, State, and United States, 1995-96**

State	During December				
	Less 600	600-699	700-799	800 Plus	Total
	<i>1,000 Head</i>	<i>1,000 Head</i>	<i>1,000 Head</i>	<i>1,000 Head</i>	<i>1,000 Head</i>
CO	32	60	55	32	179
KS	105	144	118	43	410
NE	55	122	106	87	370
TX	120	183	56	15	374
Oth Sts	145	100	75	75	395
US	457	609	410	252	1,728
	During January				
	Less 600	600-699	700-799	800 Plus	Total
	<i>1,000 Head</i>	<i>1,000 Head</i>	<i>1,000 Head</i>	<i>1,000 Head</i>	<i>1,000 Head</i>
CO	15	50	75	40	180
KS	*47	*137	*110	*46	*340
NE	32	120	127	81	360
TX	79	143	82	13	317
Oth Sts	87	100	105	60	352
US	*260	*550	*499	*240	*1,549
	During February				
	Less 600	600-699	700-799	800 Plus	Total
	<i>1,000 Head</i>	<i>1,000 Head</i>	<i>1,000 Head</i>	<i>1,000 Head</i>	<i>1,000 Head</i>
CO	10	38	105	62	215
KS	32	134	143	51	360
NE	32	106	145	87	370
TX	60	180	116	19	375
Oth Sts	95	108	120	70	393
US	229	566	629	289	1,713

See footnotes at end of table.

-continued

**Cattle on Feed: Number Placed on Feed by Weight Group, 1,000+ Capacity
Feedlots, by Month, State, and United States, 1995-96 (continued)**

State	During March				
	Less 600	600-699	700-799	800 Plus	Total
	<i>1,000 Head</i>	<i>1,000 Head</i>	<i>1,000 Head</i>	<i>1,000 Head</i>	<i>1,000 Head</i>
CO	10	40	110	80	240
KS	39	124	180	87	430
NE	24	87	147	92	350
TX	89	200	205	31	525
Oth Sts	100	93	130	80	403
US	262	544	772	370	1,948
	During April				
	Less 600	600-699	700-799	800 Plus	Total
	<i>1,000 Head</i>	<i>1,000 Head</i>	<i>1,000 Head</i>	<i>1,000 Head</i>	<i>1,000 Head</i>
CO	12	23	55	40	130
KS	30	100	141	74	345
NE	17	58	83	72	230
TX	50	135	109	36	330
Oth Sts	95	70	90	74	329
US	204	386	478	296	1,364
	During May				
	Less 600	600-699	700-799	800 Plus	Total
	<i>1,000 Head</i>	<i>1,000 Head</i>	<i>1,000 Head</i>	<i>1,000 Head</i>	<i>1,000 Head</i>
CO	6	18	30	31	85
KS	26	82	129	63	300
NE	9	34	104	123	270
TX	150	150	155	45	500
Oth Sts	115	67	110	110	402
US	306	351	528	372	1,557

See footnotes at end of table.

--continued

**Cattle on Feed: Number Placed on Feed by Weight Group, 1,000+ Capacity
Feedlots, by Month, State, and United States, 1995-96 (continued)**

State	During June				
	Less 600	600-699	700-799	800 Plus	Total
	<i>1,000 Head</i>	<i>1,000 Head</i>	<i>1,000 Head</i>	<i>1,000 Head</i>	<i>1,000 Head</i>
CO	8	10	31	31	80
KS	48	96	105	61	310
NE	10	32	57	91	190
TX	102	139	84	40	365
Oth Sts	105	65	90	100	360
US	273	342	367	323	1,305
	During July				
	Less 600	600-699	700-799	800 Plus	Total
	<i>1,000 Head</i>	<i>1,000 Head</i>	<i>1,000 Head</i>	<i>1,000 Head</i>	<i>1,000 Head</i>
CO	15	30	55	45	145
KS	68	126	200	101	495
NE	23	54	107	126	310
TX	131	131	103	45	410
Oth Sts	106	65	105	110	386
US	343	406	570	427	1,746
	During August				
	Less 600	600-699	700-799	800 Plus	Total
	<i>1,000 Head</i>	<i>1,000 Head</i>	<i>1,000 Head</i>	<i>1,000 Head</i>	<i>1,000 Head</i>
CO	11	25	121	118	275
KS	50	138	250	132	570
NE	22	57	184	197	460
TX	173	148	138	51	510
Oth Sts	115	70	115	150	450
US	371	438	808	648	2,265

See footnotes at end of table.

--continued

**Cattle on Feed: Number Placed on Feed by Weight Group, 1,000+ Capacity
Feedlots, by Month, State, and United States, 1995-96 (continued)**

State	During September				
	Less 600	600-699	700-799	800 Plus	Total
	<i>1,000 Head</i>	<i>1,000 Head</i>	<i>1,000 Head</i>	<i>1,000 Head</i>	<i>1,000 Head</i>
CO	18	34	160	193	405
KS	69	135	172	144	520
NE	37	95	178	255	565
TX	156	156	204	84	600
Oth Sts	133	100	160	170	563
US	413	520	874	846	2,653
	During October				
	Less 600	600-699	700-799	800 Plus	Total
	<i>1,000 Head</i>	<i>1,000 Head</i>	<i>1,000 Head</i>	<i>1,000 Head</i>	<i>1,000 Head</i>
CO	53	50	99	73	275
KS	114	172	197	127	610
NE	178	135	153	174	640
TX	256	232	232	80	800
Oth Sts	245	135	145	157	682
US	846	724	826	611	3,007
	During November				
	Less 600	600-699	700-799	800 Plus	Total
	<i>1,000 Head</i>	<i>1,000 Head</i>	<i>1,000 Head</i>	<i>1,000 Head</i>	<i>1,000 Head</i>
CO	50	52	60	33	195
KS	122	174	138	66	500
NE	159	130	94	97	480
TX	228	199	135	23	585
Oth Sts	250	125	110	103	588
US	809	680	537	322	2,348

* Revised.

**Cattle on Feed: Number Marketed, 1,000+ Capacity Feedlots,
by Month, State, 7 States, and United States, 1995-96**

State	During					
	Dec	Jan	Feb	Mar	Apr	May
	<i>1,000 Head</i>	<i>1,000 Head</i>	<i>1,000 Head</i>	<i>1,000 Head</i>	<i>1,000 Head</i>	<i>1,000 Head</i>
AZ	24	32	28	33	41	42
CA	45	50	50	45	45	50
CO	155	225	220	195	155	185
ID	42	51	53	33	39	41
IA	49	54	53	58	62	60
KS	390	*430	385	360	400	450
NE	380	380	350	320	370	460
NM	11	24	18	37	31	26
OK	71	80	81	70	73	92
SD	24	31	34	26	23	34
TX	369	455	455	465	540	500
WA	41	38	38	29	32	25
7 States	1,412	*1,626	1,541	1,476	1,613	1,747
Oth Sts	60	80	80	85	85	80
US	1,661	*1,930	1,845	1,756	1,896	2,045
	During					
	Jun	Jul	Aug	Sep	Oct	Nov
	<i>1,000 Head</i>	<i>1,000 Head</i>	<i>1,000 Head</i>	<i>1,000 Head</i>	<i>1,000 Head</i>	<i>1,000 Head</i>
AZ	40	37	34	29	27	24
CA	45	45	45	45	50	50
CO	215	230	220	150	150	160
ID	51	51	44	45	59	62
IA	66	56	49	43	49	39
KS	460	470	475	370	350	410
NE	430	370	350	290	310	310
NM	14	14	15	10	19	21
OK	83	87	82	52	71	64
SD	34	29	25	30	25	17
TX	440	470	480	415	495	425
WA	33	34	31	29	42	38
7 States	1,696	1,678	1,653	1,342	1,431	1,418
Oth Sts	85	85	80	65	50	75
US	1,996	1,978	1,930	1,573	1,697	1,695

* Revised.

**Cattle on Feed: Other Disappearance, 1,000+ Capacity Feedlots,
by Month, State, 7 States, and United States, 1995-96¹**

State	During					
	Dec	Jan	Feb	Mar	Apr	May
	<i>1,000 Head</i>	<i>1,000 Head</i>	<i>1,000 Head</i>	<i>1,000 Head</i>	<i>1,000 Head</i>	<i>1,000 Head</i>
AZ	1	1	1	0	4	0
CA	10	10	10	10	10	5
CO	5	5	5	5	5	10
ID	4	2	1	2	11	8
IA	1	1	1	1	1	3
KS	10	10	15	10	15	10
NE	10	10	10	10	20	20
NM	3	2	1	4	1	1
OK	2	2	2	2	2	2
SD	1	4	2	1	2	4
TX	15	12	10	20	10	10
WA	1	1	4	1	1	1
7 States	52	49	52	56	65	58
Oth Sts	5	5	10	10	25	10
US	68	65	72	76	107	84
	During					
	Jun	Jul	Aug	Sep	Oct	Nov
	<i>1,000 Head</i>	<i>1,000 Head</i>	<i>1,000 Head</i>	<i>1,000 Head</i>	<i>1,000 Head</i>	<i>1,000 Head</i>
AZ	1	0	1	0	1	5
CA	5	5	5	5	5	5
CO	5	5	5	5	5	5
ID	5	3	3	3	6	8
IA	1	1	1	1	1	1
KS	10	15	5	10	20	20
NE	10	10	10	15	10	10
NM	1	4	3	1	3	4
OK	2	2	1	3	3	3
SD	4	1	0	1	0	1
TX	15	10	10	15	15	20
WA	1	1	1	1	4	1
7 States	47	46	37	51	57	66
Oth Sts	10	5	5	10	5	10
US	70	62	50	70	78	93

¹ Includes death losses, movement from feedlots to pastures, and shipments to other feedlots for further feeding.

**Cattle on Feed: Number on Feed by Class, 1,000+ Capacity Feedlots,
by Quarter, State, 7-States, and United States, 1996**

State	Steers & Steer Calves				Heifers & Heifer Calves			
	Jan 1	Apr 1	Jul 1	Oct 1	Jan 1	Apr 1	Jul 1	Oct 1
	<i>1,000 Head</i>	<i>1,000 Head</i>	<i>1,000 Head</i>	<i>1,000 Head</i>	<i>1,000 Head</i>	<i>1,000 Head</i>	<i>1,000 Head</i>	<i>1,000 Head</i>
AZ	204	191	160	185	18	15	13	16
CA	310	270	310	320	38	33	34	34
CO	580	620	450	570	460	400	295	380
ID	191	159	163	195	69	74	61	78
IA	229	224	147	161	145	130	103	99
KS	1,420	1,350	1,030	1,210	700	720	640	710
NE	1,120	1,140	740	880	760	750	530	680
NM	77	60	56	51	58	42	42	44
OK	242	250	205	200	170	150	123	130
SD	98	102	67	66	88	73	52	43
TX	1,725	1,580	1,340	1,330	884	829	749	879
WA	99	91	85	111	62	51	53	74
7 States	5,588	5,375	4,177	4,656	3,005	2,877	2,364	2,798
Oth Sts	340	315	255	270	175	150	90	85
US	6,635	6,352	5,008	5,549	3,627	3,417	2,785	3,252
Cow and Bulls								
	Jan 1	Apr 1	Jul 1	Oct 1				
	<i>1,000 Head</i>	<i>1,000 Head</i>	<i>1,000 Head</i>	<i>1,000 Head</i>				
AZ		0	0	0	0	0	0	0
CA		2	2	2	1	1	1	1
CO		10	10	10	5	5	5	10
ID		0	2	1	1	1	2	2
IA		1	1	1	0	0	0	0
KS		40	10	10	20	20	10	10
NE		20	10	10	10	10	10	10
NM		1	0	0	0	0	0	0
OK		0	0	0	2	2	0	0
SD		4	2	2	2	2	1	1
TX		1	1	1	1	1	1	1
WA		0	0	0	0	0	0	0
7 States		74	34	34	37	37	32	32
Oth Sts		5	5	5	5	5	5	5
US		84	43	43	47	47	40	40

**Cattle on Feed: Number of Feedlots, January 1 Inventory, and Marketings,
by Size of Feedlot, State, and United States 1995-96 ¹**

Year and State	Feedlot Capacity in Number of Head					
	1,000 - 1,999			2,000 - 3,999		
	Lots	Jan 1 Inventory	Cattle Marketed	Lots	Jan 1 Inventory	Cattle Marketed
	<i>Number</i>	<i>1,000 Head</i>	<i>1,000 Head</i>	<i>Number</i>	<i>1,000 Head</i>	<i>1,000 Head</i>
1995						
AZ				3	27	213
CA	28	26	212			
CO	51	40	60	45	60	125
ID	21	7	15	16	16	27
IA	185	167	300	295	208	2406
KS	137	70	65	45	65	95
NE	271	150	319	171	240	530
NM						
OK	24	27	25			
SD	50	44	57	38	55	90
TX	10	12	24	9	43	43
WA	28	25	210			
Oth Sts						
US						
1996						
AZ				3	210	212
CA	26	26	29			
CO	48	35	55	44	60	85
ID	18	10	15	16	11	28
IA	200	154	258	2110	201	2365
KS	58	37	50	40	47	100
NE	285	170	335	175	250	490
NM	23	210	217			
OK	24	24	213			
SD	50	35	59	38	51	82
TX	10	10	17	13	25	43
WA	24	21	23			
Oth Sts	199	150	220	95	125	240
US	875	604	1,015	515	700	1,291

See footnotes at end of table.

-continued

**Cattle on Feed: Number of Feedlots, January 1 Inventory, and Marketings,
by Size of Feedlot, State, and United States 1995-96 ¹ (continued)**

Year and State	Feedlot Capacity in Number of Head					
	16,000 - 31,999			32,000 and Over		
	Lots	Jan 1 Inventory	Cattle Marketed	Lots	Jan 1 Inventory	Cattle Marketed
	<i>Number</i>	<i>1,000 Head</i>	<i>1,000 Head</i>	<i>Number</i>	<i>1,000 Head</i>	<i>1,000 Head</i>
1995						
AZ	3	51	100	3	164	267
CA	5	92	89	6	219	438
CO	11	270	510	8	400	1,210
ID						
IA						
KS	44	890	1,650	15	695	1,795
NE	25	420	970	6	220	520
NM						
OK	3	66	148	6	270	610
SD						
TX	29	645	1,215	40	1,500	3,450
WA	²⁵	² 143	² 327			
Oth Sts						
US						
1996						
AZ	3	57	96	3	166	290
CA	6	106	111	6	223	400
CO	10	205	440	8	470	1,160
ID						
IA						
KS	43	945	2,050	15	710	1,800
NE	25	440	960	6	240	540
NM	²⁵	² 109	² 184			
OK	3	65	147	6	255	619
SD						
TX	34	660	1,310	40	1,590	3,490
WA	²⁵	² 137	² 379			
Oth Sts	5	83	165			
US	138	2,707	5,612	91	3,943	8,991

See footnotes at end of table.

-continued

**Cattle on Feed: Number of Feedlots, January 1 Inventory, and Marketings,
by Size of Feedlot, State, and United States 1995-96¹ (continued)**

Year and State	Feedlot Capacity in Number of Head					
	4,000 - 7,999			8,000 - 15,999		
	Lots	Jan 1 Inventory	Cattle Marketed	Lots	Jan 1 Inventory	Cattle Marketed
<i>Number</i>	<i>1,000 Head</i>	<i>1,000 Head</i>	<i>Number</i>	<i>1,000 Head</i>	<i>1,000 Head</i>	
1995						
AZ						
CA	7	17	30	6	16	26
CO	29	120	200	23	160	320
ID	10	27	55	² 13	² 210	² 475
IA						
KS	25	120	250	34	320	975
NE	125	400	930	57	470	1,020
NM						
OK	5	16	23	5	53	85
SD	12	42	79	² 5	² 49	² 104
TX	16	155	166	31	255	630
WA	4	4	8	3	9	18
Oth Sts						
US						
1996						
AZ						
CA	6	21	27	4	19	18
CO	32	105	175	24	235	360
ID	11	29	46	² 15	² 210	² 499
IA						
KS	28	116	260	36	335	720
NE	120	450	870	59	510	1,100
NM				3	18	45
OK	7	23	39	5	48	87
SD	13	41	81	² 5	² 41	² 106
TX	25	90	180	28	245	460
WA	3	9	16	3	8	19
Oth Sts	36	110	210	5	32	70
US	304	1,061	2,019	187	1,543	3,097

See footnotes at end of table.

--continued

**Cattle on Feed: Number of Feedlots, January 1 Inventory, and Marketings,
by Size of Feedlot, State, and United States 1995-96¹ (continued)**

Year and State	Feedlot Capacity in Number of Head		
	Total - 1,000+ Capacity Feedlots		
	Lots	Jan 1 Inventory	Cattle Marketed
	<i>Number</i>	<i>1,000 Head</i>	<i>1,000 Head</i>
1995			
AZ	9	222	380
CA	32	350	595
CO	167	1,050	2,425
ID	60	260	572
IA	280	375	706
KS	300	2,160	4,830
NE	655	1,900	4,289
NM			
OK	23	412	871
SD	105	190	330
TX	135	2,610	5,528
WA	20	161	363
Oth Sts			
US			
1996			
AZ	9	233	398
CA	28	375	565
CO	166	1,110	2,275
ID	60	260	588
IA	310	355	623
KS	220	2,190	4,980
NE	670	2,060	4,295
NM	11	137	246
OK	25	395	905
SD	106	168	328
TX	150	2,620	5,500
WA	15	155	417
Oth Sts	340	500	905
US	2,110	10,558	22,025

¹ Number of feedlots is the number of lots operating at anytime during the year. Inventory is the number on hand at the end of the year. The United States total show the actual number of feedlots, inventory, and number of animals marketed in each size group. The sum of the numbers shown by States under a specified size group may or may not add to the United States total for that size group since for some States size groups are combined to avoid disclosing individual operations. The 1995 data for New Mexico, Other States, and United States are not available.

² Lots, inventory, and marketings from other size groups are included to avoid disclosing individual operations.

**Cattle on Feed: Number of Feedlots, January 1 Inventory, and Marketings,
by Size of Feedlot, Region, and United States 1995-96 ¹**

Year and State	Feedlot Capacity in Number of Head					
	16,000 - 23,999			24,000 - 31,999		
	Lots	Jan 1 Inventory	Cattle Marketed	Lots	Jan 1 Inventory	Cattle Marketed
	<i>Number</i>	<i>1,000 Head</i>	<i>1,000 Head</i>	<i>Number</i>	<i>1,000 Head</i>	<i>1,000 Head</i>
1995						
AZ,CA,TX	18	344	568	19	444	836
CO,KS,NE	46	730	1,520	34	850	1,610
Oth Sts						
US						
1996						
AZ,CA,TX	22	275	538	21	548	979
CO,KS,NE	47	830	1,745	31	760	1,705
Oth Sts	8	106	234	9	188	411
US	77	1,211	2,517	61	1,496	3,095

See footnotes at end of table.

--continued

**Cattle on Feed: Number of Feedlots, January 1 Inventory, and Marketings,
by Size of Feedlot, Region, and United States 1995-96 ¹ (continued)**

Year and State	Feedlot Capacity in Number of Head					
	32,000 - 49,999			50,000 and Over		
	Lots	Jan 1 Inventory	Cattle Marketed	Lots	Jan 1 Inventory	Cattle Marketed
<i>Number</i>	<i>1,000 Head</i>	<i>1,000 Head</i>	<i>Number</i>	<i>1,000 Head</i>	<i>1,000 Head</i>	
1995						
AZ,CA,TX	29	848	2,022	20	1,035	2,133
CO,KS,NE	17	590	1,715	12	725	1,810
Oth Sts						
US						
1996						
AZ,CA,TX	25	793	1,720	24	1,186	2,460
CO,KS,NE	17	555	1,365	12	865	2,135
Oth Sts	4	134	300	9	410	1,011
US	46	1,482	3,385	45	2,461	5,606

¹ Number of feedlots is the number of lots operating at anytime during the year. Inventory is the number on hand at the end of the year. The 1995 data for Other States and United States are not available.

Terms and Definitions of Cattle on Feed Estimates

Cattle on feed are animals being fed a ration of grain, silage, hay and/or protein supplement for slaughter market that are expected to produce a carcass that will grade select or better. It excludes cattle being "backgrounded only" for later sale as feeders or later placement in another feedlot.

Placements are cattle put into a feedlot, fed a ration which will produce a carcass that will grade select or better, and are intended for the slaughter market.

Marketings are cattle shipped out of feedlots to a slaughter market.

Other disappearance includes death losses, movement from feedlots to pastures and shipments to other feedlots for further feeding.

Reliability of Cattle on Feed Estimates

Survey Procedures: During January and July all known feedlots in the U.S. with capacity of 1,000 or more head are surveyed to provide data for cattle on feed estimates. During the other months, all known feedlots from 17 States are surveyed. The 17 States account for 98 percent of the cattle on feed.

Estimating Procedures: These cattle on feed estimates were prepared by the Agricultural Statistics Board after reviewing recommendations and analysis submitted by each State office. Regional and State survey data were reviewed for reasonableness with each other and with estimates from the previous month when setting the current estimates.

Revision Policy: Revisions to previous estimates are made to improve month to month relationships. Estimates for the previous month are subject to revision in all States each month when current estimates are made. In February, all monthly estimates for the previous year are reviewed and subject to revisions. The reviews are primarily based on slaughter data, state check-off or brand data, and any other data that may have been received after the original estimate was made. Estimates will also be reviewed after data from the Census of Agriculture are available. No revisions will be made after that date and estimates become final.

Reliability: Since all cattle on feed operators are not included in the sample, survey estimates are subject to sampling variability. Survey results are also subject to non-sampling errors such as omissions, duplications, and mistakes in reporting, recording, and processing the data. The effects of these errors cannot be measured directly. They are minimized through rigid quality controls in the data collection process and through a careful review of all reported data for consistency and reasonableness.

Index

	Page
Cattle on Feed, 1,000+ Capacity Feedlots, 7 State Summary	3
Cattle on Feed, 1,000+ Capacity Feedlots, State and U.S., January 1, 1997 and February 1, 1996-97	4
Cattle on Feed, 1,000+ Capacity Feedlots, State and U.S., January 1996 - December 1996	7
Cattle on Feed, 1,000+ Capacity Feedlots, United States Summary	2
Cattle on Feed, Number by Class, 1,000+ Capacity Feedlots, State and U.S. Total, January 1996-October 1996	15
Marketings, 1,000+ Capacity Feedlots, State and U.S., December 1995 and January 1996-November 1996	13
Marketings, 1,000+ Capacity Feedlots, State and U.S., December 1996 and January 1996-97	6
Number of Feedlots, January 1 Inventory, and Marketings by Size of Feedlot, Region and U.S., 1995-96	20
Number of Feedlots, January 1 Inventory, and Marketings by Size of Feedlot, State and U.S., 1995-96	16
Other Disappearance, 1,000+ Capacity Feedlots, State and U.S., December 1995 and January 1996-November 1996	14
Other Disappearance, 1,000+ Capacity Feedlots, State and U.S., December 1996 and January 1996-97	6
Placements, 1000+ Capacity Feedlots, State and U.S., December 1995 and January 1996-November 1996	8
Placements, 1000+ Capacity Feedlots, State and U.S., December 1996 and January 1996-97	5
Placements by Weight Group, 1,000+ Capacity Feedlots, State and U.S., December 1995 and January 1996-November 1996	9
Placements by Weight Group, 1,000+ Capacity Feedlots, State and U.S., December 1995-96 and January 1996-97	5
Reliability of Cattle on Feed Estimates	22
Terms and Definitions of Cattle on Feed Estimates	22

The next "Cattle On Feed" report will be released at 3 p.m. ET on March 14, 1997.

The United States Department of Agriculture (USDA) prohibits discrimination in its programs on the basis of race, color, national origin, sex, religion, age, disability, political beliefs, and marital or familial status. Persons with disabilities who require alternative means for communication of program information (braille, large print, audiotape, etc.) should contact the USDA Office of Communications at (202) 720-5881 (voice) or (202) 720-7808 (TDD).

To file a complaint, write the Secretary of Agriculture, USDA, Washington, D.C., 20250, or call (202) 720-7327 (voice) or (202) 720-1127 (TDD). USDA is an equal employment opportunity employer.

SUBSCRIBE TODAY!!

For your convenience, there are several ways to obtain NASS reports, data products, and services:

INTERNET ACCESS

All NASS reports are now available free of charge on the worldwide Internet. For access, connect to the Internet and select:

1. Worldwide Web: <http://www.usda.gov/nass/> *OR*
2. For Gopher/Telenet/FTP access:
HOST=usda.mannlib.cornell.edu *OR*
3. For a subscription direct to your e-mail address,
send an e-mail message to: usda-reports@usda.mannlib.cornell.edu
and in the body of the message type the word: list

AUTOFAX ACCESS

NASSFax service is available for some reports from your fax machine. Please call 202-720-2000, using the handset attached to your fax. Respond to the voice prompts.

PRINTED REPORTS OR DATA PRODUCTS

CALL OUR TOLL-FREE ORDER DESK: 1-800-999-6779 (U.S. and Canada)

Other areas, please call 1-703-834-0125

FAX: 1-703-834-0110

(Visa, MasterCard, check, or money order acceptable for payment.)

ASSISTANCE

For assistance with general agricultural statistics or further information about NASS or its products or services, contact the Agricultural Statistics Hotline at 1-800-727-9540, 7:30 a.m. to 4:00 p.m. ET, or e-mail: NASS@NASS.USDA.GOV.

USDA Announces Agricultural Outlook Forum '97

February 24 and 25, 1997

Omni Shoreham Hotel, Washington, D.C.

An era of freer markets under the 1996 Farm Bill has begun. For an expert assessment of the impact, attend the Outlook Forum. Top speakers will discuss the 1997 farm outlook, prospects to 2005, risk management, concentration issues, market stability, world food security, marketing high-valued exports and more. *Plan now to attend.* For program and registration details, check Forum home page, call (202) 720-3050 or dial (202) 219-0296 from your fax machine and request document 66666. Send e-mail to agforum@oce.usda.gov.

Get news from the Forum. Can't attend? After the Forum, download speeches from the Internet. Or, call 1-800-999-6779 to place an advance order for the printed proceedings (YCON-97) or new long term projections to 2005 (WAOB-97-1).

Ag Forum home page: <http://www.usda.gov/oce/waob/agforum.htm>

Agricultural Outlook Forum '97

