

Cattle on Feed



USDA
Washington, D.C.

Released March 14, 1997, by the National Agricultural Statistics Service (NASS), Agricultural Statistics Board, U.S. Department of Agriculture. For information on "Cattle On Feed" call Dean Groskurth at (202) 720-3040, office hours 8:00 a.m. to 4:30 p.m. ET. The "Cattle On Feed" U.S. Summary is available on AutoFax, (202) 720-2000, report 3100. See page 7.

U.S. Cattle on Feed Up 6 Percent

Cattle and calves on feed for slaughter market in the United States for feedlots with capacity of 1,000 or more head totaled 10.28 million head on March 1, 1997. The inventory was 6 percent above March 1, 1996.

Placements in feedlots during February totaled 1.77 million, 3 percent above 1996. Net placements were 1.71 million. During February, placements of cattle and calves weighing less than 600 pounds were 352,000, 600-699 pounds were 500,000, 700-799 pounds were 606,000, and 800 pounds and greater were 314,000.

Marketings of fed cattle during February totaled 1.78 million, 4 percent below 1996.

Other disappearance totaled 61,000 during February, 15 percent below the previous year.

Cattle on Feed in Historic 7 States Up 8 Percent

Cattle on feed March 1, 1997, in the historic 7 States for feedlots with capacity of 1,000 or more head totaled 8.77 million, up 8 percent from the previous year and 7 percent above March 1, 1995.

Placements in feedlots during February totaled 1.53 million, 6 percent above 1996 but slightly below 1995.

Marketings during February totaled 1.53 million, 1 percent below 1996 but 11 percent above 1995.

Other disappearance during February was 42,000 head, 19 percent below both 1996 and 1995.

**Cattle on Feed: Number on Feed, Placements, Marketings, and
Other Disappearance, 1,000+ Capacity Feedlots,
United States, March 1, 1996-97**

Item	Number		1997 as % of
	1996	1997	1996
	<i>1,000 Head</i>	<i>1,000 Head</i>	<i>Percent</i>
On Feed Feb ¹	9,900	*10,341	104
Placed on Feed During Feb	1,713	1,772	103
Fed Cattle Marketed During Feb	1,845	1,777	96
Other Disappearance During Feb ²	72	61	85
On Feed Mar 1 ¹	9,696	10,275	106

* Revised.

¹ Cattle and calves on feed are animals for slaughter market being fed a ration of grain or other concentrates and are expected to produce a carcass that will grade select or better.

² Includes death losses, movement from feedlots to pastures and shipments to other feedlots for further feeding.

**Cattle on Feed: Number on Feed, Placements, Marketings, and
Other Disappearance, 1,000+ Capacity Feedlots,
United States, February 1, 1996-97**

Item	Number		1997 as % of
	1996	1997	1996
	<i>1,000 Head</i>	<i>1,000 Head</i>	<i>Percent</i>
On Feed Jan 1 ¹	10,346	10,558	102
Placed on Feed During Jan	1,549	*1,887	122
Fed Cattle Marketed During Jan	1,930	*2,012	104
Other Disappearance During Jan ²	65	92	142
On Feed Feb 1 ¹	9,900	*10,341	104

* Revised.

¹ Cattle and calves on feed are animals for slaughter market being fed a ration of grain or other concentrates and are expected to produce a carcass that will grade select or better.

² Includes death losses, movement from feedlots to pastures and shipments to other feedlots for further feeding.

**Cattle on Feed: Number on Feed, Placements, Marketings, and
Other Disappearance, 1,000+ Capacity Feedlots,
7 States, March 1, 1995-97**

Item	Number			1997 as % of	
	1995	1996	1997	1995	1996
	<i>1,000 Head</i>	<i>1,000 Head</i>	<i>1,000 Head</i>	<i>Percent</i>	<i>Percent</i>
On Feed Feb ¹	8,119	8,304	*8,813	109	106
Placed on Feed During Feb	1,532	1,441	1,527	100	106
Fed Cattle Marketed During Feb	1,372	1,541	1,529	111	99
Other Disappearance During Feb ²	52	52	42	81	81
On Feed Mar 1 ¹	8,227	8,152	8,769	107	108

* Revised.

¹ Cattle and calves on feed are animals for slaughter market being fed a ration of grain or other concentrates and are expected to produce a carcass that will grade select or better.

² Includes death losses, movement from feedlots to pastures and shipments to other feedlots for further feeding.

**Cattle on Feed: Number on Feed, Placements, Marketings, and
Other Disappearance, 1,000+ Capacity Feedlots,
7 States, February 1, 1995-97**

Item	Number			1997 as % of	
	1995	1996	1997	1995	1996
	<i>1,000 Head</i>	<i>1,000 Head</i>	<i>1,000 Head</i>	<i>Percent</i>	<i>Percent</i>
On Feed Jan 1 ¹	8,031	8,667	8,943	111	103
Placed on Feed During Jan	1,631	1,312	*1,663	102	127
Fed Cattle Marketed During Jan	1,484	1,626	*1,728	116	106
Other Disappearance During Jan ²	59	49	65	110	133
On Feed Feb 1 ¹	8,119	8,304	*8,813	109	106

* Revised.

¹ Cattle and calves on feed are animals for slaughter market being fed a ration of grain or other concentrates and are expected to produce a carcass that will grade select or better.

² Includes death losses, movement from feedlots to pastures and shipments to other feedlots for further feeding.

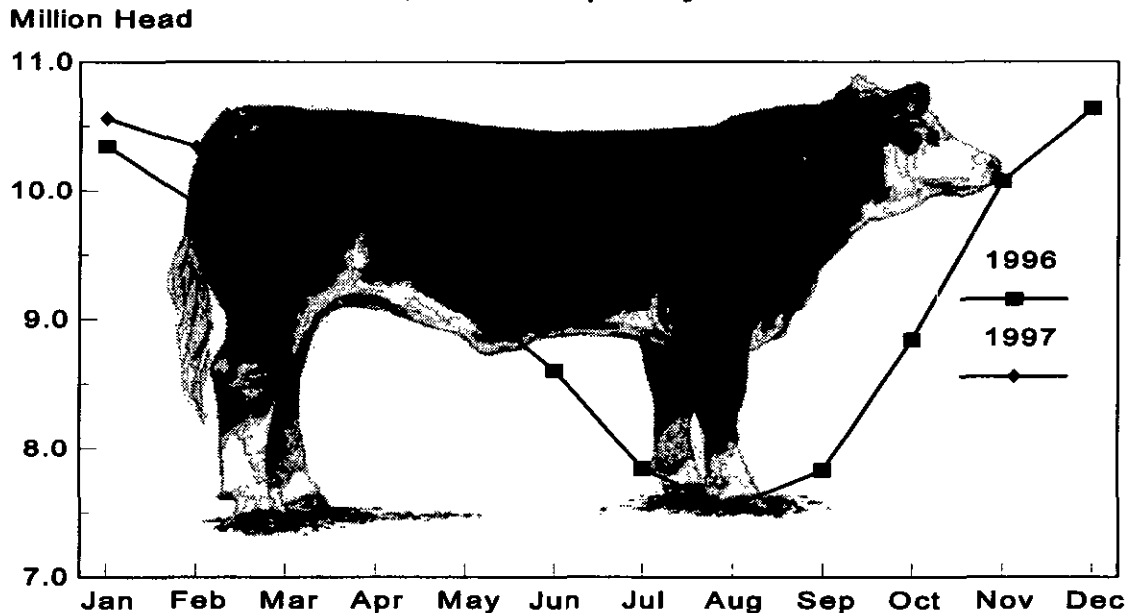
**Cattle on Feed: Number on Feed, 1,000+ Capacity Feedlots,
by Month, State, and United States 1996-97¹**

State	Mar 1, 1996	Feb 1, 1997	Mar 1, 1997		
			Number	as % of 1996	as % of Feb
	<i>1,000 Head</i>	<i>1,000 Head</i>	<i>1,000 Head</i>	<i>Percent</i>	<i>Percent</i>
AZ	202	223	224	111	100
CA	320	370	370	116	100
CO	990	1,050	1,060	107	101
ID	220	235	235	107	100
IA	370	360	355	96	99
KS	2,020	2,190	2,210	109	101
NE	1,880	2,070	2,050	109	99
NM	116	129	119	103	92
OK	390	390	385	99	99
SD	177	157	152	86	97
TX	2,370	*2,550	2,500	105	98
WA	141	137	135	96	99
Oth Sts	500	480	480	96	100
US	9,696	*10,341	10,275	106	99

* Revised.

¹ Cattle and calves on feed are animals for slaughter market being fed a ration of grain or other concentrates and are expected to produce a carcass that will grade select or better.

**United States Cattle on Feed
1,000+ Capacity Feedlots**



**Cattle on Feed: Number Placed on Feed, 1,000+ Capacity Feedlots,
by Month, State, and United States 1996-97**

State	During Feb 1996	During Jan 1997	During Feb 1997		
			Number	as % of 1996	as % of Jan
			<i>1,000 Head</i>	<i>Percent</i>	<i>Percent</i>
	<i>1,000 Head</i>	<i>1,000 Head</i>	<i>1,000 Head</i>	<i>Percent</i>	<i>Percent</i>
AZ	27	28	31	115	111
CA	40	50	50	125	100
CO	215	*260	235	109	90
ID	39	35	40	103	114
IA	54	45	41	76	91
KS	360	*470	420	117	89
NE	370	425	340	92	80
NM	15	12	13	87	108
OK	73	72	69	95	96
SD	33	22	26	79	118
TX	375	385	410	109	106
WA	32	28	27	84	96
Oth Sts	80	55	70	88	127
US	1,713	*1,887	1,772	103	94

* Revised.

**Cattle on Feed: Number Placed on Feed by Weight Group, 1,000+ Capacity
Feedlots, by Month, State, and United States, 1996-97**

State	During February									
	Less 600		600-699		700-799		800 Plus		Total	
	1996	1997	1996	1997	1996	1997	1996	1997	1996	1997
	<i>1,000 Head</i>	<i>1,000 Head</i>	<i>1,000 Head</i>	<i>1,000 Head</i>	<i>1,000 Head</i>	<i>1,000 Head</i>	<i>1,000 Head</i>	<i>1,000 Head</i>	<i>1,000 Head</i>	<i>1,000 Head</i>
CO	10	21	38	47	105	107	62	60	215	235
KS	32	63	134	149	143	155	51	53	360	420
NE	32	36	106	97	145	121	87	86	370	340
TX	60	127	180	127	116	123	19	33	375	410
Oth Sts	95	105	108	80	120	100	70	82	393	367
US	229	352	566	500	629	606	289	314	1,713	1,772
State	During January									
	Less 600		600-699		700-799		800 Plus		Total	
	1996	1997	1996	1997	1996	1997	1996	1997	1996	1997
	<i>1,000 Head</i>	<i>1,000 Head</i>	<i>1,000 Head</i>	<i>1,000 Head</i>	<i>1,000 Head</i>	<i>1,000 Head</i>	<i>1,000 Head</i>	<i>1,000 Head</i>	<i>1,000 Head</i>	<i>1,000 Head</i>
CO	15	*33	50	*65	75	*98	40	*64	180	*260
KS	47	*78	137	*205	110	*136	46	*51	340	*470
NE	32	67	120	144	127	114	81	100	360	425
TX	79	119	143	158	82	89	13	19	317	385
Oth Sts	87	112	100	85	105	85	60	65	352	347
US	260	*409	550	*657	499	*522	240	*299	1,549	*1,887

* Revised.

**Cattle on Feed: Number Marketed, 1,000+ Capacity Feedlots,
by Month, State, and United States 1996-97**

State	During Feb 1996	During Jan 1997	During Feb 1997		
			Number	as % of 1996	as % of Jan
			<i>1,000 Head</i>	<i>Percent</i>	<i>Percent</i>
	<i>1,000 Head</i>	<i>1,000 Head</i>	<i>1,000 Head</i>	<i>Percent</i>	<i>Percent</i>
AZ	28	34	29	104	85
CA	50	45	45	90	100
CO	220	*310	220	100	71
ID	53	56	39	74	70
IA	53	39	45	85	115
KS	385	*460	390	101	85
NE	350	400	350	100	88
NM	18	19	22	122	116
OK	81	74	71	88	96
SD	34	26	28	82	108
TX	455	*440	450	99	102
WA	38	44	28	74	64
Oth Sts	80	65	60	75	92
US	1,845	*2,012	1,777	96	88

* Revised.

**Cattle on Feed: Other Disappearance, 1,000+ Capacity Feedlots,
by Month, State, and United States 1996-97**

State	During Feb 1996	During Jan 1997	During Feb 1997		
			Number	as % of 1996	as % of Jan
			<i>1,000 Head</i>	<i>Percent</i>	<i>Percent</i>
	<i>1,000 Head</i>	<i>1,000 Head</i>	<i>1,000 Head</i>	<i>Percent</i>	<i>Percent</i>
AZ	1	4	1	100	25
CA	10	10	5	50	50
CO	5	10	5	100	50
ID	1	4	1	100	25
IA	1	1	1	100	100
KS	15	10	10	67	100
NE	10	15	10	100	67
NM	1	1	1	100	100
OK	2	3	3	150	100
SD	2	7	3	150	43
TX	10	15	10	100	67
WA	4	2	1	25	50
Oth Sts	10	10	10	100	100
US	72	92	61	85	66

¹ Includes death losses, movement from feedlots to pastures, and shipments to other feedlots for further feeding.

The next "Cattle On Feed" report will be released at 3 p.m. ET on April 18, 1997.

The United States Department of Agriculture (USDA) prohibits discrimination in its programs on the basis of race, color, national origin, sex, religion, age, disability, political beliefs, and marital or familial status. Persons with disabilities who require alternative means for communication of program information (braille, large print, audiotape, etc.) should contact the USDA Office of Communications at (202) 720-5881 (voice) or (202) 720-7808 (TDD).

To file a complaint, write the Secretary of Agriculture, USDA, Washington, D.C., 20250, or call (202) 720-7327 (voice) or (202) 720-1127 (TDD). USDA is an equal employment opportunity employer.

SUBSCRIBE TODAY!!

For your convenience, there are several ways to obtain NASS reports, data products, and services:

INTERNET ACCESS

All NASS reports are now available free of charge on the worldwide Internet. For access, connect to the Internet and select:

1. Worldwide Web: <http://www.usda.gov/nass/> **OR**
2. For Gopher/Telenet/FTP access:
HOST=usda.mannlib.cornell.edu **OR**
3. For a subscription direct to your e-mail address,
send an e-mail message to: usda-reports@usda.mannlib.cornell.edu
and in the body of the message type the word: list

AUTOFAX ACCESS

NASSFax service is available for some reports from your fax machine. Please call 202-720-2000, using the handset attached to your fax. Respond to the voice prompts.

PRINTED REPORTS OR DATA PRODUCTS

CALL OUR TOLL-FREE ORDER DESK: 1-800-999-6779 (U.S. and Canada)
Other areas, please call 1-703-834-0125 FAX: 1-703-834-0110
(Visa, MasterCard, check, or money order acceptable for payment.)

ASSISTANCE

For **assistance** with general agricultural statistics or further information about NASS or its products or services, contact the **Agricultural Statistics Hotline at 1-800-727-9540, 7:30 a.m. to 4:00 p.m. ET, or e-mail: NASS@NASS.USDA.GOV.**
