

# Cattle on Feed



USDA  
Washington, D.C.

---

Released April 18, 1997, by the National Agricultural Statistics Service (NASS), Agricultural Statistics Board, U.S. Department of Agriculture. For information on "Cattle On Feed" call Dean Groskurth at (202) 720-3040, office hours 8:00 a.m. to 4:30 p.m. ET.

## **U.S. Cattle on Feed Up 6 Percent**

**Cattle and calves on feed** for slaughter market in the United States for feedlots with capacity of 1,000 or more head totaled 10.39 million head on April 1, 1997. The inventory was 6 percent above April 1, 1996. The inventory included 6.39 million steers and steer calves, up 1 percent from the previous year. This group accounts for 61 percent of the total inventory. Heifers and heifer calves accounted for 3.94 million head, up 15 percent from 1996.

**Placements in feedlots during March** totaled 1.97 million, 1 percent above 1996. Net placements were 1.88 million. During March, placements of cattle and calves weighing less than 600 pounds were 321,000, 600-699 pounds were 538,000, 700-799 pounds were 721,000, and 800 pounds and greater were 386,000.

**Marketings** of fed cattle during March totaled 1.76 million, slightly above 1996. The year-to-year relationship between fed cattle marketed and commercial slaughter continues to be affected by the decrease in cattle imported from Canada that are going directly to slaughter.

**Other disappearance** totaled 86,000 during March, 13 percent above the previous year.

## **Cattle on Feed in Historic 7 States Up 7 Percent**

**Cattle on feed** April 1, 1997, in the historic 7 States for feedlots with capacity of 1,000 or more head totaled 8.9 million, up 7 percent from both the previous year and April 1, 1995. The inventory included 5.42 million steers and steer calves, up 1 percent from the previous year. This group accounts for 61 percent of the total inventory. Heifers and heifer calves accounted for 3.43 million head, up 19 percent from 1996.

**Placements in feedlots during March** totaled 1.69 million, 2 percent above 1996 and 1 percent above 1995.

**Marketings** during March totaled 1.50 million, 1 percent above 1996 but 1 percent below 1995. The year-to-year relationship between the 7 States fed cattle marketed and commercial slaughter continues to be affected by the decrease in cattle imported from Canada that are going directly to slaughter. The 7 States are marketing more fed cattle than last year, while the other States are marketing fewer fed cattle. This also has an effect on the year-to-year relationship between the 7 States fed cattle marketed and commercial slaughter.

**Other disappearance** during March was 62,000 head, 11 percent above 1996 but 7 percent below 1995.

**Cattle on Feed: Number on Feed, Placements, Marketings, and  
Other Disappearance, 1,000+ Capacity Feedlots,  
United States, April 1, 1996-97**

Item	Number		1997 as % of
	1996	1997	1996
	<i>1,000 Head</i>	<i>1,000 Head</i>	<i>Percent</i>
On Feed Mar <sup>1</sup>	9,696	10,275	106
Placed on Feed During Mar	1,948	1,966	101
Fed Cattle Marketed During Mar	1,756	1,764	100
Other Disappearance During Mar <sup>2</sup>	76	86	113
On Feed Apr 1 <sup>1</sup>	9,812	10,391	106

<sup>1</sup> Cattle and calves on feed are animals for slaughter market being fed a ration of grain or other concentrates and are expected to produce a carcass that will grade select or better.

<sup>2</sup> Includes death losses, movement from feedlots to pastures and shipments to other feedlots for further feeding.

**Cattle on Feed: Number on Feed, Placements, Marketings, and  
Other Disappearance, 1,000+ Capacity Feedlots,  
United States, March 1, 1996-97**

Item	Number		1997 as % of
	1996	1997	1996
	<i>1,000 Head</i>	<i>1,000 Head</i>	<i>Percent</i>
On Feed Feb 1 <sup>1</sup>	9,900	10,341	104
Placed on Feed During Feb	1,713	*1,797	105
Fed Cattle Marketed During Feb	1,845	*1,802	98
Other Disappearance During Feb <sup>2</sup>	72	61	85
On Feed Mar 1 <sup>1</sup>	9,696	10,275	106

\* Revised.

<sup>1</sup> Cattle and calves on feed are animals for slaughter market being fed a ration of grain or other concentrates and are expected to produce a carcass that will grade select or better.

<sup>2</sup> Includes death losses, movement from feedlots to pastures and shipments to other feedlots for further feeding.

**Cattle on Feed: Number on Feed by Class, 1,000+ Capacity Feedlots,  
United States, April 1, 1996-97**

Item	Number		1997 as % of
	1996	1997	1996
	<i>1,000 Head</i>	<i>1,000 Head</i>	<i>Percent</i>
Class on Feed Apr 1			
Steers and Steer Calves	6,352	6,386	101
Heifers and Heifer Calves	3,417	3,939	115
Cows and Bulls	43	66	153

**Cattle on Feed: Number on Feed, Placements, Marketings, and  
Other Disappearance, 1,000+ Capacity Feedlots,  
7 States, April 1, 1995-97<sup>1</sup>**

Item	Number			1997 as % of	
	1995	1996	1997	1995	1996
	<i>1,000 Head</i>	<i>1,000 Head</i>	<i>1,000 Head</i>	<i>Percent</i>	<i>Percent</i>
On Feed Mar <sup>2</sup>	8,227	8,152	8,769	107	108
Placed on Feed During Mar	1,681	1,666	1,694	101	102
Fed Cattle Marketed During Mar	1,513	1,476	1,497	99	101
Other Disappearance During Mar <sup>3</sup>	67	56	62	93	111
On Feed Apr 1 <sup>2</sup>	8,328	8,286	8,904	107	107

<sup>1</sup> The 7 States include AZ, CA, CO, IA, KS, NE, and TX.

<sup>2</sup> Cattle and calves on feed are animals for slaughter market being fed a ration of grain or other concentrates and are expected to produce a carcass that will grade select or better.

<sup>3</sup> Includes death losses, movement from feedlots to pastures and shipments to other feedlots for further feeding.

**Cattle on Feed: Number on Feed, Placements, Marketings, and  
Other Disappearance, 1,000+ Capacity Feedlots,  
7 States, March 1, 1995-97<sup>1</sup>**

Item	Number			1997 as % of	
	1995	1996	1997	1995	1996
	<i>1,000 Head</i>	<i>1,000 Head</i>	<i>1,000 Head</i>	<i>Percent</i>	<i>Percent</i>
On Feed Feb 1 <sup>2</sup>	8,119	8,304	8,813	109	106
Placed on Feed During Feb	1,532	1,441	*1,552	101	108
Fed Cattle Marketed During Feb	1,372	1,541	*1,554	113	101
Other Disappearance During Feb <sup>3</sup>	52	52	42	81	81
On Feed Mar 1 <sup>2</sup>	8,227	8,152	8,769	107	108

\* Revised.

<sup>1</sup> The 7 States include AZ, CA, CO, IA, KS, NE, and TX.

<sup>2</sup> Cattle and calves on feed are animals for slaughter market being fed a ration of grain or other concentrates and are expected to produce a carcass that will grade select or better.

<sup>3</sup> Includes death losses, movement from feedlots to pastures and shipments to other feedlots for further feeding.

**Cattle on Feed: Number on Feed by Class, 1,000+ Capacity Feedlots,  
7 States, April 1, 1995-97<sup>1</sup>**

Item	Number			1997 as % of	
	1995	1996	1997	1995	1996
	<i>1,000 Head</i>	<i>1,000 Head</i>	<i>1,000 Head</i>	<i>Percent</i>	<i>Percent</i>
Class on Feed Apr 1					
Steers and Steer Calves	5,530	5,375	5,417	98	101
Heifers and Heifer Calves	2,762	2,877	3,431	124	119
Cows and Bulls	36	34	56	156	165

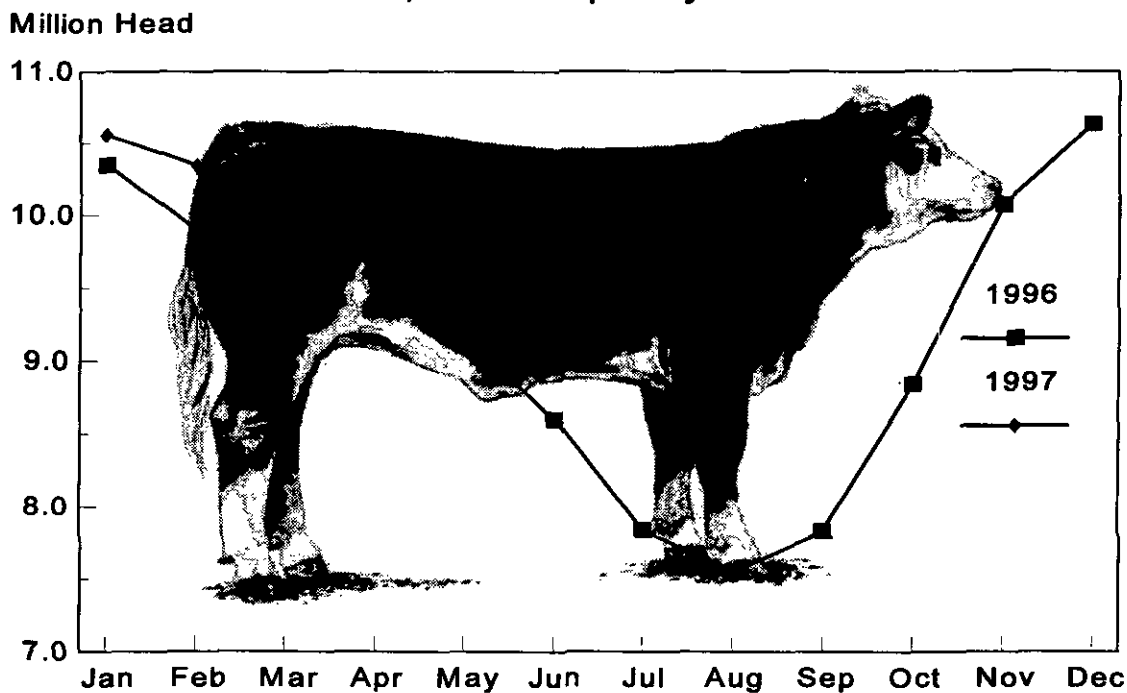
<sup>1</sup> The 7 States include AZ, CA, CO, IA, KS, NE, and TX.

**Cattle on Feed: Number on Feed, 1,000+ Capacity Feedlots,  
by Month, State, and United States 1996-97<sup>1</sup>**

State	Apr 1, 1996	Mar 1, 1997	Apr 1, 1997		
			Number	as % of 1996	as % of Mar
	<i>1,000 Head</i>	<i>1,000 Head</i>	<i>1,000 Head</i>	<i>Percent</i>	<i>Percent</i>
AZ	206	224	224	109	100
CA	305	370	380	125	103
CO	1,030	1,060	1,090	106	103
ID	235	235	235	100	100
IA	355	355	340	96	96
KS	2,080	2,210	2,270	109	103
NE	1,900	2,050	2,030	107	99
NM	102	119	118	116	99
OK	400	385	395	99	103
SD	177	152	152	86	100
TX	2,410	2,500	2,570	107	103
WA	142	135	127	89	94
Oth Sts	470	480	460	98	96
US	9,812	10,275	10,391	106	101

<sup>1</sup> Cattle and calves on feed are animals for slaughter market being fed a ration of grain or other concentrates and are expected to produce a carcass that will grade select or better.

**United States Cattle on Feed  
1,000+ Capacity Feedlots**



**Cattle on Feed: Number Placed on Feed, 1,000+ Capacity Feedlots,  
by Month, State, and United States 1996-97**

State	During Mar 1996 <i>1,000 Head</i>	During Feb 1997 <i>1,000 Head</i>	During Mar 1997		
			Number	as % of 1996	as % of Feb
			<i>1,000 Head</i>	<i>Percent</i>	<i>Percent</i>
AZ	37	31	34	92	110
CA	40	50	65	163	130
CO	240	*260	210	88	81
ID	50	40	46	92	115
IA	44	41	40	91	98
KS	430	420	440	102	105
NE	350	340	320	91	94
NM	27	13	25	93	192
OK	82	69	84	102	122
SD	27	26	34	126	131
TX	525	410	585	111	143
WA	31	27	23	74	85
Oth Sts	65	70	60	92	86
US	1,948	*1,797	1,966	101	109

\* Revised.

**Cattle on Feed: Number Placed on Feed by Weight Group, 1,000+ Capacity  
Feedlots, by Month, State, and United States, 1996-97**

State	During March									
	Less 600		600-699		700-799		800 Plus		Total	
	1996	1997	1996	1997	1996	1997	1996	1997	1996	1997
	<i>1,000 Head</i>	<i>1,000 Head</i>	<i>1,000 Head</i>	<i>1,000 Head</i>	<i>1,000 Head</i>	<i>1,000 Head</i>	<i>1,000 Head</i>	<i>1,000 Head</i>	<i>1,000 Head</i>	<i>1,000 Head</i>
CO	10	24	40	32	110	95	80	59	240	210
KS	39	48	124	134	180	182	87	76	430	440
NE	24	32	87	60	147	114	92	114	350	320
TX	89	106	200	222	205	215	31	42	525	585
Oth Sts	100	111	93	90	130	115	80	95	403	411
US	262	321	544	538	772	721	370	386	1,948	1,966
State	During February									
	Less 600		600-699		700-799		800 Plus		Total	
	1996	1997	1996	1997	1996	1997	1996	1997	1996	1997
	<i>1,000 Head</i>	<i>1,000 Head</i>	<i>1,000 Head</i>	<i>1,000 Head</i>	<i>1,000 Head</i>	<i>1,000 Head</i>	<i>1,000 Head</i>	<i>1,000 Head</i>	<i>1,000 Head</i>	<i>1,000 Head</i>
CO	10	*23	38	*52	105	*118	62	*67	215	*260
KS	32	63	134	149	143	155	51	53	360	420
NE	32	36	106	97	145	121	87	86	370	340
TX	60	127	180	127	116	123	19	33	375	410
Oth Sts	95	105	108	80	120	100	70	82	393	367
US	229	*354	566	*505	629	*617	289	*321	1,713	*1,797

\* Revised.

**Cattle on Feed: Number Marketed, 1,000+ Capacity Feedlots,  
by Month, State, and United States 1996-97**

State	During Mar 1996	During Feb 1997	During Mar 1997		
			Number	as % of 1996	as % of Feb
	<i>1,000 Head</i>	<i>1,000 Head</i>	<i>1,000 Head</i>	<i>Percent</i>	<i>Percent</i>
AZ	33	29	33	100	114
CA	45	45	50	111	111
CO	195	*245	165	85	67
ID	33	39	39	118	100
IA	58	45	54	93	120
KS	360	390	370	103	95
NE	320	350	325	102	93
NM	37	22	25	68	114
OK	70	71	72	103	101
SD	26	28	31	119	111
TX	465	450	500	108	111
WA	29	28	30	103	107
Oth Sts	85	60	70	82	117
US	1,756	*1,802	1,764	100	98

\* Revised.

**Cattle on Feed: Other Disappearance, 1,000+ Capacity Feedlots,  
by Month, State, and United States 1996-97**

State	During Mar 1996	During Feb 1997	During Mar 1997		
			Number	as % of 1996	as % of Feb
	<i>1,000 Head</i>	<i>1,000 Head</i>	<i>1,000 Head</i>	<i>Percent</i>	<i>Percent</i>
AZ	0	1	1		100
CA	10	5	5	50	100
CO	5	5	15	300	300
ID	2	1	7	350	700
IA	1	1	1	100	100
KS	10	10	10	100	100
NE	10	10	15	150	150
NM	4	1	1	25	100
OK	2	3	2	100	67
SD	1	3	3	300	100
TX	20	10	15	75	150
WA	1	1	1	100	100
Oth Sts	10	10	10	100	100
US	76	61	86	113	141

<sup>1</sup> Includes death losses, movement from feedlots to pastures, and shipments to other feedlots for further feeding.

**Cattle on Feed: Number on Feed by Class, 1,000+ Capacity Feedlots,  
by Quarter, State, and United States, 1996-97**

State	Steers & Steer Calves			Heifers & Heifer Calves			Cows and Bulls		
	Apr 1, 1996	Jan 1, 1997	Apr 1, 1997	Apr 1, 1996	Jan 1, 1997	Apr 1, 1997	Apr 1, 1996	Jan 1, 1997	Apr 1, 1997
	<i>1,000 Head</i>	<i>1,000 Head</i>	<i>1,000 Head</i>	<i>1,000 Head</i>	<i>1,000 Head</i>	<i>1,000 Head</i>	<i>1,000 Head</i>	<i>1,000 Head</i>	<i>1,000 Head</i>
AZ	191	210	199	15	23	25	0	0	0
CA	270	335	340	33	38	37	2	2	3
CO	620	605	645	400	490	435	10	15	10
ID	159	180	164	74	80	70	2	0	1
IA	224	220	193	130	135	146	1	0	1
KS	1,350	1,270	1,370	720	880	880	10	40	20
NE	1,140	1,200	1,200	750	840	810	10	20	20
NM	60	77	70	42	59	48	0	1	0
OK	250	225	235	150	170	160	0	0	0
SD	102	84	89	73	82	59	2	2	4
TX	1,580	1,570	1,470	829	1,049	1,098	1	1	2
WA	91	92	76	51	63	51	0	0	0
Oth Sts	315	330	335	150	160	120	5	10	5
US	6,352	6,398	6,386	3,417	4,069	3,939	43	91	66

The next "Cattle On Feed" report will be released at 3 p.m. ET on May 16, 1997.

The United States Department of Agriculture (USDA) prohibits discrimination in its programs on the basis of race, color, national origin, sex, religion, age, disability, political beliefs, and marital or familial status. Persons with disabilities who require alternative means for communication of program information (braille, large print, audiotape, etc.) should contact the USDA Office of Communications at (202) 720-5881 (voice) or (202) 720-7808 (TDD).

To file a complaint, write the Secretary of Agriculture, USDA, Washington, D.C., 20250, or call (202) 720-7327 (voice) or (202) 720-1127 (TDD). USDA is an equal employment opportunity employer.

---

## **SUBSCRIBE TODAY!!**

---

For your convenience, there are several ways to obtain NASS reports, data products, and services:

### **INTERNET ACCESS**

All NASS reports are now available free of charge on the worldwide Internet. For access, connect to the Internet and select:

1. Worldwide Web: <http://www.usda.gov/nass/> *OR*
2. For Gopher/Telenet/FTP access:  
HOST=usda.mannlib.cornell.edu *OR*
3. For a subscription direct to your e-mail address,  
send an e-mail message to: [usda-reports@usda.mannlib.cornell.edu](mailto:usda-reports@usda.mannlib.cornell.edu)  
and in the body of the message type the word: list

### **AUTOFAX ACCESS**

NASSFax service is available for some reports from your fax machine. Please call 202-720-2000, using the handset attached to your fax. Respond to the voice prompts.

-----

### **PRINTED REPORTS OR DATA PRODUCTS**

**CALL OUR TOLL-FREE ORDER DESK: 1-800-999-6779 (U.S. and Canada)**  
**Other areas, please call 1-703-834-0125      FAX: 1-703-834-0110**  
**(Visa, MasterCard, check, or money order acceptable for payment.)**

-----

### **ASSISTANCE**

For assistance with general agricultural statistics or further information about NASS or its products or services, contact the Agricultural Statistics Hotline at 1-800-727-9540, 7:30 a.m. to 4:00 p.m. ET, or e-mail: [NASS@NASS.USDA.GOV](mailto:NASS@NASS.USDA.GOV).

---