

Cattle on Feed



USDA
Washington, D.C.

Released May 16, 1997, by the National Agricultural Statistics Service (NASS), Agricultural Statistics Board, U.S. Department of Agriculture. For information on "Cattle on Feed" call Dean Groskurth at (202) 720-3040, office hours 7:30 a.m. to 4:00 p.m. ET.

U.S. Cattle on Feed Up 8 Percent

Cattle and calves on feed for slaughter market in the United States for feedlots with capacity of 1,000 or more head totaled 9.93 million head on May 1, 1997. The inventory was 8 percent above May 1, 1996.

Placements in feedlots during April totaled 1.54 million, 13 percent above 1996. Net placements were 1.44 million. During April, placements of cattle and calves weighing less than 600 pounds were 302,000, 600-699 pounds were 314,000, 700-799 pounds were 528,000, and 800 pounds and greater were 394,000.

Marketings of fed cattle during April totaled 1.91 million, slightly above 1996.

Other disappearance totaled 98,000 during April, 8 percent below the previous year.

Cattle on Feed in Historic 7 States Up 9 Percent

Cattle on feed May 1, 1997, in the historic 7 States for feedlots with capacity of 1,000 or more head totaled 8.48 million, up 9 percent from the previous year and up 3 percent from May 1, 1995.

Placements in feedlots during April totaled 1.29 million, 12 percent above 1996 but 8 percent below 1995.

Marketings during April totaled 1.64 million, 2 percent above 1996 and 14 percent above 1995.

Other disappearance during April was 68,000 head, 5 percent above 1996 and 11 percent above 1995.

**Cattle on Feed: Number on Feed, Placements, Marketings, and
Other Disappearance, 1,000+ Capacity Feedlots,
United States, May 1, 1996-97**

Item	Number		1997 as % of
	1996	1997	1996
	<i>1,000 Head</i>	<i>1,000 Head</i>	<i>Percent</i>
On Feed Apr 1 ¹	9,812	10,391	106
Placed on Feed During Apr	1,364	1,538	113
Fed Cattle Marketed During Apr	1,896	1,905	100
Other Disappearance During Apr ²	107	98	92
On Feed May 1 ¹	9,173	9,926	108

¹ Cattle and calves on feed are animals for slaughter market being fed a ration of grain or other concentrates and are expected to produce a carcass that will grade select or better.

² Includes death losses, movement from feedlots to pastures and shipments to other feedlots for further feeding.

**Cattle on Feed: Number on Feed, Placements, Marketings, and
Other Disappearance, 1,000+ Capacity Feedlots,
United States, April 1, 1996-97**

Item	Number		1997 as % of
	1996	1997	1996
	<i>1,000 Head</i>	<i>1,000 Head</i>	<i>Percent</i>
On Feed Mar 1 ¹	9,696	10,275	106
Placed on Feed During Mar	1,948	1,966	101
Fed Cattle Marketed During Mar	1,756	1,764	100
Other Disappearance During Mar ²	76	86	113
On Feed Apr 1 ¹	9,812	10,391	106

¹ Cattle and calves on feed are animals for slaughter market being fed a ration of grain or other concentrates and are expected to produce a carcass that will grade select or better.

² Includes death losses, movement from feedlots to pastures and shipments to other feedlots for further feeding.

**Cattle on Feed: Number on Feed, Placements, Marketings, and
Other Disappearance, 1,000+ Capacity Feedlots,
7 States, May 1, 1995-97¹**

Item	Number			1997 as % of	
	1995	1996	1997	1995	1996
	<i>1,000 Head</i>	<i>1,000 Head</i>	<i>1,000 Head</i>	<i>Percent</i>	<i>Percent</i>
On Feed Apr 1 ²	8,328	8,286	8,904	107	107
Placed on Feed During Apr	1,403	1,150	1,286	92	112
Fed Cattle Marketed During Apr	1,437	1,613	1,638	114	102
Other Disappearance During Apr ³	61	65	68	111	105
On Feed May 1 ²	8,233	7,758	8,484	103	109

¹ The 7 States include AZ, CA, CO, IA, KS, NE, and TX.

² Cattle and calves on feed are animals for slaughter market being fed a ration of grain or other concentrates and are expected to produce a carcass that will grade select or better.

³ Includes death losses, movement from feedlots to pastures and shipments to other feedlots for further feeding.

**Cattle on Feed: Number on Feed, Placements, Marketings, and
Other Disappearance, 1,000+ Capacity Feedlots,
7 States, April 1, 1995-97¹**

Item	Number			1997 as % of	
	1995	1996	1997	1995	1996
	<i>1,000 Head</i>	<i>1,000 Head</i>	<i>1,000 Head</i>	<i>Percent</i>	<i>Percent</i>
On Feed Mar 1 ²	8,227	8,152	8,769	107	108
Placed on Feed During Mar	1,681	1,666	1,694	101	102
Fed Cattle Marketed During Mar	1,513	1,476	1,497	99	101
Other Disappearance During Mar ³	67	56	62	93	111
On Feed Apr 1 ²	8,328	8,286	8,904	107	107

¹ The 7 States include AZ, CA, CO, IA, KS, NE, and TX.

² Cattle and calves on feed are animals for slaughter market being fed a ration of grain or other concentrates and are expected to produce a carcass that will grade select or better.

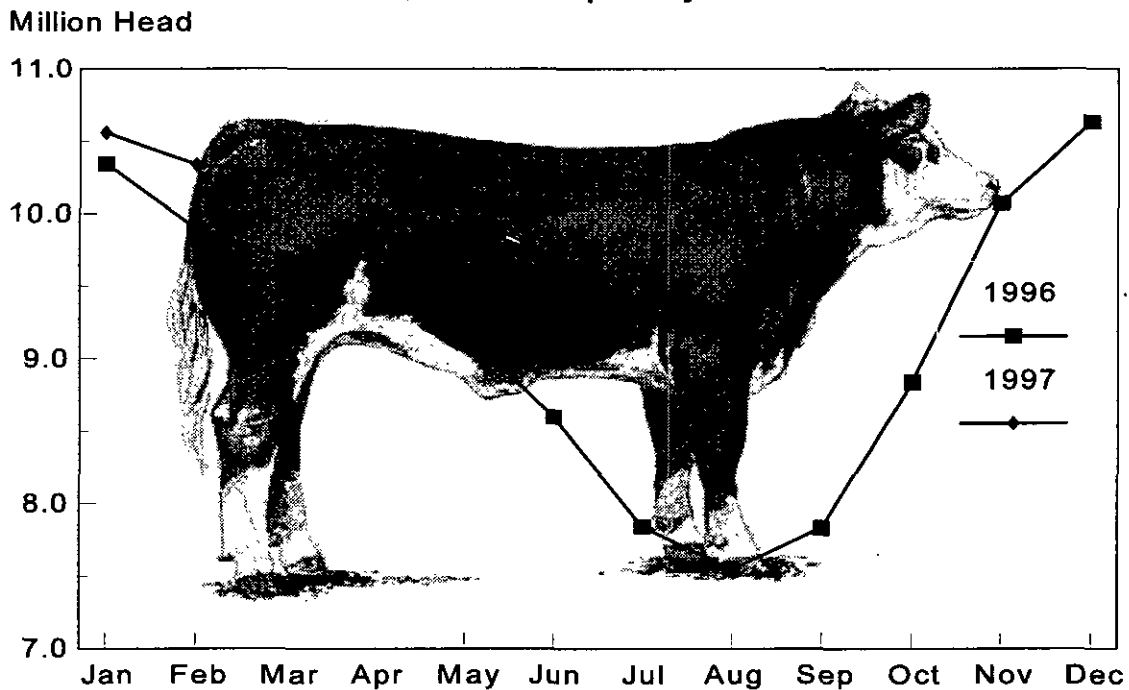
³ Includes death losses, movement from feedlots to pastures and shipments to other feedlots for further feeding.

**Cattle on Feed: Number on Feed, 1,000+ Capacity Feedlots,
by Month, State, and United States 1996-97¹**

State	May 1, 1996	Apr 1, 1997	May 1, 1997		
			Number	as % of 1996	as % of Apr
			<i>1,000 Head</i>	<i>Percent</i>	<i>Percent</i>
	<i>1,000 Head</i>	<i>1,000 Head</i>	<i>1,000 Head</i>		
AZ	188	224	214	114	96
CA	305	380	385	126	101
CO	1,000	1,090	1,050	105	96
ID	225	235	245	109	104
IA	325	340	325	100	96
KS	2,010	2,270	2,190	109	96
NE	1,740	2,030	1,930	111	95
NM	91	118	98	108	83
OK	380	395	360	95	91
SD	172	152	146	85	96
TX	2,190	2,570	2,390	109	93
WA	127	127	143	113	113
Oth Sts	420	460	450	107	98
US	9,173	10,391	9,926	108	96

¹ Cattle and calves on feed are animals for slaughter market being fed a ration of grain or other concentrates and are expected to produce a carcass that will grade select or better.

**United States Cattle on Feed
1,000+ Capacity Feedlots**



**Cattle on Feed: Number Placed on Feed, 1,000+ Capacity Feedlots,
by Month, State, and United States 1996-97**

State	During Apr 1996	During Mar 1997	During Apr 1997		
			Number	as % of 1996	as % of Mar
			1,000 Head	Percent	Percent
AZ	27	34	31	115	91
CA	55	65	60	109	92
CO	130	210	155	119	74
ID	40	46	57	143	124
IA	33	40	35	106	88
KS	345	440	350	101	80
NE	230	320	295	128	92
NM	21	25	13	62	52
OK	55	84	53	96	63
SD	20	34	22	110	65
TX	330	585	360	109	62
WA	18	23	42	233	183
Oth Sts	60	60	65	108	108
US	1,364	1,966	1,538	113	78

**Cattle on Feed: Number Placed on Feed by Weight Group, 1,000+ Capacity
Feedlots, by Month, State, and United States, 1996-97**

State	During April									
	Less 600		600-699		700-799		800 Plus		Total	
	1996	1997	1996	1997	1996	1997	1996	1997	1996	1997
	<i>1,000 Head</i>	<i>1,000 Head</i>	<i>1,000 Head</i>	<i>1,000 Head</i>	<i>1,000 Head</i>	<i>1,000 Head</i>	<i>1,000 Head</i>	<i>1,000 Head</i>	<i>1,000 Head</i>	<i>1,000 Head</i>
CO	12	15	23	31	55	54	40	55	130	155
KS	30	48	100	89	141	136	74	77	345	350
NE	17	22	58	43	83	111	72	119	230	295
TX	50	112	135	86	109	119	36	43	330	360
Oth Sts	95	105	70	65	90	108	74	100	329	378
US	204	302	386	314	478	528	296	394	1,364	1,538
	During March									
	Less 600		600-699		700-799		800 Plus		Total	
	1996	1997	1996	1997	1996	1997	1996	1997	1996	1997
	<i>1,000 Head</i>	<i>1,000 Head</i>	<i>1,000 Head</i>	<i>1,000 Head</i>	<i>1,000 Head</i>	<i>1,000 Head</i>	<i>1,000 Head</i>	<i>1,000 Head</i>	<i>1,000 Head</i>	<i>1,000 Head</i>
CO	10	24	40	32	110	95	80	59	240	210
KS	39	48	124	134	180	182	87	76	430	440
NE	24	32	87	60	147	114	92	114	350	320
TX	89	106	200	222	205	215	31	42	525	585
Oth Sts	100	111	93	90	130	115	80	95	403	411
US	262	321	544	538	772	721	370	386	1,948	1,966

**Cattle on Feed: Number Marketed, 1,000+ Capacity Feedlots,
by Month, State, and United States 1996-97**

State	During Apr 1996	During Mar 1997	During Apr 1997		
			Number	as % of 1996	as % of Mar
			<i>1,000 Head</i>	<i>Percent</i>	<i>Percent</i>
	<i>1,000 Head</i>	<i>1,000 Head</i>	<i>1,000 Head</i>	<i>Percent</i>	<i>Percent</i>
AZ	41	33	39	95	118
CA	45	50	50	111	100
CO	155	165	180	116	109
ID	39	39	33	85	85
IA	62	54	49	79	91
KS	400	370	410	103	111
NE	370	325	380	103	117
NM	31	25	32	103	128
OK	73	72	86	118	119
SD	23	31	21	91	68
TX	540	500	530	98	106
WA	32	30	25	78	83
Oth Sts	85	70	70	82	100
US	1,896	1,764	1,905	100	108

**Cattle on Feed: Other Disappearance, 1,000+ Capacity Feedlots,
by Month, State, and United States 1996-97**

State	During Apr 1996	During Mar 1997	During Apr 1997		
			Number	as % of 1996	as % of Mar
			<i>1,000 Head</i>	<i>Percent</i>	<i>Percent</i>
	<i>1,000 Head</i>	<i>1,000 Head</i>	<i>1,000 Head</i>	<i>Percent</i>	<i>Percent</i>
AZ	4	1	2	50	200
CA	10	5	5	50	100
CO	5	15	15	300	100
ID	11	7	14	127	200
IA	1	1	1	100	100
KS	15	10	20	133	200
NE	20	15	15	75	100
NM	1	1	1	100	100
OK	2	2	2	100	100
SD	2	3	7	350	233
TX	10	15	10	100	67
WA	1	1	1	100	100
Oth Sts	25	10	5	20	50
US	107	86	98	92	114

¹ Includes death losses, movement from feedlots to pastures, and shipments to other feedlots for further feeding.

The next "Cattle On Feed" report will be released at 3 p.m. ET on June 13, 1997.

The United States Department of Agriculture (USDA) prohibits discrimination in its programs on the basis of race, color, national origin, sex, religion, age, disability, political beliefs, and marital or familial status. Persons with disabilities who require alternative means for communication of program information (braille, large print, audiotape, etc.) should contact the USDA's TARGET Center at (202) 720-2600 (voice and TDD).

To file a complaint, write the Secretary of Agriculture, USDA, Washington, D.C., 20250, or call (202) 720-7327 (voice) or (202) 720-1127 (TDD). USDA is an equal employment opportunity employer.

SUBSCRIBE TODAY!!

For your convenience, there are several ways to obtain NASS reports, data products, and services:

INTERNET ACCESS

All NASS reports are now available free of charge on the worldwide Internet. For access, connect to the Internet and select:

1. Worldwide Web: <http://www.usda.gov/nass/> **OR**
2. For Gopher/Telenet/FTP access:
HOST=usda.mannlib.cornell.edu **OR**
3. For a subscription direct to your e-mail address,
send an e-mail message to: usda-reports@usda.mannlib.cornell.edu
and in the body of the message type the word: list

AUTOFAX ACCESS

NASSFax service is available for some reports from your fax machine. Please call 202-720-2000, using the handset attached to your fax. Respond to the voice prompts.

PRINTED REPORTS OR DATA PRODUCTS

CALL OUR TOLL-FREE ORDER DESK: 1-800-999-6779 (U.S. and Canada)
Other areas, please call 1-703-834-0125 FAX: 1-703-834-0110
(Visa, MasterCard, check, or money order acceptable for payment.)

ASSISTANCE

For assistance with general agricultural statistics or further information about NASS or its products or services, contact the Agricultural Statistics Hotline at 1-800-727-9540, 7:30 a.m. to 4:00 p.m. ET, or e-mail: NASS@NASS.USDA.GOV.
