

# Cattle on Feed



USDA  
Washington, D.C.

---

Released June 13, 1997, by the National Agricultural Statistics Service (NASS), Agricultural Statistics Board, U.S. Department of Agriculture. For information on "Cattle on Feed" call Dean Groskurth at (202) 720-3040, office hours 8:00 a.m. to 4:30 p.m. ET.

## U.S. Cattle on Feed Up 12 Percent

**Cattle and calves on feed** for slaughter market in the United States for feedlots with capacity of 1,000 or more head totaled 9.61 million head on June 1, 1997. The inventory was 12 percent above June 1, 1996.

**Placements** in feedlots during May totaled 1.89 million, 22 percent above 1996. Net placements were 1.78 million. During May, placements of cattle and calves weighing less than 600 pounds were 332,000, 600-699 pounds were 406,000, 700-799 pounds were 640,000, and 800 pounds and greater were 514,000.

**Marketings** of fed cattle during May totaled 2.09 million, 2 percent above 1996. The year-to-year relationship between fed cattle marketed and commercial slaughter continues to be affected by the decrease in cattle imported from Canada that are going directly to slaughter.

**Other disappearance** totaled 117,000 during May, 39 percent above the previous year.

## Cattle on Feed in Historic 7 States Up 13 Percent

**Cattle on feed** June 1, 1997, in the historic 7 States for feedlots with capacity of 1,000 or more head totaled 8.23 million, up 13 percent from the previous year and up 1 percent from June 1, 1995.

**Placements** in feedlots during May totaled 1.64 million, 26 percent above 1996 but 2 percent below 1995.

**Marketings** during May totaled 1.82 million, 4 percent above 1996 and 9 percent above 1995. The year-to-year relationship between the 7 States fed cattle marketed and commercial slaughter continues to be affected by the decrease in cattle imported from Canada that are going directly to slaughter. The 7 States are marketing more fed cattle than last year, while the other States are marketing fewer fed cattle. This also has an effect on the year-to-year relationship between the 7 States fed cattle marketed and U.S. commercial slaughter.

**Other disappearance** during May was 80,000 head, 38 percent above 1996 and 40 percent above 1995.

**Cattle on Feed: Number on Feed, Placements, Marketings, and  
Other Disappearance, 1,000+ Capacity Feedlots,  
United States, June 1, 1996-97**

Item	Number		1997 as % of
	1996	1997	1996
	<i>1,000 Head</i>	<i>1,000 Head</i>	<i>Percent</i>
On Feed May 1 <sup>1</sup>	9,173	9,926	108
Placed on Feed During May	1,557	1,892	122
Fed Cattle Marketed During May	2,045	2,091	102
Other Disappearance During May <sup>2</sup>	84	117	139
On Feed Jun 1 <sup>1</sup>	8,601	9,610	112

<sup>1</sup> Cattle and calves on feed are animals for slaughter market being fed a ration of grain or other concentrates and are expected to produce a carcass that will grade select or better.

<sup>2</sup> Includes death losses, movement from feedlots to pastures and shipments to other feedlots for further feeding.

**Cattle on Feed: Number on Feed, Placements, Marketings, and  
Other Disappearance, 1,000+ Capacity Feedlots,  
United States, May 1, 1996-97**

Item	Number		1997 as % of
	1996	1997	1996
	<i>1,000 Head</i>	<i>1,000 Head</i>	<i>Percent</i>
On Feed Apr 1 <sup>1</sup>	9,812	10,391	106
Placed on Feed During Apr	1,364	*1,548	113
Fed Cattle Marketed During Apr	1,896	*1,915	101
Other Disappearance During Apr <sup>2</sup>	107	98	92
On Feed May 1 <sup>1</sup>	9,173	9,926	108

\* Revised.

<sup>1</sup> Cattle and calves on feed are animals for slaughter market being fed a ration of grain or other concentrates and are expected to produce a carcass that will grade select or better.

<sup>2</sup> Includes death losses, movement from feedlots to pastures and shipments to other feedlots for further feeding.

**Cattle on Feed: Number on Feed, Placements, Marketings, and  
Other Disappearance, 1,000+ Capacity Feedlots,  
7 States, June 1, 1995-97<sup>1</sup>**

Item	Number			1997 as % of	
	1995	1996	1997	1995	1996
	<i>1,000 Head</i>	<i>1,000 Head</i>	<i>1,000 Head</i>	<i>Percent</i>	<i>Percent</i>
On Feed May 1 <sup>2</sup>	8,233	7,758	8,484	103	109
Placed on Feed During May	1,673	1,300	1,640	98	126
Fed Cattle Marketed During May	1,667	1,747	1,818	109	104
Other Disappearance During May <sup>3</sup>	57	58	80	140	138
On Feed Jun 1 <sup>2</sup>	8,182	7,253	8,226	101	113

<sup>1</sup> The 7 States include AZ, CA, CO, IA, KS, NE, and TX.

<sup>2</sup> Cattle and calves on feed are animals for slaughter market being fed a ration of grain or other concentrates and are expected to produce a carcass that will grade select or better.

<sup>3</sup> Includes death losses, movement from feedlots to pastures and shipments to other feedlots for further feeding.

**Cattle on Feed: Number on Feed, Placements, Marketings, and  
Other Disappearance, 1,000+ Capacity Feedlots,  
7 States, May 1, 1995-97<sup>1</sup>**

Item	Number			1997 as % of	
	1995	1996	1997	1995	1996
	<i>1,000 Head</i>	<i>1,000 Head</i>	<i>1,000 Head</i>	<i>Percent</i>	<i>Percent</i>
On Feed Apr 1 <sup>2</sup>	8,328	8,286	8,904	107	107
Placed on Feed During Apr	1,403	1,150	*1,296	92	113
Fed Cattle Marketed During Apr	1,437	1,613	*1,648	115	102
Other Disappearance During Apr <sup>3</sup>	61	65	68	111	105
On Feed May 1 <sup>2</sup>	8,233	7,758	8,484	103	109

\* Revised.

<sup>1</sup> The 7 States include AZ, CA, CO, IA, KS, NE, and TX.

<sup>2</sup> Cattle and calves on feed are animals for slaughter market being fed a ration of grain or other concentrates and are expected to produce a carcass that will grade select or better.

<sup>3</sup> Includes death losses, movement from feedlots to pastures and shipments to other feedlots for further feeding.

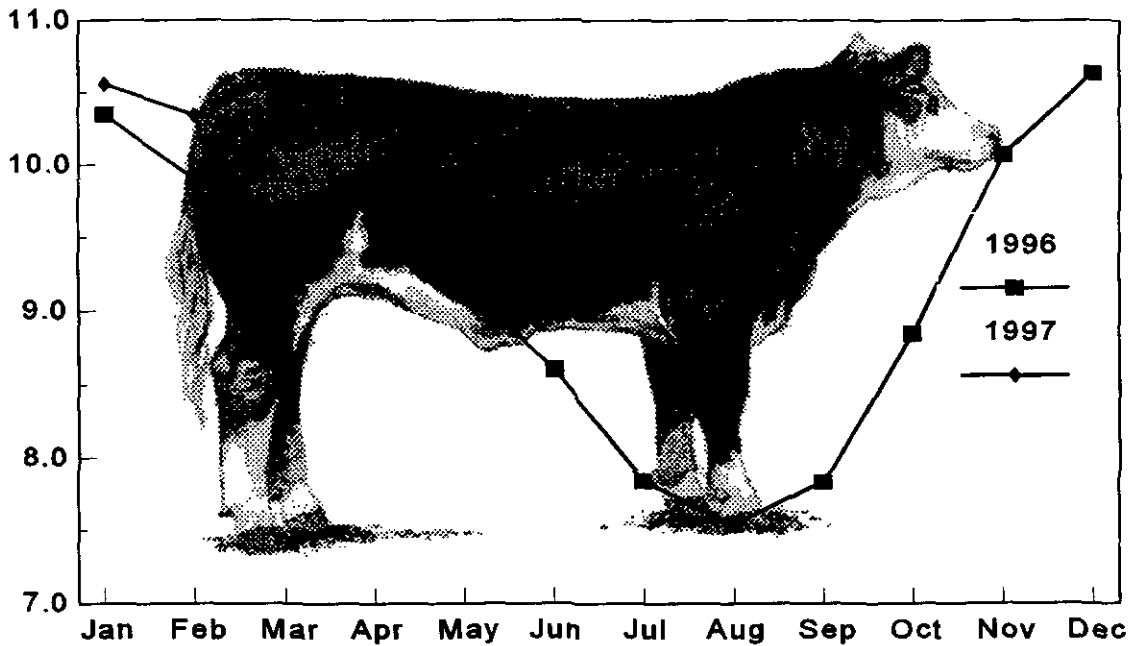
**Cattle on Feed: Number on Feed, 1,000+ Capacity Feedlots,  
by Month, State, and United States 1996-97<sup>1</sup>**

State	Jun 1, 1996	May 1, 1997	Jun 1, 1997		
			Number	as % of 1996	as % of May
	<i>1,000 Head</i>	<i>1,000 Head</i>	<i>1,000 Head</i>	<i>Percent</i>	<i>Percent</i>
AZ	183	214	206	113	96
CA	325	385	395	122	103
CO	890	1,050	1,010	113	96
ID	230	245	235	102	96
IA	295	325	295	100	91
KS	1,850	2,190	2,110	114	96
NE	1,530	1,930	1,760	115	91
NM	92	98	94	102	96
OK	355	360	360	101	100
SD	146	146	137	94	94
TX	2,180	2,390	2,450	112	103
WA	135	143	148	110	103
Oth Sts	390	450	410	105	91
US	8,601	9,926	9,610	112	97

<sup>1</sup> Cattle and calves on feed are animals for slaughter market being fed a ration of grain or other concentrates and are expected to produce a carcass that will grade select or better.

**United States Cattle on Feed  
1,000+ Capacity Feedlots**

Million Head



**Cattle on Feed: Number Placed on Feed, 1,000+ Capacity Feedlots,  
by Month, State, and United States 1996-97**

State	During May 1996	During Apr 1997	During May 1997		
			Number	as % of 1996	as % of Apr
	<i>1,000 Head</i>	<i>1,000 Head</i>	<i>1,000 Head</i>	<i>Percent</i>	<i>Percent</i>
AZ	37	31	40	108	129
CA	75	60	70	93	117
CO	85	*165	215	253	130
ID	54	57	45	83	79
IA	33	35	35	106	100
KS	300	350	380	127	109
NE	270	295	330	122	112
NM	28	13	19	68	146
OK	69	53	79	114	149
SD	12	22	19	158	86
TX	500	360	570	114	158
WA	34	42	40	118	95
Oth Sts	60	65	50	83	77
US	1,557	*1,548	1,892	122	122

\* Revised.

**Cattle on Feed: Number Placed on Feed by Weight Group, 1,000+ Capacity  
Feedlots, by Month, State, and United States, 1996-97**

State	During May									
	Less 600		600-699		700-799		800 Plus		Total	
	1996	1997	1996	1997	1996	1997	1996	1997	1996	1997
	<i>1,000 Head</i>	<i>1,000 Head</i>	<i>1,000 Head</i>	<i>1,000 Head</i>	<i>1,000 Head</i>	<i>1,000 Head</i>	<i>1,000 Head</i>	<i>1,000 Head</i>	<i>1,000 Head</i>	<i>1,000 Head</i>
CO	6	15	18	32	30	87	31	81	85	215
KS	26	48	82	96	129	139	63	97	300	380
NE	9	12	34	43	104	125	123	150	270	330
TX	150	142	150	160	155	194	45	74	500	570
Oth Sts	115	115	67	75	110	95	110	112	402	397
US	306	332	351	406	528	640	372	514	1,557	1,892
	During April									
	Less 600		600-699		700-799		800 Plus		Total	
	1996	1997	1996	1997	1996	1997	1996	1997	1996	1997
	<i>1,000 Head</i>	<i>1,000 Head</i>	<i>1,000 Head</i>	<i>1,000 Head</i>	<i>1,000 Head</i>	<i>1,000 Head</i>	<i>1,000 Head</i>	<i>1,000 Head</i>	<i>1,000 Head</i>	<i>1,000 Head</i>
CO	12	*16	23	*33	55	*57	40	*59	130	*165
KS	30	48	100	89	141	136	74	77	345	350
NE	17	22	58	43	83	111	72	119	230	295
TX	50	112	135	86	109	119	36	43	330	360
Oth Sts	95	105	70	65	90	108	74	100	329	378
US	204	*303	386	*316	478	*531	296	*398	1,364	*1,548

\* Revised.

**Cattle on Feed: Number Marketed, 1,000+ Capacity Feedlots,  
by Month, State, and United States 1996-97**

State	During May 1996	During Apr 1997	During May 1997		
			Number	as % of 1996	as % of Apr
	<i>1,000 Head</i>	<i>1,000 Head</i>	<i>1,000 Head</i>	<i>Percent</i>	<i>Percent</i>
AZ	42	39	45	107	115
CA	50	50	50	100	100
CO	185	*190	240	130	126
ID	41	33	45	110	136
IA	60	49	63	105	129
KS	450	410	445	99	109
NE	460	380	475	103	125
NM	26	32	22	85	69
OK	92	86	77	84	90
SD	34	21	21	62	100
TX	500	530	500	100	94
WA	25	25	33	132	132
Oth Sts	80	70	75	94	107
US	2,045	*1,915	2,091	102	109

\* Revised.

**Cattle on Feed: Other Disappearance, 1,000+ Capacity Feedlots,  
by Month, State, and United States 1996-97**

State	During May 1996	During Apr 1997	During May 1997		
			Number	as % of 1996	as % of Apr
	<i>1,000 Head</i>	<i>1,000 Head</i>	<i>1,000 Head</i>	<i>Percent</i>	<i>Percent</i>
AZ	0	2	3	0	150
CA	5	5	10	200	200
CO	10	15	15	150	100
ID	8	14	10	125	71
IA	3	1	2	67	200
KS	10	20	15	150	75
NE	20	15	25	125	167
NM	1	1	1	100	100
OK	2	2	2	100	100
SD	4	7	7	175	100
TX	10	10	10	100	100
WA	1	1	2	200	200
Oth Sts	10	5	15	150	300
US	84	98	117	139	119

<sup>1</sup> Includes death losses, movement from feedlots to pastures, and shipments to other feedlots for further feeding.

The next "Cattle on Feed" report will be released at 3 p.m. ET on July 18, 1997.

The United States Department of Agriculture (USDA) prohibits discrimination in its programs on the basis of race, color, national origin, sex, religion, age, disability, political beliefs, and marital or familial status. Persons with disabilities who require alternative means for communication of program information (braille, large print, audiotape, etc.) should contact the USDA's TARGET Center at (202) 720-2600 (voice and TDD).

To file a complaint, write the Secretary of Agriculture, USDA, Washington, D.C., 20250, or call 1-800-245-6340 (voice) or (202) 720-1127 (TDD). USDA is an equal employment opportunity employer.

---

## **SUBSCRIBE TODAY!!**

---

For your convenience, there are several ways to obtain NASS reports, data products, and services:

### **INTERNET ACCESS**

All NASS reports are now available free of charge on the worldwide Internet. For access, connect to the Internet and select:

1. Worldwide Web: <http://www.usda.gov/nass/> *OR*
2. For Gopher/Telenet/FTP access:  
HOST=usda.mannlib.cornell.edu *OR*
3. For a subscription direct to your e-mail address,  
send an e-mail message to: [usda-reports@usda.mannlib.cornell.edu](mailto:usda-reports@usda.mannlib.cornell.edu)  
and in the body of the message type the word: list

### **AUTOFAX ACCESS**

NASSFax service is available for some reports from your fax machine. Please call 202-720-2000, using the handset attached to your fax. Respond to the voice prompts.

-----

### **PRINTED REPORTS OR DATA PRODUCTS**

**CALL OUR TOLL-FREE ORDER DESK: 1-800-999-6779 (U.S. and Canada)**  
**Other areas, please call 1-703-834-0125                      FAX: 1-703-834-0110**  
**(Visa, MasterCard, check, or money order acceptable for payment.)**

-----

### **ASSISTANCE**

For assistance with general agricultural statistics or further information about NASS or its products or services, contact the **Agricultural Statistics Hotline** at 1-800-727-9540, 7:30 a.m. to 4:00 p.m. ET, or e-mail: [NASS@NASS.USDA.GOV](mailto:NASS@NASS.USDA.GOV).

---