

Cattle on Feed



USDA
Washington, D.C.

Released August 15, 1997, by the National Agricultural Statistics Service (NASS), Agricultural Statistics Board, U.S. Department of Agriculture. For information on "Cattle on Feed" call Dean Groskurth at (202) 720-3040, office hours 7:30 a.m. to 4:00 p.m. ET.

U.S. Cattle on Feed Up 16 Percent

Cattle and calves on feed for slaughter market in the United States for feedlots with capacity of 1,000 or more head totaled 8.79 million head on August 1, 1997. The inventory was 16 percent above August 1, 1996.

Placements in feedlots during July totaled 2.0 million, 14 percent above 1996. Net placements were 1.94 million. During July, placements of cattle and calves weighing less than 600 pounds were 360,000, 600-699 pounds were 379,000, 700-799 pounds were 644,000, and 800 pounds and greater were 612,000.

Marketings of fed cattle during July totaled 2.11 million, 6 percent above 1996

Other disappearance totaled 57,000 during July, 8 percent below the previous year.

Cattle on Feed in Historic 7 States Up 19 Percent

Cattle on feed August 1, 1997, in the historic 7 States for feedlots with capacity of 1,000 or more head totaled 7.56 million, up 19 percent from the previous year and up 2 percent from August 1, 1995.

Placements in feedlots during July totaled 1.75 million, 18 percent above 1996 and 25 percent above 1995.

Marketings during July totaled 1.83 million, 9 percent above 1996 and 8 percent above 1995.

Other disappearance during July was 42,000 head, 9 percent below 1996 and 14 percent below 1995.

**Cattle on Feed: Number on Feed, Placements, Marketings, and
Other Disappearance, 1,000+ Capacity Feedlots,
United States, August 1, 1996-97**

Item	Number		1997 as % of
	1996	1997	1996
	<i>1,000 Head</i>	<i>1,000 Head</i>	<i>Percent</i>
On Feed Jul 1 ¹	7,840	8,958	114
Placed on Feed During Jul	1,746	1,995	114
Fed Cattle Marketed During Jul	1,978	2,106	106
Other Disappearance During Jul ²	62	57	92
On Feed Aug 1 ¹	7,546	8,790	116

¹ Cattle and calves on feed are animals for slaughter market being fed a ration of grain or other concentrates and are expected to produce a carcass that will grade select or better.

² Includes death losses, movement from feedlots to pastures and shipments to other feedlots for further feeding.

**Cattle on Feed: Number on Feed, Placements, Marketings, and
Other Disappearance, 1,000+ Capacity Feedlots,
United States, July 1, 1996-97**

Item	Number		1997 as % of
	1996	1997	1996
	<i>1,000 Head</i>	<i>1,000 Head</i>	<i>Percent</i>
On Feed Jun 1 ¹	8,601	9,615	112
Placed on Feed During Jun	1,305	1,444	111
Fed Cattle Marketed During Jun	1,996	2,041	102
Other Disappearance During Jun ²	70	60	86
On Feed Jul 1 ¹	7,840	8,958	114

¹ Cattle and calves on feed are animals for slaughter market being fed a ration of grain or other concentrates and are expected to produce a carcass that will grade select or better.

² Includes death losses, movement from feedlots to pastures and shipments to other feedlots for further feeding.

**Cattle on Feed: Number on Feed, Placements, Marketings, and
Other Disappearance, 1,000+ Capacity Feedlots,
7 States, August 1, 1995-97 ¹**

Item	Number			1997 as % of	
	1995	1996	1997	1995	1996
	<i>1,000 Head</i>	<i>1,000 Head</i>	<i>1,000 Head</i>	<i>Percent</i>	<i>Percent</i>
On Feed Jul 1 ²	7,734	6,578	7,679	99	117
Placed on Feed During Jul	1,404	1,483	1,751	125	118
Fed Cattle Marketed During Jul	1,698	1,678	1,832	108	109
Other Disappearance During Jul ³	49	46	42	86	91
On Feed Aug 1 ²	7,391	6,337	7,556	102	119

¹ The 7 States include AZ, CA, CO, IA, KS, NE, and TX.

² Cattle and calves on feed are animals for slaughter market being fed a ration of grain or other concentrates and are expected to produce a carcass that will grade select or better.

³ Includes death losses, movement from feedlots to pastures and shipments to other feedlots for further feeding.

**Cattle on Feed: Number on Feed, Placements, Marketings, and
Other Disappearance, 1,000+ Capacity Feedlots,
7 States, July 1, 1995-97 ¹**

Item	Number			1997 as % of	
	1995	1996	1997	1995	1996
	<i>1,000 Head</i>	<i>1,000 Head</i>	<i>1,000 Head</i>	<i>Percent</i>	<i>Percent</i>
On Feed Jun 1 ²	8,182	7,253	8,231	101	113
Placed on Feed During Jun	1,356	1,068	1,224	90	115
Fed Cattle Marketed During Jun	1,754	1,696	1,732	99	102
Other Disappearance During Jun ³	50	47	44	88	94
On Feed Jul 1 ²	7,734	6,578	7,679	99	117

¹ The 7 States include AZ, CA, CO, IA, KS, NE, and TX.

² Cattle and calves on feed are animals for slaughter market being fed a ration of grain or other concentrates and are expected to produce a carcass that will grade select or better.

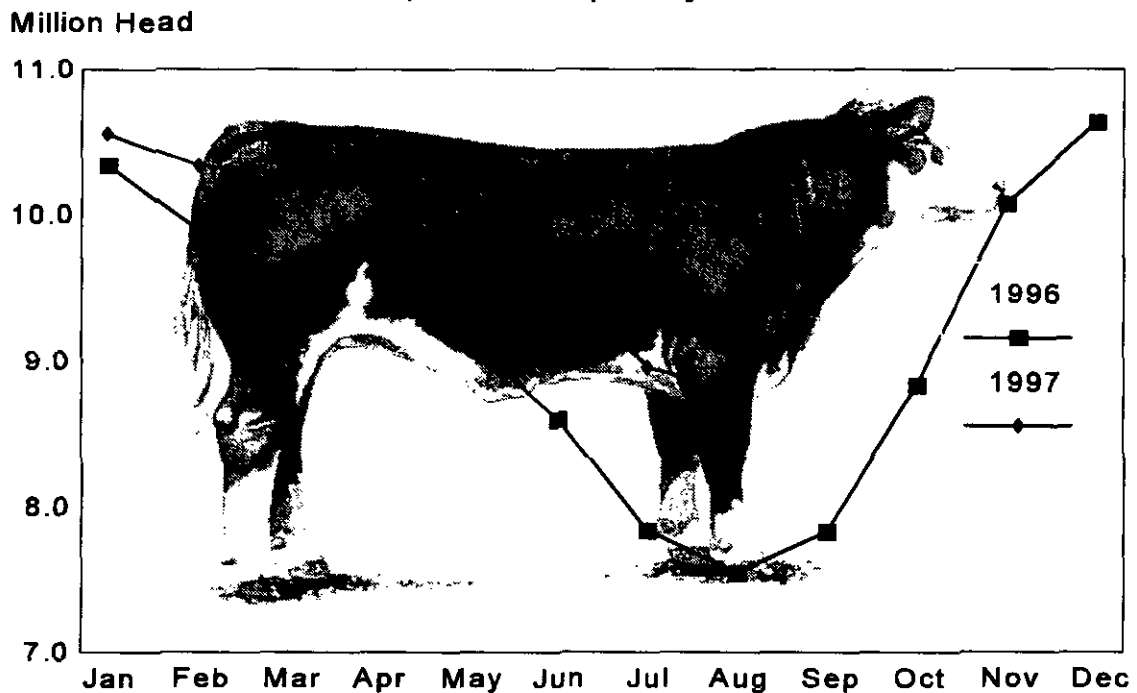
³ Includes death losses, movement from feedlots to pastures and shipments to other feedlots for further feeding.

**Cattle on Feed: Number on Feed, 1,000+ Capacity Feedlots,
by Month, State, and United States 1996-97 ¹**

State	Aug 1, 1996	Jul 1, 1997	Aug 1, 1997		
			Number	as % of 1996	as % of Jul
	<i>1,000 Head</i>	<i>1,000 Head</i>	<i>1,000 Head</i>	<i>Percent</i>	<i>Percent</i>
AZ	177	189	176	99	93
CA	345	390	380	110	97
CO	660	920	920	139	100
ID	230	215	205	89	95
IA	225	280	270	120	96
KS	1,700	1,960	2,000	118	102
NE	1,210	1,540	1,500	124	97
NM	94	90	87	93	97
OK	315	335	330	105	99
SD	105	124	109	104	88
TX	2,020	2,400	2,310	114	96
WA	145	140	148	102	106
Oth Sts	320	375	355	111	95
US	7,546	8,958	8,790	116	98

¹ Cattle and calves on feed are animals for slaughter market being fed a ration of grain or other concentrates and are expected to produce a carcass that will grade select or better.

United States Cattle on Feed 1,000+ Capacity Feedlots



**Cattle on Feed: Number Placed on Feed, 1,000+ Capacity Feedlots,
by Month, State, and United States 1996-97**

State	During Jul 1996	During Jun 1997	During Jul 1997		
			Number	as % of 1996	as % of Jun
	<i>1,000 Head</i>	<i>1,000 Head</i>	<i>1,000 Head</i>	<i>Percent</i>	<i>Percent</i>
AZ	41	27	26	63	96
CA	50	50	45	90	90
CO	145	125	235	162	188
ID	59	40	43	73	108
IA	32	37	45	141	122
KS	495	335	570	115	170
NE	310	220	370	119	168
NM	14	20	15	107	75
OK	74	67	81	109	121
SD	14	17	12	86	71
TX	410	430	460	112	107
WA	42	31	38	90	123
Oth Sts	60	45	55	92	122
US	1,746	1,444	1,995	114	138

**Cattle on Feed: Number Placed on Feed by Weight Group, 1,000+ Capacity
Feedlots, by Month, State, and United States, 1996-97**

State	During July									
	Less 600		600-699		700-799		800 Plus		Total	
	1996	1997	1996	1997	1996	1997	1996	1997	1996	1997
	<i>1,000 Head</i>	<i>1,000 Head</i>	<i>1,000 Head</i>	<i>1,000 Head</i>	<i>1,000 Head</i>	<i>1,000 Head</i>	<i>1,000 Head</i>	<i>1,000 Head</i>	<i>1,000 Head</i>	<i>1,000 Head</i>
CO	15	14	30	49	55	81	45	91	145	235
KS	68	61	126	93	200	227	101	189	495	570
NE	23	37	54	53	107	128	126	152	310	370
TX	131	158	131	124	103	118	45	60	410	460
Oth Sts	106	90	65	60	105	90	110	120	386	360
US	343	360	406	379	570	644	427	612	1,746	1,995
	During June									
	Less 600		600-699		700-799		800 Plus		Total	
	1996	1997	1996	1997	1996	1997	1996	1997	1996	1997
	<i>1,000 Head</i>	<i>1,000 Head</i>	<i>1,000 Head</i>	<i>1,000 Head</i>	<i>1,000 Head</i>	<i>1,000 Head</i>	<i>1,000 Head</i>	<i>1,000 Head</i>	<i>1,000 Head</i>	<i>1,000 Head</i>
CO	8	22	10	27	31	38	31	38	80	125
KS	48	55	96	85	105	115	61	80	310	335
NE	10	17	32	37	57	75	91	91	190	220
TX	102	120	139	129	84	142	40	39	365	430
Oth Sts	105	94	65	60	90	90	100	90	360	334
US	273	308	342	338	367	460	323	338	1,305	1,444

**Cattle on Feed: Number Marketed, 1,000+ Capacity Feedlots,
by Month, State, and United States 1996-97**

State	During Jul 1996	During Jun 1997	During Jul 1997		
			Number	as % of 1996	as % of Jun
	<i>1,000 Head</i>	<i>1,000 Head</i>	<i>1,000 Head</i>	<i>Percent</i>	<i>Percent</i>
AZ	37	41	38	103	93
CA	45	50	50	111	100
CO	230	210	230	100	110
ID	51	55	49	96	89
IA	56	56	54	96	96
KS	470	475	520	111	109
NE	370	430	400	108	93
NM	14	23	17	121	74
OK	87	90	85	98	94
SD	29	28	27	93	96
TX	470	470	540	115	115
WA	34	38	26	76	68
Oth Sts	85	75	70	82	93
US	1,978	2,041	2,106	106	103

**Cattle on Feed: Other Disappearance, 1,000+ Capacity Feedlots,
by Month, State, and United States 1996-97 ¹**

State	During Jul 1996	During Jun 1997	During Jul 1997		
			Number	as % of 1996	as % of Jun
	<i>1,000 Head</i>	<i>1,000 Head</i>	<i>1,000 Head</i>	<i>Percent</i>	<i>Percent</i>
AZ	0	3	1	0	33
CA	5	5	5	100	100
CO	5	5	5	100	100
ID	3	5	4	133	80
IA	1	1	1	100	100
KS	15	10	10	67	100
NE	10	10	10	100	100
NM	4	1	1	25	100
OK	2	2	1	50	50
SD	1	2	0	0	0
TX	10	10	10	100	100
WA	1	1	4	400	400
Oth Sts	5	5	5	100	100
US	62	60	57	92	95

¹ Includes death losses, movement from feedlots to pastures, and shipments to other feedlots for further feeding.

The next "Cattle on Feed" report will be released at 3 p.m. ET on September 19, 1997.

The United States Department of Agriculture (USDA) prohibits discrimination in its programs on the basis of race, color, national origin, sex, religion, age, disability, political beliefs, and marital or familial status. Persons with disabilities who require alternative means for communication of program information (braille, large print, audiotape, etc.) should contact the USDA's TARGET Center at 202-720-2600 (voice and TDD).

To file a complaint, write the Secretary of Agriculture, USDA, Washington, D.C., 20250, or call 1-800-245-6340 (voice) or 202-720-1127 (TDD). USDA is an equal employment opportunity employer.

ACCESS TO REPORTS!!

For your convenience, there are several ways to obtain NASS reports, data products, and services:

INTERNET ACCESS

All NASS reports are available free of charge on the worldwide Internet. For access, connect to the Internet and go to the NASS Home Page at: <http://www.usda.gov/nass/>. Select "Today's Reports" or Publications and then Reports by Calendar or Publications and then Search, by Title or Subject.

E-MAIL SUBSCRIPTION

All NASS reports are available by subscription free of charge direct to your e-mail address. Send an e-mail message to: usda-reports@usda.mannlib.cornell.edu. In the body of the message type the word: **list**.

AUTOFAX ACCESS

NASSFax service is available for some reports from your fax machine. Please call 202-720-2000, using the handset attached to your fax. Respond to the voice prompts. Document 0411 is a list of available reports.

PRINTED REPORTS OR DATA PRODUCTS

CALL OUR TOLL-FREE ORDER DESK: 800-999-6779 (U.S. and Canada)
Other areas, please call 703-834-0125 FAX: 703-834-0110
(Visa, MasterCard, check, or money order acceptable for payment.)

ASSISTANCE

For **assistance** with general agricultural statistics or further information about NASS or its products or services, contact the **Agricultural Statistics Hotline** at 800-727-9540, 7:30 a.m. to 4:00 p.m. ET, or e-mail: nass@nass.usda.gov.