

# Cattle on Feed



USDA  
Washington, D.C.

---

Released September 19, 1997, by the National Agricultural Statistics Service (NASS), Agricultural Statistics Board, U.S. Department of Agriculture. For information on "Cattle on Feed" call Dean Groskurth at (202) 720-3040, office hours 7:30 a.m. to 4:00 p.m. ET.

## U.S. Cattle on Feed Up 16 Percent

**Cattle and calves on feed** for slaughter market in the United States for feedlots with capacity of 1,000 or more head totaled 9.12 million head on September 1, 1997. The inventory was 16 percent above September 1, 1996.

**Placements** in feedlots during August totaled 2.43 million, 7 percent above 1996. Net placements were 2.38 million. During August, placements of cattle and calves weighing less than 600 pounds were 461,000, 600-699 pounds were 474,000, 700-799 pounds were 725,000, and 800 pounds and greater were 769,000.

**Marketings** of fed cattle during August totaled 2.03 million, 5 percent above 1996.

**Other disappearance** totaled 45,000 during August, 10 percent below the previous year.

## Cattle on Feed in Historic 7 States Up 19 Percent

**Cattle on feed** September 1, 1997, in the historic 7 States for feedlots with capacity of 1,000 or more head totaled 7.85 million, up 19 percent from the previous year and up 9 percent from September 1, 1995.

**Placements** in feedlots during August totaled 2.11 million, 7 percent above 1996 and 28 percent above 1995.

**Marketings** during August totaled 1.76 million, 6 percent above 1996 but 3 percent below 1995.

**Other disappearance** during August was 42,000 head, 14 percent above 1996 and 5 percent above 1995.

**Cattle on Feed: Number on Feed, Placements, Marketings, and  
Other Disappearance, 1,000+ Capacity Feedlots,  
United States, September 1, 1996-97**

Item	Number		1997 as % of
	1996	1997	1996
	<i>1,000 Head</i>	<i>1,000 Head</i>	<i>Percent</i>
On Feed Aug 1 <sup>1</sup>	7,546	*8,770	116
Placed on Feed During Aug	2,265	2,429	107
Fed Cattle Marketed During Aug	1,930	2,033	105
Other Disappearance During Aug <sup>2</sup>	50	45	90
On Feed Sep 1 <sup>1</sup>	7,831	9,121	116

\* Revised.

<sup>1</sup> Cattle and calves on feed are animals for slaughter market being fed a ration of grain or other concentrates and are expected to produce a carcass that will grade select or better.

<sup>2</sup> Includes death losses, movement from feedlots to pastures and shipments to other feedlots for further feeding.

**Cattle on Feed: Number on Feed, Placements, Marketings, and  
Other Disappearance, 1,000+ Capacity Feedlots,  
United States, August 1, 1996-97**

Item	Number		1997 as % of
	1996	1997	1996
	<i>1,000 Head</i>	<i>1,000 Head</i>	<i>Percent</i>
On Feed Jul 1 <sup>1</sup>	7,840	8,958	114
Placed on Feed During Jul	1,746	1,995	114
Fed Cattle Marketed During Jul	1,978	*2,126	107
Other Disappearance During Jul <sup>2</sup>	62	57	92
On Feed Aug 1 <sup>1</sup>	7,546	*8,770	116

\* Revised.

<sup>1</sup> Cattle and calves on feed are animals for slaughter market being fed a ration of grain or other concentrates and are expected to produce a carcass that will grade select or better.

<sup>2</sup> Includes death losses, movement from feedlots to pastures and shipments to other feedlots for further feeding.

**Cattle on Feed: Number on Feed, Placements, Marketings, and  
Other Disappearance, 1,000+ Capacity Feedlots,  
7 States, September 1, 1995-97 <sup>1</sup>**

Item	Number			1997 as % of	
	1995	1996	1997	1995	1996
	<i>1,000 Head</i>	<i>1,000 Head</i>	<i>1,000 Head</i>	<i>Percent</i>	<i>Percent</i>
On Feed Aug 1 <sup>2</sup>	7,391	6,337	*7,536	102	119
Placed on Feed During Aug	1,653	1,965	2,111	128	107
Fed Cattle Marketed During Aug	1,815	1,653	1,755	97	106
Other Disappearance During Aug <sup>3</sup>	40	37	42	105	114
On Feed Sep 1 <sup>2</sup>	7,189	6,612	7,850	109	119

\* Revised.

<sup>1</sup> The 7 States include AZ, CA, CO, IA, KS, NE, and TX.

<sup>2</sup> Cattle and calves on feed are animals for slaughter market being fed a ration of grain or other concentrates and are expected to produce a carcass that will grade select or better.

<sup>3</sup> Includes death losses, movement from feedlots to pastures and shipments to other feedlots for further feeding.

**Cattle on Feed: Number on Feed, Placements, Marketings, and  
Other Disappearance, 1,000+ Capacity Feedlots,  
7 States, August 1, 1995-97 <sup>1</sup>**

Item	Number			1997 as % of	
	1995	1996	1997	1995	1996
	<i>1,000 Head</i>	<i>1,000 Head</i>	<i>1,000 Head</i>	<i>Percent</i>	<i>Percent</i>
On Feed Jul 1 <sup>2</sup>	7,734	6,578	7,679	99	117
Placed on Feed During Jul	1,404	1,483	1,751	125	118
Fed Cattle Marketed During Jul	1,698	1,678	*1,852	109	110
Other Disappearance During Jul <sup>3</sup>	49	46	42	86	91
On Feed Aug 1 <sup>2</sup>	7,391	6,337	*7,536	102	119

\* Revised.

<sup>1</sup> The 7 States include AZ, CA, CO, IA, KS, NE, and TX.

<sup>2</sup> Cattle and calves on feed are animals for slaughter market being fed a ration of grain or other concentrates and are expected to produce a carcass that will grade select or better.

<sup>3</sup> Includes death losses, movement from feedlots to pastures and shipments to other feedlots for further feeding.

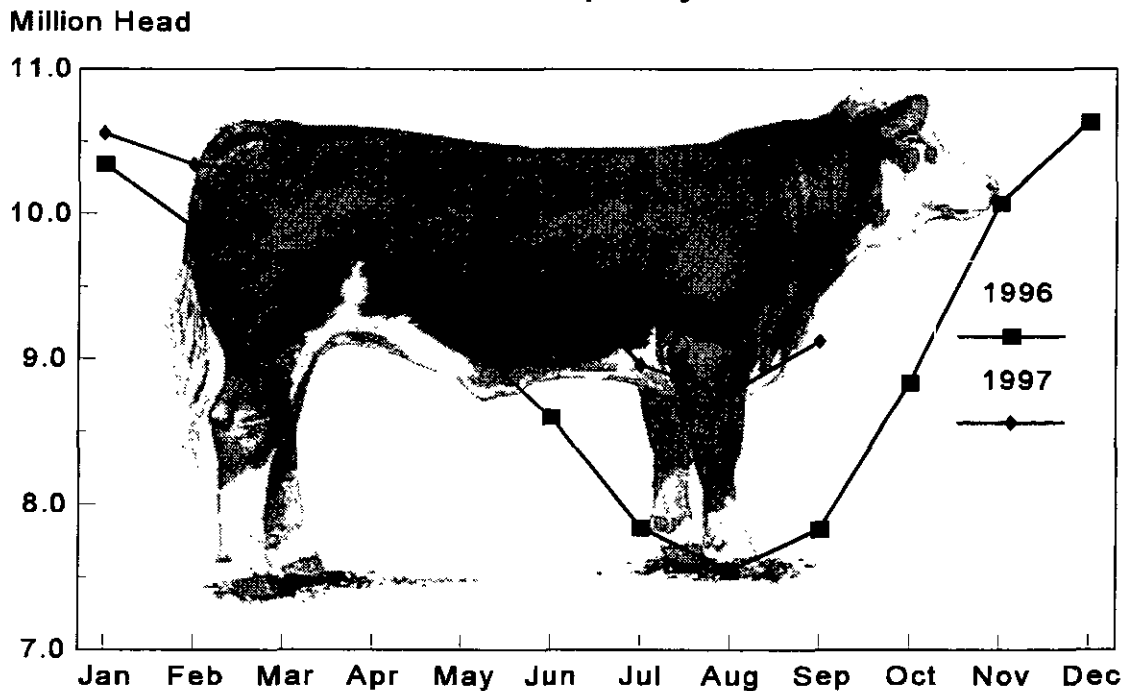
**Cattle on Feed: Number on Feed, 1,000+ Capacity Feedlots,  
by Month, State, and United States 1996-97<sup>1</sup>**

State	Sep 1, 1996	Aug 1, 1997	Sep 1, 1997		
			Number	as % of 1996	as % of Aug
	<i>1,000 Head</i>	<i>1,000 Head</i>	<i>1,000 Head</i>	<i>Percent</i>	<i>Percent</i>
AZ	182	176	185	102	105
CA	350	380	380	109	100
CO	710	*900	920	130	102
ID	250	205	210	84	102
IA	230	270	265	115	98
KS	1,790	2,000	2,070	116	104
NE	1,310	1,500	1,640	125	109
NM	90	87	88	98	101
OK	300	330	340	113	103
SD	101	109	102	101	94
TX	2,040	2,310	2,390	117	103
WA	168	148	166	99	112
Oth Sts	310	355	365	118	103
US	7,831	*8,770	9,121	116	104

\* Revised.

<sup>1</sup> Cattle and calves on feed are animals for slaughter market being fed a ration of grain or other concentrates and are expected to produce a carcass that will grade select or better.

**United States Cattle on Feed  
1,000+ Capacity Feedlots**



**Cattle on Feed: Number Placed on Feed, 1,000+ Capacity Feedlots,  
by Month, State, and United States 1996-97**

State	During Aug 1996	During Jul 1997	During Aug 1997		
			Number	as % of 1996	as % of Jul
	<i>1,000 Head</i>	<i>1,000 Head</i>	<i>1,000 Head</i>	<i>Percent</i>	<i>Percent</i>
AZ	40	26	45	113	173
CA	55	45	50	91	111
CO	275	235	235	85	100
ID	67	43	54	81	126
IA	55	45	51	93	113
KS	570	570	600	105	105
NE	460	370	500	109	135
NM	14	15	20	143	133
OK	68	81	92	135	114
SD	21	12	17	81	142
TX	510	460	630	124	137
WA	55	38	50	91	132
Oth Sts	75	55	85	113	155
US	2,265	1,995	2,429	107	122

**Cattle on Feed: Number Placed on Feed by Weight Group, 1,000+ Capacity  
Feedlots, by Month, State, and United States, 1996-97**

State	During August									
	Less 600		600-699		700-799		800 Plus		Total	
	1996	1997	1996	1997	1996	1997	1996	1997	1996	1997
	<i>1,000 Head</i>	<i>1,000 Head</i>	<i>1,000 Head</i>	<i>1,000 Head</i>	<i>1,000 Head</i>	<i>1,000 Head</i>	<i>1,000 Head</i>	<i>1,000 Head</i>	<i>1,000 Head</i>	<i>1,000 Head</i>
CO	11	24	25	27	121	75	118	109	275	235
KS	50	94	138	128	250	189	132	189	570	600
NE	22	34	57	74	184	152	197	240	460	500
TX	173	189	148	170	138	195	51	76	510	630
Oth Sts	115	120	70	75	115	114	150	155	450	464
US	371	461	438	474	808	725	648	769	2,265	2,429
	During July									
	Less 600		600-699		700-799		800 Plus		Total	
	1996	1997	1996	1997	1996	1997	1996	1997	1996	1997
	<i>1,000 Head</i>	<i>1,000 Head</i>	<i>1,000 Head</i>	<i>1,000 Head</i>	<i>1,000 Head</i>	<i>1,000 Head</i>	<i>1,000 Head</i>	<i>1,000 Head</i>	<i>1,000 Head</i>	<i>1,000 Head</i>
CO	15	14	30	49	55	81	45	91	145	235
KS	68	61	126	93	200	227	101	189	495	570
NE	23	37	54	53	107	128	126	152	310	370
TX	131	158	131	124	103	118	45	60	410	460
Oth Sts	106	90	65	60	105	90	110	120	386	360
US	343	360	406	379	570	644	427	612	1,746	1,995

**Cattle on Feed: Number Marketed, 1,000+ Capacity Feedlots,  
by Month, State, and United States 1996-97**

State	During Aug 1996	During Jul 1997	During Aug 1997		
			Number	as % of 1996	as % of Jul
	<i>1,000 Head</i>	<i>1,000 Head</i>	<i>1,000 Head</i>	<i>Percent</i>	<i>Percent</i>
AZ	34	38	35	103	92
CA	45	50	45	100	90
CO	220	*250	210	95	84
ID	44	49	48	109	98
IA	49	54	55	112	102
KS	475	520	520	109	100
NE	350	400	350	100	88
NM	15	17	18	120	106
OK	82	85	81	99	95
SD	25	27	24	96	89
TX	480	540	540	113	100
WA	31	26	32	103	123
Oth Sts	80	70	75	94	107
US	1,930	*2,126	2,033	105	96

\* Revised.

**Cattle on Feed: Other Disappearance, 1,000+ Capacity Feedlots,  
by Month, State, and United States 1996-97 <sup>1</sup>**

State	During Aug 1996	During Jul 1997	During Aug 1997		
			Number	as % of 1996	as % of Jul
	<i>1,000 Head</i>	<i>1,000 Head</i>	<i>1,000 Head</i>	<i>Percent</i>	<i>Percent</i>
AZ	1	1	1	100	100
CA	5	5	5	100	100
CO	5	5	5	100	100
ID	3	4	1	33	25
IA	1	1	1	100	100
KS	5	10	10	200	100
NE	10	10	10	100	100
NM	3	1	1	33	100
OK	1	1	1	100	100
SD	0	0	0	0	0
TX	10	10	10	100	100
WA	1	4	0	0	0
Oth Sts	5	5	0	0	0
US	50	57	45	90	79

<sup>1</sup> Includes death losses, movement from feedlots to pastures, and shipments to other feedlots for further feeding.

The next Cattle on Feed report will be released at 3 p.m. ET on October 17, 1997.

The United States Department of Agriculture (USDA) prohibits discrimination in its programs on the basis of race, color, national origin, sex, religion, age, disability, political beliefs, and marital or familial status. Persons with disabilities who require alternative means for communication of program information (braille, large print, audiotape, etc.) should contact the USDA's TARGET Center at 202-720-2600 (voice and TDD).

To file a complaint, write the Secretary of Agriculture, USDA, Washington, D.C., 20250, or call 1-800-245-6340 (voice) or 202-720-1127 (TDD). USDA is an equal employment opportunity employer.

---

## ACCESS TO REPORTS!!

---

For your convenience, there are several ways to obtain NASS reports, data products, and services:

### INTERNET ACCESS

All NASS reports are available free of charge on the worldwide Internet. For access, connect to the Internet and go to the NASS Home Page at: <http://www.usda.gov/nass/>. Select "Today's Reports" or Publications and then Reports by Calendar or Publications and then Search, by Title or Subject.

### E-MAIL SUBSCRIPTION

All NASS reports are available by subscription free of charge direct to your e-mail address. Send an e-mail message to: [usda-reports@usda.mannlib.cornell.edu](mailto:usda-reports@usda.mannlib.cornell.edu). In the body of the message type the word: **list**.

### AUTOFAX ACCESS

NASSFax service is available for some reports from your fax machine. Please call 202-720-2000, using the handset attached to your fax. Respond to the voice prompts. Document 0411 is a list of available reports.

---

### PRINTED REPORTS OR DATA PRODUCTS

CALL OUR TOLL-FREE ORDER DESK: 800-999-6779 (U.S. and Canada)  
Other areas, please call 703-834-0125      FAX: 703-834-0110  
(Visa, MasterCard, check, or money order acceptable for payment.)

---

### ASSISTANCE

For assistance with general agricultural statistics or further information about NASS or its products or services, contact the Agricultural Statistics Hotline at 800-727-9540, 7:30 a.m. to 4:00 p.m. ET, or e-mail: [nass@nass.usda.gov](mailto:nass@nass.usda.gov).

*USDA to Hold Data Users Meeting  
Holiday Inn Mart Plaza  
Chicago, Illinois  
October 20, 1997*

The National Agricultural Statistics Service will be organizing an open forum for Data Users. The purpose will be to provide updates on pending changes in the USDA statistical and information programs including the status of the 1997 Census of Agriculture, and to seek comments and input from data users. Other agencies to be represented will include the Agricultural Marketing Service, the Economic Research Service, the Foreign Agricultural Service, and the World Agricultural Outlook Board.

For registration details, see the NASS home page <http://www.usda.gov/nass/> or contact Fred Vogel (NASS) (202) 720-3896 or [fvogel@nass.usda.gov](mailto:fvogel@nass.usda.gov)