

Cattle on Feed



USDA
Washington, D.C.

Released October 17, 1997, by the National Agricultural Statistics Service (NASS), Agricultural Statistics Board, U.S. Department of Agriculture. For information on "Cattle on Feed" call Dean Groskurth at (202) 720-3040, office hours 7:30 a.m. to 4:00 p.m. ET.

U.S. Cattle on Feed Up 13 Percent

Cattle and calves on feed for slaughter market in the United States for feedlots with capacity of 1,000 or more head totaled 9.96 million head on October 1, 1997. The inventory was 13 percent above October 1, 1996. The inventory included 6.04 million steers and steer calves, up 9 percent from the previous year. This group accounts for 61 percent of the total inventory. Heifers and heifer calves accounted for 3.89 million head, up 20 percent from 1996.

Placements in feedlots during September totaled 2.71 million, 2 percent above 1996. Net placements were 2.66 million. During September, placements of cattle and calves weighing less than 600 pounds were 480,000, 600-699 pounds were 498,000, 700-799 pounds were 817,000, and 800 pounds and greater were 916,000.

Marketings of fed cattle during September totaled 1.82 million, 15 percent above 1996.

Other disappearance totaled 53,000 during September, 24 percent below the previous year.

Cattle on Feed in Historic 7 States Up 14 Percent

Cattle on feed October 1, 1997, in the historic 7 States for feedlots with capacity of 1,000 or more head totaled 8.56 million, up 14 percent from the previous year and 11 percent above October 1, 1995. The inventory included 5.15 million steers and steer calves, up 11 percent from the previous year. This group accounts for 60 percent of the total inventory. Heifers and heifer calves accounted for 3.38 million head, up 21 percent from 1996.

Placements in feedlots during September totaled 2.28 million, slightly above 1996 and 5 percent above 1995.

Marketings during September totaled 1.53 million, 14 percent above 1996 but 4 percent below 1995.

Other disappearance during September was 42,000 head, 18 percent below 1996 and 9 percent below 1995.

**Cattle on Feed: Number on Feed, Placements, Marketings, and
Other Disappearance, 1,000+ Capacity Feedlots,
United States, October 1, 1996-97**

Item	Number		1997 as % of
	1996	1997	1996
	<i>1,000 Head</i>	<i>1,000 Head</i>	<i>Percent</i>
On Feed Sep 1 ¹	7,831	9,121	116
Placed on Feed During Sep	2,653	2,711	102
Fed Cattle Marketed During Sep	1,573	1,816	115
Other Disappearance During Sep ²	70	53	76
On Feed Oct 1 ¹	8,841	9,963	113

¹ Cattle and calves on feed are animals for slaughter market being fed a ration of grain or other concentrates and are expected to produce a carcass that will grade select or better.

² Includes death losses, movement from feedlots to pastures and shipments to other feedlots for further feeding.

**Cattle on Feed: Number on Feed, Placements, Marketings, and
Other Disappearance, 1,000+ Capacity Feedlots,
United States, September 1, 1996-97**

Item	Number		1997 as % of
	1996	1997	1996
	<i>1,000 Head</i>	<i>1,000 Head</i>	<i>Percent</i>
On Feed Aug 1 ¹	7,546	8,770	116
Placed on Feed During Aug	2,265	2,429	107
Fed Cattle Marketed During Aug	1,930	2,033	105
Other Disappearance During Aug ²	50	45	90
On Feed Sep 1 ¹	7,831	9,121	116

¹ Cattle and calves on feed are animals for slaughter market being fed a ration of grain or other concentrates and are expected to produce a carcass that will grade select or better.

² Includes death losses, movement from feedlots to pastures and shipments to other feedlots for further feeding.

**Cattle on Feed: Number on Feed by Class, 1,000+ Capacity Feedlots,
United States, October 1, 1996-97**

Item	Number		1997 as % of
	1996	1997	1996
	<i>1,000 Head</i>	<i>1,000 Head</i>	<i>Percent</i>
Class on Feed Oct 1			
Steers and Steer Calves	5,549	6,036	109
Heifers and Heifer Calves	3,252	3,894	120
Cows and Bulls	40	33	83

**Cattle on Feed: Number on Feed, Placements, Marketings, and
Other Disappearance, 1,000+ Capacity Feedlots,
7 States, October 1, 1995-97 ¹**

Item	Number			1997 as % of	
	1995	1996	1997	1995	1996
	<i>1,000 Head</i>	<i>1,000 Head</i>	<i>1,000 Head</i>	<i>Percent</i>	<i>Percent</i>
On Feed Sep 1 ²	7,189	6,612	7,850	109	119
Placed on Feed During Sep	2,173	2,267	2,278	105	100
Fed Cattle Marketed During Sep	1,594	1,342	1,528	96	114
Other Disappearance During Sep ³	46	51	42	91	82
On Feed Oct 1 ²	7,722	7,486	8,558	111	114

¹ The 7 States include AZ, CA, CO, IA, KS, NE, and TX.

² Cattle and calves on feed are animals for slaughter market being fed a ration of grain or other concentrates and are expected to produce a carcass that will grade select or better.

³ Includes death losses, movement from feedlots to pastures and shipments to other feedlots for further feeding.

**Cattle on Feed: Number on Feed, Placements, Marketings, and
Other Disappearance, 1,000+ Capacity Feedlots,
7 States, September 1, 1995-97 ¹**

Item	Number			1997 as % of	
	1995	1996	1997	1995	1996
	<i>1,000 Head</i>	<i>1,000 Head</i>	<i>1,000 Head</i>	<i>Percent</i>	<i>Percent</i>
On Feed Aug 1 ²	7,391	6,337	7,536	102	119
Placed on Feed During Aug	1,653	1,965	2,111	128	107
Fed Cattle Marketed During Aug	1,815	1,653	1,755	97	106
Other Disappearance During Aug ³	40	37	42	105	114
On Feed Sep 1 ²	7,189	6,612	7,850	109	119

¹ The 7 States include AZ, CA, CO, IA, KS, NE, and TX.

² Cattle and calves on feed are animals for slaughter market being fed a ration of grain or other concentrates and are expected to produce a carcass that will grade select or better.

³ Includes death losses, movement from feedlots to pastures and shipments to other feedlots for further feeding.

**Cattle on Feed: Number on Feed by Class, 1,000+ Capacity Feedlots,
7 States, October 1, 1995-97 ¹**

Item	Number			1997 as % of	
	1995	1996	1997	1995	1996
	<i>1,000 Head</i>	<i>1,000 Head</i>	<i>1,000 Head</i>	<i>Percent</i>	<i>Percent</i>
Class on Feed Oct 1					
Steers and Steer Calves	5,078	4,656	5,147	101	111
Heifers and Heifer Calves	2,608	2,798	3,383	130	121
Cows and Bulls	36	32	28	78	88

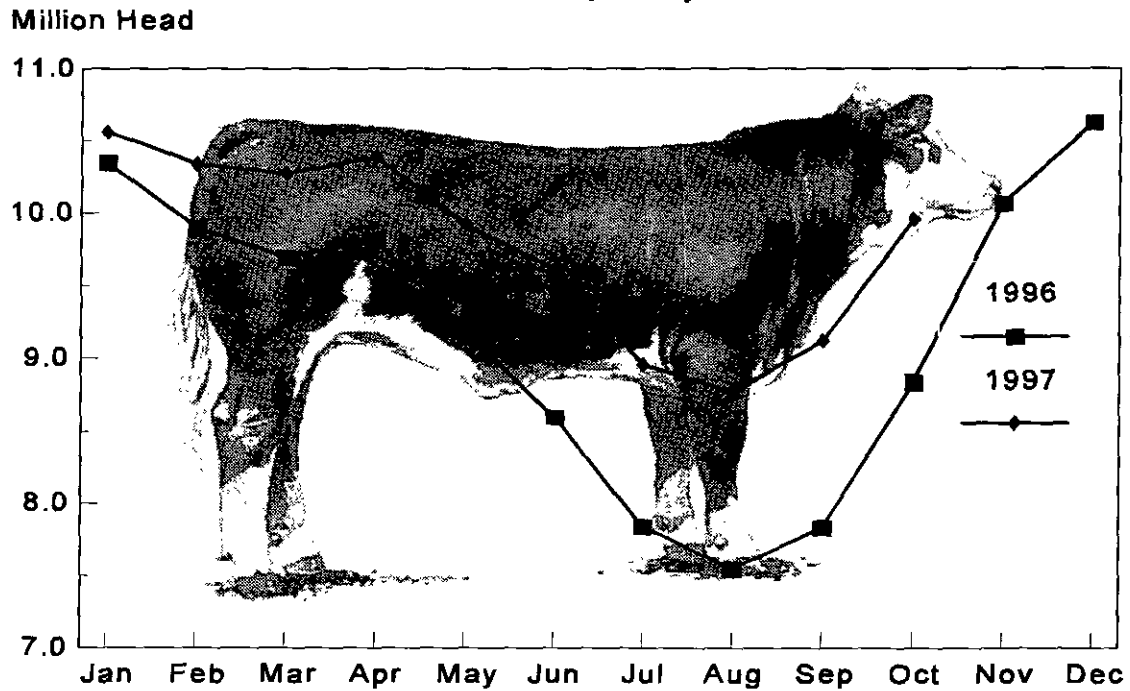
¹ The 7 States include AZ, CA, CO, IA, KS, NE, and TX.

**Cattle on Feed: Number on Feed, 1,000+ Capacity Feedlots,
by Month, State, and United States 1996-97¹**

State	Oct 1, 1996	Sep 1, 1997	Oct 1, 1997		
			Number	as % of 1996	as % of Sep
	<i>1,000 Head</i>	<i>1,000 Head</i>	<i>1,000 Head</i>	<i>Percent</i>	<i>Percent</i>
AZ	201	185	193	96	104
CA	355	380	385	108	101
CO	960	920	1,050	109	114
ID	275	210	240	87	114
IA	260	265	290	112	109
KS	1,930	2,070	2,220	115	107
NE	1,570	1,640	1,850	118	113
NM	95	88	96	101	109
OK	330	340	365	111	107
SD	110	102	118	107	116
TX	2,210	2,390	2,570	116	108
WA	185	166	191	103	115
Oth Sts	360	365	395	110	108
US	8,841	9,121	9,963	113	109

¹ Cattle and calves on feed are animals for slaughter market being fed a ration of grain or other concentrates and are expected to produce a carcass that will grade select or better.

**United States Cattle on Feed
1,000+ Capacity Feedlots**



**Cattle on Feed: Number Placed on Feed, 1,000+ Capacity Feedlots,
by Month, State, and United States 1996-97**

State	During Sep 1996	During Aug 1997	During Sep 1997		
			Number	as % of 1996	as % of Aug
	<i>1,000 Head</i>	<i>1,000 Head</i>	<i>1,000 Head</i>	<i>Percent</i>	<i>Percent</i>
AZ	48	45	35	73	78
CA	55	50	55	100	110
CO	405	235	320	79	136
ID	73	54	80	110	148
IA	74	51	68	92	133
KS	520	600	560	108	93
NE	565	500	540	96	108
NM	16	20	25	156	125
OK	85	92	105	124	114
SD	40	17	44	110	259
TX	600	630	700	117	111
WA	47	50	59	126	118
Oth Sts	125	85	120	96	141
US	2,653	2,429	2,711	102	112

**Cattle on Feed: Number Placed on Feed by Weight Group, 1,000+ Capacity
Feedlots, by Month, State, and United States, 1996-97**

State	During September									
	Less 600		600-699		700-799		800 Plus		Total	
	1996	1997	1996	1997	1996	1997	1996	1997	1996	1997
	<i>1,000 Head</i>	<i>1,000 Head</i>	<i>1,000 Head</i>	<i>1,000 Head</i>	<i>1,000 Head</i>	<i>1,000 Head</i>	<i>1,000 Head</i>	<i>1,000 Head</i>	<i>1,000 Head</i>	<i>1,000 Head</i>
CO	18	15	34	27	160	124	193	154	405	320
KS	69	90	135	109	172	185	144	176	520	560
NE	37	40	95	68	178	162	255	270	565	540
TX	156	205	156	189	204	205	84	101	600	700
Oth Sts	133	130	100	105	160	141	170	215	563	591
US	413	480	520	498	874	817	846	916	2,653	2,711
	During August									
	Less 600		600-699		700-799		800 Plus		Total	
	1996	1997	1996	1997	1996	1997	1996	1997	1996	1997
	<i>1,000 Head</i>	<i>1,000 Head</i>	<i>1,000 Head</i>	<i>1,000 Head</i>	<i>1,000 Head</i>	<i>1,000 Head</i>	<i>1,000 Head</i>	<i>1,000 Head</i>	<i>1,000 Head</i>	<i>1,000 Head</i>
CO	11	24	25	27	121	75	118	109	275	235
KS	50	94	138	128	250	189	132	189	570	600
NE	22	34	57	74	184	152	197	240	460	500
TX	173	189	148	170	138	195	51	76	510	630
Oth Sts	115	120	70	75	115	114	150	155	450	464
US	371	461	438	474	808	725	648	769	2,265	2,429

**Cattle on Feed: Number Marketed, 1,000+ Capacity Feedlots,
by Month, State, and United States 1996-97**

State	During Sep 1996	During Aug 1997	During Sep 1997		
			Number	as % of 1996	as % of Aug
	<i>1,000 Head</i>	<i>1,000 Head</i>	<i>1,000 Head</i>	<i>Percent</i>	<i>Percent</i>
AZ	29	35	26	90	74
CA	45	45	45	100	100
CO	150	210	185	123	88
ID	45	48	47	104	98
IA	43	55	42	98	76
KS	370	520	400	108	77
NE	290	350	320	110	91
NM	10	18	16	160	89
OK	52	81	78	150	96
SD	30	24	28	93	117
TX	415	540	510	123	94
WA	29	32	34	117	106
Oth Sts	65	75	85	131	113
US	1,573	2,033	1,816	115	89

**Cattle on Feed: Other Disappearance, 1,000+ Capacity Feedlots,
by Month, State, and United States 1996-97 ¹**

State	During Sep 1996	During Aug 1997	During Sep 1997		
			Number	as % of 1996	as % of Aug
	<i>1,000 Head</i>	<i>1,000 Head</i>	<i>1,000 Head</i>	<i>Percent</i>	<i>Percent</i>
AZ	0	1	1	0	100
CA	5	5	5	100	100
CO	5	5	5	100	100
ID	3	1	3	100	300
IA	1	1	1	100	100
KS	10	10	10	100	100
NE	15	10	10	67	100
NM	1	1	1	100	100
OK	3	1	2	67	200
SD	1	0	0	0	0
TX	15	10	10	67	100
WA	1	0	0	0	0
Oth Sts	10	0	5	50	0
US	70	45	53	76	118

¹ Includes death losses, movement from feedlots to pastures, and shipments to other feedlots for further feeding.

**Cattle on Feed: Number on Feed by Class, 1,000+ Capacity Feedlots,
by Quarter, State, and United States, 1996-97**

State	Steers & Steer Calves			Heifers & Heifer Calves			Cows and Bulls		
	Oct 1, 1996	Jul 1, 1997	Oct 1, 1997	Oct 1, 1996	Jul 1, 1997	Oct 1, 1997	Oct 1, 1996	Jul 1, 1997	Oct 1, 1997
	<i>1,000 Head</i>	<i>1,000 Head</i>	<i>1,000 Head</i>	<i>1,000 Head</i>	<i>1,000 Head</i>	<i>1,000 Head</i>	<i>1,000 Head</i>	<i>1,000 Head</i>	<i>1,000 Head</i>
AZ	185	170	172	16	19	21	0	0	0
CA	320	350	345	34	38	38	1	2	2
CO	570	495	585	380	415	460	10	10	5
ID	195	159	169	78	55	68	2	1	3
IA	161	160	175	99	120	115	0	0	0
KS	1,210	1,190	1,340	710	760	870	10	10	10
NE	880	880	1,090	680	645	750	10	15	10
NM	51	40	38	44	50	58	0	0	0
OK	200	184	205	130	150	160	0	1	0
SD	66	68	71	43	51	45	1	5	2
TX	1,330	1,370	1,440	879	1,029	1,129	1	1	1
WA	111	82	116	74	58	75	0	0	0
Oth Sts	270	260	290	85	110	105	5	5	0
US	5,549	5,408	6,036	3,252	3,500	3,894	40	50	33

The next "Cattle on Feed" report will be released at 3 p.m. ET on November 14, 1997.

The United States Department of Agriculture (USDA) prohibits discrimination in its programs on the basis of race, color, national origin, sex, religion, age, disability, political beliefs, and marital or familial status. Persons with disabilities who require alternative means for communication of program information (braille, large print, audiotape, etc.) should contact the USDA's TARGET Center at 202-720-2600 (voice and TDD).

To file a complaint, write the Secretary of Agriculture, USDA, Washington, D.C., 20250, or call 1-800-245-6340 (voice) or 202-720-1127 (TDD). USDA is an equal employment opportunity employer.

ACCESS TO REPORTS!!

For your convenience, there are several ways to obtain NASS reports, data products, and services:

INTERNET ACCESS

All NASS reports are available free of charge on the worldwide Internet. For access, connect to the Internet and go to the NASS Home Page at: <http://www.usda.gov/nass/>. Select "Today's Reports" or Publications and then Reports by Calendar or Publications and then Search, by Title or Subject.

E-MAIL SUBSCRIPTION

All NASS reports are available by subscription free of charge direct to your e-mail address. Send an e-mail message to: usda-reports@usda.mannlib.cornell.edu. In the body of the message type the word: **list**.

AUTOFAX ACCESS

NASSFax service is available for some reports from your fax machine. Please call 202-720-2000, using the handset attached to your fax. Respond to the voice prompts. Document 0411 is a list of available reports.

PRINTED REPORTS OR DATA PRODUCTS

CALL OUR TOLL-FREE ORDER DESK: 800-999-6779 (U.S. and Canada)
Other areas, please call 703-834-0125 FAX: 703-834-0110
(Visa, MasterCard, check, or money order acceptable for payment.)

ASSISTANCE

For **assistance** with general agricultural statistics or further information about NASS or its products or services, contact the **Agricultural Statistics Hotline** at **800-727-9540**, 7:30 a.m. to 4:00 p.m. ET, or e-mail: nass@nass.usda.gov.