

# Cattle on Feed



USDA  
Washington, D.C.

---

Released November 14, 1997, by the National Agricultural Statistics Service (NASS), Agricultural Statistics Board, U.S. Department of Agriculture. For information on "Cattle on Feed" call Dean Groskurth at (202) 720-3040, office hours 7:30 a.m. to 4:00 p.m. ET.

## U.S. Cattle on Feed Up 9 Percent

**Cattle and calves on feed** for slaughter market in the United States for feedlots with capacity of 1,000 or more head totaled 10.99 million head on November 1, 1997. The inventory was 9 percent above November 1, 1996.

**Placements** in feedlots during October totaled 2.90 million, 4 percent below 1996. Net placements were 2.81 million. During October, placements of cattle and calves weighing less than 600 pounds were 816,000, 600-699 pounds were 715,000, 700-799 pounds were 745,000, and 800 pounds and greater were 620,000.

**Marketings** of fed cattle during October totaled 1.78 million, 5 percent above 1996.

**Other disappearance** totaled 91,000 during October, 17 percent above the previous year.

## Cattle on Feed in Historic 7 States Up 10 Percent

**Cattle on feed** November 1, 1997, in the historic 7 States for feedlots with capacity of 1,000 or more head totaled 9.39 million, up 10 percent from the previous year and 12 percent above November 1, 1995.

**Placements** in feedlots during October totaled 2.43 million, 4 percent below 1996 but 7 percent above 1995.

**Marketings** during October totaled 1.53 million, 7 percent above 1996 but slightly below 1995.

**Other disappearance** during October was 77,000 head, 35 percent above 1996 and 51 percent above 1995.

**Cattle on Feed: Number on Feed, Placements, Marketings, and  
Other Disappearance, 1,000+ Capacity Feedlots,  
United States, November 1, 1996-97**

Item	Number		1997 as % of
	1996	1997	1996
	<i>1,000 Head</i>	<i>1,000 Head</i>	<i>Percent</i>
On Feed Oct 1 <sup>1</sup>	8,841	9,963	113
Placed on Feed During Oct	3,007	2,896	96
Fed Cattle Marketed During Oct	1,697	1,780	105
Other Disappearance During Oct <sup>2</sup>	78	91	117
On Feed Nov 1 <sup>1</sup>	10,073	10,988	109

<sup>1</sup> Cattle and calves on feed are animals for slaughter market being fed a ration of grain or other concentrates and are expected to produce a carcass that will grade select or better.

<sup>2</sup> Includes death losses, movement from feedlots to pastures and shipments to other feedlots for further feeding.

**Cattle on Feed: Number on Feed, Placements, Marketings, and  
Other Disappearance, 1,000+ Capacity Feedlots,  
United States, October 1, 1996-97**

Item	Number		1997 as % of
	1996	1997	1996
	<i>1,000 Head</i>	<i>1,000 Head</i>	<i>Percent</i>
On Feed Sep 1 <sup>1</sup>	7,831	9,121	116
Placed on Feed During Sep	2,653	2,711	102
Fed Cattle Marketed During Sep	1,573	1,816	115
Other Disappearance During Sep <sup>2</sup>	70	53	76
On Feed Oct 1 <sup>1</sup>	8,841	9,963	113

<sup>1</sup> Cattle and calves on feed are animals for slaughter market being fed a ration of grain or other concentrates and are expected to produce a carcass that will grade select or better.

<sup>2</sup> Includes death losses, movement from feedlots to pastures and shipments to other feedlots for further feeding.

**Cattle on Feed: Number on Feed, Placements, Marketings, and  
Other Disappearance, 1,000+ Capacity Feedlots,  
7 States, November 1, 1995-97 <sup>1</sup>**

Item	Number			1997 as % of	
	1995	1996	1997	1995	1996
	<i>1,000 Head</i>	<i>1,000 Head</i>	<i>1,000 Head</i>	<i>Percent</i>	<i>Percent</i>
On Feed Oct 1 <sup>2</sup>	7,722	7,486	8,558	111	114
Placed on Feed During Oct	2,278	2,536	2,434	107	96
Fed Cattle Marketed During Oct	1,529	1,431	1,525	100	107
Other Disappearance During Oct <sup>3</sup>	51	57	77	151	135
On Feed Nov 1 <sup>2</sup>	8,420	8,534	9,390	112	110

<sup>1</sup> The 7 States include AZ, CA, CO, IA, KS, NE, and TX.

<sup>2</sup> Cattle and calves on feed are animals for slaughter market being fed a ration of grain or other concentrates and are expected to produce a carcass that will grade select or better.

<sup>3</sup> Includes death losses, movement from feedlots to pastures and shipments to other feedlots for further feeding.

**Cattle on Feed: Number on Feed, Placements, Marketings, and  
Other Disappearance, 1,000+ Capacity Feedlots,  
7 States, October 1, 1995-97 <sup>1</sup>**

Item	Number			1997 as % of	
	1995	1996	1997	1995	1996
	<i>1,000 Head</i>	<i>1,000 Head</i>	<i>1,000 Head</i>	<i>Percent</i>	<i>Percent</i>
On Feed Sep 1 <sup>2</sup>	7,189	6,612	7,850	109	119
Placed on Feed During Sep	2,173	2,267	2,278	105	100
Fed Cattle Marketed During Sep	1,594	1,342	1,528	96	114
Other Disappearance During Sep <sup>3</sup>	46	51	42	91	82
On Feed Oct 1 <sup>2</sup>	7,722	7,486	8,558	111	114

<sup>1</sup> The 7 States include AZ, CA, CO, IA, KS, NE, and TX.

<sup>2</sup> Cattle and calves on feed are animals for slaughter market being fed a ration of grain or other concentrates and are expected to produce a carcass that will grade select or better.

<sup>3</sup> Includes death losses, movement from feedlots to pastures and shipments to other feedlots for further feeding.

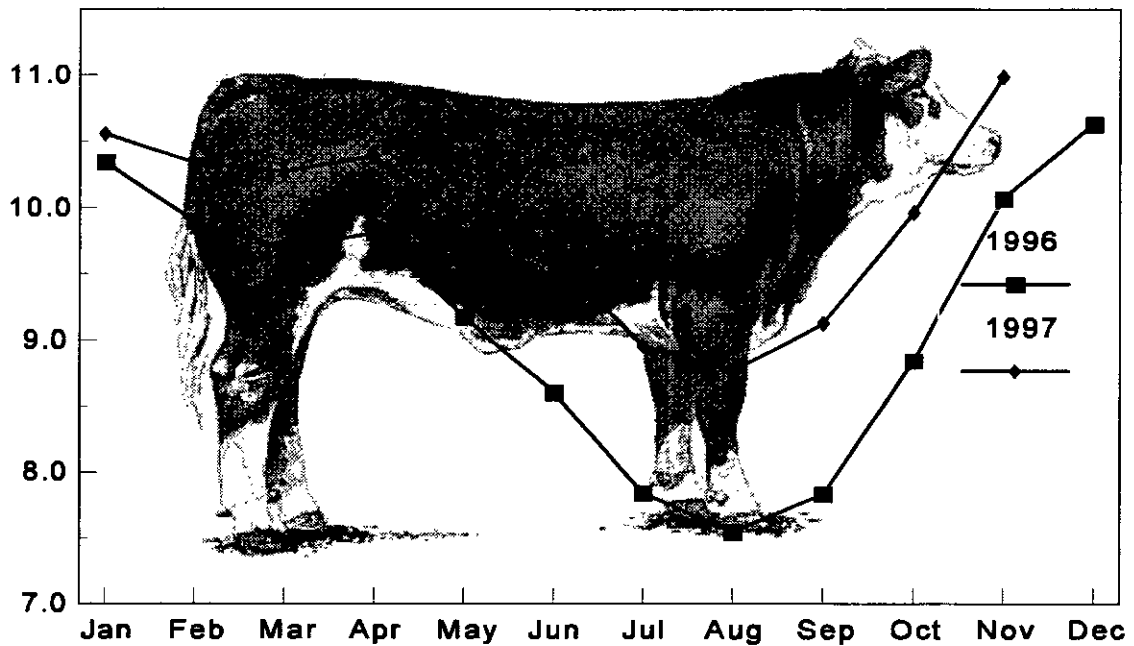
**Cattle on Feed: Number on Feed, 1,000+ Capacity Feedlots,  
by Month, State, and United States 1996-97<sup>1</sup>**

State	Nov 1, 1996	Oct 1, 1997	Nov 1, 1997		
			Number	as % of 1996	as % of Oct
	<i>1,000 Head</i>	<i>1,000 Head</i>	<i>1,000 Head</i>	<i>Percent</i>	<i>Percent</i>
AZ	224	193	215	96	111
CA	355	385	390	110	101
CO	1,080	1,050	1,140	106	109
ID	285	240	270	95	113
LA	315	290	325	103	112
KS	2,170	2,220	2,350	108	106
NE	1,890	1,850	2,130	113	115
NM	129	96	116	90	121
OK	375	365	410	109	112
SD	130	118	144	111	122
TX	2,500	2,570	2,840	114	111
WA	180	191	208	116	109
Oth Sts	440	395	450	102	114
US	10,073	9,963	10,988	109	110

<sup>1</sup> Cattle and calves on feed are animals for slaughter market being fed a ration of grain or other concentrates and are expected to produce a carcass that will grade select or better.

**United States Cattle on Feed  
1,000+ Capacity Feedlots**

Million Head



**Cattle on Feed: Number Placed on Feed, 1,000+ Capacity Feedlots,  
by Month, State, and United States 1996-97**

State	During Oct 1996	During Sep 1997	During Oct 1997		
			Number	as % of 1996	as % of Sep
	<i>1,000 Head</i>	<i>1,000 Head</i>	<i>1,000 Head</i>	<i>Percent</i>	<i>Percent</i>
AZ	51	35	51	100	146
CA	55	55	60	109	109
CO	275	320	280	102	88
ID	75	80	78	104	98
IA	105	68	93	89	137
KS	610	560	530	87	95
NE	640	540	610	95	113
NM	56	25	36	64	144
OK	119	105	116	97	110
SD	45	44	53	118	120
TX	800	700	810	101	116
WA	41	59	59	144	100
Oth Sts	135	120	120	89	100
US	3,007	2,711	2,896	96	107

**Cattle on Feed: Number Placed on Feed by Weight Group, 1,000+ Capacity  
Feedlots, by Month, State, and United States, 1996-97**

State	During October									
	Less 600		600-699		700-799		800 Plus		Total	
	1996	1997	1996	1997	1996	1997	1996	1997	1996	1997
	<i>1,000 Head</i>	<i>1,000 Head</i>	<i>1,000 Head</i>	<i>1,000 Head</i>	<i>1,000 Head</i>	<i>1,000 Head</i>	<i>1,000 Head</i>	<i>1,000 Head</i>	<i>1,000 Head</i>	<i>1,000 Head</i>
CO	53	59	50	54	99	83	73	84	275	280
KS	114	126	172	130	197	153	127	121	610	530
NE	178	155	135	121	153	154	174	180	640	610
TX	256	250	232	290	232	210	80	60	800	810
Oth Sts	245	226	135	120	145	145	157	175	682	666
US	846	816	724	715	826	745	611	620	3,007	2,896
	During September									
	Less 600		600-699		700-799		800 Plus		Total	
	1996	1997	1996	1997	1996	1997	1996	1997	1996	1997
	<i>1,000 Head</i>	<i>1,000 Head</i>	<i>1,000 Head</i>	<i>1,000 Head</i>	<i>1,000 Head</i>	<i>1,000 Head</i>	<i>1,000 Head</i>	<i>1,000 Head</i>	<i>1,000 Head</i>	<i>1,000 Head</i>
CO	18	15	34	27	160	124	193	154	405	320
KS	69	90	135	109	172	185	144	176	520	560
NE	37	40	95	68	178	162	255	270	565	540
TX	156	205	156	189	204	205	84	101	600	700
Oth Sts	133	130	100	105	160	141	170	215	563	591
US	413	480	520	498	874	817	846	916	2,653	2,711

**Cattle on Feed: Number Marketed, 1,000+ Capacity Feedlots,  
by Month, State, and United States 1996-97**

State	During Oct 1996	During Sep 1997	During Oct 1997		
			Number	as % of 1996	as % of Sep
	<i>1,000 Head</i>	<i>1,000 Head</i>	<i>1,000 Head</i>	<i>Percent</i>	<i>Percent</i>
AZ	27	26	28	104	108
CA	50	45	50	100	111
CO	150	185	180	120	97
ID	59	47	45	76	96
IA	49	42	57	116	136
KS	350	400	370	106	93
NE	310	320	320	103	100
NM	19	16	14	74	88
OK	71	78	68	96	87
SD	25	28	27	108	96
TX	495	510	520	105	102
WA	42	34	41	98	121
Oth Sts	50	85	60	120	71
US	1,697	1,816	1,780	105	98

**Cattle on Feed: Other Disappearance, 1,000+ Capacity Feedlots,  
by Month, State, and United States 1996-97 <sup>1</sup>**

State	During Oct 1996	During Sep 1997	During Oct 1997		
			Number	as % of 1996	as % of Sep
	<i>1,000 Head</i>	<i>1,000 Head</i>	<i>1,000 Head</i>	<i>Percent</i>	<i>Percent</i>
AZ	1	1	1	100	100
CA	5	5	5	100	100
CO	5	5	10	200	200
ID	6	3	3	50	100
IA	1	1	1	100	100
KS	20	10	30	150	300
NE	10	10	10	100	100
NM	3	1	2	67	200
OK	3	2	3	100	150
SD	0	0	0	0	0
TX	15	10	20	133	200
WA	4	0	1	25	0
Oth Sts	5	5	5	100	100
US	78	53	91	117	172

<sup>1</sup> Includes death losses, movement from feedlots to pastures, and shipments to other feedlots for further feeding.

The next "Cattle on Feed" report will be released at 3 p.m. ET on December 19, 1997.

The United States Department of Agriculture (USDA) prohibits discrimination in its programs on the basis of race, color, national origin, sex, religion, age, disability, political beliefs, and marital or familial status. Persons with disabilities who require alternative means for communication of program information (braille, large print, audiotape, etc.) should contact the USDA's TARGET Center at 202-720-2600 (voice and TDD).

To file a complaint, write the Secretary of Agriculture, USDA, Washington, D.C., 20250, or call 1-800-245-6340 (voice) or 202-720-1127 (TDD). USDA is an equal employment opportunity employer.

## **ACCESS TO REPORTS!!**

---

For your convenience, there are several ways to obtain NASS reports, data products, and services:

### **INTERNET ACCESS**

All NASS reports are available free of charge on the worldwide Internet. For access, connect to the Internet and go to the NASS Home Page at: <http://www.usda.gov/nass/>. Select "Today's Reports" or Publications and then Reports by Calendar or Publications and then Search, by Title or Subject.

### **E-MAIL SUBSCRIPTION**

All NASS reports are available by subscription free of charge direct to your e-mail address. Send an e-mail message to: [usda-reports@usda.mannlib.cornell.edu](mailto:usda-reports@usda.mannlib.cornell.edu). In the body of the message type the word: **list**.

### **AUTOFAX ACCESS**

NASSFax service is available for some reports from your fax machine. Please call 202-720-2000, using the handset attached to your fax. Respond to the voice prompts. Document 0411 is a list of available reports.

---

### **PRINTED REPORTS OR DATA PRODUCTS**

CALL OUR TOLL-FREE ORDER DESK: 800-999-6779 (U.S. and Canada)  
Other areas, please call 703-834-0125      FAX: 703-834-0110  
(Visa, MasterCard, check, or money order acceptable for payment.)

---

### **ASSISTANCE**

For assistance with general agricultural statistics or further information about NASS or its products or services, contact the Agricultural Statistics Hotline at 800-727-9540, 7:30 a.m. to 4:00 p.m. ET, or e-mail: [nass@nass.usda.gov](mailto:nass@nass.usda.gov).

## **USDA Announces Data Users Meeting**

**Embassy Suites (near KCI Airport)**

**Kansas City, Missouri**

**January 7, 1998**

The National Agricultural Statistics Service will be organizing an open forum for Data Users. The purpose will be to provide updates on pending changes in the USDA statistical and information programs including the status of the 1997 Census of Agriculture, and to seek comments and input from data users. Other agencies to be represented will include the Agricultural Marketing Service, the Economic Research Service, the Foreign Agricultural Service, and the World Agricultural Outlook Board.

For registration details

NASS home page: <http://www.usda.gov/nass/>

Bob Milton (NASS) at (202) 720-3570

[rmilton@nass.usda.gov](mailto:rmilton@nass.usda.gov)

## **USDA Announces Agricultural Outlook Forum '98**

**February 23 and 24, 1998**

**Washington, D.C.**

Presented by the U.S. Department of Agriculture

### **Survey the New Frontiers.**

Survey the frontiers of agriculture at USDA's seventy-fourth outlook forum. Catch the latest commodity prospects for 1998 and beyond and receive new long-term projections to the year 2007. Hear noted experts and farm leaders tackle front line issues: managing risk, selling bio-engineered products, ensuring food safety, marketing organic foods, honing export strategies, and more.

**Act Now To Attend.** For program and registration details check the Forum home page, call (202) 720-3050, or dial (202) 694-5700 from your fax machine handset and retrieve document 66666. Call (202) 401-9421 to register.

Ag Forum home page: <http://www.usda.gov/oce/waob/agforum.htm>

e-mail: [agforum@oce.usda.gov](mailto:agforum@oce.usda.gov)