

# Cattle on Feed



USDA  
Washington, D.C.

---

Released December 19, 1997, by the National Agricultural Statistics Service (NASS), Agricultural Statistics Board, U.S. Department of Agriculture. For information on "Cattle on Feed" call Dean Groskurth at (202) 720-3040, office hours 7:30 a.m. to 4:00 p.m. ET.

## U.S. Cattle on Feed Up 8 Percent

**Cattle and calves on feed** for slaughter market in the United States for feedlots with capacity of 1,000 or more head totaled 11.44 million head on December 1, 1997. The inventory was 8 percent above December 1, 1996.

**Placements** in feedlots during November totaled 2.21 million, 6 percent below 1996. Net placements were 2.12 million. During November, placements of cattle and calves weighing less than 600 pounds were 656,000, 600-699 pounds were 674,000, 700-799 pounds were 499,000, and 800 pounds and greater were 378,000.

**Marketings** of fed cattle during November totaled 1.67 million, 1 percent below 1996.

**Other disappearance** totaled 85,000 during November, 9 percent below the previous year.

## Cattle on Feed in Historic 7 States Up 8 Percent

**Cattle on feed** December 1, 1997, in the historic 7 States for feedlots with capacity of 1,000 or more head totaled 9.72 million, up 8 percent from the previous year and 12 percent above December 1, 1995.

**Placements** in feedlots during November totaled 1.83 million, 7 percent below 1996 but 1 percent above 1995.

**Marketings** during November totaled 1.43 million, 1 percent above 1996 but 3 percent below 1995.

**Other disappearance** during November was 69,000 head, 5 percent above 1996 and 13 percent above 1995.

**Cattle on Feed: Number on Feed, Placements, Marketings, and  
Other Disappearance, 1,000+ Capacity Feedlots,  
United States, December 1, 1996-97**

Item	Number		1997 as % of
	1996	1997	1996
	<i>1,000 Head</i>	<i>1,000 Head</i>	<i>Percent</i>
On Feed Nov 1 <sup>1</sup>	10,073	10,988	109
Placed on Feed During Nov	2,348	2,207	94
Fed Cattle Marketed During Nov	1,695	1,674	99
Other Disappearance During Nov <sup>2</sup>	93	85	91
On Feed Dec 1 <sup>1</sup>	10,633	11,436	108

<sup>1</sup> Cattle and calves on feed are animals for slaughter market being fed a ration of grain or other concentrates and are expected to produce a carcass that will grade select or better.

<sup>2</sup> Includes death losses, movement from feedlots to pastures and shipments to other feedlots for further feeding.

**Cattle on Feed: Number on Feed, Placements, Marketings, and  
Other Disappearance, 1,000+ Capacity Feedlots,  
United States, November 1, 1996-97**

Item	Number		1997 as % of
	1996	1997	1996
	<i>1,000 Head</i>	<i>1,000 Head</i>	<i>Percent</i>
On Feed Oct 1 <sup>1</sup>	8,841	9,963	113
Placed on Feed During Oct	3,007	*2,916	97
Fed Cattle Marketed During Oct	1,697	*1,800	106
Other Disappearance During Oct <sup>2</sup>	78	91	117
On Feed Nov 1 <sup>1</sup>	10,073	10,988	109

\* Revised.

<sup>1</sup> Cattle and calves on feed are animals for slaughter market being fed a ration of grain or other concentrates and are expected to produce a carcass that will grade select or better.

<sup>2</sup> Includes death losses, movement from feedlots to pastures and shipments to other feedlots for further feeding.

**Cattle on Feed: Number on Feed, Placements, Marketings, and  
Other Disappearance, 1,000+ Capacity Feedlots,  
7 States, December 1, 1995-97<sup>1</sup>**

Item	Number			1997 as % of	
	1995	1996	1997	1995	1996
	<i>1,000 Head</i>	<i>1,000 Head</i>	<i>1,000 Head</i>	<i>Percent</i>	<i>Percent</i>
On Feed Nov 1 <sup>2</sup>	8,420	8,534	9,390	112	110
Placed on Feed During Nov	1,804	1,953	1,826	101	93
Fed Cattle Marketed During Nov	1,478	1,418	1,429	97	101
Other Disappearance During Nov <sup>3</sup>	61	66	69	113	105
On Feed Dec 1 <sup>2</sup>	8,685	9,003	9,718	112	108

<sup>1</sup> The 7 States include AZ, CA, CO, IA, KS, NE, and TX.

<sup>2</sup> Cattle and calves on feed are animals for slaughter market being fed a ration of grain or other concentrates and are expected to produce a carcass that will grade select or better.

<sup>3</sup> Includes death losses, movement from feedlots to pastures and shipments to other feedlots for further feeding.

**Cattle on Feed: Number on Feed, Placements, Marketings, and  
Other Disappearance, 1,000+ Capacity Feedlots,  
7 States, November 1, 1995-97<sup>1</sup>**

Item	Number			1997 as % of	
	1995	1996	1997	1995	1996
	<i>1,000 Head</i>	<i>1,000 Head</i>	<i>1,000 Head</i>	<i>Percent</i>	<i>Percent</i>
On Feed Oct 1 <sup>2</sup>	7,722	7,486	8,558	111	114
Placed on Feed During Oct	2,278	2,536	*2,454	108	97
Fed Cattle Marketed During Oct	1,529	1,431	*1,545	101	108
Other Disappearance During Oct <sup>3</sup>	51	57	77	151	135
On Feed Nov 1 <sup>2</sup>	8,420	8,534	9,390	112	110

\* Revised.

<sup>1</sup> The 7 States include AZ, CA, CO, IA, KS, NE, and TX.

<sup>2</sup> Cattle and calves on feed are animals for slaughter market being fed a ration of grain or other concentrates and are expected to produce a carcass that will grade select or better.

<sup>3</sup> Includes death losses, movement from feedlots to pastures and shipments to other feedlots for further feeding.

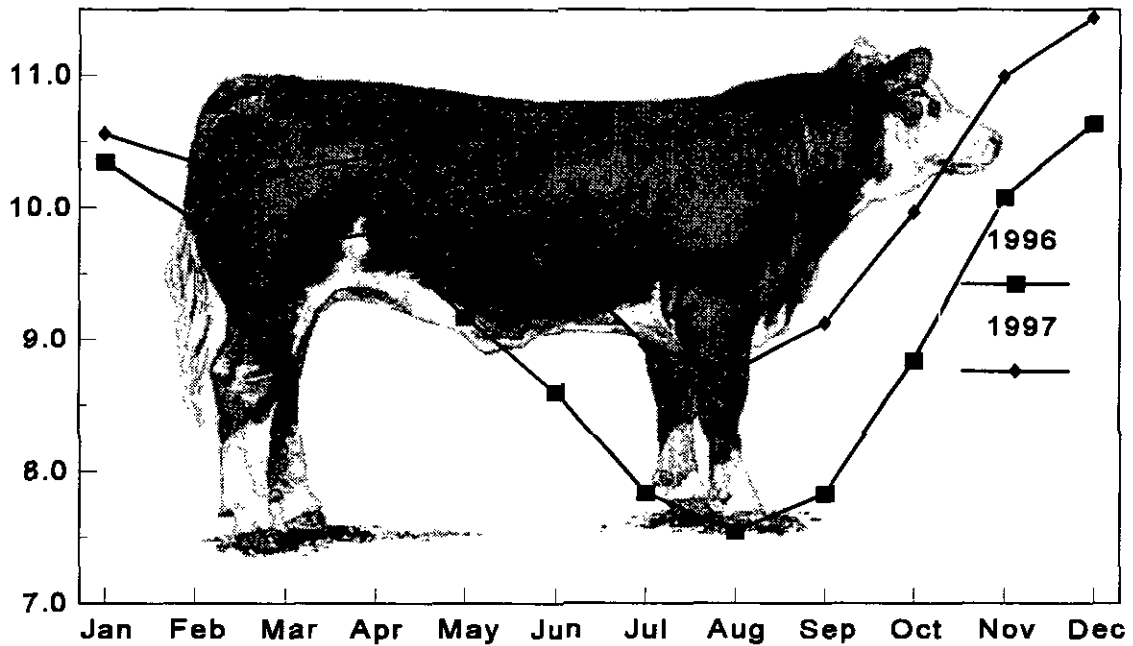
**Cattle on Feed: Number on Feed, 1,000+ Capacity Feedlots,  
by Month, State, and United States 1996-97<sup>1</sup>**

State	Dec 1, 1996	Nov 1, 1997	Dec 1, 1997		
			Number	as % of 1996	as % of Nov
	<i>1,000 Head</i>	<i>1,000 Head</i>	<i>1,000 Head</i>	<i>Percent</i>	<i>Percent</i>
AZ	238	215	243	102	113
CA	370	390	410	111	105
CO	1,110	1,140	1,160	105	102
ID	285	270	300	105	111
IA	355	325	355	100	109
KS	2,240	2,350	2,410	108	103
NE	2,050	2,130	2,200	107	103
NM	133	116	120	90	103
OK	395	410	430	109	105
SD	162	144	168	104	117
TX	2,640	2,840	2,940	111	104
WA	175	208	210	120	101
Oth Sts	480	450	490	102	109
US	10,633	10,988	11,436	108	104

<sup>1</sup> Cattle and calves on feed are animals for slaughter market being fed a ration of grain or other concentrates and are expected to produce a carcass that will grade select or better.

**United States Cattle on Feed  
1,000+ Capacity Feedlots**

Million Head



**Cattle on Feed: Number Placed on Feed, 1,000+ Capacity Feedlots,  
by Month, State, and United States 1996-97**

State	During Nov 1996	During Oct 1997	During Nov 1997		
			Number	as % of 1996	as % of Oct
	<i>1,000 Head</i>	<i>1,000 Head</i>	<i>1,000 Head</i>	<i>Percent</i>	<i>Percent</i>
AZ	43	51	55	128	108
CA	70	60	75	107	125
CO	195	*300	210	108	70
ID	70	78	80	114	103
IA	80	93	66	83	71
KS	500	530	490	98	92
NE	480	610	410	85	67
NM	29	36	16	55	44
OK	87	116	93	107	80
SD	50	53	46	92	87
TX	585	810	520	89	64
WA	34	59	46	135	78
Oth Sts	125	120	100	80	83
US	2,348	*2,916	2,207	94	76

\* Revised.

**Cattle on Feed: Number Placed on Feed by Weight Group, 1,000+ Capacity  
Feedlots, by Month, State, and United States, 1996-97**

State	During November									
	Less 600		600-699		700-799		800 Plus		Total	
	1996	1997	1996	1997	1996	1997	1996	1997	1996	1997
	<i>1,000 Head</i>	<i>1,000 Head</i>	<i>1,000 Head</i>	<i>1,000 Head</i>	<i>1,000 Head</i>	<i>1,000 Head</i>	<i>1,000 Head</i>	<i>1,000 Head</i>	<i>1,000 Head</i>	<i>1,000 Head</i>
CO	50	54	52	63	60	56	33	37	195	210
KS	122	127	174	145	138	134	66	84	500	490
NE	159	110	130	119	94	86	97	95	480	410
TX	228	150	199	215	135	103	23	52	585	520
Oth Sts	250	215	125	132	110	120	103	110	588	577
US	809	656	680	674	537	499	322	378	2,348	2,207
	During October									
	Less 600		600-699		700-799		800 Plus		Total	
	1996	1997	1996	1997	1996	1997	1996	1997	1996	1997
	<i>1,000 Head</i>	<i>1,000 Head</i>	<i>1,000 Head</i>	<i>1,000 Head</i>	<i>1,000 Head</i>	<i>1,000 Head</i>	<i>1,000 Head</i>	<i>1,000 Head</i>	<i>1,000 Head</i>	<i>1,000 Head</i>
CO	53	*63	50	*58	99	*89	73	*90	275	*300
KS	114	126	172	130	197	153	127	121	610	530
NE	178	155	135	121	153	154	174	180	640	610
TX	256	250	232	290	232	210	80	60	800	810
Oth Sts	245	226	135	120	145	145	157	175	682	666
US	846	*820	724	*719	826	*751	611	*626	3,007	*2,916

\* Revised.

**Cattle on Feed: Number Marketed, 1,000+ Capacity Feedlots,  
by Month, State, and United States 1996-97**

State	During Nov 1996	During Oct 1997	During Nov 1997		
			Number	as % of 1996	as % of Oct
	<i>1,000 Head</i>	<i>1,000 Head</i>	<i>1,000 Head</i>	<i>Percent</i>	<i>Percent</i>
AZ	24	28	24	100	86
CA	50	50	45	90	90
CO	160	*200	185	116	93
ID	62	45	44	71	98
IA	39	57	35	90	61
KS	410	370	410	100	111
NE	310	320	330	106	103
NM	21	14	11	52	79
OK	64	68	68	106	100
SD	17	27	20	118	74
TX	425	520	400	94	77
WA	38	41	42	111	102
Oth Sts	75	60	60	80	100
US	1,695	*1,800	1,674	99	93

\* Revised.

**Cattle on Feed: Other Disappearance, 1,000+ Capacity Feedlots,  
by Month, State, and United States 1996-97 <sup>1</sup>**

State	During Nov 1996	During Oct 1997	During Nov 1997		
			Number	as % of 1996	as % of Oct
	<i>1,000 Head</i>	<i>1,000 Head</i>	<i>1,000 Head</i>	<i>Percent</i>	<i>Percent</i>
AZ	5	1	3	60	300
CA	5	5	10	200	200
CO	5	10	5	100	50
ID	8	3	6	75	200
IA	1	1	1	100	100
KS	20	30	20	100	67
NE	10	10	10	100	100
NM	4	2	1	25	50
OK	3	3	5	167	167
SD	1	0	2	200	0
TX	20	20	20	100	100
WA	1	1	2	200	200
Oth Sts	10	5	0	0	0
US	93	91	85	91	93

<sup>1</sup> Includes death losses, movement from feedlots to pastures, and shipments to other feedlots for further feeding.

The next "Cattle on Feed" report will be released at 3 p.m. ET on January 23, 1998.

The United States Department of Agriculture (USDA) prohibits discrimination in its programs on the basis of race, color, national origin, sex, religion, age, disability, political beliefs, and marital or familial status. Persons with disabilities who require alternative means for communication of program information (braille, large print, audiotape, etc.) should contact the USDA's TARGET Center at 202-720-2600 (voice and TDD).

To file a complaint, write the Secretary of Agriculture, USDA, Washington, D.C., 20250, or call 1-800-245-6340 (voice) or 202-720-1127 (TDD). USDA is an equal employment opportunity employer.

## **ACCESS TO REPORTS!!**

---

For your convenience, there are several ways to obtain NASS reports, data products, and services:

### **INTERNET ACCESS**

All NASS reports are available free of charge on the worldwide Internet. For access, connect to the Internet and go to the NASS Home Page at: <http://www.usda.gov/nass/>. Select "Today's Reports" or Publications and then Reports by Calendar or Publications and then Search, by Title or Subject.

### **E-MAIL SUBSCRIPTION**

All NASS reports are available by subscription free of charge direct to your e-mail address. Send an e-mail message to: [usda-reports@usda.mannlib.cornell.edu](mailto:usda-reports@usda.mannlib.cornell.edu). In the body of the message type the word: **list**.

### **AUTOFAX ACCESS**

NASSFax service is available for some reports from your fax machine. Please call 202-720-2000, using the handset attached to your fax. Respond to the voice prompts. Document 0411 is a list of available reports.

-----

### **PRINTED REPORTS OR DATA PRODUCTS**

**CALL OUR TOLL-FREE ORDER DESK: 800-999-6779 (U.S. and Canada)**  
**Other areas, please call 703-834-0125      FAX: 703-834-0110**  
**(Visa, MasterCard, check, or money order acceptable for payment.)**

-----

### **ASSISTANCE**

For **assistance** with general agricultural statistics or further information about NASS or its products or services, contact the **Agricultural Statistics Hotline** at **800-727-9540**, 7:30 a.m. to 4:00 p.m. ET, or e-mail: [nass@nass.usda.gov](mailto:nass@nass.usda.gov).

# Cattle on Feed



USDA  
Washington, D.C.

---

Released December 19, 1997, by the National Agricultural Statistics Service (NASS), Agricultural Statistics Board, U.S. Department of Agriculture. For information on "Cattle on Feed" call Dean Groskurth at (202) 720-3040, office hours 7:30 a.m. to 4:00 p.m. ET.

## U.S. Cattle on Feed Up 8 Percent

**Cattle and calves on feed** for slaughter market in the United States for feedlots with capacity of 1,000 or more head totaled 11.44 million head on December 1, 1997. The inventory was 8 percent above December 1, 1996.

**Placements** in feedlots during November totaled 2.21 million, 6 percent below 1996. Net placements were 2.12 million. During November, placements of cattle and calves weighing less than 600 pounds were 656,000, 600-699 pounds were 674,000, 700-799 pounds were 499,000, and 800 pounds and greater were 378,000.

**Marketings** of fed cattle during November totaled 1.67 million, 1 percent below 1996.

**Other disappearance** totaled 85,000 during November, 9 percent below the previous year.

## Cattle on Feed in Historic 7 States Up 8 Percent

**Cattle on feed** December 1, 1997, in the historic 7 States for feedlots with capacity of 1,000 or more head totaled 9.72 million, up 8 percent from the previous year and 12 percent above December 1, 1995.

**Placements** in feedlots during November totaled 1.83 million, 7 percent below 1996 but 1 percent above 1995.

**Marketings** during November totaled 1.43 million, 1 percent above 1996 but 3 percent below 1995.

**Other disappearance** during November was 69,000 head, 5 percent above 1996 and 13 percent above 1995.



**Cattle on Feed: Number on Feed, Placements, Marketings, and  
Other Disappearance, 1,000+ Capacity Feedlots,  
United States, December 1, 1996-97**

Item	Number		1997 as % of
	1996	1997	1996
	<i>1,000 Head</i>	<i>1,000 Head</i>	<i>Percent</i>
On Feed Nov 1 <sup>1</sup>	10,073	10,988	109
Placed on Feed During Nov	2,348	2,207	94
Fed Cattle Marketed During Nov	1,695	1,674	99
Other Disappearance During Nov <sup>2</sup>	93	85	91
On Feed Dec 1 <sup>1</sup>	10,633	11,436	108

<sup>1</sup> Cattle and calves on feed are animals for slaughter market being fed a ration of grain or other concentrates and are expected to produce a carcass that will grade select or better.

<sup>2</sup> Includes death losses, movement from feedlots to pastures and shipments to other feedlots for further feeding.

**Cattle on Feed: Number on Feed, Placements, Marketings, and  
Other Disappearance, 1,000+ Capacity Feedlots,  
United States, November 1, 1996-97**

Item	Number		1997 as % of
	1996	1997	1996
	<i>1,000 Head</i>	<i>1,000 Head</i>	<i>Percent</i>
On Feed Oct 1 <sup>1</sup>	8,841	9,963	113
Placed on Feed During Oct	3,007	*2,916	97
Fed Cattle Marketed During Oct	1,697	*1,800	106
Other Disappearance During Oct <sup>2</sup>	78	91	117
On Feed Nov 1 <sup>1</sup>	10,073	10,988	109

\* Revised.

<sup>1</sup> Cattle and calves on feed are animals for slaughter market being fed a ration of grain or other concentrates and are expected to produce a carcass that will grade select or better.

<sup>2</sup> Includes death losses, movement from feedlots to pastures and shipments to other feedlots for further feeding.

**Cattle on Feed: Number on Feed, Placements, Marketings, and  
Other Disappearance, 1,000+ Capacity Feedlots,  
7 States, December 1, 1995-97<sup>1</sup>**

Item	Number			1997 as % of	
	1995	1996	1997	1995	1996
	<i>1,000 Head</i>	<i>1,000 Head</i>	<i>1,000 Head</i>	<i>Percent</i>	<i>Percent</i>
On Feed Nov 1 <sup>2</sup>	8,420	8,534	9,390	112	110
Placed on Feed During Nov	1,804	1,953	1,826	101	93
Fed Cattle Marketed During Nov	1,478	1,418	1,429	97	101
Other Disappearance During Nov <sup>3</sup>	61	66	69	113	105
On Feed Dec 1 <sup>2</sup>	8,685	9,003	9,718	112	108

<sup>1</sup> The 7 States include AZ, CA, CO, IA, KS, NE, and TX.

<sup>2</sup> Cattle and calves on feed are animals for slaughter market being fed a ration of grain or other concentrates and are expected to produce a carcass that will grade select or better.

<sup>3</sup> Includes death losses, movement from feedlots to pastures and shipments to other feedlots for further feeding.

**Cattle on Feed: Number on Feed, Placements, Marketings, and  
Other Disappearance, 1,000+ Capacity Feedlots,  
7 States, November 1, 1995-97<sup>1</sup>**

Item	Number			1997 as % of	
	1995	1996	1997	1995	1996
	<i>1,000 Head</i>	<i>1,000 Head</i>	<i>1,000 Head</i>	<i>Percent</i>	<i>Percent</i>
On Feed Oct 1 <sup>2</sup>	7,722	7,486	8,558	111	114
Placed on Feed During Oct	2,278	2,536	*2,454	108	97
Fed Cattle Marketed During Oct	1,529	1,431	*1,545	101	108
Other Disappearance During Oct <sup>3</sup>	51	57	77	151	135
On Feed Nov 1 <sup>2</sup>	8,420	8,534	9,390	112	110

\* Revised.

<sup>1</sup> The 7 States include AZ, CA, CO, IA, KS, NE, and TX.

<sup>2</sup> Cattle and calves on feed are animals for slaughter market being fed a ration of grain or other concentrates and are expected to produce a carcass that will grade select or better.

<sup>3</sup> Includes death losses, movement from feedlots to pastures and shipments to other feedlots for further feeding.

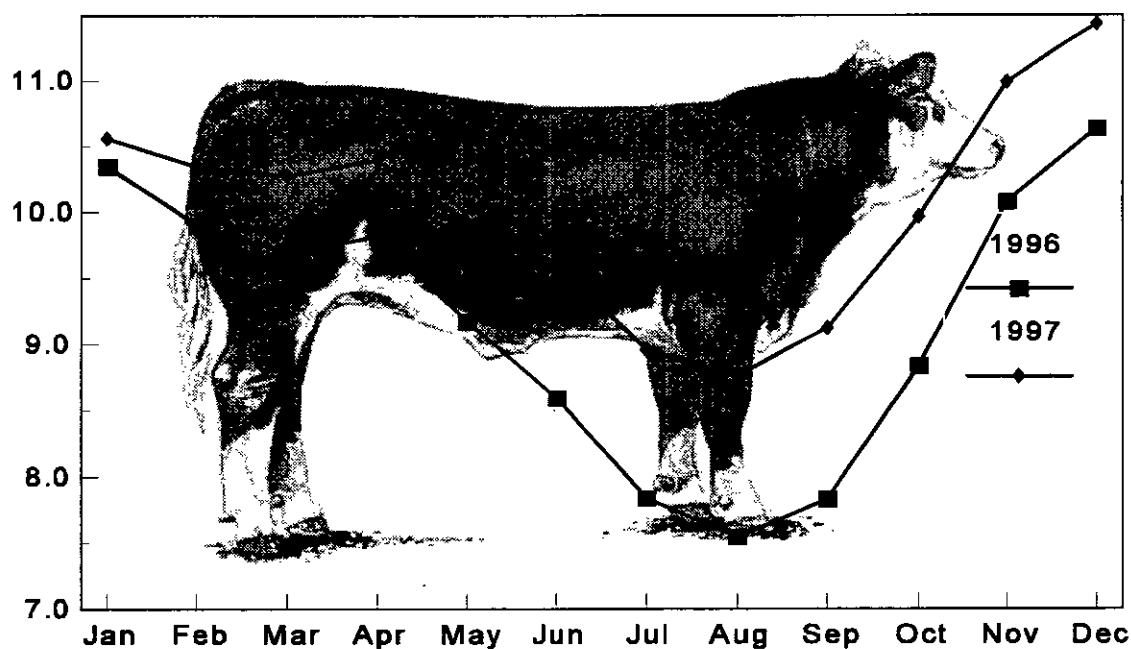
**Cattle on Feed: Number on Feed, 1,000+ Capacity Feedlots,  
by Month, State, and United States 1996-97<sup>1</sup>**

State	Dec 1, 1996	Nov 1, 1997	Dec 1, 1997		
			Number	as % of 1996	as % of Nov
	<i>1,000 Head</i>	<i>1,000 Head</i>	<i>1,000 Head</i>	<i>Percent</i>	<i>Percent</i>
AZ	238	215	243	102	113
CA	370	390	410	111	105
CO	1,110	1,140	1,160	105	102
ID	285	270	300	105	111
IA	355	325	355	100	109
KS	2,240	2,350	2,410	108	103
NE	2,050	2,130	2,200	107	103
NM	133	116	120	90	103
OK	395	410	430	109	105
SD	162	144	168	104	117
TX	2,640	2,840	2,940	111	104
WA	175	208	210	120	101
Oth Sts	480	450	490	102	109
US	10,633	10,988	11,436	108	104

<sup>1</sup> Cattle and calves on feed are animals for slaughter market being fed a ration of grain or other concentrates and are expected to produce a carcass that will grade select or better.

**United States Cattle on Feed  
1,000+ Capacity Feedlots**

Million Head



**Cattle on Feed: Number Placed on Feed, 1,000+ Capacity Feedlots,  
by Month, State, and United States 1996-97**

State	During Nov 1996	During Oct 1997	During Nov 1997		
			Number	as % of 1996	as % of Oct
	<i>1,000 Head</i>	<i>1,000 Head</i>	<i>1,000 Head</i>	<i>Percent</i>	<i>Percent</i>
AZ	43	51	55	128	108
CA	70	60	75	107	125
CO	195	*300	210	108	70
ID	70	78	80	114	103
IA	80	93	66	83	71
KS	500	530	490	98	92
NE	480	610	410	85	67
NM	29	36	16	55	44
OK	87	116	93	107	80
SD	50	53	46	92	87
TX	585	810	520	89	64
WA	34	59	46	135	78
Oth Sts	125	120	100	80	83
US	2,348	*2,916	2,207	94	76

\* Revised.

**Cattle on Feed: Number Placed on Feed by Weight Group, 1,000+ Capacity  
Feedlots, by Month, State, and United States, 1996-97**

State	During November									
	Less 600		600-699		700-799		800 Plus		Total	
	1996	1997	1996	1997	1996	1997	1996	1997	1996	1997
	<i>1,000 Head</i>	<i>1,000 Head</i>	<i>1,000 Head</i>	<i>1,000 Head</i>	<i>1,000 Head</i>	<i>1,000 Head</i>	<i>1,000 Head</i>	<i>1,000 Head</i>	<i>1,000 Head</i>	<i>1,000 Head</i>
CO	50	54	52	63	60	56	33	37	195	210
KS	122	127	174	145	138	134	66	84	500	490
NE	159	110	130	119	94	86	97	95	480	410
TX	228	150	199	215	135	103	23	52	585	520
Oth Sts	250	215	125	132	110	120	103	110	588	577
US	809	656	680	674	537	499	322	378	2,348	2,207
	During October									
	Less 600		600-699		700-799		800 Plus		Total	
	1996	1997	1996	1997	1996	1997	1996	1997	1996	1997
	<i>1,000 Head</i>	<i>1,000 Head</i>	<i>1,000 Head</i>	<i>1,000 Head</i>	<i>1,000 Head</i>	<i>1,000 Head</i>	<i>1,000 Head</i>	<i>1,000 Head</i>	<i>1,000 Head</i>	<i>1,000 Head</i>
CO	53	*63	50	*58	99	*89	73	*90	275	*300
KS	114	126	172	130	197	153	127	121	610	530
NE	178	155	135	121	153	154	174	180	640	610
TX	256	250	232	290	232	210	80	60	800	810
Oth Sts	245	226	135	120	145	145	157	175	682	666
US	846	*820	724	*719	826	*751	611	*626	3,007	*2,916

\* Revised.

**Cattle on Feed: Number Marketed, 1,000+ Capacity Feedlots,  
by Month, State, and United States 1996-97**

State	During Nov 1996	During Oct 1997	During Nov 1997		
			Number	as % of 1996	as % of Oct
	<i>1,000 Head</i>	<i>1,000 Head</i>	<i>1,000 Head</i>	<i>Percent</i>	<i>Percent</i>
AZ	24	28	24	100	86
CA	50	50	45	90	90
CO	160	*200	185	116	93
ID	62	45	44	71	98
IA	39	57	35	90	61
KS	410	370	410	100	111
NE	310	320	330	106	103
NM	21	14	11	52	79
OK	64	68	68	106	100
SD	17	27	20	118	74
TX	425	520	400	94	77
WA	38	41	42	111	102
Oth Sts	75	60	60	80	100
US	1,695	*1,800	1,674	99	93

\* Revised.

**Cattle on Feed: Other Disappearance, 1,000+ Capacity Feedlots,  
by Month, State, and United States 1996-97 <sup>1</sup>**

State	During Nov 1996	During Oct 1997	During Nov 1997		
			Number	as % of 1996	as % of Oct
	<i>1,000 Head</i>	<i>1,000 Head</i>	<i>1,000 Head</i>	<i>Percent</i>	<i>Percent</i>
AZ	5	1	3	60	300
CA	5	5	10	200	200
CO	5	10	5	100	50
ID	8	3	6	75	200
IA	1	1	1	100	100
KS	20	30	20	100	67
NE	10	10	10	100	100
NM	4	2	1	25	50
OK	3	3	5	167	167
SD	1	0	2	200	0
TX	20	20	20	100	100
WA	1	1	2	200	200
Oth Sts	10	5	0	0	0
US	93	91	85	91	93

<sup>1</sup> Includes death losses, movement from feedlots to pastures, and shipments to other feedlots for further feeding.

The next "Cattle on Feed" report will be released at 3 p.m. ET on January 23, 1998.

The United States Department of Agriculture (USDA) prohibits discrimination in its programs on the basis of race, color, national origin, sex, religion, age, disability, political beliefs, and marital or familial status. Persons with disabilities who require alternative means for communication of program information (braille, large print, audiotape, etc.) should contact the USDA's TARGET Center at 202-720-2600 (voice and TDD).

To file a complaint, write the Secretary of Agriculture, USDA, Washington, D.C., 20250, or call 1-800-245-6340 (voice) or 202-720-1127 (TDD). USDA is an equal employment opportunity employer.

## **ACCESS TO REPORTS!!**

---

For your convenience, there are several ways to obtain NASS reports, data products, and services:

### **INTERNET ACCESS**

All NASS reports are available free of charge on the worldwide Internet. For access, connect to the Internet and go to the NASS Home Page at: <http://www.usda.gov/nass/>. Select "Today's Reports" or Publications and then Reports by Calendar or Publications and then Search, by Title or Subject.

### **E-MAIL SUBSCRIPTION**

All NASS reports are available by subscription free of charge direct to your e-mail address. Send an e-mail message to: [usda-reports@usda.mannlib.cornell.edu](mailto:usda-reports@usda.mannlib.cornell.edu). In the body of the message type the word: **list**.

### **AUTOFAX ACCESS**

NASSFax service is available for some reports from your fax machine. Please call 202-720-2000, using the handset attached to your fax. Respond to the voice prompts. Document 0411 is a list of available reports.

-----

### **PRINTED REPORTS OR DATA PRODUCTS**

**CALL OUR TOLL-FREE ORDER DESK: 800-999-6779 (U.S. and Canada)**  
**Other areas, please call 703-834-0125      FAX: 703-834-0110**  
**(Visa, MasterCard, check, or money order acceptable for payment.)**

-----

### **ASSISTANCE**

For assistance with general agricultural statistics or further information about NASS or its products or services, contact the **Agricultural Statistics Hotline** at **800-727-9540**, 7:30 a.m. to 4:00 p.m. ET, or e-mail: [nass@nass.usda.gov](mailto:nass@nass.usda.gov).