



# Cattle on Feed

---

Released August 20, 1999, by the National Agricultural Statistics Service (NASS), Agricultural Statistics Board, U.S. Department of Agriculture. For information on "Cattle on Feed" call Greg Thessen at (202) 720-3040, office hours 7:30 a.m. to 4:00 p.m. ET.

## U.S. Cattle on Feed Up 2 Percent

**Cattle and calves on feed** for slaughter market in the United States for feedlots with capacity of 1,000 or more head totaled 9.20 million head on August 1, 1999. The inventory was 2 percent above August 1, 1998 and 5 percent above August 1, 1997.

**Placements** in feedlots during July totaled 1.81 million, 6 percent below 1998 and 9 percent below 1997. Net placements were 1.76 million. During July, placements of cattle and calves weighing less than 600 pounds were 333,000, 600-699 pounds were 400,000, 700-799 pounds were 578,000, and 800 pounds and greater were 501,000.

**Marketings** of fed cattle during July totaled 2.12 million, 3 percent above 1998 but slightly below 1997.

**Other disappearance** totaled 52,000 during July, 4 percent above 1998 but 9 percent below 1997.

## Cattle on Feed in Historic 7 States Up 2 Percent

**Cattle on feed** August 1, 1999, in the historic 7 States for feedlots with capacity of 1,000 or more head totaled 7.88 million, up 2 percent from the previous year and 5 percent above August 1, 1997.

**Placements** in feedlots during July totaled 1.57 million, 7 percent below 1998 and 11 percent below 1997.

**Marketings** during July totaled 1.82 million, 3 percent above 1998 but 2 percent below 1997.

**Other disappearance** during July was 43,000 head, 5 percent above 1998 and 2 percent above 1997.

**Cattle on Feed: Number on Feed, Placements, Marketings, and  
Other Disappearance, 1,000+ Capacity Feedlots,  
United States, August 1, 1997-99**

Item	Number			1999 as % of	
	1997	1998	1999	1997	1998
	<i>1,000 Head</i>	<i>1,000 Head</i>	<i>1,000 Head</i>	<i>Percent</i>	<i>Percent</i>
On Feed Jul 1 <sup>1</sup>	8,958	9,161	9,555	107	104
Placed on Feed During Jul	1,995	1,937	1,812	91	94
Fed Cattle Marketed During Jul	2,126	2,052	2,116	100	103
Other Disappearance During Jul <sup>2</sup>	57	50	52	91	104
On Feed Aug 1 <sup>1</sup>	8,770	8,996	9,199	105	102

<sup>1</sup> Cattle and calves on feed are animals for slaughter market being fed a ration of grain or other concentrates and are expected to produce a carcass that will grade select or better.

<sup>2</sup> Includes death losses, movement from feedlots to pastures and shipments to other feedlots for further feeding.

**Cattle on Feed: Number on Feed, Placements, Marketings, and  
Other Disappearance, 1,000+ Capacity Feedlots,  
United States, July 1, 1997-99**

Item	Number			1999 as % of	
	1997	1998	1999	1997	1998
	<i>1,000 Head</i>	<i>1,000 Head</i>	<i>1,000 Head</i>	<i>Percent</i>	<i>Percent</i>
On Feed Jun 1 <sup>1</sup>	9,615	9,703	9,977	104	103
Placed on Feed During Jun	1,444	1,564	1,784	124	114
Fed Cattle Marketed During Jun	2,041	2,034	2,143	105	105
Other Disappearance During Jun <sup>2</sup>	60	72	63	105	88
On Feed Jul 1 <sup>1</sup>	8,958	9,161	9,555	107	104

<sup>1</sup> Cattle and calves on feed are animals for slaughter market being fed a ration of grain or other concentrates and are expected to produce a carcass that will grade select or better.

<sup>2</sup> Includes death losses, movement from feedlots to pastures and shipments to other feedlots for further feeding.

**Cattle on Feed: Number on Feed, Placements, Marketings, and  
Other Disappearance, 1,000+ Capacity Feedlots,  
7 States, August 1, 1997-99<sup>1</sup>**

Item	Number			1999 as % of	
	1997	1998	1999	1997	1998
	<i>1,000 Head</i>	<i>1,000 Head</i>	<i>1,000 Head</i>	<i>Percent</i>	<i>Percent</i>
On Feed Jul 1 <sup>2</sup>	7,679	7,825	8,173	106	104
Placed on Feed During Jul	1,751	1,677	1,565	89	93
Fed Cattle Marketed During Jul	1,852	1,755	1,816	98	103
Other Disappearance During Jul <sup>3</sup>	42	41	43	102	105
On Feed Aug 1 <sup>2</sup>	7,536	7,706	7,879	105	102

<sup>1</sup> The 7 States include AZ, CA, CO, IA, KS, NE, and TX.

<sup>2</sup> Cattle and calves on feed are animals for slaughter market being fed a ration of grain or other concentrates and are expected to produce a carcass that will grade select or better.

<sup>3</sup> Includes death losses, movement from feedlots to pastures and shipments to other feedlots for further feeding.

**Cattle on Feed: Number on Feed, Placements, Marketings, and  
Other Disappearance, 1,000+ Capacity Feedlots,  
7 States, July 1, 1997-99<sup>1</sup>**

Item	Number			1999 as % of	
	1997	1998	1999	1997	1998
	<i>1,000 Head</i>	<i>1,000 Head</i>	<i>1,000 Head</i>	<i>Percent</i>	<i>Percent</i>
On Feed Jun 1 <sup>2</sup>	8,231	8,289	8,537	104	103
Placed on Feed During Jun	1,224	1,314	1,505	123	115
Fed Cattle Marketed During Jun	1,732	1,727	1,825	105	106
Other Disappearance During Jun <sup>3</sup>	44	51	44	100	86
On Feed Jul 1 <sup>2</sup>	7,679	7,825	8,173	106	104

<sup>1</sup> The 7 States include AZ, CA, CO, IA, KS, NE, and TX.

<sup>2</sup> Cattle and calves on feed are animals for slaughter market being fed a ration of grain or other concentrates and are expected to produce a carcass that will grade select or better.

<sup>3</sup> Includes death losses, movement from feedlots to pastures and shipments to other feedlots for further feeding.

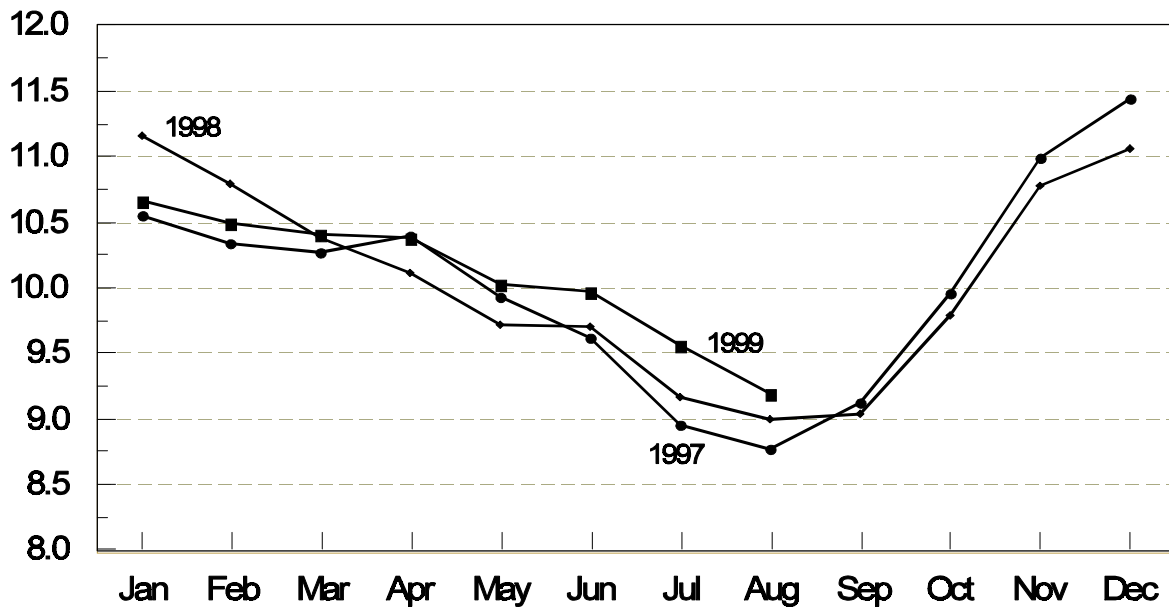
**Cattle on Feed: Number on Feed, 1,000+ Capacity Feedlots,  
by Month, State, and United States 1998-99 <sup>1</sup>**

State	Aug 1, 1998	Jul 1, 1999	Aug 1, 1999		
			Number	as % of 1998	as % of Jul
	<i>1,000 Head</i>	<i>1,000 Head</i>	<i>1,000 Head</i>	<i>Percent</i>	<i>Percent</i>
AZ	196	198	194	99	98
CA	395	375	375	95	100
CO	840	1,020	960	114	94
ID	215	275	265	123	96
IA	245	310	290	118	94
KS	1,930	1,950	1,980	103	102
NE	1,460	1,790	1,600	110	89
NM	86	82	83	97	101
OK	370	325	325	88	100
SD	134	140	125	93	89
TX	2,640	2,530	2,480	94	98
WA	150	215	202	135	94
Oth Sts	335	345	320	96	93
US	8,996	9,555	9,199	102	96

<sup>1</sup> Cattle and calves on feed are animals for slaughter market being fed a ration of grain or other concentrates and are expected to produce a carcass that will grade select or better.

**United States Cattle on Feed  
1,000+ Capacity Feedlots**

Million Head



**Cattle on Feed: Number Placed on Feed, 1,000+ Capacity Feedlots,  
by Month, State, and United States 1998-99**

State	During Jul 1998	During Jun 1999	During Jul 1999		
			Number	as % of 1998	as % of Jun
	<i>1,000 Head</i>	<i>1,000 Head</i>	<i>1,000 Head</i>	<i>Percent</i>	<i>Percent</i>
AZ	21	20	23	110	115
CA	55	60	55	100	92
CO	225	160	175	78	109
ID	50	61	48	96	79
IA	26	45	32	123	71
KS	530	400	500	94	125
NE	290	300	300	103	100
NM	18	16	16	89	100
OK	86	73	73	85	100
SD	17	15	14	82	93
TX	530	520	480	91	92
WA	44	65	45	102	69
Oth Sts	45	49	51	113	104
US	1,937	1,784	1,812	94	102

**Cattle on Feed: Number Placed on Feed by Weight Group, 1,000+ Capacity  
Feedlots, by Month, State, and United States, 1998-99**

State	During July									
	Less 600		600-699		700-799		800 Plus		Total	
	1998	1999	1998	1999	1998	1999	1998	1999	1998	1999
	<i>1,000 Head</i>	<i>1,000 Head</i>	<i>1,000 Head</i>	<i>1,000 Head</i>	<i>1,000 Head</i>	<i>1,000 Head</i>	<i>1,000 Head</i>	<i>1,000 Head</i>	<i>1,000 Head</i>	<i>1,000 Head</i>
CO	17	28	56	27	96	49	56	71	225	175
KS	50	60	130	115	210	195	140	130	530	500
NE	18	40	60	62	86	88	126	110	290	300
TX	132	120	175	149	159	141	64	70	530	480
Oth Sts	90	85	57	47	90	105	125	120	362	357
US	307	333	478	400	641	578	511	501	1,937	1,812
	During June									
	Less 600		600-699		700-799		800 Plus		Total	
	1998	1999	1998	1999	1998	1999	1998	1999	1998	1999
	<i>1,000 Head</i>	<i>1,000 Head</i>	<i>1,000 Head</i>	<i>1,000 Head</i>	<i>1,000 Head</i>	<i>1,000 Head</i>	<i>1,000 Head</i>	<i>1,000 Head</i>	<i>1,000 Head</i>	<i>1,000 Head</i>
CO	16	11	35	31	50	74	39	44	140	160
KS	43	70	80	70	119	165	88	95	330	400
NE	17	20	33	56	72	103	118	121	240	300
TX	113	109	156	156	156	172	75	83	500	520
Oth Sts	74	85	70	59	90	115	120	145	354	404
US	263	295	374	372	487	629	440	488	1,564	1,784

**Cattle on Feed: Number Marketed, 1,000+ Capacity Feedlots,  
by Month, State, and United States 1998-99**

State	During Jul 1998	During Jun 1999	During Jul 1999		
			Number	as % of 1998	as % of Jun
	<i>1,000 Head</i>	<i>1,000 Head</i>	<i>1,000 Head</i>	<i>Percent</i>	<i>Percent</i>
AZ	25	26	26	104	100
CA	45	50	50	111	100
CO	260	225	230	88	102
ID	66	62	56	85	90
IA	45	64	50	111	78
KS	460	450	460	100	102
NE	420	500	480	114	96
NM	13	19	14	108	74
OK	75	76	71	95	93
SD	28	36	27	96	75
TX	500	510	520	104	102
WA	45	48	57	127	119
Oth Sts	70	77	75	107	97
US	2,052	2,143	2,116	103	99

**Cattle on Feed: Other Disappearance, 1,000+ Capacity Feedlots,  
by Month, State, and United States 1998-99 <sup>1</sup>**

State	During Jul 1998	During Jun 1999	During Jul 1999		
			Number	as % of 1998	as % of Jun
	<i>1,000 Head</i>	<i>1,000 Head</i>	<i>1,000 Head</i>	<i>Percent</i>	<i>Percent</i>
AZ	0	3	1	0	33
CA	5	5	5	100	100
CO	5	5	5	100	100
ID	4	9	2	50	22
IA	1	1	2	200	200
KS	10	10	10	100	100
NE	10	10	10	100	100
NM	1	2	1	100	50
OK	1	2	2	200	100
SD	1	3	2	200	67
TX	10	10	10	100	100
WA	2	1	1	50	100
Oth Sts	0	2	1	0	50
US	50	63	52	104	83

<sup>1</sup> Includes death losses, movement from feedlots to pastures, and shipments to other feedlots for further feeding.

The next "Cattle on Feed" report will be released at 3 p.m. ET on September 17, 1999.

The United States Department of Agriculture (USDA) prohibits discrimination in all its programs on the basis of race, color, national origin, gender, religion, age, disability, political beliefs, sexual orientation, and marital or family status. (Not all prohibited bases apply to all programs.) Persons with disabilities who require alternative means for communication of program information (braille, large print, audiotape, etc.) should contact the USDA's TARGET Center at 202-720-2600 (voice and TDD).

To file a complaint of discrimination, write USDA, Director, Office of Civil Rights, Room 326-W, Whitten Building, 14th and Independence Avenue, SW, Washington, D.C., 20250-9410, or call 202-720-5964 (voice or TDD). USDA is an equal opportunity provider and employer.

## **ACCESS TO REPORTS!!**

---

For your convenience, there are several ways to obtain NASS reports, data products, and services:

### **INTERNET ACCESS**

All NASS reports are available free of charge on the worldwide Internet. For access, connect to the Internet and go to the NASS Home Page at: <http://www.usda.gov/nass/>. Select "Today's Reports" or Publications and then Reports by Calendar or Publications and then Search, by Title or Subject.

### **E-MAIL SUBSCRIPTION**

There are two options for subscribing via e-mail. All NASS reports are available by subscription free of charge direct to your e-mail address. 1) Starting with the NASS Home Page at <http://www.usda.gov/nass/>, click on **Publications**, then click on the **Subscribe by E-mail** button which takes you to the page describing e-mail delivery of reports. Finally, click on **Go to the Subscription Page** and follow the instructions. 2) If you do NOT have Internet access, send an e-mail message to: [usda-reports@usda.mannlib.cornell.edu](mailto:usda-reports@usda.mannlib.cornell.edu). In the body of the message type the word: **list**.

### **AUTOFAX ACCESS**

NASSFax service is available for some reports from your fax machine. Please call 202-720-2000, using the handset attached to your fax. Respond to the voice prompts. Document 0411 is a list of available reports.

-----

### **PRINTED REPORTS OR DATA PRODUCTS**

**CALL OUR TOLL-FREE ORDER DESK: 800-999-6779 (U.S. and Canada)**  
**Other areas, please call 703-834-0125      FAX: 703-834-0110**  
**(Visa, MasterCard, check, or money order acceptable for payment.)**

-----

### **ASSISTANCE**

For **assistance** with general agricultural statistics or further information about NASS or its products or services, contact the **Agricultural Statistics Hotline** at **800-727-9540**, 7:30 a.m. to 4:00 p.m. ET, or e-mail: [nass@nass.usda.gov](mailto:nass@nass.usda.gov).

USDA to Hold Public Forum  
October 18, 1999

Holiday Inn Mart Plaza  
Chicago, Illinois

The National Agricultural Statistics Service will be organizing an open forum for Data Users. The purpose will be to provide updates on pending changes in the USDA statistical and information programs, and to seek comments and input from data users. Other agencies to be represented will include the Agricultural Marketing Service, the Economic Research Service, the Foreign Agricultural Service, and the World Agricultural Outlook Board.

For registration details, see the NASS home page at <http://www.usda.gov/nass/> or contact Fred Vogel (NASS) at (202) 720-3896 or at [hq\\_ed\\_od@nass.usda.gov](mailto:hq_ed_od@nass.usda.gov)