



Cattle on Feed

Released September 17, 1999, by the National Agricultural Statistics Service (NASS), Agricultural Statistics Board, U.S. Department of Agriculture. For information on "Cattle on Feed" call Greg Thessen at (202) 720-3040, office hours 7:30 a.m. to 4:00 p.m. ET.

U.S. Cattle on Feed Up 5 Percent

Cattle and calves on feed for slaughter market in the United States for feedlots with capacity of 1,000 or more head totaled 9.53 million head on September 1, 1999. The inventory was 5 percent above September 1, 1998 and 4 percent above September 1, 1997.

Placements in feedlots during August totaled 2.41 million, 17 percent above 1998 but 1 percent below 1997. Net placements were 2.36 million. During August, placements of cattle and calves weighing less than 600 pounds were 492,000, 600-699 pounds were 480,000, 700-799 pounds were 731,000, and 800 pounds and greater were 710,000.

Marketings of fed cattle during August totaled 2.03 million, 4 percent above 1998 but slightly below 1997.

Other disappearance totaled 55,000 during August, 6 percent above 1998 and 22 percent above 1997.

Cattle on Feed in Historic 7 States Up 5 Percent

Cattle on feed September 1, 1999, in the historic 7 States for feedlots with capacity of 1,000 or more head totaled 8.18 million, up 5 percent from the previous year and 4 percent above September 1, 1997.

Placements in feedlots during August totaled 2.07 million, 17 percent above 1998 but 2 percent below 1997.

Marketings during August totaled 1.73 million, 3 percent above 1998 but 1 percent below 1997.

Other disappearance during August was 42,000 head, the same as 1998 and 1997.

-Special Note-

NASS PROGRAM CHANGES: *The National Agricultural Statistics Service has completed a preliminary review of its statistical program to make sure it best meets the needs of data users in the future. These changes are documented at the following web site:*

<http://www.usda.gov/nass/events/events.htm>

This site can be reached through the NASS home page by clicking on "Coming Events and News" under AGENCY INFORMATION. The proposed program changes are the first subject.

**Cattle on Feed: Number on Feed, Placements, Marketings, and
Other Disappearance, 1,000+ Capacity Feedlots,
United States, September 1, 1997-99**

Item	Number			1999 as % of	
	1997	1998	1999	1997	1998
	<i>1,000 Head</i>	<i>1,000 Head</i>	<i>1,000 Head</i>	<i>Percent</i>	<i>Percent</i>
On Feed Aug 1 ¹	8,770	8,996	9,199	105	102
Placed on Feed During Aug	2,429	2,063	2,413	99	117
Fed Cattle Marketed During Aug	2,033	1,962	2,031	100	104
Other Disappearance During Aug ²	45	52	55	122	106
On Feed Sep 1 ¹	9,121	9,045	9,526	104	105

¹ Cattle and calves on feed are animals for slaughter market being fed a ration of grain or other concentrates and are expected to produce a carcass that will grade select or better.

² Includes death losses, movement from feedlots to pastures and shipments to other feedlots for further feeding.

**Cattle on Feed: Number on Feed, Placements, Marketings, and
Other Disappearance, 1,000+ Capacity Feedlots,
United States, August 1, 1997-99**

Item	Number			1999 as % of	
	1997	1998	1999	1997	1998
	<i>1,000 Head</i>	<i>1,000 Head</i>	<i>1,000 Head</i>	<i>Percent</i>	<i>Percent</i>
On Feed Jul 1 ¹	8,958	9,161	9,555	107	104
Placed on Feed During Jul	1,995	1,937	1,812	91	94
Fed Cattle Marketed During Jul	2,126	2,052	2,116	100	103
Other Disappearance During Jul ²	57	50	52	91	104
On Feed Aug 1 ¹	8,770	8,996	9,199	105	102

¹ Cattle and calves on feed are animals for slaughter market being fed a ration of grain or other concentrates and are expected to produce a carcass that will grade select or better.

² Includes death losses, movement from feedlots to pastures and shipments to other feedlots for further feeding.

**Cattle on Feed: Number on Feed, Placements, Marketings, and
Other Disappearance, 1,000+ Capacity Feedlots,
7 States, September 1, 1997-99¹**

Item	Number			1999 as % of	
	1997	1998	1999	1997	1998
	<i>1,000 Head</i>	<i>1,000 Head</i>	<i>1,000 Head</i>	<i>Percent</i>	<i>Percent</i>
On Feed Aug 1 ²	7,536	7,706	7,879	105	102
Placed on Feed During Aug	2,111	1,773	2,070	98	117
Fed Cattle Marketed During Aug	1,755	1,687	1,732	99	103
Other Disappearance During Aug ³	42	42	42	100	100
On Feed Sep 1 ²	7,850	7,750	8,175	104	105

¹ The 7 States include AZ, CA, CO, IA, KS, NE, and TX.

² Cattle and calves on feed are animals for slaughter market being fed a ration of grain or other concentrates and are expected to produce a carcass that will grade select or better.

³ Includes death losses, movement from feedlots to pastures and shipments to other feedlots for further feeding.

**Cattle on Feed: Number on Feed, Placements, Marketings, and
Other Disappearance, 1,000+ Capacity Feedlots,
7 States, August 1, 1997-99¹**

Item	Number			1999 as % of	
	1997	1998	1999	1997	1998
	<i>1,000 Head</i>	<i>1,000 Head</i>	<i>1,000 Head</i>	<i>Percent</i>	<i>Percent</i>
On Feed Jul 1 ²	7,679	7,825	8,173	106	104
Placed on Feed During Jul	1,751	1,677	1,565	89	93
Fed Cattle Marketed During Jul	1,852	1,755	1,816	98	103
Other Disappearance During Jul ³	42	41	43	102	105
On Feed Aug 1 ²	7,536	7,706	7,879	105	102

¹ The 7 States include AZ, CA, CO, IA, KS, NE, and TX.

² Cattle and calves on feed are animals for slaughter market being fed a ration of grain or other concentrates and are expected to produce a carcass that will grade select or better.

³ Includes death losses, movement from feedlots to pastures and shipments to other feedlots for further feeding.

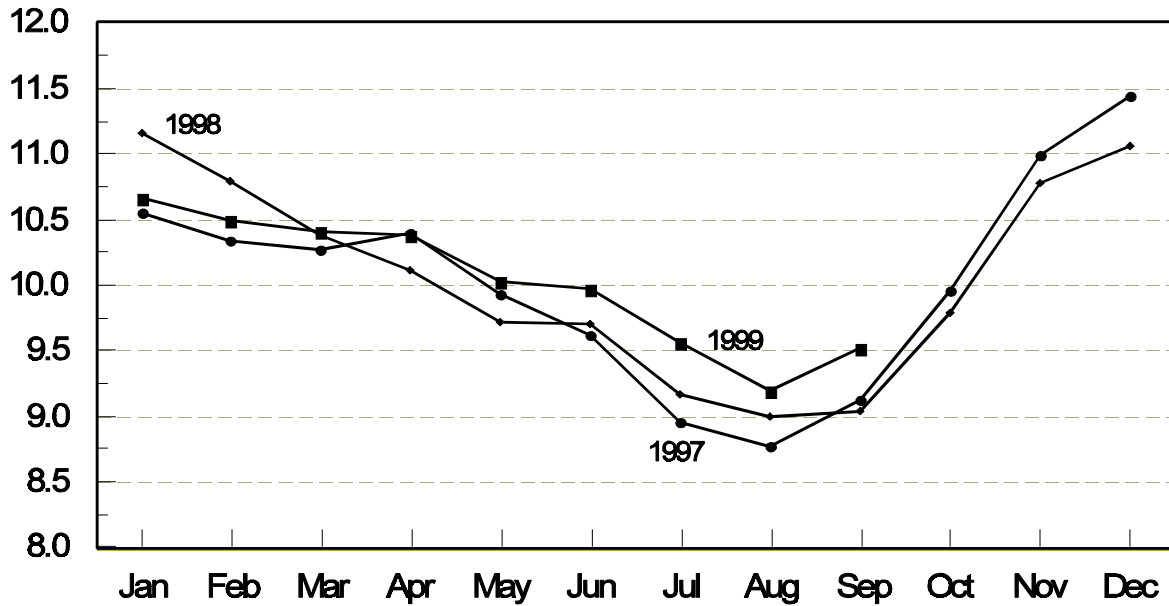
**Cattle on Feed: Number on Feed, 1,000+ Capacity Feedlots,
by Month, State, and United States 1998-99¹**

State	Sep 1, 1998	Aug 1, 1999	Sep 1, 1999		
			Number	as % of 1998	as % of Aug
	<i>1,000 Head</i>	<i>1,000 Head</i>	<i>1,000 Head</i>	<i>Percent</i>	<i>Percent</i>
AZ	200	194	200	100	103
CA	395	375	375	95	100
CO	840	960	960	114	100
ID	220	265	285	130	108
IA	235	290	300	128	103
KS	1,950	1,980	2,080	107	105
NE	1,520	1,600	1,700	112	106
NM	90	83	81	90	98
OK	380	325	350	92	108
SD	124	125	110	89	88
TX	2,610	2,480	2,560	98	103
WA	161	202	215	134	106
Oth Sts	320	320	310	97	97
US	9,045	9,199	9,526	105	104

¹ Cattle and calves on feed are animals for slaughter market being fed a ration of grain or other concentrates and are expected to produce a carcass that will grade select or better.

**United States Cattle on Feed
1,000+ Capacity Feedlots**

Million Head



**Cattle on Feed: Number Placed on Feed, 1,000+ Capacity Feedlots,
by Month, State, and United States 1998-99**

State	During Aug 1998	During Jul 1999	During Aug 1999		
			Number	as % of 1998	as % of Jul
	<i>1,000 Head</i>	<i>1,000 Head</i>	<i>1,000 Head</i>	<i>Percent</i>	<i>Percent</i>
AZ	19	23	29	153	126
CA	55	55	60	109	109
CO	220	175	245	111	140
ID	51	48	79	155	165
IA	39	32	56	144	175
KS	480	500	570	119	114
NE	450	300	500	111	167
NM	17	16	14	82	88
OK	87	73	98	113	134
SD	25	14	21	84	150
TX	510	480	610	120	127
WA	45	45	66	147	147
Oth Sts	65	51	65	100	127
US	2,063	1,812	2,413	117	133

**Cattle on Feed: Number Placed on Feed by Weight Group, 1,000+ Capacity
Feedlots, by Month, State, and United States, 1998-99**

State	During August									
	Less 600		600-699		700-799		800 Plus		Total	
	1998	1999	1998	1999	1998	1999	1998	1999	1998	1999
	<i>1,000 Head</i>	<i>1,000 Head</i>	<i>1,000 Head</i>	<i>1,000 Head</i>	<i>1,000 Head</i>	<i>1,000 Head</i>	<i>1,000 Head</i>	<i>1,000 Head</i>	<i>1,000 Head</i>	<i>1,000 Head</i>
CO	20	45	39	45	78	69	83	86	220	245
KS	60	60	100	120	190	220	130	170	480	570
NE	32	42	58	76	140	166	220	216	450	500
TX	168	225	153	171	133	146	56	68	510	610
Oth Sts	100	120	63	68	100	130	140	170	403	488
US	380	492	413	480	641	731	629	710	2,063	2,413
	During July									
	Less 600		600-699		700-799		800 Plus		Total	
	1998	1999	1998	1999	1998	1999	1998	1999	1998	1999
	<i>1,000 Head</i>	<i>1,000 Head</i>	<i>1,000 Head</i>	<i>1,000 Head</i>	<i>1,000 Head</i>	<i>1,000 Head</i>	<i>1,000 Head</i>	<i>1,000 Head</i>	<i>1,000 Head</i>	<i>1,000 Head</i>
CO	17	28	56	27	96	49	56	71	225	175
KS	50	60	130	115	210	195	140	130	530	500
NE	18	40	60	62	86	88	126	110	290	300
TX	132	120	175	149	159	141	64	70	530	480
Oth Sts	90	85	57	47	90	105	125	120	362	357
US	307	333	478	400	641	578	511	501	1,937	1,812

**Cattle on Feed: Number Marketed, 1,000+ Capacity Feedlots,
by Month, State, and United States 1998-99**

State	During Aug 1998	During Jul 1999	During Aug 1999		
			Number	as % of 1998	as % of Jul
	<i>1,000 Head</i>	<i>1,000 Head</i>	<i>1,000 Head</i>	<i>Percent</i>	<i>Percent</i>
AZ	14	26	22	157	85
CA	50	50	55	110	110
CO	215	230	240	112	104
ID	44	56	58	132	104
IA	48	50	45	94	90
KS	450	460	460	102	100
NE	380	480	390	103	81
NM	12	14	14	117	100
OK	76	71	70	92	99
SD	34	27	35	103	130
TX	530	520	520	98	100
WA	34	57	49	144	86
Oth Sts	75	75	73	97	97
US	1,962	2,116	2,031	104	96

**Cattle on Feed: Other Disappearance, 1,000+ Capacity Feedlots,
by Month, State, and United States 1998-99 ¹**

State	During Aug 1998	During Jul 1999	During Aug 1999		
			Number	as % of 1998	as % of Jul
	<i>1,000 Head</i>	<i>1,000 Head</i>	<i>1,000 Head</i>	<i>Percent</i>	<i>Percent</i>
AZ	1	1	1	100	100
CA	5	5	5	100	100
CO	5	5	5	100	100
ID	2	2	1	50	50
IA	1	2	1	100	50
KS	10	10	10	100	100
NE	10	10	10	100	100
NM	1	1	2	200	200
OK	1	2	3	300	150
SD	1	2	1	100	50
TX	10	10	10	100	100
WA	0	1	4	0	400
Oth Sts	5	1	2	40	200
US	52	52	55	106	106

¹ Includes death losses, movement from feedlots to pastures, and shipments to other feedlots for further feeding.

The next "Cattle on Feed" report will be released at 3 p.m. ET on October 15, 1999.

The United States Department of Agriculture (USDA) prohibits discrimination in all its programs on the basis of race, color, national origin, gender, religion, age, disability, political beliefs, sexual orientation, and marital or family status. (Not all prohibited bases apply to all programs.) Persons with disabilities who require alternative means for communication of program information (braille, large print, audiotape, etc.) should contact the USDA's TARGET Center at 202-720-2600 (voice and TDD).

To file a complaint of discrimination, write USDA, Director, Office of Civil Rights, Room 326-W, Whitten Building, 14th and Independence Avenue, SW, Washington, D.C., 20250-9410, or call 202-720-5964 (voice or TDD). USDA is an equal opportunity provider and employer.

ACCESS TO REPORTS!!

For your convenience, there are several ways to obtain NASS reports, data products, and services:

INTERNET ACCESS

All NASS reports are available free of charge on the worldwide Internet. For access, connect to the Internet and go to the NASS Home Page at: <http://www.usda.gov/nass/>. Select "Today's Reports" or Publications and then Reports by Calendar or Publications and then Search, by Title or Subject.

E-MAIL SUBSCRIPTION

There are two options for subscribing via e-mail. All NASS reports are available by subscription free of charge direct to your e-mail address. 1) Starting with the NASS Home Page at <http://www.usda.gov/nass/>, click on **Publications**, then click on the **Subscribe by E-mail** button which takes you to the page describing e-mail delivery of reports. Finally, click on **Go to the Subscription Page** and follow the instructions. 2) If you do NOT have Internet access, send an e-mail message to: usda-reports@usda.mannlib.cornell.edu. In the body of the message type the word: **list**.

AUTOFAX ACCESS

NASSFax service is available for some reports from your fax machine. Please call 202-720-2000, using the handset attached to your fax. Respond to the voice prompts. Document 0411 is a list of available reports.

----- PRINTED REPORTS OR DATA PRODUCTS

CALL OUR TOLL-FREE ORDER DESK: 800-999-6779 (U.S. and Canada)
Other areas, please call 703-834-0125 FAX: 703-834-0110
(Visa, MasterCard, check, or money order acceptable for payment.)

ASSISTANCE

For **assistance** with general agricultural statistics or further information about NASS or its products or services, contact the **Agricultural Statistics Hotline** at **800-727-9540**, 7:30 a.m. to 4:00 p.m. ET, or e-mail: nass@nass.usda.gov.

USDA to Hold Public Forum

October 18, 1999

Holiday Inn Mart Plaza

Chicago, Illinois

The National Agricultural Statistics Service will be organizing an open forum for Data Users. The purpose will be to provide updates on pending changes in the USDA statistical and information programs, and to seek comments and input from data users. Other agencies to be represented will include the Agricultural Marketing Service, the Economic Research Service, the Foreign Agricultural Service, and the World Agricultural Outlook Board.

For registration details, see the NASS home page at <http://www.usda.gov/nass/> or contact Fred Vogel (NASS) at (202) 720-3896 or at hq_ed_od@nass.usda.gov