



Cattle on Feed

Released October 15, 1999, by the National Agricultural Statistics Service (NASS), Agricultural Statistics Board, U.S. Department of Agriculture. For information on "Cattle on Feed" call Greg Thessen at (202) 720-3040, office hours 7:30 a.m. to 4:00 p.m. ET.

U.S. Cattle on Feed Up 5 Percent

Cattle and calves on feed for slaughter market in the United States for feedlots with capacity of 1,000 or more head totaled 10.27 million head on October 1, 1999. The inventory was 5 percent above October 1, 1998 and 3 percent above October 1, 1997. The inventory included 6.21 million steers and steer calves, up 4 percent from the previous year. This group accounted for 60 percent of the total inventory. Heifers and heifer calves accounted for 4.02 million head, up 6 percent from 1998.

Placements in feedlots during September totaled 2.76 million, 4 percent above 1998 and 2 percent above 1997. Net placements were 2.70 million. During September, placements of cattle and calves weighing less than 600 pounds were 629,000, 600-699 pounds were 557,000, 700-799 pounds were 758,000, and 800 pounds and greater were 815,000.

Marketings of fed cattle during September totaled 1.96 million, 5 percent above 1998 and 8 percent above 1997.

Other disappearance totaled 62,000 during September, 2 percent above 1998 and 17 percent above 1997.

Cattle on Feed in Historic 7 States Up 5 Percent

Cattle on feed October 1, 1999, in the historic 7 States for feedlots with capacity of 1,000 or more head totaled 8.78 million, up 5 percent from the previous year and 3 percent above October 1, 1997. The inventory included 5.28 million steers and steer calves, up 4 percent from the previous year. This group accounted for 60 percent of the total inventory. Heifers and heifer calves accounted for 3.48 million head, up 6 percent from 1998.

Placements in feedlots during September totaled 2.35 million, 4 percent above 1998 and 3 percent above 1997.

Marketings during September totaled 1.68 million, 7 percent above 1998 and 10 percent above 1997.

Other disappearance during September was 55,000 head, 8 percent above 1998 and 31 percent above 1997.

-Special Note-

NASS PROGRAM CHANGES: *The National Agricultural Statistics Service has completed a preliminary review of its statistical program to make sure it best meets the needs of data users in the future. These changes are documented at the following web site:*

<http://www.usda.gov/nass/events/events.htm>

This site can be reached through the NASS home page by clicking on "Coming Events and News" under AGENCY INFORMATION. The proposed program changes are the first subject.

**Cattle on Feed: Number on Feed, Placements, Marketings, and
Other Disappearance, 1,000+ Capacity Feedlots,
United States, October 1, 1997-99**

Item	Number			1999 as % of	
	1997	1998	1999	1997	1998
	<i>1,000 Head</i>	<i>1,000 Head</i>	<i>1,000 Head</i>	<i>Percent</i>	<i>Percent</i>
On Feed Sep 1 ¹	9,121	9,045	9,526	104	105
Placed on Feed During Sep	2,711	2,660	2,759	102	104
Fed Cattle Marketed During Sep	1,816	1,863	1,957	108	105
Other Disappearance During Sep ²	53	61	62	117	102
On Feed Oct 1 ¹	9,963	9,781	10,266	103	105

¹ Cattle and calves on feed are animals for slaughter market being fed a ration of grain or other concentrates and are expected to produce a carcass that will grade select or better.

² Includes death losses, movement from feedlots to pastures and shipments to other feedlots for further feeding.

**Cattle on Feed: Number on Feed, Placements, Marketings, and
Other Disappearance, 1,000+ Capacity Feedlots,
United States, September 1, 1997-99**

Item	Number			1999 as % of	
	1997	1998	1999	1997	1998
	<i>1,000 Head</i>	<i>1,000 Head</i>	<i>1,000 Head</i>	<i>Percent</i>	<i>Percent</i>
On Feed Aug 1 ¹	8,770	8,996	9,199	105	102
Placed on Feed During Aug	2,429	2,063	*2,423	100	117
Fed Cattle Marketed During Aug	2,033	1,962	*2,041	100	104
Other Disappearance During Aug ²	45	52	55	122	106
On Feed Sep 1 ¹	9,121	9,045	9,526	104	105

* Revised.

¹ Cattle and calves on feed are animals for slaughter market being fed a ration of grain or other concentrates and are expected to produce a carcass that will grade select or better.

² Includes death losses, movement from feedlots to pastures and shipments to other feedlots for further feeding.

**Cattle on Feed: Number on Feed by Class, 1,000+ Capacity Feedlots,
United States, October 1, 1997-99**

Item	Number			1999 as % of	
	1997	1998	1999	1997	1998
	<i>1,000 Head</i>	<i>1,000 Head</i>	<i>1,000 Head</i>	<i>Percent</i>	<i>Percent</i>
Class on Feed Oct 1					
Steers and Steer Calves	6,036	5,967	6,208	103	104
Heifers and Heifer Calves	3,894	3,782	4,021	103	106
Cows and Bulls	33	32	37	112	116

**Cattle on Feed: Number on Feed, Placements, Marketings, and
Other Disappearance, 1,000+ Capacity Feedlots,
7 States, October 1, 1997-99¹**

Item	Number			1999 as % of	
	1997	1998	1999	1997	1998
	<i>1,000 Head</i>	<i>1,000 Head</i>	<i>1,000 Head</i>	<i>Percent</i>	<i>Percent</i>
On Feed Sep 1 ²	7,850	7,750	8,175	104	105
Placed on Feed During Sep	2,278	2,254	2,345	103	104
Fed Cattle Marketed During Sep	1,528	1,577	1,682	110	107
Other Disappearance During Sep ³	42	51	55	131	108
On Feed Oct 1 ²	8,558	8,376	8,783	103	105

¹ The 7 States include AZ, CA, CO, IA, KS, NE, and TX.

² Cattle and calves on feed are animals for slaughter market being fed a ration of grain or other concentrates and are expected to produce a carcass that will grade select or better.

³ Includes death losses, movement from feedlots to pastures and shipments to other feedlots for further feeding.

**Cattle on Feed: Number on Feed, Placements, Marketings, and
Other Disappearance, 1,000+ Capacity Feedlots,
7 States, September 1, 1997-99¹**

Item	Number			1999 as % of	
	1997	1998	1999	1997	1998
	<i>1,000 Head</i>	<i>1,000 Head</i>	<i>1,000 Head</i>	<i>Percent</i>	<i>Percent</i>
On Feed Aug 1 ²	7,536	7,706	7,879	105	102
Placed on Feed During Aug	2,111	1,773	*2,080	99	117
Fed Cattle Marketed During Aug	1,755	1,687	*1,742	99	103
Other Disappearance During Aug ³	42	42	42	100	100
On Feed Sep 1 ²	7,850	7,750	8,175	104	105

* Revised.

¹ The 7 States include AZ, CA, CO, IA, KS, NE, and TX.

² Cattle and calves on feed are animals for slaughter market being fed a ration of grain or other concentrates and are expected to produce a carcass that will grade select or better.

³ Includes death losses, movement from feedlots to pastures and shipments to other feedlots for further feeding.

**Cattle on Feed: Number on Feed by Class, 1,000+ Capacity Feedlots,
7 States, October 1, 1997-99¹**

Item	Number			1999 as % of	
	1997	1998	1999	1997	1998
	<i>1,000 Head</i>	<i>1,000 Head</i>	<i>1,000 Head</i>	<i>Percent</i>	<i>Percent</i>
Class on Feed Oct 1					
Steers and Steer Calves	5,147	5,086	5,276	103	104
Heifers and Heifer Calves	3,383	3,268	3,479	103	106
Cows and Bulls	28	22	28	100	127

¹ The 7 States include AZ, CA, CO, IA, KS, NE, and TX.

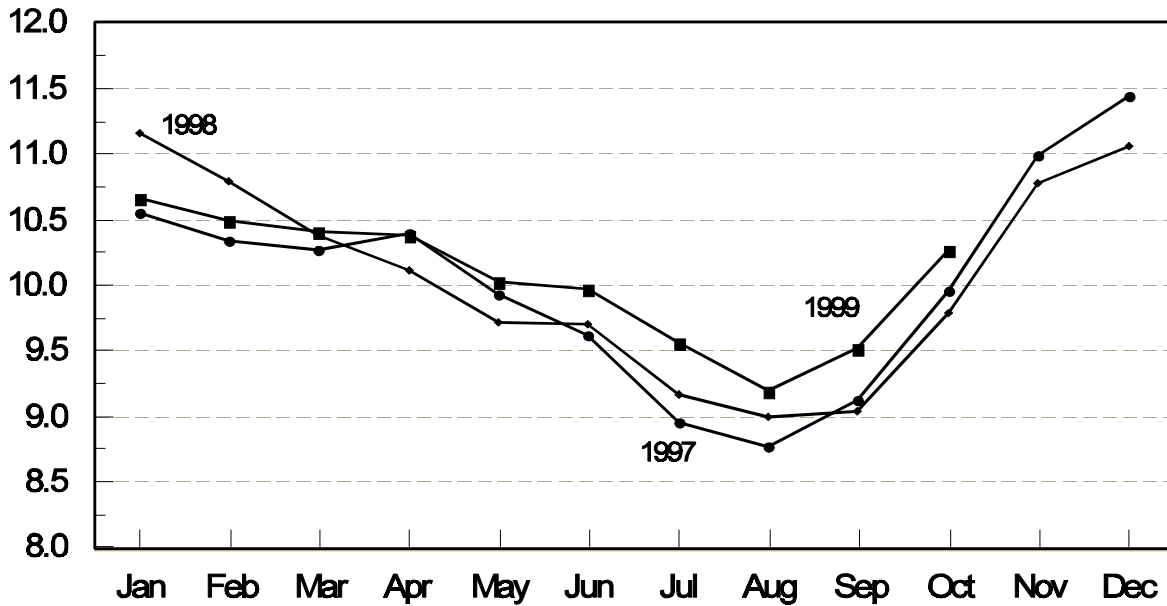
**Cattle on Feed: Number on Feed, 1,000+ Capacity Feedlots,
by Month, State, and United States 1998-99 ¹**

State	Oct 1, 1998	Sep 1, 1999	Oct 1, 1999		
			Number	as % of 1998	as % of Sep
	<i>1,000 Head</i>	<i>1,000 Head</i>	<i>1,000 Head</i>	<i>Percent</i>	<i>Percent</i>
AZ	201	200	208	103	104
CA	395	375	380	96	101
CO	1,000	960	1,070	107	111
ID	245	285	310	127	109
IA	260	300	315	121	105
KS	2,090	2,080	2,240	107	108
NE	1,760	1,700	1,900	108	112
NM	90	81	91	101	112
OK	390	350	380	97	109
SD	136	110	111	82	101
TX	2,670	2,560	2,670	100	104
WA	189	215	246	130	114
Oth Sts	355	310	345	97	111
US	9,781	9,526	10,266	105	108

¹ Cattle and calves on feed are animals for slaughter market being fed a ration of grain or other concentrates and are expected to produce a carcass that will grade select or better.

**United States Cattle on Feed
1,000+ Capacity Feedlots**

Million Head



**Cattle on Feed: Number Placed on Feed, 1,000+ Capacity Feedlots,
by Month, State, and United States 1998-99**

State	During Sep 1998	During Aug 1999	During Sep 1999		
			Number	as % of 1998	as % of Aug
	<i>1,000 Head</i>	<i>1,000 Head</i>	<i>1,000 Head</i>	<i>Percent</i>	<i>Percent</i>
AZ	23	29	29	126	100
CA	53	60	56	106	93
CO	370	*255	330	89	129
ID	68	79	80	118	101
IA	68	56	60	88	107
KS	530	570	600	113	105
NE	570	500	580	102	116
NM	16	14	23	144	164
OK	107	98	107	100	109
SD	41	21	32	78	152
TX	640	610	690	108	113
WA	64	66	75	117	114
Oth Sts	110	65	97	88	149
US	2,660	*2,423	2,759	104	114

* Revised.

**Cattle on Feed: Number Placed on Feed by Weight Group, 1,000+ Capacity
Feedlots, by Month, State, and United States, 1998-99**

State	During September									
	Less 600		600-699		700-799		800 Plus		Total	
	1998	1999	1998	1999	1998	1999	1998	1999	1998	1999
	<i>1,000 Head</i>	<i>1,000 Head</i>	<i>1,000 Head</i>	<i>1,000 Head</i>	<i>1,000 Head</i>	<i>1,000 Head</i>	<i>1,000 Head</i>	<i>1,000 Head</i>	<i>1,000 Head</i>	<i>1,000 Head</i>
CO	20	40	40	55	135	106	175	129	370	330
KS	80	125	110	120	170	195	170	160	530	600
NE	69	84	71	88	165	167	265	241	570	580
TX	154	240	179	210	186	165	121	75	640	690
Oth Sts	115	140	80	84	140	125	215	210	550	559
US	438	629	480	557	796	758	946	815	2,660	2,759
	During August									
	Less 600		600-699		700-799		800 Plus		Total	
	1998	1999	1998	1999	1998	1999	1998	1999	1998	1999
	<i>1,000 Head</i>	<i>1,000 Head</i>	<i>1,000 Head</i>	<i>1,000 Head</i>	<i>1,000 Head</i>	<i>1,000 Head</i>	<i>1,000 Head</i>	<i>1,000 Head</i>	<i>1,000 Head</i>	<i>1,000 Head</i>
CO	20	*47	39	*46	78	*72	83	*90	220	*255
KS	60	60	100	120	190	220	130	170	480	570
NE	32	42	58	76	140	166	220	216	450	500
TX	168	225	153	171	133	146	56	68	510	610
Oth Sts	100	120	63	68	100	130	140	170	403	488
US	380	*494	413	*481	641	*734	629	*714	2,063	*2,423

* Revised.

**Cattle on Feed: Number Marketed, 1,000+ Capacity Feedlots,
by Month, State, and United States 1998-99**

State	During Sep 1998	During Aug 1999	During Sep 1999		
			Number	as % of 1998	as % of Aug
	<i>1,000 Head</i>	<i>1,000 Head</i>	<i>1,000 Head</i>	<i>Percent</i>	<i>Percent</i>
AZ	20	22	20	100	91
CA	50	55	48	96	87
CO	205	*250	210	102	84
ID	41	58	54	132	93
IA	42	45	44	105	98
KS	380	460	430	113	93
NE	320	390	370	116	95
NM	15	14	12	80	86
OK	92	70	75	82	107
SD	28	35	30	107	86
TX	560	520	560	100	108
WA	35	49	43	123	88
Oth Sts	75	73	61	81	84
US	1,863	*2,041	1,957	105	96

* Revised.

**Cattle on Feed: Other Disappearance, 1,000+ Capacity Feedlots,
by Month, State, and United States 1998-99¹**

State	During Sep 1998	During Aug 1999	During Sep 1999		
			Number	as % of 1998	as % of Aug
	<i>1,000 Head</i>	<i>1,000 Head</i>	<i>1,000 Head</i>	<i>Percent</i>	<i>Percent</i>
AZ	2	1	1	50	100
CA	3	5	3	100	60
CO	5	5	10	200	200
ID	2	1	1	50	100
IA	1	1	1	100	100
KS	10	10	10	100	100
NE	10	10	10	100	100
NM	1	2	1	100	50
OK	5	3	2	40	67
SD	1	1	1	100	100
TX	20	10	20	100	200
WA	1	4	1	100	25
Oth Sts	0	2	1	0	50
US	61	55	62	102	113

¹ Includes death losses, movement from feedlots to pastures, and shipments to other feedlots for further feeding.

**Cattle on Feed: Number on Feed by Class, 1,000+ Capacity Feedlots,
by Quarter, State, and United States, 1998-99**

State	Steers & Steer Calves			Heifers & Heifer Calves			Cows and Bulls		
	Oct 1, 1998	Jul 1, 1999	Oct 1, 1999	Oct 1, 1998	Jul 1, 1999	Oct 1, 1999	Oct 1, 1998	Jul 1, 1999	Oct 1, 1999
	<i>1,000 Head</i>	<i>1,000 Head</i>	<i>1,000 Head</i>	<i>1,000 Head</i>	<i>1,000 Head</i>	<i>1,000 Head</i>	<i>1,000 Head</i>	<i>1,000 Head</i>	<i>1,000 Head</i>
AZ	170	182	199	31	16	9	0	0	0
CA	355	345	340	39	30	38	1	0	2
CO	600	540	625	395	475	440	5	5	5
ID	181	194	207	63	79	102	1	2	1
IA	151	187	192	109	122	123	0	1	0
KS	1,310	1,190	1,400	775	750	830	5	10	10
NE	1,000	1,035	1,110	750	740	780	10	15	10
NM	46	33	39	44	49	52	0	0	0
OK	230	200	220	159	124	159	1	1	1
SD	81	85	62	52	52	45	3	3	4
TX	1,500	1,360	1,410	1,169	1,169	1,259	1	1	1
WA	113	132	149	76	82	97	0	1	0
Oth Sts	230	245	255	120	95	87	5	5	3
US	5,967	5,728	6,208	3,782	3,783	4,021	32	44	37

The next "Cattle on Feed" report will be released at 3 p.m. ET on November 19, 1999.

The United States Department of Agriculture (USDA) prohibits discrimination in all its programs on the basis of race, color, national origin, gender, religion, age, disability, political beliefs, sexual orientation, and marital or family status. (Not all prohibited bases apply to all programs.) Persons with disabilities who require alternative means for communication of program information (braille, large print, audiotape, etc.) should contact the USDA's TARGET Center at 202-720-2600 (voice and TDD).

To file a complaint of discrimination, write USDA, Director, Office of Civil Rights, Room 326-W, Whitten Building, 14th and Independence Avenue, SW, Washington, D.C., 20250-9410, or call 202-720-5964 (voice or TDD). USDA is an equal opportunity provider and employer.

ACCESS TO REPORTS!!

For your convenience, there are several ways to obtain NASS reports, data products, and services:

INTERNET ACCESS

All NASS reports are available free of charge on the worldwide Internet. For access, connect to the Internet and go to the NASS Home Page at: <http://www.usda.gov/nass/>. Select "Today's Reports" or Publications and then Reports by Calendar or Publications and then Search, by Title or Subject.

E-MAIL SUBSCRIPTION

There are two options for subscribing via e-mail. All NASS reports are available by subscription free of charge direct to your e-mail address. 1) Starting with the NASS Home Page at <http://www.usda.gov/nass/>, click on **Publications**, then click on the **Subscribe by E-mail** button which takes you to the page describing e-mail delivery of reports. Finally, click on **Go to the Subscription Page** and follow the instructions. 2) If you do NOT have Internet access, send an e-mail message to: usda-reports@usda.mannlib.cornell.edu. In the body of the message type the word: **list**.

AUTOFAX ACCESS

NASSFax service is available for some reports from your fax machine. Please call 202-720-2000, using the handset attached to your fax. Respond to the voice prompts. Document 0411 is a list of available reports.

PRINTED REPORTS OR DATA PRODUCTS

CALL OUR TOLL-FREE ORDER DESK: 800-999-6779 (U.S. and Canada)
Other areas, please call 703-834-0125 FAX: 703-834-0110
(Visa, MasterCard, check, or money order acceptable for payment.)

ASSISTANCE

For **assistance** with general agricultural statistics or further information about NASS or its products or services, contact the **Agricultural Statistics Hotline** at **800-727-9540**, 7:30 a.m. to 4:00 p.m. ET, or e-mail: nass@nass.usda.gov.

USDA to Hold Public Forum

October 18, 1999

Holiday Inn Mart Plaza

Chicago, Illinois

The National Agricultural Statistics Service will be organizing an open forum for Data Users. The purpose will be to provide updates on pending changes in the USDA statistical and information programs, and to seek comments and input from data users. Other agencies to be represented will include the Agricultural Marketing Service, the Economic Research Service, the Foreign Agricultural Service, and the World Agricultural Outlook Board.

For registration details, see the NASS home page at <http://www.usda.gov/nass/> or contact Fred Vogel (NASS) at (202) 720-3896 or at hq_ed_od@nass.usda.gov