



# Cattle on Feed

---

Released November 19, 1999, by the National Agricultural Statistics Service (NASS), Agricultural Statistics Board, U.S. Department of Agriculture. For information on "Cattle on Feed" call Greg Thessen at (202) 720-3040, office hours 7:30 a.m. to 4:00 p.m. ET.

## U.S. Cattle on Feed Up 6 Percent

**Cattle and calves on feed** for slaughter market in the United States for feedlots with capacity of 1,000 or more head totaled 11.46 million head on November 1, 1999. The inventory was 6 percent above November 1, 1998 and 4 percent above November 1, 1997.

**Placements** in feedlots during October totaled 3.09 million, 9 percent above 1998 and up 6 percent from 1997. Net placements were 3.01 million. During October, placements of cattle and calves weighing less than 600 pounds were 1.02 million, 600-699 pounds were 797,000, 700-799 pounds were 687,000, and 800 pounds and greater were 588,000.

**Marketings** of fed cattle during October totaled 1.83 million, 3 percent above 1998 and 1 percent above 1997.

**Other disappearance** totaled 80,000 during October, 54 percent above 1998 but 12 percent below 1997.

## Cattle on Feed in Historic 7 States Up 6 Percent

**Cattle on feed** November 1, 1999, in the historic 7 States for feedlots with capacity of 1,000 or more head totaled 9.77 million, up 6 percent from the previous year and 4 percent above November 1, 1997.

**Placements** in feedlots during October totaled 2.61 million, 9 percent above 1998 and 6 percent above 1997.

**Marketings** during October totaled 1.56 million, 1 percent above both 1998 and 1997.

**Other disappearance** during October was 63,000 head, 40 percent above 1998 but 18 percent below 1997.

**Cattle on Feed: Number on Feed, Placements, Marketings, and  
Other Disappearance, 1,000+ Capacity Feedlots,  
United States, November 1, 1997-99**

Item	Number			1999 as % of	
	1997	1998	1999	1997	1998
	<i>1,000 Head</i>	<i>1,000 Head</i>	<i>1,000 Head</i>	<i>Percent</i>	<i>Percent</i>
On Feed Oct 1 <sup>1</sup>	9,963	9,781	10,266	103	105
Placed on Feed During Oct	2,916	2,830	3,094	106	109
Fed Cattle Marketed During Oct	1,800	1,775	1,825	101	103
Other Disappearance During Oct <sup>2</sup>	91	52	80	88	154
On Feed Nov 1 <sup>1</sup>	10,988	10,784	11,455	104	106

<sup>1</sup> Cattle and calves on feed are animals for slaughter market being fed a ration of grain or other concentrates and are expected to produce a carcass that will grade select or better.

<sup>2</sup> Includes death losses, movement from feedlots to pastures and shipments to other feedlots for further feeding.

**Cattle on Feed: Number on Feed, Placements, Marketings, and  
Other Disappearance, 1,000+ Capacity Feedlots,  
United States, October 1, 1997-99**

Item	Number			1999 as % of	
	1997	1998	1999	1997	1998
	<i>1,000 Head</i>	<i>1,000 Head</i>	<i>1,000 Head</i>	<i>Percent</i>	<i>Percent</i>
On Feed Sep 1 <sup>1</sup>	9,121	9,045	9,526	104	105
Placed on Feed During Sep	2,711	2,660	2,759	102	104
Fed Cattle Marketed During Sep	1,816	1,863	1,957	108	105
Other Disappearance During Sep <sup>2</sup>	53	61	62	117	102
On Feed Oct 1 <sup>1</sup>	9,963	9,781	10,266	103	105

<sup>1</sup> Cattle and calves on feed are animals for slaughter market being fed a ration of grain or other concentrates and are expected to produce a carcass that will grade select or better.

<sup>2</sup> Includes death losses, movement from feedlots to pastures and shipments to other feedlots for further feeding.

**Cattle on Feed: Number on Feed, Placements, Marketings, and  
Other Disappearance, 1,000+ Capacity Feedlots,  
7 States, November 1, 1997-99 <sup>1</sup>**

Item	Number			1999 as % of	
	1997	1998	1999	1997	1998
	<i>1,000 Head</i>	<i>1,000 Head</i>	<i>1,000 Head</i>	<i>Percent</i>	<i>Percent</i>
On Feed Oct 1 <sup>2</sup>	8,558	8,376	8,783	103	105
Placed on Feed During Oct	2,454	2,396	2,609	106	109
Fed Cattle Marketed During Oct	1,545	1,537	1,560	101	101
Other Disappearance During Oct <sup>3</sup>	77	45	63	82	140
On Feed Nov 1 <sup>2</sup>	9,390	9,190	9,769	104	106

<sup>1</sup> The 7 States include AZ, CA, CO, IA, KS, NE, and TX.

<sup>2</sup> Cattle and calves on feed are animals for slaughter market being fed a ration of grain or other concentrates and are expected to produce a carcass that will grade select or better.

<sup>3</sup> Includes death losses, movement from feedlots to pastures and shipments to other feedlots for further feeding.

**Cattle on Feed: Number on Feed, Placements, Marketings, and  
Other Disappearance, 1,000+ Capacity Feedlots,  
7 States, October 1, 1997-99 <sup>1</sup>**

Item	Number			1999 as % of	
	1997	1998	1999	1997	1998
	<i>1,000 Head</i>	<i>1,000 Head</i>	<i>1,000 Head</i>	<i>Percent</i>	<i>Percent</i>
On Feed Sep 1 <sup>2</sup>	7,850	7,750	8,175	104	105
Placed on Feed During Sep	2,278	2,254	2,345	103	104
Fed Cattle Marketed During Sep	1,528	1,577	1,682	110	107
Other Disappearance During Sep <sup>3</sup>	42	51	55	131	108
On Feed Oct 1 <sup>2</sup>	8,558	8,376	8,783	103	105

<sup>1</sup> The 7 States include AZ, CA, CO, IA, KS, NE, and TX.

<sup>2</sup> Cattle and calves on feed are animals for slaughter market being fed a ration of grain or other concentrates and are expected to produce a carcass that will grade select or better.

<sup>3</sup> Includes death losses, movement from feedlots to pastures and shipments to other feedlots for further feeding.

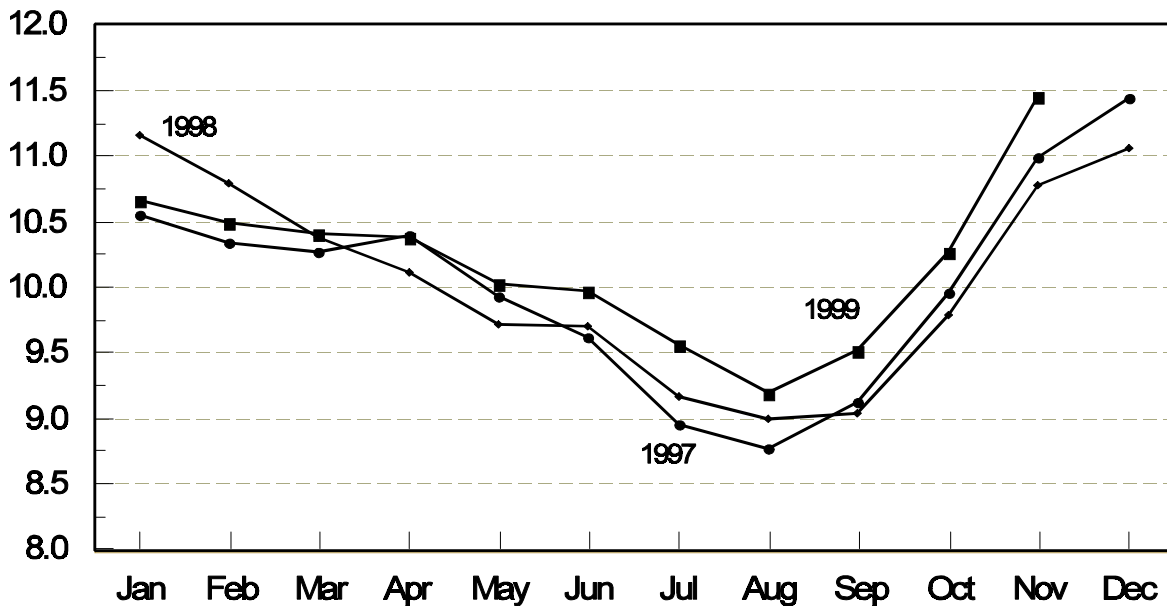
**Cattle on Feed: Number on Feed, 1,000+ Capacity Feedlots,  
by Month, State, and United States 1998-99 <sup>1</sup>**

State	Nov 1, 1998	Oct 1, 1999	Nov 1, 1999		
			Number	as % of 1998	as % of Oct
	<i>1,000 Head</i>	<i>1,000 Head</i>	<i>1,000 Head</i>	<i>Percent</i>	<i>Percent</i>
AZ	205	208	239	117	115
CA	400	380	395	99	104
CO	1,170	1,070	1,220	104	114
ID	270	310	325	120	105
IA	295	315	345	117	110
KS	2,260	2,240	2,390	106	107
NE	2,030	1,900	2,250	111	118
NM	107	91	107	100	118
OK	430	380	435	101	114
SD	166	111	157	95	141
TX	2,830	2,670	2,930	104	110
WA	211	246	257	122	104
Oth Sts	410	345	405	99	117
US	10,784	10,266	11,455	106	112

<sup>1</sup> Cattle and calves on feed are animals for slaughter market being fed a ration of grain or other concentrates and are expected to produce a carcass that will grade select or better.

**United States Cattle on Feed  
1,000+ Capacity Feedlots**

Million Head



**Cattle on Feed: Number Placed on Feed, 1,000+ Capacity Feedlots,  
by Month, State, and United States 1998-99**

State	During Oct 1998	During Sep 1999	During Oct 1999		
			Number	as % of 1998	as % of Sep
	<i>1,000 Head</i>	<i>1,000 Head</i>	<i>1,000 Head</i>	<i>Percent</i>	<i>Percent</i>
AZ	27	29	48	178	166
CA	60	56	67	112	120
CO	345	330	360	104	109
ID	67	80	76	113	95
IA	74	60	84	114	140
KS	540	600	550	102	92
NE	600	580	690	115	119
NM	35	23	31	89	135
OK	112	107	133	119	124
SD	53	32	70	132	219
TX	750	690	810	108	117
WA	57	75	56	98	75
Oth Sts	110	97	119	108	123
US	2,830	2,759	3,094	109	112

**Cattle on Feed: Number Placed on Feed by Weight Group, 1,000+ Capacity  
Feedlots, by Month, State, and United States, 1998-99**

State	During October									
	Less 600		600-699		700-799		800 Plus		Total	
	1998	1999	1998	1999	1998	1999	1998	1999	1998	1999
	<i>1,000 Head</i>	<i>1,000 Head</i>	<i>1,000 Head</i>	<i>1,000 Head</i>	<i>1,000 Head</i>	<i>1,000 Head</i>	<i>1,000 Head</i>	<i>1,000 Head</i>	<i>1,000 Head</i>	<i>1,000 Head</i>
CO	58	92	62	64	83	98	142	106	345	360
KS	130	155	130	145	150	155	130	95	540	550
NE	190	215	115	183	140	125	155	167	600	690
TX	203	290	217	255	203	195	127	70	750	810
Oth Sts	195	270	125	150	110	114	165	150	595	684
US	776	1,022	649	797	686	687	719	588	2,830	3,094
	During September									
	Less 600		600-699		700-799		800 Plus		Total	
	1998	1999	1998	1999	1998	1999	1998	1999	1998	1999
	<i>1,000 Head</i>	<i>1,000 Head</i>	<i>1,000 Head</i>	<i>1,000 Head</i>	<i>1,000 Head</i>	<i>1,000 Head</i>	<i>1,000 Head</i>	<i>1,000 Head</i>	<i>1,000 Head</i>	<i>1,000 Head</i>
CO	20	40	40	55	135	106	175	129	370	330
KS	80	125	110	120	170	195	170	160	530	600
NE	69	84	71	88	165	167	265	241	570	580
TX	154	240	179	210	186	165	121	75	640	690
Oth Sts	115	140	80	84	140	125	215	210	550	559
US	438	629	480	557	796	758	946	815	2,660	2,759

**Cattle on Feed: Number Marketed, 1,000+ Capacity Feedlots,  
by Month, State, and United States 1998-99**

State	During Oct 1998	During Sep 1999	During Oct 1999		
			Number	as % of 1998	as % of Sep
	<i>1,000 Head</i>	<i>1,000 Head</i>	<i>1,000 Head</i>	<i>Percent</i>	<i>Percent</i>
AZ	20	20	15	75	75
CA	50	48	47	94	98
CO	170	210	205	121	98
ID	39	54	58	149	107
IA	37	44	53	143	120
KS	360	430	380	106	88
NE	320	370	330	103	89
NM	17	12	14	82	117
OK	71	75	75	106	100
SD	22	30	23	105	77
TX	580	560	530	91	95
WA	34	43	37	109	86
Oth Sts	55	61	58	105	95
US	1,775	1,957	1,825	103	93

**Cattle on Feed: Other Disappearance, 1,000+ Capacity Feedlots,  
by Month, State, and United States 1998-99 <sup>1</sup>**

State	During Oct 1998	During Sep 1999	During Oct 1999		
			Number	as % of 1998	as % of Sep
	<i>1,000 Head</i>	<i>1,000 Head</i>	<i>1,000 Head</i>	<i>Percent</i>	<i>Percent</i>
AZ	3	1	2	67	200
CA	5	3	5	100	167
CO	5	10	5	100	50
ID	3	1	3	100	300
IA	2	1	1	50	100
KS	10	10	20	200	200
NE	10	10	10	100	100
NM	1	1	1	100	100
OK	1	2	3	300	150
SD	1	1	1	100	100
TX	10	20	20	200	100
WA	1	1	8	800	800
Oth Sts	0	1	1	0	100
US	52	62	80	154	129

<sup>1</sup> Includes death losses, movement from feedlots to pastures, and shipments to other feedlots for further feeding.

The next "Cattle on Feed" report will be released at 3 p.m. ET on December 17, 1999.

The United States Department of Agriculture (USDA) prohibits discrimination in all its programs on the basis of race, color, national origin, gender, religion, age, disability, political beliefs, sexual orientation, and marital or family status. (Not all prohibited bases apply to all programs.) Persons with disabilities who require alternative means for communication of program information (braille, large print, audiotape, etc.) should contact the USDA's TARGET Center at 202-720-2600 (voice and TDD).

To file a complaint of discrimination, write USDA, Director, Office of Civil Rights, Room 326-W, Whitten Building, 14th and Independence Avenue, SW, Washington, D.C., 20250-9410, or call 202-720-5964 (voice or TDD). USDA is an equal opportunity provider and employer.

## ACCESS TO REPORTS!!

---

For your convenience, there are several ways to obtain NASS reports, data products, and services:

### INTERNET ACCESS

All NASS reports are available free of charge on the worldwide Internet. For access, connect to the Internet and go to the NASS Home Page at: <http://www.usda.gov/nass/>. Select "Today's Reports" or Publications and then Reports by Calendar or Publications and then Search, by Title or Subject.

### E-MAIL SUBSCRIPTION

There are two options for subscribing via e-mail. All NASS reports are available by subscription free of charge direct to your e-mail address. 1) Starting with the NASS Home Page at <http://www.usda.gov/nass/>, click on **Publications**, then click on the **Subscribe by E-mail** button which takes you to the page describing e-mail delivery of reports. Finally, click on **Go to the Subscription Page** and follow the instructions. 2) If you do NOT have Internet access, send an e-mail message to: [usda-reports@usda.mannlib.cornell.edu](mailto:usda-reports@usda.mannlib.cornell.edu). In the body of the message type the word: **list**.

### AUTOFAX ACCESS

NASSFax service is available for some reports from your fax machine. Please call 202-720-2000, using the handset attached to your fax. Respond to the voice prompts. Document 0411 is a list of available reports.

-----

### PRINTED REPORTS OR DATA PRODUCTS

CALL OUR TOLL-FREE ORDER DESK: 800-999-6779 (U.S. and Canada)  
Other areas, please call 703-834-0125 FAX: 703-834-0110  
(Visa, MasterCard, check, or money order acceptable for payment.)

-----

### ASSISTANCE

For **assistance** with general agricultural statistics or further information about NASS or its products or services, contact the **Agricultural Statistics Hotline** at 800-727-9540, 7:30 a.m. to 4:00 p.m. ET, or e-mail: [nass@nass.usda.gov](mailto:nass@nass.usda.gov).