



Cattle on Feed

Released December 17, 1999, by the National Agricultural Statistics Service (NASS), Agricultural Statistics Board, U.S. Department of Agriculture. For information on "Cattle on Feed" call Greg Thessen at (202) 720-3040, office hours 7:30 a.m. to 4:00 p.m. ET.

U.S. Cattle on Feed Up 6 Percent

Cattle and calves on feed for slaughter market in the United States for feedlots with capacity of 1,000 or more head totaled 11.75 million head on December 1, 1999. The inventory was 6 percent above December 1, 1998 and 3 percent above December 1, 1997.

Placements in feedlots during November totaled 2.17 million, 5 percent above 1998 but 2 percent below 1997. Net placements were 2.09 million. During November, placements of cattle and calves weighing less than 600 pounds were 766,000, 600-699 pounds were 657,000, 700-799 pounds were 416,000, and 800 pounds and greater were 331,000.

Marketings of fed cattle during November totaled 1.80 million, 5 percent above 1998 and 7 percent above 1997.

Other disappearance totaled 83,000 during November, 6 percent above 1998 but 2 percent below 1997.

Cattle on Feed in Historic 7 States Up 6 Percent

Cattle on feed December 1, 1999, in the historic 7 States for feedlots with capacity of 1,000 or more head totaled 10.01 million, up 6 percent from the previous year and 3 percent above December 1, 1997.

Placements in feedlots during November totaled 1.82 million, 5 percent above 1998 but slightly below 1997.

Marketings during November totaled 1.53 million, 5 percent above 1998 and 7 percent above 1997.

Other disappearance during November was 62,000 head, 2 percent below 1998 and 10 percent below 1997.

**Cattle on Feed: Number on Feed, Placements, Marketings, and
Other Disappearance, 1,000+ Capacity Feedlots,
United States, December 1, 1997-1999**

Item	Number			1999 as % of	
	1997	1998	1999	1997	1998
	<i>1,000 Head</i>	<i>1,000 Head</i>	<i>1,000 Head</i>	<i>Percent</i>	<i>Percent</i>
On Feed Nov 1 ¹	10,988	10,784	11,455	104	106
Placed on Feed During Nov	2,207	2,065	2,170	98	105
Fed Cattle Marketed During Nov	1,674	1,708	1,796	107	105
Other Disappearance During Nov ²	85	78	83	98	106
On Feed Dec 1 ¹	11,436	11,063	11,746	103	106

¹ Cattle and calves on feed are animals for slaughter market being fed a ration of grain or other concentrates and are expected to produce a carcass that will grade select or better.

² Includes death losses, movement from feedlots to pastures and shipments to other feedlots for further feeding.

**Cattle on Feed: Number on Feed, Placements, Marketings, and
Other Disappearance, 1,000+ Capacity Feedlots,
United States, November 1, 1997-1999**

Item	Number			1999 as % of	
	1997	1998	1999	1997	1998
	<i>1,000 Head</i>	<i>1,000 Head</i>	<i>1,000 Head</i>	<i>Percent</i>	<i>Percent</i>
On Feed Oct 1 ¹	9,963	9,781	10,266	103	105
Placed on Feed During Oct	2,916	2,830	3,094	106	109
Fed Cattle Marketed During Oct	1,800	1,775	1,825	101	103
Other Disappearance During Oct ²	91	52	80	88	154
On Feed Nov 1 ¹	10,988	10,784	11,455	104	106

¹ Cattle and calves on feed are animals for slaughter market being fed a ration of grain or other concentrates and are expected to produce a carcass that will grade select or better.

² Includes death losses, movement from feedlots to pastures and shipments to other feedlots for further feeding.

**Cattle on Feed: Number on Feed, Placements, Marketings, and
Other Disappearance, 1,000+ Capacity Feedlots,
7 States, December 1, 1997-1999¹**

Item	Number			1999 as % of	
	1997	1998	1999	1997	1998
	<i>1,000 Head</i>	<i>1,000 Head</i>	<i>1,000 Head</i>	<i>Percent</i>	<i>Percent</i>
On Feed Nov 1 ²	9,390	9,190	9,769	104	106
Placed on Feed During Nov	1,826	1,732	1,823	100	105
Fed Cattle Marketed During Nov	1,429	1,455	1,525	107	105
Other Disappearance During Nov ³	69	63	62	90	98
On Feed Dec 1 ²	9,718	9,404	10,005	103	106

¹ The 7 States include AZ, CA, CO, IA, KS, NE, and TX.

² Cattle and calves on feed are animals for slaughter market being fed a ration of grain or other concentrates and are expected to produce a carcass that will grade select or better.

³ Includes death losses, movement from feedlots to pastures and shipments to other feedlots for further feeding.

**Cattle on Feed: Number on Feed, Placements, Marketings, and
Other Disappearance, 1,000+ Capacity Feedlots,
7 States, November 1, 1997-1999¹**

Item	Number			1999 as % of	
	1997	1998	1999	1997	1998
	<i>1,000 Head</i>	<i>1,000 Head</i>	<i>1,000 Head</i>	<i>Percent</i>	<i>Percent</i>
On Feed Oct 1 ²	8,558	8,376	8,783	103	105
Placed on Feed During Oct	2,454	2,396	2,609	106	109
Fed Cattle Marketed During Oct	1,545	1,537	1,560	101	101
Other Disappearance During Oct ³	77	45	63	82	140
On Feed Nov 1 ²	9,390	9,190	9,769	104	106

¹ The 7 States include AZ, CA, CO, IA, KS, NE, and TX.

² Cattle and calves on feed are animals for slaughter market being fed a ration of grain or other concentrates and are expected to produce a carcass that will grade select or better.

³ Includes death losses, movement from feedlots to pastures and shipments to other feedlots for further feeding.

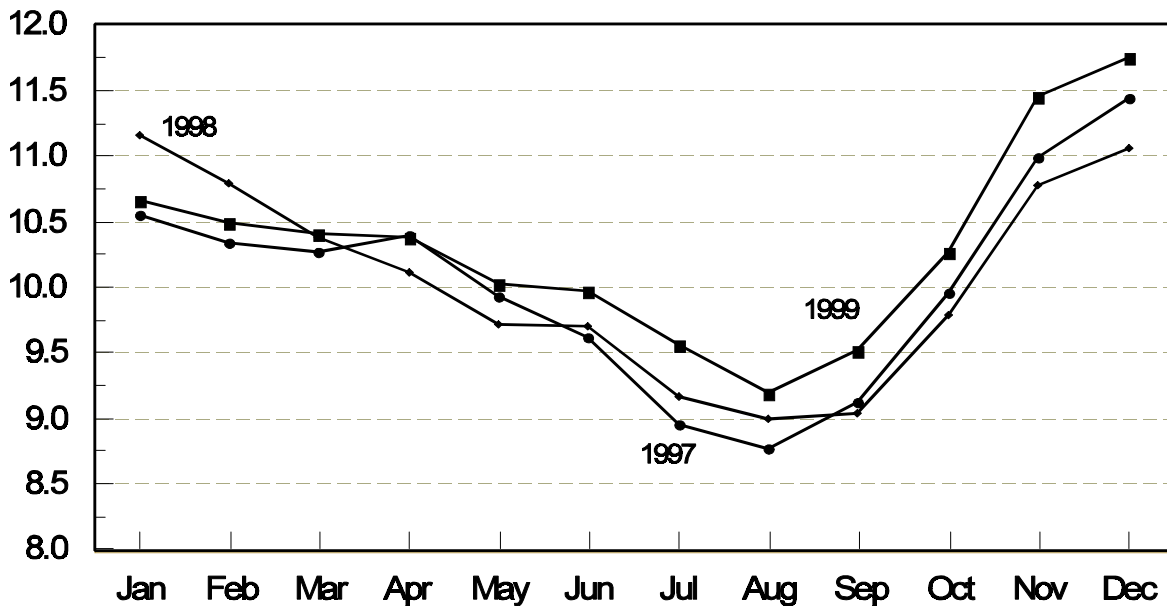
**Cattle on Feed: Number on Feed, 1,000+ Capacity Feedlots,
by Month, State, and United States 1998-1999 ¹**

State	Dec 1, 1998	Nov 1, 1999	Dec 1, 1999		
			Number	as % of 1998	as % of Nov
	<i>1,000 Head</i>	<i>1,000 Head</i>	<i>1,000 Head</i>	<i>Percent</i>	<i>Percent</i>
AZ	214	239	265	124	111
CA	410	395	405	99	103
CO	1,190	1,220	1,220	103	100
ID	285	325	320	112	98
IA	320	345	375	117	109
KS	2,250	2,390	2,380	106	100
NE	2,160	2,250	2,380	110	106
NM	110	107	109	99	102
OK	430	435	440	102	101
SD	179	157	186	104	118
TX	2,860	2,930	2,980	104	102
WA	210	257	241	115	94
Oth Sts	445	405	445	100	110
US	11,063	11,455	11,746	106	103

¹ Cattle and calves on feed are animals for slaughter market being fed a ration of grain or other concentrates and are expected to produce a carcass that will grade select or better.

**United States Cattle on Feed
1,000+ Capacity Feedlots**

Million Head



**Cattle on Feed: Number Placed on Feed, 1,000+ Capacity Feedlots,
by Month, State, and United States 1998-1999**

State	During Nov 1998	During Oct 1999	During Nov 1999		
			Number	as % of 1998	as % of Oct
	<i>1,000 Head</i>	<i>1,000 Head</i>	<i>1,000 Head</i>	<i>Percent</i>	<i>Percent</i>
AZ	36	48	48	133	100
CA	70	67	66	94	99
CO	210	360	190	90	53
ID	70	76	66	94	87
IA	66	84	74	112	88
KS	420	550	430	102	78
NE	450	690	490	109	71
NM	18	31	17	94	55
OK	70	133	75	107	56
SD	38	70	51	134	73
TX	480	810	525	109	65
WA	42	56	44	105	79
Oth Sts	95	119	94	99	79
US	2,065	3,094	2,170	105	70

**Cattle on Feed: Number Placed on Feed by Weight Group, 1,000+ Capacity
Feedlots, by Month, State, and United States, 1998-1999**

State	During November									
	Less 600		600-699		700-799		800 Plus		Total	
	1998	1999	1998	1999	1998	1999	1998	1999	1998	1999
	<i>1,000 Head</i>	<i>1,000 Head</i>	<i>1,000 Head</i>	<i>1,000 Head</i>	<i>1,000 Head</i>	<i>1,000 Head</i>	<i>1,000 Head</i>	<i>1,000 Head</i>	<i>1,000 Head</i>	<i>1,000 Head</i>
CO	83	51	57	46	41	58	29	35	210	190
KS	130	135	120	135	110	100	60	60	420	430
NE	140	155	130	166	85	83	95	86	450	490
TX	187	200	154	195	101	95	38	35	480	525
Oth Sts	205	225	95	115	105	80	100	115	505	535
US	745	766	556	657	442	416	322	331	2,065	2,170
State	During October									
	Less 600		600-699		700-799		800 Plus		Total	
	1998	1999	1998	1999	1998	1999	1998	1999	1998	1999
	<i>1,000 Head</i>	<i>1,000 Head</i>	<i>1,000 Head</i>	<i>1,000 Head</i>	<i>1,000 Head</i>	<i>1,000 Head</i>	<i>1,000 Head</i>	<i>1,000 Head</i>	<i>1,000 Head</i>	<i>1,000 Head</i>
CO	58	92	62	64	83	98	142	106	345	360
KS	130	155	130	145	150	155	130	95	540	550
NE	190	215	115	183	140	125	155	167	600	690
TX	203	290	217	255	203	195	127	70	750	810
Oth Sts	195	270	125	150	110	114	165	150	595	684
US	776	1,022	649	797	686	687	719	588	2,830	3,094

**Cattle on Feed: Number Marketed, 1,000+ Capacity Feedlots,
by Month, State, and United States 1998-1999**

State	During Nov 1998	During Oct 1999	During Nov 1999		
			Number	as % of 1998	as % of Oct
	<i>1,000 Head</i>	<i>1,000 Head</i>	<i>1,000 Head</i>	<i>Percent</i>	<i>Percent</i>
AZ	25	15	19	76	127
CA	55	47	48	87	102
CO	180	205	180	100	88
ID	50	58	67	134	116
IA	40	53	43	108	81
KS	410	380	425	104	112
NE	310	330	350	113	106
NM	14	14	12	86	86
OK	65	75	63	97	84
SD	23	23	21	91	91
TX	435	530	460	106	87
WA	41	37	56	137	151
Oth Sts	60	58	52	87	90
US	1,708	1,825	1,796	105	98

**Cattle on Feed: Other Disappearance, 1,000+ Capacity Feedlots,
by Month, State, and United States 1998-1999 ¹**

State	During Nov 1998	During Oct 1999	During Nov 1999		
			Number	as % of 1998	as % of Oct
	<i>1,000 Head</i>	<i>1,000 Head</i>	<i>1,000 Head</i>	<i>Percent</i>	<i>Percent</i>
AZ	2	2	3	150	150
CA	5	5	8	160	160
CO	10	5	10	100	200
ID	5	3	4	80	133
IA	1	1	1	100	100
KS	20	20	15	75	75
NE	10	10	10	100	100
NM	1	1	3	300	300
OK	5	3	7	140	233
SD	2	1	1	50	100
TX	15	20	15	100	75
WA	2	8	4	200	50
Oth Sts	0	1	2	0	200
US	78	80	83	106	104

¹ Includes death losses, movement from feedlots to pastures, and shipments to other feedlots for further feeding.

The next "Cattle on Feed" report will be released at 3 p.m. ET on January 21, 2000.

The United States Department of Agriculture (USDA) prohibits discrimination in all its programs on the basis of race, color, national origin, gender, religion, age, disability, political beliefs, sexual orientation, and marital or family status. (Not all prohibited bases apply to all programs.) Persons with disabilities who require alternative means for communication of program information (braille, large print, audiotape, etc.) should contact the USDA's TARGET Center at 202-720-2600 (voice and TDD).

To file a complaint of discrimination, write USDA, Director, Office of Civil Rights, Room 326-W, Whitten Building, 14th and Independence Avenue, SW, Washington, D.C., 20250-9410, or call 202-720-5964 (voice or TDD). USDA is an equal opportunity provider and employer.

ACCESS TO REPORTS!!

For your convenience, there are several ways to obtain NASS reports, data products, and services:

INTERNET ACCESS

All NASS reports are available free of charge on the worldwide Internet. For access, connect to the Internet and go to the NASS Home Page at: <http://www.usda.gov/nass/>. Select "Today's Reports" or Publications and then Reports by Calendar or Publications and then Search, by Title or Subject.

E-MAIL SUBSCRIPTION

There are two options for subscribing via e-mail. All NASS reports are available by subscription free of charge direct to your e-mail address. 1) Starting with the NASS Home Page at <http://www.usda.gov/nass/>, click on **Publications**, then click on the **Subscribe by E-mail** button which takes you to the page describing e-mail delivery of reports. Finally, click on **Go to the Subscription Page** and follow the instructions. 2) If you do NOT have Internet access, send an e-mail message to: usda-reports@usda.mannlib.cornell.edu. In the body of the message type the word: **list**.

AUTOFAX ACCESS

NASSFax service is available for some reports from your fax machine. Please call 202-720-2000, using the handset attached to your fax. Respond to the voice prompts. Document 0411 is a list of available reports.

PRINTED REPORTS OR DATA PRODUCTS

CALL OUR TOLL-FREE ORDER DESK: 800-999-6779 (U.S. and Canada)
Other areas, please call 703-834-0125 FAX: 703-834-0110
(Visa, MasterCard, check, or money order acceptable for payment.)

ASSISTANCE

For **assistance** with general agricultural statistics or further information about NASS or its products or services, contact the **Agricultural Statistics Hotline** at 800-727-9540, 7:30 a.m. to 4:00 p.m. ET, or e-mail: nass@nass.usda.gov.