



Cattle on Feed

Released January 21, 2000, by the National Agricultural Statistics Service (NASS), Agricultural Statistics Board, U.S. Department of Agriculture. For information on "Cattle on Feed" call Greg Thessen at (202) 720-3040, office hours 7:30 a.m. to 4:00 p.m. ET.

U.S. Cattle on Feed Up 7 Percent

Cattle and calves on feed for slaughter market in the United States for feedlots with capacity of 1,000 or more head totaled 11.46 million head on January 1, 2000. The inventory was 7 percent above January 1, 1999 and 3 percent above January 1, 1998. The inventory included 6.83 million steers and steer calves, up 6 percent from the previous year. This group accounted for 60 percent of the total inventory. Heifers and heifer calves accounted for 4.56 million head, up 10 percent from January 1, 1999.

Placements in feedlots during December totaled 1.65 million, 9 percent above 1998 and 6 percent above 1997. Net placements were 1.56 million. During December, placements of cattle and calves weighing less than 600 pounds were 465,000, 600-699 pounds were 498,000, 700-799 pounds were 422,000, and 800 pounds and greater were 261,000.

Marketings of fed cattle during December totaled 1.84 million, 1 percent above 1998 and 5 percent above 1997.

Other disappearance totaled 90,000 during December, 6 percent above both 1998 and 1997.

Cattle on Feed in Historic 7 States Up 8 Percent

Cattle on feed January 1, 2000, in the historic 7 States for feedlots with capacity of 1,000 or more head totaled 9.73 million, up 8 percent from the previous year and 3 percent above January 1, 1998. The inventory included 5.76 million steers and steer calves, up 6 percent from the previous year. This group accounted for 59 percent of the total inventory. Heifers and heifer calves accounted for 3.93 million head, up 11 percent from January 1, 1999.

Placements in feedlots during December totaled 1.41 million, 13 percent above 1998 and 8 percent above 1997.

Marketings during December totaled 1.60 million, 2 percent above 1998 and 7 percent above 1997.

Other disappearance during December was 75,000 head, up 9 percent from 1998 and 10 percent above 1997.

**Cattle on Feed: Number on Feed, Placements, Marketings, and
Other Disappearance, 1,000+ Capacity Feedlots,
United States, January 1, 1998-2000**

Item	Number			2000 as % of	
	1998	1999	2000	1998	1999
	<i>1,000 Head</i>	<i>1,000 Head</i>	<i>1,000 Head</i>	<i>Percent</i>	<i>Percent</i>
On Feed Dec 1 ¹	11,436	11,063	*11,741	103	106
Placed on Feed During Dec	1,552	1,512	1,646	106	109
Fed Cattle Marketed During Dec	1,748	1,823	1,842	105	101
Other Disappearance During Dec ²	85	85	90	106	106
On Feed Jan 1 ¹	11,155	10,667	11,455	103	107

* Revised.

¹ Cattle and calves on feed are animals for slaughter market being fed a ration of grain or other concentrates and are expected to produce a carcass that will grade select or better.

² Includes death losses, movement from feedlots to pastures and shipments to other feedlots for further feeding.

**Cattle on Feed: Number on Feed, Placements, Marketings, and
Other Disappearance, 1,000+ Capacity Feedlots,
United States, December 1, 1997-1999**

Item	Number			1999 as % of	
	1997	1998	1999	1997	1998
	<i>1,000 Head</i>	<i>1,000 Head</i>	<i>1,000 Head</i>	<i>Percent</i>	<i>Percent</i>
On Feed Nov 1 ¹	10,988	10,784	11,455	104	106
Placed on Feed During Nov	2,207	2,065	2,170	98	105
Fed Cattle Marketed During Nov	1,674	1,708	*1,801	108	105
Other Disappearance During Nov ²	85	78	83	98	106
On Feed Dec 1 ¹	11,436	11,063	*11,741	103	106

* Revised.

¹ Cattle and calves on feed are animals for slaughter market being fed a ration of grain or other concentrates and are expected to produce a carcass that will grade select or better.

² Includes death losses, movement from feedlots to pastures and shipments to other feedlots for further feeding.

**Cattle on Feed: Number on Feed by Class, 1,000+ Capacity Feedlots,
United States, January 1, 1998-2000**

Item	Number			2000 as % of	
	1998	1999	2000	1998	1999
	<i>1,000 Head</i>	<i>1,000 Head</i>	<i>1,000 Head</i>	<i>Percent</i>	<i>Percent</i>
Class on Feed Jan 1					
Steers and Steer Calves	6,796	6,461	6,830	101	106
Heifers and Heifer Calves	4,300	4,153	4,564	106	110
Cows and Bulls	59	53	61	103	115

**Cattle on Feed: Number on Feed, Placements, Marketings, and
Other Disappearance, 1,000+ Capacity Feedlots,
7 States, January 1, 1998-2000 ¹**

Item	Number			2000 as % of	
	1998	1999	2000	1998	1999
	<i>1,000 Head</i>	<i>1,000 Head</i>	<i>1,000 Head</i>	<i>Percent</i>	<i>Percent</i>
On Feed Dec 1 ²	9,718	9,404	*10,000	103	106
Placed on Feed During Dec	1,304	1,250	1,408	108	113
Fed Cattle Marketed During Dec	1,499	1,564	1,601	107	102
Other Disappearance During Dec ³	68	69	75	110	109
On Feed Jan 1 ²	9,455	9,021	9,732	103	108

* Revised.

¹ The 7 States include AZ, CA, CO, IA, KS, NE, and TX.

² Cattle and calves on feed are animals for slaughter market being fed a ration of grain or other concentrates and are expected to produce a carcass that will grade select or better.

³ Includes death losses, movement from feedlots to pastures and shipments to other feedlots for further feeding.

**Cattle on Feed: Number on Feed, Placements, Marketings, and
Other Disappearance, 1,000+ Capacity Feedlots,
7 States, December 1, 1997-1999 ¹**

Item	Number			1999 as % of	
	1997	1998	1999	1997	1998
	<i>1,000 Head</i>	<i>1,000 Head</i>	<i>1,000 Head</i>	<i>Percent</i>	<i>Percent</i>
On Feed Nov 1 ²	9,390	9,190	9,769	104	106
Placed on Feed During Nov	1,826	1,732	1,823	100	105
Fed Cattle Marketed During Nov	1,429	1,455	*1,530	107	105
Other Disappearance During Nov ³	69	63	62	90	98
On Feed Dec 1 ²	9,718	9,404	*10,000	103	106

* Revised.

¹ The 7 States include AZ, CA, CO, IA, KS, NE, and TX.

² Cattle and calves on feed are animals for slaughter market being fed a ration of grain or other concentrates and are expected to produce a carcass that will grade select or better.

³ Includes death losses, movement from feedlots to pastures and shipments to other feedlots for further feeding.

**Cattle on Feed: Number on Feed by Class, 1,000+ Capacity Feedlots,
7 States, January 1, 1998-2000 ¹**

Item	Number			2000 as % of	
	1998	1999	2000	1998	1999
	<i>1,000 Head</i>	<i>1,000 Head</i>	<i>1,000 Head</i>	<i>Percent</i>	<i>Percent</i>
Class on Feed Jan 1					
Steers and Steer Calves	5,803	5,432	5,758	99	106
Heifers and Heifer Calves	3,615	3,552	3,932	109	111
Cows and Bulls	37	37	42	114	114

¹ The 7 States include AZ, CA, CO, IA, KS, NE, and TX.

**Cattle on Feed: Number on Feed, 1,000+ Capacity Feedlots,
by Month, State, and United States 1999-2000 ¹**

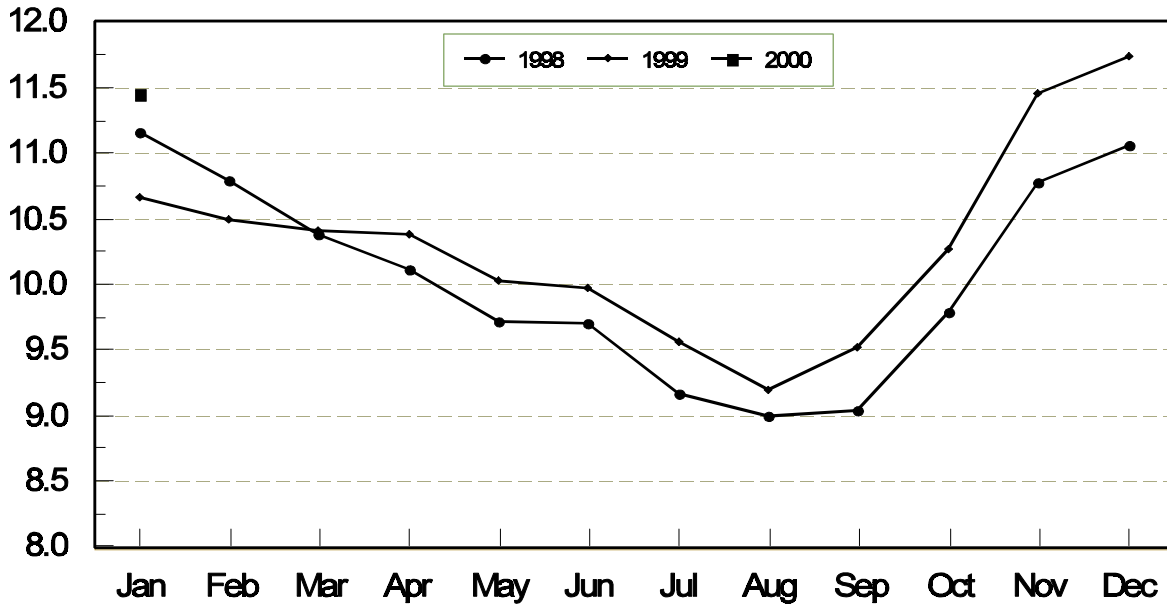
State	Jan 1, 1999	Dec 1, 1999	Jan 1, 2000		
			Number	as % of 1999	as % of Dec
	<i>1,000 Head</i>	<i>1,000 Head</i>	<i>1,000 Head</i>	<i>Percent</i>	<i>Percent</i>
AZ	206	265	272	132	103
CA	400	405	415	104	102
CO	1,140	1,220	1,180	104	97
ID	285	320	310	109	97
IA	335	*370	375	112	101
KS	2,110	2,380	2,290	109	96
NE	2,110	2,380	2,300	109	97
NM	118	109	116	98	106
OK	410	440	430	105	98
SD	184	186	194	105	104
TX	2,720	2,980	2,900	107	97
WA	199	241	228	115	95
Oth Sts	450	445	445	99	100
US	10,667	*11,741	11,455	107	98

* Revised.

¹ Cattle and calves on feed are animals for slaughter market being fed a ration of grain or other concentrates and are expected to produce a carcass that will grade select or better.

**United States Cattle on Feed
1,000+ Capacity Feedlots**

Million Head



**Cattle on Feed: Number Placed on Feed, 1,000+ Capacity Feedlots,
by Month, State, and United States 1998-1999**

State	During Dec 1998	During Nov 1999	During Dec 1999		
			Number	as % of 1998	as % of Nov
	<i>1,000 Head</i>	<i>1,000 Head</i>	<i>1,000 Head</i>	<i>Percent</i>	<i>Percent</i>
AZ	22	48	36	164	75
CA	50	66	67	134	102
CO	170	190	160	94	84
ID	55	66	50	91	76
IA	53	74	45	85	61
KS	320	430	400	125	93
NE	330	490	340	103	69
NM	19	17	15	79	88
OK	58	75	53	91	71
SD	32	51	31	97	61
TX	305	525	360	118	69
WA	33	44	38	115	86
Oth Sts	65	94	51	78	54
US	1,512	2,170	1,646	109	76

**Cattle on Feed: Number Placed on Feed by Weight Group, 1,000+ Capacity
Feedlots, by Month, State, and United States, 1998-1999**

State	During December									
	Less 600		600-699		700-799		800 Plus		Total	
	1998	1999	1998	1999	1998	1999	1998	1999	1998	1999
	<i>1,000 Head</i>	<i>1,000 Head</i>	<i>1,000 Head</i>	<i>1,000 Head</i>	<i>1,000 Head</i>	<i>1,000 Head</i>	<i>1,000 Head</i>	<i>1,000 Head</i>	<i>1,000 Head</i>	<i>1,000 Head</i>
CO	45	34	59	47	45	42	21	37	170	160
KS	70	95	110	135	100	120	40	50	320	400
NE	57	51	120	106	81	109	72	74	330	340
TX	101	125	122	130	58	80	24	25	305	360
Oth Sts	125	160	85	80	87	71	90	75	387	386
US	398	465	496	498	371	422	247	261	1,512	1,646
	During November									
	Less 600		600-699		700-799		800 Plus		Total	
	1998	1999	1998	1999	1998	1999	1998	1999	1998	1999
	<i>1,000 Head</i>	<i>1,000 Head</i>	<i>1,000 Head</i>	<i>1,000 Head</i>	<i>1,000 Head</i>	<i>1,000 Head</i>	<i>1,000 Head</i>	<i>1,000 Head</i>	<i>1,000 Head</i>	<i>1,000 Head</i>
CO	83	51	57	46	41	58	29	35	210	190
KS	130	135	120	135	110	100	60	60	420	430
NE	140	155	130	166	85	83	95	86	450	490
TX	187	200	154	195	101	95	38	35	480	525
Oth Sts	205	225	95	115	105	80	100	115	505	535
US	745	766	556	657	442	416	322	331	2,065	2,170

**Cattle on Feed: Number Marketed, 1,000+ Capacity Feedlots,
by Month, State, and United States 1998-1999**

State	During Dec 1998	During Nov 1999	During Dec 1999		
			Number	as % of 1998	as % of Nov
	<i>1,000 Head</i>	<i>1,000 Head</i>	<i>1,000 Head</i>	<i>Percent</i>	<i>Percent</i>
AZ	28	19	25	89	132
CA	55	48	47	85	98
CO	210	180	190	90	106
ID	50	67	59	118	88
IA	36	*48	39	108	81
KS	440	425	480	109	113
NE	370	350	400	108	114
NM	9	12	5	56	42
OK	76	63	60	79	95
SD	26	21	22	85	105
TX	425	460	420	99	91
WA	40	56	48	120	86
Oth Sts	58	52	47	81	90
US	1,823	*1,801	1,842	101	102

* Revised.

**Cattle on Feed: Other Disappearance, 1,000+ Capacity Feedlots,
by Month, State, and United States 1998-1999 ¹**

State	During Dec 1998	During Nov 1999	During Dec 1999		
			Number	as % of 1998	as % of Nov
	<i>1,000 Head</i>	<i>1,000 Head</i>	<i>1,000 Head</i>	<i>Percent</i>	<i>Percent</i>
AZ	2	3	4	200	133
CA	5	8	10	200	125
CO	10	10	10	100	100
ID	5	4	1	20	25
IA	2	1	1	50	100
KS	20	15	10	50	67
NE	10	10	20	200	200
NM	2	3	3	150	100
OK	2	7	3	150	43
SD	1	1	1	100	100
TX	20	15	20	100	133
WA	4	4	3	75	75
Oth Sts	2	2	4	200	200
US	85	83	90	106	108

¹ Includes death losses, movement from feedlots to pastures, and shipments to other feedlots for further feeding.

**Cattle on Feed: Number on Feed by Class, 1,000+ Capacity Feedlots,
by Quarter, State, and United States, 1999-2000**

State	Steers & Steer Calves			Heifers & Heifer Calves			Cows and Bulls		
	Jan 1, 1999	Oct 1, 1999	Jan 1, 2000	Jan 1, 1999	Oct 1, 1999	Jan 1, 2000	Jan 1, 1999	Oct 1, 1999	Jan 1, 2000
	<i>1,000 Head</i>	<i>1,000 Head</i>	<i>1,000 Head</i>	<i>1,000 Head</i>	<i>1,000 Head</i>	<i>1,000 Head</i>	<i>1,000 Head</i>	<i>1,000 Head</i>	<i>1,000 Head</i>
AZ	187	199	252	19	9	20	0	0	0
CA	365	340	376	35	38	38	0	2	1
CO	675	625	650	460	440	520	5	5	10
ID	199	207	212	82	102	98	4	1	0
IA	205	192	240	129	123	135	1	0	0
KS	1,260	1,400	1,350	840	830	930	10	10	10
NE	1,220	1,110	1,340	870	780	940	20	10	20
NM	60	39	55	58	52	61	0	0	0
OK	255	220	265	155	159	164	0	1	1
SD	109	62	103	69	45	83	6	4	8
TX	1,520	1,410	1,550	1,199	1,259	1,349	1	1	1
WA	116	149	137	82	97	91	1	0	0
Oth Sts	290	255	300	155	87	135	5	3	10
US	6,461	6,208	6,830	4,153	4,021	4,564	53	37	61

The next "Cattle on Feed" report will be released at 3 p.m. ET on February 18, 2000.

The United States Department of Agriculture (USDA) prohibits discrimination in all its programs on the basis of race, color, national origin, gender, religion, age, disability, political beliefs, sexual orientation, and marital or family status. (Not all prohibited bases apply to all programs.) Persons with disabilities who require alternative means for communication of program information (braille, large print, audiotape, etc.) should contact the USDA's TARGET Center at 202-720-2600 (voice and TDD).

To file a complaint of discrimination, write USDA, Director, Office of Civil Rights, Room 326-W, Whitten Building, 14th and Independence Avenue, SW, Washington, D.C., 20250-9410, or call 202-720-5964 (voice or TDD). USDA is an equal opportunity provider and employer.

ACCESS TO REPORTS!!

For your convenience, there are several ways to obtain NASS reports, data products, and services:

INTERNET ACCESS

All NASS reports are available free of charge on the worldwide Internet. For access, connect to the Internet and go to the NASS Home Page at: <http://www.usda.gov/nass/>. Select "Today's Reports" or Publications and then Reports by Calendar or Publications and then Search, by Title or Subject.

E-MAIL SUBSCRIPTION

There are two options for subscribing via e-mail. All NASS reports are available by subscription free of charge direct to your e-mail address. 1) Starting with the NASS Home Page at <http://www.usda.gov/nass/>, click on **Publications**, then click on the **Subscribe by E-mail** button which takes you to the page describing e-mail delivery of reports. Finally, click on **Go to the Subscription Page** and follow the instructions. 2) If you do NOT have Internet access, send an e-mail message to: usda-reports@usda.mannlib.cornell.edu. In the body of the message type the word: **list**.

AUTOFAX ACCESS

NASSFax service is available for some reports from your fax machine. Please call 202-720-2000, using the handset attached to your fax. Respond to the voice prompts. Document 0411 is a list of available reports.

PRINTED REPORTS OR DATA PRODUCTS

CALL OUR TOLL-FREE ORDER DESK: 800-999-6779 (U.S. and Canada)
Other areas, please call 703-834-0125 FAX: 703-834-0110
(Visa, MasterCard, check, or money order acceptable for payment.)

ASSISTANCE

For **assistance** with general agricultural statistics or further information about NASS or its products or services, contact the **Agricultural Statistics Hotline** at 800-727-9540, 7:30 a.m. to 4:00 p.m. ET, or e-mail: nass@nass.usda.gov.

Bring the Future into Focus.

Agricultural Outlook Forum 2000



- Commodity Outlook, 2000 and Beyond
- Coming to Terms with Biotechnology
- Future of Farming and Rural America
- Farming under Contract
- Impact of Agribusiness Mergers
- New Markets: E-Commerce, Organic Foods, Biomass
- WTO Talks, Animal & Plant Health Trade Rules

Bring your future into focus at the U.S. Department of Agriculture's Outlook Forum 2000. Hear industry leaders, producers and top officials discuss issues confronting agriculture. Receive up-to-date commodity forecasts plus new 10-year projections. Network with hundreds of experts from agriculture, business and government at this popular event.

For program and registration details, access the Forum web site, send an e-mail to agforum@oce.usda.gov, or call 202-720-3050. *Register today; rates go up after February 1.*

www.usda.gov/oce

February 24-25, 2000 • Arlington, Virginia