



Cattle on Feed

Released February 18, 2000, by the National Agricultural Statistics Service (NASS), Agricultural Statistics Board, U.S. Department of Agriculture. For information on "Cattle on Feed" call Greg Thessen at (202) 720-3040, office hours 7:30 a.m. to 4:00 p.m. ET.

U.S. Cattle on Feed Up 10 Percent

Cattle and calves on feed for slaughter market in the United States for feedlots with capacity of 1,000 or more head totaled 11.58 million head on February 1, 2000. The inventory was 10 percent above February 1, 1999 and 7 percent above February 1, 1998.

Placements in feedlots during January totaled 2.23 million, 15 percent above 1999 and 29 percent above 1998. Net placements were 2.16 million. During January, placements of cattle and calves weighing less than 600 pounds were 494,000, 600-699 pounds were 696,000, 700-799 pounds were 654,000, and 800 pounds and greater were 382,000.

Marketings of fed cattle during January totaled 2.05 million, 1 percent above 1999 and 3 percent above 1998.

Other disappearance totaled 69,000 during January, 1 percent below 1999 and 30 percent below 1998.

Cattle on Feed in Historic 7 States Up 11 Percent

Cattle on feed February 1, 2000, in the historic 7 States for feedlots with capacity of 1,000 or more head totaled 9.89 million, up 11 percent from the previous year and 8 percent above February 1, 1998.

Placements in feedlots during January totaled 1.93 million, 15 percent above 1999 and 29 percent above 1998.

Marketings during January totaled 1.75 million, 1 percent above 1999 and 3 percent above 1998.

Other disappearance during January was 51,000 head, 9 percent above 1999 but 35 percent below 1998.

1999 Cattle on Feed and Annual Size Group Estimates

This report contains the 1999 monthly cattle on feed estimates for feedlots with capacity of 1,000 or more head. Also included are the number of feedlots, inventory, and annual marketings by size group for 1998 and 1999. Minor revisions were made to the 1999 monthly estimates and the 1998 number of feedlots, inventory, and annual marketings by size group.

**Cattle on Feed: Number on Feed, Placements, Marketings, and
Other Disappearance, 1,000+ Capacity Feedlots,
United States, February 1, 1998-2000**

Item	Number			2000 as % of	
	1998	1999	2000	1998	1999
	<i>1,000 Head</i>	<i>1,000 Head</i>	<i>1,000 Head</i>	<i>Percent</i>	<i>Percent</i>
On Feed Jan 1 ¹	11,155	10,667	*11,475	103	108
Placed on Feed During Jan	1,726	*1,933	2,226	129	115
Fed Cattle Marketed During Jan	1,988	2,021	2,048	103	101
Other Disappearance During Jan ²	99	70	69	70	99
On Feed Feb 1 ¹	10,794	*10,509	11,584	107	110

* Revised.

¹ Cattle and calves on feed are animals for slaughter market being fed a ration of grain or other concentrates and are expected to produce a carcass that will grade select or better.

² Includes death losses, movement from feedlots to pastures and shipments to other feedlots for further feeding.

**Cattle on Feed: Number on Feed, Placements, Marketings, and
Other Disappearance, 1,000+ Capacity Feedlots,
United States, January 1, 1998-2000**

Item	Number			2000 as % of	
	1998	1999	2000	1998	1999
	<i>1,000 Head</i>	<i>1,000 Head</i>	<i>1,000 Head</i>	<i>Percent</i>	<i>Percent</i>
On Feed Dec 1 ¹	11,436	11,063	*11,761	103	106
Placed on Feed During Dec	1,552	1,512	1,646	106	109
Fed Cattle Marketed During Dec	1,748	1,823	1,842	105	101
Other Disappearance During Dec ²	85	85	90	106	106
On Feed Jan 1 ¹	11,155	10,667	*11,475	103	108

* Revised.

¹ Cattle and calves on feed are animals for slaughter market being fed a ration of grain or other concentrates and are expected to produce a carcass that will grade select or better.

² Includes death losses, movement from feedlots to pastures and shipments to other feedlots for further feeding.

**Cattle on Feed: Number on Feed by Class, 1,000+ Capacity Feedlots,
United States, January 1, 1998-2000**

Item	Number			2000 as % of	
	1998	1999	2000	1998	1999
	<i>1,000 Head</i>	<i>1,000 Head</i>	<i>1,000 Head</i>	<i>Percent</i>	<i>Percent</i>
Class on Feed Jan 1					
Steers and Steer Calves	6,796	6,461	*6,840	101	106
Heifers and Heifer Calves	4,300	4,153	*4,574	106	110
Cows and Bulls	59	53	61	103	115

* Revised.

**Cattle on Feed: Number on Feed, Placements, Marketings, and
Other Disappearance, 1,000+ Capacity Feedlots,
7 States, February 1, 1998-2000 ¹**

Item	Number			2000 as % of	
	1998	1999	2000	1998	1999
	<i>1,000 Head</i>	<i>1,000 Head</i>	<i>1,000 Head</i>	<i>Percent</i>	<i>Percent</i>
On Feed Jan 1 ²	9,455	9,021	*9,752	103	108
Placed on Feed During Jan	1,492	*1,681	1,931	129	115
Fed Cattle Marketed During Jan	1,689	1,738	1,747	103	101
Other Disappearance During Jan ³	78	47	51	65	109
On Feed Feb 1 ²	9,180	*8,917	9,885	108	111

* Revised.

¹ The 7 States include AZ, CA, CO, IA, KS, NE, and TX.

² Cattle and calves on feed are animals for slaughter market being fed a ration of grain or other concentrates and are expected to produce a carcass that will grade select or better.

³ Includes death losses, movement from feedlots to pastures and shipments to other feedlots for further feeding.

**Cattle on Feed: Number on Feed, Placements, Marketings, and
Other Disappearance, 1,000+ Capacity Feedlots,
7 States, January 1, 1998-2000 ¹**

Item	Number			2000 as % of	
	1998	1999	2000	1998	1999
	<i>1,000 Head</i>	<i>1,000 Head</i>	<i>1,000 Head</i>	<i>Percent</i>	<i>Percent</i>
On Feed Dec 1 ²	9,718	9,404	*10,020	103	107
Placed on Feed During Dec	1,304	1,250	1,408	108	113
Fed Cattle Marketed During Dec	1,499	1,564	1,601	107	102
Other Disappearance During Dec ³	68	69	75	110	109
On Feed Jan 1 ²	9,455	9,021	*9,752	103	108

* Revised.

¹ The 7 States include AZ, CA, CO, IA, KS, NE, and TX.

² Cattle and calves on feed are animals for slaughter market being fed a ration of grain or other concentrates and are expected to produce a carcass that will grade select or better.

³ Includes death losses, movement from feedlots to pastures and shipments to other feedlots for further feeding.

**Cattle on Feed: Number on Feed by Class, 1,000+ Capacity Feedlots,
7 States, January 1, 1998-2000 ¹**

Item	Number			2000 as % of	
	1998	1999	2000	1998	1999
	<i>1,000 Head</i>	<i>1,000 Head</i>	<i>1,000 Head</i>	<i>Percent</i>	<i>Percent</i>
Class on Feed Jan 1					
Steers and Steer Calves	5,803	5,432	*5,768	99	106
Heifers and Heifer Calves	3,615	3,552	*3,942	109	111
Cows and Bulls	37	37	42	114	114

* Revised.

¹ The 7 States include AZ, CA, CO, IA, KS, NE, and TX.

**Cattle on Feed: Number on Feed, 1,000+ Capacity Feedlots,
by Month, State, and United States 1999-2000 ¹**

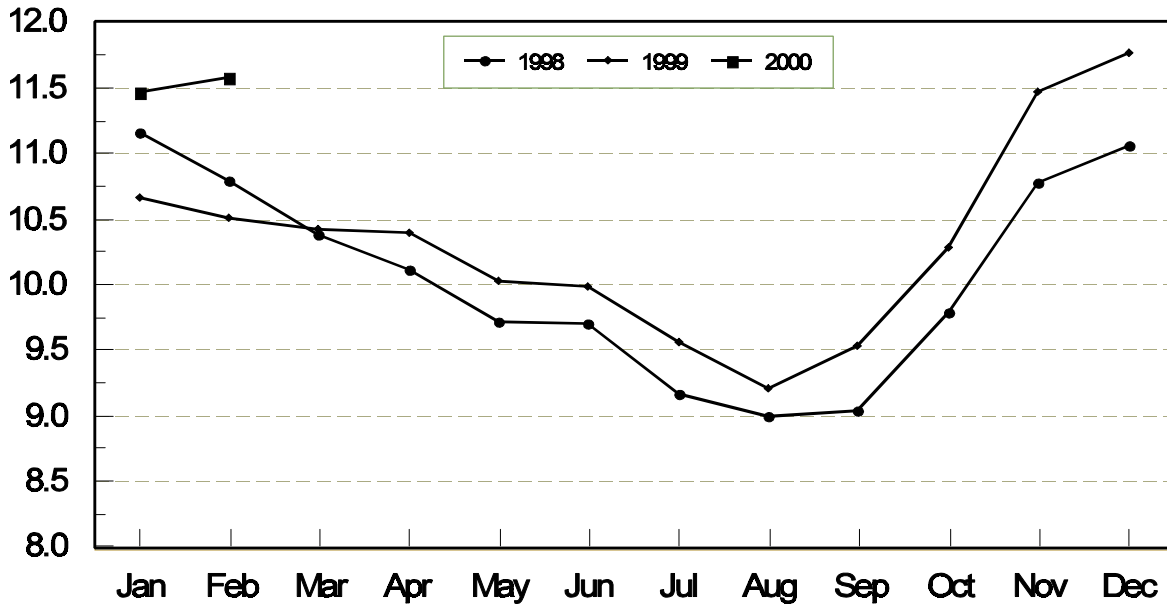
State	Feb 1, 1999	Jan 1, 2000	Feb 1, 2000		
			Number	as % of 1999	as % of Jan
	<i>1,000 Head</i>	<i>1,000 Head</i>	<i>1,000 Head</i>	<i>Percent</i>	<i>Percent</i>
AZ	202	272	275	136	101
CA	385	415	415	108	100
CO	1,140	1,180	1,200	105	102
ID	270	310	300	111	97
IA	350	375	385	110	103
KS	*2,030	*2,310	2,340	115	101
NE	2,150	2,300	2,370	110	103
NM	113	116	113	100	97
OK	385	430	430	112	100
SD	184	194	200	109	103
TX	2,660	2,900	2,900	109	100
WA	195	228	211	108	93
Oth Sts	445	445	445	100	100
US	*10,509	*11,475	11,584	110	101

* Revised.

¹ Cattle and calves on feed are animals for slaughter market being fed a ration of grain or other concentrates and are expected to produce a carcass that will grade select or better.

**United States Cattle on Feed
1,000+ Capacity Feedlots**

Million Head



**Cattle on Feed: Number Placed on Feed, 1,000+ Capacity Feedlots,
by Month, State, and United States 1999-2000**

State	During Jan 1999	During Dec 1999	During Jan 2000		
			Number	as % of 1999	as % of Dec
	<i>1,000 Head</i>	<i>1,000 Head</i>	<i>1,000 Head</i>	<i>Percent</i>	<i>Percent</i>
AZ	25	36	29	116	81
CA	45	67	57	127	85
CO	260	160	290	112	181
ID	50	50	66	132	132
IA	56	45	60	107	133
KS	*420	400	520	124	130
NE	450	340	500	111	147
NM	12	15	10	83	67
OK	60	53	72	120	136
SD	31	31	38	123	123
TX	425	360	475	112	132
WA	37	38	45	122	118
Oth Sts	62	51	64	103	125
US	*1,933	1,646	2,226	115	135

* Revised.

**Cattle on Feed: Number Placed on Feed by Weight Group, 1,000+ Capacity
Feedlots, by Month, State, and United States, 1998-2000**

State	During January									
	Less 600		600-699		700-799		800 Plus		Total	
	1999	2000	1999	2000	1999	2000	1999	2000	1999	2000
	<i>1,000 Head</i>	<i>1,000 Head</i>	<i>1,000 Head</i>	<i>1,000 Head</i>	<i>1,000 Head</i>	<i>1,000 Head</i>	<i>1,000 Head</i>	<i>1,000 Head</i>	<i>1,000 Head</i>	<i>1,000 Head</i>
CO	34	45	93	65	83	117	50	63	260	290
KS	60	100	*165	190	*145	170	50	60	*420	520
NE	52	64	143	170	166	157	89	109	450	500
TX	123	150	149	175	115	110	38	40	425	475
Oth Sts	110	135	78	96	95	100	95	110	378	441
US	379	494	*628	696	*604	654	322	382	*1,933	2,226
	During December									
	Less 600		600-699		700-799		800 Plus		Total	
	1998	1999	1998	1999	1998	1999	1998	1999	1998	1999
	<i>1,000 Head</i>	<i>1,000 Head</i>	<i>1,000 Head</i>	<i>1,000 Head</i>	<i>1,000 Head</i>	<i>1,000 Head</i>	<i>1,000 Head</i>	<i>1,000 Head</i>	<i>1,000 Head</i>	<i>1,000 Head</i>
CO	45	34	59	47	45	42	21	37	170	160
KS	70	95	110	135	100	120	40	50	320	400
NE	57	51	120	106	81	109	72	74	330	340
TX	101	125	122	130	58	80	24	25	305	360
Oth Sts	125	160	85	80	87	71	90	75	387	386
US	398	465	496	498	371	422	247	261	1,512	1,646

* Revised.

**Cattle on Feed: Number Marketed, 1,000+ Capacity Feedlots,
by Month, State, and United States 1999-2000**

State	During Jan 1999	During Dec 1999	During Jan 2000		
			Number	as % of 1999	as % of Dec
	<i>1,000 Head</i>	<i>1,000 Head</i>	<i>1,000 Head</i>	<i>Percent</i>	<i>Percent</i>
AZ	28	25	24	86	96
CA	55	47	50	91	106
CO	250	190	260	104	137
ID	55	59	70	127	119
IA	40	39	48	120	123
KS	490	480	480	98	100
NE	400	400	420	105	105
NM	16	5	13	81	260
OK	80	60	67	84	112
SD	30	22	30	100	136
TX	475	420	465	98	111
WA	37	48	59	159	123
Oth Sts	65	47	62	95	132
US	2,021	1,842	2,048	101	111

**Cattle on Feed: Other Disappearance, 1,000+ Capacity Feedlots,
by Month, State, and United States 1999-2000¹**

State	During Jan 1999	During Dec 1999	During Jan 2000		
			Number	as % of 1999	as % of Dec
	<i>1,000 Head</i>	<i>1,000 Head</i>	<i>1,000 Head</i>	<i>Percent</i>	<i>Percent</i>
AZ	1	4	2	200	50
CA	5	10	7	140	70
CO	10	10	10	100	100
ID	10	1	6	60	600
IA	1	1	2	200	200
KS	10	10	10	100	100
NE	10	20	10	100	50
NM	1	3	0	0	0
OK	5	3	5	100	167
SD	1	1	2	200	200
TX	10	20	10	100	50
WA	4	3	3	75	100
Oth Sts	2	4	2	100	50
US	70	90	69	99	77

¹ Includes death losses, movement from feedlots to pastures, and shipments to other feedlots for further feeding.

**Cattle on Feed: Number on Feed, 1,000+ Capacity Feedlots,
by Month, State, 7-States, and United States, 1999 ¹**

State	Jan 1	Feb 1	Mar 1	Apr 1	May 1	Jun 1
	<i>1,000 Head</i>	<i>1,000 Head</i>	<i>1,000 Head</i>	<i>1,000 Head</i>	<i>1,000 Head</i>	<i>1,000 Head</i>
AZ	206	202	203	214	208	207
CA	400	385	385	385	375	370
CO	1,140	1,140	1,130	1,120	1,120	1,090
ID	285	270	275	280	280	285
IA	335	350	360	360	350	330
KS	2,110	*2,030	*2,030	*2,080	*1,980	*2,020
NE	2,110	2,150	2,160	2,180	2,120	2,000
NM	118	113	107	94	85	87
OK	410	385	365	345	325	330
SD	184	184	184	182	180	164
TX	2,720	2,660	2,610	2,560	2,430	2,530
WA	199	195	181	179	179	199
7 States	9,021	*8,917	*8,878	*8,899	*8,583	*8,547
Oth Sts	450	445	430	415	400	375
US	10,667	*10,509	*10,420	*10,394	*10,032	*9,987
	Jul 1	Aug 1	Sep 1	Oct 1	Nov 1	Dec 1
	<i>1,000 Head</i>	<i>1,000 Head</i>	<i>1,000 Head</i>	<i>1,000 Head</i>	<i>1,000 Head</i>	<i>1,000 Head</i>
AZ	198	194	200	208	239	265
CA	375	375	375	380	395	405
CO	1,020	960	960	1,070	1,220	1,220
ID	275	265	285	310	325	320
IA	310	290	300	315	345	370
KS	*1,960	*1,990	*2,090	*2,250	*2,410	*2,400
NE	1,790	1,600	1,700	1,900	2,250	2,380
NM	82	83	81	91	107	109
OK	325	325	350	380	435	440
SD	140	125	110	111	157	186
TX	2,530	2,480	2,560	2,670	2,930	2,980
WA	215	202	215	246	257	241
7 States	*8,183	*7,889	*8,185	*8,793	*9,789	*10,020
Oth Sts	345	320	310	345	405	445
US	*9,565	*9,209	*9,536	*10,276	*11,475	*11,761

* Revised.

¹ Cattle and calves on feed are animals for slaughter market being fed a ration of grain or other concentrates and are expected to produce a carcass that will grade select or better.

**Cattle on Feed: Number Placed on Feed, 1,000+ Capacity Feedlots,
by Month, State, 7 States, and United States, 1998-1999**

State	During					
	Dec	Jan	Feb	Mar	Apr	May
	<i>1,000 Head</i>	<i>1,000 Head</i>	<i>1,000 Head</i>	<i>1,000 Head</i>	<i>1,000 Head</i>	<i>1,000 Head</i>
AZ	22	25	27	39	26	30
CA	50	45	45	55	45	55
CO	170	260	235	240	200	180
ID	55	50	57	58	57	68
IA	53	56	56	57	42	38
KS	320	*420	*390	*440	*350	*480
NE	330	450	410	380	340	330
NM	19	12	8	13	15	24
OK	58	60	54	69	62	93
SD	32	31	33	45	31	23
TX	305	425	400	530	440	620
WA	33	37	43	46	33	52
7 States	1,250	*1,681	*1,563	*1,741	*1,443	*1,733
Oth Sts	65	62	50	59	47	56
US	1,512	*1,933	*1,808	*2,031	*1,688	*2,049
	During					
	Jun	Jul	Aug	Sep	Oct	Nov
	<i>1,000 Head</i>	<i>1,000 Head</i>	<i>1,000 Head</i>	<i>1,000 Head</i>	<i>1,000 Head</i>	<i>1,000 Head</i>
AZ	20	23	29	29	48	48
CA	60	55	60	56	67	66
CO	160	175	255	330	360	190
ID	61	48	79	80	76	66
IA	45	32	56	60	84	74
KS	*410	500	*575	600	*570	430
NE	300	300	500	580	690	490
NM	16	16	14	23	31	17
OK	73	73	98	107	133	75
SD	15	14	21	32	70	51
TX	520	480	610	690	810	525
WA	65	45	66	75	56	44
7 States	*1,515	1,565	*2,085	2,345	*2,629	1,823
Oth Sts	49	51	65	97	119	94
US	*1,794	1,812	*2,428	2,759	*3,114	2,170

* Revised.

**Cattle on Feed: Number Placed on Feed by Weight Group, 1,000+ Capacity
Feedlots, by Month, State, and United States, 1998-1999**

State	During December				
	Less 600	600-699	700-799	800 Plus	Total
	<i>1,000 Head</i>	<i>1,000 Head</i>	<i>1,000 Head</i>	<i>1,000 Head</i>	<i>1,000 Head</i>
CO	45	59	45	21	170
KS	70	110	100	40	320
NE	57	120	81	72	330
TX	101	122	58	24	305
Oth Sts	125	85	87	90	387
US	398	496	371	247	1,512
	During January				
	Less 600	600-699	700-799	800 Plus	Total
	<i>1,000 Head</i>	<i>1,000 Head</i>	<i>1,000 Head</i>	<i>1,000 Head</i>	<i>1,000 Head</i>
CO	34	93	83	50	260
KS	60	*165	*145	50	*420
NE	52	143	166	89	450
TX	123	149	115	38	425
Oth Sts	110	78	95	95	378
US	379	*628	*604	322	*1,933
	During February				
	Less 600	600-699	700-799	800 Plus	Total
	<i>1,000 Head</i>	<i>1,000 Head</i>	<i>1,000 Head</i>	<i>1,000 Head</i>	<i>1,000 Head</i>
CO	37	52	85	61	235
KS	60	*145	*125	60	*390
NE	49	103	138	120	410
TX	92	124	148	36	400
Oth Sts	95	73	110	95	373
US	333	*497	*606	372	*1,808

See footnotes at end of table.

--continued

**Cattle on Feed: Number Placed on Feed by Weight Group, 1,000+ Capacity
Feedlots, by Month, State, and United States, 1998-1999 (continued)**

State	During March				
	Less 600	600-699	700-799	800 Plus	Total
	<i>1,000 Head</i>	<i>1,000 Head</i>	<i>1,000 Head</i>	<i>1,000 Head</i>	<i>1,000 Head</i>
CO	50	55	82	53	240
KS	45	105	*190	*100	*440
NE	38	67	148	127	380
TX	109	165	204	52	530
Oth Sts	115	76	120	130	441
US	357	468	*744	*462	*2,031
	During April				
	Less 600	600-699	700-799	800 Plus	Total
	<i>1,000 Head</i>	<i>1,000 Head</i>	<i>1,000 Head</i>	<i>1,000 Head</i>	<i>1,000 Head</i>
CO	27	45	87	41	200
KS	*45	70	*140	95	*350
NE	25	91	105	119	340
TX	106	123	145	66	440
Oth Sts	90	58	95	115	358
US	*293	387	*572	436	*1,688
	During May				
	Less 600	600-699	700-799	800 Plus	Total
	<i>1,000 Head</i>	<i>1,000 Head</i>	<i>1,000 Head</i>	<i>1,000 Head</i>	<i>1,000 Head</i>
CO	17	31	76	56	180
KS	40	*90	*190	160	*480
NE	21	66	113	130	330
TX	112	174	223	111	620
Oth Sts	100	69	120	150	439
US	290	*430	*722	607	*2,049

See footnotes at end of table.

--continued

**Cattle on Feed: Number Placed on Feed by Weight Group, 1,000+ Capacity
Feedlots, by Month, State, and United States, 1998-1999 (continued)**

State	During June				
	Less 600	600-699	700-799	800 Plus	Total
	<i>1,000 Head</i>	<i>1,000 Head</i>	<i>1,000 Head</i>	<i>1,000 Head</i>	<i>1,000 Head</i>
CO	11	31	74	44	160
KS	70	*75	*170	95	*410
NE	20	56	103	121	300
TX	109	156	172	83	520
Oth Sts	85	59	115	145	404
US	295	*377	*634	488	*1,794
	During July				
	Less 600	600-699	700-799	800 Plus	Total
	<i>1,000 Head</i>	<i>1,000 Head</i>	<i>1,000 Head</i>	<i>1,000 Head</i>	<i>1,000 Head</i>
CO	28	27	49	71	175
KS	60	115	195	130	500
NE	40	62	88	110	300
TX	120	149	141	70	480
Oth Sts	85	47	105	120	357
US	333	400	578	501	1,812
	During August				
	Less 600	600-699	700-799	800 Plus	Total
	<i>1,000 Head</i>	<i>1,000 Head</i>	<i>1,000 Head</i>	<i>1,000 Head</i>	<i>1,000 Head</i>
CO	47	46	72	90	255
KS	60	*125	220	170	*575
NE	42	76	166	216	500
TX	225	171	146	68	610
Oth Sts	120	68	130	170	488
US	494	*486	734	714	*2,428

See footnotes at end of table.

--continued

**Cattle on Feed: Number Placed on Feed by Weight Group, 1,000+ Capacity
Feedlots, by Month, State, and United States, 1998-99 (continued)**

State	During September				
	Less 600	600-699	700-799	800 Plus	Total
	<i>1,000 Head</i>	<i>1,000 Head</i>	<i>1,000 Head</i>	<i>1,000 Head</i>	<i>1,000 Head</i>
CO	40	55	106	129	330
KS	125	120	195	160	600
NE	84	88	167	241	580
TX	240	210	165	75	690
Oth Sts	140	84	125	210	559
US	629	557	758	815	2,759
	During October				
	Less 600	600-699	700-799	800 Plus	Total
	<i>1,000 Head</i>	<i>1,000 Head</i>	<i>1,000 Head</i>	<i>1,000 Head</i>	<i>1,000 Head</i>
CO	92	64	98	106	360
KS	*160	*150	*160	*100	*570
NE	215	183	125	167	690
TX	290	255	195	70	810
Oth Sts	270	150	114	150	684
US	*1,027	*802	*692	*593	*3,114
	During November				
	Less 600	600-699	700-799	800 Plus	Total
	<i>1,000 Head</i>	<i>1,000 Head</i>	<i>1,000 Head</i>	<i>1,000 Head</i>	<i>1,000 Head</i>
CO	51	46	58	35	190
KS	135	135	100	60	430
NE	155	166	83	86	490
TX	200	195	95	35	525
Oth Sts	225	115	80	115	535
US	766	657	416	331	2,170

* Revised.

**Cattle on Feed: Number Marketed, 1,000+ Capacity Feedlots,
by Month, State, 7 States, and United States, 1998-1999**

State	During					
	Dec	Jan	Feb	Mar	Apr	May
	<i>1,000 Head</i>	<i>1,000 Head</i>	<i>1,000 Head</i>	<i>1,000 Head</i>	<i>1,000 Head</i>	<i>1,000 Head</i>
AZ	28	28	25	27	31	26
CA	55	55	40	50	50	50
CO	210	250	240	240	190	200
ID	50	55	45	49	43	52
IA	36	40	45	56	50	55
KS	440	490	*380	*380	*420	*430
NE	370	400	390	350	380	430
NM	9	16	13	24	23	20
OK	76	80	71	86	80	85
SD	26	30	32	46	29	35
TX	425	475	440	565	560	505
WA	40	37	51	42	30	29
7 States	1,564	1,738	*1,560	*1,668	*1,681	*1,696
Oth Sts	58	65	60	71	60	78
US	1,823	2,021	*1,832	*1,986	*1,946	*1,995
	During					
	Jun	Jul	Aug	Sep	Oct	Nov
	<i>1,000 Head</i>	<i>1,000 Head</i>	<i>1,000 Head</i>	<i>1,000 Head</i>	<i>1,000 Head</i>	<i>1,000 Head</i>
AZ	26	26	22	20	15	19
CA	50	50	55	48	47	48
CO	225	230	250	210	205	180
ID	62	56	58	54	58	67
IA	64	50	45	44	53	48
KS	*460	460	*465	430	*390	425
NE	500	480	390	370	330	350
NM	19	14	14	12	14	12
OK	76	71	70	75	75	63
SD	36	27	35	30	23	21
TX	510	520	520	560	530	460
WA	48	57	49	43	37	56
7 States	*1,835	1,816	*1,747	1,682	*1,570	1,530
Oth Sts	77	75	73	61	58	52
US	*2,153	2,116	*2,046	1,957	*1,835	1,801

* Revised.

**Cattle on Feed: Other Disappearance, 1,000+ Capacity Feedlots,
by Month, State, 7 States, and United States, 1998-1999 ¹**

State	During					
	Dec	Jan	Feb	Mar	Apr	May
	<i>1,000 Head</i>	<i>1,000 Head</i>	<i>1,000 Head</i>	<i>1,000 Head</i>	<i>1,000 Head</i>	<i>1,000 Head</i>
AZ	2	1	1	1	1	5
CA	5	5	5	5	5	10
CO	10	10	5	10	10	10
ID	5	10	7	4	14	11
IA	2	1	1	1	2	3
KS	20	10	10	10	30	10
NE	10	10	10	10	20	20
NM	2	1	1	2	1	2
OK	2	5	3	3	2	3
SD	1	1	1	1	4	4
TX	20	10	10	15	10	15
WA	4	4	6	6	3	3
7 States	69	47	42	52	78	73
Oth Sts	2	2	5	3	2	3
US	85	70	65	71	104	99
	During					
	Jun	Jul	Aug	Sep	Oct	Nov
	<i>1,000 Head</i>	<i>1,000 Head</i>	<i>1,000 Head</i>	<i>1,000 Head</i>	<i>1,000 Head</i>	<i>1,000 Head</i>
AZ	3	1	1	1	2	3
CA	5	5	5	3	5	8
CO	5	5	5	10	5	10
ID	9	2	1	1	3	4
IA	1	2	1	1	1	1
KS	10	10	10	10	20	15
NE	10	10	10	10	10	10
NM	2	1	2	1	1	3
OK	2	2	3	2	3	7
SD	3	2	1	1	1	1
TX	10	10	10	20	20	15
WA	1	1	4	1	8	4
7 States	44	43	42	55	63	62
Oth Sts	2	1	2	1	1	2
US	63	52	55	62	80	83

¹ Includes death losses, movement from feedlots to pastures, and shipments to other feedlots for further feeding.

**Cattle on Feed: Number on Feed by Class, 1,000+ Capacity Feedlots,
by Quarter, State, 7-States, and United States, 1999**

State	Steers & Steer Calves				Heifers & Heifer Calves			
	Jan 1	Apr 1	Jul 1	Oct 1	Jan 1	Apr 1	Jul 1	Oct 1
	<i>1,000 Head</i>	<i>1,000 Head</i>	<i>1,000 Head</i>	<i>1,000 Head</i>	<i>1,000 Head</i>	<i>1,000 Head</i>	<i>1,000 Head</i>	<i>1,000 Head</i>
AZ	187	206	182	199	19	8	16	9
CA	365	350	345	340	35	35	30	38
CO	675	695	540	625	460	420	475	440
ID	199	186	194	207	82	89	79	102
IA	205	220	187	192	129	140	122	123
KS	1,260	*1,210	*1,200	*1,410	840	860	750	830
NE	1,220	1,280	1,035	1,110	870	885	740	780
NM	60	44	33	39	58	50	49	52
OK	255	215	200	220	155	130	124	159
SD	109	107	85	62	69	69	52	45
TX	1,520	1,380	1,360	1,410	1,199	1,179	1,169	1,259
WA	116	115	132	149	82	61	82	97
7 States	5,432	*5,341	*4,849	*5,286	3,552	3,527	3,302	3,479
Oth Sts	290	285	245	255	155	127	95	87
US	6,461	*6,293	*5,738	*6,218	4,153	4,053	3,783	4,021
Cow and Bulls								
	Jan 1	Apr 1	Jul 1	Oct 1				
	<i>1,000 Head</i>	<i>1,000 Head</i>	<i>1,000 Head</i>	<i>1,000 Head</i>				
AZ	0	0	0	0				
CA	0	0	0	0				
CO	5	5	5	5				
ID	4	5	5	2				
IA	1	0	0	1				
KS	10	10	10	10				
NE	20	15	15	15				
NM	0	0	0	0				
OK	0	0	0	1				
SD	6	6	6	3				
TX	1	1	1	1				
WA	1	3	3	1				
7 States	37	31	31	32				
Oth Sts	5	3	3	5				
US	53	48	48	44				

* Revised.

**Cattle on Feed: Number of Feedlots, Inventory, and Marketings,
by Size of Feedlot, State, and United States 1998-1999 ¹**

Year and State	Feedlot Capacity in Number of Head					
	1,000 - 1,999			2,000 - 3,999		
	Lots	Inventory	Cattle Marketed	Lots	Inventory	Cattle Marketed
	<i>Number</i>	<i>1,000 Head</i>	<i>1,000 Head</i>	<i>Number</i>	<i>1,000 Head</i>	<i>1,000 Head</i>
1998						
AZ						
CA	² 4	² 4	² 5			
CO	47	25	55	44	55	90
ID	18	15	21	13	11	24
IA	205	138	210	78	110	160
KS	38	30	45	35	50	100
NE	270	150	300	178	265	510
NM						
OK	² 5	² 7	² 15			
SD	54	34	51	43	54	82
TX	7	5	10	6	10	20
WA	² 10	² 22	² 30			
Oth Sts	190	130	190	85	100	190
US	834	531	886	491	670	1,203
1999						
AZ						
CA	² 4	² 5	² 6			
CO	43	20	40	42	55	90
ID	13	12	19	13	12	21
IA	200	154	235	96	130	192
KS	45	35	50	39	50	110
NE	275	160	310	184	290	540
NM						
OK	² 4	² 7	² 11			
SD	54	34	65	43	55	95
TX	6	4	10	7	10	20
WA	² 10	² 20	² 36			
Oth Sts	190	130	180	75	100	180
US	831	551	912	507	716	1,277

See footnotes at end of table.

--continued

**Cattle on Feed: Number of Feedlots, Inventory, and Marketings, by
Size of Feedlot, State, and United States 1998-1999 ¹ (continued)**

Year and State	Feedlot Capacity in Number of Head					
	4,000 - 7,999			8,000 - 15,999		
	Lots	Inventory	Cattle Marketed	Lots	Inventory	Cattle Marketed
	<i>Number</i>	<i>1,000 Head</i>	<i>1,000 Head</i>	<i>Number</i>	<i>1,000 Head</i>	<i>1,000 Head</i>
1998						
AZ	2	4	8			
CA	4	14	13	4	16	26
CO	36	120	215	18	190	310
ID	9	21	33	² 15	² 238	² 501
IA	² 27	² 87	² 158			
KS	32	110	225	32	285	640
NE	118	415	840	65	555	1,140
NM	² 6	² 26	² 45			
OK	7	20	34	5	47	98
SD	17	43	80	² 7	² 53	² 118
TX	19	60	140	27	165	420
WA				² 5	² 52	² 127
Oth Sts	38	120	210	8	30	70
US	313	1,011	1,934	184	1,424	2,936
1999						
AZ	2	6	7			
CA	3	10	11	5	17	22
CO	34	115	210	19	200	330
ID	12	32	48	² 17	² 254	² 570
IA	² 29	² 91	² 162			
KS	39	155	260	36	335	750
NE	125	450	880	66	600	1,250
NM	² 6	² 22	² 47			
OK	9	26	43	5	45	82
SD	19	46	95	² 7	² 59	² 111
TX	17	66	140	27	190	385
WA				² 6	² 73	² 141
Oth Sts	41	115	200	10	40	70
US	336	1,122	2,069	193	1,556	3,093

See footnotes at end of table.

--continued

**Cattle on Feed: Number of Feedlots, Inventory, and Marketings, by
Size of Feedlot, State, and United States 1998-1999 ¹ (continued)**

Year and State	Feedlot Capacity in Number of Head					
	16,000 - 31,999			32,000 and Over		
	Lots	Inventory	Cattle Marketed	Lots	Inventory	Cattle Marketed
	<i>Number</i>	<i>1,000 Head</i>	<i>1,000 Head</i>	<i>Number</i>	<i>1,000 Head</i>	<i>1,000 Head</i>
1998						
AZ	3	56	89	3	146	195
CA	7	105	143	5	261	383
CO	12	240	430	11	510	1,420
ID						
IA						
KS	44	885	2,060	19	750	1,960
NE	26	420	945	8	305	705
NM	3	47	90	1	45	67
OK	3	66	151	6	270	630
SD						
TX	36	590	1,270	47	1,890	4,200
WA				3	125	310
Oth Sts	² 4	² 70	² 163			
US	143	2,546	5,507	107	4,485	10,304
1999						
AZ	2	33	52	3	233	231
CA	7	116	134	5	267	417
CO	13	225	470	11	565	1,470
ID						
IA						
KS	40	815	1,790	21	920	2,250
NE	27	480	1,020	8	320	770
NM	3	53	67	1	41	72
OK	3	75	151	6	277	605
SD						
TX	36	560	1,170	49	2,070	4,340
WA				3	135	350
Oth Sts	² 4	² 60	² 147			
US	141	2,512	5,197	111	5,018	10,982

See footnotes at end of table.

--continued

**Cattle on Feed: Number of Feedlots, Inventory, and Marketings, by
Size of Feedlot, State, and United States 1998-1999 ¹ (continued)**

Year and State	Feedlot Capacity in Number of Head		
	Total - 1,000+ Capacity Feedlots		
	Lots	Inventory	Cattle Marketed
	<i>Number</i>	<i>1,000 Head</i>	<i>1,000 Head</i>
1998			
AZ	8	206	292
CA	24	400	570
CO	168	1,140	2,520
ID	55	285	579
IA	310	335	528
KS	200	2,110	5,030
NE	665	2,110	4,440
NM	10	118	202
OK	26	410	928
SD	121	184	331
TX	142	2,720	6,060
WA	18	199	467
Oth Sts	325	450	823
US	2,072	10,667	22,770
1999			
AZ	7	272	290
CA	24	415	590
CO	162	1,180	2,610
ID	55	310	658
IA	325	375	589
KS	220	2,310	5,210
NE	685	2,300	4,770
NM	10	116	186
OK	27	430	892
SD	123	194	366
TX	142	2,900	6,065
WA	19	228	527
Oth Sts	320	445	777
US	2,119	11,475	23,530

¹ Number of feedlots is the number of lots operating at anytime during the year. Inventory is the number on hand January 1 of the following year. The United States totals show the actual number of feedlots, inventory, and number of animals marketed in each size group. The sum of the numbers shown by State under a specified size group may or may not add to the United States total for that size group since for some States size groups are combined to avoid disclosing individual operations.

² Lots, inventory, and marketings from other size groups are included to avoid disclosing individual operations.

**Cattle on Feed: Number of Feedlots, Inventory, and Marketings,
by Size of Feedlot, Region, and United States 1998-1999 ¹**

Year and State	Feedlot Capacity in Number of Head					
	16,000 - 23,999			24,000 - 31,999		
	Lots	Inventory	Cattle Marketed	Lots	Inventory	Cattle Marketed
	<i>Number</i>	<i>1,000 Head</i>	<i>1,000 Head</i>	<i>Number</i>	<i>1,000 Head</i>	<i>1,000 Head</i>
1998						
AZ,CA,TX	26	312	697	20	439	805
CO,KS,NE	48	720	1,630	34	825	1,805
Oth Sts	7	97	191	8	153	379
US	81	1,129	2,518	62	1,417	2,989
1999						
AZ,CA,TX	24	275	564	21	434	792
CO,KS,NE	48	760	1,635	32	760	1,645
Oth Sts	8	115	211	8	168	350
US	80	1,150	2,410	61	1,362	2,787

See footnotes at end of table.

--continued

**Cattle on Feed: Number of Feedlots, Inventory, and Marketings, by
Size of Feedlot, Region, and United States 1998-1999 ¹ (continued)**

Year and State	Feedlot Capacity in Number of Head					
	32,000 - 49,999			50,000 and Over		
	Lots	Inventory	Cattle Marketed	Lots	Inventory	Cattle Marketed
	<i>Number</i>	<i>1,000 Head</i>	<i>1,000 Head</i>	<i>Number</i>	<i>1,000 Head</i>	<i>1,000 Head</i>
1998						
AZ,CA,TX	33	1,086	2,253	22	1,211	2,525
CO,KS,NE	22	630	1,600	16	935	2,485
Oth Sts	5	160	390	9	463	1,051
US	60	1,876	4,243	47	2,609	6,061
1999						
AZ,CA,TX	34	1,185	2,254	23	1,385	2,734
CO,KS,NE	25	780	1,820	15	1,025	2,670
Oth Sts	5	144	321	9	499	1,183
US	64	2,109	4,395	47	2,909	6,587

¹ Number of feedlots is the number of lots operating at anytime during the year. Inventory is the number on hand January 1 of the following year.

**Cattle on Feed: Number of Feedlots, Inventory, and Marketings,
Feedlots With Less Than 1,000 Head Capacity,
by State, and United States 1998-1999 ¹**

Year and State	Lots	Inventory	Cattle Marketed
	<i>Number</i>	<i>1,000 Head</i>	<i>1,000 Head</i>
1998			
IL	6,300	185	290
IN	6,400	155	220
IA	12,000	685	970
MI	4,000	153	210
MN	7,400	181	280
MO	3,900	87	120
NE	4,335	130	260
ND	1,800	59	80
OH	7,300	173	260
PA	5,100	70	100
SD	3,500	171	210
WI	7,400	142	230
Oth Sts	32,565	361	670
US	102,000	2,552	3,900
1999			
IL	6,300	172	300
IN	5,800	114	225
IA	12,000	725	1,100
MI	4,000	155	220
MN	7,400	194	310
MO	3,900	84	135
NE	4,335	140	290
ND	1,600	54	100
OH	7,400	182	290
PA	5,100	70	110
SD	3,200	156	270
WI	7,400	148	250
Oth Sts	31,565	314	650
US	100,000	2,508	4,250

¹ Number of feedlots is the number of lots operating at the end of the year. Inventory is the number on hand January 1 of the following year.

**Cattle on Feed: Number of Feedlots, Inventory, and Marketings,
by Size of Feedlot, United States 1998-1999 ¹**

Feedlot Capacity	1998			1999		
	Lots	Inventory	Cattle Marketed	Lots	Inventory	Cattle Marketed
	<i>No.</i>	<i>1,000 Head</i>	<i>1,000 Head</i>	<i>No.</i>	<i>1,000 Head</i>	<i>1,000 Head</i>
Less than 1,000 head	102,000	2,552	3,900	100,000	2,508	4,250
1,000 head or more	2,072	10,667	22,770	2,119	11,475	23,530
All Feedlots	104,072	13,219	26,670	102,119	13,983	27,780

¹ Number of feedlots with capacity less than 1,000 head is the number of lots operating at the end of the year. Number of feedlots with capacity 1,000 head or more is the number of lots operating at anytime during the year. Inventory is the number on hand January 1 of the following year.

Terms and Definitions of Cattle on Feed Estimates

Cattle on feed are animals being fed a ration of grain, silage, hay and/or protein supplement for slaughter market that are expected to produce a carcass that will grade select or better. It excludes cattle being "backgrounded only" for later sale as feeders or later placement in another feedlot.

Placements are cattle put into a feedlot, fed a ration which will produce a carcass that will grade select or better, and are intended for the slaughter market.

Marketings are cattle shipped out of feedlots to a slaughter market.

Other disappearance includes death losses, movement from feedlots to pastures and shipments to other feedlots for further feeding.

Reliability of Cattle on Feed Estimates

Survey Procedures: During January and July all known feedlots in the U.S. with capacity of 1,000 or more head are surveyed to provide data for cattle on feed estimates. During the other months, all known feedlots from 17 States are surveyed. The 17 States account for 98 percent of the cattle on feed.

Estimating Procedures: These cattle on feed estimates were prepared by the Agricultural Statistics Board after reviewing recommendations and analysis submitted by each State office. Regional and State survey data were reviewed for reasonableness with each other and with estimates from the previous month when setting the current estimates.

Revision Policy: Revisions to previous estimates are made to improve month to month relationships. Estimates for the previous month are subject to revision in all States each month when current estimates are made. In February, all monthly estimates for the previous year, and the number of feedlots and annual marketings from two years ago are reviewed and subject to revisions. The reviews are primarily based on slaughter data, state check-off or brand data, and any other data that may have been received after the original estimate was made. Estimates will also be reviewed after data from the Census of Agriculture are available. No revisions will be made after that date and estimates become final.

Reliability: Since all cattle on feed operators are not included in the sample, survey estimates are subject to sampling variability. Survey results are also subject to non-sampling errors such as omissions, duplications, and mistakes in reporting, recording, and processing the data. The effects of these errors cannot be measured directly. They are minimized through rigid quality controls in the data collection process and through a careful review of all reported data for consistency and reasonableness.

Index

Page

Cattle on Feed, 1,000+ Capacity Feedlots, 7 State Summary	3
Cattle on Feed, 1,000+ Capacity Feedlots, State and U.S., January 1, 2000 and February 1, 1999-2000	4
Cattle on Feed, 1,000+ Capacity Feedlots, State and U.S., January 1999 - December 1999	7
Cattle on Feed, 1,000+ Capacity Feedlots, United States Summary	2
Cattle on Feed, Number by Class, 1,000+ Capacity Feedlots, State and U.S., January 1999-October 1999	15
Marketings, 1,000+ Capacity Feedlots, State and U.S., December 1998 and January 1999-November 1999	13
Marketings, 1,000+ Capacity Feedlots, State and U.S., December 1999 and January 1999-2000	6
Number of Feedlots, Inventory, and Marketings by Size of Feedlot, Region and U.S., 1998-1999	20
Number of Feedlots, Inventory, and Marketings by Size of Feedlot, State and U.S., 1998-1999	16
Number of Feedlots, Inventory, and Marketings by Size of Feedlot, U.S., 1998-1999	22
Number of Feedlots with less than 1000 Head Capacity, Inventory, and Marketings, State and U.S., 1998-1999	22
Other Disappearance, 1,000+ Capacity Feedlots, State and U.S., December 1998 and January 1999-November 1999	14
Other Disappearance, 1,000+ Capacity Feedlots, State and U.S., December 1999 and January 1999-2000	6
Placements, 1000+ Capacity Feedlots, State and U.S., December 1998 and January 1999-November 1999	8
Placements, 1000+ Capacity Feedlots, State and U.S., December 1999 and January 1999-2000	5
Placements by Weight Group, 1,000+ Capacity Feedlots, State and U.S., December 1998 and January 1999-November 1999	9
Placements by Weight Group, 1,000+ Capacity Feedlots, State and U.S., December 1998-1999 and January 1999-2000	5
Reliability of Cattle on Feed Estimates	23
Terms and Definitions of Cattle on Feed Estimates	23

The next "Cattle on Feed" report will be released at 3 p.m. ET on March 17, 2000.

The United States Department of Agriculture (USDA) prohibits discrimination in all its programs on the basis of race, color, national origin, gender, religion, age, disability, political beliefs, sexual orientation, and marital or family status. (Not all prohibited bases apply to all programs.) Persons with disabilities who require alternative means for communication of program information (braille, large print, audiotape, etc.) should contact the USDA's TARGET Center at 202-720-2600 (voice and TDD).

To file a complaint of discrimination, write USDA, Director, Office of Civil Rights, Room 326-W, Whitten Building, 14th and Independence Avenue, SW, Washington, D.C., 20250-9410, or call 202-720-5964 (voice or TDD). USDA is an equal opportunity provider and employer.

ACCESS TO REPORTS!!

For your convenience, there are several ways to obtain NASS reports, data products, and services:

INTERNET ACCESS

All NASS reports are available free of charge on the worldwide Internet. For access, connect to the Internet and go to the NASS Home Page at: <http://www.usda.gov/nass/>. Select "Today's Reports" or Publications and then Reports by Calendar or Publications and then Search, by Title or Subject.

E-MAIL SUBSCRIPTION

There are two options for subscribing via e-mail. All NASS reports are available by subscription free of charge direct to your e-mail address. 1) Starting with the NASS Home Page at <http://www.usda.gov/nass/>, click on **Publications**, then click on the **Subscribe by E-mail** button which takes you to the page describing e-mail delivery of reports. Finally, click on **Go to the Subscription Page** and follow the instructions. 2) If you do NOT have Internet access, send an e-mail message to: usda-reports@usda.mannlib.cornell.edu. In the body of the message type the word: **list**.

AUTOFAX ACCESS

NASSFax service is available for some reports from your fax machine. Please call 202-720-2000, using the handset attached to your fax. Respond to the voice prompts. Document 0411 is a list of available reports.

PRINTED REPORTS OR DATA PRODUCTS

CALL OUR TOLL-FREE ORDER DESK: 800-999-6779 (U.S. and Canada)
Other areas, please call 703-834-0125 **FAX: 703-834-0110**
(Visa, MasterCard, check, or money order acceptable for payment.)

ASSISTANCE

For **assistance** with general agricultural statistics or further information about NASS or its products or services, contact the **Agricultural Statistics Hotline** at **800-727-9540**, 7:30 a.m. to 4:00 p.m. ET, or e-mail: nass@nass.usda.gov.

Bring the Future into Focus.

Agricultural Outlook Forum 2000



- Commodity Outlook, 2000 and Beyond
- Coming to Terms with Biotechnology
- Future of Farming and Rural America
- Farming under Contract
- Impact of Agribusiness Mergers
- New Markets: E-Commerce, Organic Foods, Biomass
- WTO Talks, Animal & Plant Health Trade Rules

Bring your future into focus at the U.S. Department of Agriculture's Outlook Forum 2000. Hear industry leaders, producers and top officials discuss issues confronting agriculture. Receive up-to-date commodity forecasts plus new 10-year projections. Network with hundreds of experts from agriculture, business and government at this popular event.

For program and registration details, access the Forum web site, send an e-mail to agforum@oce.usda.gov, or call 202-720-3050. *Register today; rates go up after February 1.*

www.usda.gov/oce

February 24-25, 2000 • Arlington, Virginia