



Cattle on Feed

Released March 17, 2000, by the National Agricultural Statistics Service (NASS), Agricultural Statistics Board, U.S. Department of Agriculture. For information on "Cattle on Feed" call Greg Thessen at (202) 720-3040, office hours 7:30 a.m. to 4:00 p.m. ET.

U.S. Cattle on Feed Up 9 Percent

Cattle and calves on feed for slaughter market in the United States for feedlots with capacity of 1,000 or more head totaled 11.33 million head on March 1, 2000. The inventory was up 9 percent from the 10.42 million head on March 1, 1999 and 9 percent above March 1, 1998.

Placements in feedlots during February totaled 1.88 million, 4 percent above 1999 and 26 percent above 1998. Net placements were 1.80 million. During February, placements of cattle and calves weighing less than 600 pounds were 351,000, 600-699 pounds were 476,000, 700-799 pounds were 596,000, and 800 pounds and greater were 457,000.

Marketings of fed cattle during February totaled 2.05 million, 12 percent above 1999 and 11 percent above 1998.

Other disappearance totaled 78,000 during February, 20 percent above 1999 and 13 percent above 1998.

Cattle on Feed in Historic 7 States Up 9 Percent

Cattle on feed March 1, 2000, in the historic 7 States for feedlots with capacity of 1,000 or more head totaled 9.70 million, up 9 percent from the previous year and 10 percent above March 1, 1998.

Placements in feedlots during February totaled 1.61 million, 3 percent above 1999 and 24 percent above 1998.

Marketings during February totaled 1.75 million, 12 percent above 1999 and 11 percent above 1998.

Other disappearance during February was 47,000 head, 12 percent above 1999 but 16 percent below 1998.

Special Note

The year-to-year relationship for placements, marketings, and other disappearance was affected by an extra day in February 2000 due to leap year. This extra day increased the percent change from February 1999. For example, adjusting placements to an average daily basis for the United States and historic 7 States would indicate February placements only slightly above and 1 percent below 1999, respectively.

**Cattle on Feed: Number on Feed, Placements, Marketings, and
Other Disappearance, 1,000+ Capacity Feedlots,
United States, March 1, 1998-2000**

Item	Number			2000 as % of	
	1998	1999	2000	1998	1999
	<i>1,000 Head</i>	<i>1,000 Head</i>	<i>1,000 Head</i>	<i>Percent</i>	<i>Percent</i>
On Feed Feb 1 ¹	10,794	10,509	*11,574	107	110
Placed on Feed During Feb	1,496	1,808	1,880	126	104
Fed Cattle Marketed During Feb	1,845	1,832	2,046	111	112
Other Disappearance During Feb ²	69	65	78	113	120
On Feed Mar 1 ¹	10,376	10,420	11,330	109	109

* Revised.

¹ Cattle and calves on feed are animals for slaughter market being fed a ration of grain or other concentrates and are expected to produce a carcass that will grade select or better.

² Includes death losses, movement from feedlots to pastures and shipments to other feedlots for further feeding.

**Cattle on Feed: Number on Feed, Placements, Marketings, and
Other Disappearance, 1,000+ Capacity Feedlots,
United States, February 1, 1998-2000**

Item	Number			2000 as % of	
	1998	1999	2000	1998	1999
	<i>1,000 Head</i>	<i>1,000 Head</i>	<i>1,000 Head</i>	<i>Percent</i>	<i>Percent</i>
On Feed Jan 1 ¹	11,155	10,667	11,475	103	108
Placed on Feed During Jan	1,726	1,933	*2,216	128	115
Fed Cattle Marketed During Jan	1,988	2,021	2,048	103	101
Other Disappearance During Jan ²	99	70	69	70	99
On Feed Feb 1 ¹	10,794	10,509	*11,574	107	110

* Revised.

¹ Cattle and calves on feed are animals for slaughter market being fed a ration of grain or other concentrates and are expected to produce a carcass that will grade select or better.

² Includes death losses, movement from feedlots to pastures and shipments to other feedlots for further feeding.

**Cattle on Feed: Number on Feed, Placements, Marketings, and
Other Disappearance, 1,000+ Capacity Feedlots,
7 States, March 1, 1998-2000 ¹**

Item	Number			2000 as % of	
	1998	1999	2000	1998	1999
	<i>1,000 Head</i>	<i>1,000 Head</i>	<i>1,000 Head</i>	<i>Percent</i>	<i>Percent</i>
On Feed Feb 1 ²	9,180	8,917	9,885	108	111
Placed on Feed During Feb	1,290	1,563	1,606	124	103
Fed Cattle Marketed During Feb	1,579	1,560	1,749	111	112
Other Disappearance During Feb ³	56	42	47	84	112
On Feed Mar 1 ²	8,835	8,878	9,695	110	109

¹ The 7 States include AZ, CA, CO, IA, KS, NE, and TX.

² Cattle and calves on feed are animals for slaughter market being fed a ration of grain or other concentrates and are expected to produce a carcass that will grade select or better.

³ Includes death losses, movement from feedlots to pastures and shipments to other feedlots for further feeding.

**Cattle on Feed: Number on Feed, Placements, Marketings, and
Other Disappearance, 1,000+ Capacity Feedlots,
7 States, February 1, 1998-2000 ¹**

Item	Number			2000 as % of	
	1998	1999	2000	1998	1999
	<i>1,000 Head</i>	<i>1,000 Head</i>	<i>1,000 Head</i>	<i>Percent</i>	<i>Percent</i>
On Feed Jan 1 ²	9,455	9,021	9,752	103	108
Placed on Feed During Jan	1,492	1,681	1,931	129	115
Fed Cattle Marketed During Jan	1,689	1,738	1,747	103	101
Other Disappearance During Jan ³	78	47	51	65	109
On Feed Feb 1 ²	9,180	8,917	9,885	108	111

¹ The 7 States include AZ, CA, CO, IA, KS, NE, and TX.

² Cattle and calves on feed are animals for slaughter market being fed a ration of grain or other concentrates and are expected to produce a carcass that will grade select or better.

³ Includes death losses, movement from feedlots to pastures and shipments to other feedlots for further feeding.

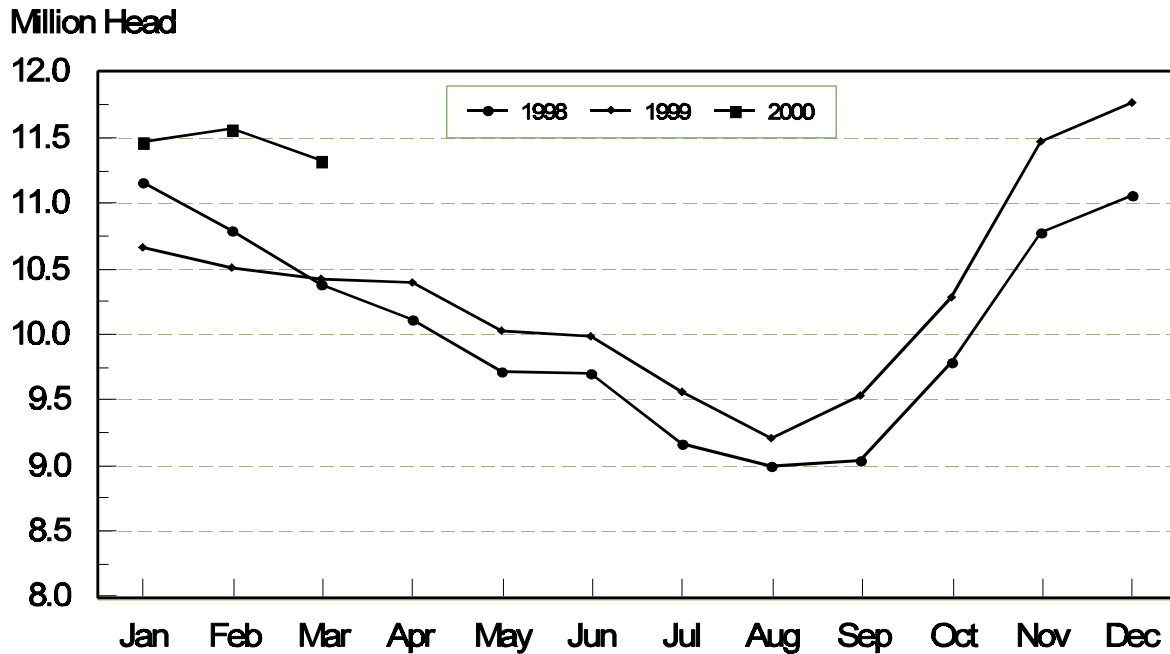
**Cattle on Feed: Number on Feed, 1,000+ Capacity Feedlots,
by Month, State, and United States 1999-2000¹**

State	Mar 1, 1999	Feb 1, 2000	Mar 1, 2000		
			Number	as % of 1999	as % of Feb
	<i>1,000 Head</i>	<i>1,000 Head</i>	<i>1,000 Head</i>	<i>Percent</i>	<i>Percent</i>
AZ	203	275	275	135	100
CA	385	415	405	105	98
CO	1,130	1,200	1,180	104	98
ID	275	300	305	111	102
IA	360	385	375	104	97
KS	2,030	2,340	2,320	114	99
NE	2,160	2,370	2,310	107	97
NM	107	113	105	98	93
OK	365	*420	400	110	95
SD	184	200	200	109	100
TX	2,610	2,900	2,830	108	98
WA	181	211	210	116	100
Oth Sts	430	445	415	97	93
US	10,420	*11,574	11,330	109	98

* Revised.

¹ Cattle and calves on feed are animals for slaughter market being fed a ration of grain or other concentrates and are expected to produce a carcass that will grade select or better.

**United States Cattle on Feed
1,000+ Capacity Feedlots**



**Cattle on Feed: Number Placed on Feed, 1,000+ Capacity Feedlots,
by Month, State, and United States 1999-2000**

State	During Feb 1999	During Jan 2000	During Feb 2000		
			Number	as % of 1999	as % of Jan
	<i>1,000 Head</i>	<i>1,000 Head</i>	<i>1,000 Head</i>	<i>Percent</i>	<i>Percent</i>
AZ	27	29	27	100	93
CA	45	57	50	111	88
CO	235	290	250	106	86
ID	57	66	70	123	106
IA	56	60	39	70	65
KS	390	520	420	108	81
NE	410	500	390	95	78
NM	8	10	10	125	100
OK	54	*62	54	100	87
SD	33	38	37	112	97
TX	400	475	430	108	91
WA	43	45	50	116	111
Oth Sts	50	64	53	106	83
US	1,808	*2,216	1,880	104	85

* Revised.

**Cattle on Feed: Number Placed on Feed by Weight Group, 1,000+ Capacity
Feedlots, by Month, State, and United States, 1999-2000**

State	During February									
	Less 600		600-699		700-799		800 Plus		Total	
	1999	2000	1999	2000	1999	2000	1999	2000	1999	2000
	<i>1,000 Head</i>	<i>1,000 Head</i>	<i>1,000 Head</i>	<i>1,000 Head</i>	<i>1,000 Head</i>	<i>1,000 Head</i>	<i>1,000 Head</i>	<i>1,000 Head</i>	<i>1,000 Head</i>	<i>1,000 Head</i>
CO	37	36	52	58	85	88	61	68	235	250
KS	60	60	145	110	125	150	60	100	390	420
NE	49	40	103	103	138	138	120	109	410	390
TX	92	110	124	145	148	125	36	50	400	430
Oth Sts	95	105	73	60	110	95	95	130	373	390
US	333	351	497	476	606	596	372	457	1,808	1,880
	During January									
	Less 600		600-699		700-799		800 Plus		Total	
	1999	2000	1999	2000	1999	2000	1999	2000	1999	2000
	<i>1,000 Head</i>	<i>1,000 Head</i>	<i>1,000 Head</i>	<i>1,000 Head</i>	<i>1,000 Head</i>	<i>1,000 Head</i>	<i>1,000 Head</i>	<i>1,000 Head</i>	<i>1,000 Head</i>	<i>1,000 Head</i>
CO	34	45	93	65	83	117	50	63	260	290
KS	60	100	165	190	145	170	50	60	420	520
NE	52	64	143	170	166	157	89	109	450	500
TX	123	150	149	175	115	110	38	40	425	475
Oth Sts	110	*130	78	*91	95	100	95	110	378	*431
US	379	*489	628	*691	604	654	322	382	1,933	*2,216

* Revised.

**Cattle on Feed: Number Marketed, 1,000+ Capacity Feedlots,
by Month, State, and United States 1999-2000**

State	During Feb 1999	During Jan 2000	During Feb 2000		
			Number	as % of 1999	as % of Jan
	<i>1,000 Head</i>	<i>1,000 Head</i>	<i>1,000 Head</i>	<i>Percent</i>	<i>Percent</i>
AZ	25	24	24	96	100
CA	40	50	52	130	104
CO	240	260	265	110	102
ID	45	70	57	127	81
IA	45	48	48	107	100
KS	380	480	430	113	90
NE	390	420	440	113	105
NM	13	13	15	115	115
OK	71	67	69	97	103
SD	32	30	36	113	120
TX	440	465	490	111	105
WA	51	59	45	88	76
Oth Sts	60	62	75	125	121
US	1,832	2,048	2,046	112	100

**Cattle on Feed: Other Disappearance, 1,000+ Capacity Feedlots,
by Month, State, and United States 1999-2000 ¹**

State	During Feb 1999	During Jan 2000	During Feb 2000		
			Number	as % of 1999	as % of Jan
	<i>1,000 Head</i>	<i>1,000 Head</i>	<i>1,000 Head</i>	<i>Percent</i>	<i>Percent</i>
AZ	1	2	3	300	150
CA	5	7	8	160	114
CO	5	10	5	100	50
ID	7	6	8	114	133
IA	1	2	1	100	50
KS	10	10	10	100	100
NE	10	10	10	100	100
NM	1	0	3	300	0
OK	3	5	5	167	100
SD	1	2	1	100	50
TX	10	10	10	100	100
WA	6	3	6	100	200
Oth Sts	5	2	8	160	400
US	65	69	78	120	113

¹ Includes death loss, movement from feedlots to pasture, and shipments to other feedlots for further feeding.

Terms and Definitions of Cattle on Feed Estimates

Cattle on feed are animals being fed a ration of grain, silage, hay and/or protein supplement for slaughter market that are expected to produce a carcass that will grade select or better. It excludes cattle being "backgrounded only" for later sale as feeders or later placement in another feedlot.

Placements are cattle put into a feedlot, fed a ration which will produce a carcass that will grade select or better, and are intended for the slaughter market.

Marketings are cattle shipped out of feedlots to a slaughter market.

Other disappearance includes death loss, movement from feedlots to pasture and shipments to other feedlots for further feeding.

Reliability of Cattle on Feed Estimates

Survey Procedures: During January and July all known feedlots in the U.S. with capacity of 1,000 or more head are surveyed to provide data for cattle on feed estimates. During the other months, all known feedlots from 17 States are surveyed. The 17 States account for 98 percent of the cattle on feed.

Estimating Procedures: These cattle on feed estimates were prepared by the Agricultural Statistics Board after reviewing recommendations and analysis submitted by each State office. Regional and State survey data were reviewed for reasonableness with each other and with estimates from the previous month when setting the current estimates.

Revision Policy: Revisions to previous estimates are made to improve month to month relationships. Estimates for the previous month are subject to revision in all States each month when current estimates are made. In February, all monthly estimates for the previous year, and the number of feedlots and annual marketings from two years ago are reviewed and subject to revisions. The reviews are primarily based on slaughter data, state check-off or brand data, and any other data that may have been received after the original estimate was made. Estimates will also be reviewed after data from the Census of Agriculture are available. No revisions will be made after that date and estimates become final.

Reliability: Since all 1000+ capacity cattle on feed operators in every State are not included in the monthly survey, survey estimates are subject to sampling variability. Survey results are also subject to non-sampling errors such as omissions, duplications, and mistakes in reporting, recording, and processing the data. The effects of these errors cannot be measured directly. They are minimized through rigid quality controls in the data collection process and through a careful review of all reported data for consistency and reasonableness.

The next "Cattle on Feed" report will be released at 3 p.m. ET on April 14, 2000.

The United States Department of Agriculture (USDA) prohibits discrimination in all its programs on the basis of race, color, national origin, gender, religion, age, disability, political beliefs, sexual orientation, and marital or family status. (Not all prohibited bases apply to all programs.) Persons with disabilities who require alternative means for communication of program information (braille, large print, audiotape, etc.) should contact the USDA's TARGET Center at 202-720-2600 (voice and TDD).

To file a complaint of discrimination, write USDA, Director, Office of Civil Rights, Room 326-W, Whitten Building, 14th and Independence Avenue, SW, Washington, D.C., 20250-9410, or call 202-720-5964 (voice or TDD). USDA is an equal opportunity provider and employer.

ACCESS TO REPORTS!!

For your convenience, there are several ways to obtain NASS reports, data products, and services:

INTERNET ACCESS

All NASS reports are available free of charge on the worldwide Internet. For access, connect to the Internet and go to the NASS Home Page at: <http://www.usda.gov/nass/>. Select "Today's Reports" or Publications and then Reports by Calendar or Publications and then Search, by Title or Subject.

E-MAIL SUBSCRIPTION

There are two options for subscribing via e-mail. All NASS reports are available by subscription free of charge direct to your e-mail address. 1) Starting with the NASS Home Page at <http://www.usda.gov/nass/>, click on **Publications**, then click on the **Subscribe by E-mail** button which takes you to the page describing e-mail delivery of reports. Finally, click on **Go to the Subscription Page** and follow the instructions. 2) If you do NOT have Internet access, send an e-mail message to: usda-reports@usda.mannlib.cornell.edu. In the body of the message type the word: **list**.

AUTOFAX ACCESS

NASSFax service is available for some reports from your fax machine. Please call 202-720-2000, using the handset attached to your fax. Respond to the voice prompts. Document 0411 is a list of available reports.

PRINTED REPORTS OR DATA PRODUCTS

CALL OUR TOLL-FREE ORDER DESK: 800-999-6779 (U.S. and Canada)
Other areas, please call 703-834-0125 FAX: 703-834-0110
(Visa, MasterCard, check, or money order acceptable for payment.)

ASSISTANCE

For **assistance** with general agricultural statistics or further information about NASS or its products or services, contact the **Agricultural Statistics Hotline** at **800-727-9540**, 7:30 a.m. to 4:00 p.m. ET, or e-mail: nass@nass.usda.gov.